

# PLAYBILL

OLDE ESSEX STAGE COMPANY

## ROMEO & JULIET

5<sup>th</sup> Annual  
Shakespeare in the Park

June 20<sup>th</sup> - Middleton MA  
June 21<sup>st</sup> - Haverhill, MA  
June 22<sup>nd</sup> - Lawrence, MA  
June 27<sup>th</sup> - Hamilton, MA  
June 28<sup>th</sup> - Beverly, MA  
June 29<sup>th</sup> - Salem, MA

Showtime: 6:30pm  
Free Admission



**OLDE ESSEX  
STAGE COMPANY**



 **Mass  
Cultural  
Council**



# About OESC

---

The Olde Essex Stage Company is dedicated to bringing the magic of live theater to our community, enriching lives through exceptional performances, innovative productions, and a commitment to artistic excellence. Grounded in the rich tradition of storytelling, we strive to captivate audiences with compelling narratives, foster a collaborative environment for local talent, and serve as a cultural hub that celebrates diversity and inspires creativity. With a passion for the arts and a dedication to the craft, we aim to ignite imaginations, provoke thought, and leave a lasting impression on all who experience the magic of the stage with us. The OESC is a 501 (c) (3) registered non-profit dedicated to the intrinsically human art of storytelling.

---

# Thank You

The Olde Essex Stage Company would like to thank the following individuals for their time and support over the past few months.

The Lawrence Cultural Council

The Beverly Cultural Council

The Salem Cultural Council

The White Fund

Greater Lawrence Community Boating Program

Beverly Parks Department

The Haverhill Recreation Department

The National Park Services

The Hamilton Parks Department

The Salem Playhouse



**Romeo** - Darcy Lefferts

**Juliet** - Mikayla Bishop

**Friar** - Billy Lewand

**Nurse** - Sophie Leiton Toomey

**Capulet** - Mike Obremski

**Lady Capulet** - Lauren Casey

**Prince/Prologue** - Ryan Stack

**Paris** - Michael Mazzone

**Montague** - Carl Schultz

**Mercutio/Apothecary** - Ian Tomarakos

**Benvolio/Balthazar** - Amelia Smith

**Tybalt/Watch** - Kristin Harris

**Sampson/Fr. John/Watch** - Cameron Nye

**Gregory/Page to Paris** - Raya Young

**Abraham/Peter** - Michael Barry



# CREW

---

## Production / Creative

Director - Ashley Skeffington

Stage Manager - Tom Rash

Assistant Stage Manager - Kyle Robertson

Fight Choreographer - Jay Connolly

Intimacy Coordinator - Cassie Foote

Costume Coordinator- Molly Farber

Costume Coordinator- Monica Pechhold

Producer - Kevin Welch

Producer - Gary Mannion

Producer - James Blatchford

Script Edited by  
Ashley Skeffington

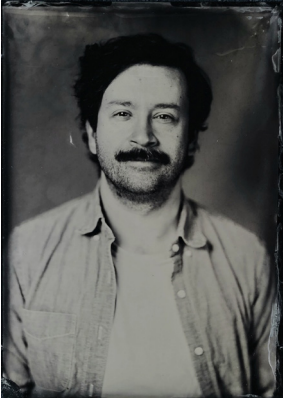
# Meet the Cast



Darcy Lefferts



Mikayla Bishop



Billy Lewand



Sophie Leiton Toomey



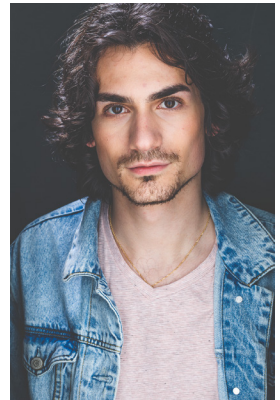
Mike Obremski



Lauren Casey



Ryan T. Stack



Michael Mazzone



# Meet the Cast



Carl Schultz



Amelia Smith



Kristin Harris



Cameron Nye



Raya Young



Michael Barry

# Meet the Cast

**Darcy Lefferts (He/They), (Romeo)** This is Darcy Lefferts' debut with Olde Essex Stage Company. Recent roles include: Owen (Translations) [Marblehead Little Theatre] and Arthur Dimmesdale (Scarlet Letter) [History Alive]. While attaining their B.A. in Theatre Arts from the Barrington Center for the Arts, Darcy's most notable characters were Mozart (Amadeus), Dmitri Gromov (Blood And Gifts), Touchstone (As You Like It). When playing the part of Darcy Lefferts they can be found singing shanties and folk songs with their band Crowninshield Punch!

**Mikayla Bishop (She/Her), (Juliet)** is thrilled to be making her debut with Olde Essex Stage Company for their 5th Annual Shakespeare in the Park! Mikayla graduated from Emerson College with a B.A. in Theatre Education and has taught around Massachusetts and Spain, using dramatic arts as a tool to teach various subjects and age levels. Happiest outdoors, Mikayla found her niche in nature education and has most recently worked in forest schools across the north shore. Previous performance credits include: Celia in As You Like It (Castle Hill Productions), Marie Antoinette in The Revolutionists (Firehouse Center for the Arts), Malcolm in Macbeth (U.S. collaboration with the Shakespeare Institute in Stratford-upon-Avon), Hester Prynne in The Scarlet Letter (History Alive), and Nell in Daemonologie: Signals & Sirens (Intramersive Media). When not in the woods or on stage, Mikayla can be found singing in a local folk band Crowninshield Punch, teaching yoga, sniffing every flower she sees, and making her ancestors proud by trying to learn Italian. Mikayla would like to thank this remarkable cast and crew, her cat, and her beloved partner who is the rock to her barnacle. For nature education content and to follow Mikayla's performance journey, you can connect with her on instagram: @mikki.of.earth.



# Meet the Cast

**Billy Lewand (He/Him), (Friar)** Billy Lewand is an actor, director, and songwriter based out of Salem, MA. He's excited to return to Olde Essex after playing Caliban in last year's production of *The Tempest*. Acting Credits: *A View From the Bridge* (Marco, MLT), *The Resistible Rise of Arturo Ui* (Arturo Ui, MLT), *The Tempest* (Caliban, Olde Essex Stage Company), *The Importance of Being Ernestine* (Cecil, Castle Hill Productions), *Edward II* (Edward II, CAST). Directing Credits: *Two Gentlemen of Verona* (Forthcoming Fall 2025, Cape Ann Shakespeare Troupe), *A Few Good Men* (Forthcoming Spring 2026, MLT), *The Actor's Nightmare* (CAST), *Twelfth Night* (Co-Director, CAST). As always, love to Emily and Junebug. Thank you for coming!

**Sophie Leiton Toomey (She/Her), (Nurse)** is an award-winning autistic multi-hyphenate artist across film and stage and a BFA graduate of NYU Tisch School of the Arts where she studied at Playwrights Horizons, the Lee Strasberg Institute, and Stonestreet Studios. While there, Sophie acted in over 120 NYU Films (Yes really), 5 musicals, and 25 different plays. Select credits include *Hamlet* (Hamlet), *Lady Anne* (Richard III), *The Host* (The Place), *Ross* (Macbeth), *Emmeline* (TimeShare), and *Mrs. Sganarelle* (Sganarelle.) Thank you to Ashley and Old Essex Stage Company for this wonderful opportunity with this amazing group of people. IG: @charmedkikyo

**Mike Obremski (He/Him), (Capulet)** Michael Obremski is thrilled to perform with the OESC. He began his lifelong love of outdoor Shakespeare playing young lover roles such as Romeo, Ferdinand and Claudio with The Sleepy Lion Theater in Topsfield, MA. A graduate of the Brown University / Trinity Rep MFA Acting program, he has played with NYC theater makers at The Atlantic Theater Company, 13th Street Repertory Company and the Antimatter Collective, where he often played less savory roles such as corrupting angels, anti-social punks and angry fathers. Back on the North Shore he has had a blast working with the Imaginary Beasts, playing comedically and most memorably as a singing, dancing Swedish Midwestern lumberjack in *Paul Bunyan* and the *Winter of the Blue Snow*. He currently teaches drama and is the Technical Director at St. John's Prep in Danvers, MA, where he gets to express his Nick Bottom Mechanical-es-que side building sets with his talented students.





# Meet the Cast

---

**Lauren Casey (She/Her), (Lady Capulet)** is delighted to be making her Olde Essex Stage Company debut with *Romeo & Juliet*. Some favorite past credits include Corie Bratter (*Barefoot in the Park*; Colonial Chorus Players) Eurydice (*Eurydice*; Firehouse Center for the Arts), Ann Deever (*All My Sons*; WCLOC), Iphigenia (*Iphigenia*; Holy Cross), and Emily Webb (*Our Town*; Holy Cross). Lauren would like to thank her family for encouraging her to pursue her passions, and her friends for being the greatest hype (wo)men on the planet.

**Ryan T. Stack (He/Him), (Prince/Prologue)** Ryan is very excited to be working his second production with The Olde Essex Stage Company, and having the chance to express his love of Shakespeare. Graduating from Suffolk with BA in theater in 2020, Ryan has been working in Boston for about 4 years as an actor and performing in historical reenactments. In his free time, he likes to play basketball.

**Michael Mazzone (He/They), (Paris)** Michael Mazzone (Paris) is thrilled to return to Olde Essex Stage Company for this production of *Romeo and Juliet*! Recent production credits include Evan Wyler in *As Bees in Honey Drown* (Theater UnCorked), Paul in *Barefoot in the Park* (Colonial Chorus Players), Romeo in *Romeo and Juliet* (Curtain Call Theatre Company), Ferdinand in *The Tempest* (Olde Essex Stage Company), and Antipholus of Syracuse in *The Comedy of Errors* (Quannapowitt Players). Up next, you can see Michael in *A Midsummer Night's Dream* as Puck with Vokes Players. Michael would like to thank their family and friends for endlessly supporting Michael's creative endeavors, as well as the cast and crew for their collaboration, humor and talent beyond compare.



# Meet the Cast

**Carl Schultz (He/Him), (Montague)** Carl Schultz is debatably an actor who definitively resides in Beverly, Massachusetts. Previous acting credits include King of Navarre (Love's Labour's Lost), Orlando (As You Like It), Daniel Webster (Goodnight Captain White), and Arthur Dimmesdale (Scarlet Letter). Carl performed in and helped produce two award-eligible feature films (Youthmin, Mass Hysteria) and voices two distinct sailors in the PEM's maritime exhibit. Outside of theater, Carl performs in the folk-band Crowninshield Punch and co-hosts the history podcast Firebrands. For added street cred, he serves on the Board of the Salem Historical Society.

**Ian Tomarakos (He/Him), (Mercutio/Apothecary)** is an actor based in Salem, MA. He recently graduated from Salem State University with a BFA in Theater Performance. This his first production with Old Essex Stage Company. Acting credits: Matt Galloway (The Laramie Project), Evelyn Oakleigh (Anything Goes), Patchy the Pirate (SpongeBob Squarepant), Adam/C (The complete works of William Shakespeare abridged), Kreon (Antigone), Shylock (Something Rotten), Ladislav Sipos (She Loves Me), Peter Shaw (Silent Sky), Orlando (As you like it). Awards: National Irene Ryan Region 1 Finalist (2024)

**Amelia Smith (She/Her), (Benvolio/Balthazar)** is an actor, writer, director, and costumer living in Beverly. She has been a devotee of Shakespeare for the past twenty years, and is thrilled to be making her debut with Olde Essex Stage Company in this beloved classic. Previous Shakespeare roles include Malcolm in Macbeth and Viola in Twelfth Night with The Bard Brigade; Francisca and the other Juliet in Measure for Measure with Still Small Theatre; Snout in A Midsummer Night's Dream with North Shore Players; Mamillius and Perdita in The Winter's Tale, Juliet in Romeo and Juliet, and Maria in Love's Labour's Lost with The Upstart Crows of Salem. When she is not performing, Amelia can usually be found fangirling over Disney movies, playing tabletop RPGs with her husband, and forcing affection on her cat. She would like to thank Ashley, Tom, the Olde Essex production team, and the entire cast for all the work they have put into this production, and all the fun we've had along the way. "Strike, drum!"



# Meet the Cast

**Kristin Harris (She/Her), (Tybalt/Watch)** is an Actor, Creative Professional, and Historian originally from the Philadelphia area, who has lived in Salem since 2013. She received her B.A. in American Studies from Penn State focusing on early American history, and her M.A. from Umass Boston in American Studies focusing on depictions of death and the supernatural in popular media, and its impact on public history.

Currently, Kristin is the Research Coordinator for the Boston Tea Party Ships & Museum, where she has worked as a Historical Interpreter, Actor, and Leadager at different times since beginning her work with the museum in 2017. Prior to her work in Boston, Kristin was a tour guide and docent at the Witch House in Salem, as well as a walking tour guide with various local companies. Kristin has been working with museums as an employee and consultant for over 13 years, including consulting for exhibits and programming on the Salem Witch Trials for the Peabody Essex Museum, as well as aiding in writing and running historical immersive theater performances for various museums on the North Shore in various roles for Intramersive Media LLC. Since the history to theater pipeline is a real phenomenon, Kristin has now found herself treading the boards (or grass) more and more often as an Actor over the years, and this is (proudly) her fourth year working with the Olde Essex Stage Company. She has taken on the role of Stage Manager, Actor, Co-Writer, Co-Director, and Dramaturg in various productions, with various theater companies over the years.

In addition to her work with museums, Kristin has also been a paranormal researcher and investigator for over 15 years, and has worked with both the Mass Ghost Hunters Paranormal Society (which helped run Salem Con, Salem's first paranormal convention at its founding, for 2 years), and the Phantom Finders of New England. She has been published for her work on the famous Salem medium Charles Henry Foster in the all-femme/non-binary authored Feminine Macabre paranormal journal. In her spare time Kristin is a rabid D&D nerd and reader, and loves escaping to the woods to howl at the moon with friends, and spend time with her husband Scott, their two cats, Luna and Minerva, and their various bugs. Yes, bugs.



# Meet the Cast

**Cameron Nye (They/He), (Sampson/Fr. John/Watch)** is beyond excited to make his professional debut with Olde Essex Stage Company! Cameron is currently perusing his Bachelor of Fine Arts in Theater at Salem State University. Previous credits include: Duke Frederick (As You Like It), Nick Bottom (Something Rotten!), Prior/Louis/Joe/Roy Swing (Angels in America Part 1: Millenium Approaches) and Heubner (Heubner the Reluctant) Awards: 2025 Kennedy Center American College Theater Festival MTSA Finalist and 2025 MTSA Past Chair Award. Love to Mom! @cameronnye\_

**Raya Young (She/Her), (Gregory/Page to Paris)** is a Boston based theater artist currently pursuing her Bachelor of Fine Arts degree at Salem State University. She is so excited to be a part of her first production with Olde Essex Stage Company! Some of her favorite credits with other companies include Celia in As You Like It, Henrietta Leavitt in Silent Sky, Puck in A Midsummer Night's Dream, Viola in Twelfth Night, and numerous roles in Cry Innocent The People VS. Bridget Bishop. This spring she earned the Best Scene Partner Award at Kennedy Center American College Theater Festival (Region 1).

**Michael Barry (He/Him), (Abraham/Peter)** This is Michael's second time being on the Olde Essex Stage, after debuting in 2022 as the titular role in Julius Caesar. Michael is also the co-director and co-founder of The Misfit Artist Company, and the Drama Director at Danvers High School. Some of his favorite Shakespearean roles include: Iago (Othello), Romeo (R&J), Berowne (Love's Labour's Lost), Malcolm (Macbeth, where he met his wife), and Fabian (Twelfth Night). He wants to thank his family and friends for their love and support, especially his wife, Stephanie. Thank you for allowing me to briefly step away from Misfits to do this show. I love you so much.



# Meet the Crew



Ashley Skeffington



Tom Rash

Kyle Robertson

Jay Connolly

Cassie Foote

Molly Farber





# Meet the Crew

---



Monica Pechhold



Kevin Welch



Gary Mannion



Jim Blatchford



# Meet the Crew

---

**Ashley Skeffington (She/Her)**, (Director) is a local actor, director, educator, and musician. She is thrilled to be working with OESC for the second time after appearing as Malvolio in Twelfth Night two summers ago. Her short play The Menders recently premiered with Cape Ann Shakespeare at Gloucester Stage. Recent directing credits include Silent Sky at Salem State University and As You Like It with Castle Hill productions. Ashley has served as the Drama Director at Marblehead High School since 2016. Special thanks to Gary, Kevin, and Jim for their trust and support, to Jay and Cassie for their expertise, to this phenomenal company of actors, and of course, to her husband Tom, for agreeing to be her stage (and general life) manager.

**Tom Rash (He/Him)**, (Stage Manager) is the wild card, the underdog, and the unsung hero of the gang. A man of few words but plenty of eccentricities, Tom is the janitor at Paddy's Pub, though he often finds himself caught in much stranger, often hazardous, situations. With a love for rats, a lack of hygiene, and a truly unique sense of logic, Tom marches to the beat of his own, slightly off-kilter drum. Despite his chaotic lifestyle and questionable decisions, Tom's loyalty to his friends (or, more accurately, his "family") is unmatched, even if he has a hard time keeping up with their more devious plans. Whether he's writing songs on a strange and magical keyboard or attempting to navigate the complicated world of "Tom work," Tom's heart is in the right place, even if his brain isn't always in sync. Off-stage, he's probably trying to figure out a new adventure or theorizing about the deeper meanings of macaroni.

**Monica Pechhold (She/Her)**, (Costume Designer) This is Monica's first time interning with Olde Essex Stage Company. She is co-costume designer with Mollie Farber. Monica is a junior at Marblehead High School, where she has designed costumes for seven shows (everything from Beowulf to Legally Blonde!). She loved costuming Romeo and Juliet, as it was a unique experience to work outside of high school theater. She would like to thank her family and co-costumer for their support in helping put together the costumes, as well as Olde Essex Stage Company and Ashley Skeffington for allowing her the opportunity to help with the show.

# Meet the Crew

**Kevin Welch (He/Him)**, (Producer) is a vampire with an extensive and colorful history, one that spans centuries, and yet, somehow, still feels perpetually underachieved. Born in the distant past in the ancient land of Revere, Kevin's early life was marked by relentless ambition, fierce battles, and a thirst for conquest, both literally and figuratively. A former warrior and master of untold riches, he grew bored with earthly power and ascended into immortality, cursed to live for eternity. Now, instead of ruling vast empires, Kevin spends his nights in the company of fellow vampires in a modern suburban home, grappling with his lack of direction in this strange new world.

Despite his self-proclaimed title of "The Relentless," Kevin's true strength lies not in his physical prowess (he's still working on that) but in his deep and slightly misguided sense of honor, loyalty, and love for his "fellow creatures of the night." Whether he's struggling to understand the complexities of modern life or attempting to conquer the world through mildly successful schemes, Kevin remains steadfast in his belief that he was destined for greatness, one vampire-infested night at a time.

**Jim Blatchford (He/Him)**, (Producer) James has served on the OESC Board since its inception. Currently James serves as the Town Clerk for West Newbury, Massachusetts and is an Advisory Board member on both the MVRTA and MBTA. Previously serving as the Assistant City Clerk for Haverhill, Massachusetts, and a member of the Planning Board and School Committee for the City of Lawrence. James received his BLA from UMass Lowell with a concentration in History and Political Science and has a Graduate Certificate in Public Management from UMass Dartmouth.

**Gary Mannion (He/Him)**, (Producer) is honored to have been given the chance to produce this production with such a talented cast and crew. Gary graduated from Merrimack College '12 with a degree in Political Science and Theater. Gary first stepped on the stage when he started tap dancing at the age of two. He has been privileged to perform with many different groups over the years, most recently he had his directorial debut in the Olde Essex Stage Company's inaugural production of *Much Ado About Nothing*, favorite past roles include Bobby in *Cabaret*, Nutcracker Prince in *The Nutcracker*, and Sabu in *The Producers*.

# Support OESC

---

The financial burden of producing high-quality productions, maintaining a talented ensemble, and providing an enriching experience for our audiences is immense.

Your generous contributions will enable us to continue our mission of bringing outstanding theatre to found spaces within our community. With your help, we can stage productions that challenge both the performers and audience members. We can perform in parks, theatres, barbershops, or anywhere we can find that has the ability to let us tell a story. We can invest in top-notch technical equipment and create sets and costumes that will help bring our stories to life.

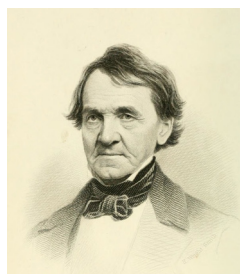
Visit our website [www.oldeessexstagecompany.org](http://www.oldeessexstagecompany.org) to learn more about how you can financially support the OESC.

---

This performance was staged in part with grant funding from the following organizations:

**Beverly  
Cultural  
Council**

**Lawrence  
Cultural Council**



**The White Fund**

