

PLAYBILL

LYNCH PARK & DERBY WHARF
OLDE ESSEX STAGE COMPANY

THE OLDE ESSEX STAGE COMPANY PRESENTS

TWELFTH NIGHT

JUNE 17TH & 18TH

LYNCH PARK - BEVERLY, MA

JUNE 23RD & 24TH

DERBY WHARF - SALEM, MA

3RD ANNUAL SHAKESPEARE IN THE PARK





About OESC

The Olde Essex Stage Company assembles local dramatic creators to activate found spaces across the North Shore with high quality theatrical performance. Founded in 2021, the Olde Essex Stage Company is now in its third year of providing quality theatre to the region that is dedicated to the intrinsically human art of storytelling. The Olde Essex Stage Company is a 501 (c) (3) registered non-profit.

Thank You

The Olde Essex Stage Company would like to thank the following individuals for their time and support over the past few months.

The Salem Cultural Council
The Beverly Cultural Council
The City of Salem MA
Salem Arts Director Julie Barry
Salem Arts & Culture Planning Assistant Chelsea Titchenell
The City of Beverly MA
Beverly Parks Director Bruce Doig
Skylar Mannion
Carolyn Welch
Kathryn Mannion
Jim Smolinsky
Jim Blatchford
Laura Santana
Kathy Mannion
Jillian Chueka



Viola.....	Caitlyn Luria
Olivia.....	Jess Emerson
Orsino.....	Thain Emrys Bertin
Fool.....	Mitch Kiliulis
Malvolio.....	Ashley Skeffington
Maria.....	Brit Christopher
Sir Toby Belch.....	Jacqueline Coughlin
Sir Andrew Aguecheek.....	Tom Rash
Sebastian.....	Declan Geoffrion Scannell
Antonio/Curio.....	Francine Davis
Fabia/Captain/Officer.....	Rachel Miller
Musican.....	Scott Harris



CREW

Production / Creative

DirectorStephen Chueka

Technical DirectorKevin Welch

Stage Manager Kristin Harris

Ast. Stage Manager.....John McLaughlin

Marketing Director.....Gary Mannion

Marketing Consultant..... Jillian Chueka

Script Edited by
Maryanne Cartier & Stephen Chueka

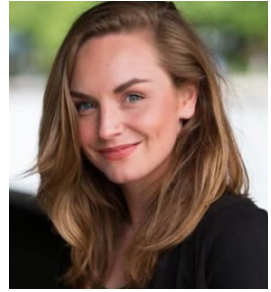
Meet the Cast



Caitlyn Lauria



Brit Christopher



Ashley Skeffington



Jess Emerson



Mitch Kiliulis



Thain Emrys Bertin



Tom Rash



Jacqueline Coughlin



Declan Geoffrion-Scannell



Francine Davis



Rachel Miller



Scott Harris

Meet the Cast

Caitlyn Lauria (She/Her), (Viola) is so thrilled to join Olde Essex Stage Company this summer! Caitlyn has just recently graduated from Salem State University with a BFA in Theatre Performance. Some previous credits include Female Ingenue (Indecent), Cinderella (Into the Woods), Orlando (Orlando), and Helen Jones (Machinal). She'd like to thank all her professors as well as friends and family for their continued 'love and support'.

Jess Emerson (She/Her), (Olivia) is pumped to be a part of the Olde Essex Twelfth Night cast! Last summer she got the chance to work with the company as Cassius in their production of Julius Caesar, and she's glad to be back on the green again this summer. She'd love to thank her parents for their continued support, her best friends Rachel (aka Fabia) and Christina, and her sweet baby cat George. Enjoy the show!

Thain Emrys Bertin (He/Him), (Orsino)

In fair and far Montana, actors dream
Of looming cities built in steel and glass,
Conjuring concrete junglescaples agleam
With neon signs and statues forged from brass;
They dream of traffic jams and midnight trains,
Jackhammers in the morning, one-room flats,
The scent of sidewalk garbage, acid rains,
And swarms of pizza-gnawing subway rats.
Just such a soul was Thain, who filled a van
With little more than clothes and fantasy.
"Farewell," he bid his friends, and then began
His search for metropolitic majesty.
Manhattan left him feeling bruised and sore.
He moved again. So far, he likes it more.

Mitch Kiliulis (He/Him), (Fool) is thrilled to be playing one of Shakespeare's most famous fools! Previous roles include: Trevor in The Play That Goes Wrong (Lyric Stage Company of Boston), Joey in Phyro-Giants, Paul in Moon Over Buffalo, Dwight in Dead Man's Cell Phone (Mass Arts Center), Bobby in American Buffalo (Pilgrim Soul Productions). Mitch is a proud graduate of the Roger Williams University Theatre Department and the Stella Adler Studio of Acting Summer Conservatory.



Meet the Cast

Ashley Skeffington (She/Her), (Malvolio) is a local actor, director, musician, and educator. She is thrilled to be making her debut performance with Olde Essex Stage Company in Twelfth Night. Notable past roles include Amiens in As You Like It, Desdemona in Othello, and Sheila in An Inspector Calls. Many thanks to the entire company for all their hard work and support.

Brit Christopher (She/Them), (Maria)

Brit Christopher. Ever heard of her? Yeah, me neither.

Jacqueline Kelley Coughlin (She/Her), (Sir Toby Belch) is ecstatic to be joining this cast for her first production with Olde Essex Stage Company. She has a Performing Arts degree from The Massachusetts College of Liberal Arts, and has always had a soft spot for Shakespeare. She has played various roles over the years, but this is her first Toby Belch. She is also a visual artist, and you can find some of her work at [@jackiecoughlinart](#) on instagram. Enjoy the show!

Tom Rash (He/Him), (Sir Andrew Aguecheek) Rockport High School (2008), BFA Actor Training, The Hartt School (2012); Tom is a mail carrier in Salem and has recently directed Marblehead High School's "Beowulf" and "Legally Blonde". This is his first production with Olde Essex Stage Co. For Castle Hill Productions Tom played Mercutio in "Romeo and Juliet" (2022). Imaginary Beasts, Mop "Princess and the Pea" (2016). Gloucester Stage, Leo "4000 Miles"(2014). Marblehead Little Theater, Trinculo "The Tempest" ('13), Bottom "A Midsummer Nights Dream"('12). Tom would like to thank The Salem Post Office, NALC Branch 25, all of my neighbors and my family for helping make this happen.

Declan Geoffrion-Scannell (He/Him), (Sebastian) This will be Declan's fourth show with the Olde Essex Stage Company. He's also recently appeared in Metropolis with the Post-Meridian Radio Players. Twelfth Night is one of his favorite Shakespeares and he's very excited to help bring it to life.

Meet the Cast

Francine Davis (She/Her), (Antonio/Curio) is a Boston-based actor/director who is happy to be back with Olde Essex Stage Company, where she appeared in last October's *The Devil in Salem*. Most recently, she was seen as Hannah in *The Spitfire Grill* (Elemental Rep). This production of *Twelfth Night* is Francine's fifth: she has previously directed it once and performed in it three times. Other acting credits include: title roles in *Saint Joan* (Piccadilly) and *The Taming of the Shrew* (R.O.S.E.); and Beatrice in *Beata Beatrix* (Boulevard), for which she received an EMACT Festival Best Actress nomination.

Rachel Miller (She/Her), (Fabia/Captain/Officer) is excited to return to the stage after 16 years! Some of her favorite past roles include Adelaide in *Guys and Dolls*, Jo March in *Little Women*, and Olivia in *Twelfth Night*. Rachel would like to thank her family and friends for their care and support as well as Olde Essex Stage Company and her incredible cast mates for the opportunity to rediscover her first love; the theater!

Scott Harris (He/Him), (Musician) is a Museum Sales Manager with the Boston Tea Party Ships & Museum from Salem, MA with a B.A. in American History from Penn State Abington, and an M.A. in American Studies from University of Massachusetts Boston. He has worked in tourism and history for over 10 years with various historic sites on the North Shore and in Boston. In addition to his background in history, Scott has over 20 years of musical experience, and has played with various rock and jazz groups over his many years, with experience playing piano, guitar, and both acoustic and electric bass, with acoustic jazz bass being his main instrument. This year, Scott is joining Olde Essex Stage Company for the first time, as a stage musician, and hopes to continue to gig as a jazz musician in the Greater Boston Area. In his spare time, Scott loves playing video games, hanging with his cats and wife, and watching his favorite football teams New England Revolution and Liverpool FC. Fun Fact: Scott successfully ran the Boston Marathon in 2022, for Cradles to Crayons Boston as a part of their team while he was an employee there (he is also terrified of Ostriches).



Meet the Crew



Stephen Chueka



Kevin Welch



Kristin Harris



John McLaughlin



Gary Mannion



Meet the Crew

Stephen Chueka (He/Him), (Director) Stephen is excited to return for his third production with Olde Essex Stage Company after appearing previously as Brutus (Julius Caesar) and Claudio (Much Ado About Nothing). Stephen helped build, worked at, and acted for a non-profit, community theatre in Connecticut for over 7 years before moving to Boston and graduating with a BA in History.

Stephen then bridged his love for education, history, and theatre through his work in museum programming for another 6+ years. He now works as an HR professional and is enjoying the chance to return to his passions. When not on stage, you can find Stephen adventuring with his wife, playing D&D, or spending time with his dog, Pika. Past credits include: Oedipus (These Seven Sicknesses), Keanu (FAB! or Whatever), Rev. Paris (Crucible), James Keller (The Miracle Worker), and Emmett (Legally Blonde the Musical).

Kevin Welch (He/Him), (Technical Director) Born and raised in Honesdale, PA to a Pennsylvania Dutch family of beet farmers. Kevin enjoys a prolific career as a beet farmer at Schrute Farms, which is home to a renowned bed and breakfast. He's also the owner of the Scranton Business Park, which houses Dunder Mifflin Scranton. As a dedicated resident of the greater Scranton area, Kevin served as a volunteer sheriff in Lackawanna County. His dedication and loyalty to the field of paper are apparent in multiple sales records he set as an employee at Dunder Mifflin.

Gary Mannion (He/Him), (Marketing Director) is honored to have been given the chance to produce this production with such a talented cast and crew. Gary graduated from Merrimack College '12 with a degree in Political Science and Theater. Gary first stepped on the stage when he started tap dancing at the age of two. He has been privileged to perform with many different groups over the years, most recently he had his directorial debut in the Olde Essex Stage Company's inaugural production of Much Ado About Nothing, favorite past roles include Bobby in Cabaret, Nutcracker Prince in The Nutcracker, and Sabu in The Producers.



Meet the Crew

Kristin Harris (She/Her), (Stage Manager) is a Historian and Podcast Host from Salem, Massachusetts with an B.A. in Early American History from Penn State University and an M.A. in American Studies from UMass Boston, specializing in studying the role of the paranormal, death culture, and folklore and its effects on popular media. Kristin has been a public historian for many years, first starting her career working at the Witch House, and the 1630 Pioneer Village in Salem as a tour guide for both, as well as giving public history and ghost tours in Salem.

Kristin also specializes in the history of the Salem Witch Trials, and has consulted on exhibit material and community events for the Peabody Essex Museum and other local historical sites. Currently, Kristin works as both the Research Coordinator at the Boston Tea Party Ships & Museum, and the Dramaturg and Historian for Intramersive Media LLC, focusing on the use of folklore and history to create immersive theatrical productions. Kristin discovered her passion for the intersection of theater and history while working for the BTPSM, and this is her second time working with Olde Essex Stage company!

John McLaughlin (He/Him), (Ast. Stage Manager) is thrilled to be spending his 3rd Shakespearesummer with the Olde Essex Stage Company in its 2023 production of Twelfth Night. Although he has performed in live theater in various capacities for over a decade, this is John's second experience fulfilling a technical role in a production. In addition to OESC, he has previously acted and actively participated with such performance groups as the Merrimack College OnStagers (N. Andover, Mass.) and the Nashua (N.H.) Theater Guild.

While he is disappointed that he was not recently selected to become the next permanent host of Jeopardy!, he is nevertheless grateful to have been offered the opportunity to learn the technical ropes, and to be reunited with such wonderfully talented people among the cast & crew. In his off-time, John enjoys reading, making strawberry rhubarb pies and learning to play Hank Williams songs on his guitar. Huzzah!



Support OESC

The financial burden of producing high-quality productions, maintaining a talented ensemble, and providing an enriching experience for our audiences is immense.

Your generous contributions will enable us to continue our mission of bringing outstanding theatre to found spaces within our community. With your help, we can stage productions that challenge both the performers and audience members. We can perform in parks, theatres, barbershops, or anywhere we can find that has the ability to let us tell a story. We can invest in top-notch technical equipment and create sets and costumes that will help bring our stories to life.

Visit our website www.oldeessexstagecompany.org to learn more about how you can financially support the OESC.

This performance was staged in part with grant funding from the following organizations:

**Beverly
Cultural
Council**

Salem
Cultural
Council

