

MONTHLY DRAINING REQUIREMENTS



1. Remove soaked cookware, rinse and store storeway



Power OFF



Unplug

1b). Turn OFF power supply
Remove the Power cord from the Outlet



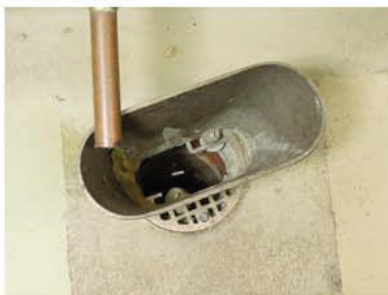
2. Connect the PVC connector to the PowerTank® drain valve and fasten



2b) Keep the drain valve CLOSED



2c) Connect the supplied plastic tube and slip over the PVC connector



3. Locate floor drain



3b) Place plastic tube into the floor drain



3c) Open drain valve allowing the used Enviosoak® to drain from the Tank



4. Once liquid has completely drained, remove remaining grime and discard



4b) Rinse Tank with clean water



5. CLOSE the drain valve, Repeat the INSTALLATION SETUP INSTRUCTIONS FOR THE LARGE TANK