

# Wi-Fi Setup



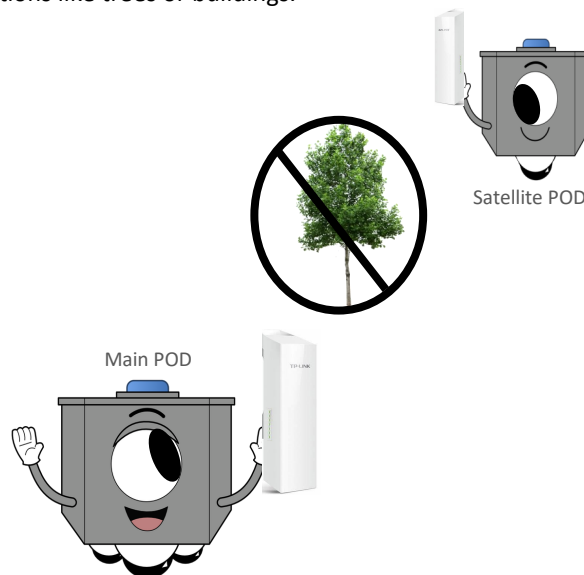
## 1 Connect "AP" transmitters to Main POD

Labeled AP1A and/or AP1B. Ex. name **PODName-AP1A**. Using Cat6 cable, plug into black connectors under POD, labeled Wi-Fi. Mount transmitter with Cat6 connection at the bottom. Point to Satellite POD.



## 2 Point "AP" transmitter towards area where Satellite POD will be mounted.

Line of site is necessary. Make sure there are not obstructions like trees or buildings.



## 3 Connect "CS" transmitter to Satellite POD

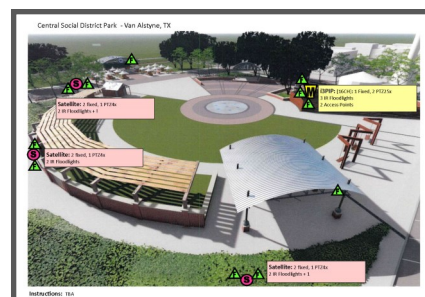
If multiple Satellites, connect transmitter to Satellite POD with matching name. Example: **PODName** connects to **PODName-CS1A**. Point transmitter towards Main POD.



## 4 Follow Map Instructions for Multiple Satellite Systems

If a site map was included with your POD and emailed to you, please follow it.

It is important to have the transmitters with the matching PODs; to have the "CS" Client Station transmitters pointing to the assigned "AP" Access Point transmitters and to have the PODs at the right locations.



Sample Map