



Frequently Asked Questions

How do I view and download video from the POD?

You can connect to the POD via cellular, wi-fi or wireless. View live video and move your pan-tilt-zoom cameras using the included software, Internet Explorer or smartphone app. Search, playback and download video remotely as well.

How much video or how many days of video can the POD store?

From 14 days up to a few months depending on how you configure each camera and how much activity there is in the area. You can choose recording speed, quality, motion sensitivity, motion fields, schedule, etc. for each camera in which cases, some PODs have recorded up to 15 months. There is also the option of upgrading the standard 2TB hard drive to 20TB.

Is it really portable/mobile?

The POD weighs just around 30 pounds and comes with a custom mount that straps onto a pole. It only requires 110 power which you can get easily when it is mounted to a streetlight that has a photocell by using our photocell power adapter. It's so easy that many clients install and move their PODs themselves.

How far can the pan-tilt-zoom camera go?

The pan-tilt-zoom cameras on our standard POD can read license plates from up to 2 blocks or 200 yards away. (See picture on POD Features panel in this brochure)

Is there a solar option?

The PODs and Satellite PODs can be made to work with solar. We do offer a Solar Power Station that includes the solar panel and Li-Ion battery. Keep in mind - the larger the POD, the larger the Solar Power Station will have to be and the less portable it becomes.



Contact Us

Contact Us Today For More Information or To Schedule a Demo

818-906-1212 Los Angeles
918-215-3606 Tulsa

info@securitylines.us

www.securitylines.us



COMPLETE CAMERA SYSTEM



Affordable
Portable
Expandable



All-in-One System



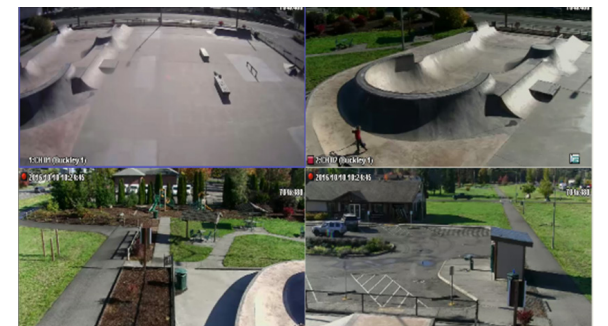
With 4 camera views, the i4POD is the affordable camera solution for parks and public areas.

Force Multiplier



Quick to deploy and needing only 110 power makes the POD versatile for monitoring areas of concern.

Deterrent

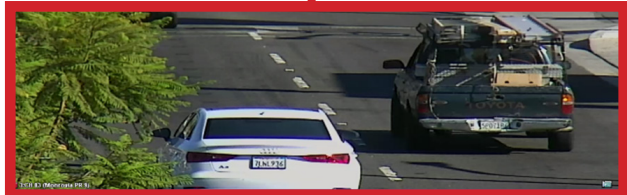


The POD's flashing blue strobe light and 24/7 live view and recording makes it a valuable tool for deterring unwanted activity.



POD Features

- ★ Up to 4 Camera Views with 3 Pan-Tilt-Zoom Cameras & 1 Fixed on a single device
- ★ 2TB of Storage in onboard Video Server so recording does not rely on wireless signal (upgradable to 20TB)
- ★ Up to 45 days of video storage, in some cases 6 months depending on preferred settings (with 2TB)
- ★ Central Monitoring Software, Web and Smartphone Viewing
- ★ Infrastructure for Storage and Video Server at Station or Office is NOT needed
- ★ Minimal Wireless System needed (if cellular is not used) because recording is directly on board
- ★ No Per Camera or Per Computer Software Licensing Fees or Firmware/Software Upgrade Fees
- ★ Easily moved from location to location since it only requires 110 power and is simple to install



Pan-Tilt-Zoom cameras can read license plates from up to 2 blocks or 200 yards away.



POD Models



i4-POD-P
3 Pan-Tilt-Zoom Cameras
1 Fixed Camera
\$7,995



i4-POD-S
3 Fixed Cameras
1 Pan-Tilt-Zoom Camera
\$6,995



i2-POD
1 Fixed Camera
1 Pan-Tilt-Zoom Camera
\$5,495



i4-POD-PIP
1 Fixed Camera
1 Pan-Tilt-Zoom 25x Zoom
2 Pan-Tilt-Zoom 4x Zoom
\$8,995
For Satellite Systems



i4-POD-SIP
3 Fixed Cameras
1 Pan-Tilt-Zoom 25x Zoom
\$8,495
For Satellite Systems



i2-POD-IP
1 Fixed Camera
1 Pan-Tilt-Zoom Camera
\$6,495
For Satellite Systems



Satellite POD System

The **i2IP**, **i4SIP**, and the **i4PIP** PODs are IP based portable systems that can add smaller satellite camera PODs that connect and record back to it wirelessly. A Satellite POD System can have up to 16 cameras.



Satellite PODs wirelessly connect and record to IP POD's hard drive.

Satellite PODs can have up to 4 cameras.

- 1CamSat:** Satellite POD with 1 Fixed Camera \$1,250
- 2CamSat:** Satellite POD with 2 Fixed Cameras \$2250
- 3CamSat:** Satellite POD with 3 Fixed Cameras \$3250
- 4CamSat:** Satellite POD with 4 Fixed Cameras \$4250

Replace a fixed camera with a Pan-Tilt-Zoom camera for an additional \$750.



FlexPOD

The FlexPOD is the newest member of our POD Systems. Like all our PODs, the FlexPOD is quick to deploy and only requires power. The difference is video is recorded directly to the micro-SD card in each camera and can also record back to the client's existing server if needed via Wi-Fi or cellular.

*For those already using **Milestone, Genetec, etc.**, the FlexPOD can make your system portable too!*



Flex2
2 Fixed Cameras
\$2,995



FlexP25
1 Fixed Camera
1 Pan-Tilt-Zoom
25x Zoom
\$3,795



Flex2Axis
1 Fixed Camera
1 Pan-Tilt-Zoom
10x Zoom
\$4,795



FlexP332
3 Pan-Tilt-Zoom Cameras
32x Zoom
\$8,995

Optional Cellular Router \$500