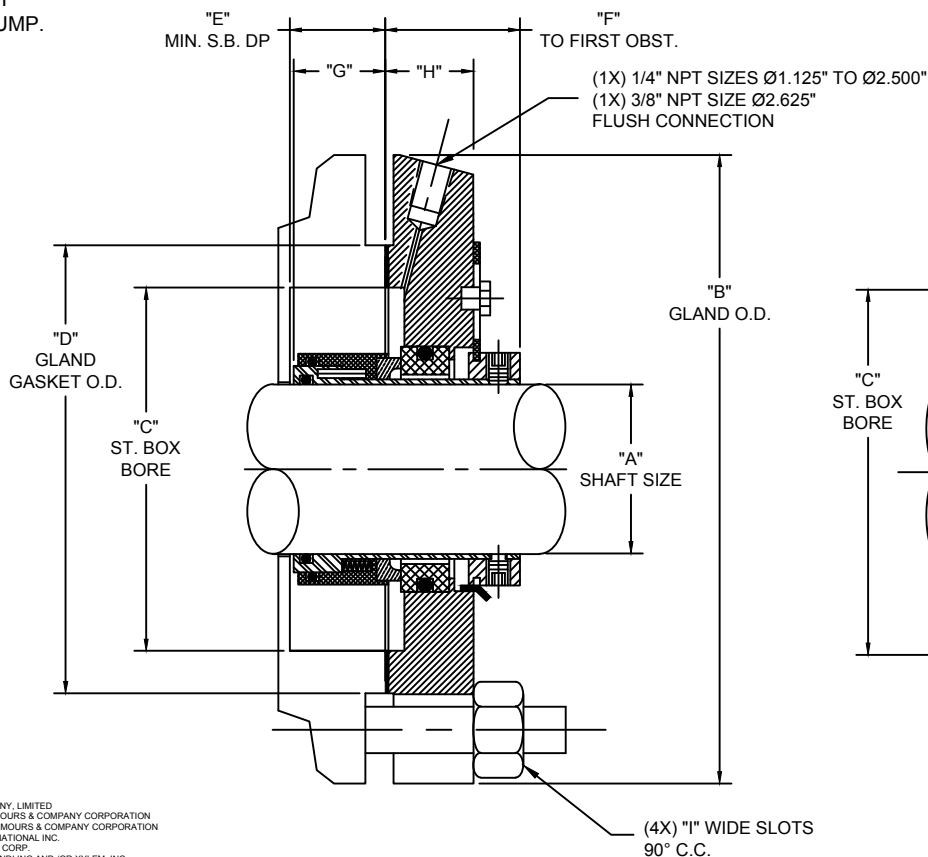


GADDIS G1 CARTRIDGE SEAL RANGE DWG FOR ANSI PUMPS BIG BORE

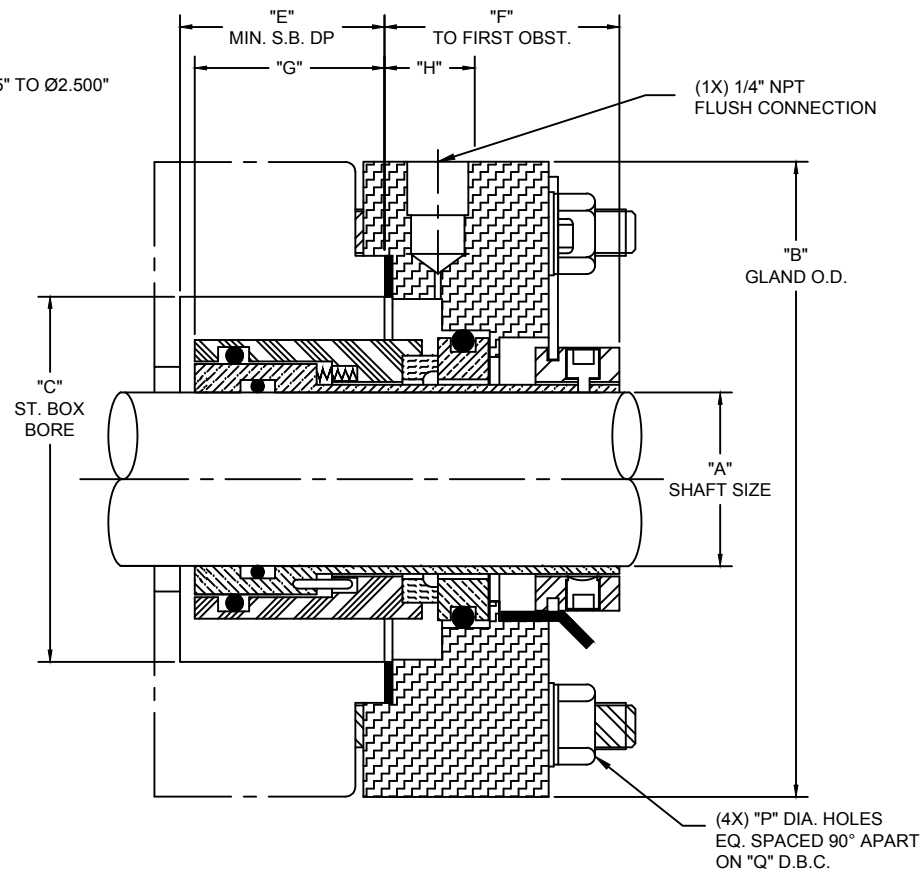
"A" SHAFT SIZE	"B" GLAND O.D.	"C" ST BOX BORE	"D" GG O.O.D.	"E" MIN S.B. DP.	"F" TO FIRST OBST.	"G" ROTARY DEPTH	"H" TO FRONT OF GLAND	"I" SLOT WIDTH	"J" BOLT/STUD DIA	"K" MIN. DIA.	"L" MAX. DIA.	"M" BOLT/STUD DIA.	"N" MIN. DIA	"O" MAX. DIA.	"P" BOLT HOLE DIA	"Q" DIA BOLT CIRCLE
Ø1.375" BG	Ø5.250"	Ø2.875"	NA	.66"	1.69"	.60"	1.19"	NA	NA	NA	NA	NA	NA	NA	7/16"	Ø4.500"
Ø1.375" BD	Ø4.750"	Ø2.875"	NA	.66"	1.69"	.60"	1.19"	NA	NA	NA	NA	NA	NA	NA	7/16"	Ø4.000"
Ø1.750"	Ø6.375"	Ø3.375"	Ø4.375"	.95"	1.50"	.89"	1.04"	5/8"	3/8"	4-7/8"	6-3/8"	1/2"	5"	6-3/8"	NA	NA
Ø1.875"	Ø6.000"	Ø3.625"	Ø4.125"	.95"	1.52"	.89"	1.05"	5/8"	3/8"	4-5/8"	6"	1/2"	4-3/4"	6"	NA	NA
Ø2.125"	Ø7.000"	Ø3.875"	Ø4.625"	1.00"	1.39"	.95"	.92"	3/4"	1/2"	5-1/4"	7"	5/8"	5-3/8"	7"	NA	NA
Ø2.500" BG	Ø8.000"	Ø4.500"	NA	1.01"	1.56"	.95"	1.06"	NA	NA	NA	NA	NA	NA	NA	11/16"	Ø6.750"
Ø2.625"	Ø7.000"	Ø4.625"	Ø5.370"	1.06"	2.13"	.96"	1.50"	3/4"	1/2"	5-15/16"	7"	5/8"	6-1/16"	7"	NA	NA

- NOTE:
 1) BG = GOULDS® 3196
 BIG BORE PUMPS.
 2) BD = DURCO® MARK III
 GROUP 1 BIG BORE PUMP.

SLOTTED GLAND PLATE



D.B.C. GLAND PLATE



AFLAS® - REGISTERED TRADEMARK - ASAHI GLASS COMPANY, LIMITED
 VITON® - REGISTERED TRADEMARK - E. I. DU PONT DE NEMOURS & COMPANY CORPORATION
 TEFLON® - REGISTERED TRADEMARK - E. I. DU PONT DE NEMOURS & COMPANY CORPORATION
 HASTELLOY® - REGISTERED TRADEMARK - HAYNES INTERNATIONAL INC.
 DURCO® PUMPS - REGISTERED TRADEMARK - FLOWSERVE CORP.
 GOULDS® PUMP - REGISTERED TRADEMARK - ITT FLUID HANDLING AND/OR XYLEM, INC.

(4X) "I" WIDE SLOTS
 90° C.C.

(4X) "P" DIA. HOLES
 EQ. SPACED 90° APART
 ON "Q" D.B.C.

BOLT CIRCLE CHART	OPERATING CONDITIONS	MATERIALS OF CONSTRUCTION	TITLE: G-1 SINGLE CARTRIDGE SEALS FOR ANSI PUMPS WITH BIG BORE STUFFING BOXES SIZE: Ø1.375" TO Ø2.625" SHAFT/SLEEVE
FOR "J" DIAMETER BOLTS/STUDS MINIMUM DIAMETER "K" MAXIMUM DIAMETER "L" FOR "M" DIAMETER BOLTS/STUDS MINIMUM DIAMETER "N" MAXIMUM DIAMETER "O"	MAXIMUM SPEED - 3600 R.P.M. MAXIMUM PRESSURE - 250 P.S.I.G. MAXIMUM TEMPERATURE - 350° F WITH AFLAS® & VITON® MAXIMUM TEMPERATURE - 212° F WITH EPR MAXIMUM RUNOUT - 0.003" T.I.R. MAXIMUM END PLAY - 0.006" T.I.R.	ROTARY SEALING FACE - CARBON / SILICON CARBIDE STATIONARY SEALING FACE - SILICON CARBIDE ELASTOMERS - AFLAS® / VITON® / EPR METAL WORK - 316SS SPRINGS - HASTELLOY® "C" GLAND GASKET - TEFLON®	DWG #: A118-07-30-02 DATE: 07/30/18