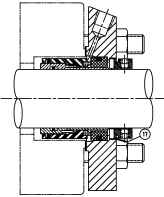


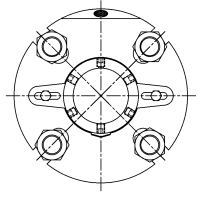
GADDIS INC - MECHANICAL SEALS & PARTS

Fraction	Inch	mm	Fraction	Inch	mm
1/64	0.016	0.397	17/64	0.266	6.747
1/32	0.031	0.794	9/32	0.281	7.144
3/64	0.047	1.191	19/64	0.297	7.541
1/16	0.063	1.588	5/16	0.313	7.938
5/64	0.078	1.984	21/64	0.328	8.334
3/32	0.094	2.381	11/32	0.344	8.731
7/64	0.109	2.778	23/64	0.359	9.128
1/8	0.125	3.175	3/8	0.375	9.525
9/64	0.141	3.572	25/64	0.391	9.922
5/32	0.156	3.969	13/32	0.406	10.319
11/64	0.172	4.366	27/64	0.422	10.716
3/16	0.188	4.763	7/16	0.438	11.113
13/64	0.203	5.159	29/64	0.453	11.509
7/32	0.219	5.556	15/32	0.469	11.906
15/64	0.234	5.953	31/64	0.484	12.303
1/4	0.250	6.350	1/2	0.500	12.700



Gaddis Inc.

MECHANICAL SEALS & PARTS



US TOLL FREE PHONE: 1-888-681-4665 US TOLL FREE FAX: 1-877-681-4661 LOCAL PHONE: 843-474-8266 LOCAL FAX: 803-335-5184

EMAIL: sales@gaddisinc.com

WEBSITE: <https://gaddis-mechanical-seals.com>

Fraction	Inch	mm	Fraction	Inch	mm
33/64	0.516	13.097	49/64	0.766	19.447
17/32	0.531	13.494	25/32	0.781	19.844
35/64	0.547	13.891	51/64	0.797	20.241
9/16	0.563	14.288	13/16	0.813	20.638
37/64	0.578	14.684	53/64	0.828	21.034
19/32	0.594	15.081	27/32	0.844	21.431
39/64	0.609	15.478	55/64	0.859	21.828
5/8	0.625	15.875	7/8	0.875	22.225
41/64	0.641	16.272	57/64	0.891	22.622
21/32	0.656	16.669	29/32	0.906	23.019
43/64	0.672	17.066	59/64	0.922	23.416
11/16	0.688	17.463	15/16	0.938	23.813
45/64	0.703	17.859	61/64	0.953	24.209
23/32	0.719	18.256	31/32	0.969	24.606
47/64	0.734	18.653	63/64	0.984	25.003
3/4	0.750	19.050	1	1.000	25.400