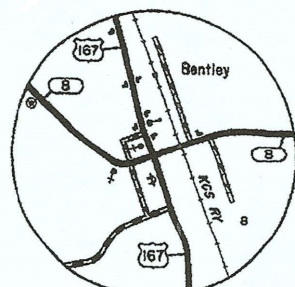
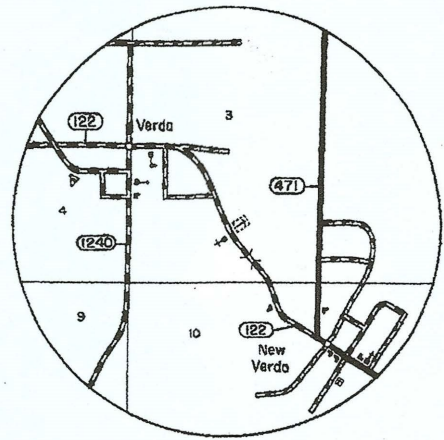


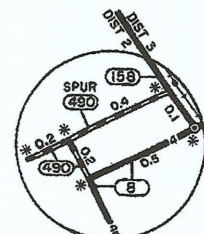
Justice of the Peace and Constable Districts



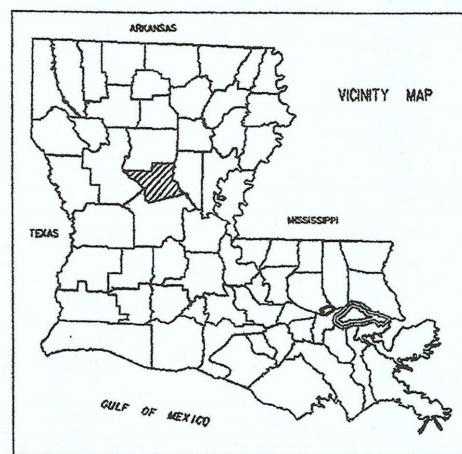
BENTLEY
SEC. 8 T6N R1W
SCALE IN MILES



VERDA
SEC. 3, 10 T8N R4W
SCALE IN MILES



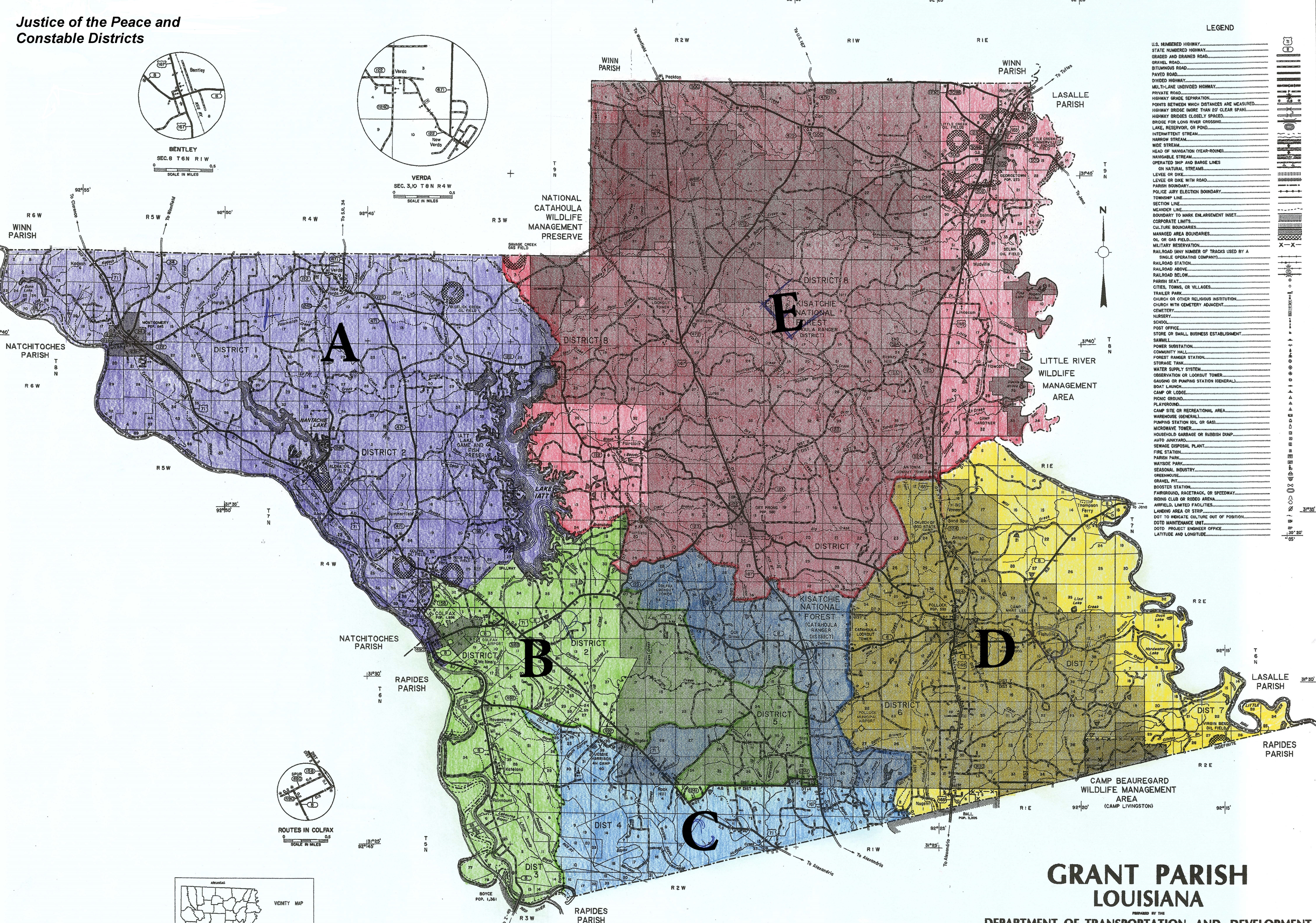
ROUTES IN COLFAX
SCALE IN MILES



REVISION SCHEDULE	
INVENTORY DATA	1995
GRAPHIC DATA SCANNED	1995
MAP DATA REVISED	1999

Copies of this map are available for public use at nominal cost. DEPARTMENT OF TRANSPORTATION AND DEVELOPMENT, OFFICE OF PLANNING AND PROGRAMMING, 1000 PINE ST., SUITE 1000, BATON ROUGE, LA 70804-0105, (504) 386-1100.

REPRODUCTION OR ALTERATION WITHOUT PERMISSION OF THE BUREAU OF PLANNING & PROGRAMMING IS PROHIBITED.



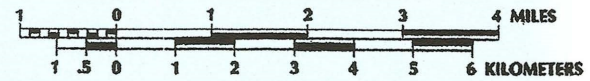
LEGEND

- U.S. NUMBERED HIGHWAY
- STATE NUMBERED HIGHWAY
- GRAVEL AND DRAINED ROAD
- GRAVEL ROAD
- BITUMINOUS ROAD
- PAVED ROAD
- DIVIDED HIGHWAY
- MULTI-LANE UNDIVIDED HIGHWAY
- PRIVATE ROAD
- HIGHWAY GRADE SEPARATION
- POINTS BETWEEN WHICH DISTANCES ARE MEASURED
- HIGHWAY BRIDGE MORE THAN 20' CLEAR SPAN
- HIGHWAY BRIDGES CLOSELY SPACED
- BRIDGE FOR LONG RIVER CROSSING
- LAKE, RESERVOIR, OR POND
- INTERMITTENT STREAM
- NARROW STREAM
- WIDE STREAM
- HEAD OF NAVIGATION (YEAR-ROUND)
- NAVIGABLE STREAM
- OPERATED SHIP AND BARGE LINES ON NATURAL STREAMS
- LEVEE OR DIKE WITH ROAD
- PARISH BOUNDARY
- POLICE JURY ELECTION BOUNDARY
- TOWNSHIP LINE
- SECTION LINE
- MEANDER LINE
- BOUNDARY TO MARK ENLARGEMENT INSET
- CORPORATE LIMITS
- CULTURE BOUNDARIES
- MANAGED AREA BOUNDARIES
- OIL OR GAS FIELD
- MILITARY RESERVATION
- RAILROAD (ANY NUMBER OF TRACKS USED BY A SINGLE OPERATING COMPANY)
- RAILROAD STATION
- RAILROAD ABOVE
- RAILROAD BELOW
- PARISH SEAT
- CITIES, TOWNS, OR VILLAGES
- TRAILER PARK
- CHURCH OR OTHER RELIGIOUS INSTITUTION
- CHURCH WITH CEMETERY ADJACENT
- CEMETERY
- NURSERY
- SCHOOL
- POST OFFICE
- STORE OR SMALL BUSINESS ESTABLISHMENT
- SAW MILL
- POWER SUBSTATION
- COMMUNITY HALL
- FOREST RANGER STATION
- STORAGE TANK
- WATER SUPPLY SYSTEM
- OBSERVATION OR LOOKOUT TOWER
- GAUGING OR PUMPING STATION (GENERAL)
- BOAT LANDING
- CAMP OR LODGE
- PICNIC GROUND
- PLAYGROUND
- CAMP SITE OR RECREATIONAL AREA
- WAREHOUSE (GENERAL)
- PUMPING STATION OIL OR GAS
- MICROWAVE TOWER
- HOUSEHOLD GARBAGE OR RUBBISH DUMP
- AUTO JUNKYARD
- SEWAGE DISPOSAL PLANT
- FIRE STATION
- PARISH PARK
- WAYSIDE PARK
- SEASONAL INDUSTRY
- GREENHOUSE
- GRAVEL PIT
- BOOSTER STATION
- FARGROUND, RACETRACK, OR SPEEDWAY
- RIDING CLUB OR HUNDED AREA
- HUNTING LIMITED FACILITIES
- LANDING AREA OR STRIP
- DOT TO INDICATE CULTURE OUT OF POSITION
- DOTS MAINTENANCE UNIT
- DOTS PROJECT ENGINEER OFFICE
- LATITUDE AND LONGITUDE

**GRANT PARISH
LOUISIANA**

DEPARTMENT OF TRANSPORTATION AND DEVELOPMENT
Office of PLANNING & PROGRAMMING

IN COOPERATION WITH THE
U.S. DEPARTMENT OF TRANSPORTATION
FEDERAL HIGHWAY ADMINISTRATION



POLYCONIC PROJECTION - NORTH AMERICAN DATUM

POPULATION FROM 1990 CENSUS