



318-448-1647  
Alexandria, LA 71303

3007 North Mac Arthur Drive

---

To:	Grant Parish Highway Dept	QUOTATION NO.	4924-1
	200 Main St		
	318-627-3157	Date:	4/9/2024
Attn:	Cody Gongre		

---

\*\*\*\*\*Please refer to our quotation number in all correspondence\*\*\*\*\*

---

DESCRIPTION:

2024 Superior Bro DT74F  
Tier 4 Final 3.4L Turbo Diesel  
2Year/2,000Hr Warranty  
8' Coreless Tube Brush  
Heavy duty 3/4 ton rear axle w/ leaf spring suspension  
Heavy duty 12 gauge core cover  
Safety engine shutdown system & can display  
Hydrostatic drive transmission w/load & pressure compensated pump  
Full instrument package, power steering, seat belt & traffic horn  
Certified Roll - Over Protection Structure w/ canopy & rear view mirror  
ST225/75R15" 8 ply radial tires  
4 - wheel hydraulic drum brakes  
Electronic brush speed control w/ on- off control  
Electronic joystick-swing, lift, float & down pressure functions  
Full engine cover w/ side & rear swing out doors  
Large capacity dual element air cleaner & precleaner  
30 gallon fuel tank  
Dual hydrostatic transmission foot controls  
Back-up alarm  
Enclosed Cab w/front wiper & one door  
Pressurized air conditioning - 35,000 BTU  
Heater & defroster fan  
Rear window wiper  
Tilt & Telescoping steering column  
Suspension Seat  
170 galk 171 gallon water sprinkler system  
7 1/2 Ft. 8 1/2 Ft. front scraper blade w/electronic controls  
Extension air cleaner stack  
Enginaire turbo precleaner  
Spare 16" tire & wheel  
16" tires & wheels--w/ LT235/85R16 10-ply tires  
Light Group- includes **Halogen headlamps**, turn signals, stop & **Halogen tail lights**  
Work lights-2 single beam, side mounted  
Work lights-2 single beam, rear mounted  
Strobe Light- Amber color  
Audible engine alarm w/light (low oil press- high water temp.)  
Hydraulic temperature gauge

SALE PRICE: \$ **84,977.00** plus tax

Respectfully Submitted,

Heath Parker

Sales Representative

Buyer's Acceptance,

Grant Parish Highway Dept

We are pleased to offering financing through **Scott Financial Services**. We offer competitive rates and simplified financing options on a wide range of both new and used equipment to qualified buyers. With our simple and fast credit approval process, we will help you put your equipment to work. Please ask your salesman about financing

**ALL APPLICABLE TAXES TO BE ADDED TO PRICES QUOTED ABOVE.**

We thank you for the opportunity to quote and look forward to the opportunity to serve you!

Telephone: 318-448-1647

Fax: -

[www.scottcompanies.com](http://www.scottcompanies.com)

## Grant Parish Police Jury

### Superior Broom DT74F Optional Equipment

#### Optionals

Pentle eye surge brake tow bar w/safety chains & tow lights	\$2,369.00
Hydrastatic drive hand control	\$1,067.00
Front Fenders	\$452.00
Hydraulic Tank 100 Mesh Suction Strainer	\$380.00
41 Gallon Tank	\$330.00

# Superior Broom

## Superior Broom

Model  
DT74J  
DT74C  
DT74F



*"Superior Quality  
& Performance!"*





**OPTIONAL SCRAPER BLADE**

Cutting edge is 7 1/2 ft. electronic joystick control with power angle, down pressure & float positions for cleaning packed material.



**OPTIONAL GUTTER BRUSH**

Electronic joystick control Gutter brush has 27 inch brush head with hydraulic power angle, tilt, down pressure and float. Brush is mounted to front bumper for better visibility and folds up when not in use.



**RADIATOR-OIL COOLER ACCESS DOOR**

Standard swing out door for easy cleaning and maintenance of your radiator, oil cooler & A/C condenser are vital to dependable operation. Proper hydraulic oil temperatures are key to extending the life of your hydraulic components. Superior Broom makes it easy to keep your coolers clean.



**TOW PACKAGE**

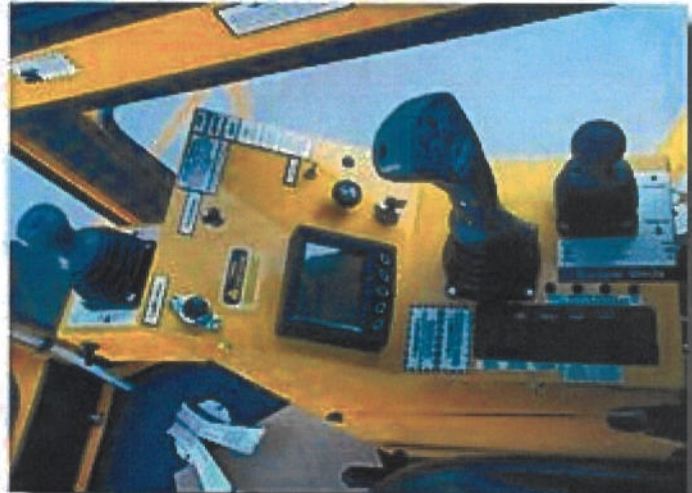
Neutral shift for towing makes moving your Superior Broom easy with fold down low hitch and safety chains.

# Superior Broom



## BROOM CONTROLS

Electronic joystick control for all broom functions with red LED lights indicating brush speed, full gauge package with tachometer, oil & water gauge, volt meter, fuel gauge and sealed rocker switches with red indicator lights.



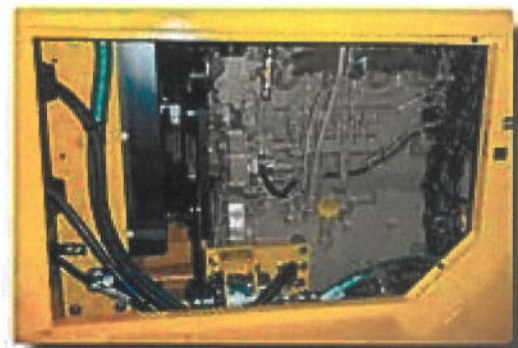
## OPTIONAL CONTROLS

Additional electronic joystick controls shown above control front scraper blade and right side gutter brush attachment. All controls are located at operator's station for easy access.



## TRAVEL CONTROL

Dual hydraulic transmission foot controls are more responsive and comfortable for operator comfort.



## EASY ENGINE ACCESS

Engine cover doors on right and left sides provide easy access for maintenance.



## OPTIONAL BRUSH SIDE SHIFT

Brush will shift 12 inches from center right or left for sweeping outside tires. You can now avoid tire sidewall wear and have better operator visibility to the brush.

*Specifications:***MODELS****DT74J**Powered by  
John Deere**DT74C**Powered by  
Caterpillar**DT74F**Powered by  
FPT**ENGINE:****John Deere diesel 4.5 liter (276 cid)**  
74 hp, turbo charged, Tier 4 Final**Caterpillar diesel 3.4 liter (208 cid)**  
74 hp, turbo charged, Tier 4 Final**FPT diesel 3.4 liter (208 cid)**  
74 hp, turbo charged, Stage 5**DIMENSIONS:**Weight: 5,300 lbs. standard unit (w/canopy)  
Height - 103 inches (w/canopy)  
Length - 172 inches  
Width - 96 inches (transport)**CHASSIS:**Welded 6" channel w/gussets at all stress  
points. Certified roll over protection (ROPS)  
structure meets and exceeds all Federal  
Standards**STEERING:**

Orbital; hydraulic power steering

**HYDRAULIC TANK:**

22 gallon capacity

**FUEL TANK:**

30 gallon capacity

**COOLING SYSTEM:**Heavy duty vertically mounted radiator  
and oil cooler w/8,000 cfm suction fan**FRONT AXLE:**

Heavy-duty truck type (full oscillating)

**REAR AXLE:**3/4 Ton-heavy duty semi-float differential w/  
spring suspension system**WHEELS:**

Four - 6 bolt (15" x 6") steel spoke

**TIRES:**

Four radial ST225/75 R15 load range D

**BRAKES:**Four wheel hydraulic w/dual master  
cylinder and mechanical disc parking brake.**TRANSMISSION:**Infinitely variable hydrostatic pump and  
motor driving a differential rear axle  
through a 2-speed gearbox.  
Low range: 0-12 mph  
High range: 0-34 mph**HYDRAULIC SYSTEM:**Load compensated piston pump  
39 GPM w/2,500 PSI operating pressure  
10 micron high pressure suction filter**BRUSH CORE:**8 foot all welded tubular construction  
Direct drive motor enclosed in core (200 RPM)  
Sweeping width: 96 inches  
10" x 32" Prostran water type brush filler**SWEEPING ANGLE:**45 degrees (left and/or right)  
Circle swing frame mounted on 10 heavy-duty  
sealed, tapered bearings with debris guards.**BRUSH COVER:**12 gauge steel, 140 degree full brush length with  
end plate covers and full length rock deflector**BROOM CONTROLS:**Electronic joystick control for brush on-off with  
trigger for float, push buttons for broom on/off  
and speed control. Broom lift, adjustable down  
pressure and swing right to left through joystick  
movement.**CONTROLS & ACCESSORIES:**Padded seat with arm rests and seat belts,  
dual element air cleaner & pre-cleaner, 12 volt  
ignition system. 950 CCA battery and back-up  
alarm. Gauges include tachometer, hour meter,  
water temp, oil pressure, fuel and volt meter.*Optional Equipment:*

Coreless poly tube brush

1/2 poly &amp; 1/2 wire water brush

Poly strip brush

Brush side shift

Reversing brush

Brush down pressure limit system

Enclosed cab w/ one door

Enclosed cab w/ two doors

35,000 BTU pressurized air conditioning

Heater &amp; defroster fan

HEPA cab filter

Rear window wiper

Front &amp; rear window washers

West coast mirrors

Operator suspension seat

12 volt air ride suspension seat

Tilt &amp; Telescoping steering column

AM/FM stereo

Back up camera &amp; color display screen

Audible engine alarm

Hydraulic temperature gauge

170 gallon water system

7 1/2 ft. front scraper blade

Gutter brush attachment

Extension air cleaner stack

Engine air rotary pre-cleaner

Front fenders

Emergency brake safety system

LT235/75R15 10 ply tires

LT235/85R16 10 ply tires

Spare tire

Custom paint color

Transmission hand control

Vandalism locks

Tool box

License plate holder

Fire extinguisher

Light group

Strobe light

LED light packages

16 inch LED light bar

4 LED mini strobe light bars

Tow bar