

General Catalogue

OMS

Your Dental Unitness

OMS, strong expertise and know-how in dental equipment manufacturing, developed on 60 years, is worldwide acknowledged by dentistry operators as the leading and most reliable supplier of dental units in hospitals, clinics, labs and practices.

OMS combines solidity of a cutting-edge industry with flexibility of a creative atelier, always using first-rate quality materials, unique made-in-Italy design and application of highly functional ergonomic features. Customized dental units are engineered for specific requests, both in terms of type of equipment, performance options as well as wide range of upholstery colours and fabrics for dental chair. For all these reasons, by choosing OMS you pick your uniqueness: "Your dental Unitness"

Indice

Universal Top with Moon ambidextrous	20
Universal Top with Moon	22
Universal Top with Moon folding legrest	24
Universal Top with hanging hoses	26
Universal Top with Kart	27
Carving Plus with microscope	28
Carving Plus with Moon	30
Carving	32
Carving with hanging hoses	34
Carving with Kart	35
Universal Star	36
Universal Top with Star	38
Carving with Star	39
Virtuosus Plus	40
Patavium Plus	42
Esse Plus	44
Virtuosus	46
Linea Patavium	48
Linea Esse	50
Linea Esse with hanging hoses	52
Linea Esse con Kart	54
Tempo 9 ELX Kart	55
Punto Kart	56



Choose the configuration of your cuspidor/dental chair.

Cuspidor/dental chair represents the first and most important configuration for your most suitable dental unit. OMS offers 3 options, all easy to be used and with great benefits, meeting every work habit and different needs:



1

Floor-standing cuspidor column with cantilever chair.



2

Floor-standing cuspidor column and floor-standing chair.



3

Swivelling and suspended cuspidor assembled to floor-standing chair.



1

Floor-standing cuspidor column with cantilever chair.

Stability, hygiene, ergonomics. The cantilever chair over a baseplate with small footprint is designed to guarantee perfect stability through a balanced assembly with floor-standing cuspidor column. Baseplate is in steel, resistant to any cleaning agents and corrosion.

This chair is highly ergonomic in that it encourages effortless posture changes with its side lift system, backrest and headrest adjustments and repositionings, like spittoon position and last position. Folding legrest, if chosen, also facilitates access to and standing up from the chair. A dentist and assistant can deliver oral health care comfortably thanks to wide treatment areas for many operations, like orthodontics, dental hygiene and surgery.



2

Floor-standing cuspidor column and floor-standing chair.

Outstanding stability for the achievement of dental treatment precision and accuracy. Since cuspidor column and chair are independent elements, any kind of vibration is reduced to the minimum. This configuration is ideal for the use of extremely sensitive instruments, like a microscope or an operation lamp with camera. Moreover, the double connections for drainage pipes – under the column or under the chair – make the dental unit installation user-friendly and adjustable to the needs of each kind of practice or clinic.



3

Swivelling and suspended cuspidor assembled to floor-standing chair.

This configuration highlights at best the operating method of the “Italian school” dentistry. A dentist is allowed to swivel the suspended cuspidor up to 90°, facilitating an assistant’s operability. Rinsing position can be activated at any moment, by just lifting the backrest without further movements. This is the right solution for optimization of treatment times, efficient work organization and achievement of medical staff’s and patient’s mutual satisfaction.



Set up your doctor console for an extremely functional delivery.

OMS allows you to arrange your instruments on a doctor console based on your work habits, room space available and specialization requirements.

It can be assembled to a dental unit (All-Around delivery), ceiling-mounted together with operating lamp (Star delivery) or on a mobile kart (Kart delivery).



All-Around

Doctor console assembled to dental unit either with S.P.R.I.D.O. (i.e. retractable balanced hoses) or Hanging hoses.



Star

Ceiling-mounted doctor console with S.P.R.I.D.O. technology (i.e. retractable balanced hoses) and/or operating lamp.



Kart

Ceramic doctor console on mobile kart with Hanging hoses.



All-Around

Doctor console assembled to dental unit either with S.P.R.I.D.O. (i.e. retractable balanced hoses) or Hanging hoses.

The choice depends on a dentist's preferences and work habits as well as on a practice needs and location.

It can be provided with black-and-white or colour membrane keyboard, with one or two handles. Equipped with single or double tray.



Star

Ceiling-mounted doctor console with S.P.R.I.D.O. technology (i.e. retractable balanced hoses) and/or operating lamp.

Both a right-handed and left-handed dentist have more work space for any kind of oral health care treatment or dental surgery. Since a practice ambience can play a significant role in initiating fear and anxiety, this extremely smart delivery, can have a positive and relaxing impact on a patient's mood and attitude during treatment, as being easily shifted to the background or upwards, out of his/her sight.



Kart

Doctor console on mobile cart with Hanging hoses.

Large tray on top, where all the instruments needed, from scaler through micromotor to turbine are easily placed and quickly removed for a dentist's daily use. Lightweight and compact, it can be moved around in a practice effortlessly in unlimited positions. It fosters an uncluttered treatment room, making post-treatment cleaning simple and easy and ensuring an efficient and safe infection control. A Kart can also work as a stand-alone equipment or be connected to a dental unit.



Take care of your patients.

Let's think it over: every patient is different. That's why OMS's core principle to a successful dental unit engineering and manufacturing is an ergonomic chair that fits a patient's body and height at best, perfectly balancing key factors like posture, well-being, back, neck and head support.

An efficient dental treatment depends above all on a patient's comfort. Swan, Moon and Arcadia EXT are the dental chairs designed for total relaxation relieving from pain and preventing injury, stress or anxiety.



Swan

Solid chair with greatest stability.

Either floor-standing or assembled to cuspidor column with highly advantageous small footprint.

Backrest compensation with armrests for optimal lower back support. Trendelenburg positioning included. This symmetric chair can be used both by right-handed and left-handed dentists.



Moon

Suspended cantilever chair or floor-standing (cuspidor-column-assembled) chair.

Available also on a mobile baseplate, with extremely functional water/air connections. It can be supplied with both armrests (synchronized with backrest), practical folding leg rest (available just with cantilever version). Backrest adjustable up to 90° for sitting upright. Sleek and comfortable design with a lifting soft-start motor, ensuring chair firmness and adjustability.



Arcadia EXT

A box-shaped base distinguishes this stunning and performing chair. Either floor-standing or assembled to cuspidor column, it can count on asymmetrical backrest, functionally curved-in on the right side, to allow a dentist to move closer to a patient's oral cavity.

Pipe connections are positioned horizontally under the chair to guarantee user-friendly, fast maintenance.



Swan

The stability and safety of this chair, either floor-standing or assembled to cuspidor column, are guaranteed by a robust steel base and a sophisticated anti-crush safety system. Thanks to a total height of cm 82, it facilitates a dentist's posture while standing up or sitting. Moreover, on its backrest right side a 9-memory program is available, with the possibility of storing up to 9 different set-ups of favourite working systems, speeding up each dentist's daily treatments.

A wide, symmetrical backrest and seat allow comfortable and correct posture also to very tall or corpulent patients, without risks of their sliding down. The exceptional comfort of this chair also ensues from a special OMS-patented compensation system that is activated automatically when backrest is in motion, Trendelenburg position included, and from a convenient folding leg rest.

Swan is recommended for any dental surgeries that do not necessarily need a cuspidor column, for example aesthetic dentistry operations, performed both by right-handed and left-handed dentists.



Moon

The versatility and originality of this chair are evident in the three configurations available: suspended cantilever chair, floor-standing chair or cuspidor-column-assembled chair.

In each of these solutions, a lifting soft-start motor, guarantees noiseless and efficient repositionings, that make Moon suitable for all kinds of patients, including the disabled on a wheelchair (with the arrangement of Libra platform) and children (with the complete Ugo set).

It can be supplied with both armrests, synchronized with backrest, adjustable up to 90° for sitting upright.

A practical folding leg rest is available with cantilever version, whereas upon request, all configurations can be equipped with premium supermemory upholstery. Standard, double-joint or 3D headrests can be provided for the greatest neck and head comfort and support.

Moon is designed for comprehensive dental treatments, from preventative dental care to restorative and reconstructive surgeries.



Arcadia

EXT

The compactness and reliability of this chair, either floor-standing or assembled to cuspidor column, are marked by a solid box-shaped base supporting an extremely soft-padded seat connected to a highly functional right curved-in backrest. This asymmetry promotes a dentist's optimal working conditions with a successful therapeutic approach to a patient, in terms of increased access to, visibility of, and control in the mouth. Contributing to an ergonomic and healthy environment, it helps prevent a dentist's musculoskeletal disorders, with reduced stress levels and increased comfort.

It can be supplied with both armrests synchronized upon request.

Arcadia EXT has been engineered for dental practices aiming at the most convenient price/quality ratio.



What are your dental treatments?

The choice of your most suitable dental unit certainly depends on your specialization, professional career, expertise and of course, expectations in terms of a successful and satisfying relationship with your patients.

That's why OMS recommends focussing your attention on the most accurate configuration and ergonomics of your doctor and assistant console, ensuring the fastest and most hygienic use of instruments and accessories for various types of dental treatments, among which preventative, curative and cosmetic dentistry. Of extreme importance is also the control system you adopt for chair positioning and instrument running as well as the options for your backrest, headrest, armrest and leg rest, that will have to guarantee the greatest comfort and relaxation to your patients.

Both in case of founding your brand-new practice or renovating the existing one with new dental equipment, be sure that OMS is by your side with the most cutting-edge and sophisticated solutions that meet all of your requirements, customization included!

Do you prefer S.P.R.I.D.O. or hanging hoses?



+ OMS doctor console can be provided with either S.P.R.I.D.O. or Hanging hoses. Two basic configurations are available.
 *4 instruments: one syringe and three dynamic instruments
 *5 instruments: one syringe and 4 dynamic instruments.

What's your favourite keyboard?



+ OMS doctor and assistant console are equipped with membrane keyboard and black-and-white or colour display.

What kind of headrest do you need?



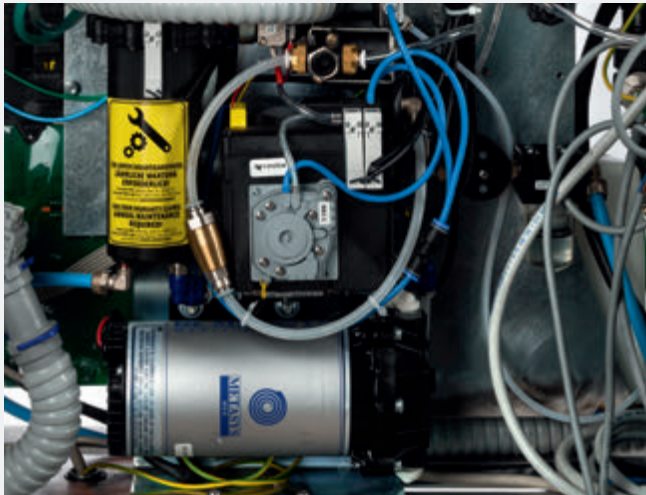
+ Three highly ergonomic headrests can be supplied: standard with just one fixed positioning, double-joint headrest (click-version included) with two comfortable positionings and 3D headrest with three functional positionings for any typology of patients.

What kind of backrest does your treatment require?



+ OMS has designed various backrests based on your treatment requirements. In orthodontics, long Moon is recommended. It allows both doctor and assistant to get closer to a patient's oral cavity. Standard Arcadia instead is preferred in endodontics as being curved-in on the right side for a dentist's reaching the treatment area. Large Moon Swan is used for long-hour dental surgeries. Supermemory upholstery is available for all models.

Would you like more hygiene for you and your patients?



+ You can choose your units with a water treatment system like WEK or WEK Light, the water incoming to the instrument and glass, is mixed up with hydrogen peroxide, to avoid any biofilm or legionella inside the water tubes, as well as other virus or bacterias.

Do you need an extra holder for suction tubes on your doctor console?



+ Your doctor console can be equipped with an extra holder for 2 suction tubes. This option allows you work solo or in tandem with your assistant. Either way, you have fast and easy access to instruments and suction handpieces.

Are you looking for ergonomic design in each detail?

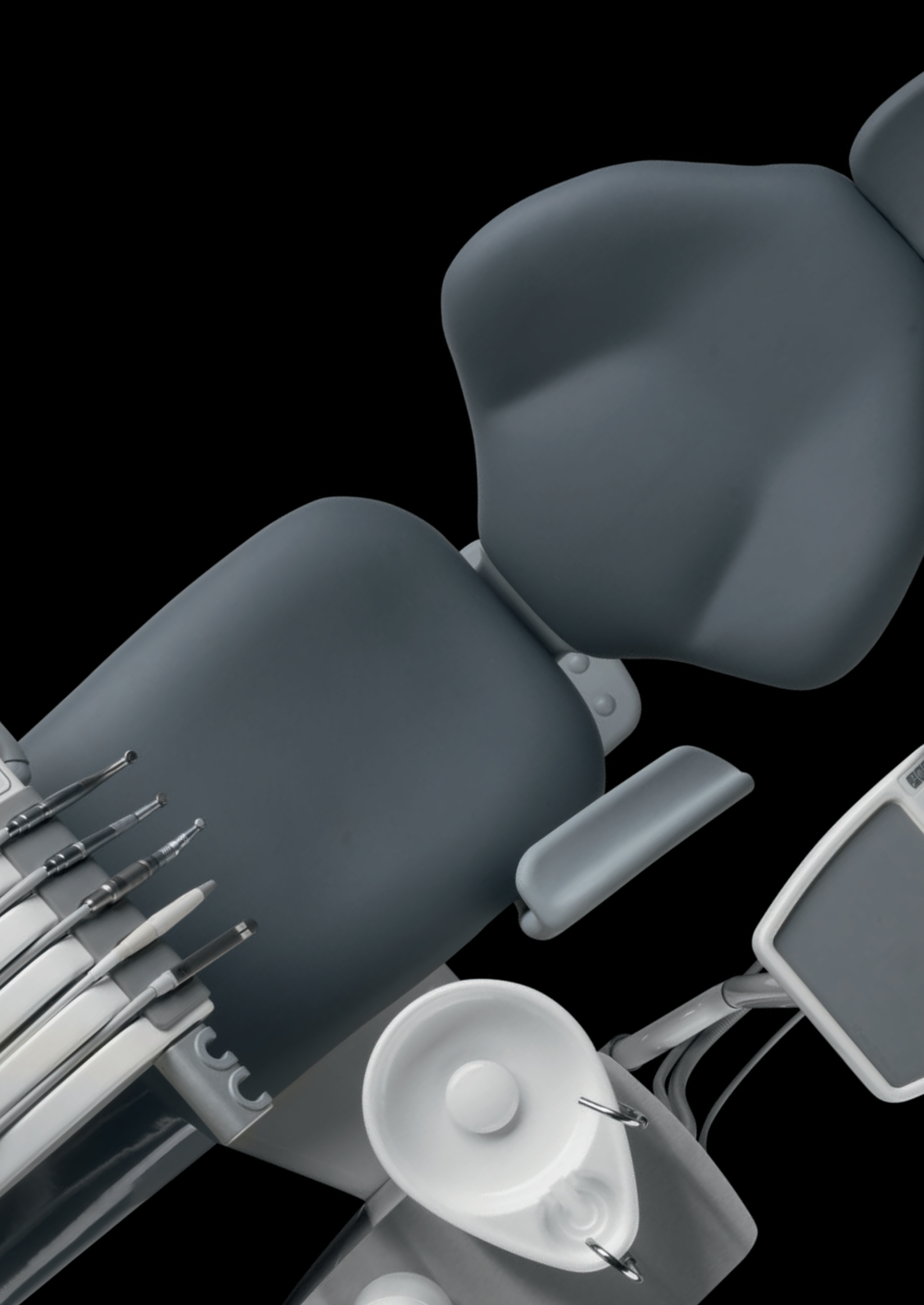


+ OMS offers the most performing assistant console arm, namely a pantograph arm (up-down balanced arm), moving in all directions for effortless adjustments that guarantee smooth and stable operations and possibility of working alone, if necessary.

What about multi-function foot control?



+ The foot control allows you to drive the chair and drive also the instrument. You can also disable/enable the spray instrument. Most used function can be controlled by your foot.





An outstanding range of cutting-edge and custom-made dental units.

Thanks to a 60-year expertise and know-how in dental equipment engineering and manufacturing, OMS is able to meet all of your specific requirements for the most suitable dental unit to be placed in your practice as well as to offer bespoke solutions that contribute to an ergonomic environment, enhancing efficiency and well-being.

Taking into consideration both the three main elements that comprise a dental unit, namely cuspidor column, chair and doctor console and the kind of delivery available (All-Around – Star – Kart) , you are now ready to choose the dental unit model that matches your expectations fully.

Do not forget that each product can be supplied with an extra wide range of options for the chair Swan, Moon and Arcadia EXT, like headrests, armrests and backseat, upholstery colour and padding.

Universal Top with Moon ambidextrous



Developed to be used both for right-handed and left-handed dentists. Universal Top ambidextrous, with chair Moon, bring together ergonomic design and highly performing technical feature. The dental unit has a floor-standing cuspidor column with stainless steel support base for ceramic bowl and cantilever chair swivelling up to 20°. Dentist can move around a sitting patient easily while reaching out for the suitable instrument. Doctor console with S.P.R.I.D.O. technology houses up to 5 instruments. Assistant console with 2 suction tubes plus two free housings and practical tray with membrane keyboard. Specifically designed to be double-face!



+ Swivelling seat up to 20°



Floor-standing cuspidor column with cantilever chair



All-Around doctor console with S.P.R.I.D.O. technology



Moon chair with folding legrest



Top-notch product of the whole range with practical folding leg rest



+ You can switch easily from right-handed to left-handed configuration



+ Front view with folding legrest. You can talk with your patient comfortably



+ Unique design for greater freedom of movement



+ User-friendly 5-housing instrument doctor console with black-and-white or colour keyboard and display

+ Top-notch dental unit of this product family for right-handed and left-handed dentists

Universal Top with Moon



Designed to be highly efficient and performing from a technological point of view, this dental unit is OMS's flagship product. It features a floor-standing cuspidor column with ceramic bowl as well as cantilever chair swivelling up to 20°, adjustable through a 4-memory program. Equipped with S.P.R.I.D.O. technology, its doctor console can house up to 5 instruments and a black-and-white or colour keyboard with single or double tray upon request. Assistant console can hold up to 2 suction tubes plus one free housing, placed on an extremely functional pantograph arm (up-down balanced arm).

+ S.P.R.I.D.O. technology with reduced height overall dimensions and long hose extension



Floor-standing cuspidor column with cantilever chair



All-Around doctor console with S.P.R.I.D.O. technology



Moon chair



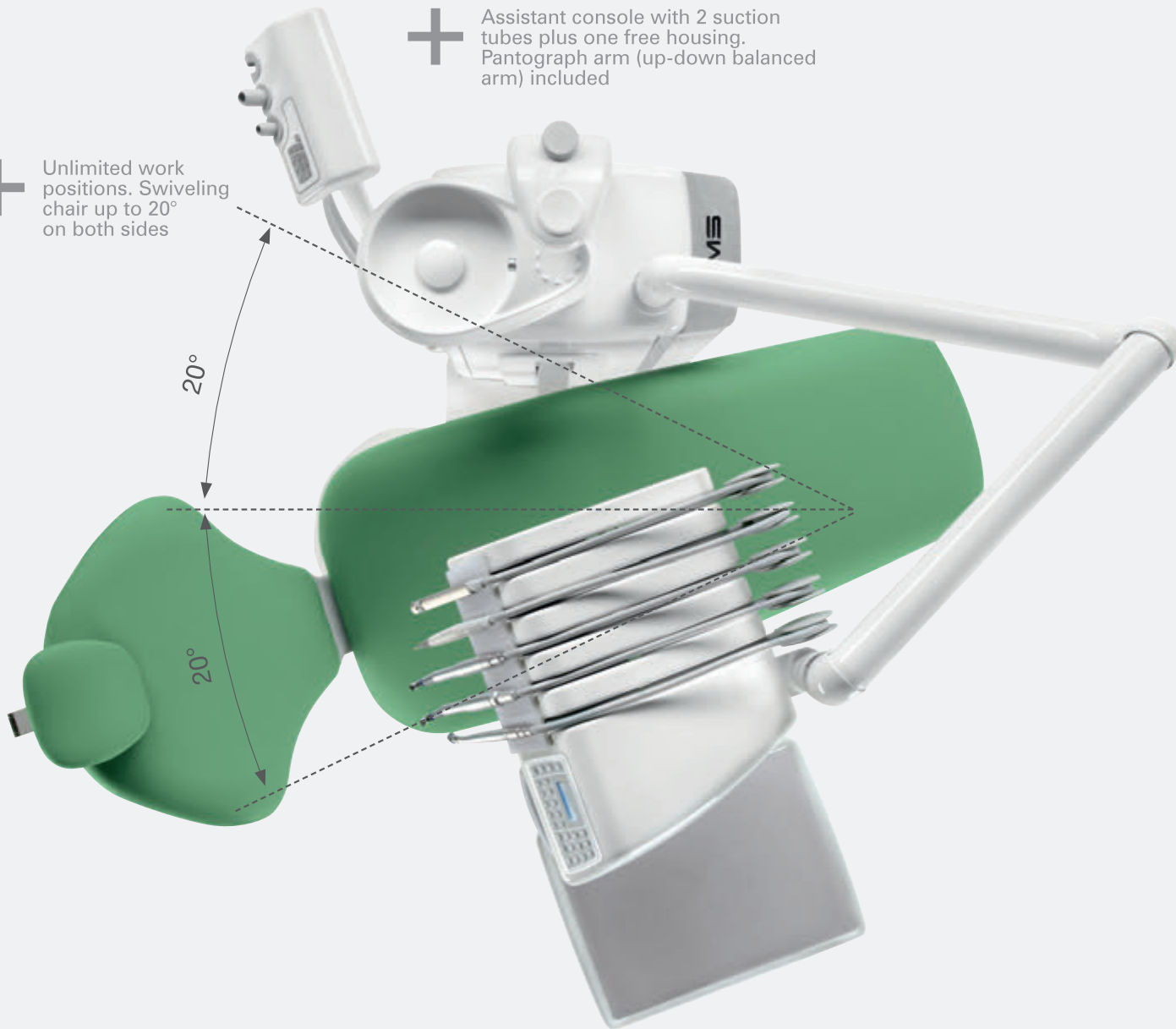
All that you expect from a Dental Unit, you will find it here!

+ Ergonomic and user-friendly doctor console with brushless micromotors



+ Assistant console with 2 suction tubes plus one free housing. Pantograph arm (up-down balanced arm) included

+ Unlimited work positions. Swiveling chair up to 20° on both sides



+ Optimised dental unit for greater freedom of movement



Universal Top with Moon folding legrest



Universal Top, the dental unit with floor-standing cuspidor column and cantilever chair, OMS's flagship product, is also available with highly practical folding leg rest. This configuration is specifically suited to dental treatments in endodontics and prosthodontics in that its ergonomic chair, swivelling up to 20°, dentist can move around a sitting patient easily while. At the same time, a dentist can carry out the dental care requested with the proper alignment of body parts when leaning over. Equipped with S.P.R.I.D.O. technology, its doctor console can house up to 5 instruments and a black-and-white or colour membrane keyboard with single or double tray upon request. Assistant console can hold up to 3 suction tubes, placed on an extremely functional pantograph arm (up-down balanced arm).



+ Unlimited work positions. Swiveling chair up to 20° on both sides



Floor-standing cuspidor column with cantilever chair



All-Around doctor console with S.P.R.I.D.O. technology



Moon chair with folding legrest



Top-notch product of the whole range with practical folding leg rest



+ You can work at 11:00-o'clock position



+ S.P.R.I.D.O. technology with reduced overall dimensions of instrument arm height and long hose extension



+ Folding leg rest

Universal Top with hanging hoses



Universal Top, the dental unit with floor-standing cuspidor column and cantilever chair, available with hanging hoses. The benefits of hanging hoses are several, instruments can be easily plugged. The light hoses allow you to avoid weariness, while their resistant material ensures no water/air leaks.

Doctor console can house up to 5 instrument

Assistant console can house up to 3 suction tubes plus one free housing for non-dynamic instrument and spacious tray on pantograph arm (up-down balanced arm) or 2 suction tubes plus one free housing.

+ Assistant console with 2 suction tubes plus one free housing. Pantograph arm (up-down balanced arm) included

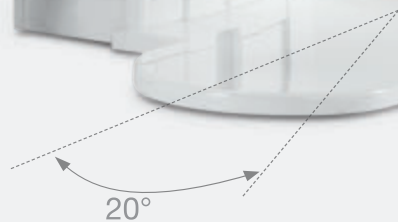


+ Ceramic doctor console with a large tray

+ Upon request, assistant console with large tray



+ Swiveling seat up to 20°



Floor-standing cuspidor column with cantilever chair



All-Around doctor console with Drop technology



Moon chair



Top-notch product of the whole range with hanging hoses

Universal Top with Kart



The dental unit with floor-standing cuspidor column and cantilever chair, aluminium-cast mobile Kart and 5 instrument hanging hoses. Thanks to a large ceramic tray on its top, all the instruments needed can be easily placed and quickly picked for a dentist's daily use. Extraordinarily lightweight and compact, it can be moved around effortlessly, ensuring both efficient, quick treatments and safe, clean work environment.

It can be connected to the dental unit or work as stand-alone equipment. Universal TOP with Kart has been specifically designed for dental treatments and surgeries that require an extremely wide workspace.

+ Assistant console with 3 suction tubes plus one free housing and spacious tray on pantograph arm

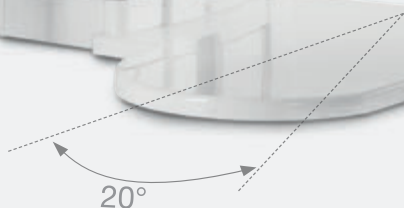
+ Upon request, assistant console with large tray




+ A large ceramic tray on doctor console





Swiveling seat up to 20° +



+ Aluminium-cast kart

 Floor-standing cuspidor column with cantilever chair

 Doctor console on mobile Kart with Drop technology

 Moon chair

+ Top-notch product of the whole range on mobile Kart

Carving Plus with microscope



Carving Plus with microscope, with a floor-standing cuspidor column and floor-standing Moon or Swan chair is OMS's most innovative and sophisticated dental unit, it is equipped with a highly technological microscope whose brilliant optics, ultra-bright led lighting, zooming and magnification features support and facilitate a dentist's treatment in endodontics, implantology, parodontology or restorative dentistry. A 5-housing instrument doctor console with S.P.R.I.D.O. technology features 2 black-and-white or colour membrane keyboards with optional single or double tray. Assistant console with 2 suction tubes and one free housing can also be supplied with an extra holder for a diagnostic camera helping detect tooth decay at different stages. A medical monitor will show live video from microscope.



+ Built-in microscope

+ Great stability and no vibrations



Floor-standing cuspidor column and floor-standing chair



All-Around doctor console with S.P.R.I.D.O. technology



Swan Moon Arcadia chair



OMS's most technologically sophisticated product

+ Ergonomic doctor console with double membrane keyboard



+ Assistant console on pantograph arm (up-down balanced arm) for extensive freedom of movement



+ Standard version with binocular swivel tube 45°/60°



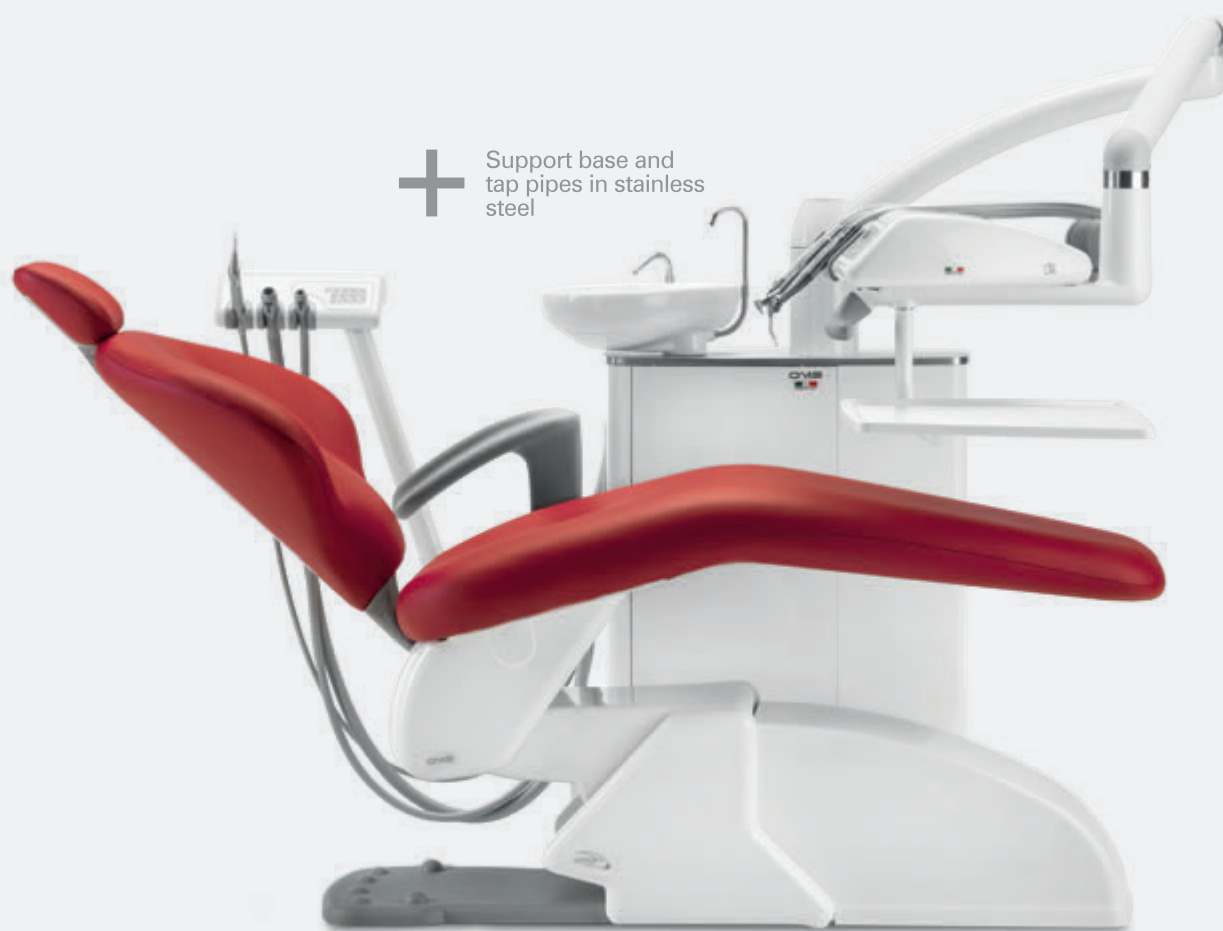
+ Version with digital video and binocular swivel tube 0°/210°

Carving Plus with Moon



Carving Plus can be considered as the complementary evolution of Carving. It features a floor-standing cuspidor column with stainless steel support base and tap pipes as well as , ceramic bowl. It can be equipped with an extremely efficient water decontamination system as well as drainage valves/amalgam separators for suction tubes.

A 5-housing instrument doctor console with S.P.R.I.D.O. technology with single or double tray can be outfitted with an extra holder for suction tubes. Assistant console with 2 suction tubes plus one free housing on pantograph arm (up-down balanced arm). Carving Plus is also available with hanging hoses, Star or Kart, with any chair.



+ Support base and tap pipes in stainless steel



Floor-standing cuspidor column and floor-standing chair



All-Around doctor console with S.P.R.I.D.O. technology



Moon chair



The complementary evolution of Carving



+ Single or double tray with central pivot



+ Double tray on double-joint arm

+ Swivelling bowl towards sitting patient. It can be easily removed for hygienic cleansing



Carving

The core of this extremely stylish dental unit is the perfect balance between swivelling, suspended cuspidor with removable ceramic bowl and stainless steel tap pipes and a robust floor-standing aluminium-cast Moon chair. This distinctive compact design also aims at the highest functionality both of a 5-housing instrument doctor console equipped with S.P.R.I.D.O. technology and an assistant console with 2 suction tubes plus one free housing on pantograph arm (up-down balanced arm). Upon request, assistant console can be provided with 2 suction tubes plus two free housings with wide tray on top. Leading-edge water systems treatment or amalgama separator are also available.

+ S.P.R.I.D.O. technology
with reduced height
overall dimensions and
long hose extension



Swivelling and
suspended cuspidor
assembled to floor-
standing chair



All-Around
doctor console
with S.P.R.I.D.O.
technology



Moon chair



Stylish and compact
dental unit



+ Ergonomic doctor console with intuitive black-and-white or colour keyboard



+ Ceramic bowl swivelling towards sitting patient. It can be easily removed for hygienic cleansing



Carving with hanging hoses



All the outstanding features of Carving can be found in Carving Drop but with the main difference in DROP technology with hanging hoses for its ceramic doctor console that can house up to 5 instruments, quick connectors and can count on a large support base on top allowing a dentist to reach for them with no trouble. A highly convenient assistant console with 2 suction tubes plus one free housing on pantograph arm (up-down balanced arm) is supplied, allowing an assistant to hand in instruments and handpieces quickly, manage materials or suction tubes comfortably and control a patient seat efficiently.

Distinctive compact design comprising a swivelling, suspended cuspidor with removable ceramic bowl and stainless steel tap pipes and a robust floor-standing aluminium-cast Moon chair. Leading-edge infection control systems are available. This is the solution that ensures exceptional time-saving dental treatment performance.



Swivelling and suspended cuspidor assembled to floor-standing chair



All-Around doctor console with Drop technology



Moon chair



Premium dental unit with stylish curved shapes and hanging hoses

Carving with Kart



The versatility of Carving featuring a swivelling, suspended cuspidor perfectly assembled to comfortable floor-standing Moon chair is worldwide acknowledged through its efficient doctor console on mobile Kart, housing up to 5 instruments with hanging hoses.

Lightweight and compact, this Kart can be moved around in your practice with no trouble in unlimited positions, as being able also to work as stand-alone equipment. It fosters an uncluttered treatment room, making post-treatment cleaning simple and easy and ensuring a highly reliable infection control system.



Swivelling and suspended cuspidor assembled to floor-standing chair



Kart doctor console with hanging hoses



Moon chair



Premium dental unit with stylish curved shapes and and Kart delivery

Universal Star



Designed to achieve the most efficient, ergonomic work environment, in terms of optimal practice space planning, elegant appeal with comfort and dental treatment functionality, Universal Star features an easily-movable, ceiling-mounted doctor console with S.P.R.I.D.O. technology and suspended operating lamp. A single or double tray can be assembled as well as an external infection control system. Equipped with Moon chair, Universal Star comes in a great number of upholstery colour options to better fit the look of your practice, Universal Star might be set up with all OMS chairs available.



Ceiling-mounted Star doctor console with S.P.R.I.D.O. technology



Moon chair



Greatest ergonomics with minimum overall dimensions



+ Ceiling-mounted assembly for greater flexibility and freedom of movement



Universal Top with Star



Engineered to offer the most efficient ergonomic environment, in terms of optimal practice space planning, comfort and dental treatment functionality, Universal Top with Star combines an easily-movable, ceiling-mounted doctor console featuring S.P.R.I.D.O. technology with floor-standing cuspidor column and cantilever Moon chair with soft-start motors.

Cutting-edge electronic devices allow installing up to 5 different instruments and switching from one another easily through the use of a pre-set memory system.

Based on your dental treatment, a brushless micromotor can run through a speed and torque control system or just through a speed control setup in case of brush micromotors.



Floor-standing cuspidor column with cantilever chair



Ceiling-mounted Star doctor console with S.P.R.I.D.O. technology



Moon chair



Greatest ergonomics with minimum overall dimensions

Carving with Star



This dental unit is the outcome of perfect balance between suspended cuspidor with removable ceramic bowl and stainless steel tap pipes and a robust floor-standing Moon chair together with the smart optimization of space and functionality.

A ceiling-mounted 5-housing instrument doctor console with S.P.R.I.D.O. technology allows installing micromotors with fixed or progressive speed, based on a pre-set memory system. Stop system can be installed for each dynamic instrument to avoid its pulling or dragging back.

A wide range of water decontamination products and amalgam separators can be applied for excellent hygiene both of instruments and suction tubes.



Swivelling and suspended cuspidor assembled to floor-standing chair



Ceiling-mounted Star doctor console with S.P.R.I.D.O. technology



Moon chair

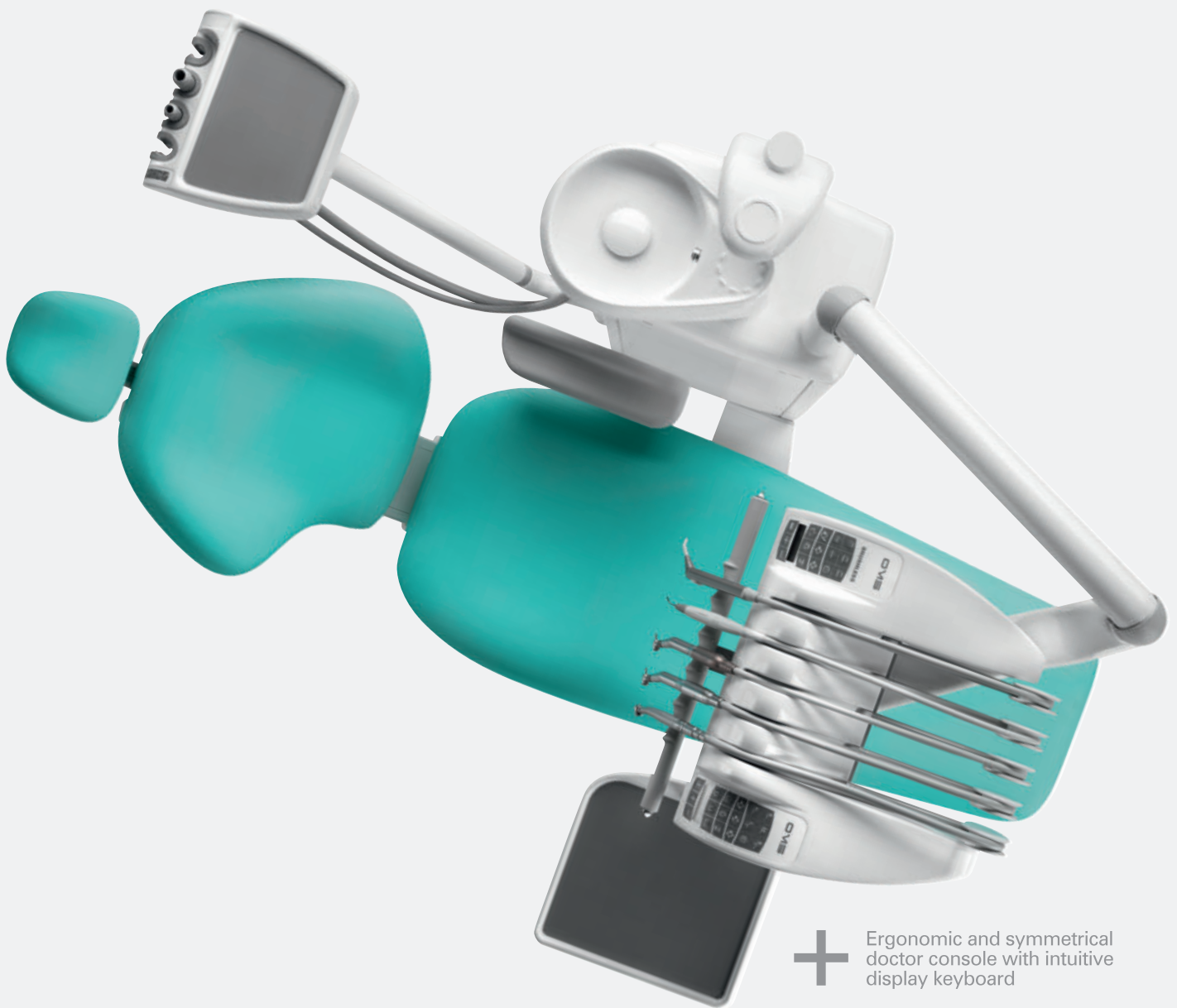


Greatest ergonomics with minimum overall dimensions

Virtuosus Plus



Virtuosus Plus, floor-standing cuspidor column featuring a swivelling user-friendly ceramic bowl with solid floor-standing Arcadia EXT chair, is state-of-the-art technology tapped into and applied to the best Italian design and its ergonomic principles. Doctor console houses up to 5 instruments with S.P.R.I.D.O. technology, engineered with smooth, no-groove surfaces that allow quick cleaning and a symmetric shape enabling a dentist and/or assistant to carry out all health care operations. It is placed on perfectly balanced instrument arm, enhancing freedom of movement. Assistant console on pantograph arm (up-down balanced arm) houses 2 suction tubes plus 2 free housings with large tray on top. It can also be equipped with excellent infection control systems.



+ Ergonomic and symmetrical doctor console with intuitive display keyboard



Floor-standing cuspidor column and floor-standing chair



All-Around doctor console with S.P.R.I.D.O. technology



Arcadia EXT chair



Absolute ergonomics and flexibility



+ Doctor console with 5 instruments



+ S.P.R.I.D.O. technology with reduced height overall dimensions and long hose extension

+ Ergonomic assistant console with keyboard and large tray on top



Patavium Plus



Patavium's evolution, a compact floor-standing cuspidor column with swivelling ceramic bowl. A comfortable floor-standing Arcadia EXT chair is available in different upholstery colours and fabrics perfectly matching your practice requirements. This unit features a 5-housing instrument doctor console with S.P.R.I.D.O. technology and micromotor speed control for lower RPM. It also can be outfitted with an extra holder for 2 suction tubes and one housing for non-dynamic instrument.

Assistant console houses 2 suction tubes plus one free housing for a 3 or 6-function syringe. It can be equipped with extremely efficient decontamination systems.



+ Doctor console with 5 instruments. Option: extra holder for two suction tubes



Floor-standing cuspidor column and floor-standing chair



All-Around doctor console with S.P.R.I.D.O. technology



Arcadia EXT chair



Greatest reliability and excellent performance



S.P.R.I.D.O. technology
with reduced height overall
dimensions



Handle and mat are
removable and autoclavable



Esse Plus

The evolution of Linea Esse, with a compact floor-standing cuspidor column and floor-standing Arcadia EXT. Doctor console can house up to 3 dynamic instruments plus 1 extra non-dynamic one with S.P.R.I.D.O. technology which reduced height overall dimensions. It is provided with a membrane keyboard featuring soft and intuitive keys. Assistant console houses 2 suction tubes plus one free housing with membrane keyboard on pantograph arm (up-down balanced arm). It can also be supplied with an infection control system.



Floor-standing cuspidor column and floor-standing chair



All-Around doctor console with S.P.R.I.D.O. technology

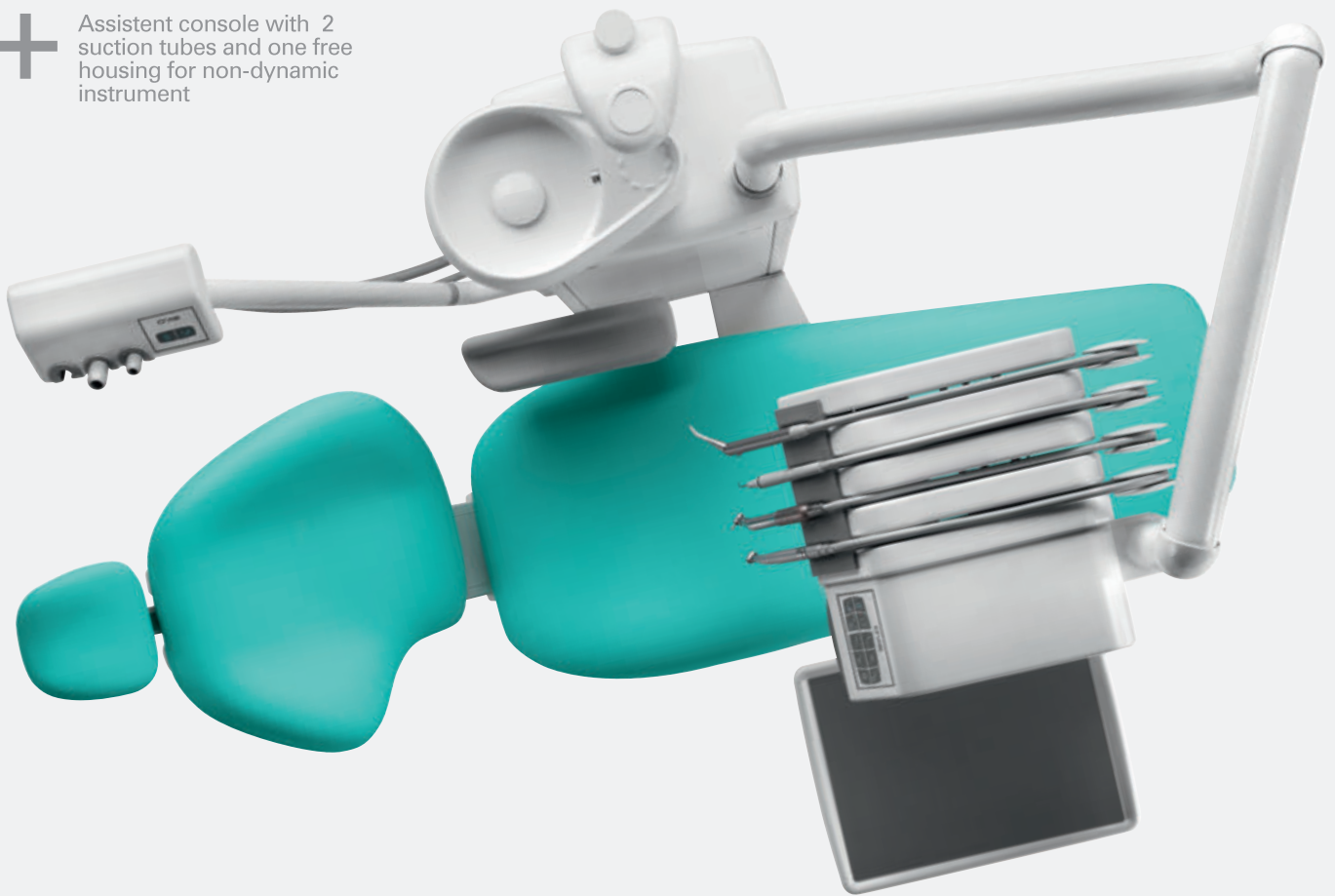


Arcadia EXT chair



Greatest reliability and excellent performance

+ Assistent console with 2 suction tubes and one free housing for non-dynamic instrument



+ S.P.R.I.D.O. technology with reduced height overall dimensions and long hose extension

+ Ergonomic multifunction foot control for chair and instruments



NEW



Virtuosus

Virtuosus Classic represents one of the best expressions of Italian design complying distinguished by the new electronic generation. The dental unit has a suspended cuspidor is assembled to a highly comfortable floor-standing chair (Swan, Moon or Arcadia), adjusted either through backrest or multifunction foot control.

Doctor console houses 5 instruments with S.P.R.I.D.O. technology and it is equipped with removable, autoclavable handles, single or double tray can be chosen. Engineered with a symmetric shape that guarantees dentist-assistant interoperability, it features a smooth, no-groove surface that allows quick and efficient cleaning and is placed on perfectly balanced instrument arm, enhancing freedom of movement.

Assistant console houses 2 suction tubes plus 2 free housings with large tray on top on pantograph arm (up-down balanced arm). An assistant is enabled to carry out all health care operations easily.



Cuspidor, suspended with floor-standing chair



All-Around doctor console with S.P.R.I.D.O. technology

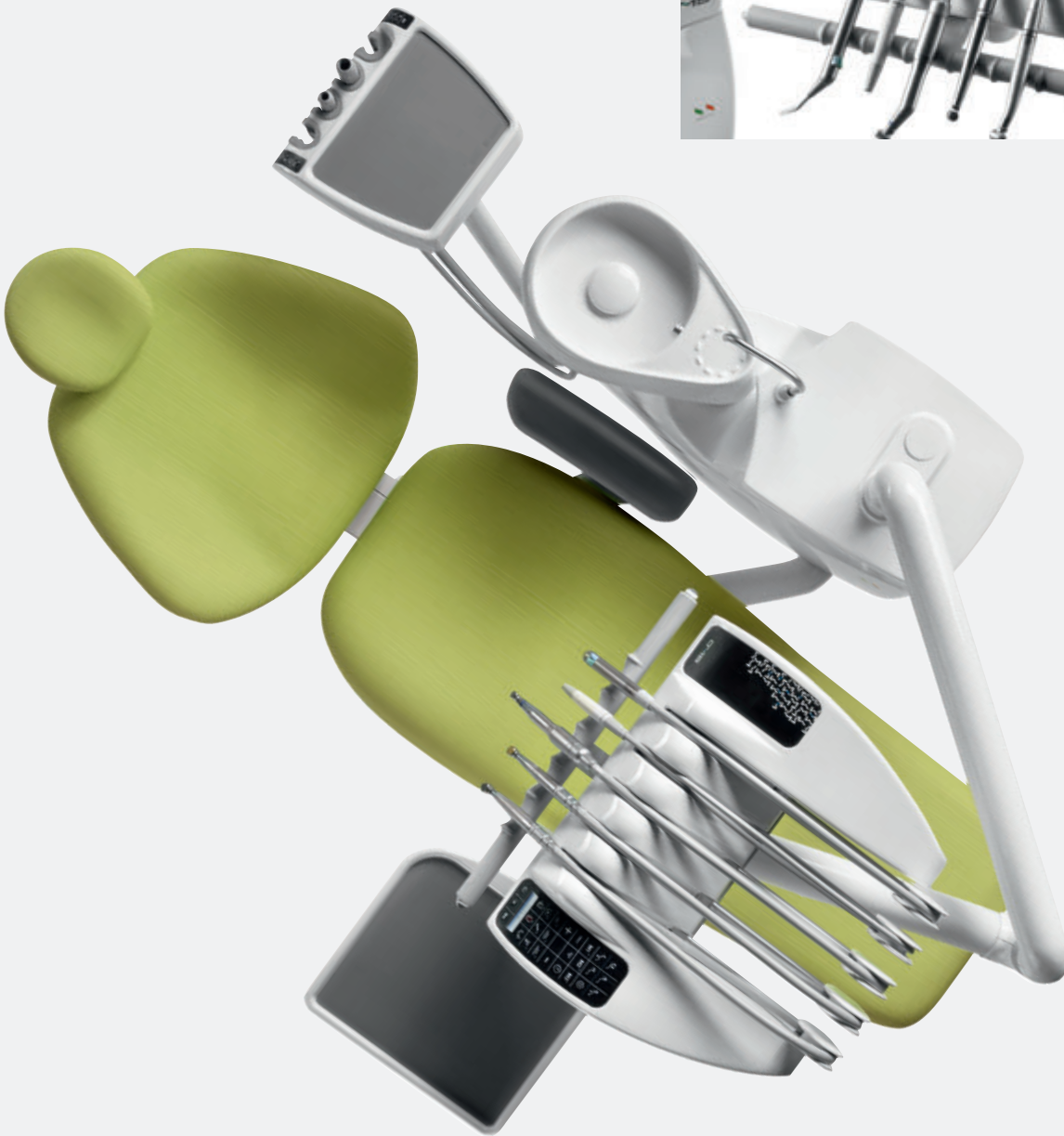


Arcadia EXT chair



Complete and highly compact unit

+ S.P.R.I.D.O. technology with reduced height overall dimensions and long hose extension



+ Silicone mat removable and autoclaved

+ Swivelling bowl, turn towards patient



Linea Patavium

Patavium pays homage to Padua, the city where OMS Headquarters and factory are based. Its suspended cuspidor assembled to either a floor-standing Arcadia EXT, The chair managed through 5-memory program, designed to guarantee the best comfort and posture to a sitting patient also with the possibility of including supermemory upholstery. Doctor console with 5-housing instrument with S.P.R.I.D.O. technology with single or double tray can also be outfitted with extra holder for 2 suction tubes plus one housing for non-dynamic instrument. Warm water heater can be supplied for two instruments of your choice.

Assistant console with 2 suction tubes plus one free housing, upon request pantograph arm (up-down balanced arm) fosters assistant/dentist interoperability, ensuring dental treatment efficacy.



Swivelling and suspended cuspidor assembled to floor-standing chair



All-Around doctor console with S.P.R.I.D.O. technology



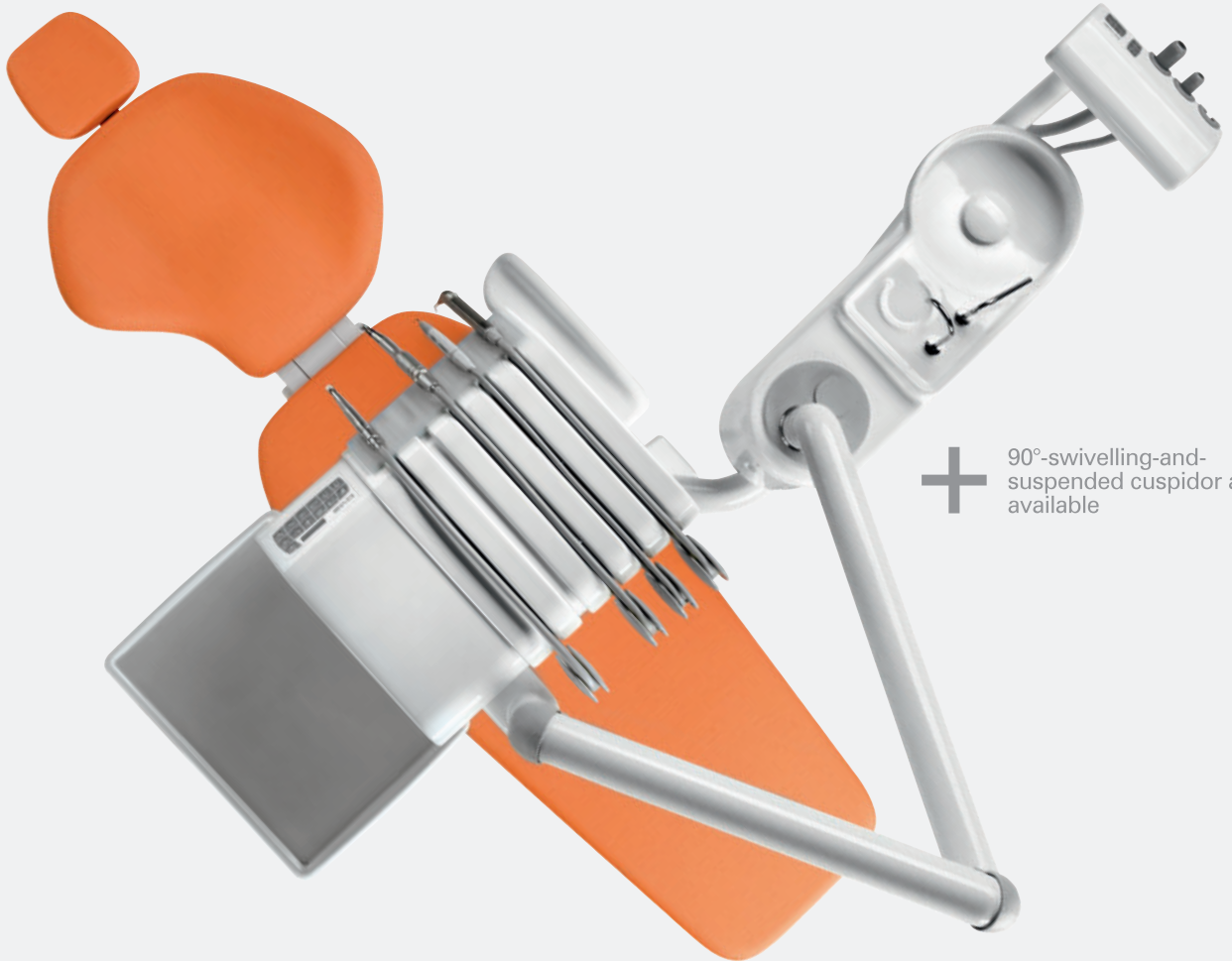
Arcadia EXT chair



Excellence with the best price/quality ratio



+ Doctor console with 5 instruments. S.P.R.I.D.O. technology. Optional: extra holder for 2 suction tubes



+ 90°-swivelling-and-suspended cuspidor also available

+ Assistant console with 2 suction tubes plus one free housing



Linea Esse

The originality and reliability of Linea Esse have consolidated OMS brand all over the world throughout the years. Designed with a compact suspended cuspidor assembled to a floor-standing Arcadia EXT chair, available with the trendiest upholstery colours and fabrics, it is equipped with a doctor console with S.P.R.I.D.O. technology and reduced height overall dimensions, housing up to 4 dynamic instruments plus 1 extra non-dynamic one. It is run through an extremely intuitive membrane keyboard featuring quiet and soft keys to the touch, without requiring a lot of pressure to use. Assistant console houses 2 suction tubes plus one free housing with an easily operated ergonomic membrane keyboard that allows an assistant to manage all dental operations appropriately and efficiently. An infection control system can also be supplied. With this dental unit you get first-rate quality with outstanding ergonomics.



Swivelling and suspended cuspidor assembled to floor-standing chair



All-Around doctor console with S.P.R.I.D.O. technology



Arcadia EXT chair



Entry-level dental unit with the best quality/price ratio

+ Assistant console with 2 suction tubes plus one free housing

+ Also available with 90° swivelling suspended cuspidor

+ Ergonomic doctor console with 5 instruments plus extra holder for suction tubes



+ Two suction tubes plus one free housing

+ S.P.R.I.D.O. technology with reduced height overall dimensions and long hose extension



Linea Esse with hanging hoses

Linea Esse with hanging hoses, a suspended cuspidor (upon request cuspidor might swiveling 90°) assembled to a solid floor-standing chair. The unit is equipped with a ceramic doctor console, with hanging hoses on a double-joint arm, that can house up to 4 instruments, easily operated through a soft-key membrane keyboard. Assistant console houses 2 suction tubes plus one free housing either on a fixed or up-down balanced arm. You can choose Arcadia EXT, Arcadia P or Swan chair, available with customized upholstery colours and fabrics that perfectly match the furniture requirements of your practice. Adjustable on backrest or through multifunction foot control, the chair can be supplied with double-joint or 3D headrest, extra comfortable padding and supermemory upholstery. The possibility of assembling a user-friendly infection control system also ensures performance maximization.



Swivelling and suspended cuspidor assembled to floor-standing chair



All-Around doctor console with hanging hoses

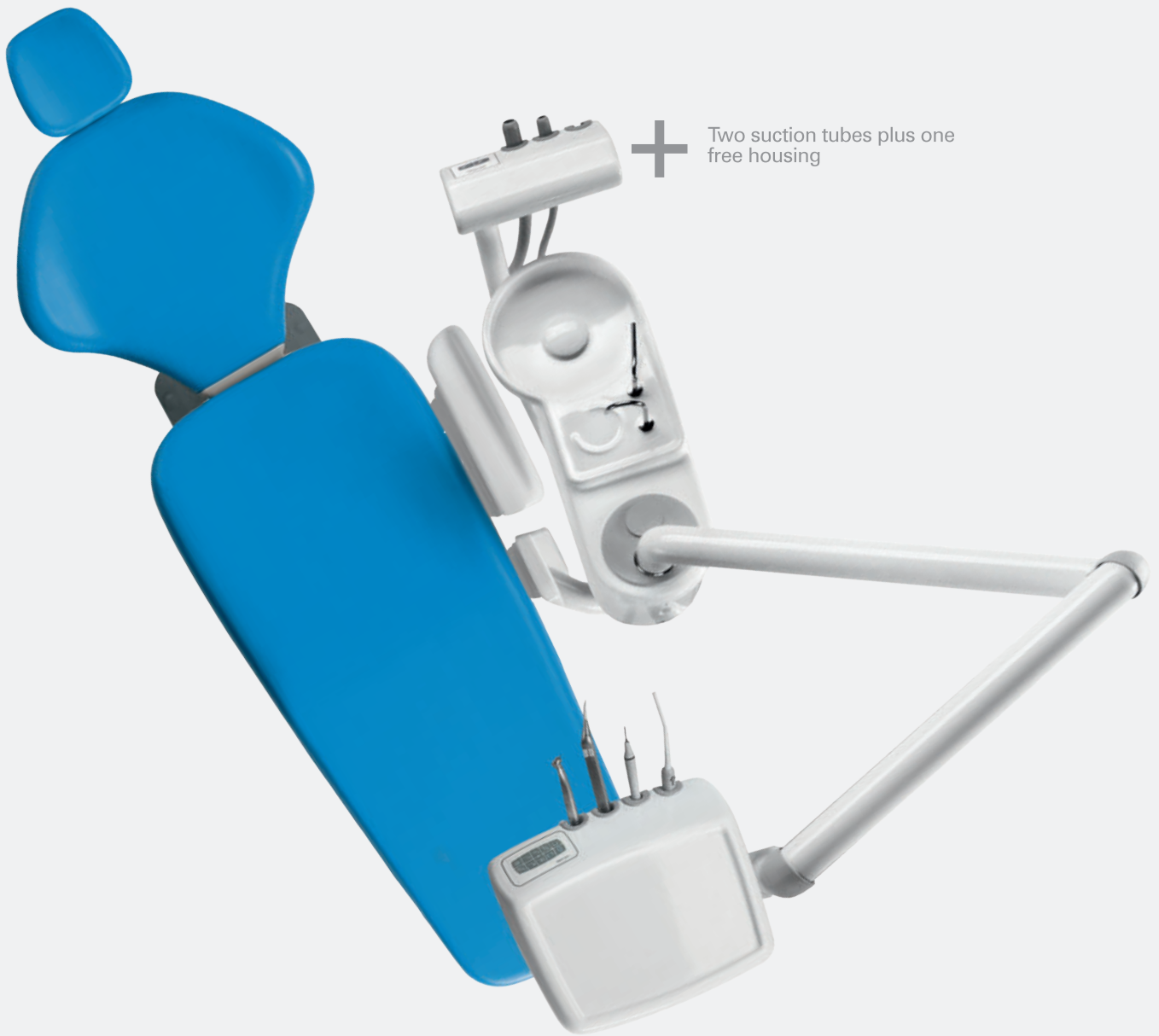


Arcadia EXT chair



Affidabilità totale

+ Adjustable headrest height



+ Two suction tubes plus one free housing

+ Ceramic doctor console

Linea Esse with Kart

Carefully engineered with a compact suspended cuspidor assembled to a floor-standing Arcadia EXT chair, available with the trendiest upholstery colours and fabrics, Tempo 9 ELX Kart is equipped with a doctor console on a mobile, lightweight Kart, easily operated and moved around. It can house up to 4 dynamic instruments with hanging hoses, and an intuitive membrane keyboard featuring soft keys. Assistant console houses 2 suction tubes plus one free housing. Linea Esse with Kart can also be equipped with Clean Spray device, an extremely efficient external infection control system, ensuring water instruments without batteries.



Swivelling and suspended cuspidor assembled to floor-standing chair



Doctor console on mobile Kart



Arcadia EXT chair



Total reliability with Kart delivery

Tempo 9 ELX Kart

This mobile Kart with ceramic doctor console housing 4 instruments with hanging hoses can be connected to your favourite dental unit and moved around in your practice effortlessly. It can be placed in a great number of positions, fostering quick and accurate dental treatments and supporting assistant/dentist interoperability. It also makes dental post-treatment cleaning and hygiene simple and easy, ensuring an efficient and safe infection control.

It features a user-friendly, black-and-white membrane keyboard for your instrument running and patient chair positioning.



Doctor console
on mobile Kart



Freedom of movement

Punto Kart



This mobile aluminium-cast Kart with ceramic doctor console housing 5 instruments with hanging hoses can work as stand-alone equipment or be connected to your favourite dental unit. Since it can be moved around in a practice with no trouble and can be placed in unlimited positions, it fosters quick and accurate dental treatments, supporting assistant/dentist interoperability. It features a user-friendly, black-and-white display membrane keyboard for your instrument running and driving patient chair positioning. Punto Kart might be installed with all OMS chairs.



Doctor console on mobile Kart



Freedom of movement



The company reserves the right to modify the illustrated products without prior notice.

O.M.S. spa - Officine Meccaniche Specializzate - Via Dante 20/A - 35030 Caselle di Selvazzano (PD) ITALIA
Tel. +39 049 8976455 - Fax +39 049 8975566 - www.omsdentalunits.com - info@omsdentalunits.com