



MORE INVENTIVE LESS INVASIVE

IT'S TIME FOR

ACTEON

MINIMALLY
INVASIVE
SOLUTIONS

2021 Products Catalog

US & Canada

UPDATED 4/1/21

ACTEON
North America



TABLE OF CONTENTS

ACTEON IMAGING

Intraoral Radiology	4
Extraoral Radiology	14
Intraoral Cameras	22

ACTEON EQUIPMENT

Ultrasonics	26
Air Polisher	43
Bliss Hand Instruments	48
Surgery	52
Curing Lights	68

ACTEON PHARMA

Gingival Retraction	71
Hemostasis & Tissue Regeneration	72
Hygiene	73

ACTEON INTEGRATED

Ultrasonics	74
Curing Lights	79
Intraoral Cameras	81

X MIND unity

X-MIND™ UNITY

X-MIND™ Unity is pre-wired for the integration of the SOPIX² digital sensor. Delivered with a long cone in standard version.

X-MIND™ UNITY - MOBILE STAND W0800140

X-MIND Unity Mobile Stand (XMU NOT INCLUDED)

X-MIND™ UNITY - TOP MOUNTING

XMU TOP 40 SHORT CONE

HXMU-TS

DC Tube Head, Scissor Arm, Timer, 2 Stud Wall Mount, Short Cone, Top Mount Extender Arm - 16"

XMU TOP 80 SHORT CONE

HXMU-TM

DC Tube Head, Scissor Arm, Timer, 2 Stud Wall Mount, Short Cone, Top Mount Extender Arm - 31"

XMU TOP 110 SHORT CONE

HXMU-TL

DC Tube Head, Scissor Arm, Timer, 2 Stud Wall Mount, Short Cone, Top Mount Extender Arm - 43"



X-MIND™ UNITY - BOTTOM MOUNTING

XMU BOTT 40 SHORT CONE

HXMU-BS

DC Tube Head, Scissor Arm, Timer, 2 Stud Wall Mount, Short Cone, Bottom Mount
Extender Arm - 16"

XMU BOTT 80 SHORT CONE

HXMU-BM

DC Tube Head, Scissor Arm, Timer, 2 Stud Wall Mount, Short Cone, Bottom Mount
Extender Arm - 31"

XMU BOTT 110 SHORT CONE

HXMU-BL

DC Tube Head, Scissor Arm, Timer, 2 Stud Wall Mount, Short Cone, Bottom Mount
Extender Arm - 43"

Digital X-ray Systems to integrate into X-MIND™ Unity

CMOS sensor with optic fiber of 1.5 million of pixels (size 1) or 2.21 millions of pixels (size 2), theoretical resolution of 25 μ /mm, actual resolution > 12 μ /mm, 3.70m cable. Includes ACE technology (Automatic Control Exposure).

Delivered with a sensor holder, 10 sensor sheaths, and ACTEON imaging Software.

SOPIX® INSIDE SENSOR SIZE 1

S_802_6500

SOPIX (SIZE 1) DIGITAL SENSOR - DIRECT USB2

SOPIX® INSIDE SENSOR SIZE 2

S_802_6501

SOPIX (SIZE 2) DIGITAL SENSOR - DIRECT USB2



X-MIND UNITY ACCESSORIES



X-MIND™ Unity short cone
W0800018
SHORT CONE: 8" Ø60 (20cm)



X-MIND™ Unity long cone
W0800019
LONG CONE: 12" Ø60 (31cm)



X-MIND™ Unity short square cone
W0800020
Square SHORT CONE: 8" Ø60 (20cm)



X-MIND™ Unity remote exposure switch
W0800021
REMOTE EXPOSURE SWITCH



WALLPLATE for X-MIND™ Unity installation
SSWALLPLATE
Single Stud Wallplate



XMU EXTERNAL LIGHT 115V
W0800034

PSPIX²

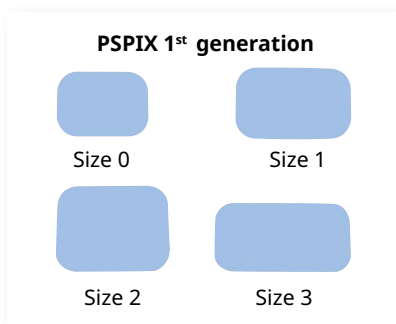
PSPIX^{®2}
S_702_0011

Digital imaging plate system

Includes 4 imaging plates (2 x size 1, 2 x size 2), 200 bag & cover for imaging plate (100 x size 1, 100 x size 2), an imaging plate storage box, 1 stylus for touchscreen, 1 power supply 100-240 VAC, 1 Ethernet cable, ACTEON imaging software and its license, and a Mac and its license.



STANDARD IMAGING PLATE



	PSPIX² Set of 2	PSPIX 1st generation Set of 2
Size 0 (22 x 35mm)	990215	700178
Size 1 (24 x 40mm)	990216	700179
Size 2 (31 x 41mm)	990217	700180
Size 3 (27 x 54mm)	990218	700181

INTRAORAL RADIOLOGY

Accessories

IDOT™ IMAGING PLATE

Numbered plate for better identification.



Size 0



Size 1



Size 2



Size 3

	PSPIX ²	PSPIX 1 st generation <u>set of 6</u>
Size 0 (22 x 35mm)		700182
Size 1 (24 x 40mm)		700183
Size 2 (31 x 41mm)		700184
Size 3 (27 x 54mm)		700185

PROTECTIVE BAG FOR IMAGING PLATE



Size 0



Size 1



Size 2



Size 3

	PSPIX ² <u>set of 250</u>	PSPIX 1 st generation <u>set of 250</u>
Size 0	700342L	700342L
Size 1	700343L	700343L
Size 2	700344L	700344L
Size 3	700345L	700345L

BAG & COVER FOR IMAGING PLATE with integrated cardboard envelope



	PSPIX² <u>set of 300</u>	PSPIX 1st generation <u>set of 250</u>
Size 0	700546	700338L
Size 1	700547	700339L
Size 2	700548	700340L
Size 3	700549	700341L

PSPIX² ACCESSORIES



Bag & cover for imaging plate start up kit
700550
(set of 100 pieces of size 1 and 100 pieces of size 2)



Imaging plate storage box
990219
(delivered without imaging plates)



Stylus for PSPIX² touchscreen
005132



Cleaning plate for PSPIX²
990243

INTRAORAL RADIOLOGY

Accessories



Autoclavable Insertion Guide 608019

Autoclavable insertion guide (Top) for imaging plates

Autoclavable Receptacle 608018

Autoclavable receptacle (Bottom) for imaging plates



Size 4 kit for PSPIX² 990250

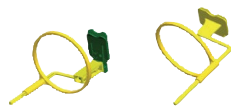
1 plastic SUPPORT size 4, 100 protective bags size 4, 3 imaging plates size 3, 1 quick set-up, 1 quick start

Plastic Support Size 4 990251

Plastic case for 3 size 3 plates

BAGS & COVERS S4 - 100 700644

Bag and cover for imaging plates size 4 (set of 100)



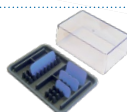
PSPIX Positioning Set - Bitewing 700195

Includes five positioning holders with ring for bitewing and one centring devices.



PSPIX Positioning Set - Anterior & Posterior 700196

Includes two positioning holders with ring for anterior teeth, two positioning holders with ring for posterior teeth and two centering devices.



Imaging Plate Storage Box - Gen 1 700194

(delivered without imaging plates)



SOPIX²

CMOS sensor with optic fiber of 1.5 million of pixels (size 1) or 2.21 millions of pixels (size 2), theoretical resolution of 25 pl/mm, actual resolution > 18 pl/mm, 3.70m cable. Includes ACE technology (Automatic Control Exposure).
Delivered with a sensor holder, 10 sensor sheaths, and ACTEON imaging software.

SOPIX² (SIZE 2) DIGITAL SENSOR

S_802_0005

SOPIX² Direct USB2 - comes w/ one sensor holder

SOPIX² (SIZE 1) DIGITAL SENSOR

S_802_0006

SOPIX² (SIZE 1) DIGITAL SENSOR - DIRECT USB2 - COMES W/ ONE SENSOR HOLDER

ACCESSORIES



Positioning set for SOPIX²/SOPIX series sensors 700042

SOPIX² Positioning Set (5 sets with positioning Ring for: BW, Ant, Post, Endo Ant, Endo Post)



Sopix²/ Sopix sensor holder 926039

Size 1 or Size 2



Sheaths for Sopix²/Sopix

(500 pieces in a single pasteboard)

for size 1 SOPIX² series sensors

403026

for size 2 SOPIX² series sensors

403027

Sensor Holder Combo Kit

ACT-459-1+2

Size 1&2 Combo kit - includes 1 Ring & rod system, 4 size 1 bite blocks, 4 size 2 bite blocks (1 each size Anterior, Posterior, Vertical and Horizontal Bitewings)



Sensor Holder Size 2 Kit

ACT-459-2

Size 2 kit - includes 1 Ring & rod system, 8 size 2 bite blocks (2 each: Anterior, Posterior, Vertical and Horizontal Bitewings)

Sensor Holder Size 1 Kit

ACT-459-1

Size 1 Kit (includes 1 Ring & rod system, 8 size 1 bite blocks: 2 each: Anterior, Posterior, Vertical and Horizontal Bitewings)

Sensor Holder Bite Blocks Size 2

ACT-462

16 pack of bite blocks size 2 (4 each: Anterior, Posterior, Vertical and Horizontal Bitewings)

Sensor Holder Bite Blocks Size 1

ACT-461

16 pack of bite blocks size 1 (4 each: Anterior, Posterior, Vertical and Horizontal Bitewings)

**Sensors, ring and rod not included*



3 pack of bite blocks size 1 Anterior

ACT-001

3 pack of bite blocks size 2 Anterior

ACT-049

**Sensors, ring and rod not included*



3 pack of bite blocks size 1 Posterior

ACT-018

3 pack of bite blocks size 2 Posterior

ACT-056

**Sensors, ring and rod not included*



3 pack of bite blocks size 1 Horizontal Bitewing

ACT-025

3 pack of bite blocks size 2 Horizontal Bitewing

ACT-063

3 pack of bite blocks size 1 Vertical Bitewing

ACT-032

3 pack of bite blocks size 2 Vertical Bitewing

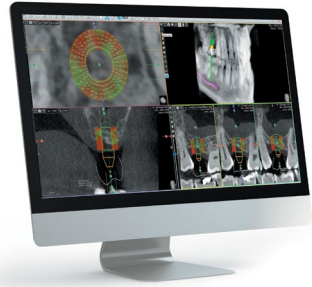
ACT-070

**Sensors, ring and rod not included*

EXTRAORAL RADIOLOGY

X-MIND® Trium - Upgradeable 3 in 1

X MIND trium



3D imaging system

- Easily upgradeable
- Superior 3D image processing with SHARP and STAR
- Patented Ceph collimation
- Large selection of F.O.V : Ø40x40, 60x60, 80x80 and 110x80

14
ACTEON IMAGING

X-MIND™ TRIUM PAN

Control panel on the right
Control panel on the left

W0900001
W0900007



- OrthoPantomograph (OPG), 115-220 V, With One CMOS Pan 2D sensor for panoramic imaging
- Adult and Child Panoramic programs
 - Improved Orthogonality
 - TMJ section
 - Maxillary Sinus exam

ACTEON® Imaging Suite Software, for visualisation and analysis of 2D acquisitions.

Installation and user e-manuals, 10 year warranty.

Not included: Workstation PC and monitor, light.



X-MIND® Trium is a class 3R laser product per IEC 60825-1:2007. Avoid direct eye exposure to laser radiation. Viewing the laser output with magnifying optical instruments (for example, surgical microscope and binocular glasses) may pose an eye hazard and thus the user should not direct the beam into an area where such instruments are likely to be used.

EXTRAORAL RADIOLOGY

X-MIND® Trium - Upgradeable 3 in 1

X-MIND™ TRIUM PAN (CEPH READY) UPGRADES

X-MIND Trium Pan Ceph Ready Upgrade Ceph right (*no sensor included*)
X-MIND Trium Pan Ceph Ready Upgrade Ceph left (*no sensor included*)

W0900001
W0900007

X-MIND™ TRIUM PAN (3D READY)

Control panel on the right
Control panel on the left

W0900225
W0900226

UPGRADE 3D

X-MIND Trium Pan 3D Ready Upgrade 3D

W0900227

UPGRADES CEPH

X-MIND Trium Pan 3D Ready Upgrade Ceph right (*1 sensor Ceph 2D included*)
X-MIND Trium Pan 3D Ready Upgrade Ceph left (*1 sensor Ceph 2D included*)

W0900018
W0900019

*Specific restrictions apply for 11 x 8cm FOV in Ontario, Canada. Contact ACTEON North America for more information.



EXTRAORAL RADIOLOGY

X-MIND® Trium - Upgradeable 3 in 1



X-MIND™ TRIUM PAN CEPH

CEPH left (control panel on the right)	W0900003
CEPH right (control panel on the left)	W0900009
CEPH right (control panel on the right)	W0900230
CEPH left (control panel on the left)	W0900232



16
ACTEON IMAGING

OrthoPantomograph (OPG), 115-220V, with one CMOS Ceph 2D sensor used for panoramic imaging and cephalometry.

- Adult and Child Panoramic programs
- Improved Orthogonality
- TMJ section
- Maxillary Sinus exam
- Cephalometric exam

ACTEON® Imaging Suite (AIS) Software, for visualisation and analysis of 2D acquisitions.

Installation and user e-manuals, 10 year warranty.

Not included: Workstation PC and monitor, light.

EXTRAORAL RADIOLOGY

X-MIND® Trium - Upgradeable 3 in 1



X-MIND™ TRIUM PAN 3D

Control panel on the right

W0900004

Control panel on the left

W0900010

OrthoPantomograph (OPG), 115-220V, with one CMOS Ceph 2D sensor used for panoramic imaging and one Flat Panel Detector for CBCT.

- Adult and Child Panoramic programs
- Improved Orthogonality
- TMJ section
- Maxillary Sinus exam
- CBCT FOV Ø40x40, Ø60x60, Ø80x80, Ø110x80

Workstation PC with standard monitor.

Software preinstalled.

ACTEON® Imaging Suite (AIS) Software, for visualisation and analysis of 2D and 3D acquisitions and treatment planning. Includes five licenses for 3D app, the 3D viewer and implant planning

application.

Installation and user e-manuals, 10 year warranty.

Not included: light.

UPGRADES

X-MIND™ Trium Pan 3D Upgrade Ceph right (1 2D Ceph sensor included)

W0900018

X-MIND™ Trium Pan 3D Upgrade Ceph left (1 2D Ceph sensor included)

W0900019

*Specific restrictions apply for 11 x 8cm FOV in Ontario, Canada. Contact ACTEON North America for more information.

EXTRAORAL RADIOLOGY

X-MIND® Trium - Upgradeable 3 in 1

X-MIND™ TRIUM PAN CEPH 3D



CEPH left (control panel on the right)
CEPH right (control panel on the left)
CEPH right (control panel on the right)
CEPH left (control panel on the left)

W0900006
W0900012
W0900231
W0900233



OrthoPantomograph (OPG), 115-220V, with one CMOS Ceph 2D sensor used for panoramic imaging and cephalometry and one Flat Panel Detector for CBCT.

- Adult and Child Panoramic programs
- Improved Orthogonality
- TMJ section
- Maxillary Sinus exam
- Cephalometry exam
- CBCT FOV Ø40x40, Ø60x60, Ø80x80, Ø110x80

Workstation PC with standard monitor. Software preinstalled.

ACTEON® Imaging Suite (AIS) Software, for visualisation and analysis of 2D and 3D acquisitions and treatment planning. Includes five licenses for 3D app, the 3D viewer and implant planning application.

Installation and user e-manuals, 10 year warranty.

Not included: light.

*Specific restrictions apply for 11 x 8cm FOV in Ontario, Canada. Contact ACTEON North America for more information.



ACTEON® IMAGING SUITE

AIS 3D APP DESIGN LICENSE FIRST YEAR	W1000025
3DAPP DESIGN LICENSE ADDL YEAR (REQ W1000025 PRIOR TO PURCHASE)	W1000026
AIS 3D APP STANDARD 1 ELECTRONIC LICENSE	W1000014
AIS 3D APP BASIC 1 ELECTRONIC LICENSE	W1000012
AIS 3D APP BASIC 5 ELECTRONIC LICENSES	W1000013
AIS 3D APP STANDARD 5 ELECTRONIC LICENSES	W1000015
AIS 3D APP PREMIUM 1 ELECTRONIC LICENSE	W1000016
AIS 3D APP PREMIUM 5 ELECTRONIC LICENSES	W1000017
AIS DICOM PACKAGE license (DICOM print license NOT included)	W0900153
DICOM print license	39800751

ACCESSORIES

Trium POWER CONDITIONER 8A, 120V	61084-03R
Trium 2D ACQUISITION PC AND MONITOR	W0900246
Trium 2D ACQUISITION PC USA	W0911246

EXTRAORAL RADIOLOGY

Accessories

Pan 2D sensor for OrthoPantomograph (OPG)
(to add a second 2D sensor or for replacement) *W0900036*

Ceph 2D sensor for OrthoPantomograph (OPG) and cephalometry
(for replacement) *W0900037*

3D sensor *W0900038*
Plan captor for 3D OrthoPantomograph (OPG) (for replacement)

115V Light *29701225.CW*
Reports X-Rays emission during acquisition

230V Light *29701226.CW*
Reports X-Rays emission during acquisition

PC workstation (no monitor) *W0900040*
Windows 7, 64 bits. Nvidia Graphic card.
Not included: network card, monitor, AIS 3D App

PC workstation with network card and dongle key (no monitor) *W0900042*
Windows 7, 64 bits. Nvidia Graphic card. 1 Gbit Ethernet Network card. 3D reconstruction
dongle. Not included: monitor, AIS 3D App.

24" PC Monitor *W0900141*

Remote trigger & 15m cable *W0900091*

Ears protections X-MIND Trium *W0900110*
only for arms Ceph

XMT CHIN REST, BITE BLOCK, TMJ *W0900080*

XMT SLIDING BITE BLOCKS (10pcs) *W0900080*

Bite protections X-MIND Trium (500 pcs) *W0900142*



X-MIND Trium Self Standing Base *W0900236*



X-MIND PRIME 2D PAN

XMP 2D WALL 110-120V: **W1200001**
COMPLETE SYSTEM KIT: PRIME + WALL FIXING
PLATE: **W1200001-08**

X-MIND® Prime is a smart space-saving solution, providing high-technology capabilities and simplicity of use. This ingenious unit offers all essential diagnostic tools in a cost effective package.

X-MIND PRIME 3D CBCT/PAN

XMP 3D WALL 110-120V + WS + MONITOR: **W1200005**
COMPLETE SYSTEM KIT: PRIME + WALL FIXING PLATE
+ EXTENDED VIEW + US PLUG: **W1200005-09**

X-MIND® Prime 3D offers a multitude of acquisition programs thanks to its multiple FOV (5x5cm, 8.5x5cm, 8.5x9.3cm and 12x10cm). Once you select the region of interest of the examination, the settings and dose are automatically adjusted.



X-MIND PRIME COLUMN

Column for X-MIND® Prime for when mounting to the wall is not possible
W1200101V

XMP Disposable Bite Protection (100) - **6107110700**
XMP Chin Support Kit - **7104011300**
XMP TMJ Protective Sleeves (60) - **6107110800**

X-MIND PRIME PAN WITH CEPH

X-Mind Prime with Cephalometric Arm
W1200009-08

X-MIND PRIME 3D WITH CEPH

COMPLETE SYSTEM KIT: PRIME + WALL FIXING PLATE
+ EXTENDED VIEW + US PLUG
W1200010-09



SOPROCARE

Patented SOPRO® innovation using fluorescence and selective chromatic amplification technologies.

SOPROCARE® instantly highlights plaque, gingival inflammation and caries even in their early stages.

- Light (78 g)
- 4 pre-set selections (extraoral, intraoral, CARE, macro)
- Lighting by LED : four white - three blue
- Freezing by sensitive touch "SOPROTouch®"



SOPROCARE® Handpiece

S_950_0002

Delivered with four SOPROTIPS, a handpiece holder, ACTEON imaging software and its license. Needs to be used with a docking station.

SOPROLIFE

Patented SOPRO® innovation using fluorescence technologies.

SOPROLIFE® Detects caries on occlusal and interproximal surfaces, helping to achieve minimally invasive treatments.

- Light (78 g)
- 4 pre-set selections (extraoral, intraoral, LIFE, macro)
- Lighting by LED : 4 whites (Daylight mode) or 4 blues (diagnostic or traitement mode)
- Freezing by sensitive touch "SOPROTouch®"



SOPROLIFE® Handpiece

S_900_0002

Delivered with four SOPROTIPS, a SOPROLIFE® handpiece holder, ACTEON imaging software and its license. Needs to be used with a docking station.

SOPRO 717 FIRST

SOPRO 717 First reveals micro-cracks, micro-lesions, infiltrations - all that human vision can not see alone.

- Light (75 g)
- 3 pre-selections (extraoral, intraoral, macro)
- Lighting by LED (x8)
- Freezing by sensitive touch "SOPROTouch®"



SOPRO® 717 FIRST Handpiece

S_717_0101

Delivered with a SOPRO® 717 First handpiece holder, ACTEON imaging software and its license. Needs to be used with a docking station.

SOPRO 617

- Very light (55 g)
- Freezing by sensitive touch "SOPROTouch®"
- No focus adjustment
- Lighting by LED (x8)
- Non-inverted image
- 105° angle of view



SOPRO® 617 Handpiece

S_617_0002

Delivered with a SOPRO® 617 handpiece holder, ACTEON imaging software and its license. Needs to be used with a docking station

DOCKING STATIONS



Mini dock USB 2.0
Docking station USB2.0

S_717_1600

Including one 2.5 meters linking cable and one 0.8 meter repeater cable

Mini Dock U USB 2M Surf6
S_717_1703

Mini Dock, 2M cable in Surf, USB cable, and ACTEON imaging Software. Air-electric switch not included - must be ordered separately

Mini Dock U USB 7M Surf6
S_717_1704

Mini Dock, 7M cable in Surf, USB cable, and ACTEON imaging Software. Air-electric switch not included - must be ordered separately

Mini Dock U USB 2M Grey3
S_717_1705

Mini Dock, 2M cable in grey, USB cable, and ACTEON imaging Software. Air-electric switch not included - must be ordered separately

Mini Dock U USB 7M Grey3
S_717_1706

Mini Dock, 7M cable in grey, USB cable, and ACTEON imaging Software. Air-electric switch not included - must be ordered separately



Linking cable 8ft
With connector on both sides
SOPROLIFE®/SOPRO® 717/SOPRO® 617

922050

Linking cable 15ft
With connector on both sides
SOPROLIFE®/SOPRO® 717/SOPRO® 617

922051

FOOTSWITCHES



USB Foot Pedal

009009

SHEATHS



Sheaths for SOPROLIFE, SOPROCARE or SOPRO 717 First **403017-TORIOC20**
500 sheaths per box

Sheaths for SOPRO 617 **403023**
500 sheaths per box

ACCESSORIES



SOPROTIPS for SOPROLIFE® and SOPROCARE® **990135**
Protection tip against light.
Sterilization by autoclave.
(Set of 4 pieces)

NEWTRON

BOOSTER



26
ACTEON EQUIPMENT

NEWTRON® BOOSTER

US F60216

CANADA F60206

NEWTRON unit delivered with NEWTRON Handpiece, US power Supply

NEWTRON® BOOSTER WITH INTRO TIP KIT

US F60211

CANADA F60201

NEWTRON unit delivered with NEWTRON Handpiece, intro kit (#1, 10Z, H3 tips, three blue torque wrenches, autoclavable plastic box), and US power Supply

NEWTRON

P5 B. LED



NEWTRON® P5 B.LED

US F61116

CANADA F61106

NEWTRON P5 B.LED unit delivered with NEWTRON Slim B.LED Handpiece with white LED ring, US power Supply

NEWTRON® P5 B.LED WITH INTRO KIT

US F61117

CANADA F61107

NEWTRON P5 B.LED delivered with NEWTRON Slim B.LED Handpiece with white LED ring, intro kit (#1, 10Z, H3 tips, three blue torque wrenches, autoclavable plastic box), and US power Supply

Class IIa medical devices (GMED) - CE 0459

NEWTRON

P5XS B.LED

28
ACTEON EQUIPMENT



NEWTRON® P5 XS B.LED

US F62118

CANADA F62106

NEWTRON P5 XS B.LED unit delivered with NEWTRON Slim B.LED Handpiece with white LED ring, US power Supply

NEWTRON® P5 XS B.LED WITH INTRO KIT

US F62117

CANADA F62107

NEWTRON P5 XS B.LED delivered with NEWTRON Slim B.LED Handpiece with white LED ring, intro kit (#1, 10Z, H3 tips, three blue torque wrenches, autoclavable plastic box), and US power Supply

Class IIa medical devices (GMED) - CE 0459

ACCESSORIES



NEWTRON® handpiece **F12281**
Autoclavable Handpiece: GII 2-Tone (Grey)
NEWTRON OEM



Nose for NEWTRON® handpiece **E12281**



NEWTRON® SLIM B.LED handpiece **F12900**
NEWTRON Slim B.LED Handpiece with blue LED ring; Compatible with NEWTRON B.LED and NEWTRON XS B.LED devices for use with FLAG fluorescent liquid assistance guide

*F.L.A.G. is currently unavailable in Canada



NEWTRON® SLIM B.LED handpiece **F12905**
NEWTRON Slim B.LED Handpiece with white LED ring for NEWTRON B.LED, XS B.LED



NEWTRON® SLIM handpiece **F12901**
without LED
For NEWTRON® Booster sold before 2016



Nose for NEWTRON® SLIM and NEWTRON® SLIM B.LED handpieces **E12904**



NEWTRON® SLIM B.LED blue LED ring **F62201**
Blue LED Ring for NEWTRON Slim B.LED handpiece (to illuminate FLAG - not available in Canada)



NEWTRON® SLIM B.LED white LED ring **F12915**
White LED Ring for NEWTRON Slim B.LED Handpiece

Light Guide **E12903**
LED Light Guide for NEWTRON Slim B.LED Handpiece

ULTRASONICS

Ultrasonic Accessories



300ml tank

F62004



500ml tank

F62005



F.L.A.G.™ for B.LED

F62209

FLAG 5, 1.5 ML vials. Fluorescent liquid assistance guide adheres to plaque and is illuminated by the blue light of the NEWTRON Slim B.LED handpiece. Not available in Canada.

F.L.A.G.™ for B.LED

F62207

FLAG 100 ML bottle. Fluorescent liquid assistance guide adheres to plaque and is illuminated by the blue light of the NEWTRON Slim B.LED handpiece. Not available in Canada.

F.L.A.G.™ Package

F62206

FLAG Package 100 ML bottle with Blue LED ring. Fluorescent liquid assistance guide adheres to plaque and is illuminated by the blue light of the NEWTRON Slim B.LED.

*F.L.A.G. is currently unavailable in Canada



Large O-Ring for Handpiece

E15019

Small O-Ring for Handpiece

E15052

O-Ring Kit

E15121

for P Max XS and P5 NEWTRON XS Irrigation Tanks

Medium O-Ring

E15002

Black Medium O-ring 9 x 1 for NEWTRON Slim and NEWTRON Slim B.LED Handpiece

O-Ring with Tool

F12304

Handpiece 3 gasket O-rings and tool

Water Filter, Complete **F10386**

Replacement water filter cartridge **F10389**



NEWTRON® LED handpiece **F12609**

Autoclavable LED Handpiece for P Max XS, P5 LED, P5 XS LED, SP NEWTRON LED and Piezotome 2 / Implant Center 2



Light Ring **F12605**

For NEWTRON® LED handpiece

Light Guide **E12674**

Light guide for the NEWTRON® LED Handpiece



Blue Plastic Color Coded Wrench **F81302**



NEWTRON® wrench **F81330**

Blue color coded torque wrench



Universal wrench **F00406**



Autoclavable plastic box (round) **F12351**

Clear Cover GII (Empty) Autoclavable Box - Holds four tips total - Requires round torque wrenches to hold the tips (not included) - F81330 and any previous round torque wrench versions

Autoclavable plastic box **F12350**

Clear Cover GII (Empty) Autoclavable Box - Holds four tips total (not included)



Autoclavable box **F00143**

Metal Blue Autoclavable Box - Holds 6 tips (not included)

scaling

Scaling



N°1
F00246
Universal



N°2
F00247
High power



N°3
F00248
Removing stains



10P
F00253
Supra and subgingival < 3mm



10X
F00359
Interproximal



10Z
F00254
Subgingival



N°1S
F00245
Supra and subgingival

periodontics

Curettes & debridement



H1
F00366
Anterior teeth, diamond-coated



H2L
F00367
Premolars & molars, left-angled



H2R
F00368
Premolars & molars, right-angled



H3
F00369
Anterior teeth, curette



H4L
F00114
Premolars & molars, left-angled



H4R
F00115
Premolars & molars, right-angled

perioFine

Periofine



PFU
F02170
Universal



PFL
F02171
Left-angled



PFR
F02172
Right-angled

implantProtect

Pure Titanium



Peri-implantitis treatment



IP1
F02121
Implant abutments and wide threads



IP2L
F02122
Medium implant threads, left-angled



IP2R
F02123
Medium implant threads, right-angled



IP3L
F02124
Narrow implant threads, left-angled



IP3R
F02125
Narrow implant threads, right-angled

perioMaintenance

BDR



Periodontal maintenance (BDR)



TK1-1S
F01001
Short probe



TK1-1L
F01004
Long probe



TK2-1L
F02162
Premolars & molars, left-angled



TK2-1R
F02161
Premolars & molars, right-angled

perioSoft

implant maintenance



PH1 (x4)
F00702
Anterior teeth



PH2L (x4)
F00705
Premolars & molars, left-angled



PH2R (x4)
F00706
Premolars & molars, right-angled

perioPrecision

PerioPrecision



P2L
F00090
Narrow pockets debridement, left-angled



P2R
F00091
Narrow pockets debridement, right-angled

ULTRASONICS

Dental tips

endodontics



Endodontics - Irrigation



K10-21 (x4)
F43710
Ø 0.1/length 21mm



K10-25 (x4)
F43712
Ø 0.1/length 25mm



K15-21 (x4)
F43715
Ø 0.15/length 21mm



K15-25 (x4)
F43717
Ø 0.15/length 25mm



K25-21 (x4)
F43725
Ø 0.25/length 21mm



K25-25 (x4)
F43727
Ø 0.25/length 25mm



K30-21 (x4)
F43730
Ø 0.3/length 21mm



K30-25 (x4)
F43732
Ø 0.3/length 25mm

irrisafe



Passive Ultrasonic Irrigation



IRR 20-21 (x4)
F43807
Ø 0.2mm
length 21mm



IRR 20-25 (x4)
F43808
Ø 0.2mm
length 25mm



IRR 25-21 (x4)
F43805
Ø 0.25mm
length 21mm



IRR 25-25 (x4)
F43806
Ø 0.25mm
length 25mm

endosurgery



Apical surgery



P14D
F00106
Universal



P15LD
F00107
Left-angled



P15RD
F00108
Right-angled



S12-70D
F00118
70°
Universal

endodontics



Retreatment



ET40
F88012
Length 40mm



ET40D
F88014
Length 40mm,
diamond-coated



ET20D
F88013
Length 20mm,
diamond-coated



SO4
F88009
Gutta Percha condenser

endosuccess

Retreatment



Retreatment



ET18D
F88017
Cavity access finishing



ETBD
F88020
Exploration



ET25S
F88021
Short Ti-Nb tip



ET25
F88018
Ti-Nb tip



ET25L
F88022
Long Ti-Nb tip



ET20
F88011
Universal



ETPR
F88019
Loosening

endosuccess

Apical Surgery



Apical surgery



AS3D
F00065
Length 3mm
Universal



AS6D
F00079
Length 6mm



AS9D
F00067
Length 9mm



ASLD
F00080
Length 3mm,
left-angled (premolars)



ASRD
F00081
Length 3mm,
right-angled (premolars)

endosuccess

Canal Access Prep



Canal Access Prep



CAP1
F88181
Cavity
preparation



CAP2
F88182
Canal
localization



CAP3
F88183
Canal opening

ULTRASONICS

Dental tips

perfectmargin

Rounded



Prosthetic finishing (rounded)



PM1
F02250
Preparation of
the dentin



PM2
F02251
Preparation/
finishing



PM3
F02252
Finishing



PM4
F02253
Corono-radicular preparation, conical,
diamond-coated 46µm

perfectmargin

Veneers



Ceramic veneers finishing



PMV1
F02021
Diamond-coated
ball



PMV2
F02022
Diamond-coated
external spoon



PMV3
F02023
Diamond-coated
internal spoon



PMV4
F02024
Smooth external
spoon



PMV5
F02025
Smooth internal
spoon



PMV6
F02026
Smooth ball

perfectmargin

Shoulder



Prosthetic finishing (shoulder)



PMS1
F02254
Preparation of
the dentin



PMS2
F02255
Preparation/
finishing



PMS3
F02256
Finishing

excavus



Excavation



EX1
F02040

Occlusal surface



EX2
F02041
Proximal
surface



EX3
F02042
Distal surface



EX-R
F02043
45° angled to the right



EX-L
F02044
45° angled to the left



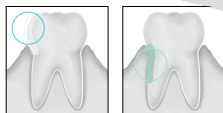
Prosthesis



C20
F00113
Inlay/onlay condensation



5AE
F00249
Loosening with spray

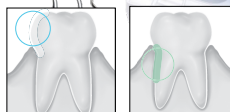
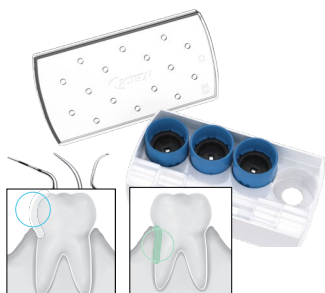


scaling

Scaling kit

F00900

Tips - #1, #2, 10X, 10Z with 4 torque wrenches and Autoclavable Box



NEWTRON

NEWTRON Intro Kit

F00932

Tips - #1, 10Z, H3, three torque wrenches and Autoclavable Box

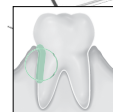


perioPrecision

Perio Precision kit

F00939

Tips - TK1- 1S, P2L, P2R, 3 torque wrenches and Autoclavable Box



periodontics

Perio kit

F00902

Tips - H3, H4L, H4R with 3 torque wrenches and Autoclavable Box



perio*m*aintenance

BDR

Bio-Film Disruption Kit

F00904

Tips - TK1- 1S /TK1- 1L / TK2- 1R / TK2- 1L with 4 torque wrenches and Autoclavable Box



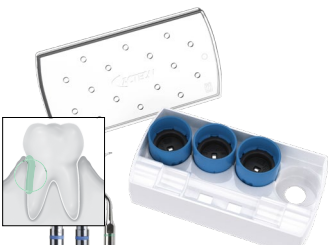
implant*P*rotect

Pure Titanium

Implant Protect kit

F02120

Tips - IP1, IP2L, IP2R, IP3L, IP3R with universal wrench and Autoclavable stand



perio*d*ontics

Perio Soft Kit

F00906

Tips - 4 pk PH1, 4 pk PH2L, 4 pk PH2R with 3 blue torque wrenches and Autoclavable Box. Only available until supplies last.



excavus

Excavus® Kit

F00739

Tips - EX1, EX2, EX3, EXR, EXL with 1 Universal Wrench and Autoclavable Stand

ULTRASONICS

Tip kits



endosuccess
Retreatment

Endo Success™ Retreatment kit

F00737



ET18D, ETBD, ET20, ET25S, ET25 and ETPR with 1
Universal Wrench and Autoclavable Stand



endosuccess
Canal Access Prep

Endo Success™ Canal Access Prep kit

F88180



CAP1, CAP2, CAP3 with universal wrench and
Autoclavable stand



endosuccess
Apical Surgery

Endo Success™ Apical Surgery kit

F00069



AS3D, AS6D, AS9D, ASLD, ASRD Tips with 1 Universal
Wrench and Autoclavable Stand



perfectmargin
Rounded



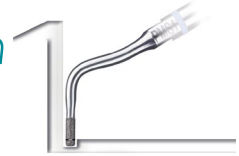
Perfect Margin® Rounded kit

F00738

Tips - PM1, PM2, PM3, PM4 with 1 Universal Wrench and Autoclavable Stand



perfectmargin
Shoulder



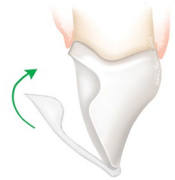
Perfect Margin® Shoulder kit

F00736

Tips - PMS1, PMS2, PMS3, PM4 with 1 Universal Wrench and Autoclavable Stand



perfectmargin
Veneers



Perfect Margin® Veneers kit

F02020

Tips - PMV1, PMV2, PMV3, PMV4, PMV5, PMV6 with universal wrench and Autoclavable stand

ULTRASONICS

Tip kits



Micro Retro Kit

F00912

Tips - P14D, P15LD, P15RD with 3 Wrenches and Autoclavable Box

AIR N GO

EASY



AIR-N-GO® easy

The new generation of dual purpose Air Polisher: SUPRA and PERIO

AIR-N-GO® easy with KaVo* adapter	F10130
AIR-N-GO® easy with Sirona* adapter	F10131
AIR-N-GO® easy with W&H* adapter	F10132
AIR-N-GO® easy with Bien-Air* adapter	F10133
AIR-N-GO® easy with Midwest* adapter	F10135

Delivered with a convertible AIR-N-GO® easy handpiece, a SUPRA nozzle, 1 intro kit of 20g bags of CLASSIC powders, 1 AIR-N-GO® easy maintenance kit (replacement o-rings, syringe of silicone grease with brushes, cannula, cleaning drill).

*KaVo, Sirona, W&H, Bien-Air and Midwest are registered trademarks.

Class IIa medical devices (GMED) - CE 0459



AIR-N-GO® EASY ACCESSORIES

FOR AIR-N-GO EASY ORIGINAL
PURCHASED PRIOR TO 2015



AIR-N-GO® easy PERIO KIT

F10120

Turns your handpiece into a Perio system to treat periodontal disease (tooth & implants) on pockets from 3 to 8mm.

Delivered with a AIR-N-GO easy nozzle and a bottle of AIR-N-GO PERIO glycine powder.

Class IIa medical devices (GMED) - CE 0459



AIR-N-GO® SUPRA nozzle

F10125

For all prophylaxis supra-gingival treatments.



AIR-N-GO® PERIO easy nozzle

F10126

Turns your handpiece into a Perio system to treat non surgical periodontal disease (tooth & implants) in pockets from 3 to 8mm.



AIR-N-GO® PERIO nozzle

F10127

Turns your handpiece into a Perio system to treat non surgical and surgical periodontal disease (tooth & implants) in pockets from 8 to 10mm.



AIR-N-GO® PERIO Maintenance nozzle

F10128

Turns your handpiece into a system adapted for periodontal maintenance in pockets until 4mm.



Air-N-Go Easy O-ring kit

F10121

Air-N-Go Easy o-ring kit: includes silicone grease syringe, (3) brushes, o-rings

POWDER - BOTTLES

Class IIa medical devices (GMED) - CE 0459



AIR-N-GO® CLASSIC powder

4 bottles (250g)

- Peppermint
- Lemon
- Raspberry
- Cola
- Neutral

- F10250**
- F10251**
- F10252**
- F10253**
- F10254**



4 flavors AIR-N-GO® CLASSIC powder

4 bottles (250g)

F10255



AIR-N-GO® PERIO powder

3 bottles (160g)

F10270

POWDER - STICKS

Class IIa medical devices (GMED) - CE 0459



AIR-N-GO® CLASSIC powder

50 sticks (20g)

- Peppermint
- Lemon
- Raspberry
- Cola
- Neutral

- F10256**
- F10257**
- F10258**
- F10259**
- F10260**

AIR-N-GO® ACCESSORIES



Ø0.5 mm AIR-N-GO® SUPRA probe

F10207



Ø1 mm AIR-N-GO® SUPRA probe

F10208



AIR-N-GO® PERIO probe

F10206



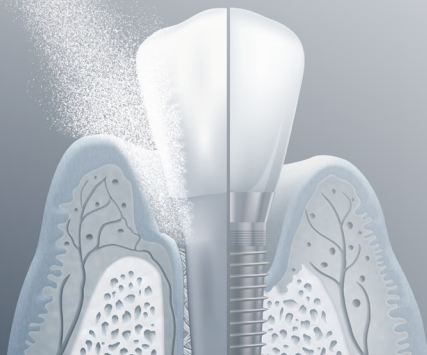
AIR-N-GO® o-rings kit

F10205

AIR-N-GO® Easy Front Body

E10207

Autoclavable front body for the AIR-N-GO Easy



OTHER ACCESSORIES



Blue ProphyPen

F10554

Disconnectable polisher handpiece (bayonet) delivered with a 135° titanium nozzle and an autoclavable universal wrench.



White ProphyPen

F10557

Disconnectable polisher handpiece (bayonet) delivered with a 135° titanium nozzle and an autoclavable universal wrench.



Titanium nozzle 135° Ø0.7 mm

F10555

GRACEY CURETTES



GRACEY 1-2	Ref. 402.01SI	GRACEY 13-14	Ref. 402.13SI
GRACEY 5-6	Ref. 402.05SI	GRACEY 15-16	Ref. 402.15SI
GRACEY 11-12	Ref. 402.11SI	GRACEY 17-18	Ref. 402.17SI

UNIVERSAL CURETTES



BARNHART 5-6	Ref. 408.05SI	COLUMBIA 4L-4R	Ref. 405.04SI
LANGER 5-6	Ref. 406.06SI	COLUMBIA 13-14	Ref. 405.13SI

SICKLE SCALERS



M23	Ref. 404.23SI
H6-H7	Ref. 406.07SI

COMBOS



H5-L5	Ref. 406.05SI
N128-L5	Ref. 406.08SI
N128-L5 mini	Ref. 406.09SI

DIAGNOSTICS - EXPLORERS



EXP11-12	Ref. 263.06SI
EXP17-23	Ref. 263.07SI

RESTORATION - EXCAVATORS & BURNISHERS



EXC36-35	Ref. 165.01SI	EXC91	Ref. 165.03SI
EXC38-37	Ref. 165.02SI	BUR125	Ref. 108.14SI

RESTORATION - COMPOSITE & CEMENT SPATULAS



CMS1	Ref. 194.12SI	SP20	Ref. 246.05SI
CMS2	Ref. 194.13SI	SP25	Ref. 246.09SI
CMS3	Ref. 194.14SI	SP42	Ref. 246.24SI
CMS4	Ref. 194.15SI		
CMS5	Ref. 194.16SI		
CMS6	Ref. 192.05SI		

PERIODONTICS - EXPROS



UNC12	Ref. 418.06SI	UNC 15	Ref. 418.08SI
CP12	Ref. 418.07SI	CP15	Ref. 418.09SI

ENDODONTICS - ROOT CANAL PLUGGERS



MACHTOU 1-1	Ref. 419.01SI	zMACHTOU 2-3	Ref. 419.03SI
MACHTOU 1-2	Ref. 419.02SI	MACHTOU 2-4	Ref. 419.04SI

CASSETTES



Easyclip Cassette

233.30

8 Instruments
Dimensions 180x136x30mm
Material: PSU
Handy and light (90g)
Sterilizable up to 180°C
Instruments not included



Sterilization Cassette

233.20

16 Instruments
Dimensions 285x92x37mm
Material: stainless steel
Yellow silicone + 2 metal clips
Sterilizable up to 180°C
Instruments not included

PROPHYLAXIS KIT



Prophylaxis Kit

400CSS.SI

Bliss Prophy kit includes: 1 M23, 1 Gracey 11-12,
1 Gracey 13-14, 1 H6-H7, 1 Columbia 13-14, 1 Bliss
Mirror Handle, 1 #5 Pure Reflect Mirror, 1 Probe,
1 Autoclavable cassette

MOUTH MIRRORS



CSS Mirror Handle
Mirror not included

212.00SI



Pure Reflect Micro Mirror #5 (CSS)
Box of 12 mirrors, single sided
9x3 mm

MP4624PH



Pure Reflect Micro Mirror #4 (CSS)
Box of 12 mirrors, single sided
7x2 mm

MP4622PH

PIEZOTOME

CUBE

Ultrasonic Bone Surgery provides Less Trauma and Less Drama for :

- Atraumatic Extractions
- Bone grafting
- Sinus elevations
- Ridge Splitting
- Accelerated Orthodontics



PIEZOTOME® CUBE

US F50108
CANADA F50117 ■

Piezotome CUBE with power cord, Piezotome CUBE handpiece, torque wrench, foot pedal, irrigation bracket, and five (5) sterile disposable irrigation lines

Class IIa medical devices (GMED) - CE 0459

NOTE

Some accessories adapted to Piezotome® 2, Piezotome® Solo, Piezotome® CUBE and ImplantCenter™ 2 are not compatible with the first generation Piezotome® and ImplantCenter™, and vice-versa

- References compatible with 1st generation devices are indicated by a blue square : ■
- References compatible with 2nd and 3rd generation devices are indicated by a grey square □

PIEZOTOME® CUBE ACCESSORIES



Piezotome® CUBE LED handpiece **F12816**

Autoclavable handpiece and cord with LED light ring for use with Piezotome CUBE device

Compatible with 2nd generation piezo tips → ■



Piezotome CUBE Foot pedal **F50109**



Handpiece support **F50133**

Autoclavable handpiece holder for Piezotome CUBE handpiece



Torque Wrench **F50150**

Torque wrench for safe application of tips on the Piezotome CUBE LED handpiece



Irrigation Clip **E57353**

Single Irrigation Clip for Surgical Ultrasonic and Micro Motor Devices



Irrigation Bracket **F50129**

Pole for holding irrigation bag on the Piezotome CUBE

IMPLANT CENTER 2



FUNCTIONS

- I-Surge™: implantology
- Piezotome®: bone surgery
- NEWTRON®: conventional treatments (perio, endo, ...)

IMPLANT CENTER 2 LED: STARTER KIT

F27168 ■

Delivered with i-Surge LED motor, i-Surge LED motor cord, power cord, a progressive footswitch, 2 brackets, 2 handpiece holders and 2 sterilizable irrigation lines, 30 perforators, an Extraction II pack *Contra Angles not supplied

This reference does not include the PIEZOTOME 2 handpiece or tips.

IMPLANT CENTER 2 LED STARTER KIT WITH LED SURGICAL CONTRA ANGLE (20:1)

F27168-CA ■

Delivered with i-Surge LED motor, i-Surge LED motor cord, power cord, a progressive footswitch, 2 brackets, 2 handpiece holders and 2 sterilizable irrigation lines, 30 perforators, an Extraction II pack and LED Surgical Contra Angle (20:1) - Bien Air

This reference does not include the PIEZOTOME 2 handpiece or tips.

- References compatible with 1st generation devices are indicated by a blue square : ■
- References compatible with 2nd and 3rd generation devices are indicated by a grey square ■

ACCESSORIES FOR IMPLANT CENTER™



Implant Center 2 Foot Control *F27170*
Implant Center 2 Progressive Foot Pedal ■



ImplantCenter™ Bracket *E27113*
Irrigation for use with Implant Center 2, Piezotome Solo, Piezotome 2 ■ ■

ACCESSORIES FOR IMPLANT CENTER™ 2 WITH LED MOTOR



I-Surge™ LED motor *F27210*
I-SURGE LED MOTOR for use with the Implant Center 2 LED only *Contra Angles not supplied ■



i-Surge™ LED Motor Cord *F27211*
Cord for use with the i-Surge LED Motor on Implant Center 2 LED only *Contra Angles not supplied ■

IMPORTANT

The handpieces are equipped with keyway systems to prevent a Piezotome® insert from being screwed onto a NEWTRON® handpiece or a classic insert (scaling, periodontics, endodontics, etc.) from being screwed onto a Piezotome® handpiece.



NEWTRON® Handpiece **F12281**
Autoclavable Handpiece: GII 2-Tone (Grey)
NEWTRON OEM. Compatible with Piezotome 1 and
Implant Center 1. Need F57305 to connect.



Piezotome® LED handpiece + cord **F12815**
Compatible with Piezotome Solo,
Piezotome 2 and Implant Center 2 device ■



LED Ring **F12821**
Light Ring for the Piezotome 2 LED Handpiece



NEWTRON® LED handpiece **F12609**
Autoclavable LED Handpiece for Piezotome 2 /
Implant Center 2. Need F12830 to connect. ■



NEWTRON® LED cord **F12830**
Sterilizable and disconnectable cord to connect the
NEWTRON LED handpiece to the Implant Center 2
or Piezotome 2 ■

- References compatible with 1st generation devices are indicated by a blue square : ■
- References compatible with 2nd and 3rd generation devices are indicated by a grey square ■



Sterilization Box

F27156

Piezotome (PZI, PZII) Sterilization box: can hold one handpiece with cord, 2 Tip Kits and 1 Wrench (items are not included)



Irrigation Kit (Sterile Disposable) F57370

Kit includes 10 sterile disposable lines and cartridge.



Irrigation Kit (Autoclavable) F57374

Kit includes 1 autoclavable irrigation line and 10 sterile disposable perforators. (For use with all I-Surge, Piezotome / Piezotome 2, Implant Center / Implant Center 2)



Perforators (Disposable)

F57372

10 Disposable perforators for use with the F57374 Irrigation lines



Irrigation Clip

E57353

Single Irrigation Clip for Surgical Ultrasonic and Micro Motor Devices



SURGERY

Accessories



Piezotome 2 Foot Control *F57404*
Piezotome 2 Progressive Foot Pedal



Piezotome SOLO: Foot Pedal *F57504*



Bracket *E27113*
Irrigation for use with Implant Center 2, Piezotome Solo, Piezotome 2



Piezotome LED Handpiece *F12815*
Piezotome 2, Piezotome Solo LED and Implant Center 2 LED Handpiece and Cord: Non-disconnectable assembly

Piezotome 2 Nose Cone *E12813*
Piezotome 2 stainless steel nose cone

LED Light Guide *E12812*
Light Guide fo the Piezotome 2 LED Handpiece



Bone Surgery-2 Kit

Tips - BS1-2, BS2L-2, BS2R-2, BS4-2, BS5-2, BS6-2, Autoclavable Stand for bone grafting procedures

Bone Surgery-2 Kit
F87509 ■



BS1 - Straight
BS2L-2 - Left-angled
BS2R-2 - Right-angled

F87301 ■

F87502 ■

F87503 ■



BS1S-2 Slim - Depth of cut 9mm

F87525 ■

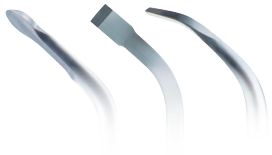
BS1L-2 Long - Depth of cut 15mm with universal wrench

F87527 ■



BS1- RD - Rounded saw, 280° of active surface

F87557 ■



BS4

BS5

BS6

BS4-2

BS5-2

BS6-2

F87504 ■

F87505 ■

F87506 ■

- References compatible with 1st generation devices are indicated by a blue square ■
- References compatible with 2nd and 3rd generation devices are indicated by a grey square ■

SURGERY

Sinus Lift



Sinus Lift-2 Kit

Tips - SL1-2, SL2-2, SL3-2, SL4-2, SL5-2, Autoclavable Stand
(These tips will only work with the Piezotome HP) for lateral approach sinus elevation.

Sinus Lift-2 Kit
F7519 ■



Sinus Lift-2 tips

SL1-2
SL2-2
SL3-2
SL4-2
SL5-2

F87511 ■
F87512 ■
F87513 ■
F87514 ■
F87515 ■



Intralift™-2 Kit

Tips - TKW1, TKW2, TKW3, TKW4, TKW5, Autoclavable Stand to perform internal sinus elevation.

Intralift™ 2 Kit
F87536 ■



TKW1 TKW2 TKW3 TKW4

Intralift™-2 tips

TKW1-2: Conical tip \varnothing 1.35mm (pilot drilling)

F87531 ■

TKW2-2: Cylindrical tip \varnothing 2.1mm (preliminary drilling)

F87532 ■

TKW3-2: Cylindrical tip \varnothing 2.35mm (preliminary drilling)

F87533 ■

TKW4-2: Cylindrical tip \varnothing 2.8mm (secondary drilling)

F87534 ■



TKW5-2
Non cutting "trumpet" tip (sinus membrane elevation)

F87535 ■

SURGERY

Extraction

62
ACTEON EQUIPMENT



EXTRACTION 2 PACK
Sterilization Box, Piezotome 2 Handpiece, Piezotome 2 Cord, Extraction 2 Kit and Easytorque Wrench for atraumatic extractions

Extraction 2 Pack
F87540 ■



Extraction-2 Kit
Tips - LC1-2, LC2-2 (2), LC2R-2, LC2L-2, Ninja-2, Autoclavable Stand and Universal Wrench for atraumatic extractions.

Extraction-2 Kit
F87546 ■



Extraction-2 tips

LC1-2
LC2-2
LC2L-2
LC2R-2

F87507 ■
F87542 ■
F87543 ■
F87544 ■



Ninja[®]-2

F87545 ■



Crown Extension-2 Kit

BS6-2, CE1-2, CE2-2, CE3-2 Tips with 1 Universal Wrench and Autoclavable Stand to perform crown lengthening procedures.

CE-2 Kit
F87554 ■



Crown Extension-2 tips

CE1-2 - Diamond-coated spherical tip
ø1.75mm

F87551 ■

CE2-2 - Diamond-coated spherical tip
ø1.20mm

F87552 ■

CE3-2 - Diamond-coated straight tip
on 5mm (laser mark placed at
3mm: biologic width)

F87553 ■



BS6-2

F87506 ■



Specialist Upgrade Tip Kits

Bone Surgery-2 Tip Kit, Sinus Lift-2
Tip Kit, IntraLift-2 Tip Kit, Clinical Book
and DVD

F87521 ■

SURGERY

Crest Splitting



Crest Splitting-2 Kit

CS1, CS2, CS3, CS4, CS5, CS6, tips
an autoclavable metal support, an
autoclavable universal wrench.

CS-2 Kit
F87567 ■



Crest Splitting tips

CS1-2
CS2-2
CS3-2
CS4-2

F87561 ■
F87562 ■
F87563 ■
F87564 ■



CS5-2
CS6-2

F87565 ■
F87566 ■



Piezocision™ Kit

Delivered with PZ1, PZ2L, PZ3R, PZ3 tips,
an autoclavable metal support and an
autoclavable universal wrench.

F87576 ■



Piezocision™ tips

PZ1 - Anterior corticotomies.

F87571 ■

PZ2L (left oriented)
Lateral corticotomies on patient's
right vestibular arch
To be used with pendulum motion

F87572 ■

PZ2R (right oriented)
Lateral corticotomies on patient's
left vestibular arch
To be used with pendulum motion

F87573 ■

PZ3 - Anterior corticotomies
for root proximity concerns

F87574 ■



SURGERY

Packs and kits



Essential-2 Kit

BS1S II, BS4 II, LC2 II, SL1 II, SL2 II, SL3 II tips, an autoclavable metal support, an autoclavable universal wrench

F87528 ■

NEWTRON® RETRO PACK

Delivered with a sterilization box, an autoclavable NEWTRON® handpiece, an autoclavable NEWTRON® cord, a NEWTRON® Retro kit and a Piezotome® autoclavable wrench.

F87322 ■

- References compatible with 1st generation devices are indicated by a blue square ■
- References compatible with 2nd and 3rd generation devices are indicated by a grey square ■

IMPORTANT

NEWTRON® kits are compatible with the NEWTRON® and NEWTRON® LED handpieces.



NEWTRON® Perio Kit

Tips - H1, H2L, H2R, H3, H4L, H4R,
Autoclavable Stand

F87321 ■ ■



NEWTRON® Implant Protect Kit

Tips IP1, IP2L, IP2R, IP3L and IP3R,
an autoclavable metal support,
an autoclavable universal wrench.

F02120 ■ ■



NEWTRON® Micro-Retro Kit

Tips - P14D, P15LD, P15RD with 3
Yellow Wrenches and Autoclavable
Box

F87325 ■ ■



NEWTRON® Retro Kit

Tips - S12-70D, AS6D, ASLD, ASRD,
Autoclavable Stand

F87326 ■ ■



Autoclavable Stand - NEWTRON Tips

NEWTRON- Silver Metal Autoclavable
Stand - Holds 6 tips (not included)

N88449 ■ ■

POLYMERIZATION

Curing lights

66
ACTEON EQUIPMENT



MINILED

SUPERCHARGED

Mini LED™ SuperCharged

F05214

2,200 mWcm² Output, (Modes: Full, Pulse & Ramp)
Handpiece, Battery, Charger, Power Supply, Light
Guide 7.5mm, Oval Light Shield (Cordless)

Mini LED™ SuperCharged handpiece

F05217



MINILED

ORTHO 2

Mini LED™ Ortho 2

F05220

3,000 mWcm² Output (Modes 4, 8, 16 & 32 seconds)
Handpiece, Battery, Charger, Power Supply, Light
Guide 5.5mm, Oval Light Shield (Cordless)



Mini LED™ Black

F05400

Mini LED Black handpiece, 7.5mm light guide and
light shield. Handpiece requires 3 AA batteries
(Batteries are included)



MINILED

STANDARD

Mini LED™ Standard

F02611

Modes: Full, Pulse & Ramp. Handpiece, Battery, Charger, Power Supply, Light Guide 7.5mm, Oval Light Shield (Cordless)

Wavelength: 420 - 480nm
Li-Ion battery
Handpiece: anodized aluminium

Mini LED™ Handpiece

F02530

Mini LED Handpiece for Battery operated unit

POLYMERIZATION Accessories

For Mini LED™ SuperCharged, Mini LED™ Ortho 2



Mini LED Battery Charger Base

F02510



Mini LED Battery Lithium Ion

F02520



Power supply with US plug for Mini LED

F02544



Light Shield

F05407

Light shield for Mini LED, SuperCharged, Ortho2 & Black

Oval Light Shield

F02555

Oval Light Shield for Standard Mini LED

For Mini LED™, Mini LED™ SuperCharged, Mini LED™ Ortho 2



**Light Guide 7.5mm Opalescent -
Minimum output 1,250 mWcm2**

F02648



Light Guide, 5.5mm, Opalescent

F02652



Light Guide, 5.5mm, black

F02658



**Light Guide 7.5mm Opalescent
for Mini LED Black**

F05409

PROSTHESIS & AESTHETICS

Gingival Retraction Paste

EXPASYL™
EXACT



EXPASYL™ EXACT

Effective and atraumatic gingival retraction for traditional and digital impressions, Class II and V Restoration, sealing/bonding, and Implantology. EXPASYL Exact Capsules work with virtually any applicator gun, and each capsule contains one dose per patient.

ACTEON PHARMA



EXPASYL™ EXACT APPLICATOR GUN
Applicator gun for Expasyl Exact capsules

261036



EXPASYL™ EXACT CAPSULE - 20 CAPSULE PACK **261010**

EXPASYL™ EXACT CAPSULE - 50 CAPSULE PACK **261011**

*EXPASYL™ Exact is currently unavailable in Canada. See next page for standard EXPASYL™

Manufacturer: Produits Dentaires Pierre Rolland - FRANCE

PROSTHESIS, PROPHYLAXIS & PERIODONTICS

Gingival Retraction, Hemostasis and Splinting

EXPASYL™



EXPASYL™ INTRO KIT

Expasyl Intro Kit (Applicator Gun, 6 Capsules, 12 Applicator Tips)
System for temporary gingival retraction.

294100



1 MANUAL APPLICATOR

Expasyl Applicator Gun

260900



EXPASYL™ CAPSULE - 20 PACK (STANDARD)

261030

EXPASYL™ CAPSULE - 20 PACK (STRAWBERRY)

261001



EXPASYL™ APPLICATOR TIP - BOX OF 40

261040

EXPASYL™ APPLICATOR TIP - BOX OF 100

261005

HEMOSTASYL™

Hemostatic dressing with mechanical action



HEMOSTASYL™ INTRO KIT - 2 Syringes, 40 Tips

246200

HEMOSTASYL™ SYRINGE - 2 Syringes

246050

HEMOSTASYL™ APPLICATOR TIP - Box of 40 Tips

246100

*HEMOSTASYL™ is currently unavailable in Canada

BIOSPLINT™

Splinting ribbons



BIOSPLINT SPLINTING RIBBONS - REFILL

201661

BIOSPLINT Ribbons: 8 Splinting Ribbons

*BIOSPLINT is currently unavailable in Canada

Manufacturer: Produits Dentaires Pierre Rolland - FRANCE

RisKontrol®



Disposable tips for air/water syringes

Classic by
RisKontrol®

Box of 250 non sterile tips



White	201664
Blue	201665
Yellow	201666
Green	201667
Pink	201668

Box of 250 non sterile tips

Art by
RisKontrol®

White/Mint	201700
------------	---------------



RISKONTROL ADAPTERS

Adapter ADEC II - fits Riskontrol Perfect only	200195
Adapter BELMONT	200158
Adapter Dental EZ	200164
Adapter DCI - fits Riskontrol Perfect only	200152
Adapter Siemens 4000	200178
Adapter Sirona	200154
Adapter KAVO	200171
Adapter Luzzani - fits Riskontrol Perfect only	200150

Manufacturer: Produits Dentaires Pierre Rolland - FRANCE
All information for a perfect use of these medical devices are indicated on the website:
www.acteongroup.com. Products reserved for professional dental use.



MODULES



**SP NEWTRON® 4K5V MODULE
with connectors (10 & 4 pin)**

F55297



SP NEWTRON® 4K3, 7V MODULE

F55287

Module only. Does not contain harness adapter (available separately if needed).

**PIEZO ULTRASONIC MODULE
F55480**

SP NEWTRON universal w/ connector, AHP, handpiece tubing, Potentiometer. Note: Does not include Air-Electric switch or power supply. Items are available separately.

**PIEZO ULTRASONIC MODULE WITH
HYGIENE TIPS
F55331**

Reference F55480 with Autoclavable Box, 3 color coded torque wrenches, Tips: # 1, 10Z, H3. Note: Does not include Air-Electric switch or power supply. Items are available separately.

NEWTRON LED



MODULES

PIEZO ULTRASONIC MODULE LED F55481

SP NEWTRON LED (Universal), w/ LED handpiece, HP tubing Potentiometer. Note: Does not include Air-Electric switch or power supply. Items are available separately.

PIEZO ULTRASONIC MODULE LED W/ HYGIENE TIPS F55521

Reference F55481 with Autoclavable Box, three color coded torque wrenches, Tips: # 1, 10Z, H3. Note: Does not include Air-Electric switch or power supply. Items are available separately.

HANDPIECES



NEWTRON® handpiece
autoclavable, light grey/dark grey

F12281



NEWTRON® LED handpiece
autoclavable

F12609



NEWTRON® SLIM B.LED handpiece
with white LED ring

F12905

HANDPIECES ACCESSORIES



LED ring
for NEWTRON® LED handpiece

F12605



Blue LED ring
for NEWTRON® SLIM B.LED handpiece

F12201



White LED ring
or NEWTRON® SLIM B.LED handpiece

F12915



ACCESSORIES



Potentiometer *F00524*
Potentiometer with wire harness *F55213*
Potentiometer Complete *F55213K*
 Potentiometer, wire harness, knob & sticker

Potentiometer with wire harness* *F55213PC1*
 - Pelton & Crane
Potentiometer with wire harness* *F55213PC2*
 - Pelton & Crane

***Tubing reference depends on Pelton delivery head series**

Knob and Sticker for the SP NEWTRON *F00526*
 Knob and Sticker for the SP NEWTRON

TRANSFORMER 36V 2.78A+CORD
DTHPU101-36C13M
 Power supply for SP NEWTRON + Mini LED + BUILT-IN SOPRO Dock Needed for retro fitted NEWTRON, MINI LED or CAMERA OEM installation

Air Electric Switch *E00596-OEM*
 For automatic operation needed for retro fitted NEWTRON, MINI LED or CAMERA OEM installation

Water Adapter *M00100*
 Water Adapter for SP NEWTRON

Water Solenoid Kit *M00103*
 Water Solenoid Kit for installation without water block

Air Bleed Pack *M00101*
 Air Bleed Pack for SP NEWTRON

Handpiece Tubing A-dec (61") *F00184*

Handpiece Tubing A-dec GREY3 (61") *F01153*

Handpiece Tubing A-dec (81") *F00188*

Handpiece Tubing A-dec GREY3 (81") *F01154*

Handpiece Tubing LED Surf6 (61") *F00616*

Handpiece Tubing LED Surf6 (81") *F00629*

Handpiece Tubing LED Grey3 (61") *F00632*

Handpiece Tubing LED Grey3 (81") *F00633*

Handpiece Tubing - Light grey silicone *F00195*

Handpiece Tubing - Light grey silicone *F00197*
with connectors

Handpiece Tubing - Light grey silicone *F00197PC1*
with connectors - Pelton and Crane. Tubing reference
depends on Pelton delivery head series.

Handpiece Tubing - Light grey silicone *F00197PC2*
with connectors - Pelton and Crane. Tubing reference
depends on Pelton delivery head series.

Handpiece Tubing Slim LED G3 61" *F01205*

Handpiece Tubing Slim LED G3 81" *F01206*

Handpiece Tubing- Light grey silicone *F00631*
for use with SP NEWTRON LED



MINILED

OEM

Mini LED™ OEM (Built In)

Mini LED Module, Light Grey Cord, Handpiece, Light Guide 7.5mm, Protective Light Shield (Fast, Pulse & Ramp) *Note - Requires a 24 VAC Transformer.

with light grey cord

F02720

Mini LED™ OEM handpiece

F02710

MINILED

SUPERCHARGED
OEM



Mini LED™ SuperCharged OEM (Built In)

2,200 mWcm² Output, (Modes: Full, Pulse & Ramp) Handpiece, Module, Light Grey Cord, Light Guide 7.5mm, Oval Light Shield) Note - Requires a 24 VAC Transformer.

with light grey cord

F05205

Mini LED™ SuperCharged OEM handpiece

F05218



POLYMERIZATION

Modules and Cords



OEM module

F02730

TRANSFORMER 36V 2.78A+CORD DTHPU101-36C13M

Power supply for SP NEWTRON + Mini LED + BUILT-IN
SOPRO Dock Needed for retro fitted NEWTRON, MINI LED
or CAMERA OEM installation

Air Electric Switch

E00596-OEM

For automatic operation needed for retro fitted NEWTRON,
MINI LED or CAMERA OEM installation



Mini LED Handpiece Tubing OEM - light grey

F02721

Mini LED Handpiece Tubing OEM - light grey

F02721PC1

- Pelton & Crane

ADEC® Surf 6 cord

F02326

ADEC® 500 Gray 3 (medium grey) cord

F02327

*Adec is a registered trademark

BUILT-IN DOCKING STATIONS

Mini Dock U USB 2M Surf6

S_717_1703

Mini Dock, 2M cable in Surf, USB cable, and ACTEON imaging Software. Air-electric switch not included - must be ordered separately

Mini Dock U USB 7M Surf6

S_717_1704

Mini Dock, 7M cable in Surf, USB cable, and ACTEON imaging Software. Air-electric switch not included - must be ordered separately

Mini Dock U USB 2M Grey3

S_717_1705

Mini Dock, 2M cable in grey, USB cable, and ACTEON imaging Software. Air-electric switch not included - must be ordered separately

Mini Dock U USB 7M Grey3

S_717_1706

Mini Dock, 7M cable in grey, USB cable, and ACTEON imaging Software. Air-electric switch not included - must be ordered separately

LINKING CABLES FOR BUILT-IN DOCKING



White Linking cable 21ft

922067

FOR BUILT-IN DOCK

SOPRO camera linking cable to build into the arm of the dental unit

Grey Linking cable 21ft

922070

FOR BUILT-IN DOCK

SOPRO camera linking cable to build into the arm of the dental unit

Light Grey Linking cable 21ft

922073

FOR BUILT-IN DOCK

SOPRO camera linking cable to build into the arm of the dental unit

Light Grey Linking cable 21ft

922073PC1

Pelton & Crane FOR BUILT-IN DOCK

SOPRO camera linking cable to build into the arm of the dental unit - cable needed depends on Pelton delivery head series number.

Light Grey Linking cable 21ft

922073PC2

Pelton & Crane FOR BUILT-IN DOCK

SOPRO camera linking cable to build into the arm of the dental unit - cable needed depends on Pelton delivery head series number.

INTRAORAL CAMERAS

Linking cables



82
ACTEON INTEGRATED

White Linking cable 21ft **922067**
FOR BUILT-IN DOCK
SOPRO camera linking cable to build into the arm of the dental unit

Grey Linking cable 21ft **922070**
FOR BUILT-IN DOCK
SOPRO camera linking cable to build into the arm of the dental unit

Light Grey Linking cable 21ft **922073**
FOR BUILT-IN DOCK
SOPRO camera linking cable to build into the arm of the dental unit

Light Grey Linking cable 21ft **922073PC1**
Pelton & Crane FOR BUILT-IN DOCK
SOPRO camera linking cable to build into the arm of the dental unit - linking cable needed depends on Pelton delivery head.

Light Grey Linking cable 21ft **922073PC2**
Pelton & Crane FOR BUILT-IN DOCK
SOPRO camera linking cable to build into the arm of the dental unit - linking cable needed depends on Pelton delivery head.

SURF6 LINKING CABLE **922118**
FOR DOCK MU USB w/swivel connector (7m/23ft) w/clip

SURF6 LINKING CABLE **922117**
FOR DOCK MU USB w/swivel connector (2m/6ft) w/clip

GREY3 LINKING CABLE **922127**
FOR DOCK MU USB w/swivel connector (7m/23ft) w/clip

GREY3 LINKING CABLE **922126**
FOR DOCK MU USB w/swivel connector (2m/6ft) w/clip

SURF6 LINKING CABLE **922139**
FOR DOCK U USB w/swivel connector (7m/23ft) w/clip

SURF6 LINKING CABLE **922138**
FOR DOCK U USB w/swivel connector (2m/6ft) w/clip

GREY3 LINKING CABLE **922141**
FOR DOCK U USB w/swivel connector (7m/23ft) w/clip

GREY3 LINKING CABLE **922140**
FOR DOCK U USB w/swivel connector (2m/6ft) w/clip

INTRAORAL CAMERAS

Linking cables



GREY LINKING CABLE 21ft

922163

FOR BUILT-IN U USB DOCK SOPRO camera linking cable to build into the arm of the dental unit

GREY3 LINKING CABLE

922141

FOR DOCK U USB w/swivel connector (7m/23ft) w/clip

LIGHT GREY LINKING CABLE 21ft

922143

FOR BUILT-IN U USB DOCK

SOPRO camera linking cable to build into the arm of the dental unit

8M USB Cable

123540

USB CABLE 26 ft for Dock MUSB reference

TRANSFORMER 36V 2.78A+CORD

DTHPU101-36C13M

Power supply for SP NEWTRON + Mini LED + BUILT-IN SOPRO Dock Needed for retro fitted NEWTRON, MINI LED or CAMERA OEM installation

Air Electric Switch

E00596-OEM

For automatic operation needed for retro fitted NEWTRON, MINI LED or CAMERA OEM installation



RELAX. WE'VE GOT YOU COVERED

ACTEON® offers a One-Year, No-Questions-Asked Warranty on all its devices.* If anything goes wrong within the first year, we will fix it for free.**

* Excludes all consumable products including but not limited to: ultrasonic tips, wrenches, imaging plates, prophy powder, air-water syringes, curing light guides.

** ACTEON reserves the right to change this policy without notice or modify accordingly due to malicious or deliberate damage.

ACTEON North America | 124 Gaither Dr Suite 140 | Mount Laurel, NJ 08054
Technical Support: 877-4ACTEON | Company Main: 800-289-6367
info@acteonusa.com | www.acteongroup.com/us



MINIMALLY
INVASIVE
SOLUTIONS