

THIS IS FAST

9100-24HR - 4cp Pocket Coolie



Side 1

Side 2

1. Follow the direction of the arrows for Art Placement.

— Bleed Line

— Maximum Imprint Area

— Seam Line (Art placed here will be cropped by thread)

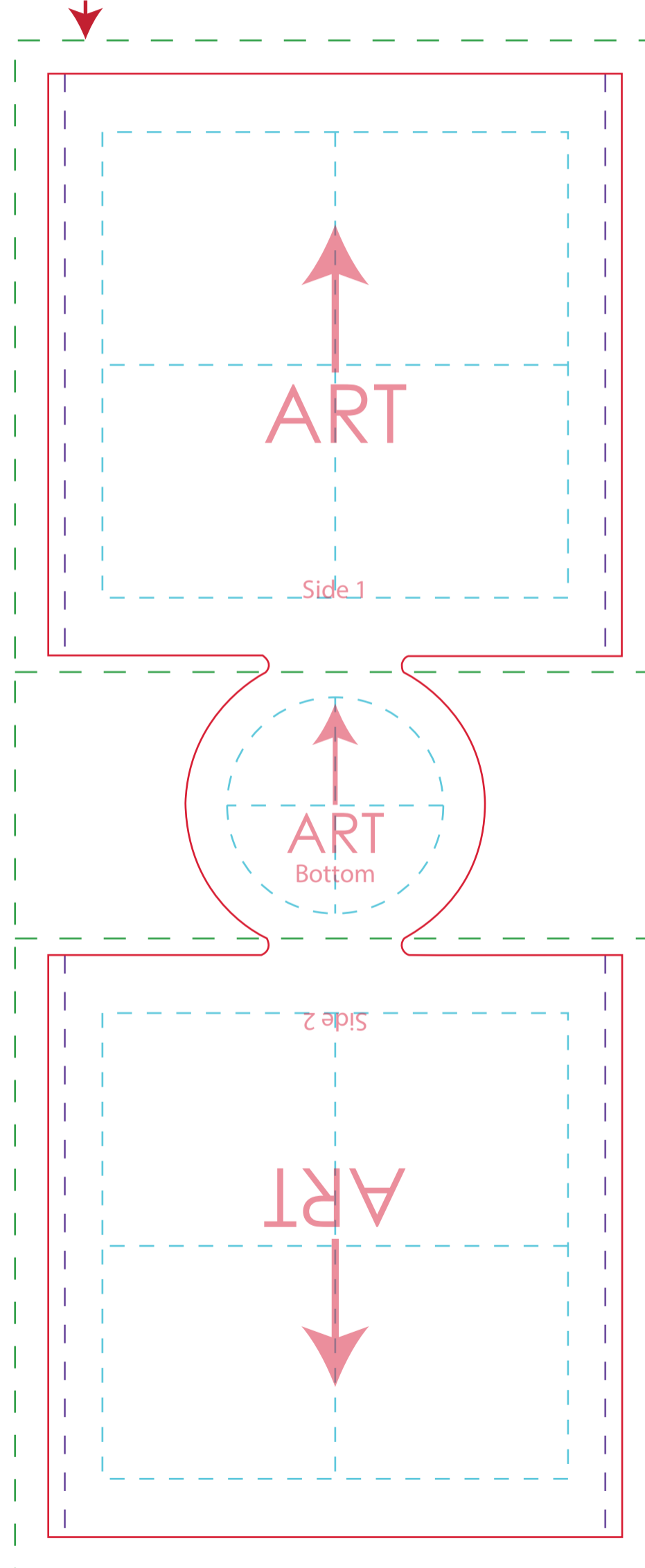
— Die Cut (Actual size of the Product, art over this line will be cut)

↑ Art Orientation Arrows (Place the art following the direction marked so it prints the correct way)

ART REQUIREMENTS

- **Imprint Location:** Must be centered
- Convert all text to outlines (vector)
- Save as .pdf .ai .pdf
- Do not save .jpg .png .cdr**

Bleed Line



Graphics on the sides need to go all the way to this line.

Graphics on the sides need to go all the way to this line.