



Secure Print Technologies, LLC



DOCULUS LUMUS® MOBILE DOCUMENT INSPECTION DEVICE

An innovative, hand held, multi-functional forensic tool for examining passports, banknotes, documents and identity cards

This is the perfect tool for the Document Examiner. Experienced document specialists know what they need to look for. Often, however, the place where documents are analyzed more precisely is in an office setting away from the border posts. Using the Doculus Lumus, the document can be identified by the front lines at the border, on the motorway, on the train or at the airport. Usually only 30 seconds is allowed for the examination of a document and to decide whether a fake is present or not. This tool allows you to do that, right on the front line. The front line counts!



MAIN FEATURES

- 15x or 22x magnification with high quality glass lenses with 20 mm lens diameter
- Robust housing: Drop resistant: 1,5 m
- 4 incident light LEDs
- 4 extra strong UV LEDs 365nm
- 8 LEDs for automatic and manual rotating oblique light
- Torchlight mode
- Left- / Right-handed mode
- Steady light mode for all light sources (persistent for taking documentary pictures/videos, with auto power off after 1min)
- Front UV Torch 365 nm integrated
- High Efficiency microprocessor
- Battery saving modes provide extra-long operation time
- Low battery warning

OPTIONAL

- RFID - RFID reader for ePassport quick check
- IR LASER – IR Laser 980 nm for Anti-Stokes (not available in combination with IR LED)
- IR LED – IR LED 870 nm to view IR ink on the documents via smartphone (not available in combination with IR Laser)
- Li - Li-Ionen battery 300 mAh / 2 AAA battery alternating operation
- UVC – 4 LEDs to view 254 nm security features

EXTRAS

- Limited color editions available
- Water-repellent, robust bag made of nylon

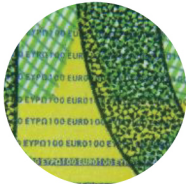




Secure Print Technologies, LLC



DOCULUS LUMUS® DEVICE FEATURES



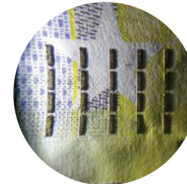
15x or 22x
Magnification



4 Extra Strong
UV LEDs
365nm



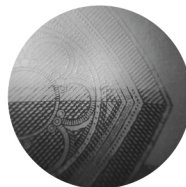
4 Incident
Light LEDs



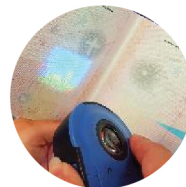
8 LEDs for
Rotating
Oblique Light



Limited colour
editions available



IR LED



Front UV
Torch 365 nm



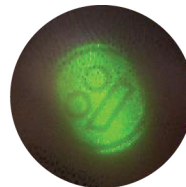
Steady Light Mode
for Photo/Video
Documentation



Torchlight
Mode



RFID
Transponder
Quick Check
(optional)



IR Laser 980 nm
for Anti-Stokes
(optional)



ABOUT SECURE PRINT TECHNOLOGIES

Secure Print Technologies is a consulting company for the printing industry with a strong focus on security printing and anti-counterfeiting solutions. We work with our customers to help determine the best solution that fits their specific needs based on risk assessment for loss of revenue and/or safety