



LIVING AREA & DINING AREA



MARCO POLO TOWER 1

Penthouse Condominium Unit with Prime Parking

This penthouse unit has approximately **93 square meters** of living space. It includes two bedrooms, one maid's quarter, and three toilet and bath units. The layout is functional and spacious. Located on the penthouse level, the unit offers added privacy and a sense of openness that is not common in standard units.

The unit has a kitchen area, a large living area, and a separate pantry. High ceilings create a very open and bright living space.

The unit is located in Tower 1, known for superior construction quality compared with the other towers in the complex.

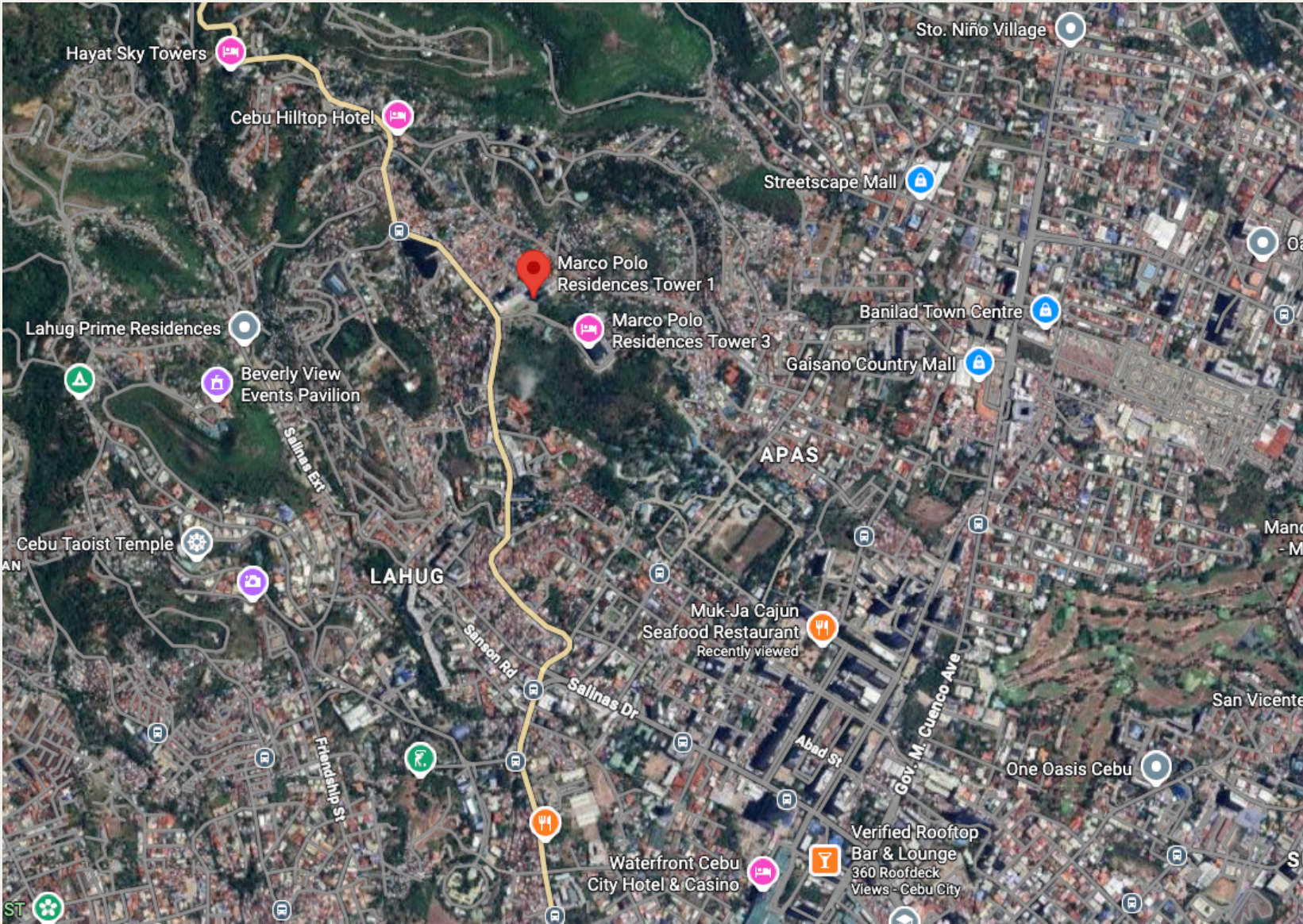
The property comes with a **12.5 square meter parking slot** located very near the entrance, offering easy access and daily convenience.

The condominium is walkable to Marco Polo Plaza Hotel, making it ideal for residents who value accessibility to hotel amenities, dining, and services.

PROPERTY DETAILS

1. **Unit Area:** 93 sqm
2. **Parking Area:** 12.5 sqm
3. **Price:** P17,000,000.00

Location Pin:



[Google Map](#)



Ong Booc Ong
& ASSOCIATES LAW OFFICES



HALLWAY TO BEDROOMS





MASTER'S BEDROOM





MASTER'S BEDROOM



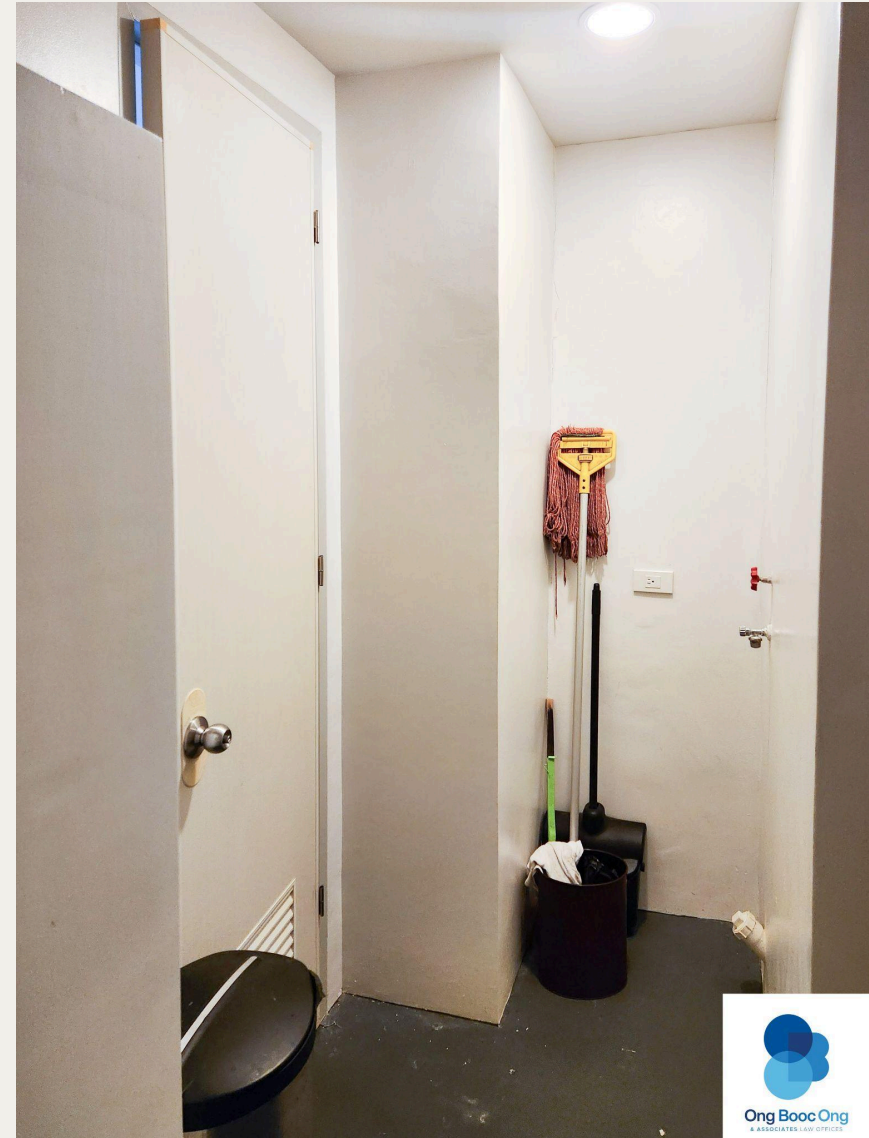


KITCHEN





MAID'S QUARTER

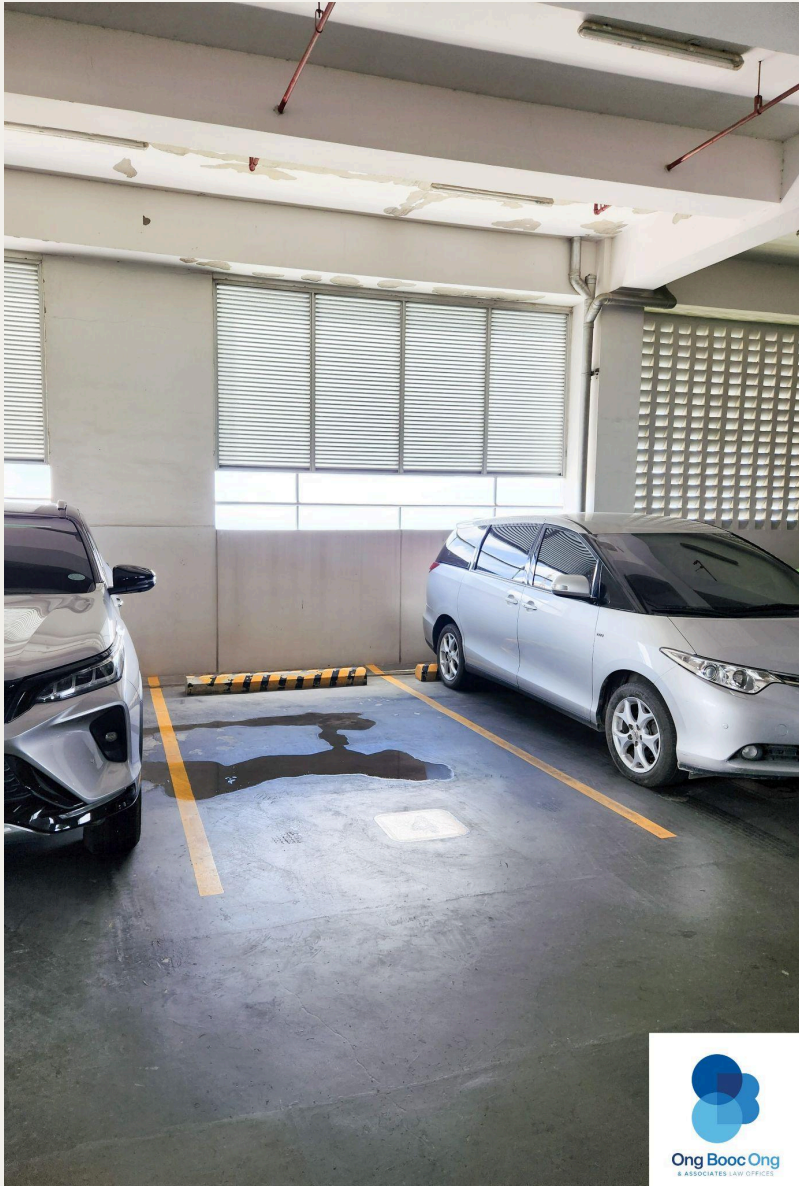


LAUNDRY AREA

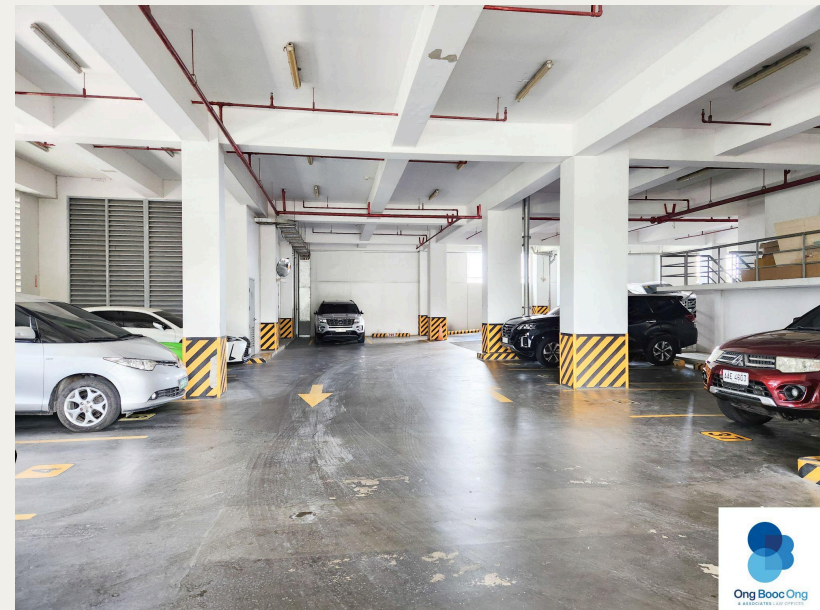


MAID'S QUARTER





PARKING SLOT



Posted as the authorized legal representative of the property owner.

This post is made for and on behalf of the owner and does not constitute real estate brokerage.



Ong Booc Ong & Associates Law Offices

[+639223244369](tel:+639223244369) | [WhatsApp](https://www.whatsapp.com/channel/00000000000000000000/office@obolaw.ph)
office@obolaw.ph

© 2025 Ong Booc Ong & Associates Law Offices. All rights reserved.

Unauthorized use of brochure content or photos is prohibited and will be subject to legal action.