



DSE892 SNMP GATEWAY®
INSTALLATION INSTRUCTIONS

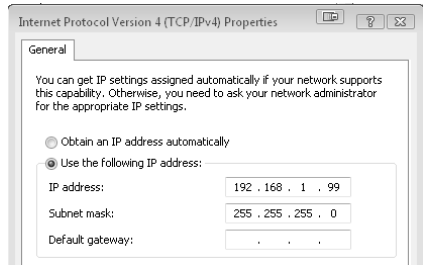
The DSE892 SNMP Gateway® communicates with the connected controller(s) monitoring the instrumentation and operating state. If the data changes, this can be used to generate SNMP TRAP messages for receipt by a third party SNMP manager and / or email to one or two addresses.

SETUP

You may wish to consult your company IT department before making changes to your PC network settings.

Connect the DSEGateway® ethernet port directly to your PC Ethernet port. You can use either a 'straight through' or 'crossover' network cable.

Set the PC IP address as shown.



Using Google Chrome, Microsoft Internet Explorer or Mozilla Firefox, enter the IP address of the gateway.



Enter the username and password of the Gateway.



NOTE:- Username and Password are both CASE SENSITIVE.

For further details refer to the following DSE publications available from our website : www.deepseapl.com

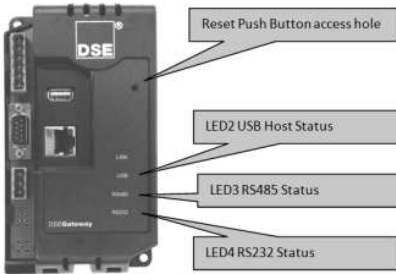
057-179 DSE892 SNMP Gateway Operator Manual

Factory Settings

IP Address	Username	Password
192.168.1.100	Admin	Password1234

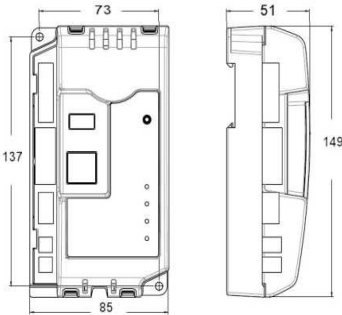
<p>Deep Sea Electronics Plc. Tel: +44 (0)1723 890099 Fax: +44 (0)1723 893303 Email: support@deepseapl.com Web: www.deepseapl.com</p>	<p>Deep Sea Electronics Inc. Tel: +1 (815) 316-8706 Fax: +1 (815) 316-8708 TOLL FREE (USA only) : Telephone: +1 866 636 9703 Email: support@deepseausa.com Web: www.deepseausa.com</p>
--	---

LED STATUS



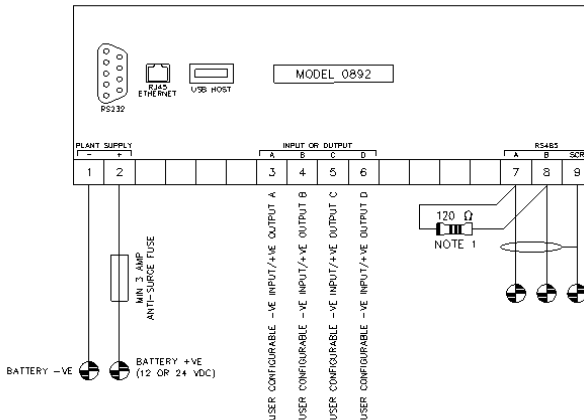
Function	Colour	Action
USB Host Status	RED	Bad Data
	GREEN	Data transfer OK
RS485 Status	RED	Bad Data
	GREEN	Data transfer OK
RS232 Status	RED	Bad Data
	GREEN	Data transfer OK

DIMENSIONS



Overall size	85 mm x 149 mm x 51 mm (3.35" x 5.85" x 2.01")
Mounting type	DIN rail or chassis mounting Indoor Use Only
Din rail type	EN 50022 35mm type only
Mounting holes	M4 clearance
Mounting hole centres	73 mm x 137 mm (2.89" x 5.39")
Maximum Ambient Operating Temperature	50°C (122°F)

TYPICAL WIRING DIAGRAM



TERMINALS SUITABLE FOR 22-16 AWG (0.6mm² - 1.3mm²) FIELD WIRING
TIGHTENING TORQUE = 0.8Nm (7lb-in)

NOTE 1

A 120 OHM TERMINATION RESISTOR MUST BE FITTED IF IT IS THE FIRST OR LAST DEVICE ON AN RS485 LINK

TO MEET UL APPROVALS, PLEASE USE A UL LISTED LIMITED
POWER SUPPLY (8V DC -36V DC)