

THE OAHU

Concierge

CELEBRATING 25 YEARS... KEEPING THE HOSPITALITY INDUSTRY INFORMED SINCE 1998



PRINCE LOT HULA FESTIVAL

Presented by MGF Hawai'i



For nearly four decades, the Honolulu Rainbow Film Festival has lit up screens and hearts as one of the globe's longest-running queer film festivals.

The Honolulu Rainbow Film Festival was founded in 1989 and has since grown into a major cultural event in Hawai'i, featuring films, documentaries, shorts, and animations from around the world while spotlighting local Hawai'i filmmakers. Several films presented at the festival have gone on to receive national recognition, including Emmy and Peabody Awards.

The event kicks off with an Opening Night Red Carpet Event on Friday, July 10, at 5 p.m. in the courtyard next to the Hawaii Theatre. The event is free and open to the public but requires a ticket, so register online in advance. It features performances by House of Zamora, Darren Zuko, DJ PatROCK Castro, and Von Appetite. The Opening Night Film, Just Kids, will be preceded by the Short Film, Blow, at 7:30 p.m.

Individual tickets cost \$18, which includes a \$10 seat fee and an \$8 Theatre Restoration Fee. VIP Passes, offering unlimited access to all screenings and events, are available at \$75, with a discounted price of \$55 for kupuna and students. On Sunday, July 12 at 11 a.m., a special drag brunch will be hosted at PEWA by Pono Potions. The event, emceed by Cocoa Chandelier and Marina Del Rey, features performances by Von Appetite and Blessica Benton,

Continued on page 4.

Each year, the Prince Lot Hula Festival brings together hālau hula, musicians, cultural practitioners, and families in a celebration that honors one of Hawai'i's most treasured traditions. More than a festival, it is a gathering rooted in history, dedicated to preserving and perpetuating the language, stories, music, and dances that define Hawaiian culture.



festival does not prioritize awards or rankings. Instead, it offers a platform for hālau to showcase hula in its various forms while highlighting the history, traditions, and values associated with the art. This creates an environment of cultural exchange, learning, and appreciation that embraces both kama'āina and visitors.

Throughout the festival, audiences will experience the beauty of traditional and contemporary hula performances, Hawaiian chant, live music, cultural demonstrations, and opportunities to learn about Hawaiian arts and practices. The event serves as a reminder that hula is far more than entertainment—it is a living expression of Hawai'i's history, genealogy, language, and connection to place.

Today, the Prince Lot Hula Festival continues to fulfill its founding mission by bringing communities together to celebrate and perpetuate Hawaiian culture. As dancers take the stage and chants fill the air, the festival honors the vision of Prince Lot Kapuāiwa while ensuring that Hawai'i's cultural traditions remain vibrant, relevant, and accessible for generations to come.

"Our mission at MGF Hawai'i is to mālama 'āina and mo'omeheu—caring for the land and perpetuating Hawaiian

Continued on page 6.

The festival is named for Prince Lot Kapuāiwa, who would later become King Kamehameha V. During the mid-19th century, Prince Lot was known for his support of Hawaiian customs and traditions at a time when many aspects of Native Hawaiian culture were undergoing significant change. His home in Moanalua became a place where Hawaiian music, chant, and hula could be appreciated and shared, helping to keep these cultural practices alive for future generations.

Inspired by that legacy, the Prince Lot Hula Festival was established in 1978 as a tribute to the prince's commitment to Hawaiian culture. From its beginnings as a modest community event, the festival has grown into one of Hawai'i's most respected cultural celebrations and the largest non-competitive hula festival in the state.

Unlike many performance events, this

TABLE OF CONTENTS

Yada Yada Yada	2
Newsflash	3
Obon Season is Underway	4
4th of July / Honolulu Surf Film Festival	5
Waikiki Steel Guitar Week	7
E Pili Kakou	8-12
Chef's Corner: Stripsteak's Garrick Mendoza	13
Calendar	14-16
Paparazzi: DRIP Hawai'i IV Wellness Lounge	18
That's Entertainment / Concierge Card	19

Publisher's Letter



Happy 4th!

After months of things moving along at a fairly tepid pace, it seems things are happening pretty rapidly all of a sudden, and I hope that means everyone just got a lot busier. For one, I'm seeing Slingshots everywhere, and that means tourists. I don't know about you, but I've yet to see a local behind the wheel of one of those things. When I see one park in front of my local restaurant, that means tourist money is about to walk through the door. I hope that if I'm seeing tourists in my neck of the woods, it means you guys have a hotel full of guests, which translates into good things for all of us! And there has certainly been some serious movement in the industry lately. I can see properties positioning themselves for future growth, and that's exciting. Check out Yada Yada for some big moves in the hotel industry hierarchy.

Here's hoping we all have a very successful summer. It's certainly been a rough shoulder period for many, so fingers crossed things have finally turned the corner. We certainly deserve it after all this island has been through lately.

Speaking of all the things we've been through, I'm thrilled to report that there will be official 4th of July celebrations with fireworks set off around the island for all to enjoy. I'm especially happy to see that the North Shore Chamber of Commerce is bringing back the annual Hale'iwa 4th of July Fireworks & Community Festival. This beloved North Shore tradition brings together residents, families, small businesses, visitors, volunteers, and more for a day of food, entertainment, classic cars, keiki activities, and fireworks over Hale'iwa. This year's celebration is especially meaningful as the North Shore continues to recover from the impacts of the recent Kona Low Storms. Please encourage your guests to head out there and support the local small-business vendors who are just getting back on their feet. The North Shore is open, and we want everyone to support them. If you're not heading to the North Shore, there will be fireworks in Waikiki, Kailua, Laie, and Joint Base Pearl Harbor, at least for now. I'm sure more will be announced as the day gets closer. Celebrate safely out there! Aloha,

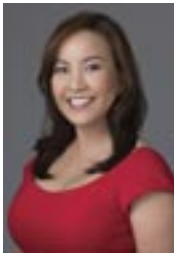
Yada Yada



Thomas Foti

There has been quite a bit of movement in the GM world lately. First up, please join me in congratulating **Thomas Foti**, who recently resigned as bi-plex general manager of the Moana Surfrider and the Sheraton Princess Kaiulani after successfully leading a \$70 million renovation of the First Lady of Waikiki in time for her 125th birthday, to take on the Managing Director position at the **Hilton Hawaiian Village**. In his new role, Foti will oversee all aspects of operations at the 3,500-room resort. As he build his new executive team, **Kyle Anger** has been promoted from hotel manager to general manager of the resort responsible for day-to-day operations. • **Kimberly Agas** has been promoted from general manager at **Aulani, Disney Resort & Spa**, to the newly created role of Executive Director. Aulani states this change reflects her ongoing leadership growth and the resort's expanding influence in Hawai'i. She joined the resort at its opening 15 years ago as resort manager, and has served as its general manager for over a decade. In her new position, she will focus on strengthening relationships with

the local community and the hospitality industry. Congrats! • Moving on, **Jennifer Batara** is now the general manager at the Ala Moana Hotel by Mantra. She first achieved the position a general manager in 2009 at Hokele Suites Waikiki with Castle Resorts, then joined Aqua-Aston in 2011, managing several different properties throughout her tenure with the company. Most recently, she managed the Aston Executive Centre after five years in the dual role of managing both the Aston Waikiki Sunset and Waikiki Banyan. • **Jannette Lee** has joined her at the property as its new Front Office Manager. Lee began her hospitality career at the Halekulani in 2008 before moving over the Waikiki Parc in 2013. She left the Halepuna in 2023 taking on the role of Director of Rooms at the Waikiki Malia. • After 28 years with the **O'ahu Visitor Bureau**, a department of the **Hawai'i Visitors & Convention Bureau (HVCB)**, **Noelani Schilling-Wheeler** has transitioned to the role of Director, Island Tactical Marketing & Cooperative Programs, within HVCB, focusing on the marketing opportunities and needs of each island.



Jennifer Batara

HONOLULU RAINBOW FILM FESTIVAL

Continued from page 1.

while guests enjoy a sweet, savory, or vegetarian brunch option for \$58.

Presented by the Hawai'i LGBT Legacy Foundation, the 37th annual Honolulu Rainbow Film Festival is among the longest-standing and most esteemed

queer film festivals nationwide. It offers a diverse lineup of local, national, and international films and shorts, building a distinctive connection between Hawai'i, Pacific Island communities, Asia, and the continental U.S. to showcase LGBTQIA+/MVPFAFF+ stories through cinema. The complete list of films is listed below. hrff.org.

HONOLULU RAINBOW FILM SCHEDULE

Friday, July 10, 7:30 p.m.

- Short Film: *Blow*
- Opening Feature: *Just Kids*

Saturday, July 11, 11 a.m.

- Short Film: *Finding Yiyi*
- Feature Film: *We Are Pat*

Saturday, July 11, 2 p.m.

- Short Film: *In Conversation with Dan Taulapapa McMullin*
- Short Film: *Hue*
- Short Film: *Glimmer*
- Short Film: *The City on the Edge of Whatever*
- Short Film: *Restoring Iona Aina*

- Short Film: *Reverence*

Saturday, July 11, 7 p.m.

- Short Film: *The Rogers*
- Feature Film: *Mahu*
- Live Hula Show: *The Return of Kapaemahu*

Sunday, July 12, 2 p.m.

- Short Film: *Notice Me*
- Short Film: *Today & Tmrw*
- Short Film: *Grace*
- Short Film: *Wild Ones*
- Short Film: *The Bend*

Sunday, July 12, 4 p.m.

- Closing Feature: *All the Things I Leave You*

EXTRA EXTRA EXTRA *Newsflash*

MANŌ MONTH: SHARKS OF HAWAI'I AT SEA LIFE PARK

Sea Life Park shines a spotlight on one of the ocean's most important, and often misunderstood, species throughout July. Rooted in science and local significance, the program highlights the vital role sharks play in maintaining healthy marine ecosystems across the islands. Manō Week (July 19–26) will feature an expanded lineup of shark-focused activities. A full schedule of activities is available online. sealifeparkhawaii.com.

BIG CHANGES AT THE WAIKIKI IMPROVEMENT ASSOCIATION

The Waikīkī Improvement Association (WIA) announces the retirement of President Rick Egged and Vice President JoAnn Morimoto. Throughout their tenure, Rick and JoAnn have been key in advancing WIA's goals and bolstering the Waikīkī community through their leadership, vision, and dedication. As part of this change, WIA will realign its management with the Waikīkī Business Improvement District, which is currently led by President Trevor Abarzua. Starting July 1, 2026, Trevor and his team will take over leadership duties for WIA.

THE RETURN OF KAPAEMAHU RETURNS FOR FINAL SHOW

The Return of Kapaemahu was a free live show at the Kūhiō Beach Hula Mound that told the legend of four mysterious, gender-fluid healers who brought their magical healing powers to Waikīkī. The show featured hula dancers in shimmering costumes, and a cinematic soundtrack blending chanting, music, and narration. Throughout its one-year run, it quickly became a favorite among many hotels to send their guests to, and many had questions when it disappeared earlier this year. Composer and director Kumu Patrick Makuakāne, along with the show's producers, Dean Hamer and Joe Wilson are bringing the cast back together for one final performance at the Hawai'i Theatre as part of the Rainbow Film Festival at 7 p.m. on July 11. Tickets are \$18. Don't miss your last chance to see this extraordinary show. hrff.org.

MANA UP KEEPS GROWING - ADDING 11 NEW MERCHANTS

Mana Up, the leading accelerator driving growth for Hawai'i-based businesses, has added 11 new companies from a record 256 applicants across seven product categories. Stop by to see what's new!

HOMA OFFERS MILITARY FREE ADMISSION THROUGH SEPT. 6

The Honolulu Museum of Art is part of the annual nationwide Blue Star Museum Program. The free admission program is available to the nation's active-duty military personnel and their families, including National Guard and Reserve. The military ID holder can bring up to five family members through Sept. 6th. Qualified members must show a Geneva Convention common access card or a dependent ID. honoluluuseum.org.

TENANT SHAKE UP AT WAIKIKI BEACH WALK

There's been some shuffling in tenants over at Waikiki Beach Walk. Tabora Galleery is now open at the former Park West Gallery location. On or around July 1, Lonohana Estate Chocolate will open in the former Wyland Gallery space, while Hulali Glowing Waters will open in the former Carludovica space. Towards the middle of the month, Liliha Bakery is expected to open its doors on the mauka end of level 2. waikikibeachwalk.com.



An enchanting luau
on our Great Lawn.

Celebrate the Pacific Islands' colorful heritage with live music, an island-inspired feast, and traditional Samoan, Tahitian, Hawaiian, and Fire Knife dance, lagoonside on our Great Lawn.



hhvluau.com
808-941-LUAU
Scan for reservations



Obon Season is Underway

Between June and September 2026, more than 30 Bon Dances will be held throughout the island, making O'ahu the largest hub of Obon celebrations outside Japan. These festivals include taiko drums, group circle dances, ancestor memorials, and some of the best festival foods available in the Pacific, all free to attend.

Legend has it that long ago, a disciple of Buddha had a vision of his dead mother trapped in a horrible place. By offering food and drink, the disciple freed his mother's spirit from suffering. This story has evolved over the years, and the meaning of Obon has shifted along with it.

This centuries-old Japanese Buddhist tradition honors the spirits of ancestors and loved ones who have passed away. It is one of Japan's most important cultural

and religious observances, centered on remembrance, gratitude, family, and community.

Hawaii Plantation Villages kicked off Obon season last month, and there are plenty of opportunities throughout the summer to celebrate life and loved ones who have passed. The Japanese Buddhist tradition is prevalent on the islands, offering locals and visitors alike a chance to honor their ancestors and welcome the spirits believed to travel back to our world.

Obon was introduced to Hawai'i by Japanese immigrants in the late 1800s and has since become a vital part of the local culture. Unlike Japan, where Obon usually spans a few days in July or August, Hawai'i observes a longer Obon period, typically from June to

September. Across the islands, Buddhist temples host Bon Dances, featuring food stands, cultural events, and memorial services that attract people of all backgrounds. For many local families, Obon serves as both a spiritual ritual and a beloved summer tradition. It is typical to see several generations dancing side by side, savoring festival foods, and reconnecting with friends and relatives.

Today, Obon is among the most significant holidays in Japan. It's a time when families unite to remember lost relatives and honor the deceased. Bon dances invite the spirits of ancestors to dance with the living. Lanterns, drum sounds, and dancers in colorful kimonos create a lively atmosphere, making these events perfect for photography and cultural experiences. The season's biggest festival will be held on July 4 & 5 at the 13th Annual Mō'ili'ili Summer Fest. See the full Obon schedule below.

2026 Obon Schedule of Events

July 4, 5 to 10 p.m.

Mō'ili'ili Summer Fest, Old Varsity Building
Parking Lot, 1100 University Ave., Mō'ili'ili
moililsummerfest.org

July 4, 7 to 10 p.m.

Waipahu Hongwanji Buddhist Temple
94-821 Kuhaulua St., Waipahu
808-677-4221 • waipahuhongwanji.org

July 10 & 11, 6:45 to 9:45 p.m.

Hale'iwa Shingon Mission
66-469 Pa'ala'a Road, Hale'iwa
808-637-4423

July 10 & 11, 6 to 9 p.m.

Rissho Kosei-kai Buddhist Church of Hawai'i
2280 Auhuhu St., Pearl City
808-455-3212 • rkhawaii.org

July 10 & 11, 5:30 to 10 p.m.

Koboji Shingon Mission
1223-B North School St., Liliha
808-841-7033 • koboji.org

July 10 & 11, 5:30 to 10 p.m.

Higashi Hongwanji Mission of Hawai'i
1685 Alaneo St., Liliha
808-531-9088 • betsuin.hhbt-hi.org

July 11, 5 to 10 p.m.

Windward Buddhist Temple
268A Ku'ulei Road, Kailua
808-262-4560 windwardbuddhisttemple.org

July 17 & 18, 7 to 10 p.m.

Wahiawā Ryusenji-Soto Mission
164 California Ave., Wahiawā
808-622-1429

July 17 & 18, 7 to 10 p.m.

Shinshu Kyokai Mission
1631 S. Beretania St., Mō'ili'ili
808-973-0150 • shinshukyokai.org

July 17 & 18, 7 to 10 p.m.

Hale'iwa Jodo Mission
66-279 Hale'iwa Road A, Hale'iwa
808-637-4382 • hawaiiiodo.net

July 18, 5 p.m.

Jikoen Hongwanji Buddhist Temple
1731 N. School St., Kalihi
808-845-3422 • jikoehongwanji.org

July 24 & 25, 6:30 to 9:30 p.m.

Pālolo Hongwanji
1641 Palolo Ave., Pālolo
808-732-1491 • @palolo.hongwanji

July 25, 7 p.m.

'Aiea Hongwanji
99-186 Puakala St., 'Aiea
808-487-2626 • aieahongwanji.org

July 31 & Aug. 1, 7 to 10 p.m.

Waipahu Soto Zen Temple Taiyoji,
94-413 Waipahu St., Waipahu
808-671-3103 • sotozen.com

Aug. 7 & 8, 7 to 10 p.m.

Soto Mission of 'Aiea-Taiheiji
99-045 Kauhale St., 'Aiea
808-488-6794 • sotomission.com

Aug. 7 & 8

Shingon Mission of Hawai'i
915 Sheridan St., Ala Moana
808-941-5663 • shingonshuhawaii.com

Aug. 8, 7 to 10 p.m.

Pearl City Hongwanji Mission
858 2nd St., Pearl City
808-455-1680 • pearlcityhongwanji.com

Aug. 14 & 15, 7 to 10 p.m.

Soto Mission of Hawai'i
1708 Nu'uuanu Ave., Nu'uuanu
808-537-9409 • sotomission.org

Aug. 21 & 22, 7 to 10 p.m.

Mililani Hongwanji
95-257 Kaloapau St., Mililani
808-625-0925 • mililanihongwanji.org

Aug. 22, 5 to 9:30 p.m.

Jodo Mission of Hawai'i
1429 Makiki St., Makiki
808-949-3995 • jodo.us

Aug. 29, 5 to 9 p.m.

Autumn Matsuri by Senwa Kai
Pāloma Settlement, 810 N Vineyard Blvd.
808-848-2500

Sept. 5, 5:30 to 9 p.m.

Okinawan Festival
Hawai'i Convention Center
1801 Kalākaua Ave., Waikīkī
808-676-5400 • okinawanfestival.com

Sept. 12, 3:45 to 9 p.m.

Megabon
Leeward Community College
96-045 Ala 'Ike, Pearl City
megabonhawaii.com

Sept. 12

Honbushin International Center
95-030 Waihonu St., Mililani
808-623-7693 • hichawaii.com

Sept. 19, 5 to 9 p.m.

Autumn Okinawan Dance Matsuri
Hawai'i Okinawa Center
94-587 Uke'e St., Waipahu
808-676-5400 • huoa.org

Sept. 26

Mari's Gardens
94-415 Makapipipi St., Mililani
808-625-2800 • marisgardens.com



Honolulu Surf Film Festival

FIREWORKS

WAIKĪKĪ 4TH OF JULY FIREWORKS SHOW

The fireworks will be launched from a barge off the coast of Waikīkī Beach and will be visible throughout the Waikīkī shoreline. The 10-minute fireworks show will begin at 8:30 p.m.

FIREWORKS

HALE'IWA 4TH OF JULY COMMUNITY FESTIVAL

Head to Hale'iwa Beach Park for family-friendly fun, food, live entertainment, keiki activities, car show and a fireworks show that begins at 8:30 p.m. 1 – 9 p.m. gonorthshore.org.

FIREWORKS

KAILUA BEACH FIREWORKS SHOW

For more than 75 years, Kailua Beach has been the center of a spectacular fireworks display on the 4th of July. Free shuttles run between Longs parking lot bus stop and The Beach Center between 4:30 and 10:30 p.m. Enjoy the show on Kailua Beach at 8 p.m. kailuafireworks.com.

FIREWORKS

JOINT BASE PEARL HARBOR-HICKAM

Head out to Joint Base for the military's annual 4th of July celebration. This year features Tyler Braden, Allen Stone, and Neon Trees performing on the main stage, activities from a petting zoo to a car show, plus a fireworks show at 9:20 p.m. Open to DoW ID holders and those with authorized base access. Gates open at 4 p.m. jbphh.greatlifehawaii.com.

FIREWORKS

HUKILAU MARKETPLACE

This free, family-friendly event features live music, inflatables and games, and local food and vendors. The concert runs from 4 - 8:45 p.m. Fireworks begin at 9 p.m. Umbrellas, mats, and lawn chairs are encouraged. Pop up tents, alcohol, smoking, and kava are prohibited. hukilaumarketplace.com.

4TH OF JULY FIREWORKS CRUISE

STAR OF HONOLULU

Celebrate Independence Day aboard the Star of Honolulu! Enjoy the sunset, Honolulu's city lights, and great fireworks. With three dinner service levels from casual to Five Star, and transportation available if needed, prices range from \$93 to \$304. 6:15 - 9:15 p.m. Aloha Tower Marketplace. starofhonolulu.com

4TH OF JULY POOL PARTY

TIKI'S GRILL & BAR

Tiki's annual 4th of July Pool Party is back! Enjoy music, sunshine, and cocktails by the water. The event features a live DJ, summer favorites, and specialty cocktails for purchase. VIP cabanas for up to 5 are available. Tickets are \$20; free for Twin Fin hotel guests. tikis.com.

STARS, STRIPES, AND GRINDZ

WAIKĪKĪ BEACH WALK

Celebrate the Fourth of July at Waikīkī Beach Walk with Stars, Stripes, and Grindz. Enjoy live music, local flavors, and games from 3:30 to 7:30 p.m. Feast on faves like shaved ice, lemonade, and savory dishes. Play life-sized Connect Four, cornhole, and more. waikikibeachwalk.com.

Expect more events to be announced closer to the 4th

Surf's up at the Honolulu Museum of Art's Doris Duke Theatre, an annual celebration of surf culture and filmmaking during the 17th annual Honolulu Surf Film Festival from July 9 to August 2. This year's festival showcases an impressive lineup of the latest surf films, shorts, and timeless classics that everyone can enjoy.

The festival begins on Thursday, July 9, with a tribute to the legendary Buzzy Trent. After the opening reception, the world premiere of *Increments of Fear: The Buzzy Trent Story*, a new documentary from Buzzy's daughter, Anna Trent Moore, will be shown at 7:30 p.m., followed by a post-screening talk story with several special guests in attendance. Tickets for the opening night screening are \$40. The movie will be shown again on Saturday, July 11 at 2 p.m. for \$15.

Throughout the month, attendees can enjoy films that showcase the diverse scope of surfing worldwide, including the new Jack Johnson documentary *SURFILMUSIC* on Sunday, July 19th at 2 p.m. As part of HoMA's Community Sunday programming, the film is free, but seats will 'sell' out fast, so reserve yours now.

Other features include *Haagua + Ceibo*, two shorts that explore indigenous knowledge at the intersection of surfing and the ocean. *Locals Only 2026*, a collection of locally made shorts; *Antarctica-Domain One*, an extraordinary sailing and surfing expedition into the heart of Antarctica's most critical marine area, narrated by 11x World champion Kelly Slater.

Other films include *Sea Her Stories*, a collection highlighting the sisterhood of surfing; a stunning documentary about Indonesia's Uluwatu called *Magic Island*; a film six years in the making, and the *Surf Poets Society* to name a few.

The festival concludes on Sunday, August 2, with an afternoon screening of Herbie Fletcher's *Water Colours*, followed by a panel discussion featuring Derek Hoffman of Nalu TV.

After each screening, HoMA invites you to vote for your favorite features and shorts for its Audience Choice Awards. A Jury Award will also be bestowed. All winners will be announced after the festival. Find the complete movie line-up online at honolulumuseum.org.

BEST OF FAMILY 2024 HAWAII HONOLULU MARKETPLACE BEST 2025

SURF . PADDLE . PLAY . DINE

Book Now!

SHUTTLE SERVICE

- Waikiki
- Ko Olina
- Kapolei

Wai Kai
EWA BEACH, HAWAII

waikai.com | 808.515.7873 | @waikailineup

Celebrating our
15th ANNIVERSARY



**BAREFOOT
BEACH
CAFÉ**
Waikiki

**On Queen's Surf Beach
at the Diamond Head
end of Waikiki**

**EXPERIENCE
TRUE HAWAII'**

OPEN DAILY, 8AM - 9PM
(last call for food at 8:30pm)

**LIVE MUSIC NIGHTLY,
5:30PM - 8:30PM
& SUNDAYS, 10AM - 1PM**




Barefoot Beach Café
2699 Kalakaua Avenue
BarefootBeachCafe.com
808.924.2233 (CAFÉ)



PRINCE LOT HULA FESTIVAL

Continued from page 1. Presented by MCF Hawaii

culture," said Festival Director Kumu Hula Michael Pili Pang. "The Prince Lot Hula Festival is more than a celebration. It's a cultural movement where we gather to practice our culture and have fun."

After bouncing around from location to location after they lost Moanalua Gardens, this year, they will gather in a new home for the foreseeable future, at the Ka Lewa Lānai, Bldg A, located on level 4 at Royal Hawaiian Center. The new location gives them an opportunity to expand their pre-festival features. For one, they will present performances on the Royal Grove stage on Tuesday, leading up to the start of the festival. They will also have Festival Merchandise for sale. The Mākeke opens at 2 p.m. on

Friday, July 17, with the opening ceremony and pule starting at 3:45 p.m. The first hālau takes the stage at 4:35 p.m. with a new hālau performing every half hour. Six hālau will perform each day, with the last one taking the stage at 7:30 p.m.

That's not the end of the fun, however, as they are launching the Lota Lounge for the first this year. According to Executive Director Ian Custino, "Lota is what Lot Kamehameha was called in his day. It will be on the 4th floor, where the rest of the festival is, but cordoned off, with a view of the stage and a big screen TV to watch it as well. We'll feature adult beverages and pupu starting at 4 p.m. At 8 p.m., after hula performances on the festival stage, we will have live music in the Lota Lounge from 8 to 10 p.m."

Along those lines, they are also launching MGF's LOTA Design Brand, premiering extensive new merchandise at the festival. For more information, go to mgfhawaii.org.

Prince Lot Schedule of Events

Friday, July 17, 2026

Ka Lewa Lānai, 4th Floor Royal Hawaiian Center

2:00PM	Mākeke Opens	
3:45PM	Opening Ceremony Pule Welcome	Royal Order of Kamehameha I Kahu Kenneth Makuakāne Ian Custino
4:00PM		Lota Lounge Opens
4:25PM	Emcee	Kamaka Pili & Ha'alilio Solomon
4:35PM	Pua Ali'i 'Ilima	Kumu Hula Vicky Holt Takamine
5:10PM	Hālau Māluaki'iwailehu	Kumu Hula Kuana Torres Kahele
5:45PM	Hālau Nā Kamalei o Līlīehua	Kumu Hula Robert Cazimero
6:20PM	Halau Kilipohē Na Lei Lehua	Kumu Hula Liko Cooke
6:55PM	Ka Pā Hula 'o Ka'ohukuilehua	Kumu Hula Allen Ka'ohu Kam
7:30PM	Hālau i Ka Wēkiu, Veto Baker	Nā Kumu Hula Lanakila Casupang
8:00PM	Live Hawaiian Music, Adult Beverages & Pūpū at Lota Lounge (until 10PM). Artists: TBD	

Saturday, July 18, 2026

Ka Lewa Lānai, 4th Floor Royal Hawaiian Center

2:00PM	Mākeke Opens	
3:45PM	Opening	Kamaka Pili & Ha'alilio Solomon
4:00PM		Lota Lounge Opens
4:00PM	Ka Pā Nani 'O Lilinoe	Lilinoe Lindsey
4:35PM	Na Pua Āhihi Lehua Mai Pihanakalani	Auli'i Hirahara
5:10PM	Nā Pua Mōhala I Ka Malu 'o KaHala Hālau Hula	Marie Paresa
5:45PM	Hālau Hula Maunalei	Lelehua Bray
6:20PM	Hālau Hula o Kukunaokalā	Elsie Ryder
7:30PM	Nā Pualei o Liko Lehua	Niuli'i Heine
8:00PM	Live Hawaiian Music, Adult Beverages & Pūpū at Lota Lounge (until 10PM). Artists: Ka Mō'i Jazz Ensemble	

Waikī Steel Guitar Week 2026

A Celebration of Hawai'i's Musical Legacy

The history of the Hawaiian steel guitar is one of Hawai'i's greatest musical contributions to the world. Its smooth, expressive sound became a signature of Hawaiian music and later influenced country, blues, rock, and popular music worldwide, and this music festival celebrates it and its continuing role in connecting people through music.

From July 5 to July 12, 2026, Waikī will become the center of the Hawaiian steel guitar world as musicians, educators, students, and audiences gather for Waikī Steel Guitar Week. The weeklong event honors the rich history of the Hawaiian steel guitar while showcasing the artists and traditions shaping its future.

The 2026 Waikī Steel Guitar Week kicks off on Sunday, July 5, with Hula Grill Waikī's Steel Guitar Sundays. It is followed by nightly one-hour performances on Monday, Tuesday, and Thursday, from 5:30 to 6:30 p.m. at the Royal Grove at the Royal Hawaiian Center. Each evening will showcase performances by a variety of talented



See the musicians free at the Royal Grove. Photo by Don Rostow

steel guitar masters and ensembles, including the NextGEN steel guitarists and musicians from Ke Kula Mele Hawai'i School of Hawaiian Music.

New this year is the first Ho'okūkū Kīkā Kila Amateur Hawaiian Steel Guitar Contest. competition gives aspiring musicians a chance to showcase their skills before a live audience, encouraging the next generation of performers and helping preserve this uniquely Hawaiian art form. The contest takes place on Wednesday from 4:30 to 7:30 p.m.

J-FESTA 2026, the fifth annual Japan-Hawaiian Steel Guitar Festival, will be held on Friday, July 10, from 3 to 6:30

p.m. Featuring seven Hawaiian steel guitarists and groups from Japan, the event will be livestreamed on Facebook and YouTube to allow people in Japan to watch live.

The centerpiece of the week is the 16th Annual Waikī Steel Guitar Festival, taking place on Saturday, July 11. The festival kicks off with a performance by Alan Akaka at 11 a.m. The renowned Hawaiian steel guitarist, music teacher, and Chairman of the Board of HIMELE

says, "It's an honor and joy for all of us in the steel guitar community to participate in the Festival, and we hope that both visitors and kama'aina will join us." The morning session wraps up at 2 p.m. The second half of the day's performers takes the stage from 4 to 6:30 p.m.

The week draws to a close with a special edition of Steel Guitar Sundays at Hula Grill Waikī from 10 a.m. to noon, followed by a Grand Finale concert at Waikī Beach Walk's Plaza Stage, with Alan Akaka and the next generation of steel guitarists from 5 to 6 p.m.

All performances are free and open to the public. waikisteelguitarweek.com.

DRIP
HAWAII
IV WELLNESS X LIFESTYLE MEDSPA

WAIKIKI'S PREMIER IV LONGEVITY LOUNGE & MEDSPA

ワイキキのプレミアムIVロングジェビティラ
ウンジ&メディスパ

Discover some of Korea's most sought-after beauty, wellness, and regenerative therapies - now available in the heart of Waikiki.

- IV Hydration & Wellness Drips
- NAD+, B12 Skinny, Glutathione & Vitamin Shots
- K-Beauty Skincare
- Advanced Korean Regenerative Aesthetics
- Wellness Recovery & Longevity Therapies

2490 Kalākaua Ave | Alohilani Resort
Located on the 2nd floor | walk-ins welcome
Call or Text (808) 807-6082
driphawaii.com

Let's be Together...

DINING ▶ ENTERTAINMENT ▶ PAU HANA ▶ EAT ▶ DRINK ▶ BE MERRY ▶ HAPPY HOUR ▶

MONDAY

Barefoot Beach Café at Queen's Beach	924-2233
<i>Live Contemporary & Hawaiian</i>	
The Barefoot Boys	5:30-8:30pm
Casamigos House of Friends	922-0811
<i>Live Contemporary</i>	
Danielle Parente	6-8pm
Chart House	941-6669
<i>Live Contemporary Hawaiian</i>	
Kamaka Camarillo (or others)	6-9pm
Duke's Canoe Club Waikiki	922-2268
<i>Live Contemporary Hawaiian</i>	
Paul Dunlap	4:30-6:30pm
Grace Welton (7/6)	4:30-6:30pm
Denny Ono (7/20)	4:30-6:30pm
Bryan & Halekahu	7-9:30pm
Ellsworth Simeona	9:30-12am
Heydey at the White Sands	475-6864
<i>Contemporary Rock</i>	
Laupepa Letuli & Stephen Harris	6-8pm
House Without a Key	923-2311
<i>Hawaiian music & hula by former Miss Hawaii USA Allie Chu</i>	
Pa'ahana Trio	5:30-8:30pm
Kani Ka Pila Grille	924-4992
<i>Hoku Award Winning Hawaiian musicians</i>	
Sean Na'auao	6-9pm
Lewers Lounge	923-2311
<i>Jazz Pianist</i>	
Johnny Kukui	8-10:30pm
Mahi'ai Table	670-2778
<i>Live Contemporary</i>	
Jenna Keala	5-8pm
Mai Tai Bar at the Royal Hawaiian	923-7311
<i>Live Contemporary Hawaiian</i>	
Brad Kawakami	11am-2pm
Mark Caldeira	8-10pm

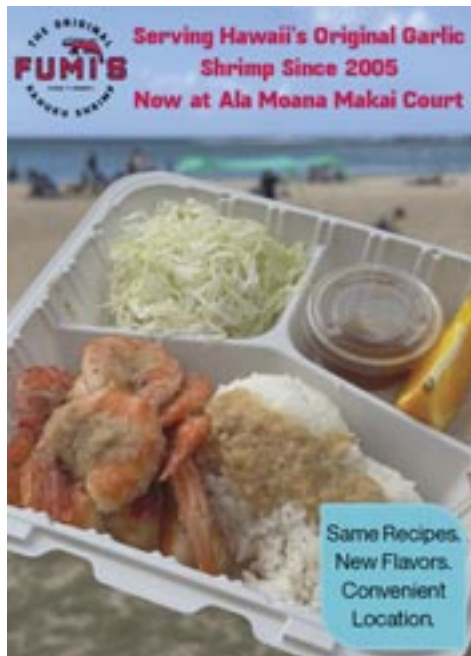
Maui Brewing Company	843-2739
<i>Live Contemporary Hawaiian</i>	
K Crisostomo (or Tim Vigilla)	8-10:30pm
Merriman's Honolulu	215-0022
<i>Live Slack Key guitarist</i>	
Ruth & Norm Foster	5:30-7:30pm
Monkeypod Kitchen Ko Olina	381-4086
<i>Live music 3x a day</i>	
Jason Midro	12:30-2:30pm
Lana	3:30-5pm
Sienna Souza	7-9pm
Monkeypod Kitchen Waikiki	900-4226
<i>Live music 3x a day</i>	
Pono	12:30-2:30pm
Shawn Garnett	3:30-5pm
Dustin Park	7-9pm
Roys Hawaii Kai	396-7697
<i>Live Contemporary Hits</i>	
Nick La'a	4:30-6:30pm
Rumfire	921-4600
<i>Live Contemporary Hits</i>	
AJ Keolani	2:30-5:30pm
Christian Yrizarry	6-9pm
Signature Prime Steak	949-3636
<i>Contemporary Pianist in the bar</i>	
Keith Montross	6-9pm
Splash Bar at the Sheraton Princess Kaiulani	921-4600
<i>Live Contemporary Hawaiian</i>	
Lovejack	6-9pm
Swell at the Alohilani	294-4108
<i>Solo Contemporary Guitarist</i>	
Kamuela Kahoano	6-9:30pm
The Beach Bar at the Moana Surfrider	922-3111
<i>Live Contemporary Hawaiian</i>	
Jesse Kuikahi	3:30-6:30pm
Johnny Valentine	7-10pm
The Edge at the Sheraton	921-4600
<i>Temporarily closed for renovation</i>	

The Point Sunset Pool Bar at Turtle Bay	293-6000
<i>Live Contemporary Hawaiian with Fireknife Dancer</i>	
Kuhio Travis	5-8pm
Tiki's Grill & Bar	923-TIKI (8454)
<i>Live Contemporary</i>	
Derrick Lee	1-3pm
Mike Piranha	5:30-7:30pm
Johnny Helm	8-10pm
Tapa Bar at the Hilton Hawaiian	949-4321
<i>Live Contemporary</i>	
Ben Kama	1-3pm

TUESDAY

Barefoot Beach Café at Queen's Beach	924-2233
<i>Backyard Hawaiian</i>	
Ben Kama & Kimo Baker	5:30-8:30pm
Casamigos House of Friends	922-0811
<i>Live Contemporary</i>	
Jenna Keala	6-8pm
Chart House	941-6669

<i>Live Contemporary Hawaiian</i>	
Hernan & Darin	6:30-9:30pm
Duke's Canoe Club Waikiki	922-2268
<i>Ukulele Tuesday</i>	
Walt Keale Duo	4:30-6:30pm
Kailua Moon	7-9:30pm
Stephen Inglis (7/14 - Duva)	9:30-12am
House Without a Key	923-2311
<i>Hawaiian music & hula by Miss Hawaii '24 Hayley Kane</i>	
Jessie Kuikahi	11:30-2pm
Delima Ohana (7/28-Puuhonua)	5-8pm
Hula's Lei Stand	923-0669
<i>Island Style</i>	
Biku	6-9pm
Kani Ka Pila Grille	924-4992
<i>Highlighting the Henry Kapon Foundation "On the Rise" artist series the first Tuesday of every month.</i>	
Ryan Hooley	5-7pm
Kala'e Camarillo	6-9pm
Lewers Lounge	923-2311
<i>Jazz Pianist</i>	
Tommy James	8-10:30pm
Mahi'ai Table	670-2778
<i>Live Contemporary</i>	
Keoni Ku	5-8pm
Mahina & Sun's	923-8882
<i>Electrifying Acoustic on the Lanai</i>	
Kokonut Point	6-8:30pm
Mai Tai Bar at the Royal Hawaiian	923-7311
<i>Live Contemporary Hawaiian</i>	
Liam Moleta	11am-2pm
YOZA	6-9pm
Maui Brewing Company	843-2739
<i>Live Contemporary Hawaiian</i>	
Mike Piranha (or Sean Cleland)	8-10:30pm
Monkeypod Kitchen Ko Olina	381-4086
<i>Live music 3x a day</i>	
Tehani & Sidney Spencer	12:30-2:30pm
Pono	3:30-5pm
Soul Purpose	7-9pm
Monkeypod Kitchen Waikiki	900-4226
<i>Live music 3x a day</i>	
Chris Murphy	12:30-2:30pm
Tiare and Keala	3:30-5pm
John Akapo	7-9pm
Queensbreak at the Marriott	922-6611
<i>Live Contemporary</i>	
Christian Yrizarry	6-9pm
Roy's Hawaii Kai	396-7697
<i>Live Local Contemporary</i>	
Mike Tulba	4:30-6:30pm
Rumfire	921-4600
<i>Live Contemporary Hits</i>	
Johnny Kukui	2:30-5:30pm
Dave Watanabe	6-9pm
Signature Prime Steak	949-3636
<i>Contemporary Pianist in the bar</i>	
Keith Montross	6-9pm



E Pili Kākou

DINING ▸ ENTERTAINMENT ▸ PAU HANA ▸ EAT ▸ DRINK

Splash Bar at the Sheraton Princess Kaiulani 921-4600 <i>Live Contemporary Hawaiian</i> Kosuke 6-9pm	Maui Brewing Company 843-2739 <i>Live Contemporary Hawaiian</i> Scott Magz & Ethan Nash 8-10:30pm
Swell at the Alohilani 294-4108 <i>Solo Contemporary Guitarist</i> Lovejack (7/28 - DJ KK) 6-9pm	Merriman's Honolulu 215-0022 <i>Live Contemporary</i> Kamaka Camarillo 5:30-7:30pm
The Beach Bar at the Moana Surfrider 922-3111 <i>Live Contemporary Hawaiian</i> Stephen Inglis (7/14 - Paul Dunlap, Jr.) 3:30-6:30pm Alex Oasay 7-10pm	MINA's Fish House 679-0079 <i>Live Contemporary Hits</i> Kamuela Kahoano 6-9pm
The Edge at the Sheraton 921-4600 <i>Temporarily closed for renovation</i>	Monkeypod Kitchen Ko Olina 381-4086 <i>Live music 3x a day</i> Shaun Garnett 12:30-2:30pm Chris Murphy 3:30-5pm Clara Stegall (7/1 - Connor Jackson) 7-9pm
Tiki's Grill & Bar 923-TIKI (8454) <i>Live Contemporary</i> Keone 1-3pm Eddie Somera 5:30-7:30pm Lindsey Wells 8-10pm	Monkeypod Kitchen Waikiki 900-4226 <i>Live music 3x a day</i> Kailua Moon 12:30-2:30pm Jasmin Nicole 3:30-5pm Chante 7-9pm
Tapa Bar at the Hilton Hawaiian 949-4321 <i>Live Contemporary</i> Ben Kama 1-3pm	Roy's Hawaii Kai 396-7697 <i>Live Contemporary Hawaiian</i> Maui Manahoe 4:30 -6:30pm
WEDNESDAY	
Barefoot Beach Café at Queen's Beach 924-2233 <i>Island Vibes</i> Danny Galura 5:30-8:30pm	Rumfire 921-4600 <i>Live Contemporary Hits</i> Kimo Opiana 2:30-5:30pm Jesse Kuikahi 6-9pm
Casamigos House of Friends 922-0811 <i>Live Contemporary</i> Christian Yrizarry (6/24-Bronson Varde) 6-8pm	Signature Prime Steak 949-3636 <i>Contemporary Pianist in the bar</i> Pierre Grill 6-9pm
Chart House 941-6669 <i>Live Contemporary Hawaiian</i> Hi'ikua 6-9pm	Splash Bar at the Sheraton Princess Kaiulani 921-4600 <i>Live Contemporary Hawaiian</i> Brad Kawakami 6-9pm
Duke's Canoe Club Waikiki 922-2268 <i>Live Contemporary Hawaiian</i> Keoni Ku (7/8 - Denny Ono) 4:30-6:30pm Taulia Lave 7-9:30pm Alika Souza 9:30-12am	The Beach Bar at the Moana Surfrider 922-3111 <i>Live Contemporary Hawaiian</i> Alika Souza 3:30-6:30pm Keahi Delovio Duo 7-10pm
House Without a Key 923-2311 <i>Hawaiian music & hula by Miss Universe '97 Brook Lee</i> Pa'hana Trio 5-8pm	The Edge at the Sheraton 921-4600 <i>Temporarily closed for renovation</i>
Hula's Lei Stand 923-0669 <i>Contemporary Guitarist</i> Jason Laeha 6-9pm	Tiki's Grill & Bar 923-TIKI (8454) <i>Live Contemporary</i> Derrick Lee 1-3pm Hula w/ Malu Productions 5:30-7:30pm Malu Productions 8-10pm
Kani Ka Pila Grille 924-4992 <i>Hoku Award Winning Hawaiian musicians</i> Ei Nei 6-9pm	Tapa Bar at the Hilton Hawaiian 949-4321 <i>Live Contemporary</i> Jeegan 1-3pm
Lewers Lounge 923-2311 <i>Jazz Pianist</i> Tommy James 8-10:30pm	Vintage 1901 at the Moana 921-4600 <i>Contemporary Piano</i> David Swanson 6:30-10pm Kalena Ku 6:30-10pm
Mahi'ai Table 670-2778 <i>Live Contemporary</i> Kai Duhaylonsod 5-8pm	
Mahina & Sun's 923-8882 <i>Soulful Guitar on the Lanai</i> John Akapo 6-8:30pm	
Mai Tai Bar at the Royal Hawaiian 923-7311 <i>Live Contemporary Hawaiian</i> Keoni Ku 11am-2pm Johnny Valentine (7/29 - Chris Luke) 6-9pm	



STRIPSTEAK
A MICHAEL MINA RESTAURANT

A MODERN
STEAKHOUSE
EXPERIENCE FROM
JAMES BEARD
AWARD-WINNING
CHEF MICHAEL MINA



Reserve your table for an unforgettable dining experience featuring Chef Michael Mina's signature cuisine, premium Wagyu and fresh seafood, and impeccable service, all set in a sophisticated atmosphere that reflects the vibrant energy of Waikiki.



Let's be Together...

DINING ▶ ENTERTAINMENT ▶ PAU HANA ▶ EAT ▶ DRINK ▶ BE MERRY ▶ HAPPY HOUR ▶

Chart House <i>Live Contemporary Hawaiian</i> Tito Berinobis 6:30-9:30pm	941-6669
Duke's Canoe Club Waikiki <i>Live Contemporary Hawaiian</i> Kalalea (or others) 4:30-6:30pm Tehani (or others) 7-9:30pm Scott Magz 9:30-12am	922-2268
Eating House 1849 Waikiki <i>Live Traditional Hawaiian</i> Shane Kainoa 5:30 - 8:30pm	924-1849
House Without a Key <i>Hawaiian music & hula by Miss Universe '97 Brook Lee</i> Walea 5-8pm	923-2311
Hula's Lei Stand <i>Contemporary Guitarist</i> YOZA 6-9pm	923-0669
Kani Ka Pila Grille <i>Hoku Award Winning Hawaiian musicians</i> Sean Na'auao 6-9pm	924-4992
Lewers Lounge <i>Jazz Pianist</i> Ethan Capone & Rocky Holmes 8:30pm-12am Dan Del Negro & Rocky 7/23, 7/30 8:30pm-12am	923-2311
Mahi'ai Table <i>Live Contemporary</i> Alex Oasay 5-8pm	670-2778
Mahina & Sun's <i>Hawaiian Contemporary on the Lanai</i> Kelly Boy DeLima 6-8:30pm	923-8882
Mai Tai Bar at the Royal Hawaiian <i>Live Contemporary Hawaiian</i> Christian Yrizarry (7/2 - Brandon Serrano) 11am-2pm Stephen Inglis (or Paul Dunlap, Jr.) 8-10pm	923-7311
Maui Brewing Company <i>Live Contemporary Hawaiian</i>	843-2739

Phil & Nick Duo (or Koa Music) 8-10:30pm	
Merriman's Honolulu <i>Live Contemporary</i> John Kema 5:30-7:30pm	215-0022
MINA's Fish House <i>Live Contemporary Hits</i> Jesse Kuikahi 6-9pm	679-0079
Monkeypod Kitchen Ko Olina <i>Live music 3x a day</i> Jesse Kuikahi 12:30-2pm Colin Devane 3:30-5pm Chante Duo 7-9pm	381-4086
Monkeypod Kitchen Waikiki <i>Live music 3x a day</i> The Mauve 12:30-2:30pm Bronson Varde 3:30-5pm Javin Kai 7-9pm	900-4226
Queensbreak at the Marriott <i>Live Contemporary</i> Cory Oliveros (or others) 6-9pm	922-6611
Roy's Hawaii Kai <i>Live Hawaiian Contemporary</i> Hoku Zuttermeister 4:30 - 6:30pm	396-7697
Rumfire <i>Live Contemporary Hits</i> Chris Salvador 2:30-5:30pm Brad Kawakami 6-9pm	921-4600
Signature Prime Steak <i>Contemporary Pianist in the bar</i> Grant Carvalho 6-9pm	949-3636
Splash Bar at the Sheraton Princess Kaiulani <i>Live Contemporary Hawaiian</i> Kaimi Hananoeau (7/9- Paul Dunlap, Jr) 3-6pm Tad Jennings 6-9pm	921-4600
Stripsteak <i>Live Contemporary</i> Jason Laeha 6-9pm	896-2545
Swell at the Alohilani <i>Solo Contemporary Guitarist with dancer</i> Eddie Somera 6-9:30pm	294-4108
The Beach Bar at the Moana Surfrider <i>Live Contemporary Hawaiian</i> Christian Yrizarry (7/2- Jason Midro) 3:30-6:30pm Kaimi Hananoeau (7/9- Paul Dunlap, Jr) 7-10pm	922-3111
The Edge at the Sheraton <i>Temporarily closed for renovation</i>	921-4600
The Point Sunset Pool Bar at Turtle Bay <i>Live Contemporary Hawaiian with Fireknife Dancer</i> Marty Saito 4-7pm	293-6000
Tiki's Grill & Bar <i>Live Contemporary</i> Roddy Lopez 1-3pm Johnny Helm 5:30-7:30pm Kai Roots 8-10pm	923-TIKI (8454)
Tapa Bar at the Hilton Hawaiian <i>Live Contemporary</i> Randy Allen 1-3pm	949-4321
Vintage 1901 at the Moana	921-4600

Contemporary Piano
David Swanson 6:30-10pm

FRIDAY

Barefoot Beach Café at Queen's Beach <i>Live Contemporary Hawaiian</i> Art Kalahiki & Friends 5:30-8:30pm	924-2233
Casamigos House of Friends <i>Live Contemporary</i> Tad Jennings 6-8pm	922-0811
Chart House <i>Live Contemporary Hawaiian</i> TJ 4:15-7:15pm BK & Friends 8-11pm	941-6669
Duke's Canoe Club Waikiki <i>Live Contemporary Hawaiian</i> Maunalua 4-6pm Kawaika Kahiapo 7-9:30pm Dukes After Dark 9:30-12am	922-2268
House Without a Key <i>Hawaiian music & hula by Miss Hawaii '73 Kanoe Miller</i> Sunset Serenaders 5-8pm	923-2311
Hula's Lei Stand <i>Contemporary Hawaiian</i> Kalau 6-9pm	923-0669
Kani Ka Pila Grille <i>Hoku Award Winning Hawaiian musicians</i> Ka Hehena 6-9pm	924-4992
Lewers Lounge <i>Jazz Pianist</i> Maggie Herron & Dean Taba 8pm-12am	923-2311
Mahi'ai Table <i>Live Contemporary</i> Eddie Somera 5-8pm	670-2778
Mahina & Sun's <i>Slack Key on the Lanai</i> Jeff Rasmussen 6-8:30pm	923-8882
Mai Tai Bar at the Royal Hawaiian <i>Live Contemporary Hawaiian</i> Johnny Kukui 11am-2pm Johnny III 6-9pm	923-7311
Maui Brewing Company <i>Live Contemporary Hawaiian</i> Justin Edwards (or others) 8-10:30pm	843-2739
Merriman's Honolulu <i>Live Contemporary</i> Matt Cockey 3-5pm Stephen Harris 5:30-7:30pm	215-0022
MINA's Fish House <i>Live Contemporary Hits</i> Jenna Keala (7/3 - Johnny Kukui) 6-9pm	679-0079
Monkeypod Kitchen Ko Olina <i>Live music 3x a day</i> Jasmin Nicole 12:30-2pm Lance Reid 3:30-5pm John Akapo 7-9pm	381-4086
Monkeypod Kitchen Waikiki <i>Live music 3x a day</i>	900-4226



WAIKIKI BAPTIST CHURCH

YOUR CHURCH IN WAIKIKI
Ministering to Waikiki for over 70 years!

SUNDAY SERVICES
9 & 10:45 AM
Prayer Meeting
Thursdays at 7:00 PM

(808) 955-3525
WaikikiBaptistChurch.com
424 Kuamo'o Street (near the Ambassador Hotel)

E Pili Kākou

DINING ▶ ENTERTAINMENT ▶ PAU HANA ▶ EAT ▶ DRINK ▶ BE MERRY ▶ HAPPY HOUR

Freddy Leone 12:30-2:30pm
 Nick Wong 3:30-5pm
 Izik (or others) 7-9pm
Original Magoos Pizza 949-5381
Live Contemporary Hawaiian
 Ernie Kanoa 5:30-8:30pm
Queensbreak at the Marriott 922-6611
Live Contemporary
 Johnny Kukui 6-9pm
Rumfire 921-4600
Live Contemporary Hits
 Stephen Inglis (or Paul Dunlap, Jr.) 2-4:30pm
 Brad Kawakami 6-9pm
 Justin Edwards (or others) 8-10:30pm
Signature Prime Steak 949-3636
Contemporary Pianist in the bar
 Keith Montross 6-9pm
Splash Bar at the Sheraton Princess Kaiulani 921-4600
Live Contemporary Hawaiian, DJ KK spins from 1-4p
 Ben Kama Duo & Dancer 4:30-7:30pm
 Johnny Helm 7:45-9:45pm
Stripsteak 896-2545
Live Contemporary
 Shane Tsukayma 6-9pm
The Beach Bar at the Moana Surfrider 922-3111
Live Contemporary Hawaiian
 Chris Salvador 12-3pm
 Kailua Moon (7/3- Kaleikaumaka Duo) 3:30-6:30pm
 Kamuela Kahoano 7-10pm
The Edge at the Sheraton 921-4600
Temporarily closed for renovation
The Grove at the Modern Pool Deck 943-5800
Live Contemporary
 Justin Edwards 2-5pm
The Veranda at the Kahala Hotel 739-8760
Live Contemporary
 Johnny Valentine (7/31- Jeremy Hirokawa) 6-10pm
Tiki's Grill & Bar 923-TIKI (8454)
Live Contemporary
 Keone 1-3pm
 BK Espiritu 5:30-7:30pm
 Rachel Faith 8-10pm
Tapa Bar at the Hilton Hawaiian 949-4321
Live Contemporary
 Mike Piranha 1-3pm
Vintage 1901 at the Moana 921-4600
Contemporary Piano
 David Swanson 6:30-10pm

SATURDAY

Barefoot Beach Café at Queen's Beach 924-2233
Live Contemporary Hawaiian
 Ernie Kanoa 5:30-8:30pm
Casamigos House of Friends 922-0811
Live Contemporary
 Justin Edwards 6-8pm
Chart House 941-6669
Live Contemporary Hawaiian

Hī'ialo 7-11pm
Duke's Canoe Club Waikiki 922-2268
Live Contemporary Hawaiian
 Beach 5 (or others) 4-6pm
 Ells Simeona w/hula 7-9:30pm
 Justin Edwards 9:30-12am
Heydey at the White Sands 475-6864
Contemporary Rock
 Ragamuff 6-8pm
House Without a Key 923-2311
Hawaiian music & hula by Miss Hawaii '73 Kanoa Miller
 Sunset Serenaders 5-8pm
Hula Grill 923-4852
Contemporary Rock
 Kamaka Camarillo w/ hula (or others) 12-2pm
Hula's Lei Stand 923-0669
Contemporary Guitarist
 Johnny III 6-9pm
Kani Ka Pila Grille 924-4992
Hoku Award Winning Hawaiian musicians
 Ho'okena 6-9pm
Lewers Lounge 923-2311
Jazz Pianist
 Maggie Herron & Dean Taba 8-10:30pm
Mahi'ai Table 670-2778
Live Contemporary
 Danielle Parente 5-8pm
Mai Tai Bar at the Royal Hawaiian 923-7311
Live Contemporary Hawaiian
 Alika Souza 11am-2pm
 Dave Watanabe 6-9pm
Maui Brewing Company 843-2739
Live Contemporary Hawaiian
 Julian Raso (or others) 8-10:30pm
Merriman's Honolulu 215-0022
Live Contemporary
 Kapu Copp 5:30-7:30pm
MINA's Fish House 679-0079
Live Contemporary Hits
 Alex Oasay 6-9pm
Monkeypod Kitchen Ko Olina 381-4086
Live music 3x a day
 JOBY 12:30-2pm
 Izik 3:30-5pm
 Javin Kai 7-9pm
Monkeypod Kitchen Waikiki 900-4226
Live music 3x a day
 Randy Allen 12:30-2pm
 Pono 3:30-5pm
 Javin Kai (or others) 7-9pm
Original Magoos Pizza 949-5381
Solo Country
 Buck Giles 5:30-8:30pm
Queensbreak at the Marriott 922-6611
Live Contemporary
 Kalau Crisotomo 6-9pm
Rumfire 921-4600
Live Contemporary Hits

YOZA 2-4:30pm
 Eddie Somera (7/11- Jeremy Hirokawa) 5-7:30pm
 Bronson Varde (7/18- Kosuke) 8-10:30pm
Signature Prime Steak 949-3636
Contemporary Pianist in the bar
 Keith Montross 6-9pm
Splash Bar at the Sheraton Princess Kaiulani 921-4600
Live Contemporary Hawaiian, DJ Kenny spins from 1-4pm
 Brad Kawakami Duo & Dancer 4:30-7:30pm
 Tangi Tully 8-10pm
Stripsteak 896-2545
Live Contemporary
 Dustin Park 6-9pm
The Beach Bar at the Moana Surfrider 922-3111
Live Contemporary Hawaiian
 Brad Kawakami (7/18- Johnny Kukui) 12-3pm
 Bronson Varde (7/18- Jason Midro) 3:30-6:30pm
 Koa Atwood 7-10pm
The Edge at the Sheraton 921-4600
Temporarily closed for renovation
The Grove at the Modern Pool Deck 943-5800
Live Contemporary
 Chrs Salvador 3-6pm
The Veranda at the Kahala Hotel 739-8760
Live Contemporary

STARTING AT \$75 SURF & SIZZLE

SAVOR OUR RUTH'S CLASSICS MEAL WITH STARTER, ENTREE, SIDE AND DESSERT

RUTH'S CHRIS STEAK HOUSE

AVAILABLE DAILY FROM 4-8 PM
 (also: Waterfront Plaza and Waikiki Beach Walk)
 Maui: The Shops at Maui
 RUTHSCRIS.COM

Let's be Together...

DINING ▶ ENTERTAINMENT ▶ PAU HANA ▶ EAT ▶ DRINK ▶ BE MERRY ▶ HAPPY HOUR ▶

Cory Oliveros (7/25- Johnny Kukui) 6-10pm
 Bronson Varde 8-10:30pm
Tiki's Grill & Bar 923-TIKI (8454)
Live Contemporary
 Tangi 1-3pm
 Kai Roots (7/25 - Kelandi) 5:30-7:30pm
 Phil Schneider 8-10pm
Tapa Bar at the Hilton Hawaiian 949-4321
Live Contemporary
 Darrell Aquino 1-3pm
Vintage 1901 at the Moana 921-4600
Contemporary Piano
 David Swanson 6:30-10pm

SUNDAY

Barefoot Beach Café at Queen's Beach 924-2233
Live Contemporary Hawaiian
 Ben Kama 10am-1pm
 Art Kalahiki 5:30-8:30pm
Casamigos House of Friends 922-0811
Live Contemporary
 Kosuke (or others) 6-8pm
Chart House 941-6669
Live Contemporary Hawaiian
 Paka 10:30am-1:30pm
 Dean & Tito 6:15-9:15pm
Duke's Canoe Club Waikiki 922-2268
Live Contemporary Hawaiian
 Henry Kapono 4-6pm
 Kaiona Duo 7-9:30pm
 Tad Jennings 9:30-12am
Hau Tree Lanai 921-7066
Live Contemporary music
 Izik 2:30-5pm
House Without a Key 923-2311
Hawaiian music & hula by Miss Universe '97 Brook Lee
 Pu'uhonua Trio 5-8pm

Hula Grill 923-4852
Contemporary Rock with Hula
 Stephen Inglis w/hula (or others) 12-2pm
Kani Ka Pila Grille 924-4992
Hoku Award Winning Hawaiian musicians
 Nathan Aweau 6-9pm
La Hiki Restaurant at the Four Seasons 679-0079
Live Contemporary Hawaiian
 Jenna Keala (7/5 - Kamuela Kahoano) 11am-2:30pm
Lewers Lounge 923-2311
Jazz Pianist
 Johnny Kukui (or Nick La'a) 8-10:30pm
Mahi'ai Table 670-2778
Live Contemporary
 Johnny Stahley III 5-8pm
Mai Tai Bar at the Royal Hawaiian 923-7311
Live Contemporary Hawaiian
 Brandon Serrano & Kanoe Arola 11am-2pm
 Denny Ono & Kanoe Arola (7/19, 7/26) 11am-2pm
 Christian Yrizarry 6-9pm
Maui Brewing Company 843-2739
Live Contemporary
 Connor Johnson (or Samoan Santana) 8-10:30pm
Merriman's Honolulu 215-0022
Live Contemporary Piano
 Grant Carvalho 5:30-7:30pm
Monkeypod Kitchen Ko Olina 381-4086
Live music 3x a day
 Kush 12:30-2:30pm
 Sierra Lucas 3:30-5pm
 Teanu Duo 7-9pm
Monkeypod Kitchen Waikiki 900-4226
Live music 3x a day
 Randy Allen (or others) 12:30-2:30pm
 Koa Inna Vision 3:30-5pm
 Soul Purpose 7-9pm

Original Magoos Pizza 949-5381
Kanikapila Night
 Leonard Jenkins & Joe Chang 5:30-8:30pm
Queensbreak at the Marriott 922-6611
Live Contemporary
 Stephen Inglis 6-9pm
Roy's Hawaii Kai 396-7697
Live Hawaiian Contemporary
 Kanikapila Sunday 4:30 - 6:30pm
Rumfire 921-4600
Live Contemporary Hits
 Jesse Kuikahi 11-1:30pm
 Jenna Keala 5-7:30pm
 Alex Oasay 8-10:30pm
Signature Prime Steak 949-3636
Contemporary Pianist in the bar
 Keith Montross 6-9pm
Splash Bar at the Sheraton Princess Kaiulani 921-4600
Live Contemporary Hawaiian - DJ Mau spins from 1-4pm
 Kailua Moon & Dancer 4:30-7:30pm
 Chris Luke 7:45-9:45pm
Swell at the Alohilani 294-4108

DJ KK Spins Poolside from 11:30-2:30 pm
 Jason Laeha 3-6p
The Beach Bar at the Moana Surfider 922-3111
Live Contemporary Hawaiian
 YOZA 12-3pm
 Keoni Ku (7/12- Johnny Kukui) 3:30-6:30pm
The Edge at the Sheraton 921-4600
Temporarily closed for renovation
The Grove at the Modern Pool Deck 943-5800
Live Contemporary
 Cory Oliveros 3-6pm
The Point Sunset Pool Bar at Turtle Bay 293-6000
Live Contemporary Hawaiian with Fireknife Dancer
 Mason Pilar 5-8pm
Tiki's Grill & Bar 923-TIKI (8454)
Live Contemporary
 Joe Kingston 1-3pm
 Ellsworth Simeona 5:30-7:30pm
 Kelandi (or Sabbath Cannon) 8-10pm
Tapa Bar at the Hilton Hawaiian 949-4321
Live Contemporary
 Tad Jennings 1-3pm
Vintage 1901 at the Moana 921-4600
Contemporary Piano
 David Swanson 6:30-10pm



Hot Lines

Here's a few numbers for you to find out the latest in live music from places that change daily or don't update us regularly, since we strive to put out correct info and can't possibly list them all.

Anna O'Brien's	946-5190
Deck	931-4488
Earl's Waikiki	751-2299
Hard Rock Cafe	955-7383
Irish Rose Saloon	947-3414
Kelley O'Neil's	926-1777
Lucky Strike Honolulu	664-1140
Moani Waikiki	466-2629
Mai Tai Bar Ala Moana	941-4400
Off the Wall	593-2337
Tommy Bahama	923-8785

Dining Dish



When was the last time you played tourist and just floated from bar to bar to bar, either in Waikiki or at a hotel? I had the chance to do that recently at the Halekulani, and it was divine. We started at **House Without a Key**, enjoying a few appetizers, listening to Kapena and watching the sunset, before heading up

HAWAII'S NAUTICAL
 Back by popular demand!
 SHORKELING
 BIG TIME BAGELS
 TRADITION COFFEE
 EVERY SATURDAY
 8AM - 10AM
 SHORKEL TRIP!
 DEPARTING FROM
 KENEKA HARBOR

Call to book!
 (808) 234-7348
 @hawaiisnautical
 hawaiisnautical.com

to **L'Aperitif Cocktail Lounge**, the bar inside La Mer, where bartenders Henry and Barry were a wealth of cocktail culture information as they whipped up delicious drinks served with a small bite, such as one oyster topped with Lychee Sorbet and Ginger Caviar. We then wrapped up the night at **Lewers Lounge**, a place I used to stop by often to enjoy its delicious old-fashioned's and tasty appetizers. I used to do these types of nights at many of the hotels in Waikiki pre-COVID. I think maybe I need to start those up again. There's lots of fun for us locals to have out there as well. • Speaking of locals, The Kahala Hotel has launched a 20% discount for kama'āina on food and non-alcoholic beverages for parties of up to 8 guests at **Plumeria Beach House** and **Seaside Grill**. Be sure to mention you're a local when ordering. • **Le Petit Chef**, the innovative dinner experience at the Romer House Waikiki that shines 3D projections on your plate and turns your dining table into a canvas, has been so popular that they've added an extra time slot to accommodate more guests. Now, visitors can enjoy a 3 p.m. weekend matinee, perfect for those who have found it difficult to secure a reservation or have kids and want to dine earlier. • **Vikram Garg** has launched **Masala Māya**, Honolulu's first fine-casual Indian kitchen built entirely for takeout and delivery, without sacrificing quality. A huge fan of Indian food myself, I plan to check it out sooner rather than later, as good Indian food is hard to find here. Order from their website and pick up from UMI or have it delivered through Door Dash or Uber Eats. If anyone is going to provide great Indian food, I expect to find it from Chef Vikram, so here's hoping the concept is a success. masalamaya.com. • **Goofy Café & Dine** has opened a new location at The Twin Fin Hotel. This all-day eatery offers a relaxed atmosphere for breakfast, happy hour, dinner, and everything in between. The new location features a main dining room, a playful bar, a breezy terrace, and even a casual hot dog stand offering quick takeout for hotel guests, beachgoers, and people on the go. The hot dog stand offers dogs, fries, acai bowls, and refreshing drinks and coffees, while the inside menu runs from avocado toast to steak and lobster. Open from 7 a.m. to 10 p.m. goofy-honolulu.com.



Chef's Corner

Stripsteak Executive Chef Garrick Mendoza

Garrick Mendoza has known he wanted to pursue a career in cooking since high school. During that time, he worked at a local steakhouse, where a visiting corporate chef inspired him to attend culinary school. There, he connected with people who told him about the Culinary Institute of America. He applied, and ended up earning his bachelor's degree in hotel & restaurant management. While working in New Mexico, he was recruited by the Mina Group for Mina's Fish House at the Four Seasons Ko Olina, and Hawaii became his home.

What is your first childhood food memory?
Tortillas made by my grandmother. This was always something my cousins and I looked forward to. We always settled in the kitchen to enjoy the smell and the snacks she would make as she prepared them.

When did you know you wanted to be a chef?
When I was about 16, I realized I didn't want to follow my father's path in construction. I joined him on side jobs and, one summer, got my first hourly laborer position. It was clear the work wasn't for me. The next school year, I worked in a local steakhouse kitchen. I appreciated that we were fed daily without bringing food. The restaurant had a kitchen manager, not a chef, but a corporate chef visited occasionally. This was my first time being around a working chef, as I only knew of Yan Can Cook from TV.

Who would you consider your mentor?
Chef Eduardo Villa Lobo truly taught me what it means to be passionate about food and all that it has to offer. He showed me the technique, drive, and motivation needed to be successful in the industry.

What's the most important thing you took from your previous jobs?
The people around me make it happen. Every position and person on the team make things happen, not me alone. The team can do it without me; I cannot do it without them.

How did you end up in Hawaii?
The Mina Group recruited me for the Mina's Fish House at the Four Seasons Ko Olina.

What's your favorite ingredient to work with?
Fish! So many different approaches and options for flavors and profiles. I also truly enjoy baking, especially bread.

Name one dish that really stands out?
My first time eating soft-shell crab. It was new to me. I was in my early 20s and thought I had tried all the different crab options out there. Then I found myself in a crab shack in Ocean City, Maryland, with some of the freshest scallops and crab options I have experienced to this day. It was amazing.

Where's your culinary inspiration come from?
My family. I have two teenagers who both love to eat, as well as my wife. They have all given me different approaches and perspectives on what people are looking for in a dining experience.

What's your goal at Stripsteak?
To operate the best steak house in Hawaii.

What's your favorite dish on the menu?
The lobster and melon salad I'm adding to the menu this month offers a great balance of acid, fat, and heat, with crisp textures, brightness, and summer flavors.

Name your favorite restaurant you like to go to when not working, and why?
Rigo. The menu is versatile with lots of small plate offerings with an upbeat vibe and cool atmosphere.

What do you like to do on your days off?
I love to go the beach every day off to get grounded and soak up the sun.



Ahi Tuna Crudo 'Rolls'

Ingredients:	5 pcs	Ahi Sashimi
30g	Frenchie's Fried Onions	1g Maldon Salt
.5g	Micro Cilantro	10g Stripsteak (SSH) Shoyu
2g	Sliced Serrano	5g SSH Garlic Confit Paste

Directions: Squeeze on the garlic confit from squeeze bottle or piping bag onto the tuna slices. Sprinkle the maldon salt on each piece. Place crispy onions on same side as the garlic paste and then roll into a log keeping the garlic and crispy onions on the inside. Place the rolled tuna on the plate. Squeeze the shoyu over the tuna. Garnish each piece with a serrano slice and micro cilantro.

SSH Shoyu Ingredients:

650g	Rice Vinegar	650g	Soy Sauce, Tamari, gluten free
100 g	Lemon Juice	200g	Yuzu Juice
		6g	Xanthan Gum

Directions: Mix all ingredients together. Once combined, blend the xanthan gum until combined.

To make SSH's Garlic Confit Paste Get 500 grams of Olive Oil and 500 grams of garlic cloves. Trim the ends of the garlic cloves and discard. Place garlic and olive oil in a pot. Bring to a simmer then lower heat and cook slowly, stirring occasionally until the garlic is soft enough to be smashed into a paste. Remove from heat and cool slightly. Drain, reserve the oil and blend the garlic until smooth. Place into piping bag or squeeze bottle.

Stripsteak Waikiki is located on the 3rd floor of the International Market Place
Open Sun - Thurs: 4 - 9pm • Fri - Sat: 4 - 10pm • Happy Hour Mon-Sun: 4 - 6pm
Ph: (808) 896-2545 • Web: stripsteak.com • FB/Instagram: @stripsteakhi

JULY CALENDAR OF EVENTS

Continuing Events

MONDAYS, WEDNESDAYS & FRIDAYS O NĀ LANI SUNSET STORIES HULA SHOW

Honoring the rich history and sense of place of the International Market Place through song & dance, beginning at sunset with the lighting of the Lamakū Torch Tower on Kalākaua Avenue and leads to the Queen's Court. Free. 6 p.m. shopinternationalmarketplace.com.

WEDNESDAYS, SATURDAYS & SUNDAYS ALOHA STADIUM SWAP MEET

The Aloha Stadium Swap Meet has been going strong since 1979. Featuring over 400 vendors, crafters and artists, grab low-prices on a wide selection of products with food trucks to snack from. Upper Halawa Parking Lot. Wednesdays & Saturdays: 8 a.m. - 3 p.m., Sundays, 6:30 a.m. - 3 p.m. \$2 admission ages 12 & up, \$1 for locals. alohastadium.hawaii.gov.

THURSDAYS NIGHT MARKET AND SURF SHOW

Every Thursday, Wai Kai's Farmer's Market features over 50 local vendors with food, crafts, gifts, and food trucks. While you're there, don't miss the free Surf Show at 7 p.m. on the Wai Kai Wave, where local surfers drop in to compete against each other, putting on a fun, free show for all to enjoy. 4 to 8 p.m. waikai.com.

FRIDAYS ROYAL HAWAIIAN BAND LUNCHTIME SHOW

The Royal Hawaiian Band heads to 'Iolani Palace for its popular lunchtime concerts. Held

on most Fridays, the concerts are free and open to the public. 12 - 1 p.m. iolanipalace.org

FRIDAYS • HOMA NIGHTS

On Friday nights head to the Honolulu Museum of Art to explore the galleries, stargaze in the courtyards, enjoy art experiences, live music, grab a drink at the HoMA Cafe, and enjoy other interactive art experiences until 9 p.m. honolulumuseum.org.

FIRST FRIDAY (JUNE 5) DOWNTOWN GALLERY WALK & CRAFT FAIR

Downtown comes alive the first Friday of every month as art lovers fill the streets for Honolulu's outdoor self-guided arts tour. Stores spill out onto the sidewalk, and artists are on hand to chat about their works and restaurants are ready to serve you. firstfridayhawaii.com.

SECOND FRIDAY (JUNE 12) MUSEUM AFTER HOURS

The Kaiwi'ula Night Market has been merged with After Hours to give guests even more options to enjoy. Explore the museum and grounds after-hours, see the exhibitions, hear about the latest scientific discoveries, and engage with Hawaiian cultural practitioners in an evening of mele, and hula, good eats and crafts from local vendors. 5 - 9 p.m. \$15 at the door. (\$10 pre-sale). bishopmuseum.org.

SATURDAYS & SUNDAYS ART ON THE ZOO FENCE

Art on the Zoo Fence is a group of resident Hawaii artists that meet every Saturday and

Sunday to display and sell art and photography on the Zoo fence on Monsarrat Avenue opposite the Kapiolani Park Bandstand. This is the only outdoor art venue in Honolulu that has proudly been displaying art since 1953. 9 a.m. - 3 p.m. Free. artonthezoo fencehi.com.

SECOND SATURDAY (JULY 11) KANIKAPILA MA KAIWI'ULA

Bring your 'ukulele, or borrow one that's there. Join in to learn some new techniques, share mo'olelo or just enjoy the music as Ukulele Guild of Hawai'i members lead guests through selections from the Hawaiian Songbook. Free with Bishop Museum admission. Bowman Hālau Wa'a. 10 a.m. bishopmuseum.org.

SECOND SUNDAY (JULY 12) KAMA'AINA SUNDAYS

Kama'aina Sundays offer entertainment and cultural workshops. Held every second Sunday, the free monthly event provides unique opportunities to enjoy live performances, engage in Hawaiian crafts and explore the historical significance of 'Iolani Palace. Take advantage of free tours, entertainment, activities and food options. Free tours available to the first 500 guests with proof of residency. 9 a.m. - 2 p.m. iolanipalace.org.

SECOND SUNDAY (JULY 12) MELE HALI'A

This month's Mele Hali'a will also be the grand finale of the 2026 Waikiki Steel Guitar Week as steel guitar master, Alan Akaka performs with the next generation of steel guitarists from Ke Kula Mele, as he continues sharing his gift with future generations. Waikiki Beach Walk's Plaza Stage. 5-6 p.m. waikikibeachwalk.com.

THIRD SUNDAY (JULY 19) COMMUNITY SUNDAY

Enjoy exploring the galleries and outdoor spaces and get creative with two art activities.. Admission is free for kama'aina. 10 a.m.-6 p.m. 532-8700. honolulumuseum.org.

JULY 1 • THE B.B. KING & FRIEND CENTENNIAL CELEBRATION

The Keith Batlin Blues Band Experience will perform songs by B.B. King and peers to honor his 100th birthday. Guests include Tavana, David Edery, Clay Campana, Mindy Smokestack, and The Mana Maoli Youth Collective with Aiyanna Mcpeek Batlin, Ezra Hutson, Finn Masterson, and Empress Eden. Tickets: \$25-\$35. 7 p.m. bluenotehawaii.com.

JULY 1 10TH ANNUAL MINDY SMOKESTACK AMY WINEHOUSE TRIBUTE

Enjoy an evening celebrating Amy Winehouse's music and legacy as local artist Mindy Smokestack returns for her 10th Annual Amy Winehouse Tribute at Blue Note Hawaii, backed by a 10-piece band. Experience memorable hits like "Valerie," "Rehab," "Back to Black," and more, in a night filled with soul, jazz, and powerful vocals honoring one of music's most legendary voices. The event features performances by Chardonnay, Trishnālei, The Elevations, Keith Batlin, Aiyanna McPeek-Batlin, Kelsea Armstrong, Keahi Delovio, Tiara Gomes, and Belen León. Tickets: \$25-\$35. 7 p.m. bluenotehawaii.com.



The highlight of your guests' vacation is one referral away. They can explore six island villages and see our HUKI lagoon show with our "Gateway Buffet" or "Islands & HA Show" packages. And they can try our new All-You-Can-Eat Hukilau Lunch. For more information, email mci@poynesia.com.



Polynesian Cultural Center
One Place Like No Other

JULY CALENDAR OF EVENTS

JULY 2-3

TOP GUN: MAVERICK IN CONCERT

Top Gun: Maverick in Concert will showcase the Hawai'i Symphony Orchestra performing the score by Lorne Balfe, Harold Faltermeyer, Lady Gaga, and Hans Zimmer. 7:30 p.m. Blaisdell Concert Hall. Thurs. 7 p.m., Fri, 2 p.m. Tickets: \$30-\$95. myhso.org.

JULY 3

SUNSET ON THE BEACH

Your visitors will not want to miss this unique opportunity to watch a movie on a 30-foot screen, kicking back on Waikiki Beach. Arrive early to take advantage of all the activities, including live music, games, and food trucks, that start at 4:30 p.m. The theme tonight is Friendship Takes Flight, and the evening's movie, "Wicked: For Good," begins at 7:30 p.m. Feel free to bring a low-slung chair or a beach towel. southwestairlineshawaii.com

JULY 3-5

TAHITI FÊTE HAWAII

The largest Tahitian dance competition in the U.S. is coming to Honolulu for the first time. Dancers from around the world showcase stunning Tahitian dance, featuring handcrafted costumes and traditional or modern choreography that tell stories of Tahiti. The event also features Polynesian cuisine, crafts, and dance workshops led by top judges. Tickets: \$35-\$90. Blaisdell Arena. tahitifete.com.

JULY 4

13TH ANNUAL MŌ'ILĪ'ILĪ SUMMER FEST

Get ready for Honolulu's largest Bon Dance in the historic Mō'ili'ili and McCully districts, to kick off Obon season. This annual event is a community favorite, offering a modern street festival with local food vendors, artisans, and retailers. The 13th Annual Mō'ili'ili Summer Fest returns home to the old Varsity Building Parking Lot on University. 5 to 10 p.m. jchawaii.org. For a list of all the Bon dances coming up this summer, see the article on page. Xx.

JULY 4

'ILAU KA HULA 2026

PAI Foundation celebrates hula, mele, Hawaiian culture, local art, and community experiences with the return of 'Ilau Ka Hula. This year, 11 hālau hula will perform, showcasing the diversity of hula traditions from across Hawai'i. Alongside live hula, guests can explore a Native & Local Mākeke with Hawai'i artisans, makers, and small businesses selling handcrafted items, apparel, jewelry, and cultural goods. Food vendors will be on-site. Tickets: \$60. Bishop Museum Great Lawn 5-9 p.m. paifoundation.org.

JULY 5

THE WAITIKI 7

Experience the captivating sounds that inspired White Lotus and Classic Exotica at the unforgettable HapaSymphony finale. Join Waitiki 7—a mesmerizing fusion of Waikiki and Tiki—as they collaborate with the Hawai'i Symphony Orchestra for a remarkable evening celebrating mid-century Exotica music. Drawing inspiration from legendary artists from the late 1950s and 1960s, Waitiki 7 aims to recreate the timeless Tiki sound, atmosphere, and joy that defined that era. 7:30 p.m. Blaisdell Concert Hall. Tickets: \$43.50-\$137.50. myhso.org.

JULY 5 - 12

2026 WAIKĪKĪ STEEL GUITAR WEEK

The 8th annual Waikiki Steel Guitar Week is a week-long celebration of Hawaiian music and the Hawaiian steel guitar that incorporates the Japan-Hawaiian Steel Guitar Festival and the Waikiki Steel Guitar Festival. Evening Concerts at the Royal Grove Stage will be presented on Monday, Tuesday, and Thursday, featuring one-hour performances by different Hawaiian steel guitar artists. Sunday's finale will take place at Waikiki Beach Walk. waikikisteelguitarweek.com.

JULY 6

DANE CONDUCTS THE PLANETS

The Hawai'i Symphony Orchestra welcomes acclaimed violinist Simone Porter back to the islands in an unforgettable season finale program that brings together a new Hawai'i-inspired work, one of classical music's most cherished violin concertos, and Holst's The Planets, one of the 20th Century's great orchestral showpieces. 4 p.m. Blaisdell Concert Hall. Tickets: \$43.50-\$137.50. myhso.org.

JULY 7

TOMMY DAVIDSON

Get ready for an evening of laughter with Tommy Davidson, the acclaimed comedian, actor, and original cast member of the hit sketch comedy series In Living Color. Known for his energetic stand-up, spot-on impressions, and memorable film and television appearances, Davidson brings his signature humor back to the island. Tickets: \$34.10 - \$45.90. 7 p.m. bluenotehawaii.com.

JULY 10

JAPAN-HAWAIIAN STEEL GUITAR FESTIVAL

The 5th Annual Japan-Hawaiian Steel Guitar Festival will feature several steel guitarists and steel guitar groups from Japan from 3 to 6:30 p.m. Free. Royal Grove at the Royal Hawaiian Center. japansteelguitarfestival.com.

JULY 12

'UKULELE FESTIVAL OF HAWAII'

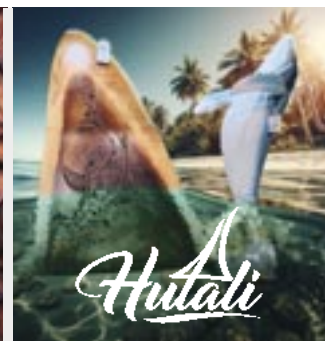
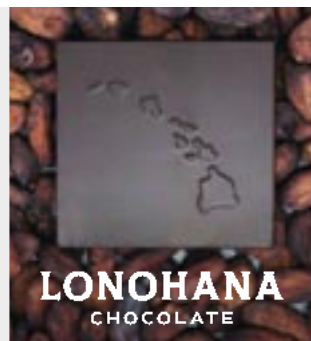
For over 50 years, Roy and Kathy Sakuma hosted the 'Ukulele Festival of Hawai'i, believing that this delightful little instrument could unite the world. Since their retirement, the festival is now celebrating its third year as the International 'Ukulele Festival of Hawai'i with the Sakuma's full support. This festival carries on their vision as ukulele lovers gather from Hawai'i and beyond. Orchestrated by Kazuyuki Sekiguchi, founding member of the Japanese super group Southern All-Stars, performers will be coming from as far as Japan, South Korea, Germany, and here in Hawaii. Kapiolani Bandstand. 10:30 a.m. - 6 pm. ukulelepiconichawaii.org.

JULY 15

KAPENA AT THE ZOO

The Wildest Show in Town at the Zoo continues with Nathan Kapena. \$15 for non-members. Gates open at 4:30 p.m. to enjoy the pre-show activities. Opening acts from the Henry Kapon Foundation's On the Rise artist program begin at 5 p.m., followed by headliners from 6 to 7 p.m. No alcohol or high-back chairs allowed. HonoluluZoo.org

Continues on page 16.



Fresh Finds

We are excited to announce our new openings at Waikiki Beach Walk®.

Free Parking 10am-3pm Daily*

*With \$10 minimum purchase

Open 365 Days | 10AM-9PM

Located on Lewers St. between Kalakaua Ave. & Kalia Rd.



WAIKIKI
BEACH WALK.

WAIKIKIBEACHWALK.COM



JULY CALENDAR OF EVENTS

Continued from page 15.

JULY 10

'UKULELE FESTIVAL GALA CONCERT

The 'Ukulele Foundation of Hawai'i will kick off its 2026 celebration with advancing finalists from around the world traveling to Honolulu to perform at 2 p.m., followed by a Benefit Gala featuring Raiatea Helm, Kimie Miner, Jeff Peterson, and more. Rock-A-Hula Theater. Dinner begins at 4:40 p.m., concert at 6:30 p.m. Tickets: \$75-\$170. ukulelepicnicinhawaii.org.

JULY 10-12

THE MUSIC OF JOHN WILLIAMS

Immerse yourself in the music of John Williams, a five-time Academy Award® winner. Your Hawai'i Symphony Orchestra will perform the iconic and breathtaking scores from beloved films such as *Star Wars*, *Jaws*, *Harry Potter*, *Indiana Jones*, *E.T. the Extra-Terrestrial*, *Superman*, and more. Conducted by Music and Artistic Director Dane Lam, with narration by HSO Composer in Residence Michael-Thomas Foumai, this concert invites you to dress as your favorite character, pose with our film props, and enjoy a memorable night for the whole 'ohana. Since the concert features only music, there will be no film screenings, but the soundtrack will sound even more special live. Blaisdell Concert Hall. 7 p.m. Tickets: \$33.50 - \$93.50. myhso.org.

JULY 11

HSO SYMPHONY IN THE PARK

HSOs Summer Festival opening night concert is a free community event that promises an unforgettable evening of music under the stars. Kailua District Park. 5:30 p.m. free, but RSVP at myhso.org.

JULY 11

JCCH CRAFT & COLLECTIBLES FAIR

Meet and shop with local vendors at the monthly JCCH Craft & Collectibles Fair. Browse a selection of Japanese and Japanese-inspired items while supporting small business owners. The JCCH Gift Shop and Gallery will also be open. 9 a.m. - 1 p.m. Japanese Cultural Center of Hawai'i. jcchawaii.org.



JULY 11-12

HAWAII STATE FARM FAIR

The 60th State Farm Fair, is an annual event that began in 1962 by the Hawaii Farm Bureau to promote awareness of Hawaii's agricultural and ranching industries. The fair will be held in Whitmore Village next to Kahi Kani Park. Come check out the country market featuring 100% local produce, a plant fair, plenty of livestock for keiki to see and touch, live entertainment, and more. Exhibitors from the state, counties, and local farmers and ranchers are present to inform, educate, and entertain fairgoers of all ages. Tickets are \$5. Keiki and students can enter for free with ID. hawaiiestatefarmfair.org.

JULY 12 • THE INTERNATIONAL UKULELE FESTIVAL OF HAWAII 2026



Celebrate all things ukulele with this free festival, featuring internationally recognized 'ukulele virtuosos from Hawaii, Japan, Korea, and even Germany, with an emphasis on cultural diversity. Both the main stage and the second stage will be filled with ukulele sounds, singing, and dancing, and feature booths from 'ukulele makers', local food vendors, fun things for children, and the highly anticipated display of the World's Largest 'Ukulele. Built in 1998 by 'Ukulele Hall of Fame co-founder Paul Norman Syphers, the giant instrument is modeled after an early 1900s Kumalae 'ukulele. Kapiolani Bandstand. 10:30 a.m. - 6 p.m. ukulelepicnicinhawaii.org.

JULY 12

HSO X PMI SIDE-BY-SIDE

Side-by-Side programs offer aspiring young musicians a chance to play in the "major leagues" for a night. Students and professionals become partners and sit side-by-side. This will be the first collaboration between the Hawai'i Youth Symphony's Pacific Music Institute and the Hawai'i Symphony Orchestra. Free to the public. Blaisdell Concert Hall. 7 p.m. myhso.org.

JULY 14

THE TWINS DUELING PIANOS SHOW



Kimberley & Tamara have played piano since age six and, after college, toured as singers and dancers with a national entertainment company. They performed worldwide, including the Super Bowl and Olympic events. Their show is an all-request sing-along with audience participation and comedy, covering songs from the Andrews Sisters and AC/DC to Bruno Mars and Chappell Roan. Tickets: \$35-\$45. Two shows at 6:30 and 9 p.m. bluenotehawaii.com.

JULY 14

HSO SYMPHONY IN THE PARK

HSOs Summer Festival opening night concert is a free community event that promises an unforgettable evening of music under the stars. Kailua District Park. 5:30 p.m. free, but RSVP at myhso.org.

JULY 15

NATHAN AWEAU AT THE ZOO

The Wildest Show in Town at the Zoo continues with Nathan Aweau. \$15 for non-members.

Gates open at 4:30 p.m. to enjoy the pre-show activities. Opening acts from the Henry Kapono Foundation's On the Rise artist program begin at 5 p.m., followed by headliners from 6 to 7 p.m. No alcohol or high-back chairs allowed. HonoluluZoo.org.

JULY 15-16

GRENTPEREZ

Australian singer/songwriter grentperez has crafted his own pop genre, charming audiences worldwide with sweet love songs that blend dreamy sincerity with lighthearted fun. Since his debut single "Cherry Wine," he has performed globally, drawing sold-out crowds and awards. After winning Emerging Songwriter of the Year at the 2024 APRA Awards, he debuted a full-length album, evolving from a bedroom-pop star to incorporate R&B, indie-folk, pop-punk, symphonic pop, '70s soft-rock, and more. Tickets: \$45-\$55. Two shows at 6:30 and 9 p.m. bluenotehawaii.com.

JULY 17

SILVERSON PICKUPS

Experience an evening of alternative rock with Silversun Pickups. Known for their soaring guitars, atmospheric soundscapes, and emotionally charged performances, the acclaimed Los Angeles quartet will perform a mix of fan favorites and newer material in a high-energy live show. 8 p.m. Tickets: \$39.50. TheRepublik.bampproject.com.

JULY 17

HENRY CHO - THE EMPTY NEST TOUR

Known for his clean, family-friendly humor and Southern storytelling, Henry Cho's The Empty Nest Tour features his observations on marriage, parenting, life after the kids leave home, and everyday experiences, delivered with his signature charm and relatable perspective. 7 p.m. Tickets: \$55.25 - \$95.25. hawaii theatre.com.

JULY 17-18

PRINCE LOT HULA FESTIVAL

One of Honolulu's most popular hula festivals has found a new home at the Ka Lewa Lāna at Royal Hawaiian Center. The 49th annual Prince Lot Hula Festival showcases an impressive lineup of Kumu Hula and Hālau, including the hālau of Kumu Hulas Vicky Holt-Takamine, Robert Cazimero, and Michael Pili Pang, to name a few. The event will also feature a local crafters makeke, cultural demonstrators, and more. 2 - 8 p.m. Free. mgfhawaii.org.

JULY 18 • THE MĀKAHA SONS 50TH ANNIVERSARY CONCERT



50 years ago, Jerome Koko, Louis 'Moon' Kauakahi, Israel Kamakawiwo'ole, his brother Skippy Kamakawiwo'ole, and Sam Gray hit the

music scene as The Mākaha Sons of Ni'ihau, with their highly influential, contemporized music style, rooted in the language and traditional performances of Hawai'i. 50 years later, founding member Jerome Koko remains the face of the group, with new bandmates dedicated to preserving the classic Mākaha Sons sound. Tickets: \$35 to \$150 7:30 p.m. Blaisdell Arena. ticketmaster.com.

JULY CALENDAR OF EVENTS

JULY 19

WIKI WIKI ONE-DAY VINTAGE COLLECTIBLES & HAWAIIANA SHOW

This all-vintage show takes place three times a year and features collectibles that are at least 20 years old. Find antiques, art, estate jewelry, vintage fashion, tikis, gold & silver, koa, Niihau shell leis, lauhala hats, stamps, coins, aloha shirts, and more. Blaisdell Center Hawaii Suites. GA \$6. 11 a.m. – 4:30 p.m. Early entry at 10 a.m. for \$25. ukulele.com.

JULY 21 • ÖÖF TATATÁ



He's ba-ack! Jason Momoa returns to the Blue Note with his longtime pals, Mike Hayes and Kenny Dale. The trio's St. Patrick's Day show was the talk of the town, return to

perform their high-energy classic rock covers from Zeppelin and Metallica. Featuring Taimane. Don't forget that Kirk Hammett showed up onstage with them during the recent Kona Low fundraiser in Ko Olina, and lives here on island. Just saying, if he's going to show up and jam with anyone, it would be these guys. Tickets: \$70 - \$115. 7 p.m. bluenotehawaii.com.

JULY 22

KALANI PE'A AT THE ZOO

The Wildest Show in Town at the Zoo concludes its summer series with the dulcet tones of Kalani Pe'a. \$15 for non-members. Gates open at 4:30 p.m. for pre-show activities. Opening acts from the Henry Kapon Foundation's On the Rise artist program begin at 5 p.m., followed by headliners from 6 to 7 p.m. No alcohol or high-back chairs allowed. HonoluluZoo.org.

JUNE 23

CIGARS UNDER THE STARS

Enjoy a beautiful evening with cigars, spirits, live music, and light pupus, while you sample a curated selection of handcrafted cigars from Fujioka's, each chosen to complement the nuanced flavors of fine spirits. Discover the stories behind each bottle and mingle with fellow enthusiasts. The Kahala Hotel Koko Head Ocean Lawn. 6 – 9 p.m. \$105. kahalaresort.com.

JUNE 23

MAUNALUA AT THE AQUARIUM



The Waikiki Aquarium continues its beloved summer concert series with the 2nd of 3 concerts this summer. Food, beer, wine, and other beverages will

be available for purchase from local restaurants and vendors. Concert #2 features Bobby Moderow and Mauanalua, Nathan Aweau, and more. Doors open at 5 p.m. Tickets: \$20-\$55. waikikiaquarium.org.

JULY 23-25 • 51ST ANNIVERSARY QUEEN LILIUOKALANI KEIKI HULA CELEBRATION

The annual Queen Liliuokalani Keiki Hula Celebration is a three-day event featuring over 600 young hula dancers competing in the world's longest-running keiki hula competition. Dancers ages 6 to 12 represent 25 hula hālau from around the state. Individual hula dancers compete for

titles on the first night, and the kahiko group competition takes place on the second night, both from 6 to 9 p.m. The 'auana group competition is held on the third day from noon to 4 p.m. across to the Exhibition Hall for a special Pop-Up Mākeke. keikihula.org.

JUNE 24

DOMAINE DROUHIN DINNER

Join in a luxurious night with a 4-course menu paired with Domaine Drouhin's finest wines from Oregon. Set in an intimate beachfront setting, in front of the Plumeria House, experience five curated selections from Domaine Drouhin, known for producing some of the finest Pinot Noir and Chardonnay fruit in the world. 6 – 9 p.m. \$240. kahalaresort.com.

JULY 24-25

JOSH TATOFI

Josh Tatofi is returning to Blue Note Hawaii as the 2026 artist-in-residence. Known as the "Polynesian Luther Vandross," his music blends traditional Hawaiian sounds with modern styles. The multiple Nā Hökū Hanohano Award winner is known for his contributions to Hawaiian music, promoting Hawaiian culture by sharing the language, traditions, and aloha spirit through his performances, connecting with audiences worldwide. Tickets: \$55-\$75. 6:30 p.m. bluenotehawaii.com.

JULY 24-26 • ALI WONG

Award-winning comedian, actress, and writer Ali Wong performs her signature stand-up, known for sharp observations on relationships, family,

culture, and modern life. Star of Beef and creator of acclaimed Netflix comedy specials, including Baby Cobra and Don Wong. The first two shows are sold out, and tickets are going fast for the 26th. 7 p.m. Tickets: \$54.50 - \$124.50. Blaisdell Concert Hall. bampproject.com.

JULY 25

HO'OLAULE'A O WAIMEA

Waimea Valley continues its annual Summer Concert Series with Nick La'a, Micah G, and Ho'onu'a. Join Kimo Kahoano on the Main Lawn for an afternoon of Hawaiian mele and hula. 2 to 5 p.m. Tickets \$18-\$25. waimeavalley.net.

JULY 25

SUNSET ON THE BEACH

Your visitors will not want to miss this unique opportunity to watch a movie on a 30-foot screen, kicking back on Waikiki Beach. Arrive early to take advantage of all the activities, including live music, games, and food trucks, that start at 4:30 p.m. The theme tonight is Born to be Blue, and the evening's movie, "Smurfs," begins at 7:30 p.m. Feel free to bring a low chair or beach towel. southwestairlineshawaii.com.

JULY 31 • HARRY POTTER AND DEATHLY HALLOWS™ IN CONCERT

Get ready to embark on the penultimate leg of Harry's journey as Harry Potter and the Deathly Hallows™ Part 1 is brought to life with the music of the Hawaii Symphony Orchestra as Harry appears on the big screen. Blaisdell Concert Hall. 7 p.m. Tickets: \$38.50-\$103.50. A second concert takes place on August 1. myhso.org.

KAULA LŪ'AU
OCEAN'S EDGE AT KO OLINA

NOW OPEN! A fun, interactive lū'au with one of a kind local food, fun, games, and an inspiring story suitable for all ages!

Where:
Ko Olina Marina
92-100 Waipahe Place,
Kapolei, HI 96707

When:
Friday - Monday
Check in @ 5:15pm
Dinner, Show & Activities Included

Scan or Call Today to Book!

@KaulaLuau
808.897.2906
LUAUKAULA.COM



ORIGINAL

MAGOO'S PIZZA

EST. 1967

HAWAII'S FAVORITE
ISLAND-STYLE
PIZZA, SUBS &
SALAD

NOW OPEN DAILY FOR
LUNCH & DINNER
11am - 9pm

HAPPY HOUR DAILY
11am - 5pm

ORDER TAKEOUT &
DELIVERY ONLINE

<http://OriginalMagoosPizza.com/Order>

3579 Waiialae Avenue
(between 11th & 12th Ave)



NO HU HU
CALL MAGOO'S
808.949.5381

DRIP

HAWAII

BY LEAHNA @ LIFESTYLE MED SPA

DRIP HAWAII, Waikiki's first premium IV Wellness Lounge & Medspa, recently held an evening of wellness and networking. Located on the 2nd floor of the 'Alohilani, they offer custom IV Therapy, aesthetics, recovery services, vitamin injections, and concierge wellness. Perfect for those recovering from travel, preparing for events, seeking hydration, or supporting active lifestyles, the team provides medically guided care in a luxury setting. For more info go to DRIPHawaii.com.



That's Entertainment

HOTELS

- ALA MOANA HOTEL** 923-2311
- **MWFSat** - Live music in the lobby, 4-6pm
- 'ALOHI LANI RESORT** 922-1233
- **Daily** - Fish Feeding 10:30am & 2:30pm *O Bar*
 - **Daily** - Live Music 6:30-9:30pm *Swell Bar*
 - **Daily** - Light Monument Video Art Series 7-9pm *Swell Bar*
 - **SunWedSat** - Tank Talk 9am. *O Bar*
- COURTYARD NORTH SHORE** 293-4900
- **FSatSun** - Live music in the lobby, 6:30-8:30pm
- HALEKULANI** 923-2311
- **Daily** - Music & Hula 5-8pm *House Without a Key*
 - **Daily** - Live Jazz 8:30-10:30pm, *Lewers Lounge*
 - **TWThFS** - Afternoon Tea in the Veranda 2-5pm
 - **Sun** - Sunday brunch w/Noly Paa on piano 9:30am - 2pm
- HILTON HAWAIIAN VILLAGE** 949-4321
- **Fri** - Fireworks at 7:45pm
 - **ThSSun** - Live entertainment, Tapa Bar. 7-10pm
- HYATT REGENCY WAIKIKI** 923-1234
- **MWed** - Farmer's Market from 4-8pm
 - **Mon-Fri** - Cultural Programs at the Ho'okela Culture Center
 - **TTh** - Walking Tour thru parts of Waikiki at 10am
 - **TTh** - Live Hawaiian music at Pualeilani Atrium, 4-6 pm
- KAHALA HOTEL & RESORT** 739-8888
- **MTWThFSat** - Free Hawaiian activities at The Veranda, 10am
 - **ThFSat** - Live entertainment at The Veranda from 6-8pm.
 - **FriSat** - Afternoon Tea at The Veranda at 2pm & 3:30pm
 - **Sun** - Brunch at Hoku's w/Johnny Kukui from 10am-1pm
 - **Daily** - See the interactive dolphin programs every hour
- KA LA'I WAIKIKI BEACH** 683-7777
- **FSSun** - Live music at Wai'olu Ocean Cuisine, 5:30-7:30pm
- LUANA WAIKIKI HOTEL & SUITES** 955-6000
- **MWF** - Enjoy live music and hula on the Mezzanine 5-6pm
- MOANA SURFRIDER** 922-3111
- **Daily** - Live music at The Beach Bar, 4:30-6:30pm, 7-10pm
 - **WThFSSu** - David Swanson at Vintage1901, 6:30-10pm
 - **SatSun** - Afternoon Tea at the Veranda, 11:30am - 2:30pm
- OUTRIGGER REEF WAIKIKI BEACH** 923-3111
- **Daily** - Live Hawaiian music at Kani Ka Pila Grille. 6-9pm
- PRINCE WAIKIKI** 956-1111
- **Sat** - DJ KK poolside from 2-5pm, Sun from 2:30-5:30pm
- SHERATON PRINCESS KA'IULANI** 922-5811
- **Daily** - Live music poolside 6-9pm. DJ from 3-6pm.
- THE ROYAL HAWAIIAN** 923-7311
- **Daily** - Live Hawaiian music at the Mai Tai Bar. 11am-2pm
 - **TWFSSu** - Live Hawaiian music at the Mai Tai Bar. 6-9pm
 - **MTh** - Live Hawaiian music at the Mai Tai Bar. 8-10pm
- TURTLE BAY RESORT** 293-6000
- **Daily** - Live music at The Pointe Pool Bar, 4-7pm
 - **Daily** - Live music at Off the Lip, 7pm
 - **Daily** - The Stable at Turtle Bay offers a variety of experiences
- WAIKIKI BEACH MARRIOTT RESORT** 922-6611
- **ThFSat** - Live music, Queensbreak Restaurant 6-9pm
 - **Sun** - Stephen Inglis plays in the Lobby 6-9pm

FARMERS MARKETS

- WBW OPEN MARKET**
- **Mon** - Set up on the Plaza at Waikiki Beach Walk. 4-8pm.
- HYATT REGENCY FARMERS MARKET** 225-4002
- **MonWed** - Hyatt Regency 1st floor waterfall atrium 4-8pm
- HAWAII FARM BUREAU MARKET** 848-2074
- **Wed** - Set up on the Blaisdell Concert Hall Lawn 4-7pm.
- KCC FARMERS MARKET** 848-2074
- **Sat** - Kapiolani Community College 7:30-11am
- KAKA'AKO FARMERS MARKET** 388-9696
- **Sat** - 919 & 1011 Ala Moana Blvd. 8am-12pm
- PEARLRIDGE FARMERS MARKET** 388-9696
- **Sat** - PearlrIDGE Wai Mauka by Zippy's. 8am-12pm

- MAKANA MARKET** 628-4800
- **WedSun** - Ka Makana Alii - Wed 4-8p, Sun 11am-3pm
- MALAMA MARKET** 225-4002
- **Wed** - Ala Moana Center Wing Level 2. 11am-4pm
- KAILUA FARM BUREAU MARKET** 848-2074
- **Thu** - Kailua Town Center. 4-7pm
- ALOHA HOME MARKET** 225-4002
- **Sun** - Kailua 340 Uluniu Street. 9-2pm
- ALOHA MARKET AT WAIKIKI** 735-4510
- **Sun** - Jefferson Elementary 324 Kapahulu Ave. 8-2pm
- KAILUA TOWN FARMERS MARKET** 388-9696
- **Sun** - 640 Ulukahiki St. at Castle Hospital. 8am-12pm

ATTRACTIONS

- FOSTER BOTANICAL GARDEN** 768-7135
- **Daily** - Hawaii's oldest Botanical Garden in the midst of downtown open 9am - 4pm. \$5/\$1 keiki (kama'aina \$3)
 - **Daily** - Free docent-led tours at 10:30am. Reservations rec.
- HONOLULU ZOO** 926-3191
- **Daily** - The Zoo is open from 10am - 4pm. Last Entry at 3pm. GA \$21 adult/\$13 keiki (kama'aina \$10/\$6).
 - **Sat** - Explore the Zoo after the gates close 5:30-7:30pm.
- KUHIO BEACH HULA SHOW** 843-8002
- **TSat** - Free show 6:30-7:30pm. Kuhio Hula Mound
- WAIKIKI AQUARIUM** 923-9741
- **Daily** - The Aquarium is open from 9am - 4:30pm. GA \$12 adult/\$5 kids (kama'aina \$8).
 - **1st3rdTue** - Hawaiian Plant Tour. 1:30pm. Free w/admission.

MUSEUMS

- BATTLESHIP MISSOURI MEMORIAL** 455-1600
- **Daily** - Relive stories of war, victory, and the road to peace onboard the "Mighty Mo." Join a guided tour in English, Japanese, Chinese, or Korean or explore the ship at your own pace. Digital tour maps in various languages are available. 8am-4pm. More info available online at ussmissouri.org.
- BISHOP MUSEUM** 847-3511
- **Daily** - The 15-acre campus offers a chance to learn about the cultural and natural heritage of Hawai'i across three different exhibition buildings. Daily planetarium shows, a native Hawaiian botanical garden and more. 9am-5pm.
- CAPITAL MODERN** 586-0900
- **Mon-Sat** - Formerly known as the Hawai'i State Art Museum. Admission is always free. Open 10am - 4pm.
 - **1stFri** - Live entertainment and food vendors. 6-9pm
 - **3rdFri** - Fri. Night Tempo, live music & food vendors. 6-9pm
 - **Sun** - Museum Closed
- HONOLULU FIRE MUSEUM** 723-7167
- **3rdSat** - Free one-hour guided tours through various exhibits with a firefighter recounting HFD's history the 3rd Saturday of every month. 9am - 2pm on the hour. 620 South Street. Reservations required. Book online: fire.honolulu.gov then hit the submit request botton and click museum tours.
- HAWAIIAN MISSION HOUSES** 447-3910
- **TWThFSat** - Docents led tours through the oldest existing frame house in the Islands. 11am, 12pm, 1pm and 2pm. Self guided tours 10am - 2pm. Gift shop open 10am - 3pm
 - **SunMon** - Museum Closed
- HONOLULU MUSEUM OF ART** 532-8726
- **ThFSSu** - Tour & Talk Story 11am. Free with admission.
 - **ThFSSu** - Highlights tour 2pm. Free with admission.
 - **Fri** - HoMa Nights, open until 9pm. Free with admission.
 - **MonTues** - Museum Closed
- IOLANI PALACE** 522-0832
- **TThS** - Audio tours available from 9am - 4pm
 - **WTh** - Docent-led tours available from 9am - 4pm
 - **EveryOtherWed** - He Mele Lahui Hawaii with Ku'uipo. 9am
 - **Fri** - Royal Hawaiian Band. Free. 12-1pm
 - **SunMon** - Museum Closed

- LUCORAL MUSEUM** 778-8189
- **Mon-Fri** - Free self-guided tours featuring gemstones, a one-of-a-kind dinosaur egg, and create your own jewelry. 10% off gift shop with mention of Oahu Concierge. 10am-5pm.
- PEARL HARBOR AVIATION MUSEUM** 441-1000
- **Daily** - Vintage aircraft in battlefield hangars at Pearl Harbor, outdoor exhibits, flight simulators, and the Bob Hope: An American Treasure Exhibit. Shuttle & Tickets at USS Arizona Memorial Visitor Center or PearlHarborAviationMuseum.org.

SHOPPING CENTERS

- ALA MOANA CENTER** 955-9517
- **Daily** - Hula Show, 5pm. *Centerstage*
 - **EveryOtherWed** - Royal Hawaiian Band. *Centerstage*. 11am.
 - **Sun** - Keiki Hula Show, 1pm. *Centerstage*
- HALE'IWA STORE LOTS** 203-5700
- **Sat** - Live Hawaiian entertainment from 2-4pm
- INTERNATIONAL MARKET PLACE** 921-0536
- **MWF** - Ceremonial sunset lighting of Lamaku Torch Tower
 - **MWF** - Sunset Stories Hula Show, 6pm. *Queens Court*
 - **1stTh** - Royal Hawaiian Band. Free. 12pm. *Queens Court*
 - **4thSat** - Free Fitness. 9am. *Queens Court*
 - **1st3rdSu** - Free Fitness. 9am. *Queens Court*
- ROYAL HAWAIIAN CENTER** 922-2299
- **Daily** - Heritage Room/Cultural Videos, *Helumoa Hale*
 - **Mon** - Free Ukelele Lessons 11pm, *Helumoa Hale*
 - **Tues** - Free Hula Lessons 11am, *Royal Grove*
 - **Wed** - Free Lauhala Weaving 11am, *Bldg A, Level 2*
 - **Thur** - Free Keiki Hula lessons 12pm, *Royal Grove*
 - **Fri** - Free Lei Making Class 12pm, *Bldg A, Level 2*
 - **Sat** - Hula Kahiko 5:30pm, *Royal Grove*
 - **TWThF** - Live Hawaiian Entertainment 5:30pm, *Royal Grove*
- WAIKIKI BEACH WALK** waikikibeachwalk.com
- **Daily** - The Ukulele Store offers free lessons at 4:30pm
 - **Tues** - Ku Ha'aeo Hula Show. 4:30-6pm. *Plaza Stage*
 - **Sun** - Free hula lessons, 9-10am



- AIR PARK KARAOKE**
- Complimentary Karaoke Room Rental when purchase average 2 drinks per person per hour (exclude Fri. & Sat.) Must show Hotel ID. 510 Piikoi St. 2nd Fl. 591-8292.
- BALI OCEANFRONT**
- 20% off all Food & Beverage. Hilton Hawaiian Village, 941-2254.
- HAWAIIAN MISSION HOUSES**
- Free tour with hotel ID. 553 S. King Street. 447-3910.
- IOLANI PALACE**
- Free Admission with hotel ID. GA \$30. Kama'aina \$19.95. 364 S. King Street, Reservations Required. 522-0832.
- MAUI DIVERS JEWELRY**
- Receive 20% off every purchase at any location. Hotel ID or business card is required for verification. Cannot be combined with other discounts or promotions. 946-2929.
- RUTH'S CHRIS STEAK HOUSE**
- Complimentary Appetizer valued up to \$22 with the purchase of 2 entrees. Waikiki Beach Walk, 440-7910. Restaurant Row, 599-3860.
- SAN PAOLO PIZZA AND WINE**
- 20% off food and drinks with hotel ID. Not combinable with any other discounts. 1765 Ala Moana Blvd. 425-5396

You will be required to show Hotel ID or business card to claim offer. Magazine not needed. Just mention offer when presenting hotel ID. Discounts available to Guest Service Professionals ONLY. Not valid with other promotions or special offers. A minimum 20% gratuity on original order requested for all food offers.

The Oahu Concierge is printed monthly and direct mailed FREE to all Oahu Concierge, Hospitality & Activity Professionals.

C O N T A C T
Davis Media
Ph: (808) 225-8229

Website: www.OahuConcierge.com

ADDRESS & NAME CHANGES / ADDITIONS
We do not take changes via telephone. All changes to mailing list **must be submitted in writing** by the 16th of the month to make the next issue, email is preferred.

S T A F F

PUBLISHER & EDITOR Pam Davis
publisher@oahuconcierge.com

DESIGN
Coreiya Design

The Oahu Concierge
4348 Waialae Avenue, #185
Honolulu, Hawaii 96816

PRSR STD
US Postage Paid
TRADE MEDIA HUI



CIRQUE DU SOLEIL ‘AUAANA™

**“HEARTFELT AND
HEART-STOPPING... WAIKĪKĪ’S
NEWEST MUST SEE-ATTRACTION”**

OC REGISTER

**“NOTHING SHORT OF A JOYOUS
CELEBRATION OF HAWAĪ’I”**

BROADWAY WORLD

**NOW PERFORMING
GET TICKETS NOW**

BOOK FOR 5:30 PM AND 8:00 PM SHOWS

CIRQUEDUSOLEIL.COM

SCAN FOR INFO



OUTRIGGER.
WAIKĪKĪ BEACHCOMBER HOTEL