

# THE OAHU Concierge

CELEBRATING 25 YEARS... KEEPING THE HOSPITALITY INDUSTRY INFORMED SINCE 1998

## Aloha Festivals

Hawai'i is a tapestry of vibrant cultural traditions, and among its most cherished celebrations is the Aloha Festivals, a rich and heartfelt celebration of Hawaiian culture.

First held nearly 80 years ago, the festivals were



The 79th annual Aloha Festivals return this month celebrating Hawaiian culture and sharing it with the world. All photos courtesy of Aloha Festivals

created to celebrate and preserve Hawai'i's rich heritage. Originally launched by a group called the Jaycees Old-Timers of Hawaii, the celebration began as "Aloha Week"—a vibrant series of public events featuring parades, hula performances, and cultural showcases. Over the decades, it has grown into a beloved statewide tradition that continues to honor the spirit of aloha and the diverse cultures that shape Hawai'i.

Over time, Aloha Week evolved into a beloved statewide tradition. In 1991, the event was officially renamed "Aloha Festivals," marking a new chapter in its history. The weeklong celebration expanded to include hundreds of events across all islands, with thousands of volunteers working together to coordinate activities for nearly a million participants and spectators each year.

The Aloha Festivals are entirely supported through the sale of commemorative ribbons (don't forget to get yours!), official merchandise, and generous donations. This vibrant celebration offers visitors a unique opportunity to experience dazzling floats, captivating performances, and the joyful spirit of Hawai'i's cultural heritage.

Aloha Festivals is the largest Hawaiian cultural celebration in the United States and one of Hawai'i's most esteemed and enduring traditions. For guests eager to

learn about Hawaiian culture, this festival offers an exceptional opportunity to experience what makes our islands so special. Throughout the month, a wide array of events will showcase Hawai'i's rich heritage through music, dance,

cuisine, and art—bringing communities together in celebration of aloha.

Each year, Aloha Festivals are guided by a unique theme that celebrates a distinct aspect of Hawaiian culture. In past years, the festival has honored cherished traditions and pastimes such as hula, pa'u riding, music, ocean voyaging, paniolo, lei making, and the intricate art of featherwork. The celebration also pays tribute to the people—especially the masters and keiki (children)—who preserve and perpetuate these traditions, care for the land (mālama the 'āina), and serve as cultural stewards for future generations.

This year's theme, *Ko Kula Uka, Ko Kula Kai* — "Those of the Upland, Those of the Shore: Mauka to Makai" — draws inspiration from the deep connections between people and food in Hawai'i. Rooted in a Hawaiian proverb, the theme emphasizes how the sharing and exchange of food foster strong communities and nurture cultural identity. It highlights the traditional practice of exchanging resources from the mountains to the sea, reflecting the interdependence that has long sustained life across the islands.

*Ko Kula Uka, Ko Kula Kai* — "Those of the Upland, Those of the Shore" — is a Hawaiian proverb that honors the long-standing tradition of mutual exchange

Continued on page 6.

## MAMo WEARABLE ART SHOW



The 18th annual MAMo Wearable Art Show takes place on September 5th at the Hilton Hawaiian Tapa Ballroom. Photos courtesy PAI Foundation.

The MAMo Wearable Art Show is making a vibrant return, promising a breathtaking celebration of Indigenous fashion, art, and cultural storytelling. This extraordinary event showcases the rich creativity of Native Hawaiian and Pacific Islander designers, who intricately weave their heritage into stunning wearable masterpieces that illuminate the runway.

Prepare to be captivated by a dazzling display of colors, textures, and narratives—each piece honoring the deep cultural roots and artistic brilliance of these remarkable creators. More than

Continued on page 2.

### TABLE OF CONTENTS

Yada Yada Yada .....	2
Newsflash .....	3
Paparazzi: Mugen at the ESPACIO .....	4
Māhū Madness .....	5
E Pili Kakou .....	8-12
Chef's Corner: HFWF Chef Gaby Maeda .....	13
Calendar .....	14-17
Paparazzi: ONKEE Korean Grill House .....	18
That's Entertainment / Concierge Card .....	19

## Publisher's Letter



### HAWAIIAN CULTURE ON DISPLAY

Hawaiian culture is prominently featured in events this month, particularly with the Aloha Festivals taking center stage. The mission of the Aloha Festivals is "to foster the Aloha Spirit through the perpetuation of Hawaiian culture and the celebration of the diverse customs and traditions of Hawai'i." These festivals include three signature events that take place throughout September, offering visitors a fun and exciting way to learn more about our islands.

With Jason Momoa's series "Chief of War" gaining popularity and making its way across televisions around the world, interest in Hawaiian culture is at an all-time high. The show, a decade in the making, is receiving rave reviews and is currently ranked among the top five shows in the country. Not only is it an enjoyable watch, but the star power of Jason Momoa helps bring the story of Kamehameha I's efforts to unify the Hawaiian islands in the late 18th and early 19th centuries to global audiences, and it's done in 'Ōlelo Hawai'i, the Hawaiian language. How cool is that?. What's especially cool is that the show is presented in 'Ōlelo Hawai'i. Let's hope the excitement surrounding the show translates into increased interest in Hawaiian culture and history among visitors.

The other events this month are presented by the Pa'i Foundation, whose goal is to preserve and perpetuate Native Hawaiian arts and cultural traditions for future generations. This month, they are bringing you the MAMo Wearable Art Show, a vibrant celebration of Native Hawaiian identity, artistry, and resilience through the lens of wearable art. They call it Woven with Meaning: honoring the deep cultural roots and creative innovation of Native Hawaiian designers and artisans. Each piece presented on the runway is more than fashion; it is a living expression of 'āina (land), mo'okū'auhau (ancestry), and 'ike kūpuna (ancestral knowledge). The next night they present Māhū Madness, a fun event that celebrates the diversity of the māhū community through live performances, music, and dancing. Bring those dollars!! Aloha!

## Yada Yada



Fabrice Ollivier

Congratulations go out to **Fabrice Ollivier** for his promotion to the Director of Guest Experience, Rooms at the **Four Seasons Resort O'ahu at Ko Olina**. Fabrice began his hospitality career over 20 years ago as a guest relations assistant in Mauritius before moving to Hawaii. He moved into a concierge position at The Modern Honolulu, before moving over to the Halekulani in 2017. He began his career at the concierge desk at the Four Seasons in 2019, and was named Chef Concierge in 2022. In his new role he oversees the concierge team, the guest experience team, and the Club lounge team which consists of **Dailyn Imai**, **Mina Mercado**, and **Moana Kuba**. • **Preston Summerhays** has joined the team at the **Ritz-Carlton O'ahu, Turtle Bay** as a Guidepost Host. Preston is a recent graduate from Brigham Young University-Hawaii with a degree in Hospitality and

Tourism Management. • **The Kahala Hotel and Resort** has added a new face to its Japanese Guest Service Team as **Ryoma Nakano** has joined as a Japanese Guest Service Manager.



Ryoma Nakano

• **The Kaimana Beach Hotel** has made a few promotions the last few months, including naming **Bailey Koerner** as Assistant Front Office Manager and making **Dustin Leong** and **Kyah Horton** Guest Services Managers. • Please welcome **Inès Bourreli** to the concierge team at the **Ka La'i Waikiki Beach**. She started at the hotel just over a year ago on the guest service team. • Congrats go out to **Edward Reyes** who has been named Lead Concierge at **Anaha at Ward Village**. • **Marc Jannsen** was recently named the General Manager of the **Hale Koa Hotel**. He has been with the US Department of Defense managing the Armed Forces Recreation Centers and Army Lodging programs since 2014.

## MAMo

Continued from page 1.

just a fashion show, MAMo is a celebration of identity, tradition, and the enduring spirit of Indigenous innovation.

The 18th annual MAMo Wearable Art Show will take place on September 5th, from 6 to 9 p.m., at the Hilton Hawaiian Tapa Ballroom. As the Maoli Arts Movement (MAMo) celebrates its 19th year, it continues to grow as a dynamic platform for Indigenous artists to share their stories through wearable art.

From bold clothing designs to intricate adornments, MAMo showcases creations that go far beyond fashion. Each piece reflects powerful narratives of identity, heritage, and creativity, offering audiences a deeper connection to the cultural richness of Native Hawaiian and Pacific Islander com

This year, the MAMo Wearable Art Show proudly honors two legendary figures in Hawaiian fashion: Danene Lunn of Manuheali'i and Nake'u Awai. Their visionary designs and deep cultural storytelling have helped shape the vibrant style and identity of Hawai'i's fashion scene.

The 2025 MAMo Wearable Art Show will spotlight innovative creations from both established and emerging



Indigenous designers. In addition to the runway show, the evening will feature live performances that celebrate cultural expression through music and movement.

Outside the ballroom, a free and open-to-the-public marketplace will showcase the work of local artisans—offering handcrafted goods, art, and more. Arrive early to explore the market and support these talented creators before the show begins.

Attendees can look forward to a multi-sensory experience that blends fashion, storytelling, and Indigenous pride into an unforgettable celebration of culture and creativity. Tickets and sponsorship opportunities are now available, offering a meaningful way to support the arts.

By attending the show, you'll be helping the Maoli Arts Movement continue its vital work—nurturing and uplifting Native Hawaiian artists through year-round programs, exhibitions, and creative opportunities. For more information, visit [paifoundation.org](http://paifoundation.org).



# EXTRA *Newsflash* EXTRA

## PVS AND ALOHA COLLECTION LAUNCHES NEW COLLAB LINE

In celebration of Hōkūle'a's 50th birthday and the upcoming anniversary of her legendary 1976 maiden voyage to Tahiti, the Polynesian Voyaging Society has announced a special collaboration with ALOHA Collection. Together, they have created a limited-edition line of Splash-Proof travel bags and apparel that pay tribute to Hōkūle'a's enduring legacy. The limited-edition collection is available online at [hokulea.com](http://hokulea.com) while supplies last.

## PVS AND ALOHA COLLECTION LAUNCHES NEW LINE



In celebration of Hōkūle'a's 50th birthday and the upcoming anniversary of her legendary 1976 maiden voyage to Tahiti, the Polynesian Voyaging Society has announced a special collaboration with ALOHA Collection. Together, they have created a limited-edition line of Splash-Proof travel bags and apparel that pay tribute to Hōkūle'a's enduring legacy of exploration, and cultural pride. The limited-edition collection is available online at [hokulea.com](http://hokulea.com) while supplies last.

## DEAN AND DELUCA REOPENS AT ROYAL HAWAIIAN CENTER

Dean & DeLuca at the Royal Hawaiian Center has reopened following months of renovations, with a new look that is now enhanced with an open, doorless entry that invites guests into an airy, welcoming space. The retail area has doubled in size, showcasing a curated selection of rare local products exclusive to the Waikīkī location. New menu items include bagels baked fresh each morning, made-to-order hot sandwiches, and their signature soft serve. Don't miss their exclusive local goodies and the famous Royal Hawaiian pink tote bags. Open from 7 a.m. to 9 p.m. Building B, first floor. [deandeluca-hawaii.com](http://deandeluca-hawaii.com).

## INTERNATIONAL MARKET PLACE HULA SHOW NOW STARTS AT 6

It's September, so that means Sunset Stories at the International Market Place will move its start time back to 6 p.m. [shopinternationalmarketplace.com](http://shopinternationalmarketplace.com).

## KA LA'I WAIKĪKĪ BEACH RENOVATION CONTINUES

Ka La'i Waikīkī Beach is undergoing a multi-million-dollar redesign as part of the property's 15th anniversary. The renovation began in early June, and includes upgrades to the guest rooms and suites, pool, restaurants, spa, and fitness center. The lobby will be reimagined with a stylish new bar as its centerpiece. The 38-story hotel will remain fully operational throughout the process, with completion anticipated in Q2 2026.

## CELEBRATE 45 YEARS OF ALOHA AT ROYAL HAWAIIAN CENTER

This September marks Royal Hawaiian Center's 45th anniversary! Join them for a month of festivities starting Saturday, September 13, with live local music and cultural performances in the Royal Grove from 11 a.m. to 6 p.m. The celebration continues on September 27 when then join the Aloha Festivals Parade aboard their own trolley. More exciting events and promotions are on the way, visit [RoyalHawaiianCenter.com](http://RoyalHawaiianCenter.com) for updates.

**An ENCHANTING evening under the STARS.**

Celebrate the colorful heritage of the Pacific Islands with live music, an island-inspired feast, and traditional Samoan, Tahitian, Hawaiian, and Fire Knife dance. Enjoy Golden Circle Seating, or upgrade to Diamond Premier for a lei greeting, complimentary beverages, and premium luau views.

**SPECIAL OFFERS**

- **BOGO** (buy one Adult Admission, get one Child Admission free)
- **"Show Only" Seating** (meal not included)

HILTON HAWAIIAN VILLAGE™ PRESENTS  
**WAIKIKI STARLIGHT LUAU**

[hhvluau.com](http://hhvluau.com)  
**808-941-LUAU**  
Scan for reservations




# NĀ Lei ALOHA

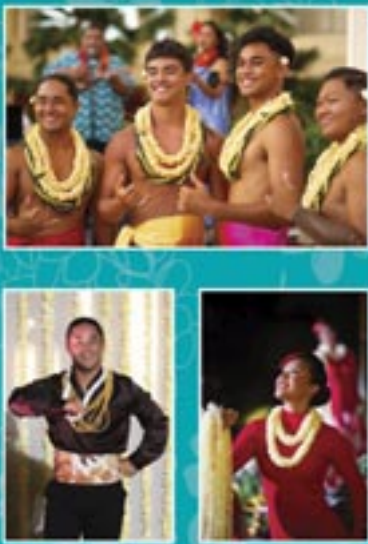
A WAIKIKI LŪ'AU

LOCATED AT THE HYATT REGENCY  
WAIKIKI BEACH RESORT AND SPA

Join us for an immersive cultural experience about  
the art of lei, with stories shared through authentic  
Hawaiian music and hula.



CELEBRATING HAWAII'S  
UNIQUE EXPRESSION OF LOVE



BOOK TICKETS NOW AT [NALEIALOHA.COM](http://NALEIALOHA.COM)

INQUIRIES: 808-897-2906

MAHALO FOR SUPPORTING REGENERATIVE TOURISM  
AND UPLIFTING OUR LOCAL COMMUNITY

**KILOHANA** TRADITIONAL | COUNCIL FOR  
NATIVE HAWAIIAN  
ADVANCEMENT



Colin Sato at Mugen has revamped the menu, adding new dishes and invited the properties who send them the most guests to experience it and learn about their afternoon tea and champagne & caviar sunsets on the rooftop. The flexible menu offers guests individual plates as well as a 4-course option for \$175, 5-courses for \$200, and 6-courses for \$230. [mugenwaikiki.com](http://mugenwaikiki.com).





# Māhū Madness Manifests!

Following the dazzling success of the MAMo Wearable Art Show, the PA'I Foundation invites you to keep the celebration going with an unforgettable evening of glamour, artistry, and pride. Step into the vibrant world of drag at the third annual Māhū Madness, where elegance meets exhilaration on September 6, from 6 to 9 p.m., at the Hilton Hawaiian Village Tapa Tower. Guests will be immersed in a night of bold performances, cultural expression, and unapologetic joy—all set against a backdrop of sophistication and style.

This extraordinary soirée brings together rising queens making their debut with cherished icons from The Glades Era, creating a dynamic fusion of artistry, storytelling, and fearless expression. As the evening unfolds, prepare to be captivated by the rich legacy and radiant queer brilliance of the Pacific, as Māhū Madness honors the māhū spirit in all its unapologetic glory. Don't miss this vibrant celebration of talent, diversity, and the transformative power of self-expression.

Māhū Madness beautifully blends class, style, and grace with the lively spirit

the community knows and loves. Drawing over 700 attendees each year, this dazzling event shines a spotlight on Hawai'i's queens in a celebration that's far more than a performance—it's a powerful tribute to identity, resistance, and joy, all deeply rooted in the spirit of aloha. Whether you're kama'āina or malihini, Māhū Madness welcomes everyone with open arms, embracing all backgrounds and ethnicities in a night of unity, pride, and unforgettable entertainment.

This year's Māhū Madness pays heartfelt tribute to Brandy Lee, a trailblazing icon whose legacy has shaped Hawai'i's LGBTQ+ and drag communities for over six decades. A well known performer and masterful choreographer from Honolulu, Brandy Lee has captivated audiences with her extraordinary talent, fierce creativity, and unwavering advocacy for marginalized voices. Her dynamic career stands as a testament to resilience, artistry, and the power of living authentically. This celebration will honor Brandy Lee's remarkable journey and enduring influence—illuminating the vibrant culture of Hawai'i through the lens of her



*Māhū Madness offers a fun and exciting evening like no other. Photo courtesy of the PA'I Foundation.*

brilliance and bold spirit.

Māhū Madness proudly centers Native Hawaiian and Pacific LGBTQIA+ talent, uplifting māhū voices and reclaiming space for Indigenous expression within the drag community. This year's electrifying lineup features queens who embody the spirit of resilience and artistry, including: Carmen San Diego, Catherine D'Cantor, Coco Chandelier, Escada, Jerrica Benton, Kaina Jacobs, Lady Laritza La Bouche, Leikia Williams, and Molliee Cocktail.

Tickets range from \$35-\$50. For more details on Māhū Madness or the MAMo Wearable Art Show, please visit their website at [paifoundation.org](http://paifoundation.org).

## COME EXPERIENCE THE ALL-NEW

## DAVE & BUSTER'S



LOCATED IN THE ALA MOANA CENTER - HONOLULU, HI - [DAVEANDBUSTERS.COM](http://DAVEANDBUSTERS.COM)

**Wai Kai**  
BIGGEST WATERPARK  
on the Water

bounce, climb, splash  
Adventure STARTS HERE

Waikiki and Ko Olina  
TRANSPORTATION  
Available

dine above the rest  
AWARD-WINNING  
FOOD Awaits LOOKOUT

waikai.com  
808.515.SURF(7873)

**WAIKIKI BAPTIST Church**  
Your Church in Waikiki  
424 Kuamo`o St  
(Near the Ambassador Hotel)  
**Sunday Worship Services**  
9:00 AM - Contemporary  
10:45 AM - Traditional  
(808)955-3525  
WaikikiBaptist.com

**HAWAII NAUTICAL**  
ADVENTURE AWAITS  
HAWAII NAUTICAL.COM | (808) 229-2816

## Aloha Festivals

Continued from page 1.



between communities across the islands. Upland residents would offer taro and other crops, while coastal communities provided fish and seafood in return. These exchanges were never made empty-handed; they were moments of generosity, connection, and shared abundance. This year's theme highlights the deep-rooted values of food, family, and reciprocity, reflecting how these practices continue to strengthen bonds and preserve Hawai'i's cultural identity.

Today, families continue this tradition by passing down cherished recipes that become treasured heirlooms, proudly shared at gatherings and celebrations. Cooking techniques and tools are lovingly handed down from one generation to the next—family treasures like grandma's cast iron pot or grandpa's dry box seem to infuse each dish with even more flavor and meaning. This year, Aloha Festivals returns to the heart of the home: the kitchen, where stories are told, memories are made, and the spirit of aloha is served with every meal.

The Aloha Festivals are dedicated to perpetuating the spirit of aloha—a way of life rooted in respect, love, and compassion. This celebration serves as a powerful reminder that the aloha spirit lives in every corner of our island chain and continues to guide how we care for one another. Life in Hawai'i would be incomplete without these essential values and practices. In light of recent events across the country, there is much the world can learn from Hawai'i's traditions of unity, generosity, and mutual respect.

The month-long celebration centers around the ceremony and tradition of the Royal Court. Each year, Hawai'i residents of Native Hawaiian ancestry are invited to apply and play an important cultural role throughout Aloha Festivals' signature events in September in representing Hawai'i's royal history. This year, Blaine Kia—known to many as the Cultural Advisor and Entertainment Director at Waikiki Beach Walk—steps into the role of Director of the Royal Court. Kia's connection to the Aloha Festivals runs deep: he first joined the Royal Court in 1979 and has served on the board for over twenty years.

Each year, the Royal Court is made up of approximately 18 to 25 members, with the Ali'i (royalty) at its core. Once someone ascends to an ali'i role, such as Prince or King, they cannot return to a lower-ranking position in future years. For example, if Kia had accepted the role of Prince, he could only be nominated as King thereafter—and once his reign ended, his participation in the court would conclude.

Instead, by serving in various supporting male roles within the court, Kia has been able to return year after year. This marks his 46th year of involvement, making him an ideal and deeply experienced choice to lead the Royal Court into its next chapter.

"As the new Royal Court Chair what will resonate throughout the 2025 season will be the words, Mō'i Ola - The Life of our Ruling Chiefs," says Kia. "The Royal Court will elevate its consciousness and the manner they each play their role as members in the Royal Court to serve the ali'i - King, Queen, Prince and Princess. Without this one critical aspect of respect, honor, and esteem in Hawai'i's rich heritage nothing else would fall in place to affect all involved and all who come to experience the Royal Court."



While the Royal Court is currently best known for its appearances during the three signature Aloha Festivals events, Kia envisions a broader role—one that restores the court's prestige by reconnecting it with the communities it represents. By bringing the court back into everyday spaces, Kia hopes to help perpetuate Hawaiian culture, inspire future generations, and strengthen the bond between tradition and community. He believes it is essential for the court to be visible year-round, empowering Hawai'i's people through heritage, presence, and purpose. Some of the places the Royal Court will be making appearances throughout the month include Kawaiha'o Church on September 4, Waimea Valley and Ko Olina on September 13, Waikiki Beach Walk on September 19, Central Union Church on September 21, Hilton Prince Kuhio Resort on September 25, the finish line at Na



Wahine o Ke Kai and the Lotte Golf Tournament September 28. Be sure to check the Aloha Festivals website for more details on the Court's appearances.



The **Royal Court Investiture & Opening Ceremony** kicks off the month-long Aloha Festivals celebration on Saturday, September 6 from 4 to 6 p.m. The evening will begin with the Royal Court Investiture at Helumoa Gardens located at The Royal Hawaiian at 4 p.m. followed by the Opening Ceremony in the Royal Grove at the Royal Hawaiian Center at 5 p.m. As representatives of Hawai'i's past, the Aloha Festivals Royal Court ensures the festival is rooted in the most cherished traditions of Hawai'i. Watch as last year's court give up their thrones and crown the new Ali'i – king, queen, prince and princess – as they take their places in the 2025 Aloha Festivals Royal Court. Court members receive the royal cloak, helmet, head feather lei and other symbols of their reign. This event is filled with protocol and ceremony. The protocol is extremely important, as it is how people paid homage to the Ali'i back in the day, and many gifts will be offered. The timing usually depends on how many gifts are bestowed upon the Ali'i each year. Traditional chant and hula kahiko will also highlight the event.

On Saturday, September 20, from 6 to 10 p.m., Kalākaua Avenue will come alive as thousands gather for one of Hawai'i's most beloved street festival with the **71st Annual Waikiki Ho'olaule'a**. Thousands of people will take to the streets for food, fun and entertainment from 6 to 10 p.m. Top Island entertainers will perform on at



least five entertainment stages, along with various hula halau while Hawaiian crafts, arts, and floral lei will be on display and available for purchase. Aloha Festivals is also partnering with Hawaii's Finest again to produce the official Aloha Festivals 2025 T-shirt. They will also produce limited collaborative apparel including board shorts, hats, jerseys, hoodies, and polos.

Celebrate the Grand Finale of Aloha Festivals by heading down to Waikiki and grabbing a good seat to catch the **77th Annual Floral Parade** on Saturday, September 27, from 9 a.m. to noon. Kalākaua Avenue transforms into a dazzling showcase of Hawai'i's culture and community spirit. This vibrant,



colorful celebration will wrap up the official Aloha Festival events with a delightful procession featuring floats, vehicles, and all sorts of fun parade units



cruising through Waikiki. You'll be amazed by the intricately decorated floats bursting with fresh flowers in every color. Look out for riders on horseback showcasing the traditional art of pā'u riding, and enjoy the lively sounds of spirited high school marching bands, and local leaders showcasing Hawai'i's rich cultural diversity and aloha spirit in a beautiful spectacle that brings our islands together. In honor of its 45th anniversary, the Royal Hawaiian Center will be hosting its own trolley in the parade, so expect a little something extra! For those of you not willing to brave the crowds, the parade will also be shown live on KHON-TV.

The Aloha Festivals is a wonderful way to celebrate Hawaii's rich community and offers multiple photo ops for visitors. For more details, visit [alohafestivals.com](http://alohafestivals.com).

A poster for the Cirque du Soleil show 'AUANA'. It features a group of performers in traditional Hawaiian attire, including a large feathered headdress, performing on a stage. The background is a vibrant sunset or sunrise. The text 'CIRQUE DU SOLEIL' is at the top, followed by 'AUANA' in large, bold letters. Below that is 'A NEW SUN RISES IN HAWAI'I'. At the bottom, it says 'NOW PERFORMING GET YOUR TICKETS' and 'CIRQUEDUSOLEIL.COM'. There is also a QR code and the text 'SCAN FOR INFO' and 'OUTRIGGER WAIKIKI BEACHCOMBER HOTEL'.

CIRQUE DU SOLEIL

# AUANA

A NEW SUN RISES IN HAWAI'I

NOW PERFORMING  
GET YOUR TICKETS

CIRQUEDUSOLEIL.COM

OUTRIGGER  
WAIKIKI BEACHCOMBER HOTEL

SCAN FOR INFO

## Let's be Together...

DINING • ENTERTAINMENT • PAU HANA • EAT • DRINK • BE MERRY • HAPPY HOUR •

**MONDAY****Barefoot Beach Café at Queen's Beach 924-2233***Live Contemporary & Hawaiian*

The Barefoot Boys 5:30-8:30pm

**Chart House 941-6669***Live Contemporary Hawaiian*

Kamaka Camarillo (or others) 6-9pm

**Duke's Canoe Club Waikiki 922-2268***Live Contemporary Hawaiian*

Paul Dunlap (9/8 - J. Lyn) 4-6pm

Bryan &amp; Halekahu 7-9:30pm

Ellsworth Simeona 9:30-12am

**Hard Rock Cafe 955-7383***Contemporary Rock or Production duo*

ODDible 8-10pm

**Heydey at the White Sands 475-6864***Contemporary Rock*

Laupepa Letuli 7-9pm

**House Without a Key 923-2311***Hawaiian music & hula by Miss Hawaii '18 Chelsea Clement*

Pa'ahana Trio 5-8pm

**Hula Grill 923-4852***Live Contemporary Hits*

Ben Kama (or Jason Midro) 12-2pm

**Kani Ka Pila Grille 924-4992***Hoku Award Winning Hawaiian musicians*

Sean Na'auao 6-9pm

**Lewers Lounge 923-2311***Jazz Pianist*

Johnny Kukui 8-10:30pm

**Mahi'ai Table 670-2778***Live Contemporary*

Jenna Keala 5-8pm

**Mahina & Sun's 923-8882***Monday Vibes on the Lanai*

Brian Keith 6-8:30pm

**Mai Tai Bar at Ala Moana 947-2900***Live Contemporary Hawaiian*

Jasmin Kaleihiwa (or others) 7-10pm

**Mai Tai Bar at the Royal Hawaiian 923-7311***Live Contemporary Hawaiian*

Brad Kawakami 11am-2pm

Mark Caldeira 8-10pm

**Maui Brewing Company 843-2739***Live Contemporary Hawaiian*

Randy Allen 8:30-10:30pm

**Merriman's Honolulu 215-0022***Live Slack Key guitarist*

Ruth &amp; Norm Foster 5:30-7:30pm

**Monkeypod Kitchen Ko Olina 381-4086***Live music 3x a day including from 12:30 - 2 p.m.*

Kree and Malik 3:30-5pm

Sienna Souza 7-9pm

**Monkeypod Kitchen Waikiki 900-4226***Live music 3x a day including from 12:30 - 2:30 p.m.*

Shawn Garnett 3:30-5pm

Dustin Park 7-9pm

**Roy's Hawaii Kai 396-7697***Live Contemporary Hits*

Nick La'a 4:30-6:30pm

**Rumfire 921-4600***Live Contemporary Hits*

Dave Watanabe 6-9pm

**Signature Prime Steak 949-3636***Contemporary Pianist in the bar*

Keith Montross 6-9pm

**Splash Bar at the Sheraton Princess Kaiulani 921-4600***Live Contemporary Hawaiian*

Lovejack 6-9pm

**Swell at the Alohilani 294-4108***Solo Contemporary Guitarist*

Kamuela Kahoano 6-9:30pm

**The Beach Bar at the Moana Surfrider 922-3111***Live Contemporary Hawaiian*

Jesse Kuikahi 3:30-6:30pm

Johnny Valentine 7-10pm

**The Edge at the Sheraton 921-4600***Live Hawaiian Music*

Stephen Inglis (or others) 1-4pm

AJ Keolanui 4:30-7:30pm

**The Point Sunset Pool Bar at Turtle Bay 293-6000***Live Contemporary Hawaiian with Fireknife Dancer*

Kuhio Travis 5-8pm

**Tiki's Grill & Bar 923-TIKI***Live music 3x a day including from 12:30-2:30pm*

Mike Piranha 5:30-7:30pm

Savannah Fliers 8-10pm

**Tropics Bar at the Hilton Hawaiian 949-4321***Live Contemporary*

Keith Batlin 1-3pm

**TUESDAY****Barefoot Beach Café at Queen's Beach 924-2233***Backyard Hawaiian*

Ben Kama 5:30-8:30pm

Shane Kainoa (or others) 6-9pm

**Chart House 941-6669***Live Contemporary Hawaiian*

Hernan &amp; Darin 6:30-9:30pm

**Duke's Canoe Club Waikiki 922-2268***Live Contemporary Hawaiian*

Grace Welton (or others) 4-6pm

Kailua Moon (9/2 - Two Can) 7-9:30pm

Stephen Inglis (or Duva) 9:30-12am

**Eating House 1849 Waikiki 924-1849***Live Contemporary Hawaiian*

Kuhio Travis 4:30-6:30pm

**Hard Rock Cafe 955-7383***Contemporary Rock*

Sidney Spencer (or others) 8-10pm

**House Without a Key 923-2311***Hawaiian music & hula by Miss Hawaii '24 Haley Kane*

Delima Ohana 5-8pm

**Hula Grill 923-4852***Contemporary Hawaiian*

Kawika Kahiapo 12-2pm

**Hula's Lei Stand 923-0669***New Orleans Blues and Jazz*

Cajun Peaches 6-9pm

**Kani Ka Pila Grille 924-4992***Highlighting the Henry Kapon Foundation "On the Rise" artist series the first Tuesday of every month.*

Ryan Hooley 5-7pm

Kala'e Camarillo 6-9pm

**Lewers Lounge 923-2311***Jazz Pianist*

Tommy James 8:30pm-12am

**Mahi'ai Table 670-2778***Live Contemporary*

Keoni Ku (or Kimo Opiana) 5-8pm

**Mahina & Sun's 923-8882***Electrifying Acoustic on the Lanai*

Laupepa Letuli &amp; Steven 6-8:30pm

**Mai Tai Bar at Ala Moana 947-2900***Live Contemporary Hawaiian*

Aaron Ono (or others) 4-7pm

Sam Kapu III (or others) 8-11pm

**Mai Tai Bar at the Royal Hawaiian 923-7311***Live Contemporary Hawaiian*

Liam Moleta 11am-2pm

YOZA 6-9pm

**Maui Brewing Company 843-2739***Live Contemporary Hawaiian*

Mike Piranha 8:30-10:30pm

**Merriman's Honolulu 215-0022***Live Contemporary*

John Kema 5:30-7:30pm

**Monkeypod Kitchen Ko Olina 381-4086***Live music 3x a day including from 12:30 - 2 p.m.*

Tehani &amp; Sidney Spencer 3:30-5pm

Soul Purpose 7-9pm

**Monkeypod Kitchen Waikiki 900-4226**


**The Lei Stand**  
WAIKIKI  
OPEN NIGHTLY  
5PM - 12PM  
(2AM Fri & Sat) @theleistand

**855-ALOHA**  
SERVING DINNER 5PM - 10PM

**ROMER HOUSE WAIKIKI**  
415 NĀHUA ST. (808) 795-8013  
Three Hours Complimentary Parking



# E Pili Kākou

DINING ▶ ENTERTAINMENT ▶ PAU HANA ▶ EAT ▶ DRINK

Live music 3x a day including from 12:30 - 2:30 p.m.

Tiare and Keala 3:30-5pm  
John Akapo 7-9pm

**Roy's Hawaii Kai 396-7697**

Live Local Contemporary

Mike Tulba 4:30 - 6:30pm

**Rumfire 921-4600**

Live Contemporary Hits

Christian Yrizarry (9/2- Jenna Keala) 6-9pm

**Signature Prime Steak 949-3636**

Contemporary Pianist in the bar

Keith Montross 6-9pm

**Splash Bar at the Sheraton Princess Kaiulani 921-4600**

Live Contemporary Hawaiian

Kosuke 6-9pm

**Swell at the Alohilani 294-4108**

Solo Contemporary Guitarist

Lovejack 6-9:30pm

**The Beach Bar at the Moana Surfrider 922-3111**

Live Contemporary Hawaiian

Stephen Inglis 3:30-6:30pm

Alex Oasay 7-10pm

**The Edge at the Sheraton 921-4600**

Live Hawaiian Music

YOZA 1-4pm

Johnny Kukui 4:30-7:30pm

**Tiki's Grill & Bar 923-TIKI**

Live music 3x a day including from 12:30-2:30pm

Eddie Somera 5:30-7:30pm

Lindsey Wells 8-10pm

**Tropics Bar at the Hilton Hawaiian 949-4321**

Live Contemporary

Ben Kama 1-3pm

## WEDNESDAY

**Barefoot Beach Café at Queen's Beach 924-2233**

Island Vibes

Danny Galura 5:30-8:30pm

**Chart House 941-6669**

Live Contemporary Hawaiian

Hi'ikua 6-9pm

**Duke's Canoe Club Waikiki 922-2268**

Live Contemporary Hawaiian

Keoni Ku 4-6pm

Taulia Lave 7-9:30pm

Alika Souza 9:30-12am

**Hard Rock Cafe 955-7383**

Contemporary Rock

Cassie and the... 8-10pm

**House Without a Key 923-2311**

Hawaiian music & hula by Miss Universe '97 Brook Lee

Pa'ahana Trio 5-8pm

**Hula Grill 923-4852**

Contemporary Rock

Ronson Asuncion 12-2pm

**Hula's Lei Stand 923-0669**

Contemporary Guitarist

Jason Laeha 6-9pm

**Kani Ka Pila Grille 924-4992**

Hoku Award Winning Hawaiian musicians

Ei Nei 6-9pm

**Lewers Lounge 923-2311**

Jazz Pianist

Tommy James 8:30pm-12am

**Mahi'ai Table 670-2778**

Live Contemporary

Kai Duhaylonsod 5-8pm

**Mahina & Sun's 923-8882**

Soulful Guitar on the Lanai

John Akapo 6-8:30pm

**Mai Tai Bar at Ala Moana 947-2900**

Live Contemporary Hawaiian

Kimo Opiana (or Lance Reid) 4-7pm

Ben Kama (or others) 8-11pm

**Mai Tai Bar at the Royal Hawaiian 923-7311**

Live Contemporary Hawaiian

Stephen Inglis (or others) 11am-2pm

Johnny Valentine (9/3 - Johnny Kukui) 6-9pm

**Maui Brewing Company 843-2739**

Live Contemporary Hawaiian

Scott Magz & Ethan Nash 8:30-10:30pm

**Merriman's Honolulu 215-0022**

Live Contemporary

Kamaka Camarillo 5:30-7:30pm

**MINA's Fish House 679-0079**

Live Contemporary Hits

Kamuela Kahoano 6-9pm

**Moani Waikiki 466-2629**

Contemporary Hawaiian/Country Music

AJ Keolanui 7-10pm

**Monkeypod Kitchen Ko Olina 381-4086**

Live Contemporary 3x a day including from 12:30 - 2 p.m.

Chris Murphy 3:30-5pm

Izik 7-9pm

**Monkeypod Kitchen Waikiki 900-4226**

Live music 3x a day including from 12:30 - 2:30 p.m.

Jasmin Nicole 3:30-5pm

Chante 7-9pm

**Roy's Hawaii Kai 396-7697**

Live Contemporary Hawaiian

Hoku Zuttermeister 4:30 - 6:30pm

**Rumfire 921-4600**

Live Contemporary Hits

Jesse Kuikahi (or others) 6-9pm

**Signature Prime Steak 949-3636**

Contemporary Pianist in the bar

Pierre Grill 6-9pm

**Splash Bar at the Sheraton Princess Kaiulani 921-4600**

Live Contemporary Hawaiian

Brad Kawakami 6-9pm

**Swell at the Alohilani 294-4108**

Solo Contemporary Guitarist

Eddie Somera 6-9:30pm

**The Beach Bar at the Moana Surfrider 922-3111**

Live Contemporary Hawaiian

Alika Souza 3:30-6:30pm

Celebrating our  
**15<sup>th</sup> ANNIVERSARY**



On Queen's Surf Beach  
at the Diamond Head  
end of Waikiki

**EXPERIENCE  
TRUE HAWAII**

OPEN DAILY, 8AM - 9PM  
(last call for food at 8:30pm)

LIVE MUSIC NIGHTLY,  
5:30PM - 8:30PM  
& SUNDAYS, 10AM - 1PM




Barefoot Beach Café  
2699 Kalakaua Avenue  
BarefootBeachCafe.com  
808.924.2233 (CAFÉ)



# Let's be Together...

DINING • ENTERTAINMENT • PAU HANA • EAT • DRINK • BE MERRY • HAPPY HOUR •

Simple Souls (or Keahi Delovio) 7-10pm  
**The Edge at the Sheraton 921-4600**

*Live Hawaiian Music*

Kupu Dalire-Na'auao (or others) 1-4pm  
 Dave Watanabe 4:30-7:30pm

**The Point Sunset Pool Bar at Turtle Bay 293-6000**

*Live Contemporary Hawaiian with Fireknife Dancer*

Alex Oasay 5-8pm

**The Veranda at the Kahala Hotel 739-8760**

*Live Contemporary*

YOZA 6-9pm

**Tiki's Grill & Bar 923-TIKI**

*Live music 3x a day including from 12:30-2:30pm*

Hula w/ Malu Productions 5:30-7:30pm

Billy Stage 5 8-10pm

**Tropics Bar at the Hilton Hawaiian 949-4321**

*Live Contemporary*

Randy Allen 1-3pm

**Vintage 1901 at the Moana 921-4600**

*Contemporary Piano*

David Swanson 6:30-10pm

## THURSDAY

**Barefoot Beach Café at Queen's Beach 924-2233**

*Live Contemporary & Hawaiian*

Alika Souza 5:30-8:30pm

**Chart House 941-6669**

*Live Contemporary Hawaiian*

Tito Berinobis 6:30-9:30pm

**Duke's Canoe Club Waikiki 922-2268**

*Live Contemporary Hawaiian*

Ben Kama 4-6pm

Henry Kapono's New Artist 'On the Rise' 7-9:30pm

Scott Magz 9:30-12am

**Eating House 1849 Waikiki 924-1849**

*Live Traditional Hawaiian*

Shane Kainoa 5:30 - 7:30pm

**Hard Rock Cafe 955-7383**

*Contemporary Rock or Production duo*

ODDible 8-10pm

**House Without a Key 923-2311**

*Hawaiian music & hula by Miss Universe '97 Brook Lee*

Walea 5-8pm

**Hula Grill 923-4852**

*Contemporary Guitarist*

YOZA 12-2pm

**Hula's Lei Stand 923-0669**

*Contemporary Guitarist*

YOZA 6-9pm

**Kani Ka Pila Grille 924-4992**

*Hoku Award Winning Hawaiian musicians*

Sean Na'auao 6-9pm

**Lewers Lounge 923-2311**

*Jazz Pianist*

Ethan Capone & Rocky Holmes 8:30pm-12am

**Mahi'ai Table 670-2778**

*Live Contemporary*

Alex Oasay 5-8pm

**Mahina & Sun's 923-8882**

*Hawaiian Contemporary on the Lanai*

Kelly Boy DeLima 6-8:30pm

**Mai Tai Bar at the Royal Hawaiian 923-7311**

*Live Contemporary Hawaiian*

Christian Yrizarry 11am-2pm

Johnny Kukui (9/18 - Drew Henmi) 8-10pm

**Maui Brewing Company 843-2739**

*Live Contemporary Hawaiian*

Sean Cleland 8:30-10:30pm

**Maui Brewing Kailua 518-2739**

*Live Contemporary Hawaiian*

Grace Welton (or others) 6-8pm

**Merriman's Honolulu 215-0022**

*Live Contemporary*

Laupepa Letuli 5:30-7:30pm

**MINA's Fish House 679-0079**

*Live Contemporary Hits*

Jesse Kuikahi (9/4- Cory Oliveros) 6-9pm

**Moani Waikiki 466-2629**

*Contemporary Island Music*

Allan 7-10pm

**Monkeypod Kitchen Ko Olina 381-4086**

*Live Contemporary 3x a day including from 12:30 - 2 p.m.*

Kona Abergas 3:30-5pm

Chante Duo 7-9pm

**Monkeypod Kitchen Waikiki 900-4226**

*Live music 3x a day including from 12:30 - 2:30 p.m.*

Bella and Tehani 3:30-5pm

Javin Kai 7-9pm

**Roy's Hawaii Kai 396-7697**

*Live Hawaiian Contemporary*

Hoku Zuttermeister 4:30 - 6:30pm

**Rumfire 921-4600**

*Live Contemporary Hits*

Brad Kawakami 6-9pm

**Signature Prime Steak 949-3636**

*Contemporary Pianist in the bar*

Grant Carvalho 6-9pm

**Splash Bar at the Sheraton Princess Kaiulani 921-4600**

*Live Contemporary Hawaiian*

Tad Jennings 3-6pm

Kaimi Hananoeau 6-9pm

**Stripsteak 896-2545**

*Live Contemporary*

Jason Laeha 6-9pm

**Swell at the Alohilani 294-4108**

*Solo Contemporary Guitarist with dancer*

Keoni Ku (or others) 6-9:30pm

**The Beach Bar at the Moana Surfrider 922-3111**

*Live Contemporary Hawaiian*

Christian Yrizarry 3:30-6:30pm

Kaimi Hananoeau 7-10pm

**The Edge at the Sheraton 921-4600**

*Live Hawaiian Music*

Alika Souza (9/25- Lovejack) 1-4pm

Chris Salvador 4:30-7:30pm

**The Veranda at the Kahala Hotel 739-8760**

*Live Contemporary*

Jason Laeha 6-9pm

**Tiki's Grill & Bar 923-TIKI**

*Live music 3x a day including from 12:30-2:30pm*

Johnny Helm 5:30-7:30pm

Roots Kai 8-10pm

**Tropics Bar at the Hilton Hawaiian 949-4321**

*Live Contemporary*

Jegaan 1-3pm

**Vintage 1901 at the Moana 921-4600**

*Contemporary Piano*

David Swanson 6:30-10pm

## FRIDAY

**Barefoot Beach Café at Queen's Beach 924-2233**

*Live Contemporary Hawaiian*

The Art Kalahiki Band 5:30-8:30pm

**Chart House 941-6669**

*Live Contemporary Hawaiian*

TJ 4:15-7:15pm

BK & Friends 8-11pm

**Duke's Canoe Club Waikiki 922-2268**

*Live Contemporary Hawaiian*

Maunalua 4-6pm

Kahiau Lam Ho Trio (9/5) 4-6pm

2nd Wind (9/12) 4-6pm

Kawaika Kahiapo (9/12- Kamuela Kahoano) 7-9:30pm

Randy Allen (or Jegaan) 9:30-12am

**Eating House 1849 Waikiki 924-1849**

*Live Traditional Hawaiian*

Eric Keawe 5:30 - 7:30pm

**Hard Rock Cafe 955-7383**

*Live Contemporary*

Psycho Tropical (or Close the Distance) 8-11pm

**House Without a Key 923-2311**

*Hawaiian music & hula by Miss Hawaii '73 Kano Miller*

Sunset Serenaders 5-8pm

Tad Jennings 8:15-10pm

**Hula Grill 923-4852**

*Contemporary Rock*

Randy Allen 12-2pm

**Hula's Lei Stand 923-0669**

*Contemporary Hawaiian*

Kalau 6-9pm

**Kani Ka Pila Grille 924-4992**

*Hoku Award Winning Hawaiian musicians*

Ka Hehena 6-9pm

**Lewers Lounge 923-2311**

*Jazz Pianist*

Maggie Herron & Dean Taba 8pm-12am

**Mahi'ai Table 670-2778**

*Live Contemporary*

Eddie Somera 5-8pm

**Mahina & Sun's 923-8882**

*Slack Key on the Lanai*

Dustin Park 6-8:30pm

**Mai Tai Bar at Ala Moana 947-2900**

*Live Contemporary Hawaiian*

Aaron Ono (or Paul Dunlap Jr.) 4-7pm



## E Pili Kākou

DINING ▶ ENTERTAINMENT ▶ PAU HANA ▶ EAT ▶ DRINK ▶ BE MERRY ▶ HAPPY HOUR

Every Day Aloha Band (or others) 8:30-11pm  
**Mai Tai Bar at the Royal Hawaiian 923-7311**

*Live Contemporary Hawaiian*

Brandon Serrano 11am-2pm  
 Johnny Ill 6-9pm

**Maui Brewing Company 843-2739**

*Live Contemporary Hawaiian*

Keith Batlin (or Deah & Duva) 8:30-10:30pm

**Maui Brewing Kailua 518-2739**

*Live Contemporary Hawaiian*

Randy Allen (or others) 6-8pm

**Merriman's Honolulu 215-0022**

*Live Contemporary*

Matt Cockey 3-5pm

Stephen Harris 5:30-7:30pm

**MINA's Fish House 679-0079**

*Live Contemporary Hits*

Jenna Keala 6-9pm

**Moani Waikiki 466-2629**

*Traditional Hawaiian Trio*

Keolu 6-9pm

**Monkeypod Kitchen Ko Olina 381-4086**

*Live Contemporary 3x a day including from 12:30 - 2 p.m.*

Iwi and Bella 3:30-5pm

John Akapo 7-9pm

**Monkeypod Kitchen Waikiki 900-4226**

*Live music 3x a day including from 12:30 - 2:30 p.m.*

The Mauve 3:30-5pm

Izik 7-9pm

**Original Magoos Pizza 949-5381**

*Live Contemporary Hawaiian*

Ernie Kanoa 5:30-8:30pm

**Rumfire 921-4600**

*Live Contemporary Hits*

Tad Jennings (9/5 - Stephen Inglis) 4:30-7:30pm

Drew Henmi (9/26 - Daielle Parente) 8-10:30pm

**Signature Prime Steak 949-3636**

*Contemporary Pianist in the bar*

Keith Montross 6-9pm

**Splash Bar at the Sheraton Princess Kaiulani 921-4600**

*Live Contemporary Hawaiian, DJ KK/Jem spins from 1-4p*

Ben Kama Duo & Dancer 4:30-7:30pm

Johnny Helm 8-10pm

**Stripsteak 896-2545**

*Live Contemporary*

Shane Kainoa 6-9pm

**The Beach Bar at the Moana Surfrider 922-3111**

*Live Contemporary Hawaiian*

Chris Salvador 12-3pm

Kailua Moon 3:30-6:30pm

Kamuela Kahoano 7-10pm

**The Edge at the Sheraton 921-4600**

*Live Hawaiian Music*

Christian Yrizarry (9/19-Tad Jennings) 1-4pm

Brad Kawakami 4:30-7:30pm

**The Grove at the Modern Pool Deck 943-5800**

*Live Contemporary*

Tad Jennings 4-7pm

**The Point Sunset Pool Bar at Turtle Bay 293-6000**

*Live Contemporary Hawaiian with Fireknife Dancer*

Mark Calderia 5-8pm

**The Veranda at the Kahala Hotel 739-8760**

*Live Contemporary*

Johnny Valentine (9/5 - Johnny Kukui) 6-9pm

**Tiki's Grill & Bar 923-TIKI**

*Live music 3x a day including from 12:30-2:30pm*

BK Espiritu 5:30-7:30pm

Rachel Faith 8-10pm

**Tropics Bar at the Hilton Hawaiian 949-4321**

*Live Contemporary*

Mike Piranha 1-3pm

**Vintage 1901 at the Moana 921-4600**

*Contemporary Piano*

David Swanson 6:30-10pm

## SATURDAY

**Barefoot Beach Café at Queen's Beach 924-2233**

*Live Contemporary Hawaiian*

Vanessa Alputila 5:30-8:30pm

**Chart House 941-6669**

*Live Contemporary Hawaiian*

Hi'ialo 7-11pm

**Duke's Canoe Club Waikiki 922-2268**

*Live Contemporary Hawaiian*

Alx Kawakami (or others) 4-6pm

Ells Simeona w/hula 7-9:30pm

Sean Cleland 9:30-12am

**Eating House 1849 Waikiki 924-1849**

*Live Contemporary Hawaiian*

Kings Kalohelani 10:30am-1pm

**Hard Rock Cafe 955-7383**

*Live Contemporary*

Savannah Duo 10 am - 12pm

Tad Jennings 8-11pm

**House Without a Key 923-2311**

*Hawaiian music & hula by Miss Hawaii '73 Kanoa Miller*

Sunset Serenaders 5-8pm

**Hula Grill 923-4852**

*Contemporary Rock*

Kamaka Camarillo (or others) 12-2pm

**Hula's Lei Stand 923-0669**

*Contemporary Guitarist*

Johnny Ill 6-9pm

**Kani Ka Pila Grille 924-4992**

*Hoku Award Winning Hawaiian musicians*

Ho'okena 6-9pm

**Lewers Lounge 923-2311**

*Jazz Pianist*

Maggie Herron & Dean Taba 8-10:30pm

**Mahi'ai Table 670-2778**

*Live Contemporary*

Danielle Parente 5-8pm

**Mahina & Sun's 923-8882**

*Contemporary Hawaiian/Blues on the Lanai*

Sabia Farang 6-8:30pm

**Mai Tai Bar at Ala Moana 947-2900**

*Live Contemporary Hawaiian*

John Feary Trio (or others) 4-7pm

Last Minute Band (or others) 9:30-11pm

**Mai Tai Bar at the Royal Hawaiian 923-7311**

*Live Contemporary Hawaiian*

Alika Souza 11am-2pm

Dave Watanabe 6-9pm

**Maui Brewing Company 843-2739**

*Live Contemporary Hawaiian*

Ben Kama Duo (or others) 3:30-5:30pm

**Maui Brewing Kailua 518-2739**

*Live Contemporary Hawaiian*

Scott Magz (or Dion "Boogie" Scott) 7-9pm

**Merriman's Honolulu 215-0022**

*Live Contemporary*

Kapu Copp 5:30-7:30pm

**MINA's Fish House 679-0079**

*Live Contemporary Hits*

Alex Oasay 6-9pm

**Moani Waikiki 466-2629**

*Live Contemporary*

Gil Bitanga 6-9pm

**Monkeypod Kitchen Ko Olina 381-4086**

*Live Contemporary 3x a day including from 12:30 - 2 p.m.*

Javin Kai 3:30-5pm

Izik 7-9pm

STARTING AT

\$68

SAVOR OUR RUTH'S CLASSICS MEAL  
 WITH STARTER, ENTREE, SIDE  
 AND DESSERT



AVAILABLE DAILY FROM 4-6 PM  
 Oahu: Waterfront Plaza and Waikiki Beach Walk  
 Maui: The Shops at Wailea  
 RUTHSCRIS.COM



## Let's be Together...

DINING ▶ ENTERTAINMENT ▶ PAU HANA ▶ EAT ▶ DRINK ▶ BE MERRY ▶ HAPPY HOUR ▶

**Monkeypod Kitchen Waikiki 900-4226***Live Contemporary Hawaiian music 3x a day*Sierra Lucia 12:30-2pm  
Tad Jennings 3:30-5pm  
Kona Abergas 7-9pm**Original Magoos Pizza 949-5381***Solo Country*

Buck Giles 5:30-8:30pm

**Redfish at the Wayfinder Waikiki 921-3220***Live Contemporary Hits*

Johnny Helm 6-10p

**Rumfire 921-4600***Live Contemporary Hits*YOZA 4:30-7:30pm  
Bronson Varde (or Kosuke) 8-10:30pm**Signature Prime Steak 949-3636***Contemporary Pianist in the bar*

Keith Montross 6-9pm

**Splash Bar at the Sheraton Princess Kaiulani 921-4600***Live Contemporary Hawaiian, DJ spins from 1-4pm*Brad Kawakami Duo & Dancer 4:30-7:30pm  
Tangi Tully 8-10pm**Stripsteak 896-2545***Live Contemporary*

Dustin Park 6-9pm

**The Beach Bar at the Moana Surfrider 922-3111***Live Contemporary Hawaiian*Brad Kawakami 12-3pm  
Bronson Varde 3:30-6:30pm  
Koa Atwood 7-10pm**The Edge at the Sheraton 921-4600***Live Hawaiian Music*Johnny Kukui 1-4pm  
Eddie Somera 4:30-7:30pm**The Grove at the Modern Pool Deck 943-5800***Live Contemporary*

Mike Izon 4-7pm

**The Point Sunset Pool Bar at Turtle Bay 293-6000***Live Contemporary Hawaiian with Fireknife Dancer*

Denny Ono 5-8pm

**The Veranda at the Kahala Hotel 739-8760***Live Contemporary*

Cory Oliveros (9/13-Lovejack) 6pm-9pm

**Tiki's Grill & Bar 923-TIKI***Live music 3x a day including from 12:30-2:30pm*Roots Kai 5:30-7:30pm  
Mike Valliere 8-10pm**Tropics Bar at the Hilton Hawaiian 949-4321***Live Contemporary*

Mark Caldeira (or Darrell Aquino) 1-3pm

**Vintage 1901 at the Moana 921-4600***Contemporary Piano*

David Swanson 6:30-10pm

**SUNDAY****Barefoot Beach Café at Queen's Beach 924-2233***Live Contemporary Hawaiian*Kimo Baker 10am-1pm  
Art Kalahiki 5:30-8:30pm**Chart House 941-6669***Live Contemporary Hawaiian*Paka 10:30am-1:30pm  
Dean & Tito 6:15-9:15pm**Duke's Canoe Club Waikiki 922-2268***Live Contemporary Hawaiian*Henry Kaponu 4-6pm  
Kaiona Duo 7-9:30pm  
Tad Jennings 9:30-12am**Eating House 1849 Waikiki 924-1849***Live Contemporary Hawaiian*

Shane Kainoa 10:30am-1pm

**Hard Rock Cafe 955-7383***Contemporary Rock*TJ & Son 10am-12pm  
Allie and the Waves 8-10pm**House Without a Key 923-2311***Hawaiian music & hula by Miss Universe '97 Brook Lee*

Pu'uhonua Trio 5-8pm

**Hula Grill 923-4852***Contemporary Rock with Hula*Keoni Ku 12-2pm  
Steel Guitar with Greg Sardinha (9/28) 12-2pm**Kani Ka Pila Grille 924-4992***Hoku Award Winning Hawaiian musicians*

Nathan Aweau 6-9pm

**La Hiki Restaurant at the Four Seasons 679-0079***Live Contemporary Hawaiian*

Jenna Keala (or Kamuela Kahoano) 11am-2:30pm

**Lewers Lounge 923-2311***Jazz Pianist*

Nick La'a 8-10:30pm

**Mahī'ai Table 670-2778***Live Contemporary*

Johnny III 5-8pm

**Mahina & Sun's 923-8882***Award-winning ukulele on the Lanai*

TJ Ro 6-8:30pm

**Mai Tai Bar at the Royal Hawaiian 923-7311***Live Contemporary Hawaiian*John Coelho & Kanoe Arola 11am-2pm  
Christian Yrizarry 6-9pm**Maui Brewing Company 843-2739***Live Contemporary*

Jason Laeha 8:30-10:30pm

**Merriman's Honolulu 215-0022***Live Contemporary Piano*

Grant Carvalho 5:30-7:30pm

**Moani Waikiki 466-2629***Contemporary Island/Reggae*

Dustin Park 7-10pm

**Monkeypod Kitchen Ko Olina 381-4086***Live Contemporary 3x a day including from 12:30 - 2 p.m.*Sierra Lucia 3:30-5pm  
Teanu 7-9pm**Monkeypod Kitchen Waikiki 900-4226***Live Contemporary Hawaiian music 3x a day*

JOBY! 12:30-2:30pm

Liam Moleta 3:30-5pm

Koa Inna Vision 7-9pm

**Original Magoos Pizza 949-5381***Kanikapila Night*

Leonard Jenkins &amp; Joe Chang 5:30-8:30pm

**Rumfire 921-4600***Live Contemporary Hits*Jenna Keala 4:30-7:30pm  
Alex Oasay 8-10:30pm**Signature Prime Steak 949-3636***Contemporary Pianist in the bar*

Keith Montross 6-9pm

**Splash Bar at the Sheraton Princess Kaiulani 921-4600***Live Contemporary Hawaiian - DJ Mau spins from 1-4pm*Kailua Moon & Dancer (or others) 4:30-7:30pm  
Chris Luke 7:45-9:45pm**Swell at the Alohilani 294-4108***DJ KK Spins Poolside from 2-5 pm*

Jason Laeha 6-9pm

**The Beach Bar at the Moana Surfrider 922-3111***Live Contemporary Hawaiian*YOZA 12-3pm  
Paul Dunlap Jr. (9/14-Keoni Ku) 3:30-6:30pm

Dave Watanabe 7-10pm

**The Edge at the Sheraton 921-4600***Live Hawaiian Music*Christian Yrizarry (or others) 1-4pm  
Jesse Kuikahi 4:30-7:30pm**The Point Sunset Pool Bar at Turtle Bay 293-6000***Live Contemporary Hawaiian with Fireknife Dancer*

Danielle Parente 5-8pm

**Tiki's Grill & Bar 923-TIKI***Live music 3x a day including from 12:30-2:30pm*Ellsworth Simeona 5:30-7:30pm  
Sabbath Cannon 8-10pm**Tropics Bar at the Hilton Hawaiian 949-4321***Live Contemporary*

Tad Jennings 1-3pm

**Vintage 1901 at the Moana 921-4600***Contemporary Piano*

David Swanson 6:30-10pm

**Hot Lines**

Here's a few numbers for you to find out the latest in live music from places that change daily or don't update us regularly, since we strive to put out correct info and can't possibly list them all.

Anna O'Brien's 946-5190  
Deck 931-4488  
Hard Rock Cafe 955-7383  
Irish Rose Saloon 947-3414  
Kelley O'Neil's 926-1777  
Lucky Strike Honolulu 664-1140  
Off the Wall 593-2337  
Tommy Bahama 923-8785

## Dining Dish



**855-ALOHA** has a new chef, **Chef Brad Dodson**, who launched a new menu inspired by nostalgic local eateries. The North Shore Detour Shrimp (\$22) is a nod to the Shrimp Trucks, the Hammah Pork Chop (\$26) pays homage to that iconic Side Street Inn dish, and his version is an absolute stand-out. I'm not sure which Auntie inspired his Auntie's Gau Gee, but those crispy mushroom wontons with sambal and a secret sauce are outstanding! Executive Chef Brad Dodson is putting his own twist on recipes inspired by iconic local eateries, and the results are delicious. Served family-style with drinks from **The Lei Stand**, the lobby at the Romer House is turning into quite the hotspot. From the pay phone in the lobby to the wallpaper throughout the restaurant, which features images of restaurants and businesses from times gone by, the atmosphere offers fantastic nostalgic vibes. 795-8013.

• There's a new restaurant called **Tonkatsu @ Honolulu**. With only 30 seats, it's known for its panko breadcrumbs made from freshly made bread from EPI-YA Bakery and homemade sauces. Offering a variety of tonkatsu, including Dry-Aged Pork Loin, Pork Tenderloin, A5 Miyasaki tenderloin, and Chicken, Shrimp, and Oyster katsu, I have to say the Chicken, Shrimp, and Wagyu were the best. Served Teishoku-style, they come with unlimited rice and cabbage, tsukumono, kobachi, and pork-vegetable miso soup. They also have five homemade sauces on each table, including their Nagoya-style miso katsu sauce. Open Thursday to Tuesday lunch is from 11:30 a.m. to 2:30 p.m. and dinner from 5:30 to 9:30 p.m. They plan to offer onigiri (rice balls) when they open for breakfast later this month. Located at 1232 Waimanu Street near Ala Moana Center, message for reservations on IG @tonkatsu\_atmark\_honolulu. • **Mugen** has brought on **Sonja Oliveri** as its new Executive Pastry Chef. She brings a wealth of experience working in luxury resorts in Honolulu (The Kahala Resort and the Moana Surfrider), as well as prominent hotels in Germany. 377-2247. • I'm hearing **The Capital Grille** will finally open on the ground floor of the Lilia Waikiki in early September. Let's hope so!



# Chef's Corner

## HFWF Celebrity Chef Gaby Maeda

Born and raised in Hawaii, Gaby began her culinary career, Gaby was fascinated with food and cooking from an early age. Both of her grandma's were great cooks, but she was more interested in eating than cooking at first. It wasn't until she was a freshman in high school that she discovered a deep love for cooking and could see herself doing it for a living. She credits her experiences in Hawai'i and California, for shaping her into the chef she is today. That hard work and passion has turned her into a humble, yet award winning chef. She is currently one of the James Beard Award semifinalists for Best Chef in California!

### What is your first childhood food memory?

It was probably around age 4 or 5 on a family trip to Tokyo. I vividly remember having scrambled eggs that were more of a runnier soft scramble, as opposed to the 'well-done' eggs my mom and grandma liked to eat. Having such a common dish be so different was mind-blowing to me.

### Why did you want to homeschool at 14?

After my freshman year, I knew I wanted to be a chef. I found an online school and presented a PowerPoint to my parents about my intentions and goals and obligations to make it work. I talked about how every subject in school was related to cooking (history, math, science, etc). The deal was to get a part-time restaurant job and maintain a good GPA. They agreed!

### So what was your first restaurant job?

I got a job as a cashier at Sekiya's Restaurant & Delicatessen when I was 14. I wasn't old enough to work in the kitchen, but I was up to the challenge in the FOH. I didn't like being a cashier and convinced them to let me be a busser on the floor (there wasn't a busser position then). I learned how to move on the floor, clear tables efficiently & took on more responsibilities like seating people, filling waters, etc. I took a lot of pride in that job and had such a great time.

### How long was it before you got a cooking job?

When I turned 16, I was legally able to work in a kitchen. My stepmom worked at Fiji Water and had restaurant accounts. Hiroshi Eurasian Tapas was one of them. She took me for my birthday and by the end, Chef Hiroshi had offered me to try out for a part-time job. It was a great start to my cooking career. I worked there almost 2 years.

### Who is your mentor?

Chef Hiroshi would be my first mentor, along with Keith Endo. Alvin Luna, my sous chef at Gary

Danko and Stuart Brioza from State Bird Provisions (SBP) also had a huge impact on me.

### What's most important for you in the kitchen?

The ability to work with people. Working in a kitchen is inherently a hard job. Being able to understand each person's ability to learn, grow, take criticism, what inspires them individually, is the most difficult skill to practice.

### What do you consider your culinary voice?

My cooking is very much rooted in the flavors of my upbringing and my time spent in California. California provided me with an abundance of new ingredients, relationships with purveyors/farms and an even further diverse community.

### How did growing up in Hawaii affect that?

Growing up in Hawai'i is truly magical. I wouldn't be the chef I am today if it wasn't for my O'ahu childhood. We have an understanding of being a true melting pot. California, for example, is more of a cultural mosaic. In Hawai'i, we are all on the same page for a lot of customs. We all take our shoes off before we enter any house, we call soy sauce "shoyu," and more. It translates to how I cook, with respect for my own culture and others.

### What's lesson did you take from SBP?

State Bird was a huge part of my career. As a chef, you are not just bound to the kitchen but a big part of the dining room. It was a great learning experience on how to balance both aspects of service and seeing the bigger picture.

### What do you like about festivals like HFWF?

It's an amazing opportunity to connect with other chefs and more importantly, the students from Hawai'i's culinary schools. I have a lot in common with the aspiring chefs, since we come from the same place, and look forward to getting to know them, some of whom I have hired in my kitchens after the events.

## Rice Cakes with Corn, Sungold Tomatoes, Bacon, Parmesan & Basil



### Corn Dashi:

1 Corn Cob  
(after kernels are cut)

1 piece Kombu  
4 each Shiitake Stems  
4 cups Water

2 Tablespoons Tamari  
or Shoyu  
2 teaspoons Salt

**Method:** Place corn cob, kombu, shiitake stems, water and salt in a medium saucepot. Bring to a simmer and lower the temperature to the medium-low setting. Let it gently simmer for at least 1 hour. Add tamari and strain. Set aside until further use.

### Rice Cakes:

2 Tablespoons Olive Oil, cooking  
2 strips Bacon, cut into lardons  
16 pcs Rice Cake (Korean Garaetteok)  
4 each Shiitake Mushrooms, sliced  
6 pieces Shaved Garlic

½ teaspoon Red Chili Flakes  
½ cup Corn Kernels, raw  
½ cup Sungold Tomatoes,  
whole and destemmed  
1 cup Corn Dashi  
1 Tablespoon Unsalted Butter

Basil, picked - 12 leaves  
(6 large & 6 smaller from the tips)  
½ cup Parmesan, freshly grated  
2 teaspoons Extra Virgin Olive Oil  
Black Pepper, freshly cracked  
(3 twists from pepper mill)

**Method:** Preheat a 10" saute pan over medium heat. Add olive oil and bacon. Let the bacon render for 2 minutes to draw out some of its fat. Add rice cakes and shiitake mushrooms. Turn to heat to medium-high and saute the rice cakes/mushrooms for 2 minutes until the rice cakes start to form a golden crust. Add garlic, red chile flakes, corn and sungold tomatoes. Saute for another minute to bloom the aromatics of the garlic and chile flakes as well as soften the sungold tomatoes. Add corn dashi and bring the sauce to a boil. Emulsify with butter and add 6 large basil leaves and half of the grated parmesan (¼ cup). Once the tomatoes have burst and the sauce is reduced slightly and emulsified, remove from heat. Distribute evenly amongst two shallow bowls or plates. Garnish with freshly grated parmesan cheese, EVOO, cracked black pepper and the remaining smaller basil leaves. Serves 2.

Meet Gaby Maeda at the HFWF at Decanted at the Convention Center on 11/1

Web: [friendsandfamilybar.com](http://friendsandfamilybar.com) • IG: @gabymaeda\_ • IG: @friendsandfamilybar



# SEPTEMBER CALENDAR OF EVENTS

## Continuing Events

### MONDAYS, WEDNESDAYS & FRIDAYS O NĀ LANI SUNSET STORIES HULA SHOW

Honoring the rich history and sense of place of the International Market Place through song & dance, beginning at sunset with the lighting of the Lamakū Torch Tower on Kalākaua Avenue and leads to the Queen's Court. Free. 6 p.m. [shopinternationalmarketplace.com](http://shopinternationalmarketplace.com).

### TUESDAY THRU SATURDAY ARTS AT MARKS LATEST EXHIBIT

Don't miss the latest monthly exhibit at the Arts at Marks, and be sure to stop by and meet the artists at Pau Hana Friday on the first and final Friday of the month from 5 - 8 p.m. Open Tues-Sat. 12 - 5 p.m. [artsatmarks.com](http://artsatmarks.com).

### WEDNESDAYS, SATURDAYS & SUNDAYS ALOHA STADIUM SWAP MEET

The Aloha Stadium Swap Meet has been going strong since 1979, but recently relocated to the Upper Halawa Parking Lot. Featuring over 400 vendors, crafters and artists, grab low-prices on a wide selection of quality products with food trucks to snack from. Wednesdays & Saturdays: 8 a.m. - 3 p.m., Sundays, 6:30 a.m. - 3 p.m. \$2 admission ages 12 & up, \$1 for locals. [alohastadium.hawaii.gov](http://alohastadium.hawaii.gov).

### THIRD WEDNESDAY (SEPTEMBER 17) KAIWI'ULA NIGHT MARKET

The Kaiwi'ula Night Market takes place at the Bishop Museum every third Wednesday. It's a new monthly opportunity to gather, enjoy good eats and amazing crafts from a rotating list of local vendors. org.

### FRIDAYS ROYAL HAWAIIAN BAND LUNCHTIME SHOW

The Royal Hawaiian Band returns to 'Iolani Palace for its popular lunchtime concerts. Held on most Fridays, the concerts are free and open to the public. 12 - 1 p.m. [iolanipalace.org](http://iolanipalace.org)

### FRIDAYS CHAMPAGNE FRIDAYS AT PARK WEST

Watch a live painting session as resident artist

Cam Rose paints in the window along Lewers Street while sipping on a complimentary glass of bubbly at Park West Gallery. Waikiki Beach Walk. 4-9 p.m. [parkwestgallery.com/hawaii](http://parkwestgallery.com/hawaii).

### FIRST FRIDAY (SEPTEMBER 5) DOWNTOWN GALLERY WALK & CRAFT FAIR

Downtown comes alive the first Friday of every month as art lovers fill the streets for Honolulu's outdoor self-guided arts tour. Stores spill out onto the sidewalk, and artists are on hand to chat about to their works, and restaurants are ready to serve you. [firstfridayhawaii.com](http://firstfridayhawaii.com).

### SECOND FRIDAY (SEPTEMBER 12) BISHOP MUSEUM AFTER HOURS

Enjoy after-hours access to the Museum and explore the grounds, experience unique exhibitions, hear about the latest scientific discoveries, and engage with Hawaiian cultural practitioners in an evening of tributes, mele, and hula. Spend the evening on the Great Lawn. 5 - 9 p.m. \$15 at the door. (\$10 pre-sale). [bishopmuseum.org](http://bishopmuseum.org).

### FRIDAYS HOMA NIGHTS

On Friday nights, explore the galleries, stargaze in the courtyards, enjoy art experiences and music, and connect with the museum community, bar service at the HoMA Cafe, and other interactive art experiences until 9 p.m. [honolulumuseum.org](http://honolulumuseum.org).

### SATURDAYS & SUNDAYS ART ON THE ZOO FENCE

Art On The Zoo Fence is a group of resident Hawaii artists that meet every Saturday and Sunday to display and sell art and photography on the Zoo fence on Monsarrat Avenue opposite the Kapiolani Park Bandstand. This is the only outdoor art venue in Honolulu that has proudly been displaying art since 1953. 9 a.m. - 3 p.m. Free. [artonthezoo fencehi.com](http://artonthezoo fencehi.com).

### SECOND SATURDAY (SEPTEMBER 13) KANIKAPILA MA KAIWI'ULA

Bring your 'ukulele, or borrow one that's there. Join in to learn some new techniques, share mo'olelo or just enjoy the music as Ukulele Guild of Hawai'i members lead guests through selections from the Hawaiian Songbook. Free with admission. Bishop Museum Native Hawaiian Garden. 10 a.m. [bishopmuseum.org](http://bishopmuseum.org).

### SECOND SUNDAY (SEPTEMBER 14) KAMA'AINA SUNDAYS

Kama'aina Sundays offer entertainment and cultural workshops. Held every second Sunday, the free monthly event provides unique opportunities to enjoy live performances, engage in Hawaiian crafts and explore the historical significance of 'Iolani Palace. Take advantage of free tours, entertainment, activities and plenty of food options. Free tours available to the first 500 guests with proof of residency. 9 a.m. - 2 p.m. [iolanipalace.org](http://iolanipalace.org).

### THIRD SUNDAY (SEPTEMBER 21) MELE HALI'A

Waikiki Beach Walk celebrates Hawaiian music and hula one Sunday a month on the Plaza Stage. This month catch veteran vocalist Henry Leoiki & Kūkalahale. [waikikibeachwalk.com](http://waikikibeachwalk.com).

### THIRD SUNDAY (SEPTEMBER 21) COMMUNITY DAY

The third Sunday of the month is Community Day at the Honolulu Museum of Art. Enjoy exploring the galleries and outdoor spaces and get creative with two art activities. Free for kama'aina. 10 a.m. to 6 p.m. 532-8700. [honolulumuseum.org](http://honolulumuseum.org).

### SEPTEMBER 1 WAIKIKI ROUGHWATER SWIM

This Labor Day tradition will be the 54th annual 2.38-mile ocean swim. Nearly 1,000 swimmers 100 will line up on San Souci Beach in front of the New Otani and race in this Labor Day tradition to the Hilton Hawaiian Village. Registration open until the day of the race. Race starts at 8:30 a.m. [waikikiroughwaterswim.com](http://waikikiroughwaterswim.com).

### SEPTEMBER 1-2 • THE JAKE SHIMABUKURO BAND WITH SPECIAL GUEST HENRY KAPONO



Featuring one long set each night of new songs and Jake favorites with the great Henry Kapono. Joining Jake and Henry are Jake's Fuji Rock band members Jackson Waldhoff, Shawn Pimental and Michael Grande. 7 p.m. Tickets: \$45-\$55. [bluenotehawaii.com](http://bluenotehawaii.com).

### SEPTEMBER 2 • 80TH ANNIVERSARY COMMEMORATION OF THE END OF WWII

Commemorate the 80th anniversary of the end of World War II with a solemn ceremony honoring the courage, sacrifice, and triumph of the Greatest Generation. The event reflects on the legacy of WWII veterans and the enduring values of duty, honor, and hope. Join in remembering the cost of war and celebrating the promise of lasting peace. This event is free and open to the public, inviting all to witness this historic commemoration of the moment that took place 80 years ago aboard the USS Missouri. While the event is free, please reserve tickets in advance and wear your Summer Whites, Service Equivalent or Aloha Crisp Attire Battleship Missouri Memorial Forward Pier. 9:02 - 10:30 a.m. [ussmissouri.org](http://ussmissouri.org).

### SEPTEMBER 3-4 RONNY CHIENG & FRIENDS

The Hawaii Theatre celebrates its 103rd anniversary with the Century of Inspiration Soirée, featuring comedy and music from Emmy-winning comedian Ronny Chieng and guests. The event honors the theatre's history since 1922 and supports restoration, community programs, and youth education. A VIP on-stage celebration includes premium seating and complimentary drinks. 7 pm. Tickets: \$55-\$95. [hawaiiitheatre.com](http://hawaiiitheatre.com).



### SEPTEMBER 4 ROOFTOP STARGAZING

Get an up-close and personal look at the moon in the Hawaiian night sky at the free Rooftop Stargazing Event at Royal Hawaiian Center located on the fourth floor of Building A. 7 - 9 p.m. [royalhawaiiancenter.com](http://royalhawaiiancenter.com).

### SEPTEMBER 4-5 AL DI MEOLA ELECTRIC BAND

Al Di Meola is a legendary guitarist known for his

HELP US  
UPDATE THE  
MAILING  
LIST

- Not getting your issue?
- Getting issues for people no longer there?
- Getting multiple issues?

Please let us know at  
[publisher@oahuconciierge.com](mailto:publisher@oahuconciierge.com)

# SEPTEMBER CALENDAR OF EVENTS

intricate rhythms, lyrical melodies, and masterful technique. With over 20 solo albums and collaborations with icons like Chick Corea, Paco de Lucía, and John McLaughlin, he has earned three gold records and sold over six million albums worldwide. His music blends virtuosity with emotional depth, captivating audiences far beyond the guitar world. Two shows, at 6:30 and 9 p.m. Tickets: \$45-\$55. [bluenotehawaii.com](http://bluenotehawaii.com).

## SEPTEMBER 5 • TERRY FATOR



America's Got Talent winner Terry Fator and his puppets are touring with a new show, "Terry Fator: On the Road Again." Featuring comedy, modern hits, past favorites, musical parodies, and Terry's ventriloquism, which has made him a Vegas headliner for 16 years. The show offers a Hall of Fame lineup of entertainers and songs through Terry's impressions. It's a unique experience for fans of comedy, music, and classic variety with a modern edge. 8 pm. Tickets: \$60-\$110. [hawaiiitheatre.com](http://hawaiiitheatre.com).

## SEPTEMBER 5 MAMO WEARABLE ART SHOW

The 18th annual MAMo Wearable Art Show celebrates Indigenous fashion and artistry, showcasing the work of Native Hawaiian and Pacific Islander designers who integrate cultural heritage into wearable art. Tickets range from \$35 to \$50. Hilton Hawaiian Tapa Ballroom, 6 to 9 p.m. [paifoundation.org](http://paifoundation.org).

## SEPTEMBER 5 LED ZEPPLICA

Led Zepplica is the best performing Led Zeppelin tribute band here in the United States and beyond. Their shows are charged with such emotion and realism, that people who attend these performances often forget that they are seeing a simulation. Tickets: \$20. The Republik. 9 p.m. [bampproject.com](http://bampproject.com).

## SEPTEMBER 6 MOON WALK AT WAIMEA

Enter the Valley after dark for a stroll along the main pathway to the waterfall and learn about the Hawaiian phases of the moon. \$10 admission. The first walk will start at 8 p.m., admission closes at 8:30 pm. Tickets are available until 5 p.m. or while they are available. [waimeavalley.net](http://waimeavalley.net).

## SEPTEMBER 6 MĀHŪ MADNESS

The PA'I Foundation hosts the third annual Māhū Madness, an elegant celebration of drag performance and Indigenous queer expression. The event features both emerging talent and iconic performers from The Glades Era, offering a dynamic showcase of storytelling, artistry, and cultural pride. Tickets range from \$35 to \$50. Hilton Hawaiian Tapa Ballroom, 6 to 9 p.m. [paifoundation.org](http://paifoundation.org).

## SEPTEMBER 6 ONE DAY HAWAII MINERAL AND GEM SHOW

The Rock and Mineral Society of Hawai'i presents a one-day mineral, jewelry, and gem show as local vendors showcase gem stones, minerals, vintage and contemporary jewelry, and fossils and meteorites for sale, and FREE

and open to everyone. 10 a.m.– 5 p.m. Free parking. Washington Middle School Cafeteria. [hawaiimineralsociety.pohakugalore.net](http://hawaiimineralsociety.pohakugalore.net).

## SEPTEMBER 6 ALOHA FESTIVALS ROYAL COURT INVESTITURE & OPENING CEREMONY



The Royal Court Investiture and Opening Ceremony will kick off the month-long Aloha Festivals celebration with the Royal Court Investiture in a stately ceremony honoring Hawai'i's Ali'i at the Royal Hawaiian Resort. The Opening Ceremony will feature hula and musical performances for a special evening in the heart of Waikiki. 4 – 6 p.m. [alohafestivals.com](http://alohafestivals.com).

## SEPTEMBER 6 HONOLULU INTERTRIBAL POWWOW

Join hundreds of people at the 49th annual Pow Wow as they gather to celebrate Native American heritages, pass on indigenous traditions, build communities, learn about Native American cultural diversity, dancers, and drummers. Browse handmade items, frybread, and try your hand at native crafts to take home at its new location in Magic Island. 9 a.m. – 5 p.m. [htchawaii.org/powwow](http://htchawaii.org/powwow).

## SEPTEMBER 6 WAIKIKI STREET JAM

Kalakaua will be closed between Seaside Avenue and Kapahulu Avenue for the Waikiki

Block Festival featuring food, rides, games, and handmade products for sale, over 140 vendors in all. 4- 10 p.m. Lane closures start at 12:30 p.m. for set up. [millwoodohanaproductions.com](http://millwoodohanaproductions.com).

## SEPTEMBER 6 TOAD THE WET SPROCKET



Toad the Wet Sprocket, the beloved alternative rock band from Santa Barbara, California, gained popularity in the late 1980s with heartfelt lyrics and melodic sound. Known for blending introspective songwriting with catchy, folk-influenced rock, they remain a lasting presence in music. VIP Packages, including a meet-and-greet, are available. 8 pm. Tickets: \$75-\$238. [hawaiiitheatre.com](http://hawaiiitheatre.com).

## SEPTEMBER 7 & 11 SUNDANCE FILM FESTIVAL SHORT FILM TOUR

See seven short films from this year's Sundance Film Festival, including two award-winners at the Doris Duke Theater, Honolulu Museum of Art. 2 – 4 p.m. [honoluluuseum.org](http://honoluluuseum.org).

## SEPTEMBER 10 THE WAVE

Make note of this band name, The Wave is a powerful collaboration featuring Henry Kapono and Tavana, joined by HKF On the Rise artists Anthony Pfluke, Danny Carvalho, and Ryan Perez. They will be playing together as part of *Continued on page 16.*

**THE BEST THING *your guests* DID WHILE ON VACATION.**

*Well, besides stay at your hotel.*

**HUKI**

The highlight of your guests' vacation is one referral away. They can explore our six island villages and see our lagoon show, "HUKI," with our popular Gateway Buffet package or our Islands & HA Show package. For more information, visit [polynesia.com](http://polynesia.com).

**Polynesian Cultural Center**  
*One Place Like No Other*



# SEPTEMBER CALENDAR OF EVENTS

Continued from page 15.

the Home in the Islands Festival celebrating Henry Kapon Foundation Month. Two shows, at 6:30 and 9 p.m. Tickets: \$35-\$45. [bluenotehawaii.com](http://bluenotehawaii.com).

## SEPTEMBER 12 GIMME GIMME DISCO

Calling all dancing queens. Gimme Gimme Disco is a traveling DJ Disco Party celebrating disco. Tickets: \$20. The Republik. 9 p.m. [bampproject.com](http://bampproject.com).

## SEPTEMBER 13 • HUAKA'I 2025

Celebrate the journey the missionaries made to Hawai'i and around Hawai'i and the Pacific more

than two hundred years ago at this luxurious benefit for the Hawaiian Mission Houses Historic Site and Archives at the historic Royal Hawaiian Hotel. Guests of the gala will participate in journeys through time and place via mele, oli and hula interwoven with HMH's award-winning historical theatre portrayals, dinner, and a live auction. \$350. 5 p.m. [missionhouses.org](http://missionhouses.org).

## SEPTEMBER 13

### ROYAL HAWAIIAN CENTER CELEBRATES 45

Royal Hawaiian Center is celebrating its 45th anniversary this month. In honor of the occasion, The Royal Grove will feature live local music and cultural performances from 11 a.m. to 6 p.m. [royalhawaiiancenter.com](http://royalhawaiiancenter.com).

## SEPTEMBER 13 • MEGABON

It's the ultimate community bon dance event. The third annual Megabon returns with more vendors, more games, a mega sized bon dance, and more at their new home at Leeward Community College. Megabon promises to offer an authentic bon dance experience for all, including food, taiko, festival games and a beer garden, working with its sister chapter from Osaka, Japan, to bring the true essence of the bon dance to Hawaii. 3:45 – 9 p.m. [megabonhawaii.com](http://megabonhawaii.com).

## SEPTEMBER 13 WAIKIKI ARTFEST

Check out the work of over dozens of local artists as they display their crafts for all to see and buy. From paintings to sculptures, jewelry to pottery, there's something for everyone to enjoy. Free. 9 a.m. – 4 p.m. Kapiolani Park. 696-6717.

## SEPTEMBER 13-14 • BONEY JAMES



Saxophonist and composer Boney James latest album, "Slow Burn," marks a high point in his over three-decade career, which boasts four Grammy® nominations, three NAACP Image Award nominations, and a Soul Train Award for Best Jazz Album. In 2009, Billboard named him one of the Top 3 Contemporary Jazz Artists of the decade, and in 2024, he became the first artist to achieve 20 number one singles on the Billboard Smooth Jazz chart. Two shows nightly. Tickets: \$95-\$175. [bluenotehawaii.com](http://bluenotehawaii.com).

## SEPTEMBER 19 THE STARS TONIGHT

Come study the skies and stars, travel across the Earth and into our solar system, and share stories in the J. Watumull Planetarium! Stargazing on the Great Lawn with the Hawaiian Astronomical Society after the show, weather permitting. 7 - 8 p.m. Space is limited, registration required [bishophmuseum.org](http://bishophmuseum.org).

## SEPTEMBER 19 • PAULA FUGA: A TRIBUTE TO ARETHA FRANKLIN



Join powerhouse vocalist Paula Fuga as she returns to Blue Note Waikiki with her unforgettable Tribute to Aretha Franklin. Experience soulful classics reimagined in Paula's signature style. Two shows, at 6:30 and 9 p.m. Tickets: \$55-\$65. [bluenotehawaii.com](http://bluenotehawaii.com).

## SEPTEMBER 19 MEET THE ROYALS

Met this year's Aloha Festivals Royal Court as they make a rare public appearance aside from the three signature events they are known for. Plaza Stage. 4:30 p.m. [waikikibeachwalk.com](http://waikikibeachwalk.com).

## SEPTEMBER 20 THE PINES OF ROME

Join in a fun journey to the Ancient Roman Empire with "Beyond the Music." Enjoy excerpts from Respighi's "Pines of Rome," conducted by Dane Lam, with stories by Composer in Residence Michael-Thomas Fomai. This family-friendly concert is perfect for a Saturday morning adventure and lasts about an hour. Blaisdell Concert Hall. 11 a.m. [myhso.org](http://myhso.org).

*Serenity and Massage*

**OPEN DAILY**  
9:00AM - 8:00PM

Hawaii Kai Towne Center  
Executive Plaza #204

*Blended Massage Styles:*  
SWEDISH  
LOMI-LOMI  
SPORTS  
HYBRID THAI  
SHIATSU  
MYOFASCIAL RELEASE  
REFLEXOLOGY  
LYMPHATIC DRAINAGE  
PRENATAL  
COUPLES

*Blended Techniques:*  
CONSERVATIVE BODYWORK  
CRANIAL SACRAL  
CUPPING  
REIKI

**BOOK NOW**  
CALL (808) 396-7594  
TEXT (808) 862-6360

[www.SerenityandMassage.com](http://www.SerenityandMassage.com)

# SEPTEMBER CALENDAR OF EVENTS

## SEPTEMBER 20

### ALOHA FESTIVALS HO'OLAULE'A



The 71st annual Waikiki Ho'olaule'a is one of Hawaii's largest block parties. Thousands of people will converge onto Kalakaua Avenue for food, fun and entertainment, including Hawaiian music, hula, Hawaiian crafts, and flower leis and plenty of food tents. The event will close Kalakaua Avenue, all lanes from Seaside to Ohua Ave. at 4 p.m. Makai lanes begin to shut down for setup beginning at 2 p.m. The street festival runs from 7 p.m. – 9:30 p.m. alohafestivals.com

## SEPTEMBER 21 STRAUSS & RESPIGHI

The 2025/2026 Halekulani Masterworks season launches with an exciting musical journey along the Silk Road. Pipa player Wu Man joins Music Director Dane Lam and the Hawai'i Symphony Orchestra for Jiping Zhao's Pipa Concerto No. 2, along with Respighi's Pines of Rome and Strauss' Don Quixote, featuring violist Mark Butin and cellist Mark Votapek. 4 p.m. Tickets: \$43.50-\$137.50. hawaii theatre.org.

## SEPTEMBER 25 THE GET UP KIDS

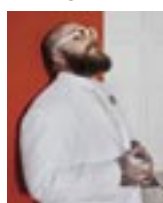
The Get Up Kids are an American emo band from Kansas City, formed in 1995. They were a leading band in the mid-1990s Midwest emo scene, also known as the "second wave" of emo. Their second album, "Something to Write Home About," is their most acclaimed and is regarded as a key album in the second-wave emo movement. Check out their '25 Years of Something to Write Home About' Tour at the Republik. Tickets: \$35. 8 p.m. bampproject.com.

## SEPTEMBER 25-28 • PARLIAMENT FUNKADELIC FEATURING GEORGE CLINTON

George Clinton is the leading innovator of funk and the creator of Parliament Funkadelic. His work has helped make funk a well-respected genre around the world. Clinton has received many honors. He was inducted into the Rock & Roll Hall of Fame in 1997 and won the Grammy Lifetime Achievement Award in 2019. 7:30 p.m. Tickets: \$95-\$175. bluenotehawaii.com.



## SEPTEMBER 26-27 • TEDDY SWIMS



The YouTube sensation-turned award-winning performer brings his hit tour to Honolulu. He was last here in 2022 when he played a show at the Republik. His hit song "Lose Control" holds the record for the longest charting song on the Billboard Hot 100, with 100 weeks at the top. Performing with special guests SevenSuns. Tickets: \$69.50 - \$124.50. Waikiki Shell. 7:30 p.m. bampproject.com.

## SEPTEMBER 27

### THE BEST OF HAWAII'S BEST KITCHENS 2025

Check out the 10th annual gala event, "The Best of Hawaii's Best Kitchens 2025" where tantalizing flavors from renowned local restaurants such as

Arancino Ristorante Italiano, Cino Hawaii, Nami Kaze Hawaii, Maile's Thai Bistro and more will be on hand for all to enjoy. 6 – 10 p.m. Tickets start at \$200. Hyatt Regency Waikiki. hawaii'sbestkitchens.org.

## SEPTEMBER 27 SUNSET ON THE BEACH

Your visitors will not want to miss this unique opportunity to watch a movie on a 30-foot screen kicking back on Waikiki Beach. Arrive early to take advantage of all the activities including live music, games, and food trucks that starts at 4 p.m. The theme tonight will be the Island of imagination and "IF" will begin at 7:00 p.m. Feel free to bring a low-slung chair or beach towel. southwestairlineshawaii.com.

## SEPTEMBER 27 ALOHA FESTIVALS FLORAL PARADE



The 77th annual floral parade has always been a fan favorite. Starting at Ala Moana Park the parade marches along Kalakaua Avenue to Kapi'olani Park with a beautiful procession of horseback pa'u riders, performances and floats filled with cascades of flowers, Hawaiian music, hula dancers and marching bands. 9 a.m. – noon. alohafestivals.com.

## SEPTEMBER 28 NA WAHINE O KE KAI

Be sure to tell your guests to keep their eyes offshore to see the canoes get close and head

down to the beach fronting the Hilton Hawaiian Village in Waikiki to see the exciting finish of the grueling 41-mile race that starts at Hale O Lono Harbor, Molokai at 7:30 a.m. with the first canoes expected to finish around 1 p.m. nawahineokekai.com.

## SEPTEMBER 28

### A BOOK READING & SHELL ACTIVITIES W/ AUTHOR SHARON FUJIMOTO-JOHNSON



"Shell Song," a picture book by Sharon Fujimoto-Johnson inspired by her own family history, explores the Japanese American incarceration in Hawai'i during World War II and the power of hope. Enjoy a live reading, view rare shells from the Malacology

collection, take part in a shell stamping activity, and feel free to bring your own shells to ID with experts. Visitors can also explore the Pūpū Ola: Kāhuli Captive Rearing Research Center to see live native snails raised at the museum. \$15. Atrium of Hawaiian Hall. 5 to 8 p.m. bishoppmuseum.org.

## SEPTEMBER 28 • HONOLULU CENTURY RIDE & RIDE ALOHA FESTIVAL

Keep your eyes out for bicyclists all day as riders hit the road for their choice of a 25, 50, 75, or 100-mile race around the island. The Aloha Fun Ride returns with 5- and 8-mile options around Diamond Head. The Ride Aloha Festival will take place at Kapi'olani Park all day long with food, music, and community partners. hbl.org.



# Meet the Royals

Witness the Royal Court in a rare, exclusive appearance for Aloha Festivals

Friday, September 19

Waikiki Beach Walk® Plaza – 4:30pm

Free Parking 10am-3pm Daily\*

\*With \$10 minimum purchase

Open 365 Days | 10AM-9PM

Located on Lewers St. between Kalakaua Ave. & Kalia Rd.



WAIKIKI  
BEACH WALK.

WAIKIKIBeachWALK.COM







ORIGINAL

**MAGOO'S PIZZA**

EST. 1967

**HAWAII'S FAVORITE  
ISLAND-STYLE  
PIZZA, SUBS &  
SALAD**

**NOW OPEN DAILY FOR  
LUNCH & DINNER  
11am - 9pm**

**HAPPY HOUR DAILY  
11am - 5pm**

**ORDER TAKEOUT &  
DELIVERY ONLINE**

<http://OriginalMagoosPizza.com/Order>

**3579 Waiālae Avenue  
(between 11th & 12th Ave)**



**NO HU HU  
CALL MAGOO'S  
808.949.5381**



ONKKE Korean Grill House, located on the 2nd floor of the Kō'ula at Ward Village, invited industry members to experience their upscale Korean yakiniku experience provided by their Michelin-trained chefs. ONKKE offers lunch from 11 to 3 p.m., a \$38 prix fixe menu makes dining between 4:30 and 5:00 p.m. affordable, and happy hour from 4:30 to 6:30 p.m. [onkeehi.com](http://onkeehi.com).





# That's Entertainment

## HOTELS

**ALA MOANA HOTEL** 923-2311  
**• MWFSat** - Live music in the lobby, 4-6pm  
**'ALOHLANI RESORT** 922-1233  
**• Daily** - Fish Feeding 10:30am & 2:30pm *O Bar*  
**• Daily** - Live Music 6:30-9:30pm *Swell Bar*  
**• Daily** - Light Monument Video Art Series 7-9pm *Swell Bar*  
**• SunWedSat** - Tank Talk 9am. *O Bar*

**HALEKULANI** 923-2311  
**• Daily** - Music & Hula 5-8pm *House Without a Key*  
**• Daily** - Live Jazz 8:30 -10:30pm, *Lewers Lounge*  
**• TWThFS** - Afternoon Tea in the Veranda 2-5pm  
**• Sun** - Sunday brunch w/Noly Paa on piano 9:30am - 2pm  
**HILTON HAWAIIAN VILLAGE** 949-4321  
**• Fri** - Fireworks at 8pm  
**• ThSSun** - Live entertainment, Tapa Bar. 7-10pm

**HYATT REGENCY WAIKIKI** 923-1234  
**• MWed** - Farmer's Market from 4-8pm  
**• Mon-Fri** - Cultural Programs at the Ho'okela Culture Center  
**• TTh** - Walking Tour thru parts of Waikiki at 10am  
**• TTh** - Live Hawaiian music at Pualeilani Atrium, 4-6 pm  
**KAHALA HOTEL & RESORT** 739-8888  
**• MTWThFSat** - Free Hawaiian activities at The Veranda, 10am  
**• ThFSat** - Live entertainment at The Veranda from 6-8pm.  
**• FriSat** - Afternoon Tea at The Veranda at 2pm & 3:30pm  
**• Sun** - Brunch at Hoku's w/Lovejack from 10am-1pm  
**• Daily** - See the interactive dolphin programs every hour

**KA LA'I WAIKIKI BEACH** 683-7777  
**• FSSun** - Live music at Wai'olu Ocean Cuisine, 5:30-7:30pm  
**LUANA WAIKIKI HOTEL & SUITES** 955-6000  
**• MWF** - Enjoy live music and hula on the Mezzanine 5-6pm  
**MOANA SURFRIDER** 922-3111  
**• Daily** - Live music at The Beach Bar, 4:30-6:30pm, 7-10pm  
**• WThFSSu** - David Swanson at Vintage1901, 6:30-10pm  
**• SatSun** - Afternoon Tea at the Veranda, 11:30am -2:30pm  
**OUTRIGGER REEF WAIKIKI BEACH** 923-3111  
**• Daily** - Live Hawaiian music at Kani Ka Pila Grille. 6-9pm

**PRINCE WAIKIKI** 956-1111  
**• ThFSSu** - Live music at 100 Sails from 6-8pm  
**• Sat** - DJ KK poolside from 2-5pm, Sun from 2:30-5:30pm  
**SHERATON PRINCESS KAIULANI** 922-5811  
**• Daily** - Live music poolside 6-9pm. DJ from 3-6pm.  
**THE ROYAL HAWAIIAN** 923-7311  
**• Daily** - Live Hawaiian music at the Mai Tai Bar. 11am-2pm  
**• TWFSu** - Live Hawaiian music at the Mai Tai Bar. 6-9pm  
**• MTh** - Live Hawaiian music at the Mai Tai Bar. 8-10pm

**TURTLE BAY RESORT** 293-6000  
**• Daily** - Live music at The Pointe Pool Bar, 4-7pm  
**• Daily** - Live music at Off the Lip, 7pm  
**• Daily** - The Stable at Turtle Bay offers a variety of experiences  
**WAIKIKI BEACH MARRIOTT RESORT** 922-6611  
**• ThFSat** - Live music, Queensbreak Restaurant 6-9pm  
**• Sun** - Stephen Inglis plays in the Lobby 6-9pm

## FARMERS MARKETS

**WBW OPEN MARKET**  
**• Mon** - Set up on the Plaza at Waikiki Beach Walk. 4-8pm.  
**HYATT REGENCY FARMERS MARKET** 225-4002  
**• MonWed** - Hyatt Regency 1st floor waterfall atrium 4-8pm  
**HAWAII FARM BUREAU MARKET** 848-2074  
**• Wed** - Set up on the Blaisdell Concert Hall Lawn 4-7pm.  
**HALE'IWA FARMERS MARKET** 388-9696  
**• Thurs** - Located at Waimea Valley. 2-6pm  
**KCC FARMERS MARKET** 848-2074  
**• Sat** - Kapiolani Community College 7:30 -11am  
**KAKA'AKO FARMERS MARKET** 388-9696  
**• Sat** - 919 Ala Moana Blvd & 210 Ward Avenue. 8am-12pm  
**PEARLRIDGE FARMERS MARKET** 388-9696  
**• Sat** - Pearlridge Mauka by Macy's. 8am-12pm  
**MALAMA MARKET** 225-4002

**• 2ndSat** - Ala Moana Center Wing Level 2. 11am-4pm  
**ALOHA HOME MARKET** 225-4002  
**• Sun** - Kailua 340 Uluniu Street 9-2pm  
**ALOHA MARKET AT WAIKIKI** 735-4510  
**• Sun** - Jefferson Elementary 324 Kapahulu Ave. 8-2pm  
**KAILUA FARM BUREAU MARKET** 848-2074  
**• Sun** - Kailua Town Center. 4-7pm  
**KAILUA TOWN FARMERS MARKET** 388-9696  
**• Sun** - Enchanted Lake Center by Kailua Cinema. 8am-12pm

## ATTRACTIONS

**FOSTER BOTANICAL GARDEN** 768-7135  
**• Daily** - Hawaii's oldest Botanical Garden in the midst of downtown open 9am - 4pm. \$5/\$1 keiki (kama'aina \$3)  
**• Daily** - Free docent-led tours at 10:30am. Reservations rec.  
**HONOLULU ZOO** 926-3191  
**• Daily** - The Zoo is open from 10am - 4pm. Last Entry at 3pm. GA \$19 adult/\$11 keiki (kama'aina \$8/\$4).  
**• Sat** - Explore the Zoo after the gates close 5:30-7:30pm.

**KILOHANA HULA SHOW**  
**• MTW** - Free hula show 9:30 - 10:30am. Kuhio Hula Mound  
**KUHIO BEACH HULA SHOW** 843-8002  
**• Sat** - Free show 6:30-7:30pm. Kuhio Hula Mound  
**THE RETURN OF KAPAEMAHU** 629-9895  
**• Wed** - Free show 6:30 - 7:30pm. Kuhio Hula Mound

**WAIKIKI AQUARIUM** 923-9741  
**• Daily** - The Aquarium is open from 9am - 4:30pm. GA \$12 adult/\$5 kids (kama'aina \$8).  
**• 1st3rdTue** - Hawaiian Plant Tour. 1:30pm. Free w/admission

## MUSEUMS

**BATTLESHIP MISSOURI MEMORIAL** 455-1600  
**• Daily** - Relive stories of war, victory, and the road to peace onboard the "Mighty Mo." Join a guided tour in English, Japanese, Chinese, or Korean or explore the ship at your own pace. Digital tour maps in various languages are available. 8am-4pm. More info available online at ussmissouri.org.  
**BISHOP MUSEUM** 847-3511  
**• Daily** - The 15-acre campus offers a chance to learn about the cultural and natural heritage of Hawai'i across three different exhibition buildings. Daily planetarium shows, a native Hawaiian botanical garden and more. 9am-5pm.

**CAPITAL MODERN** 586-0900  
**• Mon-Sat** - Formerly known as the Hawai'i State Art Museum. Admission is always free. Open 10am - 4pm.  
**• 1stFri** - Live entertainment and food vendors. 6-9pm  
**• 3rdFri** - Fri. Night Tempo, live music & food vendors. 6-9pm  
**• Sun** - Museum Closed  
**HONOLULU FIRE MUSEUM** 723-7167  
**• 3rdSat** - Free one-hour guided tours through various exhibits with a firefighter recounting HFDs history the 3rd Saturday of every month. 9am - 2pm on the hour. 620 South Street. Reservations required. Book online: fire.honolulu.gov then hit the submit request botton and click museum tours.

**HAWAIIAN MISSION HOUSES** 447-3910  
**• TW** - Docents lead tours through the oldest existing frame house in the Islands. 11am, 12pm, 1pm and 2pm.  
**• ThFSat** - 11am, 12pm, 1pm, 2pm and 3pm tours  
**• TWThFSa** - Gift shop open 10:30am - 4pm  
**HONOLULU MUSEUM OF ART** 532-8726  
**• ThFSSu** - Tour & Talk Story 11am. Free with admission.  
**• ThFSSu** - Highlights tour 2pm. Free with admission.  
**• Fri** - Ho'Ma Nights, open until 9pm. Free with admission.  
**• MonTues** - Museum Closed

**IOLANI PALACE** 522-0832  
**• TThS** - Audio tours available from 9am - 4pm  
**• WTh** - Docent-led tours available from 9am - 4pm  
**• EveryOtherWed** - He Mele Lahui Hawaii with Ku'uipo. 9am  
**• Fri** - Royal Hawaiian Band. Free. 12-1pm  
**• SunMon** - Museum Closed

**LUCORAL MUSEUM** 778-8189  
**• Mon-Fri** - Free self-guided tours featuring gemstones, a one-of-a-kind dinosaur egg, and create your own jewelry. 10% off gift shop with mention of Oahu Concierge. 10am-5pm.  
**PEARL HARBOR AVIATION MUSEUM** 441-1000  
**• Daily** - Vintage aircraft in battlefield hangars at Pearl Harbor, outdoor exhibits, flight simulators, and the Bob Hope: An American Treasure Exhibit. Shuttle & Tickets at USS Arizona Memorial Visitor Center or PearlHarborAviationMuseum.org.

## SHOPPING CENTERS

**ALA MOANA CENTER** 955-9517  
**• Daily** - Hula Show, 5pm. *Centerstage*  
**• EveryOtherWed** - Royal Hawaiian Band. 11am.  
**• Sat** - Local entertainment, 3pm. *Centerstage*  
**• Sun** - Keiki Hula Show, 1pm. *Centerstage*  
**• Daily** - Pau Hana Music Series, 5:30pm. *'Ewa Wing Stage*  
**HALE'IWA STORE LOTS** 203-5700  
**• Sat** - Live Hawaiian entertainment from 2 - 4pm

**INTERNATIONAL MARKET PLACE** 921-0536  
**• MWF** - Ceremonial sunset lighting of Lamaku Torch Tower  
**• MWF** - Sunset Stories Hula Show, 6pm. *Queens Court*  
**• 1stTh** - Royal Hawaiian Band. Free. 12pm. *Queens Court*  
**• 3rdTh** - Free Lei Making Workshop. 12pm. *Queens Court*  
**• 4thSat** - Free Fitness. 9am. *Queens Court*  
**• 1st3rdSu** - Free Fitness. 9am. *Queens Court*

**ROYAL HAWAIIAN CENTER** 922-2299  
**• Daily** - Heritage Room/Cultural Videos, *Helumoa Hale*  
**• Mon** - Free Ukelele Lessons 11pm, *Helumoa Hale*  
**• Tues** - Free Hula Lessons 11am, *Royal Grove*  
**• Wed** - Free Lauhala Weaving 11am, *Bldg A, Level 2*  
**• Thur** - Free Keiki Hula lessons 12pm, *Royal Grove*  
**• Fri** - Free Lei Making Class 12pm, *Bldg A, Level 2*  
**• Sat** - Hula Kahiko 5:30pm, *Royal Grove*

**• TWThF** - Live Hawaiian Entertainment 5:30pm, *Royal Grove*  
**WAIKIKI BEACH WALK** waikikibeachwalk.com  
**• Daily** - The Ukulele Store offers free lessons at 4:30pm  
**• Tues** - Ku Ha'aeo Hula Show. 4:30-6pm. *Plaza Stage*  
**• Sun** - Free hula lessons, 9-10am



**BALI OCEANFRONT**  
 20% off all Food & Beverage. Hilton Hawaiian Village, 941-2254.

**HAWAIIAN MISSION HOUSES**  
 Free tour with hotel ID. 553 S. King Street. 447-3910.

**IOLANI PALACE**  
 Free Admission with hotel ID. GA \$30. Kama'aina \$19.95. 364 S. King Street, Reservations Required. 522-0832.

**MAUI DIVERS JEWELRY**  
 Receive 20% off every purchase at any location. Hotel ID or business card is required for verification. Cannot be combined with other discounts or promotions. 946-2929.

**RUTH'S CHRIS STEAK HOUSE**  
 Complimentary Appetizer valued up to \$22 with the purchase of 2 entrees. Waikiki Beach Walk, 440-7910. Restaurant Row, 599-3860.

**SAN PAOLO PIZZA AND WINE**  
 20% off food and drinks with hotel ID. Not combinable with any other discounts. 1765 Ala Moana Blvd. 425-5396

You will be required to show Hotel ID or business card to claim offer. Magazine not needed. Just mention offer when presenting hotel ID. Discounts available to Guest Service Professionals ONLY. Not valid with other promotions or special offers. A minimum 20% gratuity on original order requested for all food offers.



The Oahu Concierge is printed monthly and direct mailed FREE to all Oahu Concierge, Hospitality & Activity Professionals.

C O N T A C T  
**Davis Media**  
Ph: (808) 225-8229

Website: [www.OahuConcierge.com](http://www.OahuConcierge.com)

#### ADDRESS & NAME CHANGES / ADDITIONS

We do not take changes via telephone. All changes to mailing list **must be submitted in writing** by the 16th of the month to make the next issue, email is preferred.

#### S T A F F

PUBLISHER & EDITOR **Pam Davis**  
[publisher@oahuconcierge.com](mailto:publisher@oahuconcierge.com)

DESIGN  
Coreiya Design

**The Oahu Concierge**  
4348 Waialae Avenue, #185  
Honolulu, Hawaii 96816

PRSRT STD  
US Postage Paid  
**TRADE MEDIA HUI**

SHOP

LOCAL



## DISCOVER 20+ UNIQUE SHOPS



Scan for Details

Shop local and invest in our island community. From homegrown brands to Hawai'i-inspired creations, discover the spirit of aloha at our locally owned stores.

Look for the Shaka symbol while shopping! 🤙

INTERNATIONAL MARKET PLACE