

# Concierge

KEEPING THE HOSPITALITY INDUSTRY INFORMED SINCE 1998

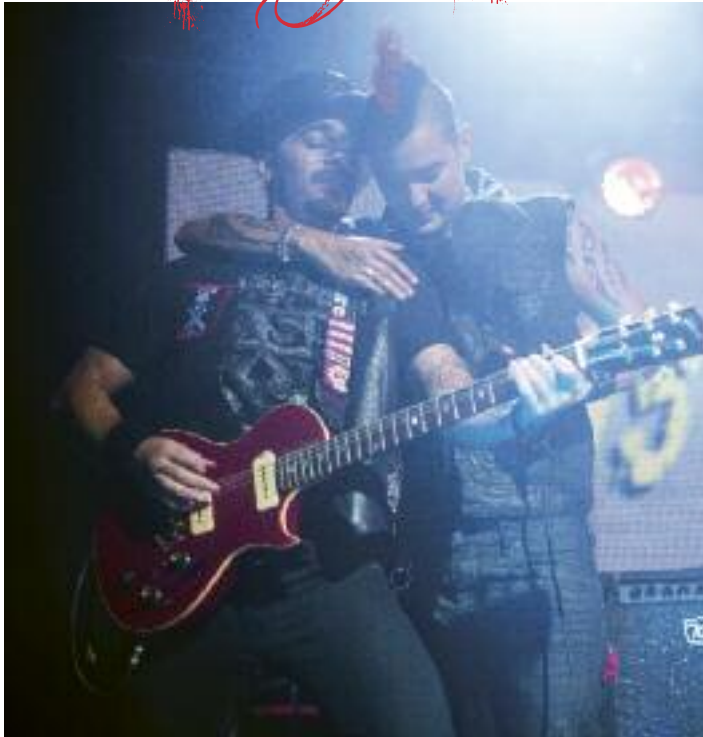
## Concierge by Day Rock Star by Night

Kasi Nunes is not your typical concierge. With her gravity defying pink mohawk and heavily tattooed arms, she's pretty much the last person anyone would expect to be sitting behind the desk setting up activities for visitors. But there's really nothing typical about her in any way. This DJ turned bartender turned lead singer never set out to be a concierge, then again, she never set out to be a lead singer either.

For those you who not familiar with the local music scene, Kasi is the lead singer of one of the best original rock bands Hawaii has even seen, Kings of Spade. Her tremendous vocal range captivates audiences with its passionate, soulful, powerful, bluesy sound that has been compared to a hybrid of Janis Joplin and Aretha Franklin. They're an amazing band to see live. She owns the stage with her vocal ability and stage presence. Her powerful bluesy vocal style paired with Jessie Savio's hard driving guitar riffs, gives the band a very classic rock sound and makes them an absolute must-see live.

But like any good story, we should start at the beginning. Jessie Savio recounts how he had just moved to the island from Vermont years ago when his sister brought him to Open Mic night at Anna Banana's to play guitar. Kasi was a bartender there, and they got to know each other when Jessie came in each week to play. One night the place was pretty empty and the house band asked Kasi if she knew any songs and wanted to come up. She said she knew the words to one song and went up. The rest as they say... is history.

"The first song I ever saw Kasi sing was Sweet Child O'Mine, which happens to be my favorite song of all time. I saw her sing and I was floored." Jessie said. Their friendship formed during those



Jessie Savio and Kasi Nunes from Kings of Spade are not only part of the hottest band in Hawaii, they're concierge as well.

open mic nights, and "although Kasi never had a goal to be in a band, she had this natural talent and this urge to do something. No real direction to it, but she was like, hey, you wanna start a band or something? I was like, yeah sure, lets start a band," and that's how it all began.

Don't think the band you now know as the Kings of Spade started then however. As Jessie continues, the funny thing was that after he and Kasi decided to start a band, Kasi said she would call some other musicians seeing as Jessie really didn't know anybody. When he showed up at the first practice, he realized Kasi didn't even know what was needed to form a band. She had just called every musician she knew and said, "Hey, we're starting a band, wanna be in it?"

"So I don't know if you know the instrumentation of a normal band, but it was not that. It was Kasi, and one other singer, two drummers, and two bass players, and me on guitar. So it was two of everything, of which you usually

*Continues on page 10.*

## Get ready for SPAM® Jam!



Get ready folks. Tens of thousands of people are about to descend into Waikiki to profess their love for all things Spam®. For the 14th year, the Waikiki SPAM® JAM Festival takes over Kalakaua in one of the more unique – and popular – street festivals we have.

The festival will start at 4 p.m. on April 30th. This is a family-friendly street fair that will have live entertainment, tons of food for sale, multiple vendor booths selling everything from Hawaiian arts & crafts to SPAM® merchandise, and since the event benefits our favorite charity, the Hawaii Food Bank, there will be volunteers collecting donations for the Food Bank at most of the booths as well.

There will be two entertainment stages set up. One stage will be in front of the Royal Hawaiian Center. Although subject to change, the current line-up will be as follows:

*Continues on page 8.*

### TABLE OF CONTENTS

Yada Yada Yada .....	2
New Les Clefs D'Or Concierge .....	2
Newsflash .....	3
Arts with Aloha .....	4
Duke's Challenge .....	6
Ko Olina Childrens Film & Music Festival .....	7
HIFF Spring Showcase .....	8
Chef's Corner: Duke's Waikiki Keith Kong .....	11
E Pili Kakou .....	12-15
Calendar .....	16-17, 20
Paparazzi: Ward Sip & Paint .....	17
Aloha Cancer Project .....	18
Paparazzi: Ala Moana Shop a Le'a .....	19
Hawaii Book & Music Festival .....	21
That's Entertainment .....	22
GSA of the Month: Rick Nomura .....	23

**WOLF GANG'S**  
STEAKHOUSE

**UNMISTEAKABLY NEW YORK**

Royal Hawaiian Center, Bldg C, Level 3  
wolfgangssteakhouse.net • opentable.com

808.922.3600

LUNCH • HAPPY HOUR • DINNER • WEEKEND BRUNCH • PRIVATE ROOMS







# So much information... so little time

Putting together this magazine is always a challenge. Sometimes no matter how much I look I simply can't get enough information to fill it up for you. Other times, I can barely squeeze it all in. This month was both of those times. What started out as a pretty empty slate, kept getting more and more crowded until I ended up having to cut everything down just to cram it all in, only to realize at the last possible moment that I had forgotten a few rather very important items and had to pull the book back from the printers to add in four more pages after all. What does this all mean to you? It's pretty simple, chances are you're going to be getting this magazine a day or two late, and I've made a perfect pest of myself this afternoon gathering last minute additions. Furthermore if I get out of this without some grammatical errors or typos, I'll be seriously impressed.

One of the good things about having to redo half the magazine at the last moment is that I get to add some things I cut from the Kings of Spade story back in. I so thoroughly enjoyed speaking with them for this interview that it was far more of a conversation than an actual interview -- which was clearly obvious when playing back the interview recording itself. I'm really impressed by these guys and their frank, honest outlook on everything they do that I truly wanted to do right by them with this article. These are solid, loyal, hardworking people who happen to have an insane amount of talent and juggle a desk job like the rest of us. This is the first time I ever wanted the magazine to have a sound link, so you could hear how well she sings and hear what Jessie can do on guitar. That guy can play! If you're not familiar with them, I urge you to head to their website and give them a listen. I mean how many people do you know that are sitting there booking a luau for a guest one day, and playing to thousands of people the next? Actually, if you know of anyone like that, let me know. I'd like to talk to them next. I think we have some pretty fascinating people that make up this industry, and there's only so many things we can say about the next festival, so the more opportunities we have to delve into the amazing people that make up this community, the better.

The other good thing about getting to redo the book at the 11th hour is I can add in information about the Gabby Pahinui Waimanalo Kanikapila. This is one of the best music festivals the island puts on all year long, and it was just announced that it will take place on April 23rd from 9 a.m. to 6 p.m. at Waimanalo Beach Park. We're talking the biggest jam session of the year with some of the best players around. Talk about chicken skin. A good friend of mine describes it best. He says it's almost indescribable it's so beautiful and makes him proud to live in the state. It's definitely one of the good things about Hawaii.



Tomo Kuriyama

The *Sheraton Waikiki* has named **Tomo Kuriyama** as its deputy general manager. He has been with Sheraton since 2003 when he started at the Sheraton Maui as a guest service agent, and actually worked at the hotel back in 2006 as their front office manager, before being promoted to Director of Rooms. He then headed off to Thailand, where most recently he was the general manager at the Sheraton Pattaya Resort. Welcome back Tomo! • Sending a warm welcome to **Dean Shingaki**. He is the newest concierge to join the team at *The Kahala Hotel & Resort*. • We would also like to welcome **Desiree Fleming**, who has just joined the concierge team at *Hilton Hawaiian Village's Alii Tower* • *The Hawaii Lodging & Tourism Association* has announced that **Lynette Eastman**, general manager of The Surfjack Hotel & Swim

Club (formerly known as Hokele Suites) has been named the first recipient of the Women in Lodging & Tourism – Woman of the Year award. Lynette was selected for her leadership and extraordinary contributions to the community. • *TS Restaurants* has announced that **Jackie Reed** has been promoted from Vice President of CA Operations to Chief Executive Officer, succeeding Bill Parson who retired after 38 years with the organization. *TS Restaurants* owns and operate 14 restaurants in Hawaii and California including Duke's, Hula Grill, Kimo's and Leilani's on the Beach. • Congratulations go out to **Frank Hernandez**, Chef Concierge at the *Halekulani Hotel*. Frank has played an active role in the Concierge Association of Hawaii for a long time and at the recent Congress in Montreal was nominated to serve on the Board of Directors for Les Clefs D'Or USA as their Director of Public Relations. Happy to see Frank take his skills to a national level.

## Hawaii's newest Les Clefs d'Or Concierge

Hawaii has just become a bit more golden with the addition of three top concierges into the ranks of Les Clefs d'Or USA. This prestigious association is the only national organization of hotel lobby concierges and to be accepted into it is the pinnacle of any concierge

The word concierge has been used rather freely in years past, but this association takes the word, and their duties, seriously. To receive ones keys, applicants must be employed as a full-time hotel lobby-level concierge for a minimum of five years. One cannot be considered for their keys if they work for an outsourced tour desk or even a lounge on a higher floor. Les Clefs d'Or place a great deal of emphasis on the fact that their recommendations are never ad-based or incentive-driven. They believe it is their duty to guide their guests, independently and impartially, to the choice that best meets their needs.

Les Clefs d'Or Concierges are distinguished by the golden crossed keys worn on their uniform lapels. They are considered providers of extraordinary service, and consistently achieve high levels of guest satisfaction. Founded in Paris in 1952, the motto of Les Clefs d'Or is "In Service through Friendship," members regularly exchange information with each other to improve their skills, solve problems and expand the number of resources available to assist guests around the world. Now, there are three more of these distinguished professionals added to their roster. Congratulations to Ryan Tucker, Chef Concierge at The Modern Honolulu, Lisa Sapp, Concierge at the Trump Waikiki, and Dennis Noah, Assistant Chef Concierge at the Trump Waikiki for becoming the newest members of Les Clefs d'Or USA.



ABOVE: Wendy Wong, Kawai Yamashiro, Frank Hernandez and Susan Koki went to *The Modern Honolulu* to present Ryan Tucker with his keys,



LEFT: Lisa Sapp and Dennis Noah with their official Les Clefs d'Or plaques.

Kawai Yamashiro, Chef Concierge of the Trump International Hotel Waikiki and the President of The Concierge Association of Hawaii had this to say, "Both Mr. Noah and Ms. Sapp have, for many years been a very integral part of our exceptional Concierge team here at Trump Waikiki and we are very proud of

their achievement. Both Mr. Noah and Ms. Sapp are also active within the Concierge community with their volunteer efforts and serving as board members on The Concierge Association of Hawaii for the past three years."

The Modern Honolulu is also extremely proud of Ryan for his incredible accomplishments. If you recall, Ryan was also just recently named Concierge of the Year by the readers of the *Oahu Concierge Magazine*. He is definitely having a stellar few months.

With Dennis, Lisa and Ryan being accepted into the ranks of Les Clefs D'Or membership, there are now 22 members in the state. 14 on Oahu, 1 on the Big Island and 7 on Maui. Congratulations!



# EXTRA EXTRA EXTRA *Newsflash*

## A SPA – FOR YOUR HEAD

It's one of the hottest trends in Japan. The Head Spa. What is it? We're talking a half hour of total relaxation, as your head is cleansed, not once, but twice and your shoulders, scalp, neck and head are treated to a luxuriously relaxing pressure point massage, followed by a blow dry and style. This is so popular in Japan some people go before and after work and treatments can last up to 2 hours. DADA Salon, located in the new 808 Center on Sheridan Street is reportedly the first salon to offer this service in Honolulu. The Head Spa Deluxe is 45 minutes of relaxing pampering leaving you feeling refreshed and relaxed with really, really, clean hair. Treatments begin at \$30 and can be added onto another service, or just enjoyed by themselves for a rejuvenating break or to help get ready for a big event. [dadahawaii.com](http://dadahawaii.com).

## ISLAND AIR RELAUNCHES KAUAI SERVICE

Island Air relaunched their Honolulu-Lihue service last month, offering passengers daily round-trip service to choose from. Island Air will be offering between 6 to 8 round trips daily to the Garden Isle depending on the the day of the week. Don't forget that Island Air also offers Travel Paks of 6 coupons good one one year of travel to come and go as you please. Check [islandair.com](http://islandair.com) for full schedule.

## NEW TROLLEY LINE

The Waikiki Trolley has launched a new trolley route. Beginning April 1st visitors can hop on the Purple Line, that will take guests from Waikiki to Pearlridge Center with stops at Aloha Tower, Pearl Harbor, Aloha Stadium, Pearlridge Uptown and Pearlridge Downtown. Passengers will enjoy unlimited boarding and re-boarding privileges for as long as their pass is valid. Passes can be purchased as a one, four or seven day format. [waikikitrolley.com](http://waikikitrolley.com).

## WINE & CANVAS HAWAII

Sheraton Waikiki has partnered with "Wine and Canvas Hawaii" to offer guests the chance to create their own souvenirs while enjoying a cocktail at the same time. Each guest will be provided with a gallery wrapped 16x20 canvas and acrylic paints to create their own painting to remember their trip. "Wine & Canvas" will be held weekly on Mondays at the Lily Pond beginning at 3 p.m. The cost will be \$45 per guest in honor of the hotel's 45th anniversary this year. Additional food and beverage will be available for purchase at the event. Reservations can be made at 931-8007 or at [wineandcanvas.com](http://wineandcanvas.com).

## HAWAIIAN AIR ADDS LANAI

'Ohana by Hawaiian, Hawaiian Air's interisland turboprop service is now the only airline serving Lanai with regularly scheduled service on its 48-seat ATR-42 aircraft. Ohana will be adding onto its current Lanai service, expanding to 5 flight daily in mid-May. [hawaiianair.com](http://hawaiianair.com)

## HYPE IT UP

The Hawaii Lodging & Tourism Association has announced the launch of new committee, HYPE! (*Hospitality's Young Professionals and Entrepreneurs*), designed to educate, network, and engage the young minds of this industry. Through this new committee the HLTA hopes to create a forum and provide a venue where this industry's younger generation can interact with the "movers and shakers" of the community. The launch will be held on April 7 at SKY Waikiki. If you're interested in learning more about this committee, please email [jhigashi@hawaiilodging.org](mailto:jhigashi@hawaiilodging.org).



## FOOTPRINTS OF LIFE



Internationally acclaimed artist, Yayoï Kusama, known as the Japanese Andy Warhol of her time has installed a special exhibit at the IBM Building Courtyard. Called Footprints of Life, this exhibit follows the artists fascination with polka dots, which she says, are a way to infinity. Multiple events are scheduled around this exhibit, which is free and open to the public daily from 10 a.m. to 5 p.m. through May 13th. For a complete schedule of events go to [wardvillageshops.com](http://wardvillageshops.com)

**NOI**  
Delicate Thai Taste

Enjoy the Most  
Amazing Thai Dining  
Experience

Featuring a delectable  
menu by Award-  
Winning Chef Jutamas  
"Kwan" Kanjanamai

### LUNCH

10:30 a.m. - 3:00 p.m.

Also featuring Lunch  
Specials from \$10.95!

### HAPPY HOUR

3:00 - 7:00 p.m.

Great appetizer and  
drink specials!

### DINNER

5:00 - 11:00 p.m.

A Truly Royal Experience!

We also offer two  
beautiful private rooms  
for 8-10 guests.

Concierges Receive  
**20% OFF**

WITH CURRENT WORK ID  
DOES NOT APPLY TO LIQUOR,  
HAPPY HOUR OR SPECIALS

Royal Hawaiian Center • Bldg. C, Level 3  
Between Wolfgang's Steakhouse & Forever 21  
[noithaicuisine.com](http://noithaicuisine.com) • 808.664.4039



# arts with aloha



It seems this April Honolulu's arts and cultural scene is filled with things that are bad for you – bad boy legends of Hawaiian music, local bad boys of reggae and R & B, a bunch of boisterous bad boys from Boston, not to mention some bad, bad, bad things for your teeth. To make sure the entire month isn't about the bad, there's some theatrical good with some historical Hawaiian characters being brought to life near the place where they are buried.

Ok, let's start with the obvious thing that is bad for our teeth but also tastes good in our tummy and that's **BISHOP MUSEUM'S** exhibition called *Sweet: A Tasty Journey* – A nostalgic look at the confections beloved by generations. The exhibit which opened in March and runs through May 30th, will take your guests on a journey of the history of candy. Your guests will learn about the



evolution of candy in western society from the way they were made, sold and packaged. Your guests will see the role candy played in pop culture and also get a chance to eat some candy while learning about the real Willy Wonka and hearing stories about candy inventors Forrest Mars and Milton Hershey. The exhibit has several interactive displays and activities that will stimulate the senses and are suitable for children as well as adults. One of the highlights is the interactive mystery jelly bean game called Bean Boozled where guests will spin a wheel to see which jelly bean they must eat. The mystery is that some of the jelly beans of the same color may taste, for example, like lemon meringue pie or dogfood. The game runs weekdays at 1 p.m. and four times on weekends (10:30 a.m., 12:30 p.m., 2 p.m. & 3 p.m.). This exhibit is included in the general admission price of \$22.95 for adults, \$19.95 for seniors 65 & older and \$14.95 for children 4 to 12. Children 3 & under are free. Don't forget to remind your guests that parking in the museum lot is \$5 per car. In addition, remember to highlight the importance of Hawaiian Hall and Pacific Hall's exhibits as well as the Abigail Kinoiki Kekaulike Kahli Room to give them insight into Hawai'i history and culture.

Now if your guests want to learn about Hawaiian contemporary culture then send them to **BLUE NOTE HAWAII** to see and hear Hawaii music icons Henry Kaponu, John Cruz and Brother Noland in their show entitled "*Rough Riders*" running through April 2nd with shows at 6:30 p.m. and 9:00 p.m. If you didn't get to see this show at the Hawaii Theatre last October, this is your chance to experience three distinctive voices who have shaped contemporary Hawaiian music. The title rough riders is inspired by the

1908 Hawaiian Rough Riders, paniolos Ikua Purdy, Archie Kaaua and Jock Low, who became World Rodeo Champions. And it is in their spirits that these contemporary bad boys of Hawaiian music blend their voices and guitar skills. Table seating is \$45 and \$35 per person and the bar area, my personal favorite spot, is \$25. For more information on tickets and dining visit [BlueNoteHawaii.com](http://BlueNoteHawaii.com) or call 777-4890. For those of you who missed the opening night festivities, Blue Note Hawaii is located in the former Society of Seven Showroom inside the Outrigger Waikiki.

Now if your guests are looking for some local bad boys in-the-making with a little less mileage, then I suggest sending them down to the **HAWAII THEATRE** on April 14th at 7:30 p.m. for the *HI\*Sessions Artists: Justin Young & Mike Love* concert presented by Kona Brewing Company. This is the first time these two local artists are performing together. Justin is known for his R & B, Hawaiian hits and fresh vibes and Mike is one of reggae music's rising stars who has performed with Stephen Marley, Don Carlos and Jack Johnson. Tickets are \$32.

These local boys don't have the monopoly on bad this month at the **HAWAII THEATRE**. On April 7th at 7:30 p.m. the Boston band *Girls, Guns and Glory* is marking its mark at the historic theatre with its blend of rock 'n roll and classic country sounds. If your guests like a mix of Dwight Yoakam, Buddy Holly, Lyle Lovett, Chris Isaak and a little Mavericks, they will fall in love with this foursome made of up Ward Hayden on vocals/guitar, Paul Dilley on electric and upright bass/piano, Josh Kiggans on drums/percussion and Chris Hersh on lead guitar/banjo. Half of the show is a Hank Williams tribute and the other half includes many of the bands original songs. Tickets are \$22 pre-sale / \$27 at the door and can be purchased through [hawaiiitheatre.com](http://hawaiiitheatre.com) or by calling the box office at 528-0506.

There is a bad girl performance happening this month, in case you were wondering about gender equality in the arts scene. **MISSION HOUSES MUSEUM** is presenting a special edition of History Theatre on April 15th from 5:30 p.m. to & 7:30 p.m. This series brings to life historic characters from Hawaii's history who give monologues about their lives near the place where they are buried. One of the characters featured in this edition is Annie Alexander (1867-1950) a Hawaii born, gun-toting lesbian, palaeontologist, botanist, and vertebrate zoologist who founded the Museum of Palaeontology and the Museum of Vertebrate Zoology at UC-Berkeley. Guests will get a chance to meet Annie and another historical figure Simon Peter Kalama, who helped Dr. Gerrit P. Judd, to transcribe and incorporate Hawaiian medical practices into their of patients. Simon's notes are the basis of the Hawaiian Medicine Book which is the leading source of information today on traditional Hawaiian medicine. Tickets are \$30 and include a drink and pupu and can be purchased by calling 447-3926.

Hopefully with all this bad boy and bad girl merry-making this month, none of your guests will need to use the knowledge from Mr. Kalama's book.  
~ Lance Rae

Mahalo for your continued support!  
JOIN OUR  
**GUEST REFERRAL PROGRAM**



Our program is simple!

For every 25 guests referred,  
Ruth's Chris Steak House will send you  
a \$50.00 dining certificate.

Please contact Emi Espinda if you have any  
questions at [eespinda@direstaurants.com](mailto:eespinda@direstaurants.com)

OPEN DAILY FROM 5PM

HAPPY HOUR DAILY IN OUR LOUNGE | 5PM – 7PM

PRIME TIME MENU | DAILY 5PM – 6PM

WINE WEDNESDAYS | 25% OFF BOTTLES OF WINE



Restaurant Row | 808.599.3850  
Waikiki Beach Walk | 808.440.7910  
[WWW.RUTHSCRISHAWAII.COM](http://WWW.RUTHSCRISHAWAII.COM)



**SOMETHING NEW.  
SOMETHING CLASSIC.**

Open Daily 11am - 10pm

Happy Hour Daily in our lounge 3pm - 6pm & 8pm - 10pm

Vino Thursdays 25% Off Bottles of Wine

**INQUIRE ABOUT OUR  
GUEST REFERRAL PROGRAM!**

Our program is simple!

For every 10 complimentary dessert cards redeemed  
(WITH YOUR NAME ON THE CARD).

Romano's Macaroni Grill will send you a  
\$25.00 dining certificate that may be used  
at our Oahu restaurant.

Please contact Emi Espinda if you have any  
questions at [eespinda@direstaurants.com](mailto:eespinda@direstaurants.com)

**ROMANO'S  
Macaroni  
GRILL.**

Ho'okipa Terrace at Ala Moana Center  
808.356.8300

[WWW.MACARONIGRILL.COM](http://WWW.MACARONIGRILL.COM)





**IT'S MORE THAN A LUAU.  
BUT THEN AGAIN, WE'RE MORE THAN  
JUST AN ATTRACTION.**

*Now your guests can see it all and do it all, for less. They'll enjoy a full day's worth of island fun with our Ali'i Luau package. See everything our center has to offer, including our spectacular evening show, "HĀ: Breath of Life" and our award-winning luau.*

For details, contact your PCC representative.

 **Polynesian**  
CULTURAL CENTER

WAY MORE THAN A LUAU

BUY  
**THE ALI'I LUAU**  
PACKAGE AND SAVE OVER \$50  
COMPARED TO A LA CARTE PRICING



BOOK NOW FOR THE BEST SEATS

808-293-3333 OR POLYNESIA.COM

CLOSED SUNDAYS • VILLAGES OPEN AT NOON



**The best in comfort food & live sports**

Join us for live sports on HD streams, "Waikiki's largest breakfast selection" served all day, New York style deli sandwiches, half-pound burgers, Round Table Pizza and our "ballpark happy hour."

**GIOVANNI PASTRAMI**  
HAWAIIAN RESTAURANT

Check it out [giovannipastrami.com](http://giovannipastrami.com)  
Call us 808-923-2100  
Stop by 227 Lewers Street in Waikiki

**MAC 24/7**  
HAWAIIAN RESTAURANT

**MAC WEDNESDAYS**

Industry Night  
11pm - 2am

**50% OFF ALL FOOD**  
With your Industry ID

LIVE DJ

\$3 valet parking when dining

808-921-5564 • [MAC247Waikiki.com](http://MAC247Waikiki.com)  
2500 Kuhio Avenue • Honolulu, HI 96815

@MAC247Waikiki OpenTable

\*Restrictions apply. Does not include alcohol, tax or gratuity.

Hale Aina Award Winner  
Best Gourmet Comfort Food - Honolulu Magazine



# Duke Challenge



There will be plenty of activities for passerby to watch and enjoy during the 31st annual Duke Kahanamoku Beach Challenge on April 24th

On April 24, it's time for all ocean devotees to head down to the Duke's Beach and Lagoon at the Hilton Hawaiian Village for the Waikiki Community Center's 31st annual Duke Kahanamoku Beach Challenge. Stop by between 9 a.m. and 2:30 p.m. to play ancient Hawaiian games, such as the 'Ulu Maika (bowling a stone through pegs), and cheer on teams as they participate in stand up paddling and canoe races.

The event will kick off at 9 a.m. with a double-hulled canoe and stand-up paddle board procession with Mayor Kirk Caldwell, Nappy Napoleon, founder of Anuenue Canoe Club and key members of OHCRA, followed by an oli, and kahiko presented by Halau Hula 'O Hokulani, the Royal Hawaiian Band accompanied by local favorite Cathy Foy. The competition will then get into full swing at 10 a.m. with canoes and paddle board taking to the ocean to compete. The outrigger canoe race is a quarter-mile race open to all skill levels, teams will then participate in stand up paddle along the lagoon.

Guests can learn and compete in a variety of Makahiki games including O'o Ihe (spear throwing), Moa Pahe'e (dart sliding), Pohaku Ho'oiikaika (stone throw), or even get down and dirty in the Huki Kaula (tug of war), which will determine the winner. Spectators are welcome to just watch and cheer on the competitors for free.

In addition to sports, visitors will enjoy ono local fare, handmade Hawaiian arts and crafts,

and live local entertainment. This year, performers include: Halau Hula 'O Nanawahine, Weldon Kekauoha, Te Vai Ura Nui (Tahitian group), Shining Star Band, Ka Hehena and Jeff Rasmussen and Robi Kahakalau wrapping up the day from 1:45 to 2:30 p.m.

Each year the event also selects a group of living legends from the water sports community to recognize and honor for their efforts to promote the legacy of Hawaiian canoeing and water safety in Hawaii. The 2016 honoree is the Oahu Hawaiian Canoe Racing Association, otherwise known as OHCRA.

In addition to sharing Hawaiian traditions, the Duke Kahanamoku Challenge raises funds for the Waikiki Community Center, which has been providing integral services to the people of Waikiki for over 37 years. Their programs include educational and emotional services for children and the elderly, a food pantry for the homeless, and many other beneficial offerings that are designed to enrich and serve the needs of the people in Waikiki. "We're looking forward to another great turnout for the 31st annual Duke Challenge," said Jeff Apaka, Waikiki Community Center's Director of Community Relations. "It's an honor to have the opportunity to host this event to perpetuate the Hawaiian culture and to support and be supported by the community."

For more information about this Challenge or the Waikiki Community Center, please visit their website at [waikikicomunitycenter.org](http://waikikicomunitycenter.org) or call 923-1802.

~ Pam

**ALERT!**

brought to you by  
The Waikiki Aquarium

open daily from 9 am - 4:30 pm

**April 1, 29-30**  
**Box Jellyfish Window**

Teaching Hawaii about jellyfish and other ocean creatures for over a century

**WAIKIKI AQUARIUM**  
GREETED BY HAWAII



# Ko Olina Children's Film & Music Festival



It's hard to imagine an evening better than one sitting on the beach, surrounded by your loved ones, and witnessing one of Hawaii's famous sunsets followed by a Disney movie on a screen roughly the size of a two car garage. If that isn't enticing enough, know that 100 percent of proceeds from the Ko Olina Children's Film & Music Festival go to a good cause: The Kapi'olani Medical Center for Women and Children.

The third annual festival is set for April 30, from 1 p.m. to 8 p.m. beachfront at Ko Olina's first lagoon, and includes a bevy of young performers, Disney movies and interactive film and music studios to keep families entertained. Tickets can be purchased through Eventbrite and are \$25 for adults (\$30 at the door) and \$10 for kids 12 and under. Last year over 3,000 people attended the event. This year, Ko Olina is amping up the festivities, and they expect it to be the biggest show yet.

Disney and Pixar movies will be shown throughout Aulani during the day, including classics like *Cinderella* and *Aladdin*, and newer movies like *Monster's University*, *Up* and *Inside Out*. Aulani will also be showing *Paper Planes*, a movie from the 2015 Hawaii International Film Festival, which tells the story of 12-year-old Dylan Webber, whose talent for folding paper airplanes took him to the World Junior Paper Plane Championship.

In addition to the screen performances, Ko Olina will feature live stage performances from young artists. In case any kids get inspired, they can head straight to a music recording station that will feature professional-grade equipment and adults teaching them how to use it all. For youth who are more drawn to movies, there will also be a studio for them to learn about movie equipment.

And like real life, it doesn't end in the studio for these kids. Anyone who posted a 15-second video to Instagram lip-syncing to his or her favorite song last month was entered into a contest to take the stage at the festival. At 6 p.m., selected performers will take the Ko Olina lagoon stage for a chance to perform live for prizes, and bragging rights.

Just before the movie that caps the festival, the big screen on the beach will show a Pixar digital short about a volcano looking for love in the ocean. The computer-animated musical *Lava* stars the voices of Hawaiian recording artists Kuana Torres Kahele and Napua Greig. Then comes the night's most anticipated event, a showing of *Big Hero 6*, a movie about an inflatable robot and the prodigy Hiro Hamada, who team up with friends to form a group of heroes.

Over the past two years, the festival has contributed \$100,000 to the Kapi'olani Medical Center. Founded in 1890 in response to a high infant mortality rate in Hawaii, the not-for-profit hospital now provides perinatal care, 24-hour pediatric care, women's health services and cares for over 6,000 births each year. ~ Alexander Deedy

# Shop where the locals shop

at over 250 stores, restaurants, and unique boutiques, overlooking historic Pearl Harbor and featuring Oahu's only monorail.

Discover one-of-a-kind jewelry, a new look or a mani-pedi. Kids will go crazy for electronics, cool kicks, boogie boards and toys.

Visit our Saturday morning farmers' market and experience favorite local foods – shave ice, loco moco, li hing mui or malasadas!

Pearlridge Center welcomes your guests on the Waikiki Trolley Purple Line. Visit [waikikitrolley.com](http://waikikitrolley.com) for route and ticket information.



PEARLRIDGE CENTER

Mon - Sat: 10am - 9pm | Sun: 10am - 6pm  
Conveniently located at the corner of Pali Momi Street and Kamehameha Highway.

[www.pearlridgeonline.com](http://www.pearlridgeonline.com) | @pearlridge



# INCREDIBLE PRICE ROLLBACK! ON MAUI & KAUAI ONE DAY TOURS ON ISLAND AIR



For eleven exciting weeks, **Poly Ad's Maui and Kauai One Day Tours on Island Air** will rollback to super low rates starting at just \$391! Rollback prices are available 3/15/16 – 5/31/16. Book early! Seats are limited.

**FOR TRAVEL**  
from March 15, 2016  
through  
May 31, 2016

Starting at

**\$391**



POLYNESIAN ADVENTURE TOURS

CALL NOW FOR YOUR AVAILABILITY

**808.756.9861**







## 2016 Spring Showcase

Good news for movie-buff visitors lucky enough to be in Honolulu in early April and everyone else too eager to wait for the Hawaii International Film Festival this fall: HIFF's Spring Showcase is returning this year from April 2 through April 10, screening 30 films in the Regal Cinemas Dole Cannery.

Visitors might question the decision to leave the sunny beaches and head into the dark, but HIFF's history proves it's worth showing up for. The inaugural Hawaii Film Festival was 35 years ago, during the first week of November 1981. The debut festival included seven films from six

countries, drew an audience of about 5,000 and had a program cover featuring a cheesy rendering of Earth as a pineapple, complete with green leaves sprouting from the north pole and rind-textured continents. From those modest beginnings, the event has built a reputation as a premiere film festival. It's a hotspot for emerging talent in the Asia-Pacific region and continues to build a community of storytellers in Hawaii. Each year, it attracts over 70,000 fans from around the state and around the world.

2016 is the 17th time HIFF has put on a spring showcase. Two years ago, HIFF Executive Robert Lambeth noted that the spring festival has grown to rival the fall festival in popularity.

The festival kicks off opening night with the film *Persona Non Grata*, which tells the true story of a Japanese diplomat who went against his government during World War II and approved transit visas for European refugees, saving the lives of over 6,000 Jews.

Eight days later the showcase ends with a film



*Family Ingredients* with Ed Kenney will hold its Hawaii premier as part of HIFF's Spring Showcase. Photo ©Renea Veneri Stewart

about the lava flow that crept toward the Big Island community of Pahoa in summer 2014, and threatened to cut off the town's main access road. It was filmed by Pahoa community members as the events unfolded, and takes an inside look at living in "such an unpredictable paradise, and what the incident can teach the rest of the world about community, sustainability, harmony, and aloha."

*Family Ingredients*, a locally produced series hosted by Chef Ed Kenney that celebrates our stories through food, connecting our genealogy to what we eat will showcase a sneak preview of the first season to be broadcast on PBS this summer. Join the Family Ingredients team at its premiere as they screen sneak previews of two episodes as part of the Showcase on April 5th at 6:15 p.m. at Dole Cannery Theaters

HIFF members receive discounted ticket prices and visitors can purchase a Flash Pass to sit in reserved, first come, first serve seats held at each screening. Tickets can be purchased at the box office or online at [hiff.org](http://hiff.org). ~ Alexander Deedy

by Oscar-nominated writer and director Richard Linklater (the same guy who made *Dazed and Confused* and *Boyhood*). This particular Linklater film is *Everybody Wants Some* and is being described as "the spiritual sequel to *Dazed and Confused*. *Everybody Wants Some* is a comedy-drama that follows a group of college baseball players during the '80s. It is making its Hawaii debut at the Spring Showcase, after premiering at Austin's SxSW festival in March.

True to its roots, the Spring Showcase also features several Hawaiian films, including the world premiere of *Aloha From Lavaland*, a documentary

Continued from page 1.



- 4:30 Hula Halau (pending)
- 5:30 Ukulele Superkids – Honaka Katayama & Azita Ganjali
- 6:30 Germaines Luau
- 7:30 Kealii Reichel (pending)
- 8:30 Emke

The other stage will be just down the street in front of the Outrigger Waikiki. The schedule for that stage is as follows:

- 4:30 The Women of Halau Ka Waikahe Lani Malie & The Men of Kahulaliwai
- 5:30 Waimanalo Sunset Band
- 6:30 Ben Vegas & Malia Gibson
- 7:30 Jeff Rasmussen & Robi Kahakalau
- 8:30 Raiatea Helm

In between walking around and catching some of your favorite local performers, there is of course the food. Seventeen different restaurants around town will be offering up their Spammy creations, and we're not talking about musubi. Nope, the chefs have gone above and beyond with their Spamminess. Like Chai's Waikiki Ahi Spam Katsu with Fresh Mango Salsa and Yellow Curry Sauce for \$12, or MAC 24-7's Mongolian Spam Poke Bowl or Coconut Spam Flan with Kona Coffee Salted Caramel and Candied Spam, each for \$5. How about an Apple Apple Spobbler from Hard Rock Cafe for \$4. Duke's Waikiki will be offering Korean Spam Street Taco's for \$5, and Chef Kong gave us the recipe in this month's Chef's Corner. Try your hand at your own SPAM® creations in preparation for the big event.

To prepare for the festival, the two mauka lanes of Kalakaua will close at 1 p.m. between Lewers Street to Kaiulani Avenue before the street is closed off completely at 2 p.m. Preferential parking rates are being offered at the Waikiki Trade Center, Waikiki Beach Walk, Waikiki Galleria, Bank of Hawaii Waikiki Parking, OHANA Waikiki East Hotel, Embassy Suites Waikiki Beach Walk and the Royal Hawaiian Center subject to availability.

For those interested in SPAM® logo items, there will be two official merchandise tents set up offering a variety of merchandise including t-shirts, to shorts, to sport balls and slippers. Many of these items sell out each year, so if that is what you or your guests are interested in, be sure to head directly to those tents when they first open at 4 p.m. Admission is free and all proceeds generated by the event will benefit the Hawaii Foodbank. For more details, head to [spamjamhawaii.com](http://spamjamhawaii.com). ~ PAM

NWL

NAILS WAX LASHES

Waikiki Grand Hotel (across Honolulu Zoo)

808.922-NAIL (6245) [www.NWLhawaii.com](http://www.NWLhawaii.com)

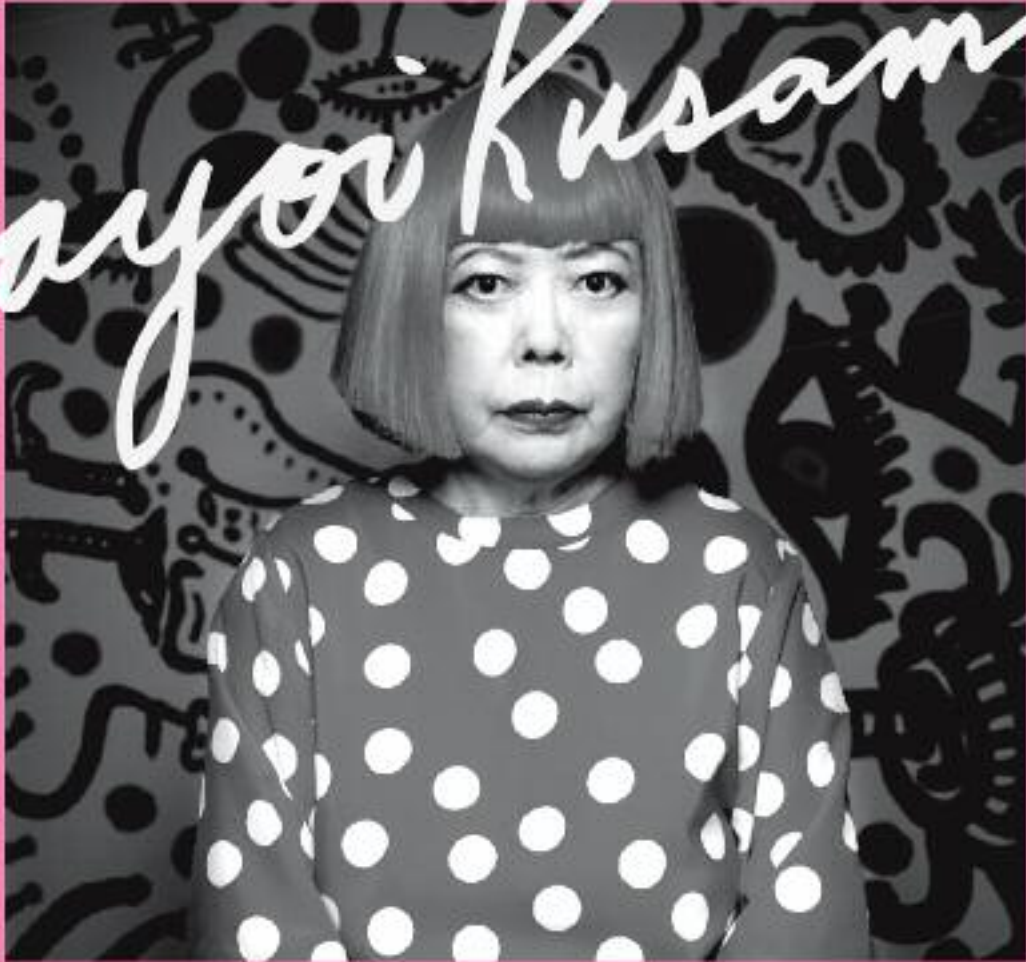
CONCIERGE 20% OFF

mention this ad and show business card & ID  
walk ins welcome, appointments preferred





*Yayoi Kusama*



- FOOTPRINTS OF LIFE -  
ART EXHIBIT

MARCH 8<sup>TH</sup> - MAY 13<sup>TH</sup>, 2016  
10AM - 5PM

IBM BUILDING COURTYARD  
[WARDVILLAGE.COM/KUSAMA](http://WARDVILLAGE.COM/KUSAMA)

#KUSAMAATWARD #WEAREWARD

*Howard Hughes.*

HONOLULU  
BIENNIAL  
FOUNDATION

Star★Advertiser



# Concierge by Day...

continued from page 1

**IL LUPINO**  
TRATTORIA & WINE BAR



Bruschetta Skewers

**15% OFF FOR ALL CONCIERGES & GSA**  
Il Lupino is pleased to extend a 15% discount to all Concierges and Guests Services Staff (Front Desk, Valet, Parkers, etc.). Must show your work I.D. or business card to receive the discount. Not applicable on liquor or specials.

ROYAL HAWAIIAN CENTER • VALIDATED PARKING  
breakfast • lunch • tapas • dinner  
www.ilupino.com • 808.922.3400



Kasi at her desk at Vive Hotel

only have one – and me. And that band actually survived for a handful of months!” They both laugh. “It was weird”, said Jessie, “but it was fun. When that band fell apart, we were like, fine, we’re the band – we’ll just

keep going”. The band has since been through several reincarnations over the years. Known as X Factor for a number of years they moved to Los Angeles to cut their first record but moved back to the island in July of 2008 and have been known as the Kings of Spade ever since. Apparently Simon Cowell had forgotten to check with them before launching the TV show with the same name.

These days there are four of them in the band. In addition to Jessie and Kasi, Matty Kato plays drums and Tim Corker is on bass. When it comes to their day jobs, they all pick them based on flexibility. “I used to only work restaurant jobs,” Jessie says, “because that’s the kind of job you can get someone to cover your shifts.” All of their jobs are flexible. Matty works a surf instructor and Tim bartends at the Hard Rock Café.

Throughout it all, it’s been Kasi and Jessie since day one, and the depth of their friendship is obvious. They are clearly the best of friends and often finished each others sentences, so it’s actually not that surprising that both ended up in concierge positions. “I didn’t even know what a concierge was,” says Kasi. “I had worked with this one bar manager before, [then she got a job managing at Hotel Renew] and on my off nights, I would help her fill in some shifts at the hotel bar.” Soon after the management team took over the Vive Hotel and took everyone with them but Kasi. The manager called Kasi up and said I don’t have a bar for you, but I need a concierge... would you be interested in trying it? She remembers calling Jessie. “Hey I got a job as a concierge!” He responded “That’s great. What do you do?” She didn’t know, but she was game to try, and taught herself the ropes on the job. These days she loves her job and it shows. A quick look at her reviews online shows she’s a natural on the desk and her guests speak very highly of her. They talk about how she’s always ready with a smile and how refreshing it is to see someone who really enjoys her job. Several said it seems more like a local giving them an inside scoop over someone just doing their job, and after talking to her that’s how she often views it. She tries to figure out what the people want to do and helps direct them towards what it sounds as if they might enjoy. One guest went so far as to call her phenomenal and stated she gave some of the best customer service they had ever seen. The mohawk doesn’t hurt. Customers are clearly fascinated with her brightly colored do, and pictures of her at work pop up online frequently. Kasi is quick to point out that she has the coolest boss in the world, because she simply wouldn’t work there if she couldn’t be herself.

A few months after Kasi got the job at Vive

Hotel, Jessie came along an opportunity to work with Elite Concierge and loves it. When asked what his top three activities are, Jessie swears by Blue Hawaiian Helicopter Tours as his number one go to activity to recommend. He’s also a fan of Ocean Joy snorkel cruises and E Noa Tours. When it comes to his recommendations, the way the tours are managed are key. If he’s never had an issue with them, neither has his guest, and their experience is paramount.

Whereas Kasi agrees about E Noa being very well managed, her top three differ slightly. Her number one recommendation is Kualoa Ranch, but it’s followed closely by EO Waianae dolphin tours. It’s not surprising that this Waianae girl loves to promote this Hawaiian owned company that showcases the beauty of her childhood home. Like Jessie, a helicopter tour rounds out her list.

Flexibility is key. They’re both upfront when they apply for any position that when they get the call to go on tour, they can get written off the schedule. Kasi says, “When I’m here I’ll be the best employee you have but when the band does something, I need to be with the band.” Jessie concurs, stating, “If you hire me you know that about me.



Jessie at his desk with Elite

That comes with it.” Besides, he says, “I have the most amazing boss. She’s just awesome. She really makes me want to come into work and do a good job so I can produce for her.” That work ethic is paying off for them both, as they both seem to be able to come and go as necessary when the opportunity to tour comes around.

Life is busy for these guys. In addition to working 4 to 5 days a week at the desk, they both have second jobs, Kasi as a bartender and Jessie as a DJ, and are both in long term relationships. Fresh off their west coast tour complete with a bucket list gig of playing to a sold out crowd at the world famous Whiskey a Go Go in West Hollywood, they’re settling down a bit to focus on writing their next album. Although the music is a team effort, Kasi says the initial burst of creativity usually comes from Jessie. When it comes to writing the lyrics, however, that’s all Kasi. Although she had never written a song before the band, she spent some time doing slam poetry and the process works well for her. Well, at least it does when she has something to push against. Jessie teases her about being too happy to write quickly these days. “Why do you need negativity to create?” she laughs, and then agrees. “I can write so fast when I’m not happy.”

When it comes to where they live however, Kasi is perfectly happy staying put. They tried the whole moving to the mainland thing several years ago. “Never again,” says Kasi. “I hated it. I’m from here. I feel like you can make it from wherever you’re from.”

“We don’t have to move, but we do have to travel,” Jessie says. “The point is we do what we love... and we live where we love to live.” What’s that saying... Don’t mess with a good thing? It’s working for them, so why change it?

To learn more about the Kings of Spade head to their website at [kingsofspade.com](http://kingsofspade.com). ~ Pam

**Whales Guaranteed**

See whales or come again free on seasonal whale-watch cruises Dec.-April. Door-to-door transportation included. Family-owned company with ocean activities for all ages.



WHALES GUARANTEED or come again for free!

WAIKIKI • WAIANAЕ • HILTON PIER

Sail • Snorkel • Dolphins • Turtles • Whales • Scuba • Fireworks Dinner • Private Charter • Transportation

**234-SAIL**  
(7245)

WE ANSWER 24 HOURS!  
[hawaiinautical.com](http://hawaiinautical.com) HawaiiNautical

**DISCOUNT HAWAII CAR RENTAL**

**SAVE UP TO 50%**



GUARANTEED RESERVATIONS  
\* NO BOOKING FEES \* NO DEPOSIT \* CANCEL ANYTIME  
\* NATIONAL RENTAL COMPANIES

call us today @  
**1.800.292.1930**  
or check us out online:  
**DiscountHawaiiCarRental.com**





# Chef's Corner

## Duke's Waikiki Executive Chef Keith Kong

This local boy has been running the culinary show of this well known Waikiki eatery for 15 years. In addition to keeping the food first and foremost in visitors minds, he's also always trying to make the restaurant more sustainable behind the scenes and has been using special compost machines with Outrigger Hotels that has resulted in a 60% reduction in food waste since the pilot program began. They are also taking a larger role in this month's SPAM Jam for the first time.

### What is your first childhood food memory?

I remember making hot and sour soup with my mom when I was around 9 years old.

### When did you know you wanted to be a chef?

I was in my second year of college and started cooking for my roommates.

### What was your first job in the industry?

I started washing dishes and worked my way up the ladder.

### Who would you consider your mentor and why?

Chef Jill and Chef Shannon hired me as a dishwasher and I was hooked immediately

### Where do you find your culinary inspiration?

In using the fresh local produce and seafood that our Island provides

### Favorite ingredient you like to work with and why?

I love lamb, especially when you cook it perfect medium rare and allow it to rest before serving.

### What's the one thing about working as a chef that people would be surprised to learn?

We spend a lot of time of managing people.

### Is there one dish you tasted that stands out above any other? Why? What made it so special?

My father's smoked salmon. He perfected the recipe over many years and he slices is very thin so it melts on your mouth.

### How did you get to Duke's and how long have you been there?

A yoga class and a hand shake, and I'm still running this beast 15 years later.

### How are you making your mark there?

Developing my team and improving the quality of their lives.

### How would you describe your style of cooking?

Consistent, familiar food with a local twist.

### What three things should a home cook always have on hand.

Olive oil, salt and pepper. That is all you need to make food taste good.

### What do you cook at home that you never cook at the restaurant?

Ribollita, an Italian vegetable soup.

### What would we find in your refrigerator at home?

Cheese, cheese and more cheese.

### What are you making for Spam Jam?

Korean Spam Street Taco.

### How do you approach creating a dish for that event?

Highlight the spam, make it fun and easy to eat.

### What do you like to do on your time off?

Rest. This is a big job.

### What's the best advice you could give an aspiring culinary student

Get the fundamentals of cooking down, walk before you run.

### Is there any other information about yourself that you want to share with our readers?

I was a professional breakdancer in high school and college!

## Korean Spam Street Taco



### Ingredients:

- |                           |                         |                           |          |
|---------------------------|-------------------------|---------------------------|----------|
| 1 can SPAM,               | cut into 1/2 inch cubes | 1/4 cup red cabbage,      | shredded |
| 8 corn tortilla           | 6 inch each             | 1/4 cup won bok cabbage,  | shredded |
| 1 tablespoon salad oil    |                         | 1 tablespoon kim chee     | base     |
| 1/4 cup red onion, sliced |                         | 1/4 cup rice wine vinegar |          |
| 1/4 cup carrot,           | peeled and shredded     |                           |          |

### Directions:

- Place a frying pan on medium heat and add oil
- Carefully place spam in pan and allow to lightly caramelize
- Turn pieces over and repeat, then remove from heat
- Combine remaining ingredients in a mixing bowl and mix well to coat evenly
- Lightly steam or fry the tortillas until soft
- Divide spam into 4 double stacked tortillas to prevent breaking
- Top each taco with slaw mix
- Optional: drizzle on kalbi sauce and salsa verde for a bold kick

Duke's Waikiki is located in the lobby of the Outrigger Waikiki

Breakfast Buffet: 7:00 a.m. - 10:30 a.m. Lunch from 11:00 a.m. Lunch Buffet: 11:30 a.m. - 2:30 p.m. Dinner: 4:45 p.m. - 10:00 p.m. Barefoot Bar: 11:00 a.m. - Midnight. Ph: 922-2268  
Web: [dukeswaikiki.com](http://dukeswaikiki.com) • Facebook: /DukesWaikiki • Twitter/Instagram: @DukesWaikiki



**GOSPEL BRUNCH**  
FEATURING  
**THE BLUE NOTE**  
GOSPEL CHOIR  
EVERY SUNDAY.  
DOORS AT 11:00AM  
SHOW AT 1:00PM



“AN INTERNATIONAL CAST OF EXTRAORDINARY VOCALISTS AND MUSICIANS”

An international cast of extraordinary vocalists and musicians here to lead to cover the most moving gospel choir in the Pacific Rim. Join us for the grand spectacle of Duke's Waikiki Sunday Gospel Brunch on March 27th. Some songs will be specially written from our award-winning chef while the rest will be made of the Blue Note Gospel Choir's own soul and grace.

\$47.00 INCLUDES BRUNCH & SHOW

KAMA'AINA DISCOUNT: SAVE 15% WITH CODE MAHALO15

## MENU

### CHOICE OF

- BLOODY MARY
- MEMOSA
- HOUSE RED OR WHITE WINE
- BEER
- ORANGE JUICE
- GUAVA JUICE

### START WITH

FRESH FRUIT MEDLEY

### CHOICE OF ONE ENTRÉE

- MAUI PINEAPPLE UPSIDE DOWN PANCAKE with Maple Syrup & Blueberry
- HAWAIIAN KING SWEET BREAD ROLL FRENCH TOAST with Mac 'n' Cheese Sauce
- KALBI BIG HASH WITH TWO EGGS ANY STYLE
- CRAB CAKE EGGS BENEDICT with Hot Honey Hollandaise
- FRIED RICE LOCO MOCO with Spicy Sauce
- CHEF'S SPECIAL THREE EGG OMELETTE with or without Sausage with Jalapenos, Spinach, Tomatoes, Bell Pepper and Cheddar Cheese

INCLUDES COFFEE, SODA AND ICED TEA

[www.bluenotehawaii.com](http://www.bluenotehawaii.com) | 808-777-4890  
Located in the Outrigger Waikiki Beach Resort



# Let's be Together...

DINING ▸ ENTERTAINMENT ▸ PAU HANA ▸ EAT ▸ DRINK ▸ BE MERRY ▸ HAPPY HOUR

## MONDAY

**Barefoot Beach Café at Queen's Beach** 924-2233  
*Contemporary Ukulele*  
 Shaka Madali 5:30-8:30pm

**Chart House Waikiki** 941-6660  
*Live Contemporary Hawaiian*  
 Tito Berinobis & David Kauahikaua 6:30-9:30pm

**Cheesecake Factory** 924-5001  
*Classic Hawaiian*  
 Christian Yrizarry Duo 8-11pm

**Duke's Canoe Club Waikiki** 922-2268  
*Live Contemporary Hawaiian*  
 Taz Vegas 4-6pm  
 Ellsworth Simeona 9:30-12am

**Hard Rock Cafe** 955-7383  
*Bluesy Mondays*  
 Bluezilla (artists vary) 9-11pm

**House Without a Key** 923-2311  
*Live Hawaiian & Hula by Skyler Kamaka*  
 DeLima Ohana 5:30 - 8:00pm

**Hula Grill** 923-HULA  
*Live Contemporary Hawaiian*  
 Eric Lee 7-9pm

**Kani Ka Pila Grille** 924-4992  
*Live Contemporary Hawaiian*  
 Bryan Tolentino 3-5pm  
 Sean Naauao 6-9pm

**LBLE at the Hilton Waikiki Beach Hotel** 922-0811  
*Live Contemporary Acoustic Hits*  
 Johnny Helm 6-9pm

**Lewers Lounge** 923-2311  
*Live Contemporary & Light Jazz*  
 Noly Pa'a 8:30-12:30am

**LuLu's** 926-5222  
*Live Contemporary*  
 Johnny Helm 6:30-9:30 p.m.

**Mai Tai Bar at the Royal Hawaiian** 923-7311  
*Live Contemporary Hawaiian with Hula Dancer*  
 Dave Watanabe 8-10 p.m.

**Rumfire** 921-4600  
*Live Contemporary Hawaiian*  
 Jeremy Cheng 5-8pm

**Signature Prime Steak** 949-3636  
*Contemporary Pianist in the bar*  
 Isao Motomochi 6-9pm

**Sky Waikiki** 979-7590  
*Live Contemporary*  
 Yoza 6-9pm

**Sunrise Pool Bar at the Modern** 943-5800  
*Live Contemporary*  
 Alex Oasay 5-8pm

**The Edge at the Sheraton** 921-4600  
*Live Hawaiian music with a firedancer at 7:30 p.m.*  
 Dave Watanabe 1:30-3:30pm  
 Ka'ala Boys 6:30-8:30pm

**The Study at the Modern** 943-5800  
*Live Contemporary Hawaiian*  
 Kaleo 7-10pm

**Tiki's Grill & Bar** 923-TIKI  
*Live Contemporary Hawaiian*  
 Kapu the Band 6-8:30pm  
 The Kristi Masuhara Band 9-11pm

**Tropics Bar & Grill** 949-4321  
*Live Contemporary Hawaiian*  
 Acoustik Playground 5:30-8:30pm

## TUESDAY

**Barefoot Beach Café at Queen's Beach** 924-2233  
*Contemporary Ukulele*  
 Shaka Madali 5:30-8:30pm

**Bin1901 at the Moana** 921-4600  
*Piano Wine Bar*  
 Scott Smith 6:30-9:30pm

**Chart House Waikiki** 941-6660  
*Live Contemporary Hawaiian*  
 The Camarillo Brothers 6:30-9:30pm

**Cheesecake Factory** 924-5001  
*Classic Hawaiian*  
 Beau Cody Duo 8-11pm

**Duke's Canoe Club Waikiki** 922-2268  
*Live Contemporary Hawaiian*  
 Sam & Haumea 4-6pm  
 Ellsworth Simeona 9:30-12am

**Hard Rock Cafe** 955-7383  
*Live Contemporary*  
 Saloon Pilots (or others) 9-11pm

**House Without a Key** 923-2311  
*Live Hawaiian & Hula by Radasha Ho'ohuli*  
 Po'okela 5:30 - 8:00pm

**Hula Grill** 923-HULA  
*Live Contemporary Hawaiian*  
 Kamuela Kahoano 7-9pm

**Kani Ka Pila Grille** 924-4992  
*Live Contemporary Hawaiian*  
 Del Beasley 3-5pm  
 Weldon Kekauoha 6-9pm

**LBLE at the Hilton Waikiki Beach Hotel** 922-0811  
*Live Contemporary Funk, Jazz, Hip Hop & Reggae*  
 Jason Laeha 6-9pm

**Lewers Lounge** 923-2311  
*Live Contemporary & Light Jazz*  
 Maggie Herron & Rocky Holmes 8:30-12:30am

**LuLu's** 926-5222  
*Live Contemporary*  
 Johnny Helm 6-9pm

**Mai Tai Bar at the Royal Hawaiian** 923-7311  
*Live Contemporary Hawaiian with Hula Dancer*  
 Kapala Duo 6:30-9:30pm

**Rumfire** 921-4600  
*Live Contemporary Rock*  
 Randy Allen 5-8pm

**Signature Prime Steak** 949-3636  
*Contemporary Pianist in the bar*  
 James Woo 6-9pm

**Sky Waikiki** 979-7590  
*Live Contemporary*  
 John Akapo 6-9pm

**Sunrise Pool Bar at the Modern** 943-5800  
*Live Contemporary Hawaiian*  
 Cory Oliveros 5-8pm

**The Edge at the Sheraton** 921-4600  
*Live Hawaiian music with a firedancer at 7:30 p.m.*  
 Eric Lee 1:30-3:30pm  
 Ho'okani Duo 6:30-8:30pm

**The Study at the Modern** 943-5800  
*Live Contemporary Hawaiian*  
 Alex Oasay & Jeremy Cheng 7:30-10:30pm

**Tiki's Grill & Bar** 923-TIKI  
*Live Hawaiian - \$2 Taco Tuesdays*  
 K.B. Riley 5:30-8:30pm  
 Sani & Friends 9-11pm

**Tropics Bar & Grill** 949-4321  
*Live Contemporary Hawaiian*  
 Kailua Bay Buddies 5:30-8:30pm

## WEDNESDAY

**Barefoot Beach Café at Queen's Beach** 924-2233  
*Instrumental Ukulele*  
 Paul Wilcox 5:30-8:30pm

**Bin1901 at the Moana** 921-4600  
*Piano Wine Bar*  
 Scott Smith 6:30-9:30pm

**Chart House Waikiki** 941-6660  
*Live Contemporary Hawaiian*  
 Tito Berinobis & David Kauahikaua 6-10:30pm

**Cheesecake Factory** 924-5001  
*Classic Hawaiian*  
 Kimo Artis Duo 8-11pm

**Duke's Canoe Club Waikiki** 922-2268  
*Acoustic, Soul, R&B*  
 Haumea Warrington 4-6pm  
 Ellsworth Simeona 9:30-12am

**Gordon Biersch** 599-4877  
*Jazz Wednesdays*  
 Varying Artists 6:30-9:30pm

**Hard Rock Cafe** 955-7383  
*Live Contemporary*  
 Da Push-O-Verse 9-11pm

**House Without a Key** 923-2311  
*Live Hawaiian & Hula by Lauren Matsumoto*  
 Pa'ahana 5:30 - 8:00pm

**Hula Grill** 923-HULA  
*Live Contemporary Music*  
 Brandon Serrano 7-9pm

**Hy's Steak House** 922-5555  
*Live Soft Contemporary*  
 Audy Kimura 6:30-10pm

**Jimmy Buffett's at the Beachcomber** 791-1200  
*Live Contemporary Hawaiian*  
 Shawn Garnet 7:00-9:30pm

**Kani Ka Pila Grille** 924-4992  
*Live Contemporary Slack Key*  
 Ben & Malia 3-5pm  
 Cyril Pahinui 6-9pm

**LBLE at the Hilton Waikiki Beach Hotel** 922-0811  
*Live Contemporary Funk, Jazz, Hip Hop & Reggae*



# E Pili Kākou

DINING ▶ ENTERTAINMENT ▶ PAU HANA ▶ EAT ▶ DRINK ▶ BE MERRY ▶ HAPPY HOUR

Soul Tree Music Factory 6-9pm  
**Lewers Lounge** 923-2311  
*Live Contemporary & Light Jazz*  
 Maggie Herron & Rocky Holmes 8:30-12:30am  
**LuLu's** 926-5222  
*Live Contemporary Hawaiian*  
 Jason Lehua 10-12:30am  
**Mai Tai Bar at the Royal Hawaiian** 923-7311  
*Live Contemporary Hawaiian with Hula Dancer*  
 Eric Lee Duo 6:30-9:30pm  
**Roy's Hawaii Kai** 396-7697  
*Acoustic & Slack Key Top 40*  
 Dayton Watanabe 6:30-9:30pm  
**Rumfire** 921-4600  
*Live Contemporary Hawaiian*  
 Alex Oasay 5-8pm  
**Signature Prime Steak** 949-3636  
*Contemporary Pianist in the bar*  
 Pierre Grill 6-9pm  
**Sky Waikiki** 979-7590  
*Live Contemporary*  
 Randy & Kanoe 6-9pm  
**SWIM at the Hyatt** 923-1234  
*Contemporary Classic*  
 Kailua Bay Buddies 6-9pm  
**Sunrise Pool Bar at the Modern** 943-5800  
*Live Contemporary Hawaiian*  
 Tahiti Rey & Sean Cleland 5-8pm  
**The Edge at the Sheraton** 922-4422  
*Live Hawaiian music with a firedancer at 7:30 p.m.*  
 Albert Maligmat 1:30-3:30pm  
 Keoni Ku Duo 6:30-8:30 pm  
**The Study at the Modern** 943-5800  
*Live Contemporary Hawaiian*  
 Melanie and Drew 6:30-9:30pm  
**Tiki's Grill & Bar** 923-TIKI  
*Live Contemporary - 1/2 off Wine Wednesdays*  
 Canoes for Rent 5:30-8:30pm  
 Johnny Helm 9-11pm  
**Tropics Bar & Grill** 949-4321  
*Live Contemporary Rock*  
 Acoustik Playground 5:30-8:30pm

## THURSDAY

**Barefoot Beach Café at Queen's Beach** 924-2233  
*Instrumental Ukulele*  
 Paul Wilcox 5:30-8:30pm  
**Bin1901 at the Moana** 921-4600  
*Piano Wine Bar*  
 Scott Smith 6:30-9:30pm  
**Chart House Waikiki** 941-6660  
*Live Contemporary Hawaiian*  
 Alika Souza Duo 6:30-10pm  
**Cheeseburger Waikiki** 941-2400  
*Contemporary / Old School Rock*  
 Jeremy Chang 6:30-9:30pm  
**Cheesecake Factory** 924-5001  
*Classic Hawaiian*  
 Alika Souza Duo 8-11pm

Tons of Aloha (4/7, 4/21) 8-11pm  
**Duke's Canoe Club** 922-2268  
*Live Contemporary Hawaiian*  
 Haumea Warrington 4-6pm  
 Randy and Kanoe (or others) 9:30-12am  
**Gordon Biersch** 599-4877  
*Live Contemporary Funk and Classics*  
 Acoustic Playground 7-10:30pm  
**Hard Rock Cafe** 955-7383  
*Live Contemporary*  
 Kailua Bay Buddies 9-11pm  
**House Without a Key** 923-2311  
*Live Hawaiian & Hula by Radasha Ho'ohuli*  
 Pa'ahana 5:30 - 8:00pm  
**Hula Grill** 923-HULA  
*Live Contemporary Hawaiian*  
 Kamuela Kahoano 7-9pm  
**Hy's Steak House** 922-5555  
*Live Soft Contemporary*  
 Audy Kimura 6:30-10pm  
**Kani Ka Pila Grille** 924-4992  
*Live Contemporary Hawaiian*  
 Jeff Rasmussen & Robi 3-5pm  
 Kawika Kahiapo 6-9 pm  
**LBLE at the Hilton Waikiki Beach Hotel** 922-0811  
*Live Contemporary Pop/Rock*  
 Sunway 6-9pm  
**Lewers Lounge** 923-2311  
*Contemporary Jazz*  
 Maggie Herron & Rocky Holmes 8:30-12:30am  
**LuLu's** 926-5222  
*Live Contemporary Hawaiian*  
 Local Uprising 6-9pm  
**Mai Tai Bar at the Royal Hawaiian** 923-7311  
*Live Contemporary Hawaiian with Hula Dancer*  
 Delima Ohana 6:30-9:30pm  
**Michel's at the Colony Surf** 923-6552  
*Live Slack Key*  
 Jeff Peterson 7:30-10:00pm  
**Roy's Hawaii Kai** 396-7697  
*Acoustic Hawaiian Guitar*  
 Steve English 6:30-9:30pm  
**Rumfire** 921-4600  
*Live Contemporary Rock*  
 Johnny Helm 5-8pm  
**Signature Prime Steak** 949-3636  
*Contemporary Pianist in the bar*  
 Isao Motomochi 6-9pm  
**Sky Waikiki** 979-7590  
*Live Contemporary*  
 Tahiti Rey 6-9pm  
**Sunrise Pool Bar at the Modern** 943-5800  
*Live Contemporary Hawaiian*  
 Christian Yrizarry Duo 5-8pm  
**SWIM at the Hyatt** 923-1234  
*Contemporary Classic*  
 Acoustik Playground 6-9pm  
**The Edge at the Sheraton** 921-4600  
*Live Hawaiian music with a firedancer at 7:30 p.m.*  
 Ellsworth Simeona 1:30-3:30pm  
 Christian Yrizarry Duo 6:30-8:30pm

**The Study at the Modern** 943-5800  
*Live Contemporary Hawaiian*  
 Simple Souls 6:30-9:30pm  
**Tiki's Grill & Bar** 923-TIKI  
*Hot Hula Thursdays - hula dancers perform*  
 Malu the Band 5:30-7:30pm  
 Ellsworth Simeona 8:30-11:30pm  
**Tropics Bar & Grill** 949-4321  
*Live Contemporary Hawaiian*  
 Nohelani Cypriano 5:30-8:30pm

## FRIDAY

**Barefoot Beach Café at Queen's Beach** 924-2233  
*Live Contemporary Hawaiian with Beach BBQ*  
 Art Kalahiki & Friends 5:30-8:30pm  
**Bin1901 at the Moana** 921-4600  
*Piano Wine Bar*  
 Scott Smith 6:30-9:30pm  
**Chart House Waikiki** 941-6660  
*Live Contemporary Hawaiian*  
 Mark Yim's Pilikia I 6-9pm  
 Mark Yim's Pilikia II 9:30-12:30am  
**Cheeseburger Waikiki** 941-2400  
*Contemporary Hawaiian*  
 Alex or Aku 6:30-9:30pm  
**Cheesecake Factory** 924-5001  
*Classic Hawaiian*  
 Johnny Helm Duo 8:00-11:00pm  
**Dave & Busters** 589-2215  
*Pau Hana Fridays Live Local Bands*  
 Varying Hawaiian Artists 6-8pm  
**Duke's Canoe Club Waikiki** 922-2268  
*Live Contemporary Hawaiian*  
 Maunalua 4-6pm  
 Keith Omizo Duo (4/1) 9:30 -12am  
 Derrick Lee Duo (4/8) 9:30 -12am  
 Christian Yrizarry Duo (4/15) 9:30 -12am  
 Kona Chang Duo (4/22) 9:30 -12am  
 Chris Mercado Duo (4/29) 9:30 -12am  
**Giovanni Pastrami** 923-2100  
*Live Acoustic*  
 Varying Artists 10pm-last call  
**Gordon Biersch** 599-4877  
*Live Contemporary, R&B, Funk*  
 Ben & Malia 5:30-9pm  
 Mojo 9 - 12:30am  
**Hard Rock Cafe** 955-7383  
*Live Contemporary*  
 The Fresh Preps 10-12am  
**House Without a Key** 923-2311  
*Live Hawaiian & Hula by Kanoe Miller*  
 Hiram Olsen Trio 5:30 - 8:00pm  
**Hula Grill** 923-HULA  
*Aloha Friday Lunch Luau with hula dancer*  
 David Asing 12:30-2:30pm  
 Keoki & Russell 7-9pm  
**Hy's Steak House** 922-5555  
*Live Soft Contemporary*  
 Audy Kimura 6:30-10pm



# Let's be Together...

DINING ▸ ENTERTAINMENT ▸ PAU HANA ▸ EAT ▸ DRINK ▸ BE MERRY ▸ HAPPY HOUR

<b>Hard Rock Cafe</b>	955-7383	<i>Live Contemporary</i>	<i>Beach BBQ with Live Contemporary Hits</i>		<b>Rumfire</b>	921-4600
The Fresh Preps	10pm-12am		Chris Salvador	5:30-8:30pm	<i>Live Contemporary Rock</i>	
<b>Kani Ka Pila Grille</b>	924-4992		<b>Bin1901 at the Moana</b>	921-4600	Tavana McMoore	5-8pm
<i>Live Hawaiian Contemporary</i>			<i>Piano Wine Bar</i>		<b>Signature Prime Steak</b>	949-3636
Christian Yrizzary	3-5pm		Scott Smith	6:30-9:30pm	<i>Contemporary Pianist in the bar</i>	
Ho'okena	6-9pm		<b>Chart House Waikiki</b>	941-6660	Grant Carvalho	6-9pm
<b>LBL at the Hilton Waikiki Beach Hotel</b>	922-0811		<i>Live Contemporary Hawaiian</i>		<b>Sky Waikiki</b>	979-7590
<i>Live Contemporary Pop/Rock</i>			Tito Berinobis & Billy Beimes	7-12pm	<i>Live Contemporary</i>	
Sunway	6-9pm		<b>Cheeseburger Waikiki</b>	941-2400	John Akapo	6-9pm
<b>Lewers Lounge</b>	923-2311		<i>Contemporary Hawaiian</i>		<b>Sunrise Pool Bar at the Modern</b>	943-5800
<i>Live Contemporary Jazz</i>			Alex or Aku	6:30-9:30pm	<i>Live Contemporary Hawaiian</i>	
Maggie Herron & Rocky Holmes	8:30-12:30am		<b>Cheesecake Factory</b>	924-5001	Kainalu	5-8pm
<b>LuLu's</b>	926-5222		<i>Classic Hawaiian</i>		<b>SWIM at the Hyatt</b>	923-1234
<i>Live Contemporary Hawaiian</i>			Dennis McClees Duo	8-11pm	<i>Contemporary Acoustic</i>	
Manoa DNA	6-9 p.m.		<b>Duke's Canoe Club Waikiki</b>	922-2268	Randy Allen & Kanoe Gibson	5 - 8pm
Vinyl Wine	10-12:30am		<i>Live Hawaiian Entertainment</i>		<b>The Edge at the Sheraton</b>	921-4600
<b>Mai Tai Bar at the Royal Hawaiian</b>	923-7311		Beach 5 (4/2)	4-6pm	<i>Live Hawaiian music with a fire dancer at 7:30 p.m.</i>	
<i>Live Contemporary Hawaiian with Hula Dancer</i>			Vaihi (4/9)	4-6pm	Tino Jacobs Duo	6:30-8:30pm
Kapala Duo	6:30-9:30pm		Kailua Bay Buddies (4/16)	4-6pm	<b>Tiki's Grill &amp; Bar</b>	923-TIKI
<b>Michel's at the Colony Surf</b>	923-6552		Kapena (4/23)	4-6pm	<i>Live Contemporary Hawaiian &amp; Reggae</i>	
<i>Live Slack Key Stylings &amp; Jazz</i>			Kaiona (4/30)	4-6pm	Johnny Helm	5-7pm
Jeff Peterson & Ernie Provencher	6:30-10pm		Camarillo Brothers	9:30-12am	Guidance	7:30-9:30pm
<b>Roy's Hawaii Kai</b>	396-7697		Darrell Aquino Duo (4/9, 4/23)	9:30-12am	Ellsworth & Piko	10-midnight
<i>Keyboardist</i>			<b>Giovanni Pastrami</b>	923-2100	<b>Tropics Bar &amp; Grill</b>	949-4321
Brian Robert Shaw	6:30-9:30pm		<i>Live Acoustic</i>		<i>Live Contemporary Hawaiian</i>	
<b>Roy's Ko Olina</b>	676-7697		Varying Artists	10pm-last call	Henry Kaponu	4-6pm
<i>Slack Key Guitar</i>			<b>Hard Rock Cafe</b>	955-7383	Juke Joint	6:30-9:30pm
Chris Rego	5:30-8pm		<i>Live Contemporary</i>			
<b>Rumfire</b>	921-4600		EMKE	10-12am		
<i>Live Contemporary Rock</i>			<b>House Without a Key</b>	923-2311		
Tim Rose	5-8pm		<i>Hawaiian &amp; Hula by Kanoe Miller</i>			
<b>Signature Prime Steak</b>	949-3636		Hiram Olsen Trio	5:30 - 8:00pm		
<i>Contemporary Pianist in the bar</i>			<b>Hula Grill</b>	923-HULA		
Grant Carvalho	6-9pm		<i>Live Traditional Hawaiian with dancer</i>			
<b>Sky Waikiki</b>	979-7590		Kaipo Dabin & friends	7-9pm		
<i>Live Contemporary</i>			<b>Hy's Steak House</b>	922-5555		
John Akapo	5-8pm		<i>Live Soft Contemporary</i>			
<b>SWIM at the Hyatt</b>	923-1234		Audy Kimura	6:30-10pm		
<i>Contemporary Classic</i>			<b>Kani Ka Pila Grille</b>	924-4992		
Taimane	6-7pm		<i>Live Contemporary Hawaiian</i>			
<b>The Edge at the Sheraton</b>	921-4600		Bryan Tolentino	3-5 pm		
<i>Live Hawaiian music with a fire dancer at 7:30 p.m.</i>			Ka Hehena	6-9pm		
Brad Kawakami	1:30-3:30pm		<b>LBL at the Hilton Waikiki Beach Hotel</b>	922-0811		
Delima Ohana Duo	6:30-8:30pm		<i>Live Contemporary Blues &amp; R&amp;B</i>			
Alika Souza (4/8)	6:30-8:30pm		YOZA	6-9pm		
<b>The Study at the Modern</b>	943-5800		<b>Lewers Lounge</b>	923-2311		
<i>Live Contemporary Hawaiian</i>			<i>Live Contemporary Jazz</i>			
Tahiti Rey	6:30-9:30pm		Maggie Herron & Rocky Holmes	8:30-12:30am		
<b>Tiki's Grill &amp; Bar</b>	923-TIKI		<b>Mai Tai Bar at the Royal Hawaiian</b>	923-7311		
<i>Live Contemporary Hawaiian</i>			<i>Live Contemporary Hawaiian with Hula Dancer</i>			
Randy Allen	5-7pm		Kapala Duo	6:30-9:30pm		
Vaihi	7:30-9:30pm		<b>Michel's at the Colony Surf</b>	923-6552		
The Kristi Masuhara Band	10-12am		<i>Live Contemporary Slack Key &amp; Jazz</i>			
<b>Tropics Bar &amp; Grill</b>	949-4321		Jeff Peterson	7-11pm		
<i>Live Contemporary Hawaiian</i>			<b>Roy's Hawaii Kai</b>	396-7697		
Piranha Brothers	3:30-6:30pm		<i>Acoustic Guitar</i>			
Nohelani Cypriano	8:00-10:30pm		Jimmy Funai	6-9:30pm		
			<b>Roy's Ko Olina</b>	676-7697		
			<i>Slack Key Guitar</i>			
<b>Barefoot Beach Café at Queen's Beach</b>	924-2233		Chris Rego	5:30-8pm		

## SATURDAY

## SUNDAY

<b>Barefoot Beach Café at Queen's Beach</b>	924-2233
<i>Contemporary Ukulele</i>	
Shaka Madali	5:30-8:30pm
<b>Chart House Waikiki</b>	941-6660
<i>Live Contemporary Hawaiian</i>	
Dean & Dean	6-9pm
<b>Cheesecake Factory</b>	924-5001
<i>Classic Hawaiian</i>	
Chris Murphy Duo	8-11pm
<b>Duke's Canoe Club Waikiki</b>	922-2268
<i>Live Hawaiian Entertainment</i>	
Henry Kaponu	4-6pm
Kapena Delima	9:30-12am
Typical Hawaiians (4/10)	9:30-12am
Kimberly June (4/17)	9:30-12am
<b>Hard Rock Cafe</b>	955-7383
<i>Live Contemporary</i>	
Youth on Stage	12 noon
Analog	9-11pm
<b>House Without a Key</b>	923-2311
<i>Live Hawaiian &amp; Hula by Debbie Nakanelua</i>	
Pa'ahana	5:30 - 8:00pm
<b>Hula Grill</b>	923-HULA
<i>Live Traditional Hawaiian with dancer</i>	
Art Kalahiki Duo	7-9pm
<b>Kani Ka Pila Grille</b>	924-4992
<i>Live Contemporary Hawaiian Masters on stage</i>	
Brother Noland	6-9pm
Kamakakeahu Fernandez	3-5pm
Nathan Aweau	6-9pm
<b>Kelley O'Neil's</b>	926-1777



# E Pili Kākou

DINING ▶ ENTERTAINMENT ▶ PAU HANA ▶ EAT ▶ DRINK ▶ BE MERRY ▶ HAPPY HOUR

Live Irish Music		
Various Celtic Bands	4-7pm	
<b>LBLE at the Hilton Waikiki Beach Hotel</b>		922-0811
Live, Energetic Mix of Pop and Rock Hits		
Pushoverse	6-9pm	
<b>Lewers Lounge</b>		923-2311
Live Contemporary & Light Jazz		
Noly Pa'a	8:30pm - 12am	
<b>LuLu's</b>		926-5222
Acoustic R&B		
Simple Souz	7-10pm	
<b>Mai Tai Bar at the Royal Hawaiian</b>		923-7311
Live Contemporary Hawaiian with Hula Dancer		
Eric Lee Duo	6:30-9:30pm	
<b>Michel's at the Colony Surf</b>		923-6552
Classical Slack Key & Jazz Stylings		
Jeff Peterson	6-9pm	
<b>Roy's Ko Olina</b>		676-7697
Slack Key Guitar		
Chris Rego	5:30-8pm	
<b>Rumfire</b>		921-4600
Live Contemporary Hawaiian		
Kamuella Kahoano	5-8pm	
<b>Signature Prime Steak</b>		949-3636
Contemporary Pianist in the bar		
Isao Motomochi	6-9pm	
<b>Sky Waikiki</b>		979-7590
Live Contemporary		
Da Push-O-Verse	6-9pm	
<b>SWIM at the Hyatt</b>		923-1234
Contemporary, Pop, Rock		
Sunway	6 - 9pm	
<b>The Edge at the Sheraton</b>		922-4422
Live Hawaiian music with a fire dancer at 7:30 p.m.		
Ellsworth Simeona Duo	6:30-8:30pm	
<b>The Study at the Modern</b>		943-5800
Live Contemporary Hawaiian & Jazz		
Jeremy Cheng	6-9pm	
Smooth Jazz (vaying artists)	10-2am	
<b>Tiki's Grill &amp; Bar</b>		923-TIKI
Live Contemporary Hawaiian		
Vaihi	6-8pm	
Ellsworth & Piko	9-11pm	
<b>Tropics Bar &amp; Grill</b>		949-4321
Live Contemporary Rock & Hawaiian		
Piranha Brothers	2-5pm	
Beach 5	5:30 - 8:30pm	



## Hot Lines

Here's a few numbers for you to find out the latest in live music from places that change daily or don't update us regularly, since we can't possible list them all.

Gordon Biersch	599-4877
Irish Rose Saloon	947-3414
Kelley O'Neil's	926-1777
Mai Tai Bar Ala Moana	947-2900
Moose McGillycuddy's	923-0751

EVENTS ARE SUBJECT TO CHANGE WITHOUT NOTICE.

## Dining Dish



As many of you are aware, **Tsukiji's Fish Market** closed in the beginning of February after failing to negotiate a new lease with the Center. One of the largest all you can eat Korean BBQ chains in the United States, **Gen Korean BBQ**, has announced their plans to open its first Hawaii location in the space later this year. The popular mainland restaurant has eleven locations in California and one in Henderson, Nevada and sounds like it should be a big hit with the locals. More info to follow once it's released. [genkoreanbbq.com](http://genkoreanbbq.com).

Speaking of being a big hit with the locals, this next bit is for you. **Pieology**, another mainland based restaurant chain has opened its first Hawaii location in the Aina Haina Shopping Center. This casual take out or dine-in restaurant specializes in "The Study of Custom Pizza," in other words – you choose it all. From the crust to the sauce to the cheese to the toppings, you tell them exactly what you want, and toppings are unlimited. Same goes for the salads. Just tell them what you want. Gone is the added surcharge for each additional topping. As a matter of fact, the only surcharge I saw on the entire menu was add \$2 for a gluten-free crust. Sorry Aloha Salads and Whole Foods... I've had my last \$15 take out salad... Peiology here I come. Not only is it cost-effective at \$10.95 for a pizza and \$8.95 for a salad, but you get a ton of food – and its good! I mean, why wouldn't be? You create exactly what you want! Love it! I've been back a half a dozen times since it opened. [pieology.com](http://pieology.com).

It sounds as if its time for a lot of mainland restaurants to finally head over to the island. In the past few weeks it's been announced that **Five Guys Burgers and Fries**, **Sonic**, and **Dickey's Barbecue Pit** will be opening in the near future. Now if we can finally get an Olive Tree here. I may not eat there, but at least all those decades of seeing their commercials play on island will not have been wasted.

The food truck craze continues with the opening of **Street Food Stadium** in downtown Honolulu offering 10 pre-existing food trucks with short-term leases to chefs wanting to break into the food truck industry. Open daily from 11 a.m. - 10 p.m. [streetfoodstadium.com](http://streetfoodstadium.com).

**Bakery & Table** has finally opened in the former SubZero appliance showroom on Piikoi and King. I haven't been yet, but I'm hearing the chef from the recently shuttered (and now reopened) **Central Bakery** has moved over there. This is a point of contention between me and a few of my friends. I was thoroughly disappointed with every item he put out, but some of my other friends swear by his food. Somehow, somewhere, we simply went to different restaurants, I'm sure of it. I just don't understand that chef. On the bright side I'm hearing the renovation of the former kitchen showroom is beautiful and the staff and management is very well trained, so I eagerly anticipate checking the place out myself. Do me a favor, if you go and to check the place out, be sure to let me know what you think.

~ Pam



## Dining Calendar

**April 3, 17 & 24:** **Chuck Furuya Wine 401 classes** Learn from a master. Taste and discuss how wines work with food. \$25++. 4:30 p.m. 524-8466.

**April 4:** **Whisky 101** Hoku's will host a whisky seminar and tasting of eight different whiskeys each paired with a small plate. \$60++. 4-6 p.m. 739-8760

**April 10:** **Courtyard Brunch** at Ward Village: Food and Farmers Market set up in a chic tent area will follow a Kusama-theme these month. Free to enter, \$7 per ticket or pre-buy tickets for discounts. 10 a.m.- 1 p.m. [wardvillageshops.com](http://wardvillageshops.com).

**April 22:** **Fanta-Sea** The 2nd installment in Chef Colin Hazama's Table to Farm series starts with a dinner at Azure, followed by a tour of the United Fishing Agency at Pier 38 on Saturday, April 23. \$150 - \$250. 921-4600

**April 29:** **Friday Night Flights** at the Kahala Hotel has moved from the first Friday to the last Friday of the month. explores the wines of New York this month. The flight lands in Oceania, New Zealand and Australia this month. Taste areas wines paired with regional cuisine. \$50++ 6-9 p.m. 739-8760.



**BAREFOOT BEACH CAFE**

CASUAL BEACHFRONT DINING  
OPEN DAILY 7AM-8:30PM  
BREAKFAST, LUNCH, DINNER

SUNSETS SERVED DAILY  
LIVE MUSIC NIGHTLY, 5:30-8:30 PM

ON QUEEN'S BEACH  
@ LIFE GUARD STAND & F  
AT THE DIAMOND HEAD  
END OF WAIKIKI  
IN KAPIOLANI PARK, ACROSS  
FROM THE BANDSTAND



FULL MENU, CALENDAR, INFO:  
[BAREFOOTBEACHCAFE.COM](http://BAREFOOTBEACHCAFE.COM)  
808.924.2233 (CAFF)



# APRIL CALENDAR OF EVENTS

## Continuing Events

### MONDAY – FRIDAY LYON ARBORETUM TOURS

The lush gardens at the top of the University of Hawai'i Manoa are open for guided tours daily. Knowledgeable guides will introduce the highlights of the botanical rainforest's 193.6 acres. Reservations required. Limit of 12 participants daily. Donations accepted. 988-0461.

### MONDAY-FRIDAY FOSTER BOTANICAL GARDENS

Guided garden tours of rare and beautiful plants from tropical regions throughout the world. Foster Botanical Gardens, 50 N. Vineyard. 1 p.m. Adults: \$5. Reservations recommended. 522-7066.

### TUESDAYS TOURS OF THE HAWAII THEATRE

Get a behind-the-scenes tour of this historic theatre including history, architecture, and a performance on the 1922 Robert Morton theatre organ. Hawaii Theatre. 11 a.m. – 12 p.m. \$10. 528-0506.

### TUESDAYS KU HA'AHEO

An afternoon of music and hula led by kumu hula Blaine Kamalani Kia. Waikiki Beach Walk Plaza Lawn. 4:30–6 p.m. waikikibeachwalk.com or 931-3591. FREE.

### TUESDAYS KCC FARMERS MARKET

The Saturday Market is so popular they added another day. Head up to Kapiolani Community College to stock up on fresh, island produce, seafood,

flowers and more, from several dozen vendors. 4–7 p.m. Free. 848-2074.

### FIRST & THIRD TUESDAYS MEET THE MONK SEALS!

Learn about monk seals in the wild and meet two resident seals up close. Designed for participants 7 and up but anyone is welcome. Waikiki Aquarium. 3 p.m. \$4–\$6. waquarium.org or 923-9741.

### TUESDAYS & THURSDAYS FRESH FARMERS MARKET AT THE HYATT

Due to its overwhelming success, the Hyatt has added another day of their popular Farmers Market for visitors and locals to stock up on fresh local organic fruits, vegetables, jams, honeys, baked goods and more. Stop by twice throughout the ground floor of the Pualeilani Atrium Shops. 4–8 p.m. Waikiki.hyatt.com.

### TUESDAYS, THURSDAYS & SUNDAYS TOUR AND TEA AT THE HONOLULU ACADEMY OF ARTS

Tours are led by volunteer docents and designed for visitors, who would like to explore the galleries, learn more about art and culture, and socialize over a cup of tea. Docents lead discussions in the galleries and offer insight into many cultures and time periods. 2:30–4 p.m. in selected galleries. Free with admission; beverage donations welcomed. Reservations required. 532-8700.

### TUESDAY – SATURDAY MISSION HOUSES MUSEUM GUIDED TOURS

Visit the Printing Office and Frame House while learning about the 19th century history and culture preserved at this beautiful museum. Galleries also

open to explore on your own. Mission Houses Museum. Tues. – Sat. 11 a.m. & 2:45 p.m.; Tues. – Fri. 1 p.m. \$6–\$10. 531-0481 or missionhouses.org.

### THIRD WEDNESDAY (APRIL 20) KONA NUI NIGHTS

Kona Nui Nights honors and highlights Hawaiian language and music, as well as the art of hula on the third Wednesday of every month with food and drinks for sale. Free. Ward Village Information Center Courtyard. 6–8 p.m. wardvillageshops.com.

### SECOND THURSDAY (APRIL 14) COURTYARD CINEMA

Ward Village hosts its monthly film series event, Courtyard Cinema, on the 2nd Thursday of each month. The showing features free popcorn, refreshments, food vendors and entertainment. Courtyard Cinema is free and open to the public. Seating is limited. Reserve your tickets at wardvillagecourtyardcinema.com.

### THURSDAYS COURTYARD YOGA

Take a complimentary yoga class with CorePower Yoga at the Ward Village Information Center Courtyard. Open to the first 50 in attendance. All experience levels welcome. 5:30–6:30 p.m. For more information visit wardvillageshops.com/yoga.

### THIRD THURSDAY (APRIL 21) DOWNTOWN GALLERY WALK & CRAFT FAIR

The Arts at Marks Garage continues to build on downtown activities offering execs an excuse to hang out after work and giving everyone else a reason to head downtown. Free. 521-2903. artsatmarks.com.

### FRIDAYS CULTURAL CRAFT FAIR

The Hyatt has had so much success with its weekly Framers Market featuring fresh local produce that they are applying the same principle to local craft items. Each week the craft fair will feature local vendors featuring arts & crafts, jewelry, photography, woodwork and more. 3–7 p.m. Waikiki.hyatt.com

### FIRST FRIDAY (APRIL 1) DOWNTOWN GALLERY WALK & CRAFT FAIR

Art lovers should head to downtown Honolulu the first Friday of each month. This event has exploded into a downtown party with galleries and studios open for exhibitions, artist demonstrations, and special performances. 23 galleries and art-related retail shops, restaurants and museums participate. Downtown Honolulu/ Chinatown. 6–9 p.m. Free. 521-2903 or artsatmarks.com.

### FINAL FRIDAY (APRIL 29) ART AFTER DARK

Art after Dark offers one of Honolulu's hippest events each month. Honolulu Academy of Art. This event is part of April's Plastic Fantastic exhibit at the Spalding House. 6–9 p.m. artafterdark.org.

### SATURDAYS KCC FARMERS MARKET

Fresh island produce, seafood, flowers and more are available from over two-dozen vendors at Kapiolani Community College. Free. 7:30-11 a.m. 848-2074.

### SATURDAYS KAKA'AKO FARMERS MARKET

The Farmer's Market held Saturdays at Ala Moana has moved to Kaka'ako in light of the construction around Sears these days. Check out an abundance of treats from around our islands. Their new home is at Ward Warehouse between Ward and Kamakee



**EXPLORE  
OUR  
OAHU**

**Atlantis  
SUBMARINES  
WAIKIKI**

Atlantis Submarines Waikiki offers the perfect underwater adventure for families. Stay dry while you get up-close and personal with Oahu's marine life!

**atlantisadventures.com**  
For info & reservations call (808) 973-9811  
or fax to (808) 973-2499

Instagram | Twitter | Facebook | #atlantishawaii



## APRIL CALENDAR OF EVENTS

Streets, Free. 9:00 a.m. - 1 p.m. 388-9696 or [haleiwa farmersmarket.com](http://haleiwa farmersmarket.com).

### THIRD SATURDAY (APRIL 16) HONOLULU NIGHT MARKET

The folks behind Eat the Street bring this monthly art event to Kakaako. Food, art and fashion will close Auahi Street down from Keawe to Coral as artists, food trucks, live entertainment and more fill the streets from 6 p.m. to 11 p.m. Lane closures begin at noon. [streetgrindz.co](http://streetgrindz.co)

### SATURDAYS & SUNDAYS ART ON THE ZOO FENCE

More than 35 local artists display their works on the Zoo fence on Monsarrat Avenue opposite the Kapiolani Park Bandstand. Works for sale include original paintings, prints and photographs. 9 a.m. - 4 p.m. Free. [artonthezoo fence.com](http://artonthezoo fence.com).

**SECOND SATURDAY (APRIL 9)  
DOWNTOWN GALLERY WALK & CRAFT FAIR**  
First Friday has become such a success that events carry over to the second Saturday. HiSAM, 11 a.m. - 4 p.m. 586-9958. Other events around downtown Honolulu all afternoon including slam poetry and open mic at The Arts at Marks from 3 - 5 p.m. Free. 521-2903 or [artsatmarks.com](http://artsatmarks.com).

**NA MELE NO NA PUA SUNDAY SHOWCASE  
(APRIL 10 & 24)**  
Waikiki Beach Walk presents Ku'uipo Kumukahion April 10th and Lehua Kalima & Shawn Pimentalon on April 24th at the Plaza Stage from 5 - 6 p.m. [waikikibeachwalk.com](http://waikikibeachwalk.com).

**SECOND SUNDAY (APRIL 10)  
FREE ADMISSION TO IOLANI PALACE**  
On the second Sunday of each month, Iolani Palace opens its doors to kamaaina guests to visit the historic landmark for free. [iolanipalace.org](http://iolanipalace.org).

**THIRD SUNDAY (APRIL 17)  
BANK OF HAWAII FREE SUNDAY**  
The Honolulu Museum of Art opens its doors to the public free of charge on the third Sunday of every month thanks to Bank of Hawaii. This month celebrate the Plastic Fantastic exhibit at the Spalding House by making your own piece of art from materials collected from our beaches. Activities include a performance from the Hawaii Theatre for Youth. 11 a.m. - 5 p.m. Free. 532-8700.

**APRIL 2 - 10  
HIFF SPRING SHOWCASE**  
The Honolulu International Film Festival presents its 18th annual Spring Showcase, which will feature 27 films that will, includes some premiers and a few fan favorites from the fall festival. Dole Cannery Theatres. See the lineup at [hiff.org](http://hiff.org).

**APRIL 2 - 16  
FILIPINO FILM FESTIVAL**  
Showcasing the Philippines vibrant culture through their diverse filmmaking. The festival will showcase 10 films. Doris Duke Theatre. [honolulumuseum.org](http://honolulumuseum.org)

**APRIL 8  
APRIL FOOLISH**  
The Boys Bunch of Honolulu present the 30th annual April Foolish Party, one of the biggest parties of the year that supports the Make-A-Wish Foundation. One of the year's hottest events, it used to be held on the Falls of Clyde years ago. This year will again find it down at Restaurant Row at the M Nightclub and Row Bar featuring food from 12 restaurants and live entertainment from Willie K. \$30 in advance, \$40 at the door. For tickets, email [jsd23@yahoo.com](mailto:jsd23@yahoo.com) or call 561-8600.

*Continues on page 21.*



Ward Villages held a special springtime event to coincide with the opening of Yayoi Kusama's special installation, Footprints of Life. Part of a preview to the Honolulu Biennial Foundation 2017, there will be events and workshops surrounding the exhibit through May 13th. Attendees learned about the upcoming Biennial and got to try their hand creating their own art as one of the hottest new trends, Sip & Paint, brought their canvas to the Courtyard for concierge to play on. Who knew you guys were so talented! [wardvillages.com](http://wardvillages.com)





# ALOHA CANCER PROJECT

Cancer is an equal opportunity killer. It knows no boundaries and is cruel, malicious, and heartless. It spares no mercy on anyone in its path and discriminates against no one. Make no bones about it, cancer affects us all. Think about it. Everyone knows someone that



Christa and Daniel getting ready for the launch of the Aloha Cancer Project. Photo submitted by Daniel Gray

has struggled against this deadly disease, survived it, lost someone, or knows someone going through treatment right now. A parent. A sibling. A co-workers cousin. Somewhere, somehow, cancer has touched your life. When cancer comes knocking at your door, or the door of someone you love, it affects all of you. Watching someone you love go through this struggle is almost as difficult as the fight itself. What if it's you? Who do you turn too? Is your family nearby? What if they're not? There is so much information coming your way, how can you possibly decipher it all? That's the question two best friends, who are now two cancer patients, found themselves facing, only they decided to do something about it.

Meet Daniel Gray and Christa Wittmier. Many of you are no doubt familiar with one or both of them, as they're in the industry. Daniel is best known for owning Soho and Next Door. Although he majored in English and has several small companies on the side building custom wood furniture and packaging hand-harvested sea salts from Kauai, he is one of the visionaries that helped to change the face of Honolulu's nightlife and has been a longtime central figure in Chinatown nightlife scene for years. When he was 32 years old he was diagnosed with stage four brain cancer, but after an aggressive few months of treatment, the tumor was 99% gone and life went on... for a year or so. Unfortunately, the cancer came back last year and for the second time in as many years, he is battling this deadly disease.

Walking him through virtually every step he had to take was one of his best friends, Christa Wittmier. If Daniel is one of the central figures in Honolulu's nightlife scene, Christa personifies it. Contrast Magazine called her "the most important

person in Hawai'i's nightlife and entertainment industries." She is a well known DJ around town spinning under the name SuperCW. Under that same moniker she was responsible for the very popular blog site "Honolulu Nightlife Diaries," and wrote similar columns for the *Honolulu Weekly*, the

*Star-Advertiser*, *metroHNL* and more. One could find her and her camera at virtually every event in town with a huge smile on her face. She helped bring the first Pow! Wow! Hawaii to the islands and is the brain behind countless popular events. Keep in mind, all of that (and more) was done during her spare time. Her real job is with Young's Market where she is the Senior Director of Marketing Events and Promotions, and as such, she is associated with just about every major happening in town. You've probably seen her at an event at your hotel. She singlehandedly has her finger on the pulse of everything that is Honolulu, and has done so for years.

In May 2015, just two short months after Daniel's cancer had reappeared; she was diagnosed with stage 4 breast cancer and given less than a year to live. She met her diagnosis head on, searching high and low on how to vigorously attack the disease. Thanks to a friend who brought her to a nutritionist, she drastically changed her diet immediately. It was difficult to do. She found it hard to find unprocessed foods and with so much information out there, figure out the best way to prepare them, but she persevered. She embraced alternative therapies such as hyperbaric oxygen chambers, vitamin C infusions, acupuncture, etc, and built them into her treatment with her doctors approval. Amazingly enough those same doctors pronounced her cancer-free just 5 months later. She convinced Daniel to start incorporating some of the alternative treatments into his regime and although his fight continues, and he has lost the vision in one eye, he feels the benefits of the nutrition plan and says he actually feels like a million bucks when he wakes up every morning.

Given this new lease on life, she and Daniel combined forces to create the Aloha Cancer Project, an organization aiming to help people deal with living with cancer with aloha. They want to provide the information and tools that they couldn't find easily when first diagnosed. The both feel that they got sick for a reason, and that reason is to help others. The life lessons they have learned they say are innumerable, and they feel it is their duty to share what they have learned and help others going through the same fight. So many people that get sick don't have the contacts or the network that they do, and they find themselves in a position to help others.

The Aloha Cancer Project is a place where those newly diagnosed can turn to for information, advice, and to help them make sense of the information they are being bombarded with. As Daniel says, "It is not a fight that you can win alone. I created the Aloha Cancer Project because when I was diagnosed, it is the exact kind of thing that I wish I had access to at the time. I was lost, confused, depressed, and completely clueless. Now, we have created a resource for people to get information about alternative medicines and treatments, nutrition, and help promoting and producing fundraisers. The Aloha Cancer Project is our way of giving back to the community that has saved our lives."

There are countless blog posts, recipes and links to items that may be of interest. These two have done a lot of research already and want to help people cut through the clutter. It is a resource hub for those just beginning their journey. Christa says, "We want to provide a community for those facing cancer and their loved ones... to create an open-minded, positive environment to find healing and happiness." They have already begun to build a network of people at the grass roots level that are more open minded to treatment options and believe they can live and are thrilled about its rapid growth. They are getting the word out there. Perhaps you might have seen them recently on the PBS Special with Kirk Matthews, Facing Our Mortality. If you missed it and are interested in watching you can find the video online at [pbshawaii.org/insights](http://pbshawaii.org/insights).

Additionally, alternative therapies aren't usually covered by insurance so the Aloha Cancer Project can also serve as the organizer to put on fundraisers to help other cancer patients raise funds for their medical bills. Given their jobs, they could put on a fundraiser half asleep, and know they can help people in that arena.

The site is loaded with food and recipe tips that they feel benefit everyone, not only cancer patients or those with chronic conditions. If you want to help, reach out to them via their website to make a donation or see what they need most at that time. They will present three health and wellness fellowship events a year. The first one features Yoga Nidra from Gwennie Mae of Mahina Yoga at Daniel Gray's bar, Nextdoor, in Chinatown on April 8th from 6 - 9 p.m. The event will also feature a selection of fresh cold pressed juices and a cooking demonstration with take-aways you can try at home. There will be raffle prizes available and all proceeds go to support the Aloha Cancer Project endeavors and events. Free for those currently in treatment, \$20 for all others. This is a great event for like-minded individuals that have decided that they are going to live. To learn more, log onto their website at [alohacancerproject.org](http://alohacancerproject.org). ~ Pam

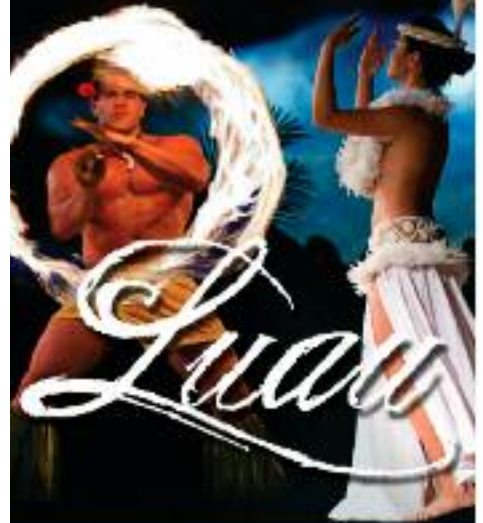




Ala Moana held their annual Shop a Le'a concierge soiree to kick off their 9th annual fashion event. Attendees were broken into groups to explore different stores throughout the Ewa Wing that would be participating in the festivities throughout the week-long event. Each group also got to a chance to sample menu items from Magnolia Bakery and Nitrogenie. Ala Moana's events are always a hit, and as always, the door prizes were amazing. Congrats to all of the winners and thanks to everyone that took the time to come. [alamoanacenter.com](http://alamoanacenter.com)



HILTON HAWAIIAN VILLAGE® PRESENTS  
**WAIKIKI'S ONLY LUAU**  
UNDER THE STARS



## WAIKIKI STARLIGHT LUAU

The drama and grace of Polynesia unfold with live music, drums, the captivating dances of the South Pacific and the fiery drama of four fire knife dancers. Indulge in a feast of unforgettable tropical flavors prepared by our award-winning resort chef, including Kalua Pig, Seared Island Catch, Hull Hull Chicken and Carved Pulehu Steak.

- SUNDAY - THURSDAY  
BEGINNING AT 5:30 PM •
- ENJOY ONE WELCOME MAI TAI &  
ONE SELECT BEVERAGE •
- COMPLIMENTARY VALET  
& SELF PARKING •

**808.941.LUAU**  
(5828)

[www.HiltonHawaiianVillage.com/luau](http://www.HiltonHawaiianVillage.com/luau)

WAIKIKI  
STARLIGHT  
*Luau*

HILTON HAWAIIAN VILLAGE®  
WAIKIKI BEACH RESORT  
2005 KALIA ROAD, HONOLULU • 808.949.4321



# APRIL CALENDAR CON'T

Continued from page 17.

## APRIL 23

### WAIKIKI BEACH CLEAN UP

The Waikiki Ohana Workforce joins forces with the Waikiki Improvement Association and a dozen hotels to help clean up our beach. Meet at the Duke Statue at 7 a.m. Continental breakfast provided.

## APRIL 23

**2ND ANNUAL HONOLULU BREWERS FESTIVAL**  
Beer lovers don't want to miss this one. The cost of admission will get you ten 4 oz. brew tasting coupons you can use to choose from 100 craft beers from around the world and unlimited samplings of beer-friendly food from 20 restaurants while enjoying live entertainment. Tickets are available online for \$70, additional beer script can be purchased for \$2 each at the event. This event sold out last year, and no tickets will be sold at the door. Designated drivers can get in for \$25 but must adhere to the rules. 2:00 - 6:30 p.m. Kaka'ako Makai Gateway Park. honolulubrewersfestival.com

## APRIL 23

**GABBY PAHINUI WAIMANALO KANIKAPILA**  
This slack key guitar festival is hands down one of the island's biggest and best jam sessions all year long as nearly 200 of the isle's best musicians, singers and dancers come together to celebrate the life of the master. If someone wants to immerse themselves in Hawaiian music, this is a must experience event. Free. Waimanalo Beach Park. 9 a.m. - 6 p.m. Gabbypahinui.com

## APRIL 29 • MELE AT THE MOANA FEATURING ROBERT CAZIMERO

The Moana Surfrider continues their concert series, reminiscent of the long-running radio show "Hawaii Calls," under the famed banyan tree fresh off their 115th birthday celebration. "Mele at the Moana" features today's most popular performers on the Banyan Courtyard stage, and this month Robert Cazimero takes the stage. 7 - 9 p.m.

## APRIL 30 • KO OLINA CHILDRENS FILM & MUSIC FESTIVAL

The 3rd annual event will bring live stage performances and plenty of kid-friendly movies including Cinderella, Monsters University, Inside out, Aladdin and Paper Planes. At sunset Lava and Big Hero 6 will show on the main stage overlooking the lagoon. Ko Olina Lagoon #1. Tickets: \$25 for adults, \$10 for kids 10 and under. 1 - 8 p.m. koolina.com.

## APRIL 30

### HAWAII BOOK AND MUSIC FESTIVAL

This always popular book and music festival takes place throughout the weekend with local, national and internationally known authors; performances by musicians, storytellers, actors and dancers; and ongoing entertainment for the kids on multiple stages. Honolulu Hale. 10 a.m. - 5 p.m. HawaiiBookandMusicFestival.com

## APRIL 30 • SPAM JAM

25,000 fans of Hawaii's favorite food will converge onto Waikiki for one of the more unique and popular block parties held all year. The 14th annual Waikiki SPAM Jam will unfold on Kalakaua between 4 - 10 p.m. with plenty of food, entertainment and fun for the whole family. waikikispamjam.com.

## APRIL 30

### KEVIN HART IN CONCERT

Since Kevin Hart last performed in the islands back in 2011 his star has risen to extraordinary heights appearing a slew of number one movies. Tickets to this show sold out so quickly they added a 2nd show that same night. Tickets: \$59.50 - \$150.50. Two shows 7 p.m. and 10:30 p.m. ticketmaster.com

## APRIL 8 - 10 • KAWAII KON

A three day convention that celebrates all things Japanese anime and manga culture. There will be a variety of events and activities including video games, table games, costume contests, thousands of comics to read, an Artist Alley, a Dealer's Room, formal ball and more. Hawaii Convention Center. kawaiikon.com

## APRIL 9 - 10 • HAWAIIAN SCOTTISH FESTIVAL & HIGHLAND GAMES

The 35th annual festival will offer two days of everything Celtic. There will be plenty of be Celtic-themed food (even haggis), wares and whisky for sale. In addition to the sound of bagpipes guaranteed to be heard throughout the weekend, the band Celtica Pipe Rocks out of Europe will be in town to perform in advance of their fourth album release. McCoy Pavilion. \$1 admission. 10 a.m. - 6 p.m. hawaiianscottishassociation.org

## APRIL 10

### THE HAPALUA HALF MARATHON

Hawaii's half-marathon kicks off at the Duke Kahanamoku Statue as runners head towards downtown, where they turn at Smith Street, and then head back towards Waikiki ending at Kapiolani Park. Expect multiple lane closures along the course starting at 3 a.m. Race starts at 6 a.m. thehapalua.com.

## APRIL 12 • THE PIT STOP

Driving to and from the west side? This event is designed to get you out of traffic and "Shop, Dine and Dash" on your way in or out of Waikiki. Walk through the food trucks, food tents, crafters, fresh produce, activities & more. Free. Aloha Stadium. 5-9 p.m. thepitstophawaii.com.

## APRIL 13 - APRIL 30 BOOK OF MORMON

It's been called the best musical of the century by the New York Times and it's coming the Honolulu stage for the first time ever for a three week performance. Tickets are around \$50 - \$100, but cheaper or more expensive ones can be found depending on the day. Don't wait, tickets will most likely sell out. ticketmaster.com. Through May 1st.

## APRIL 16 • KEIKI FOR KUSAMA

Keiki are invited to create their own brightly colored creations at an art workshop inspired by Yayoi Kusama's first Hawaii installation. Participants will explore some of Kusama's famous works of art, learn the fundamentals of sculpting and color mixing and work with foam to create spotted animals as part of the Polka Dot Creatures Workshop 3 - 4:30 p.m. \$15. artexplorium.org.

## APRIL 17

### HONOLULU AIDS WALK

The 25th annual Honolulu AIDS Walk expects over 5,000 participants to around Kapiolani Park to raise funds for the Life Foundation. Walkers can register as individuals or as a team. Free to register, desk opens at 8 a.m., walk begins at 10 a.m. Kapiolani Park Bandstand. honoluluaidswalk.org

## APRIL 20

### SEAN ROBBINS IN CONCERT

The Hawaiian Folk Artist takes to the stage for a special concert at the Doris Duke Theatre, 6:30 p.m. \$20. honolulumuseum.org.

## APRIL 22-23

### OUTRIGGER RESORTS INVITATIONAL

The nation's premier college beach volleyball tournament takes place on Queen's Beach. The action is free to spectators and will be televised live on CBS. alohainvitational.com.


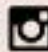



Donate and give more than just food.



27<sup>th</sup> Annual  
FOOD DRIVE  
SATURDAY 4/16  
8:00 am - 3:00 pm

www.HawaiiFoodbank.org  
(808) 836-3600

#HiFoodbank   

# Hawaii Book & Music Festival



Bookworms, scholars, music lovers and casual enthusiasts will all find something to please at the 11th Annual Hawaii Book & Music Festival. This event strives to celebrate and honor books, storytelling and music in a fun, accessible way for people of all ages and backgrounds

It's a great event for locals as the festival strives to introduce new books and music to Hawaii, and locals and visitors alike can't miss with the Bank of Hawaii Book Swap booth. Bring along your old books to pass onto others while picking up some new ones for yourself. Perfect for a tourist about to head home. Nothing personal, but the prices at the airport bookstores are crazy. Why not take this opportunity to pass along some of your old favorites and see what someone else has enjoyed. Visitors will also benefit from attending as another one of the festivals' goals is to honor our culture and introduce Hawaiian books and music to the world in a beautiful island venue.

For the scholarly types looking to be educated, there will be over 30 panels throughout the weekend on everything from the evolving Native Hawaiian Culture, to Living Well in Hawaii to the Adaptations of Buddhism in Modern Hawaii to panels with Filipina writers, discussions on Astronomy and more.

For book enthusiasts, there will major authors on hand to discuss their bodies of work including Academy Award of Literature winner Susanna Moore, author of *Paradise of the Pacific*. Some of the others presenting on stage throughout the weekend will be Julie Checkoway, author of *The Three-Year Swim Club: The Untold Story of Maui's Sugar Ditch Kids and Their Quest for Olympic Glory*; Zoe Fitzgerald Carter, *Imperfect Endings: A Daughter's Story of Love, Loss, and Letting Go*; Shawna Yang Ryan's *Green Island*; Cecily Wong will discuss her romantic novel *Diamond Head*; Victoria Kneubuhl's will talk about her new crime story, *Murder frames the Scene*; while historian Pamela Rotner Sakamoto will discuss *Midnight in Broad Daylight: A Japanese American Family Caught Between Two Worlds*. David Davis, the man who wrote *Waterman: The Life and Times of Duke Kahanamoku* will also be on hand to discuss his new book as will poet Christy Passion.

Kids will be thrilled by the return of Mr. Steve. Always a huge hit with the preschool crowd, he is the national host of PBS Kids and he will be anchoring the Keiki Stage all weekend long, while some of Hawaii's leading storytellers, including Jeff Gere and Lopaka Kapanui tell their tales.

Not to be outdone, the main stage will feature plenty of local musicians including a performance from Jeff Peterson, along with various hula halau, a Singer-Songwriter Competition; and a big 'Ukulele Kanikapila where all players are welcome

to join in the fun that will be inspired by leading 'uke players.

Lastly, did you know that 2016 is the 400th anniversary of William Shakespeare's death? In honor of the man many regard as the greatest writer of the English language of all time the Folger Society, an arm of the Folger Shakespeare Library on Capitol Hill in Washington, DC, home to the world's largest Shakespeare collection, is touring an original copy of the First Folio throughout all 50 states. It will be on display at Kapiolani Community College from April 25th to May 25th, and presumably at the Festival throughout the weekend. There will also be a special performance of *The Gravedigger's Tale*, a variant on Hamlet that is touring the country.

Festivals like this on the mainland are held in convention centers or school auditoriums and usually charge hefty admission fees. Not here. These festivals-goers will enjoy a (hopefully) beautiful day outside on the sprawling grounds of Honolulu Hale. There will be tables spread across the lawn to sit on or feel free to bring your own mat or blanket. Grab some food from one of the many food booths, or bring your own and sit back and enjoy the show. This years festival will be held April 30th and May 1st from 10 a.m. - 5 p.m. Admission and parking is free. For a complete list of speakers, musical acts, performances and more head to [HawaiiBookAndMusicFestival.org](http://HawaiiBookAndMusicFestival.org) or download their free app. ~ Pam

**Family Favorite**  
*Mother's Day*  
*Brunch Cruise*

**May 8, 2016 • 12:00 - 2:30PM**

- Relaxing cruise
- Scenic views
- Taste of Hawaii Buffet
- "Champagne" toast
- Prize giveaways for moms
- Hula and ukulele lessons
- Lei making

**\$63.98** **\$38.94**

**STAR**  
of Honolulu  
808-983-STAR (7827) • [www.StarofHonolulu.com](http://www.StarofHonolulu.com)

Please add 4.712% excise tax and 3% harbor fee to cruise prices. Price and contents subject to change.



# That's Entertainment

## HOTELS

- HALE KOA HOTEL** 955-0555
- **TuSat** - High and Right Comedy Show takes the stage at the Warriors Lounge at 8pm.
  - **MThFS** - Poolside music at the Barefoot Bar. 6-11pm
- HALEKULANI HOTEL** 923-2311
- **Daily**-Hawaiian Music and hula at House Without A Key from 5:30-8pm.
  - **Daily**-Live Contemporary and light Jazz at Lewers Lounge from 8:30pm to midnite.
  - **Sun**- Sunday brunch at Orchids features Noly Paa on the piano from 9:30 - 2:30pm.
- HILTON HAWAIIAN VILLAGE** 949-4321
- **Fri** - Fireworks at 7:45pm.
  - **Fri** - The Rockin' Hawaiian Rainbow Revue, a musical salute to King Kalakaua, at the Super Pool. 7 pm.
  - **FriSat** - Olomana at the Tapa Bar from 8-11pm.
  - **Daily** - Live entertainment at the Hau Tree Bar and the Tapa Bar from 8-11pm.
- THE KAHALA HOTEL & RESORT** 739-8888
- **TuWThFSat**- David Swanson vocalizes on the piano at The Veranda from 7:30-10pm. Hawaiian on Sun/Mon.
- MOANA SURFRIDER** 922-3111
- **Daily**-Hawaiian music & hula. The Banyan Court, 6-8 pm, and again from 8 -10 p.m. Weekends from 11:30- 2 p.m.
  - **MWFri**-Guided historical tours at 11am.
- NEW OTANI KAIMANA BEACH** 923-1555
- **FSat**- Jazz guitarists in the Sunset Lanai Bar. 6-9pm.
- OUTRIGGER WAIKIKI ON THE BEACH** 923-0711
- **Mon**- Kukui Nut Bracelet Making. 1pm.
  - **Th**- Ukulele Lessons. 1pm.
  - **Fri**- Aloha Fridays bring back old Hawai'i with music, hula, ukulele & lei making lessons. 9am-1pm.
- OUTRIGGER REEF ON THE BEACH** 923-3111
- **Daily**- See guest artists at work in Kuloko Arts of Hawaii 9am-1pm and again from 6-9pm.
- SHERATON PRINCESS KAIULANI** 922-5811
- **Daily**-Live Hawaiian music & halau at the lounge from 6-8:30pm, then poolside from 8:30-10:30pm.
  - **Th**-Princess Kaiulani historical tour at 9:30am.
- THE ROYAL HAWAIIAN** 923-7311
- **TTH**- Free guided resort tour at 1pm.
- TURTLE BAY RESORT** 293-6300
- **MTWThFSat**- Lei Making, Main Lobby at 10am.
  - **ThSun** - Fire Dancer, Hang Ten Pool Bar at Sunset
  - **TThFri** - Shell Hula Lessons, Lobby at 10am
  - **TThFri** - Ukulele Lessons, Lobby at 9am
  - **Fri**- Music & Hula. Lobby Lounge 6:30-8:30pm.
- WAIKIKI BEACH MARRIOTT RESORT** 922-6611

- **Daily**-Hawaiian entertainment in The Moana Terrace Bar. 6:30-9:30pm.
- **Fri**-Local crafters "Aloha Friday Fair" Lobby 9a-2pm

## MUSEUMS

- HAWAII STATE ART MUSEUM** 586-0900
- **TWThFSat** - Inaugural exhibition "Enriched by Diversity: The Art of Hawai'i." Free. Tuesday-Saturday, 10 a.m. to 4 p.m. Located in the Capital District.
- HAWAII THEATRE** 528-0506
- **Tues**- A one-hour guided tour offers a unique insight in the history, art, architecture and restoration of the Hawai'i Theatre with trained docents & a mini-concert on the 1922 Robert Morton Theatre Organ. 11 a.m. Admission: \$10.
- HONOLULU MUSEUM OF ART** 532-8726
- **MWF**- Japanese Language Tours. Private tours also available. 1pm. Regular admission.
- HONOLULU FIRE MUSEUM** 723-7167
- **3rdSat**- Free one-hour guided tours through various exhibits with a firefighter recounting HFDs history the 3rd Saturday: 9am - 2pm. Reservations required. 620 South Street. honolulu.gov/hfd/communityrelations
- IOLANI PALACE** 522-0832
- **Mon-Sat**-45 minutes docent-lead or self-guided audio tours available in English or Japanese. Japanese-led tour is available only at 11:30 a.m. All tours include re-tour video and entrance into the Palace Galleries. Adults: \$14.75-\$21.75 / Keiki (5-12): \$6. 9am-5pm
  - **Sat**-Hawaiian Quilt Classes. Old Archives 9:30a-12p.
- LUCORAL MUSEUM** 922-5381
- **TTh**- Learn how to plan your jewelry project and more in this beaded jewelry workshop \$10. 2-4 p.m.
- MISSION HOUSES MUSEUM** 447-3910
- **Tue-Sat**-Learn about the dramatic story of cultural change in 19th-century Hawai'i. Docents lead tours through the oldest existing frame house in the Islands, Printing Office, and the coral block Chamberlain House. Reservations required. www.missionhouses.org
- PACIFIC AVIATION MUSEUM** 441-1000
- **Daily**-Vintage aircraft in battlefield hangars at Pearl Harbor. Combat flight simulators. Aviator's Tour takes you through the new Restoration Hangar. Restaurant, Museum Store. Shuttle & Tickets at USS Arizona Memorial Visitor Center or at PacificAviationMuseum.org.
- THE SPALDING HOUSE** 526-1322
- **Daily**-Docent-led tours given daily. 1:30pm. Garden tours or Japanese language tours are by appointment.
- NAVAL AIR MUSEUM BARBERS POINT** 682-3982
- **Mon-Fri**- A unique museum experience about aviation history in Hawaii. All of the aircraft are open to climb

in, on and around. Tours: 8 a.m. - 4:30 p.m. \$7 / \$5 children under 18. BLDG 1792, Midway Road, Kalaeloa Airport. Reservations required. Sat/Sun by appt only. www.nambp.org.

## SHOPPING CENTERS

- ALA MOANA CENTERSTAGE** 955-9517
- **Tues** - PCC Polynesian Revue Show. 6pm.
  - **Sun** - Keiki Hula Show. 10-11am.
- KINGS VILLAGE** www.kings-village.com 237-6344
- **MW** Famer's Market offering fresh produce, baked goods and local food items from 4-9pm.
  - **Daily** King's Guard Museum features a variety of collectibles and memorabilia. 10a-10:30p. FREE.
- ROYAL HAWAIIAN CENTER** 922-2299
- **MWF**- Learn Lomilomi 11am-12pm, Bldg. B, 3<sup>rd</sup> floor
  - **MF**- Hawaiian Storytelling 12pm, *Helumoa Hale*
  - **MTWF**-Hula 10am (4pm on Wednesdays), *Royal Grove*
  - **ThSat**- Rock-a-Hula Pre-Show 7pm, *Royal Grove*
  - **WTh**- PCC Show 11am, *Royal Grove*
  - **TWTh**- Lauhala Weaving 1pm, *Bldg A, 1st floor*
  - **TThF**- Ukelele 12pm, *Helumoa Hale*
  - **TWF**- Live Hawaiian music 6-7pm, *Royal Grove*
  - **ThSat**- Rock-a-Hula Pre-Show 7pm, *Royal Grove*
  - **Sat**- Hula Kahiko 6-6:30pm, *Royal Grove*
- WAIKIKI BEACH WALK** www.waikikibeachwalk.com
- **Tuesdays** - Ku Ha'aeo featuring Hawaiian song and dance on the Plaza stage. 4:30-6pm
  - **Wednesdays** - Yoga Classes 4-4:45pm. Free.Plaza Stage
- WAIKIKI SHOPPING PLAZA** 923-1191
- **Daily** Hula Lessons. 10am, 12pm
  - **MTTh** - Polynesian Review 1st & 3rd floor 7-9pm

## ATTRACTIONS

- KALAKAUA AVENUE** 527-5666
- **Fri** - Strolling Hula from 8-10:00pm.
- KAPI'OLANI BANDSTAND** 527-5666
- **Fri**-Hawai'i's finest musicians perform. 5:30-6:30pm
  - **Sun**-Royal Hawaiian Band performs 2-3:15pm.
- KUHIO BEACH HULA SHOW** 843-8002
- **TThSat**- City & County presents a free hula show at sunset. 6:30 - 7:30pm at the hula mound.
- TAMARIND PARK - DOWNTOWN** 527-5666
- **Fri**- Mayor's Aloha Friday Music from 12-1pm features live music from Hawaiian to Jazz to Pop.
- WAIKIKI TOWN CENTER** 922-2724
- **Mon-Sat**-The songs and dances of Hawai'i, New Zealand, & Tahiti. Free shows begin at 7pm.

EVENTS SUBJECT TO CHANGE PLEASE CALL TO CONFIRM PRIOR TO ATTENDING

## PAPARAZZI

### HITAs Woman of the Year Lynette Eastman!



Lynette Eastman, General Manager of The Surfjack Hotel & Swim Club (formerly Hokele Suites) was named the first Woman of the Year recipient from the Women in Lodging & Tourism. Shown here with Ben Rafter and Mufi Hannemann

### Makana shines at the Moana



Slack key maestro Makana honored the Moana Surfriders 115th birthday celebration by putting on a very special "Hawaii Calls" tribute concert on the Banyan Courtyard Stage to a sold-out audience. The show was an unqualified success. Congratulations!

Do you have a picture you would like us to run? Send them to: publisher@oahuconcierge.com

### 2016 Gabby Pahinui Kanikapila



Don't miss out on one of the best music festivals all year, in honor of the late great Gabby Pahinui. Send your guests to Waimanalo Beach Park on April 23rd from 9 a.m. - 6 p.m. for the best music the island can offer. Pic: Gabby Pahinui Waimanalo Kanikapila

# conciierge card

April 30, 2016

**Dole Plantation** - 1 FREE Adult Admission To The Maze With Purchase of 1 Adult Admission. 621-8408

**Giovanni Pastrami** - 15% Off Full Bar, Dine-in or Take-Out at anytime with ID. 227 Lewers St. 923-2100.

**Hard Rock Café** - 15% off food, beverage (non-alcoholic), or merchandise. Hotel ID required. 280 Beachwalk Ave. 955-7383.

**Hawai'i Prince Golf Club** - \$5 Off Standard Kamaaina Green Fees. Tee Times: 944-4567

**Hilo Hattie** - 25% on Hilo Hattie labeled garments, 15% off other fashions/gifts and 10% off Hilo Hattie labeled foods. Not valid on sale item. Ala Moana Center and Nimitz Hwy Ph 535-6500.

**Hy's Steakhouse** - 25% VIP Discount Off Food And Beverage (up to 2 persons) 2440 Kuhio Ave. 922-5555

**Hyatt Regency Waikiki** - 15% discount with the presentation of a concierge business card at SHOR, Japengo and SWIM. 2424 Kalakaua Ave. 923-1234.

**Iolani Palace** - Free Admission. Regular rate \$20. 364 S. King Street, Reservations & Hotel ID required. 522-0832.

**IHOP** - Receive 20% on entire bill. Must show valid hotel ID. Not valid with any other offer or discount. Aqua Palms, 1850 Ala Moana Blvd restaurant only. Free parking available. 949-4467.

**Il Lupino** - 15% discount off food and beverage (not applicable on liquor or specials). Must show hotel ID or business card to receive discount. 2233 Kalakaua Avenue. 922-3400

**Kaiwa** - 20% off food & beverage between 5 & 7 p.m. 924-1555

**Longhi's** - 25% off food & beverage up to 2 persons, not applicable with any other promotion or discount. 947-9899.

**Mission Houses Museum** - Free tour with hotel ID. 553 S. King Street. 447-3910

**Pacific International Skydiving Center** - 50% Discount on Jump, 68-760 Farrington Hwy., 637-7472

**Plaza Café** - 15% off all food items. Best Western the Plaza Hotel. 3253 N Nimitz Highway. 836-3636.

**P.F. Chang's Waikiki** - Receive 20% on all appetizers, entrees, desserts and beverages 11 am - 5 pm daily (not valid for Pau Hana menu) Royal Hawaiian Center. Ph: 628-6760, 637-7472

**Romano's Macaroni Grill** - 20% Off Food and Beverage for up to 2 guests. (Not Valid for Happy Hour Menu). Ala Moana Center, 1450 Ala Moana Blvd. 356-8300

**Ruth's Chris Steak House** - 20% Off Food and Beverage for up to 2 guests. (Not Valid for Happy Hour & Prime Time menus). Restaurant Row, 500 Ala Moana Blvd. 599-3860. Waikiki Beach Walk, 226 Lewers Street. 440-7910

**Honolulu Museum of Art Spalding House.** - FREE Admission For Cardholder and One Guest. 526-1322

**The Kahala Resort** - Complimentary appetizers for a concierge and a guest with the presentation of a concierge business card at Hoku's, Plumeria Beach House, Seaside Grill, The Veranda. 5000 Kahala Avenue. 739-8888

**The Original Glider Rides** - Come experience the joy of soaring for yourself. Concierge / GSA may receive a complimentary scenic ride. Request the "GSA flight special" when booking your reservation. Hotel ID required. Dillingham Airfield. 637-0207

**Tiki's Grill & Bar** - FREE order of ANY appetizer with any purchase! One per table. OahuconPOKE. ASTON Waikiki Beach. 923-8454

**Willoughby's Restaurant** - 15% off all food items. Ohana Honolulu

**HELP us update this card. If you know of an offer not being honored let us know. As management changes, sometimes offers can get lost. Also as we work on updating this, let us know if there is something you would like to see here & we'll see what we can do!**

You will be required to show Hotel ID or business card to claim offer. Do not cut this card out of the book. One special per person per business. Offers valid on regular-priced merchandise only. Discounts are available to Guest Service Professionals ONLY. Not valid with other promotions or special offers. A minimum 18% gratuity on original order required for all special

## Guest Service Agent of the Month



NAME: Rick Nomura

HOTEL: Outrigger Reef Waikiki Beach Resort

TITLE: Japanese Guest Service Representative

**Q. How long have you been with the Outrigger Reef?**

A. I've been here for about 4 years. New owner from previous job decided to let me go, so I asked around and Outrigger Reef had a job opening for Japanese Guest Service Representative. I applied at a good time.

**Q. Do you work a specific desk more often than not?**

A. I'm the main staff at the Japanese desk. We have one more Japanese speaker who takes my place on my days off.

**Q. When did you get your start in the industry?**

A. April 2011 was my start with Outrigger and also with the hotel industry. This was something new but I've been working in customer service related jobs here in US and Japan.

**Q. What is the biggest challenge at the desk?**

A. To help understand guest's needs. Guests from different country has different needs compared to our needs here in Hawaii.

**Q. What do you like most about this industry?**

A. I get to meet new people everyday from all over the world.

**Q. Favorite perks of the job?**

A. Free lunch, discounted room for employees, and much more.

**Q. What question are you asked more than any other?**

A. How much do I tip the staff?

**Q. What is your favorite restaurant to recommend?**

A. Ocean House and Shorebird, located in our lobby right along the beach.

**Q. Do you have one really memorable guest?**

A. I have one family emailing me every year before coming to our hotel.

**Q. What's the most unusual request you ever received?**

A. Honestly, I don't have one.

**Q. How do you deal with those "difficult" guests?**

A. I give options to the guests. I can't give them everything they ask for, so options usually calms them down. I always tell myself that guest are spending tens of thousands of dollars coming here for their vacation.

**Q. What is your favorite activity to recommend?**

A. Any beach activities.

**Q. Is there one thing about you that would surprise people?**

A. I speak fluent English and Japanese. I get asked "What nationality are you?" from both Japanese and English speakers.

**Q. Are you from here originally?**

A. No. I was born in Okinawa but spent most of my childhood in Camp Zama, Japan. I spent about 10 years in mainland and came to Hawaii 7 years ago.

**Q. What do you like to do most when you're not working?**

A. I like to spend time with my 3 daughters, play golf, and of course, do NOTHING.

**Q. Any other thoughts you'd like to share?**

A. We live in PARADISE. I like to thank my co-workers and managers who always help me out when in trouble. And I also like to thank God for blessing

April 2016 23

**Royal**  
HAWAIIAN LIMOUSINE

5 Star Limousine Company  
www.RoyalHawaiianLimousine.com  
808-275-6030



The Oahu Concierge is printed monthly and direct mailed FREE to all Oahu Concierge, Hospitality & Activity Professionals.

Subscriptions available to non-industry at \$25 per year.

C O N T A C T

**Davis Media**

Ph: 596-4422

www.oahuconciierge.com

Twitter & Instagram: @OahuConciierge

Facebook: www.facebook.com/OahuConciierge

**ADDRESS & NAME CHANGES / ADDITIONS**

We do not take changes via telephone. All changes to mailing list must be submitted in writing by the 16th of the month to make the next issue, email is preferred.

S T A F F

PUBLISHER & EDITOR **Pam Davis**  
publisher@oahuconciierge.com

CONTRIBUTING EDITORS  
Lance Rae, Alexander Deedy

DESIGN  
Coreiya Design

The Oahu Concierge  
4348 Waialae Avenue, #185  
Honolulu, Hawaii 96816

**SKY**  
WAIKIKI  
ROOFTOP RESTAURANT | LOUNGE | NIGHTCLUB

**AWARD WINNING RESTAURANT**

**The best view. The best bites.**

Reservations from 5PM: 808.979.7590  
LIVE Music Daily: 6PM-9PM

2270 KALAKAUA AVENUE · 19TH FLOOR · 808.979.7590  
SKYWAIKIKI.COM @SKYWAIKIKI /SKYWAIKIKI @SKYWAIKIKI