

# Concierge

KEEPING THE HOSPITALITY INDUSTRY INFORMED SINCE 1998

## Kaka'ako is Kicking!

## HIFF Spring Showcase



What's hapn'in the hood? A lot. If your talking about the neighborhood of Kaka'ako that is. Almost weekly another newspaper story touts a plan for a building that is taller, wider, and more expensive than the one announced the week before. Letters to the editor immediately decry the paving of Paradise.

For most Hawaii folks Kaka'ako was an area accessed only if the destination was Fisher Hawaii for paper and business supplies, a car dealership, or a service store of some kind. The area began to draw more interest when young artists and tech-geeks joined in with cutting-edge technology with R&D incubator shops and intimate art galleries.

Four years of Pow! Wow! later, art murals covering buildings have stopped cars in their tracks, drawn crowds of art fans and trolleys full of tourists. The images spread from a few buildings to the entire Ward to South Street corridor that defines Kaka'ako.

Dining options expanded, (read more about those elsewhere in this issue) and when Eat the Street organizers bring in the food-trucks on the last Friday of each month, thousands descend to South Street for a taste. Expanding on the popularity of both the artisans and the foodies, Night Market puts them all together on the 3rd Saturday of every month for one of the coolest block parties in town that blends fashion, food, and live music with plenty of vendors, skate ramps, and shopping. Now that's hip.

Shops come and go. Artists find space in buildings that are soon to be dust. But many are confident that both development entities have plans, and space laid out on their master plan to support the arts.

Drew Broderick is an artist and a curator. His SPF Projects gallery at 729 Auahi Street is open evenings, Thursday, Friday and Sunday, during the hours when parking meters are open and free. His May exhibition features noted artists Solomon Enos and Carl Pao. During the day the space is often filled with artists, working on pieces that will be shown all across the islands.

At the turn of the century the area that was once a fishing village with carefully tended and highly valued salt ponds, expanded to include the Honolulu Iron Works, shops and foundrys, schools and parks. These days Kamehameha Schools is busy mapping out a new plan, which anyone can view at OurKakaako.com. Change in urban areas is inevitable. The plans for the under-used area of Honolulu are being carefully considered and shared publicly, with open lines of communication to the community. Along those lines, they have just launched free public WiFi network as part of that plan. It is accessible on any wireless device throughout the neighborhood for nine blocks bordered by Ala Moana Boulevard, South, Halekauwila and Cooke Streets. More than twenty wireless access points were placed throughout the

*Continues on page 2.*

Just as this years Academy Awards begin to fade into a memory, the 15th Annual HIFF Spring Showcase comes along at the perfect time, beginning April 4th, and delighting film fans through April 10th.

Thirty-seven films will show at the venues; Regal Dole Cannery Stadium 18 & Imax, Hawaii Theatre in downtown Honolulu and Doris Duke Theater at the Honolulu Museum of Art on Beretania. A few of the stats should wow film fans. The films come from 13 countries. One is a world premiere, another an international premiere. Six films premiered at Sundance. The films come from the U.S., India, China, Hong Kong, Europe, the U.K., South Korea, Japan, and Hawaii.

The opening film of the spring season stars the girl of many men's dreams, Catherine Deneuve. In *On My Sixty*, she plays a former beauty queen, now in her sixties. When she learns her married lover has left his wife for a younger woman she takes a road trip. Directed by Emmanuelle Bercot, the film tells a story of taking many turns while taking a shot of happiness. Catch it April 4th at the Hawaii Theatre. 7 p.m.

This years Spring Showcase films run Friday evening, noon to 9 p.m. on Saturday and Sunday *Continues on page 3.*



### TABLE OF CONTENTS

Yada Yada Yada .....	2
Newsflash .....	3
Arts with Aloha .....	4
Aunt Lynn's Adventures .....	6
Tasting Kakaako .....	7
Paradise Pedals Party Bike .....	8
Chef's Corner: Jimmy Buffett's Jason LaMotte ..	9
E Pili Kakou .....	10-13
Calendar .....	14-15, 17
Paparazzi: Shop a Lea Concierge Soiree .....	15
Hiker's Corner .....	16
Paparazzi: Nobu Waikiki .....	17
That's Entertainment .....	18
Concierge of the Month: Naoko Mitchem .....	19



**WOLFGANG'S**  
STEAKHOUSE

LUNCH • HAPPY HOUR • DINNER • WEEKEND BRUNCH • PRIVATE ROOMS

**UNMISTEAKABLY NEW YORK**

Royal Hawaiian Center, Bldg C, Level 3  
wolfgangsteakhouse.net • opentable.com  
**808.922.3600**





## Publisher's Letter



### ...and the results are in

Big mahalos to all of you that took the time to fill out the survey. I wish I could say I have a better idea of what you like and where you recommend people to go, but the only thing that was crystal clear after tallying all of the results is... you all want, look, like and recommend something different. I had equal amounts of people stating Yada Yada, Auntie Lynn, and Hiking was their favorite section/ least used section of the book. Both Chef's Corner and Dining Dish made the top five sections of the book, including a few pleas that it was their favorite section and not to make any changes at all to them, but both sections got more than their fair shares of votes in the least used section. Hula Grill and Ocean House made all three restaurants lists, meaning some recommended them most for families, some recommended them most for romance, and the others recommended them most overall. Many mentioned PCC and Kualoa Ranch was one of your favorite activities because you had been on so many FAMs out there you knew it well, while quite a few others put it on your wish list as one you wish you would get invited to. Who figured I would get 50, 60 even 70 different restaurants or activities as answers for each question? What do I take from all of this? What I already knew. Each and every one of your recommendations is colored by what you personally find most interesting or enjoyable, and whatever that is, it's something different for each of you. Some of you are foodies, others don't care. Some are into Hawaiiiana and history, while others prefer more contemporary places. Some like arts and museums, others clubs and nightlife. It's what makes you all so special and our visitors so lucky. Between all of you, you guys got it ALL covered! No wonder there are two or three of you at each desk at any one time. I bet if you turn to your coworkers working on either side of you right now and ask each of them what their favorite – whatever you choose to ask about – is, you'll get three different answers. That works for me. It's one of the things that makes you all special... your individuality.

One thing you were all pretty consistent with was your praise. Overall, it seems we're doing something right. Most of you told us not to change a thing, it's the perfect way it is and you read it cover to cover. For that I say thank you. We try, and it's thanks to the surveys I've done in the past that we ended up with the content as it is today. These types of surveys have helped me drop and add sections over the years until we got to what it is I send you now, which it seems, is still working. There's a chance we're getting close to adding a few pages though, so I appreciate the suggestions on what to add, and yes, I'll remember about trying to make the font bigger if that happens. So as always, please keep that input coming.

Last but not least I hope you enjoy this issue. We really wanted to focus on some of the cool things that are happening in Kaka'ako that some of you may not even be aware of. I encourage you all to get in your cars, drive by the murals, get a snack and see what's happening in this community.



# Yada Yada



Jill Gilboy

We would like to wish a fond farewell to **Jill Gilboy**, Senior Sales & Marketing Manager of the *Hard Rock Café*. She has been a great friend of many of us over the years and we wish her all the best on her new adventure. If you find yourself in San Diego, be

sure to stop by the Hard Rock there to say hello. Please also welcome **Cydney Chu** who has stepped in to take over that position. Many of you know Cydney from her time at Pearl and M at Restaurant Row. • Congratulations to **Shannon Wilson** for being named Cruise Manager of *Atlantis Navatek Cruises*. Shannon will be responsible for directing meal service and the entertainment programs.

## Kaka'ako

Continued from page 1.

area, allowing seamless roaming with no interruptions. The system is noticeably faster than an average LTE network or free WiFi found in stand-alone coffee shops or malls. Users say that the WiFi is a good beginning to the new community.

Kaka'ako today is growing into a place to gather and live in the heart of Honolulu, and it's not just Kamehameha Schools with a vision. The Howard Hughes Corporation also has their own complete "dream plan" laid out for all to see on the first floor of the IBM building for the section they own.

Ward Centers is actually five different shopping experiences and areas. Checking [wardcenters.com](http://wardcenters.com) leads to a monthly lineup of activity including April's Antherium and Plant Sale, the Annual Children's Painting Contest & Exhibit, spring fashion festivals and Easter activities.

Maile Meyer, owner of Native Books/ Na Mea Hawaii at Ward Warehouse, believes that making art is a hands-on activity for everyone. Every day or the week the shop is packed not only with hand made-in-Hawaii product but also with classes in ukulele, slack key guitar, lauhala weaving, lomi lomi healing, Hawaiian language, chant, and hula. Many are free. Her vision for Kaka'ako is using the Na Mea model and spreading it across the new community. She says, "our hope is that Kaka'ako will be a place for us all to be comfortable. This isn't Hong Kong. Our artists champion the place and hold the vision and their opinions and ideas are being welcomed."



Gas-powered go-karts at The Groove Hawaii

In addition to arts and food, more entertainment options are being developed as well. It's not just a night at the movies anymore. The Groove Hawaii, a new three-acre site for family entertainment, just opened between Auahi and Koula streets, facing Ala Moana Blvd. Kids and adults can now race real gas-powered go-Karts here in town rather than driving over to Kapolei. Fans are already praising the place because other tracks offer the quiet,



Another one of the cool murals you can see as you drive along the streets of Kaka'ako

electric powered karts, whereas actual sound of a gas-power engine increases the driver satisfaction many times over. For those who have never driven around a track, the new attraction offers a Racing Clinic designed for driver safety and satisfaction. Head socks, helmets are provided, shoes are required. At the end of the lessons drivers earn a "license" and are ready for the 1/3 mile long track. Friends and family cheer from the viewing grandstand. The track is lighted for night races. Open daily from 10 a.m. to 9 p.m., [groovehawaii.com](http://groovehawaii.com).

Beyond racing, The Groove has a 30 ft. tall climbing wall that goes straight up and is challenging. Food is available from, of course, a food truck, with more to come, plus a game arcade and areas for private parties. Paradise Pedals bases their party bike out of here and more information can be found on them elsewhere in this issue.

Soon to join The Groove's high energy entertainment mix is Segway of Hawaii. Currently based in Waikiki, the stand-up motorized gliders will soon be on site at The Groove, ready to glide through tours to Point Panic, Magic Island and their award-winning Honolulu History & Culture Tour through downtown Honolulu and Chinatown, [segwayofhawaii.com](http://segwayofhawaii.com).

On May 12th the Our Kaka'ako team has plans for Honolulu's largest Complete Streets demonstration. Cooke Street, between Halekauwila and Ala Moana Boulevard will be transformed into a pedestrian and bike friendly space. The day will demonstrate Kamehameha School's vision of a walk-able neighborhood. Volunteer architects, urban planners, graphic designers and others have been working for months on the plan. Jeff Gress is artist and co-founder of the Lana Lane Studios, whose artists are exhibiting in April at the ARTS at Marks Garage in Chinatown. He says, "we are already telling the story of the future of Our Kaka'ako with graphic stencils and art all down Cooke Street." The energy is contagious. Get in your car, rent a Segway, or hop on the party bike to see some of this energy for yourselves. Despite some construction here and there, whatever you may be looking for, this community is open and has it ready for you.



# EXTRA Newsflash EXTRA

## H&M HAS OPENED

Many of you may have noticed the opening over the past week, but in case you missed it, global retailer H&M finally opened its first store in Hawaii at the end of March. Located in the Waikiki Business Plaza this 31,000 square foot split level store should do well in the heart of Waikiki as it is known for providing fashion forward clothing at affordable prices for men and women of all ages. Their first store opened in Sweden back in 1947 and since then have opened more than 3,000 stores in 53 countries. Open daily from 10 a.m. - 11 p.m. [HM.com](http://HM.com)

## PCC FOR FREE

That's right, you read that header correctly. As a big Mahalo for all that you do, the Polynesian Cultural Center is offering FREE gate admission, island buffet and a ticket to see the HA Evening Show all month long with proof of employment as long as space is available. Your guests are only \$25! Certain restrictions apply. Call 293-3333 for reservations.

## KATE SPADE OUTLETS

We all have our little vices, and Kate Spade happens to be one of mine. There's nothing this publisher loves more than her Kate Spade bags, so my pocketbook is thrilled to announce that Kate Spade is finally opening their first Outlet store in the islands in the next month or so at Waikale Premium Outlets.

## BILLS SYDNEY IN WAIKIKI

Popular Australian eatery, Bills Sydney has just opened its first restaurant in the US in Waikiki next to the Hard Rock Cafe. With four restaurants in Australian, four in Japan and one in London, Bills boasts of the "best breakfast in the world." and his infamous ricotta hotcakes. The two-story restaurant will feature a full sit down casual dining upstairs and a cafe/take out area downstairs. Australian chef and food writer Bill Granger is known as the 'egg master of Sydney' according to the *New York Times* and has brought his 'surf-bar' food for breakfast, lunch and dinner. Expect items such as raspberry frappés, crisp pork & watermelon salads and shrimp curry & fried green tomatoes. 922-1577. [billshawaii.com](http://billshawaii.com).

## HIFF Spring Showcase

*continued from page 1*

and 3 to 9 p.m. on Monday and Tuesday.

Speaking of the closing night film, Robert Lambeth, executive director of HIFF says, "we are very excited to present a locally produced film that is thought provoking about a unique world that is unfamiliar and often misunderstood." *Kumu Hina* is both directed and produced by Dean Hamer and Joe Wilson. Connie Flores is the co-producer. The cast includes the students of Halau Lokahi Public Charter School. The story is of a little boy who grows up to be the woman of his dreams and a young girl who becomes a leader among men. Tickers are sure to sell out for this 7 p.m. performance at the Hawaii Theatre on April 10th, so grab your tickets early if interested. For full schedule and information on tickets, including purchases, log onto [HIFF.org](http://HIFF.org). ~ Lynn

## FARMERS MARKET & BEER

The Hyatt Farmers Market taking place every Thursday from 4 - 8 p.m. in the Great Hall of the Pualeilani Atrium Shops has added a beer garden featuring local beers from Hawaii Nui Brewing LLC. Patrons 21 years and older can not only learn about, but also taste some of Hawaii Nui's premium brews including Sunset Amber Ale, Humpback Blue Beer, and Hapa Brown Ale from 5 - 9 p.m. The Beer Garden will be located on the Ewa Tower side of the market and beers are \$5 each. Learn more about the Hyatt's weekly Farmers Market at [waikiki.hyatt.com](http://waikiki.hyatt.com).

## KEO'S THAI CUISINE CLOSES

One of Waikiki's iconic restaurants, Keo's Thai Cuisine closed their doors on March 1st, after the Ambassador Hotel was sold, and deciding not to renew their lease with the new owners. Owner Keo Sananikone launched once of the first Thai restaurants in Honolulu, Mekong Restaurant back in 1977 and opened his flagship Keo's Restaurant on Kapahulu in 1981 before moving to the Ambassador Hotel location in 1997. His other restaurant, Keoni by Keo's at the Ohana East Hotel remains open.

## MAC 24/7 LAUNCHES BUFFET

MAC 24/7 at the Hilton Waikiki Beach Hotel has launched a Farm to Table Dinner Buffet on Friday and Saturday nights from 5 - 9 p.m. [mac247waikiki.com](http://mac247waikiki.com)

## FARM FRESH LOCAL OYSTERS

After years of research and development, Kualoa Ranch has launched a commercial oyster farming operation in the ancient Hawaiian fishpond of Mo'ili. This is the first time in decades Hawaii has had its own full-fledged oyster farm allowing the oysters to grow from seeds to maturity, whereas previously they were shipped to the mainland to be raised to maturity. There are currently 30,000 mature oysters ready to market offering restaurants a chance to buy local as part of the estimated 400,000 oysters Hawaii imports each year. [Kualoa.com](http://Kualoa.com).

## FOOD COURT EXPANDS

Chiba-Ken too, a new Japanese eatery has opened in the Royal Hawaiian Center's Pa'ina Lana'i Food Court. This is a take-away concept of the original sushi house Chiba-Ken located on Ena Road, offering sushi, poke bowls, bento, homemade udon noodles and daily specials from 10 a.m. - 10 p.m. Call 922-3200 for Chiba-Ken too or go to [royalhawaiiancenter.com](http://royalhawaiiancenter.com).

## WAIOLA SHAVE ICE TO WARD

The popular shave ice store on Kapahulu and in Moiliili is opening their third location in Ward Centers later this month. Also coming soon to Ward Center is the California-based Little Sheep Mongolian Hot Pot in the former E&O Trading location. Keep up to date on all the happenings at [wardcenters.com](http://wardcenters.com).

**Legends**  
IN CONCERT Waikiki

**ROCK-a-HULA!**

Your guests will love our newest cast member...  
**Lady Gaga!**

Four Packages from **\$65**

At Royal Hawaiian Center, Bldg. B, 4th Floor  
[www.Rock-A-Hula.com](http://www.Rock-A-Hula.com) Reservations: (808) 629-SHOW (7469)

HILTON HAWAIIAN VILLAGE® PRESENTS  
**WAIKIKI'S ONLY LUAU**  
 UNDER THE STARS



## WAIKIKI STARLIGHT LUAU

The drama and grace of Polynesia unfold with live music, drums, the captivating dances of the South Pacific and the fiery drama of four fire knife dancers. Indulge in a feast of unforgettable tropical flavors prepared by our award-winning resort chef, including Kalua Pig, Seared Island Catch, Huli Huli Chicken and Carved Pulehu Steak.

- SUNDAY - THURSDAY  
 BEGINNING AT 5:30 PM •
- ENJOY ONE WELCOME MAI TAI &  
 ONE SELECT BEVERAGE •
- COMPLIMENTARY VALET  
 & SELF PARKING •

**808.941.LUAU**  
 (5828)

[www.HiltonHawaiianVillage.com/luau](http://www.HiltonHawaiianVillage.com/luau)



HILTON HAWAIIAN VILLAGE®  
 WAIKIKI BEACH RESORT  
 2005 KALIA ROAD, HONOLULU • 808.949.4321



## arts with aloha



Spring is in full bloom this April in Honolulu's cultural and arts scene. Honolulu's great museums are blossoming with special one-time cultural events that your guests simply cannot miss. Our perennial theatres are

filled with visually stimulating productions of old and new classic musicals as well as a play that utilizes one of the three primary colors on the color wheel to express the passion of life and art. Can you guess which color? This is a month for you and your guests to indulge yourselves in theatre, music and culture like you've never before.

The first place you should indulge yourself is **IOLANI PALACE** on April 6th. Local singer Mailani Makainai and kumu hula Kauai Dalire of Ha Enterprises, in conjunction with The Friends of 'Iolani Palace, are bringing together the Hawaiian music community for an all-day benefit concert called, *Ola Ka Ha*. The proceeds of the event will go toward the preservation of the royal residence. Makainai and Dalire were inspired to create this event after the recent vandalism to one of the Palace's original 19th century doors. The goal of the event is to highlight the good things about Hawaiian history. *Ola Ka Ha*, which means the essence of the Hawaiian people lives on, will feature a who's who of Hawaiian musicians and dancers. The event is free and open to the public. Donations to The Friends of 'Iolani Palace will be accepted throughout the event. This is an exceptional opportunity for you to send your guests to a local music festival on the grounds of a royal palace. The line-up includes Hawaiian musicians Mailani, Jerry Santos, Teresa Bright, Weldon Kekauoha, Sean Na'auao, Waipuna, Hu'ewa and many more special guests not yet confirmed, alongside hula halau from across the islands. *Ola Ka Ha* will begin at 10 a.m. and end at 4 p.m. For more information visit [iolanipalace.org](http://iolanipalace.org). As you all know, King Kalakaua built 'Iolani Palace in 1882 to enhance the prestige of Hawai'i overseas and to mark Hawai'i's status as a modern nation. Please share this with your guests as you encourage them to visit the only official residence of royalty in the United States.

Another place you should encourage your guests to visit of course is **BISHOP MUSEUM** and on April 5th the museum is celebrating Hawaiian culture and native plants with the *Grow Hawaiian Festival*. The event will highlight Hawai'i's culture, crafts and its native plants. For those of your guests who are weekend gardeners, this visit will be a fun opportunity for them to learn how to make lei, weave lauhala, print kapa, and craft Hawaiian implements from traditional artisans. If your guests have children, they will be able to compete with them in a variety of Hawaiian games. In addition, there will be lomilomi massage, which I am sure most of your guests would like to try after that long flight. There will be local products made in Hawai'i, plus live music by local artists, hula performances and onolicious Hawaiian style-food. And don't forget to tell them to visit Hawaiian Hall and the recently renovated Pacific Hall while they are there! The *Grow Hawaiian Festival* starts at 9 a.m. and runs until 3 p.m. so it's

the perfect morning stop for your guests on the way to the North Shore or Wai'anae Coast. Admission to the museum is \$19.95 for adults, \$16.95 for seniors 65+ and \$14.95 for kids 4 to 12. 3 and under are free. To learn more about the event visit [hawaiianelectric.com/growhawaiian](http://hawaiianelectric.com/growhawaiian) or call 543-7511.

Several productions that opened up last month are now still running strong this month. One of them is the Jerome Kern and Oscar Hammerstein musical *Show Boat* at **DIAMOND HEAD THEATRE**. For those of you not familiar with the 1927 musical, it's based on an Edna Ferber novel of the same name that follows the lives of performers, stagehands and dock workers on a river boat called the Cotton Blossom as it travels up and down the Mississippi River entertaining town folk. This epic story begins in the late 19th century and involves the audience in the successes and sorrows of the characters Julie, Joe, Queenie, Magnolia and Ravenal through the backdrop of racial and social changes shaping the United States up until the late 1920s. Your guests may be familiar with some of the unforgettable songs from the show such as "Make Believe," "Can't Help Lovin' Dat Man" and the favorite "Ol' Man River." Revivals of this classic Broadway show have won many awards, in particular the Tony Award for Best Revival of a Musical. As with all of Diamond Head Theatre's production, this musical was created by Hawai'i great pool of local talent from the actors on the state to the musicians in the orchestra pit and the backstage production crews. The musical runs through April 20th. To make reservations, please call the box office at 733-0274. The theatre seats at the foot of Diamond Head Crater and is the third oldest community theatre in the United States.

**THE ACTOR GROUP**, known as TAG, may not have the distinction of being one of the oldest community theatres in the country, but it does have the distinction of being the place in Honolulu to see and experience the works of great playwrights. Its spring production is a play by American writer John Logan entitled **RED** about a very specific time in the life of American abstract expressionist painter Mark Rothko. Some of your guests may know of his famous Seagram Murals which he was commissioned to paint for the Four Seasons restaurant in New York during late 1950s. At the time, Rothko's commission for the work was the largest ever in the history of modern art. In addition to this captivating play, your guests will get a glimpse into all the physical labor that goes into creating art and like those in the front row of a prize fight, the audience of this show might just get a few specks of red on them, but instead of blood it will be the color red, if not the paint itself the emotion between mentor and student. Call 722-6941 or visit [taghawaii.net](http://taghawaii.net) for more information on this play and future productions that might be of interest to your guests. TAG is located at Dole Cannery Square directly across from the Regal Theatres on Iwilei Road. And tell your guests not to worry about all the red paint. It should come out after a few washings, and who knows, I might just be sitting next to them!

~ Lance Rae



IT'S OUR WAY OF SAYING "MAHALO."

IT'S YOUR WAY OF BEING ENTERTAINED.



## "HOSPITALITY SPECIAL"

Our industry partners can take advantage of these special offers for you and your guests.

# GET FREE

**Gate Admission, Island Buffet & HĀ: Breath of Life**

(with proof of employment, based on space availability)

GUESTS:

**JUST \$25  
per person!**

(Limit 10 guests. Hawaii residents only. Based on space availability.)

The Polynesian Cultural Center wouldn't be a success without the help of concierges. To say thanks, we're offering you a special treat. Visit the center, enjoy our Island Buffet, and see HĀ: Breath of Life all for free. And tell your colleagues about the special—it's good for all hospitality workers. But hurry, it ends April 30, 2014.



Call 293-3333 for reservations.

### AVAILABLE FOR OUR HOSPITALITY FRIENDS!

- HOTEL EMPLOYEES
- RESTAURANT EMPLOYEES
- GROUND TRANSPORTATION EMPLOYEES
- AIRLINE EMPLOYEES

(Proof of employment & job title required.)

*To take advantage of our "Hospitality Special," just go to our Lale box office and show your proof of hospitality employment. Reservations are required for the dinner and show. Seating is based on availability.*

Offer available one (1) time only to hospitality employees that are Hawaii residents or based in Hawaii. Proof of employment is required. We will accept a valid employee ID or a letter from your HR Dept. verifying your employment. All guests accompanying you must also be kama'aina with valid Hawaii ID. No combining with other offers. Show and Dinner based on space availability. Please inquire for details. Offers are valid March 1 to April 30, 2014. No exceptions.

polynesia.com





Mahalo for your continued support!

JOIN OUR GUEST REFERRAL PROGRAM



OUR PROGRAM IS SIMPLE! FOR EVERY 25 GUESTS THAT YOU REFER, RUTH'S CHRIS STEAK HOUSE WILL SEND YOU A \$50.00 DINING CERTIFICATE

Please contact Emi Espinda if you have any questions. (808) 595.2205 • eespinda@direstaurants.com

OPEN DAILY FROM 5PM HAPPY HOUR DAILY IN OUR LOUNGE 5PM - 7PM PRIME TIME MENU DAILY 5PM - 7PM WINE WEDNESDAYS 25% OFF BOTTLES OF WINE

Restaurant Row | 808.599.3860 Waikiki Beach Walk | 808.440.7910

WWW.RUTHSCHRISHAWAII.COM



25 NEW MENU ITEMS

Open Daily 11am - 10pm

Happy Hour Daily in our lounge 3pm - 6pm

Vino Thursdays 25% Off Bottles of Wine

Inquire about our Guest Referral Program!

Our program is simple! For every 10 complimentary dessert cards redeemed (WITH YOUR NAME ON THE CARD),

Romano's Macaroni Grill will send you a \$25.00 dining certificate that may be used at our Oahu restaurant.

Please contact Emi Espinda for information. (808) 595.2205 • eespinda@direstaurants.com

ROMANO'S Macaroni GRILL

Ho'okipa Terrace at Ala Moana Center 808.356.8300

www.macaronigrill.com



Aunt Lynn's Adventures



April showers. Have you every seen Diamond Head so green? It may be possible that we've had enough rain. The front door hinges are beginning to rust and the lawn squishes when stepped on. What about April fools? Do

grade school kids pull tricks anymore?

Some think it foolish to look forward to the Nirvana of spending three hours a night, beginning Thursday, April 24, for three nights welded to a television screen watching the 51st Annual Merrie Monarch Festival, live from Hilo. It may be even more foolish for those of us who count the months, weeks, days until we can fly to Hilo, squeeze into our prized seat on a hard metal bench or chair and watch the epic hula event in person. I am already packed.

GOT THE BLA'S - if not, the man himself will be available at noon on April 6th. That man would be the music master Bla Pahinui hanging out at Na Mea Native Books at Ward Warehouse. He will talk story with John Berger, entertainment writer for the Honolulu Star Advertiser and author of the epic music encyclopedia, Hawaiian Music & Musicians. This will be an opportunity to learn about the influence of Bla's dad, Gabby Pahinui on the music Bla plays today. Bla Pahinui's new CD and John Berger's book will both be available, with autographs of course.

GROW YOUR OWN - fruit, shade and endemic tree or plant for free. From 8 a.m. to noon Malama Manoa is having a "tree-for-all", giving away 1,000 trees. Even if you don't have a yard, stop by anyhow to see Andy Cole and other woodturners demonstrate their use of a lathe. The Honolulu Woodturners Club will be running three lathes and talking story about turning chunks of wood into objects of beauty. Finished work will be on exhibit and the carvers love to answer questions. The event is held every other year at the Manoa Recreation Center in Manoa Valley.

GET OUT OF TOWN - to the peaceful North Shore and the open space where wild riders and well-mannered horses play the sport of kings. The first match of Opening Day at the Hawaii Polo Club at Mokuleia begins at 2 p.m. The main match, the Duke Kahanamoku Trophy, follows at about 3 p.m. Equus Hotel will challenge Wealth Strategy Partners. Food, drink, great beach walks, plus SkyDive Hawaii jumpers landing in center field at halftime and music for dancing after the match is like a weekend away without leaving Oahu.

GIFTS THAT GIVE - is the theme of the 12 designers + 12 causes at Eden in Love at Ward Center. The idea is to be the change. Each designer

donates a portion of the purchase price of their item to the cause that moves them. Buy Kiki Bangles and benefit the Surfrider Foundation. Pick Bamboo Sunnies and help Trees for the Future, or get a Market Tote designed by Tamar Wong and help the Hawaii Foodbank.

GOING THE DISTANCE - to train those who will circumnavigate the globe, voyaging canoe Hawai'iloa returned to Hawaiian waters in March. With Hokule'a's world wide voyage (WWV) Malama Honua, set for May, the Hawai'iloa will be the primary training vessel, keeping crews ocean-ready until they fly out to a distant, exotic destination to crew Hokule'a or her sister canoe, Hikianalia, for a month or two. Hawai'iloa, like Hokule'a is traditionally navigated using ancestral knowledge of star patterns. Hikianalia is the support vessel to Hokule'a and is powered by solar energy with two photovoltaic panels and two electric motors; a platform for modern technology.

Originally launched in 1993, the all-wood Hawai'iloa sailed for five years to Tahiti, New Zealand and the Marquesas. It was determined that the canoe, exposed to the elements for many years, required extensive renovation. The canoe was taken apart without restoration in mind. Four years ago, with no directions on how to put the parts back together, master wood-worker Jerry Ongeis took on the task. After more than 20,000 man and woman-hours the Hawai'iloa was restored, lashed and returned to her original glory. Once the other canoes sail, when residents and visitors catch a glimpse of a double-hulled voyaging canoe off the shores of Oahu, it will be Hawai'iloa, training crew. Follow Hokule'a on thier journey at hokulea.org and find the story of Hawai'iloa at fh-hawaii.org.

GET AWAY - to a South Pacific island of your choice. Te Moana Nui combines authentic dance, flaming knives and big-screen video taking you to distant islands, across vast ocean, somewhere far from your seat in the Pacific Beach Hotel Grand Ballroom. A smiling cast greets you at the delicious buffet, then delivers a wow show. Not sure any other Polynesian show has been this good, no rain-outs, never too hot, and an intimate feeling that they are dancing just for you.

GO PALI - in the Windward direction to "I Love Kailua" town party, April 13th, 11 a.m. to 4 p.m.. This 22nd year, the party includes "Taste of Kailua" featuring dozens of Kailua restaurants, plus Art in the Park, music, hula, kid's games, booths to buy crafts by fifty windward artisans. Event buttons at \$5 benefit Lani-Kailua Outdoor Circle at a "close the street" fun, old fashioned party. Basically, everyone in Kailua town ready to party. I plan to hang out with those folks. See you there!



ALERT!

April 24-26 Box Jellyfish Window

Teaching Hawaii about jellyfish and other ocean creatures for over a century

brought to you by The Waikiki Aquarium open daily from 9 am - 4:30 pm



# Tasting Kakaako

Kaka'ako now reminds me a lot of Chinatown back in the day. I remember when I used to love going to Havana Cabana and that side of the street was safe and fun, but even walking across the street was a risky decision and Hotel Street was a total no go. Now look at it – bit by bit restoration took effect, the area by the Hawaii Theatre is a thriving Arts District and Hotel Street is home to some of the hippest bars in town. Still wouldn't really recommend going too close to the canal – but the people, culture, restaurants and eateries have a stronger hold on the Chinatown district than the down and outs and continue to make their community stronger.

Similarities are taking place in Kaka'ako. Although they certainly struggle with much different issues than those of Chinatown of a decade or two ago, Kaka'ako wasn't even a destination unless you were looking to get your car fixed or buy a large quantity of office supplies. But amidst the constant construction and big picture plan Kamehameha Schools is implementing, it has not only become an urban hotspot for artists and free spirits but a burgeoning food district as well.

There's a plethora of choices. You can choose from gourmet hot dogs to Mexican street food to authentic Hawaiian food to a Vietnamese coffee shop or hit one of the hippest bars in town run by an award-winning mixologist, and that's simply on one block!

**Hank's Haute Dogs** really started it off in my opinion. Owner Henry Adaniya closed his groundbreaking Chicago eatery Trio, which launched the careers of such culinary greats as Grant Achatz, to move to Oahu and open a gourmet hot dog shop on a street so off the beaten path, I can't imagine why anyone would have thought to open a restaurant there. His menu includes everything from a traditional Chicago Dog, to Wild Boar, Alligator, Kobe and Lobster Dogs to name a few. Add in a few gourmet sides like Truffled Mac 'N Cheese, Duck Fat French Fries, and Hibiscus Lemonade and suddenly the small shop on Coral Street had a line out the door daily. Don't forget, The Pig and the Lady, moved from selling their food only at farmers markets to trying out their own pop up restaurant there to huge success and have since launched their own brick and mortar location downtown. Open 10 a.m. – 4 p.m. Monday through Thursday, 10 a.m. – 7 p.m. on Fridays, 11 a.m. – 7 p.m. on Saturdays and 11 a.m. – 4 p.m. on Sundays. 532-HANK. hankshautedogs.com

Fast forward five years when Chef Mark Noguchi and friends opened **TASTE Table** around the corner in order to offer a brick and mortar location for food truck vendors and chefs to try out their concepts as a pop up for a few days with several of those ideas becoming full-fledged restaurants of their own since then. One of those restaurants is **Cocina**, run by Chef Quinten Frye who just took over the Taste Table space as his own after Chef Noguchi closed it to focus on other projects including the birth of his first child. Cocina is a Mexican street food concept that

Quinten started up a few months ago been around the corner from where he is now, at the former Whole Ox localation. Start with some Mexican corn, papas fritas or fried avocado before diving into one of the many taco options including fresh fish, Adobo BBQ Rock Shrimp, Tecate battered Chicken or his popular Headcheese Carnitas Tacos. 667 Auahi Street. Open Tuesday through Saturday 11 a.m. – 9 p.m. cocinahawaii.com.

On one side of Cocina is **Insomnia Espresso and Café**, a mom and pop run Vietnamese coffee shop open from 6:30 a.m. – 4:30 p.m. Monday thru Friday and Saturdays from 8 a.m. – 2 p.m. Add some homemade Vietnamese fare to your daily espresso fix with Summer Rolls, Lemongrass Chicken, Pho and other daily specials. For variety there's a really odd looking fish staring at you while you wait. 669 Auahi Street. 545-4160

If java just isn't strong enough for you then head to the other side of Cochina in the afternoon to see award-winning mixologist Christian Self at the new **Bevy Bar** for a taste of his finely crafted cocktails paired with an ethnically diverse menu. Pow Wow artist Aaron De La Cruz painted the far wall inside Bevy in his trademark abstract designs bringing up the hipster level another few notches on the corner of Auahi and Keawe Street. Open Tuesday – Thursday 4 p.m.-Midnight, Friday and Saturday 4 p.m.- 2 a.m. 594-7445. Bevybar.com.

Popular eatery **Highway Inn** opened on the other

side of Hank's on the corner of Coral Street and Ala Moana Boulevard. Aside from the breakfasts, plate lunches and Hawaiian food they are known for, they have brought on pastry chef Ed Morita who is wowing the customers with his daily pastry creations such as Honey Roasted Pineapple Upside-Down Kiawe Cake, Mountain Apple Chutney w/ Olena Croutons & Bruleed Ulu Cream and Bacon Sticky Buns. Open Monday – Thursday 8:30 a.m. – 8:30 p.m., Fridays 8:30 a.m.- 9 p.m. and Saturday and Sundays 9 a.m. – 2:30 p.m. 954-4955. myhighwayinn.com

That's just one block in Kaka'ako. There's so much more, but not nearly enough room to describe them all. Up the street in the Imperial Plaza is **Ah-Lang Restaurant**, or as you may know it, the Angry Korean Lady Restaurant, one of the best hole-in-the-wall restaurants in town. On Queen Street, **I Love Country Café** opened a few doors down from another hip hangout, **Fresh Café**, and one of my favorite hole-in-the-wall's for a good cheap plate lunch is **New Queen BBQ**. The unusually named **Café Duck Butt** on Kawaiahao Street is known for their deceptively tasty Watermelon Soju in addition to tasty Korean bar bites (and Happy Hour prices between 5 – 8 p.m.). Their karaoke rooms are always filled on weekends. I'm still a fan of **This is It Bakery & Deli** across from Fisher on Cooke Street for bagels and quiche and in case that's not enough Hawaii's newest beer pub, **Honolulu Beerworks** is scheduled to open on the corner of Cooke and Ala Moana Boulevard sometime this month. What's that saying from *Field of Dreams*? "If you build it, he will come." Well Kaka'ako, keep on building, cause with options like this, we're gonna keep coming. ~ Pam

AWARD-WINNING CUISINE,  
*now disguised as a special offer.*

Join us for a special 4-course tasting menu from  
Chef Jon Matsubara for a limited time at Japengo.  
Dinner nightly, 6:00 PM to 10:00 PM.

**\$55<sup>00</sup>**

Per Person

**\$49<sup>00</sup>**

Kama'aina Discount

Including a sommelier's choice glass of wine.



HYATT REGENCY WAIKIKI

BEACH RESORT & SPA

Open nightly, 6:00 to 10:00 PM

**808 237 6180**

[japengohawaii.com](http://japengohawaii.com)



©2014 Hyatt Corporation. All rights reserved.



Introducing our new weekend dinner buffet



All Day Dining, All Night Socializing

**All You Can Eat Buffet!**

Featuring slow-roasted Prime Rib and many more MAC 24/7 favorites!

5 pm-9 pm Friday and Saturday  
\$32.95 adults - \$18.95 keiki

Always \$3 valet parking when dining at MAC 24/7 or LBLE Lounge



Hilton Waikiki Beach  
2500 Kuhio Avenue  
808.921.5564  
mac247waikiki.com  
hiltonwaikiki.com



BAREFOOT BEACH CAFE  
ESTABLISHED 1971

Open Daily, 7am - 9pm  
Serving Breakfast, Lunch & Dinner

Live Music every Thu, Fri & Sat,  
5:30-8:30pm, Sun, 11am-2pm

Available for Private Parties  
& Special Events

2699 Kalakaua, on the beach  
in Waikiki, across from the  
Kapiolani Park Bandstand



Concierge Line:  
808.699.8830

info@BarefootBeachCafe.com

# Paradise Pedals

It's not often in this town that an activity takes me by surprise. But that's what happened to me when I was introduced to Paradise Pedals last year. It wasn't a client that took me, nor had I ever heard about it from the activity itself, which is the norm. Rather a

friend of mine invited us on a pub crawl with them for her birthday and took no end of pleasure that she had 'scooped' me. Like many of you I'm sure, I am the one my friends call if they want information or a rate on something in this town. But her enjoyment in one-upping me paled in comparison to the enjoyment I took away from the experience itself. It's rare an activity takes me by surprise anymore. It's not that I'm jaded, rather fortunate enough to have been able to experience so much this town has to offer. But this? This was so very different from anything I've ever done and basically, it's just downright fun. Now that they've moved their base of operations to The Groove Hawaii I see that some of you are starting to experience it for yourselves, but for the rest of you... let me explain. Paradise Pedals is a party bike built for 15 that is pedal-powered by the passengers and took me on a pub crawl like I have never been on before. Piloted by a driver, the bike has no engine, but the driver steers you where you need to go, watches the bike while the group is inside and is in charge of the music. Picture this odd looking bike, which is street legal, blaring party music (your choice of course) with a bunch of people pedaling (and usually singing) away. I'm not exaggerating when I say dozens of people stopped to take our picture as we cruised down Ward Avenue. The party bike usually stops at three bars during the two hour Kaka'ako pub crawl. Departing from the Groove Hawaii, the bike usually heads to REAL a gastropub first and usually always makes a stop at Café Duck Butt as well. Depending on each different restaurants hours and needs, the bars do rotate day to day. Other stops on the tour can include Dave & Busters, Bevy and Hush Bar. Once Honolulu Beerworks opens they will be in the rotation as well. If you just pop on the party bike, you actually have no say in where the bike goes as it is pre-planned, but for those that rent the whole bike they can absolutely coordinate which places they would like to go too. The amount of time spent in each place is determined by how many places the bike stops at and how long the tour is, but in general each stop is about 25 minutes or so. That is more than enough time to grab a drink or two and an appetizer, especially since each restaurant is ready and waiting when they arrive as your driver has called in advance to let them know how many are coming, and service



is prompt. This is a completely new twist on the pub crawl and I can't tell you the last time I had that much fun. This is just cool.

The brain-child of husband and wife team Daryn and Tiffany Elliott, they were on vacation here at the end of 2012, lying by the pool think-

ing how in the world they could actually move here. A few days later as they were on the way to the airport to fly back to California, they got a call that there was one of these party bikes on-island for sale, but they would have to decide quickly as the owners were getting ready to ship it back to the mainland. After much discussion on the flight home, they basically turned right back around, saw it, bought it, and moved the family out to Hawaii. Not knowing anyone out here, they simply opened their doors by putting out an ad on Groupon, and voila... they were in business. In many cases, it was the quintessential Hawaiian dream. A year later, they have moved their base of operations to The Groove Hawaii and have expanded their options to not only offer the pub crawl, but they are also in the process of launching a Honolulu Historical Tour. Passengers will leave the Groove, pedal to Iolani Palace where they will stop for a tour, then pop back onto the bike to drive past several other historical sites, past some of the Pow Wow murals, make a brief stop for lunch at one of the many Kaka'ako restaurants before returning to the Groove. Definitely sounds like one of the more unique - and healthy - ways to tour Honolulu.

If you're into pub crawls, or just want to try something different, then grab a few friends and check out Paradise Pedals. There is a good deal of pedaling involved, so there needs to be at least 6 pedaling passengers on each ride to get the bike moving. There are 5 of what I call 'princess' seats available on the bike for those that can't pedal. The two seats above the rear wheels and the bench seat which holds three. I was wearing dress and heels the first time I went (having no idea what I was walking into) and at one point went to grab one of those, but was teased mercilessly by the others, so the break didn't last long. For the record, it wasn't the best footwear choice for the bike, but it was doable.

There are three 2-hour pub crawls available daily (4 p.m.- 6 p.m., 6 p.m.-8 p.m., 8 p.m.-10 p.m.) for \$39.95 and the bike can be bought out for \$499.95. A three tour buyout costs \$599.95. Be sure to check out Groupon before you buy, as they seem to pop up there regularly. Be it with a pal, with a group, for a birthday party or some fun team bonding, Paradise Pedals Party Bike certainly delivers. Call 397-7066 for reservations or check it out for yourself at paradisepedals.com. ~ Pam



# Duke Kahanamoku Beach Challenge

The Duke Kahanamoku Challenge first began back in 1985 as a community service project by the Waikiki Jaycees, the event is now one of the signature sports fundraising events benefiting the Waikiki Community Center. Now in its 29th year, the event is fun for both locals and visitors alike. Head on down to the Duke Kahanamoku Beach and Lagoon at the Hilton Hawaiian Village on Sunday, April 13 for a fun-filled day of water sports, ancient Hawaiian games and live entertainment featuring some of Hawaii's top musicians.

The fun begins at 9 a.m. with a very traditional double-hulled canoe procession into the lagoon while a traditional Hawaiian chant is being called and a kahiko is performed that is guaranteed to wow all the visitors. At 10 a.m. the games get going. On the water, teams will compete in a quarter-mile canoe races and stand up paddle board races the length of the lagoon. On land, teams will be able to compete in a series of ancient Hawaiian makahiki games such as the 'ulu maika (sand bowling), moa pahe'e (sliding), konane (Hawaiian checkers), haka moa (fighting chicken) and Huki Kaula (tug of war). There will also be plenty of handmade Hawaiian arts and crafts to look at and perhaps buy. The public invited to participate in the competition if they so desire for a small donation to WCC. Otherwise spectators will have plenty to watch, keep them occupied and entertain them on the beach in Waikiki.



Henry Kapono head up a list of stellar performers to take the stage that also includes Jake Shimabukuro

including Jake Shimabukuro and Henry Kapono.

In addition to raising badly needed funds for the Waikiki Community Center, the event also honors some of our local legends for all of their contributions to the Hawaiian water culture. This years honorees are Billy Richards and Kimo Lyman – both legendary in Native Hawaiian canoeing and have played a major role in perpetuating the legacy of the Hokule'a, which of course begins its 4 year world wide voyage next month.

Visitors should consider themselves lucky to enjoy a day on the beach with so much going around them and locals love themselves a competition. I actually steered one of the corporate teams a few years back and had blast watching the malihini try their hand at what most of us take for granted. It was hardly competitive compared to the paddling I'm used too, but it was a heck of a lot more fun.

~ Pam

# Chef's Corner

## Jimmy Buffett's Executive Chef Jason LaMotte



Jimmy Buffett's at the Beachcomber Executive Chef has cooked around the world, worked for celebrated no nonsense Chef Gordon Ramsay of TV fame and competed in cooking competitions across the country and even earned a Michelin Star. There's a lot to learn about the guy in the kitchen behind the scenes, and behind the food at this years Mahalo Party, at JBABC.

### When first sparked your interest in becoming a chef?

When I was a kid my mom would bake bread and pass it out to all the neighbors for Christmas, I would see the look on their face when they were given a warm loaf of fresh bread, and that was it. The idea of making someone truly happy.

### What was your first job in the industry?

I was a dishwasher and part time apple peeler for a small restaurant owned by a friends family.

### What inspires you in the kitchen?

The moment when a cook gets it. They taste the food they way it should be and then have that food memory implanted in there head to pass onto the guest.

### Who would you consider your mentor and why?

My Mom, she worked two jobs so we never went without, she taught me what hard work really is.

### You spent several years working for Gordon Ramsay in Europe. He's always angry and yelling on TV. Is he like that in real life? Or was he rarely there?

Gordon has extremely high standards and he gets very passionate when those standards are not met, it makes for great TV when they bring in a bunch of average cooks at best and he blows up on them. In his kitchen in Europe it was full of professionals and very quiet and organized.

### While there you earned a Michelin star. Can you describe what that meant to you?

It's really personal. You worked so hard to get this little macaroon or star next to your restaurants name and helps put all of the sacrifices in perspective.

### What's your favorite thing to do when not working?

I have to say spending time with my kids (Sam, Jack, Misha). Kids are very humbling as they help me realize that I should take myself to seriously

### Biggest pet peeve working in the kitchen?

Short cuts, there is no room for that. It's a slippery slope once that starts.

### Name the go-to ingredient one must always have on hand?

Eggs, everything taste better with a fried egg on top.

### What is the strangest food you have ever tried?

I spent a few months last year in Africa and I tried some exotic game animals that are part of the local diet there, they were amazing, they really had a strong flavor and very lean.

### Please describe your food philosophy.

Simple fresh ingredients and sound techniques. It's the basics most people take for granted. Being able to butcher fish or make a stock. These are the fundamentals that have been diluted over the years.

### Favorite (or least favorite) food trend?

Favorite food trend is the farm to table movement. Bringing to everyone an understanding of where your food comes from and the men and women that make their living as farmers.

### What's always in your fridge?

My wife (Petra) is so passionate about organics and keeps the best fresh produce at all times.

### Name one of the most unique culinary experiences you've ever had.

I had the luck and pleasure of eating at El Bulli in Spain, Three hrs. 46 courses, simply the best meal of my life.

### What brought you to Hawaii? How was the transition after so many years on the mainland and in Europe?

Jimmy Buffett's, I was the Executive Chef in Atlantic City and transferred out here. It's great, the transition has been easy. It's a serious juxtaposition compared to Europe but amazing.

### What's your favorite thing about living in the islands?

As a chef you spend so much time indoors and days off are few and far between, I love the fact that I always get a chance at a nice warm sunny day to go to the beach or parks with my family.

## Crab and Truffle Gnocchi



### Sauce for each serving:

1 teaspoon(s) minced shallot	7 gnocchi
1/2 ounce(s) olive oil	1 ounce(s) lump crabmeat
1 ounce(s) vermouth	5 drop(s) white truffle oil
1 ounce(s) unsalted fish stock	Salt, to taste
1 ounce(s) heavy cream	Parmesan cheese

### Directions

1. For the gnocchi: Prepare as directions on Package (great product out there no need to go through the complication of making yourself)
2. For the sauce: In a saucepan over medium heat, sweat shallots in olive oil. Remove from heat and add vermouth. Return to stove and bring to boil. Add fish stock and return to boil. Add cream and simmer. Strain out shallots through a chinois. Clean pan, and then return strained liquid to cleaned pan. Add butter and gnocchi. Simmer until gnocchi are hot through and sauce is emulsified and fairly thick. Stir in crab and truffle oil, heating until crab is warm. Season to taste with salt.
3. Serve immediately in warm bowl. Finish with freshly shaved Parmesan cheese.

Jimmy Buffett's at the Beachcomber is located in the lobby of the Holiday Inn Waikiki Beachcomber  
Open 7 days a week from 6 a.m. - midnight, 1 a.m. on Fridays and Saturdays.

Happy Hour Daily: 10:30 a.m. - 6 p.m. and 10 p.m. - close

jbabc.com • Phone: 791-1200 • Facebook: /JBABC



# Let's be Together...

DINING ▸ ENTERTAINMENT ▸ PAU HANA ▸ EAT ▸ DRINK ▸ BE MERRY ▸ HAPPY HOUR

## MONDAY

<b>Bin1901 at the Moana</b>	921-4600
<i>Piano Wine Bar</i>	
Scott Smith	6:30-9:30pm
<b>Chart House Waikiki</b>	941-6660
<i>Live Contemporary Hawaiian</i>	
Tito Berinobis & David Kauahikaua	6:30-9:30pm
<b>Cheesecake Factory</b>	924-5001
<i>Classic Hawaiian</i>	
Christian Yrizarry Duo	8-11pm
<b>Duke's Canoe Club Waikiki</b>	922-2268
<i>Live Contemporary Hawaiian</i>	
Haumea Warrington	4-6pm
Ellsworth Simeona	9:30-12am
<b>Hang Ten Bar at Turtle Bay</b>	293-6000
<i>Live Contemporary Hawaiian</i>	
Art Kalahiki Duo	5-7pm
<b>Hard Rock Cafe</b>	955-7383
<i>Live Contemporary</i>	
Zanuck & Piranha Duo	5-7pm
Blue Mondays Varying Artists	9-11am
<b>House Without a Key</b>	923-2311
<i>Live Hawaiian &amp; Hula by Skyler Kamaka</i>	
DeLima Ohana	5:30 - 8:00pm
<b>Hula Grill</b>	923-HULA
<i>Live Contemporary Hawaiian</i>	
Eric Lee	7-9pm
<b>Jimmy Buffett's at the Beachcomber</b>	791-1200
<i>Live Contemporary Hawaiian</i>	
Tavana	7:00-9:30pm
<b>Kani Ka Pila Grille</b>	924-4992
<i>Live Contemporary Hawaiian</i>	
Sean Na'auao	6 - 9pm
<b>LBLE at the Hilton Waikiki Beach Hotel</b>	922-0811
<i>Live Contemporary Acoustic Hits</i>	
Johnny Helm	6-9pm
<b>Lewers Lounge</b>	923-2311
<i>Live Contemporary &amp; Light Jazz</i>	
Noly Pa'a	8:30-12:30am

<b>LuLu's</b>	926-5222
<i>Live Contemporary</i>	
Johnny Helm	6:30-9:30 p.m.
<b>Rumfire</b>	921-4600
<i>Live Contemporary Hawaiian</i>	
Jeremy Cheng	5-8pm
DJ Super CW	8:30pm-12:30am
<b>Sunrise Pool Bar at the Modern</b>	943-5800
<i>Live Contemporary</i>	
Alex Oasay	5-8pm
<b>The Edge at the Sheraton</b>	921-4600
<i>Live Hawaiian music with a fire dancer at 7:30 p.m.</i>	
Randy Allen	1:30-3:30pm
Ka'ala Boys	5:30-8pm
<b>Tiki's Grill &amp; Bar</b>	923-TIKI
<i>Live Contemporary Hawaiian</i>	
Canoes 4 Rent	6:30-8:30pm
Jason Alan & Ian O'Sullivan	9-11pm
<b>Tropics Bar &amp; Grill</b>	949-4321
<i>Live Contemporary Hawaiian</i>	
Acoustik Playground	5:30-8:30pm

## TUESDAY

<b>Bin1901 at the Moana</b>	921-4600
<i>Piano Wine Bar</i>	
Kapena Delima	6:30-9:30pm
<b>Chart House Waikiki</b>	941-6660
<i>Live Contemporary Hawaiian</i>	
The Camarillo Brothers	6:30-9:30pm
<b>Cheesecake Factory</b>	924-5001
<i>Classic Hawaiian</i>	
Art Kalahiki Duo	8-11pm
<b>Duke's Canoe Club Waikiki</b>	922-2268
<i>Live Contemporary Hawaiian</i>	
Haumea Warrington	4-6pm
Ellsworth Simeona	9:30-12am
<b>Hang Ten Bar at Turtle Bay</b>	293-6000
<i>Live Contemporary Hawaiian</i>	
Christian Yrizarry Duo	5-7pm
<b>Hard Rock Cafe</b>	955-7383
<i>Live Contemporary</i>	
Alex Oasay Duo	5-7pm
Simple Souls (or others)	9-11pm
<b>House Without a Key</b>	923-2311
<i>Live Hawaiian &amp; Hula by Radasha Ho'ohuli</i>	
Po'okela	5:30 - 8:00pm
<b>Hula Grill</b>	923-HULA
<i>Live Contemporary Hawaiian</i>	
Kamuela Kahoano	7-9pm
<b>Kani Ka Pila Grille</b>	924-4992
<i>Live Contemporary Hawaiian</i>	
Weldon Kekauoha	6-9pm
<b>LBLE at the Hilton Waikiki Beach Hotel</b>	922-0811
<i>Live Contemporary Funk, Jazz, Hip Hop &amp; Reggae</i>	
Jason Laeha	6-9pm
<b>Lewers Lounge</b>	923-2311
<i>Live Contemporary &amp; Light Jazz</i>	
Maggie Herron & Rocky Holmes	8:30-12:30am
<b>LuLu's</b>	926-5222
<i>Live Contemporary</i>	
Johnny Helm	6-9pm
<b>Mai Tai Bar at the Royal Hawaiian</b>	923-7311
<i>Live Contemporary Hawaiian with Hula Dancer</i>	

<b>Kapala Duo</b>	6:30-9:30pm
<b>Rumfire</b>	921-4600
<i>Live Contemporary Rock</i>	
Randy Allen	5-8pm
<b>Sunrise Pool Bar at the Modern</b>	943-5800
<i>Live Contemporary Hawaiian</i>	
Cory Oliveros	5-8pm
<b>The Edge at the Sheraton</b>	921-4600
<i>Live Hawaiian music with a fire dancer at 7:30 p.m.</i>	
Kelly Villaverde	1:30-3:30pm
Ho'okani Duo	5:30-8pm
<b>Tiki's Grill &amp; Bar</b>	923-TIKI
<i>Live Hawaiian - \$2 Taco Tuesdays</i>	
K.B. Riley	5:30-8:30pm
Sani & Friends	9-11pm
<b>Tropics Bar &amp; Grill</b>	949-4321
<i>Live Contemporary Hawaiian</i>	
Kailua Bay Buddies	5:30-8:30pm

## WEDNESDAY

<b>Bin1901 at the Moana</b>	921-4600
<i>Piano Wine Bar</i>	
Scott Smith	6:30-9:30pm
<b>Chart House Waikiki</b>	941-6660
<i>Live Contemporary Hawaiian</i>	
Tito Berinobis & David Kauahikaua	6-10:30pm
<b>Cheesecake Factory</b>	924-5001
<i>Classic Hawaiian</i>	
Kimo Artis Duo	8-11pm
<b>Duke's Canoe Club Waikiki</b>	922-2268
<i>Acoustic, Soul, R&amp;B</i>	
Haumea Warrington	4-6pm
Ellsworth Simeona	9:30-12am
<b>Du Vin</b>	545-1115
<i>Sessions at Du Vin features Live Jazz Wednesdays.</i>	
Shoji Ledward	7-9pm
<b>Gordon Biersch</b>	599-4877
<i>Jazz Wednesdays</i>	
Varying Artists	6:30-9:30pm
<b>Hard Rock Cafe</b>	955-7383
<i>Live Contemporary</i>	
John Valentine	5-7pm
Piranha Brothers	9-11pm
<b>House Without a Key</b>	923-2311
<i>Live Hawaiian &amp; Hula by Lauren Matsumoto</i>	
Pa'ahana	5:30 - 8:00pm
<b>Hula Grill</b>	923-HULA
<i>Live Contemporary Music</i>	
Jeremy Chang	7-9pm
<b>Hy's Steak House</b>	922-5555
<i>Live Soft Contemporary</i>	
Audy Kimura	6:30-10pm
<b>Kani Ka Pila Grille</b>	924-4992
<i>Live Contemporary Slack Key</i>	
Cyril Pahinui	6-9pm
<b>LBLE at the Hilton Waikiki Beach Hotel</b>	922-0811
<i>Live Contemporary Funk, Jazz, Hip Hop &amp; Reggae</i>	
Soul Tree Music Factory	6-9pm
<b>Lewers Lounge</b>	923-2311
<i>Live Contemporary &amp; Light Jazz</i>	
Maggie Herron & Rocky Holmes	8:30-12:30am
<b>LuLu's</b>	926-5222
<i>Live Contemporary Hawaiian</i>	

**IL LUPINO**  
TRATTORIA & WINE BAR

Join us every weekend for  
*Champagne Brunch*

Sat/Sun • 7am-2pm

Choose from 6 Delicious  
Brunch Entrees, served with  
a Glass of Champagne.  
**\$19.95**

Also join us for our Champagne  
Happy Hour every Tues/Thurs all day.  
Glass of Champagne \$9.

ROYAL HAWAIIAN CENTER - BLDG. B LEVEL 1  
VALIDATED PARKING  
WWW.ILLUPINO.COM • 808.922.1400



# E Pili Kākou

DINING ▶ ENTERTAINMENT ▶ PAU HANA ▶ EAT ▶ DRINK ▶ BE MERRY ▶ HAPPY HOUR

Jason Lehua 10-12:30am  
**Mai Tai Bar** at the Royal Hawaiian 923-7311  
*Live Contemporary Hawaiian with Hula Dancer*  
 Eric Lee Duo 6:30-9:30pm  
**Rumfire** 921-4600  
*Live Contemporary Hawaiian*  
 Kamuela Kahoano 5-8pm  
**SWIM** at the Hyatt 923-1234  
*Contemporary Classic*  
 Little Albert 5-8pm  
**Sunrise Pool Bar** at the Modern 943-5800  
*Live Contemporary Hawaiian*  
 Tahiti Rey 5-8pm  
**The Edge** at the Sheraton 922-4422  
*Live Hawaiian music with a fire dancer at 7:30 p.m.*  
 Albert Maligmat 1:30-3:30pm  
 Keoni Ku Duo 5:30-8pm  
**Tiki's Grill & Bar** 923-TIKI  
*Live Contemporary - 1/2 off Wine Wednesdays*  
 Kapu 5:30-8:30pm  
 Johnny Helm 9-11pm  
**Tropics Bar & Grill** 949-4321  
*Live Contemporary Rock*  
 Acoustik Playground 5:30-8:30pm

## THURSDAY

**Barefoot Beach Café** at Queen's Beach 924-2233  
*Live Contemporary Hawaiian with Pasta Night*  
 Kaipo Dabin Duo 5:30-8:30pm  
**Bin1901** at the Moana 921-4600  
*Piano Wine Bar*  
 Scott Smith 6:30-9:30pm  
**Chart House Waikiki** 941-6660  
*Live Contemporary Hawaiian*  
 Tito Berinobis 6:30-10pm  
**Cheeseburger Waikiki** 941-2400  
*Contemporary / Old School Rock*  
 Jeremy Chang 6:30-9:30pm  
**Cheesecake Factory** 924-5001  
*Classic Hawaiian*  
 Kaiona Duo 8-11pm  
**Duke's Canoe Club** 922-2268  
*Live Contemporary Hawaiian*  
 Haumea Warrington 4-6pm  
 Kamuela Kahoano 9:30-12am  
**Five-O Bar & Lounge** 922-0550  
*Live Acoustic Contemporary & Reggae*  
 K Love Duo 7:30-10:30pm  
**Gordon Biersch** 599-4877  
*Live Contemporary Funk and Classics*  
 Acoustic Playground 7-10:30pm  
**Hang Ten Bar** at the Turtle Bay 293-6000  
*Live Hawaiian Contemporary*  
 Local Folk 5-7pm  
**Hard Rock Cafe** 955-7383  
*Live Contemporary*  
 Chris Rego (or others) 5-7pm  
 Kailua Bay Buddies 9-11pm  
**House Without a Key** 923-2311  
*Live Hawaiian & Hula by Radasha Ho'ohuli*  
 Pa'ahana 5:30 - 8:00pm  
**Hula Grill** 923-HULA  
*Live Contemporary Hawaiian*

Sheila Waiwaiole & Mara Sagapolu 7-9pm  
**Hy's Steak House** 922-5555  
*Live Soft Contemporary*  
 Audy Kimura 6:30-10pm  
**Kani Ka Pila Grille** 924-4992  
*Live Contemporary Hawaiian*  
 Kawika Kahiapo 6-9pm  
**LBLE** at the Hilton Waikiki Beach Hotel 922-0811  
*Live Contemporary Pop/Rock*  
 Sunway 6-9pm  
**Lewers Lounge** 923-2311  
*Contemporary Jazz*  
 Maggie Herron & Rocky Holmes 8:30-12:30am  
**LuLu's** 926-5222  
*Live Contemporary Hawaiian*  
 Local Uprising 6-9pm  
**Mai Tai Bar** at the Royal Hawaiian 923-7311  
*Live Contemporary Hawaiian with Hula Dancer*  
 Delima Ohana 6:30-9:30pm  
**Michel's** at the Colony Surf 923-6552  
*Live Slack Key*  
 Jeff Peterson 7:30-10:00pm  
**Rumfire** 921-4600  
*Live Contemporary Rock*  
 Johnny Helm 5-8pm  
 DJ Miked 8:30pm-12:30am  
**Sunrise Pool Bar** at the Modern 943-5800  
*Live Contemporary Hawaiian*  
 Christian Yrizarry Duo 5-8pm  
**SWIM** at the Hyatt 923-1234  
*Contemporary Classic*  
 Tahiti Rey 5-8pm  
**The Edge** at the Sheraton 921-4600  
*Live Hawaiian music with a fire dancer at 7:30 p.m.*  
 Ellsworth Simeona 1:30-3:30pm  
 Christian Yrizarry Duo 5:30-8pm  
**The Study** at the Modern 943-5800  
*Live Contemporary Hawaiian*  
 Simple Souls 6:30-8:30pm  
**Tiki's Grill & Bar** 923-TIKI  
*Heineken Hot Hula Nights - hula dancers perform*  
 Malu 5:30-7:30pm  
 Piko & Ellsworth 8:30-11:30pm  
**Tropics Bar & Grill** 949-4321  
*Live Contemporary Hawaiian*  
 Nohelani Cypriano 5:30-8:30pm

## FRIDAY

**Barefoot Beach Café** at Queen's Beach 924-2233  
*Live Contemporary Hawaiian with Beach BBQ*  
 Art Kalahiki & Friends 5:30-8:30pm  
**Bin1901** at the Moana 921-4600  
*Piano Wine Bar*  
 Scott Smith 6:30-9:30pm 7-8:30pm  
**Chart House Waikiki** 941-6660  
*Live Contemporary Hawaiian*  
 Mark Yim's Pilikia I 6-9pm  
 Mark Yim's Pilikia II 9:30-12:30am  
**Cheeseburger Waikiki** 941-2400  
*Contemporary Hawaiian*  
 Alex or Aku 6:30-9:30pm  
**Cheesecake Factory** 924-5001  
*Classic Hawaiian*

Johnny Helm Duo 8:30-11:30pm  
**Dave & Busters** 589-2215  
*Pau Hana Fridays Live Local Bands*  
 Varying Hawaiian Artists 6-8pm  
**Duke's Canoe Club Waikiki** 922-2268  
*Live Contemporary Hawaiian*  
 Maunalua 4-6pm  
 Kaala Boys 9:30 -12am  
**Five-O Bar & Lounge** 922-0550  
*Live Island Reggae*  
 Kimo Opiana 9-12am  
**Gordon Biersch** 599-4877  
*Live Contemporary, R&B, Funk*  
 Ben & Malia 5:30-9pm  
 Mojo 9 - 12:30am  
**Hard Rock Cafe** 955-7383  
*Live Contemporary*  
 Johnny Helm 5-7pm  
 Mantra 10-12am  
**House Without a Key** 923-2311  
*Live Hawaiian & Hula by Kanoe Miller*  
 Hiram Olsen Trio 5:30 - 8:00pm  
**Hula Grill** 923-HULA  
*Live Traditional Hawaiian with dancer*  
 David Asing & Alikea Souza 7-9pm  
**Hy's Steak House** 922-5555  
*Live Soft Contemporary*  
 Audy Kimura 6:30-10pm  
**Hard Rock Cafe** 955-7383  
*Live Contemporary*  
 Johnny Helm 5-7pm  
 Mantra 9-11pm  
**Kani Ka Pila Grille** 924-4992  
*Live Hawaiian Contemporary*  
 Kaukahi 6-9pm  
**LBLE** at the Hilton Waikiki Beach Hotel 922-0811  
*Live Contemporary Pop/Rock*  
 Sunway 6-9pm  
**Lewers Lounge** 923-2311  
*Live Contemporary Jazz*  
 Maggie Herron & Rocky Holmes 8:30-12:30am  
**LuLu's** 926-5222  
*Live Contemporary Hawaiian*  
 Manoa DNA 6-9 p.m.  
 Vinyl Wine 10-12:30am  
**Mai Tai Bar** at the Royal Hawaiian 923-7311  
*Live Contemporary Hawaiian with Hula Dancer*  
 Kapala Duo 6:30-9:30pm  
**Michel's** at the Colony Surf 923-6552  
*Live Slack Key Stylings & Jazz*  
 Jeff Peterson & Ernie Provencher 6:30-10pm  
**Rumfire** 921-4600  
*Live Contemporary Hawaiian*  
 Johnna Padeken 5-8pm  
 DJ Sound Check 8:30pm-12:30am  
**SWIM** at the Hyatt 923-1234  
*Contemporary Classic*  
 Taimane 6-7pm  
 Wade Cambren 7:30-9:30pm  
**The Edge** at the Sheraton 921-4600  
*Live Hawaiian music with a fire dancer at 7:30 p.m.*

EVENTS ARE SUBJECT TO CHANGE WITHOUT NOTICE.



# Let's be Together...

DINING ▸ ENTERTAINMENT ▸ PAU HANA ▸ EAT ▸ DRINK ▸ BE MERRY ▸ HAPPY HOUR

Brad Kawakami 1:30-3:30pm  
 Delima Ohana Duo 5:30-8pm  
**The Study at the Modern** 943-5800  
*Live Contemporary Hawaiian*

Tahiti Rey 7-10pm  
**Tiki's Grill & Bar** 923-TIKI  
*Live Contemporary Hawaiian*  
 Kaleo Del Sol 5-7pm  
 Vaihi 7:30-9:30pm  
 Tahiti Rey Duo 10-12am  
**Tropics Bar & Grill** 949-4321  
*Live Contemporary Hawaiian*  
 Piranha Brothers 3:30-6:30pm  
 Nohelani Cypriano 8:00-10:30pm

## SATURDAY

**Barefoot Beach Café at Queen's Beach** 924-2233  
*Beach BBQ with Live Contemporary Hawaiian*  
 Alika Souza 5:30-8:30pm  
**Bin1901 at the Moana** 921-4600  
*Piano Wine Bar*  
 Scott Smith 6:30-9:30pm  
**Chart House Waikiki** 941-6660  
*Live Contemporary Hawaiian*  
 Tito Berinobis & Billy Beimes 7-12pm  
**Cheesburger Waikiki** 941-2400  
*Contemporary Hawaiian*  
 Alex or Aku 6:30-9:30pm  
**Cheesecake Factory** 924-5001  
*Classic Hawaiian*  
 Dennis McLees Duo 8:00-11:30pm  
**Duke's Canoe Club Waikiki** 922-2268  
*Live Hawaiian Entertainment*  
 Kapena (4/5; 4/19) 4-6pm  
 Vaihi (4/12) 4-6pm  
 Beach 5 (4/26) 4-6pm  
 Tahiti Rey Duo (4/5) 9:30-12am  
 Chris Murphy Duo (4/12) 9:30-12am  
 Christian Yrizarry Duo (4/19) 9:30-12am

Simple Sessions (4/26) 9:30-12am  
**Five-O Bar & Lounge** 9220550  
*Live Island Reggae*

Christian from Hoonua 9:30-12:30am  
**Hang Ten Bar at the Turtle Bay** 293-6000  
*Live Contemporary Hawaiian*  
 Terry Stebbins Duo 5-7pm  
**Hard Rock Cafe** 955-7383  
*Live Contemporary*  
 20 Degrees North 5-7pm  
 Tavana 10-1am  
**House Without a Key** 923-2311  
*Hawaiian & Hula by Kanoe Miller*  
 Hiram Olsen Trio 5:30 - 8:00pm  
**Hula Grill** 923-HULA  
*Live Traditional Hawaiian with dancer*

Kaipo Dabin & Tommy Chock w/ Kahanu 7-9pm  
**Hy's Steak House** 922-5555  
*Live Soft Contemporary*  
 Audy Kimura 6:30-10pm  
**Jimmy Buffett's at the Beachcomber** 791-1200  
*Live Contemporary Hawaiian*  
 Vinyl Wine 9:30-11:30pm  
**Kani Ka Pila Grille** 924-4992  
*Live Contemporary Hawaiian*

Manoa DNA 6-9pm  
 Christian & Friends (4/12) 6-9pm  
 Manoa Madness (4/19) 6-9pm  
**LBLE at the Hilton Waikiki Beach Hotel** 922-0811  
*Live Contemporary Blues & R&B*  
 JP Smoketrain 6-9pm  
**Lewers Lounge** 923-2311  
*Live Contemporary Jazz*

Maggie Herron & Rocky Holmes 8:30-12:30am  
**Mai Tai Bar at the Royal Hawaiian** 923-7311  
*Live Contemporary Hawaiian with Hula Dancer*  
 Kapala Duo 6:30-9:30pm  
**Michel's at the Colony Surf** 923-6552  
*Live Contemporary Slack Key & Jazz*  
 Jeff Peterson 7-11pm  
**Rumfire** 921-4600  
*Live Contemporary Hawaiian*

Ellsworth Simeona 5-8pm  
 DJ Sho 8:30pm-12:30am  
**Sunrise Pool Bar at the Modern** 943-5800  
*Live Contemporary Hawaiian*  
 Kainalu 5-8pm  
**SWIM at the Hyatt** 923-1234  
*Contemporary Classic*

Taimane 6-7pm  
 Wade Cambern 7:30 - 9:30pm  
**The Edge at the Sheraton** 921-4600  
*Live Hawaiian music with a fire dancer at 7:30 p.m.*  
 John Valentine 1:30-3:30pm  
 Tino Jacobs Duo 5:30-8pm  
**Tiki's Grill & Bar** 923-TIKI  
*Live Contemporary Hawaiian & Reggae*

Johnny Helm 5-7pm  
 Sani and Friends (or others) 7:30-9:30pm  
 Ellsworth Simeona 10-1am  
**Tropics Bar & Grill** 949-4321  
*Live Contemporary Hawaiian*  
 Henry Kapono 4-6pm

Juke Joint 6:30-9:30pm

## SUNDAY

**Barefoot Beach Café at Queen's Beach** 924-2233  
*Live Hawaiian Music*  
 Paul Wilcox 11am -2pm  
**Bin1901 at the Moana** 921-4600  
*Piano Wine Bar*  
 Eric Lee 3 - 5:30pm  
 Kapena Delima 6:30-9:30pm  
**Chart House Waikiki** 941-6660  
*Live Contemporary Hawaiian*

Dean & Dean 6-9pm  
**Cheesecake Factory** 924-5001  
*Classic Hawaiian*  
 Chris Murphy Duo 8-11pm  
**Duke's Canoe Club Waikiki** 922-2268  
*Live Hawaiian Entertainment*  
 Henry Kapono 4-6pm  
 Christian Yrizarry Duo (or varying artists) 9:30-12am

**Hang Ten Bar at the Turtle Bay** 293-6000  
*Live Contemporary Hawaiian*  
 Jherard Miller Duo 5-7pm  
**Hard Rock Cafe** 955-7383  
*Live Contemporary*  
 Brothers Rize 5-7pm  
 Streetlight Cadence (or others) 9-11pm

**House Without a Key** 923-2311  
*Live Hawaiian & Hula by Debbie Nakanelua*  
 Pa'ahana 5:30 - 8:00pm  
**Hula Grill** 923-HULA  
*Live Traditional Hawaiian with dancer*  
 Art Kalahiki Duo 7-9pm  
**Jimmy Buffett's at the Beachcomber** 791-1200  
*Live Contemporary Hawaiian*

Randy Allen 7:30-10:00pm  
**Kani Ka Pila Grille** 924-4992  
*Live Contemporary Hawaiian Masters on stage*  
 Jeff Rasmussen & Robi Kahakalau (4/6, 4/27) 6-9pm  
 Nathan Aweau (4/13, 4/20) 6-9pm  
**Kelley O'Neil's** 926-1777  
*Live Irish Music*

Various Celtic Bands 4-7pm  
**LBLE at the Hilton Waikiki Beach Hotel** 922-0811  
*Live, Energetic Mix of Pop and Rock Hits*  
 Pushoverse 6-9pm  
**Lewers Lounge** 923-2311  
*Live Contemporary & Light Jazz*  
 Noly Pa'a 8:30pm - 12am  
**LuLu's** 926-5222  
*Acoustic R&B*

Simple Soulz 7-10pm  
**Mai Tai Bar at the Royal Hawaiian** 923-7311  
*Live Contemporary Hawaiian with Hula Dancer*  
 Tino Jacob Duo 6-10pm  
**Michel's at the Colony Surf** 923-6552  
*Classical Slack Key & Jazz Stylings*  
 Jeff Peterson 6-9pm

**Rumfire** 921-4600  
*Live Contemporary Hawaiian*  
 Duncan Osorio 5-8pm  
 Tavana McMoore (3/2) 5-8pm

## How can we help?

We're a family business dedicated to service, safety, quality & fun. Ocean activities for all ages and budgets. We're at your service to help provide a perfect match for your client.



**234-SAIL**

(7245)

WE ANSWER 24 HOURS!

hawaiinautical.com

**WAIANA E •**  
**HILTON PIER**  
 • KEWALO  
 Sail • Snorkel •  
 Dolphins • Turtles  
 • Whales • Scuba •  
 Fireworks Dinner •  
 Private Charter •  
 Transportation



**Hawaii Nautical**

# E Pili Kākou

DINING ▶ ENTERTAINMENT ▶ PAU HANA ▶ EAT ▶ DRINK ▶ BE MERRY ▶ HAPPY HOUR

DJ Sho	8:30pm - 12:30am	
<b>Sunrise Pool Bar at the Modern</b>		<b>943-5800</b>
<i>Live Contemporary Hawaiian</i>		
Jeremy Cheng	5-8pm	
<b>The Edge at the Sheraton</b>		<b>922-4422</b>
<i>Live Hawaiian music with a fire dancer at 7:30 p.m.</i>		
Jeremy Cheng	1:30-3:30pm	
Ellsworth Simeona Duo	5:30-8:30pm	
<b>Tiki's Grill &amp; Bar</b>		<b>923-TIKI</b>
<i>Live Contemporary Hawaiian</i>		
Vaihi	6-9pm	
Ellsworth Simeona	9-11pm	
<b>Tropics Bar &amp; Grill</b>		<b>949-4321</b>
<i>Live Contemporary Rock &amp; Hawaiian</i>		
Piranha Brothers	2-5pm	
Beach 5	5:30 - 8:30pm	



## Hot Lines

Here's a few numbers for you to find out the latest in live music from places that change daily or don't update us regularly, since we can't possibly list them all,

Gordon Biersch	599-4877
Irish Rose Saloon	947-3414
Kelley O'Neil's	926-1777
Mai Tai Bar Ala Moana	947-2900
Moose McGillicuddy's	923-0751

## Dining Dish



The culinary scene in this town is absolutely exploding and I have had some absolutely delicious foodie experiences this past month with new restaurants popping up all over the place. *12th Avenue Grill's Kevin Hanney* has turned his former space into a breakfast/brunch run by *Celebrity Chef Lee Anne Wong*. **Koko Head Cafe** is open daily from 7 a.m. - 2:30 p.m. We ordered many items off the menu and there were quite a few standouts. The Breakfast Bruschetta with fresh fruit and a macadamia nut yogurt was delicious (\$6) and my friend said the Cornflake French Toast with billionaire bacon, creamy black pepper maple and frost flake gelato (\$14). Breakfast Congee, Don Buri, Baked Eggs, Fresh Fish, Innovative baked goods such as Kimchi bacon cheddar scones, and several daily specials with fresh squeezed juices and delicious twists on mimosas and Bloody Mary's will bring me back again and again. 732-8920. kokoheadcafe.com. • **Nobu Waikiki** has brought on *Yuka Raso* as the restaurants general manager, and her husband *Matt* has been named the Executive Chef. Together they make the first husband-wife executive team at the this location, and believe it or not, Yuka is their first Japanese speaking GM. They have just moved to Hawaii from the Nobu Dallas location and I got to sample a few of the dishes Matt was playing with to add to the menu in the near future and they were delicious. Let me just say four words.... Black Truffle Crusted Lobster. Nuff said! 237-6999. • Also moving around is *Jason Pohlman*, who has been named general manager at **Hiroshi's** and **Vino's**. Many of you may remember him from his time at Roy's Restaurants and

Monkeypod Kitchen. • **Stage Restaurant** recently shut down for a few days to 're-stage' themselves an opened up with a new look and a new menu. Owner *Thomas Sorenson* has flown in huge pop-culture photography and artwork to adorn the walls that brings a contemporary, fun and dramatic look to the revamped dining room, while *Ron De Guzman*, who has worked at Alan Wong's and the Halekulani over the years, before moving over to help open Stage Restaurant back in 2007. Now their executive chef, he is working on a complete redesign on the menu. I was given a sneak peek in an extremely creative dinner 'performance', where each course was presented as a different act. From the high end take on take on an old classic with Grilled cheese and Truffle sandwiches to a Steak served with a Bone Marrow Butter to an explosive Wasabi Apple Sorbet Intermezzo to Hamachi Sashimi served with Shoyu Gelee, Orange and Wasabi Tobiko, Wasabi Paint and a crispy radish salad, De Guzman showed he is not afraid to work with some of the newest techniques out there utilizing some of the boldest flavors to put out dishes that explode with flavor. His new menu should be launched in April and I'm hoping a few of the previews I tasted make the cut. Not bad for a place I had pretty much written off a few years ago. Stage is open for lunch Tuesdays - Fridays, from 11:30 a.m. - 1:30 p.m., and dinner is available Tues - Saturday 5:30 - 8:30 p.m. StageRestaurantHawaii.com. 237-5429 • No disrespect meant to anyone else mentioned here, but I saved the best for last. I finally got to visit the sacred, secret society that is **Vintage Cave**. I truly don't think I can put this meal into words. It was sublime. The meal is presented as a tasting menu with every dish even more so unbelievable than the previous one. The menu sources the best products available both here and from around the world - Russian caviar, rare white truffles, etc. - and developed utilizing techniques to create flavors of a caliber all their own. The service is exquisite, each dish looks like a piece of art, and frankly presented on dishes that very well could be. I hear talk of \$500-a-piece plates being utilized. The meal is a series of small bites with simple, refined flavors filtered through a Japanese sensibility created by *Chef Chris Kajioka*, who has just been justifiably nominated for a James Beard Award. I have been dreaming of the Golden Osetra Caviar Brioche starter and the Jidori egg yolk under Parmesan foam every since. The nondescript entrance on the bottom level of Ala Moana parking lot takes to a beautiful old-world dining room with filled with billions, yes that's with a B, billions of dollars worth of art. This is not just a restaurant, this is not just a meal but an absolute culinary journey from start to finish. Many will never get to go, as it doesn't come cheap. Anyone can go for dinner as long as they order the set tasting menu at \$295 per head. That price does not include wine, which starts at around \$25 a glass and skyrockets from there, but with good reason. If you're a oenophile their wine list will absolutely send you into orbit! Lunch and bar/lounge privileges are limited to members only, with two membership tiers available priced at \$50,000 or \$500,000. This is one of those once in a lifetime culinary experiences and if you are ever offered a chance to go experience it for yourself, simply do not miss it. 441-1744. vintagecave.com. ~ Pam



## Dining Calendar

**April 4 & 5:** *Hoku's: Remembering the Maile Kahala* Executive Chef Wayne Hirabayashi, former Maile Restaurant chef Martin Wyss and Chef Katsuya Yamamoto of The Hotel Okura Tokyo's La Belle Epoque Restaurant prepare a menu of new and old dishes which evoke memories of the Maile. \$196.40. 739-8760.

**April 8-15:** *3660 on the Rise* presents Tax Prep Week. Go for the good stuff and treat yourself to a bottle of Dom Perignon, Duckhorn, Whitehall Lane, Silver Oak & anything else on the wine list for 50% off. 737-1177

**April 20: EASTER SUNDAY** - Remember to book your reservations early. There will be many special brunches and buffets and most restaurants.

**Mondays:** *Brasserie du Vin* has combined their weekly wine dinner and tasting events into one, Behind the Cellar Door. 6:30 p.m. 545-1115.

**Wednesdays:** *Beachhouse at the Moana* hosts a weekly wine tasting on the lanai with pupus and parking. \$19+-. 4:30 - 5:30 p.m. 923-2861.

**Wednesdays:** *Bar 35:* House of Brews features a different theme weekly. Taste 6-8 beers, and enjoy Chef Valentini's pizza. \$20. 6 p.m. 537-3535.

**FREE PIZZA DELIVERY IN WAIKIKI 808-944-1199**

**WAIKIKI'S LARGEST BREAKFAST SELECTION SERVED ALL DAY 7AM - MIDNIGHT**

**GIOVANNI PASTRAMI**  
A New York Style Deli  
PASTRAMI • BROSSETTI'S BAR

**227 LEWERS ST. WAIKIKI 808-923-2100**



# APRIL CALENDAR OF EVENTS

## Continuing Events

APRIL 1-6

### HAWAII QUILT GUILD ANNUAL SHOW

The annual quilt show showcasing the creative quilt work of some of Hawaii's finest quilt continues at Honolulu Museum of Art School. [honolulu-museum.org](http://honolulu-museum.org).

APRIL 1 -20 • MEET DORAEMON

The popular Meet! Doraemon exhibit, featuring Japan's iconic robotic time-traveling cat from the future continues at Bishop Museum until the 20th of this month. [Bishopmuseum.org](http://Bishopmuseum.org).

### MONDAY – FRIDAY LYON ARBORETUM TOURS

The lush gardens at the top of the University of Hawai'i Manoa are open for guided tours daily. Knowledgeable guides will introduce the highlights of the botanical rainforest's 193.6 acres. Reservations required. Limit of 12 participants daily. Donations accepted. 988-0461.

### MONDAY-FRIDAY FOSTER BOTANICAL GARDENS

Guided garden tours of rare and beautiful plants from tropical regions throughout the world. Foster Botanical Gardens, 50 N. Vineyard. 1 p.m. Adults: \$5. Reservations recommended. 522-7066.

### TUESDAYS TOURS OF THE HAWAII THEATRE

Get a behind-the-scenes tour of this historic theatre including history, architecture, and a performance on the 1922 Robert Morton theatre organ. Hawaii Theatre. 11 a.m. – 12 p.m. \$10. 528-0506.

### TUESDAYS • KU HA'AHEO

An afternoon of hula from multiple groups featuring adults and keiki performing contemporary and traditional dance and music led by kumu hula Blaine Kamalani Kani. Waikiki Beach Walk Plaza Lawn. 4:30 – 6 p.m. FREE. [waikikibeachwalk.com](http://waikikibeachwalk.com) or 931-3591.

### TUESDAYS • KCC FARMERS MARKET

The Saturday Market is so popular they added another day. Head up to Kapiolani Community College for fresh island produce, seafood, flowers, and more available from over two dozen vendors. 4 – 7 p.m. Free. 848-2074.

### FIRST & THIRD TUESDAYS MEET THE MONK SEALS!

Learn about monk seals in the wild and meet two resident seals up close. Designed for participants 7 and up but anyone is welcome. Waikiki Aquarium. 3 p.m. \$4 – \$6. [waquarium.org](http://waquarium.org) or 923-9741.

### TUESDAYS & FRIDAYS WAIKIKI FARMERS MARKET

Fresh local produce, organic pastries and food booths. Waikiki Community Center. Free. 7 – 11:30 a.m. [waikikicomunitycenter.org](http://waikikicomunitycenter.org). 923-8102.

### TUESDAYS, THURSDAYS & SUNDAYS TOUR AND TEA AT THE HONOLULU ACADEMY OF ARTS

Tours are led by volunteer docents and designed for visitors who want to explore the galleries, learn more about art and culture, and socialize over a cup of tea. Docents lead discussions in the galleries and offer insight into many cultures and time periods. 2:30 – 4 p.m. in selected galleries. Free with admission; beverage donations welcomed. Reservations required. 532-8700.

### TUESDAY – SATURDAY MISSION HOUSES MUSEUM GUIDED TOURS

Visit the Printing Office and Frame House while learning about the 19th century history and culture preserved at this beautiful museum. Galleries also open to explore on your own. Mission Houses Museum. Tues. – Sat. 11 a.m. & 2:45 p.m.; Tues. – Fri. 1 p.m. \$6 – \$10. 531-0481 or [missionhouses.org](http://missionhouses.org).

### SECOND WEDNESDAY (MARCH 12) STARGAZING

The Hokulani Imaginarium puts on a live star show while teaching about the mythology surrounding constellations. Windward CC, 45-720 Keaahala Rd., Kaneohe. 7 p.m. Adults \$7, Keiki (ages 4-12) \$5. Tickets: [aerospace.wcc.hawaii.edu/imaginarium.html](http://aerospace.wcc.hawaii.edu/imaginarium.html) or 235-7433.

### WEDNESDAYS & FRIDAYS CHADO – THE WAY OF TEA

Japanese enthusiasts can experience the traditional tea ceremony (chanoyu) as it was meant to be seen and taught at the Urasenke Foundation of Hawaii. No prior knowledge required. Demos at 10 a.m. and 11 a.m. \$5. 923-3059.

### THURSDAYS FRESH FARMERS MARKET AT THE HYATT

Stock up on fresh local organic fruits, vegetables, jams, honeys, baked goods and more now available to guests and visitors each week in the heart of Waikiki. Ground Floor, Pualeilani Atrium Shops. 4 – 8 p.m. [Waikiki.hyatt.com](http://Waikiki.hyatt.com)

### THIRD THURSDAY (APRIL 17) DOWNTOWN GALLERY WALK & CRAFT FAIR

The Arts at Marks Garage continues to build on downtown activities offering execs an excuse to hang out after work and giving everyone else a reason to head downtown. Free. 521-2903. [artsatmarks.com](http://artsatmarks.com).

### FRIDAYS • SENIOR SAFARI WALKABOUT

Continuing due to popular demand! Make exercise fascinating and fun while exploring the zoo. Staff will guide the walks, sharing wildlife facts and stories. Honolulu Zoo. 9 – 10 a.m. \$5 donation supports Zoo Education programs. 971-7195 or [honolulu-zoo.org](http://honolulu-zoo.org).

### FIRST FRIDAY (APRIL 4) DOWNTOWN GALLERY WALK & CRAFT FAIR

Art lovers are advised to head to downtown Honolulu the first Friday of each month. This event has exploded into a downtown party with galleries and studios open for exhibitions, artist demonstrations, and special performances. 23 galleries and art-related

retail shops, restaurants and museums participate. Downtown Honolulu/ Chinatown. 6 – 9 p.m. Free. 521-2903 or [artsatmarks.com](http://artsatmarks.com).

### FIRST & THIRD FRIDAYS (APRIL 4 & 18) THE SKY TONIGHT

Learn about our Hawaiian skies and current events in space at the J. Watumull Planetarium. Bishop Museum. 8 p.m. No late seating. GA \$6, Keiki \$4. 848-4168 or [bishopmuseum.org](http://bishopmuseum.org).

### THIRD FRIDAYS KAIMUKI (APRIL 18)

The neighborhood comes to life during this monthly street fest where restaurants all open their doors and local businesses offer fun discounts and sales. Live entertainment and free food samples make this fun for the whole family. Koko Head to 8th Ave and Wai'aleae. 6 – 9 p.m. 739-9797 or [kaimukihawaii.com](http://kaimukihawaii.com).

### FINAL FRIDAY (APRIL 25) ART AFTER DARK

Dancez the night away with Les Nuits du Printemps presented by the Alliance Française of Hawaii at Art After Darks hip art party. 6 – 9 p.m. Honolulu Museum, of Art. [artafterdark.org](http://artafterdark.org).

### FRIDAYS & SATURDAYS TWILIGHT TOURS OF THE ZOO

Stroll through the Honolulu Zoo after dark and learn what goes on when the sun goes down. All ages will enjoy this 2-hour guided walking tour including light refreshments. 5:30 – 7:30 p.m. Adults \$18, Keiki (ages 3-12) \$14, Under 2 free. 971-7195 or [honolulu-zoo.org](http://honolulu-zoo.org).

### SATURDAYS • KCC FARMERS MARKET

Fresh island produce, seafood, flowers and more are available from over two-dozen vendors at Kapiolani Community College. Free. 7:30-11 a.m. 848-2074.

### SATURDAYS KAKA'AKO FARMERS MARKET

The Farmer's Market held Saturdays at Ala Moana has moved to Kaka'a'ako in light of the construction around Sears these days. Check out an abundance of treats from around our islands. Their new home is at Ward Warehouse between Ward and Kamakee Streets, Free. 9:00 a.m. - 1 p.m. 388-9696 or [halei-wafarmersmarket.com](http://halei-wafarmersmarket.com).

### SATURDAYS • TASTE OF CHINATOWN

Eat your way through our own little China as you learn where to go, what to order, and how to eat. Get cultural and gastronomic notes along the way and leave fully sated. 11:30 a.m. – 2:30 p.m. Chinatown in front of HI Nat'l Bank at Smith & King Streets. Reservations required: 391-1550.

### SATURDAYS & SUNDAYS ART ON THE ZOO FENCE

More than 35 local artists display their works on the Zoo fence on Monsarrat Avenue opposite the Kapiolani Park Bandstand. Works for sale include original paintings, prints and photographs. 9 a.m. – 4 p.m. Free. [artonthezoo-fence.com](http://artonthezoo-fence.com).

### SECOND SATURDAY (APRIL 12) DOWNTOWN GALLERY WALK & CRAFT FAIR

First Friday has become such a success that events carry over to the second Saturday. HisAM, 11 a.m. – 3 p.m. 586-0900. Other events around downtown Honolulu all afternoon. Free. 521-2903 or [artsatmarks.com](http://artsatmarks.com).

### BANK OF HAWAII FREE SUNDAY (APRIL 20) HONOLULU MUSEUM OF ART

This month's theme: Sunken Treasure. This month's event will showcase actual sunken treasure in the exhibit At World's End—The Story of a Shipwreck. Honolulu Museum of Art. 11 a.m. - 5 p.m. Free. 532-8700.

**DISCOUNT HAWAII  
CAR RENTAL**  
**SAVE UP TO 50%**



GUARANTEED RESERVATIONS  
\* NO BOOKING FEES \* NO  
DEPOSIT \* CANCEL ANYTIME  
\* NATIONAL RENTAL  
COMPANIES

call us today @  
1.800.292.1930

or check us out online:

[DiscountHawaiiCarRental.com](http://DiscountHawaiiCarRental.com)



## APRIL CALENDAR OF EVENTS

### NA MELE NO NA PUA SUNDAY SHOWCASE (APRIL 20)

Waikiki Beach Walk has brought back its popular monthly free concert series every third Sunday at the Plaza Stage from 5 – 6 p.m. This month catch slack key guitar and ukulele master Ledward Kaapana.

### APRIL 4-14 • HIFF SPRING FLING

All right all you anime lovers, its back. This year the 10th annual Kawaii Kon is taking over all three floors at the Hawaii Convention Center and will bring a wide variety of events and panels, anime showings, video games, artist alley, dances, and a dealer's room. Some events include interviews with guests, autograph sessions, concerts, panel discussions, costume contests, cosplay, and even a Moonlight Magic Ball. [kawaii-kon.org](http://kawaii-kon.org)

### APRIL 4-6 • KAWAII KON

All right all you anime lovers, its back. This year the 10th annual Kawaii Kon is taking over all three floors at the Hawaii Convention Center and will bring a wide variety of events and panels, anime showings, video games, artist alley, dances, and a dealer's room. Some events include interviews with guests, autograph sessions, concerts, panel discussions, costume contests, cosplay, and even a Moonlight Magic Ball. [kawaii-kon.org](http://kawaii-kon.org)

### APRIL 5 & 6 HAWAII SYMPHONY ORCHESTRA

Concert Conversations offers a free pre-concert chat with conductor Junichi Hirokami and violinist Anne Akiko Meyers before the show where they perform pieces from Prokofiev & Strauss. Sat. 4/5 7 p.m., Sun. 4/6 3 p.m. Blaisdell Concert Hall. [HawaiiSymphony-Orchestra.org](http://HawaiiSymphony-Orchestra.org)

### APRIL 5-6 • 33RD ANNUAL HAWAIIAN SCOTTISH FESTIVAL & HIGHLAND GAMES

Revelers can enjoy live Celtic music, a highland dance competition, swordplay, fencing and weaving demonstrations, a clan and genealogy tent, keiki tent medieval hand to hand combat and Celtic wares, jewelry, food and drink for sale. Entry \$1. McCoy Pavilion. 9 a.m. – 5 p.m. [scotshawaii.org](http://scotshawaii.org)

### APRIL 6 • POLO OPENING DAY

The Polo season starts up again out at Mokuleia with the Duke Kahanamoku Trophy and will continue every Sunday through August. Gates open at 11 a.m., matches begin at 2 p.m. Entry Fee: \$10. Clubhouse: \$25. [Hawaiiopololife.com](http://Hawaiiopololife.com).

### APRIL 6 OLA KA HA BENEFIT CONCERT

Local artists Jon Osorio, Jerry Santos, Teresa Bright, Sean Na'auao and Weldon Kekauoha are just a few of the many vocalists and dancers coming the grounds of Iolani Palace for a benefit concert on behalf of the Palace. 10 a.m. – 4 p.m. [haenterprises.net](http://haenterprises.net).

### APRIL 9 & 10 • THE BETSY SHOW

A Japanese folk star back in the 70s Betsy Curtis topped the Japanese pop charts as one part of Betsy & Chris. This Hawaii native brings a nostalgic musical journey back to the islands for the first time in over 4 decades. Three shows daily at 3, 5 and 7 p.m. in the Captain's Room at the Hawaii Prince Hotel. Tickets: \$50-\$60. 953-4789 or [HawaiiPrinceHotel.com/betsy](http://HawaiiPrinceHotel.com/betsy). Additional shows on April 16, 17, 23, 29, and 30

### APRIL 13 DUKE KAHANAMOKU BEACH CHALLENGE

A fun day on the beach for both competitors and spectators. Watch canoe sprints, SUP Races, Makahai games, crafts & artist marketplace with non

*Continues on page 17.*



## 7<sup>TH</sup> ANNUAL SHOP A LEA CONCIERGE SOIREE

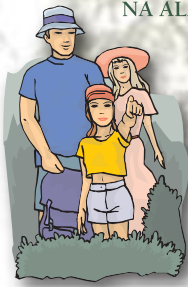
Ala Moana Center hosted their annual Shop a Lea soiree on St. Patrick's Day to kick off seven days of shopping euphoria. The team from Sephora was on hand to do make-overs while the gals from W Salon were doing hand massages and manicures and Macaroni Grill passed out some tasty goodies. As always, there were great prizes to win and a few lucky folks found Ala Moana Gift Cards in their Kipling swag bags filled with Guess products at the end of the night. [alamoanacenter.com](http://alamoanacenter.com)





# HIKER'S CORNER

## NA ALA HELE TRAILS & ACCESS PROGRAM



For detailed information about hiking trails around the state, visit [HawaiiTrails.org](http://HawaiiTrails.org). The website includes an interactive map of each island and trail info that includes length, terrain, photos, directions, biking information, and printable

topographic map links. Also included on the site are trail announcements, local weather, and more. This is an easy way to provide your guests with a lot of helpful information for their hiking trip (without a lot of time on your part). You can also call them directly at 973-9782.

**COORDINATED HIKES:** The hikes listed below are arranged by local clubs and open to visitors. Hikers are recommended to bring a snack, sunscreen, hat, sturdy shoes, insect repellent, & water.

**SIERRA CLUB:** Most hikes meet at 8 a.m. at the Church of the Crossroads (back porch), 2510 Bingham St. Do not leave cars in the church parking lot. Windward outings may meet at First HI Bank, Windward Mall. Requested donation is \$5 (\$1 under 15 years). Please contact for information. Under 18 with adult.

**HIKING HAWAII:** Join a group of up to 15 hikers on a variety of guided treks. Private

parties and door-to-door transportation available. Info and reservations at [hikinghawaii808.com](http://hikinghawaii808.com), 855-808-4453 or email [hikinghawaii@yahoo.com](mailto:hikinghawaii@yahoo.com).

**WAIMEA VALLEY GUIDED HIKING SERIES:** Waimea Valley Family Guided Hikes are offered on Thursdays and Sundays. 5 person minimum. Reservations required in advance with credit card (cost includes admission). Keiki under 18 must be with adult. Closed-toe shoes and water required. Cameras strongly recommended! Reservations at 638-5877 or [Lpool@waimeavalley.net](mailto:Lpool@waimeavalley.net).

## WAIMEA VALLEY HIKES

**KALAHE'E:** 9:30 a.m. – 12:30 p.m. Kalahe'e Ridge. 2 miles. Moderate. Ages 7+. \$35.

**NORTH VALLEY HIKE:** 9:30 a.m. – 2 p.m. Native flora and fauna. Ridge to valley. 6 miles. Strenuous. Ages 7+. \$50.

## MONTHLY HIKES

**APRIL 6 – KULIOUOU SIDE DOOR HIKE**  
4.5 Miles – Strenuous, Ridge, Kuliouou. Take the "old" trail to get to the summit and go back via the shelter cutoff, sliding downhill on ironwood duff for a 100 yards. Lots of shade on this hike, some mosquitoes. Sierra Club: [makikirandy@yahoo.com](mailto:makikirandy@yahoo.com)

**APRIL 12 – AIEA BIETUAL**  
3 Miles – Novice, Ridge, Aiea. This rarely used woody ramble connects the upper and lower sections of the 'Aiea Loop Trail. The trail is generally easy, with not too much up & down. HTMC: 247-8845.

## APRIL 13 – KAMANANUI HIKE

11 Miles – Moderate, Valley & Ridge, Moanalua Valley. Meander through a lovely valley looking at historic sites before crossing the stream many times on the way to a steep climb up to the Ko'olau summit. Sierra Club: 753-0528, [gsinclair@gmail.com](mailto:gsinclair@gmail.com).

## APRIL 13 – KAUNALA WEST SIERRA

5 Miles – Moderate, Countour, Pupukea. Reservations required. Native plants are the highlight on this trail, with beautiful views of central Oahu. Sierra Club: 262-6092, [clydekobashigawa@clearwire.net](mailto:clydekobashigawa@clearwire.net).

## APRIL 20 – KULIOUOU LOOP HIKE

4 Miles – Strenuous, Ridge, Kuliouou. NOT FOR THOSE AFRAID OF HEIGHTS. Start with a very steep climb on Kuliouou West. After obtaining the ridge, climb up to Puu O Kona for spectacular views of the Windward side. Be careful as the Koolau summit has some steep falloffs and crumbly sections. The summit can be very windy. You'll need to pay attention, but the views are awesome. Descend via the state trail. Sierra Club: 942-0145. [makikirandy@yahoo.com](mailto:makikirandy@yahoo.com).

## APRIL 26 – AIEA RIDGE HIKE

11 Miles – Strenuous, Ridge, Aiea/1700 elevation gain. This trail follows the heavily hiked Aiea Loop Trail for the first two miles, then heads for the upper section of the trail, where there is an abundance of native plants and birds to see and the views at the top are expansive. Reservations Req'd. Bring at least 3 liters of water, a hearty lunch, rain gear and wear long pants. Sierra Club: [mersino@hawaii.edu](mailto:mersino@hawaii.edu).

## APRIL 26 – KAMANAIKI

4 Miles – Intermediate/Ridge/Valley/Kalihi. A steep concrete staircase climbs from a residential Kalihi neighborhood to gain a pleasant, gentle ridge. Enjoy lunch with a view of the back of the valley and the peaks of Lanihuli and Pu'u Kahuauili. HTMC: 263-8330.

For more information on hikes visit:

**Hawaiian Trail & Mountain Club (HTMC)**  
[htclub.org](http://htclub.org)

**Sierra Club**  
[www.hi.sierraclub.org/oahu/outings.htm](http://www.hi.sierraclub.org/oahu/outings.htm)

**Hawaii Nature Center (HNC)**  
[hawaiinaturecenter.org](http://hawaiinaturecenter.org)

**Waimea Valley**  
[waimeavalley.net](http://waimeavalley.net)

## April 5 - Ala Wai Harbor Cleanup (S)

Meet at 8 a.m. at the Harbor Master's office, between the 3rd and 4th row of boats behind the Ilikai Hotel. Wear sturdy shoes with gripping soles and bring a hat, sunscreen, and water. We will use nets and scoops to rid the harbor of garbage. All participants under 18 must have a waiver signed by their legal guardian. Please contact the leader for the waiver. Closed-toe shoes only. Deborah Blair: 955-4168

**April 12 - MCBH Kaneohe Bay Service Project (S)**  
Reservations Required. We will be working with Environmental clearing wetland of mangrove plants to create habitat for Hawaii's endangered water birds. Because MCBH is a secured military facility, we must provide your name to the base in advance. We'll send you a waiver which you must bring with you. Contact Dan Anderson at 690-0479 or [dander@gmail.com](mailto:dander@gmail.com).

**Celebrate with Mom  
on the Navatek  
May 11, 2014**

**We welcome mom with a complimentary fresh flower lei  
on this special Mother's Day Sunset Cruise.  
It's the perfect way to show her how much she is loved  
and a grand opportunity to say  
"Thank you, Mom!"**

**Atlantis  
NAVATEK  
Cruises**

**Call (808) 973-1311 for Information & reservations or fax to (808) 973-2499.**



## APRIL CALENDAR CONT

stop free entertainment all day including performances by Jake Shimabukuro and Henry Kapon. Public invited to participate for small charitable donation. Hilton Hawaiian Village. Rainbow Lagoon. 9 a.m. – 3 p.m. waikikicomunitycenter.org.

**APRIL 13**

### HAPALUA, HAWAII'S HALF MARATHON

Runners descend into Waikiki for a 13.1 half marathon starting at the Duke Kahanamoku statue heading downtown and curving back around at Smith Street back to Kapiolani Park via Monsarrat and Diamond Head. Expect partial lane closures along the course. 6 a.m. start. thehawalua.com

### APRIL 13 • I LOVE KAILUA TOWN PARTY

The 22nd annual festival brings the best of this quaint little beach town to Kailua Road for a 5 hour party of food from dozens of Kailua eateries, arts, crafts, games, live entertainment and family fun. Many Kailua businesses also offer special discounts that day. 11 a.m. – 4 p.m. The event will close all traffic lanes/sidewalk areas on Kailua Road from Hahani St. to Kuulei Rd. from 9 a.m. to 5 p.m. www.LaniKailuaOutdoorCircle.org.

### APRIL 13 – 19 • LPGA LOTTE CHAMPIONSHIP

Some of the world's best female golfers descend upon West Oahu for a share of the \$1.7 million dollar purse. A week of professional ladies golf events include practice rounds, golf clinics, a Pro-Am and the actual tourney. For a complete schedule and admission fees log onto lottechampionship.com. Ko Olina Golf Club.

**APRIL 18 & 19**

### TIERNEY SUTTON LIVE AT LEWERS

Hawaii Pops continues their intimate cabaret experience, Live at Lewers with Jazz Songstress Tierney Sutton. Two sets nightly beginning at 8 p.m. and 10 p.m. Lewers Lounge. Call 923-2311 for tickets and ask for dining reservations. \$50 admission, \$85 premium. HawaiiPops.com

### APRIL 25 & 26 • IOLANI FAIR 2014

Food, games and E.K. Fernandez rides take over the Iolani School Campus this weekend for fun for the whole family. Noon-10:30 p.m. iolanifair.org.

**APRIL 25 – 27**

### HOME, GARDEN AND DIY SHOW

Check out the latest products, tricks of the trade and see the latest in home improvement to landscaping tools and a chance for do-it-yourselfers to meet with some of Hawaii's best contractors. Fri. 4/25 5-9 p.m.; Sat. 4/26 10 a.m. – 9 p.m.; Sun. 4/27 10 a.m. – 5 p.m. Blaisdell Exhibition Hall. pacificexpos.com

**APRIL 26 & 27**

### HAWAII SYMPHONY ORCHESTRA

Concert Conversations offers a free pre-concert chat with conductor Maximiano Valdes and pianist Sara Davis Buechner before the show where they perform pieces from Gershwin & Beethoven. Sat. 4/26, 7 p.m., Sun. 4/27 3 p.m. Blaisdell Concert Hall. HawaiiSymphonyOrchestra.org

### APRIL 27 • MAKANA AT THE KAHALA

Catch slack key master Makana perform music from the 60s and the 70s as well as songs from his new album, RIPE at The Kahala Hotel & Resort. Free concert, but \$30 minimum food and drink purchase required. Plumeria Beach House. 6 – 9 p.m. 739-8760.

### APRIL 29 • BOB DYLAN IN CONCERT

The legendary singer songwriter returns to Honolulu for the first time since the late 90s. One show only on Oahu, Blaisdell Arena. Tickets \$59-\$89 at 800-745-3000 or ticketmaster.com.



## NOBU WAIKIKI WELCOMES NEW EXEC TEAM

Nobu Waikiki hosted a small FAM recently to say thank you for your continued support as well as introduce their new husband and wife executive team, Yuka and Matt Raso. Moving over from Dallas, Yuka is the new GM while Matt is the new Executive Chef. Fun, lively with a cute story of how they met when she was a server and he was a sous chef at Nobu Dallas, they are going to make a great addition to the Nobu Waikiki family. Yuka speaks Japanese and is ready to help you with your guests. 237-6999.





# That's Entertainment

## HOTELS

- HALE KOA HOTEL** 955-0555  
 •**TuSat** - High and Right Comedy Show takes the stage at the Warriors Lounge at 8pm.  
 •**MThFS** - Poolside music at the Barefoot Bar. 6-11pm
- HALEKULANI HOTEL** 923-2311  
 •**Daily**-Hawaiian Music and hula at The House Without A Key from 5:30-8:00pm.  
 •**Daily**-Live Contemporary and light Jazz at Lewers Lounge from 8:30pm to midnite.  
 •**Sun**- Sunday brunch at Orchids features Noly Paa on the piano from 9:30 - 2:30pm.
- HILTON HAWAIIAN VILLAGE** 949-4321  
 •**Fri** - Fireworks at 7:45pm.  
 •**Fri** - The Rockin' Hawaiian Rainbow Revue (formerly the King's Jubilee), a musical salute to King Kalakaua, at the Super Pool. 7 pm.  
 •**FriSat** - Olomana at the Tapa Bar from 8-11pm.  
 •**Sun** - Jeff Apaka at the Tapa Bar from 5-7pm.  
 •**Daily** - Live entertainment at the Hau Tree Bar and the Tapa Bar from 8-11pm.
- THE KAHALA HOTEL** 739-8888  
 •**TuWThFSat**- David Swanson vocalizes on the piano at The Veranda from 7:30-11pm. Live Jazz on Sun/Mon.
- MOANA SURFRIDER** 922-3111  
 •**Daily**-Hawaiian music & hula. The Banyan Court, 6-8 pm, and again from 8 -11 p.m. Weekends from 11:30- 2 p.m.  
 •**MWFri**-Guided historical tours at 11am.
- NEW OTANI KAIMANA BEACH** 923-1555  
 •**FSat**- Local jazz guitarists plays live in the Sunset Lanai Bar. 6-9pm.
- OUTRIGGER WAIKIKI ON THE BEACH** 923-0711  
 •**Mon**- Kukui Nut Bracelet Making. 1pm.  
 •**Th**- Ukulele Lessons. 1pm.  
 •**Fri**- Aloha Fridays bring back old Hawai'i with music, hula, ukulele & lei making lessons. 9am-1pm.
- OUTRIGGER REEF ON THE BEACH** 923-3111  
 •**Daily**- See guest artists at work in Kuloko Arts of Hawaii 9am-1pm and again from 6-9pm.
- SHERATON PRINCESS KAIULANI** 922-5811  
 •**Daily**-Live Hawaiian music & halau at the lounge from 6-8:30pm, then poolside from 8:30-10:30pm.  
 •**MWFri**-Princess Kaiulani historical tour at 4pm.
- THE ROYAL HAWAIIAN** 923-7311  
 •**TTHSat**- Free guided resort tour at 2pm.  
 •**Fri**-Princess Kaiulani historical tour at 4pm.
- TURTLE BAY RESORT** 293-6300  
 •**MTWThFSat**- Lei Making, Main Lobby at 10am.

- ThSun** - Fire Dancer, Hang Ten Pool Bar at Sunset  
 •**TThFri** - Shell Hula Lessons, Lobby at 10am  
 •**TThFri** - Ukulele Lessons, Lobby at 9am  
 •**Fri**- Music & Hula. Lobby Lounge 6:30-8:30pm.
- WAIKIKI BEACH MARRIOTT RESORT** 922-6611  
 •**Daily**-Hawaiian entertainment in The Moana Terrace Bar. 6-9pm.  
 •**Fri**-Local crafters "Aloha Friday Fair" Lobby 9a-2pm

## MUSEUMS

- HAWAII STATE ART MUSEUM** 586-0900  
 •**TWThFSat** - Inaugural exhibition "Enriched by Diversity: The Art of Hawai'i." Free. Tuesday-Saturday, 10 a.m. to 4 p.m. Located in the Capital District.
- HAWAII THEATRE** 528-0506  
 •**Tues**- A one-hour guided tour. The Theatre is undergoing renovations from July 1<sup>st</sup> through August 15<sup>th</sup>. There will be no tours available during renovations.
- HONOLULU MUSEUM OF ART** 532-8726  
 •**MWF**- Japanese Language Tours. Private tours also available. 1pm. Regular admission.
- IOLANI PALACE** 522-0832  
 •**Mon-Sat**-45 minutes docent-led or self-guided audio tours available in English or Japanese. Japanese-led tour is available only at 11:30 a.m. All tours include re-tour video and entrance into the Palace Galleries. Adults: \$14.75-\$21.75 / Keiki (5-12): \$6. 9am-5pm  
 •**Sat**-Hawaiian Quilt Classes. Old Archives 9:30a-12p.
- LUCORAL MUSEUM** 922-5381  
 •**TTh**- Learn how to plan your jewelry project and more in this beaded jewelry workshop \$10. 2-4 p.m.
- MISSION HOUSES MUSEUM** 447-3910  
 •**Tue-Sat**-Learn about the dramatic story of cultural change in 19th-century Hawai'i. Docents lead tours through the oldest existing frame house in the Islands, Printing Office, and the coral block Chamberlain House. Reservations required. www.missionhouses.org
- PACIFIC AVIATION MUSEUM** 441-1000  
 •**Daily**-Vintage aircraft in battlefield hangars. Combat flight simulators. Aviator's Tour takes you through the new Restoration Hangar. Restaurant, Museum Store. Shuttle & Tickets at USS Arizona Memorial Visitor Center or at www.PacificAviationMuseum.org.
- THE SPALDING HOUSE** 526-1322  
 •**Daily**-Docent-led tours given daily. 1:30pm. Garden tours or Japanese language tours are by appointment.
- NAVAL AIR MUSEUM BARBERS POINT** 682-3982  
 •**Mon-Fri**- A unique museum experience about aviation history in Hawaii. All of the aircraft are open to climb in, on and around. Tours: 8 a.m. - 4:30 p.m. \$7 / \$5 children under 18. BLDG 1792, Midway Road,

Kalaeloa Airport. Reservations required. Sat/Sun by appt only. www.nambp.org.

## SHOPPING CENTERS

- ALA MOANA CENTERSTAGE** 955-9517  
 •**Tues** - PCC Polynesian Revue Show. 6pm.  
 •**Sun** - Keiki Hula Show. 10-11am.
- INTERNATIONAL MARKET PLACE** 971-2080  
 •**Daily except Sunday** - Free Food Court Entertainment starting at 6pm.
- KING'S VILLAGE** www.kings-village.com 237-6344  
 •**MW** Famer's Market offering fresh produce, baked goods and local food items from 4-9pm.  
 •**Daily** Watch the changing of the guard put away the Hawaiian flag each evening with a rifle drill exhibition at the front entrance of the Village. 6:15 p.m. FREE.  
 •**Daily** King's Guard Museum features a variety of collectibles and memorabilia. 10a-10:30p. FREE.
- ROYAL HAWAIIAN CENTER** 922-2299  
 • **TWThF** - Ukelele lessons 10-11am, *Paina Lanai*  
 • **MW**- Learn lomilomi 11am-12pm, Bldg. A, 1st floor  
 • **TTh**-Hula (T) 11am-12pm (Th) 4-5pm, Bldg C. 2nd floor  
 • **TWThF**- Live Hawaiian music 6-7pm, *Royal Grove*  
 • **MTWThSat**- Lei making 1-2pm, Bldg A., 1st floor  
 • **Sat**- Hula Kahiko 6-6:30pm, *Royal Grove*  
 • **Sat**- Hawaiian musicians 7:30-8:30pm, *Royal Grove*  
 • **ThSat** - PCC Performs. 11-11:45am, *Royal Grove*
- WAIKIKI BEACH WALK** www.waikikibeachwalk.com  
 •**Tuesdays** - Ku Ha'aeo featuring Hawaiian song and dance on the Plaza stage. 4:30-6pm  
 •**Wednesdays** - Yoga Classes 4-4:45pm. Free.Plaza Stage
- WAIKIKI SHOPPING PLAZA** 923-1191  
 •**Daily** Hula Lessons. 10am, 12pm  
 •**MTTh** - Polynesian Review 1st & 3rd floor 7-9pm

## ATTRACTIONS

- KALAKAUA AVENUE** 527-5666  
 •**Fri** - Strolling Hula from 8-10:00pm.
- KAPI'OLANI BANDSTAND** 527-5666  
 •**Fri**-Hawai'i's finest musicians perform. 5:30-6:30pm  
 •**Sun**-Royal Hawaiian Band performs 2-3:15pm.
- KUHIO BEACH HULA SHOW** 843-8002  
 •**TThSat**- City & County presents a free hula show at sunset. 6:30 - 7:30pm at the hula mound.
- TAMARIND PARK - DOWNTOWN** 527-5666  
 •**Fri**- Mayor's Aloha Friday Music from 12-1pm features live music from Hawaiian to Jazz to Pop.
- WAIKIKI TOWN CENTER** 922-2724  
 •**Mon-Sat**-The songs and dances of Hawai'i, New Zealand, & Tahiti. Free shows begin at 7pm.

**EVENTS SUBJECT TO CHANGE PLEASE CALL TO CONFIRM PRIOR TO ATTENDING**

# PAPARAZZI

## Outrigger Ohana enjoys Shop a Lea



The Outrigger Reef and OHANA Malia ohana showed off their new Kipling bags at the recent Shop a Lea event. Shown here: Roy Shimabuku, Meali'i Richardson, Micah Kalama, So'o Tana, Alex dela Cruz and Sharon Mae Lampitoc.

## Kani Ka Pila Grille turns Five



Celebrating the 5th Anniversary of Kani Ka Pila Grille were members of Outrigger's Executive Team Sean Dee, Outrigger Reef GM, Dean Nakasone, Bitsy Kelley, Hoku-Award winning artist Cyril Pahinui and Luana Maitland.

Do you have a picture you would like us to run? Send them to: publisher@oahuconciierge.com

## Aulani shows support at Great Aloha Run



The Front Office from the Aulani participated in this year's Great Aloha Run on February 17th. Shown here are Arlene Aquiat, Len Lorenzo, Sharilyn Kazunaga, and Rhodessa Munalem.



# THE OAHU concierge card

April 30, 2014

**Dole Plantation** - 1 FREE Adult Admission To The Maze With Purchase of 1 Adult Admission. 621-8408

**Giovanni Pastrami** - 15% Off Full Bar, Dine-in or Take-Out at anytime with ID. 227 Lewers St. 923-2100.

**Hard Rock Café** - 15% off food, beverage (non-alcoholic), or merchandise. Hotel ID required. 280 Beachwalk Ave. 955-7383.

**Hawai'i Prince Golf Club** - \$5 Off Standard Kamaaina Green Fees. Tee Times: 944-4567

**Hilo Hattie** - 25% on Hilo Hattie labeled garments, 15% off other fashions/gifts and 10% off Hilo Hattie labeled foods. Not valid on sale item. Ala Moana Center and Nimitz Hwy Ph 535-6500.

**Hy's Steakhouse** - 25% VIP Discount Off Food And Beverage (up to 2 persons) 2440 Kuhio Ave. 922-5555

**Hyatt Regency Waikiki** - 15% discount with the presentation of a concierge business card at SHOR, Japengo and SWIM. 2424 Kalakaua Ave. 923-1234.

**Iolani Palace** - Free Admission. Regular rate \$20. 364 S. King Street, Reservations & Hotel ID required. 522-0832.

**IHOP** - Receive 20% on entire bill. Must show valid hotel ID. Not valid with any other offer or discount. Aqua Palms, 1850 Ala Moana Blvd restaurant only. Free parking available. 949-4467.

**Kaiwa** - 20% off food & beverage between 5 & 7 p.m. 924-1555

**Longhi's** - 25% off food & beverage up to 2 persons, not applicable with any other promotion or discount. 947-9899.

**Mission Houses Museum** - Free tour with hotel ID. 447-3910

**Pacific International Skydiving Center** - 50% Discount on Jump, 68-760 Farrington Hwy, 637-7472

**Plaza Café** - 15% off all food items. Best Western the Plaza Hotel. 3253 N Nimitz Highway. 836-3636.

**P.F. Chang's Waikiki** - Receive 20% on all appetizers, entrees, desserts and beverages 11 am - 5 pm daily (not valid for Pau Hana menu) Royal Hawaiian Center. Ph: 628-6760, 637-7472

**Romano's Macaroni Grill** - 20% Off Food and Beverage for up to 2 guests. (Not Valid for Happy Hour Menu). Ala Moana Center, 1450 Ala Moana Blvd. 356-8300

**Royal Hawaiian Center** - get your FREE Malama Card which offers special retail and dining discounts to local Waikiki workers. Royal Hawaiian Center, 2201 Kalakaua. 922-2299.

**Ruth's Chris Steak House** - 20% Off Food and Beverage for up to 2 guests. (Not Valid for Happy Hour & Prime Time menus). Restaurant Row, 500 Ala Moana Blvd. 599-3860. Waikiki Beach Walk, 226 Lewers Street. 440-7910

**The Contemporary Museum** - FREE Admission For Cardholder and One Guest. 526-1322


**The Kahala Resort** - Complimentary appetizers for a concierge and a guest with the presentation of a concierge business card at Hoku's, Plumeria Beach House, Seaside Grill, The Veranda. 5000 Kahala Avenue. 739-8888

**The Original Glider Rides** - Come experience the joy of soaring for yourself. Concierge / GSA may receive a complimentary scenic ride. Request the "GSA flight special" when booking your reservation. Hotel ID required. Dillingham Airfield. 637-0207

**Tiki's Grill & Bar** - FREE order of Prime Rib Poke with any purchase! One per table. OahuconPOKE. ASTON Waikiki Beach. 923-8454

**Willoughby's Restaurant** - 15% off all food items. Ohana Honolulu Airport Hotel. 3401 N. Nimitz Hwy. 836-0661.

**HELP us update this card for 2014. If you know of an offer not being honored let us know. As management changes, sometimes offers can get lost. Also as we work on updating this, let us know if there is something you would like to see here & we'll see what we can do!**

You may be required to provide identification. One special per person per business. Offers valid on regular-priced merchandise only. Discounts are available to Guest Service Professionals ONLY. Not valid with other promotions or special offers. A minimum 15% gratuity required for all special food offers.  New offer

## Concierge of the Month



NAME: Naoko Mitchem

HOTEL: Westin Moana Surfrider

TITLE: Concierge

**Q. How long have you been at the Moana Surfrider?**

A. My 10th anniversary is coming up in August. 4 years as a Japanese Guest Services at the front desk and 6 years as a concierge.

**Q. How big is your team there?**

A. 14 of us including our wonderful manager.

**Q. How did you come to work in the hotels/travel industry?**

A. I was always interested in the travel industry. I have worked at a Japanese Travel agency, and at another hotel as a guest service agent, before coming here in 2004.

**Q. What do you think makes your property unique?**

A. As you know, we are "The First Lady in Waikiki". It's a classic hotel. While we strive to maintain her wonderful classic feel and atmosphere, we also have our state of the art Moana Lani spa, and amenities like the "Heavenly Beds." Great combination of old & new.

**Q. What do you find is the biggest perk of this industry?**

A. You are never bored at work! It's a shared experience, we get to know our island better and we get to know about other places as we talk to our guest from all over the world.

**Q. What has been your biggest challenge at the desk?**

A. When you can't deliver what guest wants, like rental cars been sold out, favorite restaurant being booked, etc. Of course we try to book alternatives, but we feel bad.

**Q. What is the one skill a good concierge needs to succeed?**

A. Being able to multitask, be patient, ability to keep up with new information and one of the most important things, keeping a smile on your face all day!

**Q. Have you had any special or memorable guests?**

A. A couple of years ago, I met this couple who visit every year. They're both musicians. I played the electric organ when I was little and I love music, so we got along. They'd bought a keyboard to practice while they were here and they gave me that keyboard, their CD and song notebook - but only if I promised to give them a CD with some kind of music pieces that I practiced next January when they return. Wait a minute! It's April already? I'd better get busy!

**Q. What's the most rewarding part of this job**

A. Helping our guests. Seeing them smile, and knowing that I was a part of making someone's stay memorable.

**Q. What question do you hear time and time again?**

A. Pearl Harbor related questions regarding ticket, transportation, security issues. Also, "What's your favorite restaurant?" This question is difficult, because each person's favorite is different, and we have so many great restaurants.

**Q. Name the one place you recommend more than anything else?**

A. Probably the Polynesian Cultural Center. I visited there many times and I had a great time on each visit. If you want to visit the modern Hawaii, then everything you need is in Waikiki, but if you want to feel the culture of the islands - just by going to Laie, you can feel the ol' Hawaii.

**Q. Name your favorite off-property restaurant to recommend?**

A. Ocean House for a dinner on the water, Imanasu Tei for experience to feel like locals.

**Q. What do you like to do when you're not working?**

A. I enjoy dancing hula, Zumba, hiking, hot yoga...etc. Also, discovering great "Cheap eats" spots.

**Q. Any other thoughts you'd like to share?**

A. I am truly grateful and blessed to be working with such a wonderful people. It is important that you like your job, but for me, it is more important to create a great relationship with your colleagues and work as a team. I learn something new from them every day.

Everyone remembers their first kiss



**Programs starting at \$125 per Person!**

Enjoy intimate, personalized, hands-on dolphin fun during the \$125 Dolphin Experience! Reserve your program now.

Call: 800.248.3316 or Visit: [DolphinQuest.com](http://DolphinQuest.com)

A portion of the proceeds from Dolphin Quest supports the local community and environment.



The Oahu Concierge is printed monthly and direct mailed FREE to all Oahu Concierge, Hospitality & Activity Professionals.

Subscriptions available to non-industry at \$20 per year.

C O N T A C T

**Davis Media**

Ph: 596-4422 • Fax: 593-0839

www.oahuconciierge.com

Twitter & Instagram: @OahuConciierge

Facebook: www.facebook.com/OahuConciierge

#### ADDRESS & NAME CHANGES / ADDITIONS

We do not take changes by telephone. All changes to mailing list must be submitted in writing by the 16th of the month, email is preferred.

S T A F F

**PUBLISHER Pam Davis**  
publisher@oahuconciierge.com

**CONTRIBUTING EDITORS**  
Lynn Cook, Lance Rae

**DESIGN**  
Coreiya Design

The Oahu Concierge  
1221 Kapiolani Boulevard, Suite 1040  
Honolulu, Hawaii 96814

Presorted Std  
US Postage Paid  
Honolulu, HI  
Permit # 583

# Survey Results!

We asked.. you answered. What did we learn? That you all like different things, and for the most part, we seem to be hitting the mark. Here are a few of the results we thought you'd like to see.

**Name the sections of The Oahu Concierge you find most useful.** Literally between all of the responses, you guys listed every section we have, but the top votes went to:

Calendar of Events	E Pili Kakou
That's Entertainment	Newsflash
Chef's Corner	Dining Dish

**Name the sections of The Oahu Concierge you find the least useful.** Most of you said you used it all and read it top to bottom, for those that actually chose one, you chose Yada Yada, Chef's Corner and Aunty Lynn. It's interesting to note that Aunty Lynn got the exact same amount of votes for most favorite as least favorite. Chef's Corner also made our top five, but was also notated multiple times on this list.

**Name the restaurant you recommend for romance most often.** 40 different restaurants made this list, your top vote getters were:

Michel's	La Mer
Hy's Steak House	Azure
Orchids	Ocean House

Top vote getters also include Vintage Cave, Ruth's Chris Steak House, Alan Wong's, Beachhouse, Hoku's, Morimoto's, Sarento's, Wolfgang's and Bali by the Sea

**Name the restaurant you recommend for families most often.** Over 50 restaurants made this list, your top vote getters were:

Hula Grill	Duke's
Oceanarium	Kai Market
Cheesecake Factory	Tiki's Grill & Bar

Pretty much tied are Jimmy Buffett's, Ocean House, Shorebird, Side Street Inn, Macaroni Grill, Uncle Bo's, Dave & Busters, P.F. Chang's, Tropics, Buca di Beppo and Makahiki.

**The top overall restaurants.** There were nearly 60 restaurants on this list, so most votes were equally distributed. Top choices were:

Roy's	Alan Wong's
Ocean House	Duke's
Wolfgang's	Azure

Top vote getters also included House without a Key, Sansei, Kai Market, Michel's, Ruth's Chris Steak House, Nobu Waikiki, Uncle Bo's, Giovanni Pastrami's, Yardhouse, Hula Grill, Kani Ka Pila Grille, and Diamond Head Grill,

**Name the top activities you recommend for a repeat visitor.** You guys listed everything. There were literally 73 different activities submitted. Some of the top choices:

Hiking	Diamond Head
North Shore	PCC
Show/Luau	Helicopter Tour

Everything you can think of from Friday night Fireworks to a Circle Island Tour to Kailua to a catamaran sail/water activity was listed as well.

**If you could add one section to the magazine what would it be.** This was interesting to me, and there were several good ideas submitted. Interestingly there were a bunch of suggestions to offer a concierge section for your comments, suggestions or pet peeves. Every time I have tried to encourage you guys to submit a review I rarely get a response. If any of you have any, please do submit them, I do try to run your thoughts as often as possible. Other good ideas included:

List of all the Happy Hours in town  
List of various FAM tours available  
More contests  
Page of deals  
Taxi Driver of the month  
Tour/Restaurant reviews

So I don't see the Taxi Driver happening, and I try to do mini reviews as they come, the others I will certainly consider them as more space becomes available.

**Name the one FAM TOUR you've always wanted to do and wish you could.** OK guys, this turned into a bit of a wish list. I'm not sure a hotel stay at the Trump or Halekulani is really going to benefit their sales much. I did find it interesting there were a few requests for a tour of the Hilton Hawaiian Village since it keeps growing. Tons of wish list requests for Outer island trips.. specifically the Big Island and Volcano. Those are unlikely, but make sense since I know those are booked fairly regularly. Others, like some of these on top of the list, I know do FAMs regularly, so reach out to your representative. Some of those include:

Chief's Luau	Kualoa Ranch
PCC	Helicopter Tour
Gourmet Food Tour	Shangri-la
Kalaupapa Day Trip	More restaurants!

Specifically you mentioned La Mer and Vintage Cave repeatedly stating the restaurants are constantly being requested to describe the experience but it's difficult to justify because of the price without knowing.

**AND THE WINNERS ARE....**  
Congratulations to the following 5 whose surveys were picked at random and will be receiving a gift certificate for your time

Cecilia Derramas	Dana Lee
Royal Hawaiian Hotel	Hale Koa Hotel
Naomi Grace	Lauren Shissler
Sheraton Princess Kaiulani	The Kahala Hotel
Debbie Murakami	
Holiday Inn Waikiki Beachcomber Hotel	