

Concierge

KEEPING THE HOSPITALITY INDUSTRY INFORMED SINCE 1998

Hawaii SPAM!

SPAM JAM® returns to Waikiki April 29



Nowhere in the world is SPAM® as loved and revered as it is in Hawaii. Hawaii is also the largest consumer of Spam per capita within the 50 states, so it's no surprise that the largest SPAM® celebration in the world takes place here as well. And, after a few years of

disruption, the biggest block party Waikiki has ever seen is returning to Kalakaua. Get ready folks, Waikiki SPAM JAM® is back!

If it is anything like it used to be, you can expect tens of thousands of people to flood into all corners of Waikiki to express their love for Hawaii's favorite food in one of the more unique – and popular – street festivals we have for a great cause.

Stroll down Kalakaua Avenue on April 29 between 4 – 10 p.m. and enjoy live entertainment featuring local musicians and hula while noshing on Spamalicious treats from twenty participating restaurants, including StripSteak, Hula Grill Waikiki, Mahina & Sons, Kirin Restaurant, Aloha Beer, Duke's Waikiki, Buho Waikiki, Maui Brewing Company, L&L, Bite Size 808, and Olay's Thai Lao Express to name a few.



There will be three stages set up for entertainment. Find them on Seaside by the Royal Hawaiian Shopping Center, in front of the Moana Surfrider and across from the Aston Waikiki Beach Tower.

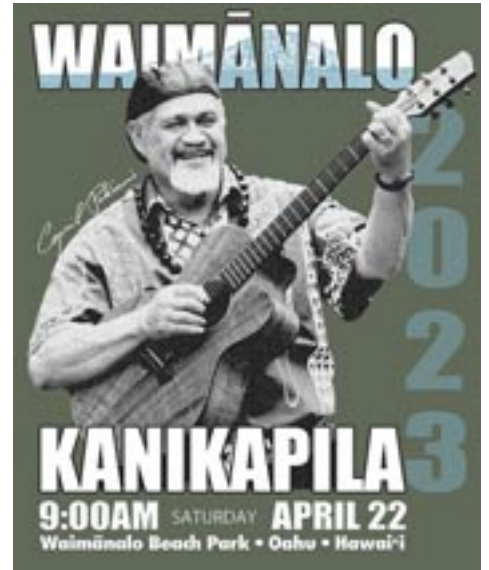
The street fest will also offer retail booths, arts and crafts, keiki activities, and appearances by SPAMMY™ characters and friends. As with every year, Waikiki SPAM JAM® Festival will offer a custom, collectible t-shirt for purchase, a locally designed reusable tote bag, and plenty of SPAM® merchandise. Since the event benefits the Hawaii Food Bank, volunteers will collect canned food and monetary donations throughout the festival. Not to be overlooked, proceeds will also benefit the Waikiki Community Center and the Visitor Aloha Society Hawaii.

For two weeks after the event, participating restaurants will serve unique SPAM® dishes from April 30 to May 14, such as Eating House 1849, which created Tempura Spam Bao Buns made with House Kimchi and Pickled Namasu for the program at \$18. Other restaurants joining the dine-in program include Aloha Table Waikiki, Kelley O'Neil's, Eggs 'n Things, Hideout at the Laylow, and Giovanni Pastrami.

Only some of the details were aware at press time, but all of the information will be posted on their website at the beginning of the month. For more information, go to SpamJamHawaii.com.



The Gabby Returns



The 16th Annual Gabby Pahinui Waimānalo Kanikapila, a free annual gathering of Hawai'i's best musicians, dancers, and entertainers held in memory of Cyril Lani Pahinui and his renowned father, Gabby, is returning to a live, in-person format on April 22nd at Waimānalo Beach Park. Although the festival never actually missed a note, transitioning to a virtual format during the pandemic, there is no comparison to the chicken skin moments you get sitting on the grass in Waimānalo listening to the more than 100 musicians the event attracts, and allows thousands of fans to witness some truly unforgettable moments, outstanding performances,

Continued on page 6.

TABLE OF CONTENTS

Yada Yada	2
Women in Lodging Names 2023 Woman of the Year	2
Newsflash	3
An Evening to Remember Chef Michael Ginor	4
Paparazzi: Aloha Kai Luau at Sea Life Park	6
Hawaii Polo Club Celebrates 60 Years	7
E Pili Kakou	8-13
Chef's Corner: Prince Waikiki Jeremy Shigekane	13
Calendar	14-17
Brunch Bunch	18
HEART of Honolulu Street Festival	18
That's Entertainment / Concierge Card	19

Publisher's Letter



Everything, Everywhere, All the Time

All of our events are returning to an in-person format and coming back one after the other. I must have written 'return' or 'coming back' two dozen times in this issue before trying to find another word to use. The Honolulu Festival was a big success last month, and two of our more iconic events are returning this month (see, there I go again!) But it's true, after all the disruption over the past few years, to see SPAM JAM® and The Gabby Waimānalo Kanikapila come back in all their glory is exciting. Both of these events are awe-inspiring. Seeing the sheer number of people swarming into Waikiki to celebrate that canned meat Hawaii loves so much is incredible. You don't know what you're missing if you have never been to Waimānalo to see a hundred of Hawaii's best musicians on stage, jamming together kanikapila-style. That event alone could be in the dictionary to describe the words "chicken skin." It's a great start to the summer rush, and exciting to have content to share with you again. Seriously. I put out an event-driven magazine here, and there have been months I have torn my hair out trying to figure out how to fill it, and you have been the recipients of some pretty desperate filler at times! Seeing all these press releases come in has been a relief.

I did have some extra space in this issue, so I was bit indulgent in how much space I gave to the tribute dinner in honor of Chef Michael Ginor, who passed away recently. Not only was he a trailblazer in the culinary world, but he was also a dear friend whose excitement about food was infectious. He was always learning and wanted to share that knowledge with everyone. I'm touched that the Hawaii Food & Wine Festival organizers also thought so highly of him that they decided to launch a scholarship in his memory. Although I can give less money to it than others, I do have a platform to spread the word, so I took it. If you've ever had and enjoyed foie gras in the states, you have him to thank for it. He was a tireless advocate of the safe and responsible production of foie gras and fought to keep it on menus. Donations do not have to be large. Every dollar will help keep his love for food alive and give Hawaii culinary students opportunities that may not otherwise be available to them. Mahalo!

Yada Yada



Jeffrey Nagata

Shoreline Hotel Waikiki recently named **Jeffrey Nagata** as its new general manager. He brings with him over 20 years of experience including tenures at the Marriott's Ko Olina Beach Club, DoubleTree Alana Waikiki, and two years as Coconut Waikiki Hotel general manager. • *Hula Grill Waikiki* has announced their 2022 Employee of The Year. **Billie Jean Brown** started off as a greeter and is now their lead breakfast server and trains all the new servers. Her positivity is just one of the reasons she has earned the honor. Congratulations! • *Ala Moana Center* has restructured its leadership team into three new areas of focus – retail, office and facilities. **Jake Wilson**, former vice president and senior general manager of Ala Moana Center, has been named vice president, property management for Brookfield Properties' retail portfolio in Hawai'i. **Liliana Ballesteros**, former associate general manager, has been named property manager for Ala Moana Medical Building and Ala Moana Pacific Center; former operations manager **Jeremy Matsui**, has been named director of facilities for Ala Moana Center and two

of their other properties. Last but not least, **Jaymes Bell** has been appointed general manager of Ala Moana Center. He actually started back in July, but the announcement was only made recently. A



Jaymes Bell

former military man, he previously managed another Brookfield outlet in Omaha, Nebraska, and Fashion Show Mall in Las Vegas before that. So far word has it he is loving Hawaii! • *The Ala Moana Hotel by Mantra* recently added three new associates to their front desk team. Welcome **Valerie Nicolas**, **Genesis Lutu**, and **Ricky Montinhos**! • The old Waikiki Sand Villa underwent an extensive renovation and the boutique hotel reopened as *The Wayfinder Waikiki* earlier this year. It's great to see the new fresh look these companies are giving some of our older properties. A few of the staffers that made their way over to the property include **Romeo Aguinaldo**, Area General Manager, who is also responsible for the *White Sands Hotel*. **Kanako Reeder** is their Director of Experience; **David Mo** was named Front Desk Supervisor, **Kaila Malavet**, Front Office Manager and **Tiana Nicolas**, Guest Services Manager.

Hawai'i Women In Lodging & Tourism Honors Embassys Carolyn Leina'ala Lopes

The Hawaii Chapter of Women in Lodging and Tourism, an affiliate of the Hawaii Lodging & Tourism Association (HLTA), has named Carolyn Leina'ala Lopes as its 2023 Woman of the Year. Carolyn is the Executive Housekeeper at Embassy Suites by Hilton Waikiki Beach Walk.



Carolyn Leina'ala Lopes

The committee decided to bestow their top honor upon Carol as her experience, dedication, and heartfelt Aloha are evidenced by how she leads her team and cares for her guests. She is a positive role model to women, young leaders, and colleagues in her organization and the hospitality industry.

"We are so privileged to have one of the strongest women in Hawaii's hospitality industry as a leader for our hotel," says Simeon Miranda, General

Manager of Embassy Suites by Hilton Waikiki Beach Walk. "Carol is the most caring, successful, driven individual I know. We are so proud of the distinction HLTA Women in Lodging has bestowed as 2023 woman of the year. Carol is so deserving of this award."

Hawaii Women in Lodging & Tourism strives to help its members grow personally and professionally. The

program is committed to the professional development of women in the hospitality industry, promoting long-term careers in hospitality and enhancing professionalism and success for women through educational programming, structured mentoring, and networking opportunities. For more information on Women in Lodging & Tourism, go to hawaiilodging.org/wil.

EXTRA EXTRA EXTRA *Newsflash*

WAI KAI OPENS AND LAUNCHES NEW SHOW LATER THIS MONTH

Wai Kai officially opened its doors on March 25, and beginning later this month will launch a weekly show every Monday evening starting April 17. The show will include a family-style dinner alongside a show that features Hawaiian and Tahitian performers weaving a story of water through song and dance and incorporate live surfing by utilizing the Wai Kai Wave. More information will be available shortly at waikai.com.

ALA MOANA CENTER ANNOUNCES NEW TENANTS

Ala Moana Center announced that Psycho Bunny, offering an inclusive and fun clothing and accessories experience and a classic Levi's store opened last month in the mall. Also recently opened is Rick's Jerk is a Caribbean restaurant that specializes in Rotisserie Jerk Chicken. Opening this month will be a Ray-Ban store, a Sbarro Pizza to Makai Market and the Dodger's Clubhouse, an store for Los Angeles Dodgers fans to get all their official merchandise for game day. alamoanacenter.com.

ROYAL HAWAIIAN CENTER EXTENDS HOURS

Royal Hawaiian Center began extending its hours of operation last month to better accommodate its customers. The center will now be open from 10 a.m. - 9 p.m., an hour earlier than its previous opening time of 11 a.m. This change in operating hours will provide visitors with additional time to shop, dine, and enjoy the center's amenities. To learn more, visit royalhawaiiancenter.com.

ROYAL HAWAIIAN BEACH CLOSED TO PUBLIC NIGHTLY

The issue of overnight sleeping, camping and storage of personal items has accelerated in the last twelve months in the Royal Hawaiian Beach area. In an effort to address significant public health and safety issues, the beach from the Royal Hawaiian Groin to Kuhio Beach will now be closed each evening from 2 a.m. - 5 p.m. and will be enforced by HPD.

MARGOTTO HAWAII NAMED BEST RESTAURANT IN HAWAII

USA Today 10 Best put out their Best Restaurant list and newcomer Margotto Hawaii topped the list. 2d place went to Merriman's Hawaii and 3rd place to Monkeypod Kitchen. 10best.com.

NEW STORE OPENS IN COLLECTIONS OF WAIKIKI

Fashion retailer Ron Herman has opened his first location in Honolulu. The new boutique will feature its exclusive high-fashion items and fine jewelry as well as limited-edition collaborative selections from partnered artists such as Oliver Hawaii, Salvage Public, and HIE Heirlooms of Hawai'i, produced by local stylist Meleana Estes and Noel Shaw. Located street-front at the Moana Surfriider. 8:30 - 10 a.m. daily. 638-3140.

PEARL HARBOR AVIATION MUSEUM OPENS NEW EXHIBIT

Pearl Harbor Aviation Museum's newest interactive exhibit is now open to the public. "Land • Sea • Air: Maui in Wartime" shares the overwhelming story of the pilot training that took place at Pu'unene field during WWII and throughout the island of Maui told through personal displays and stories narrated by the survivors themselves provides a much stronger impact. 9 a.m. - 5 p.m. pearlharboraviationmuseum.org.

**Exceptional Dishes
And a View to Match**

Discover a one-of-a-kind dining experience where chef-driven dishes meet Oahu's most spectacular views. This is Bali Oceanfront.

- Contemporary open-air setting
- Sweeping ocean views
- Award-winning service
- Seasonal and locally harvested ingredients
- Serving breakfast and dinner

HILTON HAWAIIAN VILLAGE, RAINBOW TOWER
COMPLIMENTARY SELF PARKING

FOR RESERVATIONS VISIT BALIWAIKIKI.COM
808-941-2254

BREAKFAST	DINNER
7:00 - 11:30 AM, DAILY	5:00 - 9:00 PM, TUESDAY - THURSDAY 5:00 - 9:30 PM, FRIDAY - SATURDAY

bali
OCEANFRONT

Hilton
HAWAIIAN VILLAGE®
WAIKIKI BEACH RESORT

An Evening to Honor Chef Michael Ginor



Lili Slepak, Chef Michael Ginor and Pam at one of the earlier Hawaii Food & Wine Festival's

Thanks to the Hawaii Food & Wine Festival, I have been fortunate enough to meet and befriend some amazing chefs over the past decade since the festival began. One of the first chefs I struck up a friendship with was Michael Ginor and his sous chef. We met each other the first year of the festival in 2011, and the next year, he wanted to go Side Street Inn after the event because he wanted to try the Fried Pork Chop and they asked me along. From then on, we began to keep in touch throughout the year. When my husband and I visited Long Island, he invited us to stay at their house. They showed us around and took us to one of his favorite hole-in-the-wall restaurants. They came to Hawaii often, and we would reciprocate the hospitality, taking them out on the water and showing them parts of the island they may not have seen. Dinners were always an adventure. They joined us for the Hawaii Kai Christmas Boat Parade and even came to my Mom's house a few years back for Thanksgiving dinner with my family.

Tragically, Michael died of a heart attack while participating in the Iron Man triathlon in Israel just two weeks after being on island for



Sailing off Waikiki

the Hawaii Food & Wine Festival. "Michael will be remembered as a generous and passionate fine-food artist who had a keen sense for business," said his friend and co-owner of Restaurant LOLA, Lenny Messina. "His vision revolutionized the way foie gras is produced, distributed, and served by the

world's finest chefs and restaurants."

For those who don't know, Michael was a pioneer in the culinary industry. His parents used to call him a natural-born foodie, and his favorite childhood pastime was going to restaurants. Michael called himself an explorer at heart and a food traveler. His love for foie gras actually paved the way for his culinary career. He was a student in Israel when his father visited and took him to a restaurant famous for its skewers of seasoned and grilled foie gras. He said it was the most delightful thing he had ever tasted and was the meal that launched his career and made so many of his dreams come to reality. He could only enjoy foie gras during his foreign travels as it was rarely available in the U.S. back then. He felt it was a product missing from the chef's pantry and decided to study it and eventually produce it. The result was Hudson Valley Foie Gras, the



Michael and Lili always tried to meet up with my husband Brian and I for dinner

world's most comprehensive Foie Gras producer and the first farm to produce foie gras in the U.S. Michael revolutionized modern-age foie gras processing, setting the standard for safe and responsible artisanal foie gras farming, and was instrumental in educating the dining public about foie gras and the innovative new production practices he and his farms have developed.

The Hawaii Food & Wine Festival has established the Michael Ginor Scholarship Fund to ensure his contributions to the culinary world will be remembered by generations to come. The fund will honor Ginor's culinary legacy and philanthropic spirit with a perpetual scholarship to provide annual opportunities for Hawaii's culinary students to stage (intern) at Hudson Valley Farm or Restaurant LOLA in New York and other Hawai'i Ag & Culinary Alliance initiatives to gain a global perspective on food—something Ginor prided himself on sharing through his



One of the rare pictures we took after boating

culinary travels. One of his favorite pastime's was walking for hours and exploring the local cuisines. He always said he could find great food anywhere – "If you look for it, you'll find it."

To help kick off this Scholarship, HFWF is hosting a special gourmet tribute to his life and legacy at the Halekulani on April 7 at 6 p.m. Michael attended every HFWF to share his world-renowned foie gras, duck, and other organic poultry items from Hudson Valley Foie Gras. His lifelong chef friends Vikram Garg, Susur Lee, Roy Yamaguchi, Lenny Messina, and Halekulani's Christian Testa will prepare a five-course wine-paired dinner inspired by Ginor's commitment to quality ingredients and culinary travel featuring the products he was known for. Tickets are \$500 and proceeds go towards the newly established Scholarship Fund.

If you cannot make the dinner, please consider making a gift to the fund to help provide opportunities in his name for the next generation of Hawaii's chefs to gain the global perspective on Michael loved and strived to share. To purchase tickets or to donate, please go to hfwf.me.



Michael loved the Christmas boat parade



bloomingdale's

Enjoy complimentary stylist and beauty appointments, spa services, and special offers.

ALA MOANA CENTER 1450 ALA MOANA BOULEVARD, HONOLULU

The Gabby Returns

Continued from page 1.

and one of a kind all-star jams by some of Hawai'i's most remarkable musicians who come together to sit back and just play music with each other in the park.

In 2007, Cyril Pahinui, and his wife, Chelle, decided to put together a festival to honor his father, the late great Gabby Pahinui, by keeping his dad's backyard-style kanikapila he was so fond of, where musicians just stopped by the house and jammed. Stories of weekends at the Pahinui home in Waimānalo back in the day, which turned into one long jam session, have been told for years. Word would go out that Gabby was playing, and the yard would fill with guys with guitars. Fans just followed the sound of Gabby's voice. Hard work, a dozen kids, and a hard life took Gabby away early – born in 1921, he died in 1980 at 59. His sons grew up at the knee of some of the best island musicians, and Cyril became an award-winning musician in his own right. Sadly, we lost Cyril in 2018, but Chelle continues to forge ahead with this festival, which now honors not one, but two Hawaiian musical legends.

Most musicians hang out all day long in the open pavilion at Waimānalo Beach Park. Visitors will be guaranteed a one-of-a-kind experience, hearing all-star jams by some of Hawai'i's most remarkable musicians who get together to play music in the park and honor those that came before them.

The festival will also recognize Skylark Rossetti by presenting this year's 5th Annual Skylark Rossetti Broadcaster's award. It also supports Sustainable Coastlines by recruiting volunteers for the upcoming 5th annual Earth Day Beach Cleanup on Sunday, April 23rd

The event is free and open to the public, and don't forget to grab one of their collectible T-shirts. The sales of these shirts have helped support the festival since day one and are known to hold their value. A shirt from the first event supposedly sold for hundreds of dollars on E-Bay a decade ago. The shirts are available online. Can't make it to Waimānalo? The event will also be live-streamed at [facebook.com/cyril.pahinui](https://www.facebook.com/cyril.pahinui).

The event will be held all day at Waimānalo Beach Park on April 22nd from 9 a.m. – 6 p.m. Don't miss this fantastic opportunity to see some of the best slack-key guitarists and musicians the islands have to offer jam with each other in a genuinely Hawaiian-style atmosphere. [gabbypahinui.com](https://www.gabbypahinui.com).



Sea Life Park launched their rebranded luau in partnership with Malu Productions at the beginning of this year, and invited the industry to come experience it for themselves. It was great to see how much fun everyone had and surprising to hear how many people hadn't been there before or how long it has been since they last visited. If you missed out, or want to learn more about the Park, reach out to aaron.yanagi@sealifeparkhawaii.com.



Hawaii Polo Club Celebrates 60 Years



King Charles played Polo at the Hawaii Polo Club back in 1974.

Did you know Polo was first introduced to Hawaii at the end of the 19th century? Polo came from somewhere other than Europe or the U.S., but from Asia, through an Australian cowboy visiting from India. As a result, it easily intertwined with the culture of the Paniolo. This year marks the 60th Season of the Hawaii Polo Club located in Mokuleia on the North Shore.

The world-renowned club has provided an exceptional venue to share the passion and lifestyle of the sport of Polo, both on and off the field, while also showcasing the beauty of Hawaii. The polo fields are situated against the ocean and it's an idyllic place to watch a match.

Fred and Elizabeth "Murph" Dailey founded the club in 1963. The Daileys were key figures in reviving Polo in Kapiolani Park in the 1950s and luminaries in the Waikiki hospitality scene. They owned the Waikikian Hotel, which housed one of Hawaii's greatest restaurants of days gone by, the Tahitian Lanai. Today, Mike Dailey, Fred's son, owns and runs The Equus Hotel in Waikiki, and his son Devon Dailey oversees the Hawaii Polo Club.

Duke Kahanamoku threw out the first ball at the opening of the Hawaii Polo Club in 1963. Over the years, many polo dignitaries have visited and played the polo fields, including King Charles, then Prince of Wales, back in 1974.

The 60th season opens Easter Sunday, April 9, followed by a special outdoor concert with John Cruz immediately following the final match. The games start at 2 p.m., but guests are encouraged to come earlier to enjoy all the pre-game activities, such as the Easter Bunny and an Easter Egg Hunt for the keiki. Several vendors will also be set up throughout the day, including Mayas Tapas, Honolulu Rose Cake Shop,

Flowers by the Happy Hoku, and more. Gates open at 11:30 a.m. There will also be a mini-market place with Flowers by the Happy Haku, Hats by Taste of the Tropics, and Jewelry by Forever Bracelets & Christine's Collection. John Cruz will start playing around 5:30 p.m.

For those guests looking for a unique day tour, a trip to the Polo Fields checks all the boxes.... a drive around the island, world-class polo fields on the ocean, and plenty of fun to be had throughout the afternoon. Guests can pack a lunch or buy food onsite. There will be a different food truck featured each week. Ono Eats will be on hand for opening day.

Tailgating spots are available for those who want to bring the family and enjoy the games and the surf. For your guests looking for a more refined experience, clubhouse seating is available for purchase by calling Connie Gause at

(202) 306-0848.

The 60th Polo Season runs every Sunday through September 3, 2023. Sun, surf, and fast horses all add up to make the perfect day in the country, and you can watch the best players and ponies in the state and from around the world play the "sport of kings."

But the fun doesn't stop at the end of the match; the bar remains open and a different band plays each week until dark. Players mingle with the crowd, and all have a great time until the sun dips behind the mountains.

Gates open at 11:30 a.m. on Sundays, and games start around 2 p.m. Arrive early for a dip in the ocean, take a nap on the beach, set up a fun tailgate picnic, or sit back and watch.

Admission begins at \$18 and does not include parking. Tailgaters, please select parking before adding the admission fee. Parking fees start at \$25. VIP Club House Reserved Seating is available for \$45 and includes parking.

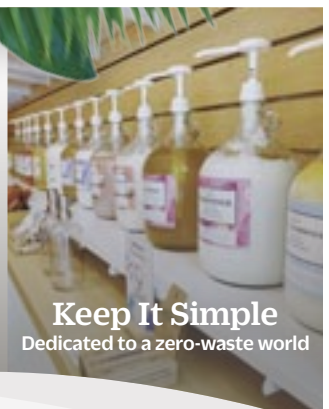
The club also offers trail rides and beginner polo lessons. For more information and to purchase tickets, go to Hawaii-Polo.org. ~ Lance Rae



Crazy Shirts
Organic, environmentally friendly dyes



Roy's
Locally sourced produce



Keep It Simple
Dedicated to a zero-waste world

Celebrate Earth Day at the beach

From environmentally dedicated stores to locally sourced organic foods to environmentally friendly beachwear, Waikiki Beach Walk® makes respecting the Earth seem like a day at the beach.

Free Parking 10am-3pm Daily*

*With \$10 minimum purchase

Located on Lewers St.
between Kalakaua Ave. & Kalia Rd.
Open 365 Days | 10AM-9PM



WAIKIKI
BEACH WALK®

WAIKIKIBEACHWALK.COM |

Let's be Together...

DINING ▶ ENTERTAINMENT ▶ PAU HANA ▶ EAT ▶ DRINK ▶ BE MERRY ▶ HAPPY HOUR ▶

MONDAY

Barefoot Beach Café at Queen's Beach 924-2233
Live Contemporary & Hawaiian
 The Barefoot Boys 5:30-8:30pm

Chart House Waikiki 941-6660
Live Contemporary Hawaiian
 Camarillo Brothers 6-9pm

Deck. at the Queen Kapiolani Hotel 931-4488
Mai Tai Mondays with Live Contemporary
 Freddy Leone (or others) 5pm-8pm

Duke's Canoe Club Waikiki 922-2268
Live Contemporary Hawaiian
 Grace Welton 4-6pm
 Bryan & Halekahu (or others) 7-9pm
 Ellsworth Simeona 9:30-11:30pm

Hard Rock Cafe 955-7383
Contemporary Rock
 Cassie and the... (or TJ & Son) 4-6pm

House Without a Key 923-2311
Hawaiian music & hula by Miss Universe '97 Brook Lee
 Pa'ahana Trio 5:30-8:30pm

Kani Ka Pila Grille 924-4992
Hoku Award Winning Hawaiian musicians
 Sean Na'auao 6-9pm

Mahi'ai Table 670-2778
Live Contemporary

Jenna Keala (4/10 - Zanuck Lindsey) 5-8pm

Mahina & Sun's 923-8882
Monday Vibes on the Lanai
 Brent Limos 6:30-9:30pm

Mai Tai Bar at the Royal Hawaiian 923-7311
Live Contemporary Hawaiian
 Eric Lee 11am-2pm
 Brad Kawakami 8-10pm

Maui Brewing Company 843-2739
Live Contemporary Hawaiian
 Scott Magz 3:30-5:30pm

Merriman's Honolulu 215-0022
Live Slack Key guitarist
 Freddy Leone 5:30-7:30pm

Moani Waikiki 466-2629
Contemporary R&B
 Freddy Leone 7-10pm

Monkeypod Kitchen Ko Olina 381-4086
Live Contemporary
 Koa & Yaz 3:30-5pm

Piko Kitchen & Bar 923-2032
Live Contemporary Hits
 Zanuck Lindsey 5:30-8:30pm

Rumfire 921-4600
Live Contemporary Hits
 Shawn Garnett 6-9pm

Signature Prime Steak 949-3636
Contemporary Pianist in the bar
 Keith Montross 6-9pm

Splash Bar at the Sheraton Princess Kaiulani 921-4600
Live Contemporary Hawaiian
 David Aquino 6-9pm

Swell at the Alohilani 294-4108
Solo Contemporary Guitarist
 Drew Henmi (4/3 - Bronson Varde) 6:30-9:30pm

SWIM at the Hyatt Regency 923-1234
Live Contemporary Hawaiian
 Kaulana Vinoya 5-8pm

The Beach Bar at the Moana Surfrider 922-3111
Live Contemporary Hawaiian
 Eric Lee 3:30-6:30pm
 Johnny Valentine 7-10pm

The Edge at the Sheraton 921-4600
Live Hawaiian Music
 Stephen Inglis 1-4pm

The Point Sunset Pool Bar at Turtle Bay 293-6000
Live Contemporary Hawaiian
 Mike Tulba 5-8pm

Tiki's Grill & Bar 923-TIKI
Live Contemporary Hawaiian
 Michael Piranha 5:30-7:30pm
 Lava Grove 10-11pm

Tommy Bahama Restaurant 923-8785
Contemporary Hawaiian. Happy Hour Daily 2 - 5 p.m.
 Jeremy Hirokawa 5-8pm

Tropics Bar & Grill 949-4321
Live Contemporary
 Ells Simeona (or Koa & Yas) 3-5pm

Amuse Wine Bar 237-5428

Live R&B & Contemporary
 Chris Salvador 7-9pm

Barefoot Beach Café at Queen's Beach 924-2233
Backyard Hawaiian
 Ben Kama 5:30-8:30pm

Chart House Waikiki 941-6660
Live Contemporary Hawaiian
 Ryan Tang Group 6-9pm

Deck. at the Queen Kapiolani Hotel 931-4488
Tequila & Taco Tuesday with Live Contemporary
 Shane Kainoa (or others) 6pm-9pm

Duke's Canoe Club Waikiki 922-2268
Live Contemporary Hawaiian
 Trish Nalei (or Taz Vegas) 4-6pm
 Kailua Moon 7-9pm
 Stephen Inglis (4/18 - Jenny Yim) 9:30-11:30pm

Eating House 1849 Waikiki 924-1849
Live Contemporary Hawaiian
 Kings Kalohelani 4:30-7:30pm

Giovanni Pastrami 923-2100
Acoustic Soul, R&B and Pop
 YOZA (or others) 6:30-9:30pm

Hard Rock Cafe 955-7383
Contemporary Rock
 Johnny Valentine (4/4, 4/18) 4-6pm
 Sidney Spencer (4/11, 4/25) 4-6pm

House Without a Key 923-2311
Hawaiian music & hula by Miss Hawaii USA '21 Allison Chu
 Delima Ohana 5:30-8:30pm

Kani Ka Pila Grille 924-4992
Hoku Award Winning Hawaiian musicians
 Kalale Camarillo 6-9pm

Lewers Lounge 923-2311
Jazz Pianist
 Tommy James 8:30pm-12am

Liko's Tap & Table 394-5456
Live Contemporary
 Jason Laeha 5-8pm

Mahi'ai Table 670-2778
Live Contemporary
 Keoni Ku 5-8pm

Mahina & Sun's 923-8882
Electrifying Acoustic on the Lanai
 Laupepa Letuli 6:30-9:30pm

Mai Tai Bar at the Royal Hawaiian 923-7311
Live Contemporary Hawaiian
 Kupu Dalire-Na'auao 11am-2pm
 Eric Lee 6-9pm

Maui Brewing Company 843-2739
Live Contemporary Hawaiian
 Wavvy Duo (4/4, 4/18) 3:30-5:30pm
 Christian Yizarry (4/11, 4/26) 3:30-5:30pm

Merriman's Honolulu 215-0022
Live Contemporary
 John Kema 5:30-7:30pm

Moani Waikiki 466-2629
Live Hawaiian, Reggae, R&B
 Lava 7-10pm

Piko Kitchen & Bar 923-2032
Live Contemporary Hits

OriginalMagoosPizza.com/Order

ORIGINAL
MAGOO'S
 PIZZA & HAWAII



**HAWAII'S FAVORITE
 ISLAND-STYLE PIZZA,
 SUBS & CHICKEN**

**WE'VE MOVED
 TO KAIMUKI!
 DINE-IN & FULL BAR
 TAKEOUT & DELIVERY**

**3579 WAIALAE AVENUE
 (BETWEEN 11TH & 12TH AVE)**

TUESDAY

E Pili Kākou

DINING ▶ ENTERTAINMENT ▶ PAU HANA ▶ EAT ▶ DRINK ▶ BE MERRY ▶ HAPPY HOUR


Drew Henmi	5-8pm		Shawn Garnett	4:30-6:30pm	
Rumfire		921-4600	Giovanni Pastrami		923-2100
<i>Live Contemporary Hits</i>			<i>Acoustic Guitar Soul, R&B</i>		
Christian Yrizarry	6-9pm		Jason Laeha	6:30-9:30pm	
Signature Prime Steak		949-3636	Hard Rock Cafe		955-7383
<i>Contemporary Pianist in the bar</i>			<i>Contemporary Rock</i>		
Keith Montross	6-9pm		Danielle Parente (4/5, 4/19)	4-6pm	
Splash Bar at the Sheraton Princess Kaiulani		921-4600	Mike Piranha (4/12, 4/26)	4-6pm	
<i>Live Contemporary Hawaiian</i>			House Without a Key		923-2311
Dave Watanabe	6-9pm		<i>Hawaiian music & hula by Miss Universe '97 Brook Lee</i>		
Swell at the Alohilani		294-4108	Pa'ahana Trio	5:30-8:30pm	
<i>Solo Contemporary Guitarist</i>			Kani Ka Pila Grille		924-4992
Kamuela Kahoano (4/18 - Brad Kawakami)	6:30-9:30pm		<i>2023 Kani Ka Pila Grille Talent Search Winner</i>		
SWIM at the Hyatt Regency		923-1234	Anthony Fpluke	6-9pm	
<i>Live Contemporary Hawaiian</i>			Lewers Lounge		923-2311
Jon Basebase	5-8pm		<i>Jazz Pianist</i>		
The Beach Bar at the Moana Surfrider		922-3111	Tommy James	8:30pm-12am	
<i>Live Contemporary Hawaiian</i>			Mahī'ai Table		670-2778
Stephen Inglis	3:30-6:30pm		<i>Live Contemporary</i>		
Bronson Varde (4/18)	3:30-6:30pm		Dillon Pakele	5-8pm	
Alex Oasay	7-10pm		Mahina & Sun's		923-8882
The Edge at the Sheraton		921-4600	<i>Soulful Guitar on the Lanai</i>		
<i>Live Hawaiian Music</i>			Cameron Achuela	6:30-9:30pm	
Eric Lee	1-4pm		Mai Tai Bar at the Royal Hawaiian		923-7311
The Point Sunset Pool Bar at Turtle Bay		293-6000	<i>Live Contemporary Hawaiian</i>		
<i>Live Contemporary Hawaiian</i>			Stephen Inglis (4/19 - Keoni Ku)	11am-2pm	
Jenna Keala	5-8pm		Johnny Valentine	6-9pm	
The Veranda at the Kahala Hotel		739-8760	Maui Brewing Company		843-2739
<i>Live Contemporary</i>			<i>Live Contemporary Hawaiian</i>		
Kupu Dalire Na'auao	6-9pm		YOZA	3:30-5:30pm	
Zanuck Lindsey (4/18, 4/25)	6-9pm		Merriman's Honolulu		215-0022
Tiki's Grill & Bar		923-TIKI	<i>Live Contemporary</i>		
<i>Live Contemporary Hawaiian & Reggae</i>			Kona Abergas	5:30-7:30pm	
Biku	5:30-7:30pm		MINA's Fish House		679-0079
Lindsey Wells	8-10pm		<i>Live Contemporary Hits</i>		
Tommy Bahama Restaurant		923-8785	Kamuela Kahoano (or others)	6-9pm	
<i>Contemporary Hawaiian. Happy Hour Daily 2 - 5 p.m.</i>			Moani Waikiki		466-2629
Johnny Kukui	5-8pm		<i>Contemporary Island Music, Reggae and Blues</i>		
Tropics Bar & Grill		949-4321	Keith Batlin	7-10pm	
<i>Live Contemporary</i>			Monkeypod Kitchen Ko Olina		381-4086
Wavy Duo	3-5pm		<i>Live Contemporary</i>		
Christian Yrizarry (4/4)	3-5pm		Shaun Garnett	12:30-2pm	
Kailua Moon (4/18)	3-5pm		Piko Kitchen & Bar		923-2032
			<i>Live Contemporary Hits</i>		
			David Aquino (4/19 - Jason Midro)	5-8pm	
			Rumfire		921-4600
			<i>Live Contemporary Hits</i>		
			Dave Watanabe	6-9pm	
			Signature Prime Steak		949-3636
			<i>Contemporary Pianist in the bar</i>		
			Pierre Grill	6-9pm	
			Splash Bar at the Sheraton Princess Kaiulani		921-4600
			<i>Live Contemporary Hawaiian</i>		
			Alika Souza	6-9pm	
			Swell at the Alohilani		294-4108
			<i>Solo Contemporary Guitarist</i>		
			Danielle Parente	6:30-9:30pm	
			SWIM at the Hyatt Regency		923-1234
			<i>Live Contemporary Hawaiian</i>		
			Biku	5-8pm	

WEDNESDAY

Azure at the Royal Hawaiian		921-4600
<i>Live Contemporary Hawaiian</i>		
Ethan Capone	5:30-8:30pm	
Barefoot Beach Café at Queen's Beach		924-2233
<i>Island Vibes</i>		
Danny Galura	5:30-8:30pm	
Chart House Waikiki		941-6660
<i>Live Contemporary Hawaiian</i>		
Mike Tulba	6-9pm	
Duke's Canoe Club Waikiki		922-2268
<i>Live Contemporary Hawaiian</i>		
Keoni Ku (or Taz Vegas)	4-6pm	
Taulia Lave (4/19 - Ells Simeona)	7-9pm	
Alika Souza	9:30-11:30pm	
Eating House 1849 Waikiki		924-1849
<i>Live Contemporary Hawaiian</i>		


RUTH'S CHRIS

Referral Program




Refer your guests to experience perfection at Ruth's Chris Steak House and receive a Ruth's Chris Gift Card

Receive a \$50 Ruth's Chris Gift Card for every 25 Guests that dine at Ruth's Chris Steak House. When making your GUEST reservation via phone, or Open Table, please provide your name and company name and our team will track your referrals accordingly.



"What's Sizzling at Ruth's"

- Sizzling Prime Time Menu available nightly from Opening to 6pm. (3) Course Menu from \$59 per person.



- Happy Hour featuring Appetizer and Drink Specials from Opening to 7pm.

Honolulu • 808.599.3860 • Waterfront Plaza, 500 Ala Moana Boulevard
 Waikiki • 808.440.7910 • Waikiki Beach Walk, 226 Lewers Street
 Wailea • 808.874.8880 • The Shops at Wailea, 3750 Wailea Ala Nui Drive

Let's be Together...

DINING ▶ ENTERTAINMENT ▶ PAU HANA ▶ EAT ▶ DRINK ▶ BE MERRY ▶ HAPPY HOUR ▶

THURSDAY

100 Sails at the Prince Waikiki	944-4494
<i>Live Contemporary & Hawaiian</i>	
Kailua Moon	6-8pm
Azure at the Royal Hawaiian	921-4600
<i>Live Contemporary Hawaiian</i>	
Noly Paa	5:30-8:30pm
Barefoot Beach Café at Queen's Beach	924-2233
<i>Live Contemporary & Hawaiian</i>	
Alika Souza	5:30-8:30pm
Chart House Waikiki	941-6660
<i>Live Contemporary Hawaiian</i>	
Tito & David	6-9pm
Deck. at the Queen Kapiolani Hotel	931-4488
<i>Live Contemporary</i>	
Freddy Leone (or others)	5pm-8pm
Duke's Canoe Club Waikiki	922-2268
<i>Live Contemporary Hawaiian</i>	
Scott Magz	4-6pm
Chapter II (or Kona Chang)	7-9pm
Walt Keale (or Uluwehi Young)	9:30-11:30pm
Eating House 1849 Waikiki	924-1849
<i>Live Contemporary Hawaiian</i>	
Shane Kainoa	5-8pm
Giovanni Pastrami	923-2100
<i>Live Contemporary</i>	
Billy Sage	6:30-9:30pm

Hard Rock Cafe	955-7383
<i>Contemporary Rock</i>	
Mark Caldeira (4/6, 4/20)	4-6pm
Danielle Parente (4/13, 4/27)	4-6pm
House Without a Key	923-2311
<i>Hawaiian music & hula by Miss Universe '97 Brook Lee</i>	
Walea	5:30-8:30pm
Kani Ka Pila Grille	924-4992
<i>Hoku Award Winning Hawaiian musicians</i>	
Kawika Kahiapo	6-9pm
Lewers Lounge	923-2311
<i>Jazz Pianist</i>	
Ethan Capone & Rocky Holmes	8:30pm-12am
Mahi'ai Table	670-2778
<i>Live Contemporary</i>	
Alex Oasay	5-8pm
Mahina & Sun's	923-8882
<i>Hawaiian Contemporary on the Lanai</i>	
Kelly Boy DeLima	6:30-9:30pm
Mai Tai Bar at the Royal Hawaiian	923-7311
<i>Live Contemporary Hawaiian</i>	
Christian Yrizarry	11am-2pm
Stephen Inglis	8-10pm
Bronson Varde (4/20)	8-10pm
Maui Brewing Company	843-2739
<i>Live Contemporary Hawaiian</i>	
Koa & Yaz	3:30-5:30pm
Taz Vegas (4/6)	3:30-5:30pm
Mark Caldeira (4/13)	3:30-5:30pm
Maui Brewing Kailua	518-2739
<i>Live Contemporary Hawaiian</i>	
David Sedlak (or Grace Welton)	6-8pm
Merriman's Honolulu	215-0022
<i>Live Contemporary</i>	
Laupepa	5:30-7:30pm
MINA's Fish House	679-0079
<i>Live Contemporary Hits</i>	
Johnny III	6-9pm
Moani Waikiki	466-2629
<i>Contemporary Island Music</i>	
Kimo Opiana	7-10pm
O Bar at the Alohilani	294-4108
<i>Solo Contemporary Guitarist</i>	
David Aquino	5-8pm
Piko Kitchen & Bar	923-2032
<i>Live Contemporary Hits</i>	
Keoni Ku (4/13 - Bronson Varde)	5-8pm
Rumfire	921-4600
<i>Live Contemporary Hits</i>	
Brad Watanabe	6-9pm
Signature Prime Steak	949-3636
<i>Contemporary Pianist in the bar</i>	
Grant Carvalho & Rocky Holmes	6-9pm
Sky Waikiki	979-7590
<i>Live Contemporary</i>	
John Akapo	5-8pm
Splash Bar at the Sheraton Princess Kaiulani	921-4600
<i>Live Contemporary Hawaiian</i>	
Kaimi Hananoeau	3:30-5:30pm
Ronson Asuncion	6-9pm

Swell at the Alohilani	294-4108
<i>Solo Contemporary Guitarist</i>	
Denny Ono	6:30-9:30pm
SWIM at the Hyatt Regency	923-1234
<i>Live Contemporary Hawaiian</i>	
Dayton Watanabe	5-8pm
Koa Attwood (4/13, 4/27)	5-8pm
The Beach Bar at the Moana Surfrider	922-3111
<i>Live Contemporary Hawaiian</i>	
Christian Yrizarry	3:30-6:30pm
Kaimi Hananoeau	7-10pm
The Edge at the Sheraton	921-4600
<i>Live Hawaiian Music</i>	
Alika Souza	1-4pm
The Point Sunset Pool Bar at Turtle Bay	293-6000
<i>Live Contemporary Hawaiian</i>	
Dave Watanabe	5-8pm
The Veranda at the Kahala Hotel	739-8760
<i>Live Contemporary</i>	
Eric Lee	6-9pm
Johnny Valentine (4/20, 4/27)	6-9pm
Tiki's Grill & Bar	923-TIKI
<i>Live Contemporary Hawaiian & Reggae</i>	
Malik Taylor	5:30-7:30pm
Roots Kai	8-10pm
Tommy Bahama Restaurant	923-8785
<i>Contemporary Hawaiian. Happy Hour Daily 2 - 5 p.m.</i>	
Alex Oasay	5-8pm
Tropics Bar & Grill	949-4321
<i>Live Contemporary</i>	
Jason Midro Duo	3-5pm
Vintage 1901 at the Moana	921-4600
<i>Contemporary Piano</i>	
David Swanson	6:30-10pm

FRIDAY

100 Sails at the Prince Waikiki	944-4494
<i>Live Contemporary & Hawaiian</i>	
Mike Tulba Duo	6-8pm
Azure at the Royal Hawaiian	921-4600
<i>Live Contemporary Hawaiian</i>	
Ethan Capone	5:30-8:30pm
Barefoot Beach Café at Queen's Beach	924-2233
<i>Live Contemporary Hawaiian</i>	
The Art Kalahiki Band	5:30-8:30pm
Chart House Waikiki	941-6660
<i>Live Contemporary Hawaiian</i>	
Mike Tulba	6-9pm
Deck. at the Queen Kapiolani Hotel	931-4488
<i>Live Contemporary</i>	
Shane Kainoa (or others)	6pm-9pm
Duke's Canoe Club Waikiki	922-2268
<i>Live Contemporary Hawaiian</i>	
Maunalua	4-6pm
Kawika Kahiapo	7-9pm
Dwight Kanae	9:30-11:30pm
Hard Rock Cafe	955-7383
<i>Live Contemporary</i>	
Heleo (or others)	8-10pm
House Without a Key	923-2311

BarefootBeachCafe.com



"WE PUT Aloha INTO EVERY BITE SO SIT BACK, RELAX AND ENJOY THE VIEW."

OPEN DAILY

BREAKFAST 8AM - 2PM
LUNCH/DINNER 11AM - 8:30PM
LIVE MUSIC NIGHTLY 5:30 - 8:30PM
& SUNDAYS 11AM - 2PM

BAREFOOT BEACH CAFE
2699 KALAKAUA AVENUE
808.924.2233

EVENTS & GROUP RESERVATIONS
808.699.8830

E Pili Kākou

DINING ▶ ENTERTAINMENT ▶ PAU HANA ▶ EAT ▶ DRINK ▶ BE MERRY ▶ HAPPY HOUR

Hawaiian music & hula by Miss Hawaii '73 Kanoë Miller
Kapalama Trio 5:30-8:30pm

Kani Ka Pila Grille 924-4992
Hoku Award Winning Hawaiian musicians
Ka Hehena 6-9pm

Lewers Lounge 923-2311
Jazz Pianist
Maggie Herron & Dean Taba 8:30pm-12am

Mahi'ai Table 670-2778
Live Contemporary
Brandon Serrano 5-8pm

Mahina & Sun's 923-8882
Slack Key on the Lanai
Dustin Park Duo 6:30-9:30pm

Mai Tai Bar at the Royal Hawaiian 923-7311
Live Contemporary Hawaiian
Brandon Serrano 11am-2pm
Johnny III 6-9pm

Mariposa 951-3420
Live Contemporary
Chris Salvador 2:30-5:30pm

Maui Brewing Company 843-2739
Live Contemporary Hawaiian
Keith Batlin 3:30-5:30pm

Maui Brewing Kailua 518-2739
Live Contemporary Hawaiian
Walt Keale (or others) 7-9pm

Merriman's Honolulu 215-0022
Live Contemporary
Stephen Harris 5:30-7:30pm

MINA's Fish House 679-0079
Live Contemporary Hits
Jenna Keala 6-9pm

Moani Waikiki 466-2629
Live Contemporary Hawaiian
Liam Moletta 6-9pm

Monkeypod Kitchen Ko Olina 381-4086
Live Contemporary
Jasmin Nicole 12:30-2pm

Piko Kitchen & Bar 923-2032
Live Contemporary Hits
Johnny Helm 5-8pm

Rumfire 921-4600
Live Contemporary Hits
Stephen Inglis 4:30-7:30pm
Bronson Varde (or others) 8-10pm

SHOR at the Hyatt Regency 923-1234
Live Contemporary Hawaiian
Dave Watanabe (4/28 - Glenn Domingo) 5:30-8:30pm

Signature Prime Steak 949-3636
Contemporary Pianist in the bar
Grant Carvalho & Rocky Holmes 6-9pm

Sky Waikiki 979-7590
Live Contemporary
John Akapo 5-8pm

Splash Bar at the Sheraton Princess Kaiulani 921-4600
Live Contemporary Hawaiian
Ben Kama Duo & Dancer 5-8pm
Alika Souza 8-10pm

Stripsteak 896-2545

Live Contemporary
Shane Kainoa 6-9pm

SWIM at the Hyatt Regency 923-1234
Live Contemporary Hawaiian
Denny Ono 5-8pm

The Beach Bar at the Moana Surfrider 922-3111
Live Contemporary Hawaiian
Zanuck Lindsey (or others) 3:30-6:30pm
Kamuella Kahoano 7-10pm

The Edge at the Sheraton 921-4600
Live Hawaiian Music
Christian Yrizarry 1-4pm

The Grove at the Modern Pool Deck 943-5800
Live Contemporary
Sidney Spencer (or others) 4-7pm
Brad Kawaikami (Upper Pool Deck) 6-8pm

The Point Sunset Pool Bar at Turtle Bay 293-6000
Live Contemporary Hawaiian
Mark Calderia 5-8pm

The Veranda at the Kahala Hotel 739-8760
Live Contemporary
Johnny Valentine 6-9pm

Tiki's Grill & Bar 923-TIKI
Contemporary Hawaiian, Alternative, Pop-Rock, Reggae
Wavvy 3-5pm
Eddie 5:30-7:30pm
Bradda Ash & Keahi 8-10pm

Tommy Bahama Restaurant 923-8785
Contemporary Hawaiian. Happy Hour Daily 2 - 5 p.m.
Chris Murphy 5-8pm

Tropics Bar & Grill 949-4321
Live Contemporary
Kumuhau 3-5pm

Vintage 1901 at the Moana 921-4600
Contemporary Piano
David Swanson 6:30-10pm

SATURDAY

100 Sails at the Prince Waikiki 944-4494
Live Contemporary & Hawaiian
Cherie Duo 6-8pm
Kupu Dalire-Na'auao Duo (4/1, 4/8) 6-8pm

Azure at the Royal Hawaiian 921-4600
Live Contemporary Hawaiian
Koco Kawabuchi (or Ethan Capone) 5:30-8:30pm

Barefoot Beach Café at Queen's Beach 924-2233
Live Contemporary Hawaiian
Vanessa Alputila 5:30-8:30pm

Chart House Waikiki 941-6660
Live Contemporary Hawaiian
Tito Berinobis 6-9pm

Duke's Canoe Club Waikiki 922-2268
Live Contemporary Hawaiian
Walt Keale (or others) 10am-noon
Donald Fialkowski (or Jenna Keala) 1-3pm
Beach 5 (4/1) 4-6pm
Kaiona Band (4/8) 4-6pm
Alx Kawakami (4/15) 4-6pm
Ben Kama (4/22) 4-6pm
Keith Batlin Guidance (4/29) 4-6pm

Koa & Yas (or others) 7-9pm
Ben Kama (or Darrell Aquino) 9:30-11:30pm

Eating House 1849 Waikiki 924-1849
Live Contemporary Hawaiian
Kings Kalohelani 10:30am-1pm

Hard Rock Cafe 955-7383
Live Contemporary
Ezekial (or others) 8-10pm

House Without a Key 923-2311
Hawaiian music & hula by Miss Hawaii '73 Kanoë Miller
Kapalama Trio 5:30-8:30pm

Kani Ka Pila Grille 924-4992
Hoku Award Winning Hawaiian musicians
Ho'okena 6-9pm

Lewers Lounge 923-2311
Jazz Pianist
Maggie Herron & Dean Taba 8:30pm-12am

Mahi'ai Table 670-2778
Live Contemporary
Kamakana Kawa (or others) 5-8pm

Mahina & Sun's 923-8882
Contemporary Hawaiian/Blues on the Lanai
Josh Akapo 6:30-9:30pm

Mai Tai Bar at the Royal Hawaiian 923-7311
Live Contemporary Hawaiian
Ronson Asuncion (Ben Kama) 11am-2pm
Dave Watanabe (4/29-Koa Atwood) 6-9pm

Mariposa 951-3420
Live Contemporary
Aisaiah Jacobs 2:30-5:30pm

Maui Brewing Company 843-2739
Live Contemporary Hawaiian
Jenna Keala (or others) 3:30-5:30pm

Maui Brewing Kailua 518-2739
Live Contemporary Hawaiian
Scott Magz (or others) 7-9pm

Merriman's Honolulu 215-0022
Live Contemporary
Shane Kainoa 5:30-7:30pm

MINA's Fish House 679-0079
Live Contemporary Hits
Johnny Helm (4/8 - David Aquino) 6-9pm

Moani Waikiki 466-2629
Contemporary Island Music, R&B, and Reggae
Wavvy Duo 6-9pm

Piko Kitchen & Bar 923-2032
Live Contemporary Hits
Alex Oasay 5-8pm

Rumfire 921-4600
Live Contemporary Hits
Mark Caldeira 4:30-7:30pm
Kaleo Kahumoku (4/5 - Keoni Ku) 8-10pm
Zanuck Lindsey 6-9pm

SHOR at the Hyatt Regency 923-1234
Live Contemporary Hawaiian
David Aquino (4/8 - Stan Albrecht) 5:30-8:30pm

Signature Prime Steak 949-3636
Contemporary Pianist in the bar
Grant Carvalho & Rocky Holmes 6-9pm

Sky Waikiki 979-7590

Let's be Together...

DINING ▶ ENTERTAINMENT ▶ PAU HANA ▶ EAT ▶ DRINK ▶ BE MERRY ▶ HAPPY HOUR ▶

Live Contemporary
John Akapo 5-8pm

Splash Bar at the Sheraton Princess Kaiulani 921-4600
Live Contemporary Hawaiian
Brad Kawakami Duo 5-8pm
Tangi Tully 8-10pm

Stripsteak 896-2545
Live Contemporary
Dustin Park 6-9pm

SWIM at the Hyatt Regency 923-1234
Live Contemporary Hawaiian
Stan Albrecht (or others) 5-8pm

The Beach Bar at the Moana Surfrider 922-3111
Live Contemporary Hawaiian
Ronson Asuncion (4/29 - Ben Kama) 3:30-6:30pm
Chris Salvador 7-10pm

The Edge at the Sheraton 921-4600
Live Hawaiian Music
Brad Kawakami 1-4pm

The Grove at the Modern Pool Deck 943-5800
Live Contemporary
Mike Izon 4-7pm

The Point Sunset Pool Bar at Turtle Bay 293-6000
Live Contemporary Hawaiian
Denny Ono (or Jenna Keala) 5-8pm

The Veranda at the Kahala Hotel 739-8760
Live Contemporary
Jeanette Trevias 6pm-9pm

Tiki's Grill & Bar 923-TIKI
Contemporary Hawaiian, Alternative, Pop-Rock, Reggae
Kapono Wong 3-5pm
RootsKai 5-7pm
Lindsey Wells 8-10pm

Tommy Bahama Restaurant 923-8785
Contemporary Hawaiian. Happy Hour Daily 2 - 5 p.m.
Chris Murphy 5-8pm

Tropics Bar & Grill 949-4321
Live Contemporary

Chapter II (or Ben Kama) 3-5pm
Vintage 1901 at the Moana 921-4600
Contemporary Piano
David Swanson 6:30-10pm

SUNDAY

100 Sails at the Prince Waikiki 944-4494
Live Contemporary & Hawaiian
Cherie Duo 6-8pm

Anna O'Briens 946-5190
Live Contemporary Rock
Chicago Bob's Classic Rock Jams 9pm - 12am
Dr. J's Blues Review Show 9pm - 12am

Azure at the Royal Hawaiian 921-4600
Live Contemporary Hawaiian
Ethan Capone 5:30-8:30pm

Barefoot Beach Café at Queen's Beach 924-2233
Live Contemporary Hawaiian
Kimo Baker 10am-1pm
Art Kalahiki 5:30-8:30pm

Chart House Waikiki 941-6660
Live Contemporary Hawaiian
Dean & Dean 6-9pm

Duke's Canoe Club Waikiki 922-2268
Live Contemporary Hawaiian
YOZA (or others) 10am-noon
Jason Midro (or others) 1-3pm
Henry Kapono 4-6pm
Kaiona Duo (4/16 - Taulia Lave) 7-9pm
Dom Carlos 9:30-11:30pm
Kaimi (4/9, 4/23) 9:30-11:30pm

Eating House 1849 Waikiki 924-1849
Live Contemporary Hawaiian
Shane Kainoa 10:30am-1pm

Giovanni Pastrami 923-2100
Reggae Pop Music
Kelandy 6:30-9:30pm

Hard Rock Cafe 955-7383
Contemporary Rock
Dylan (or others) 8-10pm

House Without a Key 923-2311
Hawaiian music & hula by Miss Hawaii USA '21 Alison Chu
Pu'uhonua Trio 5:30-8:30pm

Kani Ka Pila Grille 924-4992
Hoku Award Winning Hawaiian musicians
Nathan Aweau 6-9pm

La Hiki Restaurant at the Four Seasons 679-0079
Live Contemporary Hawaiian
Kamuela Kahoano (or Jenna Keala) 11am-2pm

Mahi'ai Table 670-2778
Live Contemporary
Johnny III 5-8pm

Mahina & Sun's 923-8882
Award-winning ukulele on the Lanai
Trishnalei 6:30-9:30pm

Mai Tai Bar at the Royal Hawaiian 923-7311
Live Contemporary Hawaiian
John Coelho & Kanoe Arola 11am-2pm
Christian Yrizarry 6-9pm

Mariposa 951-3420
Live Contemporary

Zaysha 12-3pm

Maui Brewing Company 843-2739
Live Contemporary
Jason Midro 3:30-5:30pm
Chris Murphy (4/9) 3:30-5:30pm
Kimberly June (4/23) 3:30-5:30pm

Merriman's Honolulu 215-0022
Live Contemporary
Cassie and Selwyn 5:30-7:30pm

Moani Waikiki 466-2629
Contemporary Island Music
Dustin Park 7-10pm

Monkeypod Kitchen Ko Olina 381-4086
Live Contemporary
Pono 12:30-2pm

Piko Kitchen & Bar 923-2032
Live Contemporary Hits
Mike Izon 5-8pm

Rumfire 921-4600
Live Contemporary Hits
Jenna Keala (Bronson Varde 4/2) 4:30-7:30pm
Sidney Spencer 8-10pm

SHOR at the Hyatt Regency 923-1234
Live Contemporary Hawaiian
Derrick Lee 5:30-8:30pm

Signature Prime Steak 949-3636
Contemporary Pianist in the bar
Keith Montross 6-9pm

Splash Bar at the Sheraton Princess Kaiulani 921-4600
Live Contemporary Hawaiian
Kaulana Vinoya 6-9pm

Swell at the Alohilani 294-4108
DJs Spins Poolside from 1 - 4 pm
Jason Laeha 6:30-9:30pm

SWIM at the Hyatt Regency 923-1234
Live Contemporary Hawaiian
Koa Attwood 5-8pm

The Beach Bar at the Moana Surfrider 922-3111
Live Contemporary Hawaiian
Brad Kawakami (4/2 - Zanuck Lindsey) 3:30-6:30pm
Dave Watanabe 7-10pm

The Edge at the Sheraton 921-4600
Live Hawaiian Music
Christian Yrizarry 1-4pm

The Point Sunset Pool Bar at Turtle Bay 293-6000
Live Contemporary Hawaiian
Danielle Parente (4/23 - Bronson Varde) 5-8pm

Tiki's Grill & Bar 923-TIKI
Live Contemporary Hawaiian
Dave Young Band 3 - 5pm
Ellsworth & Friends 5:30-8pm

Tommy Bahama Restaurant 923-8785
Contemporary Hawaiian. Happy Hour Daily 2 - 5 p.m.
Glen Domingo 5-8pm

Tropics Bar & Grill 949-4321
Live Contemporary
Kaiona Duo (or others) 3-5pm

Vintage 1901 at the Moana 921-4600
Contemporary Piano
David Swanson 6:30-10pm

WAIKIKI BAPTIST Church
Your Church in Waikiki
424 Kuamo'o St
(Near the Ambassador Hotel)
Sunday Worship Services
9:00 AM - Contemporary
10:45 AM - Traditional
(808)955-3525
WaikikiBaptist.com

Dining Dish

Basalt has launched a new happy hour daily from 2:30 - 4:30 p.m. with exclusive new menu items such as Oysters with Yuzu Blood Orange Sake Granita and Chili Pepper Water Mignonette and Beef Fries with Peruvian Spiced Prime Rib over Waffle Fries with Avocado Crema. Call 923-5689. • Speaking of happy hours, **Westman Cafe & Lounge** has finally opened its lounge Thursday through Sunday; from 5 - 11 p.m. (12 a.m. on Fridays and Saturdays.) They have also launched a happy hour from 5 - 8 p.m. with drinks on special and selected menu items for only \$5. See the menu at westmancafe.com. • There's a new addition to **Kuhio Avenue Food Hall** at the International Market Place. **Café Waikiki** will serve breakfast, offering coffee, acai bowls, and more. IMP is also bumping up its brunch game, with **Moani Waikiki** joining in the brunch game. See more details on their brunch options and others on page 18. • Speaking of openings, **Uncle's Bo's** is opening the **Pupu House Waikiki** in the former Moose McGillcuddy's location later this month. Offering delicious, locally-inspired cuisine paired with tropical drinks, they will feature a tiki bar and restaurant on the first level, with another bar and a larger restaurant on the second level. Uncle Bo's most popular dishes will be about half the menu while the rest will be dishes in homage to local favorites, as well as standard fare like steak, burgers, etc. it will open for dinner first from 5 p.m.- 1:30 a.m. daily, adding in breakfast and lunch later. unclebosrestaurant.com. • Hawaii Kai is getting some exciting new eateries. **Tex 808 BBQ & Brews** finally reopened in the old Cha Cha Cha location next to Liko's, and the place looks fabulous. **Scratch Kitchen** moved into the space vacated by Outback Restaurant just a few weeks ago and has already opened. It will be open for breakfast, lunch, and dinner. An authentic little Belgian Waffle place called **La Liégeoise** opened in the former Sophie's Pizza in Koko Marina Shopping Center. Their dough is locally made in Belgium using organic eggs and no palm oil. They opened with sweet waffles but will add savory ones later this month. Open from 9 a.m. - 7:30 p.m. daily.



Chef's Corner

Prince Waikiki Exec Chef Jeremy Shigekane

Shigekane went to culinary school because he thought it would be a fastest way to get a degree out of high school and then actually fell in love with cooking. He worked as a chef de cuisine at Chai's and The Kahala before being joining Chef Mavro in 2014. He credits his time there for teaching him a lot about food, people, and the overall business. When Mavro expressed his interest in retiring, they discussed what it would look for Jeremy to take over. He loved the idea of taking over such an acclaimed restaurant as his own. Then COVID came

When did you decide you wanted to be a chef?

It wasn't until I did an internship at a country club in Florida that I started to really enjoy cooking. The fast pace, responsibility, multi-tasking, and the fun kept me always wanting to learn more. In our field, we learn everyday and the many different opportunities in our industry (not just in the kitchen) are exciting.

What was your first job in the industry?

The culinary school requirement to attend was to work in a restaurant first. I wanted to work in the kitchen as a cook or prep but since I didn't have any experience, the only job I could get was a dishwasher position at Benihana. My appreciation for the dishwasher came from this.

Who would you consider your mentor and why?

I've taken a lot of different things from many people. Both the positive and negative to grow personally and professionally. Gray Kunz for his professionalism. David Bouley for a different way of thinking towards French cuisine. Chef Mavro for his view of food and flavor with local ingredients. I think a lot of the things I've learned in the industry help me in my personal life and I am grateful for it.

You opened and the pandemic came. How was it?

Hahaha. The pandemic was the hardest job of my life, mentally and physically. To try to transform a high-end restaurant to a To-Go or anything less than was extremely difficult. From sourcing food to working with two others to trying get people to understand we were doing To-Go food at an affordable price while rebranding was a huge challenge.

Can we expect more a French style at the Prince?

To adapt to the Prince I like to say French technique with Japanese influence. Our executive sous chef teaches me Japanese techniques and influences. We work together to create a meaningful and fluent menu.

You're known for showcasing local ingredients and businesses and a high level of service. How do you translate that to a large hotel with multiple outlets?

Everything I learned during the pandemic – cooking, cleaning, finance, gardening, and marketing – are some of the things that I apply at the Prince. I apply my philosophy of running a restaurant (in the kitchen and front of house hospitality) along with small business here. Continuing to help other small businesses as much as possible and never forget what it's like and how difficult small business is.

What changes have you made or have planned?

I work closely with our chefs to elevate all of our outlets. We're starting to incorporate local exotic fruits in our club lounge to give the guest a taste of local fruits they might not be able to try unless they go the farmers market. We are creating an elevated ala carte menu at 100 Sails and a new bar/lounge menu comparative to an upscale izakaya. We work on elevating our buffet offerings every month. We even bring in local greens and vegetables to our employee cafeteria to provide our staff a nutritious meal

What restaurant do you go to when you're out?

La Cucina. I don't mind the wait with some wine. I like simplicity done well. Like sushi, I believe less is more. Technique is key and attention to detail is important. The simplest looking dish is the most difficult. There's nothing to hide under.

What do you like to do on your days off?

I don't get many, so I spend time with my family as much as possible and surf when I can.

Is there any other information you want to share?

The most important thing I have learned in business (especially from the pandemic) is that working together as a community is not cliché, it's important. As a business, my decisions are made only if everyone wins. Local, sustainable, & community are things I work towards everyday

Ginger Scallion Fried Rice



For Ginger Scallion Paste

- 1½ cup chopped green scallions
- 4 T peeled and chopped ginger
- 2 tsp - granulated sugar
- ½ T - kosher salt
- ¼ cup grapeseed oil* (substitute canola or vegetable oil)

Combine all ingredients in a blender. Blend on low for a minute and then high for 2 minutes until you have a smooth paste.

For Fried Rice

- 1½ T. ginger scallion paste
- 2 tsp grapeseed oil* (can substitute canola or vegetable oil)
- 2 tsp light soy sauce
- 2 cups cooked cold rice calrose, basmati, or jasmine
- Lime juice to taste

Directions: Heat grapeseed oil in a large nonstick sauté pan on med high heat. Add rice and sauté for a minute to heat, then add ginger scallion paste and sauté for another minute until fragrant. Remove from heat and add soy sauce and lime juice just to make the rice a brighter flavor. Garnish with scallions, carrots and breakfast radishes.

100 Sails is located at Prince Waikiki - 100 Holomoana Street

Breakfast Buffet: Mon - Sat, 6:30 - 10:30 a.m. **Sunday Brunch:** 9 a.m. - 1:30 p.m. **Lunch:** Mon - Sat, 11 a.m. - 1:30 p.m. **Ala Carte Dinner:** Mon - Wed, 5 - 9 p.m. **Buffet Dinner:** Thu - Sun, 5 - 9:30 p.m. **Website:** 100Sails.com / PrinceWaikiki.com • **Phone:** 944-4494 • **Social:** @100Sails / @princewaikiki

APRIL CALENDAR OF EVENTS

Continuing Events

MONDAYS, WEDNESDAYS & FRIDAYS O NĀ LANI SUNSET STORIES HULA SHOW

Honoring the rich history and sense of place of the International Market Place through song & dance. It begins at sunset with the lighting of the Lamakū Torch Tower on Kalākaua Avenue and leads to the Queen's Court. Free. 7 p.m. shopinternationalmarketplace.com.

TUESDAY THRU SATURDAY ARTS AT MARKS LATEST EXHIBIT

The newest exhibit at the Arts at Marks Garage, Pineapple Man & Friends opens April 6th. Sam Campos, The Godfather of Hawaii Comics, brings his band of comic artists to share their creative genius with all those who love comics and unbelievable drawing and story-telling skills. Enjoy a Meet the Artists reception at Pau Hana Friday on the first and final Friday of the month from 5 - 8 p.m. Exhibit runs through April 28th. Gallery open Tues-Saturday from noon - 5 p.m. artsatmarks.com.

WEDNESDAYS, SATURDAYS & SUNDAYS ALOHA STADIUM SWAP MEET

The Aloha Stadium Swap Meet has been going strong since 1979 and will not stop anytime soon despite the Stadium shutting down. Featuring over 400 vendors, crafters and artists, the Swap Meet offers low-prices on a wide selection of quality products with food trucks to snack from. Wednesdays & Saturdays: 8 a.m. - 3 p.m., Sundays, 6:30 a.m. - 3 p.m. \$2 admission ages 12 & up, \$1 for locals. alohastadium.hawaii.gov

FIRST FRIDAY (APRIL 7) DOWNTOWN GALLERY WALK & CRAFT FAIR

Downtown comes alive the first Friday of every month as art lovers fill the streets for Honolulu's outdoor self-guided arts tour. Stores spill out onto the sidewalk, artists are on hand to chat about to their works, and restaurants are ready to serve you. Monthly updates are published on participating merchant websites, or two days before the event at firstfridayhawaii.com.

Plan an Adventure

Let Hawaii Nautical show your guests our ocean playground.
808-234-SAIL (7245) 

TURTLES GUARANTEED



Enjoy our morning and afternoon snorkel sailings at Turtle Canyon with a wildlife guarantee! See turtles or cruise again for free (certain rules apply). Wildlife guarantee is for re-rides only, no refunds.





SECOND FRIDAY (APRIL 14) BISHOP MUSEUM AFTER HOURS

Extended after-hours access to the Museum with a Pau Hana presentation, living culture demonstration, keiki activities, exhibition tours, J. Watumull Planetarium shows, a Membership Lounge, food trucks, and live music. 5 - 9 p.m. \$10 at the door. bishopmuseum.org.

FRIDAYS

ROYAL HAWAIIAN BAND LUNCHTIME SHOW

The Royal Hawaiian Band has returned to Iolani Palace for its popular lunchtime concerts. Held on most Fridays, the concerts are free and open to the public. 12 - 1 p.m. iolanipalace.org

FRIDAYS & SATURDAYS HOMA NIGHTS

On Friday and Saturday nights, regular museum admission also includes live musical performances, hands-on art activities, pop-ups in the HoMA Shop, movies on the lawn, bar service at the HoMA Cafe, and other interactive art experiences. The museum stays open until 9 p.m. honoluluuseum.org.

SATURDAYS & SUNDAYS ART ON THE ZOO FENCE

See the works of local artists displayed on the Zoo fence on Monsarrat Avenue opposite the Kapiolani Park Bandstand. This is the only outdoor art venue in Honolulu that has proudly been displaying art since 1953. Works include original paintings, prints and photographs. 9 a.m. - 3 p.m. Free. artonthezoo fence.com.

SATURDAYS & SUNDAYS YOGA IN THE PARK

Core Power Yoga have added Saturdays to their free yoga classes at Victoria Ward Park. Registration required. Sat: 12-1 p.m. Sun: 9 - 10 a.m. wardvillage.com/explore/activities.

FIRST OR SECOND SUNDAY (APRIL 2) KAMA'AINA SUNDAYS

Kama'aina Sundays are back at 'Iolani Palace. Local residents can take advantage of free tours, entertainment, family-friendly activities and plenty of food options with proof of residency. Free tours will be available to the first 500 guests (limit 4 tickets per adult) on a first-come, first-served basis. Visitors welcome with paid admission. This month's theme will center around dance, as it's just one week before the Merrie Monarch Festival begins. 9 a.m. - 3 p.m. iolanipalace.org.

THIRD SUNDAY (APRIL 16) MELE HALI'A

Waikiki Beach Walk celebrates Hawaiian music with an award-winning musician one Sunday a month on the Plaza Stage. Waimanalo Sunset Band performs 5-6 p.m. waikikibeachwalk.com.

THIRD SUNDAY (APRIL 16) FAMILY FREE SUNDAY

Thanks to Bank of Hawaii, kama'aina have been offered free admission with ID on the third Sunday of the month since 2004. Currently a combo of both in-person and virtual events, offering something for all, but for those that want to attend in-person, they can get free museum admission with reservations. Visitors welcome, but they have to pay. 10 a.m. - 6 p.m. Free. 532-8700. honoluluuseum.org.

MARCH 31 - APRIL 2 KAWAII KON

Kawaii Kon is a 3-day convention that celebrates Japanese anime (cartoons), manga (comics), and all facets of Japanese culture. Meet your favorite voice actors and artists from both Japan and the US, grab autographs, watch informative panels, concerts, performances, see Japanese animation screenings and check out the gaming rooms, Artist Alley, Dealers' Room, and more, including putting your Cosplay (costume) on display. Tickets: \$50 and up. Hawaii Convention Center. 7 a.m. - 9 p.m. kawaiikon.com.

APRIL 1 - 2 • HAWAIIAN SCOTTISH FESTIVAL & HIGHLAND GAMES

The 40th annual festival offers two days of traditional Scottish games, competition, and prizes, learn about the history of the athletic events, highland dancers, Celtic crafts, bagpipers, clan tables and performers including the famous Celtic band, 7 Nations. There will be plenty of Celtic-themed wares, scotch tasting, and whiskey for sale. Jefferson Elementary School across from the Honolulu Zoo. 9 a.m. - 4 p.m. hawaiianscottishassociation.com.

APRIL 2

JAKE SHIMABUKURO & KEB' MO'



Talk about a collaboration! Hawaiian ukulele master Jake Shimabukuro returns to the island stage with American blue musician Keb' Mo'. Two shows nightly, 6:30 and 9 p.m. Tickets: \$75-\$85. bluenotehawaii.com.

APRIL 3 - 4 ROBERT GLASPER

Five-time Grammy® Award-winner Robert Glasper will perform fresh off his 2023 win for "Best R&B Album." Glasper is bringing a dynamic performance with Burniss Travis on bass, Justin Tyson on drums and DJ Jahi Sundance. Two shows nightly, 6:30 and 9 p.m. Tickets: \$35-\$45. bluenotehawaii.com.

APRIL 6 • AN EVENING TO HONOR CHEF MICHAEL GINOR



The Hawaii Food & Wine Festival is hosting a special gourmet tribute to the life and legacy to Chef Michael Ginor, who passed away unexpectedly soon after leaving Hawaii for this past year's HFWF. Lifelong friends Chefs Vikram Garg, Susur Lee, Roy Yamaguchi, Halekulani Executive Chef, Christian Testa, and Lenny Messina will prepare a five-course wine-paired dinner inspired by Ginor's commitment to quality ingredients and culinary travel and featuring the Hudson Valley Foie Gras products he was known for. Tickets support the new scholarship fund set up in his name. \$500. 6 p.m. Halekulani Hotel. hfwf.me.

APRIL 7 - 9

AN EVENING WITH LEFTOVER SALMON

This forward thinking, progressive bluegrass band had the guts to add drums to the mix and stirred in any number of highly combustible styles into their ever-evolving sound is a pioneer of the modern jam band scene. They have been

APRIL CALENDAR OF EVENTS

a crucial link in keeping alive the traditional music of the past while at the same time pushing that sound forward with their own weirdly, unique style. Two shows nightly, 6:30 and 9 p.m. Tickets: \$35-\$45. bluenotehawaii.com.

APRIL 8

HEART OF HONOLULU STREET FESTIVAL

A family-friendly, art-focused event that aims to showcase the arts, culture, and food of the Chinatown Arts District with art, live music, food, creative local vendors, performances and more. Nu'uauu Avenue will be closed to traffic for pedestrian traffic from King Street to Chaplain Lane for everyone to experience and enjoy the HEART of this vibrant downtown area. 11 a.m. - 5 p.m. downtownarhi.org.

APRIL 8-9

THE HARLEM GOSPEL CHOIR



Performing their contemporary gospel with a touch of jazz and blues, The world famous Harlem Gospel Choir is synonymous

with power vocals, glorious sound and infectious energy. Join them for Easter Brunch over the weekend. Two shows a day, 10:30 a.m. and 2 p.m. Tickets: \$75-\$85. bluenotehawaii.com.

APRIL 9 • EASTER SUNDAY

There will be everything from special Easter services, brunch menus, easter egg hunts and even a few sightings of Easter Bunny's on a SUP.



APRIL 9-15

LPGA LOTTE CHAMPIONSHIP

The 11th annual LPGA event will feature a star-studded field of marquee pros who grace the world stage of ladies' professional golf including defending champion Hyo Joo Kim. In all 144 players will hit the links over four days for 72-hole stroke play, seeking part of the \$2 million purse. Free admission April 9 - 11. Admission afterwards is \$15 per day, or a week pass for \$30. Hoakalei Country Club. lottechampionship.com.

APRIL 12

HTA'S SPRING TOURISM UPDATE

The Hawai'i Tourism Authority will present its Spring Tourism Update to provide you with valuable insights from HTA's Global Marketing Team, updates on implementation of the Destination Management Action Plans, and panel sessions with key leaders on important topics for Hawai'i and our visitor industry. Hawaii Convention Center. gohta.net.

APRIL 13

HENRY KAPONO WITH THE MAKAHA SONS



Season 6 of Henry Kapono's Artist 2 Artist Legends Series continues with The Makaha Sons and this month's On The Rise artist, Ryan Perez, who is finding newfound fame

with his Reggae, Soul, and R&B musical style. 6:30 p.m. \$35 - \$45. bluenotehawaii.com.

APRIL 14

AN EVENING WITH JOHN BUTLER

One of the most successful recording artists Australia has ever produced. His music mixes pain and celebration in a way that is utterly beguiling. 8 p.m. Tickets \$39.50 - \$164.50. Hawaii Theatre. bamproject.com.



APRIL 14-15 • PITBULL

He is a rapper, a pop artist, businessman, an surprisingly inspirational public speaker, has the most collaborations among any other music artist. and puts on one helluva show that he's bringing to the Blaisdell

Arena for two nights. 8 p.m. Tickets \$49.95 - \$499.95. bamproject.com.

APRIL 14-15 • JEFF ROSS

As a regular on the Comedy Central Roasts, Jeff has roasted some of the industry's most famous people including Alec Baldwin, Joan Rivers, Charlie Sheen, Justin Bieber, Roseanne Barr, and Bruce Willis. Two shows nightly, 6:30 and 9 p.m. Tickets: \$30-\$50. bluenotehawaii.com.



APRIL 15 • HAPA SYMPHONY - HONOLULU JAZZ QUARTET

The Honolulu Jazz Quartet recently marked their 20th anniversary and is Hawai'i's most enduring

jazz combo. The Quartet will be front and center with the Hawai'i Symphony Orchestra for their latest installment of the Hapa Symphony, offering an evening of high energy jazz. Tickets: \$18 - \$99. myhso.org.

APRIL 15 • AMERICA

The 1970s trio was famous for its close vocal harmonies and light acoustic folk rock sound, and some of their timeless hits such as "Ventura Highway," "You Can Do Magic," and "A Horse with No Name" are instantly recognizable. Henry Kaponu opens. Blaisdell Concert Hall. 7:30 p.m. Tickets \$49 - \$279. ticketmaster.com.



APRIL 15 GREAT CHEFS FIGHT HUNGER

The Hawaii Food Bank is bringing back their signature fundraiser great Chefs Fight Hunger. Some of Hawai'i's best chef will prepare a specially curated, locally sourced meal that celebrates Hawai'i Foodbank's 40th anniversary in this re-imagined event. Chefs Kealoha Domingo, Nae Ogawa from NatuRe Waikiki, Keaka Lee from Kapa Hale, Ed Kenney from Mud Hen Water and Pauline Lam from the Halekulani will join Oysters Hawaii at The Harry and Jeanette Weinberg Ho'okupu Center. 5 - 9 p.m. Tickets are sold out, but donations are always welcome. hawaiiifoodbank.org.

Continues on page 16.

APRIL CALENDAR OF EVENTS

Continued from page 15.

APRIL 16 • THE HAPALUA

Hawaii's half-marathon kicks off the 13.1 mile course at the Duke Kahanamoku Statue with runners westward toward downtown, where they turn at Smith Street, and then head back towards Waikiki ending at the traditional Marathon finish line by Kapiolani Park. Race starts at 6 a.m. For those unable to attend the in-person race, a virtual race will also be held through May 15th. thehapalua.com.

APRIL 16

AZURE MCCALL & KENNEY POLSON



Hawaii's First Lady of Jazz, Azure McCall is a multi-award winning vocalist whose warmth and sense of humor fuel her every interpretation. She will be joined by saxophonist Kenney Polson for two shows at 3 and 6:30 p.m. \$25-\$35. bluenotehawaii.com.

APRIL 16

PHILIP GLASS VIOLIN CONCERTO

Lauded by the "Boston Globe" as having "the charisma of a rock star," violin virtuoso Charles Yang has collaborated with artists including Jon Batiste and Jake Shimbakuro. He joins the HSO in the First Violin Concerto of pioneering American composer Philip Glass – a piece hailed as "the best concerto of the last 50 years." A special 30-minute pre-concert talk will be held at 3 p.m. Performance begins at 4 pm. Hawaii Theatre. Tickets: \$18-\$99. hisymphony.org.

APRIL 18 • DAUGHTRY



Daughtry became a household name during "American Idol," and although he was eliminated in 4th place, his first self-titled album became the fastest selling debut rock album in Nielsen SoundScan history. He's the third most successful contestant in terms of record sales, behind Kelly Clarkson and Carrie Underwood. 8 p.m. \$49.50. The Republik. bampproject.com.

APRIL 19

MADS TOLLING & THE MADS MEN

Internationally renowned violinist, composer, and two-time Grammy Award-Winner Mads Tolling is celebrating the music of the 1960s with his own distinctive style and innovative flair. Hawaii Theatre. 7:30 p.m. Tickets: \$35 - \$75. myhso.org.

APRIL 20

STREETLIGHT CADENCE

Streetlight Cadence began playing on the streets of Honolulu and are now the hosts of the Emmy-nominated show "Will Play for Food" bring their tour to the islands. Special guests Keilana and MTO. 7 p.m. Tickets: \$28.50. The Republik. bampproject.com.

APRIL 21 • PAULA FUGA

Paula Fuga takes the stage with Trishnālei and DJ Kela Kennedy Special guests expected to join, and with Paula you never know who that

could be. 8 p.m. Tickets: \$35. The Republik. bampproject.com.

APRIL 21 - 22 • SERGIO MENDES



Over his remarkable six-decade career, Sergio Mendes was one of the pioneering contributors to the foundations of bossa nova, his iconic group Brasil '66 was part of the era-defining Latin-pop sound to his scintillating collaborations with jazz legends like Herbie Mann to his chart-topping adult contemporary smash "Never Gonna Let You Go;" was just part of his career to his 21st-century reinvention with the Black-Eyed Peas and John Legend and his Oscar®-nominated theme song from the animated hit "Rio," his infectious spirit of joy pervades everything Mendes has ushered into the ears of listeners. Two shows nightly, 6:30 and 9 p.m. Tickets: \$65-\$115. bluenotehawaii.com.

APRIL 21-22

IOLANI SCHOOL FAIR

Visitors and locals alike are welcome at the Iolani Family Fair. Enjoy rides, Midway games, keiki games, crafts, petting zoo, live music, lion dances, food fair staples, and more! Free admission with plenty of parking at Kaimuki High School. noon - 10 p.m. iolanifair.org.

APRIL 21 22

BELLATOR MMA

Bellator MMA returns to Hawaii for back-to-back nights of wrestling madness. Flyweight world champion and United States Marine Liz Carmouche defends her title in rematch against no. 4 ranked Deanna Bennett on Friday. Saturday will see the conclusion of the Bellator Bantamweight World Grand Prix when interim champion Raufeon Stots meets no. 2 ranked Patchy Mix and Oahu's own no. 3-ranked Ilima-lei Macfarlane returns home to face no. 2-ranked Kana Watanabe. Blaisdell Arena. 7:30 p.m. Tickets \$49 - \$279. ticketmaster.com.

APRIL 22

GABBY PAHINUI WAIMANALO KANIKAPILA



The annual festival celebrating the musical heritage of two of Hawaii's greatest, Gabby Pahinui and his son, Cyril Pahinui, who started the festival back in 2007. It is truly one of the premier celebrations of Hawaiian music that will guarantee one "chicken-skin" moment after the other. Visitors simply won't ever see anything else like it, and in the beautiful locale of Waimānalo Beach Park. Free. 9 a.m. - 6 p.m. gabbypahinui.com.

APRIL 22

SCIENCE & SUSTAINABILITY FESTIVAL 2023

Celebrate Earth Day at this one-day Science & Sustainability Festival featuring keiki activities, workshops, exhibition highlights, special presentations, and interactive performances that offer a vast spectrum of opportunities to engage with current scientific research and sustainability efforts to highlight the ongoing work needed to

HAWAII FOOD BANK

In Hawai'i,
1 in 4
keiki is struggling
with hunger.

Learn how you can help at HAWAIIFOODBANK.ORG

APRIL CALENDAR OF EVENTS

Continued from page 16.

protect biodiversity and build a sustainable future in Hawai'i. Bishop Museum. 9 a.m. - 3 p.m. GA \$28.95. Reduced admission for Kama'aina & Military of \$5. bishopmuseum.org.

APRIL 22 TUMUA: A SPECIAL TAPING



Come watch Tumua Live as he films his very first comedy special! Tumua is an actor, stand-up comedian, former collegiate athlete, and social media personality born and raised on the island of Oahu. His social media sketches and stand-up bits are known throughout the world. As a stand-up comic, Tumua has been selling out clubs, theaters, and even arenas all across the nation and sold out the Blaisdell Concert Hall three times within hours and recently sold out the Blaisdell Arena. Two shows at 7 and 9:30 p.m. Tickets \$35 - \$100. hawaii theatre.com.

APRIL 22 W.O.W WAIKIKI BEACH CLEANUP

The Waikiki 'Ohana Workforce is committed to keep Waikiki Beach clean. You can help! Meet at the Duke Statue at 7 a.m. Transportation will be provided if necessary. Many hands make light work. Continental Breakfast provided afterwards at 9 a.m. Please RSVP at 923-1094 or via email at joann@waikikiimprovement.com if you can help.

APRIL 23 28TH ANNUAL "I LOVE KAILUA" TOWN PARTY

The signature community block-party in downtown Kailua returns featuring non-stop live entertainment, a keiki fun zone, a mini health fair, food booths, a plant sale and nearly 75 artists from the Windward side will be showcasing and selling their work. Many Kailua merchants will also feature in-store specials and sidewalk sales. Kailua Road. 11 a.m. - 4 p.m. LKOC.org.

APRIL 28 MELISSA VILLASEÑOR



Melissa Villaseñor broke barriers by becoming the first-ever Latina cast member of "Saturday Night Live." A comedic impressions expert, she got her start as a semifinalist on "America's Got Talent," and Rolling Stone named her as one to watch on their "50 Funniest People Right Now" list. Two performances, 7 and 9:30 p.m. Tickets: \$25-\$35. blu notehawaii.com.

APRIL 28 TAYLOR SWIFT NIGHT

The Taylor Party is a Taylor Swift Inspired Dance Party like non other. Taylor-made for ultimate fans. Surrounded by Swifties, you'll sing and dance through all her iconic eras. This is an 18+ event. Doors open at 9 p.m, party starts at 10 p.m. The Republik. bampproject.com.

APRIL 28 - 30 BLOOMINGDALE'S KAMA'AINA EVENT

Bloomingdales will be kicking off Golden Week

with a special pop-up on the 1st floor of the store surrounding the escalator with tables set up targeting Japanese visitors. These vendors are interactive and usually have samples. Stop by if you're in the mall. bloomingdales.com

APRIL 28, 30 HOT PRESENTS GIANNI SCHICCHI

For those with a rather macabre sense of humor, don't miss Puccini's only comic opera, Gianni Schicchi. This hilarious one-act farce is filled with ridiculous plans, hijinks, and trickery. It is the perfect opera for first-timers, and even though it's brief, it's delightfully entertaining. Fri. 7:30 p.m. Sun. 4 p.m. \$25-\$130. Blaisdell Concert Hall. hawaiiopera.com.

APRIL 29 HAPA SYMPHONY FEATURING RAIATEA HELM

Raiatea Helm brings her authentic fasetto and ukulele for an all-new program of her favorite traditional mele with the Hawai'i Symphony Orchestra. 7:30 p.m. Tickets: \$18 - \$99. Hawaii Theatre. myhso.org.

APRIL 29 WAIKIKI SPAM JAM

Thousands and thousands of fans of Hawaii's favorite food will converge onto Waikiki for one of the more unique and popular block parties held all year. Waikiki SPAM Jam® returns as an in-person street festival on Kalakaua between 4 - 10 p.m. with plenty of food, entertainment and fun for the whole family. Be advised Kalakaua will shut down completely at 1:30 p.m. to prepare. waikikispamjam.com.

APRIL 29-30 GARY GULMAN: BORN ON 3RD BASE



After over 25 years in comedy, Gary Gulman has established himself as an eminent performer and peerless writer. So much so that the New York Times wrote, "Gary is finally being recognized as one of the country's strongest comedians." He has made countless television appearances as both a comedian and an actor and is one of only a handful of comedians to perform on every single late-night comedy program. Two performances, 7 and 9:30 p.m. Tickets: \$30-\$40. blu notehawaii.com.

APRIL 29-30 FOODIE CON AND SPRING EXPO

Come hungry to this one. Check out new products, the world of snacks, packaged foods, specialty drinks, craft vendors, hot plates and more while enjoying giveaways, prizes and live entertainment. Blaisdell Exhibition Hall. \$5 entry. 10 a.m. to 7 p.m. on Sat., 10 a.m. - 5 p.m. on Sun.

APRIL 30 • KALANI PE'A 5TH ANNUAL MAY DAY CONCERT

Multi Grammy and Na Hoku Hanohano award winning artist Kalani Pe'a returns to the Hawaii Theatre for his 5th annual May Day is Lei Day concert with special guests Nāpua Greig, Mākena (Ho'okena and Moon Kauakahi of Mākaha Sons) with several halau, Miss Aloha Hula and emcee Mele Apana. 4 p.m. Tickets: \$45-\$100. hawaii theatre.com.

THE BEST ART IN OAHU IS WAITING FOR YOU



THE PARK WEST FINE ART MUSEUM & GALLERY

Waikiki Beach Walk
Honolulu
808-859-4871
parkwesthawaii.com

Park West Gallery is excited to announce our brand-new Peter Max retrospective.

Please join us for the opening of this exciting new exhibit on Champagne Friday, April 7

RSVP to:
waikikibeach@parkwestgallery.com

Make a difference
starting with you

De-stress • Refresh •
Relax • Heal



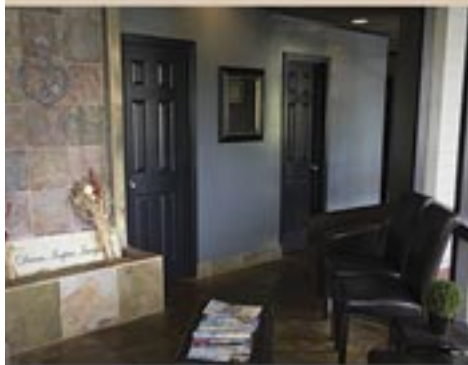
All New Clients Receive

10% off
their first massage

EXPERIENCE SERENITY AND
MASSAGE FOR YOURSELF

- Full 60 & 90 minute massages
- Peaceful, tranquil atmosphere
- Talented licensed massage therapists
- We follow COVID safety protocols
- Save \$26 per massage as a member
- Services include: Swedish, Lomi Lomi, Deep Tissue, Shiatsu, Reiki, Prenatal, Trigger Point Therapy, Neuromuscular Therapy, and more

We offer in-home/room massage services. Please call to inquire.



HAWAII KAI
SHOPPING CENTER

377 Keahole St., Ste. 207 (across from Safeway)

Call us at 396-7594

Text us at 862-6163

serenityandmassage.com



The Brunch Bunch

Your weekend brunch options just got a lot more exciting

There's just something about Sunday Brunch I love. Sunday Funday takes on a whole new meaning when you roll into a restaurant around 11 a.m., grab mimosas with friends, and if there's a buffet with crab legs? I'm in my happy place. We got a bunch of releases about brunch options this month, and we put it all here for you.

You all read how happy I was when I heard that the **Hoku's** brought back their Sunday Buffet a few weeks ago. I still haven't been, but it has always been one of my favorites, and I went into detail a few issues ago. Call 739-8760.

Another favorite has just undergone a facelift. **Orchids Sunday Brunch** at the Halekulani just got a bit more... sparkling! Two glasses of prosecco, mimosas, Kir cocktail, or sparkling cider are now included. In addition to classic brunch items, the buffet boasts carving stations with prime rib, crispy skin Waimānalo raised suckling pig, and sage roasted turkey; a shellfish station with freshly shucked oysters, snow crab legs, and chilled poached shrimp, a sushi action station and more. Available on Sundays from 9:30 a.m. – 1:30 p.m. Call 518-2019.

Brunch is now back on the Grand Lānai on Saturdays and Sundays. Beginning April 1, the **International Market Place** will offer a stamp card, inviting diners to join

the "**IMP Brunch Bunch.**" Those who go to at least 3 weekend brunches between April 1 and June 25 will be eligible to enter a drawing for IMP gift cards and other prizes. Who offers brunch at IMP?

Herringbone Waikiki offers a mimosa brunch from 10:30 a.m. - 2:30 p.m. with a special ala carte brunch menu providing everything from avocado toast to an Eggs Benedict with King Crab and uni. Remember the day drinks! 210-2656.

Eating House 1849 offers brunch from 10:30 a.m. - 2 p.m. with classic brunch items, tartines, fresh seafood, small plates, and bar drinks. 924-1849.

ShoreFyre offers its breakfast menu all week long, including its mochiko chicken and waffles and \$5 mimosas, but on weekends it's available from 9 a.m. - 3 p.m. 923-7007.

Crackin' Kitchen offers brunch from 10 a.m. - 3 p.m., with their dinner menu also being provided from 12 p.m. 404-9221

Liliha Bakery is famous for its breakfast items, so its menu remains the same, and be sure to order the Coco Puffs! 922-2488

Moani Waikiki will begin offering brunch on April 1 from 10 a.m. - 2 p.m. The menu will be released shortly. 466-2629.

There's more options out there, but where you choose, be sure to call ahead.

HEART of Honolulu Street Festival

If your guests are art lovers, send them downtown on April 8 to celebrate the arts, culture, and food to walk, shop, and eat around the Chinatown Arts District at the 2nd annual HEART of Honolulu Street Festival.



Don't miss your chance to explore the heart of the Chinatown Arts District during this unique festival. courtesy Tracy Chan/Downtown Art Center.

Presented by the Downtown Art Center, this family-friendly, daytime art festival will close Nu'uaniu Avenue, from King Street to Chaplain Lane, to vehicle traffic to showcase local art, crafts, live local music, local food vendors, and more, with fun, interactive things to do, see, and make for the entire family. The free public festival takes place on Saturday, April 8, from 11 a.m. to 5 p.m.

HEART is an acronym for Heritage,

Entertainment, Arts & Culture, Restaurants, and Theatre & Performing Arts. Together, these elements comprise the core of the vibrant creative community in the Bethel and Nu'uaniu Avenue district, between King Street and Beretania Avenue.

Participating artists and creative organizations include The ARTS at Marks Garage, Hawai'i Arts Alliance, Hawai'i Craftsmen, Hawai'i Theatre, Kumu Kahua Theatre, Chinatown artist Sergio Garzon, pop-up artist group Manini Gallery, musician Terry Oyama and friends, Honolulu Printmakers, and more.

For more details: downtownarthi.org/ heartofhonolulufestival.com

That's Entertainment

HOTELS

'ALOHLANI RESORT 922-1233
 • **Daily** - Fish Feeding 10:30am & 2:30pm *O Bar*
 • **Daily** - Live Music 6:30-9:30pm *Swell Bar*
 • **Daily** - Light Monument Video Art Series 7-9pm *Swell Bar*
 • **SunWedSat** - Tank Talk 9am. *O Bar*

HALEKULANI 923-2311
 • **Daily** - Music & Hula 5:30-8:30pm *House Without a Key*
 • **TWThFS** - Live Jazz 8pm - 12am, *Lewers Lounge*
 • **Sun** - Sunday brunch w/Noly Paa on piano 9:30am - 2pm
HILTON HAWAIIAN VILLAGE 949-4321
 • **Fri** - Fireworks revert to the Fall/Winter time of 7:45pm
 • **SunMTWTh** - Live entertainment, *Tapa Bar*. 7-10pm
 • **FriSat** - Live entertainment, *Paradise Lounge*. 7-10pm
 • **FriSat** - Live entertainment, *Tapa Bar*. 8-11pm

HYATT REGENCY WAIKIKI 923-1234
 • **Daily** - Live music at SWIM 5-8pm
 • **MWed** - Farmer's Market from 4-8pm
 • **Mon-Fri** - Cultural Programs at the Ho'okela Culture Center
 • **TTh** - Walking Tour thru parts of Waikiki at 10am
 • **TTh** - Live Hawaiian music at Pualeilani Atrium, 4-6 pm
 • **FSSun** - Live music at SHOR 5:30-8:30pm

KAHALA HOTEL & RESORT 739-8888
 • **Mon** - Free kapala stamping at The Veranda at 10am
 • **Tues** - Free lauhala weaving at The Veranda at 10am
 • **WFSat** - Free lei making at The Veranda at 10am
 • **Thurs** - Free hula dancing at The Veranda at 10am
 • **ThFSat** - Live entertainment at The Veranda from 6-8pm.
 • **FriSat** - Afternoon Tea at The Veranda at 2pm & 3:30pm
 • **Daily** - See the interactive dolphin programs every hour

LUANA WAIKIKI HOTEL & SUITES 955-6000
 • **MWF** - Enjoy live music and hula on the Mezzanine 5-6pm
MOANA SURFRIDER 922-3111

• **Daily** - Live music at The Beach Bar, 4:30-6:30pm, 7-10pm
 • **WThFSSu** - David Swanson at Vintage1901, 6:30-10pm
 • **SatSun** - Afternoon Tea at the Veranda, 11:30am - 2:30pm
OUTRIGGER WAIKIKI BEACH 923-0711
 • **Daily** - Live music at Duke's 4-11:30pm, Sat/Sun from 10am
OUTRIGGER REEF WAIKIKI BEACH 923-3111
 • **Daily** - Live Hawaiian music at Kani Ka Pila Grille. 6-9pm
PRINCE WAIKIKI 956-1111

• **ThFSSu** - Live music at 100 Sails from 6-8pm
 • **Sat** - DJ KK poolside from 2-5pm, Sun from 2:30-5:30pm
SHERATON PRINCESS KA'IULANI 922-5811
 • **Daily** - Live music poolside 6-9pm. DJ from 3-6pm.

THE ROYAL HAWAIIAN 923-7311
 • **Daily** - Live Hawaiian music at the Mai Tai Bar. 11am-2pm
 • **TWFSu** - Live Hawaiian music at the Mai Tai Bar. 6-9pm
 • **MTh** - Live Hawaiian music at the Mai Tai Bar. 8-10pm

TURTLE BAY RESORT 293-6000
 • **Daily** - Live music at The Pointe Pool Bar, 4-7pm
 • **Daily** - Live music at Off the Lip, 7pm
 • **Daily** - The Stable at Turtle Bay offers a variety of experiences

WAIKIKI BEACH MARRIOTT RESORT 922-6611
 • **Daily** - Live music, *Queensbreak Restaurant* 5:30-8:30pm
 • **Daily** - Live music in the Lobby 5-8pm

FARMERS MARKETS

WBW OPEN MARKET
 • **Mon** - Set up on the Plaza at Waikiki Beach Walk. 4-8pm.
HYATT REGENCY FARMERS MARKET 225-4002
 • **MonWed** - Hyatt Regency 1st floor waterfall atrium 4-8pm
HAWAII FARM BUREAU MARKET 848-2074
 • **Wed** - Set up on the Blaisdell Concert Hall Lawn 4-7pm.
ALOHA HOME MARKET 225-4002
 • **Sun** - Kailua 340 Uluniu Street 9-2pm.
 • **Sun** - Ala Moana Mall Level 2 parking by Macys 9am-2pm.
HALE'IWA FARMERS MARKET 388-9696
 • **Thurs** - Located at Waimea Valley. 2-6pm

MAHIKU FARMERS MARKET 225-4002
 • **Thurs** - Bottom level International Market Place 4-8pm.
KCC FARMERS MARKET 848-2074
 • **Sat** - Kapiolani Community College 7:30-11am
KAKA'AKO FARMERS MARKET 388-9696
 • **Sat** - 919 Ala Moana Blvd & 210 Ward Avenue. 8am-12pm
PEARLRIDGE FARMERS MARKET 388-9696
 • **Sat** - Pearlridge Mauka by Macy's. 8am-12pm
KAILUA FARM BUREAU MARKET 848-2074
 • **Sun** - Kailua Town Center. 4-7pm
KAILUA TOWN FARMERS MARKET 388-9696
 • **Sun** - Enchanted Lake Center by Kailua Cinema. 8am-12pm

ATTRACTIONS

FOSTER BOTANICAL GARDEN 768-7135
 • **Daily** - Hawaii's oldest Botanical Garden in the midst of downtown open 9am - 4pm. \$5/\$1 keiki (kama'aina \$3)
 • **Daily** - Free docent-led tours at 10:30am. Reservations rec.
HONOLULU ZOO 926-3191
 • **Daily** - The Zoo is open from 10am - 4pm. Last Entry at 3pm. GA \$19 adult/\$11 keiki (kama'aina \$8/\$4).
 • **Sat** - Explore the Zoo after the gates close 5:30-7:30pm.
KUHIO BEACH HULA SHOW 843-8002
 • **TuesSat** - Free hula show 6:30 - 7:30pm Kuhio Hula Mound
WAIKIKI AQUARIUM 923-9741
 • **Daily** - The Aquarium is open from 9am - 4:30pm. GA \$12 adult/\$5 kids (kama'aina \$8).
 • **1st3rdTue** - Hawaiian Plant Tour. 1:30pm. Free w/admission

MUSEUMS

BISHOP MUSEUM 847-3511
 • **Daily** - The 15-acre campus offers guests a chance to learn about the cultural and natural heritage of Hawai'i and the Pacific across three different exhibition buildings. Daily planetarium shows, a highly unique native Hawaiian botanical garden, and more. 9am-5pm.
HAWAII STATE ART MUSEUM 586-0900
 • **Mon-Sat** - 'Museum Interpreters' on-site to provide visitors with basic information about the museum and artwork. Special evening events as listed below. Open 10am - 4pm.
 • **1stFri** - Live entertainment and food vendors. 6-9pm
 • **2ndFri** - "Vibe" Jazz performances & food vendors. 6-9pm
 • **4thFri** - Hawaiian music night. 6-9pm
 • **3rdSat** - Family Arts & Crafts Day 11am - 3pm

HONOLULU MUSEUM OF ART 532-8726
 • **ThFSSu** - Tour & Talk Story 11am. Free with admission.
 • **ThFSSu** - Highlights tour 2pm. Free with admission.
 • **FSat** - HoMA Nights, open until 9pm. Free with admission.

HONOLULU FIRE MUSEUM 723-7167
 • **3rdSat** - Free one-hour guided tours through various exhibits with a firefighter recounting HFDs history the 3rd Saturday of every month. 9am - 2pm on the hour. 620 South Street. Reservations required. Book online: fire.honolulu.gov then hit the submit request button and click museum tours.
IOLANI PALACE 522-0832

• **TThS** - Audio tours available from 9am - 4pm
 • **WTh** - Docent-led tours available from 9am - 4pm
 • **EveryOtherWed** - He Mele Lahui Hawaii with Ku'uipo. 9am
 • **Fri** - Royal Hawaiian Band. Free. 12-1pm
 • **SunMon** - Museum Closed
LUCORAL MUSEUM 778-8189
 • **Mon-Fri** - Free self-guided tours featuring local and global gemstones and a one-of-a-kind dinosaur egg. Visitors can also create their own one-of-a-kind jewelry. 10% off gift shop with mention of Oahu Concierge. 10am-5pm.

HAWAIIAN MISSION HOUSES 447-3910
 • **TW** - Docents lead tours through the oldest existing frame house in the Islands. 11am, 12pm, 1pm and 2 pm
 • **ThFSat** - 11am, 12pm, 1pm, 2pm and 3pm tours
 • **TWThFSa** - Gift shop open 10:30am - 4pm
PEARL HARBOR AVIATION MUSEUM 441-1000
 • **Daily** - Vintage aircraft in battlefield hangars at Pearl Harbor, outdoor exhibits, flight simulators, and the Bob Hope: An American Treasure Exhibit. Shuttle & Tickets at USS Arizona Memorial Visitor Center or PearlHarborAviationMuseum.org.

SHOPPING CENTERS

ALA MOANA CENTERSTAGE 955-9517
 • **Daily** - Hula Show, 5pm.
 • **EveryOtherWed** - Royal Hawaiian Band. 11am.
 • **Every2nd&LastFri** - Night Market Food Truck and Craft Fair corner of Atkinson Drive and Ala Moana Boulevard. 4-9pm.
 • **Sat** - Local entertainment, 3pm.
 • **Sun** - Keiki Hula Show, 1pm.
HALE'IWA STORE LOTS 203-5700
 • **Sat** - Live Hawaiian entertainment from 2 - 4pm
INTERNATIONAL MARKET PLACE 921-0536
 • **MWF** - Ceremonial sunset lighting of Lamaku Torch Tower
 • **MWF** - Sunset Stories Hula Show, 7pm. *Queens Court*
 • **Thurs** - Mahiku Farmers Market. 4-8pm. *Banyan Court*
 • **1stTh** - Royal Hawaiian Band. Free. 11am. *Queens Court*
 • **1stSaSu** - Island Crafters Market. 11am-5pm. *2nd level*
 • **1st3rdSu** - Free Yoga Class. 10-10:45am. *Queens Court*
ROYAL HAWAIIAN CENTER 922-2299
 • **Daily** - Heritage Room/Cultural Videos, *Helumoa Hale*
 • **Mon** - Free Ukelele Lessons 11pm, *Helumoa Hale*
 • **Tues** - Free Hula Lessons 11am, *Royal Grove*
 • **Wed** - Free Lauhala Weaving 11am, *Bldg A, Level 2*
 • **Thur** - Free Keiki Hula lessons 12pm, *Royal Grove*
 • **Fri** - Free Lei Making Class 12pm, *Bldg A, Level 2*
 • **Sat** - Hula Kahiko 5:30pm, *Royal Grove*
 • **TWThF** - Live Hawaiian Entertainment 5:30pm, *Royal Grove*
WAIKIKI BEACH WALK waikikibeachwalk.com
 • **Daily** - The Ukulele Store offers free lessons at 4:30pm
 • **Mon** - Open Market 4 - 8pm
 • **Tues** - Ku Ha'aeo Hula Show. 4:30-6pm. *Plaza Stage*
 • **Wed** - Free feather lei making 11am, 2pm. *Royal Room*
 • **Sun** - Free hula lessons, 9-10am



BALI OCEANFRONT
 20% off all Food & Beverage. Hilton Hawaiian Village, 941-2254.

GUAVA SMOKED
 20% off food and drinks with hotel ID. 567 Kapahulu Ave, 2nd floor. Entrance/parking on Campbell Ave. 913-2100

HAWAIIAN MISSION HOUSES
 Free tour with hotel ID. 553 S. King Street. 447-3910.

IOLANI PALACE
 Free Admission with hotel ID. GA \$30. Kama'aina \$19.95. 364 S. King Street, Reservations Required. 522-0832.

MAUI DIVERS JEWELRY
 35% discount off purchases made at the Design Center and 20% at all stores. Must show hotel ID for discount. 1520 Liona St. 946-2929.

RUTH'S CHRIS STEAK HOUSE
 Complimentary Appetizer valued up to \$22 with the purchase of 2 entrees. Waikiki Beach Walk, 440-7910. Restaurant Row, 599-3860.

You will be required to show Hotel ID or business card to claim offer. Magazine not needed. Simply mention offer when presenting hotel ID. Discounts available to Guest Service Professionals ONLY. Not valid with other promotions or special offers. A minimum 18% gratuity on original order requested for all food offers.

The Oahu Concierge is printed monthly and direct mailed FREE to all Oahu Concierge, Hospitality & Activity Professionals.
Subscriptions available to non-industry at \$25 per year.

C O N T A C T
Davis Media
Ph: (808) 225-8229

Facebook: www.facebook.com/OahuConcierge

ADDRESS & NAME CHANGES / ADDITIONS
We do not take changes via telephone. All changes to mailing list **must be submitted in writing** by the 16th of the month to make the next issue, email is preferred.

S T A F F

PUBLISHER & EDITOR **Pam Davis**
publisher@oahuconcierge.com

DESIGN
Coreiya Design

The Oahu Concierge
4348 Waialae Avenue, #185
Honolulu, Hawaii 96816

PRSR STD
US Postage Paid
TRADE MEDIA HUI



Spring into Brunch on the Grand Lānai.

Enjoy weekend brunch at one of six open-air restaurants on the Grand Lānai. Bring your appetite and flavorful, fresh dishes like Lobster Caviar Benedict, Mochi Pancakes, Avocado Toast, Loco Mocos and more.

**INTERNATIONAL
MARKET PLACE**
The story continues.

2330 Kalākaua Avenue, Waikīkī



6 Brunches Endless Mimosas

CRACKIN' KITCHEN
Saturdays & Sundays

EATING HOUSE 1849
by Chef Roy Yamaguchi
Saturdays & Sundays

HERRINGBONE
Saturdays & Sundays

LILIHA BAKERY
Saturdays & Sundays

MOANI WAIKIKI
Sundays Only

SHOREFYRE
Saturdays & Sundays


Reservations Recommended

