

Concierge

KEEPING THE HOSPITALITY INDUSTRY INFORMED SINCE 1998

16th annual Waikiki SPAM JAM



People come out by the thousands for Hawaii's favorite festival featuring their beloved canned treat. Photo by Russ Sumida

Hawaii's love of Spam® has long been a source of hilarity and horror to the rest of the nation. Residents consume more than 7 million cans of the salty pink meat every year. Yet, the canned meat also known for its slimy texture never inspired the same affection among fellow Americans.

For many, Spam® never overcame its reputation as subsistence fare during World War II, when meat was in short supply and Spam helped feed thousands of soldiers around the world. While others considered it a necessary evil, Hawaii residents learned to love the stuff, and in a place that depends on food shipments, Spam was easy to move and store. Its long shelf life makes it one of the food items most coveted and hoarded in times of emergency.

But times they are a-changin'. Thanks to a new generation of chefs with Hawaii ties—like Noretuh's Chung Chow and Liholiho Yacht Club's Ravi Kapur, who put Spam on their menus in New York and San Francisco, respectively—Hawaii's favorite mystery meat is getting its due. In 2015, Bon Appetit declared Spam® "has officially arrived on the mainland, and we're into it."

Spam® and Hawaii also made the news from coast to coast last year after a rash of Spam thefts led grocery and convenience stores to lock up the familiar blue cans, like jewelry behind glass displays.

All are welcome to see what the fuss is all about during the annual Waikiki SPAM JAM celebrating this beloved food. The 16th annual event will take place 4 to 10 p.m. April 28 on Kalakaua Avenue, between Seaside and Liliuokalani avenues, and is expected to draw 30,000 people.

The free family friendly festival, presented by Outrigger Resorts, will feature entertainment and

samplings of creative Spam dishes from over 20 local restaurants including Duke's Waikiki, Egg's n Things, Flour and Barley, Gordon Biersch, Herringbone, Hula Grill Waikiki, Kirin Restaurant, Mahalo Burger, NOI Thai Cuisine, OnoPops, PF Chang's Waikiki, StripSteak, and Waikiki Yokochō. Attendees will taste the variety of ways Spam products can be prepared and enjoyed, from Spam corn dogs to Spam Poke to Spam-inspired cocktails.

You'll also taste the ways Hawaii has shaped parent company Hormel's product innovations, with flavors that appeal to the local palate, such as teriyaki and Portuguese sausage seasoned Spam®.



Grammy-nominated band Hiroshima, who will be performing at Blue Note Hawaii that weekend, will give festival-goers a preview of their final Hawaii show later that evening.

In addition to all that Spammy-goodness, there will be plenty of contemporary and traditional Hawaiian entertainment for all to enjoy. There will be three stages set up throughout the festival presented by Outrigger Resorts, Shops of Hawaii and Alaska Airlines. Some of the entertainers festival-goers can look forward to seeing are Hiroshima, Jeff Rasmussen & Robi Kahakala, Ka Hehena, Maunaloa, EMKE and the 2017 Kani Ka Pila Grille Talent Search Winner, Ei Nei.

Local retailers also will be on-hand, offering

Continues on page 2.



Well, it took 10 years. but we finally did it! Thank you to everyone that donated -- and a special shout out to Takumi Abe from the Hyatt Regency, who pulled up to the event a bit early with an entire trunk filled with boxes and boxes of Vienna Sausage -- because together, we finally broke that 1,000 pound ceiling. 1,015 pounds to be exact!

The Hawaii Foodbank has been my charity of choice for over a decade. Those of you who have been around for a while probably remember that for the first 7 or 8 years of the Concierge of the Year event, I would switch charities every single year. In 2008, I landed on the Hawaii Foodbank, and we've been there every since. And thanks to you, we have actually made a difference.

While I cannot seem to put my hands on the total from 2008, we do have records from all the other years, and I just wanted to share it so you know how great a job you have done. Mahalo!

| Year | Pounds |
|--------------|---------------------------|
| 2017 | 1,015 |
| 2016 | 740 |
| 2015 | 897 |
| 2014 | 754 |
| 2013 | 554 |
| 2012 | 776 |
| 2011 | 432 |
| 2010 | 432 |
| 2009 | 511 |
| 2008 | total can't be found |
| TOTAL | 5,960 (minus 2008) |

TABLE OF CONTENTS

Yada Yada Yada 2
 Newsflash 3
 Arts with Aloha 4
 HIFF Spring Showcase 5
 Paparazzi: Tommy Bahama 6
 A Look Back: Hilton Concierge not just 4 Humans 7
 Chinatown Walking Tour 8
 Chef's Corner: Orchids Chef Christian Testa ... 9
 E Pili Kakou 10-13
 Calendar 14-16
 Paparazzi: Stripsteak / The Street Social House . 17
 That's Entertainment 18
 Activity Concierge of the Month: Jordan Johnson 19

W WOLFGANG'S
 STEAKHOUSE
 OPEN DAILY 11AM - MIDNIGHT
 922.3600 | wolfgangsteakhouse.net



Publisher's Letter



Spring has Arrived?

Look at the calendar and it sure says it's springtime, but as I write this I am curled up under a blanket, wearing long sleeves and sweats. That's ok, I am enjoying the chillier weather and, it's still Hawaii. It's not like New York City, which hasn't seen snow like what they're getting in 130 years.

I'm not happy that the weather had kind of blown my whale watching season. I have to admit, the last few years of amazing whale sightings have kind of spoiled me. Although we've been out a few times (though not nearly as much, because, well, it's cold!) we really haven't seen very many. I'm hoping they stick around a bit longer than normal, and I still get one 'whale-soup' sort of day before they all go on their way.

Aside from the weather, spring has arrived with all the activities that kick up around this time. HIFF is bringing back their Spring Showcase this month, the ever-popular SPAMJam is back and our concierge events are definitely stepping up. I'm doing my best to keep them at least two weeks apart, but sometimes, either my schedule or your hosts schedule prevent that. Bear with me when they get too close together, remind me if I forget to invite your team (hey, it happens), and please keep being so great with your communications. Remember there is just one of me and hundreds of you, so it really makes my life a bit easier when you respond, even if its just to say your desk cannot attend. It's always a juggling act trying to get in as many of you as I can from as many different properties, yet still meet the hosts preferences as to whom they would like to bring in-house. Sometimes, not all properties are invited, but please remember it is not personal. It doesn't mean one hotel is better than another. There are just limits as to how many each location can, or are willing, to host, and it's just their marketing preferences as to who they want me to reach out too in order to fill those seats. It may be as simple as who the host would like to see more business from, or reward those who has been supporting them over the years. Believe me when I say every single event has a different invitation list. I do believe I reach out to most properties however, but there are several dozen that never get back to me, so if you feel I haven't reached out in a while, reach out to me. I might just have an outdated email address. Just please don't take it personally if for some reason you were not included. If a hotel has their own concierge desk, we do not always include the front desk. If their desk is outsourced, often we do. But again, every situation is different. As a reminder, if you have RSVP'd and need to cancel, I don't care why you cancel. I simply need to know you cannot attend. Preferably before the event, but, even if it's as an event starts, I need to see an email that you won't be there, or you will not be invited to the next one. Just one, unless you give me a reason otherwise, but those are rules. It helps keep those chronic no-shows down so more people can attend. Thank you!

Yada Yada



Kelly Sanders

Just over a decade ago, **Kelly Sanders** came to town to take over the general manager duties of the Sheraton Waikiki and never looked back. He is one of the most sincere, dedicated professionals ever seen in this town and the difference this man has made at both at his property and the community since he arrived on the island could fill every page of this book. So kudos to **Highgate** for grabbing him while they could and keeping him in the islands. They were able to lure him from the Starwood/Marriott brand after he spent more than 21 years with the company. He comes to Highgate as Vice President of Operations for their Hawaii portfolio, which includes the newly rebranded **Alohilani Resort Waikiki Beach** as well as the Hilton Garden Inn, Courtyard Waikiki Beach and Ambassador Hotel. In one of his first moves at the company, he has recruited **Cheryl Williams** to Highgate as Regional Vice President of Sales and Marketing – Hawaii. Williams had also been with Starwood Hotels for many years, and most recently led The Royal Hawaiian Hotel as their general manager since 2015. Congratulations to both! • Theirs wasn't the only big move recently. **Jerry Gibson** has stepped down as area vice president of Hilton Hawaii and has joined the **Turtle Bay Resort** as vice president and managing director. As Hilton's top executive in Hawaii, Gibson oversaw four managed hotels and six Hilton Grand Vacations projects in the Islands, including the Hilton Hawaiian Village Waikiki Beach Resort. • **The Ritz-Carlton Residences, Waikiki Beach** has announced two new leadership roles in their Sales & Marketing department. **Jon Ushijima** has been appointed as Director of Asia Sales. He previously served as Director of Resort Sales - Asia for Irongate, the developer of The Ritz-Carlton Residences, Waikiki Beach, as part of the resort's pre-opening team where he spearheaded strategic sales and initiatives in Asia. Also promoted within the property is **Huy Vo**, who has

been appointed Director of Public Relations. He previously served as Director of Marketing for Irongate, also as part of the resort's pre-opening team, where he led all global marketing initiatives for the resort. Both Directors will be instrumental in leading the opening of the resort's Diamond Head Tower. The anticipated launch in Summer 2018 will mark the completion of the resort and feature 246 additional luxury residences, all with unobstructed ocean views, a second resort pool, expanded spa, gourmet market, children's facility, and 2,500 square feet of meeting and event space. • Hawaii's largest pool-and-beach service provider, **Waikiki Beach Activities**, has announced a series of promotions for its top managers. Accepting the Chief Operating Officer position is **Mark Vandenberg**, responsible for coordinating with Hilton departmental managers to deliver the best-possible guest experience. Reporting to Mark is **Kekoa Bruhn** as Director of Deck Operations. Kekoa, a native-born waterman is WBA's longest-standing employee and responsible for all pool-deck and beach boy staff, concentrating on training and supervision. **Mike Murray**, former VP for the Hawaii Visitor and Convention Bureau and a respected veteran of Hawaii's hospitality industry, has accepted a special role as Director of Peerless Host Hawaii, WBA's entry into the DMC market with an emphasis on in-house group events. Last, but by no means least, is **Kay Oshiro** occupying the Chief Financial Officer position. • **The Hilton Hawaiian Village Waikiki Beach Resort** has announced **Jay Yada** has been named restaurant manager for Bali Steak & Seafood. Most recently he served as manager of Tommy Bahama Restaurant & Bar in Waikiki, and prior to that role he was at Morton's The Steakhouse in Honolulu. Yada joins the resort's signature restaurant with more than twenty years of experience in the food service and hospitality industry.



Huy Vo

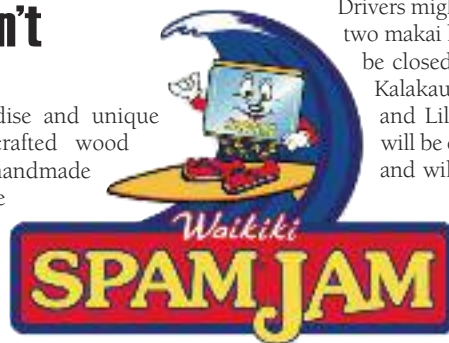
SPAMJam con't

continued on page 2

Spam® Brand merchandise and unique products. From handcrafted wood carvings to locally handmade jewelry, there should be something there for all tastes to look at, from the likes of Aloha Wood Art; Asian Elements; Casual Movements, Inc;

Crafts Way, LLC; Creative Photo Frames; Diamond Head Taffy; Hawaiian Paradise Candies; Ki-ele; LED Novelties Hawaii, LCC; Lotus Creations; Oahu Gear Company, Pearls & Beads Corp; Simply Wood Studios; Soap By Mama D; and Sunrise Shells Hawaii to name a few.

Event-goers are encouraged to bring a non-perishable food item (such as a can of Spam®) to benefit the Hawaii Foodbank, Waikiki Community Center, and the Visitor Aloha Society. Monetary donations are also welcome.



Drivers might want to arrive early because two makai lanes and one mauka lane will be closed beginning at 12:30 p.m. on Kalakaua Avenue, between Kaiulani and Liliuokalani Avenues. Kalakaua will be completely closed at 1:30 p.m. and will reopen at midnight. As one might expect, Waikiki traffic is going to be a bit of a disaster that day, so be sure to plan ahead.

For those who want to skip the traffic and stay overnight, Outrigger Resorts — which is celebrating its 70th anniversary — will give SPAM JAM attendees up to 30 percent off its Waikiki hotel rates. For reservations, visit outrigger.com, or call (800) 688-7444. This offer is subject to change and availability. Some restrictions apply.

For a complete line-up of all of the restaurants participating in this event, their Spammy menu items on display that night, and a list of entertainers, please head to their website at SPAMJAMhawaii.com. ~ Nadine Kam

EXTRA EXTRA EXTRA *Newsflash*

THE LANAI OPENS NEW RESTAURANTS

Three more restaurants at the Lanai @ Ala Moana have now opened, leaving just two more to go. Now open are Musubi Cafe Iyasume, offering a variety of freshly made musubi as well as Japanese style bento, soup, and an array of bowl options, including butterfish, katsu curry, kimchi beef, and more. Da Spot has also opened, featuring sustainable, healthy meal options, as well as a savory selection of 35 different smoothies to choose from, or a make-your-own. Lastly, Agave & Vine features an impressive selection of tequilas, cruvinet wines and craft beers and cocktails. Sit back and enjoy a game on one of Agave & Vine's flat screen HD TVs. alamoanacenter.com.

NEW ARCHITECTURAL WALKING TOUR OF KAKA'AOKO

The public is invited to join in a Walking Tour of Kaka'aoko, led by AIA member-architects, on Saturday, April 28 – a rare opportunity to explore the area's rich history and future vision from a design perspective to celebrate the 12th annual celebration of Architecture Month in Hawaii. Over the course of two hours, walkers will learn about architecturally significant historic and recent buildings and spaces in an area of urban Honolulu that has been the focus of so much attention in recent years. Walking tours are \$15 per person. Tours are set by advance reservation for a specific start time via online pre-payment. aiahonolulu.org.

WAIKIKI FOOD DRIVE

Feeding the hungry in Hawaii is a big problem, and one that takes more help than just the Foodbank can offer. Throughout the month of April, the Waikiki Community Center will be holding its inaugural Waikiki Food Drive. Simply drop off your canned goods at any participating restaurants or retailers in the Waikiki Shopping Plaza and Waikiki Business Plaza. Doing so will not only be your good deed for the day, but it will also earn you exclusive promotions and discounts. Participating merchants include Buho Cantina, Royal Hawaiian Cookie, Shaka Poke, Tanaka of Tokyo, Top of Waikiki, SKY Waikiki, and more.

STUSSY OPENS AT RHC

The cult new wave beach culture brand STUSSY is opening its first stand-alone store in Waikiki at Royal Hawaiian Center on April 10th. This is the brand's second Hawaii store and will be located in Building B, Level 1 between LeSportsac and Vitra Eyewear. royalhawaiiancenter.com

ORANGETHEORY OFFERS VISITORS A SPECIAL RATE

Hotel gym just not cutting it for your guest who is craving a class? Orangetheory Fitness has just launched a new special rate valid ONLY for non-residents of Hawaii. For \$89, visitors can purchase a weekly pass that will get them a week membership to any Oahu Studio as well as a rental heart rate monitor. Normal drop-in rates for a single class is \$35. orangetheoryfitness.com.

CONTACT ZONE PLACES ART IN PUBLIC FOR ALL TO ENJOY

Contact Zone is the fifth installment of CONTACT, an annual exhibition of contemporary art made in Hawai'i. On view at the Honolulu Museum of Art School, April 6–21, Contact Zone is expanding its reach to include additional venues in Waikiki. Installations include a sand sculpture by artists Jill Harris and Thomas Koet in the lobby of the Sheraton Waikiki, artwork in the window display and store at Saks Fifth Avenue, and a new photography series at T Galleria by DFS. Also see pieces at Bishop Museum, The Surfjack and the Royal Hawaiian Center. The exhibition and its accompanying public programming are FREE to the public to enjoy. puuhonua-society.org.

NUTRIDGE ESTATE LAUNCHES NEW TOUR

Beginning this month, the Nutridge Estate, home of Hawaii's first macadamia nut plantation, is launching a new tour of this historical location up Tantalus at Pu'u Ualaka'a State Park. The four hour tour offers plenty of interactive activities, including an authentic imu demonstration, Hawaiian protocols and traditions, cultural workshops and makahiki games, taste fresh macadamia nuts harvested directly on property and indulge in local style cuisine prepared fresh for a homestyle farm to table buffet. Two tours offered daily, Tuesday through Friday, from 9:30 a.m. - 1:30 p.m. or an evening tour from 4 - 8 p.m. nutridgeestate.com.

WAIKIKI IS GONNA BE ROCK'N

There's a new dinner show arriving at the Princess Ka'iulani Hotel this month for a limited run through June. Waikiki Rock'n Reception is an audience participation musical revue set during the wedding reception of a Las Vegas girl and a local boy in 1955. Audiences will enjoy original period style songs, entertainments, and dancing, as well as a full buffet. Expect a handful of prelim shows this month on Saturday the 14th, 21st and 28th, and then Thursday and Saturday nights in May. The final month will be June with shows 4x a week. The best part of the show? Our own Lancey Poo has a role in it! Please note that the show is double cast, so he will not be appearing every night.

SECOND ANNUAL GRAND LANAI RESTAURANT WEEK

The International Market Place will be hosting its second annual Grand Lanai Restaurant Week from April 9th to the 16th. The event is built to highlight the center's award-winning, chef-driven restaurants with a variety of special menus and events. Virtually all of their restaurants are participating, including Baku, Eating House 1849 by Roy Yamaguchi, Flour & Barley, Herringbone, Goma Tei, StripSteak Waikiki, Yauatcha and even The Street, A Food Hall by Michael Mina. Participating chefs will be showcasing their best dishes. For more information and a look at the different menus offered, go to shopinternationalmarketplace.com.



Refer 25 guests. Get \$75 off.

For every 25 guests you bring to this special oceanfront steakhouse, you'll get a \$75 dining credit. Enjoy fresh seafood, a selection of USDA Prime Allen Brothers steaks, and a majestic view of the Pacific Ocean. Contact Jay.Yada@Hilton.com to enroll in the program.

bali
steak &
seafood
OCEANFRONT

HILTON HAWAIIAN VILLAGE, RAINBOW TOWER | 5-9 PM TUES-SAT | 808-941-BALI | BALIWAIKIKI.COM



arts with aloha



Even though mele isn't until next month, I thought it would be fun to take a look back at the history of the oldest and only full-time municipal band in the United States, which happens to be right here in Honolulu.

Did you know that King Kamehameha III created the **ROYAL HAWAIIAN BAND** in 1836? This year the band will turn 182 years old. Clearly none of the original members are still around but some of the marching tunes and melodies they played during the monarchy period are still played today at concerts around the island. It was originally known as the "King's Band" and considered a military band that performed for state occasions, funeral and parades. The first bandmaster was a gentleman named Oliver, but little is known of him today other than his first name. The most influential of the bandmasters was Heinrich "Henry" Berger who headed the band from 1872 to 1915 and is considered the most influential bandmaster. Mr. Berger's musical arrangement of the "Hymn of Kamehameha I" became the kingdoms national anthem which is now our state anthem "Hawai'i Pono'i" He also created musical arrangements of Hawaiian melodies to fit European standards of music such as marches, polkas and waltzes.



Royal Hawaiian Band during the Monarchy Period

As most of you should be aware King Kalakaua, Queen Lili'uokalani, Princess Likelike and Prince Leleiohoku were all musicians and prolific musical composers. It was Mr. Berger who arranged many of their songs and incorporated them into the repertoire of the band. The most famous song composed by a member of the Hawaiian monarchy is "Aloha 'Oe" composed by Hawaii's last queen, which can be heard at the closing of every Royal Hawaiian Band concert until this day. This is why Hawaiian music and not European music is the centerpiece of the bands concerts today. For these and many other contributions, Mr. Berger is known as the Father of Hawaiian Music.

During the 20th Century, the band incorporated Hapa Haole music such as songs like "Waikiki," Sophisticated Hula," and "Hukilau."

The Royal Hawaiian Band did not only play on O'ahu, during the monarchy period, but it traveled to Maui, Kaua'i and Hawai'i Island with the Kings & Queens, in addition to Kalaupapa and Moloka'i. The band also made its U.S. debut in San Francisco in a band competition where it took first place. One can only imagine the antics the band members found themselves in in the city by the bay. In the twentieth century the band traveled across the U.S., which included a special performance at Carnegie Hall in addition to grand performances across Europe, Canada and Japan.

Today the band is part of the City and County of Honolulu and is the only full-time municipal band in the whole United States. Clarke Bright is the current bandmaster and was appointed in 2011. Prior he was the band director at Kamehameha Schools. He is also a retired member of the 111th Army National Guard Band, where he served for 21 years, which in a way brings the Royal Hawaiian Band back to its original military roots.

The band performs year-round for free at city & state functions, parades, schools, fairs, shopping malls, graduations, you named it, it plays there. I wonder if they would wear board shorts and do it at the water park? Your guests can catch the band at the following regular performances:

- Iolani Palace - Fridays at 12 p.m.
- Kapiolani Park Bandstand - Sundays at 2 p.m.
- Royal Hawaiian Center - Some Thursdays at 1 p.m.
- Ala Moana Center Stage - Some Wednesdays at 2 p.m.
- Mililani Town Center - First Saturdays at 5 p.m.
- National Memorial Cemetery of the Pacific on Sunday, April 1st at 6 a.m.

For more information you can visit their website at rhb-music.com or call 922-5331.

There's another musical entity in Honolulu that's been around since the "reign" of Heinrich Berger and that's the Honolulu Symphony Orchestra, which was founded in 1900. Today it's known as the Hawai'i Symphony Orchestra, but back then it was originally housed in a recreational hall on Punchbowl. It's the second oldest orchestra in the US west of the Rocky Mountains. The big draw this month at HSO is Harry Potter and The Chamber of Secrets In Concert on April 6 & 7 and a tribute concert the film scores of John Williams who created the themes for Star Wars, Indiana Jones and E.T. on April 27. For ticket information visit HawaiiSymphonyOrchestra.org. ~ Lance Rae



MICHELIN-STARRED
CHEF MICHAEL MINA
- INVITES YOU & YOUR GUESTS -



THE STEAKHOUSE REIMAGINED

Featuring:
Prime Steaks
Sushi Bar
Extensive Wine List
Craft Cocktails
& Plenty of Aloha Spirit



- **STRIPSTEAK OHANA PROGRAM** -
For every 25 guests referred in a month, StripSteak will send you a \$100 gift card.

TO LEARN MORE ABOUT OUR RESTAURANTS OR THE OHANA PROGRAM, PLEASE CONTACT US AT:

StripSteak

International Market Place
4330 Kalaniana'ole Ave. Suite 330, Honolulu, HI 96815
StripSteakWaikiki.com | 808.590.3094

The Street

International Market Place
4330 Kalaniana'ole Ave. Ground Fl., Honolulu, HI 96815
TheStreetSteakHouse.com | 808.377.4400

MINA

MichaelMina.net



ALERT!

brought to you by
The Waikiki Aquarium
open daily from 9 am - 4:30 pm



April 8-11
Box Jellyfish Window

Teaching Hawaii about jellyfish and other ocean creatures for over a century



The 21st Annual HIFF Spring Showcase is coming to Regal Dole Cannery Theaters April 6th through the 15th. The Spring Showcase is HIFF's annual 'mini-festival', showcasing some of the best Spring Season films from across the globe. Like the main festival that takes place in November, the Spring Showcase is also a bridge between "East and West," and includes 33 films from 12 countries – ranging from festival favorites from Sundance, Berlin, and Toronto Film Fests, including hits from across the world from China to India to Belgium to Southeast Asia and more.

Things kick off on April 6th with acclaimed director Hirokazu Kore-eda's "The Third Murder," on opening night. This thrilling murder mystery had its world premiere at the Venice Film Festival. The story revolves around a well-known attorney who takes on the defense of a murder suspect (HIFF 2012 Honoree Koji Yakusho), who freely admits his guilt. As he digs deeper into the case, he begins to doubt whether his client is the murderer. This acclaimed film recently swept the Japanese Academy Awards including Best Picture.

Japanese culture is so prevalent in Hawaii that it is no surprise that Japanese films are always the most popular ones at the festival. One third of the films are Japanese, 11 to be exact, including a world premiere, several U.S. premieres, two films about artists, two foodie films, and a return engagement of "Jimami Tofu," one of the most popular films from last fall's HIFF37.

Highlights include the world premiere of "Life in Overtime," and the U.S. premiere of sports comedy "Mixed Doubles!" Two films feature famous artists – "MORI, The Artist's Habitat" about the twilight years of Morikazu Kumagai (aka Mori) and the definitive documentary on Yayoi Kusama, the world famous artists that many people in Honolulu will remember from her iconic polka dots on those pink lady bugs installed in the Ward Village Courtyard as part of the Honolulu Biennial Foundation. The movie, called "Kusama – Infinity" just had its world premiere at Sundance.

Bollywood will also be represented during the Showcase with two Indian films. "The Hungry," is a contemporary retelling of Shakespearean tragedy Titus Andronicus, set in the extravagant surroundings of an Indian wedding while exploring the role of the patriarch and corruption in Indian politics and big business. "Sexy Burga," is about a couple on the run dealing with the agonizing brunt of a night out from a gang of hoodlums. Tossed between shady Samaritans along their sole escape route, they are subject to relentless reenactments of the proverb, "The road to hell is paved with good intentions". This film won the VPRO Tiger Award at the International Film Festival Rotterdam. Similar to last year's film, "Lipstick under my Burkha," it was initially banned by the Indian censorship board, but was later approved after the title was changed to "S Durga".

They're not all foreign films however. The United States is well represented as well, with another third of the movies, covering the gamut of topics. There is the ultra-cute "Pick of the Litter," which takes the viewer on a journey in the lives of 5 Labrador retriever puppies who were bred with the intention of becoming a guide dog for the blind. The film joins these puppies from the moment of birth to their final destination, but only the best of the best can make it as a guide dog. Watch the movie to see if any of the 5 puppies make the cut.

From puppies to Mr. Rogers, another featured film centers on the beloved father figure for generations of American children whose asked everyone, "Won't You Be My Neighbor?" The movie will be making its Hawaii premiere, and the animated sequences are intermixed with archival footage of the show as well as interviews with Fred Rogers family, friends and colleagues. Directed by Academy Award-winning director Morgan Neville (20 Feet from Stardom) the movie examines Rogers legacy, and offers a deliberate and beautiful tribute to an authentic human being and provided a much-needed salve for often-fraught times.

Moving onto a more serious subject, another US entry is "RBG," as in the "Notorious RBG," otherwise known as United States Supreme Court Justice Ruth Bader Ginsburg. Her vigorous dissenting opinions and ferocious 20-push-up workouts have earned this tiny, soft-spoken intellectual giant the status of rock star and the the nickname "Notorious RBG." What many don't know is Ginsburg's strategic, trailblazing role in defining gender-discrimination law. Intent on systematically releasing women from second-class status, she argued six pivotal gender-bias cases in the 1970s before an all-male Supreme Court blind to sexism.

Now 84, and still inspired by the lawyers who defended free speech during the Red Scare, Ginsburg refuses to relinquish her passionate duty, steadily fighting for equal rights for all citizens under the law. Through intimate interviews and unprecedented access to Ginsburg's life outside the court, RBG tells the electric story of Ginsburg's consuming love affairs with both the Constitution and her beloved husband Marty—and of a life's work that led her to become an icon of justice in the highest court in the land.

HIFF's Spring Showcase will wrap up on April 15th with "Hearts Beat Loud," a sweetly funny and heartfelt "empty nest" story about a father and daughter who form an unlikely songwriting duo in the summer before she leaves for college. Starring Nick Offerman and Kiersey Clemons, the latest film from Brett Haley (who had two films in last year's showcase), had its world premiere at Sundance, where it also served as that festival's Closing Night Film as well as this one.

For more information on the complete line-up of 33 films or to buy tickets, please head over to

LUNCH • DINNER • COPPER TOP BAR




- Kiawe Burning Brasa Grill Ovens deliver distinctive textures and flavors
- Full Bar with Premium Craft Beers, Wine, and Harbor Signature Cocktails
- Enjoy Harbor Views Daily and Live Music Wed. - Sun.

Daily Lunch 11a - 3p | Huki Pau 2p - 5p
Dinner 5p - 9p | Live Music Wed. - Sun. 5p - 8p

Happy Hour is called **Huki Pau** at Harbor. Our **Copper Top Bar** is the ideal place to relax and unwind with your favorite beverage or pupu, offered at discount prices (2pm - 6pm DAILY). Sixteen beer taps chilled to 29 degrees, along with fine bottled and tap wines, and exciting craft specialties await you at our spacious bar. Huki Pau happens daily from 2p - 6p. Free parking available



Welcome to authentic Honolulu Harbor views. Welcome to inspired cuisine. Welcome to Harbor.

For Reservations book on OPEN TABLE or call 808-550-3740
Private and Semi-Private Dining available. Contact Tricia at 550-3743 or tricia@harborpier38.com

PIER 38 | 1129 N. NIMITZ HIGHWAY | HONOLULU HI | 96817
INFO@HARBORPIER38.COM | HARBORPIER38.COM

Mahalo for your continued support!

JOIN OUR

GUEST REFERRAL PROGRAM





Our program is simple!
For every 25 guests referred,
Ruth's Chris Steak House will send you
a \$50.00 dining certificate.

Please contact Emi Espinda if you have any
questions at eespinda@dirrestaurant.com

OPEN DAILY FROM 4:30PM
HAPPY HOUR DAILY IN OUR LOUNGE | 4:30PM – 7PM
PRIME TIME MENU DAILY | 4:30PM – 6PM
WINE WEDNESDAYS | 25% OFF BOTTLES OF WINE



Restaurant Row | 808.599.3850
Waikiki Beach Walk | 808.440.7910

WWW.RUTHSCHRISHAWAII.COM   



SOMETHING NEW. SOMETHING CLASSIC.

Open Daily 11am - 10pm

Happy Hour

Daily in our lounge 3pm - 6pm & 8pm - 10pm

Vino Thursdays 25% Off Bottles of Wine

INQUIRE ABOUT OUR GUEST REFERRAL PROGRAM!

Our program is simple!
For every 10 complimentary
dessert cards redeemed
(WITH YOUR NAME ON THE CARD),
Romano's Macaroni Grill will send you a
\$25.00 dining certificate that may be used
at our Oahu restaurant.

Please contact the restaurant for details



Ho'okipa Terrace at Ala Moana Center
808.356.8300

WWW.MACARONIGRILL.COM

Tommy Bahama

RESTAURANT | BAR | STORE

Tommy Bahama Waikiki hosted their first full concierge event just in time to celebrate the brand's 25th anniversary. Guests were treated to small bite and cocktails next to the fire pits, while learning about what the restaurant, bar and retail store could offer their guests and heard about their new menu items. If you need ever anything special for your guests or group, please call Sales Manager Donna Arena at 923-8785. tommybahama.com.



Hilton Concierge Service: **It's Not Just for Humans**

The Oahu Concierge was first launched in 1998. I started working for it soon afterwards and bought it back in 1999. That's nearly twenty years of issues in my files, and we have run some fun things over the years. As we near my own 20th anniversary, I'm going to pull out a few gems from years past and share them when I feel it's applicable. This article is a perfect example. The world fell in love with Rocky the Monk Seal this past year as she gave birth and nursed her adorable pup on Kaimana Beach for all to see. As I was looking for something earlier today, I found this cute story submitted back in 2009 by Gail (Omura) Watson when she worked for Hilton Concierge. This was back when Gail still went by her married name of Omura, the Hilton still had penguins, flamingo's and wood ducks, and Rocky was only on her third pup! Gail has worked for Hilton since 2000, although she has been on medical leave since 2016.



Gail Watson

On February 22, Rocky (RH58), a six hundred pound Hawaiian Monk Seal, came up on the beach in front of the Hilton Hawaiian Village to rest for a while. She may have really wanted to check into our Ali'i Tower, but she settled for an area of beach instead.

Her concierge service needs were brought to our attention at seven thirty in the morning by a guest who came to our Ali'i desk to report that a seal was on the beach and needed help. Frusta, my co-worker, called security and calmed the woman down.

When I had finished with the guest I was assisting, I asked Frusta what had happened. I went to find Kevin from the wildlife department, as I knew he would know what to do. When I couldn't find him, I went to the beach to see if the seal was ok. Kevin was already there along with someone from security, so I joined them to see if I could do anything. Kevin assured me that the seal was alright, but needed to rest. I asked what they needed and they sent me to get a couple of red rubber cones that some workmen had left by a construction area of the hotel to help secure the walkway leading to her.



Rocky was behind the rock wall and not visible to the most of the guests on our beach so the number of people that knew she was there was fairly limited. I was allowed to walk down the path a little closer to see her. At the time, she was looking around to see if she was safe. Now mind you, I have had wonderful experiences with our penguins, swans, and other wildlife at our hotel, but I was not prepared for the gentleness of this huge seal. I felt no fear once I looked into her beautiful eyes that allowed me to see all the way into her heart and soul. I do not speak Seal, but there was definitely some communication going on at that moment. Laugh if you will, but I told

her that she was in good hands with Kevin watching out for her. As I went back to my desk I thought, "Ok, now I talk to seals."

Then I thought, "So what? I am already known for talking to penguins, swans, ibises, and ducks, so what can it matter? LOL. Our trainer tells the new hires that I talk to the penguins, and we have fun when I say, "Actually, they talk to me." The other day a co-worker brought her two-year-old to see the penguins, stopping by to see me first and tell her daughter that I was the penguins "Mommy." :-) Hey, come on... you talk to your dog or cat, don't you? LOL.

Anyway, the volunteer seal-sighting people, and two police personnel came shortly after to secure the area for her. After that everyone was given a chance to watch her rest, with the volunteers giving them information about her. We found out she is eight years old, pregnant, and her pup is due in April. This is her third pup which is beyond exciting since the Monk Seal is an endangered species. It has been said that this species of seal is endangered because of its trusting nature, allowing the hunters in the past to get close to them.

When people started arriving for the Submarine ride where they have to go down the path above her, I was concerned. I went to edge of the beach to see what would happen. The crew from Atlantis was working with Kevin all along the dock area. It was an inspiring vision of people pulling together to be courteous, and respectful of our magical visitor.

Maybe someday she will bring her pup to see



where she spent the day at the Hilton. Well, maybe not, but I do know that everyone who had a chance to see her that day was emotionally moved by her gentle ways. There was a calm feeling in the air around her. All I know is that our V.I.S. (Very Important Seal) visitor stayed the entire day, meaning she must have felt our Aloha!

Manna was the only one that was not impressed!

UPDATE: Rocky has since given birth to 7 more pups, most famously to Kaimana last year, who was born, nursed and weaned in Waikiki. The pup Gail mentions she was pregnant with at the time was a female born on Larsen's Beach in Kauai, named RH00. That pup was never given a nickname. It was last seen looking emaciated in 2010, and sadly never seen again. NOAA officials assume she did not survive. Manna the penguin now lives at the Baltimore Zoo, which is where he went after the Hilton ended its penguin program a few years back. Gail Watson still lives in Waikiki, and although she was hoping to return to work last month, her lung cancer recently returned and she's busy fighting it, so she officially retired from the Hilton after 18 years at the end of March. Reach out and say hi if you know her. She would love to hear from you.

INSPIRING A NEW GENERATION OF EXPLORERS

atlantisadventures.com
For info & reservations call (808) 973-9811
or fax to (808) 973-2499

#atlantishawaii

Blue Note

HAWAII

HAWAII'S PREMIER LIVE MUSIC VENUE

APRIL HIGHLIGHTS

SHOWS 6:30 & 9PM NIGHTLY



FREDDY COLE
April 5-7



KALANI PE'A
April 8



BLAYNE ASING & ALX KAWAKAMI
April 12 & 13



STREETLIGHT CADENCE
April 17 & 18



ROBERT CAZIMERO
SPRING CONCERT
April 19



HIROSHIMA
April 26 - 28



DONT FORGET TO CHECK OUT OUR INDUSTRY NIGHTS!

EVERY TUESDAY

REDUCED \$10 ADMISSION
1/2 OFF SELECT APPS
\$6 DRINK SPECIALS

SHOW YOUR INDUSTRY CARD AND ENJOY THE SHOW!
Limited Tickets Available. Some Restrictions Apply

Group reservations and discounts available

For more group information:
events@bluenotehawaii.com

WWW.BLUENOTEHAWAII.COM | 808-777-4900

Located in the Outrigger Waikiki Beach Resort

VALIDATED PARKING AVAILABLE AT OHANA
WAIKIKI EAST HOTEL | \$6 FOR UP TO 4 HOURS

Chinatown Walking Tour

There's no better way to get to know a city than on foot, and for cultural travelers, the Hawaii Heritage Center offers a Chinatown Historical Walking Tour from 9:30 to 11:30 a.m. every Wednesday and Friday.

The walk's \$30 fee seems steep, but goes toward supporting the nonprofit, volunteer-run organization that aims to perpetuate the rich history of Honolulu's Chinatown.

The tour starts at the center with a talk on the area's history, beginning with the arrival of the first wave of Chinese entrepreneurs who came in 1852, signed to five-year contracts to work Hawaii's sugar plantations.

According to center vice-president Karen Motosue, it didn't take long for the Chinese laborers to figure out that staying on the plantation meant they would not have enough money to send home or save, so some fled to fulfill their dreams of starting a business; others worked until the end of their contracts before venturing on their own.

"The Chinese were really good at making money," she said. There was little in the area at the time, but these dreamers gravitated to downtown area because "it was close to the banks on Bishop Street, the shops of Fort Street and the government offices. They just thought that if we build it, they will come."

And they were right. Honolulu residents flocked to Chinatown because it was the place to find the cheapest food, get clothes made and purchase leather goods.

The tour also provides insight into the successive waves of immigrants who helped shape today's multi-cultural Hawaii.

Due to the Chinese Exclusion Act of 1882, the diminishing population of Chinese meant that by the 1930s, Chinatown became Japan Town, home to one of the largest dry goods stores, Musashiya, plus Shinto shrines, movies theaters and 10 Japanese family-run hotels. Over time, these were replaced by Filipino Town's Catholic churches, seamstresses and dance halls.

"Hawaii's newest immigrants could always come here to find the cheapest housing, meet people from their homeland, find someone to talk to,



One of Chinatown's many lei vendors seen during the walking tour. All photos by Nadine Kam.

someone to advise them and get them a job," Motosue said.

As each generation of immigrants became successful, they moved out of Chinatown, making way for the next wave, from Thailand, Laos and Vietnam. All of these cultures are acknowledged during the walking tour.

The tour offers multiple photo opportunities perfect for Instagrammers, and covers a little more than 2 miles in two hours. Our tour covered ground from Bethel to River streets, and King to Kukui streets.

Our first stop was Char Hung Sut, a popular kama'aina stop for dim

sum and manapua since 1945. We were able to take pictures of the dim sum makers, and our guide purchased ma tai su, sweet flaky pastry filled with a combination of vegetables and Chinese roast pork for us to sample.



Chinese wedding cake and other pastry at Sing Cheong Yuan bakery

From there, we made our way to Smith and Hotel, home to Lucky Belly restaurant. A placard here notes this was the site of the first Chinatown fire of 1886, started during a fight among gamblers.

The fire lasted three days and destroyed eight blocks, displacing 7,000 Chinese residents, destroying 350 homes, and causing \$1.5 million (\$38 million in today's dollars) in damage. After the fire, the Hawaiian government declared that all new structures should be made of stone or brick but it didn't happen. Wood buildings continued to be put up, contributing to an even more destructive fire in 1900. That fire had been purposefully started under supervision of the fire department to destroy buildings where people had died of the bubonic plague, but raged out of control when strong winds caused embers to fly onto the wood steeple of a church, out of reach of the fire fighters' hoses.



The ladies making siu mai or pork hash at Char Hung Sut

continued on page 9



Chef's Corner

Orchids Chef de Cuisine Christian Testa

Christian Testa was born and raised on one of the biggest food centers of the world, Genova, Italy. His extensive knowledge of Italian and international techniques have been refined from his experience at several highly acclaimed hotel kitchens across the globe, such as the Splendido Hotel in Portofino and La Coquille in Bermuda. This training has turned him into quite the Italian cuisine master. His unique techniques, and utilization of the finest ingredients available, allow him to create elegantly simple yet flavorful dishes.

What is your first childhood food memory?

My favorite dish as a child was "Pasta Troffie al Pesto Genovese" with green beans and potato. It is still one of my favorite dishes as an adult.

When did you decide you wanted to be a chef?

I decided that I wanted to be a chef when I was 16 as I started my first job in the industry. It was during the summer break. I worked as a help cook at the Grand Hotel Bristol in Rapallo (Genova, Italy). When I graduated at 18 years old, I decided to follow my dream.

Who would you consider your mentor and why?

My grandmother, Giannina, was definitely my mentor and inspiration. She had a love for cooking and I inherited this passion of cooking from her.

What's your favorite ingredient to work with? Why?

I love working with aromatic herbs such as Rosemary, Thyme, Marjoram, and Sage as these fragrances remind me of my hometown in Genova.

What changes have you made to Orchids since you arrived? What's on the horizon?

Orchids has such a well-known long history and tradition that I respect. I incorporated my past experiences and techniques with the fresh local island flavors. With the new Mediterranean concept of Orchids, I am able to focus not only on the flavors, but a more healthy cuisine for our guests. My cuisine is lighter, clean, rich in vitamins with all of the taste. I try to enhance what the ocean provides and add an Italian touch.

What's your biggest pet peeve in the kitchen?

That would be when my customers have to wait too long for their food.

What's the strangest dish you've ever eaten?

The strangest dish I have ever eaten was in Mexico City - the "Chapuline" Grasshopper, toasted with lemon, salt and chili pepper. It was actually very good!

Can you name the one dish you remember the most?

The most memorable dish that I can think of would be the Veal Carpaccio alla Piemontese as it is very rich and one of the most popular dishes that my family enjoys.

Where are you from initially?

I am originally from Genova, Italy and most recently lived in South Beach, Miami. Hawaii has always been a dream destination for me since I was a child, and I am now able to live here thanks to the opportunity from Halekulani.

Favorite part of living in Hawaii?

I have only been in Hawaii for one year and four months, however enjoy all aspects of Hawaii and its culture (people, food, weather, and lifestyle).

What restaurant do you like to go too when not working?

I am always curious in trying new cuisines so I go to different restaurants and try not to go to the same restaurant twice.

Favorite past time on your days off?

On my days off, I enjoy spending time with my family, playing tennis, watching soccer, and going to the beach. Lanikai is one of my favorite beaches.

Is there any other information you want to share?

Please come to Orchids and allow me the opportunity to give you an incredible dining experience.

Orchids Lasagnette



Ingredients

- | | | | |
|---------|--------------------------------------|--------------|--------------------------|
| 5 oz | Homemade Fresh Pasta cut into 2"x 2" | 1 oz. | White Wine Chardonnay |
| 1/2 Tbs | chopped garlic, onion, shallot | Salt | to taste |
| 3 oz. | Fresh scallops | Chili flakes | - to taste |
| 3 oz. | Kahuku Shrimp | 2 oz | Avocado |
| 2 Tbs | Extra Virgin Olive Oil | 2 oz. | fresh Tomato Cut in Half |
| | | 1/2 Tbs | Italian Parsley chopped |

Directions:

Toss in the Extra Virgin Olive Oil, garlic, onion, and shallots. Add the shrimps and scallops. (Ensure that the shrimp and scallops are cut the same size so that it cooks evenly and at the same time.) Add white wine and fresh tomato and cook for 4 minutes. Add little bit of the chili flakes and the Italian parsley. Cook the pasta in boiling water with salt and a dash of Olive oil. When the pasta is ready, sauté all ingredients together for three minutes and serve.

Orchids is located at the Halekulani

Breakfast: Monday-Saturday from 7:30 - 11 a.m. • **Lunch:** Monday-Saturday from 11:30 a.m. - 2 p.m.

Afternoon Tea: Monday-Saturday from 3:00 - 4:30 p.m. • **Dinner:** Nightly from 5:30 - 9:30 p.m.

Sunday Brunch: 9:00 a.m. - 2:30 p.m.

Web: Halekulani.com • **FB/Twitter/Instagram/Pinterest:** @HalekulaniHotel • **Phone:** 923-2311

Chinatown Walking Tour

continued from page 8

Passing through the red light district of wartime Hawaii through the late 20th century, we made our way to the Chinese bakery for a taste of peanut and sesame candy, passing lei sellers, markets and roast duck specialists.

At food purveyor Bo Wah Trading Co., our guide also pointed out an array of joss paper, spirit money and paper jackets, shoes and watches created to be burned during Chinese funerals and ceremonies as a way of sending money and goods to the deceased.

Walking in the company of three gentlemen visiting from Vancouver, Canada, they compared our Chinatown to theirs, and asked me whether I normally frequent these sites.

I said, "Yeah, but I'm usually running a specific errand and don't really look around. So it's really about seeing things with fresh eyes."

There were also places I'd never been, such as the shrine on the second floor of the Lum Sai Ho Tong building, and I'd never watched the process of making look funn, as at the Ying Leong Look Funn Factory on Kekaulike Mall, where we also sampled the finished product. After stops at



We were able to watch look funn being made from scratch at the Ying Leong Look Funn factory



We then got to sample the results when they were done.

Maunakea Marketplace, Oahu Market and the Chinatown Cultural Plaza, the tour ended at the Izumo Taishakyo Mission shrine where we could purchase omamori, amulets for protection or a range of blessings in life, luck and love.

It was a fun morning and the tour ends in time for visitors to break for lunch, retracing their steps to revisit at any of the sites that caught their eye or while on the tour.

The Hawaii Heritage Center is located at 1040 Smith Street, between N. King Street and N. Hotel Street. Call 521-2749 for more information. No walking tour reservations are needed for groups of fewer than 20 people.

Let's be Together...

DINING ▸ ENTERTAINMENT ▸ PAU HANA ▸ EAT ▸ DRINK ▸ BE MERRY ▸ HAPPY HOUR ▸

MONDAY

Barefoot Beach Café at Queen's Beach 924-2233
Live Contemporary Hawaiian
 Danny Galura 5:30-8:30pm
Chart House Waikiki 941-6660
Live Contemporary Hawaiian
 Camarillo Brothers 6:30-9:30pm
Cheesecake Factory 924-5001
Classic Hawaiian
 Christian Yrizarry Duo 8-11pm
Duke's Canoe Club Waikiki 922-2268
Live Contemporary Hawaiian
 Taz Vegas 4-6pm
 Ellsworth Simeona 9:30-12am
Hard Rock Cafe 955-7383
Bluesy Monday
 Danny Wassman 9-11am
 Ezekial (3/5) 9-11am
 Candy Bullets 9-11pm
 The Clay Campania Band (4/9, 4/23) 9-11pm
House Without a Key 923-2311
Live Hawaiian & Hula by Jeanne Kapela
 DeLima Ohana 5:30 - 8:30pm
Hula Grill 923-HULA
Live Contemporary Hawaiian
 Eric Lee 7-9pm
Kani Ka Pila Grille 924-4992
Hoku Award Winning Hawaiian musicians
 Sean Naauao 6:30-9:30pm
LBLE at the Hilton Waikiki Beach Hotel 922-0811
Live Contemporary Acoustic Hits
 Sean Cleland 7-10pm
Lewers Lounge 923-2311
Live Contemporary & Light Jazz
 Tommy James 8:30-12am
LuLu's 926-5222
Live Contemporary / Industry night 50% off
 Jason Laeha 6-9 p.m.
Mahina & Sun's 923-8882
Kanikaplia Jam Poolside on the Lanai
 Kimo Opiana Jr. 7-9pm
Mai Tai Bar at the Royal Hawaiian 923-7311
Live Contemporary Hawaiian with Hula Dancer
 Dave Watanabe 8-10 pm
Maui Brewing Company 843-2739
Live Contemporary Hawaiian
 Christian Yrizarry 3:30-5:30pm
Rumfire 921-4600
Solo Contemporary Guitarist
 Jeremy Cheng 5-8pm
 Jeremy Cheng 9:30-11:30pm
Signature Prime Steak 949-3636
Contemporary Pianist in the bar
 Isao Motomochi 6-9pm
Sky Waikiki 979-7590
Live Contemporary
 Yoza 6-9pm
The Edge at the Sheraton 921-4600
Live Hawaiian music with a fire dancer at 7:30 p.m.
 Pu'uhonua Duo 6:30-9:30pm
The Study at the Modern 943-5800
Live Contemporary Hawaiian
 Kaleo 7-10pm
Tiki's Grill & Bar 923-TIKI
Live Contemporary Hawaiian
 P & L Experience 6-8:30pm

The Kristi Masuhara Band 9-11pm
Tommy Bahama Restaurant 923-8785
Live Contemporary Hawaiian
 Johnny Helm 6-9pm
Tropics Bar & Grill 949-4321
Live Contemporary Hawaiian
 Starr Kalahiki 5:30-8:30pm

TUESDAY

Barefoot Beach Café at Queen's Beach 924-2233
Live Contemporary Hawaiian
 The Barefoot Boys feat. Pokii Vaughn 5:30-8:30pm
Chart House Waikiki 941-6660
Live Contemporary Hawaiian
 Kumuhau 6:30-9:30pm
Cheesecake Factory 924-5001
Classic Hawaiian
 Local Uprising Duo 8-11pm
Duke's Canoe Club Waikiki 922-2268
Live Contemporary Hawaiian
 Haumea Warrington & Mike 4-6pm
 Ellsworth Simeona 9:30-12am
Hard Rock Cafe 955-7383
Live Contemporary
 Mike Piranha 9-11am
 Piranha Brothers 9-11pm
House Without a Key 923-2311
Live Hawaiian & Hula by Allison Chu
 Pa'ahana 5:30 - 8:30pm
Hula Grill 923-HULA
Live Contemporary Hawaiian
 Kamuela Kahoano 7-9pm
Kani Ka Pila Grille 924-4992
Hoku Award Winning Hawaiian musicians
 Weldon Kekauoha 6:30-9:30pm
LBLE at the Hilton Waikiki Beach Hotel 922-0811
Live Contemporary Funk, Jazz, Hip Hop & Reggae
 Lina 7-10pm
Lewers Lounge 923-2311
Live Contemporary & Light Jazz
 Dan Del Negro & Rocky Holmes 8:30-12am
LuLu's 926-5222
Live Contemporary
 Johnny Helm 6-9pm
Mahina & Sun's 923-8882
Bossa Nova Poolside on the Lanai
 Sandy Tsukiyama 7-9pm
Mai Tai Bar at the Royal Hawaiian 923-7311
Live Contemporary Hawaiian with Hula Dancer
 Christian Yrizarry Duo 6:30-9:30pm
Maui Brewing Company 843-2739
Live Contemporary Hawaiian
 Chris Murphy 3:30-5:30pm
 Randy Allen (4/3) 3:30-5:30pm
 Sean Cleland (4/24) 3:30-5:30pm
Rumfire 921-4600
Solo Contemporary Guitarist
 Jegaan Faye 5-8pm
 Kai Roots Duo 9:30-11:30pm
Signature Prime Steak 949-3636
Contemporary Pianist in the bar
 James Woo 6-9pm
Sky Waikiki 979-7590
Live Contemporary
 John Akapo 6-9pm
The Edge at the Sheraton 921-4600
Live Hawaiian music with a fire dancer at 7:30 p.m.

Brad Kawakami Duo 6:30-9:30pm
The Study at the Modern 943-5800
Live Contemporary Hawaiian
 Alex Oasay & Jeremy Cheng 7:30-10:30pm
Tiki's Grill & Bar 923-TIKI
Live Hawaiian - \$2 Taco Tuesdays
 K.B. Riley 5:30-8:30pm
 Sani & Friends 9-11pm
Tommy Bahama Restaurant 923-8785
Live Contemporary Hawaiian
 Alex Oasay 6-9pm
Tropics Bar & Grill 949-4321
Live Contemporary Hawaiian
 Kailua Bay Buddies 5:30-8:30pm

WEDNESDAY

Barefoot Beach Café at Queen's Beach 924-2233
Live Contemporary Hawaiian
 Kimo Baker 5:30-8:30pm
Bin1901 at the Moana 921-4600
Piano Wine Bar
 Ginny Tiu 6:30-9:30pm
Chart House Waikiki 941-6660
Live Contemporary Hawaiian
 Tito Berinobis & David Kauahikaua 6-10:30pm
Cheesecake Factory 924-5001
Classic Hawaiian
 Kimo Artis Duo 8-11pm
 Scott Magz & Brady K Duo (4/4) 8-11pm
Duke's Canoe Club Waikiki 922-2268
Acoustic, Soul, R&B
 Haumea Warrington 4-6pm
 Ellsworth Simeona 9:30-12am
Gordon Biersch 599-4877
Jazz Wednesdays
 Varying Artists 6:30-9:30pm
Hard Rock Cafe 955-7383
Live Contemporary
 Dave Watanabe 9-11am
 Buck on a Bender (or others) 9-11pm
House Without a Key 923-2311
Live Hawaiian & Hula by Allison Chu
 Pa'ahana 5:30 - 8:30pm
Hula Grill 923-HULA
Live Contemporary Music
 Brandon Serrano 7-9pm
Hy's Steak House 922-5555
Live Soft Contemporary
 Audy Kimura 6:30-10pm
Kani Ka Pila Grille 924-4992
Hoku Award Winning Hawaiian musicians
 Mike Kaawa 6-9pm
LBLE at the Hilton Waikiki Beach Hotel 922-0811
Live Contemporary Funk, Jazz, Hip Hop & Reggae
 Evan Khay 7-10pm
Lewers Lounge 923-2311
Live Contemporary & Light Jazz
 Maggie Herron & Rocky Holmes 8:30-12am
LuLu's 926-5222
Live Contemporary Hawaiian
 Mango Season 6-9pm
 Jason Laeha & Cole Strona 10-close
Mahina & Sun's 923-8882
Jazz, Pop & Rock Poolside on the Lanai
 Verge & Paula 7-9pm
Mai Tai Bar at the Royal Hawaiian 923-7311
Live Contemporary Hawaiian with Hula Dancer

E Pili Kākou

DINING ▶ ENTERTAINMENT ▶ PAU HANA ▶ EAT ▶ DRINK ▶ BE MERRY ▶ HAPPY HOUR

Jeremy Cheng 6:30-9:30pm
Maui Brewing Company 843-2739
Live Contemporary Hawaiian
 Mike Tulba (4/4) 3:30-5:30pm
 Mark Caldeira (4/11) 3:30-5:30pm
 Kala'e Camarillo (4/18) 3:30-5:30pm
 Kamuela Kahoana (4/25) 3:30-5:30pm
Roy's Hawaii Kai 396-7697
Acoustic & Slack Key Top 40
 Dayton Watanabe 6:30-9:30pm
Rumfire 921-4600
Solo Contemporary Guitarist
 Thomson Enos 5-8pm
 Son Caribe Band 9:30-11:30pm
Signature Prime Steak 949-3636
Contemporary Pianist in the bar
 Pierre Grill 6-9pm
Sky Waikiki 979-7590
Live Contemporary
 Randy & Kanoe 6-9pm
SWIM at the Hyatt 923-1234
Live Contemporary
 Kuuipo Kumukahi 5:30-7pm
The Edge at the Sheraton 922-4422
Live Hawaiian music with a fire dancer at 7:30 p.m.
 Keoni Ku Duo 6:30-9:30pm
The Street Food Hall by Michael Mina 921-4600
Live Hawaiian music with a fire dancer at 7:30 p.m.
 Christian Yrizarry Duo 6:30-9:30pm
The Study at the Modern 943-5800
Live Contemporary Hawaiian
 Melanie and Drew 6:30-9:30pm
Tiki's Grill & Bar 923-TIKI
Live Contemporary - 1/2 off Wine Wednesdays
 Canoes for Rent 5:30-8:30pm
 Johnny Helm 9-11pm
Tommy Bahama Restaurant 923-8785
Live Contemporary Hawaiian
 Sean Cleland 6-9pm
Tropics Bar & Grill 949-4321
Live Contemporary Rock
 Acoustik Playground 5:30-8:30pm

THURSDAY

Barefoot Beach Café at Queen's Beach 924-2233
Live Contemporary Hawaiian
 Shaka Madali 5:30-8:30pm
Bin1901 at the Moana 921-4600
Piano Wine Bar
 Scott Smith 6:30-9:30pm
BLT Market 729-9729
Live Contemporary Guitar
 Sean Cleland 6-9pm
Chart House Waikiki 941-6660
Live Contemporary Hawaiian
 Tito Berinobis 6:30-10pm
Cheeseburger Waikiki 941-2400
Contemporary / Old School Rock
 Alex Oasay 6:30-9:30pm
Cheesecake Factory 924-5001
Classic Hawaiian
 Ben Kama Duo 8-11pm
Duke's Canoe Club 922-2268
Live Contemporary Hawaiian
 Haumea Warrington 4-6pm
 Local Uprising Duo (4/5) 9:30-midnight
 Denny Ono Duo (4/12) 9:30-midnight

Scott Magz & Brady K (4/19) 9:30-midnight
 Jai Rodgers Duo (4/26) 9:30-midnight
Hard Rock Cafe 955-7383
Live Contemporary
 Zanut Lindsay 9-11am
 Mark Caldeira (4/5) 9-11am
 Clay Capania (4/26) 9-11am
 Kailua Bay Buddies 9-11pm
House Without a Key 923-2311
Live Hawaiian & Hula by Sarah Kamalei Kawakami
 Eric Lee Trio 5:30 - 8:30pm
Hula Grill 923-HULA
Live Contemporary Hawaiian
 Kamuela Kahoano 7-9pm
Hy's Steak House 922-5555
Live Soft Contemporary
 Audy Kimura 6:30-10pm
Kani Ka Pila Grille 924-4992
Hoku Award Winning Hawaiian musicians
 Kawika Kahiapo 6:30-9:30pm
LBLE at the Hilton Waikiki Beach Hotel 922-0811
Live Contemporary Pop/Rock
 Sunway 7-10pm
Lewers Lounge 923-2311
Contemporary Jazz
 Maggie Herron & Rocky Holmes 8:30-12am
LuLu's 926-5222
Live Contemporary Hawaiian
 Desmond Oliverira 6-9pm
Mahina & Sun's 923-8882
Mellow Acoustic Sounds Poolside on the Lanai
 Keith Omizo 7-9pm
Mai Tai Bar at the Royal Hawaiian 923-7311
Live Contemporary Hawaiian with Hula Dancer
 Dave Watanabe 8 - 10pm
Maui Brewing Company 843-2739
Live Contemporary Hawaiian
 Kamuela Kahoana 3:30-5:30pm
 Randy Allen (4/26) 3:30-5:30pm
Michel's at the Colony Surf 923-6552
Live Slack Key
 Jeff Peterson 7:30-10:00pm
Roy's Hawaii Kai 396-7697
Acoustic Hawaiian Guitar
 Steve English 6:30-9:30pm
Rumfire 921-4600
Solo Contemporary Guitarist
 Jeff James 5-8pm
Signature Prime Steak 949-3636
Contemporary Pianist in the bar
 Isao Motomochi 6-9pm
Sky Waikiki 979-7590
Live Contemporary
 Tahiti Rey 6-9pm
SWIM at the Hyatt 923-1234
Live Contemporary
 Kuuipo Kumukahi 5:30-7pm
The Edge at the Sheraton 921-4600
Live Hawaiian music with a fire dancer at 7:30 p.m.
 Christian Yrizarry Duo 6:30-9:30pm
The Study at the Modern 943-5800
Live Contemporary Hawaiian
 Simple Souls 6:30-9:30pm
Tiki's Grill & Bar 923-TIKI
Hot Hula Thursdays - hula dancers perform
 Malu the Band 5:30-7:30pm
 Ellsworth Simeona 8:30-10:30pm

Tommy Bahama Restaurant 923-8785
Live Contemporary Hawaiian
 Chris Mercado 6-9pm
Tropics Bar & Grill 949-4321
Live Contemporary Hawaiian
 Nohelani Cypriano 5:30-8:30pm

FRIDAY

Barefoot Beach Café at Queen's Beach 924-2233
Live Contemporary Hawaiian with Beach BBQ
 Art Kalahiki & Friends 5:30-8:30pm
Bin1901 at the Moana 921-4600
Piano Wine Bar
 Scott Smith 6:30-9:30pm
Chart House Waikiki 941-6660
Live Contemporary Hawaiian
 Mark Yim's Pilikia I 6-9pm
 Mark Yim's Pilikia II 9:30-12:30am
Cheeseburger Waikiki 941-2400
Contemporary Hawaiian
 Aku 6:30-9:30pm
Cheesecake Factory 924-5001
Live Contemporary
 Johnny Helm Duo 8-11pm
Dave & Busters 589-2215
Pau Hana Fridays Live Local Bands
 Varying Hawaiian Artists 6-8pm
Duke's Canoe Club Waikiki 922-2268
Live Contemporary Hawaiian
 Maunaula 4-6pm

goma tei
 JAPANESE RESTAURANT

PRESENT YOUR WORK ID & RECEIVE ONE FREE AJITAMA OR SOFT-POACHED EGG

PICTURED IS OUR SEAFOOD FRIED RICE MADE WITH FRESHLY COOKED, IMPORTED JAPANESE RICE MIXED WITH DICED CARROT, MILD ONION AND EGGS ALL IN A SPECIAL FRIED-RICE MACHINE. SERVED WITH A SPECIAL HOUSE MADE SOY SALUCE WITH CRISPY GARLIC AND GARLIC OIL, A SOFT-POACHED EGG AND SCALLION GARNISH.

INTERNATIONAL MARKET PLACE
 2300 KALAKAUA AVE. 318 - LEVEL 3, GRAND LANAI
 TEL 808 654-0363

HAVE ANY QUESTIONS OR COMMENTS? EMAIL US AT IMP@GOMATEL.COM

SOME EXCLUSIONS MAY APPLY. THIS OFFER CANNOT BE COMBINED WITH ANY OTHER OFFER.

Let's be Together...

DINING ▶ ENTERTAINMENT ▶ PAU HANA ▶ EAT ▶ DRINK ▶ BE MERRY ▶ HAPPY HOUR

| | |
|--|-----------------|
| Kona Chang Duo (4/6) | 9:30 -12am |
| Chris Murphy Duo (4/13) | 9:30 -12am |
| Maiko Duo (4/20) | 9:30 -12am |
| Jesse & Jenna (4/27) | 9:30 -12am |
| Hard Rock Cafe | 955-7383 |
| <i>Live Contemporary</i> | |
| Alex Oasay | 9-11am |
| Jesse Savio (4/27) | 9-11am |
| The Fresh Preps | 9-11pm |
| House Without a Key | 923-2311 |
| <i>Live Hawaiian & Hula by Kanoe Miller</i> | |
| The Kanoe Miller Trio | 5:30 - 8:30pm |
| Hula Grill | 923-HULA |
| <i>Aloha Friday Lunch Luau with hula dancer</i> | |
| David Asing | 12:30-2:30pm |
| Keoki & Russell | 7-9pm |
| Hy's Steak House | 922-5555 |
| <i>Live Soft Contemporary</i> | |
| Audy Kimura | 6:30-10pm |
| Kani Ka Pila Grille | 924-4992 |
| <i>Hoku Award Winning Hawaiian musicians</i> | |
| Ka Hehena | 6-9pm |
| LBL E at the Hilton Waikiki Beach Hotel | 922-0811 |
| <i>Live Contemporary Pop/Rock</i> | |
| Sunway | 7-10pm |
| LuLu's | 926-5222 |
| <i>Live Contemporary</i> | |
| Glenn Domingo | 6-9pm |
| Lewers Lounge | 923-2311 |
| <i>Live Contemporary Jazz</i> | |
| Maggie Herron & Dean Taba | 8:30-12am |
| Mahina & Sun's | 923-8882 |
| <i>Slack Key Poolside on the Lanai</i> | |
| Jeff Rasmussen | 7-9pm |
| Mai Tai Bar at the Royal Hawaiian | 923-7311 |
| <i>Live Contemporary Hawaiian with Hula Dancer</i> | |
| Kapala Contemporary | 6:30-9:30pm |
| Maui Brewing Company | 843-2739 |
| <i>Live Contemporary Hawaiian</i> | |
| Sienna Souza | 3:30-5:30pm |
| Alika Souza | 9-11pm |
| Jai Rodgers Duo (4/13) | 9-11pm |

| | |
|--|-----------------|
| Michel's at the Colony Surf | 923-6552 |
| <i>Live Slack Key Stylings & Jazz</i> | |
| Jeff Peterson & Ernie Provencher | 6:30-10pm |
| Roy's Hawaii Kai | 396-7697 |
| <i>Keyboardist</i> | |
| Brian Robert Shaw | 6:30-9:30pm |
| Roy's Ko Olina | 676-7697 |
| <i>Slack Key Guitar</i> | |
| Chris Rego | 5:30-8pm |
| Rumfire | 921-4600 |
| <i>Solo Contemporary Guitarist</i> | |
| Shar Carillo | 5-8pm |
| Signature Prime Steak | 949-3636 |
| <i>Contemporary Pianist in the bar</i> | |
| Grant Carvalho | 6-9pm |
| Sky Waikiki | 979-7590 |
| <i>Live Contemporary</i> | |
| John Akapo | 5-8pm |
| The Edge at the Sheraton | 921-4600 |
| <i>Live Hawaiian music with a fire dancer at 7:30 p.m.</i> | |
| Na'ehu Duo | 6:30-9:30pm |
| Ben Kama Duo (4/20) | 6:30-9:30pm |
| The Study at the Modern | 943-5800 |
| <i>Live Contemporary Hawaiian</i> | |
| Tahiti Rey | 6:30-9:30pm |
| Tiki's Grill & Bar | 923-TIKI |
| <i>Live Contemporary Hawaiian</i> | |
| Randy Allen | 5-7pm |
| Vaihi | 7:30-9:30pm |
| The Kristi Masuhara Band | 10:30-midnight |
| Tommy Bahama Restaurant | 923-8785 |
| <i>Live Contemporary Hawaiian</i> | |
| Chris Murphy | 6-9pm |
| Tropics Bar & Grill | 949-4321 |
| <i>Live Contemporary Hawaiian</i> | |
| Nohelani Cypriano | 8-10:30pm |

SATURDAY

| | |
|--|-----------------|
| Barefoot Beach Café at Queen's Beach | 924-2233 |
| <i>Beach BBQ with Live Contemporary Hits</i> | |
| The Barefoot Boys feat. Pokii Vaughn | 5:30-8:30pm |
| Bin1901 at the Moana | 921-4600 |
| <i>Piano Wine Bar</i> | |
| Scott Smith | 6:30-9:30pm |
| Chart House Waikiki | 941-6660 |
| <i>Live Contemporary Hawaiian</i> | |
| Tito Berinobis & Billy Beimes | 7-12pm |
| Cheeseburger Waikiki | 941-2400 |
| <i>Contemporary Hawaiian</i> | |
| Sean Cleland | 6:30-9:30pm |
| Cheesecake Factory | 924-5001 |
| <i>Classic Hawaiian</i> | |
| Dennis McClees Duo | 8-11pm |
| Duke's Canoe Club Waikiki | 922-2268 |
| <i>Live Hawaiian Entertainment</i> | |
| Beach 5 (4/7) | 4-6pm |
| Kailua Bay Buddies (4/14) | 4-6pm |
| Local Uprising (4/21) | 4-6pm |
| Kapena (4/28) | 4-6pm |
| Mike Tulba Duo (4/7) | 9:30-12am |
| Kainoa Duo (4/14) | 9:30-12am |
| Christian Yrizzary Duo (4/21) | 9:30-12am |
| Camarillo Brothers (4/28) | 9:30-12am |
| Hard Rock Cafe | 955-7383 |
| <i>Live Contemporary</i> | |
| Eric Peterson (or others) | 9-11am |
| Close the Distance | 9-11pm |

| | |
|--|-----------------|
| House Without a Key | 923-2311 |
| <i>Hawaiian & Hula by Kanoe Miller</i> | |
| The Kanoe Miller Trio | 5:30 - 8:30pm |
| Hula Grill | 923-HULA |
| <i>Live Traditional Hawaiian with dancer</i> | |
| Kaipo Dabin & friends | 7-9pm |
| Hy's Steak House | 922-5555 |
| <i>Live Soft Contemporary</i> | |
| Audy Kimura | 6:30-10pm |
| Kani Ka Pila Grille | 924-4992 |
| <i>Hoku Award Winning Hawaiian musicians</i> | |
| Hookena | 6:30-9:30pm |
| LBL E at the Hilton Waikiki Beach Hotel | 922-0811 |
| <i>Live Contemporary Blues & R&B</i> | |
| Tahiti Rey | 7-10pm |
| Lewers Lounge | 923-2311 |
| <i>Live Contemporary Jazz</i> | |
| Maggie Herron & Dean Taba | 8:30-12:30am |
| LuLu's | 926-5222 |
| <i>Live Contemporary Hawaiian</i> | |
| Kamaka | 6-9pm |
| Mahina & Sun's | 923-8882 |
| <i>Soul Poolside on the Lanai</i> | |
| Maryanne Ito | 7-9pm |
| Mai Tai Bar at the Royal Hawaiian | 923-7311 |
| <i>Live Contemporary Hawaiian with Hula Dancer</i> | |
| Mike Tulba | 6:30-9:30pm |
| Maui Brewing Company | 843-2739 |
| <i>Live Contemporary Hawaiian</i> | |
| Mark Caldeira | 3:30-5:30pm |
| Kamuella Kahoana (4/14) | 3:30-5:30pm |
| Kona Chang Duo (4/7) | 9-11pm |
| Fresh Preps (4/14) | 9-11pm |
| Ryan Tenney (4/21) | 9-11pm |
| Local Uprising (4/28) | 9-11pm |
| Michel's at the Colony Surf | 923-6552 |
| <i>Live Contemporary Slack Key & Jazz</i> | |
| Jeff Peterson | 7-11pm |
| Roy's Hawaii Kai | 396-7697 |
| <i>Acoustic Guitar</i> | |
| Jimmy Funai | 6-9:30pm |
| Roy's Ko Olina | 676-7697 |
| <i>Slack Key Guitar</i> | |
| Chris Rego | 5:30-8pm |
| Rumfire | 921-4600 |
| <i>Solo Contemporary Guitarist</i> | |
| Mike Izon | 5-8pm |
| Signature Prime Steak | 949-3636 |
| <i>Contemporary Pianist in the bar</i> | |
| Grant Carvalho | 6-9pm |
| Sky Waikiki | 979-7590 |
| <i>Live Contemporary</i> | |
| John Akapo | 6-9pm |
| The Edge at the Sheraton | 921-4600 |
| <i>Live Hawaiian music with a fire dancer at 7:30 p.m.</i> | |
| Tino Jacobs Duo | 6:30-9:30pm |
| Tiki's Grill & Bar | 923-TIKI |
| <i>Live Contemporary Hawaiian & Reggae</i> | |
| Johnny Helm | 5-7pm |
| Guidance (or others) | 7:30-9:30pm |
| Ellsworth & Piko | 10-midnight |
| Tommy Bahama Restaurant | 923-8785 |
| <i>Live Contemporary Hawaiian</i> | |
| Chris Murphy | 6-9pm |
| Tropics Bar & Grill | 949-4321 |
| <i>Live Contemporary Hawaiian</i> | |
| Henry Kapono | 4-6pm |

IL LUPINO
TRADITIONAL HAWAIIAN & WINE BAR

15% OFF
If Lupino is pleased to extend a 15% discount to all Couleages. Must show your work ID to receive the discount. Not applicable on liquor specials.

ROYAL HAWAIIAN CENTER • VALIDATED PARKING
breakfast • lunch • happy hour • afternoon tea • dinner
ilupino.com • @ilupino • #ilupino • 808.922.3400

E Pili Kākou

DINING • ENTERTAINMENT • PAU HANA • EAT • DRINK • BE MERRY • HAPPY HOUR

Juke Joint 6:30-9:30pm

SUNDAY

Barefoot Beach Café at Queen's Beach 924-2233
Live Contemporary Hawaiian

Shaka Madali 5:30-8:30pm

San Souci Beach Club w/DJ (2/11) 2-6pm

Chart House Waikiki 941-6660
Live Contemporary Hawaiian

Dean & Dean 6-9pm

Cheesecake Factory 924-5001
Classic Hawaiian

Chris Murphy 8-11pm

Duke's Canoe Club Waikiki 922-2268
Live Hawaiian Entertainment

Henry Kaponu 4-6pm

Derrick Lee Duo (4/1) 9:30-12am

Ryan Tenney Duo (4/8) 9:30-12am

Preston Kauwe (4/15) 9:30-12am

Alika Suza Duo (4/22) 9:30-12am

Chris Mercado (4/29) 9:30-12am

Hard Rock Cafe 955-7383
Live Contemporary

Johnny Helm (or others) 9-11am

Analog 9-11pm

Soul Pilot (4/29) 9-11pm

House Without a Key 923-2311
Live Hawaiian & Hula by Debbie Nakanelua

Pu'uhonua Trio 5:30 - 8:30pm

Hula Grill 923-HULA
Live Traditional Hawaiian with dancer

Art Kalahiki Duo 7-9pm

Kani Ka Pila Grille 924-4992
Hoku Award Winning Hawaiian musicians

Kaiao 6-9pm

Kelley O'Neil's 926-1777
Live Irish Music

Various Celtic Bands 4-7pm

LBLE at the Hilton Waikiki Beach Hotel 922-0811
Live, Energetic Mix of Pop and Rock Hits

Kristi Masuhara 7-10pm

Lewers Lounge 923-2311
Live Contemporary & Light Jazz

Tommy James 8:30pm - 12am

Lulu's 926-5222
Acoustic R&B

Jason Laeha 6-9pm

Mahina & Sun's 923-8882
Live Jazz on the Lanai

Jegaan Faye 7-9pm

Mai Tai Bar at the Royal Hawaiian 923-7311
Live Contemporary Hawaiian with Hula Dancer

Brian Mersberg Duo 6:30-9:30pm

Maui Brewing Company 843-2739
Live Contemporary Hawaiian

David Sedlak 3:30-5:30pm

Scott Magz & Brady K 9-11pm

Roy's Ko Olina 676-7697
Slack Key Guitar

Chris Rego 5:30-8pm

Rumfire 921-4600
Solo Contemporary Guitarist

Johnny Kukui 5-8pm

Signature Prime Steak 949-3636
Contemporary Pianist in the bar

Isao Motomochi 6-9pm

Sky Waikiki 979-7590
Live Contemporary

Da Push-O-Verse 6-9pm

The Edge at the Sheraton 922-4422
Live Hawaiian music with a fire dancer at 7:30 p.m.

Eric Lee Duo 6:30-9:30p

The Study at the Modern 943-5800
Live Contemporary Hawaiian & Jazz

Jeremy Cheng 6-9pm

Smooth Jazz (varying artists) 10-2am

Tiki's Grill & Bar 923-TIKI
Live Contemporary Hawaiian

Kapu the Band 2:30 - 5:30pm

Vaihi 6-8pm

Ellsworth & Piko 9-11pm

Tommy Bahama Restaurant 923-8785
Live Contemporary Hawaiian

Johnny Helm 6-9pm

Tropics Bar & Grill 949-4321
Live Contemporary Rock & Hawaiian

Mike Piranha 5:30 - 8:30pm

Uncle's Fish Market & Grill 275-0063
Live Slack Key

Jeff Peterson 5:30-8:30pm

oysters, chicken wings and summer rolls for \$1.50 each. 729-9729. • **Chuck's Steakhouse** at the Outrigger Waikiki closed on March 31 after over 50 years. The restaurant closing makes room for a new Outrigger Voyager 47 Club lounge in the beautiful beachfront location which should open in July. • **Goma Tei Waikiki** has launched a new milk tea. With a blend of 8 different carefully selected tea leaves to create a wonderful and unique flavor, some are even sourced locally from the Big Island. They also add in sugar, prepared with 100% cane sugar infused with a jasmine floral aroma, and evaporated milk to enhance the flavor. Remember, Goma Tei Waikiki always offers a kama'aina discount, and if you show your work ID, you will get a free Ajitama or soft-poached egg with your order. 664-0373. • **BUHO Cantina** is upping their game with a variety of daily specials. They now offer Margarita Mondays from 6 - 8 p.m. with \$5 margs and Patron shots and live music from Son Caribe; Taco Tuesdays with \$2 tacos from 5 - 10 p.m.; All you can eat Wing Wednesdays for \$20 also from 5 - 10 p.m.; on top of a daily happy hour from 2 - 6 p.m. and then again from 10 p.m. to close, with food and drink specials starting at \$3. Get your Mex on in preparation for Cinco de Mayo, and know whatever they do, it will be big. 922-BUHO. • Mexican not your thing? How about a Pac-Man pop up? Yes, you read that correctly. **Bread & Butter** has partnered with Bandai Namco Entertainment to create a pop-up, **Pac-Store Hawaii** through May 31st. You will still find all of your favorite items you've grown to love at Bread & Butter, but for a limited time only, there will also be original Pac-Man items for sale, including a special line designed only for Hawaii, and a memorable collaborative menu of food items, all incorporating the iconic Pac-Man shape of course. Don't forget to play the classic game while you're there. Top score could take home a great prize! 949-3430. ~ Pac

Dining Dish

The Hyatt Regency Waikiki Beach Resort & Spa welcomed **Jeff Szombaty** back to the resort a few months ago. Jeff was the Executive Sous Chef at the hotel from 2011 to 2014 under then **Executive Chef Sven Ullrich** before heading off to the Hyatt Regency Vancouver to take over Executive Chef responsibilities. When Sven moved to Sydney at the end of last year, Chef Jeff was brought back as Executive Chef and just added the Director of Food & Beverage title to his role as well. As he assumes full responsibility for the hotels F&B program, one of his first official tasks has been to create **The Buffet at Hyatt** in the former SHOR location. The Buffet will be available from 5:30 - 9:30 p.m. and while the dishes vary base don the day, guests can count on a fresh poke station, king crab legs, traditional Hawaiian specialties, smoked alaea salt crusted prime rib with an extended seafood selection on weekends. The buffet costs \$55 during the week, and \$59 on weekend, with a 25% discount available to kama'aina. See the full menus for each weeknight online. I checked it out when it first opened, and can tell you it's a winner. My favorite aside from the crab legs? George's Coconut Seafood Curry on the Tues/Thurs menu. So ono. waikiki.regency.hyatt.com. • I also stopped by **BASALT** to check out a few of their new breakfast and lunch items and really loved their Charcoal Buttermilk Pancakes. Despite the fact that both the pancakes and the whipped cream are black (think ash from the charcoal) they were truly refreshing and flavorful. I hear Chef Keith Kong's gluten-free, vegan Vegetable Piele, which incorporates shredded taro, mashed bananas or breadfruit, and coconut cream. was also a hit, although I was unable to taste it since there were onions in it. 923-5689. • **BLT Market** has extended their happy hour from 4 to 7 p.m. Enjoy \$6 beers, and \$9 wines and cocktails with snack items such as



Dining Calendar

April 12: Taste of Sake Join Chef de Cuisine David Lukela and founder of World Sake, Chris Pearce, as they present a 5 course meal paired with select sakes at the Beachhouse at the Moana. \$120. 6 p.m. honoluluoffice.com/moana.

April 13: Wine Down the Week, a new event featuring wine, bites and fireworks and a wine-themed talk-story. The first event kicks off with Bubbles. Learn and taste the difference between Champagne and Prosecco. 6:30-8:30 p.m. \$65. 729.9729. winesoverwaikiki.brownpapertickets.com

April 16: BLT Market Mixology Series continues with Beverage Director Sarah Landry. This month, it's a tour through Italy's bitter's. Includes appetizers that pair well with the beverage you'll be learning to make (and drink!) 5 p.m. \$50. 729-9729.

APRIL CALENDAR OF EVENTS

Continuing Events

MONDAY – FRIDAY LYON ARBORETUM TOURS

The lush gardens at the top of the UH Manoa are open for guided tours daily. Knowledgeable guides will introduce the highlights of all 193.6 acres of botanical rainforest. Reservations required. 12 participants max. Donations accepted. 988-0461.

MONDAY-FRIDAY FOSTER BOTANICAL GARDENS

Guided garden tours of rare and beautiful plants from tropical regions throughout the world. Foster Botanical Gardens, 50 N. Vineyard. 1 p.m. Adults: \$5. Reservations recommended. 522-7066.

TUESDAYS TOURS OF THE HAWAII THEATRE

Get a behind-the-scenes tour of this historic theatre including history, architecture, and a performance on the 1922 Robert Morton theatre organ. Hawaii Theatre. 11 a.m. – 12 p.m. \$10. 528-0506.

TUESDAYS • KU HA'AHEO

An afternoon of music and hula led by kumu hula Blaine Kamalani Kia. Waikiki Beach Walk, Plaza Lawn. 4:30–6 p.m. waikikibeachwalk.com. FREE.

TUESDAYS • KCC FARMERS MARKET

The Saturday Market is so popular they added another day. Head up to Kapiolani Community College to stock up on fresh, island produce, seafood, flowers and more, from several dozen vendors. 4 – 7 p.m. Free. 848-2074.

TUESDAYS & THURSDAYS

FRESH FARMERS MARKET AT THE HYATT

The Hyatt's Farmers Market is offered twice a week. A great place for visitors and locals to stock up on fresh local organic fruits, vegetables, jams, honeys, baked goods and more. The market is spread out throughout the ground floor of the Pualeilani Atrium Shops. 4 – 8 p.m. waikiki.hyatt.com.

TUESDAYS, THURSDAYS & SUNDAYS TOUR & TEA AT THE HONOLULU ACADEMY OF ARTS

Tours are led by volunteer docents and designed for visitors, who would like to explore the galleries, learn more about art and culture, and socialize over a cup of tea. Docents lead discussions in the galleries and offer insight into many cultures and time periods. 2:30 – 4 p.m. in selected galleries. Free with admission. Reservations required. 532-8700.

TUESDAY – SATURDAY

HAWAIIAN MISSION HOUSES GUIDED TOURS

Visit the Print Shop, coral block Chamberlain House, and 1821 Mission House and learn about the 19th century history and culture preserved at this historic site. Docent-led tours of the historic houses begin on the hour, every hour from 11 a.m. for \$8 - \$10. No charge for the self-guided tour of the grounds. Hawaiian Mission Houses. Tues. - Sat. 10 a.m. - 4 p.m. 447-3910 or missionhouses.org.

THIRD WEDNESDAY (APRIL 18) KONA NUI NIGHTS

Kona Nui Nights honors and highlights Hawaiian language and music, as well as the art of hula on the third Wednesday of every month with food and drinks for free. Ward Village Information Center Courtyard. 6-8 p.m. wardvillageshops.com.

SECOND THURSDAY (APRIL 12) COURTYARD CINEMA

Ward Village hosts its monthly film series event, Courtyard Cinema, on the 2nd Thursday of each month. The showing features free popcorn, refreshments, food vendors and entertainment. Courtyard Cinema is free and open to the public. Seating is limited. wardvillagecourtyardcinema.com.

THURSDAYS • COURTYARD YOGA

Take a complimentary yoga class with CorePower Yoga at the Ward Village Information Center Courtyard. Open to the first 50 in attendance. All experience levels welcome. 5:30 – 6:30 p.m. For more information visit wardvillageshops.com/yoga.

THIRD THURSDAY (APRIL 19)

DOWNTOWN GALLERY WALK & CRAFT FAIR

The Arts at Marks Garage continues to build on downtown activities offering an excuse to hang out after work and giving everyone else a reason to head downtown. Free. 521-2903. artsatmarks.com.

LAST THURSDAY (APRIL 26) MORI LIVE SESSIONS

Listen to great local music on the last Thursday of the month from 5:00 – 9:00 p.m. at MORI Live Sessions. Presented by Mori by Art + Flea, this jam session is located at South Shore Market in Ward Village. The free family-friendly event brings together various talents of all music genres. Guests are also offered free creative art activations at the community table. wardvillage.com/events/mori-live-sessions.

FRIDAYS • CULTURAL CRAFT FAIR

The Hyatt's had so much success with their Farmers Market that they are applying the same principle to

local craft items. The craft fair features local vendors featuring arts & crafts, jewelry, photography, woodwork and more. 3 - 7 p.m. Waikiki.Hyatt.com.

FIRST FRIDAY (APRIL 6)

DOWNTOWN GALLERY WALK & CRAFT FAIR

Art lovers should head to downtown Honolulu the first Friday of each month. This event has exploded into a downtown party with galleries and studios open for exhibitions, artist demonstrations, and special performances. 23 galleries and art-related retail shops, restaurants and museums participate. Downtown Honolulu/Chinatown. 6 – 9 p.m. Free. 521-2903 or artsatmarks.com.

FIRST FRIDAY (APRIL 6)

FREE MOVIE NIGHT ON THE LAWN

PCC continues its love for families by offering a free family-friendly movie the first Friday of the month to enjoy under the stars at Hukilau Marketplace. This month see the Marvel movie, "Thor: Ragnarok" at 7:30 p.m. HukilauMarketplace.com.

FINAL FRIDAY • ART AFTER DARK

Art After Dark is back with one of the hippest events all month. This month offers "Windows to the World." Take a trip around the world through art as each museum courtyard is transformed into a faraway region—grab your passport and get it stamped in each one! Food provided by EAT Honolulu. 6-9 p.m. artafterdark.org.

SATURDAYS • KCC FARMERS MARKET

Fresh island produce, seafood, flowers and more are available from over two-dozen vendors at Kapiolani Community College. Free. 7:30 - 11 a.m. 848-2074.

SATURDAYS

PEARLRIDGE FARMERS MARKET

Over 40 vendors offering locally grown fruits and vegetables, plants and freshly made treats. A pop-up cafe offering seating and live music round out the day. Free. 8 a.m. - noon. PearlridgeOnline.com.

SATURDAYS

KAKA'AKO FARMERS MARKET

The Kaka'ako Farmer's Market hosts an abundance of treats from around our islands. Located next to Ross Dress for Less at Ward Gateway Center. Free. 8 a.m. - 12 p.m. wardvillage.com.

SECOND SATURDAY (APRIL 14)

DOWNTOWN GALLERY WALK & CRAFT FAIR

First Friday has become such a success that events carry over to the second Saturday. HiSAM, 11 a.m. – 4 p.m. 586-9958. Other events around downtown Honolulu all afternoon including slam poetry and open mic events at The Arts at Marks from 3 - 5 p.m. Free. 521-2903 or artsatmarks.com.

SATURDAYS & SUNDAYS

ART ON THE ZOO FENCE

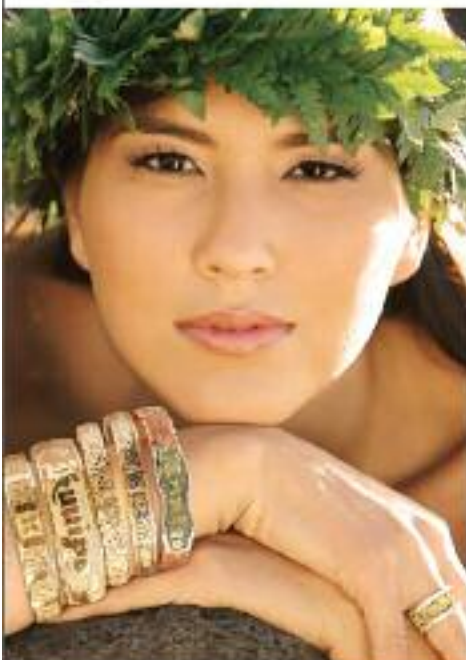
More than 35 local artists display their works on the Zoo fence on Monsarrat Avenue opposite the Kapiolani Park Bandstand. Works for sale include original paintings, prints and photographs. 9 a.m. – 4 p.m. Free. artonthezooence.com.

FIRST SUNDAY (APRIL 1)

LEI-MAKING CLASS WITH MELEANA ESTES

Bringing back the practice of lei-making, the International Market Place offers a monthly lei-making workshop, with contemporary lei artist Melana Estes every first Sunday of the month from 11am - 2pm in Queen's Court. Free will supplies last. shopinternationalmarketplace.com.

WORLD CLASS HAWAIIAN HEIRLOOM JEWELRY
Philip Rickard
NEW STORE IN WAIKIKI



INTERNATIONAL MARKET PLACE
LEVEL 1 BANYAN COURT
808-924-7972 | philiprickard.com
Special offers for Concierges

APRIL CALENDAR OF EVENTS

SECOND SUNDAY (APRIL 8)

FREE ADMISSION TO IOLANI PALACE

On the second Sunday of each month, Iolani Palace opens its doors to kama'aina guests to visit the historic landmark for free. iolanipalace.org.

THIRD SUNDAY (APRIL 15)

NA MELE NO NA PUA SUNDAY CONCERT

Waikiki Beach Walk presents Kawika Kahiaipo & Friends at the Plaza Stage from 5 – 6 p.m. for their free Sunday Concert Series. waikikibeachwalk.com.

THIRD SUNDAY (APRIL 15)

BANK OF HAWAII FREE SUNDAY

The Honolulu Museum of Art opens its doors to the public free of charge on the third Sunday of every month thanks to Bank of Hawaii. Plenty of activities for all to enjoy. 11 a.m. - 5 p.m. Free. 532-8700.

APRIL 5

CARMINA BURANA

What is not to love about celebrating Bernstein's centenary with his hope-filled Chichester Psalms paired with the exuberant and wildly popular Carmina Burana. Join the Oahu Choral Society and the HSO in a choral-orchestral evening extravaganza for one night only. Tickets: \$49-\$92. 7:30 p.m. HISymphony.org.

APRIL 6 • JACKSON BROWNE



Singer-songwriter Jackson Browne will return to Honolulu's Waikiki Shell on April 6 with his full band for the first time in over two decades for an unforgettable evening of music. Due to overwhelming demand, more lawn seats have just been released for the nearly sold out

April concert for \$39.50. For a limited time, fans can save 25% on lawn ticket 4-packs online and in-person at the venue box office. Tickets: \$39.50 - \$129.50. Waikiki Shell. 7 p.m. ticketmaster.com.

APRIL 6 - 15

HIFF SPRING SHOWCASE

The Honolulu International Film Festival presents its 21st annual Spring Showcase, with 30 films from around the world as well as a series of films straight from Sundance. Dole Cannery Theatres. See the lineup at hiff.org.

APRIL 7 • PUERTO RICAN DAY

Celebrate all that it means to be Puerto Rican with a day of Salsa dancing, music and of course Puerto Rican Food. A special Genealogy and Oral History will be presented from 8:30 - 11:30 a.m. Ms. Latina Hawaii 2018 will also be on hand. 10 a.m. - 2 p.m. hawaiiplantationvillage.org.

APRIL 6 - 7 • HARRY POTTER AND THE CHAMBER OF SECRETS IN CONCERT

Cars fly, trees fight back, and a mysterious elf comes to warn Harry Potter at the start of the second year of his amazing journey into the world of wizardry. The latest installment of the Harry Potter Concert Series projects your favorite moments from Harry Potter and the Chamber of Secrets™ in high-definition, accompanied by the Hawaii Symphony Orchestra performing the music from the movie. Tickets: \$27 - \$79. Blaisdell Concert Hall. hisymphony.org.

APRIL 7 - 8 • HAWAIIAN SCOTTISH FESTIVAL & HIGHLAND GAMES

The annual festival offers two days of Celtic music,

performers, highland dancers, swordplay and fencing demonstrations, a children's activity area and a clan and genealogy room. There will be plenty of Celtic-themed food (even haggis), wares and whisky for sale. McCoy Pavilion. \$3 admission. 10 a.m. - 9 p.m. on Saturday, until 6 p.m. on Sunday. hawaiianscottishassociation.org.

APRIL 8

THE HAPALUA

Hawaii's half-marathon kicks off the 13.1 mile course at the Duke Kahanamoku Statue with runners westward toward downtown, where they turn at Smith Street, and then head back towards Waikiki ending at the traditional Marathon finish line by Kapiolani Park. Expect multiple lane closures along the course starting at 3 a.m. Race starts at 6 a.m. thehapalua.com.

APRIL 8 - 14

LPGA LOTTE CHAMPIONSHIP 2018

This is the 7th year the ladies stop in the island with a field of marquee names in the golfing world including Ibee Park and Michelle Wie. 144 players have registered to hit the links over four days for 72-hole stroke play, in search of the \$2 million purse. Admission \$10 daily, or get a week pass for \$25. Ko Olina Golf Club. lottechampionship.com.

APRIL 10

HEART OF PEACE: FINDING ALOHA

Ambassador for Peace Sri Sri Ravi Shankar makes a rare visit to the Hawaii Theatre for an evening of music and universal wisdom on the heart of peace and transformation. 7 p.m. Tickets: \$25 - \$45. hawaiiitheatre.com.

APRIL 11

DIRTY CELLO

Led by vivacious cross-over cellist, Rebecca Roudman, Dirty Cello is cello like you've never heard before. From down home blues with a wailing cello to virtuosic stompin' bluegrass, Dirty Cello is a band that gets your heart thumping and your toes tapping. Blue Note Hawaii. 6:30 and 9 p.m. Tickets: \$15-\$35. Kamaaina get 15% off. bluenotehawaii.com.

APRIL 13

ADAM DEVINE

One of the most sought after young comedians and actors in the comedy world. Adam Devine is best known as a co-creator, writer, and star of the hit Comedy Central show, *Workaholics*, for which he was named one of THR's Top 50 Showrunners and one of Variety's 2013 Ten Comics to Watch. 8 p.m. Hawaii Theatre. Tickets: \$29.50 - \$45.50. hawaiiitheatre.com.

APRIL 14

SEA LIVE PARK TWILIGHT CONCERT SERIES

Sea Life Park is once again hosting the Makapu'u Twilight Concierge Series and they're kicking off the trio of concerts with some big names in local entertainment. The first of these concerts will feature Danny Couch, Kalani Pe'a and Amy Hanaiali'i Gillom. 5 – 10:30 p.m. Tickets: \$49.50 - \$57. Gates open at 4 p.m. for VIP, 5 p.m. for everyone else. Food and drink available for purchase. sealifeparkhawaii.com.

APRIL 19 • PRIMUS

The much loved rockers known for their alternative heavy metal feel are bringing their Ambushing the Storm Tour to Oahu and Maui. Tickets: \$47.50. Price increases day of show. Opening act starts at 8 p.m., headliner at 9:15 p.m. The Republik. jointherepublik.com.

APRIL 20

JAZZ APPRECIATION MONTH CONCERT

To celebrate Jazz Appreciation Month, the Royal Hawaiian Center is offering 4 hours of a free jazz performances from Honokaa High School Jazz Band, the Chuck James Band featuring Starr Kalahiki and the Chuck James Band. 4:30 – 8:30 p.m. Royal Grove. royalhawaiiancenter.com.

APRIL 20

SUNSET MELE ON THE ROOF

The Sunset Mele Marketplace features food booths, arts & crafts booth and more starting at 5 p.m. Live entertainment begins at 5 p.m. featuring Streetlight Cadence. Feel free to bring low-slung beach chairs, mats or blankets to watch the feature film "Coco", starting at 6 p.m. Parking \$5. facebook.com/HawaiiConventionCenter. 4 – 9 p.m. 943-3025.

APRIL 20-21

IOLANI SCHOOL FAMILY FAIR



Visitors and locals alike are welcome at the Iolani Family Fair. Enjoy food, crafts, rides, games, plant sale, chef demos, crafts, petting zoo, live music, lion dances and more! Food fair staples include giant turkey legs, gumbo, and Okinawan soba noodles. Free admission with plenty of parking at Kaimuki High School.

Continues on page 16.

Road to Hāna

Travel the famous Road to Hāna with Maui's most popular tour provider, Polynesian Adventure Tours. Guests relax on our brand new, luxury Grech mini coaches with wide viewing windows. They'll enjoy a picnic-style lunch in the heart of Hāna and swim in splendor in a waterfall-fed pool, weather-permitting.

WWW.POLYAD.COM

Polynesian adventure
808.833.3000

APRIL CALENDAR OF EVENTS

Continued from page 15.

DISCOUNT HAWAII CAR RENTAL SAVE UP TO 50%



GUARANTEED RESERVATIONS
* NO BOOKING FEES * NO
DEPOSIT * CANCEL ANYTIME
* NATIONAL RENTAL
COMPANIES

call us today @

1.800.292.1930

or check us out online:

DiscountHawaiiCarRental.com

Wildlife Guaranteed

See dolphins or turtles or come again free wildlife-specific cruises in Waikiki, West Oahu & Kona. Family-owned company with ocean activities for all ages.



WAIKIKI •
WAIANAE •
KONA
Sail • Snorkel •
Dolphins • Turtles
• Whales • Scuba •
Fireworks Dinner •
Private Charter •
Transportation

234-SAIL

(7245)

WE ANSWER 24 HOURS!

hawaiinautical.com



Hawaii Nautical

WAIKIKI BAPTIST Church

Your Church in Waikiki

424 Kuamo'o St

(Near the Ambassador Hotel)

Sunday Worship Services

9:00 AM - Contemporary

10:45 AM - Traditional

(808)955-3525

WaikikiBaptist.com

APRIL 20-24

EUGENE ONEGIN

Hawaii Opera Theatre brings their 2017-2018 season to a close with the passionate music of Tchaikovsky bringing Pushkin's famous Russian novel to life. Ryan McKinny returns to H.O.T. in this collaborative effort with the Seattle Opera, the Atlanta Opera, Michigan Opera Theatre, and Lyric Opera of Kansas City. Sung in Russian with English translations projected above the stage. Performances: Friday, 7:30 p.m., Sunday, 4 p.m. and Tuesday, 7:30 p.m. Tickets: \$34 - \$135. Blaisdell Concert Hall. hawaiiopera.org.

APRIL 20 • SPECIAL PRESENTATION OF HISTORY THEATRE

In a special presentation from the June 2017 Cemetery Pupu Theatre production Yesterday's News one will meet Rev. Lorrin Andrews, the editor of the first Hawaiian language newspaper; and Samuel Kamakau, a contributor on Hawaiian history and culture to Hawaiian language newspapers. Gathering and food from 5:30 p.m. to 6:30 p.m. Performance begins at 6:30 p.m., followed by a "talk back" session with the researcher and actors. Hawaiian Mission Houses. Tickets: \$30 includes pupu and beverage.. missionhouses.org.

APRIL 21

S T R F K R

The indie rock band out of Oregon has. Tickets: \$27. Price increases day of show. Their songs have gotten significant airplay after being featured in a multiple of TV shows and commercials. The band is bringing their "dance music you can listen to" and "pop songs you can dance to" to the Republik. 8 p.m. jointherepublik.com.

APRIL 21

BROWN BAGS TO STARDOM

Hawaii's biggest annual talent show features students of all ages and schools competing in singing, musical bands, dancers, ukulele, magicians, comedians and instrumentalist. Brown Bags has been discovering some of Hawaii's biggest stars since 1980 and promotes "music in the schools". Tourists welcome. Tickets: \$20. Elementary kids 9 a.m. - noon, middle school kids 2 - 5 p.m. and high schoolers from 6:30 - 10 p.m. Hawaii Convention Center. brownbagstostardom.com.

APRIL 21

FAMILY DAY OPEN HOUSE

One of only two free days at the Hawaiian Mission Houses. Be sure to tell your guests to take advantage of the free admission, family activities on the lawn and free tours on the half hour beginning at noon. Last tour leaves at 3 p.m. missionhouses.org.

APRIL 24

MAKANA

Local favorite and slack key virtuoso Makana will be joined by special guest Lopaka Colon, performs two shows for one night only at Blue Note Hawaii. 6:30 and 9 p.m. Tickets: \$30-\$45. Kamaaina get 15% off. bluenotehawaii.com.

APRIL 26-28 • HIROSHIMA

Hiroshima has been tearing down musical walls for over 3 decades with integrating Japanese instruments into their R&B, pop jazz, and world music blend. The multi-Grammy nominated group performs two shows a night for three days at Blue Note Hawaii. 6:30 and 9 p.m. Tickets: \$25-\$45. Kamaaina get 15% off. bluenotehawaii.com.

APRIL 27

SLATKIN CONDUCTS JOHN WILLIAMS

Internationally renowned American conductor, Leonard Slatkin takes the audience on a melodious adventure through the musical genius of John Williams' greatest hits. Be transported beyond your imagination with orchestral favorites such as The Theme from Star Wars, Indiana Jones and E.T. the Extra-Terrestrial - Maestro Slatkin with also be hosting this performance with curations and introductions to each piece. Tickets: \$27-\$79. 7:30 p.m. HISymphony.org

APRIL 28

EAST HONOLULU FOOD FESTIVAL

Top local chefs will serve signature dishes from around the world at this food and wine fest featuring nearly two dozen restaurants including Agu Ramen, Big City Diner, Café Julia, Kakaako Kitchen, Ted's Bakery and more. There will be plenty of entertainment, free rides and games including rock climbing and face painting and event a silent auction. \$70 in advance, \$80 at the door. Star of the Sea. 5:30 - 9:30 p.m. starofthesea.org.

APRIL 28

WAIKIKI SPAM JAM



25,000 fans of Hawaii's favorite food will converge onto Waikiki for one of the more unique and popular block parties held all year. The 16th

annual Waikiki SPAM Jam will unfold on Kalakaua between 4 - 10 p.m. with plenty of food, entertainment and fun for the whole family. Kalakaua will shut down completely at 1:30 p.m. to prepare. waikikispamjam.com.

APRIL 28 • WAIMEA VALLEY MOON WALK AND DINNER BUFFET

Waimea Valley's Moon Walk is back for its 35th year. On nights with a full moon, head over to Waimea Valley for a special Full Moon Walk. Admission times for moon walk are 8 p.m. and 8:30 p.m. Each admission is \$10 and begins with an 'oli and brief Waimea Valley overview. On these nights, the Proud Peacock will reopen with a fresh, local, dinner buffet (\$34.95) by Ke Nui Kitchen. You must exit the Valley no later than 10 p.m. waimeavalley.net.

APRIL 28 - 29

THE DEBUTS OF SLATKIN & VÄHÄLÄ



Photo: Steve J. Sherman

Once again, acclaimed conductor, Leonard Slatkin, will be guiding Honolulu audiences through a powerful program that pairs Finland's Elina Vähälä with Finnish master composer, Jean

Sibelius. The Violin Concerto is filled with rich textures that will evoke a Nordic spirit and showcase the violinist's precision and skill. The glorious Symphony No. 2 by Brahms rounds out this spectacular Masterworks weekend offering. Tickets: \$34-\$92. Saturday, 7:30 p.m. Sunday, 4 p.m. HISymphony.org.



THE STREET
A WALKER BROTHERS COMPANY

We planned it months ago. Michael Mina was going to be in town, and we were bringing as many concierge as we could to come meet him and experience both of his Waikiki restaurants. Murphy intervened, and due to a family emergency he flew out the evening before the event, but the restaurants didn't miss a beat, showcasing both StripSteaks menu items and craft cocktails and The Street's variety of choices. (Can we say King Crab Roll? Delish!) 800-3094.



Hawaii Exotic *Car Rentals*

**Special Occasion?
Wedding?
VIP Guest?
or just because you can....**

Hawaii Exotic Car Rentals offers beautiful, exciting Exotic Supercars perfect for your Oahu vacation. We offer some of the best Supercars in the world right here Oahu, conveniently located in Waikiki.

Our Sports Cars have exceptional after market stereo systems, as well as after market exhaust systems for boosted power and sound.



Rent our 2013 Lamborghini Gallardo or our 2012 Ferrari California Hard Top Convertible and take pictures and send them back to your friends and family at home in locations all over this stunning island.

Guaranteed to make your loved ones green with envy!!

Both cars are very simple to drive in automatic and offer the option of paddle shifting if you so choose.



Rental Requirements

- Must be 25 years of age or older
- Major credit card
- Valid drivers licence
- 24 hour rental minimum
- Insurance is included with rental

How much does a rental cost?

\$1,200 for the Ferrari

\$1,500 for the Lamborghini

\$700 for a white 2016 BMW X50 SUV
minimum 24 hour rental

10% discount available for multiple 24 hour periods and 20% discount for a week or longer.
Includes 100 miles, \$1.00 per mile over, insurance & taxes.

Waikiki Hotel Delivery
available upon request

Call: (808) 222-7376
info@hawaiiexoticcarrentals.com

www.HawaiiExoticCarRentals.com

That's Entertainment

HOTELS

- HALE KOA HOTEL** 955-0555
 •**TuSat** - High and Right Comedy Show takes the stage at the Warriors Lounge at 8pm.
 •**MThFS** - Poolside music at the Barefoot Bar. 6-11pm
- HALEKULANI HOTEL** 923-2311
 •**Daily**-Hawaiian Music and hula at House Without A Key from 5:30-8pm.
 •**Daily**-Live Contemporary and light Jazz at Lewers Lounge from 8:30pm to midnite.
 •**Sun**- Sunday brunch at Orchids features Noly Paa on the piano from 10am - 1:30pm.
- HILTON HAWAIIAN VILLAGE** 949-4321
 •**Fri** - Fireworks return to their normal time, 7:45 pm.
 •**Fri** - The Rockin' Hawaiian Rainbow Revue, a musical salute to King Kalakaua, at the Super Pool. 7 pm.
 •**Daily** - Live entertainment, Tapa Bar. 8:15-10:30pm.
- HYATT REGENCY WAIKIKI** 923-1234
 •**Fri** - Aloha Friday Polynesian show, lei-making, hula, and Fire dancer, 1st floor near the Waterfall, 4:30-6 pm.
- THE KAHALA HOTEL & RESORT** 739-8888
 •**TuWThFSat** - David Swanson vocalizes on the piano at The Veranda from 7:30-10pm. Hawaiian on Sun/Mon.
- MOANA SURFRIDER** 922-3111
 •**Daily**-Hawaiian music & hula. The Banyan Court, 6-8 pm, and again from 8 -10 p.m. Weekends from 11:30-2 p.m.
 •**MWFri**-Guided historical tours at 11am.
- NEW OTANI KAIMANA BEACH** 923-1555
 •**FSat**- Jazz guitarists in the Sunset Lanai Bar. 6-9pm.
- OUTRIGGER WAIKIKI ON THE BEACH** 923-0711
 •**Daily**- Daily Cultural Program, front lobby. 11am.
- OUTRIGGER REEF ON THE BEACH** 923-3111
 •**Daily**- Cultural programs at Kani Ka Pila Hale. 9am.
- SHERATON PRINCESS KAIULANI** 922-5811
 •**Daily**-Live Hawaiian music & halau at the lounge from 6-8:30pm, then poolside from 8:30-10:30pm.
 •**Th**-Princess Kaiulani historical tour at 9:30am.
- THE ROYAL HAWAIIAN** 923-7311
 •**TTH**- Free guided resort tour at 1pm.
- TURTLE BAY RESORT** 293-6000
 •**TThFri** - Shell Hula Lessons, Lobby at 10am
 •**TThFri** - Ukelele Lessons, Lobby at 9am
 •**Fri**- Music & Hula. Lobby Lounge 6:30-8:30pm.
- WAIKIKI BEACH MARRIOTT RESORT** 922-6611
 •**Daily**-Hawaiian entertainment in The Moana Terrace Bar. 6:30-9:30pm.
 •**Fri**-Local crafters "Aloha Friday Fair" Lobby 9am-2pm

MUSEUMS

- HAWAII STATE ART MUSEUM** 586-0900
 •**TWThFSat** - Inaugural exhibition "Enriched by Diversity: The Art of Hawai'i." Free. Tuesday-Saturday, 10 a.m. to 4 p.m. Located in the Capital District.
 •**Tues**- A one-hour guided tour offers a unique insight in the history, art, architecture and restoration of the Hawai'i Theatre with trained docents & a mini-concert on the 1922 Robert Morton Theatre Organ. 11 a.m. Admission: \$10.
- HONOLULU MUSEUM OF ART** 532-8726
 •**MWF**- Japanese Language Tours. Private tours also available. 1pm. Regular admission.
- HONOLULU FIRE MUSEUM** 723-7167
 •**3rdSat**- Free one-hour guided tours through various exhibits with a firefighter recounting HFDs history the 3rd Saturday: 9am - 2pm. Reservations required. 620 South Street. honolulu.gov/hfd/communityrelations
- IOLANI PALACE** 522-0832
 •**Mon-Sat**-45 minutes docent-lead or self-guided audio tours available in English or Japanese. Japanese-led tour is available only at 11:30 a.m. All tours include re-tour video and entrance into the Palace Galleries. Adults: \$14.75-\$21.75 / Keiki (5-12): \$6. 9am-5pm
 •**Sat**-Hawaiian Quilt Classes. Old Archives 9:30a-12p.
- LUCORAL MUSEUM** 922-5381
 •**TTh**- Learn how to plan your jewelry project and more in this beaded jewelry workshop \$10. 2-4pm
- HAWAIIAN MISSION HOUSES** 447-3910
 •**Tue-Sat**-Learn about the story of cultural change in 19th-century Hawai'i. Docents lead tours through the oldest existing frame house in the Islands, Print Shop, and the Chamberlain House. missionhouses.org
- PACIFIC AVIATION MUSEUM** 441-1000
 •**Daily**-Vintage aircraft in battlefield hangars at Pearl Harbor. Combat flight simulators. Aviator's Tour takes you through the new Restoration Hangar. Restaurant, Museum Store. Shuttle & Tickets at USS Arizona Memorial Visitor Center or at PacificAviationMuseum.org.
- THE SPALDING HOUSE** 526-1322
 •**Daily**-Docent-led tours given daily. 1:30pm. Garden tours or Japanese language tours are by appointment.
- NAVAL AIR MUSEUM BARBERS POINT** 682-3982
 •**Mon-Fri**- A unique museum experience about aviation history in Hawaii. All aircraft are open to climb in, on and around. Tours: 8am - 4:30pm. \$7 / \$5 children under 18. Kalaeloa Airport. Reservations req'd. Sat/Sun by appt only. www.nampb.org.

SHOPPING CENTERS

- ALA MOANA CENTERSTAGE** 955-9517
 •**Mon-Sat** - Ala Moana Hula Show. *Centerstage* 1-1:20pm
 •**MWF**- Hawaiian music *Mauka Wing*, Lvl 2 2:30-3:30pm
 •**Sun** - Keiki Hula Show. *Centerstage* 1-1:20pm
- INTERNATIONAL MARKET PLACE** 921-0536
 •**Daily** Ceremonial lighting of Lamaku Torch Tower just after sundown followed by a hula show. *Queen's Court*.
 •**Every Other Sun** Free Yoga from Lululemon. 10-11am. *Queen's Court*.
- KINGS VILLAGE** www.kings-village.com 237-6344
 •**MW** Famer's Market offering fresh produce, baked goods and local food items from 4-9pm.
 •**Daily** King's Guard Museum features a variety of collectibles and memorabilia. 10a-10:30p. FREE.
- ROYAL HAWAIIAN CENTER** 922-2299
 • **M**- Keiki Hula lessons 3:30pm, *Royal Grove*
 • **MWF**- Learn Lomilomi 11am-12pm, Bldg. B, 3rd floor
 • **MTF**-Hula 10am (4pm on Wednesdays), *Royal Grove*
 • **TThSat**- Rock-a-Hula Pre-Show 7pm, *Royal Grove*
 • **TWTh**- Lauhala Weaving 1pm, Bldg B., 3rd floor
 • **TThF**- Ukelele 12pm, *Helumoa Hale*
 • **TWThF**- Live Hawaiian music 6-7pm, *Royal Grove*
 • **Sat**- Hula Kahiko 6-6:30pm, *Royal Grove*
 • **Daily**- Heritage Room/Cultural Videos *Helumoa Hale*
- WAIKIKI BEACH WALK** www.waikikibeachwalk.com
 •**Tuesdays** - Ku Ha'aheo featuring Hawaiian song and dance on the Plaza stage. 4:30-6pm
 •**Wednesdays** - Yoga Classes 4-4:45pm. Free.Plaza Stage

ATTRACTIONS

- KALAKAUA AVENUE** 527-5666
 •**Fri** - Strolling Hula from 8-10:00pm.
- KAPI'OLANI BANDSTAND** 527-5666
 •**Fri**-Hawai'i's finest musicians perform. 5:30-6:30pm
 •**Sun**-Royal Hawaiian Band performs 2-3:15pm.
- KUHIO BEACH HULA SHOW** 843-8002
 •**TThSat**- Free hula show. 6:30 - 7:30pm hula mound.
- TAMARIND PARK - DOWNTOWN** 527-5666
 •**Fri**- Mayor's Aloha Friday Music from 12-1pm
- WAIKIKI TOWN CENTER** 922-2724
 •**Mon-Sat**-The songs and dances of Hawai'i, New Zealand, & Tahiti. Free shows begin at 7pm.

EVENTS SUBJECT TO CHANGE ... PLEASE CALL TO CONFIRM PRIOR TO ATTENDING

PAPARAZZI

James Beard nominees and winners speak



James Beard award-nominated Chef Ed Kenney did a talk story moderated by former food writer and radio host Jo McGarry and James Beard award-winning Southern Chef Vivian Howard at The Surfjack Hotel & Swim Club.

HFWF Raises a Record \$414,000 for Charity



The Hawaii Food & Wine Festival raised a record amount of money during this past years festival for 23 different beneficiaries! That's a total of \$2 million and counting since 2011. This years HFWF will be held Oct. 6 -28. HFWF.me.

Prada's new men's boutique



Model Bobby Cabino, Stylist Crystal Pancipanci, Publicist Erika Kauffman, Realtor Rachel Barette at a private cocktail event to introduce the new Prada Men's boutique at the Ala Moana Center. Picture courtesy of Lance Rae.

conciierge card

April 30, 2018

Bill's Sydney Waikiki - 20% discount off food and beverage (not applicable on happy hour or other offers). Must show hotel ID to receive discount. 280 Beach Walk. 922-1500

Dole Plantation - 1 FREE Adult Admission To The Maze With Purchase of 1 Adult Admission. 621-8408

Giovanni Pastrami - 15% Off Full Bar, Dine-in or Take-Out at anytime with ID. 227 Lewers St. 923-2100.

Hard Rock Café - 15% off food, beverage (non-alcoholic), or merchandise. Hotel ID required. 280 Beachwalk Ave. 955-7383.

Hawai'i Prince Golf Club - \$5 Off Standard Kamaaina Green Fees. Tee Times: 944-4567

Hilo Hattie - 25% on Hilo Hattie labeled garments, 15% off other fashions/gifts and 10% off Hilo Hattie labeled foods. Not valid on sale item. Ala Moana Center. Ph 535-6500.

Hy's Steakhouse - 25% VIP Discount Off Food And Beverage (up to 2 persons) 2440 Kuhio Ave. 922-5555

Hyatt Regency Waikiki - 15% discount with the presentation of a concierge business card at SHOR, Japengo and SWIM. 2424 Kalakaua Ave. 923-1234.

Iolani Palace - Free Admission. Regular rate \$21.75. 364 S. King Street, Reservations & Hotel ID required. 522-0832.

IHOP - Receive 20% on entire bill. Must show valid hotel ID. Not valid with any other offer or discount. Valid only at Aqua Palms, 1850 Ala Moana Blvd., 949-4467 and OHANA Waikiki Mallia by Outrigger®, 2211 Kuhio Ave., 921-2400.

Il Lupino - 15% discount off food and beverage (not applicable on liquor or specials). Must show hotel ID or business card to receive discount. Royal Hawaiian Center. 922-3400

HELP us update this card. If you know of an offer not being honored let us know. As management changes, sometimes offers can get lost.

Kaiwa - 20% off food & beverage between 5 & 7 p.m. 924-1555

Hawaiian Mission Houses - Free tour with hotel ID. 553 S. King Street. 447-3910

Noi Thai - 20% discount off food and beverage (not applicable on liquor, happy hour or specials). Must show hotel ID to receive discount. Royal Hawaiian Center, Bldg. C. Level 3. 664-4039

Pacific International Skydiving Center - 50% Discount on Jump, 68-760 Farrington Hwy, 637-7472.

P.F. Chang's Waikiki - Receive 20% on all appetizers, entrees, desserts and beverages 11 am - 5 pm daily (not valid for Pau Hana menu) Royal Hawaiian Center. Ph: 628-6760, 637-7472

Romano's Macaroni Grill - 10% Off Food for up to 2 guests. (Not Valid for Happy Hour Menu). Ala Moana Center, 1450 Ala Moana Blvd. 356-8300.

Ruth's Chris Steak House - 10% Off Food for up to 2 guests. (Not Valid for Happy Hour & Prime Time menus). Restaurant Row, 599-3860. Waikiki Beach Walk, 440-7910.

Honolulu Museum of Art Spalding House. - FREE Admission for you and one guest with hotel ID. 526-1322.

The Original Glider Rides - Come experience the joy of soaring for yourself. Concierge / GSA may receive a complimentary scenic ride. Request the "GSA flight special" when booking your reservation. Hotel ID required. Dillingham Airfield. 637-0207

Tiki's Grill & Bar - FREE order of ANY appetizer with any purchase! One per table. OahuconPOKE. ASTON Waikiki Beach. 923-8454

Willoughby's Restaurant - 15% off all food items. Ohana Honolulu Airport Hotel. 3401 N. Nimitz Hwy. 836-0661.

NEW OFFER

You will be required to show Hotel ID or business card to claim offer. Do not cut this card out of the book. One special per person per business. Offers valid on regular-priced merchandise only. Discounts are available to Guest Service Professionals ONLY. Not valid with other promotions or special offers. A minimum 18% gratuity on original order required for all special food offers.

Activity Concierge of the Month



NAME: Jordan Johnson

HOTEL: Elite Concierge

TITLE: Concierge

Q. How long have you been with Elite Concierge?

A. I have been a part of the Elite Concierge family since April of 2017.

Q. How big is your team there?

A. Thankfully our team isn't very big at all, about 10 of us all together. It makes it a lot easier to get to know each other and become closer friends.

Q. How did you get your start in this industry?

A. I worked as a guest service agent right out of high school at Sea Life Park and quickly realized how much I loved being able to make our guests' vacations memorable. Now I have a passion for helping people build their most amazing vacations!

Q. What do you think is the biggest challenge there?

A. Honestly, it's trying to figure out what tours and activities will match what guest. For example, though everyone might have their own favorite luau they like to suggest, that same luau might not fit every guest. I try my best to learn about every possible option in every category of tours. I like to hand-pick the tours for each guest and it can get challenging trying to decide what they would enjoy the most, try to keep that perfect tour within the guests desired budget.

Q. What do you like most about this industry?

A. Hands down it's the satisfaction of knowing that I helped someone have an amazing time on their vacation. The sheer joy on their faces after they return is so amazing to me.

Q. What is your favorite restaurant to recommend?

A. It depends on what the guests are looking for. If they're looking for seafood, I'll recommend Azure.A steakhouse? Hys. A great place to grab breakfast? Heavenly Café or Cream Pot. Something a little more upscale? House Without a Key or Beachhouse at the Moana. Oceanfront maybe? Dukes it is. There's so many options, the list could go on forever.

Q. And for activities?

A. Besides the typical circle island tour, Pearl Harbor tour and Luau, I always like to suggest that guests get out and see the Pacific Ocean up close and personal. I like to suggest snorkel tours, kayaking adventures, catamaran sails and especially whale watching sails if the season calls for it. My second favorite thing to suggest is a helicopter ride. One of the most valuable things my boss taught me is the best way for guests to see Hawaii is by air, land and sea.

Q. Do you have one particular guest that stands out?

A. One of the first guests I ever booked at Elite was an older couple and their grandson. They booked a lot of action-packed tours for him to do. On their last day, they came up to my desk and asked to give me a hug. The grandmother, almost in tears, looked right into my eyes and told me "Jordan, I can't thank you enough for all that you've done for us this week. We've had the most incredible time, all thanks to you. We could've never done any of this without you". Those words really changed my life forever. Seeing how happy and grateful she was in return made me feel like the happiest person on the planet and really made me realize how much I absolutely adore this industry and that there's not another job in this world that I could love more than this.

BAREFOOT BEACH CAFE Waikiki

Open Daily 7am – 8:30pm (last call)
On the Beach at the
Diamond Head End of Waikiki

Info Line | 808.924.2233 (CAFÉ)
2699 Kalakaua Avenue,
Honolulu, Hawaii 96815

Catering + Events | 808.699.8830
Events@BarefootBeachCafe.com

@BarefootBeachCafe

The Oahu Concierge is printed monthly and direct mailed FREE to all Oahu Concierge, Hospitality & Activity Professionals.

Subscriptions available to non-industry at \$25 per year.

C O N T A C T

Davis Media

Ph: 596-4422

www.oahuconciierge.com

Twitter & Instagram: @OahuConciierge

Facebook: www.facebook.com/OahuConciierge

ADDRESS & NAME CHANGES / ADDITIONS

We do not take changes via telephone. All changes to mailing list must be submitted in writing by the 16th of the month to make the next issue, email is preferred.

S T A F F

PUBLISHER & EDITOR **Pam Davis**
publisher@oahuconciierge.com

CONTRIBUTING EDITORS

Lance Rae, Nadine Kam

DESIGN

Coreiya Design

The Oahu Concierge
4348 Waiialae Avenue, #185
Honolulu, Hawaii 96816

GRAND LĀNAI RESTAURANT WEEK

MONDAY, APRIL 9 - MONDAY, APRIL 16



8 SPECTACULAR RESTAURANTS. 1 DELICIOUS WEEK.

Indulge in specially priced offerings and signature prix fixe menus from Hawaii's finest collection of eateries.

Win a \$250 Gift Card*

Post a photo to Instagram for your chance to win.

Poke Bowl II, April 13

Eating House 1B49 versus STRIPSTEAK.
Vote for the tastiest dish.

An Evening with Michael Mina, April 16

Join this iconic chef as he prepares an inspired multi-course meal under the stars.



INTERNATIONAL MARKET PLACE

*Visit ShopInternationalMarketPlace.com/grandlanairrestaurantweek for complete rules.
2330 Kalakaua Avenue | ShopInternationalMarketPlace.com