

THE OAHU Concierge

KEEPING THE HOSPITALITY INDUSTRY INFORMED SINCE 1998

On your mark...
get set... *Shop!*

On any given year, you can expect a shopping frenzy at the Made in Hawaii Festival, but in 2024, Hawaiian Airlines presents the 30th anniversary of the shopper's delight, and this year promises to be bigger and better than ever.



Yeah, yeah, yeah, you've heard that before, right? Well, they aren't exaggerating. When the festival left the Blaisdell Arena, it struggled to find its groove, but last year, the festival came into its own when it found a new home at the Hawaii Convention Center. Forty-nine thousand people flocked to the Convention Center to explore over 450 booths. It was the biggest festival they have had to date.... until now. This year's massive 30th-anniversary celebration of Hawaii's largest shopping bonanza will dwarf their previous shows with an astronomical number of vendors showcasing their wares. Over 700 vendors have signed up to participate. This will be the Lollapalooza of Made in Hawaii products. We are talking about the state's most talented local artisans, makers, and entrepreneurs.

There is no way to list all 700 vendors, but they will be offering absolutely everything. A few of the participants include tasty treats by Dipped by Dee, an O'ahu sweet treat shop specializing in chocolate strawberries, caramel apples, cookies, and more. Hawaiian Hot T's Hot Sauce is a veteran-owned company known for its small-batch sauces made from local ingredients with adorable names such as Sop Brah, BBG Bruddah, and Maui Owie! Kakou Collective will offer its Hawaii stationery, eco-friendly Hawaii-themed washi tape, weatherproof stickers, and locally inspired home goods where they weave Hawaii's story and love

of local culture into everything they create. Designed by Dari will showcase its handmade Polymer Clay Jewelry & Accessories while Napua'ala Body Care Products will showcase its line of cosmetic body care products and handcrafted soaps, all carefully sourced and made by hand. Lexbreezy Hawai'i is a custom cut and sew clothing brand that comprises one-of-a-kind signature styles in a modern twist of Aloha and resort wear. Honolulu Baby Company will be in hand with its organic baby clothes made in Hawaii by a mother of 2 who makes fun and unique children's clothing and accessories.

New this year, the festival will feature a specialty Hawaiian Miles Marketplace, an array of new vendors, and dozens of local vendors launching brand new products exclusive to the Made in Hawaii Festival, as Hawaiian Airlines has signed on to be the presenting sponsor. There will also be fashion shows highlighting the latest designs from local designers, and most of the items paraded on the catwalk will be available for sale.

It's not just about the shopping, however. The Made in Hawaii Festival is also known for its award-winning musical performances, giving shoppers an opportunity to sit down and relax in between buying sprees to enjoy music from Nā Hōkū Hanohano winners such as Taimane, Jerry Santos, Kawika Kahiapo, Melveen Leed, and Sean Na'auao, to name a few.

Hawaii's favorite comedian, Frank DeLima, will also be stopping by for what is sure to be a hilarious set. Didn't nosh enough of the samples at each of the booths? Multiple local celebrity chefs

Continued on page 7.

DUKE'S OCEANFEST



Get ready for some wild & wacky action on the waves as Duke's Oceanfest hits Waikiki August 17-25

Waikiki's premier ocean sports festival, Duke's Oceanfest, is a unique summer event that pays tribute to Hawaii's legendary waterman, Duke Kahanamoku. As one of the greatest watermen in history and a renowned figure in Hawaii, Duke's Oceanfest celebrates his life, athletic prowess, and enduring spirit that lives on through the water and beach sports he loved.

Duke was one of the best athletes to ever come out of Hawaii. Born August 24, 1890, he learned how to swim in the waters at the far end of Waikiki, where the Hilton Hawaiian Village now stands, and became one of the best swimmers in the world. While he is recognized as the "Father of Surfing," he also won six Olympic medals in swimming between 1912 and 1932, including three golds. In these roles, Duke traveled the globe, bringing with him his extraordinary athletic skills and an overall presence that inspired and amazed while inviting others to experience the aloha of Hawaii. Duke is fondly remembered today as the greatest waterman who ever lived and

Continued on page 4.

TABLE OF CONTENTS

Yada Yada	2
Milton Lau and his Slack Key Guitar Festival	2
Newsflash	3
Paparazzi: 'I'O Waikiki	6
E Pili Kakou	8-13
Chef's Corner: Chef/TV Personality Nyesha Arrington 13	
Calendar	14-17
20th annual Korean Festival	16
Paparazzi: Margotto Hawaii	17
Paparazzi: Izakaya 855-ALOHA	18
That's Entertainment / Concierge Card	19

Publisher's Letter



Summer Celebrations Continue

Summer marches on, and there is plenty of fun in the sun to fill the rest of our summer days. This month is for shoppers and water enthusiasts. The Made in Hawaii Festival is celebrating its 30th anniversary this month, bringing nearly double the number of vendors they've had before. Over 700 merchants will be participating in this year's festival held at the Convention Center, and with those numbers, you know there has to be something for everybody. We are talking about the best of the best — all made here on the island. Forget that our visitors won't know what hit them with all those goodies to choose from, but they will also have to fight off us locals for a chance to buy them. Fortunately there should be enough for everyone. It's an excellent opportunity for our local small businesses and artisans.

This month also brings Duke's Oceanfest back to Waikiki's shores. Keep your eyes trained in the surf near Queen's Beach from August 17 - 25th; you'll never know what you'll see. Either an adorable grom catching one of their first waves or a true surfing legend hanging ten off Waikiki. There will also be plenty of acrobatics, as the best tandem surfers in the world will show off their stuff, so expect plenty of action as the teams practice, and, of course, there is the annual compETition. You know there will be dogs with their toes on the nose, but in the past, there have been ducks, pigs, and cats... who knows what kind of animal will show up this year? One thing you won't see is the Red Bull Party Wave competition this year. For whatever reason, that won't be happening this year, but there will still be plenty to keep your guests entertained as they work on their tan and take in a show at the same time!

Don't forget Sunset on the Beach. What's more Hawaii than kicking back on the beach with your toes in the sand to watch a movie on a 30-foot screen? See *Wonka* this month on August 10 as the summer fun continues.

There's plenty of music this month as well. Slack-key tributes to Gabby continue.

Hey, did you realize that this year marks 25 years that I've been putting out *The Oahu Concierge*? Holy cow that's a long time, but we'll talk more about that later. Happy August!

Yada Yada



Vjee Aparra

Congratulations to **Vjee Aparra** who was recently promoted to Rooms Manager at the **Hilton Garden Inn Waikiki Beach**. Prior to joining Highgate, Vjee's held positions in retail, reception, and was a Guest Service Agent at the White Sands Hotel. • Also at **Highgate**, **Ramona Sidlo** who has been rocking it in her position as Mayor of the Block for the Romer Waikiki properties, has been promoted to

Highgate Hawaii's regional director of experiential marketing. Congrats! • The **Hilton Hawaiian Village Waikiki Beach Resort** recently announced that **Kyle Anger** has been named



Kyle Anger

hotel manager. Anger brings with him over 18-years of experience in the hospitality industry and most recently, he served as the director of hotel operations/interim general manager at the Sheraton Boston Hotel.

SHARING HIS LOVE OF SLACK KEY



Milton Lau has been promoting and producing the annual Hawaiian Slack Key Guitar Festival for over 40 years. In 1982, he organized a slack key concert to pay homage to his pal Gabby Pahinui at Waimanalo Beach Park.

Although he only planned to put on that one festival, it took on a life of its own, and 42 years later, the festival is going strong.

Over the decades, the festival has been staged at several locations, including the McCoy Pavilion at Ala Moana Park, Bishop Museum, Waterfront Park, Royal Hawaii Hotel, Kapiolani Park, Turtle Bay Resort, Kailua Town, Windward Mall, and this year, the festival will be held at the Waikiki Aquarium. The event is a benefit for the Waikiki Aquarium, but at the heart of every festival is the core of the mission - to promote, preserve, and perpetuate slack key guitar – or, as it is called in Hawaiian – ki-ho'alu.

At around 80 years old, Milton Lau has devoted more than half of his life to this festival. We asked him why he does this year after year. "In our eyes ki-ho'alu is a cultural treasure of Hawaii like the hula," says Milton, "It is in our best interest to keep this art form alive and thriving. For us, it is rewarding to attend festivals and see the smiles and happiness in the eyes of the audience. This alone validates what we are doing. It's become a labor of love for us all." He continued, "We've actually embarked on an ambitious program to expand the festival to cities in Washington State, Oregon, California, Nevada, Colorado, and elsewhere," he continues. "We've also traveled to the East Coast to do the festival in New York,



New Jersey, Maryland, Washington D.C. Of course, we've [taken the festival] to Japan. We've also done programs with the Smithsonian in Washington, D.C. In the future, we believe that the art form we represent will continue to grow all over the world. And now, with social media and new technologies, we have tools to help us grow worldwide without leaving Hawaii at all."

When asked about his unwavering commitment to the festival, Milton's response is simple yet profound. "This is a lifetime job, and the fuel that keeps us going is the love and passion for the art form and the joy it brings to people's lives. Seeing the smiles and happiness in the eyes of the audience is the ultimate validation of our efforts, making it a labor of love for us all."

The art form of ki-ho'alu sets us apart and makes us (Hawaii) special in the eyes of visitors around the world. Through workshops, concerts, and festivals, slack-key has grown worldwide. Lucky for us, we don't have to go anywhere to hear the melodic tunes of these fantastic musicians when they take the stage. Tickets are \$10 for kama'aina and \$20 for our visitors, and all proceeds will go to the Aquarium. Come celebrate the slack-key guitar – Waikiki Style on August 31st from 5 - 9 p.m. For more information, head to facebook.com/slackkeyfestivals.

EXTRA EXTRA EXTRA *Newsflash*

MAKALAUNA 2024 RETURNS TO WAIKIKI BEACH WALK

Don't miss this annual powerful tribute to late-great slack key virtuoso, Gabby Pahinui, at Waikiki Beach Walk on August 17. Join Gabby's grandson, Kunia Galderia at 4:30 p.m. as he presides over a powerful lei draping ceremony at Gabby's statue with other members of the Pahinui family, followed by live musical tributes from some of the islands best musicians until 8 p.m. For more details head to waikikibeachwalk.com.

NEW SHOW "NĀ LEI ALOHA" LAUNCHES AT THE HYATT

The long-awaited evening show from the Kilohana Hula Show and the Council for Native Hawaiian Advancement opened in late July at the Hyatt Regency Waikiki. Its new production, "Nā Lei Aloha," is a spectacular presentation of the rich cultural history of the art of lei told through music and hula in a way it's never been seen before. Nothing says "I love you" in Hawaii like a lei. Guests may choose a show-only or dinner package to "Celebrate Hawai'i's Unique Expression of Love" Sunday through Thursday evenings. Dinner packages include buffet dinner at The Buffet At Hyatt, and a complimentary beverage. To purchase tickets or find out more details, including times and prices, go to naleialoha.com

DOLE PLANTATION ENHANCES ITS GARDEN TOUR

Dole Plantation has upgraded its two-acre Plantation Garden by adding a new Native Species & Medicinal Garden where visitors can learn about Hawai'i's natural & cultural history. The new garden includes a wide variety of native plants with healing properties such as flower trees like red 'ōhi'a lehua, which were used to relieve the pain of childbirth, and canoe plants such as the red and green sugarcane, whose internal fibers from the stalk were used to clean teeth and gums. DolePlantation.com.

DRIP HAWAII

Drip Hawaii, a licensed medical spa at the 'Alohilani Resort, providing advanced anti-aging and wellness services tailored to each client's specific needs, has been a hit with visitors seeking those extra vitamins they need while traveling. They also offer micronutrient therapy, body sculpting, intimate health enhancement, and aesthetic services such as Botox, fillers, and more. driphawaii.com.

WAIKIKI'S ALOHA AMBASSADORS ARE NOW 24/7

Exciting news: The Waikiki Business Improvement District received a one-time grant of \$250,000 that they are using to provide around-the-clock service from its Aloha Ambassador Program for up to a year. The ambassadors provide a wide array of services, including hospitality, safety, custodial tasks, and landscaping. As of last month, three Ambassadors are now working overnight shifts, specifically patrolling around Kuhio Beach Park.

CELEBRATE IMP'S TIKI-VERSARY WITH MIXOLOGY MONTH

Mixology Month returns to International Market Place with specially priced cocktails, mocktails, and appetizers at participating restaurants all month. Don't miss the Battle of the Bartenders on August 7, 14, and 28 at 4 p.m. or a special Don Ho tribute on August 16 with a special lei draping and tribute concert by Henry Kaponon at 6 p.m., and the Tiki in Waikiki Festival starts on August 23. shopinternationalmarketplace.com.

Hilton
HAWAIIAN VILLAGE
WAIKIKI BEACH RESORT

An ENCHANTING evening under the STARS.

On Fridays on our beautiful Great Lawn, let us take you on a journey across the South Pacific; Savor island-inspired cuisine, try Hawaiian games and crafts, and at the end of the evening, quickly access vantage points for amazing views of the Friday fireworks show on Duke Kahanamoku Beach.

WAIKIKI STARLIGHT LUAU

hhvluau.com
808-941-LUAU
Scan for Rooftop Luau availability

PARK WEST FINE ART MUSEUM & GALLERY

Waikiki Beach Walk Honolulu
808-859-4871 parkwesthawaii.com



Any client you refer for a private tour will get

10% off their purchase*
if they mention the hotel and concierge that referred them.

For more details
waikikibeach@parkwestgallery.com

PARK WEST GALLERY

*Terms and conditions apply

DUKE'S OCEANFEST

Continued from page 1.



was the first person ever inducted into the International Swimming Hall of Fame and the International Surfing Hall of Fame.

Duke's Oceanfest is held each summer in late August and celebrates Duke

through his favorite sports. Throughout the week, multiple events will be held every day for visitors to watch and enjoy as they wander through Waikiki.

The festivities kick off on Friday, August 16, at the iconic statue of Duke Kahanamoku located alongside Kalakaua Avenue. With his arms outstretched in greeting to welcome all who pass by, local dignitaries will drape the statue in lei during a traditional opening ceremony to kick off the festivities. Competitors and visitors will come together to witness this vibrant opening ceremony filled with traditional Hawaiian music and hula dancers, showcasing the islands' rich cultural heritage. The ceremony will set the stage for the week ahead, capturing the essence of Hawaiian culture and fostering a sense of camaraderie among all in attendance.

The following day starts with a special event honoring our nation's wounded warriors. The Na Koa Wounded Warrior Canoe Regatta occurs on Fort DeRussy Beach. I had the honor of steering a few of these races in years past, and it's truly inspirational to see these warriors give it their all during this canoe regatta – and it was really fun, too. The more people

they can get on the beach to cheer them on, the better!

Most events run for a few days right on Queen's Beach. The Outrigger Resorts & Hotels Volleyball Challenge will set up camp at the beach courts, and there will be action on the waves almost every day. All of the events are spectator-friendly.

Aside from your typical surfing events featuring kids to pros, there are a few to watch for. Don't miss the Hawaii Tandem Surfing Challenge on August 19 and 20th, as beach-goers can see the moves from some of the most progressive and acrobatic tandem surfers from around the world. But some of the most entertainers surfers will be strutting their stuff Tuesday morning as the comPETition goes to the dogs. The event started with four dogs and a pig back in 2015. Since then, the contest has seen all sizes of dogs, from chihuahuas to Mastiffs to ducks and even cats. You'll never know what kind of animal might pop up on a wave, so keep your eyes on the water.

There's plenty more to see and do throughout the week. Waikiki will be bustling with activity from August 16 – 25, as this beloved community and cultural event brings some of the more exciting events. Visitors can have a front-row seat, lie on the beach, and watch all the excitement unfold right in front of them on the ocean while getting a tan. Talk about multi-tasking!

For more details, and a full schedule of events and times, head to their website at dukesoceanfest.com.



Duke's OceanFest Schedule of Events

Please visit dukesoceanfest.com for updated times and locations. Schedule subject to change.

FRIDAY, AUGUST 16

Opening Ceremony - Duke Statue

SATURDAY, AUGUST 17

Outrigger Resorts & Hotels Volleyball Challenge (Kids)

Surfboard Water Polo

Na Koa Wounded Warrior Canoe Regatta

SUNDAY, AUGUST 18

Outrigger Resorts & Hotels Volleyball Challenge (Kids)

Pacifico Longboard Classic (Day 1)

MONDAY, AUGUST 19

Pacifico Longboard Classic (Day 2)

Tandem Surf Competition (Day 1)

Adaptive Surfing Exhibition

TUESDAY, AUGUST 20

Pacifico Longboard Classic (Day 3)

Tandem Surf Competition (Day 2)

Going To The Dogs SurFur ComPETition

WEDNESDAY, AUGUST 21

Outrigger Resorts & Hotels Legends Surf Invitational
Head High Wines World Foil Challenge (Day 1)

THURSDAY, AUGUST 22

Outrigger Resorts Legends Surf Invitational (Day 2)
Head High Wines World Foil Challenge (Day 2)

FRIDAY, AUGUST 23

Outrigger Resorts Legends Surf Invitational (Day 3)
Duke's OceanFest Legends Reception

SATURDAY, AUGUST 24

Duke Paoa Kahanamoku Sunrise Birthday Lei Draping
Menehune Surf Fest (Day 1)

Keiki Kokua Surf Fest

Duke's Waikiki Ocean Mile Swim

Outrigger Resorts Volleyball Challenge (Adults)

SUNDAY, AUGUST 25

Menehune Surf Fest (Day 2)

Outrigger Resorts & Hotels Beach Volleyball
Lifeguard Challenge



HAWAII'S CENTER FOR 65 YEARS

Mahalo to the millions of guests who have helped make Ala Moana Center Hawai'i's favorite destination for shopping, dining and entertainment.

350+ STORES & RESTAURANTS AT THE HEART OF THE PACIFIC
ALAMOANACENTER.COM



CocoNene



Maui Oahu



Create Your Own!

CAPTURE HAWAII VACATION MEMORIES



#madeinhawaii

coconene.com

Instagram and Facebook icons followed by @coconenehawaii

TO WAIKIKI
RESTAURANT

The owners of Sikdorak opened the first all-you-can-eat Korean BBQ restaurant in Waikiki in the Waikiki Shopping Plaza. Choose from 11 meat selections at lunch for \$29.95. Over 25 premium meat selections are offered on the dinner menu with 4 price tiers. The premium meat only menu costs \$46.95, add on unlimited side orders and soups for \$59.95, and a \$99.95 option offers AYCE A5 Wagyu plus everything else listed before. Open from 11 a.m. to 10 p.m. daily, follow them on Instagram @io.waikikikbbq or call 200-2466.



Made in Hawaii

Continued from page 1.



Over 700 vendors will be bringing their wares to the Hawaii Convention Center for customers to browse through at the biggest Made In Hawaii Festival ever

like Keaka Lee from Kapa Hale, Paul Rivera from Hula Grill, and Foodland's Keoni Chang will be stopping by to offer cooking demonstrations that you get to try. For the most part, each day will include three 30-minute chef demos, followed by three live performances and a fashion show.

Outrigger Resorts & Hotels also continues its support of Hawai'i musicians through its annual Kani Ka Pila Grille Talent Search. The four finalists will be announced at the end of July and be invited to perform live at the Made in Hawai'i Festival on Saturday, August 24, from 3-6 p.m. in front of a panel of renowned Hawaiian music industry professionals. The winner will receive a month-long contract at Kani Ka Pila Grille amongst other prizes. In the past 17 years Outrigger has hosted the contest. Over the past 16 years, the talent search the winners have taken home 14 Nā Hōkū Hanohano awards. Don't miss your chance to see the next big thing in Hawaiian music make their big breakthrough!

That's not all; the Made in Hawaii Festival Beer Garden that appeared last year was so popular that it is making its return available to guests ages 21 and older. The beer garden will be the perfect spot for the latest from Hawai'i's local breweries, and after a few tasty beverages, you might head back to the booths and buy that item you just needed to think about.

Hawaiian Airlines 30th Annual Made in Hawai'i Festival returns to the Hawaii Convention Center August 23- 25, filling Exhibit Halls I, II, and III. The Festival opens Friday, August 23, from 10 a.m. to 8 p.m., and continues Saturday, August 24, from 9 a.m. to 8 p.m., and Sunday, August 25, from 9 a.m. to 5 p.m. For more information and a complete schedule of chefs and performers, head to madeinhawaiifestival.com.



Waikiki's Best Variety of Fun!

Inside or outside, Waikiki's best choice of feel-good activities is at Waikiki Beach Walk.

Free Parking 10am-3pm Daily*
*With \$10 minimum purchase

Open 365 Days | 10AM-9PM
Located on Lewers St. between Kalakaua Ave. & Kalia Rd.



SEND YOUR GUESTS TO A *faraway* PARADISE. OKAY, THE NORTH SHORE.

It's never been a better time for your guests to experience the Polynesian Cultural Center. They can explore our six island villages with our popular Gateway Buffet package or our Islands & HĀ Show package. For more information, visit polynesia.com.



Performers & times subject to change

Let's be Together...

DINING ▶ ENTERTAINMENT ▶ PAU HANA ▶ EAT ▶ DRINK ▶ BE MERRY ▶ HAPPY HOUR ▶

MONDAY

100 Sails at the Prince Waikiki 944-4494
Live Contemporary Hawaiian
 Mike Tulba Duo 6-8pm

Barefoot Beach Café at Queen's Beach 924-2233
Live Contemporary & Hawaiian
 The Barefoot Boys 5:30-8:30pm

BASALT 923-5689
Live Contemporary & Hawaiian
 Jon Basebase 6-8pm

Duke's Canoe Club Waikiki 922-2268
Live Contemporary Hawaiian
 Grace Welton 4-6pm
 Bryan & Halekahu 7-9:30pm
 Ellsworth Simeona 9:30-12am

Hard Rock Cafe 955-7383
Contemporary Rock
 Chapter II (or TJ & Sons) 8-10pm

Heydey at the White Sands 475-6864
Contemporary Rock
 Laupepa Letuli 7-9pm

House Without a Key 923-2311
Hawaiian music & hula by Miss Hawaii '23 Star Thurston
 Pa'ahana Trio 5-8pm
 Nick La'a 8:15 - 10pm

Hula Grill 923-4852
Live Contemporary Hits

Ben Kama 12-2pm

Kani Ka Pila Grille 924-4992
Hoku Award Winning Hawaiian musicians
 Sean Na'auao 6-9pm

Lewers Lounge 923-2311
Jazz Pianist
 Jonny Kukui 8-10:30pm

Mahi'ai Table 670-2778
Live Contemporary
 Jenna Keala 5-8pm

Mahina & Sun's 923-8882
Monday Vibes on the Lanai
 Kokonut Point 6:30-9:30pm

Mai Tai Bar at the Royal Hawaiian 923-7311
Live Contemporary Hawaiian
 Brad Kawakami 11am-2pm
 Mark Caldeira 8-10pm

Maui Brewing Company 843-2739
Live Contemporary Hawaiian
 Randy Allen (or others) 8:30-10:30pm

Merriman's Honolulu 215-0022
Live Slack Key guitarist
 Deven Camat 5:30-7:30pm

Monkeypod Kitchen Ko Olina 381-4086
Live music 3x a day including from 12:30 - 2 p.m.
 Kree and Malik 3:30-5pm
 Sienna Souza 7-9pm

Monkeypod Kitchen Waikiki 900-4226
Live music 3x a day including from 12:30 - 2:30 p.m.
 Shawn Garnett 3:30-5pm
 Dustin Park 7-9pm

Pikos Kitchen & Bar 923-2032
Live Contemporary Hits
 Christian Yrizarry 6-9pm

Rumfire 921-4600
Live Contemporary Hits
 Dave Watanabe 6-9pm

Signature Prime Steak 949-3636
Contemporary Pianist in the bar
 Keith Montross 6-9pm

Splash Bar at the Sheraton Princess Kaiulani 921-4600
Live Contemporary Hawaiian
 David Aquino 6-9pm

Swell at the Alohilani 294-4108
Solo Contemporary Guitarist
 Drew Henmi 6:30-9:30pm

SWIM at the Hyatt Regency 923-1234
Live Contemporary Hawaiian
 Kaulana Vinoya 5-9pm

The Beach Bar at the Moana Surfrider 922-3111
Live Contemporary Hawaiian
 Jesse Kuikahi 3:30-6:30pm
 Johnny Valentine 7-10pm

The Edge at the Sheraton 921-4600
Live Hawaiian Music
 Stephen Inglis (or Bronson Varde) 1-4pm

The Point Sunset Pool Bar at Turtle Bay 293-6000
Live Contemporary Hawaiian with Fireknife Dancer
 Kuhio Travis 5-8pm

100 Sails at the Prince Waikiki 944-4494
Live Contemporary Hawaiian
 Cherie Duo 6-8pm

BASALT 923-5689
Live Contemporary & Hawaiian
 Lauren Baba 6-8pm

Barefoot Beach Café at Queen's Beach 924-2233
Backyard Hawaiian
 Ben Kama 5:30-8:30pm
 Shane Kainoa (or others) 6-9pm

Duke's Canoe Club Waikiki 922-2268
Live Contemporary Hawaiian
 Walt Keale 4-6pm
 Kailua Moon 7-9:30pm
 Stephen Inglis 9:30-12am

Eating House 1849 Waikiki 924-1849
Live Contemporary Hawaiian
 Kings Kalohelani 4:30-7:30pm

Giovanni Pastrami 923-2100
Acoustic Soul, R&B and Pop
 YOZA (or others) 6:30-9:30pm

Hard Rock Cafe 955-7383
Contemporary Rock
 Sydney Spencer (or Tehani) 8-10pm

House Without a Key 923-2311
Hawaiian music & hula by Miss Aloha Hula '21 Maka Perry
 Delima Ohana 5-8pm
 Jonny Kukui 8:15 - 10pm

Hula Grill 923-4852
Contemporary Rock
 Kawika Kahiaipo 12-2pm

Kani Ka Pila Grille 924-4992
Hoku Award Winning Hawaiian musicians
 Kala'e Camarillo 6-9pm

LBLE Lounge 922-0811
Jazz Pianist
 Jessie Kuikahi 6-10pm

Lewers Lounge 923-2311
Jazz Pianist
 Tommy James 8:30pm-12am

Mahi'ai Table 670-2778
Live Contemporary
 Keoni Ku 5-8pm

Mahina & Sun's 923-8882
Electrifying Acoustic on the Lanai
 Laupepa Letuli 6:30-9:30pm

Mai Tai Bar at the Royal Hawaiian 923-7311
Live Contemporary Hawaiian
 Liam Moleta 11am-2pm
 YOZA 6-9pm

Maui Brewing Company 843-2739
Live Contemporary Hawaiian
 Trish Nalei (or Mike Piranha) 8:30-10:30pm

Merriman's Honolulu 215-0022
Live Contemporary
 John Kema 5:30-7:30pm

Moani Waikiki 466-2629
Live Contemporary Hawaiian
 Lava 7-10pm

Monkeypod Kitchen Ko Olina 381-4086
Live music 3x a day including from 12:30 - 2 p.m.

TUESDAY

STARTING AT \$64

SAVOR OUR PRIME TIME MEAL WITH STARTER, ENTRÉE, SIDE, AND DESSERT

RUTH'S CHRIS STEAK HOUSE

AVAILABLE DAILY FROM 4-8 PM
 Oahu: Waterfront Plaza and Waikiki Beach Walk
 Maui: The Shops at Wailea
 RUTHSCRIS.COM

E Pili Kākou

DINING ▶ ENTERTAINMENT ▶ PAU HANA ▶ EAT ▶ DRINK

Pono	3:30-5pm	Pa'ahana Trio	5-8pm
Chante	7-9pm	Mike Tulba	8:15 - 10pm
Monkeypod Kitchen Waikiki	900-4226	Hula Grill	923-4852
<i>Live music 3x a day including from 12:30 - 2:30 p.m.</i>		<i>Contemporary Rock</i>	
Tiare and Keala	3:30-5pm	Ronson Asuncion	12-2pm
John Akapo	7-9pm	Kani Ka Pila Grille	924-4992
Pikos Kitchen & Bar	923-2032	<i>Hoku Award Winning Hawaiian musicians</i>	
<i>Live Contemporary Hits</i>		Ei Nei	6-9pm
Drew Henmi	6-9pm	Lewers Lounge	923-2311
Rumfire	921-4600	<i>Jazz Pianist</i>	
<i>Live Contemporary Hits</i>		Tommy James	8:30pm-12am
Christian Yrizarry (or Brad Kawakami)	6-9pm	Mahi'ai Table	670-2778
Signature Prime Steak	949-3636	<i>Live Contemporary</i>	
<i>Contemporary Pianist in the bar</i>		Dillon Pakele	5-8pm
Keith Montross	6-9pm	Mahina & Sun's	923-8882
Splash Bar at the Sheraton Princess Kaiulani	921-4600	<i>Soulful Guitar on the Lanai</i>	
<i>Live Contemporary Hawaiian</i>		John Akapo	6:30-9:30pm
Mark Caldeira	6-9pm	Mai Tai Bar at the Royal Hawaiian	923-7311
Swell at the Alohilani	294-4108	<i>Live Contemporary Hawaiian</i>	
<i>Solo Contemporary Guitarist</i>		Stephen Inglis	11am-2pm
Braad Kawakami (or others)	6:30-9:30pm	Johnny Valentine	6-9pm
SWIM at the Hyatt Regency	923-1234	Maui Brewing Company	843-2739
<i>Live Contemporary Hawaiian</i>		<i>Live Contemporary Hawaiian</i>	
Dominic Carlos	5-9pm	Scott Magz & Preston	8:30-10:30pm
The Beach Bar at the Moana Surfrider	922-3111	Merriman's Honolulu	215-0022
<i>Live Contemporary Hawaiian</i>		<i>Live Contemporary</i>	
Stephen Inglis	3:30-6:30pm	Kamaka Camarillo	5:30-7:30pm
Alex Oasay	7-10pm	MINA's Fish House	679-0079
The Edge at the Sheraton	921-4600	<i>Live Contemporary Hits</i>	
<i>Live Hawaiian Music</i>		Kamuela Kahoano	6-9pm
YOZA	1-4pm	Moani Waikiki	466-2629
The Point Sunset Pool Bar at Turtle Bay	293-6000	<i>Blues, Old School Rock, Country</i>	
<i>Live Contemporary Hawaiian with Fireknife Dancer</i>		Keith Batlin	7-10pm
Danielle Parente	5-8pm	Monkeypod Kitchen Ko Olina	381-4086
WEDNESDAY			
100 Sails at the Prince Waikiki	944-4494	<i>Live Contemporary 3x a day including from 12:30 - 2 p.m.</i>	
<i>Live Contemporary Hawaiian</i>		Chris Murphy	3:30-5pm
Kai Malo'o	6-8pm	Izik	7-9pm
Barefoot Beach Café at Queen's Beach	924-2233	Monkeypod Kitchen Waikiki	900-4226
<i>Island Vibes</i>		<i>Live music 3x a day including from 12:30 - 2:30 p.m.</i>	
Danny Galura	5:30-8:30pm	Bori & Isa	3:30-5pm
Duke's Canoe Club Waikiki	922-2268	Chante	7-9pm
<i>Live Contemporary Hawaiian</i>		Pikos Kitchen & Bar	923-2032
Keoni Ku	4-6pm	<i>Live Contemporary Hits</i>	
Taulia Lave	7-9:30pm	David Aquino	6-9pm
Alika Souza	9:30-12am	Rumfire	921-4600
Eating House 1849 Waikiki	924-1849	<i>Live Contemporary Hits</i>	
<i>Live Contemporary Hawaiian</i>		Jesse Kuikahi	6-9pm
Shawn Garnett	4:30-6:30pm	Signature Prime Steak	949-3636
et al inside Kahala Market	732-2144	<i>Contemporary Pianist in the bar</i>	
<i>Live Contemporary Hawaiian</i>		Pierre Grill	6-9pm
Johnny Helm	5:30-8:30pm	Splash Bar at the Sheraton Princess Kaiulani	921-4600
Giovanni Pastrami	923-2100	<i>Live Contemporary Hawaiian</i>	
<i>Acoustic Guitar Soul, R&B</i>		Brad Kawakami	6-9pm
Jason Laeha	6:30-9:30pm	Swell at the Alohilani	294-4108
Hard Rock Cafe	955-7383	<i>Solo Contemporary Guitarist</i>	
<i>Contemporary Rock</i>		Danielle Parente	6:30-9:30pm
Cassie and the...	8-10pm	SWIM at the Hyatt Regency	923-1234
House Without a Key	923-2311	<i>Live Contemporary Hawaiian</i>	
<i>Hawaiian music & hula by Miss Universe '97 Brook Lee</i>		Biku	5-9pm
		The Beach Bar at the Moana Surfrider	922-3111

INTRODUCING DOWNTOWN HONOLULU'S NEW CULINARY EPICENTER

AC HOTEL HONOLULU
1111 BISHOP ST.
@ACHOTELHNL

COMMON GROUND



YOUR NEW BOUGIE BODEGA COFFEE SHOP, WITH ALOHA

MON - FRI | 7:00AM - 2:00PM
SAT | 7:00AM - 11:00AM

@COMMONGROUNDHNL

THE DOTTED LINE

AC KITCHEN & LOUNGE



MORE IS MORE AT THIS EXECUTIVE PLAYGROUND

BREAKFAST, BRUNCH, LUNCH,
PAU HANA, DINNER

DOTTEDLINEHAWAII.COM

YOURS TRULY

ADVENTUROUS COCKTAILS



UNDERGROUND BAR & LOUNGE WITH HIDDEN SPEAKEASY #IYKYK

WED & THU | 5:00PM - 11:00PM
FRI & SAT | 5:00PM - 12:00AM

YOURSTRULYHAWAII.COM

Performers & times subject to change

Let's be Together...

DINING ▶ ENTERTAINMENT ▶ PAU HANA ▶ EAT ▶ DRINK ▶ BE MERRY ▶ HAPPY HOUR ▶

Live Contemporary Hawaiian

Brandon Serrano 3:30-6:30pm
Kaiona 7-10pm

The Edge at the Sheraton 921-4600

Live Hawaiian Music

Kupu Dalire-Na'auao 1-4pm

The Point Sunset Pool Bar at Turtle Bay 293-6000

Live Contemporary Hawaiian with Fireknife Dancer

Alex Oasay 5-8pm

Tiki's Grill & Bar 923-TIKI

Live Contemporary Hawaiian and hula

Derrick Lee 1-3 pm
Malu Productions 5:30-7:30pm

Vintage 1901 at the Moana 921-4600

Contemporary Piano

David Swanson 6:30-10pm

THURSDAY

Barefoot Beach Café at Queen's Beach 924-2233

Live Contemporary & Hawaiian

Alika Souza 5:30-8:30pm

BASALT 923-5689

Live Contemporary & Hawaiian

Glenn Domingo 6-8pm

Duke's Canoe Club Waikiki 922-2268

Live Contemporary Hawaiian

Ben Kama 4-6pm
Henry Kapono's New Artists "On the Rise" 7-9:30pm
Scott Magz 9:30-12am

Eating House 1849 Waikiki 924-1849

Live Contemporary Hawaiian

Shane Kainoa 5-8pm

Giovanni Pastrami 923-2100

Live Contemporary

Billy Sage 6:30-9:30pm

Hard Rock Cafe 955-7383

Live Contemporary

Ezekial (Overcrowded Avenue) 8-11pm

House Without a Key 923-2311

Hawaiian music & hula by Miss Universe '97 Brook Lee

Walea 5-8pm
David Aquino 8:15-10pm

Hula Grill 923-4852

Contemporary Rock

Randy Allen 12-2pm

Kani Ka Pila Grille 924-4992

Hoku Award Winning Hawaiian musicians

Kawika Kahiapo 6-9pm

Lewers Lounge 923-2311

Jazz Pianist

Ethan Capone & Rocky Holmes 8:30pm-12am

Mahi'ai Table 670-2778

Live Contemporary

Alex Oasay 5-8pm

Mahina & Sun's 923-8882

Hawaiian Contemporary on the Lanai

Kelly Boy DeLima 6:30-9:30pm

Mai Tai Bar at the Royal Hawaiian 923-7311

Live Contemporary Hawaiian

Christian Yrizarry 11am-2pm
Stephen Inglis 8-10pm

Maui Brewing Company 843-2739

Live Contemporary Hawaiian

Sean Cleland 8:30-10:30pm

Maui Brewing Kailua 518-2739

Live Contemporary Hawaiian

Grace Welton (or others) 6-8pm

Merriman's Honolulu 215-0022

Live Contemporary

Laupepa Letuli 5:30-7:30pm

MINA's Fish House 679-0079

Live Contemporary Hits

Jesse Kuikahi 6-9pm

Moani Waikiki 466-2629

Contemporary Island Music

Kimo Opiana 7-10pm

Monkeypod Kitchen Ko Olina 381-4086

Live Contemporary 3x a day including from 12:30 - 2 p.m.

Kona Abergas 3:30-5pm
Bronson Varde 7-9pm

Monkeypod Kitchen Waikiki 900-4226

Live music 3x a day including from 12:30 - 2:30 p.m.

Bella and Tehani 3:30-5pm
Javin Kai 7-9pm

Pikos Kitchen & Bar 923-2032

Live Contemporary Hits

Keoni Ku 6-9pm

Rumfire 921-4600

Live Contemporary Hits

Brad Kawakami (or others) 6-9pm

Signature Prime Steak 949-3636

Contemporary Pianist in the bar

Grant Carvalho 6-9pm

Splash Bar at the Sheraton Princess Kaiulani 921-4600

Live Contemporary Hawaiian

Kaimi Hanannoeau 3-6pm
Tad Jennings 6-9pm

Stripsteak 896-2545

Live Contemporary

Jason Laeha 6-9pm

Swell at the Alohilani 294-4108

Solo Contemporary Guitarist

Denny Ono 6:30-9:30pm

SWIM at the Hyatt Regency 923-1234

Live Contemporary Hawaiian

Koa Atwood (or others) 5-9pm

The Beach Bar at the Moana Surfider 922-3111

Live Contemporary Hawaiian

Christian Yrizarry 3:30-6:30pm
Kaimi Hanannoeau 7-10pm

The Edge at the Sheraton 921-4600

Live Hawaiian Music

Alika Souza 1-4pm

Vintage 1901 at the Moana 921-4600

Contemporary Piano

David Swanson 6:30-10pm

FRIDAY

Barefoot Beach Café at Queen's Beach 924-2233

Live Contemporary Hawaiian

The Art Kalahiki Band 5:30-8:30pm

BASALT 923-5689

Live Contemporary & Hawaiian

Shawn Garnett 6-8pm

Duke's Canoe Club Waikiki 922-2268

Live Contemporary Hawaiian

Maunalua 4-6pm
Kawaika Kahiapo 7-9:30pm
Justin Edwards 9:30-12am

Hard Rock Cafe 955-7383

Live Contemporary

Psycho Tropical (or Close the Distance) 8-11pm

House Without a Key 923-2311

Hawaiian music & hula by Miss Hawaii '73 Kanoe Miller

Kapalama Trio 5-8pm
Tad Jennings 8:15-10pm

Hula Grill 923-4852

Contemporary Rock

YOZA 12-2pm

Kani Ka Pila Grille 924-4992

Hoku Award Winning Hawaiian musicians

Ka Hehena 6-9pm

Lewers Lounge 923-2311

Jazz Pianist

Maggie Herron & Dean Taba 8pm-12am

Mahi'ai Table 670-2778

Live Contemporary

YOZA 5-8pm

Mahina & Sun's 923-8882

Slack Key on the Lanai

Dustin Park Duo 6:30-9:30pm

Mai Tai Bar at the Royal Hawaiian 923-7311

Live Contemporary Hawaiian

Brandon Serrano 11am-2pm
Johnny III 6-9pm

Mariposa 951-3420

Live Contemporary

Chris Salvador 2:30-5:30pm

Maui Brewing Company 843-2739

Live Contemporary Hawaiian

ORIGINAL
MAGOO'S PIZZA
EST. 1987

HAWAII'S FAVORITE ISLAND-STYLE
PIZZA, SUBS & SALAD

NOW OPEN DAILY FOR LUNCH & DINNER
11am - 9pm

HAPPY HOUR DAILY
11am - 5pm

ORDER TAKEOUT & DELIVERY ONLINE
<http://OriginalMagoosPizza.com/Order>

3579 Wai'alea Avenue (Between 11th & 12th Ave)

NO HU HU
CALL MAGOO'S
808.949.5381

E Pili Kākou

DINING ▶ ENTERTAINMENT ▶ PAU HANA ▶ EAT ▶ DRINK

Keith Batlin (or Deah & Duva) 8:30-10:30pm

Maui Brewing Kailua 518-2739

Live Contemporary Hawaiian

Dion "Boogie" Scott (or others) 7-9pm

Merriman's Honolulu 215-0022

Live Contemporary

Stephen Harris 5:30-7:30pm

MINA's Fish House 679-0079

Live Contemporary Hits

Jenna Keala 6-9pm

Moani Waikiki 466-2629

Traditional Hawaiian, Reggae. DJ Spins from 10p-1:30am

Liam Molelta 6-9pm

Monkeypod Kitchen Ko Olina 381-4086

Live Contemporary 3x a day including from 12:30 - 2 p.m.

Tehani and Kapono 3:30-5pm

John Akapo 7-9pm

Monkeypod Kitchen Waikiki 900-4226

Live music 3x a day including from 12:30 - 2:30 p.m.

The Mauve 3:30-5pm

Izik 7-9pm

Original Magoos Pizza 949-5381

Live Contemporary Hawaiian

Ernie Kanoa 5:30-8:30pm

Pikos Kitchen & Bar 923-2032

Live Contemporary Hits

Johnny Helm 6-9pm

Rumfire 921-4600

Live Contemporary Hits

Stephen Inglis (or others) 4:30-7:30pm

Drew Henmi 8-10:30pm

Signature Prime Steak 949-3636

Contemporary Pianist in the bar

Grant Carvalho 6-9pm

Splash Bar at the Sheraton Princess Kaiulani 921-4600

Live Contemporary Hawaiian, DJ Jem spins from 2 - 5pm

Ben Kama Duo & Dancer 5-8pm

Dave Watanabe 8-10pm

Stripsteak 896-2545

Live Contemporary

Shane Kainoa 6-9pm

Swell at the Alohilani 294-4108

Solo Contemporary Guitarist

Eddie Somera 6:30-9:30pm

SWIM at the Hyatt Regency 923-1234

Live Contemporary Hawaiian

Denny Ono (or others) 5-9pm

The Beach Bar at the Moana Surfrider 922-3111

Live Contemporary Hawaiian

Chris Salvador 12-3pm

Kailua Moon 3:30-6:30pm

Kamuela Kahoano 7-10pm

The Edge at the Sheraton 921-4600

Live Hawaiian Music

Christian Yrizarry (or others) 1-4pm

The Grove at the Modern Pool Deck 943-5800

Live Contemporary

Tad Jennings 4-7pm

John Coelho 6-8pm

The Point Sunset Pool Bar at Turtle Bay 293-6000

Live Contemporary Hawaiian with Fireknife Dancer

Mark Calderia 5-8pm

The Veranda at the Kahala Hotel 739-8760

Live Contemporary

Johnny Valentine 6-9pm

Vintage 1901 at the Moana 921-4600

Contemporary Piano

David Swanson 6:30-10pm

SATURDAY

Barefoot Beach Café at Queen's Beach 924-2233

Live Contemporary Hawaiian

Vanessa Alputila 5:30-8:30pm

BASALT 923-5689

Live Contemporary & Hawaiian

Jeagan Faye 6-8pm

Duke's Canoe Club Waikiki 922-2268

Live Contemporary Hawaiian

Kaiona Band (or others) 4-6pm

Ells Simeona 7-9:30pm

Sean Cleland 9:30-12am

Eating House 1849 Waikiki 924-1849

Live Contemporary Hawaiian

Kings Kalohelani 10:30am-1pm

Hard Rock Cafe 955-7383

Live Contemporary

Savannah & Yagiz 10 am - 12pm

Tad Jennings 8-11pm

House Without a Key 923-2311

Hawaiian music & hula by Miss Hawaii '73 Kanoa Miller

Kapalama Trio 5-8pm

Mike Tulba 8:15 - 10pm

Hula Grill 923-4852

Contemporary Rock

Walt Keale (or others) 12-2pm

Kani Ka Pila Grille 924-4992

Hoku Award Winning Hawaiian musicians

Ho'okena 6-9pm

Lewers Lounge 923-2311

Jazz Pianist

Maggie Herron & Dean Taba 8-10:30pm

Mahi'ai Table 670-2778

Live Contemporary

Danielle Parente 5-8pm

Mahina & Sun's 923-8882

Contemporary Hawaiian/Blues on the Lanai

Savia Farang 6:30-9:30pm

Mai Tai Bar at the Royal Hawaiian 923-7311

Live Contemporary Hawaiian

Denny Ono 11am-2pm

Dave Watanabe (8/10-Johnny Kukui) 6-9pm

Mariposa 951-3420

Live Contemporary

Aisaiah Jacobs 2:30-5:30pm

Maui Brewing Company 843-2739

Live Contemporary Hawaiian

Ben Kama Duo (or others) 3:30-5:30pm

Maui Brewing Kailua 518-2739

Live Contemporary Hawaiian

Scott Magz (or others) 7-9pm

Merriman's Honolulu 215-0022



MARA

LOCAL FARE.
MEDITERRANEAN FLAIR

BREAKFAST
DAILY | 6:30AM-11AM

BRUNCH
SAT & SUN | 11AM-3PM

LUNCH
MON-FRI | 11AM-3PM

DINNER
DAILY | 5PM-10PM

PAU HANA
MON-FRI | 4PM-6PM

LIVE MUSIC
WED & FRI | 6PM-9PM

BAR & LOUNGE
DAILY | 11AM-11PM

3 Hour Complimentary
Valet Parking

Any Guest Referred by Concierge
will Receive MARA's

VIP EXPERIENCE

When making your guests' reservation
please provide your name & company name

Renaissance Honolulu Hotel & Spa
1390 Kapiolani Blvd

RESERVE TODAY
MARAHONOLULU.COM
@MARA_HONOLULU

Let's be Together...

DINING ▶ ENTERTAINMENT ▶ PAU HANA ▶ EAT ▶ DRINK ▶ BE MERRY ▶ HAPPY HOUR ▶

Live Contemporary
Shane Kainoa 5:30-7:30pm

MINA's Fish House 679-0079
Live Contemporary Hits
Alex Oasay 6-9pm

Moani Waikiki 466-2629
Contemporary Reggae
Braddah Ash 6-9pm
Live Local Band 10pm-1:30am

Monkeypod Kitchen Ko Olina 381-4086
Live Contemporary 3x a day including from 12:30 - 2 p.m.
Javin Kai 3:30-5pm
Izik 7-9pm

Monkeypod Kitchen Waikiki 900-4226
Live music 3x a day including from 12:30 - 2:30 p.m.
Tad Jennings 3:30-5pm
Kona Abergas 7-9pm

Original Magoos Pizza 949-5381
Solo Country
Buck Giles 5:30-8:30pm

Pikos Kitchen & Bar 923-2032
Live Contemporary Hits
Biku Shimabuku 6-9pm

Redfish at the Wayfinder Waikiki 921-3220
Live Contemporary Hits
Johnny Helm 6-10p

Rumfire 921-4600
Live Contemporary Hits
YOZA 4:30-7:30pm
Bronson Varde 8-10:30pm

Signature Prime Steak 949-3636
Contemporary Pianist in the bar
Grant Carvalho 6-9pm

Splash Bar at the Sheraton Princess Kaiulani 921-4600
Live Contemporary Hawaiian, DJ spins from 2-5pm
Brad Kawakami Duo & Dancer 5-8pm
Tangi Tully 8-10pm

Stripsteak 896-2545
Live Contemporary
Dustin Park 6-9pm

Swell at the Alohilani 294-4108
Solo Contemporary Guitarist
Johnny Helm 6:30-9:30pm

SWIM at the Hyatt Regency 923-1234
Live Contemporary Hawaiian
Stan Albrecht 5-9pm

The Beach Bar at the Moana Surfrider 922-3111
Live Contemporary Hawaiian
Brad Kawakami 12-3pm
Bronson Varde 3:30-6:30pm
Koa Atwood 7-10pm

The Edge at the Sheraton 921-4600
Live Hawaiian Music
Johnny Kukui 1-4pm

The Grove at the Modern Pool Deck 943-5800
Live Contemporary
Mike Izon 4-7pm

The Point Sunset Pool Bar at Turtle Bay 293-6000
Live Contemporary Hawaiian with Fireknife Dancer
Denny Ono 5-8pm

The Veranda at the Kahala Hotel 739-8760
Live Contemporary
Cory Oliveros 6pm-9pm

Vintage 1901 at the Moana 921-4600
Contemporary Piano
David Swanson 6:30-10pm

SUNDAY

Barefoot Beach Café at Queen's Beach 924-2233
Live Contemporary Hawaiian
Kimo Baker 10am-1pm
Art Kalahiki 5:30-8:30pm

BASALT 923-5689
Live Contemporary & Hawaiian
Don Baduria 6-8pm

Duke's Canoe Club Waikiki 922-2268
Live Contemporary Hawaiian
Henry Kaponu 4-6pm
Kaiona Duo 7-9:30pm
Tad Jennings (or Justin Edwards) 9:30-12am

Eating House 1849 Waikiki 924-1849
Live Contemporary Hawaiian
Shane Kainoa 10:30am-1pm

Giovanni Pastrami 923-2100
Reggae Pop Music
Kelandy 6:30-9:30pm

Hard Rock Cafe 955-7383
Contemporary Rock
Lovejack (8/25 - Drag Bingo) 10am-12pm
Allie and the Waves 8-10pm

House Without a Key 923-2311
Hawaiian music & hula by Miss Universe '97 Brook Lee
Pu'uhonua Trio 5-8pm
Jason Midro 8:15-10pm

Hula Grill 923-4852
Contemporary Rock
Stephen Inglis (or others) 12-2pm

Kani Ka Pila Grille 924-4992
Hoku Award Winning Hawaiian musicians
Nathan Aweau 6-9pm

La Hiki Restaurant at the Four Seasons 679-0079
Live Contemporary Hawaiian
Kamuela Kahoano 11am-2pm

Lewers Lounge 923-2311
Jazz Pianist
Nick La'a 8-10:30pm

Mahi'ai Table 670-2778
Live Contemporary
Johnny III 5-8pm

Mahina & Sun's 923-8882
Award-winning ukulele on the Lanai
Jeff Rasmussen 6:30-9:30pm

Mai Tai Bar at the Royal Hawaiian 923-7311
Live Contemporary Hawaiian
John Coelho & Kanoe Arola 11am-2pm
Christian Yrizarry 6-9pm

Maui Brewing Company 843-2739
Live Contemporary
Jai Rodgers Duo (or Shay Marcello Duo) 3:30-5:30pm

Merriman's Honolulu 215-0022
Live Contemporary Piano

Grant Carvalho 5:30-7:30pm

Moani Waikiki 466-2629
Contemporary Island Music

Dustin Park 7-10pm

Monkeypod Kitchen Ko Olina 381-4086
Live Contemporary 3x a day including from 12:30 - 2 p.m.
Brada Brey and Corey 3:30-5pm
Lava 7-9pm

Monkeypod Kitchen Waikiki 900-4226
Live music 3x a day including from 12:30 - 2:30 p.m.
JOB! 3:30-5pm
Liam Moleta 7-9pm

Original Magoos Pizza 949-5381
Kanikapila Night
Leonard Jenkins & Joe Chang 5:30-8:30pm

Pikos Kitchen & Bar 923-2032
Live Contemporary Hits
Dominic Carlos 6-9pm

Rumfire 921-4600
Live Contemporary Hits
Jenna Keala 4:30-7:30pm
Alex Oasay 8-10:30pm

Signature Prime Steak 949-3636
Contemporary Pianist in the bar
Keith Montross 6-9pm

Splash Bar at the Sheraton Princess Kaiulani 921-4600
Live Contemporary Hawaiian - DJ spins from 2-5pm
Kailua Moon & Dancer 3:30-5:30pm
Chris Luke 8-10pm

Swell at the Alohilani 294-4108
DJ Mau Spins Poolside from 2-5 pm
Kamuela Kahoano 6:30-9:30pm

SWIM at the Hyatt Regency 923-1234
Live Contemporary Hawaiian
Koa Atwood 5-9pm

The Beach Bar at the Moana Surfrider 922-3111
Live Contemporary Hawaiian
YOZA 12-3pm
Alika Souza 3:30-6:30pm
Dave Watanabe 7-10pm

The Edge at the Sheraton 921-4600
Live Hawaiian Music
Christian Yrizarry (or Tad Jennings) 1-4pm

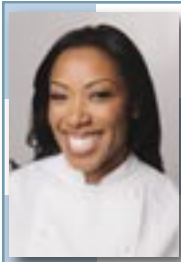
The Point Sunset Pool Bar at Turtle Bay 293-6000
Live Contemporary Hawaiian with Fireknife Dancer
Jenny Yim 5-8pm

Vintage 1901 at the Moana 921-4600
Contemporary Piano
David Swanson 6:30-10pm



I don't know what's happening, but suddenly, it seems all-you-can-eat (AYCE) is becoming a thing. I'm used to breakfast and dinner buffets, but now it's hot pot, BBQ, and sushi! Not only did **Mikiya** and **'I'O** just open, but **Bluefish**

Waikiki just added an AYCE menu option for lunch and dinner with three different price tiers - and theirs comes with a 2-hour time limit instead of 90 minutes. That's crazy. When we went to Mikiya, we were full within an hour. I am happy to say they also include a \$10 fee for any leftover food. Eating to your heart's content is one thing, but sheer waste is a shame. For those in your group with big appetites, see the different price tiers and what's included on their website, thebluefishsushi.com. • **Kapa Hale** has launched its first happy hour. On weekdays from 5 - 6 p.m., find six of the restaurant's favorites on the happy hour, specialty cocktails, and \$2 off select beer and wine. 888-2060. • Looking for a lovely poolside lunch option? **Quiora** has launched a new \$45 daily lunch set featuring your choice of beverage, entrée (select from 4), and side from 11:30 - 3:30 p.m. 729-9757. • **Restaurant Suntory** has also launched a new hot pot lunch set for the summer. Choose from shabu-shabu, seafood, or sukiyaki hot pot for \$26 through August. They also offer the "komachi Bento" (a classic collection of iconic Japanese favorites) along with donburi set meals ranging from \$28 - \$38. 922-5511. • We all know Chinatown took a big hit recently during the power outages in late June, so supporting our small businesses down there is more important than ever. My pal Melissa Chang took me to check out **Tlaxcalli** on Smith Street. Wow, what a find! Did you know these guys have been here since 2001? I didn't, and I'm sorry I missed them for so long - this menu was great! **Chef-owner Julio Gutierrez Santacruz** hails from Sinaloa, and his menu features items only found in his hometown of Culiacán. His Scallops and Shrimp Culichi are delicious! Smothered in a creamy culichi sauce and cheese au gratin, it's as authentic as it comes. (if you want a good chuckle — look up that word!) The Duck Mole is also fabulous, and, usually, I'm not too fond of mole, but this one was great. We tried the duck taquitos, turkey tostadas, and scallop aguachile - all sure-fire winners. Sadly, I left before dessert because the churro bread pudding looked out of this world! Support Chinatown and treat yourself to delicious Mexican food Tuesday to Sunday, a tough find in Hawaii! @tlaxcalli_hawaii.



Chef's Corner

Chef, TV Personality Nyesha Arrington

Did you know long before Nyesha Arrington started her TV career on Top Chef or became a mentor on FOX's Next Level Chef, she worked in a taco shop on Front Street? Cooking has been a way of life for this chef since she was young. She says cooking is more than just a profession for her; it's a way of connecting with people and celebrating different cultures through food. She's passionate about promoting sustainability and using her platform to inspire others to explore and appreciate diverse culinary traditions. Meet her at this year's Hawaii Food & Wine Festival.

Tell us about your first childhood food memory.

Helping my grandmother make her famous spicy pot roast. The rich, comforting aroma of the simmering beef and vegetables filled our home and left a lasting impression on me.

When did you decide to be a chef?

I decided I wanted to be a chef in high school when I took a culinary arts class. The experience of creating dishes from scratch and the joy it brought to others sparked my passion for cooking.

What was your first job in the industry?

I was as a line cook at a local Los Angeles restaurant called Jiraffe. It was a challenging but invaluable experience that provided me with a strong foundation in professional cooking.

How did you develop your view on food?

Growing up in an Afro-Korean household, I was exposed to a diverse range of flavors and culinary traditions. This multicultural background taught me to appreciate and blend different ingredients and techniques, creating unique and vibrant dishes that reflect my heritage.

How did working for some of the best chefs in the nation make you the chef you are?

They taught me the importance of discipline, creativity, and a relentless pursuit of excellence. These experiences shaped my culinary philosophy and inspired me to constantly push the boundaries of my craft.

Who would you consider your mentor?

My mentor is Josiah Citrin, a Michelin-starred chef who has greatly influenced my career. His dedication to precision and innovation in the kitchen has inspired me to refine my skills and approach each dish with a creative mindset.

Describe your style of cooking?

My style of cooking is modern, eclectic, and deeply rooted in my multicultural background. I love to experiment with bold flavors, fresh ingredients, and diverse cooking techniques to create dishes that tell a story.

Is it true you used to work in Maui?

True. I worked for a year at a Hawaiian-style taco shop on Front Street. A colleague who thought the opportunity would be a great fit for my skills and interests. It was an amazing experience that allowed me to explore island cuisine.

How did you end up on Top Chef?

I was encouraged by colleagues and friends to apply, but Top Chef reached but to me while I was in Maui. The opportunity to showcase my skills on a national platform and challenge myself in a competitive environment was something I couldn't pass up.

How did that experience help your career?

Being on Top Chef opened many doors for me, giving me exposure and credibility in the culinary world. It helped me build a network of industry professionals and provided me with opportunities to further my career.

What's your favorite part of being a mentor on Next Level Chef?

Guiding and inspiring the next generation of chefs. It's incredibly rewarding to share my knowledge and help aspiring chefs develop their own unique culinary voices.

What do you have planned for HFWF?

I'm planning to showcase a menu that highlights the fusion of Afro-Korean flavors, using locally sourced ingredients. I'm excited to share my culinary vision with festival attendees.

What's on your must-do list while here?

I plan to explore the local farmers' markets, visit some of my favorite eateries, and spend time at the beach enjoying the beautiful Hawaiian scenery and culture.

What's next for you?

I'm working on opening a new restaurant at LAX that will feature a menu inspired by my multicultural background. I'm also looking forward to expanding my role as a mentor and continuing to innovate in the culinary world.



Pineapple Chutney Recipe

Ingredients:

- Pineapple, med. dice (divide in two)
- 2 cups golden raisins
- 3 ½ cups water
- 1 cup sherry vinegar
- 1 ¼ cup brown sugar
- 1 vanilla bean split, seeds scraped
- 3 sprig of thyme
- 1 cinnamon stick
- 3 star anise

Directions - makes approx. 2 quarts

In a large saucepan, mix together all ingredients except for half of the diced pineapple. Bring to a simmer over medium heat. Once it reaches a simmer, reduce heat to low and cook gently for 25 minutes. Stir occasionally to ensure even cooking and dissolve sugar. After 25 min., stir in remaining half of the diced pineapple, and continue to cook for another 20 min. stirring occasionally. It should thicken slightly as the pineapple breaks down and flavors meld. After 20 min. check consistency. It should be thick but still a bit chunky. If it's too thin, cook it a bit longer, but be careful not to overcook to where it loses its texture. Once it reaches the desired consistency, remove the vanilla bean, thyme sprigs, cinnamon stick, and star anise. Cool to room temperature and transfer to jars or airtight containers. Store in refrigerator for up to a month.

You can meet Nyesha Arrington at this year's Hawaii Food & Wine Festival. She will be at Behind the Cellar Door at the Convention Center on November 8th. For tickets go to HFWF.me
Web: nyeshaarrington.com • **Instagram/TikTok:** @NyeshaJoyce • **Facebook:** /ChefNyeshaArrington

AUGUST CALENDAR OF EVENTS

Continuing Events

MONDAYS, WEDNESDAYS & FRIDAYS O NĀ LANI SUNSET STORIES HULA SHOW

Honoring the rich history and sense of place of the International Market Place through song & dance. It begins at sunset with the lighting of the Lamakū Torch Tower on Kalākaua Avenue and leads to the Queen's Court. Free. 6:30 p.m. shopinternationalmarketplace.com.

TUESDAY THRU SATURDAY ARTS AT MARKS LATEST EXHIBIT

This month's don't miss the Hawaii Watercolor Society Little Picture Show at the Arts at Marks featuring small ready to hang paintings, cards, prints and a special "Christmas in July" section. Meet the Artists at Pau Hana Friday on the first and final Friday of the month from 5 - 8 p.m. Open Tues-Sat. from 12 - 5 p.m. artsatmarks.com.

WEDNESDAYS, SATURDAYS & SUNDAYS ALOHA STADIUM SWAP MEET

The Aloha Stadium Swap Meet has been going strong since 1979. Featuring over 400 vendors, crafters and artists, the Swap Meet offers low-prices on a wide selection of quality products with food trucks to snack from. Wednesdays & Saturdays: 8 a.m. - 3 p.m., Sundays, 6:30 a.m. - 3 p.m. \$2 admission ages 12 & up, \$1 for locals. alohastadium.hawaii.gov.

FIRST FRIDAY (JULY 5) DOWNTOWN GALLERY WALK & CRAFT FAIR

Downtown comes alive the first Friday of every month as art lovers fill the streets for Honolulu's outdoor self-guided arts tour. Stores spill out onto the sidewalk, and artists are on hand to chat about to their works, and restaurants are ready to serve you. Monthly updates published two days before at firstfridayhawaii.com.

SECOND FRIDAY (JULY 12) BISHOP MUSEUM AFTER HOURS

Extended after-hours access to the Museum with a special Pau Hana. Experience unique changing exhibitions, hear about the latest scientific discoveries, engage with Hawaiian cultural practitioners, or spend the evening on the Great Lawn with food and drinks for sale from local vendors. 5 - 9 p.m. \$10 at the door. (\$5 pre-sale) bishopmuseum.org.

FRIDAYS ROYAL HAWAIIAN BAND LUNCHTIME SHOW

The Royal Hawaiian Band returns to 'Iolani Palace for its popular lunchtime concerts. Held on most Fridays, the concerts are free and open to the public. 12 - 1 p.m. iolanipalace.org

FRIDAYS & SATURDAYS HOMA NIGHTS

On Friday and Saturday nights, regular museum admission also includes live musical performances, hands-on art activities, pop-ups in the HoMA Shop, movies on the lawn, bar service at the HoMA Cafe, and other interactive art experiences. The museum stays open until 9 p.m. honoluluuseum.org.

SATURDAYS & SUNDAYS ART ON THE ZOO FENCE

Art On The Zoo Fence is a group of resident Hawaii artists that meet every Saturday and Sunday to display and sell art and photography on the Zoo fence on Monsarrat Avenue opposite the Kapiolani Park Bandstand. This is the only outdoor art venue in Honolulu that has proudly been displaying art since 1953. 9 a.m. - 3 p.m. Free. artonthefencehi.com.

SECOND SATURDAY (JULY 13) KANIKAPILA MA KAIWI'ULA

Bring your 'ukulele, or borrow one that's there. Join in to learn some new techniques, share mo'olelo or just enjoy the music as Ukulele Guild of Hawai'i members lead guests through selections from the Hawaiian Songbook. Free with admission. Bishop Museum Native Hawaiian Garden. 10 a.m. bishopmuseum.org.

SECOND SUNDAY (JULY 14) KAMA'AINA SUNDAYS

Kama'aina Sundays are back at 'Iolani Palace. Locals can take advantage of free tours, entertainment, family-friendly activities and plenty of food options with proof of residency. Free tours will be available to the first 500 guests. 9 a.m. - 2 p.m. iolanipalace.org.

THIRD SUNDAY (AUGUST 18) FAMILY SUNDAY

HoMA's Family Sundays are now quarterly. This quarter families can enjoy T-Shirt Silk-Screening (bring your own T-shirt), storytelling by Sam Kā'ai and music and hula performances throughout the day. Free for kama'aina. 10 a.m. - 6 p.m. 532-8700. honoluluuseum.org.

THIRD SUNDAY (AUGUST 18) MELE HALI'A

Waikiki Beach Walk celebrates Hawaiian music with award-winning musicians and hula hālau one Sunday a month on the Plaza Stage. This month Alan Akaka and his School of Music student takes the stage, showcasing the next generation of steel guitarists. 5-6 pm. waikikibeachwalk.com.

AUGUST 1 • LEGACY CONCERT - A FESTIVAL OF ALL THAT IS ABBA

Emceed by Torri Richards, ABBA costume contests with prizes, Drag performances, fun sing-along with the band "Direct from Sweden - the music of ABBA" - Special VIP reception with bevies and nibbles available. This event is being held as a Pride 365 fundraising event in support of the Hawaii LGBT Legacy Foundation. 7 p.m. Tickets: \$35-\$125. hawaiitheatre.com.

AUGUST 2 • DIRECT FROM SWEDEN - THE MUSIC OF ABBA

Direct from Sweden - The Music of ABBA will deliver the closest ABBA experience you'll ever get with some of Sweden's most experienced and talented singers and musicians playing 100% live. 7 p.m. Tickets: \$65-\$95. hawaiitheatre.com.

AUGUST 2-3 KOREAN FESTIVAL

Enjoy a taste of Korea and its culture when this 20th annual festival returns. Friday night includes a special showing of Night of the Assassin with a meet and greet with actor Shin Hyun Joon at



**FREE
HULA
SHOW**

**Waikīkī Shell
Sundays-Thursdays
9:30-10:30 a.m.**

ExperienceKilohana.com

AUGUST CALENDAR OF EVENTS

Ward Theatre. Saturday activities include a performance by KPOP group Spia, a KPOP Dance and Song Contest, Korean Food Eating Challenges, non-stop entertainment, food booths, cultural exhibits and more! Free. 10 a.m. – 6 p.m. Kakaako Mauka Gateway Park. koreanfesthawaii.com.

AUGUST 2-4 HAWAII TATTOO EXPO 2024

It's Hawaii's largest tattoo expo with the best tattoo artists from around the world, dozens of local entertainers, tattoo contests, a variety of vendors activities, food and more throughout the three-day expo. Fri. 3 – 11 p.m., Sat. 11 a.m. – 11 p.m., Sun. 12- 6 p.m. Blaisdell Exhibition Hall. hawaiitattooexpo.com.

AUGUST 4 MAGIC & MENTALISM SHOW

Journey "Into the Subconscious Mind" with magician Matthew Singer as he seamlessly combines slight-of-hand with psychology, neuroscience, and philosophy to create magic that captivates audiences of all ages. This cabaret show allows guests to sip on hand-crafted cocktails. Shows at 5 and 8 p.m. Tickets start at \$39. matthewsingermagic.com/tickets.

AUGUST 7, 14, & 28 BATTLE OF THE BARTENDERS

As part of Mixology Month, mixologists from restaurants from around the International Marketplace will go head-to-head to find out who will earn the title of the Best Bartender at IMP. Join IMP's bartenders in a spirited competition. Held on three Wednesdays, this tournament-style event includes music, beverage sampling and more. 4 p.m. Queen's Court. Free to observe. shopinternationalmarketplace.com.

AUGUST 8 OLYMPIC SUMMER ROMANCE

Love and sports collide just in time for the 2024 Paris Summer Olympics! Join your HSO for a Starlight summer of love and games. Celebrate the Kings and Queens of music and sports from Elvis Presley, Lady Gaga, the Beatles, and soundtrack hits from the Olympics, the NFL, Chariots of Fire, Rocky, and more. Tickets: \$15-\$75. Waikiki Shell. 7:30 p.m. myhso.org.

AUGUST 9 MAGIC!

Their debut single, "Rude" in 2013 had a meteoric rise and put them on top of the charts. "Rude" held the #1 spot on Billboard's Hot 100 chart for six weeks, while dominating charts globally, hitting #1 in 41 countries. Still going strong, the band just released their 4th album. Two shows, 6:30 and 9 p.m. Tickets: \$35-\$45. bluenotehawaii.com.

AUGUST 9-11 HOME BUILDING & REMODELING SHOW

There's something for everyone at the BIG Home Building & Remodeling Show! Find the professionals you need for your next big project, from financing to pouring foundations they have it all. \$8. Friday, 4. - 8 p.m., Saturday, 10 a.m. - 9 p.m., Sunday, 9 a.m. - 4 p.m. Blaisdell Exhibition Hall. homeshowhawaii.com.

AUGUST 10

DECADES: BACK TO THE 80'S

A power packed evening of the decade's #1 hit songs. Featuring the music of such 80's iconic stars as Madonna, Debbie Gibson, and more. Back to the 80's contains all new arrangements by Grammy-winner Jeff Tyzik and features three incredible vocalists. Tickets: \$15-\$75. Waikiki Shell. 7:30 p.m. myhso.org.

AUGUST 10 KANIKAPILA WAIKIKI FESTIVAL

It's street fair time, and as usual, this one will close all lanes and sidewalk areas of Kalakaua from Seaside to Kapahulu starting at 12:30 p.m. Wander through retail and craft booths, food trucks and more. 4 – 10 p.m. millwoodhanaproductions.com.

AUGUST 11 SPYRO GYRA 50TH ANNIVERSARY

It all began when a few musicians in Buffalo, NY organized a jam session on their night off from working in bands that actually paid them. It was a simple, idea with a humble name, "Tuesday Night – Jazz Jam". Fast forward 5 decades and this jazz super group has released over 30 albums, garnering gold and platinum along the way. They've played over 10,000 concerts on six continents, all the time maintaining its standards of excellence and that has sustained them on the "A list" of live attractions in jazz for 50 years. Two shows, 6:30 and 9 p.m. Tickets: \$45-\$55. bluenotehawaii.com.

AUGUST 16 DON HO'S BIRTHDAY CELEBRATION

In honor of the legendary Don Ho's birthday earlier this week, head over to the International Market Place for a lei draping ceremony at 5 p.m. at his statue, followed by a special Don Ho "Suck 'Em Up" Tribute Show with Henry Kapono & Friends, Queen's Court, Level 1 at 6 p.m. Free. shopinternationalmarketplace.com.

AUGUST 16 PETER PAN

Take flight to a Neverland filled with magic and pirates with the sweeping score to the timeless tale of believing and growing up, Peter Pan. Performances are under 45 minutes, perfect for keiki. Free admission. Waikiki Shell. 9:30 A.m. myhso.org.

AUGUST 16-17 BRAD WILLIAMS

Brad Williams is one of the funniest comedians in the country right now and has become one of the most in-demand comedians working today. Williams started doing stand-up comedy as a teenager and has been touring successfully ever since. Two shows, 6:30 and 9 p.m. Tickets: \$35-\$45. bluenotehawaii.com.

AUGUST 17 AUGUST MOON WALK

Enter Waimea Valley after dark for a moonlit stroll along the main pathway to the waterfall and learn about the Hawaiian phases of the moon. \$10 entry. Entry begins at 8 p.m. waimeavalley.net.

Continued on page 16.



INTRODUCING A NEW HAWAIIAN TAKE
ON A MODERN JAPANESE IZAKAYA

ANY GUEST REFERRED BY CONCIERGE WILL RECEIVE
IZAKAYA 855-ALOHA'S VIP EXPERIENCE.

FOR EVERY 10 REFERRED RESERVATIONS,
RECEIVE A COMPLIMENTARY DINNER FOR 2.

IZAKAYA855ALOHA.COM | @855ALOHA | (808)795-8013 | ROMER HOUSE WAIKIKI | 415 NĀHUA ST.

AUGUST CALENDAR OF EVENTS

Continued from page 15.

AUGUST 17-18 THE MUSIC OF DISNEY

The Sheraton Starlight Festival concludes with a spectacular Disney finale, highlighting iconic songs with special guest singers and orchestra. Tickets: \$15 - \$75. Waikiki Shell. 7:30 p.m. myhso.org.

AUGUST 17 - 25 DUKE'S OCEANFEST

This annual event is held each summer in Waikiki to honor Duke Kahanamoku, who is remembered as the greatest waterman who ever lived, and Hawaii's ambassador of Aloha with a variety of water-based competitions, surf contests and demonstrations, beach volleyball, and more, all of which are spectator-friendly! Most competitions will take place near Queen's Surf in Waikiki, with the surf stand and exhibit booths fronting Duke's Statue. dukesoceanfest.com.

AUGUST 22-23 MAXI PRIEST

Maxi Priest's music is known for its smooth, melodic sound that blends reggae with elements of R&B, pop, and dancehall. His vocal style is often described as soulful and soothing, making his music appealing to a wide audience. Two shows, 6:30 and 9 p.m. Tickets: \$45-\$55. bluenotehawaii.com.

AUGUST 23 THE GARDEN

Twin brothers Wyatt and Fletcher Shears formed the Garden in 2011. The experimental rock band is known for their fast, punk-influenced two-piece bass and drum songs as well as their clown make-up on stage. Tickets: \$35. The Republik. 8 p.m. bampproject.com.

AUGUST 23-25 MADE IN HAWAII FESTIVAL

Three days showcasing the best the Islands has to offer with loads of "Made in Hawaii" products from hundreds and hundreds of vendors, including food, books, art, gifts, fashions, plants, crafts, produce and more that's a must for most locals and visitors alike. Aside from plenty of samples, there will also be cooking demos, fashion shows and ongoing entertainment on the main stage, including the 2024 Kani Ka Pila Talent Search that takes place on Saturday. Hawaii Convention Center. \$8. 10 a.m. - 8 p.m. on Friday; 9 a.m. - 8 p.m. on Saturday, and until 5 p.m. on Sun. madeinhawaii festival.com.

AUGUST 23-25 TIKI IN WAIKIKI FESTIVAL

The third annual Tiki in Waikiki returns. This three-day event features live music, lū'aus, symposiums, a cocktail competition, local vendors, lots of rum and more. Full schedule to be released later at tikiinwaikiki.com.

AUGUST 24 PAULA POUNDSTONE

Paula is a humorist, author and comedian known for her clever, observational humor and spontaneous wit. She can be heard on her

podcasts, during her stand-up shows, her books, the big screen and more. 8 p.m. Tickets: \$29-\$59. hawaii theatre.com.

AUGUST 24 STREETLIGHT CADENCE

The Nā Hōkū Hanohano Award-winning and Emmy-nominated Streetlight Cadence started on the sidewalks in Waikiki. Fresh off their most ambitious tour ever, Waikiki returns to the Blue Note for one night only of song and story. Two shows, 6:30 and 9 p.m. Tickets: \$25-\$35. bluenotehawaii.com.

AUGUST 25 DRAG QUEEN BINGO

It's the hottest Sunday Funday ticket around these days. Looking to spice up your Sunday Brunch? Head over to Hard Rock Cafe for Drag Queen Brunch Bingo with your host, Candi Shell. 12 - 2 p.m. \$30 includes a complimentary drink and bingo cards. Make your reservations early at opentable.com, as this one sells out each month.

AUGUST 31 NIKO MOON

Chart-topping American country artist NIKO MOON has been having a very good time since breaking out as a solo act in 2019, after being a member for a couple years of Sir Rosevelt alongside fellow artists Zac Brown and Ben Simonetti. The Republik. Tickets: \$30. 8 p.m. bampproject.com.

AUGUST 31 HO'OLAULE'A O WAIMEA

Waimea Valley wraps up its three-part annual Summer Concert Series with Pa'ahana, Pomai Keawe, Nu'e, and Mauanalua. Join Kimo Kahoano on the Main Lawn for an afternoon of Hawaiian mele and hula. 2 p.m. Tickets \$15-\$25. waimeavalley.net.

AUGUST 31 OLIVER STEELE

Oliver finished in the Top 8 of American Idol Season 21, winning over America with his powerful voice and loving personality. He also became best buds with lam Tongi throughout their season. He has since accumulated over half a million streams on Spotify and tens of thousands of followers on social media. Two shows, 6:30 and 9 p.m. Tickets: \$25-\$35. bluenotehawaii.com.

AUGUST 31 HAWAIIAN SLACK KEY GUITAR FESTIVAL

The 42nd annual Hawaiian Slack Key Festival showcases some of the best slack key artists out there. The Waikiki Aquarium offers a beautiful backdrop for this magical evening of music with performances by Ledward Kaapana, Stephen Inglis, Kamuela Kahoano, Dwight Kanae, Walt Keale and more. Tickets: \$10-\$20. 5 - 9 p.m. facebook.com/slackkeyfestivals.

AUGUST 31 ORIGINAL KAPENA 40TH REUNION TOUR

Celebrate 40 years of the best of Kapena during this special reunion concert with a full circle moment. The first appeared at the Waikiki Shell at Brown Bags to Stardom. 40 years later, expect plenty of surprised throughout the evening. Tickets: \$29-\$99. Waikiki Shell. ticketmaster.com.



SeaLife
PARK
HAWAII

Aloha Kai
LUAU
SEA LIFE PARK

Enjoy the day and discover a magical, once-in-a-lifetime opportunity to enjoy up-close encounters with all your favorite sea creatures. Join us at the award-winning luau "Aloha Kai" as we celebrate our love of the sea.

808-259-2500 • SEALIFEPARKHAWAII.COM

20th Korea Korean Festival



The Korean Festival returns for its 20th annual celebration of everything Korean! Every year, the event presents authentic Korean culture through food, dance, art, music, and entertainment. The purpose of the Korean Festival is to share, promote, and raise awareness of Korean culture in the community. Put together by the Hawaii Korean Chamber of Commerce, the event is supported by dozens of community organizations and businesses, as well as hundreds of volunteers.

Proceeds from the Festival are not just for the event, but they are used to fund service projects and ventures that benefit the Korean and larger community in Hawaii. This includes an annual scholarship fund for outstanding, civic-minded students entering or currently enrolled in college. Your participation in the Festival directly contributes to these initiatives, making you an integral part of our community.

The Korean Festival presents a unique, authentic taste of Korean culture through food, dance, art, music, and more. This year, it kicks off on Friday, August 2, from 6 - 9 p.m. with a special presentation of the 2023 film *The Night of the Assassin*. Starring Shin Hyun-Joon, the actor will be on hand for a meet-and-greet at Ward Theatre.



On Saturday, August 3, head to Kaka'ako Mauke Gateway Park from 10 a.m. to 6 p.m. for the Festival itself. Wander through a variety of craft booths and cultural displays. There will be plenty of food booths with traditional dishes like bibimbap, kalbi, and kimchee fried rice. For those of you who dare, there will be a Kim Chee Eating Contest. There will be special performances from Korea, and since it's K-Pop Dance Night, after the Song Contest, there will be a special performance at 5 p.m. from brand new South Korean K-Pop girl group, Spia, whose first single was released last April.

For more details and a schedule of events, head to koreanfesthawaii.com.



Margotto Hawaii is pleased to announce Chef Shiori Okuya from their Japan location will be taking over as Executive Chef in August and presenting new menu items at that time. To show its appreciation to those that refer it most often and to allow concierge them to experience the flavors and service for themselves that their guests will have when dining at Margotto, it was a delicious evening. Want to go next year? Hint: The guest list is based upon who sends them the most reservations. Open daily from 5 - 10:30 p.m. 592-8500. margotto-hawaii.com.





BAREFOOT BEACH CAFE
HAWAII

On Queen's Surf Beach at the Diamond Head end of Waikiki

EXPERIENCE TRUE HAWAII!

OPEN DAILY, 8AM - 9PM
(Last call for food at 8:30pm)

LIVE MUSIC NIGHTLY, 8:30PM - 8:30PM & SUNDAYS, 10AM - 1PM



Barefoot Beach Cafe 2509 Kalanianaʻahele Avenue
BarefootBeachCafe.com | 808.934.2233 (CAFE)

WAIKIKI BAPTIST Church

Your Church in Waikiki

424 Kuamo`o St
(Near the Ambassador Hotel)

Sunday Worship Services

9:00 AM - Contemporary
10:45 AM - Traditional



(808)955-3525
WaikikiBaptist.com

Plan an Adventure

Let Hawaii Nautical show your guests our ocean playground.

808-234-SAIL (7245)  Hawaii Nautical

TURTLES GUARANTEED



Enjoy our morning and afternoon snorkel sailings at Turtle Canyon with a wildlife guarantee! See turtles or cruise again for free (certain rules apply). Wildlife guarantee is for rides only, no refunds.



IZAKAYA 855-ALOHA 855-ALOHA held a huge reception to introduce the community to their new restaurant, offering their playful take on a classic Japanese izakaya. The team, led by general manager Matteo Giacomazzi and Chef No, spent time meeting their industry colleagues and showing everyone what makes their restaurant so special. Located on the ground floor of the new Romer House at 415 Nahua Street, it is open for dinner starting at 5pm daily. The Bar opens at 4pm and offers happy hour from 9-11pm daily. izakaya855aloha.com



That's Entertainment

HOTELS

- 'ALOHI LANI RESORT** 922-1233
- **Daily** - Fish Feeding 10:30am & 2:30pm *O Bar*
 - **Daily** - Live Music 6:30-9:30pm *Swell Bar*
 - **Daily** - Light Monument Video Art Series 7-9pm *Swell Bar*
 - **SunWedSat** - Tank Talk 9am. *O Bar*
- HALEKULANI** 923-2311
- **Daily** - Music & Hula 5:30-8:30pm *House Without a Key*
 - **TWThFS** - Live Jazz 8pm - 12am, *Lewers Lounge*
 - **Sun** - Sunday brunch w/Noly Paa on piano 9:30am - 2pm
- HILTON HAWAIIAN VILLAGE** 949-4321
- **Fri** - Fireworks at 8pm
 - **Daily** - Live entertainment, Tapa Bar. 6:30-9:30pm
- HILTON WAIKIKI BEACH** 922-0811
- **Daily** - Live entertainment, poolside. 4-7pm
 - **Daily** - Live entertainment in the Lobby. 6-10pm
- HYATT REGENCY WAIKIKI** 923-1234
- **MWed** - Farmer's Market from 4-8pm
 - **Mon-Fri** - Cultural Programs at the Ho'okela Culture Center
 - **TTh** - Walking Tour thru parts of Waikiki at 10am
 - **TTh** - Live Hawaiian music at Pualeilani Atrium, 4-6 pm
- KAHALA HOTEL & RESORT** 739-8888
- **Mon** - Free kapala stamping at The Veranda at 10am
 - **Tues** - Free lauhala weaving at The Veranda at 10am
 - **WFSat** - Free lei making at The Veranda at 10am
 - **Thurs** - Free hula dancing at The Veranda at 10am
 - **ThFSat** - Live entertainment at The Veranda from 6-8pm.
 - **FriSat** - Afternoon Tea at The Veranda at 2pm & 3:30pm
 - **Daily** - See the interactive dolphin programs every hour
- LUANA WAIKIKI HOTEL & SUITES** 955-6000
- **MWF** - Enjoy live music and hula on the Mezzanine 5-6pm
- MOANA SURFRIDER** 922-3111
- **Daily** - Live music at The Beach Bar, 4:30-6:30pm, 7-10pm
 - **WThFSSu** - David Swanson at Vintage1901, 6:30-10pm
 - **SatSun** - Afternoon Tea at the Veranda, 11:30am - 2:30pm
- OUTRIGGER REEF WAIKIKI BEACH** 923-3111
- **Daily** - Live Hawaiian music at Kani Ka Pila Grille. 6-9pm
- PRINCE WAIKIKI** 956-1111
- **ThFSSu** - Live music at 100 Sails from 6-8pm
 - **Sat** - DJ KK poolside from 2-5pm, Sun from 2:30-5:30pm
- SHERATON PRINCESS KAIULANI** 922-5811
- **Daily** - Live music poolside 6-9pm. DJ from 3-6pm.
- THE ROYAL HAWAIIAN** 923-7311
- **Daily** - Live Hawaiian music at the Mai Tai Bar. 11am-2pm
 - **TWFSSu** - Live Hawaiian music at the Mai Tai Bar. 6-9pm
 - **MTh** - Live Hawaiian music at the Mai Tai Bar. 8-10pm
- TURTLE BAY RESORT** 293-6000
- **Daily** - Live music at The Pointe Pool Bar, 4-7pm
 - **Daily** - Live music at Off the Lip, 7pm
 - **Daily** - The Stable at Turtle Bay offers a variety of experiences
- WAIKIKI BEACH MARRIOTT RESORT** 922-6611
- **Daily** - Live music, Queensbreak Restaurant 5:30-8:30pm
 - **Daily** - Live music in the Lobby 6-9pm

FARMERS MARKETS

- WBW OPEN MARKET**
- **Mon** - Set up on the Plaza at Waikiki Beach Walk. 4-8pm.
- HYATT REGENCY FARMERS MARKET** 225-4002
- **MonWed** - Hyatt Regency 1st floor waterfall atrium 4-8pm
- HAWAII FARM BUREAU MARKET** 848-2074
- **Wed** - Set up on the Blaisdell Concert Hall Lawn 4-7pm.
- ALOHA HOME MARKET** 225-4002
- **Sun** - Kailua 340 Uluniu Street 9-2pm.
- HALE'IWA FARMERS MARKET** 388-9696
- **Thurs** - Located at Waimea Valley. 2-6pm
- KCC FARMERS MARKET** 848-2074
- **Sat** - Kapiolani Community College 7:30-11am
- KAKA'AKO FARMERS MARKET** 388-9696
- **Sat** - 919 Ala Moana Blvd & 210 Ward Avenue. 8am-12pm
- PEARLRIDGE FARMERS MARKET** 388-9696

- **Sat** - Pearlridge Mauka by Macy's. 8am-12pm
- KAILUA FARM BUREAU MARKET** 848-2074
- **Sun** - Kailua Town Center. 4-7pm
- KAILUA TOWN FARMERS MARKET** 388-9696
- **Sun** - Enchanted Lake Center by Kailua Cinema. 8am-12pm

ATTRACTIONS

- FOSTER BOTANICAL GARDEN** 768-7135
- **Daily** - Hawaii's oldest Botanical Garden in the midst of downtown open 9am - 4pm. \$5/\$1 keiki (kama'aina \$3)
 - **Daily** - Free docent-led tours at 10:30am. Reservations rec.
- HONOLULU ZOO** 926-3191
- **Daily** - The Zoo is open from 10am - 4pm. Last Entry at 3pm. GA \$19 adult/\$11 keiki (kama'aina \$8/\$4).
 - **Sat** - Explore the Zoo after the gates close 5:30-7:30pm.
- KILOHANA HULA SHOW**
- **SuMTWTh** - Free hula show 9:30 - 10:30am Waikiki Shell
- KUHIO BEACH HULA SHOW** 843-8002
- **TueSat** - Free show 6:30 - 7:30pm Kuhio Hula Mound
- WAIKIKI AQUARIUM** 923-9741
- **Daily** - The Aquarium is open from 9am - 4:30pm. GA \$12 adult/\$5 kids (kama'aina \$8).
 - **1st3rdTue** - Hawaiian Plant Tour. 1:30pm. Free w/admission

MUSEUMS

- BATTLESHIP MISSOURI MEMORIAL** 455-1600
- **Daily** - Relive stories of war, victory, and the road to peace onboard the "Mighty Mo." Join a guided tour in English, Japanese, Chinese, or Korean or explore the ship at your own pace. Digital tour maps in various languages are available. 8am-4pm. More info available online at ussmissouri.org.
- BISHOP MUSEUM** 847-3511
- **Daily** - The 15-acre campus offers a chance to learn about the cultural and natural heritage of Hawai'i across three different exhibition buildings. Daily planetarium shows, a native Hawaiian botanical garden and more. 9am-5pm.
- HAWAI'I STATE ART MUSEUM** 586-0900
- **Mon-Sat** - 'Museum Interpreters' on-site to provide visitors with basic information about the museum and artwork. Special evening events as listed below. Open 10am - 4pm.
 - **1stFri** - Live entertainment and food vendors. 6-9pm
 - **2ndFri** - "Vibe" Jazz performances & food vendors. 6-9pm
 - **4thFri** - Hawaiian music night. 6-9pm
 - **3rdSat** - Family Arts & Crafts Day 11am - 3pm
- HONOLULU FIRE MUSEUM** 723-7167
- **3rdSat** - Free one-hour guided tours through various exhibits with a firefighter recounting HFDs through the 3rd Saturday of every month. 9am - 2pm on the hour. 620 South Street. Reservations required. Book online: fire.honolulu.gov then hit the submit request button and click museum tours.
- HAWAIIAN MISSION HOUSES** 447-3910
- **TW** - Docents lead tours through the oldest existing frame house in the Islands. 11am, 12pm, 1pm and 2pm.
 - **ThFSat** - 11am, 12pm, 1pm, 2pm and 3pm tours
 - **WThFSa** - Gift shop open 10:30am - 4pm
- HONOLULU MUSEUM OF ART** 532-8726
- **ThFSSu** - Tour & Talk Story 11am. Free with admission.
 - **ThFSSu** - Highlights tour 2pm. Free with admission.
 - **FSat** - HoMA Nights, open until 9pm. Free with admission.
- IOLANI PALACE** 522-0832
- **TThS** - Audio tours available from 9am - 4pm
 - **WTh** - Docent-led tours available from 9am - 4pm
 - **EveryOtherWed** - He Mele Lahui Hawaii with Ku'uipo. 9am
 - **Fri** - Royal Hawaiian Band. Free. 12-1pm
 - **SunMon** - Museum Closed
- LUCORAL MUSEUM** 778-8189
- **Mon-Fri** - Free self-guided tours featuring local and global gemstones and a one-of-a-kind dinosaur egg. Visitors can also create their own one-of-a-kind jewelry. 10% off gift shop

with mention of Oahu Concierge. 10am-5pm.
PEARL HARBOR AVIATION MUSEUM 441-1000

- **Daily** - Vintage aircraft in battlefield hangars at Pearl Harbor, outdoor exhibits, flight simulators, and the Bob Hope: An American Treasure Exhibit. Shuttle & Tickets at USS Arizona Memorial Visitor Center or PearlHarborAviationMuseum.org.

SHOPPING CENTERS

- ALA MOANA CENTER** 955-9517
- **Daily** - Hula Show, 5pm. *Centerstage*
 - **EveryOtherWed** - Royal Hawaiian Band. 11am.
 - **Sat** - Local entertainment, 3pm. *Centerstage*
 - **Sun** - Keiki Hula Show, 1pm. *Centerstage*
 - **Daily** - Pau Hana Music Series, 5:30pm. *Ewa Wing Stage*
 - **2ndSat** - Malama Market 11am-4pm. *Mauka Wing Level 2*
- HALE'IWA STORE LOTS** 203-5700
- **Sat** - Live Hawaiian entertainment from 2-4pm
- INTERNATIONAL MARKET PLACE** 921-0536
- **MWF** - Ceremonial sunset lighting of Lamaku Torch Tower
 - **MWF** - Sunset Stories Hula Show, 6:30pm. *Queens Court*
 - **1stTh** - Royal Hawaiian Band. Free. 12pm. *Queens Court*
 - **3rdTh** - Free Lei Making Workshop. 12pm. *Queens Court*
 - **4thSat** - Free Fitness. 9am. *Queens Court*
 - **1st3rdSu** - Free Fitness. 9am. *Queens Court*
- ROYAL HAWAIIAN CENTER** 922-2299
- **Daily** - Heritage Room/Cultural Videos, *Helumoa Hale*
 - **Mon** - Free Ukelele Lessons 11pm, *Helumoa Hale*
 - **Tues** - Free Hula Lessons 11am, *Royal Grove*
 - **Wed** - Free Lauhala Weaving 11am, *Bldg A, Level 2*
 - **Thur** - Free Keiki Hula lessons 12pm, *Royal Grove*
 - **Fri** - Free Lei Making Class 12pm, *Bldg A, Level 2*
 - **Sat** - Hula Kahiko 5:30pm, *Royal Grove*
 - **TWThF** - Live Hawaiian Entertainment 5:30pm, *Royal Grove*
- WAIKIKI BEACH WALK** waikikibeachwalk.com
- **Daily** - The Ukulele Store offers free lessons at 4:30pm
 - **Tues** - Ku Ha'aeo Hula Show. 4:30-6pm. *Plaza Stage*
 - **Sun** - Free hula lessons, 9-10am

conciierge
 DISCOUNTS

- BALI OCEANFRONT**
 20% off all Food & Beverage. Hilton Hawaiian Village, 941-2254.
- GUAVA SMOKED**
 20% off food and drinks with hotel ID. 567 Kapahulu Ave, 2nd floor. Entrance/parking on Campbell Ave. 913-2100
- HAWAIIAN MISSION HOUSES**
 Free tour with hotel ID. 553 S. King Street. 447-3910.
- IOLANI PALACE**
 Free Admission with hotel ID. GA \$30. Kama'aina \$19.95. 364 S. King Street, Reservations Required. 522-0832.
- MAUI DIVERS JEWELRY**
 Receive 20% off on every purchase at any location. Hotel ID or business card is required for verification. Cannot be combined with other discounts or promotions. 946-2929.
- RUTH'S CHRIS STEAK HOUSE**
 Complimentary Appetizer valued up to \$22 with the purchase of 2 entrees. Waikiki Beach Walk, 440-7910. Restaurant Row, 599-3860.
- SAN PAOLO PIZZA AND WINE**
 20% off food and drinks with hotel ID. Not combinable with any other discounts. 1765 Ala Moana Blvd. 425-5396

You will be required to show Hotel ID or business card to claim offer. Magazine not needed. Just mention offer when presenting hotel ID. Discounts available to Guest Service Professionals ONLY. Not valid with other promotions or special offers. A minimum 18% gratuity on original order requested for all food offers.

The Oahu Concierge is printed monthly and direct mailed FREE to all Oahu Concierge, Hospitality & Activity Professionals.
Subscriptions available to non-industry at \$25 per year.

C O N T A C T
Davis Media
Ph: (808) 225-8229

Website: www.OahuConcierge.com

ADDRESS & NAME CHANGES / ADDITIONS

We do not take changes via telephone. All changes to mailing list **must be submitted in writing** by the 16th of the month to make the next issue, email is preferred.

S T A F F

PUBLISHER & EDITOR **Pam Davis**
publisher@oahuconcierge.com

DESIGN
Coreiya Design

The Oahu Concierge
4348 Waiialae Avenue, #185
Honolulu, Hawaii 96816

PRSR STD
US Postage Paid
TRADE MEDIA HUI



Enjoy exclusive crafted cocktails and appetizer pairings throughout August at participating restaurants.

Learn More
shopinternationalmarketplace.com

INTERNATIONAL MARKET PLACE

