

Duke's OceanFest takes over Waikiki

Made in Hawaii FESTIVAL



Surfers give a big thumbs up in last years AccesSurf Hawaii Adaptive Surf Championship

Duke's GM before he retired) says one of the things that make this annual festival so special is that through it, "we are paying tribute to one of the world's most renowned watermen, (Duke) and how he continues to inspire watermen and women around the world. Duke's OceanFest is committed to passing on Duke's love for the ocean and the aloha he shared with all people who came to Hawaii."

Every August, Oahu's premier ocean sports festival take place throughout Waikiki to celebrate and pay tribute to the enduring legacy of Hawaii's legendary waterman, Duke Kahanamoku. Known and beloved as the state's greatest athlete, Kahanamoku (1890-1968) won six Olympic medals, including three gold medals in swimming, from 1912 to 1932, and is recognized as the "Father of International Surfing." Kahanamoku was the world's fastest swimmer in his prime, the single-most influential person in popularizing surfing worldwide, a champion paddler and steersman, and, he continues to be an inspiration to watermen and women today.

Duke's OceanFest also pays considerable attention to both the Wounded Warrior Project and to AccesSurf, which holds the Hawaii Adaptive Surf Championships there each year, making sure to include both of these worthy associations. In addition, there are a ton of fun, silly, and entertaining contests on the waves that are a blast to either watch, and participate in. Surfing Dogs? They'll be there! The Going to the Dogs SurFUR ComPEtition is always a fan favorite. Be sure to head down to Baby Queen's at Kuhio Beach on Thursday, August 23rd from 11 a.m. - 2 p.m. to see some pretty cute dogs, often in costume, hit the waves and do their thing.

Duke's OceanFest first began as a one-day celebration that coincided with Duke's birthday (August 24, 1890) to celebrate the issuance of Duke's commemorative stamp back in 2002. Since then, the festival has grown, in large part thanks to all the support it has received over the years, and is now a nine-day event, filled with just about every type of sport close to Duke Kahanamoku's heart, including Surfing, Longboards, Paddleboard Racing, Swimming, Tandem Surfing, Surf Polo, Beach Volleyball, and Stand-Up Paddling. This fun fest, which celebrates Duke Kahanamoku's life, his athletic contributions, and his spirit that continues to live on, returns to Waikiki this month from August 18th - 26th.



Dogs like to surf too!

Chris Colgate, co-chair of Duke's OceanFest (and the guy many of you might remember as

Another fan favorite for competitors and beachgoers alike is the Red Bull Hawaiian Party Wave. For this event, competing teams are decked out in themed costumes, perform a skit on the beach,

Continued on page 8.



Some of the many items at the Made in Hawaii Festival August 17 - 19. All pictures by Tina Mahina Photography.

From coffee to cookies, clothing, cosmetics and more, Hawaii produces some of the most unique products in the world due to geography and agricultural resources ranging from noni that goes into health tonics, to rare lehua honey harvested from bees who gather the nectar of ohia lehua trees that grow only on Hawaii island.

Many of those products will be on display when the 24th annual Made in Hawaii Festival takes place August 17 through 19. The event, produced by the Hawaii Food Industry Association, is one of the largest showcases for homegrown businesses. More than 400 vendors will be offering anything from jewelry to books, to food to housewares to surf gear and more.

With the arrival of medical marijuana dispensaries in Hawaii, there has also been a surge of interest in hemp oil products, and you can expect to find CBD oils and tonics available.

Expect a multi-sensory experience the minute you walk into the arena, with several aisles full of food samples to taste before buying. Edibles include exotic tropical fruit chutneys, homegrown

Continued on page 5.

TABLE OF CONTENTS

Yada Yada Yada	2
Waikiki Beer Festival	2
Newsflash	3
Arts with Aloha	4
Paparazzi: Morimoto / Momosan	6
Chef's Corner: Chingu Hawaii's Chris Oh	9
E Pili Kakou	10-13
Calendar	14-15, 17
Paparazzi: The Brilliant Ox	16
That's Entertainment	18
Concierge of the Month: Nolan Char	19

WOLFGANG'S STEAKHOUSE
 OPEN DAILY 11AM - MIDNIGHT
 922.3600 | wolfgangsteakhouse.net



Publisher's Letter



New and improved seems to be the thing

They say necessity is the mother of invention, but I am beginning to think change is. As in, "let's change it and see what works and what doesn't." At least, I think that is how it works, because boy, is there a lot of "new" things going around right now. New hours, new prices, new tours, new technology, new buildings, you name it, apparently nothing we had going recently worked well enough because it seems every single thing I wrote about this month was "new." I guess now that summer is coming to an end here shortly, it's time to change things up going into the fall.

There also seems to a bunch of new you's out there, so, welcome! This industry is constantly expanding, and I've been seeing a lot of new faces lately. I hope to be able to meet most of you soon, and felt maybe it was time to do a brief introduction to the newbies out there. For one, let's talk about your monthly copy of the publication. At least once or twice a week, I get an email saying something to the extent of "Hey, I've been here for 'x' amount of time and you have never sent me a copy of The Oahu Concierge." Well, I can't do what I don't know. While I appreciate the vote of confidence that so many of you think I just automatically know everything that's happening out there, the fact is, unless you actually tell me, I have no idea. I'm pretty connected and all, but I am not psychic! If you work in the front of the house and would like your own copy, I would love you to receive it, but you do need to let me know.

Now then, how to tell me? Via email please. Every address change I get goes straight into an online mailing list folder, and as soon as I ship the magazine off to press, I will go into that file and update the list. I only go into that file one day a month. If your request is not in that email folder, it won't get made. It's not that I am doing that to be difficult, it's just how it's end up working. By the time I get around to updating the mailing list, I'd be hard-pressed to remember a voicemail message from a few weeks ago. I also do not usually have the mailing list open, so getting me on the line to start rambling off address info also isn't a very practical solution. Since nine times out of ten I am going to be working on something else at the time, and wouldn't be able to drop everything at a moment's notice to open up the file, the change would end up getting scribbled on a piece of paper and lost before it's time to update the list. This is what used to happen, so I had to implement a better structure to make sure everything is handled properly. Please remember there is only one of me, and several thousand of you, so these systems are imperative to be able to stay on top of everything. If you could be so kind, please always submit your changes in writing. Also, someone usually always tells me when someone arrives, but rarely do they ever tell me when someone leaves. If you see magazine hanging around the hotel addressed to people that no longer work there, please let me know so we can save a few trees.

Enjoy the last days of summer!



Yada Yada



Farrah Truong

I would like to extend a big apology to **Farrah Truong** and **Joy Tomita**. Although I changed out Joy's picture to Farrah's last month, I forgot to update the caption below the pic from Joy's name, who had been in that puka the month before, to Farrah's. To be fair, I am running Farrah's picture here again with her name underneath! Whoops! • Joining Farrah at *The Ritz-Carlton Residences, Waikiki Beach* is **Katherine Gioia**, who has been named Senior Sales Manager. She was most recently with the Ritz in Georgetown and Boston, but has also held positions at the Waikoloa Beach Marriott and the Ritz in Kapalua. • **Naoko Abarca** and **Tomomi Sugino** have joined the Japanese Guest Service Team at *The Kahala Hotel & Resort* and **May Thai** has joined the front desk. Joining the resort as Director of Sales is **Sally Halm**.

• **David Lukela**, who has been the chef de cuisine at the beachhouse at the moana for the past several years has taken on the position of **Executive Chef at the Alohilani Resort Waikiki Beach**. In his new position, Chef David will be in charge of all F&B, including banquets. • **Cole Sugimoto** has joined the team at the *Waikiki Beach Marriott Resort & Spa* as Front Desk Manager. He was most recently with Hyatt Place.

• After 10 years with the *Pacific Aviation Museum*, **Anne Murata** left the Director of Marketing & Business Development position

to focus on her own marketing company. • The *USS Missouri Memorial Association* announces three new members to its Board of Directors. Joining the board are **Doug Johnstone**, Senior Vice President at The Howard Hughes Corporation; **Judy Yuriko Lee**, a partner at Goodsill; and **Revell Newton**, General Manager for the Outrigger Waikiki Beach Resort. • The *Hawaii Tourism Association* is also

changing up their board with the addition of **David Arakawa**, Executive Director, Land Use Research Foundation of Hawaii, **Micah Alameda**, Marketing Manager of Na Leo TV, **Kyoko Kimura**, Director of Owner Relations for Aqua-Aston Hospitality, and **Ben Rafter**, CEO of OLS Hotels & Resorts. • **Robert McConnell**, former GM of the Outrigger Waikiki has taken the helm of the *Waikiki Yacht Club* as GM. Joining him as F&B Manager is **CJ Sword**. • *Anaha at Ward Village* has hired **Tatiana Cachola-Nemida** and **Ayumi Wong** for the concierge team. **Sonomi Espinoza** has left the property to work for the *Trump International Hotel Waikiki* and **Lisa Sapp** is moving across the street to the *Howard Hughes Corporation* to work directly with *Kawai Yamashiro*. • **Reiko Stiver** has joined the concierge team at *Waiea at Ward Village*. She was most recently at the *Waikiki Beachcomber by Outrigger*. • Speaking of the *Waikiki Beachcomber*, we also want to wish **Debbie Murakami** a fond aloha. She retired last month after many years in the industry. • More aloha's to go around, this time to **Czarina Lam**. Czarina recently left her position as the Director of Revenue for *OHANA Hotels & Resorts* to take a similar position in San Diego. We will miss them both and wish them the best of luck. • Last, but certainly not least, we have on last aloha to share, and sadly, this one is a forever one. **Eki Locke**, who was Director of Operations for *P.F. Chang's* for 13 years, and then took over as GM at *Bill's Sydney* passed away suddenly last month. He had just left his position in order to take some time for himself and travel the world a bit. His sudden death has rocked the restaurant industry and we are grieving with them. Aloha 'Oe Eki!



Ben Rafter

~ Pam

Great Waikiki Beer Festival

On August 18th the Hilton Hawaiian Village will play host to the 4th annual Great Waikiki Beer Festival on the Great Lawn.

This is a beer lovers dream, with over 100 seasonal, local and craft beers to select from. There will be artisan brewers and some of the biggest names in beer, both in Hawaii and beyond, on hand for this beer-y celebration. You love beer but your other half doesn't? Not a problem, there will be a selection of signature cocktails to choose from as well. Wander through the event grazing on beer-friendly small plates, imbibing on cocktails and listening to live music from local artists Ilona Irvine, Forte and more from 6 - 9 p.m. A portion



of the proceeds will benefit The Wounded Warrior Ohana.

Tickets for the festival are \$75, and for that you will get entry into the event at 10 4-ounce tasting tickets. Food and additional beer tastings available for purchase and

parking is \$10 self-parking, \$15 valet.

For \$100, you can purchase an early entry ticket, which allows you to walk in at 4 p.m. The ticket also gives you 10 tastings, but also adds on one food ticket and complimentary self-parking for one car. Military members with valid ID can purchase tickets at a discounted price of \$60, and early entry tickets for \$85. For more information, go to hiltonhawaiianvillage.com/beer.

~ Pam

EXTRA EXTRA EXTRA *Newsflash*

NEW PEARL HARBOR TOURS AVAILABLE

Pacific Historic Parks and the National Park Service have partnered to bring two new tours that allows guests to engage with history through a new Deluxe Tour and a new Pearl Harbor Virtual Reality Center. The USS Arizona Memorial Deluxe Tour comes with a smart phone component, where visitors can access videos and archival materials, as well as gives access to the Virtual Reality Center. Regularly \$25, it is being offered at an introductory rate of \$12.50 through the end of 2019. The VR experience is \$4.95 and is offered daily, 8 a.m. to 3 p.m. PacificHistoricParks.org.

COAST GUARD GETS IN FREE AT PEARL HARBOR

In honor of the U.S. Coast Guard's birthday on August 4th, Pearl Harbor Historic Sites will waive the admission of all active duty and retired Coast Guard personnel and their families into the Battleship Missouri Memorial, Pacific Aviation Museum Pearl Harbor, and the USS Bowfin Submarine Museum and Park on August 4th and 5th. Just present a valid military ID at the ticket booth to enter. PearlHarborHistoricSites.org.

NEW HOURS AT PACIFIC AVIATION MUSEUM

The Pacific Aviation Museum changed their hours last month, reflecting a one-hour change from their former opening time of 8 a.m. The Museum is now open daily from 9 a.m. – 5 p.m. They still close on Thanksgiving, Christmas, and New Year's Day. PacificAviationMuseum.org.

NEW RATES AT 'IOLANI PALACE

Iolani Palace, the only official residence of royalty in the United States, introduced special kama'aina and military rates last month. The normal guided tour cost is \$27, but for those with valid ID, the rate is \$23; the audio tour will go from \$20 to \$16 and kids get in for \$6. iolanipalace.com.

ROYAL STAR UPGRADES FLEET AND FACILITY

Royal Star Hawaii opened a new bus maintenance facility as part of a the second phase of its \$35 million upgrade project. The four-acre site is also slated to be their future corporate headquarters. The company now has plans to add 20 brand new vehicles to its fleet, including six, 58-seat buses and a few luxury 6-seat SUVs as part of a \$9 million plan to expand and upgrade their fleet. The third and final phase is expected to be completed in 2020. Royal Star is operated by Stars of Paradise.

WAIKIKI NOW HAS LIVE WI-FI

Visitors and residents now have access to high-speed connectivity in Waikiki. Users can access the service by finding "Waikiki.com" on the list of available Wi-Fi networks on their device. The service is free for the first 30 minutes, then costs \$4.95 for the day and \$19.95 for the week. Plans are in place to expand coverage throughout Oahu and across the state soon.

KUALOA ADDS NEW TOURS

Kualoa Ranch has added two new tours to choose from as of August 15th. Take an in-depth, 3 hour "behind the scenes" tasting tour of their agricultural and livestock programs, followed by a 6-course meal from Kualoa-grown ingredients. \$149.95. The Mokoli'i Kayak Adventure will take guests out in tandem kayaks from the beach to Chinaman's Hat, to a mini-sand bar for a quick swim, before heading to "Secret Island". The tour moves downwind with the current, so it's constructed to be a comfortable paddle for most guests. \$129.95 for two hours. kualoa.com.

PCC LAUNCHES A BRAND NEW WATER SHOW

The Polynesian Cultural Center is launching a brand new water show. "Huki," will replace the current afternoon canoe pageant that has been performed for the past 16 years, Rainbows of Paradise. The new lagoon experience will feature a diverse variety of canoes, including those double-hulled canoes that carry drummers, dancers, singers and storytellers throughout the lagoon. Revamped seating and sound systems encourage guests to sing and dance throughout the show. This idea first started in 2011 and has been evolving since. Runs daily at 2:30 p.m. polynesia.com.

MI ALMITA CANTINA GRAND OPENING SPECIAL

For every 60 guests referred, receive a \$150 gift card!

Special offer valid through August 31st, 2018. Must include concierge name with reservation.
Call 808.377.6915 or book online thru *Seventhdorms* to make reservations.

NOW OPEN FOR BREAKFAST, LUNCH & DINNER

Authentic Mexican cuisine in the heart of Waikiki from
James Beard Award-winning Chef Hugo Ortega!



International Market Place, 1st Floor
2311 Kuhio Avenue, Honolulu, HI 96815
808.377.6915 www.mialmitacantina.com



MI ALMITA
- CANTINA -

THE STEAKHOUSE REIMAGINED
prime steaks, sushi bar, award-winning wine list, crafted cocktails



STRIPSTEAK WAIKIKI 'OHANA PROGRAM
for every 25 guests referred, receive a \$100 gift card from us!

AUGUST HIGHLIGHTS

SHOWS 6:30 & 9PM NIGHTLY



MICHAEL LINGTON
FT. RAY PARKER JR
August 10 - 11



WILLIE K
August 21



RON ARTIS II & THE TRUTH
August 23



TOMMY EMMANUEL
August 24 & 25



KUANA TORRES KAHELE
August 26



HAPA
August 31

RESERVATIONS

808-777-4228



VOTED HAWAII'S BEST LIVE MUSIC VENUE

GROUPS & PRIVATE EVENTS

For group information:
events@bluenotehawaii.com

WWW.BLUENOTEHAWAII.COM | 808-777-4890
Located in the Outrigger Waikiki Beach Resort



arts with aloha



According to meteorologists the last day of summer in the northern hemisphere is August 31. Of course, for our Oceania friends, it's February 28th or 29th if it's a leap year, but if they're here on Oahu, then it's summer for them too! And this is pretty much the case when it comes to Honolulu's cultural and arts world. August is the end of summer, and, things are ending this month.

We know the dinosaurs ended their run 65 million years ago, but with the film "Jurassic World Lost Kingdom" grossing over \$1 billion dollars so far in the U.S., they are still around digitally as well in animatronic form here in Honolulu. If your guests missed the big Jurassic Tour exhibit last month at the Hawaii Convention Center, don't worry, all summer long **BISHOP MUSEUM** has been featuring special dinosaur programs and planetarium shows in *The Summer of the Dinosaur* to keep junior paleontologists occupied, which ends on September 3rd.

The main feature, *Exhibit Dinosaur*, is a family friendly experience that showcases the world of dinosaur hunters from the 19th and early 20th centuries. There's a special face-to-face encounter with an animatronic 15-foot walking adolescent Tyrannosaurus rex on Tuesdays, Thursdays, Saturdays and Sundays from 10:30 a.m. to 10:45 a.m. on a first-come, first-serve basis. The encounter takes place in front of the Castle Building and Hawaiian Hall. The museum does warn that the experience may be scary for very small children.

The *Dinosaur Prophecy Planetarium Show* looks at the disappearance of individual species of dinosaurs that occurred prior to the mass extinction all those many years ago. Your guests and their kids 6 years and older will get to visit dinosaur graveyards, look at their bones and see how those creatures lived. There's a cold case component to the show that looks into four specific cases from the age of dinosaurs and hopefully your guest will be able to figure out "who done it!"

Now, if some are your guests are checking out early from your hotel, they could spend the night at the **BISHOP MUSEUM** on August 31st for the *DinoSNORES Family Sleepover*. Guests will get a more interactive experience with the dinosaurs in their jammies. They'll get to sleep next to dinosaurs and gaze up at the stars as these prehistoric creatures saw them. The night skies were different 65 million years ago.

Tickets are \$24.95, \$21.95 for seniors, and \$16.95 for kids 4-17. There are some added costs for the planetariums shows, so you may want to check their website at bishopmuseum.org before sending your guests on their quest.

If prehistoric creatures are not the ideal quest for your guests, and they're also not fans of the sun, may I suggest a visit to **TAG: THE ACTORS' GROUP** at Dole Cannery for its production of *The Crusade of Connor Stephens* which runs August 3rd to 26th at 7:30 p.m. Thursdays through Saturdays. The play, written by Dewey Moss (*Death of the Persian Prince* and *Normal Life*), deals with the aftermath of the mass shooting that kills the 6-year-old daughter of a gay Texas couple. The twist here is that the murdered girl was the granddaughter of a Baptist Mega-Church preacher whose young recruit Connor Stephens is inspired by the preacher's anti-homosexual rhetoric and subsequently commits the crime while taking his own life. The confrontation between the family members as they come to terms with this tragic event becomes an allegory for the national debate over religion, tolerance and hate. Clearly this is not a show of escapism. (If you want that, come see me in Waikiki's Rockn' Reception at the PK every Saturday night!. Shameless self-plug!)

The Crusade of Connor Stephens made its world premiere at The Midtown International Theater Festival, followed by a critically-acclaimed commercial Off-Broadway run at the Jerry Orbach Theater in 2017. Tickets are \$30, \$25 for seniors and \$20 for military. For more information call 722-6941 for visit taghawaii.net.

So, let's say the debate over religion is not top of mind for your guests from Sydney! What about sending them over to **IOLANI PALACE** on a late Wednesday afternoon to tour the Palace and stay after closing for one of the The Friends of 'Iolani Palace's Na Mo'olelo Lectures. The focuses of the lectures are Hawaiian history and culture as well as museum practices. On Wednesday, August 8th the topic is *Before and After: Shangri La*. I'm sure many of your guests visit Doris Duke's estate during their visit, and this discussion looks at modern conservation practices and illustrates what the house looked like before and after its restoration. The speaker will be Kent Severson, Conservator at Shangri La, Museum of Islamic Art. On Wednesday, August 22st, the lecture is entitled *Na Kilo Ao Maiki: Observing the Microbial Realm* (Doesn't that sound worthy of tequila shots?) Seriously though, it's a look at the smallest forms of life in the ahupua'a ecosystems and the role they play in shaping the functionality of our islands. Dr. Kiana Frank who discusses how our kupuna understood the presence of micro-organisms, even though they couldn't see them, leads the lecture. I know this might be too much for most of your guests, but you never know, you just might have a bioscience group in town that would love to attend. Each presentation is at 5 p.m. and takes place inside the Kanaina Building on the Palace Grounds, next to the Diamond Head side gate. Admission is free. IolaniPalace.org. ~ Lance Rae



ALERT!

brought to you by
The Waikiki Aquarium

open daily from 9 am - 4:30 pm

August 4-7

Box Jellyfish Window

Teaching Hawaii about jellyfish and other ocean creatures for over a century



Made in Hawaii Festival *Continued from page 1.*



coffee, baked goods and Asia-Pacific spice blends. Friendly small business owners are often on hand to share their passion and answer any question about their products.

Those who time their visit right will be able to catch cooking demonstrations by some of the islands' top chefs. Among those showing off their skills in the arena will be Tiki Grill and Bar's executive chef Ronnie Nasuti at 6 p.m. August 17; Moana Surfrider executive sous chef Nolan West at noon August 18, followed by The Pig & The Lady's chef de cuisine Keaka Lee at 2 p.m.; and celebrity chef Sam Choy at 2 p.m. August 19.

And, just when you think you've seen everything, walking a few more steps across to the exhibition hall opens another world full of distinctive local color and artistry in street - and swim-wear, quilts, handbags, and more.

It's a great place for those who believe Christmas shopping starts in the summer. Favorite items include intention candles from Aloha Elixir, colorful graphic totes and tees by Ecolicious, luscious baked goods from the Hawaiian Pie Co., and hand-printed clutch purses by Jana Lam.

Those with green thumbs will find beautiful cacti and succulents from Once Again Hawaii, and pet lovers will find something for their furry friends from Hawai'i Doggie Bakery, Dog Mama and Tiki Pet Collars as well as entertainment by some of Hawaii's most popular music artists.

Among the who's who of local entertainers performing the Blaisdell's Pikake Room over the weekend are Melveen Leed, Jay Larrin and Jerry Santos singing between 11 a.m. and 2 p.m. August 17; Kalani Pe'a at 10 a.m. and Kawika Kahiapo at 1 p.m. on August 18th before the Talent Search starts later that afternoon, comedian Frank DeLima performing at 11 a.m. August 19; with Josh Tatofi at 1 p.m. and Danny Couch performing at 3 p.m.

Another highlight will be the 10th annual Kani Ka Pila Grille Talent Search on Saturday, August 18th. Last year's winner E Nei will kick everything off at 3 p.m., and the 5 finalists take the stage from 4 p.m. - 8 p.m. This is an amazing chance to see the next big Hawaiian artist on the scene. The winner will get a weekly gig at Kani Ka Pila Grille in September. Most of the winners have gone on to receive Na Hoku Hanohano nominations afterwards, with the very first winner Kupaoa, taking home multiple Na Hoku's wins since then.

Due to the event's popularity with locals and visitors, the festival keeps growing every year, and this year will welcome not only old favorites, but more than 50 new exhibitors. Here is an island-by-island listing of those new additions:

HAWAII ISLAND

DA BIG ISLAND BURN: Hawaiian chili peppers meets local organic honey and other local ingredients such as mango, pineapple, lilikoi and Kona coffee, to create new Hawaiian hot sauce blends.

HONEY-SOWN HERBS: Treat your tastebuds to flavorful raw Hawaiian honey and honey "tonics" enhanced with 100 percent organic herbs and tropical fruits.

INFINITE HEMP HAWAII: Specializes in Hawaiian body

oils made with hemp oil, blended with kukui, kamani, arnica and therapeutic essential oils.

KAUAI

ALI I SHELL LEIS: Known for stringing intricate shell lei and earrings from rare Niihau shells.

LINCOLN WOLF CREATIVE: Creates laser cut, engraved and hand-crafted wood wall art, keepsake boxes, ornaments and more.

RKL RANCH: Offers beef jerky and beef sticks in several flavors, from the ranch's 100 percent grass-fed cattle.

MAUI

KANILEHUA ENTERPRISES: Its collection of handcrafted jewelry is made with lauhala woven from the leaves of the pandanus tree. These include silver and gold pieces. They also offer hatbands and other accessories made with feathers in the Hawaiian tradition.

KULEANA: Specializes in natural beauty oils and cleansers made with pure Hawaiian macadamia nut oil and other locally sourced Hawaiian oils.

KUMU SCRATCH: Shop for handmade leather handbags and home decor.

OAHU

BOA SUNGLASSES: Their fashionable sunglasses are handcrafted from solid wood, including acacia, purpleheart and ebony.



Artist and author Patrick Ching mans his own booth at last year's event

DOG MAMA: Show your pet some love with organic homemade treats made with local meats, fish, fruits and vegetables, with no added preservatives.

MARR ARTWORKS: This husband-and-wife team is doing its part to save the planet by using found materials to create stunning wood and resin jewelry, wood signs made from reclaimed wood, and coasters made with beer and soda bottle carriers.



As always, the festival will be held at the Neal S. Blaisdell Exhibition Hall and Arena. Festival hours will be from 10 a.m. to 9 p.m. on Friday and Saturday, and 10 a.m. to 5 p.m. on Sunday Admission is \$6. Look for \$1.00 off coupons at First Hawaiian Bank's Oahu branches starting in mid-August (while supplies last). More information is available at MadeInHawaiiFestival.com. ~ Nadine Kam

Mahalo for your continued support! JOIN OUR
GUEST REFERRAL PROGRAM

Our program is simple!
For every 25 guests referred, Ruth's Chris Steak House will send you a \$50.00 dining certificate.
Please contact Emi Espinda if you have any questions at Espinda@ruthschris.com

OPEN DAILY FROM: 4:30PM (Waikiki), 5:00PM (Waterfront)
HAPPY HOUR DAILY IN OUR LOUNGE | 4:30PM - 7:00PM (Waikiki), 5:00PM - 7:00PM (Waterfront)
PRIME TIME MENU DAILY | 4:30PM - 6:00PM (Waikiki), 5:00PM - 6:00PM (Waterfront)
WINE WEDNESDAYS | 25% OFF BOTTLES OF WINE

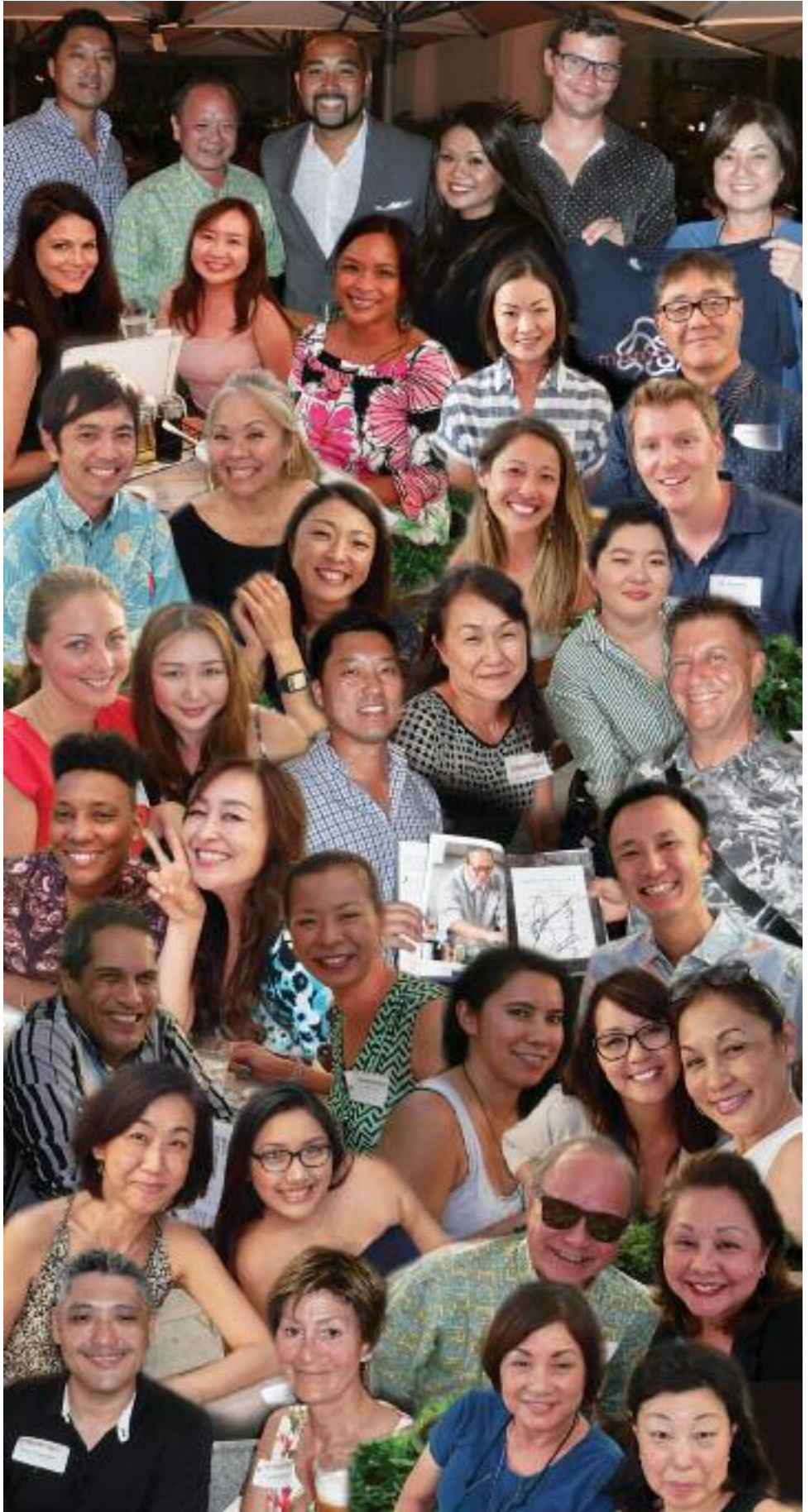
Waterfront Plaza
808.599.3860 | 500 Ala Moana Boulevard

Waikiki Beach Walk
808.440.7910 | 226 Lewers Street

RUTHSCHRIS.COM



Iron Chef Morimoto recently opened two new restaurants at the Alohilani Resort and invited a handful of concierge to check it out. After a drink and tour upstairs at Morimoto Asia, guests were led down the stairs to Momosan Waikiki where a sampling of their from grilled skewers to appetizers to their soup noodles were served alongside their signature frozen beer in a nice, casual outdoor setting that offered a lovely sunset view. Totally worth a visit. 922-0011.



HILTON HAWAIIAN VILLAGE®
**WAIKIKI
STARLIGHT
LUAU**

SUNDAY—THURSDAY
5:30PM

**NEW DIAMOND PREMIER SEATING
JUST \$159.**

- ◆ Sit front and center
- ◆ First to enjoy the buffet
- ◆ Get one extra complimentary drink



WAIKIKI
STARLIGHT
Luau

Call (808) 941-5828
to make reservations.



First Hawaiian Bank

PRESENTS



Buy HAWAII. For HAWAII.

24th annual Made in Hawaii Festival

Support local producers, artists, chefs and budding entrepreneurs who are putting Hawaii products on the map. From food to fashion, cooking demonstrations & entertainment, you'll find it here.

FRIDAY, AUGUST 17

10AM – 9PM

SATURDAY, AUGUST 18

10AM – 9PM

SUNDAY, AUGUST 19

10AM – 5PM

NEAL S. BLAISDELL EXHIBITION HALL & ARENA

\$6.00 ADMISSION

Parking: Available at the Neal S. Blaisdell Center.

Alternate parking available at McKinley High School.

Bus Information: From Waikiki take Bus route #2 or #13 to Neal S. Blaisdell Center.

PRESENTING SPONSOR



PRODUCED BY



ADDITIONAL SPONSORS



Visit MadeInHawaiiFestival.com



twitter



/MadeinHI

@MadeinHI

@MadeinHI

goma tei
FINE JAPANESE RESTAURANT
KANEHO RESTAURANT

PRESENT YOUR WORK ID & RECEIVE ONE FREE AJITAMA OR SOFT-POACHED EGG

PICTURED IS OUR SEAFOOD FRIED RICE MADE WITH FRESHLY COOKED, IMPORTED JAPANESE RICE MIXED WITH DICED CARROT, MALL ONION AND EGGS, ALL IN A SPECIAL FRIED RICE MACHINE SERVED WITH A SPECIAL HOUSE MADE SOY SALUCE WITH CRISPY GARLIC AND GARLIC OIL, A SOFT POACHED EGG AND SCALLION GARNISH

INTERNATIONAL MARKET PLACE
2200 KALANIANA'OLE AVE. 318 - LEVEL 3, GRAND LANAI
TEL 808.854.0363

HAVE ANY QUESTIONS OR COMMENTS? EMAIL US AT IMIP@GOMATEL.COM

SOME EXCLUSIONS MAY APPLY. THIS OFFER CANNOT BE COMBINED WITH ANY OTHER OFFER

SOMETHING NEW. SOMETHING CLASSIC.

Open Daily 11am - 10pm
Happy Hour
Daily in our lounge 5pm - 6pm & 8pm - 10pm
Vino Thursdays 25% Off Bottles of Wine

INQUIRE ABOUT OUR GUEST REFERRAL PROGRAM!
Our program is simple!
For every 10 complimentary dessert cards redeemed (WITH YOUR NAME ON THE CARD), Romano's Macaroni Grill will send you a \$25.00 dining certificate that may be used at our Oahu restaurant.
Please contact the restaurant for details

ROMANO'S Macaroni GRILL

Ho'okipa Terrace at Ala Moana Center
808.356.8300
WWW.MACARONIGRILL.COM

Duke's OceanFest

continued from page 1

and then paddle out together to collectively catch some waves. The costumes are inventive and contestants have to build their own vessel to ride the best wave they can as a group, often leading to some hilarious results on the waves. Tom and Jen Hinthaus have entered the competition three of the past five years the event has been held. Tom says, "It's a fun event that allows us to be creative and have a blast on the water. It's very competitive, and the people you meet are fun and like-minded. The Red Bull Team is fun to work with as well. They're very organized and host fun events in Waikiki leading up to the competition. That's where we get to meet folks from all over the world." Tom & Jen won the first year they entered with their Avatar theme, and came in 2nd last time as James Bond type. Teams take the event seriously. Tom says they start planning a year in advance, and start prepping about a month in advance. These guys take their costumes seriously, and are hoping to take their title back this year, so keep an eye out for Gilligan, the Professor and Mary Ann, as they put their Gilligan's Island theme to the test. They'll have some tough competition though, as Red Bull athlete and champion surfer Jamie O'Brien will be one of those competing as well. Check it out on Sunday, August 26th.



Crafts get pretty elaborate in the Red Bull Party Wave as showcased by Tom & Jen's Avatar theme a few years back

Locals and visitors alike will flock to the beach for the various competitions. The majestic bronze statue of Duke Kahanamoku stands in his honor, arms outstretched in greeting one and all and welcoming all who pass by, on their way to the waves or to enjoy any of the delights of the place he loved most. So it's logical that the majority of the events and exhibitions will take place in front of that statue on Queen's Surf unless otherwise noted. Make sure to look to the ocean playground that Duke once called home throughout the week to watch the fun unfold. ~ Pam

Duke's OceanFest Schedule of Events

Please visit dukesoceanfest.com for updated information. Subject to change.

SATURDAY, AUGUST 18

Na Koa Wounded Warrior Canoe Regatta
Ft. DeRussy Beach, 9 am - 3 pm

Matson Menehune Surf Fest

Kuhio Beach - Queen's Surf, 8 am - 5 pm

Lei Draping and Opening Ceremony,
Duke's Statue, 4:30 pm

SUNDAY, AUGUST 19

Matson Menehune Surf Fest

Kuhio Beach - Queen's Surf, 8 am - 4 pm

Hawaii Adaptive Surf Championships
Welcoming Ceremony, 5 - 7 pm

MONDAY, AUGUST 20

Hawaii Adaptive Surf Championships
Kuhio Beach - Queen's Surf, 8 am - 5 pm

TUESDAY, AUGUST 21

Hawaii Adaptive Surf Championships
Kuhio Beach - Queen's Surf, 8 am - 5 pm

Surfing with the Stars Accesurf Fundraiser

WEDNESDAY, AUGUST 22

Pacific Tandem Surfing Contest & Exhibition
Kuhio Beach - Queen's Surf

Duke's Amateur Longboard Surf Classic
Kuhio Beach - Queen's Surf, 8 am - 5 pm

Hawaii Adaptive Surf Championships
Kuhio Beach - Queen's Surf

THURSDAY, AUGUST 23

Pacific Tandem Surfing Contest
Kuhio Beach - Queen's Surf, 8 am - 5 pm

Waikiki Movie Night on the Sand
Duke Kahanamoku: Hawaii's Soul
Duke Statue

Going to the Dogs SurFur ComPETition
Baby Queen's Surf, 11 am - 2 pm

ODKF Waterman's Hall of Fame
Outrigger Canoe Club, 6 pm

FRIDAY, AUGUST 24

Duke Kahanamoku Birthday Lei Draping
Duke's Statue, 7 am start

Legends Surf Classic
Kuhio Beach - Queen's Surf, 8 am - 5 pm

Waikiki Movie Night on the Sand
Duke's Statue, 7 pm

SATURDAY, AUGUST 25

Duke's Waikiki Ocean Mile Swim
fronting Outrigger Waikiki, 8 am - 11 am

Legends Surf Classic
Kuhio Beach - Queen's Surf, 8 am - 5 pm

Junior Beach Volleyball Tournament
Queen's Sand Volleyball Courts, 8 am - 3 pm

Great Hawaiian Legends Luau
Waikiki Aquarium, 6 - 9:30 pm

SUNDAY, AUGUST 26

Red Bull Hawaiian Party Wave
Kuhio Beach - Queen's Surf, 8:30 am - 3 pm
Duke Kahanamoku Surfboard WaterPolo
Kapahulu Breakwall, 8:30 am - 3 pm

Adult Beach Volleyball Tournament
Queen's Sand Volleyball Courts, 8 am - 3 pm



Chef's Corner

Chingu Hawaii Chef/Partner and Celebrity Chef Chris Oh

The California-based chef who first burst into the public eye after his food truck, Seoul Sausage, won The Great Food Truck Race, wanted to bring a taste of LA's Koreatown to Hawaii. The menu reflects his twist on Korean classics. Self-described as a playful vibe along with serious eats, find items such as a bubbling bowl of cheese with Korean BBQ chicken, a giant BBQ-glazed Ahi collar and Bone Marrow with corn & cheese, alongside an extensive drink menu. Think watermelon soju you eat with a spoon topped with pop rocks and Fruity Pebbles.

What is your first childhood food memory?

Cooking leftovers after school for me and my brother and watching cartoons.

When did you decide you wanted to be a chef?

When I was young always watching my mom make the best food in the world.

What was your first job in the industry?

A bus boy at a sushi restaurant.

Who would you consider your mentor and why?

My mom. Is there really an explanation needed? LOL!

You came to prominence in LA by winning the Great Food Truck Race Season 3. How did that help launch your career?

Winning the Great Food Truck Race definitely opened a lot of doors, but I think it was the hustle and hard work that really took it over the top.

Seoul Sausage had two locations and two food trucks. Is it still open?

Seoul Sausage still is going strong with locations in Los Angeles and Oxnard and the truck still rolls around! Los Angeles is still home base, but I make the commute to Hawaii every few weeks.

How would you describe your style of cooking?

Easy like a Sunday morning.

What made you want to open a restaurant here?

The incredible people along with the equally incredible weather.

How is Chingu doing? What're your hopes for it?

Chingu is doing amazing! Our goal is just to keep promoting a piece of K-town Los Angeles to the good people of Hawaii and have a blast doing it.

Can you remember one of your first dishes that did not work?

Not one of my first, but definitely one of my latest. Li Hing Mui Fried Chicken. Let's just say it still needs a little work!

Favorite ingredient you like to work with. Why?

No real favorites, but I always enjoy working with fresh or new things that I've never worked with. Gotta keep growing as a chef.

What ingredients are always in your fridge

Korean red pepper paste, sriracha and tequila.

The Hawaii Food & Wine Festival is coming up. Are you participating in it?

Yes, I will be at Winederland at the Convention Center on Saturday night. Come see me!

What do you have planned for HFWF this year?

Something with SPAM.

What do you like most about these food festivals?

Catching up with a lot of my comrades and seeing what new and delicious things they are doing.

Favorite thing to do now that you live here?

Actually do you live here now?

I live here part time, but when I am here, it's all about the beautiful hikes and delicious musubis!



Kimchi Fried Rice

Ingredients:

- ¾ kimchi sliced
- 2 tablespoons kimchi juice
- 1 teaspoon crushed garlic
- 1 oz butter
- 2 tablespoons sesame oil
- 2 tablespoons chopped scallions
- 1 pinch of salt
- nori strips for garnish
- furikake for garnish
- 3 cups white rice
- 1 fried egg

Preparation:

- Place the butter into a hot pan until it's brown, then add the kimchi and garlic into the pan and cook for 3 minutes.
- Once brown, add the rice, gochujang, sesame oil, kimchi juice and salt into the pan and mix thoroughly with kimchi.
- Once mixed, place in bowl add the egg and garnish with furikake and nori strip and enjoy!

Chingu Hawaii is located at 1035 Kapiolani Boulevard in the former Cafe Maru locale

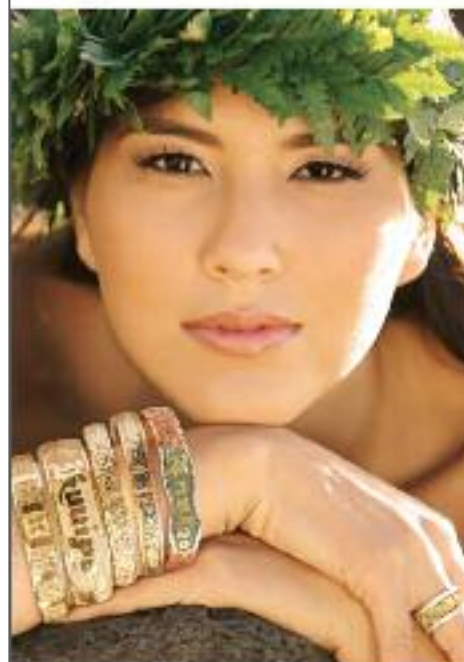
Hours: Open daily from 5 p.m. - 2:00 a.m. • Phone: 592-1035 • Email: info@chinguhawaii.com

Web: chinguhawaii.com • Instagram: @chinguhawaii • Twitter @chefchrisoh

WORLD CLASS HAWAIIAN HEIRLOOM JEWELRY

Philip Rickard

NEW STORE IN WAIKIKI



INTERNATIONAL MARKET PLACE



LEVEL 1 • BANYAN COURT

808-924-7972 | philiprickard.com

Special offers for Concierges

MOST LUXURIOUS PEARL HARBOR TOUR



Poly Ad's brand new Premium Tour provides the highest level of service and excellent value aboard a luxury "Ezra" mini coach that makes every touring experience exceptional. Features like individual USB ports, framed passenger windows and a panoramic front viewing window provide every comfort. Includes an exclusive audio/visual presentation to augment their driver/guide's live narration and so many extras that we'll leave them in awe. Lunch at a Honolulu eatery with reserved seating and harbor views and Pearl Harbor and Honolulu's very best attractions. Convenient pickups throughout Waikiki, operating daily.

Poly Ad

Premium

808.833.3000

WWW.POLYAD.COM



Let's be Together...

DINING ▶ ENTERTAINMENT ▶ PAU HANA ▶ EAT ▶ DRINK ▶ BE MERRY ▶ HAPPY HOUR ▶

MONDAY

Barefoot Beach Café at Queen's Beach 924-2233
Live Contemporary Hawaiian
Danny Galura 5:30-8:30pm

Chart House Waikiki 941-6660
Live Contemporary Hawaiian
Camarillo Brothers 6:30-9:30pm

Cheesecake Factory 924-5001
Classic Hawaiian
Christian Yrizarry Duo 8-11pm

Duke's Canoe Club Waikiki 922-2268
Live Contemporary Hawaiian
Taz Vegas 4-6pm
Ellsworth Simeona 9:30-12am

Hard Rock Cafe 955-7383
Bluesy Monday
Danny Wassman 9-11am
Candy Bullets or others 9-11pm

House Without a Key 923-2311
Live Hawaiian & Hula by Brooke Lee
DeLima Ohana 5:30 - 8:30pm

Hula Grill 923-HULA
Live Contemporary Hawaiian
Eric Lee 7-9pm

Kani Ka Pila Grille 924-4992
Hoku Award Winning Hawaiian musicians
Sean Naauao 6:30-9:30pm

LBL at the Hilton Waikiki Beach Hotel 922-0811
Live Contemporary Acoustic Hits
Sean Cleland 7-10pm

Lewers Lounge 923-2311
Live Contemporary & Light Jazz
Tommy James 8:30-12am

LuLu's 926-5222
Live Contemporary / Industry night 50% off
Jason Laeha 6-9 p.m.

Mahina & Sun's 923-8882
Kanikaplia Jam Poolside on the Lanai
Kimo Opiana Jr. 7-9pm

Mai Tai Bar at the Royal Hawaiian 923-7311
Live Contemporary Hawaiian with Hula Dancer

Dave Watanabe 8-10 pm

Maui Brewing Company 843-2739
Live Contemporary Hawaiian
Christian Yrizarry 3:30-5:30pm

Rumfire 921-4600
Solo Contemporary Guitarist
Desmond Oliveria 5-8pm
Jeremy Cheng 9:30-11:30pm

Signature Prime Steak 949-3636
Contemporary Pianist in the bar
Isao Motomochi 6-9pm

Sky Waikiki 979-7590
Live Contemporary
Yoza 6-9pm

The Edge at the Sheraton 921-4600
Hawaiian Music with conch/torch ceremony at 6 p.m.
Pu'uhonua Duo 6:30-9:30pm

The Reef Bar at the Outrigger Reef 924-7333
Live Hawaiian & Jazz during happy hour
Chris Mercado 3-5pm

Tiki's Grill & Bar 923-TIKI
Live Contemporary Hawaiian
P & L Experience 6-8:30pm
The Kristi Masuhara Band 9-11pm

Tommy Bahama Restaurant 923-8785
Live Contemporary Hawaiian
Johnny Helm 6-9pm

Tropics Bar & Grill 949-4321
Live Contemporary Hawaiian
Starr Kalahiki 5:30-8:30pm

Johnny Helm 6-9pm

Mahina & Sun's 923-8882
Bossa Nova Poolside on the Lanai
Sandy Tsukiyama 7-9pm

Mai Tai Bar at the Royal Hawaiian 923-7311
Live Contemporary Hawaiian with Hula Dancer
Christian Yrizarry Duo 6:30-8:30pm

Maui Brewing Company 843-2739
Live Contemporary Hawaiian
Chris Murphy 3:30-5:30pm

Rumfire 921-4600
Solo Contemporary Guitarist
Mike Tulba 5-8pm
Kai Roots Duo 9:30-11:30pm

Signature Prime Steak 949-3636
Contemporary Pianist in the bar
James Woo 6-9pm

Sky Waikiki 979-7590
Live Contemporary
John Akapo 6-9pm

The Edge at the Sheraton 921-4600
Hawaiian Music with conch/torch ceremony at 6 p.m.
Brad Kawakami Duo 6:30-9:30pm

The Reef Bar at the Outrigger Reef 924-7333
Live Hawaiian & Jazz during happy hour
Nick Kurosawa 3-5pm

Tiki's Grill & Bar 923-TIKI
Live Contemporary Hawaiian
K.B. Riley 5:30-8:30pm
Sani & Friends 9-11pm

Tommy Bahama Restaurant 923-8785
Live Contemporary Hawaiian
Alex Oasay 6-9pm

Tropics Bar & Grill 949-4321
Live Contemporary Hawaiian
Kailua Bay Buddies 5:30-8:30pm

TUESDAY

Barefoot Beach Café at Queen's Beach 924-2233
Live Contemporary Hawaiian
The Barefoot Boys feat. Pokii Vaughn 5:30-8:30pm

Chart House Waikiki 941-6660
Live Contemporary Hawaiian
Shyne 6:30-9:30pm

Cheesecake Factory 924-5001
Classic Hawaiian
Local Uprising Duo 8-11pm

Duke's Canoe Club Waikiki 922-2268
Live Contemporary Hawaiian
Haumea Warrington & Mike 4-6pm
Ellsworth Simeona 9:30-12am

Hard Rock Cafe 955-7383
Live Contemporary
Mike Piranha 9-11am
Piranha Brothers 9-11pm

House Without a Key 923-2311
Live Hawaiian & Hula by Brooke Lee
Pa'ahana 5:30 - 8:30pm

Hula Grill 923-HULA
Live Contemporary Hawaiian
Kamuela Kahoano 7-9pm

Kani Ka Pila Grille 924-4992
Hoku Award Winning Hawaiian musicians
Weldon Kekauoha 6:30-9:30pm

LBL at the Hilton Waikiki Beach Hotel 922-0811
Live Contemporary Funk, Jazz, Hip Hop & Reggae
Lina 7-10pm

Lewers Lounge 923-2311
Live Contemporary & Light Jazz
Dan Del Negro & Rocky Holmes 8:30-12am

LuLu's 926-5222
Live Contemporary

WEDNESDAY

Barefoot Beach Café at Queen's Beach 924-2233
Live Contemporary Hawaiian
Kimo Baker 5:30-8:30pm

Bin1901 at the Moana 921-4600
Piano Wine Bar
Ginny Tiu 6:30-9:30pm

Chart House Waikiki 941-6660
Live Contemporary Hawaiian
Tito Berinobis & David Kauahikaua 6-10:30pm

Cheesecake Factory 924-5001
Classic Hawaiian
Kimo Artis Duo 8-11pm

Duke's Canoe Club Waikiki 922-2268
Acoustic, Soul, R&B
Haumea Warrington 4-6pm
Ellsworth Simeona 9:30-12am

Gordon Biersch 599-4877
Jazz Wednesdays
Varying Artists 6:30-9:30pm

Hard Rock Cafe 955-7383
Live Contemporary
Dave Watanabe 9-11am
Kitsch (or others) 9-11pm

House Without a Key 923-2311
Live Hawaiian & Hula by Brooke Lee
Pa'ahana 5:30 - 8:30pm

Hula Grill 923-HULA
Live Contemporary Music

IL LUPINO
ITALY'S FINEST & WINE BAR

15% OFF
Il Lupino is pleased to extend a 15% discount to all Concierge. Must show your work ID to receive the discount. Not applicable on liquor or special.

ROYAL HAWAIIAN CENTER • VALIDATED PARKING
breakfast • lunch • happy hour • afternoon tea • dinner
ilupino.com • @ilupino • #ilupino • 808.922.3480

E Pili Kākou

DINING ▶ ENTERTAINMENT ▶ PAU HANA ▶ EAT ▶ DRINK ▶ BE MERRY ▶ HAPPY HOUR

Brandon Serrano 7-9pm
Hy's Steak House 922-5555
Live Soft Contemporary
 Audy Kimura 6:30-10pm
Kani Ka Pila Grille 924-4992
Hoku Award Winning Hawaiian musicians
 Mike Kaawa 6-9pm
LBLE at the Hilton Waikiki Beach Hotel 922-0811
Live Contemporary Funk, Jazz, Hip Hop & Reggae
 Evan Khay 7-10pm
Lewers Lounge 923-2311
Live Contemporary & Light Jazz
 Maggie Herron & Rocky Holmes 8:30-12am
LuLu's 926-5222
Live Contemporary Hawaiian
 Mango Season 6-9pm
 Jason Laeha & Cole Strona 10-close
Mahina & Sun's 923-8882
Jazz, Pop & Rock Poolside on the Lanai
 Verge & Paula 7-9pm
Mai Tai Bar at the Royal Hawaiian 923-7311
Live Contemporary Hawaiian with Hula Dancer
 Jeremy Cheng 6:30-8:30pm
Maui Brewing Company 843-2739
Live Contemporary Hawaiian
 Johny Helm 3:30-5:30pm
Roy's Hawaii Kai 396-7697
Acoustic & Slack Key Top 40
 Dayton Watanabe 6:30-9:30pm
Rumfire 921-4600
Solo Contemporary Guitarist
 Thomson Enos 5-8pm
 Son Caribe Band 9:30-11:30pm
Signature Prime Steak 949-3636
Contemporary Pianist in the bar
 Pierre Grill 6-9pm
Sky Waikiki 979-7590
Live Contemporary
 Randy & Kanoe 6-9pm
SWIM at the Hyatt 923-1234
Live Contemporary
 Kuuipo Kumukahi 5:30-7pm
The Edge at the Sheraton 922-4422
Hawaiian Music with conch/torch ceremony at 6 p.m.
 Keoni Ku Duo 6:30-9:30 pm
The Reef Bar at the Outrigger Reef 924-7333
Live Hawaiian & Jazz during happy hour
 Ben Vegas 3-5pm
Tiki's Grill & Bar 923-TIKI
Live Contemporary - 1/2 off Wine Wednesdays
 Canoes for Rent 5:30-8:30pm
 Johnny Helm 9-11pm
Tommy Bahama Restaurant 923-8785
Live Contemporary Hawaiian
 Sean Cleland 6-9pm
Tropics Bar & Grill 949-4321
Live Contemporary Rock
 Acoustik Playground 5:30-8:30pm

THURSDAY

Barefoot Beach Café at Queen's Beach 924-2233
Live Contemporary Hawaiian
 Shaka Madali 5:30-8:30pm
Bin1901 at the Moana 921-4600
Piano Wine Bar
 Scott Smith 6:30-9:30pm

BLT Market 729-9729
Live Contemporary Guitar
 Sean Cleland 6-9pm
Chart House Waikiki 941-6660
Live Contemporary Hawaiian
 Tito Berinobis 6:30-10pm
Cheeseburger Waikiki 941-2400
Contemporary / Old School Rock
 Alex Oasay 6:30-9:30pm
Cheesecake Factory 924-5001
Classic Hawaiian
 Ben Kama Duo 8-11pm
Duke's Canoe Club 922-2268
Live Contemporary Hawaiian
 Haumea Warrington 4-6pm
 Local Uprising Duo 9:30-midnight
 Denny Ono Duo (8/2) 9:30-midnight
 Maiko Duo (8/16) 9:30-midnight
 Scott Magz & Brady K (8/23) 9:30-midnight
Hard Rock Cafe 955-7383
Live Contemporary
 Zanuck Lindsay 9-11am
 Kailua Bay Buddies 9-11pm
House Without a Key 923-2311
Live Hawaiian & Hula by Sarah Kamalei Kawakami
 Eric Lee Trio 5:30 - 8:30pm
Hula Grill 923-HULA
Live Contemporary Hawaiian
 Kamuela Kahoano 7-9pm
Hy's Steak House 922-5555
Live Soft Contemporary
 Audy Kimura 6:30-10pm
Kani Ka Pila Grille 924-4992
Hoku Award Winning Hawaiian musicians
 Kawika Kahiapo 6:30-9:30pm
LBLE at the Hilton Waikiki Beach Hotel 922-0811
Live Contemporary Pop/Rock
 Sunway 7-10pm
Lewers Lounge 923-2311
Contemporary Jazz
 Maggie Herron & Rocky Holmes 8:30-12am
LuLu's 926-5222
Live Contemporary Hawaiian
 Desmond Oliverira 6-9pm
Mahina & Sun's 923-8882
Mellow Acoustic Sounds Poolside on the Lanai
 Keith Omizo 7-9pm
Mai Tai Bar at the Royal Hawaiian 923-7311
Live Contemporary Hawaiian with Hula Dancer
 Dave Watanabe 8 - 10pm
Maui Brewing Company 843-2739
Live Contemporary Hawaiian
 Randy Allen 3:30-5:30pm
Michel's at the Colony Surf 923-6552
Live Slack Key
 Jeff Peterson 7:30-10:00pm
Roy's Hawaii Kai 396-7697
Acoustic Hawaiian Guitar
 Steve English 6:30-9:30pm
Rumfire 921-4600
Solo Contemporary Guitarist
 Mark Calderia 5-8pm
 Son Caribe Band 9:30-11:30pm
Signature Prime Steak 949-3636
Contemporary Pianist in the bar
 Isao Motomochi 6-9pm
Sky Waikiki 979-7590

Live Contemporary
 Tahiti Rey 6-9pm
SWIM at the Hyatt 923-1234
Live Contemporary
 Kuuipo Kumukahi 5:30-7pm
The Edge at the Sheraton 921-4600
Hawaiian Music with conch/torch ceremony at 6 p.m.
 Christian Yrizarry Duo 6:30-9:30pm
The Reef Bar at the Outrigger Reef 924-7333
Live Hawaiian & Jazz during happy hour
 Kalae Camarillo 3-5pm
Tiki's Grill & Bar 923-TIKI
Hot Hula Thursdays - hula dancers perform
 Malu the Band 5:30-7:30pm
 Ellsworth Simeona 8:30-10:30pm
Tommy Bahama Restaurant 923-8785
Live Contemporary Hawaiian
 Chris Mercado 6-9pm
Tropics Bar & Grill 949-4321
Live Contemporary Hawaiian
 Nohelani Cypriano 5:30-8:30pm

FRIDAY

Barefoot Beach Café at Queen's Beach 924-2233
Live Contemporary Hawaiian with Beach BBQ
 Art Kalahiki & Friends 5:30-8:30pm
Bin1901 at the Moana 921-4600
Piano Wine Bar
 Scott Smith 6:30-9:30pm
Chart House Waikiki 941-6660
Live Contemporary Hawaiian
 Mark Yim's Pilikia I 6-9pm
 Mark Yim's Pilikia II 9:30-12:30am
Cheeseburger Waikiki 941-2400
Contemporary Hawaiian
 Aku 6:30-9:30pm
Cheesecake Factory 924-5001
Live Contemporary
 Johnny Helm Duo 8:30-11:30pm
Dave & Busters 589-2215
Pau Hana Fridays Live Local Bands
 Varying Hawaiian Artists 6-8pm
Duke's Canoe Club Waikiki 922-2268
Live Contemporary Hawaiian
 Maunaulua 4-6pm
 Christian Yrizarry (8/2) 9:30 -12am
 Kona Chang Duo (8/10) 9:30 -12am
 Kelandy Diaz Duo (8/17) 9:30 -12am
 Preston Kauwe Duo (8/24) 9:30 -12am
 Chris Murphy Duo (8/31) 9:30 -12am
Hard Rock Cafe 955-7383
Live Contemporary
 Alex Oasay (or others) 9-11am
 Jessie Savio (8/10) 9-11am
 The Fresh Preps (or others) 9-11pm
House Without a Key 923-2311
Live Hawaiian & Hula by Kanoe Miller
 Kapalama 5:30 - 8:30pm
Hula Grill 923-HULA
Aloha Friday Lunch Luau with hula dancer
 David Asing 12:30-2:30pm
 Keoki & Russell 7-9pm
Hy's Steak House 922-5555
Live Soft Contemporary
 Audy Kimura 6:30-10pm
Kani Ka Pila Grille 924-4992
Hoku Award Winning Hawaiian musicians

Let's be Together...

DINING ▶ ENTERTAINMENT ▶ PAU HANA ▶ EAT ▶ DRINK ▶ BE MERRY ▶ HAPPY HOUR

Ka Hehena 6-9pm
 Hawaiian Slack Key Jam (8/10) 5-9pm
LBL at the Hilton Waikiki Beach Hotel 922-0811
Live Contemporary Pop/Rock
 Sunway 7-10pm
LuLu's 926-5222
Live Contemporary
 Glenn Domingo 6-9pm
Lewers Lounge 923-2311
Live Contemporary Jazz
 Maggie Herron & Dean Taba 8:30-12am
Mahina & Sun's 923-8882
Slack Key Poolside on the Lanai
 Jeff Rasmussen 7-9pm
Mai Tai Bar at the Royal Hawaiian 923-7311
Live Contemporary Hawaiian with Hula Dancer
 Ben Kama 6:30-8:30pm
 Jeremy Ching 8:30-10:30pm
Maui Brewing Company 843-2739
Live Contemporary Hawaiian
 Sienna Souza 3:30-5:30pm
 Jeremy Hirokawa (or others) 9-11pm
Michel's at the Colony Surf 923-6552
Live Slack Key Stylings & Jazz
 Jeff Peterson & Ernie Provencher 6:30-10pm
Roy's Hawaii Kai 396-7697
Keyboardist
 Brian Robert Shaw 6:30-9:30pm
Roy's Ko Olina 676-7697
Slack Key Guitar
 Chris Rego 5:30-8pm
Rumfire 921-4600
Solo Contemporary Guitarist
 Shar Carillo 5-8pm
Signature Prime Steak 949-3636
Contemporary Pianist in the bar
 Grant Carvalho 6-9pm
Sky Waikiki 979-7590
Live Contemporary
 John Akapo 5-8pm
The Edge at the Sheraton 921-4600
Hawaiian Music with conch/torch ceremony at 6 p.m.

Na'ehu Duo 6:30-9:30pm
The Reef Bar at the Outrigger Reef 924-7333
Live Hawaiian & Jazz during happy hour
 Christian Yrizarry 3-5pm
Tiki's Grill & Bar 923-TIKI
Live Contemporary Hawaiian
 Randy Allen 5-7pm
 Vaihi 7:30-9:30pm
 The Kristi Masuhara Band 10:30-midnight
Tommy Bahama Restaurant 923-8785
Live Contemporary Hawaiian
 Chris Murphy 6-9pm
Tropics Bar & Grill 949-4321
Live Contemporary Hawaiian
 Nohelani Cypriano 8-10:30pm

SATURDAY

Barefoot Beach Café at Queen's Beach 924-2233
Beach BBQ with Live Contemporary Hits
 The Barefoot Boys feat. Pokii Vaughn 5:30-8:30pm
Bin1901 at the Moana 921-4600
Piano Wine Bar
 Scott Smith 6:30-9:30pm
Chart House Waikiki 941-6660
Live Contemporary Hawaiian
 Tito Berinobis & Billy Beimes 7-12pm
Cheeseburger Waikiki 941-2400
Contemporary Hawaiian
 Sean Cleland 6:30-9:30pm
Cheesecake Factory 924-5001
Classic Hawaiian
 Dennis McClees Duo 8-11pm
Duke's Canoe Club Waikiki 922-2268
Live Hawaiian Entertainment
 Wheeland Brothers (8/4) 4-6pm
 Beach 5 (8/11) 4-6pm
 Mojo (8/18) 4-6pm
 Kaiona Band (8/25) 4-6pm
 Ryan Tenney Duo (8/4) 9:30-12am
 Camarillo Brothers (8/11) 9:30-12am
 Jai Rodgers Duo (8/18) 9:30-12am
 Mike Tulba Duo (8/25) 9:30-12am
Hard Rock Cafe 955-7383
Live Contemporary
 Rob West (or others) 9-11am
 CTD (or others) 9-11pm
House Without a Key 923-2311
Hawaiian & Hula by Kanoe Miller
 Kapalama 5:30 - 8:30pm
Hula Grill 923-HULA
Live Traditional Hawaiian with dancer
 Kaipo Dabin & friends 7-9pm
Hy's Steak House 922-5555
Live Soft Contemporary
 Audy Kimura 6:30-10pm
Kani Ka Pila Grille 924-4992
Hoku Award Winning Hawaiian musicians
 Hookena 6:30-9:30pm
LBL at the Hilton Waikiki Beach Hotel 922-0811
Live Contemporary Blues & R&B
 Tahiti Rey 7-10pm
Lewers Lounge 923-2311
Live Contemporary Jazz
 Maggie Herron & Dean Taba 8:30-12:30am
LuLu's 926-5222
Live Contemporary Hawaiian
 Kamaka 6-9pm

Mahina & Sun's 923-8882
Soul Poolside on the Lanai
 Maryanne Ito 7-9pm
Mai Tai Bar at the Royal Hawaiian 923-7311
Live Contemporary Hawaiian with Hula Dancer
 Kama Kakaio 6:30-8:30pm
Maui Brewing Company 843-2739
Live Contemporary Hawaiian
 Mark Caldeira 3:30-5:30pm
 Ryan Tenney 9-11pm
Michel's at the Colony Surf 923-6552
Live Contemporary Slack Key & Jazz
 Jeff Peterson 7-11pm
Roy's Hawaii Kai 396-7697
Acoustic Guitar
 Jimmy Funai 6-9:30pm
Roy's Ko Olina 676-7697
Slack Key Guitar
 Chris Rego 5:30-8pm
Rumfire 921-4600
Solo Contemporary Guitarist
 Mike Izon 5-8pm
Signature Prime Steak 949-3636
Contemporary Pianist in the bar
 Grant Carvalho 6-9pm
Sky Waikiki 979-7590
Live Contemporary
 John Akapo 6-9pm
The Edge at the Sheraton 921-4600
Hawaiian Music with conch/torch ceremony at 6 p.m.
 Tino Jacob Duo 6:30-9:30pm
The Reef Bar at the Outrigger Reef 924-7333
Live Hawaiian & Jazz during happy hour
 Kamuela Kahoano 3-5pm
Tiki's Grill & Bar 923-TIKI
Live Contemporary Hawaiian & Reggae
 Johnny Helm 5-7pm
 Guidance (or others) 7:30-9:30pm
 Ellsworth & Piko 10-midnight
Tommy Bahama Restaurant 923-8785
Live Contemporary Hawaiian
 Chris Murphy 6-9pm
Tropics Bar & Grill 949-4321
Live Contemporary Hawaiian
 Henry Kapono 4-6pm
 Juke Joint 6:30-9:30pm

SUNDAY

Barefoot Beach Café at Queen's Beach 924-2233
Live Contemporary Hawaiian
 Shaka Madali 5:30-8:30pm
Chart House Waikiki 941-6660
Live Contemporary Hawaiian
 Dean & Dean 6-9pm
Cheesecake Factory 924-5001
Classic Hawaiian
 Chris Murphy 8-11pm
Duke's Canoe Club Waikiki 922-2268
Live Hawaiian Entertainment
 Henry Kapono 4-6pm
 Kailua Bay Buddies (8/26) 4-6pm
 Jeff James Duo (8/5) 9:30-12am
 Chris Mercado (8/12) 9:30-12am
 Derrick Lee Duo (8/19) 9:30-12am
 Ryan Tenney Duo (8/26) 9:30-12am
Hard Rock Cafe 955-7383
Live Contemporary

BAREFOOT BEACH CAFE

"I like it best at night, when the city skyline sparkles under starry skies and live music is offered. The best part is it is incredibly priced...and the food is absolutely delicious...a hint of Hawaiian culture along with fantastic views and flavors!"
 -Tina Turner, Barefoot Beach Cafe, Honolulu, HI

Casual Beachfront Dining
 Open Daily 7am - 8:00pm
 Live Music Nights, 5:30-8:00pm

FULL MENU, CALENDAR, INFO
 BarefootBeachCafe.com
 (808) 924-2233 (C.A.F.E.)

E Pili Kākou

DINING • ENTERTAINMENT • PAU HANA • EAT • DRINK • BE MERRY • HAPPY HOUR

Johnny Helm (or others)	9-11am	
Jive Nene (or others)	9-11pm	
House Without a Key		923-2311
<i>Live Hawaiian & Hula by Debbie Nakanelua</i>		
Pu'uhonua Trio	5:30 - 8:30pm	
Hula Grill		923-HULA
<i>Live Traditional Hawaiian with dancer</i>		
Art Kalahiki Duo	7-9pm	
Kani Ka Pila Grille		924-4992
<i>Hoku Award Winning Hawaiian musicians</i>		
Ei Nei	6-9pm	
Brother Noland (8/5)	6-9pm	
Kelley O'Neil's		926-1777
<i>Live Irish Music</i>		
Various Celtic Bands	4-7pm	
LBLE at the Hilton Waikiki Beach Hotel		922-0811
<i>Live, Energetic Mix of Pop and Rock Hits</i>		
Kristi Masuhara	7-10pm	
Lewers Lounge		923-2311
<i>Live Contemporary & Light Jazz</i>		
Tommy James	8:30pm - 12am	
LuLu's		926-5222
<i>Acoustic R&B</i>		
Jason Laeha	6-9pm	
Mahina & Sun's		923-8882
<i>Live Jazz on the Lanai</i>		
Jegaan Faye	7-9pm	
Mai Tai Bar at the Royal Hawaiian		923-7311
<i>Live Contemporary Hawaiian with Hula Dancer</i>		
Christian Yizarry	6:30-8:30pm	
Maui Brewing Company		843-2739
<i>Live Contemporary Hawaiian</i>		
David Sedlak or Jenna K.	3:30-5:30pm	
Scott Magz & Brady K	9-11pm	
Roy's Ko Olina		676-7697
<i>Slack Key Guitar</i>		
Chris Rego	5:30-8pm	
Rumfire		921-4600
<i>Solo Contemporary Guitarist</i>		
Johnny Kukui	5-8pm	
Signature Prime Steak		949-3636
<i>Contemporary Pianist in the bar</i>		
Isao Motomochi	6-9pm	
Sky Waikiki		979-7590
<i>Live Contemporary</i>		
Da Push-O-Verse	6-9pm	
The Edge at the Sheraton		922-4422
<i>Hawaiian Music with conch/torch ceremony at 6 p.m.</i>		
Eric Lee Duo	6:30-9:30pm	
The Reef Bar at the Outrigger Reef		924-7333
<i>Live Hawaiian & Jazz during happy hour</i>		
Danny Carvalho	3-5pm	
Tiki's Grill & Bar		923-TIKI
<i>Live Contemporary Hawaiian</i>		
Kapu the Band	2:30 - 5:30pm	
Vaihi	6-8pm	
Ellsworth & Piko	9-11pm	
Tommy Bahama Restaurant		923-8785
<i>Live Contemporary Hawaiian</i>		
Johnny Helm	6-9pm	
Tropics Bar & Grill		949-4321
<i>Live Contemporary Rock & Hawaiian</i>		
Mike Piranha	5:30 - 8:30pm	
Uncle's Fish Market & Grill		275-0063
<i>Live Slack Key</i>		
Jeff Peterson	5:30-8:30pm	



Hot Lines

Here's a few numbers for you to find out the latest in live music from places that change daily or don't update us regularly, since we can't possible list them all.

Anna O'Brien's	946-5190
Cheesecake Factory Kapolei	670-2666
Gordon Biersch	599-4877
Irish Rose Saloon	947-3414
Kelley O'Neil's	926-1777
Lucky Strike Honolulu	664-1140
Mai Tai Bar Ala Moana	947-2900
Moose McGillycuddy's	923-0751

Dining Dish



The Royal Hawaiian has introduced **The Bar at Azure**. The renovated bar features an expanded seating area and an all-new cocktail menu that pays homage to the hotel's exceptional history through craft cocktails and private-label spirits. Creating those cocktails will be an all-star veteran mixologist team, including **Robert 'Sully' Sullivan, Ryan Tanji and Alicia Yamachika**. The bar will be open nightly through 10:30 p.m. 921-4600. •



If you haven't gotten down to check out their Pac-Man Cafe Pop Up, they extended one more month. The special Pac-Man menu, merchandise and the game itself has been such a hit, it will stay open until August 31st. There will be weekly Instagram selfie contests with prizes, and every Pac-Man item sold will entitle guests to a raffle ticket, where the winner will get a trip for two to Japan! The lucky ticket will be drawn on August 31st and will be announced via social media. alohabreadbutter.com. • Congratulations to **BASALT at Duke's Lane** who just celebrated their 1st anniversary. **Executive Chef Keith Kong** is marking the occasion by adding some new items to the menu, including putting prime rib on their dinner menu which has been met with rave reviews. Other new menu items include a Pork Ragout Pappardelle, Macadamia Nut Monchong, and a creative twist on Empanadas filled with rotisserie duck, aged goat cheese, brandied cherries and pickled jalapeño with an avocado lime crema. Open from 7 a.m. - 10:30 p.m. 923-5689. • **Goma Tei Ramen** has brought in a special machine engineered and designed exclusively for to make their soup noodles. The machines were built in Sanuki, Japan and can mix flour and cut noodles to their exact specifications. The new noodles will be made in-house daily, and incorporate a special flour shipped from Kagawa, Japan and specifically formulated for the restaurant to achieve a unique texture and smoothness. gomatei.com. • **Blue Note Hawaii** has made a few changes to their menu in order to add more local fare while still paying homage to their New York Jazz

roots. The Crab Cake and Blackened Ahi starters have been revamped, and they have added new entrees such as the Spicy Green Papaya Salad, Unagi Salmon, and Cajun Shrimp Skewers. bluenotehawaii.com. • The folks behind Burgers and Things have opened a new location. **Burgers on Bishop** is located at Topa Towers underneath Bar Leather Apron, and this place looks good enough to make a special trip too even if you don't go downtown much. The official description reads that it will bring "**Chef Troy Sakoda's** interpretation of popular dishes, including grab-and-go breakfast options, sandwiches and salads at lunch, a Friday pau hana menu as well as--you guessed it--burgers." However, upon further inspection of the menu, aside from a pretty good looking burger and sandwich menu, that Friday Pau Hana menu has some pretty mouth-watering items on it, such as Prime Rib with truffle mash, a Crab Bucket, a Seafood Duet with porcini crusted snapper, pan seared scallops and corn pudding and Braised Short Ribs in a port reduction sauce over creamy polenta. BYOB. Open Monday - Thursday from 8 a.m. - 3 p.m. and until 8 p.m. on Fridays. 586-2000. burgersonbishop.com. • Sad to report that **Yauachta** will be closing their doors at the end of August. That gives you a few more weeks to stop by to get your fill of a few of your faves. I know I've got to stop by for one last taste of my hand-pulled noodles, crispy duck, a Nashi Momo and that smoky Elemental Old Fashioned. I hope they decide to re-open in Honolulu one day. ~ Pam



Dining Calendar

August 2: *The 3rd Annual Traveling Plate*, a grazing event for Easterseals Hawaii comes to Herringbone. 6:30 - 9:30 p.m. \$75. \$125 VIP. TravelingPlateHI.com

August 8: *A Collaboration Dinner with Sheldon Simeon* The Top Chef alum joins forces with Keith Kong at BASALT for a special 5-course dinner with pairings. 6 p.m. \$125. 923-5689.

August 10: *BLT Market Wine over Waikiki* features wine, bites and fireworks. Tastes wines from the Old World to the new World and talk about them with experts. 6:30-8:30 p.m. \$65 includes wine and pupu pairings. winesoverwaikiki.brownpapertickets.com.

August 18: *Mason Jar Salads*, the 3rd installation of cooking demos from INspiration Interiors and Down to Earth, Kapolei Commons. Learn tips & tricks for those prep-ahead, stay fresh all week, salads and inspire your creativity with demos and discussions. Free to the first 30 RSVPs via email to jcolgan@hdc-hawaii.com. 11:30 a.m. - 1 p.m. 237-5480.

August 25: *Wine on the Waterfront*, Harbor Restaurant at Pier 38 is hosting a food & wine event featuring over 10 food stations and more than a dozen fine wines. \$75. 5 - 8 p.m. hnlitix.com.

Wednesdays: *Wine & Dine Wednesdays* Stop by the Veranda every Wednesday from 6-9 pm for a 3-course meal with paired wines for \$65+-. Each additional glass of wine for \$12. kahalarresort.com.

AUGUST CALENDAR OF EVENTS

Continuing Events

MONDAY – FRIDAY LYON ARBORETUM TOURS

The lush gardens at the top of the UH Manoa are open for guided tours daily. Knowledgeable guides will introduce the highlights of all 193.6 acres of botanical rainforest. Reservations required. 12 participants max. Donations accepted. 988-0461.

MONDAY-FRIDAY FOSTER BOTANICAL GARDENS

Guided garden tours of rare and beautiful plants from tropical regions throughout the world. Foster Botanical Gardens, 50 N. Vineyard. 1 p.m. Adults: \$5. Reservations recommended. 522-7066.

TUESDAYS TOURS OF THE HAWAII THEATRE

Get a behind-the-scenes tour of this historic theatre including history, architecture, and a performance on the 1922 Robert Morton theatre organ. Hawaii Theatre. 11 a.m. – 12 p.m. \$10. 528-0506.

TUESDAYS • KU HA'AHEO

An afternoon of music and hula led by kumu hula Blaine Kamalani Kia. Waikiki Beach Walk, Plaza Lawn. 4:30–6 p.m. waikikibeachwalk.com. FREE.

TUESDAYS • KCC FARMERS MARKET

The Saturday Market is so popular they added another day. Head up to Kapiolani Community College to stock up on fresh, island produce, seafood, flowers and more, from several dozen vendors. 4 – 7 p.m. Free. 848-2074.

TUESDAYS

INDOOR YARD SALE & FARMER'S MARKET

Weekly yard sale offers vendors from Hawaii Kai to Waikiki along with plenty of local food and fresh produce. Waikiki Community Center. 310 Paoakalani Avenue. 9 a.m. – 12 p.m. Free admission. 923-1802. waikikicomunitycenter.org.

TUESDAYS & THURSDAYS FRESH FARMERS MARKET AT THE HYATT

The Hyatt's Farmers Market is offered twice a week. A great place for visitors and locals to stock up on fresh local organic fruits, vegetables, jams, honeys, baked goods and more. The market is spread out throughout the ground floor of the Pualeilani Atrium Shops. 4 – 8 p.m. waikiki.hyatt.com.

TUESDAYS, THURSDAYS & SUNDAYS TOUR & TEA AT THE HONOLULU ACADEMY OF ARTS

Tours are led by volunteer docents and designed for visitors, who would like to explore the galleries, learn more about art and culture, and socialize over a cup of tea. Docents lead discussions in the galleries and offer insight into many cultures and time periods. 2:30 – 4 p.m. in selected galleries. Free with admission. Reservations required. 532-8700.

TUESDAY – SATURDAY HAWAIIAN MISSION HOUSES GUIDED TOURS

Visit the Print Shop, coral block Chamberlain House, and 1821 Mission House and learn about the 19th century history and culture preserved at this historic site. Docent-led tours of the historic houses begin on the hour, every hour from 11 a.m. for \$8 - \$10. No charge for the self-guided tour of the grounds. Hawaiian Mission Houses. Tues. - Sat. 10 a.m. - 4 p.m. 447-3910 or missionhouses.org.

THIRD WEDNESDAY (AUGUST 15) KONA NUI NIGHTS

Kona Nui Nights honors and highlights Hawaiian

language and music, as well as the art of hula on the third Wednesday of every month with food and drinks for sale. Free. Ward Village Information Center Courtyard. 6-8 p.m. wardvillageshops.com.

SECOND THURSDAY (AUGUST 9) COURTYARD CINEMA

Ward Village hosts its monthly film series event, Courtyard Cinema, on the 2nd Thursday of each month. The showing features free popcorn, refreshments, food vendors and entertainment. Courtyard Cinema is free and open to the public. Seating is limited. Reserve your tickets at wardvillagecourtyardcinema.com.

THURSDAYS • COURTYARD YOGA

Take a complimentary yoga class with CorePower Yoga at the Ward Village Information Center Courtyard. Open to the first 50 in attendance. All experience levels welcome. 5:30 – 6:30 p.m. For more information visit wardvillageshops.com/yoga.

THIRD THURSDAY (AUGUST 16) DOWNTOWN GALLERY WALK & CRAFT FAIR

The Arts at Marks Garage continues to build on downtown activities offering an excuse to hang out after work and giving everyone else a reason to head downtown. Free. 521-2903. artsatmarks.com.

FRIDAYS • CULTURAL CRAFT FAIR

The Hyatt's had so much success with their Farmers Market that they are applying the same principle to local craft items. The craft fair features local vendors featuring arts & crafts, jewelry, photography, woodwork and more. 3 - 7 p.m. waikiki.hyatt.com.

FIRST FRIDAY (AUGUST 3) DOWNTOWN GALLERY WALK & CRAFT FAIR

Art lovers should head to downtown Honolulu the first Friday of each month. This event has exploded into a downtown party with galleries and studios open for exhibitions, artist demonstrations, and special performances. 23 galleries and art-related retail shops, restaurants and museums participate. Downtown Honolulu/Chinatown. 6 – 9 p.m. Free. 521-2903 or artsatmarks.com.

FIRST FRIDAY (AUGUST 3) FREE MOVIE NIGHT ON THE LAWN

PCC continues its love for families by offering a family-friendly movie the first Friday of the month to enjoy on the lawn under the stars at Hukilau Marketplace. This month watch "Sherlock Gnomes" at 7:30 p.m. Admission and parking are free. HukilauMarketplace.com.

FINAL FRIDAY • ART AFTER DARK

Art After Dark is back with one of the hippest events all month. Celebrate pride this month with a special event featuring performers from Scarlet Lounge.. Food provided by EAT Honolulu. 6-9 p.m. artafterdark.org.

SATURDAYS • KCC FARMERS MARKET

Fresh island produce, seafood, flowers and more are available from over two-dozen vendors at Kapiolani Community College. Free. 7:30 - 11 a.m. 848-2074.

SATURDAYS PEARLRIDGE FARMERS MARKET

Over 40 vendors offering locally grown fruits and vegetables, plants and freshly made treats. A pop-up cafe offering seating and live music round out the day. Free. 8 a.m. - noon. PearlridgeOnline.com.

SATURDAYS • KAKA'AKO FARMERS MARKET

The Kaka'ako Farmer's Market hosts an abundance of treats from around our islands. Located next to Ross Dress for Less at Ward Gateway Center. Free. 8 a.m. - 12 p.m. wardvillage.com.

SECOND SATURDAY (AUGUST 11) DOWNTOWN GALLERY WALK & CRAFT FAIR

First Friday has become such a success that events carry over to the second Saturday. HiSAM, 11 a.m. – 4 p.m. 586-9958. Other events around downtown Honolulu all afternoon including slam poetry and open mic events at The Arts at Marks from 3 -5 p.m. Free. 521-2903 or artsatmarks.com.

SATURDAYS & SUNDAYS ART ON THE ZOO FENCE

More than 35 local artists display their works on the Zoo fence on Monsarrat Avenue opposite the Kapiolani Park Bandstand. Works for sale include original paintings, prints and photographs. 9 a.m. – 4 p.m. Free. artonthezoo fence.com.

FIRST SUNDAY (AUGUST 5) LEI-MAKING CLASS WITH MELEANA ESTES

Bringing back the practice of lei-making, the International Market Place offers a monthly lei-making workshop, with contemporary lei artist Melana Estes every first Sunday of the month from 11am - 2pm in Queen's Court. Free will supplies last. shopinternationalmarketplace.com.

SECOND SUNDAY (AUGUST 12) FREE ADMISSION TO IOLANI PALACE

On the second Sunday of each month, Iolani Palace opens its doors to kama'aina guests to visit the historic landmark for free. iolanipalace.org.

THIRD SUNDAY (AUGUST 19) NA MELE NO NA PUA SUNDAY CONCERT

Waikiki Beach Walk presents the Makaha Sons at the Plaza Stage from 5 – 6 p.m. for their free Sunday Concert Series. waikikibeachwalk.com.

THIRD SUNDAY (AUGUST 19) BANK OF HAWAII FREE SUNDAY

The Honolulu Museum of Art opens its doors to the public free of charge on the third Sunday of every month thanks to Bank of Hawaii. Plenty of activities for all to enjoy. 11 a.m. - 5 p.m. Free. 532-8700.

AUGUST 1 JOHNNY HELM AT THE ZOO

This weeks' Wildest Show in Town at the Honolulu Zoo will feature John Helm. Kids can enjoy the Keiki Coloring Contests, animal themed trivia and prizes, and ukulele will be given to a child 12 and under each week. Plate lunches and snack foods available for purchase. \$5. Gates open at 4:35 p.m. Music starts at 6 p.m. No alcohol or high-back chairs allowed. HonoluluZoo.org.

AUGUST 2 ANDERSON .PAAK & THE FREE NATIONALS

The rapper, songwriter, drummer, singer and record producer began producing music from his bedroom as a teenager, and released his debut album in 2012. He received the a Soul Train Music Award in 2016 and was nominated for two Grammy's in 2017. The Republik. 8 p.m. Tickets: \$45. \$5 increase day of show. jointherepublik.com.

AUGUST 1-5 • HAWAIIAN INVITATIONAL WATER POLO TOURNAMENT

This is the oldest annual international water polo tournament in the world, annually attracting as many as 115 teams from around the world. Bracket games will be held at UH, Punahou, Iolani and Kamehameha School Pools. hawaiiwaterpolo.com.

AUGUST 3 • HALSEY

Grammy-Award-nominated, multi-platinum singer Halsey, whose recent new single "Alone" with Big Sean

AUGUST CALENDAR OF EVENTS

and Stefflon Don surpassed over one million streams in three days. Tickets: \$35 - \$69.50. 8 p.m. Blaisdell Arena. ticketmaster.com.

AUGUST 3 • ILIZA SHLESINGER



Iliza Shlesinger, the winner of NBC's Last Comic Standing in 2008 and one of today's leading comedians, will perform two shows at The Republik. 5 p.m. and 8 p.m. Tickets: \$29.50 - \$104.50. \$5.50 increase day of show. jointherepublik.com.

AUGUST 3 - 5 THE SLEEPING BEAUTY

Ballet Hawaii has partnered with the Kansas City Ballet to bring you Tchaikovsky timeless classic, one of the oldest full length ballet stories that was first performed in 1890, with costumes and scenery from the Cincinnati Ballet and dancers from five different troupes across the country including our own. Friday, 6:30 p.m., Saturday 4 p.m. and Sunday 2 p.m. Tickets: \$40-\$55. \$65 for a three-day pass. Blaisdell Concert Hall. ticketmaster.com.

AUGUST 3 - 5 COMIC CON HONOLULU

Comic Con. There are people that wait all year to hear those two words. Comic Con offers a wide variety of fan panels, industry guests, activities, video games, table-top games and autograph opportunities. This years guests include Kelly Hu, Jason Isaacs (Harry Potter, the new Star Trek), Lennie James (Walking Dead) Ka, tie Cassidy (Arrow) and Roy Thomas from Marvel. Get your fandom on during this 3-day convention, costumes welcome. Three-day memberships available online for \$65, day passes \$40 or \$55. comicconhonolulu.com.

AUGUST 3 - 5 THE PACIFIC INK & ART EXPO 2018

Some of the world's best tattoo artists, piercers and painting artists are in town for the 7th annual event showcasing Pacific Islander culture and traditions. Artists of all styles and cultural backgrounds travel from all over the world to share and learn from each other in a weekend of art and culture. Special guests include alt-model Masuimi Max, TV stars Megan Massacre of NY Ink, Justin Coppolino of Tattoos After Dark, Nikki Simpson of Ink Master Angels, Big Gus of Tattoo Nightmares, and Nikko Hurtado of LA Ink as well as several local and Asian cultural practitioners. Blaisdell Exposition Hall. Ticket: \$25, or \$66 for all three days. Fri. 2 - 11 p.m., Sat. 11 a.m. - 11 p.m. Sun. 12 - 6 p.m. hawaiiattooexpo.com.

AUGUST 4 NA MOKU EHA MELE O MAUI

The Asing Ohana will be performing at the next installment of Na Moku Eha Mele, Mele o Maui. A concert laden with stories and lore, songs, hula, and chant, from 5:30 p.m. to 8 p.m., \$30 each in advance, or \$35 at door. missionhouses.org. The event has been rescheduled from its original July 28th date.

AUGUST 4 • OBON FESTIVAL AND BYODO TEMPLE 50TH ANNIVERSARY

This year, Valley of the Temples Memorial Park is honored to host a one-of-a-kind event in celebration of both Obon and the 50th anniversary of the Byodo-In Temple, which was built to commemorate the 100th anniversary of the first Japanese immigrants to Hawaii. 4 - 9 p.m. Byodo-In Temple 47-200 Kahekili Highway. 762-1914.

AUGUST 5 • ALII SUNDAY

Kawaiahao Church celebrates the birthday of selected Hawaiian Royalty who were of particular importance for the Church by holding special Sunday services in their honor. Today they honor Kamehameha 'Ekolu. 9 - 10 a.m. 469-3000.

AUGUST 8

A TRIBUTE TO LEGENDARY JAZZ VOCALIST, JIMMY BORGES AT THE ZOO

This weeks' Wildest Show in Town will showcase Noel Okimoto and The Jazz All Stars in a special tribute to Jimmy Borges. Kids can enjoy Keiki Coloring Contests, animal themed trivia and prizes, and ukulele will be given to a child 12 and under each week. Plate lunches and snack foods available for purchase. \$5. Gates open at 4:35 p.m. Music starts at 6 p.m. No alcohol or high-back chairs allowed. HonoluluZoo.org.

AUGUST 9 - 19

HONOLULU RAINBOW FILM FESTIVAL

The 29th annual Rainbow Film Festival is one of the longest-running LGBT film festivals in the country. This year, the Festival will showcase fifteen films as well as special events, parties and exclusive appearances over the span of two consecutive weekends. Special guests include: Sharon Bell, Winny Clarke, Maren Hassler, Jackie Monahan, and Madeleine Olnek. Doris Duke Theatre. See a complete schedule at hgclf.org.

AUGUST 9

KALANI PE'A, NATALIE AI KAMAU'U, AND KEAUHOU AT THE AQUARIUM

Ke Nani O Ke Kai presents their final 2018

performance. Hear Kalani Pe'a, Natalie Ai Kamau'u, and Keauhou. Food and drink available for purchase. Doors open at 5:30 p.m., concert begins at 7 p.m. Tickets \$50, \$20 for kids 5-12. waikikiaquarium.org

AUGUST 10

HAWAIIAN SLACK KEY GUITAR JAM

Check out some of the performers scheduled to perform at the Slack Key Festival on Saturday from 5 - 9 p.m. at Kani Ka Pila Grille.

AUGUST 10 - 11

HOME BUILDING & REMODELING SHOW

Looking for ideas? Learn how to budget, design, plan and build projects, talk to exhibitors and attend seminars at the BIA New Summer Home Building & Remodeling Show. \$7., \$3-day pass \$10. Fri. 5 - 9 p.m.; Sat. 9:30 a.m. - 8:30 p.m.; Sun. 9:30 a.m. - 3:30 p.m. biahawaii.org.

AUGUST 11

HOME FREE IN CONCERT

The all-vocal country sensation is bringing Nashville country standards and country-dipped pop hits to town. The 5-man band has become known for their show-stopping performances that mix their signature no-instrument, all-vocal music with their quick-witted humor. Tickets: \$29.50 - \$299.50. 7:30 p.m. Blaisdell Calendar. ticketmaster.com.

AUGUST 11

MELE & HULA AT LANIKUHONUA

Spend an evening with some of Hawaii's top musicians and hula legends at the 8th annual Mele & Hula at Lanikuhonua summer concert. See Kimié

Continued on page 17.



MAJESTIC

by
Atlantis
CRUISES.

Sunset Appetizer Cruises

Cool off with our sunset appetizer cruise, now featuring a hosted beverage package including house wine, beer, champagne & more!

atlantisadventures.com

For info & reservations call (808) 973-1311 or fax to (808) 973-2499

   | #atlantishawaii

DISCOUNT HAWAII CAR RENTAL

SAVE UP TO 50%



GUARANTEED RESERVATIONS
* NO BOOKING FEES * NO DEPOSIT * CANCEL ANYTIME
* NATIONAL RENTAL COMPANIES

call us today @
1.800.292.1930

or check us out online:

DiscountHawaiiCarRental.com

Wildlife Guaranteed

See dolphins or turtles or come again Free wildlife-specific cruises in Waikiki, West Oahu & Kona. Family-owned company with ocean activities for all ages.



WAIKIKI •
WAIANAЕ •
KONA
Sail • Snorkel •
Dolphins • Turtles
• Whales • Scuba •
Fireworks Dinner •
Private Charter •
Transportation

234-SAIL

(7245)

WE ANSWER 24 HOURS!

hawaiinautical.com

Hawaii Nautical



WAIKIKI BAPTIST Church

Your Church in Waikiki

424 Kuamo'o St

(Near the Ambassador Hotel)

Sunday Worship Services

9:00 AM - Contemporary

10:45 AM - Traditional

(808)955-3525

WaikikiBaptist.com

the brilliant ox

The gastropub in the former Pearl Ultra Lounge space at Ala Moana actually opened at the beginning of the year, but they waited to work out all the kinks and fine-tune their service before inviting you all in, and their patience paid off in droves. The Brilliant Ox knocked their event out of the park! The food, the drinks, the service - everything was on point (that shrimp toast!). They had plenty of door prizes as well, including a round trip to Vegas! brilliantox.com.



AUGUST CALENDAR OF EVENTS

Continued from page 15.

Miner, Weldon Kekauoha and Pa'ahana, as well as performances from several top halau. Food and beverage available for purchase. 4:30 – 9 p.m. \$20 in advance, \$25 at the door. Lanikuhonua Cultural Institute. eventbrite.com.

AUGUST 11

HAWAIIAN SLACK KEY GUITAR FESTIVAL

Spend an afternoon enjoying over a dozen slack key guitarists performing for 6 solid hours. Musicians include Brother Noland, Nathan Aweau, Ho'okena, and more. This year the event has moved to the Waikiki Aquarium. \$5 donation. Noon – 6 p.m. Free.

AUGUST 12

KINGDOM HEARTS WORLD TOUR

Disney brings back the official KINGDOM HEARTS video game concert series presented by a world-class quality orchestral performance. Tickets: \$49-\$169. 8 p.m. Blaisdell Concert Hall. ticketmaster.com.

AUGUST 16

MAX IN CONCERT

This New York City born pop-soul singer, actor & dancer is known for his powerful acrobatic tenor which commands attention. His devoted fanbase and original voice have given him an incredibly strong social media presence with over 1.2 million followers on YouTube, 400,000 followers on Twitter and over 940,000 likes on Facebook. Tickets \$30, \$5 increase day of show. The Republik. 8 p.m. bampproject.com.

AUGUST 15 • JON YAMASATO AND IRON MANGO AT THE ZOO

This year's Wildest Show in Town summer concert series closes out with this final performance from Jon Yamasato and Iron Mango. \$5. Gates open at 4:35 p.m. Music starts at 6 p.m. No alcohol or high-back chairs allowed. HonoluluZoo.org.

AUGUST 17

PICNIC ON THE PIER

Apparently this is the last of these for the season, although we have never heard about it before, but apparently the USS Missouri has been putting on a heck of a party for families. Kids of all ages can play Giant Jengas, Giant TicTacToe, Giant Checkers, and Sandbag Toss while listening to music from Simple Souls or touring the Mighty Mo. There will be food trucks on location or you can bring your own, but certain items like glass bottles are prohibited. \$10 in advance, \$15 at the door. 5:30 – 8 p.m. ussmissouri.org/picnic.

AUGUST 17 – 19

MADE IN HAWAII FESTIVAL

Three days showcasing nothing but "Made in Hawaii" products, including food, books, art, gifts, fashions, plants, crafts, produce and more that's a must for most locals and visitors alike. Aside from plenty of samples, there will also be cooking demonstrations and ongoing entertainment. Blaisdell Exhibition Hall \$6. 10 a.m. – 9 p.m.; until 5 p.m. on Sun. madeinhawaii festival.com.

AUGUST 18 – 26 • DUKE'S OCEANFEST

Duke's OceanFest is held each summer in Waikiki in honor of Duke Kahanamoku, who is remembered as the greatest waterman who ever lived, and Hawaii's

ambassador of Aloha with a variety of water-based competitions, beach volleyball, and more, fun to participate in – or just sit by and watch. Most competitions will take place near Queen's Surf in Waikiki, with the surf stand and exhibit booths fronting the iconic statue of Kahanamoku. dukeseoceanfest.com.

AUGUST 24 • GEORGE LOPEZ



It's a full weekend of comedy. Kick it off with a TV & film star George Lopez as he brings his unforgettable and highly popular comedy tour, The Wall, to the Blaisdell Concert Hall. 8 p.m. Tickets: \$49-\$69. ticketmaster.com.

AUGUST 25

JIM JEFFRIES

Stand-up comedian Jim Jefferies brings his latest major standup comedy tour back to the Islands. Blaisdell Concert Hall. 8 p.m. Tickets: \$49-\$59. ticketmaster.com.

AUGUST 25

AN EVENING WITH TA-NEHISI COATES

The award-winning writer has become a household name as one of the most valued commentators on the current political landscape, sharing his experience as a black man with captivating and moving language. Join him for this moderated conversation on the commonalities between the African-American experience in the US and the cultural politics and history of Hawaii. The talk will be preceded by two short films. 6 p.m. \$30. honolulumuseum.org.

AUGUST 25

HENRY KAPONO & FRIENDS CONCERT



"Celebrate the Soundtrack of Hawaii" with Henry Kapono celebrating the living legacy of Hawaii's most iconic entertainers alongside rising new stars. Kalapana, Jerry Santos (Olomana), Keola Beamer, Na Leo Pilimehana, John Cruz, Brother Noland, Robi Kahakalau, Alx Kawakami, Blayne Asing, Josh Tatofi, Kalani Pe'a, Kimi Miner, Landon McNamara, Mike Love, Paula Fuga, and Starr Kalahiki will all be joining Henry onstage. 6:30 p.m. Waikiki Shell. Tickets: \$29-\$150. ticketmaster.com.

AUGUST 25 – 26

GREEK FESTIVAL

Get ready to celebrate all things Greek. The 37th annual festival includes authentic food, lively Greek entertainment, imported specialties, deli items, and much more \$3. (Wear a toga and get in for only \$1) McCoy Pavilion. 12 - 9 p.m. greekfestivalhawaii.com.

AUGUST 25 – 26 • ENGELBERT HUMPERDINCK RETURNS TO HAWAII



After his Saturday show quickly sold out, a second one was added. With nearly 50 years in the business, Engelbert has sold more than 140 million records around the world. His unique voice has charmed millions of fans with hits such as "Release Me," and "The Last Waltz." Tickets: \$49.50 - \$125. 8 p.m. Hawaii Theatre. bampproject.com.

Hawaii Exotic Car Rentals

**Special Occasion?
Wedding?
VIP Guest?
or just because you can....**

Hawaii Exotic Car Rentals offers beautiful, exciting Exotic Supercars perfect for your Oahu vacation. We offer some of the best Supercars in the world right here Oahu, conveniently located in Waikiki.

Our Sports Cars have exceptional after market stereo systems, as well as after market exhaust systems for boosted power and sound.



Rent our 2013 Lamborghini Gallardo or our 2012 Ferrari California Hard Top Convertible and take pictures and send them back to your friends and family at home in locations all over this stunning island.

Guaranteed to make your loved ones green with envy!!

Both cars are very simple to drive in automatic and offer the option of paddle shifting if you so choose.



Rental Requirements

- Must be 25 years of age or older
- Major credit card
- Valid drivers license
- 24 hour rental minimum
- Insurance is included with rental

How much does a rental cost?

\$1,200 for the Ferrari
\$1,500 for the Lamborghini
\$700 for a white 2016 BMW X50 SUV
minimum 24 hour rental

10% discount available for multiple 24 hour periods and 20% discount for a week or longer.
Includes 100 miles, \$1.00 per mile over, insurance & taxes.

Waikiki Hotel Delivery
available upon request

Call: (808) 222-7376
info@hawaiiexoticcarrentals.com

www.HawaiiExoticCarRentals.com

That's Entertainment

HOTELS

- HALE KOA HOTEL** 955-0555
 •**TuSat** - High and Right Comedy Show takes the stage at the Warriors Lounge at 8pm.
 •**MThFS** - Poolside music at the Barefoot Bar. 6-11pm
- HALEKULANI HOTEL** 923-2311
 •**Daily**-Hawaiian Music and hula at House Without A Key from 5:30-8pm.
 •**Daily**-Live Contemporary and light Jazz at Lewers Lounge from 8:30pm to midnite.
 •**Sun**- Sunday brunch at Orchids features Noly Paa on the piano from 10am - 1:30pm.
- HILTON HAWAIIAN VILLAGE** 949-4321
 •**Fri** - Fireworks return to their normal time, 7:45 pm.
 •**Fri** - The Rockin' Hawaiian Rainbow Revue, a musical salute to King Kalakaua, at the Super Pool. 7 pm.
 •**Daily** - Live entertainment, Tapa Bar. 8:15-10:30pm.
- HYATT REGENCY WAIKIKI** 923-1234
 •**Fri** - Aloha Friday Polynesian show, lei-making, hula, and Fire dancer, 1st floor near the Waterfall, 4:30-6 pm.
- THE KAHALA HOTEL & RESORT** 739-8888
 •**TuWThFSat** - David Swanson vocalizes on the piano at The Veranda from 7:30-10pm. Hawaiian on Sun/Mon.
- MOANA SURFRIDER** 922-3111
 •**Daily**-Hawaiian music & hula. The Banyan Court, 6-8 pm, and again from 8 -10 p.m. Weekends from 11:30-2 p.m.
 •**MWFri**-Guided historical tours at 11am.
- NEW OTANI KAIMANA BEACH** 923-1555
 •**FSat**- Jazz guitarists in the Sunset Lanai Bar. 6-9pm.
- OUTRIGGER WAIKIKI ON THE BEACH** 923-0711
 •**Daily**- Daily Cultural Program, front lobby. 11am.
- OUTRIGGER REEF ON THE BEACH** 923-3111
 •**Daily**- Cultural programs at Kani Ka Pila Hale. 9am.
- SHERATON PRINCESS KAIULANI** 922-5811
 •**Daily**-Live Hawaiian music & halau at the lounge from 6-8:30pm, then poolside from 8:30-10:30pm.
 •**Th**-Princess Kaiulani historical tour at 9:30am.
- THE ROYAL HAWAIIAN** 923-7311
 •**TTh**- Free guided resort tour at 1pm.
- TURTLE BAY RESORT** 293-6000
 •**TThFri** - Shell Hula Lessons, Lobby at 10am
 •**TThFri** - Ukulele Lessons, Lobby at 9am
 •**Fri**- Music & Hula. Lobby Lounge 6:30-8:30pm.
- WAIKIKI BEACH MARRIOTT RESORT** 922-6611
 •**Daily**-Hawaiian entertainment in The Moana Terrace Bar. 6:30-9:30pm.
 •**Fri**-Local crafters "Aloha Friday Fair" Lobby 9am-2pm

MUSEUMS

- HAWAII STATE ART MUSEUM** 586-0900
 •**TWThFSat** - Inaugural exhibition "Enriched by Diversity: The Art of Hawai'i." Free. Tuesday-Saturday, 10 a.m. to 4 p.m. Located in the Capital District.
 •**Tues**- A one-hour guided tour offers a unique insight in the history, art, architecture and restoration of the Hawai'i Theatre with trained docents & a mini-concert on the 1922 Robert Morton Theatre Organ. 11 a.m. Admission: \$10.
- HONOLULU MUSEUM OF ART** 532-8726
 •**MWF**- Japanese Language Tours. Private tours also available. 1pm. Regular admission.
- HONOLULU FIRE MUSEUM** 723-7167
 •**3rdSat**- Free one-hour guided tours through various exhibits with a firefighter recounting HFDs history the 3rd Saturday: 9am - 2pm. Reservations required. 620 South Street. honolulu.gov/hfd/communityrelations
- IOLANI PALACE** 522-0832
 •**Mon-Sat**-45 minutes docent-lead or self-guided audio tours available in English or Japanese. Japanese-led tour is available only at 11:30 a.m. All tours include re-tour video and entrance into the Palace Galleries. Adults: \$14.75-\$21.75 / Keiki (5-12): \$6. 9am-5pm
 •**Sat**-Hawaiian Quilt Classes. Old Archives 9:30a-12p.
- LUCORAL MUSEUM** 922-5381
 •**TTh**- Learn how to plan your jewelry project and more in this beaded jewelry workshop \$10. 2-4pm
- HAWAIIAN MISSION HOUSES** 447-3910
 •**Tue-Sat**-Learn about the story of cultural change in 19th-century Hawai'i. Docents lead tours through the oldest existing frame house in the Islands, Print Shop, and the Chamberlain House. missionhouses.org
- PACIFIC AVIATION MUSEUM** 441-1000
 •**Daily**-Vintage aircraft in battlefield hangars at Pearl Harbor. Combat flight simulators. Aviator's Tour takes you through the new Restoration Hangar. Restaurant, Museum Store. Shuttle & Tickets at USS Arizona Memorial Visitor Center or at PacificAviationMuseum.org.
- THE SPALDING HOUSE** 526-1322
 •**Daily**-Docent-led tours given daily. 1:30pm. Garden tours or Japanese language tours are by appointment.
- NAVAL AIR MUSEUM BARBERS POINT** 682-3982
 •**Mon-Fri**- A unique museum experience about aviation history in Hawaii. All aircraft are open to climb in, on and around. Tours: 8am - 4:30pm. \$7 / \$5 children under 18. Kalaeloa Airport. Reservations req'd. Sat/Sun by appt only. www.nampb.org.

SHOPPING CENTERS

- ALA MOANA CENTERSTAGE** 955-9517
 •**Mon-Sat** - Ala Moana Hula Show. *Centerstage* 1-1:20pm
 •**MWF**- Hawaiian music *Mauka Wing*, Lvl 2 2:30-3:30pm
 •**Sun** - Keiki Hula Show. *Centerstage* 1-1:20pm
- INTERNATIONAL MARKET PLACE** 921-0536
 •**Daily** Ceremonial lighting of Lamaku Torch Tower just after sundown followed by a hula show. *Queen's Court*.
 •**Every Other Sun** Free Yoga from Lululemon. 10-11am. *Queen's Court*.
- KINGS VILLAGE** www.kings-village.com 237-6344
 •**MW** Famer's Market offering fresh produce, baked goods and local food items from 4-9pm.
 •**Daily** King's Guard Museum features a variety of collectibles and memorabilia. 10a-10:30p. FREE.
- ROYAL HAWAIIAN CENTER** 922-2299
 • **M**- Keiki Hula lessons 3:30pm, *Royal Grove*
 • **MWF**- Learn Lomilomi 11am-12pm, Bldg. B, 3rd floor
 • **MTF**-Hula 10am (4pm on Wednesdays), *Royal Grove*
 • **TThSat**- Rock-a-Hula Pre-Show 7pm, *Royal Grove*
 • **TWTh**- Lauhala Weaving 1pm, Bldg B., 3rd floor
 • **TThF**- Ukelele 12pm, *Helumoa Hale*
 • **TWThF**- Live Hawaiian music 6-7pm, *Royal Grove*
 • **Sat**- Hula Kahiko 6-6:30pm, *Royal Grove*
 • **Daily**- Heritage Room/Cultural Videos *Helumoa Hale*
- WAIKIKI BEACH WALK** www.waikikibeachwalk.com
 •**Tuesdays** - Ku Ha'aheo featuring Hawaiian song and dance on the Plaza stage. 4:30-6pm
 •**Wednesdays** - Yoga Classes 4-4:45pm. Free.Plaza Stage

ATTRACTIONS

- KALAKAUA AVENUE** 527-5666
 •**Fri** - Strolling Hula from 8-10:00pm.
- KAPI'OLANI BANDSTAND** 527-5666
 •**Fri**-Hawai'i's finest musicians perform. 5:30-6:30pm
 •**Sun**-Royal Hawaiian Band performs 2-3:15pm.
- KUHIO BEACH HULA SHOW** 843-8002
 •**TThSat**- Free hula show. 6:30 - 7:30pm hula mound.
- TAMARIND PARK - DOWNTOWN** 527-5666
 •**Fri**- Mayor's Aloha Friday Music from 12-1pm
- WAIKIKI TOWN CENTER** 922-2724
 •**Mon-Sat**-The songs and dances of Hawai'i, New Zealand, & Tahiti. Free shows begin at 7pm.

EVENTS SUBJECT TO CHANGE ... PLEASE CALL TO CONFIRM PRIOR TO ATTENDING

PAPARAZZI

Stars of Paradise management at blessing



From L-R: Kahu Ken Makuakane, Capt. Richard Davison, VP Operations & CSO; Rodney Schultz, GM; Mike Moore, Director of MIS; Layne Wada, Managing Director & VP Finance; President Ron Howard; Mitzi Howard, V.P. S&M; Donna Nakamura, Controller

A mini Hawai'i reunion in New York City



Crystal Pancipanci, Wanloe Konyak Schock, Rita Blais, Jessica O'Neal and Lance Rae met up in NYC for Rita's wedding last month. Wanloe was GM of Nobu Waikiki before moving to NY to run the Nobu there, and Rita worked at Nobu before she moved. Hawaii friends forever.

Some old friends perform with Jeff Apaka



Jeff Apaka put on a Waikiki by Moonlight concert a few weeks ago and was joined by some familiar faces. From L-R: Angel Pablo, (formerly with Pleasant), Sally Crowell Fo, Wailani Bell (formerly of the Tour & Travel Co), Kuulei Jefferies, Cathy Foy, and Jeff Apaka.

conciierge card

August 31, 2018

- **Bill's Sydney Waikiki** - 20% discount off food and beverage (not applicable on happy hour or other offers). Must show hotel ID to receive discount. 280 Beach Walk. 922-1500
- Dole Plantation** - 1 FREE Adult Admission To The Maze With Purchase of 1 Adult Admission. 621-8408
- Giovanni Pastrami** - 15% Off Full Bar, Dine-in or Take-Out at anytime with ID. 227 Lewers St. 923-2100.
- Hard Rock Café** - 15% off food, beverage (non-alcoholic), or merchandise. Hotel ID required. 280 Beachwalk Ave. 955-7383.
- Hawai'i Prince Golf Club** - \$5 Off Standard Kamaaina Green Fees. Tee Times: 944-4567
- Hilo Hattie** - 25% on Hilo Hattie labeled garments, 15% off other fashions/gifts and 10% off Hilo Hattie labeled foods. Not valid on sale item. Ala Moana Center. Ph 535-6500.
- Hy's Steakhouse** - 25% VIP Discount Off Food And Beverage (up to 2 persons) 2440 Kuhio Ave. 922-5555
- Hyatt Regency Waikiki** - 15% discount with the presentation of a concierge business card at SHOR, Japengo and SWIM. 2424 Kalakaua Ave. 923-1234.
- Iolani Palace** - Free Admission. Regular rate \$21.75. 364 S. King Street, Reservations & Hotel ID required. 522-0832.
- IHOP** - Receive 20% on entire bill. Must show valid hotel ID. Not valid with any other offer or discount. Valid only at Aqua Palms, 1850 Ala Moana Blvd., 949-4467 and OHANA Waikiki Mallia by Outrigger®, 2211 Kuhio Ave., 921-2400.
- Il Lupino** - 15% discount off food and beverage (not applicable on liquor or specials). Must show hotel ID or business card to receive discount. Royal Hawaiian Center. 922-3400

HELP us update this card. If you know of an offer not being honored let us know. As management changes, sometimes offers can get lost.

You will be required to show Hotel ID or business card to claim offer. Do not cut this card out of the book. One special per person per business. Offers valid on regular-priced merchandise only. Discounts are available to Guest Service Professionals ONLY. Not valid with other promotions or special offers. A minimum 18% gratuity on original order required for all special food offers.

- Kaiva** - 20% off food & beverage between 5 & 7 p.m. 924-1555
- Hawaiian Mission Houses** - Free tour with hotel ID. 553 S. King Street. 447-3910
- Noi Thai** - 20% discount off food and beverage (not applicable on liquor, happy hour or specials). Must show hotel ID to receive discount. Royal Hawaiian Center, Bldg. C. Level 3. 664-4039
- Pacific International Skydiving Center** - 50% Discount on Jump, 68-760 Farrington Hwy, 637-7472.
- P.F. Chang's Waikiki** - Receive 20% on all appetizers, entrees, desserts and beverages 11 am - 5 pm daily (not valid for Pau Hana menu) Royal Hawaiian Center. Ph: 628-6760, 637-7472
- **Romano's Macaroni Grill** - 10% Off Food for up to 2 guests. (Not Valid for Happy Hour Menu). Ala Moana Center, 1450 Ala Moana Blvd. 356-8300.
- **Ruth's Chris Steak House** - 10% Off Food for up to 2 guests. (Not Valid for Happy Hour & Prime Time menus). Restaurant Row, 599-3860. Waikiki Beach Walk, 440-7910.
- Honolulu Museum of Art Spalding House.** - FREE Admission for you and one guest with hotel ID. 526-1322.
- The Original Glider Rides** - Come experience the joy of soaring for yourself. Concierge / GSA may receive a complimentary scenic ride. Request the "GSA flight special" when booking your reservation. Hotel ID required. Dillingham Airfield. 637-0207
- Tiki's Grill & Bar** - FREE order of ANY appetizer with any purchase! One per table. OahuconPOKE. ASTON Waikiki Beach. 923-8454
- Willoughby's Restaurant** - 15% off all food items. Ohana Honolulu Airport Hotel. 3401 N. Nimitz Hwy. 836-0661.

NEW OFFER

Conciierge of the Month



NAME: Nolan Char
HOTEL: Aulani, A Disney Resort
TITLE: Concierge

Q: How long have you been with Aulani?

A: A little over 6 years. I'd never worked in the visitor industry before, but I had an interest in helping our island visitors after an excellent experience as a visitor myself to Japan. I decided to apply...the rest is history!

Q: Where did you work before?

A: As a customer service rep at Marukai Marketplace. I also sat on the board for Hands In Helping Out, a non-profit that helps people find volunteer opportunities.

Q: How big is your team there?

A: We have 3 full-time concierge, along with a good number of cross-trained cast members who also play a pivotal role in providing magical guest experiences.

Q: Describe what makes your team different or special?

A: One of the Aulani values is *laulima* (many hands working together, teamwork), and our team exemplifies this. Comprised of people from varying backgrounds and areas of expertise, we all bring a unique perspective to offer our guests a memorable, magical stay. We work as a team and look out for each other like family.

Q: What do you think is the biggest challenge at the desk?

A: Our guests love Disney, which can be both a blessing and a challenge. They have very high expectations of us. We always strive to go beyond their expectations, and it can be a fun challenge to consistently accomplish that.

Q: What do you like most about this industry?

A: I like that we regularly create memories that our guests will cherish forever. It feels great knowing that they'll go home with priceless memories. I always remember a lot of details from my own trips, so I feel it's important to help others make their own moments.

Q: Is there a particular guest that stands out?

A: There was a young girl staying here who was absolutely obsessed with Moana and hadn't met her yet. I found out when Moana would be there next, and personally walked the girl down to make sure that she was able to meet her. The look on her face when she first saw Moana was priceless...something I will never forget.

Q: What's the most unusual request you've ever heard?

A: There was a couple that wanted to get married the same day. Miraculously, I was able to get everything necessary at the last-minute! However, after I did, they decided to wait a bit longer.

Q: What one question are you asked more than any other?

A: "How do I get to downtown Honolulu?" Usually, after asking a few questions, 99% of the time the guests are actually trying to get directions to Waikiki.

Q: What's your favorite thing to recommend in general?

A: If a guest has rented a car, definitely the North Shore. It's one of my favorite spots on the island to relax and has just the right amount of things to do to make a fun day trip. You can shop, eat, or just cruise at the beach.

Q: What off-property restaurant do you recommend?

A: If they're not looking to dine on property, I'll usually recommend Roy's, Monkeypod Kitchen, Eating House 1849, or Plantation Tavern.

Q: Tell us something about you that would surprise us?

A: I played trombone for 14 years. Former band geeks represent! If you went to a UH game in the early 2000's, there's a good chance I was there blasting my chops off.

Q: Any other thoughts you'd like to share?

I'm sure everyone says this, but we seriously have the best team here at Aulani. I'm reminded of this every day; work is a lot more fun when you enjoy the company around you. We have rough days too, but I'll always be appreciative to be surrounded by these great people.

August 2018 19

Welcome to inspired cuisine. Welcome to Harbor.

HARBOR

RESTAURANT AT PIER 38

LUNCH • DINNER • COPPER TOP BAR

Happy Hour is called **Huki Pau** at Harbor. Our **Copper Top Bar** is the ideal place to relax and unwind with your favorite beverage or pupu, offered at discount prices. Sixteen beer taps chilled to 29 degrees, along with fine bottled and tap wines, and exciting craft cocktails await you at our spacious bar.

Huki Pau happens daily from 2p - 5p. Free parking available.

Daily Lunch 11a - 3p | Huki Pau 2p - 5p | Dinner 5p - 9p | Live Music Wed. - Sun. 5p - 8p

For Reservations book on OPEN TABLE or call 550-3740 | Private & Semi-Private Dining available.

PIER 38 1129 N. NIMITZ HIGHWAY HONOLULU HI 96817
INFO@HARBORPIER38.COM HARBORPIER38.COM

The Oahu Concierge is printed monthly and direct mailed FREE to all Oahu Concierge, Hospitality & Activity Professionals.

Subscriptions available to non-industry at \$25 per year.

C O N T A C T

Davis Media

Ph: 596-4422

www.oahuconciierge.com

Twitter & Instagram: @OahuConciierge

Facebook: www.facebook.com/OahuConciierge

ADDRESS & NAME CHANGES / ADDITIONS

We do not take changes via telephone. All changes to mailing list **must be submitted in writing** by the 16th of the month to make the next issue, email is preferred.

S T A F F

PUBLISHER & EDITOR Pam Davis
publisher@oahuconciierge.com

CONTRIBUTING EDITORS
Lance Rae, Nadine Kam

DESIGN
Coreiya Design

The Oahu Concierge
4348 Waialae Avenue, #185
Honolulu, Hawaii 96816

PRESENTED BY



First Hawaiian Bank.



Henry Kapono

Kalapana Jerry Santos Keola Beamer
Robert Cazimero Na Leo John Cruz
Brother Noland Robi Kahakalau
Alx Kawakami Blayne Asing Josh Tatofi
Kalani Pe'a Kimié Miner Mike Love
Landon McNamara Paula Fuga
Starr Kalahiki



AUG 25 WAIKIKI SHELL

TICKETS: BLAISDELL BOX OFFICE / 800-745-3000

TICKETMASTER.COM / HENRYKAPONO.COM

EVERYBODY GET HAPPY with the KAPONO discount of up to 15% off best available rates at any Outrigger Hotel or Resort on Oahu!

OUTRIGGER.COM Promo code: FRIENDS

