

Concierge

KEEPING THE HOSPITALITY INDUSTRY INFORMED SINCE 1998

Hawaii's Holiday Traditions

As the song says, "Mele Kalikimaka is the thing to say on a bright Hawaiian Christmas Day". It was written by the renowned songwriter, R. Alex Anderson in 1949 and made famous by Bing Crosby in 1950. Neither writer nor singer was in Hawaii. Anderson was temporarily in Chicago and really homesick. Crosby made movies in the islands and loved Hawaii. Their music may be the most remembered Hawaiian Christmas song in modern music history.



Iolani Palace celebrates Queen Kapiolani's birthday at the end of the month by lighting up the Palace. Photo: Iolani Palace

But, a hundred years before that song hit the charts the Hawaiians had a Makahiki, a break from battles between the chiefs. It was a time of games of challenge, dance and feasting – think "really big backyard party". The first missionaries arrived with Christmas traditions, and then altered them slightly to fit their new home in the islands. One early story mentions a small palm tree decorated with shell ornaments. Another report describes a festival wherein bundles of dry branches were taken up to the top of Punchbowl, lighted on fire and rolled down the hill spewing sparks while the residents of Honolulu, both the Hawaiians and the newly transplanted missionaries, watched the "fireworks." Needless to say, back then there were no homes or businesses in the direct path of the "burning city lights". The holiday feast was, of course, roast pig.

In 1862 Christmas became an official holiday and was celebrated at Washington Place, home of Hawaii's Queen Liliuokalani. The most frequently told story is the party thrown by Mary Dominis where royals and the military celebrated in Victorian style. To this day, the home is still decorated in the same

royal fashion and open for evening tours throughout the holidays.

Much of this history is held in the **Mission Houses Museum**, started by the missionaries and home to missionary artifacts and history. On December 14th the Museum will host Candlelight

Christmas Tours from the past, bringing folks from 1821 to life via the talent of local actors. The experience includes imagination, candle making, quill writing, and Hawaiian games.

Fast forward to today. **Iolani Palace** celebrates Queen Kapiolani's birthday with evening tours on Saturday and Sunday, December 29th and 30th from 5:30 to 9:00 p.m. Her birthday was December 28th. This is a rare opportunity to visit the Palace at night.

The annual Palace Ornament is for sale at the Palace. This year the ornament, at \$25, celebrates an historic presentation and is available at the Palace Shop and Gallery shops. It reflects the amazing, recent gift to the Palace from the estate of Princess Regina Wahiikaahuula Kawananakoa of the Royal Order of Alex Nevsky, set with 609 diamonds.

To quote a national travel magazine story on Christmas in Hawaii, "nothing in Honolulu goes undecorated!" including, the editor mentioned, mailboxes, sailboat masts, restaurant and department store windows and even hotel restrooms!"

Moving on down the street to the space that was Ward Warehouse – now the home of the Kakaako Farmers Market leads to fresh and take home food. Next move on to Ward Center and Na Mea Hawaii and the new holiday sister store, Kalikimaka by Na Mea Hawaii. Both stores have treasures available

Continued on page 2.



This is the 34th year of city lights. The first year was a decorated tree and some music arranged by then Mayor Frank Fasi. A few blocks away, at Bishop Square, the big tree was covered in lights. The newspaper ad read: "The Rockefeller Center of the Pacific." When the multitude of lights were turned on by entertainer Danny Kaleikini the entire town did a "brown out" – but from that time until today the lighting of the city, from downtown to Waikiki, has grown and grown.

On Saturday, December 1st, Honolulu Hale and the Civic Center is the place to be. The parade of elaborately decorated city vehicles drives from Aala Park, through Chinatown and all around the city hall buildings, ending back at City Hall in time for the lighting of the 80-foot tall tree. The 40-year old tree was donated by Olomana School

Honolulu City Lights stretches from downtown Honolulu thru Waikiki and lasts through New Years Day. Honolulu City Lights is an event, a destination and a song. We can all hum and follow the words as if the Grammy award winning Beamers were singing – "each night Honolulu City Lights are calling me home ..."

Once you head downtown, Honolulu Hale has a special greeting committee, a 20-foot tall Santa and Mrs. Clause wearing Aloha attire. He, barefoot and dangling a toe in the reflecting pool, she dressed in her best Aloha

Continued on page 8.

TABLE OF CONTENTS

Yada Yada Yada	2
Newsflash	3
Arts with Aloha	4
Paparazzi: Bloomingdales at Forty Carrots	6
Aloha Stadium is Rocking!	8
Chef's Corner: Mahina & Suns Executive Chef Erik Leong ..	9
E Pili Kakou	10-13
Calendar	14-15, 17
Paparazzi: Ala Moana Center's Holiday Soiree	16
That's Entertainment	18
Guest Service Agent of the Month: Marlon Henobio ..	19

W WOLFGANG'S
STEAKHOUSE
OPEN DAILY 11AM - MIDNIGHT
922.3600 | wolfgangsteakhouse.net



Publisher's Letter



Another year has gone by...
Happy Holidays!

Holy Cow, 2018 is almost over. I know I say this every year... but where did the year go? *The Oahu Concierge* officially turned 20 this year, but because I didn't buy it until October 15th, 1999, and come out with my first solo issue until November of that year, I will consider the November 2019 issue my 20th anniversary. Scary how time flies. So much has changed since then. I'm excited for such a significant milestone to come up here in a few months, but, to spare many of you from repetition, I will hold my thoughts on that until then.

For now, let me say that I am in the midst of planning the annual Mahalo Party where we announce this year's winner of Concierge of the Year. The ballot is on the back cover, so I encourage of all you to vote... once! Remember, I go through every single vote, so if you cheat, and try to vote multiple times, I will know, and I will toss those votes. Only those of you that receive your own copy of the publication can vote. Although I know how integral other departments of your property are... housekeeping, engineering, etc, they do not get their own copy, therefore they are not eligible to vote. Neither is your significant other, your auntie or uncle, or your parents. You'd be amazed at who tries to vote sometime. To keep it fair, I only count people that are on the list. I've also gotten votes from people that have passed away, moved away, or no longer work for the hotel. I know! Also, please don't tell your loved ones to vote, because it adds so many more to the hundreds I have to verify. December is a crazy month for me because in addition to running around town to pick up all of the amazing items I receive to give out to you at the event, I also have all of the other magazines I do on deadline in the beginning of the month. My other books are bi-monthly and quarterly, and December is one of the 4 months a year when they are all on deadline at the same time for a January distribution date. Have sympathy on me! Non-eligible votes do nothing but annoy me as they take away time I could be using for one of the countless items on my to do list. Please keep it fair.

Lastly, I am still working to find a host for you, so at press time I cannot promote it. As soon as it's done I will let you know via email. If you have not been getting emails from me, please reach out, as someone did tonight, to let me know I am not emailing you. Every hotel will be included as long as I know how to find you. (hello, Waikiki Marina!) I need emails! Until then, I hope everyone has a very happy holiday season. Aloha!



Yada Yada



Brandon Kaya over as General Manager a few months ago. **Paul Garcia**, formerly of the Pacific Beach Hotel and Alohilani was appointed Director of Front Office. • **Cori Hara**, formerly the Director of Guest Experience at the Royal Hawaiian Hotel, and most recently with the Ritz Carlton Residences Waikiki has become the latest hotel industry employee to join the Howard Hughes Corporation as she takes over as Executive Assistant at *Anaha*. Joining her at the luxury

The *Ambassador Hotel Waikiki* recently became a Highgate hotel, and with that came some personnel changes. Congratulations go out to **Brandon Kaya**, who moved over from the Sheraton Waikiki to take over as General Manager a few months ago. **Paul Garcia**, formerly of the Pacific Beach Hotel and Alohilani was appointed Director of Front Office. • **Cori Hara**, formerly the Director of Guest Experience at the Royal Hawaiian Hotel, and most recently with the Ritz Carlton Residences Waikiki has become the latest hotel industry employee to join the Howard Hughes Corporation as she takes over as Executive Assistant at *Anaha*. Joining her at the luxury

Ward condo is her former Royal Hawaiian co-worker, **Wilson Fatongia**, who has been named Operations Manager. • Oops, I think we forgot to announce that **Jordyn Kilgore** of *The Surfjack Hotel* was recently promoted to Director of Experience. Congrats! • Also at the property, *Mahina & Suns* has made expanded their culinary team with the addition of **Lisa Taibi** as the new front-of-house manager. Taibi will work under restaurant manager **Natalie Aczon** and previously worked in the restaurant industry in New York. **Elvia Alvarez** has been named sous chef. Previously she was at the Maui Brewing Company; and **Ross Lewis** is the new bar lead. He was most recently at Ravish at The Modern.



Jordyn Kilgore

Hawaii's Holiday Traditions

Continued from page 1.

only in Hawaii including food, ornaments, classic clothing designs and books and hand crafted jewelry – plus gift certificates for unique classes in the New Year.

The *Mele Kālikimaka Marketplace and Gingerbread Workshop* is just down the street at the Blaisdell Exhibition Hall on December 8th and 9th. It is Honolulu's premier holiday shopping emporium. The Hawaiian Crafter Section will include demonstrations on site. Ben Franklin will offer a make-and-take crafting experience. The gourmet section of the event offers pre-packaged gift baskets, ready for gifting. Food sampling highlights as you graze your way around the Exhibition Hall include Auntie Nani's Cookies, Ka'iulani Organic Spices with a new organically grown whole spices in a quinoa recipe. Local fine



artist, Lisa Menor Miller, owner of Handwritten Aloha, will be onsite to customize agate and shell ornaments for you, for that perfect unique holiday gift.

The Gingerbread Workshop includes building and decorating a gingerbread house to take home. Other activities include storytelling, bouncey houses, archery, rock wall climbing, and coloring. Photos with Santa and Rudolph are available and a special spot to write Santa a letter that includes an entire list of wishes.

Continue on to Chinatown and the *Downtown Shop Around* with a discount special in every shop and gallery. December 22nd from 11 a.m. to 3 p.m. is the *Nuuuamuu Holiday Street Festival + Art & Flea Market*.

For the entire month of December theater fans can escape into a world of Christmas at Diamond Head Theatre's production of *Irving Berlin's Holiday Inn*. This is the Hawaii

premier of the long loved Broadway show. Diamond Head Theatre Director John Rampage called in from a New York visit to share a bit about the show. He describes it as pure escapism. "It is very uplifting and about more than Christmas. The show has a bit of Easter Parade, 4th of July and the dance chops of Fred Astaire and music of Bing Crosby." Of course the finale is White Christmas. Rampage says the most recent revival was two years ago on Broadway. The production runs thru December 23rd.

Ballet Hawaii offers up a very Hawaiian *Nutcracker* December 13 through 16 at the Neal S Blaisdell Center. Think Christmas party, 1858, at Washington Place, hosted by Mary Dominis. Historically, the widowed Mary ran Washington Place as a boarding house where foreign dignitaries would live when in town. Her son, John Owen Dominis would marry the future Queen Lili'uokalani. Consul Her Silberhaus visits, bringing his children Clara and Fritz and the story begins. The Hawaiian elements continue with a backdrop of Mauna Kea, a Pueo (Hawaiian owl) is there in a Banyan Tree. Another character is the Sugar Plumeria Fairy and at the end a white fairy tern transports Clara home. Count the Hawaiian references, possibly in the dozens presented by Hawaii's own ballet company.



The 1st place winner in the over 30' category which celebrated surfing being named an Olympic sport

The 22nd *Annual Festival of Lights Boat Parade* takes place in Hawaii Kai on December 15th. There will be live music at the

Continued on page 7.

EXTRA EXTRA EXTRA *Newsflash*

NEW CRAFT DISTILLERY DEBUTS IN WINDWARD O'AHU

The decorated combat veteran-owned craft distillery will debut in the Hawai'i market this month with its flagship offering, Old Pali Road Whiskey. It is an American-style whiskey and is the only aged, amber whiskey produced on O'ahu. Every batch of Old Pali Road Whiskey begins with pure Hawaiian water, filtered for decades through the volcanic rock of the Ko'olau Range before flowing into an artesian well. Locally sourced corn provides the distinctive, bourbon-style base for the mash used to create Ko'olau's hand-distilled whiskey, which is then blended with true, five-year-old whiskey. Production limited to less than 10,000 bottles a year to start, creating batches of eight barrels at a time. Distillery tours and tasting events will also be offered. koolaudistillery.com.

HAWAII CONVENTION CENTER SUPPORTS LOCAL MUSICIANS

The Hawai'i Convention Center continues to showcase the amazing talent that Hawai'i has to offer. The Center recently partnered with Haku Collective in hosting their MeleCraft Bootcamp, a free workshop that gave aspiring song writers and musicians ages 13 to 25 an opportunity to be mentored by award-winning artists Kimie Miner and Henry Kaponu. Na Hoku Hanohano Award Winner IZIK will perform December 5th in the Center's Lili'u Theater 310. On December 14th the Center will host its free community event Sunset Mele and Night Market featuring an entertainment stage with live music by various artists from 4-9 p.m. If you are a local artist interested in inquiring about event opportunities, please contact Michelle Phelps at mphelps@hccaeg.com.

WANT TO BE PART OF BAMP'S ADVISORY COMMITTEE?

Are you a music lover and enjoy going to concerts? If you said yes, then read on. BAMP wants to create a concierge advisory group and hear your thoughts on how best to market to our visitors. The goal is to drive brand awareness to visitors about live music on Oahu and help get them excited. They would only be a one initial meeting once the committee is formed, and then everything else would be done by email. Each member will receive a pair of tickets to every show BAMP promotes. You can help them create new programs such as how to get your VIP guests to skip the line, etc. If you're interested in participating and would like to put your name in for consideration, email Pam at publisher@oahuconciierge.com. The committee will be limited to 10 people.

PICTURE PERFECT EPIC ALOHA 'PHOTO MUSEUM' OPENS

It's the newest craze across the country, a photo museum with a variety of different fully decorated themed rooms, designed for those perfect social media posts. Epic Aloha has opened at the Hilton Hawaiian Village with 12 rooms with a variety of art installations. Located on the 2nd floor of the Kalia Tower the entrance is by the fountain and the rooms are really well done. 10 a.m. - 10 p.m. \$34 adults, \$24 kids, kamaaina discounts available. epicaloha.com.

HERVÉ CHAPELIER OPENS AT ROYAL HAWAIIAN CENTER

French accessories designer, Hervé Chapelier has opened its first stand-alone location in the U.S. at The Royal Hawaiian Center. Founded in 1976, the brand offers a variety of travel-friendly items including their famous bi-color cabas (traditional French market) bag, carry-on bags, briefcases, mini-totes, makeup bags, and pouches. Located on Level 1 of the C Building, the boutique is open daily from 10 a.m. to 10 p.m. 260-4619 or visit hervechapelier.com.

NEW MEDICAL CLINIC OPENS IN WAIKIKI FOR PATIENTS IN NEED

Doctors of Waikiki have opened a state-of-the-art, modern Urgent Care facility on the ground floor of the Sheraton Princess Ka'iulani Hotel. Open until midnight daily, the clinic features a bilingual staff, accepts all major insurance plans, and offers any patient who requests it, complimentary transportation to and from the clinic from any Waikiki house or hotel. In-room consultations are also available upon request. Call 922-2112 or visit doctorsofwaikiki.com.

NATIONAL GUARD GETS IN FREE AT PEARL HARBOR

In honor of the National Guard's birthday on December 13th, Pearl Harbor Historic Sites will waive the admission of all active duty and retired Guard personnel and their families into the Battleship Missouri Memorial, Pacific Aviation Museum Pearl Harbor, and the USS Bowfin Submarine Museum and Park on December 15th and 16th. Just present a valid military ID at the ticket booth to enter. PearlHarborHistoricSites.org.

LOCAL ARTISTS SHOWCASED AT THE HALEKULANI GALLERY

The Halekulani presents six acclaimed Hawaii artists selected for their recognition on the global stage of Contemporary Art and partnered for the 2018 Portfolio, a limited edition set of their works for Friends of Hawaii State Art Museum Exhibit. The works in this gallery were created especially for this event. The art exhibit will be on display in the Halekulani Gallery through January 4th.

FREE SHUTTLE FROM KO OLINA TO WAIKELE PREMIUM OUTLETS

Poly Ad has partnered with Waikale Premium Outlets to offer a free shuttle for Ko Olina area guests for the holidays until December 30th. The shuttle will pick up guests at the Four Seasons Resorts at 9 a.m., Aulani at 9:10 a.m., Beach Villas at Ko Olina at 10:15 a.m. and Marriott's Ko Olina Beach Club at 10:25 a.m. and returns with three runs at 1, 2 and 3 p.m.



Rock a Hula™
Waikiki's Biggest Show®

**MIDNIGHT
NEW YEAR'S
ROCKIN' EVE
COUNTDOWN**

December 31, 2018 • 9:45PM – January 1, 2019 • 12:45AM
Celebrate with Fireworks Visual Effects, Champagne & Party Favors!



**Royal Hawaiian Center, 4th Floor
808-629-SHOW (7469)
RockAHulaHawaii.com**

Line-up of Artists subject to change. ♿



arts with aloha



Even though its not snowing in Waikiki, Honolulu theatres and museums are beginning to look, sound and smell like Christmas.

Most of your guests should be familiar with the song and the film "White Christmas" but did you know that the song first appeared in the film "Holiday Inn" starring Bing Crosby and Fred Astaire and it received the 1943 Academy Award for Best Original Song? This month **DIAMOND HEAD THEATRE** is presenting the stage musical version of the film *Holiday Inn* running through December 23rd. The musical, based on the 1942 film of the same name, has a revised libretto by Gordon Greenberg and Chad Hodge, with music and lyrics, of course by Irving Berlin. The story revolves around the love-triangle of a song-and-dance trio Jim Hardy, Ted Hanover and Lila Dixon. Jim wants to leave show business and proposes to Lila, but she wants to keep performing with Ted. Jim buys a farmhouse in Connecticut and meets Linda and guess what? She wants to be in show business. Together they turn the farmhouse into a fabulous inn with dazzling performances that celebrate each holiday, from Thanksgiving to the Fourth of July. There is more to the drama with Lila leaving Ted and Ted then chasing Linda from Jim, but you'll have to see the show to see who ends up with who. Tickets at diamondheadtheatre.com.

A holiday tradition which is annual event is **BALLET HAWAII'S** *Nutcracker* at the Blaisdell Concert Hall and even if your guests are not a fan of ballet, they will most likely be familiar with the beloved melodies of Tchaikovsky. The residence of Mary Dominis, the mother-in-law of Queen Lili'uokalani, is the setting for production with the Hawai'i Symphony Orchestra. This Hawai'i themed version is set in the Kingdom of Hawai'i circa 1858. The tale of Uncle Drosselmeyer and the little girl named Marie remains the same as in the original ballet, but the setting is now Washington Place, which today is the official residence for the Governor of Hawai'i. The production, including costumes designed by Anne Namba, will give your guests a glimpse into the monarchy period. The toy soldiers will be dressed as the Royal Guard and the waltz of the snowflakes will take place on the slopes of Mauna Kea. In the second act the Hawai'i influences continue as The Flowers become Hibiscus and Plumeria amongst other Hawaiian touches. There will be four performances: Friday, December 14th at 7:30 p.m., December 15th at 2 p.m. & 7:30 p.m. and December 16th at 2 p.m. Tickets available by phone at 745-3000 at the Blaisdell Box Office or online at ticketmaster.com.

There is a special Nutcracker Tea on Sunday, December 9th at 1 p.m. on the veranda of the Moana Surfrider Hotel. Tickets are \$195, \$175 for children and include VIP tickets to the ballet with parking, as well as the delicious sweets, savory bites and tea with cast members of the ballet. Please note that this event is the weekend before the opening night. For those of your guests looking for something prior to the show itself, there is an opening night pre-performance dinner on the 14th at 5 p.m. at Chef Chai on Kapi'olani Blvd. The four-course dinner paired with wine created by Chef Chai Chaowasaree is \$200 per person and includes VIP seating and parking at the Blaisdell. Call 521-8600 or go to BalletHawaii.org for reservations.

Another holiday tradition in Honolulu is the *Holiday Evening Tours* at **IOLANI PALACE** in celebration of Queen Kapi'olani's birthday which is December 31st. In preparation for the event, the Palace grounds will be decorated with lanterns harking back to the time of Hawai'i's monarchy. On December 29th and December 30th the Palace will be open to the public from 5:30 p.m. to 10 p.m. for special evening tours. This is a rare opportunity for visitors to step back in time and experience the Palace as it was during the 19th century. Under the glow of golden electric light bulbs the staterooms will glimmer with holiday flowers. Soloists will perform opera in the Blue Room and period dance performances will be conducted in the Throne Room to create a sense of what court celebrations may have been during the height of the Hawaiian monarchy. In addition a reproduction of the Queen's famous Peacock Gown, other recreations of the Queen's wardrobe will be on display in the Thone Room. The original Peacock Gown was created for the Queen's visit to London for Queen Victoria's Golden Jubilee which the Queen, and then Princess Lili'uokalani, attended.

Visitors will be able to wander through the Palace Galleries to view some of the treasures of the Hawaiian Kingdom which include jewelry once worn by Queen's Kapi'olani and Lili'uokalani, in addition to other rare artifacts from Hawai'i's monarchy period. Tickets are \$38 and \$10 for children 5 to 12. The Palace doors will open at 5:30 p.m. No reservations will be taken for these tours, and guests will be taken on a first-come first-served basis. The Palace is offering a limited number of VIP Tour Experiences on Friday, December 28th. Visitors will have the opportunity to ascend to the second floor via the Palace's famous koa staircase and local entertainers will perform music just as celebrated musicians serenaded the guests at King Kalākaua's holiday soirees over 120 years ago. Call 522-0822 or visit iolanipalace.org. ~ Lance Rae



Come and experience the authentic look, feel and tastes from Japan,



No Passport Necessary...



WAIKIKI YOKOCHO

www.waikiki-yokocho.com

At The Waikiki Shopping Plaza
2250 Kalakaua Avenue, Lower Level
Honolulu Hawaii 96815

Open Daily 11am – Midnight*

* Hours are subject to change without notice

Christmas at the Hukilau Marketplace

Dec. 7, 8, 14, 15, 17-22
(Closed on Sundays)
6:00-8:00pm

This season, send your guests to Polynesia. After spending the day exploring our villages, they can enjoy our Christmas festivities at night. For details, visit polynesia.com/christmas or call (808)293-3142.

- Free Winter Wonderland (Snow Days on Dec. 15 & 21, 3-6pm)
- Live music & entertainment
- Free Selfies with Santa
- Free train rides for keiki
- Holiday treats for the family
- Free scavenger hunt with prizes

Hukilau Marketplace



Blue Note

HAWAII

HAWAII'S PREMIER LIVE MUSIC VENUE

DECEMBER HIGHLIGHTS

SHOWS NIGHTLY



TOWER OF POWER
Nov. 29 - Dec. 2



AVERAGE WHITE BAND
December 6 - 9



RICHARD MARX
December 12 - 15



HAPA HOLIDAYS
December 18



JANE SHIMADOKURO
December 20 - 22



NEW YEAR'S EVE WITH SHEILA E
December 28 - 31

RESERVATIONS

808-777-4228



NOTED HAWAII'S BEST LIVE MUSIC VENUE



GROUPS & PRIVATE EVENTS

For group information:
events@bluenotehawaii.com



WWW.BLUENOTEHAWAII.COM | 808-777-4228
Located in the Outrigger Waikiki Beach Resort

bloomingdale's Bloomingdales Concierge Appreciation Night

Bloomingdales held their annual appreciation event where they bring in a handful of their hotel partner representatives for a dinner at Forty Carrots to hear all about what's new at the retailer and bring them up to speed on their holiday plans. This year, they took the event over the top, by not only giving away some of their fabulous retail items, but also by partnering with BAMP Project, who gifted each of the lucky attendees with a pair of tickets to the upcoming Guns N' Roses concert at Aloha Stadium in December 8th!



Hawaii's Holiday Traditions

Continued from page 2.

Hawaii Kai Towne Center Center Stage starting at 3 p.m., as dozens of brightly decorated boats begin their two loops in front of the judges at 6 p.m. before continuing their way throughout the marina until around 8:30 p.m. The boats pull out all the stops with lights, lasers, music, dance, narration and amazing creativity. Competing in three different size categories, most participants take the event quite seriously -- after all, there are cash prizes to be won! Some boat concepts begin the year before. Elaborate superstructures take a simple fishing boat to something that could float on a canal at Disneyland or the Polynesian Cultural Center. Our own Pam Davis has even placed 2nd in her division for two of the past three years! But the most important thing is, it's a ton of fun for all involved, both on and off the water. The boat parade is free and crowds line the banks of the Hawaii Kai Shopping and Towne Centers, Koko Marina, as well as the countless boat parade parties along the route. Kona Brewing offers a front row seat as well. Reservations are required and go quickly.

Across the island at **Turtle Bay** the list of activities is a month long. Guests can Paint Paina with local artist Alicia Malia -- think Shaka Santa and Santa's Surf School. Don a Santa Hat to create a family photo in a kayak. Shop the Wonderland Night Market for this one dair far on th December 15th from 5 - 10 p.m., make beach S'mores for story time, take a Reindeer Ride on a gentle horse in (you guessed it) a reindeer costume from December 20th - 27th from 1:30 - 2:30 p.m. Stop by the Pa'akai restaurant for a breakfast buffet with Santa on December 16th and 23rd.

Out at the **Polynesian Cultural Center's Hukilau Marketplace** free activities include free selfies with Santa, free Train Rides for keiki, free scavenger hunts with prizes and nightly music and entertainment for the family. They're even going to host a few Snow Days. That's right, it will be snowing in Laie on December 15th and 21st from 3 - 6 p.m. For more information call 293-3142 or go to polynesia.com/christmas.

Waikiki Beach Walk Christmas begins on December 18th with a special holiday concert on the Plaza Stage with the Ku Ha'aeo Special Xmas Show from 4:30 - 6 p.m. with festive, holiday events continuing through Christmas day filled with music and hula.

And is there anything that says Hawaii more than **Santa surfing into the beach on a canoe?** Visitors will get three chances to see this rare sight. On Saturday, December 8th, crowds will gather on the shores of Waikiki at 9 a.m. to see Santa paddle to the beach fronting the Outrigger Waikiki to meet travelers and kama'aina looking to make it on the nice list this year. Christmas Eve morning people will see the Barefoot Santa surf into Queen's Surf Beach at 10 a.m. in front of Barefoot Beach

Cafe. There will be complimentary juice and cookies for the keiki and a special brunch menu from 9 a.m. to noon (that includes a VIP line for photos with Santa) while the Barefoot Boys featuring Pokii Vaughn, Leonard Jensen & Rob Burns play Hawaiian Holiday classic. A few hours later at 4:30 p.m. Santa arrives at Gray's Beach, fronting the Halekulani Hotel for a truly unique photo-op. However, once the big guy heads into the property, it turns into a guests-only event. The public can celebrate the season at Lewers Lounge when they offer an evening of Holiday Music on December 13th from 8:30 - midnight. 923-231.

Wanna eat with the big guy? There should be plenty of opportunities around town, but here's two we know of. On Thursday, December 15th from 8 - 10 a.m., kids can have **Breakfast with Santa** at The Reef Bar & Market Grill at the Outrigger Reef. Kids 5 - 11 years: \$15, and \$38 for adults. 924-7333.

Later than same day, The Kahala Hotel will offer **Tea with Santa** from 10 a.m. - 1 p.m. Enjoy a festive, family-friendly afternoon of delectable teas, treats and fun activities celebrating the holiday season for \$60, \$45 for keiki, kids under 6 are free. 739-8760.

For a cute **photo session with Santa**, head to his new home at Ala Moana Center on Mall Level 2 fronting Target. Holiday portraits will be available through December 24th. They have some special picture opportunities as well. Family PJ's photos are welcome on December 6th. December 17th is ugly holiday sweater day. Shoppers may bring their own camera for that special photo. And of course,



who can pass up the classic Santa pic of the giant Santa who has looked out over Ala Moana Park for years. Shoppers with sales receipts totaling \$500 will receive a limited edition

Big Santa Blanket to take home. Can you believe the classic big Santa will be 60 next year? A holiday hula show will fill Centerstage Monday thru Saturday. Sunday will feature a keiki hula show by Ka Hale I'O Kahala Halau. The Ewa wing stage hosts a variety of entertainment. Both stages will offer four shows a day. The center will have extended hours of 9:30 a.m. to 10 p.m. throughout the season and will close at 6 p.m. on Christmas Eve, and remain closed throughout Christmas Day.

Honolulu's decorated malls are closed on Christmas day but many shops in Waikiki will keep holiday hours. The holiday traditions of the Pacific fit into the tropical sunshine climate with sand and ocean. Thanks to the Hallmark Channel many people think of Christmas as snow covered, perfect for nights by the fire. Going back in history the first Christmas was in the Holy Land with desert sand and sun. Hawaii serves up a bit of both along with an ocean, a surfing Santa and all the glad tidings and jingle bells you could wish for. ~ Lynn Cook



Give the Gift of
STRIPSTEAK
this Holiday Season

\$25 GIFT CERTIFICATE
with every \$75.00 grill cook purchase

**ADDITIONAL \$25 BONUS
GIFT CERTIFICATE**
with every \$100 in gift cards purchased

BUY \$500 — RECEIVE \$75
BUY \$1000 — RECEIVE \$150
BUY \$2000 — RECEIVE \$300

Partial funds of the purchase amount will be returned in the form of bonus gift certificates valid through December 31, 2018. Other restrictions may apply.

Celebrate with Us!

CHRISTMAS EVE/DAY
December 24 & 25, 2018 | 4p - 9p
4-course menu \$85 pp
limited a la carte menu available

NEW YEAR'S EVE
December 31, 2018 | 5p - 9:30p
4-course menu \$125 pp
luxury chef's tasting menu \$158 pp
full a la carte menu not available

NEW YEAR'S DAY
January 1, 2019 | 4p - 10p
full a la carte menu available

OHANA PROGRAM
for every 25 guests referred in a month,
Stripsteak will send you a \$100 gift card!



Book your Holiday Dining reservations online or call the restaurant
For Private Dining inquiries,
please contact: Tazara Oriani at toriani@stripsteak.com

808.800.3094 | stripsteakwaikiki.com



Celebrate the season at **The Buffet at Hyatt.**

CHRISTMAS DINNER
 DECEMBER 24, 4:30 PM - 9:30 PM
 DECEMBER 25, 3:30 PM - 9:30 PM

\$89.00 PER PERSON **\$75.00** KAMA'ŪINA **\$35.00** KID 6-12 YEARS, 5 & UNDER FREE

THE BUFFET AT HYATT
 HYATT REGENCY WAIKIKI BEACH RESORT & SPA

For reservations call 808.237.6395 or email diningwaikiki@hyatt.com
PARKING IS COMPLIMENTARY

OpenTable

© 2018 Hyatt. OpenTable, an Expedia Group Company. All Rights Reserved. Tel: 808-922-2112

The Stadium is Rocking

Aloha Stadium hasn't seen this many concerts in, well, ever? I mean, I've seen great shows there, but it's been years. Raise your hand if you saw Michael Jackson, The Police, ZZ Top, Bryan Adams, Stevie Ray Vaughn, Janet Jackson or U2 there. I did. But since then, nothing. Bruno Mar's amazing multiple sold out shows seem to have started a new trend of stadium shows, and December 7th and 8th is going to be one heck of a weekend. Friday night brings The Eagles with special guest Jack Johnson. Tickets start at \$79.50 and go up from there. Show starts at 7 p.m. Staffers will barely have enough to clean up before Guns N'Roses makes their first concert stop in the island ever the very next night. This is their only US concert the entire year. Tickets start at \$60.50 and go up from there. Both shows are put on by BAMP Project.

Assuming the Stadium is still standing after all that rocking, Snoop Dogg, Cardi B and Sublime with Rome will close out the year with a show on December 27th. Tickets run \$49-\$5,000. Sublime takes the stage at 6:30 p.m., Cardi B at 8 p.m., and Snoop Dogg at 9 p.m. Seats for all shows at ticketmaster.com. ~ Pam

Honolulu City Lights

continued from page 1

attire. Steps away, City Hall's tree is covered in lights and ornaments. Beyond the tree is a Holiday Village with a variety of ethnic themes. Inside find a forest of 25 decorated Christmas trees, each the handiwork of a different department of the city. At the back of Honolulu Hale the long-standing wreath contest fills the walls for the 33rd year.

The Waikiki Trolley picks up at various locations then takes the scenic route up, down and around downtown Honolulu to see buildings with spectacular lighting displays with their hop-on, hop-off holiday tour. Bishop Square lights every branch of every tree. The water department has a display of waterfalls in lights. Hawaiian Electric is, what else, electric! The trolley ride is a chance to let out your inner elf. Sing, wave, pretend you are the winning Christmas parade entry and sing more. The Trolley runs from December 2nd to 30th from 6:30 to 9:25 p.m. and is \$25, \$16 for kids 3-11. Reservations required, 591-2561.

Saturday, December 15th, 7 p.m. is movie night where you can watch "Despicable Me" on the Civic Center Grounds. Saturday, December 22nd from 6 to 8 p.m. is Milk and Cookies night on the steps of Honolulu Hale.

Honolulu City Lights will be open daily from 8 a.m. to 11 p.m. on the Frank Fasi Civic Center Grounds and will run through January 1 - including the Christmas and New Year's holidays. Parking is free in the city's municipal lot. honolulucitylights.com. ~ Lynn Cook



DR. ALAN WU, M.D. **DR. TONY TRPKOVSKI, M.D.**

DR. ALAN WU, M.D.
 &
 DR. TONY TRPKOVSKI, M.D.

DOCTORS OF WAIKIKI

STATE-OF-THE-ART MODERN AND NEWEST URGENT CARE IN WAIKIKI

LARGEST MOST FULL STAFFED URGENT CARE IN WAIKIKI.

ワイキキのお医者さん



PH: (808) 922-2112
www.doctorsofwaikiki.com

Services include:

- Courtesy complimentary transportation. House/Hotel room calls.
- Diagnosis and treatment of illness and injury including work-related injuries.
- Contracted pre-employment physicals.
- Drug screenings.
- Immunizations for adults.
- Complimentary validated parking.**
- Ages of patients seen 2 yrs old - 100 + Pharmaceutical dispensary

QUALIFIED AND EXPERIENCED (BILINGUAL) ENGLISH, JAPANESE, CHINESE & KOREAN SPEAKING CLIENT SERVICE REPRESENTATIVES.

ALL MAJOR INSURANCE, TRAVEL INSURANCE, (UNIVERSAL HEALTH) ALL MAJOR CREDIT CARDS ACCEPTED.

Location:
Doctors of Waikiki
 Sheraton Princess Ka'iulani Hotel
 Ground Floor
 120 Ka'iulani Avenue, #KW10&11
 Honolulu, HI 96815
 Office: (808) 922-2112
 Email: info@doctorsofwaikiki.com
www.doctorsofwaikiki.com

Hours of Operation:
8:00 am - 12:00 am (Open Daily)



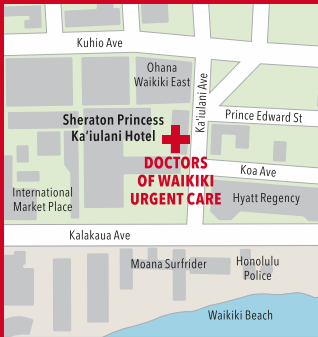
NO APPOINTMENTS NEEDED.

WALK-IN URGENT CARE.

HOUSE/HOTEL ROOM CALLS.

COURTESY COMPLIMENTARY TRANSPORTATION SERVICE BETWEEN WAIKIKI HOTELS TO/FROM URGENT CARE.

OPEN DAILY
8:00 AM - 12:00 MIDNIGHT





Chef's Corner

Mahina & Suns Executive Chef Erik Leong

Erik Leong is one of the more and more culinary stars we are seeing out of Kapiolani Community College's Culinary Arts Program. He started working with multiple James Beard nominated Chef Ed Kenney about ten years ago at his Town restaurant as a night cook, working his way up to sous chef, then helping him open Kaimuki Superette back in 2014 before being named Executive Chef at Mahina & Suns just over a year ago. Leong curates the menu spotlighting Hawaiian ingredients.

What is your first childhood food memory?

Being the youngest of four children, I began cooking at an early age, watching and helping my mother prepare meals for our family.

When did you decide to be a chef?

I decided to become a chef after participating in several culinary arts seminars and graduated from KCC in 2007 with a degree in Culinary Arts.

What was your first job in the industry?

My first job was working for Sodexo, the sustainable dining program for students at UH.

Who would you consider your mentor?

Chef Ed Kenney and Dave Caldiero (Ed's business partner) really helped me come into my own as a cooking professional. When I joined their team I was just trying to finish culinary school and needed to fill hours for my internship class. After working my first shift I really fell in love with cooking. I went from cooking pre-made food to sell, to making entire dishes from scratch and I've never looked back.

What makes Mahina & Suns special?

The menu is based on a communal sense of place with an elevated home cooking style so it's very inviting to both locals and visitors.

You've been there for about a year, what have you done differently since you arrived.

We addressed our staffing needs first and foremost. It's no secret that in this day and age it's very hard to find cooks but after we secured our staffing changes, implementing a seasonal menu is easy.

Where would you like to see Mahina & Suns go?

I want for us to be considered Hawaii's best locally sourced restaurant. I feel that this isn't just a pipe dream, it can become a reality because "when you shoot for the moon even if you miss you'll still be among the stars."

What's the best dish you ever remember?

All of my food stories start when I was young. My mom was a great cook and always made great one pot meals. Beef stew, black bean spareribs and chicken with mushroom gravy. I knew when I left for school what dinner would be. She was my first teacher and when I re-create these dishes, I'm home again.

How would you describe your cooking style?

Growing up in Hawaii you get exposed to so many different kinds of flavors and cuisines. I cook food with soul. I cook food with heart. I cook food with happiness. I love what I do. My style is food with love.

Where do you like to go to when you're off?

St. Louis Delicatessen is one of my go to places. The food is exactly how I remember when my mom would take me as a kid.

What are your favorite food combinations?

Burger and fries - others may disagree but for me it doesn't get any better than that classic combo.

Biggest pet peeve about working in a kitchen?

Punctuality is a big one for me. I like it when people show up on time, ready to work and professional.

What ingredients are always in your kitchen?

Salt, fresh herbs, lemons, and olive oil.

Name the biggest honor you've ever received?

I had a cook I trained move off island. He was good and had lots of potential. A couple of years later he messages me that he got promoted to sous chef and thanked me for all I did for him. I was speechless and it made me very happy and I'm proud to say it happened more than once. "If the student doesn't surpass the master, the master has failed."

What would you do if you couldn't be a chef?

I might want to transition into teaching in some capacity. I've always thought of myself as more of a coach when I teach my cooks. I feel that my approach to learning is something I would like to pass on to other people. Maybe a college chef instructor or high school food service teacher. I want to be a part of someone's story on how they achieve their dreams.

Any other information you would like to share?

I like to try stay as active as I can by playing sports or getting to the gym when time allows. Besides being as physically active as I can, I enjoy music, juggling, rubiks cubes and movies. I also watch/read/play a lot of cooking demos, comics, anime, Magic the Gathering and professional wrestling. Lastly, spending time with my wife is the most important thing. She's sacrificed a lot to be with me and I'm forever grateful.



Fried Fish Recipe

Make 3 slits on each side of the fish and season with salt and pepper. Dredge fish in cornstarch/mochiko flour mix. Place foil ball in cavity of the fish. Drop fish into 350 degree oil. Cook to 145 degrees. Take fish out and drain over rack salt outside of fish and remove foil ball. Stand fish up on the platter and serve with the three accompanying sauces listed below.

Curry Aioli

2 oz tatsoi

2 oz aioli

1 tsp curry powder

Ponzu

2 tablespoons rice vinegar
½ cup mirin

(3- by 3-inch) pc kombu
(about 1 ounce; 30g)
½ ounce katsuobushi

½ cup yuzu juice
½ cup soy sauce

Green Coriander Chutney

4 T cumin
2 T coriander
1 oz green onion

8 oz cilantro
4 oz Italian parsley
1 oz ginger

2 cup extra virgin olive oil
¼ cup lemon juice
salt & pepper

Mahina & Suns is located poolside at The Surfjack Hotel & Swim Club

Open daily 6:30 a.m.-10 p.m. • Happy Hour 3:30-5:30; 9-10 p.m., all day Thursday • Pau Hana 5:30-7:30 p.m.

Web: mahinaandsuns.com • Instagram/FB: @mahinaandsuns • Phone: 924-5810

HILTON HAWAIIAN VILLAGE™

WAIKIKI STARLIGHT LUAAU

SPECIAL HOLIDAY LUAAU

DEC. 24, 25, 31

DOORS OPEN 5:00 PM

- Holiday buffet
- Live carving station
- Fresh flower lei greeting

DEC. 23-27, 30 Great Lawn
DEC. 31 Rooftop Garden

RESERVATIONS
(808) 941-5828

HHVLuau.com

Let's be Together...

DINING ▶ ENTERTAINMENT ▶ PAU HANA ▶ EAT ▶ DRINK ▶ BE MERRY ▶ HAPPY HOUR ▶

MONDAY

Barefoot Beach Café at Queen's Beach	924-2233
<i>Cool Surf Vibes</i>	
Danny Galura	5:30-8:30pm
Chart House Waikiki	941-6660
<i>Live Contemporary Hawaiian</i>	
Camarillo Brothers	6:30-9:30pm
Cheesecake Factory	924-5001
<i>Classic Hawaiian</i>	
Christian Yrizarry Duo	7-10pm
Maiko Duo (12/24)	7-10pm
Duke's Canoe Club Waikiki	922-2268
<i>Live Contemporary Hawaiian</i>	
Taz Vegas	4-6pm
Ellsworth Simeona	9:30-12am
Hard Rock Cafe	955-7383
<i>Bluesy Monday</i>	
Danny Wassman	9-11am
Candy Bullets or others	9-11pm
House Without a Key	923-2311
<i>Live Hawaiian & Hula by Jeanne Kapela</i>	
DeLima Ohana	5:30 - 8:30pm
Hula Grill	923-HULA
<i>Live Contemporary Hawaiian</i>	
Eric Lee	7-9pm
Kani Ka Pila Grille	924-4992
<i>Hoku Award Winning Hawaiian musicians</i>	
Sean Naauao	6-9pm
Hii'ikua (12/17)	6-9pm
Puuloa (12/24)	6-9pm
Ke Olu (12/31)	6-9pm
LBL at the Hilton Waikiki Beach Hotel	922-0811
<i>Live Contemporary Acoustic Hits</i>	
Sean Cleland	7-10pm
Lewers Lounge	923-2311
<i>Live Contemporary & Light Jazz</i>	
Tommy James	8:30-12am
Mahina & Sun's	923-8882
<i>Monday Vibes on the Lanai</i>	
City Boys	7-9pm
Mai Tai Bar at the Royal Hawaiian	923-7311

<i>Live Contemporary Hawaiian with Hula Dancer</i>	
Dave Watanabe	8-10 pm
Maui Brewing Company	843-2739
<i>Live Contemporary Hawaiian</i>	
Christian Yrizarry	3:30-5:30pm
Alika Souza (12/24)	3:30-5:30pm
Rumfire	921-4600
<i>Solo Contemporary Guitarist</i>	
Desmond Oliveria	5-8pm
Jeremy Cheng	9:30-11:30pm
Signature Prime Steak	949-3636
<i>Contemporary Pianist in the bar</i>	
Isao Motomochi	6-9pm
Sky Waikiki	979-7590
<i>Live Contemporary</i>	
Yoza	6-9pm
The Edge at the Sheraton	921-4600
<i>Live Hawaiian Music</i>	
Pu'uhonua Duo	6:30-9:30pm
Tiki's Grill & Bar	923-TIKI
<i>Live Contemporary Hawaiian</i>	
P & L Experience	6-8:30pm
The Kristi Masuhara Band	9-11pm
Tommy Bahama Restaurant	923-8785
<i>Live Contemporary Hawaiian</i>	
Chris Mercado	6-9pm
Tropics Bar & Grill	949-4321
<i>Live Contemporary Hawaiian</i>	
Starr Kalahiki	5:30-8:30pm


<i>Hawaiian and R&B Poolside on the Lanai</i>	
Shyne	7-9pm
Mai Tai Bar at the Royal Hawaiian	923-7311
<i>Live Contemporary Hawaiian with Hula Dancer</i>	
Christian Yizarry Duo	6:30-8:30pm
Mi Almita Cantina	377-6915
<i>Acoustic Folk Rock</i>	
John Helm	6-8:30pm
Maui Brewing Company	843-2739
<i>Live Contemporary Hawaiian</i>	
Chris Murphy	3:30-5:30pm
Rumfire	921-4600
<i>Solo Contemporary Guitarist</i>	
Mike Tulba	5-8pm
Kai Roots Duo	9:30-11:30pm
Signature Prime Steak	949-3636
<i>Contemporary Pianist in the bar</i>	
James Woo	6-9pm
Sky Waikiki	979-7590
<i>Live Contemporary</i>	
John Akapo	6-9pm
The Edge at the Sheraton	921-4600
<i>Live Hawaiian Music</i>	
Brad Kawakami Duo	6:30-9:30pm
Tiki's Grill & Bar	923-TIKI
<i>Live Contemporary Hawaiian</i>	
K.B. Riley	5:30-8:30pm
Sani & Friends	9-11pm
Tommy Bahama Restaurant	923-8785
<i>Live Contemporary Hawaiian</i>	
Alex Oasay	6-9pm
Tropics Bar & Grill	949-4321
<i>Live Contemporary Hawaiian</i>	
Kailua Bay Buddies	5:30-8:30pm

TUESDAY

Barefoot Beach Café at Queen's Beach	924-2233
<i>Live Vintage Hawaiian Trip</i>	
The Barefoot Boys feat. Pokii Vaughn	5:30-8:30pm
Chart House Waikiki	941-6660
<i>Live Contemporary Hawaiian</i>	
Shyne	6:30-9:30pm
Cheesecake Factory	924-5001
<i>Classic Hawaiian</i>	
Ryan Tenney	7-10pm
Duke's Canoe Club Waikiki	922-2268
<i>Live Contemporary Hawaiian</i>	
Haumea Warrington & Mike Ellsworth Simeona	4-6pm
	9:30-12am
Hard Rock Cafe	955-7383
<i>Live Contemporary</i>	
Mike Piranha	9-11am
Piranha Brothers	9-11pm
House Without a Key	923-2311
<i>Live Hawaiian & Hula by Brook Lee</i>	
Pa'ahana	5:30 - 8:30pm
Hula Grill	923-HULA
<i>Live Contemporary Hawaiian</i>	
David Asing	7-9pm
Kani Ka Pila Grille	924-4992
<i>Hoku Award Winning Hawaiian musicians</i>	
Weldon Kekauoha	6-9pm
Robi Kahakalau (12/25)	6-9pm
LBL at the Hilton Waikiki Beach Hotel	922-0811
<i>Live Contemporary Funk, Jazz, Hip Hop & Reggae</i>	
Lina	7-10pm
Lewers Lounge	923-2311
<i>Live Contemporary & Light Jazz</i>	
Dan Del Negro & Rocky Holmes	8:30-12am
Mahina & Sun's	923-8882

WEDNESDAY

Barefoot Beach Café at Queen's Beach	924-2233
<i>Hawaiian Melodies</i>	
Kimo Baker	5:30-8:30pm
Bin1901 at the Moana	921-4600
<i>Piano Wine Bar</i>	
Ginny Tiu	6:30-9:30pm
Chart House Waikiki	941-6660
<i>Live Contemporary Hawaiian</i>	
Tito Berinobis & David Kauahikaua	6-10:30pm
Cheesecake Factory	924-5001
<i>Classic Hawaiian</i>	
Kimo Artis Duo	7-10pm
Denny Ono Duo (12/19)	7-10pm
Duke's Canoe Club Waikiki	922-2268
<i>Acoustic, Soul, R&B</i>	
Haumea Warrington	4-6pm
Ellsworth Simeona	9:30-12am
Gordon Biersch	599-4877
<i>Jazz Wednesdays</i>	
Varying Artists	6:30-9:30pm
Hard Rock Cafe	955-7383
<i>Live Contemporary</i>	
Dave Watanabe	9-11am
Saloon Pilots (or others)	9-11pm
House Without a Key	923-2311
<i>Live Hawaiian & Hula by Brook Lee</i>	
Pa'ahana	5:30 - 8:30pm
Hula Grill	923-HULA
<i>Live Contemporary Music</i>	



IL LUPINO
ITALY'S FINEST WINE BAR

15% OFF
Il Lupino is pleased to extend a 15% discount to all Concertgoers. Must show your work I.D. to receive the discount. Not applicable on liquor or specials.

ROYAL HAWAIIAN CENTER • VALIDATED PARKING
breakfast • lunch • happy hour • afternoon tea • dinner
ilupino.com • @ilupino • #ilupino • 808.922.3400

E Pili Kākou

DINING ▶ ENTERTAINMENT ▶ PAU HANA ▶ EAT ▶ DRINK ▶ BE MERRY ▶ HAPPY HOUR

Alika Souza 7-9pm
Hy's Steak House 922-5555
Live Soft Contemporary
 Audy Kimura 6:30-10pm
Kani Ka Pila Grille 924-4992
Hoku Award Winning Hawaiian musicians
 Kapena 6-9pm
LBL at the Hilton Waikiki Beach Hotel 922-0811
Live Contemporary Funk, Jazz, Hip Hop & Reggae
 Evan Khay 7-10pm
Lewers Lounge 923-2311
Live Contemporary & Light Jazz
 Maggie Herron & Rocky Holmes 8:30-12am
Mahina & Sun's 923-8882
Acoustic Guitar Poolside on the Lanai
 Nu'u Sing 7-9pm
Mai Tai Bar at the Royal Hawaiian 923-7311
Live Contemporary Hawaiian with Hula Dancer
 Jeremy Cheng 6:30-8:30pm
Maui Brewing Company 843-2739
Live Acoustic Folk Rock
 John Helm 3:30-5:30pm
Roy's Hawaii Kai 396-7697
Acoustic & Slack Key Top 40
 Dayton Watanabe 6:30-9:30pm
Rumfire 921-4600
Solo Contemporary Guitarist
 Thomson Enos 5-8pm
 Son Caribe Band 9:30-11:30pm
Signature Prime Steak 949-3636
Contemporary Pianist in the bar
 Pierre Grill 6-9pm
Sky Waikiki 979-7590
Live Contemporary
 Randy & Kanoë 6-9pm
SWIM at the Hyatt 923-1234
Live Contemporary
 Kuuipo Kumukahi 5:30-7pm
The Edge at the Sheraton 921-4600
Live Hawaiian Music
 Keoni Ku Duo 6:30-9:30pm
Tiki's Grill & Bar 923-TIKI
Live Contemporary - 1/2 off Wine Wednesdays
 Canoes for Rent 5:30-8:30pm
 John Helm 9-11pm
Tommy Bahama Restaurant 923-8785
Live Contemporary Hawaiian
 Sean Cleland 6-9pm
Tropics Bar & Grill 949-4321
Live Contemporary Rock
 Acoustik Playground 5:30-8:30pm

THURSDAY

Barefoot Beach Café at Queen's Beach 924-2233
Island Music
 Shaka Madali 5:30-8:30pm
Bin1901 at the Moana 921-4600
Piano Wine Bar
 Scott Smith 6:30-9:30pm
Chart House Waikiki 941-6660
Live Contemporary Hawaiian
 Tito Berinobis 6:30-10pm
Cheeseburger Waikiki 941-2400
Contemporary / Old School Rock
 Alex Oasay 6:30-9:30pm

Cheesecake Factory 924-5001
Classic Hawaiian
 Kona Chang Duo 7-10pm
Duke's Canoe Club 922-2268
Live Contemporary Hawaiian
 Haumea Warrington 4-6pm
 Denny Ono Duo (12/6) 9:30-midnight
 Kirby Ai Duo (12/13) 9:30-midnight
 Scott Magz & Brady K (12/20) 9:30-midnight
 Ryan Tenney Duo (12/27) 9:30-midnight
Hard Rock Cafe 955-7383
Live Contemporary
 Zanuck Lindsay 9-11am
 Kailua Bay Buddies 9-11pm
House Without a Key 923-2311
Live Hawaiian & Hula by Brook Lee
 Eric Lee Trio 5:30 - 8:30pm
Hula Grill 923-HULA
Live Contemporary Hawaiian
 Kimo Baker 7-9pm
Hy's Steak House 922-5555
Live Soft Contemporary
 Audy Kimura 6:30-10pm
Kani Ka Pila Grille 924-4992
Hoku Award Winning Hawaiian musicians
 Kawika Kahiaipo 6-9pm
LBL at the Hilton Waikiki Beach Hotel 922-0811
Live Contemporary Pop/Rock
 Sunway 7-10pm
Lewers Lounge 923-2311
Contemporary Jazz
 Maggie Herron & Rocky Holmes 8:30-12am
Mahina & Sun's 923-8882
Mellow Acoustic Sounds Poolside on the Lanai
 Frank Taua III 7-9pm
Mai Tai Bar at the Royal Hawaiian 923-7311
Live Contemporary Hawaiian with Hula Dancer
 Dave Watanabe 8 - 10pm
Maui Brewing Company 843-2739
Live Contemporary Hawaiian
 Ryan Tenney 3:30-5:30pm
Michel's at the Colony Surf 923-6552
Live Slack Key
 Jeff Peterson 7:30-10:00pm
Roy's Hawaii Kai 396-7697
Acoustic Hawaiian Guitar
 Steve English 6:30-9:30pm
Rumfire 921-4600
Solo Contemporary Guitarist
 Mark Calderia 5-8pm
Signature Prime Steak 949-3636
Contemporary Pianist in the bar
 Isao Motomochi 6-9pm
Sky Waikiki 979-7590
Live Contemporary
 Tahiti Rey 6-9pm
SWIM at the Hyatt 923-1234
Live Contemporary
 Kuuipo Kumukahi 5:30-7pm
The Edge at the Sheraton 921-4600
Live Hawaiian Music
 Christian Yrizary Duo 6:30-9:30pm
Tiki's Grill & Bar 923-TIKI
Hot Hula Thursdays - hula dancers perform
 Malu the Band 5:30-7:30pm

Ellsworth Simeona 8:30-10:30pm
Tommy Bahama Restaurant 923-8785
Live Contemporary Hawaiian
 Chris Mercado 6-9pm
Tropics Bar & Grill 949-4321
Live Contemporary Hawaiian
 Nohelani Cypriano 5:30-8:30pm

FRIDAY

Barefoot Beach Café at Queen's Beach 924-2233
Live Contemporary Hawaiian with Beach BBQ
 Art Kalahiki & Friends 5:30-8:30pm
Bin 1901 at the Moana 921-4600
Piano Wine Bar
 Scott Smith 6:30-9:30pm
Chart House Waikiki 941-6660
Live Contemporary Hawaiian
 Mark Yim's Pilikia I 6-9pm
 Mark Yim's Pilikia II 9:30-12:30am
Cheeseburger Waikiki 941-2400
Contemporary Hawaiian
 Aku 6:30-9:30pm
Cheesecake Factory 924-5001
Live Acoustic Folk Rock
 John Helm Duo 7-10pm
Dave & Busters 589-2215
Pau Hana Fridays Live Local Bands
 Varying Hawaiian Artists 6-8pm
Duke's Canoe Club Waikiki 922-2268
Live Contemporary Hawaiian
 Maunalua 4-6pm
 Kelandy Diaz Duo 9:30-12am
 Chris Murphy Duo (12/14) 9:30-12am
 Preston Kauwe Duo (12/28) 9:30-12am
Hard Rock Cafe 955-7383
Live Contemporary
 Alex Oasay 9-11am
 The Fresh Preps or others 9-11pm
House Without a Key 923-2311
Live Hawaiian & Hula by Kanoë Miller
 Kapalama 5:30 - 8:30pm
Hula Grill 923-HULA
Live Contemporary Hawaiian
 The Camarillo Brohers 7-9pm
Hy's Steak House 922-5555
Live Soft Contemporary
 Audy Kimura 6:30-10pm
Kani Ka Pila Grille 924-4992
Hoku Award Winning Hawaiian musicians
 Ka Hehena 6-9pm
LBL at the Hilton Waikiki Beach Hotel 922-0811
Live Contemporary Pop/Rock
 Sunway 7-10pm
Lewers Lounge 923-2311
Live Contemporary Jazz
 Maggie Herron & Dean Taba 8:30-12am
Mahina & Sun's 923-8882
Slack Key Poolside on the Lanai
 Jeff Rasmussen 7-9pm
Mai Tai Bar at the Royal Hawaiian 923-7311
Live Contemporary Hawaiian with Hula Dancer
 Ben Kama 6:30-8:30pm
 Jeremy Ching 8:30-10:30pm
Maui Brewing Company 843-2739
Live Contemporary Hawaiian

Let's be Together...

DINING ▶ ENTERTAINMENT ▶ PAU HANA ▶ EAT ▶ DRINK ▶ BE MERRY ▶ HAPPY HOUR

Derrick Lee 3:30-5:30pm
 Kona Chang Duo (or others) 9-11pm
Michel's at the Colony Surf 923-6552
Live Slack Key Stylings & Jazz
 Jeff Peterson & Ernie Provencher 6:30-10pm
Roy's Hawaii Kai 396-7697
Keyboardist
 Brian Robert Shaw 6:30-9:30pm
Roy's Ko Olina 676-7697
Slack Key Guitar
 Chris Rego 5:30-8pm
Rumfire 921-4600
Solo Contemporary Guitarist
 Shar Carillo 5-8pm
Signature Prime Steak 949-3636
Contemporary Pianist in the bar
 Grant Carvalho 6-9pm
Sky Waikiki 979-7590
Live Contemporary
 John Akapo 5-8pm
The Edge at the Sheraton 921-4600
Hawaiian Music with conch/torch ceremony at 6 p.m.
 Na'ehu Duo 6:30-9:30pm
Tiki's Grill & Bar 923-TIKI
Live Contemporary Hawaiian
 Randy Allen 5-7pm
 Vaihi 7:30-9:30pm
 The Kristi Masuhara Band 10:30-midnight
Tommy Bahama Restaurant 923-8785
Live Contemporary Hawaiian
 Chris Murphy 6-9pm
Tropics Bar & Grill 949-4321
Live Contemporary Hawaiian
 Nohelani Cypriano 8-10:30pm

SATURDAY

Barefoot Beach Café at Queen's Beach 924-2233
Queen's Surf + Turf w/ Hawaiian Chalang-alang music
 Bronson Bernades 5:30-8:30pm
Bin1901 at the Moana 921-4600
Piano Wine Bar

Scott Smith 6:30-9:30pm
Chart House Waikiki 941-6660
Live Contemporary Hawaiian
 Tito Berinobis & Billy Beimes 7-12pm
Cheeseburger Waikiki 941-2400
Contemporary Hawaiian
 Sean Cleland 6:30-9:30pm
Cheesecake Factory 924-5001
Classic Hawaiian
 Dennis McClees Duo 7-10pm
Duke's Canoe Club Waikiki 922-2268
Live Hawaiian Entertainment
 Kapena (12/1) 4-6pm
 Vaihi (12/8) 4-6pm
 Kona Chang Band (12/15) 4-6pm
 Kaiona Band (12/22) 4-6pm
 Kailua Bay Buddies (12/29) 4-6pm
 GJ & Shawna 9:30-12am
 Mike Tulba Duo (12/1) 9:30-12am
 Christian Yrizarry Duo (12/8) 9:30-12am
 Maiko Duo (12/29) 9:30-12am
Hard Rock Cafe 955-7383
Live Contemporary
 Sean Thibadeaux (or others) 9-11am
 CTD 9-11pm
House Without a Key 923-2311
Hawaiian & Hula by Kanoe Miller
 Kapalama 5:30 - 8:30pm
Hula Grill 923-HULA
Live Traditional Hawaiian with dancer
 Christian Yrizarry 7-9pm
Hy's Steak House 922-5555
Live Soft Contemporary
 Audy Kimura 6:30-10pm
Kani Ka Pila Grille 924-4992
Hoku Award Winning Hawaiian musicians
 Hookena 6-9pm
 Maunalua (12/1, 12/8) 6-9pm
LBLE at the Hilton Waikiki Beach Hotel 922-0811
Live Contemporary Blues & R&B
 Tahiti Rey 7-10pm
Lewers Lounge 923-2311
Live Contemporary Jazz
 Maggie Herron & Dean Taba 8:30-12:30am
Mahina & Sun's 923-8882
Soul Poolside on the Lanai
 Special Guest Saturdays (varying artists) 7-9pm
Mai Tai Bar at the Royal Hawaiian 923-7311
Live Contemporary Hawaiian with Hula Dancer
 Alex Oasay (or others) 6:30-8:30pm
Mau Brewing Company 843-2739
Live Contemporary Hawaiian
 Mark Caldeira 3:30-5:30pm
 Chris Mercado Duo (or others) 9-11pm
Michel's at the Colony Surf 923-6552
Live Contemporary Slack Key & Jazz
 Jeff Peterson 7-11pm
Roy's Hawaii Kai 396-7697
Acoustic Guitar
 Jimmy Funai 6-9:30pm
Roy's Ko Olina 676-7697
Slack Key Guitar
 Chris Rego 5:30-8pm
Rumfire 921-4600
Solo Contemporary Guitarist

Desmond Oliveria 5-8pm
Signature Prime Steak 949-3636
Contemporary Pianist in the bar
 Grant Carvalho 6-9pm
Sky Waikiki 979-7590
Live Contemporary
 John Akapo 6-9pm
The Edge at the Sheraton 921-4600
Hawaiian Music with conch/torch ceremony at 6 p.m.
 Tino Jacob Duo 6:30-9:30pm
Tiki's Grill & Bar 923-TIKI
Live Contemporary Hawaiian & Reggae
 Johnny Helm 4:30-6:30pm
 Guidance (or others) 7:30-9:30pm
 Ellsworth & Piko 10-midnight
Tommy Bahama Restaurant 923-8785
Live Contemporary Hawaiian
 Chris Murphy 6-9pm
Tropics Bar & Grill 949-4321
Live Contemporary Hawaiian
 Henry Kaponon 4-6pm
 Juke Joint 6:30-9:30pm

SUNDAY

Barefoot Beach Café at Queen's Beach 924-2233
Live Contemporary Hawaiian
 Rudy Saravia 5:30-8:30pm
Chart House Waikiki 941-6660
Live Contemporary Hawaiian
 Dean & Dean 6-9pm
Cheesecake Factory 924-5001
Classic Hawaiian
 Chris Murphy Duo 7-10pm
Duke's Canoe Club Waikiki 922-2268
Live Hawaiian Entertainment
 Henry Kaponon 4-6pm
 Beach 5 (12/2) 4-6pm
 Maiko Duo 9:30-12am
 Chris Mercado (12/9) 9:30-12am
 Full Moon Radio (12/23) 9:30-12am
Hard Rock Cafe 955-7383
Live Acoustic Folk Rock
 Johnny Helm (or others) 9-11am
 Analog (or others) 9-11pm
House Without a Key 923-2311
Live Hawaiian & Hula by Debbie Nakanelua
 Pu'uhonua Trio 5:30 - 8:30pm
Hula Grill 923-HULA
Live Traditional Hawaiian with dancer
 Alika Souza and friends 7-9pm
Kani Ka Pila Grille 924-4992
Hoku Award Winning Hawaiian musicians
 Nathan Aweau 6-9pm
 Brother Noland (12/2) 6-9pm
 Robi Kahakalau (12/23) 6-9pm
Kelley O'Neil's 926-1777
Live Irish Music
 Various Celtic Bands 4-7pm
LBLE at the Hilton Waikiki Beach Hotel 922-0811
Live, Energetic Mix of Pop and Rock Hits
 Kristi Masuhara 7-10pm
Lewers Lounge 923-2311
Live Contemporary & Light Jazz
 Tommy James 8:30pm - 12am
Mahina & Sun's 923-8882

E Pili Kākou

DINING ▶ ENTERTAINMENT ▶ PAU HANA ▶ EAT ▶ DRINK ▶ BE MERRY ▶ HAPPY HOUR

<i>Hawaiian Past & Present Poolside on the Lanai</i>		
Dustin Park	7-9pm	
Mai Tai Bar at the Royal Hawaiian		923-7311
<i>Live Contemporary Hawaiian with Hula Dancer</i>		
Christian Yizarry	6:30-8:30pm	
Maui Brewing Company		843-2739
<i>Live Contemporary Hawaiian</i>		
Sean Cleland	3:30-5:30pm	
Scott Magz & Brady K	9-11pm	
Roy's Ko Olina		676-7697
<i>Slack Key Guitar</i>		
Chris Rego	5:30-8pm	
Rumfire		921-4600
<i>Solo Contemporary Guitarist</i>		
Johnny Kukui	5-8pm	
Signature Prime Steak		949-3636
<i>Contemporary Pianist in the bar</i>		
Isao Motomochi	6-9pm	
Sky Waikiki		979-7590
<i>Live Contemporary</i>		
Da Push-O-Verse	6-9pm	
The Edge at the Sheraton		921-4600
<i>Hawaiian Music with conch/torch ceremony at 6 p.m.</i>		
Eric Lee Duo	6:30-9:30pm	
Tiki's Grill & Bar		923-TIKI
<i>Live Contemporary Hawaiian</i>		
Kapu the Band	2:30 - 5:30pm	
Vaihi	6-8pm	
Ellsworth & Piko	9-11pm	
Tropics Bar & Grill		949-4321
<i>Live Contemporary Rock & Hawaiian</i>		
Mike Piranha	5:30 - 8:30pm	
Uncle's Fish Market & Grill		275-0063
<i>Live Slack Key</i>		
Jeff Peterson	5:30-8:30pm	



Hot Lines

Here's a few numbers for you to find out the latest in live music from places that change daily or don't update us regularly, since we can't possible list them all.

Anna O'Brien's	946-5190
Cheesecake Factory Kapolei	670-2666
Gordon Biersch	599-4877
Irish Rose Saloon	947-3414
Kelley O'Neil's	926-1777
Lucky Strike Honolulu	664-1140
Lulu's Waikiki	926-5222
Mai Tai Bar Ala Moana	947-2900
Moose McGillycuddy's	923-0751

Dining Dish



Chef Roy Yamaguchi will be celebrating the 30th anniversary of his flagship location in Hawaii Kai with **Beyond the Bay, 30 Years of Spreading Aloha** on December 2nd, with a star-studded line-up that looks an awful lot like a mini Hawaii Food & Wine Festival. We're talking culinary superstars like Hubert Keller, Nobu, Celestino Drago, Michael Mina, and more. Tickets are \$155 and going quickly, so grab

yours today at royyamaguchi.com. • **Tim Ho Wan Waikiki** at the Royal Hawaiian Center is offering a Red Envelope raffle for dine-in guests, gifting Lai See (those red envelopes we see on Chinese New Year), and inside guests will find a coupon for either a Hong Kong Milk Tea, an order of BBQ Pork Buns, a choice of dessert or a \$20 gift card. Red envelopes are available Monday through Thursday, from 10 a.m. – 4 p.m. for seated guests that spend over \$50 per table. The stanchions outside tell me the restaurant is popular enough without the promotion, so be prepared to wait. 888 - 6088. • **The Reef Bar & Market Grill** and **Kani Ka Pila Grille** at the Outrigger Reef Hotel have rolled out a new vegan menu for guests to choose from with nearly a dozen new menu items in addition to vegan pastries, muffins and breads already on their breakfast buffet. outrigger.com. • You've probably driven past it a million times. That brightly lit Chinese restaurant on the corner of King & Keeaumoku called **Lobster King**. It really may not look like much, but the delights inside are truly worth a visit. Next time you or your guest is craving lobster, stop by there to get it for half the price of anywhere else. They fly their Maine Lobsters in daily and supply many of the restaurants in town. The Seafood Market (open from 9:30 a.m. - 2 p.m.) outside offers fresh seafood to the public at wholesale prices. lobsterkinghi.com. • **The Street Food Hall**, by **Michael Mina** has hired **Michael Palmer**, most recently with Ruth's Chris Restaurants, as its new general manager. Most restaurants have adjusted their hours to 8 a.m. - 9 p.m. Monday - Wednesday, and to 8 a.m. - 10 p.m. Thursday - Sunday with a few exceptions. International Smoke is now closed for lunch and opens at 4:30 daily., Burger Hale opens at noon. • **Sky Waikiki** has opened up a bar within the bar. **Backbar** is now open in the secret room that used to be used for their club members. Due to its hidden location, and the need to use a code to go in, they are calling it a speakeasy. I completely disagree with their word choice. When I hear speakeasy, I think dark, prohibition-style bars with fedoras and flappers, like **Harry's Hardware Emporium**, but that is about all I disagree with. The room is modern and contemporary, and downright cool, with a hidden door to get in. It's secluded, bright, airy and has an amazing view away from prying eyes. Director of Mixology **Jen Ackrill** drinks are perfectly on point as always, and **Chef Lance Kosaka's** food is always great. Where else can you get mini lobster rolls at the bar? (*No, seriously, where?* *If you know please tell me*). You should definitely check it out. Tuesday - Sunday from 5 p.m. skywaikiki.com/thebackbar. ~ Pam



Dining Calendar

December 2: *The Original Roy's Beyond the Bay 30th Anniversary* Chef Roy Yamaguchi celebrates 30 years at his flagship location in Hawaii Kai with some of the nation's most acclaimed chefs including Nobu Matsuhisa, Michael Mina, Hubert Keller, Celestino Drago, Raphael Lunetta, Alan Wong, Michelle Karr-Ueoka, Vikram Garg, and Hank Adaniya. 6 - 9 p.m. \$155. 396-7697. royyamaguchi.com.

December 2: *Sans Souci Beach Club* at Barefoot Beach Cafe offers a family-friendly day filled with lawn games, keiki scavenger hunt, campfire s'mores and DJs from 3 - 7 p.m. Don't miss this free beach party! BarefootBeachCafe.com.

December 7: *Vino Sociale First Fridays* Apetitia Craft Pizza & Wine Bar has launched a monthly wine event in their new secluded patio with a specially prepared wine flight and paired menu specials. Limited to 18 people \$55. 5:30 p.m. 922-1150.

Wednesdays: *Wine & Dine Wednesdays* Stop by the Veranda every Wednesday from 6-9 p.m. for a 3-course meal with paired wines for \$65+-. Additional glasses at \$12. kahalaresort.com.

Mahalo for your continued support!

JOIN OUR

GUEST REFERRAL PROGRAM



Our program is simple!

For every 25 guests referred, Ruth's Chris Steak House will send you a \$50.00 dining certificate.

Please contact *Emi Espinda* if you have any questions at eespinda@ruthschris.com

OPEN DAILY FROM 4:30PM

HAPPY HOUR DAILY IN OUR LOUNGE | 4:30PM - 7PM

PRIME TIME MENU DAILY | 4:30PM - 6PM

WINE WEDNESDAYS | 25% OFF BOTTLES OF WINE



Restaurant Row | 808.599.3850

Waikiki Beach Walk | 808.440.7910

WWW.RUTHSCHRISHAWAII.COM

DECEMBER CALENDAR OF EVENTS

Continuing Events

MONDAY - FRIDAY LYON ARBORETUM TOURS

The lush gardens at the top of the UH Manoa are open for guided tours daily. Knowledgeable guides will introduce the highlights of all 193.6 acres of botanical rainforest. Reservations Req. 12 participants max. Donations accepted. 988-0461.

MONDAY-FRIDAY FOSTER BOTANICAL GARDENS

Guided garden tours of rare and beautiful plants from tropical regions throughout the world. Foster Botanical Gardens, 50 N. Vineyard. 1 p.m. Adults: \$5. Reservations recommended. 522-7066.

TUESDAYS TOURS OF THE HAWAII THEATRE

Get a behind-the-scenes tour of this historic theatre including history, architecture, and a performance on the 1922 Robert Morton theatre organ. Hawaii Theatre. 11 a.m. - 12 p.m. \$10. 528-0506.

TUESDAYS • THE TASTING ROOM

Stop by for complimentary libations including craft beers, wines, liquors, and small-batch spirits every Tuesday. 5:30-6:30 p.m. Mahina & Sun's. surfjack.com. FREE.

TUESDAYS • KU HA'AHEO

An afternoon of music and hula led by kumu hula Blaine Kamalani Kia. Waikiki Beach Walk, Plaza Lawn. 4:30-6 p.m. waikikibeachwalk.com. FREE.

TUESDAYS • KCC FARMERS MARKET

The Saturday Market is so popular they added another day. Head up to Kapiolani Community College to stock up on fresh, island produce, seafood, flowers and more, from several dozen vendors. 4-7 p.m. Free. 848-2074.

TUESDAYS INDOOR YARD SALE & THRIFT SHOP

The Waikiki Community Center has changed this weekly event into a community yard sale. Residents can rent a table and buy and sell items. 310 Paoakalani Avenue. 9 a.m. - 12 p.m. Free. 923-1802. waikikicomunitycenter.org.

TUESDAYS & THURSDAYS FARMERS MARKET AT THE HYATT REGENCY WAIKIKI

The Waikiki Farmers Market is offered twice a week. A great place for visitors and locals to stock up on fresh local organic fruits, vegetables, jams, honeys, baked goods and more. The market is spread out throughout the ground floor of the Pualeilani Atrium Shops. 4 - 8 p.m. hyattregencywaikiki.com.

TUESDAYS, THURSDAYS & SUNDAYS TOUR & TEA AT THE HONOLULU ACADEMY OF ARTS

Tours are led by volunteer docents and designed for visitors, who would like to explore the galleries, learn more about art and culture, and socialize over a cup of tea. Docents lead discussions in the galleries and offer insight into many cultures and time periods. 2:30 - 4 p.m. in selected galleries. Free with admission. Reservations required. 532-8700.

TUESDAY - SATURDAY HAWAIIAN MISSION HOUSES TOURS

Visit the Print Shop, coral block Chamberlain House, and 1821 Mission House and learn about the 19th century history and culture preserved at this historic site. Docent-led tours of the historic houses begin on the hour, every hour from 11 a.m. for \$8 - \$10. No charge for the self-guided tour of the grounds. Hawaiian Mission Houses. Tues. - Sat. 10 a.m. - 4 p.m. 447-3910 or missionhouses.org.

WEDNESDAYS • YOGA ON THE LAWN

Waikiki Beach Walk offers free yoga every Wednesday. Sign up at the Shiatsu & Massage Center on the 2nd floor or call 922-0171. Plaza Lawn, 4:30 p.m. waikikibeachwalk.com.

THIRD WEDNESDAY (DECEMBER 19) KONA NUI NIGHTS

Kona Nui Nights honors and highlights Hawaiian language and music, as well as the art of hula on the third Wednesday of every month with a cash bar available. Free. Ward Village Information Center Courtyard. 6-8 p.m. wardvillageshops.com.

SECOND THURSDAY (DECEMBER 13) COURTYARD CINEMA

Ward Village hosts its monthly film series event, Courtyard Cinema, on the 2nd Thursday of each month. The showing features free popcorn, refreshments, food vendors and entertainment. Courtyard Cinema is free and open to the public. Seating is limited. Reserve tickets at wardvillagecourtyardcinema.com.

THURSDAYS • MARKET ON THE PLAZA

Browse locally grown produce and a variety of made in Hawaii products at Waikiki Beach Walk's Market on the Plaza. Free. 4 - 8 p.m. Also held on select Sundays, see online schedule. waikikibeachwalk.com.

THURSDAYS • COURTYARD YOGA

Take a complimentary yoga class with CorePower Yoga at the Ward Village Information Center Courtyard. Open to the first 50 in attendance. All experience levels welcome. 5:30 - 6:30 p.m. For more information visit wardvillageshops.com/yoga.

FIRST FRIDAY (DECEMBER 7) DOWNTOWN GALLERY WALK & CRAFT FAIR

Honolulu's largest monthly outdoor self-guided arts tour takes place the first Friday of each month. This event has exploded into a huge downtown party with galleries and studios open for exhibitions, artist demonstrations, and special performances as most galleries and art-related retail shops, restaurants and museums participate. Downtown Honolulu/Chinatown. 6 - 9 p.m. Free. 521-2903 or artsatmarks.com.

**FIRST FRIDAY
FREE MOVIE NIGHT ON THE LAWN**
PCC's Free Movie Night is on hiatus until next year. HukilauMarketplace.com.

FINAL FRIDAY • ART AFTER DARK
Art After Dark is on hiatus until next year.

SATURDAYS • KCC FARMERS MARKET
Fresh island produce, seafood, flowers and more are available from over two-dozen

vendors at Kapiolani Community College. Free. 7:30 - 11 a.m. 848-2074.

SATURDAYS PEARLRIDGE FARMERS MARKET

Over 40 vendors offering locally grown fruits and vegetables, plants and freshly made treats. A pop-up cafe offering seating and live music round out the day. Free. 8 a.m. - noon. PearlridgeOnline.com.

SATURDAYS • KAKA'AKO FARMERS MARKET

The Kaka'ako Farmer's Market hosts an abundance of fresh local produce, artisan foods and wares from over 50 different vendors complete with a 70-seat café to sit back and relax in while munching on the treats you have picked up. The Farmers Market has just moved to the former Ward Warehouse location. Free. 8 a.m. - 12 p.m. wardvillage.com.

SECOND SATURDAY (DECEMBER 8) DOWNTOWN GALLERY WALK & CRAFT FAIR

First Friday has become such a success that events carry over to the second Saturday. HiSAM, 11 a.m. - 4 p.m. 586-9958. Other events around downtown Honolulu all afternoon including slam poetry and open mic events at The Arts at Marks from 3-5 p.m. Free. 521-2903 or artsatmarks.com.

SATURDAYS & SUNDAYS ART ON THE ZOO FENCE

More than 35 local artists display their works on the Zoo fence on Monsarrat Avenue opposite the Kapiolani Park Bandstand. Works include original paintings, prints and photographs. 9 a.m. - 4 p.m. Free. artonthezoo fence.com.

SUNDAYS ALA MOANA FARMERS MARKET

The Ala Moana Farmer's Market is back with over 20 vendors in a new location fronting Atkinson. 9 a.m.-12 p.m. alamoanacenter.com.

FIRST SUNDAY (DECEMBER 2) LEI-MAKING CLASS WITH MELEANA ESTES

Bringing back the practice of lei-making, the International Market Place offers a monthly lei-making workshop, with contemporary lei artist Meleana Estes every first Sunday of the month from 11 a.m. - 2 p.m. in Queen's Court. Free shopinternationalmarketplace.com.

SECOND SUNDAY (DECEMBER 9) KAMAAINA SUNDAYS AT THE PALACE

On the second Sunday of each month, Iolani Palace lets kamaaina tour the historic landmark for free. Choose from the Guided Tour or Self-Led Audio Tour. A Hawaii or Active Military ID is required to receive complimentary tickets. iolanipalace.org.

THIRD SUNDAY (DECEMBER 16) BANK OF HAWAII FREE SUNDAY

The Honolulu Museum of Art opens its doors to the public free of charge on the third Sunday of every month thanks to Bank of Hawaii. Plenty of activities for all to enjoy. 11 a.m. - 5 p.m. Free. 532-8700.

FOURTH SUNDAY NA MELE NO NA PUA SUNDAY CONCERT

The Sunday Concert Series is on hiatus this month due to their special holiday programming. waikikibeachwalk.com.

DECEMBER CALENDAR OF EVENTS

DECEMBER 1 • ALL TIME LOW

The popular at-rock band is coming to The Republik. \$33. Price increases day of show. 8 p.m. bampproject.com.

DECEMBER 1 • OHANA FESTIVAL

It's time for another Kalakaua Street Fair. Enjoy food, retail, and handmade products from local vendors showcasing their products to visitors and locals alike from 4 – 10 p.m. millwoodohanaproductions.com.

DECEMBER 1-2 NA LEO'S HAWAII HOLIDAYS

Na Leo Pilimehana, the popular Hawaiian group that has won the most Hoku Awards of any Hawaiian music group, and will present their first holiday concert in over ten years. Hawaii Theatre, \$35-\$75. hawaii theatre.com

DECEMBER 1 - 31 HONOLULU CITY LIGHTS

Downtown lights up in celebration every night of the season with the 34th annual Honolulu City Lights. Enjoy opening night festivities on 12/1 kicking off with a block party at 4 p.m. with 15 food vendors set up on Punchbowl Street. The Electric Light Parade begins at 6 p.m., and the Lighting of the City Holiday Tree is at 6:30 p.m. The party goes through 11 p.m. The lights and decorations will stay up through January 1st from 8 a.m. – 11 p.m. daily. honolulucitylights.com.

DECEMBER 2 XTERRA TRAIL RUN WORLD CHAMPIONSHIP

This will be the 10th anniversary of this 21-kilometer world championship half-marathon course that takes runners through some of the most diverse – and scenic – terrain on the planet. No qualifying process so anyone can enter the 21K championship course, a 10K, a 5K, or an "adventure walk." 9 a.m. – 2 p.m. Kualoa Ranch. xterraplanet.com.

DECEMBER 7 • EAGLES IN CONCERT



They were one of the most successful bands of the 70s and are one of the world's best-selling bands in history, having sold more than 150 million records over the years. With Hawaii native Jack Johnson opening up, this concert should be amazing. Tickets: \$79.50 - \$499.50. Aloha Stadium. 7 p.m. bampproject.com.

DECEMBER 7 PEARL HARBOR MEMORIAL PARADE

The parade takes place on the anniversary of the Pearl Harbor attack to honor and pay respect to those that lost their lives, the survivors, our veterans, active duty military and their families. 2,000 marchers, 40 vehicles, 10 bands, 8 floats, and a F-104 Starfighter jet will make their way down Kalakaua from Ft. DeRussy to Kapiolani Park. 6 p.m.

DECEMBER 7-9 KUANA'S WINTER WONDERLAND

Hoku-Award winning musician Kuana Torres Kahele ushers in the holiday season with three shows at the Hawaii Theatre. 7:30 p.m., 2 p.m. on 12/9. \$30 - \$75. hawaii theatre.com.

DECEMBER 8 • TOKIMONSTA

The popular at-rock band is coming to The Republik. \$33. Price increases day of show. 8 p.m. bampproject.com.

DECEMBER 8 KALAKAUA MERRIE MILE

This fun little one-mile race in Waikiki followed by a beach party is a great way to get geared up for the Honolulu Marathon the next morning. The race goes in waves based on predicted finish time. The last wave will be the pros seeking a sub 4-minute mile. Children of all ages are welcome to run the Merrie Mile. The race finishes at Queen's with a concert on the beach. 7 a.m. honolulumarathon.org.

DECEMBER 8 • GUNS N ROSES

The legendary rockers are coming to Hawaii for the first time ever to perform their only US show in 2018. Don't miss Axel Rose, Duff McKagan, Slash and the rest of the band as they tear up Aloha Stadium. Tickets: \$60 - \$450. Aloha Stadium. 6 p.m. bampproject.com.

DECEMBER 8-20 BILLABONG PIPE MASTERS

The third and final jewel in the Vans Triple Crown is the most prized event of the season and decides the ASP World Champion, and the Triple Crown champion of the Hawaiian winter surf season. Pipeline. The event will not take place every day, but only on the best surf days. Will John John get his threeppeat? Check website for updates. vanstriplecrownofsurfing.com.

DECEMBER 8-9 MELE KALIKIMAKA MARKETPLACE

This 4th annual gift show aims to be your one stop shop for all your holiday shopping needs. Offering everything from books, apparel, jewelry, pre-packaged gift baskets, local gourmet gifts and year-end inventory specials from varied distributors, there will be five special Gingerbread Workshops you can purchase and live entertainment. Blaisdell. \$4 entry. Sat. 10 a.m. – 8 p.m., Sun. 10 a.m. – 5 p.m. melekalikimakamarketplace.com.

DECEMBER 9 WINTER CONCERT WITH KENNY ENDO

The Hawaii Symphonic Band presents its annual free Winter Concert featuring special guest Kenny Endo. Palladium at Ala Wai Golf Club. 7 p.m. hawaiisymphonicband.weebly.com.

DECEMBER 9 HONOLULU MARATHON

With around 25,000 runners each year, the Honolulu Marathon is the 4th largest marathon in the US. This year marks the 46th anniversary of the race that has so many runners from Japan they make it large enough to compete with the Boston Marathon and usually comprise around 60% of the total runners. The gun goes off at 5 a.m. at Ala Moana Beach Park. Prepare for a day filled with closed roads and traffic delays. honolulumarathon.org.

DECEMBER 9 • ALII SUNDAY

Kawaiahao Church celebrates select Hawaiian Royalty (Alii) who are of particular importance for the Church by holding seven special Sunday services in their honor around their birthdays throughout the year. Today they celebrate Kamehameha V. 9 a.m. kawaiahao.org.

DECEMBER 12 • HOLIDAY POPS

Join the Hawaii Symphony Orchestra for its annual Holiday Pops Concert. This seasonal celebration of holiday favorites, features classics with local flair will be held at the Hawaii Theatre this year. \$27-\$79. hawaiisymphonyorchestra.org

DECEMBER 12-15 • RICHARD MARX



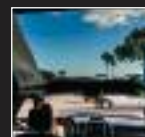
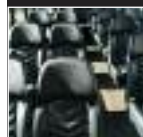
For three decades, Richard Marx has been delighting audiences with some of his #1 hits such as "Right Here Waiting" and "Hold on to the Night" for four shows at Blue Note Hawaii. Tickets: \$85-\$150. 8 p.m. bluenotehawaii.com.

DECEMBER 14 - 15 • BELLATOR AND USO PRESENT: SALUTE THE TROOPS

Bellator MMA has partnered with the USO to present a special live event free for the troops on December 14 that will be shown on television and simulcast live online. The title fight will feature current lightweight champ Brett Primus against two-time former titlist Michael Chandler, while heavyweight icon Frank Mir meets Javy Ayala in a heavyweight clash. The fight will air on Paramount Network that night and will be streamed live online. On Saturday, women's flyweight champ Ilima-Lei Macfarlane defends her title against Valérie Létourneau after several preliminary fights. Tickets \$50 - \$500. Blaisdell Arena. ticketmaster.com.

Continued on page 17.

MOST LUXURIOUS PEARL HARBOR TOUR



Poly Ad's brand new Premium Tour provides the highest level of service and value aboard a luxury "Grech" mini coach that makes every tour experience exceptional.

Many extras include lunch at a Honolulu eatery with reserved seating. Pearl Harbor and Honolulu's very best sites in divine luxury - a must for every visitor!

Poly Ad
Premium

808.833.3000

WWW.POLYAD.COM



WAIKIKI BAPTIST Church
 Your Church in Waikiki
 424 Kuamo`o St
 (Near the Ambassador Hotel)
Sunday Worship Services
 9:00 AM - Contemporary
 10:45 AM - Traditional
 (808)955-3525
 WaikikiBaptist.com

DISCOUNT HAWAII CAR RENTAL
SAVE UP TO 50%



GUARANTEED RESERVATIONS
 * NO BOOKING FEES * NO DEPOSIT * CANCEL ANYTIME
 * NATIONAL RENTAL COMPANIES

call us today @
1.800.292.1930
 or check us out online:
DiscountHawaiiCarRental.com

Wildlife Guaranteed
 See dolphins or turtles or come again free wildlife-specific cruises in Waikiki, West Oahu & Kona. Family-owned company with ocean activities for all ages.



WAIKIKI • WAIANAE • KONA
 Sail • Snorkel • Dolphins • Turtles • Whales • Scuba • Fireworks Dinner • Private Charter • Transportation

234-SAIL
 (7245)
 WE ANSWER 24 HOURS!
 hawaii.nautical.com Hawaii Nautical



Ala Moana Center Holiday Soiree

Ala Moana held their annual concierge event for 100 of the lucky ones that made it in the door (to those that no showed -- auwe -- we had 2 dozen on the waiting list) Lucky Strike hosted the first two hours where people noshed and bowled, with prizes for the best and worst scores! Afterwards, we headed over to Santas new home on Mall Level 2 by Target for pics with Santa, dessert and prizes.



DEC. CALENDAR OF EVENTS

Continued from page 15.

DECEMBER 14--16 THE NUTCRACKER 2018

Celebrate the holidays with Ballet Hawaii's Nutcracker presented with a unique Hawaiian historical theme set in the 1858 Kingdom of Hawaii. The inspiration for this special performance came when the creative team learned that Mary Dominis held a Christmas Eve children's party at Washington Place in 1858. The toy soldier uniforms are patterned after those of the Royal Guard and the famous waltz of the snowflakes takes place high upon the slopes of Mauna Kea. Performances at 2 p.m. and 7:30 p.m. both days. \$40-\$125. Blaisdell Concert Hall. ballethawaii.org

DECEMBER 16 • JINGLE ROCK RUN

The 6th annual fun run/walk through downtown Honolulu's City Lights is a benefit for Make A Wish Hawaii. Walkers, joggers, runners, strollers, pets and reindeer are welcome. 3 - 5 p.m. hawaii.wish.org.

DECEMBER 16 THE MUSIC OF TRANS-SIBERIAN ORCHESTRA

Hawaii's Rock Opera Theatre will be performing Christmas songs from The Trans-Siberian Orchestra. Hitbox Music Ensemble, a small orchestra that plays popular video game music will open the show. \$10. Hawaiian Brian's. 6 p.m. rockoperatheatre.com.

DECEMBER 16 • ALII SUNDAY

Kawaiahao Church celebrates select Hawaiian Royalty who are of particular importance for the Church by holding seven special Sunday services in their honor around their birthdays throughout the year. Today they celebrate Princess Bernice Pauahi Bishop. 9 a.m. kawaiahao.org.

DECEMBER 21-22 • JOHNNY MATHIS

Music legend Johnny Mathis returns to Honolulu for the first time in two decades as he performs his Greatest Hits & Christmas Classics with a 35-piece Orchestra including members of the Hawaii Symphony Orchestra and the Royal Hawaiian Band. Tickets: \$49.50 - \$199.50. 7:30 p.m. Blaisdell Concert Hall. ticketmaster.com.

DECEMBER 21-23 • HAWAII OPEN

The Hawaii Open is a three-day professional tennis tournament featuring top-ranked tennis players from the ATP and WTA tours, with six male and six female tennis players including Asia's No. 1 men's tennis player Kei Nishikori and two-time Grand Slam champion Garbine Muguruza. Daily tournament tickets begin at \$25 and three-day passes start at \$70. Blaisdell Arena. hawaiiopen.com.

DECEMBER 22 • HAWAII BOWL

Celebrating its 17th year, the Hawaii Bowl will pit a team from Conference-USA against a team from the Mountain West. Aloha Stadium. 5:30 p.m. thehawaiibowl.com.

DECEMBER 22, 23 & 25 DIAMOND HEAD CLASSIC

This annual college basketball tournament will consist of eight teams competing in twelve games over three days in a traditional bracket format. This years teams include Bucknell, Rhode Island, TCU, Indiana State, Colorado, UNLV, Charlotte and UH. Tickets: \$10-\$30. Stan

Sheriff Center. diamondheadclassic.com.

DECEMBER 26-27 • DON MCLEAN

One of the most enduring songwriters of our time, the singer behind those classic lyrics "Bye Bye Miss American Pie, drove my Chevy to the levee but the levee was dry" is heading to Hawaii for two shows at the Blue Note. Tickets: \$75-\$115. 8 p.m. bluenotehawaii.com.

DECEMBER 27 • SNOOP DOG, CARDI B AND SUBLIME WITH ROME.

Aloha Stadium is rocking like it hasn't in years, and if you haven't completely blown your concert budget this year, then don't miss this one. Get your ska, hip hop and rap on in one night with three of the biggest names in the biz, many making their first appearance in the islands. Snoop Dogg, Cardi B and Sublime with Rome will take the stage along with special musical guests throughout the night. \$49-\$299. VIP Packages available. ticketmaster.com



DECEMBER 27 SOMETHING 4 THE LADIES 2

The Holiday concert will please all R&B fans as TANK, Lyfe Jennings, & Jon B. join forces and collaborate. Tickets: \$59-\$79. Blaisdell Concert Hall. 8 p.m. ticketmaster.com.

DECEMBER 28-31 • SHEILA E.

The world-class drummer and percussionist best known for her Grammy Award nominated hit "The Glamorous Life" and her time spent with Prince will perform 8 shows at Blue Note Hawaii to ring out the year. Tickets: \$65-\$85. Two shows nightly. 6:30 and 9 p.m., with NYE shows (\$95-\$250) at 8 p.m. & 11 p.m. bluenotehawaii.com.

DECEMBER 30 VOICES OF ALOHA HOLIDAY CONCERT

Honolulu's renowned community choir will present their holiday concert, "Songs of Peace". Free. 6:30 - 8 p.m. Kawaiahao Church.

DECEMBER 30 THE SYLISTICS HOLIDAY SHOW

Legendary Grammy Award nominees, 70's group The Stylistics, known for such songs as "I'm Stone in Love with You" and "Break Up to Make Up", returns to Honolulu for a special holiday show. Barrington "Bo" Henderson, former lead singer and drummer with R&B/Funk bands Lakeside and the Temptations will be bringing his trademark Showmanship to the Stylistics for this performance. \$39-\$69. Blaisdell Concert Hall. 8 p.m. ticketmaster.com.

DECEMBER 31 • BILL MAHER

Bill Maher presents his 8th Annual New Year's Evening of Comedy with special guests Natasha Leggero, & Wendy Liebman. The show has sold out for the past seven years, and you never know who will show up. Special guests over the past few years included: Academy Award-winner actor Sean Penn and director Michael Moore, David Spade, Margaret Cho, Bob Saget and even Pearl Jam's Eddie Vedder, who wowed the crowd with a surprise acoustic set in 2013. Who will show up this year? Blaisdell Concert Hall. Tickets: \$45.50 - \$95.50 ticketmaster.com.

goma tei
FINE JAPANESE CUISINE
SAVOR RESTAURANT

PRESENT YOUR WORK ID & RECEIVE ONE FREE AJITAMA OR SOFT-POACHED EGG

PICTURED IS OUR SEAFOOD FRIED RICE MADE WITH FRESHLY COOKED, IMPORTED JAPANESE RICE MIXED WITH DICED CARROT, MAUI ONION AND EGGS, ALL IN A SPECIAL FRIED-RICE MACHINE SERVED WITH A SPECIAL HOUSE MADE SOY SAUCE WITH CRISPY GARLIC AND GARLIC OIL, A SOFT-POACHED EGG AND SCALLION GARNISH

INTERNATIONAL MARKET PLACE
2520 KALAKAUA AVE. 3RD - LEVEL 1, GRAND LAMAI
TEL: 808.654.0303

HAVE ANY QUESTIONS OR COMMENTS?
EMAIL US AT IMP@GOMATEI.COM

SOME EXCLUSIONS MAY APPLY. THIS OFFER CANNOT BE COMBINED WITH ANY OTHER OFFER

SOMETHING NEW. SOMETHING CLASSIC.

Open Daily 11am - 10pm
Happy Hour
Daily in our lounge 3pm - 6pm & 8pm - 10pm
Vino Thursdays 25% Off Bottles of Wine

INQUIRE ABOUT OUR GUEST REFERRAL PROGRAM!
Our program is simple!
For every 10 complimentary dessert cards redeemed (WITH YOUR NAME ON THE CARD), Romano's Macaroni Grill will send you a \$25.00 dining certificate that may be used at our Oahu restaurant.

Please contact the restaurant for details

ROMANO'S Macaroni GRILL

Ho'okipa Terrace at Ala Moana Center
808.356.8300
WWW.MACARONIGRILL.COM

That's Entertainment

HOTELS

- HALE KOA HOTEL** 955-0555
 •MThFS - Poolside music at the Barefoot Bar. 6-11pm
- HALEKULANI HOTEL** 923-2311
 •Daily-Hawaiian Music and hula at House Without A Key from 5:30-8pm.
 •Daily-Live Contemporary and light Jazz at Lewers Lounge from 8:30pm to midnite.
 •Sun- Sunday brunch at Orchids features Noly Paa on the piano from 10am - 1:30pm.
- HILTON HAWAIIAN VILLAGE** 949-4321
 •Fri - Fireworks return to their normal time, 7:45 pm.
 •Fri - The Rockin' Hawaiian Rainbow Revue, a musical salute to King Kalakaua, at the Super Pool. 7 pm.
 •Daily - Live entertainment, Tapa Bar. 8:15-10:30pm.
- HYATT REGENCY WAIKIKI** 923-1234
 •MW - Hawaiian Music 5:30-7pm.
 •TTH - Waikiki Farmers Market 4-8pm.
 •Fri - Aloha Friday Polynesian show, lei-making 4:30-6pm, 1st Floor, Pualeilani Atrium
- THE KAHALA HOTEL & RESORT** 739-8888
 •TuWThFSat - David Swanson vocalizes on the piano at The Veranda from 7:30-10pm.Hawaiian on Sun/Mon.
- MOANA SURFRIDER** 922-3111
 •Daily-Hawaiian music & hula. The Banyan Court, 6-8 pm, and again from 8 -10 p.m. Weekends from 11:30- 2 p.m.
 •MWFri-Guided historical tours at 11am.
- NEW OTANI KAIMANA BEACH** 923-1555
 •FSat - Jazz guitarists in the Sunset Lanai Bar. 6-9pm.
- OUTRIGGER WAIKIKI ON THE BEACH** 923-0711
 •Daily- Daily Cultural Program, front lobby. 11am.
- OUTRIGGER REEF ON THE BEACH** 923-3111
 •Daily- Cultural programs at Kani Ka Pila Hale. 9am.
- SHERATON PRINCESS KAIULANI** 922-5811
 •Daily-Live Hawaiian music & halau at the lounge from 6-8:30pm, then poolside from 8:30-10:30pm.
 •Th-Princess Kaiulani historical tour at 9:30am.
- THE ROYAL HAWAIIAN** 923-7311
 •TTH- Free guided resort tour at 1pm.
- TURTLE BAY RESORT** 293-6000
 •TThFri - Shell Hula Lessons, Lobby at 10am
 •TThFri - Ukulele Lessons, Lobby at 9am
 •Fri- Music & Hula. Lobby Lounge 6:30-8:30pm.
- WAIKIKI BEACH MARRIOTT RESORT** 922-6611
 •Daily-Hawaiian entertainment in The Moana Terrace Bar. 6:30-9:30pm.
 •Fri-Local crafters "Aloha Friday Fair" Lobby 9am-2pm

MUSEUMS

- HAWAII STATE ART MUSEUM** 586-0900
 •TWThFSat - Inaugural exhibition "Enriched by Diversity: The Art of Hawaii." Free. Tuesday-Saturday, 10 a.m. to 4 p.m. Located in the Capital District.
 •Tues- A one-hour guided tour offers a unique insight in the history, art, architecture and restoration of the Hawaii Theatre with trained docents & a mini-concert on the 1922 Robert Morton Theatre Organ. 11 a.m. Admission: \$10.
- HONOLULU MUSEUM OF ART** 532-8726
 •MWF- Japanese Language Tours. Private tours also available. 1pm. Regular admission.
- HONOLULU FIRE MUSEUM** 723-7167
 •3rdSat- Free one-hour guided tours through various exhibits with a firefighter recounting HFDs history the 3rd Saturday: 9am - 2pm. Reservations required. 620 South Street. honolulu.gov/hfd/communityrelations
- IOLANI PALACE** 522-0832
 •Mon-Sat-45 minutes docent-lead or self-guided audio tours available in English or Japanese. Japanese-led tour is available only at 11:30 a.m. All tours include re-tour video and entrance into the Palace Galleries. Adults: \$14.75-\$21.75 / Keiki (5-12): \$6. 9am-5pm
 •Sat-Hawaiian Quilt Classes. Old Archives 9:30a-12p.
- LUCORAL MUSEUM** 922-5381
 •TTh- Learn how to plan your jewelry project and more in this beaded jewelry workshop \$10. 2-4pm
- HAWAIIAN MISSION HOUSES** 447-3910
 •Tue-Sat-Learn about the story of cultural change in 19th-century Hawaii. Docents lead tours through the oldest existing frame house in the Islands, Print Shop, and the Chamberlain House. missionhouses.org
- PACIFIC AVIATION MUSEUM** 441-1000
 •Daily-Vintage aircraft in battlefield hangars at Pearl Harbor. Combat flight simulators. Aviator's Tour takes you through the new Restoration Hangar. Restaurant, Museum Store. Shuttle & Tickets at USS Arizona Memorial Visitor Center or at PacificAviationMuseum.org.
- THE SPALDING HOUSE** 526-1322
 •Daily-Docent-led tours given daily. 1:30pm. Garden tours or Japanese language tours are by appointment.
- NAVAL AIR MUSEUM BARBERS POINT** 682-3982
 •Mon-Fri- A unique museum experience about aviation history in Hawaii. All aircraft are open to climb in, on and around. Tours: 8am - 4:30pm. \$7 / \$5 children under 18. Kalaeloa Airport. Reservations req'd. Sat/Sun by appt only. www.nampb.org.

EVENTS SUBJECT TO CHANGE ... PLEASE CALL TO CONFIRM PRIOR TO ATTENDING

SHOPPING CENTERS

- ALA MOANA CENTERSTAGE** 955-9517
 •Mon-Sat- Ala Moana Hula Show. Centerstage 1-1:20pm
 •MWF- Hawaiian music *Mauka Wing* 2:30-3:30pm
 •Sun - Keiki Hula Show. Centerstage 1-1:20pm
- INTERNATIONAL MARKET PLACE** 921-0536
 •Daily - Ceremonial lighting of Lamaku Torch Tower just after sundown followed by a hula show.
 •1st3rd Sun - Free Yoga class. 10-11am.
 •1st Sun - Free cultural lei-making class. 12-3pm.
 •2nd Sat - Free Yoga class. 9:30-10:30am.
 •2nd Sun - Paint class 1:30-4:30pm.
 •1st3rd Fri - Live painting demonstration.3:30-4:30pm.
- KINGS VILLAGE** www.kings-village.com 237-6344
 •MW - Famer's Market offering fresh produce, baked goods and local food items from 4-9pm.
 •Daily - King's Guard Museum features a variety of collectibles and memorabilia. 10a-10:30p. FREE.
- ROYAL HAWAIIAN CENTER** 922-2299
 •M- Keiki Hula lessons 3:30pm, *Royal Grove*
 •MWF- Learn Lomilomi 11am-12pm, Bldg. B, 3rd floor
 •MTF-Hula 10am (4pm on Wednesdays), *Royal Grove*
 •TThSat- Rock-a-Hula Pre-Show 7pm, *Royal Grove*
 •TWTh- Lauhala Weaving 1pm, Bldg B., 3rd floor
 •TThF- Ukelele 12pm, *Helumoa Hale*
 •TWThF- Live Hawaiian music 6-7pm, *Royal Grove*
 •Sat- Hula Kahiko 6-6:30pm, *Royal Grove*
 •Daily- Heritage Room/Cultural Videos *Helumoa Hale*
- WAIKIKI BEACH WALK** www.waikikibeachwalk.com
 •Daily-The Ukulele Store offers free lessons at 10:30am & 4:30pm.
 •Tues - Hawaiian Quilt Collection demonstrations, 2nd floor. 10:30am - 12:30pm
 •Tues - Ku Ha'aheo Hula Show. Plaza Stage. 4:30-6pm
 •Wed - Yoga Classes 4:30-5:15pm. Free. Plaza Stage
 •Sat - Hoopdance Fitness Classes on the Lawn. 5pm

ATTRACTIONS

- KALAKAUA AVENUE** 527-5666
 •Fri - Strolling Hula from 8-10:00pm.
- KAPI'OLANI BANDSTAND** 527-5666
 •Fri-Hawaii's finest musicians perform. 5:30-6:30pm
 •Sun-Royal Hawaiian Band performs 2-3:15pm.
- KUHIO BEACH HULA SHOW** 843-8002
 •TThSat- Free hula show. 6:30 - 7:30pm hula mound.
- TAMARIND PARK - DOWNTOWN** 527-5666
 •Fri- Mayor's Aloha Friday Music from 12-1pm
- WAIKIKI TOWN CENTER** 922-2724
 •Mon-Sat-The songs and dances of Hawaii, New Zealand, & Tahiti. Free shows begin at 7pm.

PAPARAZZI

Queen Kapiolani opens after Renovation



The Queen Kapiolani Hotel held a fabulous grand opening party after their \$35 million renovation. GM Jeff Perkins, center, is surrounded by lovely hula ladies and the owners of the property from Diamond Head Land.

Voltaggio Brothers at Hawaii Food & Wine



Bryan Voltaggio joined his brother Michael at Naughty or Nice Pool Party held at the Outrigger Reef for one of the final events of another highly successful Hawaii Food & Wine Festival. Mark your calendars for October 5-27, 2019

Miss Hawaii USA 2019 is crowned



Congratulations to Miss Waikiki, Lacie Choy, who won this years Miss Hawaii USA title. Surrounded by her runner ups, from left to right Hal'a Parish, Brittany Ann Payne, Lacie, Stephanie Wang and Kayli Obrero.

conciierge card

December 31, 2018

Bill's Sydney Waikiki - 20% discount off food and beverage (not applicable on happy hour or other offers). Must show hotel ID to receive discount. 280 Beach Walk. 922-1500

Dole Plantation - 1 FREE Adult Admission to the Maze with purchase of 1 Adult Admission. 621-8408

Giovanni Pastrami - 15% Off Full Bar, Dine-in or Take-Out at anytime with ID. 227 Lewers St. 923-2100.

Hard Rock Cafe - 15% off food, beverage (non-alcoholic), or merchandise. Hotel ID req'd. 280 Beachwalk Ave. 955-7383.

Hawai'i Prince Golf Club - \$5 off Standard Kamaaina Green Fees. Tee Times: 944-4567

Hawaiian Mission Houses - Free tour with hotel ID. 553 S. King Street. 447-3910

Hilo Hattie - 25% on Hilo Hattie labeled garments, 15% off other fashions/gifts and 10% off Hilo Hattie labeled foods. Not valid on sale items. Ala Moana Center. Ph 535-6500.

Hy's Steakhouse - 25% VIP Discount Off Food And Beverage (up to 2 persons) 2440 Kuhio Ave. 922-5555

Hyatt Regency Waikiki - 15% discount by mentioning this offer and presenting your hotel ID at SHOR, The Buffet at Hyatt and SWIM. 2424 Kalakaua Ave. 923-1234.

'Iolani Palace - Free Admission. Regular rate \$21.75. 364 S. King Street, Reservations & Hotel ID required. 522-0832.

IHOP - Receive 20% on entire bill. Must show valid hotel ID. Not valid with any other offer or discount. Valid only at Aqua Palms, 949-4467 and OHANA Waikiki Malia, 921-2400.

Il Lupino - 15% discount off food and beverage (not applicable on liquor or specials). Must show hotel ID or business card to receive discount. Royal Hawaiian Center. 922-3400.

Kaiwa - 20% off food & beverage between 5 & 7 p.m. 924-1555

Maui Divers - 35% discount off purchases made at the Design Center and 20% at all stores. Must show hotel ID to receive discount. 1520 Liona Street. 946-7979.

Noi Thai - 20% discount off food and beverage (not applicable on liquor, happy hour or specials). Must show hotel ID. Royal Hawaiian Center, Bldg. C. Level 3. 664-4039

Pacific International Skydiving Center - 50% discount on Jump, 68-760 Farrington Hwy., 637-7472.

P.F. Chang's Waikiki - Receive 20% on all appetizers, entrees, desserts and beverages 11 am - 5 pm daily (not valid for Pau Hana menu) Royal Hawaiian Center. Ph: 628-6760

Romano's Macaroni Grill - 10% Off Food for up to 2 guests. (Not valid for Happy Hour Menu). Ala Moana Center, 1450 Ala Moana Blvd. 356-8300.

Ruth's Chris Steak House - 10% Off Food for up to 2 guests. (Not valid for Happy Hour & Prime Time menus). Restaurant Row, 599-3860. Waikiki Beach Walk, 440-7910.

Honolulu Museum of Art Spalding House - FREE Admission for you and one guest with hotel ID. 526-1322.

The Original Glider Rides - Experience the joy of soaring for yourself. Conciierge / GSA may receive a complimentary scenic ride. Request the "GSA flight special" when booking reservation. Hotel ID required. Dillingham Airfield. 637-0207

Tiki's Grill & Bar - FREE order of ANY appetizer with any purchase! One per table. OahuconPOKE. ASTON Waikiki Beach. 923-8454

Willoughby's Restaurant - 15% off all food items. Ohana Honolulu Airport Hotel. 3401 N. Nimitz Hwy. 836-0661.

HELP us update this card. If you know of an offer not being honored let us know. As management changes, sometimes offers can get lost.

You will be required to show Hotel ID or business card to claim offer. Do not cut this card out of the book. One special per person per business. Offers valid on regular-priced merchandise only. Discounts are available to Guest Service Professionals ONLY. Not valid with other promotions or special offers. A minimum 18% gratuity on original order required for all special food offers. **new offer**

Guest Service Agent of the Month



NAME: Marlon Henobio

HOTEL: Aqua Skyline at Island Colony

TITLE: Guest Service Manager

Q. How long have you been with the Skyline?
A. 5 years - because of the outstanding team.

Q. What is your job capacity?
A. I am in charge of the Front Desk and all functions.

Q. Where did you work before Aqua-Aston?
A. I worked as a Customer Agent for Hawaiian Air.

Q. In what capacity did you start there?
A. I started as the Conciierge at the Aloha VIP Tours desk, then I went to work for the Front Desk as guest service agent, got promoted to Supervisor, and am now a Guest Services Manager.

Q. How big is your team there?
A. I oversee about 27 employees

Q. Describe what makes your team different?
A. My Team is not just a team, they are my Family! Our Hotel is like a huge family affair ... we have our ups and downs, but we always get along.

Q. What is the biggest challenge at the desk?
A. Customer Satisfaction: I want every guest to feel welcome and at home.

Q. What do you like most about this industry?
A. Everything! I love the people, and my teammates and the Aloha spirit we carry.

Q. Do you have one guest that stands out?
A. Yes. One family came and it was their daughter's birthday. They just missed their luau, and it was their last night in Hawaii, so I gathered my team, and we created a luau for them to enjoy on the Recreation Deck and I even danced the hula!

Q. What's the most unusual request you've ever heard? Were you able to accommodate it?
A. Someone asked me if I could help them with their laundry. I washed it for them!

Q. What one question are you asked the most?
A. I'd say, it's about "aloha" I tell them, it means "love" not just hello and goodbye.

Q. How do you deal with those "difficult" guests?
A. I step back, and listen, then I apologize about the situation and assure them that I Would do my very best to help them out.

Q. What's your favorite activity to recommend?
A. I always recommend to go around the island, to see our beautiful "paradise"

Q. What's restaurant do you recommend most?
A. The Brilliant Ox. If I love their food, I know other people will. I am a very picky eater. I recommended it many times and did not hear any negative so far!

Q. Where are you from originally?
A. I am from Wahiawa and went to Leilehua.

Q. What do you like to do on your days off?
A. I love the "beach" ... We have the most beautiful beach in the world!

Q. Any other thoughts you'd like to share?
A. I always say: Just be yourself, Have fun, always respect each other and (Live it up)!

Happy Holidays!



MAJESTIC
by
Atlantis
CRUISES.

The Majestic offers the perfect setting to celebrate the holidays with friends and family.

Don't miss our Christmas and New Year's Eve Cruises!

atlantisadventures.com

For info & reservations call (808) 973-9811 or fax to (808) 973-2499

   | #atlantishawaii

The Oahu Concierge is printed monthly and direct mailed FREE to all Oahu Concierge, Hospitality & Activity Professionals.

Subscriptions available to non-industry at \$25 per year.

C O N T A C T

Davis Media

Ph: 596-4422

www.oahuconciierge.com

Twitter & Instagram: @OahuConciierge

Facebook: www.facebook.com/OahuConciierge

The Oahu Concierge
4348 Waiialae Avenue, #185
Honolulu, Hawaii 96816

ADDRESS & NAME CHANGES / ADDITIONS

We do not take changes via telephone. All changes to mailing list **must be submitted in writing** by the 16th of the month to make the next issue, email is preferred.

S T A F F

PUBLISHER & EDITOR Pam Davis
publisher@oahuconciierge.com

CONTRIBUTING EDITORS
Lance Rae, Lynn Cook

DESIGN
Coreiya Design

The Oahu Concierge's 19th Annual *Conciierge of the Year Award!*

Each of the deserving individuals pictured below were recognized this year as our Concierge, Guest Service Agent, or Activity Agent of the month for their exlemportary service. Which one should be named our Concierge of the Year? The outcome is up to you. Voting will be held online this year. Only one vote per reader, and remember, usually one vote per machine. You may need to vote from your home computer if someone has already voted from your desktop at work. **Voting opens December 1st and closes at 11 a.m. December 10th, 2018. Vote online at OahuConciierge.com.**



January

Leimomi Consylman
The Kahala Hotel



April

Jordan Johnson
Elite Concierge



July

Yuki Saito
Trump Hotel Waikiki



October

Carla Balicoco
Pleasant Holidays



February

Noelani Wright
Prince Waikiki



May

James Tabusa
Hyatt Regency Waikiki



August

Nolan Char
Aulani, A Disney Resort



November

Jonell Ching-Kalua
Hale Koa Hotel



March

Rowena Colling
Outrigger Waikiki



June

Abbie Johnson
Expedia



September

Nicolette Kim
Halekulani



December

Marlon Henobio
Aqua Skyline at Island Colony

Remember, only one vote per person. And while you're there, please tell me who you think we should recognize next year!