

# Concierge

KEEPING THE HOSPITALITY INDUSTRY INFORMED SINCE 1998

## Celebrating Christmas Island-Style

## HOLIDAY Book & Gift Guide



Hum a few bars of the classic Keola and Kapono Beamer song, "Honolulu City Lights" and get yourself into the mood to celebrate the holiday season Island-style. Drive down Ala Moana Boulevard and get a wave from the two-story tall Big Santa, perched on the top parking level of Ala Moana Center. Hard to believe that he is 60 this year. Check out the tree downtown at Honolulu Hale. Cruise Ward Village and Waikiki where every window, shop and open space is decked out for the holiday. Gaze with wonder at the two-story tall super structure "tree" at Kahala Mall with row upon row of poinsettia plants, 1,000 of them in full bloom. Hawaii does have Christmas everywhere, just like the song says, "in the land where palm trees sway!" This year the mall has added a 5-foot tall "Aloha" letters in sparkling lights at the base of the "tree" – ready for that perfect photo-op.

### City Lights



The best place to start the search for Christmas will be at Honolulu Hale in Downtown Honolulu for the 35th anniversary of **Honolulu City Lights**. Designed years ago by artist Owen Ho, the Shaka Santa and Tutu Mele (Mrs. Clause) are each larger than a Mac truck. They sit on the edge of the reflecting pond while some playful penguins leap into the pool. Inside Honolulu Hale there are trees, trees,

and, more trees. Each City department decorates a tree and everyone gets to vote. Choral groups perform nightly. The displays are open every day and night thru January 1st. A limited edition commemorative silver ornament was created in honor of their milestone 35th anniversary. Beyond Honolulu Hale's doors, on the vast lawn, displays are created by every one of Hawaii's multi-ethnic communities. Think Christmas in India or China or Japan. Check out the complete schedule of events at [honoluluclights.org](http://honoluluclights.org).

### Shopping

Need to start your Christmas shopping or just wander through for something to grab your attention? Be sure to check out the **5th annual Mele Kalikimaka Marketplace**, Honolulu's largest gift and craft fair held December 14 and 15th at the Blaisdell Exhibition Hall. This is the place to find gourmet gifts, local food, crafts, jewelry, books and treats. This family friendly event also offers plenty of activities for the kids, including Candy Land, Ben Franklin Make-and-Take Crafts, and Santa with his pal, Rudolph will stop at various times throughout the day. Tickets to the show are only \$4. Don't miss out on the Gingerbread Workshop that will take place five times throughout the weekend. Tickets for the Workshop are \$40 and include 5 free entries to the Marketplace, as well as a Gingerbread House for to decorate, make (and take) plus plenty of other activities. The show is open from 10 - 8 p.m. on Saturday and from 10 - 5 p.m. on Sunday. More information can be found online at [melekalikimakamarketplace.com](http://melekalikimakamarketplace.com).



Continued on page 2.



Running out of ideas for that perfect Christmas gift? What about getting a book? Hawaii's publishers have been working overtime to provide one of the most interesting selection of titles, ready for holiday gifting.. (hint - read them quickly yourself first or buy two – one for the gift-ee and one for you).

Hands down our #1 pick is **FASCINATING FACTS ABOUT HAWAII**. This pocket size book is a treasure trove of tidbits about the Aloha State. Author Jim Loomis has out together a 116-page mix of serious historical and culturally illuminating facts and lighthearted tidbits that will delight visitors and locals alike. From the obscure – *Did you know the first California-Hawaii flight made a forced landing at sea? Did you know that a local amateur baseball team once nearly beat the Los Angeles Dodgers?* – to factoids – *There are more than 120 Hawaiian islands. The 'ukulele isn't from Hawaii.* The book is filled trivia you may never have heard of even if you're from here.

Continued on page 11.

### TABLE OF CONTENTS

Yada Yada Yada .....	2
Newsflash .....	3
Arts with Aloha .....	4
New Years Eve Festivities .....	6
Paparazzi: Ohana Shops .....	8
Hotel Spotlight: Halepuna Waikiki by Halekulani .....	8
Paparazzi: Nobu Honolulu .....	10
E Pili Kakou .....	12-16
Chef's Corner: Dean & DeLuca's Kevin Carvalho .....	17
Calendar .....	18-19, 21
Paparazzi: Ala Moana Holiday Soiree .....	20
That's Entertainment .....	22
GSA of the Month: Mia Atsumi .....	23

Celebrating  
10 Years  
in Hawaii  
2009-2019

Open Daily 11 a.m.-Midnight (last order)

Lunch • Daily Happy Hour • Dinner • Weekend Brunch

**WOLFGANG'S**  
STEAKHOUSE

ROYAL HAWAIIAN CENTER  
808.922.3600

## Publisher's Letter



# Happy Holidays!

The holidays are here! My favorite, yet busiest, time of the year! This past year has definitely been one of the busiest ones ever, but, next year is looking like smooth sailing. Let's hope that comes to fruition.

It seems I have been having some email problems lately. When I send out my invites, most of you get it, but it a handful of you do not. Of those 10 or so who aren't getting them, we have figured out a few of them can email me, and I can reply to them and they will see that, but there's another one where suddenly we cannot talk to each other at all. When I email them, it bounces back giving me a permanent error message asking me to verify their email address and mine apparently kicks back to them when they email me. We've resorted to using Facebook Messenger. Yet another hotel gets my emails just fine but they can't email me back. It's truly bizarre, especially since it is only happening to a handful of hotels. 90% of you are getting my emails just fine. I can't figure it out.

So, since the 20th annual Mahalo Party is coming up I encourage all of you to like our Facebook page. I have resorted to posting invites there to make sure everyone is seeing them. Consider this your Save the Date notice. Concierge of the Year will be held on December 16th this year, and we're super excited about it. Invites should go out on December 5th, so if you do not get one or your manager says they haven't gotten one, feel free to email me and check. Chances are pretty high I have been sending them to your desk and not realizing you're not getting them. I'm working on installing a new email system, but it probably won't happen until the Christmas holiday when I have some free time.

That also means voting is coming up as well. Remember, one vote per person, and you must be on our mailing list to be able to vote. I do check. Your aunts and uncles can wish you all the luck they want, but their votes won't count. This year's line-up of nominees is on the back cover as are your voting instructions. As always, play fair! Please remember you select one of the 12 to be this year's winner, then I want you to give me the name of the person you would like to see recognized next year. It is two different questions so please don't write in the name of who you just voted for.

Here's wishing everyone a safe and happy holiday season -- and remember to start saving those SPAM cans!

Mele Kalikimaka!!!!



# Yada Yada



Shari Tachibana

Office Manager at the Wyndham at Waikiki Beach before that.

• **Steven Tabiolo** has been named Front Office Manager at the newly opened *ESPACIO The Jewel of Waikiki*. Steven brings

**Shari Tachibana** has joined the *Hale Koa Hotel* as their Front Office Manager. She most recently was the Director of Guest Service at the Hilton Grand Waikikian and worked as the Front

with him over 35 years of experience to this role and was previously at the Kahala Hotel & Resort and Halekulani.

• **Atlantis Adventures** appointed

**Christopher Cole** as the new General Manager of their 150-foot vessel, *Christopher Cole Majestic*. He will be responsible for all of the overall operations of the vessel. Prior to joining Atlantis, Cole was the Assistant General Manager at Dave & Busters.



Christopher Cole

## Christmas Island-Style

continued from page 1

Not far away, SALT at Our Kaka'ako has what they call an upscale shopping experience. It is called **A Pinch of Salt** and really adds flavor to the search for the right, treasured gift. The shopping options are created by local artisans, crafters and designers who have dozens of pop-up locations. Eats and bars are a big part of the area, adding a night out option to shopping.

Take a break and walk to **Chinatown**. Start at the Louis Pohl Gallery for a show called "Celebrate the Art of the Pot". Some of Hawaii's finest artists make perfect little pots and vessels at great prices. Their larger works are in Hawaii's major museums. Wander on to shops on Mauna Kea Street for gifts that no one would ever expect.



Cruise on down to **Ala Moana Center** and their iconic giant Santa who is making his 60th appearance on the rooftop. The 37-foot Big Santa first showed up back in 1959 and has been a holiday staple ever since. Photos of the big guy are free but a special lense is probably needed to get all of the gents in red in the frame. Never fear, the Center makes a special ornament each year, and this year's is shown above. It is available with \$500 in Ala Moana Center receipts dated November 9th thru December 24th while supplies last. Photos with Santa are at Mall Level 2, Mauka Wind, in front of Target. No personal cameras allowed, but families can reserve a fast pass in advance online for an additional \$4.95 fee to get to the front of the line. Every Monday, Santa also welcomes people to bring their cats and dogs for pics. The Center also will be offering shoppers another chance to get into the holiday spirit by taking fun photos in front of their Holiday Selfie Wall they put up for their 60th anniversary. Pictures are encouraged to be shared online using the hashtag

#Happy60AlaMoana and tag them with @AlaMoanaCenter.

Don't miss their Holiday Hula Show at 1 p.m. on Centerstage with the Keiki Hula Show on Sundays. Visit Guest Services around the corner from the stage to redeem your gift with purchase, ask about complimentary guest wheel chairs or transportation. The Center has 11,000 free parking stalls with a parking counter that keeps a parking tally of available spaces, but valet parking will also be offered. The Center will be open until 6 p.m. on Christmas Eve but closed on Christmas Day. [alamoanacenter.com](http://alamoanacenter.com).

While you're there be sure to swing past **Bloomingdales** as they play host to the first ever **Made in Hawaii Festival Pop-Up** from Friday, December 6th through Sunday, December 8th from 11 a.m. - 6 p.m. as a small sampling of Made in Hawaii vendors come together for this special event.



What's next? Why Waikiki, of course. The **Royal Hawaiian Center** is decked out for the holidays and will be open early for the season from 10 a.m. to 10 p.m. The Center's own Santa Marty will visit throughout the month on Mondays and Wednesdays from 6 - 8 p.m. in Santa's Hale for photo ops. He will also stop by for an additional photo session during Friday's Santa's Storytime and Keiki Cookie Decorating class with Kulu Kulu. Bring a camera and take free photos with your own mobile under the 34-foot tall holiday tree in the Royal Grove. While there, kids can write and send letters to the North Pole from Santa's Mailbox. For those visiting keiki that are afraid Santa won't find them since they're in Hawaii, Santa Marty will be sure to be onsite hand Christmas Eve from 8 - 10 p.m. before he has to get back to his sleigh. Royal Hawaiian Center also offers a special gift with

Continued on page 5.

# EXTRA EXTRA EXTRA *Newsflash*

## WINTER WISHES - A HOLIDAY FESTIVAL IS NOW OPEN

The Hawaii Convention Center Exhibit Hall Space has been transformed into a Winter Wonderland and it's open now through December 24th. Built around their 82' x 50' ice rink we wrote about last month, the festival includes a Winter Wishes Marketplace, Photos with Santa, the Winter Wishes Christmas Tree Forest and decorating contest, a Gingerbread House Competition, live music, Holiday Craft workshops and more. [hawaiiconvention.com](http://hawaiiconvention.com).

## MCM OPENS FIRST HAWAII LOCATION AT IMP

Internationally known luxury accessories and fashion brand, MCM Worldwide, has opened their first flagship retail location in Hawaii. The 2,063 square-foot store is located on Level 1 of the International Market Place. The store offers a full line of their recognizable luxury goods, including handbags, travel bags, luggage, gifts, ready-to-wear fashion, accessories, and a Hawaii exclusive product line. [MCMWorldwide.com](http://MCMWorldwide.com).

## WHISKEY TOURS NOW OPEN

Ko'olau Distillery has finally launched their new whiskey tours where you can learn more about they make their Old Pali Road Whiskey. Guests take a six-step journey through the entire whiskey-making process, beginning with an introduction to the local ingredients used, to mashing, fermenting, distilling and aging, before bottle-filling and labeling by hand. The tour ends with a whiskey tasting. [koolaudistillery.com](http://koolaudistillery.com).

## NEW SUGAR CANE JUICE JOINT

Royal Hawaiian Center's newest addition Hawaiian Cane Juice offers guests refreshing treats with freshly pressed sugar cane juices blended with local seasonal fruits such as pineapple, lime, calamansi, lilikoi and mango. The kiosk is located on the corner of Kalakaua and Lewers, it's open daily from 10 a.m. to 10 p.m. [royalhawaiiancenter.com](http://royalhawaiiancenter.com).

## NATIONAL GUARD GETS FREE ENTRY INTO PEARL HARBOR

Pearl Harbor Historic Sites celebrates the National Guard's birthday on December 13th. All active duty and retired National Guard personnel and their families will have their admission waived into the Battleship Missouri Memorial, Pacific Aviation Museum Pearl Harbor, and the USS Bowfin Submarine Museum and Park on December 14th and 15th. Present a valid military ID at the ticket booth to enter. [PearlHarborHistoricSites.org](http://PearlHarborHistoricSites.org).

## AIA WALKING TOURS

Did you know the American Institute of Architects, Honolulu Chapter conducts architectural walking tours of historic downtown Honolulu on the 2nd and the 4th Saturday of the month? Led by volunteer architect members, the tour highlights include Kawaiaha'o Church, the Alexander & Baldwin building, Hawaiian Mission Houses, 'Iolani Palace, Hawai'i State Capitol, The Cathedral of St. Andrew, Hawaii Theatre, and more. 9 - 11:30 a.m. \$15. For reservations call 628-7243.

## IOLANI PALACE ANNUAL EVENING TOURS

View the Palace by moonlight in honor of Her Majesty Queen Kapiolani's birthday. The Palace will offer its annual evening tours from 5:30 to 9 p.m. nightly from Saturday through Monday, December 28 through 30. Step back in time and experience the Palace as it was during the height of the Hawaiian monarchy, adorned with glowing decorations and live music will fill both the rooms of the Palace. A VIP Opening Night Reception will kick off the festivities on Saturday. [iolanipalaceorg](http://iolanipalaceorg).



## Come & Experience

Discover free weekly local and cultural activities at Waikiki Beach Walk\*  
E komo mai.

**DAILY**  
10:30 am & 4:30 pm **Ukulele Lessons**  
Courtesy of The Ukulele Store, 2nd floor. Information/Registration: 888-5469

**MONDAY**  
4 pm **'Ohe Kāpala: The Art of Hawaiian Stamping\***

**TUESDAY**  
10:30 am **Hawaiian Quilt Demonstrations**  
4:30 pm **Ku Ha'ahoo Hula Show**

**THURSDAY & MOST SUNDAYS**  
4-8 pm **Farmers Market on the Lawn**

**FRIDAY**  
4 pm **Ka Lei Hula: The Art of Hawaiian Dance\***

**SATURDAY**  
4:30 pm **Yoga on the Lawn**  
5 pm **Hoopdance Fitness on the Lawn**

**SUNDAY**  
5 pm **Mele Hā'il'a Music Performance**  
See online schedule.

Go to [waikikibeachwalk.com](http://waikikibeachwalk.com) for more details.

\*Registration required. Call (808) 664-0102 to sign up.

Dates, times, performances and activities are subject to change without notice - weather permitting.

Located on Lewers Street between Kalakaua Avenue & Kalia Road  
Open 365 Days | 10AM - 10PM

WAIKIKIBEACHWALK.COM | 1 (808) 931-3591 |    WAIKIKI BEACH WALK.

# arts with aloha



This December let's have your guests experience the holiday season through the residences of three of Hawaii's most dynamic queens -- Queen Emma Summer Palace, Washington

Place and Iolani Palace. Friday, December 13th at 7:30 p.m., Saturday, December 14th at 7:30 p.m. and Sunday, December 15th at 2 p.m. Tickets available by phone at 745-3000 at the Blaisdell Box Office or online at ticketmaster.com. Tickets range in price from \$40 to \$125.

Place and Iolani Palace.

In 1843 Queen Emma built Hanaiakamalama, or as we know it today, **QUEEN EMMA SUMMER PALACE**, as a summer retreat for her husband King Kamehameha IV and her son Prince Albert Edward. Even though its namesake evokes the season off from school, one of the highlights of year is the Daughters of Hawaii's Christmas Tea Service. The special event will be held on the grounds of the Palace on Saturday, December 8th from 11 a.m. to 2 p.m. Jeanne's Tea Service will provide a farm to table tea experience featuring finger sandwiches, scones, pastries, tropical fruit jams and some over-the-top decadent mini desserts. There will be entertainment by the Hawaiian Jazz trio Ei Nei. The cost for this family friendly events is \$40 per person for museum members and \$50 for non-members. To reserve seats call 595-6291 or e-mail info@daughtersofhawaii.org.

There is a special opening night pre-performance dinner on the 13th at 5 p.m. at Chef Chai on Kapi'olani Blvd. The four-course dinner paired with wine created by Chef Chai Chaowasaree is \$225 per person and includes VIP seating and parking at the Blaisdell Concert Hall, in addition to a post-performance Meet & Greet with the guest artists. For more information or to make reservations, visit BalletHawaii.org.

The last residence your guests must visit this holiday season is naturally the **IOLANI PALACE**. This month offers a unique opportunity to see the Palace at night with the *Queen Kapiolani Evening Tours* which are set for Saturday, December 28th through Monday, December 30th from 5:30 to 9:00



p.m. each night. These special evening tours are in celebration of the birth of Queen Kapiolani, whose actual birthday is December 31st.

General admission tickets are \$40 for adults, \$15 for children (6-12 years old) and free for children 5-years and younger. This is a rare opportunity for visitors to step back in time and experience the Palace as it was during the 19th century with musical performances by Hawaiian entertainers inside and on the grounds of the Palace. All tickets must be booked online at IolaniPalace.org.

For those of your guests looking for a more intimate experience, there is a VIP opening night reception on Saturday, December 28th with food and cocktails in the Barracks along with entertainment by Na Hoku Hanohano Award winning entertainers such as Ei Nei and Amy Hanaialii, Aaron Sala & Iwalani Apo in the Blue Room, Ke Olu, Halau O Na Pua Kukui with Ed Collier and Halau Hula Ka Noeau with Michael Pili Pang in the Throne Room and Natalie Ai Kamauu and Halau Hula Olana in the Upper Hall. Tickets for this special event are \$150 for adults, \$30 for children (6-12 years old) and free for children 5-years and younger. To make reservations call 522-0827.

Happy Holidays from Queen Emma, Queen Liliuokalani, and Queen Kapiolani.

~ Lance Rae

*It's the most wonderful time of the year!*

Receive a **\$100** gift card for every **20** Concierge-referred guests per month!

\*must include name when making the reservation

**CHRISTMAS EVE / DAY**  
December 24th & 25th  
3:30pm - 9:00pm

3-course prix-fixe menu  
\$95 person\*

\*not inclusive of tax & gratuity  
\*Happy Hour not available both days  
\*limited ala carte available

**NEW YEAR'S EVE**  
December 31st  
4:30pm - 9:30pm

4-course signature menu  
\$129 person\*

4-course chef's tasting menu  
\$159 person\*

\*not inclusive of tax & gratuity  
\*Happy Hour not available  
\*no ala carte menu available

Top 7 Best Steaks, Hale Aina Awards 2019  
Best of Award of Excellence, Wine Spectator 2019  
America's 100 Best Wine Restaurants 2018, Wine Enthusiast

International Market Place, 3rd Floor Grand Laniol  
808.800.3094 | stripsteakwaikiki.com

## Christmas Island-Style

*continued from page 2.*

purchase - a custom scarf for \$500 in receipts, a tote bag for those that have \$1,000 in receipts and those with \$1,250 in receipts will get both! [royalhawaiiancenter.com](http://royalhawaiiancenter.com).

Santa will be strolling through the **International Market Place** in his board shorts and aloha shirt from 3 to 10 p.m. every Friday, Saturday and Sunday from December 1-24th.

Guests are invited to snap a photo with Strolling Santa and receive a free cookie, while supplies last. For those last minute shoppers, never fear, IMP is open on Christmas Day from 10 a.m. to 10 p.m., although the operating hours of individual stores and restaurants could vary. On December 24 and 25, guests will receive four hours of free self-parking with a \$10 purchase. [ShopInternationalMarketPlace.com](http://ShopInternationalMarketPlace.com).

### Holiday Tea Service

**The Moana Surfrider** will offer a Christmas-themed Afternoon Tea service from December 10th through the 24th. The sweet and savory menu includes such delights as smoked salmon toast; lobster salad croissant roll; pumpkin madeleines; mint chocolate macaroons and yuzu éclairs to name a few, accompanies an extensive tea selection. Tea will be offered daily along the Veranda from 11:30 a.m. - 2 p.m. through Christmas Eve for \$50++. Upgrade your afternoon tea experience to include a glass of bubbly and fresh berries with crème fraiche for an additional \$20.

**Tha Kahala Hotel** will be offering Tea with Santa on December 14th from 10 a.m. - 1 p.m. at the Maile Ballroom. The big man himself will stop by between 10:15 - 11:15 a.m. and kids can decorate cookies, watch a balloon artist, and play in the ball pit pool for toddlers and the obstacle bounce course when their done with tea. The menu includes items designed to delight kids and adults alike, with items such as roasted mushroom sandwich and crab bruschetta to peanut butter & jelly, and Nutella & banana as well as French Fry station and salad bar to name a few. \$60++ for adults, \$45 for kids. The Maile Ballroom will also play host to a special holiday lunch buffet on December 20th from 11:30 a.m. - 2 p.m. \$50++ adults, \$25 for kids. For reservations, call 739-8760.

### Surfing Santa

What says Hawaii more than Santa Claus surfing into Waikiki Beach on a canoe? Visitors have two chances to grab that quintessential Hawaiian image. Their first chance will be on



December 7th at 9 a.m. as Santa surfs into the **Outrigger Waikiki**. After his exciting arrival (pray for surf!) in front of the hotel, he will be available for pictures in the lobby at no charge.

On Christmas Eve, Santa's canoe will surf into Gray's Beach at 4 p.m. Make sure your guests are on the beach to grab pics when he arrives, as shortly after he gets there, he will enter the **Halekulani** for a guest only event.

### Holiday Luau

**The Hilton Hawaiian Village** will be offering special holiday luau on the Great Lawn on Christmas Eve and Christmas Day. Perfect to combine the holidays with the inlaws visit at the same time with a roasted turkey and other holiday meal classics added onto the luau buffet. \$175. Doors open at 5 p.m. both days. [HHVLuau.com](http://HHVLuau.com).

### Holiday Waikiki Trolley Tours



**Ward Village Holiday Lights Tour** which offers enjoy a continuous ride over to Honolulu Hale

The best way to enjoy all the lights in downtown Honolulu is via the **Waikiki Trolley**. Take advantage of either the

and back with out the parking or traffic worries from 6:30 - 9 p.m. from December 8th-30th. \$8. Tickets available a [holidaylightstour.com](http://holidaylightstour.com). Or, if you're in Waikiki and want some more flexibility to browse the displays, hop onto one of their hop-on, hop-off **Holiday Lights Tours** that allows you to get off the trolley and spend as much time as perusing the exhibits, trees, and displays you want at Honolulu Hale before hopping onto another trolley to return to Waikiki. Hop on Pink, Red or Purple Line to T Galleria to catch this tour and enjoy the full view with no parking or traffic worries. \$25 for adults, \$16 for kids. Don't be surprised if fellow riders to start with a song or two. If you don't know the words - just hum along. [waikikitrolley.com](http://waikikitrolley.com).

### Breakfast with Santa

Who wouldn't want to have breakfast with the big guy? If that's what you are looking for there are several options we are aware of at this time. **The Reef Bar & Market Grill** at the Outrigger Reef will host Breakfast with Santa on December 14th from 8 - 10 a.m. Enjoy a breakfast buffet, balloon art, body painting, pictures and a Christmas goodie station for \$38, \$15 for kids. Call 924-7333 for reservations.

**The Moana Surfrider** is also offering Breakfast with Santa on the 14th, 15th, 20th and 21st from 9 a.m. - noon. Enjoy an award-winning

*Continued on page 7.*



  
**'A LOHILANI  
RESORT**  
WAIKIKI BEACH

HOLIDAYS AT 'A LOHILANI  
**BREAKFAST  
WITH SANTA**  
DECEMBER 21 & 22, 2019

**CHRISTMAS  
BRUNCH**  
DECEMBER 25, 2019

Learn more at: [alohilaniresort.com/holidays](http://alohilaniresort.com/holidays)

2490 KALAKAUA AVENUE, HONOLULU, HI 96815 | 808.922.1233

new arrivals  
every month and  
so much more

**v.i.p. shop access**  
we can open early or  
stay late to accommodate  
busy schedules.

**one-on-one time**  
guests can book a styling  
consultation or  
reserve time at our  
seasonal wardrobing events  
for style advice  
from one of our associates.

**private shopping events**  
we'll help plan big  
life events with sips and  
snacks – whether  
it's a bridal party, special  
occasion or just because.

**special delivery**  
if guests can't find their size  
in our shop, we'll find  
and deliver it right to their  
door – on us!

**first to know**  
once guests sign up in  
our shop, we'll keep them  
in-the-know on  
exclusive previews and  
sneak peeks at new arrivals.

make an appointment for  
your guests at our  
nearest shop. we'll take  
care of the rest.

ala moana center  
808-941-4565

royal hawaiian center  
808-922-3390

**kate spade**  
NEW YORK



Looking for a jump start on planning your New Year's Eve celebrations? Here's a list of some of the fun and excitement we've found going on that night. More will be announced shortly.

## Parties

### Adventures in Wonderland

Fall into the rabbit hole and enjoy a lavish buffet dinner featuring an impressive chilled seafood display on the Ocean Lawn at the Royal Hawaiian Hotel, while DJ Telley keep this posh party going from 8:30 p.m. - 1 a.m. Tickets start at \$250. [honolulu.boxoffice.com](http://honolulu.boxoffice.com).

### Around the World

The Moana Surf rider will take guests on a global journey with music by DJ Baby G all night, cultural performances every hour such as lion dances, Polynesian dances, taiko drummers, as well as costumed characters in cultural outfits to welcome the new year. Young guests will delight in activities such as face painting, balloon animal, caricature artists, party favors and a photo booth for all. Tickets start at \$100. [honolulu.boxoffice.com](http://honolulu.boxoffice.com).

### Gala on the Great Lawn

The Hilton Hawaiian Village will present a spectacular gala on the Great Lawn with a decadent multi-course 4-course or 7-course lobster dinner, and live entertainment from Blayne Asing, Honoka and Manoa DNA. 7 - 11 p.m. Tickets start at \$300. [HHV.Luau.com](http://HHV.Luau.com).

### Masquerade

SKY Waikiki is dressing it up with cocktail fashionable attire and a mask, Your ticket includes a hosted bar featuring Ketel One Vodka cocktails, and Veuve Clicquot Champagne till 11 p.m. 8 p.m. Tickets start at \$125. [tinyurl.com/SKYNYE2020](http://tinyurl.com/SKYNYE2020).

### Midnight Mirage

The 'Alohilani Resort will be transformed into a whimsical Arabian fantasy filled with secret surprises. Guests will have three distinct areas to ring in the New Year including Swell Bar and Pool Deck, Longboard Club and O Bar as they sip champagne and dance to the sounds of Ravi Drums. Tickets start at \$100. 8 p.m - 2 a.m. [alohilaninye2020.eventbrite.com](http://alohilaninye2020.eventbrite.com).

### Midnight in Paris

53 by the Sea will transform itself into a modern-day and 1920's Paris featuring theme-appropriate accouterments, complimentary champagne toast and a balloon drop at midnight. The terrace transforms into a cigar lounge, and the dining room will become a casino and live music by Island Kings Band. Tickets \$150 per or \$250 per couple. 9 p.m - 1 a.m. [53bythesea.com/NYE](http://53bythesea.com/NYE).

### Rio Carnival

It's a high energy evening at Rumfire as multiple DJs and bars spread out across Helumoa and Infinity Edge Pool Decks. Pre-sale tickets are \$110 until December 14th, Champagne room tickets begin at \$250. 8:30 p.m. - 2:30 a.m. [honolulu.boxoffice.com](http://honolulu.boxoffice.com).

## Concerts

### Bill Maher Live

For the 9th year in a row, Bill Maher is coming to Hawaii for his annual NYE performance with special guests Sarah Silverman & Larry Miller. Additional guests always stop by. Last year Woody Harrelson, Paul Simon, Eddie Vedder, Bonnie Hunt and Sean Penn stopped by. Who will show up this year? Blaisdell Concert Hall. Tickets: \$45.50 - \$95.50. 8 - 10 p.m. [ticketmaster.com](http://ticketmaster.com)

### New Year's Eve Disco Party

Start your New Year's Eve off dancing to the Music of ABBA with your Hawai'i Symphony Orchestra at the Hawaii Theatre. Find your inner "Dancing Queen" and "Take a Chance on me." Tickets: \$40-\$150. 7:30 p.m. [hawaiisymphonyorchestra.org](http://hawaiisymphonyorchestra.org).

### WAR in Concert

The iconic American funk band WAR known for such hits as "Low Rider" and "The Cisco Kid" comes to the Blue Note December 29-31 for two shows nightly and special NYE packages. \$45 - \$150. [bluenotehawaii.com](http://bluenotehawaii.com).

## Activities

### Pineapple Drop

The Town Center of Mililani is offering something for the West side with a Pineapple Drop featuring American Idol Kimberly Locke. This free, family friendly event includes fireknife dancers, prizes, and the pineapple drop at midnight. [towncenterofmililani.com](http://towncenterofmililani.com)

### New Years Eve Cruises

Step aboard the **Majestic** to watch the fireworks at sea while enjoying gourmet appetizers and a glass of champagne. 10:30 p.m. \$173. [atlantisadventures.com](http://atlantisadventures.com).

**Paradise Cruises** will be sending out the Star of Honolulu for a multi-course surf and turf dinner at 10:15 p.m. Tickets start at \$200. Dolphin Star will go out at 10:30 p.m. offering dry snacks and live music. \$94. [starofhonolulu.com](http://starofhonolulu.com).



## **NEW 2.5HR UTV TOUR W/PRIVATE LUNCH IN VALLEY**

New UTV Lunch tour stops at private location for a 30 minute lunch stop in Jurassic Valley. Above is the exact spot where they'll get to enjoy lunch at this exclusive area with sweeping views from the back of the valley to the sea. It is not accessible by any other Kualoa tour!

## **NEW PICKUP/RETURN SCHEDULES**

Morning transfers from Waikiki to Kualoa - 7:00am, 7:15am, 10:00am, 10:15am or 10:30am

Return transfers from Kualoa to Waikiki - 1:00pm, 2:30pm, 2:45pm, 3:00pm, 3:45pm, 6:00pm

## **NEW E-BIKE TOUR**

1-Hour Tour

Adult \$74.95 & Child (10-12) \$59.95 + tax

2-Hour Tour

Adult \$109.95 & Child (10-12) \$89.95 + tax

Explore Kualoa on a peddle assisted e-Mountain Bike guided tour for an eco-friendly experience. Get close to nature on state-of-the-art eBikes which can give you an assist whenever you decide. One- and two-hour tour options are available on the daily tours. Tour time includes safety briefing.

## **KUALOA CONCIERGE & AGENCY HOTLINE**

**( OPEN 7 DAYS A WEEK UNTIL 9PM )**

**(808) 427-7727**

All calls to this line are bumped to the front of the queue and so there should be minimal wait time. We appreciate your business and are determined to answer your calls and get you off of the phone as soon as possible.

## **NEW KAYAK ADVENTURE TOUR**

2-Hour Tour

\$109.95 Adult | \$89.95 Child (10-12 yrs)

Kualoa's escorted Kayak Adventure tour will take you into the azure blue waters of the beautiful Kane'ohē Bay. Depart from the sandy shores fronting Kualoa, and you'll be going downwind with the current all the way, for a more leisurely and enjoyable guided kayak tour. You'll go out to see Mokoli'i Island (Chinaman's Hat) up close, stop at Secret Island and explore the famous "dock" (which is Kualoa's most photographed and posted selfie spot on Instagram), and head out to our mini-sand bar which is usually just ankle to knee deep, for some unique picture taking opportunities. Life jackets and waterproof dry-bag provided, however, all participants must be able to swim. Bring a change of clothes, towel and sunscreen.

## Halepuna Waikiki by Halekulani



*Private cabanas on the infinity pool deck*

Just over a year after the Waikiki Parc closed its doors, and several million dollars later, a new luxury boutique hotel emerged, and the Halepuna Waikiki by Halekulani welcomed its first guests a few weeks ago on October 25th.

"We are extremely excited to introduce this new brand, Halepuna, which carries the hospitality DNA of Halekulani," said Halepuna Waikiki General Manager Julie Arigo. "Halepuna Waikiki is for the traveler who is looking to be in the center of it all on Oahu, while also feeling a sense of relaxation, escape, and comfort throughout their entire experience with us."

The property completely redid their pool area, which now offers a lovely infinity pool offering a great view of the ocean from its 8th floor location. It's an excellent place to catch a sunset view and nine cabanas inviting you to lounge in them. They also completely redesigned the poolside bar.

On the same floor on the other side of the building, they have created a peaceful, grassy, environment for small gatherings or self-reflection. The Garden is open and natural in design, featuring a unique Reflexology Path designed to stimulate the soles of the feet while balancing the mind and body.

The former Nobu location is now the first branded Halekulani food and beverage outlet. The all-day dining restaurant, named Halekulani Bakery & Restaurant, is open from 6:30 a.m. to 8:30 p.m. and offers a buffet-style breakfast until 10:30 a.m. The bakery offers a variety of artisan breads, pastries, cakes, coffees, as well as a chocolate-viewing kitchen that will allow guests to observe the delicacies being made daily (Insider Tip: Be sure to try their lilikoi chocolate)! The restaurant also offers a set lunch and dinner menu featuring local ingredients, plenty of fresh seafood, salads, sandwiches and more. Halekulani's Executive Pastry Chef, Mark Freischmidt, leads the bakery operation, working with Head Baker, Tatsuhiro Kaneshiro, from the acclaimed Imperial Hotel Tokyo, who brings the classic art of bread making with him.

Stop by to see the all new Halepuna Waikiki or log onto [halepuna.com](http://halepuna.com).

~ Pam

**'OHANA.** Popular Kauai boutique, Ohana Shop, known for showcasing the work of local artists including everything from jewelry to hats to clothing and more held their grand opening of their first Oahu store located at the Outrigger Waikiki Beach with a huge celebration that overflowed into the entry way filled with love and aloha as friends stopped in to wish owners Koral and Moku well. @ohanashophawaii.





## Christmas Island-Style

continued from page 5.

buffet, a gingerbread decorating class, one-on-one with Santa and a present! \$35 for kids, \$45 for adults. The 14th and the 15th are already sold out, so reserve your space soon if interested. For reservations call 921-4600. While you're there be sure to check out their Gingerbread Tree in the hotel lobby. This year's theme will be a tribute to the hotel's employees and the finishing touches will take place from 6 - 9 a.m. on December 13th. Stop by and see if you can recognize your friends!

**Hard Rock Cafe** will host their Breakfast with Santa on December 21st from 9 a.m. to noon. The event will also feature games, arts and crafts, a decorate-your-own-doughnut bar, hot cocoa bar, and Christmas carol sing-alongs. \$25 for adults, \$20 per child. 921-2242.

**The Alohilani Resort** will get into the game by offering a traditional breakfast buffet on December 21st and 22nd with a full array of holiday festivities for the all including keiki photos with Santa, cookie decorating with Mrs. Claus, face painting, bouncy castle, live entertainment and more. \$50 adults, \$20 kids. alohilaniresort.com/holidays.

Last, but most likely not least, on December 14th & 15th, **Dave & Buster's** will host their Breakfast with Santa from 8 - 10:30 a.m. There will be airbrush face painting, balloon twisting, and every ticket purchased receives a complimentary power card. \$28.49 for adults, \$16.49 per child. 589-2215.

### Seasonal Pop Up Bars

Christmasing is hard work, but fortunately, there is a couple seasonal bars to help you through it. **The Christmas Bar** first popped up in 2017 at Ala Moana Center, and the fun, quaint, temporary bar created by the guys behind Tiki's Grill & Bar was a huge hit, but lacked food items. This year they partnered up with Lane Muraoka of Big City Diner and will be taking over Big City Diner at Ward Entertainment Center for the holidays. The pop up will completely transform the diner with over-the-top decor where ever you look, as you break up your shopping day with a Snowman Martini, or Frozen Hot Chocolate, while nibbling on a Kris Kringle Kim Chee Grilled Cheese or a Mele Kalikimaka Mini Turkey Pot Pie. Open from 11 a.m. - 11 p.m., you can follow them on Facebook at /thechristmasbarhawaii.

Ala Moana Center took the currently empty Cafe Lani location and opened **The Holiday Bar** November 29th. They will serve festive, holiday-themed drinks such as Apple Cider with Fireball Whiskey or a Red Elk: Shochu cranberry. Don't dally, the bar is only here until December 31st. alamoanacenter.com.

OK, so **Santacon** isn't exactly a pop-up bar, but when close to hundred of Santas descend onto Waikiki to go bar hopping, it's still worthy of a mention. Santacon is an international, non-denominational, non-commercial, non-political and non-sensical Santa Claus convention that occurs once a year for absolutely no reason but to have a good time. On December 7th the 9th annual Santacon descends into Waikiki. The event kicks off at Tiki's at 5:30 before the Parade of Santas begins at 7:40 p.m. as they march over to Maui Brewing Company, handing out treats from their sacks to kids. At 10 p.m., the crowd will head over to Lewers Street. We're talking prime people watching as the Santa's will have definitely been nipping at the nog by then. Want to join the fun? Santa suits are required. You must dress up. A Santa hat is not enough, full Holiday regalia is a must.

### A round the I sland

Moving to the other side of the island, the Polynesian Cultural Center is celebrating **Christmas at Hukilau Marketplace** from December 13 to 23, (not including Sundays), with plenty of free activities for the entire family, including touring Santa's workshop, live nativity performances, a festive train ride to



view the Christmas décor, selfies with Santa, and live music every night from 6:30 - 8:30 p.m. The holiday celebration will come to a fluffy finale as PCC brings back their extremely popular Snow Day on December 23. From 4 - 8:30 p.m., PCC will be making plenty of snow for everyone to enjoy, and are even building hills to sled down. Who said it doesn't snow in Hawaii? polynesia.com.

Moving on out to **Hawaii Kai's Koko Marina** is the annual Boat Parade thru the marina. Hawaii Kai Towne Center is packed as the boats begin the parade past the judges at 6 p.m. Fun for the whole family, some of the best sites to watch the boat parade are the Costco parking lot, Kona Brewery and Liko's for the first hour or so. The boat then go through some 13 miles of waterways for three hours. Entertainment begins at 3 p.m.

### Christmas Concerts

On December 12th, **A Robert Cazimero Christmas** comes to Blue Note Hawaii for two shows. \$25-\$45. bluenotehawaii.com.

**Johnny Mathis** performs his greatest Christmas classics with a live orchestra on December 20 & 21 at the Blaisdell Concert Hall. \$49.50 - \$199.50. ticketmaster.com.

More holiday happenings will be announced as the holidays draw nearer, but this should give you a head start

**MAJESTIC**  
by  
*Atlantis*  
CRUISES

*Celebrate the Season*

Get your friends together for a festive Sunset Cocktail Cruise  
aboard the Majestic by Atlantis Cruises

atlantisadventures.com

For info & reservations call: (808) 973-1311 or fax to (808) 973-2499

Instagram Twitter Facebook | #atlantishawaii



Nobu Honolulu held a lovely event to showcase their new menu items location and introduce their new concierge program. Receive \$5 in dining credit per person, per completed reservation in credit to use for yourself when you come in. Rewards accumulate thru Oct. 30, 2020 and expire Oct. 31, 2020. Call 237-6999 or email: [honolulu@noburestaurants.com](mailto:honolulu@noburestaurants.com) for details.



# Come to *Waikiki* Yokochō!

**JAPANESE FOOD HALL**

**Make friends**

**Famous Japanese Restaurants**

**Free Karaoke & Game**

*Waikiki*  
**YOKOCHO**

11:00 a.m. - 12:00 a.m. Daily  
(Operating hours subject to change)  
[www.waikiki-yokochō.com](http://www.waikiki-yokochō.com)

DFS	ROYAL HAWAIIAN AVE.	WAIKIKI SHOPPING PLAZA B1 <b>WAIKIKI YOKOCHO</b>	SEASIDE AVE.	H&M
KALAKALIA AVE.				
<b>Royal Hawaiian Center</b>				

# HOLIDAY Gift Guide

continued from page 1.

Another winner for gifting: **THE HAWAIIAN CHRISTMAS MOUSE** by Laura-May Aziazu Tautasau. Inside the cover is a storytelling CD. The illustrations and the rhyme/story are possibly the best created in recent years. A pidgin glossary in the back makes the book "mainland ready." The authors bio makes you want to meet her. Born in New York City, grew up in Liberia, raised a family in New York and now lives in Hawaii with her husband Hank.

Next up, 365 pages of story on **RAP REPLINGER**, on the late, great comic – by Leesa Clark Stone, Rap's widow. Rap was the first Hawaiian to win an Emmy Award. He was a founding member of Booga Booga. Dr. Jonathan Orsorio, Dean of U.H. School of Hawaiian Knowledge says, "what Rap is saying is: if your dealing with Hawaiians, anything can happen." So, think of the words, "not too sweet, not too rancid but jesss right!" And then toss a "shaka" to the next person you see.

**KAMEHAMEHA, DESTINY FULFILLED**, written by Allan Seiden, is filled with glorious tales of Hawaii's warrior king by nineteenth century story-tellers. Local artist Brooke Parker puts a face to history that was not recorded. This is the story of the acts of greatness that allowed Kamehameha to fulfill his personal destiny and move the flow of Hawaiian history forward. He was a mighty warrior, born before the introduction of Hawaii to the outside world when Captain James Cook brought the outside world along on his conquests.

**FAMOUS VISITORS TO HAWAII** - For those of us in the visitor industry, (and all of us are), Walter Dudley and Pete Hendricks have scooped up stories from some of the Islands more famous visitora over the years for us to enjoy and share. Fact, the reason there is a Sun Yat-sen park in our Chinatown is that his brother had been a merchant in Honolulu. Sun Yat-sen came to Hawaii. He later became the president of China. Really, you need to read the book to understand the interwoven history. Then turn pages to stories about Jack London, Shirley Temple, Bing Crosby, Charles Lindberg, Elvis and more.

**MENEHUNE MYSTERY - THE ORIGINAL TALES AND THE ORIGINS OF THE MYTH** is by veteran journalist Jan TenBruggencate. Local keiki and their parents have always been fascinated by the tales of little people who populated the islands. With years of research the author has tracked down stories from every island – stories of fishponds, canoes, wizards and the pig-god Kamaupa'a.

Be prepared to sit with the book at a table when you read **THE ALOHA SHIRT** by Dale

Hope of Island Heritage, published by Padagonia. It is a beautiful, all encompassing story of Aloha shirts, surfers, and the Waikiki of our youth. It also weighs nearly three pounds! The intro is by Gerry Lopez. The book is dedicated to Tommy Holmes, a founding member of the Polynesian Voyaging Society. It covers the designs, the coconut buttons, palaka cloth, all the original companies and the days of the Duke and Rell Sunn. Dale Hope's opening line is: "I was born in Honolulu when Hawaii was a territory..."

A first book by Kawai Strong Washburn is one of those, "can't put it down - O.K. just one more chapter" - kind of books. **"SHARKS IN THE TIME OF SAVIORS"** is the story of a seven-year-old boy saved by sharks in 1995 Kailua-Kona. It is a first novel. Readers will only hope for more.

Most delicious of the new book harvest is an updated, expanded version of a **PORTUGUESE-HAWAII KITCHEN** by Wanda Adams. This new edition has an added chapter with delicious additions by guest chefs including George Gomes, Chef Mavro, Bobby Camara and Sandy Tsukiyama plus essays on Portuguese cooking in Hawaii.

If you aren't pidgin-fluent there is a glossary for **IN THE SEAT OF A STRANGER'S CAR** by Beau Flemister, published by nmg.network,

with a sub-title of "a tale about parking in paradise." This is a "sleep with the light's on" kind of novel!

Coffee lovers will love the new coffee table book on coffee! In this fully updated hardcover edition of **THE HAWAII COFFEE BOOK: A GOURMET'S GUIDE FROM KONA TO KAUAI**, bean-and-brew guru Dr. Shawn Steiman introduces the rich origin story of Hawaii's coffee and offers a close look at the state of the art and industry today.

Books can be found on line, at Barnes & Noble at Ala Moana, da Shop/Bess Press on Harding Avenue in Kaimuki, and Mutual Publishing at 1215 Center Street in Kaimuki.



If books aren't your thing, what about tickets to a Broadway show? **THE RENT 20TH ANNIVERSARY TOUR** is headed for the Blaisdell Concert Hall just in time for that perfect stocking stuffer December 24th – 29th. A re-imagining of Puccini's La Bohème, RENT follows an unforgettable year in the lives of seven artists struggling to follow their dreams without selling out and literally changed the landscape of American theatre when it debuted in 1996. Tickets available at [broadwayinhawaii.com](http://broadwayinhawaii.com). ~ Lynn Cook

**Rock a Hula™**  
Waikiki's Biggest Show®

**MIDNIGHT NEW YEAR'S ROCKIN' EVE COUNTDOWN**

December 31, 2019 • 9:45PM – January 1, 2020 • 12:45AM  
Celebrate with Fireworks Visual Effects, "Champagne" & Party Favors!

Royal Hawaiian Center, 4th Floor  
808-629-SHOW (7469)  
RockAHulaHawaii.com

Line-up of Artists subject to change. ♿

ALLIANCE FOR HAWAIIAN EXCELLENCE  
Celebrating 9 YEARS OF ALOHA!

# Let's be Together...

DINING ▶ ENTERTAINMENT ▶ PAU HANA ▶ EAT ▶ DRINK ▶ BE MERRY ▶ HAPPY HOUR

## MONDAY

**Barefoot Beach Café at Queen's Beach** 924-2233  
*Live Contemporary & Hawaiian*  
David Asing 5:30-8:30pm

**Basalt at Duke's Lane Market & Eatery** 923-5689  
*Live Contemporary*  
Mark Caldeira 6-9pm

**Chart House Waikiki** 941-6660  
*Live Contemporary Hawaiian*  
Camarillo Brothers 6:30-9:30pm

**Cheesecake Factory** 924-5001  
*Live Contemporary Hawaiian*  
Christian Yrizarry 7-10pm

**Duke's Canoe Club Waikiki** 922-2268  
*Live Contemporary Hawaiian*  
Taz Vegas 4-6pm  
Ellsworth Simeona 9:30-12am

**Hard Rock Cafe** 955-7383  
*Bluesy Monday*  
Danny Wassman 9-11am  
Candy Bullets or others 9-11pm

**House Without a Key** 923-2311  
*Live Hawaiian & Hula by Jeanne Kapela*  
DeLima Ohana 5:30 - 8:30pm

**Hula Grill** 923-HULA  
*Live Contemporary Hawaiian*  
Eric Lee 7-9pm

**Kani Ka Pila Grille** 924-4992  
*Hoku Award Winning Hawaiian musicians*  
Sean Naauao 6-9pm

**LBLE at the Hilton Waikiki Beach Hotel** 922-0811  
*Live Contemporary Acoustic Hits*  
Sean Cleland 7-10pm

**Lewers Lounge** 923-2311  
*Live Contemporary & Light Jazz*  
Tommy James 8:30-12am

**Mahina & Sun's** 923-8882  
*Monday Vibes on the Lanai*  
Kala'a Parish 7-9pm

**Mai Tai Bar at the Royal Hawaiian** 923-7311  
*Live Contemporary Hawaiian with Hula Dancer*  
Dave Watanabe 8-10 pm

**Maui Brewing Company** 843-2739  
*Live Contemporary Hawaiian*  
Christian Yrizarry 3:30-5:30pm

**Merriman's Honolulu** 215-0022  
*Live Slack Key guitarist*  
Jeff Peterson 6-9pm

**O Bar at the Alohilani** 294-4108  
*Solo Contemporary Guitarist*  
Jeremy Cheng 6-9pm

**Rumfire** 921-4600  
*Solo Contemporary Guitarist*  
Desmond Oliveria 5-8pm  
Chris Mercado 9:30-11:30pm

**Signature Prime Steak** 949-3636  
*Contemporary Pianist in the bar*  
Isao Motomochi 6-9pm

**Stripsteak Waikiki** 800-3094

*Live Contemporary*  
Jenna Keala 7-10pm

**The Edge at the Sheraton** 921-4600  
*Live Hawaiian Music*  
Keoni Ku 1-4pm  
Pu'uhonua Duo 6:30-9:30pm

**Tiki's Grill & Bar** 923-TIKI  
*Live Contemporary Hawaiian*  
P & L Experience 6-8:30pm  
The Kristi Masuhara Band 9-11pm

**Tommy Bahama Restaurant** 923-8785  
*Contemporary Hawaiian. Happy Hour Daily 2 - 5 p.m.*  
Derrick Lee 6-9pm

**Tropics Bar & Grill** 949-4321  
*Live Contemporary Hawaiian*  
Acoustik Playground 2-5pm

## TUESDAY

**Barefoot Beach Café at Queen's Beach** 924-2233  
*Backyard Hawaiian*  
The Barefoot Boys feat. Pokii Vaughn 5:30-8:30pm

**Basalt at Duke's Lane Market & Eatery** 923-5689  
*Live Contemporary*  
Dustin Park 6-9pm

**Chart House Waikiki** 941-6660  
*Live Contemporary Hawaiian*  
Russell (Ryan) Tang 6:30-9:30pm

**Cheesecake Factory** 924-5001  
*Classic Hawaiian*  
Ryan Tenney Duo 7-10pm

**Duke's Canoe Club Waikiki** 922-2268  
*Live Contemporary Hawaiian*  
Sam & Haumea Warrington 4-6pm  
Ellsworth Simeona 9:30-12am

**Hard Rock Cafe** 955-7383  
*Live Contemporary*  
Mike Piranha 9-11am  
Piranha Brothers (12/17) 8:30 - 10:30pm  
Cole Black & The Blackouts (12/24) 6 - 10pm  
Cutting Edge (12/31) 8:30 - 12:30pm

**House Without a Key** 923-2311  
*Live Hawaiian & Hula by Brook Lee*  
Pa'ahana 5:30 - 8:30pm

**Hula Grill** 923-HULA  
*Live Contemporary Hawaiian*  
David Asing 7-9pm

**Kani Ka Pila Grille** 924-4992  
*Hoku Award Winning Hawaiian musicians*  
Weldon Kekauoha 6-9pm  
Robi Kahakalau (12/3) 6-9pm  
Kaeo (12/31) 6-9pm

**LBLE at the Hilton Waikiki Beach Hotel** 922-0811  
*Live Contemporary Funk, Jazz, Hip Hop & Reggae*  
Lina 7-10pm

**Lewers Lounge** 923-2311  
*Live Contemporary & Light Jazz*  
Dan Del Negro & Rocky Holmes 8:30-12am

**Mahina & Sun's** 923-8882  
*Hawaiian and R&B Poolside on the Lanai*  
Shyne 7-9pm

**Mai Tai Bar at the Royal Hawaiian** 923-7311  
*Live Contemporary Hawaiian with Hula Dancer*  
Kapena Duo 6:30-8:30pm

**Merriman's Honolulu** 215-0022  
*Live Contemporary*  
Shane Tsukayama 6-9pm

**Mi Almita Cantina** 377-6915  
*Acoustic Folk Rock*  
John Helm 6-8:30pm

**Maui Brewing Company** 843-2739  
*Live Contemporary Hawaiian*  
Chris Murphy 3:30-5:30pm

**Rumfire** 921-4600  
*Solo Contemporary Guitarist*  
Sean Cleland 5-8pm  
Kai Roots Duo 9:30-11:30pm

**Roy's Hawaii Kai** 396-7697  
*Na Hoku Hanohano Award Slack Key Artist*  
Stephen Inglis 6:30-9:30pm

**Signature Prime Steak** 949-3636  
*Contemporary Pianist in the bar*  
James Woo 6-9pm

**Stripsteak Waikiki** 800-3094  
*Live Contemporary*  
Randy Allen 7-10pm

**The Deck at the Queen Kapiolani Hotel** 931-4488  
*Soul/R&B/Rock/Reggae*  
Jeffrey James 6-9m

**The Edge at the Sheraton** 921-4600  
*Live Hawaiian Music*  
Mike Tulba 1-4pm  
Brad Kawakami Duo 6:30-9:30pm

**Tiki's Grill & Bar** 923-TIKI  
*Hula Tuesdays*  
K.B. Riley 5:30-8:30pm  
Sani & Friends 9-11pm

**Tommy Bahama Restaurant** 923-8785  
*Contemporary Hawaiian. Happy Hour Daily 2 - 5 p.m.*  
Alex Oasay 6-9pm

**Tropics Bar & Grill** 949-4321  
*Live Contemporary Hawaiian*  
Kailua Bay Buddies 2-5pm

## WEDNESDAY

**Azure at the Royal Hawaiian** 921-4600  
*Live Contemporary Hawaiian*  
Jeremy Cheng 6:30-8:30pm

**Barefoot Beach Café at Queen's Beach** 924-2233  
*Island Vibes*  
Danny Galura 5:30-8:30pm

**Basalt at Duke's Lane Market & Eatery** 923-5689  
*Live R&B, Hawaiian or Pop*  
Jenna K. 6-9pm

**Bin1901 at the Moana** 921-4600  
*Piano Wine Bar*  
Ethan Capone 6:30-9:30pm

**Chart House Waikiki** 941-6660  
*Live Contemporary Hawaiian*  
Tito Berinobis & David Kauahikaua 6-10:30pm

**Cheesecake Factory** 924-5001  
*Classic Hawaiian*

# E Pili Kākou

music schedules subject to change

DINING ▶ ENTERTAINMENT ▶ PAU HANA ▶ EAT ▶ DRINK ▶ BE MERRY ▶ HAPPY HOUR

**Kimo Artis Duo** 7-10pm  
**Duke's Canoe Club Waikiki** 922-2268  
*Acoustic, Soul, R&B*  
 Haumea Warrington 4-6pm  
 Ellsworth Simeona 9:30-12am  
**Gordon Biersch** 599-4877  
*Jazz Wednesdays*  
 Varying Artists 6:30-9:30pm  
**Hard Rock Cafe** 955-7383  
*Live Contemporary*  
 Dave Watanabe 9-11am  
 The Fresh Preps (12/18) 8-10pm  
 Cole Black & The Blackouts (12/25) 6-10pm  
**House Without a Key** 923-2311  
*Live Hawaiian & Hula by Brook Lee*  
 Pa'ahana 5:30-8:30pm  
**Hula Grill** 923-HULA  
*Live Contemporary Music*  
 Alike Souza 7-9pm  
**Hy's Steak House** 922-5555  
*Live Soft Contemporary*  
 Audy Kimura 6:30-10pm  
**Kani Ka Pila Grille** 924-4992  
*Hoku Award Winning Hawaiian musicians*  
 Kapena 6-9pm  
 Kamakakehau Fernandez (12/25) 6-9pm  
**LBL at the Hilton Waikiki Beach Hotel** 922-0811  
*Live Contemporary Funk, Jazz, Hip Hop & Reggae*  
 Dave Turner 7-10pm  
**Lewers Lounge** 923-2311  
*Live Contemporary & Light Jazz*  
 Maggie Herron & Rocky Holmes 8:30-12am  
**Mahina & Sun's** 923-8882  
*Acoustic Guitar Poolside on the Lanai*  
 Nu'u Sing 7-9pm  
**Mai Tai Bar at the Royal Hawaiian** 923-7311  
*Live Contemporary Hawaiian*  
 Eric Lee Duo 6:30-8:30pm  
**Maui Brewing Company** 843-2739  
*Live Acoustic Folk Rock*  
 Maiko 3:30-5:30pm  
**Merriman's Honolulu** 215-0022  
*Live Contemporary*  
 Grant Carvahlo 6-9pm  
**O Bar at the Alohilani** 294-4108  
*Solo Contemporary Guitarist*  
 Alex Oasay 6-9pm  
**Roy's Hawaii Kai** 396-7697  
*Acoustic & Slack Key Top 40*  
 Dayton Watanabe 6:30-9:30pm  
**Rumfire** 921-4600  
*Solo Contemporary Guitarist*  
 Thomson Enos 5-8pm  
 Christian Yrizarry Duo 9:30-11:30pm  
**Signature Prime Steak** 949-3636  
*Contemporary Pianist in the bar*  
 Pierre Grill 6-9pm  
**The Deck at the Queen Kapiolani Hotel** 931-4488  
*Island-inspired Blues*  
 Kuhio Travis 6-9pm

**The Edge at the Sheraton** 921-4600  
*Live Hawaiian Music*  
 Kama Kakaio 1-4pm  
 Keoni Ku Duo 6:30-9:30pm  
**Tiki's Grill & Bar** 923-TIKI  
*Live Contemporary - 1/2 off Wine Wednesdays*  
 Sunset Groove 5:30-8:30pm  
 City Boys 9-11pm  
**Tommy Bahama Restaurant** 923-8785  
*Contemporary Hawaiian. Happy Hour Daily 2 - 5 p.m.*  
 Curtis Kamiya 6-9pm  
**Tropics Bar & Grill** 949-4321  
*Live Contemporary Rock*  
 Jook Joint 2-5pm

## THURSDAY

**Barefoot Beach Café at Queen's Beach** 924-2233  
*Contemporary & Hawaiian*  
 Alike Souza 5:30-8:30pm  
**Basalt at Duke's Lane Market & Eatery** 923-5689  
*Live R&B, Contemporary, Hip-Hop, Jazz*  
 Kona Abergas 6-9pm  
**Bin1901 at the Moana** 921-4600  
*Piano Wine Bar*  
 Kapena DeLima 6:30-9:30pm  
**Chart House Waikiki** 941-6660  
*Live Contemporary Hawaiian*  
 Tito Berinobis 6:30-10pm  
**Cheeseburger Waikiki** 941-2400  
*Contemporary / Old School Rock*  
 Alex Oasay 6:30-9:30pm  
**Cheesecake Factory** 924-5001  
*Classic Hawaiian*  
 Kona Chang Duo 7-10pm  
**Duke's Canoe Club** 922-2268  
*Live Contemporary Hawaiian*  
 Haumea Warrington 4-6pm  
 Denny Ono Duo (12/15) 9:30-midnight  
 Mark Caldeira (12/12) 9:30-midnight  
 Chapter II (12/19) 9:30-midnight  
 Scott Magz & Brady (12/26) 9:30-midnight  
**Hard Rock Cafe** 955-7383  
*Live Contemporary*  
 Zanuck Lindsay 9-11am  
 Alyssa Jacey (12/12) 9-11am  
 Kailua Bay Buddies 9-11pm  
 Piranha Brothers (12/5) 8:30-10:30pm  
**House Without a Key** 923-2311  
*Live Hawaiian & Hula by Brook Lee*  
 Eric Lee Trio 5:30-8:30pm  
**Hula Grill** 923-HULA  
*Live Contemporary Hawaiian*  
 Kimo Baker 7-9pm  
**Hy's Steak House** 922-5555  
*Live Soft Contemporary*  
 Audy Kimura 6:30-10pm  
**Kani Ka Pila Grille** 924-4992  
*Hoku Award Winning Hawaiian musicians*  
 Kawika Kahiaipo 6-9pm  
**LBL at the Hilton Waikiki Beach Hotel** 922-0811  
*Live Contemporary Pop/Rock*

Sunway 7-10pm  
**Lewers Lounge** 923-2311  
*Contemporary Jazz*  
 Maggie Herron & Rocky Holmes 8:30-12am  
**Mahina & Sun's** 923-8882  
*Hawaiian Contemporary Poolside on the Lanai*  
 Kelly Boy DeLima 7-9pm  
**Mai Tai Bar at the Royal Hawaiian** 923-7311  
*Live Contemporary Hawaiian with Hula Dancer*  
 Dave Watanabe 8-10pm  
**Maui Brewing Company** 843-2739  
*Live Contemporary Hawaiian*  
 Ryan Tenney 3:30-5:30pm  
**Merriman's Honolulu** 215-0022  
*Live Contemporary*  
 Tavana McMoore 3:30-5:30pm  
 Kristi Masuhara 6-9pm  
**Michel's at the Colony Surf** 923-6552  
*Live Slack Key*  
 Jeff Peterson 7:30-10:00pm  
**Roy's Hawaii Kai** 396-7697  
*Na Hoku Hanohano Award Slack Key Artist*  
 Stephen Inglis 6:30-9:30pm  
**Rumfire** 921-4600  
*Solo Contemporary Guitarist*  
 Mark Calderia 5-8pm  
**Signature Prime Steak** 949-3636  
*Contemporary Pianist in the bar*  
 Isao Motomochi 6-9pm  
**Sky Waikiki** 979-7590  
*Live Contemporary*  
 John Akapo 6-9pm  
**Stripsteak Waikiki** 800-3094  
*Live Contemporary*  
 Dustin Park 7-10pm  
**Swell at the Alohilani** 294-4108  
*Solo Contemporary Guitarist*

**Liko's** TAP & TABLE  
 Breakfast • Lunch • Dinner  
 Waterfront Dining  
 8AM - 10PM Everyday  
 Happy Hour 3PM - 6PM  
 Live Music  
 808•394•LIKO  
 Hawaii Kai Shopping Center  
 377 Keahole St. Honolulu, HI  
 @likoshawaii  
 www.likoshawaii.com

# Let's be Together...

DINING ▶ ENTERTAINMENT ▶ PAU HANA ▶ EAT ▶ DRINK ▶ BE MERRY ▶ HAPPY HOUR

Johnny Helm 6-9pm  
**The Deck at the Queen Kapiolani Hotel** 931-4488  
*Acoustic Contemporary Hawaiian*  
 Tahiti Rey 6-9pm  
**The Edge at the Sheraton** 921-4600  
*Live Hawaiian Music*  
 Christian Yrizarry 1-4pm  
 Christian Yrizarry Duo 6:30-9:30pm  
**Tiki's Grill & Bar** 923-TIKI  
*Hot Hula Thursdays - hula dancers perform*  
 Malu the Band 5:30-7:30pm  
 Ellsworth Simeona 8:30-11pm  
**Tommy Bahama Restaurant** 923-8785  
*Contemporary Hawaiian. Happy Hour Daily 2 - 5 p.m.*  
 Glenn Domingo 6-9pm  
**Tropics Bar & Grill** 949-4321  
*Live Contemporary Hawaiian*  
 Nohelani Cypriano 2-5pm

## FRIDAY

**Azure at the Royal Hawaiian** 921-4600  
*Live Contemporary Hawaiian*  
 Jeremy Cheng 8:30-10pm  
**Barefoot Beach Café at Queen's Beach** 924-2233  
*Live Contemporary Hawaiian with Beach BBQ*  
 Art Kalahiki & Friends 5:30-8:30pm  
**Bin 1901 at the Moana** 921-4600

*Piano Wine Bar*  
 Jeannette Trevias 6:30-9:30pm  
**Chart House Waikiki** 941-6660  
*Live Contemporary Hawaiian*  
 The Bobby Ingano Trio 6-9pm  
 Kimo Kahoano Show w/ Dean & Dean 9:30-12:30am  
**Cheeseburger Waikiki** 941-2400  
*Contemporary Hawaiian*  
 Aku 6:30-9:30pm  
**Cheesecake Factory** 924-5001  
*Live Acoustic Folk Rock*  
 Kaiona Duo 7-10pm  
**Dave & Busters** 589-2215  
*Pau Hana Fridays Live Local Bands*  
 Varying Hawaiian Artists 6-8pm  
**Duke's Canoe Club Waikiki** 922-2268  
*Live Contemporary Hawaiian*  
 Maunaulua 4-6pm  
 Chris Murphy Duo (12/6) 9:30-12am  
 Maiko Duo (12/13) 9:30-12am  
 Agent Nicole & Jeff James (12/20) 9:30-12am  
 Kona Chang Duo (12/27) 9:30-12am

**Hard Rock Cafe** 955-7383  
*Live Contemporary*  
 Alex Oasay 9-11am  
 Hi Standards 8-10pm  
 Drag Queen Bingo (12/20) 9-12am

**House Without a Key** 923-2311  
*Live Hawaiian & Hula by Kanoë Miller*  
 Kapalama 5:30-8:30pm

**Hula Grill** 923-HULA  
*Live Contemporary Hawaiian*  
 The Camarillo Brohers 7-9pm

**Hy's Steak House** 922-5555  
*Live Soft Contemporary*  
 Audy Kimura 6:30-10pm

**Kani Ka Pila Grille** 924-4992  
*Hoku Award Winning Hawaiian musicians*  
 Ka Hehena 6-9pm

**LBLE at the Hilton Waikiki Beach Hotel** 922-0811  
*Live Contemporary Pop/Rock*  
 Sunway 7-10pm

**Lewers Lounge** 923-2311  
*Live Contemporary Jazz*  
 Rocky, Maggie & Dean 8:30-12:30am

**Mahina & Sun's** 923-8882  
*Slack Key Poolside on the Lanai*  
 Jeff Rasmussen 7-9pm

**Mai Tai Bar at the Royal Hawaiian** 923-7311  
*Live Contemporary Hawaiian with Hula Dancer*  
 Jeremy Ching 6-8pm

**Maui Brewing Company** 843-2739  
*Live Contemporary Hawaiian*  
 Ryan Tenney 3:30-5:30pm  
 Shay Marcello Duo (or others) 9-11pm

**Merriman's Honolulu** 215-0022  
*Live Contemporary*  
 Timothy Kallen 3:30-5:30pm  
 Johnny Kukui or Don Baduria 6-9pm

**Michel's at the Colony Surf** 923-6552  
*Live Slack Key Stylings & Jazz*

Jeff Peterson & Ernie Provencher 6:30-10pm  
**Roy's Hawaii Kai** 396-7697  
*Instrumental, Electric Guitar*

Jimmy Funai 5:30-8pm  
**Roy's Ko Olina** 676-7697  
*Slack Key Guitar*

Chris Rego 5:30-8pm  
**Rumfire** 921-4600  
*Live Contemporary Hits*

Shar Carillo Duo 5-8pm  
**Signature Prime Steak** 949-3636  
*Contemporary Pianist in the bar*

Grant Carvalho 6-9pm  
**Sky Waikiki** 979-7590  
*Live Contemporary*

John Akapo 6:30-9:30pm  
**The Deck at the Queen Kapiolani Hotel** 931-4488  
*Acoustic Folk Rock*

Kamuela 6-9pm  
**The Edge at the Sheraton** 921-4600  
*Hawaiian Music with conch/torch ceremony at 6:25 p.m.*

Christian Yrizarry 1-4pm  
 Na'ehu Duo 6:30-9:30pm

**Tiki's Grill & Bar** 923-TIKI  
*Live Contemporary Hawaiian*  
 Push-O-Verse 4:30-6:30pm

Vaihi 7-9pm  
 KB Riley 9:30-11:30pm

**Tommy Bahama Restaurant** 923-8785  
*Contemporary Hawaiian. Happy Hour Daily 2 - 5 p.m.*  
 Chris Murphy 6-9pm

**Tropics Bar & Grill** 949-4321  
*Live Contemporary Hawaiian*  
 Nohelani Cypriano 2-5pm

## SATURDAY

**Barefoot Beach Café at Queen's Beach** 924-2233  
*Queen's Surf + Turf w/ Contemporary Hawaiian*  
 Jonathan Kama 5:30-8:30pm

**Bin1901 at the Moana** 921-4600  
*Piano Wine Bar*  
 Dan Del Negro 6:30-9:30pm

**Chart House Waikiki** 941-6660  
*Live Contemporary Hawaiian*  
 Tito Berinobis & Billy Beimes 7-12pm

**Cheeseburger Waikiki** 941-2400  
*Contemporary Hawaiian*  
 Sean Cleland 6:30-9:30pm

**Cheesecake Factory** 924-5001  
*Classic Hawaiian*  
 Dennis McClees Duo 7-10pm

**Duke's Canoe Club Waikiki** 922-2268  
*Live Hawaiian Entertainment*  
 Beach 5 (12/7) 4-6pm

Kona Chang Band (12/14) 4-6pm  
 Kaiona Band (12/21) 4-6pm  
 Vaihi (12/28) 4-6pm

Ryan Tenney (12/7) 9:30-12am  
 Denny Ono Duo (12/14) 9:30-12am  
 Preston Kauwe Duo (12/21) 9:30-12am

Sets on the Beach (12/28) 9:30-12am

*Mahalo for your continued support!*  
 JOIN OUR  
**GUEST REFERRAL PROGRAM**



Our program is simple!  
 For every 25 guests referred,  
 Ruth's Chris Steak House will send you  
 a \$50.00 dining certificate.

Please contact Emi Espinoza if you have any  
 questions at [eespinoza@ruthschris.com](mailto:eespinoza@ruthschris.com)

OPEN DAILY FROM 4:30PM  
 HAPPY HOUR DAILY IN OUR LOUNGE | 4:30PM - 7PM  
 PRIME TIME MENU DAILY | 4:30PM - 6PM  
 WINE WEDNESDAYS | 25% OFF BOTTLES OF WINE



Restaurant Row | 808.599.3860  
 Waikiki Beach Walk | 808.440.7910  
[WWW.RUTHSCHRISHAWAII.COM](http://WWW.RUTHSCHRISHAWAII.COM)

# E Pili Kākou

▷ DINING ▷ ENTERTAINMENT ▷ PAU HANA ▷ EAT ▷ DRINK

**Hard Rock Cafe** 955-7383  
*Live Contemporary*  
 Cassie/Selwyn (or others) 9-11am  
 CTD 8-10pm

**House Without a Key** 923-2311  
*Hawaiian & Hula by Kanoë Miller*  
 Kapalama 5:30 - 8:30pm

**Hula Grill** 923-HULA  
*Live Traditional Hawaiian with dancer*  
 Christian Yrizary 7-9pm

**Hy's Steak House** 922-5555  
*Live Soft Contemporary*  
 Audy Kimura 6:30-10pm

**Kani Ka Pila Grille** 924-4992  
*Hoku Award Winning Hawaiian musicians*  
 Ho'okena 6-9pm  
 Hawaiian Blend (12/21) 6-9pm

**LBLE at the Hilton Waikiki Beach Hotel** 922-0811  
*Live Contemporary Blues & R&B*  
 Tahiti Rey 7-10pm

**Lewers Lounge** 923-2311  
*Live Contemporary Jazz*  
 Rocky, Maggie & Dean 8:30-12:30am

**Mahina & Sun's** 923-8882  
*R&B Poolside on the Lanai*  
 Maile 7-9pm

**Mai Tai Bar at the Royal Hawaiian** 923-7311  
*Live Contemporary Hawaiian with Hula Dancer*  
 Christian Yrizary 6:30-8:30pm

**Maui Brewing Company** 843-2739  
*Live Contemporary Hawaiian*  
 David Sedlak 3:30-5:30pm  
 Ryan Teney Duo (or others) 9-11pm

**Merriman's Honolulu** 215-0022  
*Live Contemporary*  
 Timothy Kallen 3:30-5:30pm  
 Jesse Savio 6-9pm

**Michel's at the Colony Surf** 923-6552  
*Live Contemporary Slack Key & Jazz*  
 Jeff Peterson 7-11pm

**O Bar at the Alohilani** 294-4108  
*Solo Contemporary Guitarist*  
 Kama Kakalo 6-9pm

**Roy's Hawaii Kai** 396-7697  
*Instrumental, Electric Guitar*  
 Jimmy Funai 5:30-8pm

**Roy's Ko Olina** 676-7697  
*Slack Key Guitar*  
 Chris Rego 5:30-8pm

**Rumfire** 921-4600  
*Solo Contemporary Guitarist*  
 Chris Mercado 5-8pm

**Signature Prime Steak** 949-3636  
*Contemporary Pianist in the bar*  
 Grant Carvalho 6-9pm

**Sky Waikiki** 979-7590  
*Live Contemporary*  
 John Akapo 6-9pm

**The Edge at the Sheraton** 921-4600  
*Hawaiian Music with conch/torch ceremony at 6:25 p.m.*  
 Christian Yrizary 1-4pm

Tino Jacob Duo 6:30-9:30pm

**Tiki's Grill & Bar** 923-TIKI  
*Live Contemporary Hawaiian & Reggae*  
 Johnny Helm 4:30-6:30pm  
 Kai Roots 7-9pm  
 Ellsworth & Piko 9:30-11:30pm

**Tommy Bahama Restaurant** 923-8785  
*Contemporary Hawaiian. Happy Hour Daily 2 - 5 p.m.*  
 Chris Murphy 6-9pm

**Tropics Bar & Grill** 949-4321  
*Live Contemporary Hawaiian*  
 Henry Kapono 3-5pm

## SUNDAY

**Barefoot Beach Café at Queen's Beach** 924-2233  
*Live Contemporary Hawaiian*  
 Remington Tang 5:30-8:30pm

**Basalt at Duke's Lane Market & Eatery** 923-5689  
*Live Slack-Key, Classical*  
 Harry Koizumi 6-9pm

**Chart House Waikiki** 941-6660  
*Live Contemporary Hawaiian*  
 Dean & Dean 6-9pm

**Cheesecake Factory** 924-5001  
*Classic Hawaiian*  
 Chris Murphy Duo 7-10pm

**Duke's Canoe Club Waikiki** 922-2268  
*Live Hawaiian Entertainment*  
 Henry Kapono 4-6pm  
 Kaiona Duo 9:30-12am

**Hard Rock Cafe** 955-7383  
*Live Acoustic Folk Rock*  
 Johnny Helm (or others) 9-11am  
 Youth on Stage Xmas (12/1, 12/15) 9-11am  
 Analog (or others) 8-10pm

**House Without a Key** 923-2311  
*Live Hawaiian & Hula by Debbie Nakanelua*  
 Pu'uhonua Trio 5:30 - 8:30pm

**Hula Grill** 923-HULA  
*Live Traditional Hawaiian with dancer*  
 Alike Souza and friends 7-9pm

**Kani Ka Pila Grille** 924-4992  
*Hoku Award Winning Hawaiian musicians*  
 Nathan Aweau 6-9pm  
 Robi Kahakalau (12/8, 12/22) 6-9pm  
 Manoa DNA (12/15) 6-9pm

**Kelley O'Neil's** 926-1777  
*Live Irish Music*  
 Various Celtic Bands 4-7pm

**LBLE at the Hilton Waikiki Beach Hotel** 922-0811  
*Live, Energetic Mix of Pop and Rock Hits*  
 Kristi Masuhara 7-10pm

**Lewers Lounge** 923-2311  
*Live Contemporary & Light Jazz*  
 Tommy James 8:30pm - 12am

**Liko's** 394-5456  
*Live Contemporary*  
 Jason Laeha 6-9pm

**Mahina & Sun's** 923-8882  
*Hawaiian Past & Present Poolside on the Lanai*



## Seafood for You, for 2

FEAST ON OUR GUEST  
REFERRAL PROGRAM

Receive a Plumeria Beach House  
Best of Kahala Seafood Buffet  
for two gift certificate (valued at  
\$166 including tax and gratuities)  
for every 10 confirmed Hoku's  
reservations in a month.



Call Dining Reservations at 808.739.8760

Must use your Open Table log in  
when making reservations.



## SOMETHING NEW. SOMETHING CLASSIC.

Open Daily 11am - 10pm

Happy Hour

Daily in our lounge 3pm - 6pm & 8pm - 10pm

Vino Thursdays 25% Off Bottles of Wine

## INQUIRE ABOUT OUR GUEST REFERRAL PROGRAM!

Our program is simple!

For every 10 complimentary  
dessert cards redeemed

(WITH YOUR NAME ON THE CARD),  
Romano's Macaroni Grill will send you  
a \$25.00 dining certificate that may be used  
at our Oahu restaurant.

Please contact the restaurant for details

ROMANO'S  
**Macaroni**  
GRILL®

Ho'okipa Terrace at Ala Moana Center

808.356.8300

WWW.MACARONIGRILL.COM

# Let's be Together...

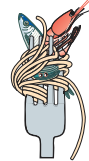
DINING ▸ ENTERTAINMENT ▸ PAU HANA ▸ EAT ▸ DRINK ▸ BE MERRY ▸ HAPPY HOUR

Dustin Park	7-9pm	
<b>Mai Tai Bar at the Royal Hawaiian</b>		<b>923-7311</b>
<i>Live Contemporary Hawaiian with Hula Dancer</i>		
Christian Yrizarry Duo	6:30-8:30pm	
<b>Maui Brewing Company</b>		<b>843-2739</b>
<i>Live Contemporary Hawaiian</i>		
John Helm	3:30-5:30pm	
Scott Magz & Brady K	9-11pm	
<b>Merriman's Honolulu</b>		<b>215-0022</b>
<i>Live Contemporary</i>		
Timothy Kallen	6-9pm	
<b>Roy's Ko Olina</b>		<b>676-7697</b>
<i>Slack Key Guitar</i>		
Chris Rego	5:30-8pm	
<b>Rumfire</b>		<b>921-4600</b>
<i>Solo Contemporary Guitarist</i>		
Johnny Kukui	5-8pm	
<b>Signature Prime Steak</b>		<b>949-3636</b>
<i>Contemporary Pianist in the bar</i>		
Isao Motomochi	6-9pm	
<b>The Edge at the Sheraton</b>		<b>921-4600</b>
<i>Hawaiian Music with conch/torch ceremony at 6:25 p.m.</i>		
Christian Yrizarry	1-4pm	
Kailua Moon Duo	6:30-9:30pm	
<b>Tiki's Grill &amp; Bar</b>		<b>923-TIKI</b>
<i>Live Contemporary Hawaiian</i>		
Kapu the Band	2:30 - 5:30pm	
Vaihi	6-8pm	
Ellsworth & Piko	9-11pm	
<b>Tommy Bahama Restaurant</b>		<b>923-8785</b>
<i>Contemporary Hawaiian. Happy Hour Daily 2 - 5 p.m.</i>		
Jenna Keliikuli	6-9pm	
<b>Tropics Bar &amp; Grill</b>		<b>949-4321</b>
<i>Live Contemporary Rock &amp; Hawaiian</i>		
Piranha Brothers	2-5pm	
<b>Uncle's Fish Market &amp; Grill</b>		<b>275-0063</b>
<i>Live Slack Key</i>		
Jeff Peterson	5:30-8:30pm	

## Dining Dish

**Stripsteak** has updated their menu a bit. They are now offering caviar service featuring Siberian osetra, Royal osetra, and Imperial osetra. They are also serving Washugyu steaks. Washugyu is made in the USA by Japanese Wagyu experts produced by using a custom Japanese cross-breeding program. We're talking a mix of Wagyu and A5, and the result is delicious. They will be hosting a Gingerbread Decorating Workshop on December 14th from 2:30 - 4:30 p.m. for \$35 a ticket to benefit Make-A-Wish. Tickets include a gingerbread house and all the trimmings, ornament station, milk & cookies for the kids and bubbles for kids at heart! 800-3094. • Speaking of steakhouses, **Bill Nickerson** has left Wolfgang's after all these years and is now the GM of the just-opened **Ya-Ya's Chophouse and Seafood** at Keauhou Lane. The guys behind Uncle Bo's, **Ho Suk Lee** and **Chef Bo Pathammavong**, the menu features a gigantic 40-44oz Tomahawk Steak and a "Prime" Prime Rib along with A5 Wagyu from Nagasaki. Open Monday - Friday 3 p.m. to 11 p.m., Saturday 5 p.m. to midnight and Sunday 5 p.m. to 11 p.m. First reports have been fabulous. Kaka'ako is truly exploding. 725-4187. • Now that we've talked about steakhouse and all those meats, let's talk about Beyond Meat, a plant-based patty just like the Impossible Burger. **L&L Hawaiian Barbecue** has recently begun to implement healthier options such as brown rice, vegetable sides and seafood entrées to their menus, and now, they are making their classic Loco Moco with a plant-based patty. The Beyond Loco Moco will be available throughout the month of December at five locations: Walgreens Keeaumoku, Airport Trade Center, Ward Entertainment Complex, Kahala and Marine Corp Base Hawaii. I tried it and was pleasantly surprised. It was the first time I have ever tried a plant-based patty, and I simply wasn't sure what to expect. The fact that it was grilled gave it a lot of flavor, masking most of the differences. There is a slight textural difference and a faint aftertaste that was quickly covered by the gravy and egg flavors. So quickly, it took me several bites to determine whether there was or was not an aftertaste at all it, was so fleeting. I enjoyed it. Later on we did a side by side comparison, and the difference was more obvious then, but how many people are going to do that? Ever since the Impossible Burger took off more and more people have

been asking for plant-based patties. Check it out for yourself if you're into all that. • **Buffalo Wild Wings** has opened in Ala Moana Center next to Target on Level 3. Open from 11 a.m. - 2 a.m. daily, they're currently opening at 7 a.m. on weekends for football. They are offering Happy Hour Monday-Friday from 2-6 p.m. and then again from 9 p.m. - midnight. Take advantage of limited pupu specials and 5 beers for \$15 special, otherwise they run \$3-\$5 each. 983-3933. • Just in time for your holiday parties, **Side Street Inn** has rolled out lunch delivery service. Offering a minimum order of fifty \$12 bentos or a full Catering Menu for \$24 each, minimum 30 and have a local favorite cater your staff meeting as they now deliver to Waikiki. Order online at [sidestreetinn.com](http://sidestreetinn.com). ~ Pam



## Dining Calendar

**December 7:** **Hale Aina Supper Club** presents a 4 course menu featuring fish, duck, lobster and more paired with wines from Fujioka's. \$130. 6 p.m. at the Hiking Hawaii Cafe. 352-8874.

**December 7:** **The Friends of Italy Cooking Class** presents how to make Canederli, a traditional dishes from the Dolomites, with Chef Ivo Rossi. \$45. 5:30 - 9 p.m. [friendsofitaly.org](http://friendsofitaly.org).

**December 8:** **Sans Souci Beach Club at Barefoot Beach Cafe** offers plenty of keiki friendly activities including lawn games, scavenger hunt, s'mores and a DJ from 3 - 7 p.m. 2nd Sunday of the month. [BarefootBeachCafe.com](http://BarefootBeachCafe.com).

**December 13:** **Vino Sociale Fridays** Appetito Craft Pizza & Wine Bar hosts a monthly wine event from the 2nd Friday. Enjoy a wine flight and paired menu on their secluded patio. \$55. 5:30 p.m. 922-1150.

**December 16:** **Kaimuki Superette** presents a Demo Dinner Series the 3rd Monday of the month with Local I'a to promote a variety of local ingredients This month explore Fish & Bananas with Gabe from Counter Culture \$45. 6:30 - 8 p.m. [localiahawaii.com](http://localiahawaii.com).

**December 19:** **Amuse Wine Bar** continues their monthly spirit tasting focusing on Brandy & Cognac this month. 6 p.m. \$35. 237-5429. [stagerestaurant-hawaii.com](http://stagerestaurant-hawaii.com).

**Wednesdays:** **12th Ave Grill** All wines by the glass are half off from 5:30-6:30 at the bar. 732-9469.

**1st & 3rd Thursdays:** **Wineview at Cattleya** Halekulani's informal tasting event at Cattleya's communal table. Join the conversation conducted by visiting wine makers, or resident wine professionals with light bites at any time between 4:30 - 7:30 p.m. \$69. 923-2311.



**BAREFOOT BEACH CAFE**  
Waikiki

On Queen's Surf Beach at the Diamond Head end of Waikiki

Open Daily, 7am - 8:30pm  
Breakfast 'til 2pm Daily  
Live Music Nightly, 5:30pm - 8:30pm

Available for  
Private Parties & Special Events

Barefoot Beach Cafe  
[BarefootBeachCafe.com](http://BarefootBeachCafe.com)  
2699 Kalakaua Avenue  
808.924.2233 (CAFE)

**ALOHA**





# Chef's Corner

## Dean & DeLuca Hawaii Chef Kevin Carvalho

Born and raised in Hawaii, Kevin has a passion for food and went to Leeward Community College's Culinary of the Pacific Program and was named Dean & DeLuca's Regional Executive Chef earlier this year. Growing up in Hawaii, learning how to hunt as a child. He calls himself a fisherman first, then a chef, adding how special it is to see a product from start to end. Earlier this year he was hired as Executive Chef and has completely redone the menu of The Artisan Loft upstairs in the Ritz-Carlton location.

### What is your first childhood food memory?

My dad would take my brother and I hunting for wild boar. We would skin and butcher our catch, marinate and smoke the meats, and utilize every part. This is when I got to learn the importance of respecting our food and what it actually takes to get that dish on the table.

### When did you decide you wanted to be a chef?

My great-grandmother used to cook for the entire family, and when she did, everyone had a great time together, enjoying each other's company regardless of any issues. When she passed away, I knew that it was something I wanted to do, make food to make people happy.

### What was your first job in the industry?

My first job in the industry was also my first job ever. I worked at McDonalds in order to pay my way through Culinary School. During this time, I was going through some hard family times and the result was me living out of my truck in Kaena Point for a couple years, showering at the beach, going to school in the morning, and working at McDonalds in the evening.

### What inspired you to be a chef?

In all honesty, I wasn't sure if I really wanted to be a chef, even while going through culinary school. It wasn't until I did a report on Chef Mavro that I began getting interested in food. His Salt Crusted Onaga was the dish that made me excited about cooking.

### You've worked in some great kitchens. How did that make you the chef you are today?

I am blessed to have worked with so many great chefs. I have definitely taken a small piece of every chef I've worked for in my cooking style. The beauty of it is that my style has gone full circle. I started hunting and harvesting at a young age, worked in small free-standing restaurants, then opened large hotels and multi-unit culinary venues. Now I'm back hunting, fishing, and harvesting for my own place, while incorporating techniques I've picked up along the way.

### Who would you consider your mentor?

First would be Kevin Chong (former Chef de Cuisine of Chef Mavro). With my constant

begging, always showing up in the rear kitchen exit asking for a job, he finally took a chance on me (and let me wash dishes for free). He coached me and was the first person to believe in me and express it verbally. He pushed me to be my best and made me see the importance of not caring what others thought. He trained me to learn every aspect of the kitchen and guided me to eventually lead the kitchen. My second mentor would have to be Chef Mavro. I was the young 'punk' in the kitchen with all these great chefs on the line, but even though he had to yell at me on a daily basis, he took his time to make sure I was successful and at my best every day. I would not be so structured and focused if it wasn't for both of these guys.

### How would you describe your style of cooking?

Modern Progressive Cuisine Preserving Local Hawaiian Ingredients. I try to find unpopular local ingredients or unpopular cuts of meat/fish and utilize everything to its greatest potential in modern ways. I like to showcase all the wonderful ingredients we have here without covering flavor.

### What's been your goal since coming to D&D.

I wanted to keep the integrity of the high-end atmosphere that the company is known for, but elevate it and make it unique to the islands. By harvesting our own Ho'io Ferns, catching our own fish, harvesting opihi and Wana Uni, not only do we stand out because we source amazing products, it gives me the opportunity to share the importance of utilizing every part, and respecting your food. It makes for a more sustainable Hawaii with the younger generation of cooks. I want to take my guests on a culinary journey tasting comfort ingredients in modern and unique ways.

### What restaurant do you like to go too?

Stage Restaurant. I had the pleasure of opening Stage and working alongside Ron De Guzman for a couple of years. I believe he is one the most underrated chefs out there. Amazing stuff always.

### Is there anything else you would like to share?

I was always taught to bring my team up with me, so I would like to thank every single person that positively encouraged me to be where I'm at. From my past chefs, to my dishwashers, every single person has contributed to my successes.

## Chicken Papaya Adobo



### Ingredients:

- ¾ c. white vinegar
- ½ c. low-sodium Aloha soy sauce
- 1 tbsp. Dean & DeLuca Hawaii Mac Nut Honey
- 6 cloves garlic, peeled and smashed
- 3 bay leaves
- 1 tsp. whole black peppercorns
- 4 lb. chicken thighs (large diced)
- 2 c. green papaya (medium dice)
- 1 c. Yellow onion (chopped)
- 2 green onions, thinly sliced
- Cooked white rice, for serving

**Directions:** In a large bowl, whisk together white vinegar, soy sauce, and honey. In a large heavy bottom pot, add olive oil and heat until oil is shimmering. Add the chicken, onions, garlic, and peppercorns. Sear for about 4-6 minutes. Add the green papaya and the sauce mix and bring to a boil. Turn down to medium simmer and simmer for about 15-20 minutes. Strain the liquid out and place the chicken mix on a serving dish. Add the strained liquid back to the pot and reduce for 10 minutes. Pour the sauce over the chicken, garnish with green onions, and serve with rice.

Dean & DeLuca's is located at the Ritz Carlton Waikiki from 7 a.m. - 10 p.m. daily.

The Artisan Loft Hours: Brunch 10 a.m. - 2 p.m. • Happy Hour 4 p.m. - 6 p.m. • Wine Lounge 4 - 8 p.m.

Web: deandeluca-hawaii.com • Instagram / Facebook: @deandelucahawaii • Phone: 729-9720

# Save the Date

# Date

and start collecting those cans

keep your eyes on your email and our Facebook page

and don't forget to vote!



## THE PEARL HARBOR TOUR YOU'D CHOOSE FOR YOURSELF

FEATURING ICONIC PEARL HARBOR AND ARIZONA MEMORIAL

- Intimate group size
- Breakfast pastry & chilled water
- Luncheon at waterfront restaurant
- Hawaii's top driver guides with historic onboard video
- Highest degree of service

THE PEARL HARBOR "NON-TOURIST'S TOUR" YOU'D LOVE\*



808.833.3000  
POLYAD.COM



\*Be our complimentary guest. Phone us for a fam.

# DECEMBER CALENDAR OF EVENTS

## Continuing Events

### MONDAY - FRIDAY LYON ARBORETUM TOURS

The lush gardens at the top of the UH Manoa are open for guided tours daily. Knowledgeable guides will introduce the highlights of all 193.6 acres of botanical rainforest. Reservations Req. 12 participants max. Donations accepted. 988-0461.

### MONDAY-FRIDAY FOSTER BOTANICAL GARDENS

Guided garden tours of rare and beautiful plants from tropical regions throughout the world. 50 N. Vineyard. 1 p.m. Adults: \$5. Reservations recommended. 522-7066.

### MONDAYS, TUESDAYS & THURSDAYS WAIKIKI FARMER'S MARKET

A new Farmers Market popped up in Waikiki a few months ago, and it's been so popular, they just added another day. Browse through the Mahiku Farmers Market (the one responsible for the former Hyatt Farmer's Market) every Monday, Tuesday and Thursday on the grounds outside of the Bank of Hawaii Waikiki Center from 4 - 8 p.m. mahikufarmersmarket.com.

### TUESDAYS • THE TASTING ROOM

Stop by for complimentary libations including craft beers, wines, liquors, and small-batch spirits every Tuesday. 5:30-6:30 p.m. Mahina & Sun's. FREE. surfjack.com.

### TUESDAYS • KU HA'AHEO

Enjoy music and hula led by kumu hula Blaine Kamalani Kia. Waikiki Beach Walk, Plaza Lawn. 4:30-6 p.m. waikikibeachwalk.com. FREE.

### TUESDAYS • KCC FARMERS MARKET

The Saturday Market is so popular they added another day. Head up to Kapiolani Community College to stock up on fresh, island produce, seafood, flowers and more, from several dozen vendors. 4 - 7 p.m. Free. 848-2074.

### TUESDAYS, THURSDAYS & SUNDAYS TOUR & TEA AT THE HONOLULU ACADEMY OF ARTS

Tours are led by volunteer docents and designed for visitors, who would like to explore the galleries, learn more about art and culture, and socialize over a cup of tea. Docents lead discussions in the galleries and offer insight into many cultures and time periods. 2:30 - 4 p.m. in selected galleries. Free with admission. Reservations required. 532-8700.

### TUESDAY - SATURDAY HAWAIIAN MISSION HOUSES TOURS

Visit the Print Shop, coral block Chamberlain House, and 1821 Mission House and learn about the 19th century history and culture preserved at this historic site. Docent-led tours of the historic houses begin on the hour, every hour from 11 a.m. for \$8 - \$10. No charge for the self-guided tour of the grounds. Hawaiian Mission Houses. Tues. - Sat. 10 a.m. - 4 p.m. 447-3910 or missionhouses.org.

### SECOND WEDNESDAY (DECEMBER 11) CINEMA IN THE PARK

Ward Village hosts its monthly film series event on the 2nd Wednesday of each month. The showing features free popcorn, refreshments, food vendors and entertainment. Courtyard Cinema is free and open to the public. Seating is limited. 6-9 p.m. Victoria Ward Park. Reserve tickets at wardvillagecourtyardcinema.com.

### THIRD WEDNESDAY (DECEMBER 18) KONA NUI NIGHTS

Kona Nui Nights honors and highlights Hawaiian language and music, as well as the art of hula on the third Wednesday of every month with a cash bar available. Free. Victoria Ward Park. 6-8 p.m. wardvillageshops.com.

### THURSDAYS • MARKET ON THE PLAZA

Browse locally grown produce and a variety of made in Hawaii products at Waikiki Beach Walk's Market on the Plaza. Free. 4 - 8 p.m. Also held on select Sundays, see online schedule. waikikibeachwalk.com.

### THURSDAYS • YOGA IN THE PARK

Take a complimentary yoga class with CorePower Yoga at Victoria Ward Park. Open to the first 50 in attendance. All experience levels welcome. 5:30 - 6:30 p.m. For more information visit wardvillageshops.com/yoga.

### FIRST FRIDAY (DECEMBER 6) DOWNTOWN GALLERY WALK & CRAFT FAIR

Honolulu's largest monthly outdoor self-guided arts tour takes place the first Friday of each month. This event has exploded into a huge downtown party with galleries and studios open for exhibitions, artist demonstrations, and special performances as most galleries and art-related retail shops, restaurants and museums participate. Downtown Honolulu/Chinatown. 6 - 9 p.m. Free. 521-2903 or artsatmarks.com.

### FINAL FRIDAY ART AFTER DARK

Art After Dark is on hiatus for the holiday season and will return in January. artafterdark.org.

### SATURDAYS KCC FARMERS MARKET

Fresh island produce, seafood, flowers and more are available from over two-dozen vendors at Kapiolani Community College. Free. 7:30 - 11 a.m. 848-2074.

### SATURDAYS PEARLRIDGE FARMERS MARKET

Over 40 vendors offering locally grown fruits and vegetables, plants and freshly made treats. A pop-up cafe offering seating and live music rounds out the day. Free. 8 a.m. - noon. PearlrIDGEOnline.com.

### SATURDAYS YOGA ON THE LAWN

Waikiki Beach Walk offers free yoga every Wednesday. Call 926-2882 to sign up. 7:30 a.m. Plaza Lawn, waikikibeachwalk.com.

### WEDNESDAYS & SATURDAYS KAKA'AKO FARMERS MARKET

The Kaka'ako Farmer's Market hosts an

**ALOHILANI RESORT**  
WAIKIKI BEACH

*Midnight Mirage*  
A SECRET ESCAPE

NEW YEAR'S EVE 2020  
DECEMBER 31 8PM

2490 KALANIANA'OLANI AVENUE HONOLULU, HAWAII 96813

**LEARN MORE AT: ALOHILANIRESORT.COM/HOLIDAYS**

# DECEMBER CALENDAR OF EVENTS

abundance of fresh local produce, artisan foods and wares from over 40 different vendors and takes place twice a week. The Farmers Market recently moved to the former Ward Warehouse location, 1050 Ala Moana Blvd. Wednesdays, 4- 8 p.m. Saturdays, 8 a.m. - 12 p.m. [wardvillage.com](http://wardvillage.com).

**SECOND SATURDAY (DECEMBER 14)  
DOWNTOWN GALLERY WALK & CRAFT FAIR**  
First Friday has become such a success that events carry over to the second Saturday features free hands-on art activities presented by professional artists and arts organizations. HiSAM. 11 a.m. - 4 p.m. 586-9958 or [sfca.hawaii.gov](http://sfca.hawaii.gov).

**SATURDAYS & SUNDAYS  
ART ON THE ZOO FENCE**  
More than 35 local artists display their works on the Zoo fence on Monsarrat Avenue opposite the Kapiolani Park Bandstand. Works include original paintings, prints and photographs. 9 a.m. - 4 p.m. [artonthezoo fence.com](http://artonthezoo fence.com).

**FIRST SUNDAY (DECEMBER 1)  
LEI-MAKING CLASS WITH MELEANA ESTES**  
Bringing back the practice of lei-making, the International Market Place offers a monthly lei-making workshop, with contemporary lei artist Meleana Estes on the first Sunday of the month from 11 a.m. - 2 p.m. in Queen's Court. Free [shopinternationalmarketplace.com](http://shopinternationalmarketplace.com).

**SECOND SUNDAY (DECEMBER 8)  
KAMA'AINA SUNDAYS AT THE PALACE**  
On a month, on either the 1st or 2nd Sunday, Iolani Palace opens its doors to kama'aina guests to visit the historic landmark for free. Locals may choose from the Guided or Self-Led Audio Tour, and a first-come, first-serve basis. 9 a.m. - 4 p.m. [iolanipalace.org](http://iolanipalace.org).

**SECOND SUNDAY (DECEMBER 8)  
SUNSET SESSIONS FEATURING PAULA FUGA**  
Queen Kapiolani's monthly concert series at their outdoor patio with Diamond Head as a backdrop features a live performance from a well-known performer once a month. This month see Paula Fuga from 5-7 p.m. Live DJ an hour before and after. [deckwaikiki.com](http://deckwaikiki.com).

**THIRD SUNDAY (DECEMBER 15)  
FAMILY FREE SUNDAY**  
The Honolulu Museum of Art opens its doors to the public free of charge on the third Sunday of every month thanks to the Bank of Hawaii Foundation. Plenty of activities for all to enjoy. 10 a.m. - 4:30 p.m. Free. 532-8700.

**THIRD SUNDAY (DECEMBER 19-25)  
MELE HALFA SUNDAY CONCERT**  
The Sunday Concert Series has a new name but features the same award winning musicians and songwriters. This month they will feature a special Holiday Mele & Hula show for the week. [waikikibeachwalk.com](http://waikikibeachwalk.com).

**DECEMBER 6  
COUNTRY MUSIC GONE VIRAL**  
11-year old Mason Ramsey captured the fans of millions of fans with his YouTube video of him yodeling went viral, and he become the youngest country artist to sign with a major record label in a generation. He will be joined by

Willie Jones and rapper Seckond Chaynce. Blasidell Arena. [ticketmaster.com](http://ticketmaster.com).

**DECEMBER 7  
KALAKAUA MERRIE MILE**  
This fun little one-mile race in Waikiki followed by a beach party is a great way to get geared up for the Honolulu Marathon the next morning. The race goes in waves based on predicted finish time. The last wave will be the pros seeking a sub 4-minute mile. Children of all ages are welcome to run the Merrie Mile. The race finishes at Queen's with a concert on the beach. 7 a.m. [honolulumarathon.org](http://honolulumarathon.org).

**DECEMBER 7  
JEFFERSON STARSHIP**  
The band formerly known as Jefferson Airplane, then as Starship, and now are back to the name of Jefferson Starship has put out chart toppers for over a decade in the 70s and are bringing those classic medleys to the Hawaii Theatre. Tickets: \$55-\$85. 8 p.m. [hawaii theatre.com](http://hawaii theatre.com).

**DECEMBER 7 - 31  
HONOLULU CITY LIGHTS**  
Downtown lights up in celebration every night of the season with the 35th annual Honolulu City Lights. Enjoy opening night festivities on the 7th kicking off with a block party at 4 p.m. with keiki rides, souvenir booths and food vendors set up on Punchbowl Street. The Electric Light Parade begins at 6 p.m., as Mayor Caldwell lights of the City Holiday Tree at 6:30 p.m. The party goes through 11 p.m. The festive lights and decorations stay up through January 1st from 8 a.m. - 11 p.m. daily. [honolulucitylights.com](http://honolulucitylights.com).

**DECEMBER 7  
PEARL HARBOR MEMORIAL PARADE**  
The parade takes place on the anniversary of the Pearl Harbor attack to honor and pay respect to those that lost their lives, the survivors, our veterans, active duty military and their families. 2,000 marchers, Lighted Cobra and Huey helicopters, floats, and bands parade down Kalakaua Avenue in Waikiki to honor the fallen, the survivors, and all veterans. The parade goes from Fort DeRussy to Kapiolani Park starting at 6 p.m. A closing ceremony will happen at the Waikiki Shell at 7:30 p.m.

**DECEMBER 7  
HAWAII KAI HOLIDAY BOAT PARADE**  
Head on over to the Hawaii Kai Towne Center, grab a seat and watch the 22nd annual Christmas Boat Parade as the elaborately decorated boats make their way around the marina (and vote for me!) Live music usually begins at 4:30 p.m. Parade begins around 6 p.m. [hawaiikaitowne center.com](http://hawaiikaitowne center.com).

**DECEMBER 8  
HONOLULU MARATHON**  
With around 25,000 runners each year, the Honolulu Marathon is the 4th largest marathon in the US. This year marks the 47th anniversary of the race that has so many runners from Japan they make it large enough to compete with the Boston Marathon and usually comprise around 60% of the total runners. The gun goes off at 5 a.m. at Ala Moana Beach Park. Prepare for a day filled with closed roads and traffic delays. Are you running? Send us your pics and we will run them! [honolulumarathon.org](http://honolulumarathon.org).

**DECEMBER 8  
THE MUSIC OF TRANS-SIBERIAN ORCHESTRA**  
Hawaii's Rock Opera Theatre will be performing Christmas songs from The Trans-Siberian Orchestra. Hitbox Music Ensemble, a small orchestra that plays popular video game music will open the show. \$8. Hawaiian Brian's. 5 p.m. [rockoperatheatre.com](http://rockoperatheatre.com).

**DECEMBER 8  
MASON RAMSEY**  
The 11-year old yodeling You Tube sensation will be doing a stand-alone show at The Republik. 8 p.m. \$20. [bampproject.com](http://bampproject.com).

**DECEMBER 8  
ALOHA HOME MARKET**  
Enjoy this Hana Hou Holiday Market PopUp in Kailua in the parking lot outside of Assaggio's on Uluniu Street. See the work of over 85 of Hawaii's finest furniture makers, artisans, jewelry makers, clothing designers, food vendors, and more! 9 a.m. - 2 p.m. [alohahomemarket.com](http://alohahomemarket.com).

**DECEMBER 8-20  
BILLABONG PIPE MASTERS**  
The third and final jewel in the Vans Triple Crown is the most prized event of the season and decides the ASP World Champion, and the Triple Crown champion of the Hawaiian winter surf season. Pipeline. The event will take place on four of the best surf days throughout the holding window. Check website for updates. [vanstriplecrownofsurfing.com](http://vanstriplecrownofsurfing.com).

**DECEMBER 8 • ALII SUNDAY**  
Kawaiahao Church celebrates select Hawaiian Royalty (Alii) who are of particular importance for the Church by holding seven special Sunday services in their honor around their birthdays throughout the year. Today they celebrate Kamehameha V. 9 a.m. [kawaiahao.org](http://kawaiahao.org).

**DECEMBER 9  
HOLIDAY BRASS CHOIR**  
The Emerald Brass Quintet of Cincinnati joins Chamber Music Hawaii's Honolulu Brass Quintet to herald in the holiday season. \$35. Central Union Church. 7 p.m. [chambermusic hawaii.org](http://chambermusic hawaii.org).

**DECEMBER 10 • HOLIDAY POPS**  
Join the Hawaii Symphony Orchestra for its annual Holiday Pops Concert. This festive seasonal celebration of holiday favorites, featuring classics with local flair will be held at the Hawaii Theatre this year. \$27-\$79. [hawaiisymphonyorchestra.org](http://hawaiisymphonyorchestra.org).

**DECEMBER 11 • REEL BIG FISH**  
Reel Big Fish was one of the legions of Southern California ska-punk bands to edge into the mainstream following the mid-'90s success of No Doubt and Sublime. The Republik. 8 p.m. \$29.50. [bampproject.com](http://bampproject.com).

**DECEMBER 12-13  
THE RACONTEURS**  
Jack White and friends have been off the grid since 2011, taking their time to prepare their first album in over a decade. Two nights, and this is a phone free show. All phones will be locked up in a special lock pouch prior to the show (not to worry, you keep it on you). The Republik. 8 p.m. \$52.50. [bampproject.com](http://bampproject.com).

*Continued on page 21.*

**WAIKIKI BAPTIST Church**  
*Your Church in Waikiki*  
 424 Kuamo'o St  
 (Near the Ambassador Hotel)  
**Sunday Worship Services**  
 9:00 AM - Contemporary  
 10:45 AM - Traditional  
 (808)955-3525  
 WaikikiBaptist.com

**60**  
 YEARS  
**ALAMOANA**  
 HAWAIIAN CENTER

Ala Moana hosted their annual Holiday Soiree inside the pop-up Holiday Bar tasting some of the festive cocktails they will be serving until the end of the month. Food was provided by the newly opened Buffalo Wild Wings, Forty Carrots, Mai Tai Bar, Bubba Gump Shrimp Co. and Rainbow Burrito. The prizes were amazing! [alamoanacenter.com](http://alamoanacenter.com).



**DISCOUNT HAWAII CAR RENTAL**  
**SAVE UP TO 50%**

 GUARANTEED RESERVATIONS  
 \* NO BOOKING FEES \* NO DEPOSIT \* CANCEL ANYTIME  
 \* NATIONAL RENTAL COMPANIES

call us today @  
 1.800.292.1930  
 or check us out online:  
[DiscountHawaiiCarRental.com](http://DiscountHawaiiCarRental.com)

**Wildlife Guaranteed**  
 See dolphins or turtles or come again free wildlife-specific cruises in Waikiki, West Oahu & Kona. Family-owned company with ocean activities for all ages.

 **WAIKIKI • WAIANAE • KONA**  
 Sail • Snorkel • Dolphins • Turtles • Whales • Scuba • Fireworks Dinner • Private Charter • Transportation

**234-SAIL**  
 (7245)  
 WE ANSWER 24 HOURS!  
[hawaiinautical.com](http://hawaiinautical.com)  Hawaii Nautical

# DECEMBER CALENDAR OF EVENTS

Continued from page 19.

## DECEMBER 13-16 • THE NUTCRACKER

Celebrate the Holidays with Ballet Hawaii's Nutcracker presented with a unique Hawaiian historical theme. Enjoy Tchaikovsky's classic ballet re-interpreted and set in the 1858 Kingdom of Hawaii. The performance was inspired after the team learned Mary Dominis held a Christmas Eve party for kids at Washington Place in 1858. At the party, Hawaii's first Christmas tree was lit with candles as Saint Nicholas passed out candies and gifts for all. The toy soldier uniforms are patterned after those of the Royal Guard and the famous waltz of the snowflakes takes place high upon the slopes of Mauna Kea. Performances at 7:30 p.m., 2:00 p.m. on Sunday. \$40-\$125. Blaisdell Concert Hall. [ballethawaii.org](http://ballethawaii.org).

## DECEMBER 14

### NA LEO'S HAWAII HOLIDAYS

Na Leo Pilimehana, the popular Hawaiian group that has won the most Hoku Awards of any Hawaiian music group, and will again present their holiday concert for fans to enjoy. Hawaii Theatre, \$30-\$75. 7:30 p.m. [hawaii-theatre.com](http://hawaii-theatre.com)

## DECEMBER 14-15

### MELE KALIKIMAKA MARKETPLACE

The 5th annual gift-show aims to be your one stop shop for all your holiday shopping needs. Offering everything from books, apparel, jewelry, pre-packaged gift baskets, gourmet gifts and year-end inventory specials from varied distributors while enjoying live entertainment. There will be also special Gingerbread Workshops you can participate in for an additional fee. Blaisdell Expo Hall. \$4 entry. Sat. 10 a.m. – 8 p.m., Sun. 10 a.m. – 5 p.m. [melekalikimakamarketplace.com](http://melekalikimakamarketplace.com).

## DECEMBER 15

### JINGLE ROCK RUN

The 7th annual fun run/walk through downtown Honolulu's City Lights is a benefit for Make A Wish Hawaii. Walkers, joggers, runners, strollers, pets and reindeer are welcome. 3 – 5 p.m. [hawaii.wish.org](http://hawaii.wish.org).

## DECEMBER 15

### ALII SUNDAY

Kawaiaha'o Church celebrates select Hawaiian Royalty (Alii) who are of particular importance for the Church by holding seven special Sunday services in their honor around their birthdays throughout the year. Today they celebrate Bernice Pauahi Bishop 9 a.m. [kawaiaha'o.org](http://kawaiaha'o.org).

## DECEMBER 16

### HOLIDAY BRASS QUINTET

The jovial mood continues on the Windward side with the Honolulu Brass Quintet's festive renditions of holiday favorites. \$30. Paliku Theatre. 7:30 p.m. [chambermusic-hawaii.org](http://chambermusic-hawaii.org).

## DECEMBER 19

### THE KINGSTON TRIO

Legendary folk icons The Kingston Trio, known for their signature-striped shirts, banjos, bongos, guitars and charismatic personalities, became one of the most outstanding singing and recording acts of their time. All three current members, have intrinsic links to and experience with the original group and are out on a national tour to mark the group's 60th anniversary

performing many of the Trio's best-loved songs. Hawaii Theatre. Tickets: \$39-\$150. 7:00 p.m. [hawaii-theatre.com](http://hawaii-theatre.com).

## DECEMBER 19-21

### MACY GRAY

Known for her unmistakable rasp and unshakable grasp on soul and funky spirit, Macy Gray has sold over 25 million albums worldwide. Two shows each night at 6:30 & 9 p.m. Blue Note Hawaii. Tickets: \$45 - \$65. [bluenotehawaii.com](http://bluenotehawaii.com).

## DECEMBER 20

### MERRY & BRIGHT II

Chamber Music Hawaii's Spring Wind Quintet returns to Doris Duke for a round of great holiday favorites – your favorite carols, stirring choruses from Handel's Messiah and some brand-new arrangements from J.S. Bach's Christmas Oratorio. \$30. Doris Duke Theatre. 7:30 p.m. [chambermusic-hawaii.org](http://chambermusic-hawaii.org).

## DECEMBER 20-21

### A JOHNNY MATHIS CHRISTMAS

Music legend Johnny Mathis returns to Honolulu for the second year in a row to perform his Greatest Hits & Christmas Classics with a 35-piece Orchestra including members of the Hawaii Symphony Orchestra and the Royal Hawaiian Band. Tickets: \$49.50 - \$199.50. 7:30 p.m. – 9:45 p.m. Blaisdell Concert Hall. [ticketmaster.com](http://ticketmaster.com).

## DECEMBER 20-22

### HAWAII HOLIDAY CRAFT & GIFT FAIR

Grab some last minute gifts at this annual three-day gift fair with hundreds of vendors to browse through. Open from 5 – 9 p.m. on Friday, 10 a.m. – 7 p.m. on Saturday and until 5 p.m. on Sunday. \$4 admission. Blaisdell Exhibition Hall. [hawaii-holiday-fair.com](http://hawaii-holiday-fair.com).

## DECEMBER 21

### BELLATOR HAWAII

Bellator MMA will feature women's undefeated flyweight champ Ilima-Lei Macfarlane as she defends her title against Kate Jackson after two preliminary fights. Tickets \$50 - \$100. Blaisdell Arena. 3:30-9:30 p.m. [ticketmaster.com](http://ticketmaster.com).

## DECEMBER 21

### IRA GLASS

Ira Glass is the host of This American Life, the iconic weekly public radio program with millions of listeners around the world. Under Glass's editorial direction, This American Life has won the highest honors for broadcasting and journalistic excellence, including six Peabody awards. Using audio clips, music, and video, Glass delivers a unique talk; sharing lessons from his life and career in storytelling. Hawaii Theatre. Tickets: \$55-\$85. 8:00 p.m. [hawaii-theatre.com](http://hawaii-theatre.com).

## DECEMBER 22, 23 & 25

### DIAMOND HEAD CLASSIC

This 11th annual college basketball tournament will consist of eight teams competing in twelve games over three days in a traditional bracket format. This year's teams include Ball State, Boise, Georgia Tech, Houston, Portland, UTEP, Washington, and UH. Tickets: \$10-\$30. Stan Sheriff Center. [diamondheadclassic.com](http://diamondheadclassic.com).

## DECEMBER 24 • HAWAII BOWL

Celebrating its 18th year, the Hawaii Bowl will pit

a team from Conference-USA against a team from the Mountain West. Aloha Stadium. 3 p.m. [thehawaiibowl.com](http://thehawaiibowl.com).

## DECEMBER 24 - 29

### RENT - 20TH ANNIVERSARY TOUR

The Broadway hit that forever changed the landscape of American theatre, RENT, is bringing its 20th Anniversary Tour to the Blaisdell Concert Hall. See the show at 2 p.m. on Xmas Eve, 7:30 p.m. on the 26th, 2 p.m. and 8 p.m. the 27th and 28th and 1 and 6:30 p.m. on the 29th. [BroadwayinHawaii.com](http://BroadwayinHawaii.com).

## DECEMBER 26-28

### HAWAII OPEN

The Hawaii Open is a three-day professional tennis tournament featuring top-ranked tennis players from the ATP and WTA tours, with six male and six female tennis players including Asia's No. 1 men's tennis player Kei Nishikori and three-time Grand Slam champion Angelique Kerber. Daily tournament tickets begin at \$25 and three-day passes start at \$148. Blaisdell Arena. [hawaii-tennis-open.com](http://hawaii-tennis-open.com).

## DECEMBER 27 • NEIL SEDAKA

The legendary singer, songwriter, composer, pianist and author has had an impressive sixty year career ranging from being one of the first teen pop sensations of the 50's, a tunesmith for himself and other artists in the 60's, an international superstar in the 70's, remaining a constant force in writing and performing presently. The countless songs he has written, performed, and produced continue to inspire artists and audiences around the world. Tickets: \$68-\$98. 8 p.m. [hawaii-theatre.com](http://hawaii-theatre.com).

## DECEMBER 27-28

### AN EVENING WITH RUFUS WAINWRIGHT

One of the great male vocalists, composers, and songwriters of his generation. Two shows each night at 6:30 & 9 p.m. Blue Note Hawaii. Tickets: \$45 - \$55. [bluenotehawaii.com](http://bluenotehawaii.com).

## DECEMBER 28

### TOM SEGURA

One of the top comedy theater acts in the country has been scoring big with his series of Netflix specials lately and continues to perform at the top comedy festivals in the world. See him yourself at the Hawaii Theatre. Tickets: \$50-\$150. 7:00 p.m. [hawaii-theatre.com](http://hawaii-theatre.com).

## DECEMBER 28 - 30

### IOLANI PALACE EVENING TOURS RECEPTION

In honor of Queen Kapiolani's birthday, Iolani Palace will offer its annual evening tours nightly through Saturday through Monday, December 28 through 30, 2019, from 5:30 to 9 p.m. each night. On Saturday, an opening reception will offer a VIP experience featuring food and cocktails in the Barracks, along with special performances by Hoku award-winning entertainers in various rooms of the Palace. \$150. [iolanipalace.org](http://iolanipalace.org).

## DECEMBER 29

### HOWIE MANDEL

The host of "Deal or No Deal" and judge on "America's Got Talent" well known for his OCD and DHD is bringing his award-winning brand of comedy to the Hawaii Theatre. Bring some Purell in case you get a chance to shake his hand! Tickets \$55-\$85. 8 p.m. [hawaii-theatre.com](http://hawaii-theatre.com).

# That's Entertainment

## HOTELS

- ALOHI LANI HOTEL** 922-1233  
 •Daily- Fish Feeding & Tank Talk, O Bar. 2:30pm  
 •Daily- Video Art Projection Series, Swell Bar. 7-10pm.
- HALE KOA HOTEL** 955-0555  
 •MThFS - Poolside music at the Barefoot Bar. 6-11pm
- HALEKULANI** 923-2311  
 •Daily-Hawaiian Music and hula at House Without A Key from 5:30-8:30pm.  
 •Daily-Live Contemporary Light Jazz at Lewers Lounge Sun - Thurs: 8:30pm to midnite, till 12:30 Fri - Sat  
 •Sun- Sunday brunch at Orchids features Noly Paa on the piano from 10am - 1:30pm.
- HILTON HAWAIIAN VILLAGE** 949-4321  
 •Fri- Fireworks revert to their regular time at 7:45 pm.  
 •FriSat - Jerry Santos/Olomana, Paradise Lounge 8-11p  
 •Daily - Live entertainment, Tapa Bar. 7:30-10:30pm.
- HYATT REGENCY WAIKIKI** 923-1234  
 •TuesThursSun Live music at SWIM 7:30-9:30pm  
 •TuesThurs Farmer's Market returns 4-8pm  
 •MonWedFri - Hawaiian Song and Dance, Pualeilani Atrium 4-8pm  
 •Mon-Fri - Culture Program at Ho'okela Culture Center, 2nd Floor.
- THE KAHALA HOTEL & RESORT** 739-8888  
 •TuWThFSat- David Swanson vocalizes on the piano at The Veranda from 7:30-11:30pm.  
 •SunMon- Ginny Tiu - Classical/Show Tunes on Sunday, Classical Hawaiian on Monda. The Veranda 6-9pm.
- MOANA SURFRIDER** 922-3111  
 •Daily-Hawaiian music & hula. The Banyan Court, 5:30-7:30 pm, and again from 8-10 p.m. Lunch guitarist from 12:30 - 2:30pm.  
 •MWFri-Guided historical tours at 11am.
- NEW OTANI KAIMANA BEACH** 923-1555  
 •FSat- Jazz guitarists in the Sunset Lanai Bar. 6-9pm.
- OUTRIGGER WAIKIKI BEACH RESORT** 923-0711  
 •Daily- Daily Cultural Program, front lobby. 11am.
- OUTRIGGER REEF WAIKIKI BEACH** 923-3111  
 •Daily- Cultural programs at Hale O No'eau. 9am.
- SHERATON PRINCESS KAIULANI** 922-5811  
 •Daily-Live Hawaiian music & halau at the lounge from 6-8:30pm, then poolside from 8:30-10:30pm.  
 •Th-Princess Kaiulani historical tour at 9:30am.
- THE ROYAL HAWAIIAN** 923-7311  
 •TTH- Free guided resort tour at 1pm.
- TURTLE BAY RESORT** 293-6000

- TThFri - Shell Hula Lessons, Lobby at 10am  
 •TThFri - Ukulele Lessons, Lobby at 9am  
 •Fri- Music & Hula. Lobby Lounge 6:30-8:30pm.
- WAIKIKI BEACH MARRIOTT RESORT** 922-6611  
 •Daily-Hawaiian entertainment in The Moana Terrace Bar. 6:30-9:30pm.  
 •Fri-Local crafters "Aloha Friday Fair" Lobby 9am-2pm

## MUSEUMS

- BISHOP MUSEUM** 847-3511  
 •Daily - Hawai'i's museum of natural and cultural history offers daily exhibits, garden tours, planetarium shows, interactive exhibits, workshops, events and more as you discover the history of Hawai'i. 9 - 5 daily.
- HAWAII STATE ART MUSEUM** 586-0900  
 •TWThFSu- English & Japanese Language Tours. Private tours also available. 10am-4pm. Regular admission.
- HONOLULU MUSEUM OF ART** 532-8726  
 •TWThFSu- English & Japanese Language Tours. Private tours also available. 10am-4pm. Regular admission.
- HONOLULU FIRE MUSEUM** 723-7167  
 •3rdSat- Free one-hour guided tours through various exhibits with a firefighter recounting HFDs history the 3rd Saturday: 9am - 2pm. Reservations required. 620 South Street. honolulu.gov/hfd/communityrelations
- IOLANI PALACE** 522-0832  
 •Mon-Sat-45 minutes docent-led or self-guided audio tours available in English or Japanese. Japanese-led tour is available only at 11:30 a.m. All tours include re-tour video and entrance into the Palace Galleries. Adults: \$14.75-\$21.75 / Keiki (5-12): \$6. 9am-5pm  
 •Sat-Hawaiian Quilt Classes. Old Archives 9:30a-12p.
- LUCORAL MUSEUM** 922-5381  
 •TTh- Learn how to plan your jewelry project and more in this beaded jewelry workshop \$10. 2-4pm
- HAWAIIAN MISSION HOUSES** 447-3910  
 •Tue-Sat-Learn about the story of cultural change in 19th-century Hawai'i. Docents lead tours through the oldest existing frame house in the Islands, Print Shop, and the Chamberlain House. missionhouses.org
- PACIFIC AVIATION MUSEUM** 441-1000  
 •Daily-Vintage aircraft in battlefield hangars at Pearl Harbor. Combat flight simulators. Aviator's Tour takes you through the new Restoration Hangar. Restaurant, Museum Store. Shuttle & Tickets at USS Arizona Memorial Visitor Center or at PacificAviationMuseum.org.
- NAVAL AIR MUSEUM BARBERS POINT** 682-3982  
 •Mon-Fri- This unique museum experience about aviation history in Hawaii is currently fighting an eviction notice over a lease dispute with the State and

temporarily closed while they figure it out. Call for updates. www.nambp.org.

## SHOPPING CENTERS

- ALA MOANA CENTERSTAGE** 955-9517  
 •Mon-Sat- Ala Moana Hula Show. Centerstage 1-1:20pm  
 •MWF- Hawaiian music *Mauka Wing* 2:30-3:30pm  
 •Sun - Keiki Hula Show. Centerstage 1-1:20pm
- INTERNATIONAL MARKET PLACE** 921-0536  
 •Daily - Ceremonial lighting of Lamaku Torch Tower just after sundown followed by a hula show.  
 •1st3rd Sun - Free Yoga class. 10-11am.  
 •1st Sun - Free cultural lei-making class. 12-3pm.  
 •2nd Sat - Free Yoga class. 9:30-10:30am.  
 •2nd Sun - Paint class 1:30-4:30pm.  
 •1st3rd Fri - Live painting demonstration. 3:30-4:30pm.
- ROYAL HAWAIIAN CENTER** 922-2299  
 •M- Keiki Hula lessons 3:30pm, *Royal Grove*  
 •MWF- Learn Lomilomi 11am-12pm, Bldg. B, 3rd floor  
 •MTF-Hula 10am (4pm on Wednesdays), *Royal Grove*  
 •TThSat- Rock-a-Hula Pre-Show 7pm, *Royal Grove*  
 •TWTh- Lauhala Weaving 1pm, Bldg B, 3rd floor  
 •TThF- Ukelele 12pm, *Helumoa Hale*  
 •TWThF- Live Hawaiian music 6-7pm, *Royal Grove*  
 •Sat- Hula Kahiko 6-6:30pm, *Royal Grove*  
 •Daily- Heritage Room/Cultural Videos *Helumoa Hale*
- WAIKIKI BEACH WALK** www.waikikibeachwalk.com  
 •Daily-The Ukulele Store offers free lessons at 10:30am & 4:30pm.  
 •Tues - Hawaiian Quilt Collection demonstrations, 2nd floor. 10:30am - 12:30pm  
 •Tues - Ku Ha'aheo Hula Show. Plaza Stage. 4:30-6pm  
 •WSat - Free Yoga Wed 4:30pm, Sat. 7:30am Plaza Stage  
 •Sat- Hoopdance Fitness Classes on the Lawn. 5pm

## ATTRACTIONS

- KALAKAUA AVENUE** 527-5666  
 •Fri - Strolling Hula from 8-10:00pm.
- KAPI'OLANI BANDSTAND** 527-5666  
 •Fri-Hawai'i's finest musicians perform. 5:30-6:30pm  
 •Sun-Royal Hawaiian Band performs 2-3:15pm.
- KUHI O BEACH HULA SHOW** 843-8002  
 •TThSat- Free hula show 6:30 - 7:30pm. Hula mound.
- TAMARIND PARK - DOWNTOWN** 527-5666  
 •Fri- Mayor's Aloha Friday Music from 12-1pm
- WAIKIKI TOWN CENTER** 922-2724  
 •Mon-Sat-The songs and dances of Hawai'i, New Zealand, & Tahiti. Free shows begin at 7pm.

ALL EVENTS ARE SUBJECT TO CHANGE ... PLEASE CALL TO CONFIRM PRIOR TO ATTENDING

## PAPARAZZI

### Hawaii Food & Wine Festival is a wrap



The 9th annual Hawaii Food & Wine Festival was home run - in part to the hard work of the lady above, Aya Leslie, the Festival's Director of Development & Marketing, shown here with Chef Will Chen. Congrats to the entire HFWF team for a fantastic job!

### Halepuna Waikiki by Halekulani opens



It's been a long time coming, but General Manager Julie Arigo led the charge throughout the entire 18-month transformation as the Waikiki Parc became the Halepuna Waikiki by Halekulani. Julie is pictured with Waikiki Beach Walk GM Conchita Malaquid

### Windborne Music sold out the Blaisdell, twice!



The guys from Windborne Music brought the Music of Queen back to the Blaisdell for two sold out shows. From L-R: George Cintron, Dan Clemens, Justin Avery, Powell Randolph, Brody Dolyniuk, and Brent Havens. Even Jack Johnson was there!

# conciierge card

December 31, 2019

**Bill's Sydney Waikiki** - 20% discount off food and beverage (not applicable on happy hour or other offers). Must show hotel ID to receive discount. 280 Beach Walk. 922-1500

**Dole Plantation** - 1 FREE Adult Admission to the Maze with purchase of 1 Adult Admission. 621-8408

**Giovanni Pastrami** - 15% off Full Bar, Dine-in or Take-Out at anytime with ID. 227 Lewers St. 923-2100.

**Hard Rock Cafe** - 15% off food, beverage (non-alcoholic), or merchandise. Hotel ID req'd. 280 Beachwalk Ave. 955-7383.

**Hawai'i Prince Golf Club** - \$5 off Standard Kamaaina Green Fees. Tee Times: 944-4567

**Hawaiian Mission Houses** - Free tour with hotel ID. 553 S. King Street. 447-3910

**Hy's Steakhouse** - 25% VIP Discount off Food and Beverage (up to 2 persons) 2440 Kuhio Ave. 922-5555

**Hyatt Regency Waikiki** - 15% discount by mentioning this offer and presenting your hotel ID at SHOR, The Buffet at Hyatt and SWIM. 2424 Kalakaua Ave. 923-1234.

**'Iolani Palace** - Free Admission. Regular rate \$21.75. 364 S. King Street, Reservations & Hotel ID required. 522-0832.

**IHOP** - Receive 20% on entire bill. Must show valid hotel ID. Not valid with any other offer or discount. Valid only at Aqua Palms, 949-4467 and OHANA Waikiki Malia, 921-2400.

**Il Lupino** - 15% discount off food and beverage (not applicable on liquor or specials). Must show hotel ID or business card to receive discount. Royal Hawaiian Center. 922-3400.

**Liko's Tap & Table** - 15% discount off food and beverage (not applicable on happy hour or other offers). Offer good up to

4 guests. Must show a valid hotel ID or business card. Hawaii Kai Shopping Center. 377 Keahole St. 394-5456

**Maui Divers Jewelry** - 35% discount off purchases made at the Design Center and 20% at all stores. Must show hotel ID to receive discount. 1520 Liona Street. 946-7979.

**Noi Thai** - 20% discount off food and beverage (not applicable on liquor, happy hour or specials). Must show hotel ID. Royal Hawaiian Center, Bldg. C. Level 3. 664-4039

**Pacific International Skydiving Center** - 50% discount on Jump, 68-760 Farrington Hwy., 637-7472.

**P.F. Chang's Waikiki** - Receive 20% on all appetizers, entrees, desserts and beverages 11 am - 5 pm daily (not valid for Pau Hana menu) Royal Hawaiian Center. Ph: 628-6760

**Romano's Macaroni Grill** - 10% off Food for up to 2 guests. (Not valid for Happy Hour). Ala Moana Center. 356-8300.

**Ruth's Chris Steak House** - 10% off Food for up to 2 guests. (Not valid for Happy Hour & Prime Time menus). Restaurant Row, 599-3860. Waikiki Beach Walk, 440-7910.

**Stripsteak Waikiki** - 20% off Food Only for up to 4 guests with hotel ID. Does not include alcohol & Happy Hour. 800-3094.

**The Original Glider Rides** - Experience the joy of soaring for yourself. Conciierge / GSA may receive a complimentary scenic ride. Request the "GSA flight special" when booking reservation. Hotel ID required. Dillingham Airfield. 637-0207

**Tiki's Grill & Bar** - FREE order of ANY appetizer with any purchase! One per table. OahuconPOKE. ASTON Waikiki Beach. 923-8454

**Willoughby's Restaurant** - 15% off all food items. Ohana Honolulu Airport Hotel. 3401 N. Nimitz Hwy. 836-0661.

**HELP us update this card. If you know of an offer not being honored let us know. As management changes, sometimes offers can get lost.**

You will be required to show Hotel ID or business card to claim offer. Do not cut this card out of the book. One special per person per business. Offers valid on regular-priced merchandise only. Discounts are available to Guest Service Professionals ONLY. Not valid with other promotions or special offers. A minimum 18% gratuity on original order required for all special food offers.

**NEW** = new offer

## Guest Service Agent of the Month



**NAME:** Mia Atsumi  
**HOTEL:** Royal Hawaiian Hotel  
**TITLE:** Guest Experience Coordinator

**Q. How long have you been with the Royal?**

**A.** 8 months and counting! Upon graduating college in the Fall, I began my job search and was thrilled to interview for such an iconic hotel as The Royal Hawaiian. I'm sure you could only imagine my reaction when I when I was chosen for the job!

**Q. Why did you choose the hospitality industry?**

**A.** I knew I wanted to help people, so for me that meant either hospitality or medical. Since medical requires a much more intensive school route... I decided hospitality was the way to go.

**Q. Describe a typical day?**

**A.** I begin by checking my emails. Since most of my interaction with guests is prior to their arrival, we communicate via email. I'm often called to the lobby to assist guests with small tasks such as making reservations or package inquiries.

**Q. What's the biggest challenge at the desk?**

**A.** Trying to satisfy every request. We really do try to accommodate as much as possible but in a high occupancy hotel, some people do not realize there are 100 other guests asking for the same thing.

**Q. What do you like most about this industry?**

**A.** I like being able to make people happy! We have lived in Hawaii for so long, sometimes we forget the magic of this place.

**Q. What's question do you hear the most?**

**A.** "Can I have an upgrade to ocean view?"

**Q. Favorite part of the job?**

**A.** Meeting people from all over the world and doing my best to make sure they enjoy their stay.

**Q. What off-site restaurant do you recommend?**

**A.** For fine-dining, I usually recommend 53 by the Sea. I had the opportunity to dine there and it was an amazing experience. Many people do not leave Waikiki, so I like to give them a reason to.

**Q. Is there a guest that sticks out?**

**A.** I recently worked with a couple that were the nicest, most genuine people I've ever met. The kind words they said to me made me want to cry. I recommended Mediterraneo to them on King St. (it's casual, but the food is amazing) and they liked it so much, they went back for their last dinner!

**Q. Most unusual request you've received?**

**A.** There was a potential guest who reached out asking if we carried a specific type of fleece blanket and if we could provide 6-7 of them in his room if he booked with us. He also provided pictures of the different blankets he had at home and a selfie of him cuddled up with all of his blankets. I advised him we did not carry that specific type, but he was more than welcome to bring his own blankets from home. Let's just say he never booked with us...

**Q. Is there one thing about you people would be surprised to know?**

**A.** I am racially half Japanese and half Jewish. Yes, I had a Bat Mitzvah but I am not a practicing Jew. I still celebrate Hanukkah though!

**Q. Any other stories you'd like to share?**

**A.** A few months ago, we had a guest try to call the police because he said the room didn't match the pictures online. I've heard of people complaining, but this seemed a bit extreme!



**DR. ALAN WU, M.D. & DR. TONY TRPKOVSKI, M.D.**

## DOCTORS OF WAIKIKI

STATE-OF-THE-ART MODERN AND NEWEST URGENT CARE IN WAIKIKI

PH: (808) 922-2112  
www.doctorsofwaikiki.com

**Services include:**

- Courtesy complimentary transportation. House/Hotel room calls.
- Diagnosis and treatment of illness and injury, including work-related injuries.
- Contracted pre-employment physicals.
- Drug screenings.
- Immunizations for adults.
- Complimentary validated parking.
- Ages of patients seen 2 yrs old - 100+.
- Pharmaceutical dispensary.

**Location:**

**Doctors of Waikiki**  
Sheraton Princess Kaiulani Hotel  
Ground Floor  
120 Kaiulani Avenue, #K1W10811  
Honolulu, HI 96815  
Office: (808) 922-2112  
Email: info@doctorsofwaikiki.com  
www.doctorsofwaikiki.com

**Hours of Operation:**  
8:00 am - 12:00 am (Open Daily)

**LARGEST MOST FULL STAFFED URGENT CARE IN WAIKIKI.**

**QUALIFIED AND EXPERIENCED (BILINGUAL) ENGLISH, JAPANESE, CHINESE & KOREAN SPEAKING CLIENT SERVICE REPRESENTATIVES.**

**IMMIGRATION MEDICAL EXAMINATIONS FOR ANYONE APPLYING FOR ADJUSTMENT OF STATUS OR FOR PERMANENT RESIDENCE IN THE UNITED STATES.**

**ALL MAJOR INSURANCE, TRAVEL INSURANCE, (UNIVERSAL HEALTH) ALL MAJOR CREDIT CARDS ACCEPTED.**

**NO APPOINTMENTS NEEDED.**

**WALK IN URGENT CARE.**

**HOUSE/HOTEL ROOM CALLS.**

**COURTESY COMPLIMENTARY TRANSPORTATION SERVICE BETWEEN WAIKIKI HOTELS TO/FROM URGENT CARE.**

**OPEN DAILY 8:00 AM - 12:00 MIDNIGHT**



The Oahu Concierge is printed monthly and direct mailed FREE to all Oahu Concierge, Hospitality & Activity Professionals.

Subscriptions available to non-industry at \$25 per year.

C O N T A C T

**Davis Media**

Ph: 596-4422

www.oahuconciierge.com

Twitter & Instagram: @OahuConciierge

Facebook: www.facebook.com/OahuConciierge

**ADDRESS & NAME CHANGES / ADDITIONS**

We do not take changes via telephone. All changes to mailing list **must be submitted in writing** by the 16th of the month to make the next issue, email is preferred.

S T A F F

**PUBLISHER & EDITOR Pam Davis**  
publisher@oahuconciierge.com

**CONTRIBUTING EDITORS**  
Lance Rae, Lynn Cook

**DESIGN**  
Coreiya Design

**The Oahu Concierge**  
4348 Waiialae Avenue, #185  
Honolulu, Hawaii 96816

PRSR STD  
U. S. Postage  
**PAID**  
Honolulu, HI  
Permit No. 583

## The Oahu Concierge's 20th Annual

# Conciierge of the Year Award!

Each of the deserving individuals pictured below were recognized this year as our Conciierge, Guest Service Agent, or Activity Agent of the month for their exlemporary service. Which one should be named our Conciierge of the Year? The outcome is up to you. Remember to nominate your choice for next year as well (may not be someone who has won before). Voting will be held online Check Facebook for updates. Only one vote per reader, and remember, usually one vote per machine. You may need to vote from your home computer if someone has already voted from your desktop at work. **Voting opens December 1<sup>st</sup> and closes at 3 p.m. December 11<sup>th</sup>, 2019. Vote online at [OahuConciierge.com](http://OahuConciierge.com).**



**January**  
**Sarah Oesterling**  
Trump Hotel Waikiki



**April**  
**Dean Shigaki**  
The Kahala Hotel & Resort



**July**  
**Kiana MacDonald**  
was Outrigger Reef now  
at the Waikiki Beachcomber



**October**  
**Julie Smith**  
Hilton Grand Vacations



**February**  
**Evan Isihara**  
Aulani, a Disney Resort



**May**  
**Jordyn Kilgore**  
The Surfjack Hotel & Swim Club



**August**  
**Mariam Beard**  
Expedia



**October**  
**Satomi Crabbe**  
Hyatt Regency Waikiki



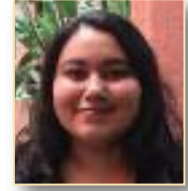
**March**  
**Hiromi Hendrix**  
Ko Olina Beach Club



**June**  
**Leinani Enguito**  
Elite Conciierge



**September**  
**Cindy Quiane**  
Embassy Suites



**December**  
**Mia Atsumi**  
Royal Hawaiian Hotel