

Concierge

KEEPING THE HOSPITALITY INDUSTRY INFORMED SINCE 1998

TROPICAL KALIKIMAKA

Great expanses of white, punctuated with glittering trees, stretch across Oahu. Visitors will be dazzled with Waikiki wonderland and beyond. True, the white is a sandy beach and the trees sparkle with lights, not ice. Take time to take a look and send your guests to see the Hawaiian holiday magic.

ICY DELIGHTS

Wax up the skis and head for Logan's Run down the slopes of Mt. Isabelle. Take a trip to winter via **SANTA'S GINGERBREAD VILLAGE**, through January 2nd, at the Sheraton Princess Kaiulani. Each year, Chef Ralf Bauer's edible winter wonderland takes 950 hours to create. Stretching 14.5 feet high and nearly 30 feet long, it fills the hotel's lobby. The village is made of 100 sheets of gingerbread, 320 gallons of icing, 150 pounds of dark chocolate, 50 pounds of white chocolate and a year of Chef Ralf's creative thinking.



The Gingerbread Village at the Sheraton Princess Kaiulani is one of the season's highlights each year.

Beyond a simple gingerbread house, the display started with a quaint mountainside village, much like the village of his native Germany, populated with churches, bell towers, a train station, skating rink, carousel, and Swiss chalet and gondolas to the top of ski runs in the Alps. Each year Chef Ralf's imagination wandered to new wonders and he wondered what Honolulu would look like in real winter.

Taking more and more of the lobby space, his village grew with the addition of Hawaii's iconic historic landmarks, Kawaihau Church, the Moana Surfride, Aloha Tower, and Iolani Palace; built with the exact number of iconic columns that stand in the real palace on King Street in downtown Honolulu.

New this year, the Washington Monument from Washington D.C., the Eiffel Tower from France, the Tower Bridge from London, and a Japanese pagoda. Last year a couple, visiting from Australia, chatted with chef while he was frosting. They asked, "where is a structure from our part of the world." Hopefully they will return to be dazzled by the Sydney Opera House crafted with chocolate and gingerbread.

SURFING SANTA

The jolly fellow with the white beard must look forward to his arrival in Waikiki as much as visiting keiki. Outrigger Waikiki on the Beach welcomes Santa in his outrigger canoe at 9 a.m. on December 14th – plenty early for the jolly fellow to get a tan before his world-wide sleigh ride. Halau O Pua Kahele's keiki dancers will welcome Santa, followed by a meet and greet and free photo op, open to everyone, in the hotel's lobby.

STOP N SHOP

MELE TREES OF LIGHT crown the newly re-opened Center Stage at Ala Moana Center. The trees provide a magic show of light accompaniment while onlookers sing at the top of their voices to a variety of songs, followed by a snowfall finale over Center Court. Beginning at 6 p.m. singers can join in six 10-minute shows each evening.

PHOTOS WITH SANTA, on the street level across from Center Stage, are available every day. On Monday from 6 to 9 p.m. cats and dogs can bring their owners down for a Santa pic. On Tuesday evenings Santa will welcome pajama wearing folks, more likely the kids, to pose for photos in their pajamas. Unwrapped toys for the Toys for Tots collection box are encouraged.

The newly renovated center stage will once again be home to daily performances of their Holiday Show, concert bands, visiting dance ensembles, hula presentations, beauty pageant shows, singers, fashion shows and the Ala Moana Keiki Hula Show. Updated schedules of events are available online at alamoanacenter.com/events.

COUNTRY CHRISTMAS

The Polynesian Cultural Center's **CHRISTMAS LAGOON: THE LIGHT WITHIN**, is a scenic canoe ride through the meandering freshwater lagoon. The annual holiday experience includes musical performances, elaborate lighting displays, and random acts of singing as the canoe cruises round

Continues on page 3.

Honolulu Lights Up



Honolulu Hale lights up like a postcard through the holidays. Photos credit city photographers Robert Rock & Ron Slauson.

On Saturday, December 7th as the sunset fades and the sky darkens, the city of Honolulu flips a switch, or many switches, and turns the center of downtown into a holiday wonderland of lights. At the center of the gala display directly in front of Honolulu Hale, City Hall, is the 50-foot tall Christmas tree. A dozen lighted displays cover the park-like lawn to one side. Shaka Santa and the lovely Tutu Mele, relax on the edge of the pond where their penguin pals frolic in the water. All reality is suspended and the magic of the holidays brings out the child in everyone. The opening ceremony begins at 6 p.m. and the lights go on about 6:30.

The opening night celebration at Honolulu Hale kicks off a month-long holiday display of trees, a wreath competition and an exhibition of trees inside Honolulu Hale decorated by city departments. Various city departments compete for the "best tree" status. Centered in this magical forest, Santa Clause sits in a Gingerbread House,

Continues on page 2.

TABLE OF CONTENTS

Yada Yada Yada	2
Newsflash	3
Arts with Aloha	4
Aunt Lynn's Adventures	6
Ring in the New Year	7
The Gift of Words & Music	8
Chef's Corner: Japengo's Chef Jon Matsubara ..	9
E Pili Kakou	10-13
Calendar	14-15, 17
Hiker's Corner	16
Paparazzi: Ala Moana Holiday Party	17
That's Entertainment	18
GSA of the Month: Angeli Furutani	19

WOLFGANG'S
STEAKHOUSE

HAPPY HOLIDAYS!
Royal Hawaiian Center, Bldg C, Level 3
wolfgangsteakhouse.net • opentable.com
808.922.3600

Publisher's Letter



Happy Holidays

I think I'm trying to make up for lost time, trying to squeeze in every last moment of 2103. Shocking I know, but somehow it feels like this year has flown by - yet it feels as if I haven't accomplished much. Paddling season took a huge chunk of time this year. More so than normal, or so it felt. I had to postpone several of my regular get-a-ways. Immediately after the channel I took off for 10 days to the mainland and Canada and then returned to having 22 days to pack up everything I owned (which boy was it a lot) sell or give away half of it, find a place to move to and then actually move. I feel like anything after late August was a wash. I'm normally on the leading edge of what's happening around town, but I missed some big ones there for a few weeks. It just got to be too much trying to keep up with my own reality. Trying to keep up with the work reality as well somewhat failed. However, paddling season is over, the move is finished, and all my things are gone - so suddenly I'm trying to make up for lost time. Doing pretty well at it too. Somehow finagled tickets to Matchbox 20 at the last moment and ended up backstage with the band and even taking a few to Sorabol. Then headed off to Maui to check out the new Hyatt property, the Andaz in Wailea. I forgot how beautiful it is over there. Checked out the new Morimoto Maui that's part of that hotel. Completely different than the one we have over here. Far more intimate and a much different atmosphere, but the food is just as fabulous. There's a few new menu items over there as well. I may have only been a 20-minute plane ride away but it sure felt like I was on vacation. Now it's time to finish the magazine, and head back to the mainland for the holidays before returning to prepare for the big Concierge of the Year event and the sheer madness that is December on Oahu.

Be sure to mark your calendars for December 17th as we'll be hosting our 14th annual Mahalo Party and the announcement of your choice for Concierge of the Year at Jimmy Buffet's at the Beachcomber. They have a new management team, a new chef and a new menu and they are super excited to be bringing you all back in to experience. I hope you can make it.

Please remember to be on your best behavior however. I was disappointed by some bad manners at the Ala Moana Holiday party the other day. I didn't think I still had to Mother Hen everyone and remind them to tip at these things anymore, but a large majority of the people did not bother to do so the other night. I also witnessed some rather demanding, entitled behavior that I was saddened to see. When these invites come past, we should all feel fortunate we are able to experience these places, restaurants and their menus as part of our jobs. Let's not forget that and demand special service over and above what they have already been so generous as to provide. I was ashamed to see how one person was acting the other day and her co-workers really didn't stop her. One person's bad behavior can absolutely ruin it all for the rest of us, so please let's work together, be gracious and appreciative for what we have and bring 2013 to a very positive productive close. Happy Holidays everyone!



Yada Yada



Ryan Loo

The Moana Surfrider has named **Ryan Loo** as its executive chef. He will oversee culinary creativity and operations for the 793-room resort's banquets and catering services, and all restaurants including Beachhouse at the Moana Beach Bar, Surfrider Café, The Veranda, and BIN1901. Loo has been with Starwood Hotels & Resorts since 1999 when he started at the Royal Hawaiian and most notably was the executive chef for Sheraton Waikiki's former Twist at Hanohano where he won the Silver Award for Best New Restaurant in Honolulu Magazine's 2010 Hale 'Aina Awards • The *Sheraton Princess Kaiulani* has added **Ricky Domingo** to their concierge team. He most recently was at Kintetsu. • Also new to the industry is **Kana Hashimoto**. Kana recently joined the concierge desk at the *Hawaii Prince Hotel*. •

Ryan Majewski, formerly part of the Hilton Waikiki Beach team has joined the PBX departmental the *Waikiki Beach Marriott Resort*. • It may not be a hotel per se, but the *Ala Moana Center Customer Service Center* is busy helping guests at their desk as well and have recently added **Katherine Prestoza** and **Michele Hall** to their guest services team. • Over at the *Outrigger Waikiki*, **Sophia Chen** and **Lazar Bogdanovski** have joined the guest services department and **Lily Tran**, has transferred over from the *Outrigger Luana* as Guest Services Manager. • **Executive Chef Yoichi Saito** has recently joined *Park Restaurant* from his own restaurant in Greenwich, CT where he was known for presenting French Asian Fusion cuisine. Although I have yet to get back there to try his cuisine, his old restaurant reviews from Connecticut use the words, "brilliant," "genius," and offered an "adventurous and memorable dining experience." It'll be interesting to see what he does at Park.

HONOLULU LIGHTS UP Continued from page 1

decorated by the folks at Kraft Foods. Santa is ready to hear every child's gift wish as they pose together for a few thousand photos. The tree, the lights and the displays are lighted each evening at sunset and stay on until dawn, through the end of December. (The exhibits come down on January 2nd.) The inside exhibits are open from 8 a.m. daily to 11 p.m.

The Mountain Apple recording stars, the Brothers Cazimero, will sing three songs, light the tree and then wave to let the parade will begin – the Public Workers Electric Light Parade that is – followed by a star-studded concert on the SkyGate Stage, at 7:30, on the Frank F. Fasi Civic Center grounds. Food booths dot the landscape. Low backrests and mats are welcomed on the lawn.

The parade is a don't-miss. The city departments of fire, police, maintenance trucks, buses, emergency and other vehicles are always out to outdo one another with thousands of lights and festive decorations on their city vehicles. Corporate sponsor floats and vehicles and marching bands punctuate the parade that begins at River Street and moves all the way up King Street to City Hall. One example of Christmas magic, and decorating talent, is the fire department's ladder truck turned into a smoke and fire-breathing magic dragon.

Starting at River Street, the parade can be enjoyed along King Street, all the way through Chinatown, past the gloriously lighted Tamarind Park on the corner of King and Bishop Street, and from the lawn of Iolani Palace and the Hawaii State



Crowds line the street for the parade on December 7th. Over 75,000 guests have showed up for past Honolulu City Lights parades. Credit: Ron Slauson

Library. The Palace lighting is soft and subtle, mirroring the lights and the electric power of a hundred years ago. A small factoid, the Palace had electric power before the White House in Washington D.C.

The opening tree lighting ceremony, parade and

concert will be broadcast live from 6 to 10 p.m. on Oceanic cable Olole. For visitors who might not have arrived, and for residents who were unable to attend, the broadcast is repeated during the month of December.

Event parking is at the Fasi Municipal Building Parking at the corner of Beretania and Alapai Streets. This lot fills quickly on opening night. If you wish to see only the parade on opening night, there are parking lots and restaurants in the Chinatown area. However, it is best to park before the street closures take place for the parade and traffic becomes heavy. After the parade, the concert and the tree and wreath displays offer plenty to enjoy while the traffic clears and the streets reopen.

Honolulu City Lights is created for everyone to enjoy by the City and County of Honolulu and the Friends of Honolulu City Lights. Visit the Friends of Honolulu City Lights website to purchase the official Honolulu City Lights ornament.

The Waikiki Trolley Holiday Lights Tour runs from December 8th to 30th between T Galleries, (formerly known as DFS Galleries) and Honolulu Hale, between 7p.m. and 9 p.m. Adult fare is \$25, children 4 to 11 years, \$16 and lap children 3 and under are free. Reservations are required.

~ Lynn Cook

EXTRA Newsflash EXTRA

HYATT LAUNCHES FARMERS MARKET

Hyatt Regency Waikiki has launched a Farmer's Market every Thursday from 4 – 8 p.m. at the Pualeilani Atrium Shops. Located on the ground floor, the market will feature fresh local fruits, jams, honeys and baked goods for sale. Executive Chef Sven Ullrich is committed to sourcing local produce and supporting local farms, so providing healthy, fresh, organic alternatives to guests and shoppers was a perfect fit. Following their farm to table philosophy, they have just installed a beehive on the third floor terrace. 6000 bees were brought in last month. By the time you read this, there should be 12,000, and they should be selling honey made on property within the year. waikiki.hyatt.com

GUARD GETS IN FREE

If you're with the National Guard it's your turn to check out Pearl Harbor Historic Sites for free. The Park will waive the admission of all active duty and retired National Guard personnel and their families into the Battleship Missouri Memorial, Pacific Aviation Museum Pearl Harbor, and the USS Bowfin Submarine Museum and Park on December 14th and 15th. Just present a valid military ID at the ticket booth to redeem. PearlHarborHistoricSites.org.

TROPICAL KALIKIMAKA

continued from page 1.



a bend and glides along the waterway between cultural villages. Guests can also enjoy holiday-inspired foods, arts and crafts exhibits and entertainment by choirs and bands. Reservations: Polynesia.com.

On December 7th, from 8 to 10 a.m., Kualoa Ranch will serve up **BREAKFAST WITH SANTA**. St. Nick himself will join the crowd for a full country breakfast, Christmas crafts, games, music, a 20-minute trolley ride through the ranch and photos, with Santa and Chocolate the Shetland Pony. The rest of the season the ranch will provide its usual cool, green, winter-ish escape from the city.

To top off the season, Ballet Hawaii has invited a crowd of New York and Australia ballet stars to present **THE NUTCRACKER** on December 20, 21, and 22 at Honolulu's Blaisdell Concert Hall. The music will be performed by the Honolulu Symphony Orchestra. Fantasy with sugarplum fairies and snow is a fine way to dance toward a Mele Kalikimaka.

~ Lynn Cook

ISLAND OLIVE OIL

A few weeks ago, I was in Canada and found an amazing olive oil store. After spending a delightful half hour tasting oil after delicious flavored oil, I purchased several bottles, bubble-wrapped them up and hauled them all the way back to Honolulu. Imagine my surprise when I received an invitation to the opening of Island Olive Oil at Royal Hawaiian Center. I went down there and discovered the same concept. Fabulous flavor-infused olive oils and balsamic vinegars utilizing premium extra virgin olive oils. Then I discovered this was their 2nd location, the first being in Ward Centre. Not sure how I missed this one in the first place but thrilled to know there is a location for quality flavored oils, vinegars, sauces, jams, salts and other gourmet products. islandoliveoil.com

DRIVE SAFELY

Tis the season and sometimes the festivities can sneak up on you. Don't take a chance. Call TheCab at 422-2222 if you need a ride home. Got your car? Call Designated Drivers Hawaii at 247-0384 and they drive you and your car home or leave your car at home and Uber it. Download the app at uber.com and type in the promo code 'oahuconcerge' for a \$20 credit in your account so your first ride's on us. Let's all stay safe this season.

SAVE THE DATE!

It's time for the 14th Annual Mahalo Party

Tuesday, December 17th 5:30 - 7:30 p.m.

You know the drill... get your votes for Concierge of the Year in by December 13th and start collecting those food cans.

We'll give you the rest of the details on December 3rd.

Our goal is to reach 1,000 pounds of food to donate to the Hawaii Food Bank. This year I know we can do it!

See you at.....



Your family flies free.

1 YEAR FREE FAMILY & FRIENDS PASS. FOR CONCIERGES ONLY. OFFER ENDS 12/30/2013.

Prepare yourself for when the relatives come to town. Get 1 year free admission for 2 adults, up to 4 children, plus 4 guest passes to what TripAdvisor® calls "One of America's Top 10 Aviation Attractions."

To get your Free Family & Friends pass, contact Neil at 441-1009 or neil@PacificAviationMuseum.org



www.PacificAviationMuseum.org
Open 9am to 5pm daily.



EVERY GIFT IN ONE PLACE

GIFT WITH PURCHASE

Limited-edition Big Santa
Bobble with \$500 or more in
Ala Moana Center receipts.

While supplies last. Other restrictions may apply.



PHOTOS WITH SANTA

Now through December 24
Opens at 10am daily.
Photo packages available
for purchase.



SHOP UNTIL 10PM
STARTING
DECEMBER 7



ALAMOANA

HAWAII'S CENTER

AlaMoanaCenter.com • 808-955-9517



arts with aloha



Even though the winter season in Honolulu is not dusted with snowflakes, our local theatres and museums do their best in making your guests get into the holiday spirit. From the adventures of one of Santa Claus'

workers to a little girl who falls in love with a prince in the land of the Sugar Plum Fairy and finally the birthday of a Hawaiian Queen, December is filled with lots of festive joy to keep your guests in the best of holiday spirits.

Our favorite Christmas films are always a guarantee to get us into the holiday spirits. Most of your guests probably watch *It's A Wonderful Life*, *A Christmas Story* and maybe even *Home Alone* on a regular basis each year. Another film that I am sure they are familiar with is *ELF*, the 2003 American holiday comedy starring Will Ferrell as the uber tall Santa's elf named Buddy who learns of his true identity as a human and goes to New York City to meet his biological father, and on the way spread Christmas cheer and joy to everyone he meets, even if they don't want it.

The musical version of this film, entitled *ELF – THE MUSICAL*, which debuted on Broadway in 2010, makes its Hawai'i at **DIAMOND HEAD THEATRE**. The musical comedy runs from Friday, December 6 to Sunday, December 29. Show times are Thursdays through Saturdays at 8 p.m., Saturday matinee at 3 p.m., Sunday matinee at 4 p.m. There are some differences between the stage version and the film. The musical is narrated by Santa Claus instead of Papa Elf and there is a new subplot regarding Buddy's real little brother who doesn't believe in Santa Claus. To order tickets please contact the theatre's box office at 733-0274 or order online at www.diamondheadtheatre.com.

Regardless of where you grow up in the world, it wouldn't be Christmas without a visit to the *Nutcracker* each holiday, and Hawai'i's very own **BALLET HAWAII** turns that magical ballet into a grand experience for both adults and children. This year the newly formed Hawai'i Symphony Orchestra joins in for three performances with dancers from New York City Ballet and Carolina Ballet plus Australian ballet superstar Steven Heathcote. Supporting roles will be danced by stars of the USA Network's series *Suits* to include Rick Hoffman, who plays attorney Louis Litt and local girl Amanda Schull, who plays fifth year associate Katrina Bennett. Amanda danced with the San Francisco Ballet for many years and starred in the film *Center Stage*. In addition to all the talent on stage, your guests will be the first audiences to welcome the **HAWAII SYMPHONY ORCHESTRA** as they perform Tchaikovsky's score conducted by Maestra Ann Krinitsky along with the angelic voices of the Hawai'i Youth Opera Chorus. Performance dates are Friday, December 20 at 7:30 p.m., Saturday, December 21 at 7:30 p.m. and Sunday, December 22 at 2 p.m. Tickets are on sale by phone at 800-745-3000, at the Blaisdell Box Office or online at ticketmaster.com. Joining these international stars of dance on-stage are more than 185 young and aspiring dancers from across Hawai'i, so your guest will get to experience the best of the up and coming dancers from Hawai'i as

well as the best dancers from around the world.

Her husband the King was the first reigning monarch to travel around the world. His name was King Kalakaua and he built **IOLANI PALACE** in 1882 to enhance the prestige of Hawai'i overseas and to mark Hawai'i status as a modern nation. She, of course, was Queen Kapi'olani, who established the Kapi'olani Maternity Home which today is known as Kapi'olani Medical Center. Did you know she traveled to London in 1887 to attend Queen Victoria's 50th Jubilee? Did you also know that Queen Kapi'olani refused to speak anything but Hawaiian and she always traveled with an interpreter? Another thing that you may not know is that 'Iolani Palace celebrates her birthday each year with a night of special evening tours. In preparation for the event, the Palace grounds are decorated with lanterns harking back to the time of Hawai'i's monarchy. On Friday, December 27th, evening tours of the Palace will be offered to commemorate the birthday of Her Majesty Queen Kapi'olani on December 31st.

This is a rare opportunity for visitors to step back in time and experience the Palace as it was during the 19th century. Under the glow of golden electric light bulbs the staterooms will glimmer with holiday flowers. Soloists from the Mae Z. Orvis Opera Studio of the Hawai'i Opera Theatre will perform in the Blue Room and period dance performances will be conducted in the Throne Room to create a sense of what court celebrations may have been during the height of the Hawaiian monarchy. In addition a reproduction of the Queen's famous Peacock Gown will be put on display. The original gown was created for the Queen's visit to London for Queen Victoria's Golden Jubilee.

Visitors will be able to wander through the Palace Galleries to view some of the treasures of the Hawaiian Kingdom which include monarchy jewelry once worn by Queen Kapi'olani and Queen Lili'uokalani, in addition to other rare artifacts from Hawai'i's monarchy period. The tours run from 5:30 p.m. to 9:30 p.m. which the last ticket sold at 9:30 p.m. Tickets are \$12 for adults and \$6 for children 5 to 12. Children under 5 years of age are free but limited to the basement galleries only. All children must be accompanied by a paying adult. The Palace doors open at 5:30 p.m. No reservations are taken for these tours. Guests will be accommodated on a first-come first-served basis. Members of The Friends of 'Iolani Palace will have a priority line. Please note that regular daytime tours will end at 3 p.m. that day to prepare for the evening tours. For more information, please call 'Iolani Palace at 522-0822 or visit the website at www.iolanipalace.org

Aside from all the above mentioned holidays events, please encourage your guests to visit other popular cultural destinations such as the **HONOLULU MUSEUM OF ART** which if you haven't seen the Hawai'i inspired works of Georgia O'Keeffe and Ansel Adams, it closes January 12th; **BISHOP MUSEUM**, which recently reopened its Pacific Hall; and the **MISSION HOUSES MUSEUM** to learn more about this history of the missionaries and what they did to preserve the Hawaiian language.

~ Lance Rae

*Polynesia by day. Winter wonderland
by night.*

DECEMBER
13TH-23RD



*Christmas
Lagoon*

*Have your
guests explore our island
villages during the day, then enjoy our
Christmas Lagoon at night. They can take a festive
canoe ride and experience the heart-warming story of
"Christmas Around the World." For more information,
see your PCC representative.*

**Canoe Rides Start
at 6:45 pm
(box office closes at 8pm)**

Plus enjoy:

- Concert choir & halau performances
- Holiday arts & crafts and seasonal treats
- Special train rides for keiki
- Picture taking with Santa

293-3333 | polynesia.com

Celebrating
Fifty Years
50
Polynesian
CULTURAL CENTER

A BREAK THAT'S SERVED
SIZZLING
IS THE PERFECT
GIFT



Purchase a \$100 Gift Card now through December 31, 2013,
and receive a \$30.00 Gift Voucher*

RUTH'S CHRIS STEAK HOUSE

Book your private holiday event now.
Our private event spaces will accommodate all your needs.
To enjoy a holiday experience you'll never forget.

Reservations: King, Waikiki | 808-559-2000 | 1500 Ala Moana Boulevard
Honolulu, Hawaii 96813
Pearl and Regent, Waikiki | 808-942-1500 | 225 Ala Moana Blvd
The Shops at Ala Moana, City Center | 808-942-8800 | 1515 Ala Moana Blvd, Suite 100
Waikiki Center, Waikiki | 808-942-8813 | 1500 Ala Moana Blvd
New Street, Ala Moana Center | 808-942-8800 | 1515 Ala Moana Blvd, Suite 100

www.ruthschrissteakhouse.com



Auntie Lynn's Adventures X



Ladies and gentlemen, start your engines. Shopping anyone? Tallying up answers to that question leads me to report ideas, must-haves and wish-list answers gathered as I wore my investigative reporter hat.

The very first stop should be Tolani Sportswear's Boutique at 1234 Kona Street by Ala Moana Center, (fun address, yeah? 1234?). What you may not know is that by day Wayne Harada is a *Honolulu Star-Advertiser* show-biz columnist and blogger. By night, and any time he isn't writing, he is creating cards, Christmas decor, pins, and table decorations from paper and tiny trees and treasures. On my desk, year round, is a Christmas tree decorated in tiny, folded paper Aloha shirts. His folded note cards have lei motifs for shirts and muu muu have Puakenikeni, carnation, Christina orchid, pakalana, Spam musubi, sushi and other local kine stuffs. Garins, give one of his cards and you will see it in a picture frame next time you visit the receiver.

THINK TALL – Next stop, the Honolulu Museum of Art School at Linekona, at Victoria and Beretania streets. All year art, great and small, is created here. On sale through December 8th, student and faculty art in metal work, ceramics, glass fusion, weaving and painting. The sale is open daily from 10 a.m. to 6 p.m. and open on the way to the December 7th Honolulu City Lights where the Brothers Cazimero sing to light the tree.

At City Lights, Santa photos come in all sizes, from the giant Shaka Santa, barefoot and holding court in front of Honolulu Hale to the right-sized Santa inside. December 14th and 21st Kraft Foods is sponsoring Santa's elves as they take keiki photos for free, adding in a master balloon making artist and servings of free Capri Sun and Gevalia coffee.

TOWN BOUND – Time to stop again at the Louis Pohl Gallery on your way to go see the Cazimero Christmas Concert at Hawaii Theatre. Remember how much fun it was when Helen Nakano recreated Hanafuda cards last year? Her free classes spilled out of the gallery onto Bethel Street. This year she is back with Hanafuda - Hawaii Style featuring cards in size XL. The set is \$12 and the fun is priceless.

Through December 24th the gallery is filled with the paintings of Charlie Dickson and the wood, metal and stone sculpture of Bob Freitas, two internationally respected artists. The show, "Deciphering the Creative Act," is a window into the magic moment when an artist's creative energy becomes focused and they know when to stop the tool from grinding more or when the painter puts down the brush. "Vital," they say to achieving the desired result.

THINK SMALL – Two of the city's most exciting and affordable December art events make shopping and collecting so easy. The Matchbox Plus IX show at Cedar Street Galleries, on Cedar



Loreen Matsushima's *For The Love of the Sea*, Cedar Street Gallery Matchbox Plus miniature show

Street just off King Street, and the MMM XIV show at the Koa Art Gallery on the campus of Kapiolani

Community College offer hundreds of tiny masterpieces by artists renowned both in Hawaii and in galleries across oceans. The works are 2D and 3D. The shows include the work of dozens of artists such as Satoru Abe, Mark Brown, Chuck Davis, Mapuana Schneider, Noe Tanigawa, George Wollard, Debbie Young and Loreen Matsushima to name a few. Commenting on the concept of small fine art, Matsushima compares the work to Persian miniatures, "little gems, richly painted or sculpted with amazing details, commanding you to pause and get close to a work to examine it carefully."

TIME WARP – Start the gift exchange early with a bit of psychedelic cowboy music, possibly gift wrapped in a bandana. Add tickets for yourself. The new Riders of the Purple Sage will be at Crossroads at Hawaiian Brian's on December 14th. From 1971 they toured for eleven years and sold over 4 million records. Music history buffs remember that NRPS was a spin-off from the Grateful Dead with Jerry Garcia as the lead. Amazingly, they were often considered a warm up act. Buddy Cage replaced Garcia and the sound is still the same. *Personal note, Les Lazar is bringing in some fun music folks. Recently I went to hear one of my faves, Leon Russell, at Hawaiian Brian's. The place is remodeled, has plenty of parking and the feel of bars "back in the day" when the musicians were up close and personal, not far away in a giant arena. Kinda fun.*

Collectors James and Cheryle Pierce bought their first photograph in 1978. It was Ansel Adams' Moonrise. Thirty-five years later the two photo fans have assembled an enormous collection of photographs giving a view of the art form rarely seen in such a complete manner. The show, divided in four parts, running through June 2014, is drawing national attention for the Honolulu Museum of Art. Critters! Animal Pictures, runs through March 2, 2014. This is an excellent opportunity to give yourself and your family one more visit to the Museum to see the once-in-a-lifetime Georgia O'Keeffe and Ansel Adams in Hawaii exhibition. What? You haven't been. Well, that settles it. See you there!

**BUONE FESTE-
HAPPY HOLIDAYS!**

**ROMANO'S
Macaroni
GRILL.**

YOUR MACARONI GRILL GIFT CARD
COMES WITH A PRESENT FOR YOU TOO!

For each \$25 Gift Card purchased
now through December 31,
receive a \$5 Grazie Gift Certificate.



Ala Moana Center
Waikiki Terrace
808-556-8800

Queen's MarketPlace
Molokai Beach Square
808-443-5515

OPEN DAILY 11AM - 10PM
LUNCH SPECIALS FROM \$11
HAPPY HOUR
DAILY FROM 3PM - 5PM

www.macrgrill.com



brought to you by
The Waikiki Aquarium
open daily from 9 am - 4:30 pm

ALERT!
December 25-27
Box Jellyfish Window

Teaching Hawaii about jellyfish and other ocean creatures for over a century



Ring in the New Year!

We know you're already being asked what the New Year's Eve options are, so we've done our best to try find out some early info for you. As always, not all the details are finalized and many events haven't been announced yet, but this should give you a head start!

The Great Modern Experience NYE 2014

Ring in the New Year at The Modern Honolulu featuring multiple designated party areas and a great view of the fireworks at midnight. Hosted by Blaise & Flash. Tickets available online at flavorus.com/event/Modern-Experience-NYE-2014/205177. (Cost \$50 - \$5k and everything in between). *Note: New Years Day Beach Party at Addiction Beach Club to follow the following day.*

4th annual Kaka'ako NYE Party of the Year

Kaka'ako Waterfront Park offers something for all age groups starting at 6 p.m. There will be a Eat The Street, live entertainment, DJs, a beer garden, the LED-adorned EK Fernandez ferris wheel, VIP sections and multiple firework shows every hour until the grand finale show ushers in the new year at midnight. Visit nyehawaii.com.

NYE Lux at the Trump Casino Royale

The black-tie version of this popular event brings DJs, champagne, casino, and a variety of VIP packages from \$100-\$1200. 8:30 p.m. - 1:30 a.m. Tickets at NewYearsEveHawaiiLUX.EventBrite.com.

NYE at the Hyatt

The Hyatt will be offering set menus from Japengo (\$135) and SHOR (\$85) and a Poolside Dinner Buffet at SWIM (\$65). For the complete menus log onto waikiki.hyatt.com or call 237-6395.

Star of Honolulu NYE Cruises

Celebrate New Years Eve aboard the Star of Honolulu enjoying amazing views of the fireworks, dinner, live entertainment and dancing. Departs Pier 8 at 10:15 p.m., returns at 12:30 a.m. Three packages available from \$75-\$240. Call 983-STAR (7827) or visit starofhonolulu.com.

Morimoto's NYE Omakase Dinner

Morimoto Waikiki will be offering 3-course (\$80), 4-course (\$95), 5-course (\$115) or 7-course (\$120) Omakase Chef's Tasting Menu for the holidays. Book now if you want one of the tables on the outside lanai to see the fireworks. 943-5913. *Note: These same menus will be offered Christmas Eve.*

Bill Maher NYE Concert

It's the 3rd annual Aloha Tour. Let the 'equal opportunity offender' start your NYE off hilariously. Tickets: \$45-\$150. Blaisdell Concert Hall. 8 p.m. rpbconcerts.com.

Speakeasy 2014 NYE

The Sheraton Waikiki hosts a huge 1920s Great Gatsby inspired event. RumFire will transform into a Seedy Prohibition Speakeasy while The Edge of Waikiki will embody the Glitz and Glamour of the Roaring 20s. The Leahi Lounge upstairs will be an Exclusive VIP Area. 8 p.m. - 2 a.m. Tickets: \$20 - \$500. honoluluboxoffice.com. *Note: Sheraton is happy to extend one comp ticket to all concierge as a big mahalo. Email Audrey.noyes@sheraton.com before 12/23 to get on the list.*



Hawaii's Most Popular
WHALE WATCH CRUISE
12.26.13 - 4.15.14

WHALE GUARANTEED

Premier Whale Watch features:

- ★ Most whale and Hawaiian cultural activities
- ★ New Keiki program
- ★ Kids cruise free

Daily whale watch from \$33⁰⁰

STAR of Honolulu

808-983-STAR (7827)
www.StarofHonolulu.com



Legends Waikiki
Magical Christmas
ROCK-A-HULA!
December 24 - 25

Let us put your guests in the holiday spirit!
Plus special Christmas Carols and dessert!

MIDNIGHT NEW YEAR'S ROCKIN' EVE with ELVIS
12/31/13, 9:30PM - 1/1/14, 12:30AM

Countdown with firework visual effects projected on a 42' screen!

Regular dinner show packages also available 12/31/13 starting at 6:00PM

At Royal Hawaiian Center, Bldg. B, 4th Floor
www.LegendsWaikiki.com Reservations: (808) 629-SHOW (7469)

HILTON HAWAIIAN VILLAGE® PRESENTS
WAIKIKI'S ONLY LUAU
UNDER THE STARS



WAIKIKI STARLIGHT LUAU

The drama and grace of Polynesia unfold with live music, drums, the captivating dances of the South Pacific and the fiery drama of four fire knife dancers. Indulge in a feast of unforgettable tropical flavors prepared by our award-winning resort chef, including Kalua Pig, Seared Island Catch, Huli Huli Chicken and Carved Pulehu Steak.

• SUNDAY - THURSDAY
 BEGINNING AT 5:30 PM •

• ENJOY ONE WELCOME MAI TAI &
 ONE SELECT BEVERAGE •

• COMPLIMENTARY VALET
 & SELF PARKING •

808.941.LUAU
 (5828)

www.HiltonHawaiianVillage.com/luau



HILTON HAWAIIAN VILLAGE®
 WAIKIKI BEACH RESORT
 2005 KALIA ROAD, HONOLULU • 808.949.4321

The Gift of Words & Music

Put words to the “what should I buy” refrain and you’ll make your guests, family and yourself happy this holiday season. We all know that Hawaii is the only state with its own official language (it’s in the State constitution), our own dance and our own music. Share that when you answer the question, “what can I buy that is truly Hawaiian – and not a perishable pineapple.”

READ CAREFULLY



Waikiki Hotel main showroom, you would be hard-pressed to find anyone, local or visitor, who hasn’t been wowed by the S.O.S. shows. Check out Dr. Richard Kelley’s Saturday Briefing, November 16th to hear his fun side of the story.

The book is 362-pages of show music history. entertainment writer Wayne Harada, in the book’s forward, says, “the SOS wouldn’t have been able to succeed without Frances, and vice versa.” The boys of the S.O.S. came to Kirk in 1963 when they were still called the Fabulous Echoes, performing to standing room only crowds from Hong Kong to Las Vegas. Kirk made music history and has put it all down in the pages of a book that is bound to spark conversations that begin, “I was there that night!” Available for \$19.95 at bookstores and at legacyislepublishing.net.

Say Bamboo Ridge and books full of pidgin stories and local moments immediately comes to mind. They are the publishers of Lois-Ann Yamanaka, Lee Cataluna, Lee Tonouchi and now Gail Harada. The press has gone all out for their newest publication, *Beyond Green Tea and Grapefruit* by Harada. The pages are packed with short stories and poems that will make you laugh and cry. The cover art, by Noe Tanigawa, makes you want to frame it. The most heartwarming story is “Finding My Father in Bruyeres”, the touching nonfiction piece about her visit to Vosges where her father fought in the 442nd Regimental Combat Team and participated in the rescue of the Lost Battalion.

Harada is a professor at Kapiolani Community College, a graduate of Stanford University, the University of Iowa Writers’ Workshop and a winner of a Pushcart Prize in literature. She says she was trying to decide between law school and a degree in poetry. “I figured one of them would turn me down and I wouldn’t have to worry about it.” Of course, both said yes. After a moment’s thought Harada says she decided she could always go to law school later. Bambooridge.com

For the young keiki, the thick page, a totally charming book that is fun for both the reader and

listener. *Twinkle, Twinkle Small Honu*, is the Hawaiian version of the classic rhyme. Created by Jane Gillespie of BeachHouse publishing, and illustrated by Jing Jing Tsong, the story is a poetic journey across the ocean with canoe paddlers.



Chinatown gallery owner Sandy Pohl has created a new book that has something for everyone and every situation. Called, *This I Know – Reflections for Joyful Living*, the palm-sized, spiral bound book has a message or two on every page. Flip open a page and it sits nicely open on the desk, keep the reader engaged in the message of the day, hour, week. At \$10 it is a book for every friend. Pohl coins phrases that become part of conversations. One page says, “infinite possibilities” followed by “become a possibilitarian,” a necessary skill in the world today.

HUMMM ALONG

Grammy nominations are about to be announced. Hawaii artists are on the preliminary ballot. Don’t wait for the results. Buy music, give music, enjoy the sounds of the season, beginning with *Napua Lei Kuluaia* by five-time Na Hoku Hanohano Award winner Napua Makua. The CD has favorite holiday songs to fit the holiday season, the time of Lono in the islands, November thru February. Sung in Hawaiian and translated in the enclosed story-telling booklet, the CD is sugar-coated education. Just for fun, and because she loves Willy Wonka and the Chocolate Factory, Napua put golden tickets in a dozen CD’s. The ticket can be redeemed for makana, gifts by some of Hawaii’s finest artists; Maile Andrade, Paulette Kahalepuna and Pohaku Kahoohanohano.



Nothing brings Christmas into the room like *Caz Christmas*. It’s not new but often new to the folks on the gift list. The Brothers Cazimero turn each cut into a three act play. The song *I Love Christmas / Aloha Kalikimaka* was written by Eddie and



Myrna Kamae and Mary Kawena Pukui. Yes, Pukui is also the author of Hawaiian Dictionary and the poetic book of Hawaiian proverbs, ‘Olelo Noeau - gifts you should give yourself.

More favorite music to give yourself or others? New from KAPOA, *I Know You By Heart* by Lihau and Kellen Paik, following on the heels of their best-selling CD, *Bumbye*. The disc is filled with never-before recorded songs, either penned by the couple or by close friends. Add in *Hilo for the Holidays* by Kuana Torres Kahele and *Willie Kalikamaka* and the stockings should be full. mountainapplecompany.com. ~ Lynn Cook



Chef's Corner

Japengo's Executive Chef Jon Matsubara

Local boy Jon Matsubara first made a name for himself here in the Islands as Chef de Cuisine at the Canoe House in the Mauna Lani Bay Hotel, then went on open Stage Restaurant as Executive Chef and then moved onto Azure at the Royal Hawaiian. Now, he brings that culinary talent to Hyatt's Japengo.

How does a Punahou kid first get interested in cooking?

I'm sure it didn't have anything to do with the cafeteria food. (although I have fond memories of those caramel cuts) It was always about the ladies! I remember cooking in high school for my girlfriend to impress her. It was steamed whole fish with sizzling ginger scallion sauce over somen noodles with lup cheong. She was amused.

What is your favorite childhood food memory?

Spencer cut steak cooked in a black skillet with creamed corn and garlic mushrooms, cherry stone clams with black bean porkhash, smoked chicken in the weber, kona crab raw, miso soup with opihi

What was your first job in the industry?

Dishwasher for both Roy and Alan

Who would you consider your mentor and why?

There have been so many in and out of the culinary industry. In Hawaii definitely Alan and Roy. They have taken out so much of their precious time to help me grow and develop in this industry. Alan molded me from a dishwasher into a line cook that could work in NYC at 3 star Michelin restaurants. I learned about being a student of the game, food philosophy, respecting food, product knowledge, technique, creativity, relationships with farmers, developing my palate, the ability to work with anyone in the kitchen and most of all try to be a good person in life. I make it a point to stop and help any young cooks or students along the way. It is important to give back what was given to me. I wouldn't be where I am today without their help.

Who would you be most excited to see dine in your restaurant and why?

Obama - he is a fellow son of Oahu alumni.

What ingredients should one always have on hand?

Bacon, beef jerky, kim chee, dried opelu and chili pepper water.

What's always in your fridge at home?

Milk, salad greens, juice, cheese – all for my kids

What was the strangest food item you've ever tried?

Fish food.

On the flip side – name the most memorable dish you've ever tasted.

When I was a teenager my father took me out to eat lobster in Chicago- it was a 3-4# monster. I never had so much lobster meat before or since. I ate it like a Viking.

How would you describe your culinary point of view?

It has to be fun and not so serious.

Name one or two of your favorite restaurants to visit when not working?

Alicia's in Kalihi and Janes Fountain in Liliha.

Favorite midnight snack?

Southern BBQ.

If your cooking career ended tomorrow, what new career would you choose?

Tattoo artist by night and wine vineyard grower during the day.

I hear a new menu will be launched next year at Japengo. What do you have planned?

Fun and delicious dishes utilizing our sushi chefs and Chinese Wok chefs.

What's one thing most people don't know about you?

I was the first ever Bacardi Worlds Best Mai Tai winner in Kona and got a check for \$10,000 beating out circuit bartenders and mixologist from Vegas, LA, Chicago and Hawaii

Is there anything else you want to share?

I think I've shared too much.

Kauai Shrimp

Carotene, Japanese Horseradish, Citrus, Black Garam Crisp

THE SHRIMP:

- 12 pc Kauai shrimp head on
- 1 qt. water
- ½ c. olive oil
- 2 T. butter
- 3 T. salt

DIRECTIONS:

Slow poach the shrimp 4-5 minutes then chill down in refrigerator.



FOR THE BLACK GARAM CRISP:

- 1 pc. pampadum (found in Indian store)

DIRECTIONS:

Bake at 315° for 4 minutes

FOR THE CAROTENE SAUCE:

- 1 c. carrot juice
- 2 T. lemon juice
- 1 t. salt
- 2 t. sugar
- 1½ t. wasabi oil

DIRECTIONS:

Mix all ingredients together

Japengo is located on the 3rd floor the Hyatt Regency Waikiki Hotel.

Open nightly from 5:30 - 10 p.m. Happy Hour: 5:30 - 7:00 p.m.

Phone: 237-6180 • HyattRegencyWaikiki.com/Japengo

GIVE YOUR V.I.P. GUESTS AN EXPERIENCE THEY'LL NEVER FORGET.



THE KUALOA ROYAL EXPERIENCE



• PERSONAL GUIDED TOUR •



• AIR CONDITIONED LUXURY MOTOR COACH TO VIP LOCATIONS •

• GOURMET PICNIC LUNCH •

KUALOA TRULY HAWAII

CALL 1-808-257-7321 WWW.KUALOA.COM

Let's be Together...

DINING ▸ ENTERTAINMENT ▸ PAU HANA ▸ EAT ▸ DRINK ▸ BE MERRY ▸ HAPPY HOUR

MONDAY

Bin1901 at the Moana	921-4600
<i>Piano Wine Bar</i>	
Scott Smith	6:30-9:30pm
Chart House Waikiki	941-6660
<i>Live Contemporary Hawaiian</i>	
Eric Ho & Derrick Lee	6:30-9:30pm
Cheesecake Factory	924-5001
<i>Classic Hawaiian</i>	
Christian Yrizarry Duo	8-11pm
Duke's Canoe Club Waikiki	922-2268
<i>Live Contemporary Hawaiian</i>	
Haumea Warrington	4-6pm
Ellsworth Simeona	9:30-12am
Hang Ten Bar at Turtle Bay	293-6000
<i>Live Contemporary Hawaiian</i>	
Art Kalahiki Duo	5-7pm
Hard Rock Cafe	955-7383
<i>Live Contemporary</i>	
Zanuck & Piranha Duo	5-7pm
Blue Mondays Varying Artists	9-11am
House Without a Key	923-2311
<i>Live Hawaiian & Hula by Skyler Kamaka</i>	
DeLima Ohana	5:30 - 8:30pm
Hula Grill	923-HULA
<i>Live Contemporary Hawaiian</i>	
Eric Lee	7-9pm
Kani Ka Pila Grille	924-4992
<i>Live Contemporary Hawaiian</i>	
Sean Na'auao	6 - 9pm
Lewers Lounge	923-2311
<i>Live Contemporary & Light Jazz</i>	
Noly Pa'a	8:30-12:30am
LuLu's	926-5222
<i>Live Contemporary</i>	
Johnny Helm	6:30-9:30 p.m.
Rumfire	921-4600
<i>Live Contemporary Hawaiian</i>	
Jeremy Cheng	5-8pm

DJ Super CW	8:30pm-12:30am
Sunrise Pool Bar at the Modern	943-5800
<i>Live Contemporary</i>	
Alex Oasay	5-8pm
The Edge at the Sheraton	921-4600
<i>Live Hawaiian music with a fire dancer at 7:30 p.m.</i>	
Randy Allen	1:30-3:30pm
Naluhoe Duo	6:30-8pm
Tiki's Grill & Bar	923-TIKI
<i>Live Contemporary Hawaiian</i>	
Canoes 4 Rent	6:30-8:30pm
Jason Alan & Ian O'Sullivan	9-11pm
Tropics Bar & Grill	949-4321
<i>Live Contemporary Hawaiian</i>	
Acoustik Playground	5:30-8:30pm

<i>Live Contemporary Hawaiian</i>	
Cory Oliveros	5-8pm
The Edge at the Sheraton	921-4600
<i>Live Hawaiian music with a fire dancer at 7:30 p.m.</i>	
Kelly Villaverde	1:30-3:30pm
Ho'okani Duo	6:30-8pm
Tiki's Grill & Bar	923-TIKI
<i>Live Hawaiian - \$2 Taco Tuesdays</i>	
K.B. Riley	5:30-8:30pm
Sani & Friends	9-11pm
Tropics Bar & Grill	949-4321
<i>Live Contemporary Hawaiian</i>	
Kailua Bay Buddies	5:30-8:30pm

WEDNESDAY

TUESDAY

Bin1901 at the Moana	921-4600
<i>Piano Wine Bar</i>	
Scott Smith	6:30-9:30pm
Chart House Waikiki	941-6660
<i>Live Contemporary Hawaiian</i>	
Tito Berinobis & Billy Beimes	6-9pm
Cheesecake Factory	924-5001
<i>Classic Hawaiian</i>	
Kimo Artis Duo	8-11pm
Duke's Canoe Club Waikiki	922-2268
<i>Acoustic, Soul, R&B</i>	
Haumea Warrington	4-6pm
Ellsworth Simeona	9:30-12am
Du Vin	545-1115
<i>Sessions at Du Vin features Live Jazz Wednesdays.</i>	
Shoji Ledward	7-9pm
Gordon Biersch	599-4877
<i>Jazz Wednesdays</i>	
Varying Artists	6:30-9:30pm
Hard Rock Cafe	955-7383
<i>Live Contemporary</i>	
Alex Oasay Duo	5-7pm
Simple Souls (or others)	9-11pm
House Without a Key	923-2311
<i>Live Hawaiian & Hula by Radasha Ho'ohuli</i>	
Po'okela	5:30 - 8:30pm
Hula Grill	923-HULA
<i>Live Contemporary Hawaiian</i>	
Kamuela Kahoano	7-9pm
Indigo	521-2900
<i>Live Music Tuesdays (1st one of the month is jazz)</i>	
Varying Artists	6 - 9pm
Kani Ka Pila Grille	924-4992
<i>Live Contemporary Hawaiian</i>	
Weldon Kekauoha	6-9pm
Lewers Lounge	923-2311
<i>Live Contemporary & Light Jazz</i>	
Maggie Herron & Rocky Holmes	8:30-12:30am
LuLu's	926-5222
<i>Live Contemporary</i>	
Johnny Helm	6-9pm
Mai Tai Bar at the Royal Hawaiian	923-7311
<i>Live Contemporary Hawaiian with Hula Dancer</i>	
Kapala Duo	6:30-9:30pm
Rumfire	921-4600
<i>Live Contemporary Rock</i>	
Randy Allen	5-8pm
Duncan Osorio (12/17)	5-8pm
Sunrise Pool Bar at the Modern	943-5800

Bin1901 at the Moana	921-4600
<i>Piano Wine Bar</i>	
Scott Smith	6:30-9:30pm
Chart House Waikiki	941-6660
<i>Live Contemporary Hawaiian</i>	
Tito Berinobis & Billy Beimes	6-9pm
Cheesecake Factory	924-5001
<i>Classic Hawaiian</i>	
Kimo Artis Duo	8-11pm
Duke's Canoe Club Waikiki	922-2268
<i>Acoustic, Soul, R&B</i>	
Haumea Warrington	4-6pm
Ellsworth Simeona	9:30-12am
Du Vin	545-1115
<i>Sessions at Du Vin features Live Jazz Wednesdays.</i>	
Shoji Ledward	7-9pm
Gordon Biersch	599-4877
<i>Jazz Wednesdays</i>	
Varying Artists	6:30-9:30pm
Hard Rock Cafe	955-7383
<i>Live Contemporary</i>	
John Valentine	5-7pm
Piranha Brothers	9-11pm
House Without a Key	923-2311
<i>Live Hawaiian & Hula</i>	
Pa'ahana	5:30 - 8:30pm
Hula Grill	923-HULA
<i>Live Contemporary Music</i>	
Jeremy Chang	7-9pm
Hy's Steak House	922-5555
<i>Live Soft Contemporary</i>	
Audy Kimura	6:30-10pm
Kani Ka Pila Grille	924-4992
<i>Live Contemporary Slack Key</i>	
Cyril Pahinui	6-9pm
LBL at the Hilton Waikiki Beach Hotel	922-0811
<i>Live Contemporary Funk, Jazz, Hip Hop & Reggae</i>	
Jason Laeha	6-9pm
Lewers Lounge	923-2311
<i>Live Contemporary & Light Jazz</i>	
Maggie Herron & Rocky Holmes	8:30-12:30am
LuLu's	926-5222
<i>Live Contemporary Hawaiian</i>	
Jason Lehua	10-12:30am
Mai Tai Bar at the Royal Hawaiian	923-7311
<i>Live Contemporary Hawaiian with Hula Dancer</i>	
Eric Lee Duo	6:30-9:30pm
Rumfire	921-4600

E Pili Kākou

DINING ▶ ENTERTAINMENT ▶ PAU HANA ▶ EAT ▶ DRINK ▶ BE MERRY ▶ HAPPY HOUR

Live Contemporary Hawaiian
 Kamuela Kahoano 5-8pm
SWIM at the Hyatt 923-1234
Contemporary Classic
 Little Albert 5-8pm
Sunrise Pool Bar at the Modern 943-5800
Live Contemporary Hawaiian
 Tahiti Rey 5-8pm
The Edge at the Sheraton 922-4422
Live Hawaiian music with a fire dancer at 7:30 p.m.
 Albert Maligmat 1:30-3:30pm
 Keoni Ku Duo 6:30-8pm
Tiki's Grill & Bar 923-TIKI
Live Contemporary - 1/2 off Wine Wednesdays
 Kapu 5:30-8:30pm
 Johnny Helm 9-11pm
Tropics Bar & Grill 949-4321
Live Contemporary Rock
 Acoustik Playground 5:30-8:30pm

THURSDAY

Barefoot Beach Café at Queen's Beach 924-2233
Live Contemporary Hawaiian with Pasta Night
 Kaipo Dabin Duo 5:30-8:30pm
Bin1901 at the Moana 921-4600
Piano Wine Bar
 Scott Smith 6:30-9:30pm
Chart House Waikiki 941-6660
Live Contemporary Hawaiian
 Tito Berinobis 6:30-9:30pm
Cheeseburger Waikiki 941-2400
Contemporary / Old School Rock
 Jeremy Chang 6:30-9:30pm
Cheesecake Factory 924-5001
Classic Hawaiian
 T & J Duo 8-11pm
 Kaiona Duo (12/12; 12/26) 8-11pm
Duke's Canoe Club 922-2268
Live Contemporary Hawaiian
 Haumea Warrington 4-6pm
 Ellsworth Simeona 9:30-12am
Five-O Bar & Lounge 922-0550
Live Acoustic Contemporary & Reggae
 K Love Duo 7:30-10:30pm
Gordon Biersch 599-4877
Live Contemporary Funk and Classics
 Acoustik Playground 7-10:30pm
Hang Ten Bar at the Turtle Bay 293-6000
Live Hawaiian Contemporary
 Local Folk 5-7pm
Hard Rock Cafe 955-7383
Live Contemporary
 Chris Rego (or others) 5-7pm
 Kailua Bay Buddies 9-11pm
House Without a Key 923-2311
Live Hawaiian & Hula
 Pa'ahana 5:30 - 8:30pm
Hula Grill 923-HULA
Live Contemporary Hawaiian
 Sheila Waiwaiole & Mara Sagapolu 7-9pm
Hy's Steak House 922-5555
Live Soft Contemporary

Audy Kimura 6:30-10pm
Kani Ka Pila Grille 924-4992
Live Contemporary Hawaiian
 Kawika Kahiapo 6-9pm
LBLE 922-0811
Live Contemporary Pop/Rock
 Sunway 6-9pm
Lewers Lounge 923-2311
Contemporary Jazz
 Maggie Herron & Rocky Holmes 8:30-12:30am
LuLu's 926-5222
Live Contemporary Hawaiian
 Local Uprising 6-9pm
Mai Tai Bar at the Royal Hawaiian 923-7311
Live Contemporary Hawaiian with Hula Dancer
 Delima Ohana 6:30-9:30pm
Michel's at the Colony Surf 923-6552
Live Slack Key
 Jeff Peterson 7:30-10:00pm
Rumfire 921-4600
Live Contemporary Rock
 Johnny Helm 5-8pm
 DJ Mike 8:30pm-12:30am
Sunrise Pool Bar at the Modern 943-5800
Live Contemporary Hawaiian
 Christian Yrizarry Duo 5-8pm
SWIM at the Hyatt 923-1234
Contemporary Classic
 Tahiti Rey 5-8pm
The Edge at the Sheraton 921-4600
Live Hawaiian music with a fire dancer at 7:30 p.m.
 Ellsworth Simeona 1:30-3:30pm
 Christian Yrizarry Duo 6:30-8pm
The Study at the Modern 943-5800
Live Contemporary Hawaiian
 Simple Souls 6:30-8:30pm
Tiki's Grill & Bar 923-TIKI
Heineken Hot Hula Nights - hula dancers perform
 Malu 5:30-7:30pm
 Piko & Ellsworth 8:30-11:30pm
Tropics Bar & Grill 949-4321
Live Contemporary Hawaiian
 Nohelani Cypriano 5:30-8:30pm

FRIDAY

Barefoot Beach Café at Queen's Beach 924-2233
Live Contemporary Hawaiian with Beach BBQ
 Art Kalahiki & Friends 5:30-8:30pm
Bin1901 at the Moana 921-4600
Piano Wine Bar
 Scott Smith 6:30-9:30pm 7-8:30pm
Chart House Waikiki 941-6660
Live Contemporary Hawaiian
 Mark Yim's Pilikia I 6-9pm
 Mark Yim's Pilikia II 9:30-12:30am
Cheeseburger Waikiki 941-2400
Contemporary Hawaiian
 Alex or Aku 6:30-9:30pm
Cheesecake Factory 924-5001
Classic Hawaiian
 Johnny Helm Duo 8:30-11:30pm

Dave & Busters 589-2215
Pau Hana Fridays Live Local Bands
 Varying Hawaiian Artists 6-8pm
Duke's Canoe Club Waikiki 922-2268
Live Contemporary Hawaiian
 Maunualua 4-6pm
 Haumea Warrington 10-12am
Five-O Bar & Lounge 922-0550
Live Island Reggae
 Kimo Opiana 9-12am
Gordon Biersch 599-4877
Live Contemporary, R&B, Funk
 Ben & Malia 5:30-9pm
 Mojo 9 - 12:30am
Hang Ten Bar at the Turtle Bay 293-6000
Live Contemporary Hawaiian with fire dancer
 Jherard Miller Duo 5:30-8:30pm
Hard Rock Cafe 955-7383
Live Contemporary
 Johnny Helm 5-7pm
 Mantra 10-12am
House Without a Key 923-2311
Live Hawaiian & Hula
 Sunset Seranaders 5:30 - 8:30pm
Hula Grill 923-HULA
Live Traditional Hawaiian with dancer
 David Asing & Alika Souza 7-9pm
Hy's Steak House 922-5555

Happy Holidays!

MAHALO
 For Your Support!

Join us, show your industry I.D., and receive 15% off all food and beverages for you and your guests!

GIOVANNI PASTRAMI
 Pastrami Sandwiches

Not combinable with happy hour, other discounts, or offers. Price is only.

227 LEWERS ST. WAIKIKI 808-923-2100

EVENTS ARE SUBJECT TO CHANGE WITHOUT NOTICE.

Let's be Together...

DINING ▸ ENTERTAINMENT ▸ PAU HANA ▸ EAT ▸ DRINK ▸ BE MERRY ▸ HAPPY HOUR

Live Soft Contemporary
Audy Kimura 6:30-10pm
Jimmy Buffett's at the Beachcomber 791-1200
Live Contemporary Hawaiian
Kailua Bay Buddies 9:30-11:30pm
Hang Ten Bar at the Turtle Bay 293-6000
Fireshow with 13-yr old 5x world fire knife champion
Jherard Miller Duo 5-8pm
Hard Rock Cafe 955-7383
Live Contemporary
Johnny Helm 5-7pm
Mantra 9-11pm
Kani Ka Pila Grille 924-4992
Live Hawaiian Contemporary
Kaukahi 6-9pm
LBLE at the Hilton Waikiki Beach Hotel 922-0811
Live Contemporary Pop/Rock
Sunway 6-9pm
Lewers Lounge 923-2311
Live Contemporary Jazz
Maggie Herron & Rocky Holmes 8:30-12:30am
LuLu's 926-5222
Live Contemporary Hawaiian
Manoa DNA 6-9 p.m.
Vinyl Wine 10-12:30am
Mai Tai Bar at the Royal Hawaiian 923-7311
Live Contemporary Hawaiian with Hula Dancer
Kapala Duo 6:30-9:30pm
Michel's at the Colony Surf 923-6552
Live Slack Key Stylings & Jazz
Jeff Peterson & Ernie Provencher 6:30-10pm
Rumfire 921-4600
Live Contemporary Hawaiian
Johnna Padeken 5-8pm
DJ Sound Check 8:30pm-12:30am
SWIM at the Hyatt 923-1234
Contemporary Classic
Taimane 6-7pm
Wade Cambern 7:30-9:30pm

The Edge at the Sheraton 921-4600
Live Hawaiian music with a fire dancer at 7:30 p.m.
Brad Kawakami 1:30-3:30pm
Ho'okani Duo 6:30-8pm
The Study at the Modern 943-5800
Live Contemporary Hawaiian
Tahiti Rey 7-10pm
Tiki's Grill & Bar 923-TIKI
Live Contemporary Hawaiian
Kaleo Del Sol 5-7pm
Vaihi 7:30-9:30pm
Tahiti Rey Duo 10-12am
Tropics Bar & Grill 949-4321
Live Contemporary Hawaiian
Piranha Brothers 3:30-6:30pm
Nohelani Cypriano 8:00-10:30pm

SATURDAY

Barefoot Beach Café at Queen's Beach 924-2233
Beach BBQ with Live Contemporary Hawaiian
Alika Souza 5:30-8:30pm
Bin1901 at the Moana 921-4600
Piano Wine Bar
Scott Smith 6:30-9:30pm
Chart House Waikiki 941-6660
Live Contemporary Hawaiian
Tito Berinobis & Billy Beimes 8-12pm
Cheeseburger Waikiki 941-2400
Contemporary Hawaiian
Alex or Aku 6:30-9:30pm
Cheesecake Factory 924-5001
Classic Hawaiian
Dennis McLees Duo 8:00-11pm
Duke's Canoe Club Waikiki 922-2268
Live Hawaiian Entertainment
Beach 5 (12/7) 4-6pm
Kapena (12/14) 4-6pm
Simple Sessions (12/21) 4-6pm
Sean Naauao (12/28) 4-6pm
Kaiona Duo (11/2) 9:30-12am
Kaala Boys Duo (12/7) 9:30-12am
Chris Murphy Duo (12/14, 12/26) 9:30-12am
Christian Yrizarry Duo (12/21) 9:30-12am
Five-O Bar & Lounge 922-0550
Live Island Reggae
Christian from Hoonua 9:30-12:30am
Hang Ten Bar at the Turtle Bay 293-6000
Live Contemporary Hawaiian
Terry Stebbins Duo 5-7pm
Hard Rock Cafe 955-7383
Live Contemporary
20 Degrees North 5-7pm
Tavana 10-1am
House Without a Key 923-2311
Hawaiian & Hula
Sunset Seranaders 5:30 - 8:30pm
Hula Grill 923-HULA
Live Traditional Hawaiian with dancer
Kaipo Dabin & Tommy Chock w/ Kahanu 7-9pm
Hy's Steak House 922-5555
Live Soft Contemporary
Audy Kimura 6:30-10pm
Jimmy Buffett's at the Beachcomber 791-1200

Live Contemporary Hawaiian
Kailua Bay Buddies 9:30-11:30pm
Kani Ka Pila Grille 924-4992
Live Contemporary Hawaiian
Manoa DNA 6-9pm
LBLE at the Hilton Waikiki Beach Hotel 922-0811
Live Contemporary Pop/Rock
Michael Fabbri 6-9pm
Lewers Lounge 923-2311
Live Contemporary Jazz
Maggie Herron & Rocky Holmes 8:30-12:30am
Mai Tai Bar at the Royal Hawaiian 923-7311
Live Contemporary Hawaiian with Hula Dancer
Kapala Duo 6-10pm
Michel's at the Colony Surf 923-6552
Live Contemporary Slack Key & Jazz
Jeff Peterson 7-11pm
Rumfire 921-4600
Live Contemporary Hawaiian
Ellsworth Simeona 5-8pm
DJ Sho 8:30pm-12:30am
Signature Prime Steak 949-3636
Piano player with vocalist singing jazz standards
Jennifer Cleve Sojot 6:30-8:30pm
Sunrise Pool Bar at the Modern 943-5800
Live Contemporary Hawaiian
Kainalu 5-8pm
SWIM at the Hyatt 923-1234
Contemporary Classic
Taimane 6-7pm
Wade Cambern 7:30 - 9:30pm
The Edge at the Sheraton 921-4600
Live Hawaiian music with a fire dancer at 7:30 p.m.
John Valentine 1:30-3:30pm
Tino Jacobs Duo 6:30-8pm
Tiki's Grill & Bar 923-TIKI
Live Contemporary Hawaiian & Reggae
Johnny Helm 5-7pm
Sani and Friends (or others) 7:30-9:30pm
Ellsworth Simeona 10-1am
Tropics Bar & Grill 949-4321
Live Contemporary Hawaiian
Henry Kaponu 4-6pm
Juke Joint 6:30-9:30pm

SUNDAY

Barefoot Beach Café at Queen's Beach 924-2233
Live Hawaiian Music
Paul Wilcox 11am -2pm
Bin1901 at the Moana 921-4600
Piano Wine Bar
Eric Lee 3 - 5:30pm
Kapena Delima 6:30-9:30pm
Chart House Waikiki 941-6660
Live Contemporary Hawaiian
Dean & Dean 6-9pm
Cheesecake Factory 924-5001
Classic Hawaiian
Chris Murphy Duo 8-11pm
Duke's Canoe Club Waikiki 922-2268
Live Hawaiian Entertainment
Henry Kaponu 4-6pm
Terry Stebbins Duo 9:30-12am

How can we help?

We're a family business dedicated to service, safety, quality & fun. Ocean activities for all ages and budgets. We're at your service to help provide a perfect match for your client.

'Honi Olani,' one of the many yachts in our fleet



234-SAIL

(7245)

WE ANSWER 24 HOURS!

hawaiinautical.com

WAIANAЕ • HILTON PIER • KEWALO
Sail • Snorkel • Dolphins • Turtles • Whales • Scuba • Fireworks Dinner • Private Charter • Transportation



Hawaii Nautical

E. Pili Kākou

DINING ▶ ENTERTAINMENT ▶ PAU HANA ▶ EAT ▶ DRINK

Kamuela Kahoano Duo (12/15)	9:30-12am	Kelley O'Neil's	926-1777
Jason Alan Duo (12/22)	9:30-12am	Mai Tai Bar Ala Moana	947-2900
Hard Rock Cafe	955-7383	Moose McGillycuddy's	923-0751
<i>Live Contemporary</i>			
Brothers Rize	5-7pm		
Streetlight Cadence (or others)	9-11pm		
House Without a Key	923-2311		
<i>Live Hawaiian & Hula</i>			
Pa'ahana	5:30 - 8:30pm		
Hula Grill	923-HULA		
<i>Live Traditional Hawaiian with dancer</i>			
Art Kalahiki Duo	7-9pm		
Jimmy Buffett's at the Beachcomber	791-1200		
<i>Live Contemporary Hawaiian</i>			
Jeremy Chang	8:30-10:30pm		
Kani Ka Pila Grille	924-4992		
<i>Live Contemporary Hawaiian</i>			
Hoku Zuttermeister	6-9pm		
Kelley O'Neil's	926-1777		
<i>Live Irish Music</i>			
Various Celtic Bands	4-7pm		
Lewers Lounge	923-2311		
<i>Live Contemporary & Light Jazz</i>			
Noly Pa'a	8:30pm - 12am		
LuLu's	926-5222		
<i>Acoustic R&B</i>			
Simple Soulz	7-10pm		
Mai Tai Bar at the Royal Hawaiian	923-7311		
<i>Live Contemporary Hawaiian with Hula Dancer</i>			
Tino Jacob Duo	6-10pm		
Michel's at the Colony Surf	923-6552		
<i>Classical Slack Key & Jazz Stylings</i>			
Jeff Peterson	6-9pm		
Rumfire	921-4600		
<i>Live Contemporary Hawaiian</i>			
Kona Chang Duo	5-8pm		
DJ Sho	8:30pm - 12:30am		
Sunrise Pool Bar at the Modern	943-5800		
<i>Live Contemporary Hawaiian</i>			
Jeremy Cheng	5-8pm		
The Edge at the Sheraton	922-4422		
<i>Live Hawaiian music with a fire dancer at 7:30 p.m.</i>			
Jeremy Cheng	1:30-3:30pm		
Ellsworth Simeona Duo	6:30-8:30pm		
Tiki's Grill & Bar	923-TIKI		
<i>Live Contemporary Hawaiian</i>			
Vaihi	6-9pm		
Ellsworth Simeona	9-11pm		
Tropics Bar & Grill	949-4321		
<i>Live Contemporary Rock & Hawaiian</i>			
Piranha Brothers	2-5pm		
Beach 5	5:30 - 8:30pm		

Dining Dish



Hoku's at the Kahala, normally only open Wednesdays thru Sundays will open nightly for dinner for the holidays beginning December 15th thru January 2nd. Plumeria Beach House, which normally closes on Wednesdays and Sundays, will also open daily from December 22nd thru January 2nd as well. 739-8760. • They Hyatt Regency Waikiki opened their newly renovated \$2 million dollar **Kou Ballroom** recently, and held a small get together to showcase it. The food served throughout this event was fabulous. From salt encrusted onaga to Wagyu filled Ravioli's, the food was top notch restaurant quality. This will be the food philosophy the ballroom follows. No chafing dishes there and everything is served farm to table fresh to follow the Hyatt's new corporate food philosophy, one Executive Chef Sven Ullrich has enthusiastically instilled and followed since his first day at the Hyatt Regency Waikiki a few years ago. Almost makes me want to book the ballroom for an event. I don't have a reason too – but if you do, add it to your places to think about. • **The Pig and the Lady** has opened up for lunch downtown. Chef Andrew Le's inspired take on Vietnamese cuisine (I mean who knew a Mung Bean Tamale could be so good?) is now available Tuesday - Friday from 11 a.m. - 2 p.m. and on Saturdays from 10 a.m. - 2 p.m. at 83 N. King Street 585-8255. pigandthelady.com. • **Chef Quinten Frye** and **Danny Kaaialii** from Salt Kitchen & Tasting Bar have opened a Mexican street-food kitchen called **Cocina** in the former Whole Ox Deli location. Frye, a James Beard semi-finalist, used to work in Mexico and is showcasing foods we rarely see in Hawaii. Be sure to try the headcheese carnitas tacos (\$12) the Mexican Style street corn (\$5) and the papas fritas (\$5). Open for lunch Tuesday - Saturday from 11 a.m. - 3 p.m., and dinner Wednesday through Saturday from 6 - 9 p.m., get there soon because it's only around for a few months. Kam Schools starts a major redevelopment in that area in the spring. cocinahawaii.com. ~ Pam



Dining Calendar

December 6: *The Veranda First Friday Flights* at the Kahala Hotel explores Portugal. Some of the areas great wines will complement some of the small dishes that will be featured in this 5-course \$50 per person tour for dinner. 6-9 p.m. 739-8760.

Mondays: *Brasserie du Vin* has combined their weekly wine dinner and tasting events into one, Behind the Cellar Door. 6:30 p.m. 545-1115.

Wednesdays: *Beachhouse at the Moana* hosts a weekly wine tasting on the lanai with pupus and parking. \$19++. 4:30 - 5:30 p.m. 923-2861.

Wednesdays: *Bar 35:* House of Brews features a different theme weekly. Taste 6-8 beers, and enjoy Chef Valentini's pizza. \$20. 6 p.m. 537-3535.



BAREFOOT BEACH CAFE

Open Daily, 7am - 9pm
Serving Breakfast, Lunch & Dinner
Live Music every Thu, Fri & Sat,
5:30-8:30pm, Sun, 11am-2pm
Available for Private Parties
& Special Events
2699 Kalakaua, on the beach
in Waikiki, across from the
Kapiolani Park Bandstand



Concierge Line:
808.699.8830

Info@BarefootBeachCafe.com



Hot Lines

Here's a few numbers for you to find out the latest in live music from places that change daily or don't update us regularly, since we can't possible list them all,

Gordon Biersch	599-4877
Irish Rose Saloon	947-3414

Jimmy Buffett's
RESTAURANT & BAR
at the BEACHCOMBER

- GREAT FOOD
- SIGNATURE COCKTAILS
- FAMILIES WELCOME
- LIVE ENTERTAINMENT

LOCATED ON THE LOBBY LEVEL
OF THE HOLIDAY INN™ WAIKIKI
BEACHCOMBER RESORT

Restaurant opens daily at 6 AM
2300 Kalakaua Avenue, Honolulu, Hawaii 96815
808-791-1200 • www.jbabc.com

DECEMBER CALENDAR OF EVENTS

Continuing Events

DECEMBER 1-6

VANS WORLD CUP OF SURFING

The second of the three jewels in the Vans Triple Crown holding period continues through December 6th. The event will not take place every day, but only on the four best surf days. Check website for updates. Sunset Beach. vanstriplecrownofsurfing.com.

MONDAY – FRIDAY

LYON ARBORETUM TOURS

The lush gardens at the top of the University of Hawai'i Manoa are open for guided tours daily. Knowledgeable guides will introduce the highlights of the botanical rainforest's 193.6 acres. Reservations required. Limit of 12 participants daily. Donations accepted. 988-0461.

MONDAY-FRIDAY

FOSTER BOTANICAL GARDENS

Guided garden tours of rare and beautiful plants from tropical regions throughout the world. Foster Botanical Gardens, 50 N. Vineyard. 1 p.m. Adults: \$5. Reservations recommended. 522-7066.

TUESDAYS

TOURS OF THE HAWAII THEATRE

Get a behind-the-scenes tour of this historic theatre including history, architecture, and a performance on the 1922 Robert Morton theatre organ. Hawaii Theatre. 11 a.m. – 12 p.m. \$10. 528-0506.

TUESDAYS • KU HA'AHEO

An afternoon of hula from multiple groups featuring adults and keiki performing contemporary and traditional dance and music led by kumu hula Blaine Kamalani Kia. Waikiki Beach Walk Plaza Lawn. 4:30 – 6 p.m. FREE. waikikibeachwalk.com or 931-3591.

TUESDAYS

KCC FARMERS MARKET

The Saturday Market is so popular they added another day. Head up to Kapiolani Community College for fresh island produce, seafood, flowers, and more available from over two dozen vendors. 4 – 7 p.m. Free. 848-2074.

FIRST & THIRD TUESDAYS MEET THE MONK SEALS!

Learn about monk seals in the wild and meet two

resident seals up close. Designed for participants 7 and up but anyone is welcome. Waikiki Aquarium. 3 p.m. \$4 – \$6. waquarium.org or 923-9741.

TUESDAYS & FRIDAYS

WAIKIKI FARMERS MARKET

Fresh local produce, organic pastries and food booths. Waikiki Community Center. Free. 7 – 11:30 a.m. waikikicomunitycenter.org. 923-8102.

TUESDAYS, THURSDAYS & SUNDAYS

TOUR AND TEA AT THE HONOLULU ACADEMY OF ARTS

Tours are led by volunteer docents and designed for visitors who want to explore the galleries, learn more about art and culture, and socialize over a cup of tea. Docents lead discussions in the galleries and offer insight into many cultures and time periods. 2:30 – 4 p.m. in selected galleries. Free with admission; beverage donations welcomed. Reservations required. 532-8700.

TUESDAY – SATURDAY

MISSION HOUSES MUSEUM GUIDED TOURS

Visit the Printing Office and Frame House while learning about the 19th century history and culture preserved at this beautiful museum. Galleries also open to explore on your own. Mission Houses Museum. Tues. – Sat. 11 a.m. & 2:45 p.m.; Tues. – Fri. 1 p.m. \$6 – \$10. 531-0481 or missionhouses.org.

SECOND WEDNESDAY (DECEMBER 11)

STARGAZING

The Hokulani Imaginarium puts on a live star show while teaching about the mythology surrounding constellations. Windward CC, 45-720 Keaahala Rd., Kaneohe. 7 p.m. Adults \$7, Keiki (ages 4-12) \$5. Tickets: aerospace.wcc.hawaii.edu/imaginarium.html or 235-7433.

WEDNESDAYS & FRIDAYS

CHADO – THE WAY OF TEA

Japanese enthusiasts can experience the traditional tea ceremony (chanoyu) as it was meant to be seen and taught at the Urasenke Foundation of Hawaii. No prior knowledge required. Demos at 10 a.m. and 11 a.m. \$5. 923-3059.

THURSDAYS

FRESH FARMERS MARKET AT THE HYATT

Stock up on fresh local organic fruits, vegetables, jams, honeys, baked goods and more now available to guests and visitors each week in the heart of Waikiki. Ground Floor, Pualeilani Atrium Shops. 4 – 8 p.m. Waikiki.hyatt.com

THIRD THURSDAY (DECEMBER 19)

DOWNTOWN GALLERY WALK & CRAFT FAIR

The Arts at Marks Garage continues to build on downtown activities offering execs an excuse to hang out after work and giving everyone else a reason to head downtown. Free. 521-2903. artsatmarks.com.

FRIDAYS

SENIOR SAFARI WALKABOUT

Continuing due to popular demand! Make exercise fascinating and fun while exploring the zoo. Staff will guide the walks, sharing wildlife facts and stories. Honolulu Zoo. 9 – 10 a.m. \$5 donation supports Zoo Education programs. 971-7195 or honolulu.zoo.org.

FIRST FRIDAY (DECEMBER 6)

DOWNTOWN GALLERY WALK & CRAFT FAIR

Art lovers are advised to head to downtown Honolulu the first Friday of each month. This event has exploded into a downtown party with galleries and studios open for exhibitions, artist demonstrations, and special performances. 23 galleries and art-related retail shops, restaurants and museums participate.

Downtown Honolulu/ Chinatown. 6 – 9 p.m. Free. 521-2903 or artsatmarks.com.

FIRST & THIRD FRIDAYS (DECEMBER 6 & 20) THE SKY TONIGHT

Learn about our Hawaiian skies and current events in space at the J. Watiumull Planetarium. Bishop Museum. 8 p.m. No late seating. GA \$6, Keiki \$4. 848-4168 or bishopmuseum.org.

THIRD FRIDAYS KAIMUKI (DECEMBER 20)

The neighborhood comes to life during this monthly street fest where restaurants all open their doors and local businesses offer fun discounts and sales. Live entertainment and free food samples make this fun for the whole family. Koko Head to 8th Ave and Wai'ialea. 6 – 9 p.m. 739-9797 or kaimukihawaii.com.

FINAL FRIDAY • ART AFTER DARK

Art after Dark will return in January. artafterdark.org.

FRIDAYS & SATURDAYS TWILIGHT TOURS OF THE ZOO

Stroll through the Honolulu Zoo after dark and learn what goes on when the sun goes down. All ages will enjoy this 2-hour guided walking tour including light refreshments. 5:30 – 7:30 p.m. Adults \$18, Keiki (ages 3-12) \$14, Under 2 free. 971-7195 or honolulu.zoo.org.

SATURDAYS • KCC FARMERS MARKET

Fresh island produce, seafood, flowers and more are available from over two-dozen vendors at Kapiolani Community College. Free. 7:30-11 a.m. 848-2074.

SATURDAYS

KAKA'AKO FARMERS MARKET

The Farmer's Market held Saturdays at Ala Moana has moved to Kaka'a'ako in light of the construction around Sears these days. 'Check out an abundance of treats from around our islands. Their new home is at Ward Warehouse between Ward and Kamakee Streets. Free. 9:00 a.m. – 1 p.m. 388-9696 or haleiwafarmersmarket.com.

SATURDAYS • TASTE OF CHINATOWN

Eat your way through our own little China as you learn where to go, what to order, and how to eat. Get cultural and gastronomic notes along the way and leave fully sated. 11:30 a.m. – 2:30 p.m. Chinatown in front of HI Nat'l Bank at Smith & King Streets. Reservations required: 391-1550.

SATURDAYS & SUNDAYS

ART ON THE ZOO FENCE

More than 35 local artists display their works on the Zoo fence on Monsarrat Avenue opposite the Kapiolani Park Bandstand. Works for sale include original paintings, prints and photographs. 9 a.m. – 4 p.m. Free. artonthezoofence.com.

SECOND SATURDAY (DECEMBER 13)

DOWNTOWN GALLERY WALK & CRAFT FAIR

First Friday has become such a success that events carry over to the second Saturday. HiSAM, 11 a.m. – 3 p.m. 586-0900. Other events around downtown Honolulu all afternoon. Free. 521-2903 or artsatmarks.com.

BANK OF HAWAII FREE SUNDAY
(DECEMBER 22)

HONOLULU MUSEUM OF ART

This month's theme: Celebrate the Season. As always, event includes a variety of activities such as making a snow globe or Christmas ornaments and entertainment including holiday music and story telling by Susie Roth in addition to wandering the regular galleries and exhibits. Honolulu Museum of Art. 11 a.m. – 5 p.m. Free. 532-8700.

**DISCOUNT HAWAII
CAR RENTAL**
SAVE UP TO 50%



GUARANTEED RESERVATIONS
* NO BOOKING FEES * NO
DEPOSIT * CANCEL ANYTIME
7 NATIONAL RENTAL
COMPANIES

call us today @

1.800.292.1930

or check us out online:

DiscountHawaiiCarRental.com

DECEMBER CALENDAR OF EVENTS

DECEMBER 4

OCEAN TALK STORY FEATURES GREG LONG
Surf Talk Story, brings surfing's legends and their tall but true tales directly to you, as they are told to host Jodi Wilmott. In conjunction with the Vans Triple Crown, Greg Long, defending champion of the Quick-silver Eddie Aikau will be tonight's featured guest. Surfer, The Bar. 7:30 p.m. \$10. turtlebayresort.com

DECEMBER 4-7 HONOLULU MARATHON EXPO

Free and open to the public. Hours vary daily, usually around 9 a.m. – 6 p.m. Souvenir sales will be at the expo and at Kapiolani Park after the race and again on Monday. Kamehameha Hall. Hawaii Convention Center. honolulumarathon.org.

DECEMBER 7 TOWER OF POWER & WAR IN CONCERT

Two powerhouse bands from the 70's join together for one explosive night of R&B, funk and rock music. Blaisdell Arena. 7:30 p.m. Tickets: \$65. (800) 745-3000 or ticketmaster.com.

DECEMBER 7 - 31 HONOLULU CITY LIGHTS

Downtown lights up in the spirit of the season kicking off with the Electric Light Parade along King Street on 12/7 at 5 p.m. followed by the lighting of the 50-foot tree at 6 p.m. The lights and decorations stay up through January 2nd. 768-6622. honolulucitylights.com.

DECEMBER 8 HONOLULU MARATHON CONCERT/LUAU

Pre-race festivities include All-You-Can-Eat Buffet and Hawaiian entertainment. Waikiki Shell. Tickets available for purchase by race entrants only. \$50-\$135. 4 -8:30 p.m. honolulumarathon.org.

DECEMBER 8 • WIKI WIKI ONE DAY VINTAGE COLLECTIBLES & HAWAIIANA SHOW

The annual Christmas sale is an all vintage collectible and antiques show and sale. 92 tables of vendors offering antiques, estate jewelry, vintage fashion, aloha shirts, Hawaiiana and more. Neal Blaisdell Center. 10:30 a.m. - 4:30 p.m. \$4.50. Early entry \$15 from 9 a.m. ukulele.com.

DECEMBER 8 • WELCOME YULE CONCERT

Ring in the holiday season with a special concert by the Honolulu Symphony Chorus as the present John Rutter's Gloria and a selection of traditional Christmas music for the audience sing-a-long. Special guests include the Festival Brass and a children's choir. \$35. St. Andrew's Cathedral. 5:30 – 8 p.m. oahuchoral.org.

DECEMBER 8- 20 • BILLABONG PIPE MASTERS

The third and final jewel in the Vans Triple Crown is the most prized event of the season and decides the ASP World Champion, and Triple Crown champion of the Hawaiian winter surf season. Pipeline. The event will not take place every day, but on the three best surf days. Check website for updates. vanstriple-crownofsurfing.com.

DECEMBER 8 • HONOLULU MARATHON

With around 25,000 runners each year, the Honolulu Marathon is up there with the big ones such as Boston, New York, Chicago and London. There are so many runners from Japan they make it large enough to compete with Boston and usually comprise around 60% of the total runners. On your marks, the gun goes off at 5 a.m. at Ala Moana Beach Park.

Prepare for closed roads and traffic delays. honolulumarathon.org.

DECEMBER 8 • ALII SUNDAY

Kawaiahao Church celebrates select Hawaiian Royalty (Alii) who are of particular importance for the Church by holding seven special Sunday services in their honor around their birthdays throughout the year. Today they celebrate King Kamehameha V. 9 a.m. kawaiahao.org.

DECEMBER 11 • OCEAN TALK STORY FEATURES NAINOA THOMPSON

Surf Talk Story, brings surfing's legends and their tall but true tales directly to you, as they are told to host Jodi Wilmott. Tonight's featured guest is renown Hokule'a navigator, Nainoa Thompson. Surfer, The Bar. 7:30 p.m. \$10. turtlebayresort.com

DECEMBER 12 CULTURAL FUSION

Formerly known as the Awamori Festival this event celebrates the Okinawan rice beverage, similar to sake and shochu, both of which will also be featured. Enjoy food from Nico's at Pier 38 Restaurant. Kachashii, an Okinawan freestyle dance will be performances and contests. \$80. 5:30 - 8:00 p.m. Harbor View Center. 780-3440. senjukaihawaii.com.

DECEMBER 13-15 A CAZIMERO CHRISTMAS

Another favorite holiday tradition returns as the brothers bring a few of their favorite dancers including Robert's halau, Miss and Master Keiki Hula 2013 and special guest star Lehua Kalima for three special performances. \$30-\$75. Hawaii Theatre. 7:30 p.m. 528-0506. Hawaiiitheatre.com

DECEMBER 14 JIMMY BUFFETT AND THE CORAL REEFER BAND



It's always 5 o'clock somewhere – and tonight get your salt shakers ready as the legendary and (fortunately) frequent visitor to the islands brings his "Songs From St. Somewhere" Tour to the Waikiki Shell. Tickets: \$39 - \$136. 7 p.m. 800-745-3000 or ticketmaster.com.

DECEMBER 14 SANTA PADDLES INTO WAIKIKI

In what has become a holiday tradition, Santa arrives Hawaiian-style surfing into the beach on his canoe in front of the Outrigger Waikiki on the Beach. Hundreds line the shore to welcome St. Nick including a keiki halau. Santa then heads into the lobby of the Outrigger Waikiki for picture op and a complimentary meet and greet. Free. Open to the public. 9 a.m. 923-0711.



DECEMBER 15 • ALII SUNDAY CELEBRATES PRINCESS BERNICE PAUAAHI BISHOP

Kawaiahao Church celebrates select Hawaiian Royalty (Alii) who are of particular importance for the Church by holding seven special Sunday services in their honor around their birthdays throughout the year. Today they celebrate Princess Bernice Pauahi Bishop. 9 a.m. kawaiahao.org.

Continues on page 17.

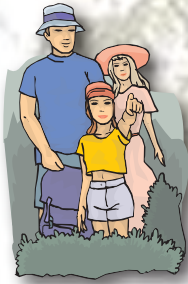
NAVATEK
Whale Watch

The humpback whales have returned to Hawaii, and Atlantis Navatek Cruises will start its **Whale Watch Morning & Lunch Cruises.**
December 16 - April 13, 2014

FREE round trip transportation from select Waikiki locations.
FREE CHILD 6 & UNDER!

Call (808) 973-1311 for information & reservations or fax to (808) 973-2499.

HIKER'S CORNER



NA ALA HELE TRAILS & ACCESS PROGRAM

For detailed information about hiking trails around the state, visit HawaiiTrails.org. The website includes an interactive map of each island and trail info that includes length, terrain, photos, directions, biking information, and printable topographic map links. Also included on the site are trail announcements, local weather, and more. This is an easy way to provide your guests with a lot of helpful information for their hiking trip (without a lot of time on your part). You can also call them directly at 973-9782.

COORDINATED HIKES: The hikes listed below are arranged by local clubs and open to visitors. Hikers are recommended to bring a snack, sunscreen, hat, sturdy shoes, insect repellent, & water.

SIERRA CLUB: Most hikes meet at 8 a.m. at the Church of the Crossroads (back porch), 2510 Bingham St. Do not leave cars in the church parking lot. Windward outings may meet at First HI Bank, Windward Mall. Requested donation is \$5 (\$1 under 15 years). Please call for information. Under 18 with adult.

HIKING HAWAII: Join a group of up to 15 hikers on a variety of guided treks. Private parties and door-to-door transportation available. Info and reservations at 855-808-4453, hiking-hawaii@yahoo.com or hikinghawaii808.com.

WAIMEA VALLEY GUIDED HIKING SERIES: Waimea Valley Family Guided Hikes are offered on Thursdays and Sundays. 5 person minimum. Reservations required in advance with credit card (cost includes admission). Keiki under 18 must be with adult. Closed-toe shoes and water required. Cameras strongly recommended! Reservations at 638-5877 or Lpool@waimeavalley.net

WAIMEA VALLEY HIKES

KALAHE'E: 9:30 a.m. – 12:30 p.m. Kalahe'e Ridge. 2 miles. Moderate. Ages 7+. \$35.

NORTH VALLEY HIKE: 9:30 a.m. – 2 p.m. Native flora and fauna. Ridge to valley. 6 miles. Strenuous. Ages 7+. \$50.

MONTHLY HIKES

DECEMBER 7 – KA'ENA POINT WEST
4 Miles – Intermediate/Shoreline/Ka'ena. See stonework for a railroad, military bunkers, a blow hole, sea caves (bring flashlight to explore tunnels), native plants, birds and, with luck, whales and monk seals. Bring sunscreen and water. Meet at Iolani Palace, 8 a.m. or at Kaena Point Satellite Tracking Station guard shack at 9 a.m. HTMC: 696-4746.

DECEMBER 8 (9 a.m.) – AIEA LOOP TRAIL
Beginner Hike. Meet at the Church of the

Crossroads and learn the basics of hiking.
Sierra Club: 942-0145

DECEMBER 8 – KEALIA
3.4 Miles – Intermediate/Graded/Ridge/Kahalu'u. Traverse the windward hillside by Temple Valley with views up the coast and toward the Ko'olau's. It's not too easy, not too hard, just a nice Sunday trek. Meet at Iolani Palace, 8 a.m.
HTMC: 590-0939

**DECEMBER 15 – PHOTOGRAPHY HIKE
KAENA POINT**
5 Miles – Easy, Coast, Waianae. The pace of photography hikes is very slow. Beautiful coastal and ocean scenery, bring water and sunscreen. Resv. Req. Meet at the Church of the Crossroads at 7 a.m.
Sierra Club: 227-9925.

DECEMBER 15 – WAIU
12 Miles – Advanced/Ridge/Waiu. This long ungraded, semi-cleared trail is hikable only because of the efforts of the HTMC trail maintenance crew. Bring water: you'll need it as you attempt to make the summit.
Meet at Iolani Palace, 8 a.m.
HTMC: 265-3283

DECEMBER 21 – MAKAPUU COASTAL HIKE
3 Miles – Moderate/Coast/Makapuu. Hike around the rocky coast to hidden tidal pools where hikers can take a refreshing swim. Visit the cave of the hungry god and the blow holes below the

lighthouse. Climb up to the lighthouse for views of the windward coast. Expect a lot of rock hopping and a climbing. Bring sun screen, hats and water. Meet at Iolani Palace, 8 a.m.
HTMC: 223-5765

DECEMBER 29 – PU'U HELEAKALA
6 Miles – Advanced/Ridge/Nanakuli. Start at sea level near Nanakuli and climb up and up toward the Wai'anae summit. Bring water and sunscreen, necessary for this hot, rocky hike.
Meet at Iolani Palace, 8 a.m.
HTMC: 735-2220

For more information on hikes visit:
Hawaii Nature Center (HNC) –
www.hawaiinaturecenter.org

Hawaiian Trail & Mountain Club (HTMC)
htmcclub.org

Sierra Club
www.hi.sierraclub.org/oahu/outings.htm

Hawaii Nature Center (HNC)
hawaiinaturecenter.org

Waimea Valley
waimeavalley.net

VOLUNTEER CORNER

If your guests are looking for more opportunities to give back, find new and updated events or activities to suggest at
www.voluntourism.org.

FEATURED HIKE THIS MONTH

Please send us your mini review and favorite pictures from your hike to: publisher@oahuconcierge.com.

Pu'u Manamana

This is a most dangerous hike near Kahana Bay Beach Park. It is call Pu'u manamana, and was a great hike. Probably the most intense hike I've ever been on. It took about 6 hours. You need to bring at least 3 liters of water per person, I recommend bringing shoes for sliding in mud, gloves for rope climbing, and more energy bars than you think you will need.

Submitted by Morita Koji, Guest Service Manager at the Ala Moana Hotel



DECEMBER CONT

Continued from page 15.

DECEMBER 18

MUSIC OF HAWAII: MIKE LOVE & PAULA FUGA
Every third Wednesday of the month Hawaiian music lights up the Honolulu Museum of Art. This month features Mike Love and Paula Fuga. Doris Duke Theatre. Tickets: \$25-\$45. 7:30 p.m. 532-8701. Honolulumuseum.org.

DECEMBER 21

HAWAII POPS HOLIDAY CONCERT

The Hawaii Pops Orchestra Series continues with a salute to the holiday season in a special concert starring Amy Hanaiali'i, The Diamond Head Theater Shooting Stars with special guest appearances by both Jim Nabors and Emma Veary. 8 p.m. Hawaii Convention Center Ballroom. \$35-\$75. 550-8457. hawaii pops.com.

DECEMBER 21

HAWAII KAI HOLIDAY BOAT PARADE

Head on over to the Hawaii Kai Towne Center, grab a seat and watch the 17th annual Christmas Boat Parade as the elaborately decorated boats make their way around the marina. Concert at 4:30 p.m. Parade begins around 6:30 p.m. hawaiikaitownecenter.com.

DECEMBER 20 – 22 • THE NUTCRACKER

The holiday traditions continue with this classic presented by Ballet Hawaii featuring principal dancers from New York City Ballet, Broadway star John Selva, Australian Ballet's Steven Heathcote & the Hawaii Symphony Orchestra. Fri. & Sat. 7:30 p.m. Sun. 2 p.m. Blaisdell Concert Hall. Tickets \$35 - \$99. 800-745-3000. Ballethawaii.org.

DECEMBER 6 – 22 • ELF, THE MUSICAL

Diamond Head Theatre presents Elf, the hilarious story of Buddy, a human raised in the North Pole who thinks he is an actually an elf made famous in the movies by Will Ferrell. Starring New York guest artist, Jami Keck as the Buddy the elf. Thurs-Sat. 8 p.m. Sun, 4 p.m. and a Sat, 3 p.m. matinee on 12/14 & 12/21. Tickets \$25. DiamondHeadTheatre.com or 734-0274.

DECEMBER 22-25

DIAMOND HEAD CLASSIC

The 5th annual college basketball tournament. Eight teams will compete in twelve game over three days in a bracket format. \$10. Stan Sheriff Center. 956-6955 diamondheadclassic.com

DECEMBER 24

SANTA PADDLES INTO GRAY'S

Head over to Grays Beach to see Santa paddle to shore in an outrigger canoe for all to see at 4:30 p.m before slipping into the Halekulani for a hotel guest only event. 923-2311.

DECEMBER 29

MAKANA AT THE KAHALA

Catch slack key master Makana is joined by Lono and Lopaka and Kanoë Cazimero dancing hula for a special CD Release Concert party for his album RIPE at The Kahala Hotel & Resort. The December event will include dinner, wine, and select cocktails for \$70++ Maile Ballroom. 6 – 9 p.m. 739-8760.

DECEMBER 31

**Happy
New
Year**

ALAMOANA

HAWAII CENTER

Ala Moana Center kicked off the re-opening of Center Court and the holiday season with their annual concierge holiday party. Guests started the evening at Alan Wong's Pineapple Room where they noshed on sliders, soybeans & pipikaula poke while hearing what the Center had planned for the holidays. After a brief tour of the newly opened redeveloped common areas, the Customer Service Center some new stores and a special performance of their show on the new Centerstage, complete with snow, the evening finished up with dessert, prizes and champagne at Mariposa. alamoanacenter.com



That's Entertainment

HOTELS

- HALE KOA HOTEL** 955-0555
 •TuSat - High and Right Comedy Show takes the stage at the Warriors Lounge at 8pm.
 •MThFS - Poolside music at the Barefoot Bar. 6-11pm
- HALEKULANI HOTEL** 923-2311
 •Daily-Hawaiian Music and hula at The House Without A Key from 5:30-8:30pm.
 •Daily-Live Contemporary and light Jazz at Lewers Lounge from 8:30pm to midnight.
 •Sun- Sunday brunch at Orchids features Noly Paa on the piano from 9:30 - 2:30pm.
- HILTON HAWAIIAN VILLAGE** 949-4321
 •TuesFri - Fireworks at 7:45pm.
 •Fri - The Rockin' Hawaiian Rainbow Revue (formerly the King's Jubilee), a musical salute to King Kalakaua, at the Super Pool. 7 pm.
 •FriSat - Olomana at the Tapa Bar from 8-11pm.
 •Sun - Jeff Apaka at the Tapa Bar from 5-7pm.
 •Daily - Live entertainment at the Hau Tree Bar and the Tapa Bar from 8-11pm.
- THE KAHALA HOTEL** 739-8888
 •TuWThFSat - David Swanson vocalizes on the piano at The Veranda from 7:30-11pm. Live Jazz on Mondays.
- MOANA SURFRIDER** 922-3111
 •Daily-Hawaiian music & hula. The Banyan Court, 6-8 pm, and again from 8 -11 p.m. Weekends from 11:30- 2 p.m.
 •MWFri-Guided historical tours at 11am.
- NEW OTANI KAIMANA BEACH** 923-1555
 •FSat- Local jazz guitarists plays live in the Sunset Lanai Bar. 6-9pm.
- OUTRIGGER WAIKIKI ON THE BEACH** 923-0711
 •Mon- Kukui Nut Bracelet Making. 1pm.
 •Th- Ukulele Lessons. 1pm.
 •Fri- Aloha Fridays bring back old Hawai'i with music, hula, ukulele & lei making lessons. 9am-1pm.
- OUTRIGGER REEF ON THE BEACH** 923-3111
 •Daily- See guest artists at work in Kuloko Arts of Hawaii 9am-1pm and again from 6-9pm.
- SHERATON PRINCESS KAIULANI** 922-5811
 •Daily-Live Hawaiian music & halau at the lounge from 6-8:30pm, then poolside from 8:30-10:30pm.
 •MWFri-Princess Kaiulani historical tour at 4pm.
- THE ROYAL HAWAIIAN** 923-7311
 •TThSat- Free guided resort tour at 2pm.
 Fri-Princess Kaiulani historical tour at 4pm.
- TURTLE BAY RESORT** 293-6300
 •MTWThFSat- Lei Making, Main Lobby at 10am.

- ThSun - Fire Dancer, Hang Ten Pool Bar at Sunset
 •TThFri - Shell Hula Lessons, Lobby at 10am
 •TThFri - Ukulele Lessons, Lobby at 9am
 •Fri- Music & Hula. Lobby Lounge 6:30-8:30pm.
- WAIKIKI BEACH MARRIOTT RESORT** 922-6611
 •Daily-Hawaiian entertainment in The Moana Terrace Bar. 6-9pm.
 •Fri-Local crafters "Aloha Friday Fair" Lobby 9a-2pm

MUSEUMS

- HAWAII STATE ART MUSEUM** 586-0900
 •TWThFSat - Inaugural exhibition "Enriched by Diversity: The Art of Hawai'i." Free. Tuesday-Saturday, 10 a.m. to 4 p.m. Located in the Capital District.
- HAWAII THEATRE** 528-0506
 •Tues- A one-hour guided tour. The Theatre is undergoing renovations from July 1st through August 15th. There will be no tours available during renovations.
- HONOLULU MUSEUM OF ART** 532-8726
 •MWF - Japanese Language Tours. Private tours also available. 1pm. Regular admission.
- IOLANI PALACE** 522-0832
 •Mon-Sat-45 minutes docent-lead or self-guided audio tours available in English or Japanese. Japanese-led tour is available only at 11:30 a.m. All tours include re-tour video and entrance into the Palace Galleries. Adults: \$14.75-\$21.75 / Keiki (5-12): \$6. 9am-5pm
 •Sat-Hawaiian Quilt Classes. Old Archives 9:30a-12p.
- LUCORAL MUSEUM** 922-5381
 •TTh- Learn how to plan your jewelry project and more in this beaded jewelry workshop \$10. 2-4 p.m.
- MISSION HOUSES MUSEUM** 447-3910
 •Tue-Sat-Learn about the dramatic story of cultural change in 19th-century Hawai'i. Docents lead tours through the oldest existing frame house in the Islands, Printing Office, and the coral block Chamberlain House. Reservations required. www.missionhouses.org
- PACIFIC AVIATION MUSEUM** 441-1000
 •Daily-Vintage aircraft in battlefield hangars. Combat flight simulators. Aviator's Tour takes you through the new Restoration Hangar. Restaurant, Museum Store. Shuttle & Tickets at USS Arizona Memorial Visitor Center or at www.PacificAviationMuseum.org.
- THE SPALDING HOUSE** 526-1322
 •Daily-Docent-led tours given daily. 1:30pm. Garden tours or Japanese language tours are by appointment.
- NAVAL AIR MUSEUM BARBERS POINT** 682-3982
 •Mon-Fri- A unique museum experience about aviation history in Hawaii. All of the aircraft are open to climb in, on and around. Tours: 8 a.m. - 4:30 p.m. \$7 / \$5 children under 18. BLDG 1792, Midway Road,

Kalaeloa Airport. Reservations required. Sat/Sun by appt only. www.nambp.org.

SHOPPING CENTERS

- ALA MOANA CENTERSTAGE** 955-9517
 •Tues - PCC Polynesian Revue Show. 6pm.
 •Sun - Keiki Hula Show. 10-11am.
- INTERNATIONAL MARKET PLACE** 971-2080
 •Daily except Sunday - Free Food Court Entertainment starting at 6pm.
- KING'S VILLAGE** www.kings-village.com 237-6344
 •MW Famer's Market offering fresh produce, baked goods and local food items from 4-9pm.
 •Daily Watch the changing of the guard put away the Hawaiian flag each evening with a rifle drill exhibition at the front entrance of the Village. 6:15 p.m. FREE.
 •Daily King's Guard Museum features a variety of collectibles and memorabilia. 10a-10:30p. FREE.
- ROYAL HAWAIIAN CENTER** 922-2299
 • TWThF - Ukelele lessons 10-11am, *Paina Lanai*
 • MW- Learn lomilomi 11am-12pm, Bldg. A, 1st floor
 • TTh-Hula (T) 11am-12pm (Th) 4-5pm, *Bldg C. 2nd floor*
 • TWThF- Live Hawaiian music 6-7pm, *Royal Grove*
 • MTWThSat- Lei making 1-2pm, *Bldg A., 1st floor*
 • Sat- Hula Kahiko 6-6:30pm, *Royal Grove*
 • Sat- Hawaiian musicians 7:30-8:30pm, *Royal Grove*
 • ThSat - PCC Performs. 11-11:45am, *Royal Grove*
- WAIKIKI BEACH WALK** www.waikikibeachwalk.com
 •Tuesdays - Ku Ha'aeo featuring Hawaiian song and dance on the Plaza stage. 4:30-6pm
 •Wednesdays - Yoga Classes 4-4:45pm. Free.Plaza Stage
- WAIKIKI SHOPPING PLAZA** 923-1191
 •Daily Hula Lessons. 10am, 12pm
 •MTTh - Polynesian Review 1st & 3rd floor 7-9pm

ATTRACTIONS

- KALAKAUA AVENUE** 527-5666
 •Fri - Strolling Hula from 8-10:00pm.
- KAPI'OLANI BANDSTAND** 527-5666
 •Fri-Hawai'i's finest musicians perform. 5:30-6:30pm
 •Sun-Royal Hawaiian Band performs 2-3:15pm.
- KUHIO BEACH HULA SHOW** 843-8002
 •TThSatSun- City & County presents a free hula show at sunset. 6 - 7pm at the hula mound. (No show 12/24)
- TAMARIND PARK - DOWNTOWN** 527-5666
 •Fri- Mayor's Aloha Friday Music from 12-1pm features live music from Hawaiian to Jazz to Pop.
- WAIKIKI TOWN CENTER** 922-2724
 •Mon-Sat-The songs and dances of Hawai'i, New Zealand, & Tahiti. Free shows begin at 7pm.

EVENTS SUBJECT TO CHANGE PLEASE CALL TO CONFIRM PRIOR TO ATTENDING



Do you have a picture you would like us to run? Send them to: publisher@oahuconcierge.com

Hula Royalty



Hula Grill's Chris Pasquil and Robert Cazimero presented the I Ola Mau Ka Hula award to full time teacher, 84-year old Kumu Joan Lindsey. Chris has worked at Hula Grill since it opened and is the organizer of the annual award.

Concierge at The Pineapple Room



There were some great pics taken at Ala Moana's Holiday Party and as usual, we didn't get them all in. I was going to run Sheraton's Brian Chan and the 'murse' but figured it was wiser to run the happy smiling pic of a whole lot of you!

Matchbox 20



So nobody sent in any Paparazzi pictures this month, so I thought I'd share these pics from the recent Matchbox 20 concert at the Blaisdell. Here's Rob Thomas and Kyle Cook during the show and another with Paul Doucette backstage.

THE OAHU

conciierge card

December 31, 2013

- Dole Plantation** - 1 FREE Adult Admission To The Maze With Purchase of 1 Adult Admission. 621-8408
- Giovanni Pastrami** - 15% Off Full Bar, Dine-in or Take-Out at anytime with ID. 227 Lewers St. 923-2100.
- Hard Rock Café** - 15% off food, beverage (non-alcoholic), or merchandise. Hotel ID required. 280 Beachwalk Ave. 955-7383.
- Hawai'i Prince Golf Club** - \$5 Off Standard Kamaaina Green Fees. Tee Times: 944-4567
- Hilo Hattie** - 25% on Hilo Hattie labeled garments, 15% off other fashions/gifts and 10% off Hilo Hattie labeled foods. Not valid on sale item. Ala Moana Center and Nimitz Hwy Ph 535-6500.
- Hy's Steakhouse** - 25% VIP Discount Off Food And Beverage (up to 2 persons) 2440 Kuhio Ave. 922-5555
- Hyatt Regency Waikiki** - 15% discount with the presentation of a concierge business card at SHOR, Japengo and SWIM. 2424 Kalakaua Ave. 923-1234.
- Iolani Palace** - Free Admission. Regular rate \$20. 364 S. King Street, Reservations & Hotel ID required. 522-0832.
- IHOP** - Receive 20% on entire bill. Must show valid hotel ID. Not valid with any other offer or discount. Aqua Palms, 1850 Ala Moana Blvd restaurant only. Free parking available. 949-4467.
- Kaiwa** - 20% off food & beverage between 5 & 7 p.m. 924-1555
- Longhi's** - 25% off food & beverage up to 2 persons, not applicable with any other promotion or discount. 947-9899.
- Mission Houses Museum** - Free tour with hotel ID. 447-3910
- Pacific International Skydiving Center** - 50% Discount on Jump, 68-760 Farrington Hwy, 637-7472
- Plaza Café** - 15% off all food items. Best Western the Plaza Hotel. 3253 N Nimitz Highway. 836-3636.

- P.F. Chang's Waikiki** - Receive 20% on all appetizers, entrees, desserts and beverages 11 am - 5 pm daily (not valid for Pau Hana menu) Royal Hawaiian Center. Ph: 628-6760, 637-7472
- Romano's Macaroni Grill** - 20% Off Food and Beverage for up to 2 guests. (Not Valid for Happy Hour Menu). Ala Moana Center, 1450 Ala Moana Blvd. 356-8300
- Royal Hawaiian Center** - get your FREE Malama Card which offers special retail and dining discounts to local Waikiki workers. Royal Hawaiian Center, 2201 Kalakaua. 922-9299.
- Ruth's Chris Steak House** - 20% Off Food and Beverage for up to 2 guests. (Not Valid for Happy Hour & Prime Time menus). Restaurant Row, 500 Ala Moana Blvd. Waikiki Beach Walk, 226 Lewers Street. 440-7910
- The Contemporary Museum** - FREE Admission For Cardholder and One Guest. 526-1322
- The Deck** - 25% off all cocktails on Sundays from 11 a.m. to close. for all hotel industry employees at the new poolside bar at The Queen Kapiolani Hotel. 150 Kapahulu Ave. Must show hotel ID. 931-3325.
- The Kahala Resort** - Complimentary appetizers for a concierge and a guest with the presentation of a concierge business card at Hoku's, Plumeria Beach House, Seaside Grill, The Veranda. 5000 Kahala Avenue. 739-8888
- The Original Glider Rides** - Come experience the joy of soaring for yourself. Concierge / GSA may receive a complimentary scenic ride. Request the "GSA flight special" when booking your reservation. Hotel ID required. Dillingham Airfield. 637-0207
- Tiki's Grill & Bar** - FREE order of Prime Rib Poke with any purchase! One per table. OahuconPOKE. ASTON Waikiki Beach. 923-8454
- Willoughby's Restaurant** - 15% off all food items. Ohana Honolulu Airport Hotel. 3401 N. Nimitz Hwy. 836-0661.

You may be required to provide identification. One special per person per business. Offers valid on regular-priced merchandise only. Discounts are available to Guest Service Professionals ONLY. Not valid with other promotions or special offers. A minimum 15% gratuity required for all special food offers.

New offer

Guest Service Agent of the Month



NAME: Angeli Furutani

HOTEL: Hotel Renew

TITLE: Front Office Supervisor

Q. How long have you been at Renew?

A. I have been at Hotel Renew for nearly 8 years.

Q. How big is your team there?

A. We have 7 dedicated team members at the front desk.

Q. How did you come to work in the industry?

A. Living in Hawaii, the travel industry seemed like the ideal place to pursue my interests. My first job upon graduation was as a front desk agent at the Waikiki Sand Villa.

Q. What do you think makes your property unique?

A. Far and away, it is the eclectic team of creative people we have here at Renew that brings the hotel to life. Our staff are some of the most sincere you will ever meet. Each of us is able to connect with different guests, and together we strive to sustain an almost familial atmosphere that goes beyond what most others are able to achieve.

Q. What's the biggest perk of being in this industry?

A. I love meeting interesting people from different parts of the world, and building lasting friendships along the way. The knowledge that comes along with being in the industry is also very useful when it comes to my own travels.

Q. What has been your biggest challenge at the desk?

A. To answer the question, "What will the weather be like tomorrow?" I know it sounds trivial at first, but for guests who have been saving for a once in a lifetime journey to our islands, this becomes a legitimate concern. We all wish to provide the most memorable experience for our visitors, and the real challenges arise when dealing with circumstances that no one can control... like the weather.

Q. What is the one skill necessary to succeed?

A. Patience is essential. Anyone who has worked in the industry for longer than a week can attest to that. It is important to always remember that what seems like common knowledge to us is an experience a world apart for many of our guests.

Q. Any memorable guests come to mind?

A. Over the years at Renew we have built quite a legion of faithful, return guests. From the smiley San Diego college recruiter, to the globe-trekking counselor from New Mexico, so many have left their stamp of us over the years.

Q. What are your favorite holiday activity suggestions?

A. The Honolulu City Lights tour, along with the gingerbread house at the Princess Kaiulani.

Q. What would you recommend if a guest only had one day?

A. Hike Diamond Head at sunrise. Stop off at Leonard's for malasadas, then head to Pearl Harbor. Next stop, North Shore. Lounge at the beach, discover Haleiwa, grab lunch at Ted's Bakery or drive over to Giovanni's. Return to Waikiki coming down the east side of the island. Stop off in Kailua, maybe take a dip at Lanikai, or discover your own beach along the way. For those with endless energy I would suggest hiking Pillbox before taking the Pali back into town. Stop off at the lookout for one last glimpse before sunset. To finish off the day, I would recommend Uncle Bo's for those seeking a casual and delicious dinner.

Q. What is your favorite restaurant to recommend?

A. Royal Hawaiian Hotel's Mai Tai Bar for cocktails, House Without a Key for great food and live Hawaiian music, and Side Street Inn for a taste of the local cuisine.

Q. Any other thoughts you'd like to share?

A. I think it's important for all of us to remember how fortunate we are to live in such a paradise. Although our jobs can be stressful at times, we are in a unique position as to be able to make dreams come true for travelers from around the globe. Millions of honest and hardworking people save money for years, just to enjoy our beautiful island for a single week out of their entire lives. What could be more humbling and motivating than that? Let's remember why we do what we do, and who we do it for.

Everyone remembers their first kiss



Programs starting at \$125 per Person!

Enjoy intimate, personalized, hands-on dolphin fun during the \$125 Dolphin Experience! Reserve your program now.

Call: 800.248.3316 or Visit: DolphinQuest.com

© 2013 Dolphin Quest, Inc. All rights reserved. No part of this publication may be reproduced without written permission.

The Oahu Concierge is printed monthly and direct mailed FREE to all Oahu Concierge, Hospitality & Activity Professionals.

Subscriptions available to non-industry at \$20 per year.

C O N T A C T

Davis Media

Ph: 596-4422 • Fax: 593-0839

www.oahuconciierge.com

Twitter: @OahuConciierge

Facebook: www.facebook.com/OahuConciierge

ADDRESS & NAME CHANGES / ADDITIONS

We do not take changes by telephone. All changes to mailing list must be submitted in writing by the 16th of the month, email is preferred.

S T A F F

PUBLISHER **Pam Davis**
publisher@oahuconciierge.com

CONTRIBUTING EDITORS
Lynn Cook, Lance Rae

DESIGN
Coreiya Design

The Oahu Concierge
1221 Kapiolani Boulevard, Suite 1040
Honolulu, Hawaii 96814

Presorted Std
US Postage Paid
Honolulu, HI
Permit # 583

The Oahu Concierge's 14th annual Concierge of the Year Award!

Rules: Your name, title and hotel must be legible as shown underneath, and the name **must** match that of the preprinted mailing label. **Only one entry per person.** Multiple entries from the same name or illegible entries shall be discarded. Play fair folks!



Each of these deserving individuals was recognized this year as our Concierge, Guest Service Agent, or Activity Agent of the month for their exemplary service. Which one should be our Concierge of the Year? The outcome is up to you. Please photocopy this page and fax back your nominee to 593-0839 **no later than 2 p.m. December 13, 2013.**

Name _____


Title _____ Hotel _____

Signature _____

Who do you think we should honor next?

Let us know who you think should be nominated next for their service and why and maybe we'll be voting on them next year! People may only win once.

JANUARY



Tracy Crofton
Ohana East Hotel
Guest Services

FEBRUARY



Jan Minders
J.W. Ihilani Resort
Concierge

MARCH



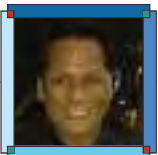
Aki Matsuyama
Westin Moana Surf Rider
Concierge

APRIL



Heather Bailey
Expedia
Activities Concierge

MAY



Alika Tabion
Hilton Grand Vacations Club
Guest Services

JUNE



Wako Mimura
Aulani, A Disney Resort & Spa
Concierge

JULY



Mark Pralle
The Modern Honolulu
Concierge

AUGUST



David Nakamura
Halekulani
Concierge

SEPTEMBER



Ewa Jachimczyk
Doubletree Alana
Front Desk Supervisor

OCTOBER



Kahea Molabe-Hutton
Marriott KoOlina Beach Club
Activities Concierge

NOVEMBER



Ingrid Noda
Sheraton Waikiki
Activities Concierge

DECEMBER



Angeli Furutani
Hotel Renew
Front Desk Supervisor