

Concierge

KEEPING THE HOSPITALITY INDUSTRY INFORMED SINCE 1998

Makahiki Christmas Ancient Traditions In Modern Times

The first formal introduction of the celebration of Christmas in Hawaii arrived with the missionaries in 1820. The concept of "peace on earth, goodwill to men" was not new to the Hawaiians. From the time before recorded time, Hawaii celebrated from mid-November into the new year. The rising of the constellation Makalihi, the Pleiades, heralded the wet season and the season of peace with no war. Commoners and royals celebrated together. It was the time of Lonoikamakahiki, the time for games of skill, feasting and general congeniality.



Santa's Beach House at Ward Villages is one of the many fun opportunities kids have this season.

Pre-dating the arrival of the Protestant missionaries from New England, historic reports of Captain George Dixon sailing a ship into Waimea Bay on Kauai in 1786 describe a Christmas feast of roasted pig, pie and grog mixed with coconut milk. The captain and his men toasted friends and family back home in England. Some stories add in burning branches thrown from the cliffs, possibly an early form of fireworks. Other reports describe the same "fireworks" from the slopes of Punchbowl on Oahu.

Kawaiahao Church, commissioned by Kamehameha II and Kamehameha III, designed by Hiram Bingham, was completed in 1842. It was and is the church of the royal families open to everyone. In 1858 King Kamehameha IV, Alexander Liholiho, declared December 25th to be the kingdom's national day of Thanksgiving. Within two years Santa Claus made his first visit to Washington Place, to deliver gifts to children. Holiday parties were held on the lawn of Iolani Palace and Christmas parades filling King Street. Attending the service on Christmas Eve at the church is like stepping back in time to the quiet, early days of our islands.

The love of parades continued into modern times. In the 1950's, 60's and 70's island neighborhoods and communities pooled resources. The Punchbowl, Paoa Valley Christmas parade was a fine example. Anyone who owned an

instrument was drafted into the parade ranks. Drums, horns and bells were welcomed. The parade started at the Punchbowl Holy Ghost church, went up Puowaina Drive and down through Paoa Valley - then it made a second round of the route to make sure everyone had a chance to watch.

Through the years Hawaiian Christmas echoed across the nation and the world. R. Alex Anderson wrote "Mele Kalikimaka" in 1949. The song became a national Christmas classic when it was recorded by Bing Crosby. For any and all military deployed to Hawaii or from Hawaii the song resonated home, family and Hawaii. Just hum along, "Mele Kalikimaka is the thing to say on a bright Hawaiian Christmas Day," and someone will answer, "in Hawaii we have two seasons, summer and Christmas!"

Hawaii's enthusiasm for parades has never diminished, only grown. The 31st Annual Honolulu City Lights lighting of a 50-foot tall tree in front of Honolulu Hale (city hall), is followed by one of the most unique parades in the nation, holiday displays, keiki rides, a wreath exhibition and holiday concert all beginning at 4 p.m. on December 5th.

The big news this year is the addition of three new parade mascots. At nine feet tall, the red, green and yellow old fashioned Christmas lights will dance their way along the parade route and make appearances for photo-ops at numerous Honolulu Hale lawn events during the holiday season.

The second big scoop is the addition of a new train for keiki rides. Ala Moana Center donated their much-loved Candy Cane Train to the Friends of Honolulu City Lights, forever. With all the new construction and the master plan for the Center the train attraction was stuck in the "train station." What better place to be - Honolulu City Lights.

Arriving early is suggested. Parking is free at the municipal lots. Photos of Shaka Santa and family

Continues on page 2.

2015 EDITION BOOKS & Music



This new cookbook by Denise Hayashi Yamaguchi is one of the many books out there that would make the perfect Xmas gift.

The oft repeated question, "What can I take home to family and friends that is 'real' Hawaii?" The question has an easy answer. Books and music. Easy to find, light and easy to pack, stories and songs of Hawaii to share. Read a page or two or hum along, you might need two copies.

The shoppers favorite, ABC Stores, carry children's books and CD's, as does the new Longs Drugs, finally opened in Waikiki. Ala Moana Center has the only full service bookstore, Barnes & Noble. Walmart, near Ala Moana, has an ever-changing assortment of titles. Possibly the best location for shopping is Na Mea Hawaii at the Ewa end of Ward Warehouse. Books on Hawaii, both new and rare, large bins of CD's by category and a staff who know not just the merchandise but may well be related to the author or recording artist. Mutual Publishing and BeachHouse hold the record for new titles. The majority of music CD's are either recorded and produced or distributed by Mountain Apple Company.

Continues on page 7.

TABLE OF CONTENTS

Yada Yada Yada	2
Newsflash	3
Arts with Aloha	4
Aunt Lynn's Adventures	6
Paparazzi: Rock-a-Hula	8
Chef's Corner Tommy Bahama Andrew Warner	11
E Pili Kakou	12-15
Calendar	16-17, 19
New Year's Eve Preview	18
Paparazzi: PEChang's	19
Paparazzi: Ala Moana Holiday Soiree	20
Paparazzi: Planet Blue at Ala Moana	21
That's Entertainment	22
GSA of the Month: Dean Hashimoto	23

W WOLFGANG'S STEAKHOUSE
LUNCH • HAPPY HOUR • DINNER • WEEKEND BRUNCH • PRIVATE ROOMS

UNMISTEAKABLY NEW YORK
Royal Hawaiian Center, Bldg C, Level 3
wolfgangsteakhouse.net • opentable.com
808.922.3600



Publisher's Letter



Mele Kalikimaka

Unbelievable. Where in the world did the year go and why was it so dang busy? These past few months were at warp speed. I'm used to being busy and having a crazy schedule, but somehow I always get it done. I gotta say, I didn't do that this year. I dropped a lot of balls. If you were one of them I apologize, but this schedule was beyond insane. I do have to say it's not just me. As I spoke with my friends in the industry, there was a lot commiserating, so at least I wasn't alone. That being said, it's not quite over yet. The busiest month of the year is now upon us. There are several concierge events at the beginning of the month, and then... the big one. It's time for our annual Mahalo Party, where we announce your choice of concierge of the year! Remember to get your votes in. Once again, time will be tight, so here's a few things to remember. Vote only once. Multiple votes will be discarded. Do not white out the printed address on the back cover of the magazine. The name and signature of the person voting must match the pre-printed address label on the magazine. Votes that don't match or if the label is blanked out will be discarded. If you do not receive your own copy of the magazine, I am sorry but you are not eligible to vote. That's just how it works.

Now onto the big event. I'm thrilled to announce that SKY Waikiki has generously offered to host the party this year. I know how many of you are excited to come check it out, so it's such a great fit. Please note however, there are occupancy issues at work here, so there will be seat limitations. I will be out of town until December 1st, but upon my return I will send out invites with how many seats I have for you. Obviously if there is room, I will get as many of you in as I can, but it's going to be very difficult to juggle getting in representation from every hotel, with a few extra seats for the nominees hotels plus accommodate the larger groups, etc. In short, please bear with me and understand if you try to RSVP with a larger number than I feel I can accept in the beginning. It's a mammoth task trying to be fair and get everyone in. Also, are you getting the magazine but don't usually get an invite email from me? Please reach out via email and let me know you are interested. Remember, I suffered a pretty major email fail earlier this year that I have been too busy to deal with yet. I no longer have many of your emails that I used to have. Please let me know who you are so I can get you the invitation. This one is open to all of our readers that I can fit in within the limitations that have been given to me, and I want to know you are out there. Please also remember, this event is a food drive for the Hawaii Food Bank. Please bring canned food items to give to those less fortunate. I really really really want to raise 1,000 pounds of food for them this year, so I am asking for your help. And of course, for every three cans you bring, I will give you a special raffle ticket. If I don't see you, I wish you all a very happy holiday season. Mahalo for all that you do!



Yada Yada



Jamie Lambert

A belated congratulations to **Jamie Lambert** who was recently promoted to Director of Sales at **MC&A, Inc., Hawaii's Destination and Event Management Specialists**. Jamie has been with the company for the past 12 years and will now be responsible for managing some of the firm's largest corporate direct clients. • There are some new cast members in the front office at the **Aulani, A Disney Resort**. A warm welcome goes out too: **Khrisna Fabian, Na Alii Grantham, Iwalani Higa** and **Jonathon Rego**. • The Aqua-Aston Hospitality team has announced that **Janice Wakatsuki** has joined the team as their senior vice-president of human resources. She will be responsible for overseeing the administration of employee and labor relations, compensation, benefits, and recruitment for the corporate office

and for the properties that Aqua-Aston Hospitality manages. • The **Hilton Hawaiian Village** welcomes **Grace Barraza** as the resort's national sales manager. She brings with her 22 years of experience, 15 of which are with Hilton. The resort has also announced that **Jessica Heath** has come onboard as the resort's hotel manager on duty. Jessica has extensive front office and guest service experience including a stint at the **DoubleTree by Hilton Hotel Alana Waikiki** as an assistant front office manager. We say hello to Jessica as we say farewell to manager on duty. We want to send out our best wishes to **Chandra Huang**, who will be retiring on December 17th after 33 years, 6 months and 2 days at the property. What an accomplishment. Enjoy your retirement, Chandra... you've earned it!



Jessica Heath

Makahiki Christmas

Continued from page 1.

are best as the sun is setting. Food booths open and keiki rides begin at 4 p.m. Mayor Kirk Caldwell opens the festivities from the steps of Honolulu Hale at 6 p.m. the 50-foot Norfolk pine tree and the corridor of lights down King and Punchbowl streets. The parade travels through Chinatown and downtown on its way to Honolulu Hale. A new Santa float and the big candy toss truck will be there. All floats gather at the end of the parade for photo ops. The first night concert follows at 7:30 p.m. with Kapena, Amy Hanaiali'i, Kalei Gamiao and Halau Hula 'O Hokulani. Check the web site for times and dates for ornament making, movie nights, and times for photos with Santa. He will be there until Christmas Eve. Honolulu City Lights displays continue through Saturday, January 3, 2016.

The all new Ala Moana was our front page feature last month. Trust us when we say, it will not disappoint. It looks and feels like New York with a brush stroke of Hawaii. Who knew that Bloomingdales had such a broad range of items, departments and designers. Personal shoppers are there to help – not just to shop with you but also to keep you headed in the right direction when the next display over distracts any attempt to stay on track. And can we say

Taste the magic of Christmas past with a stop at the Plumeria Beach House at the Kahala Hotel and Resort for their traditional Christmas Stollen. The traditional taste delight from small-kid days is available from December 1st to 15th from 10 a.m. to 3 p.m. and December 16th to 31st from 10 a.m. to 6 p.m. The new chef, Todd Champagne, will continue the Kahala's traditional recipe. Dark and golden raisins, orange and lemon peel, roasted almonds, dark rum, German marzipan, holiday spices. The holiday decor at the hotel is always stunning. This year the giant tree will be unveiled on November 27th with the angel charity tree dedicated to Helping Hands Hawaii as the beneficiary charity. Of course the resident dolphins are always ready to entertain and the feeling is vintage memories.

On Sunday, December 6th Hawaii's Governor,

David Ige, and First Lady Dawn Amana-Ige open the doors to Christmas at Washington Place on Beretania Street. From 3:30 to 6 p.m. the open house offers a chance to walk back to the time of Hawaiian royalty. Glenn Smith and Chris Kamaka of Ho'okena will be joined by songstress Ku'uipo Kumukahi, entertaining in the royal manner. Reservations are available at 586-0249.

The rumors that Ward Center and Ward Warehouse were closing are far from true. For this holiday season, and next, the shops are alive and well and welcoming. Ward Villages is presenting something Honolulu has only dreamed of... an ice rink! Ice skating in New York's Central Park is such a romantic thought – until the reality of the travel and the cold set in. This year Ward Village is putting in an outdoor community ice skating rink for all to enjoy. The Ward Village Ice Rink will offer a special open-air skating experience from November 27th to January 10th at the courtyard of the former IBM Building, adding a 4,200 square foot outdoor ice skating to their line-up of community activities. The rink will be a once-in-a-lifetime opportunity to ice skate only a short block from the ocean! The rink will be open daily, with tickets (including skate rentals) available at the gate at \$15 per person for a one-and-a-half hour skate time.

Kids of all ages will be able to watch, sing and ice skate along to Disney® fan favorite, "Frozen Sing-Along Edition." The film follows Princess Anna's epic journey to save her sister, Queen Elsa, and her kingdom from an eternal winter. The event includes a "sing-along" edition of the popular film, with the smash-hit song "Let it Go," by Idina Menzel.

Through December 24th families can stop by Santa's Beach House at the Ward Entertainment Center, Box Office Level (near Ward 16 Theatres) throughout the holiday season for photos with Santa and a chance to share your wish list.

From December 5th to 19th, Ward Village presents its annual Holiday Concert Series with free live entertainment every Saturday in December from 7 to 8 p.m. at the Ward Warehouse Amphitheater, including: Jacob Kailiwi, Natalie Kamau'u, and Mark Yamanaka and Kuapoa. Every night there is a light show

Continues on page 8.

NEW STORES AT RHC

St. Tropez lifestyle has arrived with the opening of Vilebrequin the French trend-setting luxury swim and resort wear lines for men, women and children. The line was created in the 1970s by Fred Pysquel, a French automobile journalist, and the name of the brand means "crankshaft." Noi Thai Cuisine recently opened showcasing traditional and authentic Thai cuisine with spectacular table side presentations. And the local company Island Soap & Candle Works has expanded to a new location across from Fendi. Just follow the scents up the escalator.

\$4 TICKETS TO ROCK-A-HULA

Rock-A-Hula is celebrating its 4th anniversary by thanking guests for their continued support with \$4 admission tickets for residents. Kama'aina are invited to take advantage of the special just in time for the "12 Days of Christmas" from December 1 - 15 (closed on 12/7, 12/13 and 12/14). The \$4 tickets are for the Rock-A-Hula show only; cocktail and dinner packages may be purchased at regular kama'aina rates at the Box Office. rock-a-hula.com

HWFW GIVES AWAY \$350,00

The Hawai'i Food & Wine Festival (HFWF) presented checks to sixteen local non-profit organizations totaling \$350,000. The contribution represented a record level of giving, with a total over the last five years reaching \$1.3 million. The beneficiaries include local culinary arts and sustainable programs. By far the most delicious way to support a good cause in town. HFWF.me

NATIONAL GUARD GOES FREE

In honor of the U.S. National Guard's birthday on December 13th, Pearl Harbor Historic Sites will waive the admission of all active duty and retired Air Force personnel and their families into the Battleship Missouri Memorial, Pacific Aviation Museum Pearl Harbor, and the USS Bowfin Submarine Museum and Park on December 12th and 13th. Just present a valid military ID at the ticket booth to enter. PearlHarborHistoricSites.org.

RAPTORS AT KUALOA RANCH

No, not the dinosaurs that terrified viewers in Jurassic Park, but rather the new multi-passenger ATVs that Kualoa Ranch has added to its arsenal. The appropriately named new ATVs hold up to 5 passengers including the driver. The 2-hour Raptor tour costs \$329 per vehicle and the 1 hour tours cost \$199 per vehicle. Note: Drivers must be at least 25 years old. 237-7321. kualoa.com

REMEMBERING PEARL HARBOR

This year's Dec 7th ceremonies will be held at Kilo Pier on Pearl Harbor base. This 74th annual ceremonies of the bombing of Pearl Harbor is open to the public and free transportation is available from Aloha Stadium. PearlHarborEvents.com

POLO AT BLOOMINGDALE'S

If you missed the polo season you still have a chance to catch the Operation Toy Box polo match, December 6th at 2:00 p.m. at Mokule'ia on the North Shore. Team Equus plays "team Bloomingdale's". Admission, an unwrapped toy + \$5. Toys are distributed by the sponsoring North Shore News to needy families on the North Shore. December 3rd a Hawaii Polo Club member event is being generously hosted by Ralph Lauren Polo at Bloomingdale's with a percentage of sales to benefit the toy project. Invites for prospective Hawaii Polo Club members RSVP: hpsocialclub@gmail.com.

808 CENTER OPENS

The new 3 story restaurant and entertainment complex is located across from Walmart and the HMSA building in the Keeaumoku area is scheduled to be completed this month. The building is home to the already wildly popular Urban Bistro, home of the roasted garlic crème brulee, Sichuan cuisine eatery Fortune Noodle, fruit tea and smoothie shop Infinita, revolving conveyor belt shabu shabu called Hawaii Pot and the Vietnamese Pho Ca Dao. The Center is also home to DADA Salon, which offers the first head spa service in Hawaii, a concept popular in Asia.

Please join The Oahu Concierge for the
15th ANNUAL MAHALO PARTY

Tuesday, December 15th
from 5 - 8 p.m.

You're invited to join us at SKY Waikiki, for a fun-filled evening at Hawaii's hottest new location



Who's going to be named the
2015 Concierge of the Year?

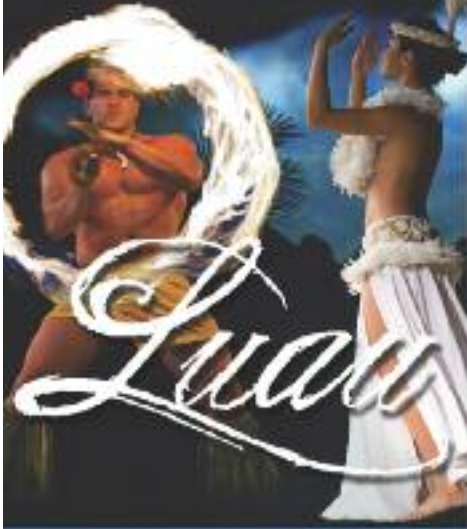
RSVP REQUIRED
to rsvp@oahuconcierge.com by December 13th

Once again this year's event is a food drive for the Hawaii Food Bank. They really need our help this year. Please bring canned goods to donate to those less fortunate. For every three cans you bring, you will receive one raffle ticket towards a special prize drawing. The goal this year is 1,000 pounds. Let's do this!

THIS IS A HOSPITALITY EVENT ONLY. SORRY NO GUESTS. SEATS WILL BE LIMITED



HILTON HAWAIIAN VILLAGE® PRESENTS
 WAIKIKI'S ONLY LUAU
 UNDER THE STARS



WAIKIKI STARLIGHT LUAU

The drama and grace of Polynesia unfold with live music, drums, the captivating dances of the South Pacific and the fiery drama of four fire knife dancers. Indulge in a feast of unforgettable tropical flavors prepared by our award-winning resort chef, including Kalua Pig, Seared Island Catch, Huli Huli Chicken and Carved Pulehu Steak.

- SUNDAY - THURSDAY
 BEGINNING AT 5:30 PM •
- ENJOY ONE WELCOME MAI TAI &
 ONE SELECT BEVERAGE •
- COMPLIMENTARY VALET
 & SELF PARKING •

808.941.LUAU
 (5828)

www.HiltonHawaiianVillage.com/luau



HILTON HAWAIIAN VILLAGE®
 WAIKIKI BEACH RESORT
 2005 KALIA ROAD, HONOLULU • 808.949.4321



Most of your guests I'm sure get a big kick out of seeing Christmas trees decorated in your lobbies while the sun beams down on them and kids are traipsing sand across the floor. Over the years I've heard

friends say while drinking their Mai Tais "It doesn't feel like Christmas!" Well, if that's the case for your guests then a I have a few suggestions to get them all Kris Kringle and feel like it's a White Christmas even though the palm trees are swaying.

The thing that's swaying at **DIAMOND HEAD THEATRE** this December is a garish leg lamp and the fun times of *A Christmas Story: The Musical*, based on the 1980s classic holiday film that starred Peter Billingsley as Ralphie, the kid who wanted a Red Ryder BB Gun for Christmas. The musical version of that film is outstanding with Tony nominated music and lyrics by Benj Pasek and Justin Paul and book by Joseph Robinette. This created team has taken this heartwarming film and turned it into a spectacular musical. The show opened on Broadway in 2012 (I was there on opening night) and has since become the quintessential musical to celebrate the joys of childhood and the memories of family Christmases. For those of you who are not familiar with the film don't feel bad. I went to the pre-Broadway opening of the production in Chicago and was the only one in the audience who didn't see the film. With that said, you don't need to be a fan of the film to fall in love with Ralphie Parker and his quirky family growing up in 1940s Indiana where all he wants for Christmas is the above mentioned Red Ryder Air Rifle and all his mother can say is "you gonna shoot your eye out," which of course turns into a grand musical number reminiscent of those 1950s television variety shows. The musical takes you on a journey through the days leading up to Christmas through the reminiscent eyes of a grown-up Ralphie. Your guests will enjoy the number "Up on Santa's Lap" where a cranky elf and Santa have to deal with children's peculiar requests, in addition to all the crazy things that kids do and go through for holiday fun. Don't worry the pink bunny suit is still there. For those of you who don't know what I'm talking about, you'll just have to buy a ticket. The production runs December 4 to 23 with performances on Fridays & Saturdays at 8 p.m., Saturday matinees at 3 p.m. and Sunday matinees at 4 p.m. Call the box office at 734-0274 or go online at DiamondHeadTheatre.com. If you can't get your guests to leave the jacuzzi or your infinity pool then I suggest switch shifts with someone and head down to theater yourself and bring some friends, it's a really, really good show!

What else, is really, really good? It's the **HAWAII SYMPHONY ORCHESTRA** which made its debut in 2012 (as did *A Christmas Story: The Musical* on Broadway) and is carrying on the legacy of the Honolulu Symphony which was founded in 1900. Symphonic musical may not make all your guest "giggly" but for those wanting the get into the holiday spirits, I suggest they check out Holiday Pops on December 12th at 7:30 p.m. and December 13th at 2 p.m. to enjoy all those classic tunes of sleigh bells, silver bells and jingle bells with

a little local twist under the direction of Conductor Rob Fisher. Tickets are available online at hisymphony.org or by call 946-8742. This is a great "date night" for your guests who have children. So all you'll need to do is find them a baby sitter that won't let the kids "shoot their eyes out" with a BB gun!

Now, where else can you find shooting in a holiday tale? Ah, yes, the toy soldiers battling the Mouse King in E. T. A. Hoffmann's *The Nutcracker and the Mouse King*, which was turned into a ballet with music and orchestrations by Tchaikovsky at the Imperial Theatre in St. Petersburg, Russian in 1892. (Ah, too bad it didn't debut in 1912, that would have work out nicely with the two 2012 debuts above, oh well, this column can't always be symmetrical.) Clearly most of your guests will not be in the mood to see a ballet, even the Nutcracker, while the beaches of Waikiki, the coast line of the North Shore and Ala Moana Center's new 'Ewa Wing beckons them, but try this on for size to lure them into **BALLET HAWAII'S** production of *The Nutcracker*. First, it's the Nutcracker, how many people from Louisiana and Kentucky can brag to their friends at the Piggly Wiggly that they saw The Nutcracker in Hawai'i. (That also goes for your



Japanese guests from Iwate and Yamaguchi and their bragging rights at Don Quijote.) The second avenue of persuasion with your guests

is that New York City Ballet Principal Dancer Megan Fairchild, direct from her Broadway debut in the revival of the musical *On The Town* will reprise her role as the Sugar Plum Fairy. The danced this role in PBS' *Live From Lincoln Center* in December of 2011. (Oh, we were so close to 2012, we just missed it by 18 days!) Not everyone gets to experience a dancer of her caliber and this holiday ballet is an exceptional opportunity for your guests to see excellence in dance. Performances are Friday, December 18 and Saturday, December 19th at 7:30 p.m. and Sunday, December 20th at 2 p.m. at the Blaidell Concert Hall. Tickets range from \$35 to \$99. Tickets are also on sale at ticketmaster.com. For more information call (808) 521-8600 or visit ballethawaii.org. The production also features dancers from New York City Ballet, Miami City Ballet and Caroline Ballet as well as students from Ballet Hawaii's school under the direction of Artistic Director Pamela Taylor Tongg who is celebrating her 30th anniversary with the company. There is a special opening night VIP dinner at Chef Chai's prior to the performance. The ticket price of \$165 includes dinner, VIP seating and reserved parking. Please call 521-8600 to make a reservation.

Well, Christmas is coming and the goose is getting fat and I'm looking forward to seeing all of your at the Concierge of the Year party at Sky Waikiki to see who I will help crown our very own Sugar Plum Fairy or Cavalier for 2015. (Hey, who was Concierge of the Year in 2012? I want to buy them a drink!)

~ Lance Rae

Sponsored by  pepsi

12 Days of Christmas

at the
**POLYNESIAN
CULTURAL CENTER**

December 10th to 23rd

Have your guests experience twelve days of holiday fun at the Polynesian Cultural Center. Take a festive canoe ride plus enjoy entertainment, family activities and treats for all.

FREE HOLIDAY CANOE RIDE

w/Pepsi product

Monday - Saturday
Closed on Sundays

Rides start at 6:30 pm

Just bring any Pepsi product

- Live entertainment
- Special train rides for keiki
- Snow Day for keiki (Dec. 19th only)
- Holiday sales at Hukilau Marketplace
- Photos with Santa

*For more information, see your PCC representative
or call 293-3333.*


Polynesian
CULTURAL CENTER

polynesia.com

Mahalo for your continued support!
JOIN OUR
GUEST REFERRAL PROGRAM



Our program is simple!

For every 25 guests referred,
Ruth's Chris Steak House will send you
a \$50.00 dining certificate.

Please contact Emi Espinda if you have any
questions at eespinda@direstaurants.com

OPEN DAILY FROM 5PM

HAPPY HOUR DAILY IN OUR LOUNGE | 5PM – 7PM

PRIME TIME MENU | DAILY 5PM – 6PM

WINE WEDNESDAYS | 25% OFF BOTTLES OF WINE



Restaurant Row | 808.599.3860
Waikiki Beach Walk | 808.440.7910

WWW.RUTHSCRISHAWAII.COM



**SOMETHING NEW.
SOMETHING CLASSIC.**

Open Daily 11am - 10pm

Happy Hour Daily in our lounge 3pm - 6pm & 8pm - 10pm

Vino Thursdays 25% Off Bottles of Wine

**INQUIRE ABOUT OUR
GUEST REFERRAL PROGRAM!**

Our program is simple!

For every 10 complimentary dessert cards redeemed
(WITH YOUR NAME ON THE CARD).

Romano's Macaroni Grill will send you a
\$25.00 dining certificate that may be used
at our Oahu restaurant.

Please contact Emi Espinda if you have any
questions at eespinda@direstaurants.com

**ROMANO'S
Macaroni
GRILL.**

Ho'okipa Terrace at Ala Moana Center
808.356.8300

WWW.MACARONIGRILL.COM



Auntie Lynn's Adventures



Here we are, into red and green time, packing up boxes for the mainland folks, filled with the usual cases of Hawaiian Host chocolate covered macadamia nuts, Hurricane Popcorn, an assortment of Honolulu Cookie Company treats and anything labeled Li Hing.

As I hum a few bars of "these are a few of my favorite things," an idea grows in my jingle bell brain. What would I wrap up and give my pals here in Hawaii, or visitors, or for that matter, give myself? My best answer to that question is time. Time to see and do, go and look. O.K., maybe buy just a few treasures.

NEAR – yet far from mall madness, take time to do the downtown walk around made easy with extended hours. First Friday in Chinatown, December 4th is the beginning of HHH - Happy Holiday Hours. Shops and galleries are open until 7 p.m. every Friday through December. The Louis Pohl Gallery has a hundred choices for small, elegant art pieces to start or complete an art collection. The December exhibition also features the work of Sanit Khewhok. One of Hawaii's most renowned painters, he is known for portraits on ice cream spoons and very large paintings. This show is called "Doors." Until the opening, it's anyone's guess what size they will be. After shopping, dine around.

NEEDING COFFEE – One "must see" is the art on the walls of Brue Bar on Merchant Street. A newcomer to Hawaii and Hawaii's art scene, artist Sam Guerrero is showing a collection of monoprinted skyscapes juxtaposed with titles that express the frustrations of transitioning to island life. Newcomers from the mainland to Hawaii, Sam's wife, Marisa, works in social media for Outrigger Hotels and Resorts.

NOT TO BE MISSED – Without the Cazimero Christmas show, we can all still feel and hear the spirit. Amy Hanaiali'i and Willie K are back, together on Hawaii's most elegant stage. Their music will make the magic happen at Hawaii Theatre, 7:30 p.m. on Friday and Saturday, December 18 and 19. On Sunday the show is at 4 p.m., early enough to allow the younger generation to hear the music for the first time. One bit of advice, bring Kleenex, always necessary when Willie sings O Holy Night.

NEW WORD? – Do you know the word, Parsi? No, it isn't a spicy food or a vegetable. It is name of the followers of Zoroastrianism, one of the world's oldest religions. Somewhere around the 8th or 10th century the Parsis migrated from central Asia to India. Through January the East-West Center Gallery has an exhibit of Parsi textiles, silk and

muslin so fine it is hard to believe their age. The history, detailed in the exhibit, recounts not only the religion and artistry but also a people important to the modernization of India. A plus for this show is the plentiful parking during the holiday break at the University of Hawaii. Beyond the gallery the grounds of the East-West Center are a lovely place to stroll, far, as they say, from the crowds and close to the Japanese garden, Japanese Tea House and a Thai Pavillion. A small factoid, then Vice-President Lyndon B. Johnson wielded a shovel at the 1961 groundbreaking for EWC. His wife, Lady Bird, planted trees.

NOT SHOPPING – after a quick trip to Barnes & Noble take time to park yourself under a palm tree, or maybe on a soft couch, and read. What? During the holidays? According to the TV doctors, a few hours of stress relief makes everything easier. They say, even on a Hawaii vacation taking a half day of focused relaxation makes the rest of the time better. Check out the Books & Music story or pick up the one story not to be missed – Charley Memminger's *Aloha, Lady Blue: The Mystery of Kahala Road*. Memminger has covered crime, features and edited newspapers in Hawaii for over 30 years. Local Watermark Publishing released the soft cover edition of the book. Suggestion, don't read this one late into the night.

NOTHING BETTER – than the Hawaiian sound of Christmas – play it in the car, house or hotel room, Henry Kapon's *I Wish Christmas Was Everyday*, CAZ Christmas, Keola Beamer's *Ki Ho'alo Christmas* and Keali'i Reichel's *Maluhia*, all full of real Hawaiian Christmas.

NAUGHTY OR NICE – Santa arriving by outrigger canoe, The Nutcracker, Big Santa at Ala Moana are our favorite traditions and Hawaiian Christmas classics, to be sure. Another classic tradition, the final Hawaii Symphony Orchestra concert of the calendar year, ends with Beethoven's famous Symphony No.9, "Ode to Joy". The Oahu Choral Society will be there. It brings to mind the year that the chorus was a bit upstaged by all the "Pegs Legs", the team dedicated to helping Hawaii's beloved watercolor painter Peggy Chun. Her paintings can be found in lobbies and suites of Waikiki's finest hotels. Her "Legs" could always be found in some kind of mischief. One of the "Legs" was singing in the chorus that holiday season. The other twenty-four of us were seated in the third row – wearing red, green and fuzzy reindeer antlers. I really have no idea where I – oops – we found that many. I do remember that audience members came to ask if we were a club and how could they join. Peggy would have been proud. If the fall preview with JoAnn Falletta is a clue, we can count on a spectacular show. See you there!



ALERT!

December 4-6

Box Jellyfish Window

Teaching Hawaii about jellyfish and other ocean creatures for over a century

brought to you by
The Waikiki Aquarium
open daily from 9 am - 4:30 pm

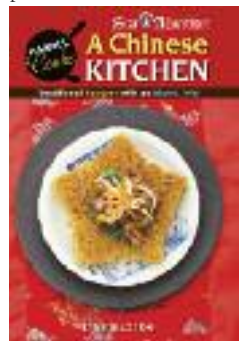


READ BOOKS READ



One small yet beautiful book is “*Cherished Hawaiian Quilts and Other Joys*” by Patricia Lei Murray. Former Miss Hawaii, former Mrs. Hawaii, singer, koa wood furniture maker and foremost quilt maker, this author can be found quilting and chatting every Monday, 10:30 to 11:30 a.m. at the Royal Hawaiian Hotel. She has her books for sale.

Hawaii’s number one topic – food. “*Taste Our Love For The Land*”, by Denise Hayashi Yamaguchi, is a mouth-watering tome sub-titled, “recipes and sustainability stories from the chefs of the Hawaii Food & Wine Festival. It is a culinary journey through the eyes and palates of chefs who have participated in the fest. Pages are filled by thirty-one selected chefs from the more than 200 chef-participants. Most chefs are local to the islands. Others have a connection to Hawaii. All have contributed their food expertise in a way that gives the reading audience the feeling of being in their kitchen, chopping side by side with the chef. The book is available at all Roy’s Restaurants. Page 85 has Roy’s “Dad’s Teriyaki Short Ribs.” Just the photo makes the mouth water.



Food is actually a major theme for Hawaii’s authors and publishers. Most of the books have stories to accompany the recipe and the reader is starving by page 10. An unexpected pleasure is Lynette Lo Tom’s “*A Chinese Kitchen*” inspired by her Chinese mother, Lorna Hung Kee Lee.

The stories take the reader back to a time when a grandma might quote, “when you eat fruit, think of the tree that bore it. When you drink water, think of its source.” “*Hawaii’s Food Dictionary*” makes Hawaii’s culinary terms understandable. It makes sorting out all the ethnic food names very easy. Cookbooks and fine dining restaurant menus with fancy food terminology become instantly understandable for newcomers and even local folks who may not know a particular ethnic food. Here is a taste test: Oboro, Kau Yuk, Ketjap Manis, Ginnan, Tai, Toen Jang, Zuiki. Don’t know? Look ‘em up. “*Cooking Hawaiian Style Two*” is all ‘ohana recipes from Lani Tabura and friends, inspired by the television show of the same name.

Mutual Publishing has a new, improved version of “*Poke, Hawaii’s Food*” by Chef Sam Choy. It has all the fun stories from the first edition and a selection of new and improved recipes. The Guest Chefs section includes many of the Food & Wine Festival stars.

“*A Harvest of Hawaii Plantation Pidgin, The Japanese Way*”, by Myra Sachiko Ikeda is history, food, words and illustrations that take the reader back

in time. The book explains how plantation workers developed pidgin to communicate between languages. Reading the glossary of words brings awareness of the things we say and understand and may not notice in our own vocabulary.

Shopping for board books with easily turnable pages leads directly to Mutual Publishing and BeachHouse books including “*Hawaiian Ocean Lullaby*,” “*Rock-a-Bye Baby*,” “*Baby’s First A.B.C in Hawaii*,” and “*Shave Ice in Hawaii*”. Add to the stack larger, next level books, “*His Majesty’s Goldfish*,” “*Hawaiian Word Book just for Kids*” and “*The New What Am I? A Hawaii Animal Guessing Game*”.

For the inquisitive scholar in all of us, *Ancestral Places/Understanding Kanaka Geographies* sounds formidable but it’s not. The book explores the deep connections the Kanaka, native Hawaiian, people enjoy with their environment. It honors historical accounts of places and tells the story of how these stories create the sense of place. Written by Katrina-Ann Kapa’anao’kaloakeola Nakoa Oliveira, a Hawaiian scholar, it is a new way to look at Hawaii. Published by Native Peoples, University of Oregon Press, the book is available at Native Books at Ward Warehouse.

Remember *Mana Magazine*? It served as an independent voice for the Hawaiian community but sadly shut down a few months ago. Not to worry, the best of the magazine is now available in a special book due out December 15th by Watermark Publishing. *MANA: A Journal of Hawaii* will present insightful articles, and beautiful photos and an anthology of 20 of their best articles as a hardcover, coffee table-style book.

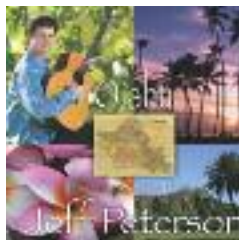
LISTEN MUSIC LISTEN



Listen and sing along to the melodies of Hawaii. Topping the list is *Jimmy Borges*, self titled CD. He is the legendary jazz man of Hawaii who can sing everything. He is the only singer ever allowed complete access to Frank Sinatra’s musical arrangements. Working with Hawaii’s finest producer, Jon DeMello, the new CD is, believe it or not, *Borges* first, includes twelve tracks from *Old Devil Moon* to *Aloha ‘Oe*.

Sean Na’auao’s title track, *Lehua Beauty*, was composed by Frank Kawaikapuokalani Hewett. The entire line-up of songs leaves no doubt that he will continue to win awards. His voice has been charming fans since the 1990’s. Jon DeMello, says, “this could be his (Sean) best album to date, the music is delicious and he has never been in better voice.”

Jeff Peterson is a Maui boy who’s just released O’ahu CD, is a slack key musical journey around our own island. Song titles include *Old Pali*, *Ko’olau Beauty*, *Manoa Falls*, *Tantalus*, *Waimea Bay*, *Waikiki Hula* and more.



Peterson plays in many styles, teaches at the University of Hawaii and has been around the world to play with Eric Clapton, Michael Feinstein, symphonies, jazz bands and the Hawaii Opera Theatre.

Continues on page 21.

MAC 24/7
ULTIMATE HAWAIIAN DINING

MAC WEDNESDAYS

Industry Night
11pm - 2am

50% OFF
ALL FOOD
with your Industry ID

LIVEDJ

\$3 valet parking when dining

808-921-5564 - MAC247Waikiki.com
2500 Kūhiō Avenue - Honolulu, HI 96815

MAC247Waikiki

*Excludes apps, does not include alcohol, tax or gratuity

Hale’Aina Award Winner
Best Gourmet Comfort Food - Honolulu Magazine

BAREFOOT BEACH CAFE

CASUAL BEACHFRONT DINING
OPEN DAILY 7AM-8:30PM
BREAKFAST, LUNCH, DINNER

SUNSETS SERVED DAILY
LIVE MUSIC NIGHTLY, 5:30-8:30PM

ON QUEEN’S BEACH
& LIFEGUARD STAND 2F
AT THE DIAMOND HEAD
END OF WAIKIKI
IN KAPĪOLANI PARK, ACROSS
FROM THE BANDSTAND

FULL MENU, CALENDAR, INFO:
BAREFOOTBEACHCAFE.COM
808.924.2233 (CAFÉ)



Rock-A-Hula held a concierge night to introduce their latest cast members. Johnny Fortuno still stars as Elvis, but joining him is Corey Melton, who took over the role of Michael Jackson and brings the artist alive with his vocal and dancing ability. Erika Moul brings her powerful vocals to her portrayal of Lady Gaga. Rock-a-Hula.com

Makahiki Christmas

Continued from page 2.

across the iconic facade of the IBM Building.

The Honolulu City Lights Trolley Tours run from December 6 to 30th. This is the ultimate holiday outing. Just board the trolley and enjoy the lights, no driving, no parking and plenty of photo ops. A portion of proceeds from ticket sales benefit the Hawaii Foodbank. Tickets are easily available on line at wardvillageshops.com. The price is \$6.50 per person, children under three free. Make a night of it. On December 6 and 13 Kincaid's will offer the trolley ride free for diners. Call 591-2005 for details.

Get creative at Na Mea in Ward Warehouse nearly every day in December. For small materials costs the teachers are there to guide you through the steps to weave a lauhala ornament. Take a card making class with Aunty Lynn at 5:30 p.m. December 10, 15, 17th. Learn a variety of card-making techniques. Complete a set of four cards and envelopes with your name, not Hallmark, on the back. Once you master the technique you can easily make more at home.

Through the month of December the Cedar Street Galleries present Matchbox Plus XI. Tiny paintings, drawings, sculptures by over 100 of Hawaii's top artists are for sale at tiny prices. These are artists whose work commands big prices. The beauty of the mini show is the prices are tiny too. The gallery is located on on Cedar Street only an easy two blocks from Wallmart – for those who happen to be shopping in the neighborhood. Hours are 11 a.m. to 5 p.m. Monday through Saturday.

From 8 to 10 a.m. December 12th, Sea Life Park offers what may be the most unique breakfast with Santa event in the islands. For your dining entertainment count on dolphin and sea lion shows, music and a day of princess appearances and crafts.

The event wizard who brings us the Made in Hawaii show has a Christmas plan in the works with the 1st Annual Mele Kalikimaka Marketplace, 10 a.m. to 9 p.m. on December 12 and 13 at the Blaisdell Exhibition Hall. Over 100 booths will be filled with food, gifts, books, apparel and crafts. One pop-up show will be filled with already wrapped gifts priced at \$10. Everyone will want to be a kid again in Secret Santaland, packed with a rock climbing wall, carnival games, make and take crafts and best of all, a Winter Wonderland where it will actually snow.

Really the season is not complete without Ballet Hawaii's Nutcracker. On the evenings of December 18, 19 and the afternoon of the 20th the Blaisdell Concert Hall will become that place in our dreams where mice and snowflakes dance. The principal dancers are coming if from New York City Ballet, Miami City Ballet and Carolina Ballet. Famed dancer Megan Fairchild may look very familiar. Among her many credits, she was a star in the PBS Live from Lincoln Center televised Nutcracker. Hundreds of local students of Ballet Hawaii's artistic director, Pam Taylor Tongg will have their magic moment on stage as part of this production. This is Tongg's 30th anniversary year with the ballet. For Hawaii fashion fans, Anne Namba is designer of the costumes. Opening night, December 18th the VIP Dinner Package begins with dinner at Chef Chai's, a VIP ticket and

Continues on page 21.



Hawaii's Most Popular
WHALE WATCH
 CRUISE
 12.23.15 – 4.15.16

WHALES GUARANTEED

Premier Whale Watch features:
 ★ Most whale and Hawaiian cultural activities
 ★ Keiki (child) program ★ Kids cruise free!*

Daily Packages
 from \$34 adult

STAR
 of Honolulu

*One child (age 3-11) per paid adult is free on Whale Watch Cruises only. Inquire for details.
 808-983-STAR (7827) ★ StarofHonolulu.com



WARD VILLAGE

RETAIL • ENTERTAINMENT • DINING

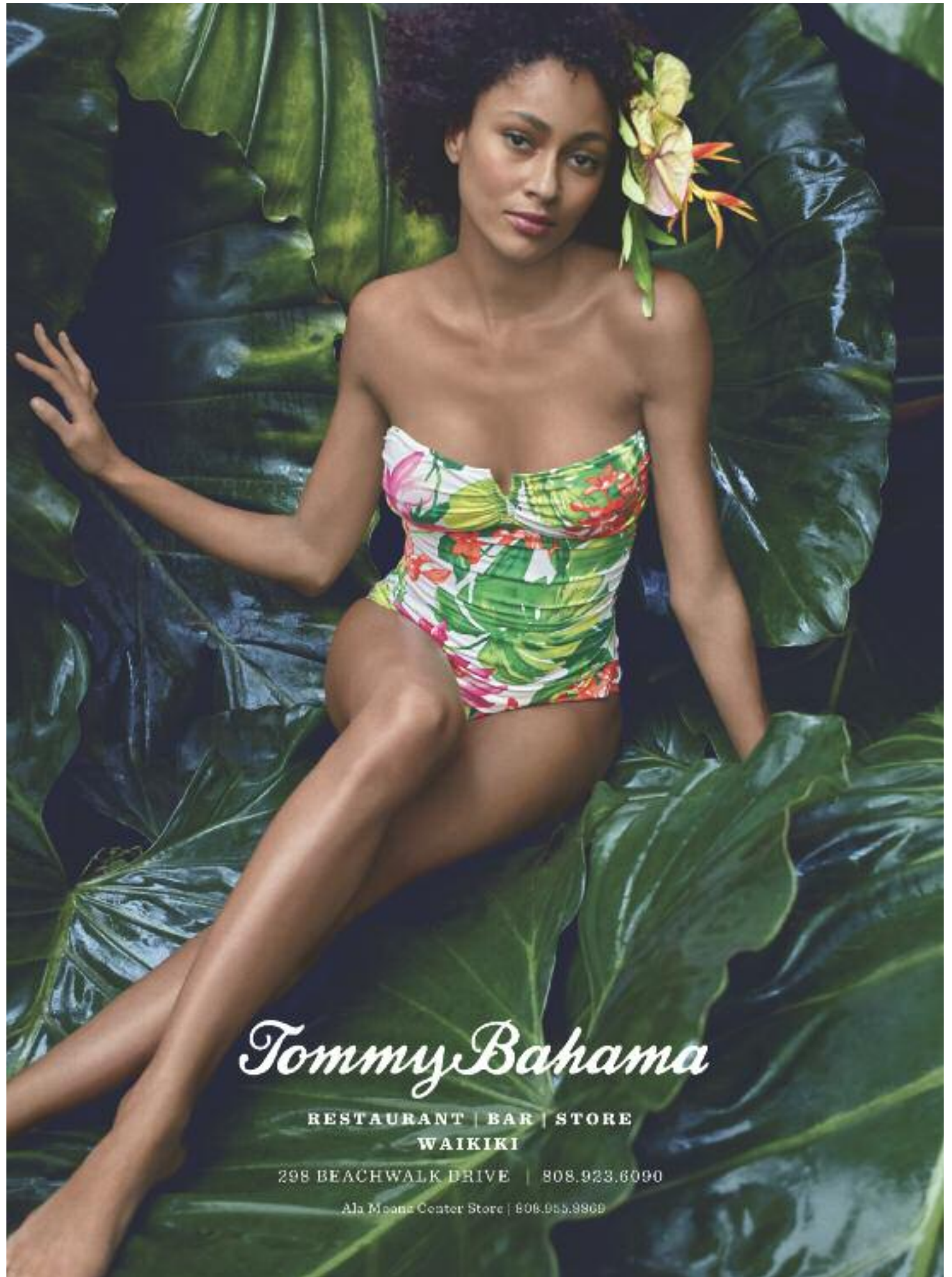
HOME TO OVER 135 UNIQUE SPECIALTY SHOPS,
RESTAURANTS AND NATIONAL RETAILERS.

Nordstrom Rack, T.J.Maxx, Pier 1 Imports, Sports Authority, Ross,
Bed Bath & Beyond, Buca di Beppo and more.

WARDVILLAGESHOPS.COM



#WeAreWard @WVSHOPS



Tommy Bahama

RESTAURANT | BAR | STORE
WAIKIKI

298 BEACHWALK DRIVE | 808.923.6090

Ala Moana Center Store | 808.955.9869



Chef's Corner

Tommy Bahama's Executive Chef Andrew Warner

Tommy Bahama opened up a huge three-story store last month on the corner of Beachwalk and Kalakaua. The retail shop on the 1st floor has some super cute items I may go get as Xmas gifts, the restaurant is on the 2nd floor and there's a rooftop bar complete with sandbox & firepits on top. I definitely need to go back and try more of the menu, but most of the menu items I did try were spot on. We spoke to chef Andrew to find out a bit more.

Congratulations on the successful opening of Tommy Bahama. Was it everything you imagined?

It is everything I imagined and more. This was an exciting new challenge and opportunity for me to come out to Hawaii. I am blessed to be here.

When did you decide you wanted to be a chef?

Even from an early age I have always loved food. One thing that I am very proud of is my heritage. My father is "hapa" and my Grandmother moved from Yokohama years ago to Portland, Oregon. So I was introduced to Sushi, Tempura, Katsu, Sukiyaki and other Japanese foods and flavors. Unfortunately my parents divorced when I was ten and of course with two other brothers in the mix eating at fancy restaurants daily wasn't always in the household budget. So to supplement my craving for nice foods I would ask my mom to tag along when she would buy groceries. I always wanted to pick out new things. Portland has an abundance of farms and great ingredients that you can pick from seasonally so I always enjoy when I get to visit.

What was your first childhood food memory?

I think my first memory of food is when I finally got to eat at a Prime Steak house for the first time. My dad took us to Jakes Grill in downtown Portland. I am sure I have more but you truly appreciate good beef when you have it for the first time. Of course I love my grandmother to death, but she is always feeding the local wildlife with leftovers and unfortunately we did not get steak & eggs the next day. ☺

Who would you consider your mentor and why?

It would have to be Chef Reed Groban. I started my career at the Fairmont Scottsdale Princess and was able to do all my training in one spot. I don't think that you could replicate the experience and opportunity I was given when I worked underneath him. He challenged me in many different ways. When it came to cooking he had a certain style that was unique, always a few years ahead of the trend. There are things now that I am seeing come out that we talked about years ago. My food to this day still has a lot of influence from what I learned in the first six years of my career. I am happy that we are still in contact today and consider him a close friend.

What's your favorite dish on the menu?

Hands down Scallop Sliders. If you get beautiful fresh dry pack Scallops they are the best. Right now we are getting in Japanese Hokkaido's which have awesome flavor.



Seared Scallop Sliders

Ingredients:

- | | |
|---|-------------------------------------|
| 4 slider buns | 8 tsp Chipotle Aioli |
| 2 Tbsp clarified butter | 4 Roma tomatoes, cut in 6-mm slices |
| 1 Tbsp whole butter | 4 basil leaves |
| 4 scallops, U10 size, cleaned w/adductor muscle removed | 2 tsp scallion, bias cut |
| | Salt and pepper to taste |

Preparation: Spread clarified butter over hot sauté pan or flat-top stove. Brown bun interiors and set aside. Sear both sides of scallops until brown—about 2 minutes each side. Add more butter if necessary. Season with salt and pepper to taste. Spread Chipotle Aioli (recipe below) on the inside of each bun. Season tomatoes with salt and pepper to taste, then place basil leaf leaves and scallops. Cover with top buns.

For the Chipotle Aioli:

- | | |
|------------------------|-----------------------------------|
| ¾ cup/165 g mayonnaise | 1½ Tbsp canned chipotles in adobo |
| 3 Tbsp Dijon mustard | ½ Tbsp lime juice |
| | ¼ tsp kosher salt |

Preparation: For the aioli, simply mix all ingredients in food processor until smooth and enjoy.

Tommy Bahama is located at 298 BeachWalk Drive

Open from 11 a.m. to 11 p.m. daily • Phone: 923-8785 • Web: tommybahama.com

Facebook: [facebook.com/TBWaikiki](https://www.facebook.com/TBWaikiki) • Twitter: @TBahama • Instagram: @tbahama

The best in comfort food & live sports

Join us for live sports on HD screens, "Waikiki's largest breakfast selection" served all day, New York-style deli sandwiches, half-pound burgers, Round Table Pizza and our "ballpark happy hour."

88 Parking 6am-8pm

GIOVANNI PASTRAMI
EST. 1982

Check it out giovannipastrami.com
Call us 808-923-2100
Stop by 227 Leupers Street in Waikiki

NWL
NAILS WAX LASHES

Waikiki Grand Hotel
808.922-NAIL (6245)
NWLhawaii.com

CONCIERGE 20% OFF
show business card & ID
walk ins welcome. appointments preferred

Let's be Together...

DINING ▸ ENTERTAINMENT ▸ PAU HANA ▸ EAT ▸ DRINK ▸ BE MERRY ▸ HAPPY HOUR

MONDAY

Barefoot Beach Café at Queen's Beach 924-2233
Contemporary Ukulele
 Shaka Madali 5:30-8:30pm

Chart House Waikiki 941-6660
Live Contemporary Hawaiian
 Tito Berinobis & David Kauahikaua 6:30-9:30pm

Cheesecake Factory 924-5001
Classic Hawaiian
 Christian Yrizarry Duo 8-11pm
 Beau Cody Duo (12/21) 8-11pm
 Keith Omzo Duo (12/28) 8-11pm

Duke's Canoe Club Waikiki 922-2268
Live Contemporary Hawaiian
 Taz Vegas 4-6pm
 Ellsworth Simeona 9:30-12am

Hard Rock Cafe 955-7383
Bluesy Mondays
 The Fat Cat (artists vary) 9-11pm

House Without a Key 923-2311
Live Hawaiian & Hula by Skyler Kamaka
 DeLima Ohana 5:30 - 8:00pm

Hula Grill 923-HULA
Live Contemporary Hawaiian
 Eric Lee 7-9pm

Jimmy Buffett's at the Beachcomber 791-1200
Live Contemporary Hawaiian
 Ashley Lilinoe 7:00-9:30pm

Kani Ka Pila Grille 924-4992
Live Contemporary Hawaiian
 Kupaoa (11/2) 6 - 9pm
 Lehua & Shawn (11/9) 6 - 9pm
 Hi'ikua 6 - 9pm

LBL E at the Hilton Waikiki Beach Hotel 922-0811
Live Contemporary Acoustic Hits
 Johnny Helm 6-9pm

Lewers Lounge 923-2311
Live Contemporary & Light Jazz
 Noly Pa'a 8:30-12:30am

LuLu's 926-5222
Live Contemporary
 Johnny Helm 6:30-9:30 p.m.

Rumfire 921-4600
Live Contemporary Hawaiian
 Jeremy Cheng 5-8pm

Signature Prime Steak 949-3636
Contemporary Pianist in the bar
 Isao Motomochi 6-9pm

Sky Waikiki 979-7590
Live Contemporary
 Yoza 5-8pm

Sunrise Pool Bar at the Modern 943-5800
Live Contemporary
 Alex Oasay 5-8pm

The Edge at the Sheraton 921-4600
Live Hawaiian music with a fire dancer at 7:30 p.m.
 Widdy Loo 1:30-3:30pm
 Ka'ala Boys 6:30-8:30pm

The Study at the Modern 943-5800
Live Contemporary Hawaiian
 Kaleo 7-10pm

Tiki's Grill & Bar 923-TIKI
Live Contemporary Hawaiian

Kapu the Band 6-8:30pm
 Jason Alan & Ian O'Sullivan 9-11pm

Tommy Bahama Restaurant 923-8785
Live Contemporary Hawaiian
 Ellsworth Simeona 6-9pm

Tropics Bar & Grill 949-4321
Live Contemporary Hawaiian
 Acoustik Playground 5:30-8:30pm

TUESDAY

Barefoot Beach Café at Queen's Beach 924-2233
Contemporary Ukulele
 Shaka Madali 5:30-8:30pm

Bin1901 at the Moana 921-4600
Piano Wine Bar
 Scott Smith 6:30-9:30pm

Chart House Waikiki 941-6660
Live Contemporary Hawaiian
 The Camarillo Brothers 6:30-9:30pm

Cheesecake Factory 924-5001
Classic Hawaiian
 Derrick Lee Duo 8-11pm

Duke's Canoe Club Waikiki 922-2268
Live Contemporary Hawaiian
 Sam & Haumea 4-6pm
 Ellsworth Simeona 9:30-12am

Hard Rock Cafe 955-7383
Live Contemporary
 Saloon Pilots (or others) 9-11pm

House Without a Key 923-2311
Live Hawaiian & Hula by Radasha Ho'ohuli
 Po'okela 5:30 - 8:00pm

Hula Grill 923-HULA
Live Contemporary Hawaiian
 Kamuela Kahoano 7-9pm

Jimmy Buffett's at the Beachcomber 791-1200
Live Contemporary Hawaiian
 Mike Huhn 7:00-9:30pm

Kani Ka Pila Grille 924-4992
Live Contemporary Hawaiian
 Weldon Kekauoha 6-9pm

LBL E at the Hilton Waikiki Beach Hotel 922-0811
Live Contemporary Funk, Jazz, Hip Hop & Reggae
 Jason Laeha 6-9pm

Lewers Lounge 923-2311
Live Contemporary & Light Jazz
 Maggie Herron & Rocky Holmes 8:30-12:30am

LuLu's 926-5222
Live Contemporary
 Johnny Helm 6-9pm

Mai Tai Bar at the Royal Hawaiian 923-7311
Live Contemporary Hawaiian with Hula Dancer
 Kapala Duo 6:30-9:30pm

Rumfire 921-4600
Live Contemporary Rock
 Randy Allen 5-8pm
 Twilight Audio 8:30pm-12:30am

Signature Prime Steak 949-3636
Contemporary Pianist in the bar
 James Woo 6-9pm

Sky Waikiki 979-7590
Live Contemporary
 John Akapo 5-8pm

Sunrise Pool Bar at the Modern 943-5800

Live Contemporary Hawaiian
 Cory Oliveros 5-8pm

The Edge at the Sheraton 921-4600
Live Hawaiian music with a fire dancer at 7:30 p.m.
 Eric Lee 1:30-3:30pm
 Ho'okani Duo 6:30-8:30pm

The Study at the Modern 943-5800
Live Contemporary Hawaiian
 Alex Oasay & Jeremy Cheng 7:30-10:30pm

Tiki's Grill & Bar 923-TIKI
Live Hawaiian - \$2 Taco Tuesdays
 K.B. Riley 5:30-8:30pm
 Sani & Friends 9-11pm

Tommy Bahama Restaurant 923-8785
Live Contemporary Hawaiian
 Kimberly June 6-9pm
 Chris Murphy (12/22, 12/29) 6-9pm

Tropics Bar & Grill 949-4321
Live Contemporary Hawaiian
 Kailua Bay Buddies 5:30-8:30pm

WEDNESDAY

Barefoot Beach Café at Queen's Beach 924-2233
Instrumental Ukulele
 Paul Wilcox 5:30-8:30pm

Bin1901 at the Moana 921-4600
Piano Wine Bar
 Scott Smith 6:30-9:30pm

Chart House Waikiki 941-6660
Live Contemporary Hawaiian
 Tito Berinobis & David Kauahikaua 6-10:30pm

Cheesecake Factory 924-5001
Classic Hawaiian
 Kimo Artis Duo 8-11pm

Duke's Canoe Club Waikiki 922-2268
Acoustic, Soul, R&B
 Haumea Warrington 4-6pm
 Ellsworth Simeona 9:30-12am

Gordon Biersch 599-4877
Jazz Wednesdays
 Varying Artists 6:30-9:30pm

Hard Rock Cafe 955-7383
Live Contemporary
 Piranha Brothers 9-11pm

House Without a Key 923-2311
Live Hawaiian & Hula by Lauren Matsumoto
 Pa'ahana 5:30 - 8:00pm

Hula Grill 923-HULA
Live Contemporary Music
 Brandon Serrano 7-9pm

Hy's Steak House 922-5555
Live Soft Contemporary
 Audy Kimura 6:30-10pm

Jimmy Buffett's at the Beachcomber 791-1200
Live Contemporary Hawaiian
 Shawn Garnet 7:00-9:30pm

Kani Ka Pila Grille 924-4992
Live Contemporary Slack Key
 Ben & Malia 3-5pm
 Cyril Pahinui 6-9pm

LBL E at the Hilton Waikiki Beach Hotel 922-0811
Live Contemporary Funk, Jazz, Hip Hop & Reggae
 Soul Tree Music Factory 6-9pm

Lewers Lounge 923-2311

E Pili Kākou

DINING ▶ ENTERTAINMENT ▶ PAU HANA ▶ EAT ▶ DRINK ▶ BE MERRY ▶ HAPPY HOUR

Live Contemporary & Light Jazz
Maggie Herron & Rocky Holmes 8:30-12:30am
LuLu's 926-5222
Live Contemporary Hawaiian
Jason Lehua 10-12:30am
Mai Tai Bar at the Royal Hawaiian 923-7311
Live Contemporary Hawaiian with Hula Dancer
Eric Lee Duo 6:30-9:30pm

Roy's Hawaii Kai 396-7697
Acoustic & Slack Key Top 40
Dayton Watanabe 6:30-9:30pm
Rumfire 921-4600
Live Contemporary Hawaiian
Kamuela Kahoano 5-8pm
Twilight Audio 8:30pm-12:30am

Signature Prime Steak 949-3636
Contemporary Pianist in the bar
Pierre Grill 6-9pm
Sky Waikiki 979-7590
Live Contemporary
Randy & Kanoe 5-8pm

SWIM at the Hyatt 923-1234
Contemporary Classic
Kailua Bay Buddies 6-9pm
Sunrise Pool Bar at the Modern 943-5800
Live Contemporary Hawaiian
Tahiti Rey & Sean Cleland 5-8pm

The Edge at the Sheraton 922-4422
Live Hawaiian music with a fire dancer at 7:30 p.m.
Albert Maligmat 1:30-3:30pm
Keoni Ku Duo 6:30-8:30pm

The Study at the Modern 943-5800
Live Contemporary Hawaiian
Melanie and Drew 6:30-9:30pm
Tiki's Grill & Bar 923-TIKI
Live Contemporary - 1/2 off Wine Wednesdays
Canoes for Rent 5:30-8:30pm
Johnny Helm 9-11pm

Tommy Bahama Restaurant 923-8785
Live Contemporary Hawaiian
Ellsworth Simeona 6-9pm
Tropics Bar & Grill 949-4321
Live Contemporary Rock
Acoustik Playground 5:30-8:30pm

THURSDAY

Barefoot Beach Café at Queen's Beach 924-2233
Instrumental Ukulele
Paul Wilcox 5:30-8:30pm
Bin1901 at the Moana 921-4600
Piano Wine Bar
Scott Smith 6:30-9:30pm

Chart House Waikiki 941-6660
Live Contemporary Hawaiian
Tito Berinobis 6:30-10pm
Cheeseburger Waikiki 941-2400
Contemporary / Old School Rock
Jeremy Chang 6:30-9:30pm
Cheesecake Factory 924-5001
Classic Hawaiian
T & J Duo 8-11pm

Duke's Canoe Club 922-2268
Live Contemporary Hawaiian
Haumea Warrington 4-6pm

Randy and Kanoe (or others) 9:30-12am
Gordon Biersch 599-4877
Live Contemporary Funk and Classics
Acoustic Playground 7-10:30pm
Hard Rock Cafe 955-7383
Live Contemporary

Kailua Bay Buddies 9-11pm
House Without a Key 923-2311
Live Hawaiian & Hula by Radasha Ho'ohuli
Pa'ahana 5:30 - 8:00pm
Hula Grill 923-HULA
Live Contemporary Hawaiian

Kamuela Kahoano 7-9pm
Hy's Steak House 922-5555
Live Soft Contemporary
Audy Kimura 6:30-10pm
Jimmy Buffett's at the Beachcomber 791-1200
Live Contemporary Hawaiian

Shawn Garnet 7:00-9:30pm
Kani Ka Pila Grille 924-4992
Live Contemporary Hawaiian
Jeff Rasmussen & Robi 3-5pm
Kawika Kahiapo 6-9pm
LBLE at the Hilton Waikiki Beach Hotel 922-0811
Live Contemporary Pop/Rock

Sunway 6-9pm
Lewers Lounge 923-2311
Contemporary Jazz
Maggie Herron & Rocky Holmes 8:30-12:30am
LuLu's 926-5222
Live Contemporary Hawaiian

Local Uprising 6-9pm
Mai Tai Bar at the Royal Hawaiian 923-7311
Live Contemporary Hawaiian with Hula Dancer
Delima Ohana 6:30-9:30pm
Michel's at the Colony Surf 923-6552
Live Slack Key

Jeff Peterson 7:30-10:00pm
Roy's Hawaii Kai 396-7697
Acoustic Hawaiian Guitar
Steve English 6:30-9:30pm
Rumfire 921-4600
Live Contemporary Rock

Johnny Helm 5-8pm
Signature Prime Steak 949-3636
Contemporary Pianist in the bar
Isao Motomochi 6-9pm
Sky Waikiki 979-7590
Live Contemporary

Randy Allen 5-8pm
Sunrise Pool Bar at the Modern 943-5800
Live Contemporary Hawaiian
Christian Yrizarry Duo 5-8pm
SWIM at the Hyatt 923-1234
Contemporary Classic

Acoustik Playground 6-9pm
The Edge at the Sheraton 921-4600
Live Hawaiian music with a fire dancer at 7:30 p.m.
Ellsworth Simeona 1:30-3:30pm
Christian Yrizarry Duo 6:30-8:30pm
The Study at the Modern 943-5800
Live Contemporary Hawaiian

Simple Souls 6:30-9:30pm
Tiki's Grill & Bar 923-TIKI

Heineken Hot Hula Nights - hula dancers perform
Malu the Band 5:30-7:30pm
Ellsworth Simeona 8:30-11:30pm
Tommy Bahama Restaurant 923-8785
Live Contemporary Hawaiian
Christian Yrizarry 6-9pm
Derrick Lee (12/24) 6-9pm
Chris Mercado (12/31) 6-9pm
Tropics Bar & Grill 949-4321
Live Contemporary Hawaiian
Nohelani Cypriano 5:30-8:30pm

FRIDAY

Barefoot Beach Café at Queen's Beach 924-2233
Live Contemporary Hawaiian with Beach BBQ
Art Kalahiki & Friends 5:30-8:30pm
Bin1901 at the Moana 921-4600
Piano Wine Bar
Scott Smith 6:30-9:30pm

Chart House Waikiki 941-6660
Live Contemporary Hawaiian
Mark Yim's Pilikia I 6-9pm
Mark Yim's Pilikia II 9:30-12:30am
Cheeseburger Waikiki 941-2400
Contemporary Hawaiian
Alex or Aku 6:30-9:30pm

Cheesecake Factory 924-5001
Classic Hawaiian
Johnny Helm Duo 8:30-11:30pm
Busters 589-2215
Pau Hana Fridays Live Local Bands

Varying Hawaiian Artists 6-8pm
Duke's Canoe Club Waikiki 922-2268
Live Contemporary Hawaiian
Maunalua 4-6pm
Imua Garza Duo (12/4) 9:30 -12am
Keith Omizo Duo (12/11) 9:30 -12am

Derrick Lee (12/18) 9:30 -12am
David Asing (12/25) 9:30 -12am
Gordon Biersch 599-4877
Live Contemporary, R&B, Funk
Ben & Malia 5:30-9pm
Mojo 9 - 12:30am

Hard Rock Cafe 955-7383
Live Contemporary
Mantra 10-12am
House Without a Key 923-2311
Live Hawaiian & Hula by Kanoe Miller
Hiram Olsen Trio 5:30 - 8:00pm

Hula Grill 923-HULA
Aloha Friday Lunch Luau with hula dancer
David Asing 12:30-2:30pm
Keoki & Russell 7-9pm
Hy's Steak House 922-5555
Live Soft Contemporary

Audy Kimura 6:30-10pm
Hard Rock Cafe 955-7383
Live Contemporary
The Fresh Preps 10pm-12am
Jimmy Buffett's at the Beachcomber 791-1200
Live Contemporary Hawaiian
Missing Dave 9:30 - 11:30pm

Kani Ka Pila Grille 924-4992
Live Hawaiian Contemporary

Let's be Together...

DINING ▸ ENTERTAINMENT ▸ PAU HANA ▸ EAT ▸ DRINK ▸ BE MERRY ▸ HAPPY HOUR

Christian Yrizzary 3-5pm
 Ho'okena 6-9pm
LBL at the Hilton Waikiki Beach Hotel 922-0811
Live Contemporary Pop/Rock
 Sunway 6-9pm
Lewers Lounge 923-2311
Live Contemporary Jazz
 Maggie Herron & Rocky Holmes 8:30-12:30am
LuLu's 926-5222
Live Contemporary Hawaiian
 Manoa DNA 6-9 p.m.
 Vinyl Wine 10-12:30am
Mai Tai Bar at the Royal Hawaiian 923-7311
Live Contemporary Hawaiian with Hula Dancer
 Kapala Duo 6:30-9:30pm
Michell's at the Colony Surf 923-6552
Live Slack Key Stylings & Jazz
 Jeff Peterson & Ernie Provencher 6:30-10pm
Roy's Hawaii Kai 396-7697
Keyboardist
 Brian Robert Shaw 6:30-9:30pm
Roy's Ko Olina 676-7697
Slack Key Guitar
 Chris Rego 5:30-8pm
Rumfire 921-4600
Live Contemporary Rock
 Kristi Masuhara 5-8pm
Signature Prime Steak 949-3636

Contemporary Pianist in the bar
 Grant Carvalho 6-9pm 979-7590
Sky Waikiki
Live Contemporary
 John Akapo 5-8pm 923-1234
SWIM at the Hyatt 921-4600
Contemporary Classic
 Taimane 6-7pm
The Edge at the Sheraton
Live Hawaiian music with a fire dancer at 7:30 p.m.
 Brad Kawakami 1:30-3:30pm
 Delima Ohana Duo 6:30-8:30pm
The Study at the Modern 943-5800
Live Contemporary Hawaiian
 Tahiti Rey 6:30-9:30pm
Tiki's Grill & Bar 923-TIKI
Live Contemporary Hawaiian
 Randy Allen 5-7pm
 Vaihi 7:30-9:30pm
 Solanna and Selwyn 10-12am
Tommy Bahama Restaurant 923-8785
Live Contemporary Hawaiian
 Tahiti Rey Duo 6-9pm
 Local Uprising (12/25) 6-9pm
Tropics Bar & Grill 949-4321
Live Contemporary Hawaiian
 Piranha Brothers 3:30-6:30pm
 Nohelani Cypriano 8:00-10:30pm

Live Soft Contemporary
 Audy Kimura 6:30-10pm
Jimmy Buffett's at the Beachcomber 791-1200
Live Contemporary Hawaiian
 Local Uprising 9:30-11:30pm
Kani Ka Pila Grille 924-4992
Live Contemporary Hawaiian
 Mike Kaawa 3-5pm
 Ka Hehena 6-9pm
LBL at the Hilton Waikiki Beach Hotel 922-0811
Live Contemporary Blues & R&B
 YOZA 6-9pm
Lewers Lounge 923-2311
Live Contemporary Jazz
 Maggie Herron & Rocky Holmes 8:30-12:30am
Mai Tai Bar at the Royal Hawaiian 923-7311
Live Contemporary Hawaiian with Hula Dancer
 Kapala Duo 6:30-9:30pm
Michell's at the Colony Surf 923-6552
Live Contemporary Slack Key & Jazz
 Jeff Peterson 7-11pm
Roy's Hawaii Kai 396-7697
Acoustic Guitar
 Jimmy Funai 6-9:30pm
Roy's Ko Olina 676-7697
Slack Key Guitar
 Chris Rego 5:30-8pm
Rumfire 921-4600
Live Contemporary Rock
 Tavana McMoore 5-8pm
Signature Prime Steak 949-3636
Contemporary Pianist in the bar
 Grant Carvalho 6-9pm
Sky Waikiki 979-7590
Live Contemporary
 John Akapo 5-8pm
Sunrise Pool Bar at the Modern 943-5800
Live Contemporary Hawaiian
 Kainalu 5-8pm
SWIM at the Hyatt 923-1234
Contemporary Acoustic
 Randy Allen & Kanoe Gibson 5-8pm
The Edge at the Sheraton 921-4600
Live Hawaiian music with a fire dancer at 7:30 p.m.
 John Valentine 1:30-3:30pm
 Tino Jacobs Duo 6:30-8:30pm
Tiki's Grill & Bar 923-TIKI
Live Contemporary Hawaiian & Reggae
 Johnny Helm 5-7pm
 Varying Artiststs 7:30-9:30pm
 Ellsworth & Piko 10-midnight
Tommy Bahama Restaurant 923-8785
Live Contemporary Hawaiian
 Eric Ho Duo 6-9pm
Tropics Bar & Grill 949-4321
Live Contemporary Hawaiian
 Henry Kapono 4-6pm
 Juke Joint 6:30-9:30pm

SATURDAY

Barefoot Beach Café at Queen's Beach 924-2233
Beach BBQ with Live Contemporary Hits
 Chris Salvador 5:30-8:30pm
Bin1901 at the Moana 921-4600
Piano Wine Bar
 Scott Smith 6:30-9:30pm
Chart House Waikiki 941-6660
Live Contemporary Hawaiian
 Tito Berinobis & Billy Beimes 7-12pm
Cheeseburger Waikiki 941-2400
Contemporary Hawaiian
 Alex or Aku 6:30-9:30pm
Cheesecake Factory 924-5001
Classic Hawaiian
 Dennis McClees Duo 8-11pm
Duke's Canoe Club Waikiki 922-2268
Live Hawaiian Entertainment
 Beach 5 (12/5) 4-6pm
 Vaihi (12/12) 4-6pm
 Mojo (12/19) 4-6pm
 Kaiona Band (12/26) 4-6pm
 Brothers Camarillo (12/5, 12/12) 9:30-12am
 David Asing Duo (12/19) 9:30-12am
 Darrell Aquino Duo (12/26) 9:30-12am
Hard Rock Cafe 955-7383
Live Contemporary
 EMKE 10-12am
House Without a Key 923-2311
Hawaiian & Hula by Kanoe Miller
 Hiram Olsen Trio 5:30 - 8:00pm
Hula Grill 923-HULA
Live Traditional Hawaiian with dancer
 Kaipo Dabin & friends 7-9pm
Hy's Steak House 922-5555

Barefoot Beach Café at Queen's Beach 924-2233
Contemporary Ukulele
 Shaka Madali 5:30-8:30pm
Chart House Waikiki 941-6660

SUNDAY

World Famous Thai Cuisine
 by Keo

- FRESH ingredients from our own Wai'anae organic farm
- Classic American breakfast including our \$4.95 special
- Thai & American dinners at AFFORDABLE prices
- Family-owned and operated Thai restaurants for 30 years in Hawaii
- Walking distance from Waikiki Beach and hotels

OHANA Waikiki East Hotel
 2375 Kuhio Avenue
 (corner of Kuhio & Kaula Aves.)
 Phone 808.922.9888
 Indoor and outdoor seating available
 Validated parking \$3 for 4 hours

Keoni
 By Keo's

BREAKFAST 7AM - 1:00PM
 LUNCH 11AM - 1:00PM
 DINNER 5PM - CLOSING



E Pili Kākou

DINING ▶ ENTERTAINMENT ▶ PAU HANA ▶ EAT ▶ DRINK ▶ BE MERRY ▶ HAPPY HOUR

Live Contemporary Hawaiian
Dean & Dean 6-9pm
Cheesecake Factory 924-5001
Classic Hawaiian
Chris Murphy Duo 8-11pm
Keith Omizo Duo (12/8) 8-11pm
Duke's Canoe Club Waikiki 922-2268
Live Hawaiian Entertainment
Henry Kaponu 4-6pm
Kapena Delima (12/6) 9:30-12am
Typical Hawaiians (12/13) 9:30-12am
Chris Mercado Duo (12/20) 9:30-12am
Solid Rock Duo (12/27) 9:30-12am
Hard Rock Cafe 955-7383
Live Contemporary
Youth on Stage 12 noon
Analog 9-11pm
House Without a Key 923-2311
Live Hawaiian & Hula by Debbie Nakanelua
Pa'ahana 5:30 - 8:00pm
Hula Grill 923-HULA
Live Traditional Hawaiian with dancer
Art Kalahiki Duo 7-9pm
Jimmy Buffett's at the Beachcomber 791-1200
Live Contemporary Hawaiian
Randy Allen 7:30-10pm
Kani Ka Pila Grille 924-4992
Live Contemporary Hawaiian Masters on stage
Mailani Makainai 6-9pm
Kelley O'Neil's 926-1777
Live Irish Music
Various Celtic Bands 4-7pm
LBL E at the Hilton Waikiki Beach Hotel 922-0811
Live, Energetic Mix of Pop and Rock Hits
Pushoverse 6-9pm
Lewers Lounge 923-2311
Live Contemporary & Light Jazz
Noly Pa'a 8:30pm - 12am
LuLu's 926-5222
Acoustic R&B
Simple Soulz 7-10pm
Mai Tai Bar at the Royal Hawaiian 923-7311
Live Contemporary Hawaiian with Hula Dancer
Eric Lee Duo 6:30-9:30pm
Michel's at the Colony Surf 923-6552
Classical Slack Key & Jazz Stylings
Jeff Peterson 6-9pm
Roy's Ko Olina 676-7697
Slack Key Guitar
Chris Rego 5:30-8pm
Rumfire 921-4600
Live Contemporary Hawaiian
Alex Oasay 5-8pm
Twilight Audio 8:30pm-12:30am
Signature Prime Steak 949-3636
Contemporary Pianist in the bar
Isao Motomochi 6-9pm
Sky Waikiki 979-7590
Sunset Sessions
Randy Allen 4-7pm
SWIM at the Hyatt 923-1234
Contemporary, Pop, Rock

Sunway 6-9pm
The Edge at the Sheraton 922-4422
Live Hawaiian music with a fire dancer at 7:30 p.m.
Dave Watanabe 1:30-3:30pm
Ellsworth Simeona Duo 6:30-8:30pm
The Study at the Modern 943-5800
Live Contemporary Hawaiian & Jazz
Jeremy Cheng 6-9pm
Smooth Jazz (vaying artists) 10-2am
Tiki's Grill & Bar 923-TIKI
Live Contemporary Hawaiian
Vaihi 6-9pm
Ellsworth & Piko 9-11pm
Tommy Bahama Restaurant 923-8785
Live Contemporary Hawaiian
Johnny Helm 6-9pm
Tropics Bar & Grill 949-4321
Live Contemporary Rock & Hawaiian
Piranha Brothers 2-5pm
Beach 5 5:30 - 8:30pm



Hot Lines

Here's a few numbers for you to find out the latest in live music from places that change daily or don't update us regularly, since we can't possible list them all.

Gordon Biersch	599-4877
Irish Rose Saloon	947-3414
Kelley O'Neil's	926-1777
Mai Tai Bar Ala Moana	947-2900
Moose McGillycuddy's	923-0751

Dining Dish



Congratulations to *Chef William Chen* for a successful take over of the **Modern Honolulu** last month. Supporting sustainability and education, Chef Will created specials for his weekend takeover and held a special event that was both informative and delicious. *Executive Chef Keith Pajinag* plans on handing over his kitchen twice a year to support his mission. Keep your eyes open for the hashtag #MODERNChefTakeover in the future. The events are worth attending. • Big news in the restaurant industry. *Donato Loperfido* has been named the Corporate Executive Chef of **Il Lupino Trattoria & Wine Bar**. He has introduced a new Tapas menu which will be available everyday from 2:30 - 5:30 p.m., and I expect he will be streamline and upgrade the rest of the menu in his true Italian style. Here's hoping he brings back his homemade stracciatella I fell in love with at his old restaurant in Manoa Marketplace. 922-3400. • **Japengo** has opened new terrace dining at the popular Hyatt restaurant. The new space is 2,200 square feet and seats 108 additional people on the lanai in a mix of island tables, couches and manta-ray shaped umbrellas and wrap around glass railings that are softly illuminated and radiates an aquamarine glow. 237-6180 • I stopped by **Cinnamon's at the Ilikai** recently. Although they are known for their breakfast items,

they have a substantial lunch and dinner menu to choose from that is very reasonably priced. Open daily from 7 a.m. - 9 p.m., happy hour is from 2 - 6 p.m. They have terrace dining as well so it's an ideal place to catch the Friday night fireworks. 670-1915. • I stopped by two places I wrote about last month and both get A+'s. **Tommy Bahama** had a very successful opening, and I thoroughly enjoyed almost every item I had. There was one I wasn't overly fond of, but that was a personal preference. A bit too many herbs for me (and I like herbs), but it was still cooked perfectly. The place looks even better than I expected. Wide open spaces, super cool rooftop lounge, herb walls and the retail store on the bottom had a ton of fun things in there - not just the touristy kitsch I expected. Lots of games, wine glasses with cute sayings, shot glass sets. Just ask Lance -- he liked some so much he bought a few! All in all, a fabulous job by the new kid on the block and yet another welcome addition. 923-8785. • I also got to experience **Noi Thai Cuisine** in the Royal Hawaiian Center. One word. Wow. They will be redefining Thai food in Hawaii. To start with the space looks amazing. This is in the former Five-Star Buffet location if you recall, so there were lots of nooks and crannies to play with. They have built the restaurant off the theme of the Royal Thai Palace and, therefore, there are three sections, just like at the Palace. The Outer Palace (where the villagers lived) The Central Palace (where all the activities were held) and the Inner Palace (where the Royal family resides). Along those lines there are several eating areas - and several private dining rooms, including a chef's table which is secluded from the rest of the restaurant and looks right into the kitchen and another private room so exclusive that you can only reserve it after being recommended. The presentation of the menu items is five-star and the plating is simply superb. Items are presented tableside with a dramatic flourish, and the taste of course, was wonderful. Thailand to ensure the authenticity of the cuisine. Needless to say, food, service and presentation like this does come with a price tag, but from what I've seen, it's well deserved. Want to try it without breaking the bank. Check out their happy hour daily from 3 - 7 p.m. 664-4039. ~ Pam



Dining Calendar

December 4, 11, 18: *The Veranda Friday Night Flights* present Bubbles. In light of the holiday season, The Kahala Hotel will present three premium sparkling wines and champagne on three consecutive Fridays paired with a global regional cuisine. \$60++ 6-9 p.m. 739-8760.

December 12, 13, 19, & 20: *Tea with Santa* Enjoy the Veranda's famous afternoon tea with small ites, both sweet and savory, along with a special visit from Santa. \$50++, kids 6-12 \$40, 5 and under are \$20. 2 - 5:30 p.m. 739-8760.

Courtyard Brunch is on hiatus until next year.

EVENTS ARE SUBJECT TO CHANGE WITHOUT NOTICE.

DECEMBER CALENDAR OF EVENTS

Continuing Events

MONDAY – FRIDAY LYON ARBORETUM TOURS

The lush gardens at the top of the University of Hawai'i Manoa are open for guided tours daily. Knowledgeable guides will introduce the highlights of the botanical rainforest's 193.6 acres. Reservations required. Limit of 12 participants daily. Donations accepted. 988-0461.

MONDAY – FRIDAY FOSTER BOTANICAL GARDENS

Guided garden tours of rare and beautiful plants from tropical regions throughout the world. Foster Botanical Gardens, 50 N. Vineyard. 1 p.m. Adults: \$5. Reservations recommended. 522-7066.

TUESDAYS TOURS OF THE HAWAII THEATRE

Get a behind-the-scenes tour of this historic theatre including history, architecture, and a performance on the 1922 Robert Morton theatre organ. Hawaii Theatre. 11 a.m. – 12 p.m. \$10. 528-0506.

TUESDAYS KU HA'AHEO

An afternoon of hula from multiple groups featuring adults and keiki performing contemporary and traditional dance and music led by kumu hula Blaine Kamalani Kia. Waikiki Beach Walk Plaza Lawn. 4:30 – 6 p.m. FREE. waikikibeachwalk.com or 931-3591.

TUESDAYS • KCC FARMERS MARKET

Head up to Kapiolani Community College for a smaller version of their popular Saturday market. 4 – 7 p.m. Free. 848-2074.

FIRST & THIRD TUESDAYS MEET THE MONK SEALS!

Learn about monk seals in the wild and meet two resident seals up close. Designed for participants 7 and up but anyone is welcome. Waikiki Aquarium. 3 p.m. \$4 – \$6. waikikiaquarium.org or 923-9741.

TUESDAYS & THURSDAYS FRESH FARMERS MARKET AT THE HYATT

The Hyatt holds a Farmers Market for visitors and locals to stock up on fresh local organic fruits, vegetables, jams, honeys, baked goods and more. Stop by twice weekly on ground floor of the Pualeilani Atrium Shops. 4 – 8 p.m. Waikiki.Hyatt.com.

TUESDAYS, THURSDAYS & SUNDAYS TOUR & TALK STORY AT THE HONOLULU MUSEUM OF ART

Museum docents lead tours of art themes and special exhibitions, which include discussions in the galleries that inspire guests to consider art, cultures and eras in new ways. 2:30-4 p.m. meet at museum entrance. Free with admission. No reservations required. 532-8700.

TUESDAY – SATURDAY MISSION HOUSES MUSEUM GUIDED TOURS

Visit the Printing Office and Frame House while learning about the 19th century history and culture preserved at this beautiful museum. Galleries also open to explore on your own. Mission Houses Museum. Tues. – Sat. 11 a.m. & 2:45 p.m.; Tues. – Fri. 1 p.m. \$6 – \$10. 531-0481 or missionhouses.org.

WEDNESDAYS HONOLULU FARMERS MARKET

Meet the farmers and select from a wide variety of fruits, vegetables, flowers, beef, seafood, baked goods

and more. This market is held weekly on the Concert Hall Lawn at the Blaisdell. On days an event is in the Concert Hall, the Market will be in the Arena parking lot on the corner of Kapiolani Blvd and Ward Ave. Free Entrance and Parking. 4 – 7 p.m.

WEDNESDAYS & FRIDAYS CHADO – THE WAY OF TEA

Japanese enthusiasts can experience the traditional tea ceremony (chanoyu) as it was meant to be seen, and taught, at the Urasenke Foundation of Hawaii. No prior knowledge required. Demos at 10 a.m. and 11 a.m. \$5. 923-3059.

SECOND THURSDAY (OCTOBER 8) COURTYARD CINEMA

Ward Village hosts its monthly film series event on the 2nd Thursday of each month. The showing features free popcorn, refreshments, food vendors and entertainment. Courtyard Cinema is free and open to the public. Seating is limited. Reserve your tickets and learn more about future shows at wardvillagecourtyardcinema.com.

THIRD THURSDAY (OCTOBER 15) DOWNTOWN GALLERY WALK & CRAFT FAIR

The Arts at Marks Garage continues to build on downtown activities offering execs an excuse to hang out after work and giving everyone else a reason to head downtown. Free. 521-2903. artsatmarks.com.

FRIDAYS • CULTURAL CRAFT FAIR

The Hyatt has had so much success with its weekly Farmers Market featuring fresh local produce that they are applying the same principle to local craft items. Each week the craft fair will feature local vendors featuring arts & crafts, jewelry, Photography, woodwork and more. 3 – 7 p.m. Waikiki.Hyatt.com

FIRST FRIDAY (DECEMBER 4) DOWNTOWN GALLERY WALK & CRAFT FAIR

Art lovers are advised to head to downtown Honolulu the first Friday of each month. This event has exploded into a downtown party with galleries and studios open for exhibitions, artist demonstrations, and special performances. 23 galleries and art-related retail shops, restaurants and museums participate. Downtown Honolulu/ Chinatown. 6 – 9 p.m. Free. 521-2903 or artsatmarks.com.

FIRST & THIRD FRIDAYS (DECEMBER 4 & 18) THE SKY TONIGHT

Learn about our Hawaiian skies and current events in space at the J. Watumull Planetarium. Bishop Museum. 8 p.m. No late seating. GA \$6, Keiki \$4. 848-4168 or bishopmuseum.org.

FINAL FRIDAY • ART AFTER DARK

The hip hot artsy party is on hiatus until next year.

SATURDAYS • KCC FARMERS MARKET

Fresh island produce, seafood, flowers and more are available from over two-dozen vendors at Kapiolani Community College. Free. 7:30-11 a.m. 848-2074.

SATURDAYS • KAKA'AKO FARMERS MARKET

Check out an abundance of locally grown produce, island made treats and much more from around our islands at the Kakaako Farmers Market at Ward Warehouse located between Ward and Kamakee Streets, Free. 9:00 a.m. - 1 p.m. 388-9696 or haleiwafarmersmarket.com.

SATURDAYS & SUNDAYS ART ON THE ZOO FENCE

More than 35 local artists display their works on the Zoo fence on Monsarrat Avenue opposite the Kapiolani Park Bandstand. Works for sale include original paintings, prints and photographs. 9 a.m. – 4 p.m. Free. artonthezoo fence.com.

PARTY IN PARADISE THIS HOLIDAY SEASON!



JOIN US FOR CHRISTMAS & NEW YEARS!

HAPPY HOUR 2:00-6:00 & 9:00-11:00

50% OFF PUPUS • \$12.95 VOLCANO NACHOS • \$2.50 OFF ALL BEERS

\$4.25 LANDSHARK • \$3 OFF MARGARITAS & BOAT DRINKS

HOLIDAY INN RESORT WAIKIKI BEACHCOMBER • 2300 KALAKAUA AVE

CALL TO RESERVE AT 791-1200 • BREAKFAST 7-10:30AM • HAPPY HOUR 2-5PM & 9-11PM

DECEMBER CALENDAR OF EVENTS

SECOND SATURDAY (DECEMBER 12)

DOWNTOWN GALLERY WALK & CRAFT FAIR

First Friday has become such a success that events carry over to the second Saturday. HiSAM, 11 a.m. – 3 p.m. 586-0900. Other events around downtown Honolulu all afternoon. Free. 521-2903 or artsatmarks.com.

NA MELE NO NA PUA SUNDAY SHOWCASE (DECEMBER 13 & 27)

Waikiki Beach Walk has brought back its popular monthly free concert series. See IPO KUMUKAHI on December 13th and Mailani on the 27th at the Plaza Stage from 5 – 6 p.m. waikikibeachwalk.com.

THIRD SATURDAY (DECEMBER 19) HONOLULU NIGHT MARKET

The folks behind Eat the Street bring this monthly art event to Kakaako. Food, art and fashion will close Auahi Street down from Keawe to Coral as artists, food trucks, live entertainment and more fill the streets from 6 p.m. to 11 p.m. Lane closures begin at noon. streetgrindz.com

BANK OF HAWAII FREE SUNDAY (DECEMBER 20) HONOLULU MUSEUM OF ART

Celebrate the holidays by making gingerbread cookies or stained glass votives while enjoying holiday classics from the Oahu Civic Orchestra. Honolulu Museum of Art. 11 a.m. - 5 p.m. Free. 532-8700.

DECEMBER 1 - 6 VANS WORLD CUP OF SURFING

The second jewel of the Triple Crown continues at Sunset Beach. Binoculars recommended. vanstripelcrownofsurfing.com.

DECEMBER 3 • KAIMUKI CHRISTMAS PARADE AND TREE LIGHTING

This is the 69th year this community has started the holiday season with a 1.1 mile parade from St. Louis School to Koko Head Avenue. Over 40 groups will march in the parade and there is a slew of amazing restaurants for people to try when it is over. 6 – 8 p.m.

DECEMBER 5-6, 12-13 • INTERNATIONAL TANDEM WORLD CHAMPIONSHIP

Sixteen invited teams will compete for the World Title in Tandem surfing. Surf permitting this will be an exciting day for spectators. Makaha Beach. 8 – 4 p.m. banzaibetty.com

DECEMBER 5 - 31 HONOLULU CITY LIGHTS

Downtown lights up in celebration every night of the season with the 31st annual Honolulu City Lights. Watch the Electric Light Parade along King Street kick everything off on 12/5 at 4 p.m. followed by the lighting of the 50-foot tree at 6:30 p.m. The festive lights and decorations stay up through January 2nd., and reservations on all the trolley tours are recommended. 768-3392. honolulucitylights.com.

DECEMBER 6

WORLD CUP WOMENS SOCCER IN HAWAII

For the first time ever, the newly crowned FIFA Women's World Cup Champions, the U.S. Women's National Team, will play in Hawaii as part of their Victory Tour against Trinidad and Tobago at Aloha Stadium. Tickets: \$28-\$400. Kickoff 3 p.m. alohastadium.hawaii.gov.

DECEMBER 6 • ALII SUNDAY

Kawaiahao Church celebrates select Hawaiian Royalty (Alii) who are of particular importance for the Church by holding seven special Sunday services in their honor around their birthdays throughout the year. Today they celebrate King Kamehameha V. 9 a.m. kawaiahao.org.

DECEMBER 6

XTERRA TRAIL RUN WORLD CHAMPIONSHIP

This 21-kilometer half-marathon course is considered a world championship course, and it takes runners through some of the most diverse – and scenic – terrain on the planet. No qualifying process so anyone can enter the 21K championship course, a 10K, a 5K, or an "adventure walk." 9 a.m. – 2 p.m. Kualoa Ranch. xterrplanet.com.

DECEMBER 8- 20 • BILLABONG PIPE MASTERS

The third and final jewel in the Vans Triple Crown is the most prized event of the season and decides the ASP World Champion, and Triple Crown champion of the Hawaiian winter surf season. Pipeline. The event will not take place every day, but only on the best surf days. Check website for updates. vanstripelcrownofsurfing.com

DECEMBER 9-12 • MARATHON EXPO

Free and open to the public. Hours vary daily, usually around 9 a.m. – 6 p.m. Souvenir sales will be at the expo as well as massages, sports gels, sunglasses and lots more on offer at the Marathon Expo and at Kapiolani Park after the race and again on Monday. Hawaii Convention Center. honolulumarathon.org.

DECEMBER 11 • WAIKIKI ARTS & CRAFTS

This blok party will feature local island favorites from some of the favorite food the island has to offer to a variety of local arts and crafts vendors, hula lessons, carnival games and more. Kalakaua Avenue. 6 – 10 p.m. millwoodohanaproductions.com.

DECEMBER 11

HONOLULU MARATHON CONCERT/LUAU

It's a carbo loading party for all the runners. All-You-Can-Eat Buffet and Hawaiian entertainment. Waikiki

Shell. Tickets available for purchase by race entrants only. \$55-\$125. 4-8:30 p.m. honolulumarathon.org.

DECEMBER 12 • SANTA SURFS IN

In true Hawaiian style, Santa will make an early arrival to the islands by surfing into Waikiki Beach via canoe in front of the Outrigger Waikiki Hotel. Definitely a sight for visitors to see, Santa will pose for pics in the lobby immediately thereafter. 9 a.m.

DECEMBER 12

54TH ANNUAL HOLIDAY CONCERT

Ring in the holiday season as the Honolulu Youth Chorus performs holiday favorites from around the world in one of the islands more historic locations. Free. Kawaiahao Church. 7 p.m. hyoc.org.

DECEMBER 12-13

MELE KALIKIMAKA MARKETPLACE

This new gift show aims to be your one stop shop for all your holiday shopping needs. Offering everything from books, apparel, jewelry, pre-packaged gift baskets, local gourmet gifts and year-end inventory specials from varied distributors, there will also be a special Winter Wonderland, complete with snow, a Secret Santa Land and live entertainment. Blaisdell. \$4 entry. Sat. 10 a.m. – 9 p.m., Sun. 10 a.m. – 7 p.m. melekalikimakamarketplace.com.

DECEMBER 13 HONOLULU MARATHON

The 43rd annual Honolulu marathon will have around 25,000 runners and ranks up with the big ones such as Boston, New York, Chicago and London. There are so many runners from Japan they make it large enough to compete with Boston and usually comprise around 60% of the total runners. On your *Continues on page 19.*



FARMERS MARKET

MARKET ON THE PLAZA | THURSDAYS 4-8PM

Enjoy a wide variety of island produce and products from local farmers and producers. Tantalize your tastebuds and indulge your senses. Savor fresh fruits & vegetables, delicious baked goods, coffee and much more!

Due to seasonal changes and weather conditions, products and vendors will vary from time-to-time.

LOCATED ON LEWERS STREET BETWEEN KALAKAUA AVENUE & KALIA ROAD



WAIKIKI BEACH WALK

BIG SAVINGS FOR THEIR OHANA

We ♥ kids and it's shown in our prices!



Cruise: Oahu Island Tour



Pearl Harbor Tours



**Kid-friendly Tours
Family-friendly Prices**

CALL NOW FOR TOUR AVAILABILITY

808.756.9861



Celebrate NYE



The crowd at Sheraton Waikiki's Rumfire last New Years Eve.

We know you're already being asked what the New Year's Eve options are, so we've done our best to try find out some early info for you. Many events haven't been announced yet, but this should give you a head start!

Sheraton Waikiki presents Night Circus
Ring in 2016 alongside Waikiki beach as the Sheraton turns RumFire, Helumoa Pool and the Infinity Edge Pool into a circus extravaganza. Guests will enjoy Go-Go dancers, firebreathers, aerialists and 4 DJs. 8:30 p.m. - 2:30 a.m. Tickets: \$50 - \$100. VIP service available. 550-8457

6th annual NYE 'Party of the Year'
The party has moved back to where it began this year to Aloha Tower Marketplace. There will be 8 areas to celebrate in with over 30 bands and DJs, playing everything from 70's & 80's, EDM, reggae, country, classic rock and alternative, depending on which zone you head too. There's something for everyone including a Food Trucks. VIP Tables and bottle service available. Fun for the entire family or the 21 and older crowd. Tickets: \$40 - \$150 www.nyehawaii.com.

Bill Maher New Year's MakeMageddon
It's the 5th annual Aloha Tour. Let the 'equal opportunity offender' start your NYE off hilariously. Guest stars this year include David Sapce and Jeff Ross. Tickets: \$45-\$95. Blaisdell Concert Hall. 7:30 p.m. ticketmaster.com.

Booze Cruises
It's too early for all of the info, but you can guarantee your favorite boat. be it the Navatek, Star of Honolulu, Maita'i or Na Hoku to name a few will have a special NYE event to watch the fireworks from the water. Call your fave today.

Rock Your New Years Away with Elvis
Guests can ring in the new year with a Midnight New Year's Rockin' Eve at Legends Waikiki Rock-A Hula. This special show starts at 9:45 p.m. and ends at 2:45 a.m. and includes fireworks visual effects and party favors. 629-SHOW.

NYE Lux at the Trump
The black-tie version of this popular event will have yet to be announced live entertainment, champagne, casino, and gourmet food stations. A variety of VIP packages will be available 8:30 p.m.-12:30 a.m. NewYearsEveHonolulu.com.

M Nightclub's NYE Block Party
M Nightclub and Tantriq Entertainment will host their annual New Year's Eve Block Party at Restaurant Row. The theme this year is Prohibition and S.K.A.M. Artist Fred Matters will headline. There will be a cover charge to the black party this time. Flavorus.com/MNLHNL

ROYAL
HAWAIIAN LIMOUSINE

5 Star Limousine Company
www.RoyalHawaiianLimousine.com
808-275-6030

DECEMBER CALENDAR CONT

continued from page 17

marks, get ready, go... the gun goes off at 5 a.m. at Ala Moana Beach Park. Prepare for closed roads and traffic delays. honolulumarathon.org.

DECEMBER 13 • ALII SUNDAY

Kawaiahao Church celebrates select Hawaiian Royalty (Alii) who are of particular importance for the Church by holding seven special Sunday services in their honor around their birthdays throughout the year. Today they celebrate Princess Bernice Pauahi Bishop. 9 a.m. kawaiahao.org.

DECEMBER 14

A VERY SWINGING BASIE CHRISTMAS

The Hawaii Pops Orchestra Series presents three special holiday shows by the internationally renowned Count Basie Orchestra. 7:30 p.m. Hawaii Theatre. \$40-\$100. hawaiiipop.com.

DECEMBER 15

THE COUNT BASIE SEXTET AND FRIENDS

Halekulani's Live at Lewers jazz series presents The Count Basie Sextet and Friends at Lewers Lounge. Featuring the Basie rhythm section and trumpet and saxophone stars from The Count Basie Orchestra, with special appearances by Jimmy Borges, Monica Mancini and former Basie and Frank Sinatra drummer Gregg Field. 7:00 p.m. Lewers Lounge. \$75-\$100. hawaiiipop.com.

DECEMBER 18-20 • THE NUTCRACKER

The holiday traditions continue with this classic presented by Ballet Hawaii featuring principal dancers from top companies, including Megan Fairchild, fresh off Broadway's "On the Town" and the NY City Ballet will reprise her role as the Sugar Plum Fairy, Pierre Vilanoba, who recently retired as Principal Dancer of San Francisco Ballet will dance the role of Drosselmeyer and many more celebrated dancers will come to town for the holiday favorite. Fri. & Sat. 7:30 p.m. Sun. 2 p.m. Blaisdell Concert Hall. Tickets \$35 - \$99. 800-745-3000. Balletohawaii.org.

DECEMBER 19

HAWAII KAI HOLIDAY BOAT PARADE

Head on over to the Hawaii Kai Towne Center, grab a seat and watch the 18th annual Christmas Boat Parade as the elaborately decorated boats make their way around the marina. Concert at 4:30 p.m. Parade begins around 6:30 p.m. hawaiikaitownecenter.com.

DECEMBER 22-25 • DIAMOND HEAD CLASSIC

This 7th annual college basketball tournament will consist of eight teams competing in twelve game over three days in a traditional bracket format. \$10. Stan Sheriff Center. diamondheadclassic.com. 956-6955

DECEMBER 24 • HAWAII BOWL 2015

This Christmas Eve tradition will be televised nationally on ESPN with teams to be announced in the near future. Kick off is at 8 p.m. Aloha Stadium. Get your tickets at sheratonhawaiibowl.com

DECEMBER 24

SANTA PADDLES INTO GRAY'S

Head over to Grays Beach to see Santa paddle to shore in an outrigger canoe for all to see at 4:30 p.m. before slipping into the Halekulani for a hotel guest only event. 923-2311.

DECEMBER 26 • WATER FOR THE WORLD 5K

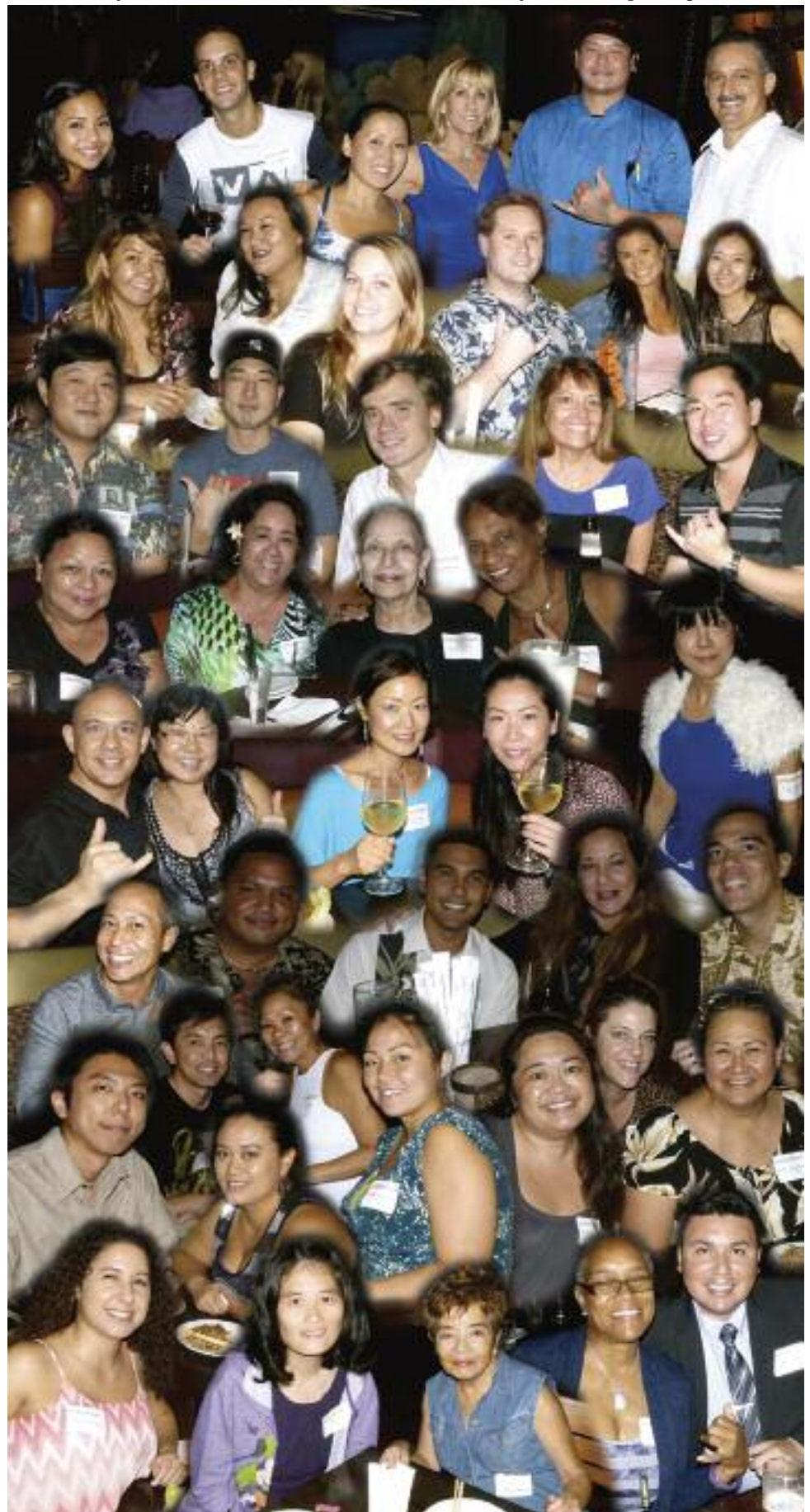
Participate in this fun run that benefits charities that create clean water solutions. This fun run/walk starts at the Waikiki Shell, goes around Kapiolani Park and the Zoo and ends with a slip and slide and DJ. 6 a.m. WaterForTheWorldRun.org.

华
馆

P.F. CHANG'S

It's been years since P.F. Chang's hosted a concierge event, so they went big and invited a bunch of you to their location in the Royal Hawaiian Center. They wanted to introduce their new sushi and happy hour menu to the industry.

No one went home hungry, except for me, because I was working! LOL. Next time, and there will be one as they have decided to hold these events semi-annually. 628-6760. pfchangshawaii.com.



How Can We Help?

We're a family-operated business dedicated to service, safety, quality & fun! Ocean activities for all ages and budgets. We're at your service to help provide a perfect match for your client.



Check out our newest yacht,
the Ko Nau Lani

Located at:
**WAIANAE
HILTON PIER
KEWALO**

We offer:
Sail • Snorkel •
Dolphins • Turtles •
Whales • Scuba •
Fireworks Dinner •
Private Charters •
Transportation

234-SAIL

(7245)

WE ANSWER 24 HOURS!

hawaii.nautical.com

Hawaii Nautical



Once again, Ala Moana Center threw their annual Holiday Party and the response was amazing. Apologies to those of you I couldn't fit in. Attendees got to see the new Ewa Wing, taste Magnolia Bakery famous cupcakes, were treated to dinner from one of the participating restaurants that included Romano's Macaroni Grill, Jade Dynasty, Tanaka of Tokyo, The Pineapple Room or Longhi's and then wound up the evening at Mariposa with champagne, dessert & prizes. alamoanacenter.com

DISCOUNT HAWAII CAR RENTAL SAVE UP TO 50%



GUARANTEED RESERVATIONS
* NO BOOKING FEES * NO
DEPOSIT * CANCEL ANYTIME
* NATIONAL RENTAL
COMPANIES

call us today @

1.800.292.1930

or check us out online:

DiscountHawaiiCarRental.com

IL LUPINO

TRATTORIA & WINE BAR

Join us every weekend for

Champagne Brunch

Sat/Sun • 7am-2pm

Choose from 6 Delicious
Brunch Entrees, served with
a Glass of Champagne,
\$19.95

Also join us for our Champagne
Happy Hour every Tues/Thurs all day.
Glass of Champagne \$9.

ROYAL HAWAIIAN CENTER • BLDG. B LEVEL 1
VALIDATED PARKING
WWW.ILLUPINO.COM • 808.922.3400

BOOKS & Music
Continued from page 7.

Kupaoa (Lihua and Kellen) with Mark Yamanaka released *A Gift of the Heart* in time to please everyone at Christmas. The CD has favorites including *Silent Night/ Po La'i E* and new original *Hula Girl Christmas*. The song *Yodeling Santa* is pure fun.



Kuana Torres is writing and singing his way around the Hawaiian Islands. The fourth in his *Music for the Hawaiian Islands* series is titled *Manookalanipo*, a tribute to the ancient name for the island of Kauai. The CD features eleven original songs written for the Garden Isle. His falsetto melts the air and makes the listener think they know the song, even though they have never heard it before. Amazing to his fans and other songwriters, Torres simply sits down and writes an album.

Jake Shimabukuro's *Travels* pulls in Jake's diverse artistry. Some tracks are original compositions, others his interpretations of Hawaiian standards. Just to keep fans smiling he added in "I'll Be There" by the Jackson 5 and "Low Rider" by War, proving he is as fun as he looks. *Rolling Stone Magazine* called him "hero" but his smile is biggest when Hawaii calls him "local."

Of course the books and music are available on line. Shipping is sometimes free but the best time to buy is while the island breeze is wafting by, the music is live or the author is there. The TGIF section of the Honolulu Star-Advertiser lists all the music venues and book events, seven days and nights a week. Nothing like taking home the autographed copy. It is true for visitors and for us. Support your local artists, they might be your next door neighbor.
~ Lynn Cook

Makahiki Christmas

Continued from page 7.

reserved parking.

And, if one isn't enough you can have more Nutcracker in the Holiday Laser Light Show at Bishop Museum. The lights will play to Bing Crosby's *White Christmas*, *Winter Wonderland*, *Rockin' Around the Christmas Tree* and *Dance of the Sugar Plum Fairy*. The laser light system is state of the art. The lights dance with the music at the first laser light show to happen in our Honolulu. In addition to the holiday show the museum offers *Laser Zepplin*, *Pink Floyd's Dark Side of the Moon* and *The Wall and Laser Metallica*. The shows run through January 3 with matinees daily at 11:30 and 2:30 and evening shows Wednesday through Saturday at 7 p.m.

Last but not least, the Polynesian Cultural Center will be offering the "12 Days of Christmas" from December 10-23. Guests will be able to enjoy lagoon rides every night from 6:30 - 9 p.m. There will be keiki train rides, photos with Santa, and live entertainment. If that's not enough, snow will fall over PCC on December 19th giving kids a chance to play in it. Imagine.. kids can have a snowball fight and make a snowman in Hawaii! ~ Lynn Cook

Planet blue

Ala Moana Center opened up its Ewa Wing Expansion as month and Planet Blue hosted a handful of concierge to celebrate the opening of their first store in Hawaii. Kailua born and raised Ling-Su Chinn, who founded the store, was here for the opening and guests noshed on guava-strawberry cupcakes and fresh juices while exploring the store and trying on clothes before setting out to check out the rest of the mall. Ladies, check out their boho look. shopplanetblue.com



Explore Our Hawaii

We offer the perfect submarine excursion which families can enjoy together!

Explore Oahu's marine paradise in the comfort of an air conditioned submarine that dives to over 100 feet.

Atlantis
SUBMARINES
WAIKIKI

Call (808) 973-9811 for information & reservations or fax to (808) 973-2499.

That's Entertainment

HOTELS

HALE KOA HOTEL 955-0555

•**TuSat** - High and Right Comedy Show takes the stage at the Warriors Lounge at 8pm.

•**MThFS** - Poolside music at the Barefoot Bar. 6-11pm

HALEKULANI HOTEL 923-2311

•**Daily**-Hawaiian Music and hula at House Without A Key from 5:30-8pm.

•**Daily**-Live Contemporary and light Jazz at Lewers Lounge from 8:30pm to midnite.

•**Sun**- Sunday brunch at Orchids features Noly Paa on the piano from 9:30 - 2:30pm.

HILTON HAWAIIAN VILLAGE 949-4321

•**Fri** - Fireworks at 7:45pm.

•**Fri** - The Rockin' Hawaiian Rainbow Revue, a musical salute to King Kalakaua, at the Super Pool. 7 pm.

•**FriSat** - Olomana at the Tapa Bar from 8-11pm.

•**Daily** - Live entertainment at the Hau Tree Bar and the Tapa Bar from 8-11pm.

THE KAHALA HOTEL & RESORT 739-8888

•**TuWThFSat** - David Swanson vocalizes on the piano at The Veranda from 7:30-11pm. Live Jazz on Sun/Mon.

MOANA SURFRIDER 922-3111

•**Daily**-Hawaiian music & hula. The Banyan Court, 6-8 pm, and again from 8 -11 p.m. Weekends from 11:30- 2 p.m.

•**MWFri**-Guided historical tours at 11am.

NEW OTANI KAIMANA BEACH 923-1555

•**FSat** Jazz guitarists in the Sunset Lanai Bar. 6-9pm.

OUTRIGGER WAIKIKI ON THE BEACH 923-0711

•**Mon**- Kukui Nut Bracelet Making. 1pm.

•**Th**- Ukulele Lessons. 1pm.

•**Fri**- Aloha Fridays bring back old Hawai'i with music, hula, ukulele & lei making lessons. 9am-1pm.

OUTRIGGER REEF ON THE BEACH 923-3111

•**Daily**- See guest artists at work in Kuloko Arts of Hawaii 9am-1pm and again from 6-9pm.

SHERATON PRINCESS KAIULANI 922-5811

•**Daily**-Live Hawaiian music & halau at the lounge from 6-8:30pm, then poolside from 8:30-10:30pm.

•**Th**-Princess Kaiulani historical tour at 9:30am.

THE ROYAL HAWAIIAN 923-7311

•**TTh**- Free guided resort tour at 1pm.

TURTLE BAY RESORT 293-6300

•**MTWThFSat**- Lei Making, Main Lobby at 10am.

•**ThSun** - Fire Dancer, Hang Ten Pool Bar at Sunset

•**TThFri** - Shell Hula Lessons, Lobby at 10am

•**TThFri** - Ukulele Lessons, Lobby at 9am

•**Fri**- Music & Hula. Lobby Lounge 6:30-8:30pm.

WAIKIKI BEACH MARRIOTT RESORT 922-6611

•**Daily**-Hawaiian entertainment in The Moana Terrace Bar. 6:30-9:30pm.

•**Fri**-Local crafters "Aloha Friday Fair" Lobby 9a-2pm

MUSEUMS

HAWAII STATE ART MUSEUM 586-0900

•**TWThFSat** - Inaugural exhibition "Enriched by Diversity: The Art of Hawai'i." Free. Tuesday-Saturday, 10 a.m. to 4 p.m. Located in the Capital District.

HAWAII THEATRE 528-0506

•**Tues**- A one-hour guided tour offers a unique insight in the history, art, architecture and restoration of the Hawai'i Theatre with trained docents & a mini-concert on the 1922 Robert Morton Theatre Organ. 11 a.m. Admission: \$10.

HONOLULU MUSEUM OF ART 532-8726

•**MWF**- Japanese Language Tours. Private tours also available. 1pm. Regular admission.

HONOLULU FIRE MUSEUM 723-7167

•**3rdSat**- Free one-hour guided tours through various exhibits with a firefighter recounting HFDs history the 3rd Saturday: 9am - 2pm. Reservations required. 620 South Street. honolulu.gov/hfd/communityrelations

IOLANI PALACE 522-0832

•**Mon-Sat**-45 minutes docent-led or self-guided audio tours available in English or Japanese. Japanese-led tour is available only at 11:30 a.m. All tours include re-tour video and entrance into the Palace Galleries. Adults: \$14.75-\$21.75 / Keiki (5-12): \$6. 9am-5pm

•**Sat**-Hawaiian Quilt Classes. Old Archives 9:30a-12p.

LUCORAL MUSEUM 922-5381

•**TTh**- Learn how to plan your jewelry project and more in this beaded jewelry workshop \$10. 2-4 p.m.

MISSION HOUSES MUSEUM 447-3910

•**Tue-Sat**-Learn about the dramatic story of cultural change in 19th-century Hawai'i. Docents lead tours through the oldest existing frame house in the Islands, Printing Office, and the coral block Chamberlain House. Reservations required. www.missionhouses.org

PACIFIC AVIATION MUSEUM 441-1000

•**Daily**-Vintage aircraft in battlefield hangars at Pearl Harbor. Combat flight simulators. Aviator's Tour takes you through the new Restoration Hangar. Restaurant, Museum Store. Shuttle & Tickets at USS Arizona Memorial Visitor Center or at PacificAviationMuseum.org.

THE SPALDING HOUSE 526-1322

•**Daily**-Docent-led tours given daily. 1:30pm. Garden tours or Japanese language tours are by appointment.

NAVAL AIR MUSEUM BARBERS POINT 682-3982

•**Mon-Fri**- A unique museum experience about aviation history in Hawaii. All of the aircraft are open to climb

in, on and around. Tours: 8 a.m. - 4:30 p.m. \$7 / \$5 children under 18. BLDG 1792, Midway Road, Kalaeloa Airport. Reservations required. Sat/Sun by appt only. www.nambp.org.

SHOPPING CENTERS

ALA MOANA CENTERSTAGE 955-9517

•**Tues** - PCC Polynesian Revue Show. 6pm.

•**Sun** - Keiki Hula Show. 10-11am.

KINGS VILLAGE www.kings-village.com 237-6344

•**MW** Famer's Market offering fresh produce, baked goods and local food items from 4-9pm.

•**Daily** King's Guard Museum features a variety of collectibles and memorabilia. 10a-10:30p. FREE.

ROYAL HAWAIIAN CENTER 922-2299

•**MWF**- Learn Lomilomi 11am-12pm, Bldg. B, 3rd floor

•**MF**- Hawaiian Storytelling 12pm, *Helumoa Hale*

•**MTWF**-Hula 10am (4pm on Wednesdays), *Royal Grove*

•**ThSat**- Rock-a-Hula Pre-Show 7pm, *Royal Grove*

•**WTh**- PCC Show 11am, *Royal Grove*

•**TWTh**- Lauhala Weaving 1pm, *Bldg A, 1st floor*

•**TThF**- Ukelele 12pm, *Helumoa Hale*

•**TWF**- Live Hawaiian music 6-7pm, *Royal Grove*

•**ThSat**- Rock-a-Hula Pre-Show 7pm, *Royal Grove*

•**Sat**- Hula Kahiko 6-6:30pm, *Royal Grove*

WAIKIKI BEACH WALK www.waikikibeachwalk.com

•**Tuesdays** - Ku Ha'aheo featuring Hawaiian song and dance on the Plaza stage. 4:30-6pm

•**Wednesdays** - Yoga Classes 4-4:45pm. Free.Plaza Stage

WAIKIKI SHOPPING PLAZA 923-1191

•**Daily** Hula Lessons. 10am, 12pm

•**MTTh** - Polynesian Review 1st & 3rd floor 7-9pm

ATTRACTIONS

KALAKAUA AVENUE 527-5666

•**Fri** - Strolling Hula from 8-10:00pm.

KAPI'OLANI BANDSTAND 527-5666

•**Fri**-Hawai'i's finest musicians perform. 5:30-6:30pm

•**Sun**-Royal Hawaiian Band performs 2-3:15pm.

KUHIO BEACH HULA SHOW 843-8002

•**TThSat**- City & County presents a free hula show at sunset. 6:30 - 7:30pm at the hula mound.

TAMARIND PARK - DOWNTOWN 527-5666

•**Fri**- Mayor's Aloha Friday Music from 12-1pm features live music from Hawaiian to Jazz to Pop.

WAIKIKI TOWN CENTER 922-2724

•**Mon-Sat**-The songs and dances of Hawai'i, New Zealand, & Tahiti. Free shows begin at 7pm.

EVENTS SUBJECT TO CHANGE PLEASE CALL TO CONFIRM PRIOR TO ATTENDING

PAPARAZZI

Hyatt Raises Funds for Wounded Warrior



The Hyatt held a bake sale to raise money for the Wounded Warrior project. Pictured are Alex Watson, GSM, David Nadelman, GM, Fiha Dahana-Ellis & Tony Holland from Wounded Warriors & Takumi Abe, Regency Club Concierge

Celebrating Aloha Festivals Pa'u style



Riding in the Island of Ni'ihau Pa'u Unit during the 69th Annual Aloha Festivals Parade were Keonaona Salis, Sales Manager at the Courtyard Marriott Waikiki and Christopher Sawai, Front Office Supervisor at the Hyatt Regency Waikiki.

Do you have a picture you would like us to run? Send them to: publisher@oahuconciierge.com

Do you Truffaux



Look who I ran into recently! Remember Yasu Tamashiro from his time at the Hawaii Prince Hotel and Aston Waikiki Beach Resort? He's been working as the Operations Manager at Truffaux Hat Shop on Waikiki Beach Walk. Stop by and say hi!

conciierge card

November 30, 2015

Dole Plantation - 1 FREE Adult Admission To The Maze With Purchase of 1 Adult Admission. 621-8408

Giovanni Pastrami - 15% Off Full Bar, Dine-in or Take-Out at anytime with ID. 227 Lewers St. 923-2100.

Hard Rock Café - 15% off food, beverage (non-alcoholic), or merchandise. Hotel ID required. 280 Beachwalk Ave. 955-7383.

Hawai'i Prince Golf Club - \$5 Off Standard Kamaaina Green Fees. Tee Times: 944-4567

Hilo Hattie - 25% on Hilo Hattie labeled garments, 15% off other fashions/gifts and 10% off Hilo Hattie labeled foods. Not valid on sale item. Ala Moana Center and Nimitz Hwy Ph 535-6500.

Hy's Steakhouse - 25% VIP Discount Off Food And Beverage (up to 2 persons) 2440 Kuhio Ave. 922-5555

Hyatt Regency Waikiki - 15% discount with the presentation of a concierge business card at SHOR, Japengo and SWIM. 2424 Kalakaua Ave. 923-1234.

Iolani Palace - Free Admission. Regular rate \$20. 364 S. King Street, Reservations & Hotel ID required. 522-0832.

IHOP - Receive 20% on entire bill. Must show valid hotel ID. Not valid with any other offer or discount. Aqua Palms, 1850 Ala Moana Blvd restaurant only. Free parking available. 949-4467.

Kaiwa - 20% off food & beverage between 5 & 7 p.m. 924-1555

Longhi's - 25% off food & beverage up to 2 persons, not applicable with any other promotion or discount. 947-9899.

Mission Houses Museum - Free tour with hotel ID. 447-3910

Pacific International Skydiving Center - 50% Discount on Jump, 68-760 Farrington Hwy, 637-7472

Plaza Café - 15% off all food items. Best Western the Plaza Hotel. 3253 N Nimitz Highway. 836-3636.

P.F. Chang's Waikiki - Receive 20% on all appetizers, entrees, desserts and beverages 11 am - 5 pm daily (not valid for Pau Hana menu) Royal Hawaiian Center. Ph: 628-6760, 637-7472

Romano's Macaroni Grill - 20% Off Food and Beverage for up to 2 guests. (Not Valid for Happy Hour Menu). Ala Moana Center, 1450 Ala Moana Blvd. 356-8300

Ruth's Chris Steak House - 20% Off Food and Beverage for up to 2 guests. (Not Valid for Happy Hour & Prime Time menus). Restaurant Row, 500 Ala Moana Blvd. 599-3860. Waikiki Beach Walk, 226 Lewers Street. 440-7910

Honolulu Museum of Art Spalding House. - FREE Admission For Cardholder and One Guest. 526-1322

The Kahala Resort - Complimentary appetizers for a concierge and a guest with the presentation of a concierge business card at Hoku's, Plumeria Beach House, Seaside Grill, The Veranda. 5000 Kahala Avenue. 739-8888

The Original Glider Rides - Come experience the joy of soaring for yourself. Concierge / GSA may receive a complimentary scenic ride. Request the "GSA flight special" when booking your reservation. Hotel ID required. Dillingham Airfield. 637-0207

Tiki's Grill & Bar - FREE order of ANY appetizer with any purchase! One per table. OahuconPOKE. ASTON Waikiki Beach. 923-8454

Wooloughby's Restaurant - 15% off all food items. Ohana Honolulu Airport Hotel. 3401 N. Nimitz Hwy. 836-0661.

HELP us update this card. If you know of an offer not being honored let us know. As management changes, sometimes offers can get lost. Also as we work on updating this, let us know if there is something you would like to see here & we'll see what we can do!

You may be required to provide identification. Must show Hotel ID to claim offer. One special per person per business. Offers valid on regular-priced merchandise only. Discounts are available to Guest Service Professionals ONLY. Not valid with other promotions or special offers. A minimum 18% gratuity on original order required for all special food offers.  New offer

GSA of the Month



NAME Dean Hashimoto

HOTEL: Embassy Suites Waikiki Beach Walk Hotel

TITLE: Bellman

Q. How long have you been with Outrigger?

A. I've been with Outrigger Hotels for 15 years.

Q. When did you start at the Embassy?

A. I've been with Embassy Suites from the opening date, December of 2006.

Q. How big is your team there?

A. We have a Bell Staff of 10 Bellman and 1 Bell Captain.

Q. What makes your hotel special?

A. Our hotel is special as we are the only "all suite" hotel in Waikiki and we offer Full American Breakfast with made to order omelettes along with an Evening Poolside Cocktail Reception daily with Entertainment (on selected nights).

Q. Where did you work before this?

A. Started at the Hawaiian Regent Hotel (which is now a Marriott) as a Banquet Captain for 20 years.

Q. What has been your biggest challenge at the desk?

A. Not being able to assist everyone.

Q. What do you like most about this industry?

A. I like meeting new people from all parts of the world and sharing our Hawaiian Culture with them. Showing a lot of Aloha Spirit in greeting always makes me feel good.

Q. What do you find yourself recommending most often?

A. A lot of guests are always asking for a good local restaurant w/ comfort food. I do suggest to them Side Street Inn which they seem to enjoy.

Q. What one question do you hear again and again?

A. What is the cheapest and fastest way to Ala Moana Shopping Center? I usually suggest to them to take the Pink Trolley System in which their children love to ride.

Q. How do you deal with those "difficult" guests

A. Just being a good listener in difficult situations and show a lot of empathy with understanding their needs. I always try to make their visit here as comfortable as possible.

Q. Favorite part of the island and why?

A. I enjoy the Windward Side. I grew up in Kaneohe and Kahaluu area. I did a lot of activities in and around the ocean. My dad and uncles taught me how to respect and take care of the ocean.

Q. What's one thing about you people would be surprised to know?

A. I am a cancer survivor. It's been 7 years now, cancer free. I take nothing for granted anymore. Now, I enjoy life every day. I got a second chance in life and share my knowledge and my understanding about this terrible disease to everyone who wants to know. I say always be positive, always fight the good fight, stay strong and never give up!

Q. Where are you from originally?

A. Kaneohe, Oahu. God's Country!

Q. What do you like to do most when you're not working?

A. A lot of swimming, fishing, surfing, and diving. I enjoy anything to do with the ocean.



Embrace Your Dreams

Experience the magic of dreams coming true in our inspiring and unforgettable dolphin programs starting at only \$125. Dolphin Quest is located at the legendary Kahala Hotel & Resort.

 **DOLPHIN QUEST**
Oahu

Reserve

800-248-3316
808-739-8918
dolphinquest.com

A portion of the proceeds supports vital marine education, conservation and research.

The Oahu Concierge is printed monthly and direct mailed FREE to all Oahu Concierge, Hospitality & Activity Professionals.

Subscriptions available to non-industry at \$25 per year.

C O N T A C T
Davis Media

Ph: 596-4422

www.oahuconciierge.com

Twitter & Instagram: @OahuConciierge

Facebook: www.facebook.com/OahuConciierge

ADDRESS & NAME CHANGES / ADDITIONS

We do not take changes by telephone. All changes to mailing list **must be submitted in writing** by the 16th of the month to make the next issue, email is preferred.

S T A F F


PUBLISHER **Pam Davis**
publisher@oahuconciierge.com

CONTRIBUTING EDITORS
Lynn Cook, Lance Rae

DESIGN
Coreiya Design

The Oahu Concierge
4348 Waialae Avenue, #185
Honolulu, Hawaii 96816

The Oahu Concierge's 15th annual Conciierge of the Year Award!



Rules: Please place a checkmark in the middle of the box next to the picture of the person you would like be named Conciierge of the Year. Your name, title and hotel must be legible as shown underneath, and the **name must match that of the preprinted mailing label. Only one entry per person.** Multiple entries from the same name or illegible entries shall be discarded. Play fair folks!

Each of the deserving individuals pictured below was recognized this year as our Conciierge, Guest Service Agent, or Activity Agent of the month for their extemporary service. Which one should be named our Conciierge of the Year? The outcome is up to you. Please photocopy this page and fax back your nomination to **808-443-0090** no later than **2 p.m. December 10, 2015.**



Name _____

Title _____

Hotel _____

Signature _____

Who do you think should be recognized in 2016 for their service? (do NOT enter the name of who you want to win this year) **Please write in the name of your next nominee** ▶

JANUARY



Aina Kam
AULANI, A DISNEY RESORT & SPA

FEBRUARY



Emelyn Damo
AMBASSADOR HOTEL

MARCH



Ryan Tucker
THE MODERN HONOLULU

APRIL



Benjamin Puccetti
EXPEDIA

MAY



Marivic Aldaya
HILTON GRAND VACATION CLUB

JUNE



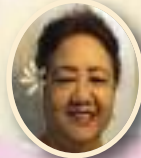
Joshua Smith
OHANA WAIKIKI EAST HOTEL

JULY



Hiroe Yanagisawa
ROYAL HAWAIIAN HOTEL

AUGUST



Mary Ann Puaol
PLEASANT HOLIDAYS

SEPTEMBER



Christie Thompson
TRUMP WAIKIKI

OCTOBER



Mami Chee
SHERATON WAIKIKI

NOVEMBER



Keren Gray
WAIKIKI PARC

DECEMBER



Dean Hashimoto
EMBASSY SUITES