

Honolulu City Lights

Honolulu City Lights is a beloved tradition for residents and visitors alike, offering a unique blend of Christmas spirit with the beautiful Hawaiian setting. It's a time when the community comes together to celebrate the



One of the amazing floats in the Electric Light Parade taken a few years ago. The parade will take place on December 2. Photo courtesy HCL/ Ron Slauson

holiday season in a distinctly tropical way. Its festive decorations and lighting transform the island city into a winter wonderland despite its warm tropical climate.

In 1985, the City and County of Honolulu secured a 50-foot Norfolk pine tree in the Honolulu Hale lawn. Music and a drum roll, and the lights went on. It was a simple ceremony at first, but Hawaii loves to decorate and throw a party. From that humble one-tree beginning, the festival of lights has grown into Hawaii's premier holiday celebration.

The centerpiece of the Honolulu City Lights event is still that giant Christmas tree located in front of Honolulu Hale. The tree is beautifully decorated with large, handmade, signature Honolulu City Lights ornaments. We are talking about individual decorations the size of most home Christmas trees, and the lighting ceremony is a significant community event that includes music, entertainment, and various activities for families.

The official illumination is Saturday, December 2, starting at 5:30 p.m., and lights are scheduled to be turned on around 6 p.m. Food booths and keiki rides will be set up around the grounds while decorated trees and wreaths will be on display in Honolulu Hale Courtyard. After the tree lighting, Santa will be on hand to help greet the children.

Take advantage of the Electric Light Parade, an essential part of the opening night celebration. The parade travels along King Street, from River Street to Kawaiahao, and the first unit arrives at Honolulu Hale at approximately

6:30 p.m. All along, King Street is a great location to see the Electric Light Parade, which leaves Aala Park at 6 p.m. A large crowd gathers in front of Honolulu Hale to view the tree lighting, program, and parade. Crowds also fill the sidewalks on both sides of King Street between Bishop and Punchbowl Streets.

Opening night will be filled with other surprises. The ceremony will be emceed by University of Hawai'i women's basketball head coach Laura Beeman and will include a blessing by Kahu Kordell Kekoa, a performance by the Kamehameha Children's Choir, under the direction of Lynell Bright, and will conclude with the lighting of the holiday tree. Kids can get "The Free Photo with Santa" at the Mission Memorial Auditorium, sponsored by Hawaiian Telcom. Families and visitors should arrive between 4-5 p.m. to find parking in the Frank F. Fasi Municipal lot, with entry from the left lane of Beretania Street just past Alapa'i Street.

If you wish to see the parade in Chinatown, there are several parking lots in the area. However, it would be best if you parked before the parade-related street closures have begun. Also, you may have to wait for the streets to reopen to exit certain lots. King Street will close along the parade route and reopen progressively after the parade, except for the section from Punchbowl to the

Continued on page 4.

Celebrating Christmas, island-style



One of two sand sculptures in the Sheraton lobby

The holiday spirit bursts to life in the islands during December. There are plenty of events, decorations, and celebrations all month long to delight kids of all ages. Here are just a few ways to get into the Christmas spirit this season, island style.

Santa Sand Sculptures

It's Hawaii, so it's no surprise Santa trades in his sleigh for a surfboard when he gets here (by canoe, of course). Sandsational Sand Sculpting, a Florida-based company, has returned to the Sheraton Waikiki to construct its annual holiday sand sculptures. Designing visually stunning masterpieces in the lobby since 2006, it took them over three weeks and 250 hours to create two Surfing Santa sculptures this year. The first, which took 8 tons of sand, shows Santa with his surfboard and bag of toys.

continued on page 18.

TABLE OF CONTENTS

Yada Yada Yada	2
2023 Gift Guide	2
Newsflash	3
NYE	4
Paparazzi: Bloomingdale's Ala Moana	6
E Pili Kakou	8-13
Chef's Corner: BASALT Exec. Chef Maelani Iokepa ..	13
Calendar	14-17
Paparazzi: Arden Waikiki	18
That's Entertainment / Concierge Card	19

Publisher's Letter



Good riddance 2023 — Let's welcome 2024!

I don't know about you, but I cannot wait to usher 2023 out the door. This year was a tough one. 2020 and 2021 were difficult, but they were filled with issues we could manage and move forward with if we had the right mindset. 2023 was a sucker punch filled with gut-wrenching losses. The amount of people I lost in the last half of the year is overwhelming. Aside from the tragedy that happened in Maui, which will be breaking a lot of hearts for years to come, the year was filled with entirely too many losses that hit close to home: lifelong friends, work friends I have gotten very close to over the years, family friends, icons I had to come to feel were a part of my life, and most recently, my mother. I don't care how old you are - losing a parent is never easy, and even though she was getting up there in years, and logically, it was going to be sooner rather than later, it didn't seem as if it was imminent in any way, and I was entirely unprepared when it happened. It was truly unexpected, and it hit me hard. Typically, I turn to some close work friends to help me when something happens, but a few weeks before my mom died, Nadine Kam passed away as well. She had been the only one I turned to for editorial support over the past few years, so that wasn't an option either, and I just had to work my way through it. So, if any of you felt I sort of "phoned" in the last issue or was distant at concierge events, you were right. Sorry about that, but with an industry like this, it doesn't matter what happens in your life; as the old saying goes... the show must go on. Mahalo to all of you who reached out in support. Even if I didn't reply, please know your messages were heard and meant the world. I just needed to stay low for a while.

So, although there were some high points in 2023, and business is certainly on the rise after all the uncertainty over the past few years, it was overshadowed by mind-numbing losses that I hope have run their course for a while. There has been too much loss this year, not only here in Hawaii but around the world, and as trite as it sounds, if I had one wish for 2024, I really would wish peace and happiness for all. Here's to kicking 2023 out the door and hoping 2024 will bring everyone all of the peace, happiness, and success that they deserve. Enjoy the holidays!

Yada Yada



Matt McGuigan

In case you missed it, Highgate reopened the old Ambassador Hotel in October, now known as **Romer Waikiki at The Ambassador**. Congrats to **Matthew McGuigan**, who has been named as General Manager. He served as Hotel Manager at the Ala Moana Hotel for five years. Before that, he was working at several Seattle Hotels. McGuigan has been out and about promoting the hotel's new Waikiki Swim & Social Club, which is open to locals and their guests, offering live music, beverages, special events, and more. • Please welcome **Tomo Hikichi** back to the hotel industry as he takes over the Resort Manager position at the **Outrigger Reef**

Waikiki Beach Resort. Tomo began his hotel career at the Waikiki Beach Marriott before moving on to the Ritz Carlton and the Halepuna Waikiki before moving to the residential side of things as Director of Operations at Waiea where he has been for the past three years. • On that same note, congrats to **Andria Stevenson**, who was promoted to Tomo's former role as Director of Operations at **Waiea at Ward Village**. Andria started at Waiea as Housekeeping Manager in 2020 before being promoted to Residential Service Manager last year and has been instrumental in the transformation of the RS Department into a well-oiled machine



Tomo Hikichi

2023 Christmas Gift Guide

Every year, we try to compile a list of items to direct your guests towards the perfect Hawaiian item to give their loved ones as a Christmas gift. Given the events of this past summer, this year's list will showcase Maui-based vendors. What better gift to give than one that gives back to some of those that need it the most? Here's a few vendors to take into consideration when putting together your list this year.

Maui Ocean Jewelry

www.etsy.com/shop/mauiocceanjewelry



Hand made island inspired jewelry, featuring the popular Maui shaped charm with a heart. All of the shells used in pieces are hand picked on the beaches of Maui. Custom orders are welcome and everything ships within 1-5 days.

Volcano Oil by Maui Excellent

www.mauieuxcellent.com



Icy-hot analgesics and cooling mints combine to provide deep healing relief with this one-of-a-kind Volcano Oil®. Use it on sore, aching muscles, as a decongestant, or as a headache remedy. Family-owned and operated since 1999.

Lehua's Forest

www.lehuasforest.com



Lehua's Forest is a farmers collective in upcountry Maui, offering door to door gift delivery. Select from dozens of flower, plant and fruit arrangements, native plants and fruit trees.

Bootzie - Lux perfume and oils

www.bootzie.com

Creating intoxicating tropical perfume oils & luscious body products since 1999.



Sea Adora, Island Couture

www.seaadora.com



Sea Adora, Island Couture offers handmade jewelry made with the highest-quality gems and lux boho Island couture fashion line ranging in styles for the beach, night out, yoga, bikini's, handbags and more.

EXTRA EXTRA EXTRA *Newsflash*

BLAISDELL ARENA REOPENS WITH IAM TONGI CONCERT

After over six months of renovations focusing on safety measures such as upgrading the electrical backstage, improving the load capability of the performance grid, improving safety railings in working areas, replacing the perimeter door, and upgrading the house lighting, plumbing and fixtures of all the restrooms in the arena, it is ready to reopen. Hawaii's Iam Tongi opens the new & improved arena on December 9th.

SEA LIFE PARK INTRODUCES FIRST EVER HOLIDAY LŪ'AU

Sea Life Park Hawai'i announces the first-ever holiday-themed production of its highly rated Aloha Kai Lū'au. The popular show will now include a Christmas twist on the traditional Hawaiian luau as Aloha Kai transforms into a tropical holiday celebration throughout the month of December. Guests can take in the spirit of the season and aloha with five holiday hulas, festive costumes and songs including performances to "Mele Kalikimaka," "Jingle Bells," "Winter Wonderland" and other holiday songs, photo opportunities with Santa and more in a dazzling presentation from Malu Productions. alohakailuau.com.

LEALEA TROLLEY EXPANDS TO EIGHT ROUTES

LeaLea Trolley first launched in 2009, but like many other businesses, it temporarily suspended operations when COVID hit. In November 2022, they restarted operations, but only with two routes as Japanese visitors were at a minimum. In an encouraging move, they expanded their services to a total of 8 routes. 7 LeaLea Trolley routes (6 lines and an express) along with Waikiki Trolley Pink Line. They are now accepting Hawaiian Miles to purchase passes under a new program with Hawaiian Airlines. Redeem 5,000 miles for a 1-Day Pass, and 8,500 miles for a 4-Day Pass at the LeaLea Lounge at the Royal Hawaiian Center. his-hawaii.com or his-hawaii.com/en.

TOMMY BAHAMA POP-UP AT BLOOMINGDALE'S ALA MOANA

Bloomingdale's Ala Moana is hosting a special Tommy Bahama Pop-Up featuring a Hawaii Holiday Vibe from December 2 - 13. Enjoy 25% off all Tommy Bahama apparel at the special launch party on December 2 from 12-4 p.m. with food, entertainment, prizes, and giveaways. bloomingdales.com.

STÜSSY UNVEILS NEW FLAGSHIP AT ROYAL HAWAIIAN CENTER

Stüssy, the legendary streetwear brand, recently unveiled their new expanded store at Royal Hawaiian Center. The only location in Hawaii, and one of only three Chapter stores in the U.S. Featuring a selection of exclusive merchandise include a limited-edition Stüssy Honolulu Tee and Custom Stüssy Honolulu Water Short, inspired by Hawaii's tropical locale and natural beauty. Located on Level 1 of Building B. royalhawaiiancenter.com.

MELE KALIKIMAKA FESTIVAL RETURNS FOR THE 7TH YEAR

Mele Kalikimaka Marketplace, Honolulu's gift and craft fair, is a one-stop local holiday shop for made in Hawai'i products, holiday gifts and crafts. The event will be held December 16-17 at the Blaisdell Exhibition Hall. The 2-day event showcases local food products, gourmet gifts, gift baskets, holiday pop up shops, gifts, books, apparel, jewelry, crafts, and more from over 200 vendors. Tickets: \$6. melekalikimakamarketplace.com.



ENJOY A VERY MERRY

Breakfast with Santa



Bali Oceanfront is where you'll find the most wonderful dining experience of the year. Enjoy a special breakfast buffet with Santa or join us in the evening for a memorable holiday dinner.

BREAKFAST WITH SANTA

DEC 22ND, 23RD AND 24TH - SEATINGS AT 8AM & 10:30AM

Full breakfast buffet, activity stations for kids, and photo with Santa



HOLIDAY DINNER

CHRISTMAS EVE, DAY AND NEW YEAR'S EVE DINNERS

Special prix fixe holiday menu along with à la carte dining available



WAIKIKI STARLIGHT LUAU

CHRISTMAS EVE, CHRISTMAS DAY & NEW YEAR'S EVE SHOWS

Enjoy our traditional luau show featuring an enhanced holiday buffet

Learn more at hiltonhawaiianvillage.com/holidays

PARK WEST FINE ART MUSEUM & GALLERY

Waikiki Beach Walk Honolulu
808-859-4871 parkwesthawaii.com



Any client you refer for a private tour will get

10% off their purchase*
if they mention the hotel and concierge that referred them.

For more details
waikikibeach@parkwestgallery.com

PARK WEST GALLERY

*Terms and conditions apply

Honolulu City Lights

Continued from page 1

Alapa'i/South/King Street intersection, which will remain closed until 10 p.m. for street sweeping and crowd control barrier removal. There's no need to worry about food. There will be plenty of food booths open along Punchbowl Street to grab a snack if you get hungry.

By 7:30 p.m., all the sponsor floats and decorated City & County work vehicles should be parked past Honolulu Hale between Alapai and Kawaiahao Streets so families can see the floats up close and meet the city workers responsible for the decorated City vehicles, which usually includes an ambulance, refuse truck, street lighting vehicle, dump truck, TheBus, vector sewer cleaning truck and the perennial favorite, the antique La France Fire Pumper truck.

The entire downtown area around Honolulu Hale is adorned with colorful lights and decorations, creating a festive atmosphere. Visitors can enjoy walking around and taking in the sights. The lights and other outdoor decorations are lighted nightly at approximately 6 p.m. and remain on until dawn, switching off around 6 a.m. Take the time to drive through downtown Honolulu and enjoy the lights throughout the season. Take a slow drive down Beretania Street, enjoying multiple light displays. Turn left on Bishop Street and drive by Bishop Square and its plethora of lights, then turn left again on King Street and pass Iolani Palace, lighted as it was for Queen Lili'uokalani back in the day, then take the slow lane past Honolulu Hale and make the loop again. Don't want to drive? E Noa Tours is bringing back its Holiday Trolley Tours. Every evening beginning December 3, departs the Waikiki Trolley's Winter Wonderland at Kewalo Basin, where guests can enjoy cocoa, free games, crafts, and photos with Santa and the Grinch before setting off for two revolutions of the downtown district to enjoy the lights. The Holiday Lights Tour

will take you through historic downtown before dropping you off at Honolulu Hale to explore the festive holiday lights, marvel at the city's 50-foot Christmas tree, Shaka Santa, and more. Enjoy joyous sing-a-longs and jolly Christmas stories from the comfort of an open-air bus along the way. Tours are \$30 per adult and \$20 per child (ages 3-11). Go to holidaylightshi.com for more info.

The Hawaiian Mission Houses offers another place to watch the parade. For \$10 per person you can reserve your spot to not only enjoy the parade, but also participate in family activities from 4 to 6 p.m. Random fact: the grounds of the Hawaiian Mission Houses are actually 18" above the height of King Street making a perfect viewing location "above" from the crowds. There will be family fun with activities such as 19th century games and candle making from 4 - 6 p.m., with parade viewing from 6 - 9 p.m. Feel free to bring your own chairs and blankets to sit on. Reserve your spot at missionhouses.org.

During the holiday season, the 2023 Honolulu City Lights Official Ornaments will be on sale at all Macy's stores and First Hawaiian Bank branches on O'ahu. The ornaments are made from highly polished brass that is electroplated first with nickel and then with 24K gold for a hard, durable finish. The Friends of Honolulu City Lights will sell the official ornament and T-shirts on-site at the opening ceremonies. All proceeds from ornament sales go toward keeping the Honolulu City Lights celebration FREE for residents and visitors.

Following the Opening Night celebration on December 2, 2023, The Honolulu City Lights celebration continues throughout the month of December, featuring various family-friendly events presented by the Friends of Honolulu City Lights. Open daily from 8 a.m. to 10 p.m. on the Frank F. Fasi Civic Center Grounds, it will run through December 29, 2023. For more information, head to hnlcitylights.org.

Celebrate New Year's Eve

To be honest we haven't received very much info at press time, but here's what we did find to start.

THE GREEN

Two shows at 8 and 11 p.m. Tickets: \$75 - \$95. Meet & Greet for \$100. bluenotehawaii.com.

NEW YEARS EVE OMAKASE AT BAR MAZE

Enjoy a 6-course menu with 4 paired cocktails at 6:30 or 7 p.m. Reservations on resy.com.

KAHALA NYE DIAMOND CELEBRATION

Celebrate with live music, dancing, caviar, pupus, a special countdown surprise by the Kahala Hotel pool. Tickets: \$350. kahalaresort.com.

NYE AT INFINITY & EDGE


Doors open at 8 p.m. at the Sheraton Waikiki Edge pool with an extensive buffet, live music, and more. Tickets: \$350 and up on Fare Harbor.

DANCING THROUGH THE DECADES

Dance the night away through a musical journey from the 70's on. Beachhouse Aloha Tower. Tickets start at \$25 on Eventbrite.

ROCK-A HULA NEW YEARS EVE SHOW

NYE show starts at 10:15 p.m. rock-a-hula.com.



Book Jewelry Manufacturing Tour

Located in the heart of Honolulu, the Design Center is a free tour that gives you the chance to learn how Maui Divers Jewelry creates their exclusive masterpieces.



MAUI DIVERS JEWELRY

Inspired, designed and created in Hawai'i EST. 1959

Ala Moana Center | Hilton Hawaiian Village | International Market Place | Pearl Harbor | Dole Plantation

Hale'iwa Store Lots | Honolulu Airport | Maui Divers Jewelry Design Center

Tours, Bookings and Questions? Call or Text 808.946.2929

O'ahu | Maui | Big Island | Kaua'i | MauiDivers.com

WAIKIKI MARKET

WHERE ALOHA MEETS 'ONO



'OLILI



PiKO

kitchen + bar

FREE
Delivery or
Curbside
Pickup

with your first order!



Open daily from 6 am – 10 pm
waikikimarkethawaii.com
Lili'a Waikiki, 2380 Kuhio Avenue

bloomingdale's

Bloomingdale's Ala Moana held their annual Concierge Appreciation Event last month kicking off the holiday season with a fun scavenger hunt, food from Panya Bistro, plenty of swag and prizes, and giveaways from all around the store and the new Romer Honolulu Hotel. Bloomingdale's has been the hot spot for events lately, and will be hosting another one on December 2. Try to stop by one of them if you can and remember they are there to assist with any private VIP needs your guests have. Call 291-2252.



ALA  MOANA
HAWAII'S CENTER.



heart of the
H  **LIDAYS**

HOLIDAY SHOPPING, DINING & MEMORIES

ALAMOANACENTER.COM

Let's be Together...

DINING ▶ ENTERTAINMENT ▶ PAU HANA ▶ EAT ▶ DRINK ▶ BE MERRY ▶ HAPPY HOUR ▶

MONDAY

Barefoot Beach Café at Queen's Beach 924-2233
Live Contemporary & Hawaiian
 The Barefoot Boys 5:30-8:30pm

Chart House Waikiki 941-6660
Live Contemporary Hawaiian
 Camarillo Brothers 6-9pm

Duke's Canoe Club Waikiki 922-2268
Live Contemporary Hawaiian
 Grace Welton 4-6pm
 Bryan & Halekahu 7-9:30pm
 Ellsworth Simeona 9:30-12am

Hard Rock Cafe 955-7383
Contemporary Rock
 Cassie and the... (or TJ & Son) 4-6pm

House Without a Key 923-2311
Hawaiian music & hula by Miss Universe '97 Brook Lee
 Pa'ahana Trio 5-8pm
 Nick La'a (12/11 - Ben Kama) 8:15 - 10pm

Kani Ka Pila Grille 924-4992
Hoku Award Winning Hawaiian musicians
 Sean Na'auao 6-9pm

Mahi'ai Table 670-2778
Live Contemporary (closed on Christmas Day)
 Jenna Keala (12/11 - Bronson Varde) 5-8pm

Mahina & Sun's 923-8882

Monday Vibes on the Lanai
 Brent Limos 6:30-9:30pm

Mai Tai Bar at the Royal Hawaiian 923-7311
Live Contemporary Hawaiian
 Eric Lee (or Shaun Gomban) 11am-2pm
 Brad Kawakami 8-10pm

Maui Brewing Company 843-2739
Live Contemporary Hawaiian
 Scott Magz 3:30-5:30pm

Merriman's Honolulu 215-0022
Live Slack Key guitarist
 Deven Camat 5:30-7:30pm

Monkeypod Kitchen Ko Olina 381-4086
Live Contemporary 3x a day including from 12:30 - 2 p.m.
 Kree and Malik 3:30-5pm
 Sienna Souza 7-9pm

Monkeypod Kitchen Waikiki 900-4226
Live Contemporary 3x a day including from 12:30 - 2 p.m.
 Shawn Garnett 3:30-5pm
 Dustin Park 7-9pm

Piko Kitchen & Bar 923-2032
Live Contemporary Hits
 Christian Yrizarry (closed 12/25) 5-9pm

Rumfire 921-4600
Live Contemporary Hits
 Dave Watanabe 6-9pm

Signature Prime Steak 949-3636
Contemporary Pianist in the bar
 Keith Montross 6-9pm

Splash Bar at the Sheraton Princess Kaiulani 921-4600
Live Contemporary Hawaiian
 David Aquino 6-9pm

Swell at the Alohilani 294-4108
Solo Contemporary Guitarist
 Drew Henmi (12/25 - Jenna Keala) 6:30-9:30pm

SWIM at the Hyatt Regency 923-1234
Live Contemporary Hawaiian
 Kaulana Vinoya 5-9pm

The Beach Bar at the Moana Surfrider 922-3111
Live Contemporary Hawaiian
 Eric Lee 3:30-6:30pm
 Johnny Valentine 7-10pm

The Edge at the Sheraton 921-4600
Live Hawaiian Music
 Stephen Inglis 1-4pm

The Point Sunset Pool Bar at Turtle Bay 293-6000
Live Contemporary Hawaiian with Fireknife Dancer
 Kuhio Travis 5-8pm

Live Contemporary Hawaiian
 Walt Keale 4-6pm
 Kailua Moon 7-9:30pm
 Stephen Inglis (12/14 - Duva) 9:30-12am

Eating House 1849 Waikiki 924-1849
Live Contemporary Hawaiian
 Kings Kalohelani 4:30-7:30pm

Giovanni Pastrami 923-2100
Acoustic Soul, R&B and Pop
 YOZA (or others) 6:30-9:30pm

Hard Rock Cafe 955-7383
Contemporary Rock
 Lance Reid (or others) 4-6pm

House Without a Key 923-2311
Hawaiian music & hula by former Miss Hawaii's
 Delima Ohana 5-8pm
 Jesse Kuikahi (or Biku Shimabuku) 8:15 - 10pm

Kani Ka Pila Grille 924-4992
Hoku Award Winning Hawaiian musicians
 Kala'e Camarillo 6-9pm

Lewers Lounge 923-2311
Jazz Pianist
 Tommy James 8:30pm-12am

Liko's Tap & Table 394-5456
Live Contemporary
 Jason Laeha 5-8pm

Mahi'ai Table 670-2778
Live Contemporary
 Danielle Parente (or Keoni Ku) 5-8pm

Mahina & Sun's 923-8882
Electrifying Acoustic on the Lanai
 Laupepa Letuli 6:30-9:30pm

Mai Tai Bar at the Royal Hawaiian 923-7311
Live Contemporary Hawaiian
 Kupu Dalire-Na'auao 11am-2pm
 Eric Lee (or Jesse Kuikahi) 6-9pm

Maui Brewing Company 843-2739
Live Contemporary Hawaiian
 Christian Yrizarry 3:30-5:30pm

Merriman's Honolulu 215-0022
Live Contemporary
 John Kema 5:30-7:30pm

Moani Waikiki 466-2629
Live Contemporary Hawaiian
 Lava 7-10pm

Monkeypod Kitchen Ko Olina 381-4086
Live Contemporary 3x a day including from 12:30 - 2 p.m.
 Pono 3:30-5pm
 Chante 7-9pm

Monkeypod Kitchen Waikiki 900-4226
Live Contemporary 3x a day including from 12:30 - 2 p.m.
 Tiare and Evan 3:30-5pm
 John Akapo 7-9pm

Piko Kitchen & Bar 923-2032
Live Contemporary Hits
 Drew Henmi (or Bronson Varde) 5-9pm

Rumfire 921-4600
Live Contemporary Hits
 Christian Yrizarry (or others) 6-9pm

Signature Prime Steak 949-3636

TUESDAY

Amuse Wine Bar 237-5428
Live R&B & Contemporary
 Chris Salvador 7-9pm

Barefoot Beach Café at Queen's Beach 924-2233
Backyard Hawaiian
 Ben Kama 5:30-8:30pm

Chart House Waikiki 941-6660
Live Contemporary Hawaiian
 Ryan Tang Group 6-9pm
 Shane Kainoa (or others) 6pm-9pm

Duke's Canoe Club Waikiki 922-2268

OriginalMagoosPizza.com/Order







HAWAII'S FAVORITE ISLAND-STYLE PIZZA, SUBS & CHICKEN

WE'VE MOVED TO KAIMUKI!
DINE-IN & FULL BAR TAKEOUT & DELIVERY

3579 WAIALAE AVENUE
(BETWEEN 11TH & 12TH AVE)

E Pili Kākou

DINING ▶ ENTERTAINMENT ▶ PAU HANA ▶ EAT ▶ DRINK ▶ BE MERRY ▶ HAPPY HOUR

Contemporary Pianist in the bar
Keith Montross 6-9pm

Splash Bar at the Sheraton Princess Kaiulani 921-4600
Live Contemporary Hawaiian
Mark Caldeira 6-9pm

Swell at the Alohilani 294-4108
Solo Contemporary Guitarist
Kamuela Kahoana 6:30-9:30pm

SWIM at the Hyatt Regency 923-1234
Live Contemporary Hawaiian
Dominic Carlos 5-9pm

The Beach Bar at the Moana Surfrider 922-3111
Live Contemporary Hawaiian
Stephen Inglis 3:30-6:30pm
Alex Oasay 7-10pm

The Edge at the Sheraton 921-4600
Live Hawaiian Music
Eric Lee 1-4pm

The Point Sunset Pool Bar at Turtle Bay 293-6000
Live Contemporary Hawaiian with Fireknife Dancer
Jenna Keala 5-8pm

WEDNESDAY

Barefoot Beach Café at Queen's Beach 924-2233
Island Vibes
Danny Galura 5:30-8:30pm

Chart House Waikiki 941-6660
Live Contemporary Hawaiian
Mike Tulba 6-9pm

Duke's Canoe Club Waikiki 922-2268
Live Contemporary Hawaiian
Keoni Ku 4-6pm
Taulia Lave 7-9:30pm
Alika Souza 9:30-12am

Eating House 1849 Waikiki 924-1849
Live Contemporary Hawaiian
Shawn Garnett 4:30-6:30pm

et al inside Kahala Market 732-2144
Live Contemporary Hawaiian
Chris Luke 5:30-8:30pm

Giovanni Pastrami 923-2100
Acoustic Guitar Soul, R&B
Jason Laeha 6:30-9:30pm

Hard Rock Cafe 955-7383
Contemporary Rock
Mike Piranha (or Danielle Parente) 4-6pm

House Without a Key 923-2311
Hawaiian music & hula by Miss Universe '97 Brook Lee
Pa'ahana Trio 5-8pm
Mike Caldeira 8:15-10pm

Kani Ka Pila Grille 924-4992
Hoku Award Winning Hawaiian musicians
Ei Nei 6-9pm

Lewers Lounge 923-2311
Jazz Pianist
Jenna Keala 5:30pm-8pm
Tommy James 8:30pm-12am

Mahi'ai Table 670-2778
Live Contemporary
Dillon Pakele 5-8pm

Mahina & Sun's 923-8882

Soulful Guitar on the Lanai
Cameron Achuela 6:30-9:30pm

Mai Tai Bar at the Royal Hawaiian 923-7311
Live Contemporary Hawaiian
Stephen Inglis 11am-2pm
Johnny Valentine 6-9pm

Maui Brewing Company 843-2739
Live Contemporary Hawaiian
Donald Fialkowski (or others) 3:30-5:30pm

Merriman's Honolulu 215-0022
Live Contemporary
Kamaka Camarillo 5:30-7:30pm

MINA's Fish House 679-0079
Live Contemporary Hits
Kamuela Kahoana 6-9pm

Moani Waikiki 466-2629
Blues, Old School Rock, Country
Keith Batlin 7-10pm

Monkeypod Kitchen Ko Olina 381-4086
Live Contemporary
Chris Murphy 3:30-5pm
Sierra Lucia 7-9pm

Monkeypod Kitchen Waikiki 900-4226
Live Contemporary
Kailua Moon 12:30-2pm
Jasmin Nicole 3:30-5pm
Chante 7-9pm

Piko Kitchen & Bar 923-2032
Live Contemporary Hits
David Aquino 5-9pm

Rumfire 921-4600
Live Contemporary Hits
Jesse Kuikahi (12/27 - Bronson Varde) 6-9pm

Signature Prime Steak 949-3636
Contemporary Pianist in the bar
Pierre Grill 6-9pm

Splash Bar at the Sheraton Princess Kaiulani 921-4600
Live Contemporary Hawaiian
Alika Souza 6-9pm

Swell at the Alohilani 294-4108
Solo Contemporary Guitarist
Danielle Parente (12/27 - Brad Kawakami) 6:30-9:30pm

SWIM at the Hyatt Regency 923-1234
Live Contemporary Hawaiian
Biku 5-9pm

The Beach Bar at the Moana Surfrider 922-3111
Live Contemporary Hawaiian
Brandon Serrano 3:30-6:30pm
Kaiona 7-10pm

The Edge at the Sheraton 921-4600
Live Hawaiian Music
Kupu Dalire-Na'auao 1-4pm

The Point Sunset Pool Bar at Turtle Bay 293-6000
Live Contemporary Hawaiian with Fireknife Dancer
Alex Oasay 5-8pm

Tiki's Grill & Bar 923-TIKI
Live Contemporary Hawaiian and hula
Derrick Lee 1-3pm
Malu Productions 5:30-7:30pm

Vintage 1901 at the Moana 921-4600

Contemporary Piano
David Swanson 6:30-10pm

THURSDAY

100 Sails at the Prince Waikiki 944-4494
Live Contemporary & Hawaiian
Kailua Moon (12/28 - Tad Jennings) 6-8pm

Barefoot Beach Café at Queen's Beach 924-2233
Live Contemporary & Hawaiian
Alika Souza 5:30-8:30pm

Chart House Waikiki 941-6660
Live Contemporary Hawaiian
Tito & David 6-9pm

Duke's Canoe Club Waikiki 922-2268
Live Contemporary Hawaiian
Ben Kama 4-6pm
Chapter II (or Kona Chang Duo) 7-9:30pm
Scott Magz 9:30-12am

Eating House 1849 Waikiki 924-1849
Live Contemporary Hawaiian
Shane Kainoa 5-8pm

Giovanni Pastrami 923-2100
Live Contemporary
Billy Sage 6:30-9:30pm

Hard Rock Cafe 955-7383
Contemporary Rock
Chapter II (or others) 4-6pm

STARTING AT \$59

SAVOR OUR PRIME TIME MEAL WITH STARTER, ENTRÉE, SIDE, AND DESSERT



RUTH'S CHRIS STEAK HOUSE

AVAILABLE DAILY FROM 4-6 PM
Oahu: Waterfront Plaza and Waikiki Beach Walk
Maui: The Shops at Wailea
RUTHSCHRIS.COM

Let's be Together...

DINING ▶ ENTERTAINMENT ▶ PAU HANA ▶ EAT ▶ DRINK ▶ BE MERRY ▶ HAPPY HOUR ▶

House Without a Key **923-2311**
Hawaiian music & hula by Miss Universe '97 Brook Lee
 Walea 5-8pm
 Duncan Kamakana (or others) 8:15-10pm

Kani Ka Pila Grille **924-4992**
Hoku Award Winning Hawaiian musicians
 Kawika Kahiapo 6-9pm

Lewers Lounge **923-2311**
Jazz Pianist
 Dabid Aquino 5:30pm-8pm
 Ethan Capone & Rocky Holmes 8:30pm-12am

Mahi'ai Table **670-2778**
Live Contemporary
 Alex Oasay (12/21 - Jason Midro) 5-8pm

Mahina & Sun's **923-8882**
Hawaiian Contemporary on the Lanai
 Kelly Boy DeLima 6:30-9:30pm

Mai Tai Bar at the Royal Hawaiian **923-7311**
Live Contemporary Hawaiian
 Shaun Gomban (or others) 11am-2pm
 Stephen Inglis 8-10pm

Maui Brewing Company **843-2739**
Live Contemporary Hawaiian
 Johnny Helm 3:30-5:30pm

Maui Brewing Kailua **518-2739**
Live Contemporary Hawaiian
 Grace Welton (or others) 6-8pm

Merriman's Honolulu **215-0022**
Live Contemporary
 Laupepa 5:30-7:30pm

MINA's Fish House **679-0079**
Live Contemporary Hits
 Cory Oliveros 6-9pm

Moani Waikiki **466-2629**
Contemporary Island Music
 Kimo Opiana 7-10pm

Monkeypod Kitchen Ko Olina **381-4086**
Live Contemporary 3x a day including from 12:30 - 2 p.m.

Kona Abergas 3:30-5pm
 Wavy 7-9pm

Monkeypod Kitchen Waikiki **900-4226**
Live Contemporary 3x a day including from 12:30 - 2 p.m.

Bella and Kapono 3:30-5pm
 Javin Kai 7-9pm

Piko Kitchen & Bar **923-2032**
Live Contemporary Hits
 Keoni Ku (or others) 5-9pm

Rumfire **921-4600**
Live Contemporary Hits
 Brad Kawakami 6-9pm

Signature Prime Steak **949-3636**
Contemporary Pianist in the bar
 Grant Carvalho 6-9pm

Splash Bar at the Sheraton Princess Kaiulani **921-4600**
Live Contemporary Hawaiian

Kaimi Hananoeau 3:30-5:30pm
 Ronson Asuncion 6-9pm

Stripsteak **896-2545**
Live Contemporary
 Jason Laeha 6-9pm

Swell at the Alohilani **294-4108**
Solo Contemporary Guitarist
 Denny Ono (or YOZA) 6:30-9:30pm

SWIM at the Hyatt Regency **923-1234**
Live Contemporary Hawaiian
 Koa Atwood (or others) 5-9pm

The Beach Bar at the Moana Surfrider **922-3111**
Live Contemporary Hawaiian
 Shaun Gomban (or Christian Yrizarry) 3:30-6:30pm
 Kaimi Hananoeau 7-10pm

The Edge at the Sheraton **921-4600**
Live Hawaiian Music
 Alika Souza (12/14 - Brad Kawakami) 1-4pm

The Point Sunset Pool Bar at Turtle Bay **293-6000**
Live Contemporary Hawaiian with Fireknife Dancer
 Dave Watanabe 5-8pm

The Veranda at the Kahala Hotel **739-8760**
Live Contemporary
 Johnny Valentine 6-9pm

Vintage 1901 at the Moana **921-4600**
Contemporary Piano
 David Swanson 6:30-10pm

Maunaula 4-6pm
 Kawaika Kahiapo (12/24 - Na Ukulele Ekolu) 7-9:30pm
 Ernest Chang 9:30-12am

Hard Rock Cafe **955-7383**
Live Contemporary
 Heleo (or Close the Distance) 8-10pm

House Without a Key **923-2311**
Hawaiian music & hula by Miss Hawaii '73 Kanoë Miller
 Kapalama Trio 5-8pm
 Danielle Parente (12/29 - Alika Souza) 8:15-10pm

Kani Ka Pila Grille **924-4992**
Hoku Award Winning Hawaiian musicians
 Ka Hehena 6-9pm

Lewers Lounge **923-2311**
Jazz Pianist
 Nick La'a 5:30pm-8pm
 Maggie Herron & Dean Taba 8:30pm-12am

Mahi'ai Table **670-2778**
Live Contemporary
 Kai Duhaylonsod 5-8pm

Mahina & Sun's **923-8882**
Slack Key on the Lanai
 Dustin Park Duo 6:30-9:30pm

Mai Tai Bar at the Royal Hawaiian **923-7311**
Live Contemporary Hawaiian
 Brandon Serrano 11am-2pm
 Johnny III (12/22 - Tad Jennings) 6-9pm

Mariposa **951-3420**
Live Contemporary
 Chris Salvador 2:30-5:30pm

Maui Brewing Company **843-2739**
Live Contemporary Hawaiian
 Keith Batlin 3:30-5:30pm

Maui Brewing Kailua **518-2739**
Live Contemporary Hawaiian
 Dion "Boogie" Scott (or others) 6-8pm

Merriman's Honolulu **215-0022**
Live Contemporary
 Stephen Harris 5:30-7:30pm

MINA's Fish House **679-0079**
Live Contemporary Hits
 Jenna Keala 6-9pm

Moani Waikiki **466-2629**
Traditional Hawaiian, Reggae. DJ Spins from 10p-1:30am
 Liam Moletta 6-9pm

Monkeypod Kitchen Ko Olina **381-4086**
Live Contemporary 3x a day including from 12:30 - 2 p.m.
 Kona Abergas 3:30-5pm
 John Akapo 7-9pm

Monkeypod Kitchen Waikiki **900-4226**
Live Contemporary 3x a day including from 12:30 - 2 p.m.
 Sienna Souza 3:30-5pm
 Izik 7-9pm

PAI Honolulu **744-2531**
Live Contemporary Hits
 Ben Vegas 4:30 - 6pm

Piko Kitchen & Bar **923-2032**
Live Contemporary Hits
 Johnny Helm 5-9pm

Rumfire **921-4600**

FRIDAY

100 Sails at the Prince Waikiki **944-4494**
Live Contemporary & Hawaiian
 Mike Tulba Duo 6-8pm

Barefoot Beach Café at Queen's Beach **924-2233**
Live Contemporary Hawaiian
 The Art Kalahiki Band 5:30-8:30pm

Chart House Waikiki **941-6660**
Live Contemporary Hawaiian
 Mike Tulba 6-9pm

Dave & Buster's Honolulu **589-2215**
Pauhana Fridays hosted by Kona Chang
 Kawaika Kahiapo Trio (artists vary weekly) 5-8pm

Duke's Canoe Club Waikiki **922-2268**
Live Contemporary Hawaiian

Plan an Adventure

Let Hawaii Nautical show your guests our ocean playground.
808-234-SAIL (7245)

TURTLES GUARANTEED

Enjoy our morning and afternoon snorkel sailings at Turtle Canyon with a wildlife guarantee! See turtles or cruise again for free (certain rules apply). Wildlife guarantee is for re-rides only, no refunds.

E Pili Kākou

DINING ▶ ENTERTAINMENT ▶ PAU HANA ▶ EAT ▶ DRINK ▶ BE MERRY ▶ HAPPY HOUR

Live Contemporary Hits

Stephen Inglis 4:30-7:30pm
Drew Henmi 8-10:30pm

SHOR at the Hyatt Regency 923-1234

Live Contemporary Hawaiian
Dave Watanabe 5-9pm

Signature Prime Steak 949-3636

Contemporary Pianist in the bar
Grant Carvalho 6-9pm

Splash Bar at the Sheraton Princess Kaiulani 921-4600

Live Contemporary Hawaiian, DJ spins from 2-5pm
Ben Kama Duo & Dancer 5-8pm
Stephen Inglis 8-10pm

Stripsteak 896-2545

Live Contemporary
Shane Kainoa 6-9pm

SWIM at the Hyatt Regency 923-1234

Live Contemporary Hawaiian
Denny Ono (or others) 5-9pm

The Beach Bar at the Moana Surfrider 922-3111

Live Contemporary Hawaiian
Keoni Ku (or others) 12-3pm
Kailua Moon 3:30-6:30pm
Kamuella Kahoano 7-10pm

The Edge at the Sheraton 921-4600

Live Hawaiian Music
Christian Yrizarry (or others) 1-4pm

The Grove at the Modern Pool Deck 943-5800

Live Contemporary
Danelle Parente (or others) 4-7pm
Brad Kawakami 6-8pm

The Point Sunset Pool Bar at Turtle Bay 293-6000

Live Contemporary Hawaiian with Fireknife Dancer
Mark Calderia (12/22 - Jasmin Nicole) 5-8pm

The Veranda at the Kahala Hotel 739-8760

Live Contemporary
Johnny Valentine 6-9pm

Vintage 1901 at the Moana 921-4600

Contemporary Piano
David Swanson 6:30-10pm

SATURDAY

100 Sails at the Prince Waikiki 944-4494

Live Contemporary Hawaiian, DJ KK at the pool from 2-5
Chase Favella (or others) 6-8pm

Barefoot Beach Café at Queen's Beach 924-2233

Live Contemporary Hawaiian
Vanessa Alputila 5:30-8:30pm

Chart House Waikiki 941-6660

Live Contemporary Hawaiian
Tito Berinobis 6-9pm

Duke's Canoe Club Waikiki 922-2268

Live Contemporary Hawaiian
Drew Henmi (or others) 12-2pm
Beach 5 (or others) 4-6pm
Ells Simeona (12/11 - Jegaan & Yasmyrn) 7-9:30pm
Sean Cleland (or others) 9:30-12am

Eating House 1849 Waikiki 924-1849

Live Contemporary Hawaiian
Kings Kalohelani 10:30am-1pm

Hard Rock Cafe 955-7383

Live Contemporary
Stephen Harris (or others) 8-10pm

House Without a Key 923-2311

Hawaiian music & hula by Miss Hawaii '73 Kanoë Miller
Kapalama Trio 5-8pm
Stephen Inglis 8:15-10pm

Kani Ka Pila Grille 924-4992

Hoku Award Winning Hawaiian musicians
Ho'okena 6-9pm

Lewers Lounge 923-2311

Jazz Pianist
Mike Tulba 5:30pm-8pm
Maggie Herron & Dean Taba 8:30pm-12am

Mahi'ai Table 670-2778

Live Contemporary
Kamakana Kawa'a 5-8pm

Mahina & Sun's 923-8882

Contemporary Hawaiian/Blues on the Lanai
Josh Akapo 6:30-9:30pm

Mai Tai Bar at the Royal Hawaiian 923-7311

Live Contemporary Hawaiian
Ronson Asuncion (oxl 12/9) 11am-2pm
Dave Watanabe 6-9pm

Mariposa 951-3420

Live Contemporary
Aisaiah Jacobs 2:30-5:30pm

Maui Brewing Company 843-2739

Live Contemporary Hawaiian
Sean Cleland (or others) 3:30-5:30pm

Maui Brewing Kailua 518-2739

Live Contemporary Hawaiian
Scott Magz (or others) 7-9pm

Merriman's Honolulu 215-0022

Live Contemporary
Shane Kainoa 5:30-7:30pm

MINA's Fish House 679-0079

Live Contemporary Hits
Alex Oasay 6-9pm

Moani Waikiki 466-2629

Contemporary Reggae
Braddah Ash 6-9pm
Live Local Band 10pm-1:30am

Monkeypod Kitchen Ko Olina 381-4086

Live Contemporary 3x a day including from 12:30-2 p.m.
Koa 3:30-5pm
Javin Kai 7-9pm

Monkeypod Kitchen Waikiki 900-4226

Live Contemporary 3x a day including from 12:30-2 p.m.
Michael Delara 3:30-5pm
Kona Abergas 7-9pm

Piko Kitchen & Bar 923-2032

Live Contemporary Hits
Biku Shimabuku 5-8pm

Redfish at the Wayfinder Waikiki 921-3220

Live Contemporary Hits
Johnny Helm (12/16 - Tad Jennings) 6-10pm

Rumfire 921-4600

Live Contemporary Hits
Mark Caldeira 4:30-7:30pm

Kaleo Kahumoku (12/2 - Bronson Varde) 8-10:30pm

SHOR at the Hyatt Regency 923-1234

Live Contemporary Hawaiian zz
David Aquino 5-9pm

Signature Prime Steak 949-3636

Contemporary Pianist in the bar
Grant Carvalho 6-9pm

Splash Bar at the Sheraton Princess Kaiulani 921-4600

Live Contemporary Hawaiian, DJ spins from 2-5pm
Brad Kawakami Duo & Dancer 5-8pm
Tangi Tully 8-10pm

Stripsteak 896-2545

Live Contemporary
Dustin Park 6-9pm

SWIM at the Hyatt Regency 923-1234

Live Contemporary Hawaiian
Stan Albrecht 5-9pm

The Beach Bar at the Moana Surfrider 922-3111

Live Contemporary Hawaiian
Chris Salvador 12-3pm
Ronson Asuncion 3:30-6:30pm
Koa Atwood (12/30 - Tad Jennings) 7-10pm

The Edge at the Sheraton 921-4600

Live Hawaiian Music
Brad Kawakami 1-4pm

The Grove at the Modern Pool Deck 943-5800

Live Contemporary



BarefootBeachCafe.com

"WE PUT *Aloha* INTO EVERY BITE SO SIT BACK, RELAX AND ENJOY THE VIEW."

OPEN DAILY

BREAKFAST 8AM - 2PM
LUNCH/DINNER 11AM - 8:30PM
LIVE MUSIC NIGHTLY 5:30 - 8:30PM & SUNDAYS 11AM - 2PM

BAREFOOT BEACH CAFE
2699 KALAKAUA AVENUE
808.924.2233

EVENTS & GROUP RESERVATIONS
808.699.8830

Let's be Together...

DINING ▶ ENTERTAINMENT ▶ PAU HANA ▶ EAT ▶ DRINK ▶ BE MERRY ▶ HAPPY HOUR ▶

Mike Izon (12/9 - Bronson Varde) 4-7pm
The Point Sunset Pool Bar at Turtle Bay 293-6000
Live Contemporary Hawaiian with Fireknife Dancer
 Denny Ono (or Dominic Carlos) 5-8pm
The Veranda at the Kahala Hotel 739-8760
Live Contemporary
 Jeanette Trevais (12/9 - Brad Kawakami) 6pm-9pm
The Veranda at the Kahala Hotel 739-8760
Live Contemporary
 Johnny Valentine 6-9pm
Vintage 1901 at the Moana 921-4600
Contemporary Piano
 David Swanson 6:30-10pm

SUNDAY

100 Sails at the Prince Waikiki 944-4494
Live Contemporary Hawaiian, DJ Jem at the pool from 2 - 5
 Cherie Duo 6-8pm
Barefoot Beach Café at Queen's Beach 924-2233
Live Contemporary Hawaiian
 Kimo Baker 10am-1pm
 Art Kalahiki 5:30-8:30pm
Chart House Waikiki 941-6660
Live Contemporary Hawaiian
 Dean & Dean 6-9pm
Duke's Canoe Club Waikiki 922-2268
Live Contemporary Hawaiian
 Duva (or others) 12-2pm
 Henry Kapono (or others) 4-6pm
 Kaiona Duo 7-9pm
 Tad Jennings 9:30-12am
Eating House 1849 Waikiki 924-1849
Live Contemporary Hawaiian
 Shane Kainoa 10:30am-1pm
Giovanni Pastrami 923-2100
Reggae Pop Music
 Kelandy 6:30-9:30pm

Hard Rock Cafe 955-7383
Contemporary Rock
 Brunch with Lovejack 10am-12pm
 Dylan (or others) 8-10pm
House Without a Key 923-2311
Hawaiian music & hula Miss Hawaii '23 Star Dahl-Thurston
 Pu'uhonua Trio 5-8pm
 Brad Kawakami 8:15-10pm
Kani Ka Pila Grille 924-4992
Hoku Award Winning Hawaiian musicians
 Nathan Aweau 6-9pm
La Hiki Restaurant at the Four Seasons 679-0079
Live Contemporary Hawaiian
 Jenna Keala (or Kamuela Kahoano) 11am-2pm
Mahi'ai Table 670-2778
Live Contemporary
 Johnny III (12/24 - John Coelho) 5-8pm
Mahina & Sun's 923-8882
Award-winning ukulele on the Lanai
 Trishnaiei 6:30-9:30pm
Mai Tai Bar at the Royal Hawaiian 923-7311
Live Contemporary Hawaiian
 John Coelho & Kanoë Arola 11am-2pm
 Christian Yrizarry (or others) 6-9pm
Mariposa 951-3420
Live Contemporary
 Zaysha 12-3pm
Maui Brewing Company 843-2739
Live Contemporary
 Duva & Yas 3:30-5:30pm
Merriman's Honolulu 215-0022
Live Contemporary Piano
 Grant Carvalho 5:30-7:30pm
Moani Waikiki 466-2629
Contemporary Island Music
 Dustin Park 7-10pm
Monkeypod Kitchen Ko Olina 381-4086
Live Contemporary 3x a day including from 12:30 - 2 p.m.
 Kapono and Bella 3:30-5pm
 Lava 7-9pm
Monkeypod Kitchen Waikiki 900-4226
Live Contemporary 3x a day including from 12:30 - 2 p.m.
 Tad Jennings 3:30-5pm
 Koa and Yazmin 7-9pm
Piko Kitchen & Bar 923-2032
Live Contemporary Hits
 Dominic Carlos 5-9pm
Rumfire 921-4600
Live Contemporary Hits
 Jenna Keala (12/17 - Jesse Kuikahi) 4:30-7:30pm
 Alex Oasay 8-10:30pm
SHOR at the Hyatt Regency 923-1234
Live Contemporary Hawaiian
 Derrick Lee 5-9pm
Signature Prime Steak 949-3636
Contemporary Pianist in the bar
 Keith Montross 6-9pm
Splash Bar at the Sheraton Princess Kaiulani 921-4600
Live Contemporary Hawaiian
 Kailua Moon & Dancer 3:30-5:30pm
 Chris Luke 8-10pm

Swell at the Alohilani 294-4108
DJ Kenny Spins Poolside from 2-6 pm
 Jason Laeha 6:30-9:30pm
SWIM at the Hyatt Regency 923-1234
Live Contemporary Hawaiian
 Koa Attwood 5-9pm
The Beach Bar at the Moana Surfider 922-3111
Live Contemporary Hawaiian
 YOZA 12-3pm
 Brad Kawakami 3:30-6:30pm
 Dave Watanabe 7-10pm
The Edge at the Sheraton 921-4600
Live Hawaiian Music
 Jesse Kuikahi (or others) 1-4pm
The Point Sunset Pool Bar at Turtle Bay 293-6000
Live Contemporary Hawaiian with Fireknife Dancer
 Danielle Parente 5-8pm
Vintage 1901 at the Moana 921-4600
Contemporary Piano
 David Swanson 6:30-10pm



Hot Lines

It's difficult to keep up with some music schedules these days, as many places have a different performer each day. Including contact numbers below of places that don't update us regularly, or have too many performers to list, so you can reach out and ask.

Anna O'Brien's 946-5190
 Deck. 931-4488
 Hard Rock Cafe 955-7383
 Irish Rose Saloon 947-3414
 Kelley O'Neil's 926-1777
 Lucky Strike Honolulu 664-1140
 Mai Tai Bar Ala Moana 947-2900
 Off the Wall 593-2337
 Tiki's Grill & Bar 923-TIKI
 Tommy Bahama 923-8785

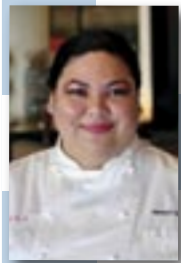
Dining Dish



Maui Brewing Company is now open a half hour earlier every day and serving brunch from 11 a.m. to 3 p.m. Offering local favorites with a twist, such as Avocado Toast sprinkled with Macadamia Nuts and kochujang salt, Loco Moco with tonkatsu-huli mushroom sauce, a 2-egg breakfast with choice of Kukui spicy sausage or jalapeño bacon and hash browns, Eggs Benedict and breakfast staples such as pancakes. Breakfast Bevies will also be available and include Mimosas, Bloody Marys, Aperol Spritz, and Espresso Martini Slosies. 843-2739.
 • I checked out the new a la carte menu

WAIKIKI BAPTIST Church
 Your Church in Waikiki
 424 Kuamo`o St
 (Near the Ambassador Hotel)
Sunday Worship Services
 9:00 AM - Contemporary
 10:45 AM - Traditional
 (808)955-3525
 WaikikiBaptist.com

at **Margotto Hawaii**, and it was everything I knew it would be. Each dish was exquisitely prepared and presented, and you can add truffles if you choose. There are several varieties available right now, including the revered Italian Truffle. This menu format allows guests to build their own dining experience according to their own budget, with many affordable and delectable items to choose from. Pasta options begin at \$28. Throughout December, there will also be a sushi pop-up at the bar every Thursday and Friday offering a 12-course handroll omakase with two seatings each night. 592-8500. • **La Vie** has launched a four-course sunset menu from 5:30 - 6 p.m. in the bar. Enjoy a Frish Crudo Anchoiade to start, followed by Hirabara Farm Beets with foie gras, choice of entree (kanpachi, duck, or steak) with a lovely dessert for \$99. laviewaikiki.com. • **Dean & Deluca** has launched Afternoon Tea at The Artisan Loft on Tuesdays and Wednesdays from 11:30 to 3:30 p.m. Enjoy a 5-course menu for \$54. (locals get \$5 off). 729-9720. • **Nori Bar** is now open on the grand floor of Koula at Ward Village. This hand roll bar concept from the owners of Paradise Poke, will be open for both dine-in and take-out and will source its fish locally. Offering an extensive lunch and dinner menu for dine in or take out. 271-8898. • **Straits Hawaii**, a restaurant inspired by the diverse culinary melting pot of Singapore opened in the former Big City Diner location at Ward Entertainment Center from noted restaurateur, **Chris Yeo**. Known for its chic, contemporary atmosphere that pairs well with the exotic nature of the cuisine, Straits is open for dinner daily at 4 p.m. straitshawaii.com. • **The Blue Fish**, a Texas-based restaurant known for its variety of classic and specialty sushi, sashimi, Japanese and Korean menu items in a lively, and modern atmosphere, is now open at Waikiki Beach Walk in the old Cheeseburger location. It's offerings range from a vibrant happy hour to a chef curated Omakase dinner. The 5,400 square-foot location offers indoor and patio seating, a bar and lounge area, a sushi counter and a dining room. thebluefishsushi.com. • Familiar faces... **Ruth's Chris Steak House Honolulu** announced they have promoted **Marc Shirai** to General Manager and **Joe Bardouche** has returned as a manager. 599-3860.



Chef's Corner

BASALT Executive Chef Maelani Iokepa

Mae has part of the culinary team of BASALT since its opening in 2017. One of her mentor's, Keith Steel Kong, opened the restaurant as Exec. Chef, and Mae had a long history working with him at Duke's Waikiki for over a decade. She is honored by the recent decision to award her the top slot, and considers it her personal mission to invest in her team, like her mentor did before for her, and showcase their talents on their menus. She was the creative source behind BASALT's top requested menu item, their signature Charcoal Pancakes.

What is your first childhood food memory?

My grandfather's lumpia, when we had family gatherings he would have a pan of banana lumpia ready for us kids to eat as we ran around.

When did you decide you wanted to be a chef?

6th or 7th grade I liked my family's parties and helping everyone cook especially when my grandparents were in the kitchen. Then as I got older it became more of a passion.

What was your first job in the industry?

I worked at Taco Bell McCully for a year before joining the team Dukes Waikiki.

Where did you study?

I did some studying at KCC but never finished. The rest of my training came from all the various kitchens and chefs I've worked with over time.

Who would you consider your mentor?

I have had many mentors over the years with each one leaving a mark on me in some way.

Tell us about the one dish you remember most?

The dish is Banana Lumpia, it was the first dish my grandfather taught me how to make. As simple as it is to make, he made sure I paid attention. His teaching was strict, always about respecting the ingredients you're working with and consistency that's why it was always so good.

What position were you hired for at BASALT?

I joined the opening team as a sous chef.

Any plans to change the menu?

I've changed the menu a few times since becoming Executive Chef. It's a very interesting time now coming out of COVID and adapting to the new world, and change is inevitable.

What's your favorite ingredient to work with?

That's a hard one to answer as I like so many. If I think of it as what I reach for most in my professional and daily life I would have to say shoyu. It's versatile in either savory or sweet applications and also simple like shoyu on white rice.

How would you describe your style of cooking?

I like to think of my cooking style as simply local with sprinkles of Asian. I really like the layering of flavors and like Hawaii being a melting pot of cultures I feel my cooking takes after that very same melting pot.

You feel strongly about Hawaii's food security. How do you make a difference?

Making an impact on Hawaii's food security is ongoing. We like to support local small farmers and businesses. Whenever possible we do our best to bring locally grown produce into the restaurant.

What do you like to do on your days off?

I like to toil at my family farm. I enjoy the process of knowing where our food comes from.

Ulu Veggie Stack

Mae recently graduated from UH's GoFarm program fulfilling one step in her goal towards helping Hawaii's food security. 'Ulu plays an important part of that idea, and she is always coming up with ideas on how to prepare this natural resource that is so abundant in Hawai'i. Find more 'ulu recipes at eatbreadfruit.com.



Ingredients:

- | | |
|-----------------------------|-----------------------------------|
| 5 oz Pre steamed/cooled Ulu | 2 ea. large egg (your preference) |
| 1 oz Onions sliced | 1 pinch salt |
| 2 oz Mushrooms sliced | 1 pinch pepper |
| 1 oz Red Bell Pepper | 2 tsp cooking oil |
| 1 oz Baby Spinach | More oil for frying |

Tool Tip:

You will need a pan for deep frying the ulu, and you can also adapt this recipe for an air fryer. Oil temperature should be 350° F

Directions:

1. Heat a pot with oil for deep frying. Temperature should be 350° F
2. Heat a saute pan on medium high heat.
3. Cut your 'Ulu into approximately 3 inch pieces and smash down slightly.
4. Place 'Ulu into the fry oil and fry until golden brown, crispy.
5. While 'Ulu is working place 2 tbsp of cooking oil into heated saute pan and saute onions, mushrooms, red bell pepper, and spinach. Season with salt and pepper.
6. Drain excess oil from 'Ulu, season with salt and pepper then place on a plate. Lay sauteed vegetables on top of the 'Ulu.
7. Cook eggs to your preference, I personally like sunny up for this dish, season well.
8. Lay cooked eggs on top of sauteed vegetables and enjoy!

BASALT is located at Duke's Lane Market, 2255 Kuhio Avenue

Open Daily: Brunch: 8 a.m. - 1:30 p.m. (7 a.m. on weekends) • Happy Hour: 3-5 p.m. • Dinner: 5-9:15 p.m.
 Web: basaltwaikiki.com • Instagram: @basaltwaikiki • Facebook: facebook.com/basalt • Ph: 923-5689

DECEMBER CALENDAR OF EVENTS

Continuing Events

MONDAYS, WEDNESDAYS & FRIDAYS O NĀ LANI SUNSET STORIES HULA SHOW

Honoring the rich history and sense of place of the International Market Place through song & dance. It begins at sunset with the lighting of the Lamakū Torch Tower on Kalākaua Avenue and leads to the Queen's Court. Free. 7 p.m. shopinternationalmarketplace.com.

TUESDAY THRU SATURDAY ARTS AT MARKS LATEST EXHIBIT

This month's exhibition at the Arts at Marks Garage will display a variety of works, including small items like prints and cards perfect for holiday gift giving. Enjoy a Meet the Artists reception at Pau Hana Friday on the first and final Friday of the month from 5 - 8 p.m. Open Tues-Sat. from 12 - 5 p.m. artsatmarks.com.

WEDNESDAYS, SATURDAYS & SUNDAYS ALOHA STADIUM SWAP MEET

The Aloha Stadium Swap Meet has been going strong since 1979. Featuring over 400 vendors, crafters and artists, the Swap Meet offers low-prices on a wide selection of quality products with food trucks to snack from. Wednesdays & Saturdays: 8 a.m. - 3 p.m., Sundays, 6:30 a.m. - 3 p.m. \$2 admission ages 12 & up, \$1 for locals. alohastadium.hawaii.gov.

FIRST & THIRD THURSDAY (DECEMBER 7/21) SIP & SHOP MARKET

Supporting Hawaii grown businesses &

encouraging the community to shop local over live music + 'ono eats from Mahina & Sun's. Surfjack Hotel. \$8 parking for 4 hours validation at the Hyatt Centric. surfjack.com.

FIRST FRIDAY (DECEMBER 1) DOWNTOWN GALLERY WALK & CRAFT FAIR

Downtown comes alive the first Friday of every month as art lovers fill the streets for Honolulu's outdoor self-guided arts tour. Stores spill out onto the sidewalk, and artists are on hand to chat about to their works, and restaurants are ready to serve you. Don't miss the living art exhibition in the windows of The ARTS at Marks Garage, as they relight the Red Light District of Honolulu with burlesque and go-go dancers from 9 - 10 p.m. Monthly updates are published on participating merchant websites, or two days before the event at firstfridayhawaii.com.

SECOND FRIDAY (DECEMBER 8) BISHOP MUSEUM NIGHT MARKET

Extended after-hours access to the Museum with a Pau Hana presentation, living culture demonstration, keiki activities, exhibition tours, J. Watumull Planetarium shows, a Membership Lounge, food trucks, and live music. 5 - 9 p.m. \$10 at the door. bishopmuseum.org.

FRIDAYS

ROYAL HAWAIIAN BAND LUNCHTIME SHOW

The Royal Hawaiian Band has returned to Iolani Palace for its popular lunchtime concerts. Held on most Fridays, the concerts are free and open to the public. 12 - 1 p.m. iolanipalace.org

FRIDAYS & SATURDAYS • HOMA NIGHTS

On Friday and Saturday nights, regular museum admission also includes live musical performances, hands-on art activities, pop-ups in the HoMA Shop, movies on the lawn, bar service at the HoMA Cafe, and other interactive art experiences. The museum stays open until 9 p.m. honoluluuseum.org.

SATURDAYS & SUNDAYS ART ON THE ZOO FENCE

Art On The Zoo Fence is a group of resident Hawaii artists that meet every Saturday and Sunday to display and sell art and photography on the Zoo fence on Monsarrat Avenue opposite the Kapiolani Park Bandstand. This is the only outdoor art venue in Honolulu that has proudly been displaying art since 1953. 9 a.m. - 3 p.m. Free. artonthefencehi.com.

SECOND SUNDAY (DECEMBER 10) KAMA'AINA SUNDAYS

Kama'aina Sundays are back at Iolani Palace. Locals can take advantage of free tours, entertainment, family-friendly activities and plenty of food options with proof of residency. Free tours will be available to the first 500 guests. This month's theme is Mo'ōlelo Traditions, highlighting stories, myths, legends that are part of the cultural fabric of Hawai'i. 9 a.m. - 3 p.m. iolanipalace.org.

THIRD SUNDAY (DECEMBER 17) FAMILY FREE SUNDAY

Thanks to Bank of Hawaii, kama'aina have been offered free admission with ID on the third Sunday of the month since 2004. With engaging activities for keiki of all ages, entertainment, and community-focused programming around the museum, this is a great way for families to spend creative time together. Free admission for kama'aina. 10 a.m. - 6 p.m. 532-8700. honoluluuseum.org.

DECEMBER 2 • HAPASYMPHONY FEATURING NA LEO PILIMEHANA

Kick off the holiday season as the ladies of Na Leo Pilimehana join your Hawaii Symphony Orchestra for a Christmas concert like no other. \$10.50-\$99. 7:30 p.m. Hawaii Theatre. hawaiisymphonyorchestra.org.

DECEMBER 2-3 • DON MCLEAN

Forever associated with his classic hits "American Pie," Don McLean, has amassed over 40 gold and platinum records worldwide and, in 2004, was inducted into the Songwriters' Hall of Fame. One performance each evening at 6:30 p.m. Tickets: \$65-\$125. bluenotehawaii.com.

DECEMBER 2-3 • CHAUNTÉ WAYANS

Chaunté Wayans, a member of the legendary Wayans family is bringing her national comedy Tour to Hawaii. One performance each night at 9 p.m. Tickets: \$25-\$35. bluenotehawaii.com.

DECEMBER 2-29 • HONOLULU CITY LIGHTS

Downtown lights up in celebration every night of the season with the annual Honolulu City Lights. Enjoy opening night festivities on December 2nd at 5:30 p.m. The Electric Light Parade starts at River Street and goes to Honolulu Hale where Mayor Blangiardi lights the City Holiday Tree around 6 p.m. honolulucitylights.com.



SEND YOUR GUESTS TO A *faraway* PARADISE.
OKAY, THE NORTH SHORE.

It's never been a better time for your guests to experience the Polynesian Cultural Center. They can explore our six island villages with our popular Gateway Buffet package or our Islands & HĀ Show package. For more information, visit polynesia.com.



DECEMBER CALENDAR OF EVENTS

DECEMBER 3 • JINGLE ROCK RUN

The annual fun community walk/run will be a 2.5-mile route that walkers, joggers, runners, strollers, pets and reindeer are welcome. Enjoy live entertainment along the route. Ko Olina Resort. 3 – 6 p.m. hawaii.wish.org.

DECEMBER 5 HENRY KAPONO & FRIENDS

Join Henry Kapono and special guest Alx Kawakami will be joined by different guest artists at each show. Two shows at 6:30 and 9 p.m. Tickets: \$35-\$45. bluenotehawaii.com.

DECEMBER 5 HAWAII HOLIDAY CRAFT & GIFT FAIR

Get ready to get your holiday shopping on with close to 200 local vendors. Check their website for a coupon for a few dollars off entry prices for you and 5 of your friends. Blaisdell Exhibition Hall. Fri. 2 – 7 p.m., Sat. 10 a.m. – 6 p.m. Sun. 10 a.m. – 5 p.m. Tickets: \$5. hawaiiholidayfair.com.

DECEMBER 7 CHERRY POPPIN' DADDIES

In the past few years the Cherry Poppin' Daddies have become the kind of band that you would book if you were throwing a party at the Gatsby mansion. Penning elegant, lush arrangements of the great American songbook, from Cole Porter to Frank Sinatra, the Daddies have surprised many familiar with them from their 90's punk/ska "Zoot Suit Riot" days. Two shows at 6:30 and 9 p.m. Tickets: \$35-\$45. bluenotehawaii.com.

DECEMBER 7 PEARL HARBOR MEMORIAL PARADE

Commemorate the anniversary of World War II with this special parade that takes place on the anniversary of the attack on Pearl Harbor to honor and pay respect to those that lost their lives, the survivors, our veterans, active-duty military, and their families. 2,000 marchers, helicopters, floats, and bands parade down Kalakaua Avenue in Waikiki to honor the fallen, the survivors, and all veterans starting at 6 p.m. Ceremony begins at 4:30 p.m. at Fort DeRussy. A closing ceremony will take place at the Waikiki Shell at 7:30 p.m. pearlharborparade.org.

DECEMBER 7 • THE KINGSTON TRIO

With their signature-striped shirts, banjos, bongos, guitars, and charismatic personalities, The Kingston Trio became the most influential music band to emerge from the 1950's, only to be outdone by The Beatles. Rediscover their timeless music in a national tour to mark the group's 60th anniversary on a national tour performing many of the Trio's best-loved songs. 7 p.m. Tickets: \$35-\$45. hawaii theatre.com.

DECEMBER 8 & 10 • I'LL BE SEEING YOU

The Hawaii Opera Theatre presents a live radio show featuring musical hits of 1940s Jazz, Swing, Big Band, Blues, the Great American Songbook, and the Golden Age of Hawaiian. Tickets: \$30. A fundraiser will be held on the 10th. Tickets: \$100. Studio101. 6 p.m. hawaiiopera.org.

DECEMBER 8-10 • WAYNE NEWTOWN

Don't miss Mr. Las Vegas himself, Wayne Newton, as the legendary crooner brings his world-renowned stage performance to Hawaii. Two shows at 6:30 and 9 p.m. Tickets: \$85-\$125. bluenotehawaii.com.



DECEMBER 9 YESSAH: IAM TONGI

Hawaii's own American Idol, Iam Tongi, will perform the first official concert in the newly reopened Blaisdell Arena since it closed for repairs back in May. Tongi is one of the most viral contestants to ever appear on the show and proudly returns to the islands as the winner of Season 21, to perform for the people of Hawai'i alongside of a few special guests. Tickets start at only \$27.50. 8 p.m. ticketmaster.com.

DECEMBER 9 • KALAKAUA MERRIE MILE

This fun little one-mile race in Waikiki followed by a beach party is a great way to get geared up for the Honolulu Marathon the next morning. The race goes in waves based on predicted finish time. The last wave will be the pros seeking a sub-4-minute mile. Children of all ages are welcome to run. The race finishes at Queen's Beach. 7 a.m. honolulumarathon.org.

DECEMBER 9-10 • FROZEN IN CONCERT

The Hawai'i Symphony Orchestra presents Walt Disney's "Frozen" in concert with the Grammy®-nominated score performed live to the film. Sat. 7 p.m. Sun. 2 p.m. Tickets: \$15-\$75. hawaii theatre.com. *Continued on page 16.*

DECEMBER CALENDAR OF EVENTS

DECEMBER 10 ALII SUNDAY

Kawaiahao Church celebrates select Hawaiian Alii who are of particular importance for the Church by holding seven special Sunday services in their honor around their birthdays throughout the year. Today they celebrate Kamehameha V. 9 a.m. kawaiahao.org.

DECEMBER 10 HONOLULU MARATHON

The Honolulu Marathon is held annually on the second Sunday of December. With around 25,000 runners each year, the Honolulu Marathon is the 4th largest marathon in the US. The gun goes off at 5 a.m. at Ala Moana Beach Park. Prepare for a day filled with closed roads and traffic delays. honolulumarathon.org.

DECEMBER 16 CHRISTMAS WITH THE MAKAHA SONS



Continue the holiday celebration with The Mākaha Sons as they are joined onstage with pals John Cruz and Melveen Leed for an evening of holiday favorites. 7 pm. Tickets: \$40-\$75. hawaii theatre.com

DECEMBER 16 HAWAII KAI HOLIDAY BOAT PARADE

Head on over to the Hawaii Kai Towne Center and watch the annual Christmas Boat Parade as the elaborately decorated boats make their way around the marina. Live music at 4:30 p.m., the parade at 6 p.m. hawaiikaitownecenter.com.

DECEMBER 16 -17 MELE KALIKIMAKA MARKETPLACE

Honolulu's one-stop local holiday shop for Made in Hawaii products, gifts, and crafts return to the Blaisdell Exhibition Hall for the 7th year. Tickets: \$6. Sat. 10 a.m. – 8 p.m., Sun. 10 a.m. – 5 p.m. melekalikimakamarketplace.com

DECEMBER 16 -17 THE NUTCRACKER

Hawaii's favorite holiday tradition returns as Ballet Hawaii brings back its popular version of The Nutcracker, set in the 1858 Kingdom of Hawaii. There will only be two shows this year, on Sat. 7:30 p.m. and Sun. 2 p.m. Tickets: \$45 - \$125. ballethawaii.org.

DECEMBER 17 ALII SUNDAY

Kawaiahao Church celebrates select Hawaiian Alii who are of particular importance for the Church by holding seven special Sunday services in their honor around their birthdays throughout the year. Today they celebrate Princess Bernice Pauahi Bishop. 9 a.m. kawaiahao.org.

DECEMBER 20-21 AMY HĀNAIALI'I

Enjoy songs from Hawaii's top female vocalist as Amy Hanaiali'i performs a special Christmas Concert at Chef Chai. Enjoy a 4-course meal paired with Amy's award-winning wine's with each course. \$195. Tickets available at chefchai.com.



DECEMBER 21, 22 & 24 DIAMOND HEAD CLASSIC

The 14th annual college basketball tournament will consist of eight teams competing in twelve games over three days in a traditional bracket format. This year's teams include Nevada, Temple, Georgia Tech, U Mass, Portland, TCU, Old Dominion, and UH. Tickets: \$10-\$140 Stan Sheriff Center. diamondheadclassic.com.

DECEMBER 22-23

PAULA FUGA: HOME FOR THE HOLIDAYS

Celebrate the season at Paula Fuga's annual "Home for the Holidays" show as she shares her favorite holiday tunes, with a few special guests. Two shows nightly. 6:30 p.m. and 9 p.m. Tickets: \$35-\$45. bluenotehawaii.com.

DECEMBER 23

KALANI PE'A'S HAWAIIAN CHRISTMAS SHOW

Three-time Grammy winner Kalani Pe'a will be joined by his friends such as Raiatea Helm, Kalā'e Parish and more for this special Christmas show sharing much-loved songs of the season as Pe'a showcases his gorgeous voice, powerful presence, and captivating style that is not-to-be-missed. Tickets: \$45-\$100. 7 p.m. hawaii theatre.com.

DECEMBER 23 • HAWAII BOWL

The Easy Post Hawai'i Bowl will pit a team from Conference-USA against a team from the Mountain West. Clarence T.C. Ching Athletics Complex. \$30-\$75. 3 p.m. thehawaiibowl.com.

DECEMBER 26-28

JOHN TESH BIG BAND LIVE

With over 50 recordings and numerous popular PBS specials, John Tesh has never failed to inspire masses of fans with his always-evolving musical muses. John's Christmas interpretations resound enhance the beauty of being together during the holidays. Two shows nightly at 6:30 & 9 p.m. Tickets: \$85 - \$125. bluenotehawaii.com.

DECEMBER 29 - 31 • THE GREEN



One of the most successful and beloved bands in the reggae world, Oahu's own The Green is closing out the year at home with six shows, including two on New Year's Eve. Two shows nightly at 6:30 & 9 p.m. Tickets: \$65 - \$85 with a VIP Meet & Greet available to 20 people before the first show for \$100. bluenotehawaii.com.

DECEMBER 30 • TOM SEGURA

Comedian Tom Segura has been playing to sold out audiences across the country, as well as his popular Netflix specials. A regular visitor to the islands, he will be performing live at the Blaisdell Arena. 7 p.m. Tickets: \$39.50 - \$129.50. ticketmaster.com.

DECEMBER 30

THE CLAIRVOYANTS HOLIDAY SPECTACULAR

Direct from Las Vegas, this Austrian mentalist couple have been performing together for over 10 years and finished in 2nd place, on Season 11 of "America's Got Talent." Since then, they have appeared several times on "AGT: The Champions," and performed over 500 shows as part of "AGT Las Vegas LIVE" at the Luxor. 8 p.m. Tickets: \$45-\$75. hawaii theatre.com.



the VIP
EXPERIENCE

Complimentary stylist and beauty appointments, special offers, and spa services to indulge your guests.

bloomingdale's

ALA MOANA CENTER 1450 ALA MOANA BOULEVARD, HONOLULU

Christmas Island-style

continued from page 1.

The second sand-sational holiday sculpture uses a whopping 20 tons of sand and shows Santa catching his last few waves of the winter season. The sculptures will be up for all to enjoy until early January.

Santa Surfing in

What screams Hawaii more than Santa surfing to the beach on a canoe? Don't miss the big man as he surfs into Waikiki Beach not once but twice! On December 9, keep your eyes open in front of the **Outrigger Waikiki** as he surfs into Duke's at 9 a.m., and then again on December 24 at 10 a.m. as he surfs into Queen's Beach for some quality time at **Barefoot Beach Café**.

Holiday Fun at the Malls

Nothing says it's the holidays more than Big Santa going up at **Ala Moana Center**, and he's been up since early November. Shoppers can meet and take photos with Santa at Santa's Surf Shack in his new location on Mall Level 2, in the Ewa Wing, then drop off a letter to Santa at the North Pole mailbox located at Level 3, Mauka Wing, and enjoy the holiday Hula Show at Centerstage daily at 5 p.m. The mall offers extended holiday hours beginning December 8. alamoanacenter.com.

International Market Place will offer photos for purchase with Santa from December 1 - 24 near the 'Waikiki' sign on Level 1. Enjoy musical performances featuring Na Hoku Hanohano Award-Winning artists from 5 - 7 p.m on December 20, and a Petting Zoo from 10 a.m. - 4 p.m. on December 22. Traditionally celebrated on January 1, IMP is offering twice the fun for this years Fukubukuro (Lucky Bag) festivities, as the deals start on the 31. shopinternationalmarketplace.com.

Royal Hawaiian Center will have Aloha Santa on hand every Wednesday from 5-7 p.m. through December 24 for complimentary photos. Keiki will enjoy peppermint cookies from Honolulu Cookie Company and a Santa Savings Pass with exclusive holiday deals from participating vendors.

Waikiki Beach Walk will be featuring some of Hawaii's renown hula schools and musical artists during its annual Seven Days 'til Christmas Series from December 19 to 25 each night from 6 - 7 p.m. Watch a different performer and halau every night at Plaza Stage from 5 - 6 p.m. On December 13, they will hold a Holiday Open House from 5 - 8 p.m. Merchants will offer refreshments, deals, prizes and more. waikikibeachwalk.com.

arden

WAIKIKI

Arden, a brand-new restaurant at the Lotus Honolulu opened in mid-October and held a small sampling for nearby hotels to introduce their contemporary Hawaiian cuisine. Chef de Cuisine Makoto Ono uses local ingredients in all his dishes, and his wife Chef Amanda Cheng, one of Canada's top pastry chefs, is known for her exceptional desserts. Together they have created a delightful menu at Arden Waikiki for all to enjoy. Open for dinner from 5 - 9 p.m. Wed - Sun. ardenwaikiki.com.



That's Entertainment

HOTELS

- 'ALOHI LANI RESORT** 922-1233
 • **Daily** - Fish Feeding 10:30am & 2:30pm *O Bar*
 • **Daily** - Live Music 6:30-9:30pm *Swell Bar*
 • **Daily** - Light Monument Video Art Series 7-9pm *Swell Bar*
 • **SunWedSat** - Tank Talk 9am. *O Bar*

- HALEKULANI** 923-2311
 • **Daily** - Music & Hula 5:30-8:30pm *House Without a Key*
 • **TWThFS** - Live Jazz 8pm - 12am, *Lewers Lounge*
 • **Sun** - Sunday brunch w/Noly Paa on piano 9:30am - 2pm
HILTON HAWAIIAN VILLAGE 949-4321
 • **Fri** - Fireworks at 8pm

- **SMTWThF** - Live entertainment, Tapa Bar. 7-10pm
 • **FriSat** - Live entertainment, Paradise Lounge. 7-10pm
HYATT REGENCY WAIKIKI 923-1234
 • **MWed** - Farmer's Market from 4-8pm

- **Mon-Fri** - Cultural Programs at the Ho'okela Culture Center
 • **TTh** - Walking Tour thru parts of Waikiki at 10am
 • **TTh** - Live Hawaiian music at Pualeilani Atrium, 4-6 pm

- KAHALA HOTEL & RESORT** 739-8888
 • **Mon** - Free kapala stamping at The Veranda at 10am
 • **Tues** - Free lauhala weaving at The Veranda at 10am
 • **WFSat** - Free lei making at The Veranda at 10am

- **Thurs** - Free hula dancing at The Veranda at 10am
 • **ThFSat** - Live entertainment at The Veranda from 6-8pm.
 • **FriSat** - Afternoon Tea at The Veranda at 2pm & 3:30pm
 • **Daily** - See the interactive dolphin programs every hour

- LUANA WAIKIKI HOTEL & SUITES** 955-6000
 • **MWF** - Enjoy live music and hula on the Mezzanine 5-6pm
MOANA SURFRIDER 922-3111

- **Daily** - Live music at The Beach Bar, 4:30-6:30pm, 7-10pm
 • **WThFSSu** - David Swanson at Vintage1901, 6:30-10pm
 • **SatSun** - Afternoon Tea at the Veranda, 11:30am - 2:30pm

- OUTRIGGER WAIKIKI BEACH** 923-0711
 • **Daily** - Live music at Duke's 4-11:30pm, Sat/Sun from 10am
OUTRIGGER REEF WAIKIKI BEACH 923-3111
 • **Daily** - Live Hawaiian music at Kani Ka Pila Grille. 6-9pm
PRINCE WAIKIKI 956-1111

- **ThFSSu** - Live music at 100 Sails from 6-8pm
 • **Sat** - DJ KK poolside from 2-5pm, Sun from 2:30-5:30pm
SHERATON PRINCESS KA'IULANI 922-5811
 • **Daily** - Live music poolside 6-9pm. DJ from 3-6pm.

- THE ROYAL HAWAIIAN** 923-7311
 • **Daily** - Live Hawaiian music at the Mai Tai Bar. 11am-2pm
 • **TWFSSu** - Live Hawaiian music at the Mai Tai Bar. 6-9pm
 • **MTh** - Live Hawaiian music at the Mai Tai Bar. 8-10pm

- TURTLE BAY RESORT** 293-6000
 • **Daily** - Live music at The Pointe Pool Bar, 4-7pm
 • **Daily** - Live music at Off the Lip, 7pm
 • **Daily** - The Stable at Turtle Bay offers a variety of experiences

- WAIKIKI BEACH MARRIOTT RESORT** 922-6611
 • **Daily** - Live music, Queensbreak Restaurant 5:30-8:30pm
 • **Daily** - Live music in the Lobby 6-9pm

FARMERS MARKETS

- WBW OPEN MARKET**
 • **Mon** - Set up on the Plaza at Waikiki Beach Walk. 4-8pm.
HYATT REGENCY FARMERS MARKET 225-4002
 • **MonWed** - Hyatt Regency 1st floor waterfall atrium 4-8pm

- HAWAII FARM BUREAU MARKET** 848-2074
 • **Wed** - Set up on the Blaisdell Concert Hall Lawn 4-7pm.
ALOHA HOME MARKET 225-4002
 • **Sun** - Kailua 340 Uluniu Street 9-2pm.
 • **Sun** - Ala Moana Mall Level 2 parking by Macys 9am-2pm.

- HALE'IWA FARMERS MARKET** 388-9696
 • **Thurs** - Located at Waimea Valley. 2-6pm
MAHIKU FARMERS MARKET 225-4002
 • **Thurs** - Bottom level International Market Place 4-8pm.

- KCC FARMERS MARKET** 848-2074
 • **Sat** - Kapiolani Community College 7:30-11am

- KAKA'AKO FARMERS MARKET** 388-9696
 • **Sat** - 919 Ala Moana Blvd & 210 Ward Avenue. 8am-12pm

- PEARLRIDGE FARMERS MARKET** 388-9696
 • **Sat** - PearlrIDGE Mauka by Macy's. 8am-12pm

- KAILUA FARM BUREAU MARKET** 848-2074
 • **Sun** - Kailua Town Center. 4-7pm

- KAILUA TOWN FARMERS MARKET** 388-9696
 • **Sun** - Enchanted Lake Center by Kailua Cinema. 8am-12pm

ATTRACTIONS

- FOSTER BOTANICAL GARDEN** 768-7135
 • **Daily** - Hawaii's oldest Botanical Garden in the midst of downtown open 9am - 4pm. \$5/\$1 keiki (kama'aina \$3)
 • **Daily** - Free docent-led tours at 10:30am. Reservations rec.

- HONOLULU ZOO** 926-3191
 • **Daily** - The Zoo is open from 10am - 4pm. Last Entry at 3pm. GA \$19 adult/\$11 keiki (kama'aina \$8/\$4).
 • **Sat** - Explore the Zoo after the gates close 5:30-7:30pm.

- KUHIO BEACH HULA SHOW** 843-8002
 • **TSLastSun** - Free show 6:30 - 7:30pm Kuhio Hula Mound

- JWAIKIKI AQUARIUM** 923-9741
 • **Daily** - The Aquarium is open from 9am - 4:30pm. GA \$12 adult/\$5 kids (kama'aina \$8).
 • **1st3rdTue** - Hawaiian Plant Tour. 1:30pm. Free w/admission

MUSEUMS

- BISHOP MUSEUM** 847-3511
 • **Daily** - The 15-acre campus offers guests a chance to learn about the cultural and natural heritage of Hawai'i and the Pacific across three different exhibition buildings. Daily planetarium shows, a highly unique native Hawaiian botanical garden, and more. 9am-5pm.

- HAWAII STATE ART MUSEUM** 586-0900
 • **Mon-Sat** - 'Museum Interpreters' on-site to provide visitors with basic information about the museum and artwork. Special evening events as listed below. Open 10am - 4pm.

- **1stFri** - Live entertainment and food vendors. 6-9pm
 • **2ndFri** - "Vibe" Jazz performances & food vendors. 6-9pm
 • **4thFri** - Hawaiian music night. 6-9pm
 • **3rdSat** - Family Arts & Crafts Day 11am - 3pm

- HONOLULU MUSEUM OF ART** 532-8726
 • **ThFSSu** - Tour & Talk Story 11am. Free with admission.
 • **ThFSSu** - Highlights tour 2pm. Free with admission.

- **FSat** - HoMA Nights, open until 9pm. Free with admission.
HONOLULU FIRE MUSEUM 723-7167
 • **3rdSat** - Free one-hour guided tours through various exhibits with a firefighter recounting HFDs history the 3rd Saturday of every month. 9am - 2pm on the hour. 620 South Street. Reservations required. Book online: fire.honolulu.gov then hit the submit request button and click museum tours.

- IOLANI PALACE** 522-0832
 • **TThS** - Audio tours available from 9am - 4pm
 • **WTh** - Docent-led tours available from 9am - 4pm

- **EveryOtherWed** - He Mele Lahui Hawaii with Ku'uipo. 9am
 • **Fri** - Royal Hawaiian Band. Free. 12-1pm
 • **SunMon** - Museum Closed

- LUCORAL MUSEUM** 778-8189
 • **Mon-Fri** - Free self-guided tours featuring local and global gemstones and a one-of-a-kind dinosaur egg. Visitors can also create their own one-of-a-kind jewelry. 10% off gift shop with mention of Oahu Concierge. 10am-5pm.

- HAWAIIAN MISSION HOUSES** 447-3910
 • **TW** - Docents lead tours through the oldest existing frame house in the Islands. 11am, 12pm, 1pm and 2pm
 • **ThFSat** - 11am, 12pm, 1pm, 2pm and 3pm tours
 • **TWThFsa** - Gift shop open 10:30am - 4pm

- PEARL HARBOR AVIATION MUSEUM 441-1000**
 • **Daily** - Vintage aircraft in battlefield hangars at Pearl Harbor, outdoor exhibits, flight simulators, and the Bob Hope: An American Treasure Exhibit. Shuttle & Tickets at USS Arizona Memorial Visitor Center or PearlHarborAviationMuseum.org.

SHOPPING CENTERS

- ALA MOANA CENTERSTAGE** 955-9517
 • **Daily** - Hula Show, 5pm.
 • **EveryOtherWed** - Royal Hawaiian Band. 11am.
 • **Sat** - Local entertainment, 3pm.
 • **Sun** - Keiki Hula Show, 1pm.
 • **Every2nd&LastFri** - Night Market Food Truck and Craft Fair corner of Atkinson Drive and Ala Moana Boulevard. 4-9pm.
 • **Daily** - Pau Hana Music Series, 5:30pm. *'Ewa Wing Stage*

- HALE'IWA STORE LOTS** 203-5700
 • **Sat** - Live Hawaiian entertainment from 2 - 4pm
INTERNATIONAL MARKET PLACE 921-0536
 • **MWF** - Ceremonial sunset lighting of Lamaku Torch Tower
 • **MWF** - Sunset Stories Hula Show, 7pm. *Queens Court*
 • **Thurs** - Mahiku Farmers Market. 4-8pm. *Banyan Court*
 • **1stTh** - Royal Hawaiian Band. Free. 11am. *Queens Court*
 • **1stSaSu** - Island Crafters Market. 11am-5pm. *2nd level*
 • **1st3rdSu** - Free Yoga Class. 10-10:45am. *Queens Court*

- ROYAL HAWAIIAN CENTER** 922-2299
 • **Daily** - Heritage Room/Cultural Videos, *Helumoa Hale*
 • **Mon** - Free Ukelele Lessons 11pm, *Helumoa Hale*
 • **Tues** - Free Hula Lessons 11am, *Royal Grove*
 • **Wed** - Free Lauhala Weaving 11am, *Bldg A, Level 2*
 • **Thur** - Free Keiki Hula lessons 12pm, *Royal Grove*
 • **Fri** - Free Lei Making Class 12pm, *Bldg A, Level 2*
 • **Sat** - Hula Kahiko 5:30pm, *Royal Grove*
 • **TWThF** - Live Hawaiian Entertainment 5:30pm, *Royal Grove*
WAIKIKI BEACH WALK waikikibeachwalk.com
 • **Daily** - The Ukulele Store offers free lessons at 4:30pm
 • **Mon** - Open Market 4 - 8pm
 • **Tues** - Ku Ha'aheo Hula Show. 4:30-6pm. *Plaza Stage*
 • **Wed** - Free feather lei making 11am, 2pm. *Royal Room*
 • **Sun** - Free hula lessons, 9-10am



- BALI OCEANFRONT**
 20% off all Food & Beverage. Hilton Hawaiian Village, 941-2254.

- GUAVA SMOKED**
 20% off food and drinks with hotel ID. 567 Kapahulu Ave, 2nd floor. Entrance/parking on Campbell Ave. 913-2100

- HAWAIIAN MISSION HOUSES**
 Free tour with hotel ID. 553 S. King Street. 447-3910.

- IOLANI PALACE**
 Free Admission with hotel ID. GA \$30. Kama'aina \$19.95. 364 S. King Street, Reservations Required. 522-0832.

- MAUI DIVERS JEWELRY**
 35% discount off purchases made at the Design Center and 20% at all stores. Must show hotel ID for discount. 1520 Liona St. 946-2929.

- RUTH'S CHRIS STEAK HOUSE**
 Complimentary Appetizer valued up to \$22 with the purchase of 2 entrees. Waikiki Beach Walk, 440-7910. Restaurant Row, 599-3860.

You will be required to show Hotel ID or business card to claim offer. Magazine not needed. Simply mention offer when presenting hotel ID. Discounts available to Guest Service Professionals ONLY. Not valid with other promotions or special offers. A minimum 18% gratuity on original order requested for all food offers.

The Oahu Concierge is printed monthly and direct mailed FREE to all Oahu Concierge, Hospitality & Activity Professionals.
Subscriptions available to non-industry at \$25 per year.

C O N T A C T
Davis Media
Ph: (808) 225-8229

Website: www.OahuConcierge.com

ADDRESS & NAME CHANGES / ADDITIONS

We do not take changes via telephone. All changes to mailing list **must be submitted in writing** by the 16th of the month to make the next issue, email is preferred.

S T A F F

PUBLISHER & EDITOR **Pam Davis**
publisher@oahuconcierge.com

DESIGN
Coreiya Design

The Oahu Concierge
4348 Waiialae Avenue, #185
Honolulu, Hawaii 96816

PRSR STD
US Postage Paid
TRADE MEDIA HUI

Waikiki Wonderland

ENJOY THESE HOLIDAY HAPPENINGS IN PARADISE!

Photos with Santa

DEC. 1 - DEC. 24

Santa Claus is making a special stop right here in the heart of Waikiki, and he's bringing the North Pole charm with him.

Pet Photos with Santa

DEC. 4 & DEC. 11

Bring your four-legged family members to meet Santa Claus and join in on the holiday fun!

Gift of Mele

DEC. 20

Join us for a free concert featuring local artist Anuhea.

Fukubukuro

DEC. 31 - JAN. 1

Celebrate the Japanese custom of Fukubukuro and get 50% off – or more – when you purchase a "lucky bag."



Learn more about our holiday events.

INTERNATIONAL MARKET PLACE