

Christmas in Hawaii



Honolulu City Lights is a highlight of the holidays in Honolulu. Head down to walk around throughout the month of December of take a trolley to make a night of it. Photo courtesy of the Waikiki Trolley.

So, your guest is spending Christmas in Hawaii. How can you help make it memorable? Well, let's be honest, the location does a lot of the work for you. Mother Nature usually graces us with beautiful Hawaiian weather for all those people escaping the snow to enjoy. But the weather is only part of what makes a Hawaiian Christmas special. Here's a list of a few other activities they can take advantage of during their holiday, starting with the Christmas Lights.

Honolulu City Lights

It's been one of the highlights of every Christmas season since it began in 1985. Shaka Santa and Tutu Mele will return with all their friends. The fun kicks off on December 3rd with the **Opening Night Tree Lighting Ceremony** and the **Electric Light Parade**. The parade kicks off at 6 p.m., and marching bands, lighted fire trucks, and more make their way through downtown. Santa draws the parade to a close as his sleigh makes its way to meet with Mayor Blangiardi at Honolulu Hale, where the mayor will light the holiday tree, Honolulu Hale, and the Civic Center Grounds. McKenna Maduli hosts the mayor's stage with plenty of live entertainment. The City Department Tree Exhibit is open daily from 7:45 a.m. – 10 p.m. All the wreaths that entered the 35th annual Holiday Wreath Contest will also

be displayed in Honolulu Hale's Lane Gallery. Enjoy the lights and wander through the outside displays every night through January 1st, 2023.

Holiday Trolleys

The **Waikiki Holiday Trolley** offers guests another way to enjoy the festive holiday lights downtown from the comfort of an open-air vehicle with plenty of sing-alongs and Christmas stories along the way. Hop off at Honolulu Hale to wander through the lighted display before hopping back on to return. The trolley starts and ends at Victoria Ward Park. Ward Village offers plenty of free parking and dining options before and after your tour. Running daily December 4th – 25th at 6 p.m., 7 p.m., and 8 p.m. Tickets: \$25, \$17 for children. holidaylightshi.com.

Speaking of trolleys, the **Barefoot Beach Café** has set up a special trolley on Wednesday, December 21st, from 5:30 – 8:30 p.m. Meet at the Café for a complimentary Hot Cocoa Bar from 5:30 – 6 p.m. The trolley leaves at 6 p.m. to take everyone to Honolulu City Lights. Guests arrive at 6:45 and have an hour to wander through the displays before it heads back at 7:45 p.m. for a 45-minute drive back to the café. Seats are limited, so book yours early. Tickets: \$35, \$25 for kids. BarefootBeachCafe.com/Shop.

Continues on page 6.

2022 Christmas Gift Guide



What better to round out your guest's holiday experience than to direct them toward that perfect Hawaiian item to give their loved ones as a Christmas gift? Here are a few items that top our 2022 Gift Guide.

THE LATEST BOOKS

Books are a perfect gift to take home with you. They take the reader on a journey, allowing them to travel without moving. They teach us new things and empower our imagination to roam. They give us a better understanding of the world, let the reader travel through time, and help us learn about other cultures. Hawaii has a lively, local literary community, and here's a handful of recent releases for your consideration. They can all be found on Amazon or at select stores locally.



The Codebreaker's Secret

by Sara Ackerman

A brilliant female codebreaker. An "unbreakable" Japanese naval code. A pilot on a top-secret mission that could change the course of WWII. *The Codebreaker's Secret* is a dazzling story of love and intrigue set during America's darkest hour in 1943 as the war in the Pacific rages. This intense thriller weaves together the worlds of World War II and 1960s Hawaii with intrepid, smart female characters who

Continued on page 2.

TABLE OF CONTENTS

Yada Yada Yada	2
Newsflash	3
E Pili Kakou	10-15
Chef's Corner: La Mer Chef Alexandre Trancher	15
Calendar	16-17, 19
Paparazzi: International Market Place	17
Paparazzi: Bloomingdale's/ Morton's	18
Paparazzi: TBD... by Vikram Garg	20
NYE Events	21
Mele Kalikimaka Marketplace / Around Town	22
That's Entertainment / Concierge Card	23



Happy Holidays!

Wow, what a difference a year makes. This time last year, COVID numbers were way up, events were way down, masks were required, and we were all trying to get back to some semblance of reality. Now things are busier than ever, and last month two of our signature events, HIFF and HFWF, came back in a big way, and were both highly successful! It's been stupid busy, but it feels good to have life as we know it return. Business is back, our numbers are up (and finally, when I say that, it's referring to our visitor counts and not our COVID counts), and it's been great to see everyone again regularly. We're back baby!

The holidays are here, and there are plenty of opportunities to celebrate. I've done my best to put together a list of unique Hawaiian ways for you and your guests to celebrate. I also put together a gift guide of things you might want to recommend to your guests to find that perfect piece of Hawaii to give as a gift. These lists are by no means complete. I am dependent upon the information I find or am sent, so I'm confident there are some fantastic items out there I may have missed, but all I'm looking to do is give you a head start. I hope it helps.

Concierge events are absolutely back, and I have to thank everyone again for being so responsive, as trying to manage so many people with so few seats can be difficult. Every single event has a different invite list depending on who the host wants to reach and how many seats they have to offer. I appreciate those of you who patiently wait to hear from me while I track everyone down and those who jump at a last-minute opportunity even though I couldn't give you much notice. Always responding to me, especially if your desk cannot attend, really helps. I also appreciate those of you that make time to come when I reach back out after you say no if I ask. It takes a village, and it makes a difference. There's one or two more small ones I might take on this month, but aside from that, it's time to shut down and enjoy the season. I hope you all find time for yourselves and have a safe and happy holiday season. Aloha!!



Katalin Szilagyi

The Hilton Hawaiian Village has hired **Katalin Szilagyi** as the manager of *Bali Oceanfront*, their signature restaurant. Szilagyi brings with her more than 10 years of experience in the hospitality and food & beverage fields, having most recently worked as manager of Merriman's Honolulu. Prior to that she served as the general manager at Kona Grill in Honolulu. Many of you probably met her there as she participated in many of our IMP Concierge events. • *The Kahala Hotel & Resort* has added a few new faces to their concierge team with the addition of **Maico Sosa**, **Tiana San Miguel**, and **Pomai Fola** to the desk, and they've already made their way to a few concierge events. • Some other new faces have

made an appearance recently, including **Kanoelehua Valdes-Healy**, who recently joined *Wyndham Waikiki Beach Walk* as their new Guest Experience Supervisor. *The Hawaii Symphony Orchestra* has appointed **Dr. Michael-Thomas Foumai** as director of artistic engagement and composer in residence. This new position focuses on broadening and deepening the scope of its service to the community. Foumai is also able to distill essential historical and cultural context of the performance piece for the audience, while connecting it to what was happening in Hawai'i during the time of its composition. His efforts in framing each performance in this manner creates a deeper level of audience engagement with the music.



Kanoe Valdes-Healy

Christmas Gift Guide

Continued from page 1.

must uncover a decades-old mystery that is sure to keep readers guessing to the end. Born and raised on Oahu, author Sara Ackerman is the bestselling author of *The Codebreaker's Secret*, *Radar Girls*, *Red Sky Over Hawaii*, *Island of Sweet Pies and Soldiers*, and *The Lieutenant's Nurse*. ackermanbooks.com.

Island Wisdom

by Kainoa Daines and Annie Daly



Island Wisdom is a celebration of Hawaiian culture, history, and values that will give the reader a deeper understanding, appreciation, and respect for Hawai'i, her people, and the Hawaiian way of life. Learn how ancient, traditional lessons and ideals can help you find balance in a modern world. Native Hawaiian and HVCB exec Kainoa Daines teams up with journalist and author Annie Daly to lead an inspirational journey through Hawaiian teachings that have stood the test of time. Together, Kainoa and Annie guide readers through four key themes—aloha, 'āina, mo'olelo, and 'ohana – hoping they will come away with the tools needed to weave Indigenous Hawaiian culture, language, and values into their own lives. Find the book at Native Books, Hilton Hawaiian Village, Daughters of Hawaii, Kai Ku Hale

Bookends, Academy Shop & Bookstore, The Refinery, Papahana Kuaola, and Residence Inn. chroniclebooks.com.

Hawaiian-Made Goodies

by Kelimia Mednick

This delightful cookbook, features 75 assorted easy-to-make recipes from Hawai'i and around the world, with colorful food photos on nearly every page. Kelimia is a local girl that has been cooking and baking for years. Do you remember Hawaiian Biscotti by Keli Mia on Nimitz years ago? That place belonged to the author. Find the book at Magnolia (Kahala Mall), Nā Mea (Ward Centre), Red Pineapple (Kaimuki), Sugarcane (Kaimuki), Da Shop (Kaimuki), Silver Moon (Haleiwa), and Boutiki (Pearl Harbor Naval Base). kelimiabooks.com.



Eat Pono

by Candes and Poet Gentry

EAT PONO was inspired by 9-year-old Poet, who took the pandemic as an opportunity to question where his food was coming from, live a healthy lifestyle, and fuel his mind, body, and spirit with the best nutrition possible. A passion project turned practical-and-prolific healthy lifestyle guide, Poet and



Continued on page 4.

EXTRA EXTRA EXTRA *Newsflash*

NATIONAL GUARD & SPACE FORCE OFFERED FREE ENTRY

This month all active duty and retired personnel and their families of the US National Guard and Space Force will gain free entry into the Pearl Harbor Historic Sites in honor of their respective forces birthday. Members of the National Guard will be welcomed in at no charge on December 10th and 11th, and the Space Force on December 17th and 18th. Just present a valid military ID at entry on the right days. PearlHarborHistoricSites.org.

HAWAII THEATRE HONORS VETS WITH TICKET DONATIONS

The Hawaii Theatre launched a new partnership with the national nonprofit Veteran Tickets Foundation (Vet Tix), which provides donated tickets to U.S. military veterans, as well as currently serving members of the U.S. military, first responders and their families. The program kicked off in November with thousands of dollars of tickets for Louis CK and the Tom Segura World Tour comedy show on NYE. All future shows will have tickets donated to Vet Tix for distribution to verified recipients. Free tickets may be requested or qualified recipients by creating an account at Veteran Tickets Foundation at vettix.org.

REGISTER NOW FOR THE HAWAII TOURISM CONFERENCE

The Hawai'i Tourism Authority will be hosting the 2022 Hawaii Tourism Conference at the Hawai'i Convention Center on Thursday, December 8th, and Friday, December 9th. The two-day conference will include the Tourism Legacy Awards Luncheon, presentations and panel discussions, networking opportunities, and multiple educational sessions focused on topics including destination management progress, cultural tourism, travel sector updates, regenerative tourism and research trends. Early registration is available for \$195 through Sunday, December 4, and includes both days. Please note the registration fee will increase to \$225 on December 5. Sponsorship opportunities still available. hawaiitourismauthority.org.

ADVISORY: USS MISSOURI SCHEDULE CHANGE NOTICE

The Battleship Missouri will be closing at 2:30 p.m. on December 4th and 10th for private events. Make sure your guests arrive at the Battleship by 1 p.m. to get the most from their visit. ussmissouri.org.

THE MAGICAL MYSTERY SHOWS MAGICIAN LINE-UP

The Magical Mystery Show at the Hilton Waikiki Beach Hotel has updated its line-up. Through December 15th, see Shoot Ogawa, originally from Japan. He has won multiple awards including 1st place in the close-up competition and has been named Parlor Magician of the Year. He returns to the stage on December 23. Don't miss one of the strongest sleight-of-hand experts Master Magician Curtis Kam, December 16 -22 hotel-magic.com.

CHAMBER ESCAPE GAMES ADDS VR FLIGHT SIMULATOR

Chambers Escape Games, known for their escape rooms, has added a new, state-of-the-art virtual reality flight simulator. Birdly® combines robotics and simulation technology, including full-range head wind simulation, 3D audio, and visual impact, allowing guests to enjoy the avian experience: from the wind beneath your wings to a bird's-eye view of some of the richest landscapes in the digital world. chambershawaii.com



Bali Oceanfront is where you'll find the most wonderful dining experience of the year. Enjoy a special breakfast buffet with Santa or join us in the evening for a memorable holiday dinner.

BREAKFAST WITH SANTA

DEC 22ND, 23RD AND 24TH - SEATINGS AT 8AM & 10:30AM
Full breakfast buffet, balloon and glitter tattoo stations for kids, and photo with Santa



HOLIDAY DINNER

CHRISTMAS EVE, DAY AND NEW YEAR'S EVE DINNERS
Special prix fixe holiday menu along with à la carte dining available



WAIKIKI STARLIGHT LUAU

CHRISTMAS EVE, CHRISTMAS DAY & NEW YEAR'S EVE SHOWS

Enjoy our traditional luau show featuring an enhanced holiday buffet

Learn more at hiltonhawaiianvillage.com/holidays

BRINGING WORLD- CLASS ART TO WAIKIKI



THE PARK WEST FINE ART MUSEUM & GALLERY

Waikiki Beach Walk
Honolulu
808-859-4871
parkwesthawaii.com

Any client you refer for a private tour will
get **10% off their purchase***
if they mention the hotel and concierge
that referred them.

Email: waikikibeach@parkwestgallery.com
for more details.

*Terms and conditions apply

Christmas Gift Guide

Continued from page 1.

his mother, former Miss Hawaii Candace Gentry, released a healthy lifestyle cookbook with the motto: Source Local. Eat Nutritiously. Live Sustainably, to make daily healthy choices to thrive together as a family. Find *EAT PONO* at Barnes & Noble Ala Moana, Bikini Bird, select Foodland Stores, SoHa Living Stores, Magnolia, Red Pineapple, and the Kaimana Beach Hotel. eatpono.org.

CHRISTMAS ORNAMENTS

I don't know about you or your guests, but I buy a Christmas Ornament as my souvenir every time I travel. This year may be the first year I decorate my tree with only ornaments that mean something to me or remind us of a memorable moment. There are several unique ornaments to choose from this year your guests can look back on for years to come and remember their Christmas in Hawaii.

Honolulu City Lights 2022



During the holiday season, the Honolulu City Lights Official 2022 Ornaments will be on sale on O'ahu at all Macy's stores and First Hawaiian Bank branches. Designed by artist Owen Ho, the ornaments are made from highly polished brass that is electroplated first with nickel and then with 24K gold for a hard, durable finish. This year, there are two designs to choose from. 'Makapu'u' which shows Shaka Santa with his binoculars by Makapu'u Point Lighthouse looking for humpback whales. \$24.

'Honolulu Hale' shows Shaka Santa and Tutu Mele standing on either side of the tree fronting Honolulu Hale. \$24.



Find these years' ornament and those from year past at honoluluclights.org.

'Iolani Palace's 2022 Ornament



The Friends of Iolani Palace's ornament is available online or at the Gift Shop. This year's design features the flag, flown on the Hawaiian Royal Navy ship, HHMS Kaimiloa, and designed by Isobel Strong. It has eight alternating horizontal stripes of red, white, and blue, with a Hawaiian crown surmounting a yellow shield on a white

background. The shield contains a white kapu stick crossed by two red kahili, one representing King Kalakaua and the other Princess Liliuokalani. \$30. Find this ornament and those from years past at iolanipalace.org.

ART, MUSIC, AND JEWELRY

In Hawai'i, there's no gift more special than a piece of gold heirloom jewelry, personalized keepsakes adorned with the name of the recipient in Hawaiian, plumeria, monstera and maile leaves. These pieces are often passed down from generation to generation. The artists in this town continuously impress with their works. Stop by any of the Farmer's Markets or Holiday Markets to find local artisans showing their wares, and find that special something made here in Hawaii, and this year, there's a new kid-friendly ukulele on the market.

Maui Divers Jewelry



If you can't find a art fair, and want to be sure you take home something made here in Hawaii, stop by Maui Divers Jewelry. Everything is inspired, designed, and created in Hawaii, locally made

at the Design Center in Honolulu. From the design sketch to the final stone setting, each piece is created by local artists and hand-crafted by masterful artisans. Your guests can experience the process for themselves and visit the Maui Divers Jewelry Design Center to see how each piece is made.

Honu by the Sea Ukulele

For the last decade, *Honu by the Sea* has been engaging kids in the magic of music combined with lessons that teach the virtues of caring for the ocean environment in this fun family-friendly underwater musical fantasy. Just in time for the holiday season, through a partnership with Islander 'Ukulele by Kanile'a, they have released special *Honu by The Sea* edition ukuleles. The keiki-focused instruments, decorated in bright colors and artwork from the musical, are now available at Kanile'a' Ukulele stores at Ala Moana Center and Windward Mall. kanileaukulele.com.



These are just a few ideas of what's out there this year, but hopefully, they will give you a head start when the guests inevitably ask for gift advice.



Explore the latest trends and top designers.

ALA MOANA CENTER 1450 ALA MOANA BOULEVARD, HONOLULU, HAWAII

Christmas in Hawaii

Continued from page 1.

Queen's Evening Tours



There is nothing more special in Hawaii than **Iolani Palace**, and nothing more magical than visiting it at night, lit up as it would be for King Kalakaua's holiday parties. Fortunately for us, Queen Kapiolani was born on December 31st, and the Friends of Iolani Palace celebrate it each year, giving people the rare opportunity to visit Iolani Palace at night, with the lights adding to the spirit of the season. Guests will travel from room to room to hear the stories of the Queen's life, and legacy as live music fills the halls. Reservations are required, and tickets will be limited to two per adult. Tours will start every 15 minutes, beginning at 5:30 p.m., with the last tour starting at 9 p.m. Don't miss this rare opportunity to explore the only royal palace in the

United States at night. Three days only, December 28, 29, and 30. Tickets: \$45, \$25 for kids aged 6 – 12. iolanipalace.org.

Please note: Iolani Palace will close early at 3 p.m. those days in preparation for the Evening Tours.

Show Aloha Land

The 3rd Annual **Show Aloha Land** is coming to Aloha Stadium with brand new attractions! Don't miss the snow room, filled with 3,900 square feet of fresh snow! Build a snowman, make a snow angel, and even go tobogganing. There is a massive bouncing town, a human snow globe, Santa's photo studio, a bubble zone zip lining, 3 new trains for keiki to enjoy the light show, and of course the holiday drive-thru spectacular culminating with its signature light tunnel. Adults can enjoy \$5 drinks at Cupid's Bar while the kids play, and the food court offers something for everyone. Added bonus? One winner a night will be picked to go into the Aloha Win chamber to grab as much cash, SouthWest Flights and gift cards they can. Tickets: \$39.95. showalohaland.com.

Winter Wonderland

The **Polynesian Cultural Center** will offer its annual Winter Wonderland for eight fun-filled days from December 16th – 23rd.

Enjoy nightly Christmas scavenger hunts, selfies with Mr. and Mrs. Claus, a tour of his workshop, keiki train rides, live music and entertainment, and winter wonderland décor lights. Aloha Stadium isn't the only place it's going to snow. Don't miss PCC's much beloved Keiki Snow Day on December 13th! Find more details on their website at polynesia.com.

SAND & SEA

Seasonal Sand Sculptures



Those holiday sand sculptures will make their 'sand'-sational return to the **Sheraton Waikiki** for the first time in three years. A team of world-champion sculptors will spend around 250 hours

completing two different holiday sand sculptures. Inside the lobby, there will be a smaller sculpture of a gingerbread house, utilizing 9 tons of sand. A larger sculpture of Santa and his elves building a tiki gingerbread house will sit outside the lobby using a whopping 23 tons of sand to capture the magic of the season island-style. sheratonwaikiki.com.

Surfing Santa

What says Hawaii more than Santa surfing to the beach in a canoe? There are several opportunities to catch Old St. Nick catch a wave to the beach this year.

December 10th - Head down to Waikiki Beach to see Santa get an early start on his Christmas deliveries as he surfs into Outrigger Waikiki Beach Resort at 9 a.m.

December 24th - Santa surfs into Barefoot Beach Café at 10 a.m. and sticks around to enjoy the music until 1 p.m. as The Barefoot Boys perform live. Seating is reserved for dine-in customers only. No tickets are necessary, as it is sponsored by Barefoot Beach Café each year.

December 24th - Santa will paddle into The Kahala Hotel at 9 a.m. A special hula performance and a dolphin show will celebrate his arrival on the beach.

HOLIDAY TREATS

Breeakfast with Santa

There are several options for Keiki who want to have Breakfast with Santa. On Saturday, December 17th head to **Kani Ka Pila Grille** at the Outrigger Waikiki from 8 – 10 a.m. Tickets include a breakfast buffet, kid's activities, a picture with

Continued on page 8.



7 Days of Mele!

A special holiday gala of Hawaiian music and hula, every day from 6 to 7 p.m. starting December 19 and continuing through Christmas Day.

And only at Waikiki Beach Walk.

Free Parking 10am-3pm Daily*
*With \$10 minimum purchase

Located on Lewers St.
between Kalakaua Ave. & Kalia Rd.
Open 365 Days | 11AM-9PM



Scan to view the full lineup and schedule.



WAIKIKI BEACH WALK.

WAIKIKIBEACHWALK.COM |   

Happy Holidays

Celebrate with a True Gift of Aloha



Hawaiian Snowflake

Free 2022 Limited Edition Ornament
with minimum purchase



MAUI DIVERS JEWELRY

Inspired, designed and created in Hawai'i EST. 1959

Ala Moana Center | Dole Plantation | Hilton Hawaiian Village | Hale'iwa Store Lots | Pearl Harbor | International Market Place | Honolulu Airport

Maui Divers Jewelry Design Center | 808.946.2929 | www.mauivers.com



RESTAURANT SUNTORY HONOLULU SEASON OF CELEBRATION



Our PRIVATE DINING ROOM is the perfect setting for holiday parties, anniversaries, birthdays, engagements, and life's celebrations. Family and friends can commemorate these special events in style.



TOKIWA, A WORLD-CLASS SUSHI COUNTER DISCRETELY HIDDEN TO CREATE A PRIVATE, IMMERSIVE AMBIANCE

Indulge the senses with an omakase sushi and sake menu unlike any other.



LUNCH: 11:30AM - 1:30PM
DINNER: 5:30PM - 9:30PM
CAFÉ LOUNGE: 2:00PM - 4:00PM

SUSHI TOKIWA is closed on Wednesdays and during Lunch on Fridays.

Sushi · Teppan · Washoku · Lounge · Private Dining



Royal Hawaiian Center
Level 3, Building B
2233 Kalakaua Avenue,
Honolulu, HI 96815

Reservations: Resy or (808) 922-5511
RestaurantSuntory.com

Christmas in Hawaii

Continued from page 6.

Santa, balloon twisting, and body art. Tickets: \$50, \$25 for kids ages 4 – 12.

Bali Oceanfront at the Hilton Hawaiian Village will offer its Breakfast with Santa on December 22nd - 24th, with seating at 8 a.m. and 10:30 a.m. Tickets include a breakfast buffet, kid's activities, a picture with Santa, an action station for the kids, and crafts to make at your table. Tickets: \$75, and kids aged 12 and under are \$45.

Christmas Teas



The Moana Surf rider offers its **Keiki Afternoon Tea** throughout December (except Christmas Day) starting on Friday, December 3rd. The Afternoon Tea includes the current keiki tea set with sandwiches and desserts, a Santa hat, decorated gingerbread cookie, a Moana teddy bear, a strawberry, and a chocolate milkshake. Reservations can be made on OpenTable at Moana Surf rider. \$65.

The Kahala Hotel will be hosting its annual **Teddy Bear Tea** on its Veranda. Munch on delicious snacks, cookies, and treats from their regular Afternoon Tea menu, but with an added charitable stuffed animal twist for a good cause. Bring a stuffed teddy bear to donate to local kids in need. December 23rd and December 24th from 1:30 – 3:30 p.m. kahalaresort.com.

Christmas Cookies



The **Honolulu Cookie Company** holiday flavors are as much a part of the season as Candy Canes and Pumpkin Spice Lattes. These shortbread cookies shaped like pineapples are already iconic in their own right. The Peppermint Macadamia cookies have bits of peppermint baked into their famous macadamia shortbread

cookies, making them a traditional holiday treat. Dip those in dark chocolate for their Dark Chocolate Peppermint Macadamia, and the White Chocolate Ginger Spice cookie highlights the warm spice of baked ginger and the creamy sweetness of white chocolate. This year they also include White Chocolate Pumpkin premium shortbread cookies spiced with ginger, nutmeg, and cinnamon. Be sure to duck into the store when you see it for some tasty treats!

'TIS THE SHOPPING SEASON

Ala Moana Center

Decorated with over 7,600 ornaments, 160 garlands, 500 poinsettias, and 3 Christmas trees, holiday music will be piped throughout Ala Moana Center to put shoppers in the mood. Big Santa is back overseeing the festivities which include Photos with Santa through December 24th. Available Monday – Saturday from 11 a.m. – 7 p.m., Sundays from 12 – 6 p.m., and from 10 a.m. – 4 p.m. on December 24th.

On Sunday, December 4th, they will host a special Santa Cares for children with special needs to participate in a sensory-friendly experience that allows customers to visit and warm up to Santa at their own pace from 9 – 10 a.m. Guests can schedule reservations in advance online. The Center will also offer complimentary gift wrapping at Guest Services for up to three gifts per person with same-day proof of purchase. Special holiday-themed hula shows will also be presented daily at 5 p.m. through the season. Ala Moana will offer extended holiday hours from December 9 – 23. Monday – Saturday from 10 a.m. – 9 p.m., 10 a.m. – 8 p.m. on Sundays, and 9 a.m. – 6 p.m. December 24th. The Center will be closed on Christmas Day. alamoanacenter.com.



International Market Place

The holidays are in full swing at the International Market Place with the return of The Gift of Mele with a series of 5 performances throughout the holiday season in partnership with Haku Collective. The series will culminate on Wednesday, December 21st, with Kimie Miner's Christmas in Hawaii Concert. Photos with Santa will be available until December 24th with a Hawaiian-inspired

Christmas in Hawaii

Continued from page 9.

photo backdrop. Packages start at \$39.99. On December 10th, don't miss a memorable free holiday swag-making class with renowned lei-maker Meleana Estes at 11 a.m. Reservations required. shopinternationalmarketplace.com.

Royal Hawaiian Center

Passerby won't be able to miss the 34-foot tree that turns the Royal Grove into a tropical winter wonderland as they walk down Kalakaua. Complimentary photos with Santa will be available every Wednesday and Saturday from 5-7 p.m. through Saturday, December 24th. Each family will receive one printed copy of the photo and a digital copy to keep and share. Santa also leaves the property promptly at 7, so organizers may shut the line down earlier if it's long. Keiki will also enjoy a gift of peppermint cookies from Honolulu Cookie Company and a Royal Santa Savings Pass for their parents, which unlocks exclusive holiday offers from participating shops and restaurants. royalhawaiiancenter.com.

Waikiki Beach Walk

Celebrate the holidays with music and dance at Waikiki Beach Walk with the "Seven Nights of Christmas." This annual, week-long celebration will feature traditional hula and song and kicks off on Monday, December 19th, with renowned director and Kumu hula, Sallie Kauakea Yoza, and her halau. The following six days will feature Del Beazley & Friends, Halau Hula' O Nawahine, Ka Pa Hula O Kauanoe O Wa'ahila, Kahale I O Kahala, and Mailani Makainai. The series wraps up on Christmas Day with Blaine Kia and his family and friends. 6 to 7 p.m. nightly throughout the series. waikikibeachwalk.com.

HOLIDAY CONCERTS

Holiday Brunch with Frank DeLima

Join one of Hawaii's most beloved comedians and favorite Babooze, Frank DeLima, on December 11th at Blue Note Hawaii. It's time for the annual Hammajang Christmas, as only Frank can deliver. Doors open at 10:30 a.m. 12 p.m. Tickets \$35-\$45. bluenotehawaii.com.



Ho'okena for the Holidays

Continue the celebration at Blue Note Hawaii later that same day as Ho'okena continues the holiday spirit with a show featuring their classic hits as they are joined by a few of their friends for two shows at 4:30 p.m. and 8 p.m. Tickets \$35-\$45. bluenotehawaii.com.

The Muppet Christmas Carol

Enjoy Disney's *The Muppet Christmas Carol* in Concert at the Hawaii Theatre featuring a screening of the complete film with the musical score performed live to the film by the Hawaii Symphony Orchestra. December 16 – 18. 7:30 p.m., Sun. 4 p.m. Tickets: \$18 - \$68. Hawaii Theatre. hawaiisymphonyorchestra.org.

Kalani Pe'a's Hawaiian Christmas Show



Aldan Fukushima

Kalani Pe'a's Hawaiian Christmas Show is a celebration of the warmth and special "aloha" of the Holiday Season, sharing much-loved songs from both western and Hawaiian roots. December 23 at the Hawaii Theatre. Tickets: \$45-\$100. 7 p.m. hawaii theatre.com.

Paula Fuga: Home for the Holidays



Celebrate the season with 2022 Hoku-Award winning "Female Vocalist of the Year," Paula Fuga as she heads to Blue Note Hawaii on December 23rd and 24th to share her favorite holiday tunes.

Performing two shows a night at 4:30 p.m. and 8 p.m. Tickets: \$35-\$45. bluenotehawaii.com.

A Charlie Brown Christmas

A familiar face at Blue Note Hawaii, Native New-Yorker and trumpeter Mike Lewis presents *A Charlie Brown Christmas*, featuring some of Hawaii's best jazz musicians. The show will highlight selections from this classic holiday delight on December 25th and 26th with two shows daily at 4:30 p.m. and 8 p.m. Tickets \$25-\$35. bluenotehawaii.com.

However your guests decide to take in the holidays while in Hawaii, they're guaranteed to create magical memories of Christmas in the islands, so make sure to help them plan early to spend a warm, wonderful visit. Mele Kalikimaka!

tbd

RESERVATIONS
808-791-5164
tbdhawaii.com

2885 Kalakaua Ave. 2nd Floor

Let's be Together...

DINING ▶ ENTERTAINMENT ▶ PAU HANA ▶ EAT ▶ DRINK ▶ BE MERRY ▶ HAPPY HOUR ▶

MONDAY

Barefoot Beach Café at Queen's Beach	924-2233
<i>Live Contemporary & Hawaiian</i>	
The Barefoot Boys	5:30-8:30pm
Chart House Waikiki	941-6660
<i>Live Contemporary Hawaiian</i>	
Camarillo Brothers	6-9pm
Deck. at the Queen Kapiolani Hotel	931-4488
<i>Mai Tai Mondays with Live Contemporary</i>	
Freddy Leone (or others)	5pm-8pm
Duke's Canoe Club Waikiki	922-2268
<i>Live Contemporary Hawaiian</i>	
Grace Welton	4-6pm
Bryan & Halekahu (or others)	7-9pm
Ellsworth Simeona (or others)	9:30-11:30pm
House Without a Key	923-2311
<i>Hawaiian music & hula by Miss Universe '97 Brook Lee</i>	
Pa'ahana Trio	5:30-8:30pm
Kani Ka Pila Grille	924-4992
<i>Hoku Award Winning Hawaiian musicians</i>	
Sean Na'auao	6-9pm
Kekoa Correa (12/26)	6-9pm
Mahi'ai Table	670-2778
<i>Live Contemporary</i>	
Jenna Keala	5-8pm
Mahina & Sun's	923-8882

<i>Monday Vibes on the Lanai</i>	
Brent Limos	6:30-9:30pm
Mai Tai Bar at the Royal Hawaiian	923-7311
<i>Live Contemporary Hawaiian</i>	
Eric Lee	11am-2pm
Sidney Spencer	8-10pm
Maui Brewing Company	843-2739
<i>Live Contemporary Hawaiian</i>	
Scott Magz	3:30-5:30pm
Wavvy Duo	6-8pm
Merriman's Honolulu	215-0022
<i>Live Slack Key guitarist</i>	
Freddy Leone	5:30-7:30pm
Moani Waikiki	466-2629
<i>Contemporary Island Music and Hula Show</i>	
Na Maka	5-7pm
Monkeypod Kitchen Ko Olina	381-4086
<i>Live Contemporary</i>	
Koa & Yaz	3:30-5pm
Rumfire	921-4600
<i>Live Contemporary Hits</i>	
Shawn Garette (or Bronson Varde)	6-9pm
Signature Prime Steak	949-3636
<i>Contemporary Pianist in the bar</i>	
Keith Montross	6-9pm
Splash Bar at the Sheraton Princess Kaiulani	921-4600
<i>Live Contemporary Hawaiian</i>	
David Aquino	6-9pm
Swell at the Alohilani	294-4108
<i>Solo Contemporary Guitarist</i>	
Drew Henmi	6:30-9:30pm
YOZA (12/26)	6:30-9:30pm
SWIM at the Hyatt Regency	923-1234
<i>Live Contemporary Hawaiian</i>	
Kupu Dalire Na'auao (12/5, 12/26)	5-8pm
Bronson Varde (12/12, 12/19)	5-8pm
The Beach Bar at the Moana Surfrider	922-3111
<i>Live Contemporary Hawaiian</i>	
Eric Lee	3:30-6:30pm
Johnny Valentine	7-10pm
The Edge at the Sheraton	921-4600
<i>Live Hawaiian Music</i>	
Stephen Inglis	1-4pm
The Point Sunset Pool Bar at Turtle Bay	293-6000
<i>Live Contemporary Hawaiian</i>	
Mike Cheape	4-7pm
Tiki's Grill & Bar	923-TIKI
<i>Live Contemporary Hawaiian</i>	
Michael Piranha	5-7pm
BK Espiritu	7:30-9:30pm
Tommy Bahama Restaurant	923-8785
<i>Contemporary Hawaiian. Happy Hour Daily 2 - 5 p.m.</i>	
Jeremy Hirokawa	5-8pm

TUESDAY

Amuse Wine Bar	237-5428
<i>Live R&B & Contemporary</i>	
Chris Salvador	7-9pm
Barefoot Beach Café at Queen's Beach	924-2233
<i>Backyard Hawaiian</i>	
Ben Kama	5:30-8:30pm
Chart House Waikiki	941-6660
<i>Live Contemporary Hawaiian</i>	
Ryan Tang Group	6-9pm
Deck. at the Queen Kapiolani Hotel	931-4488
<i>Tequila & Taco Tuesday with Live Contemporary</i>	
Shane Kainoa (or others)	6-9pm
Duke's Canoe Club Waikiki	922-2268
<i>Live Contemporary Hawaiian</i>	
Taz Vegas (or others)	4-6pm
Kailua Moon (or Taulia Lave)	7-9pm
Stephen Inglis (or Ben Kama)	9:30-11:30pm
Giovanni Pastrami	923-2100
<i>Acoustic Soul, R&B and Pop</i>	
YOZA (or others)	6:30-9:30pm
House Without a Key	923-2311
<i>Hawaiian music & hula by Miss Hawaii USA '21 Allison Chu</i>	
Delima Ohana	5:30-8:30pm
Pa'ahana Trio (12/6)	5:30-8:30pm
Kani Ka Pila Grille	924-4992
<i>Hoku Award Winning Hawaiian musicians</i>	
Kala'e Camarillo	6-9pm
Lewers Lounge	923-2311
<i>Jazz Pianist</i>	
Tommy James	8:30pm-12am
Liko's Tap & Table	394-5456
<i>Live Contemporary</i>	
Jason Laeha	5-8pm
Mahi'ai Table	670-2778
<i>Live Contemporary</i>	
Keoni Ku	5-8pm
Mahina & Sun's	923-8882
<i>Electrifying Acoustic on the Lanai</i>	
Laupepa Letuli	6:30-9:30pm
Mai Tai Bar at the Royal Hawaiian	923-7311
<i>Live Contemporary Hawaiian</i>	
Kupu Dalire-Na'auao	11am-2pm
Zanuck Lindsey (12/13)	11am-2pm
Eric Lee	6-9pm
Maui Brewing Company	843-2739
<i>Live Contemporary Hawaiian</i>	
Christian Yizarry	3:30-5:30pm
Donald Fialkowski	6-8pm
Merriman's Honolulu	215-0022
<i>Live Contemporary</i>	
John Kema	5:30-7:30pm
Moani Waikiki	466-2629
<i>Reggae, Country, Contemporary Hawaiian</i>	
AJ Keolanui	7-10pm
Rumfire	921-4600
<i>Live Contemporary Hits</i>	
Christian Yizarry	6-9pm
Signature Prime Steak	949-3636
<i>Contemporary Pianist in the bar</i>	
Keith Montross	6-9pm
Splash Bar at the Sheraton Princess Kaiulani	921-4600
<i>Live Contemporary Hawaiian</i>	
Dave Watanabe (or others)	6-9pm
Swell at the Alohilani	294-4108
<i>Solo Contemporary Guitarist</i>	
Kamuela Kahoano	6:30-9:30pm

OriginalMagoosPizza.com/Order



HAWAII'S FAVORITE ISLAND-STYLE PIZZA, SUBS & CHICKEN

**WE'VE MOVED TO KAIMUKI!
DINE-IN & FULL BAR
TAKEOUT & DELIVERY**

**3579 WAIALAE AVENUE
(BETWEEN 11TH & 12TH AVE)**

E Pili Kākou

DINING ▶ ENTERTAINMENT ▶ PAU HANA ▶ EAT ▶ DRINK ▶ BE MERRY ▶ HAPPY HOUR

SWIM at the Hyatt Regency **923-1234**
Live Contemporary Hawaiian
 Drew Henmi 5-8pm
 Sidney Spencer (12/27) 5-8pm

The Beach Bar at the Moana Surfrider **922-3111**
Live Contemporary Hawaiian
 Stephen Ingles 3:30-6:30pm
 Alex Oasay 7-10pm

The Edge at the Sheraton **921-4600**
Live Hawaiian Music
 Eric Lee (or Bronson Varde) 1-4pm

The Point Sunset Pool Bar at Turtle Bay **293-6000**
Live Contemporary Hawaiian
 Danielle Parente 4-7pm

The Veranda at the Kahala Hotel **739-8760**
Live Contemporary
 Kupu Dalire Na'auao (David Aquino 12/13) 6-8pm

Tiki's Grill & Bar **923-TIKI**
Live Contemporary Hawaiian & Reggae
 Biku 5-7pm
 Kelandy Diaz 7:30-9:30pm

Tommy Bahama Restaurant **923-8785**
Contemporary Hawaiian. Happy Hour Daily 2 - 5 p.m.
 Johnny Kukui 5-8pm

Tropics Bar & Grill **949-4321**
Live Contemporary
 Scott Magz Duo 3-5pm

WEDNESDAY

Azure at the Royal Hawaiian **921-4600**
Live Contemporary Hawaiian
 Ethan Capone 5:30-8:30pm

Barefoot Beach Café at Queen's Beach **924-2233**
Island Vibes
 Danny Galura 5:30-8:30pm

Chart House Waikiki **941-6660**
Live Contemporary Hawaiian
 Mike Tulba 6-9pm

Duke's Canoe Club Waikiki **922-2268**
Live Contemporary Hawaiian
 Donald Fialkowski 4-6pm
 Taulia Lave (or others) 7-9pm
 Alika Souza 9:30-11:30pm

Giovanni Pastrami **923-2100**
Acoustic Guitar Soul, R&B
 Jason Laeha 6:30-9:30pm

House Without a Key **923-2311**
Hawaiian music & hula by Miss Universe '97 Brook Lee
 Puuhonua Trio 5:30-8:30pm

Kani Ka Pila Grille **924-4992**
Hoku Award Winning Hawaiian musicians
 Ei Nei 6-9pm

Lewers Lounge **923-2311**
Jazz Pianist
 Tommy James 8:30pm-12am

Mahi'ai Table **670-2778**
Live Contemporary
 Dillon Pakele 5-8pm

Mahina & Sun's **923-8882**
Soulful Guitar on the Lanai

Cameron Achuela 6:30-9:30pm

Mai Tai Bar at the Royal Hawaiian **923-7311**
Live Contemporary Hawaiian
 Stephen Inglis 11am-2pm
 Johnny Valentine 6-9pm
 Brad Kawakami (12/7) 6-9pm
 Zanuck Lindsay (12/28) 6-9pm

Maui Brewing Company **843-2739**
Live Contemporary Hawaiian
 YOZA 3:30-5:30pm
 Scott Magz 6-8pm

Maui Brewing Kailua **518-2739**
Live Contemporary Hawaiian
 David Sedlak (or Kaimi) 6-8pm

Merriman's Honolulu **215-0022**
Live Contemporary
 Kona Abergas 5:30-7:30pm

MINA's Fish House **679-0079**
Live Contemporary Hits
 Kamuela Kahoano 6-9pm

Moani Waikiki **466-2629**
Contemporary Island Music, Reggae and Blues
 Keith Batlin 6-9pm

Monkeypod Kitchen Ko Olina **381-4086**
Live Contemporary
 Shaun Garnett 12:30-2pm

Rumfire **921-4600**
Live Contemporary Hits
 Mike Tulba 6-9pm

Signature Prime Steak **949-3636**
Contemporary Pianist in the bar
 Pierre Grill 6-9pm

Splash Bar at the Sheraton Princess Kaiulani **921-4600**
Live Contemporary Hawaiian
 Alika Souza 6-9pm

Swell at the Alohilani **294-4108**
Solo Contemporary Guitarist
 Danielle Parente (12/7, 12/14) 6:30-9:30pm
 Brad Kawakami (12/21, 12/28) 6:30-9:30pm

SWIM at the Hyatt Regency **923-1234**
Live Contemporary Hawaiian
 Keoni Ku 5-8pm

The Beach Bar at the Moana Surfrider **922-3111**
Live Contemporary Hawaiian
 Brandon Serrano 3:30-6:30pm
 David Aquino 7-10pm

The Edge at the Sheraton **921-4600**
Live Hawaiian Music
 Kupu Dalire-Na'auao 1-4pm

The Point Sunset Pool Bar at Turtle Bay **293-6000**
Live Contemporary Hawaiian
 Alex Oasay 4-7pm

The Veranda at the Kahala Hotel **739-8760**
Live Contemporary
 Nick La'a 6-8pm

Tiki's Grill & Bar **923-TIKI**
Live Contemporary Hawaiian
 Ben Kama 5-7pm
 TJ Rosimo 7:30-9:30pm

Tommy Bahama Restaurant **923-8785**

Contemporary Hawaiian. Happy Hour Daily 2 - 5 p.m.
 Stan Albrecht 5-8pm

Tropics Bar & Grill **949-4321**
Live Contemporary
 Bryan & Halehaku 3-5pm

Vintage 1901 at the Moana **921-4600**
Contemporary Piano
 David Swanson 6:30-10pm

THURSDAY

100 Sails at the Prince Waikiki **944-4494**
Live Contemporary & Hawaiian
 Kailua Moon (Cherie Moon 12/29) 6-8pm

Azure at the Royal Hawaiian **921-4600**
Live Contemporary Hawaiian
 Noly Paa 5:30-8:30pm

Barefoot Beach Café at Queen's Beach **924-2233**
Live Contemporary & Hawaiian
 Keoni Coelho 5:30-8:30pm

Chart House Waikiki **941-6660**
Live Contemporary Hawaiian
 Tito & David 6-9pm

Deck. at the Queen Kapiolani Hotel **931-4488**
Live Contemporary
 Freddy Leone (or others) 5pm-8pm

Duke's Canoe Club Waikiki **922-2268**
Live Contemporary Hawaiian



BarefootBeachCafe.com

"WE PUT *Aloha*
 INTO EVERY BITE SO
 SIT BACK, RELAX AND
 ENJOY THE VIEW."

OPEN DAILY

BREAKFAST 8AM - 2PM
 LUNCH/DINNER 11AM - 8:30PM
 LIVE MUSIC NIGHTLY 5:30 - 8:30PM
 & SUNDAYS 11AM - 2PM

BAREFOOT BEACH CAFE
 2699 KALAKAUA AVENUE
 808.924.2233

EVENTS &
 GROUP RESERVATIONS
 808.699.8830

Let's be Together...

DINING ▶ ENTERTAINMENT ▶ PAU HANA ▶ EAT ▶ DRINK ▶ BE MERRY ▶ HAPPY HOUR ▶

Jason Midro (or others) 4-6pm		Splash Bar at the Sheraton Princess Kaiulani 921-4600	Hard Rock Cafe 955-7383
Kona Chang Duo (or others) 7-9pm		<i>Live Contemporary Hawaiian</i>	<i>Live Contemporary</i>
Uluwehi Young (or others) 9:30-11:30pm		Kaimi Hananoeau 3:30-5:30pm	Kailua Beach Buddies 6-9pm
Eating House 1849 Waikiki 924-1849		Ronson Asuncion 6-9pm	House Without a Key 923-2311
<i>Live Contemporary Hawaiian</i>		Swell at the Alohilani 294-4108	<i>Hawaiian music & hula by Miss Hawaii '73 Kanoe Miller</i>
Shane Kainoa 5-8pm		<i>Solo Contemporary Guitarist</i>	Kapalama Trio 5:30-8:30pm
Giovanni Pastrami 923-2100		Denny Ono 6:30-9:30pm	Kani Ka Pila Grille 924-4992
<i>Live Contemporary</i>		SWIM at the Hyatt Regency 923-1234	<i>Hoku Award Winning Hawaiian musicians</i>
Billy Sage 6:30-9:30pm		<i>Live Contemporary Hawaiian</i>	Kamakakehau Fernandez 6-9pm
House Without a Key 923-2311		Danielle Parente 5-8pm	Lewers Lounge 923-2311
<i>Hawaiian music & hula by Miss Universe '97 Brook Lee</i>		The Beach Bar at the Moana Surfriider 922-3111	<i>Jazz Pianist</i>
Ei Nei 5:30-8:30pm		<i>Live Contemporary Hawaiian</i>	Maggie Herron & Dean Taba 8:30pm-12am
Kani Ka Pila Grille 924-4992		Christian Yrizarry (or others) 3:30-6:30pm	Mahi'ai Table 670-2778
<i>Hoku Award Winning Hawaiian musicians</i>		Kaimi Hananoeau 7-10pm	<i>Live Contemporary</i>
Kawika Kahiapo 6-9pm		Kamuela Kahoano (12/8) 7-10pm	Brandon Serrano 5-8pm
Kulaiwi (12/15) 6-9pm		The Edge at the Sheraton 921-4600	Mahina & Sun's 923-8882
Lewers Lounge 923-2311		<i>Live Hawaiian Music</i>	<i>Slack Key on the Lanai</i>
<i>Jazz Pianist</i>		Alika Souza 1-4pm	Dustin Park Duo 6:30-9:30pm
Ethan Capone & Rocky Holmes 8:30pm-12am		The Point Sunset Pool Bar at Turtle Bay 293-6000	Mai Tai Bar at the Royal Hawaiian 923-7311
Mahi'ai Table 670-2778		<i>Live Contemporary Hawaiian</i>	<i>Live Contemporary Hawaiian</i>
<i>Live Contemporary</i>		Johnny Helm 4-7pm	Brandon Serano 11am-2pm
Alex Oasay 5-8pm		The Veranda at the Kahala Hotel 739-8760	Johnny III 6-9pm
Mahina & Sun's 923-8882		<i>Live Contemporary</i>	Mariposa 951-3420
<i>Hawaiian Contemporary on the Lanai</i>		Eric Lee 6-8pm	<i>Live Contemporary</i>
Kelly Boy DeLima 6:30-9:30pm		Zanuck Lindsay (12/30) 6-8pm	Chris Salvador 2:30-5:30pm
Mai Tai Bar at the Royal Hawaiian 923-7311		Tiki's Grill & Bar 923-TIKI	Maui Brewing Company 843-2739
<i>Live Contemporary Hawaiian</i>		<i>Live Contemporary Hawaiian & Reggae</i>	<i>Live Contemporary Hawaiian</i>
Christian Yrizarry 11am-2pm		Malu Productions 5-7pm	Keith Batlin 3:30-5:30pm
Ben Kama (12/22) 11am-2pm		Ashton Nicolas 7:30-9:30pm	Taz Vegas (or others) 6-8pm
Zanuck Lindsay (12/29) 11am-2pm		Tommy Bahama Restaurant 923-8785	Maui Brewing Kailua 518-2739
Stephen Inglis 8-10pm		<i>Contemporary Hawaiian. Happy Hour Daily 2 - 5 p.m.</i>	<i>Live Contemporary Hawaiian</i>
Alika Souza (12/29) 8-10pm		Alex Oasay 5-8pm	Mark Caldeira (or others) 7-9pm
Maui Brewing Company 843-2739		Tropics Bar & Grill 949-4321	Merriman's Honolulu 215-0022
<i>Live Contemporary Hawaiian</i>		<i>Live Contemporary</i>	<i>Live Contemporary</i>
Mark Caldeira (or Duva) 3:30-5:30pm		Ellsworth Simeona 3-5pm	Stephen Harris 5:30-7:30pm
David Sedlak 6-8pm		Jason Midro (12/1, 12/8) 3-5pm	MINA's Fish House 679-0079
Maui Brewing Kailua 518-2739		Vintage 1901 at the Moana 921-4600	<i>Live Contemporary Hits</i>
<i>Live Contemporary Hawaiian</i>		<i>Contemporary Piano</i>	Jenna Keala 6-9pm
Grace Welton 6-8pm		David Swanson 6:30-10pm	Moani Waikiki 466-2629
Merriman's Honolulu 215-0022			<i>Live Contemporary Hawaiian</i>
<i>Live Contemporary</i>			Keolu Trio 6-9pm
Laupepa 5:30-7:30pm			Monkeypod Kitchen Ko Olina 381-4086
MINA's Fish House 679-0079			<i>Live Contemporary</i>
<i>Live Contemporary Hits</i>			Jasmin Nicole 12:30-2pm
John Stayley 6-9pm			O Bar at the Alohilani 294-4108
Moani Waikiki 466-2629			<i>Solo Contemporary Guitarist - DJ Spins poolside 6:30-9:30</i>
<i>Contemporary Island Music</i>			Chris Salvador 6-9pm
Kimo Opiana 7-10pm			Rumfire 921-4600
O Bar at the Alohilani 294-4108			<i>Live Contemporary Hits</i>
<i>Solo Contemporary Guitarist</i>			Stephen Inglis 4:30-7:30pm
David Aquino 5-8pm			Kupu Dalire Na'auao (or Zanuck Lindsey) 8-10:30pm
Rumfire 921-4600			Signature Prime Steak 949-3636
<i>Live Contemporary Hits</i>			<i>Contemporary Pianist in the bar</i>
Dave Watanabe 6-9pm			Grant Carvalho & Rocky Holmes 6-9pm
Signature Prime Steak 949-3636			Sky Waikiki 979-7590
<i>Contemporary Pianist in the bar</i>			<i>Live Contemporary</i>
Grant Carvalho & Rocky Holmes 6-9pm			John Akapo 5-8pm
Sky Waikiki 979-7590			Splash Bar at the Sheraton Princess Kaiulani 921-4600
<i>Live Contemporary</i>			<i>Live Contemporary Hawaiian</i>
John Akapo 5-8pm			Ben Kama Duo & dancer 5-8pm

FRIDAY

100 Sails at the Prince Waikiki 944-4494			
<i>Live Contemporary & Hawaiian</i>			
Mike Tulba Duo 6-8pm			
Azure at the Royal Hawaiian 921-4600			
<i>Live Contemporary Hawaiian</i>			
Ethan Capone 5:30-8:30pm			
Barefoot Beach Café at Queen's Beach 924-2233			
<i>Live Contemporary Hawaiian</i>			
Art Kalahiki & Friends 5:30-8:30pm			
Chart House Waikiki 941-6660			
<i>Live Contemporary Hawaiian</i>			
Mike Tulba 6-9pm			
Deck. at the Queen Kapiolani Hotel 931-4488			
<i>Live Contemporary</i>			
Shane Kainoa (or others) 6pm-9pm			
Duke's Canoe Club Waikiki 922-2268			
<i>Live Contemporary Hawaiian</i>			
Maunalua 4-6pm			
Kawika Kahiapo 7-9pm			
Dwight Kanae (or Walt Keale) 9:30-11:30pm			

E Pili Kākou

DINING ▶ ENTERTAINMENT ▶ PAU HANA ▶ EAT ▶ DRINK ▶ BE MERRY ▶ HAPPY HOUR

Brad Kawakami (or others) 8-10pm
Stripsteak 896-2545
Live Contemporary
 Shane Kainoa 6-9pm
SWIM at the Hyatt Regency 923-1234
Live Contemporary Hawaiian
 Mike Izon 5-8pm
The Beach Bar at the Moana Surfrider 922-3111
Live Contemporary Hawaiian
 Kupu Dalire-Na'auao (or Brad Kawakami) 3:30-6:30pm
 Alex Oasay 7-10pm
The Edge at the Sheraton 921-4600
Live Hawaiian Music
 Christian Yrizarry 1-4pm
The Grove at the Modern Pool Deck 943-5800
Live Contemporary
 Chris Salvador (or others) 4-7pm
 Bronson Varde 6-8pm
The Point Sunset Pool Bar at Turtle Bay 293-6000
Live Contemporary Hawaiian
 Mark Calderia (or Denny Ono) 4-7pm
The Veranda at the Kahala Hotel 739-8760
Live Contemporary
 Johnny Valentine 6-8pm
Tiki's Grill & Bar 923-TIKI
Contemporary Hawaiian, Alternative, Pop-Rock, Reggae
 Biku 3-5pm
 RootsKai 5-7pm
 Malu Productions 7:30-9:30pm
Tommy Bahama Restaurant 923-8785
Contemporary Hawaiian. Happy Hour Daily 2 - 5 p.m.
 Chris Murphy 5-8pm
Tropics Bar & Grill 949-4321
Live Contemporary
 Kaiona Duo 3-5pm
 Kumuhau (12/2) 3-5pm
Vintage 1901 at the Moana 921-4600
Contemporary Piano
 David Swanson 6:30-10pm

SATURDAY

100 Sails at the Prince Waikiki 944-4494
Live Contemporary & Hawaiian
 Kupu Dalire-Na'auao 6-8pm
 Cherie Duo (12/3, 12/17) 6-8pm
Azure at the Royal Hawaiian 921-4600
Live Contemporary Hawaiian
 Koco Kawabuchi (or Ethan Capone) 5:30-8:30pm
Barefoot Beach Café at Queen's Beach 924-2233
Live Contemporary Hawaiian
 Vanessa Alputila 5:30-8:30pm
Chart House Waikiki 941-6660
Live Contemporary Hawaiian
 Tito Berinobis 6-9pm
Duke's Canoe Club Waikiki 922-2268
Live Contemporary Hawaiian
 Walt Keale (or others) 10am-noon
 Stephen Inglis (or others) 1-3pm
 Beach 5 (12/3) 4-6pm
 Ben Kama (12/10) 4-6pm

Alx Kawakami (12/17) 4-6pm
 Keith Batlin (12/24) 4-6pm
 Kaiona Band (12/31) 4-6pm
 Chapter II (or others) 7-9pm
 Grace Welton (or Ben Kama) 9:30pm-12:30am
Hard Rock Cafe 955-7383
Live Contemporary
 Kailua Beach Buddies 6-9pm
House Without a Key 923-2311
Hawaiian music & hula by Miss Hawaii '73 Kanoë Miller
 Kapalama Trio 5:30-8:30pm
Kani Ka Pila Grille 924-4992
Hoku Award Winning Hawaiian musicians
 Ho'okena 6-9pm
 Allan Poki & Ohana (12/3, 12/10) 6-9pm
Lewers Lounge 923-2311
Jazz Pianist
 Maggie Herron & Dean Taba 8:30pm-12am
Mahi'ai Table 670-2778
Live Contemporary
 Kamakana Kawaa 5-8pm
Mahina & Sun's 923-8882
Contemporary Hawaiian/Blues on the Lanai
 Josh Akapo 6:30-9:30pm
Mai Tai Bar at the Royal Hawaiian 923-7311
Live Contemporary Hawaiian
 Ronson Asuncion 11am-2pm
 Dave Watanabe 6-9pm
 Zanuck Lindsay (special time 12/3) 8-10pm
 Dave Watanabe (special time 12/31) 5-8pm
Mariposa 951-3420
Live Contemporary
 Aisaiah Jacobs 2:30-5:30pm
Maui Brewing Company 843-2739
Live Contemporary Hawaiian
 Deah Duo (or others) 3:30-5:30pm
 Chapter II (or others) 6-8pm
Maui Brewing Kailua 518-2739
Live Contemporary Hawaiian
 Michael Delara (or others) 7-9pm
Merriman's Honolulu 215-0022
Live Contemporary
 Shane Kainoa 5:30-7:30pm
MINA's Fish House 679-0079
Live Contemporary Hits
 Johnny Helm 6-9pm
Moani Waikiki 466-2629
Contemporary Island Music, R&B, and Reggae
 Wavvy Duo 6-9pm
O Bar at the Alohilani 294-4108
Solo Contemporary - DJ Spins poolside 1-4 / 6:30-9:30
 Alex Oasay 6-9pm
Rumfire 921-4600
Live Contemporary Hits
 Mark Caldeira 4:30-7:30pm
 Kale Kahumoku 8-10:30pm
SHOR at the Hyatt Regency 923-1234
Live Contemporary Hawaiian
 David Aquino (dark 12/10) 6-9pm
Signature Prime Steak 949-3636

Contemporary Pianist in the bar
 Grant Carvalho & Rocky Holmes 6-9pm
Sky Waikiki 979-7590
Live Contemporary
 John Akapo 5-8pm
Splash Bar at the Sheraton Princess Kaiulani 921-4600
Live Contemporary Hawaiian
 Brad Kawakami & dancer 5-8pm
 Tangi Tully 8-10pm
Stripsteak 896-2545
Live Contemporary
 Dustin Park 6-9pm
The Beach Bar at the Moana Surfrider 922-3111
Live Contemporary Hawaiian
 Brad Kawakami (special for 12/31) 12-3pm
 Ronson Asuncion 3:30-6:30pm
 Chris Salvador (Kamuela on 12/31) 7-10pm
 Chris Salvador (special for 12/31) 10pm - 12am
The Edge at the Sheraton 921-4600
Live Hawaiian Music
 Brad Kawakami 1-4pm
The Grove at the Modern Pool Deck 943-5800
Live Contemporary
 Mike Izon 4-7pm
The Point Sunset Pool Bar at Turtle Bay 293-6000
Live Contemporary Hawaiian
 Kuhio Travis 4-7pm

RUTH'S CHRIS Referral Program

Refer your guests to experience perfection at Ruth's Chris Steak House and receive a Ruth's Chris Gift Card



Receive a \$50 Ruth's Chris Gift Card for every 25 Guests that dine at Ruth's Chris Steak House. When making your GUEST reservation via phone, or Open Table, please provide your name and company name and our team will track your referrals accordingly.



"What's Singling at Ruth's"

- Sizzling Prime Time Menu available nightly from Opening to 6pm. (3) Course Menu from \$57.95 per person.



- Happy Hour featuring Appetizer and Drink Specials from Opening to 7pm.

Honolulu • 808.599.3860 • Waterfront Plaza, 500 Ala Moana Boulevard
 Waikiki • 808.440.7910 • Waikiki Beach Walk, 226 Lewers Street
 Wailea • 808.874.8880 • The Shops at Wailea, 3750 Wailea Ala Nui Drive

Let's be Together...

DINING ▶ ENTERTAINMENT ▶ PAU HANA ▶ EAT ▶ DRINK ▶ BE MERRY ▶ HAPPY HOUR ▶

The Veranda at the Kahala Hotel **739-8760**
Live Contemporary
 Jeanette Trevais (or others) 6pm-8pm

Tiki's Grill & Bar **923-TIKI**
Contemporary Hawaiian, Alternative, Pop-Rock, Reggae
 RootsKai 5-7pm
 Kelandy Diaz 7:30-9:30pm

Tommy Bahama Restaurant **923-8785**
Contemporary Hawaiian. Happy Hour Daily 2 - 5 p.m.
 Chris Murphy 5-8pm

Tropics Bar & Grill **949-4321**
Live Contemporary
 Ben Kama 3-5pm
 Chapter II (12/24, 12/31) 3-5pm

Vintage 1901 at the Moana **921-4600**
Contemporary Piano
 David Swanson 6:30-10pm

SUNDAY

100 Sails at the Prince Waikiki **944-4494**
Live Contemporary & Hawaiian
 Kailua Moon 6-8pm

Azure at the Royal Hawaiian **921-4600**
Live Contemporary Hawaiian
 Ethan Capone 5:30-8:30pm

Barefoot Beach Café at Queen's Beach **924-2233**
Live Contemporary Hawaiian
 Alikea Souza 11am-2pm
 Art Kalahiki 5:30-8:30pm

Chart House Waikiki **941-6660**
Live Contemporary Hawaiian
 Dean & Dean 6-9pm

Duke's Canoe Club Waikiki **922-2268**
Live Contemporary Hawaiian
 Ben Kama (or others) 10am-noon
 Stephen Inglis (or others) 1-3pm
 Henry Kapono 4-6pm
 Funkaholics with Ginai (12/25) 4-6pm
 Ono Kine Duo (or Kaiona Duo) 7-9pm
 Kaimi (or others) 9:30-11:30pm

Giovanni Pastrami **923-2100**
Reggae Pop Music
 Kelandy 6:30-9:30pm

Hinana Pool Bar at the Prince Waikiki **944-4494**
Live Contemporary & Hawaiian
 Alex Oasay (12/4 only) 2:30-5:30pm

House Without a Key **923-2311**
Hawaiian music & hula by Miss Hawaii USA '21 Allison Chu
 Pu'uhonua Trio 5:30-8:30pm
 Pa'uahana Trio (12/11) 5:30-8:30pm

Kani Ka Pila Grille **924-4992**
Hoku Award Winning Hawaiian musicians
 Nathan Aweau 6-9pm

La Hiki Restaurant at the Four Seasons **679-0079**
Live Contemporary Hawaiian
 Jenna Keala (or Kamuela Kahoano) 11am-2pm

Mahi'ai Table **670-2778**
Live Contemporary
 Johnny III 5-8pm

Mahina & Sun's **923-8882**
Award-winning ukulele on the Lanai

Trishnaiei 6:30-9:30pm

Mai Tai Bar at the Royal Hawaiian **923-7311**
Live Contemporary Hawaiian
 John Coelho & Kanoë Arola 11am-2pm
 Christian Yrizarry 6-9pm
 Keoni Ku (12/25) 6-9pm

Mariposa **951-3420**
Live Contemporary
 Zaysha 12-3pm

Maui Brewing Company **843-2739**
Live Contemporary
 Jason Midro 3:30-5:30pm
 Chris Murphy (or others) 6-8pm

Maui Brewing Kailua **518-2739**
Live Contemporary Hawaiian
 Dom Carlos (or others) 6-8pm

Merriman's Honolulu **215-0022**
Live Contemporary
 Cassie and Selwyn 5:30-7:30pm

Moani Waikiki **466-2629**
Contemporary Island Music
 Dustin Park 7-10pm

Monkeypod Kitchen Ko Olina **381-4086**
Live Contemporary
 Pono 12:30-2pm

O Bar at the Alohilani **294-4108**
Solo Contemporary - DJ Spins poolside 1-5
 Johnny Helm 5-8pm

Rumfire **921-4600**
Live Contemporary Hits
 Jenna Keala (Danielle Parente 11/13) 4:30-7:30pm
 Sidney Spencer 8-10:30pm

Signature Prime Steak **949-3636**
Contemporary Pianist in the bar
 Keith Montross 6-9pm

Splash Bar at the Sheraton Princess Kaiulani **921-4600**
Live Contemporary Hawaiian
 Grace Welton 6-9pm

Swell at the Alohilani **294-4108**
DJs Spins Poolside from 1 - 5 pm
 Jason Laeha 6:30-9:30pm

SWIM at the Hyatt Regency **923-1234**
Live Contemporary Hawaiian
 Christian Yrizarry 5-8pm

The Beach Bar at the Moana Surftrider **922-3111**
Live Contemporary Hawaiian
 Brad Kawakami 3:30-6:30pm
 Dave Watanabe 7-10pm

The Edge at the Sheraton **921-4600**
Live Hawaiian Music
 Christian Yrizarry 1-4p

The Point Sunset Pool Bar at Turtle Bay **293-6000**
Live Contemporary Hawaiian
 Derrick Lee 4-7pm

Tiki's Grill & Bar **923-TIKI**
Live Contemporary Hawaiian
 Eddie & the Coconuts 3 - 5pm
 Ellsworth & Friends 5:30-7:30pm

Tommy Bahama Restaurant **923-8785**
Contemporary Hawaiian. Happy Hour Daily 2 - 5 p.m.

Glen Domingo 5-8pm

Vintage 1901 at the Moana **921-4600**
Contemporary Piano
 David Swanson 6:30-10pm

Dining Dish

Get your K-Pop on at this latest entry into West Oahu's food scene. **Steve Chicks**, a unique K-Style family-style restaurant with a full bar, opened a few weeks ago at Kunia Shopping Center. Offering a variety of foods, from the trendiest to most authentic K-foods, including Pocha Foods, with K-POP music videos playing to entertain customers. From the creator of the Chicken Factory, formerly located on Keeaumoku Street, the restaurant focuses on quality ingredients such as free-range chicken, prime beef, organic cage-free eggs and makes its soup base from scratch daily. Open Mon-Sat from 3:00 p.m. - 1:00 a.m. and Sun 3:00 p.m. - 12:00 a.m. 680-0005. • **Morton's The Steakhouse** has relaunched their Bar Bites happy hour menu with longtime favorites from \$8 - \$19. Most items are \$12. Sunday - Thursday from 7 p.m., Fridays from 4 - 6 p.m. • There have been some chef changes recently. Mariposa's longtime Chef, **Lawrence Nakamoto**, has taken over at **Tangö Contemporary Cafe Honolulu**. The Chef says he has kept the menu the same but added some of his touches. They have re-opened for breakfast during the week and are continuing their popular wine dinners. They are now open Monday through Friday for breakfast from 7 a.m. - 10 a.m. and lunch from 11 a.m. - 3 p.m. Dinner is available Monday through Saturday from 8 a.m. - 2 p.m. and brunch on weekends from 8 a.m. - 2 p.m. Check out the menu at tangocafehawaii.com. 593-7288. • Taking over his former Executive Chef duties at **Mariposa** is **Lance Kosaka**. The menu appears mostly the same, but you can already see a few of the Chef's personal touches, along with regular Chef specials. 951-3420. • Speaking of chefs who have moved, **Dell Valdez**, formerly of vein at Kakaako, quietly opened **McCully 11x**, more commonly referred to as **Dell's Kitchen & Bakery**, a multi-concept kitchen on the corner of McCully and Young Street during the pandemic. Styled after rest-stop concepts seen along Japan's

highways, Dell's offers authentic Japanese and fresh takes on local favorites like Maui-style short ribs, an Ahi Katsu Plate, Seafood Croquettes, Pork Katsu Curry. There is also a Shiso Nori Chicken made by **Chef Masanori Tsuda**, the former Chef at Honolulu's Japanese Consulate. There is also a Japanese bakery and **Kawagoe Dango**, offering authentic dumplings made from twice-steamed white rice, balled, skewered, and grilled over an open flame. If that's not enough for you to choose from, check out **Mio Pastalogy**, a homemade pasta shop offering Japanese flavor combos and a weekend lasagna that usually has a waitlist. Check out all the menus at mccully11x.com. • Hawaii Kai's restaurant scene has been more active lately. **Liko's Tap & Table** had updated its menu, including adding an East Coast Lobster Roll (\$36) every weekend and a Chef's Prime Cut selection nightly, as well as bringing back live music on Tuesday nights. 394-5456. • **Repetti's Pizza and Provisions** has opened next door in the former Pizza Hut space offering a great selection of reasonably priced New Jersey-style pizzas and subs for dine-in or take-out. Opened by the folks behind Prison Street Pizza and Serpico's Pizzeria on Maui, this is their first Oahu location. Open from 11 a.m. - 9 a.m. daily. Check out their menu at repettispizza.com. • **Tex808 BBQ & Brews**, on the other side of Liko's in the former Cha Cha Cha location, has been ready to open for a while and should hopefully open their doors this month. • **bEASTside Kitchen** has opened right down the road in the former Cafe Asia location in Niu Valley. They gained a loyal following during their pop-ups in Waimanalo, and this is their first brick-and-mortar location. Known for their Guava BBQ Fried Chicken (\$16) and their Garlic Umami Plate (\$20), the rest of the menu is filled with local favorites. Open from 11 a.m. - 10 p.m. daily. They offer Happy Hour from 3 - 6 p.m. and 8:30 - 10 p.m. 888-0138. • Lastly, **Donato Loperfido** has opened **Bocconcino Café**, a cheese-centric Italian cafe in Kaka'ako. Producing Hawai'i's first locally made mozzarella, he offers coffees, sandwiches, Roman-style pizzas and lots of imported Italian goods. Open Monday to Saturday from 10:30 a.m. to 7 p.m. at 978 Kawaiaha'o Street. 778-0672.



Chef's Corner

La Mer Executive Chef Alexandre Trancher

Ten years ago, Chef Alexandre Trancher was named Chef de Cuisine at La Mer, and has been leading the restaurant ever since. Earlier this year he was promoted to the Executive Chef Position. Aside from maintaining the impeccable standards that has kept them on the AAA Five Diamond list since 1990, he also creates and oversees the appetizers that are served in L'Apertif Cocktail Bar. When he's not working he enjoys spending time with his family and says if he was not a chef he would be a comedic actor!

What is your first food memory?

One of the first dishes I remember is a mousseline potato that looked like a volcano.

What made you decide to become a chef?

When I was 14 years old, I worked at my uncle's hotel and became inspired to become a chef.

What was your first job in the industry?

I was a porter at my uncle's hotel – carrying the guests' luggage to their rooms.

How did your upbringing shape your aspirations?

I was born and raised in Paris, France, however I'm proud to say that I am now an American citizen. I did learn my basic culinary techniques in France, however living in various destinations (Greece and Japan). It helped to create my style of kitchen.

Who is your mentor and why?

All chefs have mentors. I've had several that gave me inspiration, techniques, and motivation to strive to always do better. My mentor would be Master Chef Gerard Salle, whom I worked with as the Sous Chef at Hotel Vendome. His work strategy, cooking, and consistency has kept me inspired. Not only did he teach me how important the ingredients are and to respect the product, but he also helped me grow personally – and how to change my own life.

You've earned several Michelin stars, correct?

Yes, I've had the wonderful opportunity to have earned several Michelin stars around the world – France, Greece, and Japan. These experiences were fantastic as I was able to see very different cultures in each country. Now that I am in Hawaii, I am disappointed that Michelin does not do rankings in Hawaii as we have such wonderful and diverse restaurants such as Senio, Café Miro, Mugen, Sushi Sho, Nan Zan Jiro Jiro, and of course....La Mer.

Talk about being named to the AAA Five Diamond list

La Mer has been awarded the AAA Five Diamond Award consecutively since 1990. With Halekulani's history of gracious hospitality, we must always keep in mind the tastes and preferences of the client. We are constantly striving to find the best and freshest ingredient for our guests. It is the combination of the cuisine and service that makes dining at La Mer an unforgettable experience.

Any big plans now that you're Executive Chef?

The promotion is an honor. I will continue to lead my culinary team and provide a gastronomic experience for our guests. We are constantly striving to improve, and my dream is to put La Mer on the Top 100 Restaurants in the World.

Where do you find your inspiration?

The inspiration is all around me in nature, from the mountains to the ocean. All the fresh ingredients help me decide what dishes I will create.

How would you describe your cooking style?

Having many years of classical French training and living in Hawaii, I think my style of cooking has evolved. Diets and tastes have progressed and changed over the years so we must constantly evolve to incorporate the classic techniques that I have learned and introduce lighter and healthier dishes, while still ensuring taste and visual appeal.

Tell us about being part of HFWF's Gala closing event at the hotel. How did you decide what to create?

I was elated to be selected as a guest chef for this event. Interesting question. I concentrated on the experience that the guests will have while enjoying my dish. The theme was ART and we try to use as many local products as possible.

Is there any other information you want to share?

Hawaii is very special to me as it is the place where I met my wife and where my daughter was born.



La Mer Tomato Salad w/ Tomato Gazpacho

- Ingredients:**
- Edible herbs and flowers
 - Tomato Gazpacho (see recipe below)
 - Mango vinegar
 - 10 Cherry Tomatoes (slice in halves)
 - Oil
 - 5 slices of cucumber (slice in mandolin)
 - Salt & Pepper

Tomato Gazpacho:

- 10 Cherry tomatoes, cut into chunks
- 2 -inch piece cucumber, peeled, seeded, & chopped
- 2 -inch-wide strip bell pepper, chopped
- 2 small garlic clove, finely grated
- ½ liter Orange juice

- ¼ teaspoon sherry vinegar
- ¼ teaspoon red-wine vinegar
- 1 tablespoon extra-virgin olive oil plus more for serving
- Coarse salt and ground pepper
- 30 grams Worcestershire sauce
- 20 drops Tabasco

Marinate the above products together for 12 hours, blend in the Thermomix, strain, and put in the ice cream machine. When the gazpacho is ready put in the freezer. Slice ten cherry tomatoes in halves and slice cucumbers into slivers with a mandolin. Arrange cucumber slices and tomato halves in the center of the plate and add a scoop of the tomato gazpacho. Drizzle salad with mango vinegar, olive oil and season with salt and pepper to taste. Add edible herbs and flowers.

La Mer is located at the Halekulani Hotel

Hours: Wednesday to Saturday 5:30 to 8:30 p.m. • Phone: 923-2311

Website: halekulani.com/dining/la-mer • FB/Instagram/Twitter: @halekulanihotel

DECEMBER CALENDAR OF EVENTS

Continuing Events

Continuing events such as cultural events at shopping centers and Farmer's Markets can now be found in our *That's Entertainment* section on page 19.

MONDAYS, WEDNESDAYS & FRIDAYS O NĀ LANI SUNSET STORIES HULA SHOW

Honoring the rich history and sense of place of the International Market Place through song & dance. It begins at sunset with the lighting of the Lamakū Torch Tower on Kalākaua Avenue and leads to the Queen's Court. Free. 7 p.m. shopinternationalmarketplace.com.

WEDNESDAYS, SATURDAYS & SUNDAYS ALOHA STADIUM SWAP MEET

The Aloha Stadium Swap Meet has been going strong since 1979. Featuring over 400 vendors, crafters and artists, the Swap Meet offers low-prices on a wide selection of quality products with food trucks to snack from. Wednesdays & Saturdays: 8 a.m. - 3 p.m., Sundays, 6:30 a.m. - 3 p.m. alohastadium.hawaii.gov.

FIRST FRIDAY (DECEMBER 2) DOWNTOWN GALLERY WALK & CRAFT FAIR

Downtown comes alive the first Friday of every month as art lovers fill the streets for Honolulu's outdoor self-guided arts tour. Stores spill out onto the sidewalk, artists are on hand to chat about to their works, and restaurants are ready to serve you. Monthly updates are published on participating merchant websites, or two days before the event at firstfridayhawaii.com.

SECOND FRIDAY (DECEMBER 9) BISHOP MUSEUM AFTER HOURS

Extended after-hours access to the Museum with a Pau Hana presentation, living culture demonstration, keiki activities, exhibition tours, J. Watumull Planetarium shows, a Membership Lounge, food trucks, and live music. 5:30 - 9 p.m. \$20/\$10 kama'aina. bishopmuseum.org.

FRIDAYS ROYAL HAWAIIAN BAND LUNCHTIME SHOW

The Royal Hawaiian Band has returned to Iolani Palace for its popular lunchtime concerts. Held on most Fridays, the concerts are free and open to the public. 12 - 1 p.m. iolanipalace.org

FRIDAYS & SATURDAYS • HOMA NIGHTS

On Friday and Saturday nights, regular museum admission also includes live musical performances, hands-on art activities, pop-ups in the HoMA Shop, movies on the lawn, bar service at the HoMA Cafe, and other interactive art experiences. The museum stays open until 9 p.m. honoluluuseum.org.

SATURDAYS & SUNDAYS ART ON THE ZOO FENCE

See the works of local artists displayed on the Zoo fence on Monsarrat Avenue opposite the Kapiolani Park Bandstand. Works include original paintings, prints and photographs. 9 a.m. - 3 p.m. Free. artonthezoo fence.com.

SATURDAYS & SUNDAYS YOGA IN THE PARK

Core Power Yoga have added Saturdays to their free yoga classes at Victoria Ward Park. Registration required. Sat: 12-1 p.m. Sun: 9 - 10 a.m. wardvillage.com/explore/activities.

THIRD SUNDAY (DECEMBER 18) FAMILY FREE SUNDAY

Thanks to Bank of Hawaii, kama'aina have been offered free admission with ID on the third Sunday of the month since 2004. Currently a combo of both in-person and virtual events, offering something for all, but for those that want to attend in-person, they can get free museum admission with reservations. Visitors welcome, but they have to pay. 10 a.m. - 6 p.m. Free. 532-8700. honoluluuseum.org.

DECEMBER 1 - 4 DIONNE WARWICK

Dionne Warwick ranks second only to Aretha Franklin as the most charted female vocalist in history. Join this award-winning artist for four intimate performances. 8 p.m. nightly. Tickets \$95-\$150. bluenotehawaii.com.

DECEMBER 2-4 THE NUTCRACKER

Don't miss the Nutcracker presented by Ballet Hawaii's with a Hawaiian historical theme. Enjoy Tchaikovsky's classic ballet re-interpreted and set in the 1858 Kingdom of Hawaii based on the parties Mary Dominis's held for the children at Washington Place on Christmas Eve. At the party, Hawaii's first Christmas tree was lit with candles as Saint Nicholas passed out candies and gifts for all. The toy soldier uniforms are patterned after those of the Royal Guard and the famous Waltz of the Snowflakes takes place high on the slopes of Mauna Kea. Friday at 7:30 p.m., Saturday at 3:00 p.m. on Sunday at 12 p.m. \$40-\$125. Blaisdell Concert Hall. ballethawaii.org.

DECEMBER 3 CHRISTMAS WITH THE MAKAHA SONS

Celebrate the season with The Makaha Sons as they are joined by a few of their closest friends, including Jerry Santos, Raiatea Helm, and more. Two shows at 1 p.m. and 7 p.m. Tickets: \$35 - \$50. hawaii theatre.com.

DECEMBER 3 A PINCH OF SALT

SALT at Our Kaka'ako presents its annual shopping celebration featuring an array of unique products and goods from local merchants and small businesses found at pop-up locations in The Barn and throughout the center. Shop small and support local businesses. 10 a.m. - 3 p.m. saltatkaako.com.

DECEMBER 4 EAST MEETS WEST WHISKY DINNER EVENT

Enjoy the best of both worlds during this special dinner event merging world-renowned Japanese whisky by Suntory and exceptional American whiskey varieties. Served alongside seasonal Japanese dishes, a full evening of food, drinks, and demonstrations is planned. This event's main feature is a "live" virtual tour of the Hakushu Whisky Distillery in Yamanashi Prefecture. 5:30 - 9:30 p.m. \$350. Limited to 46 participants. restaurantsuntory.com.

DECEMBER 3 - 31 HONOLULU CITY LIGHTS

Downtown lights up in celebration every night of the season with the 36th annual Honolulu City Lights. Enjoy opening night festivities kicking off with a block party at 4 p.m. with keiki rides, souvenir booths and food vendors set up on Punchbowl Street. The Electric Light Parade begins at 6 p.m., as Mayor Blangiardi lights of the City Holiday Tree and Honolulu Hale at 6:30 p.m. McKenna Maduli will be hosting the Mayor's stage this year, and there will be live entertainment on the Skygate Stage. The party goes through 11 p.m. The festive lights and decorations stay up through January 1st from 8 a.m. - 11 p.m. daily.honolulucitylights.com.

DECEMBER 4 BLUE OYSTER CULT

Multi-Platinum Rock Hall of Famers Blue Öyster Cult, are bringing their timeless classics to Hawaii as they tour new studio album. Thrilling audiences for over five decades, occupying a unique place in rock history because it's one of very few hard rock/heavy metal bands to earn both genuine mainstream critical acclaim as well as commercial success. 8 p.m. Tickets: \$57.50 - \$87.50. hawaii theatre.com.

DECEMBER 4 JINGLE ROCK RUN

The annual fun community walk/run will be a 2.5-mile route at a new location - Ko Olina Resort. Walkers, joggers, runners, strollers, pets and reindeer are welcome to Enjoy live entertainment along the route and at the festival grounds as you take in the sunset view from the Ko Olina Resort lagoons. 3 - 6 p.m. hawaii.wish.org.

DECEMBER 7 - 31 HAMILTON

Don't miss your shot to see the Hawaii debut of Lin-Manuel Miranda's blockbuster musical that



Holiday Wellness and Metaphysical Expo

Meaningful gifts for them...
Self care for you...

Blaisdell Hawaii Suites
December 10 - 11, 2022
10:00 am - 5:30 pm

FREE ADMISSION TO ALL

Free Wellness Workshops | Pop Up Shops |
Healthy Food | Organic Natural Products |
Psychic + Medium Readings | Free Yoga Class
| On Site Wellness Services | Family Friendly

FREE WELLNESS WORKSHOPS FEATURING:

Breathwork | Sound Healing |
Human Design | Qigong
Psychic Medium + Tarot Cards |
Sun Yoga | Yoga Room

www.wellnessandmetaphysical.com

DECEMBER CALENDAR OF EVENTS

has the story of American founding father Alexander Hamilton and created a revolutionary moment in theatre—a musical that has had a profound impact on culture, politics, and education. Blaisdell Concert Hall. The show runs through January 29th. BroadwayinHawaii.com.

DECEMBER 7 PEARL HARBOR MEMORIAL PARADE

Commemorate the anniversary of World War II with this special parade down Kalakaua Avenue that takes place annually on the anniversary of the attack on Pearl Harbor to honor and pay respect to those that lost their lives, the survivors, our veterans, active-duty military, and their families. Open ceremony begins at 4:30 p.m. at Fort DeRussy. The parade starts at 6 p.m. and winds down Kalakaua Avenue. A closing ceremony will take place at the Waikiki Shell at 7:30 p.m. pearlharborparade.org.

DECEMBER 7-8 HENRY KAPONO: THE SONGS OF C&K

Join Henry Kapono as he celebrates the music of C&K with a few of his friends. Two shows nightly. 6:30 p.m. and 9 p.m. Tickets \$35-\$45, with a special backstage "Hang with Henry" Meet & Greet option for \$400. bluenotehawaii.com.

DECEMBER 8-9 2022 HAWAII TOURISM CONFERENCE

The two-day conference will include the Tourism Legacy Awards Luncheon, presentations and panel discussions, networking opportunities, and multiple educational sessions focused on topics including destination management progress, cultural tourism, travel sector updates, regenerative tourism, and research trends. Early registration available for \$195 plus tax through Sunday, December 4. hawaiiauthority.org

DECEMBER 9-10 TAIMANE AND HER QUARTET

Taimane returns home after a world tour where she headlined shows from London to San Diego and even performed at the prestigious Glastonbury Festival. Join her and her quartet for two special performances. 7 p.m. Tickets \$35-\$45. bluenotehawaii.com.

DECEMBER 10 HAPASYMPHONY FEATURING KIMIE MINER

Featuring music from her 2022 Nā Hökü Hanohano Award winning album for EP of the Year, "Christmas in Hawai'i," Grammy-award nominated singer Kimié Miner kicks off the holiday season. \$27-\$99. 7:30 p.m. Hawaii Theatre. hawaiiensemble.org.

DECEMBER 10 EARTH, WIND & FIRE

Beloved around the globe for more than 50 years, the legendary Earth, Wind & Fire is one of the best-selling and most influential bands of all time. Throughout their career, the band has amassed a treasured catalog of music that's infused with strands of disco, funk, and R&B. They first performed in Hawaii in 1975 and are still rocking Hawaii audiences. Only about 100 seats left. Tickets: \$66-\$226. ticketmaster.com.

DECEMBER 10 KALAKAUA MERRIE MILE

This fun little one-mile race in Waikiki followed

Continues on page 19.

INTERNATIONAL MARKET PLACE

For the first time since 2019, the International Market Place brought back its Concierge Appreciation Event to thank the industry for all they do and let them see all that's new at the Market Place. It was also an opportunity to introduce the new General Manager, Desiree Mosiman and their new Director of Customer Service, Noah Elgin to the industry, and let them know about their first ever NYE event on the Grand Lanai. It was a fabulous way to kick off the holiday season, and the tenants were beyond generous with the prizes! shopinternationalmarketplace.com.



**Make a difference
starting with you**

*De-stress • Refresh •
Relax • Heal*

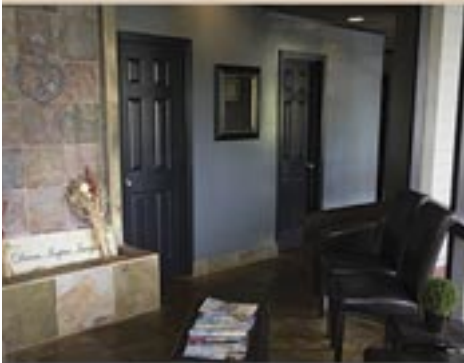


All New Clients Receive
10% off
their first massage

**EXPERIENCE SERENITY AND
MASSAGE FOR YOURSELF**

- Full 60 & 90 minute massages
- Peaceful, tranquil atmosphere
- Talented licensed massage therapists
- We follow COVID safety protocols
- Save \$26 per massage as a member
- *Services include:* Swedish, Lomi Lomi, Deep Tissue, Shiatsu, Reiki, Prenatal, Trigger Point Therapy, Neuromuscular Therapy, and more

**We offer in-home/room massage
services. Please call to inquire**



**HAWAII KAI
SHOPPING CENTER**

377 Keahole St., Ste. 207 (across from Safeway)

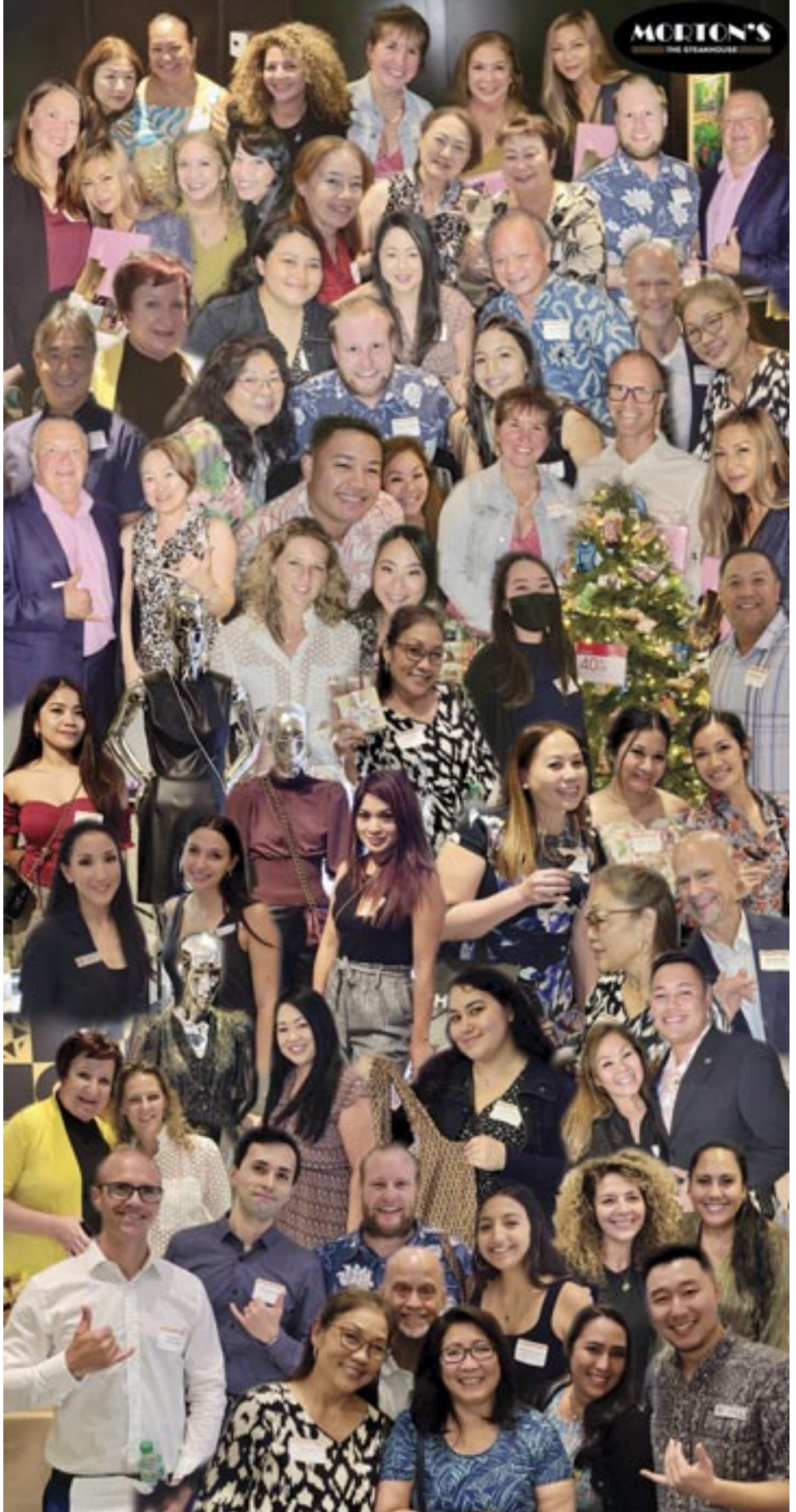
Call us at **396-7594**

Text us at **862-6163**

serenityandmassage.com



As part of its 150th anniversary celebration, Bloomingdales Ala Moana held a small introductory event. They partnered with Morton's Steakhouse (947-5293) who hosted the first hour at the restaurant wine and dine guests. Afterwards, concierge were invited into Bloomingdale's to check out their personalized service, meeting their personal stylists, learning how to set up private shopping parties VIPS or events such as bridal showers, get hand massages and facials, have their make-up done and prepare for special occasions.



DECEMBER CALENDAR OF EVENTS

Continued on page 17.

by a beach party is a great way to get geared up for the Honolulu Marathon the next morning. The race goes in waves based on predicted finish time. The last wave will be the pros seeking a sub 4-minute mile. Children of all ages are welcome to run the Merrie Mile. The race finishes at Queen's Beach. 7 a.m. honolulumarathon.org.

DECEMBER 10 HAWAII KAI HOLIDAY BOAT PARADE

Head on over to the Hawaii Kai Towne Center, grab a seat and watch the 25th annual Christmas Boat Parade as the elaborately decorated boats make their way around the marina. Live music usually begins at 4:30 p.m. Parade begins around 6 p.m. hawaiikaitownecenter.com.

DECEMBER 10-11 MELE KALIKIMAKA MARKETPLACE

The 6th annual gift-show aims to be your one stop shop for all your holiday shopping needs. Offering everything from books, apparel, jewelry, pre-packaged gift baskets, local gourmet gifts and year-end inventory specials from varied distributors, there will be plenty to choose from and live entertainment. Blaisdell Expo Hall. \$5 entry. Sat. 10 a.m. – 8 p.m., Sun. 10 a.m. – 5 p.m. melekalikimakamarketplace.com.

DECEMBER 10-11 HOLIDAY WELLNESS & METAPHYSICAL EXPO

Don't rush away when you're done Christmas Shopping. The Hawaii The Holiday Wellness and Metaphysical Expo is setting up right next door for the first time in Hawaii! The Expo will provide a safe space and welcoming atmosphere for everyone to come together and rejuvenate themselves, featuring hand-picked international speakers providing educational talks and discussions, along with workshops ranging from breathwork, quantum energy and sound healing, psychic sessions, meditation, morning yoga, and more. Admission is free. 10 a.m. – 5:30 p.m. Blaisdell Hawaii Suites. wellnessandmetaphysical.com.

DECEMBER 11 ALII SUNDAY

Kawaiahao Church celebrates select Hawaiian Royalty (Alii) who are of particular importance for the Church by holding seven special Sunday services in their honor around their birthdays throughout the year. Today they celebrate Kamehameha V. 9 a.m. kawaiahao.org.

DECEMBER 11 HONOLULU MARATHON

With around 25,000 runners each year, the Honolulu Marathon is the 4th largest marathon in the US. This year marks the 47th anniversary of the race that has so many runners from Japan they make it large enough to compete with the Boston Marathon and usually comprise around 60% of the total runners. The gun goes off at 5 a.m. at Ala Moana Beach Park. Prepare for a day filled with closed roads and traffic delays. honolulumarathon.org.

DECEMBER 14 - 18 • ROBERT CAZIMERO'S FULL MOON CONCERT DINNER AT CHAI'S

In honor of the Christmas season, Robert Cazimero's monthly concert series at Chef Chai's

has been extended to five days (two of which were already sold out at press time). Enjoy a four course dinner and a special performance by Robert Cazimero and his hula dancers. Dinner at 5:30 p.m., show at 6:30 p.m. \$99. chefchai.com.

DECEMBER 15 - 18 THE COMMODORES

One of the greatest Motown and R&B/funk artists of all time is coming to Hawaii for four nights to perform some of their biggest hits from over the decades. 8 p.m. Tickets \$85-\$125. bluenotehawaii.com.

DECEMBER 16-18 WAIKIKI CUP

Introducing the first-ever Waikiki Cup, brought to you by the former Hawaii Open team. This three-day men's and women's professional tennis event will be held at Fort DeRussy Beach Park Tennis Center. This three-day event features opportunities to mix and mingle with the pros. Players include Japan's Kei Nishikori and American's Mackenzie McDonald, Claire Liu, and CoCo Vandeweghe. Former World No. 11 Sam Querrey makes his debut as an analyst during the LIVE televised and streamed matches on the Tennis Channel and other networks around the world. waikikicup.com.

DECEMBER 18 ALII SUNDAY

Kawaiahao Church celebrates select Hawaiian Royalty who are of particular importance for the Church by holding seven special Sunday services in their honor around their birthdays throughout

the year. Today they celebrate Princess Bernice Pauahi Bishop. 9 a.m. kawaiahao.org.

DECEMBER 22, 23 & 25 DIAMOND HEAD CLASSIC

This 11th annual college basketball tournament will consist of eight teams competing in twelve games over three days in a traditional bracket format. This years teams include IONA, SMU, Seattle U, Utah State, George Washington, Pepperdine, Washington State, and of course, UH. Tickets: \$10-\$125. Stan Sheriff Center. diamondheadclassic.com.

DECEMBER 24 • HAWAII BOWL

The Easy Post Hawai'i Bowl Hawaii Bowl will pit a team from Conference-USA against a team from the Mountain West. Clarence T.C. Ching Athletics Complex. 3 p.m. thehawaiibowl.com.

DECEMBER 27-28, 30 THE GREEN

The Green was one of the first Hawaiian reggae bands to tour extensively on the mainland in the past decade, and in the past 13 years, they have become one of the most successful reggae bands in the country. Two shows nightly. 6:30 p.m. and 9 p.m. Tickets \$65-\$85. bluenotehawaii.com.

DECEMBER 29 • JEREMY PIVEN

One of the most followed live comedy performers around, "Entourage," actor, comedian and podcast host, Jeremy Piven is coming to Hawaii. Two shows nightly. 6:30 p.m. and 9 p.m. Tickets \$40-\$50. bluenotehawaii.com.



EXPERIENCE OUR NEW SEA LION ENCOUNTER

\$89.99 PER PERSON

FEED, TOUCH, AND INTERACT WITH A CALIFORNIA SEA LION. HAVE A FUN, EDUCATIONAL, AND PERSONAL EXPERIENCE WITH THESE FASCINATING ANIMALS.

CALL 808-259-2500 TO BOOK OR VISIT SEALIFEPARKHAWAII.COM

THE WHALES ARE BACK!

Every winter, thousands of humpback whales travel to the warm, shallow waters of Hawai'i to mate, give birth, and raise their young.

WHALES GUARANTEED
December 1st - March 31st
or ride again free!
(for information sake apply)

**HILTON PIER
KEWALO HARBOR
WAIKAI HARBOR**

We answer 24 hours a day!
808-234-SAIL
(Toll Free)

Hawaii Nautical hawaiinautical.com

BREAK'N ANGER
HAWAII'S FIRST AND ONLY
RAGE ROOM
SMASH LAB
& **SPLATTER ART STUDIO**

Come down and smash away your frustrations in one of our Smash Labs or discover your creative side in our Splatter Art Studio.

808-888-2630
1008-A KAWAIAHAO ST, HONOLULU PBT4
WWW.BREAKNANGER.COM

WAIKIKI BAPTIST Church
Your Church in Waikiki
424 Kuamo`o St
(Near the Ambassador Hotel)
Sunday Worship Services
9:00 AM - Contemporary
10:45 AM - Traditional
(808)955-3525
WaikikiBaptist.com

tbd
BY VIKRAM GARG

What started as a pop-up in 2019 has quietly become a permanent fixture in Honolulu's restaurant scene with extraordinary reviews. Chef Vikram Garg held a small gathering to introduce a handful of properties to the restaurant that haven't been there before. He introduced their new lounge menu and sampled some of their fall flavors. (Pro tip: If you like fondue you have to head to the lounge and check out his cheese-bacon fondue for yourself. So good!) Wednesday through Sunday from 5 - 9 p.m. tbdhawaii.com





How are you going to ring in the New Year? We know you're already being asked what the options are, so we've done our best to try find some early info for you. Remember every restaurant in town has a special menu or hours so be sure to call ahead. We found a handful of events, but not all of the details have been finalized yet, and many haven't been announced yet. Hopefully this gives you a head start!

Concerts

Bill Maher Live!



Don't miss Bill Maher's 11th annual NYE show in Hawaii. Bill Maher's NYE shows are often

joined by some exceptional surprise guests. This year's announced special guests include "The Meanest Man in Comedy," Jeff Ross and the "Best Female Stand-up Comedian," Wendy Liebman. Past unannounced appearances have been made by Sean Penn, Michael Moore, Eddie Vedder, Woody Harrelson, Paul Simon, and Bonnie Hunt. There's only one way to find out who stops by this year! Tickets: \$49.50 - \$199.50. Waikiki Shell. 8 p.m. ticketmaster.com.

The Green NYE Show

Hawaii's own The Green is going to bring in the New Year with two special shows at Blue Note Hawaii. 8 p.m. and 11 p.m. Tickets \$75-\$95

Tom Segura

Funnyman Tom Segura is returning to Hawaii again with his wry observational humour, and his well written and defined standup comedy routine that is relatable, smart, and sometimes ridiculous. His podcasts are two of the most popular comedy podcasts around these days. Tickets: \$69-\$150. Hawaii Theatre. 7 p.m. hawaii theatre.com.

Parties

We're Having a Disco Ball

Celebrate NYE 2023 on the pool deck of the Alohilani Hotel. Hosted by Star1019s Flash, the event will feature Red Bull National DJ Evil One, Local DJs include Keala Kennely, Jimmy Taco, XL & more. Other entertainers include Candi Shell, Roller Girl, Jonah Face & some special

surprises. VIP & Cabanas available. 8 p.m. - 2 a.m. 21+ only. Tickets at eventbrite.com and AlohilaniResort.com.

POP! FIZZ! CLINK!

Why go to one party, when you can go to six! Ring in the New Year in style from the Grand Lanai at International Market Place where you can "Pop, Fizz, Clink" and party hop around multiple parties hosted by your favorite restaurants on the Grand Lanai. Enjoy complimentary champagne and passed appetizers for the first hour and a complimentary champagne toast at midnight. Each restaurant will offer a no-host full bar and specialty lite bite tasting menu options all night, as well as a variety of live entertainment so you can

dance the night away under the stars. Satellite bars throughout the Grand Lanai allow ticket holders the option to sip libations outdoors under the stars while enjoying live entertainment by a well known name I am not allowed to say! Tickets required. 9:30 p.m. - 2 a.m. shopinternationalmarketplace.com.

THE GREAT GATSBY

The Moana Surfrider will be hosting a Great Gatsby Party. \$50 admission fee for non-guests includes one drink. VIP packages available. 6 p.m. - midnight. beachhousewaikiki.com.

At Sea

STAR OF HONOLULU

Ring in 2023 with Star of Honolulu's New Year's Eve Midnight Cruise. Enjoy live entertainment, dancing, New Year's Eve party favors, and amazing views of the city lights and fireworks show. Packages start at \$99. starofhonolulu.com.

Midnight Rock-A-Hula

ROCK-A-HULA

Countdown to the New Year in the heart of Waikiki with Rock-A-Hula's New Year's Eve Luau & Show. Packages start at \$79. rockahulahawaii.com.

DOCTORS OF WAIKIKI STATE-OF-THE-ART MODERN AND NEWEST URGENT CARE IN WAIKIKI

808.922.2112 | doctorsofwaikiki.com

Call to request courtesy complimentary transportation **FREE**

Offering ALL 5 TYPES of FDA/EUA Approved Tests for COVID-19

Currently only Medical Center on Oahu offering Abbott Rapid Covid-19 test with results ready in 20 minutes

SERVICES INCLUDE:

- Courtesy complimentary transportation
- House/Hotel room calls
- Diagnosis and treatment of illness and injuries
- Contracted pre-employment physicals
- Drug screenings
- Immunizations for adults



Dr. Alan Wu, M.D.



Dr. Tony Trpkovski, M.D.









- Largest most full staffed urgent care in Waikiki
- Immigration medical examinations
- Qualified and experience English, Japanese, Chinese & Korean speaking client service representatives
- No appointment needed (walk-in urgent care)
- All major insurance and major credit cards accepted

HOURS OF OPERATION: 8:00AM-12:00AM (OPEN DAILY)

Sheraton Princess Ka'iulani Hotel ground floor • 120 Ka'iulani Avenue, #KW10 & 11, Honolulu, HI 96815 • 808.922.2112 • info@doctorsofwaikiki.com



www.MeleKalikimakaMarketplace.com

The 6th annual Mele Kalikimaka Marketplace returns to the Blaisdell Exposition Hall on December 10th and 11th. Honolulu's one-stop local holiday shop for made-in-Hawai'i products, holiday gifts, and crafts is a 2-day shopping extravaganza featuring over 300 vendors showcasing locally made products, local food items, gifts, books, and apparel. Expect local gourmet gifts, prepackaged gift baskets, jewelry, crafts, and other consumer goods, and year-end inventory specials from manufacturers, distributors, wholesalers, retailers, and more. This pop-up holiday shop will also offer festive activities, including Candy Land and the Ben Franklin Make and Take Crafts.

Vendors include artists such as Lisa Menor Miller of Handwritten Aloha, a boutique art and calligraphy design studio. She showcases italic-style calligraphy in oil, acrylic, watercolor painting, resin art, note cards, and planners on handmade paper. Lisa learned this calligraphy style while hanging out in the art room after school. In 2003 Lisa was introduced to plein air painting with oil and acrylics by well-known Hawai'i artist Mark Brown. In the years following, she continued to paint and practice, broadening her capacity through art, watercolor, and calligraphy workshops. Handwritten Aloha is the result of her love for her craft.

DoiandD'Angelo is Dexter Doi, and Carol D'Angelo, a husband and wife fine art team, will be another vendor at the Marketplace. The team has been creating a variety of products that begin as artwork. Formed in 2008 with just two tote bags, D&D has expanded to put their artwork on tee shirts, clutches, towels, pillow covers, art cards, prints, and women's tops.

The Mele Kalikimaka Marketplace is a joint venture which began in 2014 between Pacific Expos and Special Events Hawai'i, who promoted and produced the Made in Hawai'i Festival for 26 years, so you have an idea of what to expect here. They partnered to make the Mele Kalikimaka Marketplace Hawai'i's premier local holiday shopping emporium.

Admission is \$5 for adults, and \$4 for students, military, and seniors 60 and over. Children 12 years and under are free with a paid adult. Open December 10th from 10 a.m. – 8 p.m. and Sunday, December 11th from 10 a.m. – 5 p.m. For a complete list of vendors participating in the event, go to MeleKalikimakaMarketplace.com.



Pictures from the Hawaii Food & Wine Festival



Chef Jon Matsubara from Feast and Adam Richman



Chef Grant MacPherson from ScotchMyst



Hawaii Convention Center GM Teri Orton with Kent Torrey from the Cheese Shop in Carmel, California



Kani Ka Pila Grille's Chef Dean Kamiya, Chef Alan Wong and Chef Colin Hazama

Braida Wines and Friends at HWWF



Italy's winemakers from Braida loved the festival. Hawaii folks pictured: Chef Vikram Garg, Dara Lum, Erika Kaufmann and Arancino's Alessandro Bolla

HIFF Kick Off at the Halekulani



HWWF wasn't the only event last month. HIFF was another huge success. Executive Director Beckie Stocchetti kicked off the event at the Halekulani.



Looking for a few extra hours? Do you have friends not back at work yet or looking for jobs? Whatever the case may be here are a few companies actively looking.

KO'ULA, WARD VILLAGE

KO'ULA Ko'ula, Ward Village's newest luxury condominium is now seeking concierge professionals to join our family to aid in anticipating needs, exceeding expectations and delivering first class services to our local, national and international residents. Preferred experiences: Language, hotel, condo, security. Pre-employment drug screen & background check required. Starting: \$19.00 - \$22.00/hour. Part and Full time positions available. Weekends, nights and holidays required. This is an on-site, non-remote position. Please email resumes to: admin@koulawardvillage.org

BAREFOOT BEACH CAFE

is hiring all positions for its oceanfront restaurant on Queen's Surf Beach. Looking for a Dish/Prep Cook Line Cook, Cashier/Server, and General Manager. Please send your resume and a short summary about yourself to: HireMe@BarefootBeachCafe.com.

ORIGINAL MAGOO'S PIZZA

is hiring all positions for its new dine-in location in Kaimuki. Pizza Cook, Dish/Prep Cook, Line Cook, Cashier/ Server, Bartender, Please send a resume and short summary about yourself to HireMe@OriginalMagoosPizza.com.

That's Entertainment

HOTELS

'ALOHILANI RESORT 922-1233
 • **Daily** - Fish Feeding 10:30am & 2:30pm *O Bar*
 • **Daily** - Live Music 6:30-9:30pm *Swell Bar*
 • **Daily** - Light Monument Video Art Series 7-9pm *Swell Bar*
 • **SunWedSat** - Tank Talk 9am. *O Bar*

HALEKULANI 923-2311
 • **Daily** - Music & Hula 5:30-8:30pm *House Without a Key*
 • **TWThFS** - Live Jazz 8pm - 12am, *Lewers Lounge*
 • **Sun** - Sunday brunch w/Noly Paa on piano 9:30am - 2pm
HILTON HAWAIIAN VILLAGE 949-4321
 • **Fri** - Fireworks revert to the Fall/Winter time of 7:45pm
 • **SunMTWTh** - Live entertainment, *Tapa Bar*. 7-10pm
 • **FriSat** - Live entertainment, *Tapa Bar*. 8-11pm

HYATT REGENCY WAIKIKI 923-1234
 • **Daily** - Live music at SWIM 5-8pm
 • **MWed** - Farmer's Market from 4-8pm
 • **Mon-Fri** - Cultural Programs at the Ho'okela Culture Center
 • **TTh** - Walking Tour thru parts of Waikiki at 10am
 • **TTh** - Live Hawaiian music at Pualeilani Atrium, 4-6 pm
 • **FSSun** - Live music at SHOR 5:30-8:30pm

KAHALA HOTEL & RESORT 739-8888
 • **Mon** - Free kapala stamping at The Veranda at 10am
 • **Tues** - Free lauhala weaving at The Veranda at 10am
 • **WFSat** - Free lei making at The Veranda at 10am
 • **Thurs** - Free hula dancing at The Veranda at 10am
 • **ThFSat** - Live entertainment at The Veranda from 6-8pm.
 • **FriSat** - Afternoon Tea at The Veranda at 2pm & 3:30pm
 • **Daily** - See the interactive dolphin programs every hour

LUANA WAIKIKI HOTEL & SUITES 955-6000
 • **MWF** - Enjoy live music and hula on the Mezzanine 5-6pm

MOANA SURFRIDER 922-3111
 • **Daily** - Live music at The Beach Bar, 4:30-6:30pm, 7-10pm
 • **WThFSSu** - David Swanson at Vintage 1901, 5:30-9:30pm
 • **SatSun** - Afternoon Tea at the Veranda, 11:30am - 2:30pm

OUTRIGGER WAIKIKI BEACH 923-0711
 • **Daily** - Live music at Duke's 4-11:30pm, Sat/Sun from 10am
OUTRIGGER REEF WAIKIKI BEACH 923-3111
 • **Daily** - Live Hawaiian music at Kani Ka Pila Grille. 6-9pm

PRINCE WAIKIKI 956-1111
 • **ThFSSu** - Live music at 100 Sails from 6-8pm
 • **FSSu** - Live music Hinana Bar from 5-7pm
 • **Sat** - DJ Jem poolside from 2-5pm

SHERATON PRINCESS KAIULANI 922-5811
 • **Daily** - Live music poolside 6-9pm. DJ from 3-6pm.

THE ROYAL HAWAIIAN 923-7311
 • **Daily** - Live Hawaiian music at the Mai Tai Bar. 11am-2pm
 • **TWFSu** - Live Hawaiian music at the Mai Tai Bar. 6-9pm
 • **MTh** - Live Hawaiian music at the Mai Tai Bar. 8-10pm

TURTLE BAY RESORT 293-6000
 • **Daily** - Live music at The Pointe Pool Bar, 4-7pm
 • **Daily** - Live music at Off the Lip, 7pm
 • **Daily** - The Stable at Turtle Bay offers a variety of experiences

WAIKIKI BEACH MARRIOTT RESORT 922-6611
 • **Daily** - Live music, Queensbreak Restaurant 5:30-8:30pm

FARMERS MARKETS

WBW OPEN MARKET
 • **Mon** - Set up on the Plaza at Waikiki Beach Walk. 4-8pm.

HYATT REGENCY FARMERS MARKET 225-4002
 • **MonWed** - Hyatt Regency 1st floor waterfall atrium 4-8pm

HAWAII FARM BUREAU MARKET 848-2074
 • **Wed** - Set up on the Blaisdell Concert Hall Lawn 4-7pm.

ALOHA HOME MARKET 225-4002
 • **Thurs** - Pool Terrace Sheraton Princess Kaiulani 3-9pm.
 • **Sun** - Ala Moana Mall Level 2 parking by Macys 9am-2pm.

HALE'IWA FARMERS MARKET 388-9696
 • **Thurs** - Located at Waimea Valley. 2-6pm

MAHIKU FARMERS MARKET 225-4002

• **Thurs** - Bottom level International Market Place 4-8pm.

KCC FARMERS MARKET 848-2074
 • **Sat** - Kapiolani Community College 7:30 - 11am

KAKA'AKO FARMERS MARKET 388-9696
 • **Sat** - 919 Ala Moana Blvd & 210 Ward Avenue. 8am-12pm

PEARLRIDGE FARMERS MARKET 388-9696
 • **Sat** - PearlrIDGE Mauka by Macy's. 8am-12pm

KAILUA FARM BUREAU MARKET 848-2074
 • **Sun** - Kailua Town Center. 4-7pm

KAILUA TOWN FARMERS MARKET 388-9696
 • **Sun** - Enchanted Lake Center by Kailua Cinema. 8am-12pm

ATTRACTIONS

FOSTER BOTANICAL GARDEN 768-7135
 • **Daily** - Hawaii's oldest Botanical Garden in the midst of downtown open 9am - 4pm. \$5/\$1 keiki (kama'aina \$3)

• **Daily** - Free docent-led tours at 10:30am. Reservations rec.

HONOLULU ZOO 926-3191
 • **Daily** - The Zoo is open from 10am - 4pm. Last Entry at 3pm. GA \$19 adult/\$11 keiki (kama'aina \$8/\$4).

• **Sat** - Explore the Zoo after the gates close 5:30-7:30pm.

KUHIO BEACH HULA SHOW 843-8002
 • **WSat** - Free hula show 6:30 - 7:30pm Kuhio Hula Mound

WAIKIKI AQUARIUM 923-9741
 • **Daily** - The Aquarium is open from 9am - 4:30pm. GA \$12 adult/\$5 kids (kama'aina \$8).

• **1st3rdTue** - Hawaiian Plant Tour. 1:30pm. Free w/admission

MUSEUMS

BISHOP MUSEUM 847-3511
 • **Daily** - The 15-acre campus offers guests a chance to learn about the cultural and natural heritage of Hawai'i and the Pacific across three different exhibition buildings. Daily planetarium shows, a highly unique native Hawaiian botanical garden, and more. 9am-5pm.

HAWAII STATE ART MUSEUM 586-0900
 • **Mon-Sat** - 'Museum Interpreters' on-site to provide visitors with basic information about the museum and artwork. Special evening events as listed below. Open 10am - 4pm.
 • **1stFri** - Live entertainment and food vendors. 6-9pm
 • **2ndFri** - "Vibe" Jazz performances & food vendors. 6-9pm
 • **4thFri** - Hawaiian music night. 6-9pm
 • **3rdSat** - Family Arts & Crafts Day 11am - 3pm

HONOLULU MUSEUM OF ART 532-8726
 • **ThFSSu** - Tour & Talk Story 11am. Free with admission.
 • **ThFSSu** - Highlights tour 2pm. Free with admission.
 • **FSat** - HoMA Nights, open until 9pm. Free with admission.

HONOLULU FIRE MUSEUM 723-7167
 • **3rdSat** - Free one-hour guided tours through various exhibits with a firefighter recounting HFDs history the 3rd Saturday of every month. 9am - 2pm on the hour. 620 South Street. Reservations required. Book online: fire.honolulu.gov then hit the submit request button and click museum tours.

IOLANI PALACE 522-0832
 • **TThS** - Audio tours available from 9am - 4pm
 • **WTh** - Docent-led tours available from 9am - 4pm
 • **EveryOtherWed** - He Mele Lahui Hawaii with Ku'uipo. 9am
 • **Fri** - Royal Hawaiian Band. Free. 12-1pm
 • **SunMon** - Museum Closed

LUCORAL MUSEUM 388-8905
 • **Daily** - Learn how to plan your jewelry project and more in these beaded jewelry workshops. Open by appointment only.

HAWAIIAN MISSION HOUSES 447-3910
 • **TW** - Docents lead tours through the oldest existing frame house in the Islands. 11am, 12pm, 1pm and 2pm
 • **ThFSat** - 11am, 12pm, 1pm, 2pm and 3pm tours
 • **TWThFSa** - Gift shop open 10:30am - 4pm

PEARL HARBOR AVIATION MUSEUM 441-1000

• **Daily** - Vintage aircraft in battlefield hangars at Pearl Harbor, outdoor exhibits, flight simulators, and the Bob Hope: An American Treasure Exhibit. Shuttle & Tickets at USS Arizona Memorial Visitor Center or PearlHarborAviationMuseum.org.

SHOPPING CENTERS

ALA MOANA CENTERSTAGE 955-9517
 • **Daily** - Hula Show, 5pm.
 • **EveryOtherWed** - Royal Hawaiian Band. 11am.
 • **Every2nd&LastFri** - Night Market Food Truck and Craft Fair corner of Atkinson Drive and Ala Moana Boulevard. 4-9pm.
 • **Sat** - Local entertainment, 3pm.
 • **Sun** - Keiki Hula Show, 1pm.

HALE'IWA STORE LOTS 203-5700
 • **Sat** - Live Hawaiian entertainment from 2-4pm

INTERNATIONAL MARKET PLACE 921-0536
 • **MWF** - Ceremonial sunset lighting of Lamaku Torch Tower
 • **MWF** - Sunset Stories Hula Show, 7pm. *Queens Court*
 • **Thurs** - Mahiku Farmers Market. 4-8pm. *Banyan Court*
 • **1stTh** - Royal Hawaiian Band. Free. 11am. *Queens Court*
 • **1stSaSu** - Island Crafters Market. 11am-5pm. *2nd level*
 • **1st3rdSu** - Free Yoga Class. 10-10:45am. *Queens Court*

ROYAL HAWAIIAN CENTER 922-2299
 • **Daily** - Heritage Room/Cultural Videos, *Helumoa Hale*
 • **Mon** - Free Ukelele Lessons 11pm, *Helumoa Hale*
 • **Tues** - Free Hula Lessons 11am, *Royal Grove*
 • **Wed** - Free Lauhala Weaving 11am, *Bldg A, Level 2*
 • **Thur** - Free Keiki Hula Lessons 12pm, *Royal Grove*
 • **Fri** - Free Lei Making Class 12pm, *Bldg A, Level 2*
 • **Sat** - Hula Kahiko 5:30pm, *Royal Grove*
 • **TWThF** - Live Hawaiian Entertainment 5:30pm, *Royal Grove*

WAIKIKI BEACH WALK waikikibeachwalk.com
 • **Daily** - The Ukulele Store offers free lessons at 4:30pm
 • **Mon** - Open Market 4 - 8pm
 • **Tues** - Ku Ha'aeo Hula Show. 4:30-6pm. *Plaza Stage*
 • **Wed** - Free feather lei making 11am, 2pm. *Royal Room*
 • **Sun** - Free hula lessons, 9-10am

conciierge
 DISCOUNTS

BALI OCEANFRONT
 20% off all Food & Beverage. Hilton Hawaiian Village, 941-2254.

GUAVA SMOKED
 20% off food and drinks with hotel ID. 567 Kapahulu Ave, 2nd floor. Entrance/parking on Campbell Ave. 913-2100

HAWAIIAN MISSION HOUSES
 Free tour with hotel ID. 553 S. King Street. 447-3910.

IOLANI PALACE
 Free Admission with hotel ID. GA \$30. Kama'aina \$19.95. 364 S. King Street, Reservations Required. 522-0832.

MAUI DIVERS JEWELRY
 35% discount off purchases made at the Design Center and 20% at all stores. Must show hotel ID for discount. 1520 Liona St. 946-2929.

RUTH'S CHRIS STEAK HOUSE
 Complimentary Appetizer valued up to \$22 with the purchase of 2 entrees. Waikiki Beach Walk, 440-7910. Restaurant Row, 599-3860.

You will be required to show Hotel ID or business card to claim offer. Magazine not needed. Simply mention offer when presenting hotel ID. Discounts available to Guest Service Professionals ONLY. Not valid with other promotions or special offers. A minimum 18% gratuity on original order requested for all food offers.

The Oahu Concierge is printed monthly and direct mailed FREE to all Oahu Concierge, Hospitality & Activity Professionals.
Subscriptions available to non-industry at \$25 per year.

C O N T A C T
Davis Media
Ph: (808) 225-8229

Facebook: www.facebook.com/OahuConcierge

ADDRESS & NAME CHANGES / ADDITIONS
We do not take changes via telephone. All changes to mailing list **must be submitted in writing** by the 16th of the month to make the next issue, email is preferred.

S T A F F

PUBLISHER & EDITOR **Pam Davis**
publisher@oahuconcierge.com

DESIGN
Coreiya Design

The Oahu Concierge
4348 Waialae Avenue, #185
Honolulu, Hawaii 96816

PRSR STD
US Postage Paid
TRADE MEDIA HUI



MORE CHEFS MORE FLAVOR

BANZAI BURGER

CRACKIN' KITCHEN

EATING HOUSE 1849
by Chef Roy Yamaguchi

HERRINGBONE

KONA COFFEE
PURVEYORS

KUHIO AVE FOOD HALL

LA PINA CANTINA

LILIHA BAKERY

MITSUWA MARKETPLACE
Japanese Market

MOANI WAIKĪKĪ

SKYBOX TAPHOUSE

SHOREFYRE

STRIPSTEAK WAIKĪKĪ
by Chef Michael Mina

UNCLE SHARKII POKE BAR



HAPPY HOUR 3-6PM DAILY
at participating restaurants

GRAND LĀNAI
INTERNATIONAL MARKET PLACE

2330 Kalākaua Avenue, Waikīkī