

Concierge

KEEPING THE HOSPITALITY INDUSTRY INFORMED SINCE 1998

Remembering Pearl Harbor Honoring the Past, Inspiring the Future

Online Voting *Begins*



One single word, Pearl; can bring up a memory to survivors and to three or four generations of their family that followed. Teachers, ministers, hotel front desk clerks, just about anyone you ask has a story or a piece of Pearl Harbor history in their memory bank. For many Hawaii visitors, from another country or too young to remember, this becomes what's called a "teaching and learning moment."



HONORING THE PAST, INSPIRING THE FUTURE

From December 1st through December 11th dozens of events will honor the brave heroes, the survivors, both the military and the civilians -- husbands, sons, wives and the freedom each of them fought for as we commemorate the 75th anniversary of that fateful day. The President of the United States is planning to attend, joined by many other dignitaries -- the most important of all -- the few remaining survivors who were defending freedom seventy-five years ago.

Being on the front line of Hawaii's visitor industry, it is a time to ask family to share their story. Then, remember the stories they tell and share them with visitors, many of whom only know "Pearl Harbor" from the story in a movie. The real details of the attack and the battle with ships and planes and bombs and guns has been told and re-told in epic movies and even in television series. This anniversary month presents an opportunity to hear real stories from the source.

What visitors may not know, what many residents don't know, is the history of the harbor. There really were pearl oysters. Some of the Royals wore jewelry made with the "pearls from the harbor." Until the ships needed a safe mooring, the waters were sheltered and pristine and a playground for the "royals", the Ali'i and the maka'ainana, the citizens of the islands. As Hawaii

grew, so did the population. Chinese, Japanese, and other Pacific Islanders came, some to open small stores, some to work plantations, farming and growing sugar cane. They were good citizens, happy to be part of the community of residents. Few had any idea that these islands would attract world travelers. These transplants eventually became "American." Many who know history say that without the determination of the Chinese and Japanese, Hawaii would have gone to some other world power; never growing to the community it is today.

One special event, Monday, December 5th will honor Japanese American Veterans. It will be held at the Hawaii Convention Center and attended by many of the remaining AJA veterans of the war and members of their families. The tribute luncheon will include addresses by Hawaii's Governor David Ige and former Governor George Ariyoshi. These AJA veterans served in the 100th Infantry Battalion

Continues on page 2.

It's Concierge of the Year time! For the 16th year in row, you guys get to choose from the 12 people you selected throughout the year who will take home top honors as Concierge of the Year with plenty of bragging rights and a basket full of goodies. And for the 16th year in a row, I am hard at work trying to figure out how to outsmart those of you that persist in trying to stuff the ballot box.

For years I have sat on the floor surrounded by hundreds and hundreds of pieces of paper, going through ballot after ballot, looking for duplicate names, or people that took all the unused copies from the mailroom and "pretended" to sign it, using the same handwriting or misspelling on dozens of copies. I'm sure a few of them got through here and there, but I'm confident I caught most of them, and all those people ended up doing is wasting my time and ticking me off. I even had someone fill out a ballot for someone who had passed away and sent it in. That was just wrong.

Let's review the rules. There is only one vote per person. The only people eligible to vote are those that get their own subscription to the publication. Groundskeepers, maintenance guys, engineering, your guests, or even your friends, are not eligible to vote. We love them all, but if they do not have their own subscription, their vote does not count.

So now it's time to change with the times, and we're going to try a new way of voting. Our new website is not quite finished yet, but we will launch it, finished or not, when voting goes live on November 30th. The system will recognize email addresses and ISP addresses and limit each one to a single vote, and once again I will go through every ballot to make sure. I'm proud of this contest, and I'm proud of each and every nominee over the years. Let's put the petty games away this year and celebrate them all. oahuconcierge.com.

TABLE OF CONTENTS

Yada Yada Yada	2
Newsflash	3
Arts with Aloha	4
Concierge of the Year Ballot	6
New Years Eve Countdown	10
Chef's Corner: Sheraton's Chef Daniel Delbrel	11
E Pili Kakou	12-15
Calendar	16-17, 19, 21
Chinatown's Second Saturday	18
Paparazzi: Ala Moana Holiday FAM	20
Honolulu City Lights	21
That's Entertainment	22
GSA of the Month: Sharleen Tacazon	23

W WOLFGANG'S STEAKHOUSE
 LUNCH • ALL-DAY HAPPY HOUR
 DINNER 'TIL MIDNIGHT • WKND BRUNCH
 Royal Hawaiian Center • wolfgangsteakhouse.net
 808.922.3600



Publisher's Letter



Mele Kalikimaka

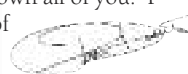
Hard to believe another year has almost passed us by. 2016 is winding to an end and I am not ready. It has been one of the busiest years ever, for many of us, thank to the fact that tourism is booming. The HTA released a report earlier this month that stated Hawaii enjoyed its best September ever for visitor arrivals and spending. Great news for all of us, but definitely one of the many reasons we've all been so busy.

Busy enough that it seems I have dozens of projects half finished all over the place. One of those is my website. The subscription link broke in the one I have up over a year ago. My web designer moved to the mainland with out a trace and I haven't been able to change a thing since. I actually hired a new designer to start building a new site 6 months ago, but I was too busy to get her what she needed to finish. However, finished or not, I am going to use the new site to run this year's Concierge of the Year voting. We're getting close to finishing it. I just need to send some of the content she's been waiting for, but realistically, I am not going to get it all to you by the time voting opens, so I ask your patience when we do go live if all of the tabs aren't working yet. Voting will go live on November 30th, and you will have until 11 a.m. December 9th to cast your vote. Just log into our website at oahuconciierge.com, and although the rest of the site may not be live, the voting will be. I hate to say it again, but one vote per eligible person. I will go through every single vote, so I hope you guys don't waste what little time I do have by trying to ballot stuff again. I can promise you if I do see someone doing that year, they won't be welcome at any concierge events any time soon!

Speaking of, we've had a new faces come to these events recently, so I just wanted to put out a gentle reminder to those of you not as familiar with the process as others. Please don't push in line, or cut, and always leave a gratuity if you're sitting down for dinner. Just because the restaurant has been gracious enough to comp you, the server is still hard at work. We're all in the service industry, so I kind of figured it was a no brainer, but I saw a lot of not great behavior at a recent event, so I thought it might be time to remind you all again.

Speaking of events, I'm busy trying to line up a place for our annual Mahalo Party but haven't secured a location in time to announce it in this issue, so stay tuned to Facebook, our website and your email, as I will be making an announcement around the first of the month to let you all know.

Last but not least I wanted to extend my heartfelt holiday wishes to all of you. You guys make my job fun. I'm so fortunate to be able to work with so many wonderful people day in and day out, and take part on all the great experiences we get to go on together and I thank you for that. We're slowly inching up on 20 years, and I'm a better person for having known all of you. I wish each and every one of you a happy, holiday season!



Yada Yada



Tiffany King

Hilton Hawaiian Village Waikiki Beach Resort has promoted **Tiffany King** to director of advertising. She has been working for Hilton since 2005 where she began as a regional advertising coordinator, and most recently worked as their regional marketing manager for Hawaii. • **Sean**

O'Harrow has been hired as the new director of the *Honolulu Museum of Arts*. Currently the director at the Museum of Arts in Iowa, he grew up in Honolulu and will take the charge of the museum on January 1st. He is the first director in the museum's almost 90-year history to have been raised in Hawai'i. • The Hawaii Visitors and Convention Bureau (HVCB) announced that Michelle Drenker has been promoted to director of market insights. Drenker will be responsible for analyzing trends affecting tourism in Hawaii and HVCB programs.

• **Alvin Yeh** was hired recently as the new General Manager of Rumfire and was almost immediately promoted to Director of Restaurants and Bars at the *Sheraton Waikiki*. Many of you might remember Alvin from his time at Pearl Ultra Lounge, or when he was with LEVEL4 in 2008.



Alvin Yeh

He then moved to Vegas to take over VIP Services at the Wynn and work with nightclubs there. It's great to see him return home. • Yet another hotel is about to open. The *Hyatt Centric Waikiki Beach*, part of Hyatt's new, full service lifestyle brand for business and leisure travelers will open at the former Waikiki Trade Center location on December 8th. A few familiar faces are there as **Alex Watson** from the Hyatt Waikiki is their Front Office Manager and **Jackie Minami** moved over from Hotel Renew to work as their Front Office Supervisor.

Remembering Pearl

Continued from page 1

and the famed 442nd Regimental Combat Team. The units were some of the most fierce and most honored units in the war – protecting and defending Hawaii and the United States.

As part of the commemoration, residents and visitors alike are invited to watch some of the epic war films on the big screen at Waikiki Beach. Each movie night will honor a different branch of the U.S. military with a notable film acknowledging the people and heroes from World War II.



Gary Sinise

The first night of films, December 5th, features an opening concert by the co-star of *Forrest Gump*, Gary Sinise, and his Lt. Dan Band. Gary has been quoted saying, "Freedom and security are precious gifts that we, as Americans, should never take for granted. We must do all we can to extend our hand in times of need to those who willingly sacrifice each day to provide that freedom and security. While we can never do enough to show gratitude to our nation's defenders, we can always do a little more". Based on that mind set, he founded the Gary Sinise Foundation in 2011. Fans are likely to set up their beachmats and low-slung beach chairs in the early afternoon. Sinise will fly in on an American Airlines flight on December 3rd, that will carry 120 survivors.

The commemoration of the 75th anniversary of "the day that will live in infamy" has been carefully planned by, and will be orchestrated by leaders of Hawaii's visitor industry, the US military and the business community. Dozens of events, some ticketed, most free, will tell the story of December 7th, 1941. The someplte schedule of events is on page 9. Information on new events, changes, additions and questions about security are updated daily on the web site;

Most of the primary events honoring the survivors do have high security. President Obama will be joined by leaders of many countries but the



The Lt. Dan Band will perform for free on December 5th as part of the Commemorations' Movies on the Beach program

organizers are working hard to make the events inclusive, not restricted to the few, rather, open to the many. Again, check the rules and details before going to an event. Basic rules, all year, are no big bags, small cameras only. Park rangers, guides and informative signage make the tour easy. Take children. It's important. They need to know our history in order to not repeat it.

Many books have been written about Pearl Harbor and the war that changed history forever. Two of the best are "DAYS of '41" by the late internationally known Hawaii reporter and columnist, Ed Sheehan, and contemporary writer Allan Seiden's book, *From Fishpond to Warships - PEARL HARBOR*. Seiden spends three or more days a week at the Pearl Harbor Visitor Center gift shop of the Arizona Memorial talking about his research and the stories still waiting to be learned and told.

Before, during and after the December commemoration, the Arizona Memorial will host an open table. Any visiting survivor or veteran of the war in the Pacific is welcomed to spend time sitting and talking to visitors. It is a place to take a moment to hear a story, share your family story and thank the warrior. Honor bravery every day by visiting the places of history only minutes from Waikiki. The Arizona, the Bowfin, the Pacific Aviation Museum, the Missouri across the water from the Arizona - the "bookends of the war", and the National Memorial Cemetery of the Pacific at Punchbowl. Always Remember. For a complete schedule of events, flip to page 9 or log onto pearlharbor75thanniversary.com. ~ Lynn Cook

EXTRA EXTRA EXTRA *Newsflash*

AULANI LAUNCHES LUAU

There's a new luau in town, focusing on the "wa'a," or canoe. A storyteller will take guests on a journey back to the days when the first voyagers arrived in Hawaii from Tahiti. The show's story is brought to life through music and dance and guests will dine on traditional Hawaiian buffet with a few modern offerings for the less adventurous keiki palates such as mac and cheese, pasta and chicken tenders. Ka Wa's takes place on the Aulani Resort's Halawai Lawn Wednesdays and Saturdays beginning at 5 p.m. \$119, (keiki \$79). 674-6850.

H5 OAHU ECO-TOUR

Hoku Hawaii Tours has updated their eco-tour to feature more of the North Shore of the island. They have discontinued the south shore portion of the tour and the new itinerary includes stops at Greenworld Coffee Farm, Dole Plantation, Haleiwa Town, Tsue's Farm for a SUP/Kayak & lunch, a hike & waterfall swim at Waimea, a drive through the beaches of the North Shore, Byodo-In and the Pali Lookout. For more information, head to hokutours.com.

MORE STORES AT ALA MOANA

Just in time for the holiday shopping season, 5 new stores are opening up at Ala Moana Center including the very first Tory Sport the island has seen on December 16th. Also opening is pop culture novelty store BoxLunch, Rix Island Wear, Roberto Cavalli and luxury candy boutique Sugarfina. alamoanacenter.com

FREE SHUTTLE TO BISHOP MUSEUM

The Bishop Museum launched a free shuttle to and from Waikiki three times a week last month. The Robert's Hawaii minibus seats up to 21 people, available on a first-come, first-served basis. The shuttle will pick up passengers on Wednesday, Friday, and Saturdays at 9:45 a.m. at the Ilikai Hotel flagpole and at the Duke Statue at 10 a.m. The shuttle will then depart the Museum at 12:30 p.m., returning to the Ilikai at 1:00 p.m. and to the Duke statue at 1:15 p.m. For more information on Bishop Museum's free shuttle transportation and schedule, please visit bishopmuseum.org

GET YOUR ICE SKATES ON

'Tis the season, so Ward Villages is bringing back its outdoor community ice skating rink. The Ice Rink will offer a festive open-air skating experience from Nov. 25 through Jan. 16 at the Ward Village Courtyard. Tickets are \$16 per person for an hour and a half skate session, skate rentals included.

MAHALO M

The M Nightclub at Restaurant Row closed its doors last month for renovation in advance of new ownership reopening. Thanks for the memories!

HOMEFRONT HAWAII

In honor of the 75th commemoration of the attack on Pearl Harbor, Bishop Museum will present an original exhibit unveiling the stories of the citizens and civilians of Hawaii who endured that fateful day and the years of aftermath that followed. The exhibit, entitled Homefront Hawaii, will open on December 1st in conjunction with the official programming honoring the 75th Pearl Harbor Remembrance Day, and will remain on display through March 1, 2017 in the Portico Hall in the Hawaiian Hall Complex. Bishopmuseum.com

THE WORLD OF PENGUINS

Sea Life Park celebrates the antics of one of nature's most quirky, and cutest creatures, the penguin, during its December Keiki Sunday event. Penguins: A Black Tie Affair, will take place on Sunday, December 4 from 10 a.m. to 2 p.m. Two children 3-12 years old will receive free entry with each paying adult. Children are invited to get into the spirit of the day by dressing in black and white to pay homage to the penguin with plenty of penguin themed games. Adult admission is \$39.99 kama'aina rates available. sealifeparkhawaii.com.



A BRAND NEW COCKTAIL
+ CULINARY EXPERIENCE

KBG Restaurant & Bar

Stylish locally sourced American cuisine with shared dishes served table side. Home of Waikiki's best selection of whiskey & bourbon in a stunning setting overlooking Waikiki Beach.

Open for Dinner 5 - 10pm
Waikiki Beach Marriott Resort & Spa - Kealahilani Tower 2F
For reservations book on OPEN TABLE or call 808 921 5171

Free validated parking #KBGwaikiki   

Mahalo for your continued support!
JOIN OUR
GUEST REFERRAL PROGRAM



Our program is simple!

For every 25 guests referred,
Ruth's Chris Steak House will send you
a \$50.00 dining certificate.

Please contact Emi Espinda if you have any
questions at eespinda@direstaurants.com

OPEN DAILY FROM 4:30PM

HAPPY HOUR DAILY IN OUR LOUNGE | 4:30PM – 7PM

PRIME TIME MENU DAILY | 4:30PM – 6PM

WINE WEDNESDAYS | 25% OFF BOTTLES OF WINE



Restaurant Row | 808.599.3860
Waikiki Beach Walk | 808.440.7910

WWW.RUTHSCHRISHAWAII.COM   



**SOMETHING NEW.
SOMETHING CLASSIC.**

Open Daily 11am - 10pm

Happy Hour Daily in our lounge 3pm - 6pm & 8pm - 10pm

Vino Thursdays 25% Off Bottles of Wine

**INQUIRE ABOUT OUR
GUEST REFERRAL PROGRAM!**

Our program is simple!

For every 10 complimentary dessert cards redeemed
(WITH YOUR NAME ON THE CARD),

Romano's Macaroni Grill will send you a
\$25.00 dining certificate that may be used
at our Oahu restaurant.

Please contact Emi Espinda if you have any
questions at eespinda@direstaurants.com



Ho'olika Terrace at Ala Moana Center
808.356.8300

WWW.MACARONIGRILL.COM

arts with aloha



All the usual arts & culture suspects are back this December with their holiday offerings but each has a new twist to its old standards that will make this holiday seem familiar and also fresh.

The first twist, even though it's based on a Charles Dickens novel, is not the famed Oliver but rather Ebenezer Scrooge who in addition to his "bah, humbugs" sings in **DIAMOND HEAD THEATRE'S A Christmas Carol, The Musical** which runs December 2nd to 23rd. The musical was written by Alan Menken, who you may remember composed the music for *The Little Mermaid*, *Beauty and the Beast*, *Aladdin* and *Pocahontas*, with lyric by Lynn Ahrens and book by Mike Ockrent and Lynn Ahrens. I find these last two names amusing since didn't Charles Dickens write the book? The original production ran seasonally at Madison Square Garden from 1994 to 2003. The show runs Thursdays, Fridays & Saturdays at 7:30 p.m. Saturday matinees at 3 p.m. and Sunday matinees at 4 p.m. Diamond Head Theatre's holiday productions usually sell out quickly so I suggest calling the box office directly at 733-0274 or go online at DiamondHeadTheatre.com. Don't forget to tell them that Bette Midler once performed there when she lived in Hawaii.

Our next twist does not involve Bette Midler but if it did, tickets sales would skyrocket much like they did when tickets went on sale this fall for her revival of *Hello Dolly* opening at the Shubert Theatre next year. The first day of sales was over 9 million dollars! (I knew I should have invested in that show!) Back to the twist, **BALLET HAWAII** presents its annual *Nutcracker* ballet this year, but to celebrate its 40th Anniversary Season, is presenting an all new *Nutcracker* with an historical Hawaiian theme. Under the guidance of Septime Webre, the recently retired artistic director of the Washington Ballet, the Ballet is re-interpreting this annual favorite and setting it in the Kingdom of Hawaii circa 1858. The tale of Drosselmeyer and the little girl Marie will now occur at Washington Place, the residence of Mary Dominis who was the mother-in-law to the future Queen Liliokalani. Your guests will get a glimpse into the monarchy period of Hawaii. The twists are bountiful in this production. The flowers that dance will be Crown, Hibiscus and Plumeria. The birds will be 'Iwi and rumor has it that a Honu might appear. The toy soldiers will be dressed as the Royal Guard and the waltz of the snowflakes will take place on the slopes of Mauna Kea. New York City Ballet principal dancers Megan Fairchild will return at the Sugar Plum Fairy, and her brother Michael Fairchild, who was nominated for a Tony Award for his performance in *An American in Paris* on Broadway will perform Lohiau (Arabian) and Pueo

(Soldier Doll). Broadway and American Ballet Theatre alum John Selya will return to play Drosselmeyer. (John was nominated for a Tony back in 2003 for *Movin' Out*). There are only three performances December 16th & 17th at 7:30 p.m. and 18th at 2 p.m. Tickets available by phone at 745-3000 or online at ticketmaster.com. Visit BalletHawaii.org for more information. For your guests interested in one of the performances, please tell them that Mary Dominis, who will be played by Ballet Hawaii's artistic director Pamela Taylor Tongg, actually held a Christmas Eve children's party at Washington Place to celebrate Hawaii's first Christmas tree.

Across the street from Washington Palace is **IOLANI PALACE** which was built by King Kalakaua in 1882 to enhance the prestige of Hawaii overseas and to mark Hawaii's status as a modern nation. Today that prestige is celebrated each holiday when The Friends of 'Iolani Palace partake in a unique Palace tradition of evening tours to celebrate the birthday of Queen Kapi'olani who was born on December 31st. This December the special tours will occur on December 28th & 29th. This is a rare opportunity for visitors to step back in time and experience the Palace as it was during the 19th century. Guests will be greeted on the front of the Palace with performances by Ka Pili Mai, Halau O Napuala Ikauika iu led by Na Kumu Hula, Sallie Yoza, and Sam Kaina. Soloists from the Mae Z. Orvis Opera Studio of the Hawaii Opera Theatre will perform in the Blue Room and Keauho, Iwalani Apo w/Michael Pili Pang and Halau Hula Ka Noe'au will perform in the Throne Room while Puamana, Kuuipo Kumukahi and the Hawaiian Music Hall of Fame Serenaders and Kaiao fill the Upper Hall with more Hawaiian melodies. The tours run from 5:30 p.m. to 9:30 p.m. with the last ticket sold at 8:45 p.m. Pre-sale tickets are \$30, day of \$20 for adults and \$10 for children 5-12. Children 4 and under are free, but they must be in a front-held infant/child carrier worn by an adult at all times or safely strapped. Iolani Palace will provide strollers upon request. Personal strollers are not permitted inside the Palace. Guests will be accommodated on a first-come first-served basis. Members of The Friends of 'Iolani Palace will have priority entry. Please note that day time tours will end at 2:00 p.m. in preparations of the evening tours. For more information, please visit IolaniPalace.org or call 522-0832. Rumor has it that a recreation of Queen Kapi'olani's Peacock Gown by Hawaii's historic dress designer Iris Viacrusin will be put on display. The original dress was worn by the Hawaii's Queen to Queen Victoria's Diamond Jubilee Celebration in 1887 in London, which brings us full circle to the setting of *A Christmas Carol, The Musical*. The twists are ever present this holiday in Honolulu arts and cultural scene. ~ Lance Rae



ALERT!

brought to you by
The Waikiki Aquarium

open daily from 9 am - 4:30 pm

December 21-23

Box Jellyfish Window

Teaching Hawaii about jellyfish and other ocean creatures for over a century





Christmas in Polynesia

Dec. 9th to 22nd
(Mon-Sat only, closed Sundays)
starting at 6:30pm

Enjoy the true spirit of the holidays in the islands. Our **Christmas in Polynesia** event is filled with family fun, plus a little snow too. For details, go to PCCOhana.com.

- Christmas Canoe Rides – *Free for Ohana Club Members**
– presented by Pepsi
- NEW** • Winter Wonderland (Snow Days) – presented by Hawaiian Ice
- Live Christmas Entertainment to Dec. 22
- Special train rides for the keiki
- Hukilau Marketplace Scavenger Hunt
- Holiday Sales at the Hukilau Marketplace



Sponsored by



Polynesian
Cultural Center
One Ohana Sharing Aloha

808-293-3333

*Some restrictions apply.



STRIPSTEAK



STEAKHOUSE REIMAGINED

Introducing Chef Michael Mina's evocative and modern steakhouse to your neighborhood, infused with the spirit of Aloha.

As a way to say Mahalo for your continued support, we're introducing...




—THE STRIPSTEAK WAIKIKI GUEST— REFERRAL PROGRAM

For every 50 guests referred, STRIPSTEAK Waikiki will send you a \$100 Gift Card. To join the program please contact events@stripsteakwaikiki.com



PRIVATE DINING

STRIPSTEAK Waikiki is also available for private events, please contact: events@stripsteakwaikiki.com

Follow Us    #StripSteakHI

StripSteak Waikiki at International Market Place
2330 Kalakaua Avenue, Suite 330 Honolulu, HI 96815
www.StripSteakWaikiki.com | 808.800.3094

THE OAHU CONCIERGE'S 16TH ANNUAL

Concierge of the Year Award!

Each of the deserving individuals pictured below were recognized this year as our Concierge, Guest Service Agent, or Activity Agent of the month for their exemplary service. Which one should be named our Concierge of the Year? The outcome is up to you. Voting will be held online this year. **Voting opens November 30th and closes at 11 a.m. December 9th, 2016.**

vote online at OahuConcierge.com

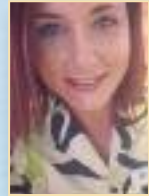
Only one vote per reader. Multiple votes from the same person will result in all their votes being discarded.

January



Cameron Frithsen
The Kahala Hotel

July



Laura Cole
Expedia

February



Roxanne Momohara
The Tour & Travel Company

August



Melissa Majewski
Moana Surfrider

March



Kalei Cardenas
Elite Concierge

September



Deanna Tofa
Turtle Bay Resort

April



Rick Nomura
Outrigger Reef Hotel

October



Antoine Garandau
Trump

May



Laurie Ann Henriques
Royal Hawaiian Hotel

November



Takumi Abe
Hyatt Regency Waikiki

June



Patrick Conception
Holiday Inn Waikiki Beachcomber

December



Sharleen Tacazon
Hale Koa Hotel

OPEN NOV 25—JAN 16



ICE RINK

**THE ICE RINK IS BACK
BETTER THAN EVER**

**ADMISSION — \$16 PER PERSON FOR 90 MINUTES
WARDVILLAGE.COM/ICERINK**

WardVillage.com/icerink #weareward



WARD VILLAGE

Howard Hughes

Hawaiian-Style Holiday Celebrations

Hilton Hawaiian Village presents

WAIKIKI STARLIGHT LU'AU

SUNDAY-THURSDAY
5:30PM

WAIKIKI'S ONLY FIVE-NIGHT-A-WEEK
LU'AU UNDER THE STARS

- ◆ Hawaiian and local cuisine
- ◆ Includes Mai Tai punch and a select beverage
- ◆ Conveniently located in Waikiki

WAIKIKI
STARLIGHT
Luau

Call (808) 941-5828
to make reservations.



For the 10th consecutive Christmas, the Sheraton Waikiki will feature sand sculptures during the holidays. The one pictured above used 24 tons of sand and features Santa the bartender serving up cocktails to his Frosty friends in a RumFire cabana.

Here in Hawaii we may not offer the typical white Christmas so many people are used too, but we take our holidays seriously, and there's plenty of holiday decorations and activities around town to get your Christmas spirit going.

The malls take the holidays seriously. **Ala Moana Center** hasn't retired their iconic Big Santa yet, and hopefully won't anytime soon. New oversized displays of gifts and ornaments will be put up around the mall and Santa moved in last month for holiday photos on Mall Level 2, Ewa Wing in the Bloomingdale's Court. Santa will be there Monday-Saturday from 10 a.m. - 8 p.m. and Sunday from 10 a.m. - 6 p.m. thru December 15th. Hours extend to 9:30 a.m. - 9 p.m. from December 16th - 23rd, and he makes his last appearance Christmas Eve from 9 a.m. - 6 p.m. Pets are welcome every Monday night from 6 p.m. through December 12th. Reservation for photo packages can be made online and include (1) 5x7s, (2) 4x6s, 8 wallets and digital downloads of your images for \$34.99 before 12/8 and \$39.99 afterwards. A holiday hula show will take place daily at 1 p.m. on Centerstage. A limited-edition Big Santa snow globe is this year's gift with purchase with \$500 in Ala Moana Center receipts while supplies last and stores will stay open until 10 p.m. as of the 3rd. AlaMoanaCenter.com

The **International Market Place** will light up their iconic lit banyan tree with festive laser lights throughout the season, and a 2-story tall animated holiday light wall will be displayed on the Grand Lanai each evening every half hour, with extensive holiday décor throughout the center. Find out more info at shopinternationalmarketplace.com.

Santa has a workshop at **Kahala Mall** as well. The mall rolls out its annual Holiday Concert Series every Saturday in December. See Ben & Malia on 12/3, Maunalua on 12/10, Streetlight Cadence on 12/17 and Kupaoa & Mark Yamanaka on 12/23. All from 2 - 3 p.m. There is a gift with purchase if you spend more than \$200, Find the details at kahalamallcenter.com.

Royal Hawaiian Center has a 25-foot tree in the Royal Grove and Santa will stop by Wednesday

December 7, 14 and 21st from 6 to 8 p.m. for free photo opportunities on a first come, first-serve basis. Local musicians will provide a Hawaiian musical backdrop throughout the sessions. Santa will also be roaming A Building every Monday in December for selfie moments with customers. Check royalhawaiiancenter.com for times.

Stop by the **Sheraton Princess Kaiulani** for their annual Gingerbread House display in the lobby. This year they will be partnering with local schools to come up with a special Christmas in Hawaii gingerbread display. Each school will have the opportunity to decorate their own gingerbread houses that will be displayed in the Ainahau lobby. This construction will begin the week after Thanksgiving with the fully decorated display set to unveil the week before Christmas. One lucky school will receive a donation to their arts & crafts program for being the most creatively decorated.

As you can see by the picture above, the **Sheraton Waikiki** will be bringing back their Santa sand sculptures. You can see the one pictured above in the porte cochere and the other sculpture portrays snowmen with surfboards in the hotel's main lobby. They will stay up through early 2017.

Ward Villages takes the holidays to a new extreme with the return of their outdoor community ice rink which will be open through January 16 at the Ward Village Courtyard. Open at 10 a.m. Friday - Sunday, and 4 p.m. Monday thru Thursday, guests can get their skate on for an hour and a half for \$16, skates included. Families and friends are invited to take their annual holiday photos with Santa at his Beach House through December 24th at Ward Entertainment Center, Box Office level. Photo Packages start at \$23, which includes a \$20 promo card with every photo package purchased, compliments from Shutterfly. Pet Night every Tuesday, 5 p.m. to 8:30 p.m. And, to round out the holiday spirit, a holiday-themed light show will play out the IBM Building, every evening throughout the holiday season. Check it out when you head down to hop on the Honolulu City Lights Trolley Tours, December 4-30. Tickets are \$7.75. wardvillage.com. ~ Pam

75TH COMMEMORATION EVENT SCHEDULE

THURSDAY, DECEMBER 1

8:45 – 10:00 a.m.

U.S. Air Force Band of the Pacific Jazz Combo – Papana Performance, Pearl Harbor Visitor Center Lanai

FRIDAY, DECEMBER 2

8:45 – 10:00 a.m.

25th Infantry Band Performance, Pearl Harbor Visitor Center Lanai

9:00 a.m. – 4:15 p.m.

75th Anniversary of Pearl Harbor Symposium with National WWII Museum and Hawaii Pacific University Symposium, HPU at Aloha Tower Marketplace

1:30 – 2:00 p.m.

USS Arizona Memorial Reunion Association Wreath Laying Ceremony, National Memorial Cemetery of the Pacific (Punchbowl)

5:30 – 10:00 p.m.

Activities & Movie (7:30 p.m.) on the Beach – “12 O’ Clock High” (U.S. Air Force), Waikiki Outdoor Theater

SATURDAY, DECEMBER 3

8:45 – 10:00 a.m.

Military Band Performance, Pearl Harbor Visitor Center Lanai

1:00 – 3:00 p.m.

The Swingin’ Blue Stars Performance, Pearl Harbor Visitor Center

3:00 – 5:30 p.m.

Expedition Arizona, Pearl Harbor Visitor Center Theater

6:00 – 10:00 p.m.

“For Love of Country—Pass It On” Opening Gala, Pacific Aviation Museum Pearl Harbor

SUNDAY, DECEMBER 4

8:45 – 10:00 a.m.

Royal Hawaiian Band Performance, Pearl Harbor Visitor Center Lanai

1:00 to 2:00 p.m.

Aerological Tower Dedication, Pacific Aviation Museum Pearl Harbor

2:00 – 4:30 p.m.

“Remember Pearl Harbor” Documentary Film Premiere, Pacific Aviation Museum Pearl Harbor

5:00 – 9:00 p.m.

“Hawaii Remembers” – Block Party, Home of the Brave museum & Brewseum

5:30 – 10:00 p.m.

Activities & Movie (7:30 p.m.) on the Beach – “Run Silent, Run Deep” (U.S. Navy), Waikiki Outdoor Theater

5:30 – 8:00 p.m.

Night at the Museum: VIP Reception & Virtual Reality Premiere, Pearl Harbor Visitor Center

MONDAY, DECEMBER 5

8:45 – 10:00 a.m.

U.S. Pacific Fleet Band Performance, Pearl Harbor Visitor Center Lanai

11:00 – 2:00 p.m.

Fighting Two Wars: Japanese American Veterans Tribute, Hawaii Convention Center

2:00 – 4:00 p.m.

The Swingin’ Blue Stars Performance, Pearl Harbor Visitor Center

3:30 – 6 p.m.

Harbor Tour for Survivors and Veterans, Pearl Harbor Visitor Center

5:30 – 10:00 p.m.

Gary Sinise & Lt. Dan Band FREE Concert (preceding movie), Movie (7:30 p.m.) on the Beach – “From Here to Eternity” (U.S. Army), Waikiki Outdoor Theater

TUESDAY, DECEMBER 6

7:00 – 8:00 a.m.

Blackened Canteen Ceremony, USS Arizona Memorial

8:45 – 10:00 a.m.

U.S. Marine Corps Forces Pacific Band Performance, Pearl Harbor Visitor Center Lanai

9:30 – 11:00 a.m.

8th Annual Ewa Field Battlefield Commemoration, Ewa Plain Battlefield

10:00 a.m. – 5:00 p.m.

Freedom Bell Opening Ceremony & Bell Ringing, USS Bowfin Submarine Museum & Park

10:30 a.m. – 2:30 p.m.

Beneath Pearl Harbor, Pearl Harbor Visitor Center Educational Classroom

2:00 & 4:30 p.m.

Fox Sports Pearl Harbor Basketball Invitational, Princeton vs. California, followed by Seton Hall vs. Hawai’i

3:30 – 4:30 p.m.

Interfaith Prayer Service, USS Arizona Memorial

5:00 – 6:00 p.m.

USS Utah Memorial Sunset Service, USS Utah Memorial

5:30 – 10:00 p.m.

“December 7th Remembered” Gala Tribute, Hilton Hawaiian Village, Coral Ballroom

WEDNESDAY, DECEMBER 7

7:45 – 9:15 a.m.

National Pearl Harbor Remembrance Day Commemoration, Kilo Pier & Live Streaming

7:50 a.m.

Attack on Hickam Field Ceremony & Reception, Atterbury Circle, Hickam AFB

8:00 a.m.

Annual Wreath Presentation, Marine Corps Base Hawaii

11:00 a.m. – 1:00 p.m.

Freedom Bell Ringing, USS Bowfin Submarine Museum & Park

Noon – 1:00 p.m.

75th Anniversary Pearl Harbor Mass Band Performance, Battleship Missouri Memorial

1:00 – 2:30 p.m.

USS Oklahoma Memorial Ceremony, USS Oklahoma Memorial, Ford Island

2:00 & 4:30 p.m.

Fox Sports Pearl Harbor Basketball Invitational, Princeton vs. California, followed by Seton Hall vs. Hawai’i

3:00 – 3:30 p.m.

25th Infantry Division Commemoration Ceremony, Fort DeRussy

4:00 – 5:30 p.m.

Double Interment Service, USS Arizona Memorial

4:30 – 7:30 p.m.

Pearl Harbor Memorial Parade and Public Ceremony, Kalakaua Avenue, Waikiki

THURSDAY, DECEMBER 8

7:00 a.m. – 5:00 p.m.

Freedom Bell Ringing, USS Bowfin Submarine Museum & Park

10:00 – 11:00 a.m.

USS Nevada Remembrance Ceremony, USS Nevada Memorial, Joint Base Pearl Harbor -Hickam

1:30 – 2:30 p.m.

Doris ‘Dorie’ Miller Bust Rededication Ceremony, Doris Miller Housing

5:30 – 10:00 p.m.

Movie (7:30 p.m.) on the Beach “Sands of Iwo Jima” (U.S. Marine Corps) Waikiki Outdoor Theater

8:00 p.m.

Garth Brooks with Trisha Yearwood Concert “Inspiring the Future”. Neal S Blaisdell Arena.

FRIDAY, DECEMBER 9

7:00 a.m. – 5:00 p.m.

Freedom Bell Ringing, USS Bowfin Submarine Museum & Park

5:30 – 10:00 p.m.

Movie (7:30 p.m.) on the Beach, “The Finest Hours” (U.S. Coast Guard), Waikiki Outdoor Theater

6:00 – 9:00 p.m.

“Righteous Revenge”, Pacific Aviation Museum Pearl Harbor

6:00 – 10:00 p.m.

A Salute to Doris ‘Dorie’ Miller: The Heroic Reflection of Bravery & Service, Honolulu Country Club

8:00 p.m.

Garth Brooks with Trisha Yearwood Concert “Inspiring the Future”. Neal S Blaisdell Arena.

SATURDAY, DECEMBER 10

7:00 a.m. – 5:00 p.m.

Freedom Bell Ringing, USS Bowfin Submarine Museum & Park

6:30 p.m. & 10:00 p.m.

Garth Brooks with Trisha Yearwood Concert “Inspiring the Future”. Neal S Blaisdell Arena.

SUNDAY, DECEMBER 11

5:00 a.m.

Honolulu Marathon (Honoring the Past, Inspiring the Future), Ala Moana Blvd, Kapiolani Park

KEY

Blue – Free and Open to the Public
Black – Ticketed and / or Private Event

CHIBO

Japanese & Hawaiian

VISIT OUR NEW LOCATION



WE ARE NOW LOCATED ON BEACH WALK
NEXT TO BILLS WAIKIKI



HAPPY HOUR EVERYDAY

from 4:30 pm to 6:00 pm

LUNCH: 11:30 am - 2:30 pm

DINNER: 4:30 pm - 10:00 pm

CALL 922-9722

Book us on Open Table



chibohawaii.com



280 Beach Walk Avenue, Suite L-106



It's time to start planning your New Years Eve plans. This is what we've heard about so far. Photo thanks to Sheraton Waikiki

New Years Eve

FIRE AND ICE AT ADDICTION

Join the high-energy dance party at Addiction Nightclub with special guest DJs and bottle service packages. High rollers can get Armand Di Brignac 'Ace of Spades' Champagne with canape platter for \$500. Advance reservations required for bottle service.

THE SUNSET BEACH NEW YEAR'S EVE CELEBRATION

Enjoy a low-key lounge beach party at Sunset Beach at The Modern Honolulu. Price includes one drink and passed pupu and one complimentary glass of champagne for the midnight toast. Guest DJ and fire dancers will perform 9 p.m. - 12.30 a.m. Tickets: \$100 inclusive, \$75 for in-house guests. themodernhonolulu.com

KENNY G IN CONCERT

Grammy Award-winning saxophonist Kenny G has grafted elements of R&B, pop, and Latin music to a jazz foundation to make him one of the premier artist in contemporary jazz. 8 p.m. show tickets: \$75 - \$95. 11 p.m. show tickets \$85-\$125, includes complimentary champagne toast. Bluenotehawaii.com.

BILL MAHER ALL STAR EVENING

The most polarizing in-your-face late-night talk show host will be ringing in the New Year for the 6th year in a row at the Blaisdell Concert Hall with special guests Margret Cho and David Cross. 7:30 p.m. - 11:45 p.m. Tickets: \$45.50.

PHIL LESH AND FRIENDS

Ring in the New Year with Phil Lesh, best known as the bassist with the Grateful Dead, will bring together a stellar lineup of musical friends and family for this special performance with a musical legend. Tickets: \$80-\$145. 9 p.m. HawaiiTheatre.com

THE PINK PARTY

The Royal Hawaiian's Pink Party on the Ocean Lawn has food stations including everything from caviar to crab legs, DJs and guests are welcome to wander into Interstellar at the Sheraton. Tickets start at \$200. 8 p.m. 921-4600

INTERSTELLAR

Ring in 2017 with a celestial celebration for the ages at the Sheraton Waikiki as four DJs and live entertainment throughout RumFire and the Infinity Edge Pool. The Helumoa Pool will turn into an exclusive Champagne Room with special tastings for 300 people for \$200. General admission tickets are \$100. (\$85 if purchased before December 20th), but will drop to \$50 for anyone coming in after midnight. 8:30 p.m. - 2:30 a.m. 550-8457 VIP packages are available at RumFireWaikiki.com.

7TH ANNUAL PARTY OF THE YEAR

The 7th Annual Bud Light New Year's Eve Party of the Year at Aloha Tower Marketplace returns from 7 p.m.-2 a.m. There will be eight stages and performance areas spotlighting top artists, with live entertainment available throughout the evening as well their fireworks shows, going off every hour, from 9 p.m. with the grand finale at midnight. Several Eat the Street food truck vendors will be on site. This is an 18+ event. Tickets: GA \$45, VIP \$150+. Fast passes for those 21+ available for \$75. nyehawaii.com.

SKY WAIKIKI MASQUERADE PARTY

Sky Waikiki will ring in the New Year with a Masquerade Party. Doors open at 8 p.m. with a hosted bar from 8 p.m. - 12 a.m., passed hors d'oeuvres and a midnight toast. Presale tickets are available online at skywaikiki.com. VIP Reservations available at vip@skywaikiki.com.

NYE LUX AT THE TRUMP

Think James Bond and dress to impress at Casino Royale. Every ticket includes: Two drinks and two pupu plates from their Ultra-VIP Menu and \$10,000.00 in Casino Royale LUX BUX to gamble the night away. Entertainment from DJ Bikini and DJ Misc. 8:30 p.m. - 12:30 a.m. Tickets start at \$99. LuxattheTrump.com.

FIREWORKS AT SEA

Hop onboard your favorite dinner or booze cruise for an evening of food, fun and fireworks. From the Star of Honolulu to the Majestic to the beach cats, most all of them will have a special midnight cruises to choose from to ring in 2017.



Chef's Corner

Daniel Delbrel, Sheraton Waikiki's Director of Culinary

Starwood Hotels Area Managing Director Waikiki, Kelly Sanders is passionate about his chef. "There are few chefs that you meet in this world that truly embody the humble, committed and passion that is Chef Daniel Delbrel the Director of Culinary for the Starwood Hotels in Waikiki. Daniel is the quintessential professional and his focus on growing young talent has made a huge impact to the culinary skill and leadership in the islands." Read about his passion for yourself.

What is your first childhood food memory?

I was lucky although I come from a working class of modest income, food was always abundant so actually there was many dishes that I like, both my mother and especially my grandmother were great cooks- they cook simple food, but a roast chicken was sublime, mashed potato were divine, a caramel custard was unlike anything else you could find anywhere, not only did my mother and grandmother spent time to cook properly the food served at each meals, they also searched for the very best ingredients, best farmer, hormone free, pesticide free, etc....

When did you decide you wanted to be a chef?

When I was age 10, just because I realized earlier how much good food impacted people. Besides, it was considered a very difficult job, and also one could most likely have better chance to travel the world.

What was your first job in the industry?

I worked as a kitchen helper from age 11 on school holidays & vacation (and yes I got paid). I never spent a Christmas home ever after age 11.

Describe the best dish you remember and why?

I have to say the dish that strikes me the most was a baked organic grown potato, cooked right in a wood burning fire, it was so simple and yet so perfect, from the moisture of the potato, to the crackling of the skin to the subtle smokiness of the wood burning fire....just add some good old fashioned butter and a sprinkle of sea salt.

Who would you consider your mentor and why?

I had different mentors throughout my career and life, I would prefer to refer them as people that I admire for the skills they had (management/visions/skills/drive/ambitions)

What's your biggest pet peeve in a kitchen?

Cooks not tasting the food they make.

How would you describe your style of cooking?

I have become definitively more of a melting pot style of cooking, as I learned and taste different cuisine I also blend style and flavors.

Favorite ingredient you like to work with and why?

Vegetables, I think they have taken for too long, an almost invisible place on the dining scene, vegetables were added just because the plate needed more colors, obviously organic vegetables, they are much better for your health and they have a much positive impact on our carbon foot print.

When did you move to the US? To Hawaii?

I landed in Boston for the time in December 1979, great city, one of my favorite regions, just a bit cold in winter.

What restaurant do you like to go to when not working?

Everything is about the excuse/reason of why you go out, so anything goes, it just need to be good, and it is always related to what you pay for and how well you have to dress for the occasion.

What are your favorite food combinations?

Beets, local tomato and local goat cheese crumble, just add some extra virgin olive oil and a dash of balsamic vinegar, do not forget sea salt & fresh ground black peppercorn, fresh herbs optional.

What staple ingredients are in your kitchen and or fridge

Vegetables (tomato/onion/lettuces/avocado, some fruits) always some nice cheese and a good bottle of wine... sometimes bread.

If you had to stop being a chef tomorrow. What would you do?

I would be consulting, still related to food service, anything from operation to design...

Best part about living in Hawaii?

The people, beautiful scenery and weather.



Vegetable Autumn Harvest and Avocado Tarragon Emulsion

Ingredients:

Fresh beets, washed, steamed and peeled	Watermelon radish strings
Fresh heart of palm steam	Pickled vegetables (daikon, cucumber...)
Local tomato	Edible flowers
Fresh Hamakua mushrooms roasted	Dill
	Black olives
	Capers

Avocado Tarragon Emulsion

Ingredients:

- Fresh avocado
- Fresh tarragon
- Lemon juice
- Sugar
- Sea salt
- Tarragon vinegar
- Eggs yolks
- Dijon mustard
- Salad oil
- Olive oil

Directions:

Add all ingredients in a blender cup (except oils)
Blend thoroughly
Add blended oil slowly to mixture on low speed, add some water if the mixture become too thick.
Season with salt & pepper, chili pepper water...etc....
Will keep chill for 3 days

For Plating:

1st add the emulsion on plate, than place all vegetables raw or cooked, season individually.

The Sheraton Waikiki is home to Rumfire, The Edge of Waikiki and Kai Market

Rumfire is open Sunday – Thursday: 11:30 a.m. – 12:00 a.m., Friday and Saturday noon – 1:30 a.m. The Edge of Waikiki is open from 10 a.m. - 10 p.m. daily. •Kai Market is open for breakfast from 6 a.m. - 11 a.m. and dinner from 5:30 - 9:30 p.m.

Web: sheratonwaikiki.com • Twitter/Instagram: @SheratonWaikiki • FB: [facebook.com/SheratonWaikiki](https://www.facebook.com/SheratonWaikiki)

Blue Note

HAWAII

WORLD'S FINEST
JAZZ CLUB & RESTAURANT

New Year's Eve with KENNY G



DECEMBER 28 - 30
@ 6:30pm & 9pm

DECEMBER 31
@ 8pm & 11pm

UPCOMING



Karyn Parsons Presents:
BACK IN THE DAY WITH C&K
December 8 - 10



TREVOR HALL
December 11 & 12



HERB ALPERT
& LANI HALL
December 15 - 18



CHRIS BOTTI
January 17 - 22

SHOWS NIGHTLY

VIP reservations & discounts available for groups of 12 or more

Email Jye Parsons for more group information:
jye@bluenotehawaii.com.

www.bluenotehawaii.com | 808-777-4390
Located in the Outrigger Waikiki Beach Resort
VALIDATED PARKING AVAILABLE AT OHANA
WAIKIKI EAST HOTEL 1 \$6 FOR UP TO 4 HOURS

Let's be Together...

DINING ▸ ENTERTAINMENT ▸ PAU HANA ▸ EAT ▸ DRINK ▸ BE MERRY ▸ HAPPY HOUR

MONDAY

Barefoot Beach Café at Queen's Beach 924-2233
Contemporary Ukulele
 Shaka Madali 5:30-8:30pm
Chart House Waikiki 941-6660
Live Contemporary Hawaiian
 Tito Berinobis & David Kauahikaua 6:30-9:30pm
Cheesecake Factory 924-5001
Classic Hawaiian
 Christian Yrizarry Duo 8-11pm
 Kami Duo (12/26) 8-11pm
Duke's Canoe Club Waikiki 922-2268
Live Contemporary Hawaiian
 Ellsworth Simeona 9:30-12am
Hard Rock Cafe 955-7383
Bluesy Mondays
 Candy Bullets 9-11pm
 Overcrowded Avenue (12/12) 9-11pm
 Foreseeable Futures (12/26) 9-11pm
House Without a Key 923-2311
Live Hawaiian & Hula by Skyler Kamaka
 DeLima Ohana 5:30 - 8:00pm
Hula Grill 923-HULA
Live Contemporary Hawaiian
 Eric Lee 7-9pm
Kani Ka Pila Grille 924-4992
Live Contemporary Hawaiian
 Sean Naauao 6-9pm
LBLE at the Hilton Waikiki Beach Hotel 922-0811
Live Contemporary Acoustic Hits
 Johnny Helm 6-9pm
Lewers Lounge 923-2311
Live Contemporary & Light Jazz
 Noly Pa'a 8:30-12:30am
LuLu's 926-5222
Live Contemporary / Industry night 50% off
 Jason Laeha 6-9 p.m.
Mai Tai Bar at the Royal Hawaiian 923-7311
Live Contemporary Hawaiian with Hula Dancer
 Dave Watanabe 8-10 p.m.
Rumfire 921-4600
Solo Contemporary Guitarist
 Jeremy Cheng 5-8pm
Signature Prime Steak 949-3636
Contemporary Pianist in the bar
 Isao Motomochi 6-9pm
Sky Waikiki 979-7590
Live Contemporary
 Yoza 6-9pm
Sunrise Pool Bar at the Modern 943-5800
Live Contemporary
 Alex Oasay 5-8pm
The Edge at the Sheraton 921-4600
Live Hawaiian music with a firedancer at 7:30 p.m.
 Meheu Duo 6:30-8:30pm
The Study at the Modern 943-5800
Live Contemporary Hawaiian
 Kaleo 7-10pm
Tiki's Grill & Bar 923-TIKI
Live Contemporary Hawaiian
 P & L Experience 6-8:30pm
 The Kristi Masuhara Band 9-11pm
Tommy Bahama Restaurant 923-8785

Live Contemporary Hawaiian
 Johnny Helm 6-9pm
Tropics Bar & Grill 949-4321
Live Contemporary Hawaiian
 Acoustik Playground 5:30-8:30pm

TUESDAY

Barefoot Beach Café at Queen's Beach 924-2233
Contemporary Ukulele
 Shaka Madali 5:30-8:30pm
Bin1901 at the Moana 921-4600
Piano Wine Bar
 Scott Smith 6:30-9:30pm
Chart House Waikiki 941-6660
Live Contemporary Hawaiian
 The Camarillo Brothers 6:30-9:30pm
Cheesecake Factory 924-5001
Classic Hawaiian
 Beau Cody Duo 8-11pm
Duke's Canoe Club Waikiki 922-2268
Live Contemporary Hawaiian
 Haumea Warrington & Mike 4-6pm
 Ellsworth Simeona 9:30-12am
Hard Rock Cafe 955-7383
Live Contemporary
 Piranha Brothers 9-11pm
House Without a Key 923-2311
Live Hawaiian & Hula by Radasha Ho'ohuli
 Po'okela 5:30 - 8:00pm
Hula Grill 923-HULA
Live Contemporary Hawaiian
 Kamuela Kahoano 7-9pm
Kani Ka Pila Grille 924-4992
Live Contemporary Hawaiian
 Weldon Kekauoha 6-9pm
LBLE at the Hilton Waikiki Beach Hotel 922-0811
Live Contemporary Funk, Jazz, Hip Hop & Reggae
 Jason Laeha 6-9pm
Lewers Lounge 923-2311
Live Contemporary & Light Jazz
 Maggie Herron & Rocky Holmes 8:30-12:30am
LuLu's 926-5222
Live Contemporary
 Johnny Helm 6-9pm
Mai Tai Bar at the Royal Hawaiian 923-7311
Live Contemporary Hawaiian with Hula Dancer
 Kapala Duo 6:30-9:30pm
Rumfire 921-4600
Solo Contemporary Guitarist
 Randy Allen 5-8pm
Signature Prime Steak 949-3636
Contemporary Pianist in the bar
 James Woo 6-9pm
Sky Waikiki 979-7590
Live Contemporary
 John Akapo 6-9pm
Sunrise Pool Bar at the Modern 943-5800
Live Contemporary Hawaiian
 Cory Oliveros 5-8pm
The Edge at the Sheraton 921-4600
Live Hawaiian music with a firedancer at 7:30 p.m.
 Ho'okani Duo 6:30-8:30pm
The Study at the Modern 943-5800
Live Contemporary Hawaiian

Alex Oasay & Jeremy Cheng 7:30-10:30pm
Tiki's Grill & Bar 923-TIKI
Live Hawaiian - \$2 Taco Tuesdays
 K.B. Riley 5:30-8:30pm
 Sani & Friends 9-11pm
Tommy Bahama Restaurant 923-8785
Live Contemporary Hawaiian
 Chris Mercado 6-9pm
Tropics Bar & Grill 949-4321
Live Contemporary Hawaiian
 Kailua Bay Buddies 5:30-8:30pm

WEDNESDAY

Barefoot Beach Café at Queen's Beach 924-2233
Instrumental Ukulele
 Paul Wilcox 5:30-8:30pm
Bin1901 at the Moana 921-4600
Piano Wine Bar
 Scott Smith 6:30-9:30pm
Chart House Waikiki 941-6660
Live Contemporary Hawaiian
 Tito Berinobis & David Kauahikaua 6-10:30pm
Cheesecake Factory 924-5001
Classic Hawaiian
 Kimo Artis Duo 8-11pm
Duke's Canoe Club Waikiki 922-2268
Acoustic, Soul, R&B
 Haumea Warrington & Sam 4-6pm
 Ellsworth Simeona 9:30-12am
Gordon Biersch 599-4877
Jazz Wednesdays
 Varying Artists 6:30-9:30pm
Hard Rock Cafe 955-7383
Live Contemporary
 Saloon Pilots (or others) 9-11pm
House Without a Key 923-2311
Live Hawaiian & Hula by Lauren Matsumoto
 Pa'ahana 5:30 - 8:00pm
Hula Grill 923-HULA
Live Contemporary Music
 Brandon Serrano 7-9pm
Hy's Steak House 922-5555
Live Soft Contemporary
 Audy Kimura 6:30-10pm
Kani Ka Pila Grille 924-4992
Live Contemporary Slack Key
 Ben & Malia 3-5pm
 Mike Kaawa 6-9pm
LBLE at the Hilton Waikiki Beach Hotel 922-0811
Live Contemporary Funk, Jazz, Hip Hop & Reggae
 Izik 6-9pm
Lewers Lounge 923-2311
Live Contemporary & Light Jazz
 Maggie Herron & Rocky Holmes 8:30-12:30am
LuLu's 926-5222
Live Contemporary Hawaiian
 Mango Season 6-9am
Mai Tai Bar at the Royal Hawaiian 923-7311
Live Contemporary Hawaiian with Hula Dancer
 Eric Lee Duo 6:30-9:30pm
Roy's Hawaii Kai 396-7697
Acoustic & Slack Key Top 40
 Dayton Watanabe 6:30-9:30pm
Rumfire 921-4600

E Pili Kākou

DINING ▶ ENTERTAINMENT ▶ PAU HANA ▶ EAT ▶ DRINK ▶ BE MERRY ▶ HAPPY HOUR

Solo Contemporary Guitarist
Alex Oasay 5-8pm
Signature Prime Steak 949-3636
Contemporary Pianist in the bar
Pierre Grill 6-9pm
Sky Waikiki 979-7590
Live Contemporary
Randy & Kanoe 6-9pm
SWIM at the Hyatt 923-1234
Contemporary Classic
Kailua Bay Buddies 6-9pm
Sunrise Pool Bar at the Modern 943-5800
Live Contemporary Hawaiian
Tahiti Rey & Sean Cleland 5-8pm
The Edge at the Sheraton 922-4422
Live Hawaiian music with a fire dancer at 7:30 p.m.
Keoni Ku Duo 6:30-8:30 pm
The Study at the Modern 943-5800
Live Contemporary Hawaiian
Melanie and Drew 6:30-9:30pm
Tiki's Grill & Bar 923-TIKI
Live Contemporary - 1/2 off Wine Wednesdays
Canoes for Rent 5:30-8:30pm
Johnny Helm 9-11pm
Tommy Bahama Restaurant 923-8785
Live Contemporary Hawaiian
Randy Allen 6-9pm
Tropics Bar & Grill 949-4321
Live Contemporary Rock
Acoustik Playground 5:30-8:30pm

THURSDAY

Barefoot Beach Café at Queen's Beach 924-2233
Instrumental Ukulele
Paul Wilcox 5:30-8:30pm
Bin1901 at the Moana 921-4600
Piano Wine Bar
Scott Smith 6:30-9:30pm
Chart House Waikiki 941-6660
Live Contemporary Hawaiian
Alika Souza Duo 6:30-10pm
Cheesburger Waikiki 941-2400
Contemporary / Old School Rock
Jeremy Chang 6:30-9:30pm
Cheesecake Factory 924-5001
Classic Hawaiian
Alika Souza Duo 8-11pm
Tons of Aloha Duo (12/1, 12/15) 8-11pm
Duke's Canoe Club 922-2268
Live Contemporary Hawaiian
Haumea Warrington & Sam 4-6pm
Scott Magz & Brady K (12/1) 9:30-midnight
Local Uprising (12/8) 9:30-midnight
Kaiona Duo (12/15) 9:30-midnight
Denny Ono (12/22) 9:30-midnight
Kapena Delima Duo (12/29) 9:30-midnight
Hard Rock Cafe 955-7383
Live Contemporary
Kailua Bay Buddies 9-11pm
House Without a Key 923-2311
Live Hawaiian & Hula by Radasha Ho'ohuli
Pa'ahana 5:30 - 8:00pm
Hula Grill 923-HULA
Live Contemporary Hawaiian

Kamuela Kahoano 7-9pm
Hy's Steak House 922-5555
Live Soft Contemporary
Audy Kimura 6:30-10pm
Kani Ka Pila Grille 924-4992
Live Contemporary Hawaiian
Jeff Rasmussen & Robi 3-5pm
Kawika Kahiapo 6-9 pm
Donald Kaulia (12/1, 12/29) 6-9 pm
LBLE at the Hilton Waikiki Beach Hotel 922-0811
Live Contemporary Pop/Rock
Sunway 6-9pm
Lewers Lounge 923-2311
Contemporary Jazz
Maggie Herron & Rocky Holmes 8:30-12:30am
LuLu's 926-5222
Live Contemporary Hawaiian
Local Uprising 6-9pm
Mai Tai Bar at the Royal Hawaiian 923-7311
Live Contemporary Hawaiian with Hula Dancer
Delima Ohana 6:30-9:30pm
Michel's at the Colony Surf 923-6552
Live Slack Key
Jeff Peterson 7:30-10:00pm
Roy's Hawaii Kai 396-7697
Acoustic Hawaiian Guitar
Steve English 6:30-9:30pm
Rumfire 921-4600
Solo Contemporary Guitarist
Johnny Helm 5-8pm
Signature Prime Steak 949-3636
Contemporary Pianist in the bar
Isao Motomochi 6-9pm
Sky Waikiki 979-7590
Live Contemporary
Tahiti Rey 6-9pm
Sunrise Pool Bar at the Modern 943-5800
Live Contemporary Hawaiian
Christian Yrizarry Duo 5-8pm
SWIM at the Hyatt 923-1234
Contemporary Classic
Acoustik Playground 6-9pm
The Edge at the Sheraton 921-4600
Live Hawaiian music with a fire dancer at 7:30 p.m.
Christian Yrizarry Duo 6:30-8:30pm
The Study at the Modern 943-5800
Live Contemporary Hawaiian
Simple Souls 6:30-9:30pm
Tiki's Grill & Bar 923-TIKI
Hot Hula Thursdays - hula dancers perform
Malu the Band 5:30-7:30pm
Ellsworth Simeona 8:30-10:30pm
Tommy Bahama Restaurant 923-8785
Live Contemporary Hawaiian
Chris Mercado 6-9pm
Tropics Bar & Grill 949-4321
Live Contemporary Hawaiian
Nohelani Cypriano 5:30-8:30pm

FRIDAY

Barefoot Beach Café at Queen's Beach 924-2233
Live Contemporary Hawaiian with Beach BBQ
Art Kalahiki & Friends 5:30-8:30pm
Bin1901 at the Moana 921-4600

Piano Wine Bar
Scott Smith 6:30-9:30pm
Chart House Waikiki 941-6660
Live Contemporary Hawaiian
Mark Yim's Pilikia I 6-9pm
Mark Yim's Pilikia II 9:30-12:30am
Cheesburger Waikiki 941-2400
Contemporary Hawaiian
Alex or Aku 6:30-9:30pm
Cheesecake Factory 924-5001
Live Contemporary
Johnny Helm Duo 8-11pm
Dave & Busters 589-2215
Pau Hana Fridays Live Local Bands
Varying Hawaiian Artists 6-8pm
Duke's Canoe Club Waikiki 922-2268
Live Contemporary Hawaiian
Maunalua 4-6pm
Solid Rock Duo (12/2) 9:30 -12am
Kona Chang Duo (12/9) 9:30 -12am
Christian Yrizarry Duo (12/16) 9:30 -12am
Alika Souza Duo (12/23) 9:30 -12am
Chris Mercado Duo (12/30) 9:30 -12am
Giovanni Pastrami 923-2100
Live Acoustic
Varying Artists 10pm-last call
Hard Rock Cafe 955-7383
Live Contemporary

IHOP HAWAII

Breakfast All Day
Morning, Noon & Night

THURSDAY Waikiki: Make by 11:00pm
1211 Kalia Ave
(808) 921-2300

Alala Palace (Maui):
1650 Ala Moana Blvd
(808) 943-4447

50% OFF
Lunch & Dinner
Menu

THURSDAYS
w/ industry ID w/ 10% off
IHOP Kula 9p-2a
IHOP Ala Moana 9p-9p

www.IHOPHawaii.com

Let's be Together...

DINING ▸ ENTERTAINMENT ▸ PAU HANA ▸ EAT ▸ DRINK ▸ BE MERRY ▸ HAPPY HOUR

The Fresh Preps 10-12am
House Without a Key 923-2311
Live Hawaiian & Hula by Kanoë Miller
 Hiram Olsen Trio 5:30 - 8:00pm
Hula Grill 923-HULA
Aloha Friday Lunch Luau with hula dancer
 David Asing 12:30-2:30pm
 Keoki & Russell 7-9pm
Hy's Steak House 922-5555
Live Soft Contemporary
 Audy Kimura 6:30-10pm
Hard Rock Cafe 955-7383
Live Contemporary
 The Fresh Preps 10pm-12am
Kani Ka Pila Grille 924-4992
Live Hawaiian Contemporary
 Christian Yrizzary 3-5pm
 Ka Hehena 6-9pm
LBLÉ at the Hilton Waikiki Beach Hotel 922-0811
Live Contemporary Pop/Rock
 Sunway 6-9pm
Lewers Lounge 923-2311
Live Contemporary Jazz
 Maggie Herron & Rocky Holmes 8:30-12:30am
Mai Tai Bar at the Royal Hawaiian 923-7311
Live Contemporary Hawaiian with Hula Dancer
 Kapala Duo 6:30-9:30pm
Michel's at the Colony Surf 923-6552
Live Slack Key Stylings & Jazz
 Jeff Peterson & Ernie Provencher 6:30-10pm
Roy's Hawaii Kai 396-7697
Keyboardist
 Brian Robert Shaw 6:30-9:30pm
Roy's Ko Olina 676-7697
Slack Key Guitar
 Chris Rego 5:30-8pm
Rumfire 921-4600
Solo Contemporary Guitarist
 Tim Rose 5-8pm
Signature Prime Steak 949-3636

Contemporary Pianist in the bar
 Grant Carvalho 6-9pm
Sky Waikiki 979-7590
Live Contemporary
 John Akapo 5-8pm
SWIM at the Hyatt 923-1234
Contemporary Classic
 Taimane 6-7pm
The Edge at the Sheraton 921-4600
Live Hawaiian music with a fire dancer at 7:30 p.m.
 Delima Ohana Duo 6:30-8:30pm
The Study at the Modern 943-5800
Live Contemporary Hawaiian
 Tahiti Rey 6:30-9:30pm
Tiki's Grill & Bar 923-TIKI
Live Contemporary Hawaiian
 Randy Allen 5-7pm
 Vaihi 7:30-9:30pm
 The Kristi Masuhara Band 10:30-midnight
Tommy Bahama Restaurant 923-8785
Live Contemporary Hawaiian
 Chris Murphy 6-9pm
Tropics Bar & Grill 949-4321
Live Contemporary Hawaiian
 Piranha Brothers 3:30-6:30pm
 Nohelani Cypriano 8-10:30pm

Kaipo Dabin & friends 7-9pm
Hy's Steak House 922-5555
Live Soft Contemporary
 Audy Kimura 6:30-10pm
Kani Ka Pila Grille 924-4992
Live Contemporary Hawaiian
 Bryan Tolentino 3-5 pm
 Ho'okena 6-9pm
LBLÉ at the Hilton Waikiki Beach Hotel 922-0811
Live Contemporary Blues & R&B
 Tahiti Rey 6-9pm
Lewers Lounge 923-2311
Live Contemporary Jazz
 Maggie Herron & Rocky Holmes 8:30-12:30am
Mai Tai Bar at the Royal Hawaiian 923-7311
Live Contemporary Hawaiian with Hula Dancer
 Kapala Duo 6:30-9:30pm
Michel's at the Colony Surf 923-6552
Live Contemporary Slack Key & Jazz
 Jeff Peterson 7-11pm
Roy's Hawaii Kai 396-7697
Acoustic Guitar
 Jimmy Funai 6-9:30pm
Roy's Ko Olina 676-7697
Slack Key Guitar
 Chris Rego 5:30-8pm
Rumfire 921-4600
Solo Contemporary Guitarist
 Sean Clealand 5-8pm
Signature Prime Steak 949-3636
Contemporary Pianist in the bar
 Grant Carvalho 6-9pm
Sky Waikiki 979-7590
Live Contemporary
 John Akapo 6-9pm
Sunrise Pool Bar at the Modern 943-5800
Live Contemporary Hawaiian
 Kainalu 5-8pm
SWIM at the Hyatt 923-1234
Contemporary Acoustic
 Randy Allen & Kanoë Gibson 5 - 8pm
The Edge at the Sheraton 921-4600
Live Hawaiian music with a fire dancer at 7:30 p.m.
 Tino Jacobs Duo 6:30-8:30pm
Tiki's Grill & Bar 923-TIKI
Live Contemporary Hawaiian & Reggae
 Johnny Helm 5-7pm
 Guidance (or others) 7:30-9:30pm
 Ellsworth & Piko 10-midnight
Tommy Bahama Restaurant 923-8785
Live Contemporary Hawaiian
 Chris Murphy 6-9pm
Tropics Bar & Grill 949-4321
Live Contemporary Hawaiian
 Henry Kaponu 4-6pm
 Juke Joint 6:30-9:30pm

SATURDAY

Barefoot Beach Café at Queen's Beach 924-2233
Beach BBQ with Live Contemporary Hits
 Chris Salvador 5:30-8:30pm
Bin1901 at the Moana 921-4600
Piano Wine Bar
 Scott Smith 6:30-9:30pm
Chart House Waikiki 941-6660
Live Contemporary Hawaiian
 Tito Berinobis & Billy Beimes 7-12pm
Cheeseburger Waikiki 941-2400
Contemporary Hawaiian
 Alex or Aku 6:30-9:30pm
Cheesecake Factory 924-5001
Classic Hawaiian
 Dennis McClees Duo 8-11pm
Duke's Canoe Club Waikiki 922-2268
Live Hawaiian Entertainment
 Beach 5 (12/3) 4-6pm
 Kaiona (12/10) 4-6pm
 Vaihi (12/17) 4-6pm
 Kailua Bay Buddies (12/24) 4-6pm
 Mojo (12/31) 4-6pm
 Camarillo Brothers 9:30-12am
 Darrell Aquino Duo (12/3, 12/24) 9:30-12am
Giovanni Pastrami 923-2100
Live Acoustic
 Varying Artists 10pm-last call
Hard Rock Cafe 955-7383
Live Contemporary
 EMKE 10-12am
 Piranha Brothers (12/3) 10-12am
House Without a Key 923-2311
Hawaiian & Hula by Kanoë Miller
 Hiram Olsen Trio 5:30 - 8:00pm
Hula Grill 923-HULA
Live Traditional Hawaiian with dancer

Barefoot Beach Café at Queen's Beach 924-2233
Contemporary Ukulele
 Shaka Madali 5:30-8:30pm
Chart House Waikiki 941-6660
Live Contemporary Hawaiian
 Dean & Dean 6-9pm

SUNDAY

Barefoot Beach Café at Queen's Beach 924-2233
Contemporary Ukulele
 Shaka Madali 5:30-8:30pm
Chart House Waikiki 941-6660
Live Contemporary Hawaiian
 Dean & Dean 6-9pm



IL LUPINO
 TRATTORIA & WINE BAR

15% OFF FOR ALL CONCIERGES & GSA
 Il Lupino is pleased to extend a 15% discount to all Concierges and Guests Services Staff (Front Desk, Valet, Porters, etc.). Must show your work I.D. or business card to receive the discount. Not applicable on liquor or specials.

ROYAL HAWAIIAN CENTER • VALIDATED PARKING
 breakfast • lunch • tapas • dinner
 www.ilupino.com • 808.922.3400

E Pili Kākou

DINING ▶ ENTERTAINMENT ▶ PAU HANA ▶ EAT ▶ DRINK ▶ BE MERRY ▶ HAPPY HOUR

Cheesecake Factory Classic Hawaiian	924-5001
Chris Murphy Duo	8-11pm
Duke's Canoe Club Waikiki Live Hawaiian Entertainment	922-2268
Henry Kaponō	4-6pm
Typical Hawaiians (12/4)	9:30-12am
Randy & Kanoē (12/11)	9:30-12am
Derrick Lee Duo (12/18)	9:30-12am
Kimberly June (12/25)	9:30-12am
Hard Rock Cafe Live Contemporary	955-7383
Analog	9-11pm
Live Nene (12/11,12/25)	9-11pm
House Without a Key Live Hawaiian & Hula by Debbie Nakanelua	923-2311
Pa'ahana	5:30 - 8:00pm
Hula Grill Live Traditional Hawaiian with dancer	923-HULA
Art Kalahiki Duo	7-9pm
Kani Ka Pila Grille Live Contemporary Hawaiian	924-4992
Kuuipo Kumukahi	6-9pm
Brother Noland (12/4)	6-9pm
Waimanalo Sunset Band (12/11)	6-9pm
Kelley O'Neil's Live Irish Music	926-1777
Various Celtic Bands	4-7pm
LBLE at the Hilton Waikiki Beach Hotel Live, Energetic Mix of Pop and Rock Hits	922-0811
Tavana	6-9pm
Lewers Lounge Live Contemporary & Light Jazz	923-2311
Noly Pa'a	8:30pm - 12am
LuLu's Acoustic R&B	926-5222
Simple Soulz	7-10pm
Mai Tai Bar at the Royal Hawaiian Live Contemporary Hawaiian with Hula Dancer	923-7311
Eric Lee Duo	6:30-9:30pm
Michel's at the Colony Surf Classical Slack Key & Jazz Stylings	923-6552
Jeff Peterson	6-9pm
Roy's Ko Olina Slack Key Guitar	676-7697
Chris Rego	5:30-8pm
Rumfire Live Contemporary Hawaiian	921-4600
Kamuela Kahoano	5-8pm
Signature Prime Steak Contemporary Pianist in the bar	949-3636
Isao Motomochi	6-9pm
Sky Waikiki Live Contemporary	979-7590
Da Push-O-Verse	6-9pm
SWIM at the Hyatt Contemporary, Pop, Rock	923-1234
Sunway	6 - 9pm
The Edge at the Sheraton Live Hawaiian music with a fire dancer at 7:30 p.m.	922-4422
Ellsworth Simeona Duo	6:30-8:30p
The Study at the Modern	943-5800

<i>Live Contemporary Hawaiian & Jazz</i>	
Jeremy Cheng	6-9pm
Smooth Jazz (varying artists)	10-2am
Tiki's Grill & Bar Live Contemporary Hawaiian	923-TIKI
Kapu the Band	2:30 - 5:30pm
Vaihi	6-8pm
Ellsworth & Piko	9-11pm
Tommy Bahama Restaurant Live Contemporary Hawaiian	923-8785
Johnny Helm	6-9pm
Tropics Bar & Grill Live Contemporary Rock & Hawaiian	949-4321
Piranha Brothers	2-5pm
Beach 5	5:30 - 8:30pm



Hot Lines

Here's a few numbers for you to find out the latest in live music from places that change daily or don't update us regularly, since we can't possible list them all.

Gordon Biersch	599-4877
Irish Rose Saloon	947-3414
Kelley O'Neil's	926-1777
Mai Tai Bar Ala Moana	947-2900
Moose McGillycuddy's	923-0751

Dining Dish



Hy's Steak House celebrated a milestone anniversary last month, marking 40 years of one of the best classic steakhouses in Hawaii. To cap off the honor of reaching that landmark occasion, they were also just named as one the 100 best steakhouses in America by OpenTable.com, and were the only steakhouse in Hawaii to make the list. In celebration of its 40th year in business Hy's will be offering special events throughout 2017, including more wine pairing dinners and a chef's table series in collaboration with popular local chefs. These monthly wine dinners will resume in March 2017. If you're interested in sending your guests there for the holidays, call soon. I hear they're virtually sold out for Christmas already. 922-1555. • **Goma Tei** has opened inside the International Market Place. Known for their Tan Tan Ramen, the restaurant is open from 10 a.m. - 11 p.m. daily, and offers a 10% discount for kama'aina. 664-0363. • On December 1st, the newest dining concept in Waikiki opens in the 23,000 square-foot space in the basement of Waikiki Shopping Plaza. **Waikiki Yokocho** will offer 16 authentic Japanese eateries, including one of the best ramen restaurants in Hokkaido. **Baikohken** will be debuting their first US restaurant here in Hawaii including their specialty W soup. Diners will also find the Kyoto-style **Beniya** featuring traditional sushi, Osaka soul food at **Kushikatsu Tanaka** serves a variety of deep-fried cutlet skewers, Japanese-style crepes at

Marion Crepe, Nin Nin Curry, RAMEN Bario's, Shichi Musubi, Umami Teppan Kingyo and more. Open daily from 9:30 a.m. - 10 p.m., you can learn about all the restaurants on their website at waikiki-yokocho.com. • Just a reminder that **Morimoto Waikiki** closes their doors on December 8th, so get in there soon to grab your fill of their Soft Shell Crab rolls, Hamachi Tacos or Wagyu Carpaccio to hold you over for a while. It may be a year before their new location opens. Rumor has it a Mexican pop-up may open up inside the location shortly while **The Modern Honolulu** considers thier options. • The Hawaii Prince Hotel Waikiki and Golf Club opened its new restaurant, **100 Sails**, in late November. The new restaurant is the first part of the hotel's multi-million dollar transformation to be completed. Located in the former Prince Court, 100 Sails, will offer guests fresh smoothies and coffee in the morning, and craft cocktails in the evening will serve as the centerpiece of the restaurant. Menu selections will vary from small bites including Poke Tempura, Uni Carbonara and Oxtail Dumplings, to an expansive buffet featuring dishes such as Crispy Garlic Soy Chicken with Spicy Banana Ketchup, Hoisin Barbecue Ribs with Shichimi Fried Onions and signature steamed crab legs and prime rib. The hotel's famous bread pudding remains a staple dessert with exciting additions including Prince Shave Ice and Chocolate Macadamia Nut Pie. Open for breakfast, lunch, afternoon pupus and dinner as well as brunch on Sundays. • Ramen lovers unite. **Agu Ramen** just opened in Waikiki! Honestly it's one of my favorites, and I'm truly disappointed I was out of town for their opening. they're bringing some new items to the menu as well, but Im not sure what, so let me know. They moved into the spot formerly occupied by Ramen Ezogiku at 2146 Kalakaua. Open daily at 11 a.m., until 10 p.m. Sunday - Thursday and until 11 p.m. Friday and Saturday. aguramen.com ~ Pam



Dining Calendar

December 1: *Beachhouse* presents a special pairings dinner featuring the exalted wines of Caymus Vineyards. \$100. 6:30 p.m. honoluluboxoffice.com.

December 9: *Westin Moana* presents their monthly #LoveofLibations interactive beverage event. This month celebrates Absinthe. \$25. Vintage 1901. 5:30 - 7 p.m. 921-4600.

December 30: *Friday Night Flights* explores Bubbles & Pearls, a selection of Champagne and Sparkling wine with a 3-course regional menu. The Veranda at the Kahala. \$60. 6-9 p.m. 739-8760.

EVENTS ARE SUBJECT TO CHANGE WITHOUT NOTICE.

DECEMBER CALENDAR OF EVENTS

Continuing Events

MONDAY – FRIDAY LYON ARBORETUM TOURS

The lush gardens at the top of the University of Hawai'i Manoa are open for guided tours daily. Knowledgeable guides will introduce the highlights of the botanical rainforest's 193.6 acres. Reservations required. Limit of 12 participants daily. Donations accepted. 988-0461.

MONDAY-FRIDAY FOSTER BOTANICAL GARDENS

Guided garden tours of rare and beautiful plants from tropical regions throughout the world. Foster Botanical Gardens, 50 N. Vineyard. 1 p.m. Adults: \$5. Reservations recommended. 522-7066.

TUESDAYS TOURS OF THE HAWAII THEATRE

Get a behind-the-scenes tour of this historic theatre including history, architecture, and a performance on the 1922 Robert Morton theatre organ. Hawaii Theatre. 11 a.m. – 12 p.m. \$10. 528-0506.

TUESDAYS KU HA'AHEO

An afternoon of music and hula led by kumu hula Blaine Kamalani Kia. Waikiki Beach Walk, Plaza Lawn. 4:30–6 p.m. waikikibeachwalk.com. FREE.

TUESDAYS KCC FARMERS MARKET

The Saturday Market is so popular they added another day. Head up to Kapiolani Community College to stock up on fresh, island produce,

seafood, flowers and more, from several dozen vendors. 4–7 p.m. Free. 848-2074.

FIRST & THIRD TUESDAYS MEET THE MONK SEALS!

Learn about monk seals in the wild and meet two resident seals up close. Designed for participants 7 and up but anyone is welcome. Waikiki Aquarium. 3 p.m. \$4–\$6. waquarium.org or 923-9741.

TUESDAYS & THURSDAYS FRESH FARMERS MARKET AT THE HYATT

Due to its overwhelming success, the Hyatt has added another day of their popular Farmers Market for visitors and locals to stock up on fresh local organic fruits, vegetables, jams, honeys, baked goods and more. Stop by twice throughout the ground floor of the Pualeilani Atrium Shops. 4–8 p.m. Waikiki.hyatt.com.

TUESDAYS, THURSDAYS & SUNDAYS TOUR AND TEA AT THE HONOLULU ACADEMY OF ARTS

Tours are led by volunteer docents and designed for visitors, who would like to explore the galleries, learn more about art and culture, and socialize over a cup of tea. Docents lead discussions in the galleries and offer insight into many cultures and time periods. 2:30–4 p.m. in selected galleries. Free with admission. Reservations required. 532-8700.

**TUESDAY – SATURDAY
HAWAIIAN MISSION HOUSES GUIDED TOURS**
Visit the Printing Office and Frame House while learning about the 19th century history and culture preserved at this beautiful museum. Galleries also

open to explore on your own. Hawaiian Mission Houses. Tues. – Sat. 11 a.m. & 2:45 p.m.; Tues. – Fri. 1 p.m. \$6 – \$10. 531-0481 or missionhouses.org.

FIRST WEDNESDAY HIP: HOSPITALITY INDUSTRY PAU HANA

The Hawaii Lodging & Tourism Association hospitality industry pau hana at SKY Waikiki is on hiatus until February 1st. hawaiilodging.org.

THIRD WEDNESDAY (DECEMBER 21) KONA NUI NIGHTS

Kona Nui Nights honors and highlights Hawaiian language and music, as well as the art of hula on the third Wednesday of every month with food and drinks for sale. Free. Ward Village Information Center Courtyard. 6–8 p.m. wardvillageshops.com.

SECOND THURSDAY (DECEMBER 8) COURTYARD CINEMA

Ward Village hosts its monthly film series event, Courtyard Cinema, on the 2nd Thursday of each month. The showing features free popcorn, refreshments, food vendors and entertainment. Courtyard Cinema is free and open to the public. Seating is limited. Reserve your tickets at wardvillagecourtyardcinema.com.

THURSDAYS COURTYARD YOGA

Take a complimentary yoga class with CorePower Yoga at the Ward Village Information Center Courtyard. Open to the first 50 in attendance. All experience levels welcome. 5:30–6:30 p.m. For more information visit wardvillageshops.com/yoga.

**THIRD THURSDAY (DECEMBER 15)
DOWNTOWN GALLERY WALK & CRAFT FAIR**
The Arts at Marks Garage continues to build on downtown activities offering execs an excuse to hang out after work and giving everyone else a reason to head downtown. Free. 521-2903. artsatmarks.com.

FRIDAYS CULTURAL CRAFT FAIR

The Hyatt has had so much success with its weekly Farmers Market featuring fresh local produce that they are applying the same principle to local craft items. Each week the craft fair will feature local vendors featuring arts & crafts, jewelry. Photography, woodwork and more. 3–7 p.m. Waikiki.hyatt.com

**FIRST FRIDAY (DECEMBER 2)
DOWNTOWN GALLERY WALK & CRAFT FAIR**
Art lovers should head to downtown Honolulu the first Friday of each month. This event has exploded into a downtown party with galleries and studios open for exhibitions, artist demonstrations, and special performances. 23 galleries and art-related retail shops, restaurants and museums participate. Downtown Honolulu/ Chinatown. 6–9 p.m. Free. 521-2903 or artsatmarks.com.

**FINAL FRIDAY
ART AFTER DARK**
Art after Dark is on hiatus until January. artafterdark.org.

**SATURDAYS
KCC FARMERS MARKET**
Fresh island produce, seafood, flowers and more are available from over two-dozen vendors at Kapiolani Community College. Free. 7:30–11 a.m. 848-2074.

“The absolute highlight of our Hawaii vacation!”

BIG ISLAND ONE DAY HELICOPTER + LAND TOUR

VOLCANO ADVENTURE

Gray Line

POLYNESIAN ADVENTURE TOURS

808.212.9758

polyad.com

DECEMBER CALENDAR

SATURDAYS

KAKA'AKO FARMERS MARKET

The Kaka'ako Farmer's Market hosts an abundance of treats from around our islands. Located between Ward and Kamakee Streets, Free. 8 a.m. - 12 p.m. 388-9696 or haleiwafarmersmarket.com.

THIRD SATURDAY HONOLULU NIGHT MARKET

Honolulu Night Market is on hiatus for the rest of the year and will return in their 2017 for our annual Pow Wow Hawaii collaboration event.

SATURDAYS & SUNDAYS ART ON THE ZOO FENCE

More than 35 local artists display their works on the Zoo fence on Monsarrat Avenue opposite the Kapiolani Park Bandstand. Works for sale include original paintings, prints and photographs. 9 a.m. - 4 p.m. Free. artonthezoo fence.com.

SECOND SATURDAY (DECEMBER 10) DOWNTOWN GALLERY WALK & CRAFT FAIR

First Friday has become such a success that events carry over to the second Saturday. HiSAM, 11 a.m. - 4 p.m. 586-9958. Other events around downtown Honolulu all afternoon including slam poetry and open mic events at The Arts at Marks from 3-5 p.m. Free. 521-2903 or artsatmarks.com.

NA MELE NO NA PUA SUNDAY SHOWCASE (DECEMBER 11)

Waikiki Beach Walk presents Nathan Aweau on December 11th at the Plaza Stage from 5 - 6 p.m. waikikibeachwalk.com.

SECOND SUNDAY (DECEMBER 11) FREE ADMISSION TO IOLANI PALACE

On the second Sunday of each month, Iolani Palace opens its doors to kama'aina guests to visit the historic landmark for free. iolanipalace.org.

THIRD SUNDAY (DECEMBER 18) BANK OF HAWAII FREE SUNDAY

The Honolulu Museum of Art opens its doors to the public free of charge on the third Sunday of every month thanks to Bank of Hawaii. Plenty of activities for kids and adults alike. 11 a.m. - 5 p.m. Free. 532-8700.

DECEMBER 1

KAIMUKI CHRISTMAS PARADE AND TREE LIGHTING

It's the 70th annual event. Watch as the community kick off of holiday season with a 1.1-mile parade from St. Louis School to Koko Head Avenue. Over 40 groups will march in the parade and there is a slew of amazing restaurants for people to try when it is over. 6 - 8 p.m.

DECEMBER 2, 7, 16, & 21 KO OLINA ARTFEST

Check out the work of close to a dozen local artists as they display their crafts for all to see and buy. Free. 9 a.m. - 4 p.m. Pool level lobby. Ko Olina Marriot's Beach Club Resort

DECEMBER 3 - 31 HONOLULU CITY LIGHTS

Downtown lights up in celebration every night of the season with the 32nd annual Honolulu City Lights. Watch the Electric Light Parade along King Street kick everything off on 12/3 at 4 p.m. followed by the lighting of the 50-foot tree at 6:30 p.m. The festive lights and decorations stay up through January 1st., and reservations on all the trolley tours are recommended. 768-3392. honolulucitylights.com.

DECEMBER 3 • M.A.C. 24/7'S 10TH ANNIVERSARY MILITARY PANCAKE CHALLENGE

One representative from each branch of the military has been selected to participate in the 10th anniversary of the M.A.C. Daddy Pancake Challenge. Contestants have to eat three 14" pancakes with toppings (5 lbs) in under 90 minutes with no bathroom breaks. The fastest time wins \$1000. Cheering sections encouraged - there will be free giveaways, entertainment, food samples & restaurant specials for spectators. Hilton Waikiki Beach Hotel. 1 p.m.

DECEMBER 3 HER BODIES OF STORIES

Her Bodies of Stories is a new spoken-art work exploring themes of diaspora, settler colonialism, and growing up in Hawaii. This performance piece combines slam poetry choreography with theater, producing scenes that move from thought-provoking to playful to fierce. Doris Duke Theatre. Tickets: \$10. 7:00 p.m. 532-8701. honoluluseum.org.

DECEMBER 4

XTERRA TRAIL RUN WORLD CHAMPIONSHIP

This 21-kilometer half-marathon course is considered a world championship course, and it takes runners through some of the most diverse - and scenic - terrain on the planet. No qualifying process so anyone can enter the 21K championship course, a 10K, a 5K, or an "adventure walk." 9 a.m. - 2 p.m. Kualoa Ranch. xterraplanet.com.

DECEMBER 8-20

BILLABONG PIPE MASTERS

The third and final jewel in the Vans Triple Crown is the most prized event of the season and decides the ASP World Champion, and Triple Crown champion of the Hawaiian winter surf season. Pipeline. The event will not take place every day, but only on the best surf days. Check website for updates. vanstriplecrownofsurfing.com.

DECEMBER 8 - 10 HONOLULU MARATHON EXPO

Free and open to the public. Hours vary daily, usually around 9 a.m. - 6 p.m. Souvenir sales will be at the expo, as well as massages, sports gels, sunglasses and lots more on offer at the Marathon Expo and at Kapiolani Park after the race and again on Monday. A free shuttle will take runners to the Hawaii Convention Center. Stops include Duke Statue, DFS, and the Hilton Hawaiian Village on Kalia Road. honolulumarathon.org.

DECEMBER 8 - 10

BACK IN THE DAY - THE SONGS OF C&K

Henry Kapono celebrates the music of Cecilio & Kapono. Just the mention of these songs immediately conjures up a "Lifetime Party" of "Friends" enjoying "Goodtimes Together," ... and the best is yet to come... Blue Note Hawaii. Two shows: 6:30 p.m. & 9:00 p.m. Tickets: \$25-\$45. Kama'aina always get 15% off. bluenotehawaii.com

DECEMBER 9

HONOLULU MARATHON CONCERT/LUAU

Pre-race festivities include All-You-Can-Eat Buffet and Hawaiian entertainment. Bands to be announced at a later time. Waikiki Shell. Tickets available for purchase by race entrants only. \$55/\$125. (\$75 at the Expo. No tickets will be sold at the door). 4-8:30 p.m. honolulumarathon.org.

Noi
THAI
CUISINE



Trust us to treat
your guests
like Royalty!



Lunch 11:00 a.m. - 3:00 p.m.
Happy Hour (Bar & Lanai)
3:00 - 7:00 p.m.
Dinner 5:00 - 10:00 p.m.

Concierges Receive
20% OFF

WITH CURRENT WORK ID
DOES NOT APPLY TO LIQUOR,
HAPPY HOUR OR SPECIALS

Royal Hawaiian Center
Level 3 (above Cheesecake Factory)
**FREE VALIDATED PARKING
FOR 2 HOURS!!**
www.noithaicuisine.com
808.664.4039

Continues on page 19.

DISCOUNT HAWAII CAR RENTAL

SAVE UP TO 50%



GUARANTEED RESERVATIONS
* NO BOOKING FEES * NO
DEPOSIT * CANCEL ANYTIME
* NATIONAL RENTAL
COMPANIES

call us today @
1.800.292.1930

or check us out online:

DiscountHawaiiCarRental.com

FIRST CHOICE! Chinatown's Second Saturday



Vendors abound along Nu'uaniu and Bethel Streets during Chinatown's Second Saturday

Street art takes on a whole new meaning on Second Saturday in Chinatown. Tables along Bethel and Nu'uaniu Streets host painters, potters and jewelry makers from 11 a.m. to 3 p.m. Sandy Pohl, owner of the Louis Pohl Gallery, has always had her finger on the pulse of the area. She was one of the originators of First Friday, which is still great fun, but is now more of a restaurant and club event, than an art event. Pohl's latest creation, Second Saturday, is bringing crowds to enjoy a new creative space for exhibits, art demonstrations and shopping, plus music and comedy.

Many of Hawaii's top artists, designers and entertainers agreed that daytime was shopping-time and Second Saturday began to grow. When sidewalk tables multiplied, Pohl and her neighboring business owners spread into the street with what she calls "parklets", basically parking stalls surrounded by with low railings. The spaces are perfect for showing art or joining in for a free painting or printmaking class. And, the "make and take" tables are for adults and kids, all free or with a small, one or two-dollar charge for the materials.

Within a few trial months the Second Saturday success resulted in a schedule with plans and themes through next year. "Response," Pohl says, "has been awesome!" describing parking as "plentiful for individual shoppers and families who come to stay and play." Municipal lots offer \$3 all day parking. Trolleys and shuttles drop visitors at the event. Word has gotten around and the line-up of artists expands every month.

Holiday shopping in Chinatown is totally unlike being in a mall. For December the Pohl Gallery will be filled with what might be called "gift art," small affordable pieces by some of Hawaii's top artists – muralists, sculptors, printmakers, fiber artists, jewelry makers, ceramic masters – small works that can start a "collection" or simply be the art that pleases.

Music happens on the Great Lawn at the ARTS at Mark's Garage. "Joke, joke," Sandy says. The 'great lawn' is a triangle of grass in front of Marks where several well known musical groups perform each Second Saturday. Some play contemporary Hawaii; some play the "old style", other groups' just

rock out with rock and roll. CD's are for sale, if they have a new one. And, if you know the hula, dance along.

Inside the ARTS at Marks Garage one can find On the Spot Improv, Hanafuda Japanese card game lessons, and free ukulele lessons by Terry Koyama, who says, "BYOU, bring your own 'uke. We have a few "loaner" ukulele's available in case you don't have your own in your pocket." For Decembers event, Second Saturday shoppers can expect a few Hawaiian Christmas songs, accompanied by the shopper's voices should they want to join in. Pohl adds, "with a "words in Hawaiian" song sheet of course."

Another participatory event will be the 4 x 6-foot mural outside the Pohl Gallery door. It comes complete with head artist, Imai, on hand to teach, plus brushes and paints and an open invitation to create contemporary art. Imai and other artists will supervise, suggest and cheer on the new "mural artists" who may be painting for the very first time.

The "Make & Take" for the December event is a Brown Paper Package" shopping bag to stencil, print and decorate – complete and ready to fill with purchases or take away to use under the tree at home. "The requested one or two dollar donation goes to the fund to keep the Second Saturday musicians paid," says Sandy Pohl.

A multitude of dining choices are open on Saturday, some offering a Second Saturday Special. The Chinese shops and markets are a block or two, and easy away. Of the shops have special holiday window decor, judged early in December. Themes were "entrants choice" and many make a great backdrop for that "wish you were here" or "too bad you didn't come along to jingle some Chinatown bells."

Pohl says, "we knew we needed an alternate daytime event for our area, geared to folks who love interactive art, theater, live music and shopping – daytime fun for individuals and families." Count on it for every Second Saturday in 2017.

The next Second Saturday will be held December 10th in Chinatown. For information, call the Louis Pohl Gallery at 521-1812. ~ Lynn Cook

WAIKIKI BAPTIST

Church

Your Church in Waikiki

424 Kuamo'o St

(Near the Ambassador Hotel)

Sunday Worship Services

9:00 AM - Contemporary

10:45 AM - Traditional

(808)955-3525

WaikikiBaptist.com

Wildlife Guaranteed

See dolphins or turtles or come again Free wildlife-specific cruises in Waikiki, West Oahu & Kona. Family-owned company with ocean activities for all ages.



WAIKIKI •
WAIANAE •
KONA

Sail • Snorkel •
Dolphins • Turtles
• Whales • Scuba •
Fireworks Dinner •
Private Charter •
Transportation

234-SAIL

(7245)

WE ANSWER 24 HOURS!

hawaiinautical.com

Hawaii Nautical



DECEMBER CALENDAR CONTINUED

Continued from page 17.

DECEMBER 9 DIM MAK 20TH ANNIVERSARY

World famous DJ Steve Aoki (and brother to Doraku Sushi owner Kevin Aoki) returns to the island to celebrate Dim Mak 20th Anniversary. Tickets start at \$65, round trip transportation from Aloha Stadium available for \$25. Hawaii Country Club. Gates open at 6 p.m. bampproject.com

DECEMBER 10 SANTA SURFS IN



In what has become a holiday tradition, Santa arrives Hawaiian-style, surfing into the beach on his canoe in front of the Outrigger Waikiki on the Beach. Hundreds line the shore to welcome St. Nick including a keiki halau. Santa then heads into the lobby of the Outrigger Waikiki for pictures and a complimentary meet and greet. Free. Open to the public. 9 a.m. 923-0711.

DECEMBER 10 CHRISTMAS CONCERT

Ring in the holiday season with a special concert by the Honolulu Symphony Chorus. \$25. St. Andrew's Cathedral. 7:30 p.m. oahuchoral.org.

DECEMBER 10 JOY KOY

Los Angeles-based comedian Jo Koy, an island favorite hugely successful career selling out shows in clubs across the nation. His infectious, explosive energy on stage, insightful jokes, and family-inspired humor cross all boundaries

DECEMBER 10 HAWAII KAI HOLIDAY BOAT PARADE

Head on over to the Hawaii Kai Towne Center, grab a seat and watch the 20th annual Christmas Boat Parade as the elaborately decorated boats make their way around the marina (and vote for me!) Live music usually begins at 4:30 p.m. Parade begins around 6 p.m. hawaiikaitownecenter.com.

DECEMBER 10-11 MELE KALIKIMAKA MARKETPLACE

This 2nd annual gift show aims to be your one stop shop for all your holiday shopping needs. Offering everything from books, apparel, jewelry, pre-packaged gift baskets, local gourmet gifts and year-end inventory specials from varied distributors, there will also be a special Winter Wonderland, complete with snow, a Secret Santa Land and live entertainment. Blaisdell. \$4 entry. Sat. 10 a.m. - 9 p.m., Sun. 10 a.m. - 7 p.m. melekalikimakamarketplace.com.

DECEMBER 11 HONOLULU MARATHON

With around 25,000 runners each year, the Honolulu Marathon is up there with the big ones such as Boston, New York, Chicago and London. There are so many runners from Japan they make it large enough to compete with Boston and usually comprise around

60% of the total runners. On your marks, the gun goes off at 5 a.m. at Ala Moana Beach Park. Prepare for closed roads and traffic delays. The winners will return to Kapiolani Park on Monday at 10 a.m. to sign autographs. honolulumarathon.org.

DECEMBER 11 WAY TOO MERRY

The Gay Men's Chorus of Honolulu returns with their rollicking Holiday Concert! Circle the holidays with traditional sleigh rides and jingle bells, then add a dash of camp with A Drag Queen Christmas and Deck the Rooftop. Round out the evening with the tight harmonies of madrigal numbers and a hearty Merry Merry to all. Tickets: \$25-\$50. 5:30 p.m. hawaii theatre.com

DECEMBER 11 HOLIDAY POPS

The Hawaii Symphony Orchestra presents their annual Holiday Pops Concert with Maestro Rob Fisher and Natalie Ai Kamauu featuring Natalie's original songs as well as classical holiday favorites. Tickets from \$27. 4:00 p.m. Blaisdell Concert Hall. hawaiisymphonyorchestra.org.

DECEMBER 11 ALII SUNDAY

Kawaiahao Church celebrates select Hawaiian Royalty (Alii) who are of particular importance for the Church by holding seven special Sunday services in their honor around their birthdays throughout the year. Today they celebrate Kamehameha V. 9 a.m. kawaiahao.org.

DECEMBER 13 • WILLIE K



Hawaii's favorite Uncle return for an evening of Hawaiian. Jazz, Blues, Reggae, Rock to Opera. Blue Note Hawaii. Two shows: 6:30 p.m. & 9:00 p.m. Tickets: \$25-\$45. Kama'aina always get 15% off. bluenotehawaii.com

DECEMBER 14 HLTA HOLIDAY PARTY

The Hawaii Lodging & Tourism Association will hold their annual Holiday Party at SKY Waikiki from 5:30 - 8:00 p.m. hawaiilodging.org.

DECEMBER 16 WILLOW SINGS SONGS OF THE SEASON

Vocalist Willow Chang and friends celebrate the holidays in song. From sacred to secular, old world to new world, Willow's favorite music spans wonderment and joy. Doris Duke Theatre. Tickets: \$25. 7:30 p.m. 532-8701. honolulumuseum.org.

DECEMBER 16-18 THE NUTCRACKER

To celebrate its 40th Anniversary Season, Ballet Hawaii is producing an all new Nutcracker with an unprecedented historical theme. Tchaikovsky's classic ballet will be re-interpreted and set in the 1858 Kingdom of Hawaii. Featuring choreography by Septime Webre, all new costumes, and principal roles performed by Megan Fairchild as Sugar Plum, Joaquin De Luz as Cavalier, Ana Sophia Scheller as Snow Queen, and Nicolai Gorodiskil as Snow King and the Hawaii Symphony Orchestra. Friday and Saturday at 7:30 p.m., Sunday at 2:00 p.m. VIP dinner packages at Chef Chai available. 521-8600 x104. ballethawaii.org

Continues on page 21

The best in comfort food & live sports

Join us for live sports on HD screens. "Walk-In's largest breakfast selection" served all day. New York-style deli sandwiches, half-pound burgers, Round Table Pizza and our "ballpark happy hour."

GIOVANNI PASTRAMI
Since 1988

Check it out! giovannipastrami.com
Call us 808-923-2100
Stop by 227 Lelewa Street in Waikiki

MAC 24/7
HAWAIIAN RESTAURANT & BAR
1988-P

M.A.C. WEDNESDAYS
Industry Night / 71 pm - 2 am
LIVEDJ
50% OFF ALL FOOD

Peakon Power Hour
Weekdays 12-1pm
Lures planted + \$3 shave ice

HALE'AIWA AWARD WINNER
Best Gourmet Comfort Food
Honolulu Magazine

\$3 valet parking when dining

808-521-1564
MAC247Waikiki.com
2500 Kalia Avenue
Honolulu, HI 96815

OpenTable

*Reservations apply, does not include alcohol, tax or gratuity. Subject to availability.



bills
SYDNEY

you are an important part of
bills 'ohana

concierges & guest services staff
receive our 'ohana discount
of 20% off your entire bill
with valid id

does not apply to happy hour
may not be combined with other offers



bills hawaii
280 beachwalk ave
breakfast 7-11am
lunch 11am-5pm
happy hour 3-6pm
dinner 5-10pm
billshawaii.com
808.922.1500



Ala Moana Center presented it's 9th annual Holiday Concierge event and everyone got to let their inner child out as we met at the new Family Fun Zone and guests were given free reign to play with the Lazer Maze, the Virtual Realty Roller Coaster the giant checker set and even a huge pool table where players kick soccer balls as the cue ball. From there, we split into dining groups and reconvened at Mariposa for dessert and prizes and the always entertaining Lance Rae as emcee. alamoanacenter.com



LOCATED IN THE KO OLINA AREA
AND AT TURTLE BAY RESORT
866-876-7422
www.paradisicopters.com



DECEMBER CALENDAR CONTINUED

Continued from page 19.

DECEMBER 16

REBELUTION, PEPPER AND NEW KINGSTON
California's favorite reggae band Rebelution is joined by Island fave Pepper and Brooklyn's New Kingston for an all ages show. Tickets \$35, \$40 increase day of. 6 p.m. Waikiki Shell. bampproject.com

DECEMBER 16, 17 & 18

THE AMY & WILLIE K HOLIDAY SHOW
Celebrate the season with the extraordinary musical artistry of award-winning artists Amy Hanaiali'i and Willie K. as two of Hawaiian islands most popular and top selling artists. Tickets \$62-\$72. 12/16 7:30 p.m. . 12/18. 4:30 p.m. The show on the 17th is at 7:30 p.m. and runs \$65-\$95, and offers a 20% discount for kamaaina. 528-0506. Hawaiiitheatre.com

DECEMBER 17

MUSIC OF HAWAII: HAPA
Every third Wednesday of the month Hawaiian music lights up the Honolulu Museum of Art. This month features HAPA. Doris Duke Theatre. Tickets: \$25. 7:30 p.m. 532-8701. honolulumuseum.org.

DECEMBER 17 • MIGUEL

Grammy Award winning R&B/Hip-Hop superstar Miguel is on tour supporting his third studio album "Wildheart". The singer is known for such #1 hits as "Sure Thing," and "Quickie," 800-745-3000. tantrique.net

DECEMBER 18 • ALII SUNDAY

Kawaiahao Church celebrates select Hawaiian Royalty (Alii) who are of particular importance for the Church by holding seven special Sunday services in their

honor around their birthdays throughout the year. Today they honor Princess Bernice Pauahi Bishop. 9 a.m. kawaiahao.org.

DECEMBER 22-25

DIAMOND HEAD CLASSIC
This annual college basketball tournament will consist of eight teams competing in twelve game over three days in a traditional bracket format. ITHis years teams are from Illinois State, San Diego State, San Francisco, Southern Miss, Stephen F Austin, Tulsa, Utah and of course, the University of Hawaii. Tickets: \$10-\$30. Stan Sheriff Center. 956-6955 diamondheadclassic.com.

DECEMBER 24

SANTA PADDLES INTO GRAY'S
Head over to Grays Beach to see Santa paddle to shore in an outrigger canoe for all to see at 4:30 p.m. before slipping into the Halekulani for a hotel guest only event. 923-2311.

DECEMBER 28-31 • KENNY G

The lines snaked through the lobby the last time this guy was here. Performing 3 nights before his big NYE show. Blue Note Hawaii. Two shows: 6:30 p.m. & 9:00 p.m. Tickets; \$65-\$85. Kama'aina always get 15% off. bluenotehawaii.com

DECEMBER 29-30 • ODE TO JOY

Maestro JoAnn Falletta leads the Hawaii Symphony Orchestra in a performance with the Oahu Choral Society featuring Strauss's Death & Transfiguration and Beethoven's famous Symphony No. 9, "Ode to Joy." Tickets from \$34. 7:30 p.m. Blaisdell Concert Hall. hawaiiisymphonyorchestra.org.



One of the several Pearl Harbor themed ornaments made this year to commemorate the 75th anniversary of the attack on Pearl Harbor.

Honolulu City Lights are lighting up the pages of magazines and newspapers across the continental U.S. New York may be Honolulu's only competition. From Waikiki to Downtown Honolulu, every store and shopping center is aglow. One story mentioned that in Waikiki even the hotel bathrooms had "decor". Back in the day there was one tree at city hall and a few lights in Waikiki.

Moving downtown, the Christmas Lighting of Bishop Square was and still is an epic holiday event. The lights have spread like "lightening", pardon the pun. Honolulu is aglow. Palm trees are wrapped in lights. Honolulu Hale, city hall, is filled with trees, decorated by the various city departments. Outside, a one-story tall Shaka Santa and Mrs. Clause wave Aloha from the edge of the reflecting pool. A massive 3-story tall tree glows for the entire holiday season. Booths, entertainment, a Sugar Cane Train (donated by Ala Moana Center) offers rides around the grounds and, rather than drive or walk, the Waikiki Trolley provides a comfortable ride from Ward Village – for a small fee. At the Village the outdoor ice skating rink is something no one ever expected. A full holiday light show reflects off the Ward Village IBM Building.

Riding past Iolani Palace, the trolley driver explains that the quietly glowing strings of lights are the same as lights that decorated the home of King David Kalakaua and Queen Liliuokalani when electricity was new to the islands. An ornament, available at the gift shop, celebrates the 90th birthday of Princess Aulani Kekauliki Kawanakoa's personal insignia. .

Each year a special Honolulu City Lights ornament is designed by Owen Ho. This year two ornaments salute Pearl Harbor with Santa saluting the Arizona Memorial and the Battleship Missouri and another with a crowd of happy sailors, dressed in "whites", heading over to say Aloha to Tutu Mele, also known as Mrs. Clause. The ornament are also available at Macy's in the Ala Moana Center, a place that may have more lights and music performances than any Hawaii location, plus Santa, housed in a giant, two-story Christmas ornament.

~ Lynn Cook

Hawaii's Most Popular

WHALE WATCH CRUISE

12.15.16 – 4.5.17

Premier Whale Watch® features:

- ★ Most whale and Hawaiian cultural activities
- ★ Keiki (child) program ★ Kids cruise FREE!*

Daily Packages
from \$36 adult

*One child age 3-11 per paid adult is FREE on Whale Watch Cruise only packages. Inquire for details.

808-983-STAR (7827) ★ StarofHonolulu.com

That's Entertainment

HOTELS

- HALE KOA HOTEL** 955-0555
 •**TuSat** - High and Right Comedy Show takes the stage at the Warriors Lounge at 8pm.
 •**MThFS** - Poolside music at the Barefoot Bar. 6-11pm
- HALEKULANI HOTEL** 923-2311
 •**Daily**-Hawaiian Music and hula at House Without A Key from 5:30-8pm.
 •**Daily**-Live Contemporary and light Jazz at Lewers Lounge from 8:30pm to midnite.
 •**Sun**- Sunday brunch at Orchids features Noly Paa on the piano from 9:30 - 2:30pm.
- HILTON HAWAIIAN VILLAGE** 949-4321
 •**Fri** - Fireworks at 7:45pm.
 •**Fri** - The Rockin' Hawaiian Rainbow Revue, a musical salute to King Kalakaua, at the Super Pool. 7 pm.
 •**FriSat** - Olomana at the Tapa Bar from 8-11pm.
 •**Daily** - Live entertainment at the Hau Tree Bar and the Tapa Bar from 8-11pm.
- THE KAHALA HOTEL & RESORT** 739-8888
 •**TuWThFSat**- David Swanson vocalizes on the piano at The Veranda from 7:30-10pm.Hawaiian on Sun/Mon.
- MOANA SURFRIDER** 922-3111
 •**Daily**-Hawaiian music & hula. The Banyan Court, 6-8 pm, and again from 8 -10 p.m. Weekends from 11:30- 2 p.m.
 •**MWFri**-Guided historical tours at 11am.
- NEW OTANI KAIMANA BEACH** 923-1555
 •**FSat**- Jazz guitarists in the Sunset Lanai Bar. 6-9pm.
- OUTRIGGER WAIKIKI ON THE BEACH** 923-0711
 •**Mon**- Kukui Nut Bracelet Making. 1pm.
 •**Th**- Ukulele Lessons. 1pm.
 •**Fri**- Aloha Fridays bring back old Hawai'i with music, hula, ukulele & lei making lessons. 9am-1pm.
- OUTRIGGER REEF ON THE BEACH** 923-3111
 •**Daily**- See guest artists at work in Kuloko Arts of Hawaii 9am-1pm and again from 6-9pm.
- SHERATON PRINCESS KAIULANI** 922-5811
 •**Daily**-Live Hawaiian music & halau at the lounge from 6-8:30pm, then poolside from 8:30-10:30pm.
 •**Th**-Princess Kaiulani historical tour at 9:30am.
- THE ROYAL HAWAIIAN** 923-7311
 •**TTH**- Free guided resort tour at 1pm.
- TURTLE BAY RESORT** 293-6300
 •**MTWThFSat**- Lei Making, Main Lobby at 10am.
 •**ThSun** - Fire Dancer, Hang Ten Pool Bar at Sunset
 •**TThFri** - Shell Hula Lessons, Lobby at 10am
 •**TThFri** - Ukulele Lessons, Lobby at 9am
 •**Fri**- Music & Hula. Lobby Lounge 6:30-8:30pm.

- WAIKIKI BEACH MARRIOTT RESORT** 922-6611
 •**Daily**-Hawaiian entertainment in The Moana Terrace Bar. 6:30-9:30pm.
 •**Fri**-Local crafters "Aloha Friday Fair" Lobby 9a-2pm

MUSEUMS

- HAWAII STATE ART MUSEUM** 586-0900
 •**TWThFSat** - Inaugural exhibition "Enriched by Diversity: The Art of Hawai'i." Free. Tuesday-Saturday, 10 a.m. to 4 p.m. Located in the Capital District.
- HAWAII THEATRE** 528-0506
 •**Tues**- A one-hour guided tour offers a unique insight in the history, art, architecture and restoration of the Hawai'i Theatre with trained docents & a mini-concert on the 1922 Robert Morton Theatre Organ. 11 a.m. Admission: \$10.
- HONOLULU MUSEUM OF ART** 532-8726
 •**MWF**- Japanese Language Tours. Private tours also available. 1pm. Regular admission.
- HONOLULU FIRE MUSEUM** 723-7167
 •**3rdSat**- Free one-hour guided tours through various exhibits with a firefighter recounting HFDs history the 3rd Saturday: 9am - 2pm. Reservations required. 620 South Street. honolulu.gov/hfd/communityrelations
- IOLANI PALACE** 522-0832
 •**Mon-Sat**-45 minutes docent-led or self-guided audio tours available in English or Japanese. Japanese-led tour is available only at 11:30 a.m. All tours include re-tour video and entrance into the Palace Galleries. Adults: \$14.75-\$21.75 / Keiki (5-12): \$6. 9am-5pm
 •**Sat**-Hawaiian Quilt Classes. Old Archives 9:30a-12p.
- LUCORAL MUSEUM** 922-5381
 •**TTh**- Learn how to plan your jewelry project and more in this beaded jewelry workshop \$10. 2-4 p.m.
- HAWAIIAN MISSION HOUSES** 447-3910
 •**Tue-Sat**-Learn about the dramatic story of cultural change in 19th-century Hawai'i. Docents lead tours through the oldest existing frame house in the Islands, Printing Office, and the coral block Chamberlain House. Reservations required. www.missionhouses.org
- PACIFIC AVIATION MUSEUM** 441-1000
 •**Daily**-Vintage aircraft in battlefield hangars at Pearl Harbor. Combat flight simulators. Aviator's Tour takes you through the new Restoration Hangar. Restaurant, Museum Store. Shuttle & Tickets at USS Arizona Memorial Visitor Center or at PacificAviationMuseum.org.
- THE SPALDING HOUSE** 526-1322
 •**Daily**-Docent-led tours given daily. 1:30pm. Garden tours or Japanese language tours are by appointment.

- NAVAL AIR MUSEUM BARBERS POINT** 682-3982
 •**Mon-Fri**- A unique museum experience about aviation history in Hawaii. All of the aircraft are open to climb in, on and around. Tours: 8 a.m. - 4:30 p.m. \$7 / \$5 children under 18. BLDG 1792, Midway Road, Kalaeloa Airport. Reservations required. Sat/Sun by appt only. www.nambp.org.

SHOPPING CENTERS

- ALA MOANA CENTERSTAGE** 955-9517
 •**Tues** - PCC Polynesian Revue Show. 6pm.
 •**Sun** - Keiki Hula Show. 10-11am.
- KINGS VILLAGE** www.kings-village.com 237-6344
 •**MW** Famer's Market offering fresh produce, baked goods and local food items from 4-9pm.
 •**Daily** King's Guard Museum features a variety of collectibles and memorabilia. 10a-10:30p. FREE.
- ROYAL HAWAIIAN CENTER** 922-2299
 • **MWF**- Learn Lomilomi 11am-12pm, Bldg. B, 3rd floor
 • **MF**- Hawaiian Storytelling 12pm, *Helumoa Hale*
 • **MTWF**-Hula 10am (4pm on Wednesdays), *Royal Grove*
 • **ThSat**- Rock-a-Hula Pre-Show 7pm, *Royal Grove*
 • **WTh**- PCC Show 11am, *Royal Grove*
 • **TWTh**- Lauhala Weaving 1pm, *Bldg A, 1st floor*
 • **TThF**- Ukelele 12pm, *Helumoa Hale*
 • **TWF**- Live Hawaiian music 6-7pm, *Royal Grove*
 • **ThSat**- Rock-a-Hula Pre-Show 7pm, *Royal Grove*
 • **Sat**- Hula Kahiko 6-6:30pm, *Royal Grove*
- WAIKIKI BEACH WALK** www.waikikibeachwalk.com
 •**Tuesdays** - Ku Ha'aheo featuring Hawaiian song and dance on the Plaza stage. 4:30-6pm
 •**Wednesdays** - Yoga Classes 4-4:45pm. Free.Plaza Stage

ATTRACTIONS

- KALAKAUA AVENUE** 527-5666
 •**Fri** - Strolling Hula from 8-10:00pm.
- KAPI'OLANI BANDSTAND** 527-5666
 •**Fri**-Hawai'i's finest musicians perform. 5:30-6:30pm
 •**Sun**-Royal Hawaiian Band performs 2-3:15pm.
- KUHIO BEACH HULA SHOW** 843-8002
 •**TThSat**- City & County presents a free hula show at sunset. 6:30 - 7:30pm at the hula mound.
- TAMARIND PARK - DOWNTOWN** 527-5666
 •**Fri**- Mayor's Aloha Friday Music from 12-1pm features live music from Hawaiian to Jazz to Pop.
- WAIKIKI TOWN CENTER** 922-2724
 •**Mon-Sat**-The songs and dances of Hawai'i, New Zealand, & Tahiti. Free shows begin at 7pm.

EVENTS SUBJECT TO CHANGE PLEASE CALL TO CONFIRM PRIOR TO ATTENDING

PAPARAZZI

Hats of Fun



Twenty Miss Hawaii USA hopefuls competed in the Longines Most Elegant Woman fashion contest during the launch event of the new Steel and Gold Longines DolceVita timepiece at the Longines Boutique at the Ala Moana Center.

HIFF was another huge success



Halekulani's Peter Shaindlin; HIFF Co-Director of Programming Anna Page; HIFF Co-Director of Programming Anderson Le; and HIFF Executive Director Robert Lambeth kicked off the 2016 Film Festival last month. Photo credit Kaveh Kardan, courtesy of HIFF.

Undisputed Brunch Champs!



Chef Lee Anne Wong from Koko Head Cafe and Sven Ullrich, Executive Chef at the Hyatt Regency Waikiki Beach Resort react as Adam Richman announces their third consecutive win at the Hawaii Food and Wine Festival's Battle of the Brunch

conciierge card

December 31, 2016

• **Bill's Sydney Waikiki** - 20% discount off food and beverage (not applicable on happy hour or other offers). Must show hotel ID to receive discount. 280 Beach Walk. 922-1500

Dole Plantation - 1 FREE Adult Admission To The Maze With Purchase of 1 Adult Admission. 621-8408

Giovanni Pastrami - 15% Off Full Bar, Dine-in or Take-Out at anytime with ID. 227 Lewers St. 923-2100.

Hard Rock Café - 15% off food, beverage (non-alcoholic), or merchandise. Hotel ID required. 280 Beachwalk Ave. 955-7383.

Hawai'i Prince Golf Club - \$5 Off Standard Kamaaina Green Fees. Tee Times: 944-4567

Hilo Hattie - 25% on Hilo Hattie labeled garments, 15% off other fashions/gifts and 10% off Hilo Hattie labeled foods. Not valid on sale item. Ala Moana Center. Ph 535-6500.

Hy's Steakhouse - 25% VIP Discount Off Food And Beverage (up to 2 persons) 2440 Kuhio Ave. 922-5555

Hyatt Regency Waikiki - 15% discount with the presentation of a concierge business card at SHOR, Japengo and SWIM. 2424 Kalakaua Ave. 923-1234.

Iolani Palace - Free Admission. Regular rate \$21.75. 364 S. King Street, Reservations & Hotel ID required. 522-0832.

• **IHOP** - Receive 20% on entire bill. Must show valid hotel ID. Not valid with any other offer or discount. Valid only at Aqua Palms, 1850 Ala Moana Blvd., 949-4467 and OHANA Waikiki Malia by Outrigger®, 2211 Kuhio Ave., 921-2400.

• **Il Lupino** - 15% discount off food and beverage (not applicable on liquor or specials). Must show hotel ID or business card to receive discount. Royal Hawaiian Center. 922-3400

Kaiwa - 20% off food & beverage between 5 & 7 p.m. 924-1555

Hawaiian Mission Houses - Free tour with hotel ID. 553 S. King Street. 447-3910

• **Noi Thai** - 20% discount off food and beverage (not applicable on liquor, happy hour or specials). Must show hotel ID to receive discount. Royal Hawaiian Center, Bldg. C. Level 3. 664-4039

• **NWL Nails Wax & Lashes** - 20% discount off all services. Must show hotel ID and mention ad in magazine to receive discount. Inside the lobby of the Waikiki Grand Hotel. 922-NAIL

Pacific International Skydiving Center - 50% Discount on Jump, 68-760 Farrington Hwy., 637-7472.

P.F. Chang's Waikiki - Receive 20% on all appetizers, entrees, desserts and beverages 11 am - 5 pm daily (not valid for Pau Hana menu) Royal Hawaiian Center. Ph: 628-6760, 637-7472

Romano's Macaroni Grill - 20% Off Food and Beverage for up to 2 guests. (Not Valid for Happy Hour Menu). Ala Moana Center, 1450 Ala Moana Blvd. 356-8300

Ruth's Chris Steak House - 20% Off Food and Beverage for up to 2 guests. (Not Valid for Happy Hour & Prime Time menus). Restaurant Row, 599-3860. Waikiki Beach Walk, 440-7910.

Honolulu Museum of Art Spalding House. - FREE Admission For you and one guest with hotel ID. 526-1322

The Original Glider Rides - Come experience the joy of soaring for yourself. Concierge / GSA may receive a complimentary scenic ride. Request the "GSA flight special" when booking your reservation. Hotel ID required. Dillingham Airfield. 637-0207

Tiki's Grill & Bar - FREE order of ANY appetizer with any purchase! One per table. OahuconPOKE. ASTON Waikiki Beach. 923-8454

Willoughby's Restaurant - 15% off all food items. Ohana Honolulu Airport Hotel. 3401 N. Nimitz Hwy. 836-0661.

HELP us update this card. If you know of an offer not being honored let us know. As management changes, sometimes offers can get lost.

You will be required to show Hotel ID or business card to claim offer. Do not cut this card out of the book. One special per person per business. Offers valid on regular-priced merchandise only. Discounts are available to Guest Service Professionals ONLY. Not valid with other promotions or special offers. A minimum 18% gratuity on original order required for all special food offers.

Guest Service Agent of the Month



NAME: Sharleen Tacazon
COMPANY: Hale Koa
TITLE: Guest Service Agent

Q. How long have you been with the Hale Koa?

A. I'm what you would call an old timer. I first started at the Hale Koa back in 1995, almost 19 years ago!

Q. Describe an average day at work.

A. I have an ideal shift of 8:30 a.m. – 5 p.m and we're CONSTANTLY BUSY! Not only do we deal with check-in and check, we also deal with booking room reservations, in-house activity ticket sales, tennis court reservations, helping out PBX by relieving them when they need help along with answering concierge questions among other 101 other questions that the guests come up with. Yes, you definitely need to be a multi-tasker to work at the Reception Desk.

Q. What is your biggest challenge at the desk?

A. I'd say having a very picky guest and being able to accommodate them with the room that they "specifically booked" a year ago.

Q. What do you like most about this industry?

A. I truly enjoy working at the hotel and enjoy basically helping people. I've made friends with guests who've stayed with us year after year and I actually was able to visit them and have stayed at their place for a change.

Q. Favorite perk of the job?

A. There's quite a few that I like such as free access to our fitness center which I actually use. Also being a military hotel, we do have a Department of Defense ID card for the military and having base access.

Q. Least favorite part of the job.

A. When my computer crashes in the middle of helping a guest and goes down for over an hour!

Q. What's the one question you are asked the most?

A. At least 20 times a day, what time is check out?

Q. What is your favorite restaurant to recommend?

A. Hy's Steakhouse for their great steaks!

Q. Do you have a guest that sticks out more than another?

A. There's so many to choose from but I would say Mrs. Edna Cross from Alaska who comes every year and gives me a dish towel, pot holder and dish scrubby when she visits. I have about 6 sets already. She comes here to soak up the sun... literally. She checks in with no tan and leaves about 2 weeks later with a tan rivaling George Hamilton.

Q. What's the most unusual request you ever received?

A. One request that sticks out was when a woman had called Reception and had told me her sister was sitting in the lobby crying because she just got word that an immediate family member had just passed away. She wanted me to give her a hug. I went out into the lobby looking for her while I had the sister on hold. Unfortunately, I couldn't find that woman and tried calling her room but there was no answer. Her sister appreciated the fact that at least I tried.

Q. What is your favorite activity to recommend?

A. My favorite activity I recommend is EATING! If the guest is here towards the last week of the month, I would refer them to go to Eat the Street. So many food trucks to choose from all in one area!

Q. What do you like to do most when you're not working?

A. Aside from spending time with my family, I love to read. Having 3 kids with 2 of them being little ones makes it difficult to find time to read.

CELEBRATE THE SEASON

Atlantis
SUBMARINES
WAIKIKI

EXPLORE OUR OAHU

Celebrate the season with Atlantis Submarines! Create unforgettable family memories on our Undersea Adventure.

atlantisadventures.com

For info & reservations call (808) 973-9811 or fax to (808) 973-2499

   | #atlantishawaii

The Oahu Concierge is printed monthly and direct mailed FREE to all Oahu Concierge, Hospitality & Activity Professionals.

Subscriptions available to non-industry at \$25 per year.

C O N T A C T

Davis Media

Ph: 596-4422

www.oahuconciierge.com

Twitter & Instagram: @OahuConciierge

Facebook: www.facebook.com/OahuConciierge

ADDRESS & NAME CHANGES / ADDITIONS

We do not take changes via telephone. All changes to mailing list must be submitted in writing by the 16th of the month to make the next issue, email is preferred.

S T A F F

PUBLISHER & EDITOR **Pam Davis**
publisher@oahuconciierge.com

CONTRIBUTING EDITORS
Lance Rae, Lynn Cook

DESIGN
Coreiya Design

The Oahu Concierge
4348 Waiialae Avenue, #185
Honolulu, Hawaii 96816



**Award-Winning Restaurants.
Special Happy Hour Prices.
Live Entertainment.**

**A happy hour your guests
will never forget.**



Bites and libations at the Grand Lānai Happy Hour are the perfect way to turn a day at the beach into a night on the town at Waikiki's newest dining destination. It starts with pupus and drink specials from 3-5 PM daily, with live local music for your guests to enjoy every Thursday-Sunday.

GRAND LĀNAI
INTERNATIONAL MARKET PLACE

[f /IntlMktPlace](https://www.facebook.com/IntlMktPlace) | [IG @IntlMktPlace](https://www.instagram.com/IntlMktPlace)
+ [International Market Place](https://www.instagram.com/InternationalMarketPlace)
Kalakaua Avenue | GrandLanai.com