

## The Whales are Back!



There is nothing like whale watching. One of my favorite times of the year, seeing these magnificent creatures up close in their natural environment is an experience you will never forget, and can easily be the highlight of any trip. Humpback whales have some of the longest migrations of any mammal with some populations swimming 5,000 miles between breeding and feeding grounds. Fortunately for us, the whales return to our shores year after year, giving us the opportunity to see them up close and personal, and it's one show I never tire of seeing.

Humpback whales migrate from their feeding grounds in Alaska to the warm waters surrounding the Hawaiian Islands each winter to breed, give birth, and nurse their young. Research shows they take about 39 days to travel the 3,200 miles from Alaska, cruising an estimated 3 to 4 miles per hour and are believed to swim 24 hours a day. In 1992, recognizing the need to increase protection of these endangered mammals, the federal government designated these waters a marine sanctuary to help protect the whales and their habitat in the Islands.

The Hawaiian Islands serve as a crucial winter habitat for North Pacific humpback whales. These whales migrate from their feeding grounds in Alaska to the warm Hawaiian waters

The name says it all. The Hawaiian Islands Humpback Whale National

Marine Sanctuary is home to one of the world's most important populations of that protected species. The sanctuary covers approximately 1,400 square miles of waters around the main Hawaiian Islands, including Maui, Moloka'i, Lana'i, Kaho'olawe, O'ahu, and Hawai'i Island, protecting more than 21,000 humpbacks. The primary purpose of the sanctuary is to protect humpback whales and their habitat through research, education, conservation, and resource protection efforts, working in collaboration with various partners, to reduce threats to humpback whales, including through enforcement activities. The sanctuary is managed as a Federal-State partnership by both the Hawai'i Department of Land and Natural Resources (DLNR) and the NOAA Fisheries Office of National Marine Sanctuaries.

The sanctuary has regulations in place to minimize human disturbances to the whales. These regulations include guidelines for vessel traffic to prevent collisions with whales and restrictions on approaching whales too closely. It is illegal to approach within 100 yards of a humpback whale. These regulations are strictly enforced, and violations can result in fines anywhere from \$500-\$12,000.

According to NOAA, "ocean stewardship is deeply embedded in Native Hawaiian culture. Humpback whales, or koholā, are an important part

*Continued on page 6.*

## LUNAR NEW YEAR

The Year of the Dragon begins Feb. 10



Hawaii loves its holidays, and Chinese New Year is big here. Chinese New Year, often called Lunar New Year, is a big deal in Hawaii with the melting pot of Asian cultures that make up our community. It's a time for families and friends to gather, enjoy special meals, exchange gifts, and wish each other good luck and prosperity for the coming year. In the Chinese calendar, each year is associated with one of the twelve animal signs, and the cycle repeats every 12 years. Each year in the Chinese zodiac is also associated with one of the five elements (wood, fire, earth, metal, water). 2024 will be the Year of the Water Dragon.

Dragons are the only mythical animal in the Chinese zodiac and are considered a symbol of strength, courage, and good fortune. People born in the Year of the Dragon are believed to inherit the characteristics associated with this mythical creature. Dragons are seen as ambitious, confident, and charismatic individuals. They are considered natural leaders with a strong sense of determination and perseverance. However, they can also be perceived as

*continued on page 4.*

### TABLE OF CONTENTS

|  |               |
|--|---------------|
| Yada Yada Yada .....                                 | 2             |
| Saying Goodbye to the Landline .....                 | 2             |
| Newsflash .....                                      | 3             |
| E Pili Kakou .....                                   | 8-13          |
| Chef's Corner: Alohilani Exec. Chef Jordan Swiler .. | 13            |
| Calendar .....                                       | 14-15, 17, 18 |
| Happy Valentine's Day .....                          | 16            |
| That's Entertainment / Concierge Card .....          | 19            |

## Publisher's Letter



### STARTING OFF STRONG

We're a few weeks into 2024, and so far so good. I am determined to turn a new page and move forward from everything negative that happened last year. I'm talking about cleaning house in a big way. From my actual house that desperately needs a spring cleaning to try to keep my desk clean (if you saw it, you'd be so disappointed in me) to try to clean out my Inbox, 13,000 and counting! Even things like trying to stick to deadlines and getting things out on time will help. (Remember, I have five books in all, not just this one, plus three annuals! I am always on deadline!) Things fell too far off track last year when my mom started to go down, and I am focusing on picking up all of the pieces bit by bit. I'll be honest – it may take me all of 2024 to get there, but I'm going to give it my best shot. So, for a girl who really doesn't like making resolutions, I guess I did this year, and I'm hard at work getting them started. I am determined to make this year a great one. I hope you are, too.

The year started off pretty well. I had a great time at the Sony Open. Mahalo to the Kahala and the Halekulani for hosting me. I went during the week and got to see the beginning of the tournament, and for the first time ever, (I am so not a golfer), I became completely invested in the game. It helps that I got to meet a few of the players along the way as a few of my classmates were volunteering for Sony, and another works for the PGA. I ended up staying home on Sunday glued to the TV, using picture-in-picture to keep a close eye on both the golfers and the football playoffs. I don't know which one we were cheering for louder. Super fun! Speaking of football, here comes the Super Bowl. The second weekend of February is going to be a busy one. You have the Lunar New Year on Saturday the 10th, the big game on Sunday, a concierge event on Tuesday, and Valentine's Day on Wednesday. Plan accordingly! Last year, many places were selling tickets for Super Bowl Sunday. I didn't cover any of that in this issue, but now is the time to call around and make your reservations if you're a football fan.

The year seems to be starting off strong on all levels. The world is generally happier, the industry looks good, and we have at least six concierge events scheduled over the next two months. Hope to see you all soon!

# Yada Yada



Kelly Kitashima

**Kelly Kitashima** has joined *The Laylow Waikiki* as their new Director of Sales and Marketing. With over 20+ years of hospitality experience at top Hawaii and Las Vegas hotels and resorts, she has worked with

Highgate, Vacasa, Marriott, Hyatt, and the Kahala Hotel amongst others over the years, she brings a wealth of knowledge and a passion for Hawaiian culture and community engagement to the role where she will lead the sales, marketing, and events strategy of the hotel. • *Hilton Hawaiian Village Waikiki Beach Resort* has appointed **Brian Fung** as its Assistant Director of Banquets. He will assist in leading all luau, banquet, and catering operations at the resort, working to ensure profitability and outstanding guest experiences. He will also be involved in key aspects of the banquet operation, including guest service, food & beverage quality, and team member engagement. Most recently he served as the director of food & beverage at Playa Largo Resort in Key Largo, Florida, and previously held director and assistant director positions at other Hawaii resorts including Mauna Lani on Hawaii Island and the Ritz Carlton Kapalua. • A belated

welcome to **Christina Maffei** who took over the position of Director of Food & Beverage at *The Kahala Hotel & Resort* a few months ago. Christina is an award-winning mixologist who many of you may



Christina Maffei

remember from her time when she first came to Hawaii to open the Trump International Hotel as its Food & Beverage Manager, before she moved over to the Hale Koa Hotel, and then the Hilton Hawaiian Village before heading over to the mainland for a stint with Kimpton Hotels for a few years before returning in 2019 as GM of Stripsteak. If you don't remember her from any of those properties, then you should remember her from the fact she won the title of creating 'The World's Best Mai Tai' at the Bacardi World Mai Tai Competition in Kona not once, but twice! Glad to see her back on island. • Last, but certainly not least, let's all congratulate **Aunty Luana Maitland** on her promotion to Area Director of Cultural Experiences for both the *Outrigger Reef Waikiki Beach Resort* and *Outrigger Waikiki Beach Resort*. She started with Outrigger Resorts 23 years ago as their Events & Activities Manager, and we are all better people for working with her.

## It's Time to Say Goodbye to the Landline

It's been a few years since I moved out of an 'official' office and into a home one. At that time, I forwarded my office number to my cell phone and that's been

how it has been working for years. In the beginning, it only cost about \$13 a month with Hawaiian Tel, but as years go by, the cost keeps going up, and it just doesn't make sense anymore, I'm not going to get a new one. So, as I continue trying to become a bit more organized this year, it's time to give that old landline that the old heave ho.

Most all of you know and use the (808) 225-8229 number. It has been listed on all



of the back of all of my magazines, at the bottom of every email, and is on my and business cards and website. I some of you still use both, as I often see two missed

calls from the same number, and hear both voicemails you leave, but please consider this formal notice that I will be disconnecting the landline in the next 45 days - so please do not freak out if you call 596-4422 and you hear a disconnected notice. We are still here are gong strong - just cutting the strings to the past and continuing to move forward.

Please make a notation in your phone. Texts are welcome at (808) 225-8229.



# EXTRA EXTRA EXTRA *Newsflash*

## HVCB PROMOTES SUE KANOHO TO MANAGING DIRECTOR

The Hawai'i Visitors and Convention Bureau has promoted of Sue Kanoho to Managing Director of its Island Chapters, which includes the Kaua'i Visitors Bureau (KVB), O'ahu Visitors Bureau, Maui Visitors and Convention Bureau and the Island of Hawai'i Visitors Bureau. In her role, Kanoho will lead the Island Chapters with the Hawai'i Tourism Authority. Kanoho started as the Executive Director of KVB in 1997 and has been there since.

## COCO NENE LAUNCHES NEW FLAGSHIP STORE AT IMP

CocoNene, the renowned local brand, opened its newest flagship store at the International Market Place, marking a significant resurgence for the brand after the unfortunate loss of their previous flagship store on Front Street during the Lahaina wildfires. Dedicated to crafting meaningful products that feature designs by local artists, all of CocoNene's products are 100% made in Hawaii. Their assortment of wood wall art, home décor and gifts capture the essence and beauty of Hawaii and its gift-giving culture. The new location offers shoppers a chance to design their own keepsake onsite using locally-made products. [coconene.com](http://coconene.com).

## GOODBYE TRUMP WAIKIKI - HELLO KA LA'I WAIKIKI BEACH

As most of you have heard, LXR Hotels & Resorts assumed management of the Trump International Waikiki a few months ago. As part of its rebranding process, the hotel is changing its name. When deciding on what to call the property, they thought of the natural elements and overall spirit of abundance, comfort, prevailing warmth and hospitality. With inspiration rooted in the story of Wakea and Papa, and honoring the reciprocal relationship between Earth and Sky, this feeling is best described as Ka La'i (pronounced Kah Lah-ee), a feeling of calm, serenity and tranquility and a connection to these elements. The Ka La'i Waikiki Beach comes to life Feb. 7.

## A NEW TOY STORE OPENS IN WARD CENTRE

Selfmade Something, a locally-owned toy store recently opened in Ward Village, offering fun toys designed to provide breaks from screen time that are also educational. In the future, the store plans on offering workshops and special events. [selfmadesomething.com](http://selfmadesomething.com).

## THE KAHALA HOTEL & RESORT CELEBRATES 60 YEARS

The Kahala Hotel & Resort celebrates its diamond anniversary in 2024, marking 60 years as one of Hawaii's premier luxury destination. The resort has planned with a series of special events and promotions throughout 2024, and held a dazzling Diamond Gala last month and continues with a Ramen Festival this month. Expect exclusive anniversary dishes and artisanal cocktails at their dining outlets as they pay homage to the year they opened.

## THE RETURN OF THE 'KODAK' HULA SHOW AT THE SHELL

For 65 years, the iconic Kodak Hula Show was an institution at the Waikiki Shell. First launched in 1937, the show was such a part of our culture that people still bring it up to this day, and now, 20 years after its last performance, a new hula show returns to Tom Moffatt Waikiki Shell thanks to the Council for Native Hawaiian Advancement. The Kilohana Hula Show will be free Sunday to Thursday from 9:30 a.m. to 10:30 a.m. as of February 15.

**Entertainment EVERY NIGHT**

HILTON HAWAIIAN VILLAGE® PRESENTS  
**WAIKIKI STARLIGHT LUAU**

ROOFTOP OF THE MID-PACIFIC CONFERENCE CENTER

Fire knife dancers, live music and an authentic island feast—all under the stars. Upgrade to **Premier seating** for access to the first and second rows, a welcome beverage plus two drinks, and fresh flower lei greeting.

**GOLDEN CIRCLE and GENERAL SEATING also available.**

SCAN FOR CURRENT SCHEDULE & RESERVATIONS.

**TAPA BAR**  
IN THE TAPA TOWER

**LIVE MUSIC NIGHTLY 7-10pm**

A venue for icons of Hawaii's music scene, this is where you'll experience some of the finest local talent the islands have to offer. Join us for a fun-filled evening immersed in the heartbeat of Hawaii's music.

**NOW SERVING**  
Smash Burgers, Nashville Hot Chicken, Pizzas and more!





CocoNene



Create Your Own!

CAPTURE  
HAWAII  
VACATION  
MEMORIES



#madeinhawaii

coconene.com

@coconenehawaii

## LUNAR NEW YEAR

Continued from page 1.

arrogant or overly assertive at times. Are you a Dragon? You are if you were born in 1940, 1952, 1964, 1976, 1988, or 2000.

Chinese New Year falls on February 10 this year, but the party gets started the weekend before, as you can expect to see lion dancers at First Friday go from business to business to wish them luck in the coming year. The lion dancers are one of the most visible traditions of Chinese New Year. The lion dance is believed to bring good luck and prosperity and ward off evil spirits. How can you and your guests celebrate Chinese New Year?

On Saturday, February 3, take advantage of the popular Night in **Chinatown Festival & Lunar New Year Parade**. The event is an all-day celebration from 9 a.m. – 10 p.m. at Aala Park. Guests can look forward to fiery festivities, including lion dances, martial arts demonstrations, food and craft vendors, keiki activities, live entertainment, and many other traditions and activities that will bring good luck and prosperity in the New Year. See the schedule below:

### Chinatown Festival Schedule

**9 a.m. - noon** - Free Kids Make & Take Craft stations by Home Depot

**9 a.m. - 6 p.m.** - Enjoy activities and entertainment, including free bouncy houses, craft booths, lion dances, and martial arts demonstrations.

**6 p.m. - 10 p.m.** - All activities except for bouncy houses continue.



The parade marches down Hotel Street to the Festival. Photo courtesy Chinatown 808.

At 4:30 p.m., the **Lunar New Year Parade** starts at the Hawaii State Capitol Lawn, traveling along Hotel Street through Chinatown. Parade goers will enjoy performances by lion dance groups and dragons, appearances by festival queens and their courts, local cultural organizations, kung fu martial artists, local dignitaries, and more. The parade will end at the Festival in A'ala Park. If you haven't been in a while, there's no reason for concern. A'ala Park is all cleaned up

these days, and there will be hundreds and hundreds of folks on site that day.



The lions will spread good luck through all of the mall tenants. Photo courtesy Ala Moana Center.

All the shopping centers will be celebrating the Lunar New Year as well. Expect plenty of seasonal décor, lion dancers, special events, and gifts with purchase no matter where you go. Here's what we know:

**Ala Moana Center** will usher in the "Year of the Dragon" with celebrations featuring lion and dragon dancing, Chinese calligraphy demonstrations, lion dance pole jumping, and other cultural performances from Feb. 9-19. Shoppers can leave special messages of hope, happiness, and health on its Lunar New Year Wishing Wall on Mall Level 2, Center Court. On February 17, starting at 11 a.m., more than 20 lions will spread good luck and collect lai see throughout the Center. At 1:30 p.m., there will be demonstrations on the Ewa Wing stage, followed by performances on Centerstage at 3 p.m., and at 5 p.m. On February 18, master calligrapher Ina Chang will be on the Ewa Wing Stage from 11 a.m. to 1 p.m., offering a complimentary, hand-lettered good luck fortune, followed by more performances on Centerstage at 1, 3, and 5 p.m. Up to 888 lucky customers with a minimum of \$250 in receipts can receive a tote and gift card valued at up to \$100 in a lai see envelope. [alamoanacenter.com](http://alamoanacenter.com).

At **International Market Place**, the lions will visit the stores on February 10 from 11 – 1:30 p.m. Visitors will also learn about Chinese Calligraphy from 1 – 3 p.m. On February 10 & 17, there will be complimentary star gazing on the Grand Lanai, and from February 10 to the 24, guests who spend \$150 in same-day receipts at International Market Place will receive a commemorative Year of the Dragon Honolulu Cookie Company Box. [shopinternationalmarketplace.com](http://shopinternationalmarketplace.com).

**Royal Hawaiian Center** will be celebrating from February 3 to February 18. Guests are invited to immerse themselves in the art of calligraphy with

continued on page 18.





# LUNAR NEW YEAR CELEBRATION

FEBRUARY 9-19, 2024



## WELCOME THE YEAR OF THE DRAGON

Join Ala Moana Center and celebrate the Year of the Dragon with a limited-edition gift-with-purchase, Chinese calligraphy demonstrations, lion and dragon dancing, lion pole jumping, and other cultural performances. Shop exclusive Lunar New Year products and promotions offered at select retailers.

FOR MORE INFORMATION VISIT  
ALAMOANACENTER.COM



ALA MOANA  
HAWAII'S CENTER

1450 ALA MOANA BLVD. HONOLULU, HI 96814 • 808.955.9517



**WAIKIKI MARKET**  
WHERE ALOHA MEETS 'ONO

**'OLILI**

**PiKo**  
kitchen + bar

**FREE**  
Delivery or  
Curbside  
Pickup  
with your first order!

Open daily from 6 am – 10 pm  
waikikimarkethawaii.com  
Lilia Waikiki, 2380 Kuhio Avenue

## Whales

Continued from page 1.



of history, legends, and connection to the sea. The cultural and maritime heritage of Hawai'i plays a role in management decisions and how the sanctuary's daily activities are carried out."

By providing a protected environment for humpback whales, the Hawaiian Islands Humpback Whale National Marine Sanctuary plays a crucial role in the conservation of this species and the marine ecosystem in the region. Thanks to their efforts, the whale population seems to be growing, ensuring these beautiful creatures will continue to swim to our shores each year.

There are countless ways to see the whales. You can easily see the whales from your hotel room. I remember being in a meeting one year, sitting across from the desk with a window overlooking Waikiki Beach behind my client, and had the hardest time keeping my attention on the person speaking as a whale and a calf were putting on a heck of a show behind them the entire time.

For the budget conscious, visitors can simply take a break as they hike up Makapu'u or Diamond Head and take a few minutes scanning the shoreline for breaches. Sitting up at Diamond Head Lookout is also usually a great place to spot whales as well. This time of year, those beach catamaran booze cruises turn into a whale watches themselves nine out of ten times.

Of course, there are countless whale watches to choose from, and most of them are pretty affordable. Most all of them offer a guarantee that guests will see a whale or can ride again free through March 31st. It's a pretty safe bet for companies to make this time of year. I usually call February Whale Soup, finger's crossed it's like that this year.

However you and your guests choose to see the whales, just make sure you don't miss this once-in-a-lifetime (or annual for us locals) opportunity to see this majestic beings. Seeing them close-up the way we are often able to is truly one of those #luckyyoulivehawaii kind of moments.

For those of you that want to get onto the water, here a few companies to call:

**Hawaii Nautical** **ph: 234-7245**  
Offering five departures from three locations to choose from daily. Tours depart from Kewalo Basin, Waianae Harbor, and Hilton Hawaiian Village Hilton Hawaiian Village/Port Waikiki Cruises. Their whale guarantee is good through March 31st, and re-rides never expire. *Pro Tip: if your guests are short on time, the 2-hour whale watch from Kewalo at 8 a.m. is the same price as their Sunset Cocktail Cruise, so if no whale is sighted in the morning, they can hop on a free Sunset Cocktail Cruise that same day. Just a thought.*

[hawaiinautical.com](http://hawaiinautical.com)

**Kanoa Yacht Charters** **ph: 399-8845**  
This Beneteau 60-foot yacht is available for private hourly or full-day charters.

[kanoayachtcharters.com](http://kanoayachtcharters.com)

**Majestic by Atlantis** **ph: 381-0237**  
Offering three decks to view the wildlife with a naturalist onboard. Adults \$79, kids \$39.50. Kids under 2 free. Departs from Pier 6, Aloha Tower Marketplace.

[majestichawaii.com](http://majestichawaii.com)

**Makani Catamaran** **ph: 591-9000**  
Offering 2-hour whale watches departing from Kewalo Basin on their 64-foot cat.

[sailmakani.com](http://sailmakani.com)

**Ocean Joy** **ph: 677-1277**  
Ocean Joy Cruises offers several cruises through the day from Ko Olina Marina.

[oceanjoycruises.com](http://oceanjoycruises.com)

**Pau Hana Sailing** **ph: 807-9191**  
Private charters for up to 12 people, for 2, 3 or 4 hours, prices depending on how many people and the duration.

[pauhanasailing.com](http://pauhanasailing.com)

**Pink Sails Waikiki** **ph: 922-7722**  
Offering three 2-hour cruises throughout the day departing from the Ala Wai Boat Harbor for \$47.

[pinksailsaikiki.com](http://pinksailsaikiki.com)

**Star of Honolulu** **ph: 983-7730**  
Enjoy a morning searching for whales on the Early Bird Whale Watch Cruise at 8:45 a.m. for only \$49 and kids cruise free if booking by telephone. One free child per paying adult. All others \$29. Special cannot be booked online and combined with other offers. Naturalist onboard. Departs from Aloha Tower Marketplace.

[starofhonolulu.com](http://starofhonolulu.com)

**Wild Side Specialty Tours** **ph: 306-7273**  
Offering private and semi-private cruises departing from Waianae Boat Harbor.

[sailhawaii.com](http://sailhawaii.com)



*the* VIP  
EXPERIENCE

Complimentary stylist and beauty appointments, special offers, and spa services to indulge your guests.

bloomingdale's

ALA MOANA CENTER 1450 ALA MOANA BOULEVARD, HONOLULU



# Let's be Together...

DINING ▶ ENTERTAINMENT ▶ PAU HANA ▶ EAT ▶ DRINK ▶ BE MERRY ▶ HAPPY HOUR ▶

## MONDAY

**100 Sails at the Prince Waikiki** 944-4494  
*Live Contemporary Hawaiian*  
 Mike Tulba Duo 6-8pm

**Barefoot Beach Café at Queen's Beach** 924-2233  
*Live Contemporary & Hawaiian*  
 The Barefoot Boys 5:30-8:30pm

**BASALT** 923-5689  
*Live Contemporary & Hawaiian*  
 Jon Basebase 6-8pm

**Chart House Waikiki** 941-6660  
*Live Contemporary Hawaiian*  
 Camarillo Brothers 6-9pm

**Duke's Canoe Club Waikiki** 922-2268  
*Live Contemporary Hawaiian*  
 Grace Welton 4-6pm  
 Bryan & Halekahu 7-9:30pm  
 Ellsworth Simeona 9:30-12am

**Hard Rock Cafe** 955-7383  
*Contemporary Rock*  
 Cassie and the... (or TJ & Son) 4-6pm

**House Without a Key** 923-2311  
*Hawaiian music & hula by Miss Universe '97 Brook Lee*  
 Pa'ahana Trio 5-8pm  
 Nick La'a 8:15 - 10pm

**Kani Ka Pila Grille** 924-4992  
*Hoku Award Winning Hawaiian musicians*  
 Sean Na'auao 6-9pm

**Mahi'ai Table** 670-2778  
*Live Contemporary*  
 Jenna Keala 5-8pm

**Mahina & Sun's** 923-8882  
*Monday Vibes on the Lanai*  
 Kokonut Point 6:30-9:30pm

**Mai Tai Bar at the Royal Hawaiian** 923-7311  
*Live Contemporary Hawaiian*  
 Eric Lee 11am-2pm  
 Brad Kawakami 8-10pm

**Maui Brewing Company** 843-2739  
*Live Contemporary Hawaiian*  
 Scott Magz 3:30-5:30pm

**Merriman's Honolulu** 215-0022  
*Live Slack Key guitarist*  
 Deven Camat 5:30-7:30pm

**Monkeypod Kitchen Ko Olina** 381-4086  
*Live Contemporary 3x a day including from 12:30 - 2 p.m.*  
 Kree and Malik 3:30-5pm  
 Sienna Souza 7-9pm

**Monkeypod Kitchen Waikiki** 900-4226  
*Live Contemporary 3x a day including from 12:30 - 2 p.m.*  
 Shawn Garnett 3:30-5pm  
 Dustin Park 7-9pm

**Piko Kitchen & Bar** 923-2032  
*Live Contemporary Hits*  
 Christian Yrizary 5-9pm

**Rumfire** 921-4600  
*Live Contemporary Hits*  
 Dave Watanabe 6-9pm

**Signature Prime Steak** 949-3636  
*Contemporary Pianist in the bar*  
 Keith Montross 6-9pm

**Splash Bar at the Sheraton Princess Kaiulani** 921-4600  
*Live Contemporary Hawaiian*  
 David Aquino 6-9pm

**Swell at the Alohilani** 294-4108  
*Solo Contemporary Guitarist*  
 Drew Henmi 6:30-9:30pm

**SWIM at the Hyatt Regency** 923-1234  
*Live Contemporary Hawaiian*  
 Kaulana Vinoya 5-9pm

**The Beach Bar at the Moana Surfrider** 922-3111  
*Live Contemporary Hawaiian*  
 Eric Lee 3:30-6:30pm  
 Johnny Valentine 7-10pm

**The Edge at the Sheraton** 921-4600  
*Live Hawaiian Music*  
 Stephen Inglis 1-4pm

**The Point Sunset Pool Bar at Turtle Bay** 293-6000  
*Live Contemporary Hawaiian with Fireknife Dancer*  
 Kuhio Travis 5-8pm

*Live Contemporary Hawaiian*  
 Walt Keale 4-6pm  
 Kailua Moon 7-9:30pm  
 Stephen Inglis 9:30-12am

**Eating House 1849 Waikiki** 924-1849  
*Live Contemporary Hawaiian*  
 Kings Kalohelani 4:30-7:30pm

**Giovanni Pastrami** 923-2100  
*Acoustic Soul, R&B and Pop*  
 YOZA (or others) 6:30-9:30pm

**Hard Rock Cafe** 955-7383  
*Contemporary Rock*  
 Lance Reid (or others) 4-6pm

**House Without a Key** 923-2311  
*Hawaiian music & hula by Miss Aloha Hula '21 Maka Perry*  
 Delima Ohana (2/6, 2/13) 5-8pm  
 Puuhonua (2/20, 2/27) 5-8pm  
 Jesse Kuikahi (2/6-YOZA) 8:15 - 10pm

**Kani Ka Pila Grille** 924-4992  
*Hoku Award Winning Hawaiian musicians*  
 Kala'e Camarillo 6-9pm

**Lewers Lounge** 923-2311  
*Jazz Pianist*  
 Tommy James 8:30pm-12am

**Liko's Tap & Table** 394-5456  
*Live Contemporary*  
 Jason Laeha 5-8pm

**Mahi'ai Table** 670-2778  
*Live Contemporary*  
 Keoni Ku 5-8pm

**Mahina & Sun's** 923-8882  
*Electrifying Acoustic on the Lanai*  
 Laupepa Letuli 6:30-9:30pm

**Mai Tai Bar at the Royal Hawaiian** 923-7311  
*Live Contemporary Hawaiian*  
 Kupu Dalire-Na'auao 11am-2pm  
 Eric Lee 6-9pm

**Maui Brewing Company** 843-2739  
*Live Contemporary Hawaiian*  
 Christian Yrizary 3:30-5:30pm

**Merriman's Honolulu** 215-0022  
*Live Contemporary*  
 John Kema 5:30-7:30pm

## TUESDAY

**100 Sails at the Prince Waikiki** 944-4494  
*Live Contemporary Hawaiian*  
 Cherie Duo 6-8pm

**Amuse Wine Bar** 237-5428  
*Live R&B & Contemporary*  
 Chris Salvador 7-9pm

**BASALT** 923-5689  
*Live Contemporary & Hawaiian*  
 Lauren Baba 6-8pm

**Barefoot Beach Café at Queen's Beach** 924-2233  
*Backyard Hawaiian*  
 Ben Kama 5:30-8:30pm

**Chart House Waikiki** 941-6660  
*Live Contemporary Hawaiian*  
 Ryan Tang Group 6-9pm  
 Shane Kainoa (or others) 6pm-9pm

**Duke's Canoe Club Waikiki** 922-2268

**Moani Waikiki** 466-2629  
*Live Contemporary Hawaiian*  
 Lava 7-10pm

**Monkeypod Kitchen Ko Olina** 381-4086  
*Live Contemporary 3x a day including from 12:30 - 2 p.m.*  
 Pono 3:30-5pm  
 Chante 7-9pm

**Monkeypod Kitchen Waikiki** 900-4226  
*Live Contemporary 3x a day including from 12:30 - 2 p.m.*  
 Tiare and Evan 3:30-5pm  
 John Akapo 7-9pm

**Piko Kitchen & Bar** 923-2032  
*Live Contemporary Hits*  
 Drew Henmi 5-9pm

**Rumfire** 921-4600  
*Live Contemporary Hits*  
 Christian Yrizary 6-9pm

**THE WHALES ARE BACK!**

Every winter, thousands of humpback whales travel to the warm, shallow waters of Hawai'i to mate, give birth, and raise their young.

**WHALES GUARANTEED**  
 December 1<sup>st</sup> - March 31<sup>st</sup>  
 or ride again free!  
(no refund on ride used)

HILTON PIER  
 KEWALO HARBOR  
 WAIKAKAI HARBOR

We answer 24 hours a day!  
**808-234-SAIL**  
(T234)

HawaiiNautical  
 hawaiinautical.com



# E Pili Kākou

DINING ▶ ENTERTAINMENT ▶ PAU HANA ▶ EAT ▶ DRINK ▶ BE MERRY ▶ HAPPY HOUR

**Signature Prime Steak** 949-3636  
Contemporary Pianist in the bar  
Keith Montross 6-9pm

**Splash Bar at the Sheraton Princess Kaiulani** 921-4600  
Live Contemporary Hawaiian  
Mark Caldeira 6-9pm

**Swell at the Alohilani** 294-4108  
Solo Contemporary Guitarist  
Kamuela Kahoana (2/6- Jesse Kuikahi) 6:30-9:30pm

**SWIM at the Hyatt Regency** 923-1234  
Live Contemporary Hawaiian  
Dominic Carlos 5-9pm

**The Beach Bar at the Moana Surfrider** 922-3111  
Live Contemporary Hawaiian  
Stephen Inglis 3:30-6:30pm  
Alex Oasay 7-10pm

**The Edge at the Sheraton** 921-4600  
Live Hawaiian Music  
Eric Lee 1-4pm

**The Point Sunset Pool Bar at Turtle Bay** 293-6000  
Live Contemporary Hawaiian with Fireknife Dancer  
Jenna Keala 5-8pm

## WEDNESDAY

**100 Sails at the Prince Waikiki** 944-4494  
Live Contemporary Hawaiian  
Kai Malo'o 6-8pm

**Barefoot Beach Café at Queen's Beach** 924-2233  
Island Vibes  
Danny Galura 5:30-8:30pm

**Chart House Waikiki** 941-6660  
Live Contemporary Hawaiian  
Mike Tulba 6-9pm

**Duke's Canoe Club Waikiki** 922-2268  
Live Contemporary Hawaiian  
Keoni Ku 4-6pm  
Taulia Lave 7-9:30pm  
Alika Souza (2/14- Jason Movrich) 9:30-12am

**Eating House 1849 Waikiki** 924-1849  
Live Contemporary Hawaiian  
Shawn Garnett 4:30-6:30pm

**et al inside Kahala Market** 732-2144  
Live Contemporary Hawaiian  
Johnny Helm 5:30-8:30pm

**Giovanni Pastrami** 923-2100  
Acoustic Guitar Soul, R&B  
Jason Laeha 6:30-9:30pm

**Hard Rock Cafe** 955-7383  
Contemporary Rock  
Mike Piranha (or Danielle Parente) 4-6pm

**House Without a Key** 923-2311  
Hawaiian music & hula by Miss Universe '97 Brook Lee  
Pa'ahana Trio 5-8pm  
Mike Tulba 8:15-10pm

**Kani Ka Pila Grille** 924-4992  
Hoku Award Winning Hawaiian musicians  
Ei Nei 6-9pm

**Lewers Lounge** 923-2311  
Jazz Pianist  
Mark Caldeira 5:30pm-8pm  
Tommy James 8:30pm-12am

**Mahi'ai Table** 670-2778  
Live Contemporary  
Dillon Pakele 5-8pm

**Mahina & Sun's** 923-8882  
Soulful Guitar on the Lanai  
John Akapo 6:30-9:30pm

**Mai Tai Bar at the Royal Hawaiian** 923-7311  
Live Contemporary Hawaiian  
Stephen Inglis 11am-2pm  
Johnny Valentine 6-9pm

**Maui Brewing Company** 843-2739  
Live Contemporary Hawaiian  
YOZA 3:30-5:30pm

**Merriman's Honolulu** 215-0022  
Live Contemporary  
Kamaka Camarillo 5:30-7:30pm

**MINA's Fish House** 679-0079  
Live Contemporary Hits  
Kamuela Kahoano 6-9pm  
YOZA (2/7) 6-9pm

**Moani Waikiki** 466-2629  
Blues, Old School Rock, Country  
Keith Batlin 7-10pm

**Monkeypod Kitchen Ko Olina** 381-4086  
Live Contemporary 3x a day including from 12:30-2 p.m.  
Chris Murphy 3:30-5pm  
Sierra Lucia 7-9pm

**Monkeypod Kitchen Waikiki** 900-4226  
Live Contemporary 3x a day including from 12:30-2 p.m.  
Kailua Moon 12:30-2pm  
Jasmin Nicole 3:30-5pm  
Chante 7-9pm

**Piko Kitchen & Bar** 923-2032  
Live Contemporary Hits  
David Aquino 5-9pm

**Rumfire** 921-4600  
Live Contemporary Hits  
Jesse Kuikahi (2/14- Chris Luke) 6-9pm  
Bronson Varde 6-9pm

**Signature Prime Steak** 949-3636  
Contemporary Pianist in the bar  
Pierre Grill 6-9pm

**Splash Bar at the Sheraton Princess Kaiulani** 921-4600  
Live Contemporary Hawaiian  
Alika Souza (2/14- Christian Yizarry) 6-9pm

**Swell at the Alohilani** 294-4108  
Solo Contemporary Guitarist  
Danielle Parente 6:30-9:30pm

**SWIM at the Hyatt Regency** 923-1234  
Live Contemporary Hawaiian  
Biku 5-9pm

**The Beach Bar at the Moana Surfrider** 922-3111  
Live Contemporary Hawaiian  
Brandon Serrano 3:30-6:30pm  
Kaiona 7-10pm

**The Edge at the Sheraton** 921-4600  
Live Hawaiian Music  
Kupu Dalire-Na'auao 1-4pm

**The Point Sunset Pool Bar at Turtle Bay** 293-6000  
Live Contemporary Hawaiian with Fireknife Dancer  
Alex Oasay 5-8pm

**Tiki's Grill & Bar** 923-TIKI  
Live Contemporary Hawaiian and hula  
Derrick Lee 1-3 pm  
Malu Productions 5:30-7:30pm

**Vintage 1901 at the Moana** 921-4600  
Contemporary Piano  
David Swanson 6:30-10pm

## THURSDAY

**Barefoot Beach Café at Queen's Beach** 924-2233  
Live Contemporary & Hawaiian  
Alika Souza 5:30-8:30pm

**BASALT** 923-5689  
Live Contemporary & Hawaiian  
Glenn Domingo 6-8pm

**Chart House Waikiki** 941-6660  
Live Contemporary Hawaiian  
Tito & David 6-9pm

**Duke's Canoe Club Waikiki** 922-2268  
Live Contemporary Hawaiian  
Ben Kama 4-6pm  
Henry Kapon'o's New Artists "On the Rise" 7-9:30pm  
Scott Magz 9:30-12am

**Eating House 1849 Waikiki** 924-1849  
Live Contemporary Hawaiian  
Shane Kainoa 5-8pm

**Giovanni Pastrami** 923-2100

**FIRST SONG. BEST SONG.**

JOIN US FOR BREAKFAST & START YOUR DAY ON THE RIGHT TRACK

MONDAY - SUNDAY  
8 AM - 12 PM

Honolulu  
280 Beach Walk  
+1 808.955.7383

**Hard Rock CAFE**  
HONOLULU

#HardRockCafe | hardrockcafe.com  
©2024 Hard Rock International (USA), Inc. All rights reserved.

# Let's be Together...

DINING ▶ ENTERTAINMENT ▶ PAU HANA ▶ EAT ▶ DRINK ▶ BE MERRY ▶ HAPPY HOUR ▶

*Live Contemporary*  
 Billy Sage 6:30-9:30pm  
**Hard Rock Cafe** 955-7383  
*Contemporary Rock*  
 Chapter II (or others) 4-6pm  
**House Without a Key** 923-2311  
*Hawaiian music & hula by Miss Universe '97 Brook Lee*  
 Walea 5-8pm  
 Tad Jennings 8:15-10pm  
**Kani Ka Pila Grille** 924-4992  
*Hoku Award Winning Hawaiian musicians*  
 Kawika Kahiapo 6-9pm  
**Lewers Lounge** 923-2311  
*Jazz Pianist*  
 David Aquino 5:30pm-8pm  
 Ethan Capone & Rocky Holmes 8:30pm-12am  
**Mahi'ai Table** 670-2778  
*Live Contemporary*  
 Alex Oasay 5-8pm  
**Mahina & Sun's** 923-8882  
*Hawaiian Contemporary on the Lanai*  
 Kelly Boy DeLima 6:30-9:30pm  
**Mai Tai Bar at the Royal Hawaiian** 923-7311  
*Live Contemporary Hawaiian*  
 Christian Yrizarry 11am-2pm  
 Stephen Inglis 8-10pm

**Maui Brewing Company** 843-2739  
*Live Contemporary Hawaiian*  
 Johnny Helm 3:30-5:30pm  
**Maui Brewing Kailua** 518-2739  
*Live Contemporary Hawaiian*  
 Grace Welton (or others) 6-8pm  
**Merriman's Honolulu** 215-0022  
*Live Contemporary*  
 Laupepa 5:30-7:30pm  
**MINA's Fish House** 679-0079  
*Live Contemporary Hits*  
 Jesse Kuikahi 6-9pm  
**Moani Waikiki** 466-2629  
*Contemporary Island Music*  
 Kimo Opiana 7-10pm  
**Monkeypod Kitchen Ko Olina** 381-4086  
*Live Contemporary 3x a day including from 12:30 - 2 p.m.*  
 Kona Abergas 3:30-5pm  
 Wavvy 7-9pm  
**Monkeypod Kitchen Waikiki** 900-4226  
*Live Contemporary 3x a day including from 12:30 - 2 p.m.*  
 Bella and Kapono 3:30-5pm  
 Javin Kai 7-9pm  
**Piko Kitchen & Bar** 923-2032  
*Live Contemporary Hits*  
 Keoni Ku 5-9pm  
**Rumfire** 921-4600  
*Live Contemporary Hits*  
 Brad Kawakami 6-9pm  
**Signature Prime Steak** 949-3636  
*Contemporary Pianist in the bar*  
 Grant Carvalho 6-9pm  
**Splash Bar at the Sheraton Princess Kaiulani** 921-4600  
*Live Contemporary Hawaiian*  
 Kaimi Hananoeau 3:30-5:30pm  
 Ronson Asuncion 6-9pm  
**Stripsteak** 896-2545  
*Live Contemporary*  
 Jason Laeha 6-9pm  
**Swell at the Alohilani** 294-4108  
*Solo Contemporary Guitarist*  
 Denny Ono 6:30-9:30pm  
**SWIM at the Hyatt Regency** 923-1234  
*Live Contemporary Hawaiian*  
 Koa Atwood (or others) 5-9pm  
**The Beach Bar at the Moana Surfrider** 922-3111  
*Live Contemporary Hawaiian*  
 Christian Yrizarry (2/29 - Shawn Gomban) 3:30-6:30pm  
 Kaimi Hananoeau 7-10pm  
**The Edge at the Sheraton** 921-4600  
*Live Hawaiian Music*  
 Alika Souza 1-4pm  
**The Point Sunset Pool Bar at Turtle Bay** 293-6000  
*Live Contemporary Hawaiian with Fireknife Dancer*  
 Dave Watanabe 5-8pm  
**The Veranda at the Kahala Hotel** 739-8760  
*Live Contemporary*  
 Johnny Valentine (2/29 - David Aquino) 6-9pm  
**Vintage 1901 at the Moana** 921-4600  
*Contemporary Piano*

David Swanson 6:30-10pm  
**FRIDAY**  
**Barefoot Beach Café at Queen's Beach** 924-2233  
*Live Contemporary Hawaiian*  
 The Art Kalahiki Band 5:30-8:30pm  
**BASALT** 923-5689  
*Live Contemporary & Hawaiian*  
 Shawn Garnett 6-8pm  
**Chart House Waikiki** 941-6660  
*Live Contemporary Hawaiian*  
 Mike Tulba 6-9pm  
**Duke's Canoe Club Waikiki** 922-2268  
*Live Contemporary Hawaiian*  
 Maunalua 4-6pm  
 Kawaika Kahiapo 7-9:30pm  
 Ernest Chang 9:30-12am  
**Hard Rock Cafe** 955-7383  
*Live Contemporary*  
 Heleo (or Close the Distance) 8-10pm  
**House Without a Key** 923-2311  
*Hawaiian music & hula by Miss Hawaii '73 Kanoë Miller*  
 Kapalama Trio 5-8pm  
 Danielle Parente 8:15-10pm  
**Kani Ka Pila Grille** 924-4992  
*Winner of the 2023 KKPG Talent Search Competition*  
 Kahiau Lam Ho 6-9pm  
**Lewers Lounge** 923-2311  
*Jazz Pianist*  
 Nick La'a (2/2 - Biku Shimabuku) 5:30pm-8pm  
 Maggie Herron & Dean Taba 8:30pm-12am  
**Mahi'ai Table** 670-2778  
*Live Contemporary*  
 Jenny Yim (2/9 - Jason Midro) 5-8pm  
**Mahina & Sun's** 923-8882  
*Slack Key on the Lanai*  
 Dustin Park Duo 6:30-9:30pm  
**Mai Tai Bar at the Royal Hawaiian** 923-7311  
*Live Contemporary Hawaiian*  
 Brandon Serrano 11am-2pm  
 Johnny III 6-9pm  
**Mariposa** 951-3420  
*Live Contemporary*  
 Chris Salvador 2:30-5:30pm  
**Maui Brewing Company** 843-2739  
*Live Contemporary Hawaiian*  
 Keith Batlin 3:30-5:30pm  
**Maui Brewing Kailua** 518-2739  
*Live Contemporary Hawaiian*  
 Darrell Aquino (or others) 7-9pm  
**Merriman's Honolulu** 215-0022  
*Live Contemporary*  
 Stephen Harris 5:30-7:30pm  
**MINA's Fish House** 679-0079  
*Live Contemporary Hits*  
 Jenna Keala 6-9pm  
**Moani Waikiki** 466-2629  
*Traditional Hawaiian, Reggae. DJ Spins from 10p-1:30am*  
 Liam Moletta 6-9pm  
**Monkeypod Kitchen Ko Olina** 381-4086  
*Live Contemporary 3x a day including from 12:30 - 2 p.m.*

BarefootBeachCafe.com



"WE PUT Aloha INTO EVERY BITE SO SIT BACK, RELAX AND ENJOY THE VIEW."

**OPEN DAILY**  
 BREAKFAST 8AM - 2PM  
 LUNCH/DINNER 11AM - 8:30PM  
 LIVE MUSIC NIGHTLY 5:30 - 8:30PM  
 & SUNDAYS 11AM - 2PM

**BAREFOOT BEACH CAFE**  
 2699 KALAKAUA AVENUE  
 808.924.2233

**EVENTS & GROUP RESERVATIONS**  
 808.699.8830



# E Pili Kākou

DINING ▶ ENTERTAINMENT ▶ PAU HANA ▶ EAT ▶ DRINK ▶ BE MERRY ▶ HAPPY HOUR

|   |                 |  |                 |  |                 |
|---|-----------------|--|-----------------|--|-----------------|
| Kona Abergas  | 3:30-5pm        | <b>Chart House Waikiki</b>                                       | <b>941-6660</b> | Michael Delara   | 3:30-5pm        |
| John Akapo  | 7-9pm           | <i>Live Contemporary Hawaiian</i>                                |                 | Kona Abergas   | 7-9pm           |
| <b>Monkeypod Kitchen Waikiki</b>                                | <b>900-4226</b> | Tito Berinobis   | 6-9pm           | <b>Piko Kitchen &amp; Bar</b>                          | <b>923-2032</b> |
| <i>Live Contemporary 3x a day including from 12:30 - 2 p.m.</i> |                 | <b>Duke's Canoe Club Waikiki</b>                                 | <b>922-2268</b> | <i>Live Contemporary Hits</i>                          |                 |
| Sienna Souza  | 3:30-5pm        | <i>Live Contemporary Hawaiian</i>                                |                 | Biku Shimabuku   | 5-9pm           |
| Izik  | 7-9pm           | Kaiona Band (or others)  | 4-6pm           | <b>Redfish at the Wayfinder Waikiki</b>                | <b>921-3220</b> |
| <b>PAI Honolulu</b>   | <b>744-2531</b> | Ells Simeona   | 7-9:30pm        | <i>Live Contemporary Hits</i>                          |                 |
| <i>Live Contemporary Hits</i>                                   |                 | Sean Cleland   | 9:30-12am       | Johnny Helm  | 6-10p           |
| Ben Vegas   | 4:30 - 6pm      | <b>Eating House 1849 Waikiki</b>                                 | <b>924-1849</b> | <b>Rumfire</b>   | <b>921-4600</b> |
| <b>Piko Kitchen &amp; Bar</b>                                   | <b>923-2032</b> | <i>Live Contemporary Hawaiian</i>                                |                 | <i>Live Contemporary Hits</i>                          |                 |
| <i>Live Contemporary Hits</i>                                   |                 | Kings Kalohelani   | 10:30am-1pm     | Mark Caldeira  | 4:30-7:30pm     |
| Johnny Helm   | 5-9pm           | <b>Hard Rock Cafe</b>  | <b>955-7383</b> | Bronson Varde  | 8-10:30pm       |
| <b>Rumfire</b>  | <b>921-4600</b> | <i>Live Contemporary</i>   |                 | <b>SHOR at the Hyatt Regency</b>                       | <b>923-1234</b> |
| <i>Live Contemporary Hits</i>                                   |                 | Stephen Harris (or others)                                       | 8-10pm          | <i>Live Contemporary Hawaiian</i>                      |                 |
| Stephen Inglis  | 4:30-7:30pm     | <b>House Without a Key</b>                                       | <b>923-2311</b> | David Aquino   | 5-9pm           |
| Drew Henmi  | 8-10:30pm       | <i>Hawaiian music &amp; hula by Miss Hawaii '73 Kanoë Miller</i> |                 | <b>Signature Prime Steak</b>                           | <b>949-3636</b> |
| <b>SHOR at the Hyatt Regency</b>                                | <b>923-1234</b> | Kapalama Trio  | 5-8pm           | <i>Contemporary Pianist in the bar</i>                 |                 |
| <i>Live Contemporary Hawaiian</i>                               |                 | Stephen Inglis   | 8:15 - 10pm     | Grant Carvalho   | 6-9pm           |
| Dave Watanabe   | 5-9pm           | <b>Kani Ka Pila Grille</b>                                       | <b>924-4992</b> | <b>Splash Bar at the Sheraton Princess Kaiulani</b>    | <b>921-4600</b> |
| <b>Signature Prime Steak</b>                                    | <b>949-3636</b> | <i>Hoku Award Winning Hawaiian musicians</i>                     |                 | <i>Live Contemporary Hawaiian, DJ spins from 2-5pm</i> |                 |
| <i>Contemporary Pianist in the bar</i>                          |                 | Ho'okena   | 6-9pm           | Brad Kawakami Duo & Dancer                             | 5-8pm           |
| Grant Carvalho  | 6-9pm           | <b>Lewers Lounge</b>   | <b>923-2311</b> | Tangi Tully  | 8-10pm          |
| <b>Splash Bar at the Sheraton Princess Kaiulani</b>             | <b>921-4600</b> | <i>Jazz Pianist</i>  |                 | <b>Stripsteak</b>                                      | <b>896-2545</b> |
| <i>Live Contemporary Hawaiian, DJ Jem spins from 2-5pm</i>      |                 | Mike Tulba   | 5:30pm-8pm      | <i>Live Contemporary</i>                               |                 |
| Ben Kama Duo & Dancer   | 5-8pm           | Maggie Herron & Dean Taba  | 8:30pm-12am     | Dustin Park  | 6-9pm           |
| Stephen Inglis (or Tad Jennings)                                | 8-10pm          | <b>Mahi'ai Table</b>   | <b>670-2778</b> | <b>SWIM at the Hyatt Regency</b>                       | <b>923-1234</b> |
| <b>Stripsteak</b>   | <b>896-2545</b> | <i>Live Contemporary</i>   |                 |  |                 |
| <i>Live Contemporary</i>  |                 | Dominic Carlos (2/10 - Kamakana Kawa'a)                          | 5-8pm           |  |                 |
| Shane Kainoa  | 6-9pm           | <b>Mahina &amp; Sun's</b>  | <b>923-8882</b> |  |                 |
| <b>SWIM at the Hyatt Regency</b>                                | <b>923-1234</b> | <i>Contemporary Hawaiian/Blues on the Lanai</i>                  |                 |  |                 |
| <i>Live Contemporary Hawaiian</i>                               |                 | Savia Farang   | 6:30-9:30pm     |  |                 |
| Denny Ono (or others)   | 5-9pm           | <b>Mai Tai Bar at the Royal Hawaiian</b>                         | <b>923-7311</b> |  |                 |
| <b>The Beach Bar at the Moana Surfrider</b>                     | <b>922-3111</b> | <i>Live Contemporary Hawaiian</i>                                |                 |  |                 |
| <i>Live Contemporary Hawaiian</i>                               |                 | Ronson Asuncion (2/17 - Alike Souza)                             | 11am-2pm        |  |                 |
| Keoni Ku  | 12-3pm          | Dave Watanabe  | 6-9pm           |  |                 |
| Kailua Moon   | 3:30-6:30pm     | <b>Mariposa</b>  | <b>951-3420</b> |  |                 |
| Kamuela Kahoano (2/9 - Jesse Kuikahi)                           | 7-10pm          | <i>Live Contemporary</i>   |                 |  |                 |
| <b>The Edge at the Sheraton</b>                                 | <b>921-4600</b> | Aisaiah Jacobs   | 2:30-5:30pm     |  |                 |
| <i>Live Hawaiian Music</i>                                      |                 | <b>Maui Brewing Company</b>                                      | <b>843-2739</b> |  |                 |
| Christian Yrizary   | 1-4pm           | <i>Live Contemporary Hawaiian</i>                                |                 |  |                 |
| <b>The Grove at the Modern Pool Deck</b>                        | <b>943-5800</b> | Chapter II (or others)   | 3:30-5:30pm     |  |                 |
| <i>Live Contemporary</i>  |                 | <b>Maui Brewing Kailua</b>                                       | <b>518-2739</b> |  |                 |
| Danelle Parente   | 4-7pm           | <i>Live Contemporary Hawaiian</i>                                |                 |  |                 |
| <b>The Point Sunset Pool Bar at Turtle Bay</b>                  | <b>293-6000</b> | Scott Magz (or others)   | 7-9pm           |  |                 |
| <i>Live Contemporary Hawaiian with Fireknife Dancer</i>         |                 | <b>Merriman's Honolulu</b>                                       | <b>215-0022</b> |  |                 |
| Mark Calderia   | 5-8pm           | <i>Live Contemporary</i>   |                 |  |                 |
| <b>The Veranda at the Kahala Hotel</b>                          | <b>739-8760</b> | Shane Kainoa   | 5:30-7:30pm     |  |                 |
| <i>Live Contemporary</i>  |                 | <b>MINA's Fish House</b>   | <b>679-0079</b> |  |                 |
| Johnny Valentine  | 6-9pm           | <i>Live Contemporary Hits</i>                                    |                 |  |                 |
| <b>Vintage 1901 at the Moana</b>                                | <b>921-4600</b> | Alex Oasay   | 6-9pm           |  |                 |
| <i>Contemporary Piano</i>                                       |                 | <b>Moani Waikiki</b>   | <b>466-2629</b> |  |                 |
| David Swanson   | 6:30-10pm       | <i>Contemporary Reggae</i>                                       |                 |  |                 |
|   |                 | Braddah Ash  | 6-9pm           |  |                 |
|   |                 | Live Local Band  | 10pm-1:30am     |  |                 |
|   |                 | <b>Monkeypod Kitchen Ko Olina</b>                                | <b>381-4086</b> |  |                 |
|   |                 | <i>Live Contemporary 3x a day including from 12:30 - 2 p.m.</i>  |                 |  |                 |
|   |                 | Koa  | 3:30-5pm        |  |                 |
|   |                 | Javin Kai  | 7-9pm           |  |                 |
|   |                 | <b>Monkeypod Kitchen Waikiki</b>                                 | <b>900-4226</b> |  |                 |
|   |                 | <i>Live Contemporary 3x a day including from 12:30 - 2 p.m.</i>  |                 |  |                 |

## SATURDAY

|   |                 |
|---|-----------------|
| <b>Barefoot Beach Café at Queen's Beach</b> | <b>924-2233</b> |
| <i>Live Contemporary Hawaiian</i>           |                 |
| Vanessa Alputila                            | 5:30-8:30pm     |
| <b>BASALT</b>                               | <b>923-5689</b> |
| <i>Live Contemporary &amp; Hawaiian</i>     |                 |
| Jeagan Faye                                 | 6-8pm           |

STARTING AT

\$59

SAVOR OUR PRIME TIME MEAL WITH STARTER, ENTRÉE, SIDE, AND DESSERT





AVAILABLE DAILY FROM 4-6 PM  
Oahu: Waterfront Plaza and Waikiki Beach Walk  
Maui: The Shops at Wailea  
[RUTHSCHRIS.COM](http://RUTHSCHRIS.COM)

# Let's be Together...

DINING ▶ ENTERTAINMENT ▶ PAU HANA ▶ EAT ▶ DRINK ▶ BE MERRY ▶ HAPPY HOUR ▶

*Live Contemporary Hawaiian*  
 Stan Albrecht 5-9pm  
**The Beach Bar at the Moana Surfrider 922-3111**  
*Live Contemporary Hawaiian*  
 Chris Salvador 12-3pm  
 Ronson Asuncion (2/17 - Alike Souza) 3:30-6:30pm  
 Koa Atwood 7-10pm  
 YOZA (2/24) 7-10pm  
**The Edge at the Sheraton 921-4600**  
*Live Hawaiian Music*  
 Brad Kawakami 1-4pm  
**The Grove at the Modern Pool Deck 943-5800**  
*Live Contemporary*  
 Mike Izon 4-7pm  
**The Point Sunset Pool Bar at Turtle Bay 293-6000**  
*Live Contemporary Hawaiian with Fireknife Dancer*  
 Denny Ono (2/10- Kuhio Travis) 5-8pm  
**The Veranda at the Kahala Hotel 739-8760**  
*Live Contemporary*  
 Cory Oliveros 6pm-9pm  
**Vintage 1901 at the Moana 921-4600**  
*Contemporary Piano*  
 David Swanson 6:30-10pm

## SUNDAY

**Barefoot Beach Café at Queen's Beach 924-2233**  
*Live Contemporary Hawaiian*

Kimo Baker 10am-1pm  
 Art Kalahiki 5:30-8:30pm  
**BASALT 923-5689**  
*Live Contemporary & Hawaiian*  
 Don Baduria 6-8pm  
**Chart House Waikiki 941-6660**  
*Live Contemporary Hawaiian*  
 Dean & Dean 6-9pm  
**Duke's Canoe Club Waikiki 922-2268**  
*Live Contemporary Hawaiian*  
 Henry Kapono 4-6pm  
 Kaiona Duo 7-9:30pm  
 Tad Jennings (or Justin Edwards) 9:30-12am  
**Eating House 1849 Waikiki 924-1849**  
*Live Contemporary Hawaiian*  
 Shane Kainoa 10:30am-1pm  
**Giovanni Pastrami 923-2100**  
*Reggae Pop Music*  
 Kelandy 6:30-9:30pm  
**Hard Rock Cafe 955-7383**  
*Contemporary Rock*  
 Brunch with Lovejack 10am-12pm  
 Dylan (or others) 8-10pm  
**House Without a Key 923-2311**  
*Hawaiian music & hula by Miss Universe '97 Brook Lee*  
 Pu'uhonua Trio 5-8pm  
 Brad Kawakami 8:15-10pm

**Kani Ka Pila Grille 924-4992**  
*Hoku Award Winning Hawaiian musicians*  
 Nathan Aweau 6-9pm  
**La Hiki Restaurant at the Four Seasons 679-0079**  
*Live Contemporary Hawaiian*  
 Kamuela Kahoano (or others) 11am-2pm  
**Mahi'ai Table 670-2778**  
*Live Contemporary*  
 Johnny III 5-8pm  
**Mahina & Sun's 923-8882**  
*Award-winning ukulele on the Lanai*  
 Jeff Rasmussen 6:30-9:30pm

**Mai Tai Bar at the Royal Hawaiian 923-7311**  
*Live Contemporary Hawaiian*  
 John Coelho & Kanoe Arola 11am-2pm  
 Christian Yrizary 6-9pm  
**Mariposa 951-3420**  
*Live Contemporary*  
 Zaysha 12-3pm  
**Maui Brewing Company 843-2739**  
*Live Contemporary*  
 Duva & Yas 3:30-5:30pm

**Merriman's Honolulu 215-0022**  
*Live Contemporary Piano*  
 Grant Carvalho 5:30-7:30pm  
**Moani Waikiki 466-2629**  
*Contemporary Island Music*  
 Dustin Park 7-10pm  
**Monkeypod Kitchen Ko Olina 381-4086**  
*Live Contemporary 3x a day including from 12:30 - 2 p.m.*  
 Kapono and Bella 3:30-5pm  
 Lava 7-9pm  
**Monkeypod Kitchen Waikiki 900-4226**

*Live Contemporary 3x a day including from 12:30 - 2 p.m.*  
 Tad Jennings 3:30-5pm  
 Koa and Yazmin 7-9pm  
**Piko Kitchen & Bar 923-2032**  
*Live Contemporary Hits*  
 Dominic Carlos 5-9pm  
**Rumfire 921-4600**  
*Live Contemporary Hits*  
 Jenna Keala 4:30-7:30pm  
 YOZA (2/25) 4:30-7:30pm  
 Alex Oasay 8-10:30pm  
**SHOR at the Hyatt Regency 923-1234**  
*Live Contemporary Hawaiian*  
 Derrick Lee 5-9pm  
**Signature Prime Steak 949-3636**  
*Contemporary Pianist in the bar*  
 Keith Montross 6-9pm  
**Splash Bar at the Sheraton Princess Kaiulani 921-4600**  
*Live Contemporary Hawaiian*  
 Kailua Moon & Dancer 3:30-5:30pm  
 Chris Luke 8-10pm  
**Swell at the Alohilani 294-4108**  
*DJ Kenny Spins Poolside from 2-6 pm*  
 Jason Laeha 6:30-9:30pm

**SWIM at the Hyatt Regency 923-1234**  
*Live Contemporary Hawaiian*  
 Koa Attwood 5-9pm  
**The Beach Bar at the Moana Surfrider 922-3111**  
*Live Contemporary Hawaiian*  
 YOZA (2/11 - Johnny Helm) 12-3pm  
 Brad Kawakami 3:30-6:30pm  
 Dave Watanabe 7-10pm

**The Edge at the Sheraton 921-4600**  
*Live Hawaiian Music*  
 Christian Yrizary 1-4pm  
**The Point Sunset Pool Bar at Turtle Bay 293-6000**  
*Live Contemporary Hawaiian with Fireknife Dancer*  
 Danielle Parente 5-8pm  
**Vintage 1901 at the Moana 921-4600**  
*Contemporary Piano*  
 David Swanson 6:30-10pm

**Hot Lines**

Here's a few numbers for you to find out the latest in live music from places that change daily or don't update us regularly, since we can't possibly list them all.

Anna O'Brien's 946-5190  
 Deck 931-4488  
 Hard Rock Cafe 955-7383  
 Irish Rose Saloon 947-3414  
 Kelley O'Neil's 926-1777  
 Lucky Strike Honolulu 664-1140  
 Mai Tai Bar Ala Moana 947-2900  
 Off the Wall 593-2337  
 Tiki's Grill & Bar 923-TIKI  
 Tommy Bahama 923-8785

OriginalMagoosPizza.com/Order



HAWAII'S FAVORITE ISLAND-STYLE PIZZA, SUBS & CHICKEN

WE'VE MOVED TO KAIMUKI!  
 DINE-IN & FULL BAR TAKEOUT & DELIVERY

3579 WAIALAE AVENUE (BETWEEN 11TH & 12TH AVE)



## Dining Dish



**Mugen** has finally found a new Executive Chef in **Colin Sato**, who will oversee its new seasonal 5-course dinner menu for \$180. Guests can choose each course from a brand-new selection of options that will change seasonally based on availability. Chef Colin's new dinner menu is now available Tues. - Sat. from 5:30 to 8:30 p.m. Mugen is also now making its breakfast experience available to all; previously, it was only offered to hotel guests. Breakfast menu items include an elevated take on the Loco Moco using Miyazaki A5 Wagyu and a decadent Lobster Eggs Benedict with bacon-gruyère biscuit, black truffle pearls, and smoked trout caviar for \$45. Available daily from 7 – 10 a.m. If you haven't heard, **Wes Zane** found a new home there last year as its Food & Beverage Manager, so be sure to stop by and say hi. Call 377-2247 and see the current menu at [mugenwaikiki.com](http://mugenwaikiki.com). • As part of its 60th anniversary celebration, the Kahala Hotel & Resort will host **The Kahala's Ramen Festival** featuring noodle master **Chef Ivan Orkin**. The chef will offer his popular ramen and mazemen for lunch and dinner at the Plumeria Beach House. from February 21 to 26. Call 739-8760. • Did you know **Restaurant Suntory** has launched its own non-alcoholic beer? Of course, it's not what they're known for, but it's nice to know they have a quality option. They are offering rotating dinner specials that change out every two weeks. Check the website for the latest offerings, and for those of you that live and work in Waikiki, they launched two new kama'aina promotions last month. A Washugyu and Sushi Roll lunch set for \$26 and a teppanyaki dinner course for \$85. 922-5511. • Speaking of sushi, there's a new sushi experience hidden inside the Nimitz Business Center (home to many culinary delights over the years). **TORO Honolulu** offers a traditional Japanese omakase-style chef's tasting, promising a culinary adventure off the beaten path. With only ten seats, this intimate venue has already made a name for itself, so reservations are going quickly. [torohonolulu.com](http://torohonolulu.com). • Heads up! **Hy's Steak House** closed for renovation the end of January. After 45 years, a renovation is certainly in order. They are hoping to reopen sometime in May.



## Chef's Corner

### 'Alohilani Resort Executive Chef Jordan Swiler

*Chef Jordan Swiler started his culinary career in the basement of his parents' Minneapolis home watching watch the likes of Emeril Lagasse and Alton Brown cook and explain food and became enamored with the craft and science behind the art form. He enrolled in culinary classes while attending high school and graduated college with a bachelor's in food science, but has no formal culinary training per se. He is a self-taught chef who did all his training in working kitchens. He moved to Oahu in October last year.*

#### When did you decide you wanted to be a chef?

I became obsessed with cooking around the age of 12 watching the Food Network and would try to make the dishes I'd see on TV. Fast forward to being 23, graduating college and needing a job. I really caught the bug of wanting to be a chef when I was hired at Café Lurcat in Minneapolis as a line cook in November of 2010.

#### What was your first job in the industry?

When I was 16, I got to work alongside some incredible Chefs as an apprentice at D'amico Catering in Minneapolis. I would do anything, from peeling fruit, assisting with banquet plating, working as a dishwasher, getting chefs coffee, always saying yes to learn as much as I could.

#### Who would you consider your mentor?

Larry D'amico is my restaurant idol and mentor. He and his brother Richard altered the fine dining scene of the Twin Cities, and both of them completely changed my life and outlook on running restaurants. Larry taught me about how important the people in these properties are. The chef tends to get a lot of attention in the restaurant, but I can tell you the wheel doesn't turn without the whole entire team, all the way down to the dishwashers. I also have to acknowledge that I wouldn't be successful today without the leadership and support of my parents and siblings along the way.

#### Has travel influenced the way you cook?

Absolutely. I have been so blessed to be able to travel for work these last 3 years. I've had an amazing opportunity to not only work with other chefs and see their creative process, but also get to taste the food in different regions.

#### Is there one job that really stands out and why?

I've been fortunate to work in a lot of different kitchens with a lot of amazing people over the years. In 2023 alone, I assisted with culinary operations at 13 different Highgate properties. The kitchen at Salmon Falls Resort in Ketchikan Alaska sticks out as the most unique. It's a small, incredibly beautiful, 51-room salmon fishing resort in Alaska. It has a very small kitchen and a ton of demand. It forced me to be creative with writing menus operationally, while still operating the kitchen of the most sought after reservations in town. The 'Alohilani is my new baby, and I'm looking forward to the future in this kitchen.

#### Describe your style of cooking?

I try to not put a ceiling on the creative process. It has served me well to be nimble and open to all cuisines in my time traveling and entering so many properties. The creative process is always the most exciting part. I like to take familiar flavors or dishes that people know and present them in a different yet still familiar way.

#### What do you do when you get to a new kitchen?

I like to watch the team do what they do first and see how we can improve our product or our systems for our guests. I try to remain humble in that process because change takes time. Gaining the trust of the teams throughout the property and sharing the vision and roadmap for the vision is how we are able to make lasting change. It's all about the guest experience, which starts with the staff.

#### Favorite ingredient you like to work with?

High quality eggs. They are incredibly versatile and have so many applications in the culinary world. On a more specific spectrum I like seasoning dishes with high quality vinegars, and I also like to make different pickles often.

#### When did you start working with Highgate?

My journey with Highgate started at Salmon Falls Resort in 2021.

#### What brought you to Hawaii?

I came here in support of our Table One Hospitality team, which is a partnership between Chef Michael Mina and Highgate Hotels. The Alohilani opened its doors to me in a very serendipitous fashion. The opportunity then presented itself to remain in Hawaii and I decided to put my suitcases down for a bit.

#### What direction will you take the 'Alohilani?

I think the sky's the limit. For our pool restaurant, Swell, we will try to make craveable, shareable food. I want Swell to feel like an extension of your temporary home here at the Alohilani. In a perfect world, it would feel like you're leaving your hotel room to come to your own living room that happens to be in a beautiful outdoor pool setting.

#### Best part about living here in Hawaii?

The climate and the scenery are shocking, still. I love being able to be in the city, then on the beach, then in the jungle in the matter of a short drive.

#### Favorite restaurant you've found thus far?

I really like Pho Nina. I eat there almost weekly.

#### What do you like to do most on your days off?

I don't get many, so when I do, I like to ride a moped around town and just find new spots to relax.

#### Any other information you want to share?

We are always looking for new associates to join our growing family here at Highgate. I am a great example of how hard work can pay off in this growing company, and I always want to try and extend that opportunity to new team members. Other than that? Just take care of each other.

The 'Alohilani Resort at 2490 Kalakaua Avenue is home to: Swell Restaurant, Makana Lani, Morimoto Asia, Momosan, La Bettola, Piccola Onda, Luna's Tequila Bar and the Longboard Club.

Swell Restaurant & Pool Bar: Opens at 10 a.m. daily. Closes at 10 p.m., 12 a.m. on Fri. and Sat.

Web: [alohilaniresort.com](http://alohilaniresort.com) • Instagram: @swellwaikiki • Ph: 923-1233

# FEBRUARY CALENDAR OF EVENTS

## Continuing Events

### MONDAYS, WEDNESDAYS & FRIDAYS O NĀ LANI SUNSET STORIES HULA SHOW

Honoring the rich history and sense of place of the International Market Place through song & dance. It begins at sunset with the lighting of the Lamakū Torch Tower on Kalākaua Avenue and leads to the Queen's Court. Free. 6 p.m. [shopinternationalmarketplace.com](http://shopinternationalmarketplace.com).

### TUESDAY THRU SATURDAY ARTS AT MARKS LATEST EXHIBIT

This month's exhibition at the Arts at Marks Garage celebrates National Fairytale Month with a special exhibit. Enjoy a Meet the Artists reception at Pau Hana Friday on the first and final Friday of the month from 5 - 8 p.m. Open Tues-Sat. from 12 - 5 p.m. [artsatmarks.com](http://artsatmarks.com).

### WEDNESDAYS, SATURDAYS & SUNDAYS ALOHA STADIUM SWAP MEET

The Aloha Stadium Swap Meet has been going strong since 1979. Featuring over 400 vendors, crafters and artists, the Swap Meet offers low-prices on a wide selection of quality products with food trucks to snack from. Wednesdays & Saturdays: 8 a.m. - 3 p.m., Sundays, 6:30 a.m. - 3 p.m. \$2 admission ages 12 & up, \$1 for locals. [alohastadium.hawaii.gov](http://alohastadium.hawaii.gov).

**FIRST FRIDAY (FEBRUARY 2)  
DOWNTOWN GALLERY WALK & CRAFT FAIR**  
Downtown comes alive the first Friday of every month as art lovers fill the streets for Honolulu's

outdoor self-guided arts tour. Stores spill out onto the sidewalk, and artists are on hand to chat about their works, and restaurants are ready to serve you. Monthly updates are published on participating merchant websites, or two days before the event at [firstfridayhawaii.com](http://firstfridayhawaii.com).

### SECOND FRIDAY (FEBRUARY 9) BISHOP MUSEUM AFTER HOURS

Extended after-hours access to the Museum with a special Pau Hana. Experience unique changing exhibitions, hear about the latest scientific discoveries, engage with Hawaiian cultural practitioners, or spend the evening on the Great Lawn with food and drinks for sale from local vendors. 5 - 9 p.m. \$10 at the door. (\$5 pre-sale) [bishopmuseum.org](http://bishopmuseum.org).

**FRIDAYS  
ROYAL HAWAIIAN BAND LUNCHTIME SHOW**  
The Royal Hawaiian Band returns to 'Iolani Palace for its popular lunchtime concerts. Held on most Fridays, the concerts are free and open to the public. 12 - 1 p.m. [iolanipalace.org](http://iolanipalace.org)

**FRIDAYS & SATURDAYS  
HOMA NIGHTS**  
On Friday and Saturday nights, regular museum admission also includes live musical performances, hands-on art activities, pop-ups in the HoMA Shop, movies on the lawn, bar service at the HoMA Cafe, and other interactive art experiences. The museum stays open until 9 p.m. [honolulumuseum.org](http://honolulumuseum.org).

**SATURDAYS & SUNDAYS  
ART ON THE ZOO FENCE**  
Art On The Zoo Fence is a group of resident Hawaii artists that meet every Saturday and Sunday to display and sell art and photography on the Zoo fence on Monsarrat Avenue opposite the Kapiolani Park Bandstand. This is the only outdoor art venue in Honolulu that has proudly been displaying art since 1953. 9 a.m. - 3 p.m. Free. [artonthefencehi.com](http://artonthefencehi.com).

**SECOND SATURDAY (FEBRUARY 10)  
KANIKAPILA MA KAIWI'ULA**  
Bring your 'ukulele, or borrow one that's there. Join in to learn some new techniques, share mo'olelo or just enjoy the music as Ukulele Guild of Hawai'i members lead guests through selections from the Hawaiian Songbook. Free with admission. Bishop Museum Native Hawaiian Garden. 10 a.m. [bishopmuseum.org](http://bishopmuseum.org).

**SECOND SUNDAY (FEBRUARY 11)  
KAMA'AINA SUNDAYS**  
Kama'aina Sundays are back at 'Iolani Palace. Locals can take advantage of free tours, entertainment, family-friendly activities and plenty of food options with proof of residency. Free tours will be available to the first 500 guests. 9 a.m. - 2 p.m. [iolanipalace.org](http://iolanipalace.org).

**THIRD SUNDAY (FEBRUARY 18)  
FAMILY FREE SUNDAY**  
Thanks to Bank of Hawaii, kama'aina have been offered free admission with ID on the third Sunday of the month since 2004. With engaging activities for keiki of all ages, live entertainment, and community-focused programming around the museum, this is a great way for families to spend creative time together. Free admission for kama'aina. 10 a.m. - 6 p.m. 532-8700. [honolulumuseum.org](http://honolulumuseum.org).

**SECOND SUNDAY (FEBRUARY 18)  
MELE HALI'A**  
Waikiki Beach Walk celebrates Hawaiian music with award-winning musicians and hula hālau one Sunday a month on the Plaza Stage. This month, catch Kumu Hula NaWahine Kuraoka. See a different performer each month from 5-6 p.m. [waikikibeachwalk.com](http://waikikibeachwalk.com).

**FEBRUARY 1-9  
HONOLULU AFRICAN AMERICAN  
FILM FESTIVAL**  
The 2024 Festival kicks off with a dinner gala on February 1st, followed by the Hawaii Premier of The Space Race. This remarkable film weaves together the stories of Black astronauts seeking to break the bonds of social injustice to reach for the stars, including Guion Bluford, Ed Dwight and Charles Bolden, among many others. Doris Duke Theatre. Check the website for a list of workshops, movies, times, and prices. [honolulumuseum.org](http://honolulumuseum.org).

**FEBRUARY 2-3  
CHINESE LUNAR NEW YEAR CELEBRATION**  
Chinatown comes alive to celebrate the Lunar New Year. Enjoy two days of entertainment, food, and celebration at Chinatown Cultural Plaza to welcome the Year of the Dragon. Lion Dancers will be visiting business Friday night from 5 - 9 p.m. Saturday is the Lunar New Year Parade and Night in Chinatown Festival from 9 a.m. - 10 p.m. The parade starts at 4:30 p.m. at



## A great finish to start with Il Gelato sweetens your treat options at Waikiki Beach Walk®

Whether finishing off a meal or enjoying an anytime snack, indulge in fresh gelato from Beachwalk Café, or grab a smoothie from Nalu Health Bar & Café or Big Wave Dave to sweeten your day. And now Il Gelato joins the delectable choices ready for you at Waikiki Beach Walk®.

**Free Parking 10am-3pm Daily\***  
\*With \$10 minimum purchase

Located on Lewers St.  
between Kalakaua Ave. & Kalia Rd.  
Open 365 Days | 10AM-9PM



[WAIKIKIBEACHWALK.COM](http://WAIKIKIBEACHWALK.COM) | [f](#) [x](#) [@](#)



# FEBRUARY CALENDAR OF EVENTS

the Hawaii State Capitol lawn with participants marching along Hotel Street, where they enter Honolulu Chinatown and walk to the Night in Chinatown Street Festival along Beretania Street to Aala Park. chinatown808.com.

## FEBRUARY 2-4 HAWAII CANNABIS EXPO

The Expo offers booths from a wide range of companies pertaining to the Medical Cannabis industry, including clothing brands, lifestyle vendors, glass artists, accessories, hydroponics, farming, testing, dispensaries and more. The Expo provides attendees with accurate information and education on how to safely access cannabis in Hawaii as a registered patient. Admission: \$5-\$20. Blaisdell Exhibition Hall. Fri. 1-7 p.m., Sat. 10 a.m. - 7 p.m., Sun. 10 a.m. - 5 p.m. hawaiicannabisexpo.com.

## FEBRUARY 3 JAKE SHIMABUKURO

Jake Shimabukuro is one of the most innovative and exciting musicians of his generation, changing the perception of the instrument itself and breaking barriers of what kind of music it is capable of. Don't miss this island favorite at 7 p.m. Tickets: \$35-\$45. bluenotehawaii.com.

## FEBRUARY 3 BRETT YOUNG

From his self-titled debut in 2017, Brett Young has captured the hearts of fans everywhere through his honest lyrics and West Coast-meets-Southern sound, dubbed "Caliville" style. With an impressive string of seven #1 Platinum hits - and multiple hit albums, the 2018 Academy of Country Music New Male Artist of the Year has cemented his status as a master of matters of the heart. 8 p.m. Tickets: \$59.50 - \$99.50. Blaisdell Arena. bampproject.com.

## FEBRUARY 3 BACK IN BLACK

The well known AC/DC tribute band has been giving an incredible, exciting, high-energy reproduction of a concert performance of AC/DC for over 20 years. 8 p.m. Tickets: \$25. The Republik. bampproject.com.

## FEBRUARY 5-6 JAKE SHIMABUKURO & MAC MCANALLY

Jake Shimabukuro is back with well known singer/songwriter, Mac McAnally. For years, Mac performed with the legendary Jimmy Buffett as part of the Coral Reefer Band, and Jake first played with Mac with Jimmy. They are longtime kindred spirits and collaborators. This special performance will include material and collaboration from both artists in addition to select songs you know by heart to honor their friend and mentor. 7 p.m. Tickets: \$45-\$55. bluenotehawaii.com.

## FEBRUARY 7 ISLAND SAKE BREWERY TASTING

Indulge in a five-course tasting of Japanese favorites prepared by Herringbone Chef Gary Tamashiro, paired with a selection of five

exquisite sakes from Islander Brewery while learning its owner, and esteemed sake scientist, Dr. Chiaki Takashi. Islander Brewery Sake is a rare gem, being one of the only locally made sakes on the island and marking Hawai'i's first locally brewed sake in over 30 years. 6 - 9 p.m. Herringbone Waikiki. Tickets: eventbrite.com.

## FEBRUARY 7-8 JULIAN MARLEY AND THE UPRISING



Julian Marley and his band The Uprising will perform songs from his new record along with hits spanning both his career and songs from his famous father's repertoire. 7 p.m. Tickets: \$65-\$75. bluenotehawaii.com.

## FEBRUARY 9-10 MARLON WAYANS

Marlon Wayans, part of incredibly funny Wayans family is an actor, producer, comedian, standup comedian, writer, and film director. Known for such shows as "White Chicks," "The Wayans Brothers", and "Scary Movie," he is returning to Hawaii for two shows each night at 6:30 and 9 p.m. Tickets: \$50-\$69.50. bluenotehawaii.com.



## FEBRUARY 10 LOKAHI BLOCK FESTIVAL

Kalakaua will be closed between Seaside Avenue and Uluniu Avenue for a Waikiki Block Festival featuring food, rides, games, and

handmade products for sale. Proceeds benefit Make-A-Wish Hawaii. Lane closures start at 12:30 p.m. 4-10 p.m. millwoodohanaproductions.com.

## FEBRUARY 10 • HOONANEA: A VINTAGE EXPERIENCE AT HANAIAKAMALAMA

Take a step back in time, select a vintage mu'umu'u and enjoy the serenity of Hānaiakamalama in Nu'uānu, during this deluxe tour experience at the Queen Emma Summer Palace. Ho'onanea: A Vintage Experience at Hānaiakamalama offers a unique and immersive tour at one of Honolulu's most honored and revered historic homes with a docent-led tour of the Palace to learn more about Queen Emma and their lives in old Hawai'i. The experience will conclude with a light picnic lunch on the terrace overlooking the picturesque tropical gardens. \$70. 9:30-11 a.m. daughtersofhawaii.org.

## FEBRUARY 10 SUICIDAL TENDENCIES

The 80's band formed by vocalist Mike Muir began as hardcore punk, before transitioning into thrash metal, making them the "fathers of crossover thrash" Muir is the only original remaining member. Metallica's Robert Trujillo was the bassist for the band from 1989 - 1995. His son Tye Trujillo is the current bassist. 8 p.m. Tickets: \$47.50. The Republik. bampproject.com.

## FEBRUARY 11 TAN DUN

Dane Lam conducts Mahler's monumental song cycle of life, death, and nature, Das Lied von der

*Continued on page 17.*



SEND YOUR GUESTS TO A *faraway* PARADISE.  
OKAY, THE NORTH SHORE.

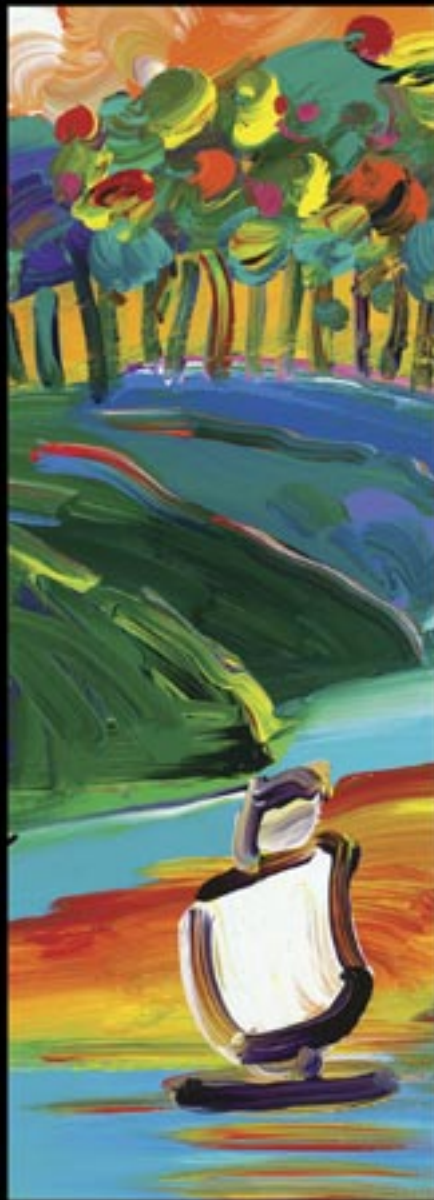
It's never been a better time for your guests to experience the Polynesian Cultural Center. They can explore our six island villages with our popular Gateway Buffet package or our Islands & HĀ Show package. For more information, visit polynesia.com.



## PARK WEST FINE ART MUSEUM & GALLERY

Waikiki Beach Walk Honolulu

808-859-4871 parkwesthawaii.com



Any client you refer for a private tour will get

**10% off their purchase\***

if they mention the hotel and concierge that referred them.

For more details  
waikikibeach@parkwestgallery.com

**PARK WEST GALLERY**

\*Terms and conditions apply



Valentine's Day is almost here. If you haven't made reservations by the time you read this, you are probably already too late for some of the standards. Although we have a lot of new restaurants in town that are adding to the inventory, we are also down one long-time favorite. If you have not heard, Hy's Steak House closed for renovations on January 22 and doesn't plan to reopen for at least four months. They were always among the first to sell out for Valentine's Day. Fortunately, so many new restaurants have opened recently that you should be able to find alternatives, but be sure to pick up that phone now.

What to do? In addition to trying to figure out your plans, you also need to be prepared with any number of inquiries from your guests about what they should do. Aside from the standard dinner reservations, which nearly every restaurant in town has a special menu that day, what else is there to do? Are they going big budget, or are they keeping it low key? Here are a few ideas that may help you out.

There are always places to go if you think out of the box. We ended up getting out of our plans earlier than expected last year and were still hungry, so knowing not to try some of the fancier places that are known to be slammed for Valentine's Day, we stopped by et al. in Kahala. We found a few seats on their communal table, and it worked out perfectly.

Big heart, small budget? Not a problem. We live in paradise, and nature offers its own reward daily. Early risers? Walking up to the Makapuu Lighthouse and watching the sunrise is always amazing. If you're lucky, you might even catch a whale breaching in the distance. Picnics are always a good way to go. Stop by Diamond Head or Waikiki Market. They have great gourmet options ready to go. Head up to Tantalus Lookout in Pu'u Ualaka'a State Park. The stunning view from the lookout is irreplaceable. Kailua Beach is also a winner. Grab some upscale takeout from Kalapawai Market and watch the kite surfers sail by. A drive around the island can also work well. It's big swell season, so you might catch

some big waves on the North Shore with any luck.

Take a hike. Literally. There are plenty of trails around that offer stunning views. For something a bit less active, try a stroll around the Lyon Arboretum in the back of Manoa Valley. There are around 200 acres of lush valley filled with tropical botanical gardens, and it features a lowland tropical rainforest surrounded by three steep cliffs offering beautiful, romantic, stunning landscapes. It's free to enter, but reservations are required.

Lucky us, we live in one of the world's most beautiful places, and the simple and inexpensive act of grabbing a bottle of bubbly and heading out to watch the sun go down can easily turn into a romantic moment. I love sunsets, and Hawaii has some of the best.

Have you thought about taking a horseback ride on the beach? Check out the Stables at Turtle Bay, Oahu Horseback Rides, or North Shore Stables, to name a few. And, of course, what's more romantic than landing on the top of a mountain and enjoying champagne and chocolates? There are a few companies out there that offer that.

Check out the ads on the opposite page. Aloha Kai Luau is offering a specially-themed performance that week at Sea Life Park (the drive itself will knock your date's socks off). And for those looking for a rocking good time, Kings of Spade is bringing back their Motown Valentine's at the Republik. If you book early enough, you can grab a VIP table, which includes dinner for two and a bottle of the good stuff. Those tend to sell out early, but plenty of GA tickets are available even if you miss out on a table. The show has a fantastic line-up of musicians, offering an incredible night of music. I've done this for years, and you will undoubtedly find me there that night.

Whatever you choose, you get the gist. Oahu offers a great natural backdrop for fun, romantic, inexpensive play dates, breath-taking experiences for various price points, delectable restaurants wherever you turn, and phenomenal musicians. So pick what works best for you and your guests and enjoy the moment. Happy Valentine's Day!



## FEBRUARY CALENDAR OF EVENTS CON'T

Continued from page 16.

Erde, paired with Tan Dun's sweeping cello concerto from Ang Lee's Academy Award-winning film *Crouching Tiger, Hidden Dragon* performed by HSO's own Mark Votapek. 4 p.m. Tickets: \$10.50-\$99. Hawaii Theatre. myhso.org.

### FEBRUARY 14 MOTOWN VALENTINES TRIBUTE SHOW



Spend Valentine's Day enjoying the soulful R&B jams of the 60s will be recreated with an epic 10-piece live band and 15 of Honolulu's fiercest

soul singers, including local powerhouses Paula Fuga and Tavana, American Idol finalists Big Mox, Na Hoku Hanohano Award winner, Yoza, Keith Batlin and more. An original opening set will be provided by Blues-Rock band Kings of Spade. Limited VIP Tables include tickets and dinner for 2 and a bottle of wine for \$275. GA \$40. kingsofspade.com.

### FEBRUARY 14-17 JOSH TATOFI

Celebrating the season with his "I'm Gonna Love You Concert," Josh Tatofi is bringing his smooth R&B slow jams to the Blue Note for 8 shows over four nights. Two shows each night at 6:30 and 9 p.m. Tickets: \$45-\$75. bluenotehawaii.com.

### FEBRUARY 15 SYMPHONY OF THE HAWAII FORESTS

Presented for the first time in public, journey from raindrops to rivers to the deepest roots with stories to ignite the imagination and safeguard our natural wonders with the magic of animation, music, narration, and hula. 6 p.m. \$10. Hawaii Convention Center. myhso.org.

### FEBRUARY 16-17 PAGLIACCI

Pagliacci is an Italian opera with music and libretto by Ruggero Leoncavallo. The opera tells the tale of Canio, actor and leader of a commedia dell'arte theatrical company, who murders his wife Nedda and her lover Silvio on stage during a performance. Fri. 7:30 p.m., Sat. 4 p.m. Tickets: \$30-\$100. hawaiiopera.org.

### FEBRUARY 18 JAPAN FESTIVAL ISHIKAWA

This cultural charity event features traditional Japanese music, folk arts, and the first ever performance of Kanazawa Geishas in Honolulu. Enjoy live performances, a Japanese tea ceremony, traditional flower arrangement, and Japanese calligraphy in the exhibition room as well as a modern fashion show featuring the fusion between the traditional and the modern Japanese culture featuring traditional fabrics from Ishikawa in modern fashion. 3 p.m. Tickets: \$20. hawaii theatre.com.

### FEBRUARY 19 GREAT ALOHA RUN

It's the 40th annual Great Aloha Run. Established in 1985, the race has raised over \$17 million over the years for Hawaii non-profits. The 8.15-mile race begins at Aloha Tower and finishes at Aloha Stadium. greataloharun.com.

Continued on page 18.

# Love & LEIS

SELECT DATES FEBRUARY 11 - 18

## Aloha Kai

LŪ'AU

### O'AHU'S MOST SCENIC LUAU

Celebrate Valentine's Day with a dreamy evening filled with tropical music, delicious food, and romantic vibes. Enjoy a special lei, bubbly toast, romantic photos, and a decadent dessert that will melt your heart.

808-259-2500 | ALOHAKAILUAU.COM

FEBRUARY 14TH WEDS

# Motown Valentines

PAULA FUGA | KINGS OF SPADE | TAVANA

POWERHOUSE HORNS | BIG MOX | KAHNMA | MELODIE SOUL | YOZA | RIYA DAVIS | KEITH BATLIN  
MEUSSA DIALLO | NOAH INAMORI | PRAISE JESUS ARTIS | KEAHI DEIVID | EVAN KHAY

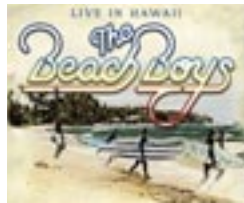
TIX: BIT.LY/MOTOWNLIVE | The Republik



## FEBRUARY CALENDAR OF EVENTS CON'T

Continued from page 17.

### FEBRUARY 21-22 • THE BEACH BOYS



Renowned for their distinctive vocal harmonies and musical innovation, The Beach Boys are legendary, and are easily one of the most influential acts of the

rock era. Drawing inspiration from a diverse range of musical genres, including older pop vocal groups and 1950s rock and roll, they cultivated a unique and enduring sound. 7:30 p.m. Tickets: \$75-\$250. hawaii theatre.com.

### FEBRUARY 23 • JOY OF SAKE

Celebrating Hawai'i's 150-year love affair with sake, this is the biggest sake festival outside of Japan featuring 578 different sakes in peak condition paired with appetizers from Hawai'i's top chefs. The admission fee includes appetizers from participating restaurants and unlimited samplings of sake. 6:30 – 9 p.m. \$120. Hawaii Convention Center. joyofsake.com.

### FEBRUARY 23 • LESLIE JONES LIVE

The wildly successful former "Saturday Night Live" writer and cast member, Leslie Jones performs her wild and crazy stand-up show to sold out audiences around the world. 8 p.m. \$75-\$110. hawaii theatre.com.

### FEBRUARY 24

#### KAMEHAMEHA SCHOOLS HO'OLAULE'A

It's the 99th annual ho'olaule'a featuring entertainment, shopping, 'ono food, rides, games and crafts for the keiki. 8:30 a.m. - 4 p.m. Bring your lawn chairs and mats to Kam Schools Konia Field. parents.ksbe.edu. 842-8680.

### FEBRUARY 28 • JERRY SANTOS & KAMUELA KIMOKEO LIVE AT THE KAHALA

Jerry Santos has been a presence on the Hawai'i music scene for decades. Kamuela Kimokeo has toured with Amy Hanaiali'i. He performed for the President of Tahiti and in 2013 he was a featured guitarist at Obama's inaugural ball. Plumeria Beach House. 6:30 – 8:30 p.m. 739-8760.

**WAIKIKI BAPTIST**

# Church

Your Church in Waikiki

424 Kuamo`o St  
(Near the Ambassador Hotel)

**Sunday Worship Services**

9:00 AM - Contemporary  
10:45 AM - Traditional

(808)955-3525

WaikikiBaptist.com

## LUNAR NEW YEAR

Continued from page 4.



Chinese Calligrapher Ina Chang is certainly busy this time of year. She will make appearances at several malls. Photo courtesy Ala Moana Center.

the talented Ina Chang on February 3 from 10 a.m. to 1 p.m. and February 11 from 2 to 5 p.m. Royal Hawaiian Center will host two lion dance performances on February 10 at 5 p.m. to kick off the Year of the Dragon. From 5:30 to 7 p.m., the lions will continue throughout the Center, weaving their way through participating stores and restaurants. Marking the grand finale, the spectacular Wah Ngai Association's performance of an acrobatic lion dance on February 18 from 6 to 6:30 p.m. promises a mesmerizing experience. Guests who spend a minimum of \$200 at participating stores and restaurants will receive a special red envelope with prizes, ranging from gift cards to tote bags.

**Waikiki Beach Walk** will celebrate the Lunar New Year on February 17, including the Lion Dance Showcase, the Pole Jumping demonstration, and the booming firecracker ceremony with the Sing Yung Dragon and Lion Dance Association, who will also visit each Outrigger property. The pole jumping will occur from 5 to 5:30 p.m., and the lion dancers will wander through the property from 6 to 7:30 p.m.

As mentioned above, the lion dancers will also be visiting different hotels throughout the day, so visitors will have

plenty of opportunities to see the lions perform in Waikiki. They are scheduled to be at the following **Outrigger Hotels** at the following times:

- 10:00 a.m. - 11:30 a.m.**  
Outrigger Waikiki Beach
- 11:45 a.m. - 12:45 p.m.**  
Outrigger Waikiki Beachcomber
- 2:00 p.m. - 2:30 p.m.**  
Embassy Suites Waikiki
- 2:45 p.m. - 3:30 p.m.**  
Outrigger Reef Waikiki Beach
- 5:00 p.m. - 5:30 p.m.**  
Pole Jumping
- 5:30 p.m. - 6:00 p.m.**  
Hokulani Waikiki & Club Wyndham  
Waikiki Beach Walk

While they may be visiting more hotels throughout the day, the only other one we know about is Tuesday, February 13, when the **Prince Waikiki** welcomes Gee Yung Martial Arts Dragon & Lion Dance Sports Association at 5:00 p.m. to perform a Lunar New Year Lion Dance in the lobby and on the third floor.

Enjoy the festivities throughout the month, and to be safe, always bring lai see with you when you go out. The term "lai see" translates to "lucky money" in Cantonese, and the color red is considered auspicious in Chinese culture and symbolizes good luck and prosperity. Lai see is a cherished tradition that adds joy and positive energy to special occasions such as the Lunar New Year, fostering a sense of generosity and goodwill within the community – and keeps those hardworking lions happy, so be prepared! If you don't have any lucky red envelopes handy, remember that it is customary to use crisp, new bills inside the red envelope, so have a few ready to go in your bag. And, although crisp new bills are best, those lions are hungry and will 'eat' whatever bills you have handy. Whatever you do to celebrate the occasion, enjoy. Kung Hee Fat Choy!



Look for festive decorations throughout the month. Photo courtesy Royal Hawaiian Center.



# That's Entertainment

## HOTELS

- 'ALOHLANI RESORT 922-1233**
- **Daily** - Fish Feeding 10:30am & 2:30pm *O Bar*
  - **Daily** - Live Music 6:30-9:30pm *Swell Bar*
  - **Daily** - Light Monument Video Art Series 7-9pm *Swell Bar*
  - **SunWedSat** - Tank Talk 9am. *O Bar*
- HALEKULANI 923-2311**
- **Daily** - Music & Hula 5:30-8:30pm *House Without a Key*
  - **TWThFS** - Live Jazz 8pm - 12am, *Lewers Lounge*
  - **Sun** - Sunday brunch w/Noly Paa on piano 9:30am - 2pm
- HILTON HAWAIIAN VILLAGE 949-4321**
- **Fri** - Fireworks at 8pm
  - **SMTWThF** - Live entertainment, Tapa Bar. 7-10pm
  - **FriSat** - Live entertainment, Paradise Lounge. 7-10pm
- HYATT REGENCY WAIKIKI 923-1234**
- **MWed** - Farmer's Market from 4-8pm
  - **Mon-Fri** - Cultural Programs at the Ho'okela Culture Center
  - **TTh** - Walking Tour thru parts of Waikiki at 10am
  - **TTh** - Live Hawaiian music at Pualeilani Atrium, 4-6 pm
- KAHALA HOTEL & RESORT 739-8888**
- **Mon** - Free kapala stamping at The Veranda at 10am
  - **Tues** - Free lauhala weaving at The Veranda at 10am
  - **WFSat** - Free lei making at The Veranda at 10am
  - **Thurs** - Free hula dancing at The Veranda at 10am
  - **ThFSat** - Live entertainment at The Veranda from 6-8pm.
  - **FriSat** - Afternoon Tea at The Veranda at 2pm & 3:30pm
  - **Daily** - See the interactive dolphin programs every hour
- LUANA WAIKIKI HOTEL & SUITES 955-6000**
- **MWF** - Enjoy live music and hula on the Mezzanine 5-6pm
- MOANA SURFRIDER 922-3111**
- **Daily** - Live music at The Beach Bar, 4:30-6:30pm, 7-10pm
  - **WThFSSu** - David Swanson at Vintage1901, 6:30-10pm
  - **SatSun** - Afternoon Tea at the Veranda, 11:30am - 2:30pm
- OUTRIGGER REEF WAIKIKI BEACH 923-3111**
- **Daily** - Live Hawaiian music at Kani Ka Pila Grille. 6-9pm
- PRINCE WAIKIKI 956-1111**
- **ThFSSu** - Live music at 100 Sails from 6-8pm
  - **Sat** - DJ KK poolside from 2-5pm, Sun from 2:30-5:30pm
- SHERATON PRINCESS KAIULANI 922-5811**
- **Daily** - Live music poolside 6-9pm. DJ from 3-6pm.
- THE ROYAL HAWAIIAN 923-7311**
- **Daily** - Live Hawaiian music at the Mai Tai Bar. 11am-2pm
  - **TWfSSu** - Live Hawaiian music at the Mai Tai Bar. 6-9pm
  - **MTh** - Live Hawaiian music at the Mai Tai Bar. 8-10pm
- TURTLE BAY RESORT 293-6000**
- **Daily** - Live music at The Pointe Pool Bar, 4-7pm
  - **Daily** - Live music at Off the Lip, 7pm
  - **Daily** - The Stable at Turtle Bay offers a variety of experiences
- WAIKIKI BEACH MARRIOTT RESORT 922-6611**
- **Daily** - Live music, Queensbreak Restaurant 5:30-8:30pm
  - **Daily** - Live music in the Lobby 6-9pm

## FARMERS MARKETS

- WBW OPEN MARKET**
- **Mon** - Set up on the Plaza at Waikiki Beach Walk. 4-8pm.
- HYATT REGENCY FARMERS MARKET 225-4002**
- **MonWed** - Hyatt Regency 1st floor waterfall atrium 4-8pm
- HAWAII FARM BUREAU MARKET 848-2074**
- **Wed** - Set up on the Blaisdell Concert Hall Lawn 4-7pm.
- ALOHA HOME MARKET 225-4002**
- **Sun** - Kailua 340 Uluniu Street 9-2pm.
- HALE'IWA FARMERS MARKET 388-9696**
- **Thurs** - Located at Waimea Valley. 2-6pm
- MAHIKU FARMERS MARKET 225-4002**
- **Thurs** - Bottom level International Market Place 4-8pm.
- KCC FARMERS MARKET 848-2074**
- **Sat** - Kapiolani Community College 7:30 - 11am
- KAKA'AKO FARMERS MARKET 388-9696**

- **Sat** - 919 Ala Moana Blvd & 210 Ward Avenue. 8am-12pm
- PEARLRIDGE FARMERS MARKET 388-9696**
- **Sat** - PearlrIDGE Mauka by Macy's. 8am-12pm
- KAILUA FARM BUREAU MARKET 848-2074**
- **Sun** - Kailua Town Center. 4-7pm
- KAILUA TOWN FARMERS MARKET 388-9696**
- **Sun** - Enchanted Lake Center by Kailua Cinema. 8am-12pm

## ATTRACTIONS

- FOSTER BOTANICAL GARDEN 768-7135**
- **Daily** - Hawaii's oldest Botanical Garden in the midst of downtown open 9am - 4pm. \$5/\$1 keiki (kama'aina \$3)
  - **Daily** - Free docent-led tours at 10:30am. Reservations rec.
- HONOLULU ZOO 926-3191**
- **Daily** - The Zoo is open from 10am - 4pm. Last Entry at 3pm. GA \$19 adult/\$11 keiki (kama'aina \$8/\$4).
  - **Sat** - Explore the Zoo after the gates close 5:30-7:30pm.
- KUHIO BEACH HULA SHOW 843-8002**
- **TSLastSun** - Free show 6:30 - 7:30pm Kuhio Hula Mound
- WAIKIKI AQUARIUM 923-9741**
- **Daily** - The Aquarium is open from 9am - 4:30pm. GA \$12 adult/\$5 kids (kama'aina \$8).
  - **1st3rdTue** - Hawaiian Plant Tour. 1:30pm. Free w/admission

## MUSEUMS

- BATTLESHIP MISSOURI MEMORIAL 455-1600**
- **Daily** - Relive stories of war, victory, and the road to peace onboard the "Mighty Mo." Join a guided tour in English, Japanese, Chinese, or Korean or explore the ship at your own pace. Digital tour maps in various languages are available. 8am-4pm. More info available online at ussmissouri.org.
- BISHOP MUSEUM 847-3511**
- **Daily** - The 15-acre campus offers a chance to learn about the cultural and natural heritage of Hawai'i across three different exhibition buildings. Daily planetarium shows, a native Hawaiian botanical garden and more. 9am-5pm.
- HAWAII STATE ART MUSEUM 586-0900**
- **Mon-Sat** - 'Museum Interpreters' on-site to provide visitors with basic information about the museum and artwork. Special evening events as listed below. Open 10am - 4pm.
  - **1stFri** - Live entertainment and food vendors. 6-9pm
  - **2ndFri** - "Vibe" Jazz performances & food vendors. 6-9pm
  - **4thFri** - Hawaiian music night. 6-9pm
  - **3rdSat** - Family Arts & Crafts Day 11am - 3pm
- HONOLULU FIRE MUSEUM 723-7167**
- **3rdSat** - Free one-hour guided tours through various exhibits with a firefighter recounting HFD's history the 3rd Saturday of every month. 9am - 2pm on the hour. 620 South Street. Reservations required. Book online: fire.honolulu.gov then hit the submit request button and click museum tours.
- HAWAIIAN MISSION HOUSES 447-3910**
- **TW** - Docents lead tours through the oldest existing frame house in the Islands. 11am, 12pm, 1pm and 2pm.
  - **ThFSat** - 11am, 12pm, 1pm, 2pm and 3pm tours
  - **TWThFsa** - Gift shop open 10:30am - 4pm
- HONOLULU MUSEUM OF ART 532-8726**
- **ThFSSu** - Tour & Talk Story 11am. Free with admission.
  - **ThFSSu** - Highlights tour 2pm. Free with admission.
  - **FSat** - HoMA Nights, open until 9pm. Free with admission.
- IOLANI PALACE 522-0832**
- **TThS** - Audio tours available from 9am - 4pm
  - **WTh** - Docent-led tours available from 9am - 4pm
  - **EveryOtherWed** - He Mele Lahui Hawaii with Ku'uipo. 9am
  - **Fri** - Royal Hawaiian Band. Free. 12-1pm
  - **SunMon** - Museum Closed
- LUCORAL MUSEUM 778-8189**
- **Mon-Fri** - Free self-guided tours featuring local and global gemstones and a one-of-a-kind dinosaur egg. Visitors can

also create their own one-of-a-kind jewelry. 10% off gift shop with mention of Oahu Concierge. 10am-5pm.

**PEARL HARBOR AVIATION MUSEUM 441-1000**

- **Daily** - Vintage aircraft in battlefield hangars at Pearl Harbor, outdoor exhibits, flight simulators, and the Bob Hope: An American Treasure Exhibit. Shuttle & Tickets at USS Arizona Memorial Visitor Center or PearlHarborAviationMuseum.org.

## SHOPPING CENTERS

- ALA MOANA CENTER 955-9517**
- **Daily** - Hula Show, 5pm. *Centerstage*
  - **EveryOtherWed** - Royal Hawaiian Band. 11am.
  - **Sat** - Local entertainment, 3pm. *Centerstage*
  - **Sun** - Keiki Hula Show, 1pm. *Centerstage*
  - **Daily** - Pau Hana Music Series, 5:30pm. *'Ewa Wing Stage*
  - **2ndSat** - Malama Market 11am-4pm. *Mauka Wing Level 2*
- HALE'IWA STORE LOTS 203-5700**
- **Sat** - Live Hawaiian entertainment from 2 - 4pm
- INTERNATIONAL MARKET PLACE 921-0536**
- **MWF** - Ceremonial sunset lighting of Lamaku Torch Tower
  - **MWF** - Sunset Stories Hula Show, 7pm. *Queens Court*
  - **Thurs** - Mahiku Farmers Market. 4-8pm. *Banyan Court*
  - **1stTh** - Royal Hawaiian Band. Free. 11am. *Queens Court*
  - **1stSaSu** - Island Crafters Market. 11am-5pm. *2nd level*
  - **1st3rdSu** - Free Yoga Class. 10-10:45am. *Queens Court*
- ROYAL HAWAIIAN CENTER 922-2299**
- **Daily** - Heritage Room/Cultural Videos, *Helumoa Hale*
  - **Mon** - Free Ukelele Lessons 11pm, *Helumoa Hale*
  - **Tues** - Free Hula Lessons 11am, *Royal Grove*
  - **Wed** - Free Lauhala Weaving 11am, *Bldg A, Level 2*
  - **Thur** - Free Keiki Hula lessons 12pm, *Royal Grove*
  - **Fri** - Free Lei Making Class 12pm, *Bldg A, Level 2*
  - **Sat** - Hula Kahiko 5:30pm, *Royal Grove*
  - **TWThF** - Live Hawaiian Entertainment 5:30pm, *Royal Grove*
- WAIKIKI BEACH WALK waikikibeachwalk.com**
- **Daily** - The Ukulele Store offers free lessons at 4:30pm
  - **Tues** - Ku Ha'aeo Hula Show. 4:30-6pm. *Plaza Stage*
  - **Wed** - Free feather lei making 11am, 2pm. *Royal Room*
  - **Sun** - Free hula lessons, 9-10am



- BALI OCEANFRONT**  
20% off all Food & Beverage. Hilton Hawaiian Village, 941-2254.
- GUAVA SMOKED**  
20% off food and drinks with hotel ID. 567 Kapahulu Ave, 2nd floor. Entrance/parking on Campbell Ave. 913-2100
- HAWAIIAN MISSION HOUSES**  
Free tour with hotel ID. 553 S. King Street. 447-3910.
- IOLANI PALACE**  
Free Admission with hotel ID. GA \$30. Kama'aina \$19.95. 364 S. King Street, Reservations Required. 522-0832.
- MAUI DIVERS JEWELRY**  
35% discount off purchases made at the Design Center and 20% at all stores. Must show hotel ID for discount. 1520 Liona St. 946-2929.
- RUTH'S CHRIS STEAK HOUSE**  
Complimentary Appetizer valued up to \$22 with the purchase of 2 entrees. Waikiki Beach Walk, 440-7910. Restaurant Row, 599-3860.

You will be required to show Hotel ID or business card to claim offer. Magazine not needed. Just mention offer when presenting hotel ID. Discounts available to Guest Service Professionals ONLY. Not valid with other promotions or special offers. A minimum 18% gratuity on original order requested for all food offers.

The Oahu Concierge is printed monthly and direct mailed FREE to all Oahu Concierge, Hospitality & Activity Professionals.  
Subscriptions available to non-industry at \$25 per year.

C O N T A C T  
**Davis Media**  
Ph: (808) 225-8229

Website: [www.OahuConcierge.com](http://www.OahuConcierge.com)

ADDRESS & NAME CHANGES / ADDITIONS  
We do not take changes via telephone. All changes to mailing list **must be submitted in writing** by the 16th of the month to make the next issue, email is preferred.

S T A F F

PUBLISHER & EDITOR **Pam Davis**  
[publisher@oahuconcierge.com](mailto:publisher@oahuconcierge.com)

DESIGN  
Coreiya Design

The Oahu Concierge  
4348 Waiialae Avenue, #185  
Honolulu, Hawaii 96816

PRSR STD  
US Postage Paid  
TRADE MEDIA HUI



# CELEBRATE WITH US

SATURDAY • FEBRUARY 10



Scan QR Code for details.

**11am – 1:30pm • Queen's Court**

Lion Dance Performances throughout Levels 1, 2 & 3 followed by an educational presentation in Queen's Court

**1:00pm – 3:00pm • Mauka Court**

Traditional Chinese Calligraphers

**6:30 – 8:30pm • Stargazers of Hawaii Moon Viewing**

See the Moon through a large telescope on the Grand Lanai  
*\*additional viewing on February 17*

**Lucky Gift**

Get a Honolulu Cookie Company Year of the Dragon Gift Box with any purchase of \$100 or more, February 1 - February 14.

INTERNATIONAL MARKET PLACE