

# Concierge

KEEPING THE HOSPITALITY INDUSTRY INFORMED SINCE 1998

## POW! WOW! RETURNS!

## Shangri La



Artists will descend upon Kakaako to create their annual colorful masterpieces. Picture Brandon Shigeta, Pow! Wow! Hawaii!

### POW!

It's the impact that art has on a person.

### WOW!

It's reaction to that art as a viewer.

Hopefully you got the pow and wow of the 2014 Pow! Wow! murals in Kaka'ako. It's time again for many to disappear and new art to spatter and spray from cans and the inner depths of the minds of an artist army that will gather for the annual world-newsworthy event. Guaranteed, the dozens and dozens and dozens of artists invited from Hawaii and around the globe have spent the last twelve months dreaming the wall.

In February Hawaii's award-winning graphic artist Jasper Wong will welcome artists from around the world to do what most artists want to do. Paint big! Wong calls it a gathering that celebrates culture, music and art - and manages to entertain and illuminate the non-painters in our community. This is fine art. Tagging is simply not allowed. Teens who want in need to prove themselves and demonstrate their creativity.

Pow! Wow! is an easy event to savor. For five days and nights, plus extras, the painting goes on all day. Artists stop to talk and share ideas with each other and with you, the mural art connoisseur.

Drums are optional but spray paint is mandatory for the internationally acclaimed mural painting event in Kaka'ako. Over 100 artists, from 50+ countries, converge on the quiet back streets of the area between South Street and Piikoi, Kapiolani and Ala Moana. It is an annual gathering that celebrates culture, music and art and, after a week of creativity, it leaves us with 40-plus murals to savor for a year.

According to Wong, Pow! Wow! started in 2010. A group of committed island artists took the concept to a level far beyond Wongs expectations. First they transformed a really dull part of town into a magic kingdom of murals. Then they added art and music events and, now, in 2015, they have a world-class art-blowout planned you do not want to miss!

On Saturday, February 7th from 6pm - 10pm

*Continues on page 2.*



The bedroom of the Mughal Suite at Shangri La after preservation work. © 2014 Linny Morris, courtesy of the Doris Duke Foundation for Islamic Art, Honolulu, Hawai'i.

Hawaii Calls – especially to an heiress on her honeymoon. Actually, in 1935 Doris Duke was on her way back from a honeymoon trip through the Muslim world and had an extended stay in the islands. She found herself in love with the Mughal art and Hawaii.

Her home, Shangri La, is now a showplace museum accessible to visitors via the Honolulu Museum of Art and the auspices of the Doris Duke Foundation for Islamic Art. The estate maintains a collection of 2,500 objects.

Tours can accommodate about 20,000 people per year but on any day they fill up quickly. Plan ahead, reserve in advance and the experience is guaranteed to encourage dreams of being a millionaire. Stepping off the shuttle bus from HMOA and thru the doors of the mansion is a time machine trip to true elegance. With the added attraction of the recent opening of the Mughal Suite, it is truly one of Honolulu's great treasures.

*Continues on page 7.*

### TABLE OF CONTENTS

Yada Yada Yada .....	2
Newsflash .....	3
Arts with Aloha .....	4
Auntie Lynn's Adventures .....	6
Na Po'e Pa'ahana Award Winners .....	8
Chef's Corner: Top of Waikiki's Lance Kosaka ..	9
E Pili Kakou .....	10-13
Calendar .....	14-15
Hiking Corner .....	16
Ocean Awareness .....	17
That's Entertainment .....	18
Concierge of the Month: Emelyn Damo .....	19

**W** WOLFGANG'S  
STEAKHOUSE  
1110 KALANIANA'OHU BLVD  
LUNCH • HAPPY HOUR • DINNER • WEEKEND BRUNCH • PRIVATE ROOMS

**UNMISTEAKABLY NEW YORK**  
Royal Hawaiian Center, Bldg C, Level 3  
wolfgangsteakhouse.net • opentable.com  
**808.922.3600**





## Publisher's Letter



### Bidding Aloha to a friend

Once again, the year ended on a sad note. For those of you that have not heard, our own Aunt Lynn lost her husband, Richard Hardy on December 30th, after a brief but violent struggle with cancer. Richard was a gentle giant of a man, always ready with a hug and smile, distinctive with that gray braid down his back. Personally, I will miss him dearly. My heart breaks for Lynn Cook, who lost her daughter Elizabeth to this dreadful disease just two years ago. Life can be very cruel at times. After all of this, Lynn needs our help. As you might imagine, the medical bills were astronomical, so a bunch of her friends have put together a fundraiser filled with music and dance and lots of fabulous silent auction items for people to bid on. The musical line-up is still being set, but Henry Kapono and Kuana Torres have already confirmed. Her kumu, Mapuana de Silva and her award-winning hula sisters will be there to perform as well. This will be a fun event, no matter what the circumstances, and it's all for a great cause. I hope those of you that know Lynn take the time to attend. The more the merrier. And those silent auction items? I've been busy collecting them, and they are fabulous! You might just find the perfect Valentine's Day gift. You really should stop by. Friends helping Friends, a fundraiser for Lynn Cook will take place on Sunday, February 8th from 5 - 8 p.m. at the Lotus Honolulu.

Pow! Wow! Hawaii kicks off this month, so I encourage you to get in your cars, check out what was done and watch the progress as they give Kaka'ako yet another facelift. Other than that, there's not too much going on this month. The biggest news is PCC is finally going to open their Hukilau Marketplace on February 20th. Although a few stores are already open, most of all of them should be ready to go in time for the grand opening, giving the tourists lots more shopping options while they are out there. That is, unless the Eddie goes. It came close this week, but no go thus far. This is the last month for the window. The Eddie hasn't been held since 2009, so I'm really hoping this is the year. There's really nothing else like it in the world. I've never been out there for it, but with the wonders of technology, and my very large computer screen (for layouts, of course!) I was able to watch it live last time around and it was thrilling! So come on, Eddie... Let's Go!!!!

Aside from that it's been a nice slow start to the year work-wise. We had one event scheduled for late January, but it's been postponed and for now, our next one isn't until March. This month isn't very filled with a lot of events or activities either, allowing for lots of personal time and family activities... or in my case... a move and cleanse. But hey, it had to happen at some time right? But we all know how that goes, and in a few weeks time I'm sure I'll be harassing your emails for the latest and greatest events to go check out. In the meantime, as the song says... Enjoy the Silence.

By the way, if any of you are interested in a cleanse let me know. It worked for me - and I have \$50 gift cards to give out for you to try.



# Yada Yada



Cheryl Williams

Congratulations to **Cheryl Williams** who has been named the general manager of the **Royal Hawaiian Hotel**. Williams is a longtime Starwood Hotels & Resorts employee, who most recently served at the regional director of sales and marketing. A recognized leader within the industry who has more than 30 years of experience, 25 of those with Starwood, she is an ideal choice to preserve the iconic property's legacy while continuing to elevate its performance. • Congratulations also go out to **Tina Larson**, formerly of Expedia, Maui Divers and the Hawaii Visitors and Convention Bureau. She has joined

**Hawaiian Airlines** as director of online travel agencies and distribution, a newly created position that will oversee online travel agency partnerships and global distribution strategy. • **Page Gaylord** is now in charge of leading the **Hawaii Visitors and Convention Bureau** B2B marketing programs. Page has been with Starwood Hotels as their Director of Advertising and Promotions. • **Greg Dickhens** has been named vice president of **Prince Resorts Hawaii** assisting the strategic planning of the company, repositioning current assets and developing new real estate opportunities. • **Sisilia "Lia" Taelangi**, formerly of the OHANA Waikiki West has joined the **Hale Koa Hotel** as Assistant Front Office Manager. Also joining the hotel is **Charlotte Hance**, as front desk agent. Welcome!

Continued from page 1.



the opening event will be The 2<sup>nd</sup> Annual POW! WOW!: Exploring the New Contemporary Art Movement Exhibition, curated by Andrew Hosner from Thinkspace Gallery. The exhibit will be on view from Feb. 7th to Feb 18th at the Honolulu Museum of Art School located at 111 Victoria Street.

On Saturday night from 6 p.m. - 2 a.m. hang with the artists at the Red Bull Music Academy presents The Lei-Over: Official POW! WOW! Hawaii Opening Party. The program reads, "An all-star lineup of special mystery guest DJs and Do-Over residents Haycock & Strong" at Buho Cantina. Sounds like fun.

Sunday, February 8th from noon to 6 p.m. it will be Grey Goose Day Club: POW! WOW! + Purps Edition, at the Modern Honolulu Pool.

On Monday, February 9th the mural painting begins. Artists paint murals and create installations all over Kaka'ako. Check the web site map for the various locations.

On Tuesday, February 10th from 6 p.m. to 10 p.m. 1XRUN Print Exhibition will open at Fresh Cafe Kaka'ako located at 831 Queen Street.

Wednesday, February 11th from 6 to 8 p.m. Imprint presents Jeff Staple 1-2-1 with Kevin Lyons. The talk is followed immediately by a panel discussion with a focus on the art and media industry. Located at Kaka'ako Agora, 441 Cooke Street.

Thursday, February 12th from 6 to 8 p.m. Imprint presents Jeff Staple 1-2-1 with James Jean, again talking, followed immediately by a panel discussion with a focus on the music industry. Also located at Kaka'ako Agora.

Friday, February 13th from 6 to 10 p.m. RVCA Art Show Curated by PM Tenore happens at the Modern Honolulu Sun Suite.

And, as the paint dries and seasons, on Friday night from 10 p.m. to 2 a.m. the RVCA Afterparty at the Addiction, located in the Modern Honolulu.

Saturday, February 14th is the day of love (ing) all the art and artists. From 6 to 11 p.m. it is the Finale Block Party presented by POW! WOW! and Night Market on Cooke Street in Kaka'ako.

As an after party, Tuesday, February 17th RVCA X POW! WOW! presents Deltron 3030 WITH Special Guest Mangchi Hammer. Doors open at 7 p.m. at the Republik. Music acts still to be



Don't miss the Pow! Wow! events. Photo: Brandon Shigetia determined. Purchase tickets at Bamp Project.

For more info, event schedules or changes, artist names and bios and paint party details are on [powwowhawaii.com](http://powwowhawaii.com), as are the workshops and educational events planned for the days surrounding the actual art making.

Names you'll recognize: Solomon Enos, creator of the Royal Hawaiian Center murals and paintings at the Sheraton Waikiki, Prime Hina, the man that started it all in Kaka'ako, writer, printmaker Sergio Garzon and someone too fun not to say with the name, Gary Draws Fish, and Jasper Wong - know to everyone in Waikiki as the artist who wrapped the DFS building in a giant red and white graphic design. The national and international artist list reads like Art in America magazine.

There was a time when nearly every building in Kaka'ako was tagged with the spray painted ego logos of urban delinquents. The first year of Pow! Wow! couldn't cover all the tagging. By the second and third years buildings were being transformed by the art. The merchants and business owners of Kaka'ako enjoy the "looky-lou" parade that spots one mural and then realizes they are surrounded by two-story high art. And the aforementioned delinquents are working on their spray technique with the hope of being an assistant to their spray can idols.

It is not unusual to see artists on one big project jump to the aid of another artist, or just jump in to have more fun. A City Mill manager said the sale of spray paint and sheets of plywood spikes after Pow! Wow!. The artist known as Prime says maybe they all make it look too easy and everyone wants to try it in their backyard, but not necessarily on the side of their house.

Street art is for all of us. It magnifies and amplifies statements, makes the viewer laugh, and shows that the terrible graffiti down the block is bad energy that can and is turned to good. ~ Lynn

# EXTRA *Newsflash* EXTRA

## FRIENDS HELPING FRIENDS

That's the name of fundraiser taking place to benefit our very own Lynn Cook who just lost her husband to cancer. For those of you that remember, she also lost her daughter to cancer two years ago. To help her pay off all those medical bills, a fundraiser and silent auction will be held on February 8th from 5-8 p.m. at the Lotus Honolulu with music from Henry Kaponu, Kuana Torres, hula and more. Please come and support.

## ATLANTIS OFFERS TWO

Atlantis Cruises is offering two daily whale watches to catch those magnificent creatures until April 19th, around when the season ends. They are now offering morning whale watches from 9 - 11 a.m. as well as their daily lunch cruise taking place from 12:00 to 2:30 p.m. which includes their lunch buffet. Both include free round-trip transportation from Waikiki. [AtlantisAdventures.com](http://AtlantisAdventures.com).

## WE ALL SCREAM FOR ICE CREAM

Ben & Jerry's opened its flagship store next to L&L Drive Inn at Ward Village. The famous Vermont-based company that began with two guys named Ben and Jerry in 1978 offers a large selection of ice cream flavors and frozen yogurt. [wardvillage.com](http://wardvillage.com).

## PINK SAND IS HERE

The owners of Aloha Aina Boutique are opening a beach lifestyle boutique called Pink Sand just in time for Valentine's Day. This pink oasis will provide shoppers with an exquisite selection of swimwear, resort wear and island-inspired accessories for women and children for the perfect day at the beach. Located in Building B, Level 1 next to Koi Boutique and across from Kate Spade New York. [royalhawaiiancenter.com](http://royalhawaiiancenter.com)

## MAKE LISEE PAPER LANTERNS

As part of Royal Hawaiian Center's Chinese New Year celebrations, members of the Miss Chinatown Organization will be teaching visitors how to make Lisee Paper Red Lanterns to ward off evil spirits at the Helumoa Hale Guest Services next to the Royal Grove. For information on dates and times on these special classes. call 922-2299. Classes are free. [royalhawaiiancenter.com](http://royalhawaiiancenter.com).

## GROCERY DELIVERY DIRECT TO HOME OR HOTELS

Oahu Grocery Service, already familiar to several properties island-wide, has expanded to provide delivery for all residents, visitors and businesses 24 hours a day, 7 days a week in partnership with Charley's Taxi. [oahugroceryservice.com](http://oahugroceryservice.com) 922-4670.

## VINTAGE IN VOGUE

One of Hawaii's top graphic designers, Stacey Leong Mills, offers up "Popo's Collection" of carry bags, totes, padded iPad holders and mens ties all made from the treasure trove of fabrics from her grandmother's stash of '50's, '60's and '70's Von-Hamm Young, Turek of Hawaii and Alfred Shaheen - a rare collection of fabrics bought by her grandmother who ran the fabric department of Liberty House. [poposcollection.com](http://poposcollection.com)

## GUARD GETS IN FREE

Sea Life Park has partnered with its next door neighbor, HPU's Oceanic Institute, to offer a behind-the-scene tours of this research facility that is dedicated to marine aquaculture, biotechnology, and coastal resource management that opened in 1964. The never before offered tour, includes a 15-minute introduction at Sea Life Park detailing the attraction's marine conservation activities, followed by a 45-minute tour of Oceanic Institute. Guests will learn about ongoing research into making ocean resources safer and more sustainable, such as using sea urchins to combat invasive algae, and operating a shrimp breeding program. The twice daily tour will cost \$79.99, and the fee includes admission to the Park, transportation from Waikiki, the tour, lunch, and a souvenir photo. For tickets call 259-2500 or [sealifeparkhawaii.com](http://sealifeparkhawaii.com).

We are the Master in Private Tours



Private Pearl Harbor Tours  
Custom-Design Private Tours

# RRHLL



Black-and-Gold is not our color. It is our CULTURE.



[www.RoyalHawaiianLimousine.com](http://www.RoyalHawaiianLimousine.com) | 1-808-275-6030 or 1-800-544-0066



HILTON HAWAIIAN VILLAGE® PRESENTS  
**WAIKIKI'S ONLY LUAU**  
 UNDER THE STARS



## WAIKIKI STARLIGHT LUAU

The drama and grace of Polynesia unfold with live music, drums, the captivating dances of the South Pacific and the fiery drama of four fire knife dancers. Indulge in a feast of unforgettable tropical flavors prepared by our award-winning resort chef, including Kalua Pig, Seared Island Catch, Huli Huli Chicken and Carved Pulehu Steak.

• SUNDAY - THURSDAY  
 BEGINNING AT 5:30 PM •

• ENJOY ONE WELCOME MAI TAI &  
 ONE SELECT BEVERAGE •

• COMPLIMENTARY VALET  
 & SELF PARKING •

808.941.LUAU  
 (5828)

www.HiltonHawaiianVillage.com/luau



HILTON HAWAIIAN VILLAGE®  
 WAIKIKI BEACH RESORT  
 2005 KALIA ROAD, HONOLULU • 808.949.4321



It's all about LOVE this February in Honolulu Arts and Cultural scene. Love of music and love of art!

What better place to beginning the Month of Love than at the **HAWAII THEATRE**

**CENTER** known at the "Pride of the Pacific," the historic theatre has been entertaining audiences for more than 90 years. From vaudeville revues and shows to silent films, musicals, ballets and concert, the theatre has become one of the centers of Honolulu's cultural scene. If your guests don't have a Valentine this month, please have them make this theatre their Valentine and fall in love with music of Hawai'i.

The Hawaii Theatre Center's Hana Hou! Series presents on February 7th Hawaiian singer **Kuana Torres Kahele** who is known for his incredible vocal range. Kuana is sought out by fellow musicians for his arranging, songwriting and producing genius. The multi Na Hoku award-winning artist brings the top winners for the 2013-2014 Merrie Monarch Hula Festival to the historic Hawaii Theatre. Kuana will showcase new music and hula for his bestselling Music for the Hawaiian Islands series. For this special evening, halau will perform new selections from his Hawaii Island, Niihau and Maui CDs. The halaus performing are the winning groups from 2013 and 2014, including Kaleo Trinidad and Halau Ka Leo O Laka I Ka Hikina O Ka La, Chinky Mahoe and Halau Hula O Kawaili'ula and Sonny Ching and Lopaka Igarta De Vera and Halau Na Mamo O Pu'uana'hulu. Among the very special guests featured will be Miss Aloha Hula TeHani Gonzado Pimental, Maila Gibson and Kanoe Gibson performing "I Call Him Lord" with Kuana, and Maila and Kuana performing Song of the Year "E Ku'u Lei, My Love." For those of you with Japanese guests fond of hula this is a must see concert. Tickets are \$40.

The following night, February 8th at the Hawai'i Theatre Center the Kauakoko Foundation presents **Born to Love**. This annual concert features Halau I Ka Wekiu's celebrating love. Even if your guests have a Valentine of their own, this concert will remind them of other types of love, such as that for a child. The concert is dedicated to the recent birth of Keahi'enaikala'iku to Kumu Hula Karl Veto Baker's daughter Ka'enaaloha. The concert also celebrates the halau's love of their Kumu Hulu Auntie Paulette Kahalepuna and her legacy of leihulu that continues within multitudes of her students. This is another concert that your Japanese guests, especially those who study hula will enjoy. Tickets are \$22, \$32, and \$37.

It's not all Hawaiian music this month. On February 13th the Hawaii Theatre Center's Encore! Series presents **Eric Bibb in Concert**. For those of you not familiar with Eric, his debut album for Dixie Frog/Stony Plain entitled Deeper in the Well is considered on one of the most important roots music albums in recent years. What is roots music? Roots music general refers to America folk music, but this debut album was a mix of folk, gospel-infused acoustic blues and basic country music. Eric has had a four-decade career with 35 albums, countless radio and television shows and

a never-ending tour schedule. I'm sure he was happy to book Honolulu! Tickets are \$35.

Now if all of this isn't enough for your Valentine, the perhaps the Hawai'i Pops Concert Series **An Evening of Romance & Love Songs** with the Matt Catingub and the Hawai'i Pops Orchestra on February 14th Valentine's Day will make them swoon. The program as always will include several special guest performers celebrating some of the best love songs ever written. This concert is a good concert to bring someone you want to smooch. Tickets are a bit pricey but well worth the credit card bill at \$95, \$75 and \$40.

Something that isn't pricey, in fact is free, is the **Hawai'i-Japan Goodwill Concert** on February 15th sponsored by MCEC International which is Japanese organization has put together a group of talented musicians that have been touring around the world for the past 10 years. Aside from Japan, they have entertained in Austria, Switzerland, Italy, Germany, Australia and various States throughout the United States. These performing artists have been to Hawaii several times and just as they have entertained their audiences around the globe they have also captivated the people here in times past. The performance will include the beautiful traditional sounds of Japan accompanied by contemporary music and Taisho Koto performances as well as special performances by Violyre Sound Orchestra and Dragon Beat Members to name a few. Again admission is free and tickets can be obtained at the Hawaii Theatre Box Office or by contacting Hiromi Kawasaki at 386-1412 or hiromi.kawasakirealty@gmail.com. Admission is based on availability of seats and is not guaranteed. For tickets to all the other shows listed above call the Hawai'i Theatre Center box office at 528-0506 or you can purchase them online at [www.hawaiitheatre.com](http://www.hawaiitheatre.com).



*The Bath: Woman Sponging Her Back, Pastel on paper. c. 1887 Edgar-Hilaire Germain Degas (French, 1834-1917)*

Post-Impressionist painters while wearing slippers and board shorts? The exhibition "Impressionist, Post-Impressionists, Neo-Impressionists: 19th Century Prints and Drawings" also includes works by Vuillard, Cassatt, Manet, Pissarro and Gauguin. The exhibition looks at the evolution of the graphic arts, which includes printmaking and drawing, from simply being illustrations to becoming works of art. These prints and master drawings are rarely seen by the public and should not be missed. When was the last time you saw a Toulouse-Lautrec in person? The exhibition runs through May 24th. For more information call the museum at 532-8700.

~ Lance Rae



WARD VILLAGE

HOME TO OVER 135  
UNIQUE SPECIALTY  
SHOPS, RESTAURANTS AND  
NATIONAL RETAILERS.

Nordstrom Rack, T.J.Maxx, Pier 1 Imports,  
Sports Authority, Ross, Bed Bath & Beyond,  
Buca di Beppo and more.

WARD CENTERS  
IS CHANGING TO  
WARD VILLAGE

WARDVILLAGESHOPS.COM



#WEAREWARD @WVSHOPS



Mahalo for your continued support!

JOIN OUR GUEST REFERRAL PROGRAM



OUR PROGRAM IS SIMPLE! FOR EVERY 25 GUESTS THAT YOU REFER, RUTH'S CHRIS STEAK HOUSE WILL SEND YOU A \$50.00 DINING CERTIFICATE

Please contact Emi Espinda if you have any questions.

(808) 595.2205 • eespinda@direstaurants.com

OPEN DAILY FROM 5PM HAPPY HOUR DAILY IN OUR LOUNGE 5PM - 7PM PRIME TIME MENU DAILY 5PM - 7PM WINE WEDNESDAYS 25% OFF BOTTLES OF WINE

Restaurant Row | 808.599.3860 Waikiki Beach Walk | 808.440.7910

WWW.RUTHSCHRISHAWAII.COM



25 NEW MENU ITEMS

Open Daily 11am - 10pm

Happy Hour Daily in our lounge 3pm - 6pm

Vino Thursdays 25% Off Bottles of Wine

Inquire about our Guest Referral Program!

Our program is simple! For every 10 complimentary dessert cards redeemed (WITH YOUR NAME ON THE CARD),

Romano's Macaroni Grill will send you a \$25.00 dining certificate that may be used at our Oahu restaurant.

Please contact Emi Espinda for information.

(808) 595.2205 • eespinda@direstaurants.com



Ho'okipa Terrace at Ala Moana Center 808.356.8300

WWW.MACARONIGRILL.COM



Aunty Lynn's Adventures



Happy New Year! Yes, February 4th is the first day of the year 4712. It is the first day of the year of the Sheep and the going away party for the year of the Horse.

This just in, Chinese Lion Sightings have been reported in China Town! Coming out of hibernation, the starving Chinese lions are sending an exploratory party to survey the land. On First Friday, February 6th beginning at 6 p.m. nine Bethel St. merchants volunteered to protect the town. They are armed with fireworks to scare away and negative energies and they are hanging greens with red li-see envelopes in their doorways - tasty treats for hungry cats. The trustworthy news source for this information is Sandy Pohl, ring-leader of events in Chinatown.

GRRRRRR - Pohl says that the merchants are asking for your help to distract and feed the lions. If nourished with greens (dollar bills), these lions will feel satisfied. Grateful, they will prance about showering blessings. When the lions return home, they will tell of our town's kindness, inviting all of Honolulu's lions to descend on Chinatown the following week to usher in a prosperous and abundant 2015.

So, what we need to do on First Friday is please these first scouting lions on this last waning full-moon transition. The night will become magical and the heartfelt wishes hung on the wishing tree can come true. Oh, did I mention that the tree will magically grow in front of the Louis Pohl Gallery on Bethel Street. You can get the wishing tags at the following businesses: Mojo Barbershop, Tap Room, JJ Dolans, Blank Canvas, Fighting Eel, Soul de Cuba, Brasserie Du Vin, Eleven44, Louis Pohl Gallery, House of Aria, Ginger 13, Arts at Marks Garage and Barrio Vintage. At the Chinese temple the tags will already be blessed for the new year.

GIVE IT UP - for Kuana Torres. When we all heard about his plan to honor each island with a CD it seemed a bit like climbing Mt. Everest. Well, he gave us Hawaii Keawe music for the Big Island. That one debuted on the Billboard World Music Charts for his never before experienced collection of original Hawaiian music. Then he followed up, only six months later, with another Billboard debut of Kahelelani for Ni'ihau. And, yes, his family is there and his Ni'ihau shell artistry just takes the breath away. Now, Kuana is launching music for Maui. All original, ten new songs (mele) and two oli (chant).

The CD will be out February 24th but you can get a sneak peek - er, listen - on February 7th at Hawaii Theatre. The show is at 7 p.m. and the halau joining him included Kaleo Trinidad and

Halau Ka leo o Lake I Ka Hikina O Kala, Chinky Mohoe and Halau Hula O Kawai'ula and Sonny Ching and Lopaka Igarta De Vera and halau Na Mamo O Pu'uanaulu.

GOT THE URGE - to shop? The Art Deco exhibition at the Honolulu Museum of Art was a very good time to cruise the Museum gift shop. It's a place where you want one of everything and two of most! The reason for the Museum visit was the Matson paintings by Eugene Savage. They are each as big as a wall and have never been shown here before. Savage painted them for Matson. They appeared on the ship's menu covers and on everything from shirts to shoe laces since. If you missed the show, and hopefully you got there, you still have a chance to see just the Savage murals. They have been moved upstairs for a very short visit to the John Dominis Holt Gallery.

While you are there, eat at the cafe. Delicious! And cruise, through February 8th, among the masterpieces of Japanese woodcuts. They can only be shown for three weeks. The show includes Hokusai's Great Wave print. Living and working from 1776 to 1849, it is amazing how contemporary his art looks today. And, who remembers the WAVE Waikiki with the mural inspired by that woodcut.

GRAB A COLD ONE - Henry Kapono is celebrating his 20th Anniversary of Duke's on Sunday concerts - at - you guessed it Duke's at the Outrigger Waikiki, every Sunday from 4 to 6 p.m.



The years of music are documented in his new CD, "Henry Kapono Live, Duke's on Sunday 2". With fourteen newly recorded Henry Kapono songs and classics and signature covers. This CD probably brings up more memories than a fan could count. Where

were you when he sang Stairway to Heaven, Ain't No Sunshine or Hotel California? That's the thing about Henry, he grabs you by the heart strings and then belts out Friends. Aunty Lynn has been here long enough to be a pushover for a Waikiki memory - but so have many of our visitors and other stars. One factoid is that Jimmy Buffett covered Henry's song, Duke's on Sunday. Only research can answer the question - do cold beers and Hula Pie really go together? Stay tuned, this intrepid reporter will do some extensive research and let you know. Duke's on Sunday, see you there!



ALERT! February 12-14 Box Jellyfish Window

Teaching Hawaii about jellyfish and other ocean creatures for over a century

brought to you by The Waikiki Aquarium open daily from 9 am - 4:30 pm



The Playhouse at Shangri La in front of Diamond Head



For those of us who call Hawaii home the Museum has a Kama'aina Saturday. The first Saturday of every month, except September, two tours are offered at 10:30 a.m. and 1:30 p.m. Reservations can be made in advance. Driver's license, state ID, student ID or Military ID is required at check in. All tours originate at the Museum with a short bus ride to the mansion on Black Point. No cars are allowed on the Shangri La property.

In Duke's own words, "Precisely at the time I fell in love with Hawaii and I decided I could never live anywhere else, a Mughal-inspired bedroom and bathroom planned for another house was being completed for me in India so there was nothing to do but have it shipped to Hawaii and build a house around it."

The Mughal Suite captures the both the transformative moment in 1935 when Duke fell in love with the art and architecture of Mughal India and the very origins of Shangri La itself with the suite as its nucleus. It is also the first of many commissions, including work from contemporary designers and artisans in Morocco, Iran, Syria and India that Duke placed in order to create her Honolulu home. Think about it, Doris Duke commissioned entire rooms and buildings in India and brought to Hawaii. Her husband, James Cromwell, noted in a letter to his mother that, "(Doris) had fallen in love with the Taj Mahal and all the beautiful marble tile, with their lovely floral designs with some precious stones."

Early photographs of the suite served as one of the key sources for restoration. The earliest paint schemes were also uncovered through microscopic examination of small samples of paint cut from the walls. The original colors were brought back. Red velvet divans, jades and jewelry and ancient glass from Iran and Syria enhance the brilliance of the place. Though the home restoration came first, Duke actually began her saga of creation with the Mughal Suite.

Among the highlights of the Suite, and of the entire home, are the stunning carved and inlaid marble panels of Doris Duke's bathroom. Encircling the walls are 26 floral studies fashioned from slices of lapis lazuli, jade, carnelian and other precious stones set into marbel. They evoke the beautiful and historic marble work of Mughal

architecture and, at the same time, set the mood for the feel of the 1930's. Also original to the Mughal Suite is the dressing room's vaulted ceiling covered in plaster work and inset with individually cut small mirrors.

To better appreciate the glory of Shangri La, an exhibition entitled: Doris Duke's Shangri La: Architecture, Landscape and Islamic Art, opens February 12th and runs through June 7 at the Honolulu Museum of Art. The show includes contemporary artists of Islamic background and works from Duke's personal collection - shown for the first time outside her home. Photographs by

Tim Street-Porter will establish the context of the legendary five-acre property of Shangri La. The photos set the mood with hanging lamps, light through grilled windows, elegant rooms and unfolding views of the ocean through doorways. Dukes pieces date from the first millennium BC to the 21st century. They originate from Spain, North Africa, Central & South Asia and the Middle East.

The exhibit will be enhanced by a series of public programs, films, and discussions like There's An Elephant In Every Room presented by Ganzeer, an Egyptian street artist. Concerts and dinners at the museum café have a ticket price. Many presentations are free. Admission is only \$10 per person (17 and under are free). Of course there is a book, titled *Doris Duke's Shangri La: A House in Paradise*, available in the HAOA bookstore.

You may wonder – who was this woman who fell in love with our islands? Doris Duke was born in 1912 in New York City. She was the only child of John Buchanan Duke, founder of the American Tobacco Company and Duke Energy Company. At his death in 1925 his fortune was divided. At age 12 Doris Duke became a wealthy young woman. She used her wealth to become a free-thinking adventurer. She was an environmentalist before it was fashionable, a war correspondent in Italy during World War II, an early funder of AIDS research, a dancer who studied with the famed choreographer Martha Graham, an art collector and a lifelong philanthropist. At age 21 she established a foundation, giving away what in today's dollars would be many millions and her own Doris Duke Charitable Foundation has awarded more than \$1 billion in grants. How lucky we are that she loved Hawaii and left us a place to imagine riches. HonoluluMuseum.org. ~ LYN



# 2015 Na Po'e Pa'ahana Award

The Hawai'i Lodging & Tourism Association (HLTA) has once again hosted their annual luncheon honoring Hawai'i's top hospitality industry employees statewide. The Na Po'e Pa'ahana (*the hardworking people*) Awards spotlight those that exhibit outstanding service and professionalism within the industry. This year, the 25th anniversary of these prestigious awards, **Wayne English**, a transportation driver at The Westin Kaanapali Ocean Resort Villas took home the top honor of *Outstanding Lodging Employee of the Year*.

"His notable acts of kindness and compassion continue, even after seven years of service at this

Maui resort," wrote Sasha Tanaka, Human Resource Manager for The Westin Kaanapali Ocean Resort Villas, who nominated English for the award. "Without a doubt, he is most deserving of the Outstanding Lodging Employee of the Year award." We wish to offer our congratulations to him as well. Both 2nd and 3rd place winners of this top honor were from Oahu. Congratulations to **Daniel Spracklen**, Embassy Suites Waikiki Beach Walk who grabbed 2nd place and **Hiroe Yanagisawa**, The Royal Hawaiian, A Luxury Collection Resort who was awarded 3rd place.

In the *Manager of the Year* category, first place went to **Sheri DeCosta** of the Mauna Lani Bay

# Winners!

Hotel and Bungalows, second place to **Francisco Hernandez** of the Halekulani and third place to **Liezl Oandasan**, Sheraton Maui Resort & Spa. Way to go Frank!

Next up was the recognition of *Housekeeper of the Year*. This one was one of several clean sweep for Oahu properties. First place went to **Mederic Brown** from The Kahala Hotel & Resort. Second place to **Roger Deuz**, Sheraton Waikiki and third place to **Saipele Siatini**, Hokele Suites Waikiki.

Another Oahu sweep was for *Food & Beverage Person of the Year*. First place went to **John Salcedo** from the Sheraton Waikiki, second place to **Felix Chiang** of the Sheraton Princess Kaiulani and third place to **Dennis Harney** from Turtle Bay Resort.

In the *Engineering/Maintenance Person of the Year* category, **Samuel Saribay** from The Westin Kaanapali Ocean Resort Villas took first place, **Gilbert Salmon Jr.** of the Sheraton Maui Resort & Spa took second place while **Henry Cocker** of the Sheraton Waikiki took third.

Taking home first place honors in the *Front Office Person of the Year* category was **Florence Dela Cruz** from the Aston at the Executive Centre Hotel. Second place went to **Cecilia Richardson** from the Aulani, A Disney Resort while third place honors went to **June Tsukayama** of the Waikiki Resort Hotel.

Not only did Oahu properties sweep the *Bell Valet Person of the Year* category, but all the winners were Starwood employees! Congratulations to **Frederick Cadorna** from the Sheraton Waikiki for capturing first place. Second place went to Sheraton Princess Kaiulani's **Leslie Tanabe**, and third place to The Royal Hawaiian, A Luxury Collection Resort's **Todd Ikeda**. Way to go guys!

Last but not least, **Chris Brown** from the Sheraton Waikiki took home top honors as *Security Officer of the Year*. Second place went to **Runell Bajet** from the Waikiki Beach Marriott Resort & Spa and third place to **Brycen Campos** from Marriott's Kauai Lagoons, Kalanipuu.

Congratulations go out to not only all of the winners, but also each of the nominees. Each and every one of you guys represent what aloha means and are a valuable part of Hawai'i's visitor industry and community. It's nice to see so many of you get recognized each and every year. Mahalo to the Hawaii Lodging & Tourism Association for taking the time to shine a spotlight on all of these valuable workers for the past twenty-five years. Here's to twenty-five more!  
~ Pam



Explore Oahu's Wonders.  
Experience the once-in-a-lifetime  
adventure of our  
West Oahu Eco-Tours.

TURTLE TOURS



SURF LESSONS



KAYAK TOURS



PADDLE BOARD TOURS



DOLPHIN TOURS



Lessons ★ Whale Watching  
★ Groups ★ Tours ★ Rentals

Call 808-729-2229  
[www.westoahusup.com](http://www.westoahusup.com)



Finalists and winners from lodging properties statewide celebrate their wins. Picture courtesy of the Hawaii Lodging & Tourism Association.



# Chef's Corner



## Top of Waikiki's Executive Chef Lance Kosaka

Lance Kosaka worked his way up from dishwasher to one of the top chefs this island has seen. The bold flavors that come out of his kitchen bely his quiet manner. A big advocate of training our future chefs, Chef Lance has done some exciting things with Top of Waikiki's menu and is in charge of planning the menus for the soon to be open Sky Waikiki.

### What was your first job in the culinary industry?

I was a dishwasher after high school, in a sushi bar called Toku's on Kona Street, and also busboy and dishwasher at Horatio's, which is now Kincaid's, during college.

### You spent 17 years at Alan Wong's. What are the main things you took away from that?

I learned the important and basic fundamentals of cooking, such as paying attention to detail, being disciplined, and having consistency in cooking.

### Would you consider him your mentor? Are there others?

Yes, he is. I also consider Edwin Goto and Roy Yamaguchi to be my mentors.

### What made you decide to leave Alan Wong's after all those years?

I felt it was time for a change in my culinary career, and to see what else I would be able to do.

### How has your culinary life changed since then?

At Alan Wong's, I was always able to rely on Alan as my back-up; whenever I had a question or problem, he was the "Chef." Now, since I'm the one responsible in my kitchen, I have to always be prepared.

### What have you changed since you started at the Top of Waikiki?

We've introduced more fish and local products to the menu, and incorporated more ethnic, Hawaii Regional Cuisine flavors into our dishes.

### What's your favorite thing to do when you're not working?

I love to spend time with my family.

### When you go out to eat, what do you look for in a restaurant?

I like eating in a place where I feel comfortable, where it's clean and I feel welcome. I look for a place where I feel the chef really cares about what they're cooking.

### What's your favorite dish to cook at home?

I like cooking really simple stuff, like spam with shoyu or tamago gohan (raw egg over rice with shoyu).

### What's your favorite ingredient to cook with?

I like cooking with noodles, whether it's spaghetti or ramen noodles. I like the versatility of seafood as well.

### Biggest pet peeve working in the kitchen?

Being inconsistent and undisciplined, such as putting things in the wrong place or cooking the same dishes differently.

### Is there one meal, or one guest that really stands out? Who and why?

I had the opportunity to cook with Chef Alan Wong for President Obama's congressional luau. We made tilapia sliders (Obama loves tilapia), kalua pig, shrimps and clam, and soy-braised short ribs.

### Describe your involvement in helping to shape the next generation of chefs.

Top of Waikiki participates in LCC and KCC's culinary internship programs, and we are also involved in Restaurant Week every year. This March, we're also involved in the 2015 Localicious Hawaii Campaign.

### Name your favorite restaurant to go to?

Le Bistro. I love Alan Takasaki's food.

### What do you have planned for Sky Waikiki when it opens later this year?

We're putting together a fun and creative menu, so wait and see!

### Is there any other information about yourself that you would like to share with our readers?

Not really, except that we are hiring at Top of Waikiki and looking for good people to join our staff as bartenders, server assistants, hostesses, and chefs. You can apply only at [topofwaikiki.com/apply](http://topofwaikiki.com/apply).



## Korean Style Poke serves 2

by Chef Lance Kosaka

### Ingredients:

- |                    |                       |
|--------------------|-----------------------|
| 1/2 pound Ahi      | 4 tbs. Soy Sauce      |
| 1/4 of an Onion    | 2 tsp. Ko Chu Jang    |
| 1 Jalapeno         | 1 tsp. Sugar          |
| 1 tbs. Green Onion | 1 tsp. Sambol         |
|                    | 6 leaves Baby Romaine |

**Method:** Fresh ahi (yellowfin tuna) with onions and jalapeño in a soy ko chu jang sauce, with Kula baby romaine lettuce.

In a bowl, mix soy sauce, ko chu jang sauce, sugar and sambol until blended.

Dice ahi into 3/4 inch cubes, add to sauce mixture.

Slice onions and jalapeno, combine with ahi and sauce mixture.

Enjoy Korean style Poke with the baby romaine lettuce, either spooned on top or rolled up in a lettuce wrap.

Top of Waikiki is located on the 18th floor of 2270 Kalakaua Avenue

Open daily from 4:30 - 9:30 p.m. • Happy Hour: 4:30 - 7 p.m. daily • Phone: 923-3877  
[topofwaikiki.com](http://topofwaikiki.com) • Twitter: @TopofWaikiki • FB: facebook.com/topofwaikiki



Mahalo to all for your continued support of our little café on the beach in Waikiki...

Mele Kalikimaka & Hauoli Makahiki Hou!

Kekoa, Sakara, GJ & The Barefoot Beach Café Crew



Concierge Info Line: 808.699.8830  
 Café Direct: 808.924.2233 (CAFÉ)  
<http://BarefootBeachCafe.com>

FROM BACKYARD  
 BBQS TO  
 HIGH-END  
 CELEBRITY  
 EVENTS, WE  
 OFFER A WIDE  
 RANGE OF EVENT  
 SERVICES



- planning + coordination
- unique locations
- site design
- rentals
- food + bar catering
- florals + plants
- entertainment + audio-visual
- still photography + videography
- custom itineraries + travel services
- vow renewals + ohana blessings



### FOR MORE INFORMATION:

- Communicate: info@DHCatering.com or HI 808.699.8830
- Check out our style: Pinterest.com/DHCatering
- Follow us: @DHCatering | twitter.com/DHCatering
- Like us: facebook.com/DHCatering

# Let's be Together...

DINING ▸ ENTERTAINMENT ▸ PAU HANA ▸ EAT ▸ DRINK ▸ BE MERRY ▸ HAPPY HOUR

## MONDAY

**Barefoot Beach Café** at Queen's Beach 924-2233  
*Local Contemporary*  
 Shaka Madali 5:30-8:30pm

**Chart House Waikiki** 941-6660  
*Live Contemporary Hawaiian*  
 Tito Berinobis & David Kauahikaua 6:30-9:30pm

**Cheesecake Factory** 924-5001  
*Classic Hawaiian*  
 Christian Yrizarry Duo 8-11pm

**Duke's Canoe Club Waikiki** 922-2268  
*Live Contemporary Hawaiian*  
 Haumea Warrington 4-6pm  
 Ellsworth Simeona 9:30-12am

**Hard Rock Cafe** 955-7383  
*Live Contemporary*  
 Zanuck & Piranha Duo 5-7pm  
 Blue Mondays Varying Artists 9-11am

**House Without a Key** 923-2311  
*Live Hawaiian & Hula by Skyler Kamaka*  
 DeLima Ohana 5:30 - 8:00pm

**Hula Grill** 923-HULA  
*Live Contemporary Hawaiian*  
 Eric Lee 7-9pm

**Jimmy Buffett's at the Beachcomber** 791-1200  
*Live Contemporary Hawaiian*  
 Ashley Lilinoe 7:00-9:30pm

**Kani Ka Pila Grille** 924-4992  
*Live Contemporary Hawaiian*  
 Sean Na'auao 6 - 9pm

**LBL E at the Hilton Waikiki Beach Hotel** 922-0811  
*Live Contemporary Acoustic Hits*  
 Johnny Helm 6-9pm

**Lewers Lounge** 923-2311  
*Live Contemporary & Light Jazz*  
 Noly Pa'a 8:30-12:30am

**LuLu's** 926-5222  
*Live Contemporary*  
 Johnny Helm 6:30-9:30 p.m.

**Rumfire** 921-4600  
*Live Contemporary Hawaiian*  
 Jeremy Cheng 5-8pm  
 DJ Super CW 8:30pm-12:30am

**Sunrise Pool Bar at the Modern** 943-5800  
*Live Contemporary*  
 Alex Oasay 5-8pm

**The Edge at the Sheraton** 921-4600  
*Live Hawaiian music with a firedancer at 7:30 p.m.*  
 Widdy Loo 1:30-3:30pm  
 Randy Allen (2/16, 2/23) 1:30-3:30pm  
 Ka'ala Boys 6:30-8:30pm

**The Study at the Modern** 943-5800  
*Live Contemporary Hawaiian*  
 Kaleo 7-10pm

**Tiki's Grill & Bar** 923-TIKI  
*Live Contemporary Hawaiian*  
 Kapu the Band 6-8:30pm  
 Jason Alan & Ian O'Sullivan 9-11pm

**Tropics Bar & Grill** 949-4321  
*Live Contemporary Hawaiian*  
 Acoustik Playground 5:30-8:30pm

## TUESDAY

**Barefoot Beach Café** at Queen's Beach 924-2233  
*Local Contemporary Hits*  
 Chris Salvador or Paul Wilcox 5:30-8:30pm

**Bin1901 at the Moana** 921-4600  
*Piano Wine Bar*  
 Scott Smith 6:30-9:30pm

**Chart House Waikiki** 941-6660  
*Live Contemporary Hawaiian*  
 The Camarillo Brothers 6:30-9:30pm

**Cheesecake Factory** 924-5001  
*Classic Hawaiian*  
 Derrick Lee Duo 8-11pm

**Duke's Canoe Club Waikiki** 922-2268  
*Live Contemporary Hawaiian*  
 Haumea Warrington 4-6pm  
 Ellsworth Simeona 9:30-12am

**Hard Rock Cafe** 955-7383  
*Live Contemporary*  
 Alex Oasay Duo 5-7pm  
 Da Push-O-Verse (or others) 9-11pm

**House Without a Key** 923-2311  
*Live Hawaiian & Hula by Radasha Ho'ohuli*  
 Po'okela 5:30 - 8:00pm

**Hula Grill** 923-HULA  
*Live Contemporary Hawaiian*  
 Kamuela Kahoano 7-9pm

**Jimmy Buffett's at the Beachcomber** 791-1200  
*Live Contemporary Hawaiian*  
 Mike Huhn 7:00-9:30pm

**Kani Ka Pila Grille** 924-4992  
*Live Contemporary Hawaiian*  
 Weldon Kekauoha 6-9pm

**LBL E at the Hilton Waikiki Beach Hotel** 922-0811  
*Live Contemporary Funk, Jazz, Hip Hop & Reggae*  
 Jason Laeha 6-9pm

**Lewers Lounge** 923-2311  
*Live Contemporary & Light Jazz*  
 Maggie Herron & Rocky Holmes 8:30-12:30am

**LuLu's** 926-5222  
*Live Contemporary*  
 Johnny Helm 6-9pm

**Mai Tai Bar at the Royal Hawaiian** 923-7311  
*Live Contemporary Hawaiian with Hula Dancer*  
 Kapala Duo 6:30-9:30pm

**Rumfire** 921-4600  
*Live Contemporary Rock*  
 Randy Allen 5-8pm  
 Twilight Audio 8:30pm-12:30am

**Sunrise Pool Bar at the Modern** 943-5800  
*Live Contemporary Hawaiian*  
 Cory Oliveros 5-8pm

**The Edge at the Sheraton** 921-4600  
*Live Hawaiian music with a firedancer at 7:30 p.m.*  
 Eric Lee 1:30-3:30pm  
 Widdy Loo (2/24) 1:30-3:30pm  
 Ho'okani Duo 6:30-8:30pm

**The Study at the Modern** 943-5800  
*Live Contemporary Hawaiian*  
 Alex Oasay & Jeremy Cheng 7:30-10:30pm

**Tiki's Grill & Bar** 923-TIKI

*Live Hawaiian - \$2 Taco Tuesdays*  
 K.B. Riley 5:30-8:30pm  
 Sani & Friends 9-11pm

**Tropics Bar & Grill** 949-4321  
*Live Contemporary Hawaiian*  
 Kailua Bay Buddies 5:30-8:30pm

## WEDNESDAY

**Barefoot Beach Café** at Queen's Beach 924-2233  
*Instrumental Guitar*  
 Paul Wilcox 5:30-8:30pm

**Bin1901 at the Moana** 921-4600  
*Piano Wine Bar*  
 Scott Smith 6:30-9:30pm

**Chart House Waikiki** 941-6660  
*Live Contemporary Hawaiian*  
 Tito Berinobis & David Kauahikaua 6-10:30pm

**Cheesecake Factory** 924-5001  
*Classic Hawaiian*  
 Kimo Artis Duo 8-11pm

**Duke's Canoe Club Waikiki** 922-2268  
*Acoustic, Soul, R&B*  
 Haumea Warrington 4-6pm  
 Ellsworth Simeona 9:30-12am

**Du Vin** 545-1115  
*Sessions at DuVin features Live Jazz Wednesdays.*  
 Shoji Ledward 7-9pm

**Gordon Biersch** 599-4877  
*Jazz Wednesdays*  
 Varying Artists 6:30-9:30pm

**Hard Rock Cafe** 955-7383  
*Live Contemporary*  
 John Valentine 5-7pm  
 Piranha Brothers 9-11pm

**House Without a Key** 923-2311  
*Live Hawaiian & Hula by Lauren Matsumoto*  
 Pa'ahana 5:30 - 8:00pm

**Hula Grill** 923-HULA  
*Live Contemporary Music*  
 Jeremy Chang 7-9pm

**Hy's Steak House** 922-5555  
*Live Soft Contemporary*  
 Audy Kimura 6:30-10pm

**Jimmy Buffett's at the Beachcomber** 791-1200  
*Live Contemporary Hawaiian*  
 Shawn Garnet 7:00-9:30pm

**Kani Ka Pila Grille** 924-4992  
*Live Contemporary Slack Key*  
 Cyril Pahinui 6-9pm

**LBL E at the Hilton Waikiki Beach Hotel** 922-0811  
*Live Contemporary Funk, Jazz, Hip Hop & Reggae*  
 Soul Tree Music Factory 6-9pm

**Lewers Lounge** 923-2311  
*Live Contemporary & Light Jazz*  
 Maggie Herron & Rocky Holmes 8:30-12:30am

**LuLu's** 926-5222  
*Live Contemporary Hawaiian*  
 Jason Lehua 10-12:30am

**Mai Tai Bar at the Royal Hawaiian** 923-7311  
*Live Contemporary Hawaiian with Hula Dancer*  
 Eric Lee Duo 6:30-9:30pm

**Roy's Hawaii Kai** 396-7697



# E Pili Kākou

DINING ▶ ENTERTAINMENT ▶ PAU HANA ▶ EAT ▶ DRINK ▶ BE MERRY ▶ HAPPY HOUR

Acoustic & Slack Key Top 40  
Dayton Watanabe 6:30-9:30pm  
**Rumfire** 921-4600  
*Live Contemporary Hawaiian*  
Kamuela Kahoano 5-8pm  
Twilight Audio 8:30pm-12:30am  
**SWIM at the Hyatt** 923-1234  
*Contemporary Classic*  
Kailua Bay Buddies 6-9pm  
**Sunrise Pool Bar at the Modern** 943-5800  
*Live Contemporary Hawaiian*  
Tahiti Rey & Sean Cleland 5-8pm  
**The Edge at the Sheraton** 922-4422  
*Live Hawaiian music with a fire dancer at 7:30 p.m.*  
Albert Maligmat 1:30-3:30pm  
Keoni Ku Duo 6:30-8:30pm  
**The Study at the Modern** 943-5800  
*Live Contemporary Hawaiian*  
Melanie and Drew 6:30-9:30pm  
**Tiki's Grill & Bar** 923-TIKI  
*Live Contemporary Hawaiian - 1/2 off Wine Wednesdays*  
Canoes for Rent 5:30-8:30pm  
Johnny Helm 9-11pm  
**Tropics Bar & Grill** 949-4321  
*Live Contemporary Rock*  
Acoustik Playground 5:30-8:30pm

## THURSDAY

**Barefoot Beach Café at Queen's Beach** 924-2233  
*Instrumental Guitar*  
Paul Wilcox 5:30-8:30pm  
**Bin1901 at the Moana** 921-4600  
*Piano Wine Bar*  
Scott Smith 6:30-9:30pm  
**Chart House Waikiki** 941-6660  
*Live Contemporary Hawaiian*  
Tito Berinobis 6:30-10pm  
**Cheeseburger Waikiki** 941-2400  
*Contemporary / Old School Rock*  
Jeremy Chang 6:30-9:30pm  
**Cheesecake Factory** 924-5001  
*Classic Hawaiian*  
T & J Duo 8-11pm  
**Duke's Canoe Club** 922-2268  
*Live Contemporary Hawaiian*  
Haumea Warrington 4-6pm  
Kaiona Duo (or others) 9:30-12am  
**Five-O Bar & Lounge** 922-0550  
*Live Acoustic Contemporary & Reggae*  
K Love Duo 7:30-10:30pm  
**Gordon Biersch** 599-4877  
*Live Contemporary Funk and Classics*  
Acoustic Playground 7-10:30pm  
**Hard Rock Cafe** 955-7383  
*Live Contemporary*  
Tim Rose (or others) 5-7pm  
Kailua Bay Buddies 9-11pm  
**House Without a Key** 923-2311  
*Live Hawaiian & Hula by Radasha Ho'ohuli*  
Pa'ahana 5:30 - 8:00pm  
**Hula Grill** 923-HULA  
*Live Contemporary Hawaiian*

Sheila Waiwaiolo & Mara Sagapolu 7-9pm  
**Hy's Steak House** 922-5555  
*Live Soft Contemporary*  
Audy Kimura 6:30-10pm  
**Jimmy Buffett's at the Beachcomber** 791-1200  
*Live Contemporary Hawaiian*  
Shawn Garnet 7:00-9:30pm  
**Kani Ka Pila Grille** 924-4992  
*Live Contemporary Hawaiian*  
Kawika Kahiapo 6-9pm  
**LBLE at the Hilton Waikiki Beach Hotel** 922-0811  
*Live Contemporary Pop/Rock*  
Sunway 6-9pm  
**Lewers Lounge** 923-2311  
*Contemporary Jazz*  
Maggie Herron & Rocky Holmes 8:30-12:30am  
**LuLu's** 926-5222  
*Live Contemporary Hawaiian*  
Local Uprising 6-9pm  
**Mai Tai Bar at the Royal Hawaiian** 923-7311  
*Live Contemporary Hawaiian with Hula Dancer*  
Delima Ohana 6:30-9:30pm  
**Michel's at the Colony Surf** 923-6552  
*Live Slack Key*  
Jeff Peterson 7:30-10:00pm  
**Roy's Hawaii Kai** 396-7697  
*Acoustic Hawaiian Guitar*  
Steve English 6:30-9:30pm  
**Rumfire** 921-4600  
*Live Contemporary Rock*  
Johnny Helm 5-8pm  
DJ Miked 8:30pm-12:30am  
**Sunrise Pool Bar at the Modern** 943-5800  
*Live Contemporary Hawaiian*  
Christian Yrizarry Duo 5-8pm  
**SWIM at the Hyatt** 923-1234  
*Contemporary Classic*  
Acoustik Playground 6-9pm  
**The Edge at the Sheraton** 921-4600  
*Live Hawaiian music with a fire dancer at 7:30 p.m.*  
Ellsworth Simeona 1:30-3:30pm  
Christian Yrizarry Duo 6:30-8:30pm  
**The Study at the Modern** 943-5800  
*Live Contemporary Hawaiian*  
Simple Souls 6:30-9:30pm  
**Tiki's Grill & Bar** 923-TIKI  
*Heineken Hot Hula Nights - hula dancers perform*  
Malu the Band 5:30-7:30pm  
Ellsworth Simeona 8:30-11:30pm  
**Tropics Bar & Grill** 949-4321  
*Live Contemporary Hawaiian*  
Nohelani Cypriano 5:30-8:30pm

## FRIDAY

**Barefoot Beach Café at Queen's Beach** 924-2233  
*Live Contemporary Hawaiian with Beach BBQ*  
Art Kalahiki & Friends 5:30-8:30pm  
**Bin1901 at the Moana** 921-4600  
*Piano Wine Bar*  
Scott Smith 6:30-9:30pm 7-8:30pm  
**Chart House Waikiki** 941-6660  
*Live Contemporary Hawaiian*

Mark Yim's Pilikia I 6-9pm  
Mark Yim's Pilikia II 9:30-12:30am  
**Cheeseburger Waikiki** 941-2400  
*Contemporary Hawaiian*  
Alex or Aku 6:30-9:30pm  
**Cheesecake Factory** 924-5001  
*Classic Hawaiian*  
Johnny Helm Duo 8-11pm  
**Dave & Busters** 589-2215  
*Pau Hana Fridays Live Local Bands*  
Varying Hawaiian Artists 6-8pm  
**Duke's Canoe Club Waikiki** 922-2268  
*Live Contemporary Hawaiian*  
Maunalua 4-6pm  
Kaiona Folk (2/8) 9:30 -12am  
Imua Garza Duo (2/13, 2/20) 9:30 -12am  
Randy & Kanoe Duo (2/27) 9:30 -12am  
**Five-O Bar & Lounge** 922-0550  
*Live Island Reggae*  
Kimo Opiana 9-12am  
**Gordon Biersch** 599-4877  
*Live Contemporary, R&B, Funk*  
Ben & Malia 5:30-9pm  
Mojo 9 - 12:30am  
**Hard Rock Cafe** 955-7383  
*Live Contemporary*  
Johnny Helm 5-7pm  
Mantra 10-12am  
**House Without a Key** 923-2311  
*Live Hawaiian & Hula by Kanoe Miller*  
Hiram Olsen Trio 5:30 - 8:00pm  
**Hula Grill** 923-HULA  
*Live Traditional Hawaiian with dancer*  
David Asing & Alika Souza 7-9pm  
**Hy's Steak House** 922-5555  
*Live Soft Contemporary*  
Audy Kimura 6:30-10pm  
**Hard Rock Cafe** 955-7383  
*Live Contemporary*  
Johnny Helm 5-7pm  
Mantra 9-11pm  
**Jimmy Buffett's at the Beachcomber** 791-1200  
*Live Contemporary Hawaiian*  
Missing Dave 9:30 - 11:30pm  
**Kani Ka Pila Grille** 924-4992  
*Live Hawaiian Contemporary*  
Ho'okena 6-9pm  
**LBLE at the Hilton Waikiki Beach Hotel** 922-0811  
*Live Contemporary Pop/Rock*  
Sunway 6-9pm  
**Lewers Lounge** 923-2311  
*Live Contemporary Jazz*  
Maggie Herron & Rocky Holmes 8:30-12:30am  
**LuLu's** 926-5222  
*Live Contemporary Hawaiian*  
Manoa DNA 6-9 p.m.  
Vinyl Wine 10-12:30am  
**Mai Tai Bar at the Royal Hawaiian** 923-7311  
*Live Contemporary Hawaiian with Hula Dancer*  
Kapala Duo 6:30-9:30pm  
**Michel's at the Colony Surf** 923-6552

EVENTS ARE SUBJECT TO CHANGE  
WITHOUT NOTICE.

# Let's be Together...

DINING ▸ ENTERTAINMENT ▸ PAU HANA ▸ EAT ▸ DRINK ▸ BE MERRY ▸ HAPPY HOUR

*Live Slack Key Stylings & Jazz*  
 Jeff Peterson & Ernie Provencher 6:30-10pm  
**Roy's Hawaii Kai** 396-7697  
*Keyboardist*  
 Brian Robert Shaw 6:30-9:30pm  
**Roy's Ko Olina** 676-7697  
*Slack Key Guitar*  
 Chris Rego 5:30-8pm  
**Rumfire** 921-4600  
*Live Contemporary Rock*  
 Kristi Masuhara 5-8pm  
 DJ Euphoric 8:30pm-12:30am  
**SWIM at the Hyatt** 923-1234  
*Contemporary Classic*  
 Taimane 6-7pm  
**The Edge at the Sheraton** 921-4600  
*Live Hawaiian music with a fire dancer at 7:30 p.m.*  
 Brad Kawakami 1:30-3:30pm  
 Delima Ohana Duo 6:30-8:30pm  
**The Study at the Modern** 943-5800  
*Live Contemporary Hawaiian*  
 Tahiti Rey 6:30-9:30pm  
**Tiki's Grill & Bar** 923-TIKI  
*Live Contemporary Hawaiian*  
 Kaleo Del Sol 5-7pm  
 Vaihi 7:30-9:30pm  
 Tahiti Rey Duo 10-12am

**Tropics Bar & Grill** 949-4321  
*Live Contemporary Hawaiian*  
 Piranha Brothers 3:30-6:30pm  
 Nohelani Cypriano 8:00-10:30pm

## SATURDAY

**Barefoot Beach Café at Queen's Beach** 924-2233  
*Beach BBQ with Live Contemporary Hits*  
 Chris Salvador 5:30-8:30pm  
**Bin1901 at the Moana** 921-4600  
*Piano Wine Bar*  
 Scott Smith 6:30-9:30pm  
**Chart House Waikiki** 941-6660  
*Live Contemporary Hawaiian*  
 Tito Berinobis & Billy Beimes 7-12pm  
**Cheeseburger Waikiki** 941-2400  
*Contemporary Hawaiian*  
 Alex or Aku 6:30-9:30pm  
**Cheesecake Factory** 924-5001  
*Classic Hawaiian*  
 Dennis McLees Duo 8-11pm  
**Duke's Canoe Club Waikiki** 922-2268  
*Live Hawaiian Entertainment*  
 Kapena (2/7) 4-6pm  
 Kona Chang(2/14) 4-6pm  
 Simple Sessions (2/21) 4-6pm  
 Beach 5 (2/28) 4-6pm

Chris Murphy Duo (2/7) 9:30-12am  
 Christian Yrizarry Duo (2/14) 9:30-12am  
 Kai Roots Duo (2/21) 9:30-12am  
 Darrell Aquino Duo (2/28) 9:30-12am

**Five-O Bar & Lounge** 922-0550  
*Live Island Reggae*  
 Christian from Hoonua 9:30-12:30am

**Hard Rock Cafe** 955-7383  
*Live Contemporary*  
 20 Degrees North 5-7pm  
 Tavana (or others) 10-1am

**House Without a Key** 923-2311  
*Hawaiian & Hula by Kanoe Miller*  
 Hiram Olsen Trio 5:30 - 8:00pm

**Hula Grill** 923-HULA  
*Live Traditional Hawaiian with dancer*  
 Kaipo Dabin & Tommy Chock w/ Kahanu 7-9pm

**Hy's Steak House** 922-5555  
*Live Soft Contemporary*  
 Audy Kimura 6:30-10pm

**Jimmy Buffett's at the Beachcomber** 791-1200  
*Live Contemporary Hawaiian*  
 Local Uprising 9:30-11:30pm

**Kani Ka Pila Grille** 924-4992  
*Live Contemporary Hawaiian*  
 Ka Hehena 6-9pm

**LBL at the Hilton Waikiki Beach Hotel** 922-0811  
*Live Contemporary Blues & R&B*  
 YOZA 6-9pm

**Lewers Lounge** 923-2311  
*Live Contemporary Jazz*  
 Maggie Herron & Rocky Holmes 8:30-12:30am

**Mai Tai Bar at the Royal Hawaiian** 923-7311  
*Live Contemporary Hawaiian with Hula Dancer*  
 Kapala Duo 6:30-9:30pm

**Michel's at the Colony Surf** 923-6552  
*Live Contemporary Slack Key & Jazz*  
 Jeff Peterson 7-11pm

**Roy's Hawaii Kai** 396-7697  
*Acoustic Guitar*  
 Jimmy Funai 6-9:30pm

**Roy's Ko Olina** 676-7697  
*Slack Key Guitar*  
 Chris Rego 5:30-8pm

**Rumfire** 921-4600  
*Live Contemporary Rock*  
 Tavana McMoore 5-8pm  
 DJ Betty 8:30pm-12:30am

**Sunrise Pool Bar at the Modern** 943-5800  
*Live Contemporary Hawaiian*  
 Kainalu 5-8pm

**SWIM at the Hyatt** 923-1234  
*Contemporary Acoustic followed by karaoke at 8*  
 Randy Allen & Kanoe Gibson 5 - 8pm

**The Edge at the Sheraton** 921-4600  
*Live Hawaiian music with a fire dancer at 7:30 p.m.*  
 John Valentine 1:30-3:30pm  
 Tino Jacobs Duo 6:30-8:30pm

**Tiki's Grill & Bar** 923-TIKI  
*Live Contemporary Hawaiian & Reggae*  
 Johnny Helm 5-7pm  
 Sani and Friends (or others) 7:30-9:30pm  
 Ellsworth Simeona 10-1am

**Tropics Bar & Grill** 949-4321  
*Live Contemporary Hawaiian*  
 Henry Kaponu 4-6pm  
 Juke Joint 6:30-9:30pm

## SUNDAY

**Barefoot Beach Café at Queen's Beach** 924-2233  
*Live Instrumental Guitar*  
 Paul Wilcox 11am -2pm

**Chart House Waikiki** 941-6660  
*Live Contemporary Hawaiian*  
 Dean & Dean 6-9pm

**Cheesecake Factory** 924-5001  
*Classic Hawaiian*  
 Chris Murphy Duo 8-11pm

**Duke's Canoe Club Waikiki** 922-2268  
*Live Hawaiian Entertainment*  
 Henry Kaponu 4-6pm  
 Imua Garza (2/8) 4-6pm

Kapena Delima (2/1, 2/15) 9:30-12am  
 Kamuela Kahoano Duo (2/8) 9:30-12am  
 Typical Hawaiians (2/22) 9:30-12am

**Hard Rock Cafe** 955-7383  
*Live Contemporary*  
 Brothers Rize 5-7pm  
 EMKE (or others) 9-11pm

**House Without a Key** 923-2311  
*Live Hawaiian & Hula by Debbie Nakanelua*  
 Pa'ahana 5:30 - 8:00pm

**Hula Grill** 923-HULA  
*Live Traditional Hawaiian with dancer*  
 Art Kalahiki Duo 7-9pm

**Jimmy Buffett's at the Beachcomber** 791-1200  
*Live Contemporary Hawaiian*

## PAU HANA

Monday-Friday, 3:00pm-6:00pm ... &  
 Sunday-Thursday, 10:00pm-12:00 Midnight  
 Dining only. Excludes holidays. No other discounts apply.

NEW! APPETIZERS

GP's NACHOS \$9  
 CHICKEN WINGS \$9  
 FRIED CALAMARI \$8  
 CHILI CHEESE FRIES \$8

NEW! GIOVANNI'S SLIDERS

Four per order, served with french fries.  
 MINI CHEESEBURGERS \$9  
 MINI HOT DOG SLIDERS \$9  
 BBQ KALUA PIG SLIDERS \$9

PERSONAL PIZZAS \$5-\$7

BAR

DOMESTIC DRAFT BEER \$4-\$5  
 WELL DRINKS \$4  
 PATRON SILVER \$8  
 MAI TAI // BLUE HAWAII \$7  
 CROWN // JACK \$6  
 JAGERMEISTER // FIREBALL \$5  
 30Z. STOLI MARTINI \$7  
 WINE BY THE GLASS \$1 OFF

227 LEWERS ST. WAIKIKI 808-923-2100



# E Pili Kākou

DINING ▶ ENTERTAINMENT ▶ PAU HANA ▶ EAT ▶ DRINK ▶ BE MERRY ▶ HAPPY HOUR

Randy Allen	7:30-10:00pm	
<b>Kani Ka Pila Grille</b>		924-4992
<i>Live Contemporary Hawaiian Masters on stage</i>		
Nathan Aweau	6-9pm	
<b>Kelley O'Neil's</b>		926-1777
<i>Live Irish Music</i>		
Various Celtic Bands	4-7pm	
<b>LBLE at the Hilton Waikiki Beach Hotel</b>		922-0811
<i>Live, Energetic Mix of Pop and Rock Hits</i>		
Pushoverse	6-9pm	
<b>Lewers Lounge</b>		923-2311
<i>Live Contemporary &amp; Light Jazz</i>		
Noly Pa'a	8:30pm - 12am	
<b>LuLu's</b>		926-5222
<i>Acoustic R&amp;B</i>		
Simple Souz	7-10pm	
<b>Mai Tai Bar at the Royal Hawaiian</b>		923-7311
<i>Live Contemporary Hawaiian with Hula Dancer</i>		
Eric Lee Duo	6:30-9:30pm	
<b>Michél's at the Colony Surf</b>		923-6552
<i>Classical Slack Key &amp; Jazz Stylings</i>		
Jeff Peterson	6-9pm	
<b>Roy's Ko Olina</b>		676-7697
<i>Slack Key Guitar</i>		
Chris Rego	5:30-8pm	
<b>Rumfire</b>		921-4600
<i>Live Contemporary Hawaiian</i>		
Alex Oasay	5-8pm	
Twilight Audio	8:30pm-12:30am	
<b>SWIM at the Hyatt</b>		923-1234
<i>Contemporary, Pop, Rock</i>		
Sunway	6 - 9pm	
<b>The Edge at the Sheraton</b>		922-4422
<i>Live Hawaiian music with a fire dancer at 7:30 p.m.</i>		
Dave Watanabe	1:30-3:30pm	
Ellsworth Simeona Duo	6:30-8:30pm	
<b>The Study at the Modern</b>		943-5800
<i>Live Contemporary Hawaiian &amp; Jazz</i>		
Jeremy Cheng	6-9pm	
Smooth Jazz (vaying artists)	10- 2am	
<b>Tiki's Grill &amp; Bar</b>		923-TIKI
<i>Live Contemporary Hawaiian</i>		
Vaihi	6-9pm	
Ellsworth Simeona	9-11pm	
<b>Tropics Bar &amp; Grill</b>		949-4321
<i>Live Contemporary Rock &amp; Hawaiian</i>		
Piranha Brothers	2-5pm	
Beach 5	5:30 - 8:30pm	



## Hot Lines

Here's a few numbers for you to find out the latest in live music from places that change daily or don't update us regularly, since we can't possible list them all,

Gordon Biersch	599-4877
Irish Rose Saloon	947-3414
Kelley O'Neil's	926-1777
Mai Tai Bar Ala Moana	947-2900
Moose McGillycuddy's	923-0751

## Dining Dish



Ed Morita is a man of many skills. Photographer, frequent contributor to FrolicHawaii.com, and most recently, Highway Inn's pastry chef. Now he can add restaurant owner to the list. He has partnered with Kyle Matsumoto Off The Wall Restaurant and Catering in Pearl Kai Shopping Center and Off The Walls Andrew Mitani to bring us **Off The Wall Craft Desserts & Kitchen**, (OTW Craft) in the former Tsunami Night Club location on King Street. The three have collaborated to create a fun menu that plays on both sweet and savory. For a fun twist, Ed will consistently encourage diners to eat their dessert first while Chef de Cuisine Andrew wants you to eat your meal first. Kids-- get your parents to bring you here. Dessert first has got to be every kids dream! There will also be a continuous play on food, with items like banana, nutella and white chocolate sandwiches and ahi poke cupcakes. Dessert can go straight up against food with their sweet and savory cream puffs served two ways. Diners will get both the savory puffs filled with bacon, chives and goat cheese with a passion fruit glaze and the sweet cream puffs made with tiramisu soaked in beer and coffee syrup. There's also sliders, pizzas, salads and more to choose from, but it sounds as if this place will make it fun to play with your food. 486-WALL (9255). offthewallhawaii.com.

• There's a new tapas bar in Waikiki, and I'm hearing it's pretty good. Unfortunately I started the year with a cleanse so I missed the grand opening of **Wood & Bucket Tapas Bar & Grill**. I meant to get there this week before I had to write the column, but time got away from me. Not too sure what's on the menu, but the items on the website look pretty darn good and one of my foodie friends said it was the type of place she would go to if she still worked in Waikiki. That's high praise from that one! I'll have to stop by and see for myself. Open from 6:30 a.m. - 3:30 a.m. at the Waikiki Sand Villa, they offer a buffet breakfast until 10 a.m. and the kitchen is open from 10 a.m. - 3 a.m.! They also have happy hour twice a day at 4 - 7 p.m. and 11 p.m. - 1 a.m. sandvillahotel.com. • Another thing on my hit list for next month? Hau Tree Lanai breakfast. Not much has been able to top my Sunday obsession with **Longhi's** Lobster Benedict. Get a full order to share with a side of bacon and half potatoes?! Mmmmm. The perfect way to start the day. **Koko Head Cafe** is definitely a close second if I feel up to waiting in line. That Morning Milkshake with bourbon and bacon is delicious, especially paired with the Breakfast Bruschetta of fruit and macadamia nut yogurt on a Japanese rusk. However, a friend posted a pic of the Super Kaimana Benedict at the **Hau Tree Lanai**, and one look at the description that states it comes with a Filet, Foie Gras infused Mushroom Spread, and Lobstermeat and this moved right to the top of the list of my must-try's. I love a good benedict, and not your ordinary run of the mill Canadian bacon type of benedict either. If you know of any other places or menu items I should try, please send them on over! There are worse things to do on Sunday then go brunch hopping. • Last but not least, just a quick pet peeve. If you're a restaurant that states you will be open at a certain time, please be open. Twice in the

past week I've gone out to either find the place closed, or in the case of **Morning Glass Coffee**, been turned away 30 minutes before breakfast was supposed to end. If you're not going to serve until the time you say you will, please change what you say. That was the second and last time they've turned me away for service when they clearly state they are open. I don't care how good their molasses cookies are, I won't be going back. ~ Pam



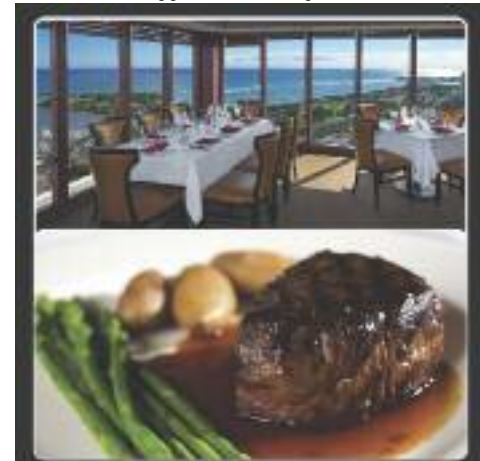
## Dining Calendar

**February 3:** Honolulu Japanese Chamber of Commerce presents Chocolates, Champagne & Wine at Fujioka's Wine Times at Market City. \$60 includes pupus. 6-8 p.m. hjcc.org or 949-5531.

**Mondays:** *Brasserie du Vin* combines their weekly wine dinner and tasting events into one, Behind the Cellar Door. 6:30 p.m. 545-1115.

**Wednesdays:** *Beachhouse at the Moana* hosts a weekly wine tasting on the lanai with pupus and parking. \$19+-. 4:30 - 5:30 p.m. 923-2861.

**Wednesdays:** *Bar 35:* For eight years, House of Brews has been hosting weekly beer tastings with different themes that feature around 6-8 beers, while enjoying Chef Valentini's appetizers. \$25. 6 p.m. 537-3535.



- Live Entertainment Nights
- Happy Hour
- Early / Late Bird Specials
- Private Dining for Events
- GDI Cakes



Ala Moana Hotel 36th Floor  
808.949.3636  
Nightly 4:30 pm - last seating at 10 pm  
www.signatureprimesteak.com

# FEBRUARY CALENDAR OF EVENTS

## Continuing Events

### MONDAY – FRIDAY LYON ARBORETUM TOURS

The lush gardens at the top of the University of Hawai'i Manoa are open for guided tours daily. Knowledgeable guides will introduce the highlights of the botanical rainforest's 193.6 acres. Reservations required. Limit of 12 participants daily. Donations accepted. 988-0461.

### MONDAY-FRIDAY FOSTER BOTANICAL GARDENS

Guided garden tours of rare and beautiful plants from tropical regions throughout the world. Foster Botanical Gardens, 50 N. Vineyard. 1 p.m. Adults: \$5. Reservations recommended. 522-7066.

### TUESDAYS TOURS OF THE HAWAII THEATRE

Get a behind-the-scenes tour of this historic theatre including history, architecture, and a performance on the 1922 Robert Morton theatre organ. Hawaii Theatre. 11 a.m. – 12 p.m. \$10. 528-0506.

### TUESDAYS • KU HA' AHEO

An afternoon of hula from multiple groups featuring adults and keiki performing contemporary and traditional dance and music led by kumu hula Blaine Kamalani Kia. Waikiki Beach Walk Plaza Lawn. 4:30 – 6 p.m. FREE. waikikibeachwalk.com or 931-3591.

### TUESDAYS • KCC FARMERS MARKET

The Saturday Market is so popular they added another day. Head up to Kapiolani Community College for fresh island produce, seafood, flowers, and more available from over two dozen vendors. 4 – 7 p.m. Free. 848-2074.

### FIRST & THIRD TUESDAYS MEET THE MONK SEALS!

Learn about monk seals in the wild and meet two resident seals up close. Designed for participants 7 and up but anyone is welcome. Waikiki Aquarium. 3 p.m. \$4 – \$6. waquarium.org or 923-9741.

### TUESDAYS & FRIDAYS WAIKIKI FARMERS MARKET

Fresh local produce, organic pastries and food booths. Waikiki Community Center. Free. 7 – 11:30 a.m. waikikicomunitycenter.org. 923-8102.

### TUESDAYS, THURSDAYS & SUNDAYS TOUR AND TEA AT THE HONOLULU ACADEMY OF ARTS

Tours are led by volunteer docents and designed for visitors who want to explore the galleries, learn more about art and culture, and socialize over a cup of tea. Docents lead discussions in the galleries and offer insight into many cultures and time periods. 2:30 – 4 p.m. in selected galleries. Free with admission; beverage donations welcomed. Reservations required. 532-8700.

### TUESDAY – SATURDAY MISSION HOUSES MUSEUM GUIDED TOURS

Visit the Printing Office and Frame House while learning about the 19th century history and culture preserved at this beautiful museum. Galleries also open to explore on your own. Mission Houses Museum. Tues. – Sat. 11 a.m. & 2:45 p.m.; Tues. – Fri. 1 p.m. \$6 – \$10. 531-0481 or missionhouses.org.

### WEDNESDAYS HONOLULU FARMERS MARKET

Meet the farmers and select from a wide variety of fruits, vegetables, flowers, beef, seafood, baked goods and more. This market is held weekly on the

Concert Hall Lawn. At the Blaisdell Center. On days an event is in the Concert Hall, Market will be in the Arena parking lot on the corner of Kapiolani Blvd and Ward Ave. Free Entrance and Parking. 4 – 7 p.m.

### SECOND WEDNESDAY (FEBRUARY 11) STARGAZING

The Hokulani Imaginarium puts on a live star show while teaching about the mythology surrounding constellations. Windward CC, 45-720 Keaahala Rd., Kaneohe. 7 p.m. Adults \$7, Keiki (ages 4-12) \$5. Tickets: aerospace.wcc.hawaii.edu/imaginarium.html or 235-7433.

### WEDNESDAYS & FRIDAYS CHADO – THE WAY OF TEA

Japanese enthusiasts can experience the traditional tea ceremony (chanoyu) as it was meant to be seen and taught at the Urasenke Foundation of Hawaii. No prior knowledge required. Demos at 10 a.m. and 11 a.m. \$5. 923-3059.

### THURSDAYS

#### FRESH FARMERS MARKET AT THE HYATT

Stock up on fresh local organic fruits, vegetables, jams, honeys, baked goods and more now available to guests and visitors each week in the heart of Waikiki. Ground Floor, Pualeilani Atrium Shops. 4 – 8 p.m. Waikiki.hyatt.com

### SECOND THURSDAY (JANUARY 8) COURTYARD CINEMA

Ward Village hosts its monthly film series event on the 2nd Thursday of each month. The showing features free popcorn, refreshments, food vendors and entertainment. Courtyard Cinema is free and open to the public. Seating is limited. Reserve your tickets and learn more about future shows at wardvillagecourtyardcinema.com.

### THIRD THURSDAY (FEBRUARY 19) DOWNTOWN GALLERY WALK & CRAFT FAIR

The Arts at Marks Garage continues to build on downtown activities offering execs an excuse to hang out after work and giving everyone else a reason to head downtown. Free. 521-2903. artsatmarks.com.

### FRIDAYS SENIOR SAFARI WALKABOUT

Continuing due to popular demand! Make exercise fascinating and fun while exploring the zoo. Staff will guide the walks, sharing wildlife facts and stories. Honolulu Zoo. 9 – 10 a.m. \$5 donation supports Zoo Education programs. 971-7195 or honolulu.zoo.org.

### FIRST FRIDAY (FEBRUARY 6) DOWNTOWN GALLERY WALK & CRAFT FAIR

Art lovers are advised to head to downtown Honolulu the first Friday of each month. This event has exploded into a downtown party with galleries and studios open for exhibitions, artist demonstrations, and special performances. 23 galleries and art-related retail shops, restaurants and museums participate. Downtown Honolulu/ Chinatown. 6 – 9 p.m. Free. 521-2903 or artsatmarks.com.

### FIRST & THIRD FRIDAYS (FEBRUARY 6 & 20) THE SKY TONIGHT

Learn about our Hawaiian skies and current events in space at the J. Watumull Planetarium. Bishop Museum. 8 p.m. No late seating. GA \$6, Keiki \$4. 848-4168 or bishopmuseum.org.

**THIRD FRIDAYS (FEBRUARY 20) • KAIMUKI**  
The neighborhood comes to life during this monthly street fest where restaurants all open their doors and local businesses offer fun discounts and sales. Live entertainment and free food samples make this fun

for the whole family. Koko Head to 8th Ave and Wai'ialea. 6 – 9 p.m. 739-9797 or kaimukihawaii.com.

### FINAL FRIDAY ART AFTER DARK

Art after Dark returns with Sweet, a celebration of Valentine's Day, desserts, fwoers and love. Music by Mike Love and Paula Fuga Trio. artafterdark.org.

### FRIDAYS & SATURDAYS TWILIGHT TOURS OF THE ZOO

Stroll through the Honolulu Zoo after dark and learn what goes on when the sun goes down. All ages will enjoy this 2-hour guided walking tour including light refreshments. 5:30 – 7:30 p.m. Adults \$18, Keiki (ages 3-12) \$14, Under 2 free. 971-7195 or honolulu.zoo.org.

### SATURDAYS KCC FARMERS MARKET

Fresh island produce, seafood, flowers and more are available from over two-dozen vendors at Kapiolani Community College. Free. 7:30-11 a.m. 848-2074.

### SATURDAYS KAKA'AKO FARMERS MARKET

The Farmer's Market held Saturdays at Ala Moana has moved to Kaka'a'ko in light of the construction around Sears these days. Check out an abundance of treats from around our islands. Their new home is at Ward Warehouse between Ward and Kamakee Streets, Free. 9:00 a.m. - 1 p.m. 388-9696 or haleiwaafarmersmarket.com.

### SATURDAYS TASTE OF CHINATOWN

Eat your way through our own little China as you learn where to go, what to order, and how to eat. Get cultural and gastronomic notes along the way and leave fully sated. 11:30 a.m. – 2:30 p.m. Chinatown in front of HI Nat'l Bank at Smith & King Streets. Reservations required: 391-1550.

### SATURDAYS & SUNDAYS ART ON THE ZOO FENCE

More than 35 local artists display their works on the Zoo fence on Monsarrat Avenue opposite the Kapiolani Park Bandstand. Works for sale include original paintings, prints and photographs. 9 a.m. – 4 p.m. Free. artonthefence.com.

**SECOND SATURDAY (FEBRUARY 14)  
DOWNTOWN GALLERY WALK & CRAFT FAIR**  
First Friday has become such a success that events carry over to the second Saturday. HiSAM, 11 a.m. – 3 p.m. 586-0900. Other events around downtown Honolulu all afternoon. Free. 521-2903 or artsatmarks.com.

### THIRD SATURDAY HONOLULU NIGHT MARKET

The folks behind Eat the Street bring this monthly art event to Kaka'ako. Food, art and fashion will close Auahi Street down from Keawe to Coral as artists, food trucks, live entertainment and more fill the streets from 6 p.m. to 11 p.m. Lane closures begin at noon. streetgrindz.com

### BANK OF HAWAII FREE SUNDAY (FEBRUARY 15) HONOLULU MUSEUM OF ART

Start the Year of the Sheep with a baa-baa-bang with hands-on cultural activities. Kids can make a snapping wood sheep or a fluffy ram, enjoy entertainment includes lion dances, and Chinese music to welcome in the new year in addition to wandering the regular galleries and exhibits. Honolulu Museum of Art. 11 a.m. - 5 p.m. Free. 532-8700.



# FEbruary CALENDAR OF

## FEbruary 6-7 PUNAHOU CARNIVAL

Break out the umbrellas and hope it doesn't rain while thousands descend onto lower field of Punahou School for games, rides, The White Elephant booth, Art Gallery, malasadas, Portuguese Bean Soup and everything else that makes this an annual family tradition. 11 a.m. - 11 p.m. punahou.edu

## FEbruary 7 KUANA TORRES KAHELE

The multi Na Hoku award-winning artist brings the top winners for the 2013-2014 Merrie Monarch Hula Festival to the historic Hawaii Theatre. Kuana will showcase new music and hula from his bestselling Music for the Hawaiian Islands series. Hawaii Theatre Tickets \$40 and include one free CD. 7 p.m. 528-0506 or hawaii theatre.com.

## FEbruary 7 REAL CELEBEERTION BASH

That's no typo! Celebrate beer and this outdoor event sponsored by REAL, a gastropub, featuring crafter beers, music, art, fashion and food. The event will be st up in the parking lot fronting REAL in Ward Village. 7 - 10 p.m. 21 and older. realgastropub.com.

## FEbruary 7 SUPER GARAGE SALE

This is not your ordinary garage sale. This one is where military families sell items they've acquired all over the world. Richardson Field. 8 a.m. - noon. Open to the public and free admission.

## FEbruary 7 • KA'OHINANI O KE KAI: THE BOUNTY OF THE SEAS

Enjoy an evening of history as designers Sig and Kuhao Zane talk story and share their special Limu edition designed fabric at the event. A special collection viewing from Isabella Abbott's research, hear the history of 19th century shells in the collection, learn limu nutrition and more. 5 to 9 p.m. Bishop Museum Hawaiian Hall. Free, bishopmuseum.org.

## FEbruary 8 - FRIENDS HELPING FRIENDS A FUNDRAISER FOR LYNN COOK

Our own Aunty Lynn lost her beloved husband Richard to cancer last month. A generous outpouring of love have come in with gift certificates from some of the best places in town. Please join this afternoon gathering with friends, enjoy fabulous music and hula, and lend our support to Lynn to help offset medical expenses incurred during Richard's illness. Henry Kapono and Kuana Torres have already confirmed to play, and her kumu Mapuna de Silva, as well as some of her award winning hula sisters will be on hand to dance the afternoon away. The Lotus Honolulu, 2nd floor. 5 - 8 p.m. 596-4422.

## FEbruary 13, 15, & 17 ERIC BIBB IN CONCERT

Grammy nominee and multiple W.C. Handy Blues award winner, Eric Bibb is a singer, songwriter and guitar player who appeals to anybody who enjoys good music as well as blues fans comes to the Hawaii Theatre for one show only. Hawaii Theatre Tickets \$35. 7:30 p.m. 528-0506 or hawaii theatre.com.

## FEbruary 13 - 17 THE FLYING DUTCHMAN

Hawaii Opera Theatre bring Richard Wagner's famed opera to life. Sung in German with English translations projected above the stage.. 2/13 8 p.m. 2/15, 4 p.m.; 2/17 7 p.m. \$29 -\$130. ticketmaster.com or 800-745-3000. hawaiiopera.org.

## FEbruary 14

### AN EVENING OF ROMANCE & LOVE SONGS

Matt Catingub and the Hawaii Pops Orchestra are joined by special guests including Raiatea Helm for an evening of some of the greatest music and songs about the many moods of love and togetherness. Bring your significant other and spend Valentine's Day with the Hawaii Pops at the Hawaii Theatre. Tickets \$40-\$95. 7:30 p.m. 528-0506 or hawaii theatre.com.

## FEbruary 14 SOUL SESSION VOL 7.

The best-selling R&B group of all time, Boys II Men, headline this Valentine's Day show with their award-winning hits "End of the Road," "I'll Make Love to You," and "One Sweet Day" and special guest Rebel Souljahz. Blaisdell Arena. 8 p.m. Tickets: \$40 - \$125. ticketmaster.com or 800-745-3000.

## FEbruary 17 THE HARLEM QUARTET

This New York-based chamber music ensemble has collaborated with such distinguished performers as Itzhak Perlman, Ida Kavafian, and Misha Dichter as well as jazz legends Chick Corea and Gary Burton and won a Grammy Award for Best Instrumental Composition for that collaboration. Hawaii Theatre. Tickets \$35. 7:00 p.m. 528-0506 or hawaii theatre.com.

## FEbruary 19 CHINESE NEW YEAR

Expect lots of fireworks, lion dances, red envelopes and block parties this week as the Year of the Sheep begins with great fanfare. Chinatown is always the place to be, especially to get your Chinese dumplings to bring good luck in the coming year.

## FEbruary 19-21 CHINESE NEW AT ALA MOANA CENTER

Welcome the "Year of the Sheep" at Ala Moana Center's Chinese New Year celebration will offer three days of vibrant entertainment filled with cultural performances, and of course, lion dancing throughout the entire mall. AlaMoanaCenter.com.

## FEbruary 20 SARA EVANS IN CONCERT

Award-winning country music star Sara Evans will perform her number #1 hits, "No Place That Far," "Born to Fly," "Suds in the Bucket" and more at the Republik. 8 p.m. Tickets: \$39.50, \$5 increase day of show. flavorful.com.

## FEbruary 21-22 WAIKIKI ARTFEST

Check out the work of close to 100 local artists as they display their crafts for all to see and buy. Enjoy live music and food booths while shopping. Free. 9 a.m. - 4 p.m. Kapiolani Park. 696-6717.

## FEbruary 26-28 WANDERLUST OAHU

Join the world's leading yoga teachers, musical acts, renowned speakers, food and wine delights and performances. Fill the days with beachside yoga, sunrise surfing, hikes, SUP yoga and more. Tickets available for individual events or all three day at oahu.wanderlustfestival.com.

## FEbruary 28 BLEACHERS IN CONCERT

Indie pop artists Bleachers are at the top of the charts with their hit "I Wanna Get Better" brings their high-energy show to the Republik. 8 p.m. Tickets: \$39.50, \$5 increase day of show. flavorful.com.

## Whales Guaranteed

See whales or come again free on seasonal whale-watch cruises Dec.-April. Door-to-door transportation included. Family-owned company with ocean activities for all ages.



WHALES GUARANTEED or come again for free!

WAIKIKI •  
WAIANAЕ •  
HILTON PIER  
Sail • Snorkel •  
Dolphins • Turtles •  
Whales • Scuba •  
Fireworks Dinner •  
Private Charter •  
Transportation

234-SAIL

(7245)

WE ANSWER 24 HOURS!

hawaiinautical.com



## DISCOUNT HAWAII CAR RENTAL

SAVE UP TO 50%



GUARANTEED RESERVATIONS  
\* NO BOOKING FEES \* NO  
DEPOSIT \* CANCEL ANYTIME  
\* NATIONAL RENTAL  
COMPANIES

call us today @

1.800.292.1930

or check us out online:

DiscountHawaiiCarRental.com

## IL LUPINO

TRATTORIA & WINE BAR

Join us every weekend for

Champagne  
Brunch

Sat/Sun • 7am-2pm

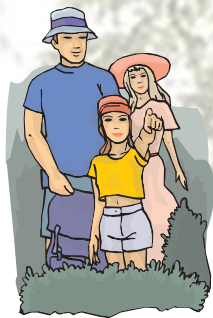
Choose from 6 Delicious  
Brunch Entrees, served with  
a Glass of Champagne  
\$19.95

Also join us for our Champagne  
Happy Hour every Tues/Thurs all day.  
Glass of Champagne \$9.

ROYAL HAWAIIAN CENTER • BLDG. B LEVEL 1  
VALIDATED PARKING  
WWW.ILLUPINO.COM • 938.922.1400



# HIKER'S CORNER



## NA ALA HELE TRAILS & ACCESS PROGRAM

For detailed information about hiking trails around the state, visit [HawaiiTrails.org](http://HawaiiTrails.org). The website includes an interactive map of each island and trail info that includes length, terrain,

photos, directions, biking information, and printable topographic map links. Also included on the site are trail announcements, local weather, and more. This is an easy way to provide your guests with a lot of helpful information for their hiking trip (without a lot of time on your part). You can also call them directly at 973-9782.

**COORDINATED HIKES:** The hikes listed below are arranged by local clubs and open to visitors. Hikers are recommended to bring a snack, sunscreen, hat, sturdy shoes, insect repellent, & water.

**SIERRA CLUB:** Most hikes meet at 8 a.m. at the Church of the Crossroads (back porch), 2510 Bingham St. Do not leave cars in the church parking lot. Windward outings may meet at First HI Bank, Windward Mall. Requested donation is \$5 (\$1 under 15 years). Please contact for information. Under 18 with adult.

**HIKING HAWAII:** Join a group of up to 15 hikers on a variety of guided treks. Private parties and door-to-door transportation available. Info and reservations at 855-808-4453, [hiking-hawaii@yahoo.com](mailto:hiking-hawaii@yahoo.com) or [hikinghawaii808.com](http://hikinghawaii808.com).

**WAIMEA VALLEY GUIDED HIKING SERIES:** Waimea Valley Family Guided Hikes are offered on Thursdays and Sundays. 5 person minimum. Reservations required in advance with credit card (cost includes admission). Keiki under 18 must be with adult. Closed-toe shoes and water required. Cameras strongly recommended! Reservations at 638-5877 or [Lpool@waimeavalley.net](mailto:Lpool@waimeavalley.net)

### WAIMEA VALLEY HIKES

**KALAHE'E:** 9:30 a.m. – 12:30 p.m. Kalahe'e Ridge. 2 miles. Moderate. Ages 7+. \$35.

**SOUTH RIDGE LOOKOUT:** 9:30 a.m. – 12:30 p.m. Climb to the Waihi (waterfall), views. 2 miles. Moderate. Ages 7+. \$35.

**NORTH VALLEY HIKE:** 9:30 a.m. – 2 p.m. Native flora and fauna. Ridge to valley. 6 miles. Strenuous. Ages 7+. \$50.

### MONTHLY HIKES

#### FEBRUARY 8 - WAILUPE LOOP

5.5 Miles – Intermediate, Ridge, Aina Haina. This little-known loop is one of the more challenging intermediate hikes, involving steep ups and downs and a narrow summit crossing. Meet at Iolani Palace at 8 a.m. HTMC: 590-0939.

#### FEBRUARY 8 - PUU MA'ELI ELI

Uphill hike to the pillboxes overlooking beautiful

Kaneohe Bay. Reservations Required. Sierra Club: 429-9814 or [clydekobashigawa@clearwire.net](mailto:clydekobashigawa@clearwire.net)

#### FEBRUARY 14 - KAIPAPA'U MAKAI

4 Miles – Intermediate, Hillside, Hau'ula. This short spur off Kaipapa'u Trail rewards hikers with a glorious vista of the La'ie shoreline. This is a great intro to O'ahu hiking for newbies. HTMC: 429-8123 or [ronmiller@htmcclub.org](mailto:ronmiller@htmcclub.org).

#### FEBRUARY 15 - ULUPAINA LOOP

4 Miles – Intermediate, Kaneohe. This trail is an easy uphill contour with views of the windward side. There is a steady climb to a lunch spot near power poles around 900 feet elevation. The last leg takes hikers down a ridge and back to the trailhead. Reservations Required by 2/13/15. Sierra Club: 748-9215 or [csoares48@gmail.com](mailto:csoares48@gmail.com).

#### FEBRUARY 15 - PUPUKEA-PAUMALU

8 Miles – Novice, Hillside, Hau'ula. This hike will introduce hikers to the entire 1,100 acres of the Pupukea Paumalu State Park. We will hike old ranch roads, mountain bike trails, foot paths and equestrian trails. There are 30 or more junctions so you must follow the ribbons carefully or end up a long, long way from where you parked your car. Hike will take all day. Rendezvous at 8:30 a.m. in Pupukea at Wilinau & Makana Roads. HTMC: 226-0429 or [fredboll@htmcclub.org](mailto:fredboll@htmcclub.org).

#### FEBRUARY 21 - NUUANU-PUU 'OHIA

5 Miles – Moderate, Countour, Tantalus, +1,500 ft. Reservations (before 2/19) and car shuttle required. Enjoy beautiful views of Nu'uuanu and Honolulu from the Makiki-Tantalus trail system. Sierra Club: [gsinclair@gmail.com](mailto:gsinclair@gmail.com) or 735-0528.

#### FEBRUARY 22 - MT. OLYMPUS

5.6 Miles – Intermediate, Ridge, St. Louis Heights. – This popular trail starts at the Wa'ahila Ridge State Park and gradually climbs the ridge between Manoa and Palolo Valleys to the Ko'olau summit. Native plants are common along the upper section, including koa and 'ohi'a lehua. HTMC: 371-1492 or [steve.davis@htmcclub.org](mailto:steve.davis@htmcclub.org).

**FEBRUARY 22 - KEALIA TRAIL & ACCESS RD**  
5.5-6 Miles – Moderate, +1,700 ft, Dillingham. 1st mile is up switchbacks, remainder on dirt firebreak road with a 1700 ft elevation gain, 4 - 5 hrs long. Great views of North shore and Makua Valley. Meet at trailhead parking lot at Dillingham Air Field. Sierra Club: [danderhi@gmail.com](mailto:danderhi@gmail.com)

For more information on hikes visit:

**Hawaiian Trail & Mountain Club (HTMC)**  
[htmcclub.org](http://htmcclub.org)

**Hawaii Nature Center (HNC)**  
[hawaiinaturecenter.org](http://hawaiinaturecenter.org)

**Hawaii Trail and Access System**  
[hawaiitrails.org](http://hawaiitrails.org)

**Hiking Hawaii**  
[hikinghawaii808.com](http://hikinghawaii808.com)

**Sierra Club**  
[hi.sierraclub.org/oahu/outings.htm](http://hi.sierraclub.org/oahu/outings.htm)

**Unreal Hawaii**  
[unrealhawaii.com/hikes](http://unrealhawaii.com/hikes)

**Waimea Valley**  
[waimeavalley.net](http://waimeavalley.net)

Explore Our Hawaii

Atlantis  
SUBMARINES  
WAIKIKI

Waikiki submarine tours depart hourly.  
Dive into an adventure!

Call (808) 973-9811 for Information & reservations or fax to (808) 973-2499.



# Ocean Awareness

## Know Before You Go

Will Eddie Go? As of press time it hasn't, but forecasters are saying it still could. Whether it goes or not, there is some huge surf on the forecast and that means thousands of visitors will head to the North Shore to watch the huge waves we're so famous for. If you seen the evening news, then you heard the lifeguards warning people to be careful of the shore break. Each and every one of you need to join that brigade and do your part reminding our visitors how dangerous that shore break can be. Each year, millions of visitors flock to our islands and the vast majority is looking forward to getting into the warm, tropical ocean, to swim, to try their hand at surfing, to snorkel, or just to play at the shore's edge. As the face of our hospitality industry, it's important that we all stay informed about potential hazards in order to keep our guests as safe and happy as possible during their stay. With this in mind, you should be aware that drowning is the leading cause of death among visitors to the Hawaiian Islands, and that snorkeling and swimming are the activities most likely to get visitors into trouble in the ocean. Though this statistic sounds a bit scary, the more you keep your guests informed, the safer they will be and the better vacation they'll have! First-time visitors, in particular, may be very unfamiliar with the size and power of our waves and the danger of rip tides. They often don't know which beaches to visit and what to expect when they get there. Thanks to the Ocean Safety Division and NOAA we want to offer some very useful suggestions and great references you can pass on to help prepare your guests for a wonderful (and safe) experience in our warm coastal waters.

One of our guests' favorite activities has to be snorkeling with beautiful tropical fish and the chance to swim alongside a giant honu is something many people dream about. That dream can come true here, but they should be advised that they should always observe turtles from a distance. By no means should they ever attempt to touch, ride or feed the turtles. Pursuing or feeding marine mammals is actually prohibited by federal law, so make sure they are advised of such. If they are fortunate enough to run into whales, dolphins or Hawaiian monk seals, they must remain at least 100 yards away. Frankly as cute as monk seals are, I think I'd be terrified to be in the water close to one. They can be mean little buggers.

Here are a few other tips you can share with your guests before they head out into the sea:

- **Equipment:** For first-timers, learn to use your equipment before you venture out past shallow waters. (How to clear your mask and snorkel, etc.) Guided trips or instructions in advance are highly recommended for a more enjoyable experience.

- **Conditions:** Always check conditions before you go, including the waves and the current at the specific location where you plan to snorkel.

- **Don't Go Alone:** Always use the buddy system and keep track of each other in the water. Currents can separate you quickly and it can be hard to find someone.

- **Know Yourself:** Be aware of your own ability. Snorkeling is a physical activity and you must be able to get out and get back in.

For those venturing out into the ocean, whether it's swimming, surfing, snorkeling, or any other water activity, it's good to make guests aware of the dangers of a rip current and share some tips on how to handle themselves. A 'rip current' is a fast-moving belt of water formed when waves break strongly in some spots and weakly in others, causing 'circulation cells' that can pull swimmers quickly offshore. While lifeguards and ocean safety are usually careful to warn beach-goers of dangerous conditions, the potential to get caught in a rip current is still there. The key things to remember are:

- **Don't fight the current** - Conserve energy, keep calm, float, breathe, don't panic, and wave for help.

- **Swim out of the current** - then swim to shore. Swim out of the current in a direction following the shoreline. When out of the current, swim at an angle - away from the current - towards shore.

- **If you can't escape, float or tread water** - You can easily float in the current, there is no undertow.

- **If you need help, call or wave for assistance** - If there is large surf or shoreline hazards, wave your hands for help and wait for assistance

For more information and updates, the Hawaiian Lifeguard Association has developed an excellent website everyone can check as a resource.

Go to [www.hawaii beachesafety.com](http://www.hawaii beachesafety.com) and find numerous tips, suggestions, up-to-the-minute information and much more to help you and your guests plan some safe fun in the ocean. This is a great site to check conditions before you send guests out to a beach. There is a place on the website to zoom in on Oahu (or the outer islands) and see ocean and surf condition reports for all of the specific beaches. There is also a section called Recommended activities and Amenities. If your guest is looking for a good beach to go bodyboarding for example, the site lists the best beaches to go to for that activity. Want to make sure your beach has public restrooms or is legal to go camping on? Click the icon and the appropriate list of beaches meeting your requirements pops up. No matter which beach you click on, it will give you the current conditions at that beach, any active alerts, the surf report for that location, onshore and offshore hazards to be aware of, directions on how to get there and the background of the beach itself this website is mobile-friendly, so encourage your guests to bookmark it while they're here. They should find it very useful.

This information is designed not to make visitors nervous, but rather to make them aware and prepared, which should ensure a safe and memorable trip. That old adage, "the more you know..." certainly applies here. The more knowledgeable you are, the more info you can share with your guests. We want everyone to have a safe and happy experience while in Hawaii. No one needs a near drowning experience or worse to mar their vacation memories, and a few precautions can help prevent any tragedies. Remember, when in doubt, don't go out. ~ Pam

**K1 SPEED**

AMERICA'S PREMIER INDOOR KARTING CENTER

100% ELECTRIC

ARRIVE & DRIVE ADULTS AND JUNIORS 48" AND UP

GREAT FAMILY FUN!

SPACIOUS LOBBIES

**K1 SPEED HAWAII** **K1SPEED.COM**

91-1085 LEXINGTON ST. KAPOLEI, HI 96707 - (808) 682-7223

AZ - PHOENIX, CA - SAN DIEGO - IRVINE - ANAHEIM - TORRANCE - ONTARIO - SANTA CLARA - SAN FRANCISCO - SACRAMENTO - SAN DIEGO, CO - DENVER - FT. LAUDERDALE

MIAMI, FL - ATLANTA, GA - KAPOLEI, HI - BUFFALO GROVE - ADDISON, TX - INDIANAPOLIS, IN - AUSTIN - DUBLIN, OH - SAN ANTONIO - DALLAS, TX - SEATTLE

# That's Entertainment

## HOTELS

- HALE KOA HOTEL** 955-0555  
 •**TuSat** - High and Right Comedy Show takes the stage at the Warriors Lounge at 8pm.  
 •**MThFS** - Poolside music at the Barefoot Bar. 6-11pm
- HALEKULANI HOTEL** 923-2311  
 •**Daily**-Hawaiian Music and hula at The House Without A Key from 5:30-8:00pm.  
 •**Daily**-Live Contemporary and light Jazz at Lewers Lounge from 8:30pm to midnite.  
 •**Sun**- Sunday brunch at Orchids features Noly Paa on the piano from 9:30 - 2:30pm.
- HILTON HAWAIIAN VILLAGE** 949-4321  
 •**Fri** - Fireworks at 7:45pm.  
 •**Fri** - The Rockin' Hawaiian Rainbow Revue (formerly the King's Jubilee), a musical salute to King Kalakaua, at the Super Pool. 7 pm.  
 •**FriSat** - Olomana at the Tapa Bar from 8-11pm.  
 •**Sun** - Jeff Apaka at the Tapa Bar from 5-7pm.  
 •**Daily** - Live entertainment at the Hau Tree Bar and the Tapa Bar from 8-11pm.
- THE KAHALA HOTEL** 739-8888  
 •**TuWThFSat** - David Swanson vocalizes on the piano at The Veranda from 7:30-11pm. Live Jazz on Sun/Mon.
- MOANA SURFRIDER** 922-3111  
 •**Daily**-Hawaiian music & hula. The Banyan Court, 6-8 pm, and again from 8 -11 p.m. Weekends from 11:30- 2 p.m.  
 •**MWFri**-Guided historical tours at 11am.
- NEW OTANI KAIMANA BEACH** 923-1555  
 •**FSat**- Local jazz guitarists plays live in the Sunset Lanai Bar. 6-9pm.
- OUTRIGGER WAIKIKI ON THE BEACH** 923-0711  
 •**Mon**- Kukui Nut Bracelet Making. 1pm.  
 •**Th**- Ukulele Lessons. 1pm.  
 •**Fri**- Aloha Fridays bring back old Hawai'i with music, hula, ukulele & lei making lessons. 9am-1pm.
- OUTRIGGER REEF ON THE BEACH** 923-3111  
 •**Daily**- See guest artists at work in Kuloko Arts of Hawaii 9am-1pm and again from 6-9pm.
- SHERATON PRINCESS KAIULANI** 922-5811  
 •**Daily**-Live Hawaiian music & halau at the lounge from 6-8:30pm, then poolside from 8:30-10:30pm.  
 •**Th**-Princess Kaiulani historical tour at 9:30am.
- THE ROYAL HAWAIIAN** 923-7311  
 •**TTH**- Free guided resort tour at 1pm.
- TURTLE BAY RESORT** 293-6300  
 •**MTWThFSat**- Lei Making, Main Lobby at 10am.  
 •**ThSun** - Fire Dancer, Hang Ten Pool Bar at Sunset

- TThFri** - Shell Hula Lessons, Lobby at 10am  
 •**TThFri** - Ukulele Lessons, Lobby at 9am  
 •**Fri**- Music & Hula. Lobby Lounge 6:30-8:30pm.

- WAIKIKI BEACH MARRIOTT RESORT** 922-6611  
 •**Daily**-Hawaiian entertainment in The Moana Terrace Bar. 6-9pm.  
 •**Fri**-Local crafters "Aloha Friday Fair" Lobby 9a-2pm

## MUSEUMS

- HAWAII STATE ART MUSEUM** 586-0900  
 •**TWThFSat** - Inaugural exhibition "Enriched by Diversity: The Art of Hawai'i." Free. Tuesday-Saturday, 10 a.m. to 4 p.m. Located in the Capital District.
- HAWAII THEATRE** 528-0506  
 •**Tues**- A one-hour guided tour offers a unique insight in the history, art, architecture and restoration of the Hawai'i Theatre with trained docents & a mini-concert on the 1922 Robert Morton Theatre Organ. 11 a.m. Admission: \$10.
- HONOLULU MUSEUM OF ART** 532-8726  
 •**MWF**- Japanese Language Tours. Private tours also available. 1pm. Regular admission.
- IOLANI PALACE** 522-0832  
 •**Mon-Sat**-45 minutes docent-led or self-guided audio tours available in English or Japanese. Japanese-led tour is available only at 11:30 a.m. All tours include re-tour video and entrance into the Palace Galleries. Adults: \$14.75-\$21.75 / Keiki (5-12): \$6. 9am-5pm  
 •**Sat**-Hawaiian Quilt Classes. Old Archives 9:30a-12p.
- LUCORAL MUSEUM** 922-5381  
 •**TTh**- Learn how to plan your jewelry project and more in this beaded jewelry workshop \$10. 2-4 p.m.
- MISSION HOUSES MUSEUM** 447-3910  
 •**Tue-Sat**-Learn about the dramatic story of cultural change in 19th-century Hawai'i. Docents lead tours through the oldest existing frame house in the Islands, Printing Office, and the coral block Chamberlain House. Reservations required. www.missionhouses.org
- PACIFIC AVIATION MUSEUM** 441-1000  
 •**Daily**-Vintage aircraft in battlefield hangars. Combat flight simulators. Aviator's Tour takes you through the new Restoration Hangar. Restaurant, Museum Store. Shuttle & Tickets at USS Arizona Memorial Visitor Center or at www.PacificAviationMuseum.org.
- THE SPALDING HOUSE** 526-1322  
 •**Daily**-Docent-led tours given daily. 1:30pm. Garden tours or Japanese language tours are by appointment.
- NAVAL AIR MUSEUM BARBERS POINT** 682-3982  
 •**Mon-Fri**- A unique museum experience about aviation history in Hawaii. All of the aircraft are open to climb

in, on and around. Tours: 8 a.m. - 4:30 p.m. \$7 / \$5 children under 18. BLDG 1792, Midway Road, Kalaeloa Airport. Reservations required. Sat/Sun by appt only. www.nambp.org.

## SHOPPING CENTERS

- ALA MOANA CENTERSTAGE** 955-9517  
 •**Tues** - PCC Polynesian Revue Show. 6pm.  
 •**Sun** - Keiki Hula Show. 10-11am.
- KING'S VILLAGE** www.kings-village.com 237-6344  
 •**MW** Famer's Market offering fresh produce, baked goods and local food items from 4-9pm.  
 •**Daily** King's Guard Museum features a variety of collectibles and memorabilia. 10a-10:30p. FREE.
- ROYAL HAWAIIAN CENTER** 922-2299  
 • **TWThF**- Beginner Ukelele 10-11am, *Helumoa Hale*  
 • **MW**- Learn Lomilomi 11am-12pm, Bldg. C, 3<sup>rd</sup> floor  
 • **MF**- Hawaiian Storytelling 12pm, *Helumoa Hale*  
 • **TTh**- Intermediate Ukulele 11:30am, Bldg. C, 3<sup>rd</sup> floor  
 • **TTh**-Hula (T) 11am-12pm (Th) 4-5pm, *Royal Grove*  
 • **TWThF**- Live Hawaiian music 6-7pm, *Royal Grove*  
 • **MTWThSat**- Lei making 1-2pm, *Bldg A, 1st floor*  
 • **Sat**- Hula Kahiko 6-6:30pm, *Royal Grove*  
 • **Sat**- Hawaiian musicians 7:30-8:30pm, *Royal Grove*  
 • **WSat** - PCC Performs. 11-11:45am, *Royal Grove*
- WAIKIKI BEACH WALK** www.waikikibeachwalk.com  
 •**Tuesdays** - Ku Ha'aheo featuring Hawaiian song and dance on the Plaza stage. 4:30-6pm  
 •**Wednesdays** - Yoga Classes 4-4:45pm. Free.Plaza Stage
- WAIKIKI SHOPPING PLAZA** 923-1191  
 •**Daily** Hula Lessons. 10am, 12pm  
 •**MTTh** - Polynesian Review 1st & 3rd floor 7-9pm

## ATTRACTIONS

- KALAKAUA AVENUE** 527-5666  
 •**Fri** - Strolling Hula from 8-10:00pm.
- KAPI'OLANI BANDSTAND** 527-5666  
 •**Fri**-Hawai'i's finest musicians perform. 5:30-6:30pm  
 •**Sun**-Royal Hawaiian Band performs 2-3:15pm.
- KUHIO BEACH HULA SHOW** 843-8002  
 •**TThSat**- City & County presents a free hula show at sunset. 6:30 - 7:30pm at the hula mound.
- TAMARIND PARK - DOWNTOWN** 527-5666  
 •**Fri**- Mayor's Aloha Friday Music from 12-1pm features live music from Hawaiian to Jazz to Pop.
- WAIKIKI TOWN CENTER** 922-2724  
 •**Mon-Sat**-The songs and dances of Hawai'i, New Zealand, & Tahiti. Free shows begin at 7pm.

EVENTS SUBJECT TO CHANGE PLEASE CALL TO CONFIRM PRIOR TO ATTENDING

# PAPARAZZI

## 25th annual Na Po'e Pa'ahana Awards



Francis Galiza-Honorable mention for Bell Desk, Janelle Sanqui, Aulani Ambassador, Cecilia Richardson, 2nd place Front Office of the Year, and Samuel Vance, Honorable mention for Outstanding Lodging Employee of the Year.



George Szigeti, President and CEO of Hawaii Lodging & Tourism Association, gives the opening remarks at the 25th annual Na Po'e Pa'ahana Awards. Photo courtesy of the Hawaii Lodging & Tourism Association.



Wayne English of The Westin Kaanapali Ocean Resort Villas, wins the award's top honor for Outstanding Lodging Employee of the Year. Photo courtesy of the Hawaii Lodging & Tourism Association.



THE OAHU

# conciierge card

February 28, 2015

**Dole Plantation** - 1 FREE Adult Admission To The Maze With Purchase of 1 Adult Admission. 621-8408

**Giovanni Pastrami** - 15% Off Full Bar, Dine-in or Take-Out at anytime with ID. 227 Lewers St. 923-2100.

**Hard Rock Café** - 15% off food, beverage (non-alcoholic), or merchandise. Hotel ID required. 280 Beachwalk Ave. 955-7383.

**Hawai'i Prince Golf Club** - \$5 Off Standard Kamaaina Green Fees. Tee Times: 944-4567

**Hilo Hattie** - 25% on Hilo Hattie labeled garments, 15% off other fashions/gifts and 10% off Hilo Hattie labeled foods. Not valid on sale item. Ala Moana Center and Nimitz Hwy Ph 535-6500.

**Hy's Steakhouse** - 25% VIP Discount Off Food And Beverage (up to 2 persons) 2440 Kuhio Ave. 922-5555

**Hyatt Regency Waikiki** - 15% discount with the presentation of a concierge business card at SHOR, Japengo and SWIM. 2424 Kalakaua Ave. 923-1234.

**Iolani Palace** - Free Admission. Regular rate \$20. 364 S. King Street, Reservations & Hotel ID required. 522-0832.

**IHOP** - Receive 20% on entire bill. Must show valid hotel ID. Not valid with any other offer or discount. Aqua Palms, 1850 Ala Moana Blvd restaurant only. Free parking available. 949-4467.

**Kaiwa** - 20% off food & beverage between 5 & 7 p.m. 924-1555

**Longhi's** - 25% off food & beverage up to 2 persons, not applicable with any other promotion or discount. 947-9899.

**Mission Houses Museum** - Free tour with hotel ID. 447-3910

**Pacific International Skydiving Center** - 50% Discount on Jump, 68-760 Farrington Hwy, 637-7472

**Plaza Café** - 15% off all food items. Best Western the Plaza Hotel. 3253 N Nimitz Highway. 836-3636.

**P.F. Chang's Waikiki** - Receive 20% on all appetizers, entrees, desserts and beverages 11 am - 5 pm daily (not valid for Pau Hana menu) Royal Hawaiian Center. Ph: 628-6760, 637-7472

**Romano's Macaroni Grill** - 20% Off Food and Beverage for up to 2 guests. (Not Valid for Happy Hour Menu). Ala Moana Center, 1450 Ala Moana Blvd. 356-8300

**Royal Hawaiian Center** - get your FREE Malama Card which offers special retail and dining discounts to local Waikiki workers. Royal Hawaiian Center, 2201 Kalakaua. 922-2299.

**Ruth's Chris Steak House** - 20% Off Food and Beverage for up to 2 guests. (Not Valid for Happy Hour & Prime Time menus). Restaurant Row, 500 Ala Moana Blvd. 599-3860. Waikiki Beach Walk, 226 Lewers Street. 440-7910

**The Contemporary Museum** - FREE Admission For Cardholder and One Guest. 526-1322

**The Kahala Resort** - Complimentary appetizers for a concierge and a guest with the presentation of a concierge business card at Hoku's, Plumeria Beach House, Seaside Grill, The Veranda. 5000 Kahala Avenue. 739-8888

**The Original Glider Rides** - Come experience the joy of soaring for yourself. Concierge / GSA may receive a complimentary scenic ride. Request the "GSA flight special" when booking your reservation. Hotel ID required. Dillingham Airfield. 637-0207

**Tiki's Grill & Bar** - FREE order of ANY appetizer with any purchase! One per table. OahuconPOKE. ASTON Waikiki Beach. 923-8454

**Willoughby's Restaurant** - 15% off all food items. Ohana Honolulu Airport Hotel. 3401 N. Nimitz Hwy. 836-0661.

**HELP us update this card. If you know of an offer not being honored let us know. As management changes, sometimes offers can get lost. Also as we work on updating this, let us know if there is something you would like to see here & we'll see what we can do!**

You may be required to provide identification. Must show Hotel ID to claim offer. One special per person per business. Offers valid on regular-priced merchandise only. Discounts are available to Guest Service Professionals ONLY. Not valid with other promotions or special offers. A minimum 18% gratuity on original order required for all special food offers.  New offer

## Guest Service Agent of the Month



NAME: Emelyn Damo

HOTEL: Ambassador Hotel

TITLE: Guest Service Agent

**Q. How long have you been at the Ambassador?**  
A. I started in late 2011.

**Q. How big is your team there?**  
A. Including the Front Office Manager, there are 15 of us.

**Q. What makes your hotel special?**  
A. The rooms, which makes the family feel at home. They have microwaves, kitchen, and laundry facilities.

**Q. Where did you work before the Ambassador?**  
A. I worked at First Hawaiian Bank and at the Sheraton Moana Surftrider Hotel.

**Q. How did you get your start in the industry?**  
A. Right after college I started at the Sheraton Moana Surftrider.

**Q. What has been your biggest challenge there?**  
A. Currently Hawaii charges a resort fee on all rooms and the Ambassador Hotel is no different than the others, so trying to explain the benefits of that fee to the guests.

**Q. What do you like most about this industry?**  
A. Providing customer service to people from around the world.

**Q. What is your favorite restaurant to recommend?**  
A. There are too many to mention.

**Q. Have you had any memorable guests?**  
A. Again there are too many to mention. I could write a story book, but each and every guest service agent gave special encounters with many.

**Q. What's the one question you keep hearing?**  
A. What's the closest restaurant to the hotel.

**Q. How do you deal with those "difficult" guests?**  
A. I try to put myself into their shoes.

**Q. What is your favorite part of the Island?**  
A. Oahu has so much to offer, so I don't really have a favorite.

**Q. What is your favorite activity to recommend?**  
A. I love to hike, so all different hiking places.

**Q. What's one thing about you people would be surprised to know?**  
A. That I do ballroom dancing, participate in drama onstage and also emcee functions such as birthday parties and weddings etc.

**Q. Where are you from originally?**  
A. I am from Manila in the Philippines. I arrived here in 1972.

**Q. What do you like to do when not working?**  
A. Hiking if time permits, bowling, walking, and horseback riding.

**Q. Where would you like to see yourself in 5 years?**  
A. I hope to retire from within the same property.

**Q. Any other thoughts you would like to share?**  
A. Treat other with respect and dignity. Each one of us have the same characteristics, only different colors. We all breathe and love the same way.



*Embrace Your Dreams*

Experience the magic of dreams coming true in our inspiring and unforgettable dolphin programs starting at only \$125. Dolphin Quest is located at the legendary Kahala Hotel & Resort.



**DOLPHIN QUEST**  
Oahu

*Reserve*

800-248-3316  
808-739-8918  
dolphinquest.com

A portion of the proceeds supports vital marine education, conservation and research.

The Oahu Concierge is printed monthly and direct mailed FREE to all Oahu Concierge, Hospitality & Activity Professionals.

Subscriptions available to non-industry at \$25 per year.

C O N T A C T

**Davis Media**

Ph: 596-4422 • Fax: 593-0839

www.oahuconciierge.com

Twitter & Instagram: @OahuConciierge

Facebook: www.facebook.com/OahuConciierge

#### ADDRESS & NAME CHANGES / ADDITIONS

We do not take changes by telephone. All changes to mailing list **must be submitted in writing** by the 16th of the month to make the next issue, email is preferred.

S T A F F

PUBLISHER **Pam Davis**  
publisher@oahuconciierge.com

CONTRIBUTING EDITORS  
Lynn Cook, Lance Rae

DESIGN  
Coreiya Design

**The Oahu Concierge**  
1221 Kapiolani Boulevard, Suite 1040  
Honolulu, Hawaii 96814

Presorted Std  
US Postage Paid  
Honolulu, HI  
Permit # 583



## LOOK & BOOK

Go to  
[www.HIRealTime.com](http://www.HIRealTime.com)

A NEW AGENT TOOL  
built specifically for  
Hawaii Guest Professionals.

It's **FREE!**

- Activities
- Attractions
- Restaurants
- Events

Real-time booking for over  
130 Vendors, with more  
being added each month.

Register to access for free at  
[WWW.HIREALTIME.COM](http://WWW.HIREALTIME.COM)



 **ponorez** serving Hawaii's visitor industry since 1988... 27 years & counting.

**“Thank you for holding,  
a representative will be with  
you shortly.”**



**A**re you getting tired of hearing the same automatic voice answering service every day? Put down the phone because now there is a new way to book activities without picking up the phone!

Now you can **Look & Book** at your convenience, at the office, on your way to work or even in your bed.

**HIRealtime.com** works on a variety of devices: Personal computer, MAC, tablet, Apple & Android mobile phones.

Similar to Net Neutrality, which ensures a level playing field for all internet companies,

**A3H's PonoRez** provides free, easy, non-preferenced ticketing access by logging on or by our API. API stands for Application Program Interface, essentially it provides a way for systems to talk with each other. A common layman's term for API is "bridge". **PonoRez's** bridge has been available to outside systems since May 2010. **A3H** continues to keep our bridge open and willing to communicate.

The system is called **PonoRez** for a reason. It's made with principle over profit in mind. **PonoRez** is not just a different kind of system, it's a system that is **“Making a Difference”**.