

THE OAHU

Concierge

KEEPING THE HOSPITALITY INDUSTRY INFORMED SINCE 1998

Get ready for the...  Sony Open in Hawaii.



The signature "W" located at the 16th hole at Waialae Country Club is just part of the allure of this course. Photo courtesy of the Sony Open in Hawaii

The Sony Open has a rich history in Hawaii, attracting top golfers from around the world year after year. It serves as the first full-field event of the calendar year on the PGA TOUR and is the second event of the calendar year following the Sentry Tournament of Champions, which is held on Maui. The tournament has seen many notable winners over the years and is played on the beautiful but challenging Waialae Country Club course in one of the most picturesque settings of the PGA TOUR.

The Sony Open in Hawaii is part of the PGA's FedEx Cup Series. This year's PGA season consists of 36 events, with the 2024 FedEx Cup Regular Season kicking off with the "Opening Drive" starting with The Sentry, featuring the Top 50 players from the previous season's FedEx standings, which proudly returns to the Plantation Course in Kapalua the first week of January, and is followed by The Sony Open on Oahu from January 8 – 14 – where all players start with zero FedEx Cup points and look to get off to a strong start in the race for this year's FedEx Cup.

This tournament is the TOUR's longest-running event in the Hawaiian Islands. It

first began in 1965 as the Hawaiian Open. In 1967, NBC broadcast the game live, making it the first color television sports transmission from Hawaii to the U.S. mainland. Initially, the event took place in the fall, but it was skipped in 1970 to move it to a winter slot in early February 1971. The Sony Open also showcases the natural beauty of Hawaii to the world as over 560 million homes in some 216 countries turn on The Sony Open to see some of the best golf pros in the world tackle the course.

In 1991, United Airlines became the first title sponsor of the tournament, and the name was changed from the "Hawaiian Open" to the "United Hawaiian Open." Sony stepped in as the tournament's title sponsor in 1999 and celebrated a quarter-century of sponsorship last year. An international field of PGA Tour pros and amateurs return to the island this month to make their mark on this beloved tournament as they compete for their share of the \$7.9 million purse.

Last year's champion, Si Woo Kim – the first Korean player to win the event since K.J. Choi in 2008, will return to defend his title alongside 143 other players. Six other past champions will return to Waialae to give the course their best shot. Previous winners attending this year's Sony include Hideki Matsuyama, Russell Henley, Matt Kuchar, Jimmy Walker, Patton Kizzire, and Ryan Palmer. Other top-ranked pros scheduled to compete are Lucas Glover, Emiliano Grillo, Chris Kirk, and Matt Fitzpatrick.

Continued on page 4.

A Message from Honolulu Ocean Safety

Submitted by John Titchen, Chief of Ocean Safety



There's a new lifeguard stand at Kahe Point, a.k.a. Electric Beach. Photo courtesy John Titchen.

O'ahu's lifeguards send a big mahalo to all of you working at our island's hotels, restaurants, and other visitor-oriented businesses for your continued efforts to help keep everyone safe as they journey out to enjoy the beach and ocean. We are halfway through another epic winter surf season on the North Shore, and we wanted to check in with you for a little operational update.

By and large, the vast majority of visitors we see on our island beaches right now are from the continental U.S. Frequently, these visitors want to look for a bit of adventure and try to get off the beaten path a little. We continue to remind beachgoers and ocean users that the safest place to get in the water here – at least for the first time – is at a "lifeguarded beach." We want to remind you that we have towers all around

continued on page 7.

TABLE OF CONTENTS

| | |
|------------------------------------------------------|-----------|
| Yada Yada Yada | 2 |
| What's new at Sea Life Park | 2 |
| Newsflash | 3 |
| Paparazzi: Maui Brewing Co. | 6 |
| E Pili Kakou | 8-13 |
| Chef's Corner: Threadfin Bistro Chef Jason Kiyota .. | 13 |
| Calendar | 14-15, 17 |
| Paparazzi: Monkeypod Kitchen Waikiki | 16 |
| Paparazzi: International Market Place | 18 |
| That's Entertainment / Concierge Card | 19 |

Publisher's Letter



2024
is finally here

OK, technically, it's still 2023 as I am writing this, and I have to say, the year had a few nasty surprises left for me before it headed out the door, but by the time you read this, 2023 will be finally be gone - and it cannot come soon enough for me. I truly hope that with the end of the year comes the end of some of the (insert word that should not be put into print here) that I have been dealing with. After everything that happened last year, I am genuinely looking forward to turning the page and starting fresh. New Year, New Beginnings, and all that, or at least let's hope so!

We're kicking off the year in the right direction with more concierge events. We have a lot planned and I'm looking forward to them. Way back when, I had a rule that if you no-showed without letting me know why by the next morning, I simply did not invite you to the next event. People have been communicating with me so well lately that I haven't had to bring that back officially, but I'm on the verge of it. Now, remember, I totally get that life happens. People will get sick, or stuck at the desk, or have car problems. All of that is completely understandable. That's never been what I've been talking about. It's more the people who reserve a seat and then don't communicate they end up getting scheduled to work or make other plans. Just send an email or a text, and life is good. If you just don't feel like it, that's okay, too. To be honest, I don't care why you aren't coming. That's your business. I just want to know if you aren't going to make it, preferably with enough time to let someone else know they can have your seat, or let the host know the headcount has changed. Our events have been filling up quickly lately, and fortunately, most of you let me know when your plans change in enough time to clear those waitlists, but we've gotten a lot more 11th hour cancellations recently and I see the writing on the wall. There are always more people I want to include in an event than the seat count allows for, so please keep me in the loop, and remember, no excuses are necessary, just a heads up. I can tell you that we're already booked out until March, and there are a lot more in the works, so keep yourself on the list by always keeping me informed.

Here's wishing all of you,
a fabulous 2024!!

Yada Yada



Jonathan Lee

Jonathan Lee is the new Director of Food & Beverage at *The Hilton Hawaiian Village*. Many of you may recognize him from his time as the director of operations with the Mina Group, where he ran The Street

Social House at the International Market Place. He brings more than 30 years of experience in the food and beverage industry and was most recently the director of food & beverage for Marriott International and oversaw a \$125-million dollar resort renovation in the heart of West Maui. • *The Hawai'i Visitors and Convention Bureau* has announced that **Lynn Whitehead** has been selected as its new Vice President Global MCI Sales & Marketing. She assumes the role with more than three decades of experience effective January 1, 2024, following the retirement of John Reyes who held the position since February 2020. • The *Honolulu Museum of Art* announced that **Jenny Grondin**, who was part of the team behind the now-shuttered, but much loved Grondin French Latin Kitchen in Chinatown, has joined its staff as head of food and beverage. Jenny will oversee operations of the HoMA Café, Coffee Bar and all catering for museum events.

Previously, she was director of retail operations at Honolulu Coffee Company and restaurant manager at the Kahala Hotel & Resort. • *The Hilton Waikiki Beach* announced **Joel Scott Johnson** as its



Jenny Grondin

new executive chef, overseeing culinary operations for the entire property, including LBLE Lounge, M.A.C. 24/7 Restaurant, in-room dining, and more. He studied at Le Cordon Bleu and interned at a San Francisco waterfront eatery, where he mastered his signature Cioppino dish before moving on to such Michelin-starred restaurants as Thomas Keller's Bouchon, where he further honed his culinary skills and has held numerous Executive Chef positions since. • Sticking with the F&B theme, the *Hyatt Regency Waikiki Beach Resort and Spa* has hired **Chef David Ishihara** as the new Chef de Cuisine, overseeing The Buffet at Hyatt and Swim Restaurant + Bar. Honing his skills in various restaurants, ranging from casual upscale locations to Michelin-starred restaurants, he played a key role in the opening team at Strip Steak in Waikiki, and has worked at Prince Waikiki, Hoku's at The Kahala, and most recently, The Royal Hawaiian. Welcome aboard!

What's New at Sea Life Park in 2024

Sea Life Park is celebrating the new year with some brand new exhibits and keiki activities.

The brand new interactive seaside museum, the **'Ohana Learning Center**, is now open. This revamped educational space will feature a series of rotating exhibits, starting with an expansive and fascinating collection of seashells and fossils generously donated by the family of the late William Lai Lee. The former US Air Force major and chaplain was an avid collector. While stationed in cities all over the world, he found and bought shells, coral and other unique mementos resulting in a fascinating personal collection of underwater treasures. Over time, Mr. Lee curated an impressive collection of underwater treasures.



The Ohana Learning Center is Sea Life Park's newly revamped educational space. Photos courtesy Sea Life Park

They will also kick off the **'Year of the Honu'** with an educational event and special Keiki Day on January 14. Partnering with 808 Cleanups to host a beach cleanup at the adjacent Kaupō Beach from 8 a.m. - 10 a.m., Sea Life Park invites the community to lend a hand in keeping

shoreslines free from marine debris. Buckets and supplies will be provided to volunteers. Immediately following the cleanup, attendees are invited to witness a traditional Hawaiian blessing and majestic honu release into the ocean, with turtles from the Sea Life Park Hawai'i Honu Conservation Program. The festivities will then continue back at the park with a special Year of the Honu Keiki Day (10 a.m. - 3 p.m.), offering additional

continued on page 16.

EXTRA EXTRA EXTRA *Newsflash*

REYN SPOONER OPENS NEW STORE AT THE HILTON

Reyn Spooner has opened its newest store in Waikiki at the Hilton Hawaiian Village Waikiki Beach Resort. The new retail store makes the fourth Reyn Spooner location for O'ahu, and its sixth in the state. The new store also features the largest selection of fan gear prints – National Football League, Major League Baseball, and NCAA – as well as Reyn Spooner's full women's collection. Open from 9 a.m. - 9 p.m. Call 275-4222.

CELEBRATE THE NEW YEAR WITH MOCHI-TSUKI

The Japanese mochi pounding tradition of mochi-tsuki is used to celebrate the New Year, and guests are invited to participate in the traditional art to celebrate the new year at Margotto Hawaii through January 10. The freshly pounded Japanese rice cakes will be incorporated into an Ozoni, a Japanese-style mochi soup (\$20 plus cost of truffle) and an Assorted Mochi plate for \$30, inclusive of truffle, accompanied by chef's selection of accoutrements. 6:30 p.m. margotto-hawaii.com or 592-8500.

'IOLANI PALACE OPENS NEW ROYAL GUARD EXHIBIT

'Iolani Palace's latest exhibit, "Nā Koa o Ka Mō'i: The Royal Guard," is now open in the Bartels Gallery in the Palace Basement. Offering a captivating journey through the storied history of the Royal Guard, the exhibit traces their inception by King Kamehameha I to their revival in the 1960s. Highlighting this journey are historical artifacts, several of which are on loan from descendants of Royal Guard members, including ceremonial swords, commemorative keepsakes, a Springfield rifle, a password log, and rare documents personally signed by King Kalākaua. The exhibit runs through May 2024 and will be open Tuesday through Saturday from 9 a.m. to 4 p.m. iolanipalace.org.

WAIMANA JEWELRY OPENS AT HALE'IWA STORE LOTS


North Shore-based Waimana Jewelry has been gaining popularity for its boutique mobile jewelry bar since it first opened in 2019. It now has a permanent location at Hale'iwa Store Lots. Known for offering its customers an in-person permanent and custom jewelry experience, it sells a wide selection of jewelry, such as rings, toe rings, necklaces, chains, bracelets, earrings and more. waimanajewelry.com.

LEATHER SOUL MOVES INTO BIGGER, LARGER SPACE

The locally-owned and operated retailer of exclusive men's shoes and accessories, Leather Soul heads into its 20th anniversary year by moving into a brand-new space on the 2nd floor of the Royal Hawaiian Center (RHC) next to world-class retailers such as Tiffany & Co. The first Waikiki store opened on Lewers Street in 2005, with its initial RHC location launching in 2008, that has continued to grow ever since. leathersoul.com.

A POP-UP COMEDY CLUB OPENS AT PEARLRIDGE CENTER

Local comedians Andy Bumatai, Augie Tulba and Frank De Lima will be headlining at the No Vacancies Comedy Club with their trademark local-style stand-up comedy at the first-ever No Vacancy's Comedy Show. Popping-up in vacant retail space at Pearlridge Center to rustle up new customers to the Mall in an online age, shows will be offered every Friday and Saturday through January 27 for now. pearlridgeonline.com.



Entertainment EVERY NIGHT

HILTON HAWAIIAN VILLAGE® PRESENTS
WAIKIKI STARLIGHT LUAU

ROOFTOP OF THE MID-PACIFIC CONFERENCE CENTER

Fire knife dancers, live music and an authentic island feast—all under the stars. Upgrade to **Premier seating** for access to the first and second rows, a welcome beverage plus two drinks, and fresh flower lei greeting.

GOLDEN CIRCLE and GENERAL SEATING also available.

SCAN FOR CURRENT SCHEDULE & RESERVATIONS.

TAPA BAR
IN THE TAPA TOWER

LIVE MUSIC NIGHTLY 7-10pm

A venue for icons of Hawaii's music scene, this is where you'll experience some of the finest local talent the islands have to offer. Join us for a fun-filled evening immersed in the heartbeat of Hawaii's music.

NOW SERVING
Smash Burgers, Nashville Hot Chicken, Pizzas and more!

Hilton HAWAIIAN VILLAGE® WAIKIKI BEACH RESORT

WAIKIKI MARKET
WHERE ALOHA MEETS 'ONO

'OLILI

PiKO
kitchen + bar

FREE
Delivery or
Curbside
Pickup
with your first order!

Open daily from 6 am – 10 pm
waikikimarkethawaii.com
Lilia Waikiki, 2380 Kuhio Avenue

The Sony Open

continued from page 1.

The 2024 tournament also marks the debut of the PGA TOUR's new members from the DP World Tour, Korn Ferry Tour, and PGA TOUR Q-School presented by Korn Ferry.

The course plays to a par 70 for the Sony Open with a yardage of 7,020 from championship tees. It includes both left and right doglegs and thanks to its well-planned layout; it can challenge the low-handicap player while not penalizing the high-handicap player. Nestled in the quiet Kahala neighborhood, the course includes the signature 8th hole, bordered along its full 186 yards by the Pacific Ocean, and the signature 16th hole, featuring a massive "W" made from 4 coconut palms. Waialae's front and back nines are switched for the PGA Tour event, finishing at the dogleg ninth hole in front of scores of fans sitting in the exclusive Skyboxes. From green to green, the course also allows golf enthusiasts to walk right alongside their favorite players, a tangibility unlike any professional golfing event in the world.

The Sony Open has also taken an active role in implementing sustainability efforts in every aspect of the planning, management, and operation of the tournament since 1999, being recognized by the State repeatedly for its energy efficiency efforts and sustainable business practices and raising awareness among event attendees and the community and serving as a reminder about the importance of keeping Hawaii beautiful.

The Sony Open in Hawaii is also the principal fundraising event for Friends of Hawaii Charities, which serves and benefits Hawai'i's women, youth, elderly, and impoverished, generating around 1.2 million dollars that benefit more than 100 non-profits annually. Since 1999, the Sony Open has raised over \$23 million for over 350 local non-profits.

For visitors seeking transportation to The Sony Open from Waikiki, E Noa Tours will again designate several of their Trolleys to provide round-trip shuttle service from Waikiki to Triangle Park/ Fort Ruger Park and back.

For a small fee each way, shuttles will depart every 40 minutes beginning at 8:20 a.m. following the Blue Line route. Shuttle stops include the Ilikai Hotel, The Trump Hotel, the Waikiki Shopping Plaza, the Duke Kahanamoku statue on Kuhio Beach, Waikiki Beach across from the Zoo, and the Waikiki Aquarium. There is



Last year's champion Si Woo Kim returns to Waialae to defend his title this January. Photo courtesy Sony Open in Hawaii.

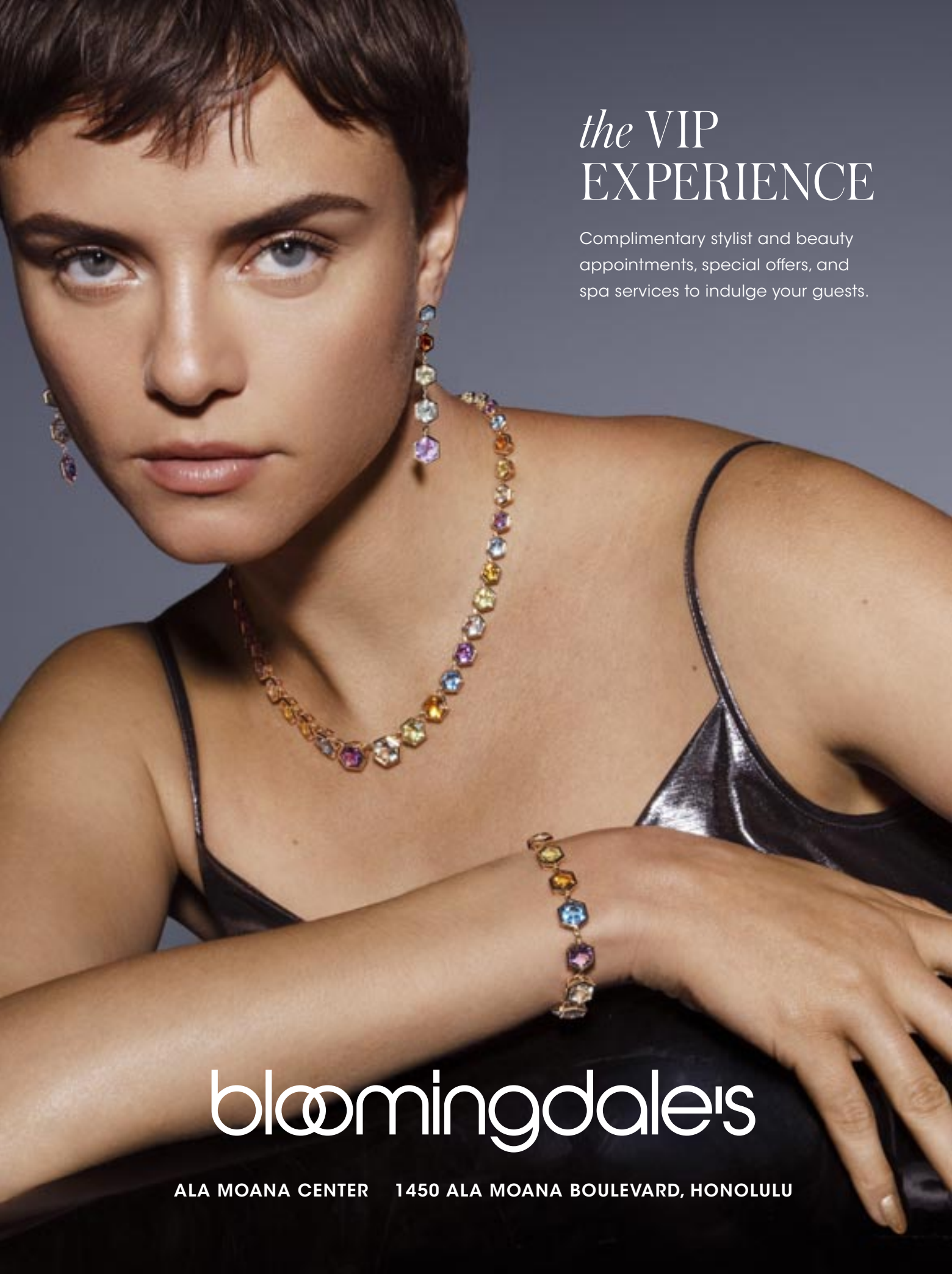
no public parking available Monday - Wednesday, but free spectator parking is available Thursday through Sunday at Kahala Community Park for those wanting to drive themselves. A free shuttle will then take spectators from Kahala Community Park (the corner of Pueo Street and Moa Street) to the corner of Kealaolu and Kahala Avenues to go to the tournament. The designated drop-off location for disabled spectators is at the Pro Shop parking lot adjacent to the main entrance. A bike valet will also be available.

Tickets for the Sony Open in Hawaii are on sale now and available online, and there are a variety of price options to choose from. Admission is free on Monday, January 8, and Tuesday, January 9, 2024. A Season Badge priced at \$100 per person is good for weeklong admission. Daily Tickets are \$40 per person. Children 15 and under can enter the Sony free when accompanied by an adult ticket holder. Sweet 16 Chalet Hospitality Passes are still available and priced at \$265 (Thursday or Friday) and \$290 (Saturday or Sunday).

As always, free admission is extended to active duty and retired military service members, reservists, and dependents who present a valid military ID at the gates. Active duty, retired military, reserves, and dependents are eligible. Veterans are provided free admission each year through the Veteran Tickets Foundation. Register at vettix.org.

Please remind your guests that the Sony adheres to a strict bag policy at the gate. There is no bag check available at the gate, so guests will save themselves a massive headache just by taking a few moments to read the policy before they head out to the tournament.

Visit sonyopeninhawaii.com for tickets, bag policy, or more information.



the VIP
EXPERIENCE

Complimentary stylist and beauty appointments, special offers, and spa services to indulge your guests.

bloomingdale's

ALA MOANA CENTER 1450 ALA MOANA BOULEVARD, HONOLULU

PARK WEST FINE ART MUSEUM & GALLERY

Waikiki Beach Walk Honolulu
808-859-4871 parkwesthawaii.com



Any client you refer for
a private tour will get

10% off their purchase*
if they mention the hotel and concierge
that referred them.

For more details
waikikibeach@parkwestgallery.com

PARK WEST GALLERY

*Terms and conditions apply



MAUI
BREWING CO

Maui Brewing Company held a small concierge event to welcome industry members to their brewery-to-table restaurant located in the heart of Waikiki, showcasing some of its 36 craft and specialty beers on tap and menu items. They also used the occasion to announce their new hours, opening at 11 a.m. every day, and the launch of their new brunch service, served from 11 a.m. - 3 p.m. mbcrestaurants.com.



A Message from Ocean Safety

continued from page 1.

O'ahu, and they are now staffed from 8 a.m. to 6:30 p.m., an increase of two extra hours from a year ago. They can visit our website at emergency-services.honolulu.gov/ocean-safety-lifeguard-services, for a map of where those towers are.

If visitors are looking for good snorkeling and safe swimming, the beaches in Waikīkī offer a good option right now, as waves tend to be smaller on the South Shore in winter. Visitors can find good snorkeling just off the shore of the Aquarium between the Kapahulu groin and the War Memorial Natatorium (this is the Waikīkī Marine Conservation District).

That area is also great for visitors interested in learning how to surf, or they can head to the inside area at Pua'ena Point on the North Shore. Other good ocean-going activities include kayaking, paddling, stand-up paddle surfing, or even foiling and winging. There are a number of these types of activities at Ko Olina, and Honolulu Ocean Safety routinely stops by the lagoons throughout the day to check on everyone.

For those who want to watch the action, there are still some terrific surf contests coming up, including the World Surf League events at Pipe and Sunset, and let's not forget about "The Eddie," a contest named for the heroic city lifeguard and won last year by a current city lifeguard, our own Luke Shepardson. The famed Eddie Aikau Big Wave Invitational has only been held ten times in the past thirty-seven years, as wave face heights must consistently reach 40 feet during the holding period for the event to go. The Eddie has only been held in back-to-back years twice in its history. But, the experts are saying it's not a matter of if it will happen this year, but when, as the El Niño conditions make it likely we'll see the conditions the contest needs to go ahead.

If you send visitors to the North Shore to watch the surf contests or to snorkel at places like Shark's Cove, we ask you to arm them with a few reminders on our behalf before they go. Please tell them to come with food and water, bring a source of shade, either binoculars or a good camera, and above all, to heed all warnings by county first responders and event organizers. For surf contest watching: pay plenty of attention to where they're parking, don't leave valuables in the car, prepare to have to walk in a little bit from further down the

road, and remember that the two-lane road in and out is the same one that emergency response vehicles have to use. For the record, we love what you have been doing so far because visitors, by and large, seem to show up prepared for the action, knowing that it's an all-day event, and we know a lot of that is thanks to you.

If you send them out for snorkeling or reef walking at the Pūpūkea Marine Life Conservation District near Shark's Cove, please remind them to heed caution tape that is strung up by Ocean Safety or the Department of Emergency Management (for high waves or surf), to watch out for wet rocks – that means a wave has broken there over the reef or ledge or rocks – and also remind them that a telephoto shot is sometimes better than risking everything to get up close for that winning social media picture. We have seen some serious injuries by folks trying to get the million dollar shot down by the ocean, and they get too far out from the tide pools there and are sometimes pulled in.

Thankfully, Honolulu Ocean Safety enjoyed a banner year in 2023, making more rescues and preventative actions than ever before and seeing a decrease in drownings. We installed our first new

tower in over a decade at Kahe Point, more commonly known as Electric Beach. Anecdotal, we know that more people are now going to that beach because of the tower. We put a tower there in August, and we have already prevented six possible drownings. Our lifeguards report constant interaction with snorkelers, swimmers, paddlers, and scuba students. In 2022, Honolulu Ocean Safety reported 6,180 rescues. We counted 6,350 in 2023, and our lifeguards have reported 1.6 million "preventative actions," whereby our personnel interact with beach patrons before a rescue is bound to happen (i.e., they see someone in distress sometimes before the potential victim even knows they might be in distress). Our lifeguards reported 1,169 serious medical situations involving needing EMS transport or referral to higher medical care. We have responded to 14 drownings, down from 15 in 2022 and 16 in 2021.



The new lifeguard tower at Kahe Point is open daily.

continued on page 17.

THE BLUE FISH
JAPANESE RESTAURANT

IL GELATO HAWAII
Authentic Italian Ice Cream

Opening Late January!

New Tastes for the New Year

Two new eateries join Waikiki's best selection of restaurants

Dig in to fresh sushi, sashimi and an exciting array of exciting Japanese and Korean dishes and finish it off with a sumptuous and healthy dessert of handmade fresh daily gelato, as *The Blue Fish* and *Il Gelato* join the lineup of fabulous restaurants at Waikiki Beach Walk.

Free Parking 10am-3pm Daily*
*With \$10 minimum purchase

Located on Lewers St.
between Kalakaua Ave. & Kalia Rd.
Open 365 Days | 10AM-9PM

WAIKIKI BEACH WALK.

WAIKIKIBEACHWALK.COM |

Let's be Together...

DINING ▶ ENTERTAINMENT ▶ PAU HANA ▶ EAT ▶ DRINK ▶ BE MERRY ▶ HAPPY HOUR ▶

MONDAY

100 Sails at the Prince Waikiki 944-4494
Live Contemporary Hawaiian
 Mike Tulba Duo 6-8pm

Barefoot Beach Café at Queen's Beach 924-2233
Live Contemporary & Hawaiian
 The Barefoot Boys 5:30-8:30pm

Chart House Waikiki 941-6660
Live Contemporary Hawaiian
 Camarillo Brothers 6-9pm

Duke's Canoe Club Waikiki 922-2268
Live Contemporary Hawaiian
 Grace Welton 4-6pm
 Bryan & Halekahu 7-9:30pm
 Ellsworth Simeona 9:30-12am

Hard Rock Cafe 955-7383
Contemporary Rock
 Cassie and the... (or TJ & Son) 4-6pm

House Without a Key 923-2311
Hawaiian music & hula by Miss Universe '97 Brook Lee
 Pa'ahana Trio 5-8pm
 Nick La'a 8:15 - 10pm

Kani Ka Pila Grille 924-4992
Hoku Award Winning Hawaiian musicians
 Sean Na'auao 6-9pm

Mahi'ai Table 670-2778

Live Contemporary
 Jenna Keala 5-8pm

Mahina & Sun's 923-8882
Monday Vibes on the Lanai
 Kokonut Point 6:30-9:30pm

Mai Tai Bar at the Royal Hawaiian 923-7311
Live Contemporary Hawaiian
 Eric Lee 11am-2pm
 Brad Kawakami 8-10pm

Maui Brewing Company 843-2739
Live Contemporary Hawaiian
 Scott Magz 3:30-5:30pm

Merriman's Honolulu 215-0022
Live Slack Key guitarist
 Deven Camat 5:30-7:30pm

Monkeypod Kitchen Ko Olina 381-4086
Live Contemporary 3x a day including from 12:30 - 2 p.m.
 Kree and Malik 3:30-5pm
 Sienna Souza 7-9pm

Monkeypod Kitchen Waikiki 900-4226
Live Contemporary 3x a day including from 12:30 - 2 p.m.
 Shawn Garnett 3:30-5pm
 Dustin Park 7-9pm

Piko Kitchen & Bar 923-2032
Live Contemporary Hits
 Christian Yrizarry (1/22 - Chris Luke) 5-9pm

Rumfire 921-4600
Live Contemporary Hits
 Dave Watanabe 6-9pm

Signature Prime Steak 949-3636
Contemporary Pianist in the bar
 Keith Montross 6-9pm

Splash Bar at the Sheraton Princess Kaiulani 921-4600
Live Contemporary Hawaiian
 David Aquino 6-9pm

Swell at the Alohilani 294-4108
Solo Contemporary Guitarist
 Drew Henmi 6:30-9:30pm

SWIM at the Hyatt Regency 923-1234
Live Contemporary Hawaiian
 Kaulana Vinoya 5-9pm

The Beach Bar at the Moana Surfrider 922-3111
Live Contemporary Hawaiian
 Eric Lee 3:30-6:30pm
 Johnny Valentine 7-10pm

The Edge at the Sheraton 921-4600
Live Hawaiian Music
 Stephen Inglis (1/22 - Tad Jennings) 1-4pm

The Point Sunset Pool Bar at Turtle Bay 293-6000
Live Contemporary Hawaiian with Fireknife Dancer
 Kuhio Travis 5-8pm

Tropics Bar & Grill 949-4321
Live Contemporary
 Kaiona Duo 3-5pm

Chris Salvador 7-9pm

Barefoot Beach Café at Queen's Beach 924-2233
Backyard Hawaiian
 Ben Kama 5:30-8:30pm

Chart House Waikiki 941-6660
Live Contemporary Hawaiian
 Ryan Tang Group 6-9pm
 Shane Kainoa (or others) 6pm-9pm

Duke's Canoe Club Waikiki 922-2268
Live Contemporary Hawaiian
 Walt Keale 4-6pm
 Kailua Moon 7-9:30pm
 Stephen Inglis 9:30-12am

Eating House 1849 Waikiki 924-1849
Live Contemporary Hawaiian
 Kings Kalohelani 4:30-7:30pm

Giovanni Pastrami 923-2100
Acoustic Soul, R&B and Pop
 YOZA (or others) 6:30-9:30pm

Hard Rock Cafe 955-7383
Contemporary Rock
 Lance Reid (or others) 4-6pm

House Without a Key 923-2311
Hawaiian music & hula by Miss Aloha Hula '21 Maka Perry
 Delima Ohana 5-8pm
 Jesse Kuikahi (1/23 - Brad Kawakami) 8:15 - 10pm

Kani Ka Pila Grille 924-4992
Hoku Award Winning Hawaiian musicians
 Kala'e Camarillo 6-9pm

Lewers Lounge 923-2311
Jazz Pianist
 Tommy James 8:30pm-12am

Liko's Tap & Table 394-5456
Live Contemporary
 Jason Laeha 5-8pm

Mahi'ai Table 670-2778
Live Contemporary
 Keoni Ku 5-8pm

Mahina & Sun's 923-8882
Electrifying Acoustic on the Lanai
 Laupepa Letuli 6:30-9:30pm

Mai Tai Bar at the Royal Hawaiian 923-7311
Live Contemporary Hawaiian
 Kupu Dalire-Na'auao 11am-2pm
 Eric Lee 6-9pm

Maui Brewing Company 843-2739
Live Contemporary Hawaiian
 Christian Yrizarry 3:30-5:30pm

Merriman's Honolulu 215-0022
Live Contemporary
 John Kema 5:30-7:30pm

Moani Waikiki 466-2629
Live Contemporary Hawaiian
 Lava 7-10pm

Monkeypod Kitchen Ko Olina 381-4086
Live Contemporary 3x a day including from 12:30 - 2 p.m.
 Pono 3:30-5pm
 Chante 7-9pm

Monkeypod Kitchen Waikiki 900-4226
Live Contemporary 3x a day including from 12:30 - 2 p.m.

OriginalMagoosPizza.com/Order



HAWAII'S FAVORITE ISLAND-STYLE PIZZA, SUBS & CHICKEN

**WE'VE MOVED TO KAIMUKI!
 DINE-IN & FULL BAR
 TAKEOUT & DELIVERY**

**3579 WAIALAE AVENUE
 (BETWEEN 11TH & 12TH AVE)**

TUESDAY

100 Sails at the Prince Waikiki 944-4494
Live Contemporary Hawaiian
 Cherie Duo 6-8pm

Amuse Wine Bar 237-5428
Live R&B & Contemporary

E Pili Kākou

DINING ▶ ENTERTAINMENT ▶ PAU HANA ▶ EAT ▶ DRINK ▶ BE MERRY ▶ HAPPY HOUR

Tiare and Evan 3:30-5pm
John Akapo 7-9pm

Piko Kitchen & Bar 923-2032

Live Contemporary Hits
Drew Henmi 5-9pm

Rumfire 921-4600

Live Contemporary Hits
Christian Yrizarry (orothers) 6-9pm

Signature Prime Steak 949-3636

Contemporary Pianist in the bar
Keith Montross 6-9pm

Splash Bar at the Sheraton Princess Kaiulani 921-4600

Live Contemporary Hawaiian
Mark Caldeira 6-9pm

Swell at the Alohilani 294-4108

Solo Contemporary Guitarist
Kamuela Kahoana (1/23- Jesse Kuikahi) 6:30-9:30pm

SWIM at the Hyatt Regency 923-1234

Live Contemporary Hawaiian
Dominic Carlos 5-9pm

The Beach Bar at the Moana Surfrider 922-3111

Live Contemporary Hawaiian
Stephen Inglis 3:30-6:30pm
Alex Oasay 7-10pm

The Edge at the Sheraton 921-4600

Live Hawaiian Music
Eric Lee 1-4pm

The Point Sunset Pool Bar at Turtle Bay 293-6000

Live Contemporary Hawaiian with Fireknife Dancer
Jenna Keala 5-8pm

Tropics Bar & Grill 949-4321

Live Contemporary
Kailua Bay Buddies 3-5pm

WEDNESDAY

100 Sails at the Prince Waikiki 944-4494

Live Contemporary Hawaiian
Kai Malo'o 6-8pm

Barefoot Beach Café at Queen's Beach 924-2233

Island Vibes
Danny Galura 5:30-8:30pm

Chart House Waikiki 941-6660

Live Contemporary Hawaiian
Mike Tulba 6-9pm

Duke's Canoe Club Waikiki 922-2268

Live Contemporary Hawaiian
Keoni Ku 4-6pm
Taulia Lave 7-9:30pm
Alika Souza 9:30-12am

Eating House 1849 Waikiki 924-1849

Live Contemporary Hawaiian
Shawn Garnett 4:30-6:30pm

et al inside Kahala Market 732-2144

Live Contemporary Hawaiian
Chris Luke 5:30-8:30pm

Giovanni Pastrami 923-2100

Acoustic Guitar Soul, R&B
Jason Laeha 6:30-9:30pm

Hard Rock Cafe 955-7383

Contemporary Rock
Mike Piranha (or Danielle Parente) 4-6pm

House Without a Key 923-2311

Hawaiian music & hula by Miss Universe '97 Brook Lee
Pa'ahana Trio 5-8pm
Mike Tulba 8:15 - 10pm

Kani Ka Pila Grille 924-4992

Hoku Award Winning Hawaiian musicians
Ei Nei 6-9pm

Lewers Lounge 923-2311

Jazz Pianist
Mark Caldeira 5:30pm-8pm
Tommy James 8:30pm-12am

Mahi'ai Table 670-2778

Live Contemporary
Dillon Pakele 5-8pm

Mahina & Sun's 923-8882

Soulful Guitar on the Lanai
John Akapo 6:30-9:30pm

Mai Tai Bar at the Royal Hawaiian 923-7311

Live Contemporary Hawaiian
Stephen Inglis 11am-2pm
Johnny Valentine 6-9pm

Maui Brewing Company 843-2739

Live Contemporary Hawaiian
YOZA 3:30-5:30pm

Merriman's Honolulu 215-0022

Live Contemporary
Kamaka Camarillo 5:30-7:30pm

MINA's Fish House 679-0079

Live Contemporary Hits
Kamuela Kahoana (1/24- Jesse Kuikahi) 6-9pm

Moani Waikiki 466-2629

Blues, Old School Rock, Country
Keith Batlin 7-10pm

Monkeypod Kitchen Ko Olina 381-4086

Live Contemporary 3x a day including from 12:30 - 2 p.m.
Chris Murphy 3:30-5pm
Sierra Lucia 7-9pm

Monkeypod Kitchen Waikiki 900-4226

Live Contemporary 3x a day including from 12:30 - 2 p.m.
Kailua Moon 12:30-2pm
Jasmin Nicole 3:30-5pm
Chante 7-9pm

Piko Kitchen & Bar 923-2032

Live Contemporary Hits
David Aquino 5-9pm

Rumfire 921-4600

Live Contemporary Hits
Jesse Kuikahi 6-9pm
Bronson Varde (1/24) 6-9pm

Signature Prime Steak 949-3636

Contemporary Pianist in the bar
Pierre Grill 6-9pm

Splash Bar at the Sheraton Princess Kaiulani 921-4600

Live Contemporary Hawaiian
Alika Souza 6-9pm

Swell at the Alohilani 294-4108

Solo Contemporary Guitarist
Danielle Parente 6:30-9:30pm

SWIM at the Hyatt Regency 923-1234

Live Contemporary Hawaiian
Biku 5-9pm

The Beach Bar at the Moana Surfrider 922-3111

Live Contemporary Hawaiian
Brandon Serrano 3:30-6:30pm
Kaiona 7-10pm

The Edge at the Sheraton 921-4600

Live Hawaiian Music
Kupu Dalire-Na'auao 1-4pm

The Point Sunset Pool Bar at Turtle Bay 293-6000

Live Contemporary Hawaiian with Fireknife Dancer
Alex Oasay 5-8pm

Tiki's Grill & Bar 923-TIKI

Live Contemporary Hawaiian and hula
Derrick Lee 1-3 pm
Malu Productions 5:30-7:30pm

Tropics Bar & Grill 949-4321

Live Contemporary
Jason Midro Duo 3-5pm

Vintage 1901 at the Moana 921-4600

Contemporary Piano
David Swanson 6:30-10pm

THURSDAY

Barefoot Beach Café at Queen's Beach 924-2233

Live Contemporary & Hawaiian
Alika Souza 5:30-8:30pm

Chart House Waikiki 941-6660

Live Contemporary Hawaiian

STARTING AT \$59

SAVOR OUR PRIME TIME MEAL WITH STARTER, ENTRÉE, SIDE, AND DESSERT

RUTH'S CHRIS STEAK HOUSE

AVAILABLE DAILY FROM 4-6 PM
Oahu: Waterfront Plaza and Waikiki Beach Walk
Maui: The Shops at Wailea
RUTHSCHRIS.COM

Let's be Together...

DINING ▶ ENTERTAINMENT ▶ PAU HANA ▶ EAT ▶ DRINK ▶ BE MERRY ▶ HAPPY HOUR ▶

Tito & David 6-9pm
Duke's Canoe Club Waikiki 922-2268
Live Contemporary Hawaiian
 Ben Kama 4-6pm
 Henry Kapono's New Artists "On the Rise" 7-9:30pm
 Scott Magz 9:30-12am
Eating House 1849 Waikiki 924-1849
Live Contemporary Hawaiian
 Shane Kainoa 5-8pm
Giovanni Pastrami 923-2100
Live Contemporary
 Billy Sage 6:30-9:30pm
Hard Rock Cafe 955-7383
Contemporary Rock
 Chapter II (or others) 4-6pm
House Without a Key 923-2311
Hawaiian music & hula by Miss Universe '97 Brook Lee
 Walea 5-8pm
 Tad Jennings 8:15-10pm
Kani Ka Pila Grille 924-4992
Hoku Award Winning Hawaiian musicians
 Kawika Kahiapo 6-9pm
Lewers Lounge 923-2311
Jazz Pianist
 David Aquino 5:30pm-8pm
 Ethan Capone & Rocky Holmes 8:30pm-12am
Mahi'ai Table 670-2778

Live Contemporary
 Alex Oasay 5-8pm
Mahina & Sun's 923-8882
Hawaiian Contemporary on the Lanai
 Kelly Boy DeLima 6:30-9:30pm
Mai Tai Bar at the Royal Hawaiian 923-7311
Live Contemporary Hawaiian
 Christian Yrizarry 11am-2pm
 Stephen Inglis 8-10pm
Maui Brewing Company 843-2739
Live Contemporary Hawaiian
 Johnny Helm 3:30-5:30pm
Maui Brewing Kailua 518-2739
Live Contemporary Hawaiian
 Grace Welton (or others) 6-8pm
Merriman's Honolulu 215-0022
Live Contemporary
 Laupepa 5:30-7:30pm
MINA's Fish House 679-0079
Live Contemporary Hits
 Cory Oliveros 6-9pm
Moani Waikiki 466-2629
Contemporary Island Music
 Kimo Opiana 7-10pm
Monkeypod Kitchen Ko Olina 381-4086
Live Contemporary 3x a day including from 12:30 - 2 p.m.
 Kona Abergas 3:30-5pm
 Wavvy 7-9pm
Monkeypod Kitchen Waikiki 900-4226
Live Contemporary 3x a day including from 12:30 - 2 p.m.
 Bella and Kapono 3:30-5pm
 Javin Kai 7-9pm
Piko Kitchen & Bar 923-2032
Live Contemporary Hits
 Keoni Ku 5-9pm
Rumfire 921-4600
Live Contemporary Hits
 Brad Kawakami 6-9pm
Signature Prime Steak 949-3636
Contemporary Pianist in the bar
 Grant Carvalho 6-9pm
Splash Bar at the Sheraton Princess Kaiulani 921-4600
Live Contemporary Hawaiian
 Kaimi Hananoeau 3:30-5:30pm
 Ronson Asuncion (or Bronson Varde) 6-9pm
Stripsteak 896-2545
Live Contemporary
 Jason Laeha 6-9pm
Swell at the Alohilani 294-4108
Solo Contemporary Guitarist
 Denny Ono 6:30-9:30pm
SWIM at the Hyatt Regency 923-1234
Live Contemporary Hawaiian
 Koa Atwood (or others) 5-9pm
The Beach Bar at the Moana Surfrider 922-3111
Live Contemporary Hawaiian
 Christian Yrizarry 3:30-6:30pm
 Kaimi Hananoeau 7-10pm
The Edge at the Sheraton 921-4600
Live Hawaiian Music

Alika Souza 1-4pm
The Point Sunset Pool Bar at Turtle Bay 293-6000
Live Contemporary Hawaiian with Fireknife Dancer
 Dave Watanabe 5-8pm
The Veranda at the Kahala Hotel 739-8760
Live Contemporary
 Johnny Valentine 6-9pm
Tropics Bar & Grill 949-4321
Live Contemporary
 Ben & Halehaku Duo 3-5pm
Vintage 1901 at the Moana 921-4600
Contemporary Piano
 David Swanson 6:30-10pm

FRIDAY

Barefoot Beach Café at Queen's Beach 924-2233
Live Contemporary Hawaiian
 The Art Kalahiki Band 5:30-8:30pm
Chart House Waikiki 941-6660
Live Contemporary Hawaiian
 Mike Tulba 6-9pm
Duke's Canoe Club Waikiki 922-2268
Live Contemporary Hawaiian
 Maunalua 4-6pm
 Kawaika Kahiapo 7-9:30pm
 Ernest Chang 9:30-12am
Hard Rock Cafe 955-7383
Live Contemporary
 Heleo (or Close the Distance) 8-10pm
House Without a Key 923-2311
Hawaiian music & hula by Miss Hawaii '73 Kanoe Miller
 Kapalama Trio 5-8pm
 Danielle Parente 8:15-10pm
Kani Ka Pila Grille 924-4992
Winner of the 2023 KKPG Talent Search Competition
 Kahiau Lam Ho 6-9pm
Lewers Lounge 923-2311
Jazz Pianist
 Nick La'a 5:30pm-8pm
 Maggie Herron & Dean Tabata 8:30pm-12am
Mahi'ai Table 670-2778
Live Contemporary
 Jenny Yim (1/19 - Bronson Varde) 5-8pm
Mahina & Sun's 923-8882
Slack Key on the Lanai
 Dustin Park Duo 6:30-9:30pm
Mai Tai Bar at the Royal Hawaiian 923-7311
Live Contemporary Hawaiian
 Brandon Serrano 11am-2pm
 Johnny III 6-9pm
Mariposa 951-3420
Live Contemporary
 Chris Salvador 2:30-5:30pm
Maui Brewing Company 843-2739
Live Contemporary Hawaiian
 Keith Batlin 3:30-5:30pm
Maui Brewing Kailua 518-2739
Live Contemporary Hawaiian
 Darrell Aquino (or others) 7-9pm
Merriman's Honolulu 215-0022
Live Contemporary

BarefootBeachCafe.com



"WE PUT Aloha INTO EVERY BITE SO SIT BACK, RELAX AND ENJOY THE VIEW."

OPEN DAILY
 BREAKFAST 8AM - 2PM
 LUNCH/DINNER 11AM - 8:30PM
 LIVE MUSIC NIGHTLY 5:30 - 8:30PM
 & SUNDAYS 11AM - 2PM

BAREFOOT BEACH CAFE
 2699 KALAKAUA AVENUE
 808.924.2233

EVENTS & GROUP RESERVATIONS
 808.699.8830

E Pili Kākou

DINING ▶ ENTERTAINMENT ▶ PAU HANA ▶ EAT ▶ DRINK ▶ BE MERRY ▶ HAPPY HOUR

Stephen Harris 5:30-7:30pm
MINA's Fish House 679-0079
Live Contemporary Hits
 Jenna Keala 6-9pm
Moani Waikiki 466-2629
Traditional Hawaiian, Reggae. DJ Spins from 10p-1:30am
 Liam Moletta 6-9pm
Monkeypod Kitchen Ko Olina 381-4086
Live Contemporary 3x a day including from 12:30 - 2 p.m.
 Kona Abergas 3:30-5pm
 John Akapo 7-9pm
Monkeypod Kitchen Waikiki 900-4226
Live Contemporary 3x a day including from 12:30 - 2 p.m.
 Sienna Souza 3:30-5pm
 Izik 7-9pm
PAI Honolulu 744-2531
Live Contemporary Hits
 Ben Vegas 4:30 - 6pm
Piko Kitchen & Bar 923-2032
Live Contemporary Hits
 Johnny Helm 5-9pm
Rumfire 921-4600
Live Contemporary Hits
 Stephen Inglis 4:30-7:30pm
 Drew Henmi 8-10:30pm
SHOR at the Hyatt Regency 923-1234
Live Contemporary Hawaiian
 Dave Watanabe 5-9pm
Signature Prime Steak 949-3636
Contemporary Pianist in the bar
 Grant Carvalho 6-9pm
Splash Bar at the Sheraton Princess Kaiulani 921-4600
Live Contemporary Hawaiian, DJ Jem spins from 2 -5pm
 Ben Kama Duo & Dancer 5-8pm
 Stephen Inglis (or Tad Jennings) 8-10pm
Stripsteak 896-2545
Live Contemporary
 Shane Kainoa 6-9pm
SWIM at the Hyatt Regency 923-1234
Live Contemporary Hawaiian
 Denny Ono (or others) 5-9pm
The Beach Bar at the Moana Surfrider 922-3111
Live Contemporary Hawaiian
 Keoni Ku (or others) 12-3pm
 Kailua Moon 3:30-6:30pm
 Kamuela Kahoano 7-10pm
The Edge at the Sheraton 921-4600
Live Hawaiian Music
 Christian Yrizarry (or others) 1-4pm
The Grove at the Modern Pool Deck 943-5800
Live Contemporary
 Danelle Parente 4-7pm
 Brad Kawakami (restaurant) 6-8pm
The Point Sunset Pool Bar at Turtle Bay 293-6000
Live Contemporary Hawaiian with Fireknife Dancer
 Mark Calderia 5-8pm
The Veranda at the Kahala Hotel 739-8760
Live Contemporary
 Johnny Valentine 6-9pm
Tropics Bar & Grill 949-4321

Live Contemporary
 Kumuhau Duo (or Duva & Deah) 3-5pm
Vintage 1901 at the Moana 921-4600
Contemporary Piano
 David Swanson 6:30-10pm

SATURDAY

Barefoot Beach Café at Queen's Beach 924-2233
Live Contemporary Hawaiian
 Vanessa Alputila 5:30-8:30pm
Chart House Waikiki 941-6660
Live Contemporary Hawaiian
 Tito Berinobis 6-9pm
Duke's Canoe Club Waikiki 922-2268
Live Contemporary Hawaiian
 Drew Henmi (or others) 12-2pm
 Kaiona Band (or others) 4-6pm
 Ells Simeona 7-9:30pm
 Sean Cleland 9:30-12am
Eating House 1849 Waikiki 924-1849
Live Contemporary Hawaiian
 Kings Kalohelani 10:30am-1pm
Hard Rock Cafe 955-7383
Live Contemporary
 Stephen Harris (or others) 8-10pm
House Without a Key 923-2311
Hawaiian music & hula by Miss Hawaii '73 Kanoë Miller
 Kapalama Trio 5-8pm
 Stephen Inglis 8:15 - 10pm
Kani Ka Pila Grille 924-4992
Hoku Award Winning Hawaiian musicians
 Ho'okena 6-9pm
Lewers Lounge 923-2311
Jazz Pianist
 Mike Tulba 5:30pm-8pm
 Maggie Herron & Dean Taba 8:30pm-12am
Mahi'ai Table 670-2778
Live Contemporary
 Kamakana Kawa'a 5-8pm
Mahina & Sun's 923-8882
Contemporary Hawaiian/Blues on the Lanai
 Savia Farang 6:30-9:30pm
Mai Tai Bar at the Royal Hawaiian 923-7311
Live Contemporary Hawaiian
 Ronson Asuncion (or others) 11am-2pm
 Dave Watanabe 6-9pm
Mariposa 951-3420
Live Contemporary
 Aisaiah Jacobs 2:30-5:30pm
Maui Brewing Company 843-2739
Live Contemporary Hawaiian
 Chapter II (or others) 3:30-5:30pm
Maui Brewing Kailua 518-2739
Live Contemporary Hawaiian
 Scott Magz (or others) 7-9pm
Merriman's Honolulu 215-0022
Live Contemporary
 Shane Kainoa 5:30-7:30pm
MINA's Fish House 679-0079
Live Contemporary Hits

Alex Oasay 6-9pm
Moani Waikiki 466-2629
Contemporary Reggae
 Braddah Ash 6-9pm
 Live Local Band 10pm-1:30am
Monkeypod Kitchen Ko Olina 381-4086
Live Contemporary 3x a day including from 12:30 - 2 p.m.
 Koa 3:30-5pm
 Javin Kai 7-9pm
Monkeypod Kitchen Waikiki 900-4226
Live Contemporary 3x a day including from 12:30 - 2 p.m.
 Michael Delara 3:30-5pm
 Kona Abergas 7-9pm
Piko Kitchen & Bar 923-2032
Live Contemporary Hits
 Biku Shimabuku 5-9pm
Redfish at the Wayfinder Waikiki 921-3220
Live Contemporary Hits
 Johnny Helm 6-10p
Rumfire 921-4600
Live Contemporary Hits
 Mark Caldeira 4:30-7:30pm
 Bronson Varde (1/27 - Kaleo Kahumoku) 8-10:30pm
SHOR at the Hyatt Regency 923-1234
Live Contemporary Hawaiian
 David Aquino 5-9pm
Signature Prime Steak 949-3636

FIRST SONG. BEST SONG.

JOIN US FOR BREAKFAST & START YOUR DAY ON THE RIGHT TRACK

MONDAY - SUNDAY
 8 AM - 12 PM

Honolulu
 280 Beach Walk
 +1 808.955.7383

Hard Rock CAFE
 HONOLULU

#HardRockCafe | hardrockcafe.com
 ©2024 Hard Rock International (HRI), Inc. All rights reserved.

Let's be Together...

DINING ▶ ENTERTAINMENT ▶ PAU HANA ▶ EAT ▶ DRINK ▶ BE MERRY ▶ HAPPY HOUR ▶

Contemporary Pianist in the bar
 Grant Carvalho 6-9pm

Splash Bar at the Sheraton Princess Kaiulani 921-4600
Live Contemporary Hawaiian, DJ spins from 2-5pm
 Brad Kawakami Duo & Dancer 5-8pm
 Tangi Tully 8-10pm

Stripsteak 896-2545
Live Contemporary
 Dustin Park 6-9pm

SWIM at the Hyatt Regency 923-1234
Live Contemporary Hawaiian
 Stan Albrecht 5-9pm

The Beach Bar at the Moana Surfrider 922-3111
Live Contemporary Hawaiian
 Chris Salvador 12-3pm
 Ronson Asuncion (or others) 3:30-6:30pm
 Koa Atwood 7-10pm

The Edge at the Sheraton 921-4600
Live Hawaiian Music
 Brad Kawakami 1-4pm

The Grove at the Modern Pool Deck 943-5800
Live Contemporary
 Mike Izon 4-7pm

The Point Sunset Pool Bar at Turtle Bay 293-6000
Live Contemporary Hawaiian with Fireknife Dancer
 Denny Ono 5-8pm

The Veranda at the Kahala Hotel 739-8760
Live Contemporary
 Jeanette Trevas (1/27 - David Aquino) 6pm-9pm

Tropics Bar & Grill 949-4321
Live Contemporary
 Ells Simeona Duo (or Chapter II) 3-5pm

Vintage 1901 at the Moana 921-4600
Contemporary Piano
 David Swanson 6:30-10pm

Live Contemporary Hawaiian
 Kimo Baker 10am-1pm
 Art Kalahiki 5:30-8:30pm

Chart House Waikiki 941-6660
Live Contemporary Hawaiian
 Dean & Dean 6-9pm

Duke's Canoe Club Waikiki 922-2268
Live Contemporary Hawaiian
 Justin Edwards (or others) 12-2pm
 Henry Kapono 4-6pm
 Kaiona Duo 7-9:30pm
 Tad Jennings 9:30-12am

Eating House 1849 Waikiki 924-1849
Live Contemporary Hawaiian
 Shane Kainoa 10:30am-1pm

Giovanni Pastrami 923-2100
Reggae Pop Music
 Kelandy 6:30-9:30pm

Hard Rock Cafe 955-7383
Contemporary Rock
 Brunch with Lovejack 10am-12pm
 Dylan (or others) 8-10pm

House Without a Key 923-2311
Hawaiian music & hula by Miss Universe '97 Brook Lee
 Pu'uhonua Trio 5-8pm
 Brad Kawakami 8:15-10pm

Kani Ka Pila Grille 924-4992
Hoku Award Winning Hawaiian musicians
 Nathan Aweau 6-9pm

La Hiki Restaurant at the Four Seasons 679-0079
Live Contemporary Hawaiian
 Jenna Keala (or Kamuela Kahoano) 11am-2pm

Mahi'ai Table 670-2778
Live Contemporary
 Johnny III 5-8pm

Mahina & Sun's 923-8882
Award-winning ukulele on the Lanai
 Jeff Rasmussen 6:30-9:30pm

Mai Tai Bar at the Royal Hawaiian 923-7311
Live Contemporary Hawaiian
 John Coelho & Kanoe Arola 11am-2pm
 Christian Yrizarry (1/21 - Keoni Ku) 6-9pm

Mariposa 951-3420
Live Contemporary
 Zaysha 12-3pm

Maui Brewing Company 843-2739
Live Contemporary
 Duva & Yas 3:30-5:30pm

Merriman's Honolulu 215-0022
Live Contemporary Piano
 Grant Carvalho 5:30-7:30pm

Moani Waikiki 466-2629
Contemporary Island Music
 Dustin Park 7-10pm

Monkeypod Kitchen Ko Olina 381-4086
Live Contemporary 3x a day including from 12:30 - 2 p.m.
 Kapono and Bella 3:30-5pm
 Lava 7-9pm

Monkeypod Kitchen Waikiki 900-4226
Live Contemporary 3x a day including from 12:30 - 2 p.m.
 Tad Jennings 3:30-5pm

Koa and Yazmin 7-9pm

Piko Kitchen & Bar 923-2032
Live Contemporary Hits
 Dominic Carlos 5-9pm

Rumfire 921-4600
Live Contemporary Hits
 Jenna Keala 4:30-7:30pm
 Alex Oasay (1/14 - Biku Shimabuku) 8-10:30pm

SHOR at the Hyatt Regency 923-1234
Live Contemporary Hawaiian
 Derrick Lee 5-9pm

Signature Prime Steak 949-3636
Contemporary Pianist in the bar
 Keith Montross 6-9pm

Splash Bar at the Sheraton Princess Kaiulani 921-4600
Live Contemporary Hawaiian
 Kailua Moon & Dancer 3:30-5:30pm
 Chris Luke 8-10pm

Swell at the Alohilani 294-4108
DJ Kenny Spins Poolside from 2-6 pm
 Jason Laeha 6:30-9:30pm

SWIM at the Hyatt Regency 923-1234
Live Contemporary Hawaiian
 Koa Attwood 5-9pm

The Beach Bar at the Moana Surfrider 922-3111
Live Contemporary Hawaiian
 YOZA 12-3pm
 Brad Kawakami 3:30-6:30pm
 Dave Watanabe 7-10pm

The Edge at the Sheraton 921-4600
Live Hawaiian Music
 Christian Yrizarry (1/21 - Jesse Kuikahi) 1-4pm

The Point Sunset Pool Bar at Turtle Bay 293-6000
Live Contemporary Hawaiian with Fireknife Dancer
 Danielle Parente 5-8pm

Tropics Bar & Grill 949-4321
Live Contemporary
 Ben Kama Duo 3-5pm

Vintage 1901 at the Moana 921-4600
Contemporary Piano
 David Swanson 6:30-10pm

SUNDAY

Barefoot Beach Café at Queen's Beach 924-2233

Plan an Adventure

Let Hawaii Nautical show your guests our ocean playground.
808-234-SAIL (7245)

TURTLES GUARANTEED

Enjoy our morning and afternoon snorkel sailings at Turtle Canyon with a wildlife guarantee! See turtles or cruise again for free (certain rules apply). Wildlife guarantee is for re-rides only, no refunds.

Dining Dish



Threadfin Bistro's Kula Persimmon Salad

There are some great new restaurants around town lately, and one of the newest places I am super excited about is **Threadfin Bistro** on Kapahulu. *Chef Jason Kiyota* offers a menu filled with items that are exploding with flavor and look as if they dropped off

the pages of a magazine. Abalone was served escargot-style with a delectable cognac butter that I could put on anything. Other items we tried included a Raw Beet & Fuji Apple Salad with lemon scented goat cheese, truffle vinaigrette, Onaga with a perfectly fried piece of skin artfully placed on top and a Mugifuji Pork Tenderloin with a lovely huckleberry pine nut ragout. A friend had a Hokkaido Scallop dish with a wild mushroom and corn risotto with an olive tomato relish that rocked his world I can't wait to try. This tiny hole in the wall is going to make a big splash. Offering a three-course fixed menu that changes frequently for under \$80 per person (it was \$68 last week), put this place on your must-go list. Open for dinner Thursday – Saturday from 5:30 – 8 p.m. threadfinbistro.com. 692-2562. • **Texas de Brazil**, has opened in Ala Moana Center, bringing authentic churrasco-style cooking to Ho'okipa Terrace. Guests will be able to enjoy 15 different cuts of high-quality meat and endless access to an extensive salad area for \$69.99. Servers will bring the flame-grilled skewers to your table, where they will be sliced onto your plate. Non-meat eaters can order the salad area only for \$39.99. Open for dinner daily at 4 p.m. texasdebrazil.com. 944-2702. • **808 Craft House** opened in Ko Olina Resort offering casual dining, local craft beers and cocktails. Calling themselves "Grain to Glass, Farm to Table," the menu includes everything from Smoked Ahi Dip to Roasted Beet Poke, Superfood Salad to Sicilian-style pizzas and more. Open from 11 a.m. – 11 p.m., happy hour is 2 – 5 p.m. daily. 808craft.com. • I checked out two of the new restaurants I mentioned last month. **Blue Fish Waikiki** is tucked away on the 2nd floor of Waikiki Beach Walk in the former Cheeseburger location. It offers an extensive menu, and their signature sushi rolls and sashimi selections were really good. Happy hour is offered daily from 4 – 6 p.m. with special prices on sushi, food, drinks, and \$1 sake. Wednesdays are Industry Nights where those with ID can order from the happy hour menu all night long. 892-1115. • I also checked out **Straits Hawaii**, whose menu brings the flavors of Southeast Asia alive. Executive **Chef Reid Matsumura**, formerly with Redfish Poke Bar, is combining traditional flavors with modern techniques to present Singaporean cuisine with an innovative approach. I really love the variety of cuisines offered by the restaurants in Ward Village these days.



Chef's Corner

Threadfin Bistro Executive Chef Jason Kiyota

Chef Jason Kiyota, who earned a cult-like following during his time at the Food Company in Kailua, is wowing diners with his new neighborhood bistro offering wine-friendly globally-focused dishes that are as flavorful as they are beautiful, each dish more perfectly plated than the one before. The prix-fixe menu will change regularly, but he will offer customer favorites, like the Kona Abalone with cognac butter, as add-ons to share. Check his Instagram for the latest menu, and no matter what he is serving you will not be disappointed!

What is your first food memory?

Having fresh fish for dinner regularly that my dad and I caught fishing. Especially Moi and Papio.

When did you know you wanted to be a chef?

I got a job as a dishwasher that led to food prep/ line cooking and eventually to culinary school. That's where I got the drive to become a chef.

Who would you consider your mentor?

Chef Alfredo Cabacungan my former instructor and culinary travel partner. He would always be hard on me to learn European classics, especially French cooking.

Once you graduated from KCC, what made you decide to move to Thailand?

I was awarded a scholarship to study abroad. My mentor set me up with a cooking college that he had ties with. I spent a year there studying and traveling throughout the country to learn various regional Thai cuisines.

Why did you move to Napa?

The second part of the scholarship brought me to Napa. I took various continuing education courses at the CIA. That is also where I fell in love with wine and food pairing.

Is there one dish that inspired your cooking style? What other profiles inspire you?

There was no one dish. It was an accumulation of various dishes from my travels that inspired me.

How would you describe your cooking style?

I would say European classics with Thai and global fusion.

Why did you open Threadfin Bistro?

To offer and serve the community with a warm and friendly place to dine.

Did you bring any signature items from The Food Company over?

The Kona Abalone with cognac butter and a lot of our fresh fish and seafood options.

How often will your menu change?

We are still fine tuning our menu. Right now we are doing small changes weekly on our prix fixe and are planning a small market ala carte menu shortly.

How do we find out what's on the menu?

On our website or Instagram.

Do you accommodate special requests? (Seriously, I would want to order that cognac butter every time I go there!)

Yes we always accommodate our guests as best we can.

What's your favorite part being a chef?

Serving people and working with my culinary family (team.)

What restaurant do you like to go to when not working?

Inaba, Sushi Izakaya Gaku and Akira. But honestly I like to support all our fellow chefs and restaurants.

Thai Yellow Curry with Fish



Ingredients:

- 10-12 oz. fresh salmon filet, diced 1 1/2"
- 1 ea 13.5oz. coconut milk. (Chao Koh brand)
- 1 1/2 T. Thai yellow curry paste (Mae Ploy brand)
- 1/4 c. zucchini, lg dice
- 1/4 c. red bell pepper, lg dice
- 1/4 c. sweet onion, lg dice
- 1 ea. lemongrass stalk, bruised
- 5 ea. fresh makrut lime leaves
- 2 T. cane sugar
- 1 1/2 T. Thai fish sauce
- 1/4 c. dry white wine.
- 1 T. Canola oil

Directions:

1. Heat oil on med in a sauce pan.
2. Add curry paste and stir for 30 seconds or until fragrant.
3. Add white wine and reduce by half.
4. Add coconut milk and bring to a slow simmer for 5-10 min.
5. Add cane sugar and fish sauce.
6. Add vegetables and cook for 3-5 min or until just cooked through.
7. Add salmon, stir for 2-3 min and turn off heat and let sit for a few min.
8. Taste and adjust sugar and fish sauce if needed.
9. Serve with Jasmine rice.

Threadfin Bistro is located at Kilohana Square at 1016 Kapahulu Avenue

Open for Dinner: Thursdays, Fridays and Saturdays from 5:30 - 8 p.m.

Web: threadfinbistro.com • Instagram: [@threadfinbistro](https://www.instagram.com/threadfinbistro) • Ph: 692-2562

JANUARY CALENDAR OF EVENTS

Continuing Events

MONDAYS, WEDNESDAYS & FRIDAYS O NĀ LANI SUNSET STORIES HULA SHOW

Honoring the rich history and sense of place of the International Market Place through song & dance. It begins at sunset with the lighting of the Lamakū Torch Tower on Kalākaua Avenue and leads to the Queen's Court. Free. 7 p.m. shopinternationalmarketplace.com.

TUESDAY THRU SATURDAY ARTS AT MARKS LATEST EXHIBIT

This month's exhibition at the Arts at Marks Garage will be Surf's Up featuring art by surfers and other artists, including the 1978-79 World Champion Woman Surfer, Lynne Boyer. Enjoy a Meet the Artists reception at Pau Hana Friday on the first and final Friday of the month from 5 - 8 p.m. Open Tues-Sat. from 12 - 5 p.m. artsatmarks.com.

WEDNESDAYS, SATURDAYS & SUNDAYS ALOHA STADIUM SWAP MEET

The Aloha Stadium Swap Meet has been going strong since 1979. Featuring over 400 vendors, crafters and artists, the Swap Meet offers low-prices on a wide selection of quality products with food trucks to snack from. Wednesdays & Saturdays: 8 a.m. - 3 p.m., Sundays, 6:30 a.m. - 3 p.m. \$2 admission ages 12 & up, \$1 for locals. alohastadium.hawaii.gov.

FIRST & THIRD THURSDAY (JANUARY 18) SIP & SHOP MARKET

Supporting Hawaii grown businesses & encouraging the community to shop local over live music + 'ono eats from Mahina & Sun's. Surfjack Hotel. \$8 parking for 4 hours validation at the Hyatt Centric. surfjack.com.

FIRST FRIDAY (JANUARY 5) DOWNTOWN GALLERY WALK & CRAFT FAIR

Downtown comes alive the first Friday of every month as art lovers fill the streets for Honolulu's outdoor self-guided arts tour. Stores spill out onto the sidewalk, and artists are on hand to chat about to their works, and restaurants are ready to serve you. Don't miss the living art exhibition in the windows of The ARTS at Marks Garage, as they relight the Red Light District of Honolulu with burlesque and go-go dancers from 9 - 10 p.m. Monthly updates are published on participating merchant websites, or two days before the event at firstfridayhawaii.com.

SECOND FRIDAY (JANUARY 12) BISHOP MUSEUM AFTER HOURS

Extended after-hours access to the Museum with a special Pau Hana. Experience unique changing exhibitions, hear about the latest scientific discoveries, engage with Hawaiian cultural practitioners, or spend the evening on the Great Lawn with food and drinks for sale. 5:30 - 9 p.m. \$10 at the door. (\$5 pre-sale) bishopmuseum.org.

FRIDAYS ROYAL HAWAIIAN BAND LUNCHTIME SHOW

The Royal Hawaiian Band returns to 'Iolani

Palace for its popular lunchtime concerts. Held on most Fridays, the concerts are free and open to the public. 12 - 1 p.m. iolanipalace.org

FRIDAYS & SATURDAYS • HOMA NIGHTS

On Friday and Saturday nights, regular museum admission also includes live musical performances, hands-on art activities, pop-ups in the HoMA Shop, movies on the lawn, bar service at the HoMA Cafe, and other interactive art experiences. The museum stays open until 9 p.m. honolulumuseum.org.

SATURDAYS & SUNDAYS ART ON THE ZOO FENCE

Art On The Zoo Fence is a group of resident Hawaii artists that meet every Saturday and Sunday to display and sell art and photography on the Zoo fence on Monsarrat Avenue opposite the Kapiolani Park Bandstand. This is the only outdoor art venue in Honolulu that has proudly been displaying art since 1953. 9 a.m. - 3 p.m. Free. artonthezoofencehi.com.

SECOND SUNDAY (JANUARY 14) MELE HALI'A

Waikiki Beach Walk celebrates Hawaiian music with award-winning musicians one Sunday a month on the Plaza Stage. Watch a different performer each month from 5-6 p.m. waikikibeachwalk.com.

SECOND SUNDAY (JANUARY 14) KAMA'AINA SUNDAYS

Kama'aina Sundays are back at 'Iolani Palace. Locals can take advantage of free tours, entertainment, family-friendly activities and plenty of food options with proof of residency. Free tours will be available to the first 500 guests. 9 a.m. - 2 p.m. iolanipalace.org.

THIRD SUNDAY (JANUARY 21) FAMILY FREE SUNDAY

Thanks to Bank of Hawaii, kama'aina have been offered free admission with ID on the third Sunday of the month since 2004. With engaging activities for keiki of all ages, entertainment, and community-focused programming around the museum, this is a great way for families to spend creative time together. Free admission for kama'aina. 10 a.m. - 6 p.m. 532-8700. honolulumuseum.org.

JANUARY 4 OLD DOMINION



Old Dominion has created their own lane in country music, created a sound unlike any in country music bringing them countless awards and legions of fans around the world. Their No Vibes Tours hits the Blaisdell

Arena for one night. 7:30 p.m. Tickets: \$65.60 - \$145.50. ticketmaster.com.

JANUARY 5-6 MICRO MANIA MIDGET WRESTLING

The MicroMania Tour is a high powered, explosive, athletic Pro Wrestling show with just the right touch of comedy thrown in. These micro athletes may be short in stature but are giants in the world of entertainment, and will keep you on your feet wanting more. 8 p.m. \$35-\$69. The Republik. bampproject.com.



It's never been a better time for your guests to experience the Polynesian Cultural Center. They can explore our six island villages with our popular Gateway Buffet package or our Islands & HĀ Show package. For more information, visit polynesia.com.



JANUARY CALENDAR OF EVENTS

JANUARY 5-6 • BIG MOUNTAIN



Big Mountain first hit the charts in 1992, but their song "Baby, I Love Your Way," is one of the most well known love songs of all times. Two shows each night at 6:30 and 9 p.m. \$35-45. bluenotehawaii.com.

JANUARY 6 - 7 HAWAII POP CON

The largest sports, trading cards, comic book, anime, and pop culture convention in Hawaii. Meet & Greet with Sports Stars, Local and International Celebrities, Comic Book and TCG Artists, food trucks, live performances, and more. Tickets: \$25-\$200. 10 a.m. - 6 p.m. Blaisdell Exhibition Hall. ticketmaster.com.

JANUARY 7 ONENESIAN

For the first time ever in the USA, international rap duo HP Boyz will be joining up and coming California rapper Cuuhraig and the remix king DJ Noiz to bring a night of upbeat and melodic music. Opening the night will be Hawaii's own, local hip-hop artists Boto Bangaz, Juws, Kaiika, and UceShxt. Tickets: \$60. 6 - 11 p.m. The Republik. 455made.com.

JANUARY 8 - 14 SONY OPEN IN HAWAII

144 of the world's greatest golf professionals are heading to the Waialae Country Club for the largest charity golf event in Hawaii. The Sony Open has raised over \$23 million dollars for more than 100 not-for-profit organizations each year since 1999 and will be shown live around the world. sonyopeninhawaii.com.

JANUARY 12-13 SISTER SLEDGE



The ladies behind the iconic hit "We Are Family" are one of the most iconic female groups of all time will perform two shows each night at 6:30 and 9 p.m. Tickets \$55-65. bluenotehawaii.com.

JANUARY 13 THE MUSIC OF STUDIO GHILBI

The Hawaii Symphony Orchestra presents the music of legendary Studio Ghibli favorites in a symphonic performance. Enjoy the spellbinding music from fan faves, "My Neighbor Totoro," "Spirited Away," "Howl's Moving Castle," and "Kiki's Delivery Service." \$25-\$75. 7:30 p.m. hawaii theatre.com.

JANUARY 13 WAIKIKI FESTIVAL

The festival will shut down Kalakaua and showcase food trucks, food booths, retail and handmade craft booths from local vendors. 4 - 10 p.m. Lane closures begin at 1 p.m. millwoodohanaproductions.com.

JANUARY 13 MU'U AT MUSEUM

In honor of Queen Emma's 188th birthday celebrate Mu'umu'u Month with the 3rd Annual Mu'u at the Museum. This year's event draws its inspiration from the Great Chinese Merchants'

Ball of 1856 with its "Where East Meets West" theme. Heavy pūpū and specialty cocktails will be available as well as a few other surprises throughout the event. Tickets are \$150, \$85 for Youth (25 years old & younger). Queen Emma Summer Palace. 5-9 p.m. daughtersofhawaii.org.

JANUARY 13 2024 NEW YEARS OHANA FESTIVAL

The New Year's Ohana Festival is a celebration of the most beloved local and Japanese New Year traditions in the islands. The festival features food, cultural demonstrations, and entertainment for all. 10 a.m. - 4 p.m. Japanese Cultural Center of Hawai'i. jcchawaii.org.

JANUARY 13-15, 19-21 FRIENDS OF THE LIBRARY OF HAWAII ANNUAL MUSIC & BOOK SALE

The 13th annual Music and Book Sales offers Over 25,000 Records, 10,000 CDs, plus DVDs, 20,000 Books, Audio Books, Artwork, Comics, and more. Located at the former Pier 1 Store at Ward Village. Open 10 a.m. - 5 p.m. or 10 a.m. - 7 p.m. friendsofthelibraryofhawaii.org.

JANUARY 14 MASTERWORKS - BRAHMS SERENADE NO.1

Maestro Anthony Parnter will be the guest conductor of the Hawaii Symphony Orchestra with pianist David Kaplan as they perform Mozart's Piano Concerto No. 24 paired with Brahms' Serenade No. 1 and Florence Price's dark and enigmatic tone poem, The Oak. There will be a special pre-concert talk at 3 p.m. \$27-\$99. Show at 4 p.m. hawaii theatre.com.

JANUARY 17-18 • THE FOUR TOPS



Inducted into the Rock and Roll Hall of Fame in 1990, the Motown icons, known for such hits as "Baby I Need Your Loving" and "Sugar Pie, Honey Bunch" will perform two shows each night at 6:30 and 9 p.m. Tickets \$75-85. bluenotehawaii.com.

JANUARY 18-19 • 311 IN CONCERT

Their 1995 triple platinum self-titled album threw the band into the spotlight with the hits "Down" and "All Mixed Up," and songs like "Beautiful Disaster" kept them there for years. 8 p.m. Tickets: \$69.50. The Republik. bamproject.com.



JANUARY 19 POLYNESIAN BOWL

The top Polynesian high school players from around the country gather in Hawai'i during the Polynesian Football Hall of Fame Enshrinement Week to celebrate their culture and play a special game each year that is broadcast live on the NFL Network. The game takes place at 4 p.m. Kūnuīākea Stadium, Kam Schools. Tickets \$20. polynesianbowl.com.

Continued on page 17.



Award-winning entertainment by Malu Productions
Select packages include admission to day time activities
NEW vegan curry and seasonal salads
AYCE buffet prepared fresh on-site

808-259-2500 • ALOHAKAILUAU.COM

What's New at SLP

continued from page 2.

education about these fascinating animals and how to respect them in the wild. This will be the first event in a year-long celebration, recognizing the 50th Anniversary of the park's Honu Conservation Program as well as the collective efforts of like-minded organizations that are making a daily difference in Hawaiian green sea turtle conservation awareness. To date, Sea Life Park's Honu Conservation Program has released more than 17,000 turtle hatchlings into the wild and provided ongoing education about honu and their important role in our reef ecosystems.



Little girls have been dreaming of being a mermaid for years. Well, Hawaii's one stop shop for all things party entertainment, offering everything from face painting, to characters, balloons, glitter tattoos and

more, Storybook Entertainment, has opened a new mermaid makeover bar called "Tails and Scales" at the park, turning those dreams into reality. Keiki can transform into mystical sea creatures with creative costumes, face paintings, hair enhancements and more. Tails and Scales is nestled in a charming space across from the Dolphin Lagoon and is open daily during regular park hours. Skip the line and book an appointment in advance at storybookstationhawaii.com/tailsandscales.

For more information on Sea Life Park, the new exhibits and more, call 259-2500 or visit sealifeparkhawaii.com.



This was the event everyone has been asking for. Monkeypod Waikiki opened this past summer and it's been a huge success with visitors and locals alike. Located on the ocean side of the Outrigger Reef Hotel in the former Shorebirds location, the restaurant is open from 7 a.m. - 11 p.m., offers happy hour from 3:30 - 5 p.m. daily, and has live music 3x a day! Attendees got to check out the location during sunset, sample menu items and win prizes! monkeypodkitchen.com.



WAIKIKI BAPTIST Church
Your Church in Waikiki
424 Kuamo`o St
(Near the Ambassador Hotel)
Sunday Worship Services
9:00 AM - Contemporary
10:45 AM - Traditional
(808)955-3525
WaikikiBaptist.com

A Message from Ocean Safety

continued from page 7.

Ocean Safety deploys eight rescue jet ski teams daily and eight other mobile responder units (in addition to staffing 42 towers), and those 16 mobile units responded to 202 rescues, including 23 vessel cases and two aircraft cases, managed 153 trauma cases, 37 of which were spinal or cervical cases, assisted the Honolulu Police Department 14 times, including two cases involving the apprehension of fugitives, and patrolled after 112 shark sightings.

Lifeguards remind visitors to:

- **Know before you go** – check out the signs, the beach, the lineup, etc, before you get in the water. Sometimes, just watching for a moment can help you assess the situation and see where to get in the water and, more importantly, how to get out;

- **Know your limits** – by getting the information ahead of time on swell size, wind, current, etc. (and all of this is readily available on any good website or app drawing its information from the National Weather Service), you can figure out the best place to go for the visitor and/or a family;

- **Know some humility** – there is absolutely nothing wrong with asking the lifeguards what's been happening all day at a beach; even lifelong residents do this on a daily basis, because conditions can change hour to hour, and a lifeguard on duty has been watching it all day;

- **Know the marine life hazards** – threats of shark attacks, etc., are often exaggerated, but it's important not to swim in murky areas, especially at dusk and dawn; don't get close to Hawaiian monk seals; watch out for wana (sea urchin); watch out for jellyfish – signs will be posted – and generally, the concierge desks are well aware of when we see the jellyfish influxes;

- **Know HNL.info** – download the app and set the alerts for anything related to Ocean Safety.

Once again, we thank all of you in the visitor industry for doing your part in helping keep our visitors and kama'āina safe on our beaches. We appreciate your continued cooperation. Mahalo and O'ahu's Lifeguards hope everyone had a safe and Happy Holiday!

JANUARY CALENDAR OF EVENTS

Continued from page 15.

JANUARY 19 • NICK SWARDSON



A comedian, actor, writer and producer, Nick Swardson has found success on the small and silver screens as well as the live stage. His unique comedic view has made him a regular guest on the talk show circuit, and he tours regularly with Adam Sandler, David Spade and Rob Schneider. \$49.50-\$59. 8 p.m. hawaii theatre.com.

JANUARY 19

NICOLE BYER & MATTEO LANE LIVE

Nicole Byer, comedian, actress, and prolific podcaster known for her hilarious role in Brooklyn Nine-Nine as Trudy Judy has joined forces with hilarious stand-up comedian Matteo Lane who has been selling out shows across the country. \$49.50-\$59. 8 p.m. hawaii theatre.com.

JANUARY 19 - 20

POLYNESIAN FOOTBALL HALL OF FAME

The Polynesian Football Hall of Fame honors Polynesia's greatest players, coaches, and contributors to the game. The Class of 2024 includes Dwayne "The Rock" Johnson, Reno Mahe, and Domata Peko. The College players of the year are Taulia Tagovailoa from University of Maryland and UCLA's Laiatu Latu. Polynesian Cultural Center. 9 a.m. – 1:30 p.m. Tickets are \$25 and include lunch and admission to PCCs villages. Sunday's Celebration Dinner at the Sheraton Waikiki. PolynesianFootballHOF.org.

JANUARY 20

THUNDERSTORM ARTIS



North Shore born and bred artist Thunderstorm Artis hit the big time as a Season 18 finalist of The Voice. He will be joined by special guests Todd Carey and Jenny Yim at The Republik. 8 p.m. Tickets: \$39.50. bamproject.com.

JANUARY 20

MEET THE FOUNDER OF MR. YOSHIDA'S

The owner and founder of Mr. Yoshida's® Marinade and Cooking Sauces, Junki Yoshida, will be talking about how he transformed his life when he moved to the States in 1968 and began making his family's secret gourmet sauce to give to friends. Learn how he turned that into a successful line of sauces available around the

country. He will give three seminars at the Prince Waikiki at 10 a.m., 11:30 a.m., and 12:15 p.m., along with a VIP dinner at Fujiyama Texas at 6 p.m. His speech will presented only be in Japanese. An English translation will not be available. Tickets on Eventbrite or call 429-0825.

JANUARY 20

UB40 WITH ALI CAMPBELL

One of the most commercially successful reggae acts of all time, legendary English band that formed in 1978, is on tour with their original lead singer, Ali Campbell. Tickets: \$79 - \$299. Blaisdell Arena. 7 p.m. ticketmaster.com.

JANUARY 25

TAVANA WITH KEITH BATLIN



Tavana is joined by Keith Batlin for a special night of rock, blues and everything in between. With these two artists you know the show will not disappoint! 7 p.m. \$25-35. bluenotehawaii.com.

JANUARY 26

ARTS AT MARKS GARAGE SALE

Check out this unique Garage Sale at the ARTS at MARKS featuring new and used surf gear, among other things. 12 - 5 p.m. artsatmarks.com.

JANUARY 28 • ALII SUNDAY

Ali'i Sundays are among the many long and honored traditions of Kawaiaha'o Church. Each year, the celebrate nin Alii Sundays on Sundays or the Sunday just before the birthday of the Ali'i. Today the church will celebrate King William Charles Lunalilo born January 31, 1835 from 9 - 10 a.m. kawaiaha.org.

JANUARY 28

DRAG QUEEN BINGO

Looking to spice up your Sunday Brunch? Head over to Hard Rock Cafe for Drag Queen Brunch Bingo with your host Candi Shell. 12 - 2 p.m. Reservations at opentable.com

JANUARY 28-29

LOS LOBOS 50TH ANNIVERSARY

The numbers are staggering, Los Lobos has performed 100+ gigs a year for five decades running, crossing millions of miles to rock millions of fans, and they are coming to Hawaii for two shows as part of their 50th anniversary celebration. 8 p.m. Tickets \$55-75. bluenotehawaii.com.

FEBRUARY 14TH WEDS

Motown Valentines

PAUNA FUGA | KINGS OF SPADE | TAVANA

TICKETS: \$40-\$100 | \$100-\$150 | \$150-\$200 | \$200-\$250 | \$250-\$300 | \$300-\$350 | \$350-\$400 | \$400-\$450 | \$450-\$500 | \$500-\$550 | \$550-\$600 | \$600-\$650 | \$650-\$700 | \$700-\$750 | \$750-\$800 | \$800-\$850 | \$850-\$900 | \$900-\$950 | \$950-\$1000

TIX: [KINGSOFSPADE.COM](https://www.kingsofspade.com) & [JOINTHEREPUBLIK.COM](https://www.jointherepublik.com)

DOORS 7P SHOW 830P 18+ PRE-SALE \$40 / VIP FOOD & WINE TABLE \$275

**Make a difference
starting with you**

*De-stress • Refresh •
Relax • Heal*

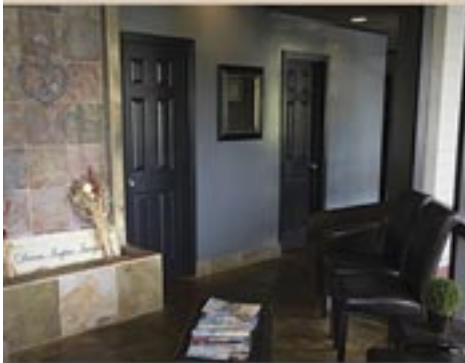


All New Clients Receive
10% off
their first massage

**EXPERIENCE SERENITY AND
MASSAGE FOR YOURSELF**

- Full 60 & 90 minute massages
- Peaceful, tranquil atmosphere
- Talented licensed massage therapists
- We follow COVID safety protocols
- Save \$26 per massage as a member
- *Services include:* Swedish, Lomi Lomi, Deep Tissue, Shiatsu, Reiki, Prenatal, Trigger Point Therapy, Neuromuscular Therapy, and more

We offer in-home/room massage services. Please call to inquire.



**HAWAII KAI
SHOPPING CENTER**

377 Keahole St., Ste. 207 (across from Safeway)

Call us at **396-7594**

Text us at **862-6163**

serenityandmassage.com



**INTERNATIONAL
MARKET PLACE**

A little rain wasn't going to stop the International Market Place from putting on a fabulous Concierge Appreciation Event as our final event of the year. Guests noshed on bites from Moani, Stripsteak, Skybox, Kuhio Avenue Food Hall and Magnolia Ice Cream. Tippy Tiki Bar served the drinks while guests making their own jewelry from The Gem Store, letting Drybar style their hair, and popping into the photo booth while winning some of the amazing prizes donated by the tenants.



That's Entertainment

HOTELS

- 'ALOHI LANI RESORT** 922-1233
• **Daily** - Fish Feeding 10:30am & 2:30pm *O Bar*
• **Daily** - Live Music 6:30-9:30pm *Swell Bar*
• **Daily** - Light Monument Video Art Series 7-9pm *Swell Bar*
• **SunWedSat** - Tank Talk 9am. *O Bar*

- HALEKULANI** 923-2311
• **Daily** - Music & Hula 5:30-8:30pm *House Without a Key*
• **TWThFS** - Live Jazz 8pm - 12am, *Lewers Lounge*
• **Sun** - Sunday brunch w/Noly Paa on piano 9:30am - 2pm
HILTON HAWAIIAN VILLAGE 949-4321

- **Fri** - Fireworks at 8pm
• **SMTWThF** - Live entertainment, Tapa Bar. 7-10pm
• **FriSat** - Live entertainment, Paradise Lounge. 7-10pm
HYATT REGENCY WAIKIKI 923-1234
• **MWed** - Farmer's Market from 4-8pm
• **Mon-Fri** - Cultural Programs at the Ho'okela Culture Center
• **TTh** - Walking Tour thru parts of Waikiki at 10am
• **TTh** - Live Hawaiian music at Pualeilani Atrium, 4-6 pm

- KAHALA HOTEL & RESORT** 739-8888
• **Mon** - Free kapala stamping at The Veranda at 10am
• **Tues** - Free lauhala weaving at The Veranda at 10am
• **WFSat** - Free lei making at The Veranda at 10am
• **Thurs** - Free hula dancing at The Veranda at 10am
• **ThFSat** - Live entertainment at The Veranda from 6-8pm.
• **FriSat** - Afternoon Tea at The Veranda at 2pm & 3:30pm
• **Daily** - See the interactive dolphin programs every hour

- LUANA WAIKIKI HOTEL & SUITES** 955-6000
• **MWF** - Enjoy live music and hula on the Mezzanine 5-6pm
MOANA SURFRIDER 922-3111
• **Daily** - Live music at The Beach Bar, 4:30-6:30pm, 7-10pm
• **WThFSSu** - David Swanson at Vintage1901, 6:30-10pm
• **SatSun** - Afternoon Tea at the Veranda, 11:30am - 2:30pm

- OUTRIGGER WAIKIKI BEACH** 923-0711
• **Daily** - Live music at Duke's 4-11:30pm, Sat/Sun from 10am
OUTRIGGER REEF WAIKIKI BEACH 923-3111
• **Daily** - Live Hawaiian music at Kani Ka Pila Grille. 6-9pm
PRINCE WAIKIKI 956-1111

- **ThFSSu** - Live music at 100 Sails from 6-8pm
• **Sat** - DJ KK poolside from 2-5pm, Sun from 2:30-5:30pm
SHERATON PRINCESS KA'IULANI 922-5811
• **Daily** - Live music poolside 6-9pm. DJ from 3-6pm.

- THE ROYAL HAWAIIAN** 923-7311
• **Daily** - Live Hawaiian music at the Mai Tai Bar. 11am-2pm
• **TWFSSu** - Live Hawaiian music at the Mai Tai Bar. 6-9pm
• **MTh** - Live Hawaiian music at the Mai Tai Bar. 8-10pm
TURTLE BAY RESORT 293-6000

- **Daily** - Live music at The Pointe Pool Bar, 4-7pm
• **Daily** - Live music at Off the Lip, 7pm
• **Daily** - The Stable at Turtle Bay offers a variety of experiences
WAIKIKI BEACH MARRIOTT RESORT 922-6611

- **Daily** - Live music, Queensbreak Restaurant 5:30-8:30pm
• **Daily** - Live music in the Lobby 6-9pm

FARMERS MARKETS

- WBW OPEN MARKET**
• **Mon** - Set up on the Plaza at Waikiki Beach Walk. 4-8pm.
HYATT REGENCY FARMERS MARKET 225-4002
• **MonWed** - Hyatt Regency 1st floor waterfall atrium 4-8pm

- HAWAII FARM BUREAU MARKET** 848-2074
• **Wed** - Set up on the Blaisdell Concert Hall Lawn 4-7pm.
ALOHA HOME MARKET 225-4002
• **Sun** - Kailua 340 Uluniu Street 9-2pm.
• **Sun** - Ala Moana Mall Level 2 parking by Macys 9am-2pm.

- HALE'IWA FARMERS MARKET** 388-9696
• **Thurs** - Located at Waimea Valley. 2-6pm
MAHIKU FARMERS MARKET 225-4002
• **Thurs** - Bottom level International Market Place 4-8pm.

- KCC FARMERS MARKET** 848-2074
• **Sat** - Kapiolani Community College 7:30-11am

- KAKA'AKO FARMERS MARKET** 388-9696
• **Sat** - 919 Ala Moana Blvd & 210 Ward Avenue. 8am-12pm
PEARLRIDGE FARMERS MARKET 388-9696
• **Sat** - PearlrIDGE Mauka by Macy's. 8am-12pm

- KAILUA FARM BUREAU MARKET** 848-2074
• **Sun** - Kailua Town Center. 4-7pm
KAILUA TOWN FARMERS MARKET 388-9696
• **Sun** - Enchanted Lake Center by Kailua Cinema. 8am-12pm

ATTRACTIONS

- FOSTER BOTANICAL GARDEN** 768-7135
• **Daily** - Hawaii's oldest Botanical Garden in the midst of downtown open 9am - 4pm. \$5/\$1 keiki (kama'aina \$3)
• **Daily** - Free docent-led tours at 10:30am. Reservations rec.
HONOLULU ZOO 926-3191

- **Daily** - The Zoo is open from 10am - 4pm. Last Entry at 3pm. GA \$19 adult/\$11 keiki (kama'aina \$8/\$4).
• **Sat** - Explore the Zoo after the gates close 5:30-7:30pm.
KUHIO BEACH HULA SHOW 843-8002

- **TSLastSun** - Free show 6:30 - 7:30pm Kuhio Hula Mound
JWAIKIKI AQUARIUM 923-9741
• **Daily** - The Aquarium is open from 9am - 4:30pm. GA \$12 adult/\$5 kids (kama'aina \$8).
• **1st3rdTue** - Hawaiian Plant Tour. 1:30pm. Free w/admission

MUSEUMS

- BISHOP MUSEUM** 847-3511
• **Daily** - The 15-acre campus offers guests a chance to learn about the cultural and natural heritage of Hawai'i and the Pacific across three different exhibition buildings. Daily planetarium shows, a highly unique native Hawaiian botanical garden, and more. 9am-5pm.

- HAWAII STATE ART MUSEUM** 586-0900
• **Mon-Sat** - 'Museum Interpreters' on-site to provide visitors with basic information about the museum and artwork. Special evening events as listed below. Open 10am - 4pm.

- **1stFri** - Live entertainment and food vendors. 6-9pm
• **2ndFri** - "Vibe" Jazz performances & food vendors. 6-9pm
• **4thFri** - Hawaiian music night. 6-9pm
• **3rdSat** - Family Arts & Crafts Day 11am - 3pm

- HONOLULU MUSEUM OF ART** 532-8726
• **ThFSSu** - Tour & Talk Story 11am. Free with admission.
• **ThFSSu** - Highlights tour 2pm. Free with admission.
• **FSat** - HoMA Nights, open until 9pm. Free with admission.

- HONOLULU FIRE MUSEUM** 723-7167
• **3rdSat** - Free one-hour guided tours through various exhibits with a firefighter recounting HFDs history the 3rd Saturday of every month. 9am - 2pm on the hour. 620 South Street. Reservations required. Book online: fire.honolulu.gov then hit the submit request button and click museum tours.

- IOLANI PALACE** 522-0832
• **TThS** - Audio tours available from 9am - 4pm
• **WTh** - Docent-led tours available from 9am - 4pm
• **EveryOtherWed** - He Mele Lahui Hawaii with Ku'uipo. 9am
• **Fri** - Royal Hawaiian Band. Free. 12-1pm
• **SunMon** - Museum Closed

- LUCORAL MUSEUM** 778-8189
• **Mon-Fri** - Free self-guided tours featuring local and global gemstones and a one-of-a-kind dinosaur egg. Visitors can also create their own one-of-a-kind jewelry. 10% off gift shop with mention of Oahu Concierge. 10am-5pm.

- HAWAIIAN MISSION HOUSES** 447-3910
• **TW** - Docents lead tours through the oldest existing frame house in the Islands. 11am, 12pm, 1pm and 2pm
• **ThFSat** - 11am, 12pm, 1pm, 2pm and 3pm tours
• **TWThFsa** - Gift shop open 10:30am - 4pm

- PEARL HARBOR AVIATION MUSEUM 441-1000**
• **Daily** - Vintage aircraft in battlefield hangars at Pearl Harbor, outdoor exhibits, flight simulators, and the Bob Hope: An American Treasure Exhibit. Shuttle & Tickets at USS Arizona Memorial Visitor Center or PearlHarborAviationMuseum.org.

SHOPPING CENTERS

- ALA MOANA CENTERSTAGE** 955-9517
• **Daily** - Hula Show, 5pm.
• **EveryOtherWed** - Royal Hawaiian Band. 11am.
• **Sat** - Local entertainment, 3pm.

- **Sun** - Keiki Hula Show, 1pm.
• **Every2nd&LastFri** - Night Market Food Truck and Craft Fair corner of Atkinson Drive and Ala Moana Boulevard. 4-9pm.
• **Daily** - Pau Hana Music Series, 5:30pm. *'Ewa Wing Stage*

- HALE'IWA STORE LOTS** 203-5700
• **Sat** - Live Hawaiian entertainment from 2-4pm
INTERNATIONAL MARKET PLACE 921-0536
• **MWF** - Ceremonial sunset lighting of Lamaku Torch Tower

- **MWF** - Sunset Stories Hula Show, 7pm. *Queens Court*
• **Thurs** - Mahiku Farmers Market. 4-8pm. *Banyan Court*
• **1stTh** - Royal Hawaiian Band. Free. 11am. *Queens Court*
• **1stSaSu** - Island Crafters Market. 11am-5pm. *2nd level*
• **1st3rdSu** - Free Yoga Class. 10-10:45am. *Queens Court*

- ROYAL HAWAIIAN CENTER** 922-2299
• **Daily** - Heritage Room/Cultural Videos, *Helumoa Hale*
• **Mon** - Free Ukelele Lessons 11pm, *Helumoa Hale*
• **Tues** - Free Hula Lessons 11am, *Royal Grove*

- **Wed** - Free Lauhala Weaving 11am, *Bldg A, Level 2*
• **Thur** - Free Keiki Hula lessons 12pm, *Royal Grove*
• **Fri** - Free Lei Making Class 12pm, *Bldg A, Level 2*
• **Sat** - Hula Kahiko 5:30pm, *Royal Grove*

- **TWThF** - Live Hawaiian Entertainment 5:30pm, *Royal Grove*
WAIKIKI BEACH WALK waikikibeachwalk.com
• **Daily** - The Ukulele Store offers free lessons at 4:30pm
• **Mon** - Open Market 4-8pm

- **Tues** - Ku Ha'aheo Hula Show. 4:30-6pm. *Plaza Stage*
• **Wed** - Free feather lei making 11am, 2pm. *Royal Room*
• **Sun** - Free hula lessons, 9-10am



- BALI OCEANFRONT**
20% off all Food & Beverage. Hilton Hawaiian Village, 941-2254.

- GUAVA SMOKED**
20% off food and drinks with hotel ID. 567 Kapahulu Ave, 2nd floor. Entrance/parking on Campbell Ave. 913-2100
HAWAIIAN MISSION HOUSES
Free tour with hotel ID. 553 S. King Street. 447-3910.

- IOLANI PALACE**
Free Admission with hotel ID. GA \$30. Kama'aina \$19.95. 364 S. King Street, Reservations Required. 522-0832.

- MAUI DIVERS JEWELRY**
35% discount off purchases made at the Design Center and 20% at all stores. Must show hotel ID for discount. 1520 Liona St. 946-2929.

- RUTH'S CHRIS STEAK HOUSE**
Complimentary Appetizer valued up to \$22 with the purchase of 2 entrees. Waikiki Beach Walk, 440-7910. Restaurant Row, 599-3860.

You will be required to show Hotel ID or business card to claim offer. Magazine not needed. Simply mention offer when presenting hotel ID. Discounts available to Guest Service Professionals ONLY. Not valid with other promotions or special offers. A minimum 18% gratuity on original order requested for all food offers.

The Oahu Concierge is printed monthly and direct mailed FREE to all Oahu Concierge, Hospitality & Activity Professionals.
Subscriptions available to non-industry at \$25 per year.

C O N T A C T
Davis Media
Ph: (808) 225-8229

Website: www.OahuConcierge.com

ADDRESS & NAME CHANGES / ADDITIONS

We do not take changes via telephone. All changes to mailing list **must be submitted in writing** by the 16th of the month to make the next issue, email is preferred.

S T A F F

PUBLISHER & EDITOR **Pam Davis**
publisher@oahuconcierge.com

DESIGN
Coreiya Design

The Oahu Concierge
4348 Waiialae Avenue, #185
Honolulu, Hawaii 96816

PRSRST STD
US Postage Paid
TRADE MEDIA HUI



MORE CHEFS
MORE FLAVOR

- BANZAI BURGER
- CRACKIN' KITCHEN
- EATING HOUSE 1849
by Chef Roy Yamaguchi
- HERRINGBONE
- KONA COFFEE
PURVEYORS
- KUHIO AVE FOOD HALL
- LA PINA CANTINA
- LILIHA BAKERY
- MITSUWA MARKETPLACE
Japanese Market
- MOANI WAIKĪKĪ
- SKYBOX TAPHOUSE
- SHOREFYRE
- STRIPSTEAK WAIKĪKĪ
by Chef Michael Mina
- UNCLE SHARKII POKE BAR


HAPPY HOUR 3-6PM DAILY
at participating restaurants

GRAND LĀNAI
INTERNATIONAL MARKET PLACE

2330 Kalākaua Avenue, Waikīkī