

Hula Graces the Moanalua Gardens: The Prince Lot Hula Festival



© Moanalua Gardens Foundation

Moanalua Gardens exist as one of the most beautiful and historically significant places on the island of O'ahu. As such, the gardens have provided the ideal location for the annual Prince Lot Hula Festival – the largest non-competitive hula event in the Hawaiian Islands.

Prince Lota (Lot) Lihohilo Kapuaiwa was born in December of 1830, and, in November of 1863, he would become King Kamehameha V. He was granted the ownership of the Moanalua ahupua'a (a land division that extends from the mountains to the sea) through the Mahele of 1848 (the formal redistribution of Hawaiian lands).

Before taking residence at Iolani Palace, Lot owned a Victorian cottage built in the 1850s. The original dwelling consisted of the single central unit, but Lot built a separate kitchen and dining structure in 1856; a pavilion for entertaining was added post-Kamehameha V.

The cottage, relocated throughout the years, can be found on the Moanalua Gardens grounds and features a covered lanai (terrace) that connects the structures and that completely surrounded the original cottage. During Lot's reign, a revival of hula had been taking place in Hawai'i, largely due to his own commitment to the tradition and his inclusion of hula during his many pa'ina (parties).

Moanalua had been established as the center of hula during the reign of Kakuhihewa in the 1500s. According to mo'olelo of Moanalua – including songs, chants, and legends – peace prevailed during Kakuhihewa's rule, thus also establishing Moanalua as a favorite site for the celebration of the makahiki – a season of peace and a time for

39th annual
*Prince Lot
Hula Festival*
**Mo'olelo O Moanalua
Stories of Moanalua**

Location: Moanalua Gardens

Saturday, July 16
from 9 a.m. to 4 p.m.

Sunday, July 17
from 10 a.m. to 3 p.m.

Along with hula halau and musical performances, the event will host over 30 crafters and food vendors.

There is no charge to attend the festival; however, donations through the purchase of a souvenir button or t-shirt would be most appreciated.

For more information, call 839-5334 or visit the Moanalua Gardens Foundation website at moanalugardensfoundation.org

games and competition instead of war.

Kahikili of Maui would follow as ruler; then, under the reign of his eldest son, Kalanikupule, a significant incident is said to have occurred. The tale recounts how Kalanikupule placed two pulo'ulo'u (kapu or warning sticks) at the entrance of the valley sealing it off from those who would otherwise enter.

However, Kamehameha's mother, Keku'i'apoiwa, would visit O'ahu preceding her son's taking of the island, and, in acknowledgement of her connection to Kahikili, the sticks were taken down.

After Kamehameha I invaded and took possession of O'ahu, he granted Moanalua to favorite uncle Kame'eiamoku, and, over the next century, the land was passed down as such to family members and to friends.

- ✦ 1803: Upon the death of Kame'eiamoku, his son Hoapilikane inherits the land.
- ✦ 1839: British Captain William Sumner, who had jumped ship when his vessel landed on the shores of Kaua'i, obtains a lease to use the up land area of the valley for pasture.
- ✦ 1848: The Mahele occurs, and ownership of the land is granted to Prince Lot, the hanai (adopted) son of Hoapili.
- ✦ 1872: Lot passes away and bequeaths the land to his half-sister Princess Ruth Ke'elikolani. Upon her death, her cousin Bernice Pauahi Bishop receives the land.

Continues on page 2.

Festival Mania



When you think of the month of July, the first things that come to mind are the 4th of July, summertime, vacations, and, if you live in Hawaii... festivals. As always, July is filled with festivals of all shapes and sizes offering a little something for everyone, no matter what you like to do. Here's a quick rundown of what's to come.

Mangoes at the Moana

July 16th, Moana Surfrider 9 a.m. - 2 p.m.

Mango season. It's one of the good things about living in Hawaii. Roaming the neighborhood for fruit, cutting the sides off and slicing them into perfect squares so that when you push the round side in the squares pop out. Eating them over the sink so the juices don't run all over you. Pickled mango, mango bread, mango salsa, there is no end to what one can make with them. For the 8th year, the Moana Surfrider will be celebrating this summer delicacy with an entire day dedicated to everything about the succulent fruit. Join them in the Banyan Courtyard from 9 a.m. to 2 p.m.

Continues on page 6

TABLE OF CONTENTS

Yada Yada Yada	2
Newsflash	3
Arts with Aloha	4
Paparazzi: The District Nightclub	8
Chef's Corner: James Donahue	9
E Pili Kakou	10-13
Calendar	14-15, 17
Paparazzi: Kahala Mall	16
4th of July	17
That's Entertainment	18
Activity Concierge of the Month: Laura Cole ..	19



WOLFGANG'S
STEAKHOUSE

LUNCH • ALL-DAY HAPPY HOUR
DINNER 'TIL MIDNIGHT • WKND BRUNCH
Royal Hawaiian Center • wolfgangsteakhouse.net
808.922.3600





Summer days, drifting away

How is it July already? Summer is half over and there hasn't been a dull moment yet. The days are just teeming with things to do and it seems like there's always something going on. This month is no exception as there are a slew of festivals to choose from. The only problem is you're simply going to have to make a choice the weekend of the 16th. It's just not possible to go to all the different events that day. For some reason the Prince Lot Hula Festival, Mangoes at the Moana, the Steel Guitar Festival, The Ukulele Festival, Sea Life Park's Summer Concert Series, the Hawaii All-Collectors Show, and Hawaiian Mission Houses Na Mele Aloha are all on the 16th or the 17th. Talk about busy. For me the evening event is easy. The Cure is coming back to town, and I'm headed to the Blaisdell to get my 80s on. I went when they were here a few years ago and they played for 3 hours straight without a single break. I'm not sure I've ever seen anyone else play that long at the Blaisdell. It was fabulous. I'd like to give a shout out to BAMP Project. They've just been on a roll lately. No matter what kind of music you like, they've been bringing them in. Country, comedy, rock, rap, DJs, even male revue shows for pete's sake (*Shoots, I knew I forgot to do something last month*). Whatever your speed, they're bringing them all in. They've personally made my day a few times these past few weeks by announcing a band that brings a smile to my face. I'm ridiculously stoked about one of their latest announcements. I was fortunate enough to go to a three-day music festival in Napa Valley over Memorial Day weekend. You know the ones... start at noon, end late at night and dozens of bands playing all day long. You've never even heard of half of them. Well one of those bands came on early one afternoon and blew my mind. The lead singer was like a young Mick Jagger and they had the audience wrapped around their fingers. The entire place went nuts and they totally owned the stage. It was one of the best live shows I've seen in a very long time. I had to ask what their name was a few times because nobody really knew. They're a young British glam rock band called The Struts and I became an instant fan. I ran into one of the guys from BAMP Project right after I got back and raved about them. He hadn't heard of them so I emailed him a few links, telling him they needed to bring them to Hawaii. Turns out the guys in charge were way ahead of me. They had already been talking to them trying to get them here, and they just announced an August concert at The Republik. If you want to go to a really fun concert, take a moment and Google the guys. If you like their music, go get tickets. Most of the shows they've done on the mainland have sold out, but as always, we're a little behind the 8-ball here in the middle of the Pacific. Hence why I had never heard of them. Not your style? Not to worry. Based on what BAMP has been doing lately, they're certain to have something your speed sooner rather or later. Mahalo BAMP for doing what you do, I know I appreciate it. See you at the show!



David Uchiyama

Congratulations to **David Uchiyama** who was recently promoted to President and Chief Executive office at *Island Air*. He joined Island Air as its Chief Commercial Officer at the beginning of the year. David has been a fixture in the local visitor industry for 37 years, including extensive tenures as regional director of communication for Starwood Hotels & Resorts and vice president of brand management for Hawaii Tourism Authority. David will lead the charge to reinvigorate Island Air, overseeing the inter-island airlines operations and development. Island Air also just announced that they have hired **Richard Oshiro** as their Vice President of Sales and Marketing. Richard has spent the past 20 years in the Waikiki hospitality industry, most recently with Outrigger Hotels and Resorts and prior to that with the Miramar at Waikiki. • *The Hawaii Tourism Authority* announced the appointment of **Kalani Kanaana** as their Director of Hawaiian Cultural Affairs. The Kailua-bred native most recently served as the Clinical Health and Community Program Coordinator in the Native Hawaiian Health Program at Queen's Health Systems. He is fluent in Hawaiian and has degrees in both Hawaiian Language and Hawaiian Studies from UH. • The *Hilton Hawaiian Village* has promoted **Scott**

Hamilton to resident manager of the property. Hamilton joined the Hilton Hawaiian Village in 2014 as their food & beverage director, coming from a New York based restaurant group and has been instrumental in improving service and creating new revenue generating events. The hotel also recently brought on **Duke Ah Moo** as vice president & commercial director for the state of Hawaii. Ah Moo was most recently VP of product development and eCommerce for Pleasant Holidays. • *MCC&A, Inc.* the leading destination management company in the islands, recently hired **Heather Bailey** as their Director of Program Development. Heather brings with her an extensive background in the hotel and destination management fields and worked extensively with one of Chicago's top destination management companies. They also hired **Marie Watanabe** as a Sales Account Executive. Watanabe was most recently the Director of Sales at O'ahu Visitors Bureau, responsible for marketing O'ahu globally as a destination for meetings and conventions and bringing that business to the island. • The *Hale Koa Hotel* is building up its guest service team with the addition of three new agents. **Dottie Bailey, Janie Chrisco** and **Leah Frazier** have recently joined their team.



Scott Hamilton

Prince Lot Hula Festival

Continued from page 1.



© Moanalua Gardens Foundation

1884: Upon the death of Pauahi Bishop, a codicil in her will grants the land to Samuel Mills Damon, a business partner of her husband Charles Reed Bishop.

The lush, expansive Moanalua Gardens is situated in the Kamananui Valley within the ahupua'a of Moanalua—a land division including the valleys of Kamananui (The Great Power) and the adjacent Kamanaiki (The Lesser Power). The annual hula festival is held the third weekend of July. While it was initially just a Saturday event, it now spans both weekend days featuring the very best dancers and chanters from the islands and beyond.

The first festival took place on the grounds on July 22, 1978, with a wooden stage constructed for the performances. Then, in 1981, a pa hula (hula mound) was created using soil that had been excavated from an area within the gardens in the 1970s for the construction of the Moanalua Freeway. The mound was given the name Kamaipu'upa'a and exists still as it paying homage to the many pa hula that once were present within Moanalua.

Noted historian, musician, composer, dancer, and lecturer Nalani Olds and her cousin, esteemed Hawaiian historian Wendell Silva were the festi-

val's founders. In 1977, she had envisioned Moanalua Gardens as the ideal venue for celebrating Hawaiian culture through hula because of the rich history held within the ahupua'a.

Renowned chantress of Kamananui Valley, Namakahelu Makaena, recounted for trusted friend Gertrude MacKinnon Damon – who would act as chronicler – the mo'olelo of Moanalua so these precious tellings of creation, migration, and genealogy would never be lost. Her voice and the voices of generations of Hawaiians who called Moanalua home can still be heard in the melody of the songbirds, the movement of the leaves in the wind, and, on one weekend in July, the song, chant, and dance of the Prince Lot Hula Festival.

~ Karyl Garland

Set to perform at the 2016 festival are premier halau hula who will dance in both kahiko (ancient) and 'auana (contemporary) styles with the inclusion of out-of-state dancers from Hawaii-based halau.

Mo'olelo O Moanalua –

Stories of Moanalua – will be the theme for this year's festival, featuring dancers from over 20 halau under the masterful direction of their preeminent kumu hula. The 2-day event will also include a tribute to the Royal Order of Kamehameha I as they celebrate their 150th anniversary.

The Royal Order was established by Lot Kapuuiwa in honor of his great-grandfather, Kamehameha I, for his leadership, skill, and passion for the people of Hawaii.

Alika Jamile, Moanalua Gardens Foundation Executive Director and President expresses, "We're very excited about continuing our new 2-day tradition so that more halau hula can participate and share their love for hula at spectacular Moanalua Gardens. Also, we feel very honored to have Raiatea Helm, as our special guest on Sunday, who traces her roots back to Prince Lot. It will be a fabulous weekend of hula, and everyone is invited!"

EXTRA NEWSFLASH EXTRA

INTRODUCING THE MAJESTIC



Atlantis Cruises has retired the Navatek and replaced it with the brand-new 150-foot Majestic last month. This state-of-

the-art vessel has three decks with roomy dining areas, a large dance floor, bar and lounge. Two decks are air-conditioned with high ceilings and panoramic windows and there's a large open-air top deck. Cutting-edge technology ensures a comfortable ocean cruise. AtlantisAdventure.com

IOLANI PALACE PERKS

Due to rotating employees at their check in kiosk, Iolani Palace has adapted their concierge offer to ensure the best experience. They will continue to offer one free adult admission to the Iolani Palace Guided or Audio Tour to the hospitality industry, but reservations are now being required to ensure a seamless experience. To make a reservation call 522-0832 to set up a day and time. Closed on Sundays and major holidays. iolanipalace.org

OLIVE & OLIVER IN WAIKIKI

Kailua-based women's fashion boutique Olive boutique, has partnered with the menswear shop Oliver, to open Olive & Oliver in the Surfjack Hotel & Swim Club. Offering a mix of clothing and accessories for both men and women inspired by Waikiki's surf culture, the inventory focuses on beach essentials such as cover-ups, board shorts, and fun gift items for guests to remember their time in Hawaii and an on-site artisanal coffee bar.

KAHALA IN WAIKIKI

Kahala Sportswear has opened its first Waikiki location. The new Waikiki Beach Walk store is now the brand's flagship. Their complete line of aloha shirts, t-shirts, and bottoms is available in the 1260 sq.foot store which was designed to showcase both the heritage and the future of the brand. Framed vintage Kahala shirts from the 1930's through the 1970's and surfboards adorn the walls. Open daily from 9 a.m. - 10 p.m. 922-0066. kahala.com.

PINEAPPLE FLEA & FOOD

A new weekly flea market is coming to Makers & Tasters every Saturday morning as of July 30th. The Pineapple Flea & Food Market will showcase local handmade food products, vintage clothing, jewelry, arts & crafts, collectibles and of course, food trucks. 8 a.m.-2 p.m. streetgrindz.com

ANGELS BY THE SEA

Angels by the Sea opened its second location on Kalakaua at the Sheraton Princess Kaiulani. This beach house themed boutique offers dresses handmade by owner Nina Thai, hand crafted Hawaiian jewelry, island-style home décor, bath & body products & more. angelsbytheseahawaii.org

PACIFIC PARKS PASS

Pacific Historic Parks has announced a new VIP discount card for a concierges to use personally that gives the cardholder 15% off of merchandise at both the USS Arizona Memorial store and 20% at the new Diamond Head Visitor Center inside the crater, selling official Diamond Head merchandise. Available to most concierge, activity agents, and guest service agents. If you're interested in getting a card of your own and would like to see if you're eligible to receive one, please email your request to ckramer@PacificHistoricParks.org. Be sure to include your employment information.

SUMMER 'KIDS GO FREE' SPECIALS

Kids go free this summer at both Legends Rock-A-Hula and onboard the Dolphin Star's Wild Dolphin Watch. Rock-a-Hula is offering free admission to their Rockin' Show package for kids between the ages of 3-11 with each paid adult. Tickets are \$55 for adults. Special upgrade prices and kama'aina rates are also available. For tickets, visit RockAHulaHawaii.com or call 629-SHOW (7469). The same deal applies to kids wanting to go on the Wild Dolphin Watch Cruise off the Waianae coast. 983-STAR (7827) or Dolphin-Star.com. Offer valid July 1st thru September 30th.



NOI
Delicate Thai Taste

Enjoy the Most
Amazing Thai Dining
Experience

Featuring a delectable
menu by Award-
Winning Chef Jutamas
"Kwan" Kanjanamai

LUNCH
10:30 a.m. - 3:00 p.m.
Also featuring Lunch
Specials from \$10.95!

HAPPY HOUR
3:00 - 7:00 p.m.
Great appetizer and
drink specials!

DINNER
5:00 - 11:00 p.m.
A Truly Royal Experience!

We also offer two
beautiful private rooms
for 8-10 guests.

**Concierges Receive
20% OFF**

WITH CURRENT WORK ID
DOES NOT APPLY TO LIQUOR,
HAPPY HOUR OR SPECIALS

Royal Hawaiian Center • Bldg. C, Level 3
Between Wolfgang's Steakhouse & Forever 21
noithaicuisine.com • 808.664.4039

Blue Note HAWAII

WORLD'S FINEST
JAZZ CLUB & RESTAURANT

JULY LINEUP

Shows at
6:30 & 9PM
Nightly



Jake Shimabukuro
July 1



David Crosby
July 2-3



Willie K
July 5



Jeff Peterson's
Steak Key & Ukulele Night
July 6



Robert Glaasper
Experiment
July 7 - 10



Aidan James
July 11



Adagio
July 13



Jeffrey Osborne
July 14-17



Kiara Torres
July 18



Joan Osborne
July 19 - 24



Keahi Conjugacion
July 25

VIP reservations and discounts
available for groups of 12 or more.

Email Jive Ramos for more information:
jive@bluenotehawaii.com.

www.bluenotehawaii.com | 808-777-4800

Located in the Outrigger Waikiki Beach Resort

VALIDATED PARKING AVAILABLE AT OHANA
WAIKIKI EAST HOTEL 1 \$5 FOR UP TO 4 HOURS



arts with aloha



This month's column should be titled Arts, Arts, Arts, Arts & then some Aloha!

Let's start with the first art which is the musical *Lysistrata Jones* with book by Douglas Carter Beane and score by Lewis Flinn at **MANOA VALLEY THEATRE** from July 7 to 24. The musical, which opened on Broadway in 2011, is based on the classic Greek comedy *Lysistrata* which opened in Athens in 411 BC. (Sorry, I don't recall the theatre, it's been a while!) The Greek account if you remember from school is about one woman's mission to end the Peloponnesian War by getting all the women of Greece to withhold sex from all the men until the men figure out a peace treaty. It works out in the end but frankly I think all the men went to Hula's to take care of business. We've all heard about Greek love! The musical *Lysistrata Jones*, updates the story which now revolves around the 30-year losing streak of the University of Athens' basketball team. You pretty much can guess the rest, a cheerleader named Lyssie Jones transfers to the school and convinces all the cheerleaders to stop having sex with the team members until the boys finally "pull-out" a win. Did I mention this was a musical comedy? Performance schedule is as follows: Wednesdays & Thursdays at 7:30 p.m., Fridays & Saturdays at 8 p.m. and Sundays at 4 p.m. Tickets for all mainstage productions is \$39 for adults, \$34 for seniors 65+ and military, those 25 years or younger tickets are \$20. For more information visit www.ManoaValleyTheatre.com or call the box office at 988-6131.

The second art moment this month also has a Greek influence. It's the musical *Mamma Mia* based on the songs of the Swedish pop group ABBA at **DIAMOND HEAD THEATRE**. You are probably wondering, where's the Greek? Well, it's the story about a young girl named Sophie who lives with her mother on a small Greek Island and is getting ready to be wed. The issue is that she doesn't know who her father is and would like him to walk her down the aisle. She discovers from her mother's diary that at the time of her conception, her mother had sex with three men. So, what does Sophie do? She invites all three men to the wedding and chaos erupts for the mother. You may have seen the film version, it starred Meryl Streep as the free loving mother and earned \$609.8 million at the box office. All the great ABBA tunes are integrated into the story - *Dancing Queen*, *Waterloo*, and of course *Mamma Mia* among others and actually helps move the plot forward. The production runs from July 15 to August 7 with performances on Thursdays, Fridays, & Saturdays at 8 p.m., Saturday Matinees at 3 p.m., and Sunday Matinees at 4 p.m. (Please note that the August 4 & 5 performances have a special 7:30 p.m. curtain). Tickets range from \$22 to \$35 and can be purchased online at DiamondHeadTheatre.com or by calling the box office at 733-0277.

The third art moment this month has no Greek connection, unless you count the possibility that playwright Terrance McNally may have once eaten Baklava. The play is entitled *Mother's & Sons* which runs from July 8 to 31 at **TAG (THE**

ACTORS' GROUP), located at 650 Iwilei Road, Suite 101 across the street from Dole Cannery Theatres. The play, which starred Tyne Daly in 2014 on Broadway, deals with a mother, a Dallas woman named Katharine Gerard, who is finally coming to terms with her son Andre's death and homosexuality after twenty years. Clearly she needs to realign the shakras. Katharine confronts her son's former lover, Cal Porter, who is now married to another man and has a young son. The couple live in a posh Upper West Side apartment and live an idyllic life that the mother has issues with. One might say, what does she not have issues with? She blames Cal for making her son gay and ultimately killing him. The overall theme of the play is all about confronting the truth and dealing with unresolved emotions. The original production on Broadway was nominated for four Tony Awards and the local production is on par with the talent. Tickets for this production are \$25 with performances on Thursdays, Fridays and Saturdays at 7:30 p.m. and Sundays at 2 p.m. You can order tickets by calling the box office at 722-6941. Parking is validated for 4 hours in any of the unassigned parking stalls in the Regal Theatre parking garage. Entrance to the garage is from Pacific Street and please remind you guests to bring their parking ticket to the theatre for validation.

And the last bit of art for the month should make all of you anime fans happy. The **HAWAII THEATRE** presents *Miyazaki Ghibli Film Festival*, showcasing the internationally acclaimed animator Hayao Miyazaki, co-founder of Studio Ghibli, featuring four of his celebrated films over a three day period from July 8 - 10. hawaiiitheatre.com

Ok, now it's time for the Aloha part. Did you know that even though the ukulele is synonymous with Hawaii, the steel guitar is the only contemporary musical instrument that is exclusively Hawaiian? It was created by an 11-year old boy named Joseph Kekuku in 1885. The self-taught musician was goofing around one day and discovered that he could alter the tone of a regular guitar by applying various objects to the strings. This discovery resulted in the creation of the Hawaiian Guitar, which was the more popular name for the Steel Guitar used in the early 1900's. Joseph began his schooling in 1889 at Kamehameha Schools and eventually went on to become well respected entertainer who traveling the United States and Europe showcasing the music of the Steel Guitar. It seems fitting that the *7th Annual Waikiki Steel Guitar Festival* is moving to the **ROYAL HAWAIIAN CENTER'S** Royal Grove on July 16th since the land, known as Helumoa, is owned by Joseph's alma mater Kamehameha Schools. The festival which is produced by Alan Akaka and the Hawaii Institute for Music Enrichment and Learning Experiences (HIMELE) bring together legendary steel guitarists as well as up & coming students from 11 a.m. to 9 p.m. The entire festival is free to the public and with all day performances should fit into any of your guest's schedule that day. For more information, please call Helumoa Hale desk at 922-2299.

And that my friends, is this month's arts, arts, arts, and arts, with a lot of aloha! ~ Lance Rae

All This in One Place



THE PREMIER EXPERIENCE FOR YOUR GUESTS.

With our *Ambassador Prime Dining Package*, your guests will be treated like an island VIP. They'll get general admission, and enjoy Ambassador-level seats at our "HĀ: Breath of Life" evening show.

With our *Prime Dining option*, they'll enjoy crab legs, prime rib, an enhanced salad bar and more.

For more details about the Polynesian Cultural Center and all of our latest renovations and upgrades, please contact your PCC representative.



WAY MORE THAN A LU'AU

BY POPULAR DEMAND
CRABS LEGS ARE BACK
AT OUR PRIME DINING PACKAGE



BOOK NOW FOR THE BEST SEATS
808-293-3333 OR POLYNESIA.COM
CLOSED SUNDAYS • VILLAGES OPEN AT NOON

Mahalo for your continued support!
JOIN OUR
GUEST REFERRAL PROGRAM



Our program is simple!

For every 25 guests referred,
Ruth's Chris Steak House will send you
a \$50.00 dining certificate.

Please contact Emi Espinda if you have any
questions at eespinda@direstaurants.com

OPEN DAILY FROM 5PM

HAPPY HOUR DAILY IN OUR LOUNGE | 5PM - 7PM

PRIME TIME MENU | DAILY 5PM - 6PM

WINE WEDNESDAYS | 25% OFF BOTTLES OF WINE



Restaurant Row | 808.599.3860
Waikiki Beach Walk | 808.440.7910

WWW.RUTHSCHRISHAWAII.COM



**SOMETHING NEW.
SOMETHING CLASSIC.**

Open Daily 11am - 10pm

Happy Hour Daily in our lounge 5pm - 6pm & 8pm - 10pm

Vino Thursdays 25% OFF Bottles of Wine

**INQUIRE ABOUT OUR
GUEST REFERRAL PROGRAM!**

Our program is simple!

For every 10 complimentary dessert cards redeemed
(WITH YOUR NAME ON THE CARD),

Romano's Macaroni Grill will send you a
\$25.00 dining certificate that may be used
at our Oahu restaurant.

Please contact Emi Espinda if you have any
questions at eespinda@direstaurants.com

**ROMANO'S
Macaroni
GRILL**

Hokulipa Terrace at Ala Moana Center
808.356.8300

WWW.MACARONIGRILL.COM

Festivals

Continued from page 1.

The day kicks off at 9 a.m. as people submit mangoes from their own backyard for the title of **Best Mango of the Year**. Judges will determine the winner based on flavor, skin, flesh, aroma and texture. The winner will get a two-night stay at the Moana. Registration begins at 8 a.m.

After that get ready for the **Mango Farmer's Market** set up in the lobby of the hotel. Talk story with mango farmers as they sample their different varieties of mango from 11 a.m. - 2 p.m.

At noon, guests can learn how to make mango-inspired dishes and desserts during the **Mango Cooking Demos** at Vintage 1901 by beachhouse chef de cuisine, David Lukela and pastry chef, Nanako Perez-Nava.

One of the most anticipated events of the festival is the **Mango Throw Down** where eight local chefs prepare creative mango dishes. A few of the chefs participating this year include Ed Kenney, Ronnie Nasuti, Mark Noguchi, Andy Reagan, Michelle Karr-Ueoka and Lee Anne Wong. Guests can try each chef's creation for \$6 a plate, or if you know you'll want to taste their creations, buy your tickets pre-sale prior to the event. Tickets bought in advance will give guests 10 tickets for the price of eight. The two extra tickets can be used towards the purchase of a cocktail.

After a while you're going to be ready for that cocktail, so don't miss the **Mango Cocktail Mixdown** from noon to 2 p.m. in the lower Veranda. Get in on the impromptu mixology sessions that will allow guests to purchase cocktails at the booth as well as participate and learn about the featured cocktails at the event. Tickets from the Throw Down can be used for the Cocktail Mixdown.

There's more throughout the day, so stop by and get your mango on. Self-parking is available at the Sheraton Princess Kaiulani and is complimentary for four hours with validation. Call 922-3111.

Hawaii State Farm Fair

July 11th - 12th, Kualoa Ranch 9 a.m. - 2 p.m.

Kids of all ages will revel in the numerous exhibits set up at Kualoa Ranch for this two-day affair. There will be plenty of livestock on display for the kids to see and sometimes touch in the 4-H tent, live entertainment, demonstrations, kiddie rides, bouncers and more. Don't miss the ever popular watermelon eating, corn husking and chili pepper eating contests. The Kamehameha Schools' Country Market and Plant sale is perhaps the biggest plant sale on the island. There's plenty of fresh produce for sale as well. Kualoa Ranch. 9 a.m. - 5 p.m. hawaiiestatefarmfair.org

Waikiki Steel Guitar Festival

July 16th, Royal Hawaiian Center 11 a.m. - 9 p.m.

The 7th Annual Waikiki Steel Guitar Festival is moving to the Royal Hawaiian Center this year

with all day performances at the Royal Grove Stage from 11 a.m. to 9 p.m. on Saturday, July 16th. The event, which is the largest steel guitar festival of its kind on O'ahu, will be hosted by radio personalities Mele Apana and Kimo Kahoano and feature popular Hawaiian Steel Guitar masters along with steel guitar students from the Ke Kula Mele Hawai'i School of Hawaiian Music. This year's featured steel guitar masters will include Alan Akaka, Jeff Au Hoy, Bobby Ingano, Isaac Akuna, Paul Kim, Eddie Palama, Greg Sardinha and Timi Abrigo in individual programs of traditional and contemporary Hawaiian music and dance. For a more in depth look at the history of the Steel Guitar or the Hawaiian Guitar as it was known in the 1900's please refer to our Arts with Aloha column in this issue.

Ukulele Festival

July 17th, Kapiolani Park 10:30 a.m. - 5 p.m.

The 46th annual Ukulele Festival will have the iconic sounds of ukulele filling the air at Kapiolani Park most of the day on July 17th as more than 15 world-class musicians stop by to entertain, educate and grace visitors with their talents. Expect local performers such as Ohta-San, Willie K, Kalei Gamiao, Paula Fuga, Herb Ohta Jr., Nick Acosta, and Roy Sakuma's 700-piece 'Ukulele Band composed mostly of children. There will also be a host of international musicians coming to islands to share their gifts including Ukestralia from Australia; The Bohemian Ukuleles from California; Korea's Kolea Ukulele Friends and The Special Swimanians from Japan. Hawai'i's Ambassador of Aloha, Danny Kaleikini, will emcee for the 45th straight year. Free parking and shuttle service from Kapiolani Community College to Kapiolani Park will be offered on air-conditioned buses. Follow the sweet sounds of hundreds of ukulele strumming to Kapiolani Park between 10:30 a.m. to 5 p.m. on July 17th. ukulelefestivalhawaii.org.

Joy of Sake

July 22nd, Convention Center 6:30 - 9 p.m.

Sake enthusiasts get ready. The 2016 Joy of Sake is back and each year this event gets bigger and better. This year nearly 400 sakes will be showcased, including about 200 ultra-premium daiginjo labels. Some of the best junmai, ginjo and daiginjo sakes that just participated in the U.S National Sake Appraisal will be part of this event. One can't try that much sake without food. Twenty-one of Oahu's favorite restaurants will offer small sake-inspired bites throughout the event to nosh on between sips. About half the lineup will be sakes that are otherwise unavailable in the U.S. If you're into sake, this is the world's largest sake celebration outside of Japan and you won't want to miss it. Friday, July 22nd from 6:30 - 9 p.m. at the Hawaii Convention Center. Tickets: \$95 in advance, \$105 at the door. Want an extra hour of sipping? There are limited early access tickets for \$145 that get you in at 5:30 p.m. joyofsake.com.



ALERT!

July 25-27

Box Jellyfish Window

Teaching Hawaii about jellyfish and other ocean creatures for over a century

brought to you by
The Waikiki Aquarium
open daily from 9 am - 4:30 pm





WARD VILLAGE.

FREE EVENTS AT WARD VILLAGE



WEEKLY—Sessions welcome all ages and skill levels taught by CorePower Yoga instructors



MONTHLY—Features independent films curated by the Hawaii International Film Festival and themed activities in an extraordinary outdoor theater setting.



MONTHLY—Brings the abundance of the country into the heart of the city with fresh-locally grown fruits, vegetables, meats and treats.



MONTHLY—Celebrates Hawaiian culture and language through performances by beloved hula halau and Hawaiian musicians.

Visit WardVillage.com/events for full schedule.
#weareward





THE DISTRICT
WALKIEKI

It's been a year since The District Nightclub first opened its doors, so they decided it was time to invite the industry for a look. A private event was held to give concierge a glimpse into what they have to offer. There was pizza from The Lounge; a dance contest won by Patrick Concepcion of the Beachcomber and they even gave away a trip for two to Las Vegas! Congrats go out to Turtle Bay's Dado Corpuz! Open on Wednesday, Friday and Saturday from 10 p.m. - 4 a.m. For reservations call 949-1349 or thedistrictnightclub.com



bills
SYRACY

you are an important part of
bills 'ohana

concierges & guest services staff
receive our 'ohana discount
of 20% off your entire bill
with valid id

does not apply to happy hour
may not be combined with other offers



bills hawaii
280 beachwalk ave
breakfast 7-11am
lunch 11am-5pm
happy hour 3-6pm
dinner 5-10pm

billshawaii.com
808.922.1500



**The best in
comfort food &
live sports**

Join us for live
sports on HD
screens. "Walkiki's
largest breakfast
selection" served
all day. New
York style deli
sandwiches, half-
pound burgers,
Round Table Pizza
and our "ballpark
happy hour."



Walkiki
GIOVANNI PASTRAMI
WALKIEKI

Check it out giovannipastrami.com
Call us 808-923-2100
Stop by 227 Lewers Street in Walkiki



Chef's Corner

Il Lupino Executive Chef James Donahue

Chef James recently returned to Il Lupino after a couple of years in Seattle, where he worked for renowned restaurateur Ted Furst at Le Grand Bistro. Donahue had previously worked his way up to Executive Chef at Wolfgang's Steakhouse prior to being asked to bring his talents to Il Lupino after the passing of Executive Chef Nicola Sayada. The move to Seattle and Le Grand Bistro allowed for a temporary change of scenery, a time to explore, and hone his craft with a mentor of his, but he is happy to return to his former home.

What is your first childhood food memory?

I remember "helping" my mom and grandma cook in our kitchen from the time I was little. I always loved being in that kitchen – everything tasted so good!

When did you decide you wanted to be a chef?

When I was 18 and working my first job in a restaurant in Florida. I was front of house but the chef asked me to cut some fruit and vegetables up one day and jokingly asked me if I wanted to work in the kitchen, instead. I called his bluff and said, "Yes!" – but it actually worked out. I loved it way more in the kitchen!

What was your first job in the industry?

I worked at casual Italian eatery in Florida.

Did any of your first dishes not work?

How much space do you have? Nah, just kidding! I was a young cook, making chicken salad, trying to follow the chef's recipe. He had "EVOO" as an ingredient. I looked everywhere for something that said "EVOO," but couldn't find it so I didn't put it in – needless to say that was a pretty dry salad! Later on I found out it meant Extra Virgin Olive Oil, and I became the laughing stock in the restaurant!

Who would you consider your mentor and why?

I worked at Le Grand Bistro in Seattle, and the owner and past Exec. Chef Ted Furst really taught me so much about being a good chef. I already had years of experience, but he had so much more and shared so generously. He really filled in a lot of the blanks for me, and I am forever grateful to him for that.

How would you describe your style of cooking?

My own personal style is really about making comfort food – something delicious that isn't overly fussy, that reminds me of being back in that kitchen with my mom and grandma.

Favorite ingredient you like to work with and why?

Chicken. It's versatile, inexpensive, and just tastes good!

Where do you like to go to when not working?

There are several restaurants, but off the cuff I'd have to say Pint & Jigger. They have a friendly vibe – not stuffy at all – and their food is good and affordable.

What's your favorite dish on the Il Lupino menu?

Again, so many...depends what I'm in the mood for. Right now, I could eat one of our famous meatballs – made with veal, pork and beef, served with a perfect pomodoro sauce. It's one of our most popular dishes!

What do you have in plan for the menu?

I just returned to Il Lupino recently and we're re-doing all of our menus, updating them, offering more variety, but staying authentic, and really watching the price points – we've actually lowered a lot of the prices, but did not sacrifice quality and taste. I believe it's one of the best menus we've ever had here, so I really encourage people to come and check it out. We try to keep farm to table whenever we can, buying from local farms, but our authentic Italian ingredients still come from Italy. We also make certain pastas like our gnocchi, tagliatelle, an papardelle in-house fresh every day – makes the dishes come out so much better!

What are your favorite food combinations?

I love a sweet and savory breakfast to start my day.

What's your biggest pet peeve working in a kitchen?

ORGANIZATION!!! Everything needs to be in its place or it drives me crazy.

What staple ingredients are always in your fridge.

Cholula Hot Sauce and sour cream...they can help make almost any dish better, and work well in soups and sauces, too.

What do you like most about living here?

I love that I can spend almost all my free time outdoors – hiking, at the beach, whatever – all year long.

What do you like to do most on your days off?

I don't rest at home – I get outdoors and keep active! I recently took a trip to Na Pali that was amazing.

Is there any other information you'd like to share?

I'd say that as a chef, especially in someplace like Waikiki where your patrons will have different palates, it's important to love the menu you've created, but it's equally important to be flexible enough to cater to your customers. I don't mind making things spicier, milder, sweeter, saltier, or whatever so that they're happy.

Short Ribs and Polenta Cakes



Ingredients:

8 cup chicken stock	
Boneless short ribs 4 lbs	4 bay leaves
Portion in 4oz chunks	8 sprig rosemary
3 carrots peeled rough chop	16 sprig thyme
3 stalks celery, remove leaves, rough chop	3 tbsp whole peppercorn
2 white onion rough chop	3 cup red wine
	1 cup cherries pitted

Directions:

In a hot pan with just enough oil to coat pan sear the short rib pieces till they are dark brown, place in Dutch oven with rest of ingredients. Place in oven for 3-4 hours at 250° degrees and take out when tender. Separate the meat from the liquid and reduce the liquid till it's thick. Serve with creamy polenta or polenta cakes

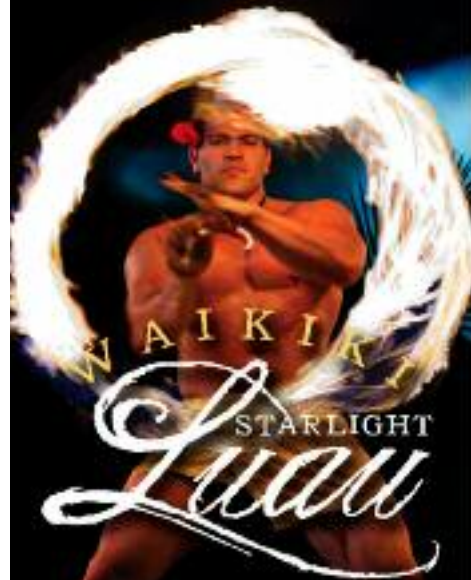
Il Lupino is located in the Royal Hawaiian Center

Brunch: 8 a.m. - 11:30 a.m. • Lunch: 11:30 a.m. - 4:45 p.m. • Happy Hour: 12 noon - 6:30 p.m.

Dinner: Sunday - Thursday: 5 p.m - 10:30 p.m., Friday - Saturday: 5 p.m. - 11 p.m.

Phone: 922-3400 • Web: IlLupino.com • Facebook/Instagram: [IlLupino](https://www.facebook.com/IlLupino) • Twitter: [@IlLupinoHawaii](https://twitter.com/IlLupinoHawaii)

HILTON HAWAIIAN VILLAGE PRESENTS



LOCATION

- Beautiful outdoor setting under the stars
- Just a short distance from your hotel - no need for transportation out of Waikiki!

TASTE OF ALOHA

- Authentic Hawaii cuisine including local favorites like Kalua Pig, Lomi Lomi Salmon, Poi and more
- Extravagant performers and the most exciting fire knife dancers in the Island

PURCHASE GOLDEN CIRCLE PREMIUM SEATING AND RECEIVE:

- Fresh orchid lei greeting
- Premier seating, closest to the stage
- Be the first to enjoy the buffet!



Five Days A Week!

Sunday - Thursday • Doors Open at 5pm

808.941.LUAU (5828)

www.HiltonHawaiianVillage.com/luau

HILTON HAWAIIAN VILLAGE®

WAIKIKI BEACH RESORT

2005 KALIA ROAD, HONOLULU

808.949.4321

Let's be Together...

DINING ▸ ENTERTAINMENT ▸ PAU HANA ▸ EAT ▸ DRINK ▸ BE MERRY ▸ HAPPY HOUR

MONDAY

Barefoot Beach Café at Queen's Beach 924-2233
Contemporary Ukulele
 Shaka Madali 5:30-8:30pm

Chart House Waikiki 941-6660
Live Contemporary Hawaiian
 Tito Berinobis & David Kauahikaua 6:30-9:30pm

Cheesecake Factory 924-5001
Classic Hawaiian
 Christian Yrizarry Duo 8-11pm

Duke's Canoe Club Waikiki 922-2268
Live Contemporary Hawaiian
 Taz Vegas 4-6pm
 Ellsworth Simeona 9:30-12am

Hard Rock Cafe 955-7383
Bluesy Mondays
 Bluezilla (artists vary) 9-11pm

House Without a Key 923-2311
Live Hawaiian & Hula by Skyler Kamaka
 DeLima Ohana 5:30 - 8:00pm

Hula Grill 923-HULA
Live Contemporary Hawaiian
 Eric Lee 7-9pm

Kani Ka Pila Grille 924-4992
Live Contemporary Hawaiian
 Sean Naauao 6-9pm

LBLE at the Hilton Waikiki Beach Hotel 922-0811
Live Contemporary Acoustic Hits
 Johnny Helm 6-9pm

Lewers Lounge 923-2311
Live Contemporary & Light Jazz
 Noly Pa'a 8:30-12:30am

LuLu's 926-5222
Live Contemporary
 Johnny Helm 6:30-9:30 p.m.

Mai Tai Bar at the Royal Hawaiian 923-7311
Live Contemporary Hawaiian with Hula Dancer
 Dave Watanabe 8-10 p.m.

Rumfire 921-4600
Live Contemporary Hawaiian
 Jeremy Cheng 5-8pm

Signature Prime Steak 949-3636
Contemporary Pianist in the bar
 Isao Motomochi 6-9pm

Sky Waikiki 979-7590
Live Contemporary
 Yoza 6-9pm

Sunrise Pool Bar at the Modern 943-5800
Live Contemporary
 Alex Oasay 5-8pm

The Edge at the Sheraton 921-4600
Live Hawaiian music with a firedancer at 7:30 p.m.
 Ka'ala Boys 6:30-8:30pm

The Study at the Modern 943-5800
Live Contemporary Hawaiian
 Kaleo 7-10pm

Tiki's Grill & Bar 923-TIKI
Live Contemporary Hawaiian
 Kapu the Band 6-8:30pm
 The Kristi Masuhara Band 9-11pm

Tommy Bahama Restaurant 923-8785

Live Contemporary Hawaiian
 Johnny Helm 6-9pm

Tropics Bar & Grill 949-4321
Live Contemporary Hawaiian
 Acoustik Playground 5:30-8:30pm

TUESDAY

Barefoot Beach Café at Queen's Beach 924-2233
Contemporary Ukulele
 Shaka Madali 5:30-8:30pm

Bin1901 at the Moana 921-4600
Piano Wine Bar
 Scott Smith 6:30-9:30pm

Chart House Waikiki 941-6660
Live Contemporary Hawaiian
 The Camarillo Brothers 6:30-9:30pm

Cheesecake Factory 924-5001
Classic Hawaiian
 Beau Cody Duo 8-11pm

Duke's Canoe Club Waikiki 922-2268
Live Contemporary Hawaiian
 Sam & Haumea 4-6pm
 Ellsworth Simeona 9:30-12am

Hard Rock Cafe 955-7383
Live Contemporary
 Piranha Brothers 9-11pm
 Candy Bullets (7/5.) 9-11pm

House Without a Key 923-2311
Live Hawaiian & Hula by Radasha Ho'ohuli
 Po'okela 5:30 - 8:00pm

Hula Grill 923-HULA
Live Contemporary Hawaiian
 Kamuela Kahoano 7-9pm

Kani Ka Pila Grille 924-4992
Live Contemporary Hawaiian
 Weldon Kekauoha 6-9pm

LBLE at the Hilton Waikiki Beach Hotel 922-0811
Live Contemporary Funk, Jazz, Hip Hop & Reggae
 Jason Laeha 6-9pm

Lewers Lounge 923-2311
Live Contemporary & Light Jazz
 Maggie Herron & Rocky Holmes 8:30-12:30am

LuLu's 926-5222
Live Contemporary
 Johnny Helm 6-9pm

Mai Tai Bar at the Royal Hawaiian 923-7311
Live Contemporary Hawaiian with Hula Dancer
 Kapala Duo 6:30-9:30pm

Rumfire 921-4600
Live Contemporary Rock
 Randy Allen 5-8pm

Signature Prime Steak 949-3636
Contemporary Pianist in the bar
 James Woo 6-9pm

Sky Waikiki 979-7590
Live Contemporary
 John Akapo 6-9pm

Sunrise Pool Bar at the Modern 943-5800
Live Contemporary Hawaiian
 Cory Oliveros 5-8pm

The Edge at the Sheraton 921-4600
Live Hawaiian music with a firedancer at 7:30 p.m.

Ho'okani Duo 6:30-8:30m

The Study at the Modern 943-5800
Live Contemporary Hawaiian
 Alex Oasay & Jeremy Cheng 7:30-10:30pm

Tiki's Grill & Bar 923-TIKI
Live Hawaiian - \$2 Taco Tuesdays
 K.B. Riley 5:30-8:30pm
 Sani & Friends 9-11pm

Tommy Bahama Restaurant 923-8785
Live Contemporary Hawaiian
 Chris Mercado 6-9pm

Tropics Bar & Grill 949-4321
Live Contemporary Hawaiian
 Kailua Bay Buddies 5:30-8:30pm

WEDNESDAY

Barefoot Beach Café at Queen's Beach 924-2233
Instrumental Ukulele
 Paul Wilcox 5:30-8:30pm

Bin1901 at the Moana 921-4600
Piano Wine Bar
 Scott Smith 6:30-9:30pm

Chart House Waikiki 941-6660
Live Contemporary Hawaiian
 Tito Berinobis & David Kauahikaua 6-10:30pm

Cheesecake Factory 924-5001
Classic Hawaiian
 Kimo Artis Duo 8-11pm

Duke's Canoe Club Waikiki 922-2268
Acoustic, Soul, R&B
 Haumea Warrington 4-6pm
 Ellsworth Simeona 9:30-12am

Gordon Biersch 599-4877
Jazz Wednesdays
 Varying Artists 6:30-9:30pm

Hard Rock Cafe 955-7383
Live Contemporary
 Blue Light Funk Band 9-11pm
 Saloon Pilots (7/13) 9-11pm
 Da Push-0-Verse (7/20) 9-11pm
 Dave Young (7/27) 9-11pm

House Without a Key 923-2311
Live Hawaiian & Hula by Lauren Matsumoto
 Pa'ahana 5:30 - 8:00pm

Hula Grill 923-HULA
Live Contemporary Music
 Brandon Serrano 7-9pm

Hy's Steak House 922-5555
Live Soft Contemporary
 Audy Kimura 6:30-10pm

Kani Ka Pila Grille 924-4992
Live Contemporary Slack Key
 Ben & Malia 3-5pm
 Mike Kaawa 6-9pm

LBLE at the Hilton Waikiki Beach Hotel 922-0811
Live Contemporary Funk, Jazz, Hip Hop & Reggae
 Izik 6-9pm

Lewers Lounge 923-2311
Live Contemporary & Light Jazz
 Maggie Herron & Rocky Holmes 8:30-12:30am

LuLu's 926-5222
Live Contemporary Hawaiian

E Pili Kākou

DINING ▶ ENTERTAINMENT ▶ PAU HANA ▶ EAT ▶ DRINK ▶ BE MERRY ▶ HAPPY HOUR

Jason Lehua 10-12:30am
Mai Tai Bar at the Royal Hawaiian 923-7311
Live Contemporary Hawaiian with Hula Dancer
 Eric Lee Duo 6:30-9:30pm
Roy's Hawaii Kai 396-7697
Acoustic & Slack Key Top 40
 Dayton Watanabe 6:30-9:30pm
Rumfire 921-4600
Live Contemporary Hawaiian
 Alex Oasay 5-8pm
Signature Prime Steak 949-3636
Contemporary Pianist in the bar
 Pierre Grill 6-9pm
Sky Waikiki 979-7590
Live Contemporary
 Randy & Kanoë 6-9pm
SWIM at the Hyatt 923-1234
Contemporary Classic
 Kailua Bay Buddies 6-9pm
Sunrise Pool Bar at the Modern 943-5800
Live Contemporary Hawaiian
 Tahiti Rey & Sean Cleland 5-8pm
The Edge at the Sheraton 922-4422
Live Hawaiian music with a firedancer at 7:30 p.m.
 Keoni Ku Duo 6:30-8:30pm
The Study at the Modern 943-5800
Live Contemporary Hawaiian
 Melanie and Drew 6:30-9:30pm
Tiki's Grill & Bar 923-TIKI
Live Contemporary - 1/2 off Wine Wednesdays
 Canoes for Rent 5:30-8:30pm
 Johnny Helm 9-11pm
Tommy Bahama Restaurant 923-8785
Live Contemporary Hawaiian
 Randy Allen 6-9pm
Tropics Bar & Grill 949-4321
Live Contemporary Rock
 Acoustik Playground 5:30-8:30pm

THURSDAY

Barefoot Beach Café at Queen's Beach 924-2233
Instrumental Ukulele
 Paul Wilcox 5:30-8:30pm
Bin1901 at the Moana 921-4600
Piano Wine Bar
 Scott Smith 6:30-9:30pm
Chart House Waikiki 941-6660
Live Contemporary Hawaiian
 Alika Souza Duo 6:30-10pm
Cheeseburger Waikiki 941-2400
Contemporary / Old School Rock
 Jeremy Chang 6:30-9:30pm
Cheesecake Factory 924-5001
Classic Hawaiian
 Kaimi Duo 8-11pm
 Alika Souza Duo (7/21) 8-11pm
Duke's Canoe Club 922-2268
Live Contemporary Hawaiian
 Haumea Warrington 4-6pm
 Kaiona Duo (or others) 9:30-12am
Gordon Biersch 599-4877
Live Contemporary Funk and Classics

Acoustic Playground 7-10:30pm
Hard Rock Cafe 955-7383
Live Contemporary
 Kailua Bay Buddies 9-11pm
House Without a Key 923-2311
Live Hawaiian & Hula by Radasha Ho'ohuli
 Pa'ahana 5:30 - 8:00pm
Hula Grill 923-HULA
Live Contemporary Hawaiian
 Kamuela Kahoano 7-9pm
Hy's Steak House 922-5555
Live Soft Contemporary
 Audy Kimura 6:30-10pm
Kani Ka Pila Grille 924-4992
Live Contemporary Hawaiian
 Jeff Rasmussen & Robi 3-5pm
 Kawika Kahapo 6-9pm
LBLE at the Hilton Waikiki Beach Hotel 922-0811
Live Contemporary Pop/Rock
 Sunway 6-9pm
Lewers Lounge 923-2311
Contemporary Jazz
 Maggie Herron & Rocky Holmes 8:30-12:30am
LuLu's 926-5222
Live Contemporary Hawaiian
 Local Uprising 6-9pm
Mai Tai Bar at the Royal Hawaiian 923-7311
Live Contemporary Hawaiian with Hula Dancer
 Delima Ohana 6:30-9:30pm
Michel's at the Colony Surf 923-6552
Live Slack Key
 Jeff Peterson 7:30-10:00pm
Roy's Hawaii Kai 396-7697
Acoustic Hawaiian Guitar
 Steve English 6:30-9:30pm
Rumfire 921-4600
Live Contemporary Rock
 Johnny Helm 5-8pm
Signature Prime Steak 949-3636
Contemporary Pianist in the bar
 Isao Motomochi 6-9pm
Sky Waikiki 979-7590
Live Contemporary
 Tahiti Rey 6-9pm
Sunrise Pool Bar at the Modern 943-5800
Live Contemporary Hawaiian
 Christian Yrizarry Duo 5-8pm
SWIM at the Hyatt 923-1234
Contemporary Classic
 Acoustik Playground 6-9pm
The Edge at the Sheraton 921-4600
Live Hawaiian music with a firedancer at 7:30 p.m.
 Christian Yrizarry Duo 6:30-8:30pm
The Study at the Modern 943-5800
Live Contemporary Hawaiian
 Simple Souls 6:30-9:30pm
Tiki's Grill & Bar 923-TIKI
Hot Hula Thursdays - hula dancers perform
 Malu the Band 5:30-7:30pm
 Ellsworth Simeona 8:30-10:30pm
Tommy Bahama Restaurant 923-8785
Live Contemporary Hawaiian

Chris Mercado 6-9pm
Tropics Bar & Grill 949-4321
Live Contemporary Hawaiian
 Nohelani Cypriano 5:30-8:30pm

FRIDAY

Barefoot Beach Café at Queen's Beach 924-2233
Live Contemporary Hawaiian with Beach BBQ
 Art Kalahiki & Friends 5:30-8:30pm
Bin1901 at the Moana 921-4600
Piano Wine Bar
 Scott Smith 6:30-9:30pm
Chart House Waikiki 941-6660
Live Contemporary Hawaiian
 Mark Yim's Pilikia I 6-9pm
 Mark Yim's Pilikia II 9:30-12:30am
Cheeseburger Waikiki 941-2400
Contemporary Hawaiian
 Alex or Aku 6:30-9:30pm
Cheesecake Factory 924-5001
Classic Hawaiian
 Johnny Helm Duo 8-11pm
Dave & Busters 589-2215
Pau Hana Fridays Live Local Bands
 Varying Hawaiian Artists 6-8pm
Duke's Canoe Club Waikiki 922-2268
Live Contemporary Hawaiian
 Maunualua 4-6pm
 Christian Yrizarry Duo 9:30-12am
 Kumuhau Duo (7/1) 9:30-12am
 Chris Mercado Duo (7/15) 9:30-12am
 Alika Souza Duo (7/29) 9:30-12am
Giovanni Pastrami 923-2100
Live Acoustic
 Varying Artists 10pm-last call
Gordon Biersch 599-4877
Live Contemporary, R&B, Funk
 Ben & Malia 5:30-9pm
 Mojo 9 - 12:30am
Hard Rock Cafe 955-7383
Live Contemporary
 The Fresh Preps 10-12am
 Masters of Oz (7/29) 10-12am
House Without a Key 923-2311
Live Hawaiian & Hula by Kanoë Miller
 Hiram Olsen Trio 5:30 - 8:00pm
Hula Grill 923-HULA
Aloha Friday Lunch Luau with hula dancer
 David Asing 12:30-2:30pm
 Keoki & Russell 7-9pm
Hy's Steak House 922-5555
Live Soft Contemporary
 Audy Kimura 6:30-10pm
Hard Rock Cafe 955-7383
Live Contemporary
 The Fresh Preps 10pm-12am
Kani Ka Pila Grille 924-4992
Live Hawaiian Contemporary
 Christian Yrizarry 3-5pm
 Ho'okena 6-9pm
 Kupaoa (7/8) 6-9pm
 Waipuna (7/22) 6-9pm

Let's be Together...

DINING ▸ ENTERTAINMENT ▸ PAU HANA ▸ EAT ▸ DRINK ▸ BE MERRY ▸ HAPPY HOUR

LBL at the Hilton Waikiki Beach Hotel 922-0811
Live Contemporary Pop/Rock
 Sunway 6-9pm

Lewers Lounge 923-2311
Live Contemporary Jazz
 Maggie Herron & Rocky Holmes 8:30-12:30am

LuLu's 926-5222
Live Contemporary Hawaiian
 Manoa DNA 6-9 p.m.
 Vinyl Wine 10-12:30am

Mai Tai Bar at the Royal Hawaiian 923-7311
Live Contemporary Hawaiian with Hula Dancer
 Kapala Duo 6:30-9:30pm

Michel's at the Colony Surf 923-6552
Live Slack Key Stylings & Jazz
 Jeff Peterson & Ernie Provencher 6:30-10pm

Roy's Hawaii Kai 396-7697
Keyboardist
 Brian Robert Shaw 6:30-9:30pm

Roy's Ko Olina 676-7697
Slack Key Guitar
 Chris Rego 5:30-8pm

Rumfire 921-4600
Live Contemporary Rock
 Tim Rose 5-8pm

Signature Prime Steak 949-3636
Contemporary Pianist in the bar
 Grant Carvalho 6-9pm

Sky Waikiki 979-7590
Live Contemporary
 John Akapo 5-8pm

SWIM at the Hyatt 923-1234
Contemporary Classic
 Taimane 6-7pm

The Edge at the Sheraton 921-4600
Live Hawaiian music with a fire dancer at 7:30 p.m.
 Delima Ohana Duo 6:30-8:30pm

The Study at the Modern 943-5800
Live Contemporary Hawaiian
 Tahiti Rey 6:30-9:30pm

Tiki's Grill & Bar 923-TIKI
Live Contemporary Hawaiian
 Randy Allen 5-7pm
 Vaihi 7:30-9:30pm
 The Kristi Masuhara Band 10:30-midnight

Tommy Bahama Restaurant 923-8785
Live Contemporary Hawaiian
 Chris Murphy 6-9pm

Tropics Bar & Grill 949-4321
Live Contemporary Hawaiian
 Piranha Brothers 3:30-6:30pm
 Nohelani Cypriano 8-10:30pm

SATURDAY

Barefoot Beach Café at Queen's Beach 924-2233
Beach BBQ with Live Contemporary Hits
 Chris Salvador 5:30-8:30pm

Bin1901 at the Moana 921-4600
Piano Wine Bar
 Scott Smith 6:30-9:30pm

Chart House Waikiki 941-6660
Live Contemporary Hawaiian

Tito Berinobis & Billy Beimes 7-12pm

Cheeseburger Waikiki 941-2400
Contemporary Hawaiian
 Alex or Aku 6:30-9:30pm

Cheesecake Factory 924-5001
Classic Hawaiian
 Dennis McClees Duo 8-11pm

Duke's Canoe Club Waikiki 922-2268
Live Hawaiian Entertainment
 Beach 5 (7/2) 4-6pm
 Vaihi (7/9) 4-6pm
 Kailua Bay Buddies (7/16) 4-6pm
 Kapena (7/23) 4-6pm
 Kaiona (7/30) 4-6pm

Darrell Aquino Duo 9:30-12am
 Camarillo Brothers (7/9, 7/16) 9:30-12am

Giovanni Pastrami 923-2100
Live Acoustic
 Varying Artists 10pm-last call

Hard Rock Cafe 955-7383
Live Contemporary
 EMKE 10-12am
 Piranha Brothers (7/2) 10-12am

House Without a Key 923-2311
Hawaiian & Hula by Kanoë Miller
 Hiram Olsen Trio 5:30 - 8:00pm

Hula Grill 923-HULA
Live Traditional Hawaiian with dancer
 Kaipo Dabin & friends 7-9pm

Hy's Steak House 922-5555
Live Soft Contemporary
 Audy Kimura 6:30-10pm

Kani Ka Pila Grille 924-4992
Live Contemporary Hawaiian
 Del Beazley (7/2; 7/30) 3-5 pm
 Kamakakehau Fernandez (7/9, 7/16) 3-5 pm
 Blayne Asing (7/23) 3-5 pm
 Ka Hehena 6-9pm

LBL at the Hilton Waikiki Beach Hotel 922-0811
Live Contemporary Blues & R&B
 Tahiti Rey 6-9pm

Lewers Lounge 923-2311
Live Contemporary Jazz
 Maggie Herron & Rocky Holmes 8:30-12:30am

Mai Tai Bar at the Royal Hawaiian 923-7311
Live Contemporary Hawaiian with Hula Dancer
 Kapala Duo 6:30-9:30pm

Michel's at the Colony Surf 923-6552
Live Contemporary Slack Key & Jazz
 Jeff Peterson 7-11pm

Roy's Hawaii Kai 396-7697
Acoustic Guitar
 Jimmy Funai 6-9:30pm

Roy's Ko Olina 676-7697
Slack Key Guitar
 Chris Rego 5:30-8pm

Rumfire 921-4600
Live Contemporary Rock
 Kamuela Kahoano 5-8pm

Signature Prime Steak 949-3636
Contemporary Pianist in the bar
 Grant Carvalho 6-9pm

Sky Waikiki 979-7590
Live Contemporary
 John Akapo 6-9pm

Sunrise Pool Bar at the Modern 943-5800
Live Contemporary Hawaiian
 Kainalu 5-8pm

SWIM at the Hyatt 923-1234
Contemporary Acoustic
 Randy Allen & Kanoë Gibson 5 - 8pm

The Edge at the Sheraton 921-4600
Live Hawaiian music with a fire dancer at 7:30 p.m.
 Tino Jacobs Duo 6:30-8:30pm

Tiki's Grill & Bar 923-TIKI
Live Contemporary Hawaiian & Reggae
 Johnny Helm 5-7pm
 Guidance 7:30-9:30pm
 Ellsworth & Piko 10-midnight

Tommy Bahama Restaurant 923-8785
Live Contemporary Hawaiian
 Chris Murphy 6-9pm

Tropics Bar & Grill 949-4321
Live Contemporary Hawaiian
 Henry Kaponu 4-6pm
 Juke Joint 6:30-9:30pm

SUNDAY

Barefoot Beach Café at Queen's Beach 924-2233
Contemporary Ukulele
 Shaka Madali 5:30-8:30pm

Chart House Waikiki 941-6660
Live Contemporary Hawaiian
 Dean & Dean 6-9pm

Cheesecake Factory 924-5001
Classic Hawaiian
 Chris Murphy Duo 8-11pm
 Kaimi Duo (7/24) 8-11pm

Duke's Canoe Club Waikiki 922-2268
Live Hawaiian Entertainment
 Henry Kaponu 4-6pm
 Kapena (7/3) 4-6pm
 Imua Garza (7/17) 4-6pm
 Typical Hawaiians (7/3) 9:30-12am
 Kapena Delima (7/10) 9:30-12am
 Derrick Lee (7/17, 7/24) 9:30-12am

Hard Rock Cafe 955-7383
Live Contemporary
 Youth on Stage 12 noon
 Analog (or others) 9-11pm

House Without a Key 923-2311
Live Hawaiian & Hula by Debbie Nakanelua
 Pa'ahana 5:30 - 8:00pm

Hula Grill 923-HULA
Live Traditional Hawaiian with dancer
 Art Kalahiki Duo 7-9pm

Kani Ka Pila Grille 924-4992
Live Contemporary Hawaiian
 Brother Noland (7/3) 6-9pm
 Maunualua (7/10, 7/17) 6-9pm
 Nathan Aweau (7/24, 7/31) 6-9pm

Kelley O'Neil's 926-1777
Live Irish Music
 Various Celtic Bands 4-7pm

E Pili Kākou

DINING ▶ ENTERTAINMENT ▶ PAU HANA ▶ EAT ▶ DRINK ▶ BE MERRY ▶ HAPPY HOUR

LBL at the Hilton Waikiki Beach Hotel	922-0811
<i>Live, Energetic Mix of Pop and Rock Hits</i>	
Tavana	6-9pm
Lewers Lounge	923-2311
<i>Live Contemporary & Light Jazz</i>	
Noly Pa'a	8:30pm - 12am
LuLu's	926-5222
<i>Acoustic R&B</i>	
Simple Soulz	7-10pm
Mai Tai Bar at the Royal Hawaiian	923-7311
<i>Live Contemporary Hawaiian with Hula Dancer</i>	
Eric Lee Duo	6:30-9:30pm
Michel's at the Colony Surf	923-6552
<i>Classical Slack Key & Jazz Stylings</i>	
Jeff Peterson	6-9pm
Roy's Ko Olina	676-7697
<i>Slack Key Guitar</i>	
Chris Rego	5:30-8pm
Rumfire	921-4600
<i>Live Contemporary Hawaiian</i>	
Kamuela Kahoano	5-8pm
Signature Prime Steak	949-3636
<i>Contemporary Pianist in the bar</i>	
Isao Motomochi	6-9pm
Sky Waikiki	979-7590
<i>Live Contemporary</i>	
Da Push-O-Verse	6-9pm
SWIM at the Hyatt	923-1234
<i>Contemporary, Pop, Rock</i>	
Sunway	6-9pm
The Edge at the Sheraton	922-4422
<i>Live Hawaiian music with a fire dancer at 7:30 p.m.</i>	
Ellsworth Simeona Duo	6:30-8:30pm
The Study at the Modern	943-5800
<i>Live Contemporary Hawaiian & Jazz</i>	
Jeremy Cheng	6-9pm
Smooth Jazz (vaying artists)	10-2am
Tiki's Grill & Bar	923-TIKI
<i>Live Contemporary Hawaiian</i>	
Kapu the Band	2:30 - 5:30pm
Vaihi	6-8pm
Ellsworth & Piko	9-11pm
Tommy Bahama Restaurant	923-8785
<i>Live Contemporary Hawaiian</i>	
Johnny Helm	6-9pm
Tropics Bar & Grill	949-4321
<i>Live Contemporary Rock & Hawaiian</i>	
Piranha Brothers	2-5pm
Beach 5	5:30 - 8:30pm



Hot Lines

Here's a few numbers for you to find out the latest in live music from places that change daily or don't update us regularly, since we can't possible list them all.

Gordon Biersch	599-4877
Irish Rose Saloon	947-3414
Kelley O'Neil's	926-1777
Mai Tai Bar Ala Moana	947-2900
Moose McGillycuddy's	923-0751

EVENTS ARE SUBJECT TO CHANGE WITHOUT NOTICE.

Dining Dish



OK so let's start with the big news. **Shirokiya's Japan Village Walk** has finally opened. I'm not sure what I thought it was going to be exactly, so I was actually surprised when I realized it is one big huge giant food court. And not just any food court, but one ringed by Vintage Cave-run food stalls. Yes, that **Vintage Cave**, offering Vintage Cave quality food in a food court location and pricing. (ok, some things are certainly more expensive than say, Subway, but not Vintage Cave expensive) One side of Japan Walk features their Waygu Plaza, a series of six boutique restaurants. Along another edge of the 44,680 sq. foot space is their Seafood Plaza featuring eight bistros. There is also a Vintage Cave Bakery towards the front. (If that's not enough, they're currently building the Italian-inspired **Vintage Cave Café** scheduled to open in October.) Japan Village Walk was designed with a traditional Japanese town in mind with many small shops lining all of the streets. There are a total of 56 shops inside and 900 seats. Many of the shops feature Japanese food, but you will also find everything from crepes, to hamburgers to pizza to Hawaiian, Chinese and even Shirokiya's beloved \$1 beers can be found at any of the 5 bars. There is a Guardian Spirits Sanctuary area in the far corner with a quiet area and a small stage. I can see musicians and dancers there in the future. In other words, this place has a little of everything and should do very well. With a price tag of \$35 million, that's good news for them! It's well worth a visit, but be sure to give yourself enough time to wander through when you go. It will take a while. Open from 10 a.m. to 10 p.m. daily, the bakery opens at 8 a.m. • **Taormina Sicilian Cuisine** at Waikiki Beach Walk is showcasing a special Mango Menu through July 31st. A mango-inspired salad and risotto dish is being offered in addition to specialty mango drinks and desserts. 926-5050. • The Modern Honolulu's **Executive Chef Keith Pajinag** has given the menu at **The Study** a total makeover. Enjoy items such as Pork Hash Sliders served on Brioche, with House Ground Pork, Pickled Vegetable Frisse, Spicy Hoisin Sauce (\$12), Quail Egg Ravioli filled with Lemon & Shiso Ricotta, Smoked Bacon Vinaigrette, Sorrel (\$16), Fig & Brie Flatbread with Shaved Cappicola, Brie, Fig Spread, Arugula, Balsamic (\$10) or Burrata Bruschetta with Burrata, Balsamic Tomatoes and Basil Pesto are served on Grilled Baguette (\$9). On Tuesdays, stop by for specialty Pizzas and Punches for Fresh Tuesday. Chef Keith makes Pizza Pies Tuesdays only utilizing fresh ingredients such as the Pear This (Prosciutto, Arugula, Grilled Pears and Pesto) for \$17. 943-5800 • This summer, the Moana Surf rider introduced a new **Keiki Afternoon Tea Party** that'll make tea time fun for kids. For each party, there needs to be a minimum of five people. Each setting comes with tea sandwiches (grilled ham and cheese, and Nutella and banana), mini pepperoni bagel pizza and shoestring fries or tater tots, as well as desserts, fruits, juice, soda and fun décor including balloons, kids teddy bears in large tea cups, candy jars and kids' colorful tea set. \$40 per child. Adults can opt for the Moana Classic Tea at \$40 or the First Lady Tea service at \$48. There is a 12 o'clock seating daily, but reservations are recommended in advance. 924-4778. ~ Pam



Dining Calendar

July 8: *Westin Moana* presents their monthly #LoveofLibations interactive beverage event and it perfectly coincides with Mangoes at the Moana. This month features all things Mango of course. \$25. Vintage 1901. 5:30 - 7 p.m. 921-4600.

July 13-14: *Hawaii Lodging, Hospitality & Foodservice Expo* This should probably be in the calendar but came across it too late to put it there. This is a business and industry trade event. 10-5 p.m. Blaisdell Center.

July 29: *Friday Night Flights* lands at the Veranda on the last Friday of the month. This month explore the wines of Greece paired with a 3-course regional menu. \$65++ 6-9 p.m. 739-8760.

Wednesdays: *Make Your own Chocolate Bar* learn all about chocolate, taste several varieties and make your very own chocolate bar, choosing from a selection of fruits, nuts and spices to flavor your bar. Madre Chocolate Downtown. \$25++ 6-7:30 p.m. 377-6440.

MAC 24/7
HAWAIIAN & BISTRO BAR

MAC WEDNESDAYS

Industry Night
11 pm - 2 am

50% OFF
ALL FOOD
with your Industry ID

LIVEDJ

\$3 valet parking when dining

808-921-5554 • MAC247Waikiki.com
7500 Kuliho Avenue • Honolulu, HI 96815

@MAC247Waikiki • OpenTable

*Restrictions apply, does not include alcohol, tax & gratuity.

Hale 'Alaha Award Winner
Best Gourmet Comfort Food - Honolulu Magazine

JULY CALENDAR OF EVENTS

Continuing Events

MONDAY – FRIDAY LYON ARBORETUM TOURS

The lush gardens at the top of the University of Hawai'i Manoa are open for guided tours daily. Knowledgeable guides will introduce the highlights of the botanical rainforest's 193.6 acres. Reservations required. Limit of 12 participants daily. Donations accepted. 988-0461.

MONDAY-FRIDAY FOSTER BOTANICAL GARDENS

Guided garden tours of rare and beautiful plants from tropical regions throughout the world. Foster Botanical Gardens, 50 N. Vineyard. 1 p.m. Adults: \$5. Reservations recommended. 522-7066.

TUESDAYS TOURS OF THE HAWAII THEATRE

Get a behind-the-scenes tour of this historic theatre including history, architecture, and a performance on the 1922 Robert Morton theatre organ. Hawaii Theatre. 11 a.m. – 12 p.m. \$10. 528-0506.

TUESDAYS • KU HA'AHEO
An afternoon of music and hula led by kumu hula Blaine Kamalani Kia. Waikiki Beach Walk Plaza Lawn. 4:30–6 p.m. waikikibeachwalk.com. FREE.

**TUESDAYS
KCC FARMERS MARKET**
The Saturday Market is so popular they added another day. Head up to Kapiolani Community College to stock up on fresh, island produce, seafood, flowers and more, from several dozen vendors. 4 – 7 p.m. Free. 848-2074.

FIRST & THIRD TUESDAYS MEET THE MONK SEALS!

Learn about monk seals in the wild and meet two resident seals up close. Designed for participants 7 and up but anyone is welcome. Waikiki Aquarium. 3 p.m. \$4 – \$6. waquarium.org or 923-9741.

TUESDAYS & THURSDAYS FRESH FARMERS MARKET AT THE HYATT

Due to its overwhelming success, the Hyatt has added another day of their popular Farmers Market for visitors and locals to stock up on fresh local organic fruits, vegetables, jams, honeys, baked goods and more. Stop by twice throughout the ground floor of the Pualeilani Atrium Shops. 4 – 8 p.m. Waikiki.hyatt.com.

TUESDAYS, THURSDAYS & SUNDAYS TOUR AND TEA AT THE HONOLULU ACADEMY OF ARTS

Tours are led by volunteer docents and designed for visitors, who would like to explore the galleries, learn more about art and culture, and socialize over a cup of tea. Docents lead discussions in the galleries and offer insight into many cultures and time periods. 2:30 – 4 p.m. in selected galleries. Free with admission; beverage donations welcomed. Reservations required. 532-8700.

TUESDAY – SATURDAY HAWAIIAN MISSION HOUSES GUIDED TOURS

Visit the Printing Office and Frame House while learning about the 19th century history and culture preserved at this beautiful museum. Galleries also open to explore on your own. Hawaiian Mission Houses. Tues -Sat. 11 a.m. & 2:45 p.m.; Tues. – Fri. 1 p.m. \$6 – \$10. 531-0481 or missionhouses.org.

THIRD WEDNESDAY (JULY 20) KONA NUI NIGHTS

Kona Nui Nights honors and highlights Hawaiian language and music, as well as the art of hula on the third Wednesday of every month with food and drinks for sale. Free. Ward Village Information Center Courtyard. 6-8 p.m. wardvillageshops.com.

SECOND THURSDAY (JULY 14) COURTYARD CINEMA

Ward Village hosts its monthly film series event, Courtyard Cinema, on the 2nd Thursday of each month. The showing features free popcorn, refreshments, food vendors and entertainment. Courtyard Cinema is free and open to the public. Seating is limited. Reserve your tickets at wardvillagecourtyardcinema.com.

THURSDAYS • COURTYARD YOGA

Take a complimentary yoga class with CorePower Yoga at the Ward Village Information Center Courtyard. Open to the first 50 in attendance. All experience levels welcome. 5:30 – 6:30 p.m. For more information visit wardvillageshops.com/yoga.

THIRD THURSDAY (JULY 21) DOWNTOWN GALLERY WALK & CRAFT FAIR

The Arts at Marks Garage continues to build on downtown activities offering execs an excuse to hang out after work and giving everyone else a reason to head downtown. Free. 521-2903. artsatmarks.com.

FRIDAYS • CULTURAL CRAFT FAIR

The Hyatt has had so much success with its weekly Framers Market featuring fresh local produce that they are applying the same principle to local craft items. Each week the craft fair will feature local vendors featuring arts & crafts, jewelry. Photography, woodwork and more. 3–7 p.m. Waikiki.hyatt.com

FIRST FRIDAY (JULY 1) DOWNTOWN GALLERY WALK & CRAFT FAIR

Art lovers should head to downtown Honolulu the first Friday of each month. This event has exploded into a downtown party with galleries and studios open for exhibitions, artist demonstrations, and special performances. 23 galleries and art-related retail shops, restaurants and museums participate. Downtown Honolulu/ Chinatown. 6 – 9 p.m. Free. 521-2903 or artsatmarks.com.

FINAL FRIDAY (JULY 29) ART AFTER DARK

Art after Dark offers one of Honolulu's hippest events each month. Honolulu Academy of Art. Get transported to the streets of Havana during the evenings Soul de Cuba theme.. 6-9 p.m. artafterdark.org.

SATURDAYS • KCC FARMERS MARKET

Fresh island produce, seafood, flowers and more are available from over two-dozen vendors at Kapiolani Community College. Free. 7:30-11 a.m. 848-2074.

SATURDAYS • KAKA'AKO FARMERS MARKET

The Kaka'ako Farmer's Market hosts an abundance of treats from around our islands. Located between Ward and Kamakee Streets, Free. 9 a.m. - 1 p.m. 388-9696 or haleiwafarmersmarket.com.

THIRD SATURDAY (JULY 16) HONOLULU NIGHT MARKET

The folks behind Eat the Street bring this monthly art event to Kakaako. Food, art and fashion will close Auahi Street down from Keawe to Coral as artists, food trucks, live entertainment and more fill the streets from 6 p.m. to 11 p.m. Lane closures begin at noon. streetgrindz.com.

ONE DAY FLYAWAY Helicopter + Land Combo Tour

VOLCANO ADVENTURE

"Circle of Fire" Helicopter Tour +
Expertly Narrated Volcano Land Tour

CALL NOW FOR TOUR AVAILABILITY

808.756.9861



JULY CALENDAR OF EVENTS

SATURDAYS & SUNDAYS ART ON THE ZOO FENCE

More than 35 local artists display their works on the Zoo fence on Monsarrat Avenue opposite the Kapiolani Park Bandstand. Works for sale include original paintings, prints and photographs. 9 a.m. – 4 p.m. Free. artonthezoo fence.com.

**SECOND SATURDAY (JULY 9)
DOWNTOWN GALLERY WALK & CRAFT FAIR**
First Friday has become such a success that events carry over to the second Saturday. HiSAM, 11 a.m. – 4 p.m. 586-9958. Other events around downtown Honolulu all afternoon including slam poetry and open mic at The Arts at Marks from 3-5 p.m. Free. 521-2903 or artsatmarks.com.

**NA MELE NO NA PUA SUNDAY SHOWCASE
(JULY 10 & 24)**
Waikiki Beach Walk presents Danny Couch July 10th and Kapena on July 24th at the Plaza Stage from 5 – 6 p.m. waikikibeachwalk.com.

**SECOND SUNDAY (JULY 10)
FREE ADMISSION TO IOLANI PALACE**
On the second Sunday of each month, Iolani Palace opens its doors to kamaaina guests to visit the historic landmark for free. iolanipalace.org.

**THIRD SUNDAY (JULY 17)
BANK OF HAWAII FREE SUNDAY**
The Honolulu Museum of Art opens its doors to the public free of charge on the third Sunday of every month thanks to Bank of Hawaii. 11 a.m. - 5 p.m. Free. 532-8700.

JULY 6 ROLAND SANCHEZ AND SALSA HAWAII PERFORM AT THE ZOO

Roland Sanchez and Salsa Hawaii performs at this weeks' Wildest Show in Town at the Honolulu Zoo. \$3. Gates open at 4:35 p.m., mini-guided tours offered to the first 30 people at 5:25 p.m. Music starts at 6 p.m. No alcohol or high-back chairs allowed. HonoluluZoo.org.

**JULY 7
AMY HANAIALII AT THE AQUARIUM**
The Wakiki Aquarium continues its summer concert series with Hawaii favorite Amy Hanaialii. She will be joined onstage with Kupaoa and Mark Yamanaka. Enjoy an evening of food and music under the stars. Doors open at 5:30 p.m., concert begins at 7 p.m. Tickets \$50, \$20 for kids aged 5-12. waikikiaquarium.org

JULY 9 • REMINISCING THE BASH
The Cruz Brothers, Kalapana, Kapena, Darren Benitez, Bruddah Waltah, Ilona Irvine & more. Tickets: \$35-\$75. Waikiki Shell. Doors open at 4 p.m., music at 4:30p.m. ticketmaster.com.

**JULY 9-10
HAWAII STATE FARM FAIR**
It's time for the 54th annual Hawaii State Farm Fair. Enjoy two days of live animals, entertainment, demonstrations and the always popular on stage contests like watermelon eating, corn husking and chili pepper eating as well as educational exhibits, kiddie rides, bouncers and more. Plenty of produce and plats to buy as well. Kualoa Ranch. 9 a.m. – 5 p.m. hawaii statefarmfair.org

JULY 13 • WILLIE K AT THE ZOO
Wille K. performs at this weeks' Wildest Show in Town at the Honolulu Zoo. \$3. Gates open at 4:35 p.m., mini-guided tours offered to the first 30 people at 5:25 p.m. Music starts at 6 p.m. No alcohol or high-back chairs allowed. HonoluluZoo.org.

JULY 16 ANUHEA & THE MAKAHA SONS

Summer concerts abound this time of year and Sea Life Park is in the game with their Summer Twilight Concert Series. This month catch Anuhea and The Makaha Sons onstage from 5:30 – 9 p.m. 259-2500.

JULY 16 • NA MELE ALOHA
Mission Houses Museum continues its Na Mele Aloha musical series this month that explores the meaning of the word Aloha with the 2nd installment. Aloha Ho'oiipoipo explores romantic love through songs, mele ho'oiipoipo, both those which openly reveal the individuals in such a relationship and those songs which use kaona or hidden meanings to obscure the specific relationships.. Chef Mark "Gooch" Noguchi will offer a special menu from Mission for this event. Tickets: \$30 in advance, \$35 at door. 5:30 – 8 p.m. missionhouses.org

JULY 16-17 • PRINCE LOT FESTIVAL
The 39th annual Prince Lot Hula Festival will showcase some of the islands best dancers over 2 days. Stop by Moanalua Gardens on Saturday, July 16 from 9 a.m. – 4 p.m. or Sunday from 10 a.m. – 3 p.m. See cover story for complete details.

JULY 16 • THE CURE IN HAWAII
They were one of the quintessential bands of the 80s, and put on an amazing 3-hour show a few years ago. Ivory City opens both nights. Join Robert Smith and his wild hair and lipstick at the Blaisdell Arena. Tickets: \$25-\$250. 7:30 p.m. bamproject.com



JULY 17 HAWAII ALL-COLLECTORS SHOW

Hawaii's largest annual collectibles and antiques show will feature 180 booths showcasing the biggest selection of vintage and antique Hawaiiana under one roof in one day. Vendors from around the world will offer everything for sale from Aloha shirts, jewelry, antiques, art, beads, estate jewelry, vintage fashion, and more. Blaisdell Exhibition Hall. 9 a.m. – 5:30 p.m. ukulele.com

JULY 17 • UKULELE FESTIVAL
The 46th annual Ukulele Festival will bring more than 15 world-class musicians together for a day of celebrating Hawaii's most celebrate instrument. Emceed by none other than Danny Kaleikini, over 10,000 attendees will hear some of the best Hawaii has to offer as well as musicians from Australia, Japan and Korea. Expect non-stop live music, food booths and even ukulele lessons in Kapiolani Park. 10:30 a.m. – 5 p.m. ukulelefestivalhawaii.org.

**JULY 20
OHTA SAN WITH NANDO SUAN AT THE ZOO**
Ohta San with Nando Suan performs at this weeks' Wildest Show in Town at the Honolulu Zoo. \$3. Gates open at 4:35 p.m., mini-guided tours offered to the first 30 people at 5:25 p.m. Music starts at 6 p.m. No alcohol or high-back chairs allowed. HonoluluZoo.org.

JULY 20 • JEFF PETERSON
Every third Wednesday the music of Hawaii takes to the stage at the Doris Duke Theatre. Slack key fans can enjoy the work of Jeff Peterson. 7:30 p.m. \$25. honolulu museum.org.

Continues on page 17

Experience
MAJESTIC
by
Atlantis
CRUISES

Atlantis Cruises has recently launched Majestic, our sleek next-generation of cruise vessel that offers spacious comfort and panoramic views from all three decks. We still offer Hawaii's most scenic sunset dinner cruises daily. Contact your sales person for a special tour of Majestic.

atlantisadventures.com
For info & reservations call (808) 973-1311 or fax to (808) 973-2499

| #atlantishawaii

IL LUPINO

ITALY & WINE BAR



Bruschetta Siciliana

15% OFF FOR ALL CONCIERGES & GSA

Il Lupino is pleased to extend a 15% discount to all Concierges and Guest Services Staff (Front Desk, Valet, Porters, etc.). Must show your work I.D. or business card to receive the discount. Not applicable on liquor or specials.

ROYAL HAWAIIAN CENTER • VALIDATED PARKING
breakfast • lunch • tapas • dinner
www.ilupino.com • 808.922.3400



Kahala Mall hosted its first ever concierge event and it was a hit! Concierge broke into teams and raced through the mall on a scavenger hunt. There was food from many of the mall's restaurants and loads of prizes including the top prizes of 10,000 Hawaiian Miles (won by Cecilia Derramas) and an evening at the Kahala Hotel (won by Naomi Abe). The evening wrapped up at The Counter and many stayed well after the event was over. Everyone had a blast and learned a lot about the mall along the way. kahalamall.com



Wildlife Guaranteed

See dolphins or turtles or come again Free wildlife-specific cruises in Waikiki, West Oahu & Kona. Family-owned company with ocean activities for all ages.



WAIKIKI •
WAIANAЕ •
KONA

Sail • Snorkel •
Dolphins • Turtles
• Whales • Scuba •
Fireworks Dinner •
Private Charter •
Transportation

234-SAIL

(7245)

WE ANSWER 24 HOURS!

hawaiinautical.com

Hawaii Nautical



DISCOUNT HAWAII CAR RENTAL

SAVE UP TO 50%



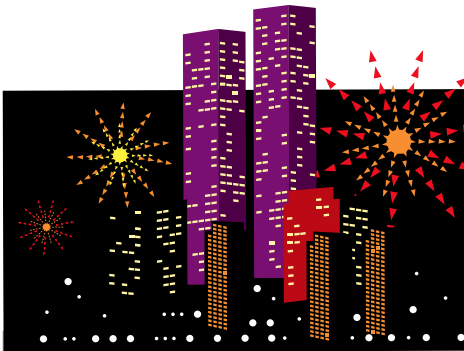
GUARANTEED RESERVATIONS
* NO BOOKING FEES * NO
DEPOSIT * CANCEL ANYTIME
* NATIONAL RENTAL
COMPANIES

call us today @

1.800.292.1930

or check us out online:

DiscountHawaiiCarRental.com



It's time to celebrate Independence Day and there are plenty of options to choose from. Here's a few of them:

Enjoy some of the islands finest slack key guitarist during the **North Shore Style Guitar Festival**, a 6-hour concert on the North Shore. It will be a day of great music, fun, food trucks and fireworks for the whole family. Turtle Bay Resort. 2 – 8 p.m. slackkeyfestival.com

Shoppers can enjoy four days of savings, sweepstakes and live entertainment at the **25th annual Ala Moana 4th of July Celebration** from July 1st – 4th. Pick up a 25% Savings pass from Guest Services or print one out online and maybe even win a travel package for two including round trip airfare to fly anywhere in the United States, courtesy of United Airlines. If that's not enough, let's not forget Ala Moana sponsors the largest Fourth of July fireworks display in Hawai'i. The fireworks begin on at 8:30 p.m. Spectators can tune in to KSSK 92.3 FM for a live soundtrack that is synced to accompany the show.

Three Days Grace will be the feature band at Joint Base Pearl Harbor-Hickam in a special free concert for our troops and their guests. Anyone who can get on base is welcome to attend. Festivities run from 3 - 9:30 p.m. Open to all military affiliated personnel with a DOD I.D. and their guests. Ward Field. Plenty of family friendly activities. Three Days Grace takes the stage at 7:30 p.m., fireworks begin at 9 p.m. greatlifehawaii.com.

Kailua Town has been celebrating the 4th of July as a community for 65 years with a parade in the morning from 10 a.m. to 12 noon on Kainalu Drive. Then at 6 p.m., there will be a 30-minute airshow followed by fireworks that start at 8 p.m. set off from a barge just off the beach. Kailua Beach Park. Remember no parking in Lanikai. Parking is available in the old Macy's parking lot and Kailua Elementary School and there will be a free shuttle up at both locations to take people to the beach area. Shuttle will run until 10:30 p.m. kailuafireworks.com.

Macfarlane Day takes over Waikiki Beach for the annual 4th of July canoe races. Depending on the conditions this can be a very exciting day on the water for the paddlers and onlookers. Please tell your guests to stay out of the way if they go into the water. It's tough to stop a 400 lb. canoe on a wave as it flies into shore. Hula Grill will be open for lunch that day for those that want a safer view.

Ward Village will celebrate with a five-minute red, white and blue light show on the IBM Building every 30 minutes from 7 to 9:00 p.m.

Want to watch the show from the water? Paradise Cruises, Atlantis Adventures and all of the beach cats will have special fireworks packages

JULY CALENDAR CON'T

Continued from page 15.

JULY 21 • RAIATEA AT THE AQUARIUM

The Wakiki Aquarium continues its summer concert series with Raiatea Helm, Maunaulua, and Lehua Kalima. Enjoy an evening of food and music by the seals under the stars. Doors open at 5:30 p.m., concert begins at 7 p.m. Tickets \$50, \$20 for kids aged 5-12. waikikiaquarium.org.

JULY 22 • JOY OF SAKE

This 16th annual event will offer over 400 sakes to sample in one evening including some of the best junmai, ginjo and daiginjo labels submitted to the recent U.S National Sake Appraisal, around 200 ultra-premium daiginjo labels and about half of the sakes available to try that evening are not available in the states, so this will be the only opportunity to taste them outside of Japan. Hawaii Convention Center. 6:30 - 9 p.m. joyofsake.com.

JULY 22

HAWAII PERFORMING ARTS FESTIVAL

This three week summer music festival on the Big Island comes to Oahu for one night for a performance by violinists Iggy Jang, Avery Fisher Grant recipient violinist Chee-Yun, and friends. Doris Duke Theatre. \$25. 7:30 p.m. hawaiiperformingartsfestival.org.

JULY 24 • TINMAN TRIATHLON

Top athletes take to the streets near Waikiki as the Tinman begins and ends at Kapiolani Park. Participants will complete a 750M swim, a 40K bike and a 10K run. The first swim wave starts at Queen's Beach at 5:45 a.m. Streets will be closed throughout the race. tinmanhawaii.com.

JULY 21-23 • QUEEN LILIUOKALANI KEIKI HULA COMPETITION

This 41st annual Keiki Hula Competition was created for youths ranging in ages 6-12 years to honor Hawaii's reigning Monarch, Queen Liliuokalani. Competition begins at 6 p.m. on Thursday and Friday and at 1 p.m. on Saturday. kpcchawaii.com

JULY 23

2ND ANNUAL CLASSIC ROCK FESTIVAL

1970s rocker Stephen Bishop, best known for his 1977 hit single "On and On" is joined by Ambrosia and Firefall join together for the 2nd annual Classic Rock Festival at the Waikiki Shell. 6:30 p.m. \$40-\$75. ticketmaster.com.

JULY 27 • KAPENA AT THE ZOO

Kapena performs at this weeks' Wildest Show in Town at the Honolulu Zoo. \$3. Gates open at 4:35 p.m., mini-guided tours offered to the first 30 people at 5:25 p.m. Music starts at 6 p.m. No alcohol or high-back chairs allowed. HonoluluZoo.org.

JULY 29-30 • THE MAYJAH RAYJAH

This is one of the years biggest reggae festival, two days and 14 artists including Matisyahu, JBoog, Iration, King Yellowman, Rebel Souljahz and more. Single tickets and two day passes available. \$65-\$182. Waikiki Shell. Gates open at 4:30 p.m on Friday at 3:p.m. on Saturday. tmrhonolulu.com

JULY 29 • MELE AT THE MOANA FEATURING JOHN CRUZ

The Moana Surfrider continues their concert series, reminiscent of the long-running radio show "Hawaii Calls," under the famed banyan tree fresh off their 115th birthday celebration. "Mele at the Moana" features today's most popular performers on the Banyan Courtyard stage, and this month John Cruz takes the stage. 7 – 9 p.m.

JULY 30

WAIMEA VALLEY CONCERT SERIES

Join Kapena, Raiatea Helm, Brother Noland, and

Mailani Makainai take to the stage with several halau on the main lawn from 3 – 7 p.m. Tickets: \$12 in advance, \$15 at the gate. waimeavalley.net

JULY 29-31 • COMIC CON HONOLULU

Comic Con. There are people that wait all year to hear those two words. Well I have two more for you... George Takei. That's right, the beloved actor best known for his work on Star Trek will be coming to town for this event. Get your fandom on during this 3-day convention with special guests, panels, activities, games, and of course.. the costumes. Three-day memberships available online for \$60. comicconhonolulu.com

JULY 15

MANOA DNA PERFORMS AT THE ZOO

Manoa DNA performs at this weeks' Wildest Show in Town at the Honolulu Zoo. \$3. Gates open at 4:35 p.m., mini-guided tours offered to the first 30 people at 5:25 p.m. Music starts at 6 p.m. No alcohol or high-back chairs allowed. HonoluluZoo.org.

JUNE 23 • STREETLIGHT CADENCE & HAPA AT THE AQUARIUM

The Waikiki Aquarium's Ke Nani O Ke Kai continues with a performance from Streetlight Cadence and Hapa. Doors open at 5:30 p.m., concert begins at 7 p.m. Tickets \$50, \$20 for kids aged 5-12. waikikiaquarium.org

JUNE 5 • ALII SUNDAY

Kawaiahao Church celebrates select Hawaiian Royalty (Alii) who are of particular importance for the Church by holding seven special Sunday services in their honor around their birthdays throughout the year. Today they celebrate Kamehameha Ekahi. 9 a.m. kawaiahao.org.

IHOP HAWAII
Breakfast All Day
 Morning, Noon & Night

50% OFF
 Lunch & Dinner
 Menu

THURSDAYS
 w/ Industry ID at:
 IHOP Kuliou 5p-2a
 IHOP Ala Moana 6p-9p

OAHU Waikiki Mahealani Center
 2213 Kalia Ave.
 (808) 527-2400

MAUI Palani Waikiki
 1100 S. Moana Blvd.
 (308) 240-4467

www.IHOPHawaii.com

That's Entertainment

HOTELS

- HALE KOA HOTEL** 955-0555
 •**TuSat** - High and Right Comedy Show takes the stage at the Warriors Lounge at 8pm.
 •**MThFS** - Poolside music at the Barefoot Bar. 6-11pm
- HALEKULANI HOTEL** 923-2311
 •**Daily**-Hawaiian Music and hula at House Without A Key from 5:30-8pm.
 •**Daily**-Live Contemporary and light Jazz at Lewers Lounge from 8:30pm to midnight.
 •**Sun**- Sunday brunch at Orchids features Noly Paa on the piano from 9:30 - 2:30pm.
- HILTON HAWAIIAN VILLAGE** 949-4321
 •**Fri** - Fireworks at 7:45pm.
 •**Fri** - The Rockin' Hawaiian Rainbow Revue, a musical salute to King Kalakaua, at the Super Pool. 7 pm.
 •**FriSat** - Olomana at the Tapa Bar from 8-11pm.
 •**Daily** - Live entertainment at the Hau Tree Bar and the Tapa Bar from 8-11pm.
- THE KAHALA HOTEL & RESORT** 739-8888
 •**TuWThFSat**- David Swanson vocalizes on the piano at The Veranda from 7:30-10pm.Hawaiian on Sun/Mon.
- MOANA SURFRIDER** 922-3111
 •**Daily**-Hawaiian music & hula. The Banyan Court, 6-8 pm, and again from 8 -10 p.m. Weekends from 11:30- 2 p.m.
 •**MWFri**-Guided historical tours at 11am.
- NEW OTANI KAIMANA BEACH** 923-1555
 •**FSat**- Jazz guitarists in the Sunset Lanai Bar. 6-9pm.
- OUTRIGGER WAIKIKI ON THE BEACH** 923-0711
 •**Mon**- Kukui Nut Bracelet Making. 1pm.
 •**Th**- Ukulele Lessons. 1pm.
 •**Fri**- Aloha Fridays bring back old Hawai'i with music, hula, ukulele & lei making lessons. 9am-1pm.
- OUTRIGGER REEF ON THE BEACH** 923-3111
 •**Daily**- See guest artists at work in Kuloko Arts of Hawaii 9am-1pm and again from 6-9pm.
- SHERATON PRINCESS KAIULANI** 922-5811
 •**Daily**-Live Hawaiian music & halau at the lounge from 6-8:30pm, then poolside from 8:30-10:30pm.
 •**Th**-Princess Kaiulani historical tour at 9:30am.
- THE ROYAL HAWAIIAN** 923-7311
 •**TTH**- Free guided resort tour at 1pm.
- TURTLE BAY RESORT** 293-6300
 •**MTWThFSat**- Lei Making, Main Lobby at 10am.
 •**ThSun** - Fire Dancer, Hang Ten Pool Bar at Sunset
 •**TThFri** - Shell Hula Lessons, Lobby at 10am
 •**TThFri** - Ukulele Lessons, Lobby at 9am
 •**Fri**- Music & Hula. Lobby Lounge 6:30-8:30pm.

- WAIKIKI BEACH MARRIOTT RESORT** 922-6611
 •**Daily**-Hawaiian entertainment in The Moana Terrace Bar. 6:30-9:30pm.
 •**Fri**-Local crafters "Aloha Friday Fair" Lobby 9a-2pm

MUSEUMS

- HAWAII STATE ART MUSEUM** 586-0900
 •**TWThFSat** - Inaugural exhibition "Enriched by Diversity: The Art of Hawai'i." Free. Tuesday-Saturday, 10 a.m. to 4 p.m. Located in the Capital District.
- HAWAII THEATRE** 528-0506
 •**Tues**- A one-hour guided tour offers a unique insight in the history, art, architecture and restoration of the Hawai'i Theatre with trained docents & a mini-concert on the 1922 Robert Morton Theatre Organ. 11 a.m. Admission: \$10.
- HONOLULU MUSEUM OF ART** 532-8726
 •**MWF**- Japanese Language Tours. Private tours also available. 1pm. Regular admission.
- HONOLULU FIRE MUSEUM** 723-7167
 •**3rdSat**- Free one-hour guided tours through various exhibits with a firefighter recounting HFDs history the 3rd Saturday: 9am - 2pm. Reservations required. 620 South Street. honolulu.gov/hfd/communityrelations
- IOLANI PALACE** 522-0832
 •**Mon-Sat**-45 minutes docent-led or self-guided audio tours available in English or Japanese. Japanese-led tour is available only at 11:30 a.m. All tours include re-tour video and entrance into the Palace Galleries. Adults: \$14.75-\$21.75 / Keiki (5-12): \$6. 9am-5pm
 •**Sat**-Hawaiian Quilt Classes. Old Archives 9:30a-12p.
- LUCORAL MUSEUM** 922-5381
 •**TTh**- Learn how to plan your jewelry project and more in this beaded jewelry workshop \$10. 2-4 p.m.
- HAWAIIAN MISSION HOUSES** 447-3910
 •**Tue-Sat**-Learn about the dramatic story of cultural change in 19th-century Hawai'i. Docents lead tours through the oldest existing frame house in the Islands, Printing Office, and the coral block Chamberlain House. Reservations required. www.missionhouses.org
- PACIFIC AVIATION MUSEUM** 441-1000
 •**Daily**-Vintage aircraft in battlefield hangars at Pearl Harbor. Combat flight simulators. Aviator's Tour takes you through the new Restoration Hangar. Restaurant, Museum Store. Shuttle & Tickets at USS Arizona Memorial Visitor Center or at PacificAviationMuseum.org.
- THE SPALDING HOUSE** 526-1322
 •**Daily**-Docent-led tours given daily. 1:30pm. Garden tours or Japanese language tours are by appointment.

- NAVAL AIR MUSEUM BARBERS POINT** 682-3982
 •**Mon-Fri**-A unique museum experience about aviation history in Hawaii. All of the aircraft are open to climb in, on and around. Tours: 8 a.m. - 4:30 p.m. \$7 / \$5 children under 18. BLDG 1792, Midway Road, Kalaeloa Airport. Reservations required. Sat/Sun by appt only. www.nambp.org.

SHOPPING CENTERS

- ALA MOANA CENTERSTAGE** 955-9517
 •**Tues** - PCC Polynesian Revue Show. 6pm.
 •**Sun** - Keiki Hula Show. 10-11am.
- KINGS VILLAGE** www.kings-village.com 237-6344
 •**MW** Famer's Market offering fresh produce, baked goods and local food items from 4-9pm.
 •**Daily** King's Guard Museum features a variety of collectibles and memorabilia. 10a-10:30p. FREE.
- ROYAL HAWAIIAN CENTER** 922-2299
 • **MWF**- Learn Lomilomi 11am-12pm, Bldg. B, 3rd floor
 • **MF**- Hawaiian Storytelling 12pm, *Helumoa Hale*
 • **MTWF**-Hula 10am (4pm on Wednesdays), *Royal Grove*
 • **ThSat**- Rock-a-Hula Pre-Show 7pm, *Royal Grove*
 • **WTh**- PCC Show 11am, *Royal Grove*
 • **TWTh**- Lauhala Weaving 1pm, *Bldg A, 1st floor*
 • **TThF**- Ukelele 12pm, *Helumoa Hale*
 • **TWF**- Live Hawaiian music 6-7pm, *Royal Grove*
 • **ThSat**- Rock-a-Hula Pre-Show 7pm, *Royal Grove*
 • **Sat**- Hula Kahiko 6-6:30pm, *Royal Grove*
- WAIKIKI BEACH WALK** www.waikikibeachwalk.com
 •**Tuesdays** - Ku Ha'aheo featuring Hawaiian song and dance on the Plaza stage. 4:30-6pm
 •**Wednesdays** - Yoga Classes 4-4:45pm. Free.Plaza Stage

ATTRACTIONS

- KALAKAUA AVENUE** 527-5666
 •**Fri** - Strolling Hula from 8-10:00pm.
- KAPI'OLANI BANDSTAND** 527-5666
 •**Fri**-Hawai'i's finest musicians perform. 5:30-6:30pm
 •**Sun**-Royal Hawaiian Band performs 2-3:15pm.
- KUHIO BEACH HULA SHOW** 843-8002
 •**TThSat**- City & County presents a free hula show at sunset. 6:30 - 7:30pm at the hula mound.
- TAMARIND PARK - DOWNTOWN** 527-5666
 •**Fri**- Mayor's Aloha Friday Music from 12-1pm features live music from Hawaiian to Jazz to Pop.
- WAIKIKI TOWN CENTER** 922-2724
 •**Mon-Sat**-The songs and dances of Hawai'i, New Zealand, & Tahiti. Free shows begin at 7pm.

EVENTS SUBJECT TO CHANGE PLEASE CALL TO CONFIRM PRIOR TO ATTENDING

PAPARAZZI

The Mighty Mo hits another milestone



The Battleship Missouri Memorial welcomed its 7-millionth visitor last month. Mike Carr, President and CEO of the USS Missouri Memorial Association is shown with Devon Fitts, a Major in the U.S. Air Force based at Hickam, and his family

Hula Grill Celebrates their 12th Anniversary



Employees Sterling Kovach, Edwin Rivera, Jorge Gorriti, Tammy Fukugawa, VP, TS Restaurants; Eric Smith, GM Keli'i Gouveia, Dylan Ching, Regional GM Kauai & Oahu; dining room chef Steve Balantac & Chris Colgate, Operations Services Manager

The Fresh Preps



Congratulations to the Fresh Preps, winners of this years Hard Rock Rising Honolulu. They will now be judged by a panel of 12 industry experts who will pick four regional finalists, and eventually the overall winner. Good luck boys!

Do you have a picture you would like us to run?
 Send them to: publisher@oahuconcierge.com

conciierge card

July 31 2016

- **Bill's Sydney Waikiki** - 20% discount off food and beverage (not applicable on happy hour or other offers). Must show hotel ID to receive discount. 280 Beach Walk. 922-1500
- Dole Plantation** - 1 FREE Adult Admission To The Maze With Purchase of 1 Adult Admission. 621-8408
- Giovanni Pastrami** - 15% Off Full Bar, Dine-in or Take-Out at anytime with ID. 227 Lewers St. 923-2100.
- Hard Rock Café** - 15% off food, beverage (non-alcoholic), or merchandise. Hotel ID required. 280 Beachwalk Ave. 955-7383.
- Hawai'i Prince Golf Club** - \$5 Off Standard Kamaaina Green Fees. Tee Times: 944-4567
- Hilo Hattie** - 25% on Hilo Hattie labeled garments, 15% off other fashions/gifts and 10% off Hilo Hattie labeled foods. Not valid on sale item. Ala Moana Center. Ph 535-6500.
- Hy's Steakhouse** - 25% VIP Discount Off Food And Beverage (up to 2 persons) 2440 Kuhio Ave. 922-5555
- Hyatt Regency Waikiki** - 15% discount with the presentation of a concierge business card at SHOR, Japengo and SWIM. 2424 Kalakaua Ave. 923-1234.
- Iolani Palace** - Free Admission. Regular rate \$21.75. 364 S. King Street, Reservations & Hotel ID required. 522-0832.
- **IHOP** - Receive 20% on entire bill. Must show valid hotel ID. Not valid with any other offer or discount. Valid only at Aqua Palms, 1850 Ala Moana Blvd., 949-4467 and OHANA Waikiki Malia by Outrigger®, 9211 Kuhio Ave., 921-2400.
- **Il Lupino** - 15% discount off food and beverage (not applicable on liquor or specials). Must show hotel ID or business card to receive discount. Royal Hawaiian Center. 922-3400
- Kaiwa** - 20% off food & beverage between 5 & 7 p.m. 924-1555

- Longhi's** - 25% off food & beverage up to 2 persons, not applicable with any other promotion or discount. 947-9899.
- Hawaiian Mission Houses** - Free tour with hotel ID. 553 S. King Street. 447-3910
- **Noh Thai** - 20% discount off food and beverage (not applicable on liquor, happy hour or specials). Must show hotel ID to receive discount. Royal Hawaiian Center, Bldg. C. Level 3. 664-4039
- Pacific International Skydiving Center** - 50% Discount on Jump, 68-760 Farrington Hwy., 637-7472.
- P.F. Chang's Waikiki** - Receive 20% on all appetizers, entrees, desserts and beverages 11 am - 5 pm daily (not valid for Pau Hana menu) Royal Hawaiian Center. Ph: 628-6760, 637-7472
- Romano's Macaroni Grill** - 20% Off Food and Beverage for up to 2 guests. (Not Valid for Happy Hour Menu). Ala Moana Center, 1450 Ala Moana Blvd. 356-8300
- Ruth's Chris Steak House** - 20% Off Food and Beverage for up to 2 guests. (Not Valid for Happy Hour & Prime Time menus). Restaurant Row, 599-3860. Waikiki Beach Walk, 440-7910.
- Honolulu Museum of Art Spalding House.** - FREE Admission For you and one guest with hotel ID. 526-1322
- The Original Glider Rides** - Come experience the joy of soaring for yourself. Concierge / GSA may receive a complimentary scenic ride. Request the "GSA flight special" when booking your reservation. Hotel ID required. Dillingham Airfield. 637-0207
- Tiki's Grill & Bar** - FREE order of ANY appetizer with any purchase! One per table. OahuconPOKE. ASTON Waikiki Beach. 923-8454
- Willoughby's Restaurant** - 15% off all food items. Ohana Honolulu Airport Hotel. 3401 N. Nimitz Hwy. 836-0661.

HELP us update this card. If you know of an offer not being honored let us know. As management changes, sometimes offers can get lost. Also as we work on updating this, let us know if there is something you would like to see here & we'll see what we can do!

You will be required to show Hotel ID or business card to claim offer. Do not cut this card out of the book. One special per person per business. Offers valid on regular-priced merchandise only. Discounts are available to Guest Service Professionals ONLY. Not valid with other promotions or special offers. A minimum 18% gratuity on original order required for all special food offers.

Activity Concierge of the Month



NAME: Laura Cole
 COMPANY: Expedia
 TITLE: Expedia Local Expert

Q. How long have you been with Expedia?
 A. This September will mark 6 years at Expedia.

Q. How big is your team there?
 A. I think my team consists of 19 people.

Q. What desk do you work at most often?
 A. I usually work at the Park Shore and Waikiki Beach Marriott.

Q. How did you get your start in the industry?
 A. When I first moved to the island, I worked a few restaurant jobs. Then I went to a job fair and originally found Wyndham which led me to Expedia.

Q. What has been your biggest challenge at the desk?
 A. My biggest challenge at the desk might be gaining the trust of people with language barriers.

Q. What do you like most about this industry?
 A. What I like most about this industry is helping people, who are on vacation, to make the best memories ever – and being a local expert!

Q. What do you find yourself recommending most often?
 A. I recommend Hoku Tours quite often because all my guests have made it a point to give me the most positive and satisfying feedback. Guest after guest has expressed how they have gone above and beyond their expectations. Restaurants depend on what my guest is looking for but I find myself recommending the Outrigger properties often. People like the "beachfront" feel. Or Top of Waikiki for honeymooners and anniversaries.

Q. What's the most unusual request you've ever received??
 Well I've definitely had some inappropriate requests but unusual... I'd say has been when a guest once sat at my desk and said, "I need a passport right now to go to Germany!" He was American. I think he met another tourist and wanted to go back with her when she left. He acted very bizarre.

Q. Have you had any guests that stand out?
 A. I have had guests that I am still in contact with today and even hung out with outside of work. One girl, came back to visit and we hung out her whole trip. I was pregnant then and she just had a baby too. So now we're mommies and we follow each other on social media. It's awesome!

Q. What one question do you hear again and again?
 A. "So you actually LIVE here?"

Q. How do you deal with those "difficult" guests?
 A. Kill them with kindness and patience. Eventually they will feel stupid enough to chill out.

Q. Favorite part of the island and why?
 A. I love Makaha. The beach is perfect, the ocean is pristine and there are hardly any people.

Q. Describe your perfect day.
 A. My perfect day happens almost every Friday. Spending time with my family on the beach – relaxing with a cocktail.

Q. Where are you from originally?
 A. I am from New York and moved here seven years ago with my sister. She is in the military and got orders two months after I came. She left and I stayed.

Q. What do you like to do most when you're not working?
 A. Hanging out with my baby boy. He's 15 months and we enjoy going on very long walks and running around at the parks.

CHILD FREE

Wild Dolphin Watch Cruise

7/1 – 9/30/16

Call for Details!

808-983-STAR (7827)
www.Dolphin-Star.com

The Oahu Concierge is printed monthly and direct mailed FREE to all Oahu Concierge, Hospitality & Activity Professionals.
Subscriptions available to non-industry at \$25 per year.

C O N T A C T
Davis Media

Ph: 596-4422
www.oahuconciierge.com
Twitter & Instagram: @OahuConciierge
Facebook: www.facebook.com/OahuConciierge

ADDRESS & NAME CHANGES / ADDITIONS
We do not take changes via telephone. All changes to mailing list must be submitted in writing by the 16th of the month to make the next issue, email is preferred.

S T A F F

PUBLISHER & EDITOR Pam Davis
publisher@oahuconciierge.com

CONTRIBUTING EDITORS
Karyl Garland, Lance Rae

DESIGN
Coreiya Design

The Oahu Concierge
4348 Waiialae Avenue, #185
Honolulu, Hawaii 96816



LOOK & BOOK
Go to www.HIRealTime.com

AN AGENT TOOL
built specifically for
Hawaii Guest Professionals

It's FREE!

- Activities
- Attractions
- Restaurants
- Events

Real-time booking for over 130 Vendors, with more being added each month

Register to access for free at WWW.HIREALTIME.COM



ponorez serving Hawaii's visitor industry since 1988. . . 28 years & counting



**"Thank you for holding,
a representative will be
with you shortly."**

Are you getting tired of hearing the same automatic voice answering service every day? Put down the phone because now there is a new way to book activities without picking up the phone!

PonoRez, created by **A3H**, provides a user friendly reservation system that is **FREE** and Non-Preferential.

Now you can **Look & Book** at your convenience, at the office, on your way to work or even in your bed. **HIRealtime.com** works on a variety of devices; Personal computer, MAC, tablet, Apple and Android mobile phones.

