

Concierge

KEEPING THE HOSPITALITY INDUSTRY INFORMED SINCE 1998

A Princely Hula Fest

Party Time! THE JULY FESTIVALS ARE HERE

The Prince Lot Hula Festival at Moanalua Gardens was, of course, named for Prince Lot, who later reigned as King Kamehameha V. The festival is the largest non-competitive hula event in Hawai'i, honoring Prince Lot Kapu'iaha who reprised the once forbidden hula in the district of



Picture courtesy of the Moanalua Gardens Foundation.

Moanalua. For many years the festival was held on one day. When one day was no longer enough the obvious question was answered by expanding the event. Titled He Wahi Pana... Moanalua, A Sacred Place, the free 38th Annual Prince Lot Hula Festival will be held Saturday, July 18, from 9 a.m. to 4 p.m., and Sunday, July 19 from 10 a.m. to 3 p.m.

Kimo Kahoano will emcee both days. Opening the 2015 festival will be Kumu Hula Joan Lindsey along with an impressive line-up of premier halau hula who will perform both kahiko, ancient, and 'auana, contemporary hula. Closing the festival on Sunday afternoon will be Ed Collier's Halau O Na Pua Kukui.

The festival was founded in 1978 by Moanalua Gardens Foundation and attracts more than 15,000 visitors and residents each year. Visitors love the event, where casual seating, on beach towels or mats, is welcomed and shade is plentiful, provided by the famed Hitachi tree of logo fame. From a distance the gardens look much like a French Impressionist painting with people reclining on colorful blankets or strolling past the reflecting pond fronting the cottage of a prince. Up close the crowd is a mix of local folks and visitors from Japan to Germany.

The image of days gone by is true. Moanalua was a favorite recreation spot for Prince Lot, who is credited with reviving the hula in the district of Moanalua. His summer cottage with a wrap-around natural pond, can be found on the gardens' grounds.

The festival is free and the normal fee to visit the gardens is waived for both days. Trolleys, busses

and vans arrive all day from Waikiki. A collector's souvenir button is sold by volunteers, along with the annual, very collectable, Prince Lot T-shirt. All funds are used to produce the event. Ample parking is available at

Moanalua Middle School, as is street parking.

Fine crafts will be demonstrated, including kapa by Hawaiian artist named national treasures, Moana Eisele, carver Umi Kai, kii by Keith Maile, ipu making by Dexter Soares and kalo pounding by Daniel Anthony.

When hunger strikes food booths are only steps away. Moanalua Lions Club runs the Shave Ice stand, Aloha Pop and Ono Pop join 808 Burgers, Royal Hawaiian Hot Dogs, Kazu's Lunch Wagon, Haili's Hawaiian Food and, Saturday only, Leonard's Bakery Malasada Truck.

Alika Jamile, Moanalua Gardens Foundation (MGF) Executive Director and President says, "with encouragement from kumu hula, and supporters including the Hawaii Tourism Authority and the Office of Hawaiian Affairs, we are adding another day of great hula to include additional halau and their dancers from out-of-state mainland U.S. and Japan branches of their Hawaii-based halau."

Halau including their out-of-state dancers are Kumu Lilinoe Lindsey's Ka Pa nani 'O Lilinoe, Kumu Hokulani De Rego's Halau Hula 'O Hokulani, Kumu Charlan Kalama's Halau Ha'a Hula 'O Kekau'ilani Na Pua and Kumu Pumehana Cullen, Kapulani McElroy and Malia Helela's Na Hula O Puamana.

For only the second time in thirty-eight years, the MGF will present the Malia Kau Award, this time to hula icons, Joan Lindsey and Ed Collier, honoring them as keepers of the culture who have dedicated their life's work perpetuation of hula traditions. Kau, a descendant of the valley's early

Continues on page 2.



Prepare to celebrate more food, music and fun. July is even more event packed than June. What are we celebrating? Begin with July 4th, of course, then the last days of the 50th State Fair, the Farm Fair, plus celebrations for Korean culture, Ukuleles, Mangoes, Ukuleles, Hula, Arts, Steel Guitar, and even Sake. Think of the month as a marathon full of fun. The month starts explosively with the plenty of 4th of July fun, and that's just the start...

50th State Fair: July 3th, 4th and 5th are the final days of the 50th State Fair at Aloha Stadium. Dozens of E.K. Fernandez rides await. On July 3rd Carol Kai and Kimo Kahoano will present Brown Bags to Stardom. Other entertainment includes pig races, a petting zoo for the keiki, and, for the entire family, Ma'ceo, a high energy acrobatic equestrian stunt show with a Gypsy theme. Admission is \$1 and 10-ride wristbands are \$20 for the closing weekend. Full info is available at ekfernandez.com

Hawaii State Farm Fair: The 53rd annual Fair spans two days. July 11th from 9 a.m. to 8 p.m. and on the 12th from 9 a.m. to 5 p.m. at Kualoa *Continues on page 2.*

TABLE OF CONTENTS

Yada Yada Yada	2
Newsflash	3
Arts with Aloha	4
Auntie Lynn's Adventures	6
Chef's Corner: Holoholo Grill Jill Owens	9
E Pili Kakou	10-13
Calendar	14-15, 17
Paparazzi: Ward Village Residences	16
Chinatown After Dark	17
That's Entertainment	18
Concierge of the Month: Hiroe Yanagisawa	19

WOLFGANG'S STEAKHOUSE
LUNCH • HAPPY HOUR • DINNER • WEEKEND BRUNCH • PRIVATE ROOMS

UNMISTEAKABLY NEW YORK
Royal Hawaiian Center, Bldg C, Level 3
wolfgangsteakhouse.net • opentable.com
808.922.3600



Publisher's Letter



Smile and the world
will smile with you

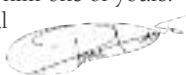
It's important to recognize that most all of us are in the position to make a difference. Whether you're checking someone in, making their golf reservations, answering a question on the phone or opening their door as their call pulls in, how you act and what you say can affect that person. If you're having a bad day, they'll know. If you're having a good one they'll also know. If you're dealing with a person that just had their day ruined by someone else, think that guest who just arrived after being delayed 10 hours or their bag was lost, remember you also have the power to change their entire day around by simply offering a smile. The difference one person can make is amazing.

I've run into a bunch of situations recently where the actions of one person effected me one way or the other. I had a run in with a security guard at a concert recently. Technically he was doing his job, but he certainly could have gone around it better. As a result of his actions, I went from having the time of my life to battling back tears for the rest of the evening. He pretty much singlehandedly ruined the entire night for me.

On the other hand, I was at a restaurant recently where the experience was pretty awful no matter which way you cut it. The server verged on incompetent, the food wasn't cooked, and an hour after we ordered and everyone else had finished, one guy still hadn't been served and was told the dish would take another half hour. Almost immediately thereafter we were presented with a \$300 bill for a virtually unedible meal. To say we were beyond frustrated at this point would be an understatement, but I have to say that although the server had no business actually being a waiter, he was beyond nice, ridiculously apologetic and his mere kindness dissipated our anger. A sincere smile can really go a long way.

We all have bad days, but it's important we don't share that with the people we interact with. I secret shopped a restaurant recently and one of the things I noticed was that the hostess never smiled. I watched her sulk around the floor all evening and just knew she absolutely didn't want to be there. It ended up making me feel bad that I was even there. Maybe if I left she would be able to go home, but that was silly because the restaurant was full of people. But that is how powerful a smile, or a lack of one, can be.

Smiling is evolutionarily contagious. Most everyone has a subconscious urge to smile when they see one. It can be one of the most powerful gifts and tools we have to use in our daily lives, and by sharing a smile, it can often singularly change a situation. Try it. Smile at someone randomly and see if they don't smile back. When we smile, something lights up inside of us. It can be an expression of joy, or love, or laughter. A smile is aloha. As the proverb says, "If you see a friend without a smile; give him one of yours." Let's remember how powerful one simple act can be. Smile!



Yada Yada



Brad Logsdon

Starwood Hotels & Resorts has named **Brad Logsdon** complex director of sales and marketing. Logsdon will be responsible for overseeing the sales and marketing activities at the four Starwood properties in Waikiki as well as strategic planning in growing target markets and overseeing other current and emerging markets. Most recently he was the director of sales and marketing at the Moana Surfriider. • There's been some shuffling over at the **Aulani** recently. **Michelle McIntyre** left her concierge position at the hotel, but didn't

go far, as she joined the team at Pleasant Holidays to work the Tour and Activity desk directly across from her old one in the lobby of the hotel. **Sharilyn Kazunaga** also left the desk, but she went a bit further and now works for the Sales and Catering Department at The Modern Hotel. **Nicole Timbreza** has joined their front desk. • **Pila Hanson** has been named Director, organizational development at **Outrigger Enterprises Group**. Hanson will be responsible for enhancing organizational effectiveness and the development of Outrigger hosts on a global level. **Kaipo Ho** has been named the director, cultural experiences. He will work closely with Pila to ensure Outrigger's brand training.

Celebrations Continued from page 1.

Ranch. Sponsored by the Hawaii Farm Bureau in partnership with the Hawaii State Department of Agriculture and the Hawaii 4-H Livestock Council, the two-day event strives to educate the public about the various aspects of agriculture, and gives 4-H'ers the opportunity to show off their livestock. The fair showcases local farmers and their products, from coffee to locally raised beef to fruits and vegetables. Young fair-goers can enter contests like corn husking and watermelon-eating. The fair includes food booths, entertainment, contests, kiddie rides, the Country Market and one of the largest plant sales on the island. Parking is free. The event is free for children and students with a valid student ID and just \$5.00 for the general public. hawaiistatefarmfair.org

Korean Festival: Magic Island is the place for Korean culture, old and new, on Saturday, July 11th, 10 a.m. to 8 p.m. Presented by the Hawaii Korean Chamber of Commerce, The 14th Annual Korean Festival in Hawaii is like taking a short trip to Korea – no packing, just fun. The day is filled with dance, art, music, entertainment, and food, plus taekwondo demonstrations. Tasty breaks come with the Korean cooking lessons by top chefs and a kim chi eating contest. Food tents offer kalbi, BBQ

shorttrips, small rice cakes in spicy sauce, and mandoo, dumplings. The winner of the talent show wins two tickets to Seoul via Korean Air. Want to give it your best shot? Enter the show by calling Mark Sim at 230-7255, info at koreanfestivalalhi.com

Mangoes at the Moana: Mangoes return to the Moana Surfriider, a Westin Resort & Spa, where the daylong celebration of one of our favorite summer fruits can be found all over the property on July 18th, from 9 a.m. to 4 p.m. This will be the 7th Mangoes at the Moana and it's bigger, better and more delicious each time. The day includes a contest that looks for the "best" mango of the year, and the winner wins two nights at the hotel! Bring your mangoes in at 8 a.m. to register. Bystanders can wander the Mango Farmers Market all day in the lobby, watch cooking demonstrations at noon on the Veranda and of course, the big event of the day is the Mango Throw Down, noon to 4 p.m. where 8 of local chefs, including Ronnie Nasuti, James Aptakin and Leann Wong prepare mango dishes. The event is free with guests invited to taste each offering at \$6 a plate. There will also be cocktail mixdown during that same time. Self-parking is available at the Sheraton Princess Kaiulani and is complimentary for 4 hours with validation. moana-surfriider.com

Continues on page 8.

Prince Lot

Continued from page 1.

families, was born in the valley in 1881. Raised by Auntie Mohoano Nui, she was taught the sacred hula of the place. When Nui died Kau was taught by Namakahelu, the last chantress of Moanalua, and charged with carrying the traditions forward. Kau taught Iolani Luahine, Mary Kawena Pukui and her daughters Pele Pukui and Pat Namaka Bacon, Henry Pa, Lokalia Montgomery, Maiki Aiu and Hoakalei Kamauu. Many went on to establish halau and continue the traditions handed down for generations.

A highlight this year will be the debut presentation of Pele O Moanalua, an oli from the notebook of Namakahelu, the last chantress of



Moanalua. Each year one oli from the famed notebook is offered to participating kumu. Kumu Hula Vicky Holt Takamine and her halau, Pua Ali'i 'Ilima accepted the challenge.

Moanalua Gardens is home to famous structures and rare trees, including the famous "Hitachi" tree. The entire viewing and hula mound areas will be shaded all day. A beach mat or blanket would be ideal to spread out on the lawn on offers great viewing of the raised hula mound. Areas for kupuna, elders, and folks with chairs are cordoned off in the back of the lawn. No commercial

photography is allowed. Participating halau and a performance schedules can be found online at moanalugardensfoundation.org. ~ Lynn Cook

EXTRA Newsflash EXTRA

WET'N'WILD HAWAII IS NAMED ONE OF THE BEST

The Travel Channel released their top 10 choices for best Amusement and Water Parks of 2015 and our own Wet 'n' Wild Hawaii made the list, along with the introduction "might simply be one of the best water parks in the country." Congratulations! To check it out yourself call 674-9283 or head to wetnwildhawaii.com.

EVERYBODY LOVES A PARADE

Aloha Festivals is looking for marching bands, floral floats, specialty car units (like the finely restored oldies-but-goodies), marching bands and unique marching units (like the walk-sit-walk-sit folding chair marchers), and pa'u equestrian units in full pa'u dress, horse lei, outriders and pooper-scoopers. The parade takes over Kalakaua Avenue September 26th, beginning at 9 a.m. Applications due Friday, July 31st. Contact Tony Lee at parade.lady001@gmail.com.

STARS BUY ONE GET ONE

From July 1 through August 31st, kama'aina and military members can take advantage of a buy one get one free offer on Star of Honolulu's Five Star Sunset Dining & Jazz Cruise. Simply purchase one ticket at the suggested retail price of \$197 and receive a second ticket free with valid Hawaii or military I.D. starofhonolulu.com.

SHAMROCK SHUTTLE

Want to get your Irish on? Well thanks to the Shamrock Shuttle, a complimentary shuttle service that visits O'Toole's, Irish Rose, Kelley O'Neils and Anna O'Brien's once an hour every Friday and Saturday between 8 p.m. and 2 a.m. visitors and locals alike will now find that quest a lot easier to accomplish. It's a free shuttle, but please always remember to tip your driver.

PATRICK CHING OCEAN ART

The KAI Waikiki Ocean Art Show will feature acclaimed nature artist Patrick Ching painting seascapes in the lobby of the Moana Surfrider. Visitors are encouraged to bid on the paintings with a portion of the proceeds going to the Waikiki Aquarium. Mr. Ching will also be offering two art classes on site on Thursday, July 9 and Wednesday, July 15 from 2 to 4 p.m. for just \$20. 922-3111.

CHAI FEEDS LUAU GUESTS

One of our island's most beloved chefs, Chai Chaowasaree, has joined forces with the folks at Discover Hawaii Tours to provide the food for their Big Kahuna Luau in Tantalus. Guests can expect some of his more familiar dishes as his ahi katsu with mango salsa and seafood tarts are served as passed app before settling in for the luau portion which he will also cater. For a premium, guests can also pre-order a special plated menu or premium wines and champagnes. discoverhawaii.com

26 YEARS OF AAA FOUR DIAMONDS

Bali Steak and Seafood opened in the Hilton Hawaiian Village back in 1982. In 1989 they received their first AAA Four Diamond Award, and they have held that status for the past 26 years, making it the longest running status in Hawaii and among the top 10 longest-running winners in the nation. Orchids at the Halekulani has now held the honor for 20 years, making the list back in 1995 and Hoku's at the Kahala has been on the list since 2002. As a reminder, Honolulu actually has two restaurants that have received AAA's highest honor, the Five Diamond Award. La Mer has been on the 5 Diamond list consecutively for the past 25 years, and Chef Mavro since 2008. #luckywelivehawaii

HILTON RENOVATED TAPA BALLROOM

The Hilton Hawaiian Village recently finished a \$7 million renovation of its Tapa Ballroom, featuring a redesign inspired by patterns of Hawaiian tapa or kapa cloth expressed through color, images, textures, patterns and artwork by local artists, creating a strong Hawaii sense of place consistent with their location for meetings or celebrations. The new 16,536-square-foot ballroom, known as the Tapa Conference Center, includes the Tapa Ballroom, Palace Lounge, Honolulu Suites, and the Iolani Suites. hiltonhawaiianvillage.com.



MAC 24/7
WEDNESDAYS

Industry Night
11pm - 2am

50% OFF
ALL FOOD
with your industry ID

LIVE DJ

\$3 valet parking when dining

808-921-5564 - MAC247Waikiki.com
2500 Kuhio Avenue - Honolulu, HI 96815

MAC247Waikiki

Hale 'Aina Award Winner
Best Gourmet Comfort Food - Honolulu Magazine



DOLPHIN STAR

CHILD FREE
Wild Dolphin Watch Cruise
7/1 - 9/30/15
ASK FOR DETAILS!

DOLPHIN STAR IS OPERATED BY
STAR OF HONOLULU
CRUISES & EVENTS

808-983-STAR (7827)
www.Dolphin-Star.com

60th Anniversary 1955-2015

Mahalo for your continued support!
JOIN OUR
GUEST REFERRAL PROGRAM



Our program is simple!

For every 25 guests referred,

Ruth's Chris Steak House will send you
a \$50.00 dining certificate.

Please contact Emi Espinda if you have any
questions at eespinda@direstaurants.com

OPEN DAILY FROM 5PM

HAPPY HOUR DAILY IN OUR LOUNGE | 5PM – 7PM

PRIME TIME MENU | DAILY 5PM – 6PM

WINE WEDNESDAYS | 25% OFF BOTTLES OF WINE



Restaurant Row | 808.599.3860

Waikiki Beach Walk | 808.440.7910

WWW.RUTHSCRISHAWAII.COM



**SOMETHING NEW.
SOMETHING CLASSIC.**

Open Daily 11am - 10pm

Happy Hour Daily in our lounge 3pm - 6pm & 8pm - 10pm

Vino Thursdays 25% Off Bottles of Wine

**INQUIRE ABOUT OUR
GUEST REFERRAL PROGRAM!**

Our program is simple!

For every 10 complimentary dessert cards redeemed
(WITH YOUR NAME ON THE CARD),

Romano's Macaroni Grill will send you a
\$25.00 dining certificate that may be used
at our Oahu restaurant.

Please contact Emi Espinda if you have any
questions at eespinda@direstaurants.com



Ho'olupa Terrace at Ala Moana Center

808.356.8300

WWW.MACARONIGRILL.COM

arts with aloha



Are tourists arriving in July really interested in going to the theatre or visiting a museum? Probably not, but this month, I am going to give you some ideas to tempt your guests with a little traditional and not-so-traditional Hawaiian culture, plus I'm throwing in a couple of dinosaurs and an Australian to keep things interesting.

You know what's interesting about the Honolulu theatre scene? It's the number of local playwrights who have become successful sharing their versions of Hawaii and its culture. One noted playwright and children's author is the late Lisa Matsumoto. With her musical collaborator Roslyn Cattracia, Lisa created a series of musical adaptations of traditional western fairy tales by turning the characters into local endearing stereotypes. For example, the *Three Little Pigs* were turned into *Da Tree Local Pigs*. You get the idea! *Once Upon One Naddah Time* is the second installment of this series and opens on July 2nd at **MANOA VALLEY THEATRE** and runs through July 19th.

In addition to *Da Tree Local Pigs*, your guests will get to meet *Da Mongoosettes* (think Diana Ross and The Supremes), *Da Mean Mongoose* (think the Big Bad Wolf), *Da Wicked Queen* (just pick any jealous queen from history and you'll be good) and a lot of other surprise characters with roots in childhood fairy tales, of course with a very local twist. Shows runs Wednesdays & Thursdays at 7:30 p.m. Friday & Saturdays at 8 p.m., and Sundays at 4 p.m. Tickets are \$39 with discounts for seniors and military. Call 988-6131 for more information. There is a string attached to this production and it's that most of the characters speak in pidgin, so give your guests a quick crash course in da kine and they should be fine. But never-the-less, even if they don't get all the jokes, they will definitely laugh their okoles off!



There is one thing you can do on your okole that can be quite productive and that's the Hawaiian practice of weaving hala (Pandanus tectorius for your scientific types). You may recall that **BISHOP MUSEUM** opened an exhibit earlier in the year on the beauty and significant of hala in Hawaii. Well, that exhibit is coming to a close on July 27th so you still have some time to get your guests to experience *Nani I Ka Hala: Weaving Hawaii*. The exhibit addresses the need to collect, share and perpetuate this tradition as part of Hawaii's heritage and vibrant living culture. This will be a chance for you guests to understand the real meaning and value of hala from its functional roots beyond what they see as hats and such in the lei shops and stores around

Honolulu. Your guests can try their hand at lau hala weaving daily at 1 p.m. (remember the museum is closed on Tuesdays) in the Hawaiian Hall Portico. An experience weaver will guide them through the art of weaving with pandanus leaf. Your guests will take home their handmade lau hala bracelet as a memento. This hands on activity should make a visit to a museum fun for the kids. Plan about 25 minutes for the class and there is a \$10 cost per person to cover the costs of the materials. Reservation can be made the day of visit at the ticket office.

Now if the kids and dad are not patient enough for 25 minutes of weaving, you can send them over to the Castle Memorial Building at Bishop Museum to check out the dozen or so life-like dinosaurs that have been keeping house at the museum since February. The exhibit is called *Dinosaurs Unleashed* and the animatronic creatures are a lot of fun and can be a wee bit scary for little ones, but worth the visit. Your guests will get to learn about the giant reptiles from the Mesozoic Period. One of the creatures is the Maiasaura (caring mother lizard) with her baby and nest of eggs but of course the big star is Tyrannosaurus rex, the Michael Jordan of dinosaurs. I dare you to try to take a selfie and fit everyone into the same frame. In addition to the animated creatures, there are also interactive stations and activities for the kids to show kids and adults how these animals flourished in their environments. Adult admission is \$19.95, children 4-12 are \$14.95, and children under 3 are free. Seniors are \$16.95. The museum is open 9 a.m. to 5 p.m. but remember it's closed on Tuesdays. Don't forget to tell your guests to check out the amateur paleontologist section to do some digging and perhaps imprinting of some bones.

If you dig deep enough into the earth you might just end up in Australia and discover internationally renowned comedian **Jim Jefferies**. But if you're not in the mood or in shape for all that digging, I suggest to check him out at the **HAWAII THEATRE** on July 11th for his new live tour called *Freedumb*. Jim is familiar to American audiences through his HBO stand-up special *I Swear to God* and his comedy series on FX called *Legit*. His humor is not suitable for children so best to keep the kids at home this night. Tickets are \$42.50 and can be purchased online at HawaiiTheatre.com or charge by phone at 528-0506. Seeing stand-up comedy while in Hawaii might not be the first thing on your guests' agenda for their holiday, but if they like comedy and are planning to visit the Capitol District that day, dinner and a stop at this historic theatre would be a nice urban touch.

If your guests are not into comedy, perhaps a traditional hula concert on July 12th at 2 p.m. with Kumu Hula Mapuana De Silva and the keiki of Halau Mohala Ilima will be more to their liking. Kumu Hula De Silva's halau is dedicated to the preservation of Hawaiian culture and celebrates the chants and dances from the 18th and 19th centuries. At the time of this writing tickets prices for Jim Jefferies and Halau Mohala Ilima were not available. Please reach out to the theatre directly at HawaiiTheatre.com or by calling the box office at 528-0506 for more information and to purchase tickets.

~ Lance Rae

WE TREAT VISITORS LIKE ISLAND ROYALTY.



AMBASSADOR LUAAU PACKAGE

Adult: \$139.⁹⁵

Child: \$111.⁹⁶

Mini Coach \$30
Motor Coach \$22

GENERAL ADMISSION INCLUDES:

- 6 villages & exhibits
- "GO NATIVE" activities
- Canoe Rides
- Canoe Pageant
- Tram tour of Laie
- "HAWAIIAN JOURNEY" movie experience

Premium Amenities:

- Small group guided tour
- "HĀ: BREATH OF LIFE" evening show with premium Ambassador-level seating and special Sherbet Delight dessert
- Flower lei greeting
- Souvenir DVD
- Award-winning ALI'Ī LUAAU Dinner Buffet
- Backstage Tour

TO BOOK ANY OF OUR PACKAGES FOR YOUR GUESTS, see your PCC representative or call 293-3333.

polynesia.com


POLYNESIAN
CULTURAL CENTER

4TH OF JULY SIDEWALK SALE EVENT!

Celebrate the 4th and save up to 75% off at the Hukilau Marketplace.



JULY 2

- Sidewalk Sale - all 3 days
- Free Movie Night

JULY 3

- Talent Show
- Free Movie Night

JULY 4

- BBQ Cook-Off Contest
- Watermelon & Hot Dog Eating Contest
- Free Concert*
- Free Movie Night



*Free July 4th Concert

B.E.T. 6-7pm
Ron Artis II 7-8pm



HILTON HAWAIIAN VILLAGE® PRESENTS
WAIKIKI'S ONLY LUAU
 UNDER THE STARS



WAIKIKI STARLIGHT LUAU

The drama and grace of Polynesia unfold with live music, drums, the captivating dances of the South Pacific and the fiery drama of four fire knife dancers. Indulge in a feast of unforgettable tropical flavors prepared by our award-winning resort chef, including Kalua Pig, Seared Island Catch, Huli Huli Chicken and Carved Pulehu Steak.

- SUNDAY - THURSDAY
 BEGINNING AT 5:30 PM •
- ENJOY ONE WELCOME MAI TAI &
 ONE SELECT BEVERAGE •
- COMPLIMENTARY VALET
 & SELF PARKING •

808.941.LUAU
 (5828)

www.HiltonHawaiianVillage.com/luau

WAIKIKI
 STARLIGHT
 Luau

HILTON HAWAIIAN VILLAGE®
 WAIKIKI BEACH RESORT
 2005 KALIA ROAD, HONOLULU • 808.949.4321



Auntie Lynn's Adventures X



July – warm, very very warm. No trades. July in Hawaii always reminds me of that song, “Summertime and the livin’ is easy...” Really? Obviously that songwriter didn’t know about the chock-a-block full and busy island of Oahu. Then a singer friend commented that she was glad for deep-chill air conditioning at her gig because summer heat put her in the doldrums. Again, Really?

I suggested that she ask the three young apprentice navigators who just delivered the double-hull voyaging canoe, Hikianalia, back home to Hawaii. They know about doldrums. Twenty-one days sailing from Tahiti, many days in the real doldrums - no sun, no moon, no stars to guide them. Still Austin Kino, Jason Patterson and Kekaimalu Lee located the Southern Cross and Hokupa’a, the North Star, to chart their course. For the next year they will sail the canoe around the Hawaiian Islands, providing learning experiences to youth, future voyagers. Then Hikianalia will sail to the U.S. West Coast, meet up with Hokule’a and head for South America. This is the stuff of adventure films, only it’s real!

If you happen to be a reader of the *New Yorker Magazine* you will already know that the June 22nd issue featured an interview with Navigator Nainoa Thompson. His cousin, Sam Low is the author of the book “*Hawaiiki Rising - Hokule’a, Nainoa Thompson and the Hawaiian Renaissance.*” He is also Nainoa’s cousin. He lives in Martha’s Vineyard on the far side of America. Sam has voyaged on Hokulea, has a wry wit and wrote the following that I have to share - slightly abridged.

Sam speaking: On a cool clear evening this May, Nainoa Thompson went down to the Hudson river in Manhattan after giving a number of talks and presentations about Hokule’a’s Malama Honua voyage around the world at the United Nations, New York University, the Harvard Club and various other locations. His mission in New York, organized by Halawai - a group dedicated to promoting an understanding of Hawaiian and other Pacific Island cultures - was to lay plans for Hokule’a’s visit there in 2016.

He loitered on the wide sidewalk bordering the river next to a building containing about a dozen six-man outrigger canoes owned by the New York Outrigger Canoe Club. He was waiting for Nick Paumgarten, of *The New Yorker Magazine*, who was late because he had encountered unusually heavy pedestrian traffic as he made his way from the magazine’s headquarters on roller skates.

The two men talked on the sidewalk for a while, then walked onto a nearby dock where they boarded a canoe and set out for the Statue of Liberty, about four miles away. The purpose of the



trip was to provide Nainoa with an opportunity to orient himself to the waters he would sail when Hokule’a visited New York in June of 2016. It was also an opportunity for Nick, to gather material for his “Talk of the Town” column. *The New Yorker* is one of the most widely read magazines in the country, and one of the oldest – founded in 1925.

As Sam explains: The story was, and is, important. Hokule’a is well known, iconic even, throughout the Pacific but if you mention her on the mainland, and the fact that she is a replica of the kind of sailing vessel that Polynesians employed a thousand years ago to settle one-third of Earth’s surface, most mainlanders will nod knowingly and say: “Oh yes, like Kon Tiki.”

On such occasions, Sam says, “if you know anything about the canoe, you will have to sit that person down and brief him on the real facts of the matter: that Thor Heyerdahl was wrong, Polynesia was not settled by landlubbers who drifted haplessly with the prevailing winds and currents from South America on primitive rafts but by real seamen who ventured out into the ocean void (at about the time the walls of Troy were falling to the Greeks) and sailed against those winds and currents in powerful vessels, like Hokule’a. You will also have to relate that they made voyages of 24,000 miles (as between Tahiti and Hawaii) and found land without charts or instruments of any kind.” Sam adds that one sobering fact is that Heyerdahl sold 50 million copies of *Kon Tiki*. So far Sam has sold 10,000 copies of *Hawaiiki Rising*. He’s catching up. If you haven’t read Sam’s book, buy it. You’ll want to read it more than once.

So what do we do, on days off, to make the “living easy”? And, further, what do we advise visitors? My suggestion is, take a sunset cruise, squint your eyes and pretend your feet are on the deck of a voyaging canoe, searching for an island. That’s such a sobering thought that your next stop may need to involve a cold beer. Best places for that, in Auntie Lynn’s book – any beachside bar, Friday or Saturday at the Tapa Bar at Hilton Hawaiian Village to hear Jerry Santos, Sunday at Dukes to hear Henry Kaponu and any night at the Outrigger Reef’s Kani Ka Pila Grille – seven nights a week Hawaiian music by Na Hoku and Grammy nominated musicians. See you there!



ALERT!

July 10-12

Box Jellyfish Window

Teaching Hawaii about jellyfish and other ocean creatures for over a century

brought to you by
 The Waikiki Aquarium
 open daily from 9 am - 4:30 pm



Asia Pacific Dance Festival: Showcasing the finest dances, dancers, and choreographers from Asia and the Pacific, the festival centers on a series of performances, and includes free activities as workshops, university course offerings, lectures, forums, and demonstrations from July 14- 27th. The festival believes that dance is an ideal window through which to expand our understandings of others and to gain insights into our own worldview and those of others because the values and belief systems of people are embedded in their dances. This event is offered every other year and is built around a central theme. This year that theme is Stories. And will focus on sharing the “stories” through traditional and contemporary dances of Hawaii, Asia, the Philippines and Fiji. Special guests include Ballet Philippines, the Oceania Dance Theatre from the University of the South Pacific, Fiji; and Okinawan Drum Dance Artists, Churasa. outreach.hawaii.edu/community

6th annual Waikiki Steel Guitar Festival: The 6th annual Festival (formerly known as the Hawaiian Steel Guitar Festival at Waikiki Beach Walk) will be held at the Waikiki Beach Walk's Plaza Stage on Saturday, July 18 from 3 – 7 p.m.. The lineup features Hawaiian steel guitar masters and students of this classic Hawaiian instrument. This year's featured masters include Alan Akaka, Jeff Au Hoy, Bobby Ingano and Greg Sardinha. Also featured will be Mark Prucha, a young steel guitarist from Naperville, Illinois, and Ho'oulu Cabrinha, great grand-nephew of one of Laie's favorite sons, Joseph Kekuku. Kekuku is often credited for

“discovering” the sound of the Hawaiian Steel Guitar as has been mentioned in recent issues. waikikisteelguitarfestival.com

38th annual Prince Lot Hula Festival: One day wasn't enough for this annual non-competitive hula festival, so not only did it expand into two days, but we pulled it out of this article to give it its own section. See story page 1

Haleiwa Arts Festival: “Take a ride in the country”, words to a favorite Hawaiian song, describes two days, July 18th and 19th, on the North Shore. The free Haleiwa Arts Festival 18th Annual Summer ArtFest is an art party not to be missed. Juried visual arts competitions, music, singers, dancing, cultural history tours, student art displays, art demonstrations, and children's art activities fill event inch of the Haleiwa Beach Park and spread all over town. Admission is free, 10 a.m to 5 p.m. The 130-plus juried artists will be available to discuss and sell their art in oil, acrylic, ceramics, photography, ceramics, sculpture, watercolor and fabric, plus jewelry and glass art. Music and keiki activities fill both days. Food and beverage booths and restaurants in Haleiwa provide an energy boost to miss nothing, enjoy everything. haleiwaartsfestival.org

Ukulele Festival Hawaii: Hawaii and the world's most beloved four-stringed instrument will again be celebrated with three more days of festivities. Roy Sakuma's free Ukulele Festival Hawaii happens Sunday, July 19th, in Kapiolani Park. The festival features Jake Shimabukuro and Willie K and the Ukulele's For Peace from Israel. Other artists include Ohta-San, Paula Fuga, Herb Ohta Jr., Aidan

James, Nick Acosta and the Roy Sakuma 700-piece ukulele band composed mostly of children. Danny Kaleikini, Hawaii's Ambassador of Aloha, serves as emcee for the 44th straight year.

The Festival is preceded by a July 17th gala dinner at the Ala Moana Hotel and, also at the hotel, a free one-hour Anyone Can Learn to Play free workshop presented by Roy and Kathy Sakuma at 10 a.m. on July 18th. See the schedule online at ukulelefestivalhawaii.org.

Queen Lili'uokalani Keiki Hula Competition: For three days, July 23rd to 25th, the Neal Blaisdell Arena will be filled with tiny dancers from six to 12 years of age. The Queen Lili'uokalani Keiki Hula Competition invites the halau, hula schools, to present solo and groups of dancers, both in kahiko, ancient hula, and auana, modern hula. Four hundred youth will represent twenty-three hula halau from Oahu, Maui, Hawaii Island, California and Japan. Some of the six-year old dancers are two-year dance veterans, starting hula training at age four. Na Hoku-winning musicians accompany the solo and group dancers. Thursday, July 23rd the Soloist Competition begins at 6 p.m. followed by the Friday, July 24th 6 p.m. Kahiko Competition and the all day 'Auana Competition on Saturday, July 25th, beginning at 1 p.m. Tickets, at \$14.50 adult and \$12.50 for children under 12, are available at the door.

The Joy of Sake: On July 31st, starting at 6:30 pm, the 15th Annual Joy of Sake is presenting 391 different sakes from 150 breweries across Japan and the U.S. Sake lovers have a rare opportunity. More than half of these brews are not sold in the U.S. The event takes place in the Kalakaua Ballroom of the Hawaii Convention Center where live music will play throughout the evening and new displays will highlight the making of sake, Hawaii's historic Honolulu Sake Brewery and tips on tasting sake; and in the adjacent patio area.. Ticket price starts from \$95. The event is held just days after the U.S. Sake Appraisal, hosted here, where 10 judges blind taste sakes and recognize winners with gold and silver awards. Did you know Honolulu boasts more sake-serving spots per capita than any other city? Launched here in Hawaii, the Joy of Sake now tours New York and Tokyo making it the only Hawaii-based event to stage a word tour.

Sake-inspired appetizers accompany the tasting. Participating restaurants include the newly opened Mud Hen Water, soon to be opened SKY Waikiki, Pig & the Lady, MW Restaurant, BLT Steak, Halekulani, Kaiwa, and more. Each dish will be created to accompany sake with harmonious flavor – proving to the uninitiated taster that sake is far more than a shot to be gulped after a party toast. joyofsake.com

Obon Festivals: Last but not least the summer Obon Festivals are well underway perpetuating the Buddhist custom of honoring the spirits of family ancestors. They are said to return to our world during this time to visit loved ones. It has been celebrated in Japan for more than 500 years, and has become an vital part of our culture. Festivals can be found around town in various Hongwanji for family fun evenings filled with taiko drummers, food booths, and the colorful sights and sounds of a bon dance. There's over a dozen this month and again next month to choose from. Google Bon Festival Hawaii 2015 to pull up a list of opportunities to experience one.

Explore Our Waikiki

Atlantis
SUBMARINES
WAIKIKI

Waikiki submarine tours depart hourly.
It's like scuba diving without getting wet!

Call (808) 973-9811 for Information & reservations or fax to (808) 973-2499.



Chef's Corner

Holoholo Grill Chef/Owner Jill Owens

Jill Owens grew up cooking and baking with her family here in the islands and once she decided she wanted to open a restaurant, she wanted to open one that made her feel as if it was just a big local-style party but without the dishes! Holoholo recently started offering breakfast which includes their popular smoked meat now sauteed with potatoes, onions on rice, topped with an egg and a Monte Cristo Benedict. Good stuff!

When did you decide you wanted to be a chef?

I don't really know that there was an "Ah, ha" moment. I had an Auntie who loved to watch Martha Stewart and try the recipes and decorating tips. I was at her house a lot and she would teach me how to make cakes. I would help her cook and bake for family parties. Since we had a lot of parties and we were always cooking, it seemed like something I could excel in and perhaps open a restaurant myself one day and we would just move the parties to the restaurant which seems like has happened, except for the fact that there is no pool to swim in.

What is your favorite childhood food memory?

I have to pick one? When I was about 4-5 years old my uncle used to take me to eat beef stew at the old Kings Bakery, which is now Pint & Jigger. I would only eat the gravy and the rice, which had to be mixed together. To this day beef stew is one of my favorite dishes to eat.

Who would you consider your mentor and why?

My mom, even though she was not a chef but a great home cook. She is great in business and she is one of the people that I turn to all the time for help with my business. Questions that no one else can help me with, she always has an answer for, even if it isn't something I want to hear. She is always pushing me and cheering me on.

What was your first job in the industry?

My first job in the industry was at Starvin Marvin's in Kilauea on Kaua'i. It was a great little place that served great food. I wanted to see if this was what I wanted to do. Cindy Marvin was great and taught me a lot.

What made you decide to open Holoholo Grill?

I always wanted to open something up but I never thought I wanted it to be such a big space until it happened.

Describe what are you trying to achieve there?

I wanted to create a place where people would feel relaxed, kind of like being at a great party that you didn't need to clean up after where you would find all different kinds of dishes on the menu just like you would if you were to go to a pot-luck.

You just launched breakfast. Any other future plans?

Just building our breakfast and lunch crowd along with building our scotch club membership and our scotch dinners that happen once a month.

Describe your food philosophy.

Hmm... make good food? Eat and cook local as much as you can with fresh ingredients from local farmers.

You're a local girl right?

Yes, local girl born and raised in Honolulu and shipped off to Kona most summer and winter breaks to stay with family and drive cattle with the cowboys (which I am pretty sure I drove them more crazy than anything) on our family ranch.

Is Holoholo Grill somewhat of a family affair?

Aren't most local businesses family affairs in Hawai'i? My middle sister helps me managing and bartending. My youngest sister owns Wai'ea Aquaponics in South Kona where we used to get some of our produce from. My mom helps watch my little 18 month old baby girl. My husband does tech support in between running his own company and my dad helps me with maintenance around the restaurant when he is not helping my sister with her aquaponics farm or playing with his hot rods. Whooh, that was a lot!

What's your favorite thing to do when not working?

Not working!!! It would be spending time with my family and friends just hanging out.

What's your biggest pet peeve in a kitchen?

Neatness, it drives me crazy that my kitchen guys are messy so they get scoldings all the time.

How often do you change the menu?

At least every 6 months. I am currently working on changing our dinner menu, trying to figure out what will come off as I know what I am going to put on. Taking off things is hard as just when I think that a certain menu item is unpopular, people start ordering it, and when guests ask what is coming off, it always happens that those are some of their favorites.

What's would we find in your fridge at home?

Ha! Baby bottles, baby food, take-out containers as my husband doesn't cook, cut fruit, girl scout cookies, lots of condiments and filtered water. Our little one has overrun our lives and love every minute of it but it doesn't leave much time to cook at home.

What's your favorite restaurant to go out too?

I take my daughter to Tango Contemporary Café once a week because she likes their Asian Braised Beef and then we can play on the playground next door. If it's just my hubby and I, then it's Le Bistro in Aina Haina. If it's with friends then Korea House Yakiniku. Sorry, I couldn't pick just one.

Is there any other information that you'd like to share?

We were a catering company before this. We still offer off-site catering along with restaurant buy-outs. We offer prix-fixe menus for large groups that buy out the bar and/or the dining room, which happens a lot.



Taegu Salad

- | | |
|---|---------------------------------|
| Ingredients: | 1/4 c. imitation crab |
| 1/2 head Romaine lettuce washed & chopped | 1/8 c. good mayo |
| 1/4 lb angel hair pasta, cooked & cooled | 1 tsp Sriracha |
| 1/4 c. Tropics Oriental dressing | 1/4 c. cucumber seeded & sliced |
| | 1/4 c. red Korean taegu |

Method: Toss lettuce & dressing, platter, add noodles on top of lettuce, mix crab, mayo & sriracha, add on top of noodles, add sliced cucumbers & finish with taegu.



GIOVANNI PASTRAMI

APPETIZERS

GP's NACHOS // CHICKEN WINGS \$9
FRIED CALAMARI // CHILI CHEESE FRIES \$8

GIOVANNI'S SLIDERS

Four per order, served with french fries.

MINI CHEESEBURGERS \$9
MINI HOT DOG SLIDERS \$9
BBQ KALUA PIG SLIDERS \$9

PERSONAL PIZZAS \$5-\$7

BAR

DOMESTIC DRAFT BEER \$4-\$5
WELL DRINKS \$4
PATRON SILVER \$8
MAI TAI // BLUE HAWAII \$7
CROWN // JACK \$6
JAGERMEISTER // FIREBALL \$5
3OZ. STOLI MARTINIS \$7
WINE BY THE GLASS \$1 OFF

PAU HANA

Monday-Friday: 3:00pm-6:00pm ... &
Sunday-Thursday: 10:00am-12:00 Midnight
There is a very detailed beverage list on our website.



BAREFOOT
BEACH
CAFE
HONOLULU, HI

CASUAL BEACHERONT DINING
OPEN DAILY 7AM-8:30PM
BREAKFAST, LUNCH, DINNER

SUNSETS SERVED DAILY
LIVE MUSIC NIGHTLY, 5:30-8:30PM

ON QUEEN'S BEACH
@ LIFEGUARD STAND 3F
AT THE DIAMOND HEAD
END OF WAIKIKI
IN KAPIOLANI PARK, ACROSS
FROM THE BANDSTAND



FULL MENU, CALENDAR, INFO:
BAREFOOTBEACHCAFE.COM
808.924.2233 (CAFE)

Holoholo Grill is located at 2494 S Beretania Street by the Japanese Cultural Center
Monday - Thursday from 7 a.m. - 12 a.m., Friday-Saturday 7 a.m - 2 a.m., Sun. 7 a.m. - 10 p.m.
Phone: 369-7297 • Web: holoholobarandgrill.com Facebook: holoholobarandgrill

Let's be Together...

DINING ▸ ENTERTAINMENT ▸ PAU HANA ▸ EAT ▸ DRINK ▸ BE MERRY ▸ HAPPY HOUR

MONDAY

Barefoot Beach Café at Queen's Beach 924-2233
Contemporary Ukulele
 Shaka Madali 5:30-8:30pm

Chart House Waikiki 941-6660
Live Contemporary Hawaiian
 Tito Berinobis & David Kauahikaua 6:30-9:30pm

Cheesecake Factory 924-5001
Classic Hawaiian
 Christian Yrizarry Duo 8-11pm

Duke's Canoe Club Waikiki 922-2268
Live Contemporary Hawaiian
 Haumea Warrington 4-6pm
 Ellsworth Simeona 9:30-12am

Hard Rock Cafe 955-7383
Bluesy Mondays
 FreeSound (artists vary) 9-11am

House Without a Key 923-2311
Live Hawaiian & Hula by Skyler Kamaka
 DeLima Ohana 5:30 - 8:00pm

Hula Grill 923-HULA
Live Contemporary Hawaiian
 Eric Lee 7-9pm

Jimmy Buffett's at the Beachcomber 791-1200
Live Contemporary Hawaiian
 Ashley Lilinoe 7:00-9:30pm

Kani Ka Pila Grille 924-4992
Live Contemporary Hawaiian
 Sean Na'auao 6 - 9pm
 Lehua & Shawn (7/27) 6 - 9 p.m.

LBLE at the Hilton Waikiki Beach Hotel 922-0811
Live Contemporary Acoustic Hits
 Johnny Helm 6-9pm

Lewers Lounge 923-2311
Live Contemporary & Light Jazz
 Noly Pa'a 8:30-12:30am

LuLu's 926-5222
Live Contemporary
 Johnny Helm 6:30-9:30 p.m.

Rumfire 921-4600
Live Contemporary Hawaiian
 Jeremy Cheng 5-8pm
 DJ Super CW 8:30pm-12:30am

Signature Prime Steak 949-3636
Contemporary Pianist in the bar
 Isao Motomochi 6-9pm

Sunrise Pool Bar at the Modern 943-5800
Live Contemporary
 Alex Oasay 5-8pm

The Edge at the Sheraton 921-4600
Live Hawaiian music with a fire dancer at 7:30 p.m.
 Widdy Loo 1:30-3:30pm
 Ka'ala Boys 6:30-8:30pm

The Study at the Modern 943-5800
Live Contemporary Hawaiian
 Kaleo 7-10pm

Tiki's Grill & Bar 923-TIKI
Live Contemporary Hawaiian
 Kapu the Band 6-8:30pm
 Jason Alan & Ian O'Sullivan 9-11pm

Tropics Bar & Grill 949-4321
Live Contemporary Hawaiian

Acoustik Playground 5:30-8:30pm

TUESDAY

Barefoot Beach Café at Queen's Beach 924-2233
Contemporary Ukulele
 Shaka Madali 5:30-8:30pm

Bin1901 at the Moana 921-4600
Piano Wine Bar
 Scott Smith 6:30-9:30pm

Chart House Waikiki 941-6660
Live Contemporary Hawaiian
 The Camarillo Brothers 6:30-9:30pm

Cheesecake Factory 924-5001
Classic Hawaiian
 Derrick Lee Duo 8-11pm

Duke's Canoe Club Waikiki 922-2268
Live Contemporary Hawaiian
 Haumea Warrington 4-6pm
 Ellsworth Simeona 9:30-12am

Hard Rock Cafe 955-7383
Live Contemporary
 Saloon Pilots (or others) 9-11pm

House Without a Key 923-2311
Live Hawaiian & Hula by Radasha Ho'ohuli
 Po'okela 5:30 - 8:00pm

Hula Grill 923-HULA
Live Contemporary Hawaiian
 Kamuela Kahoano 7-9pm

Jimmy Buffett's at the Beachcomber 791-1200
Live Contemporary Hawaiian
 Mike Huhn 7:00-9:30pm

Kani Ka Pila Grille 924-4992
Live Contemporary Hawaiian
 Weldon Kekauoha 6-9pm

LBLE at the Hilton Waikiki Beach Hotel 922-0811
Live Contemporary Funk, Jazz, Hip Hop & Reggae
 Jason Laeha 6-9pm

Lewers Lounge 923-2311
Live Contemporary & Light Jazz
 Maggie Herron & Rocky Holmes 8:30-12:30am

LuLu's 926-5222
Live Contemporary
 Johnny Helm 6-9pm

Mai Tai Bar at the Royal Hawaiian 923-7311
Live Contemporary Hawaiian with Hula Dancer
 Kapala Duo 6:30-9:30pm

Rumfire 921-4600
Live Contemporary Rock
 Randy Allen 5-8pm
 Twilight Audio 8:30pm-12:30am

Signature Prime Steak 949-3636
Contemporary Pianist in the bar
 James Woo 6-9pm

Sunrise Pool Bar at the Modern 943-5800
Live Contemporary Hawaiian
 Cory Oliveros 5-8pm

The Edge at the Sheraton 921-4600
Live Hawaiian music with a fire dancer at 7:30 p.m.
 Eric Lee 1:30-3:30pm
 Ho'okani Duo 6:30-8:30pm

The Study at the Modern 943-5800
Live Contemporary Hawaiian

Alex Oasay & Jeremy Cheng 7:30-10:30pm

Tiki's Grill & Bar 923-TIKI
Live Hawaiian - \$2 Taco Tuesdays
 K.B. Riley 5:30-8:30pm
 Sani & Friends 9-11pm

Tropics Bar & Grill 949-4321
Live Contemporary Hawaiian
 Kailua Bay Buddies 5:30-8:30pm

WEDNESDAY

Barefoot Beach Café at Queen's Beach 924-2233
Instrumental Ukulele
 Paul Wilcox 5:30-8:30pm

Bin1901 at the Moana 921-4600
Piano Wine Bar
 Scott Smith 6:30-9:30pm

Chart House Waikiki 941-6660
Live Contemporary Hawaiian
 Tito Berinobis & David Kauahikaua 6-10:30pm

Cheesecake Factory 924-5001
Classic Hawaiian
 Kimo Artis Duo 8-11pm

Duke's Canoe Club Waikiki 922-2268
Acoustic, Soul, R&B
 Haumea Warrington 4-6pm
 Ellsworth Simeona 9:30-12am

Gordon Biersch 599-4877
Jazz Wednesdays
 Varying Artists 6:30-9:30pm

Hard Rock Cafe 955-7383
Live Contemporary
 Piranha Brothers 9-11pm
 Adam Crowe (7/1; 7/8) 9-11pm

House Without a Key 923-2311
Live Hawaiian & Hula by Lauren Matsumoto
 Pa'ahana 5:30 - 8:00pm

Hula Grill 923-HULA
Live Contemporary Music
 Brandon Serrano 7-9pm

Hy's Steak House 922-5555
Live Soft Contemporary
 Audy Kimura 6:30-10pm

Jimmy Buffett's at the Beachcomber 791-1200
Live Contemporary Hawaiian
 Shawn Garnet 7:00-9:30pm

Kani Ka Pila Grille 924-4992
Live Contemporary Slack Key
 Kaala Boys 3-5pm
 Cyril Pahinui 6-9pm

LBLE at the Hilton Waikiki Beach Hotel 922-0811
Live Contemporary Funk, Jazz, Hip Hop & Reggae
 Soul Tree Music Factory 6-9pm

Lewers Lounge 923-2311
Live Contemporary & Light Jazz
 Maggie Herron & Rocky Holmes 8:30-12:30am

LuLu's 926-5222
Live Contemporary Hawaiian
 Jason Lehua 10-12:30am

Mai Tai Bar at the Royal Hawaiian 923-7311
Live Contemporary Hawaiian with Hula Dancer
 Eric Lee Duo 6:30-9:30pm

Roy's Hawaii Kai 396-7697
Acoustic & Slack Key Top 40

E Pili Kākou

DINING ▶ ENTERTAINMENT ▶ PAU HANA ▶ EAT ▶ DRINK ▶ BE MERRY ▶ HAPPY HOUR

Dayton Watanabe 6:30-9:30pm
Rumfire 921-4600
Live Contemporary Hawaiian
 Kamuela Kahoano 5-8pm
 Twilight Audio 8:30pm-12:30am
Signature Prime Steak 949-3636
Contemporary Pianist in the bar
 Pierre Grill 6-9pm
SWIM at the Hyatt 923-1234
Contemporary Classic
 Kailua Bay Buddies 6-9pm
Sunrise Pool Bar at the Modern 943-5800
Live Contemporary Hawaiian
 Tahiti Rey & Sean Cleland 5-8pm
The Edge at the Sheraton 922-4422
Live Hawaiian music with a fire dancer at 7:30 p.m.
 Albert Malignat 1:30-3:30pm
 Keoni Ku Duo 6:30-8:30pm
The Study at the Modern 943-5800
Live Contemporary Hawaiian
 Melanie and Drew 6:30-9:30pm
Tiki's Grill & Bar 923-TIKI
Live Contemporary - 1/2 off Wine Wednesdays
 Canoes for Rent 5:30-8:30pm
 Johnny Helm 9-11pm
Tropics Bar & Grill 949-4321
Live Contemporary Rock
 Acoustik Playground 5:30-8:30pm

THURSDAY

Barefoot Beach Café at Queen's Beach 924-2233
Instrumental Ukulele
 Paul Wilcox 5:30-8:30pm
Bin1901 at the Moana 921-4600
Piano Wine Bar
 Scott Smith 6:30-9:30pm
Chart House Waikiki 941-6660
Live Contemporary Hawaiian
 Tito Berinobis 6:30-10pm
Cheeseburger Waikiki 941-2400
Contemporary / Old School Rock
 Jeremy Chang 6:30-9:30pm
Cheesecake Factory 924-5001
Classic Hawaiian
 T & J Duo 8-11pm
Duke's Canoe Club 922-2268
Live Contemporary Hawaiian
 Haumea Warrington 4-6pm
 Kimo Artis (or others) 9:30-12am
Gordon Biersch 599-4877
Live Contemporary Funk and Classics
 Acoustic Playground 7-10:30pm
Hard Rock Cafe 955-7383
Live Contemporary
 Kailua Bay Buddies 9-11pm
House Without a Key 923-2311
Live Hawaiian & Hula by Radasha Ho'ohuli
 Pa'ahana 5:30 - 8:00pm
Hula Grill 923-HULA
Live Contemporary Hawaiian
 Kamuela Kahoano 7-9pm
Hy's Steak House 922-5555
Live Soft Contemporary

Audy Kimura 6:30-10pm
Jimmy Buffett's at the Beachcomber 791-1200
Live Contemporary Hawaiian
 Shawn Garnet 7:00-9:30pm
Kani Ka Pila Grille 924-4992
Live Contemporary Hawaiian
 Jeff Rasmussen & Robi 3-5pm
 Kawika Kahiapo 6-9pm
LBLE at the Hilton Waikiki Beach Hotel 922-0811
Live Contemporary Pop/Rock
 Sunway 6-9pm
Lewers Lounge 923-2311
Contemporary Jazz
 Maggie Herron & Rocky Holmes 8:30-12:30am
LuLu's 926-5222
Live Contemporary Hawaiian
 Local Uprising 6-9pm
Mai Tai Bar at the Royal Hawaiian 923-7311
Live Contemporary Hawaiian with Hula Dancer
 Delima Ohana 6:30-9:30pm
Michel's at the Colony Surf 923-6552
Live Slack Key
 Jeff Peterson 7:30-10:00pm
Roy's Hawaii Kai 396-7697
Acoustic Hawaiian Guitar
 Steve English 6:30-9:30pm
Rumfire 921-4600
Live Contemporary Rock
 Johnny Helm 5-8pm
 DJ Miked 8:30pm-12:30am
Signature Prime Steak 949-3636
Contemporary Pianist in the bar
 Isao Motomochi 6-9pm
Sunrise Pool Bar at the Modern 943-5800
Live Contemporary Hawaiian
 Christian Yrizarry Duo 5-8pm
SWIM at the Hyatt 923-1234
Contemporary Classic
 Acoustik Playground 6-9pm
The Edge at the Sheraton 921-4600
Live Hawaiian music with a fire dancer at 7:30 p.m.
 Ellsworth Simeona 1:30-3:30pm
 Christian Yrizarry Duo 6:30-8:30pm
The Study at the Modern 943-5800
Live Contemporary Hawaiian
 Simple Souls 6:30-9:30pm
Tiki's Grill & Bar 923-TIKI
Heineken Hot Hula Nights - hula dancers perform
 Malu the Band 5:30-7:30pm
 Ellsworth Simeona 8:30-11:30pm
Tropics Bar & Grill 949-4321
Live Contemporary Hawaiian
 Nohelani Cypriano 5:30-8:30pm

FRIDAY

Barefoot Beach Café at Queen's Beach 924-2233
Live Contemporary Hawaiian with Beach BBQ
 Art Kalahiki & Friends 5:30-8:30pm
Bin1901 at the Moana 921-4600
Piano Wine Bar
 Scott Smith 6:30-9:30pm
Chart House Waikiki 941-6660
Live Contemporary Hawaiian

Mark Yim's Pilikia I 6-9pm
 Mark Yim's Pilikia II 9:30-12:30am
Cheeseburger Waikiki 941-2400
Contemporary Hawaiian
 Alex or Aku 6:30-9:30pm
Cheesecake Factory 924-5001
Classic Hawaiian
 Johnny Helm Duo 8-11pm
Busters 589-2215
Pau Hana Fridays Live Local Bands
 Varying Hawaiian Artists 6-8pm
Duke's Canoe Club Waikiki 922-2268
Live Contemporary Hawaiian
 Maunalua 4-6pm
 Imua Garza Duo (7/3) 4-6pm
 Keith Omzo Duo (7/3) 9:30 - 12am
 Christian Yrizarry (7/10, 7/24) 9:30 - 12am
 Kaiona Duo (7/17) 9:30 - 12am
 Randy and Kanoe (7/31) 9:30 - 12am
Gordon Biersch 599-4877
Live Contemporary, R&B, Funk
 Ben & Malia 5:30-9pm
 Mojo 9 - 12:30am
Hard Rock Cafe 955-7383
Live Contemporary
 Mantra 10-12am
 Streetlight Cadence (7/3, 7/17) 10-12am
House Without a Key 923-2311
Live Hawaiian & Hula by Kanoe Miller
 Hiram Olsen Trio 5:30 - 8:00pm
Hula Grill 923-HULA
Aloha Friday Lunch Luau with hula dancer
 David Asing 12:30-2:30pm
 Keoki & Russell 7-9pm
Hy's Steak House 922-5555
Live Soft Contemporary
 Audy Kimura 6:30-10pm
Hard Rock Cafe 955-7383
Live Contemporary
 Johnny Helm 5-7pm
 Streetlight Cadence 9-11pm
Jimmy Buffett's at the Beachcomber 791-1200
Live Contemporary Hawaiian
 Missing Dave 9:30 - 11:30pm
Kani Ka Pila Grille 924-4992
Live Hawaiian Contemporary
 Christian Yrizarry 3-5pm
 Hookena 6-9pm
LBLE at the Hilton Waikiki Beach Hotel 922-0811
Live Contemporary Pop/Rock
 Sunway 6-9pm
Lewers Lounge 923-2311
Live Contemporary Jazz
 Maggie Herron & Rocky Holmes 8:30-12:30am
LuLu's 926-5222
Live Contemporary Hawaiian
 Manoa DNA 6-9 p.m.
 Vinyl Wine 10-12:30am
Mai Tai Bar at the Royal Hawaiian 923-7311
Live Contemporary Hawaiian with Hula Dancer
 Kapala Duo 6:30-9:30pm

EVENTS ARE SUBJECT TO CHANGE
 WITHOUT NOTICE.

Let's be Together...

DINING ▸ ENTERTAINMENT ▸ PAU HANA ▸ EAT ▸ DRINK ▸ BE MERRY ▸ HAPPY HOUR

Michel's at the Colony Surf	923-6552
<i>Live Slack Key Stylings & Jazz</i>	
Jeff Peterson & Ernie Provencher	6:30-10pm
Roy's Hawaii Kai	396-7697
<i>Keyboardist</i>	
Brian Robert Shaw	6:30-9:30pm
Roy's Ko Olina	676-7697
<i>Slack Key Guitar</i>	
Chris Rego	5:30-8pm
Rumfire	921-4600
<i>Live Contemporary Rock</i>	
Kristi Masuhara	5-8pm
DJ Euphoric	8:30pm-12:30am
Signature Prime Steak	949-3636
<i>Contemporary Pianist in the bar</i>	
Grant Carvalho	6-9pm
SWIM at the Hyatt	923-1234
<i>Contemporary Classic</i>	
Taimane	6-7pm
The Edge at the Sheraton	921-4600
<i>Live Hawaiian music with a fire dancer at 7:30 p.m.</i>	
Brad Kawakami	1:30-3:30pm
Delima Ohana Duo	6:30-8:30pm
The Study at the Modern	943-5800
<i>Live Contemporary Hawaiian</i>	
Tahiti Rey	6:30-9:30pm
Tiki's Grill & Bar	923-TIKI

<i>Live Contemporary Hawaiian</i>	
Randy Allen	5-7pm
Vaihi	7:30-9:30pm
Solanna and Selwyn	10-12am
Tropics Bar & Grill	949-4321
<i>Live Contemporary Hawaiian</i>	
Piranha Brothers	3:30-6:30pm
Nohelani Cypriano	8:00-10:30pm

Maggie Herron & Rocky Holmes	8:30-12:30am
Mai Tai Bar at the Royal Hawaiian	923-7311
<i>Live Contemporary Hawaiian with Hula Dancer</i>	
Kapala Duo	6:30-9:30pm
Michel's at the Colony Surf	923-6552
<i>Live Contemporary Slack Key & Jazz</i>	
Jeff Peterson	7-11pm
Roy's Hawaii Kai	396-7697
<i>Acoustic Guitar</i>	
Jimmy Funai	6-9:30pm
Roy's Ko Olina	676-7697
<i>Slack Key Guitar</i>	
Chris Rego	5:30-8pm
Rumfire	921-4600
<i>Live Contemporary Rock</i>	
Tavana McMoore	5-8pm
DJ Betty	8:30pm-12:30am
Signature Prime Steak	949-3636
<i>Contemporary Pianist in the bar</i>	
Grant Carvalho	6-9pm
Sunrise Pool Bar at the Modern	943-5800
<i>Live Contemporary Hawaiian</i>	
Kainalu	5-8pm
SWIM at the Hyatt	923-1234

SATURDAY

Barefoot Beach Café at Queen's Beach	924-2233
<i>Beach BBQ with Live Contemporary Hits</i>	
Chris Salvador	5:30-8:30pm
Bin1901 at the Moana	921-4600
<i>Piano Wine Bar</i>	
Scott Smith	6:30-9:30pm
Chart House Waikiki	941-6660
<i>Live Contemporary Hawaiian</i>	
Tito Berinobis & Billy Beimes	7-12pm
Cheeseburger Waikiki	941-2400
<i>Contemporary Hawaiian</i>	
Alex or Aku	6:30-9:30pm
Cheesecake Factory	924-5001
<i>Classic Hawaiian</i>	
Dennis McClees Duo	8-11pm
Bobby Gonzales Duo (7/4)	8-11pm
Duke's Canoe Club Waikiki	922-2268
<i>Live Hawaiian Entertainment</i>	
Beach 5 (7/4)	4-6pm
Mojo (7/11)	4-6pm
Vaihi (7/18)	4-6pm
Eric Ho Duo (7/25)	4-6pm
Darrell Aquino Duo	9:30-12am
Chris Murphy Duo (7/4)	9:30-12am
Eric Ho Duo (7/25)	9:30-12am
Hard Rock Cafe	955-7383
<i>Live Contemporary</i>	
Emke (7/4, 7/18)	10-12am
Masters of Oz (7/11, 7/25)	10-12am

The Edge at the Sheraton	921-4600
<i>Live Hawaiian music with a fire dancer at 7:30 p.m.</i>	
John Valentine	1:30-3:30pm
Tino Jacobs Duo	6:30-8:30pm
Tiki's Grill & Bar	923-TIKI
<i>Live Contemporary Hawaiian & Reggae</i>	
Johnny Helm	5-7pm
Varying Artists	7:30-9:30pm
Ellsworth & Piko	10-midnight
Tropics Bar & Grill	949-4321
<i>Live Contemporary Hawaiian</i>	
Henry Kapon	4-6pm
Juke Joint	6:30-9:30pm

SUNDAY

House Without a Key	923-2311
<i>Hawaiian & Hula by Kanoe Miller</i>	
Hiram Olsen Trio	5:30 - 8:00pm
Hula Grill	923-HULA
<i>Live Traditional Hawaiian with dancer</i>	
Kaipo Dabin & friends	7-9pm
Hy's Steak House	922-5555
<i>Live Soft Contemporary</i>	
Audy Kimura	6:30-10pm
Jimmy Buffett's at the Beachcomber	791-1200
<i>Live Contemporary Hawaiian</i>	
Local Uprising	9:30-11:30pm
Kani Ka Pila Grille	924-4992
<i>Live Contemporary Hawaiian</i>	
Ben & Malia	3-5pm
Brian Tolentino & Herb Ohta Jr. (7/18)	3 - 5pm
Ka Hehena	6-9pm
Vaihi (7/4)	6-9pm
LBLE at the Hilton Waikiki Beach Hotel	922-0811
<i>Live Contemporary Blues & R&B</i>	
YOZA	6-9pm
Lewers Lounge	923-2311
<i>Live Contemporary Jazz</i>	

Barefoot Beach Café at Queen's Beach	924-2233
<i>Contemporary Ukulele</i>	
Shaka Madali	5:30-8:30pm
Chart House Waikiki	941-6660
<i>Live Contemporary Hawaiian</i>	
Dean & Dean	6-9pm
Cheesecake Factory	924-5001
<i>Classic Hawaiian</i>	
Chris Murphy Duo	8-11pm
Duke's Canoe Club Waikiki	922-2268
<i>Live Hawaiian Entertainment</i>	
Kapena (7/5, 7/26)	4-6pm
Beach 5 (7/12)	4-6pm
Mojo (7/19)	4-6pm
Kapena Delima	9:30-12am
Typical Hawaiians (7/5)	9:30-12am
Kaiona (7/26)	9:30-12am
Hard Rock Cafe	955-7383
<i>Live Contemporary</i>	
Analog (or others)	9-11pm
House Without a Key	923-2311

World Famous Thai Cuisine
by Keo

- FRESH ingredients from our own Waiulua organic farm
- Classic American breakfast including our \$4.95 special
- Thai & American dinners at AFFORDABLE prices
- Family-owned and operated Thai restaurants for 30 years in Hawaii
- Walking distance from Waikiki Beach and hotels

OHANA Waikiki East Hotel
2375 Kuhio Avenue
(corner of Kuhio & Kaula Aves.)
Phone 808.922.9888
Indoor and outdoor seating available
Validated parking \$3 for 4 hours

Keo

By Keo's

BREAKFAST
7 AM - 1:30 PM

LUNCH
11 AM - 1:30 PM

DINNER
5 PM - CLOSING

E Pili Kākou

DINING ▶ ENTERTAINMENT ▶ PAU HANA ▶ EAT ▶ DRINK ▶ BE MERRY ▶ HAPPY HOUR

<i>Live Hawaiian & Hula by Debbie Nakanelua</i>		
Pa'ahana	5:30 - 8:00pm	
Hula Grill		923-HULA
<i>Live Traditional Hawaiian with dancer</i>		
Art Kalahiki Duo	7-9pm	
Jimmy Buffett's at the Beachcomber		791-1200
<i>Live Contemporary Hawaiian</i>		
Randy Allen	7:30-10:00pm	
Kani Ka Pila Grille		924-4992
<i>Live Contemporary Hawaiian Masters on stage</i>		
The Pandanus Club	6-9pm	
Kelley O'Neil's		926-1777
<i>Live Irish Music</i>		
Various Celtic Bands	4-7pm	
LBLE at the Hilton Waikiki Beach Hotel		922-0811
<i>Live, Energetic Mix of Pop and Rock Hits</i>		
Pushoverse	6-9pm	
Lewers Lounge		923-2311
<i>Live Contemporary & Light Jazz</i>		
Noly Pa'a	8:30pm - 12am	
Lulu's		926-5222
<i>Acoustic R&B</i>		
Simple Soulz	7-10pm	
Mai Tai Bar at the Royal Hawaiian		923-7311
<i>Live Contemporary Hawaiian with Hula Dancer</i>		
Eric Lee Duo	6:30-9:30pm	
Michel's at the Colony Surf		923-6552
<i>Classical Slack Key & Jazz Stylings</i>		
Jeff Peterson	6-9pm	
Roy's Ko Olina		676-7697
<i>Slack Key Guitar</i>		
Chris Rego	5:30-8pm	
Rumfire		921-4600
<i>Live Contemporary Hawaiian</i>		
Alex Oasay	5-8pm	
Twilight Audio	8:30pm-12:30am	
Signature Prime Steak		949-3636
<i>Contemporary Pianist in the bar</i>		
Isao Motomochi	6-9pm	
SWIM at the Hyatt		923-1234
<i>Contemporary, Pop, Rock</i>		
Sunway	6 - 9pm	
The Edge at the Sheraton		922-4422
<i>Live Hawaiian music with a fire dancer at 7:30 p.m.</i>		
Dave Watanabe	1:30-3:30pm	
Ellsworth Simeona Duo	6:30-8:30pm	
The Study at the Modern		943-5800
<i>Live Contemporary Hawaiian & Jazz</i>		
Jeremy Cheng	6-9pm	
Smooth Jazz (vaying artists)	10- 2am	
Tiki's Grill & Bar		923-TIKI
<i>Live Contemporary Hawaiian</i>		
Vaihi	6-9pm	
Ellsworth & Piko	9-11pm	
Tropics Bar & Grill		949-4321
<i>Live Contemporary Rock & Hawaiian</i>		
Piranha Brothers	2-5pm	
Beach 5	5:30 - 8:30pm	



Hot Lines

Here's a few numbers for you to find out the latest in live music from places that change daily or don't update us regularly, since we can't possible list them all,

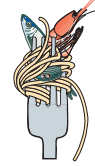
Gordon Biersch	599-4877
Irish Rose Saloon	947-3414
Kelley O'Neil's	926-1777
Mai Tai Bar Ala Moana	947-2900
Moose McGillicuddy's	923-0751

Dining Dish



Fisherman's Wharf is the new home to the the latest Food Truck Park. Think Eat the Street on a smaller scale every day - at least for now. The lease is temporary, but for at least the next few months, there will be a handful of food trucks open from 10 a.m. - 10 p.m. with free parking available to customers. Grab the food to go, or eat next to the waterfront at one of the umbrella-shaded tables. Trucks change daily for both lunch and dinner. You can find a complete list of what trucks are serving when on their website at streetgrindz.com and follow the links to Street Grindz Kewalo. • I finally got to **Wood + Bucket Tapas Bar + Grill** about 5 months after i was supposed to, and now I'm just angry at myself for letting it take so long. I mean wow, this place was awesome and since it's located in the lobby of the Waikiki Sand Villa Hotel off Kanekapolei, you simply would never know it's there. Aside from the fact I love eating Tapas style and there's a serious lack of those types of restaurants in this town, these bites were really, really good... and priced reasonably! Get a 5-Spice, Asian style Lamb served with Potato Au gratin for \$8. How about Two Kobe beef sliders topped with Hudson foie gras and caramelized pineapple served with sweet potato shoestring fries for \$9? Personally I fell in love with their Creamy Polenta with BBQ Shrimp. Creamy polenta whipped with milk and fresh butter topped with ancho chilli rubbed pan seared shrimp for \$7. Some dishes are offered full size, but nothing's more than \$17. Most are \$12 or \$13. Apparently they also offer an all-you-can-eat breakfast buffet for \$12.95. Hint: there's a 15% off coupon on their website. Grab it! Open from 6 a.m. to 4 a.m. daily. woodandbucket.com. • On the flip side, I did go to the new restaurant in Kahala behind the Olive Tree called **Central Bakery** and had a truly awful experience. I mean literally, it was one of the worst dining experiences I have ever had. The service was horrible, the food was either overcooked or undercooked, and even the pasta was raw. Besides that, it's expensive. There isn't even an appetizer under \$16. The only bright spot at all that night was the bread, which was fresh out of the oven and very good, and dessert. But our waiter told us the pastry chef was changing out the following week, so who knows what's going to happen there. However, several of my foodie friends whose opinions I trust, had great experiences, so I'm keeping my fingers crossed that what we experienced was simply a bad case of growing pains, even though Melissa Chang is convinced we dined at different restaurants than these other guys.

Maybe they just opened too soon and needed a few more weeks to get their act together. Soft opening guys. Ever hear of it? You could have used one, trust me. Actually there were 8 of us, most in the industry, trust all of us! If I can persuade Melissa to give it a 3rd try here in the next few weeks, I'll let you know if our impressions change. Open Monday thru Saturday from 5 - 10 p.m. if you dare. 777-6700. ~ Pam



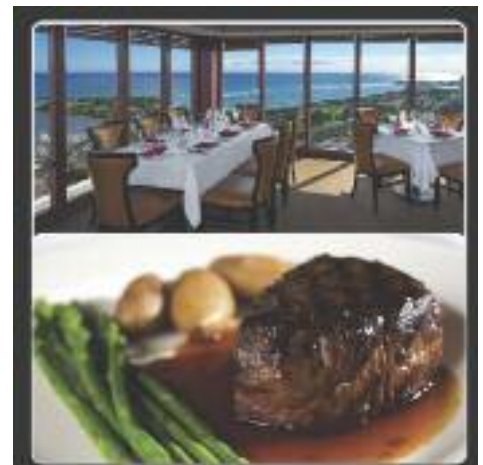
Dining Calendar

July 2: *Plumeria Beach House* presents a special set menu in honor of the full moon. Enjoy dining by the stars. 5:30 - 10 p.m. \$50++. 739-8760

July 3: *The Veranda First Friday Flights* at the Kahala Hotel explores the wines of New York this month. Four of the areas wines will with their regional cuisine. \$50++ 6-9 p.m. 739-8760.

July 26: *Courtyard Brunch* at Ward Village Food and Farmers Market set up in this chic tent area Free to enter, \$7 per ticket or pre-buy tickets for discounts. 10 a.m. - 1 p.m. wardvillageshops.com

Wednesdays: *Bar 35* offers weekly beer tastings with different themes. Taste 6-8 beers, while enjoying Chef Valentini's appetizers. \$25. 6 p.m. 537-3535.



- Live Entertainment Nightly
- Happy Hour
- Early / Late Bird Specials
- Private Dining for 12 guests
- GBI Cards



Ala Moana Hotel 36th Floor
808.949.3636
 Nightly 4:30 pm - last seating at 10 pm
www.signatureprimesteak.com

EVENTS ARE SUBJECT TO CHANGE WITHOUT NOTICE.

JULY CALENDAR OF EVENTS

Continuing Events

MONDAY – FRIDAY LYON ARBORETUM TOURS

The lush gardens at the top of the University of Hawai'i Manoa are open for guided tours daily. Knowledgeable guides will introduce the highlights of the botanical rainforest's 193.6 acres. Reservations required. Limit of 12 participants daily. Donations accepted. 988-0461.

MONDAY – FRIDAY FOSTER BOTANICAL GARDENS

Guided garden tours of rare and beautiful plants from tropical regions throughout the world. Foster Botanical Gardens, 50 N. Vineyard. 1 p.m. Adults: \$5. Reservations recommended. 522-7066.

TUESDAYS TOURS OF THE HAWAII THEATRE

Get a behind-the-scenes tour of this historic theatre including history, architecture, and a performance on the 1922 Robert Morton theatre organ. Hawaii Theatre. 11 a.m. – 12 p.m. \$10. 528-0506.

TUESDAYS • KU HA'AHEO

An afternoon of hula from multiple groups featuring adults and keiki performing contemporary and traditional dance and music led by kumu hula Blaine Kamalani Kia. Waikiki Beach Walk Plaza Lawn. 4:30 – 6 p.m. FREE. waikikibeachwalk.com or 931-3591.

TUESDAYS • KCC FARMERS MARKET

Head up to Kapiolani Community College for a smaller version of their popular weekend market. 4 – 7 p.m. Free. 848-2074.

FIRST & THIRD TUESDAYS MEET THE MONK SEALS!

Learn about monk seals in the wild and meet two resident seals up close. Designed for participants 7 and up but anyone is welcome. Waikiki Aquarium. 3 p.m. \$4 – \$6. waikikiaquarium.org or 923-9741.

TUESDAYS & THURSDAYS FRESH FARMERS MARKET AT THE HYATT

The Hyatt holds a Farmers Market for visitors and locals to stock up on fresh local organic fruits, vegetables, jams, honeys, baked goods and more. Stop by twice weekly at this market located on ground floor of the Pualeilani Atrium Shops. 4 – 8 p.m. Waikiki.Hyatt.com.

TUESDAYS, THURSDAYS & SUNDAYS TOUR AND TEA AT THE HONOLULU ACADEMY OF ARTS

Tours are led by volunteer docents and designed for visitors who would like to explore the galleries, learn more about art and culture, and socialize over a cup of tea. Docents lead discussions in the galleries offer insight into many cultures and time periods. 2:30 – 4 p.m. in selected galleries. Free with admission; Reservations required. 532-8700.

TUESDAY – SATURDAY MISSION HOUSES MUSEUM GUIDED TOURS

Visit the Printing Office and Frame House while learning about the 19th century history and culture preserved at this beautiful museum. Galleries also open to explore on your own. Mission Houses Museum. Tues. – Sat. 11 a.m. & 2:45 p.m.; Tues. – Fri. 1 p.m. \$6 – \$10. 531-0481 or missionhouses.org.

WEDNESDAYS HONOLULU FARMERS MARKET

Meet the farmers and select from a wide variety of fruits, vegetables, flowers, beef, seafood, baked goods and more. This market is held weekly on the Con-

cert Hall Lawn at the Blaisdell. On days an event is in the Concert Hall, the Market will be in the Arena parking lot on the corner of Kapiolani Blvd and Ward Ave. Free Entrance and Parking. 4 – 7 p.m.

WEDNESDAYS & FRIDAYS CHADO – THE WAY OF TEA

Japanese enthusiasts can experience the traditional tea ceremony (chanoyu) as it was meant to be seen, and taught, at the Urasenke Foundation of Hawaii. No prior knowledge required. Demos at 10 a.m. and 11 a.m. \$5. 923-3059.

SECOND THURSDAY (JULY 9) COURTYARD CINEMA

Ward Village hosts its monthly film series event on the 2nd Thursday of each month. The showing features free popcorn, refreshments, food vendors and entertainment. Courtyard Cinema is free and open to the public. Seating is limited. Reserve your tickets and learn more about the movies shown at wardvillage-courtyardcinema.com.

THIRD THURSDAY (JULY 16) DOWNTOWN GALLERY WALK & CRAFT FAIR

The Arts at Marks Garage continues to build on downtown activities offering execs an excuse to hang out after work and giving everyone else a reason to head downtown. Free. 521-2903. artsatmarks.com.

FRIDAYS CULTURAL CRAFT FAIR

The Hyatt has had so much success with its weekly Farmers Market featuring fresh local produce that they are applying the same principle to local craft items. Each week the craft fair will feature local vendors featuring arts & crafts, jewelry. Photography, woodwork and more. 3 – 7 p.m. Waikiki.Hyatt.com

FIRST FRIDAY (JULY 3) DOWNTOWN GALLERY WALK & CRAFT FAIR

Art lovers are advised to head to downtown Honolulu the first Friday of each month. This event has exploded into a downtown party with galleries and studios open for exhibitions, artist demonstrations, and special performances. 23 galleries and art-related retail shops, restaurants and museums participate. Downtown Honolulu/ Chinatown. 6 – 9 p.m. Free. 521-2903 or artsatmarks.com.

FIRST & THIRD FRIDAYS (JULY 3 & 17) THE SKY TONIGHT

Learn about our Hawaiian skies and current events in space at the J. Watumull Planetarium. Bishop Museum. 8 p.m. No late seating. GA \$6, Keiki \$4. 848-4168 or bishopmuseum.org.

FINAL FRIDAY ART AFTER DARK

The hip art party where all the cool people go to mix and mingle amongst the art galleries takes place the last Friday each month. 6 – 9 p.m. artafterdark.org.

SATURDAYS KCC FARMERS MARKET

Fresh island produce, seafood, flowers and more are available from over two-dozen vendors at Kapiolani Community College. Free. 7:30-11 a.m. 848-2074.

SATURDAYS KAKA'AKO FARMERS MARKET

Check out an abundance of locally grown produce, island made treats and much more from around our islands at the Kakaako Farmers Market at Ward Warehouse located between Ward and Kamakee Streets, Free. 9:00 a.m. - 1 p.m. 388-9696 or halei-wafarmersmarket.com.

SATURDAYS & SUNDAYS ART ON THE ZOO FENCE

More than 35 local artists display their works on the

Zoo fence on Monsarrat Avenue opposite the Kapiolani Park Bandstand. Works for sale include original paintings, prints and photographs. 9 a.m. – 4 p.m. Free. artonthezoo fence.com.

SECOND SATURDAY (JULY 11) DOWNTOWN GALLERY WALK & CRAFT FAIR

First Friday has become such a success that events carry over to the second Saturday. HiSAM, 11 a.m. – 3 p.m. 586-0900. Other events around downtown Honolulu all afternoon. Free. 521-2903 or artsatmarks.com.

NA MELE NO NA PUA SUNDAY SHOWCASE (JULY 12 & 26)

Waikiki Beach Walk has brought back its popular monthly free concert series. See Lehua Kalima & Shawn Pimental on July 12th and Sean Naauao on the 26th at the Plaza Stage from 5 – 6 p.m. waikikibeachwalk.com.

THIRD SATURDAY (JULY 18) HONOLULU NIGHT MARKET

The folks behind Eat the Street bring this monthly art event to Kakaako. Food, art and fashion will close Auahi Street down from Keawe to Coral as artists, food trucks, live entertainment and more fill the streets from 6 p.m. to 11 p.m. Lane closures begin at noon. streetgrindz.com

FOURTH SUNDAY (JULY 26) KONA NUI NIGHTS

This free monthly cultural event treats guests to an evening of live entertainment featuring popular Hawaiian musicians and halau under the stars at the Ward Village Information Center Courtyard (IBM Building). Admission is free but tickets required. wardvillageshops.com

BANK OF HAWAII FREE SUNDAY (JULY 19) HONOLULU MUSEUM OF ART

This month's Family Sunday is inspired by summer swells. Honolulu Museum of Art. 11 a.m. - 5 p.m. Free. 532-8700.

JULY 1 MANOA DNA PERFORMS AT THE ZOO

Manoa DNA performs at this week's Wildest Show in Town at the Honolulu Zoo. \$3. Gates open at 4:35 p.m., mini-guided tours offered to the first 30 people at 5:25 p.m. Music starts at 6 p.m. No alcohol or high-back chairs allowed. HonoluluZoo.org.

JULY 2 TWILIGHT SUMMER CONCERT SERIES

It's the summer of music as the oldest of all of Honolulu's Botanical Gardens Hawaii present Tuesday afternoon free concerts in the lush gardens hidden in downtown Honolulu. The Wind Ensemble take the stage from 4:30 – 7 p.m. Foster Botanical Garden. 522-7066

JULY 3 • O.A.R.

In town to perform at a special free performance for the military with Dishwalla to celebrate the 4th of July, the popular rock band has also agreed to do a show for the rest of us. \$39.50, tickets go up \$5.50 day of. All ages show. Doors open at 6 p.m., show begins at 8 p.m. The Republik. bampproject.com

JULY 4

See last month's event list



JULY CALENDAR OF EVENTS

JULY 4 • XTERRA FREEDOM FEST

This is a full day of race events including a 20K & 40K mountain bike, off-road triathlon, 5K and 10K trail runs, 1K ocean swim, and kid's races. Visitors heading to the Ranch that day can expect to see elite athletes finishing up as this is an ironman qualifier. Live Music will be going on and a BBQ available for \$15 at the door. Proceeds to benefit AccesSurf and Wounded Warrior Project. Kualoa Ranch. xterrafreedomfest.com.

JULY 9

TWILIGHT SUMMER CONCERT SERIES

The Celtic Pipes and Drums of Hawaii take the stage during this free concert from 4:30 – 7 p.m. at the oldest of all of Honolulu's Botanical Gardens, a gem buried in the midst of downtown Honolulu. Foster Botanical Garden. 522-7066

JULY 9 • RAIATEA HELM AND KAWIKA KAHI-APO AT THE AQUARIUM

The Waikiki Aquarium's Ke Nani O Ke Kai continues with a performance from superstars Raiatea Helm and Kawika Kahiapo and food available from Laverne's. Doors open at 5:30 p.m., concert begins at 7 p.m. Tickets \$50, \$20 for kids aged 5-12. waikikiaquarium.org

JULY 10-12; 16-19

SESAME STREET LIVE: LET'S DANCE!

It's an interactive dance experience that will blow your kids minds as some of their favorite Sesame Street characters like Elmo, Cookie Monster, Big Bird and more come join the kids on the floor for what becomes one big huge dance party! 16 show times to choose from. \$12 - \$40. Blaisdell Concert Hall. Ticketmaster.com

JULY 12

KOREAN FESTIVAL

Experience all that is Korean at this annual cultural festival that will feature taekwondo demonstrations, dance performances, cooking lessons and the ever-popular kim chee eating contest. K-Pop dance group M. Pire will perform and be available for autographs. Ala Moana Beach Park. 10 a.m. – 8 p.m. koreanfestival.com

JULY 11 • CRISTOPHER CROSS & THE LITTLE RIVER BAND

It's a Classic Rock Festival featuring that classic Australian rock band that first hit the scene in 1975 and the guy that won three Grammys for "Sailing" and an Oscar for "Arthur's Theme." Get your 70s and 80s on at the Waikiki Shell. \$55-\$125. ticketmaster.com

JULY 11 • MELE WAHI PANI

It's been a musical tour around Oahu and the 3rd installment features the Songs of Honolulu. There will be plenty of stories, music and hula. \$35. Hawaii Mission Houses. 5:30 – 8 p.m. missionhouses.org

JULY 11 & 12 • HAWAII STATE FARM FAIR

The 53rd annual Farm Fair offers numerous educational exhibits, the freshest locally grown produce, rides for kids and tons of local food. The fair also boasts one of the largest plant sales on Oahu. 9 a.m. \$5. HawaiiStateFarmFair.org.

JULY 12

HAWAII ALL-COLLECTORS SHOW

The 25th annual event offers the largest selection of Hawaii's vintage and antique for sale under one roof with over 160 booths to peruse. Vendors from Hawaii, the mainland and Japan will offer a little bit of everything from Aloha shirts to Niihau shells to medals, anime, stamps and more. Experts will be on hand to answer your collectible questions. 10:30 a.m. – 5:30 p.m. ukulele.com.

JULY 15

WILLIE K PERFORMS AT THE ZOO

Catch Uncle Wille K at this weeks' Wildest Show in Town at the Honolulu Zoo. \$3. Gates open at 4:35 p.m., mini-guided tours offered to the first 30 people at 5:25 p.m. Music starts at 6 p.m. No alcohol or high-back chairs allowed. HonoluluZoo.org.

JULY 15 • YELLOWCARD

This pop, punk, alternative band is best known for their hits "Ocean Avenue", "Lights and Sounds", and "Light Up the Sky," and their use of violin in their songs. \$33, tickets go up \$5 day of. All ages show. Doors open at 6 p.m., show begins at 8 p.m. The Republik. bampproject.com

JULY 16

TWILIGHT SUMMER CONCERT SERIES

The summer of music continues with the Air Force Hana Hou Band at this weeks Twilight Concert Series 4:30 – 7 p.m. Foster Botanical Garden. 522-7066

JULY 16 • LIVING THE ART OF HULA

A uniquely structured performance focusing on specific aspects of hula. Kumu hula will weave demonstrations into descriptive stories as part of this years' Asia Pacific Dance Festival. 7:30 p.m. Kennedy Theatre. \$25. Ticketmaster.com

JULY 18

MIDSUMMERS NIGHT GLEAM

Over 2500 luminaries will turn Foster Botanical Gardens into a magical wonderland complete with lion dances, bagpipers, Scottish dancers, Mongolian Tribesmen and their fighting knights and West African Drums & Dancers. Kids activities until 6:30 p.m. 4-9 p.m. Free. (note: garden closes at noon to prepare). 522-7066.

JULY 18-19 • PRINCE LOT HULA FESTIVAL

One of Honolulu's most popular hula festivals has now expanded into two days. The 38th annual non-competitive hula celebration is held each year in Moanalua Gardens. 9 a.m. – 2 p.m. Free. moanalua GardensFoundation.org

JULY 19

WAIKIKI STEEL GUITAR FEST

Visitors will get the chance to hear the sweet sounds of Hawaiian steel guitar as some of the masters take the Plaza Stage at Waikiki Beach Walk throughout the afternoon. 3-7 p.m. Free. waikikisteelguitarfestival.com.

JULY 20

45TH ANNUAL UKULELE FESTIVAL

Ukulele prodigies, virtuosos, students and practitioners from around the world come together to celebrate the art of the ukulele and delight the audience with non stop music. One of summers best musical treats. Kapiolani Park Bandstand. 10:30 a.m. – 5 p.m. ukulelefestivalhawaii.org.

JULY 22 • HERB OHTA SAN AND NANDO SUAN PERFORMS AT THE ZOO

Legendary Ukulele Master Herb "Ohta San" and Jazz Guitarist Nando Suan are this weeks' performers for the Wildest Show in Town at the Honolulu Zoo. \$3. Gates open at 4:35 p.m., mini-guided tours offered to the first 30 people at 5:25 p.m. Music starts at 6 p.m. No alcohol or high-back chairs allowed. HonoluluZoo.org.

JULY 23 • CHURASA

An award-winning youth performing arts group from Okinawa performs as part of the Asia Pacific Dance Festival. Infusing a lively, contemporary style into

Continues on page 17.

NEW! GOLD UPGRADE LUNCH OPTION

GRAND CIRCLE ISLAND TOUR

Your guests will love our NEW GOLD Package on our Grand Circle Island Tour! They'll enjoy a local-style buffet lunch at Kualoa's Ranch House amidst the scenic backdrop of the Kī'ōla's. Check out our attractive low rates and child rates!

\$88.20 adult | \$14.70 child (12 & 13)

808.212.9758
polyad.com

Gray Line
POLYNESIAN ADVENTURE TOURS

How Can We Help?

We're a family-operated business dedicated to service, safety, quality & fun! Ocean activities for all ages and budgets. We're at your service to help provide a perfect match for your client.



Check out our newest yacht, the Ko Nau Lani

Located at:
**WAIANAE
HILTON PIER
KEWALO**

We offer:
Sail • Snorkel •
Dolphins • Turtles •
Whales • Scuba •
Fireworks Dinner •
Private Charters •
Transportation

234-SAIL

(7245)

WE ANSWER 24 HOURS!

hawaii.nautical.com



Hawaii Nautical

**DISCOUNT HAWAII
CAR RENTAL**
SAVE UP TO 50%



GUARANTEED RESERVATIONS
* NO BOOKING FEES * NO
DEPOSIT * CANCEL ANYTIME
* NATIONAL RENTAL
COMPANIES

call us today @
1.800.292.1930

or check us out online:

DiscountHawaiiCarRental.com

IL LUPINO

TRATTORIA & WINE BAR

Join us every weekend for

*Champagne
Brunch*

Sat/Sun • 7am-2pm

Choose from 6 Delicious
Brunch Entrees, served with
a Glass of Champagne,
\$19.95

Also join us for our Champagne
Happy Hour every Tues/Thurs all day.
Glass of Champagne \$9.

ROYAL HAWAIIAN CENTER • BLDG. B LEVEL 1
VALIDATED PARKING
WWW.ILLUPINO.COM • 808.922.3400



WARD VILLAGE

FOR RENT

Ward Village held a very informative event recently for a select few to introduce their latest project, Gateway Towers. Designed by highly acclaimed architect Richard Meier, the towers will strive to offer unrivaled craftsmanship and attention to detail, in these luxury apartments scheduled to be built as part of Howard Hughes master-planned 60 acres Kakaako community; The plans include a 4-acre public park and both pedestrian and bicycle friendly streets. Get ready...there are big changes ahead for the Ward area we all know so well in the next few years. See the plans at wardvillagegateway.com.



CHINATOWN After Dark

For those of your guests who plan to “paint the town red” one night downtown hitting up all the lounges and night clubs, you should alert them to two guaranteed late night dining options that should not only sober them up but also satisfy their palettes. Most of you know that **LUCKY BELLY** is open Mondays to Saturdays until 12 a.m. but did you know that its takeout window on Smith Street is open Thursdays to Saturdays from 10 p.m. to 2:30 a.m.? You can order kimchee pork fried rice, pork belly pao, chicken karaage sandwiches among other items that switch out every two or three days. The items run about \$5 per and to find out what’s on the menu each night just follow its Instagram @_dawindow for the latest late night delicacy. Now if your guests just can’t make it to “da window” by 2:30 a.m. they can just walk around the corner to **DOWNBEAT DINER** and sit down with all the late night hipsters for some French Toast, Loco Moco or a plate of Volcano Fries covered with garlic, Cajun seasoning, cheese and gravy. Believe it or not, Downbeat Diner is open Mondays until 12 a.m., Tuesdays to Thursdays until 3 a.m., Friday and Saturdays until 4 a.m. and Sundays until 10 p.m. Go to DownBeatDiner.com to check out all the great items on the menu from Breakfast & Brunch to Dinner & Dessert. What’s even more amazing is that almost everything on the menu can be made vegetarian or vegan. Now all you’ll have to do is convince your guests that everything eaten after midnight has less calories!

~ Lance Rae

JULY CALENDAR OF EVENTS

traditional Okinawan folk arts, they will showcase eisa (drumming), shishimai (lion dance) and Ryukyu Kobudo (Okinawan martial arts weaponry). 7:30 p.m. Kennedy Theatre. \$25. Ticketmaster.com

JULY 23 • CYRIL PAHINUI AND JERRY SANTOS AT THE AQUARIUM

The Waikiki Aquarium’s Ke Nani O Ke Kai continues with a performance from Cyril Pahinui and Jerry Santos with food available from Haili’s. Doors open at 5:30 p.m., concert begins at 7 p.m. Tickets \$50, \$20 for kids aged 5-12. waikikiaquarium.org

JULY 23 TWILIGHT SUMMER CONCERT SERIES

The summer of music continues with the Sam and the Sumo Ninjas at this weeks Twilight Concert Series 4:30 – 7 p.m. Foster Botanical Garden. 522-7066

JULY 23 IGGY, CHEE YUN AND FRIENDS IN CONCERT

Internationally renowned violinist Chee-Yun performs with Iggy Jang and his critically acclaimed string program as part of the Hawaii Performing Arts Festival. \$25. Doris Duke Theatre. 7:30 p.m. honoluluuseum.org

JULY 24 -25 THE MAYJAH RAJAY FESTIVAL 2015

Micah Banks host two nights of island and reggae line-ups to choose from. Comon Kings and Rebel Souljahz lead 6 other artists Friday night while Tarrus Rileu and Sons of Zion kick off night 2. \$29-\$120. 5 p.m. Waikiki Shell. Full musical line-up available online at tmrmusicfestival.com.

JULY 24 – 26 • COMIC CON HONOLULU

Organized the folks from Kawaii Kon, this 3-day convention is sure to grab the eye of passer-by as many

participants will attend in costume. Celebrate comics, fantasy, sci-fi, and all things nerdom. Fans of all types are welcome. Guest include Gates McFadden from Star Trek: The Next Generation; Sean from Firefly; Edward James Olmos; Erin Gray and Colin Ferguson to name a few. Get all the details at comiconhonolulu.com

JULY 25 DRAGON BOAT FESTIVAL

Those large funky looking Dragon Boats are going to make Magic Island quite the spectacle. Stop by and watch the races go on Saturday from 8 a.m. – 4 p.m. Ala Moana Beach Park. dragonboathawaii.com

JULY 25-26 • STORIES

The 2015 Asia Pacific Dance Festival explores the theme of “Stories” and dance’s own way of telling them: stories of dancers, of what the human body can do, of culture and history. Presented this year will be the works of Ballet Philippines, Oceania Dance Theatre (Fiji), and Hāhau I Ka Wekiu. 7:30 p.m. Kennedy Theatre. \$25. 7:30 p.m. Saturday, 2:30 p.m. Sunday. Ticketmaster.com

JULY 30 TWILIGHT SUMMER CONCERT SERIES

Lots of chances to check out the Twilight Concert Series this month. This week see Matt Sproat from 4:30 – 7 p.m. Foster Botanical Garden. 522-7066

JULY 31 JOY OF SAKE HONOLULU

This is the biggest sake festival outside of Japan. Hundreds of the world’s finest sakes will be available to taste along with food bites from many of Honolulu’s fine restaurants. 6:30 – 9 p.m. \$95. Hawaii Convention Center. Joyofsake.com.

Royal
HAWAIIAN LIMOUSINE

★★★★★
5 Star Limousine Company
www.RoyalHawaiianLimousine.com
808-275-6030

That's Entertainment

HOTELS

- HALE KOA HOTEL** 955-0555
 •**TuSat** - High and Right Comedy Show takes the stage at the Warriors Lounge at 8pm.
 •**MThFS** - Poolside music at the Barefoot Bar. 6-11pm
- HALEKULANI HOTEL** 923-2311
 •**Daily**-Hawaiian Music and hula at The House Without A Key from 5:30-8:00pm.
 •**Daily**-Live Contemporary and light Jazz at Lewers Lounge from 8:30pm to midnite.
 •**Sun**- Sunday brunch at Orchids features Noly Paa on the piano from 9:30 - 2:30pm.
- HILTON HAWAIIAN VILLAGE** 949-4321
 •**Fri** - Fireworks at 7:45pm.
 •**Fri** - The Rockin' Hawaiian Rainbow Revue (formerly the King's Jubilee), a musical salute to King Kalakaua, at the Super Pool. 7 pm.
 •**FriSat** - Olomana at the Tapa Bar from 8-11pm.
 •**Sun** - Jeff Apaka at the Tapa Bar from 5-7pm.
 •**Daily** - Live entertainment at the Hau Tree Bar and the Tapa Bar from 8-11pm.
- THE KAHALA HOTEL** 739-8888
 •**TuWThFSat** - David Swanson vocalizes on the piano at The Veranda from 7:30-11pm. Live Jazz on Sun/Mon.
- MOANA SURFRIDER** 922-3111
 •**Daily**-Hawaiian music & hula. The Banyan Court, 6-8 pm, and again from 8 -11 p.m. Weekends from 11:30- 2 p.m.
 •**MWFri**-Guided historical tours at 11am.
- NEW OTANI KAIMANA BEACH** 923-1555
 •**FSat**- Local jazz guitarists plays live in the Sunset Lanai Bar. 6-9pm.
- OUTRIGGER WAIKIKI ON THE BEACH** 923-0711
 •**Mon**- Kukui Nut Bracelet Making. 1pm.
 •**Th**- Ukulele Lessons. 1pm.
 •**Fri**- Aloha Fridays bring back old Hawai'i with music, hula, ukulele & lei making lessons. 9am-1pm.
- OUTRIGGER REEF ON THE BEACH** 923-3111
 •**Daily**- See guest artists at work in Kuloko Arts of Hawaii 9am-1pm and again from 6-9pm.
- SHERATON PRINCESS KAIULANI** 922-5811
 •**Daily**-Live Hawaiian music & halau at the lounge from 6-8:30pm, then poolside from 8:30-10:30pm.
 •**Th**-Princess Kaiulani historical tour at 9:30am.
- THE ROYAL HAWAIIAN** 923-7311
 •**TTH**- Free guided resort tour at 1pm.
- TURTLE BAY RESORT** 293-6300
 •**MTWThFSat**- Lei Making, Main Lobby at 10am.
 •**ThSun** - Fire Dancer, Hang Ten Pool Bar at Sunset

- TThFri** - Shell Hula Lessons, Lobby at 10am
 •**TThFri** - Ukulele Lessons, Lobby at 9am
 •**Fri**- Music & Hula. Lobby Lounge 6:30-8:30pm.
- WAIKIKI BEACH MARRIOTT RESORT** 922-6611
 •**Daily**-Hawaiian entertainment in The Moana Terrace Bar. 6:30-9:30pm.
 •**Fri**-Local crafters "Aloha Friday Fair" Lobby 9a-2pm

MUSEUMS

- HAWAII STATE ART MUSEUM** 586-0900
 •**TWThFSat** - Inaugural exhibition "Enriched by Diversity: The Art of Hawai'i." Free. Tuesday-Saturday, 10 a.m. to 4 p.m. Located in the Capital District.
- HAWAII THEATRE** 528-0506
 •**Tues**- A one-hour guided tour offers a unique insight in the history, art, architecture and restoration of the Hawai'i Theatre with trained docents & a mini-concert on the 1922 Robert Morton Theatre Organ. 11 a.m. Admission: \$10.
- HONOLULU MUSEUM OF ART** 532-8726
 •**MWF**- Japanese Language Tours. Private tours also available. 1pm. Regular admission.
- IOLANI PALACE** 522-0832
 •**Mon-Sat**-45 minutes docent-led or self-guided audio tours available in English or Japanese. Japanese-led tour is available only at 11:30 a.m. All tours include re-tour video and entrance into the Palace Galleries. Adults: \$14.75-\$21.75 / Keiki (5-12): \$6. 9am-5pm
 •**Sat**-Hawaiian Quilt Classes. Old Archives 9:30a-12p.
- LUCORAL MUSEUM** 922-5381
 •**TTh**- Learn how to plan your jewelry project and more in this beaded jewelry workshop \$10. 2-4 p.m.
- MISSION HOUSES MUSEUM** 447-3910
 •**Tue-Sat**-Learn about the dramatic story of cultural change in 19th-century Hawai'i. Docents lead tours through the oldest existing frame house in the Islands, Printing Office, and the coral block Chamberlain House. Reservations required. www.missionhouses.org
- PACIFIC AVIATION MUSEUM** 441-1000
 •**Daily**-Vintage aircraft in battlefield hangars on Ford Island. Combat flight simulators. Aviator's Tour takes you through the new Restoration Hangar. Restaurant, Museum Store. Shuttle & Tickets at USS Arizona Memorial Visitor Center or at PacificAviationMuseum.org.
- THE SPALDING HOUSE** 526-1322
 •**Daily**-Docent-led tours given daily. 1:30pm. Garden tours or Japanese language tours are by appointment.
- NAVAL AIR MUSEUM BARBERS POINT** 682-3982
 •**Mon-Fri**- A unique museum experience about aviation history in Hawaii. All of the aircraft are open to climb

in, on and around. Tours: 8 a.m. - 4:30 p.m. \$7 / \$5 children under 18. BLDG 1792, Midway Road, Kalaeloa Airport. Reservations required. Sat/Sun by appt only. www.nambp.org.

SHOPPING CENTERS

- ALA MOANA CENTERSTAGE** 955-9517
 •**Tues** - PCC Polynesian Revue Show. 6pm.
 •**Sun** - Keiki Hula Show. 10-11am.
- KINGS VILLAGE** www.kings-village.com 237-6344
 •**MW** Famer's Market offering fresh produce, baked goods and local food items from 4-9pm.
 •**Daily** King's Guard Museum features a variety of collectibles and memorabilia. 10a-10:30p. FREE.
- ROYAL HAWAIIAN CENTER** 922-2299
 • **TWThF**- Beginner Ukelele 10-11am, *Helumoa Hale*
 • **MW**- Learn Lomilomi 11am-12pm, Bldg. C, 3rd floor
 • **MF**- Hawaiian Storytelling 12pm, *Helumoa Hale*
 • **TTh**- Intermediate Ukulele 11:30am, Bldg. C, 3rd floor
 • **TTh**-Hula (T) 11am-12pm (Th) 4-5pm, *Royal Grove*
 • **TWThF**- Live Hawaiian music 6-7pm, *Royal Grove*
 • **MTWThSat**- Lei making 1-2pm, *Bldg A, 1st floor*
 • **Sat**- Hula Kahiko 6-6:30pm, *Royal Grove*
 • **Sat**- Hawaiian musicians 7:30-8:30pm, *Royal Grove*
 • **WSat** - PCC Performs. 11-11:45am, *Royal Grove*
- WAIKIKI BEACH WALK** www.waikikibeachwalk.com
 •**Tuesdays** - Ku Ha'aheo featuring Hawaiian song and dance on the Plaza stage. 4:30-6pm
 •**Wednesdays** - Yoga Classes 4-4:45pm. Free.Plaza Stage
- WAIKIKI SHOPPING PLAZA** 923-1191
 •**Daily** Hula Lessons. 10am, 12pm
 •**MTTh** - Polynesian Review 1st & 3rd floor 7-9pm

ATTRACTIONS

- KALAKAUA AVENUE** 527-5666
 •**Fri** - Strolling Hula from 8-10:00pm.
- KAPI'OLANI BANDSTAND** 527-5666
 •**Fri**-Hawai'i's finest musicians perform. 5:30-6:30pm
 •**Sun**-Royal Hawaiian Band performs 2-3:15pm.
- KUHIO BEACH HULA SHOW** 843-8002
 •**TThSat**- City & County presents a free hula show at sunset. 6:30 - 7:30pm at the hula mound.
- TAMARIND PARK - DOWNTOWN** 527-5666
 •**Fri**- Mayor's Aloha Friday Music from 12-1pm features live music from Hawaiian to Jazz to Pop.
- WAIKIKI TOWN CENTER** 922-2724
 •**Mon-Sat**-The songs and dances of Hawai'i, New Zealand, & Tahiti. Free shows begin at 7pm.

EVENTS SUBJECT TO CHANGE PLEASE CALL TO CONFIRM PRIOR TO ATTENDING

PAPARAZZI

Cyril wins 2015 Ho'okahiko Award



Duke's honored Cyril Pahinui with their annual award. In back: Jasmine Medina, Teagan Waialeale, Tanya Rames, Cyril, Keli'i Gouveia, Cory Dotario. In front: Tom Loughney, Cody Kalehuawehe, Richard Nguyen, Kilakilapono Youn

Diner en Blanc 2015



The 2nd annual Diner en Blanc took place in June with nearly double the participants from last year. An estimated 1,300 people boarded busses to an unknown location, which turned out to be Ko Olina Lagoon #4 for a flash mob dinner.

Do you have a picture you would like us to run?
 Send them to: publisher@oahuconciierge.com

...dinner is served



As the sun started to set, napkins twirled in the air indicating it was time to eat. Participants dressed all in white converged upon the park, set up their tables and chairs, ate, drank, danced the night away and then left without a trace. Fun!!

July 31, 2015

Dole Plantation - 1 FREE Adult Admission To The Maze With Purchase of 1 Adult Admission. 621-8408

Giovanni Pastrami - 15% Off Full Bar, Dine-in or Take-Out at anytime with ID. 227 Lewers St. 923-2100.

Hard Rock Café - 15% off food, beverage (non-alcoholic), or merchandise. Hotel ID required. 280 Beachwalk Ave. 955-7383.

Hawai'i Prince Golf Club - \$5 Off Standard Kamaaina Green Fees. Tee Times: 944-4567

Hilo Hattie - 25% on Hilo Hattie labeled garments, 15% off other fashions/gifts and 10% off Hilo Hattie labeled foods. Not valid on sale item. Ala Moana Center and Nimitz Hwy Ph 535-6500.

Hys Steakhouse - 25% VIP Discount Off Food And Beverage (up to 2 persons) 2440 Kuhio Ave. 922-5555

Hyatt Regency Waikiki - 15% discount with the presentation of a concierge business card at SHOR, Japengo and SWIM. 2424 Kalakaua Ave. 923-1234.

Iolani Palace - Free Admission. Regular rate \$20. 364 S. King Street, Reservations & Hotel ID required. 522-0832.

IHOP - Receive 20% on entire bill. Must show valid hotel ID. Not valid with any other offer or discount. Aqua Palms, 1850 Ala Moana Blvd restaurant only. Free parking available. 949-4467.

Kaiwa - 20% off food & beverage between 5 & 7 p.m. 924-1555

Longhi's - 25% off food & beverage up to 2 persons, not applicable with any other promotion or discount. 947-9899.

Mission Houses Museum - Free tour with hotel ID. 447-3910

Pacific International Skydiving Center - 50% Discount on Jump, 68-760 Farrington Hwy, 637-7472

Plaza Café - 15% off all food items. Best Western the Plaza Hotel. 3253 N Nimitz Highway. 836-3636.

P.F. Chang's Waikiki - Receive 20% on all appetizers, entrees, desserts and beverages 11 am - 5 pm daily (not valid for Pau Hana menu) Royal Hawaiian Center. Ph: 628-6760, 637-7472

Romano's Macaroni Grill - 20% Off Food and Beverage for up to 2 guests. (Not Valid for Happy Hour Menu). Ala Moana Center, 1450 Ala Moana Blvd. 356-8300

Royal Hawaiian Center - get your FREE Malama Card which offers special retail and dining discounts to local Waikiki workers. Royal Hawaiian Center, 2201 Kalakaua. 922-2299.

Ruth's Chris Steak House - 20% Off Food and Beverage for up to 2 guests. (Not Valid for Happy Hour & Prime Time menus). Restaurant Row, 500 Ala Moana Blvd. 599-3860. Waikiki Beach Walk, 226 Lewers Street. 440-7910

The Contemporary Museum - FREE Admission For Cardholder and One Guest. 526-1322

The Kahala Resort - Complimentary appetizers for a concierge and a guest with the presentation of a concierge business card at Hoku's, Plumeria Beach House, Seaside Grill, The Veranda. 5000 Kahala Avenue. 739-8888

The Original Glider Rides - Come experience the joy of soaring for yourself. Concierge / GSA may receive a complimentary scenic ride. Request the "GSA flight special" when booking your reservation. Hotel ID required. Dillingham Airfield. 637-0207

Tiki's Grill & Bar - FREE order of ANY appetizer with any purchase! One per table. OahuconPOKE. ASTON Waikiki Beach. 923-8454

Willoughby's Restaurant - 15% off all food items. Ohana Honolulu Airport Hotel. 3401 N. Nimitz Hwy. 836-0661.

HELP us update this card. If you know of an offer not being honored let us know. As management changes, sometimes offers can get lost. Also as we work on updating this, let us know if there is something you would like to see here & we'll see what we can do!

You may be required to provide identification. Must show Hotel ID to claim offer. One special per person per business. Offers valid on regular-priced merchandise only. Discounts are available to Guest Service Professionals ONLY. Not valid with other promotions or special offers. A minimum 18% gratuity on original order required for all special food offers.  New offer

Concierge of the Month



NAME: Hiroe Yanagisawa

HOTEL: Royal Hawaiian Hotel

TITLE: Concierge

Q. How long have you been with the Royal Hawaiian?

A. I have been with the Royal Hawaiian for 20 years and 9 months. Besides all daily duties as a concierge, I personally take care of many of our return guests.

Q. How big is your team there?

A. We have 1 Manager and 14 concierges consisting of 7 from Japan, 6 from Hawaii, 1 from Saipan and 1 from Jersey.

Q. Describe what makes the Royal different?

A. Its history, many long-time return guests and the color of PINK definitely make the Royal different from other hotels.

Q. How did you get your start in the industry?

A. I applied for United Airlines and Sheraton Waikiki at the same time when I first graduated from the business college in 1991. Although being a flight attendant was my dream, United Airlines didn't call back but Sheraton Waikiki did.

Q. Where did you work before then?

A. I started as a secretary for Japanese Sales at Sheraton Waikiki in 1991, transferred to Telephone Department, then, joined the concierge team in 1994.

Q. What is the biggest challenge at the desk?

A. Trying to be as up-to-date and helpful as possible, however, things are changing so quickly moment-to-moment. We are required to have as much as information that internet provides while maintaining the genuine human interaction.

Q. What do you like most about this industry?

A. Every day, I meet a variety of people who come from geographically and culturally different areas. I learn and discover something new from them every day.

Q. Describe how being a Les Clef D'Or affects you?

A. Higher expectation for the members of Les Clefs d'Or makes me work harder and continue to make effort. Being a member of Les Clefs d'Or is a stimulus to my work ethic.

Q. Describe getting your keys?

A. Most difficult part of the process was making a decision to apply for Les Chefs d'Or. I finally decided to apply for Les Clefs d'Or in 2004 after I had been a concierge for 10 years, however, I never felt that I was qualified to be compared to my predecessors. Because Hawaii is isolated from other states and countries, the worldwide network of Les Clefs d'Or benefits me when I assist guests who travel around the world.

Q. What's your favorite off property restaurant?

A. Michel's at the Colony Surf has been my favorite off property restaurant ever since I first came to Hawaii because of its ambiance, delectable food and professionalism.

Q. Do you have one particular guest that stands out?

A. I have too many guests that stand out! Because each one of them is so special to me, I cannot choose just one.

Q. What's the one question you are asked most often?

A. "Where is the restroom?"

Q. What's your favorite activity to recommend?

A. I like to recommend driving to Kailua or the windward coast of Oahu. Many tourists enjoy our beautiful ocean, but I would also like them to see the magnificent Ko'olau Mountain and feel the spiritual power.

Q. Where do you see yourself in 5 years?

A. I am planning to start taking classes online. I hope I will earn Master Degree of Esoteric Buddhism by then.

Q. Where are you from originally?

A. I am originally from Japan. I first came to Hawaii in 1987 to study English and recuperate from Lupus which I was diagnosed with when I was 18 years old.

Q. What do you like to do most on your days off?

A. I would like to read books about Buddhism and temples. I spend hours to copy the sutra by using calligraphy brush. I would also like to study the map and plan for my pilgrimage, which I walk and visit 88 temples scattered all around the Shikoku Island of Japan. It took me for 34 days to walk the whole island (700 miles) in 2008.



Embrace Your Dreams

Experience the magic of dreams coming true in our inspiring and unforgettable dolphin programs starting at only \$125. Dolphin Quest is located at the legendary Kahala Hotel & Resort.



DOLPHIN QUEST
Oahu

Reserve

800-248-3316
808-739-8918
dolphinquest.com

A portion of the proceeds supports vital marine education, conservation and research.

The Oahu Concierge is printed monthly and direct mailed FREE to all Oahu Concierge, Hospitality & Activity Professionals.

Subscriptions available to non-industry at \$25 per year.

C O N T A C T

Davis Media

Ph: 596-4422 • Fax: 593-0839

www.oahuconciierge.com

Twitter & Instagram: @OahuConciierge

Facebook: www.facebook.com/OahuConciierge

ADDRESS & NAME CHANGES / ADDITIONS

We do not take changes by telephone. All changes to mailing list **must be submitted in writing** by the 16th of the month to make the next issue, email is preferred.

S T A F F

PUBLISHER **Pam Davis**
publisher@oahuconciierge.com

CONTRIBUTING EDITORS
Lynn Cook, Lance Rae

DESIGN
Coreiya Design

The Oahu Concierge
1221 Kapiolani Boulevard, Suite 1040
Honolulu, Hawaii 96814



LOOK & BOOK

Go to
www.HIRealTime.com

A NEW AGENT TOOL
built specifically for
Hawaii Guest Professionals.

It's **FREE!**

- Activities
- Attractions
- Restaurants
- Events

Real-time booking for over
130 Vendors, with more
being added each month.

Register to access for free at
WWW.HIREALTIME.COM



 **ponorez** serving Hawaii's visitor industry since 1988. . . 27 years & counting.

**“Thank you for holding,
a representative will be with
you shortly.”**



Are you getting tired of hearing the same automatic voice answering service every day? Put down the phone because now there is a new way to book activities without picking up the phone!

Now you can **Look & Book** at your convenience, at the office, on your way to work or even in your bed.

HIRealtime.com works on a variety of devices: Personal computer, MAC, tablet, Apple & Android mobile phones.

Similar to Net Neutrality, which ensures a level playing field for all internet companies,

A3H's PonoRez provides free, easy, non-preferenced ticketing access by logging on or by our API. API stands for Application Program Interface, essentially it provides a way for systems to talk with each other. A common layman's term for API is "bridge". **PonoRez's** bridge has been available to outside systems since May 2010. **A3H** continues to keep our bridge open and willing to communicate.

The system is called **PonoRez** for a reason. It's made with principle over profit in mind. **PonoRez** is not just a different kind of system, it's a system that is **“Making a Difference”**.