

## FestPAC

The 13th Festival of Pacific Art and Culture comes to Oahu

## The Pan-Pacific Festival

Returns to Waikiki



The Opening Ceremonies brings together all of the participants with a parade of nations, as seen here at the 11th Festival of Pacific Arts held in the Solomon Islands in 2012. All photos by Nicholas Tomasello.



It's been five long years, but the Pan-Pacific Festival Foundation and the Matsuri in Hawaii Committee announced the return of the Pan-Pacific Festival on June 7-9, 2024. The festival is an annual celebration of the cultural traditions of Hawai'i and the Pacific Rim spanning four decades, making its triumphant return to the islands after a five-year hiatus that began with COVID. One of Hawai'i's largest and most popular events, the festival focuses on uniting cultures around the Pacific, embodying the diverse cultures that make up our island home.

The Festival of Pacific Arts and Culture is the world's largest celebration of indigenous Pacific Islanders. Celebrating the diverse cultures and arts of the Pacific region, it's held every four years, hosted by different Pacific Island nations on a rotational basis, bringing together artists, performers, and cultural practitioners from across the Pacific Islands to showcase their traditions, music, dance, crafts, and more. The festival serves as a platform for sharing heritage, fostering cultural exchange, and strengthening connections among Pacific communities. This year, the highly-anticipated festival will convene on O'ahu from June 6 – 16.

The inaugural Festival of Pacific Art and Culture (FestPAC), took place in 1972 in Suva, Fiji. Over the years, FestPAC has evolved and grown in stature, becoming a highly anticipated event for both Pacific Islanders and visitors from around the world. For more than 40 years, the festival has not only preserved traditional arts and culture but has also served as a platform for contemporary Pacific Island artists to express their creativity and address contemporary issues.

FestPAC has developed into a strong entity in which cultural sharing and learning from differences has enhanced people's appreciation and knowledge of the region.

The state has been busy preparing to host the 13th FestPAC for years now. They pitched the idea of O'ahu hosting the event back in 2012. Originally scheduled to take place in 2020, FestPAC was one of the first major festivals in Hawai'i to be postponed owing to the COVID-19 pandemic. FestPAC provides a unique opportunity for Hawaii to showcase our own culture and hospitality to our Pacific Island neighbors while celebrating the cultures of more than 28 Pacific Island nations. Events will be spread out over a dozen different locations, giving Hawaii even more opportunities to showcase our beautiful island.

This year's theme is "Ho'oulu Lāhui: Regenerating Oceania," honoring the traditions that FestPAC works to perpetuate with an eye toward the future.

The 10-day festival features more than 50 programs and events, including conferences, live performances, cultural workshops, hands-on demonstrations, films, storytelling and more. A few signature events include:

**June 6**  
**Opening Ceremony**  
**Stan Sheriff Center**

The opening ceremony will bring  
*Continued on page 7*

The festival originated to promote intercultural exchange between Japan and Hawaii to share traditions and celebrate the historical diversity in Hawaii through the music, arts, and cuisine of these Pacific neighbors. Since its inception in 1980, the event, previously known as Matsuri in Hawaii, began as a way to share traditional Japanese culture with residents and visitors to Hawaii. Participants could experience Japanese music, crafts, food, and performances in Waikiki to interact with and build a solid international community. As the scope of the event grew and its capacity widened

*Continued on page 4.*

TABLE OF CONTENTS	
Yada Yada Yada .....	2
Breathing New Life into Something Old .....	2
Newsflash .....	3
Cirque du Soleil's new show - 'AUANA .....	6
E Pili Kakou .....	8-13
Chef's Corner: .....	13
Calendar .....	14-17
Around Town .....	16
Celebrating King Kamehameha .....	18
That's Entertainment / Concierge Card .....	19

## Publisher's Letter



### Celebrating Culture

June is the month of celebrating our culture and learning about the culture and traditions of our neighbors in the Pacific and beyond. But be aware, the weekend of Waikiki street closures is back.

First, seeing the Pan-Pacific Festival return after five years is a huge deal. Launching over 40 years ago, the festival began as a way to share culture and traditions with our Japanese neighbors and has grown ever since to include so many other neighboring cultures. Learning more about different cultures leads to appreciation and understanding, thereby accepting and creating an atmosphere in which harmony and diversity can thrive. In the process, visitors will enjoy colorful and fabulous displays of dance, music, and a festive ho'olaule'a.

At the same time, an even bigger event will take place. The Festival of Pacific Arts & Culture is like the Olympics of cultural understanding. Perpetuating Pacific culture for 50 years, the objective is to promote cultural exchange and understanding among the participating nations, allowing artists and cultural practitioners to learn from each other. The event happens every four years on a rotational basis, just like the Olympics. This month, the festival has been in the works for over a decade and is coming to our shores. Hawaii presented a bid to host the event in 2012 and was granted the opportunity to host it in 2020. As COVID swept across the globe, the event was canceled and pushed back to 2024 to maintain the event's four-year schedule. Twenty-eight nations are coming together on O'ahu's shores, giving us another chance to showcase what makes Hawaii so unique, and again, our visitors will be able to take advantage of wonderful displays of dance, music, and culture. And, in case that doesn't give your guests enough opportunities to immerse themselves in culture, don't forget we celebrate King Kamehameha this month, and the 107th Floral Parade is not to be missed.

As mentioned, June 7 - 9 will be busy in Waikiki, as a ho'olaule'a closes down Kalakaua Friday night, the Floral parade closes it Saturday morning and the closing Pan Pacific parade takes place Sunday night, so plan accordingly, travel will be difficult.



Nicole Okuna

Congratulations go out to **Nicole Okuna** who was named general manager of *The Royal Hawaiian* last month, becoming the fourth woman to lead the hotel in its 97-year history. She began her journey with Sheraton as an intern in 2007, and has continued climbing the ranks throughout the Starwood/Marriott organization ever since. For the past four years she served as the hotel manager of the iconic resort, and saw remarkable achievements in associate engagement and customer satisfaction scores, making her the perfect person to take the reins of the hotel and an amazing success story. • **Highgate** has appointed general managers at two of its hotels. **Hayato Nogaki** has been named general manager of the 112-room **AC Hotel by**

**Marriott Honolulu** located in downtown Honolulu. **Nogaki** started his hospitality career over 20 years ago at The Ritz Carlton Kapalua, and was most recently the GM at the Omni Charlotte Hotel in North Carolina. Highgate has also been hard at work renovating the Pearl Hotel Waikiki, and is excited to open the 179-room **Romer House Waikiki** on June 1st. **Daniel Teixeira**, who most recently opened the AC Hotel as general manager, has now been named GM of "Oahu's first adults-only hotel." • **Cara Goodrich** has joined the **Hilton Waikiki Beach** as its Director of Sales & Marketing. She brings with her over 30 years of promoting brands and leading Hawai'i properties to profitability. Most recently she was the DSM at the Grand Naniloa Hotel Hilo.



Hayato Nogaki

## Breathing New Life into Something Old

It's an exciting trend that became more noticeable about a decade ago. Companies are taking over some of the older properties and giving them a facelift. Remember the Seaside Hotel before it became the Shoreline? What the Surfjack used to look like when it was Ho'okele Suites? The Queen Kapiolani got a facelift from top to bottom. Repurposing with passion has become a thing, and how lucky are we that there are companies out there giving old Waikiki properties fresh looks? Springboard Hospitality has been a leader in that area. What they have done with the White Sands and turning the Waikiki Sand Villa into Wayfinder Waikiki was fun and retro. They just announced they will remodel the Luana Waikiki. The trend of turning old walk-ups and decaying hotels into fun, retro, mid-century modern gems has been a pleasure to witness.

Of course, it doesn't stop there. BlackSand Capital remodeled the New Otani into the Kaimana Beach Hotel a few years back. Although we love the hotel's remodel, expect more to happen soon, as Highgate Hawaii assumes management of the property in July and has big plans for the place.

Highgate Hawaii, the fastest-growing hospitality company in the state, has nearly quadrupled its footprint here since 2018. It has expanded to eighteen properties from four, with at least ten

more on the horizon. Their success story includes transforming the Pacific Beach Hotel into The Alohilani Resort, a project involving a \$150 million investment. With such a track record, we can expect their future projects to be equally impressive.



Romer House is Waikiki's first adults-only hotel

Highgate will reopen the former Pearl Hotel Waikiki as the Romer House Waikiki, O'ahu's first adults-only hotel, this month. The once-tired property has been reborn into an artsy, relaxed vibe, modern hotel that celebrates Waikiki's eclectic lifestyle. The Romer House offers an upscale urban hideaway with mid-century-inspired interiors, curated local art partnerships, wellness programs, recreational amenities, and a pool retreat with cocktail culture, all without kids. This transformation will redefine the concept of adult-only hotels in Waikiki.

It's exciting to see what these companies are doing to modernize the older hotels in Waikiki, and we can't wait to see what they plan next. Please keep it up! Keep making old places new again.

# EXTRA EXTRA EXTRA *Newsflash*

## ALA MOANA CENTER ADDS NEW SHOW TO ITS HULA LINEUP

Ala Moana Center has added a third hula show to its daily rotation throughout the week, increasing the possibility that your guest won't see the same show twice during their vacation. The new show takes place every Monday, Wednesday and Friday. After every performance, shoppers can join the cast for photos. Ala Moana Center's free, 20-minute hula show takes place daily on Centerstage at 5 p.m. [alamoanacenter.com](http://alamoanacenter.com).

## PRINCE WAIKIKI ANNOUNCES 'ART REDEFINED' SERIES

Prince Waikiki launched a new art series in their lobby. Art Redefined kicked off with pieces from local natural dye artist, Kristin Baucom, will be on display thru July 26. a free Natural Dye Workshop & Color Demonstration will be offered on May 25 at 10 a.m. The series continues throughout the year, exploring endless possibilities of artistic expression through the works of various artists. Open to the public. [princewaikiki.com](http://princewaikiki.com).

## SUMMER OF MAGIC BEGINS AT THE ALA MOANA HOTEL

Matthew Singer, a professional magician and mentalist from Kauai, is coming to Oahu for a series of spellbinding shows in three different formats at the Ala Moana Hotel. On June 9, 30, July 21, and August 4, there will be a cabaret show. In this format, guests arrive early and enjoy hand-crafted cocktails before the show at 5 and 8 p.m. On Father's Day June 16, there's an all-you-can-eat prime rib buffet starting at 11 a.m., and on July 28, he will perform at a dinner show featuring a Hawaiian Buffet starting at 6 p.m. Tickets start at \$39. [matthewsingermagic.com](http://matthewsingermagic.com).

## HILTON HAWAIIAN VILLAGE ADJUSTS FIREWORKS TIME

The Hilton Hawaiian Village is making its annual time adjustment to the start time of their weekly Friday fireworks to 8 p.m. to accommodate the longer summer days effective June 7. The new start time will continue until the fall, when it will jump back to 7:45 p.m.

## THE REAL REYN SPOONER OPENS AT WAIKIKI BEACH WALK

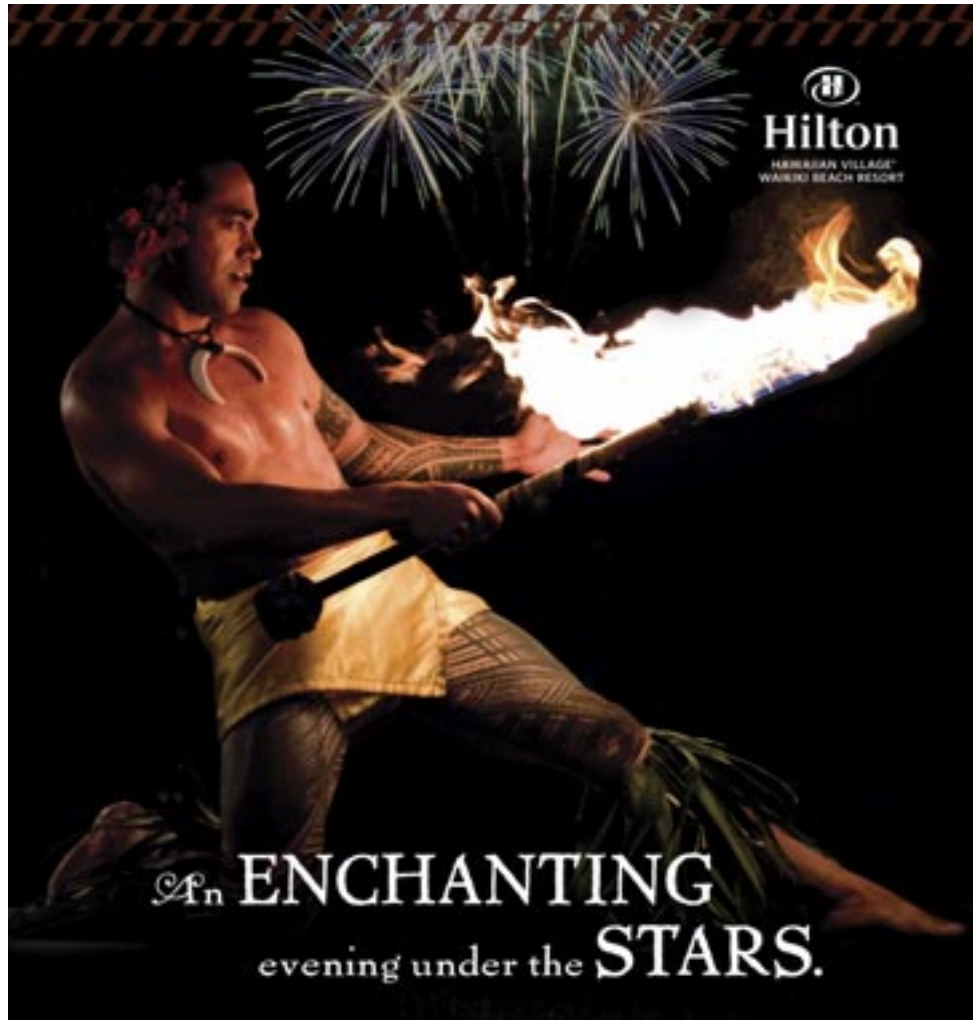
Reyn Spooner, the victim of the latest online spoof, is opening a new retail location at Waikiki Beach Walk, the seventh in the islands. Offering their signature designs, the store is open daily from 9 a.m. to 10 p.m.

## NEW DINING OPTIONS OPEN AT ROYAL HAWAIIAN CENTER

Royal Hawaiian Center has opened two new eateries at the Pā'ina Lanai. 206 BCE is known for their Instagrammable Anti-Gravity Noodles, and seafood platters with heart-shaped rice, such as the Crab and Shrimp Cajun Platter. Mini Monster Café is a decade-old Southern California favorite, known for its signature drinks while embracing eco-friendly practices, offering a menu of handcrafted coffees, teas, fruit beverages, and boba drinks.

## THE WATERMAN'S FEAST OPENS AT DECK WAIKIKI

The Waterman's Feast, offering Hawaiian fire cooking and "whole animal" cooking Hawaii style, previously only available to friends and family at a private North Shore farm estate to Deck Waikiki this month. The Hunt Club dining experience is more than just a meal; it's a journey into Hawaiian culture and cuisine. Join Wild Chef Chris, twice-weekly for an evening of food, fun, and aloha from 6:30 to 9:30 p.m. Find out more at [deckwaikiki.com](http://deckwaikiki.com).



An ENCHANTING evening under the STARS.

On Fridays on our beautiful Great Lawn, let us take you on a journey across the South Pacific; Savor island-inspired cuisine, try Hawaiian games and crafts, and at the end of the evening, quickly access vantage points for amazing views of the Friday fireworks show on Duke Kahanamoku Beach.

WAIKIKI  
STARLIGHT LUAU

[hhvluau.com](http://hhvluau.com)  
808-941-LUAU  
Scan for Rooftop  
Luau availability





CocoNene



Create Your Own!

CAPTURE  
HAWAII  
VACATION  
MEMORIES



#madeinhawaii

coconene.com

@coconenehawaii

# The Pan-Pacific Festival

Continued from page 1.



A Bon Dance will be part of the Ho'olaule'a

to include other cultures found in Hawai'i, the Matsuri in Hawaii became known as the Pan-Pacific Festival.

It became a major annual celebration incorporating cultural influences from around the Pacific, and this year's events will proudly bring those traditions back to various venues throughout Honolulu. From music to crafts, there is something to delight kids of all ages and visitors of many tastes at one of Oahu's most famous fests. Four decades later, the Pan-Pacific Festival returns this month with all the parties, parades, and culture that make it a favorite with visitors and locals alike.

"We are thrilled to be back after a five-year hiatus to kick off summer with Hawai'i's first matsuri," said Yusuke Komoriya, President of the Pan-Pacific Festival Foundation. "The festival has evolved over the years and is meant to symbolize bringing cultures from around the Pan-Pacific together to celebrate our global community with performances from local and Japanese artists ranging from taiko to hula."

The festival has four key components: the Performing Arts Showcase, the Pan-Pacific Hula Festival, the Ho'olaule'a, and the Parade. Let's examine each of these components in more detail.

The festivities kick off on Friday, June 7, with the Performing Arts Showcase at Ala Moana Centerstage from 10 a.m. – 8 p.m., which continues on Saturday and Sunday. A special Performing Arts Showcase will also be held at the International Market Place on Saturday from 10 a.m. to 2 p.m. The performances feature traditional Japanese acts from all over Japan and a few cultural performance groups from Hawai'i. These Japanese performances are distinctive to various regions throughout Japan, and it's a rare opportunity to see these cultural presentations performed all on one stage.

This year marks the 20th Annual Pan-Pacific Hula Festival on the Hula Mound at Kūhiō Beach, where halau from across

Japan will showcase their skill. Hula is extremely popular in Japan, with over 200,000 people actively pursuing their love of dance. An exhibition performance by local halau, Halau O Napuala 'Ikauika 'lu, will also be presented. The Hula Festival will showcase performances from Japanese halau on Friday and Saturday from 4 to 10 p.m. and Sunday from 7 to 10 p.m.

The Pan-Pacific Festival's signature Ho'olaule'a takes place Friday evening from 7 to 10 p.m. with three stages of local entertainers, Na Hoku Award musicians, and Japanese Dance groups. The Seaside stage in front of the Royal Hawaiian Center will focus on local entertainment. The Nā Hōkū Stage in front of the Outrigger Waikiki will showcase Hawai'i's local artists and nominees for the coveted Nā Hōkū awards. At the Moana Surfrider Stage, attendees can get moving at Dance Fest in Hawaii, where Show-hehey of RADIO FISH will appear. There will also be a Bon Dance Tower near Kaiulani Avenue that always sees a lot of action. Food vendors will line the streets in between the performance stages with a diverse mix of food items such as popular Japanese festival foods like Takoyaki, Wagyu skewers, and Hokkaido ice cream, and local favorites like lumpia, corn on the cob, and ahi bowls. This Ho'olaule'a used to be one of the biggest street festivals that hit Kalakaua each year. We will see what this year brings since it's the first time it's back in so long, but if SPAMJam is any indication, the crowds will most definitely be returning.

Finally, as with all great festivals in Hawaii, the Pan-Pacific Parade presents its grand finale to wrap up its triumphant return with a parade starting at 5 p.m. at Fort DeRussy Park, which runs along Avenue. A thousand marchers will participate in the parade, which will feature colorful costumed dancers, high school bands, and ethnic cultural groups, and will pass through Waikīkī on Kalākaua Avenue.

To learn more about the various events happening throughout the weekend, head to [panpacificfestival.org](http://panpacificfestival.org).



# Island Fun for Everyone

**Boost Bookings with the  
Nation's Fourth-Ranked  
New Water Attraction!**



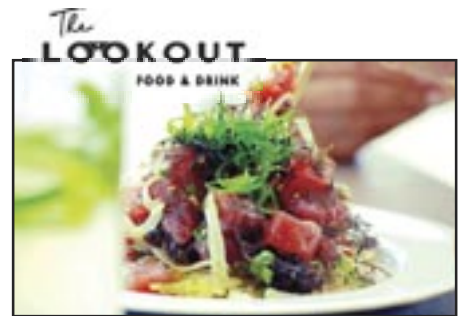
**Offer Your Clients an Unforgettable Experience  
With Optional Transportation**



Surf the Islands' only  
man-made wave.



Paddle, pedal or just relax on  
your own private lagoon.



Choose from a variety of local  
shopping & dining options - from  
fine to family or just plain fun!

E-mail:  
Reservation@AtTheLineUp.com  
WaiKai.Com



Wai Kai

Call for more information:  
808.515.SURF(7873)

## PARK WEST FINE ART MUSEUM & GALLERY

Waikiki Beach Walk Honolulu  
808-859-4871 parkwesthawaii.com



Any client you refer for  
a private tour will get

**10% off their purchase\***  
if they mention the hotel and concierge  
that referred them.

For more details  
waikikibeach@parkwestgallery.com

**PARK WEST GALLERY**

\*Terms and conditions apply



Cirque du Soleil, a name synonymous with awe-inspiring performances, is embarking on a new journey in Hawaii. After captivating audiences worldwide, the company is now preparing for its first-ever residency in the islands. This is a unique opportunity for residents and tourists alike to be a part of history and experience the magic of Cirque du Soleil up close and personal.

It's a full-circle moment for the company. Its founder, Guy Laliberté, was watching the sunset on a beach in Hawaii years ago when he first thought about creating a circus unlike anything seen before. Inspired by the stunning Hawaiian sunset, the name he came up with reflects its origins. Laliberté presented his idea for a show called Cirque du Soleil (Circus of the Sun), and so began a cultural phenomenon that has been wowing audiences around the world ever since. It's only fitting that Cirque is making its new home in Hawaii.

According to Sean Dee, executive vice president and chief commercial officer of Outrigger Resorts, they promised Cirque du Soleil they "would deliver them a literally brand new state-of-the-art theater." They are spending millions of dollars remodeling the 20,000-square-foot theater on the fourth floor of the Waikiki Beachcomber, home to both Magic of Polynesia and the Don Ho Show over the years. They have been hard at work renovating it to create a first-class showroom befitting the spectacular productions Cirque du Soleil is known for with its mesmerizing acrobatics, cutting-edge digital effects, creative lighting, and live music.

This will be Cirque's first Hawaiian-inspired production. The show will fuse the world-renowned acrobatics and innovation that Cirque du Soleil is known for with the islands' natural beauty and unique culture. Committed to giving the show the authenticity it deserves, Cirque



*Cirque du Soleil skaters Billy and Emily England offered a sneak peek of one of the many acts to come when 'Auana opens December 15. Tickets are now on sale. Photo by Erik Kabik.*

du Soleil contracted Dr. Aaron Salā as its cultural creative director, Manaola Yap as the production's costume designer to provide insight into contemporary usage of traditional Native Hawaiian design, and Kumu Hula Hiwa Vaughan to craft the hula choreography that will connect the spirit of Hawaii to the production. They have also committed that a lot of the talent will come from Hawaii, adding to the overall authenticity of the show.

After careful consideration and collaboration with community voices, the show will be called 'Auana. The name stems from the loose translation to wander, veer off the beaten path, or embark on a journey, and will feature stories from Hawai'i's past and stylized depictions of historic milestone events. "Storytelling has served instrumentally in the preservation of our culture," said Dr. Aaron Salā, "and I am deeply honored to uplift native voices in tandem with the stellar artistry of Cirque du Soleil."

The fabric of the show is woven through the Native Hawaiian inspiration of the natural beauty of the islands. "Our vision for 'Auana faithfully connects us all to the islands of Hawai'i through innovative and engaging storytelling, using hula dance, music, comedy, and incredible acrobatic performances," said Director Neil Dorward. Each component will be expressed through color, texture, projections, and sound, culminating in a spectacular celebration of the rich Hawaiian culture through the lens of an internationally and locally acclaimed ensemble.

Tickets for 'Auana are now on sale for performances beginning December 15. Prices start at \$69 plus taxes and fees, and a 30% discount is being offered to kama'āina. 'Auana will present two shows Wednesday through Sunday at 5:30 p.m. and 8:30 p.m. To purchase tickets, go to their website, [cirquedusoleil.com/hawaii](http://cirquedusoleil.com/hawaii).

## Festival of Pacific Art & Culture

Continued from page 1

together all festival participants in a kick-off event that commences with a grand parade of nations.

**June 7 – 16**  
**Festival Village & Marketplace**  
*Hawai'i Convention Center*



The Festival Village & Marketplace will provide a gathering space for cultural practitioners to demonstrate, share, and celebrate. Weavers, fiber artists, jewelry makers, and others will be located in individual country hale ready to engage with each other and with the general public.

**June 8**  
**Ecumenical Service**  
*Stan Sheriff Center*

This festival tradition will bring together VIPs, delegates, festival participants, and the community to give thanks in prayer and song.

**June 8**  
**Wa'a Showcase**  
*Kualoa Regional Park*



Canoes from around the Pacific will dock at Kualoa making for an amazing photo op that is certain to be a once-in-a-lifetime experience. There will be multiple wayfinding cultural exchanges, workshops and canoe tours.

**June 16**  
**Closing Ceremony**  
*Stan Sheriff Center*

Festival participants and delegates will join back together for the last time. As host, Hawai'i will offer a send-off to the festival participants and celebrate New

Caledonia as the host of the 14th Festival of Pacific Arts and Culture when they reconvene in 2028.



During festival week, FestPAC heritage dance, choral presentations, fashion shows, and live music performances will pop up at the following locations:

**Ala Moana Center Stage**  
June 10, 12-14

**Bishop Museum**  
June 7-8, 10-15

**Kaimana Beach Hotel**  
June 7-8, 10-15

**Kani Ka Pila Grille**  
June 7-8, 10-15

**Kapiolani Bandstand**  
June 5

**Kawaiaha'o Church**  
June 10 and 12

**Our Kaka'ako**  
June 8 and 14

**Pālama Settlement**  
June 7 and 8

**Royal Hawaiian Center**  
June 7-8, 10-15

**University of Hawai'i - West O'ahu**  
June 10 and 13

**Waikiki Beach Walk**  
June 7-8, 10-15

**Windward Mall**  
June 7 and 8

With its vibrant displays of creativity and rich cultural expressions, FestPAC is truly a testament to the beauty and diversity of the Pacific region. Most events are free and open to the public.

For more details and to see a complete schedule to find out where performances and activities will be held each day, please visit [festpachawaii.org](http://festpachawaii.org).

**FestPAC:  
Up Close & Personal**

The 13th Festival of Pacific Arts & Culture (FestPAC) will be held in Hawaii and the relaxed & intimate location of Waikiki Beach Walk' will be one of the best places to experience it. Nightly starting at 4 p.m.

**Friday, June 7  
to Saturday,  
June 15.**

**Free Parking 10am-3pm Daily\***  
\*With \$10 minimum purchase

Located on Lewers St. between Kalakaua Ave.  
& Kalia Rd. Open 365 Days | 11AM-9PM

**HO'OU LU LĀHUI**  
Regenerating Oceania

**WAIKIKI  
BEACH WALK.**

[WAIKIKIBEACHWALK.COM](http://WAIKIKIBEACHWALK.COM) |

Photos by Nicholas Tomaseffo

Performers & times subject to change

# Let's be Together...

DINING ▶ ENTERTAINMENT ▶ PAU HANA ▶ EAT ▶ DRINK ▶ BE MERRY ▶ HAPPY HOUR ▶

## MONDAY

<b>100 Sails at the Prince Waikiki</b>	<b>944-4494</b>
<i>Live Contemporary Hawaiian</i>	
Mike Tulba Duo (or Brad Kawakami)	6-8pm
<b>Barefoot Beach Café at Queen's Beach</b>	<b>924-2233</b>
<i>Live Contemporary &amp; Hawaiian</i>	
The Barefoot Boys	5:30-8:30pm
<b>BASALT</b>	<b>923-5689</b>
<i>Live Contemporary &amp; Hawaiian</i>	
Jon Basebase	6-8pm
<b>Duke's Canoe Club Waikiki</b>	<b>922-2268</b>
<i>Live Contemporary Hawaiian</i>	
Grace Welton	4-6pm
Bryan & Halekahu	7-9:30pm
Ellsworth Simeona	9:30-12am
<b>Hard Rock Cafe</b>	<b>955-7383</b>
<i>Contemporary Rock</i>	
Chapter II (or TJ & Sons)	8-10pm
<b>Heydey at the White Sands</b>	<b>475-6864</b>
<i>Contemporary Rock</i>	
Laupepa Letuli	7-9pm
<b>House Without a Key</b>	<b>923-2311</b>
<i>Hawaiian music &amp; hula by Miss Universe '97 Brook Lee</i>	
Pa'ahana Trio	5-8pm
Nick La'a	8:15 - 10pm
<b>Hula Grill</b>	<b>923-4852</b>

<i>Live Contemporary Hits</i>	
Ben Kama	12-2pm
<b>Kani Ka Pila Grille</b>	<b>924-4992</b>
<i>Hoku Award Winning Hawaiian musicians</i>	
Sean Na'auao	6-9pm
<b>Lewers Lounge</b>	<b>923-2311</b>
<i>Jazz Pianist</i>	
Jonny Kukui	8-10:30pm
<b>Mahi'ai Table</b>	<b>670-2778</b>
<i>Live Contemporary</i>	
Jenna Keala	5-8pm
<b>Mahina &amp; Sun's</b>	<b>923-8882</b>
<i>Monday Vibes on the Lanai</i>	
Kokonut Point	6:30-9:30pm
<b>Mai Tai Bar at the Royal Hawaiian</b>	<b>923-7311</b>
<i>Live Contemporary Hawaiian</i>	
Eric Lee	11am-2pm
Brad Kawakami (6/3 - Justin Edwards)	8-10pm
<b>Maui Brewing Company</b>	<b>843-2739</b>
<i>Live Contemporary Hawaiian</i>	
Randy Allen (or Wavy Duo)	8:30-10:30pm
<b>Merriman's Honolulu</b>	<b>215-0022</b>
<i>Live Slack Key guitarist</i>	
Deven Camat	5:30-7:30pm
<b>Monkeypod Kitchen Ko Olina</b>	<b>381-4086</b>
<i>Live Contemporary 3x a day including from 12:30 - 2 p.m.</i>	
Kree and Malik	3:30-5pm
Sienna Souza	7-9pm
<b>Monkeypod Kitchen Waikiki</b>	<b>900-4226</b>
<i>Live Contemporary 3x a day including from 12:30 - 2 p.m.</i>	
Shawn Garnett	3:30-5pm
Dustin Park	7-9pm
<b>Pikos Kitchen &amp; Bar</b>	<b>923-2032</b>
<i>Live Contemporary Hits</i>	
Christian Yrizarry (or Kamaka Camarillo)	6-9pm
<b>Rumfire</b>	<b>921-4600</b>
<i>Live Contemporary Hits</i>	
Dave Watanabe (or others)	6-9pm
<b>Signature Prime Steak</b>	<b>949-3636</b>
<i>Contemporary Pianist in the bar</i>	
Keith Montross	6-9pm
<b>Splash Bar at the Sheraton Princess Kaiulani</b>	<b>921-4600</b>
<i>Live Contemporary Hawaiian</i>	
David Aquino	6-9pm
<b>Swell at the Alohilani</b>	<b>294-4108</b>
<i>Solo Contemporary Guitarist</i>	
Drew Henmi	6:30-9:30pm
<b>SWIM at the Hyatt Regency</b>	<b>923-1234</b>
<i>Live Contemporary Hawaiian</i>	
Kaulana Vinoya	5-9pm
<b>The Beach Bar at the Moana Surfrider</b>	<b>922-3111</b>
<i>Live Contemporary Hawaiian</i>	
Eric Lee (6/10 - Liam Moleta)	3:30-6:30pm
Johnny Valentine	7-10pm
<b>The Edge at the Sheraton</b>	<b>921-4600</b>
<i>Live Hawaiian Music</i>	
Stephen Inglis (6/3-Jesse Kuikahi)	1-4pm
<b>The Point Sunset Pool Bar at Turtle Bay</b>	<b>293-6000</b>
<i>Live Contemporary Hawaiian with Fireknife Dancer</i>	
Kuhio Travis	5-8pm


## TUESDAY

<b>100 Sails at the Prince Waikiki</b>	<b>944-4494</b>
<i>Live Contemporary Hawaiian</i>	
Cherie Duo	6-8pm
<b>BASALT</b>	<b>923-5689</b>
<i>Live Contemporary &amp; Hawaiian</i>	
Lauren Baba	6-8pm
<b>Barefoot Beach Café at Queen's Beach</b>	<b>924-2233</b>
<i>Backyard Hawaiian</i>	
Ben Kama	5:30-8:30pm
Shane Kainoa (or others)	6-9pm
<b>Duke's Canoe Club Waikiki</b>	<b>922-2268</b>
<i>Live Contemporary Hawaiian</i>	
Walt Keale	4-6pm
Kailua Moon	7-9:30pm
Stephen Inglis	9:30-12am
<b>Eating House 1849 Waikiki</b>	<b>924-1849</b>
<i>Live Contemporary Hawaiian</i>	
Kings Kalohelani	4:30-7:30pm
<b>Giovanni Pastrami</b>	<b>923-2100</b>
<i>Acoustic Soul, R&amp;B and Pop</i>	
YOZA (or others)	6:30-9:30pm
<b>Hard Rock Cafe</b>	<b>955-7383</b>
<i>Contemporary Rock</i>	
Sydney Spencer (or The Black Tees)	8-10pm
<b>House Without a Key</b>	<b>923-2311</b>
<i>Hawaiian music &amp; hula by Miss Aloha Hula '21 Maka Perry</i>	
Delima Ohana	5-8pm
Jonny Kukui	8:15 - 10pm
<b>Hula Grill</b>	<b>923-4852</b>
<i>Contemporary Rock</i>	
Kawika Kahiapo	12-2pm
<b>Kani Ka Pila Grille</b>	<b>924-4992</b>
<i>Hoku Award Winning Hawaiian musicians</i>	
Kala'e Camarillo	6-9pm
<b>Lewers Lounge</b>	<b>923-2311</b>
<i>Jazz Pianist</i>	
Tommy James	8-10:30pm
<b>Mahi'ai Table</b>	<b>670-2778</b>
<i>Live Contemporary</i>	
Keoni Ku (6/25 - Johnny Kukui)	5-8pm
<b>Mahina &amp; Sun's</b>	<b>923-8882</b>
<i>Electrifying Acoustic on the Lanai</i>	
Laupepa Letuli	6:30-9:30pm
<b>Mai Tai Bar at the Royal Hawaiian</b>	<b>923-7311</b>
<i>Live Contemporary Hawaiian</i>	
Kupu Dalire-Na'auao	11am-2pm
Eric Lee (6/25 - YOZA)	6-9pm
<b>Maui Brewing Company</b>	<b>843-2739</b>
<i>Live Contemporary Hawaiian</i>	
Trish Nalei (or Mike Piranha)	8:30-10:30pm
<b>Merriman's Honolulu</b>	<b>215-0022</b>
<i>Live Contemporary</i>	
John Kema	5:30-7:30pm
<b>Moani Waikiki</b>	<b>466-2629</b>
<i>Live Contemporary Hawaiian</i>	
Lava	7-10pm
<b>Monkeypod Kitchen Ko Olina</b>	<b>381-4086</b>
<i>Live Contemporary 3x a day including from 12:30 - 2 p.m.</i>	
Pono	3:30-5pm

**STARTING AT**

**\$64**

SAVOR OUR PRIME TIME MEAL WITH STARTER, ENTRÉE, SIDE, AND DESSERT



**RUTH'S CHRIS STEAK HOUSE**

AVAILABLE DAILY FROM 4-6 PM  
Oahu: Waterfront Plaza and Waikiki Beach Walk  
Maui: The Shops at Wailea  
[RUTHSCRIS.COM](http://RUTHSCRIS.COM)



# E Pili Kākou

DINING ▶ ENTERTAINMENT ▶ PAU HANA ▶ EAT ▶ DRINK

Chante	7-9pm	Pa'ahana Trio	5-8pm
<b>Monkeypod Kitchen Waikiki</b>	<b>900-4226</b>	Mike Tulba (6/5-Jesse Kuikahi)	8:15 - 10pm
<i>Live Contemporary 3x a day including from 12:30 - 2 p.m.</i>			
Tiare Gomes	3:30-5pm	<b>Hula Grill</b>	<b>923-4852</b>
John Akapo	7-9pm	<i>Contemporary Rock</i>	
<b>Pikos Kitchen &amp; Bar</b>	<b>923-2032</b>	Ronson Asuncion	12-2pm
<i>Live Contemporary Hits</i>			
Drew Henmi	6-9pm	<b>Kani Ka Pila Grille</b>	<b>924-4992</b>
<b>Rumfire</b>	<b>921-4600</b>	<i>Hoku Award Winning Hawaiian musicians</i>	
<i>Live Contemporary Hits</i>			
Christian Yrizarry	6-9pm	Ei Nei	6-9pm
<b>Signature Prime Steak</b>	<b>949-3636</b>	<b>Lewers Lounge</b>	<b>923-2311</b>
<i>Contemporary Pianist in the bar</i>			
Keith Montross	6-9pm	<i>Jazz Pianist</i>	
<b>Splash Bar at the Sheraton Princess Kaiulani</b>	<b>921-4600</b>	Tommy James	8:30pm-12am
<i>Live Contemporary Hawaiian</i>			
Mark Caldeira	6-9pm	<b>Mahi'ai Table</b>	<b>670-2778</b>
<b>Swell at the Alohilani</b>	<b>294-4108</b>	<i>Live Contemporary</i>	
<i>Solo Contemporary Guitarist</i>			
Kamuela Kahoana	6:30-9:30pm	Dillon Pakele	5-8pm
<b>SWIM at the Hyatt Regency</b>	<b>923-1234</b>	<b>Mahina &amp; Sun's</b>	<b>923-8882</b>
<i>Live Contemporary Hawaiian</i>			
Dominic Carlos	5-9pm	<i>Soulful Guitar on the Lanai</i>	
<b>The Beach Bar at the Moana Surfrider</b>	<b>922-3111</b>	John Akapo	6:30-9:30pm
<i>Live Contemporary Hawaiian</i>			
Stephen Inglis (6/4 - Kalau Crisostomo)	3:30-6:30pm	<b>Mai Tai Bar at the Royal Hawaiian</b>	<b>923-7311</b>
Alex Oasay (6/14 - YOZA)	7-10pm	<i>Live Contemporary Hawaiian</i>	
<b>The Edge at the Sheraton</b>	<b>921-4600</b>	Stephen Inglis (6/5 - Liam Moleta)	11am-2pm
<i>Live Hawaiian Music</i>			
YOZA	1-4pm	Johnny Valentine	6-9pm
<b>The Point Sunset Pool Bar at Turtle Bay</b>	<b>293-6000</b>	<b>Maui Brewing Company</b>	<b>843-2739</b>
<i>Live Contemporary Hawaiian with Fireknife Dancer</i>			
Jenny Yim (or others)	5-8pm	<i>Live Contemporary Hawaiian</i>	
<i>Scott Magz &amp; Preston (6/5-Made to Order) 8:30-10:30pm</i>			
<b>WEDNESDAY</b>			
<b>100 Sails at the Prince Waikiki</b>	<b>944-4494</b>	<b>Merriman's Honolulu</b>	<b>215-0022</b>
<i>Live Contemporary Hawaiian</i>			
Kai Malo'o	6-8pm	<i>Live Contemporary</i>	
<b>Barefoot Beach Café at Queen's Beach</b>	<b>924-2233</b>	Kamaka Camarillo	5:30-7:30pm
<i>Island Vibes</i>			
Danny Galura	5:30-8:30pm	<b>MINA's Fish House</b>	<b>679-0079</b>
<b>Duke's Canoe Club Waikiki</b>	<b>922-2268</b>	<i>Live Contemporary Hits</i>	
<i>Live Contemporary Hawaiian</i>			
Keoni Ku	4-6pm	Kamuela Kahoano	6-9pm
Taulia Lave	7-9:30pm	<b>Moani Waikiki</b>	<b>466-2629</b>
Alika Souza	9:30-12am	<i>Blues, Old School Rock, Country</i>	
<b>Eating House 1849 Waikiki</b>	<b>924-1849</b>	Keith Batlin	7-10pm
<i>Live Contemporary Hawaiian</i>			
Shawn Garnett	4:30-6:30pm	<b>Monkeypod Kitchen Ko Olina</b>	<b>381-4086</b>
<b>et al inside Kahala Market</b>	<b>732-2144</b>	<i>Live Contemporary 3x a day including from 12:30 - 2 p.m.</i>	
<i>Live Contemporary Hawaiian</i>			
Johnny Helm (or David Aquino)	5:30-8:30pm	Chris Murphy	3:30-5pm
<b>Giovanni Pastrami</b>	<b>923-2100</b>	Izik	7-9pm
<i>Acoustic Guitar Soul, R&amp;B</i>			
Jason Laeha	6:30-9:30pm	<b>Monkeypod Kitchen Waikiki</b>	<b>900-4226</b>
<b>Hard Rock Cafe</b>	<b>955-7383</b>	<i>Live Contemporary 3x a day including from 12:30 - 2 p.m.</i>	
<i>Contemporary Rock</i>			
Cassie and the... (or Chapter II)	8-10pm	Bori & Isa	3:30-5pm
<b>House Without a Key</b>	<b>923-2311</b>	Chante	7-9pm
<i>Hawaiian music &amp; hula by Miss Universe '97 Brook Lee</i>			
<b>The Beach Bar at the Moana Surfrider</b>	<b>922-3111</b>	<b>Pikos Kitchen &amp; Bar</b>	<b>923-2032</b>
<i>Live Contemporary Hawaiian</i>			
		<i>Live Contemporary Hits</i>	
		Jessie Kuikahi (6/5 - David Aquino)	6-9pm
		<b>Rumfire</b>	<b>921-4600</b>
		<i>Live Contemporary Hits</i>	
		YOZA (6/5-Jessie Kuikahi)	6-9pm
		<b>Signature Prime Steak</b>	<b>949-3636</b>
		<i>Contemporary Pianist in the bar</i>	
		Pierre Grill	6-9pm
		<b>Splash Bar at the Sheraton Princess Kaiulani</b>	<b>921-4600</b>
		<i>Live Contemporary Hawaiian</i>	
		Alika Souza	6-9pm
		<b>Swell at the Alohilani</b>	<b>294-4108</b>
		<i>Solo Contemporary Guitarist</i>	
		Danielle Parente	6:30-9:30pm
		<b>SWIM at the Hyatt Regency</b>	<b>923-1234</b>
		<i>Live Contemporary Hawaiian</i>	
		Biku	5-9pm

## INTRODUCING DOWNTOWN HONOLULU'S NEW CULINARY EPICENTER

AC HOTEL HONOLULU  
1111 BISHOP ST.

@ACHOTELHNL

## COMMON GROUND



YOUR NEW BOUGIE BODEGA COFFEE SHOP, WITH ALOHA

MON - FRI | 7:00AM - 2:00PM  
SAT | 7:00AM - 11:00AM

@COMMONGROUNDHNL

## THE DOTTED LINE

AC KITCHEN & LOUNGE



MORE IS MORE AT THIS EXECUTIVE PLAYGROUND

BREAKFAST, BRUNCH, LUNCH,  
PAU HANA, DINNER

DOTTEDLINEHAWAII.COM

## YOURS TRULY

ADVENTUROUS COCKTAILS



UNDERGROUND BAR & LOUNGE WITH HIDDEN SPEAKEASY #IYKYK

WED & THU | 5:00PM - 11:00PM  
FRI & SAT | 5:00PM - 12:00AM

YOURSTRULYHAWAII.COM

# Let's be Together...

DINING ▶ ENTERTAINMENT ▶ PAU HANA ▶ EAT ▶ DRINK ▶ BE MERRY ▶ HAPPY HOUR ▶

*Live Contemporary Hawaiian*  
 Brandon Serrano (or Stephen Inglis) 3:30-6:30pm  
 Kaiona (on Cherie Duo) 7-10pm  
**The Edge at the Sheraton 921-4600**  
*Live Hawaiian Music*  
 Kupu Dalire-Na'auao 1-4pm  
**The Point Sunset Pool Bar at Turtle Bay 293-6000**  
*Live Contemporary Hawaiian with Fireknife Dancer*  
 Alex Oasay 5-8pm  
**Tiki's Grill & Bar 923-TIKI**  
*Live Contemporary Hawaiian and hula*  
 Derrick Lee 1-3 pm  
 Malu Productions 5:30-7:30pm  
**Vintage 1901 at the Moana 921-4600**  
*Contemporary Piano*  
 David Swanson 6:30-10pm

## THURSDAY

**Barefoot Beach Café at Queen's Beach 924-2233**  
*Live Contemporary & Hawaiian*  
 Alika Souza 5:30-8:30pm  
**BASALT 923-5689**  
*Live Contemporary & Hawaiian*  
 Glenn Domingo 6-8pm  
**Duke's Canoe Club Waikiki 922-2268**  
*Live Contemporary Hawaiian*  
 Ben Kama 4-6pm  
 Henry Kaponon's New Artists "On the Rise" 7-9:30pm  
 Scott Magz 9:30-12am  
**Eating House 1849 Waikiki 924-1849**  
*Live Contemporary Hawaiian*  
 Shane Kainoa 5-8pm  
**Giovanni Pastrami 923-2100**  
*Live Contemporary*  
 Billy Sage 6:30-9:30pm  
**Hard Rock Cafe 955-7383**  
*Live Contemporary*  
 Ezekial (Savannah Duo) 8-11pm

**House Without a Key 923-2311**  
*Hawaiian music & hula by Miss Universe '97 Brook Lee*  
 Walea 5-8pm  
 David Aquino 8:15-10pm  
**Hula Grill 923-4852**  
*Contemporary Rock*  
 Randy Allen (6/20 - Jenna K) 12-2pm  
**Kani Ka Pila Grille 924-4992**  
*Hoku Award Winning Hawaiian musicians*  
 Kawika Kahiapo 6-9pm  
**Lewers Lounge 923-2311**  
*Jazz Pianist*  
 Ethan Capone & Rocky Holmes 8:30pm-12am  
**Mahi'ai Table 670-2778**  
*Live Contemporary*  
 Alex Oasay 5-8pm  
**Mahina & Sun's 923-8882**  
*Hawaiian Contemporary on the Lanai*  
 Kelly Boy DeLima 6:30-9:30pm  
**Mai Tai Bar at the Royal Hawaiian 923-7311**  
*Live Contemporary Hawaiian*  
 Christian Yrizarry 11am-2pm  
 Stephen Inglis (6/6 - Chris Luke) 8-10pm  
**Maui Brewing Company 843-2739**  
*Live Contemporary Hawaiian*  
 Sean Cleland 8:30-10:30pm  
**Maui Brewing Kailua 518-2739**  
*Live Contemporary Hawaiian*  
 Grace Welton (or others) 6-8pm  
**Merriman's Honolulu 215-0022**  
*Live Contemporary*  
 Laupepa Letuli 5:30-7:30pm  
**MINA's Fish House 679-0079**  
*Live Contemporary Hits*  
 YOZA (6/6 - Jesse Kuikahi) 6-9pm  
**Moani Waikiki 466-2629**  
*Contemporary Island Music*  
 Kimo Opiana 7-10pm  
**Monkeypod Kitchen Ko Olina 381-4086**  
*Live Contemporary 3x a day including from 12:30 - 2 p.m.*  
 Kona Abergas 3:30-5pm  
 Bronson Varde 7-9pm  
**Monkeypod Kitchen Waikiki 900-4226**  
*Live Contemporary 3x a day including from 12:30 - 2 p.m.*  
 Bella and Tehani 3:30-5pm  
 Javin Kai 7-9pm  
**Pikos Kitchen & Bar 923-2032**  
*Live Contemporary Hits*  
 Keoni Ku (6/27-Johnny Kukui) 6-9pm  
**Rumfire 921-4600**  
*Live Contemporary Hits*  
 Brad Kawakami 6-9pm  
**Signature Prime Steak 949-3636**  
*Contemporary Pianist in the bar*  
 Grant Carvalho 6-9pm  
**Splash Bar at the Sheraton Princess Kaiulani 921-4600**  
*Live Contemporary Hawaiian*  
 Tad Jennings 6-9pm  
**Stripsteak 896-2545**  
*Live Contemporary*

Jason Laeha 6-9pm  
**Swell at the Alohilani 294-4108**  
*Solo Contemporary Guitarist*  
 Denny Ono 6:30-9:30pm  
**SWIM at the Hyatt Regency 923-1234**  
*Live Contemporary Hawaiian*  
 Koa Atwood (or others) 5-9pm  
**The Beach Bar at the Moana Surfrider 922-3111**  
*Live Contemporary Hawaiian*  
 Christian Yrizarry 3:30-6:30pm  
 Kaimi Hananoeau 7-10pm  
**The Edge at the Sheraton 921-4600**  
*Live Hawaiian Music*  
 Alika Souza 1-4pm  
**The Point Sunset Pool Bar at Turtle Bay 293-6000**  
*Live Contemporary Hawaiian with Fireknife Dancer*  
 Dave Watanabe (or others) 5-8pm  
**The Veranda at the Kahala Hotel 739-8760**  
*Live Contemporary*  
 Johnny Valentine (6/20 - Jesse Kuikahi) 6-9pm  
**Vintage 1901 at the Moana 921-4600**  
*Contemporary Piano*  
 David Swanson 6:30-10pm

## FRIDAY

**Barefoot Beach Café at Queen's Beach 924-2233**  
*Live Contemporary Hawaiian*  
 The Art Kalahiki Band 5:30-8:30pm  
**BASALT 923-5689**  
*Live Contemporary & Hawaiian*  
 Shawn Garnett 6-8pm  
**Duke's Canoe Club Waikiki 922-2268**  
*Live Contemporary Hawaiian*  
 Maunalua 4-6pm  
 Kawaika Kahiapo 7-9:30pm  
 Ernest Chang 9:30-12am  
**Hard Rock Cafe 955-7383**  
*Live Contemporary*  
 Psycho Tropical (or Close the Distance) 8-11pm  
**House Without a Key 923-2311**  
*Hawaiian music & hula by Miss Hawaii '73 Kanoë Miller*  
 Kapalama Trio 5-8pm  
 Tad Jennings 8:15-10pm  
**Hula Grill 923-4852**  
*Contemporary Rock*  
 YOZA 12-2pm  
**Kani Ka Pila Grille 924-4992**  
*Hoku Award Winning Hawaiian musicians*  
 Ka Hehena 6-9pm  
**Lewers Lounge 923-2311**  
*Jazz Pianist*  
 Maggie Herron & Dean Taba 8-10:30pm  
**Mahi'ai Table 670-2778**  
*Live Contemporary*  
 Jenny Yim (or others) 5-8pm  
**Mahina & Sun's 923-8882**  
*Slack Key on the Lanai*  
 Dustin Park Duo 6:30-9:30pm  
**Mai Tai Bar at the Royal Hawaiian 923-7311**  
*Live Contemporary Hawaiian*

Barefoot Beach Cafe 2509 Kalaniana'olani Avenue  
 BarefootBeachCafe.com | 808.934.2233 (CAFE)

# E Pili Kākou

DINING ▶ ENTERTAINMENT ▶ PAU HANA ▶ EAT ▶ DRINK

Brandon Serrano	11am-2pm	Tad Jennings	4-7pm
Johnny III	6-9pm	John Coelho	6-8pm
<b>Mariposa</b>	<b>951-3420</b>	<b>The Point Sunset Pool Bar at Turtle Bay</b>	<b>293-6000</b>
<i>Live Contemporary</i>		<i>Live Contemporary Hawaiian with Fireknife Dancer</i>	
Chris Salvador	2:30-5:30pm	Mark Calderia	5-8pm
<b>Maui Brewing Company</b>	<b>843-2739</b>	<b>The Veranda at the Kahala Hotel</b>	<b>739-8760</b>
<i>Live Contemporary Hawaiian</i>		<i>Live Contemporary</i>	
Keith Batlin (or Deah & Duva)	8:30-10:30pm	Johnny Valentine	6-9pm
<b>Maui Brewing Kailua</b>	<b>518-2739</b>	<b>Vintage 1901 at the Moana</b>	<b>921-4600</b>
<i>Live Contemporary Hawaiian</i>		<i>Contemporary Piano</i>	
Dion "Boogie" Scott (or others)	7-9pm	David Swanson (6/28 - Ginny Tiu)	6:30-10pm
<b>Merriman's Honolulu</b>	<b>215-0022</b>		
<i>Live Contemporary</i>			
Stephen Harris	5:30-7:30pm		
<b>MINA's Fish House</b>	<b>679-0079</b>		
<i>Live Contemporary Hits</i>			
Jenna Keala	6-9pm		
<b>Moani Waikiki</b>	<b>466-2629</b>		
<i>Traditional Hawaiian, Reggae. DJ Spins from 10p-1:30am</i>			
Liam Moletta	6-9pm		
<b>Monkeypod Kitchen Ko Olina</b>	<b>381-4086</b>		
<i>Live Contemporary 3x a day including from 12:30 - 2 p.m.</i>			
Tehani and Kapono	3:30-5pm		
John Akapo	7-9pm		
<b>Monkeypod Kitchen Waikiki</b>	<b>900-4226</b>		
<i>Live Contemporary 3x a day including from 12:30 - 2 p.m.</i>			
The Mauve	3:30-5pm		
Izik	7-9pm		
<b>Original Magoos Pizza</b>	<b>949-5381</b>		
<i>Live Contemporary Hawaiian</i>			
Ernie Kanoa	5:30-8:30pm		
<b>Pikos Kitchen &amp; Bar</b>	<b>923-2032</b>		
<i>Live Contemporary Hits</i>			
Johnny Helm (or Chris Luke)	6-9pm		
<b>Rumfire</b>	<b>921-4600</b>		
<i>Live Contemporary Hits</i>			
Stephen Inglis (6/7 - Jesse Kuikahi)	4:30-7:30pm		
Drew Henmi (6/21 - YOZA)	8-10:30pm		
<b>Signature Prime Steak</b>	<b>949-3636</b>		
<i>Contemporary Pianist in the bar</i>			
Grant Carvalho	6-9pm		
<b>Splash Bar at the Sheraton Princess Kaiulani</b>	<b>921-4600</b>		
<i>Live Contemporary Hawaiian, DJ Jem spins from 2 - 5pm</i>			
Ben Kama Duo & Dancer	5-8pm		
<b>Stripsteak</b>	<b>896-2545</b>		
<i>Live Contemporary</i>			
Shane Kainoa	6-9pm		
<b>SWIM at the Hyatt Regency</b>	<b>923-1234</b>		
<i>Live Contemporary Hawaiian</i>			
Denny Ono (or others)	5-9pm		
<b>The Beach Bar at the Moana Surfrider</b>	<b>922-3111</b>		
<i>Live Contemporary Hawaiian</i>			
Chris Salvador	12-3pm		
Kailua Moon (or others)	3:30-6:30pm		
Kamuela Kahoano (6/28 - YOZA)	7-10pm		
<b>The Edge at the Sheraton</b>	<b>921-4600</b>		
<i>Live Hawaiian Music</i>			
Christian Yrizarry (or Bronson Varde)	1-4pm		
<b>The Grove at the Modern Pool Deck</b>	<b>943-5800</b>		
<i>Live Contemporary</i>			

## SATURDAY

**Barefoot Beach Café at Queen's Beach** **924-2233**

*Live Contemporary Hawaiian*

Vanessa Alputila 5:30-8:30pm

**BASALT** **923-5689**

*Live Contemporary & Hawaiian*

Jeagan Faye 6-8pm

**Duke's Canoe Club Waikiki** **922-2268**

*Live Contemporary Hawaiian*

Kaiona Band (or others) 4-6pm

Ells Simeona 7-9:30pm

Sean Cleland 9:30-12am

**Eating House 1849 Waikiki** **924-1849**

*Live Contemporary Hawaiian*

Kings Kalohelani 10:30am-1pm

**Hard Rock Cafe** **955-7383**

*Live Contemporary*

Savannah & Yagiz 10 am - 12pm

Tad Jennings 8-11pm

**House Without a Key** **923-2311**

*Hawaiian music & hula by Miss Hawaii '73 Kanoa Miller*

Kapalama Trio 5-8pm

Mike Tulba (6/8-Johnny Kukui) 8:15 - 10pm

**Hula Grill** **923-4852**

*Contemporary Rock*

Walt Keale (or others) 12-2pm

**Kani Ka Pila Grille** **924-4992**

*Hoku Award Winning Hawaiian musicians*

Ho'okena 6-9pm

**Lewers Lounge** **923-2311**

*Jazz Pianist*

Maggie Herron & Dean Taba 8-10:30pm

**Mahi'ai Table** **670-2778**

*Live Contemporary*

Danielle Parente (6/8-Justin Edwards) 5-8pm

**Mahina & Sun's** **923-8882**

*Contemporary Hawaiian/Blues on the Lanai*

Savia Farang 6:30-9:30pm

**Mai Tai Bar at the Royal Hawaiian** **923-7311**

*Live Contemporary Hawaiian*

Ronson Asuncion (6/15 - Kalau Crisostomo) 11am-2pm

Dave Watanabe (or YOZA) 6-9pm

**Mariposa** **951-3420**

*Live Contemporary*

Aisaiah Jacobs 2:30-5:30pm

**Maui Brewing Company** **843-2739**

*Live Contemporary Hawaiian*

Ben Kama Duo (or others) 3:30-5:30pm



# MARA

LOCAL FARE,  
MEDITERRANEAN FLAIR

**BREAKFAST**  
DAILY | 6:30AM-11AM

**BRUNCH**  
SAT & SUN | 11AM-3PM

**LUNCH**  
MON-FRI | 11AM-3PM

**DINNER**  
DAILY | 5PM-10PM

**PAU HANA**  
MON-FRI | 4PM-6PM

**LIVE MUSIC**  
WED & FRI | 6PM-9PM

**BAR & LOUNGE**  
DAILY | 11AM-11PM

3 Hour Complimentary  
Valet Parking

Any Guest Referred by Concierge  
will Receive MARA's  
**VIP EXPERIENCE**

When making your guests' reservation  
please provide your name & company name

Renaissance Honolulu Hotel & Spa  
1390 Kapiolani Blvd

RESERVE TODAY  
**MARAHONOLULU.COM**  
**@MARA\_HONOLULU**

# Let's be Together...

DINING ▶ ENTERTAINMENT ▶ PAU HANA ▶ EAT ▶ DRINK ▶ BE MERRY ▶ HAPPY HOUR ▶

**Maui Brewing Kailua** **518-2739**  
*Live Contemporary Hawaiian*  
 Scott Magz (or others) 7-9pm

**Merriman's Honolulu** **215-0022**  
*Live Contemporary*  
 Shane Kainoa 5:30-7:30pm

**MINA's Fish House** **679-0079**  
*Live Contemporary Hits*  
 Alex Oasay (6/8 - Danielle Parente) 6-9pm

**Moani Waikiki** **466-2629**  
*Contemporary Reggae*  
 Braddah Ash 6-9pm  
 Live Local Band 10pm-1:30am

**Monkeypod Kitchen Ko Olina** **381-4086**  
*Live Contemporary 3x a day including from 12:30 - 2 p.m.*  
 Javin Kai 3:30-5pm  
 Izik 7-9pm

**Monkeypod Kitchen Waikiki** **900-4226**  
*Live Contemporary 3x a day including from 12:30 - 2 p.m.*  
 Tad Jennings 3:30-5pm  
 Kona Abergas 7-9pm

**Original Magoos Pizza** **949-5381**  
*Solo Country*  
 Buck Giles 5:30-8:30pm

**Pikos Kitchen & Bar** **923-2032**  
*Live Contemporary Hits*  
 Biku Shimabuku 6-9pm

**Redfish at the Wayfinder Waikiki** **921-3220**  
*Live Contemporary Hits*  
 Johnny Helm 6-10p

**Rumfire** **921-4600**  
*Live Contemporary Hits*  
 Mark Calderia (or others) 4:30-7:30pm  
 Bronson Varde 8-10:30pm

**Signature Prime Steak** **949-3636**  
*Contemporary Pianist in the bar*  
 Grant Carvalho 6-9pm

**Splash Bar at the Sheraton Princess Kaiulani** **921-4600**  
*Live Contemporary Hawaiian, DJ spins from 2-5pm*  
 Brad Kawakami Duo & Dancer 5-8pm

**Stripsteak** **896-2545**  
*Live Contemporary*  
 Dustin Park 6-9pm

**SWIM at the Hyatt Regency** **923-1234**  
*Live Contemporary Hawaiian*  
 Stan Albrecht 5-9pm

**The Beach Bar at the Moana Surfriider** **922-3111**  
*Live Contemporary Hawaiian*  
 Johnny Kukui (6/15 - Keoni Ku) 12-3pm  
 Bronson Varde (or others) 3:30-6:30pm  
 Koa Atwood (6/1 - YOZA) 7-10pm

**The Edge at the Sheraton** **921-4600**  
*Live Hawaiian Music*  
 Brad Kawakami 1-4pm

**The Grove at the Modern Pool Deck** **943-5800**  
*Live Contemporary*  
 Mike Izon (6/8 - Kamaka Camarillo) 4-7pm

**The Point Sunset Pool Bar at Turtle Bay** **293-6000**  
*Live Contemporary Hawaiian with Fireknife Dancer*  
 Denny Ono 5-8pm

**The Veranda at the Kahala Hotel** **739-8760**  
*Live Contemporary*  
 Cory Oliveros (6/8 - David Aquino) 6pm-9pm

**Vintage 1901 at the Moana** **921-4600**  
*Contemporary Piano*  
 David Swanson 6:30-10pm

## SUNDAY

**Barefoot Beach Café at Queen's Beach** **924-2233**  
*Live Contemporary Hawaiian*  
 Kimo Baker 10am-1pm  
 Art Kalahiki 5:30-8:30pm

**BASALT** **923-5689**  
*Live Contemporary & Hawaiian*  
 Don Baduria 6-8pm

**Duke's Canoe Club Waikiki** **922-2268**  
*Live Contemporary Hawaiian*  
 Henry Kapono (6/23 - Hawaiian Soul) 4-6pm  
 Kaiona Duo 7-9:30pm  
 Tad Jennings (or Justin Edwards) 9:30-12am

**Eating House 1849 Waikiki** **924-1849**  
*Live Contemporary Hawaiian*  
 Shane Kainoa 10:30am-1pm

**Giovanni Pastrami** **923-2100**  
*Reggae Pop Music*  
 Kelandy 6:30-9:30pm

**Hard Rock Cafe** **955-7383**  
*Contemporary Rock*  
 Lovejack (6/30 - Drag Bingo) 10am-12pm  
 Allie and the Waves 8-10pm

**House Without a Key** **923-2311**  
*Hawaiian music & hula by Miss Hawaii '23 Star Thurston*  
 Pu'uhonua Trio 5-8pm  
 Jason Midro 8:15-10pm

**Hula Grill** **923-4852**  
*Contemporary Rock*  
 Stephen Inglis (or Jason Midro) 12-2pm

**Kani Ka Pila Grille** **924-4992**  
*Hoku Award Winning Hawaiian musicians*  
 Nathan Aweau 6-9pm

**La Hiki Restaurant at the Four Seasons** **679-0079**  
*Live Contemporary Hawaiian*  
 Jenna Keala (or others) 11am-2pm

**Lewers Lounge** **923-2311**  
*Jazz Pianist*  
 Nick La'a 8-10:30pm

**Mahī'ai Table** **670-2778**  
*Live Contemporary*  
 Johnny III 5-8pm

**Mahina & Sun's** **923-8882**  
*Award-winning ukulele on the Lanai*  
 Jeff Rasmussen 6:30-9:30pm

**Mai Tai Bar at the Royal Hawaiian** **923-7311**  
*Live Contemporary Hawaiian*  
 John Coelho & Kanoe Arola 11am-2pm  
 Christian Yrizarry 6-9pm

**Maui Brewing Company** **843-2739**  
*Live Contemporary*  
 Jai Rodgers Duo (6/9 - Jason Midro Duo) 3:30-5:30pm

**Merriman's Honolulu** **215-0022**

*Live Contemporary Piano*  
 Grant Carvalho 5:30-7:30pm

**Moani Waikiki** **466-2629**  
*Contemporary Island Music*  
 Dustin Park 7-10pm

**Monkeypod Kitchen Ko Olina** **381-4086**  
*Live Contemporary 3x a day including from 12:30 - 2 p.m.*  
 Brada Brey and Corey 3:30-5pm  
 Lava 7-9pm

**Monkeypod Kitchen Waikiki** **900-4226**  
*Live Contemporary 3x a day including from 12:30 - 2 p.m.*  
 Liam Moleta 3:30-5pm  
 Koa and Yazmin 7-9pm

**Original Magoos Pizza** **949-5381**  
*Kanikapila Night*  
 Leonard Jenkins & Joe Chang 5:30-8:30pm

**Pikos Kitchen & Bar** **923-2032**  
*Live Contemporary Hits*  
 Dominic Carlos 6-9pm

**Rumfire** **921-4600**  
*Live Contemporary Hits*  
 Jenna Keala 4:30-7:30pm  
 Alex Oasay 8-10:30pm

**Signature Prime Steak** **949-3636**  
*Contemporary Pianist in the bar*  
 Keith Montross 6-9pm

**Splash Bar at the Sheraton Princess Kaiulani** **921-4600**  
*Live Contemporary Hawaiian - DJ spins from 2-5pm*  
 Kailua Moon & Dancer (or others) 3:30-5:30pm

**Swell at the Alohilani** **294-4108**  
*DJ Mau Spins Poolside from 2-5 pm*  
 Jason Laeha 6:30-9:30pm

**SWIM at the Hyatt Regency** **923-1234**  
*Live Contemporary Hawaiian*  
 Koa Atwood 5-9pm

**The Beach Bar at the Moana Surfriider** **922-3111**  
*Live Contemporary Hawaiian*  
 YOZA 12-3pm  
 Brad Kawakami 3:30-6:30pm  
 Dave Watanabe (or YOZA) 7-10pm

**The Edge at the Sheraton** **921-4600**  
*Live Hawaiian Music*  
 Christian Yrizarry (6/9 - Tad Jennings) 1-4pm

**The Point Sunset Pool Bar at Turtle Bay** **293-6000**  
*Live Contemporary Hawaiian with Fireknife Dancer*  
 Danielle Parente 5-8pm

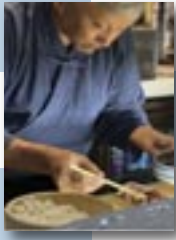
**The Veranda at the Kahala Hotel** **739-8760**  
*Live Contemporary*  
 Hi'i Asing (or others) 6pm-9pm

**Vintage 1901 at the Moana** **921-4600**  
*Contemporary Piano*  
 David Swanson (6/16 - Ginny Tiu) 6:30-10pm



**Betty's Burgers**, home of smash burgers, thick milkshakes, and hand-cut french fries, has opened a second location in the Royal Hawaiian Dining Plaza on

Waikolu Way in between Royal Hawaiian and Seaside Avenue. If you're craving old-school drive-in style burgers and shakes, you must check out this place. Open from 11 a.m. - 8:30 p.m. • There's a new Korean BBQ restaurant behind Victoria's Secret in the Waikiki Shopping Plaza. **'O Waikiki** offers an all-you-can-eat menu with over 25 premium meat choices. They also serve other traditional Korean dishes, from soups to noodles to appetizers. Diners get all-you-can-eat ban chan and meat, but there will be an additional charge for sides, salad, mandoo, noodles, etc. Open from 11 a.m. - 10 p.m. daily. The lunch menu is available until 3 p.m. at \$29.95 with 11 meat options offered, and the dinner menu starts at 3 p.m. with 25 meat options for \$46.95. 200-2466. • Speaking of Korean food at the Waikiki Shopping Plaza, **Good Chicken Waikiki** is now open in Stix Asia on the bottom level. Serving Crispy Korean Fried Chicken with other signature dishes such as mandoo and bulgogi, it is also open from 11 a.m. - 10 p.m. 260-1765. • **Orchids** is featuring another culinary collaboration. This time, **Executive Chef Christian Testa** will team up with the Imperial Hotel Tokyo's **Executive Chef Yu Sugimoto**, one of the youngest Executive Chefs in the 134-year history, to craft a carefully designed five-course tasting menu created by the two chefs, each bringing their signature styles and influences to create a fusion of tastes. This menu will be available for the entire month of June. Call 518-2019. • **The Grove Restaurant** at the Modern has launched an all-you-can-eat buffet dinner from 6 - 8 p.m. on Friday nights with live entertainment and front-row seats to the Hilton fireworks. 943-5800. Lastly, Hawaii has its first tempura specialty restaurant. **Executive Chef Kiyoshi Chikano** earned a Michelin star for eight consecutive years as Executive Chef at Tempura Matsui in New York and is now the Executive Chef at **Tempura Ichika**, serving up a 12-to 14-course omakase from \$160. Each piece is delicately fried in a blend of cottonseed and black sesame oils imported from Japan and served individually for an exquisite dining experience. Currently offering two seatings at 5:30 and 7 p.m. Tuesday through Saturday. The bar only seats 8 patrons at a time, so reservations are highly recommended. Call 888-0000.



# Chef's Corner

## Sushi Ogame Chef Koichi Ogame

*Chef Koichi Ogame is a familiar name to sushi lovers. He worked at Tsukasa at the Ala Moana Hotel for seven years before starting the first rendition of Sushi Ogame in 2000. After it closed, he continued to run pop-ups in various locations. His latest effort, is a 10-course, 16-item omakase twice a night on Thursdays, Fridays, and Saturdays inside the Kuhio Food Hall, along with a selection of beer, wine, sake, and Japanese whiskey. A health bar by day, don't miss this hidden gem on select nights.*

### Tell us a bit about yourself.

I was born in Osaka, Japan. At 18 I moved to Tokyo and began my culinary journey working at a yakitori restaurant in Rappongi as well as a sushi restaurant in Shibuya. In 1980, moved to USA to work at a sushi restaurant in Del Mar, California called Shirahama. I then had the opportunity to work at Hatsuana in New York City. I moved back to Beverly Hills in 1988 to work at Robata.

### What was your focus in the beginning?

In my early restaurant jobs, the focus was always sanitation & cleanliness first.

### Who would you consider your mentor?

My mentor was Chef Kotani at Shirahama in Del Mar, who I studied under and learned many skills (cleaning & cutting fish, sushi preparation, etc.) He was very talented, passionate, and a perfectionist at his craft!

### Describe your style of cooking?

First and foremost, cleanliness & quality is my trademark. Second, I pride myself on speed. Finally, food presentation is important to me, but also simplicity. You don't need gold flakes and silly gimmicks to make food look and taste great.

### What made you decide to be a sushi chef?

I saw a huge opportunity with sushi in the USA. Even though sushi was a staple in Japan, it wasn't very popular in the early 80's in America, but was an up-and-coming cuisine, especially in big cities and places with high-end clientele. Sushi chefs were in demand in the U.S. and it also paid very well compared to sushi chefs in Japan.

### How long have you lived in Hawaii?

I moved to Hawaii in 1993... So 31 years now!

### Why did you decide to open your own place?

I had recently got married, and had some investors who supported my dream of opening my own sushi restaurant.

### How long was the restaurant open?

My restaurant, Sushi Ogame, was open for seven years from 2000-2006. The recession hit restaurants hard at that time, so we decided to close the restaurant and focus on catering, as

there was a demand there's much less overhead. In the past several years I have also done pop-ups inside spaces such as the old Jazz Minds, and most recently in downtown at Hanalei which was inside the Islander Sake Shop on King St.

### How did the latest Sushi Ogame come about?

My friend, Naomi Palmer, who I've known since college, suggested I might be able to do a pop-up at the Kuhio Avenue Food Hall at the International Market Place. I met with the owner, her husband Mike, about a year ago and we launched in February. I love working with them.

### What makes your omakase special?

I like to prepare seasonal & rare items when possible, because local tastes are elevated, due to sushi's popularity here. There are many choices for great sushi restaurants and even omakase, so we strive to be somewhat unique. Our setting is a bit hidden within the food hall, almost like a speakeasy with only 8 seats at the counter. There also aren't too many omakase in Waikiki. Compared to others, at \$125/pp. it's a great value for what you get.

### How do you decide on each weeks' menu?

70% of my menu is typically customer favorites that people know and love, using fresh fish I fly in from Japan every week. The rest of the menu are the seasonal or more rare items I mentioned before. It's fun to offer guests things they have never tried before that are absolutely delicious.

### What do you like to do most on your days off?

I play in a softball league and also enjoy golfing. I used to surf a lot, but not so much lately.

### What's your favorite restaurant to go to?

Yakitori Ando in Kaimuki is a favorite of mine. I also like Dew Drop Inn on Beretania and 3660 on the Rise. I loved going to Alan Wong's as well, before it closed.

### Is there any else you want to share?

I have been doing sushi my whole life. It's my passion. I have a great relationship with my vendors and fish buyers in Japan, so they get me top-quality product which I am proud to serve and love to share with my guests!

## Koichi Ogame's Miso Soup (makes 8 servings)



### Ingredients:

- 8 Sweet Ama Ebi heads (sweet shrimp) – Kauai shrimp is a good substitute
- 16-24 Manila clams
- 6 tablespoons of Aka Miso (Black Miso)
- 2 tablespoons of Saikyo Miso
- 1 tablespoon Usukuchi Shoyu

### Directions:

Place shrimp heads and clams in pot and fill with 10 cups of water. Bring to a boil (don't boil for more than 1 minute). Remove shrimp and clams from water using a strainer or colander. Add remaining ingredients to water (miso & shoyu) and whisk together for approx 1 minute over low heat until miso paste dissolves. Portion soup into bowls and add 2-3 clams and 1 shrimp head to each bowl. Serve and enjoy!

Sushi Ogame is located inside the Kuhio Avenue Food Hall at IMP

Hours: Available Thursday, Friday and Saturdays only • Two seatings at 5:30 and 7:30 p.m. (8 seats each)  
Instagram: @sushiogame • Reservations: yelp.com/biz/sushi-ogame-honolulu

# JUNE CALENDAR OF EVENTS

## Continuing Events

### MONDAYS, WEDNESDAYS & FRIDAYS O NĀ LANI SUNSET STORIES HULA SHOW

Honoring the rich history and sense of place of the International Market Place through song & dance. It begins at sunset with the lighting of the Lamakū Torch Tower on Kalākaua Avenue and leads to the Queen's Court. Free. 6:30 p.m. [shopinternationalmarketplace.com](http://shopinternationalmarketplace.com).

### TUESDAY THRU SATURDAY ARTS AT MARKS LATEST EXHIBIT

This month's exhibition at the Arts at Marks honors the memory of Susan Rogers - Aregger. The hand-dyed papers in the collages and the creative pottery are the works of the late artists students in the gallery named after her. Meet the Artists at Pau Hana Friday on the first and final Friday of the month from 5 - 8 p.m. Open Tues-Sat. from 12 - 5 p.m. [artsatmarks.com](http://artsatmarks.com).

### WEDNESDAYS, SATURDAYS & SUNDAYS ALOHA STADIUM SWAP MEET

The Aloha Stadium Swap Meet has been going strong since 1979. Featuring over 400 vendors, crafters and artists, the Swap Meet offers low-prices on a wide selection of quality products with food trucks to snack from. Wednesdays & Saturdays: 8 a.m. - 3 p.m., Sundays, 6:30 a.m. - 3 p.m. \$2 admission ages 12 & up, \$1 for locals. [alohastadium.hawaii.gov](http://alohastadium.hawaii.gov).

### FIRST FRIDAY (JUNE 7) DOWNTOWN GALLERY WALK & CRAFT FAIR

Downtown comes alive the first Friday of every month as art lovers fill the streets for Honolulu's outdoor self-guided arts tour. Stores spill out onto the sidewalk, and artists are on hand to chat about to their works, and restaurants are ready to serve you. Monthly updates published two days before at [firstfridayhawaii.com](http://firstfridayhawaii.com).

### SECOND FRIDAY (JUNE 7) BISHOP MUSEUM AFTER HOURS

Extended after-hours access to the Museum with a special Pau Hana. Experience unique changing exhibitions, hear about the latest scientific discoveries, engage with Hawaiian cultural practitioners, or spend the evening on the Great Lawn with food and drinks for sale from local vendors. 5 - 9 p.m. \$10 at the door. (\$5 pre-sale) [bishopmuseum.org](http://bishopmuseum.org).

### FRIDAYS ROYAL HAWAIIAN BAND LUNCHTIME SHOW

The Royal Hawaiian Band returns to 'Iolani Palace for its popular lunchtime concerts. Held on most Fridays, the concerts are free and open to the public. 12 - 1 p.m. [iolanipalace.org](http://iolanipalace.org)

### FRIDAYS & SATURDAYS HOMA NIGHTS

On Friday and Saturday nights, regular museum admission also includes live musical performances, hands-on art activities, pop-ups in the HoMA Shop, movies on the lawn, bar service at the HoMA Cafe, and other interactive art experiences. The museum stays open until 9 p.m. [honolulumuseum.org](http://honolulumuseum.org).

### SATURDAYS & SUNDAYS ART ON THE ZOO FENCE

Art On The Zoo Fence is a group of resident Hawaii artists that meet every Saturday and Sunday to display and sell art and photography on the Zoo fence on Monsarrat Avenue opposite the Kapiolani Park Bandstand. This is the only outdoor art venue in Honolulu that has proudly been displaying art since 1953. 9 a.m. - 3 p.m. Free. [artonthezoofencehi.com](http://artonthezoofencehi.com).

### SECOND SATURDAY (JUNE 14) KANIKAPILA MA KAIWI'ULA

Bring your 'ukulele, or borrow one that's there. Join in to learn some new techniques, share mo'olelo or just enjoy the music as Ukulele Guild of Hawai'i members lead guests through selections from the Hawaiian Songbook. Free with admission. Bishop Museum Native Hawaiian Garden. 10 a.m. [bishopmuseum.org](http://bishopmuseum.org).

### SECOND SUNDAY (JUNE 9) KAMA'AINA SUNDAYS

Kama'aina Sundays are back at 'Iolani Palace. Locals can take advantage of free tours, entertainment, family-friendly activities and plenty of food options with proof of residency. Free tours will be available to the first 500 guests. 9 a.m. - 2 p.m. [iolanipalace.org](http://iolanipalace.org).

### THIRD SUNDAY (JUNE 21) COMMUNITY DAY

HoMA's Family Sundays are now quarterly. This month the museum is open in a new promotion called Community Day. Admission is still free for kama'aina, ensuring access to the museum for everyone. Visitors can enjoy exploring the galleries and outdoor spaces and get creative with two art activities. 10 a.m. - 6 p.m. 532-8700. [honolulumuseum.org](http://honolulumuseum.org).

### THIRD SUNDAY (JUNE 21) MELE HALI'A

Waikiki Beach Walk celebrates Hawaiian music with award-winning musicians and hula hālau one Sunday a month on the Plaza Stage. See a different performer each month from 5-6 p.m. [waikikibeachwalk.com](http://waikikibeachwalk.com).

### JUNE 1 AMY HANAIALI'I AT THE LOUNGE

18 Nā Hōkū Hanohano award-winner Amy Hanai'i'i will perform at Oahu's newest concert venue, The Lounge, giving guests a unique opportunity to see Hawaii's top-selling female artist of all time perform in an intimate setting. Performances at 6 and 9:00 p.m. Tickets: \$55-\$70. [theloungeatlandsound.com](http://theloungeatlandsound.com).



### JUNE 1 • HAWAII PLANTATION VILLAGE'S 34TH ANNUAL OBON CELEBRATION

Head out to Hawaii Plantation Village as it kicks off the 2024 bon season with their annual celebration. Ten Bon Dance groups from around Oahu will be featured, dance under the stars, enjoy tasty treats from food trucks, and browse craft booths, the gift shop, and historical exhibits about plantation life. Special performance by singer Hikariyama Torao and taiko performances from Waipahu Taiyoji and Ryugen Taiko. Free parking and shuttle service to and from Waipahu Elementary School and Hawaii Tech Academy. 4 - 10 p.m. [hawaiiplantationvillage.org](http://hawaiiplantationvillage.org).





Enjoy the day and discover a magical, once-in-a-lifetime opportunity to enjoy up-close encounters with all your favorite sea creatures. Join us at the award-winning luau "Aloha Kai" as we celebrate our love of the sea.

808-259-2500 • [SEALIFEPARKHAWAII.COM](http://SEALIFEPARKHAWAII.COM)

# JUNE CALENDAR OF EVENTS

## JUNE 2 THE MAKAHA SONS

The Makaha Sons perform a benefit for the Alzheimer's Association of Hawaii with special guests Robi Kahakalau, Kawika Kahiapo, Kimo & Kaimi Artis and more. Tickets: \$35-\$60. 3 p.m. hawaiiitheatre.com.

## JUNE 2 • JUNIOR TOOTS: TRIBUTE TO TOOTS & THE MAYTALS

Junior Toots, son of the legendary Toots Hibbert of Toots & The Maytals, began singing stage shows at a young age touring internationally with his late father, Toots Hibbert, a mainstay reggae artist on the world stage for over twenty years. Junior Toots has an ever-growing fan base with his electrifying high-energy up-tempo ska and reggae performances, soul-filled vocals and socially relevant lyrics. His music is which generates great crowd responses. 7 p.m. Tickets: \$25-\$35. bluenotehawaii.com.

## JUNE 5-6 BJ THE CHICAGO KID: THE GRAVY TOUR

You've been hearing his voice everywhere, on the songs by some of the greatest artists of our era, (punctuating tracks by Dr. Dre, Kanye West, Kendrick Lamar, Mary J. Blige, and more), he's now dropping his major-label debut on Motown, the modern yet deeply soulful "In My Mind." Performances at 6:30 and 9 p.m. Tickets: \$35. bluenotehawaii.com.

## JUNE 6 MICHAEL MINA WINE DINNER

Michelin-starred Chef Michael Mina will be in town and looking to reconnect with his patrons, is offering a grazing event featuring five action food stations on the lanai paired with wines from Ohana Beverage and Sandhi/Evening Land Wines. Chat with Chef while he mans one of the stations. \$75 gets one dish paired with one wine from each station. 5 - 7 p.m. Happy Hour pricing for ticketholders for the rest of the evening. Reservations (808) 896-2545.

## JUNE 6-16 • 13TH ANNUAL FESTIVAL OF PACIFIC ARTS & CULTURE

The Festival of Pacific Arts & Culture is the largest celebration of indigenous Pacific Islanders in the world. Held every 4 years in a different location, the culturally enriching event is taking place in Oahu with 10 days of events across the island scheduled. festpachawaii.org.

## JUNE 7 KING KAMEHAMEHA LEI DRAPING

The King Kamehameha statue fronting Ali'iolani Hale will be draped in multiple 30-foot plumeria lei, making for an amazing picture opportunity. The traditional lei draping of his statue begins with the Royal Hawaiian Band honoring the revered monarch. The ceremony begins at 2:30 p.m. Donation of loose plumeria flowers accepted at 8 a.m., and volunteers wanting to help string the lei are welcome. hawaii.com/kamehamehaday.



## JUNE 7-8 EDDIE HENDERSON LIVE AT LEWERS

Renowned jazz trumpeter Eddie Henderson returns to Lewers Lounge for a special "Live at

Lewers" series at 8:30 – 11:00 p.m. Tickets: \$70 - \$80. Reservations required at (808) 518-2019.

## JUNE 7-9 PAN-PACIFIC FESTIVAL

The Pan-Pacific Festival returns following a 5-year hiatus. The Festival celebrates the cultural traditions of Hawaii, the Pacific Rim and around the world, takes place over three days at various locations around town including a Ho'olaule'a on Friday night from 7:30 – 10 p.m. and a parade on Sunday from 5 – 7 p.m. that will close down Kalakaua Avenue to vehicular traffic. See cover story for more details. pan-pacific-festival.com.



## JUNE 8 MAKANA AT THE LOUNGE

The slack-key phenom has been elusive to see locally in the past few years, as he works on various projects. Don't miss your chance to see Makana perform and take your questions in an intimate setting as part of the Music Makers Series at The Lounge. Two shows to choose from: 6 and 9 p.m. Tickets: \$55-\$70. theloungeatlandsound.com.



## JUNE 8 • KING KAMEHAMEHA FLORAL PARADE & CELEBRATION

The 107th Annual King Kamehameha Floral Parade is back. The parade starts at 'Iolani Palace at 9 a.m. and ends at Kapiolani Park

around 11 a.m. followed by the King Kamehameha Celebration Ho'olaule'a at Kapiolani Park from 11 a.m. to 5 p.m. with Hawaiian Cultural activities, hula, live entertainment, Hawaii made products, food booths and more. FestPAC will be taking part of the event. Free. hawaii.com/kamehamehaday.

## JUNE 8 THUNDERSTORM ARTIS

The singer-songwriter from Hawaii was a favorite throughout The Voice's 18th season, gaining national exposure, and become a runner-up in the competition. His musical career has continued, sharing the stage with the likes of Jack Johnson and opening for Train. Special guest Johnny Helm. Tickets: \$39.50. The Republik. 8 p.m. bampproject.com.

## JUNE 8 - 9 • SIXTIESMANIA

Sixtiesmania's "A Journey through the Sixties" is returning to the islands. The band cover all the great groups and songs that turned into an iconic backdrop for that turbulent decade, Sixtiesmania takes the audience on a musical roller coaster through the British Invasion, the California sounds, the Vietnam tour of duty, Flower Power, Woodstock, and more. Tickets: \$45-\$65. Sat. 7 p.m., Sun. 4 p.m. hawaiiitheatre.com.



Continued on page 16.



# KILOHANA

Hula Show

# FREE HULA SHOW

## Waikīkī Shell Sundays-Thursdays 9:30-10:30 a.m.

ExperienceKilohana.com

# JUNE CALENDAR OF EVENTS

Continued from page 15.

## JUNE 9 ALII SUNDAY

Kawaiahao Church celebrates select Hawaiian Royalty (Ali'i) who are of particular importance for the Church by holding seven special Sunday services in their honor around their birthdays throughout the year. Today they celebrate Kamehameha Ekahi, who was born on June 11th. 9:30 a.m. [kawaiahao.org](http://kawaiahao.org).

## JUNE 9 TAVANA



The one-man band is a multi-instrumentalist who uses his feet to lay down a variety of grooves to accompany himself while playing guitar and singing soulful, island-inspired rock and blues. 7 p.m. \$25-\$35. [bluenotehawaii.com](http://bluenotehawaii.com).

## JUNE 10 MAMO WEARABLE ARTS SHOW

This is not your typical fashion show. Launched in Honolulu in 2006, the MAMo Wearable Arts Show is a component of PA'I Foundation's Maoli Arts Movement. This wearable art fashion show celebrates Native Hawaiian designers in fabric, clothing, and accessories, in terms of cultural motifs. A mākeke will be set up outside the Tapa Ballroom, Hilton Hawaiian Village from 5 – 9 p.m. Dinner 6 p.m., doors open at 7 p.m. Tickets: \$40-\$500+. [paifoundation.org](http://paifoundation.org).

## JUNE 11 MĀHŪ MADNESS

Where are all my Queens? Don't miss PA'I Foundation's 2nd annual Māhū Madness, showcasing some of Hawai'i's most talented individuals in the māhū LGBTQ+ community. From self-taught vocalists to a Julliard alumni pianist, artists have the creative freedom to express their colors through their performances on stage. Māhū Madness provides a unique opportunity for attendees to enjoy a night of "drag" in an elegant and sophisticated environment. This year will feature Sasha Colby, winner of Season 15 of RuPaul's Drag Race, and former Waimānalo resident. 7 p.m. Hilton Hawaiian's Tapa Ballroom, [paifoundation.org](http://paifoundation.org).

## JUNE 12 THE WILDEST SHOW IN TOWN RETURN



The Honolulu Zoo Aquarium is kicking off their summer concert series, Wildest Show in Town. The series begins with a performance from Manoa DNA. \$15 for non-members. Gates open at 4:30 p.m. to enjoy the pre-show activities. Opening acts from the Henry Kapono Foundation's On The Rise artist program will kick off the evening starting at 5 p.m. Music starts at 6 p.m. No alcohol or high-back chairs allowed. [HonoluluZoo.org](http://HonoluluZoo.org).

## JUNE 14

### HOPS 'N POPS COLLABORATION DINNER

Award-winning chefs Blake Kajiwara and Vicky Ngyuen have been collaborating to put together special dinners at the Sheraton Princess Kaiulani Splash Bar. The next event features a five-course pairing dinner with Kona Brewing. \$105. Reservations - 896-2545. [splashbarwaikiki.com](http://splashbarwaikiki.com).

## JUNE 15

### DINNER & SHOW WITH ROBERT CAZIMERO

Enjoy an up close and personal evening with one of Hawai'i's most beloved entertainers, Robert Cazimero. Chef Chai offers a prix fix dinner at 5:30, followed by hula and mele from the master himself at 6:30 p.m. \$109. Reserve your seats at [chefchai.com](http://chefchai.com) or call 585-0011.

## JUNE 15

### HENRY KAPONO AT THE LOUNGE



Henry Kapono takes the stage as part of the Music Makers series he helped put together. Get a chance to hear why finding these projects are so important to him and why he put so much focus on mentoring the next generation. Two shows at 6 and 9:00 p.m. Tickets: \$55-\$70. [theloungeatlandsound.com](http://theloungeatlandsound.com).

## JUNE 9 MAGIC & MENTALISM AT THE ALA MOANA

Journey "Into the Subconscious Mind" with magician Matthew Singer as he seamlessly combines sleight-of-hand with psychology, neuroscience, and philosophy to create magic that captivates audiences of all ages. This cabaret show allows guest to sip on hand-crafted cocktails. Shows at 5 and 8 p.m. Tickets start at \$39. [matthewsingermagic.com/tickets](http://matthewsingermagic.com/tickets).

## JUNE 9-16 ALOHA INTERNATIONAL PIANO FESTIVAL & COMPETITION

The Aloha International Piano Festival invites piano students from around the world to apply to compete. Applicants have the option of competing live in Honolulu or virtually through video submission. Applicant must be between 18 and 29 years old and after a series 7 of qualifying rounds at Orvis Auditorium, the finalists will rehearse and compete at the Blaisdell Concert Hall alongside the Hawaii Symphony Orchestra. [alohapianofestival.org](http://alohapianofestival.org).

## JUNE 14

### SAILOR JERRY INAUGURAL MEET & GREET

For the first time ever, the Sailor Jerry Festival is presenting an inaugural Meet & Greet Pau Hana Party featuring Meriel Collins, Sailor Jerry's oldest daughter at The Green Lady Cocktail room inside the White Sands Hotel. 6:30 - 8 p.m. Free admission. Afterwards head to the official Kickoff Party at Anna O'Briens to see Southern California's Bad Cop/ Bad Cop perform in Hawaii for the first time ever. 9 p.m. [808shows.com](http://808shows.com).

## JUNE 15

### SAILOR JERRY FESTIVAL

It's the 10th annual Sailor Jerry Festival in Chinatown featuring live music, DJ's, burlesque, comedy, tattoo specials, a fashion show, a pinup pageant, drink specials, and more. Each year the Festival aims to educate and celebrate the achievements of Norman Keith "Sailor Jerry" Collins, his legendary status in the tattoo world, and his Hawaii ties. See participating venues and the complete schedule at [sailorjerryfestival.com](http://sailorjerryfestival.com).

## JUNE 15 - 16

### PETRUSHKA & LA MER

The season finale of Halekulani Masterworks concludes with a circus of the sea through Debussy's vibrant depiction of the Sea, La Mer, Stravinsky's Petrushka, and the Orchestral Suite from Raise Hawaii. Tickets: \$27-\$99. Sat. 7:30 p.m., Sun. 4 p.m. [hawaii theatre.com](http://hawaii theatre.com).

## JUNE 16

### ROOFTOP STARGAZING

Get an up-close and personal look at the moon in the Hawaiian night sky at the free Rooftop Stargazing Event at Royal Hawaiian Center located on the fourth floor of Building A. 7:15 – 9:15 p.m. [royalhawaiiancenter.com](http://royalhawaiiancenter.com).

## JUNE 16

### MAGIC & PRIME RIB AT THE ALA MOANA

Celebrate Father's day with Matthew Singer Magic and an all-you-can-eat prime rib buffet. 11 a.m. Tickets: 808-944-4333.



## HFWF Donates \$195,300 to Charity



The Hawaii Food & Wine Festival donated \$195,300 to local culinary, agricultural, and community groups with funds raised from last year's Festival, making the total donated since 2011 nearly \$5 million. Mark your calendars for November 6 - 10.

## Cirque gives sneak peek of new show



Dr. Aaron Salā, cultural creative producer, and Neil Dorward, director on the left and kumu hula Hiwa Vaughan and designer Manaola Yap on the right flank cast members at a recent press conference about the new Cirque show. Photo by Erik Kabik.



# JUNE CALENDAR OF EVENTS

Continued from page 16.

**JUNE 17**

## **MS. PRAISEJESUS ARTIS**



The next member of the uber-talented Artis family to take the Blue Note stage this month is Ms. PraiseJesus. She will showcase the smooth sounds of jazz. Known for her love for the 1920s through the 80s, a lot of her music is inspired by some of her favorite artists such as Louis Armstrong, Shirley Bassey, Whitney Houston and more. Buckle up and enjoy the show. 7 p.m. Tickets: \$25. [bluenotehawaii.com](http://bluenotehawaii.com).

**JUNE 19**

## **KALE'A AND KALENA PARISH AT THE ZOO**

The Wildest Show in Town at the Zoo continues with a performance from Kale'a and Kalena Parish. \$15 for non-members. Gates open at 4:30 p.m. to enjoy the pre-show activities. Opening acts from the Henry Kapon Foundation's On The Rise artist program will kick off the evening starting at 5 p.m. Music starts at 6 p.m. No alcohol or high-back chairs allowed. [HonoluluZoo.org](http://HonoluluZoo.org).

**JUNE 20**

## **KE NANI O KE KAI**

The super-sized concert features an all-star lineup of Na Hoku Hanohano Award-winning musicians, including Kawika Kahiapo, Bobby Moderow, Robi Kahakalau, and Makana. Due to a major construction project scheduled to begin July 1st, there will only be one concert in the annual summer concert series. Tickets: \$20-\$55. 5 p.m. [fowaquarium.org](http://fowaquarium.org).

## **JUNE 21-22 • WAHIAWA HONGWANJI MISSION OBON FESTIVAL**

Bon dance season is ramping up. Get ready for two nights of dancing, eating and shopping. There will plenty of food trucks, crafts and homemade food items for sale. Fri. 6 p.m. Sat. 7 p.m. [wahiawashinbuddhists.org](http://wahiawashinbuddhists.org).

**JUNE 22**

## **THE MAKAHA SONS AT THE LOUNGE**



The Makaha Sons present a another chance to see them this month as they take the stage to close out the 8-week Music Makers Series at Oahu's newest concert venue. Two shows at 6 and 9 p.m. Tickets: \$55-\$70. [theloungeatlandsound.com](http://theloungeatlandsound.com).

**JUNE 24**

## **SONIA AND NIGEL PERFORM AT MARGOTTO**

The French/American/Kiwi acoustic music duo based in New Zealand, known for their Parisian Chic French music, will present three performances at 6, 7 and 8 p.m. while diners featuring 10 songs with a 7-string guitar and an ukulele. Patrons will enjoy a live musical performance while savoring Margotto's 12-course Grand Degustation menu. [margotto-hawaii.com](http://margotto-hawaii.com) or (808) 592-8500.

**JUNE 26**

## **LEDWARD KAAPANA AT THE ZOO**

The Wildest Show in Town at the Zoo continues with a performance from Ledward Kaapana. \$15 for non-members. Gates open at 4:30 p.m. to enjoy the pre-show activities. Opening acts from

the Henry Kapon Foundation's On The Rise artist program will kick off the evening starting at 5 p.m. Music starts at 6 p.m. No alcohol or high-back chairs allowed. [HonoluluZoo.org](http://HonoluluZoo.org).

**JUNE 27**

## **DAR WILLIAMS**

Dar Williams success rose out of the vibrant mid-90's Boston scene, inspired by the eclectic influences of alt-rockers, Berklee jazz musicians, slam poets, and folk artists, like Patty Griffith, Melissa Ferrick, the Throwing Muses, and more. Performances at 6:30 and 9 p.m. Tickets: \$35-\$45. [bluenotehawaii.com](http://bluenotehawaii.com).

**JUNE 28-29**

## **OBON DANCE & FESTIVAL**

O-bon season is underway. The Obon honors ancestors that have passed on with dances and festivals across the island that are held throughout the summer. Festivities begin at 6 p.m. with a taiko drumming performance followed by an opening aspiration at 6:15. Dancing begins at 6:30 p.m. Honpa Hongwanji Hawaii Betsuin located at 1727 Pali Highway. [hawaiibetsuin.org](http://hawaiibetsuin.org).

**JUNE 29**

## **HO'OLAULE'A O WAIMEA**

Waimea Valley is bringing back its annual Summer Concert Series. The three-part series kicks off with Keko Kane, Mike Tulb, Patrick Landeza & Sons, and Ledward Kaapana. Join Kimo Kahoano on the Main Lawn for an afternoon of Hawaiian mele and hula. 2 p.m. Tickets \$15-\$25. [waimeavalley.net](http://waimeavalley.net).

## **JUNE 29-30 • ERIC ROBERSON: THE 30TH ANNIVERSARY TOUR**



Described as the original pioneer of the independent movement in R&B/Soul music, the GRAMMY Award-nominee, Singer, Songwriter, Producer, Professor and Howard University Alum, Eric Roberson continues to break boundaries as an independent artist. Performances at 6:30 and 9 p.m. Tickets: \$35-\$45. [bluenotehawaii.com](http://bluenotehawaii.com).

**JUNE 30**

## **MAGIC & MENTALISM AT THE ALA MOANA**

Journey "Into the Subconscious Mind" with magician Matthew Singer as he seamlessly combines sleight-of-hand with psychology, neuroscience, and philosophy to create magic that captivates audiences of all ages. This cabaret show offers guests a chance to sip on hand-crafted cocktails before the show. Shows at 5 and 8 p.m. Tickets start at \$39. [matthewsingermagic.com/tickets](http://matthewsingermagic.com/tickets).

**JUNE 30**

## **DRAG BRUNCH BINGO**

It's the hottest Sunday Funday ticket around these days. Looking to spice up your Sunday Brunch? Head over to Hard Rock Cafe for Drag Queen Brunch Bingo with your host, Candi Shell. 12 - 2 p.m. \$30 includes a complimentary drink and bingo cards. This event sells out regularly as it is, but this is Pride Month, so be sure to make your reservations early at [opentable.com](http://opentable.com).



**SEND YOUR GUESTS TO A *faraway* PARADISE.  
OKAY, THE NORTH SHORE.**

**It's never been a better time for your guests to experience the Polynesian Cultural Center.** They can explore our six island villages with our popular Gateway Buffet package or our Islands & HÅ Show package. For more information, visit [polynesia.com](http://polynesia.com).



## Plan an Adventure

Let Hawaii Nautical show your guests our ocean playground.

808-234-SAIL (7245)



**TURTLES GUARANTEED**



Enjoy our morning and afternoon snorkel sailings at Turtle Canyon with a wildlife guarantee! See turtles or cruise again for free (certain rules apply). Wildlife guarantee is for re-rides only, no refunds.



# CELEBRATING KING KAMEHAMEHA

King Kamehameha Day is a time for residents of Hawaii and visitors alike to celebrate the history and heritage of the Hawaiian Islands and reflect on King Kamehameha I's many contributions to shaping the state's identity.



Visitors shouldn't miss the lei being draped on the Kings statue. Photo: Tina Mahina

Early celebrations included fairs, carnivals, foot races, and horse races. When Hawaii became a state in 1959, Kamehameha Day was one of the first holidays proclaimed by the governor and the Hawaii State Legislature.

These days, the annual celebration of King Kamehameha Day begins with the Lei Draping Ceremony on Friday, June 7, at 2:30 p.m., fronting Ali'iōlani Hale. Expect to see cultural protocols and pageantry, along with hand-made lei being elaborately draped on the outstretched arms of King Kamehameha. Enjoy the music of the Royal Hawaiian Band and a performance by Hālau Mōhala' Ilima. Everyone is welcome to join the women of 'Ahahui Ka'ahumanu in stringing 30-foot plumeria lei to serve as a base of lei on the statue - a tradition that these gracious ladies have carried on for nearly as long as the statue has stood. Donations of loose plumeria flowers will be accepted at 8 a.m.

On Saturday, June 8, the 107th King Kamehameha Celebration Floral Parade begins at 9:00 a.m. As in years past, the

parade moves along the route, several blocks before its approach.

Known for its elaborate floral floats, marching bands, and Pā'ū riders on horseback as well as representatives from Hawai'i's Royal Societies and, of

course, the infamous pooper scoopers, crowds are expected to line the streets to watch the parade that has been exciting viewers for over a century. The parade is scheduled to reach Kapi'olani Park around 11:30 a.m., where the Ho'olaule'a will begin.



Floats, marching bands, and pa'ū riders will be part of this annual parade. Photo: Greg Yamamoto

The King Kamehameha Celebration Ho'olaule'a is from 11 a.m. to 5 p.m. Guests are welcome to wander through the food booths and enjoy family-friendly cultural activities, hula, games, and live entertainment. Attendees can also partake in traditional Hawaiian games, such as konane, and learn about their historical significance.

Additionally, interactive workshops and demonstrations will provide insights into Pupu Ni'ihau lei making, 'ohe kāpala, lauhala weaving, and other traditional crafts, allowing participants to gain hands-on experience and appreciation for these cultural practices. Featured musicians include performers from FestPAC, the Festival of the Pacific, who are performing on stage this year from around the Pacific Rim. The event has become a tradition where parade-goers end their day. It is a time for families and supporters to relax and enjoy the afternoon with all who attend and meet and greet with Pā'ū Riders and those participating in the parade.

Remember to remind your guests to bring their cameras. For more details, head to [KamehamehaDay.Hawaii.Gov](http://KamehamehaDay.Hawaii.Gov).



Floats, marching bands, and pa'ū riders will be part of this annual parade. Photo: Greg Yamamoto

parade will start at King Street, fronting 'Iolani Palace. Participants will then head down Punchbowl Street before making a left onto Ala Moana Boulevard and eventually Kalākaua Avenue. The parade comes to a finish at Monsarrat Avenue and Queen Kapi'olani Park. Streets will begin to close in Downtown Honolulu at 7:30 a.m., with closures coinciding as the

ORIGINAL  
**MAGOOS PIZZA**

EST. 1987

HAWAII'S FAVORITE ISLAND-STYLE  
PIZZA, SUBS & SALAD

NOW OPEN DAILY FOR LUNCH & DINNER  
11am - 9pm

HAPPY HOUR DAILY  
11am - 5pm

ORDER TAKEOUT & DELIVERY ONLINE  
<http://OriginalMagoosPizza.com/Order>



3579 Waiālae Avenue (Between 11th & 12th Ave)



**NO HU HU**  
CALL MAGOO'S  
808.949.5381

WAIKIKI BAPTIST  
**Church**

Your Church in Waikiki

424 Kuamo`o St

(Near the Ambassador Hotel)

**Sunday Worship Services**

9:00 AM - Contemporary

10:45 AM - Traditional



(808)955-3525

[WaikikiBaptist.com](http://WaikikiBaptist.com)

# That's Entertainment

## HOTELS

- 'ALOHI LANI RESORT** 922-1233
- **Daily** - Fish Feeding 10:30am & 2:30pm *O Bar*
  - **Daily** - Live Music 6:30-9:30pm *Swell Bar*
  - **Daily** - Light Monument Video Art Series 7-9pm *Swell Bar*
  - **SunWedSat** - Tank Talk 9am. *O Bar*
- HALEKULANI** 923-2311
- **Daily** - Music & Hula 5:30-8:30pm *House Without a Key*
  - **TWThFS** - Live Jazz 8pm - 12am, *Lewers Lounge*
  - **Sun** - Sunday brunch w/Noly Paa on piano 9:30am - 2pm
- HILTON HAWAIIAN VILLAGE** 949-4321
- **Fri** - Fireworks at 8pm
  - **SMTWThF** - Live entertainment, Tapa Bar. 7-10pm
  - **FriSat** - Live entertainment, Tapa Bar. 7-10pm
- HILTON WAIKIKI BEACH** 922-0811
- **Daily** - Live entertainment, poolside. 4-7pm
  - **Daily** - Live entertainment in the Lobby. 6-10pm
- HYATT REGENCY WAIKIKI** 923-1234
- **MWed** - Farmer's Market from 4-8pm
  - **Mon-Fri** - Cultural Programs at the Ho'okela Culture Center
  - **TTh** - Walking Tour thru parts of Waikiki at 10am
  - **TTh** - Live Hawaiian music at Pualeilani Atrium, 4-6 pm
- KAHALA HOTEL & RESORT** 739-8888
- **Mon** - Free kapala stamping at The Veranda at 10am
  - **Tues** - Free lauhala weaving at The Veranda at 10am
  - **WFSat** - Free lei making at The Veranda at 10am
  - **Thurs** - Free hula dancing at The Veranda at 10am
  - **ThFSat** - Live entertainment at The Veranda from 6-8pm.
  - **FriSat** - Afternoon Tea at The Veranda at 2pm & 3:30pm
  - **Daily** - See the interactive dolphin programs every hour
- LUANA WAIKIKI HOTEL & SUITES** 955-6000
- **MWF** - Enjoy live music and hula on the Mezzanine 5-6pm
- MOANA SURFRIDER** 922-3111
- **Daily** - Live music at The Beach Bar, 4:30-6:30pm, 7-10pm
  - **WThFSSu** - David Swanson at Vintage1901, 6:30-10pm
  - **SatSun** - Afternoon Tea at the Veranda, 11:30am -2:30pm
- OUTRIGGER REEF WAIKIKI BEACH** 923-3111
- **Daily** - Live Hawaiian music at Kani Ka Pila Grille. 6-9pm
- PRINCE WAIKIKI** 956-1111
- **ThFSSu** - Live music at 100 Sails from 6-8pm
  - **Sat** - DJ KK poolside from 2-5pm, Sun from 2:30-5:30pm
- SHERATON PRINCESS KAIULANI** 922-5811
- **Daily** - Live music poolside 6-9pm. DJ from 3-6pm.
- THE ROYAL HAWAIIAN** 923-7311
- **Daily** - Live Hawaiian music at the Mai Tai Bar. 11am-2pm
  - **TWFSSu** - Live Hawaiian music at the Mai Tai Bar. 6-9pm
  - **MTh** - Live Hawaiian music at the Mai Tai Bar. 8-10pm
- TURTLE BAY RESORT** 293-6000
- **Daily** - Live music at The Pointe Pool Bar, 4-7pm
  - **Daily** - Live music at Off the Lip, 7pm
  - **Daily** - The Stable at Turtle Bay offers a variety of experiences
- WAIKIKI BEACH MARRIOTT RESORT** 922-6611
- **Daily** - Live music, Queensbreak Restaurant 5:30-8:30pm
  - **Daily** - Live music in the Lobby 6-9pm

## FARMERS MARKETS

- WBW OPEN MARKET**
- **Mon** - Set up on the Plaza at Waikiki Beach Walk. 4-8pm.
- HYATT REGENCY FARMERS MARKET** 225-4002
- **MonWed** - Hyatt Regency 1st floor waterfall atrium 4-8pm
- HAWAII FARM BUREAU MARKET** 848-2074
- **Wed** - Set up on the Blaisdell Concert Hall Lawn 4-7pm.
- ALOHA HOME MARKET** 225-4002
- **Sun** - Kailua 340 Uluniu Street 9-2pm.
- HALE'IWA FARMERS MARKET** 388-9696
- **Thurs** - Located at Waimea Valley. 2-6pm
- KCC FARMERS MARKET** 848-2074
- **Sat** - Kapiolani Community College 7:30-11am
- KAKA'AKO FARMERS MARKET** 388-9696
- **Sat** - 919 Ala Moana Blvd & 210 Ward Avenue. 8am-12pm

- PEARLRIDGE FARMERS MARKET** 388-9696
- **Sat** - PearlrIDGE Mauka by Macy's. 8am-12pm
- KAILUA FARM BUREAU MARKET** 848-2074
- **Sun** - Kailua Town Center. 4-7pm
- KAILUA TOWN FARMERS MARKET** 388-9696
- **Sun** - Enchanted Lake Center by Kailua Cinema. 8am-12pm

## ATTRACTIONS

- FOSTER BOTANICAL GARDEN** 768-7135
- **Daily** - Hawaii's oldest Botanical Garden in the midst of downtown open 9am - 4pm. \$5/\$1 keiki (kama'aina \$3)
  - **Daily** - Free docent-led tours at 10:30am. Reservations rec.
- HONOLULU ZOO** 926-3191
- **Daily** - The Zoo is open from 10am - 4pm. Last Entry at 3pm. GA \$19 adult/\$11 keiki (kama'aina \$8/\$4).
  - **Sat** - Explore the Zoo after the gates close 5:30-7:30pm.
- KILOHANA HULA SHOW**
- **SuMTWTh** - Free hula show 9:30 - 10:30am Waikiki Shell
- KUHIO BEACH HULA SHOW** 843-8002
- **TueSat** - Free show 6:30 - 7:30pm Kuhio Hula Mound
- WAIKIKI AQUARIUM** 923-9741
- **Daily** - The Aquarium is open from 9am - 4:30pm. GA \$12 adult/\$5 kids (kama'aina \$8).
  - **1st3rdTue** - Hawaiian Plant Tour. 1:30pm. Free w/admission

## MUSEUMS

- BATTLESHIP MISSOURI MEMORIAL** 455-1600
- **Daily** - Relive stories of war, victory, and the road to peace onboard the "Mighty Mo." Join a guided tour in English, Japanese, Chinese, or Korean or explore the ship at your own pace. Digital tour maps in various languages are available. 8am-4pm. More info available online at ussmissouri.org.
- BISHOP MUSEUM** 847-3511
- **Daily** - The 15-acre campus offers a chance to learn about the cultural and natural heritage of Hawai'i across three different exhibition buildings. Daily planetarium shows, a native Hawaiian botanical garden and more. 9am-5pm.
- HAWAI'I STATE ART MUSEUM** 586-0900
- **Mon-Sat** - 'Museum Interpreters' on-site to provide visitors with basic information about the museum and artwork. Special evening events as listed below. Open 10am - 4pm.
  - **1stFri** - Live entertainment and food vendors. 6-9pm
  - **2ndFri** - "Vibe" Jazz performances & food vendors. 6-9pm
  - **4thFri** - Hawaiian music night. 6-9pm
  - **3rdSat** - Family Arts & Crafts Day 11am - 3pm
- HONOLULU FIRE MUSEUM** 723-7167
- **3rdSat** - Free one-hour guided tours through various exhibits with a firefighter recounting HFDs history the 3rd Saturday of every month. 9am - 2pm on the hour. 620 South Street. Reservations required. Book online: fire.honolulu.gov then hit the submit request botton and click museum tours.
- HAWAIIAN MISSION HOUSES** 447-3910
- **TW** - Docents lead tours through the oldest existing frame house in the Islands. 11am, 12pm, 1pm and 2pm.
  - **ThFSat** - 11am, 12pm, 1pm, 2pm and 3pm tours
  - **TWThFSa** - Gift shop open 10:30am - 4pm
- HONOLULU MUSEUM OF ART** 532-8726
- **ThFSSu** - Tour & Talk Story 11am. Free with admission.
  - **ThFSSu** - Highlights tour 2pm. Free with admission.
  - **FSat** - HoMA Nights, open until 9pm. Free with admission.
- IOLANI PALACE** 522-0832
- **TThS** - Audio tours available from 9am - 4pm
  - **WTh** - Docent-led tours available from 9am - 4pm
  - **EveryOtherWed** - He Mele Lahui Hawaii with Ku'uipo. 9am
  - **Fri** - Royal Hawaiian Band. Free. 12-1pm
  - **SunMon** - Museum Closed
- LUCORAL MUSEUM** 778-8189
- **Mon-Fri** - Free self-guided tours featuring local and global gemstones and a one-of-a-kind dinosaur egg. Visitors can

also create their own one-of-a-kind jewelry. 10% off gift shop with mention of Oahu Concierge. 10am-5pm.

**PEARL HARBOR AVIATION MUSEUM** 441-1000

- **Daily** - Vintage aircraft in battlefield hangars at Pearl Harbor, outdoor exhibits, flight simulators, and the Bob Hope: An American Treasure Exhibit. Shuttle & Tickets at USS Arizona Memorial Visitor Center or PearlHarborAviationMuseum.org.

## SHOPPING CENTERS

- ALA MOANA CENTER** 955-9517
- **Daily** - Hula Show, 5pm. *Centerstage*
  - **EveryOtherWed** - Royal Hawaiian Band. 11am.
  - **Sat** - Local entertainment, 3pm. *Centerstage*
  - **Sun** - Keiki Hula Show, 1pm. *Centerstage*
  - **Daily** - Pau Hana Music Series, 5:30pm. *'Ewa Wing Stage*
  - **2ndSat** - Malama Market 11am-4pm. *Mauka Wing Level 2*
- HALE'IWA STORE LOTS** 203-5700
- **Sat** - Live Hawaiian entertainment from 2 - 4pm
- INTERNATIONAL MARKET PLACE** 921-0536
- **MWF** - Ceremonial sunset lighting of Lamaku Torch Tower
  - **MWF** - Sunset Stories Hula Show, 6:30pm. *Queens Court*
  - **1stTh** - Royal Hawaiian Band. Free. 12pm. *Queens Court*
  - **3rdTh** - Free Lei Making Workshop. 12pm. *Queens Court*
  - **4thSat** - Free Fitness. 9am. *Queens Court*
  - **1st3rdSu** - Free Fitness. 9am. *Queens Court*
- ROYAL HAWAIIAN CENTER** 922-2299
- **Daily** - Heritage Room/Cultural Videos, *Helumoa Hale*
  - **Mon** - Free Ukelele Lessons 11pm, *Helumoa Hale*
  - **Tues** - Free Hula Lessons 11am, *Royal Grove*
  - **Wed** - Free Lauhala Weaving 11am, *Bldg A, Level 2*
  - **Thur** - Free Keiki Hula lessons 12pm, *Royal Grove*
  - **Fri** - Free Lei Making Class 12pm, *Bldg A, Level 2*
  - **Sat** - Hula Kahiko 5:30pm, *Royal Grove*
  - **TWThF** - Live Hawaiian Entertainment 5:30pm, *Royal Grove*
- WAIKIKI BEACH WALK** waikikibeachwalk.com
- **Daily** - The Ukelele Store offers free lessons at 4:30pm
  - **Tues** - Ku Ha'aeo Hula Show. 4:30-6pm. *Plaza Stage*
  - **Sun** - Free hula lessons, 9-10am



- BALI OCEANFRONT**
- 20% off all Food & Beverage. Hilton Hawaiian Village, 941-2254.
- GUAVA SMOKED**
- 20% off food and drinks with hotel ID. 567 Kapahulu Ave, 2nd floor. Entrance/parking on Campbell Ave. 913-2100
- HAWAIIAN MISSION HOUSES**
- Free tour with hotel ID. 553 S. King Street. 447-3910.
- IOLANI PALACE**
- Free Admission with hotel ID. GA \$30. Kama'aina \$19.95. 364 S. King Street, Reservations Required. 522-0832.
- MAUI DIVERS JEWELRY**
- 35% discount off purchases made at the Design Center and 20% at all stores. Must show hotel ID for discount. 1520 Liona St. 946-2929.
- RUTH'S CHRIS STEAK HOUSE**
- Complimentary Appetizer valued up to \$22 with the purchase of 2 entrees. Waikiki Beach Walk, 440-7910. Restaurant Row, 599-3860.

You will be required to show Hotel ID or business card to claim offer. Magazine not needed. Just mention offer when presenting hotel ID. Discounts available to Guest Service Professionals ONLY. Not valid with other promotions or special offers. A minimum 18% gratuity on original order requested for all food offers.

The Oahu Concierge is printed monthly and direct mailed FREE to all Oahu Concierge, Hospitality & Activity Professionals.  
Subscriptions available to non-industry at \$25 per year.

C O N T A C T  
**Davis Media**  
Ph: (808) 225-8229

Website: [www.OahuConcierge.com](http://www.OahuConcierge.com)

ADDRESS & NAME CHANGES / ADDITIONS  
We do not take changes via telephone. All changes to mailing list **must be submitted in writing** by the 16th of the month to make the next issue, email is preferred.

S T A F F

PUBLISHER & EDITOR **Pam Davis**  
[publisher@oahuconcierge.com](mailto:publisher@oahuconcierge.com)

DESIGN  
Coreiya Design

The Oahu Concierge  
4348 Waialae Avenue, #185  
Honolulu, Hawaii 96816

PRSR STD  
US Postage Paid  
TRADE MEDIA HUI



**JUNE 1 - JULY 31**

# SUMMER TOTE BAG GIFT WITH PURCHASE

Receive a Summer Tote when you spend \$750 in combined receipts at any International Market Place store or restaurant.



Scan QR Code for Details

INTERNATIONAL MARKET PLACE