

Concierge

KEEPING THE HOSPITALITY INDUSTRY INFORMED SINCE 1998

38th annual

Pan-Pacific Festival

KING KAMEHAMEHA



Picture courtesy Pan-Pacific Festival

will take place that evening on the Waikiki Beach Walk Plaza Stage from 6:30 - 9 p.m. This dance exhibition will showcase dance from some of Japan and Hawai'i's hottest amateur dance troupes. Kento Mori, one of the most successful choreographers and professional dancers in the world, who has worked with such famous artists like Madonna, Usher, and Ciara will make a special appearance at this years event. He will provide dance tips throughout the evening. Keep in mind this event

This month, we honor one of Hawaii's great leaders and a figure with the tale befitting a king and straight out of a fable.

The Ali'i (Chief)

When King Kamehameha I was born on the island of Hawai'i, the Big Island, (sometime between 1748 and 1761), the Kahuna (priests) predicted he would become a great leader who would unite the warring clans of the islands. Such a significant prophecy frightened and angered the current Ali'i who ordered the baby be put to death. To save his life, the infant was whisked away to Waipio Valley where he was raised in secrecy by foster parents until he could safely return to his parents in Kailua-Kona. It was then that young Kamehameha earned his nickname "The Lonely One." It came to pass that the future ruler fulfilled the Kahunas' prediction. Being present when Captain Cook came to the islands, Kamehameha learned about foreign ships and weapons, and with his newly knowledge, he built a strong army and united the Hawaiian Islands, bringing peace to the land and justice to his people. He went on to establish foreign trade and ushered in the modern Hawaiian flag with 8 stripes representing the main Hawaiian islands and the Union Jack in the corner. Kamehameha died in his hometown of Kailua-Kona on May 8, 1819 and his bones were hidden as tradition dictates to protect their mana (power). No one knows his final resting place.



Continues on page 16.

The advent of warmer weather and summer sun means it's time for our summer festivals to return and this year promises not to disappoint. A family-friendly street festival or a flower-festooned parade is just the thing to delight visitors of all ages and the budget-friendly aspect is just a happy bonus. Bring the whole family out for the parties, parades, and culture that make it the Pan-Pacific Festival a favorite with visitors and locals alike. Matsuri in Hawai'i, as the event was formerly called, began on a much smaller scale nearly four decades ago with the goal of promoting intercultural exchange between Japan and Hawaii and enriching the lives of both participating artists and audiences with exposure to traditional Japanese culture – music, dance, food, crafts and more. Since its inception in 1980, this festival has exploded into a major annual celebration. In 1996, Matsuri in Hawai'i became known the Pan-Pacific Festival in order to broaden its scope and appeal by including cultural influences from around the Pacific, creating a more global community through the sharing and celebration of cultures. This year's events run from June 9 thru June 11 at various places around town.

The three-day festival will showcase nearly 100 different performance groups and organizations from around the world and Hawai'i, and attracts an audience of approximately 100,000 annually. Kicking off the Festival each year is Friday nights popular Ho'olaule'a, where multiple stages take over Kalakaua from Lewers to Uluniu, from 7 – 10 p.m. Set amid a maze of ethnic food and craft booths there will be plenty of people there to see the various cultural performances, including live entertainment by local and international groups. The 2nd Annual Street Dance Festival in Hawai'i

will close all traffic lanes/sidewalk areas on Kalakaua, from Seaside to Ohua and traffic will be diverted starting 4:30 p.m. for setup, so taxis and foot-traffic are your guests' best options.

Entertainment can be found all weekend on the Ala Moana Centerstage, Waikiki Beach Walk Plaza Stage and the Hula Mound at Kuhio Beach. On June 10th varying performers are featured in the Performing Arts Showcase at Centerstage from 10 a.m. to 9 p.m. There will be another Showcase at the Plaza Stage from 1 p.m. to 5 p.m. More than 25 international and local groups will present the Showcase.

The Kuhio Beach Hula Mound will be the scene for the 17th Annual Pan-Pacific Hula Festival featuring hula halau from Japan and Hawaii as their share their art and love for dance each evening. Don't miss all of those lovely hula hands beginning at 4 p.m. Friday and Saturday and after the parade at 7 p.m. on Sunday. There will also be a Punahale Party on Saturday from 6:30 – 9:30 p.m. on the Plaza Stage where halau will choose their favorite songs to dance with one of Hawai'i's Na Hoku Hanohano award winner, Weldon Kekauoha.

Winding up the weekend's events is the Pan-Pacific Parade, bringing the culture-packed weekend to an exciting, colorful close. Over 1,000 marchers will take over Waikiki on Sunday, June 11th from 5 to 7 p.m. with featuring a mix of cultural performers, music, dance and pageantry from around the world. Colorful floats light up Kalakaua at sunset as marching bands add to the exciting din. For more information on events including an updated schedule, visit the festival's website online at pan-pacific-festival.com. ~ Pam

TABLE OF CONTENTS

Yada Yada Yada	2
Gabby Pahinui Statue	2
Newsflash	3
Arts with Aloha	4
Paparazzi: Búho Breakfast Club FAM	6
Paparazzi: Rock-a-Hula FAM	8
Chef's Corner: BLT Steak's Fred DeAngelo	9
E Pili Kakou	10-13
Calendar	14-15
Paparazzi: Charity Walk Pictures	16
Dying for Vacation	17
That's Entertainment	18
Concierge of the Month: Jenifer Mai Ishigami	19

W WOLFGANG'S
STEAKHOUSE
OPEN DAILY 11AM - MIDNIGHT
922.3600 | wolfgangsteakhouse.net





Summer has arrived

Everyone has something in his or her life that indicates summer has arrived. For some, it's the last day of school, for others perhaps it's a change in seasons. For me, it's two things. The first paddling regatta and that one weekend in June when you simply cannot traverse Waikiki. What did I say a few years ago? Beware the Parade? Well, it's back! You know, that weekend where Kalakaua closes Friday night, Saturday morning and Sunday evening? For our visitors, it's probably the most exciting weekend in the world to be in Hawaii, perfect weather and non-stop action and parades. For the rest of us? Not so much, however, given proper planning, most problems can be easily avoided. Forget when to stay off the roads and you might find yourself in endless gridlock. So, always bring one to do my part for public service, here's the 411. On Friday, June 9th, traffic will start being diverted on Kalakaua at 4:30 p.m. so they can set up the Pan-Pacific Ho'olaulea that takes place from 6 to 9 p.m. The following morning, Saturday, June 10th, lanes start closing at 7 a.m. for the 101st King Kamehameha Parade. Remember the Parade starts at Iolani Palace, goes down Punchbowl to Ala Moana Boulevard where it turns on Kalakaua until it reaches the Park. They will start opening up lanes in a rolling fashion once the final float has passed by a road closure, but the City & Country warn that roads could be closed up until 2 p.m. To bring the weekend to a perfect trifecta, the Pan-Pacific Festival comes to a close with yet another ginormous parade on Sunday, June 11th. Running the typical parade route from Fort DeRussy to the Park, traffic will be diverted from 4:15 p.m. for set up and the parade runs from 5 - 7 p.m. Any guests that happen to find themselves in town during that 72-hour period is in for a real treat if they just want to plant themselves along Kalakaua for the weekend, but they need to plan ahead as well, so they don't miss those dinner reservations they were driving too. A little pre-planning in this case could make the difference between having a happy or unhappy guests in-house.

Aside from those two big events, there are plenty of other activities to keep your guests busy. The Biggest Little Airshow returns to Ford Island for you big little kids out there who wish they could handle remote-control airplanes so well. Looking for something different to experience? Head over to BLT Market at the Ritz-Carlton Residences, Waikiki Beach for happy hour see the property's new signature offering, a sunset flower drop. Thousands of fresh flower petals, from orchids to plumeria will be dropped from a higher floor, gently floating towards the infinity pool. The sunset flower drop is currently only taking place on Mondays and Fridays, but they plan to offer the experience nightly at some point this summer. Hope everyone is doing well and getting ready for the summer rush (if it hasn't already started) and I look forward to seeing you all around. Aloha!



Yada Yada



Kelly Hoen

We've got some high level movement this month. In the biggest news, **Kelly Hoen** was named the area general manager for Outrigger's two beachfront properties, the *Outrigger Reef Waikiki* and the *Outrigger Waikiki*, and will serve serving as the on-property general manager for the Reef. • Stepping into her role at the *The Modern Honolulu* is **Douglas Rucker**, who has been named Managing Director. The former Maui hotelier has

extensive experience in the industry both here and in Florida. • The *Hawaii Tourism Authority* welcomed two new members to their board of directors. **Sherry Menor-McNamara**, President & CEO of the Chamber of Commerce Hawaii and **Kelly Sanders**, area managing director of Marriott Hotels and Resorts Waikiki were recently confirmed by the Hawaii State Legislature to serve through June 2020.



Kelly Sanders

Pure Gabby

Outrigger unveils new statue of the slack-key master

A man that played some of Hawaii's greatest songs is being honored and introduced to the thousands of young residents, newcomers and visitors who may not have grown up listening to the gravel voice of slack-key guitar master – Gabby 'Pops' Pahinui.

His music and legend are larger than life, as is his statue, unveiled on May 26th at Waikiki Beach Walk. Sculpted by master artist Kim Duffett, "Kanikapila," the bronze statue of Gabby will stand beside their fountain stage, that often features music and hula.

How this iconic sculpture came to be is a story of collaboration between Outrigger's dedication to honoring the music, art, sport and culture of Hawaii and the Pahinui ohana who have continuously presented their pure Hawaiian music through the artistry of Gabby, and three of his sons, Cyril, Martin and Bla Pahinui.

Sean Dee, Executive Vice President and Chief Marketing Officer for Outrigger Enterprises Group describes the project as, "fulfilling the original vision for Waikiki Beach Walk – which included making this promenade a vibrant hub to present and celebrate Hawai'i's rich culture."

Mission accomplished. Since its opening 10 years ago this year, Waikiki Beach Walk has been attracting visitors and locals alike. The open-air venue perpetuates the wealth of Hawaii's creative talents through their different concert series.

It became clear that the focal point of the place should be an art piece. The only choice for a sculptor was Kim Duffett – creator of many of Hawaii's iconic sculptures, including the Hilton's graceful hula dancers that welcome all to Waikiki.

The "Gabby" sculpture is a larger than life bronze statue of the slack-key legend. Duffett created a model in Hawaii and worked with Artworks Foundry in Berkley, California to have the statue cast, a process that took many weeks to complete. Between work trips to the foundry Duffett returned to Hawaii to create the pedestal for his art. Back in California, Duffett worked on what is called the "patina" of the surface – making it glow like Gabby's music.

Duffett was born in Ohio and started carving wood at age six. He studied arts, found himself in a foundry job and began casting bronze. He



Gabby and his guitar. Photo courtesy of Panini Records, Inc. All rights reserved.

traveled and studied in North Africa, then Europe, where there seemed to be a sculpture on every corner. After sailing the Pacific, he settled in Hawaii, sculpting stone, casting bronze and making music with his wife and their band.

Son Cyril Pahinui, a long-time performer at the Outrigger Reef's Kani Ka Pila Grill talked with Luana Maitland, cultural advisor for Outrigger Hotels. He said, "I feel good about how Outrigger supported me and my music. I'm very proud to have my dad's statue there. I can't wait to see it."

The plaque that accompanies the sculpture reads: *Gabby "Pops" Pahinui, 1921 – 1980. Gabby "Pops" Pahinui, a working class hero and a self-taught musician, was one of the great masters of Hawai'i's unique slack-key guitar sound.*

Raised on blues and jazz, his first professional gig was in 1933, followed by years of performing. In 1946, he recorded Hi'ilawe, the first-ever recording of Hawaiian slack-key and a song that still brings tears to the eyes of all who listen.

Considered the father of slack key, Gabby had weekend jam-sessions or Kanikapila, in his backyard in Waimanalo that drew musicians from throughout Hawai'i. They just wanted to play with the master, making music with a sound that has spread around the globe. They still do. Last month was the 10th anniversary of the Waimanalo Kanikapila honoring him. Over 80 musicians showed up to play and thousands attended.

The legacy continues. The Pahinui family is well represented at this year's Na Hoku Hanohano Awards as two of Gabby's grandsons, Alapaki Pahinui with the Sons of Yeshua and Kunia Galdeira were nominated. Cyril added two more Hoku Awards to his collection. He received the Instrumental Composition (Composer's Award) and the Hawaiian Slack Key Album of the Year award for his latest album "Hi'ilawe".

Dee says, "With the statue of Hawaiian-music legend Gabby Pahinui now watching over Waikiki Beach Walk, it serves as a reminder of our intention for this special place."

They hadn't unveiled the statue by presstime, so unfortunately we do not have a photo to show you. Next time you walk through Waikiki Beach Walk, be sure to take and see for yourself. ~ Lynn Cook

EXTRA NEWSFLASH EXTRA

INTERNATIONAL MARKET PLACE OPENS MORE STORES

Mitsuwa Marketplace, the largest Japanese supermarket chain in the country, opened its first Hawaii location at the International Market Place last month. Offering a variety of Japanese groceries, general items, electric appliances, cosmetics and a food court, the 9,980 square-foot store has already garnered plenty of attention. Tesla, the electric car company, also opened their 3rd store on Oahu in early May. Michael Mina's gourmet food hall, The Street, also opened last month with 12 different stations including one offering beer and wines.

'AHA 'AINA ADDS 2ND SHOW

The Royal Hawaiian Hotel has added a second evening performance to their weekly 'Aha'aina, A Royal Celebration. Beginning last month, the popular beachfront luau, which has been held every Monday night for years, began offering a Thursday evening show as well. 'Aha'aina provides a cultural journey through time paying homage to Helumoa, the legendary playground of Hawaiian royalty, where the resort now stands. Admission: \$89-197. 921-4600 or royal-hawaiianluau.com.

OCEAN THRILLER

Roberts Hawaii launched a new tour at the end of last month. The Waikiki Ocean Thriller will offer up to 25 guests a 45-minute exhilarating experience as the 32-foot rigid hull, inflatable speed boat leaves Ala Wai Boat Harbor and begins speeding across the ocean to Diamond Head. The boats sit low on the water, so guests can get really up close and personal if a Turtle or Dolphin passes by. These boats are not ADA accessible, so your guests will have to be able to board on their own. Transportation is not included, although the Pink Line gets you pretty close. Waikiki Ocean Thriller sails six days a week (closed on Wednesdays) from the Ala Wai Boat Harbor at 10 a.m., 11 a.m., and 12 p.m. \$39.95. robertshawaii.com.

IT'S BANANAS IN WAIKIKI

Many of you are probably familiar with the food truck on Monsarrat or the store on University, but now the Punahou boys who created Banán, dairy-free soft serve, are moving into Waikiki. Their third shop opens this month at Royal Hawaiian Center in the beach access way just past Cheesecake Factory. Grab some soft-serve and a local cold brewed coffee. They are introducing an omiyage boxed-set of their Banan Honey by Manoa Honey Company to be sold only at this location. Also opening at RHC? A Disney Vacation Club Showroom on the 3rd floor of Building C.

HERMES WAIKIKI EXPANDS TO THREE-LEVELS

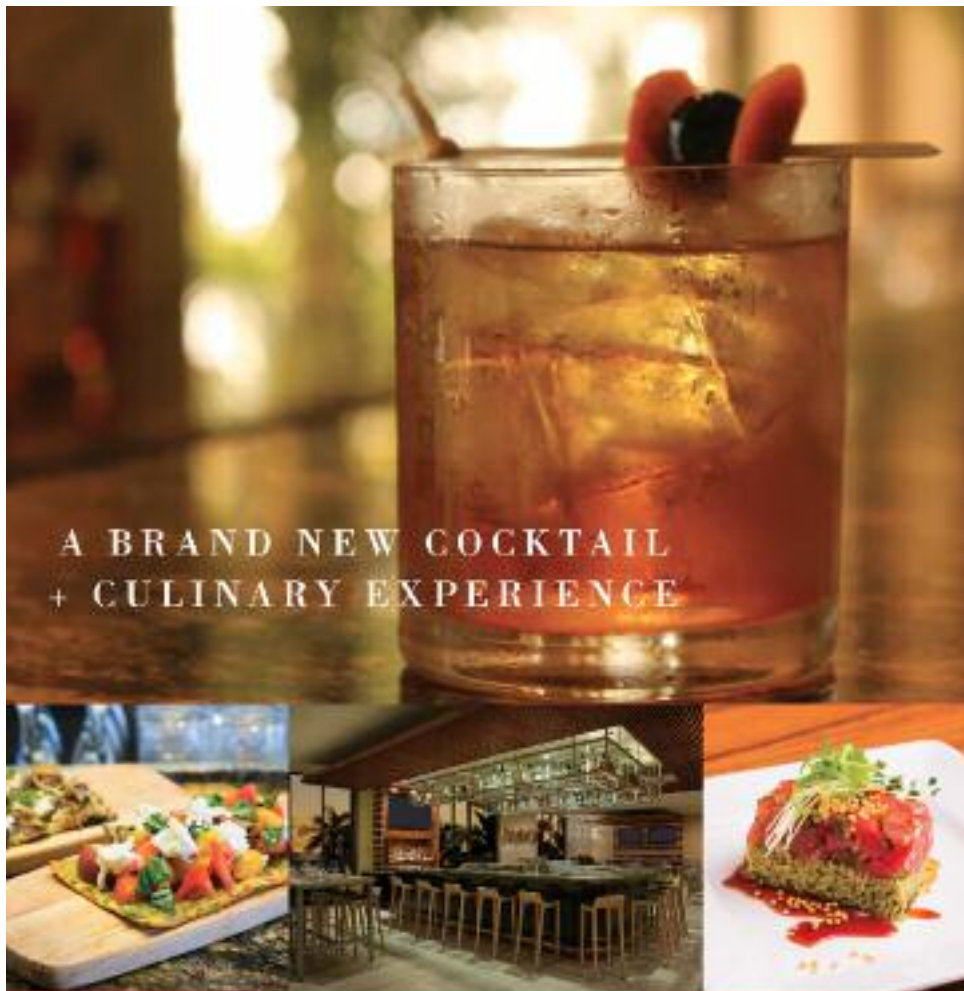
Construction begins this month at the French boutique's location at Royal Hawaiian Center. The new 12,301 square-foot three-level store is scheduled to open in early 2019 and will include a client elevator and dedicated VIP room. Hermes has temporarily relocated to a two-level space in the C-Building facing Kalakaua Avenue.

KONG: SKULL ISLAND OPENS

The Hawaii Food & Wine Festival announces the stellar line-up for this year event at Cuisines of the Sea. Enjoy the tastes of 10 talented chefs including Chris Kajioka, Michelle Karr-Ueoka, Sheldon Simeon, Lee Ann Wong and more for an evening of fine wines, seafood and fireworks 6 - 9 p.m. After the line-up is announced, tickets for this year's festival, which will be held on three islands from October 20 to November 5 will be available for sale online. Tickets for this kick off event are \$175. hawaiiifoodandwinefestival.com.

BIGGEST LITTLE AIRSHOW

The Pacific Aviation Museum is bringing back the Biggest Little Airshow for the tenth year on June 3 and 4 from 10 a.m.- 4 p.m. Don't miss this popular remote-control airshow complete with candy "bombings" and lots of full-size aircraft on display. Local pilots and Warbirds West, a nationally acclaimed, award-winning team of pilots flying giant-scale remote controlled aircraft return this year with a tribute to the 75th anniversary of the Battle of Midway. Tickets: \$5, or free with Museum general admission. PacificAviationMuseum.com.



KUHIO BEACH GRILL RESTAURANT & BAR

Stylish locally sourced American cuisine with shared dishes served table side. Home of Waikiki's best selection of whiskey & bourbon in a stunning setting overlooking Waikiki Beach.

Open for Dinner 5 - 10pm

Waikiki Beach Marriott Resort & Spa - Kealahilani Tower 2F

For reservations book on OPEN TABLE or call 808 921 5171

Free validated parking #KBGwaikiki



Blue Note

HAWAII

WORLD'S FINEST
JAZZ CLUB & RESTAURANT

JUNE HIGHLIGHTS

SHOWS AT 6:30 & 9PM NIGHTLY



**Squirrel Nut
Zippers**

June 1 - 3



Keller Williams

June 16



Livingston Taylor

June 17 & 18



Willie K

June 20



**Capleton & The
Prophecy Band**

June 21 & 22



Manhattan Transfer

June 23 - 25 &
June 29 - July 2

DONT FORGET TO CHECK OUT OUR
INDUSTRY NIGHTS!

EVERY TUESDAY

\$10 COVER

1/2 OFF SELECT APPS

\$6 DRINK SPECIALS

SHOW YOUR INDUSTRY CARD AND ENJOY THE SHOW!
Limited Tickets Available

VIP reservations and discounts available

Email Shaun Singh for more group information:

Shaun@bluenotehawaii.com

WWW.BLUENOTEHAWAII.COM | 808-777-4890

Located in the Outrigger Waikiki Beach Resort

VALIDATED PARKING AVAILABLE AT OHANA
WAIKIKI EAST HOTEL | \$6 FOR UP TO 4 HOURS



arts with aloha



If there is one theatre on O'ahu that truly exemplifies Art with Aloha, that would definitely be **KUMU KAHUA THEATRE**. I'm sure many of you are familiar with the theatre company, but when was the last time you sent a guest there, or more importantly when was the last time YOU went with your family. For those of you who are not, familiar with the non-profit, Kumu Kahua Theatre was founded in 1971 by a group of graduate students from the University of Hawai'i with the original goal of producing locally-written experimental works. Today the theatre nurtures plays that are written not only locally but also showcase some aspect of the Hawaiian or kama'aina experience. Unlike Hollywood, you will not find an Anglo Saxon guy from New Jersey portraying King Kalakaua in a production at this theatre.



Did you know that in Hawaiian the words "kumu" and "kahua" translate to "original stage?" And the over 230 productions that have debuted here, have not only been original in content, but also inspiring and heart breaking at times, as local playwrights have delved into the darker side of kama'aina lives beyond the aloha of our tourism economy.

The 100-seat playhouse is located at 46 Merchant Street at Bethel Street, a block down from Murphy's Bar & Grill. The original structure was built in 1870 and was the first building in Hawai'i constructed of pre-cast concrete blocks, reinforced by iron bars. It was turned into the King Kamehameha V Post Office in 1894. Then in the 1920s it became a territorial tax overflow office for the district courts. It wasn't until 1993, that the state renovated the building for use by Kumu Kahua Theatre.

Ok, enough history, let's get to the party, the garage party that is happening at the theatre this running at the theatre from June 1 to July 2. Kumu Kahua Theatre is presenting another original play and world premier by prolific playwright Lee Cataluna entitled "*Uncle's Regularly Scheduled Garage Party's Is Cancelled Tonight*." The play, directed by Harry Wong III, Kumu Kahua Theatre's Artistic Director, is set in the garage of a Windward O'ahu family's home. The weekly festivities have become the focal point for many of the current and former neighbors, but on this night the party has been cancelled but no one pays

attention and they continue to party much to Uncle and Auntie's protests.

For your guests who really want to experience the true Hawai'i, this is your chance to send them to a local garage party without their Uber driver being a wee bit suspicious of the location on his GPS. Two of the characters in the play will be playing guitars during the preshow and guests will be encouraged to request songs and also perform. The idea of the production is to make the audience members feel like they are part of the party. This is the perfect place to send your guests after dining at The Pig and The Lady or Senia on King Street.

Many of the characters will be familiar to you. There is a mother and her daughter who have celebrated many significant milestones at Uncle's weekly party. There is also a cop who tries to impress his son with the fact that he once appeared on *Hawai'i 5-0*. The son of course lives on the mainland with mom and only comes during the summer. Mostly likely the result of a one-night stand in Waikiki. (I'm only guessing since I haven't seen the play yet, but we all know guys like this!) As you would expect over the course of the party, which is officially not a party, many things are revealed about the guests and finally the reason that Uncle had canceled the garage party.

Think of this production as a kanikapila of personal stories with some music on the side. The theatre refers to it as a neighbor comedy so no major tragedies here. (Remember I haven't seen the show yet, so maybe there is one!) The production runs Thursdays, Fridays, & Saturdays at 8 p.m. (Don't forget to come early to enjoy the music and get a front row seat) and Sundays 2 p.m. Tickets are \$25 general admission and \$20 for seniors at the door or can be purchased in advance online at www.kumukahua.org.

Have fun at the show and make sure to DRIVE SOBER and remember the designated driver is not the one who drank the least, it's the one who drank nothing alcoholic at all.

The **HONOLULU MUSEUM OF ART** will be screening films this month from nations affected by the Travel Ban. Part of national initiative known as the *The Seventh Art Stand*, the program will open and close with live performances by artists from Syria, Aiming to challenge Islamophobia by addressing equity and diversity issues in film, a dozen films, including Director Asghar Farhadi's *The Salesman*, the movie that won the Academy Award® for Best Foreign Language Film, but he was unable to accept his award in person because of the ban. The films will be screened at the *Doris Duke Theatre*, through June 7th. Most films cost \$10, some will be offered for free. In conjunction with the film series, the museum will offer tours of its Islamic gallery. For the complete schedule of films, performances and speakers, go to their website at honoluluuseum.org. ~ Lance Rae



ALERT!

brought to you by
The Waikiki Aquarium

open daily from 9 am - 4:30 pm

June 17-20

Box Jellyfish Window

Teaching Hawaii about jellyfish and other ocean creatures for over a century





WAY MORE THAN A LUAU

Tell your guests about our 42 acres of adventure, food and shopping. They'll enjoy six interactive island villages, canoe tours and parades, and our spectacular evening show. Also, voted Hawaii Magazine's Reader's Choice "Best Luau on Oahu."



**BUY THE ALI'I LUAU PACKAGE
AND SAVE OVER \$50**

Compared to a la carte pricing.



FOR DETAILS SEE YOUR PCC REPRESENTATIVE.

808-293-3333 or POLYNESIA.COM

Unforgettable Island Adventures. Starting Daily at Noon. Closed Sundays.

Some restrictions apply.



HILTON HAWAIIAN VILLAGE™

WAIKIKI STARLIGHT LUAU

SUNDAY–THURSDAY
5:30PM

**NEW DIAMOND PREMIER SEATING
JUST \$159.**

- Sit front and center
- First to enjoy the buffet
- Get one extra complimentary drink



WAIKIKI
STARLIGHT
Luau

Call (808) 941-5828
to make reservations.

BÚHO BREAKFAST CLUB

Búho recently launched a daily breakfast buffet featuring the culinary talents of award-winning Chef Masa Gushiken from their sister restaurant, Bread + Butter. Healthy, fresh, seasonal ingredients will be offered farm-to-table style, along with hot contemporary dishes for only \$23 (tax included). A full bar and Bottomless Mimosas (\$20) will also be available, along with live music on the weekends. Weekdays from 7 - 11 a.m. and until 2 p.m. on weekends. Yoga offered daily from 8 - 9 a.m. (\$40 includes yoga mat rental, and breakfast). 922-BUHO (2846). buhocantina.com.





WARD VILLAGE.

FREE EVENTS AT WARD VILLAGE



WEEKLY—Sessions welcome all ages and skill levels taught by CorePower Yoga instructors



MONTHLY—Features independent films curated by the Hawaii International Film Festival and themed activities in an extraordinary outdoor theater setting.



MONTHLY—Brings the abundance of the country into the heart of the city with fresh-locally grown fruits, vegetables, meats and treats.



MONTHLY—Celebrates Hawaiian culture and language through performances by beloved hula halau and Hawaiian musicians.

Visit WardVillage.com/events for full schedule.
#weareward



Mahalo for your continued support!

JOIN OUR

GUEST REFERRAL PROGRAM



Our program is simple!

For every 25 guests referred,
Ruth's Chris Steak House will send you
a \$50.00 dining certificate.

Please contact Emi Espinda if you have any
questions at eespinda@direstaurants.com

OPEN DAILY FROM 4:30PM

HAPPY HOUR DAILY IN OUR LOUNGE | 4:30PM – 7PM

PRIME TIME MENU DAILY | 4:30PM – 6PM

WINE WEDNESDAYS | 25% OFF BOTTLES OF WINE



Restaurant Row | 808.599.3860
Waikiki Beach Walk | 808.440.7910

WWW.RUTHSCHRISHAWAII.COM   



SOMETHING NEW. SOMETHING CLASSIC.

Open Daily 11am - 10pm

Happy Hour Daily in our lounge 3pm - 6pm & 6pm - 10pm

Vino Thursdays 25% Off Bottles of Wine

INQUIRE ABOUT OUR GUEST REFERRAL PROGRAM!

Our program is simple!

For every 10 complimentary dessert cards redeemed
(WITH YOUR NAME ON THE CARD),

Romano's Macaroni Grill will send you a
\$25.00 dining certificate that may be used
at our Oahu restaurant.

Please contact Emi Espinda if you have any
questions at eespinda@direstaurants.com



Ho'okipa Terrace at Ala Moana Center
808.356.8300

WWW.MACARONIGRILL.COM



Rock-a-Hula presented their completely new show to concierge with a special luau dinner and show invitation. New costumes, new choreography, new songs and even a brand new tribute artist in the form of 'Katy Perry'. I've seen the show at least a dozen times, and this version really was different. They mixed up the format of the performance, so I was never sure where we were. It really is a fun show and I will never tire of seeing how excited everyone gets when Johnny Fortuno as 'Elvis', walks through the audience. 629-SHOW (7469). rockahula.com.





Chef's Corner

BLT Steak's Chef de Cuisine Fred DeAngelo

Fred DeAngelo has been a mainstay of Hawaii's culinary scene for over 25 years working at such familiar restaurants as Tiki's Grill & Bar, Palomino and is perhaps best known for his highly successful restaurant Ola at the Turtle Bay Resort that he and his wife opened in 2005. He is a part of the HVCB's "Chefs of Aloha" program and has traveled the world promoting the flavors of Hawaii. He recently took the helm of BLT Steak in Waikiki. Here's his story.

What is your first childhood food memory?

Writing my first menu when I was in the first grade. I would give my mother a menu weekend mornings, and make her breakfast in bed. The menu would change depending on what was in the fridge but it always included Bacon and Eggs, Saimin, Toast, Coffee, and Alka Selzer. (I understood what this was for in my later years, Ha!) I handled the cooking and cleaning without supervision, funny when I think back now!

When did you decide you wanted to be a chef?

When I went to Florida to attend college. I always loved my grandmother's cooking, since my father's side of the family lived over there, our weekly Sunday dinner family gatherings allowed me to live and love Italian food, and it opened a whole different way for me to approach food and flavors.

What was your first job in the industry?

My first job in the industry was at the Palm Aire Hotel & Spa in Coconut Creek, Florida. I moved to "Spa Chef" within a month and cooked for celebrities such as Linda Carter and Jackie Gleason to name a few. In Hawaii it was working for Chef Eddie Fernandez and Randy Schoch at Nick's Fishmarket. My relationship with them continues to this day.

Who would you consider your mentor and why?

I have been blessed with many mentors throughout my career. More importantly though, I am surrounded by friends who are professionals in our industry. Paul Ah Cook of Paradise Beverage, Russell Siu from 3660 on the Rise and Kakaako Kitchen, Colin Nishida of Side Street, Arrison Iwahiro from Fukuya, Scott Okamoto from Chart House, Craig "Skippy" Nagano from CHOYCE Foods, and Chef Mariano Latica to name a few. We get together as often as possible, and I am so fortunate to be able to bounce ideas, get feedback and have a group who will tell me the truth about everything.

Describe the best dish you ever remember and why.

My Grandmother's chicken soup. I had never had a dish with such a depth of flavor made with such simple ingredients in my first 8 years of life. It helped shape a career.

What ingredients are always in your kitchen or fridge.

BUTTER. Maybe because my mom used to make me butter sandwiches on wonderbread back in the day.

What restaurant do you like to go to when not working?

My wife Cheryl and I enjoy visiting Chef Alan Takasaki at Le Bistro, it's our number one go-to restaurant.

How would you describe your style of cooking?

I would describe it as ethnically diverse/classic technique.

Ola was your baby for a decade. Was it difficult to let go?

I can honestly say having brought that restaurant to life has been one of my wife Cheryl's and my major life achievements. We stayed true to our mission, our values, we operated with integrity, and took care of our crew. So when the time came to say goodbye, yes, it was difficult, but all good things must come to an end and we have the lasting, fond memories we shared with the guests we were so grateful to serve.

John Heckathorn once wrote you "put flavors together with real nerve." Now you're working with a corporate restaurant, will you still be allowed culinary freedom?

I so appreciate you quoting John Heckathorn, he was such an amazing man. I feel so fortunate to have known and cooked for him. Even in my own restaurant SPECS need to be followed, so insuring recipe adherence gives our guests a consistent dining experience. Freedom to express my culinary creativity happens daily with my blackboard menu. I create 3 different appetizers, 3 different entrees, 2-3 different sides, 2 different desserts, and a featured steak.

Biggest pet peeve thing about working in a kitchen?

Respect everyone the same. Order, Please, and Thank You go a long way. Communicate with respect, speak to Chef the same way you speak to the dishwasher. No swearing, and do not come into my kitchen smelling like an ashtray.

Name the biggest honor you've ever received?

The "Best New Restaurant" accolades from Honolulu Magazine's Hale Aina award for the restaurants I have opened over the years. Palomino Euro Bistro, Tiki's Grill, Ola at Turtle Bay, and the Grove in Kailua.

If you stopped being a chef tomorrow, what would you do?

I would train Jiu Jitsu and travel the world with my family. Traveling with my wife Cheryl and daughter Maya Rose has been the most educational, bonding, and enlightening time for us. I got to compete in an International Jiu Jitsu meet last year in Seoul Korea, our family's first time there, and we had a blast touring the country. Japan is our favorite place to visit.

Is there any other information you want to share?

It is a bit weird not working with my wife, as we have worked together on all projects, but you can find her at Side Street Kapahulu, where she is the General Manager. Cheers.

All Natural Hawaiian Beef "Poke" with Kahuku Sea Asparagus

Serves 4

Chef Fred DeAngelo



Ingredients: Poke Sauce	1 tbsp	Oyster sauce
8 fl oz Soy sauce	1 tsp	Sambal Oleck (chili paste)
1 tbsp Hot chili sesame oil	1 tsp	Ginger - chopped fine

Method

Combine all ingredients and reserve.

Ingredients: Poke Mix	6 oz wt.	Watercress
2 ea 12 oz New York Strip Steak	2 oz wt.	Chives - chopped fine
4 oz wt. Maui Onions - julienned	1 tsp.	Toasted sesame seeds
6 Grape tomato	2 tsp	Garlic - chopped fine
8 oz wt. Kahuku Sea Asparagus	1 tsp.	Sesame oil

Method:

1. Season Steak and cook until desired temperature, Chef recommends Medium Rare. Once meat has rested for 3 minutes dice into cubes, reserve. 2. In a hot skillet add the sesame oil, then flash sear the sea asparagus and watercress, finish with 1 fl oz of poke sauce. 3. Place the watercress/sea asparagus mixture in a mixing bowl and toss with remaining Poke Mix ingredients. 4. Add in the beef and 4 fl. oz of Poke sauce. Enjoy!

BLT Steak is located in the lobby of the Trump International Waikiki

Open for dinner nightly from 5:00 p.m. • Daily Sunset Hour 4:30 p.m. - 6:30 p.m. • Phone: 683-7440

Web: bltrestaurants.com • FB/Instagram: [@bltrestaurants](https://www.facebook.com/bltrestaurants) • Twitter: [@BLTSteakWaikiki](https://twitter.com/BLTSteakWaikiki)



CALL IT EARLY BIRD, CALL IT NIGHTCAP.

HAPPY HOUR IS 20% OFF THE ENTIRE MENU

10X A WEEK!

MON-FRI 3-6PM SUN-THU 10PM-MIDNIGHT



giovannipastrami.com 808-923-2100

227 Lewers Street in Waikiki

*Happy Hour is dine-in only. Visit us for details.



you are an important part of bills 'ohana

concierges & guest services staff
receive our 'ohana discount
of 20% off your entire bill
with valid id

does not apply to happy hour
may not be combined with other offers



bills hawaii
280 beachwalk ave
breakfast 7-11am
lunch 11am-5pm
happy hour 3-6pm
dinner 5-10pm

billshawaii.com
808.922.1500

Let's be Together...

DINING ▸ ENTERTAINMENT ▸ PAU HANA ▸ EAT ▸ DRINK ▸ BE MERRY ▸ HAPPY HOUR

MONDAY

Barefoot Beach Café at Queen's Beach 924-2233
Contemporary Ukulele
 Sonny Kapu 6-8:30pm
Chart House Waikiki 941-6660
Live Contemporary Hawaiian
 Camarillo Brothers 6:30-9:30pm
Cheesecake Factory 924-5001
Classic Hawaiian
 Christian Yrizarry Duo 8-11pm
Duke's Canoe Club Waikiki 922-2268
Live Contemporary Hawaiian
 Taz Vegas 4-6pm
 Ellsworth Simeona 9:30-12am
Hard Rock Cafe 955-7383
Bluesy Monday
 Buck on a Bender (or others) 9-11pm
House Without a Key 923-2311
Live Hawaiian & Hula by Skyler Kamaka
 DeLima Ohana 5:30 - 8:00pm
Hula Grill 923-HULA
Live Contemporary Hawaiian
 Eric Lee 7-9pm
Kani Ka Pila Grille 924-4992
Live Contemporary Hawaiian
 Sean Naauao 6:30-9:30pm
LBLE at the Hilton Waikiki Beach Hotel 922-0811
Live Contemporary Acoustic Hits
 Sean Cleland 6-9pm
Lewers Lounge 923-2311
Live Contemporary & Light Jazz
 Noly Pa'a 8:30-12:30am
LuLu's 926-5222
Live Contemporary / Industry night 50% off
 Jason Laeha 6-9 p.m.
Mahina & Sun's 923-8882
Kanikaplia Jam Poolside on the Lanai
 Kimo Opiana Jr. 7-9pm
Mai Tai Bar at the Royal Hawaiian 923-7311
Live Contemporary Hawaiian with Hula Dancer
 Dave Watanabe 8-10 pm
Maui Brewing Company 843-2739
Live Contemporary Hawaiian
 Christian Yrizarry 4-6pm
 Keith Matlin 6:15-8:15pm
 Jegaan & Izon 8:30-11pm
Rumfire 921-4600
Solo Contemporary Guitarist
 Jeremy Cheng 5-8pm
Signature Prime Steak 949-3636
Contemporary Pianist in the bar
 Isao Motomochi 6-9pm
Sky Waikiki 979-7590
Live Contemporary
 Yoza 6-9pm
The Edge at the Sheraton 921-4600
Live Hawaiian music with a fire dancer at 7:30 p.m.
 Meheu Duo 6:30-8:30pm
The Study at the Modern 943-5800
Live Contemporary Hawaiian
 Kaleo 7-10pm
Tiki's Grill & Bar 923-TIKI
Live Contemporary Hawaiian
 P & L Experience 6-8:30pm
 The Kristi Masuhara Band 9-11pm
Tommy Bahama Restaurant 923-8785

Live Contemporary Hawaiian
 Johnny Helm 6-9pm
Tropics Bar & Grill 949-4321
Live Contemporary Hawaiian
 Starr Kalahiki 5:30-8:30pm

TUESDAY

Barefoot Beach Café at Queen's Beach 924-2233
Contemporary Ukulele
 Shaka Madali 6-8:30pm
Bin1901 at the Moana 921-4600
Piano Wine Bar
 Scott Smith 6:30-9:30pm
Chart House Waikiki 941-6660
Live Contemporary Hawaiian
 Kumuhau 6:30-9:30pm
Cheesecake Factory 924-5001
Classic Hawaiian
 Local Uprising Duo 8-11pm
Duke's Canoe Club Waikiki 922-2268
Live Contemporary Hawaiian
 Haumea Warrington & Mike 4-6pm
 Ellsworth Simeona 9:30-12am
Hard Rock Cafe 955-7383
Live Contemporary
 Piranha Brothers 9-11pm
House Without a Key 923-2311
Live Hawaiian & Hula by Radasha Ho'ohuli
 Po'okela 5:30 - 8:00pm
Hula Grill 923-HULA
Live Contemporary Hawaiian
 Kamuela Kahoano 7-9pm
Kani Ka Pila Grille 924-4992
Live Contemporary Hawaiian
 Weldon Kekauoha 6:30-9:30pm
LBLE at the Hilton Waikiki Beach Hotel 922-0811
Live Contemporary Funk, Jazz, Hip Hop & Reggae
 Jason Laeha 6-9pm
Lewers Lounge 923-2311
Live Contemporary & Light Jazz
 Maggie Herron & Rocky Holmes 8:30-12:30am
LuLu's 926-5222
Live Contemporary
 Johnny Helm 6-9pm
Mahina & Sun's 923-8882
Bossa Nova Poolside on the Lanai
 Sandy Tsukiyama 7-9pm
Mai Tai Bar at the Royal Hawaiian 923-7311
Live Contemporary Hawaiian with Hula Dancer
 Kapala Duo 6:30-9:30pm
Maui Brewing Company 843-2739
Live Contemporary Hawaiian
 Vaihi Duo 4-6pm
 Jonny Kamai 6:15-8:15pm
 Chris Murphy 8:30-11pm
Rumfire 921-4600
Solo Contemporary Guitarist
 Randy Allen 5-8pm
Signature Prime Steak 949-3636
Contemporary Pianist in the bar
 James Woo 6-9pm
Sky Waikiki 979-7590
Live Contemporary
 John Akapo 6-9pm
The Edge at the Sheraton 921-4600
Live Hawaiian music with a fire dancer at 7:30 p.m.

Ho'okani Duo 6:30-8:30pm
The Study at the Modern 943-5800
Live Contemporary Hawaiian
 Alex Oasay & Jeremy Cheng 7:30-10:30pm
Tiki's Grill & Bar 923-TIKI
Live Hawaiian - \$2 Taco Tuesdays
 K.B. Riley 5:30-8:30pm
 Sani & Friends 9-11pm
Tommy Bahama Restaurant 923-8785
Live Contemporary Hawaiian
 Alex Oasay 6-9pm
Tropics Bar & Grill 949-4321
Live Contemporary Hawaiian
 Kailua Bay Buddies 5:30-8:30pm

WEDNESDAY

Barefoot Beach Café at Queen's Beach 924-2233
Instrumental Ukulele
 Sonny Kapu 6-8:30pm
Bin1901 at the Moana 921-4600
Piano Wine Bar
 Scott Smith 6:30-9:30pm
Chart House Waikiki 941-6660
Live Contemporary Hawaiian
 Tito Berinobis & David Kauahikaua 6-10:30pm
Cheesecake Factory 924-5001
Classic Hawaiian
 Kimo Artis Duo 8-11pm
Duke's Canoe Club Waikiki 922-2268
Acoustic, Soul, R&B
 Haumea Warrington 4-6pm
 Ellsworth Simeona 9:30-12am
Gordon Biersch 599-4877
Jazz Wednesdays
 Varying Artists 6:30-9:30pm
Hard Rock Cafe 955-7383
Live Contemporary
 Saloon Pilots (or others) 9-11pm
House Without a Key 923-2311
Live Hawaiian & Hula by Lauren Matsumoto
 Pa'ahana 5:30 - 8:00pm
Hula Grill 923-HULA
Live Contemporary Music
 Brandon Serrano 7-9pm
Hy's Steak House 922-5555
Live Soft Contemporary
 Audy Kimura 6:30-10pm
Kani Ka Pila Grille 924-4992
Live Contemporary Slack Key
 Ben Vegas 4:30-5:30pm
 Mike Kaawa 6:30-9:30pm
LBLE at the Hilton Waikiki Beach Hotel 922-0811
Live Contemporary Funk, Jazz, Hip Hop & Reggae
 Izik 6-9pm
Lewers Lounge 923-2311
Live Contemporary & Light Jazz
 Maggie Herron & Rocky Holmes 8:30-12:30am
LuLu's 926-5222
Live Contemporary Hawaiian
 Mango Season 6-9pm
 Jason Laeha & Cole Strona 10-close
Mahina & Sun's 923-8882
Jazz, Pop & Rock Poolside on the Lanai
 Verge & Paula 7-9pm
Mai Tai Bar at the Royal Hawaiian 923-7311
Live Contemporary Hawaiian with Hula Dancer

E Pili Kākou

DINING ▶ ENTERTAINMENT ▶ PAU HANA ▶ EAT ▶ DRINK ▶ BE MERRY ▶ HAPPY HOUR

Eric Lee Duo 6:30-9:30pm
Maui Brewing Company 843-2739
Live Contemporary Hawaiian
 Johnny Helm 4-6pm
 Mark Caldeira 6:15-8:15pm
 Jai Rodgers Duo 8:30-11pm
Roy's Hawaii Kai 396-7697
Acoustic & Slack Key Top 40
 Dayton Watanabe 6:30-9:30pm
Rumfire 921-4600
Solo Contemporary Guitarist
 Alex Oasay 5-8pm
Signature Prime Steak 949-3636
Contemporary Pianist in the bar
 Pierre Grill 6-9pm
Sky Waikiki 979-7590
Live Contemporary
 Randy & Kanoe 6-9pm
The Edge at the Sheraton 922-4422
Live Hawaiian music with a fire dancer at 7:30 p.m.
 Keoni Ku Duo 6:30-8:30 pm
The Study at the Modern 943-5800
Live Contemporary Hawaiian
 Melanie and Drew 6:30-9:30pm
Tiki's Grill & Bar 923-TIKI
Live Contemporary - 1/2 off Wine Wednesdays
 Canoes for Rent 5:30-8:30pm
 Johnny Helm 9-11pm
Tommy Bahama Restaurant 923-8785
Live Contemporary Hawaiian
 Sean Cleland 6-9pm
Tropics Bar & Grill 949-4321
Live Contemporary Rock
 Acoustik Playground 5:30-8:30pm

THURSDAY

Barefoot Beach Café at Queen's Beach 924-2233
Instrumental Ukulele
 Shaka Madali 6-8:30pm
Bin1901 at the Moana 921-4600
Piano Wine Bar
 Scott Smith 6:30-9:30pm
Chart House Waikiki 941-6660
Live Contemporary Hawaiian
 Tito Berinobis 6:30-10pm
Cheeseburger Waikiki 941-2400
Contemporary / Old School Rock
 Alex Oasay 6:30-9:30pm
Cheesecake Factory 924-5001
Classic Hawaiian
 Mike Tulba Duo 8-11pm
Duke's Canoe Club 922-2268
Live Contemporary Hawaiian
 Haumea Warrington 4-6pm
 Denny Ono Duo (6/1) 9:30-midnight
 Chris Murphy (6/8) 9:30-midnight
 Scott Magz & Brady K (6/15) 9:30-midnight
 Local Uprising (6/22) 9:30-midnight
 Kimberly June (6/29) 9:30-midnight
Hard Rock Cafe 955-7383
Live Contemporary
 Kailua Bay Buddies 9-11pm
House Without a Key 923-2311
Live Hawaiian & Hula by Radasha Ho'ohuli
 Pa'ahana 5:30 - 8:00pm
Hula Grill 923-HULA

Live Contemporary Hawaiian
 Kamuela Kahoano 7-9pm
Hy's Steak House 922-5555
Live Soft Contemporary
 Audy Kimura 6:30-10pm
Kani Ka Pila Grille 924-4992
Live Contemporary Hawaiian
 Robi Kahakalau 4:30-5:30pm
 Kawika Kahiapo 6:30-9:30pm
LBL at the Hilton Waikiki Beach Hotel 922-0811
Live Contemporary Pop/Rock
 Sunway 6-9pm
Lewers Lounge 923-2311
Contemporary Jazz
 Maggie Herron & Rocky Holmes 8:30-12:30am
LuLu's 926-5222
Live Contemporary Hawaiian
 Desmond Oliverira 6-9pm
Mahina & Sun's 923-8882
Mellow Acoustic Sounds Poolside on the Lanai
 Keith Omizo 7-9pm
Mai Tai Bar at the Royal Hawaiian 923-7311
Live Contemporary Hawaiian with Hula Dancer
 Delima Ohana 6:30-9:30pm
Maui Brewing Company 843-2739
Live Contemporary Hawaiian
 Sean Cleland 4-6pm
 Darrell Aquino 6:15-8:15pm
 Taz Vegas 8:30-11pm
Michel's at the Colony Surf 923-6552
Live Slack Key
 Jeff Peterson 7:30-10:00pm
Roy's Hawaii Kai 396-7697
Acoustic Hawaiian Guitar
 Steve English 6:30-9:30pm
Rumfire 921-4600
Solo Contemporary Guitarist
 Johnny Helm 5-8pm
Signature Prime Steak 949-3636
Contemporary Pianist in the bar
 Isao Motomochi 6-9pm
Sky Waikiki 979-7590
Live Contemporary
 Tahiti Rey 6-9pm 5-8pm
The Edge at the Sheraton 921-4600
Live Hawaiian music with a fire dancer at 7:30 p.m.
 Christian Yrizzary Duo 6:30-8:30pm
The Study at the Modern 943-5800
Live Contemporary Hawaiian
 Simple Souls 6:30-9:30pm
Tiki's Grill & Bar 923-TIKI
Hot Hula Thursdays - hula dancers perform
 Malu the Band 5:30-7:30pm
 Ellsworth Simeona 8:30-10:30pm
Tommy Bahama Restaurant 923-8785
Live Contemporary Hawaiian
 Chris Mercado 6-9pm
Tropics Bar & Grill 949-4321
Live Contemporary Hawaiian
 Nohelani Cypriano 5:30-8:30pm

FRIDAY

Barefoot Beach Café at Queen's Beach 924-2233
Live Contemporary Hawaiian with Beach BBQ
 Art Kalahiki & Friends 5:30-8:30pm
Bin1901 at the Moana 921-4600

Piano Wine Bar
 Scott Smith 6:30-9:30pm
Chart House Waikiki 941-6660
Live Contemporary Hawaiian
 Mark Yim's Pilikia I 6-9pm
 Mark Yim's Pilikia II 9:30-12:30am
Cheeseburger Waikiki 941-2400
Contemporary Hawaiian
 Aku 6:30-9:30pm
Cheesecake Factory 924-5001
Live Contemporary
 Johnny Helm Duo 8-11pm
 Kaimi Duo (6/16, 6/23, 6/30)
Dave & Busters 589-2215
Pau Hana Fridays Live Local Bands
 Varying Hawaiian Artists 6-8pm
Duke's Canoe Club Waikiki 922-2268
Live Contemporary Hawaiian
 Maunalua 4-6pm
 Kona Chang Duo (6/2) 9:30 -12am
 Christian Yrizzary Duo (6/9) 9:30 -12am
 Solid Rock Duo (6/16) 9:30 -12am
 Kevin & Stan (6/23) 9:30 -12am
 Brown Sugar Eyes (6/30) 9:30 -12am
Hard Rock Cafe 955-7383
Live Contemporary
 The Fresh Preps 10-12am
House Without a Key 923-2311
Live Hawaiian & Hula by Kanoe Miller
 Hiram Olsen Trio 5:30 - 8:00pm
Hula Grill 923-HULA
Aloha Friday Lunch Luau with hula dancer
 David Asing 12:30-2:30pm
 Keoki & Russell 7-9pm
Hy's Steak House 922-5555
Live Soft Contemporary
 Audy Kimura 6:30-10pm
Japengo Steak & Seafood 923-1234
Contemporary, Pop, Rock
 Joanna G 5 - 9pm
Kani Ka Pila Grille 924-4992

IL LUPINO
 TRATTORIA & WINE BAR

15% OFF
 If Lupino is pleased to extend a 15% discount to all Cowiengos. Must show your work I.D. Not applicable on liquor specials.

ROYAL HAWAIIAN CENTER • VALIDATED PARKING
 breakfast • lunch • happy hour • afternoon tea • dinner
 ilupino.com • @ilupino • #ilupino • 808.922.3400

Let's be Together...

DINING ▸ ENTERTAINMENT ▸ PAU HANA ▸ EAT ▸ DRINK ▸ BE MERRY ▸ HAPPY HOUR

Live Hawaiian Contemporary
 Christian Yrizzary 4:30-5:30pm
 Ka Hehena 6:30-9:30pm
LBL at the Hilton Waikiki Beach Hotel 922-0811
Live Contemporary Pop/Rock
 Sunway 6-9pm
LuLu's 926-5222
Live Contemporary
 Glenn Domingo 6-9pm
Lewers Lounge 923-2311
Live Contemporary Jazz
 Maggie Herron & Rocky Holmes 8:30-12:30am
Mahina & Sun's 923-8882
Slack Key Poolside on the Lanai
 Jeff Rasmussen 7-9pm
Mai Tai Bar at the Royal Hawaiian 923-7311
Live Contemporary Hawaiian with Hula Dancer
 Kapala Duo 6:30-9:30pm
Maui Brewing Company 843-2739
Live Contemporary Hawaiian
 GT & Shawna 4-6pm
 Root Hub 6:15-8:15pm
 Kai Roots Duo 8:30-11pm
Michel's at the Colony Surf 923-6552
Live Slack Key Stylings & Jazz
 Jeff Peterson & Ernie Provencher 6:30-10pm
Roy's Hawaii Kai 396-7697
Keyboardist
 Brian Robert Shaw 6:30-9:30pm

Roy's Ko Olina 676-7697
Slack Key Guitar
 Chris Rego 5:30-8pm
Rumfire 921-4600
Solo Contemporary Guitarist
 Tim Rose 5-8pm
Signature Prime Steak 949-3636
Contemporary Pianist in the bar
 Grant Carvalho 6-9pm
Sky Waikiki 979-7590
Live Contemporary
 John Akapo 5-8pm
The Edge at the Sheraton 921-4600
Live Hawaiian music with a firedancer at 7:30 p.m.
 Delima Ohana Duo 6:30-8:30pm
The Study at the Modern 943-5800
Live Contemporary Hawaiian
 Tahiti Rey 6:30-9:30pm
Tiki's Grill & Bar 923-TIKI
Live Contemporary Hawaiian
 Randy Allen 5-7pm
 Vaihi 7:30-9:30pm
 The Kristi Masuhara Band 10:30-midnight
Tommy Bahama Restaurant 923-8785
Live Contemporary Hawaiian
 Chris Murphy 6-9pm
Tropics Bar & Grill 949-4321
Live Contemporary Hawaiian
 Nohelani Cypriano 8-10:30pm

Live Soft Contemporary
 Audy Kimura 6:30-10pm
Japengo Steak & Seafood 923-1234
Contemporary, Pop, Rock
 Dave Toma 5-9pm
Kani Ka Pila Grille 924-4992
Live Contemporary Hawaiian
 Donald Kaulia (6/3) 4:30-5:30 pm
 Alx (6/10) 4:30-5:30 pm
 Kamakakehau (6/17) 4:30-5:30 pm
 Chris Mercado (6/24) 4:30-5:30 pm
 Kamakakehau (6/3) 6:30-9:30pm
 Manoa DNA (6/10) 6:30-9:30pm
 Kuana Torres Kahele (6/17) 6:30-9:30pm
 Puuloa (6/24) 6:30-9:30pm
LBL at the Hilton Waikiki Beach Hotel 922-0811
Live Contemporary Blues & R&B
 Tahiti Rey 6-9pm
Lewers Lounge 923-2311
Live Contemporary Jazz
 Maggie Herron & Rocky Holmes 8:30-12:30am
LuLu's 926-5222
Live Contemporary Hawaiian
 Kamaka 6-9pm
Mahina & Sun's 923-8882
Soul Poolside on the Lanai
 Maryanne Ito 7-9pm
Mai Tai Bar at the Royal Hawaiian 923-7311
Live Contemporary Hawaiian with Hula Dancer
 Kapala Duo 6:30-9:30pm
Maui Brewing Company 843-2739
Live Contemporary Hawaiian
 Dave Watanabe 4-6pm
 Tim Rose 6:15-8:15pm
 Local Uprising 8:30-11pm
Michel's at the Colony Surf 923-6552
Live Contemporary Slack Key & Jazz
 Jeff Peterson 7-11pm
Roy's Hawaii Kai 396-7697
Acoustic Guitar
 Jimmy Funai 6-9:30pm
Roy's Ko Olina 676-7697
Slack Key Guitar
 Chris Rego 5:30-8pm
Rumfire 921-4600
Solo Contemporary Guitarist
 Sean Cleland 5-8pm
Signature Prime Steak 949-3636
Contemporary Pianist in the bar
 Grant Carvalho 6-9pm
Sky Waikiki 979-7590
Live Contemporary
 John Akapo 6-9pm
The Edge at the Sheraton 921-4600
Live Hawaiian music with a firedancer at 7:30 p.m.
 Tino Jacobs Duo 6:30-8:30pm
Tiki's Grill & Bar 923-TIKI
Live Contemporary Hawaiian & Reggae
 Johnny Helm 5-7pm
 Guidance (or others) 7:30-9:30pm
 Ellsworth & Piko 10-midnight
Tommy Bahama Restaurant 923-8785
Live Contemporary Hawaiian
 Chris Murphy 6-9pm
Tropics Bar & Grill 949-4321
Live Contemporary Hawaiian

SATURDAY

Barefoot Beach Café at Queen's Beach 924-2233
Beach BBQ with Live Contemporary Hits
 Johnny Kukui 5:30-8:30pm
Bin1901 at the Moana 921-4600
Piano Wine Bar
 Scott Smith 6:30-9:30pm
Chart House Waikiki 941-6660
Live Contemporary Hawaiian
 Tito Berinobis & Billy Beimes 7-12pm
Cheeseburger Waikiki 941-2400
Contemporary Hawaiian
 Sean Cleland 6:30-9:30pm
Cheesecake Factory 924-5001
Classic Hawaiian
 Dennis McClees Duo 8-11pm
Duke's Canoe Club Waikiki 922-2268
Live Hawaiian Entertainment
 Kapena (6/3) 4-6pm
 Vaihi (6/10) 4-6pm
 Beach 5 (6/17) 4-6pm
 Kailua Bay Buddies (6/24) 4-6pm
 Mike Tulba Duo (6/3) 9:30-12am
 Tavana (6/10) 9:30-12am
 Camarillo Brothers (6/17) 9:30-12am
 Jai Rodgers Duo (6/24) 9:30-12am
Hard Rock Cafe 955-7383
Live Contemporary
 Piranha Brothers 10-12am
House Without a Key 923-2311
Hawaiian & Hula by Kanoe Miller
 Hiram Olsen Trio 5:30 - 8:00pm
Hula Grill 923-HULA
Live Traditional Hawaiian with dancer
 Kaipo Dabin & friends 7-9pm
Hy's Steak House 922-5555

Live Contemporary Hawaiian
 Dave Watanabe 4-6pm
 Tim Rose 6:15-8:15pm
 Local Uprising 8:30-11pm
Michel's at the Colony Surf 923-6552
Live Contemporary Slack Key & Jazz
 Jeff Peterson 7-11pm
Roy's Hawaii Kai 396-7697
Acoustic Guitar
 Jimmy Funai 6-9:30pm
Roy's Ko Olina 676-7697
Slack Key Guitar
 Chris Rego 5:30-8pm
Rumfire 921-4600
Solo Contemporary Guitarist
 Sean Cleland 5-8pm
Signature Prime Steak 949-3636
Contemporary Pianist in the bar
 Grant Carvalho 6-9pm
Sky Waikiki 979-7590
Live Contemporary
 John Akapo 6-9pm
The Edge at the Sheraton 921-4600
Live Hawaiian music with a firedancer at 7:30 p.m.
 Tino Jacobs Duo 6:30-8:30pm
Tiki's Grill & Bar 923-TIKI
Live Contemporary Hawaiian & Reggae
 Johnny Helm 5-7pm
 Guidance (or others) 7:30-9:30pm
 Ellsworth & Piko 10-midnight
Tommy Bahama Restaurant 923-8785
Live Contemporary Hawaiian
 Chris Murphy 6-9pm
Tropics Bar & Grill 949-4321
Live Contemporary Hawaiian

Odori-ko
 Introducing Our New
CONCIERGE REFERRAL PROGRAM
 Receive \$1 credit for each guest you refer for lunch
 and \$2 credit for each guest you refer for dinner.
 Odori-ko gift certificates will be mailed out monthly
 or when you reach twenty (20) guests. Please email
concierge.odoriko@gmail.com
 to find out more and register to participate!
 We look forward to partnering with you and
 providing your guests with the best Japanese
 food and friendly, hospitable service!

call & ask us
 about free taxi
 for your guests
 (w/ from waikiki)
 with minimum
 purchase!

1680 Kapiolani Boulevard (same bldg as 24 hr fitness)
 lunch • happy hour • dinner • late night
odoriko.com • @odoriko • #odorikokapiolani

E Pili Kākou

DINING ▶ ENTERTAINMENT ▶ PAU HANA ▶ EAT ▶ DRINK ▶ BE MERRY ▶ HAPPY HOUR

Henry Kaponu	4-6pm	
Juke Joint	6:30-9:30pm	
SUNDAY		
Barefoot Beach Café at Queen's Beach	924-2233	
<i>Contemporary Hawaiian</i>		
Paul Wilcox	11am-2pm.	
Chart House Waikiki	941-6660	
<i>Live Contemporary Hawaiian</i>		
Dean & Dean	6-9pm	
Cheesecake Factory	924-5001	
<i>Classic Hawaiian</i>		
Chris Murphy Duo	8-11pm	
Duke's Canoe Club Waikiki	922-2268	
<i>Live Hawaiian Entertainment</i>		
Henry Kaponu	4-6pm	
Kapena Delima Duo (6/4)	9:30-12am	
Typical Hawaiians (6/11)	9:30-12am	
Chris Mercado (6/18)	9:30-12am	
Derrick Lee Duo (6/25)	9:30-12am	
Hard Rock Cafe	955-7383	
<i>Live Contemporary</i>		
Analog (or others)	9-11pm	
House Without a Key	923-2311	
<i>Live Hawaiian & Hula by Debbie Nakanelua</i>		
Pa'ahana	5:30 - 8:00pm	
Hula Grill	923-HULA	
<i>Live Traditional Hawaiian with dancer</i>		
Art Kalahiki Duo	7-9pm	
Japengo Steak & Seafood	923-1234	
<i>Contemporary, Pop, Rock</i>		
Jon Basebase	5 - 9pm	
Kani Ka Pila Grille	924-4992	
<i>Mele Mai Sunday</i>		
Brother Noland (6/4)	6:30-9:30pm	
Waimanalo Sunset Band (6/11)	6:30-9:30pm	
Maunialua (6/18)	6:30-9:30pm	
Melveen Leed (6/25)	11am -1 pm	
Waipuna (6/25)	6:30-9:30pm	
Kelley O'Neil's	926-1777	
<i>Live Irish Music</i>		
Various Celtic Bands	4-7pm	
LBLE at the Hilton Waikiki Beach Hotel	922-0811	
<i>Live, Energetic Mix of Pop and Rock Hits</i>		
Maryann Ito	6-9pm	
Lewers Lounge	923-2311	
<i>Live Contemporary & Light Jazz</i>		
Noly Pa'a	8:30pm - 12am	
LuLu's	926-5222	
<i>Acoustic R&B</i>		
Jason Laeha	6-9pm	
Mahina & Sun's	923-8882	
<i>Live Jazz on the Lanai</i>		
Jegaan Faye	7-9pm	
Mai Tai Bar at the Royal Hawaiian	923-7311	
<i>Live Contemporary Hawaiian with Hula Dancer</i>		
Eric Lee Duo	6:30-9:30pm	
Maui Brewing Company	843-2739	
<i>Live Contemporary Hawaiian</i>		
Kai Roots Duo	4-6pm	
Sonny Kapu	6:15-8:15pm	
Scott Magz & Brady K	8:30-11pm	
Michel's at the Colony Surf	923-6552	
<i>Classical Slack Key & Jazz Stylings</i>		
Jeff Peterson	6-9pm	
Roy's Ko Olina	676-7697	

<i>Slack Key Guitar</i>		
Chris Rego	5:30-8pm	
Rumfire	921-4600	
<i>Live Contemporary Hawaiian</i>		
Kamuela Kahoano	5-8pm	
Signature Prime Steak	949-3636	
<i>Contemporary Pianist in the bar</i>		
Isao Motomochi	6-9pm	
Sky Waikiki	979-7590	
<i>Live Contemporary</i>		
Da Push-O-Verse	6-9pm	
The Edge at the Sheraton	922-4422	
<i>Live Hawaiian music with a fire dancer at 7:30 p.m.</i>		
Ellsworth Simeona Duo	6:30-8:30p	
The Study at the Modern	943-5800	
<i>Live Contemporary Hawaiian & Jazz</i>		
Jeremy Cheng	6-9pm	
Smooth Jazz (varying artists)	10-2am	
Tiki's Grill & Bar	923-TIKI	
<i>Live Contemporary Hawaiian</i>		
Kapu the Band	2:30 - 5:30pm	
Vaihi	6-8pm	
Ellsworth & Piko	9-11pm	
Tommy Bahama Restaurant	923-8785	
<i>Live Contemporary Hawaiian</i>		
Johnny Helm	6-9pm	
Tropics Bar & Grill	949-4321	
<i>Live Contemporary Rock & Hawaiian</i>		
Mike Piranha	5:30 - 8:30pm	
Uncle's Fish Market & Grill	275-0063	
<i>Live Slack Key</i>		
Jeff Peterson	5:30-8:30pm	

Dining Dish



Chef Mavro is undoubtedly one of Oahu's best restaurants. It has earned AAA Five Diamond status every year since 2008, and is known for its fabulous cuisine, excellent wine list, and its price point. An evening with Chef Mavro will delight your senses, but put a serious dent in your wallet. That is, until now. Previously, guests could only order from set menus that started over \$100 (before wines), and frankly, that prevented a lot of people from coming unless they were willing to splurge. But last month, Chef launched an extensive small plates menu, allowing almost any sized wallet the capability of trying some of Chef's mouthwatering cuisine. The plates are made to share and start as low as \$15. A couple could easily come in, order an appetizer, a salad course and an entree and walk out satisfied for under \$100. Many of the items on the menu are the same as one would find on Chef's Degustation menu. His Peterson Farm Egg with Yukon potato, San Danielle prosciutto and poutargue for \$18 is a delicious example. I was a huge fan of the Foie Gras Parfait (\$22) with celery, basil blossoms and Sauternes glaze and the Day-Boat Snapper Bourride (\$31) with fennel onion, tomato and aioli. There are also a handful of sides available (\$12) desserts (\$9-\$18). At the end of the Small Plates menu you will also find one very special big plate to share. Chef Mavro's famous salt-crusted

onaga (\$140). For those looking for the full Mavro experience never fear. They still offer the 9-course Degustation menu (\$175) with optional wine pairings. If you haven't been to the restaurant lately, this is as good as time as any to go back and rediscover the culinary destination that is Chef Mavro. See the new menu at chefmavro.com. 944-4714. • **Hoku's** is bringing back some of their classic dishes such as Hawaiian Salt & Herb Crusted Colorado Rack of Lamb and Hoku's Loco Moco to complement their new Summer menu which includes Big Island Abalone Brick Pastry & Grilled Hokkaido Scallop and Bouillabaisse to name a few. Check out their new 5-course prix fix menu for only \$75. 739-8760. • **Roy's Waikiki** introduced a new 3-course sunset menu for only \$46. Guests will enjoy a trio of poke, followed by a petite filet & garlic shrimp with spaetzle "mac & cheese," asparagus and their famous chocolate soufflé for dessert. The menu is offered from 5 to 6 p.m. daily. 923-7697. • **Scratch Kitchen and Meatery** has opened in Ward Village's South Shore Market. Mixing up the menu of the highly popular Scratch Kitchen and Bakery in Chinatown, the menu centers around a variety of house-cured meats and is inspired by Southern fare. The location will soon include an in-house butcher and a deli case offering charcuterie. Hours are currently 9:30 a.m. to 3 p.m. on weekdays, and 7:30 a.m. to 3 p.m. on Saturdays & Sundays. They expect to offer dinner service later this month. 589-1669. • **Nobu Honolulu** is now offering lunch from 11:30 a.m. - 2 p.m. every Friday, Saturday and Sunday at their new Ward location in Waiea Tower. 237-6999. • **Chef Jon Matsubara** has introduced a new Happy Hour menu at **Forty Carrots** from 3 - 6 p.m. daily. Choose from a half dozen pupu from \$3-\$6 including Mushroom Tartine or Grilled Garlic Shrimp, \$7 drinks, \$6 wines and \$4.5 beers. 800-3638. • **12th Avenue Grill** celebrates their 13th anniversary this month by completing their collection of Private Label Wines. They will also be hosting two wine dinners and an Aged Japanese Whisky Tasting to round out the month. 732-9469. • **Okonomiyaki Chibo** is running a special "Tako" Tuesday, promotion through June, offering 20% off all Octopus Dishes on Tuesday. 922-9722.

~ Pam



Dining Calendar

June 7: *Beachhouse* offers a Grgich Hills Estate Wine Dinner. 5 dishes paired. 6:30 p.m. \$125. 922-3111.

June 9: *Westin Moana* presents #LoveofLibations, their interactive beverage event. This month's theme is Cocktails & Cacti. Guests will enjoy drinks, pupu and decorate a take home tabletop succulent terrarium. \$75. Vintage 1901. 5:30 - 7 p.m. 921-4600.

June 20: *Tiki's Grill & Bar* offers a Niner Wine Estate Dinner. 6 courses by Chef Ronnie Nasuti. Winemaker Patrick Muran pairs. 6 p.m. \$95 inclusive. 923-8454.

JUNE CALENDAR OF EVENTS

Continuing Events

**MONDAY – FRIDAY
LYON ARBORETUM TOURS**

The lush gardens at the top of the University of Hawai'i Manoa are open for guided tours daily. Knowledgeable guides will introduce the highlights of the botanical rainforest's 193.6 acres. Reservations required. Limit of 12 participants daily. Donations accepted. 988-0461.

**MONDAY-FRIDAY
FOSTER BOTANICAL GARDENS**

Guided garden tours of rare and beautiful plants from tropical regions throughout the world. Foster Botanical Gardens, 50 N. Vineyard. 1 p.m. Adults: \$5. Reservations recommended. 522-7066.

**TUESDAYS
TOURS OF THE HAWAII THEATRE**

Get a behind-the-scenes tour of this historic theatre including history, architecture, and a performance on the 1922 Robert Morton theatre organ. Hawaii Theatre. 11 a.m. – 12 p.m. \$10. 528-0506.

TUESDAYS • KU HA'AHEO
An afternoon of music and hula led by kumu hula Blaine Kamalani Kia. Waikiki Beach Walk, Plaza Lawn. 4:30–6 p.m. waikikibeachwalk.com. FREE.

TUESDAYS • KCC FARMERS MARKET
The Saturday Market was so popular they added another day. Head up to Kapiolani Community College to stock up on fresh, island produce, seafood, flowers and more, from several dozen vendors. 4–7 p.m. Free. 848-2074.

**TUESDAYS & THURSDAYS
FRESH FARMERS MARKET AT THE HYATT**
Due to its overwhelming success, the Hyatt has added another day of their popular Farmers Market for visitors and locals to stock up on fresh local organic fruits, vegetables, jams, honeys, baked goods and more. Stop by twice throughout the ground floor of the Pualeilani Atrium Shops. 4–8 p.m. Waikiki.hyatt.com.

**TUESDAYS, THURSDAYS & SUNDAYS •
TOUR AND TEA AT THE HONOLULU
ACADEMY OF ARTS**
Tours are led by volunteer docents and designed for visitors, who would like to explore the galleries, learn

more about art and culture, and socialize over a cup of tea. Docents lead discussions in the galleries and offer insight into many cultures and time periods. 2:30 – 4 p.m. in selected galleries. Free with admission. Reservations required. 532-8700.

**TUESDAY – SATURDAY
HAWAIIAN MISSION HOUSES GUIDED TOURS**
Visit the Print Shop, coral block Chamberlain House, and 1821 Mission House and learn about the 19th century history and culture preserved at this historic site. Docent-led tours of the historic houses begin on the hour, every hour from 11 a.m. for \$8 - \$10. No charge for the self-guided tour of the grounds. Hawaiian Mission Houses. Tues. – Sat. 10 a.m. - 4 p.m. 447-3910 or missionhouses.org.

**THIRD WEDNESDAY (JUNE 21)
KONA NUI NIGHTS**
Kona Nui Nights honors and highlights Hawaiian language and music, as well as the art of hula on the third Wednesday of every month with food and drinks for sale. Free. Ward Village Information Center Courtyard. 6-8 p.m. wardvillageshops.com.

**SECOND THURSDAY (JUNE 8)
COURTYARD CINEMA**
Ward Village hosts its monthly film series event, Courtyard Cinema, on the 2nd Thursday of each month. The showing features free popcorn, refreshments, food vendors and entertainment. Courtyard Cinema is free and open to the public. Seating is limited. Reserve your tickets at wardvillagecourtyardcinema.com.

THURSDAYS • COURTYARD YOGA
Take a complimentary yoga class with CorePower Yoga at the Ward Village Information Center Courtyard. Open to the first 50 in attendance. All experience levels welcome. 5:30 – 6:30 p.m. For more information visit wardvillageshops.com/yoga.

**THIRD THURSDAY (JUNE 15)
DOWNTOWN GALLERY WALK & CRAFT FAIR**
The Arts at Marks Garage continues to build on downtown activities offering execs an excuse to hang out after work and giving everyone else a reason to head downtown. Free. 521-2903. artsatmarks.com.

FRIDAYS • CULTURAL CRAFT FAIR
The Hyatt's weekly Farmers Market are so successful that they are applying the same principle to local craft items. Each week the craft fair will feature local vendors featuring arts & crafts, jewelry, Photography, woodwork and more. 3-7 p.m. Waikiki.hyatt.com

**FIRST FRIDAY (JUNE 2)
DOWNTOWN GALLERY WALK & CRAFT FAIR**
Art lovers should head to downtown Honolulu the first Friday of each month. This event has exploded into a downtown party with galleries and studios open for exhibitions, artist demonstrations, and special performances. 23 galleries and art-related retail shops, restaurants and museums participate. Downtown Honolulu/ Chinatown. 6–9 p.m. Free. 521-2903 or artsatmarks.com.

**FINAL FRIDAY (JUNE 30)
ART AFTER DARK**
The hippest event in town celebrates everything French this month with "The French Paradox." Enjoy a night of French art, food, and fun. artafterdark.org.

SATURDAYS • KCC FARMERS MARKET
Fresh island produce, seafood, flowers and more are available from over two-dozen vendors at Kapiolani Community College. Free. 7:30-11 a.m. 848-2074.

**SATURDAYS
PEARLRIDGE FARMERS MARKET**
Over 40 vendors offering locally grown fruits and vegetables, plants and freshly made treats. A pop-up cafe offering seating and live music round out the day. Free. 8 a.m. - noon. PearlridgeOnline.com.

**SATURDAYS
KAKA'AKO FARMERS MARKET**
The Kaka'ako Farmer's Market hosts an abundance of treats from around our islands. Located between Ward and Kamakee Streets, Free. 8 a.m. - 12 p.m. 388-9696 or haleiwafarmersmarket.com.

**SECOND SATURDAY (JUNE 10)
DOWNTOWN GALLERY WALK & CRAFT FAIR**
First Friday has become such a success that events carry over to the second Saturday. HiSAM, 11 a.m. – 4 p.m. 586-9958. Other events around downtown Honolulu all afternoon including slam poetry and open mic events at The Arts at Marks from 3 -5 p.m. Free. 521-2903 or artsatmarks.com.

**SATURDAYS & SUNDAYS
ART ON THE ZOO FENCE**
More than 35 local artists display their works on the Zoo fence on Monsarrat Avenue opposite the Kapiolani Park Bandstand. Works for sale include original paintings, prints and photographs. 9 a.m. – 4 p.m. Free. aronthezoo fence.com.

**SECOND SUNDAY (JUNE 11)
FREE ADMISSION TO IOLANI PALACE**
On the second Sunday of each month, Iolani Palace opens its doors to kama'aina guests to visit the historic landmark for free. iolanipalace.org. (note: the palace will be closed on 5/29 in honor of Memorial Day)

**SUNDAYS (JUNE 4 & 18)
NA MELE NO NA PUA SUNDAY SHOWCASE**
Waikiki Beach Walk presents the slack key sounds of Jeff Rasmussen on June 4th and Kapena on the 18th at the Plaza Stage from 5 – 6 p.m. waikikibeachwalk.com.

**THIRD SUNDAY (JUNE 18)
BANK OF HAWAII FREE SUNDAY**
The Honolulu Museum of Art opens its doors to the public free of charge on the third Sunday of every month thanks to Bank of Hawaii. Lots of activities for kids and grown-ups alike. 11 a.m. - 5 p.m. Free. 532-8700.

**JUNE 2
HAWAII FOOD & WINE LAUNCH EVENT**
Enjoy top tier wines such as Caymus and Opus One paired with plenty of seafood, food and fireworks at Cuisines of the Sea as they launch #HFWF17. Ten chefs will prepare delicious plates as they announce this years line-up of world-class chefs, winemakers and mixologists. Tickets: \$175. 6 - 9 p.m. The Kahala Hotel & Resort. HFWFme.

JUNE 2 • WE THE KINGS
Best known for their platinum single "Check Yes Juliet", as well as hit singles "Heaven Can Wait", "She Takes Me High", and "We'll Be a Dream" (featuring Demi Lovato). Tickets: \$29. 8 p.m. The Republik. bampproject.com.

JUNE 3 • UKULELE JAM SESSION
Bring your own ukulele or just sit back and enjoy the music as members of the Ukulele Guild of Hawaii host a one-hour jam session. Free with Museum admission. Bishop Museum. 10 – 11 a.m. bishopmuseum.org.

JUNE 3-4 • BIGGEST LITTLE AIRSHOW
Pearl Harbor's annual Biggest Little Airshow is back for its tenth year. This year's event will pay tribute to

BACKDOOR SOCIAL CAFE

"I like it best at night, when the city skyline sparkles under starry skies and live music is offered. The best part is it is incredibly peered...and the food is absolutely delicious...a hint of Hawaiian culture along with fantastic views and flavors!"
—Lisa Dalton, Travel Advisor (Cavanaugh, VA)

Casual Beachfront Dining
Open Daily 7am - 8:30pm
Live Music Nightly 5:30-8:30pm

THE MENU, CALENDAR, INFO
Backdoor Social Cafe, LLC
813.924.5533 (CAPE)

JUNE CALENDAR OF EVENTS

the 75th anniversary of the Battle of Midway as this annual remote control airshow offers plenty of aerial acrobatics to enjoy. Enjoy food, drink, musical performances, actual aircraft flyovers, aircraft static displays, hangar tours and more. Ford Island. Admission is \$5 per person, \$15 per family (limit 6 entries). Free with Museum general admission. 10 a.m. – 4 p.m. PacificAviationMuseum.org.

JUNE 8 • FELLY

Felly, also known as Rob Fel or Felly the Kid, is a rapper and producer who gained fame posting videos of him producing his songs on his YouTube channel. His first full album was released in 2014 on SoundCloud. Tickets: \$20. 8 p.m. The Republik. bampproject.com.

JUNE 9 KING KAMEHAMEHA LEI DRAPING

The King Kamehameha statue, located across the street from the Iolani Palace fronting, Aliiolani Hale will be draped with multiple 30-foot long floral lei during a special ceremony at 3:30 p.m. hawaii.com/kamehamehaday

JUNE 9-11 THUNDER FROM DOWN UNDER

Those sexy Aussie Boys are back for three nights of bachelorette fun! Don't miss this rare opportunity for a true girls night out (boys welcome of course, if they so desire). Tickets: \$39.50 - \$59.50. The Republik. bampproject.com.

JUNE 9-11 PAN-PACIFIC FESTIVAL

The 38th annual Pan-Pacific Festival, which celebrates the cultural traditions of Hawaii, the Pacific Rim and around the world, will take place over three days at various locations around town including a Ho'olaule'a on Friday night from 7 – 10 pm and a parade on Sunday from 5 – 7 p.m. that will close down Kalakaua Avenue to vehicular traffic. See cover story. pan-pacific-festival.com.

JUNE 9-18 • PAINT BY NUMBERS

The IONA dancers become human paintbrushes and pallets, beginning the evening in the midst of a white void of a blank masterpiece-to-be. As the dynamics pick up, the white floor canvas comes alive with a new dimension of movement and color complemented and commanded by live music from Quadraphonix (you know.. Shree's band!) 11 dancers, 10 gallons of paint, and live music makes for an unforgettable evening. Nightly, 8 p.m. Ward Gateway Center. Tickets: \$35 in advance, \$40 at the door. iona360.org.

JUNE 10 • KING KAMEHAMEHA FLORAL PARADE & HO'OLAULE'A

The 101st Annual King Kamehameha Floral Parade and Ho'olaule'a. The parade starts at the Iolani Palace at 9 a.m. and ends at Kapiolani Park around 11 a.m. A huge Ho'olaule'a takes place in the Park immediately following the parade from 10 a.m. to 4 p.m.

**JUNE 10 - 11
HALEKULANI MASTERWORKS SEASON FINALE**
Legendary pianist André Watts will perform Rachmaninoff's Piano Concerto No. 2 in the final concert of the season, conducted by Naoto Otomo. Saturday at 7:30 p.m. and Sunday at 4 p.m. Blaisdell Concert Hall. Tickets: \$34-\$92. hisymphony.org.

JUNE 11 GAY MENS CHORUS

Join the Gay Men's Chorus of Honolulu for a closer look at the music from Hawaii to Broadway as they present "Let's Be Perfectly Queer." Hawaii Theatre. 5:30 p.m. \$20-\$50. hawaiitheatre.com.

JUNE 11 • ALII SUNDAY

Kawaiahaio Church celebrates select Hawaiian Royalty (Alii) who are of particular importance for the Church by holding seven special Sunday services in their honor around their birthdays throughout the year. Today they celebrate Kamehameha Ekahi. 9 a.m. kawaiahaio.org.

JUNE 14 • KAPENA KICKS OFF THE WILDEST SHOW IN TOWN SUMMER SERIES

Kapena is the first artist for this years version of Wildest Show in Town concert series. Every Wednesday through August 16th, some of the Islands best entertainers perform at the Honolulu Zoo for only \$5. Gates open at 4:35 p.m., mini-guided tours offered to the first 30 people at 5:25 p.m. Music starts at 6 p.m. No alcohol or high-back chairs allowed. Plate lunches for sale and there will be a weekly 'ukulele giveaway for kids aged 12 and under. HonoluluZoo.org.

JUNE 15 • KE NANI O KE KAI RETURNS WITH JERRY SANTOS

The Waikiki Aquarium is kicking off their summer concert series. The five-concert event will be held every other Thursday through August 10th. The series begins with a performance by Jerry Santos & Kamuela Kimokeo, Hot Club of Hulaville, and Osorio Ohana. Doors open at 5:30 p.m., concert begins at 7 p.m. Tickets \$50, \$20 for kids 5-12. waikikiaquarium.org.

JUNE 17-18 HONOLULU BBQ & BLUES FESTIVAL

After a sold-out inaugural event, it is no surprise this event is returning for round two. Featuring Pitmaster Myron Mixon, the man who has won more barbecue competitions than anyone else in the world and is the host of "Smoked," the event kicks off with special cooking classes by Mixon on Friday. Cost is \$250. On Saturday everyone is invited to a huge BBQ on the Great Lawn. \$35 admission (\$50 VIP) includes one food item (and a drink for VIPS). Discounted rates for all military. Live music and additional food and beverage items available for purchase. 5 - 9 p.m. hiltonhawaiianvillage.com/bbq or 947-7955.

JUNE 16-17; 23-24 CEMETERY PUPU THEATRE

Hawaiian Mission Houses brings back their popular Cemetery Pupu Theatre Production, where else but in the historic Oahu Cemetery. Entitled "Yesterday's News" focuses on when literacy by Hawaiians gave rise to an important role for newspapers. Follow characters such as editor of the first Hawaiian language newspaper. Doors open at 5 p.m. show begins at 6 p.m. \$55 includes pupu and 2 drink tickets. A "talk back" session follows each performance. 447-3926 or missionhouses.org.

**JUNE 21
THE WILDEST SHOW IN TOWN: ROY SAKUMA**
The Wildest Show in Town continues with Roy Sakumi Super Keiki, some of the Islands best entertainers perform at the Honolulu Zoo for only \$5. Gates open at 4:35 p.m., mini-guided tours offered to the first 30 people at 5:25 p.m. Music starts at 6 p.m. No alcohol or high-back chairs allowed. Plate lunches for sale and there will be a weekly 'ukulele giveaway for kids aged 12 and under. HonoluluZoo.org.

JUNE 23 MELISSA MANCHESTER AND ORCHESTRA

Melissa Manchester performs with the Citrus College Orchestra in this benefit-concert a benefit for Susan G. Komen for the Cure in the legendary Monarch Room. 8 p.m. Royal Hawaiian Hotel. \$55-\$200. honoluluboxoffice.com.



JUNE 28 THE MAINE

2010 Album and Song of the year winners, The Maine come to the Republik for one night only. Tickets: \$25. 8 p.m. The Republik. bampproject.com.

**JUNE 28
THE WILDEST SHOW IN TOWN: MANOA DNA**
The Wildest Show in Town continues this week with Manoa DNA. Every Wednesday through August 16th expect the Islands best entertainers to perform at the Honolulu Zoo for only \$5. Gates open at 4:35 p.m., mini-guided tours offered to the first 30 people at 5:25 p.m. Music starts at 6 p.m. No alcohol or high-back chairs allowed. Plate lunches for sale and there will be a weekly 'ukulele giveaway for kids aged 12 and under. HonoluluZoo.org.

JUNE 29 • MAE
American rock band MAE brings their Multi-sensory Aesthetic Experience to the Republik. Tickets: \$25. 8 p.m. The Republik. bampproject.com.

JUNE 29 • STREETLIGHT CADENCE & HOKU ZUTTERMEISTER AT THE AQUARIUM
The Waikiki Aquarium's Ke Nani O Ke Kai continues with a performance from Streetlight Cadence, Hoku Zuttermeister, and Kalani Pea. Doors open at 5:30 p.m., concert begins at 7 p.m. Tickets \$50, \$20 for kids aged 5-12. waikikiaquarium.org

**JUNE 30
EVERCLEAR IN CONCERT**
90s rock band Everclear that first hit the scene with their song "Father of Mine." Vertical Horizon & Fastball will open the show. Tickets: \$46 - \$225 for the Ultimate VIP Meet & Greet package. 8 p.m. The Republik. bampproject.com.

BEST OF KAUAI NEW!

One Day Helicopter+Land Combo

Fly to Kauai, see the island by land & helicopter, return to Oahu in a single day!

Gray Line
POLYNESIAN ADVENTURE TOURS

Booking your Gray Line Hawaii Tour is Easy!
808.833.3000

Pics from the 2017 Visitor Industry Charity Walk

On May 20th, over 6,000 people took the streets for the 39th annual Visitor Industry Charity Walk, raising roughly \$440,000 for Oahu charities. Thank you to everyone who sent in pictures for us to use.



KING KAMEHAMEHA

Continued from page 1.

The Statue

To commemorate the great leader, King David Kalakaua commissioned American sculptor Thomas Gould to create a statue of King Kamehameha I. Gould created the 9-foot-tall master-piece while living in Italy and sent it to Paris for bronzing. But on the journey from Paris to Hawai'i, the ship that was transporting the King's likeness was sunk in the Faulkland Islands. Insurance money allowed a second statue to be made from the preserved mold and arrived in Honolulu in 1883 to take its place at Ali'iolani Hale (the Hawaii Supreme Court Building) on King Street. Much to everyone's surprise, just weeks after its arrival, though, an English ship arrived with the salvaged original. Since a Kahuna (priest) had prophesized at its inception that the statue would only be happy in Kamehameha's birthplace, this original was sent to the town of Kapaa on the Big Island.

The Day

To honor King Kamehameha I, his grandson King Kamehameha V established June 11th as his day 145 years ago. This state holiday is celebrated in Honolulu and North Kohala by tributes to the great Ali'i including an elaborate flower lei decoration hung about his statues and a floral parade with floats, bands, mounted "pa'u" riders, and traditional hula.

Since 1998, the King Kamehameha Celebration has been held in conjunction with the Pan-Pacific Festival which adds even more pageantry and thousands of blossoms to the weekend's events. Many of the photos of King Kamehameha's famous bronze statue depict him standing majestically in front of Honolulu Hale display his figure in full floral splendor. This year marks the 101st year of

his birthday celebration and floral parade where thirty-foot leis sporting thousands of blooms are strung by hand on site and draped about the King's statue. The decoration ceremony takes place Friday afternoon with music and hula performances on the lawn. Saturday morning is also bursting with brilliant blooms as the annual King Kamehameha Celebration Floral Parade glides through town complete with flower-bedecked floats and saddled pa'u riders. An award ceremony will follow to honor the breathtaking floats created from fresh blooms and foliage. This unique parade is a must-see for festival goers with new floral creations every year.

Kamehameha Statue Lei Draping Ceremony

The King Kamehameha statue fronting Ali'iolani Hale will be draped with multiple 30-foot plumeria lei on Friday, June 9th, making for an amazing picture opportunity. The traditional lei draping of his statue usually begins with the Royal Hawaiian Band at 3 p.m in honor of the revered monarch. The ceremony itself takes place from 3:30 - 4 p.m. Loose plumeria flowers may also be dropped off at the statue between 7 a.m. - noon, and volunteers wanting to help string lei with the ladies of 'Ahahui Ka'ahumanu are welcome.

King Kamehameha Day Parade & Ho'oluale'a

The parade will start at 9 a.m. on Saturday, June 10th at Iolani Palace where it turns down onto Punchbowl Street, continuing down Ala Moana Boulevard into Waikiki and winds up at Kapi'olani Park, where a Ho'oluale'a will be ready by 10 a.m. and continue until 4 p.m. They are expecting over 6,000 marchers, 50 vehicles, 10 floats & 8 bands in this year's parade. (Keep in mind that Kalakaua will be closed quite a bit this weekend as it will be closed on Friday night for the Pan-Pacific Ho'oluale'a, this parade on Saturday and then for Pan-Pacific's parade on Sunday). Plan accordingly.



STRIPSTEAK



STEAKHOUSE REIMAGINED

Introducing Chef Michael Mina's evocative and modern steakhouse to your neighborhood, infused with the spirit of Aloha.

As a way to say Mahalo for your continued support, we're introducing...

—THE STRIPSTEAK WAIKIKI GUEST—
REFERRAL PROGRAM

For every 50 guests referred, STRIPSTEAK Waikiki will send you a \$100 Gift Card. To join the program please contact events@stripsteakwaikiki.com



PRIVATE DINING

StripSteak Waikiki is also available for private events, please contact: events@stripsteakwaikiki.com

Follow Us @StripSteakHI

StripSteak Waikiki at International Market Place
2330 Kalakaua Avenue, Suite 330 Honolulu, HI 96815
www.StripSteakWaikiki.com | 808.600.3094

Dying For Vacation

Reprinted with permission from the Honolulu Civil Beat

As we enter the height of the tourist season, it is as good as time as any to remember the tourists drowning in the Islands represents one of the highest rates of visitor drownings in the country. This five-part series was written in early 2016 by Nathan Eagle and Marina Riker for the Honolulu Civil Beat and received one of the top awards from a recent Society of American Business Editors and Writers contest. The national competition recognizes outstanding business stories. "Dying For Vacation" won the Airlines/Travel category for small publications. As space permits, we will reprint parts of each of the five chapters. One of the most important gifts you can give your guest, is advice to keep them and their family safe while in our Islands. It is so important to give our visitors appropriate safety information to help keep them safe. We all need to work together on this. To read the series in its entirety, please go to civilbeat.org and search for Dying for Vacation.

Chapter 1

Death In Paradise Is All Too Frequent For Visitors To Hawaii

Married 32 years, Jane and Bob Jones did a lot in life together. They raised a family, served those in need and traveled when they could.

They died together, too.

The Joneses drowned in Hawaii, on a vacation aimed at escaping wintry Washington state weather for sun and sand.

On a Friday last March, the couple decided to snorkel the azure waters of Hanauma Bay, a popular tourist destination a half-hour east of Honolulu. They were a few hundred yards from the beach in an area called Witches Brew. Witnesses said one of them got in trouble and the other tried to help. Lifeguards responded but it was too late.

A longtime social worker, Jane, 55, coordinated free medical clinics and advocated for the homeless. Bob, 60, a retired Army captain, was a volunteer firefighter and worked for the Troops to Teachers program that helps military personnel start new careers.

"They were real 'spark plugs' for the community, always looking for ways to serve the marginalized among us and working for justice," David Ammons, a fellow parishioner at Westminster Presbyterian, told *The Olympian* newspaper. "Together, they made a real difference."

The Joneses were not unlike others who have come to Hawaii for vacation, lured by the majesty and mystique conveyed by countless visitor publications, movies and magazines, songs and social media.

But like dozens of other visitors, the Joneses died in a manner that's becoming all too familiar in the islands.

Drowning is by far the leading cause of death for tourists in Hawaii and snorkeling is the most common activity that leads to visitor drownings.

State health department records over the past decade show that Hawaii's visitor-drowning rate is 13 times the national average and 10 times the rate of Hawaii residents.

Since July 2012, at least 147 visitors — nearly one a week on average — have died in Hawaii from injuries suffered while doing common tourist activities like swimming, snorkeling, hiking and going on scenic drives.

Many also have sustained serious injuries,

especially spinal cord damage.

The state, counties and tourism industry spend millions of dollars on lifeguards, warning signs, informational websites, safety videos and other strategies to keep people safe.

But a *Civil Beat* review of tourist deaths over the last three and a half years suggests safety is far from the top concern when it comes to the 8 million visitors who travel to the islands every year.

Hawaii lacks clear and consistent safety messages to target visitors before they arrive.

Although many visitors now use social media sites like Facebook, Twitter and other online sites to plan vacations and find activities, government officials and tourism industry leaders have done little to develop a social media presence that promotes safety.

Experts say the key to injury prevention is getting that message in front of visitors as many times as possible — whether it's through websites like Yelp! or in-flight videos and brochures in hotel rooms.

Yet, the Aloha State's drowning rate for visitors is so much higher than the national average. Hawaii's visitor drowning rate — 5.7 per 1 million visitor arrivals — dwarfs those in states like North Carolina and Florida, where drowning rates are .5 and .9 drownings per 1 million visitors, respectively.

"We've done a really, really good job of branding Hawaii. We've done a really good job of marketing and getting people here," said Jim Howe, a longtime ocean safety advocate.

"What I think is missing is that we oftentimes don't tell people about some of the issues that they may face when they get here, and how to either avoid those, No. 1, or if they find themselves in those circumstances, what to do."

"Social media and the Internet are the key players in this game right now," he said. "They're not going on guided tours, but they need that information."

Hawaii's unique ocean conditions can look deceptively mild to visitors. Experts say the physical characteristics found only in the Hawaiian Islands — the way the surf pounds and currents rip — often surprise visitors who were expecting the glassy waters seen on many postcards.

The state and counties put up signs warning of unsafe conditions — for instance, high surf or strong shore breaks — but mostly just at public beach parks. These signs are often ignored, and ocean safety experts say they don't go far enough to deter visitors from going into the water on dangerous days.

Safety advocates say the balance between promoting Hawaii to visitors and protecting them has tilted too far in favor of the tourism industry over the past few decades, but there's optimism that it can be leveled.

"There really is a sea change of attitude and kind of perspective that we feel is really timely right now," said Bridget Velasco, the state drowning and spinal cord injury prevention coordinator.

"Hawaii Tourism Authority has said we realize we are bringing people here and we need to keep them safe, and that's part of their mission now," she said. "Being able to partner with them is huge."

Please note the statistics quoted in this article were as of January 2016. Article has been edited for space.

Wildlife Guaranteed

See dolphins or turtles or come again free wildlife-specific cruises in Waikiki, West Oahu & Kona. Family-owned company with ocean activities for all ages.



WAIKIKI •
WAIANAЕ •
KONA
Sail • Snorkel •
Dolphins • Turtles
• Whales • Scuba •
Fireworks Dinner •
Private Charter •
Transportation

234-SAIL

(7245)

WE ANSWER 24 HOURS!

hawaiiinautical.com

HawaiiNautical



DISCOUNT HAWAII CAR RENTAL

SAVE UP TO 50%



GUARANTEED RESERVATIONS
* NO BOOKING FEES * NO
DEPOSIT * CANCEL ANYTIME
* NATIONAL RENTAL
COMPANIES

call us today @

1.800.292.1930

or check us out online:

DiscountHawaiiCarRental.com

WAIKIKI BAPTIST

Church

Your Church in Waikiki

424 Kuamo`o St

(Near the Ambassador Hotel)

Sunday Worship Services

9:00 AM - Contemporary

10:45 AM - Traditional

(808)955-3525

WaikikiBaptist.com

That's Entertainment

HOTELS

- HALE KOA HOTEL** 955-0555
 •**TuSat** - High and Right Comedy Show takes the stage at the Warriors Lounge at 8pm.
 •**MThFS** - Poolside music at the Barefoot Bar. 6-11pm
- HALEKULANI HOTEL** 923-2311
 •**Daily**-Hawaiian Music and hula at House Without A Key from 5:30-8pm.
 •**Daily**-Live Contemporary and light Jazz at Lewers Lounge from 8:30pm to midnite.
 •**Sun**- Sunday brunch at Orchids features Noly Paa on the piano from 9:30 - 2:30pm.
- HILTON HAWAIIAN VILLAGE** 949-4321
 •**Fri** - Fireworks at 7:45pm.
 •**Fri** - The Rockin' Hawaiian Rainbow Revue, a musical salute to King Kalakaua, at the Super Pool. 7 pm.
 •**FriSat** - Olomana at the Tapa Bar from 8-11pm.
 •**Daily** - Live entertainment, Tapa Bar. 7:30-10:30pm.
- THE KAHALA HOTEL & RESORT** 739-8888
 •**TuWThFSat**- David Swanson vocalizes on the piano at The Veranda from 7:30-10pm.Hawaiian on Sun/Mon.
- MOANA SURFRIDER** 922-3111
 •**Daily**-Hawaiian music & hula. The Banyan Court, 6-8 pm, and again from 8 -10 p.m. Weekends from 11:30- 2 p.m.
 •**MWFri**-Guided historical tours at 11am.
- NEW OTANI KAIMANA BEACH** 923-1555
 •**FSat**- Jazz guitarists in the Sunset Lanai Bar. 6-9pm.
- OUTRIGGER WAIKIKI ON THE BEACH** 923-0711
 •**Mon**- Kukui Nut Bracelet Making. 1pm.
 •**Th**- Ukulele Lessons. 1pm.
 •**Fri**- Aloha Fridays bring back old Hawai'i with music, hula, ukulele & lei making lessons. 9am-1pm.
- OUTRIGGER REEF ON THE BEACH** 923-3111
 •**Daily**- See guest artists at work in Kuloko Arts of Hawaii 9am-1pm and again from 6-9pm.
- SHERATON PRINCESS KAIULANI** 922-5811
 •**Daily**-Live Hawaiian music & halau at the lounge from 6-8:30pm, then poolside from 8:30-10:30pm.
 •**Th**-Princess Kaiulani historical tour at 9:30am.
- THE ROYAL HAWAIIAN** 923-7311
 •**TTh**- Free guided resort tour at 1pm.
- TURTLE BAY RESORT** 293-6000
 •**TThFri** - Shell Hula Lessons, Lobby at 10am
 •**TThFri** - Ukulele Lessons, Lobby at 9am
 •**Fri**- Music & Hula. Lobby Lounge 6:30-8:30pm.
- WAIKIKI BEACH MARRIOTT RESORT** 922-6611
 •**Daily**-Hawaiian entertainment in The Moana Terrace Bar. 6:30-9:30pm.
 •**Fri**-Local crafters "Aloha Friday Fair" Lobby 9a-2pm

MUSEUMS

- HAWAII STATE ART MUSEUM** 586-0900
 •**TWThFSat** - Inaugural exhibition "Enriched by Diversity: The Art of Hawai'i." Free. Tuesday-Saturday, 10 a.m. to 4 p.m. Located in the Capital District.
- HAWAII THEATRE** 528-0506
 •**Tues**- A one-hour guided tour offers a unique insight in the history, art, architecture and restoration of the Hawai'i Theatre with trained docents & a mini-concert on the 1922 Robert Morton Theatre Organ. 11 a.m. Admission: \$10.
- HONOLULU MUSEUM OF ART** 532-8726
 •**MWF**- Japanese Language Tours. Private tours also available. 1pm. Regular admission.
- HONOLULU FIRE MUSEUM** 723-7167
 •**3rdSat**- Free one-hour guided tours through various exhibits with a firefighter recounting HFDs history the 3rd Saturday: 9am - 2pm. Reservations required. 620 South Street. honolulu.gov/hfd/communityrelations
- IOLANI PALACE** 522-0832
 •**Mon-Sat**-45 minutes docent-led or self-guided audio tours available in English or Japanese. Japanese-led tour is available only at 11:30 a.m. All tours include re-tour video and entrance into the Palace Galleries. Adults: \$14.75-\$21.75 / Keiki (5-12): \$6. 9am-5pm
 •**Sat**-Hawaiian Quilt Classes. Old Archives 9:30a-12p.
- LUCORAL MUSEUM** 922-5381
 •**TTh**- Learn how to plan your jewelry project and more in this beaded jewelry workshop \$10. 2-4 p.m.
- HAWAIIAN MISSION HOUSES** 447-3910
 •**Tue-Sat**-Learn about the story of cultural change in 19th-century Hawai'i. Docents lead tours through the oldest existing frame house in the Islands, Print Shop, and the Chamberlain House. missionhouses.org
- PACIFIC AVIATION MUSEUM** 441-1000
 •**Daily**-Vintage aircraft in battlefield hangars at Pearl Harbor. Combat flight simulators. Aviator's Tour takes you through the new Restoration Hangar. Restaurant, Museum Store. Shuttle & Tickets at USS Arizona Memorial Visitor Center or at PacificAviationMuseum.org.
- THE SPALDING HOUSE** 526-1322
 •**Daily**-Docent-led tours given daily. 1:30pm. Garden tours or Japanese language tours are by appointment.
- NAVAL AIR MUSEUM BARBERS POINT** 682-3982
 •**Mon-Fri**- A unique museum experience about aviation history in Hawaii. All aircraft are open to climb in, on and around. Tours: 8am - 4:30pm. \$7 / \$5 children under 18. Kalaeloa Airport. Reservations req'd. Sat/Sun by appt only: www.nampb.org.

SHOPPING CENTERS

- ALA MOANA CENTERSTAGE** 955-9517
 •**Mon-Sat** - Ala Moana Hula Show. *Centerstage* 1-1:20pm
 •**MWF**- Hawaiian music *Mauka Wing*, Lvl 2 2:30-3:30pm
 •**Sun** - Keiki Hula Show. *Centerstage* 1-1:20pm
- INTERNATIONAL MARKET PLACE** 921-0536
 •**Daily** Ceremonial lighting of Lamaku Torch Tower just after sundown followed by a hula show. *Queen's Court*.
 •**Every Other Sun** Free Yoga from Lululemon. 10-11am. *Queen's Court*.
- KINGS VILLAGE** www.kings-village.com 237-6344
 •**MW** Famer's Market offering fresh produce, baked goods and local food items from 4-9pm.
 •**Daily** King's Guard Museum features a variety of collectibles and memorabilia. 10a-10:30p. FREE.
- ROYAL HAWAIIAN CENTER** 922-2299
 • **MWF**- Learn Lomilomi 11am-12pm, Bldg. B, 3rd floor
 • **MF**- Hawaiian Storytelling 12pm, *Helumoa Hale*
 • **MTWF**-Hula 10am (4pm on Wednesdays), *Royal Grove*
 • **ThSat**- Rock-a-Hula Pre-Show 7pm, *Royal Grove*
 • **WTh**- PCC Show 11am, *Royal Grove*
 • **TWTh**- Lauhala Weaving 1pm, *Bldg A, 1st floor*
 • **TThF**- Ukelele 12pm, *Helumoa Hale*
 • **TWF**- Live Hawaiian music 6-7pm, *Royal Grove*
 • **ThSat**- Rock-a-Hula Pre-Show 7pm, *Royal Grove*
 • **Sat**- Hula Kahiko 6-6:30pm, *Royal Grove*
- WAIKIKI BEACH WALK** www.waikikibeachwalk.com
 •**Tuesdays** - Ku Ha'aheo featuring Hawaiian song and dance on the Plaza stage. 4:30-6pm
 •**Wednesdays** - Yoga Classes 4-4:45pm. Free.Plaza Stage

ATTRACTIONS

- KALAKAUA AVENUE** 527-5666
 •**Fri** - Strolling Hula from 8-10:00pm.
- KAPI'OLANI BANDSTAND** 527-5666
 •**Fri**-Hawai'i's finest musicians perform. 5:30-6:30pm
 •**Sun**-Royal Hawaiian Band performs 2-3:15pm.
- KUHIO BEACH HULA SHOW** 843-8002
 •**TThSat**- City & County presents a free hula show at sunset. 6:30 - 7:30pm at the hula mound.
- TAMARIND PARK - DOWNTOWN** 527-5666
 •**Fri**- Mayor's Aloha Friday Music from 12-1pm features live music from Hawaiian to Jazz to Pop.
- WAIKIKI TOWN CENTER** 922-2724
 •**Mon-Sat**-The songs and dances of Hawai'i, New Zealand, & Tahiti. Free shows begin at 7pm.
- EVENTS SUBJECT TO CHANGE PLEASE CALL TO CONFIRM PRIOR TO ATTENDING**

PAPARAZZI

Aqua-Aston Hospitality Team



The Aqua-Aston Hospitality Sales, Marketing, and Revenue team posed with their teammates from the newly opened Holiday Inn Express at a VIP Travel Partner Mahalo Reception held at their newly renovated 4th Floor Recreation Deck at the Aston Waikiki Beach Tower last month.

The Hilton Represents at the Charity Walk



Everyone came out for the anaging the checkpoint on behalf of the Hilton Hawaiian Village Jeffrey Yedlin, Susana Ribeiro-Marczak, Lora Gallagher, David Yedlin, Scott Hamilton, Hugo Hamilton. Mahalo to everyone that participated.

Holiday Inn Team



The gang from the Holiday Inn Resort Waikiki Beachcomber was out in their Outrigger team shirts. Shown here is Virgil Dungalen, Xorda Laurin (from the Hilton Garden Inn), Anita Cabulera, Vicky Manalo, Myna Elcano and Fina Salvador.

conciierge card

June 30, 2017

• **Bill's Sydney Waikiki** - 20% discount off food and beverage (not applicable on happy hour or other offers). Must show hotel ID to receive discount. 280 Beach Walk. 922-1500

Dole Plantation - 1 FREE Adult Admission To The Maze With Purchase of 1 Adult Admission. 621-8408

Giovanni Pastrami - 15% Off Full Bar, Dine-in or Take-Out at anytime with ID. 927 Lewers St. 923-2100.

Hard Rock Café - 15% off food, beverage (non-alcoholic), or merchandise. Hotel ID required. 280 Beachwalk Ave. 955-7383.

Hawai'i Prince Golf Club - \$5 Off Standard Kamaaina Green Fees. Tee Times: 944-4567

Hilo Hattie - 25% on Hilo Hattie labeled garments, 15% off other fashions/gifts and 10% off Hilo Hattie labeled foods. Not valid on sale item. Ala Moana Center. Ph 535-6500.

Hy's Steakhouse - 25% VIP Discount Off Food And Beverage (up to 2 persons) 2440 Kuhio Ave. 922-5555

Hyatt Regency Waikiki - 15% discount with the presentation of a concierge business card at SHOR, Japengo and SWIM. 2424 Kalakaua Ave. 923-1234.

Iolani Palace - Free Admission. Regular rate \$21.75. 364 S. King Street, Reservations & Hotel ID required. 522-0832.

• **IHOP** - Receive 20% on entire bill. Must show valid hotel ID. Not valid with any other offer or discount. Valid only at Aqua Palms, 1850 Ala Moana Blvd., 949-4467 and OHANA Waikiki Malia by Outrigger®, 2211 Kuhio Ave., 921-2400.

• **Il Lupino** - 15% discount off food and beverage (not applicable on liquor or specials). Must show hotel ID or business card to receive discount. Royal Hawaiian Center. 922-3400

Kaiwa - 20% off food & beverage between 5 & 7 p.m. 924-1555

Hawaiian Mission Houses - Free tour with hotel ID. 553 S. King Street. 447-3910

• **Noi Thai** - 20% discount off food and beverage (not applicable on liquor, happy hour or specials). Must show hotel ID to receive discount. Royal Hawaiian Center, Bldg. C. Level 3. 664-4039

• **NWL Nails Wax & Lashes** - 20% discount off all services. Must show hotel ID and mention ad in magazine to receive discount. Inside the lobby of the Waikiki Grand Hotel. 922-NAIL

Pacific International Skydiving Center - 50% Discount on Jump, 68-760 Farrington Hwy., 637-7472.

P.F. Chang's Waikiki - Receive 20% on all appetizers, entrees, desserts and beverages 11 am - 5 pm daily (not valid for Pau Hana menu) Royal Hawaiian Center. Ph: 628-6760, 637-7472

Romano's Macaroni Grill - 20% Off Food and Beverage for up to 2 guests. (Not Valid for Happy Hour Menu). Ala Moana Center, 1450 Ala Moana Blvd. 356-8300

Ruth's Chris Steak House - 20% Off Food and Beverage for up to 2 guests. (Not Valid for Happy Hour & Prime Time menus). Restaurant Row, 599-3860. Waikiki Beach Walk, 440-7910.

Honolulu Museum of Art Spalding House. - FREE Admission For you and one guest with hotel ID. 526-1322

The Original Glider Rides - Come experience the joy of soaring for yourself. Concierge / GSA may receive a complimentary scenic ride. Request the "GSA flight special" when booking your reservation. Hotel ID required. Dillingham Airfield. 637-0207

Tiki's Grill & Bar - FREE order of ANY appetizer with any purchase! One per table. OahuconPOKE. ASTON Waikiki Beach. 923-8454

Willoughby's Restaurant - 15% off all food items. Ohana Honolulu Airport Hotel. 3401 N. Nimitz Hwy. 836-0661.

HELP us update this card. If you know of an offer not being honored let us know. As management changes, sometimes offers can get lost.

You will be required to show Hotel ID or business card to claim offer. Do not cut this card out of the book. One special per person per business. Offers valid on regular-priced merchandise only. Discounts are available to Guest Service Professionals ONLY. Not valid with other promotions or special offers. A minimum 18% gratuity on original order required for all special food offers.

Conciierge of the Month



NAME: **Jenifer Ishigami**

HOTEL: **Four Seasons Resort Oahu at Ko Oina**

TITLE: **Conciierge**

Q. How long have you been with the Four Seasons?
A. I've been with the Four Seasons since June of 2016 (a few weeks after our soft opening).

Q. How big is your team there?
A. We have a fabulous team of 11 here!

Q. Where were you before?
A. I was a concierge at the Trump International Waikiki Beach Walk for a little over 2 years.

Q. How did you get your start in this industry?
A. I've always worked in a customer service related job, but I had zero experience in the hotel industry. After moving back and seeing the fast growth in the market, I was eager to get in. The first hotel that I applied for was the Trump International Waikiki Beach Walk. My former manager, Kawai Yamashiro offered me a position with her concierge team and I am forever grateful to her for the opportunity.

Q. What was your biggest challenge at the desk?
A. Hands down the opening process at the Four Seasons. Since we were a new resort, we had to start everything from scratch. From brochure ordering, to creating our own hotel activity/dining suggestion list, to setting up our desks.

Q. What do you like most about this industry?
A. Definitely the people that you meet. Being in a world collection brand attracts people from different countries. It is fascinating to meet new people who live on the other side of the world.

Q. The Four Seasons guest is very well traveled. What do you find yourself doing for them most often?
A. Our guest holds very high expectations. We often put together special itineraries for the family with private island excursions.

Q. Do you have one particular guest that stands out?
A. I assisted a Japanese couple at the Trump who had lost their camera and cell phone. I located both items after numerous calls. They were so appreciative, they returned to the Trump the following year with tasty treats from Japan. We still keep in touch and they're planning on staying at the Four Seasons next year.

Q. What one question do you hear again and again?
A. How do I visit Pearl Harbor and get the tickets?

Q. What's the most unusual request you ever heard?
A. A gentleman was looking for a salsa partner during his stay. He attended an event in Honolulu and was able to dance his night away with great local dancers.

Q. Your guest has one day, what should they do?
My go-to itinerary is to take a rental car and visit the North Shore, my favorite place on the island. North Shore offers a unique mixture of local dining, shopping, and stunning beaches.

Q. Have you received your keys yet?
I just need one more year to qualify for the application. It would be a big accomplishment and hopefully will open up more opportunities for me.

Q. Where are you from originally?
I was born in Honolulu but grew up in Kobe, Japan. After graduating high school in Japan, I moved to Washington State for college and now I'm back in Hawaii. I needed to move away from the cold!

Q. Describe your perfect day.
My perfect day would begin at the beach with my fins and my mask. After freediving, finish up my day on the shore with an ice cold beer and poke!

We clean a lot of fingerprints

Atlantis
SUBMARINES
WAIKIKI

The Atlantis underwater adventure is a great activity for the entire family. Create memories for a lifetime with Atlantis!

atlantisadventures.com

For info & reservations call (808) 973-9811
or fax to (808) 973-2499

   | #atlantishawaii

The Oahu Concierge is printed monthly and direct mailed FREE to all Oahu Concierge, Hospitality & Activity Professionals.

Subscriptions available to non-industry at \$25 per year.

C O N T A C T

Davis Media

Ph: 596-4422

www.oahuconciierge.com

Twitter & Instagram: @OahuConciierge

Facebook: www.facebook.com/OahuConciierge

ADDRESS & NAME CHANGES / ADDITIONS

We do not take changes via telephone. All changes to mailing list must be submitted in writing by the 16th of the month to make the next issue, email is preferred.

S T A F F

PUBLISHER & EDITOR **Pam Davis**
publisher@oahuconciierge.com

CONTRIBUTING EDITOR
Lance Rae, Lynn Cook

DESIGN
Coreiya Design

The Oahu Concierge
4348 Waialae Avenue, #185
Honolulu, Hawaii 96816

Discover Jurassic Valley.

RESERVATION LINE NOW
OPEN UNTIL 9PM



Watch our video!

For these Adventures and more,
Call 808-202-2245 or visit kualoa.com

Open daily 8:30am - 5:30pm

KUALOA

WHERE LEGENDS ARE MADE



MOVIE SITE & PREMIERE
MOVIE SITE IMMERSION TOURS



Movie Site Immersion



Jurassic World



KING Skull Island



Jurassic Park



LOST

TASTE OF KUALOA
"FARM TO FORK" FOOD TOUR



Tarrow Net Fishing



Kualoa Beef



Kualoa Shrimp



Oyster Farming



Luxury Coach