

SUPER SIZE THAT PARTY 2015 PAN PACIFIC FESTIVAL

Every year, for thirty-six years, the Pan-Pacific Festival has entertained visitors and local folks. Thousands of folks from Japan pick June as the month to visit to learn and share their hula education, arts and crafts. This year, June 12, 13, and 14th the streets of Waikiki, the Kuhio Beach Hula Mound, Waikiki Beach Walk Plaza Stage and Ala Moana Center Stage will



be joined by yet another venue. The Marukai Wholesale Mart on Nimitz is hosting a daily Food & Product Fair, 8 a.m. to 6 p.m.

On Friday night, June 12th, from 7 to 10 p.m., Kalakaua Avenue is closed to cars and open to fun. Ho'olaule'a translates to a really big party celebrating any number of cultural holidays, royal birthdays, sporting events, international music themes and even Spam. The word Ho'olaulea means festival, "a gathering for a celebration; to preserve friendship and good will." This particular street party is a perfect fit for the beginning of Pan-Pacific Festival and an amazing amount of fun for any season or reason.

A most spectacular event as the sun sets on Sunday, is the 36th Annual Pan-Pacific Festival Parade. Colorful performers, dynamic drummers, coordinated dancers, high school marching bands and the most amazing dance and martial arts cultural groups all march down Kalakaua Avenue. From 7 to 10 pm, beginning about the time of the setting sun, the parade begins at Fort DeRussy, at the top of Waikiki, and finishes at Kapi'olani Park, below Diamond Head.

Each year a new highlight is added to the parade, like the 2014 several-story high, Shinto-

style lantern floats called Kiriko, so stunning that the photos hit the wire serves and made front page news in America and Japan. Carried at local festivals in Japan during the summer and autumn seasons, their name, Kiriko comes from 'Kiriko Toro' or 'hanging lantern.'

These lanterns are used to guard the front and back of the parade at night. Kiriko originally are from Noto Island in

Ishikawa and are unique to the region with more than 700 Kiriko on Noto Island alone. Normally a Kiriko is about 4-5 meters high, but some are 15 meters tall and require more than a 100 people to carry them. It is a truly magnificent sight. A full line-up of events is on the web site, pan-pacific-festival.com

Announcing the festival, banners will fly from the lamp poles all through Waikiki, each bearing the logo has gone through several changes over the last 30 years. The most recent transformation was in 2008. The current logo was designed to incorporate the Festival's multicultural scope. The two swirls are a representation of the ocean – an important source of food and where all life begins. It is a connection that all countries of the Pacific Rim share. The Festival participants come from very unique countries, but yet they all touch the very same waters of the Pacific Ocean. The splashes at the top of the logo further illustrate energy, activity and motion. It resembles the waves of the ocean which can bring plants and birds from miles away to grow and prosper in far away lands. Similarly, the Pan-Pacific Festival brings a diversity of cultures and people together to celebrate their

Continues on page 8.

Celebrating a KING

As most of us learn in kindergarten, Hawaii is the only

U.S. state that began as a monarchy. Sharing royal history is a gift to visitors. June is the month we can offer up a schedule of easily attended events where the legacy of the royal chiefs and rulers can be celebrated – events celebrated for decades with state holidays, historic palaces and parades and hula. June has one or more of each.

June 7th the celebration begins at the Kawaiahao Church with **Alii Sunday**. Built in 1842, the great stone church, sits across from the royal Iolani Palace. In the 1970's, with full royal protocol, the most Reverend Abraham Akaka rejuvenated the tradition that began in 1914. The Royal Order of King Kamehameha, dressed in black suits, wearing the short feather shoulder capes, presides and welcomes The women of the royal societies attend, dressed in the Kalakaua era puff sleeve gowns, and matching hats - all black or all white. The general public is welcome to step back in time to the sound of the Kawaiahao Church Choir and organ, echoing from the choir loft of the church. Check kawaiahao.org for time.

June 12 the **King Kamehameha Statue Lei Draping Ceremony** at Ali'iolani Hale in downtown Honolulu is one of the most photographed events in the islands. Hundreds of feet of ropes of plumeria lei, each at least 20 feet long, many sewn by the ladies of the members of the 'Ahahui Ka'ahumanu Society, decadents of royalty, are loaded into the arms of city workers who are lifted up in the bucket truck. The lei must be placed over the king's outstretched arms only. Lei are never draped over a feather cape - bronze or real.

Continues on page 2.

TABLE OF CONTENTS

Yada Yada Yada	2
Newsflash	3
Arts with Aloha	4
Aunty Lynn's Adventures	6
Chef's Corner: Roy's Garrett Mukogawa	9
E Pili Kakou	10-13
Calendar	14-15
Haleiwa Store Lots / Chinatown After Dark ..	16
4th of July	17
That's Entertainment	18
GSA of the Month: Joshua Smith	19





Parade Madness has begun

It's on. The festivals have begun in force. Get ready for throngs of people to continually descend into Waikiki and for Kalakaua to close down for countless parades and Ho'olaule'a's throughout the summer months. If you have a bike, you might strongly want to consider pulling it out the weekend of June 12th as Kalakaua shuts down Friday night, Saturday morning and Sunday afternoon for the Pan-Pacific and King Kam Day celebrations. If that's not enough, it will also close during certain time frames on the first and last Saturdays of the month for the Gay Pride Parade and the International Lions Festival respectively. Be patient and more importantly, plan accordingly.

This month brings us a new column by our own super cool, hipster, nightlife loving, party boy Lance Rae, or as some of you know him, Lancey Poo. We have always tried to cover a little bit of everything in here for you. Dining, arts, Hawaiiana, history, industry news, event information, happy hours, you name it – we pretty much have it covered – except for one thing. Nightlife. But not just any nightlife, our own man about town will focus on some of the eclectic, unusual and unique offerings one can only find in Chinatown. His first column explores The Dragon Upstairs. In future issues you can expect to read about Fresh Café, Downbeat Lounge, maybe Mezz 127. Have a place downtown you want learn more about? Let me know and if I had to guess, Lance has been there. If not, I'm pretty sure he'll be down for going again. His office has been in Chinatown for years, so he is my go to source for all things downtown. Check out on page 16.

On page 17 in this issue you'll see our annual 4th of July preview. I know many of you are already being peppered with questions on what to do and where to go on the 4th, so we've gathered what we can. As you might imagine, this list will expand considerably over the next few weeks but this should get you started. It also should go without saying that premium seating at oceanfront restaurants will go pretty quickly, so it would be best to make those reservations right away. Same goes for Father's Day on June 21st. It may seem to early to book now, but it's not. Virtually every restaurant has a special menu, brunch, or event that day, so call around to your favorites and book. If you're lucky enough to still have your Dad around, take him out somewhere, anywhere. To a restaurant, to the beach, go play golf, or just walk around the block. Just be sure to spend some time with him and cherish those moment. As far too many of us know, those opportunities aren't around forever.

Other than that the sun is shining, the trade winds are blowing, and the surf has been cooperating for what is starting out to be a phenomenal summer. Get outside and enjoy it, and if you happen to grab a great shot along the way, send it in! We love to run your photographs.

Aloha!



Larry Hanson

Congratulations to **Lawrence Hanson** for being named general manager of the *Moana Surfriider, A Westin Resort & Spa*. Larry has been with Starwood Hotels & Resorts for more than 15 years, most recently serving as hotel manager of the Sheraton Waikiki since 2013 before being promoted last month. • Congratulations also being sent out to **George Szigeti**, who was named the next president and CEO of the *Hawaii Tourism Authority*. George has been running the Hawaii Tourism and Lodging Association since 2012. Also sending congrats to *Outrigger Hotels & Resorts* Executive Vice President and Chief Marketing Officer **Sean Dee** for being officially confirmed by the State Senate to the HTA board of directors. Sean has been serving in an interim capacity since July this

past year, but he is now his official until June 2018. • *The Modern Honolulu* has announced several new executive positions. **Joshua Hargrove** has been named as Director of Rooms. He previously was the director of rooms at the Royal Hawaiian Hotel and had worked with Starwood since his time as a guest service manager back in 2007. **Jennifer Lam** joined the Modern team as Senior Group Sales Manager, and **Ashley Ong** as Group Sales Manager. • **Sabra Wagner** has rejoined the *Hilton Hawaiian Village* as Director of Revenue Management. She was previously with the hotel before moving to the California to work with the brand in the Bay Area. The Hilton also hired **Jason Sliman** as the resort's new Director of Banquets. • *Hyatt Regency Waikiki Beach Resort* Assistant Human Resources Director, **Al Hikida** was just given a huge nationwide honor, winning the 2015 Hyatt Human Resources Leadership Award for the Americas. Congratulations!

Celebrating a KING

continued from page 1.

June 13 the **99th Annual King Kamehameha Celebration Floral Parade** will begin at 9 am at King and Richards Street in downtown Honolulu and wind it's colorful way to Queen Kapi'olani Park at the Diamond Head end of Kalakaua Avenue in Waikiki. At the park the all-day Ho'olaule'a will begin at 10 a.m. with live entertainment in the bandstand until 3 p.m. The parade is estimated to finish at the park by 11:30 a.m. The parade route goes down Punchbowl Street, then down Ala Moana Boulevard to Kalakaua in Waikiki, which will be closed with some cross streets open.

June 20 the **42nd Annual Kamehameha Hula Competition** will take place at the Blaisdell Arena from 1 p.m., with awards presented at 9 p.m. Tickets are available at the box office, prices range from \$8.50 to \$24. The international competition includes both kahiko and auana, traditional and contemporary style hula. Male, Female, and Kupuna Wahine. Individual Chanters are invited to present hula. The festival is the only competition festival featuring out of state and country hula halau. Groups come from all over including Canada, Japan and Mexico.

Many monarchs are honored in Hawaii. King Kamehameha is the most celebrated monarch of all, with more statues than the others. The sculpture in Honolulu is one of the most photographed landmarks. Photos were used in the opening scenes of the original 1970's *Hawaii Five-O* and in the new *Five-O* series, possibly hundreds of travel magazine pages and an uncounted number of Trip to Hawaii storyline sitcoms and television commercials.

How the king got to the spot is interesting. In 1878 Walter M. Gibson, a member of the Hawaiian government wanted to commemorate the 100-year arrival of Captain Cook to the Hawaiian Islands. The legislature appropriated \$10,000 for the project. Gibson contacted and contracted with Thomas R. Gould, a Boston sculptor living in Italy. Since Gould had never been to Hawaii, Gibson sent photos of Polynesians. Still, the face came out a bit Roman. In 1880 the sculpture was sent to Paris to be cast in bronze, to late for the 100th anniversary of Cook's arrival. In 1883 it was packed and ready. On its way the ship



sunk off the Falkland Islands and the statue was assumed lost. It was insured for \$12,000 and was quickly re-cast. Then some Falkland-islanders found the original and sold it to the captain of the wrecked ship. He, in turn, sold it to Gibson for \$875. Both statues arrived. The first stands on Hawaii Island in the king's birthplace, Kapa'au. The second is in Downtown Honolulu.

The third statue was commissioned when Hawaii became a state. It was unveiled in 1969 and stood in the United States Capitol beside the Father Damien of Molokai statue. It was the heaviest of all the statues, weighing in at 15,000 pounds. When Barack Obama was nominated as a candidate for president the statue was moved from a dark back corner of Statuary Hall to a very prominent position in Emancipation Hall in the new visitor center. Another casting of the statue stands at the Grand Waialea resort on Maui and, finally, there is a statue in the 51st state in the Las Vegas Hawaiian Marketplace.

All the statues were created to honor the warrior king who unified the Hawaiian islands, more with strategy than force, predicted when Kamehameha's birth was announced by the appearance of Haley's Comet, streaking across the sky.

~ Lym

EXTRA Newsflash EXTRA

SUMMER CONCERTS ARE HERE

It's that time again! Many of the Islands top musicians come out each summer for the special concert series that happen all summer long at both the Honolulu Zoo and the Waikiki Aquarium. The concerts will take place every Wednesday at the Zoo and every other Thursday at the Aquarium beginning this month until the first week of August. Check out the calendar to see who is up when. These are great opportunities for visitors.

HOKULANI WINS AWARDS

Congratulations go out to design firm Group 70 International, Inc for wining an ARDA Circle of Excellence (ACE) Awards for their work refurbishing the Hokulani Hilton Grand Vacations Club. ACE Awards honor those that have attained the very highest level of excellence in the resort industry and whose accomplishments and dedication spur the industry to new heights.

KALAKAUA CLOSURES

Be aware of the following events that will effect traffic. Honolulu Gay Pride Parade. 6/6, 10-noon. Matsuri Ho'olaule'a. 6/12, 4:30-10 p.m. King Kam Parade. 6/13, 6 a.m. - 2 p.m. Matsuri Parade. 6/14, 5 - 7 p.m. Lions Parade. 6/27, 6 a.m. - 2 p.m.

OUR ISLAND AIR WINNERS

Congratulations to Hilton Grand Vacations Club's Nikki Nakamura, Waikiki Beach Marriott's Lisa Wong, and Elite Concierge's Leinani Agres-Enguito and Kerry Fernandez for playing our various Mahalo Month social media contests sponsored by Island Air. Each of them won a pair of round trip tickets on just for playing. We'll try to do some more contests with other partners in the future, so continue to follow us on Facebook, Twitter and Instagram at OahuConcierge going forward.

ROYAL STAR GROWS

Royal Star Hawaii expanded its transportation offerings with the addition of two new Gold Temsa 30 Series Mini Buses. These brand new vehicles are perfectly suited for medium-sized groups and are now available for booking. The new 34-seat minibuses feature designer upholstery, reclining chairs with adjustable footrests, individual lighting and A/C controls, an advanced audio/DVD video system and restrooms. royalstarhawaii.com.

STATUE OF JOSEPH KEKUKU

The Polynesian Cultural Center recently unveiled a statue in honor of Joseph Kekuku (1874-1932), inventor of the Hawaiian steel guitar, in a permanent tribute to this special man who is such a part of Laie's heritage. The life-size bronze statue showing Kekuku seated and playing the steel guitar is part of the new Hukilau Marketplace and prominently placed where all visitors entering PCC will walk past it. polynesia.com

NEW PEARL HARBOR SHUTTLE

Roberts Hawaii launched a new direct shuttle service between Waikiki and Pearl Harbor last month offering an affordable transportation option for visitors who opt not to rent a car. There are six pick-up and drop-off points in Waikiki: the Hawaii Prince Hotel entrance; the Ilikai Hotel flag pole on Ala Moana Boulevard; the Outrigger Reef; the Duke Kahanamoku Statue; Hyatt Place and the Waikiki Sand Villa. PearlHarborShuttles.com.

HILTON PARTNERS WITH ANA

Hilton Worldwide has partnered with Japan's largest airline, ANA, to create a first of its kind partnership. The initial phase is desinged for passengers to "Experience More" and Hawaii was selected as the first destination to kick start the program, Passengers will enjoy Hawaiian- inspired menus created by Hilton Hawaiian Village chefs and special destination videos.

LOOKING FOR NOMINATIONS

A few people nominated for our Concierge of the Month honor have passed on it recently. Given the fact we can only have one person from each hotel a year and the recent rejections we're now running low on nominees. Nominate your coworker today!

PAN-PACIFIC TENNIS FESTIVAL

In addition to the parades and floats and cultural displays across the island during Matsuri, the first-ever Pan-Pacific Hawaiian Tennis Festival will take place at the Ala Moana Park Tennis Courts from June 19 to 21st. Tennis matches will consist of a men and women's division for ages 45 and over. Participants can compete in singles matches and may also play doubles matches with players from Japan. Register online. pan-pacific-festival.com.

CHARITY WALK RAISES \$\$\$\$

The 37th annual Hawaii Lodging & Tourism Association's Visitor Industry Charity Walk, together with the Hawaii for Hawaii concert on May 9, raised a record-breaking \$2.2 million statewide this year to be distributed between more than 200 charities statewide. Over 11,000 walkers participated this year, with 5,300 of them right here on Oahu. Way to come together everyone!

PAPARAZZI PICS

Mahalo to Alex dela Cruz, John Delos Reyes and Sam Richardson for sending in their photos for the Paparazzi section in the back the past few months. We want to run your pics, so please remember to send them in if you get a good one. Thanks!



New Chinese Exhibit & Free Audio Tour.

We're proud to serve as the first stop of the "National Memories" 2015 United States tour. It's a once-in-a-lifetime opportunity for your guests to view rarely seen images chronicling the cooperation and camaraderie between Chinese and US soldiers during WWII.

Admission to the traveling exhibit is free with paid admission.

Free Ford Island shuttle from Pearl Harbor Visitor Center.

For more information, call 808-441-1007 or email Education@pacificaviationmuseum.org.

PACIFIC AVIATION MUSEUM PEARL HARBOR

1008 H.L.H. BLVD.



arts with aloha



This month Honolulu's arts and cultural scene is all about the address, from 42nd Street on Broadway to 2411 Makiki Heights Drive and all the addresses in between there is someone your guests will find entertaining as long as they have GPS.

You don't really need GPS to get to 42nd Street to see a Broadway show but you will need a ticket, and for your guests staying on O'ahu, that ticket would have to be on Hawaiian Airlines' non-stop flight to JFK. For those guests looking for a less expensive alternative to flying to New York City, I suggest sending them over to **DIAMOND HEAD THEATRE**, the third oldest continually operating theatre in the United States (did you know that?) this June to see the musical *42nd Street*. The musical play is based on the 1933 Warner's Brother film about a young girl named Peggy Sawyer fresh off the bus from Allentown, PA (Broadway Trivia: In the musical *Bye, Bye, Birdie*, the main character Rose, originated by Chita Rivera, was from the same town.) Long story short, Peggy gets into the chorus of a Broadway show, during the out of town tryouts, the leading lady breaks her ankle and Peggy steps in and saves the show. You've all heard the story before and that's because this is the original story! The show's a big tap dance extravaganza with songs you might of heard of "We're in the Money," "Shuffle Off to Buffalo," and the title, mega-tap-dance-tacular "42nd Street." The show opened last month and runs through June 14th. For more information, please call 733-0247. Performances runs Thursdays, Fridays & Saturdays at 8 p.m., Saturday matinees at 3 p.m. and Sunday matinees at 4 p.m. Please tell your guests that even though this theatre is almost 5,000 miles away from Broadway, many of its performers are Broadway veterans. This past April Tony® Award Nominee Loretta Ables Sayre starred in the musical *South Pacific* reprising the role of Blood Mary. Her Broadway director Bartlett Sher is now at the helm of the musical revival of *The King and I* at the Vivian Beaumont Theatre in New York City starring Ken Watanabe, Kelli O'Hara and Ruthie Ann Miles as Madam Thiang, who is originally from Kaimuki which is just around the corner from Diamond Head Theatre.

Just around the corner and down three blocks from 42nd Street on Broadway at 242 West 45th Street at the Bernard B. Jacobs Theatre is the new comedy "It's Only a Play" starring Nathan Lane, Matthew Broderick, F. Murray Abraham (he won the Oscar for Amadeus) and Stockard Channing (she plays Julianna Margulies' mother on CBS's *The Goodwife*, she was also Rizzo in the film *Grease*). It's a fun ensemble comedy written by four-time Tony® winner Terrence McNally about "theatah" people dealing with the bad opening night reviews of their play. Having just seen the show on Broadway, any of your guests who love theatre will get a kick out of this show, and the good news is, your guests don't have to fly to New York City to see it. The **HAWAII THEATRE CENTER** is mounting its own production of the play as part of its ENCORE! Series this month starring Linda Purl (best known for playing *Matlock's* daughter in

season one) as the novice yet extremely wealthy producer, KHON news anchor Joe Moore as the playwright and former Miss Hawaii Cathy Foy as the doped-up diva. The show runs June 18th to 29th and tickets are \$22, \$32, \$37, & \$72. The production runs Thursdays at 7 p.m., Friday & Saturday at 7:30 p.m., Saturday & Sunday matinees at 2 p.m. All seating is at the orchestra level and the \$72 ticket includes VIP seating in rows E & F Center with an autographed program and post-performance backstage meet & greet with the cast. This is the perfect place for your guests to end a day of site-seeing Honolulu's Capitol District and Chinatown by experiencing Hawaii's grand dame theatre known once as the Pride of the Pacific.



Linda Purl stars this month

Another downtown theatre that deserves a similar title is **KUMU KAHUA THEATRE**, which is known for plays about life in Hawaii by Hawaii's own playwrights for Hawaii's people. This month the world premiere of Lee A. Tonouchi's *Echoes of Dat Red Guitar* takes the stage by telling the darkly humorous story of an unmotivated man still living at home with his parents who berate him for his lack of ambition. (Are you related to anyone like this?) As with many plays at Kumu Kahua Theatre, this production offers a glimpse into the contemporary life of Hawaii, in this case the lives people who populate the main character's office for an unnamed state department. Among the crew of co-workers is the bully, the born-again Christian bomb shell, the haole boss and a couple of nerdy techies (aren't all techies nerdy)? The show runs Thursdays, Fridays, & Saturdays at 8 p.m. and Sundays at 2 p.m. Call the box office at 536-4222 or visit kumukahua.org for more information on this play and to learn more about the playwright known at the Hawaii's Pidgin Guerilla.

There may not be any guerillas up at 2411 Makiki Heights Drive at the **HONOLULU MUSEUM OF ART SPALDING HOUSE**, but from June 10th to 28th, there will be an innovative 10-day art event entitled Contempo #ArtShop which will feature a variety of art mediums available for purchase by local and international up-and-coming as well as established masters. Price points will vary from \$100 to \$100,000 but don't let this scare your guests, no purchase necessary other than the ticket to the museum. Throughout the 10 days there will be artist talks, workshops that celebrate art appreciation and educate guests about art collecting, so much more than just standing around looking at painting and sculptures. For a complete listing of all the different workshops planned, visit HonoluluMuseumofArt.com and click on the events tab.

As you can see, there are lots of interesting things to do this June in Honolulu beyond the Mai Tai Drinks at bars across Waikiki. The only thing you need to do is call last call and send your guests to one for our great theatre and museums to get a taste of contemporary Hawaii. ~ Lance Rae

Mahalo for your continued support!
JOIN OUR
GUEST REFERRAL PROGRAM

Our program is simple!
For every 25 guests referred,
Ruth's Chris Steak House will send you
a \$50.00 dining certificate.
Please contact Emi Espinda if you have any
questions at eespinda@direstaurants.com

OPEN DAILY FROM 5PM
HAPPY HOUR DAILY IN OUR LOUNGE | 5PM - 7PM
PRIME TIME MENU | DAILY 5PM - 6PM
WINE WEDNESDAYS | 25% OFF BOTTLES OF WINE

Restaurant Row | 808.599.3860
Waikiki Beach Walk | 808.440.7910
WWW.RUTHSCHRISHAWAII.COM

**SOMETHING NEW.
SOMETHING CLASSIC.**

Open Daily 11am - 10pm
Happy Hour Daily in our lounge 3pm - 6pm & 8pm - 10pm
Vino Thursdays 25% Off Bottles of Wine

**INQUIRE ABOUT OUR
GUEST REFERRAL PROGRAM!**

Our program is simple!
For every 10 complimentary dessert cards redeemed
(WITH YOUR NAME ON THE CARD),
Romano's Macaroni Grill will send you a
\$25.00 dining certificate that may be used
at our Oahu restaurant.
Please contact Emi Espinda if you have any
questions at eespinda@direstaurants.com

Ho'olupa Terrace at Ala Moana Center
808.356.8300
WWW.MACARONIGRILL.COM

A TASTE OF OLD LAIE.

(ACTUALLY, A LOT OF TASTES.)

Hukilau
MARKETPLACE

at the POLYNESIAN CULTURAL CENTER
LAIE, HAWAII



Seared Ahi & Avocado BLT



Kiawe Wood Fired Brick Oven Pizza



World-famous "Coco Mac Nut Shrimp"



Local style Greek Yogurt

THE HUKILAU MARKETPLACE IS A THROWBACK TO THE HOSPITABLE ERA OF THE 1950'S LAIE, when the food was as lively and authentic as the locals. Have your guests savor island-inspired cuisine at our many dining options including **Pounders Restaurant** featuring Chef Sean Priester's menu of local produce and fresh ingredients.

A new North Shore shopping & dining experience.

FREE parking. FREE wi-fi. FREE entertainment. Canoe rides. Clean restrooms.
For a full list of stores, go to HukilauMarketplace.com.



GIOVANNI PASTRAMI

APPETIZERS
 GP's NACHOS // CHICKEN WINGS \$9
 FRIED CALAMARI // CHILI CHEESE FRIES \$8

GIOVANNI'S SLIDERS
 Four per order, served with french fries.
 MINI CHEESEBURGERS \$9
 MINI HOT DOG SLIDERS \$9
 BBQ KALUA PIG SLIDERS \$9

PERSONAL PIZZAS \$5-\$7

BAR
 DOMESTIC DRAFT BEER \$4-\$5
 WELL DRINKS \$4
 PATRON SILVER \$8
 MAI TAI // BLUE HAWAII \$7
 CROWN // JACK \$6
 JAGERMEISTER // FIREBALL \$5
 3OZ. STOLI MARTINIS \$7
 WINE BY THE GLASS \$1 OFF

PAU HANA
 Monday - Friday, 3:00pm - 6:00pm L.B.
 Sunday - Thursday, 10:00am - 12:00 Midnight
 One-ta only. Subject to availability. For other discounts apply.



Auntie Lynn's Adventures X



June is half way to Christmas. Too soon to think of that, then head to the Waikiki Aquarium at 3 p.m. on any Wednesday for summer fun where kids are welcome to bring their adults. Check out sea snails and unicorn fish and create honu, Hawaiian sea turtle, art cards and drawings.

first three rows of patrons nearly jumped out of their seats when Jake ran forward, and in one leap, jumped off the stage and got up close and personal with everyone in the end seats. His fingers moving at lightening speed, moved patrons into fans. Don't forget than famous YouTube video of him 9 years ago playing "While My Guitar Gently Weeps" in Cental Park that has been seen nearly 14 million times. The rest, as they say, is history.

STELLAR CONTRIBUTIONS – will make our island home better. Whether you walked, bought tickets, sold tickets or just supported the folks who did – Waikiki will be better for your efforts. It is time for all of you in the visitor industry to give yourself a "Chee-hoo". The Hawaii for Hawaii concert, featured the first Oahu performance of the Rough Riders (Henry Kaponu, John Cruz, Brother Noland), joined by many other top Hawaii artists was a fantastic success. The concert, held at Hilton Hawaiian Village's Great Lawn brought in \$400,000 for the Institute for Human Services to aid their efforts to help the homeless. It was the same venue for the concerts that raised many thousands of dollars for the Philippines, Kokua for Japan and for Haiti. This time Hilton Area Vice President Jerry Gibson said, "it's for help right here in Hawaii."

STORY TELLERS – since June is a month of royal celebrations it's a good time to refresh what you remember, read something new and refreshing and recommend good Hawaiian reading to your guests.

First choice: *Kohala Kuamo'o, Nae'ole's Race to Save a King*. It is the story of the birth of King Kamehameha. Some of the chiefs believed Kamehameha would be their downfall. Nae'ole was the great runner who took the newly born king and ran, saving him for the greatness that would be his future. The book, published by Island Heritage, was written by the Kawai'ae'a family. The grandson, gifted with the name Kekauleleanae'ole, wrote what his grandparents told. His father did the powerful illustrations.

The Hawaii Tourism Authority put up funds. Thousands of in-kind furniture and bedding donations from the hotels is making temporary housing move-in ready. The funds help homeless get back to their families on the mainland or find a safe place to be and take their children until they can get off the streets. Add in the monies raised at the 37th annual Visitor Industry Charity Walk and the total tops \$2.2 million statewide. Chee-hoo!

Second book choice to recommend: *Hawaii's Story by Hawaii's Queen. Liliu'okalani*. Published an easy to tuck in your bag paperback by Mutual and again in the annotated edition hard cover by Hui Hanai. The book is a look at more modern Hawaii, with history that makes the reader both sad and glad.

STAR OF GLADNESS – While our great voyaging canoe Hokulea sailed from New Zealand to Australia the great leader of modern voyaging, Nainoa Thompson, was voyaging to Washington D.C. to receive the 2015 Peter Benchley Ocean Award. His co-awardees included Prince Albert II of Monaco and U.S. Secretary of State John F. Kerry. Thompson's award was for Excellence in Exploration. These awards are the "Academy Awards of the Ocean." Thompson was honored for his contributions to marine conservation and exploration as the first Hawaiian in seven centuries to practice the ancient Polynesian art of long-distance navigation known as wayfinding.

SHIMABUKURO-SAN – starts off the month with a June 6th world premier with the Hawaii Symphony Orchestra. The three-part concerto for 'Ukulele and Orchestra, "Campanella" has the nickname "concert for Jake." It was composed by Dr. Byron Yasui, Shimabukuro's University of Hawaii - Manoa music professor. Commissioned by the HSO, After premiering it in Hawaii, Jake will take it from here to the Colorado Symphony Orchestra, the Virginia Symphony Orchestra and the Buffalo Philharmonic. Asking around a bit you can gather a multitude of first-time-ever Jake sightings. Our very own, world-renowned megastar on the ukulele was the boy everyone rooted for to win fame and fortune. One of the most outrageous performances was early in his career, held at the Doris Duke Theater at the Honolulu Museum of Art. The 200-plus seats were filled with the "regulars" who attended all performances, loyal museum fans who bought tickets to everything. Jake was an unknown. The audience nodded in approval when he started to play. The

Keep checking in on the great Malama Honua World Wide Voyage as our canoe voyages to the Indian Ocean, heading out of the Pacific Ocean for the very first time. And join in the free fun with the Friends of Hokulea and Hawaiioloa, June 20th at the Outrigger Reef. From 9 to noon the lobby will be the place to talk with crew and captains, carve some canoe parts, learn about canoe plants and how to survive and thrive while crossing great oceans. Make arts and crafts and get that tattoo (temporary of course) you always wanted. See you there!



BAREFOOT BEACH CAFE

CASUAL BEACHFRONT DINING
 OPEN DAILY 7AM-8:30PM
 BREAKFAST, LUNCH, DINNER

SUNSETS SERVED DAILY
 LIVE MUSIC NIGHTLY, 5:30-8:30PM

ON QUEEN'S BEACH
 @ LIFEGUARD STAND 2F
 AT THE DIAMOND HEAD
 END OF WAIKIKI
 IN KAPIOLANI PARK, ACROSS
 FROM THE BANDSTAND

FULL MENU, CALENDAR, INFO:
 BAREFOOTBEACHCAFE.COM
 808.924.2233 (CAFÉ)



ALERT!

June 11 -13

Box Jellyfish Window

Teaching Hawaii about jellyfish and other ocean creatures for over a century

brought to you by
 The Waikiki Aquarium
 open daily from 9 am - 4:30 pm





WARD VILLAGE

RETAIL • ENTERTAINMENT • DINING

HOME TO OVER 135 UNIQUE SPECIALTY SHOPS,
RESTAURANTS AND NATIONAL RETAILERS.

Nordstrom Rack, T.J.Maxx, Pier 1 Imports, Sports Authority, Ross,
Bed Bath & Beyond, Buca di Beppo and more.

WARDVILLAGESHOPS.COM



#WeAreWard @WVSHOPS

PAN PACIFIC FESTIVAL

continued from page 1.

heritage collectively her in Hawaii.

The interconnection of the swirls symbolizes the sharing of cultures. This image embodies the goal of the festival, which is to foster goodwill and understanding; to cultivate friendship between people; and to nurture appreciation of diversity.

The flowers in the logo are the international symbol of friendship, often given in expression of love and appreciation. The Hibiscus represents the host state of Hawaii and the Cherry Blossom represents Japan, the country from which the facilitating organization originated. The circular shape of the logo symbolizes Earth and Humanity. The Pan-Pacific Festival is an international festival bringing various traditions and people together and creating a more global community through the sharing and celebration of cultures.

The 36th Anniversary Pan-Pacific Festival is a super-sized celebration of friendship and goodwill a diverse gathering of people, cultural exhibitions, and talent from across the Pacific Rim that is not to be missed! It is one of the largest outdoor multi-cultural exhibits of its kind in the State of Hawaii and it happens in the center of Waikiki, on Kalakaua Avenue.

For Waikiki visitors the party is in the front yard – just steps from their hotel front door. Kalakaua Avenue is closed to cars from Lewers Street to Kaiulani Avenue, clear for walking from one fun spot to the next. The festive block party, as always, will incorporate delicious food booths of every kind, lining the street, offering ethnic cuisine, local fare, as well as plenty of hamburgers and fries. Island crafters and vendors will fill tables with

unique arts and craft items, reflecting the diversity of the island.

Waikiki has year-round hula performances to enjoy every week, but the Pan Pacific Festival takes the entertainment up a notch with multiple entertainment stages featuring cultural performances; Korean dance, Japanese Taiko drums, Hawaiian music, and hula. Visitors can catch events throughout the festival at Ala Moana Center Stage, called the Performing Arts Showcase for the Festival, with hula from 10 a.m. to 3 p.m. on Friday, 10 a.m. to 9 p.m. on Saturday and 10 am to 3:30 pm on Saturday.

The Waikiki Beach Walk Plaza Stage, the Kuhio Beach Hula Mound and even Marukai Wholesale Mart on Nimitz celebrate all weekend.

At the Diamond Head end of Waikiki beach the Annual Pan-Pacific Hula Festival is a “don’t miss - bring a camera event” that will take place from 4 - 10 pm on Friday and 7:30 to 10 p.m. on Saturday, at the Hula Mound on Kuhio Beach.

A Performing Arts Showcase is held daily throughout the Festival. Featured at both Centertage at Ala Moana and the Plaza Stage at Waikiki Beach Walk will be traditional Japanese presentations by performers from all over Japan, as well as local cultural performance groups from Hawaii. Many of the Japanese performances are distinctive to various regions in Japan, depicting local folklore and traditions.

It is a rare opportunity to see these cultural presentations with traditional costumes and instruments performed all at once and outside of



Don't miss the Ho'olaule'a Friday. Photos courtesy Pan-Pacific Festival

Japan. The traditional cultural presentations include the always popular Japanese Taiko drumming, as well as various ethnic groups from Korean, Thai, and Filipino traditional arts groups.

The traditional Hawaiian fine art of hula has become very popular worldwide, most especially in Japan, where there are more than 200,000 practitioners of this time-honored dance. The Pan-Pacific Hula Festival provides a dream opportunity for many of these groups, practicing year round, in anticipation of dancing the hula in Hawaii; the birthplace of this much revered and appreciated art form.

In a true example of cultural exchange, you will see hula groups from across Japan performing their interpretation of the hula on stage. There will also be a special exhibition performance by local halau, Halau O Napuala 'Ikauika 'Iu led by Kumu Hula Sally Yoza. These presentations are a friendly competition held under the banyan tree on Waikiki Beach, a perfect spot for dancers and spectators, shaded and enjoying the tradewinds.

A bit of history on how the Festival came to be: in the late 1970's the number of travelers from Japan to Hawaii dramatically increased. A small group of people wanted to ensure that the increased interaction between these two cultures would be both enjoyable and educational. Thus, the very first Matsuri in Hawaii was born in 1980. The word “matsuri” is a Japanese word meaning “festival.” Matsuri in Hawaii was envisioned as a means to enrich the lives of both participating artists and audiences, including Hawaii residents and other travelers visiting Hawaii, with a rewarding and participatory exposure to traditional Japanese culture.

Matsuri in Hawaii allowed visiting participants from Japan to share their music, crafts, traditions, and foods with others in the beautiful setting of world-famous Waikiki, while Hawaii residents and other Hawaii visitors gained a deeper appreciation of Japanese sensibilities and cultural heritage. By highlighting traditional folk music and age-old arts and crafts and bringing internationally respected performers to Hawaii, Matsuri has served Japan as a sort of cultural goodwill ambassador, introducing the people of Hawaii and its many visitors to the richness of the Japanese culture. Today, the most popular events continue to be those that invite participation, such as the block party, parade, and bon dance.

In 1998 Matsuri in Hawaii became known as the Pan-Pacific Festival as it broadened its capacity to include other cultures from Hawaii's rich melting pot. However, the Festival is still called Matsuri in Hawaii in Japan and continues to have fans from around the globe.

~ Lynn

An advertisement for Atlantis Submarines Waikiki. The top half shows a large white submarine with a conning tower, illuminated from below with green lights, floating in a deep blue underwater environment. Various colorful fish and coral are visible in the background. The text "Explore Our Waikiki" is written in a stylized font at the top. At the bottom, the Atlantis Submarines Waikiki logo is displayed, along with the text "Waikiki submarine tours depart hourly. It's like scuba diving without getting wet!" and a call to action: "Call (808) 973-9811 for information & reservations or fax to (808) 973-2499." A small circular seal on the left side of the advertisement reads "AMERICAN CERTIFIED".



Chef's Corner

Roy's Corporate Sous Chef Garrett Mukogawa

Meet the guy behind the scenes at Roy's statewide. He makes sure the kitchens of all six Roy's locations statewide are running smoothly working hand in hand with Jackie Lau, Roy's corporate chef. He just returned from Okinawa where he helped open the newest Roy's Restaurant. He first started at Roy's on Maui in 2001, then went to California, returning after working as Executive Chef at Enoteca Drago in Beverly Hills.

What is your first childhood food memory?

Baking apple pies with my Grandma.

When did you decide you wanted to be a chef?

I've always loved to cook. I really became serious about becoming a chef after college.

What was your first job in the industry?

A restaurant in Hollywood named Citrus.

Who would you consider your mentor and why?

Roy Yamaguchi. His drive and passion for food.

Looking back at your own journey to be executive chef. What stands out?

All of the friendships I have made along the way.

Describe the best dish you can remember. It can be either a dish that you made or you tasted.

I would say my Grandma's apple pie.

What's your biggest pet peeve about a kitchen?

People that are messy and unorganized.

How would you describe your style of cooking?

Adventurous.

Favorite ingredient you like to work with?

Honey. Because of its versatility.

Best part about living in Hawaii?

Great people!

What's your favorite dish on the menu?

The cavatelli pasta dish in Hawaii Kai.

Has travel influenced the way you cook?

Yes. It has definitely broadened my culinary palate.

What's the most exciting place for foodies to eat?

I like to find little hole in the wall restaurants. Those are usually the best.

Describe a typical day?

My typical day is not all that typical. I have to make sure all of Roy's restaurants in Hawaii are running smoothly from a kitchen stand point.

If you had to stop being a chef tomorrow, what would you do?

Maybe be a food writer.

What do you like to do most on your days off??

Relax and BBQ with friends.

Is there any other information about yourself that you want to share with our readers?

No. That's pretty much me in a nutshell.

Roy's Misoyaki Butterfish



Misoyaki Marinade:	½ cup	Sake
8 oz.	Miso	½ cup
8 oz.	Sugar	7 oz.
		Mirin
		Black Cod or Butterfish

Method: In a pot, mix miso, sugar, sake, and mirin. Cook the mixture of medium high heat until the marinade has a slightly light brown color. Remember that when the marinade is brought to a boil, it will boil over the pot and create a big mess on the stove top, so keep an eye on it and when it starts to boil, reduce heat for a while and bring the heat back up. Once the marinade has reached the correct color, take off heat and cool it in the refrigerator.

Butterfish: Once the marinade is cooled, pour marinade over the fish until it is covered, and let it marinate over night. Reserve some of the marinade for later. Flat top sear until dark brown (sugar must caramelize). Butterfish must be cooked to medium-well.

Beurre Blanc:

1 cup	White Wine	3 tbsp.	Heavy Cream
3 tsp.	White Wine Vinegar	½ lb.	Unsalted, Cold Butter (cut into small pieces)
1 ½ tsp.	Fresh Lemon Juice	¼-½ tsp.	Kosher Salt
1 ½ tbsp.	Minced Shallots	TT	White Pepper (preferably fresh ground)

Method: Combine wine, vinegar, lemon juice and shallot in saucepan and bring to boil over high heat. Reduce until liquid becomes syrupy but not too dark. Add cream and reduce by half. Turn heat down to low and gradually add butter, one or two pieces at a time stirring constantly until it is all incorporated. Take off of heat immediately. Do no boil or sauce will break. Season with salt and white pepper to taste. Strain through chinois. Hold in warm double broiler.

Sweet Ginger Wasabi Beurre Blanc:

6 oz.	Pink Pickled Ginger
2 cups	Warm Beurre Blanc
4 oz.	Juice Sweet Onion (minced)
6 oz.	Sake
4 oz.	Wasabi Paste
6 oz.	Mirin
15-20	Scallions (green parts only) (rough chopped)

Method: Place sake, mirin, ginger juice and onion in sauce pan and bring to boil. Reduce until only about 2-3 ounces remain. Place mixture in blender with beurre blanc, scallions, and wasabi paste. Puree and strain through chinois. Hold in warm double broiler.

Roy's Restaurants has three locations on Oahu: Hawaii Kai, Waikiki and Ko'olina

Hawaii Kai: 396-7697 Hours: 5:30 - 9:30 p.m. (till 10 on F/S, opens at 5 S/S)

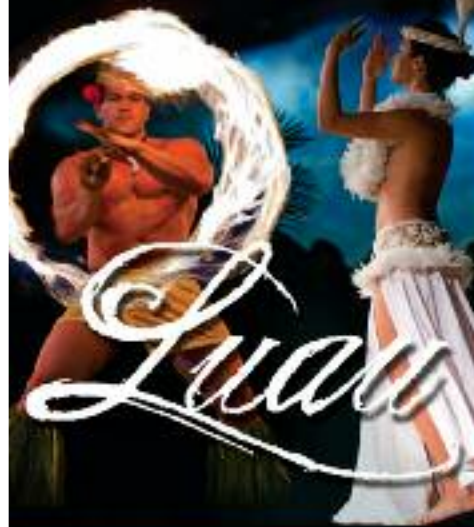
Waikiki: 923-7697 Hours: 11 - 9:30 p.m. daily (till 10 on F/S/S)

Ko'Oolina: 676-7697 Hours: 11 - 9:30 p.m. daily

Facebook/Instagram: RoysHawaii • Twitter: @roys_hawaii • Web: royshawaii.com

HILTON HAWAIIAN VILLAGE® PRESENTS

WAIKIKI'S ONLY LUAU UNDER THE STARS



WAIKIKI STARLIGHT LUAU

The drama and grace of Polynesia unfold with live music, drums, the captivating dances of the South Pacific and the fiery drama of four fire knife dancers. Indulge in a feast of unforgettable tropical flavors prepared by our award-winning resort chef, including Kalua Pig, Seared Island Catch, Huli Huli Chicken and Carved Pulehu Steak.

- SUNDAY - THURSDAY BEGINNING AT 5:30 PM •
- ENJOY ONE WELCOME MAI TAI & ONE SELECT BEVERAGE •
- COMPLIMENTARY VALET & SELF PARKING •

808.941.LUAU (5828)

www.HiltonHawaiianVillage.com/luau



HILTON HAWAIIAN VILLAGE®
WAIKIKI BEACH RESORT
2005 KALIA ROAD, HONOLULU • 808.949.4321

Let's be Together...

DINING ▸ ENTERTAINMENT ▸ PAU HANA ▸ EAT ▸ DRINK ▸ BE MERRY ▸ HAPPY HOUR

MONDAY

Barefoot Beach Café at Queen's Beach 924-2233
Contemporary Ukulele
 Shaka Madali 5:30-8:30pm

Chart House Waikiki 941-6660
Live Contemporary Hawaiian
 Tito Berinobis & David Kauahikaua 6:30-9:30pm

Cheesecake Factory 924-5001
Classic Hawaiian
 Christian Yrizarry Duo 8-11pm

Duke's Canoe Club Waikiki 922-2268
Live Contemporary Hawaiian
 Haumea Warrington 4-6pm
 Ellsworth Simeona 9:30-12am

Hard Rock Cafe 955-7383
Bluesy Mondays
 FreeSound (artists vary) 9-11am

House Without a Key 923-2311
Live Hawaiian & Hula by Skyler Kamaka
 DeLima Ohana 5:30 - 8:00pm

Hula Grill 923-HULA
Live Contemporary Hawaiian
 Eric Lee 7-9pm

Jimmy Buffett's at the Beachcomber 791-1200
Live Contemporary Hawaiian
 Ashley Lilinoe 7:00-9:30pm

Kani Ka Pila Grille 924-4992
Live Contemporary Hawaiian
 Sean Na'auao 6 - 9pm
 Nathan Aweau (6/1, 6/8) 6 - 9 p.m.

LBLE at the Hilton Waikiki Beach Hotel 922-0811
Live Contemporary Acoustic Hits
 Johnny Helm 6-9pm

Lewers Lounge 923-2311
Live Contemporary & Light Jazz
 Noly Pa'a 8:30-12:30am

LuLu's 926-5222
Live Contemporary
 Johnny Helm 6:30-9:30 p.m.

Rumfire 921-4600
Live Contemporary Hawaiian
 Jeremy Cheng 5-8pm
 DJ Super CW 8:30pm-12:30am

Signature Prime Steak 949-3636
Contemporary Pianist in the bar
 Isao Motomochi 6-9pm

Sunrise Pool Bar at the Modern 943-5800
Live Contemporary
 Alex Oasay 5-8pm

The Edge at the Sheraton 921-4600
Live Hawaiian music with a fire dancer at 7:30 p.m.
 Widdy Loo 1:30-3:30pm
 Ka'ala Boys 6:30-8:30pm

The Study at the Modern 943-5800
Live Contemporary Hawaiian
 Kaleo 7-10pm

Tiki's Grill & Bar 923-TIKI
Live Contemporary Hawaiian
 Kapu the Band 6-8:30pm
 Jason Alan & Ian O'Sullivan 9-11pm

Tropics Bar & Grill 949-4321

Live Contemporary Hawaiian
 Acoustik Playground 5:30-8:30pm

TUESDAY

Barefoot Beach Café at Queen's Beach 924-2233
Contemporary Ukulele
 Shaka Madali 5:30-8:30pm

Bin1901 at the Moana 921-4600
Piano Wine Bar
 Scott Smith 6:30-9:30pm

Chart House Waikiki 941-6660
Live Contemporary Hawaiian
 The Camarillo Brothers 6:30-9:30pm

Cheesecake Factory 924-5001
Classic Hawaiian
 Derrick Lee Duo 8-11pm

Duke's Canoe Club Waikiki 922-2268
Live Contemporary Hawaiian
 Haumea Warrington 4-6pm
 Ellsworth Simeona 9:30-12am

Hard Rock Cafe 955-7383
Live Contemporary
 Saloon Pilots (or others) 9-11pm

House Without a Key 923-2311
Live Hawaiian & Hula by Radasha Ho'ohuli
 Po'okela 5:30 - 8:00pm

Hula Grill 923-HULA
Live Contemporary Hawaiian
 Kamuela Kahoano 7-9pm

Jimmy Buffett's at the Beachcomber 791-1200
Live Contemporary Hawaiian
 Mike Huhn 7:00-9:30pm

Kani Ka Pila Grille 924-4992
Live Contemporary Hawaiian
 Hoku Zuttermeister 6-9pm

LBLE at the Hilton Waikiki Beach Hotel 922-0811
Live Contemporary Funk, Jazz, Hip Hop & Reggae
 Jason Laeha 6-9pm

Lewers Lounge 923-2311
Live Contemporary & Light Jazz
 Maggie Herron & Rocky Holmes 8:30-12:30am

LuLu's 926-5222
Live Contemporary
 Johnny Helm 6-9pm

Mai Tai Bar at the Royal Hawaiian 923-7311
Live Contemporary Hawaiian with Hula Dancer
 Kapala Duo 6:30-9:30pm

Rumfire 921-4600
Live Contemporary Rock
 Randy Allen 5-8pm
 Twilight Audio 8:30pm-12:30am

Signature Prime Steak 949-3636
Contemporary Pianist in the bar
 James Woo 6-9pm

Sunrise Pool Bar at the Modern 943-5800
Live Contemporary Hawaiian
 Cory Oliveros 5-8pm

The Edge at the Sheraton 921-4600
Live Hawaiian music with a fire dancer at 7:30 p.m.
 Eric Lee 1:30-3:30pm
 Ho'okani Duo 6:30-8:30m

The Study at the Modern 943-5800

Live Contemporary Hawaiian
 Alex Oasay & Jeremy Cheng 7:30-10:30pm

Tiki's Grill & Bar 923-TIKI
Live Hawaiian - \$2 Taco Tuesdays
 K.B. Riley 5:30-8:30pm
 Sani & Friends 9-11pm

Tropics Bar & Grill 949-4321
Live Contemporary Hawaiian
 Kailua Bay Buddies 5:30-8:30pm

WEDNESDAY

Barefoot Beach Café at Queen's Beach 924-2233
Instrumental Ukulele
 Paul Wilcox 5:30-8:30pm

Bin1901 at the Moana 921-4600
Piano Wine Bar
 Scott Smith 6:30-9:30pm

Chart House Waikiki 941-6660
Live Contemporary Hawaiian
 Tito Berinobis & David Kauahikaua 6-10:30pm

Cheesecake Factory 924-5001
Classic Hawaiian
 Kimo Artis Duo 8-11pm

Duke's Canoe Club Waikiki 922-2268
Acoustic, Soul, R&B
 Haumea Warrington 4-6pm
 Ellsworth Simeona 9:30-12am

Gordon Biersch 599-4877
Jazz Wednesdays
 Varying Artists 6:30-9:30pm

Hard Rock Cafe 955-7383
Live Contemporary
 John Valentine 5-7pm
 Piranha Brothers 9-11pm

House Without a Key 923-2311
Live Hawaiian & Hula by Lauren Matsumoto
 Pa'ahana 5:30 - 8:00pm

Hula Grill 923-HULA
Live Contemporary Music
 Brandon Serrano 7-9pm

Hy's Steak House 922-5555
Live Soft Contemporary
 Audy Kimura 6:30-10pm

Jimmy Buffett's at the Beachcomber 791-1200
Live Contemporary Hawaiian
 Shawn Garnet 7:00-9:30pm

Kani Ka Pila Grille 924-4992
Live Contemporary Slack Key
 Kaala Boys 3-5pm
 Cyril Pahinui 6-9pm

LBLE at the Hilton Waikiki Beach Hotel 922-0811
Live Contemporary Funk, Jazz, Hip Hop & Reggae
 Soul Tree Music Factory 6-9pm

Lewers Lounge 923-2311
Live Contemporary & Light Jazz
 Maggie Herron & Rocky Holmes 8:30-12:30am

LuLu's 926-5222
Live Contemporary Hawaiian
 Jason Lehua 10-12:30am

Mai Tai Bar at the Royal Hawaiian 923-7311
Live Contemporary Hawaiian with Hula Dancer
 Eric Lee Duo 6:30-9:30pm

E Pili Kākou

DINING ▶ ENTERTAINMENT ▶ PAU HANA ▶ EAT ▶ DRINK ▶ BE MERRY ▶ HAPPY HOUR

Roy's Hawaii Kai 396-7697
Acoustic & Slack Key Top 40
 Dayton Watanabe 6:30-9:30pm
Rumfire 921-4600
Live Contemporary Hawaiian
 Kamuela Kahoano 5-8pm
 Twilight Audio 8:30pm-12:30am
Signature Prime Steak 949-3636
Contemporary Pianist in the bar
 Pierre Grill 6-9pm
SWIM at the Hyatt 923-1234
Contemporary Classic
 Kailua Bay Buddies 6-9pm
Sunrise Pool Bar at the Modern 943-5800
Live Contemporary Hawaiian
 Tahiti Rey & Sean Cleland 5-8pm
The Edge at the Sheraton 922-4422
Live Hawaiian music with a firedancer at 7:30 p.m.
 Albert Maligmat 1:30-3:30pm
 Keoni Ku Duo 6:30-8:30 pm
The Study at the Modern 943-5800
Live Contemporary Hawaiian
 Melanie and Drew 6:30-9:30pm
Tiki's Grill & Bar 923-TIKI
Live Contemporary - 1/2 off Wine Wednesdays
 Canoes for Rent 5:30-8:30pm
 Johnny Helm 9-11pm
Tropics Bar & Grill 949-4321
Live Contemporary Rock
 Acoustik Playground 5:30-8:30pm

THURSDAY

Barefoot Beach Café at Queen's Beach 924-2233
Instrumental Ukulele
 Paul Wilcox 5:30-8:30pm
Bin1901 at the Moana 921-4600
Piano Wine Bar
 Scott Smith 6:30-9:30pm
Chart House Waikiki 941-6660
Live Contemporary Hawaiian
 Tito Berinobis 6:30-10pm
Cheeseburger Waikiki 941-2400
Contemporary / Old School Rock
 Jeremy Chang 6:30-9:30pm
Cheesecake Factory 924-5001
Classic Hawaiian
 T & J Duo 8-11pm
Duke's Canoe Club 922-2268
Live Contemporary Hawaiian
 Haumea Warrington 4-6pm
 Randy Allen (or others) 9:30-12am
Gordon Biersch 599-4877
Live Contemporary Funk and Classics
 Acoustic Playground 7-10:30pm
Hard Rock Cafe 955-7383
Live Contemporary
 Kailua Bay Buddies 9-11pm
House Without a Key 923-2311
Live Hawaiian & Hula by Radasha Ho'ohuli
 Pa'ahana 5:30 - 8:00pm
Hula Grill 923-HULA
Live Contemporary Hawaiian

Kamuela Kahoano 7-9pm
Hy's Steak House 922-5555
Live Soft Contemporary
 Audy Kimura 6:30-10pm
Jimmy Buffett's at the Beachcomber 791-1200
Live Contemporary Hawaiian
 Shawn Garnet 7:00-9:30pm
Kani Ka Pila Grille 924-4992
Live Contemporary Hawaiian
 Jeff Rasmussen & Robi 3-5pm
 Kawika Kahiapo 6-9pm
LBLE at the Hilton Waikiki Beach Hotel 922-0811
Live Contemporary Pop/Rock
 Sunway 6-9pm
Lewers Lounge 923-2311
Contemporary Jazz
 Maggie Herron & Rocky Holmes 8:30-12:30am
LuLu's 926-5222
Live Contemporary Hawaiian
 Local Uprising 6-9pm
Mai Tai Bar at the Royal Hawaiian 923-7311
Live Contemporary Hawaiian with Hula Dancer
 Delima Ohana 6:30-9:30pm
Michel's at the Colony Surf 923-6552
Live Slack Key
 Jeff Peterson 7:30-10:00pm
Roy's Hawaii Kai 396-7697
Acoustic Hawaiian Guitar
 Steve English 6:30-9:30pm
Rumfire 921-4600
Live Contemporary Rock
 Johnny Helm 5-8pm
 DJ Miked 8:30pm-12:30am
Signature Prime Steak 949-3636
Contemporary Pianist in the bar
 Isao Motomochi 6-9pm
Sunrise Pool Bar at the Modern 943-5800
Live Contemporary Hawaiian
 Christian Yrizarry Duo 5-8pm
SWIM at the Hyatt 923-1234
Contemporary Classic
 Acoustik Playground 6-9pm
The Edge at the Sheraton 921-4600
Live Hawaiian music with a firedancer at 7:30 p.m.
 Ellsworth Simeona 1:30-3:30pm
 Christian Yrizarry Duo 6:30-8:30pm
The Study at the Modern 943-5800
Live Contemporary Hawaiian
 Simple Souls 6:30-9:30pm
Tiki's Grill & Bar 923-TIKI
Heineken Hot Hula Nights - hula dancers perform
 Malu the Band 5:30-7:30pm
 Ellsworth Simeona 8:30-11:30pm
Tropics Bar & Grill 949-4321
Live Contemporary Hawaiian
 Nohelani Cypriano 5:30-8:30pm

FRIDAY

Barefoot Beach Café at Queen's Beach 924-2233
Live Contemporary Hawaiian with Beach BBQ
 Art Kalahiki & Friends 5:30-8:30pm
Bin1901 at the Moana 921-4600

Piano Wine Bar
 Scott Smith 6:30-9:30pm
Chart House Waikiki 941-6660
Live Contemporary Hawaiian
 Mark Yim's Pilikia I 6-9pm
 Mark Yim's Pilikia II 9:30-12:30am
Cheeseburger Waikiki 941-2400
Contemporary Hawaiian
 Alex or Aku 6:30-9:30pm
Cheesecake Factory 924-5001
Classic Hawaiian
 Johnny Helm Duo 8-11pm
Busters 589-2215
Pau Hana Fridays Live Local Bands
 Varying Hawaiian Artists 6-8pm
Duke's Canoe Club Waikiki 922-2268
Live Contemporary Hawaiian
 Maunalua 4-6pm
 Kona Chang Duo (6/5) 9:30 -12am
 Imua Garza Duo (6/19) 9:30 -12am
 Christian Yrizarry (6.12) 9:30 -12am
Gordon Biersch 599-4877
Live Contemporary, R&B, Funk
 Ben & Malia 5:30-9pm
 Mojo 9 - 12:30am
Hard Rock Cafe 955-7383
Live Contemporary
 Mantra 10-12am
 Streetlight Cadence (4/3) 10-12am
 Bon Temps (4/3) 10-12am
House Without a Key 923-2311
Live Hawaiian & Hula by Kanoe Miller
 Hiram Olsen Trio 5:30 - 8:00pm
Hula Grill 923-HULA
Aloha Friday Lunch Luau with hula dancer
 David Asing 12:30-2:30pm
 Keoki & Russell 7-9pm
Hy's Steak House 922-5555
Live Soft Contemporary
 Audy Kimura 6:30-10pm
Hard Rock Cafe 955-7383
Live Contemporary
 Johnny Helm 5-7pm
 Streetlight Cadence 9-11pm
 Mantra (5/8, 5/22) 9-11pm
Jimmy Buffett's at the Beachcomber 791-1200
Live Contemporary Hawaiian
 Missing Dave 9:30 - 11:30pm
Kani Ka Pila Grille 924-4992
Live Hawaiian Contemporary
 Christian Yrizarry 3-5pm
 Hookena 6-9pm
 Hi'ikua (5/12) 6-9pm
LBLE at the Hilton Waikiki Beach Hotel 922-0811
Live Contemporary Pop/Rock
 Sunway 6-9pm
Lewers Lounge 923-2311
Live Contemporary Jazz
 Maggie Herron & Rocky Holmes 8:30-12:30am
LuLu's 926-5222
Live Contemporary Hawaiian

EVENTS ARE SUBJECT TO CHANGE
 WITHOUT NOTICE.

Let's be Together...

DINING ▸ ENTERTAINMENT ▸ PAU HANA ▸ EAT ▸ DRINK ▸ BE MERRY ▸ HAPPY HOUR

Manoa DNA 6-9 p.m.
 Vinyl Wine 10-12:30am
Mai Tai Bar at the Royal Hawaiian 923-7311
Live Contemporary Hawaiian with Hula Dancer
 Kapala Duo 6:30-9:30pm
Michel's at the Colony Surf 923-6552
Live Slack Key Stylings & Jazz
 Jeff Peterson & Ernie Provencher 6:30-10pm
Roy's Hawaii Kai 396-7697
Keyboardist
 Brian Robert Shaw 6:30-9:30pm
Roy's Ko Olina 676-7697
Slack Key Guitar
 Chris Rego 5:30-8pm
Rumfire 921-4600
Live Contemporary Rock
 Kristi Masuhara 5-8pm
 DJ Euphoric 8:30pm-12:30am
Signature Prime Steak 949-3636
Contemporary Pianist in the bar
 Grant Carvalho 6-9pm
SWIM at the Hyatt 923-1234
Contemporary Classic
 Taimane 6-7pm
The Edge at the Sheraton 921-4600
Live Hawaiian music with a fire dancer at 7:30 p.m.
 Brad Kawakami 1:30-3:30pm

Delima Ohana Duo 6:30-8:30pm
The Study at the Modern 943-5800
Live Contemporary Hawaiian
 Tahiti Rey 6:30-9:30pm
Tiki's Grill & Bar 923-TIKI
Live Contemporary Hawaiian
 Randy Allen 5-7pm
 Vaihi 7:30-9:30pm
 Solanna and Selwyn 10-12am
Tropics Bar & Grill 949-4321
Live Contemporary Hawaiian
 Piranha Brothers 3:30-6:30pm
 Nohelani Cypriano 8:00-10:30pm

Maggie Herron & Rocky Holmes 8:30-12:30am
Mai Tai Bar at the Royal Hawaiian 923-7311
Live Contemporary Hawaiian with Hula Dancer
 Kapala Duo 6:30-9:30pm
Michel's at the Colony Surf 923-6552
Live Contemporary Slack Key & Jazz
 Jeff Peterson 7-11pm
Roy's Hawaii Kai 396-7697
Acoustic Guitar
 Jimmy Funai 6-9:30pm
Roy's Ko Olina 676-7697
Slack Key Guitar
 Chris Rego 5:30-8pm
Rumfire 921-4600
Live Contemporary Rock

SATURDAY

Barefoot Beach Café at Queen's Beach 924-2233
Beach BBQ with Live Contemporary Hits
 Chris Salvador 5:30-8:30pm
Bin1901 at the Moana 921-4600
Piano Wine Bar
 Scott Smith 6:30-9:30pm
Chart House Waikiki 941-6660
Live Contemporary Hawaiian
 Tito Berinobis & Billy Beimes 7-12pm
Cheeseburger Waikiki 941-2400
Contemporary Hawaiian
 Alex or Aku 6:30-9:30pm
Cheesecake Factory 924-5001
Classic Hawaiian
 Dennis McClees Duo 8-11pm
Duke's Canoe Club Waikiki 922-2268
Live Hawaiian Entertainment
 Beach 5 (6/6) 4-6pm
 Mojo (6/13) 4-6pm
 Kapena (6/20) 4-6pm
 Chris Murphy Duo 9:30-12am
 Kamuela Kahoano (6/13) 9:30-12am
Hard Rock Cafe 955-7383
Live Contemporary

Tavana McMoore 5-8pm
 DJ Betty 8:30pm-12:30am
Signature Prime Steak 949-3636
Contemporary Pianist in the bar
 Grant Carvalho 6-9pm
Sunrise Pool Bar at the Modern 943-5800
Live Contemporary Hawaiian
 Kainalu 5-8pm
SWIM at the Hyatt 923-1234
Contemporary Acoustic
 Randy Allen & Kanoe Gibson 5-8pm
The Edge at the Sheraton 921-4600
Live Hawaiian music with a fire dancer at 7:30 p.m.
 John Valentine 1:30-3:30pm
 Tino Jacobs Duo 6:30-8:30pm
Tiki's Grill & Bar 923-TIKI
Live Contemporary Hawaiian & Reggae
 Johnny Helm 5-7pm
 Varying Artists 7:30-9:30pm
 Ellsworth & Piko 10-midnight
Tropics Bar & Grill 949-4321
Live Contemporary Hawaiian
 Henry Kapono 4-6pm
 Juke Joint 6:30-9:30pm

SUNDAY

Emke 10-12am
House Without a Key 923-2311
Hawaiian & Hula by Kanoe Miller
 Hiram Olsen Trio 5:30-8:00pm
Hula Grill 923-HULA
Live Traditional Hawaiian with dancer
 Kaipo Dabin & friends 7-9pm
Hy's Steak House 922-5555
Live Soft Contemporary
 Audy Kimura 6:30-10pm
Jimmy Buffett's at the Beachcomber 791-1200
Live Contemporary Hawaiian
 Local Uprising 9:30-11:30pm
Kani Ka Pila Grille 924-4992
Live Contemporary Hawaiian
 Ben & Malia 3-5pm
 Ka Hehena 6-9pm
 Vaihi (6/6) 6-9pm
LBL at the Hilton Waikiki Beach Hotel 922-0811
Live Contemporary Blues & R&B
 YOZA 6-9pm
Lewers Lounge 923-2311
Live Contemporary Jazz

Barefoot Beach Café at Queen's Beach 924-2233
Contemporary Ukulele
 Shaka Madali 5:30-8:30pm
Chart House Waikiki 941-6660
Live Contemporary Hawaiian
 Dean & Dean 6-9pm
Cheesecake Factory 924-5001
Classic Hawaiian
 Chris Murphy Duo 8-11pm
Duke's Canoe Club Waikiki 922-2268
Live Hawaiian Entertainment
 Henry Kapono 4-6pm
 Kapena (6/7) 4-6pm
 Typical Hawaiians 9:30-12am
 Kapena Delima (6/14) 9:30-12am
Hard Rock Cafe 955-7383
Live Contemporary
 Analog (or others) 9-11pm
House Without a Key 923-2311
Live Hawaiian & Hula by Debbie Nakanelua
 Pa'ahana 5:30-8:00pm

World Famous Thai Cuisine
by Keo

- FRESH ingredients from our own Waialua organic farm
- Classic American breakfast including our \$4.95 special
- Thai & American dinners at AFFORDABLE prices
- Family-owned and operated Thai restaurants for 30 years in Hawaii
- Walking distance from Waikiki Beach and hotels

OHANA Waikiki East Hotel
2375 Kuhio Avenue
(corner of Kuhio & Kaulani Aves.)
Phone 808.922.9888
Indoor and outdoor seating available
Validated parking \$3 for 4 hours

BREAKFAST	7 AM - 1:30 PM
LUNCH	11 AM - 1:30 PM
DINNER	5 PM - 12:00 AM

E Pili Kākou

DINING ▶ ENTERTAINMENT ▶ PAU HANA ▶ EAT ▶ DRINK ▶ BE MERRY ▶ HAPPY HOUR

Hula Grill Live Traditional Hawaiian with dancer Art Kalahiki Duo 7-9pm	923-HULA
Jimmy Buffett's at the Beachcomber Live Contemporary Hawaiian Randy Allen 7:30-10:00pm	791-1200
Kani Ka Pila Grille Live Contemporary Hawaiian Masters on stage Mailani Makainai 6-9pm	924-4992
Kelley O'Neil's Live Irish Music Various Celtic Bands 4-7pm	926-1777
LBLE at the Hilton Waikiki Beach Hotel Live, Energetic Mix of Pop and Rock Hits Pushoverse 6-9pm	922-0811
Lewers Lounge Live Contemporary & Light Jazz Noly Pa'a 8:30pm - 12am	923-2311
LuLu's Acoustic R&B Simple Souz 7-10pm	926-5222
Mai Tai Bar at the Royal Hawaiian Live Contemporary Hawaiian with Hula Dancer Eric Lee Duo 6:30-9:30pm	923-7311
Michel's at the Colony Surf Classical Slack Key & Jazz Stylings Jeff Peterson 6-9pm	923-6552
Roy's Ko Olina Slack Key Guitar Chris Rego 5:30-8pm	676-7697
Rumfire Live Contemporary Hawaiian Alex Oasay 5-8pm Twilight Audio 8:30pm-12:30am	921-4600
Signature Prime Steak Contemporary Pianist in the bar Isao Motomochi 6-9pm	949-3636
SWIM at the Hyatt Contemporary, Pop, Rock Sunway 6-9pm	923-1234
The Edge at the Sheraton Live Hawaiian music with a fire dancer at 7:30 p.m. Dave Watanabe 1:30-3:30pm Ellsworth Simeona Duo 6:30-8:30pm	922-4422
The Study at the Modern Live Contemporary Hawaiian & Jazz Jeremy Cheng 6-9pm Smooth Jazz (vaying artists) 10- 2am	943-5800
Tiki's Grill & Bar Live Contemporary Hawaiian Vaihi 6-9pm Ellsworth & Piko 9-11pm	923-TIKI
Tropics Bar & Grill Live Contemporary Rock & Hawaiian Piranha Brothers 2-5pm Beach 5 5:30 - 8:30pm	949-4321



Hot Lines

Here's a few numbers for you to find out the latest in live music from places that change daily or don't update us regularly, since we can't possible list them all,

Gordon Biersch	599-4877
Irish Rose Saloon	947-3414
Kelley O'Neil's	926-1777
Mai Tai Bar Ala Moana	947-2900

Dining Dish



Grondin has begun Saturday lunch service offering both a \$22 prix menu and a special lunch menu with items from \$3 to \$16. Expect Sunday brunch to offered shortly. grondinhi.com or 566-6768. • **Keith Pajinag** has returned to **The Modern Honolulu** as executive chef replacing former Executive Chef **Scott Toner**. Keith was actually part of the opening team that worked closely with Toner and is excited to have this opportunity to continue furthering the hotels culinary program. • We've mentioned all of these are coming, but **Pa'ina Cafe**, **AGU Ramen**, and **Bellini Bistro and Bar** are now all open at Ward Centre. Mmmmm. AGU Ramen within walking distance from my office? Yeah, you'll see me there. • For those of you closer to Kahala Mall, another ramen favorite, **Goma Tei**, will be opening later this month. • A new concept has opened in the former Blue Marlin, aka Matteo's location. It's the same owners but they felt a new concept was needed so they opened a Hawaiian Cajun seafood restaurant for lunch and dinner last month called **Crackin' Kitchen** 922-5552. I haven't been yet, but based on the amount on Japanese tourists I saw in **Kickin Kajun** when I was there the other night the place should do ok. I mean seriously, we were the only locals in the place the entire time, but the Japanese tourists were streaming in one after another. How in the world did they find that tiny hole in the wall on Makaloa Street of all places? • **Hyatt Place Waikiki Beach** will be working with **Cooking Fresh** to establish a pop-up on King Kamehameha Day, Thursday, June 11th from 5 to 8 pm offering Hawaiian-inspired cuisine. They will establish an action table in the lobby, serving these dishes at affordable prices (under \$14). Hawaiian drink specials will also be offered. • All good things must come to an end, and I'm sorry to say that **VINO** and **Hiroshi** in Restaurant Row decided not to renew their lease and closed late last month. But as one door closes, another opens, and DK Restaurants has laready announced they will be opening their first **Sansei Restaurant** in Seattle this fall, former editor Kathryn Wheeler is doing somersaults in Oregon right now! • Congratulations to **bills Sydney**. They were the only Hawaii restaurant named to Open Table.com Top 100 Brunches this year.



Dining Calendar

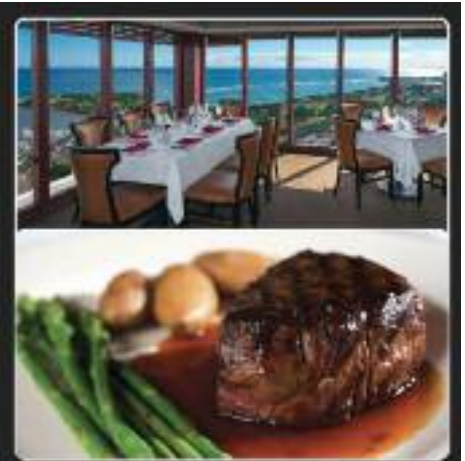
June 2: **Plumeria Beach House** presents a special set menu in honor of the full moon. Enjoy dining by the stars. 5:30 - 10 p.m. \$50++. 739-8760

June 5: **The Veranda First Friday Flights** at the Kahala Hotel explores the wines of New Zealand this month. Four of the areas wines will with their regional cuisine. \$50++ 6-9 p.m. 739-8760.

June 21: **Father's Day** Have you made your reservations yet??? Don't miss this opportunity to show your Dad how much you love him.

June 28: **Courtyard Brunch** at Ward Village Food and Farmers Market set up in this chic tent area with DJ Free to enter, \$7 per ticket or pre-buy tickets in advance for discounts. 10 a.m. - 1 p.m. wardvillageshops.com

Wednesdays: Bar 35: For many years, House of Brews has been hosting weekly beer tastings with different themes that feature around 6-8 beers, while enjoying Chef Valentini's appetizers. \$25. 6 p.m. 537-3535.



- Live Entertainment Nightly
- Happy Hour
- Early/Late Bird Specials
- Private Dining for 45 guests
- Gift Cards



Ala Moana Hotel 36th Floor
808.949.3636
Nightly 4:30 pm - last seating at 10 pm
www.signatureprimesteak.com

EVENTS ARE SUBJECT TO CHANGE WITHOUT NOTICE.

JUNE CALENDAR OF EVENTS

Continuing Events

MONDAY – FRIDAY LYON ARBORETUM TOURS

The lush gardens at the top of the University of Hawai'i Manoa are open for guided tours daily. Knowledgeable guides will introduce the highlights of the botanical rainforest's 193.6 acres. Reservations required. Limit of 12 participants daily. Donations accepted. 988-0461.

MONDAY – FRIDAY FOSTER BOTANICAL GARDENS

Guided garden tours of rare and beautiful plants from tropical regions throughout the world. Foster Botanical Gardens, 50 N. Vineyard. 1 p.m. Adults: \$5. Reservations recommended. 522-7066.

TUESDAYS TOURS OF THE HAWAII THEATRE

Get a behind-the-scenes tour of this historic theatre including history, architecture, and a performance on the 1922 Robert Morton theatre organ. Hawaii Theatre. 11 a.m. – 12 p.m. \$10. 528-0506.

TUESDAYS • KU HA'AEHO

Enjoy hula from multiple groups featuring adults and keiki performing contemporary and traditional dance and music led by kumu hula Blaine Kamalani Kia. Waikiki Beach Walk Plaza Lawn. 4:30 – 6 p.m. FREE. waikikibeachwalk.com or 931-3591.

TUESDAYS KCC FARMERS MARKET

Head up to Kapiolani Community College for a smaller version of this popular weekend market. 4 – 7 p.m. Free. 848-2074.

FIRST & THIRD TUESDAYS MEET THE MONK SEALS!

Learn about monk seals in the wild and meet two resident seals up close. Designed for participants 7 and up but anyone is welcome. Waikiki Aquarium. 3 p.m. \$4 – \$6. waikikiaquarium.org or 923-9741.

TUESDAYS & THURSDAYS FRESH FARMERS MARKET AT THE HYATT

The Hyatt holds their popular Farmers Market for visitors and locals to stock up on fresh local organic fruits, vegetables, jams, honeys, baked goods and more. Stop by twice weekly at this market located on ground floor of the Pualeilani Atrium Shops. 4 – 8 p.m. Waikiki.Hyatt.com.

TUESDAYS, THURSDAYS & SUNDAYS TOUR AND TEA AT THE HONOLULU ACADEMY OF ARTS

Tours are led by volunteer docents and designed for visitors who would like to explore the galleries, learn more about art and culture, and socialize over a cup of tea. Docents lead discussions in the galleries offer insight into many cultures and time periods. 2:30 – 4 p.m. in selected galleries. Free with admission; Reservations required. 532-8700.

TUESDAY – SATURDAY MISSION HOUSES MUSEUM GUIDED TOURS

Visit the Printing Office and Frame House while learning about the 19th century history and culture preserved at this beautiful museum. Galleries also open to explore on your own. Mission Houses Museum. Tues. – Sat. 11 a.m. & 2:45 p.m.; Tues. – Fri. 1 p.m. \$6 – \$10. 531-0481 or missionhouses.org.

WEDNESDAYS HONOLULU FARMERS MARKET

Meet the farmers and select from a variety of fruits, vegetables, flowers, beef, seafood, baked goods and more. This market is held weekly on the Concert Hall Lawn at the Blaisdell. On days an event is being held in the Concert Hall, the Market will be in the Arena parking lot on the corner of Kapiolani Blvd. & Ward Ave. Free Entrance and parking. 4 – 7 p.m.

WEDNESDAYS & FRIDAYS CHADO – THE WAY OF TEA

Japanese enthusiasts can experience the traditional tea ceremony (chanoyu) as it was meant to be seen, and taught, at the Urasenke Foundation of Hawaii. No prior knowledge required. Demos at 10 a.m. and 11 a.m. \$5. 923-3059.

SECOND THURSDAY (JUNE 11) COURTYARD CINEMA

Ward Village hosts its monthly film series event on the 2nd Thursday of each month. This month they will show Kumu Hina, a film that delves into the struggle to maintain Pacific Islander culture and values within the westernized society of Hawaii. Free popcorn, refreshments, food vendors and entertainment. Courtyard Cinema is free and open to the public. Seating is limited. Reserve your tickets and learn more about future shows at wardvillagecourtyardcinema.com.

THIRD THURSDAY (JUNE 18) DOWNTOWN GALLERY WALK & CRAFT FAIR

The Arts at Marks Garage continues to build on downtown activities offering execs an excuse to hang out after work and giving everyone else a reason to head downtown. Free. 521-2903. artsatmarks.com.

FRIDAYS CULTURAL CRAFT FAIR

The Hyatt has had so much success with its weekly Farmers Market featuring fresh local produce that they are applying the same principle to local craft

items. Each week the craft fair will feature local vendors featuring arts & crafts, jewelry, Photography, woodwork and more. 3 – 7 p.m. Waikiki.Hyatt.com

FIRST FRIDAY (JUNE 5) DOWNTOWN GALLERY WALK & CRAFT FAIR

Art lovers are advised to head to downtown Honolulu the first Friday of each month. This event has turned into a downtown party with galleries and studios open for exhibitions, artist demonstrations, and special performances. 23 galleries and art-related retail shops, restaurants and museums participate. Downtown Honolulu/ Chinatown. 6 – 9 p.m. Free. 521-2903 or artsatmarks.com.

FIRST & THIRD FRIDAYS (JUNE 5 & 19) THE SKY TONIGHT

Learn about our Hawaiian skies and current events in space at the J. Watumull Planetarium. Bishop Museum. 8 p.m. No late seating. GA \$6, Keiki \$4. 848-4168 or bishopmuseum.org.

FINAL FRIDAY • ART AFTER DARK

The hip art party where all the cool people go to mix and mingle amongst the art galleries takes place the last Friday each month. 6 – 9 p.m. artafterdark.org.

SATURDAYS KCC FARMERS MARKET

Fresh island produce, seafood, flowers and more are available from over two-dozen vendors at Kapiolani Community College. Free. 7:30-11 a.m. 848-2074.

SATURDAYS KAKA'AOKO FARMERS MARKET

Check out an abundance of locally grown produce, island made treats and much more from around our islands at the Kakaako Farmers Market at Ward Warehouse located between Ward and Kamakee Streets, Free. 9:00 a.m. - 1 p.m. 388-9696 or haleiwafarmersmarket.com.

SATURDAYS & SUNDAYS ART ON THE ZOO FENCE

More than 35 local artists display their works on the Zoo fence on Monsarrat Avenue opposite the Kapiolani Park Bandstand. Works for sale include original paintings, prints and photographs. 9 a.m. – 4 p.m. Free. artonthezoo fence.com.

SECOND SATURDAY (JUNE 13) DOWNTOWN GALLERY WALK & CRAFT FAIR

First Friday has become such a success that events carry over to the second Saturday. HiSAM, 11 a.m. – 3 p.m. 586-0900. Other events around downtown Honolulu all afternoon. Free. 521-2903 or artsatmarks.com.

FIRST & THIRD SUNDAY (JUNE 7 & 21) NA MELE NO NA PUA SUNDAY SHOWCASE

Waikiki Beach Walk has brought back its popular monthly free concert series. See Jeff Rasmussen June 7th and Kapena on the 21st at the Plaza Stage from 5 – 6 p.m. waikikibeachwalk.com.

THIRD SATURDAY HONOLULU NIGHT MARKET

The folks behind Eat the Street bring this monthly art event to Kakaako. Food, art and fashion will close Auahi Street down from Keawe to Coral as artists, food trucks, live entertainment and more fill the streets from 6 p.m. to 11 p.m. Lane closures begin at noon. streetgrindz.com

BANK OF HAWAII FREE SUNDAY (JUNE 21) HONOLULU MUSEUM OF ART

This month's Family Sunday is inspired by the 2015 Artists of Hawai'i. A free shuttle bus will run to the Spalding House for their Family Day. Honolulu Museum of Art. 11 a.m. - 5 p.m. Free. 532-8700.

MAC 24/7
WEDNESDAYS
Industry Night
11pm - 2am
50% OFF
ALL FOOD
with your industry ID
LIVEDJ
\$3 valet parking when dining
800-921-5664 - MAC247Waikiki.com
2500 Kuhio Avenue - Honolulu, HI 96815
MAC247Waikiki

Hale Aina Award Winner
Best Gourmet Comfort Food - Honolulu Magazine

JUNE CALENDAR OF EVENTS

JUNE 3

RAIATEA HELM PERFORMS AT THE ZOO

Raiatea Helm kicks off this year's Wildest Show in Town concert series at the Honolulu Zoo. Every Wednesday through August 5th, some of the Islands best entertainers perform at Zoo for only \$3. Gates open at 4:35 p.m., mini-guided tours offered to the first 30 people at 5:25 p.m. Music starts at 6 p.m. No alcohol or high-back chairs allowed. HonoluluZoo.org.

JUNE 5 • JOHN FOGERTY LIVE IN CONCERT

The former lead singer of Creedence Clearwater Revival has been named one of the 100 Greatest Singers & one of the 100 Greatest Guitarists by Rolling Stone Magazine brings his John Fogerty 1969 Tour to the Blaisdell Arena. 7:30 p.m. Tickets: \$69.50 - \$99.50. ticketmaster.com or 800-745-3000.

JUNE 6-7 • JAKE SHIMABUKURO WITH THE HAWAII SYMPHONY ORCHESTRA

Catch the world premiere of a three-part "Concerto for Jake" composed by Dr. Byron Yasui, who wrote the concerto specifically with his former student Shimabukuro in mind. Saturday 8 p.m., Sunday 4 p.m. Tickets \$32. HawaiiSymphonyOrchestra.org.

JUNE 7 • ALII SUNDAY

Kawaiahao Church celebrates select Hawaiian Royalty (Alii) who are of particular importance for the Church by holding seven special Sunday services in their honor around their birthdays throughout the year. Today they celebrate Kamehameha Ekahi. 9 a.m. kawaiahao.org.

JUNE 11 • KE NANI O KE KAI RETURNS

The Waikiki Aquarium is also kicking off their summer concert series. The five-concert event will be held every other Thursday through August 6th. The series begins with a performance by Kaiholu and Makana. Doors open at 5:30 p.m., concert begins at 7 p.m. Tickets \$50, \$20 for kids aged 5-12. waikikiaquarium.org.

JUNE 12-14 • PAN-PACIFIC FESTIVAL

The 36th annual Pan-Pacific Festival, which celebrates the cultural traditions of Hawaii, the Pacific Rim and around the world, will take place June 12 to 14 at various locations around town including a Ho'olaule'a on Friday night from 7 - 10 pm and a parade on Sunday from 5 - 7 p.m. that will close down Kalakaua Avenue to vehicular traffic. See cover story. pan-pacific-festival.com.

JUNE 12

KING KAMEHAMEHA LEI DRAPING

The King Kamehameha statue fronting Ali Iolani Hale will be draped in multiple lei at least 20 feet long, making for an amazing picture opportunity. The traditional lei draping of his statue begins with the Royal Hawaiian Band at 3 p.m. that honors the revered monarch. Official start time of the ceremony is at 4 p.m. ags.hawaii.gov/Kamehameha.

JUNE 13

KING KAMEHAMEHA FLORAL PARADE

This will be the 99th Annual King Kamehameha Floral Parade and Ho'olaule'a. The parade starts at the corner of King and Richards Streets at 9 a.m. and ends at Kapiolani Park in Waikiki with a Ho'olaule'a at Kapiolani Park from 11 a.m. to 4 p.m.

JUNE 17 • ROY SAKUMA AT THE ZOO

Roy Sakuma and His Super Keiki performs at this year's Wildest Show in Town at the Honolulu Zoo. \$3. Gates open at 4:35 p.m., mini-guided tours offered to the first 30 people at 5:25 p.m. Music starts at 6 p.m. No alcohol or high-back chairs allowed. HonoluluZoo.org.

JUNE 20

DINER EN BLANC

This was "the" event last year, with 600 participants in all white being taken to Iolani Palace for a flash-mob type fine dining experience. This year, organizers will be allowing even more to participate at the as of yet undisclosed location. Must be invited to attend. If you're interested in attending, email publisher@oahuconcerge.com and I'll help where I can. honolulu.dinerenblanc.info

JUNE 20

HONOLULU NIGHT MARKET

The folks behind Eat the Street bring this monthly art event to Kakaako. Food, art and fashion will close Auahi Street down from Keawe to Coral as artists, food trucks, live entertainment and more fill the streets from 6 p.m. to 11 p.m. Lane closures begin at noon. streetgrindz.com

JUNE 20 & 23

TAKING BACK SUNDAY



This Long Island based rock band will be performing a free concert on Saturday night for our military affiliated personnel and their sponsored guests. Ward Field. 8:30 p.m.

Contact MWR with questions. Not military? BAMP Project is bringing the band to the Republik Tuesday evening at 8 p.m. for an all ages show. \$33. bampproject.com

JUNE 20-21 • WAIKIKI ARTFEST

Check out the work of close to 100 local artists as they display their crafts for all to see and buy. Enjoy

live music and food booths while shopping. Free. 9 a.m. - 4 p.m. Kapiolani Park.

JUNE 24 • JIMMY BORGES AT THE ZOO

Jimmy Borges performs with his Jazz All Stars at this year's Wildest Show in Town at the Honolulu Zoo. \$3. Gates open at 4:35 p.m., mini-guided tours offered to the first 30 people at 5:25 p.m. Music starts at 6 p.m. No alcohol or high-back chairs allowed. HonoluluZoo.org.

JUNE 25 • SEAN NAAUAO

AND BEN & MALIA AT THE AQUARIUM

The Waikiki Aquarium's Ke Nani O Ke Kai continues with a performance from Sean Naaauo and Ben & Malia. Doors open at 5:30 p.m., concert begins at 7 p.m. Tickets \$50, \$20 for kids aged 5-12. waikikiaquarium.org

JUNE 25-27

THUNDER FROM DOWN UNDER



Oh ladies!!! The sexy men from the popular Australian male revue show return for three nights of fabulous girls night out entertainment. 8 p.m. The Republik. 18+. Tickets: \$39.50- \$49.50. bampproject.com.

JUNE 27 • ESPN 1420 SPORTS FESTIVAL

Check out the latest in the sports, health and fitness industry products and services. There will be 100 exhibitor booths, activities and demonstrations from local sports clubs and the Hawaii Tourism Authority. Neal Blaisdell Center Exhibition Hall. 9 a.m. - 4 p.m. Free. espn1420sportsfestival.com.

NEW! GOLD UPGRADE LUNCH OPTION

GRAND CIRCLE ISLAND TOUR

Your guests will love our NEW GOLD Package on our Grand Circle Island Tour! They'll enjoy a local-style buffet lunch at Kualoa's Ranch House amidst the scenic backdrop of the Wa'olaloa. Check out our attractive low rates and child rates!

\$88.20 adult | \$14.70 child (4-15)

808.212.9758
polyad.com

How Can We Help?

We're a family-operated business dedicated to service, safety, quality & fun! Ocean activities for all ages and budgets. We're at your service to help provide a perfect match for your client.



Check out our newest yacht, the Ko Nau Lani

Located at:
**WAIANAE
HILTON PIER
KEWALO**

We offer:
Sail • Snorkel •
Dolphins • Turtles •
Whales • Scuba •
Fireworks Dinner •
Private Charters •
Transportation

234-SAIL

(7245)

WE ANSWER 24 HOURS!

hawaii.nautical.com

Hawaii Nautical



DISCOUNT HAWAII CAR RENTAL SAVE UP TO 50%



GUARANTEED RESERVATIONS
* NO BOOKING FEES * NO
DEPOSIT * CANCEL ANYTIME
* NATIONAL RENTAL
COMPANIES

call us today @

1.800.292.1930

or check us out online:

DiscountHawaiiCarRental.com

IL LUPINO

TRATTORIA & WINE BAR

Join us every weekend for

*Champagne
Brunch*

Sat/Sun • 7am-2pm

Choose from 6 Delicious
Brunch Entrees, served with
a Glass of Champagne.
\$19.95

Also join us for our Champagne
Happy Hour every Tues/Thurs all day.
Glass of Champagne \$9.

ROYAL HAWAIIAN CENTER • BLDG. B, LEVEL 1
VALIDATED PARKING
WWW.ILLUPINO.COM • 808.922.3400

Haleiwa Store Lots

For years, Kamehameha Schools has worked closely with the residents and businesses of Haleiwa to revitalize the historic section of this picturesque, laid-back North Shore town that is also one of Oahu's more famous tourist destinations. It was a delicate situation.



Find a way to preserve the existing historic buildings while redeveloping the area, as well as build several more new buildings that were an organic match of the originals, all while maintaining the charm and character of this quiet, quaint surf town. Finally, the \$16 million dollar revitalization project along Kamehameha Highway has been realized with the opening of Haleiwa Store Lots last month.

The final result? A 27,000-square-foot open air retail complex comprised of an eclectic mix of brightly painted plantation-style buildings, with the new buildings designed to appear as if they had been there as long as the original ones offering lots of open spaces that would only house merchants that were either locally-owned or native to the North Shore area. Even the name, Haleiwa Store Lots is a historical reference to the site's original name – Waialua Store Lots.

Twelve stores in the Haleiwa Store Lots are now

open including Matsumoto Shave Ice, Global Creations, Malibu Shirts, Kahala Sportswear, T&C Surf, Whalers General Store, Haleiwa Fruit Stand, Teddy's Bigger Burgers, Spam Hawaii, Mahina, Guava Shop, Splash! Hawaii, and Island Vintage Cof-

fee. In the coming months Rajanee Thai Cuisine, Clark Little Galleries, Greenroom Hawaii, Fatboy's, Uncle Bo's Pupu Bar & Grill and a Better Homes and Gardens Real Estate Advantage Realty North Shore office are expected to open.

Haleiwa Store Lots is part of the Kamehameha Schools' North Shore Master Plan that began in 2006 and was completed in March 2008 after significant input and consultation with the community and public agencies. In fact, more than 30 community groups, including kupuna, local farmers, business owners, community associations, schools and churches chimed in to help mold the future vision of the North Shore community. Revenues generated from Haleiwa Store Lots will fund multiple Kamehameha School educational opportunities around the state.

Haleiwa Store Lots is located between Mahaulu Lane and Kewalo Lane at 66-111 Kamehameha Highway. haleiwestorelots.com. ~ Pam

CHINATOWN After Dark

With the dilapidated building exteriors and sidewalks blanketed with homeless, many of your guests may be intimidated to visit Chinatown in the evening, but they shouldn't be. Chinatown is exploding these days as the home to some of the Islands hottest restaurants



and art events. Many of you in the hotel industry already send your guests to First Friday and restaurants like The Pig and The Lady, Lucky Belly or Livestock Tavern to name a few, however, there are many other cool establishments downtown that most tourists have never heard about. This month we start a new section where we will let you know you about some of the hip, cool places to sip a grownup cocktail, listen to great music and show off the urban side of O'ahu that some visitors might enjoy when lookig for something new to do.

If your guests are looking for some casual jazz, one of the best places to go downtown is **The Dragon Upstairs**, located at 1038 Nu'uuanu Avenue just above Hank's Café. Wednesday to Saturday nights at 7 p.m. guests will find a great

line-up of musicians playing all types of jazz. From the moment they walk up the steps the vibrant décor of the red walls and gigantic dragon murals will definitely be a conversation starter, and yet the overbearing décor contrasts with the low key atmosphere of the cliental

and staff. This is a place where you can listen to music and not have to shout at the bartender to order your drink. The Dragon has several multi-levels which provides ample view of the stage area with small cocktail tables and chairs throughout. It's a great place for an after dinner date. The bar is open Mondays through Saturdays from 5 p.m. to 2 a.m. Happy Hour runs from 5 to 8 p.m. with \$2 off everything on the menu. Some nights there is a \$5 cover for the band beginning at 8 p.m. They don't serve food, but guests are welcome to order from neighboring restaurants and bring it in with them. Check out their special theme nights, such as Motown Mondays, Gypsy Jazz Thursdays and Salsa 2nd Fridays. For a complete schedule, visit TheDragonUpstairs.com or call 526-1411. ~



We always do our best to get you a sneak peek of what's coming up for Independence Day. It's always tough trying to find info early but here's what we have now... you know there will be more.

PARTY ON LAND

Ala Moana Center presents their 24th annual fireworks extravaganza. This ranks up there as one of the top 25 largest shows in the country. In addition to the fireworks, Ala Moana makes a weekend out of it with festivities from July 3 - July 5th, including great entertainment at Centerstage from 3 - 7 p.m. on the hour from by some of Hawai'i's top performers, offering a 20% Savings Pass valid at participating retailers, a chance to win a trip for two to Vegas to see the iHeart Radio Music Festival. Fireworks go off at 8:30 p.m. Saturday night, and they will be synchronized to a soundtrack played over 92.3 KSSK. alamoanacenter.com.

Dishwalla and Oar are coming to town to rock out Joint Base Pearl Harbor - Hickam in a special free concert for our troops. Festivities run from 3 - 9:30 p.m. Open to all military affiliated personnel with a DOD I.D. and their guests. Ward Field. Plenty of family friendly activities. Dishwalla takes the stage at 5 p.m., OAR at 7:30 p.m. Spectacular fireworks begin at 9 p.m. greatlifehawaii.com.

Eat the Street heads out to Turtle Bay for a special 4th of July BBQ theme beginning at 2 p.m. with live entertainment starting at 3:30 p.m. Varying artists will take the stage until the fireworks show that begins at 8:30 p.m. turtlebayresort.com.

Hukilau Marketplace at PCC will celebrate with several days full of activities with an eating contest, talent show, and a BBQ cook off. There will be free movies shown on the lawn from 7/2-7/4 with a special concert at 6 p.m. on the 4th. polynesia.com

Kailua celebrates the 4th with a parade in the morning from 10 a.m. to 12 noon on Kainalu Drive, that ends at Kailua Intermediate School. Then at 6 p.m., there will be a 30-minute airshow followed by a fireworks display beginning at 8 p.m. set off from a barge just off the beach. Kailua Beach Park. kailuafireworks.com.

Macfarlane Day takes over Waikiki Beach for the annual 4th of July canoe races. Depending on the conditions this can be a very exciting day on the water for the paddlers and onlookers. Please tell your guests to stay out of the way if they go into the water. It's tough to stop a 400 lb. canoe on a wave as it flies into shore. Hula Grill will be open

for lunch that day for those that want a safer view. **Ward Village** will celebrate with a five-minute red, white and blue light show on the IBM Building every 30 minutes from 7 to 9:00 p.m.

PARTY ON THE WATER

Navatek will be offering their special fireworks cruise departing Pier 6. An All American buffet dinner will be offered and premium window seats will go fast so reserve now. 6:15 - 9:15 p.m. atlandisadventures.com or 793-1311.

Star of Honolulu will be also be offering a special fireworks cruise and different dining options depending on which package they purchase, At press time one was already sold out. 6:15 - 9:15 p.m. Pier 6. Their Dolphin Star cruise is also already sold out. starofhonolulu.com.

Waikiki Ocean Club will also be doing a special fireworks party that night. Enjoy food, dancing under the stars and of course, fireworks. 21 + only. 6:30 - 9:30. Invite will be on Eventbrite.com or email chris@alohaeventproductions.com for info.

Not happening: Once again the Hawaii Kai Fireworks show has been cancelled and the 3rd of July at Aloha Tower Marketplace has yet to be

Royal
HAWAIIAN LIMOUSINE

5 Star Limousine Company
www.RoyalHawaiianLimousine.com
 808-275-6030

That's Entertainment

HOTELS

- HALE KOA HOTEL** 955-0555
 •**TuSat** - High and Right Comedy Show takes the stage at the Warriors Lounge at 8pm.
 •**MThFS** - Poolside music at the Barefoot Bar. 6-11pm
- HALEKULANI HOTEL** 923-2311
 •**Daily**-Hawaiian Music and hula at The House Without A Key from 5:30-8:00pm.
 •**Daily**-Live Contemporary and light Jazz at Lewers Lounge from 8:30pm to midnite.
 •**Sun**- Sunday brunch at Orchids features Noly Paa on the piano from 9:30 - 2:30pm.
- HILTON HAWAIIAN VILLAGE** 949-4321
 •**Fri** - Fireworks at 7:45pm.
 •**Fri** - The Rockin' Hawaiian Rainbow Revue (formerly the King's Jubilee), a musical salute to King Kalakaua, at the Super Pool. 7 pm.
 •**FriSat** - Olomana at the Tapa Bar from 8-11pm.
 •**Sun** - Jeff Apaka at the Tapa Bar from 5-7pm.
 •**Daily** - Live entertainment at the Hau Tree Bar and the Tapa Bar from 8-11pm.
- THE KAHALA HOTEL** 739-8888
 •**TuWThFSat** - David Swanson vocalizes on the piano at The Veranda from 7:30-11pm. Live Jazz on Sun/Mon.
- MOANA SURFRIDER** 922-3111
 •**Daily**-Hawaiian music & hula. The Banyan Court, 6-8 pm, and again from 8 -11 p.m. Weekends from 11:30- 2 p.m.
 •**MWFri**-Guided historical tours at 11am.
- NEW OTANI KAIMANA BEACH** 923-1555
 •**FSat**- Local jazz guitarists plays live in the Sunset Lanai Bar. 6-9pm.
- OUTRIGGER WAIKIKI ON THE BEACH** 923-0711
 •**Mon**- Kukui Nut Bracelet Making. 1pm.
 •**Th**- Ukulele Lessons. 1pm.
 •**Fri**- Aloha Fridays bring back old Hawai'i with music, hula, ukulele & lei making lessons. 9am-1pm.
- OUTRIGGER REEF ON THE BEACH** 923-3111
 •**Daily**- See guest artists at work in Kuloko Arts of Hawaii 9am-1pm and again from 6-9pm.
- SHERATON PRINCESS KAIULANI** 922-5811
 •**Daily**-Live Hawaiian music & halau at the lounge from 6-8:30pm, then poolside from 8:30-10:30pm.
 •**Th**-Princess Kaiulani historical tour at 9:30am.
- THE ROYAL HAWAIIAN** 923-7311
 •**TTH**- Free guided resort tour at 1pm.
- TURTLE BAY RESORT** 293-6300
 •**MTWThFSat**- Lei Making, Main Lobby at 10am.
 •**ThSun** - Fire Dancer, Hang Ten Pool Bar at Sunset

- TThFri** - Shell Hula Lessons, Lobby at 10am
 •**TThFri** - Ukulele Lessons, Lobby at 9am
 •**Fri**- Music & Hula. Lobby Lounge 6:30-8:30pm.

- WAIKIKI BEACH MARRIOTT RESORT** 922-6611
 •**Daily**-Hawaiian entertainment in The Moana Terrace Bar. 6:30-9:30pm.
 •**Fri**-Local crafters "Aloha Friday Fair" Lobby 9a-2pm

MUSEUMS

- HAWAII STATE ART MUSEUM** 586-0900
 •**TWThFSat** - Inaugural exhibition "Enriched by Diversity: The Art of Hawai'i." Free. Tuesday-Saturday, 10 a.m. to 4 p.m. Located in the Capital District.
- HAWAII THEATRE** 528-0506
 •**Tues**- A one-hour guided tour offers a unique insight in the history, art, architecture and restoration of the Hawai'i Theatre with trained docents & a mini-concert on the 1922 Robert Morton Theatre Organ. 11 a.m. Admission: \$10.
- HONOLULU MUSEUM OF ART** 532-8726
 •**MWF**- Japanese Language Tours. Private tours also available. 1pm. Regular admission.
- IOLANI PALACE** 522-0832
 •**Mon-Sat**-45 minutes docent-led or self-guided audio tours available in English or Japanese. Japanese-led tour is available only at 11:30 a.m. All tours include re-tour video and entrance into the Palace Galleries. Adults: \$14.75-\$21.75 / Keiki (5-12): \$6. 9am-5pm
 •**Sat**-Hawaiian Quilt Classes. Old Archives 9:30a-12p.
- LUCORAL MUSEUM** 922-5381
 •**TTh**- Learn how to plan your jewelry project and more in this beaded jewelry workshop \$10. 2-4 p.m.
- MISSION HOUSES MUSEUM** 447-3910
 •**Tue-Sat**-Learn about the dramatic story of cultural change in 19th-century Hawai'i. Docents lead tours through the oldest existing frame house in the Islands, Printing Office, and the coral block Chamberlain House. Reservations required. www.missionhouses.org
- PACIFIC AVIATION MUSEUM** 441-1000
 •**Daily**-Vintage aircraft in battlefield hangars on Ford Island. Combat flight simulators. Aviator's Tour takes you through the new Restoration Hangar. Restaurant, Museum Store. Shuttle & Tickets at USS Arizona Memorial Visitor Center or at PacificAviationMuseum.org.
- THE SPALDING HOUSE** 526-1322
 •**Daily**-Docent-led tours given daily. 1:30pm. Garden tours or Japanese language tours are by appointment.
- NAVAL AIR MUSEUM BARBERS POINT** 682-3982
 •**Mon-Fri**- A unique museum experience about aviation history in Hawaii. All of the aircraft are open to climb

in, on and around. Tours: 8 a.m. - 4:30 p.m. \$7 / \$5 children under 18. BLDG 1792, Midway Road, Kalaeloa Airport. Reservations required. Sat/Sun by appt only. www.nambp.org.

SHOPPING CENTERS

- ALA MOANA CENTERSTAGE** 955-9517
 •**Tues** - PCC Polynesian Revue Show. 6pm.
 •**Sun** - Keiki Hula Show. 10-11am.
- KINGS VILLAGE** www.kings-village.com 237-6344
 •**MW** Famer's Market offering fresh produce, baked goods and local food items from 4-9pm.
 •**Daily** King's Guard Museum features a variety of collectibles and memorabilia. 10a-10:30p. FREE.
- ROYAL HAWAIIAN CENTER** 922-2299
 • **TWThF**- Beginner Ukelele 10-11am, *Helumoa Hale*
 • **MW**- Learn Lomilomi 11am-12pm, Bldg. C, 3rd floor
 • **MF**- Hawaiian Storytelling 12pm, *Helumoa Hale*
 • **TTh**- Intermediate Ukelele 11:30am, Bldg. C, 3rd floor
 • **TTh**-Hula (T) 11am-12pm (Th) 4-5pm, *Royal Grove*
 • **TWThF**- Live Hawaiian music 6-7pm, *Royal Grove*
 • **MTWThSat**- Lei making 1-2pm, *Bldg A, 1st floor*
 • **Sat**- Hula Kahiko 6-6:30pm, *Royal Grove*
 • **Sat**- Hawaiian musicians 7:30-8:30pm, *Royal Grove*
 • **WSat** - PCC Performs. 11-11:45am, *Royal Grove*
- WAIKIKI BEACH WALK** www.waikikibeachwalk.com
 •**Tuesdays** - Ku Ha'aheo featuring Hawaiian song and dance on the Plaza stage. 4:30-6pm
 •**Wednesdays** - Yoga Classes 4-4:45pm. Free.Plaza Stage
- WAIKIKI SHOPPING PLAZA** 923-1191
 •**Daily** Hula Lessons. 10am, 12pm
 •**MTTh** - Polynesian Review 1st & 3rd floor 7-9pm

ATTRACTIONS

- KALAKAUA AVENUE** 527-5666
 •**Fri** - Strolling Hula from 8-10:00pm.
- KAPI'OLANI BANDSTAND** 527-5666
 •**Fri**-Hawai'i's finest musicians perform. 5:30-6:30pm
 •**Sun**-Royal Hawaiian Band performs 2-3:15pm.
- KUHIO BEACH HULA SHOW** 843-8002
 •**TThSat**- City & County presents a free hula show at sunset. 6:30 - 7:30pm at the hula mound.
- TAMARIND PARK - DOWNTOWN** 527-5666
 •**Fri**- Mayor's Aloha Friday Music from 12-1pm features live music from Hawaiian to Jazz to Pop.
- WAIKIKI TOWN CENTER** 922-2724
 •**Mon-Sat**-The songs and dances of Hawai'i, New Zealand, & Tahiti. Free shows begin at 7pm.

EVENTS SUBJECT TO CHANGE PLEASE CALL TO CONFIRM PRIOR TO ATTENDING

PAPARAZZI

Happy anniversary bills!



Bill's Sydney in Waikiki was the only Hawaii restaurant named to the OpenTable.com 100 Best Brunch Restaurants in America this year. GM Tony Miloni, Masa Kobayashi and Marie Kozuma were all smiles at their anniversary.

Aulani at the Charity Walk



Enjoying this year's charity walk from the Aulani Resort was Bell Captain Ananias Temaeva, 2015 Na Po'e Pa'ahana Front Office of the Year award winner Cecilia (Sam) Richardson and Arynn Ishikawa from the Front Office.

More Aulani Fun at the Visitor Charity Walk



Also participating in this year's HLTA Visitor Industry Charity Walk that raised over \$2.2 million from the Aulani was Crystal Siruno, PBX and Vacation Planning; John Delos Reyes, Concierge; and Arynn Ishikawa, Front Office.

THE OAHU concierge card

June 30, 2015

Dole Plantation - 1 FREE Adult Admission To The Maze With Purchase of 1 Adult Admission. 621-8408

Giovanni Pastrami - 15% Off Full Bar, Dine-in or Take-Out at anytime with ID. 227 Lewers St. 923-2100.

Hard Rock Café - 15% off food, beverage (non-alcoholic), or merchandise. Hotel ID required. 280 Beachwalk Ave. 955-7383.

Hawai'i Prince Golf Club - \$5 Off Standard Kamaaina Green Fees. Tee Times: 944-4567

Hilo Hattie - 25% on Hilo Hattie labeled garments, 15% off other fashions/gifts and 10% off Hilo Hattie labeled foods. Not valid on sale item. Ala Moana Center and Nimitz Hwy Ph 535-6500.

Hy's Steakhouse - 25% VIP Discount Off Food And Beverage (up to 2 persons) 2440 Kuhio Ave. 922-5555

Hyatt Regency Waikiki - 15% discount with the presentation of a concierge business card at SHOR, Japengo and SWIM. 2424 Kalakaua Ave. 923-1234.

Iolani Palace - Free Admission. Regular rate \$20. 364 S. King Street, Reservations & Hotel ID required. 522-0832.

IHOP - Receive 20% on entire bill. Must show valid hotel ID. Not valid with any other offer or discount. Aqua Palms, 1850 Ala Moana Blvd restaurant only. Free parking available. 949-4467.

Kaiwa - 20% off food & beverage between 5 & 7 p.m. 924-1555

Longhi's - 25% off food & beverage up to 2 persons, not applicable with any other promotion or discount. 947-9899.

Mission Houses Museum - Free tour with hotel ID. 447-3910

Pacific International Skydiving Center - 50% Discount on Jump, 68-760 Farrington Hwy, 637-7472

Plaza Café - 15% off all food items. Best Western the Plaza Hotel. 3253 N Nimitz Highway. 836-3636.

P.F. Chang's Waikiki - Receive 20% on all appetizers, entrees, desserts and beverages 11 am - 5 pm daily (not valid for Pau Hana menu) Royal Hawaiian Center. Ph: 628-6760, 637-7472

Romano's Macaroni Grill - 20% Off Food and Beverage for up to 2 guests. (Not Valid for Happy Hour Menu). Ala Moana Center, 1450 Ala Moana Blvd. 356-8300

Royal Hawaiian Center - get your FREE Malama Card which offers special retail and dining discounts to local Waikiki workers. Royal Hawaiian Center, 2201 Kalakaua. 922-2299.

Ruth's Chris Steak House - 20% Off Food and Beverage for up to 2 guests. (Not Valid for Happy Hour & Prime Time menus). Restaurant Row, 500 Ala Moana Blvd. 599-3860. Waikiki Beach Walk, 226 Lewers Street. 440-7910

The Contemporary Museum - FREE Admission For Cardholder and One Guest. 526-1322

The Kahala Resort - Complimentary appetizers for a concierge and a guest with the presentation of a concierge business card at Hoku's, Plumeria Beach House, Seaside Grill, The Veranda. 5000 Kahala Avenue. 739-8888

The Original Glider Rides - Come experience the joy of soaring for yourself. Concierge / GSA may receive a complimentary scenic ride. Request the "GSA flight special" when booking your reservation. Hotel ID required. Dillingham Airfield. 637-0207

Tiki's Grill & Bar - FREE order of ANY appetizer with any purchase! One per table. OahuconPOKE. ASTON Waikiki Beach. 923-8454

Willoughby's Restaurant - 15% off all food items. Ohana Honolulu Airport Hotel. 3401 N. Nimitz Hwy. 836-0661.

HELP us update this card. If you know of an offer not being honored let us know. As management changes, sometimes offers can get lost. Also as we work on updating this, let us know if there is something you would like to see here & we'll see what we can do!

You may be required to provide identification. Must show Hotel ID to claim offer. One special per person per business. Offers valid on regular-priced merchandise only. Discounts are available to Guest Service Professionals ONLY. Not valid with other promotions or special offers. A minimum 18% gratuity on original order required for all special food offers.  New offer

Guest Service Agent of the Month



NAME: Joshua Smith
HOTEL: OHANA Waikiki East Hotel
TITLE: Guest Service Rep, Manager on Duty, & Relief Night Auditor

Q. How long have you been with Outrigger ?
A. I have been with Outrigger hotels for 4 Years.

Q. How big is your team there?
A. We have 13 that make up our OHANA Waikiki East Hotel ohana.

Q. What makes your hotel special?
A. We are a budget friendly hotel close to the beach. We provide an excellent guest experience.

Q. Where did you work before the OHANA East?
A. I worked for Aston and then Aqua before Outrigger.

Q. How did you get your start in the industry?
A. I started at the Aston Coral Reef Hotel as maintenance then just moved up from there

Q. What's the biggest challenge at the desk?
A. Our biggest challenge is the increased number of Chinese visitors. That creates a language barrier but we try our best the make sure that Chinese visitors enjoy Hawai'i.

Q. What do you like most about this industry?
A. Hawai'i is a one of kind place in the world. I enjoy this industry because I can share my knowledge of the islands and share the aloha to our guests from around the world.

Q. What is your favorite restaurant to recommend?
A. ONO Hawaiian Food on Kapahulu! Guests really want to experience real Hawaiian food and that place never lets you down!

Q. Do you have one particular guest that stands out?
A. We have many return guests, but Bruce from England is one of my favorites. He always brings cheesecake for us and his stories are hilarious. I'm always waiting for Bruce to return!

Q. What's the one question you are asked most often?
A. The number one question here is "where's the beach?"

Q. How do you deal with those "difficult" guests?
A. The best way I deal with difficult guests is to just listen to them, let them vent, and then resolve the situation.

Q. Favorite part of the island to send guests too?
A. I love the west end of the island. The beaches over there are fabulous!

Q. What is your favorite activity to recommend?
A. Kualoa Ranch. It is beautiful and there are so many activities to do.

Q. What's one thing about you people would be surprised to know?
A. That I love hunting and fishing!

Q. Where are you from originally?
A. I was born in Colorado, my parents moved to Moloka'i when I was 2 years old. I am a Moloka'i boy!

Q. What do you like to do most when not working?
A. Hang out with my family and BBQ at the beach.

Q. Where would you like to see yourself in 5 years?
A. Hopefully I will have become a manager for Outrigger Hotels!

Q. Any other comments you'd like to share?
A. Live ALOHA and take care of our guests from around the world.



Embrace Your Dreams

Experience the magic of dreams coming true in our inspiring and unforgettable dolphin programs starting at only \$125. Dolphin Quest is located at the legendary Kahala Hotel & Resort.



DOLPHIN QUEST
Oahu

Reserve

800-248-3316
808-739-8918
dolphinquest.com

A portion of the proceeds supports vital marine education, conservation and research.

The Oahu Concierge is printed monthly and direct mailed FREE to all Oahu Concierge, Hospitality & Activity Professionals.
Subscriptions available to non-industry at \$25 per year.

C O N T A C T

Davis Media

Ph: 596-4422 • Fax: 593-0839

www.oahuconciierge.com

Twitter & Instagram: @OahuConciierge

Facebook: www.facebook.com/OahuConciierge

ADDRESS & NAME CHANGES / ADDITIONS

We do not take changes by telephone. All changes to mailing list must be submitted in writing by the 16th of the month to make the next issue, email is preferred.

S T A F F

PUBLISHER Pam Davis
publisher@oahuconciierge.com

CONTRIBUTING EDITORS
Lynn Cook, Lance Rae

DESIGN
Coreiya Design

The Oahu Concierge
1221 Kapiolani Boulevard, Suite 1040
Honolulu, Hawaii 96814



LOOK & BOOK

Go to www.HIRealTime.com

A NEW AGENT TOOL built specifically for Hawaii Guest Professionals.

It's **FREE!**

- Activities
- Attractions
- Restaurants
- Events

Real-time booking for over 130 Vendors, with more being added each month.

Register to access for free at WWW.HIREALTIME.COM



ponorez serving Hawaii's visitor industry since 1988... 27 years & counting.

“Thank you for holding, a representative will be with you shortly.”



Are you getting tired of hearing the same automatic voice answering service every day? Put down the phone because now there is a new way to book activities without picking up the phone!

Now you can **Look & Book** at your convenience, at the office, on your way to work or even in your bed.

HIRealtime.com works on a variety of devices: Personal computer, MAC, tablet, Apple & Android mobile phones.

Similar to Net Neutrality, which ensures a level playing field for all internet companies,

A3H's PonoRez provides free, easy, non-preferenced ticketing access by logging on or by our API. API stands for Application Program Interface, essentially it provides a way for systems to talk with each other. A common layman's term for API is "bridge". **PonoRez's** bridge has been available to outside systems since May 2010. **A3H** continues to keep our bridge open and willing to communicate.

The system is called **PonoRez** for a reason. It's made with principle over profit in mind. **PonoRez** is not just a different kind of system, it's a system that is **“Making a Difference”**.