

THE OAHU

Concierge

KEEPING THE HOSPITALITY INDUSTRY INFORMED SINCE 1998

HONOLULU Festival



The Grand Parade never fails to delight. Photo: Honolulu Festival Foundation

The Honolulu Festival is often called "Hawaii's Premier Cultural Event." It is a festival that really does have something for everyone, from everywhere. Symposiums, sporting events, hula festivals, traditional arts festivals, entertainment all over town, a fantastic feast and, for the finale, a gala parade and a massive fireworks display over Waikiki.

The big party will be the 21st annual time this festival has taken place on Oahu and begins March 6th. Cultural diversity is spotlighted. Every day of the Honolulu Festival weekend is packed with free ethnic entertainment, arts, cuisine, and arts and crafts, all celebrating Hawaii's Pacific roots. The theme for 2015 event continues to promote traditions that bond Hawaii with countries around the Pacific Rim: "Creating Friendship with Aloha" The organizers suggest that each experience will fascinate. Check the schedule and agree.

From March 6th to 8th, Waikiki will explode with the colors and sounds of celebration, culminating in the Waikiki Grand Parade and Nagaoka Fireworks Show. The weekend includes a wide variety of events at venues around Waikiki and Honolulu, with all entertainment offered free and open to the public. Visitors and residents can unite in this chance to experience the unique cultural practices and art forms of Hawaii, Japan, China, Taiwan, Korea, the Philippines, Australia, Canada, and Alaska.

The Honolulu Festival was conceived with the idea of sharing the history of our different peoples, languages, and customs to foster an ongoing relationship between Hawaii and the Pacific

neighbors that have helped form our cultural landscape. Since the Fest first burst onto the scene in 1995 it has steadily grown with each year and today boasts the highest attendance in Honolulu's festival history. Through visitors, television coverage, and movie clips, this much-anticipated event has become the ideal vehicle to spread the importance of cultural traditions and heritage of our communities with the world. In a diverse melting pot like Hawaii, it's easy to take our differences for granted,

especially when many morph or blend with others to create the new, multi-cultural traditions that mold our wonderful islands. Today, visitors come from around the U.S., the Pacific, and beyond to take part in the festivities of one of Hawaii's most popular cultural fiestas.

Once again the 21st Annual Honolulu Festival will kick off Friday, March 6th with an Educational School Tour that is by invitation only beginning at 9 a.m. at the Hawaii Convention Center. This event includes the Hawaii students from elementary through high school, invited to a behind-the-scenes tour of exhibits while interacting with artists and performers participating in the Festival. While this tour is designed for local students, and the official receptions (Governor's Luncheon and Mayor's Welcome) are by invitation only, the rest of the festivities throughout the weekend are designed to unite residents and visitors of many cultures to share in activities and entertainment.

Bringing the weekend to a close is the Friendship Gala, from 6:30 p.m. at the Hawaii Convention Center. Attendees are invited to join in an evening promoting international benevolence between Hawaii and our neighbors around the Pacific Rim. Events will include top local chefs creating ono cuisine, along with live entertainment from cultures throughout the Pacific. Admission is \$90 for adults or \$70 for keiki under 21 years of age, which includes food and two beverages. Keiki under 6 are free, excluding food and beverage.

Entertainment will include Raiatea Helm, Jody

Continues on page 2.

SHOP! Don't Drop.. at



For the eighth year running the opportunity to feast on fashion is only days away. Shop a Le'a returns to Ala Moana Center with seven days of shopping mania, beginning March 16 and continuing through March 22. Think of the expression, Shop 'Till You Drop and go for it! This spring fashion fling has continued to expand, becoming the most popular, don't miss, fashion event in Honolulu. Conceived in 2008, the event coincided with the completion of the Center's last massive redevelopment project and the opening of the long-awaited Nordstrom store. Eight years later it has become one of Honolulu's premier shopping events attracting everyone from local shopping divas to visiting fashionistas, all in need of some retail therapy.

Exclusive products are created just for the week. Look for the center-wide gift with purchase and mall-wide shopping and dining offers, a gala event, plus the opportunity to win a Shop a Le'a Staycation.

Kicking off on Monday, March 16 with a special event from 5 to 8 p.m. the celebration will feature entertainment by Streetlight Cadence on Centerstage at 5 p.m., and live DJ's will be throughout the Center. Complimentary refreshments will be offered at Bubba Gump Shrimp Co., Jamba Juice, Mai Tai Bar and other locations. The first 500 shoppers will receive a free gift. The annual gift with purchase is a Shop a Le'a tote designed by Samantha Thavasa. Shoppers who redeem \$300 or more in Ala Moana store and

Continues on page 16.

TABLE OF CONTENTS

Yada Yada Yada	2
Newsflash	3
Arts with Aloha	4
Aunty Lynn's Adventures	6
Duke Kahanamoku Beach Challenge	8
Chef's Corner: Off the Wall Craft's Ed Morita ..	9
E Pili Kakou	10-13
Calendar	14-15, 17
2015 Polo Season Opener	17
That's Entertainment	18
Concierge of the Month: Ryan Tucker	19



LUNCH • HAPPY HOUR • DINNER • WEEKEND BRUNCH • PRIVATE ROOMS

UNMISTEAKABLY NEW YORK

Royal Hawaiian Center, Bldg C, Level 3
wolfgangsteakhouse.net • opentable.com

808.922.3600





Hashtag #luckywelivehawaii

Boy are we ever. Spring is here, and while the rest of the country has been busy digging themselves out, the island seems to be more beautiful than ever! Unlike previous years, the whales are everywhere!!! Mango trees that have lain dormant for years have flowers exploding all over them, making my mouth water just thinking of the fruits to come, and the rain we got a few weeks ago is making everything such a vibrant green the island has simply been breathtaking recently. I had a meeting on the North Shore today, and although I was racing a thousand miles an hour to get back here and finish this magazine up for you so you get it in time, I have to tell you, all I wanted to do is pull the car over and jump into the ocean. Crystal clear blues and greens wherever I looked. I never wanted to be a tourist quite so badly as I did when I looked at those rent-a-Mustangs pulled off to the side of Kam Hwy knowing they were doing exactly what I wanted to. However, duty calls, so I came back to work... this time. Next time you may not be so lucky. It's looking pretty gorgeous out there these days.

Have you been whale watching recently? If you haven't, call your favorite whale watch tour company and head out while you can. Those guys are everywhere. I was lucky enough to be out on the water a few weeks ago and they were all over the place. At one point we saw the blow about a mile away, so we turned the boat to head towards the mist when suddenly two whales surfaced right next to us. We instantly killed the engines and quietly drifted waiting for them to pass on by. Instead, they became inquisitive and we were "mugged." "Mugging" is a term used when a whale reacts to the presence of a boat by becoming inquisitive, rather than their normal non-responsive behavior, and stays to check you out, and it is a once in a lifetime experience. The whales lazily swam around us, lifting their pectoral fins and flukes out of the water remaining just mere feet from the boat or swimming gracefully around us on either side. Federal law prohibits approaching whales closer than 100 yards, and if you are less than 100 yards from a whale you cannot move the boat until the whale departs. Therefore we were stuck with these amazing creatures simply gliding around checking us out for nearly a half an hour. Simply amazing. I've lived here my whole life, and that has only ever happened one other time - and certainly not for that long. In that case a whale surfaced nearby, we killed the engines, waited for it to swim safely past, and then kept on going. These guys just were enjoying the day checking things out. Once they finally left us they simply swam a few hundred yards away to another boat nearby, who had been watching from afar until finally they disappeared long enough that we all felt safe enough to turn our engines on and go home in silent awe. If that isn't one of life's gifts, I'm not sure what is. #luckywelivehawaii



Yada Yada



Stephanie Dowling

Starwood Hotels & Resorts has promoted **Stephanie Dowling** to their Regional Communications Director, in charge of both the public relations team and the in-house agency for all 11 Starwood properties statewide. Dowling first joined Starwood Hotels in 2006 and moved over to Hawaii in September 2013. • **Kenji Stevens** has been named executive director at *Ballet Hawaii*. Stevens was the former general manager at the Hawaii Symphony so is very familiar with Ballet Hawaii having worked so closely with them on numerous productions over the years. • **John Parkinson**, former executive director at Ballet Hawaii has taken over as director of programming at the *Hawaii Theatre Center*. John will be responsible for planning, managing and contracting all of the presentations at the historic theatre. Also joining the team is **Elizabeth O'Brien** who has been named the Director of audience relations at the theatre in charge of all front-of-house services including box

office operations. • Congratulations go out to **Karen Wataru Nakaoka** who was just promoted to Executive Director of the *Hawaii Lodging and Tourism Association*. • The *Royal Hawaiian Center* has hired **Aaron J. Sala** as its Director of Cultural Affairs. Sala will be responsible for direction and oversight of all resources and activities promoting Hawaiian culture at the Center. Sala, a recipient of Na Hoku Hanohano award, will also be helping integrate both Hawaiian management practices and ho'okipa to enhance the guest experience at the Center. • **Randy Ha** has been named the general manager of *The Plaza Club*. Ha has spent the last 20 years with Starwood Hotels & Resorts and is excited to return to the islands. • *Hilton Hawaiian Village* has named **John Hawley**, a newcomer to the islands most recently from Baltimore, as their new director of sales. • Lastly, please welcome **Tomoko Yagi** as the *Halekulani's* newest director of rooms. Yagi, who has worked around the world including The Kahala Hotel & Resort, will oversee hotel operations, which will include the front office, housekeeping, concierge and pool staff.

HONOLULU FESTIVAL

Continued from page 1.

Kamisato & the Ukulele Super Kids, University of Hawaii Marching Band, Ryukyu Koten Afuso Ryu Ongaku Hawaii Choichi Kai, Sonoda Gakuen High School, Un Bijou and Sophia University Cheerleading Team EAGLES.

Saturday and Sunday are jam packed with tons of activities so there will something for everyone to enjoy. Performances and events run from 10 a.m. to 6 p.m. on March 7 and 10 a.m. to 3 p.m. on March 8 at locations around Honolulu including the Hawaii Convention Center, Ala Moana Shopping Center, DFS Galleria, Waikiki Beach Walk, and Waikiki Shopping Plaza.

On Saturday, March 7 a massive craft fair at the Convention Center will allow your guests to shop at over one hundred booths while enjoying free live entertainment from Japan, Hawaii, and more. The fair runs 10 a.m. to 6 p.m. on Saturday and 10 a.m. to 3p.m. Sunday. Participating exhibitors offer demonstrations and teach crafts to attendees. This year will again include a Japanese-style Ennichi corner complete with activities, traditional games, food, and more, as well as an Anime Corner for comic fans.

Back by popular demand, guests can try out traditional Japanese dance at a Bon Dance Workshop preceded by the Yagura (tower) Unveiling Ceremony, followed by bon dancing lessons until noon.

As always, the Maui Mikoshi Building Contest, will showcases the talents of Maui high school students as they compete in a design contest to build their own mikoshi (decorative Japanese floats). The contest will have already taken place prior to the Festival itself, but guests will see the winning school and float when the the results of the contest are unveiled Saturday in a ceremony at the Convention Center from 11 a.m. to 11:15 a.m. The winning students will be invited to carry their float in the Festival's grand finale parade, showing off their skillful creation.

Another repeat event will invite runners to participate in the "Honolulu Rainbow Ekiden"

race. Runners from Hawaii, the Mainland, Japan, and around the Pacific Rim will participate in the Ekiden, a traditional Japanese marathon-style race that has been gaining in popularity since its inception over ninety years ago. On Sunday, March 7, teams of three to five runners ages 12 and up will race 5K laps from Fort DeRussy to Sans Souci Beach and back. The top three teams will be recognized at the post-race Awards Ceremony and each participant will receive a commemorative T-shirt and complementary ticket to the Honolulu Festival Friendship Gala. Entry fee is \$450 and race numbers are available for pick-up at the Hawaii Convention Center's Honolulu Rainbow Ekiden desk. At the end of the race, runners and spectators alike can enjoy WaikiKitchen, as the huge food festival returns to Kapiolani Park as part of the days events. Celebrate local food from 8 a.m. - 2 p.m. To sign up or for more information, go to honoluluEkiden.com.

As always, the weekend's festivities culminate in the brilliant and exciting Grand Parade on Sunday from 4:30 to 8 p.m. in Waikiki. An awe-inspiring, toe-tapping procession of music, drums, floats, mikoshi, and performers will make its way along Kalakaua Avenue from Lewers Street to Kapiolani Park. Parade participants include local high school bands, hula, dance troupes, and special appearances by Miss Hawaii, the Cherry Blossom and Narcissus Queens, and the popular Daijyama (fire-breathing dragon).

One of the more anticipated events of the Festival is always the spectacular Nagaoka Fireworks Show, which will take to the sky at 8:30 p.m. Sunday evening, bringing an explosive close to the event with dramatic pyrotechnics launched from the water off Waikiki, accompanied by a synchronized music broadcast by Hawaiian 105 KINE.

Make sure to remind your guests that traffic will be restricted during the Grand Parade on Sunday and remind them to take a camera! For more information and an updated schedule, call 833-3378, visit honoluluFestival.com, like it on Facebook, or get the latest updates on Twitter at @honfestival.

~ LYNN

EXTRA *Newsflash* EXTRA

DIAMOND FINISH

Forever Flawless has opened their first ever Hawaii boutique inside the Royal Hawaiian Center. The upscale skin care line whose products contain diamonds in a micronized powder form which is used as an exfoliating agent and allows the product to penetrate into the deeper skin layers for the best results. Located across from the Apple Store on the ground floor, the store also hosts a private treating room. 924-6868 foreverflawless.com.

LEAHI THRIFT SHOP

Did you know there was a thrift shop hiding behind Leahi Hospital on Maunalei Street for over 50 years? Located on Diamond Head, their patrons seem to be dropping off some pretty high end stuff on a regular basis. From collectibles to dishes to jewelry to clothes to suitcases and more... for some of the best prices in town. Wednesday & Saturday from 10 a.m. - 2 p.m. 733-8091.

HUKILAU MARKETPLACE IS NOW OPEN TO THE PUBLIC

Polynesian Cultural Center's Hukilau Marketplace fully opened last month offering people a chance to pull into PCC, grab a snack, shop around multiple stores or sit down for a full meal outside the center either before they go in, or just as they pass by.

WET 'N' WILDS NEW WHIRL

Wet 'n' Wild Hawaii has introduced its first new ride in six years, the Waimea Whirl. This two-person, rainbow-colored thriller lets riders pair up on an inner tube, where they swirl around a funnel-shaped bowl before they get flushed down a colorful, long slide that lands in a splash pool. Just in time for their upcoming 16th anniversary later this year, this new ride is one of many specials taking place in 2015. wetnwildhawaii.com.

BREW & BITES

Due to overwhelming demand, Paradise Pedals is adding an all inclusive Kakaako beer tour Wednesday thru Saturday. Stopping at REAL, Brewseum and Honolulu Beerworks, there will be beers and appetizers at each stop included in the price. The standard tour where drinks and apps are no host in addition to the tour price are also still available. 397-7066. paradisedpedals.com

CONCIERGE GET 50% OFF AT WOOD & BUCKET

Concierge can take a 50% discount on any order, excluding alcohol, all month at Wood & Bucket at the Waikiki Sand Villa. Can't be combined with other discount or promos. Present your business card to receive discount though March 31st, 2015.

ALOHA FRIDAY LUNCH LUAU

Hula Grill has added the Aloha Friday Lunch Luau every Friday from 11:45 a.m. - 3 p.m. Guests can take advantage of tasting all of the luau foods on one sampler plate for only \$22, while enjoying some of the sights and sounds of the islands as well. The million dollar view of Diamond Head comes at no charge along lei making, with live music and hula from 12:30 - 2:30 p.m. Regular menu also available. 923-HULA (4852).

TRIBUTE TO ALFRED APAKA

Each year, the Hilton Hawaiian Village plays host to a special celebration honoring "The Golden Voice of Hawaii" on his birthday. Alfred Apaka was Hawaii's most famous entertainer during the 1940s and 50s and his good looks, fame and magical voice helped put the Hilton on the map all those years ago. Apaka would have been 96 years old this year, and on March 29th, some of the islands biggest voices come out to honor him. The day begins at 3 p.m. with an oli by Kai Markell, a pule by Kahu Wendell Davis, and lei draping at Apaka's statue with Danny Kaleikini, Mihana Souza, Hailama Farden and more. For the next few hours, performer after performer will serenade guests with song and dance in the Tapa Bar until 7 p.m., including Aaron Mahi, Cathy Foy, Wailani Bell and Henry Kapono to name a few.

We are the Master in Private Tours

RRHIL

Royal
HAWAIIAN LIMOUSINE

Black-and-Gold is not our color. It is our CULTURE.



www.RoyalHawaiianLimousine.com | 1-808-275-6030 or 1-800-544-0066

Mahalo for your continued support!

JOIN OUR GUEST REFERRAL PROGRAM



OUR PROGRAM IS SIMPLE! FOR EVERY 25 GUESTS THAT YOU REFER, RUTH'S CHRIS STEAK HOUSE WILL SEND YOU A \$50.00 DINING CERTIFICATE

Please contact Emi Espinda if you have any questions. (808) 595.2205 • eespinda@direstaurants.com

OPEN DAILY FROM 5PM HAPPY HOUR DAILY IN OUR LOUNGE 5PM - 7PM PRIME TIME MENU DAILY 5PM - 7PM WINE WEDNESDAYS 25% OFF BOTTLES OF WINE

Restaurant Row | 808.599.3860 Waikiki Beach Walk | 808.440.7910

WWW.RUTHSCHRISHAWAII.COM



25 NEW MENU ITEMS

Open Daily 11am - 10pm

Happy Hour Daily in our lounge 3pm - 6pm

Vino Thursdays 25% Off Bottles of Wine

Inquire about our Guest Referral Program!

Our program is simple! For every 10 complimentary dessert cards redeemed (WITH YOUR NAME ON THE CARD),

Romano's Macaroni Grill will send you a \$25.00 dining certificate that may be used at our Oahu restaurant.

Please contact Emi Espinda for information. (808) 595.2205 • eespinda@direstaurants.com



Ho'okipa Terrace at Ala Moana Center 808.356.8300

WWW.MACARONIGRILL.COM

arts with aloha



It's a good thing that March has 31 days, because there is a lot happening in the Honolulu arts and cultural scene this month to keep all your guests amused.

The big news this month is the return of Ola Ka Ha - A Celebration of Hawaiian Arts, History and Culture at IOLANI PALACE on March 29th from 11 a.m. to 5 p.m. Members of the local Hawaiian music community are coming together on the grounds of 'Iolani Palace for an all-day free concert organized by entertainer Mailani Makainai and Kumu Hula Kauai Dalire of Ha Enterprises in conjunction with The Friends of 'Iolani Palace. The essence of the event is to showcase the many positive aspects of being Hawaiian and the importance of having an emotional connection to 'Iolani Palace.

Ola Ka Ha, which means the essence of the Hawaiian people lives on, will feature a who's who of Hawaiian musicians and dancers. The event is free and open to the public. If your guests are looking for an authentic local Hawaiian experience this is the event which includes Hawaiian arts, crafts, music, hula and food. A portion of the proceeds from food and craft vendors will be donated to The Friends of 'Iolani Palace. The Palace will be open for tours that day, which is a Sunday a normally closed day.

The line-up of Hawaiian entertainment is spectacular. Your guests can see Waipuna, Sean Na'auao, Huewa with Josh Tafofi, Jerry Santos, Mailani, Weldon Kekauoha, Patrick Landeza, Hinaleimoana Wong-Kalu, Mele Apana, Halau Na Kamalei O Lililehua, Halau O Ke A Ali'i Ku Makani and Halau Ka Liko Pua'O Kalaniakea plus many surprise guests. And the cost is free! Please tell your guests, especially your Japanese guests, that



normally they would have to pay to see these artists and halau perform, in addition please inform them that many of the artists will be performing this year at Merrie Monarch.

The Friends of 'Iolani Palace organization for the past several years been supporting cultural events such as this as part of its mission to not only provide caring stewardship for this Hawaiian landmark and national treasure, but to also preserve the history of the Hawaiian monarchy and to providing kama'aina and tourists with a fresh understanding of Hawai'i's royal heritage. And what better way to learn about Hawai'i's heritage and culture than by taking a tour of the Palace and then hanging out on the grounds "talking story and eating grinds" with the locals. For more information on this event and regular tours please visit iolanipalace.org or call 522-0822.

If your guests are not in town for the last Sunday in March, then I suggest sending them to Hawai'i's

Off-Broadway inspired theatre MANOA VALLEY THEATRE for its production of Peter and the Starcatcher. The entertaining ensemble play with music tells the origin story of Peter Pan. It's a swashbuckling grown up prequel to the story of Peter Pan. A dozen actors play more than 100 characters using clever props to create the epic journey of Peter, his Lost Boys and Wendy. The production runs from March 5th to the 22nd. The original Broadway production was nominated for a Tony Award for Best Play. Call 988-6131 or visit manoaalleytheatre.com for information.

Some of you may have guests who want to see where the musical film South Pacific was shot. Once they realize it was shot on Kaua'i, you can steer them to DIAMOND HEAD THEATRE's production of the Rogers and Hammerstein classic and tell them that actress playing Bloody Mary, Loretta Ables Sayre, is reprising her Tony nominated role. Just be clear to your guests that Loretta wasn't the original actress to play the role Bloody Mary in the 1949 original production. For those of you who are not familiar with the play, it's based on James Michner's book "Tales of the South Pacific" and features American military folks stationed in the South Pacific and their struggles with racial prejudice. The main story surrounds a young naive nurse named Nellie, who falls in love with a mature French planter who has children of mixed race. A secondary plots follows a young Navy Lt. named Joe Cable who is infatuated by Bloody Mary's daughter Liat. The musical, which features such light hearted songs as "I'm Gonna Wash That Man Right Outta My Hair" and "There is Nothing Like a Dame" and romantic songs like "Some Enchanted Evening" and "Bali Ha'i" also blatantly touches upon racial prejudice in the song "You've Got To Be Carefully Taught." The show itself is worth seeing, but if that isn't enough to get them to the base of Diamond, then tell them it's their chance to see a Broadway Star, Loretta that is, up close and personal. This production runs March 27th through April 19th. Thursday, Friday and Saturday at 8 p.m., Saturday matinee at 3 p.m. and Sunday matinee at 4 p.m. Call 733-0274.

Once last theater to check out it TAG, THE ACTORS' GROUP Theatre at Dole Cannery to see its production of August Wilson's Ma Rainey's Black Bottom, which is one of the ten-play Pittsburgh Cycle plays by the Pulitzer Prize winning author. This particular productions completes TAG's commitment to produce all ten plays which portrays African American life in each decade of the 20th Century. This play is set in the 1920s and deals with the issues of race, art, religion and the exploitation of black recording artists by white producers. The story follows Ma Rainey's band members as they try to record a new album in Chicago. Personalities clash and the tragedy ultimately befalls one of the characters. I don't want to give away too much of the story. The show runs March 6th through March 29th. Call 722-6941 for information.

If most of your guests aren't in the mood for theatre this month, just hang a "do not disturb" sign at your desk and head to one of the above mentioned theatres for some fun in front of the footlights. ~ Lance Rae

THE SPIRIT OF OLD LAIE IS BACK.

Hukilau MARKETPLACE

at the POLYNESIAN CULTURAL CENTER
LAIE, HAWAII



DON'T JUST SEND YOUR GUESTS TO A DIFFERENT PART OF THE ISLAND. Send them to a different era. Drop by the **Polynesian Cultural Center's Hukilau Marketplace**—a unique shopping, dining and entertainment destination with a nostalgic feel. Come to a shopping experience unlike anything else in Hawaii. At least in this century.

A new shopping & dining experience.

FREE parking. FREE wi-fi. FREE entertainment. Canoe rides. Clean restrooms.
For a full list of stores, go to HukilauMarketplace.com.

HILTON HAWAIIAN VILLAGE® PRESENTS
WAIKIKI'S ONLY LUAU
 UNDER THE STARS



WAIKIKI STARLIGHT LUAU

The drama and grace of Polynesia unfold with live music, drums, the captivating dances of the South Pacific and the fiery drama of four fire knife dancers. Indulge in a feast of unforgettable tropical flavors prepared by our award-winning resort chef, including Kalua Pig, Seared Island Catch, Huli Huli Chicken and Carved Pulehu Steak.

- SUNDAY - THURSDAY
 BEGINNING AT 5:30 PM •
- ENJOY ONE WELCOME MAI TAI &
 ONE SELECT BEVERAGE •
- COMPLIMENTARY VALET
 & SELF PARKING •

808.941.LUAU
 (5828)

www.HiltonHawaiianVillage.com/luau

WAIKIKI
 STARLIGHT
 Luau

HILTON HAWAIIAN VILLAGE®
 WAIKIKI BEACH RESORT
 2005 KALIA ROAD, HONOLULU • 808.949.4321



Auntie Lynn's Adventures X



On the mainland grade school teachers would recite about March – “in like a lion and out like a lamb”? Certainly true for the frozen folks on the Eastern Seaboard of the continent. Not too far off here with chilly nights at the beginning of the year of the sheep. On the other hand, how often do we get to wear a jacket?

MARCHING – right along (sorry, just had to do that) head to the Honolulu Museum of Art School. The Honolulu Printmakers 87th Annual Exhibition is in full bloom. If you aren't sure of the difference between intaglio, lithography, relief, screen printing and hand printing – this is the place to learn. Dozens of Hawaii's finest artists create prints, enter, and wait for the decision of the juror about who's work goes on the wall. This year the juror's name is sonnenzimmer. OK, it is actually Nadine Nakaishi and Nick Butcher of Chicago, but their studio is that other fun name. The show runs Tuesday thru Saturday, 10 a.m. to 4:30 p.m. and Sunday 1 to 5 p.m.

While you are parked, March 3 to 22 are the dates when Tunderstorm Beneath the Summit is on view. One of the art world's most iconic subjects, the Mt. Fuji woodblock prints of Katsushika Hokusai are so delicate that each can be shown for only a couple of weeks – then they have to rest for several years. Through March 15th you can still catch the show, Modern Love: 20th-Century Japanese Erotic Art – putting that “shaded grey” film into a distant second place.

MAPU MAGIC – Halau Mohala 'Ilima presents their 35th Annual Holoma Ka No'eau, titled Ku'u Pua, Ku'u Lei Aloha. The Saturday, March 14, 6:00 p.m. event happens on stage at Hawaii Theatre.



Kumu Mapuana de Silva at the Merrie Monarch. Photo by Nicholas Tomasello.

The annual concert is presented by Kumu Hula Mapuana de Silva and the multi-Merrie Monarch award-winning dancers of Halau Mohala 'Ilima. The dancers will string a lei of shared memories and beloved flowers – all recounted in hula that will delight the senses. The audience can count on a glimpse of what is to come as the Merrie Monarch dancers prepare for their upcoming journey to the stage of the Hilo

festival. Dancing to 1,200 fans at the theater is not quite like the bright lights and 5,000 fans at the MM, but still a lovely way for the ladies to get comfortable in their dance. Young dancers, adult women and the 3-time Kamehameha Hula Competition winning male dancers will join the Merrie Monarch ladies, all dancing to the music of Na Hoa. hawaiiitheater.com

Halau Mohala 'Ilima, founded in 1976, is dedicated to the preservation of Hawaiian culture through hula, specializing in traditionally learned and transmitted chants and dances from the legacy of dances of the 18th and 19th century, celebrating the land and people, and modern hula with a spirit that carries forward the older traditions of hula. Kumu Mapuana de Silva graduated as kumu hula from Maiki Aiu Lake and continued her studies with Lani Kalama, Sally Wood Naluai and Pat Namaka Bacon. A Halau Mohala 'Ilima concert offers a total experience of the joy of hula, balanced with discipline and commitment to excellence.

MAKING A BITE COUNT – is a lecture coming on March 28th. This is not a snooze in the corner lecture. It is a morning filled with delicious information on how to make every bite count. The Energy Solution will be presented at Spa Halekulani by Kamala Skipper, certified integrative lifestyle coach. OK, what does that mean, you ask. Me too. But after the first lecture you can be sure they will need a bigger room. For the first time we all learned things that would be good for us without feeling like we had to give up everything good. Call the spa and get ready to feel better. And, when you are pau listening, try the Kona coffee ice cream at Orchids. Then, if you want to be bad and good, all in one bite, ask Kamala for a copy of her recipe for Vegan Macadamia Chocolate Bark. Hard to believe what tastes like being bad is really being good.

MARKING THE BEAT – Most of our parents listened to Frank Sinatra -- so we did too. Girls fell in love with the charmer and boys wanted to be him – my mother and dad included. It is the centennial of “old golden throat” and March 26 and 27 horn player Eddie Henderson will serenade us for two nights only with his renditions of Sinatra songs. Lewers Lounge at the Halekulani will rock. I googled Eddie and found that his mother was an original Cotton Club dancer. She danced with Bill “Bojangles” Robinson. Henderson graduated from medical school worked as a doctor and took time off to go on the road if he got a gig. Wonder if his doctor's office was his after hours rehearsal hall. Sinatra would be 100 this year. Who remembers the film High Society? Wonder if a theater here could screen it. We could all sing along. See you there!



ALERT!

March 14-16
Box Jellyfish Window

Teaching Hawaii about jellyfish and other ocean creatures for over a century

brought to you by
 The Waikiki Aquarium
 open daily from 9 am - 4:30 pm





WARD VILLAGE

BE PART OF THE WARD VILLAGE COMMUNITY



Ward Village is home to over 135 unique specialty shops and restaurants including Nordstrom Rack, T.J. Maxx, and Pier 1 Imports.

Ward Village offers a series of weekly and monthly events dedicated to improving health and wellness, and keeping you inspired and entertained. Enjoy movies under the stars, farmer's markets and yoga classes. A new community is under way.

#WeAreWard

WARDVILLAGESHOPS.COM

ALA MOANA CENTER

..... presents

Shop a Le'a

Seven blissful days of shopping euphoria

Hawaii's 8th Annual

PREMIER FASHION EVENT

March 16-22

OVER 100 OFFERS

Plus exclusive events & runway shows

Samantha Thavasa GIFT WITH PURCHASE

Spring's most splendid tote

KICK-OFF EVENT

ONE NIGHT ONLY
MONDAY, MARCH 16

Shop the first night & receive a special gift*



ALA MOANA
HAWAII'S CENTER

AlaMoanaCenter.com | 808.955.9517

FREE WI-FI

*Limited to the first 500 customers



For the past 30 years, the Waikiki Community Center's Duke Kahanamoku Beach Challenge honors our living legends that have contributed to Hawaii's water culture with a family friendly day of outrigger canoe racing, SUP races, ancient Hawaiian games and live entertainment. This year being the 30th anniversary of what many of you may remember as the Ala Wai Challenge, before it was moved to the Hilton some years ago, they will focus on the man that started it all, Hawaii's greatest waterman himself... Duke Kahanamoku.



The traditional blowing of the conch shell, or Pu, is the Hawaiian way to officially mark the beginning of a ceremony. Blowing the Pu will call the festivities to order before the procession begins at Duke Lagoon.

Festivities kick off at 9 a.m. with a double-hulled canoe procession, an oli' and kahiko by Halau Hula 'o Hokulani and Kumu Hula Hokulani DeRego and Larry DeRego. The competition begins at 10 a.m. and goes throughout the day until the final awards presentation at 2 p.m.

Both the canoe and SUP races are open to teams of all skill levels and will run the length of Duke Lagoon, about a quarter-mile. Traditional Hawaiian makahiki games will be happening on the beach where spectators can watch 'ulu maika (sand bowling), moa pahe'e (sliding), konane (Hawaiian checkers) and haka moa (fighting chicken) and Huki Kaula (tug of war).

Throughout the day, the Waikiki Market Place featuring handmade arts and crafts and food booths with items for purchase will be set up on the Great Lawn. There will also be live entertainment on the Great Lawn stage with soprano lyricist Cathy Foy. They will be followed by some of Hawaii's top artists including Nina Kealiwahamana, Streetlight Cadence, Halau Hula 'O Nawahine, Te Vai Ura Nui, The Lyman 'Ohana, and the Shining Star Band.

The fun takes place at the Duke Kahanamoku Beach and Lagoon at the Hilton Hawaiian Village. There is no charge for spectators watching the races, competition or entertainment and makes for an exciting addition to a visitor's beach day. ~ Pam



Chef's Corner

Off the Wall Craft Chef Ed Morita

Many of you will probably recognize Ed as one of the guys that snapped your picture at an event over the past few years. What most people don't realize is he is an extremely accomplished pastry chef before an accident sidelined him for a few years. Happily he has returned and just opened his own restaurant with partner Andy Mitani from Off the Wall where diners decide the ultimate question in the tastiest manner. Is it #DessertFirst? or #FoodFirst?

When did you decide you wanted to be a pastry chef?

My senior year high school. I was accepted to the University of Hawaii and USC. The school that I would go to was dependent on the major that I chose. I couldn't decide, so I went with my fallback, which was culinary school at KCC. I figured that it would give me the time to figure out what I wanted to do while learning a skill that could get me a decent job while at college. By the time I took the advance baking classes, it was apparent to me that I wasn't going to either.

What is your favorite childhood food memory?

Baking banana nut muffins with my grandmother or climbing into and digging through the family's giant freezer looking for a specific cut of meat for my grandfather to cook for dinner.

Would you consider your mentor?

Chef Ernst Hiltbrand was the head of the pastry program at KCC. I apprenticed under him for two years. Before taking his classes, I was considering leaving the culinary program. He's a very strict taskmaster and his stern ways broke me of bad habits that held me back in my other classes. By the time I graduated, Chef Hiltbrand told me that I was one of the best bakers he had ever taught, which is why when I started my apprenticeship, he forbade me from baking bread. He said that pastry chefs don't just bake bread, or decorate cakes, or make chocolates, a pastry chef has to be able to make everything.

What was your first job in the industry?

Night shift baker at Cafe Ciao (closed) formerly located on the ground floor of Harbor Court.

Most people know you as a food blogger and photographer. Why did you leave the culinary industry?

In 2009, I was working at Longhi's Restaurant when my right hand was crushed in a kitchen accident. After two years on worker's comp, the insurance company declared that I was unable to return to work. To this day, I still have issues with my hand, which include nerve damage and early onset arthritis. Because I could no longer work in a kitchen, I transitioned into photography, writing, and social media.

What made you decide to come back to the industry?

There became a point while covering the Hawaii Food & Wine Festival that I realized that I was watching my life pass me by. I had the skill to be one of the participating chefs at Food & Wine, yet I chose to be a spectator in my life. Instead of my camera and my blog connecting me to the food industry, it became a barrier to my life. As much as I enjoyed what I was doing, it was never as fulfilling to me as cooking and baking was. It was then that I recognized that despite how much fun it was to be paid to attend events and eat amazing food, that I was most happy when I was working in a kitchens.

You then went to Highway Inn where you were known for your creative spin on desserts. What motivates you?

The dishes I create are like puzzles for me. It usually starts with a "what if" question, and I then work at figuring out a way to solve the problem. So, at Highway Inn, the question

arose what can I do with the restaurant's sour poi. Although many people prefer sour poi, we were legally not able to sell it, so it fell to me to find a use for it. Hence, I came up with several recipes that used sour poi like pizza dough, cake batter, poi filled cupcakes, poi crunches, and kulolo scones.

Describe your concept behind Off The Wall Craft?

At all the restaurants I have ever worked at, the pastry side has always been an afterthought when designing the concept, kitchen and menu. I always knew that if I ever had a chance to develop a concept of my own, it would involve designing everything around desserts. This is how I came up with the idea of #DessertFirst. Why not start your meal with desserts? Why not pair cocktails with the dessert menu? Why not put the dessert station in the dining room? These are all the things that I was thinking while developing Off The Wall Craft.

Why should we always choose #DessertFirst?

While contemplating about #DessertFirst, I started to think about the boundaries between sweet and savory. Ideally, it shouldn't be one or the other. The perfect bite of food has a balance of both, so these boundaries started to blur for me. As such, I tend to pull a lot of savory elements into my desserts, and conversely, Chef Andy Mitani pulls sweet elements into the savory menu. Of course I would like people to order #DessertFirst, however customers will get the same experience regardless of how they order.

Describe your food philosophy.

People's palates all differ, so I say eat what you like. In my opinion, perfect food encompasses balance. There should never be an extreme anything. Sweet should be balanced with tart/salty/bitter, hot with cold, soft with crunchy. Also, try everything at least once. It's fine if you taste something and don't like it, what's important is that you at least tried it.

Who would you be most excited to see in your restaurant?

Any of the local chefs who supported me during my return to the industry. When I stopped by Town after opening Highway Inn, Ed Kenney came out and exclaimed, "Out of retirement!" Mark Noguchi and everyone with Lunch Box, along with the gang from 12th Ave Grill, the Highway crew, and anyone else who was rooting for me to get back in the kitchen.

What's your favorite thing to do when not working?

I'm a movie buff. HIFF is one of my favorite times of the year, and food films is a marriage made in culinary heaven.

What's your biggest pet peeve about working in a kitchen?

People touching my knives.

What's the strangest thing you've eaten or made?

The one that sticks out most at the moment is a grilled peanut butter and provalone sandwich. It was really popular in the small town I lived and worked at in Michigan and I often wonder how it became so popular in that town. It's one of the inspirations for the nutella sandwich roll on my menu. Right now, I'm strangely obsessed with asparagus, so don't be surprised if you see an asparagus dessert pop up on my menu sometime.



Nutella Sandwich Rolls

by Chef Ed Morita

Ingredients:	4 oz	Nutella
as needed	White Bread	Provalone Cheese Slices
(Pullman bread with the crust cut off)		(as needed, cut in half)
8 oz	Roasted Banana Puree	Unsalted Butter
4 oz	Peanut Butter	(as needed, for grilling)

Method: Prick bananas skins with a fork and place on a baking tray. Roast in 325° oven until peel is black and juices start to bubble out of the holes. While bananas are warm, peel and puree. Add peanut butter and nutella to the banana puree and mix until incorporated. With a rolling pin, roll out the bread slices flat. For best results, roll from corner to corner. Spread nutella filling over bread. Place cheese on the nutella and roll the bread. Allow to chill for an hour before grilling. Melt butter in a pan and grill rolls until golden brown.

Off the Wall Craft is located at 1272 S. King Street • Phone: 591-9255

Tuesday - Saturday from 5 - 9 p.m. • Sundays: 4 - 8 p.m. offering 'Breakfast for Dinner'
offthewallhawaii.com • FB: facebook.com/OTWCraft • Twitter/IG: @offthewallcraft



Mahalo to all for your continued support of our little café on the beach in Waikiki...

Mele Kalikimaka & Hauoli Makahiki Hou!

Kekoa, Sakara, GJ & The Barefoot Beach Café Crew



Concierge Info Line: 808.699.8830
Café Direct: 808.924.2233 (CAFÉ)
<http://BarefootBeachCafe.com>

- FROM BACKYARD
- BBQ'S TO
- HIGH-END
- CELEBRITY
- EVENTS, WE
- OFFER A WIDE
- RANGE OF EVENT
- SERVICES



- planning + coordination
- unique locations
- site design
- rentals
- food + bar catering
- florals + plants
- entertainment + audio-visual
- still photography + videography
- custom itineraries + travel services
- vow renewals + ohana blessings



FOR MORE INFORMATION:

- ☑ Contact us at: 1-800-DHCatering or 1-808-699-8830
- 📍 Check out our style: Pinterest.com/DHCatering
- 📧 Follow us: @DHCatering, Twitter.com/DHCatering
- 🌐 Like us: facebook.com/DHCatering

Let's be Together...

DINING ▸ ENTERTAINMENT ▸ PAU HANA ▸ EAT ▸ DRINK ▸ BE MERRY ▸ HAPPY HOUR

MONDAY

Barefoot Beach Café at Queen's Beach 924-2233
Local Contemporary
Shaka Madali 5:30-8:30pm

Chart House Waikiki 941-6660
Live Contemporary Hawaiian
Tito Berinobis & David Kauahikaua 6:30-9:30pm

Cheesecake Factory 924-5001
Classic Hawaiian
Christian Yrizarry Duo 8-11pm

Duke's Canoe Club Waikiki 922-2268
Live Contemporary Hawaiian
Haumea Warrington 4-6pm
Ellsworth Simeona 9:30-12am

Hard Rock Cafe 955-7383
Live Contemporary
Zanuck & Piranha Duo 5-7pm
Blue Mondays Varying Artists 9-11am

House Without a Key 923-2311
Live Hawaiian & Hula by Skyler Kamaka
DeLima Ohana 5:30 - 8:00pm

Hula Grill 923-HULA
Live Contemporary Hawaiian
Eric Lee 7-9pm

Jimmy Buffett's at the Beachcomber 791-1200
Live Contemporary Hawaiian
Ashley Lilinoe 7:00-9:30pm

Kani Ka Pila Grille 924-4992
Live Contemporary Hawaiian
Sean Na'auao 6 - 9pm

LBLE at the Hilton Waikiki Beach Hotel 922-0811
Live Contemporary Acoustic Hits
Johnny Helm 6-9pm

Lewers Lounge 923-2311
Live Contemporary & Light Jazz
Noly Pa'a 8:30-12:30am

LuLu's 926-5222
Live Contemporary
Johnny Helm 6:30-9:30 p.m.

Rumfire 921-4600
Live Contemporary Hawaiian
Jeremy Cheng 5-8pm
DJ Super CW 8:30pm-12:30am

Signature Prime Steak 949-3636
Classical Pianist in the bar
Isao Motomochi 6-9pm

Sunrise Pool Bar at the Modern 943-5800
Live Contemporary
Alex Oasay 5-8pm

The Edge at the Sheraton 921-4600
Live Hawaiian music with a fire dancer at 7:30 p.m.
Widdy Loo 1:30-3:30pm
Randy Allen (2/16, 2/23) 1:30-3:30pm
Ka'ala Boys 6:30-8:30pm

The Study at the Modern 943-5800
Live Contemporary Hawaiian
Kaleo 7-10pm

Tiki's Grill & Bar 923-TIKI
Live Contemporary Hawaiian
Kapu the Band 6-8:30pm
Jason Alan & Ian O'Sullivan 9-11pm

Tropics Bar & Grill 949-4321
Live Contemporary Hawaiian
Acoustik Playground 5:30-8:30pm

TUESDAY

Barefoot Beach Café at Queen's Beach 924-2233
Local Contemporary Hits
Chris Salvador or Paul Wilcox 5:30-8:30pm

Bin1901 at the Moana 921-4600
Piano Wine Bar
Scott Smith 6:30-9:30pm

Chart House Waikiki 941-6660
Live Contemporary Hawaiian
The Camarillo Brothers 6:30-9:30pm

Cheesecake Factory 924-5001
Classic Hawaiian
Derrick Lee Duo 8-11pm

Duke's Canoe Club Waikiki 922-2268
Live Contemporary Hawaiian
Haumea Warrington 4-6pm
Ellsworth Simeona 9:30-12am

Hard Rock Cafe 955-7383
Live Contemporary
Alex Oasay Duo 5-7pm
Da Push-O-Verse (or others) 9-11pm

House Without a Key 923-2311
Live Hawaiian & Hula by Radasha Ho'ohuli
Po'okela 5:30 - 8:00pm

Hula Grill 923-HULA
Live Contemporary Hawaiian
Kamuela Kahoano 7-9pm

Jimmy Buffett's at the Beachcomber 791-1200
Live Contemporary Hawaiian
Mike Huhn 7:00-9:30pm

Kani Ka Pila Grille 924-4992
Live Contemporary Hawaiian
Weldon Kekauoha 6-9pm

LBLE at the Hilton Waikiki Beach Hotel 922-0811
Live Contemporary Funk, Jazz, Hip Hop & Reggae
Jason Laeha 6-9pm

Lewers Lounge 923-2311
Live Contemporary & Light Jazz
Maggie Herron & Rocky Holmes 8:30-12:30am

LuLu's 926-5222
Live Contemporary
Johnny Helm 6-9pm

Mai Tai Bar at the Royal Hawaiian 923-7311
Live Contemporary Hawaiian with Hula Dancer
Kapala Duo 6:30-9:30pm

Rumfire 921-4600
Live Contemporary Rock
Randy Allen 5-8pm
Twilight Audio 8:30pm-12:30am

Signature Prime Steak 949-3636
Classical Pianist in the bar
James Woo 6-9pm

Sunrise Pool Bar at the Modern 943-5800
Live Contemporary Hawaiian
Cory Oliveros 5-8pm

The Edge at the Sheraton 921-4600
Live Hawaiian music with a fire dancer at 7:30 p.m.
Eric Lee 1:30-3:30pm
Ho'okani Duo 6:30-8:30pm

The Study at the Modern 943-5800
Live Contemporary Hawaiian
Alex Oasay & Jeremy Cheng 7:30-10:30pm

Tiki's Grill & Bar 923-TIKI
Live Hawaiian - \$2 Taco Tuesdays
K.B. Riley 5:30-8:30pm
Sani & Friends 9-11pm

Tropics Bar & Grill 949-4321
Live Contemporary Hawaiian
Kailua Bay Buddies 5:30-8:30pm

WEDNESDAY

Barefoot Beach Café at Queen's Beach 924-2233
Instrumental Guitar
Paul Wilcox 5:30-8:30pm

Bin1901 at the Moana 921-4600
Piano Wine Bar
Scott Smith 6:30-9:30pm

Chart House Waikiki 941-6660
Live Contemporary Hawaiian
Tito Berinobis & David Kauahikaua 6-10:30pm

Cheesecake Factory 924-5001
Classic Hawaiian
Kimo Artis Duo 8-11pm

Duke's Canoe Club Waikiki 922-2268
Acoustic, Soul, R&B
Haumea Warrington 4-6pm
Ellsworth Simeona 9:30-12am

Gordon Biersch 599-4877
Jazz Wednesdays
Varying Artists 6:30-9:30pm

Hard Rock Cafe 955-7383
Live Contemporary
John Valentine 5-7pm
Piranha Brothers 9-11pm

House Without a Key 923-2311
Live Hawaiian & Hula by Lauren Matsumoto
Pa'ahana 5:30 - 8:00pm

Hula Grill 923-HULA
Live Contemporary Music
Jeremy Chang 7-9pm

Hy's Steak House 922-5555
Live Soft Contemporary
Audy Kimura 6:30-10pm

Jimmy Buffett's at the Beachcomber 791-1200
Live Contemporary Hawaiian
Shawn Garnet 7:00-9:30pm

Kani Ka Pila Grille 924-4992
Live Contemporary Slack Key
Cyril Pahinui 6-9pm

LBLE at the Hilton Waikiki Beach Hotel 922-0811
Live Contemporary Funk, Jazz, Hip Hop & Reggae
Soul Tree Music Factory 6-9pm

Lewers Lounge 923-2311
Live Contemporary & Light Jazz
Maggie Herron & Rocky Holmes 8:30-12:30am

LuLu's 926-5222
Live Contemporary Hawaiian
Jason Lehua 10-12:30am

Mai Tai Bar at the Royal Hawaiian 923-7311
Live Contemporary Hawaiian with Hula Dancer
Eric Lee Duo 6:30-9:30pm

E Pili Kākou

DINING ▶ ENTERTAINMENT ▶ PAU HANA ▶ EAT ▶ DRINK ▶ BE MERRY ▶ HAPPY HOUR

Roy's Hawaii Kai 396-7697
Acoustic & Slack Key Top 40
 Dayton Watanabe 6:30-9:30pm
Rumfire 921-4600
Live Contemporary Hawaiian
 Kamuela Kahoano 5-8pm
 Twilight Audio 8:30pm-12:30am
Signature Prime Steak 949-3636
Classical Pianist in the bar
 Pierre Grill 6-9pm
SWIM at the Hyatt 923-1234
Contemporary Classic
 Kailua Bay Buddies 6-9pm
Sunrise Pool Bar at the Modern 943-5800
Live Contemporary Hawaiian
 Tahiti Rey & Sean Cleland 5-8pm
The Edge at the Sheraton 922-4422
Live Hawaiian music with a firedancer at 7:30 p.m.
 Albert Maligmat 1:30-3:30pm
 Keoni Ku Duo 6:30-8:30 pm
The Study at the Modern 943-5800
Live Contemporary Hawaiian
 Melanie and Drew 6:30-9:30pm
Tiki's Grill & Bar 923-TIKI
Live Contemporary - 1/2 off Wine Wednesdays
 Canoes for Rent 5:30-8:30pm
 Johnny Helm 9-11pm
Tropics Bar & Grill 949-4321
Live Contemporary Rock
 Acoustik Playground 5:30-8:30pm

THURSDAY

Barefoot Beach Café at Queen's Beach 924-2233
Instrumental Guitar
 Paul Wilcox 5:30-8:30pm
Bin1901 at the Moana 921-4600
Piano Wine Bar
 Scott Smith 6:30-9:30pm
Chart House Waikiki 941-6660
Live Contemporary Hawaiian
 Tito Berinobis 6:30-10pm
Cheeseburger Waikiki 941-2400
Contemporary / Old School Rock
 Jeremy Chang 6:30-9:30pm
Cheesecake Factory 924-5001
Classic Hawaiian
 T & J Duo 8-11pm
Duke's Canoe Club 922-2268
Live Contemporary Hawaiian
 Haumea Warrington 4-6pm
 Imua Garza Duo (or others) 9:30-12am
Five-O Bar & Lounge 922-0550
Live Acoustic Contemporary & Reggae
 K Love Duo 7:30-10:30pm
Gordon Biersch 599-4877
Live Contemporary Funk and Classics
 Acoustic Playground 7-10:30pm
Hard Rock Cafe 955-7383
Live Contemporary
 Tim Rose (or others) 5-7pm
 Kailua Bay Buddies 9-11pm
House Without a Key 923-2311

Live Hawaiian & Hula by Radasha Ho'ohuli
 Pa'ahana 5:30 - 8:00pm
Hula Grill 923-HULA
Live Contemporary Hawaiian
 Sheila Waiwaiole & Mara Sagapolu 7-9pm
Hy's Steak House 922-5555
Live Soft Contemporary
 Audy Kimura 6:30-10pm
Jimmy Buffett's at the Beachcomber 791-1200
Live Contemporary Hawaiian
 Shawn Garnet 7:00-9:30pm
Kani Ka Pila Grille 924-4992
Live Contemporary Hawaiian
 Kawika Kahiapo 6-9pm
LBLE at the Hilton Waikiki Beach Hotel 922-0811
Live Contemporary Pop/Rock
 Sunway 6-9pm
Lewers Lounge 923-2311
Contemporary Jazz
 Maggie Herron & Rocky Holmes 8:30-12:30am
LuLu's 926-5222
Live Contemporary Hawaiian
 Local Uprising 6-9pm
Mai Tai Bar at the Royal Hawaiian 923-7311
Live Contemporary Hawaiian with Hula Dancer
 Delima Ohana 6:30-9:30pm
Michel's at the Colony Surf 923-6552
Live Slack Key
 Jeff Peterson 7:30-10:00pm
Roy's Hawaii Kai 396-7697
Acoustic Hawaiian Guitar
 Steve English 6:30-9:30pm
Rumfire 921-4600
Live Contemporary Rock
 Johnny Helm 5-8pm
 DJ Miked 8:30pm-12:30am
Signature Prime Steak 949-3636
Classical Pianist in the bar
 Isao Motomochi 6-9pm
Sunrise Pool Bar at the Modern 943-5800
Live Contemporary Hawaiian
 Christian Yrizarry Duo 5-8pm
SWIM at the Hyatt 923-1234
Contemporary Classic
 Acoustik Playground 6-9pm
The Edge at the Sheraton 921-4600
Live Hawaiian music with a firedancer at 7:30 p.m.
 Ellsworth Simeona 1:30-3:30pm
 Christian Yrizarry Duo 6:30-8:30pm
The Study at the Modern 943-5800
Live Contemporary Hawaiian
 Simple Souls 6:30-9:30pm
Tiki's Grill & Bar 923-TIKI
Heineken Hot Hula Nights - hula dancers perform
 Malu the Band 5:30-7:30pm
 Ellsworth Simeona 8:30-11:30pm
Tropics Bar & Grill 949-4321
Live Contemporary Hawaiian
 Nohelani Cypriano 5:30-8:30pm

FRIDAY

Barefoot Beach Café at Queen's Beach 924-2233

Live Contemporary Hawaiian with Beach BBQ
 Art Kalahiki & Friends 5:30-8:30pm
Bin1901 at the Moana 921-4600
Piano Wine Bar
 Scott Smith 6:30-9:30pm
Chart House Waikiki 941-6660
Live Contemporary Hawaiian
 Mark Yim's Pilikia I 6-9pm
 Mark Yim's Pilikia II 9:30-12:30am
Cheeseburger Waikiki 941-2400
Contemporary Hawaiian
 Alex or Aku 6:30-9:30pm
Cheesecake Factory 924-5001
Classic Hawaiian
 Johnny Helm Duo 8-11pm
 Jeremy Hirokawa Duo (3/13) 8-11pm
Dave & Busters 589-2215
Pau Hana Fridays Live Local Bands
 Varying Hawaiian Artists 6-8pm
Duke's Canoe Club Waikiki 922-2268
Live Contemporary Hawaiian
 Maunalua 4-6pm
 Kaiona Folk (3/6) 9:30 -12am
 Jereny Hirokawa Folk (3/13) 9:30 -12am
 Imua Garza Duo (3/20) 9:30 -12am
 Randy & Kanoe Duo (3/27) 9:30 -12am
Five-O Bar & Lounge 922-0550
Live Island Reggae
 Kimo Opiana 9-12am
Gordon Biersch 599-4877
Live Contemporary, R&B, Funk
 Ben & Malia 5:30-9pm
 Mojo 9 - 12:30am
Hard Rock Cafe 955-7383
Live Contemporary
 Johnny Helm 5-7pm
 Mantra 10-12am
House Without a Key 923-2311
Live Hawaiian & Hula by Kanoe Miller
 Hiram Olsen Trio 5:30 - 8:00pm
Hula Grill 923-HULA
Live Traditional Hawaiian with dancer
 David Asing & Alike Souza 7-9pm
Hy's Steak House 922-5555
Live Soft Contemporary
 Audy Kimura 6:30-10pm
Hard Rock Cafe 955-7383
Live Contemporary
 Johnny Helm 5-7pm
 Mantra 9-11pm
Jimmy Buffett's at the Beachcomber 791-1200
Live Contemporary Hawaiian
 Missing Dave 9:30 - 11:30pm
Kani Ka Pila Grille 924-4992
Live Hawaiian Contemporary
 Ho'okena 6-9pm
LBLE at the Hilton Waikiki Beach Hotel 922-0811
Live Contemporary Pop/Rock
 Sunway 6-9pm
Lewers Lounge 923-2311
Live Contemporary Jazz

EVENTS ARE SUBJECT TO CHANGE
 WITHOUT NOTICE.

Let's be Together...

DINING ▸ ENTERTAINMENT ▸ PAU HANA ▸ EAT ▸ DRINK ▸ BE MERRY ▸ HAPPY HOUR

Maggie Herron & Rocky Holmes 8:30-12:30am
LuLu's 926-5222
Live Contemporary Hawaiian
 Manoa DNA 6-9 p.m.
 Vinyl Wine 10-12:30am
Mai Tai Bar at the Royal Hawaiian 923-7311
Live Contemporary Hawaiian with Hula Dancer
 Kapala Duo 6:30-9:30pm
Michel's at the Colony Surf 923-6552
Live Slack Key Stylings & Jazz
 Jeff Peterson & Ernie Provencher 6:30-10pm
Roy's Hawaii Kai 396-7697
Keyboardist
 Brian Robert Shaw 6:30-9:30pm
Roy's Ko Olina 676-7697
Slack Key Guitar
 Chris Rego 5:30-8pm
Rumfire 921-4600
Live Contemporary Rock
 Kristi Masuhara 5-8pm
 DJ Euphoric 8:30pm-12:30am
Signature Prime Steak 949-3636
Classical Pianist in the bar
 Grant Carvalho 6-9pm
SWIM at the Hyatt 923-1234
Contemporary Classic
 Taimane 6-7pm

The Edge at the Sheraton 921-4600
Live Hawaiian music with a fire dancer at 7:30 p.m.
 Brad Kawakami 1:30-3:30pm
 Delima Ohana Duo 6:30-8:30pm
The Study at the Modern 943-5800
Live Contemporary Hawaiian
 Tahiti Rey 6:30-9:30pm
Tiki's Grill & Bar 923-TIKI
Live Contemporary Hawaiian
 Kaleo Del Sol 5-7pm
 Vaihi 7:30-9:30pm
 Tahiti Rey Duo 10-12am
Tropics Bar & Grill 949-4321
Live Contemporary Hawaiian
 Piranha Brothers 3:30-6:30pm
 Nohelani Cypriano 8:00-10:30pm

SATURDAY

Barefoot Beach Café at Queen's Beach 924-2233
Beach BBQ with Live Contemporary Hits
 Chris Salvador 5:30-8:30pm
Bin1901 at the Moana 921-4600
Piano Wine Bar
 Scott Smith 6:30-9:30pm
Chart House Waikiki 941-6660
Live Contemporary Hawaiian
 Tito Berinobis & Billy Beimes 7-12pm
Cheeseburger Waikiki 941-2400
Contemporary Hawaiian
 Alex or Aku 6:30-9:30pm
Cheesecake Factory 924-5001
Classic Hawaiian
 Dennis McLees Duo 8-11pm
Duke's Canoe Club Waikiki 922-2268
Live Hawaiian Entertainment
 Kapena 4-6pm
 Beach 5 (3/7) 4-6pm
 Simple Sessions (3/14) 4-6pm
 Kai Roots Duo (3/7) 9:30-12am
 Chris Murphy Duo (3/14) 9:30-12am
 Christian Yrizarry Duo (3/21) 9:30-12am
 Darrell Aquino Duo (3/28) 9:30-12am
Five-O Bar & Lounge 922-0550
Live Island Reggae
 Christian from Hoonua 9:30-12:30am
Hard Rock Cafe 955-7383
Live Contemporary
 20 Degrees North 5-7pm
 Tavana (or others) 10-1am
House Without a Key 923-2311
Hawaiian & Hula by Kanoë Miller
 Hiram Olsen Trio 5:30 - 8:00pm
Hula Grill 923-HULA
Live Traditional Hawaiian with dancer
 Kaipo Dabin & Tommy Chock w/ Kahanu 7-9pm
Hy's Steak House 922-5555
Live Soft Contemporary
 Audy Kimura 6:30-10pm
Jimmy Buffett's at the Beachcomber 791-1200
Live Contemporary Hawaiian
 Local Uprising 9:30-11:30pm
Kani Ka Pila Grille 924-4992
Live Contemporary Hawaiian

Ka Hehena 6-9pm
LBLE at the Hilton Waikiki Beach Hotel 922-0811
Live Contemporary Blues & R&B
 YOZA 6-9pm
Lewers Lounge 923-2311
Live Contemporary Jazz
 Maggie Herron & Rocky Holmes 8:30-12:30am
Mai Tai Bar at the Royal Hawaiian 923-7311
Live Contemporary Hawaiian with Hula Dancer
 Kapala Duo 6:30-9:30pm
Michel's at the Colony Surf 923-6552
Live Contemporary Slack Key & Jazz
 Jeff Peterson 7-11pm
Roy's Hawaii Kai 396-7697
Acoustic Guitar
 Jimmy Funai 6-9:30pm
Roy's Ko Olina 676-7697
Slack Key Guitar
 Chris Rego 5:30-8pm
Rumfire 921-4600
Live Contemporary Rock
 Tavana McMoore 5-8pm
 DJ Betty 8:30pm-12:30am
Signature Prime Steak 949-3636
Classical Pianist in the bar
 Grant Carvalho 6-9pm
Sunrise Pool Bar at the Modern 943-5800
Live Contemporary Hawaiian
 Kainalu 5-8pm
SWIM at the Hyatt 923-1234
Contemporary Acoustic followed by karaoke at 8
 Randy Allen & Kanoë Gibson 5 - 8pm
The Edge at the Sheraton 921-4600
Live Hawaiian music with a fire dancer at 7:30 p.m.
 John Valentine 1:30-3:30pm
 Tino Jacobs Duo 6:30-8:30pm
Tiki's Grill & Bar 923-TIKI
Live Contemporary Hawaiian & Reggae
 Johnny Helm 5-7pm
 Sani and Friends (or others) 7:30-9:30pm
 Ellsworth Simeona 10-1am
Tropics Bar & Grill 949-4321
Live Contemporary Hawaiian
 Henry Kapono 4-6pm
 Juke Joint 6:30-9:30pm

SUNDAY

Barefoot Beach Café at Queen's Beach 924-2233
Live Instrumental Guitar
 Paul Wilcox 11am -2pm
Chart House Waikiki 941-6660
Live Contemporary Hawaiian
 Dean & Dean 6-9pm
Cheesecake Factory 924-5001
Classic Hawaiian
 Chris Murphy Duo 8-11pm
Duke's Canoe Club Waikiki 922-2268
Live Hawaiian Entertainment
 Henry Kapono 4-6pm
 Kapena Delima 9:30-12am
 Typical Hawaiians (3/22) 9:30-12am
 Kamuela Kahoano Duo (3/29) 9:30-12am
Hard Rock Cafe 955-7383

PAU HANA

Monday-Friday, 3:00pm-6:00am ... &
 Sunday-Thursday, 10:00pm-12:00 Midnight
 Dine-in only. Excludes holidays. No other discounts apply.

NEW!

APPETIZERS

GP's NACHOS \$9
 CHICKEN WINGS \$9
 FRIED CALAMARI \$8
 CHILI CHEESE FRIES \$8

NEW!

GIOVANNI'S SLIDERS

Four per order, served with french fries.

MINI CHEESEBURGERS \$9
 MINI HOT DOG SLIDERS \$9
 BBQ KALUA PIG SLIDERS \$9

PERSONAL PIZZAS \$5-\$7

BAR

DOMESTIC DRAFT BEER \$4-\$5
 WELL DRINKS \$4
 PATRON SILVER \$8
 MAI TAI // BLUE HAWAII \$7
 CROWN // JACK \$6
 JAGERMEISTER // FIREBALL \$5
 30Z. STOLI MARTINIS \$7
 WINE BY THE GLASS \$1 OFF

227 LEWERS ST. WAIKIKI 808-923-2100

E Pili Kākou

DINING ▶ ENTERTAINMENT ▶ PAU HANA ▶ EAT ▶ DRINK ▶ BE MERRY ▶ HAPPY HOUR

<i>Live Contemporary</i>		
Brothers Rize	5-7pm	
EMKE (or others)	9-11pm	
House Without a Key		923-2311
<i>Live Hawaiian & Hula by Debbie Nakanelua</i>		
Pa'ahana	5:30 - 8:00pm	
Hula Grill		923-HULA
<i>Live Traditional Hawaiian with dancer</i>		
Art Kalahiki Duo	7-9pm	
Jimmy Buffett's at the Beachcomber		791-1200
<i>Live Contemporary Hawaiian</i>		
Randy Allen	7:30-10:00pm	
Kani Ka Pila Grille		924-4992
<i>Live Contemporary Hawaiian Masters on stage</i>		
Brother Noland	6-9pm	
Kelley O'Neil's		926-1777
<i>Live Irish Music</i>		
Various Celtic Bands	4-7pm	
LBLE at the Hilton Waikiki Beach Hotel		922-0811
<i>Live, Energetic Mix of Pop and Rock Hits</i>		
Pushoverse	6-9pm	
Lewers Lounge		923-2311
<i>Live Contemporary & Light Jazz</i>		
Noly Pa'a	8:30pm - 12am	
LuLu's		926-5222
<i>Acoustic R&B</i>		
Simple Souz	7-10pm	
Mai Tai Bar at the Royal Hawaiian		923-7311
<i>Live Contemporary Hawaiian with Hula Dancer</i>		
Eric Lee Duo	6:30-9:30pm	
Michel's at the Colony Surf		923-6552
<i>Classical Slack Key & Jazz Stylings</i>		
Jeff Peterson	6-9pm	
Roy's Ko Olina		676-7697
<i>Slack Key Guitar</i>		
Chris Rego	5:30-8pm	
Rumfire		921-4600
<i>Live Contemporary Hawaiian</i>		
Alex Oasay	5-8pm	
Twilight Audio	8:30pm-12:30am	
Signature Prime Steak		949-3636
<i>Classical Pianist in the bar</i>		
Isao Motomochi	6-9pm	
SWIM at the Hyatt		923-1234
<i>Contemporary, Pop, Rock</i>		
Sunway	6 - 9pm	
The Edge at the Sheraton		922-4422
<i>Live Hawaiian music with a fire dancer at 7:30 p.m.</i>		
Dave Watanabe	1:30-3:30pm	
Ellsworth Simeona Duo	6:30-8:30pm	
The Study at the Modern		943-5800
<i>Live Contemporary Hawaiian & Jazz</i>		
Jeremy Cheng	6-9pm	
Smooth Jazz (vaying artists)	10- 2am	
Tiki's Grill & Bar		923-TIKI
<i>Live Contemporary Hawaiian</i>		
Vaihi	6-9pm	
Ellsworth Simeona	9-11pm	
Tropics Bar & Grill		949-4321
<i>Live Contemporary Rock & Hawaiian</i>		
Piranha Brothers	2-5pm	
Beach 5	5:30 - 8:30pm	



Hot Lines

Here's a few numbers for you to find out the latest in live music from places that change daily or don't update us regularly, since we can't possible list them all,

Gordon Biersch	599-4877
Irish Rose Saloon	947-3414
Kelley O'Neil's	926-1777
Mai Tai Bar Ala Moana	947-2900
Moose McGillycuddy's	923-0751

Dining Dish



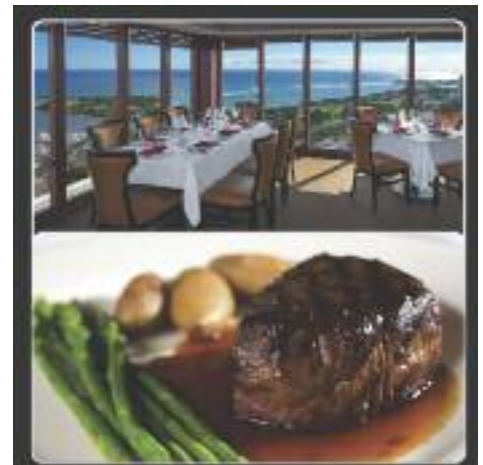
The **Hilton Hawaiian Village** has hired **Anthony Miller** as the resort's new executive sous chef. Miller hails from the mainland and spent the last 7 years as owner, head chef, etc of Father John's Brewing Company in Ohio. • There's a new restaurant in the former Palomino space downtown in Harbor Court. **Rico**, said to be serving contemporary Japanese cuisine with an international flair is being helmed by **Yoichi Saito**, former chef at the now defunct Park Restaurant. Initial reports have been positive and it's nice to see another restaurant in that location. Open for lunch from 11 a.m. - 2 p.m. and dinner from 5 - 10 p.m., call 208-8180 for reservations. • **Treetops Restaurant at Paradise Park** reopened last month having undergone a full renovation, now boasting a stage, a small lounge, a new management team and new chef in **Mike Gedeon**, formerly of Roy's and Tiki's. The restaurant features a Hawaiian lunch buffet daily from 11 - 2 p.m. for about \$20, and plans for dinner should start in the very near future. Paradise Park opened back in the late 60s with the restaurant opening soon thereafter, and although the restaurant stayed open until 2013, the Park closed back in 1994. I clearly remember going up there as a kid with my dad. Those birds were awesome. The new owners have plans to reopen the park as a Hawaiian cultural center at some point. Plenty of parking. Head to 3737 Manoa Road or call 988-6838. I can toss both of these places onto the list of restaurants I am dying to get too but somehow haven't pulled off yet this year. • **Kona Brewing Company** has reopened after a brisk \$1 million dollar renovation which included expanding the bar to 48 taps, adding retail space, new flooring, work in the kitchen and more. All that and more in just under 3 weeks. Very impressive! 334-BREW. • **Chef Sean Priester** of SOUL and Top of Waikiki fame, has taken over head chef duties at **Pounders Restaurant**, part of PCC's new Hukilau Marketplace which officially opened late last month. Featuring an authentic wood burning oven from Naples, Italy, the chefs have all been learning how to stretch their own dough prior to opening. Chef Sean will be utilizing as much fresh

produce from neighboring farms as possible. Sample dishes in addition to the wood fired pizzas include fresh Ho Farms tomatoes paired with fresh strawberries, basil, parmesan cheese and a simple olive oil, balsamic vinaigrette. Another fresh crisp bite would be the cucumber, watermelon salad with melon and mint. The salads are needed to balance the meal when paired with other appetizer choices such as the candied bacon with blue cheese. It's nice to see Chef Sean back in charge, but I do hope his fried chicken and shrimp & grits makes a guest appearance once Pounders menu is finalized. • Hollywood's hippest Hot Dog is coming to Oahu. **Pink's Hot Dogs** will open their first hot dog stand in Hawaii early this month outside of Sea Life Park, as well as introduce an exclusive Hawaii dog to their famed menu. ~ Pam



Dining Calendar

Wednesdays: Bar 35: For many years, House of Brews has been hosting weekly beer tastings with different themes that feature around 6-8 beers, while enjoying Chef Valentini's appetizers. \$25. 6 p.m. 537-3535.



- Live Entertainment Nightly
- Happy Hour
- Early / Late Bird Specials
- Private Dining for 40 guests
- Gift Cards



Ala Moana Hotel 36th Floor
 808.949.3636
 Nightly 4:30 pm ~ last seating at 10 pm
 www.signatureprimesteak.com

MARCH CALENDAR OF EVENTS

Continuing Events

MONDAY – FRIDAY LYON ARBORETUM TOURS

The lush gardens at the top of the University of Hawai'i Manoa are open for guided tours daily. Knowledgeable guides will introduce the highlights of the botanical rainforest's 193.6 acres. Reservations required. Limit of 12 participants daily. Donations accepted. 988-0461.

MONDAY-FRIDAY FOSTER BOTANICAL GARDENS

Guided garden tours of rare and beautiful plants from tropical regions throughout the world. Foster Botanical Gardens, 50 N. Vineyard. 1 p.m. Adults: \$5. Reservations recommended. 522-7066.

TUESDAYS TOURS OF THE HAWAII THEATRE

Get a behind-the-scenes tour of this historic theatre including history, architecture, and a performance on the 1922 Robert Morton theatre organ. Hawaii Theatre. 11 a.m. – 12 p.m. \$10. 528-0506.

TUESDAYS • KU HA'AHEO

An afternoon of hula from multiple groups featuring adults and keiki performing contemporary and traditional dance and music led by kumu hula Blaine Kamalani Kia. Waikiki Beach Walk Plaza Lawn. 4:30 – 6 p.m. FREE. waikikibeachwalk.com or 931-3591.

TUESDAYS • KCC FARMERS MARKET

The Saturday Market is so popular they added another day. Head up to Kapiolani Community College to stock up on fresh, island produce, seafood, flowers and more, from several dozen vendors. 4 – 7 p.m. Free. 848-2074.

FIRST & THIRD TUESDAYS MEET THE MONK SEALS!

Learn about monk seals in the wild and meet two resident seals up close. Designed for participants 7 and up but anyone is welcome. Waikiki Aquarium. 3 p.m. \$4 – \$6. waquarium.org or 923-9741.

TUESDAYS & THURSDAYS FRESH FARMERS MARKET AT THE HYATT

The Hyatt has added another day of their popular Farmers Market for visitors and locals to stock up on fresh local organic fruits, vegetables, jams, honeys, baked goods and more. Stop by twice weekly at this market located on ground floor of the Pualeilani Atrium Shops. 4 – 8 p.m. Waikiki.Hyatt.com.

TUESDAYS, THURSDAYS & SUNDAYS TOUR AND TEA AT THE HONOLULU ACADEMY OF ARTS

Tours are led by volunteer docents and designed for visitors, who would like to explore the galleries, learn more about art and culture, and socialize over a cup of tea. Docents lead discussions in the galleries and offer insight into many cultures and time periods. 2:30 – 4 p.m. in selected galleries. Free with admission; Reservations required. 532-8700.

TUESDAY – SATURDAY MISSION HOUSES MUSEUM GUIDED TOURS

Visit the Printing Office and Frame House while learning about the 19th century history and culture preserved at this beautiful museum. Galleries also open to explore on your own. Mission Houses Museum. Tues. – Sat. 11 a.m. & 2:45 p.m.; Tues. – Fri. 1 p.m. \$6 – \$10. 531-0481 or missionhouses.org.

SECOND WEDNESDAY (MARCH 11) STARGAZING

The Hokulani Imaginarium puts on a live star show

while teaching about the mythology surrounding constellations. Windward CC, 45-720 Kealahala Rd., Kaneohe. 7 p.m. Tickets: Adults \$7, Keiki (ages 4-12) \$5. aerospace.wcc.hawaii.edu/imaginarium.html or 235-7433.

WEDNESDAYS & FRIDAYS CHADO – THE WAY OF TEA

Japanese enthusiasts can experience the traditional tea ceremony (chanoyu) as it was meant to be both seen and taught at the Urasenke Foundation of Hawaii. No prior knowledge required. Demos at 10 a.m. and 11 a.m. \$5. 923-3059.

SECOND THURSDAY (MARCH 12) COURTYARD CINEMA

Ward Village hosts its monthly film series event, Courtyard Cinema, on the 2nd Thursday of each month. Each month's movie features free popcorn, refreshments, food vendors and entertainment. Courtyard Cinema is free and open to the public. Seating is limited. Reserve your tickets and learn more about future shows at wardvillagecourtyardcinema.com.

THIRD THURSDAY (MARCH 19) DOWNTOWN GALLERY WALK & CRAFT FAIR

The Arts at Marks Garage continues to build on downtown activities offering execs an excuse to hang out after work and giving everyone else a reason to head downtown. Free. 521-2903. artsatmarks.com.

FRIDAYS • CULTURAL CRAFT FAIR

The Hyatt has had so much success with its weekly Framers Market featuring fresh local produce that they are applying the same principle to local craft items. Each week the craft fair will feature local vendors featuring arts & crafts, jewelry, Photography, woodwork and more. 3 – 7 p.m. Waikiki.hyatt.com.

FIRST FRIDAY (MARCH 6) DOWNTOWN GALLERY WALK & CRAFT FAIR

Art lovers are advised to head to downtown Honolulu the first Friday of each month. This event has exploded into a downtown party with galleries and studios open for exhibitions, artist demonstrations, and special performances. 23 galleries and art-related retail shops, restaurants and museums participate. Downtown Honolulu/ Chinatown. 6 – 9 p.m. Free. 521-2903 or artsatmarks.com.

FIRST & THIRD FRIDAYS (MARCH 6 & 20) THE SKY TONIGHT

Learn about our Hawaiian skies and current events in space at the J. Watumull Planetarium. Bishop Museum. 8 p.m. No late seating. GA \$6, Keiki \$4. 848-4168 or bishopmuseum.org.

FINAL FRIDAY • ART AFTER DARK

Art after Dark continues with Vasant, spotlighting springtime in India and showcasing high energy bhangra beats. 6 – 9 p.m. artafterdark.org.

SATURDAYS • KCC FARMERS MARKET

Fresh island produce, seafood, flowers and more are available from over two-dozen vendors at Kapiolani Community College. Free. 7:30-11 a.m. 848-2074.

SATURDAYS KAKA'AOKO FARMERS MARKET

Check out an abundance of locally grown produce, island made treats and much more from around our islands at the Kakaako Farmers Market at Ward Warehouse located between Ward and Kamakee Streets, Free. 9:00 a.m. - 1 p.m. 388-9696 or haleiwaifarmersmarket.com.

SATURDAYS & SUNDAYS ART ON THE ZOO FENCE

More than 35 local artists display their works on the Zoo fence on Monsarrat Avenue opposite the Kapiolani Park Bandstand. Works for sale include

MAKE US YOUR FIRST CALL
FOR ARIZONA MEMORIAL TOURS

Gray Line
POLYNESIAN
ADVENTURE TOURS

808-212-9758
polyad.com

ARIZONA • MISSOURI • HEROES • BOWFIN • AVIATION MUSEUM

MARCH CALENDAR OF EVENTS

original paintings, prints and photographs. 9 a.m. – 4 p.m. Free. artonthefence.com.

SECOND SATURDAY (MARCH 14)

DOWNTOWN GALLERY WALK & CRAFT FAIR
First Friday has become such a success that events carry over to the second Saturday. HiSAM, 11 a.m. – 3 p.m. 586-0900. Other events around downtown Honolulu all afternoon. Free. 521-2903 or artsatmarks.com.

NA MELE NO NA PUA SUNDAY SHOWCASE (MARCH 15 & MARCH 29)

Waikiki Beach Walk has brought back its popular monthly free concert series. See Huewa March 15th and Del Beazley on the 29th at the Plaza Stage from 5 – 6 p.m. waikikibeachwalk.com.

BANK OF HAWAII FREE SUNDAY (MARCH 15) HONOLULU MUSEUM OF ART

Bank of Hawaii makes it possible for the Honolulu Museum of Art to open its doors to the public free of charge on the third Sunday of every month. The month celebrates the Hōkūle'a and the return of the Hawaii Loa with special activities and demonstrations. 11 a.m. - 5 p.m. Free. 532-8700.



MARCH 4 GEORGE BENSON IN CONCERT

The 10-time Grammy winner is coming to Oahu for one night only. The renown jazz guitarist is known for such chart busters as "Give Me the Night," "On Broadway," and "The Greatest Love of All." Blaisdell Arena. 7:30 p.m. Tickets: \$35-\$95. (800) 745-3000 or ticketmaster.com.

MARCH 7 • KE AHE LAU MAKANI FESTIVAL & PRINCE KUHIO TRIBUTE CONCERT

The Hawaiian Choral Music Festival culminates with a concert dedicated to Prince Kuhio featuring the festival choir, guest choirs from Hawaii and the mainland and the Royal Hawaiian Band makes a guest appearance. \$25. Kawaiahaō Church. 1 – 8 p.m. 282-5606.

MARCH 7 • KO OLINA CHILDRENS FILM & MUSIC FESTIVAL



The resort is bringing this highly successful event back with a day filled with live musical performances, interactive music and video studios, a host of family-friendly movies. In a special edition of Sunset on the Beach, "Frozen" will be showcased on the lagoon at dusk. \$25 for adults, \$10 for kids. All proceeds benefit the Kapi'olani Medical Center for Women & Children 1 – 8 p.m. koolinachildrensfestival.com.

MARCH 7

DOLE PLANTATION ANNUAL FAMILY FUN DAY

The public is invited to this annual event featuring live musical performances, hula, arts and crafts, prize giveaways and more. This is only day all year where everyone can get a buy-one-get-one-free admissions to the World's Largest Maze and Garden Tour. They also offer reduced admission to the Pineapple Express Train Tour. 10 a.m. - 2 p.m.. DolePlantation.com

MARCH 7 – 8 HONOLULU FESTIVAL

The 21st annual Honolulu Festival celebrates the people and culture of the Pacific Rim and Hawaii with dance, music, and exhibits. The activity packed weekend includes the Grand Parade through Waikiki

and the spectacular Nagaoka Fireworks Show. honolulufestival.com.

MARCH 7 – 20

KIRK CASHMIRE JEWISH FILM FESTIVAL

The 13th annual Temple Emanu-El Kirk Cashmire Jewish Film Festival kicks off on March 7th with Scott Marshall's hilarious "Keeping Up with the Steins" and continues over the next two weeks with a variety of films to choose from including "Sturgeon Queens," "Magic Men," "24 Days," "Theodore Bikel" and more. Complete listings and show times available on their website under 'films.' Doris Duke Theatre. honolumuseum.org.

MARCH 15

DUKE KAHANAMOKU CHALLENGE

This is the 30th anniversary of this family-friendly day of competition that includes canoe races, ancient Hawaiian games, and stand up paddle races. This is a fun day for both those participating, as well as those sitting on the beach watching. The day kicks off with a double canoe procession, chant and hula. There will be a craft fair and live entertainment on the min stage all day. Great Lawn. Hilton Hawaiian Village. 2 p.m. waikikicommunitycenter.org

MARCH 15 ALII SUNDAY

Kawaiahaō Church celebrates select Hawaiian Royalty (Alii) who are of particular importance for the Church by holding seven special Sunday services in their honor around their birthdays throughout the year filled with traditional Hawaiian cultural touches. Today they honor Queen Ka'ahumanu, who was born on March 17, 1768. 9 a.m. kawaiahaō.org.

MARCH 16 & 17

INCUBUS IN CONCERT

Known for their hits such as "Pardon Me," "Drive," "Nice To Know You," the hugely popular rock band Incubus heads to Hawaii for two shows at The Republik. Safehouse open at 6 pm, concert hall at 7. Concert at 8 p.m. Tickets: \$57.50 GA, \$7.50 increase day of the show.

MARCH 17 • ST. PATRICKS DAY

Celebrate the luck of the Irish with some of the many events around town including the parade down Kalakaua at noon and Murphy's block party kicks off at noon with his famous Oyster bar, fish n chips, corned beef and cabbage and more, but the official party gets busy after dark, when downtown turns into a sea of green. Erin go bragh!

MARCH 20-21 • HEIVA

The best of Tahiti's culture comes alive during this 12th annual two day competition. It's the largest Tahitian dance competition all year with competitors from here in the islands, and around the world. Watch some of the best Tahitian dancers in the world as they compete for top honors. Drums, music, Polynesian crafts and food. Tickets: \$15. Waikiki Shell. tahitinuiinternational.com

MARCH 21

STEP OUT: WALK TO STOP DIABETES 2015

Do your part to help stop diabetes and get a great workout at the same time by joining the 2.3-mile walk around Kapiolani Park. Participants and spectators can enjoy live entertainment, health fair, contests, food booths and more. 7-11 a.m. diabetes.org/stepouthawaii *Continued on page 17.*

K1 SPEED

AMERICA'S PREMIER INDOOR KARTING CENTER

100% ELECTRIC

ARRIVE & DRIVE
ADULTS AND JUNIORS
48" AND UP

GREAT FAMILY FUN!

SPACIOUS LOBBIES

K1 SPEED HAWAII **K1SPEED.COM**
 91-1085 LEXINGTON ST. KAPOLEI, HI 96707 - (808) 682-7223

AZ - PHOENIX, IA - CHARLESTON, ILLINOIS - ANAHEIM - TORRANCE - ONTARIO - SANTA CLARA - SAN FRANCISCO - SACRAMENTO - SAN DIEGO, CA - DENVER, CO - FLAORIDA - MIAMI, FL - ATLANTA, GA - KAPOLEI, HI - BUFFALO GROVE - ACONSON, TX - INDIANAPOLIS, IN - AUSTIN - HOUSTON - SAN ANTONIO - DALLAS, TX - SEATTLE

Shop! Don't Drop

Continued from page 1.

restaurant receipts, dated March 16 to 22, will receive their gift at the Guest Services desk.

In honor of Shop a Le'a, over 100 merchants will be offering special discounts and free gifts with purchase throughout the week. From Bvlgari to Michael Kors to Macaroni Grill the list of participating stores is endless. Most stores will have a sign out front indicating their participation, but for a complete list of discounts, entertainers and fashion shows be sure to log onto alamoanacenter.com or pick up an event guide that will be located throughout the mall.

The week showcases the best in global brands and merchandise, presenting shoppers with a wide range of experiences in fashion, health and beauty, active lifestyle, home decor, travel and cuisine. Retailers offer fashion and trunk shows daily on Center Stage. Fashions include Reyn Spooner, Diane von Furstenberg, Banana Republic, Porche Design, Cache, Spiral Girl, Old Navy, Ann Taylor and White House/Black Market, plus performances by Sunway and Jordan Segundo.

Don't miss the chance to enter to win the Shop a Le'a Staycation Sweepstakes for The Modern Honolulu. The winner will receive 3-night accommodations for two in an Ocean Front Suite, dinner for two at Morimoto Waikiki Restaurant, a poolside Day Bed Experience for two and a \$500 Ala Moana Center gift card. Entries can be submitted March 16 to 22 on the mall level 2 or online via facebook.

The Dress For Success Initiative affirms that every woman deserves to look her best. Shoppers can help women look fabulous in professional attire as they re-enter the workforce by donating to YWCA of O'ahu's Dress for Success® Honolulu.

Donations of unworn or gently used apparel, shoes, accessories, as well as gifts cards will be accepted at participating retailers. Most merchants acting as collection sites will offer discounts or gifts to shoppers who provide a donation.

Finally, Passport to Luxury takes place on Friday, March 20 from 6 to 9 p.m. Shop a Le'a will present the ultimate opportunity to enjoy Ala Moana Center's luxury boutiques. Hosted by Modern Luxury Hawai'i, Passport to Luxury gives shoppers the opportunity to preview new products while dining on delectable bites from Hawai'i's top restaurants including Beach House at the Moana, Big Island Candies, Bread + Butter, Chef Mavro, Hokulani Bake Shop, Mariposa, Morimotos, MW Restaurant, Taormina, Tango Contemporary Café, The Modern Honolulu, The Pineapple Room and Top of Waikiki. Passport to Luxury participating retailers include Bally, Ben Bridge, Cole Haan, Diane von Furstenberg, Emporio Armani, Fendi, Jimmy Choo, Kate Spade, Louis Vuitton, Michael Kors, Mont Blanc, Neiman Marcus, REDValentino, Salvatore Ferragamo, St. John and Tod's. A portion of the evening's proceeds will benefit the Blue Planet Foundation. Shoppers must be age 21 or older to participate. This event is by invitation only.

There is tons of fun, entertainment and amazing deals to be had March 16 through 22 at Ala Moana Center. Follow the fashion by using hashtag #ShopaLea or by following @AlaMoanaCenter on Twitter and Instagram and be sure to log onto alamoanacenter.com for an complete up to date schedule of events. See you at the mall! ~ LYNN

ATLANTIS CRUISES

Whale Watch Season

MORNING CRUISE
LUNCH BUFFET CRUISE
December 20, 2014 - April 19, 2015

Don't miss Hawaii's spectacular whale watch season! Kids age 6 and under enjoy a complimentary cruise. Free transportation available from select Waikiki locations.

Atlantis Cruises

Call (808) 973-1311 for information & reservations or fax to (808) 973-2499.

Polo Returns with Legends

2015 Season Opener kicks off with legendary players Peter Baldwin and Freddy Rice

Think Sunday, think a relaxing day in the country with moments of pulse-raising excitement. It's time for the start of the Hawaii Polo Club season, March 15th at the only ocean-side polo field, Mokule'ia on Oahu's North Shore. Opening day ceremonies will honor two heros of polo in Hawaii. Honorees, Peter Baldwin and Freddy Rice, will be on hand to accept the Legends of Hawaii Polo award, watch the match and talk-story about the early days of Mokule'ia polo.



Hawaii Polo Club president, Mike Dailey, says, "These two sportsmen, along with my dad, Fred Dailey, and Bim Wilson, composed the original Hawaii Polo Club core team that reigned in the 1960s – hard-riding competitors against local teams. Every year they vied against the visiting English team with expertise that often surprised the visitors."

The Hawai'i Polo Club kicks off the 2015 polo season with a new theme. In 2014 the Hawai'i Polo Club concluded 50 years of bringing exciting polo matches to Hawai'i. This year's theme honors the past but looks forward to what's to come by "Honoring our Past, Celebrating our Present and Preserving the Future."

The season's kickoff match will pit Hawaii against England, will feature a presentation by halau 'Aha Pulama Pa'u Holo Lio's pau unit. The halau's cowboys will be featured at halftime with paniolo music and a barbeque following the matches. Proceeds will benefit the halau.

Due to the special content of this opening event, gates open early at 10 a.m. and the ceremonies will begin at 12:30 p.m. Under normal circumstances, matches are held every Sunday through mid-August with gates opening at 11 a.m.

and matches commencing at 2 p.m.

Throughout the season, the Hawaii Polo Club will incorporate different events that will honor the various accomplishments and contributions of the legends as well as acknowledge the legacies they have left behind and how their pioneering spirit and contributions have impacted our lives today as well as future generations to come.

The Club will continue to carry out the Legends and Legacies throughout the polo season, honoring distinguished leaders representing a wide variety of industries and facets of Hawaiian Island community, life and history. The series categories include Arts and Entertainment, Tourism and Hospitality, Broadcast and Print Media, Sports, Fashion, Philanthropy, Military, Hawaiian Culture and Cultural Diversity.

Admission to the matches is \$12.00 for general admission/\$10.00 military open field seating and \$25.00 per person for the clubhouse area. The clubhouse offers premium bar service and food service as well as reserved tables and seating options. Clubhouse seating is available for season ticket holders: \$275.00 per person or \$450.00 per couple. Info@hawaii-polo.org. ~ LYN

MARCH CALENDAR CON'T

Continued from page 15.

MARCH 21 HONOLULU NIGHT MARKET

The folks behind Eat the Street bring this monthly art event to Kakaako. Food, art and fashion will close Auahi Street down from Keawe to Coral as artists, food trucks, live entertainment and more fill the streets from 6 p.m. to 11 p.m. Lane closures begin at noon. streetgrindz.com.

MARCH 21 – 22 • SUNDANCE SHORTSLAB

Aspiring Hawaii filmmakers have a chance to learn the inside scoop of making short films from staff and directors from the Sundance Institute during this first ever Sundance Institute Short Film Lab in Hawaii. A two day lab that includes panel discussions, screenings of short films handpicked by Sundance's Senior Short Film Programmer, and a networking reception. Doris Duke Theatre. honolulumuseum.org

MARCH 22 SPRING WIKI WIKI ONE DAY VINTAGE COLLECTIBLES & HAWAIIANA SHOW

This all vintage collectible and antiques show features 92 tables of vendors offering antiques, estate jewelry, vintage fashion, aloha shirts, Hawaiiiana and more. Neal Blaisdell Center. 10:30 a.m. - 4:30 p.m. \$4.50. Early entry \$15 from 9 a.m. ukulele.com.

MARCH 22 • ALII SUNDAY

Kawaihahao Church celebrates select Hawaiian Royalty

(Alii) who are of particular importance for the Church by holding seven special Sunday services in their honor around their birthdays throughout the year filled with traditional Hawaiian cultural touches. Today they honor Prince Jonah Kuhio Kalaniana'ole, who was born on March 26, 1871. 9 a.m. kawaihahao.org.

MARCH 26 PRINCE KUHIO DAY

It's a state holiday today, one of only two holidays in the United States dedicated to royalty, the other being King Kamehameha Day on June 11. Look for his statue to be draped in lei.

MARCH 28 GREAT HAWAIIAN RUBBER DUCKIE RACE

For the 28th year, the Ala Wai prepares for the annual invasion of around 20,000 bright yellow rubber duckies in their mad 100-yard float down the canal after being dumped from the McCully Street Bridge at precisely 1:28 p.m. Stop by the McCully Shopping Center, from 9 a.m. - 12:30 p.m. to adopt a duck and participate in pre-race festivities. ucphai.org.

MARCH 28-29 WAIKIKI ARTFEST

Check out the work of close to 100 local artists as they display their crafts for all to see and buy. Enjoy live music and food booths while shopping. Free. 9 a.m. - 4 p.m. Kapiolani Park.

Whales Guaranteed

See whales or come again free on seasonal whale-watch cruises Dec.-April. Door-to-door transportation included. Family-owned company with ocean activities for all ages.



WAIKIKI •
WAIANAЕ •
HILTON PIER
Sail • Snorkel •
Dolphins • Turtles •
Whales • Scuba •
Fireworks Dinner •
Private Charter •
Transportation

234-SAIL

(7245)

WE ANSWER 24 HOURS!

hawaiinautical.com

HawaiiNautical

DISCOUNT HAWAII CAR RENTAL SAVE UP TO 50%



GUARANTEED RESERVATIONS
* NO BOOKING FEES * NO
DEPOSIT * CANCEL ANYTIME
* NATIONAL RENTAL
COMPANIES

call us today @

1.800.292.1930

or check us out online:

DiscountHawaiiCarRental.com

IL LUPINO

TRATTORIA & WINE BAR

Join us every weekend for

Champagne
Brunch

Sat/Sun • 7am-2pm

Choose from 6 Delicious
Brunch Entrees, served with
a Glass of Champagne.
\$19.95

Also join us for our Champagne
Happy Hour every Tues/Thurs all day.
Glass of Champagne \$9.

ROYAL HAWAIIAN CENTER • BLDG. B LEVEL 1
VALIDATED PARKING
WWW.ILLUPINO.COM • 808.922.3400

That's Entertainment

HOTELS

- HALE KOA HOTEL** 955-0555
 •**TuSat** - High and Right Comedy Show takes the stage at the Warriors Lounge at 8pm.
 •**MThFS** - Poolside music at the Barefoot Bar. 6-11pm
- HALEKULANI HOTEL** 923-2311
 •**Daily**-Hawaiian Music and hula at The House Without A Key from 5:30-8:00pm.
 •**Daily**-Live Contemporary and light Jazz at Lewers Lounge from 8:30pm to midnite.
 •**Sun**- Sunday brunch at Orchids features Noly Paa on the piano from 9:30 - 2:30pm.
- HILTON HAWAIIAN VILLAGE** 949-4321
 •**Fri** - Fireworks at 7:45pm.
 •**Fri** - The Rockin' Hawaiian Rainbow Revue (formerly the King's Jubilee), a musical salute to King Kalakaua, at the Super Pool. 7 pm.
 •**FriSat** - Olomana at the Tapa Bar from 8-11pm.
 •**Sun** - Jeff Apaka at the Tapa Bar from 5-7pm.
 •**Daily** - Live entertainment at the Hau Tree Bar and the Tapa Bar from 8-11pm.
- THE KAHALA HOTEL** 739-8888
 •**TuWThFSat** - David Swanson vocalizes on the piano at The Veranda from 7:30-11pm. Live Jazz on Sun/Mon.
- MOANA SURFRIDER** 922-3111
 •**Daily**-Hawaiian music & hula. The Banyan Court, 6-8 pm, and again from 8 -11 p.m. Weekends from 11:30- 2 p.m.
 •**MWFri**-Guided historical tours at 11am.
- NEW OTANI KAIMANA BEACH** 923-1555
 •**FSat**- Local jazz guitarists plays live in the Sunset Lanai Bar. 6-9pm.
- OUTRIGGER WAIKIKI ON THE BEACH** 923-0711
 •**Mon**- Kukui Nut Bracelet Making. 1pm.
 •**Th**- Ukulele Lessons. 1pm.
 •**Fri**- Aloha Fridays bring back old Hawai'i with music, hula, ukulele & lei making lessons. 9am-1pm.
- OUTRIGGER REEF ON THE BEACH** 923-3111
 •**Daily**- See guest artists at work in Kuloko Arts of Hawaii 9am-1pm and again from 6-9pm.
- SHERATON PRINCESS KAIULANI** 922-5811
 •**Daily**-Live Hawaiian music & halau at the lounge from 6-8:30pm, then poolside from 8:30-10:30pm.
 •**Th**-Princess Kaiulani historical tour at 9:30am.
- THE ROYAL HAWAIIAN** 923-7311
 •**TTH**- Free guided resort tour at 1pm.
- TURTLE BAY RESORT** 293-6300
 •**MTWThFSat**- Lei Making, Main Lobby at 10am.
 •**ThSun** - Fire Dancer, Hang Ten Pool Bar at Sunset

- TThFri** - Shell Hula Lessons, Lobby at 10am
- TThFri** - Ukulele Lessons, Lobby at 9am
- Fri**- Music & Hula. Lobby Lounge 6:30-8:30pm.

- WAIKIKI BEACH MARRIOTT RESORT** 922-6611
 •**Daily**-Hawaiian entertainment in The Moana Terrace Bar. 6-9pm.
 •**Fri**-Local crafters "Aloha Friday Fair" Lobby 9a-2pm

MUSEUMS

- HAWAII STATE ART MUSEUM** 586-0900
 •**TWThFSat** - Inaugural exhibition "Enriched by Diversity: The Art of Hawai'i." Free. Tuesday-Saturday, 10 a.m. to 4 p.m. Located in the Capital District.
- HAWAII THEATRE** 528-0506
 •**Tues**- A one-hour guided tour offers a unique insight in the history, art, architecture and restoration of the Hawai'i Theatre with trained docents & a mini-concert on the 1922 Robert Morton Theatre Organ. 11 a.m. Admission: \$10.
- HONOLULU MUSEUM OF ART** 532-8726
 •**MWF**- Japanese Language Tours. Private tours also available. 1pm. Regular admission.
- IOLANI PALACE** 522-0832
 •**Mon-Sat**-45 minutes docent-led or self-guided audio tours available in English or Japanese. Japanese-led tour is available only at 11:30 a.m. All tours include re-tour video and entrance into the Palace Galleries. Adults: \$14.75-\$21.75 / Keiki (5-12): \$6. 9am-5pm
 •**Sat**-Hawaiian Quilt Classes. Old Archives 9:30a-12p.
- LUCORAL MUSEUM** 922-5381
 •**TTh**- Learn how to plan your jewelry project and more in this beaded jewelry workshop \$10. 2-4 p.m.
- MISSION HOUSES MUSEUM** 447-3910
 •**Tue-Sat**-Learn about the dramatic story of cultural change in 19th-century Hawai'i. Docents lead tours through the oldest existing frame house in the Islands, Printing Office, and the coral block Chamberlain House. Reservations required. www.missionhouses.org
- PACIFIC AVIATION MUSEUM** 441-1000
 •**Daily**-Vintage aircraft in battlefield hangars. Combat flight simulators. Aviator's Tour takes you through the new Restoration Hangar. Restaurant, Museum Store. Shuttle & Tickets at USS Arizona Memorial Visitor Center or at www.PacificAviationMuseum.org.
- THE SPALDING HOUSE** 526-1322
 •**Daily**-Docent-led tours given daily. 1:30pm. Garden tours or Japanese language tours are by appointment.
- NAVAL AIR MUSEUM BARBERS POINT** 682-3982
 •**Mon-Fri**- A unique museum experience about aviation history in Hawaii. All of the aircraft are open to climb

in, on and around. Tours: 8 a.m. - 4:30 p.m. \$7 / \$5 children under 18. BLDG 1792, Midway Road, Kalaeloa Airport. Reservations required. Sat/Sun by appt only. www.nambp.org.

SHOPPING CENTERS

- ALA MOANA CENTERSTAGE** 955-9517
 •**Tues** - PCC Polynesian Revue Show. 6pm.
 •**Sun** - Keiki Hula Show. 10-11am.
- KINGS VILLAGE** www.kings-village.com 237-6344
 •**MW** Famer's Market offering fresh produce, baked goods and local food items from 4-9pm.
 •**Daily** King's Guard Museum features a variety of collectibles and memorabilia. 10a-10:30p. FREE.
- ROYAL HAWAIIAN CENTER** 922-2299
 • **TWThF**- Beginner Ukelele 10-11am, *Helumoa Hale*
 • **MW**- Learn Lomilomi 11am-12pm, Bldg. C, 3rd floor
 • **MF**- Hawaiian Storytelling 12pm, *Helumoa Hale*
 • **TTh**- Intermediate Ukulele 11:30am, Bldg. C, 3rd floor
 • **TTh**-Hula (T) 11am-12pm (Th) 4-5pm, *Royal Grove*
 • **TWThF**- Live Hawaiian music 6-7pm, *Royal Grove*
 • **MTWThSat**- Lei making 1-2pm, *Bldg A, 1st floor*
 • **Sat**- Hula Kahiko 6-6:30pm, *Royal Grove*
 • **Sat**- Hawaiian musicians 7:30-8:30pm, *Royal Grove*
 • **WSat** - PCC Performs. 11-11:45am, *Royal Grove*
- WAIKIKI BEACH WALK** www.waikikibeachwalk.com
 •**Tuesdays** - Ku Ha'aheo featuring Hawaiian song and dance on the Plaza stage. 4:30-6pm
 •**Wednesdays** - Yoga Classes 4-4:45pm. Free.Plaza Stage
- WAIKIKI SHOPPING PLAZA** 923-1191
 •**Daily** Hula Lessons. 10am, 12pm
 • **MTTh** - Polynesian Review 1st & 3rd floor 7-9pm

ATTRACTIONS

- KALAKAUA AVENUE** 527-5666
 •**Fri** - Strolling Hula from 8-10:00pm.
- KAPI'OLANI BANDSTAND** 527-5666
 •**Fri**-Hawai'i's finest musicians perform. 5:30-6:30pm
 •**Sun**-Royal Hawaiian Band performs 2-3:15pm.
- KUHIO BEACH HULA SHOW** 843-8002
 •**TThSat**- City & County presents a free hula show at sunset. 6:30 - 7:30pm at the hula mound.
- TAMARIND PARK - DOWNTOWN** 527-5666
 •**Fri**- Mayor's Aloha Friday Music from 12-1pm features live music from Hawaiian to Jazz to Pop.
- WAIKIKI TOWN CENTER** 922-2724
 •**Mon-Sat**-The songs and dances of Hawai'i, New Zealand, & Tahiti. Free shows begin at 7pm.

EVENTS SUBJECT TO CHANGE PLEASE CALL TO CONFIRM PRIOR TO ATTENDING

PAPARAZZI

Delima Daughters Grow Up



Kelly Boy Delimas daughters are growing up following their father's footsteps, and boy are they good.. Kalena and Lilo Delima of Kapena played the opening of Pink Sand at the Royal Hawaiian Center with a proud papa looking on.

Hukilau Marketplace is Now Open



The 119,000 square foot open air marketplace out front of the Polynesian Cultural Center officially opened last month offering a bit of old-school La'ie to residents and visitors to the North Shore looking to dine, shop or just walk around.

Whale Season is Almost Over



Don't miss your chance to see these amazing creatures while they are still in our waters. February was whale soup around Oahu and it's simply a sight to behold. Send your guests to your favorite whale watch, and join them while you can.

March 31, 2015

Dole Plantation - 1 FREE Adult Admission To The Maze With Purchase of 1 Adult Admission. 621-8408

Giovanni Pastrami - 15% Off Full Bar, Dine-in or Take-Out at anytime with ID. 227 Lewers St. 923-2100.

Hard Rock Café - 15% off food, beverage (non-alcoholic), or merchandise. Hotel ID required. 280 Beachwalk Ave. 955-7383.

Hawai'i Prince Golf Club - \$5 Off Standard Kamaaina Green Fees. Tee Times: 944-4567

Hilo Hattie - 25% on Hilo Hattie labeled garments, 15% off other fashions/gifts and 10% off Hilo Hattie labeled foods. Not valid on sale item. Ala Moana Center and Nimitz Hwy Ph 535-6500.

Hy's Steakhouse - 25% VIP Discount Off Food And Beverage (up to 2 persons) 2440 Kuhio Ave. 922-5555

Hyatt Regency Waikiki - 15% discount with the presentation of a concierge business card at SHOR, Japengo and SWIM. 2424 Kalakaua Ave. 923-1234.

Iolani Palace - Free Admission. Regular rate \$20. 364 S. King Street, Reservations & Hotel ID required. 522-0832.

IHOP - Receive 20% on entire bill. Must show valid hotel ID. Not valid with any other offer or discount. Aqua Palms, 1850 Ala Moana Blvd restaurant only. Free parking available. 949-4467.

Kaiwa - 20% off food & beverage between 5 & 7 p.m. 924-1555

Longhi's - 25% off food & beverage up to 2 persons, not applicable with any other promotion or discount. 947-9899.

Mission Houses Museum - Free tour with hotel ID. 447-3910

Pacific International Skydiving Center - 50% Discount on Jump, 68-760 Farrington Hwy, 637-7472

Plaza Café - 15% off all food items. Best Western the Plaza Hotel. 3253 N Nimitz Highway. 836-3636.

P.F. Chang's Waikiki - Receive 20% on all appetizers, entrees, desserts and beverages 11 am - 5 pm daily (not valid for Pau Hana menu) Royal Hawaiian Center. Ph: 628-6760, 637-7472

Romano's Macaroni Grill - 20% Off Food and Beverage for up to 2 guests. (Not Valid for Happy Hour Menu). Ala Moana Center, 1450 Ala Moana Blvd. 356-8300

Royal Hawaiian Center - get your FREE Malama Card which offers special retail and dining discounts to local Waikiki workers. Royal Hawaiian Center, 9201 Kalakaua. 922-2299.

Ruth's Chris Steak House - 20% Off Food and Beverage for up to 2 guests. (Not Valid for Happy Hour & Prime Time menus). Restaurant Row, 500 Ala Moana Blvd. 599-3860. Waikiki Beach Walk, 226 Lewers Street. 440-7910

The Contemporary Museum - FREE Admission For Cardholder and One Guest. 526-1322

The Kahala Resort - Complimentary appetizers for a concierge and a guest with the presentation of a concierge business card at Hoku's, Plumeria Beach House, Seaside Grill, The Veranda. 5000 Kahala Avenue. 739-8888

The Original Glider Rides - Come experience the joy of soaring for yourself. Concierge / GSA may receive a complimentary scenic ride. Request the "GSA flight special" when booking your reservation. Hotel ID required. Dillingham Airfield. 637-0207

Tiki's Grill & Bar - FREE order of ANY appetizer with any purchase! One per table. OahuconPOKE. ASTON Waikiki Beach. 923-8454

Willoughby's Restaurant - 15% off all food items. Ohana Honolulu Airport Hotel. 3401 N. Nimitz Hwy. 836-0661.

HELP us update this card. If you know of an offer not being honored let us know. As management changes, sometimes offers can get lost. Also as we work on updating this, let us know if there is something you would like to see here & we'll see what we can do!

You may be required to provide identification. Must show Hotel ID to claim offer. One special per person per business. Offers valid on regular-priced merchandise only. Discounts are available to Guest Service Professionals ONLY. Not valid with other promotions or special offers. A minimum 18% gratuity on original order required for all special food offers.  New offer

Conciierge of the Month



NAME: Ryan Tucker

HOTEL: The Modern Honolulu

TITLE: Chef Conciierge

Q. How long have you been at the Modern?

A. For nearly three years and joke that I'm a professional dot-conector. Partnering guests with vendors that will provide the experience they are looking for.

Q. How big is your team there?

A. Including myself, we have seven full service concierge.

Q. What made you decide on this industry?

A. I derive genuine pleasure from providing others with opportunities for happiness, and our profession allows for this daily.

Q. What were you doing before getting into this?

A. I have worked in some form of the service industry since I was a teenager. I've done it all from waiting tables to selling real estate to peddling a bicycle taxi, but being a concierge has by far been my favorite.

Q. What's the one question you're asked the most?

A. Pearl Harbor. Without a doubt, this is the number one topic of inquiry. How to get there, what's there, and even what it is.

Q. What's been the biggest challenge at the desk?

A. No comment. ☺

Q. What is the one skill every concierge needs?

A. It's not so much a skill as it is a personality trait, but in my opinion, it's humility. Being humble in your endeavors will take you a long way in our profession.

Q. Is there one particular guest that stands out?

A. All my guests are unique, but I won't tell stories. ☺

Q. What's the most unusual request you've heard?

A. I did have a honeymoon guest request a framed portrait of Seahawks quarterback Russell Wilson to be placed on his bedside table. To be fair it was right after they won the Super Bowl and easy enough to accommodate.

Q. What's the biggest perk of being a concierge?

A. My history in F&B has definitely left me a foodie, and this profession is the perfect excuse to sample all of the best restaurants throughout our island.

Q. Your guest has one day... What should they do?

A. After an Egg-White Kale omelet poolside at The Modern, a circle island helicopter tour is one of the best experiences a guest can have when short on time. Now back to Waikiki for some retail therapy, a stop by Chai's Market for a take-out lunch, then perhaps a private surf lesson on waves that were once reserved only for royalty. Have a little nap on the beach before sunset. Dinner on the lanai at Morimoto, down to The Study for a nightcap, a little live music, and then call it a night.

Q. Favorite off-property restaurant to recommend?

A. The original Side Street Inn holds a special place in my heart. It's one of the first restaurants I went to after moving to the island, and it never fails.

Q. Where are you from originally?

A. I'm from South Carolina originally, and most recently Charleston. It's a little coastal city about half of the size of Honolulu, but equally vibrant in history, restaurants, and retail. I caught the surfing bug while I was there and followed the waves to Oahu three years ago.

Q. Recommendations for spring breakers and families?

A. Robert's Hawaii has recently taken over management of the Red Dolphin, and I've always liked the variety that Waikiki Ocean Club offers. Jet skiing, parasailing, and scuba diving all from the same fun place is hard to beat.

Q. What is your favorite thing to do when not working?

A. Surfing. I try to paddle out as often as I can. If I'm not out at Diamond Head, you can find me at Ala Moana.



Embrace Your Dreams

Experience the magic of dreams coming true in our inspiring and unforgettable dolphin programs starting at only \$125. Dolphin Quest is located at the legendary Kahala Hotel & Resort.



DOLPHIN QUEST
Oahu

Reserve

800-248-3316
808-739-8918
dolphinquest.com

A portion of the proceeds supports vital marine education, conservation and research.

The Oahu Concierge is printed monthly and direct mailed FREE to all Oahu Concierge, Hospitality & Activity Professionals.

Subscriptions available to non-industry at \$25 per year.

C O N T A C T
Davis Media

Ph: 596-4422 • Fax: 593-0839

www.oahuconcierge.com

Twitter & Instagram: @OahuConcierge

Facebook: www.facebook.com/OahuConcierge

ADDRESS & NAME CHANGES / ADDITIONS

We do not take changes by telephone. All changes to mailing list **must be submitted in writing** by the 16th of the month to make the next issue, email is preferred.

S T A F F

PUBLISHER **Pam Davis**
publisher@oahuconcierge.com

CONTRIBUTING EDITORS

Lynn Cook, Lance Rae

DESIGN

Coreiya Design

The Oahu Concierge
1221 Kapiolani Boulevard, Suite 1040
Honolulu, Hawaii 96814

LOOK & BOOK

Go to
www.HIRealTime.com

A NEW AGENT TOOL
built specifically for
Hawaii Guest Professionals.

It's FREE!

- Activities
- Attractions
- Restaurants
- Events

Real-time booking for over
130 Vendors, with more
being added each month.

Register to access for free at
WWW.HIREALTIME.COM



serving Hawaii's visitor industry since 1988... 27 years & counting.

**"Thank you for holding,
a representative will be with
you shortly."**



Are you getting tired of hearing the same automatic voice answering service every day? Put down the phone because now there is a new way to book activities without picking up the phone!

Now you can **Look & Book** at your convenience, at the office, on your way to work or even in your bed.

HIRealtime.com works on a variety of devices: Personal computer, MAC, tablet, Apple & Android mobile phones.

Similar to Net Neutrality, which ensures a level playing field for all internet companies,

A3H's PonoRez provides free, easy, non-preferenced ticketing access by logging on or by our API. API stands for Application Program Interface, essentially it provides a way for systems to talk with each other. A common layman's term for API is "bridge". **PonoRez's** bridge has been available to outside systems since May 2010. **A3H** continues to keep our bridge open and willing to communicate.

The system is called **PonoRez** for a reason. It's made with principle over profit in mind. **PonoRez** is not just a different kind of system, it's a system that is **"Making a Difference"**.