

Concierge

KEEPING THE HOSPITALITY INDUSTRY INFORMED SINCE 1998

19TH ANNUAL HONOLULU FESTIVAL



Our islands' cultural diversity is spotlighted this month at the 19th Annual Honolulu Festival weekend packed with free ethnic entertainment, arts, cuisine, and wares, that celebrates Hawaii's Pacific roots. The theme for 2013 continues to promote traditions that bond Hawaii with countries around the Pacific Rim: "Transforming the world; Connect! Discover! Let each experience fascinate you!" From March 1 through 3, Waikiki will explode with the colors and sounds of celebration, culminating in the Waikiki Grand Parade and Nagaoka Fireworks Show.

The weekend includes a wide variety of events at venues around Waikiki and Honolulu, with all entertainment offered free and open to the public. Visitors and residents can unite in this chance to experience the unique cultural practices and art forms of Hawaii, Japan, China, Taiwan, Korea, the Philippines, Australia, Canada, and Alaska. The Honolulu Festival was conceived with the idea of sharing the history of our different peoples, languages, and customs to foster an ongoing relationship between Hawaii and the Pacific neighbors that have helped form our cultural landscape. Since the Fest first burst onto the scene in 1995 it has steadily grown with each year and today boasts the highest attendance in Honolulu's festival history. Through visitors, television coverage, and movie clips, this much-anticipated event is the ideal vehicle to spread the importance of cultural traditions and heritage to our community with the world. In a diverse melting

pot like Hawaii, it's easy to take our differences for granted, especially when many morph or blend with others to become new traditions that mold our wonderful islands. Today, visitors come from around the U.S., the Pacific, and beyond to take part in the festivities of one of Hawaii's most popular cultural fiestas.

Once again the 19th Annual Honolulu Festival will kick off Friday, March 1 with an Educational School Tour that is by invitation only beginning at 9 a.m. at the Hawaii Convention Center. This event is where Hawaii students from elementary through high school are invited to a behind-the-scenes tour of exhibits while interacting with artists and performers participating in the Festival. While this tour is designed for local students, and the official receptions (Governor's Luncheon and Mayor's Welcome) are by invitation only, the rest of the festivities throughout the weekend are designed to unite residents and visitors of many cultures to share in activities and entertainment.

Bringing day one to a close is the Friendship Gala (6:30 – 8:30 p.m.) at Hawaii Convention Center. Attendees are invited to join in an evening promoting international benevolence between Hawaii and our neighbors around the Pacific Rim. Events will include top local chefs creating ono cuisine, along with live entertainment from cultures throughout the Pacific. Admission is \$90 for adults or \$70 for keiki under 21 years of age, which includes food and two beverages (keiki

Continues on page 2.

SPRING BREAK

School's out for a week and the families are headed for warmer weather along the shores of Waikiki. Your desk has probably already been inundated with requests for reservations at PCC and directions to the aquarium, but for those who have yet to plan their visit, here are a few great ideas and helpful suggestions to help your visiting families make their trip unforgettable.

BUDGET FAMILY

The bigger the family, the less economical traveling becomes. Luckily, Waikiki is packed with great activities and sights to enjoy for free or at least cheap. Transportation can be costly and kids can get bored cooped up in a car or tour bus for the day. **THE WAIKIKI TROLLEY** is one way to see the



city without busting the trip budget. Tickets start at \$9 for kids, \$19 for adults, and go up from there. Tours include everything from shopping to beaches between Ward Center and Sea Life Park and riders can hop off in town and pick up a later trolley to get home. It's also much more negotiable than the City Bus for visitors. Purchase tickets at waikikitrolley.com or call 593-2822. **THE ALOHA BUS** also offers a hop-on hop-off scenario on a double decker bus. Tickets begin at \$14 for kids and \$30 for adults and go up from there. alohabus.com. There's a bunch of free music and dance to be seen

Continues on page 8.

TABLE OF CONTENTS

Yada Yada Yada	2
Newsflash	3
Arts with Aloha	4
Aunty Lynn's Adventures	6
Shop a Le'a	7
Chef's Corner: Chef Peter Merriman	9
E Pili Kakou	10-13
Calendar	14-15
St. Patrick's Day	17
Hiker's Corner	16
That's Entertainment	18
Concierge of the Month: Aki Mastuyama	19



Publisher's Letter



A Tale of Three Restaurants

Time and time again the topic of service is raised. Yes everyone strives to give good service but the fact remains that things happen, and that's ok. It's how you and or your staff deal with those things that makes all the difference in the world. Recently there were three distinct cases that arose so I wanted to talk about them. We'll start with Restaurant A, the worst offender. I have an allergy to raw onions. It's a bad one, but it won't kill me, unlike some less fortunate people who have fatal peanut and shellfish allergies. Because there are such people out there it is vital to know your menu when asked. Recently when at Restaurant A I asked specifically about an appetizer and whether or not it had onions in it and told her I was allergic. She assured me there were not, but after the 1st taste, I knew there were, and when I called her back to inform her the waitress told me I was wrong and must have been mistaken. I told her I was not and she should know her menu better. About 10 minutes later she came back and off-handedly told me I was right. She did offer to get us something else but by then we were done. There was no apology, the offending item was not taken off the bill and I spent the next 6 hours sick as a dog. Lucky for her I only got sick, mistakes like that when people specifically tell you there is an allergy involved kill. There is no reason for not knowing your menu.

Restaurant B is high-end restaurant known for superb food and service. This was definitely an off-night. The waitress was frazzled, when asked what the fish was she didn't know and went to find out. When she came back with the answer and was asked how it was prepared she again didn't know and had to go ask again. They topped off the evening by serving teaspoons for French onion soup and salad forks for Steaks. It sounds small, but people go to restaurants of that caliber for the small things, and when you're known for superior service and quality the errors stand out even more and there is never an excuse for not knowing the menu. In this case, when management found out, they comped the entire meal and kept a regular customer. Mistakes happen, it's how you deal with them that matters.

Restaurant C is also allergy related only this time it was my fault. I ordered the dish and when I saw there were onions on it I checked. When I asked them about it the restaurant became very concerned, but I felt I could eat around them with no issue and told them not to worry about it. Two bites later I knew I was wrong. This was my fault. I ordered it and even after knowing it had onions on it I thought I could get away with it, but once I realized I couldn't, they whisked it away, removed it from my bill, and then the Chef even brought me something on the house. This was my mistake and their response was way beyond what was necessary and the way they handled it stands out in my mind. So congrats Pint + Jigger for providing amazing customer service and setting a great example.

Yada Yada



Heidi Putnam

AccesSurf, a local non-profit on Oahu has recently appointed **Heidi Putnam**, Sales Manager at the **Hard Rock Cafe Honolulu** to the governing board of directors. AccesSurf helps individuals and wounded veterans enjoy the ocean in a safe environment and the Hard Rock has been veryinvolved with them for some years now. • **The Royal Hawaiian Hotel** has added a lot of new faces to their concierge desk. Congratulations to **Kelli Kajiwara, Parker Smith, Naomi Elza, Laurie Ann Henriques, Atsuko Hirobe**, and **Yumi Antalán** for joining the team. •

The Hawaii Prince Hotel recently added **Mari Laraway** to their concierge team. • We'd like to send a warm aloha to **Sili Ueno** who recently retired from the **Hale Koa Hotel**. She was always one of the first faces I'd see at any event and unquestionably one of the first ones to offer help when I looked like I was going to drown when things got chaotic. May you enjoy your well-deserved retirement, but know we'll miss you. Aloha! • Lastly we would like to welcome **Paul Fa'i** to the guest services team out at the **Aulani, A Disney Resort & Spa**. Welcome aboard!



Sili Ueno

HONOLULU FESTIVAL

Continued from page 1.

under 6 free excluding food and beverage; partially tax-deductible).

Saturday and Sunday are jam packed with tons of activities so there will something for everyone to enjoy. Performances and events run from 10 a.m. to 6 p.m. on March 2 and 10 a.m. to 3 p.m. on March 4 at locations around Honolulu including the Hawaii Convention Center, Ala Moana Shopping Center, DFS Galleria, Waikiki Beach Walk, and Waikiki Shopping Plaza.

On Saturday, March 2 a craft fair at the Convention Center will allow your guests to shop at over one hundred booths while enjoying free live entertainment from Japan, Hawaii, and more. The fair runs 10 a.m. to 6 p.m. on Saturday and 10 a.m. to 3 p.m. Sunday. Participating exhibitors will also offer demonstrations and teach crafts to attendees. This year will again include a Japanese-style Ennichi corner complete with activities, traditional games, food, and more, as well as an Anime Corner for comic fans. Back by popular demand, guests can try out traditional Japanese dance at a Bon Dance Workshop preceded by the Yagura (tower) Unveiling Ceremony from 11:30 to 11:45 a.m. Dancing lessons from 11:45 a.m. to 12:30 p.m.

As always, the Maui Mikoshi Building Contest, will showcases the talents of Maui high school students as they compete in a design contest to build their own mikoshi (decorative Japanese floats). The contest will have already taken place prior to the Festival itself, but guests will see the winning school and float when the the results of the Contest are unveiled Saturday in a ceremony at the Convention Center from 11 a.m. to 11:15 a.m. The winning students will also get to carry their float in the Festival's grand finale parade to show off their skillful creation.

For the first time ever, runners are invited to participate in the "Honolulu Rainbow Ekiden" race welcoming runners from Hawaii, the Mainland, Japan, and around the Pacific Rim. Ekiden is a traditional Japanese marathon-style race that has been gaining in popularity since its inception over ninety years ago. On Sunday, March 3, teams of three to five runners ages 12 and up will race 5K laps from Fort DeRussy to Sans Souci Beach and back. The top three teams will be recognized at the post-race Awards Ceremony and each participant will receive a commemorative t-shirt



Festival participants share dance and culture throughout the weekend. All pictures courtesy Honolulu Festival Foundation

and complementary ticket to the Honolulu Festival Friendship Gala. Entry fee is \$450 and race numbers are available for pick-up March 1 and 2 at the Hawaii Convention Center's Honolulu Rainbow Ekiden desk. More information at www.honoluluweekiden.com.

As always, the weekend's festivities culminate in the brilliant and exciting Grand Parade on Sunday from 4:30 to 8 p.m. in Waikiki. An awe-inspiring, toe-tapping procession of music, drums, floats, mikoshi, and performers will make its way along Kalakaua Avenue from Lewers Street to Kapiolani Park. Parade participants include local high school bands, hula, dance troupes, and special appearances by Miss Hawaii, the Cherry Blossom and Narcissus Queens, and the popular Daijyama (fire-breathing dragon). An explosive ending to



the parade is back again this year all the way from N a g a o k a , Japan. Taking to the skies at 8:30 p.m., the spectacular Nagaoka Fireworks Show

will make the weekend's events even more dramatic as pyrotechnics are launched from the water off Waikiki, accompanied by music broadcast by Hawaiian 105 KINE.

Make sure to remind your guests that traffic will be restricted during the Grand Parade on Sunday and remind them to take a camera! For more information and updated schedule, call 833-3378, visit www.honolulu festival.com, like it on Facebook, and get the latest updates on Twitter at @honfestival.

~ Kathryn

EXTRA Newsflash EXTRA

FÉLICITATIONS!

La Mer continues to garner top honors for its Neo-classic French cuisine and ocean-side dining experience. The revered Zagat guide has awarded La Mer an enviable 29 out of 30 points on all three of their categories – food, service, and décor – giving it the highest score among 730 top dining establishments. La Mer is already the longest consecutively ranked AAA Five Diamond restaurant in Hawaii. If you haven't been there recently it might be time to visit again. Don't forget to stop by L'Aperitif before dinner for some of the most remarkable cocktails in town. These delicious concoctions were created by Colin Field, from The Hemingway Bar in Paris who was named Forbes 'Greatest Bartender in the World.' 923-2311.

OHANA AIR

Hawaiian Airlines has launched a new turbo-prop airline that will fly inter-island to Molokai and Lanai beginning this summer and have named the subsidiary airline Ohana by Hawaiian. They will launch the airline with two turboprop aircraft that have 48-seats a piece and the outside of the planes will feature a design by local artist Sig Zane and his son Kuhao. The flights themselves will be operated by Idaho-based contractor Empire Airlines but we assumed they will be manned by the top notch Hawaiian Air employees.

PACIFICA EATERIES ALL OPEN

With the opening of Chef Chai at Pacifica early this month, the dining trifecta of this section of Kapiolani Boulevard is complete. Beginning the street-level dining Doraku Sushi, Kevin Aoki's restaurant that has been a hit since it's opening at Royal Hawaiian Center a few years back. Right next door is another of Aoki's concepts, the Blue Tree Cafe offering healthy, organic, vegan treats supplementing it coffee, tea and smoothie menu. Completing this dining destination is Chef Chai's. as one of our favorite chefs reinvents himself again with this health-conscious restaurant which has banned butter from the kitchen. Butter or no butter, this is Chai we're talking about. Can't wait!

FIGHTING EEL

Flirty, feminine fashion born right here in the islands moves into the Royal Hawaiian Center this month. Fighting Eel clothing opens its newest boutique on level 1 of building B, featuring flowy dresses, tops, and more for visitors and locals. Information and full lines at www.fightingeel.com.

TOUCH OF SOL

Hilo Hattie is proud to partner with international cosmetics company Touch of Sol, offering affordable beauty products with local flare. Guests can sample BB creams, lip gloss, and lip tint in tantalizing flavors like cherry guava and pink plumeria.

PEARL HARBOR HALF DAY

Three new tours at Pearl Harbor permit visitors to learn in more for less. Pearl Harbor Half-Day Tours includes a visit to the USS Arizona Audio Tour paired with one of the three other tours: Battleship Missouri Memorial, USS Bowfin Submarine, or the Pacific Aviation Museum Pearl Harbor. Prices for the half day start at \$15 or guests can opt to upgrade to the "Passport to Pearl Harbor" allowing one-day access to all four tours for \$55 (\$30 per keiki). For those who need more time to explore, the "Two-Day Passport" is available for \$10 more and permits visitors to return to Pearl Harbor within seven days of initial visit for no additional charge. Information at 877-444-6777 or PearlHarborHistoricSites.org or recreation.gov.

A KAHALA ARANCINO

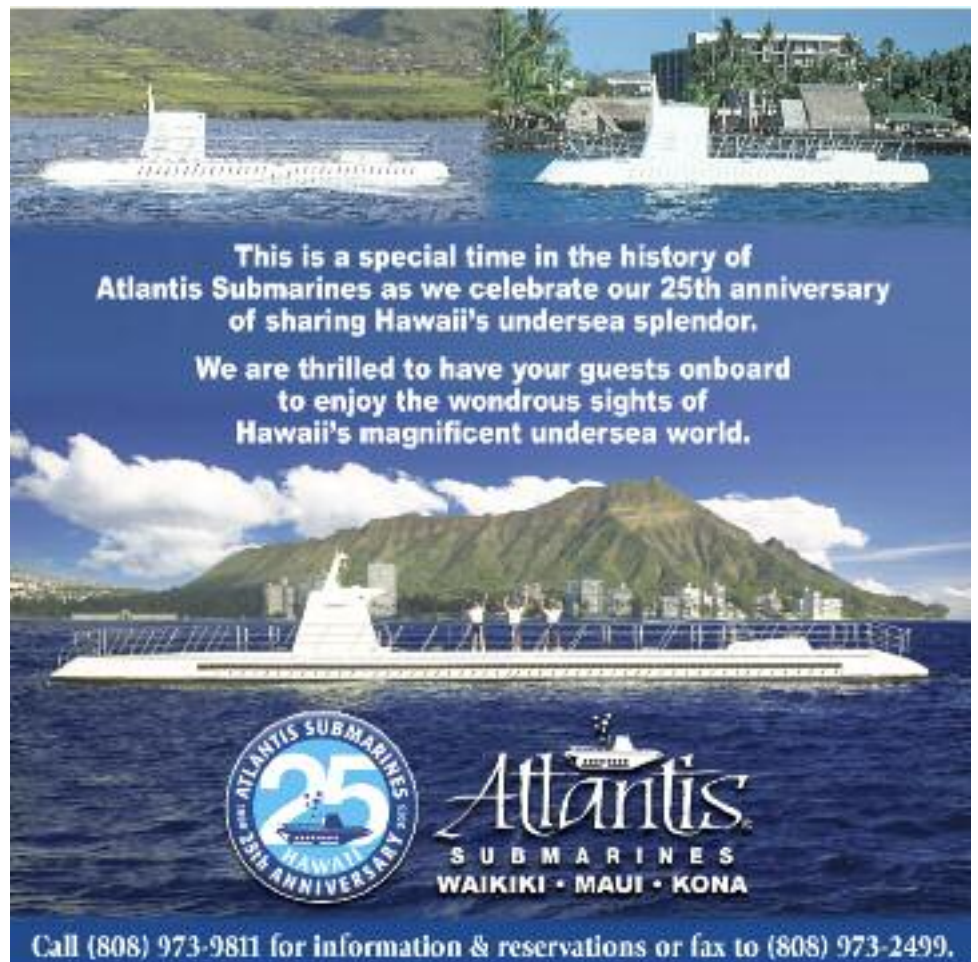
At long last, Arancino at the Kahala is getting ready to open their doors sometime in March. The popular Italian eatery has spent a good deal of time and money renovating the former Tokyo Tokyo location and the new fine dining restaurant will feature a display kitchen, a wood-burning pizza oven and both inside and outside al fresco dining areas. The traditional Napoli-style menu will feature some of the current favorites from their other two locations as well as game meat dishes known as gibier cuisine. 739-8888.

MARGARITAVILLE'S MOVING

When you walk down Kalakaua Avenue and see a big empty space where Jimmy Buffett's at the Beachcomber retail shop, Margaritaville used to be, never fear. They just moved on up.. stairs that is. Margaritaville has been relocated to the Beachcomber's lobby, directly next door to the Honolulu Surf Museum. The reason for this? Nothing sinister or negative. Apparently they always wanted to have all of their operations in one place like this where one can eat, drink, shop and browse, it was just that the retail location next to the surf museum has been occupied by another tenant this entire time and this is the first opportunity they have had to take it over. For more info go to jbabc.com. 791-1200.

BENISE

The Magic of Polynesia showroom is going to start heating up nightly towards the end of this month as internationally renown Spanish Flamenco guitarist Benise brings his Emmy Award®-winning show, Benise's Nights of Fire to the Beachcomber. The show will feature fiery Spanish guitar rhythms with flamenco dancers, samba dancers, tribal drummers, gypsy violins and more in this latin-flavored musical. Beginning in late March, Benise will take the stage nightly at 9:30 p.m. For more information go to benise.com or call 971-4321.



This is a special time in the history of Atlantis Submarines as we celebrate our 25th anniversary of sharing Hawaii's undersea splendor. We are thrilled to have your guests onboard to enjoy the wondrous sights of Hawaii's magnificent undersea world.

Atlantis SUBMARINES WAIKIKI • MAUI • KONA

Call (808) 973-9811 for information & reservations or fax to (808) 973-2499.

ALA MOANA CENTER PRESENTS

Shop a Le'a

• seven blissful days of shopping euphoria •

HAWAII'S 6TH ANNUAL
PREMIER FASHION EVENT
MARCH 18-24

Gift WITH PURCHASE

A limited-edition umbrella, designed exclusively for Shop a Le'a

CHICAGO GETAWAY

Enter to win a trip for two to Chicago

100+

Store offers, events & pink carpet runway shows

ALA MOANA
HAWAII'S CENTER

AlaMoanaCenter.com • 955-9517



arts with aloha



It's a good thing that March has 31 days, because there is a lot happening in the Honolulu arts scene this month to keep your guests amused and you just might need an extra day or two.

Many of you send your guests down to the Capital District each day to visit Iolani Palace and the Mission Houses Museum to learn more about Hawaii's history. That's fantastic, but the next time you do, please make sure your guests also take an hour to stop by the **HAWAII STATE ART MUSEUM (HISAM)**. The current exhibition entitled *Body of Work: Interpretation of the Human Form*, in the Diamond Head Gallery through July 20, focuses on the human figure, primarily the nude. Hopefully the idea of nude figures as portraiture, figure studies and symbolic representations will be enough to entice your guests to stop by. If that's not enough, perhaps a hands-on, hand-weaving class by the Hawaii Handweaver's Hui might do the trick. On March 9, the members of the hui will demonstrate the skills and techniques of the weaver's art and guide your guests in creating their own project. The event is free and your guests will be able to make and take home their very own Easter bonnet, basket, potholder or placemat. What better souvenir from Hawaii than one your guests made themselves! Gallery hours are 10 a.m. to 4 p.m. For more information, you can visit the museum's website at Hawaii.Gov/SFCA. The hands-on art activities are from 11 a.m. to 3 p.m. while supplies last, so please get your guests their early.

There is not too much of a hands-on experience to have at **IOLANI PALACE** since the artifacts are out of the visitor's reach; however, there is something new at the only official residence of royalty in the U.S. that your guests can wrap their hands around! The Palace has recently enhanced its self guided audio tour with a new multi-media device, called the IRIS, created by Antenna International. The new device looks like a large cell-phone with a touch screen. The audio tour,



Iolani Palace's new IRIS touch screen audio tour device using state-of-the-art technology in English, French, German, Hawaiian, Japanese, Mandarin Chinese and Spanish.

which already includes music and dramatic presentations of Palace history, now has access to historic photos and close-up images as well as additional information on artifacts. From room to room visitors now can see and learn more about the paintings on the walls, the place settings on the dining room table and the provenance of gifts giving to the Hawaiian monarchy on display in the Grand Hall. In addition, the new audio tour is presented in seven languages: English, Japanese, Hawaiian, Mandarin, German, French and Spanish. The cost for the audio tour is \$14.75 for adults and \$6 for children.

The new self guided audio tours are offered Mondays from 9 a.m. to 5 p.m., Tuesdays, Wednesday, & Thursdays from 10:30 a.m. to 4 p.m. and Fridays & Saturdays from 12 p.m. to 5 p.m. The tours enter the Palace every 10 minutes or so. The addition of these new languages will allow more of your foreign guests to learn about Hawaiian monarchy and the history of the Palace in their own native tongues.

The native tongue of Bernice Pauahi Bishop, the namesake for **BISHOP MUSEUM**, was Hawaiian and even though a good portion of the Museum is dedicated to Hawaiian culture, this spring the newest exhibit is devoted to the experiences of Japanese American soldiers. The museum is hosting *American Heroes: Japanese American WWII Nisei Soldiers and the Congressional Gold Medal*. The medal, the nation's highest civilian award, was given to the U.S. Army's 100th Infantry Battalion, the 442nd Regimental Combat Team, and the Military Intelligence Service nearly seven decades after the beginning of WWII for their extraordinary accomplishments throughout the war. This exhibit, part of a Smithsonian national tour, honors the veterans who courageously fought on the battlefields of Europe and Asia even as their loved ones back home were held in internment camps. It's a rare opportunity for your guests to see this historic medal and learn about the American Nisei experience. Bishop Museum is only the second museum to host a Congressional Gold Medal. There will be a public unveiling ceremony on March 9th and will run through April 14, before it moves onto the next museum in its seven-city tour. As this exhibit opens, the **XTREME BUGS** exhibit comes to a close this month. This exhibit features extra-large animatronic bugs, including a 15-foot long Japanese hornet, a larger than life Tarantula and Orchid Mantis! For more information visit BishopMuseum.org. This may not be what your guests planned to see while in Hawaii, but your guests' children will be enthralled by getting to hang out with a giant Madagascar hissing cockroach!

There aren't any giant cockroaches like that one in Kafka's play *The Metamorphosis* happening in Honolulu's theatrical scene this month, but there are two musicals – one emotional and one light-hearted that your guests will enjoy. Running from March 7-24, **MANOA VALLEY THEATRE** presents *Next to Normal*, the Tony Award and Pulitzer Prize winning musical, with a contemporary score about a family trying to take care of themselves and each other. The production deals with grieving a loss, suicide, drug abuse and suburban life. Visit www.ManoaValleyTheatre.com for details. If all this Sturm and Drang drama is too much for your guests to handle, then a bit of light hearted comedy with **DIAMOND HEAD THEATRE'S** production of *9 to 5 The Musical* should be more to their liking. The show runs from March 29 to April 14 and is based on the 1980s film starring Dolly Parton, Jane Fonda and Lily Tomlin and you will find local songbirds Jessica Cruz, Jody Bill and Jennifer Cleve Sojot playing their respective roles.

Thank you for continuing to support Hawaii's arts and cultural community.

~ Lance Rae



THE ONE THING BETTER THAN DISCOVERING POLYNESIA: REDISCOVERING IT.

JOURNEY BACK TO A BIGGER AND BETTER POLYNESIAN CULTURAL CENTER. We're always changing to create a better experience for your guests. They can enjoy new activities like canoe paddling and coconut tree climbing, a newly renovated Hawaiian Village, our new interactive movie "Hawaiian Journey" opening this spring, and more. Mahalo for your support during our 50th anniversary.

Rediscover Polynesia. If you haven't been here lately, you haven't really been here. See your PCC representative for more details.

Polynesia.com




Polynesian
CULTURAL CENTER

Celebrating Fifty Years



AT HILTON HAWAIIAN VILLAGE®

- Sunday – Thursday, 5:30 pm
- Rooftop of the Mid-Pacific Conference Center at Hilton Hawaiian Village
- Experience the colorful heritage of the Pacific Islands as you join the excitement of the celebration with live music, drums, the fiery drama of four fire knife dancers on stage as well as traditional Samoan, Tahitian and Hawaiian dance
- Indulge in a feast of unforgettable tropical flavors created with traditional island ingredients which include Kalua Pig, Seared Island Catch, Huli Huli Chicken and Hawaiian Fried Rice
- Includes a welcome Mai Tai Punch and one select beverage
- Complimentary self & valet parking

For reservations and information:

941-LUAAU

(808-941-5828)

visit HiltonHawaiianVillage.com/luau



Hilton

HAWAIIAN VILLAGE®
WAIKIKI BEACH RESORT

2005 Kalia Road, Honolulu, Hawaii 96815

HiltonHawaiianVillage.com



BOOK NOW!



Aunty Lynn's Adventures X



Marching along – and occasionally looking back – I found a March column opener written a couple of years ago. Couldn't resist using it again – just thinking of the ides of March, march to the music, March madness, marching orders - “just you march yourself right over here, young lady,” (oh, that one was the worst!), and, of course, marching to a different drummer, (who, me?).

Personally I think of March as a month to prepare for the Olympics of Hula that will happen the first week in April. It is non-stop hula-robics for the hulaholics who are lucky enough to have tickets to the 50th Annual Merrie Monarch Festival in Hilo – or you could think of March as a month to do research for the three nights of sit-on-the-couch televised live -from-Hilo hula, with runs for necessities like potty stops and Hurricane popcorn and beer on the commercial breaks.



THE PRINCE OF HULA

– Robert Cazimero has a new CD. HULA 2 - from Mountain Apple Company. Simply listening makes anyone who has ever danced, or even learned “Little Grass Shack”, start to sway and make lovely hula hands. The CD is pure hula music, with just Robert and his piano. Watch the entertainment

listings in the Honolulu Star-Advertiser TGIF and you might find a personal appearance or two -- but the word around town is that Robert is taking 50 dancers to the 50th Merrie Monarch Festival in April, so he may be a bit busy with rehearsals.

Picking up a few facts from a magical hour-long interview, I think the time is now to talk story about Robert Cazimero, with lots of help from his liner-notes. He says he came of age, along with many Hawaiians, in the 1970's. It was a turbulent time, the beginning of what is now known as the Hawaiian Renaissance. For him it was the time when he discovered his life's purpose – Hawaiian music and the art of Hula. This discovery has taken him on an amazing journey.

Robert's twin passions of hula and music have always been interrelated. They are the threads that weave the intricate patterns that we can recognize and often name-that-tune in three notes. His musical talent was recognized at the age of three, followed quickly with piano lessons while still in elementary school. His quickness endeared him to his instructors while his ability to vary and improvise astounded them. Robert's secondary education required participation in the

Kamehameha Schools' Concert Glee Club and Hawaiian Ensemble. His knowledge of music deepened but more importantly, he came in contact with the person who would serve as his Kumu Hula (hula teacher), Maiki Aiu Lake, at just the right time, for the Hawaiian cultural renaissance was blooming.

And so it came to be that at the height of the Hawaiian cultural renaissance, Robert Cazimero was learning the art of hula from one of the most respected masters of the dance form. Aunty Maiki infused Robert with her vision of him starting an all male halau (hula school). Men dancing hula as a halau was something that had not happened in decades. Men dancing hula with pride and masculine grace was their shared vision. The rest is history we all can experience and enjoy – if we dance hula or just imagine that we can. Gentlemen, start your engines.

THE PEOPLE'S PRINCE – What do you know about Prince Jonah Kuhio Kalaniana'ole, other than the March state holiday with his name gives some of us a day off? Well, here's the Crib Notes so you can impress your co-workers: The prince was born on March 26th, 1871, in Koloa, Kaua'i. He was the youngest son of High Chief David Kahalepouli and Princess Kinohiwa Kekaulike. Well educated, he was a sportsman and statesman. They called him the Citizen Prince. Kuhio served as a U.S. Delegate to Congress and was responsible for creation of the Hawaiian Homes Commission Act that provided homesteads for native Hawaiians. The Saturday, March 23rd Kuhio Day Parade, in honor of the Prince, will fill Kalakaua Avenue with marching bands and color guards.

THE PLACE TO BE – Na Mea Hawaii at Ward Warehouse closed for a re-vamp and is now all new and a must see. The space is studio, work space, weaving area, native knowledge center, music, gallery space, local manufacturing POP-Ups, wearable art wall, and soon-to-be-opened tea service, 'awa place, retail, and anything else the creative team of Hawaiians can think of! Originator of Na Mea and all its incarnations, Maile Meyer calls it a “hybrid space, blending Hawaiian and Western ways of thinking and being.”

Meyer says that the products are always locally made, and, whenever possible, culturally focused. Visitors and local folk are invited to contribute to the making part. The class schedule and full calendar of events including book launches, talk stories, special classes and activities will be up and running shortly. The new Na Mea is a reflection of the Young of Heart Workshop & Gallery, founded in the 1970s by Emma Aluli Meyer. The shop is open from 10 a.m. to 9 p.m. Monday through Saturday and 10 a.m. to 6 p.m. on Sunday. See you there! And by the way, Gung Hee Fat Choy!



ALERT!

March 6-8

Box Jellyfish Window

Teaching Hawaii about jellyfish and other ocean creatures for over a century

brought to you by
The Waikiki Aquarium
open daily from 9 am - 4:30 pm



6TH ANNUAL Shop a Le'a

ALA MOANA SHOPPING CENTER

Hawaii's pink-carpet event is back at Ala Moana Center featuring trunk shows and fashion for even the most discerning Prada-hound. Now in its sixth year, Ala Moana Center comes alive with the week-long "Shop a Le'a" fest: the innovative spring fashion fling that has become the annual fashion event in Honolulu. "Le'a" is Hawaiian for "to delight or take pleasure in" and that is definitely what will happen at the week-long festival which will include fashion shows, lifestyle seminars, gifts, prizes, and special shopping and dining offers throughout the mall.

From March 18 through March 24, shopaholics are invited to the world's largest open-air mall for 150 events, specials, demos, gifts and more, celebrating the world of fashion and shopping. Even your fashion-challenged guests in need of a new bathing suit or the perfect omiyage to take home will be able to find that ideal item, and Shop a Le'a is the perfect time to buy, offering discounts all week long ranging from ten to fifty percent off regular and clearance-priced merchandise in addition to special offers throughout the mall. Along with great deals, participating stores will offer their own special events and celebrity guest appearances.



In addition to shopping specials and events, Macy's and Centerstage will be offering fashion and lifestyle demonstrations throughout the week-long fest offering tips and trends for everything from the latest in cosmetics to cooking. As a reward for shoppers during the extravaganza, an exclusive Ala Moana Center hot pink umbrella pictured here will be the gift-with-purchase offered all week long while supplies last. Redeem receipts dated during the festival at Ala Moana Center's Customer Service Center (one item per person). For a dining diversion between shopping sprees, eateries around the Center will be offering specials and events.

If in-store freebies and specials aren't enough, keep an eye out for this year's contests. Be sure to enter the Shop a Le'a Pink Carpet Contest. By posting pictures of you and/or your purchases on the Shop a Le'a pink carpet from March 18-24 and post it on Instagram or Twitter using hashtag #ShopaLea and @AlaMoanaCenter, you could win 1 of 6 \$50 Ala Moana Center Gift Cards.

While many details and specials have yet to be finalized when we went to press, check online or visit the mall for dozens more events, gifts, and in-store specials currently being planned throughout the Center. Whether your guests are interested in fine fashion or casual shopping trips, top designers or dining deals, Shop a Le'a has something in store (pun intended) for everyone. Join your fellow fabulous fashion fans and discount devotees to celebrate all that is best about beauty, style, vogue, and hedonism. For all of the juicy details and a full schedule of events, visit their website at www.alamoanacenter.com.

~ Kathryn



Nobu's hosted their 3rd (almost) annual mahalo party and used the occasion to introduce their new general manager, Casper Khamphouy, to everyone there. Guests enjoyed hand-crafted cocktails and appetizers while being apprised of upcoming specials and menu additions. As they enter their 6th year in Waikiki, Nobu's continues to delight guests with top service, showcasing signature dishes while keeping the menu fresh. Open for dinner nightly, 237-6999



SPRING BREAK

Continued from page 1.

around Waikiki including DFS Galleria, Outrigger Reef, and of course at Kuhio Beach for the sunset torch lighting and hula show. The **ROYAL HAWAIIAN CENTER** offers a variety of free lessons including hula, ukulele, and lei making. Visit shop-waikiki.com for schedule. **WAIKIKI BEACH WALK** is also committed to sharing Hawaii's culture by offering innovating classes like Hoopdance Fitness and Yoga on the Lawn. waikikibeachwalk.com. For much of the free entertainment found around Waikiki, turn to *That's Entertainment* on page 18 for a fairly concise listing of many of them.

KEIKI FUN

Any trip to the islands isn't complete without spending some time with our beautiful marine life. Keiki will love to play with sea life, touch a sting ray or swim with sharks at the recently-revamped **SEA LIFE PARK**; a great day activity is fun for the whole family starting at only \$19.99 for kids. Even



How many people can say they've swam with a Sea Lion? At Sea Life Park kids can play with penguins, swim with sharks rays and dolphins and much more.

if you choose not to do any of the add-on activities, most all of them are available to watch as they happen and plenty of shows are put on throughout the day. For a special splurge, kids of all ages can get nose-to-nose with a bottle nosed dolphin at **DOLPHIN QUEST** in The Kahala Hotel & Resort. One



Dolphin Quest at the Kahala Hotel offers a onee-in-a-lifetime dolphin adventure for the entire family.

of the best ways for kids to become instant divers is a trip under the sea on **ATLANTIS SUBMARINES**. Parents and keiki alike will enjoy seeing the colorful fish and many other sea creatures among the reefs and wrecks off the coast. It is whale season, with any luck, the sub will get 'mugged'. You might suggest they spring for the bigger sub where the windows are much bigger and you almost feel like you're swimming alongside the fishes. If animals are the day's theme, there are plenty to see at the **HONOLULU ZOO** with exotic and fun creatures and a keiki playground. There are many wonderful luaus and each has fun activities and games for kids. For sun and snorkel, **HANAUHA BAY** is still one of the best spots for

beginners with shallow water right on the beach so parents can introduce their little ones to the joys of the underwater world. The added bonus is that all of the equipment can be rented on the spot so there's no need to worry about lugging the family's fins. If the kids are a bit more daring, a snorkel sail offer a lot of options aside from snorkeling. Make sure you send them with plenty of sunscreen. If they've done all the usual activities, send them off for a wet and wild day at **WET N' WILD HAWAII**. The upscale mini golf and ongoing Hawaiian-style additions to their water rides make this a great way to enjoy paradise.

RAINY DAY FUN

Even on a rainy spring day, there are plenty of indoor activities to entertain the kids. For a little culture, our many museums offer lots of fun activities for kids to do and see. The Bishop Museum is also full of interesting things to do for small and big kids including a planetarium and special exhibits. Sometimes forgotten but always loved is the **HAWAII CHILDREN'S DISCOVERY CENTER** where kids can play, learn, and explore through games, activities, and exploration stations. Open Tuesday through Sunday, this is a great spot to spend an inclement day and so much kid-friendly entertainment will give the parents a chance to sit down and take a break. Go to www.discoverycenterhawaii.org or call 524-5437. The family can still see underwater up close while staying dry at the **WAIKIKI AQUARIUM** with plenty of exotic creatures to see. A food court below at



the Top of Waikiki above offer ample meal options for the family. For a day or evening of family fun, the Ward Center complex includes movie theater, ice cream and goodies, shops, and family friendly restaurants like Big City Diner and Buca Di Beppo. Even when you're in paradise, sometimes you just wanna hang out and see a movie.

CROWN UP TIME

Sometimes the best way to love your kids is to get some time away from them. Even on vacation, it's not impossible to sneak away for some adult time. If your hotel doesn't have any sitters or a keiki club, you're in luck! Several local companies offer in-room nannies and sitters, even on short notice. Make sure to research your care-takers but here are a couple to help get you started. Nannies Hawaii is island-wide and fully insured. Call 754-4931 or visit nannieshawaii.com. Aloha Sitters matches local care providers with your guests. Call 861-7294 or email Kathy@KeikiSitters.com. Care.com offers great stats online including photos, profiles, prices, and more so you can choose your perfect sitter. Give mom and dad a night (or day) alone while the kids play with a new friend in their room or around the hotel. ~Kathryn

Your family flies free.

1 YEAR FREE FAMILY & FRIENDS PASS. FOR CONCIERGES ONLY. OFFER ENDS 3/31/2013.

Prepare yourself for when the relatives come to town. Get 1 year free admission for 2 adults, up to 4 children, plus 4 guest passes to what TripAdvisor® calls "One of America's Top 10 Aviation Attractions."

To get your Free Family & Friends pass, contact Neil at 441-1009 or neil@PacificAviationMuseum.org

PACIFIC AVIATION MUSEUM
PEARL HARBOR®
1005 ISLAND ISLAND

www.PacificAviationMuseum.org
Open 9am to 5pm daily.





Chef's Corner

Monkeypod Kitchen's Chef/Owner Peter Merriman

At long last, one of the founding fathers of the Hawaii Regional Cuisine movement and the man responsible for bringing the farm-to-table concept to the level it is today has opened a restaurant here on Oahu across from the Hihlani and the Aulani Resort. Trust me, if you're a townie, it's worth the drive.

You're credited for beginning the farm-to-table movement in Hawaii. How did that get started?

Back in 1980's, I was so excited to be in Hawaii and realized the beauty and the unique culture and it's food. I also realized most everything grows in Hawaii, and tastes better when it is grown here.

How did you get the movement started?

We started purchasing locally produced items simply because we wanted to serve the best tasting food. There were very few farmers and ranchers raising crops intended to be consumed in Hawaii. So we had to do what I call guerilla purchasing; unconventional methods of finding and purchasing items for our restaurant menus. We did everything from running ads in the classified ads section of the newspaper requesting people sell us locally grown items, to visiting farms and asking the farmer to grow different crops for us to buy.

What motivated Hawaii Regional Cuisine?

Going out and visiting farms educated me about these amazing people who are the farmers and ranchers in Hawaii. I wanted to help them find more customers and I wanted to let my fellow chefs know about this exciting opportunity. So during the 2nd meeting that the HRC chefs ever had, we loaded everyone in the back of pickup-trucks and went to visit a group of farmers I had come to know on the Big Island. The more the idea caught on, the more viable farming became in Hawaii. This helped make it possible for at least a few farmers to stay in business and help maintain open space and the agricultural life style in our state. This was a very exciting opportunity for chefs like me, to give back to Hawaii.

You are still so passionate about what you do 30 years later. What maintains that exuberance?

This year I have agreed to serve as the chairman of the board of the Hawaii Islands Land Trust, (HILT), is a non profit, statewide land preservation organization. HILT protects land in a nonprofit, private ownership and nongovernmental fashion. Conservation, and maintaining Hawaii as one of the most special places on earth is something that drives me everyday.

You're considered by many to be the father of modern Hawaiian Cuisine. Not bad for a guy from Pittsburgh. Thoughts?

I feel both humbled and proud when described as the father of Modern Hawaii cuisine.

Merriman's Waimea is known for it's edible landscape garden. Any plans to do that in Kapolei?

We do not have the space available to have a garden at the restaurant in Ko Olina as we do in Waimea. No big deal, Oahu has plenty of great farmers and we will be able to get all that we need.

Your motto is "Do the Right Thing" How do you apply that to your every day life?

Our company motto is "Do the Right Thing." It's not possible to explain how to do this in every circumstance that might arise. We just try to act in a way which we will be proud of. I tell my cooks to "cook every plate as if you're cooking it for your mom." Make mom proud could also be our motto.

Can you name a few of your favorite restaurants on Oahu you seek when not in your own kitchen?

Sushi Sasabune, Town, and Little Village. (their spinach salad is killer)

What ingredients should one always have?

Sambal Oelek, Nam pla (Thai fermented fish sauce), capers and I grow parsley, basil, rosemary and cilantro at home.

Name one of the most unique culinary experiences you've ever had.

Last summer I was on the Okavango delta in Botswana. We were eating under a tarp, the sun was setting and elephants were playing in the water and some monkeys decided to steal the sugar bowl and bounce it off the tarp. They had been using it as a sliding board! Kinda unique I thought.

Now that Monkeypod Kitchen by Merriman's is up and rolling in Ko Olina, what's next for you?

We would love to open another restaurant on Oahu. If we can not find the right location we will probably take Monkeypod Kitchen by Merriman to the mainland.



Bulgogi Pork Tacos

Ingredients:

4 ozs.	Marinated Pork, Fine Julienne Cut	6 ea	Corn Tortillas
¼ ozs.	Ginger, Minced	2 ozs.	Kim Chee
1 ozs.	Bulgogi Sauce	9 ea	Jalapeño, Thinly Sliced
1 oz	Butter	¼ oz.	Green Onion, Thinly Sliced
1 ¼ oz	Onions, Julienne	¼ tsp.	Salt
¼ oz.	Garlic, Thinly Sliced	¼ tsp.	Pepper

Directions:

Place the butter in pan and heat, add marinated pork and season with salt and pepper. To the side of the pork, sauté the onions and the garlic in butter as well. When both are lightly caramelized, combine together using a spatula, then remove when pork is fully cooked. Heat the tortillas, 2 tortillas per taco. Place the kim chee on one third of each tortilla. Place the pork and onion mixture on the other 2/3rds of the three tortillas. Garnish each taco with the sliced jalapeños and the green onions.

Monkeypod Kitchen by Merriman's is located at 92-1048 Olani Street.

Monkeypod Kitchen features locally sourced food, 36 handcrafted beers served at 29 degrees, and an extensive list of wines and culinary cocktails. This brand-new laid back eatery features a modern industrial chic look offering a variety of tastes in a family friendly atmosphere.

HOURS: 11:30 a.m. - 11:00 p.m. • Phone: 380-4086 • monkeypodkitchen.com

Happy Hour is from 3 - 5:30 daily • Live music from 3 p.m. daily

THE REPUBLIC



JOINTHEREPUBLIC.COM
FOLLOW @JOINTHEREPUBLIC
1349 KAPIOLANI BLVD #30 UP THE RAMP
HONOLULU, HI 96814
EMAIL FLASH@JOINTHEREPUBLIC.COM
FOR SPECIAL REQUESTS OR QUESTIONS

Let's be Together...

DINING ▸ ENTERTAINMENT ▸ PAU HANA ▸ EAT ▸ DRINK ▸ BE MERRY ▸ HAPPY HOUR ▸ DINING

MONDAY

Bin1901 at the Moana	921-4600
<i>Piano Wine Bar</i>	
Scott Smith	6:30-9:30pm
Chart House Waikiki	941-6660
<i>Live Contemporary Hawaiian</i>	
Eric Ho & Derrick Lee	6-8:45pm
Cheesecake Factory	924-5001
<i>Classic Hawaiian</i>	
Christian Yrizarry	8-11pm
Duke's Canoe Club Waikiki	922-2268
<i>Live Contemporary Hawaiian</i>	
Ellsworth Simeona	4-6pm
Haumea Warrington	10-12am
Hang Ten Bar at Turtle Bay	293-6000
<i>Live Contemporary Hawaiian</i>	
Art Kalahiki Duo	5-8pm
Hard Rock Cafe	955-7383
<i>Live Contemporary</i>	
Zanuck & Piranha Duo	5-7pm
Mantra	9-12am
House Without a Key	923-2311
<i>Live Hawaiian & Hula by Lauren Cheape</i>	
DeLima Ohana	5:30 - 8:30pm
Hula Grill	923-HULA
<i>Live Contemporary Hawaiian</i>	
Eric Lee	7-9pm
Kani Ka Pila Grille	924-4992
<i>Live Contemporary Hawaiian</i>	
Sean Na'auao	6 - 9pm
Lewers Lounge	923-2311
<i>Live Contemporary & Light Jazz</i>	
Noly Pa'a	8:30-12:30am
LuLu's	926-5222
<i>Live Contemporary</i>	
Johnny Helm	6:30-9:30 p.m.
Rumfire	921-4600
<i>Live Contemporary Hawaiian</i>	

Jeremy Cheng	5-8pm
Sunrise Pool Bar at the Modern	943-5800
<i>Live Contemporary</i>	
Alex Oasay	5-8pm
The Edge at the Sheraton	921-4600
<i>Live Hawaiian music with a fire dancer at 7:30 p.m.</i>	
Randy Allen	1:30-3:30pm
Naluhoe Duo	6:30-8pm
Tiki's Grill & Bar	923-TIKI
<i>Live Contemporary Hawaiian</i>	
Canoes 4 Rent	6:30-8:30pm
Tahiti Rey & Jason Alan	9-11pm
Tropics Bar & Grill	949-4321
<i>Live Contemporary Hawaiian</i>	
Acoustik Playground	5-8pm

<i>Live Contemporary Hawaiian</i>	
Cory Oliveros	5-8pm
The Edge at the Sheraton	921-4600
<i>Live Hawaiian music with a fire dancer at 7:30 p.m.</i>	
Kelly Villaverde	1:30-3:30pm
Ho'okani Duo	6:30-8pm
Tiki's Grill & Bar	923-TIKI
<i>Live Contemporary Hawaiian / Reggae</i>	
Canoes 4 Rent	5:30-8:30pm
Sani & Friends	9-11pm
Tropics Bar & Grill	949-4321
<i>Live Contemporary Hawaiian</i>	
Kailua Bay Buddies	5-8pm

TUESDAY

Bin1901 at the Moana	921-4600
<i>Piano Wine Bar</i>	
Kapena Delima	6:30-9:30pm
Chart House Waikiki	941-6660
<i>Live Contemporary Hawaiian</i>	
Eric Ho & Derrick Lee	6:30-9:30pm
Cheesecake Factory	924-5001
<i>Classic Hawaiian</i>	
Art Kalahiki Duo	8-11pm
Duke's Canoe Club Waikiki	922-2268
<i>Live Contemporary Hawaiian</i>	
Haumea Warrington	4-6pm
Ellsworth Simeona	10-12am
Hang Ten Bar at Turtle Bay	293-6000
<i>Live Contemporary Hawaiian</i>	
Christian Yrizarry Duo	5-8pm
Hard Rock Cafe	955-7383
<i>Live Contemporary</i>	
Alex Oasay Duo	5-7pm
Simple Souls	9-11pm
House Without a Key	923-2311
<i>Live Hawaiian & Hula by Kanoe Miller</i>	
Po'okela	5:30 - 8:30pm
Hula Grill	923-HULA
<i>Live Contemporary Hawaiian</i>	
Kamuela Kahoano	7-9pm
Indigo	521-2900
<i>Live Music Tuesdays (1st one of the month is jazz)</i>	
Varying Artists	6 - 9pm
Kani Ka Pila Grille	924-4992
<i>Live Contemporary Hawaiian</i>	
Weldon Kekauoha	6-9pm
Lewers Lounge	923-2311
<i>Live Contemporary & Light Jazz</i>	
Maggie Herron & Rocky Holmes	8:30-12:30am
LuLu's	926-5222
<i>Live Contemporary</i>	
Johnny Helm	6-9pm
Mai Tai Bar at the Royal Hawaiian	923-7311
<i>Live Contemporary Hawaiian with Hula Dancer</i>	
Kapala Duo	6-10pm
Rumfire	921-4600
<i>Live Contemporary Rock</i>	
Randy Allen	5-8pm
Sunrise Pool Bar at the Modern	943-5800

WEDNESDAY

Bin1901 at the Moana	921-4600
<i>Piano Wine Bar</i>	
Scott Smith	6:30-9:30pm
Chart House Waikiki	941-6660
<i>Live Contemporary Hawaiian</i>	
Tito Berinobis & Billy Beimes	6-9pm
Cheesecake Factory	924-5001
<i>Classic Hawaiian</i>	
Zanuck Lindsey Duo (3/6, 3/13)	8-11pm
Dennis McLees Duo (3/20, 3/27)	8-11pm
Duke's Canoe Club Waikiki	922-2268
<i>Acoustic, Soul, R&B</i>	
Ellsworth Simeona	4-6pm
Haumea Warrington	9:30-12am
Du Vin	545-1115
<i>Sessions at Du Vin features Live Jazz Wednesdays.</i>	
Shoji Ledward	7-9pm
Gordon Biersch	599-4877
<i>Jazz Wednesdays</i>	
Varying Artists	6:30-9:30pm
Hang Ten Bar at the Turtle Bay	293-6000
<i>Live Hawaiian Contemporary</i>	
Pu'uhonua Duo	5-8pm
Hard Rock Cafe	955-7383
<i>Live Contemporary</i>	
John Valentine & Vito	5-7pm
Adam Crowe	9-11pm
House Without a Key	923-2311
<i>Live Hawaiian & Hula by Kanoe Miller</i>	
Pa'ahana	5:30 - 8:30pm
Hula Grill	923-HULA
<i>Live Contemporary Music</i>	
Jeremy Chang	7-9pm
Hy's Steak House	922-5555
<i>Live Soft Contemporary</i>	
Audy Kimura	6:30-10pm
Kani Ka Pila Grille	924-4992
<i>Live Contemporary Slack Key</i>	
Cyril Pahinui	6-9pm
Lewers Lounge	923-2311
<i>Live Contemporary & Light Jazz</i>	
Maggie Herron & Rocky Holmes	8:30-12:30am
LuLu's	926-5222
<i>Live Contemporary Hawaiian</i>	
Jason Lehua	10-12:30am
Mai Tai Bar at the Royal Hawaiian	923-7311
<i>Live Contemporary Hawaiian with Hula Dancer</i>	

IL LUPINO
TRATTORIA & WINE BAR

ENJOY OUR NEW
\$10 LUNCH SPECIALS
DAILY, 11AM-5PM

- Choose from 3 PANINIS served with a Small Green Salad
- MINI LOCO MOCO The BEST you've ever had!
- CAESAR SALAD
- INSALATA di ANGIULIA A refreshing Watermelon Salad

And try our delicious new red or white wine smoothies for a delightful treat!

BREAKFAST * LUNCH * HAPPY HOUR * BILLIARDS * DINNER * DESSERT
AND THE HOTTEST LATE NIGHT HAPPY HOUR * "LA DOLCE VITA"

ROYAL HAWAIIAN CENTER * VALIDATED PARKING
WWW.ILLUPINO.COM * 808.922.3400

E Pili Kākou

ENTERTAINMENT ▶ PAU HANA ▶ EAT ▶ DRINK ▶ BE MERRY

Eric Lee Duo	6-10pm		<i>Live Contemporary Hawaiian</i>
Rumfire		921-4600	Kawika Kahiapo 6-9pm
<i>Live Contemporary Hawaiian</i>			Lewers Lounge 923-2311
Kamuela Kahoano	5-8pm		<i>Contemporary Jazz</i>
SWIM at the Hyatt		923-1234	Maggie Herron & Rocky Holmes 8:30-12:30am
<i>Contemporary Classic</i>			LuLu's 926-5222
Little Albert	5-8pm		<i>Live Contemporary Hawaiian</i>
Sunrise Pool Bar at the Modern		943-5800	Local Uprising 6-9pm
<i>Live Contemporary Hawaiian</i>			Mai Tai Bar at the Royal Hawaiian 923-7311
Tahiti Rey	5-8pm		<i>Live Contemporary Hawaiian with Hula Dancer</i>
The Edge at the Sheraton		922-4422	Delima Ohana 6-10pm
<i>Live Hawaiian music with a fire dancer at 7:30 p.m.</i>			Michel's at the Colony Surf 923-6552
Albert Maligmat	1:30-3:30pm		<i>Live Slack Key</i>
Kamakakehau Duo	6:30-8pm		Jeff Peterson 7:30-10:00pm
Tiki's Grill & Bar		923-TIKI	Barefoot Beach Café (at Queen's Beach) 924-2233
<i>Live Contemporary / 1/2 off Wine Wednesdays</i>			<i>Live Contemporary Hawaiian with Pasta Night</i>
Kapu	5:30-8:30pm		Art Kalahiki 5:30-8:30pm
Johnny Helm	9-11pm		Rumfire 921-4600
Tropics Bar & Grill		949-4321	<i>Live Contemporary Rock</i>
<i>Live Contemporary Rock</i>			Johnny Helm 5-8pm
Acoustik Playground	5-8pm		Sunrise Pool Bar at the Modern 943-5800

THURSDAY

Bin1901 at the Moana		921-4600	Christian Yrizarry Duo 5-8pm
<i>Piano Wine Bar</i>			SWIM at the Hyatt 923-1234
Scott Smith	6:30-9:30pm		<i>Contemporary Classic</i>
Chart House Waikiki		941-6660	Tahiti Rey & Jason Alan 5-8pm
<i>Live Contemporary Hawaiian</i>			The Edge at the Sheraton 921-4600
Tito Berinobis	6:30-9:30pm		<i>Live Hawaiian music with a fire dancer at 7:30 p.m.</i>
Cheeseburger Waikiki		941-2400	Ellsworth Simeona 1:30-3:30pm
<i>Contemporary / Old School Rock</i>			Christian Yrizarry Duo 6:30-8pm
Jeremy Chang	6:30-9:30pm		The Study at the Modern 943-5800
Cheesecake Factory		924-5001	<i>Live Contemporary Hawaiian</i>
<i>Classic Hawaiian</i>			Simple Souls 6:30-8:30pm
Kaiona Duo	8-11pm		Tiki's Grill & Bar 923-TIKI
Chuck's Celler		923-4488	<i>Live Contemporary Hawaiian w/ hula</i>
<i>Hawaiian Local Contemporary</i>			Ho'ohihi 5:30-7:30pm
Mango Jam	6-10pm		Tropics Bar & Grill 949-4321
Duke's Canoe Club		922-2268	<i>Live Contemporary Hawaiian</i>
<i>Live Contemporary Hawaiian</i>			Nohelani Cypriano 5:00-8:00pm

FRIDAY

Bin1901 at the Moana		921-4600	
<i>Piano Wine Bar</i>			
Scott Smith	6:30-9:30pm	7-8:30pm	
Chart House Waikiki		941-6660	
<i>Live Contemporary Hawaiian</i>			
Mark Yim's Pilikia I	6-9pm		
Mark Yim's Pilikia II	9:30-12:30am		
Cheeseburger Waikiki		941-2400	
<i>Contemporary Hawaiian</i>			
Alex or Aku	6:30-9:30pm		
Cheesecake Factory		924-5001	
<i>Classic Hawaiian</i>			
Johnny Helm Duo	8:30-11:30pm		
Dave & Busters		589-2215	
<i>Pau Hana Fridays Live Local Bands</i>			
Varying Hawaiian Artists	6-8pm		
Duke's Canoe Club Waikiki		922-2268	
<i>Live Contemporary Hawaiian</i>			

EVENTS ARE SUBJECT TO CHANGE WITHOUT NOTICE. WE DO NOT LIST MOST DJ/ KARAOKE EVENTS, ONLY LIVE MUSIC.

Mahalo for your continued support!

JOIN OUR GUEST REFERRAL PROGRAM



OUR PROGRAM IS SIMPLE! FOR EVERY 25 GUESTS THAT YOU REFER, RUTH'S CHRIS STEAK HOUSE WILL SEND YOU A \$50.00 DINING CERTIFICATE

Please contact Emi Espinda if you have any questions. (808) 595.2205 • eespinda@direstaurants.com

OPEN DAILY FROM 5PM
HAPPY HOUR DAILY IN OUR LOUNGE 5PM - 7PM
PRIME TIME MENU DAILY 5PM - 7PM
WINE WEDNESDAYS 25% OFF BOTTLES OF WINE

Restaurant Row | 808.599.3860
Waikiki Beach Walk | 808.440.7910

WWW.RUTHSCHRISHAWAII.COM



25 NEW MENU ITEMS

Open Daily 11am - 10pm

Happy Hour Daily in our lounge 3pm - 6pm

Vino Thursdays 25% Off Bottles of Wine

Inquire about our Guest Referral Program!

Our program is simple! For every 10 complimentary dessert cards redeemed (WITH YOUR NAME ON THE CARD), Romano's Macaroni Grill will send you a \$25.00 dining certificate that may be used at our Oahu restaurant.

Please contact Emi Espinda for information. (808) 595.2205 • eespinda@direstaurants.com

ROMANO'S
Macaroni GRILL

Ho'okipa Terrace at Ala Moana Center

808.356.8300

www.macaronigrill.com

Let's be Together...

DINING ▸ ENTERTAINMENT ▸ PAU HANA ▸ EAT ▸ DRINK ▸ BE MERRY ▸ HAPPY HOUR

Simple Sessions (3/1) 4-6pm
 Mailani Maikainai (3/8) 4-6pm
 Maunaloa 4-6pm
 Haumea Warrington 10-12am
Five-O Bar & Lounge 922-0550
Live Island Reggae
 Kimo Opiana 9-12am
Gordon Biersch 599-4877
Live Contemporary, R&B, Funk
 Ben & Malia 5:30-9pm
 Mojo 9 - 12:30am
Hang Ten Bar at the Turtle Bay 293-6000
Live Contemporary Hawaiian
 Alex Levine Duo 5-7:30pm
Hard Rock Cafe 955-7383
Live Contemporary
 Johnny Helm & Dave Cruz 5-7pm
 Candy Bullets 9-11pm
House Without a Key 923-2311
Live Hawaiian & Hula by Kanoe Miller
 Sunset Seranaders 5:30 - 8:30pm
Hula Grill 923-HULA
Live Traditional Hawaiian with dancer
 David Asing & Alika Souza 7-9pm
Hy's Steak House 922-5555
Live Soft Contemporary
 Audy Kimura 6:30-10pm
Jimmy Buffett's at the Beachcomber 791-1200
Live Contemporary Hawaiian
 Kailua Bay Buddies 9:30-11:30pm
Kani Ka Pila Grille 924-4992
Live Contemporary Hawaiian
 Kaukahi 6-9pm
Lewers Lounge 923-2311
Live Contemporary Jazz
 Maggie Herron & Rocky Holmes 8:30-12:30am
LuLu's 926-5222
Live Contemporary Hawaiian
 Manoa DNA 6-9 p.m.
 Vinyl Wine 10-12:30am
Mai Tai Bar at the Royal Hawaiian 923-7311
Live Contemporary Hawaiian with Hula Dancer
 Welo Duo 6-10pm
Michel's at the Colony Surf 923-6552
Live Slack Key Stylings & Jazz
 Jeff Peterson & Ernie Provencher 6:30-10pm
Barefoot Beach Café (at Queen's Beach) 924-2233
Live Contemporary Hawaiian with Beach BBQ
 Kaipo Dabin & Buzzy Kealoha 5:30-8:30pm
Rumfire 921-4600
Live Contemporary Hawaiian
 Johnna Padeken 5-8pm
Sam Choy's BLC 545-7979
Contemporary Hawaiian
 Kaiona Duo 6-9pm
SWIM at the Hyatt 923-1234
Contemporary Classic
 Taimane 6-7pm
 Wade Cambern 7:30-9:30pm
The Edge at the Sheraton 921-4600
Live Hawaiian music with a firedancer at 7:30 p.m.
 Brad Kawakami 1:30-3:30pm
 Delima Ohana Trio 6:30-8pm

The Study at the Modern 943-5800
Live Contemporary Hawaiian
 Tahiti Rey 7-10pm
Tiki's Grill & Bar 923-TIKI
Live Contemporary Hawaiian
 Vaihi 7:30-9:30pm
 Tahiti Rey & Jason Alan 10-12am
Tropics Bar & Grill 949-4321
Live Contemporary Hawaiian
 Piranha Brothers 3:30-6:30pm
 Nohelani Cypriano 8:00-10:30pm

SATURDAY

Bin1901 at the Moana 921-4600
Piano Wine Bar
 Scott Smith 6:30-9:30pm
Chart House Waikiki 941-6660
Live Contemporary Hawaiian
 Tito Berinobis & Billy Beimes 8-12pm
Cheeseburger Waikiki 941-2400
Contemporary Hawaiian
 Alex or Aku 6:30-9:30pm
Duke's Canoe Club Waikiki 922-2268
Live Hawaiian Entertainment
 Sean Naauao (3/2) 4-6pm
 Kona Chang Duo (3/9) 4-6pm
 Kapena (3/16) 4-6pm
 Beach 5 (3/23) 4-6pm
 Simple Sessions (3/23) 4-6pm
 Tahiti Rey & Jason Alan (3/2) 9:30-12am
 Shar Carillo (3/9) 9:30-12am
 Chris Murphy Duo (3/16) 9:30-12am
 Kaiona Duo (3/23) 9:30-12am
 Kona Chang Duo (3/30) 9:30-12am

Five-O Bar & Lounge 922-0550
Live Island Reggae
 Christian from Hoonua 9:30-12:30am
Hang Ten Bar at the Turtle Bay 293-6000
Live Contemporary Hawaiian
 Mike Tulba Duo 5-8pm
 Jherard Miller Duo (3/9, 3/23) 5-8pm
Hard Rock Cafe 955-7383
Live Contemporary
 20 Degrees North 5-7pm
 Tavana & Zen Outlaw 10-1am
House Without a Key 923-2311
Hawaiian & Hula by Mrs. America Lara Fonoimoana
 Sunset Seranaders 5:30 - 8:30pm
Hula Grill 923-HULA
Live Traditional Hawaiian with dancer
 Kaipo Dabin & Tommy Chock w/ Kahanu 7-9pm
Hy's Steak House 922-5555
Live Soft Contemporary
 Audy Kimura 6:30-10pm
Jimmy Buffett's at the Beachcomber 791-1200
Live Contemporary Hawaiian
 Kailua Bay Buddies 9:30-11:30pm
Kani Ka Pila Grille 924-4992
Live Contemporary Hawaiian
 Manoa DNA 6-9pm
Lewers Lounge 923-2311
Live Contemporary Jazz

Maggie Herron & Rocky Holmes 8:30-12:30am
Mai Tai Bar at the Royal Hawaiian 923-7311
Live Contemporary Hawaiian with Hula Dancer
 Kapala Duo 6-10pm
Michel's at the Colony Surf 923-6552
Live Contemporary Slack Key & Jazz
 Jeff Peterson 7-11pm
Barefoot Beach Café (at Queen's Beach) 924-2233
Jazz on the Beach with a Seafood Grill
 Nando Suan & Mike Barquez 5:30-8:30pm
Rumfire 921-4600
Live Contemporary Hawaiian
 Ellsworth Simeona 5-8pm
Sunrise Pool Bar at the Modern 943-5800
Live Contemporary Hawaiian
 Kainalu 5-8pm
SWIM at the Hyatt 923-1234
Contemporary Classic
 Taimane 6-7pm
 Wade Cambern 7:30 - 9:30pm
The Edge at the Sheraton 921-4600
Live Hawaiian music with a firedancer at 7:30 p.m.
 John Valentine 1:30-3:30pm
 Kamakakehau Duo 6:30-8pm
Tiki's Grill & Bar 923-TIKI
Live Contemporary Hawaiian & Reggae
 Johnny Helm 5-7pm
 Ellsworth Simeona 10-1am
Tropics Bar & Grill 949-4321
Live Contemporary Hawaiian
 Henry Kapono 4-6pm
 Juke Joint 6:30-9:30pm

SUNDAY

Bin1901 at the Moana 921-4600
Piano Wine Bar
 Kapena Delima 6:30-9:30pm
Chart House Waikiki 941-6660
Live Contemporary Hawaiian
 Dean & Dean 6-9pm
Cheesecake Factory 924-5001
Classic Hawaiian
 Chris Murphy Duo 8-11pm
Duke's Canoe Club Waikiki 922-2268
Live Hawaiian Entertainment
 Henry Kapono 4-6pm
 Blayne Asing (3/3, 3/17) 9:30-12am
 Terry Stebbins (3/10) 9:30-12am
 Christian Yrizarry (3/24) 9:30-12am
Hard Rock Cafe 955-7383
Live Contemporary
 Youth on Stage 12-1pm
 Johnny Kamai Duo 5-7pm
House Without a Key 923-2311
Live Hawaiian & Hula
 Pa'ahana 5:30 - 8:30pm
Hula Grill 923-HULA
Live Traditional Hawaiian with dancer
 Art Kalahiki Duo 7-9pm
Jimmy Buffett's at the Beachcomber 791-1200
Live Contemporary Hawaiian
 Jeremy Chang 8:30-10:30pm

E Pili Kākou

DINING ▶ ENTERTAINMENT ▶ PAU HANA ▶ EAT ▶ DRINK

Kani Ka Pila Grille	924-4992
<i>Live Contemporary Hawaiian</i>	
Hi'ikua	6-9pm
Kelley O'Neil's	926-1777
<i>Live Irish Music</i>	
Various Celtic Bands	4-7pm
Lewers Lounge	923-2311
<i>Live Contemporary & Light Jazz</i>	
Noly Pa'a	8:30pm - 12am
LuLu's	926-5222
<i>Acoustic R&B</i>	
Simple Soulz	7-10pm
Mai Tai Bar at the Royal Hawaiian	923-7311
<i>Live Contemporary Hawaiian with Hula Dancer</i>	
Tino Jacob Duo	6-10pm
Michel's at the Colony Surf	923-6552
<i>Classical Slack Key & Jazz Stylings</i>	
Jeff Peterson	6-9pm
Queen's Surf Café & Lanai	924-2233
<i>Hawaiian Steel Guitar</i>	
Buck Giles & Friends	4:30-6:30pm
Rumfire	921-4600
<i>Live Contemporary Hawaiian</i>	
Kona Chang Duo	5-8pm
Phoenix Pool Party (3/31)	5-11pm
Sunrise Pool Bar at the Modern	943-5800
<i>Live Contemporary Hawaiian</i>	
Jeremy Cheng	5-8pm
The Edge at the Sheraton	922-4422
<i>Live Hawaiian music with a fire dancer at 7:30 p.m.</i>	
Jeremy Cheng	1:30-3:30pm
Ellsworth Simeona Duo	6:30-8:30pm
Tiki's Grill & Bar	923-TIKI
<i>Live Contemporary Hawaiian</i>	
Kapu	2:30-5:30pm
Vaihi	6-9pm
Ellsworth Simeona	9-11pm
Tropics Bar & Grill	949-4321
<i>Live Contemporary Rock & Hawaiian</i>	
Piranha Brothers	2-5pm
Beach 5	5:30 - 8:30pm

diners will find either a free dessert, a gift card valued at \$15, \$20 or \$25 or up to 20% off the food bill. Easter Eggs never tasted so good. 737-1177. • At long last we're seeing something happening in the dining room at **The Lotus Honolulu** that used to be David Paul's. Aside from recently starting afternoon tea, they are now featuring pop-up restaurants experiences. They kicked it off Valentine's Day weekend with *Chef Greg Profeta*, a former chef at Restaurant Marc Forgione, who recently accepted a job at the long anticipated Sakai of Hawaii. (Clearly the guy likes to work with Iron Chefs, can't wait to see what he has to offer.) and are following it up with another pop-up experience from March 1-3 featuring the talents of **Sakai of Hawaii's Executive Chef Koji Tanaka**. For a complete menu and pictures of the last event follow the Lotus Honolulu on Facebook. We're pretty sure we'll see a few more of these pop-up dining experiences happen prior to the grand opening of their new signature restaurant later this year. Yes it's true. After much rumor and indecision, we were thrilled to hear that the hotel has finally decided on which restaurant to bring to the once bustling space. Benvenuto a **Pèppoli**, coming to the hotel late this summer. Pèppoli is a high-end Italian restaurant that has been thriving in Pebble Beach Florida for over a decade. Specializing in the cuisine of the Tuscan countryside, it is a partnership along with Piero Antinori, one of Italy's most famous winemakers, so the menu will also feature centuries-old traditions of culture & cuisine of the Antinori family. The family has been producing some of Italy's best wines for over six centuries, and if we get some of the food and the service they've been doling out at their sister restaurant in Florida, we're in for a treat. We'll see. 922-1700. ~ Pam



Dining Calendar



Hot Lines

Here are a few important hotlines for you to find out the latest in live music since we can't possible list them all, especially those that change daily, or don't update us regularly.

Gordon Biersch	599-4877
Irish Rose Saloon	947-3414
Kelley O'Neil's	926-1777
Mai Tai Bar Ala Moana	947-2900
Moose McGillycuddy's	923-0751

Dining Dish



3660 on the Rise is offering a fun promotion to celebrate Easter from March 24th through April 4th. At the end of each meal, diners will be able to grab an Easter Egg from a basket. Inside the egg

March 1-3: *The Lotus Honolulu* presents a pop-up dining experience featuring a 5-course meal prepared by Koji Tanaka, Executive Chef from the Sakai of Hawaii, opening soon. \$60++. 922-1700.

March 14: *3660 on the Rise* presents a cooking class presenting Coquille St. Jacques, Chicken Oscar, Kale & Roasted Beet Salad and Chocolate Mousse. 6 p.m. \$67. 737-1177.

March 15: *The Kahala Hotel & Resort* presents an Ancien Wine Dinner featuring a 5-course dinner paired with Ancien wines. 6 p.m. \$120. 739-8760.

Mondays: *Brasserie du Vin* has combined their weekly wine dinner and tasting events into one, Behind the Cellar Door. 6:30 p.m. 545-1115.

Wednesdays: *Beachhouse at the Moana* hosts a weekly wine tasting on the lanai with pupus and parking. \$19++. 5:30 - 6:30 p.m. 923-2861.

Wednesdays: *Bar 35: House of Brews* features a different theme weekly. Taste 6-8 beers, and enjoy Chef Valentini's pizza. \$20. 6 p.m. 537-3535.

MARCH CALENDAR OF EVENTS

Continuing Events

MONDAYS

CULINARY WALKING TOUR OF CHINATOWN
Culinary Walking Tour of Chinatown with food writer Anthony Chang visiting noodle shops and factories, dim sum parlors, roasted meat stalls, food courts, bakeries, and more. Meet at 9:30 a.m. at the Chinese Chamber of Commerce, 42 N. King Street. \$10. 533-3181.

MONDAY – FRIDAY LYON ARBORETUM TOURS

The lush gardens at the top of the University of Hawai'i Manoa are open for guided tours daily. Knowledgeable guides will introduce the highlights of the botanical rainforest's 193.6 acres. Reservations required. Limit of 12 participants daily. Donations accepted. 988-0461.

MONDAY-FRIDAY FOSTER BOTANICAL GARDENS

Guided garden tours of rare and beautiful plants from tropical regions throughout the world. Foster Botanical Gardens, 50 N. Vineyard. 1 p.m. Adults: \$5. Reservations recommended. 522-7066.

TUESDAYS TOURS OF THE HAWAII THEATRE

Get a behind-the-scenes tour of this historic theatre including history, architecture, and a performance on the 1922 Robert Morton theatre organ. Hawaii Theatre. 11 a.m. – 12 p.m. \$10. 528-0506.

TUESDAYS KU HA'AHEO

An afternoon of hula from multiple groups featuring adults and keiki performing contemporary and traditional dance and music led by kumu hula Blaine Kamalani Kia. Waikiki Beach Walk Plaza Lawn. 4:30– 6 p.m. FREE. 931-3591 or waikikibeachwalk.com.

TUESDAYS KCC FARMERS MARKET

The Saturday Market is so popular they added another day. Head up to Kapiolani Community College for fresh island produce, seafood, flowers and more are available from over two dozen vendors from 4 - 7 p.m. Free. 848-2074.

TUESDAYS

CHINATOWN WALKING TOUR

Presented by the Chinese Chamber of Commerce of Hawaii, this insightful guided tour takes visitors to some of the fascinating shops and eateries in Chinatown in downtown Honolulu. 9:30 a.m. – 12 p.m. \$5. 533-3181.

FIRST & THIRD TUESDAYS MEET THE MONK SEALS!

Learn about Monk Seals in the wild and meet the two resident seals up close. Designed for participants 7 and up but anyone is welcome. \$4-\$6. Waikiki Aquarium. 3 p.m. waquarium.org or 923-8102.

TUESDAYS & FRIDAYS WAIKIKI FARMERS MARKET

Fresh island produce and ono delectables are available from vendors at the Waikiki Community Center. Free. 7 a.m. - 1 p.m. 923-8102.

TUESDAYS & SUNDAYS TOUR AND TEA AT THE HONOLULU ACADEMY OF ARTS

Tours are led by volunteer docents and designed for visitors who want to explore the galleries, learn more about art and culture, and socialize over a cup of tea. Docents lead discussions in the galleries and offer insight into many cultures and time periods. 2:30 – 4 p.m. in selected galleries. Free with museum admission; voluntary donations for beverages are welcomed. Reservations required. 532-8700.

TUESDAY – SATURDAY MISSION HOUSES MUSEUM GUIDED TOURS

Visit the Printing Office and Frame House while learning about the 19th Century history and culture preserved at this beautiful museum. Galleries also open to explore on your own. Mission Houses Museum. 11 a.m. & 2:45 p.m. Tues. – Sat. 1 p.m. Tues.–Fri. \$6-\$10. 531-0481 or missionhouses.org.

SECOND WEDNESDAY (MARCH 13) STARGAZING

The Hokulani Imaginarium puts on a live star show while teaching about the mythology surrounding constellations. Windward CC, 45-720 Keaahala Rd, Kaneohe. 7 p.m. Keiki \$3, Adults \$5. Advance tickets aerospace.wcc.hawaii.edu/imaginarium.html or 235-7433.

WEDNESDAYS & FRIDAYS CHADO – THE WAY OF TEA

Japanese enthusiasts can experience the traditional tea ceremony (chanoyu) as it is meant to be seen and taught at the Urasenke Foundation of Hawaii. No prior knowledge required. 10 a.m. – 12 p.m. \$3. 923-3059.

THIRD THURSDAY (MARCH 21) DOWNTOWN GALLERY WALK & CRAFT FAIR

The Arts at Marks Garage continues to build on downtown activities offering execs an excuse to hang out after work and giving everyone else a reason to head downtown. Free. 521-2903. artsatmarks.com.

THIRD THURSDAY (MARCH 21) AT THE CONTEMPORARY MUSEUM

Bring the whole family and enjoy FREE entry to TCM including its exciting exhibitions and tranquil gardens. The Contemporary Museum. 10 a.m. – 4 p.m. 526-1322 or tcmhi.org.

FIRST FRIDAY (MARCH 1) DOWNTOWN GALLERY WALK & CRAFT FAIR

Art lovers are advised to head to downtown Honolulu the first Friday of each month. This event has exploded into a downtown party with galleries and studios open for exhibitions, artist demonstrations, and special performances. 23

galleries and art-related retail shops, restaurants and museums participate. Downtown Honolulu/Chinatown. 6-9 p.m. Free. 521-2903 or artsatmarks.com.

FIRST & THIRD FRIDAYS (MARCH 1 & 15) THE SKY TONIGHT

Learn about our Hawaiian skies and current events in space at the J. Watumull Planetarium. Bishop Museum. 8 p.m. No late seating. GA \$6, Keiki \$4. 848-4168 or bishopmuseum.org.

THIRD FRIDAYS KAIMUKI (MARCH 15)

The neighborhood comes to life during this monthly street fest where restaurants all open their doors and local businesses offer fun discounts and sales. Live entertainment and free food samples make this fun for the whole family. Koko Head to 8th Ave and Waialae. 6 – 9 p.m. kaimukihawaii.com or 739-9797.

LAST FRIDAY (MARCH 29) ARTAFTERDARK – 10TH ANNIVERSARY

The fabulous Friday for hep trend-setters and artsy enthusiasts is celebrating a decade of delighting art-lovers. This month's theme "Allure." As always, galleries and the courtyards are open late. 6 p.m. to 9 p.m. Admission: \$10. artafterdark.org.

FRIDAYS & SATURDAYS TWILIGHT TOURS OF THE ZOO

Stroll through the zoo after dark and learn what goes on after hours. All ages will enjoy this 2-hour guided walking tour including light refreshments. Reservations encouraged. 4:30 - 6:30 p.m. Tickets: \$12 - \$18. Honolulu Zoo. 971-7195 or honoluluzoo.org.

SATURDAYS KCC FARMERS MARKET

The original! Fresh island produce, seafood, flowers and more are available from over two dozen vendors at Kapiolani Community College. Free. 7:30 - 11 a.m. 848-2074.

SATURDAYS ALA MOANA FARMERS MARKET

Can't get to KCC? Ala Moana Shopping Center launched their Farmer's Market a month or two ago on the upper parking deck by Sears to rave reviews. The same abundance of treats all our local farmer's markets have to offer. Free. 9:00 a.m. - 1 p.m. 388-9696 or www.haleiwa farmersmarket.com.

SATURDAYS TASTE OF CHINATOWN

Eat your way through our own little China as you learn where to go, what to order, and how to eat. Get cultural and gastronomic notes along the way and leave fully sated. 11:30 a.m. – 2:30 p.m. Chinatown in front of HI Nat'l Bank at Smith & King Streets. Reservations required: 391-1550.

SATURDAYS & SUNDAYS ART ON THE ZOO FENCE

More than 35 local artists display their works on the Zoo fence on Monsarrat Avenue opposite the Kapiolani Park Bandstand. Works for sale include original paintings, prints and photographs. 9 a.m. – 4 p.m. Free.

SECOND SATURDAY (MARCH 9) DOWNTOWN GALLERY WALK & CRAFT FAIR

First Friday has become such a success that the event carries over to the second Saturday of each month. This month features demos by members of the Hawaii Stitchery & Fiber Arts Guild. HiSAM, 11 a.m. – 3 p.m. 586-0900. Other events: Downtown Honolulu. Afternoon. Free. 521-2903 or artsatmarks.com.

How can we help?

We're a family business dedicated to service, safety, quality & fun. Ocean activities for all ages and budgets. We're at your service to help provide a perfect match for your client.

Spirit of Aloha, one of the many yachts in our fleet



234-SAIL
(7245)

WE ANSWER 24 HOURS!
hawaiinautical.com

**KO OLINA •
HILTON PIER
• KEWALO**
Sail • Snorkel •
Dolphins • Scuba •
Snuba • Fireworks
Dinner • Private
Luxury Charter •
Surf Cruise



Hawaii Nautical

MARCH CALENDAR OF EVENTS

SUNDAY (MARCH 17) KANIKAPILA

Enjoy traditional Hawaiian music in a beautiful setting during this monthly jam session with local performers. Waimea Valley, Pikake Pavillion. 1 – 4 p.m. Adults \$10, Keiki \$5. 638-7766.

BANK OF HAWAII FREE SUNDAY (MARCH 17) HONOLULU MUSEUM OF ART

This month's theme: Great Snakes! As always, event includes a variety of activities and entertainment for the whole family in addition to regular galleries and exhibits. Honolulu Museum of Art. 11 a.m. - 5 p.m. Free. 532-8700.

MARCH 1 – 3 19TH ANNUAL HONOLULU FESTIVAL

Plan ahead to join in the biggest cultural fest of the year with ethnic activities, events, food, and much more. Parade on 3/3: 4:30 p.m. 926-2424 or honolulufestival.com.

MARCH 1 – 3 A CAGE OF FIREFLIES

Guests can take in a glimpse of Hawaii from a different angle in this world premier that has been workshopped at Sundance Festival. Playwright Daniel Akiyama spins a tale of three Okinawa as keiki and returned to Hawaii to live and work. Kumu Kahua Theatre. Thu – Sat 8 p.m.; Sun 2 p.m. \$5 – \$20. 536-4222 or kumukahua.org.

MARCH 2 LOS LONELY BOYS



Grammy-winners Los Lonely Boys perform their Tex-Mex rock blend including hits from their recent 4th album, "Rockpango." All ages w/adult. Aloha Tower Marketplace. 8 p.m. GA

\$45, VIP \$65. Ticketweb.com.

MARCH 3 • 36TH ANNUAL HAWAII PACIFIC HEALTH WOMEN'S 10K

Women of all ages and speeds can join in this race for a good cause supporting "The Campaign for Hawai'i's Children: Building the Future of Kapi'olani Medical Center for Women & Children." The 6.2 mile trail starts at Kapiolani Park to Kahala and back to the park. Awards presented to top finishers in multiple categories. 7 a.m. \$60 in person. 535-7674 or hawaiihealth.org.

MARCH 7 & 21 CATCH THE ROYAL HAWAIIAN BAND

The Royal Hawaiian Band was established in the mid-19th century by King Kamehameha III. Visitors can catch bandmaster Michael Nakasone and the 40-member band perform in concert at the Royal Grove at the Royal Hawaiian Center. 1 p.m.

MARCH 9 & 10 THE TWITS

Roald Dahl's hilarious Twits are a riotous duo of practical jokers until they become the victims of another's mean-spirited trick. Hawaii Theatre. Sat 7 p.m., Sun 2 p.m. \$5 – \$10. 528-0506 or hawaiiitheatre.com.

MARCH 10 HAPALUA HONOLULU MARATHON HALF MARATHON

Over 3000 runners are expected to race the course from Kalakaua Ave. near Duke's statue to Ala Moana Blvd. up to Punchbowl St. and back to Kalakaua winding up at Kapiolani Bandstand. 6 – 11 a.m. Honolulumarathon.org.

MARCH 10 BAMBOO TREASURES

Hike through a grass jungle and explore the wonders of bamboo, search for bamboo treasures, and make bamboo crafts. Ages 3 – 5. RSVP Required. Hawaii Nature Center. 9:30 – 11:30 a.m. \$10. 955-0100, ext. 118.

MARCH 16 18TH ANNUAL SEAHUNT

Celebrate Easter at the Aquarium's Annual SeaHunt, searching for items to complete a marine life puzzle, along with games, crafts, and Easter Bunny photos. Ages 2 – 7. Waikiki Aquarium. 8:30 a.m. – 12 p.m. Keiki \$15. RSVP recommended. 440-9011 or waquarium.org.

MARCH 16 BONNIE RAITT



Grammy-winner singer-songwriter Raitt brings her band to Honolulu for one night only. Opener John Cruz. Waikiki Shell. 7:30 p.m. \$27.50 – \$65. www.ticketmaster.com or 800-745-3000.

MARCH 16 COMEDY SMASH 2013

Capone's Productions presents a hilarious line-up of comedians featuring The comedian's favorite comedian" Earthquake, Luenell, and Aries Spears. Blaisdell Concert Hall. 8 p.m. \$45 – \$100. (VIP packages 306-2926.) 800-745-3000 or ticketmaster.com.

MARCH 16 HONOLULU NIGHT MARKET

The people behind Eat the Street are behind this revived monthly event whose goal is to support Honolulu's eclectic mix of artisans. Food trucks and crafters will close down Auahi Street from Keawe to Coral Street during this block party from 6-11 p.m. streetgrindz.com

MARCH 17 ST. PATRICK'S DAY PARADE

This short, fun parade kicks off at noon as live bands on flatbed trucks and trolleys slowly move down Kalakaua Avenue. Many parade participants toss green beads towards the keiki and more than one visitor has been know to jump onto a trolley for a ride.

MARCH 17 ST. PATRICK'S DAY BLOCK PARTY

Murphy's rules the day downtown in the name of all those Irish. The parking lot next to O'Toole's will begin to fill around lunchtime with people seeking fish 'n chips and continually grows until it culminates as one of the biggest block parties of year.

MARCH 17 ALFRED APAKA TRIBUTE

Honor the Golden Voice of Hawaii on what would have been his 93rd birthday at this musical tribute. Lobby procession begins at 3 p.m. followed by a blessing and lei draping at Apaka's statue. Music continues the celebration at Tapa Bar with an all-star lineup of local musicians including John Cruz, Lopaka Colon and of course his son, Jeff Apaka. Hilton Waikiki Beach Resort. 3 – 7 p.m.

MARCH 21 – 23 ANNUAL HEIVA I HONOLULU

Experience traditional Tahitian culture and arts with three days of drumming and solo competitions as well as crafts, cuisine, and more. Waikiki Shell. tahitiniuiinternational.com.

MARCH 21 – 24 SEMI-ANNUAL CLEARANCE SALE

Get great deals on the perfect memento or omiyage at the Museum's spring cleaning sale including books, posters, jewelry, and more for 30 to 80 percent off. Honolulu Museum of Art. Thu – Sat 10 a.m. – 4:30 p.m.; Sun 1 – 5 p.m. FREE. 532-8703.

MARCH 23 • AVIATION DAY

Keiki who are looking to the sky for inspiration will a day dedicated to pilots and high-flying adventure. Learn about aviation through workshops, flight lab, interactive exhibits, and a career fair. Don't forget to pose with re-enactor Amelia Earhart and others. Pacific Aviation Museum. 10 a.m. – 4 p.m. 441-1007 or PacificAviationMuseum.org.

MARCH 23 PRINCE KUHIO PARADE

The Annual Prince Jonah Kuhio Kalaniana'ole Commemorative Parade will march through Waikiki from Saratoga Rd. to Kapiolani Park. 10 – 11:30 a.m. Free. 688-8949 or aohcc.org.

MARCH 23 POUHALA MARSH WETLAND ADVENTURE

Explore a 70-acre marsh and watch endangered wetland birds in their habitat. Ages 6+. Hawaii Nature Center. 2 – 4 p.m. \$10. 955-0100, x. 118.

MARCH 23 GREAT CHEFS FIGHT HUNGER

Dine out for a good cause at this fundraiser featuring fine wines, beer tasting, and more to accompany cuisine from some of our island's top chefs. Live music and silent auction. Hawaii Foodbank, 2611 Kilihaui St. 6 – 8:30 p.m. GA \$150, 836-3600 ext. 244 or hawaiifoodbank.org.

MARCH 24 VINTAGE COLLECTIBLES & HAWAIIANA SHOW

The spring Wiki Wiki show is a great chance to find authentic, vintage (20 years or more) items for gifts or collections. Products include Aloha shirts, dolls, furniture, glassware, stamps, jewelry, Asian antiques, and of course plenty of Hawaiiana. Blaisdell Hawaii Suites. 10:30 a.m. – 4:30 p.m. GA \$4.50, Early Entry \$15. 941-9754 or ukulele.com/wikiwiki.html.

MARCH 24 • 2013 OSCAR NIGHT PARTY

True film buffs and fans of the red carpet can indulge their addiction at this annual glam party supporting the Hawaii International Film Festival. The Modern Hotel. Cocktails 4 p.m.; Show 5 p.m. Individual \$350, VIP Tables Avail. 447-0577 or hiff.org.

MARCH 27 WAIKIKI AQUARIUM TOUR

Take a behind-the-scenes tour of our beautiful aquarium and learn about our aquatic friends. RSVP Required. Sierra Club. Evening. \$12. 739-3936 or bshrine@yahoo.com.

MARCH 30 • PENTATONIX

This a cappella quintet delighted audiences on TV series "The Sing-Off" last fall and will make their Hawaii debut this month. All ages w/adult. The Republik Lounge (ages 21+) 6 p.m.; Show 8 p.m. GA \$28, Riser \$38 (+\$5 at door). 877-714-7668 or Groovetickets.com.

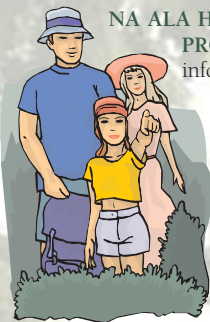
APRIL Sneak Peek 2013

APRIL 13 JAMES TAYLOR IN CONCERT

The beloved songwriter of such hits as "You've Got A Friend", "How Sweet It Is" and countless others returns to Honolulu for the 1st time since 2001. Blaisdell Arena. 8 p.m. Tickets: \$65-\$110. available at ticketmaster.com or 800-745-3000.

Hiker's Corner

We continue to welcome input from those of you who get a chance to go try some of these hikes or others on your own. Please send us your reviews, information, and photos to: editor@oahuconciierge.com.



NA ALA HELE TRAILS & ACCESS PROGRAM

For detailed information about hiking trails around the state, visit HawaiiTrails.org. The website includes an interactive map of each island and trail info that includes length, terrain, photos, directions, biking information, and printable topographic map links.

Also included on the site are trail announcements, local weather, and more. This is an easy way to provide your guests with a lot of helpful information for their hiking trip (without a lot of time on your part). You can also call them directly at 973-9782.

Waimea Valley Hikes

Please see Waimea Valley Hiking Series info above.

KALAHE'E: 9:30 a.m. – 12:30 p.m. Kalahe'e Ridge. 2 miles. Moderate. Ages 7+. \$35.

SOUTH RIDGE LOOKOUT: 9:30 a.m. – 12:30 p.m. Climb to the Waihi (waterfall), views. 2 miles. Moderate. Ages 7+. \$35.

NORTH VALLEY HIKE: 9:30 a.m. – 2 p.m. Native flora and fauna. Ridge to valley. 6 miles. Strenuous. Ages 7+. \$50.

Monthly Hikes

MARCH 2 (8:30 a.m. – 2:30 p.m.) – KA'ENA POINT
5 Miles – Moderate Hike
Ages 7+, Coast, Nature Reserve, RSVP REQ, \$10
Hawaii Nature Center: 955-0100, ext. 118

MARCH 2 (8:30 a.m.) – PU'U O HULU
2 Miles – Intermediate Hike
Ridge, Abandoned Army Posts
HTMC: 247-5380

HIKING CLUB INFO & UPDATES

Sierra Club Hawaii Chapter is also seeking new outings leaders. For information, call Stan Oka at 429-9814 or Deborah Blair at 955-4168.

COORDINATED HIKES

The hikes listed below are arranged by local clubs and open to visitors. Hikers are recommended to bring a snack, sunscreen, hat, sturdy shoes, insect repellent, & water.

SIERRA CLUB: Most hikes meet at 8 a.m. at the Church of the Crossroads (back porch), 2510 Bingham St. Do not leave cars in the church parking lot. Windward outings may meet at First HI Bank, Windward Mall. Requested donation is \$5 (\$1 under 15 years). Please call for information. Under 18 with adult.

MARCH 3 (9 a.m.) – BEGINNER HIKE

Kuliouou Valley – Easy Hike
Sierra Club: 942-0145

MARCH 10 (8 a.m.) – MAKIKI TANTALIZER

6 Miles – Intermediate Hike
RidgeHTMC: 590-0939

MARCH 10 – PUU MA'ELI'ELI

3 Miles – Moderate Hike
Ridge, RSVP REQ. Sierra Club: 262-6092,
227-9925, 429-9814, 545-1252

MARCH 17 – WILIWILINUI

5 Miles – Strenuous Hike
Ridge, Views
Sierra Club: 203-8508

MARCH 17 (9 a.m.) – BICYCLE OUTING

12 Miles – Moderate Hike
Hills, Diamond Head & Kahala, Bring Bike & Helmet. Sierra Club: 753-0528

MARCH 17 – PHOTOGRAPHY HIKE

Easy Hike
Leeward Community College NativePlant Garden, RSVP REQ Sierra Club: 429-9814, 227-9925, 262-6092

MARCH 24 (8 a.m.) – WAIUAU

12 Miles – Advanced Hike
Ridge, Summit
HTMC: 265-3283

MARCH 30 (8 a.m.) – WAIMANO POOL

3 Miles – Novice Hike
Valley, Swimming, Waterfall
HTMC: 729-3811

MARCH 30 – KAHANA VALLEY

6 Miles – Moderate Hike
Valley, Pool, Hawaiian History, Mosquitoes
Sierra Club: 223-5765

APRIL 6 (8:30 a.m.) – KUAOKALA

5 Miles – Intermediate Hike
Ridge, RSVP REQ. HTMC: 388-5373

APRIL 7 – SIERRA SEMINAR

5 Miles – Moderate Hike
Kaunala West, Contour, Native Plants
Sierra Club: 262-6092, 227-9925, 429-9814

HIKING HAWAII

Join a group of up to 15 hikers on a variety of guided treks. Door-to-door transportation is available and we are available for Private Parties. Info and reservations at hikinghawaii@yahoo.com, 855-808-4453, or hikinghawaii808.com.

WAIMEA VALLEY HIKING SERIES

Waimea Valley Family Hikes now offered ONLY Thursdays and Sundays. 5 person minimum. Reservations required in advance with credit card (cost includes admission). Keiki under 18 must be with adult. Closed-toe shoes and water required. Cameras strongly recommended! Reservations at 638-5877 or Lpool@waimeavalley.net. See Hike schedule below

For more information on hikes visit:

Hawaii Nature Center (HNC) –
www.hawaiinaturecenter.org

Hawaiian Trail & Mountain Club (HTMC) –
htclub.org

Sierra Club –

www.hi.sierraclub.org/oahu/outings.htm

Waimea Valley – waimeavalley.net

VOLUNTEER CORNER

If your guests are looking for more opportunities to give back, find new and updated events or activities to suggest at www.voluntourism.org.

MARCH 16

MANOA FALLS TRAIL PROJECT

Help improve one of our most popular hiking trails: graveling, widening, and removing old debris. RSVP required. 20 people per day.
Sierra Club. Restoremanoa@gmail.com.

MARCH 17

KAENA POINT NAR SERVICE PROJECT

Learn about native coastal flora and fauna while helping with weed control and outplanting. Possible whale and seal sightings. Reservations required. Meet 8:30 a.m. at Camp Erdman. Sierra Club. Csoares48@gmail.com.

APRIL 6 (8:30 a.m. – 1:30 p.m.) – MANOA CLIFF TRAIL

3 Miles – Moderate, With Geographer
Dr. Merlin, RSVQ REQ, \$10
Hawaii Nature Center: 955-0100, ext. 118

APRIL 7

MANOA FALLS TRAIL PROJECT

Help improve one of our most popular hiking trails: graveling, widening, and removing old debris. RSVP required. 20 people per day.
Sierra Club. Restoremanoa@gmail.com.

**DISCOUNT HAWAII
CAR RENTAL
SAVE UP TO 50%**



GUARANTEED RESERVATIONS
* NO BOOKING FEES * NO
DEPOSIT * CANCEL ANYTIME
* NATIONAL RENTAL
COMPANIES

call us today @
1.800.292.1930

or check us out online:

DiscountHawaiiCarRental.com

Get a Little Luck of the Irish

Top o' the mornin' to ya! March 17 brings us a little Irish to the islands as St. Patrick's Day takes over Honolulu. Grab a mug of green beer, don your best green togs, and join in the celebration! Here are a few suggestions to get you started.

MARCH 16 ROYAL HAWAIIAN IRISH

Kick off the holiday early at Royal Hawaiian Center with The Celtic Pipes and Drums of Hawaii. The Royal Grove. 4:30 p.m. More information at RoyalHawaiianCenter.com.

MARCH 17 MURPHY'S BLOCK PARTY

The Irish corner downtown will be full of green beer and thousands of celebrants sponsored by Murphy's Bar & Grill. Traffic will be diverted between Nuuanu Ave. and Merchant St. 11 a.m. - 10 p.m. Free. 531-0422.

MARCH 17 46th ANNUAL ST. PATRICK'S DAY PARADE

Join the Friendly Sons of Saint Patrick of Hawaii and ride or march your way through town spreading the green Aloha. Marchers, floats, vehicles, and bands will be parading from Ft. DeRussy to Kapiolani Park. 12 - 2 p.m. FREE. More information at 220-2584 or irishclubhawaii.com. To be a parade volunteer, call 220-2584 or irishladhi@mac.com.

MARCH 17 POST PARADE PARTY

The fest doesn't end at Kapiolani Park so whether you join in or can't make it till later, be sure to pencil in the after party at Kelly O'Neils on Lewers St. Keep the Irish spirit going with plenty of food, drinks, and pick up some Paddy's Day paraphernalia to help raise funds for the FOSP. 1:30 - 3 p.m. FREE.

IRISH PUBS

This is the busiest day of the year for our local Irish hot spots. Not sure where to go? Here's a list of them with websites and phone numbers so you can check closer to the time the specials they have planned that day.

Anna O'Brien's annaobriens.com	946-5190
Irish Rose Saloon irishrosesaloon.com	947-3414
J.J. Dolan's jkdolan.com	537-4992
Kelly O'Neils kelleyoneils.com	926-1777
Murphy's murphyshawaii.com	531-0422
O'Tooles Irish Pub ootoolerishpub.com	536-4138

Hawaii's Most Popular
WHALE WATCH CRUISE

WHALES GUARANTEED

- ★ Most whale and Hawaiian cultural activities
- ★ Kids cruise free
- ★ Delicious dining options!
- ★ New keiki program

Daily whale watch from \$**29.⁹⁵**

Special Easter Cruise 3/31/13
Fun Egg Hunt, Prize Giveaways and More!

STAR OF HONOLULU™ CRUISES & EVENTS
808-963-STAR (7827) ★ www.starofhonolulu.com

Your guests will love Hawaii's most popular whale watch aboard the Star of Honolulu (Now - 4/15/13)

Legends IN CONCERT Waikiki

ROCK-a-HULA!

Your guests will love our new cast!

Six Packages from **\$59**

"Steven Tyler" "Madonna" "Elvis" "Michael Jackson"

At Royal Hawaiian Center, 4th Floor

www.LegendsWaikiki.com Reservations: (808) 629-SHOW (7469)

That's Entertainment

HOTELS

- HALE KOA HOTEL** 955-0555
 •Sat, Sun & Tues The Gonzales Trio performs Big Band to Pop at the Warriors Lounge. 8pm-midnight.
 •MThFS - Poolside music at the Barefoot Bar. 6-11pm
- HALEKULANI HOTEL** 923-2311
 •Daily-Hawaiian Music and hula at The House Without A Key from 5:30-8:30pm.
 •Daily-Live Contemporary and light Jazz at Lewers Lounge from 8:30pm to midnite.
 •Sun- Sunday brunch at Orchids features Noly Paa on the piano from 9:30 - 2:30pm.
- HILTON HAWAIIAN VILLAGE** 949-4321
 •Fri - The Rockin' Hawaiian Rainbow Revue (formerly the King's Jubilee), a musical salute to King Kalakaua, at the Super Pool. 7 pm. Fireworks at 7:45pm.
 •FriSat - Olomana at the Tapa Bar from 8-11pm.
 •Daily - Live entertainment at the Hau Tree Bar and the Tapa Bar from 8-11pm.
- THE KAHALA HOTEL** 739-8888
 •TuWThFSat- David Swanson vocalizes on the piano at The Veranda from 7:30-11pm.
- MOANA SURFRIDER** 922-3111
 •Daily-Hawaiian music & hula. The Banyan Court, 6-8 pm, and again from 8 -11 p.m. Weekends from 11:30- 2 p.m.
 •MWFri-Guided historical tours at 11am.
- NEW OTANI KAIMANA BEACH** 923-1555
 •FSat- Local jazz guitarists plays live in the Sunset Lanai Bar. 6-9pm.
- OUTRIGGER WAIKIKI ON THE BEACH** 923-0711
 •Mon- Kukui Nut Bracelet Making. 1pm.
 •Th- Ukulele Lessons. 1pm.
 •Fri- Aloha Fridays bring back old Hawai'i with music, hula, ukulele & lei making lessons. 9am-1pm.
- OUTRIGGER REEF ON THE BEACH** 923-3111
 •Daily- See guest artists at work in Kuloko Arts of Hawaii 9am-1pm and again from 6-9pm.
- SHERATON PRINCESS KAIULANI** 922-5811
 •Daily-Live Hawaiian music & halau at the lounge from 6-8:30pm, then poolside from 8:30-10:30pm.
 •MWFri-Princess Kaiulani historical tour at 4pm.
- THE ROYAL HAWAIIAN** 923-7311
 •TTHSat- Free guided resort tour at 2pm.
 Fri-Princess Kaiulani historical tour at 4pm.
- TURTLE BAY RESORT** 293-6300
 •MTWThFSat- Lei Making, Main Lobby at 10am.
 •ThSun - Fire Dancer, Hang Ten Pool Bar at Sunset
 •TThFri - Shell Hula Lessons, Lobby at 10am
 •TThFri - Ukulele Lessons, Lobby at 9am
 •Fri- Hawaiian Music, Hula. Lobby Lounge 6:30-8:30pm.

- WAIKIKI BEACH MARRIOTT RESORT** 922-6611
 •Daily-Hawaiian entertainment in The Moana Terrace Bar. 6-9pm.
 •Fri-Local crafters "Aloha Friday Fair" Lobby 9a-2pm
- ## MUSEUMS

- HAWAII STATE ART MUSEUM** 586-0900
 •TWThFSat - Inaugural exhibition "Enriched by Diversity: The Art of Hawai'i." Free. Tuesday-Saturday, 10 a.m. to 4 p.m. Located in the Capital District.
- HAWAII THEATRE** 528-0506
 •Tues- A one-hour guided tour offers a unique insight in the history, art, architecture and restoration of the Hawai'i Theatre with trained docents & a mini-concert on the 1922 Robert Morton Theatre Organ. 11 a.m. Admission: \$10.
- HONOLULU MUSEUM OF ART** 532-8726
 •MWF- Japanese Language Tours. Private tours also available. 1pm. Regular admission.
- IOLANI PALACE** 522-0832
 •Mon-Sat-45 minute docent-lead or self-guided audio tours in English or Japanese. Japanese docent-lead tour is available only at 11:30 a.m. All tours include pre-tour video and entrance into the Palace Galleries. Adults: \$20 / Children (5-12) \$5 / 9 a.m. to 5 p.m.
 •Sat- Hawaiian Quilt Classes: Old Archives 9 - noon.
- LUCORAL MUSEUM** 922-5381
 •TTh- Learn how to plan your jewelry project and more in this beaded jewelry workshop \$10. 2-4 p.m.
- MISSION HOUSES MUSEUM** 447-3910
 •Tue-Sat-Learn about the dramatic story of cultural change in 19th-century Hawai'i. Docents lead tours through the oldest existing frame house in the Islands, Printing Office, and the coral block Chamberlain House. Reservations required. www.missionhouses.org
- PACIFIC AVIATION MUSEUM** 441-1000
 •Daily-Vintage aircraft in battlefield hangars. Combat flight simulators. Aviator's Tour takes you through the new Restoration Hangar. Restaurant, Museum Store. Shuttle & Tickets at USS Arizona Memorial Visitor Center or at www.PacificAviationMuseum.org.
- THE SPALDING HOUSE** 526-1322
 •Daily-Docent-led tours given daily. 1:30pm. Garden tours or Japanese language tours are by appointment.
- NAVAL AIR MUSEUM BARBERS POINT** 682-3982
 •Mon-Fri- A unique museum experience about aviation history in Hawaii. All of the aircraft are open to climb in, on and around. Tours: 8 a.m. - 4:30 p.m. \$7 / \$5 children under 18. BLDG 1792, Midway Road, Kalaeloa Airport. Reservations required. Sat/Sun by appt only. www.nambp.org.

- ALA MOANA CENTERSTAGE** 955-9517
 •Tues - PCC Polynesian Revue Show. 6pm.
 •Sun - Keiki Hula Show. 10-11am.
- INTERNATIONAL MARKET PLACE** 971-2080
 •Daily except Sunday - Free Food Court Entertainment starting at 6pm.
- KING'S VILLAGE** www.kings-village.com 237-6344
 •Daily Watch the changing of the guard put away the Hawaiian flag each evening with a rifle drill exhibition at the front entrance of the Village. 6:15 p.m. FREE.
 •Daily King's Guard Museum features a variety of collectibles and memorabilia. 10a-10:30p. FREE.
 •Daily FREE Hawaiian movies in the Peacock Court. 7:30 - 9:30 pm.
- ROYAL HAWAIIAN CENTER** 922-2299
 •T-Hawaiian Quilting. 9:30-11:30am, Bldg A, 3rd floor
 •TWThF - Ukulele lessons 10-11am, Paina Lanai
 •MW- Learn lomilomi. 11am-12pm, Bldg A, 1st floor.
 •TTh - Hula. (T) 11am-12pm, (Th) 4-5pm, Royal Grove
 •TWThF- Live Hawaiian music 6-7pm, Royal Grove
 •Fri- Lei making 1-2pm, Bldg A., 1st floor
 •Fri- Live Hawaiian music 6-7:30pm, Royal Grove
 •Sat- Coconut frond weaving 3-6pm, Royal Grove
 •Sat- Hula Kahiko 6-6:30pm, Royal Grove
 •Sat- Live Hawaiian music 7:30-8:30pm, Royal Grove
 •ThSat - PCC Performs. 11-11:45am, Royal Grove
- WAIKIKI BEACH WALK** www.waikikibeachwalk.com
 •Tuesdays - Ku Ha'aheo featuring Hawaiian song and dance on the Plaza stage. 4:30-6pm
 •Wednesdays - Yoga Classes 4-4:45pm. Free.Plaza Stage
- WAIKIKI SHOPPING PLAZA** 923-1191
 •Daily Hula Lessons. 10am, 12pm
 •MTTh - Polynesian Review 1st & 3rd floor 7-9pm

ATTRACTIONS

- KALAKAUA AVENUE** 527-5666
 •Fri - Strolling Hula from 8-10:00pm.
- KAPI'OLANI BANDSTAND** 527-5666
 •Fri-Hawai'i's finest musicians perform. 5:30-6:30pm
 •Sun-Royal Hawaiian Band performs 2-3:15pm.
- KUHIO BEACH HULA SHOW** 843-8002
 •TThSat- (except Nov/Dec/Jan) City & County presents a free hula show at sunset that is cancelled til February.
- TAMARIND PARK - DOWNTOWN** 527-5666
 •Fri- Mayor's Aloha Friday Music from 12-1pm features live music from Hawaiian to Jazz to Pop.
- WAIKIKI TOWN CENTER** 922-2724
 •Mon-Sat-The songs and dances of Hawai'i, New Zealand, & Tahiti. Free shows begin at 7pm.

EVENTS SUBJECT TO CHANGE PLEASE CALL TO CONFIRM PRIOR TO ATTENDING

PAPARAZZI

Do you have a picture you would like us to run? Send them to: publisher@oahuconcierge.com

Amway at the Aviation



Pacific Aviation Museum Pearl Harbor was the location for a huge Amway China event back on February 1 with a gala event for 1600 people. Museum Director of Marketing Anne Murata stands in front of the beautifully decorated room.

Amway brings out the Governor



Pacific Aviation Museum Pearl Harbor hosted 1600 Amway China visitors February 1 with a gala event. L-R, Museum Director of Marketing Anne Murata, Hawaii Governor Neil Abercrombie and show Producer Bert Li of Amway China.

Aunty Lynn meets Aerosmith.. kind of



Man he does look like the guy doesn't he? We all met Chris VanDahl, Legends in Concert's very own Steven Tyler at this years Christmas Party at The Republiq, but here's Aunty Lynn meeting him for the first time after seeing the new show.

Dole Plantation - 1 FREE Adult Admission To The Maze With Purchase of 1 Adult Admission. 621-8408

Giovanni Pastrami - 15% Off Full Bar, Dine-in or Take-Out at anytime with ID. 227 Lewers St. 923-2100.

Hard Rock Café - 15% off food, beverage (non-alcoholic), or merchandise. Hotel ID required. 280 Beachwalk Ave. 955-7383.

Hawai'i Prince Golf Club - \$5 Off Standard Kamaaina Green Fees. Tee Times: 944-4567

Hilo Hattie - 25% on Hilo Hattie labeled garments, 15% off other fashions/gifts and 10% off Hilo Hattie labeled foods. Not valid on sale item. Ala Moana Center and Nimitz Hwy Ph 535-6500.

Hy's Steakhouse - 25% VIP Discount Off Food And Beverage (up to 2 persons) 2440 Kuhio Ave. 922-5555

Hyatt Regency Waikiki - 15% discount with the presentation of a concierge business card at SHOR, Japengo and SWIM. 2424 Kalakaua Ave. 923-1234.

Iolani Palace - Free Admission. Regular rate \$20. 364 S. King Street, Reservations & Hotel ID required. 522-0832.

IHOP - Receive 20% on entire bill. Must show valid hotel ID. Not valid with any other offer or discount. Aqua Palms, 1850 Ala Moana Blvd restaurant only. Free parking available. 949-4467.

Kaiwa - 20% off food & beverage between 5 & 7 p.m. 924-1555

Longhi's - 25% off food & beverage up to 2 persons, not applicable with any other promotion or discount. 947-9899.

Mission Houses Museum - Free tour with hotel ID. 447-3910

Pacific International Skydiving Center - 50% Discount on Jump, 68-760 Farrington Hwy, 637-7472

Plaza Café - 15% off all food items. Best Western the Plaza Hotel. 3253 N Nimitz Highway. 836-3636.

P.F. Chang's Waikiki - Receive 20% on all appetizers, entrees, desserts and beverages 11 am - 5 pm daily (not valid for Pau Hana menu) Royal Hawaiian Center. Ph: 628-6760, 637-7472

Romano's Macaroni Grill - 20% Off Food and Beverage for up to 2 guests. (Not Valid for Happy Hour Menu). Ala Moana Center, 1450 Ala Moana Blvd. 356-8300

Royal Hawaiian Center - get your FREE Malama Card which offers special retail and dining discounts to local Waikiki workers. Royal Hawaiian Center, 2201 Kalakaua. 922-2299.

Ruth's Chris Steak House - 20% Off Food and Beverage for up to 2 guests. (Not Valid for Happy Hour & Prime Time menus). Restaurant Row, 500 Ala Moana Blvd. 599-3860. Waikiki Beach Walk, 226 Lewers Street. 440-7910

The Contemporary Museum - FREE Admission For Cardholder and One Guest. 526-1322

The Kahala Resort - Complimentary appetizers for a concierge and a guest with the presentation of a concierge business card at Hoku's, Plumeria Beach House, Seaside Grill, The Veranda. 5000 Kahala Avenue. 739-8888

The Original Glider Rides - Come experience the joy of soaring for yourself. Concierge / GSA may receive a complimentary scenic ride. Request the "GSA flight special" when booking your reservation. Hotel ID required. Dillingham Airfield. 637-0207

Tiki's Grill & Bar - FREE order of Prime Rib Poke with any purchase! One per table. OahuconPOKE. ASTON Waikiki Beach. 923-8454

Willoughby's Restaurant - 15% off all food items. Ohana Honolulu Airport Hotel. 3401 N. Nimitz Hwy. 836-0661.

You may be required to provide identification. One special per person per business. Offers valid on regular-priced merchandise only. Discounts are available to Guest Service Professionals ONLY. Not valid with other promotions or special offers. A minimum 15% gratuity required for all special food offers. † New offer

Conciierge of the Month

NAME: Aki Matsuyama

HOTEL: Moana Surftrider, a Westin Resort

TITLE: Conciierge

Juggling career and family give Aki Matsuyama plenty of perspective (and patience) as she navigates a busy desk at the Moana Surftrider. Many congratulations to a well-deserving winner this month!

Q: How long have you been at the Moana?
Six and a half years.

Q: Where were you prior to joining the Moana?
Aii Tower Conciierge desk at Hilton Hawaiian Village and previously as Executive and Accounting assistant for All Nippon Airways.

Q: What do you feel makes your desk unique?
We are all good friends and we seem to be one big family.

Q: What's the biggest perk of being a concierge?
It's a privilege to meet people from all over the world and to participate in creating their memorable experiences in Hawaii.

Q: What's your biggest challenge at the desk?
Standing eight hours a day.

Q: What skill does a concierge need to succeed?
Patience and good instincts.

Q: Any memorable guests stories you can share?
One man who immigrated to Australia from Northern Europe with great ambitions 50 years ago and now is very successful entrepreneur. His story was very inspiring.

Q: What's is one of your favorite off-property restaurant to send guests too?
12th Avenue Grill, Hiroshi Eurasian tapas, and Home Bar and Grill.

Q: What is your favorite activity to recommend?
Golfing in Hawaii is very exceptional in the beautiful weather Hawaii. Snorkeling, hiking, or a nature tour to appreciate the island.

Q: As spring break is nearly here, any fun family things you like to tell your guests about?
Experience a road trip, as we are a small island it is very lucky that we can get around the whole island within half a day. Start from Honolulu and go east around the island and take memorable pictures of the beautiful scenery and stop some local favorite casual eatery places such as Teddy's at Sunset Beach, shrimp trucks, etc. Visit beautiful beaches and turtles as well.

Q: Are you from the islands originally?
[I'm originally from] Kanagawa, Japan

Q: What do you love best about living in Hawaii?
It is very small and easy to get around and everything is nearby.

Q: What do you like to do when not working?
Enjoy silence and read books but I haven't had a chance to do that for a long time since a little one came into my life. However, I appreciate the time with my son now.

Q: Do you have a secret hobby or skill that your guests would never guess?
I love cooking and of course the eating part as well. Recently, I started making my own different kinds of pickles and trying to make them better.

Q: Any other thoughts you'd like to share with your colleagues?

I find The Oahu Conciierge's Facebook page very helpful and if each hotel posts some information on upcoming/special events at your hotel, we can help each other stay informed up-to-the-minute.

Everyone remembers their first kiss



DOLPHIN QUEST
Oahu

Programs starting at \$125 per Person!

Enjoy intimate, personalized, hands-on dolphin fun during the \$125 Dolphin Experience! Reserve your program now.

Call: 800.248.3316 or Visit: DolphinQuest.com

A portion of the proceeds from Dolphin Quest supports the local education, conservation and research.

The Oahu Concierge is printed monthly and direct mailed FREE to all Oahu Concierge, Hospitality & Activity Professionals.

Subscriptions available to non-industry at \$20 per year.

C O N T A C T

Davis Media

Ph: 596-4422 • Fax: 593-0839

www.oahuconciierge.com

Twitter: @OahuConciierge

Facebook: www.facebook.com/OahuConciierge

ADDRESS & NAME CHANGES / ADDITIONS

We do not take changes by telephone. All changes to mailing list must be submitted in writing by the 16th of the month, email is preferred.

S T A F F

PUBLISHER Pam Davis
publisher@oahuconciierge.com

EDITOR Kathryn Wheeler
editor@oahuconciierge.com

CONTRIBUTING EDITORS
Lynn Cook, Lance Rae

DESIGN
Coreiya Design

The Oahu Concierge
1221 Kapiolani Boulevard, Suite 1040
Honolulu, Hawaii 96814

Presorted Std
US Postage Paid
Honolulu, HI
Permit # 583

Great Chefs® Fight Hunger

HAWAII'S PREMIER CULINARY EVENT!



Saturday, March 23, 2013
6:00 – 8:30 pm

HAWAII FOODBANK • 2611 Kilihau Street • Valet Parking

Hawaii's greatest culinary talents will come together on one special evening to raise much needed funds to feed the hungry in Hawaii.

FEATURING:

• 12th Avenue Grill/
SALT bar & kitchen

• Asantae Java

• Chef Chai at Pacifica Honolulu

• d.k Steak House

• Halekulani Hotel & Dining

• HASR Bistro

• Henry Loui's Restaurant

• Hilton Hawaiian Village
Waikiki Beach Resort

• Himalayan Kitchen

• Hokulani Bake Shop

• Le Bistro

• Paradise Beverages

• Roy's Ko 'Olina

• Sansei Seafood Restaurant & Sushi Bar

• Southern Wine & Spirits

• Taste Table

• The Whole Ox Butcher & Deli

• Y. Hata & Co., Ltd.

• Young's Market Company of Hawaii

• And Many More!



Order online at www.hawaiifoodbank.org or call 836-3600 ext. 244

For more information, visit www.hawaiifoodbank.org

To complement the evening's dining experience, enjoy fine wines, a beer tasting, martinis, live music, a silent auction and more. All proceeds raised by the Great Chefs® will benefit the Hawaii Foodbank now feeding over 183,000 islanders in need.

TICKETS

VIP Early Entry Ticket \$200

General Admission Ticket \$150

VIP Early Entry Table for 10 \$2,500

• Reserved VIP table, wait staff not included