

# Concierge

KEEPING THE HOSPITALITY INDUSTRY INFORMED SINCE 1998

## Fireknife Festival 2023



2018, 2021 and 2022 champion, Hale Motu'apuaka. Photo courtesy of the Polynesian Cultural Center

From the silence comes the sound of drums beating through the night air. The excitement is palpable as suddenly a flame appears in the darkness, which turns spins, twirls, twists, and turns into a breathtaking explosive finale. For many visitors, the fire dance is one of the most exciting parts of the luau, so imagine an entire evening of nothing but fireknife dancers.

This year, the Polynesian Cultural Center is celebrating its 60th anniversary with its 30th Annual World Fireknife Competition. Make sure your guests take advantage of this exciting event as the best fireknife dancers from around the world come together to battle it out in a fiery competition for the coveted title.

Performers have been twirling, throwing, catching, and dancing with a Samoan war club known as a nifo oti for centuries. Nifo oti translates to "tooth at the end" and has been considered the national weapon of Samoa from at least the early 1800s. The nifo oti was eventually combined with another Samoan weapon, the lave or hook, used to snare an enemy's various body parts. The siva afi, or fireknife dance, is an integral part of the Samoan culture and was started to train warriors to protect themselves and others. The purpose of

this competition is not only to crown a fireknife champion but also to educate and maintain the integrity, quality, and high level of performance in this skilled art form while enhancing the cultural background and origin of this Samoan weapon. According to the event's website, in more modern times, after village, tribal and interisland warfare faded into history, the nifo oti has become an essential element in the Samoan ta'alolo or gift-giving procession that honors special visitors. Custom now demands in the most formal occasions that the ornately decorated manaia or "prince" and taupou or "princess" should lead ta'alolo processions, each carrying and twirling nifo oti. Over the years, young Samoans developed the twirling motions into their own art form and stylized the knife, adding such touches as using two and even three knives simultaneously with chrome blades and reshaping the hook.

The various divisions will take to the stage at the Pacific Theater for multiple competitions leading up to the main event, the Men's Finals. It's going to be tough to get there, however. In honor of the 30th anniversary, the entire judge's panel for the Men's Finals will be former

*continued on page 7.*

## Lantern Floating Hawaii 2023

In pre-pandemic times, the Shinnyo Lantern Floating Hawai'i was famous for bringing together around 50,000 people to Ala Moana Beach Park, joined by thousands worldwide via live streaming and telecast to honor loved ones while generating collective hope toward the future.

The first three years, the Festival was held at Ke'ehi Lagoon before moving a few miles down the coast to Ala Moana Beach Park in 2002, where it's been held ever since. Shinnyo-en, an international Buddhist community with Japanese roots, officiates the free event. But did you ever wonder where the event came from?

Memorial Day is for people to remember and honor those who have fallen in service to their country. Several sources account for its origins, among which is the tale of women in the South



*Continued on page 4.*

### TABLE OF CONTENTS

Yada Yada Yada .....	2
Cirque du Soleil Plans Waikiki Residency .....	2
Newsflash .....	3
Little Plumeria Farm Opens for Tours .....	6
E Pili Kakou .....	8-13
Chef's Corner: Pau Hana Sailing's Mariah Raftree ..	13
Calendar .....	14-17
Afternoon Tea .....	18
That's Entertainment / Concierge Card .....	19

## Publisher's Letter



### Happy Mothers Day

May is about Mom, so I hope all of you that still have yours around take the time to spend some time with them. And for you Moms out there? I hope your kids spoil you rotten. It goes without saying that most places have special menus and buffets to honor moms on the 14th, and some of them are already sold out. So, if you haven't made reservations by the time you read this, put the magazine down now and pick up the phone. I know places that sold out before Valentine's Day. This year, I decided to look into afternoon tea as an option. One or two places I reached out to never called me back to confirm my information, so I may have missed a few, but even if I did, there are some great options here, and what's more of a mom or grandma thing than to take them to tea?

Memorial Day also takes place this month, and with it comes the return of the Lantern Festival. Honestly, I have never braved the crowds, and although I am usually out of town that weekend, I'd always log onto the live stream. The emotional aspect of this event is big. I remember watching the ceremony on my laptop in California and still getting chicken skin, watching everyone place their lanterns into the water and watching them float away. It will be interesting to see how many people come out this year. This event is probably more popular amongst the locals than the visitors but combined; their numbers are mighty!

We also have a few concierge events planned this month, so please let me know if you are not receiving invitations. To be clear, I usually send the invites to the managers and ask them to share them with the team, but we invited absolutely everyone on the list to see Sea Life Park's new luau last month, so if you didn't know about it, check with your manager, and if they didn't get it, have them reach out to me. I am still rebuilding my event list and my mailing list, so I count on you guys to keep me up to speed. I always love the emails that say, "I've been here for years, and you don't send me the magazine," and I have to ask.. did you ever tell me? If you are still waiting for your own copy, please send me an email and let me know. If you're in the front of the house, I am happy to add you to the list. Enjoy your month everyone. Hope to see you soon. Aloha!

# Yada Yada



**DoubleTree by Hilton Alana Waikiki Beach** has named **Shaun Ono** as its General Manager. Ono has 18 years of hospitality experience and joins Hilton after serving as director of rooms at Sheraton Waikiki since 2019. Before that, Ono held a variety of executive positions with Sheraton's Waikiki properties, including bi-plex director of Asia Guest Services for Sheraton Waikiki and Royal Hawaiian; outlets manager at Sheraton Waikiki; general manager of Twist at Hanohano, Sheraton Waikiki; outlet manager of Momoyama, Sheraton Princess Kaiulani and director of guest services at Moana Surfrider. • **Hilton Hawaiian Village** has appointed **Atsushi Ganaha** as the new chef de cuisine of Bali Oceanfront. Most recently, Ganaha served as the executive chef at Torien, a Michelin-starred yakitori and omakase-style restaurant in New York City. With an extensive knowledge of international cuisine styles, including Japanese, Sushi, Yakitori, French, Italian, Chinese, Caribbean, and Latin, Ganaha will lead an exciting revamp of the restaurant's menu offerings. • **Dee Jay Mailer** was appointed Interim President and CEO of **Bishop Museum** in February. By the end of March, the Board of Directors had offered her a three-year term effective immediately. Her extensive

experience in all levels of leadership and the strong, steady hand she showed in the first eight weeks on the job was so well received they made her a full-time offer. Mailer served as CEO of Kamehameha Schools/ Bishop Estate for a decade before retiring to devote her time to community advancement and board governance, and served on the museum's Board in the past. • **The Hawaiian Mission Houses** announced multiple changes to its leadership team recently starting with **Erin Shapiro**, who has been named its new Executive Director. Shapiro brings an extensive museum background with her, including previous roles with the Honolulu Museum of Art. **Elisabeth Case** has been hired as its Director of Development and Marketing. Previously she worked with The Contemporary Museum and the Hawaii Opera Theatre. **Lisa Solomine** will be stepping into the newly created role of Curator of Community Engagement. **Mike Smola** has been on staff since 2008 and has been the Curator of Public Programs for the last 12 years. He has been promoted to Director of Education. **Marissa Rohlfing** is the incoming Society Relations Director, and **Susan Pelfrey**, who has been involved with HMH since 2000, has been named the new Curatorial Assistant.



Dee Jay Mailer

## Cirque du Soleil & Outrigger plan Hawaii Residency

Cirque du Soleil is coming to the islands for a multi-year residency next year. Known for its breathtaking, high-flying acrobatics, they are partnering with the Outrigger Hospitality Group to fuse their world-renowned acrobats with the natural beauty and culture Hawaii offers to create an exciting new show unique



Simon Painter, Cirque du Soleil Creative Director; Makanani Salā, Exec. Director of Honolulu Mayor's Office of Culture & the Arts; Eric Grilly, Cirque du Soleil President of Resident & Affiliate Shows; Mayor Rick Blangiardi; Jeff Wagoner, President & CEO of Outrigger Hospitality Group

to the islands. Plans have already begun to completely transform the 20,000 sq. ft. showroom that was the home to Magic of Polynesia at the Outrigger Waikiki

Beachcomber for nearly 30 years into a 800-seat state-of-the-art theatre. Native Hawaiian Aaron J. Salā, PhD has been retained as the creative cultural producer to assist in creating the show's storyline along with other prominent local artists, musicians and dancers.

It will be exciting to see what these two companies do as they join forces to raise the bar in Honolulu's entertainment scene and bring a brand new world-class immersive experience to life in 2024.



# EXTRA EXTRA EXTRA *Newsflash*

## WAIKIKI BEACH WALK WELCOMES NEW TENANTS

Waikiki Beach Walk has added two new stores to its list of locally-owned businesses. Both SoHa Keiki and Nalu Health Bar & Café and opened last month. Nalu Health Bar and Cafe offers acai bowls, locally sourced and organic ingredients, tea and coffee. SoHa Keiki, an offshoot of SoHa Living offers kids bedroom and nursery decor, baby blankets, stuffed animals, books, games and accessories. [waikikibeachwalk.com](http://waikikibeachwalk.com).

## NEW CATAMARAN ENTERS PRIVATE CHARTER MARKET

There's a new Waikiki-based 41-foot catamaran on the water offering private customizable charters. Pau Hana Sailing launched its fast cruising catamaran with slim, lightweight asymmetrical hulls late last year. Offering a large covered seating area, galley and interior seating and forward nets perfect for lounging, the boat is available for private charters up to 12 people. Guests are able to bring their own food and beverage or enjoy a menu of locally-inspired pupus from their private chef. Pick up in front of the Prince Hotel. Details at [pauhanasailing.com](http://pauhanasailing.com).

## MARGOTTO ANNOUNCES 1ST CHEF COLLAB W/ ALAN WONG

Margotto Hawaii announces its first chef collaboration with Chef Alan Wong. Executive Chef Kenta Kayama will be present for this \$485 degustation on Wednesday, May 10 at 6 p.m. Wine pairings by Chuck Furuya are included. The 8-course meal will include a classic favorite from each of the chefs, as well as a signature presentation swap where each chef will reinterpret the other's recipe, putting their own twist into the dish. The special menu will be available until May 16. [margotto-hawaii.com](http://margotto-hawaii.com)

## BLAISDELL BEGINS CLOSURES FOR RENOVATION PROJECT

The Blaisdell Center begins renovations with closures starting this month. The Arena will be closed for construction from May 8th - November 15th. The Exhibition is scheduled to June 15th to August 7 with the Concert Hall closing for a year on July 1st. [blaisdellcenter.com](http://blaisdellcenter.com).

## HELP UPDATE OUR MAILING LIST

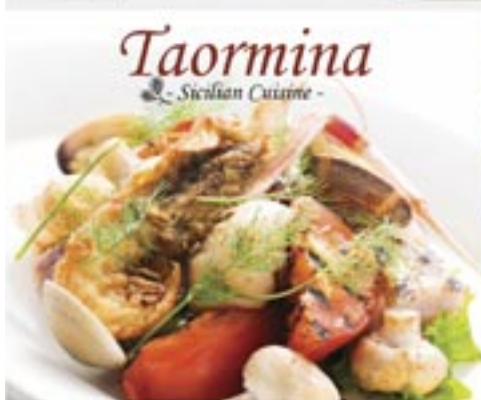
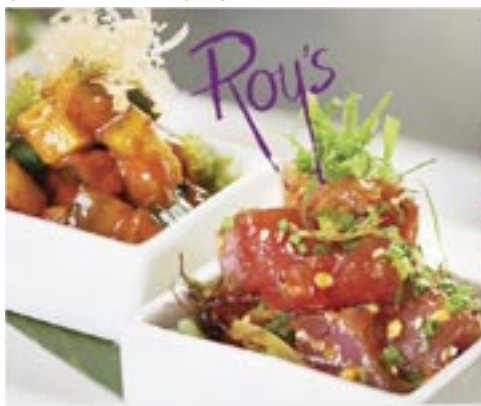
Are you getting copies for someone no longer at your property? Others missing an issue? Please email us any changes.

## THE ESCAPE GAME OPENS IN HAWAII AT ALA MOANA CENTER

Escape rooms have soared in popularity the past few years. They're a lot of fun and a great way to bond with your friends and/or co-workers. The Escape Game opened at Ala Moana Center at the beginning of the year. Their games are designed for everyone from a first time to experts. Located on the 2nd floor next to Target, they will open as early as 7 a.m. or stay open until midnight for special guests. [theescapegame.com](http://theescapegame.com). 736-3834.

## THE KAHALA HOTEL LAUNCHES RETAIL STORE IN WAIKIKI

The Kahala Hotel & Resort is launching a one-of-a-kind retail line at the Royal Hawaiian Center. Offering exclusive gourmet gifts and souvenirs from the resort's collection of local specialty goods, and a delicious selection of high-quality chocolate macadamia nuts, shortbread cookies, pancake mix and custom blends of coffee. Open daily from 10 a.m. - 9 p.m. Located in Building C, Level 1. [royalhawaiiancenter.com](http://royalhawaiiancenter.com).



## Why Limit Mom to Just One Great Meal?

Make the month of May Mothers' Day month with Waikiki's best selection of dining.



WAIKIKI  
BEACH WALK.

**Free Parking 10am-3pm Daily\***

\*With \$10 minimum purchase

Located on Lewers St.  
between Kalakaua Ave. & Kalia Rd.  
Open 365 Days | 10AM-9PM

[WAIKIKIBEACHWALK.COM](http://WAIKIKIBEACHWALK.COM) |   

# Lantern Festival

Continued from page 1.

who visited a cemetery to decorate the graves of Confederate soldiers after the Civil War. Disturbed by the sight of the neglected graves of Union soldiers, they offered flowers on their graves as well. The custom grew to decorate the graves of all departed loved ones and honor everyone who died in battle. When the founder of Shinnyo-en, Master Shinjo Ito, visited Hawai'i in 1970, he paid his respects at Punchbowl and the Arizona Memorial. Profoundly moved by this experience, he was inspired by the wish to hold a lantern floating where people could share their hopes for peace. After Master Ito's passing in 1989, Shinso Ito, recognized as his most accomplished disciple, succeeded him as the head of Shinnyo Buddhism. Her Holiness Shinso Ito fulfilled his wish by launching the first Shinnyo Lantern Floating Hawai'i in 1999. She is one of the few women to become a Buddhist master and attain the highest priestly rank of Daisojo.

After three years of alternative observances thanks to the pandemic, the 25th annual observance of Shinnyo Lantern Floating Hawai'i will finally return as an in-person event at Ala Moana Beach Park for the first time since 2019. "We are grateful to return to an in-person event to collectively reflect on the countless and continuing acts of compassion and heroism over the past few years, share in a moment of collective remembrance, and generate hope and a sense of renewal toward the future," said Rev. Craig Yamamoto, community relations liaison of Shinnyo-en Hawaii.

During the free sunset event, a stunning display of 6,000 lighted lanterns bearing remembrances and names of loved ones will be set adrift in the ocean at Ala Moana Beach Park. At the end of the evening, the lanterns will be collected for reuse in following years. The messages are also collected and handled in a ceremonial way.

The annual ceremony draws people from various ethnic, cultural, and religious backgrounds in a gathering that aims to create a moment of collective remembrance, harmony, and international friendship. The community is invited to honor fallen service members and loved ones in person on May 29, 2023. Candle-lit lanterns bearing remembrances, prayers, and affirmations to perpetuate the goodness of those remembered will be set afloat at Ala Moana Beach at sunset.

Participants write messages to their lost loved ones on the sails of the specially constructed lanterns and float them out to sea. This year there will be 6,000 lanterns expected to illuminate the waters of Ala Moana Beach Park as tens of thousands gather to release their lanterns into the sunset. There is no cost to attend or participate.

Visitors and guests are encouraged to join the ceremony led by Her Holiness Shinso Ito of Shinnyo-en Buddhist Order at 6 p.m. This highly traditional ceremony begins with blowing the pū, or conch shell, followed by taiko drums and Hawaiian chants before the grand entrance of the Guiding Lanterns. Six large lanterns carry prayers for all spirits on behalf of everyone. Volunteers will float these lanterns, hoping to encourage peace and harmony. After a few more ceremonial blessings, Her Holiness rings the bell. The crystal-clear sound of the bell is meant to focus everyone's thoughts and prayers and signifies it is time to float the lanterns. At the end of the ceremony, the lanterns will be collected and refurbished for use next year.

Participants wishing to float a lantern in person should be able to pick up a single individual lantern at the Lantern Request



Tent on a first-come, first-served basis on the day of the event. All lanterns are free. Due to the high number of participants expected, they ask you to limit your request to one lantern per family or group to allow others to participate. Besides, many different names and messages fit on a single lantern, and the experience of sharing your lantern with others can be a very bonding moment. Full details on how lanterns will be distributed will be available closer to the event date.

Floating homemade lanterns are highly discouraged to protect the environment. You should know that each lantern is constructed especially for this event with the environment and participants' safety in mind. You should also be aware that adorning your lantern with lei is not allowed due to environmental and fire safety concerns.

Volunteers have been preparing for this event since April, and for those who would like to help construct some of the thousands of lanterns, please feel free to volunteer your time by emailing [volunteer@naleialoha.org](mailto:volunteer@naleialoha.org) or calling 942-1848.

To have a volunteer float a lantern on your behalf, submit your remembrances and messages online. Submissions will be printed and floated on a Collective Remembrance Lantern in the ceremony from the canoes. Submissions can be made in person at the temple located at 2348 Beretania Street or online.

Live streaming of the entire ceremony and the complete schedule of events will be available on its website on May 29. You may also view the ceremony on Facebook, Instagram, YouTube, and on [khon2.com](http://khon2.com) and KHON TV-2 from 6:30 – 7:30 p.m. To submit a remembrance, see the entire schedule or watch the Festival online, go to [lanternfloatinghawaii.com](http://lanternfloatinghawaii.com).

## New Private Charter Yacht

Pau Hana Sailing is now offering guests highly personalized small group charters out of the Ala Wai Boat Harbor



**Our Services:**


- Sailing
- Marine Life
- Swimming
- Snorkeling
- Magic Carpet
- Chef Available

BYOB or choose from our chef-driven curated menus

Contact Us for Details:  
**808-807-9191**  
[pauhanasailing.com](http://pauhanasailing.com)







Book Your Guests the  
Experience of a Lifetime



Schedule Tours of the Maui Divers Jewelry Design Center. Guests will learn how we create all our jewelry locally in Hawaii, shop our updated showroom, and hand pick pearls from our New Pearl Bar.



MAUI DIVERS JEWELRY

Inspired, designed and created in Hawai'i EST. 1959

Ala Moana Center | Hilton Hawaiian Village | International Market Place | Pearl Harbor | Dole Plantation

Hale'iwa Store Lots | Honolulu Airport | Maui Divers Jewelry Design Center

Tours, Bookings and Questions? Call or Text 808.946.2929

O'ahu | Maui | Big Island | Kaua'i | MauiDivers.com

# BRINGING WORLD- CLASS ART TO WAIKIKI



## THE PARK WEST FINE ART MUSEUM & GALLERY

Waikiki Beach Walk  
Honolulu  
808-859-4871  
parkwesthawaii.com

Any client you refer for a private tour will  
get **10% off their purchase\***  
if they mention the hotel and concierge  
that referred them.

Email: [waikikibeach@parkwestgallery.com](mailto:waikikibeach@parkwestgallery.com)  
for more details.

\*Terms and conditions apply

## Tour the Little Plumeria Farm

Do you have repeat guests that have "been there — done that" for all things Hawaii? Well, now there's something new to recommend to them, and unique for you too. For the first time in its 50-year history, Little Plumeria Farms will open to the public on Lei Day, offering tours as of May 1.

Jim Little started Little Plumeria Farms in 1973 as a hobby over fifty years ago. A former photography teacher at Punahou School, Jim was first introduced to the cross-pollination technique by the pioneer of hybridizing, Bill Moragne. Soon after, Jim successfully created his first hybrid plumeria flower. Over the next five decades, hundreds of exotic color combinations, fragrances, compact growers, and more followed. The 20-acre farm now features the world's largest collection of rare hybrid plumerias.

This farm has never been open to the public before. However, all of that changes on May 1 as they offer a once-in-a-lifetime experience for flower lovers, plumeria enthusiasts, and those who want an intimate tour with just family and friends through their 20-acre farm overlooking the North Shore.

The Farm Tour offers a partially guided walking group tour that includes strolling through its Rare Hybrid Plumeria Garden, learning about the various stages of plant growth at The Nursery, and surrounding yourself with blossoming trees and time to pick your flowers in designated areas. Tours are one hour and are \$45 per person, \$25 for keiki 13 and under.

For a truly unique experience, sign up for a private tour. This experience includes everything in the standard Farm Tour, plus visiting restricted areas by all-terrain vehicles. These exclusive zones feature many additional rare plumeria trees and some of the newest hybrids yet to be seen by the public. Each guest will be greeted with a plumeria lei, receive a signed copy of Jim Little's book 'Growing Plumerias in Hawaii and Around the World,' and choose a plumeria cultivar (USDA approved) from the packaged varieties in the gift store. These tours take an hour and a half, and one of the Littles will serve as your guide. A private tour costs \$250 per person and \$150 for kids 13 years of age and under.



Clark Little, Jim Little, and Dane Little

Which Little, you may ask? Three generations of the Little family run the farm — Jim, his son Clark, and his grandson Dane. Clark's name may ring a bell for some of you, as he is the same Clark Little many of you know for his award-winning photography. His photos have appeared around the world, and even graced the walls of the Oval Office during President Obama's time in office. So, while his schedule is understandably busy, this family-run farm is intensely personal for all three generations. Some of your VIPS may end up with the internationally known artist as their tour guide.

Clark has been helping his father at the farm since his teens. "It's pretty special that we have three generations working the plumeria farm," said Clark. "It's something we've been doing as a family for 50 years. And for these past few years, my dad, my son, and I have been working extra hard to get things ready to open to the public. Some people have noticed I've been shooting less wave photos lately. Now you know why."

His son Dane is now an active part of the farm as well. "When my dad, Clark, was in his 20s, he was focused on the farm helping out my grandfather every day. Now that I am in my 20s, I am doing the same thing. I am following in their footsteps. I love being at the farm and sharing the flowers and stories with everyone. It's a special place for me," said Dane Little, the youngest generation running the farm.

So, the next time your guests tell you to find something new because they have done 'everything' before, let them know about this brand-new experience now available to them. Kama'aina discounts are available.

The farm offers plumeria tours from May 1 through October 31, coinciding with the blossoming season. Farm tours off-season, meaning without plumerias in bloom, may be scheduled by special appointment. Guests will need covered shoes to walk around the farm and should bring sunscreen and a hat. Reservations are required in advance.

For more information, go to [littleplumeriafarms.com](http://littleplumeriafarms.com).



# Fireknife Championship

Continued from page 1.

World Fireknife Champions themselves. Between the six judges, they have won 13 of the past 29 competitions, including Chief Sielu Avea of Hauula, who in 1993 became the first-ever World Fireknife Dance Champion. Since winning the title, he has performed in dozens of countries and appeared on multiple TV shows, including The Oprah Winfrey Show, The Tonight Show, and the Miss Universe Pageant. In 2002, Chief Sielu threw the flaming spear that ignited the ceremonial torch at the Stadium of Fire event before the 2002 Winter Olympics opening ceremony in Salt Lake City. In case he's not an intimidating enough judge by himself, five other world champions will join him at the judge's table. They include Maui's Ifi So'o, who won in 1994, 1995, and 1996; Samoa's Pati Levasa, a 4x winner in 1997, 1998, 2001, and 2002; Waianae's Andrew Umi Sexton, who took home the title in 2007; Maui's VJ Tiumalu, a 3x winner in 2008, 2011, and 2014; and 2004 champion, Laie's own Alex Galeai. If you don't know, the Galeai family is fireknife royalty. His father, Pulefano, an outstanding knife dancer in his youth, won his first Fireknife World title in 1964 and founded this event in 1993. Now that's a final judging panel. You think these contestants will be nervous?

Another fun note about the judges, Tuione Tovo will be judging the preliminary rounds. He was the 2nd place finisher for the inaugural competition and the first fireknife dancer to be recruited by Cirque du Soleil. Recently, he retired from Cirque and moved to O'ahu, and PCC jumped on the chance to recruit him for this phenomenal line-up of judges for the 30th anniversary.

The World Fireknife Championships are part of the We Are Samoa Festival. Hawaii's largest Samoan event was established to perpetuate the values and traditions of the Samoan culture through learning and performance, thereby increasing knowledge, harmony, and respect for self and others. Local high school students come together to demonstrate Samoan traditions, skills, and games and offer exciting cultural performances based on this year's theme of "Historical Events." The We Are Samoa Festival will be held on Saturday, May 6, from 9 a.m. – 12 p.m.

One of the more exciting aspects of this event is the Junior & Intermediate Fireknife Competition on Wednesday, May 3, at 6:30 p.m. Children as young as six years old will take to the stage to strut

their stuff. Many of these kids are following in their family's footsteps, but others are just fascinated by the sport. Three-time champion David Galeai (of the aforementioned Galeai family), who started dancing himself at the age of 6, launched a fireknife academy in Laie back in 2006, offering kids from all ages and nationalities a chance who want to learn how to spin and fireknife, and many of the competitors on stage will be his students. These kids have been training regularly, and as the competition gets closer, it moves to a daily basis. Imagine being six years old and training day in and day out for a competition like this.

Get your Chee Hoo's ready to cheer them on!

The Men & Women's World Fireknife Competition on Wednesday, May 10, starts at 6:30 p.m., and admission is \$15, leading to the final competitors facing off during the intermission of Ha: Breath of Life on Thursday, May 11, at 7:30 p.m. Tickets for the finale are \$89.95. The cost includes admission to the show, and the winner will be crowned in a lavish award ceremony after the show.

For more information about the event or to purchase tickets, please call the Polynesian Cultural Center at 293-3333 or visit [worldfireknife.com](http://worldfireknife.com).

## Exceptional Dishes And a View to Match

Discover a one-of-a-kind dining experience where chef-driven dishes meet Oahu's most spectacular views. This is Bali Oceanfront.

- Contemporary open-air setting
- Sweeping ocean views
- Award-winning service
- Seasonal and locally harvested ingredients
- Serving breakfast and dinner

WILTON HAWAIIAN VILLAGE, RAINBOW TOWER  
COMPLIMENTARY SELF PARKING

FOR RESERVATIONS VISIT [BALIWAIKIKI.COM](http://BALIWAIKIKI.COM)  
808-941-2254

BREAKFAST	DINNER
7:00 - 11:30 AM, DAILY	5:00 - 9:00 PM, TUESDAY - THURSDAY 5:00 - 9:30 PM, FRIDAY - SATURDAY

Hilton  
HAWAIIAN VILLAGE®  
WAIKIKI BEACH RESORT

# Let's be Together...

DINING ▶ ENTERTAINMENT ▶ PAU HANA ▶ EAT ▶ DRINK ▶ BE MERRY ▶ HAPPY HOUR ▶

## MONDAY

**Barefoot Beach Café at Queen's Beach** 924-2233  
*Live Contemporary & Hawaiian*  
 The Barefoot Boys 5:30-8:30pm

**Chart House Waikiki** 941-6660  
*Live Contemporary Hawaiian*  
 Camarillo Brothers 6-9pm

**Deck. at the Queen Kapiolani Hotel** 931-4488  
*Mai Tai Mondays with Live Contemporary*  
 Freddy Leone (or others) 5pm-8pm

**Duke's Canoe Club Waikiki** 922-2268  
*Live Contemporary Hawaiian*  
 Grace Welton 4-6pm  
 Bryan & Halekahu (or others) 7-9pm  
 Ellsworth Simeona 9:30-11:30pm

**Hard Rock Cafe** 955-7383  
*Contemporary Rock*  
 Cassie and the... (or TJ & Son) 4-6pm

**House Without a Key** 923-2311  
*Hawaiian music & hula by Miss Universe '97 Brook Lee*  
 Pa'ahana Trio 5:30-8:30pm

**Kani Ka Pila Grille** 924-4992  
*Hoku Award Winning Hawaiian musicians*  
 Sean Na'auao 6-9pm

**Mahi'ai Table** 670-2778  
*Live Contemporary*

Jenna Keala 5-8pm

**Mahina & Sun's** 923-8882  
*Monday Vibes on the Lanai*  
 Brent Limos 6:30-9:30pm

**Mai Tai Bar at the Royal Hawaiian** 923-7311  
*Live Contemporary Hawaiian*  
 Eric Lee 11am-2pm  
 Brad Kawakami (5/1 - Chris Luke) 8-10pm

**Maui Brewing Company** 843-2739  
*Live Contemporary Hawaiian*  
 Scott Magz 3:30-5:30pm

**Merriman's Honolulu** 215-0022  
*Live Slack Key guitarist*  
 Freddy Leone 5:30-7:30pm

**Moani Waikiki** 466-2629  
*Contemporary R&B*  
 Freddy Leone 7-10pm

**Monkeypod Kitchen Ko Olina** 381-4086  
*Live Contemporary*  
 Koa & Yaz 3:30-5pm

**Piko Kitchen & Bar** 923-2032  
*Live Contemporary Hits*  
 Christian Yrizarry (5/1 - Jenny Yim) 5:30-8:30pm

**Rumfire** 921-4600  
*Live Contemporary Hits*  
 Shawn Garnett 6-9pm

**Signature Prime Steak** 949-3636  
*Contemporary Pianist in the bar*  
 Keith Montross 6-9pm

**Splash Bar at the Sheraton Princess Kaiulani** 921-4600  
*Live Contemporary Hawaiian*  
 David Aquino 6-9pm

**Swell at the Alohilani** 294-4108  
*Solo Contemporary Guitarist*  
 Drew Henmi 6:30-9:30pm

**SWIM at the Hyatt Regency** 923-1234  
*Live Contemporary Hawaiian*  
 Kaulana Vinoya 5-8pm

**The Beach Bar at the Moana Surfrider** 922-3111  
*Live Contemporary Hawaiian*  
 Eric Lee 3:30-6:30pm  
 Johnny Valentine 7-10pm

**The Edge at the Sheraton** 921-4600  
*Live Hawaiian Music*  
 Stephen Inglis 1-4pm

**The Point Sunset Pool Bar at Turtle Bay** 293-6000  
*Live Contemporary Hawaiian*  
 Mike Tulba 5-8pm

**Tiki's Grill & Bar** 923-TIKI  
*Live Contemporary Hawaiian*  
 Michael Piranha 5:30-7:30pm  
 Lava Grove 10-11pm

**Tommy Bahama Restaurant** 923-8785  
*Contemporary Hawaiian. Happy Hour Daily 2 - 5 p.m.*  
 Jeremy Hirokawa 5-8pm

**Tropics Bar & Grill** 949-4321  
*Live Contemporary*  
 Ells Simeona (or Ben Kama) 3-5pm

**Amuse Wine Bar** 237-5428

*Live R&B & Contemporary*  
 Chris Salvador 7-9pm

**Barefoot Beach Café at Queen's Beach** 924-2233  
*Backyard Hawaiian*  
 Ben Kama 5:30-8:30pm

**Chart House Waikiki** 941-6660  
*Live Contemporary Hawaiian*  
 Ryan Tang Group 6-9pm

**Deck. at the Queen Kapiolani Hotel** 931-4488  
*Tequila & Taco Tuesday with Live Contemporary*  
 Shane Kainoa (or others) 6pm-9pm

**Duke's Canoe Club Waikiki** 922-2268  
*Live Contemporary Hawaiian*  
 Trish Nalei (or Taz Vegas) 4-6pm  
 Kailua Moon (5/16 - Ben Kama) 7-9pm  
 Stephen Inglis 9:30-11:30pm

**Eating House 1849 Waikiki** 924-1849  
*Live Contemporary Hawaiian*  
 Kings Kalohelani 4:30-7:30pm

**Giovanni Pastrami** 923-2100  
*Acoustic Soul, R&B and Pop*  
 YOZA (or others) 6:30-9:30pm

**Hard Rock Cafe** 955-7383  
*Contemporary Rock*  
 Sidney Spencer (or others) 4-6pm

**House Without a Key** 923-2311  
*Hawaiian music & hula by Miss Hawaii USA '21 Allison Chu*  
 Delima Ohana 5:30-8:30pm

**Kani Ka Pila Grille** 924-4992  
*Hoku Award Winning Hawaiian musicians*  
 Kala'e Camarillo 6-9pm

**Lewers Lounge** 923-2311  
*Jazz Pianist*  
 Tommy James 8:30pm-12am

**Liko's Tap & Table** 394-5456  
*Live Contemporary*  
 Jason Laeha 5-8pm

**Mahi'ai Table** 670-2778  
*Live Contemporary*  
 Keoni Ku 5-8pm  
 Jenny Yim (5/2, 5/23) 5-8pm

**Mahina & Sun's** 923-8882  
*Electrifying Acoustic on the Lanai*  
 Laupepa Letuli 6:30-9:30pm

**Mai Tai Bar at the Royal Hawaiian** 923-7311  
*Live Contemporary Hawaiian*  
 Kupu Dalire-Na'auao (5/2 - Zanuck Lindsey) 11am-2pm  
 Eric Lee 6-9pm

**Maui Brewing Company** 843-2739  
*Live Contemporary Hawaiian*  
 Wavvy Duo 3:30-5:30pm  
 Christian Yrizarry (5/16, 5/30) 3:30-5:30pm

**Merriman's Honolulu** 215-0022  
*Live Contemporary*  
 John Kema 5:30-7:30pm

**Moani Waikiki** 466-2629  
*Live Hawaiian, Reggae, R&B*  
 Lava 7-10pm

**Piko Kitchen & Bar** 923-2032  
*Live Contemporary Hits*

OriginalMagoosPizza.com/Order

ORIGINAL  
**MAGOO'S**  
 PIZZA & HAWAII



**HAWAII'S FAVORITE  
 ISLAND-STYLE PIZZA,  
 SUBS & CHICKEN**

**WE'VE MOVED  
 TO KAIMUKI!  
 DINE-IN & FULL BAR  
 TAKEOUT & DELIVERY**

**3579 WAIALAE AVENUE  
 (BETWEEN 11TH & 12TH AVE)**

## TUESDAY



# E Pili Kākou

DINING ▶ ENTERTAINMENT ▶ PAU HANA ▶ EAT ▶ DRINK ▶ BE MERRY ▶ HAPPY HOUR

Drew Henmi 5-8pm  
**Rumfire 921-4600**  
*Live Contemporary Hits*  
 Christian Yrizarry (5/9 - Johnny Helm) 6-9pm  
**Signature Prime Steak 949-3636**  
*Contemporary Pianist in the bar*  
 Keith Montross 6-9pm  
**Splash Bar at the Sheraton Princess Kaiulani 921-4600**  
*Live Contemporary Hawaiian*  
 Dave Watanabe (5/9 - Jenny Yim) 6-9pm  
**Swell at the Alohilani 294-4108**  
*Solo Contemporary Guitarist*  
 Kamuela Kahoano 6:30-9:30pm  
**SWIM at the Hyatt Regency 923-1234**  
*Live Contemporary Hawaiian*  
 Jon Basebase 5-8pm  
**The Beach Bar at the Moana Surfrider 922-3111**  
*Live Contemporary Hawaiian*  
 Stephen Inglis 3:30-6:30pm  
 Alex Oasay 7-10pm

**The Edge at the Sheraton 921-4600**  
*Live Hawaiian Music*  
 Eric Lee 1-4pm  
**The Point Sunset Pool Bar at Turtle Bay 293-6000**  
*Live Contemporary Hawaiian*  
 Jenna Keala 5-8pm  
**The Veranda at the Kahala Hotel 739-8760**  
*Live Contemporary*  
 Kupu Dalire Na'auao 6-9pm  
 David Aquino (5/2) 6-9pm  
**Tiki's Grill & Bar 923-TIKI**  
*Live Contemporary Hawaiian & Reggae*  
 Biku 5:30-7:30pm  
 Lindsey Wells 8-10pm  
**Tommy Bahama Restaurant 923-8785**  
*Contemporary Hawaiian. Happy Hour Daily 2 - 5 p.m.*  
 Johnny Kukui 5-8pm  
**Tropics Bar & Grill 949-4321**  
*Live Contemporary*  
 Kailua Bay Buddies 3-5pm

## WEDNESDAY

**Azure at the Royal Hawaiian 921-4600**  
*Live Contemporary Hawaiian*  
 Ethan Capone 5:30-8:30pm  
**Barefoot Beach Café at Queen's Beach 924-2233**  
*Island Vibes*  
 Danny Galura 5:30-8:30pm  
**Chart House Waikiki 941-6660**  
*Live Contemporary Hawaiian*  
 Mike Tulba 6-9pm  
**Duke's Canoe Club Waikiki 922-2268**  
*Live Contemporary Hawaiian*  
 Keoni Ku (or Donald Fialkowski) 4-6pm  
 Taulia Lave (5/17 - Ells Simeona) 7-9pm  
 Alika Souza 9:30-11:30pm  
**Eating House 1849 Waikiki 924-1849**  
*Live Contemporary Hawaiian*  
 Shawn Garnett 4:30-6:30pm  
**Giovanni Pastrami 923-2100**  
*Acoustic Guitar Soul, R&B*

Jason Laeha 6:30-9:30pm  
**Hard Rock Cafe 955-7383**  
*Contemporary Rock*  
 Mike Piranha (or others) 4-6pm  
**House Without a Key 923-2311**  
*Hawaiian music & hula by Miss Universe '97 Brook Lee*  
 Pa'ahana Trio 5:30-8:30pm  
**Kani Ka Pila Grille 924-4992**  
*2023 Kani Ka Pila Grille Talent Search Winner*  
 Anthony Fpluke 6-9pm  
**Lewers Lounge 923-2311**  
*Jazz Pianist*  
 Tommy James 8:30pm-12am  
**Mahi'ai Table 670-2778**  
*Live Contemporary*  
 Dillon Pakele 5-8pm  
**Mahina & Sun's 923-8882**  
*Soulful Guitar on the Lanai*  
 Cameron Achuela 6:30-9:30pm

**Mai Tai Bar at the Royal Hawaiian 923-7311**  
*Live Contemporary Hawaiian*  
 Stephen Inglis (5/31 - Keoni Ku) 11am-2pm  
 Johnny Valentine 6-9pm  
**Maui Brewing Company 843-2739**  
*Live Contemporary Hawaiian*  
 YOZA 3:30-5:30pm  
**Merriman's Honolulu 215-0022**  
*Live Contemporary*  
 Kona Abergas 5:30-7:30pm  
**MINA's Fish House 679-0079**  
*Live Contemporary Hits*  
 Kamuela Kahoano 6-9pm  
**Moani Waikiki 466-2629**  
*Contemporary Island Music, Reggae and Blues*  
 Keith Batlin 7-10pm  
**Monkeypod Kitchen Ko Olina 381-4086**  
*Live Contemporary*  
 Shaun Garnett 12:30-2pm  
**Piko Kitchen & Bar 923-2032**  
*Live Contemporary Hits*  
 David Aquino 5-8pm

**Rumfire 921-4600**  
*Live Contemporary Hits*  
 Dave Watanabe 6-9pm  
**Signature Prime Steak 949-3636**  
*Contemporary Pianist in the bar*  
 Pierre Grill 6-9pm  
**Splash Bar at the Sheraton Princess Kaiulani 921-4600**  
*Live Contemporary Hawaiian*  
 Alika Souza 6-9pm  
**Swell at the Alohilani 294-4108**  
*Solo Contemporary Guitarist*  
 Danielle Parente 6:30-9:30pm  
**SWIM at the Hyatt Regency 923-1234**  
*Live Contemporary Hawaiian*  
 Biku 5-8pm  
**The Beach Bar at the Moana Surfrider 922-3111**  
*Live Contemporary Hawaiian*  
 Brandon Serrano 3:30-6:30pm  
 Christian Yrizarry (or Zanuck Lindsay) 7-10pm

**The Edge at the Sheraton 921-4600**  
*Live Hawaiian Music*  
 Kupu Dalire-Na'auao 1-4pm  
**The Point Sunset Pool Bar at Turtle Bay 293-6000**  
*Live Contemporary Hawaiian*  
 Alex Oasay 5-8pm  
**The Veranda at the Kahala Hotel 739-8760**  
*Live Contemporary*  
 Nick La'a (5/10 - Brad Kawakami) 6-9pm  
**Tiki's Grill & Bar 923-TIKI**  
*Live Contemporary Hawaiian and hula*  
 Malu Productions 5:30-7:30pm  
**Tommy Bahama Restaurant 923-8785**  
*Contemporary Hawaiian. Happy Hour Daily 2 - 5 p.m.*  
 Stan Albrecht 5-8pm  
**Tropics Bar & Grill 949-4321**  
*Live Contemporary*  
 Bryan & Halehaku 3-5pm  
 BIKU & the Honolulu Beer Choir (5/24) 3-5pm  
**Vintage 1901 at the Moana 921-4600**  
*Contemporary Piano*  
 David Swanson 6:30-10pm


## THURSDAY

**100 Sails at the Prince Waikiki 944-4494**  
*Live Contemporary & Hawaiian*  
 Kailua Moon 6-8pm


## RUTH'S CHRIS

### Referral Program

Refer your guests to experience perfection at Ruth's Chris Steak House and receive a Ruth's Chris Gift Card




Receive a \$50 Ruth's Chris Gift Card for every 25 Guests that dine at Ruth's Chris Steak House. When making your GUEST reservation via phone, or Open Table, please provide your name and company name and our team will track your referrals accordingly.



*"What's Sizzling at Ruth's"*

- Sizzling Prime Time Menu available nightly from Opening to 6pm. (3) Course Menu from \$59 per person.
- Happy Hour featuring Appetizer and Drink Specials from Opening to 7pm.



Honolulu • 808.599.3860 • Waterfront Plaza, 500 Ala Moana Boulevard  
 Waikiki • 808.440.7910 • Waikiki Beach Walk, 226 Lewers Street  
 Wailea • 808.874.8880 • The Shops at Wailea, 3750 Wailea Ala Nui Drive

# Let's be Together...

DINING ▶ ENTERTAINMENT ▶ PAU HANA ▶ EAT ▶ DRINK ▶ BE MERRY ▶ HAPPY HOUR ▶

**Azure at the Royal Hawaiian** 921-4600  
*Live Contemporary Hawaiian*  
 Noly Paa 5:30-8:30pm

**Barefoot Beach Café at Queen's Beach** 924-2233  
*Live Contemporary & Hawaiian*  
 Alika Souza 5:30-8:30pm

**Chart House Waikiki** 941-6660  
*Live Contemporary Hawaiian*  
 Tito & David 6-9pm

**Deck. at the Queen Kapiolani Hotel** 931-4488  
*Live Contemporary*  
 Freddy Leone (or others) 5pm-8pm

**Duke's Canoe Club Waikiki** 922-2268  
*Live Contemporary Hawaiian*  
 Scott Magz 4-6pm  
 Chapter II (or Kona Chang) 7-9pm  
 Walt Keale (or Uluwehi Young) 9:30-11:30pm

**Eating House 1849 Waikiki** 924-1849  
*Live Contemporary Hawaiian*  
 Shane Kainoa 5-8pm

**Giovanni Pastrami** 923-2100  
*Live Contemporary*  
 Billy Sage 6:30-9:30pm

**Hard Rock Cafe** 955-7383  
*Contemporary Rock*  
 Mark Caldeira (or others) 4-6pm

**House Without a Key** 923-2311

*Hawaiian music & hula by Miss Universe '97 Brook Lee*  
 Walea 5:30-8:30pm

**Kani Ka Pila Grille** 924-4992  
*Hoku Award Winning Hawaiian musicians*  
 Kawika Kahiapo 6-9pm

**Lewers Lounge** 923-2311  
*Jazz Pianist*  
 Ethan Capone & Rocky Holmes 8:30pm-12am

**Mahi'ai Table** 670-2778  
*Live Contemporary*  
 Alex Oasay 5-8pm

**Mahina & Sun's** 923-8882  
*Hawaiian Contemporary on the Lanai*  
 Kelly Boy DeLima 6:30-9:30pm

**Mai Tai Bar at the Royal Hawaiian** 923-7311  
*Live Contemporary Hawaiian*  
 Christian Yrizarry 11am-2pm  
 Stephen Inglis 8-10pm

**Maui Brewing Company** 843-2739  
*Live Contemporary Hawaiian*  
 Johnny Helm 3:30-5:30pm

**Maui Brewing Kailua** 518-2739  
*Live Contemporary Hawaiian*  
 David Sedlak (or Grace Welton) 6-8pm

**Merriman's Honolulu** 215-0022  
*Live Contemporary*  
 Laupepa 5:30-7:30pm

**MINA's Fish House** 679-0079  
*Live Contemporary Hits*  
 Johnny III 6-9pm

**Moani Waikiki** 466-2629  
*Contemporary Island Music*  
 Kimo Opiana 7-10pm

**O Bar at the Alohilani** 294-4108  
*Solo Contemporary Guitarist*  
 David Aquino 5-8pm

**Piko Kitchen & Bar** 923-2032  
*Live Contemporary Hits*  
 Keoni Ku 5-8pm

**Rumfire** 921-4600  
*Live Contemporary Hits*  
 Brad Kawakami 6-9pm

**Signature Prime Steak** 949-3636  
*Contemporary Pianist in the bar*  
 Grant Carvalho & Rocky Holmes 6-9pm

**Sky Waikiki** 979-7590  
*Live Contemporary*  
 John Akapo 5-8pm

**Splash Bar at the Sheraton Princess Kaiulani** 921-4600  
*Live Contemporary Hawaiian*  
 Kaimi Hananoeau 3:30-5:30pm  
 Ronson Asuncion 6-9pm

**Swell at the Alohilani** 294-4108  
*Solo Contemporary Guitarist*  
 Denny Ono 6:30-9:30pm

**SWIM at the Hyatt Regency** 923-1234  
*Live Contemporary Hawaiian*  
 Dayton Watanabe 5-8pm

**The Beach Bar at the Moana Surfrider** 922-3111  
*Live Contemporary Hawaiian*

Christian Yrizarry 3:30-6:30pm  
 Kaimi Hananoeau 7-10pm

**The Edge at the Sheraton** 921-4600  
*Live Hawaiian Music*  
 Alika Souza 1-4pm

**The Point Sunset Pool Bar at Turtle Bay** 293-6000  
*Live Contemporary Hawaiian*  
 Dave Watanabe 5-8pm

**The Veranda at the Kahala Hotel** 739-8760  
*Live Contemporary*  
 Johnny Valentine 6-9pm

**Tiki's Grill & Bar** 923-TIKI  
*Live Contemporary Hawaiian & Reggae*  
 Malik Taylor 5:30-7:30pm  
 Roots Kai 8-10pm

**Tommy Bahama Restaurant** 923-8785  
*Contemporary Hawaiian. Happy Hour Daily 2 - 5 p.m.*  
 Alex Oasay 5-8pm

**Tropics Bar & Grill** 949-4321  
*Live Contemporary*  
 Jason Midro Duo 3-5pm

**Vintage 1901 at the Moana** 921-4600  
*Contemporary Piano*  
 David Swanson 6:30-10pm

## FRIDAY

**100 Sails at the Prince Waikiki** 944-4494  
*Live Contemporary & Hawaiian*  
 Mike Tulba Duo (5/5 - Kaiona Duo) 6-8pm

**Azure at the Royal Hawaiian** 921-4600  
*Live Contemporary Hawaiian*  
 Ethan Capone 5:30-8:30pm

**Barefoot Beach Café at Queen's Beach** 924-2233  
*Live Contemporary Hawaiian*  
 The Art Kalahiki Band 5:30-8:30pm

**Chart House Waikiki** 941-6660  
*Live Contemporary Hawaiian*  
 Mike Tulba 6-9pm

**Deck. at the Queen Kapiolani Hotel** 931-4488  
*Live Contemporary*  
 Shane Kainoa (or others) 6pm-9pm

**Duke's Canoe Club Waikiki** 922-2268  
*Live Contemporary Hawaiian*  
 Maunalua 4-6pm  
 Kawika Kahiapo 7-9pm  
 Dwight Kanae 9:30-11:30pm

**Hard Rock Cafe** 955-7383  
*Live Contemporary*  
 Heleo (or others) 8-10pm

**House Without a Key** 923-2311  
*Hawaiian music & hula by Miss Hawaii '73 Kanoë Miller*  
 Kapalama Trio 5:30-8:30pm

**Kani Ka Pila Grille** 924-4992  
*Hoku Award Winning Hawaiian musicians*  
 Ka Hehena 6-9pm

**Lewers Lounge** 923-2311  
*Jazz Pianist*  
 Maggie Herron & Dean Taba 8:30pm-12am

**Lucky Strike Honolulu** 664-1140  
*Live Reggae and R&B*

BarefootBeachCafe.com



"WE PUT Aloha INTO EVERY BITE SO SIT BACK, RELAX AND ENJOY THE VIEW."

### OPEN DAILY

BREAKFAST 8AM - 2PM  
 LUNCH/DINNER 11AM - 8:30PM  
 LIVE MUSIC NIGHTLY 5:30 - 8:30PM  
 & SUNDAYS 11AM - 2PM

BAREFOOT BEACH CAFE  
 2699 KALAKAUA AVENUE

808.924.2233

EVENTS &  
 GROUP RESERVATIONS

808.699.8830



# E Pili Kākou

DINING ▶ ENTERTAINMENT ▶ PAU HANA ▶ EAT ▶ DRINK ▶ BE MERRY ▶ HAPPY HOUR

Johnny Suite (or Riya Davis) 9pm-12am		Kupu Dalire-Na'auao 3:30-6:30pm		Hawaiian music & hula by Miss Hawaii '73 Kanoë Miller	
<b>Mah'i ai Table</b> 670-2778		Kamuëla Kahoano 7-10pm		Kapalama Trio 5:30-8:30pm	
<i>Live Contemporary</i>		<b>The Edge at the Sheraton</b> 921-4600		<b>Kani Ka Pila Grille</b> 924-4992	
Brandon Serrano 5-8pm		<i>Live Hawaiian Music</i>		<i>Hoku Award Winning Hawaiian musicians</i>	
<b>Mahina &amp; Sun's</b> 923-8882		Christian Yizarry (5/5 - Shawn Garrett) 1-4pm		Ho'okena 6-9pm	
<i>Slack Key on the Lanai</i>		<b>The Grove at the Modern Pool Deck</b> 943-5800		<b>Lewers Lounge</b> 923-2311	
Dustin Park Duo 6:30-9:30pm		<i>Live Contemporary</i>		<i>Jazz Pianist</i>	
<b>Mai Tai Bar at the Royal Hawaiian</b> 923-7311		Jenny Yim (or others) 4-7pm		Maggie Herron & Dean Taba 8:30pm-12am	
<i>Live Contemporary Hawaiian</i>		Brad Kawakami (Upper Pool Deck) 6-8pm		<b>Lucky Strike Honolulu</b> 664-1140	
Brandon Serrano 11am-2pm		<b>The Point Sunset Pool Bar at Turtle Bay</b> 293-6000		<i>Live Contemporary</i>	
Johnny III 6-9pm		<i>Live Contemporary Hawaiian</i>		Johnny Suite (or others) 9pm-12am	
<b>Mariposa</b> 951-3420		Mark Calderia 5-8pm		<b>Mah'i ai Table</b> 670-2778	
<i>Live Contemporary</i>		<b>The Veranda at the Kahala Hotel</b> 739-8760		<i>Live Contemporary</i>	
Chris Salvador 2:30-5:30pm		<i>Live Contemporary</i>		Jason Midro (or others) 5-8pm	
<b>Maui Brewing Company</b> 843-2739		Johnny Valentine 6-9pm		<b>Mahina &amp; Sun's</b> 923-8882	
<i>Live Contemporary Hawaiian</i>		<b>Tiki's Grill &amp; Bar</b> 923-TIKI		<i>Contemporary Hawaiian/Blues on the Lanai</i>	
Keith Batlin 3:30-5:30pm		<i>Contemporary Hawaiian, Alternative, Pop-Rock, Reggae</i>		Josh Akapo 6:30-9:30pm	
<b>Maui Brewing Kailua</b> 518-2739		Wavy 3-5pm		<b>Mai Tai Bar at the Royal Hawaiian</b> 923-7311	
<i>Live Contemporary Hawaiian</i>		Eddie 5:30-7:30pm		<i>Live Contemporary Hawaiian</i>	
Dion "Boogie" Scott (or others) 6-8pm		Bradda Ash & Keahi 8-10pm		Ronson Asuncion 11am-2pm	
<b>Merriman's Honolulu</b> 215-0022		<b>Tommy Bahama Restaurant</b> 923-8785		Dave Watanabe 6-9pm	
<i>Live Contemporary</i>		<i>Contemporary Hawaiian. Happy Hour Daily 2 - 5 p.m.</i>		<b>Mariposa</b> 951-3420	
Stephen Harris 5:30-7:30pm		Chris Murphy 5-8pm		<i>Live Contemporary</i>	
<b>MINA's Fish House</b> 679-0079		<b>Tropics Bar &amp; Grill</b> 949-4321		Aisaiah Jacobs 2:30-5:30pm	
<i>Live Contemporary Hits</i>		<i>Live Contemporary</i>		<b>Maui Brewing Company</b> 843-2739	
Jenna Keala 6-9pm		Kumuhaui 3-5pm		<i>Live Contemporary Hawaiian</i>	
<b>Moani Waikiki</b> 466-2629		<b>Vintage 1901 at the Moana</b> 921-4600		Shay & Majik (or others) 3:30-5:30pm	
<i>Live Contemporary Hawaiian</i>		<i>Contemporary Piano</i>		<b>Maui Brewing Kailua</b> 518-2739	
Liam Moletta 6-9pm		David Swanson 6:30-10pm		<i>Live Contemporary Hawaiian</i>	
<b>Monkeypod Kitchen Ko Olina</b> 381-4086				Justin Edwards (or others) 7-9pm	
<i>Live Contemporary</i>				<b>Merriman's Honolulu</b> 215-0022	
Jasmin Nicole 12:30-2pm				<i>Live Contemporary</i>	
<b>Piko Kitchen &amp; Bar</b> 923-2032				Shane Kainoa 5:30-7:30pm	
<i>Live Contemporary Hits</i>				<b>MINA's Fish House</b> 679-0079	
Johnny Helm 5-8pm				<i>Live Contemporary Hits</i>	
<b>Rumfire</b> 921-4600				Johnny Helm (5/6 - Alex Oasay) 6-9pm	
<i>Live Contemporary Hits</i>				<b>Moani Waikiki</b> 466-2629	
Stephen Inglis (5/19 - Zanuck Lindsey) 4:30-7:30pm				<i>Contemporary Island Music, R&amp;B, and Reggae</i>	
Kupu Dalire-Na'auao 8-10pm				Wavy Duo 6-9pm	
<b>SHOR at the Hyatt Regency</b> 923-1234				<b>Piko Kitchen &amp; Bar</b> 923-2032	
<i>Live Contemporary Hawaiian</i>				<i>Live Contemporary Hits</i>	
Dave Watanabe 5:30-8:30pm				Jenny Yim (5/6, 5/13) 5-8pm	
<b>Signature Prime Steak</b> 949-3636				Alex Oasay (5/20, 5/27) 5-8pm	
<i>Contemporary Pianist in the bar</i>				<b>Rumfire</b> 921-4600	
Grant Carvalho & Rocky Holmes 6-9pm				<i>Live Contemporary Hits</i>	
<b>Sky Waikiki</b> 979-7590				Mark Caldeira 4:30-7:30pm	
<i>Live Contemporary</i>				Kaleo Kahumoku 8-10pm	
John Akapo 5-8pm				<b>SHOR at the Hyatt Regency</b> 923-1234	
<b>Splash Bar at the Sheraton Princess Kaiulani</b> 921-4600				<i>Live Contemporary Hawaiian</i>	
<i>Live Contemporary Hawaiian, DJ Jem spins from 1-4 pm</i>				David Aquino 5:30-8:30pm	
Ben Kama Duo & Dancer 5-8pm				<b>Signature Prime Steak</b> 949-3636	
Alika Souza 8-10pm				<i>Contemporary Pianist in the bar</i>	
<b>Stripsteak</b> 896-2545				Grant Carvalho & Rocky Holmes 6-9pm	
<i>Live Contemporary</i>				<b>Sky Waikiki</b> 979-7590	
Shane Kainoa 6-9pm				<i>Live Contemporary</i>	
<b>SWIM at the Hyatt Regency</b> 923-1234				John Akapo 5-8pm	
<i>Live Contemporary Hawaiian</i>				<b>Splash Bar at the Sheraton Princess Kaiulani</b> 921-4600	
Denny Ono 5-8pm				<i>Live Contemporary Hawaiian, DJ spins from 1-4pm</i>	
<b>The Beach Bar at the Moana Surfrider</b> 922-3111				Brad Kawakami Duo 5-8pm	
<i>Live Contemporary Hawaiian</i>				Tangi Tully 8-10pm	

## SATURDAY

<b>100 Sails at the Prince Waikiki</b> 944-4494			
<i>Live Contemporary &amp; Hawaiian</i>			
Kupu Dalire-Na'auao Duo 6-8pm			
<b>Azure at the Royal Hawaiian</b> 921-4600			
<i>Live Contemporary Hawaiian</i>			
Koco Kawabuchi (or Ethan Capone) 5:30-8:30pm			
<b>Barefoot Beach Café at Queen's Beach</b> 924-2233			
<i>Live Contemporary Hawaiian</i>			
Vanessa Alputila 5:30-8:30pm			
<b>Chart House Waikiki</b> 941-6660			
<i>Live Contemporary Hawaiian</i>			
Tito Berinobis 6-9pm			
<b>Duke's Canoe Club Waikiki</b> 922-2268			
<i>Live Contemporary Hawaiian</i>			
Kala'e Camarillo (or Walt Keale) 10am-noon			
Donald Fialkowski (or others) 1-3pm			
Beach 5 (5/6) 4-6pm			
Kaiona Band (5/13) 4-6pm			
Alx Kawakami (5/20) 4-6pm			
Keith Batlin Guidance (5/27) 4-6pm			
Ells Simeona (or others) 7-9pm			
Ben Kama (or Darrell Aquino) 9:30-11:30pm			
<b>Eating House 1849 Waikiki</b> 924-1849			
<i>Live Contemporary Hawaiian</i>			
Kings Kalohelani 10:30am-1pm			
<b>Hard Rock Cafe</b> 955-7383			
<i>Live Contemporary</i>			
Ezekial (or others) 8-10pm			
<b>House Without a Key</b> 923-2311			

# Let's be Together...

DINING ▶ ENTERTAINMENT ▶ PAU HANA ▶ EAT ▶ DRINK ▶ BE MERRY ▶ HAPPY HOUR ▶

<b>Stripsteak</b> <i>Live Contemporary</i> Dustin Park 6-9pm	<b>896-2545</b>	Ben Kama (or others) 1-3pm Henry Kapono 4-6pm Kaiona Duo (5/14 - Taulia Lave) 7-9pm Kaimi (or others) 9:30-11:30pm	<b>SHOR at the Hyatt Regency</b> <i>Live Contemporary Hawaiian</i> Derrick Lee 5:30-8:30pm	<b>923-1234</b>
<b>SWIM at the Hyatt Regency</b> <i>Live Contemporary Hawaiian</i> Stan Albrecht (or others) 5-8pm	<b>923-1234</b>	<b>Eating House 1849 Waikiki</b> <i>Live Contemporary Hawaiian</i> Shane Kainoa 10:30am-1pm	<b>Signature Prime Steak</b> <i>Contemporary Pianist in the bar</i> Keith Montross 6-9pm	<b>949-3636</b>
<b>The Beach Bar at the Moana Surfrider</b> <i>Live Contemporary Hawaiian</i> Ronson Asuncion 3:30-6:30pm Koa Atwood (5/6, 5/20) 7-10pm Zanuck Lindsey (5/13, 5/27) 7-10pm	<b>922-3111</b>	<b>Giovanni Pastrami</b> <i>Reggae Pop Music</i> Kelandy 6:30-9:30pm	<b>Splash Bar at the Sheraton Princess Kaiulani</b> <i>Live Contemporary Hawaiian</i> Jason Midro Duo & Dancer 5-8pm Kaulana Vinoya 6-9pm	<b>921-4600</b>
<b>The Edge at the Sheraton</b> <i>Live Hawaiian Music</i> Brad Kawakami (5/20 - Dave Watanabe) 1-4pm	<b>921-4600</b>	<b>Hard Rock Cafe</b> <i>Contemporary Rock</i> Dylan (or others) 8-10pm	<b>Swell at the Alohilani</b> <i>DJs Spins Poolside from 1 - 4 pm</i> Jason Laeha 6:30-9:30pm	<b>294-4108</b>
<b>The Grove at the Modern Pool Deck</b> <i>Live Contemporary</i> Mike Izon 4-7pm	<b>943-5800</b>	<b>House Without a Key</b> <i>Hawaiian music &amp; hula by Miss Hawaii USA '21 Alison Chu</i> Pu'u honua Trio 5:30-8:30pm	<b>SWIM at the Hyatt Regency</b> <i>Live Contemporary Hawaiian</i> Koa Attwood 5-8pm	<b>923-1234</b>
<b>The Point Sunset Pool Bar at Turtle Bay</b> <i>Live Contemporary Hawaiian</i> Denny Ono (or Jenna Keala) 5-8pm	<b>293-6000</b>	<b>Kani Ka Pila Grille</b> <i>Hoku Award Winning Hawaiian musicians</i> Nathan Aweau 6-9pm	<b>The Beach Bar at the Moana Surfrider</b> <i>Live Contemporary Hawaiian</i> Brad Kawakami (or others) 3:30-6:30pm Dave Watanabe 7-10pm	<b>922-3111</b>
<b>The Veranda at the Kahala Hotel</b> <i>Live Contemporary</i> Jeanette Trevias (5/6 - Kamuela Kahoano) 6pm-9pm	<b>739-8760</b>	<b>La Hiki Restaurant at the Four Seasons</b> <i>Live Contemporary Hawaiian</i> Jenna Keala (5/28 - Kamuela Kahoano) 11am-2pm Jenna Keala (5/14) 10am-2pm	<b>The Edge at the Sheraton</b> <i>Live Hawaiian Music</i> Christian Yrizarry 1-4pm	<b>921-4600</b>
<b>Tiki's Grill &amp; Bar</b> <i>Contemporary Hawaiian, Alternative, Pop-Rock, Reggae</i> Kapono Wong 3-5pm RootsKai 5-7pm Lindsey Wells 8-10pm	<b>923-TIKI</b>	<b>Mahī'ai Table</b> <i>Live Contemporary</i> Johnny III 5-8pm	<b>The Point Sunset Pool Bar at Turtle Bay</b> <i>Live Contemporary Hawaiian</i> Danielle Parente 5-8pm	<b>293-6000</b>
<b>Tommy Bahama Restaurant</b> <i>Contemporary Hawaiian. Happy Hour Daily 2 - 5 p.m.</i> Chris Murphy 5-8pm	<b>923-8785</b>	<b>Mahina &amp; Sun's</b> <i>Award-winning ukulele on the Lanai</i> Trishnalei 6:30-9:30pm	<b>The Veranda at the Kahala Hotel</b> <i>Live Hawaiian Entertainment for Mother's Day Only</i> Kamuela Kahoano (5/14) 10:30am -2:30pm Kings Kalohelani (5/14) 5-9pm	<b>739-8760</b>
<b>Tropics Bar &amp; Grill</b> <i>Live Contemporary</i> Chapter II (or Ben Kama) 3-5pm Ben Kama (5/6) 3-5pm Ells Simeona (5/20) 3-5pm	<b>949-4321</b>	<b>Mai Tai Bar at the Royal Hawaiian</b> <i>Live Contemporary Hawaiian</i> John Coelho & Kanoe Arola 11am-2pm Christian Yrizarry 6-9pm	<b>Tiki's Grill &amp; Bar</b> <i>Live Contemporary Hawaiian</i> Dave Young Band 3 - 5pm Ellsworth & Friends 5:30-8pm	<b>923-TIKI</b>
<b>Vintage 1901 at the Moana</b> <i>Contemporary Piano</i> David Swanson 6:30-10pm	<b>921-4600</b>	<b>Mariposa</b> <i>Live Contemporary</i> Zaysha 12-3pm	<b>Tommy Bahama Restaurant</b> <i>Contemporary Hawaiian. Happy Hour Daily 2 - 5 p.m.</i> Glen Domingo 5-8pm	<b>923-8785</b>
	<b>SUNDAY</b>	<b>Maui Brewing Company</b> <i>Live Contemporary</i> Chris Murphy 3:30-5:30pm Evan Khay (5/14) 3:30-5:30pm Ben Kama (5/28) 3:30-5:30pm	<b>Tropics Bar &amp; Grill</b> <i>Live Contemporary</i> Kaiona Duo 3-5pm BIKU & the Honolulu Beer Choir (5/14) 3-5pm	<b>949-4321</b>
<b>100 Sails at the Prince Waikiki</b> <i>Live Contemporary &amp; Hawaiian</i> Cherie Duo 6-8pm	<b>944-4494</b>	<b>Merriman's Honolulu</b> <i>Live Contemporary</i> Cassie and Selwyn 5:30-7:30pm	<b>Vintage 1901 at the Moana</b> <i>Contemporary Piano</i> David Swanson 6:30-10pm	<b>921-4600</b>
<b>Anna O'Briens</b> <i>Live Contemporary Rock</i> Chicago Bob's Classic Rock Jams 9pm - 12am Dr. J's Blues Review Show 9pm - 12am	<b>946-5190</b>	<b>Moani Waikiki</b> <i>Contemporary Island Music</i> Dustin Park 7-10pm		
<b>Azure at the Royal Hawaiian</b> <i>Live Contemporary Hawaiian</i> Ethan Capone 5:30-8:30pm	<b>921-4600</b>	<b>Monkeypod Kitchen Ko Olina</b> <i>Live Contemporary</i> Pono 12:30-2pm		
<b>Barefoot Beach Café at Queen's Beach</b> <i>Live Contemporary Hawaiian</i> Kimo Baker 10am-1pm Art Kalahiki 5:30-8:30pm	<b>924-2233</b>	<b>Noe Restaurant at the Four Seasons</b> <i>Live Hawaiian Entertainment for Mother's Day Only</i> Jeremy Hirokawa (5/14) 10am-2pm		
<b>Chart House Waikiki</b> <i>Live Contemporary Hawaiian</i> Dean & Dean 6-9pm	<b>941-6660</b>	<b>Piko Kitchen &amp; Bar</b> <i>Live Contemporary Hits</i> Mike Izon 5-8pm		
<b>Duke's Canoe Club Waikiki</b> <i>Live Contemporary Hawaiian</i> Kamuela Kahoano (or others) 10am-noon	<b>922-2268</b>	<b>Rumfire</b> <i>Live Contemporary Hits</i> Jenna Keala 4:30-7:30pm Sidney Spencer 8-10pm		

## Dining Dish

Kicking off this month's column by noting I left out a couple of brunch locations in last month's Brunch Bunch. I can't believe I forgot to mention **The Artisan Loft at Dean & DeLuca**. Their Sunday Brunch from 10 a.m. - 2 p.m. offers delicacies such as the Truffle Vicysoise Egg Osmosis with a braised pork belly "bacon" for \$20 and Beef Wagyu Loco Moco for \$28. 729-9720. And, of course, **Makana Lani, A Dining Experience** in the 'Alohilani Resort. Their weekend brunch



buffet is \$68 per person, featuring a Carving Station with Prime Rib, Lechon, Salmon, and other brunch favorites from an egg station to fresh seafood. Saturday and Sundays from 9 a.m. - 2 p.m. 921-6198. • Speaking of the 'Alohilani, they have a new bar hidden away on the ground level called **Luna's Tequila Bar**. Offering nearly 50 tequilas and mezcals, they provide a small selection of street tacos and guacamole made tableside. Open Wednesday, Thursday, and Sunday from 5 to 10 p.m.; Friday and Saturday from 5 to 11 p.m. Happy hour is offered from 5 to 6 p.m. • **UMI by Vikram Garg** has opened in the former NOBU location at the Halepuna Waikiki. Currently open for breakfast daily from 7 - 11 a.m., the menu consists of Chef's signature home-churned butter, preserves, Le Chariot Du Pain (baked goods), and spice blends, all served tableside as well as signature items such as Mai Tai Pancakes, Croque Madame. The restaurant plans on opening for dinner from 5 - 10 p.m. beginning on Mother's Day, celebrating the very best of what the ocean provides. This highly anticipated solo venture is a celebrated return for Garg, who served as Executive Chef for Halekulani from 2008-2016. Please note alcohol is limited to a chef-paired-BYOB-recommendation for now until they get their liquor license. For more info call 744-4244 or go to [umibyvikramgarg.com](http://umibyvikramgarg.com). • **Kaimuki Shokudo Soba + Izakaya** opened in the former Heiho House location on 11th Avenue. Currently open for lunch only, the menu includes hot and cold soba, sushi, tempura, and donburi from 11 a.m. - 2 p.m. daily. Plans include opening for dinner service later this month or early June (as soon as they get their liquor license) and offering modern-style izakaya dishes from Japan. 367-0966. • **Little Joe's Steakhouse** has opened its 2nd location at Pearl Highlands Center next to Liliha Bakery. Open for dinner daily from 4:30 to 10 p.m. Happy hour is from 4:30 to 7 p.m. 455-3388. • Lastly, another big-name chef is opening up restaurant in Honolulu. L.A.'s Ria Dolly Barbosa, a featured chef in last year's Hawaii Food & Wine Festival, is opening **Peso Honolulu**, Hawaii's first Modern Filipino-American restaurant in the former Piggy Smalls location in Ward Centre early this month for dinner and weekend brunch.



# Chef's Corner

## Pau Hana's Private Chef Mariah Raftree

*In the late 90s, Mariah moved from Chicago to the Pacific Northwest and ended up at a conference that was catered by a whole food chef and fell in love with food. From there she left her corporate job, wanting to be more connected to her community and decided to work for a local non-profit. She launched the first Eat Local First Campaign that connected eaters with local growers. That program has since been replicated all over the country. It was the beginning of a new career focusing on cooking using local and sustainable ingredients.*

**When did you decide you wanted to be a chef?**  
I went to a conference that was catered by a local whole foods chef and the food was incredible and beautiful. It was all fresh and local and healthy and I felt great at the end of the day instead of how I usually felt at the end of a week-long conference. That was the day I fell in love with food.

**What was your first job in the industry?**  
I started catering weddings and special events with an in season and local food focus.

**Where did you start cooking professionally?**  
Most of my professional cooking has been on a yacht and doing catering gigs. I am a whole foods chef who enjoys crafting pupus from the best ingredients we have to offer here on Oahu.

**How was it working on yachts?**  
I worked on a 96-foot luxury yacht in Alaska. We ran week-long charters for 12 people and I would have a day and half to restock the boat for the next week long charter. I was told you can't find local food in Alaska. I found the best local food there! I would go harvest food for the week from several local gardens, backyard eggs and fishers and local producers like ice cream. I had a chalkboard to list what was local for each day. It was amazing and the guests loved it.

**What brought you to Hawaii?**  
I fell in love with an old friend who was a sailor and had sailed into Hawaii in 2014 after 10 years of solo sailing in the South Pacific.

**What prompted you to start your own charter biz?**  
After running week long luxury charters with my husband Jason in Alaska, we knew we wanted to run a private charter boat here in Hawaii. We had been looking for a catamaran for over 3 years and found the right one in French Polynesia. We brought it back to Honolulu and immediately started making upgrades on the boat and filing all the necessary permits to start up our business.

**How would you describe your style of cooking?**  
Simple - use the best locally grown ingredients and cook in season.

**Where do you find your culinary inspiration?**  
I get inspiration by traveling to places and seeing how people like to eat in that place. Hawaii is such an inspiration because the food here is inspired from so many places.

**Favorite ingredient you like to work with and why?**  
I love vegetables! It's hard to pick my favorite one. I love it when someone says they don't like a vegetable say like eggplant. And they try my eggplant caponata and say this is delicious, what is it? I think people build food aversions from poorly cooked food and that happens with vegetables more than any other food.

**How do you like being a private chef?**  
I love it! I can cook with great ingredients and it's super creative as I'm always menu planning.

**How do you decide what to make for your guests?**  
Our boat's name is Pau Hana. We picked that name as I love pau hana and making pupus to share. It's my favorite style of cooking. Finger foods work great on a boat. Everything I make can be easily grabbed and eaten. We do also provide plates and flatware for those wanting a more formal experience.

**How many guests have their charter food catered?**  
I would say about 75% of our guests add on food and drink.

**What's your specialty?**  
Scratch made sourdough olive oil crackers, eggplant caponata, za'atar flatbread are some pupus I really like to make.

**What's your favorite restaurant in town?**  
Castro's Cuban Food in Waikiki. I love Luis' style. Healthy, simple, and vegetable forward.

**What's your favorite thing to do when not working?**  
Being on the water or being in the water.



## Tomato Jam

- Ingredients:**
- 2½ lbs tomatoes, chopped (I use Kawamata Farms)
  - ¼ cup fresh lime juice (I use Kahumana Farms)
  - 1 tsp ginger, grated (I use Orchidland Farms)
  - 1¾ cup sugar
  - ½ tsp cinnamon
  - ¼ tsp ground cloves
  - 1½ tsp salt
  - 1½ tsp dried cayenne, minced or pepper flake (I grow my own)

**Directions:** Combine all ingredients in a heavy bottom pan. Bring to a boil and reduce to a simmer. Stir regularly and reduce to a jammy mess. 1½ - 2 hours. When the jam starts to stick to the back of a spoon, remove from heat and let cool. Once cool, pour into pint jars. Makes 2 pints. Use local ingredients whenever possible. It's a perfect addition to any charcuterie board and pairs well with feta, goat or brie. Sweet Land Farm is a great local option.

**Pau Hana Sailing is located at the Ala Wai Boat Harbor**  
Hours: Offering private charters 7 days a week sunrise to sunset • Phone: 807-9191  
Website: [pauhanasailing.com](http://pauhanasailing.com) • Instagram: @pauhanasailinghawaii FB: /pauhanasailing

# MAY CALENDAR OF EVENTS

## Continuing Events

### MONDAYS, WEDNESDAYS & FRIDAYS O NĀ LANI SUNSET STORIES HULA SHOW

Honoring the rich history and sense of place of the International Market Place through song & dance. It begins at sunset with the lighting of the Lamakū Torch Tower on Kalākaua Avenue and leads to the Queen's Court. Free. 7 p.m. [shopinternationalmarketplace.com](http://shopinternationalmarketplace.com).

### TUESDAY THRU SATURDAY ARTS AT MARKS LATEST EXHIBIT

The newest exhibit at the Arts at Marks Garage, encourages visitors to use their imagination as the Maybe? Maybe Not. Exhibit asks guests to be creative beyond the boundaries of their imagination May 4th. Enjoy a Meet the Artists reception at Pau Hana Friday on the first and final Friday of the month from 5 - 8 p.m. Exhibit runs through May 27th. Gallery open Tuesday-Saturday from noon - 5 p.m. [artsatmarks.com](http://artsatmarks.com).

### WEDNESDAYS, SATURDAYS & SUNDAYS ALOHA STADIUM SWAP MEET

The Aloha Stadium Swap Meet has been going strong since 1979 and will not stop anytime soon despite the Stadium shutting down. Featuring over 400 vendors, crafters and artists, the Swap Meet offers low-prices on a wide selection of quality products with food trucks to snack from. Wednesdays & Saturdays: 8 a.m. - 3 p.m., Sundays, 6:30 a.m. - 3 p.m. \$2 admission ages 12 & up, \$1 for locals. [alohastadium.hawaii.gov](http://alohastadium.hawaii.gov)

**FIRST FRIDAY (MAY 5)  
DOWNTOWN GALLERY WALK & CRAFT FAIR**  
Downtown comes alive the first Friday of every month as art lovers fill the streets for Honolulu's outdoor self-guided arts tour. Stores spill out onto the sidewalk, and artists are on hand to chat about their works, and restaurants are ready to serve you. Monthly updates are published on participating merchant websites, or two days before the event at [firstfridayhawaii.com](http://firstfridayhawaii.com).

## Plan an Adventure

Let Hawaii Nautical show your guests our ocean playground.  
**808-234-SAIL (7245)**



**TURTLES GUARANTEED**

Enjoy our morning and afternoon snorkel sailings at Turtle Canyon with a wildlife guarantee! See turtles or cruise again for free (certain rules apply). Wildlife guarantee is for re-rides only, no refunds.





### SECOND FRIDAY (MAY 12) BISHOP MUSEUM AFTER HOURS

Extended after-hours access to the Museum with a Pau Hana presentation, living culture demonstration, keiki activities, exhibition tours, J. Watumull Planetarium shows, a Membership Lounge, food trucks, and live music. 5 - 9 p.m. \$10 at the door. [bishopmuseum.org](http://bishopmuseum.org).

### FRIDAYS ROYAL HAWAIIAN BAND LUNCHTIME SHOW

The Royal Hawaiian Band has returned to Iolani Palace for its popular lunchtime concerts. Held on most Fridays, the concerts are free and open to the public. 12 - 1 p.m. [iolanipalace.org](http://iolanipalace.org)

### FRIDAYS & SATURDAYS HOMA NIGHTS

On Friday and Saturday nights, regular museum admission also includes live musical performances, hands-on art activities, pop-ups in the HoMA Shop, movies on the lawn, bar service at the HoMA Cafe, and other interactive art experiences. The museum stays open until 9 p.m. [honolulumuseum.org](http://honolulumuseum.org).

### SATURDAYS & SUNDAYS ART ON THE ZOO FENCE

See the works of local artists displayed on the Zoo fence on Monsarrat Avenue opposite the Kapiolani Park Bandstand. This is the only outdoor art venue in Honolulu that has proudly been displaying art since 1953. Works include original paintings, prints and photographs. 9 a.m. - 3 p.m. Free. [artonthezoofence.com](http://artonthezoofence.com).

### SATURDAYS & SUNDAYS YOGA IN THE PARK

Core Power Yoga have added Saturdays to their free yoga classes at Victoria Ward Park. Registration required. Sat: 12-1 p.m. Sun: 9 - 10 a.m. [wardvillage.com/explore/activities](http://wardvillage.com/explore/activities).

### FIRST OR SECOND SUNDAY (MAY 7) KAMA'AINA SUNDAYS

Kama'aina Sundays are back at 'Iolani Palace. Locals can take advantage of free tours, entertainment, family-friendly activities and plenty of food options with proof of residency. Free tours will be available to the first 500 guests (limit 4 tickets per adult) on a first-come, first-served basis. Visitors welcome with paid admission. 9 a.m. - 3 p.m. [iolanipalace.org](http://iolanipalace.org).

### THIRD SUNDAY (MAY 21) MELE HALI'A

Waikiki Beach Walk celebrates Hawaiian music with an award-winning musician one Sunday a month on the Plaza Stage. This month features Kumu Hula Hiwa Vaughan-Darval, daughter of the legendary Palani Vaughan, and her halau. 5-6 p.m. [waikikibeachwalk.com](http://waikikibeachwalk.com).

### THIRD SUNDAY (MAY 21) FAMILY FREE SUNDAY

Thanks to Bank of Hawaii, kama'aina have been offered free admission with ID on the third Sunday of the month since 2004. Currently a combo of both in-person and virtual events, offering something for all, but for those that want to attend in-person, they can get free museum admission with reservations. Visitors welcome, but they have to pay. 10 a.m. - 6 p.m. Free. 532-8700. [honolulumuseum.org](http://honolulumuseum.org).

### MAY 1 95TH ANNUAL LEI DAY CELEBRATION

The scent of flowers will surround Kapi'olani Park as Hawaiian entertainment, demonstrations, and exhibits, while featuring a lei contest exhibit showcasing some of the most exquisitely crafted lei in a variety of colors and methods in honor of Lei Day. [honolulu.gov/parks/program](http://honolulu.gov/parks/program).

### MAY 2-14 HAWAII QUILT SHOW

Check out the works of Hawaii Quilt Guild members and this year's featured quilt artist Donna Kanealli. The show will take place at the Downtown Art Center from 11 a.m. - 6 p.m. (closed Mondays). Send your guests to go see the amazing quilts from [hawaiiquiltguild.com](http://hawaiiquiltguild.com).

### MAY 3 JUNIOR WORLD FIREKNIFE CHAMPIONSHIP



As a precursor to the men's and women's finals of the World Fireknife Championship later this week, prepared to be amazed

as competitors as young as six years old take the stage for the Junior and Intermediate Competition. 6:30 p.m. Polynesian Cultural Center. [worldfireknife.com](http://worldfireknife.com)

### MAY 3-4 THE SKATALITES

The original members of The Skatalites played on hundreds of recording sessions before forming the band in 1964, backing most of the vocalists in Jamaica at that time, including Bob Marley, Jimmy Cliff, and more. After disbanding in 1965 the individual members continued playing in various groups as the music evolved from ska to rocksteady to reggae. The names have changed over the past 59 years, but the beat goes on. 1 p.m. \$35. [bluenotehawaii.com](http://bluenotehawaii.com).

### MAY 5 CINCO DE MAYO BLOCK PARTY

Enjoy a block party in the heart of downtown Chinatown in front of Hank's Cafe. 6 - 10 p.m.

### MAY 5 THE DOOBIE BROTHERS

Join Michael McDonald, John Fee, Tom Johnstone and Pat Simmons on the 50th Anniversary Tour of the Doobie Brothers. Their #1 singles "Black Water" and "What a Fool Believes," both gold, lead a catalog of iconic songs that include: "China Grove," "Jesus Is Just All Right," "Takin' it to the Streets," and more. 7 p.m. Tickets: \$49.50 - \$179.50. Waikiki Shell. [bamproject.com](http://bamproject.com).

### MAY 6 ANNUAL VISITOR INDUSTRY CHARITY WALK

This one is your event, starting at 7 a.m. at Ala Moana Beach Park. Be sure to snap pictures of you and your colleagues along the way and email them to [publisher@oahuconciierge.com](mailto:publisher@oahuconciierge.com) by May 15th. [charitywalkhawaii.org](http://charitywalkhawaii.org).

### MAY 6 WE ARE SAMOA FESTIVAL

Hawaii's largest Samoan cultural gathering and premier showcase of Samoa's traditions. 9 a.m. Pacific Theatre. Polynesian Cultural Center. [polynesia.com](http://polynesia.com).



# MAY CALENDAR OF EVENTS

**MAY 6**

## **EAST HONOLULU FOOD FESTIVAL**

Taste fabulous selections from over 15 of the the islands favorite restaurants including Big City Diner, Tiny Pyramid, Tight Tacos, Cafe Julia, Katsu Sando 808 and more. There will be live music, a Keiki Corner, a Silent Auction, and more in a Roaring 20's theme. Tickets: \$85. Star of the Sea. 5:30 – 9:30 p.m. theehff.com.

## **MAY 6 • FILIPINO FIESTA**

Enjoy authentic Filipino food and desserts, non-stop live entertainment, art gallery, pop up shop vendors, non-profits, and more at this joyous celebration of Filipino culture. Filipino Community Center. Free. 10 a.m. – 8 p.m. filcom.org.

**MAY 6**

## **LEI DAY ALOHA**

SALT at Our Kaka'ako hosts a special Lei Day Aloha celebration with Hawaiian entertainment, lei-making activities and the SALT at Our Kaka'ako Prize Wheel to win a variety of prizes . Open to the public and free to attend. Beautiful fresh blossoms will be available to make lei wristlets, while supplies last. The Barn. 10 a.m. – 12 p.m. SALTatKakaako.com

**MAY 6 - 7**

## **BÉLA BARTÓK CONCERTO FOR ORCHESTRA**



The German-born conductor, Maestra Erina Yashima, a rising star in the industry, leads the Hawaii Symphony Orchestra Masterwork's season finale in a Hungarian festival including Brahms' beloved Hungarian Dances, Liszt's Hungarian Rhapsodies, and Bartók's tour de force, Concerto for Orchestra. 7:30 p.m., Sun. 4 p.m. Tickets: \$18 - \$99 Hawaii Theatre. myhso.org.

**MAY 7**

## **MAY MOON WALK**

Waimea Valley's Moon Walks are back for the 38th year! Guests enter the Valley after dark, for a stroll along the main pathway to the waterfall, and learn about the Hawaiian phases of Mahina. Special cultural tours of the authentic Hawaiian living site, Kauhale are also available. The first Moon Walk includes a night-time botanical tour by Botanist David Orr. \$10 entry. Entry begins at 8 p.m. and closes by 8:30 p.m. waimeavalley.net.

**MAY 7**

## **LUCKY 7 GRATEFUL DEAD TRIBUTE CONCERT**

An evening immersed in music, nature, community and love as The Stephen Inglis Project plays the Dead's May 7, 1977 Boston Garden concert in its entirety on May 7, 2020, in honor of Bill Kreutzmann's 77th birthday. 5:30 p.m. Tickets: \$25 - \$50. Waikiki Shell. rootsmusichawaii.com/lucky7.

**MAY 8-13**

## **HAWAII ADAPTIVE SURFING CHAMPIONSHIPS**

AccessSurf is bringing over 100 surfers with disabilities from 17 countries to compete in 9 competitive divisions. Opening ceremonies at the Duke Kahanamoku Statue at 4:30 p.m. on the 8th. Competition takes place from 8 a.m. - 4 p.m. at Queens Surf Break from the 9 - 13th. Don't miss this incredible display of fortitude and athleticism. accessurf.org.

**MAY 10**

## **HENRY KAPONO WITH BROTHER NOLAND**

Season 6 of Henry Kapono's Artist 2 Artist Legends Series concludes with the "Father of Jawaiian Music," Brother Noland along with "On the Rise" artist Noelani Love who is making a name for herself with her conscious lyrics and ukulele melodies. 6:30 p.m. \$35 - \$45. bluenotehawaii.com.

## **MAY 10-11 • FIREKNIFE FESTIVAL**

Watch the world's most talented fireknife warriors come together for a heated competition at the Annual World Fireknife Championships See the best in the world as they spin, twirl, and flip flaming knives to earn the coveted title of World Champion. Both the men and the women compete on Wednesday at 6:30 p.m. and the Women's Champion will be named. \$15, Men's Finals take place at 7:30 p.m. on Thursday during the intermission of Ha: The Breath of Live. Polynesian Cultural Center. \$89.95. worldfireknife.com.

**MAY 11-14**

## **TOWER OF POWER**

Tower of Power has delivered the best in funk and soul music for over 50 years, and clearly they love Hawaii and Hawaii loves them because their shows usually sell but and they have been coming almost yearly – for years! They will be performing 5 shows this time around. 7 p.m. nightly except for Saturday when they will play two shows at 6:30 and 9 p.m. \$86-\$116. bluenotehawaii.com.

**MAY 11-18**

## **THE PLAY THAT GOES WRONG**

Called "the funniest play Broadway has ever seen," this classic murder mystery is chock-full of mishaps and madcap mania. During the opening night performance of The Murder at Haversham Manor – a 1920s murder mystery play, similar to The Mousetrap, things are quickly going from bad to utterly disastrous. With an unconscious leading lady, a corpse that can't play dead, and actors who trip over everything (including their lines), it's "comic gold" sure to bring down the house. 7:30 p.m. Tickets: \$24-\$42. manoavalleytheatre.com.

## **MAY 12 • BLACK FLAG**

Black Flag formed in the late 70s in California and is widely considered to be one of the first hardcore punk bands, as well as one of the pioneers of post-hardcore. The Republik. 8 p.m. \$27.50. bluenotehawaii.com.

## **MAY 12-21 • PAW PATROL LIVE!**

This action-packed, music-filled production is based on the top-rated animated preschool series PAW Patrol airing on Nickelodeon. Guests will see Ryder and his team of pups embark on a pirate-themed adventure to uncover hidden treasure. The performance is an interactive live stage show, encouraging audiences to learn pirate catchphrases, dance the pirate boogie and help the pups follow the treasure map and solve picture puzzles throughout their mission. Tickets: \$45-\$145. Blaisdell Concert Hall. pawpatrollive.com.

*Continues on page 16.*

**Aloha Kai**  
LŪ'AU  
SEA LIFE PARK

Join us at Sea Life Park Hawaii  
where the heart meets the sea.

Sea Life  
PARK  
HAWAII

alohakailuau.com • (866) 524-5828

# MAY CALENDAR OF EVENTS

Continued from page 15.

## MAY 14 • MOTHER'S DAY BRUNCH WITH FRANK DELIMA



Frank DeLima has been entertaining local residents and tourists for more than 45 years with his zany parodies, outrageous sense of humor, and spontaneous creativity. His musical parodies are an iconic part of Hawaii's lifestyle. 1 p.m. \$35-\$45. [bluenotehawaii.com](http://bluenotehawaii.com).

## MAY 14 AMY HANAIALI'I MOTHERS' DAY CONCERT

This Mother's Day will be a very special performance with Amy, her band, and her daughter along with special guests Mailani Maka'ina'i, and Kainani Kahaunaele Pomaika'i Keawe, and Marlene Sai accompanied with their daughters. During the show Amy will also be celebrating the 25th anniversary of her award-winning song, Pālehua, introducing a new verse sung in French and Japanese. Hawaii Theatre. Tickets: \$35 - \$75. 2 p.m. [hawaii theatre.com](http://hawaii theatre.com).

## MAY 14 NA LEO MOTHERS' DAY CONCERT



Enjoy a special Mother's Day brunch and concert by Na Leo Pilemehana with special guest Josh Tafoti at the Hawaii Convention Center.

Tickets: \$65 - \$110. Doors open for brunch ticket holders at 10 a.m. The brunch buffet is from 10:30 - 11:45 p.m. Concert begins at noon. 4th Floor, Kalākaua Ballroom [hawaii convention.com](http://hawaii convention.com)

## MAY 20 • 7TH ANNUAL KO OLINA CHILDREN'S FESTIVAL

Featuring fun family activities, hula with Disney characters, arts & crafts, food booths, free Keiki IDs, and Disney's "Encanto" will be shown on the beach at sunset. A benefit Kapi'olani Medical Center for Women & Children. \$25-\$45. 4 p.m. [koolinachildrensfestival.com](http://koolinachildrensfestival.com).

**WAIKIKI BAPTIST Church**  
Your Church in Waikiki  
424 Kuamo`o St  
(Near the Ambassador Hotel)  
**Sunday Worship Services**  
9:00 AM - Contemporary  
10:45 AM - Traditional  
(808)955-3525  
[WaikikiBaptist.com](http://WaikikiBaptist.com)

MAY 20

## THE OFFICE TRIVIA WITH TODD PACKER



What's up trivia nerds? Test your knowledge of The Office with the Pack-Man himself, David Koechner. Teams will compete for prizes - while also hearing behind-the-scenes stories from David about playing the hit show's favorite obnoxious paper salesman. Todd Packer. After multiple trivia rounds, top teams will need to channel their favorite The Office characters and test their acting chops in order to be crowned - by David - trivia champions. Later on that evening The show also features a Q&A, meet and greet and pictures with the Pack-Man! Trivia Show is at 3 p.m. Later on that evening David puts on two stand-up comedy shows at 6:30 and 9 p.m. \$30-\$40. [bluenotehawaii.com](http://bluenotehawaii.com).

MAY 21

## HONOLULU TRIATHALON

All events will start and finish at Ala Moana Beach Park for the annual Triathlon. The elite wave for the Olympic Trials will start at 5:45 a.m. with all other levels starting in waves afterwards. Traffic will be affected in the Ward area for several hours. [honolulu triathlon.com](http://honolulu triathlon.com).

MAY 22

## BERNADETTE PETERS



Bernadette Peters, Broadway's brightest star, presents an evening of song from the Broadway shows she's known for, as well as from all her Grammy Award winning and nominated albums including standards, Rodgers & Hammerstein, Stephen Sondheim, among others. Her career has spanned over six decades, and she delights to this day. Hawaii Theatre. Tickets: \$89 - \$130. 8 p.m. [hawaii theatre.com](http://hawaii theatre.com).

MAY 23

## LIL TECCA PRESENTS TECCA MONTANA

Lil Tecca rose to stardom with his 2019 single "Ransom" See the rapper live with special guest Tana. The Republik. Tickets: \$39.50. 8 p.m. [bampproject.com](http://bampproject.com).

MAY 24

## THE MAKAHA SONS & FRIENDS



The Makaha Sons are joined by Kawika Kahiapo, Bobby Moderow, Robi Kahakalau, and Nue - Nā Ukulele 'Eholu at the Hawaii Theatre to benefit the Alzheimers Association. \$35 - \$50. 7 p.m. [hawaii theatre.com](http://hawaii theatre.com).

MAY 25

## TAVANA IN CONCERT

Tavana is a one-man band who uses his feet to lay down a variety of grooves to accompany himself while playing guitar and singing soulful, island-inspired rock and blues. Joined by special guest Kala'e Parish. 6:30 p.m. \$25. [bluenotehawaii.com](http://bluenotehawaii.com).

MAY 26 • STEVE BYRNE

Steve Byrne has risen through the ranks of the comedy world to become one of the industry's most innovative and sought-after performers. In 2020, he released a feature film he wrote and directed "The Opening Act" about his early years in stand up. Two shows at 6:30 and 9 p.m. \$30-\$35. [bluenotehawaii.com](http://bluenotehawaii.com).

MAY 26 - 29 • 50TH STATE FAIR



The 50th State Fair kicks off at 6 p.m. Friday night and runs through Memorial Day weekend then opens up again every Friday, Saturday and Sunday through July 9th. FREE admission for all active-duty and retired military and their dependents with a valid military ID on Memorial Day. Hours & details online at [ekfernandez.com](http://ekfernandez.com).

MAY 28 • L.A.B. USA TOUR

This alternative rock band from Helsinki, Finland has put out three albums, and their single "Beat the Boys" was featured in the PS2/Xbox/PC game "Flatout." The Republik. Tickets: \$29.50-\$49.50. 8 p.m. [bampproject.com](http://bampproject.com).

MAY 29

## LANTERN FLOATING CEREMONY

Shinnyo Lantern Floating Hawai'i returns to Ala Moana Beach as an in-person ceremony for the first time since 2019, just in time to celebrate its 25th anniversary. One of the more popular festivals that takes place all year long, the event used to bring more than 50,000 people at Ala Moana Beach Park to send off specially made candle-lit lanterns into the ocean to honor their loved ones. This year there will be 6,000 lanterns floating away. Ceremonies start at 6:30 p.m. and are webcast live at [lanternfloatinghawaii.com](http://lanternfloatinghawaii.com).



MAY 29 • MEMORIAL DAY

If your guests have never been to the National Memorial Cemetery of the Pacific, there isn't a more moving day to visit than Memorial Day, with the Mayor's ceremony and boy scouts decorating each grave

MAY 31

## AN EVENING WITH JUDY COLLINS



The award-winning singer-songwriter's stunning rendition of Joni Mitchell's "Both Sides Now" from her landmark 1967 album, Wildflowers, has been entered into the Grammy Hall of Fame. Judy's dreamy and sweetly intimate version of "Send in the Clowns," a ballad written by Stephen Sondheim for the Broadway musical A Little Night Music, won a Grammy for "Song of the Year" in 1975. Five decades later, her luminescent presence still shines as new generations bask in the glow of her iconic 55-album body of work. Hawaii Theatre. Tickets: \$35 - \$65. 7 p.m. [hawaii theatre.com](http://hawaii theatre.com).





# bloomingdale's

Enjoy complimentary stylist and beauty appointments, spa services, and special offers.

**ALA MOANA CENTER 1450 ALA MOANA BOULEVARD, HONOLULU**

**Make a difference  
starting with you**

*De-stress • Refresh •  
Relax • Heal*



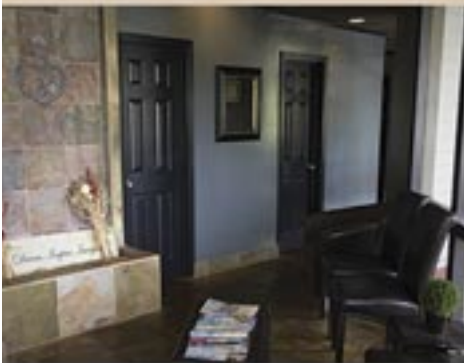
**All New Clients Receive**

**10% off**  
their first massage

**EXPERIENCE SERENITY AND  
MASSAGE FOR YOURSELF**

- Full 60 & 90 minute massages
- Peaceful, tranquil atmosphere
- Talented licensed massage therapists
- We follow COVID safety protocols
- Save \$26 per massage as a member
- Services include: Swedish, Lomi Lomi, Deep Tissue, Shiatsu, Reiki, Prenatal, Trigger Point Therapy, Neuromuscular Therapy, and more

**We offer in-home/room massage  
services. Please call to inquire.**



**HAWAII KAI  
SHOPPING CENTER**

377 Keahole St., Ste. 207 (across from Safeway)

Call us at **396-7594**

Text us at **862-6163**

serenityandmassage.com



## Time for Tea

It's one of the quintessential British traditions, sitting down for an afternoon of tea, tiny finger sandwiches, scones and scrumptious desserts. When afternoon tea became fashionable in the early 19th century, it was meant to tide one over between the long gap between lunch and dinner. Since then, it has become more a treat, a more respectable way for some to get together and catch-up, over the happy hour some say perhaps happy hour. (although, champagne has worked its way into some of the menus). Afternoon tea is also something I will

always associate with my mom. She was born in England and my grandmother was British through and through until the day she died. Tea was a very important part of each day. Therefore, in honor of Mother's Day, I thought it might be nice to talk about the different places that offer tea here in Honolulu.

You may notice two notable omissions from the list, but it's not because I overlooked them. It's because neither one of them offer tea service any more. Both Mariposa or MW Restaurant have both discontinued afternoon tea for now.

### Makana Lani Hawaii

Makana Lani, A Dining Experience, located on the 2nd floor of the 'Alohilani Resort offers tea the first Friday of every month at 3:30 p.m. In honor of Mother's Day, May's date will slide to Friday, May 12 from 3 - 6 p.m. It's \$55 for coffee and tea service with seasonal tea sandwiches, fruits and desserts served buffet-style, as diners can fill up their plates as they browse the on-site shopping from vendors such as Saks and local artists. [makanalanihawaii.com](http://makanalanihawaii.com). Call 921-6198.

### Tea at 1024

Head downtown to the Arts District for this adorable tearoom that has been serving Afternoon Tea since 1999. Prices start at \$29.95 with vegetarian, gluten-free, vegan, dairy-free and keto menus available. Open Thur-Sun from 11 a.m. - 3 p.m. Advance reservations required. At press time Mother's Day is still open. Menu at [teaat1024.net](http://teaat1024.net). Call 521-9596.

### The Kahala Hotel

The Kahala offers afternoon tea Fri & Sat on the Veranda from 2 - 3:30 p.m. for \$80 inclusive. The menu can be found on their website and features savory sandwiches and sweet treats. 739-8760. [kahalaresort.com/Dining/The-Veranda](http://kahalaresort.com/Dining/The-Veranda).

### The Halekulani



The Halekulani presents its Afternoon Tea Wed - Sat from 2 - 5 p.m. in the Veranda. Diners can enjoy the Classic Afternoon

Tea with freshly made cakes, pastries, scones with Devonshire cream, and savory sandwiches for \$58. Add a glass of champagne for \$68, and top that off with a slice of their signature coconut cake for \$80. [halekulani.com/dining](http://halekulani.com/dining). Call 923-2311

### Veranda at the Beachhouse



The Moana serves up tea service Fri-Sun from 11:30 a.m.-2:30 p.m. Offering a variety of tea sets starting at \$69, there are four other menus to choose from including "The First Lady" serving sparkling rose, berries and yogurt and savory & sweet options, or "The Duke" serving a Surf Rider Burger and sweet offerings. At press time Mother's Day is sold out. [verandawaikiki.com/specials](http://verandawaikiki.com/specials).

### Urasenke Tea House

For those of you that want to learn the history of Japanese tea ceremonies, Urasenke Foundation of Hawaii offers Chado, the "Way of Tea, classes to the public and apparently the best matcha in the country. Located behind the Breakers Hotel at 245 Saratoga Road. 923-1057.

### Waikiki Tea

This cute little shop across the street from Embassy Suites at 234 Saratoga has only 7 seats, but with over 30 teas on the menu and the official distributor of those famous Lady M Mille Cakes. Open from 11 a.m. - 8 p.m Mon, Wed-Sat, and Sun 11 a.m. - 6:30 p.m. (closed Tues) Call 886-6000. [instagram.com/ladym.waikikitea](https://www.instagram.com/ladym.waikikitea).



# That's Entertainment

## HOTELS

**'ALOHLANI RESORT** 922-1233  
 • **Daily** - Fish Feeding 10:30am & 2:30pm *O Bar*  
 • **Daily** - Live Music 6:30-9:30pm *Swell Bar*  
 • **Daily** - Light Monument Video Art Series 7-9pm *Swell Bar*  
 • **SunWedSat** - Tank Talk 9am. *O Bar*

**HALEKULANI** 923-2311  
 • **Daily** - Music & Hula 5:30-8:30pm *House Without a Key*  
 • **TWThFS** - Live Jazz 8pm - 12am, *Lewers Lounge*  
 • **Sun** - Sunday brunch w/Noly Paa on piano 9:30am - 2pm  
**HILTON HAWAIIAN VILLAGE** 949-4321  
 • **Fri** - Fireworks at 7:45pm  
 • **SunMTWTh** - Live entertainment, Tapa Bar. 7-10pm  
 • **FriSat** - Live entertainment, Paradise Lounge. 7-10pm  
 • **FriSat** - Live entertainment, Tapa Bar. 8-11pm

**HYATT REGENCY WAIKIKI** 923-1234  
 • **Daily** - Live music at SWIM 5-8pm  
 • **MWed** - Farmer's Market from 4-8pm  
 • **Mon-Fri** - Cultural Programs at the Ho'okela Culture Center  
 • **TTh** - Walking Tour thru parts of Waikiki at 10am  
 • **TTh** - Live Hawaiian music at Pualeilani Atrium, 4-6 pm  
 • **FSSun** - Live music at SHOR 5:30-8:30pm

**KAHALA HOTEL & RESORT** 739-8888  
 • **Mon** - Free kapala stamping at The Veranda at 10am  
 • **Tues** - Free lauhala weaving at The Veranda at 10am  
 • **WFriSat** - Free lei making at The Veranda at 10am  
 • **Thurs** - Free hula dancing at The Veranda at 10am  
 • **ThFSat** - Live entertainment at The Veranda from 6-8pm.  
 • **FriSat** - Afternoon Tea at The Veranda at 2pm & 3:30pm  
 • **Daily** - See the interactive dolphin programs every hour

**LUANA WAIKIKI HOTEL & SUITES** 955-6000  
 • **MWF** - Enjoy live music and hula on the Mezzanine 5-6pm  
**MOANA SURFRIDER** 922-3111

• **Daily** - Live music at The Beach Bar, 4:30-6:30pm, 7-10pm  
 • **WThFSSu** - David Swanson at Vintage1901, 6:30-10pm  
 • **SatSun** - Afternoon Tea at the Veranda, 11:30am - 2:30pm

**OUTRIGGER WAIKIKI BEACH** 923-0711  
 • **Daily** - Live music at Duke's 4-11:30pm, Sat/Sun from 10am

**OUTRIGGER REEF WAIKIKI BEACH** 923-3111  
 • **Daily** - Live Hawaiian music at Kani Ka Pila Grille. 6-9pm  
**PRINCE WAIKIKI** 956-1111

• **ThFSSu** - Live music at 100 Sails from 6-8pm  
 • **Sat** - DJ KK poolside from 2-5pm, Sun from 2:30-5:30pm

**SHERATON PRINCESS KA'IULANI** 922-5811  
 • **Daily** - Live music poolside 6-9pm. DJ from 3-6pm.

**THE ROYAL HAWAIIAN** 923-7311  
 • **Daily** - Live Hawaiian music at the Mai Tai Bar. 11am-2pm  
 • **TWFSSu** - Live Hawaiian music at the Mai Tai Bar. 6-9pm  
 • **MTh** - Live Hawaiian music at the Mai Tai Bar. 8-10pm

**TURTLE BAY RESORT** 293-6000  
 • **Daily** - Live music at The Pointe Pool Bar, 4-7pm  
 • **Daily** - Live music at Off the Lip, 7pm  
 • **Daily** - The Stable at Turtle Bay offers a variety of experiences

**WAIKIKI BEACH MARRIOTT RESORT** 922-6611  
 • **Daily** - Live music, Queensbreak Restaurant 5:30-8:30pm  
 • **Daily** - Live music in the Lobby 5-8pm

## FARMERS MARKETS

**WBW OPEN MARKET**  
 • **Mon** - Set up on the Plaza at Waikiki Beach Walk. 4-8pm.  
**HYATT REGENCY FARMERS MARKET** 225-4002

• **MonWed** - Hyatt Regency 1st floor waterfall atrium 4-8pm  
**HAWAII FARM BUREAU MARKET** 848-2074

• **Wed** - Set up on the Blaisdell Concert Hall Lawn 4-7pm.  
**ALOHA HOME MARKET** 225-4002

• **Sun** - Kailua 340 Uluniu Street 9-2pm.  
 • **Sun** - Ala Moana Mall Level 2 parking by Macys 9am-2pm.  
**HALE'IWA FARMERS MARKET** 388-9696

• **Thurs** - Located at Waimea Valley. 2-6pm

**MAHIKU FARMERS MARKET** 225-4002

• **Thurs** - Bottom level International Market Place 4-8pm.  
**KCC FARMERS MARKET** 848-2074

• **Sat** - Kapiolani Community College 7:30-11am  
**KAKA'AKO FARMERS MARKET** 388-9696

• **Sat** - 919 Ala Moana Blvd & 210 Ward Avenue. 8am-12pm  
**PEARLRIDGE FARMERS MARKET** 388-9696

• **Sat** - Pearlridge Mauka by Macy's. 8am-12pm  
**KAILUA FARM BUREAU MARKET** 848-2074

• **Sun** - Kailua Town Center. 4-7pm  
**KAILUA TOWN FARMERS MARKET** 388-9696

• **Sun** - Enchanted Lake Center by Kailua Cinema. 8am-12pm

## ATTRACTIONS

**FOSTER BOTANICAL GARDEN** 768-7135  
 • **Daily** - Hawaii's oldest Botanical Garden in the midst of downtown open 9am - 4pm. \$5/\$1 keiki (kama'aina \$3)

• **Daily** - Free docent-led tours at 10:30am. Reservations rec.  
**HONOLULU ZOO** 926-3191

• **Daily** - The Zoo is open from 10am - 4pm. Last Entry at 3pm. GA \$19 adult/\$11 keiki (kama'aina \$8/\$4).

• **Sat** - Explore the Zoo after the gates close 5:30-7:30pm.  
**KUHIO BEACH HULA SHOW** 843-8002

• **TuesSat** - Free hula show 6:30 - 7:30pm Kuhio Hula Mound  
**WAIKIKI AQUARIUM** 923-9741

• **Daily** - The Aquarium is open from 9am - 4:30pm. GA \$12 adult/\$5 kids (kama'aina \$8).

• **1st3rdTue** - Hawaiian Plant Tour. 1:30pm. Free w/admission

## MUSEUMS

**BISHOP MUSEUM** 847-3511  
 • **Daily** - The 15-acre campus offers guests a chance to learn about the cultural and natural heritage of Hawai'i and the Pacific across three different exhibition buildings. Daily planetarium shows, a highly unique native Hawaiian botanical garden, and more. 9am-5pm.

**HAWAII STATE ART MUSEUM** 586-0900  
 • **Mon-Sat** - 'Museum Interpreters' on-site to provide visitors with basic information about the museum and artwork. Special evening events as listed below. Open 10am - 4pm.

• **1stFri** - Live entertainment and food vendors. 6-9pm  
 • **2ndFri** - "Vibe" Jazz performances & food vendors. 6-9pm

• **4thFri** - Hawaiian music night. 6-9pm  
 • **3rdSat** - Family Arts & Crafts Day 11am - 3pm

**HONOLULU MUSEUM OF ART** 532-8726  
 • **ThFSSu** - Tour & Talk Story 11am. Free with admission.

• **ThFSSu** - Highlights tour 2pm. Free with admission.  
 • **FSat** - HoMA Nights, open until 9pm. Free with admission.

**HONOLULU FIRE MUSEUM** 723-7167  
 • **3rdSat** - Free one-hour guided tours through various exhibits with a firefighter recounting HFDs history the 3rd Saturday of every month. 9am - 2pm on the hour. 620 South Street. Reservations required. Book online: fire.honolulu.gov then hit the submit request botton and click museum tours.

**IOLANI PALACE** 522-0832  
 • **TThS** - Audio tours available from 9am - 4pm  
 • **WTh** - Docent-led tours available from 9am - 4pm

• **EveryOtherWed** - He Mele Lahui Hawaii with Ku'uipo. 9am  
 • **Fri** - Royal Hawaiian Band. Free. 12-1pm  
 • **SunMon** - Museum Closed

**LUCORAL MUSEUM** 778-8189  
 • **Mon-Fri** - Free self-guided tours featuring local and global gemstones and a one-of-a-kind dinosaur egg. Visitors can also create their own one-of-a-kind jewelry. 10% off gift shop with mention of Oahu Concierge. 10am-5pm.

**HAWAIIAN MISSION HOUSES** 447-3910  
 • **TW** - Docents lead tours through the oldest existing frame house in the Islands. 11am, 12pm, 1pm and 2 pm

• **ThFSat** - 11am, 12pm, 1pm, 2pm and 3pm tours

• **TWThFSa** - Gift shop open 10:30am - 4pm

**PEARL HARBOR AVIATION MUSEUM** 441-1000

• **Daily** - Vintage aircraft in battlefield hangars at Pearl Harbor, outdoor exhibits, flight simulators, and the Bob Hope: An American Treasure Exhibit. Shuttle & Tickets at USS Arizona Memorial Visitor Center or PearlHarborAviationMuseum.org.

## SHOPPING CENTERS

**ALA MOANA CENTERSTAGE** 955-9517

• **Daily** - Hula Show, 5pm.

• **EveryOtherWed** - Royal Hawaiian Band. 11am.

• **Every2nd&LastFri** - Night Market Food Truck and Craft Fair corner of Atkinson Drive and Ala Moana Boulevard. 4-9pm.

• **Sat** - Local entertainment, 3pm.

• **Sun** - Keiki Hula Show, 1pm.

**HALE'IWA STORE LOTS** 203-5700

• **Sat** - Live Hawaiian entertainment from 2 - 4pm

**INTERNATIONAL MARKET PLACE** 921-0536

• **MWF** - Ceremonial sunset lighting of Lamaku Torch Tower

• **MWF** - Sunset Stories Hula Show, 7pm. *Queens Court*

• **Thurs** - Mahiku Farmers Market. 4-8pm. *Banyan Court*

• **1stTh** - Royal Hawaiian Band. Free. 11am. *Queens Court*

• **1stSaSu** - Island Crafters Market. 11am-5pm. *2nd level*

• **1st3rdSu** - Free Yoga Class. 10-10:45am. *Queens Court*

**ROYAL HAWAIIAN CENTER** 922-2299

• **Daily** - Heritage Room/Cultural Videos, *Helumoa Hale*

• **Mon** - Free Ukelele Lessons 11pm, *Helumoa Hale*

• **Tues** - Free Hula Lessons 11am, *Royal Grove*

• **Wed** - Free Lauhala Weaving 11am, *Bldg A, Level 2*

• **Thur** - Free Keiki Hula lessons 12pm, *Royal Grove*

• **Fri** - Free Lei Making Class 12pm, *Bldg A, Level 2*

• **Sat** - Hula Kahiko 5:30pm, *Royal Grove*

• **TWThF** - Live Hawaiian Entertainment 5:30pm, *Royal Grove*

**WAIKIKI BEACH WALK** waikikibeachwalk.com

• **Daily** - The Ukulele Store offers free lessons at 4:30pm

• **Mon** - Open Market 4 - 8pm

• **Tues** - Ku Ha'aeo Hula Show. 4:30-6pm. *Plaza Stage*

• **Wed** - Free feather lei making 11am, 2pm. *Royal Room*

• **Sun** - Free hula lessons, 9-10am



**BALI OCEANFRONT**  
 20% off all Food & Beverage. Hilton Hawaiian Village, 941-2254.

**GUAVA SMOKED**  
 20% off food and drinks with hotel ID. 567 Kapahulu Ave, 2nd floor. Entrance/parking on Campbell Ave. 913-2100

**HAWAIIAN MISSION HOUSES**  
 Free tour with hotel ID. 553 S. King Street. 447-3910.

**IOLANI PALACE**  
 Free Admission with hotel ID. GA \$30. Kama'aina \$19.95. 364 S. King Street, Reservations Required. 522-0832.

**MAUI DIVERS JEWELRY**  
 35% discount off purchases made at the Design Center and 20% at all stores. Must show hotel ID for discount. 1520 Liona St. 946-2929.

**RUTH'S CHRIS STEAK HOUSE**  
 Complimentary Appetizer valued up to \$22 with the purchase of 2 entrees. Waikiki Beach Walk, 440-7910. Restaurant Row, 599-3860.

**You will be required to show Hotel ID or business card to claim offer. Magazine not needed.** Simply mention offer when presenting hotel ID. Discounts available to Guest Service Professionals ONLY. Not valid with other promotions or special offers. A minimum 18% gratuity on original order requested for all food offers.

The Oahu Concierge is printed monthly and direct mailed FREE to all Oahu Concierge, Hospitality & Activity Professionals.  
Subscriptions available to non-industry at \$25 per year.

C O N T A C T  
**Davis Media**  
Ph: (808) 225-8229

Website: [www.OahuConcierge.com](http://www.OahuConcierge.com)

**ADDRESS & NAME CHANGES / ADDITIONS**  
We do not take changes via telephone. All changes to mailing list **must be submitted in writing** by the 16th of the month to make the next issue, email is preferred.

S T A F F

PUBLISHER & EDITOR **Pam Davis**  
[publisher@oahuconcierge.com](mailto:publisher@oahuconcierge.com)

DESIGN  
Coreiya Design

The Oahu Concierge  
4348 Waiialae Avenue, #185  
Honolulu, Hawaii 96816

PRSR STD  
US Postage Paid  
TRADE MEDIA HUI



## Spring into Brunch on the Grand Lānai.

Enjoy weekend brunch at one of six open-air restaurants on the Grand Lānai. Bring your appetite and flavorful, fresh dishes like Lobster Caviar Benedict, Mochi Pancakes, Avocado Toast, Loco Mocos and more.

**INTERNATIONAL  
MARKET PLACE**  
*The story continues.*

2330 Kalākaua Avenue, Waikīkī



### 6 Brunches Endless Mimosas

**CRACKIN' KITCHEN**  
*Saturdays & Sundays*


**EATING HOUSE 1849**  
*by Chef Roy Yamaguchi*  
*Saturdays & Sundays*

**HERRINGBONE**  
*Saturdays & Sundays*

**LILIHA BAKERY**  
*Saturdays & Sundays*

**MOANI WAIKIKI**  
*Sundays Only*

**SHOREFYRE**  
*Saturdays & Sundays*

  
Reservations Recommended

