

## Light Up the Night

## WORLD FIREKNIFE CHAMPIONSHIPS



The annual Shinnyo Lantern Floating Hawai'i takes place Monday, May 27th at Ala Moana Beach Park

Since the beginning of mankind, human beings have found varying ways to cope with death, often influenced by their religious, cultural, and personal beliefs. Rituals, traditions, and ceremonies surrounding death differ widely across cultures, serving as a means of honoring the deceased, providing closure for the living, and navigating the transition between life and death.

These practices include maintaining ancestral shrines, conducting rituals or ceremonies, making unique offerings, or seeking guidance or blessings from the spirits of ancestors. Creating memorials or tributes in honor of the deceased, such as planting a tree, erecting a monument, or holding an annual remembrance event, can provide a tangible way for loved ones to keep their memory alive. Floating lanterns on water is a long-held tradition in East Asia to honor and remember lost loved ones. This beautiful and poignant event takes place in various parts of the world, particularly in Japan, and, for the last 25-odd years here in Hawaii, as a unique and revered way to honor and remember loved ones who have passed away.

The Lantern Floating Ceremony is a unique and profoundly symbolic event. It began in Hawaii at Ke'ehi Lagoon in 1999 before moving to Ala Moana Beach Park in 2002, where it has been held ever

since. Organized by the Shinnyo-en Buddhist order, the ceremony draws around 50,000 people who come to Magic Island to participate or watch as tens of thousands collectively celebrate those who have gone before us. They come together to release lanterns onto the water, creating a powerful symbol of remembrance, reflection, and hope. During the ceremony, individuals are invited to write messages or prayers on a small piece of paper attached to lanterns. These lanterns, made of biodegradable materials such as wood and paper, are then set afloat on the ocean. As the lanterns drift away, illuminated by candlelight at dusk, they create a breathtaking and serene scene.

The Lantern Floating Ceremony is a powerful testament to the unity of all beings and the enduring bonds that transcend time and space. It offers a unique opportunity for people to come together, honor the memories of those who have passed, and find solace and healing in shared reflection. The collective act of setting the lanterns afloat at the same time, each person in their own private moment of remembrance, but united as a group, creates a visually stunning and deeply moving experience.

Participating in or witnessing a Lantern

*Continued on page 6.*



Jeralee Galeai of the famed Laie fire-dancing Galeai family, took home last years woman's title. Photo courtesy of the Polynesian Cultural Center

The history of fire dancing history spans many countries, as numerous cultures have used dance as an important part of ceremonies, gatherings and storytelling, but perhaps the most well-known and historically rich region for fire dancing, and the one most familiar to us in the Hawaiian Islands, is Polynesia, particularly the Tahitian and Samoan cultures.

Fire knife dancing is steeped in the history of the Samoan people and plays a significant role in their culture. It is one of the most intense, skillful and beautiful Samoan art forms that must be seen firsthand to appreciate the self-control and the beauty of the dancers on stage.

Polynesian fire dancing evolved from the traditional Samoan knife dance, known as Siva Afi or Ailao Afi, an ancient warrior exhibition performed at important ceremonies. This mesmerizing and physically demanding dance that involves twirling and spinning a specially designed knife or "nifo oti" that has both

*continued on page 4.*

### TABLE OF CONTENTS

Yada Yada Yada .....	2
Aloha Reviews Launches .....	2
Newsflash .....	3
The Lounge at Island Sound Studios Debuts .....	5
Around Town .....	6
Exploring RED through Exhibits and Quilts .....	7
E Pili Kakou .....	8-13
Chef's Corner: The Blue Fish Chef "Jay Jay" Bawi ...	13
Calendar .....	14-17
Wai Kai Aqua Venture .....	18
That's Entertainment / Concierge Card .....	19

## Publisher's Letter



### April Showers bring May Flowers

That old saying, April shows bring May flowers, is pretty accurate this month, after the drenching rains we got in April, and of course, that other old saying, May Day is Lei Day in Hawaii, comes into play, so bring on the flowers! May traditionally brings a statewide celebration of the aloha spirit and the giving of the flower lei. May isn't just about the lei, of course; it's also about the mele, and there's a lot of music in May.

Although I didn't write about it, seeing as you're supposed to get this book on the 1st, May 1st is Lei Day, and I'm sure many of you will send your guests to Kapiolani Park for the festivities. The scent of flowers wafts through the air as you get close. It's a must-do for visitors, as it is yet another quintessential Hawaii moment. There is non-stop Hawaiian entertainment, exhibits, cultural demonstrations, and a lei contest showcasing exquisitely crafted lei in various colors and methods, so get out and enjoy. Wearing and or giving a lei is a centuries-old tradition that symbolizes love, friendship, and the spirit of Aloha. What a wonderful Hawaii tradition to celebrate that floral garland

A few days later is the annual Visitor Charity Walk. I just found all of my old T-shirts from the walks I did for years with Aloha Magazine back in the day. They were so much fun, but all those tasty snacks you eat at each stop completely counteract all the calories burned during the walk. It's worth it, though! Enjoy yourself, and please be sure to send me some pictures so I can put together a collage next month. If you all send me a few pics, we can get a great collage together!

Lastly, Happy Mother's Day to all you Mom's out there. Virtually every restaurant offers a special menu, and there are multiple concerts to choose from, but flowers could be at a premium between May Day, Mother's Day, Memorial Day, and graduation, so order those leis early. Make your plans early and celebrate that wonderful woman in your life.

I hope all of you who are still lucky enough to have your moms around take some time to make her know how special she is. This ywill be the first Mother's Day I celebrate without my Mom, so don't miss your chance to celebrate with your mother. Happy Mother's Day to all your Moms out there!

# Yada Yada



Erika Kauffman

Highgate Hawaii has added two established executives to its local leadership team. **Gary Spencer** has been named Senior Vice President of Sales & Marketing - Luxury, Lifestyle & Hawaii, bringing with him more than 30 years of expertise and leadership. **Erika Kauffman**, has joined the team as Regional Director of Communications. She spent 5 years as Corporate Director of Public Relations for Halekulani before launching her own PR firm which she has been successfully running for the past 17 years. Congrats! •



Martha Seroogy

Congratulations are also in order for **Martha Seroogy**, who just accepted a position as Senior Director of Show Operations & Revenue for the new **Cirque du Soleil** show coming to town at the end of this year. Martha spent the last 8 years with Blue Note Entertainment Group and was the Director of Marketing for the Hawaii Symphony Orchestra before that. Her passion for the arts and years of experience in the entertainment industry makes her a welcome addition to this exciting new project!

## Aloha Reviews

### Local Guest Service Professional Launches New Training Program

Noah Elgin got into the hospitality industry back in 2006. From humble beginnings as a valet in California, he rose through the Front Services ranks before moving to Hawaii in 2013 and the Guest Relations side. He spent seven years at the Hilton Hawaiian Village as the Director of Guest Relations before COVID upended those plans. Since then, he has worked as the Guest Relations Manager at several hotels, overseeing the Front Office, Reservations, and Guest Services operations before taking on the Guest Relations Manager role at Highgate before taking on the role of Director of Customer Experience at the International Market Place, where he remains today.

Why list his resume? Because Noah Elgin is not just a guest service professional, he is using everything he learned from his vast experience to start a new company in his free time called Aloha Reviews, offering specialized TripAdvisor Front Desk Training Programs to enhance your hotel's online reputation. With a focus on guest satisfaction, positive reviews, visibility, and revenue growth, Elgin's program promises tailored solutions and expert guidance. Through proven strategies, real-world practice, and ongoing



support, Aloha Reviews aims to empower your front desk team for sustained excellence.

The program offers comprehensive and expert guidance, tailored solutions, and proven strategies. It includes strategically tailored training to cater to the needs of both your frontline staff and

leadership team. Front desk agents learn practical insights and strategies that empower them to create memorable guest experiences, while specialized leadership training is designed to delve deeper into the principles of guest satisfaction and effective management strategies.

"Training our front desk staff with Noah's expertise was a game-changer for our hotel," said Jak Hu, Area General Manager of the Queen Kapiolani Hotel. "The personalized approach and insights shared empowered our team to not only connect with guests on a deeper level, but also, turn those connections into glowing TripAdvisor reviews. We're not just providing a service; we're creating memorable experiences that our guests can't wait to share."

To learn more about Aloha Reviews and see if it would work for your hotel, email [AlohaReviewsOahu@gmail.com](mailto:AlohaReviewsOahu@gmail.com).

# EXTRA EXTRA EXTRA *Newsflash*

## HALEKULANI BAKERY PARTNERS WITH IMPERIAL HOTEL TOKYO

Imperial Hotel Tokyo Pastry Chef Yuki Saito and Halekulani Pastry Chef Michelle Baldomero have collaborated to bring two desserts to the Halekulani Bakery from May 1 to June 30. Chef Saito will offer a Sakura Tropical Mochi Roll. Sakura blossoms, mochi, and soft sponge are wrapped around a tropical cream and fruits. Chef Baldomero presents The Exotique, a coconut mousse bar layered with pineapple, guava, and a hint of lime.

## NEW STORES OPEN AT PEARLRIDGE CENTER

Pearlridge Center had opened several new stores. Cat Café Moff, which opened at IMP a few months ago launched their 2nd Hawaii location on the 2nd level Mauka. Homegrown, the local apparel and gift brand opened on the 2nd level above Center Court, and Lasoon, a local eatery offering freshly prepared express-style Nepali and Indian dishes open its second location at Pearlridge Center Wai Makai. [pearlridgeonline.com](http://pearlridgeonline.com).

## HONOLULU MUSEUM OF ART JOINS MUSEUMS FOR ALL

The Honolulu Museum of Art has joined Museums for All to ensure people of all backgrounds have access to museums. Now, people with SNAP benefits can show their EBT card for free entry to HoMA for up to four people. HoMA, Bishop Museum, and more than 1,200 other institutions in all 50 states offer free or reduced admission. HoMA also provides free admission to children 18 and under. [honoluluuseum.org](http://honoluluuseum.org).

## THE FREE KUHIO BEACH HULA SHOW IS BACK

You may have noticed that the Kuhio Beach Hula Show near the Duke Statue has started again after being on hiatus for a few months due to a loss of funding. The Hawaii Tourism Authority, City & County of Honolulu, Aloha Festivals, Hyatt Regency Waikiki Beach Resort & Spa, and Waikiki Improvement Association have stepped up to present the show, weather permitting, Tuesdays and Saturdays from 6:30 - 7:30 p.m. The show is free. For more info, call 843-8002.

## BREITLING OPENS FIRST SOLO BOUTIQUE AT ALA MOANA

Léon Breitling opened his first workshop in Switzerland in 1884 where he began to develop and produce his iconic watches, staying true to his vision of creating instruments that could measure, divide and master time. Breitling set the benchmark for the industry in the early 20th-century, and the timepieces were coveted by sports enthusiasts, athletes and aviation pioneers match. 140 years later, the standard continues and the company, long a staple in other watch stores, has opened its first stand alone location in Ala Moana Center. Featuring a unique design concept a contemporary interpretation of an industrial loft, offering a relaxed yet sophisticated ambience to explore their collections. [breitling.com](http://breitling.com).

## LEI MAKING RETURNS TO THE INTERNATIONAL MARKET PLACE

The International Market Place has brought back their popular free lei making classes. The interactive workshop takes place on the 3rd Thursday of the month in the Queen's Court on Level 1 Admission is FREE and open to the public. No RSVPs needed, but lei available only while supplies last. 12 - 2 p.m. [shopinternationalmarketplace.com](http://shopinternationalmarketplace.com).

## Exceptional Dishes And a View to Match

Discover a one-of-a-kind dining experience where chef-driven dishes meet Oahu's most spectacular views. This is Bali Oceanfront.

- Contemporary open-air setting
- Sweeping ocean views
- Award-winning service
- Seasonal and locally harvested ingredients
- Serving breakfast and dinner

HILTON HAWAIIAN VILLAGE, RAINBOW TOWER  
COMPLIMENTARY SELF PARKING

FOR RESERVATIONS VISIT [BALIWAIKIKI.COM](http://BALIWAIKIKI.COM)  
808-941-2254

BREAKFAST	DINNER
7:00 - 11:30 AM, DAILY	5:00 - 9:00 PM, TUESDAY - THURSDAY
	5:00 - 9:30 PM, FRIDAY - SATURDAY





## On vacation? Then dress like it.

Waikiki's best selection of resort wear.  
All local, and all in one place.

**Free Parking 10am-3pm Daily\***  
\*With \$10 minimum purchase

Open 365 Days | 10AM-9PM  
Located on Lewers St. between Kalakaua Ave. & Kalia Rd.

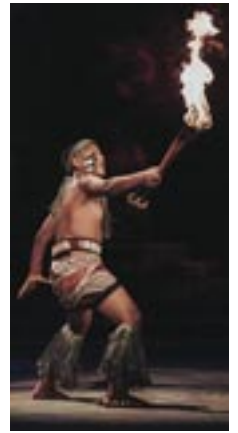


## WORLD FIREKNIFE CHAMPIONSHIPS

Continued from page 1.

ends wrapped in flaming material, typically soaked in kerosene or another flammable liquid so fast that the flames blurs into circles. The action has audience members sitting on the edge of their seats in awe.

Fireknife dancing requires a high level of skill as well as physical fitness and coordination. These performances often incorporate elements of storytelling, rhythm, and athleticism, showcasing the rich cultural heritage of Samoa. Dancers undergo rigorous training to master the techniques involved in handling the flaming knives safely while creating visually stunning performances.



Laie's Kalivati Volavola Jr. won the 2023 Junior title. Photo credit: PCC

Lucky for us, this breathtaking art form can be seen widely throughout the islands, and for the last three decades, the Polynesian Cultural Center has played host to the World Fireknife Championships, where the best of the best from around the world come together each May to showcase their skills and compete for the title.

This year, the 2024 World Fireknife Championships will feature performers from across the US, as well as Samoa, Tahiti, Japan, and Australia. Competitors as young as six years old to the most experienced and celebrated performers will compete in their respective divisions seeking to win the coveted title of World Fireknife Champion.

Kicking things off is the Junior and Intermediate Competition on May 1st, followed by the Men's Preliminaries and Women's Competition on May 8th. Tickets for each of these events are \$15 for all ages.

The Championship concludes with the Men's Finals at 7:30 p.m. on Thursday, May 9th during intermission of the evening show, *Ha: Breath of Life*. Tickets start at \$89.95 for general admission and includes entry into "Ha." The evening promises to be spectacular, filled with intense, and breathtaking performances and cultural pride, featuring incredible displays of athleticism and coordination, that is unlike anything your guest has ever seen before.

For more information or to purchase tickets, visit [worldfireknife.com](http://worldfireknife.com).



SEND YOUR GUESTS TO A *faraway* PARADISE.  
OKAY, THE NORTH SHORE.

It's never been a better time for your guests to experience the Polynesian Cultural Center. They can explore our six island villages with our popular Gateway Buffet package or our Islands & HÅ Show package. For more information, visit [polynesia.com](http://polynesia.com).



# The Lounge Debuts

A New Venue Opens with a Curated Concert Series



The Lounge can accommodate up to 50 with table seating for 2 to 4, table top standing room and a VIP couch. Global menu offerings by Chef Karol.

Henry Kapono is doing it again. A prominent force in the music industry, he continually strives to support musicians and live music venues and create opportunities to support emerging artists. Recently, his friend and acclaimed film and television producer, Bryan Spicer, reached out to Henry to see if he would be interested in working together to curate a rich and diverse musical experience that plans to captivate audiences, transcend boundaries, and elevate the artistry of music makers to new heights at Spicer's brand new venue, The Lounge at Island Sound Studios. The studio has a rich history of hosting legendary artists and is well-known as an incomparable music venue renowned for its state-of-the-art facilities. In its latest rendition, Spicer has created a space downstairs and turned it into a unique venue for intimate productions. To introduce the space, an exclusive 8-week concert series featuring some of Hawaii's best entertainers called the "Music Makers" Series begins this month.

Bryan Spicer is an award-winning producer and director with a 35-year reputation for consistently delivering his cinematic style to high-profile film and television projects. Spicer has lived and worked in Honolulu since 2010, producing and directing more than 200 episodes of *Hawaii Five-0* and *Magnum P.I.* Not only does Spicer live here, he has also worked tirelessly to improve the companies the film industry needs to film here. He created Point Panic Studios, bought Sight & Sound, a company about to go out of business, and built it up, upgrading the equipment. Between the two, he has offered film companies the resources they need to film in Hawaii, bringing more business to the island.

Recently, he took over Island Sound Studios, a 10,000-square-foot two-story facility in Hawaii Kai that has been a coveted destination for musical superstars such as Dr. Dre, Jay-Z, Beyoncé, and Rihanna. The studio was listed amongst the top recording studios in the world in

2017 by *Billboard Magazine*, offering privacy and state-of-the-art equipment to record their music in paradise. The studio had fallen into disrepair until Bryan and his brother Kyle took over in 2022 and made significant upgrades to pave the way for Island Sound Studios to return to its former glory as a top destination for superstars to record. But in addition to creating a world-class recording studio, they are now opening it up on Saturdays as a unique, high-end, intimate concert venue. Following the main acts, the venue has plans to transform into three live stages spanning multiple floors, each boasting a distinct ambiance. Concertgoers can dance all night to Live Bands / DJs in "Studio 808" or enjoy a cozy Speakeasy Jazz and acoustic Set in "The Shark Club" on the second floor once the renovations, currently underway, are completed. "We are offering an experience unlike no other on the island," says Bryan. "The intimate venue also allows the audience a unique opportunity to interact with the artists."

Enter Henry Kapono, who, along with his wife Lezlee, has curated some of the island's favorite musicians to present The Music Makers Series. Together, Kapono and Spicer invite audiences to an unforgettable musical odyssey, promising an unparalleled line-up of artists.

Music Makers, the first of many concert series to come to The Lounge, runs from May 4 to June 22, presenting two shows every Saturday at 6 and 9 p.m. Each show opens with a 15-minute set from an emerging artist and includes an intimate Q&A session with the leading performer, gaining insights into the artistic process, inspirations, and stories behind the music. Tickets include VIP, GA/Host, and Bar seating. With only 50 seats available



The patio to the side of the Lounge opens up onto the marina, offering spectacular sunset views for each show, early booking is encouraged to secure preferred seating options. In addition to providing a platform for exceptional musical talent, the Music Makers Series also aims to make a meaningful impact in the community, with a portion of the proceeds going to the Henry Kapono Foundation. For more details, go to [www.theloungeatissound.com](http://www.theloungeatissound.com).

## Music Makers Series Schedule

- May 4** - Brother Noland
- May 11** - Taimane
- May 18** - Chadwick & the Elegant Endeavors
- May 25** - Payton Sullivan
- June 1** - Amy Hānaiali'i
- June 8** - Makana
- June 15** - Henry Kapono
- June 22** - The Mākaha Sons

**STARTING AT \$64**

SAVOR OUR PRIME TIME MEAL WITH STARTER, ENTRÉE, SIDE, AND DESSERT

**RUTH'S CHRIS STEAK HOUSE**

AVAILABLE DAILY FROM 4-6 PM  
Oahu: Waterfront Plaza and Waikiki Beach Walk  
Maui: The Shops at Wailea  
[RUTHSCHRIS.COM](http://RUTHSCHRIS.COM)

**INTRODUCING  
DOWNTOWN  
HONOLULU'S  
NEW CULINARY  
EPICENTER**

**AC HOTEL HONOLULU**  
1111 BISHOP ST.  
@ACHOTELHNL

**COMMON  
GROUND**



**YOUR NEW BOUGIE BODEGA  
COFFEE SHOP, WITH ALOHA**

MON - FRI | 7:00AM - 2:00PM  
SAT | 7:00AM - 11:00AM  
@COMMONGROUNDHNL

**THE DOTTED LINE**  
AC KITCHEN & LOUNGE



**MORE IS MORE AT THIS  
EXECUTIVE PLAYGROUND**

BREAKFAST, BRUNCH, LUNCH,  
PAU HANA, DINNER  
DOTTEDLINEHAWAII.COM

**YOURS TRULY**  
ADVENTUROUS COCKTAILS



**UNDERGROUND BAR &  
LOUNGE WITH HIDDEN  
SPEAKEASY #IYKYK**

WED & THU | 5:00PM - 11:00PM  
FRI & SAT | 5:00PM - 12:00AM  
YOURSTRULYHAWAII.COM

*Floating Lanterns*

Continued from page 1.

Floating Ceremony is not just a cultural event, it's a deeply emotional and potentially transformative experience. It offers a sense of peace and connection in the midst of grief and loss. This is a testament to the power of cultural traditions and rituals, which can provide comfort and meaning, regardless of one's background or beliefs, in times of mourning.

The Lantern Floating Ceremony is a truly inclusive event, welcoming everyone to participate in this emotional and spiritual ceremony, whether as active participants or as observers. However, please note that personal lanterns are not allowed. Each of the 6,000 lanterns available for the ceremony has been lovingly crafted by hundreds of volunteers. These lanterns, many of which are original wooden-framed lanterns from the early years of the event, are designed to catch a line laid out in advance to prevent them from floating out to sea, ensuring they can be recycled for next year.

The festival is celebrating its 25th anniversary on May 27 at Ala Moana Beach Park, with the theme of Many Rivers, One Ocean. The ceremony is from 6:30 to 7:30 p.m., and the festival hopes to connect the community by offering a physical and emotional space for residents and visitors to experience a sense of comfort, connection, and healing.

For those wishing to float a lantern during the ceremony, individual lanterns will be distributed on a first-come, first-



6,000 lanterns will be floated after sunset. Photo courtesy of Shinnyo Lantern Floating Hawai'i.

served basis at the Lantern Request Tent at Ala Moana Beach on Monday, May 27. Check the website closer to the event day to see the hours, as advanced reservations are unavailable. Six thousand candle-lit lanterns bearing remembrances, prayers, and affirmations will be set afloat at Ala Moana Beach at sunset. The event is free and open to the public, but remember that it usually generates tens of thousands of participants, and parking at Magic Island will be reserved for those with permits only, so plan your arrival accordingly.

Head to their website for more information. Although nothing compares to attending the ceremony in person, for those who don't want to brave the crowds, the ceremony will also be broadcast live on KHON2 and their website, LanternFloatingHawaii.com.

*Around Town*

**Mara Honolulu Opens**



Mara Honolulu held a private blessing for its opening and members of the TableOne Hospitality Executive team were on hand: (l-r) Bryan Feigenbaum, Executive V.P. (EVP) Operations, Tim Flowers, EVP Development, Patric Yumul, CEO, and David Varley, EVP Culinary

**Outrigger donates to Maui fund**



Sean Dee, EVP & Chief Commercial Officer, Justin Jeffre & Nick Lachey from 98 Degrees, Outrigger Reef GM Markus Krebs, VP Global Communications Monica Salter, VP Operations, Americas, Mike Shaff, President & CEO Jeff Wagoner, at Monkeypod's grand opening.

# Exploring the color **RED** through Exhibits and Quilts

Red is a vibrant color associated with energy, passion, and strength. From fiery sunsets to ripe strawberries, red catches the eye. In Hawai'i, the color red holds significant importance in the context of Hawaiian royalty, symbolizing power, prestige, and sacredness. According to Bishop Museum, it is present in everyday and sacred objects, in 'ōlelo (speech) and mo'olelo (stories), and in the names and classifications of nature and place. They are opening a new, original exhibition, **Ka'Ula Wena: Oceanic Red**, to explore how red signifies beyond color. It explores manifestations of red in landscapes and memory and creates expressions of Oceania.

It is the first exhibition of its kind to gather the material culture of Oceania and articulate the multiple uses and understandings of a single color: RED. This exhibition aims to explore how red signifies beyond color. It shows how redness can reveal the kinship shared by those who live guided by a mediating, divining Indigenous Oceania. Drawing from the vast collections of Bishop Museum and important loaned objects from around the world, this once-in-a-lifetime exhibit is curated by Native Hawaiians collaborating with Indigenous peoples around Oceania. The exhibit opens on May 25 in Bishop Museum's Castle Memorial Building and will remain open until early January next year.

Following the same theme, this year's **Hawaii Quilt Show** also delves into the color red. It is the state's largest show of its kind and represents various quilting styles, tastes, and talents. This year is the 40th anniversary of the Quilt Show, and accordingly, the theme is **40 Shades of Red**. Quilters must make a quilt using only shades of red, 40 of them to be exact, with red being the dominant color. Only one color other than red is allowed, but it needs to be predominantly RED quilt overall. The show will be held at the former Gentry Design Center, now called Na Lama Kukui, from May 30 to June 9 and will be open Mon-Sat from 10 a.m. – 5 p.m. and Sundays from 12-5 p.m. [hawaiiquiltguild.com](http://hawaiiquiltguild.com).

Hawaiian quilting history has deep cultural roots in the islands. The origins of Hawaiian quilting can be traced back to before the missionaries arrived, when Hawaiians used a fabric called kapa, pounded from the bark of certain trees and dyed and decorated with geometric patterns. When the missionaries arrived,

they brought woven fabrics and steel needles and taught the Hawaiian people how to make patchwork quilts.

It wasn't until the late 19th and early 20th centuries that Hawaiian quilting developed its distinct style. Legend has it that the first Hawaiian quilt design was a breadfruit pattern. Some Hawaiian women laid some fabric on the grass to dry. They noticed a shadow from the branches of the breadfruit tree on the fabric. The Hawaiian women then cut out the shadowy design, laid it onto another fabric, appliqued it, and quilted it. Thus the birth of the first Hawaiian quilt.

Hawaiian quilting is a beautiful, intricate art form with a rich cultural history. It is characterized by its unique motifs and patterns, often inspired by nature and the island landscape. The art form and quilts are passed down from generation to generation, passed down as treasured family heirlooms, and given as gifts to mark special occasions such as weddings, births, and graduations.

Interested in quilting but unable to make the show? Head to the **A'O Cultural Center** at the Outrigger Reef, where Aunty Healani stores her family's



quilt. The quilt is a work of art and tells a story. "Every time I unroll and display Tutu's quilt, I see a different stitch," says Aunty. "It's starting to fray in areas, and repairing it would lose the history of time and character that tells a story we will never know yet." Crafted by Mary Asui, born in 1894, Aunty Healani treasures the quilt and her role of caretaker, and is always willing to show the quilt and share its story with anyone who stops by.

Both seasoned and new quilters are drawn to the beauty and intricacy of this beautiful art form. Exploring Hawaiian quilting, whether as a quilter or an admirer, is a testament to the enduring legacy of this art form and the dedication of those who preserve and innovate it.



**FREE  
HULA  
SHOW**

**Waikīkī Shell  
Sundays-Thursdays  
9:30-10:30 a.m.**

[ExperienceKilohana.com](http://ExperienceKilohana.com)

# Let's be Together...

DINING ▶ ENTERTAINMENT ▶ PAU HANA ▶ EAT ▶ DRINK ▶ BE MERRY ▶ HAPPY HOUR ▶

## MONDAY

<b>100 Sails at the Prince Waikiki</b>	<b>944-4494</b>
<i>Live Contemporary Hawaiian</i>	
Mike Tulba Duo	6-8pm
<b>Barefoot Beach Café at Queen's Beach</b>	<b>924-2233</b>
<i>Live Contemporary &amp; Hawaiian</i>	
The Barefoot Boys	5:30-8:30pm
<b>BASALT</b>	<b>923-5689</b>
<i>Live Contemporary &amp; Hawaiian</i>	
Jon Basebase	6-8pm
<b>Duke's Canoe Club Waikiki</b>	<b>922-2268</b>
<i>Live Contemporary Hawaiian</i>	
Grace Welton	4-6pm
Bryan & Halekahu	7-9:30pm
Ellsworth Simeona	9:30-12am
<b>Hard Rock Cafe</b>	<b>955-7383</b>
<i>Contemporary Rock</i>	
Chapter II (or TJ & Sons)	8-10pm
<b>Heydey at the White Sands</b>	<b>475-6864</b>
<i>Contemporary Rock</i>	
Laupepa Letuli	7-9pm
<b>House Without a Key</b>	<b>923-2311</b>
<i>Hawaiian music &amp; hula by Miss Universe '97 Brook Lee</i>	
Pa'ahana Trio	5-8pm
Nick La'a	8:15 - 10pm
<b>Hula Grill</b>	<b>923-4852</b>
<i>Contemporary Rock</i>	
Ben Kama	12-2pm
<b>Kani Ka Pila Grille</b>	<b>924-4992</b>
<i>Hoku Award Winning Hawaiian musicians</i>	
Sean Na'auao	6-9pm
<b>Mahi'ai Table</b>	<b>670-2778</b>
<i>Live Contemporary</i>	
Jenna Keala	5-8pm
<b>Mahina &amp; Sun's</b>	<b>923-8882</b>
<i>Monday Vibes on the Lanai</i>	
Kokonut Point	6:30-9:30pm
<b>Mai Tai Bar at the Royal Hawaiian</b>	<b>923-7311</b>

<i>Live Contemporary Hawaiian</i>	
Eric Lee	11am-2pm
Brad Kawakami	8-10pm
<b>Maui Brewing Company</b>	<b>843-2739</b>
<i>Live Contemporary Hawaiian</i>	
Randy Allen	8:30-10:30pm
<b>Merriman's Honolulu</b>	<b>215-0022</b>
<i>Live Slack Key guitarist</i>	
Deven Camat	5:30-7:30pm
<b>Monkeypod Kitchen Ko Olina</b>	<b>381-4086</b>
<i>Live Contemporary 3x a day including from 12:30 - 2 p.m.</i>	
Kree and Malik	3:30-5pm
Sienna Souza	7-9pm
<b>Monkeypod Kitchen Waikiki</b>	<b>900-4226</b>
<i>Live Contemporary 3x a day including from 12:30 - 2 p.m.</i>	
Shawn Garnett	3:30-5pm
Dustin Park	7-9pm
<b>Pikos Kitchen &amp; Bar</b>	<b>923-2032</b>
<i>Live Contemporary Hits</i>	
Christian Yrizarry (or others)	6-9pm
<b>Rumfire</b>	<b>921-4600</b>
<i>Live Contemporary Hits</i>	
Dave Watanabe (5/13 - Eddie Somera)	6-9pm
<b>Signature Prime Steak</b>	<b>949-3636</b>
<i>Contemporary Pianist in the bar</i>	
Keith Montross	6-9pm
<b>Splash Bar at the Sheraton Princess Kaiulani</b>	<b>921-4600</b>
<i>Live Contemporary Hawaiian</i>	
David Aquino	6-9pm
<b>Swell at the Alohilani</b>	<b>294-4108</b>
<i>Solo Contemporary Guitarist</i>	
Drew Henmi	6:30-9:30pm
<b>SWIM at the Hyatt Regency</b>	<b>923-1234</b>
<i>Live Contemporary Hawaiian</i>	
Kaulana Vinoya	5-9pm
<b>The Beach Bar at the Moana Surfrider</b>	<b>922-3111</b>
<i>Live Contemporary Hawaiian</i>	
Eric Lee	3:30-6:30pm
Johnny Valentine (or AJ Keolanui)	7-10pm
<b>The Edge at the Sheraton</b>	<b>921-4600</b>
<i>Live Hawaiian Music</i>	
Stephen Inglis (or others)	1-4pm
<b>The Point Sunset Pool Bar at Turtle Bay</b>	<b>293-6000</b>
<i>Live Contemporary Hawaiian with Fireknife Dancer</i>	
Kuhio Travis	5-8pm

Kona Chang (5/7, 5/28)	7-9:30pm
Kailua Moon (5/14, 5/21)	7-9:30pm
Stephen Inglis	9:30-12am
<b>Eating House 1849 Waikiki</b>	<b>924-1849</b>
<i>Live Contemporary Hawaiian</i>	
Kings Kalohelani	4:30-7:30pm
<b>Giovanni Pastrami</b>	<b>923-2100</b>
<i>Acoustic Soul, R&amp;B and Pop</i>	
YOZA (or others)	6:30-9:30pm
<b>Hard Rock Cafe</b>	<b>955-7383</b>
<i>Contemporary Rock</i>	
Sydney Spencer (or Tehani)	8-10pm
<b>House Without a Key</b>	<b>923-2311</b>
<i>Hawaiian music &amp; hula by Miss Aloha Hula '21 Maka Perry</i>	
Delima Ohana	5-8pm
Jesse Kuikahi	8:15 - 10pm
<b>Hula Grill</b>	<b>923-4852</b>
<i>Contemporary Rock</i>	
Kawika Kahiapo	12-2pm
<b>Kani Ka Pila Grille</b>	<b>924-4992</b>
<i>Hoku Award Winning Hawaiian musicians</i>	
Kalale Camarillo	6-9pm
<b>Lewers Lounge</b>	<b>923-2311</b>
<i>Jazz Pianist</i>	
Tommy James	8:30pm-12am
<b>Mahi'ai Table</b>	<b>670-2778</b>
<i>Live Contemporary</i>	
Keoni Ku	5-8pm
<b>Mahina &amp; Sun's</b>	<b>923-8882</b>
<i>Electrifying Acoustic on the Lanai</i>	
Laupepa Letuli	6:30-9:30pm
<b>Mai Tai Bar at the Royal Hawaiian</b>	<b>923-7311</b>
<i>Live Contemporary Hawaiian</i>	
Kupu Dalire-Na'auao	11am-2pm
Eric Lee	6-9pm
<b>Maui Brewing Company</b>	<b>843-2739</b>
<i>Live Contemporary Hawaiian</i>	
Trish Nalei (or Mike Piranha)	8:30-10:30pm
<b>Merriman's Honolulu</b>	<b>215-0022</b>
<i>Live Contemporary</i>	
John Kema	5:30-7:30pm
<b>Moani Waikiki</b>	<b>466-2629</b>
<i>Live Contemporary Hawaiian</i>	
Lava	7-10pm
<b>Monkeypod Kitchen Ko Olina</b>	<b>381-4086</b>
<i>Live Contemporary 3x a day including from 12:30 - 2 p.m.</i>	
Pono	3:30-5pm
Chante	7-9pm
<b>Monkeypod Kitchen Waikiki</b>	<b>900-4226</b>
<i>Live Contemporary 3x a day including from 12:30 - 2 p.m.</i>	
Tiare Gomes	3:30-5pm
John Akapo	7-9pm
<b>Pikos Kitchen &amp; Bar</b>	<b>923-2032</b>
<i>Live Contemporary Hits</i>	
Drew Henmi	6-9pm
<b>Rumfire</b>	<b>921-4600</b>
<i>Live Contemporary Hits</i>	
Christian Yrizarry (5/7 - Eddie Somera)	6-9pm
<b>Signature Prime Steak</b>	<b>949-3636</b>
<i>Contemporary Pianist in the bar</i>	

## TUESDAY

<b>100 Sails at the Prince Waikiki</b>	<b>944-4494</b>
<i>Live Contemporary Hawaiian</i>	
Cherie Duo	6-8pm
<b>BASALT</b>	<b>923-5689</b>
<i>Live Contemporary &amp; Hawaiian</i>	
Lauren Baba	6-8pm
<b>Barefoot Beach Café at Queen's Beach</b>	<b>924-2233</b>
<i>Backyard Hawaiian</i>	
Ben Kama	5:30-8:30pm
Shane Kainoa (or others)	6-9pm
<b>Duke's Canoe Club Waikiki</b>	<b>922-2268</b>
<i>Live Contemporary Hawaiian</i>	
Walt Keale	4-6pm

**WAIKIKI BAPTIST Church**  
 Your Church in Waikiki  
 424 Kuamo'o St  
 (Near the Ambassador Hotel)  
**Sunday Worship Services**  
 9:00 AM - Contemporary  
 10:45 AM - Traditional  
 (808) 955-3525  
 WaikikiBaptist.com



# E Pili Kākou

DINING ▶ ENTERTAINMENT ▶ PAU HANA ▶ EAT ▶ DRINK

Keith Montross	6-9pm	Dillon Pakele	5-8pm
<b>Splash Bar at the Sheraton Princess Kaiulani</b>	<b>921-4600</b>	<b>Mahina &amp; Sun's</b>	<b>923-8882</b>
<i>Live Contemporary Hawaiian</i>		<i>Soulful Guitar on the Lanai</i>	
Mark Caldeira	6-9pm	John Akapo	6:30-9:30pm
<b>Swell at the Alohilani</b>	<b>294-4108</b>	<b>Mai Tai Bar at the Royal Hawaiian</b>	<b>923-7311</b>
<i>Solo Contemporary Guitarist</i>		<i>Live Contemporary Hawaiian</i>	
Kamuela Kahoana	6:30-9:30pm	Stephen Inglis (or others)	11am-2pm
<b>SWIM at the Hyatt Regency</b>	<b>923-1234</b>	Johnny Valentine (or YOZA)	6-9pm
<i>Live Contemporary Hawaiian</i>		<b>Maui Brewing Company</b>	<b>843-2739</b>
Dominic Carlos	5-9pm	<i>Live Contemporary Hawaiian</i>	
<b>The Beach Bar at the Moana Surfrider</b>	<b>922-3111</b>	Scott Magz & Preston Kauwe (5/15-Kosuke)	8:30-10:30pm
<i>Live Contemporary Hawaiian</i>		<b>Merriman's Honolulu</b>	<b>215-0022</b>
Stephen Inglis (or Jason Midro)	3:30-6:30pm	<i>Live Contemporary</i>	
Alex Oasay (5/14 - YOZA)	7-10pm	Kamaka Camarillo	5:30-7:30pm
<b>The Edge at the Sheraton</b>	<b>921-4600</b>	<b>MINA's Fish House</b>	<b>679-0079</b>
<i>Live Hawaiian Music</i>		<i>Live Contemporary Hits</i>	
Eric Lee	1-4pm	Kamuela Kahoano	6-9pm
<b>The Point Sunset Pool Bar at Turtle Bay</b>	<b>293-6000</b>	<b>Moani Waikiki</b>	<b>466-2629</b>
<i>Live Contemporary Hawaiian with Fireknife Dancer</i>		<i>Blues, Old School Rock, Country</i>	
Jenna Keala	5-8pm	Keith Batlin	7-10pm

## WEDNESDAY

<b>100 Sails at the Prince Waikiki</b>	<b>944-4494</b>	<b>Monkeypod Kitchen Ko Olina</b>	<b>381-4086</b>
<i>Live Contemporary Hawaiian</i>		<i>Live Contemporary 3x a day including from 12:30 - 2 p.m.</i>	
Kai Malo'o	6-8pm	Chris Murphy	3:30-5pm
<b>Barefoot Beach Café at Queen's Beach</b>	<b>924-2233</b>	Izik	7-9pm
<i>Island Vibes</i>		<b>Monkeypod Kitchen Waikiki</b>	<b>900-4226</b>
Danny Galura	5:30-8:30pm	<i>Live Contemporary 3x a day including from 12:30 - 2 p.m.</i>	
<b>Duke's Canoe Club Waikiki</b>	<b>922-2268</b>	Bori & Isa	3:30-5pm
<i>Live Contemporary Hawaiian</i>		Chante	7-9pm
Keoni Ku	4-6pm	<b>Pikos Kitchen &amp; Bar</b>	<b>923-2032</b>
Taulia Lave (5/1 - Chapter II)	7-9:30pm	<i>Live Contemporary Hits</i>	
Alika Souza	9:30-12am	David Aquino	6-9pm
Randy Allen (5/1, 5/8)	9:30-12am	<b>Rumfire</b>	<b>921-4600</b>
<b>Eating House 1849 Waikiki</b>	<b>924-1849</b>	<i>Live Contemporary Hits</i>	
<i>Live Contemporary Hawaiian</i>		Jesse Kuikahi	6-9pm
Shawn Garnett	4:30-6:30pm	<b>Signature Prime Steak</b>	<b>949-3636</b>
<b>et al inside Kahala Market</b>	<b>732-2144</b>	<i>Contemporary Pianist in the bar</i>	
<i>Live Contemporary Hawaiian</i>		Pierre Grill	6-9pm
Johnny Helm	5:30-8:30pm	<b>Splash Bar at the Sheraton Princess Kaiulani</b>	<b>921-4600</b>
<b>Giovanni Pastrami</b>	<b>923-2100</b>	<i>Live Contemporary Hawaiian</i>	
<i>Acoustic Guitar Soul, R&amp;B</i>		YOZA (5/1, 5/22)	6-9pm
Jason Laeha	6:30-9:30pm	Christian Yrizarry (5/8)	6-9pm
<b>Hard Rock Cafe</b>	<b>955-7383</b>	Alika Souza (5/15, 5/29)	6-9pm
<i>Contemporary Rock</i>		<b>Swell at the Alohilani</b>	<b>294-4108</b>
Cassie and the...	8-10pm	<i>Solo Contemporary Guitarist</i>	
<b>House Without a Key</b>	<b>923-2311</b>	Danielle Parente	6:30-9:30pm
<i>Hawaiian music &amp; hula by Miss Universe '97 Brook Lee</i>		<b>SWIM at the Hyatt Regency</b>	<b>923-1234</b>
Pa'ahana Trio	5-8pm	<i>Live Contemporary Hawaiian</i>	
Mike Tulba	8:15 - 10pm	Biku	5-9pm
<b>Hula Grill</b>	<b>923-4852</b>	<b>The Beach Bar at the Moana Surfrider</b>	<b>922-3111</b>
<i>Contemporary Rock</i>		<i>Live Contemporary Hawaiian</i>	
Ronson Asuncion	12-2pm	Brandon Serrano (5/22 - Stephen Inglis)	3:30-6:30pm
<b>Kani Ka Pila Grille</b>	<b>924-4992</b>	Kaiona (on 5/8 and 5/22)	7-10pm
<i>Hoku Award Winning Hawaiian musicians</i>		<b>The Edge at the Sheraton</b>	<b>921-4600</b>
Ei Nei	6-9pm	<i>Live Hawaiian Music</i>	
<b>Lewers Lounge</b>	<b>923-2311</b>	Kupu Dalire-Na'auao	1-4pm
<i>Jazz Pianist</i>		<b>The Point Sunset Pool Bar at Turtle Bay</b>	<b>293-6000</b>
Tommy James	8:30pm-12am	<i>Live Contemporary Hawaiian with Fireknife Dancer</i>	
<b>Mahi'ai Table</b>	<b>670-2778</b>	Alex Oasay	5-8pm
<i>Live Contemporary</i>		<b>Tiki's Grill &amp; Bar</b>	<b>923-TIKI</b>
		<i>Live Contemporary Hawaiian and hula</i>	
		Derrick Lee	1-3 pm



# MARA

LOCAL FARE.  
MEDITERRANEAN FLAIR

**BREAKFAST**  
DAILY | 6:30AM-11AM

**BRUNCH**  
SAT & SUN | 11AM-3PM

**LUNCH**  
MON-FRI | 11AM-3PM

**DINNER**  
DAILY | 5PM-10PM

**PAU HANA**  
MON-FRI | 4PM-6PM

**LIVE MUSIC**  
WED & FRI | 6PM-9PM

**BAR & LOUNGE**  
DAILY | 11AM-11PM

3 Hour Complimentary  
Valet Parking

Any Guest Referred by Concierge  
will Receive MARA's  
**VIP EXPERIENCE**

When making your guests' reservation  
please provide your name & company name

Renaissance Honolulu Hotel & Spa  
1390 Kapiolani Blvd

RESERVE TODAY  
**MARAHONOLULU.COM**  
@MARA\_HONOLULU

# Let's be Together...

DINING ▶ ENTERTAINMENT ▶ PAU HANA ▶ EAT ▶ DRINK ▶ BE MERRY ▶ HAPPY HOUR ▶

Malu Productions	5:30-7:30pm	<b>Moani Waikiki</b>	<b>466-2629</b>	<b>Hard Rock Cafe</b>	<b>955-7383</b>
<b>Vintage 1901 at the Moana</b>	<b>921-4600</b>	<i>Contemporary Island Music</i>		<i>Live Contemporary</i>	
<i>Contemporary Piano</i>		Kimo Opiana	7-10pm	Psycho Tropical (or Close the Distance)	8-11pm
David Swanson (5/8 - Ginny Tiu)	6:30-10pm	<b>Monkeypod Kitchen Ko Olina</b>	<b>381-4086</b>	<b>House Without a Key</b>	<b>923-2311</b>
		<i>Live Contemporary 3x a day including from 12:30 - 2 p.m.</i>		<i>Hawaiian music &amp; hula by Miss Hawaii '73 Kanoë Miller</i>	
		Kona Abergas	3:30-5pm	Kapalama Trio	5-8pm
		Bronson Varde	7-9pm	Tad Jennings	8:15-10pm
		<b>Monkeypod Kitchen Waikiki</b>	<b>900-4226</b>	<b>Hula Grill</b>	<b>923-4852</b>
		<i>Live Contemporary 3x a day including from 12:30 - 2 p.m.</i>		<i>Contemporary Rock</i>	
		Bella and Tehani	3:30-5pm	YOZA	12-2pm
		Javin Kai	7-9pm	<b>Kani Ka Pila Grille</b>	<b>924-4992</b>
		<b>Pikos Kitchen &amp; Bar</b>	<b>923-2032</b>	<i>Hoku Award Winning Hawaiian musicians</i>	
		<i>Live Contemporary Hits</i>		Ka Hehena	6-9pm
		Keoni Ku	6-9pm	<b>Lewers Lounge</b>	<b>923-2311</b>
		<b>Rumfire</b>	<b>921-4600</b>	<i>Jazz Pianist</i>	
		<i>Live Contemporary Hits</i>		Maggie Herron & Dean Tabata	8:30pm-12am
		Brad Kawakami	6-9pm	<b>Mahi'ai Table</b>	<b>670-2778</b>
		<b>Signature Prime Steak</b>	<b>949-3636</b>	<i>Live Contemporary</i>	
		<i>Contemporary Pianist in the bar</i>		Jenny Yim (5/17 - YOZA)	5-8pm
		Grant Carvalho	6-9pm	<b>Mahina &amp; Sun's</b>	<b>923-8882</b>
		<b>Splash Bar at the Sheraton Princess Kaiulani</b>	<b>921-4600</b>	<i>Slack Key on the Lanai</i>	
		<i>Live Contemporary Hawaiian</i>		Dustin Park Duo	6:30-9:30pm
		Tad Jennings	6-9pm	<b>Mai Tai Bar at the Royal Hawaiian</b>	<b>923-7311</b>
		<b>Stripsteak</b>	<b>896-2545</b>	<i>Live Contemporary Hawaiian</i>	
		<i>Live Contemporary</i>		Brandon Serrano	11am-2pm
		Jason Laeha	6-9pm	Johnny III (5/3 - 2:15 - 5pm)	6-9pm
		<b>Swell at the Alohilani</b>	<b>294-4108</b>	<b>Mariposa</b>	<b>951-3420</b>
		<i>Solo Contemporary Guitarist</i>		<i>Live Contemporary</i>	
		Denny Ono	6:30-9:30pm	Chris Salvador	2:30-5:30pm
		<b>SWIM at the Hyatt Regency</b>	<b>923-1234</b>	<b>Maui Brewing Company</b>	<b>843-2739</b>
		<i>Live Contemporary Hawaiian</i>		<i>Live Contemporary Hawaiian</i>	
		Koa Atwood (or others)	5-9pm	Deah & Duva (or others)	8:30-10:30pm
		<b>The Beach Bar at the Moana Surf Rider</b>	<b>922-3111</b>	<b>Maui Brewing Kailua</b>	<b>518-2739</b>
		<i>Live Contemporary Hawaiian</i>		<i>Live Contemporary Hawaiian</i>	
		Christian Yrizarry	3:30-6:30pm	Dion "Boogie" Scott (or others)	7-9pm
		Kaimi Hananoëau	7-10pm	<b>Merriman's Honolulu</b>	<b>215-0022</b>
		<b>The Edge at the Sheraton</b>	<b>921-4600</b>	<i>Live Contemporary</i>	
		<i>Live Hawaiian Music</i>		Stephen Harris	5:30-7:30pm
		YOZA (5/30 - Alike Souza)	1-4pm	<b>MINA's Fish House</b>	<b>679-0079</b>
		<b>The Point Sunset Pool Bar at Turtle Bay</b>	<b>293-6000</b>	<i>Live Contemporary Hits</i>	
		<i>Live Contemporary Hawaiian with Fireknife Dancer</i>		Jenna Keala (5/31-Cory Oliveros)	6-9pm
		Dave Watanabe (or Marty Saito)	5-8pm	<b>Moani Waikiki</b>	<b>466-2629</b>
		<b>The Veranda at the Kahala Hotel</b>	<b>739-8760</b>	<i>Traditional Hawaiian, Reggae. DJ Spins from 10p-1:30am</i>	
		<i>Live Contemporary</i>		Liam Moletta	6-9pm
		Johnny Valentine (5/30 - YOZA)	6-9pm	<b>Monkeypod Kitchen Ko Olina</b>	<b>381-4086</b>
		<b>Vintage 1901 at the Moana</b>	<b>921-4600</b>	<i>Live Contemporary 3x a day including from 12:30 - 2 p.m.</i>	
		<i>Contemporary Piano</i>		Tehani and Kaponono	3:30-5pm
		David Swanson (5/9 - Ginny Tiu)	6:30-10pm	John Akapo	7-9pm
				<b>Monkeypod Kitchen Waikiki</b>	<b>900-4226</b>
				<i>Live Contemporary 3x a day including from 12:30 - 2 p.m.</i>	
				The Mauve	3:30-5pm
				Izik	7-9pm
				<b>Original Magoos Pizza</b>	<b>949-5381</b>
				<i>Live Contemporary Hawaiian</i>	
				Ernie Kanoa	5:30-8:30pm
				<b>Pikos Kitchen &amp; Bar</b>	<b>923-2032</b>
				<i>Live Contemporary Hits</i>	
				Johnny Helm	6-9pm
				<b>Rumfire</b>	<b>921-4600</b>
				<i>Live Contemporary Hits</i>	
				Stephen Inglis (or YOZA)	4:30-7:30pm

## FRIDAY

<b>Barefoot Beach Café at Queen's Beach</b>	<b>924-2233</b>	<b>Barefoot Beach Café at Queen's Beach</b>	<b>924-2233</b>
<i>Live Contemporary Hawaiian</i>		<i>Live Contemporary Hawaiian</i>	
The Art Kalahiki Band	5:30-8:30pm	The Art Kalahiki Band	5:30-8:30pm
<b>BASALT</b>	<b>923-5689</b>	<b>BASALT</b>	<b>923-5689</b>
<i>Live Contemporary &amp; Hawaiian</i>		<i>Live Contemporary &amp; Hawaiian</i>	
Shawn Garnett	6-8pm	Shawn Garnett	6-8pm
<b>Duke's Canoe Club Waikiki</b>	<b>922-2268</b>	<b>Duke's Canoe Club Waikiki</b>	<b>922-2268</b>
<i>Live Contemporary Hawaiian</i>		<i>Live Contemporary Hawaiian</i>	
Maunalua	4-6pm	Maunalua	4-6pm
Kawaika Kahiapo	7-9:30pm	Kawaika Kahiapo	7-9:30pm
Ernest Chang	9:30-12am	Ernest Chang	9:30-12am

# E Pili Kākou

DINING ▶ ENTERTAINMENT ▶ PAU HANA ▶ EAT ▶ DRINK

Drew Henmi (5/31-Biku)	8-10:30pm	<b>Kani Ka Pila Grille</b>	<b>924-4992</b>
<b>Signature Prime Steak</b>	<b>949-3636</b>	<i>Hoku Award Winning Hawaiian musicians</i>	
<i>Contemporary Pianist in the bar</i>		Ho'okena	6-9pm
Grant Carvalho	6-9pm	<b>Lewers Lounge</b>	<b>923-2311</b>
<b>Splash Bar at the Sheraton Princess Kaiulani</b>	<b>921-4600</b>	<i>Jazz Pianist</i>	
<i>Live Contemporary Hawaiian, DJ Jem spins from 2-5pm</i>		Maggie Herron & Dean Taba	8:30pm-12am
Ben Kama Duo & Dancer	5-8pm	<b>Mahi'ai Table</b>	<b>670-2778</b>
<b>Stripsteak</b>	<b>896-2545</b>	<i>Live Contemporary</i>	
<i>Live Contemporary</i>		Danielle Parente (5/11-Kaimi Hananoeau)	5-8pm
Shane Kainoa	6-9pm	<b>Mahina &amp; Sun's</b>	<b>923-8882</b>
<b>SWIM at the Hyatt Regency</b>	<b>923-1234</b>	<i>Contemporary Hawaiian/Blues on the Lanai</i>	
<i>Live Contemporary Hawaiian</i>		Savia Farang	6:30-9:30pm
Denny Ono (or others)	5-9pm	<b>Mai Tai Bar at the Royal Hawaiian</b>	<b>923-7311</b>
<b>The Beach Bar at the Moana Surfrider</b>	<b>922-3111</b>	<i>Live Contemporary Hawaiian</i>	
<i>Live Contemporary Hawaiian</i>		Ronson Asuncion (5/11 - Stephen Inglis)	11am-2pm
Keoni Ku	12-3pm	Dave Watanabe (5/11-YOZA)	6-9pm
Kailua Moon (5/3 - Stephen Inglis)	3:30-6:30pm	<b>Mariposa</b>	<b>951-3420</b>
Kamuela Kahoano	7-10pm	<i>Live Contemporary</i>	
<b>The Edge at the Sheraton</b>	<b>921-4600</b>	Aisaiah Jacobs	2:30-5:30pm
<i>Live Hawaiian Music</i>		<b>Maui Brewing Company</b>	<b>843-2739</b>
Christian Yrizarry (or Dominic Carlos)	1-4pm	<i>Live Contemporary Hawaiian</i>	
<b>The Grove at the Modern Pool Deck</b>	<b>943-5800</b>	Ben Kama Duo (or others)	3:30-5:30pm
<i>Live Contemporary</i>		<b>Maui Brewing Kailua</b>	<b>518-2739</b>
Tad Jennings	4-7pm	<i>Live Contemporary Hawaiian</i>	
John Coelho	6-8pm	Scott Magz (5/4-Justin Edwards)	7-9pm
<b>The Point Sunset Pool Bar at Turtle Bay</b>	<b>293-6000</b>	<b>Merriman's Honolulu</b>	<b>215-0022</b>
<i>Live Contemporary Hawaiian with Fireknife Dancer</i>		<i>Live Contemporary</i>	
Mark Calderia	5-8pm	Shane Kainoa	5:30-7:30pm
<b>The Veranda at the Kahala Hotel</b>	<b>739-8760</b>	<b>MINA's Fish House</b>	<b>679-0079</b>
<i>Live Contemporary</i>		<i>Live Contemporary Hits</i>	
Johnny Valentine (5/24 - Jesse Kuikahi)	6-9pm	Alex Oasay (5/18 - YOZA)	6-9pm
<b>Vintage 1901 at the Moana</b>	<b>921-4600</b>	<b>Moani Waikiki</b>	<b>466-2629</b>
<i>Contemporary Piano</i>		<i>Contemporary Reggae</i>	
David Swanson (5/10 - Ginny Tiu)	6:30-10pm	Braddah Ash	6-9pm
		Live Local Band	10pm-1:30am
		<b>Monkeypod Kitchen Ko Olina</b>	<b>381-4086</b>
		<i>Live Contemporary 3x a day including from 12:30 - 2 p.m.</i>	
		Javin Kai	3:30-5pm
		Izik	7-9pm
		<b>Monkeypod Kitchen Waikiki</b>	<b>900-4226</b>
		<i>Live Contemporary 3x a day including from 12:30 - 2 p.m.</i>	
		Tad Jennings	3:30-5pm
		Kona Abergas	7-9pm
		<b>Original Magoos Pizza</b>	<b>949-5381</b>
		<i>Solo Country</i>	
		Buck Giles	5:30-8:30pm
		<b>Pikos Kitchen &amp; Bar</b>	<b>923-2032</b>
		<i>Live Contemporary Hits</i>	
		Biku Shimabuku (5/4 - AJ Keolanui)	6-9pm
		<b>Redfish at the Wayfinder Waikiki</b>	<b>921-3220</b>
		<i>Live Contemporary Hits</i>	
		Johnny Helm	6-10p
		<b>Rumfire</b>	<b>921-4600</b>
		<i>Live Contemporary Hits</i>	
		Mark Calderia	4:30-7:30pm
		Bronson Varde	8-10:30pm
		<b>Signature Prime Steak</b>	<b>949-3636</b>
		<i>Contemporary Pianist in the bar</i>	
		Grant Carvalho	6-9pm
		<b>Splash Bar at the Sheraton Princess Kaiulani</b>	<b>921-4600</b>
		<i>Live Contemporary Hawaiian, DJ spins from 2-5pm</i>	

## SATURDAY

<b>Barefoot Beach Café at Queen's Beach</b>	<b>924-2233</b>
<i>Live Contemporary Hawaiian</i>	
Vanessa Alputila	5:30-8:30pm
<b>BASALT</b>	<b>923-5689</b>
<i>Live Contemporary &amp; Hawaiian</i>	
Jeagan Faye	6-8pm
<b>Duke's Canoe Club Waikiki</b>	<b>922-2268</b>
<i>Live Contemporary Hawaiian</i>	
Kaiona Band (or others)	4-6pm
Ells Simeona	7-9:30pm
Sean Cleland	9:30-12am
<b>Eating House 1849 Waikiki</b>	<b>924-1849</b>
<i>Live Contemporary Hawaiian</i>	
Kings Kalohelani	10:30am-1pm
<b>Hard Rock Cafe</b>	<b>955-7383</b>
<i>Live Contemporary</i>	
Tad Jennings	8-11pm
<b>House Without a Key</b>	<b>923-2311</b>
<i>Hawaiian music &amp; hula by Miss Hawaii '73 Kanoe Miller</i>	
Kapalama Trio	5-8pm
Mike Tulba (or Alika Souza)	8:15 - 10pm
<b>Hula Grill</b>	<b>923-4852</b>
<i>Contemporary Rock</i>	
Uluwehi Young (or Jason Midro)	12-2pm



**BAREFOOT BEACH CAFE**  
Waikiki

On Queen's Surf Beach  
at the Diamond Head  
end of Waikiki

**EXPERIENCE  
TRUE HAWAII!**

OPEN DAILY, 8AM - 9PM  
(last call for food at 8:30pm)

LIVE MUSIC NIGHTLY,  
5:30PM - 8:30PM  
& SUNDAYS, 10AM - 1PM




**Barefoot Beach Café**  
2699 Kalakaua Avenue  
BarefootBeachCafe.com  
808.924.2233 (CAFÉ)

# Let's be Together...

DINING ▶ ENTERTAINMENT ▶ PAU HANA ▶ EAT ▶ DRINK ▶ BE MERRY ▶ HAPPY HOUR ▶

Brad Kawakami Duo & Dancer	5-8pm	
Chris Luke & Dancer (5/25)	5-8pm	
<b>Stripsteak</b>		<b>896-2545</b>
<i>Live Contemporary</i>		
Dustin Park	6-9pm	
<b>SWIM at the Hyatt Regency</b>		<b>923-1234</b>
<i>Live Contemporary Hawaiian</i>		
Stan Albrecht	5-9pm	
<b>The Beach Bar at the Moana Surfriider</b>		<b>922-3111</b>
<i>Live Contemporary Hawaiian</i>		
Chris Salvador (dark on 5/4)	12-3pm	
Alika Souza (or others)	3:30-6:30pm	
Koa Atwood	7-10pm	
<b>The Edge at the Sheraton</b>		<b>921-4600</b>
<i>Live Hawaiian Music</i>		
Brad Kawakami	1-4pm	
<b>The Grove at the Modern Pool Deck</b>		<b>943-5800</b>
<i>Live Contemporary</i>		
Mike Izon (5/11 - YOZA)	4-7pm	
<b>The Point Sunset Pool Bar at Turtle Bay</b>		<b>293-6000</b>
<i>Live Contemporary Hawaiian with Fireknife Dancer</i>		
Denny Ono	5-8pm	
<b>The Veranda at the Kahala Hotel</b>		<b>739-8760</b>
<i>Live Contemporary</i>		
Cory Oliveros	6pm-9pm	
<b>Vintage 1901 at the Moana</b>		<b>921-4600</b>
<i>Contemporary Piano</i>		
David Swanson (5/4-Cherie Kainoa Duo)	6:30-10pm	

## SUNDAY

<b>Barefoot Beach Café at Queen's Beach</b>		<b>924-2233</b>
<i>Live Contemporary Hawaiian</i>		
Kimo Baker	10am-1pm	
Art Kalahiki	5:30-8:30pm	
<b>BASALT</b>		<b>923-5689</b>
<i>Live Contemporary &amp; Hawaiian</i>		
Don Baduria	6-8pm	
<b>Duke's Canoe Club Waikiki</b>		<b>922-2268</b>

<i>Live Contemporary Hawaiian</i>		
Henry Kapono	4-6pm	
Kaiona Duo	7-9:30pm	
Tad Jennings (or Justin Edwards)	9:30-12am	
<b>Eating House 1849 Waikiki</b>		<b>924-1849</b>
<i>Live Contemporary Hawaiian</i>		
Shane Kainoa	10:30am-1pm	
<b>Giovanni Pastrami</b>		<b>923-2100</b>
<i>Reggae Pop Music</i>		
Kelandy	6:30-9:30pm	
<b>Hard Rock Cafe</b>		<b>955-7383</b>
<i>Contemporary Rock</i>		
Allie and the Waves (or others)	8-10pm	
<b>House Without a Key</b>		<b>923-2311</b>
<i>Hawaiian music &amp; hula by Miss Hawaii '23 Star Thurston</i>		
Pu'uhonua Trio	5-8pm	
Brad Kawakami	8:15-10pm	
<b>Hula Grill</b>		<b>923-4852</b>
<i>Contemporary Rock</i>		
Stephen Inglis (or Keoni Ku)	12-2pm	
<b>Kani Ka Pila Grille</b>		<b>924-4992</b>
<i>Hoku Award Winning Hawaiian musicians</i>		
Nathan Aweau	6-9pm	
<b>La Hiki Restaurant at the Four Seasons</b>		<b>679-0079</b>
<i>Live Contemporary Hawaiian</i>		
Kamuella Kahoano (or Jenna Keala)	11am-2pm	
<b>Mahi'ai Table</b>		<b>670-2778</b>
<i>Live Contemporary</i>		
Johnny III	5-8pm	
<b>Mahina &amp; Sun's</b>		<b>923-8882</b>
<i>Award-winning ukulele on the Lanai</i>		
Jeff Rasmussen	6:30-9:30pm	
<b>Mai Tai Bar at the Royal Hawaiian</b>		<b>923-7311</b>
<i>Live Contemporary Hawaiian</i>		
John Coelho & Kanoe Arola	11am-2pm	
Christian Yrizary	6-9pm	
<b>Mariposa</b>		<b>951-3420</b>
<i>Live Contemporary</i>		
Zaysha	12-3pm	
<b>Maui Brewing Company</b>		<b>843-2739</b>
<i>Live Contemporary</i>		
Jai Rodgers Duo (or others)	3:30-5:30pm	
<b>Merriman's Honolulu</b>		<b>215-0022</b>
<i>Live Contemporary Piano</i>		
Grant Carvalho	5:30-7:30pm	
<b>Moani Waikiki</b>		<b>466-2629</b>
<i>Contemporary Island Music</i>		
Dustin Park	7-10pm	
<b>Monkeypod Kitchen Ko Olina</b>		<b>381-4086</b>
<i>Live Contemporary 3x a day including from 12:30 - 2 p.m.</i>		
Brada Brey and Corey	3:30-5pm	
Lava	7-9pm	
<b>Monkeypod Kitchen Waikiki</b>		<b>900-4226</b>
<i>Live Contemporary 3x a day including from 12:30 - 2 p.m.</i>		
Liam Moleta	3:30-5pm	
Koa and Yazmin	7-9pm	
<b>Original Magoos Pizza</b>		<b>949-5381</b>
<i>Kanikapila Night</i>		
Leonard Jenkins & Joe Chang	5:30-8:30pm	
<b>Pikos Kitchen &amp; Bar</b>		<b>923-2032</b>
<i>Live Contemporary Hits</i>		

Dominic Carlos	6-9pm	
<b>Rumfire</b>		<b>921-4600</b>
<i>Live Contemporary Hits</i>		
Jenna Keala	4:30-7:30pm	
Alex Oasay	8-10:30pm	
<b>Signature Prime Steak</b>		<b>949-3636</b>
<i>Contemporary Pianist in the bar</i>		
Keith Montross	6-9pm	
<b>Splash Bar at the Sheraton Princess Kaiulani</b>		<b>921-4600</b>
<i>Live Contemporary Hawaiian - DJ spins from 2-5pm</i>		
Kailua Moon & Dancer (or others)	3:30-5:30pm	
<b>Swell at the Alohilani</b>		<b>294-4108</b>
<i>DJ Mau Spins Poolside from 2-5 pm</i>		
Jason Laeha (dark on 5/5)	6:30-9:30pm	
<b>SWIM at the Hyatt Regency</b>		<b>923-1234</b>
<i>Live Contemporary Hawaiian</i>		
Koa Atwood	5-9pm	
<b>The Beach Bar at the Moana Surfriider</b>		<b>922-3111</b>
<i>Live Contemporary Hawaiian</i>		
YOZA	12-3pm	
Brad Kawakami (5/12 - Kalau)	3:30-6:30pm	
Dave Watanabe (5/12 - Eddie Somera)	7-10pm	
<b>The Edge at the Sheraton</b>		<b>921-4600</b>
<i>Live Hawaiian Music</i>		
Christian Yrizary	1-4pm	
<b>The Point Sunset Pool Bar at Turtle Bay</b>		<b>293-6000</b>
<i>Live Contemporary Hawaiian with Fireknife Dancer</i>		
Danielle Parente (5/12 - Bronson Varde)	5-8pm	
<b>Vintage 1901 at the Moana</b>		<b>921-4600</b>
<i>Contemporary Piano</i>		
David Swanson (5/12 - Ginny Tiu)	6:30-10pm	



## Hot Lines

Here's a few numbers for you to find out the latest in live music from places that change daily or don't update us regularly, since we strive to put out correct info and can't possibly list them all.

Anna O'Brien's	946-5190
Deck	931-4488
Hard Rock Cafe	955-7383
Irish Rose Saloon	947-3414
Kelley O'Neil's	926-1777
Lucky Strike Honolulu	664-1140
Mai Tai Bar Ala Moana	947-2900
Off the Wall	593-2337
Tiki's Grill & Bar	923-TIKI
Tommy Bahama	923-8785

## Dining Dish

**Lewers Lounge** is changing its hours of operation effective April 28. They will now be open at 7 p.m. daily. Closing at midnight on Sunday and Monday, 12:30 a.m. Tuesday to Thursday and 1 a.m. on Friday and Saturday. Live Music will be offered Tuesday to Saturday at 8:30 p.m.,

### Plan an Adventure

Let Hawaii Nautical show your guests our ocean playground.

**808-234-SAIL (7245)**

**TURTLES GUARANTEED**

Enjoy our morning and afternoon snorkel sailings at Turtle Canyon with a wildlife guarantee! See turtles or cruise again for free (certain rules apply). Wildlife guarantee is for re-rides only, no refunds.

but the early show will no longer occur. Food service hours will be from 7 to 10:30 p.m. 923-2311. • **Mugen Waikiki** has launched Sunset Champagne & Caviar Hour. Guests can enjoy Waikiki's beautiful sunset from the rooftop of the ESPACIO Waikiki while enjoying champagne and caviar service for \$140 per person. I see this easily becoming the next proposal hotspot! They also launched an elegant twist on the classic afternoon tea experience. Available every Saturday at 1:00 p.m. for \$120 per person. Guests are greeted with a glass of Rosé before selecting a teapot from an assortment of intricately designed teapots. Guests choose their tea and enjoy an elevated menu of small bites is included. 377-2247. • **The Artisan Loft** is also adding to its afternoon tea service starting May 7, Dean & Deluca will introduce an early summer menu as part of its upstairs Afternoon Tea. Served every Tuesday, Wednesday, and Thursday from 11:30 a.m. – 3:30 p.m., the Early Summer Limited Edition Afternoon Tea features a 5-course set menu highlighted by pink and red hues for \$65 per person and includes a gift with purchase. 729 – 9720. • Not to be outdone, **Fusion Café + Wine** launched a new series of champagne tea parties in Kaimuki. The posh take on afternoon tea features five savory bites and five sweets accompanied by a choice of beverage. The champagne tea service will happen monthly, with the next one scheduled on Saturday, May 11 for \$50 per person. fusion-cafe.com. • **The Original Magoos Pizza**, a longtime local favorite now located in Kaimuki, is now open daily for lunch & dinner, from 11 a.m. - 9 p.m., with daily happy hour 11 a.m. - 5 p.m. originalmagoospizza.com. • Speaking of happy hours, **Mara Honolulu** has launched Pau Hana Monday through Friday, offering special pricing on cocktails, wine, beer, and 16 delectable bar bites from 4 - 6 p.m. marahonolulu.com. • Sad news on the restaurant front as we are losing two popular eateries. **Likos Tap & Table** closed suddenly at the end of March. Although very popular, they fell behind financially during COVID and never caught up, forcing them to close. • Citing rising costs, **Redfish Poke Bar by Foodland**, announced they are closing its Kaka'ako location when their lease expires at the end of June. Stop by while you still can.



# Chef's Corner

## The Blue Fish Chef Ram Uk Bawi "Jay Jay"

*Chef "Jay Jay" lives in Dallas, Texas and has been working for The Blue Fish since 2008. Starting as a prep cook, he is now in charge of food quality control, management, and overseeing the opening of new restaurants to make sure they measure up. He has opened multiple locations over the years, but the Waikiki location is special to him. Having visited Oahu before, this location became his passion project and he is thrilled to be here for a few months to revamp the menu and build this restaurant for success.*

### Tell us a bit about yourself.

I am from Myanmar, but most people know it as Burma. I started my culinary journey in 2008 from my love of eating and wanting to always try new things. I loved spending time in the kitchen and being creative with my food – even simple things like freezing coffee and eating it like ice cream.

### What was your first job in the industry?

My first job was a prep cook at The Blue Fish in 2008, learning to cook from everyone on the line. I did not stay in that position too long because I quickly started moving up in the kitchen.

### What drew you to becoming a sushi chef?

I love to learn new things and I love fish. So, I started training on the sushi line. I also loves to cook BBQ and brisket but usually just at home.

### Describe your rise through the company.

I moved from prep cook, to sous chef, second head chef, Head Chef, then I was approached to train for the corporate roll of food quality control.

### Who's would you consider your mentor?

My mentor was Ito-San. Ito taught me at Blue Fish. He taught me organization and everything about sushi. I worked under him for a couple of years. I also take the time to still self-teach through magazines, social media, and I am continuously learning from everyone around me.

### You oversee the opening of all The Blue Fish locations, how many have you opened?

I have opened up a number of Blue Fish Locations. Blue Fish 121, Blue Fish Toyota Music Factory, Blue Fish Breckenridge, Blue Fish Waikiki, Blue Fish Denver, Blue Fish Galleria, Blue Fish SugarLand, Blue Fish Woodland. Many unfortunately closed down due to Covid. We have 7 in total open now.

### Why did you want to open a location in Hawaii?

The beauty of the island mixed with the tourism and different cultures that visit the island made it very desirable. I really wanted to extend Blue Fish out to Hawaii.

### Had you been to Hawaii before?

Yes, I visited Oahu multiple times, and also visited The Big Island.

### Did you enjoy working out here? What makes this location special?

Yes, the people and the culture of the island is so welcoming. Everyone is so nice. It's genuinely great working here on Oahu, everyone is willing to help and lend out a hand.

### Do all the restaurants follow the same menu?

Yes – every location has the same basis of our menu but we cater each location to the environment and what the different states locations prefer.

### But you're changing up the Hawaii menu?

We want to add things to the menu that the people in Hawaii will absolutely love – focusing on pork, ramen and adding some Korean dishes.

### What changes do you plan to make?

Leaning towards some katsu – pork katsu, things are still in the works but I am making and trying things out at the moment, my main focus is incorporating more pork into our menu.

### How long do you plan to stay in the islands overseeing this location?

Until the end of summer.

### What have you enjoyed most living in Hawaii ?

Hiking Diamond Head and the variety of local food. I have tried so much food and right now my favorite is Zippy's Fried Chicken.

### What's on your must do list while in the islands?

My next goal is hiking Koko Head and learning to surf – and continuing to tour around and eat authentic Hawaiian food.

### Any other information you want to share?

I don't have any secrets. I'm an open book who loves the restaurant world and won't turn down a good meal. My favorite thing is to go to a restaurant and try everything!

## How to cook A5 Wagyu perfectly (Medium Rare)



### Ingredients:

- Wagyu cut an inch thick
- Salt & pepper
- Wagyu Fat (Can use lob)
- Pan to sear

### Directions:

Heat your pan to high temp. Season Wagyu with salt and pepper on both sides. Put lob in pan and make sure you coat the entire pan. Lay steak in pan covered for 2 mins on the first side. As soon as you lay down the Wagyu turn temp down to medium. Flip the Wagyu and sear other side for covered for 2 more minutes. Remove Wagyu from pan and let it rest for 3 minutes. Cut Wagyu into thinner slices and serve. Can serve with chimichurri sauce but wagyu can be served just by itself because it's so delicious. Don't forget to serve your favorite vegetables on the side.

**The Blue Fish is located on the 2nd level of Waikiki Beach Walk by the Hokulani escalator. Open daily at 12 p.m. Closes at 9 p.m., 10 p.m. on Fri/Sat • Happy Hour: 3 - 6 p.m. daily, 9 - 10 p.m. Fri/Sat**  
**Web:** thebluefishsushi.com • **Instagram:** @bluefish\_waikiki • **FB:** /thebluefishwaikiki • **Ph:** 892-1115

# MAY CALENDAR OF EVENTS

## Continuing Events

### MONDAYS, WEDNESDAYS & FRIDAYS O NĀ LANI SUNSET STORIES HULA SHOW

Honoring the rich history and sense of place of the International Market Place through song & dance. It begins at sunset with the lighting of the Lamakū Torch Tower on Kalākāua Avenue and leads to the Queen's Court. Free. 6:30 p.m. [shopinternationalmarketplace.com](http://shopinternationalmarketplace.com).

### TUESDAY THRU SATURDAY ARTS AT MARKS LATEST EXHIBIT

This month's exhibition at the Arts at Marks Garage celebrates the art of raku-firing pottery displaying 98 pieces of raku will be shown from 59 artists. Enjoy a Meet the Artists reception at Pau Hana Friday on the first and final Friday of the month from 5 - 8 p.m. Open Tues-Sat. from 12 - 5 p.m. [artsatmarks.com](http://artsatmarks.com).

### WEDNESDAYS, SATURDAYS & SUNDAYS ALOHA STADIUM SWAP MEET

The Aloha Stadium Swap Meet has been going strong since 1979. Featuring over 400 vendors, crafters and artists, the Swap Meet offers low-prices on a wide selection of quality products with food trucks to snack from. Wednesdays & Saturdays: 8 a.m. - 3 p.m., Sundays, 6:30 a.m. - 3 p.m. \$2 admission ages 12 & up, \$1 for locals. [alohastadium.hawaii.gov](http://alohastadium.hawaii.gov).

### FIRST FRIDAY (APRIL 5) DOWNTOWN GALLERY WALK & CRAFT FAIR

Downtown comes alive the first Friday of every

month as art lovers fill the streets for Honolulu's outdoor self-guided arts tour. Stores spill out onto the sidewalk, and artists are on hand to chat about to their works, and restaurants are ready to serve you. Monthly updates are published two days before the event at [firstfridayhawaii.com](http://firstfridayhawaii.com).

### SECOND FRIDAY (MAY 10) BISHOP MUSEUM AFTER HOURS

Extended after-hours access to the Museum with a special Pau Hana. Experience unique changing exhibitions, hear about the latest scientific discoveries, engage with Hawaiian cultural practitioners, or spend the evening on the Great Lawn with food and drinks for sale from local vendors. 5 - 9 p.m. \$10 at the door. (\$5 pre-sale) [bishopmuseum.org](http://bishopmuseum.org).

### FRIDAYS ROYAL HAWAIIAN BAND LUNCHTIME SHOW

The Royal Hawaiian Band returns to 'Iolani Palace for its popular lunchtime concerts. Held on most Fridays, the concerts are free and open to the public. 12 - 1 p.m. [iolanipalace.org](http://iolanipalace.org)

### FRIDAYS & SATURDAYS HOMA NIGHTS

On Friday and Saturday nights, regular museum admission also includes live musical performances, hands-on art activities, pop-ups in the HoMA Shop, movies on the lawn, bar service at the HoMA Cafe, and other interactive art experiences. The museum stays open until 9 p.m. [honolulumuseum.org](http://honolulumuseum.org).

### SATURDAYS & SUNDAYS ART ON THE ZOO FENCE

Art On The Zoo Fence is a group of resident Hawaii artists that meet every Saturday and Sunday to display and sell art and photography on the Zoo fence on Monsarrat Avenue opposite the Kapiolani Park Bandstand. This is the only outdoor art venue in Honolulu that has proudly been displaying art since 1953. 9 a.m. - 3 p.m. Free. [artonthefencehi.com](http://artonthefencehi.com).

### SECOND SATURDAY (MAY 11) KANIKAPILA MA KAIWI'ULA

Bring your 'ukulele, or borrow one that's there. Join in to learn some new techniques, share mo'olelo or just enjoy the music as Ukulele Guild of Hawai'i members lead guests through selections from the Hawaiian Songbook. Free with admission. Bishop Museum Native Hawaiian Garden. 10 a.m. [bishopmuseum.org](http://bishopmuseum.org).

### SECOND SUNDAY (MAY 12) KAMA'AINA SUNDAYS

Kama'aina Sundays are back at 'Iolani Palace. Locals can take advantage of free tours, entertainment, family-friendly activities and plenty of food options with proof of residency. Free tours will be available to the first 500 guests. 9 a.m. - 2 p.m. [iolanipalace.org](http://iolanipalace.org).

### THIRD SUNDAY (MAY 19) FAMILY FREE SUNDAY

Thanks to Bank of Hawaii, kama'aina have been offered free admission with ID on the third Sunday of the month since 2004. With engaging activities for keiki of all ages, live entertainment, and community-focused programming around the museum, this is a great way for families to spend creative time together. Free admission for kama'aina. 10 a.m. - 6 p.m. 532-8700. [honolulumuseum.org](http://honolulumuseum.org).

### THIRD SUNDAY (MAY 19) MELE HALI'A

Waikiki Beach Walk celebrates Hawaiian music with award-winning musicians and hula hālau one Sunday a month on the Plaza Stage. This month, catch the Waimanalo Sunset Band. See a different performer each month from 5-6 p.m. [waikikibeachwalk.com](http://waikikibeachwalk.com).

### MAY 1 96TH ANNUAL LEI DAY CELEBRATION

The first Lei Day was celebrated on May 1, 1927, with a few people wearing lei in downtown Honolulu. Over time, more and more people began to wear lei on May 1, and thus began the tradition of "May Day

is Lei Day in Hawai'i." Even during the pandemic, when large, in-person events were restricted, our island community found innovative ways to celebrate this uniquely Hawaiian holiday. Don't miss the 96th annual lei day celebration as Hawaiian entertainment, demonstrations, and exhibits, including a lei contest exhibit showcasing some of the most exquisitely crafted lei in a variety of colors and methods in honor of Lei Day. The Royal Hawaiian Band will kick off the festivities at 9 a.m. to 5:30 p.m. Kapiolani Park. [honolulu.gov/parks/program](http://honolulu.gov/parks/program).



**ORIGINAL**  
**MAGOO'S PIZZA**  
**EST. 1967**

**HAWAII'S FAVORITE  
ISLAND-STYLE PIZZA,  
SUBS & SALAD**

NOW OPEN DAILY FOR LUNCH & DINNER  
11am - 9pm

HAPPY HOUR DAILY  
11am - 5pm

ORDER TAKEOUT & DELIVERY ONLINE  
<http://OriginalMagoosPizza.com/Order>



3579 Waialae Avenue  
(between 11th & 12th Ave)



**NO HU HU  
CALL MAGOO'S  
808.949.5381**

# MAY CALENDAR OF EVENTS

**MAY 1**

## MAY DAY WITH KUANA TORRES KAHELE



Celebrate May Day with Kuana Torres Kahele and special guest dancers, Teva and Amberlee Medeiros from Maui's own Halau Kekuaoakala'au'ala'iliahi. Two shows at 6:30 and 9 p.m.

Tickets: \$35-\$45. [bluenotehawaii.com](http://bluenotehawaii.com).

**MAY 1**

## HAWAIIAN AIRLINES MAY DAY 2024

Hawaiian Airlines May Day 2024 presented by Mele continues the annual Lei Day tradition by the Brothers Cazimero with Keauhou, the 19-time Nā Hōkū Hanohano award-winning group, returning to headline the concert experience alongside special guests, including Kamalei Kawa'a, Robert Cazimero and more. 5-9 p.m. Tickets: \$35-\$135. [eventbrite.com](http://eventbrite.com).

**MAY 1 • KE KAI 'OLA**

It's the 3rd annual May Day Celebration presented by the Kauakoko Foundation, Nā Kumu Hula Karl Veto Baker and Michael Lanakila Casupang bring Hawaiian Music and hula to the Tom Moffatt Waikiki Shell in a fundraiser concert for Hālau i ka Wēkiu. 7 p.m. Tickets: \$30-\$50

**MAY 1**

## JUNIOR WORLD FIREKNIFE CHAMPIONSHIP

As a precursor to the men's and women's finals of the World Fireknife Championship later this week, prepared to be amazed as competitors as young as six years old take the stage for the Junior and Intermediate Competition. 6:30 p.m. Polynesian Cultural Center. [worldfireknife.com](http://worldfireknife.com).

**MAY 2**

## THE PSYCHEDELIC FURS

The distinctive voice of lead singer Richard Butler still takes listeners back to the 80s even today with such iconic hits as "Pretty in Pink," "Love My Way," "Heaven," and "The Ghost In You." Tickets: \$59-\$125. 8 p.m. [hawaii theatre.com](http://hawaii theatre.com).

**MAY 4**

## KALANI PE'A MAY DAY SPECIAL

Three-time Grammy® award-winner & Five Time Nā Hōkū Hanohano Award Winner Kalani Pe'a returns to the Hawaii Theatre stage for his 6th Annual May Day is Lei Day in Hawai'i Concert featuring award winning hālau and entertainers. 7 p.m. Tickets: \$45-\$250. [hawaii theatre.com](http://hawaii theatre.com).

**MAY 4**

## ANNUAL VISITOR INDUSTRY CHARITY WALK

Get ready for the annual visitor industry charity walk starting at 7 a.m. at Ala Moana Beach Park. Be sure to snap pictures of you and your colleagues along the way and email them to [publisher@oahuconciierge.com](mailto:publisher@oahuconciierge.com) by May 15th. [charitywalkhawaii.org](http://charitywalkhawaii.org).



**MAY 3**

## LED ZEPPLICA

The international known tribute band returns to Honolulu to present audiences with the Led Zepplika Experience. Tickets: \$25. 8 p.m. The Republik. [bampproject.com](http://bampproject.com).

**MAY 4**

## EAST HONOLULU FOOD FESTIVAL

"May the 4th be with You" as the 16th annual East Honolulu Food Festival invites fans of all things Star Wars to celebrate local cuisine against the backdrop of an intergalactic celebration and "out-of-this-world" themed culinary experience from more than 20 Hawaii restaurants and purveyors. Guests can immerse themselves in lively activities ideal for all age groups from a dedicated keiki corner for kids, while adults can enjoy live entertainment, a silent auction, or showcase their best costumes in the spirit of the saga. Tickets: \$95. Star of the Sea. 5:30 – 9:30 p.m. [starofthesea.org](http://starofthesea.org).

**MAY 4**

## FILIPINO FIESTA

Enjoy authentic Filipino food and desserts, non-stop live entertainment, art gallery, pop up shop vendors, non-profits, and more at this joyous celebration of Filipino culture. Waipahu. Filipino Community Center. Free. 10 a.m. – 6 p.m. [filcom.org](http://filcom.org).

**MAY 4**

## WE ARE SAMOA FESTIVAL

It's Hawaii's largest Samoan cultural gathering and premier showcase of Samoa's traditions as high school students of Samoan ancestry demonstrate their cultural knowledge by competing in a series of traditional practices including protocol and speech making, basket weaving, coconut husking and fire making, costuming, poise, dance and interpretation. 9 a.m. Polynesian Cultural Center. Tickets were

sold out at press time but check out [worldfireknife.com](http://worldfireknife.com) for the latest updates.

**MAY 4 • JAMES TAYLOR**



At 76 years of age, the six-time Grammy-award winner and Rock n Roll Hall of Fame inductee is still showing us "How Sweet It Is" as one of the greatest singer-songwriters of all time brings his classic hit songs to the Blaisdell Arena. 8 p.m. Tickets: \$69-\$195. [bampproject.com](http://bampproject.com).

**MAY 5 & 19**

## DINNER & SHOW WITH ROBERT CAZIMERO

Enjoy an up close and personal evening with one of Hawaii's most beloved entertainers, Robert Cazimero. Chef Chai offers a prix fix dinner at 5:30, followed by hula and mele from the master himself at 6:30 p.m. \$109. Reserve your seats at [chefchai.com](http://chefchai.com) or call 585-0011.

**MAY 8-9**

## WORLD FIREKNIFE FESTIVAL

The world's most talented fire knife warriors come together for a heated competition at the Annual World Fireknife Championships. See the best in the world spin, twirl, and flip flaming knives to earn the coveted title of World Champion. The men and the women compete on Wednesday at 6:30 p.m. and the Women's Champion will be named. \$15. The Men's Finals are on Thursday during the intermission of *Ha* at 7:30 p.m. PCC. \$89.95. [worldfireknife.com](http://worldfireknife.com).

*Continued on page 16.*






Enjoy the day and discover a magical, once-in-a-lifetime opportunity to enjoy up-close encounters with all your favorite sea creatures. Join us at the award-winning luau "Aloha Kai" as we celebrate our love of the sea.

808-259-2500 • [SEALIFEPARKHAWAII.COM](http://SEALIFEPARKHAWAII.COM)

# PARK WEST FINE ART MUSEUM & GALLERY

Waikiki Beach Walk Honolulu  
808-859-4871 parkwesthawaii.com



Any client you refer for a private tour will get

**10% off their purchase\***  
if they mention the hotel and concierge that referred them.

For more details  
waikikibeach@parkwestgallery.com

**PARK WEST GALLERY**

\*Terms and conditions apply

# MAY CALENDAR OF EVENTS

Continued from page 15.

**MAY 10-11**

## **PALM TREE MUSIC FESTIVAL**

The Palm Tree Music Festival is bringing two days of EDM to Hawaii for the first time. Turtle Bay Resort. Four performers per day, including Kygo, Zedd, Vandelux, Frank Walker, Coco & Breezy, and more. Tickets start at \$89.50 per day to \$179 for a 2-day pass and up. Turtle Bay Resort. This is an 18+ event. [bampproject.com](http://bampproject.com).

**MAY 11**

## **MOTHERS' DAY BRUNCH & SHOW**



Enjoy a special Mother's Day brunch and concert by Josh Tatofi with special guest Miss Aloha Hula 2023 Manalani English-Souza at the Hawaii Convention Center. Tickets: \$90 - \$175. Doors open at 9:45 a.m.

The brunch buffet is from 10 - 11:45 a.m. and there will be a Hawaii products marketplace. Concert begins at noon. [hawaii-convention.com](http://hawaii-convention.com).

**MAY 11**

## **ANNUAL KO OLINA CHILDREN'S FESTIVAL**

The family-friendly afternoon is filled with arts & crafts activities, an interactive percussion studio, superhero booths and at sunset, watch "A Bug's Life" on the beach at Ko Olina. Pre-sale tickets start at \$27.50 for keiki, \$40 for adults, with event parking and shuttle transportation included. 3 - 8 p.m. [koolinachildrensfestival.com](http://koolinachildrensfestival.com).

**MAY 11**

## **INSPO! 2024**

Help celebrate the 85th anniversary of Lanakila Pacific with INSPO! 2024, a benefit event to support individuals with disabilities and seniors on Oahu. This art-inspired, community-driven and family-friendly event celebrates the entrepreneurial spirit with PopUp PopArt exhibits, a marketplace of creative products and artworks, artisans, delicious savory and sweet foods, and live entertainment. 5 - 9 p.m. Tickets: \$10-\$50. Bishop Museum Great Lawn. [INSPOhi.org](http://INSPOhi.org).



**MAY 11**

## **LEAHI BLOCK FESTIVAL**

Kalakaua will be closed between Seaside Avenue and Kapahulu Avenue for a Waikiki Block Festival featuring food, rides, games, and handmade products for sale. 4 - 10 p.m. [millwoodhanaproductions.com](http://millwoodhanaproductions.com).

**MAY 12**



As with all signature holidays, virtually every restaurant out there is offering a special menu or offer, and there is simply no room to list them all. Be sure to reach out to your favorite eatery and make your reservations right away, as many locations sell out quickly. Hug your moms tight!

**MAY 12 • MOTHER'S DAY BRUNCH WITH FRANK DELIMA**



Frank DeLima has been entertaining local residents and tourists for more than 45 years with his zany parodies, outrageous sense of humor, and spontaneous creativity. His musical parodies are an iconic part of Hawaii's lifestyle and he returns for his annual Mother's Day Brunch. 1 p.m. \$35-\$45. [bluenotehawaii.com](http://bluenotehawaii.com).

**MAY 12**

## **AN EVENING FOR MOM WITH RIYA DAVIS**

Celebrate Mother's Day with Riya Davis, who got her start right here in Hawai'i, competing in "Brown Bags to Stardom." As a background vocalist, Riya has supported Kenny Loggins, Michael McDonald, Natalie Cole, Sheila E., Ray Parker Jr, Deniece Williams, Mary J. Blige, and more. Riya is currently the lead singer in a full-time Jazz singer on the Star of Honolulu. 6:30 p.m. \$25. [bluenotehawaii.com](http://bluenotehawaii.com).

**MAY 13-16 • THE HAWAII' I ADAPTIVE SURFING CHAMPIONSHIPS**

AccessSurf presents The Hawai'i Adaptive Surfing Championships in Waikiki. This event marks the second stop of a global tour and brings together over 100 adaptive surfers from around the world, competing in nine divisions to showcase their incredible talent and spirit. It's a celebration of resilience, athleticism, and inclusivity within the surfing community not to be missed. The Welcome Ceremony will take place at 5 p.m. at the Duke Kahanamoku Statue. The action happens at Queens Surf Break. [accessurf.org](http://accessurf.org).

**MAY 15**

## **HENRY KAPONOS ARTIST TO ARTIST**

Season 7 of Henry Kaponos Artist to Artist Maui series continues with Jerry Santos featuring Maui Artist Josh Kahula. 6:30 p.m. Tickets: \$35-\$45. [bluenotehawaii.com](http://bluenotehawaii.com).

**MAY 16 • CROCE PLAYS CROCE 50TH ANNIVERSARY TOUR**

The conic Americana singer-songwriter Jim Croce known for such hits as "Time in a Bottle," "Bad, Bad Leroy Brown" died in a plane crash 50 years ago last September. His son, AJ, not even 2 years old when his famous father died, built his own musical career and spent over 30 years touring the world, brings his father's classic songs in this special 50th Anniversary Tour." 8 p.m. Tickets: \$65-\$85. [hawaii-theatre.com](http://hawaii-theatre.com).

**MAY 17-19**

## **BILLIE GIBBONS**



Best known for his signature beard, trademark sunglasses, and hat, ZZ Top's Billie Gibbons is recognized as one of the most inventive and dexterous guitarists of the rock era, and is widely regarded as one of the world's finest guitarists working in the blues-rock idiom. His down 'n dirty growl is unmistakable; as the vocals on such hits as "Sharp Dressed Man" and "Cheap Sunglasses" will attest. This one is likely to sell out as there is only one show nightly at 7 p.m. nightly. \$65-125. [bluenotehawaii.com](http://bluenotehawaii.com).



# MAY CALENDAR OF EVENTS

Continued from page 16.

## MAY 18 • HAPA SYMPHONY FEATURING JAKE SHIMABUKURO



Shimabukuro reunites with the Hawai'i Symphony Orchestra to present a unique night of contemporary symphonic music. 7:30 p.m. Tickets: \$10.50 - \$99. myhso.org.

## MAY 19 SHOSTAKOVICH SYMPHONY NO. 5

Dane Lam conducts pianist Michelle Cann as she joins the Hawai'i Symphony for a program featuring Florence Price's Piano Concerto, Margaret Bond's gripping evocation of the Civil Right movement in her Montgomery Variations, and Shostakovich's defiant Symphony No. 5. 4 p.m. Tickets: \$10.50 - \$99. Hawaii Theatre. myhso.org.

## MAY 19 HONOLULU TRIATHALON

All events will start and finish at Ala Moana Beach Park for the annual Triathlon. The elite wave for the Olympic Trials will start at 5:45 a.m. with all other levels starting in waves afterwards. Traffic will be affected in the Ward area for several hours. honolulutriathlon.com.

## MAY 20 TOMMY CASTRO & THE PAINKILLERS

Tommy Castro is an American blues, R&B, and rock guitarist and singer. His unshakable musical foundation—a dynamic mix of 1960s-influenced guitar-fueled blues, testifying Memphis-soaked blue-eyed soul and Latin-tinged East San Jose funk, all driven by Castro's grab-you-by-the-collar vocals and passionate guitar work won him the Blues Music Award for Entertainer of the Year in 2008. Two shows at 6:30 and 9 p.m. Tickets: \$35-\$45. bluenotehawaii.com.

## MAY 21 BURNING TROTMAN TOP 7

The Top 7 artists from South Korea's popular TV show "Burning Trotman," will embark on their first USA concert tour. They will not only perform traditional Korean trot music, but also reinterpret old classics into a modern, new trot style. 7 p.m. Tickets: \$80-\$150. hawaii theatre.com.

## MAY 22 BEBEL GILBERTO IN CONCERT



World renowned and Grammy® nominated singer/songwriter Bebel Gilberto, one of the top-selling Brazilian artists in the U.S. since the '60s with her trademark electronic bossa nova, returns to Hawaii. 7:30 p.m. Tickets: \$55-\$115. hawaii theatre.com.

## MAY 24-25 THE WAITIKI 7 RETURNS

Sixty-five years ago, the enchanting sounds of Hawaii's musical maestros, Martin Denny, the virtuoso pianist, and Arthur Lyman, the mesmerizing vibraphonist, ignited a national sensation with their groundbreaking albums "Exotica" and "Taboo." Through their creativity and passion, they not only crafted extraordinary music but birthed an entirely new genre —

Exotica! Back by popular demand, The WAITIKI 7, consisting of seven conservatory trained professional musicians (four from Honolulu) Tickets: \$39.50 - \$59.50. 5:30 p.m. Halekulani's House Without A Key. Call 518-2019 for reservations. halekulani.com.

## MAY 24-25 SHENG WANG

The comedian, actor and writer's first Netflix special, "Sweet and Juicy" (produced/directed by Ali Wong) is streaming now to rave reviews about his joke-writing and laid-back view on life. He was a featured stand-up on HBO's "2 Dope Queens" special and a writer for the ABC show "Fresh Off the Boat." The Friday show sold out, so they have added a 2nd on Saturday. 7 p.m. Tickets: \$39.50 - \$59.50. Hawaii Theatre. bampproject.com.



## MAY 26 DRAG BRUNCH BINGO

It's the hottest Sunday Funday ticket around these days. Looking to spice up your Sunday Brunch? Head over to Hard Rock Cafe for Drag Queen Brunch Bingo with your host, Candi Shell. 12 - 2 p.m. \$30 includes a complimentary drink and bingo cards. Make your reservations early at opentable.com, as this one sells out each month.

## MAY 26 KALA'E PARISH



Kala'e Parish is a multi-Na Hoku Hanohano Award-winning Native Hawaiian country artist that has been a professional musician since 2013. Performing around the world, he has shared the stage with top country artists Brett Young and Rascal Flatt's lead singer Gary Levox. 6:30 p.m. Tickets: \$25-\$35. bluenotehawaii.com.

## MAY 30 40 SHADES OF RED

Check out the works of Hawaii Quilt Guild members in this year's theme of making a quilt using only shades of red, 40 to be exact, with red being the dominant color. This year's free show is at Na Lama Kukui at 560 N. Nimitz Highway (formerly the Gentry Design Center). Open Mon-Sat from 10 a.m. - 5 p.m., Sun 12-5 p.m. hawaiiquiltguild.com. Runs through June 9.

## MAY 31 TAYLOR DAYNE



Taylor's groundbreaking debut single "Tell It To My Heart" turned her into an overnight international star in 1987. She is one of the very few artists in musical history to successfully crossover into almost every musical genre and chart with hit singles in pop, dance, R&B, adult contemporary and rock. Still bringing her hits to audiences, she appears for two shows nightly at 6:30 and 9 p.m. Tickets: \$45-\$85. bluenotehawaii.com. Show continues on June 1.



Create Your Own!

# CAPTURE HAWAII VACATION MEMORIES



#madeinhawaii

coconene.com

Instagram Facebook @coconenehawaii

# Make a difference starting with you

De-stress • Refresh • Relax • Heal

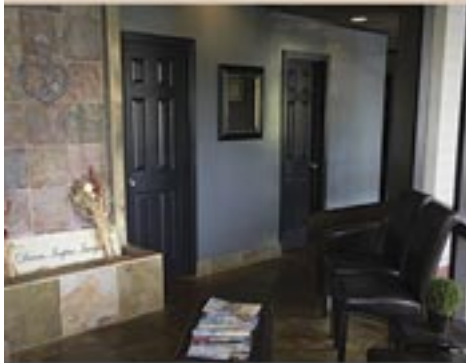


All New Clients Receive  
**10% off**  
their first massage

## EXPERIENCE SERENITY AND MASSAGE FOR YOURSELF

- Full 60 & 90 minute massages
- Peaceful, tranquil atmosphere
- Talented licensed massage therapists
- We follow COVID safety protocols
- Save \$26 per massage as a member
- Services include: Swedish, Lomi Lomi, Deep Tissue, Shiatsu, Reiki, Prenatal, Trigger Point Therapy, Neuromuscular Therapy, and more

We offer in-home/room massage services. Please call to inquire.



## HAWAII KAI SHOPPING CENTER

377 Keahole St., Ste. 207 (across from Safeway)

Call us at **396-7594**

Text us at **862-6163**

serenityandmassage.com



## WAI KAI Aqua Venture

Wai Kai recently launched Aqua Venture, a family friendly obstacle course on the water, and sent out an invite to the hospitality industry to check it out. People had a blast playing on the water, but we know the invite came out last minute and many of you were not able to attend. So, we are going to extend this offer through the month of May! Want to check it out? Ask your manager to submit a FAM Tour request for The LineUp at Wai Kai. Please contact Jayce at [jaycelyn@atthelineup.com](mailto:jaycelyn@atthelineup.com) with questions.



# That's Entertainment

## HOTELS

- 'ALOHI LANI RESORT** 922-1233  
 • **Daily** - Fish Feeding 10:30am & 2:30pm *O Bar*  
 • **Daily** - Live Music 6:30-9:30pm *Swell Bar*  
 • **Daily** - Light Monument Video Art Series 7-9pm *Swell Bar*  
 • **SunWedSat** - Tank Talk 9am. *O Bar*

- HALEKULANI** 923-2311  
 • **Daily** - Music & Hula 5:30-8:30pm *House Without a Key*  
 • **TWThFS** - Live Jazz 8pm - 12am, *Lewers Lounge*  
 • **Sun** - Sunday brunch w/Noly Paa on piano 9:30am - 2pm  
**HILTON HAWAIIAN VILLAGE** 949-4321  
 • **Fri** - Fireworks at 7:45pm

- **SMTWThF** - Live entertainment, Tapa Bar. 7-10pm  
 • **FriSat** - Live entertainment, Paradise Lounge. 7-10pm  
**HYATT REGENCY WAIKIKI** 923-1234  
 • **MWed** - Farmer's Market from 4-8pm

- **Mon-Fri** - Cultural Programs at the Ho'okela Culture Center  
 • **TTh** - Walking Tour thru parts of Waikiki at 10am  
 • **TTh** - Live Hawaiian music at Pualeilani Atrium, 4-6 pm

- KAHALA HOTEL & RESORT** 739-8888  
 • **Mon** - Free kapala stamping at The Veranda at 10am  
 • **Tues** - Free lauhala weaving at The Veranda at 10am  
 • **WFSat** - Free lei making at The Veranda at 10am  
 • **Thurs** - Free hula dancing at The Veranda at 10am  
 • **ThFSat** - Live entertainment at The Veranda from 6-8pm.

- **FriSat** - Afternoon Tea at The Veranda at 2pm & 3:30pm  
 • **Daily** - See the interactive dolphin programs every hour  
**LUANA WAIKIKI HOTEL & SUITES** 955-6000  
 • **MWF** - Enjoy live music and hula on the Mezzanine 5-6pm

- MOANA SURFRIDER** 922-3111  
 • **Daily** - Live music at The Beach Bar, 4:30-6:30pm, 7-10pm  
 • **WThFSSu** - David Swanson at Vintage1901, 6:30-10pm  
 • **SatSun** - Afternoon Tea at the Veranda, 11:30am - 2:30pm

- OUTRIGGER REEF WAIKIKI BEACH** 923-3111  
 • **Daily** - Live Hawaiian music at Kani Ka Pila Grille. 6-9pm  
**PRINCE WAIKIKI** 956-1111  
 • **ThFSSu** - Live music at 100 Sails from 6-8pm  
 • **Sat** - DJ KK poolside from 2-5pm, Sun from 2:30-5:30pm

- SHERATON PRINCESS KAIULANI** 922-5811  
 • **Daily** - Live music poolside 6-9pm. DJ from 3-6pm.  
**THE ROYAL HAWAIIAN** 923-7311  
 • **Daily** - Live Hawaiian music at the Mai Tai Bar. 11am-2pm  
 • **TWFSu** - Live Hawaiian music at the Mai Tai Bar. 6-9pm  
 • **MTh** - Live Hawaiian music at the Mai Tai Bar. 8-10pm

- TURTLE BAY RESORT** 293-6000  
 • **Daily** - Live music at The Pointe Pool Bar, 4-7pm  
 • **Daily** - Live music at Off the Lip, 7pm  
 • **Daily** - The Stable at Turtle Bay offers a variety of experiences  
**WAIKIKI BEACH MARRIOTT RESORT** 922-6611  
 • **Daily** - Live music, Queensbreak Restaurant 5:30-8:30pm  
 • **Daily** - Live music in the Lobby 6-9pm

## FARMERS MARKETS

- WBW OPEN MARKET**  
 • **Mon** - Set up on the Plaza at Waikiki Beach Walk. 4-8pm.  
**HYATT REGENCY FARMERS MARKET** 225-4002  
 • **MonWed** - Hyatt Regency 1st floor waterfall atrium 4-8pm

- HAWAII FARM BUREAU MARKET** 848-2074  
 • **Wed** - Set up on the Blaisdell Concert Hall Lawn 4-7pm.  
**ALOHA HOME MARKET** 225-4002  
 • **Sun** - Kailua 340 Uluniu Street 9-2pm.

- HALE'IWA FARMERS MARKET** 388-9696  
 • **Thurs** - Located at Waimea Valley. 2-6pm  
**KCC FARMERS MARKET** 848-2074  
 • **Sat** - Kapiolani Community College 7:30 - 11am

- KAKA'AKO FARMERS MARKET** 388-9696  
 • **Sat** - 919 Ala Moana Blvd & 210 Ward Avenue. 8am-12pm  
**PEARLRIDGE FARMERS MARKET** 388-9696

- **Sat** - PearlrIDGE Mauka by Macy's. 8am-12pm  
**KAILUA FARM BUREAU MARKET** 848-2074  
 • **Sun** - Kailua Town Center. 4-7pm  
**KAILUA TOWN FARMERS MARKET** 388-9696  
 • **Sun** - Enchanted Lake Center by Kailua Cinema. 8am-12pm

## ATTRACTIONS

- FOSTER BOTANICAL GARDEN** 768-7135  
 • **Daily** - Hawaii's oldest Botanical Garden in the midst of downtown open 9am - 4pm. \$5/\$1 keiki (kama'aina \$3)  
 • **Daily** - Free docent-led tours at 10:30am. Reservations rec.

- HONOLULU ZOO** 926-3191  
 • **Daily** - The Zoo is open from 10am - 4pm. Last Entry at 3pm. GA \$19 adult/\$11 keiki (kama'aina \$8/\$4).  
 • **Sat** - Explore the Zoo after the gates close 5:30-7:30pm.

- KILOHANA HULA SHOW**  
 • **SuMTWTh** - Free hula show 9:30 - 10:30am Waikiki Shell  
**KUHIO BEACH HULA SHOW** 843-8002  
 • **TueSat** - Free show 6:30 - 7:30pm Kuhio Hula Mound

- WAIKIKI AQUARIUM** 923-9741  
 • **Daily** - The Aquarium is open from 9am - 4:30pm. GA \$12 adult/\$5 kids (kama'aina \$8).  
 • **1st3rdTue** - Hawaiian Plant Tour. 1:30pm. Free w/admission

## MUSEUMS

- BATTLESHIP MISSOURI MEMORIAL** 455-1600  
 • **Daily** - Relive stories of war, victory, and the road to peace onboard the "Mighty Mo." Join a guided tour in English, Japanese, Chinese, or Korean or explore the ship at your own pace. Digital tour maps in various languages are available. 8am-4pm. More info available online at ussmissouri.org.

- BISHOP MUSEUM** 847-3511  
 • **Daily** - The 15-acre campus offers a chance to learn about the cultural and natural heritage of Hawai'i across three different exhibition buildings. Daily planetarium shows, a native Hawaiian botanical garden and more. 9am-5pm.

- HAWAII STATE ART MUSEUM** 586-0900  
 • **Mon-Sat** - 'Museum Interpreters' on-site to provide visitors with basic information about the museum and artwork. Special evening events as listed below. Open 10am - 4pm.  
 • **1stFri** - Live entertainment and food vendors. 6-9pm  
 • **2ndFri** - "Vibe" Jazz performances & food vendors. 6-9pm  
 • **4thFri** - Hawaiian music night. 6-9pm  
 • **3rdSat** - Family Arts & Crafts Day 11am - 3pm

- HONOLULU FIRE MUSEUM** 723-7167  
 • **3rdSat** - Free one-hour guided tours through various exhibits with a firefighter recounting HFDs history the 3rd Saturday of every month. 9am - 2pm on the hour. 620 South Street. Reservations required. Book online: fire.honolulu.gov then hit the submit request button and click museum tours.

- HAWAIIAN MISSION HOUSES** 447-3910  
 • **TW** - Docents lead tours through the oldest existing frame house in the Islands. 11am, 12pm, 1pm and 2pm.  
 • **ThFSat** - 11am, 12pm, 1pm, 2pm and 3pm tours  
 • **TWThFSa** - Gift shop open 10:30am - 4pm

- HONOLULU MUSEUM OF ART** 532-8726  
 • **ThFSSu** - Tour & Talk Story 11am. Free with admission.  
 • **ThFSSu** - Highlights tour 2pm. Free with admission.  
 • **Sat** - HoMA Nights, open until 9pm. Free with admission.

- IOLANI PALACE** 522-0832  
 • **TThS** - Audio tours available from 9am - 4pm  
 • **WTh** - Docent-led tours available from 9am - 4pm  
 • **EveryOtherWed** - He Mele Lahui Hawaii with Ku'uipo. 9am  
 • **Fri** - Royal Hawaiian Band. Free. 12-1pm  
 • **SunMon** - Museum Closed

- LUCORAL MUSEUM** 778-8189  
 • **Mon-Fri** - Free self-guided tours featuring local and global gemstones and a one-of-a-kind dinosaur egg. Visitors can

also create their own one-of-a-kind jewelry. 10% off gift shop with mention of Oahu Concierge. 10am-5pm.

**PEARL HARBOR AVIATION MUSEUM** 441-1000  
 • **Daily** - Vintage aircraft in battlefield hangars at Pearl Harbor, outdoor exhibits, flight simulators, and the Bob Hope: An American Treasure Exhibit. Shuttle & Tickets at USS Arizona Memorial Visitor Center or PearlHarborAviationMuseum.org.

## SHOPPING CENTERS

- ALA MOANA CENTER** 955-9517  
 • **Daily** - Hula Show, 5pm. *Centerstage*  
 • **EveryOtherWed** - Royal Hawaiian Band. 11am.  
 • **Sat** - Local entertainment, 3pm. *Centerstage*

- **Sun** - Keiki Hula Show, 1pm. *Centerstage*  
 • **Daily** - Pau Hana Music Series, 5:30pm. *'Ewa Wing Stage*  
 • **2ndSat** - Malama Market 11am-4pm. *Mauka Wing Level 2*

- HALE'IWA STORE LOTS** 203-5700  
 • **Sat** - Live Hawaiian entertainment from 2 - 4pm  
**INTERNATIONAL MARKET PLACE** 921-0536  
 • **MWF** - Ceremonial sunset lighting of Lamaku Torch Tower

- **MWF** - Sunset Stories Hula Show, 6:30pm. *Queens Court*  
 • **1stTh** - Royal Hawaiian Band. Free. 12pm. *Queens Court*  
 • **3rdTh** - Free Lei Making Workshop. 12pm. *Queens Court*  
 • **4thSat** - Free Fitness. 9am. *Queens Court*  
 • **1st3rdSu** - Free Fitness. 9am. *Queens Court*

- ROYAL HAWAIIAN CENTER** 922-2299  
 • **Daily** - Heritage Room/Cultural Videos, *Helumoa Hale*  
 • **Mon** - Free Ukelele Lessons 11pm, *Helumoa Hale*  
 • **Tues** - Free Hula Lessons 11am, *Royal Grove*

- **Wed** - Free Lauhala Weaving 11am, *Bldg A, Level 2*  
 • **Thur** - Free Keiki Hula lessons 12pm, *Royal Grove*  
 • **Fri** - Free Lei Making Class 12pm, *Bldg A, Level 2*  
 • **Sat** - Hula Kahiko 5:30pm, *Royal Grove*

- **TWThF** - Live Hawaiian Entertainment 5:30pm, *Royal Grove*  
**WAIKIKI BEACH WALK** waikikibeachwalk.com  
 • **Daily** - The Ukulele Store offers free lessons at 4:30pm  
 • **Tues** - Ku Ha'aeo Hula Show. 4:30-6pm. *Plaza Stage*  
 • **Sun** - Free hula lessons, 9-10am



**BALI OCEANFRONT**  
 20% off all Food & Beverage. Hilton Hawaiian Village, 941-2254.

**GUAVA SMOKED**  
 20% off food and drinks with hotel ID. 567 Kapahulu Ave, 2nd floor. Entrance/parking on Campbell Ave. 913-2100

**HAWAIIAN MISSION HOUSES**  
 Free tour with hotel ID. 553 S. King Street. 447-3910.

**IOLANI PALACE**  
 Free Admission with hotel ID. GA \$30. Kama'aina \$19.95. 364 S. King Street, Reservations Required. 522-0832.

**MAUI DIVERS JEWELRY**  
 35% discount off purchases made at the Design Center and 20% at all stores. Must show hotel ID for discount. 1520 Liona St. 946-2929.

**RUTH'S CHRIS STEAK HOUSE**  
 Complimentary Appetizer valued up to \$22 with the purchase of 2 entrees. Waikiki Beach Walk, 440-7910. Restaurant Row, 599-3860.

You will be required to show Hotel ID or business card to claim offer. Magazine not needed. Just mention offer when presenting hotel ID. Discounts available to Guest Service Professionals ONLY. Not valid with other promotions or special offers. A minimum 18% gratuity on original order requested for all food offers.

The Oahu Concierge is printed monthly and direct mailed FREE to all Oahu Concierge, Hospitality & Activity Professionals.  
Subscriptions available to non-industry at \$25 per year.

C O N T A C T  
**Davis Media**  
Ph: (808) 225-8229

Website: [www.OahuConcierge.com](http://www.OahuConcierge.com)

**ADDRESS & NAME CHANGES / ADDITIONS**  
We do not take changes via telephone. All changes to mailing list **must be submitted in writing** by the 16th of the month to make the next issue, email is preferred.

S T A F F

**PUBLISHER & EDITOR Pam Davis**  
[publisher@oahuconcierge.com](mailto:publisher@oahuconcierge.com)

**DESIGN**  
Coreiya Design

**The Oahu Concierge**  
4348 Waialae Avenue, #185  
Honolulu, Hawaii 96816

PRSR STD  
US Postage Paid  
**TRADE MEDIA HUI**



**EVERY MONDAY, WEDNESDAY & FRIDAY**

## **FREE O NĀ LANI SUNSET STORIES HULA**

Join us at sunset for an unforgettable storytelling performance told through Hawaiian and Polynesian song and dance. Our hula show honors the beloved Queen Emma and highlights the stories and traditions of this special gathering place.



Scan to learn more

### **TIME CHANGES**

6:30pm | March through August

6:00pm | September through February

**INTERNATIONAL MARKET PLACE**