

Concierge

KEEPING THE HOSPITALITY INDUSTRY INFORMED SINCE 1998

Book & Music Festival Fun!



Send your visitors down to Frank F. Fasi Civic Grounds at Honolulu Hale on May 6th and 7th for the 12th annual Hawaii Book & Music Festival. This year, the event promises to be bigger and better than ever before. Festival-goers can expect more than 140 events at 10 pavilions and stages to choose from over the course of the two-day event, which takes place from 10 a.m. to 5 p.m. There will be best-selling local and national authors, gifted new writers; award-winning musicians and dancers on the Main Stage; ongoing Keiki Stage performances; and a expansive offering of thought-provoking panels covering topics from history to Hawaiian culture to wellness and politics in Hawaii, and everything in between. The best part? It's all free! Even parking is free in the municipal and neighboring parking lots. Waikiki trolleys and shuttle vans pull up within a few steps of the center of the event.

This year there will be three new themed pavilions including a new Food & Cookbook Pavilion sponsored by Hawaii's Department of Agriculture that will focus on local foods and food production. Spearheaded by Chef Mark "Gooch" Noguchi and the Pili Group, the pavilion will feature multiple food-centric demonstrations by local chefs such as Lee Ann Wong and James Aptakin; presentations by authors and local food writers including our former editor, Lynn Cook, as well as various cultural experts. The pavilion will also offer locals a chance to participate in a cookbook swap. Up to three gently used local cookbooks can be exchanged for three local cookbooks. This is in addition to the festival's popular Bank of Hawaii Book Swap.

Also new to the festival is the Storytelling Pavilion. The stage will feature eight professional storytellers, two plays and improv performances, including local favorite Jeff Gere and an

appearance from English storyteller Craig Jenkins, known for his contemporary telling of Indian tales. The last pavilion to be added this year is the Kristi Yamaguchi Reading Corner, a new venue for keiki featuring 14 celebrity book-readers, including the beloved Olympic ice-skater herself.

As in years past, the Publishers Village booth will offer great showcase local publishers and booksellers, brand new book and music releases and tables where authors are ready to sign their newest book, including three national best-selling young female novelists. Kauai Hart Hemmings (author of *The Descendants*, will be there with her latest book, *How to Party with an Infant*), Jade Chang (*The Wangs vs. the World*) and Shanthi Sekaran (*Lucky Boy, A Novel*) will all be on hand. Also in attendance will be best-selling novelist and human rights journalist Mike Bond (*Assassins*, the story about the last 30 years of war between Islam and the West); Sonia Patel with her debut YA novel (*Rani in Full Effect*) inspired by her experience as a first-generation Indian immigrant cradled in Hawaii's indigenous culture; and John Pomfret, veteran foreign correspondent and China expert (*The Beautiful Country and the Middle Kingdom: America and China, 1776 to the Present*) to name a few. All in all, over 20 national authors will be on hand to sign their books throughout the weekend as well as quite a few local authors.

This is a book and music festival, so let's talk musicians. The Royal Hawaiian Band, Barry Flannagan, Keith & Carmen Haugen, and Jeff Peterson are a few names expected to perform. There will also be a special tribute to legendary musician and filmmaker Eddie Kamae, including a panel discussion of his work, and a special performance from his Sons of Hawaii. No festival in Hawaii would be complete without hula, and some of the best are slated to perform. Mapuana

Continues on page 16.



It's a staple of every great lu'au or evening of Polynesian entertainment, the thrilling spinning and twirling of the fire dancers who leap and twist and lick the fiery flames right off of their whirling poles. For many visitors, this is one of the most exciting parts of their vacation. Every May, we are fortunate enough to have the chance to see the best fire knife dancers in the world compete against each other for the ultimate bragging rights. For one exciting weekend, the Polynesian Cultural Center's main theater is filled with the sounds of drums and rhythmic chants as dancers from around the world heat up the stage with their fiery antics to take top honors at the World Fireknife Championships.

This year marks the 25th anniversary of this heated competition as the world's most talented performers come together at PCC for three nights of blazing competition. Competitors range from youngsters as young as six years old to some of the most experienced performers in the world as they compete in both the Junior and Senior Divisions. Audience members will be treated to a cultural experience unlike any other.

Performers have been twirling, throwing and catching, and dancing with a Samoan war club known as a Nifi Oti for centuries, but it wasn't until 1946, when a young street performer in San

Continues on page 2.

TABLE OF CONTENTS

Yada Yada Yada	2
Newsflash	3
Arts with Aloha	4
Floating Lantern Festival	6
Mele Mei Festival	6
Chef's Corner: Stripsteaks Benjamin Jenkins . .	9
E Pili Kakou	10-13
Calendar	14-16
Paparazzi: Peter Lik Gallery	17
That's Entertainment	18
Concierge of the Month: Michael Thiele	19

W WOLFGANG'S
STEAKHOUSE
OPEN DAILY 11AM - MIDNIGHT
922.3600 | wolfgangsteakhouse.net





May Day is Lei Day in Hawaii

This issue is jam packed with tons of information for you. There is just so much going on these days its cuckoo. Quite frankly I should have increased another four pages to fit it all in, but unfortunately much of it wasn't released until after I was already so far into the layout that it was too late. So, while I wasn't able to cover every thing I would have liked in as detailed as a fashion as I would have preferred, hopefully most of it still got in. Think it may be time to start re-envisioning the book, especially the dining section, to keep up with everything that is going on. If you have any suggestions, please feel free to email them to me at publisher@oahuconciierge.com.

Hope you all enjoyed the month of April. It was pretty relaxed all things considered, but I can definitely feel the pace picking up as the month draws to a close. Things are about to go back to their normal frenetic pace I can tell, a sure sign summer is almost here.

If you're a music lover, May is definitely your month. Mele Mei is in full swing this month with live concert series going on every Sunday at Kani Ka Pila Grille and the House Without a Key, Thursdays at the Willows for Pakele Live!, as well as places such as the Hilton Hawaiian Village, Waikiki Beach Walk, the Convention Center, Blue Note Hawaii and more. On May 20th, the 40th anniversary Na Hoku Hanohano Awards will occur where the islands top musicians will receive their just rewards. New this year will be Ho'ike Lanakila, a special concert featuring award-winning artists, hula halau and their kumu on Sunday May 21st at the Convention Center. In case that's not enough Hawaiian music for you, the 10th Annual Gabby Pahinui Kanikapila will take place on May 13th at Waimanalo Beach Park. This is hands down one of the best (and free) days to experience Hawaiian music, as the Islands best come together to jam with each other and pay homage to one of the greatest. You, and your guests, should all drive over to the Windward side to experience one of the good things about Hawaii.

May also brings us a few more of those good things about Hawaii. From the fragrant scent of flowers in the air as we celebrate May Day to the powerful sight of 7,000 candle-it lanterns floating into the sea as dusk falls at Ala Moana Beach Park, most events this month evoke powerful feelings and images that make Hawaii so special.

Plus, things are booming. Hotels are being refreshed and refurbished left and right and the non-stop hotel and restaurant openings continue. From a hidden speakeasy next to Pint + Jigger to a few more celebrity chef restaurants and even a huge Japanese grocery store, Hawaii's culinary scene continues to grow. And that's just the ones I know about. I saw an awful lot of scaffolding as I drove down Kalakaua the other day that I do not even know what it's for, so I know there's more to come in the future. Clearly business is good. I sure hope the world stays stable enough for this positive trend to continue. Life is good and people are out enjoying it. Isn't that how it's all supposed to be?



Sheila Newman

The **Hilton Hawaiian Village** has a bunch of new hires to talk about. **Sheila Newman** has come to the resort all the way from Chicago, Illinois. Newman was hired as the new senior events manager for the resort and brings over 15 years of event management experience with her. The hotel also announced it has recently promoted **Brooks Tadena** to executive sous chef. Chef started at the hotel back in 2009, but has also spent time working at the Kahala Mandarin Oriental, Halekulani, Sheraton Waikiki, and the Moana Surfrider before returning to the property in 2015 as the executive banquet chef. Also joining the team is **Nicholas Kabetso**, who was named assistant director of food & beverage from his previous post at Foxwoods. **April Gilarmo** is the new restaurant manager of Tropics. April comes to us from the Hilton Atlanta Airport and last but not least, **Michael Macdonald** has been appointed purchasing manager for the resort's food & beverage program. • A belated welcome to **Melanie Tennant** who joined the **Luana Waikiki** as their new Rooms Division Manger at the beginning of the year. • More news on the hotel rebranding front. The Hawaii Prince Hotel Waikiki has finished a \$55 million dollar renovation and has rebranded themselves as the **Prince Waikiki**. The

refreshed property has transformed 563 rooms, modernized the lobby, added a guest lounge and infinity pool and new restaurants. • The **Coconut Waikiki Hotel** just previewed its new look. All 81-rooms have been redone in bright, colorful, chic and contemporary designs in this family-friendly hotel. These hotels are truly getting new looks and new life with this renovations! Front Office Manager **Wayne Rapoza** is leading the front desk team over there that includes **Isaac Kaaihue**, **Liz Bacayon**, **Silvia Drew** and **Ronald Neri**. • There's one more refresh to talk about, and that's **The Laylow**. Formerly the Waikiki Wave and then reopened as the Okina, the hotel has undergone yet another refurbish and the results are pretty contemporary. The 251-room property is now part of the Autograph Collection by Marriott and features a very cool 2nd level signature restaurant bar called the Hideout, complete with Pacific Rim cuisine, firepits and live music. There are some familiar faces in the lobby as well. Front Office Manager **Andrea Clarabal** and Assistant Front Office Manager **Chris Horning** came from The Modern Honolulu and **Jarren Patao** at the front desk came over from Hyatt Place to name a few. Waikiki continues to undergo some pretty major changes, but it's looking good! • Speaking of familiar faces, **Denise "DeeDee" Mikasa**, formerly with the Halekulani has left the Ritz-Carlton to join the concierge desk at **The Kahala Hotel**.

Fireknife 2017 Continued from page 1

Francisco named Uluao "Freddie" Letuli noticed a Hindu fire eater and a baton twirler nearby and was inspired. The story goes that Freddie asked the fire-eater for some fuel, wrapped towels around his blades, set them on fire and started his routine again. And so, fire dancing was born.

Over years and years of practice and intense competitions, the fireknife dance continues to evolve, challenging better and better dancers to continue to raise the bar for new generations. The speed of twirling and variety of movements are always increasing, making the competition even tougher as judges look for a combination of traditional movements based on those used in battle centuries ago, along with modern elements such as speed, tumbling, and flawlessness. In case they make it look too easy, you should know that even after many years of practice, the danger is still real. That's actual fire, and occasionally the dancers still get burned or cut by the knives edge. Though it's hard to tell as they nimbly spin and dance, the knife is heavy, and hard to wield and well, it's real fire folks, and fire burns! Most dancers have extremely thick calluses on their feet, which help protect them, but it's not always enough. Ouch!

According to the official website, judges are looking for several traditional movements or actions when deciding on a winner. They look for the "mo'emo'e", or running movements, which traditionally indicated victory in battle. They also look for feet stamping, a sign of challenge or intimidation, as well as the "gego", or head movement, which warriors used to confuse their enemies. Other movements known as "olioli" were used in ancient times to distract enemies included rolling the knife around the neck, through the legs,

around the ankles, or around the back, as well as "folifoli" or movements leading up to a strike. The dancer that incorporates all of those movements as seamlessly as possible will be crowned the champion. Though many have tried to dethrone them, the same three men have traded the title between themselves for over a decade. Reigning world champion Mikaele Oloa from Waialua, Hawaii has grabbed the title 5x since 2005. 2015 champion Joseph Cadousteau from Papeete, Tahiti hastaken top honors 3x since 2012 and 2014 Champion Viavia Tiualu, Jr. out of Orlando, Florida has taken the title 3x since 2011. Will this year crown a new champion or will these talented veterans continue their reign?

This year's championship will be held May 11th through May 13th. Preliminary rounds will be held on Thursday starting at 7:45 p.m. in both the Junior and Senior division. On Friday at 7:45 p.m. catch the finals of the Junior division, we're talking kids twirling knives that are on fire aged 6-11 and 12-17, followed by the semi-finals of the Seniors. Both nights will be held at Hale Aloha. On Saturday the Samoan cultural Arts Festival will be held from 9 a.m. - 2 p.m. in the Pacific Theatre. That evening, three senior finalists will compete during the intermission of the evening show, *Ha: Breath of Life*. The champion will be announced at the conclusion of the evening show at 9:00 p.m.

Admissions for the first two evenings of competition of the World Fireknife Competition, May 11-12, will cost \$10 for adults and \$6 for keiki (ages 5-11). Tickets for the Senior Division Finals on May 13 will cost \$49.95 (\$19.95 for kama'aina). The cost also includes admission to the evening's performance of *Ha*. For more information or reservations, call Polynesian Cultural Center at 293-3333 or visit worldfireknife.com. ~ Pam

EXTRA EXTRA EXTRA *Newsflash*

NEW HOLOHOLO TOURS

Gray Line Hawaii and Blue Hawaiian Helicopters have joined forces to offer a new tour that takes guests from Oahu to Kauai for the day to experience the "Best of Kauai" by land and air. The tour visits well-known historic and cultural locations on the Garden Isle including lunch at the restaurant where George Clooney dined in "The Descendants", followed by a helicopter tour that explores Kauai's breathtaking scenery from above. The tour is available on Mondays, Wednesdays, and Saturdays. Call 833-3000 or polyad.com.

TWILIGHT TOURS RETURN

The Honolulu Zoo is bringing back their popular after-hours tour that showcases what happens after the gates have closed. Every Friday and Saturday evening from 5:30 – 7:30 p.m., educators will lead visitors on a two-hour walking tour to visit some of the Zoo's most intriguing residents. Tickets for the Honolulu Zoo Twilight Tours are \$20 for adults, \$15 for children ages 3-12, and free for kids under 2-years-old. Kama'aina save \$5. 926-3191 or honolulu.zoo.org.

POLO RETURNS

The Hawaii Polo Club began its 2017 season last month promising one of the best seasons on record with teams visiting from England (April 23 & May 30); New Zealand (May 21); Malaysia (June 11); and India (August 20 & 27). Entertainers are slated to include Makana (May 7), Liko Martin (May 21), Taimane (May 28), Tavana (July 2) and Jeff Peterson (July 16). Polo matches are held every Sunday thru September 4th with gates opening at 11 a.m. and matches beginning at 2 p.m. Admission is \$12 for open field seating, \$10 for military. Clubhouse seating \$25. hawaii-polo.org.

HAWAII'S SPIRITUAL SIDE

These islands we live on are extremely special, filled with magical places bursting with mana. For those looking to explore the spiritual side of our islands history, there is a brand new tour company out called Spiritual Tours Hawaii. Offering small group tours designed to explore some of Hawaii's most spiritual and culturally significant sites, the tours have been carefully crafted with the advice of the Kahu's they have enlisted in this venture. To learn more, go to spiritualtourshawaii.com.

ALOHA MAILE SKY COURT, HELLO HOLIDAY INN

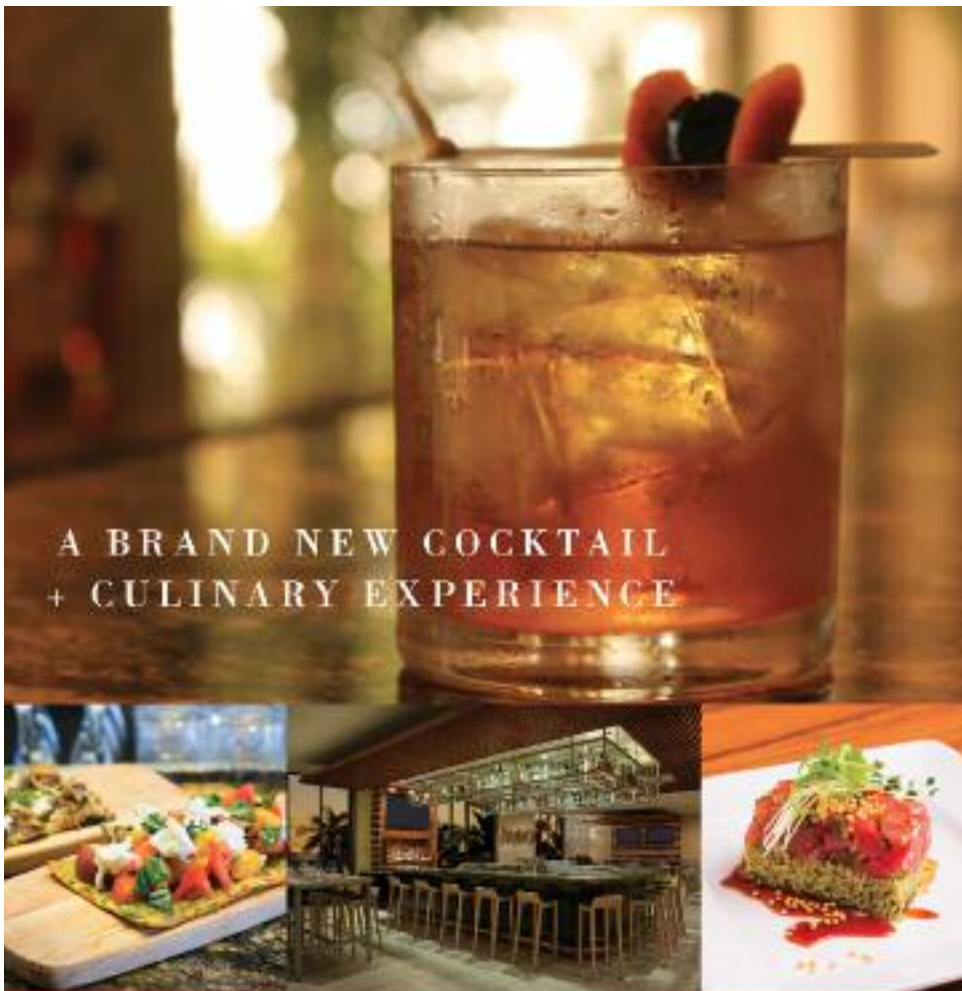
Express, that is. Aqua-Aston Hospitality is now managing the former Maile Sky Court and gave it quite a modern facelift with clean lines and plenty of amenities. It's the first Holiday Inn Express on Oahu, and the 596-room, 44-floor property is also the largest Holiday Inn Express in the country. The 5th floor has been turned into a recreational area complete with pool, Jacuzzi, fitness center, 9-hole mini gold course, foosball tables, ping pong, giant chess and even yoga and hula lessons. holidayinnexpresswaikiki.com.

KONG: SKULL ISLAND OPENS

Just as the movie hit the big screen, Kualoa Ranch revealed its latest attraction. "KONG: Skull Island" was in town last year filming the blockbuster film which is currently in theatres. Now the bone yard displays, complete with the skull, ribcage, about 500 bones and a giant 30-foot high painting of King Kong's head that were used during filming have been added to their movie tours. Guests can see this latest addition to Kualoa's storied movie history as part of the Premier Movie Tour (\$119.95) and Movie Tour (\$45.95). kualoa.com.

SUNSET APPETIZER CRUISES

Atlantis Adventures has added a Sunset Appetizer Cruise for guests to choose from in place of the more traditional dinner option (which is still available). Served on the 2nd level lounge of the Majestic, guests will enjoy a complimentary cocktail, entertainment and indulge in a array of appetizers such as Teri Meatballs, Chicken Satay, Andouille Sausage, and more. This new option costs \$79 and includes transportation from Waikiki. Friday evening fireworks costs \$10 more and returns a bit later. atlantisadventures.com.



KUHIO BEACH GRILL RESTAURANT & BAR

Stylish locally sourced American cuisine with shared dishes served table side. Home of Waikiki's best selection of whiskey & bourbon in a stunning setting overlooking Waikiki Beach.

Open for Dinner 5 - 10pm

Waikiki Beach Marriott Resort & Spa - Kealahilani Tower 2F

For reservations book on OPEN TABLE or call 808 921 5171

Free validated parking #KBGWaikiki   



arts with aloha



It's all about the power of theatre this May in Honolulu's arts and cultural scene. All of our distinct local theater companies are offering some exciting entertainment as we anticipate the beginning of summer. There's a musical tribute to The King of Rock and Roll ala *Mama Mia!* There's a dark play about a doll filled with heroin and if that's not enough there's another play about a successful Muslim lawyer living in the Upper East Side of New York City whose life is anything but Carrie Bradshaw fabulous. Clearly at first reading this may not seem to be the best way to prep for summer, but if your guests are looking for something beyond the beach and the ubiquitous Mai Tai, send them to the theater!

DIAMOND HEAD THEATRE presents the musical comedy *All Shook Up* from May 19th to June 11th. The original Broadway production debuted in 2005 and is built around the songs made famous by Elvis Presley with a romantic plot based on the shenanigans of Shakespeare's characters from *Twelfth Night*. The show is set in the 1950s and surrounds a guitar-playing, recently-released-from-jail-dude named Chad who falls in love with a mechanic named Natalie. The town is a little like the town from the musical *Footloose*, but in this instance the town elders outlaw "loud music, public necking and tight pants," which means Jimmy Fallon's white tight pants routine would not be welcome in this township.

Adding to the romantic mix of *Twelfth Night* cross-dressing is an aspiring dentist named Dennis, an intellectual hottie named Miss Sandra who runs a museum, a sassy talking owner of a honky tonk bar named Sylvia and Natalie's father Jim. They all get married in the end but I'm not telling you who marries who but there is a guy named Ed who gets in the way.

There are 24 Elvis songs in the show which include "Heartbreak Hotel," "Love Me Tender," "Don't Be Cruel," "Can't Help Falling in Love," and the title song "All Shook Up." I can't remember if "Viva Las Vegas" made it past the out of town previews! The production runs Thursdays, Fridays & Saturdays at 7:30 p.m. Saturday matinees at 3 p.m. and Sunday matinees at 4 p.m. Tickets range from \$15 to \$50 and can be ordered online at DiamondHeadTheatre.com.

If your guests are not big fans of Mr. Graceland, then perhaps they should wait until after sunset to see **MANOA VALLEY THEATRE'S** production of *Wait Until Dark* which runs May 18th to June 4th. (Side note: if your guests plan to walk to the theatre, please ask them to always wear bright and reflective clothing when walking at night in Hawai'i.) The original Broadway production opened in 1966 with actress Lee Remick and Oscar

winner Robert Duvall (*Tender Mercies*). The play is set in the Greenwich Village basement apartment of a blind housewife named Susy Hendrix who is the target of three conmen searching for a doll filled with heroin which her husband unknowingly transported for a lady friend. Clearly everyone is suspicious in this story. Long story short, the three ex-convicts try to take advantage of Susy's disability to retrieve the doll, but unbeknownst to all of them the doll has been stolen by a neighbor girl living upstairs. If you are familiar with *Games of Thrones* and Arya's blind final fight scene, you'll get the idea of how this story ends. This dark production runs Wednesdays & Thursdays at 7:30 p.m., Fridays & Saturdays at 9 p.m. and Sundays at 4 p.m. Tickets range from \$22 to \$40. A little trivia about the play, Audrey Hepburn, Miss *Breakfast at Tiffany's* played Susy in the film version.

Clearly the search for heroin is not on the minds of a majority of your guests, but perhaps in these slightly uncertain times, a drama about Islamophobia and what it means to be Muslim in America today would be the perfect way to unwind after a sunset dinner cruise. **THE ACTORS' GROUP**, also known as TAG, has over the past several years specialized in presenting plays focusing on the African American experience is now venturing into plays that explore the experience of other minority Americans. From May 5th to 28th TAG presents the play *Disgraced* by Ayad Akhtar which won the 2013 Pulitzer Prize for Drama. The play focuses on the various identities of two ex-Muslims, an African-American, a Jew and a WASP at a dinner party as they discuss religious faith. The main character Amir is a successful lawyer and second generation Muslim from Pakistan who has renounced Islam. Joined by his wife Emily, who is an up-and-coming artist with a passion for Islamic themes that will make you want to visit Doris Dukes Shangri La again to see what you missed; his American assimilated nephew Abe; and Jory a fellow attorney plus her husband Isaac, who is Emily's Jewish art dealer. Dinner conversation turns to religion, race and violence as a result of Amir appearing in court in support of a local imam (a Muslim who leads prayers in a mosque) who was imprisoned for allegedly supporting terrorist groups. The close knit groups of friends' true colors and beliefs are revealed by the main course and let's just say they never get to dessert.

Tickets are \$30, seniors over 62 are \$25 and students and military with proper ID are \$20. Call 722-6941 or purchase online at taghawaii.net. TAG is located at Dole Cannery and its productions fill a unique niche in Honolulu's theatre community by staging productions in an intimate setting with a passion and commitment to excellence and diversity. So, now are you in the mood for a fun summer? ~ Lance Rae



STRIPSTEAK



STEAKHOUSE REIMAGINED

Introducing Chef Michael Mina's evocative and modern steakhouse to your neighborhood, infused with the spirit of Aloha.

As a way to say Mahalo for your continued support, we're introducing...

—THE STRIPSTEAK WAIKIKI GUEST— REFERRAL PROGRAM

For every 50 guests referred, STRIPSTEAK Waikiki will send you a \$100 Gift Card.

To join the program please contact events@stripsteakwaikiki.com



PRIVATE DINING

STRIPSTEAK Waikiki is also available for private events, please contact: events@stripsteakwaikiki.com

Follow Us @StripSteakHI

StripSteak Waikiki at International Market Place
2330 Kalanianaʻahele Avenue, Suite 330 Honolulu, HI 96815
www.StripSteakWaikiki.com | 808.600.3094



ALERT!

brought to you by
The Waikiki Aquarium
open daily from 9 am - 4:30 pm

May 19-21

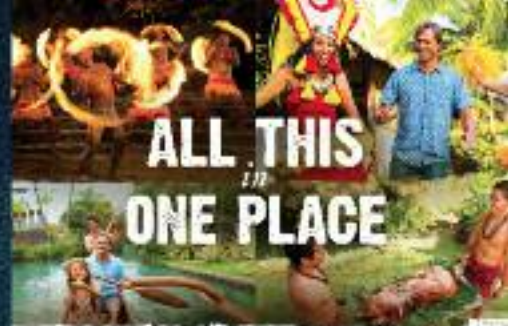
Box Jellyfish Window

Teaching Hawaii about jellyfish and other ocean creatures for over a century



25 years World *May 11-13, 2017*
FIREKNIFE
 Championship

 **Polynesian Cultural Center**
One Place Like No Other



**ALL THIS
 IN
 ONE PLACE**

**2017
 ANNUAL**

MAY 22, 24, 26 & 27

FAM TOUR

Come and see what's new at the Polynesian Cultural Center. Our Fam Tour is perfect for travel agents and concierges who actively sell the center. We'll be featuring the Hukilau Marketplace with an "Old Laie tasting" and product samples. Followed by training and light refreshments at Pounders. Plus, get a 20% discount in all retail stores on this day only.

PICK UP:

- 10am Ala Moana
- 10:10am Waikiki Gateway
- 10:15am Sheraton Waikiki
- 10:20am Ross
- 10:25am Hyatt Regency
- 10:30am Waikiki Beach Marriott

DRIVE OUTS:

Please arrive by 11:45am and meet at Pounders - outside overflow area.

OPTIONS:

HÅ: Breath of Life option or early return at 6:30 pm.

RSVP:

Contact your sales rep for more details

Schedule of events worldfireknife.com » 808-293-3333

THURSDAY, MAY 11

6:15 pm » Hale Aloha
 Preliminary Competition

SATURDAY, MAY 13

9:00 am - 2:00 pm » Pacific Theater
 » High School song & dance Festival

FRIDAY, MAY 12

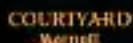
6:15 pm » Hale Aloha
 » Jr. Division: Ages 6-11 & 12-17
 » Semi-Finals

SATURDAY, MAY 13

7:30 pm » Pacific Theater
 » World Fireknife championship finals during intermission of HÅ: Breath of Life

 **Polynesian Cultural Center**
One Place Like No Other

Training to start promptly at 12:30pm. 1 guest allowed at \$23.14. Children 4 and above welcome. (\$23.14 applies to guest adult or child). Guest to experience our Jr. Guides Program during our agent training. Meet up at 4pm Luau.



GALUMAEI MAMA
 LESTER W. E. NYDRE

THE LAIE
 SOLOMONA &
 NAOTALA TAIFA

THE LAIE
 HILOMAIWA &
 AIAGAGA GALLAI

LEI &
 KANITTE
 STEWARD

KALO
 MAZELL
 SOUKOP

ASO O TUPULAGA -
 LOIULAI
 GENERATION

Blue Note

HAWAII

WORLD'S FINEST
JAZZ CLUB & RESTAURANT

MAY HIGHLIGHTS

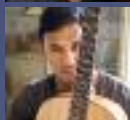
SHOWS AT 6:30 & 9PM NIGHTLY



Black Uhuru
May 4 & 5



Taylor Hicks
May 12 - 14



Blayne Asing
May 17



WAR
May 18 - 21



Willie K
May 23



The New Mastersounds
May 25 - 27



Living Colour
May 28 - 30

DONT FORGET TO CHECK OUT OUR
INDUSTRY NIGHTS!

EVERY TUESDAY

\$10 COVER

1/2 OFF SELECT APPS

\$6 DRINK SPECIALS

SHOW YOUR INDUSTRY CARD AND ENJOY THE SHOW!
Limited Tickets Available

VIP reservations and discounts available

Email Shaun Singh for more group information:
Shaun@bluenotehawaii.com

WWW.BLUENOTEHAWAII.COM | 808-777-4890

Located in the Outrigger Waikiki Beach Resort

VALIDATED PARKING AVAILABLE AT OHANA
WAIKIKI EAST HOTEL | \$6 FOR UP TO 4 HOURS

LANTERN FESTIVAL 2017

We've all lost someone. It's one of life's cruel twists. But it's also an important part of life to honor those we have lost. There is a hauntingly beautiful way for you to celebrate your loved ones this Memorial Day. Join thousands of people, visitors and locals alike, as they converge onto Magic Island to remember those that have gone before us during the 19th Annual Lantern Floating Hawai'i Ceremony.

Participants write messages to their lost loved ones on the sails of the specially constructed lanterns and float them out to sea. This year there will be over 7,000 lanterns expected to illuminate the waters of Ala Moana Beach Park on Monday, May 29th as well over 50,000 people gather to release their lanterns into the sunset. There is no cost to attend or participate.

Participants wishing to float a lantern in person may pick up a single individual lantern at the Lantern Request Tent on a first-come, first-serve basis on the day of the event from 10 a.m. - 4 p.m. All lanterns are free. Due to the high number of participants, they ask to limit your request to one lantern per family or group so as to allow others to participate. Besides, many different names and messages can be placed on a single lantern, and the experience of sharing your lantern with others can be a very bonding moment.

Floating homemade lanterns are highly discouraged in order to protect the environment. You should know that each of the lanterns are constructed especially for this event with the environment and participants safety in mind, and every effort is made to retrieve each lantern to use next year using special lines strung across the water to prevent the lanterns from floating out to sea. Any homemade lanterns that are retrieved will not be returned to their owner. You should also be aware that due to environmental and fire safety concerns, adorning your lantern with lei is not allowed.

A pre-ceremony performance by Shinnyo Taiko will start at 6:10 p.m., followed by the official



ceremony led by Her Holiness Shinso Ito of Shinnyo-en Buddhist Order beginning at 6:30 p.m. Throughout the ceremony, local and international musicians will perform and special guests will offer words of inspiration. This highly traditional ceremony begins with the blowing of the conch shell, or pu, followed by taiko drums and Hawaiian chants before the grand entrance of the main lanterns. Six large lanterns will carry prayers for all spirits on behalf of everyone. Prayers are offered for victims of war and terrorism-related incidents, natural disasters, accidents, disease and

more. The lanterns are then floated with the hope of encouraging peace and harmony. There will be more traditions presented until it is time for Her Holiness to ring the bell. The crystal clear sound of the bell is to focus everyone's thoughts and prayers and signifies it is time to float the lanterns.

If you cannot attend, but would like to have a remembrance of your own floated to sea, members of the public are welcome to submit their own prayers or thoughts on specially prepared paper provided by Shinnyo-en Hawaii that can then be attached to the lanterns that will be floated by volunteers. This can be done in person at the temple located at 2348 Beretania Street or online at lanternfloatinghawaii.com through the day before.

Volunteers has been preparing for this event since April and for those you that would like to help construct or refurbish some of the thousands of lanterns needed, please feel free to volunteer your time by emailing volunteer@naleialoha.org.

The entire ceremony will be broadcast live on Hawaii News Now from 6:30 - 7:30 p.m. and live streamed on their website. For those attending the ceremony itself, free event parking is available at the Hawai'i Convention Center from 7 a.m. until 11:59 p.m. A complimentary shuttle will transport passengers from the Convention Center to the Beach Park beginning at 3 p.m. and will return you back to your vehicle after the ceremony. A complete schedule of events is available on their website at lanternfloatinghawaii.com. ~ Pam

Mele Mei May

The 8th annual Mele Mei is underway featuring an expanded lineup of culturally rich, Hawaiian music performances and concerts statewide. More than 70 events are scheduled this year, featuring globally recognized musicians, including multiple Na Hoku Hanohano award-winning and Grammy-nominated artists, performing at various venues around Hawai'i, Los Angeles and throughout Japan.

Highlights of Mele Mei 2017 included the 40th Anniversary Na Hoku Hanohano in Maihama,

Japan in April; the Mele Mei Hotel Concert Series held at the Hilton Hawaiian Village, Outrigger Reef Waikiki Beach Resort Kani Ka Pila Grille, Halekulani and Hyatt Regency Waikiki; 37th Annual Pan Pacific Festival's Matsuri in Hawai'i and Ho'ike Lanakila 2017 Festival across Japan. It all culminates with the highly anticipated 40th Annual Na Hoku Hanohano Awards ceremony and dinner show on Saturday, May 20 at the Hawai'i Convention Center. A complete schedule of this year's events can be found online at melemei.com.



Herringbone

FISH MEATS FIELD

CALIFORNIA COASTAL CUISINE

SAYS ALOHA TO WAIKIKI SPRING 2017

INTERNATIONAL MARKET PLACE - GRAND LAKAI - (800) 797-2435 - HERRINGBONEEATS.COM



WARD VILLAGE.

FREE EVENTS AT WARD VILLAGE



WEEKLY—Sessions welcome all ages and skill levels taught by CorePower Yoga instructors



MONTHLY—Features independent films curated by the Hawaii International Film Festival and themed activities in an extraordinary outdoor theater setting.



MONTHLY—Brings the abundance of the country into the heart of the city with fresh-locally grown fruits, vegetables, meats and treats.



MONTHLY—Celebrates Hawaiian culture and language through performances by beloved hula halau and Hawaiian musicians.

Visit WardVillage.com/events for full schedule.
#weareward





Chef's Corner

STRIPSTEAK Executive Chef Benjamin Jenkins

Benjamin Jenkins has been with Michael Mina Group since 2003, starting at his Seablue restaurant, moving to Stripsteak at Mandalay Bay before becoming the Executive Chef at Michael Mina's eponymous restaurant at the Bellagio. He moved here last year to open STRIPSTEAK as Executive Chef. He has just been promoted to Culinary Director overseeing both Stripsteak and The Street, Mina multi-concept gourmet food hall opening later this month.

What is your first childhood food memory?

As both of my parents are excellent cooks, we spent much of our time in the kitchen when I was growing up. My first childhood food memory would have to be making Butter Gems at Christmas time with my mother (tiny shortbread cookies with a sliver of a maraschino cherry on top). They're a staple in our family during the holidays that my mother has been making since she was a child with her grandmother.

What was your first job in the industry?

When I was 16 I made ice cream for upscale restaurants in Durham, North Carolina. It was fun to experiment with flavors and try new things – Butter Pecan was definitely my favorite flavor back then.

When did you decide you wanted to be a chef?

The afterschool position of making ice cream allowed me to network and eventually I met James Beard award-winning chef, Scott Howell, who provided me with an unpaid apprenticeship at Nana's, also in Durham. Nana's is known for its dinner offerings and its cozy setting. It was my first experience into real restaurant life – I instantly fell in love.

How did you learn all your tricks and techniques?

I graduated from the New England Culinary Institute in 1998, but the ever-evolving techniques have come from the books, the people, and the experiences over the years – in our field we're constantly exposed to new ingredients and new challenges so we're forever learning and growing.

Can you remember a dish that didn't work?

Off-hand nothing really – as a dish comes to life there are constant tweaks and changes – of course there are things that don't work, but that's part of the fun – the trial and error, the experimentation.

Who would you consider your mentor and why?

Michael Mina is one of my mentors as I've been part of his team for close to 19 years. Michael is a great teacher and to date I've helped Michael open 10 restaurants. I'm constantly learning new and inventive cooking techniques and most importantly, how to be a better leader.

Favorite ingredient you like to work with and why?

I like to do things the way I like to eat – locally and clean. This may sound a bit strange coming from a guy that runs a steakhouse, but the seafood would have to be my favorite right now – the seafood in Hawaii is pretty special.

What's your biggest pet peeve in the kitchen?

Cooks that don't taste the food – we must constantly taste and check everything.

What's your favorite thing to do for fun?

Anything I can do that's outside – I enjoy playing a round of golf here and there, and I also love to surf.

Is there anything else you want to share?

My primary goal as a chef is to not only provide guests with an amazing culinary experience, but one that is comfortable and fun – a fun, loud room, you know - family style.

What's on your must-do list while in the Islands?

I'd like to free dive with sharks on Ocean Ramsey's One Ocean Diving. Ocean is doing amazing things in protecting these magical creatures as well as educating the community of their importance.

What's your cooking mantra?

Kaizen. It's a Japanese word for "constantly striving to be better – continuous improvement."



Roasted Beets

Whipped Goat Cheese

10 grams of Salt
350 grams of Crème Fraiche
1000 grams of Goat Cheese

Candied Apple Vinaigrette

2 grams of Cayenne Pepper
10 grams of Paprika
55 grams of Dijon Mustard
200 grams of Apple Cider Vinegar

Apple Fluid Gel

4 grams of Agar agar
500 ml of Apple Juice

Ingredients:

5 grams of Pistachios, toasted and crushed
7 Asian Pear batons, compressed
4 Watercress Springs

Marinated Beets

2240 grams of Large Gold Beets
2240 grams of Large Red Beets

Directions: On a black oval plate, use a squeeze bottle to create rings of whipped goat cheese along the outer border of the plate. Place 5 slices each of marinated red and gold beets into 2 rows alongside each other in the middle of the plate. Alternate colors when placing beets onto plate to create a checkerboard effect. Sprinkle crushed pistachios around the 2 rows of beets. Place Asian pear sticks in a zig zag pattern across the top of the 2 rows of beets. In a small mixing bowl, mix watercress and apple fluid gel making sure to not over-saturate the leaves and place over the pears.

STRIPSTEAK and The Street are located at the International Market Place

Open for dinner nightly from 5:30 p.m. • The Street will open for breakfast, lunch & dinner in May.

Web: stripsteakwaikiki.com • Instagram/FB/Twitter: [@stripsteakHI](https://www.instagram.com/stripsteakHI) • Phone: 800-3094

HILTON HAWAIIAN VILLAGE
WAIKIKI STARLIGHT LUAU

SUNDAY-THURSDAY
5:30PM

NEW DIAMOND PREMIER SEATING
JUST \$159.

- Sit front and center
- First to enjoy the buffet
- Get one extra complimentary drink

WAIKIKI STARLIGHT Luau

Call (808) 941-5828 to make reservations.

Let's be Together...

DINING ▸ ENTERTAINMENT ▸ PAU HANA ▸ EAT ▸ DRINK ▸ BE MERRY ▸ HAPPY HOUR

MONDAY

Barefoot Beach Café at Queen's Beach 924-2233
Contemporary Ukulele
 Sonny Kapu 6-8:30pm

Chart House Waikiki 941-6660
Live Contemporary Hawaiian
 Camarillo Brothers 6:30-9:30pm

Cheesecake Factory 924-5001
Classic Hawaiian
 Christian Yrizarry Duo 8-11pm

Duke's Canoe Club Waikiki 922-2268
Live Contemporary Hawaiian
 Taz Vegas 4-6pm
 Ellsworth Simeona 9:30-12am

Hard Rock Cafe 955-7383
Bluesy Monday
 Free Sound (or others) 9-11pm

House Without a Key 923-2311
Live Hawaiian & Hula by Skyler Kamaka
 DeLima Ohana 5:30 - 8:00pm

Hula Grill 923-HULA
Live Contemporary Hawaiian
 Eric Lee 7-9pm

Kani Ka Pila Grille 924-4992
Live Contemporary Hawaiian
 Sean Naauao 6-9pm

LBLE at the Hilton Waikiki Beach Hotel 922-0811
Live Contemporary Acoustic Hits
 Sean Cleland 6-9pm

Lewers Lounge 923-2311
Live Contemporary & Light Jazz
 Noly Pa'a 8:30-12:30am

LuLu's 926-5222
Live Contemporary / Industry night 50% off
 Jason Laeha 6-9 p.m.

Mahina & Sun's 923-8882
Kanikaplia Jam Poolside on the Lanai
 Kimo Opiana Jr. 7-9pm

Mai Tai Bar at the Royal Hawaiian 923-7311
Live Contemporary Hawaiian with Hula Dancer
 Dave Watanabe 8-10 p.m.

Rumfire 921-4600
Solo Contemporary Guitarist
 Jeremy Cheng 5-8pm

Signature Prime Steak 949-3636
Contemporary Pianist in the bar
 Isao Motomochi 6-9pm

Sky Waikiki 979-7590
Live Contemporary
 Yoza 6-9pm

The Edge at the Sheraton 921-4600
Live Hawaiian music with a firedancer at 7:30 p.m.
 Meheu Duo 6:30-8:30pm

The Study at the Modern 943-5800
Live Contemporary Hawaiian
 Kaleo 7-10pm

Tiki's Grill & Bar 923-TIKI
Live Contemporary Hawaiian
 P & L Experience 6-8:30pm
 The Kristi Masuhara Band 9-11pm

Tommy Bahama Restaurant 923-8785
Live Contemporary Hawaiian
 Johnny Helm 6-9pm

Tropics Bar & Grill 949-4321
Live Contemporary Hawaiian
 Acoustik Playground 5:30-8:30pm

TUESDAY

Barefoot Beach Café at Queen's Beach 924-2233
Contemporary Ukulele
 Shaka Madali 6-8:30pm

Bin1901 at the Moana 921-4600
Piano Wine Bar
 Scott Smith 6:30-9:30pm

Chart House Waikiki 941-6660
Live Contemporary Hawaiian
 Kumuhau 6:30-9:30pm

Cheesecake Factory 924-5001
Classic Hawaiian
 Local Uprising Duo 8-11pm

Duke's Canoe Club Waikiki 922-2268
Live Contemporary Hawaiian
 Haumea Warrington & Mike 4-6pm
 Ellsworth Simeona 9:30-12am

Hard Rock Cafe 955-7383
Live Contemporary
 Candy Bullets (5/9) 9-11pm
 Piranha Brothers 9-11pm

House Without a Key 923-2311
Live Hawaiian & Hula by Radasha Ho'ohuli
 Po'okela 5:30 - 8:00pm

Hula Grill 923-HULA
Live Contemporary Hawaiian
 Kamuela Kahoano 7-9pm

Kani Ka Pila Grille 924-4992
Live Contemporary Hawaiian
 Weldon Kekauoha 6-9pm

LBLE at the Hilton Waikiki Beach Hotel 922-0811
Live Contemporary Funk, Jazz, Hip Hop & Reggae
 Jason Laeha 6-9pm

Lewers Lounge 923-2311
Live Contemporary & Light Jazz
 Maggie Herron & Rocky Holmes 8:30-12:30am

LuLu's 926-5222
Live Contemporary
 Johnny Helm 6-9pm

Mahina & Sun's 923-8882
Bossa Nova Poolside on the Lanai
 Sandy Tsukiyama 7-9pm

Mai Tai Bar at the Royal Hawaiian 923-7311
Live Contemporary Hawaiian with Hula Dancer
 Kapala Duo 6:30-9:30pm

Rumfire 921-4600
Solo Contemporary Guitarist
 Randy Allen 5-8pm

Signature Prime Steak 949-3636
Contemporary Pianist in the bar
 James Woo 6-9pm

Sky Waikiki 979-7590
Live Contemporary
 John Akapo 6-9pm

The Edge at the Sheraton 921-4600
Live Hawaiian music with a firedancer at 7:30 p.m.
 Ho'okani Duo 6:30-8:30pm

The Study at the Modern 943-5800
Live Contemporary Hawaiian
 Alex Oasay & Jeremy Cheng 7:30-10:30pm

Tiki's Grill & Bar 923-TIKI
Live Hawaiian - \$2 Taco Tuesdays
 K.B. Riley 5:30-8:30pm
 Sani & Friends 9-11pm

Tommy Bahama Restaurant 923-8785
Live Contemporary Hawaiian
 Chris Mercado 6-9pm

Tropics Bar & Grill 949-4321
Live Contemporary Hawaiian
 Kailua Bay Buddies 5:30-8:30pm

WEDNESDAY

Barefoot Beach Café at Queen's Beach 924-2233
Instrumental Ukulele
 Sonny Kapu 6-8:30pm

Bin1901 at the Moana 921-4600
Piano Wine Bar
 Scott Smith 6:30-9:30pm

Chart House Waikiki 941-6660
Live Contemporary Hawaiian
 Tito Berinobis & David Kauahikaua 6-10:30pm

Cheesecake Factory 924-5001
Classic Hawaiian
 Kimo Artis Duo 8-11pm
 Mike Tulba Duo (5/10, 5/24) 8-11pm

Duke's Canoe Club Waikiki 922-2268
Acoustic, Soul, R&B
 Haumea Warrington 4-6pm
 Ellsworth Simeona 9:30-12am

Gordon Biersch 599-4877
Jazz Wednesdays
 Varying Artists 6:30-9:30pm

Hard Rock Cafe 955-7383
Live Contemporary
 Saloon Pilots (or others) 9-11pm

House Without a Key 923-2311
Live Hawaiian & Hula by Lauren Matsumoto
 Pa'ahana 5:30 - 8:00pm

Hula Grill 923-HULA
Live Contemporary Music
 Brandon Serrano 7-9pm

Hy's Steak House 922-5555
Live Soft Contemporary
 Audy Kimura 6:30-10pm

Kani Ka Pila Grille 924-4992
Live Contemporary Slack Key
 Ben & Malia 3-5pm
 Mike Kaawa 6-9pm

LBLE at the Hilton Waikiki Beach Hotel 922-0811
Live Contemporary Funk, Jazz, Hip Hop & Reggae
 Izik 6-9pm

Lewers Lounge 923-2311
Live Contemporary & Light Jazz
 Maggie Herron & Rocky Holmes 8:30-12:30am

LuLu's 926-5222
Live Contemporary Hawaiian
 Mango Season 6-9am

Mahina & Sun's 923-8882
Jazz, Pop & Rock Poolside on the Lanai
 Verge & Paula 7-9pm

Mai Tai Bar at the Royal Hawaiian 923-7311
Live Contemporary Hawaiian with Hula Dancer
 Eric Lee Duo 6:30-9:30pm

Roy's Hawaii Kai 396-7697

E Pili Kākou

DINING ▶ ENTERTAINMENT ▶ PAU HANA ▶ EAT ▶ DRINK

Acoustic & Slack Key Top 40
Dayton Watanabe 6:30-9:30pm
Rumfire 921-4600
Solo Contemporary Guitarist
Alex Oasay 5-8pm
Signature Prime Steak 949-3636
Contemporary Pianist in the bar
Pierre Grill 6-9pm
Sky Waikiki 979-7590
Live Contemporary
Randy & Kanoe 6-9pm
The Edge at the Sheraton 922-4422
Live Hawaiian music with a fire dancer at 7:30 p.m.
Keoni Ku Duo 6:30-8:30 pm
The Study at the Modern 943-5800
Live Contemporary Hawaiian
Melanie and Drew 6:30-9:30pm
Tiki's Grill & Bar 923-TIKI
Live Contemporary - 1/2 off Wine Wednesdays
Canoes for Rent 5:30-8:30pm
Johnny Helm 9-11pm
Tommy Bahama Restaurant 923-8785
Live Contemporary Hawaiian
Randy Allen 6-9pm
Tropics Bar & Grill 949-4321
Live Contemporary Rock
Acoustik Playground 5:30-8:30pm

THURSDAY

Barefoot Beach Café at Queen's Beach 924-2233
Instrumental Ukulele
Shaka Madali 6-8:30pm
Bin1901 at the Moana 921-4600
Piano Wine Bar
Scott Smith 6:30-9:30pm
Chart House Waikiki 941-6660
Live Contemporary Hawaiian
Tito Berinobis 6:30-10pm
Cheeseburger Waikiki 941-2400
Contemporary / Old School Rock
Alex Oasay 6:30-9:30pm
Cheesecake Factory 924-5001
Classic Hawaiian
Mike Tulba Duo (5/4, 5/18) 8-11pm
Danny Carvalho Duo (5/11, 5/25) 8-11pm
Duke's Canoe Club 922-2268
Live Contemporary Hawaiian
Haumea Warrington 4-6pm
Denny Ono Duo (5/4) 9:30-midnight
Chris Murphy (5/11) 9:30-midnight
Scott Magz & Brady K (5/18) 9:30-midnight
Local Uprising (5/25) 9:30-midnight
Hard Rock Cafe 955-7383
Live Contemporary
Fresh Preps (5/18) 5:30-8pm
Kailua Bay Buddies 9-11pm
House Without a Key 923-2311
Live Hawaiian & Hula by Radasha Ho'ohuli
Pa'ahana 5:30 - 8:00pm
Hula Grill 923-HULA
Live Contemporary Hawaiian
Kamuela Kahoano 7-9pm
Hy's Steak House 922-5555
Live Soft Contemporary

Audy Kimura 6:30-10pm
Kani Ka Pila Grille 924-4992
Live Contemporary Hawaiian
Jeff Rasmussen & Robi K 3-5pm
Kawika Kahiapo 6-9 pm
LBLE at the Hilton Waikiki Beach Hotel 922-0811
Live Contemporary Pop/Rock
Sunway 6-9pm
Lewers Lounge 923-2311
Contemporary Jazz
Maggie Herron & Rocky Holmes 8:30-12:30am
LuLu's 926-5222
Live Contemporary Hawaiian
Local Uprising 6-9pm
Mahina & Sun's 923-8882
Mellow Acoustic Sounds Poolside on the Lanai
Keith Omizo 7-9pm
Mai Tai Bar at the Royal Hawaiian 923-7311
Live Contemporary Hawaiian with Hula Dancer
Delima Ohana 6:30-9:30pm
Michel's at the Colony Surf 923-6552
Live Slack Key
Jeff Peterson 7:30-10:00pm
Roy's Hawaii Kai 396-7697
Acoustic Hawaiian Guitar
Steve English 6:30-9:30pm
Rumfire 921-4600
Solo Contemporary Guitarist
Johnny Helm 5-8pm
Signature Prime Steak 949-3636
Contemporary Pianist in the bar
Isao Motomochi 6-9pm
Sky Waikiki 979-7590
Live Contemporary
Tahiti Rey 6-9pm 5-8pm
The Edge at the Sheraton 921-4600
Live Hawaiian music with a fire dancer at 7:30 p.m.
Christian Yrizzary Duo 6:30-8:30pm
The Study at the Modern 943-5800
Live Contemporary Hawaiian
Simple Souls 6:30-9:30pm
Tiki's Grill & Bar 923-TIKI
Hot Hula Thursdays - hula dancers perform
Malu the Band 5:30-7:30pm
Ellsworth Simeona 8:30-10:30pm
Tommy Bahama Restaurant 923-8785
Live Contemporary Hawaiian
Chris Mercado 6-9pm
Tropics Bar & Grill 949-4321
Live Contemporary Hawaiian
Nohelani Cypriano 5:30-8:30pm

FRIDAY

Barefoot Beach Café at Queen's Beach 924-2233
Live Contemporary Hawaiian with Beach BBQ
Art Kalahiki & Friends 5:30-8:30pm
Bin1901 at the Moana 921-4600
Piano Wine Bar
Scott Smith 6:30-9:30pm
Chart House Waikiki 941-6660
Live Contemporary Hawaiian
Mark Yim's Pilikia I 6-9pm
Mark Yim's Pilikia II 9:30-12:30am

EVENTS ARE SUBJECT TO CHANGE WITHOUT NOTICE.


The Hawaii Convention Center presents
the 34th Annual
Signature Prime
Mother's Day
Brunch Celebration

Sunday, May 14, 2017
Kalākaua Ballroom
Hawai'i Convention Center
11:30 am - 2:00pm

Visit www.hawaii-convention.com for ticket purchase
Call: (808) 943-3025 or email tickets@hawaii-convention.com



Enjoy a delicious brunch from Executive Chef Kevin Nakata plus
entertainment by Kapena and Da Braddles & Friends,
Ku'ulgo Kumukahi, Marlene Sai, and more!



"I like it best at night, when the city skyline
sparkles under starry skies and live music
is offered. The best part is it is incredibly
quiet...and the food is absolutely
delicious...a hint of Hawaiian culture
along with fantastic views and flavors!"
—Lisa Doherty, TripAdvisor (5/14/2016)

Casual Beachfront Dining
Open Daily 7am - 8:00pm
Live Music Nightly 5:30-8:30pm

FULL MENU CALENDAR INFO:
BarefootBeachCafe.com
808.924.5522 (CAFE)

IL LUPINO

TRATTORIA & WINE BAR



15% OFF
If Lupino is pleased
to extend a 15%
discount to all
Concierges. Must
show your work I.D.
to receive the discount.
Not applicable on
Lupino specialties.

ROYAL HAWAIIAN CENTER • VALIDATED PARKING
breakfast • lunch • happy hour • afternoon tea • dinner
ilupino.com • @ilupino • #ilupino • 808.922.3400

Let's be Together...

DINING ▸ ENTERTAINMENT ▸ PAU HANA ▸ EAT ▸ DRINK ▸ BE MERRY ▸ HAPPY HOUR

Cheeseburger Waikiki 941-2400
Contemporary Hawaiian
Aku 6:30-9:30pm

Cheesecake Factory 924-5001
Live Contemporary
Johnny Helm Duo 8-11pm

Dave & Busters 589-2215
Pau Hana Fridays Live Local Bands
Varying Hawaiian Artists 6-8pm

Duke's Canoe Club Waikiki 922-2268
Live Contemporary Hawaiian
Maunalua 4-6pm

Kona Chang Duo (5/5) 9:30-12am
Christian Yrizarry Duo (5/12) 9:30-12am
Solid Rock Duo (5/19) 9:30-12am
Kevin & Stan (5/26) 9:30-12am

Giovanni Pastrami 923-2100
Live Acoustic
Varying Artists 10pm-last call

Hard Rock Cafe 955-7383
Live Contemporary
The Fresh Preps 10-12am

House Without a Key 923-2311
Live Hawaiian & Hula by Kanoe Miller
Hiram Olsen Trio 5:30-8:00pm

Hula Grill 923-HULA
Aloha Friday Lunch Luau with hula dancer
David Asing 12:30-2:30pm

Keoki & Russell 7-9pm
Hy's Steak House 922-5555
Live Soft Contemporary
Audy Kimura 6:30-10pm

Japengo Steak & Seafood 923-1234
Contemporary, Pop, Rock
Joanna G 5-9pm

Kani Ka Pila Grille 924-4992
Live Hawaiian Contemporary
Christian Yrizarry 3-5pm
Ka Hehena 6-9pm

LBLE at the Hilton Waikiki Beach Hotel 922-0811
Live Contemporary Pop/Rock
Sunway 6-9pm

Lewers Lounge 923-2311
Live Contemporary Jazz
Maggie Herron & Rocky Holmes 8:30-12:30am

Mahina & Sun's 923-8882
Slack Key Poolside on the Lanai
Jeff Rasmussen 7-9pm

Mai Tai Bar at the Royal Hawaiian 923-7311
Live Contemporary Hawaiian with Hula Dancer
Kapala Duo 6:30-9:30pm

Michel's at the Colony Surf 923-6552
Live Slack Key Stylings & Jazz
Jeff Peterson & Ernie Provencher 6:30-10pm

Roy's Hawaii Kai 396-7697
Keyboardist
Brian Robert Shaw 6:30-9:30pm

Roy's Ko Olina 676-7697
Slack Key Guitar
Chris Rego 5:30-8pm

Rumfire 921-4600
Solo Contemporary Guitarist
Tim Rose 5-8pm

Signature Prime Steak 949-3636
Contemporary Pianist in the bar
Grant Carvalho 6-9pm

Sky Waikiki 979-7590
Live Contemporary
John Akapo 5-8pm

The Edge at the Sheraton 921-4600
Live Hawaiian music with a fire dancer at 7:30 p.m.
Delima Ohana Duo 6:30-8:30pm

The Study at the Modern 943-5800
Live Contemporary Hawaiian
Tahiti Rey 6:30-9:30pm

Tiki's Grill & Bar 923-TIKI
Live Contemporary Hawaiian
Randy Allen 5-7pm
Vaihi 7:30-9:30pm
The Kristi Masuhara Band 10:30-midnight

Tommy Bahama Restaurant 923-8785
Live Contemporary Hawaiian
Chris Murphy 6-9pm

Tropics Bar & Grill 949-4321
Live Contemporary Hawaiian
Piranha Brothers 3:30-6:30pm
Nohelani Cypriano 8-10:30pm

Bin1901 at the Moana 921-4600
Piano Wine Bar
Scott Smith 6:30-9:30pm

Chart House Waikiki 941-6660
Live Contemporary Hawaiian
Tito Berinobis & Billy Beimes 7-12pm

Cheeseburger Waikiki 941-2400
Contemporary Hawaiian
Sean Cleland 6:30-9:30pm

Cheesecake Factory 924-5001
Classic Hawaiian
Dennis McClees Duo 8-11pm

Duke's Canoe Club Waikiki 922-2268
Live Hawaiian Entertainment
Beach 5 (5/6) 4-6pm
Vaihi (5/20) 4-6pm
Kapena (5/13) 4-6pm
Kailua Bay Buddies (5/27) 4-6pm
Jai Rodgers Duo (5/6, 5/27) 9:30-12am
Mike Tulba Duo (5/13) 9:30-12am
Camarillo Brothers (5/20) 9:30-12am

Giovanni Pastrami 923-2100
Live Acoustic
Varying Artists 10pm-last call

Hard Rock Cafe 955-7383
Live Contemporary
Piranha Brothers 10-12am

House Without a Key 923-2311
Hawaiian & Hula by Kanoe Miller
Hiram Olsen Trio 5:30-8:00pm

Hula Grill 923-HULA
Live Traditional Hawaiian with dancer
Kaipo Dabin & friends 7-9pm

Hy's Steak House 922-5555
Live Soft Contemporary
Audy Kimura 6:30-10pm

Japengo Steak & Seafood 923-1234
Contemporary, Pop, Rock
Dave Toma 5-9pm

Kani Ka Pila Grille 924-4992
Live Contemporary Hawaiian
Bryan Tolentino 3-5 pm
Josh Tatofi (5/13) 3-5 pm
Kamakakehau (5/20) 3-5 pm
Ho'okena 6-9pm
Waiamanalo Sunset Band (5/13) 6-9pm

LBLE at the Hilton Waikiki Beach Hotel 922-0811
Live Contemporary Blues & R&B
Tahiti Rey 6-9pm

Lewers Lounge 923-2311
Live Contemporary Jazz
Maggie Herron & Rocky Holmes 8:30-12:30am

Mahina & Sun's 923-8882
Soul Poolside on the Lanai
Maryanne Ito 7-9pm

Mai Tai Bar at the Royal Hawaiian 923-7311
Live Contemporary Hawaiian with Hula Dancer
Kapala Duo 6:30-9:30pm

Michel's at the Colony Surf 923-6552
Live Contemporary Slack Key & Jazz
Jeff Peterson 7-11pm

Roy's Hawaii Kai 396-7697
Acoustic Guitar
Jimmy Funai 6-9:30pm



Odori-ko
KAPLANA HONOLULU

Introducing Our New
CONCIERGE REFERRAL PROGRAM

Receive \$1 credit for each guest you refer for lunch and \$2 credit for each guest you refer for dinner. Odori-ko gift certificates will be mailed out monthly or when you reach twenty (20) guests. Please email concierge.odori-ko@gmail.com to find out more and register to participate! We look forward to partnering with you and providing your guests with the best Japanese food and friendly, hospitable service!

call & ask us about free taxi for your guests (to/from waikiki) with minimum purchase!

1680 Kapiolani Boulevard (same bldg as 24 hr fitness)
lunch • happy hour • dinner • late night
odori-ko.com • @odori-ko • #odori-kokapiolani

SATURDAY

Barefoot Beach Café at Queen's Beach 924-2233
Beach BBQ with Live Contemporary Hits
Johnny Kukui 5:30-8:30pm

E Pili Kākou

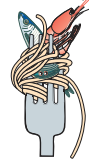
DINING ▶ ENTERTAINMENT ▶ PAU HANA ▶ EAT ▶ DRINK ▶ BE MERRY ▶ HAPPY HOUR

Roy's Ko Olina <i>Slack Key Guitar</i>	676-7697	Nathan Aweau (5/14)	7-9pm
Chris Rego	5:30-8pm	Maunalua (5/21)	7-9pm
Rumfire	921-4600	Kupaoa (5/28)	7-9pm
<i>Solo Contemporary Guitarist</i>		Kelley O'Neil's	926-1777
Sean Clealand	5-8pm	<i>Live Irish Music</i>	
Signature Prime Steak	949-3636	Various Celtic Bands	4-7pm
<i>Contemporary Pianist in the bar</i>		LBLE at the Hilton Waikiki Beach Hotel	922-0811
Grant Carvalho	6-9pm	<i>Live, Energetic Mix of Pop and Rock Hits</i>	
Sky Waikiki	979-7590	Maryann Ito	6-9pm
<i>Live Contemporary</i>		Lewers Lounge	923-2311
John Akapo	6-9pm	<i>Live Contemporary & Light Jazz</i>	
The Edge at the Sheraton	921-4600	Noly Pa'a	8:30pm - 12am
<i>Live Hawaiian music with a fire dancer at 7:30 p.m.</i>		LuLu's	926-5222
Tino Jacobs Duo	6:30-8:30pm	<i>Acoustic R&B</i>	
Tiki's Grill & Bar	923-TIKI	Simple Soulz	7-10pm
<i>Live Contemporary Hawaiian & Reggae</i>		Mahina & Sun's	923-8882
Johnny Helm	5-7pm	<i>Live Jazz on the Lanai</i>	
Guidance (or others)	7:30-9:30pm	Jegaan Faye	7-9pm
Ellsworth & Piko	10-midnight	Mai Tai Bar at the Royal Hawaiian	923-7311
Tommy Bahama Restaurant	923-8785	<i>Live Contemporary Hawaiian with Hula Dancer</i>	
<i>Live Contemporary Hawaiian</i>		Eric Lee Duo	6:30-9:30pm
Chris Murphy	6-9pm	Michel's at the Colony Surf	923-6552
Tropics Bar & Grill	949-4321	<i>Classical Slack Key & Jazz Stylings</i>	
<i>Live Contemporary Hawaiian</i>		Jeff Peterson	6-9pm
Henry Kaponu	4-6pm	Roy's Ko Olina	676-7697
Juke Joint	6:30-9:30pm	<i>Slack Key Guitar</i>	

SUNDAY

Barefoot Beach Café at Queen's Beach	924-2233	Rumfire	921-4600
<i>Contemporary Hawaiian</i>		<i>Live Contemporary Hawaiian</i>	
Paul Wilcox	11am-2pm.	Kamuela Kahoano	5-8pm
Chart House Waikiki	941-6660	Signature Prime Steak	949-3636
<i>Live Contemporary Hawaiian</i>		<i>Contemporary Pianist in the bar</i>	
Dean & Dean	6-9pm	Isao Motomochi	6-9pm
Cheesecake Factory	924-5001	Sky Waikiki	979-7590
<i>Classic Hawaiian</i>		<i>Live Contemporary</i>	
Chris Murphy Duo	8-11pm	Da Push-O-Verse	6-9pm
Duke's Canoe Club Waikiki	922-2268	The Edge at the Sheraton	922-4422
<i>Live Hawaiian Entertainment</i>		<i>Live Hawaiian music with a fire dancer at 7:30 p.m.</i>	
Henry Kaponu	4-6pm	Ellsworth Simeona Duo	6:30-8:30p
Chris Mercado (5/7)	9:30-12am	The Study at the Modern	943-5800
Typical Hawaiians (5/14)	9:30-12am	<i>Live Contemporary Hawaiian & Jazz</i>	
Kapena Delima Duo (5/21)	9:30-12am	Jeremy Cheng	6-9pm
Derrick Lee Duo (5/28)	9:30-12am	Smooth Jazz (vaying artists)	10-2am
Hard Rock Cafe	955-7383	Tiki's Grill & Bar	923-TIKI
<i>Live Contemporary</i>		<i>Live Contemporary Hawaiian</i>	
Analog (or others)	9-11pm	Kapu the Band	2:30 - 5:30pm
House Without a Key	923-2311	Vaihi	6-8pm
<i>Live Hawaiian & Hula by Debbie Nakanelua</i>		Ellsworth & Piko	9-11pm
Pa'ahana	5:30 - 8:00pm	Tommy Bahama Restaurant	923-8785
Hula Grill	923-HULA	<i>Live Contemporary Hawaiian</i>	
<i>Live Traditional Hawaiian with dancer</i>		Johnny Helm	6-9pm
Art Kalahiki Duo	7-9pm	Tropics Bar & Grill	949-4321
Japengo Steak & Seafood	923-1234	<i>Live Contemporary Rock & Hawaiian</i>	
<i>Contemporary, Pop, Rock</i>		Piranha Brothers	2-5pm
Jon Basebase	5 - 9pm	Beach 5	5:30 - 8:30pm
Kani Ka Pila Grille	924-4992	Uncle's Fish Market & Grill	275-0063
<i>Mele Mai Sunday</i>		<i>Live Slack Key</i>	
Kaiao (5/7)	4:30-6:30pm	Jeff Peterson	5:30-8:30pm
Kaii Hananoeau (5/14)	4:30-6:30pm		
Keauhou (5/21)	4:30-6:30pm		
Kunia Galdeira (5/28)	4:30-6:30pm		
Brother Noland (5/7)	7-9pm		

looks great and features live music every daily. Haven't tried the food yet, but the place was doing a pretty brisk business so that's a good sign. • **Eating House 1849 by Roy Yamaguchi** at the International Market Place has launched Plantation Pa'ina every Thursday from 4 - 7 p.m. Guests can enjoy selected small plates such as Makaweli Beef & Wild Boar Sliders or Spicy Garlic Shrimp Piri Piri with edamame guacamole for \$10 and \$5 cocktail while enjoying live music. There's plenty going on at the Market Place these days as well. They just successfully wrapped up their 1st annual Grand Lanai Restaurant Week, and they're gearing up for a bunch of openings as **The STREET, A Michael Mina Social House, Herringbone** and **Mitsuwa Marketplace**, the largest Japanese Supermarket in the US will all be opening their doors sometime in May. Now that the The Street, a multi-concept gourmet food hall with 12 different stations highlighting global cuisines is set to open, **STRIPSTEAK** will stop serving lunch as of May 1st and focus on their dinner service. • Congratulations to **James Aptakin**, who has just been named Executive Chef as **Turtle Bay Resort** and Spa. Fresh off his win in the seafood division of the World Food Championships, he has been hired to revamp the properties entire culinary program to take it to the next level. • **Burgers & Things** was crowned the "world's best burger" by a Swedish television show. Thier signature Doe a Deer Burger made with Maui Nui Venison, braised in a red wine sauce and topped with pineapple chutney took top honors for the Pauoa location. • **Katsumidori Sushi Tokyo** has opened its first US location in the lobby of the Prince Waikiki. Katsumidori Sushi Tokyo is famous for offering fresh, high-quality sushi at affordable prices which should appeal to the prince's clientele. Open for lunch from 11 a.m. - 2 p.m. and dinner from 5 - 10 p.m. nightly except Mondays. 946-7603. • **SKY Waikiki** Director of Mixology, **Jennifer Ackrill**, has updated their drink menu with seven new Signature Cocktails. Conceptualized after favorite surf spots, try the Treasure at Kaena Point. Spiced rum, merlot, lemon, grapefruit, cinnamon, pineapple and bitters it carries a spicy kick! • You should really go take the time to check out the **Hideout**. This kitschy, cool restaurant and bar comes complete with sand bar, firepits, a great looking menu and daily live music is on the 2nd floor overlooking Kuhio of the Laylow Waikiki, Marriott's new Autograph Collection boutique hotel. Open daily from 7 a.m. - 12 a.m. they offer 4 hours free parking. ~ P.am



Dining Calendar

May 10: Hy's Steak House presents a special 4-course paired Chef's Table. 5:30 p.m. \$100. 922-5555.

May 20: BLT Market offers a new monthly Farmer's Market series with cocktail reception & 6-course meal featuring Kunia Farms and Manulele Distillery. 6-9:30 p.m. \$95. (+\$35 for beverage pairing). 729-9729.



Finally got a chance to walk into **Maui Brewing Company**. Wow, what a transformation. The place

Mahalo for your continued support!

JOIN OUR
GUEST REFERRAL PROGRAM



Our program is simple!

For every 25 guests referred,
Ruth's Chris Steak House will send you
a \$50.00 dining certificate.

Please contact Eimi Espinda if you have any
questions at eespinda@direstaurants.com

OPEN DAILY FROM 4:30PM

HAPPY HOUR DAILY IN OUR LOUNGE | 4:30PM – 7PM

PRIME TIME MENU DAILY | 4:30PM – 6PM

WINE WEDNESDAYS | 25% OFF BOTTLES OF WINE



Restaurant Row | 808.599.3860
Waikiki Beach Walk | 808.440.7910

WWW.RUTHSCHRISHAWAII.COM   



**SOMETHING NEW.
SOMETHING CLASSIC.**

Open Daily 11am - 10pm

Happy Hour: Daily in our lounge 3pm - 6pm & 8pm - 10pm

Vino Thursdays 25% Off Bottles of Wine

**INQUIRE ABOUT OUR
GUEST REFERRAL PROGRAM!**

Our program is simple!

For every 10 complimentary dessert cards redeemed
(WITH YOUR NAME ON THE CARD),
Romano's Macaroni Grill will send you a
\$25.00 dining certificate that may be used
at our Oahu restaurant.

Please contact Eimi Espinda if you have any
questions at eespinda@direstaurants.com

**ROMANO'S
Macaroni
GRILL.**

Ho'okipa Terrace at Ala Moana Center
808.356.8300

WWW.MACARONIGRILL.COM

MAY CALENDAR OF EVENTS

Continuing Events

MONDAY – FRIDAY LYON ARBORETUM TOURS

The lush gardens at the top of the University of Hawai'i Manoa are open for guided tours daily. Knowledgeable guides will introduce the highlights of the botanical rainforest's 193.6 acres. Reservations required. Limit of 12 participants daily. Donations accepted. 988-0461.

MONDAY-FRIDAY FOSTER BOTANICAL GARDENS

Guided garden tours of rare and beautiful plants from tropical regions throughout the world. Foster Botanical Gardens, 50 N. Vineyard. 1 p.m. Adults: \$5. Reservations recommended. 522-7066.

TUESDAYS TOURS OF THE HAWAII THEATRE

Get a behind-the-scenes tour of this historic theatre including history, architecture, and a performance on the 1922 Robert Morton theatre organ. Hawaii Theatre. 11 a.m. – 12 p.m. \$10. 528-0506.

TUESDAYS • KU HA'AHEO

An afternoon of music and hula led by kumu hula Blaine Kamalani Kia. Waikiki Beach Walk, Plaza Lawn. 4:30–6 p.m. waikikibeachwalk.com. FREE.

TUESDAYS KCC FARMERS MARKET

The Saturday Market is so popular they added another day. Head up to Kapiolani Community College to stock up on fresh, island produce, seafood, flowers and more, from several dozen vendors. 4 – 7 p.m. Free. 848-2074.

TUESDAYS & THURSDAYS FRESH FARMERS MARKET AT THE HYATT

Due to its overwhelming success, the Hyatt has added another day of their popular Farmers Market for visitors and locals to stock up on fresh local organic fruits, vegetables, jams, honeys, baked goods and more. Stop by twice throughout the ground floor of the Pualeilani Atrium Shops. 4 – 8 p.m. Waikiki.hyatt.com.

TUESDAYS, THURSDAYS & SUNDAYS • TOUR AND TEA AT THE HONOLULU ACADEMY OF ARTS

Tours are led by volunteer docents and designed for visitors, who would like to explore the galleries, learn more about art and culture, and socialize over a cup of tea. Docents lead discussions in the galleries and offer insight into many cultures and time periods. 2:30 – 4 p.m. in selected galleries. Free with admission. Reservations required. 532-8700.

**TUESDAY – SATURDAY
HAWAIIAN MISSION HOUSES GUIDED TOURS**
Visit the Print Shop, coral block Chamberlain House, and 1821 Mission House and learn about the 19th century history and culture preserved at this historic site. Docent-led tours of the historic houses begin on the hour, every hour from 11 a.m. for \$8 - \$10. No charge for the self-guided tour of the grounds. Hawaiian Mission Houses. Tues. – Sat. 10 a.m. - 4 p.m. 447-3910 or missionhouses.org.

THIRD WEDNESDAY (MAY 17) KONA NUI NIGHTS

Kona Nui Nights honors and highlights Hawaiian language and music, as well as the art of hula on the third Wednesday of every month with food and drinks for sale. Free. Ward Village Information Center Courtyard. 6-8 p.m. wardvillageshops.com.

SECOND THURSDAY (MAY 11) COURTYARD CINEMA

Ward Village hosts its monthly film series event, Courtyard Cinema, on the 2nd Thursday of each month. The showing features free popcorn, refreshments, food vendors and entertainment. Courtyard Cinema is free and open to the public. Seating is limited. Reserve your tickets at wardvillagecourtyardcinema.com.

THURSDAYS • COURTYARD YOGA

Take a complimentary yoga class with CorePower Yoga at the Ward Village Information Center Courtyard. Open to the first 50 in attendance. All experience levels welcome. 5:30 – 6:30 p.m. For more information visit wardvillageshops.com/yoga.

THIRD THURSDAY (MAY 18)

DOWNTOWN GALLERY WALK & CRAFT FAIR

The Arts at Marks Garage continues to build on downtown activities offering execs an excuse to hang out after work and giving everyone else a reason to head downtown. Free. 521-2903. artsatmarks.com.

FRIDAYS • CULTURAL CRAFT FAIR

The Hyatt's weekly Farmers Market are so successful that they are applying the same principle to local craft items. Each week the craft fair will feature local vendors featuring arts & crafts, jewelry, Photography, woodwork and more. 3–7 p.m. Waikiki.hyatt.com

FIRST FRIDAY (MAY 5)

DOWNTOWN GALLERY WALK & CRAFT FAIR

Art lovers should head to downtown Honolulu the first Friday of each month. This event has exploded into a downtown party with galleries and studios open for exhibitions, artist demonstrations, and special performances. 23 galleries and art-related retail shops, restaurants and museums participate. Downtown Honolulu/ Chinatown. 6 – 9 p.m. Free. 521-2903 or artsatmarks.com.

FINAL FRIDAY (MAY 26) • ART AFTER DARK

Art after Dark returns with the hippest event of the month. artafterdark.org.

SATURDAYS • KCC FARMERS MARKET

Fresh island produce, seafood, flowers and more are available from over two-dozen vendors at Kapiolani Community College. Free. 7:30-11 a.m. 848-2074.

SATURDAYS

PEARLRIDGE FARMERS MARKET

Over 40 vendors offering locally grown fruits and vegetables, plants and freshly made treats. A pop-up cafe offering seating and live music round out the day. Free. 8 a.m. - noon. PearlridgeOnline.com.

SATURDAYS

KAKA'AKO FARMERS MARKET

The Kaka'ako Farmer's Market hosts an abundance of treats from around our islands. Located between Ward and Kamakee Streets, Free. 8 a.m. - 12 p.m. 388-9696 or haleiwafarmersmarket.com.

SECOND SATURDAY (MAY 13)

DOWNTOWN GALLERY WALK & CRAFT FAIR

First Friday has become such a success that events carry over to the second Saturday. HiSAM, 11 a.m. – 4 p.m. 586-9958. Other events around downtown Honolulu all afternoon including slam poetry and open mic events at The Arts at Marks from 3-5 p.m. Free. 521-2903 or artsatmarks.com.

THIRD SATURDAY (MAY 20) HONOLULU NIGHT MARKET

Honolulu Night Market returns to its normal day for its art, fashion and food truck block party. honolulunightmarket.com.

MAY CALENDAR OF EVENTS

SATURDAYS & SUNDAYS ART ON THE ZOO FENCE

More than 35 local artists display their works on the Zoo fence on Monsarrat Avenue opposite the Kapiolani Park Bandstand. Works for sale include original paintings, prints and photographs. 9 a.m. – 4 p.m. Free. artonthezoofence.com.

SECOND SUNDAY (MAY 14) FREE ADMISSION TO IOLANI PALACE

On the second Sunday of each month, Iolani Palace opens its doors to kama'aina guests to visit the historic landmark for free. iolanipalace.org. (note: the palace will be closed on 5/29 in honor of Memorial Day)

SUNDAYS (MAY 7 & 21)

NA MELE NO NA PUA SUNDAY SHOWCASE

Waikiki Beach Walk presents the music of Maunaloa on May 7th and N Mea Ho'okani on the 21st at the Plaza Stage from 5 – 6 p.m. waikikibeachwalk.com.

THIRD SUNDAY (MAY 21) BANK OF HAWAII FREE SUNDAY

The Honolulu Museum of Art opens its doors to the public free of charge on the third Sunday of every month thanks to Bank of Hawaii. Lots of activities for kids and grown-ups alike. 11 a.m. - 5 p.m. Free. 532-8700.

MAY 1 • MAY DAY

May Day is Lei Day in Hawaii and visitors and kama'aina alike will be able to smell the fragrance of flowers wafting through the air most of the day. This is the 90th anniversary of this annual celebration and it will take place at Kapiolani Park from 9 a.m. – 5:30 p.m. with live entertainment throughout the day.

MAY 1 • MAY DAY WAIKIKI: BEACH BOYS, MEMORIES AND MUSIC

This 4th annual event will take place on the beach in front of the Outrigger Waikiki. Attendees will be able to enjoy hula dancers, free canoe rides, a helicopter flower drop, and Henry Kaponu & Friends on stage. 3 - 5 p.m. waikikiimprovement.com.

MAY 5 • CINCO DE MAYO BLOCK PARTY

First Friday just got a lot more exciting as the Biggest Cinco de Mayo Hispanic Street Festival Celebration closes the streets down between Nuuanu and King and Hotel to Smith Streets. Live bands, Latin dancers, DJs, contests, food vendors and more. 6 p.m. – 10 p.m.

MAY 6 • FILIPINO FIESTA

It's the 25th anniversary of Hawaii's largest showcase of Filipino culture. over 10,000 people usually stop by this fun fair. 9 a.m. - 5 p.m. Kapiolani Park

MAY 6 • PARADE OF FARMS

The 2nd annual event, presented by the Oahu Resource Conservation & Development Council will focus on Waialua. A free open house of activities will be held at Waialua Sugar Mill including booths about local farming initiatives. Short tours of agribusinesses located nearby are available as is a farmer's market packed with fresh produce from local farms until 12:30 p.m. Specialized in-depth farm tours available for a small fee. 9 a.m. – 4 p.m. parade-of-farms.org.

MAY 6 • KAPENA & FRIENDS

It's the second of Sea Life Park Makapu'u Twilight Concert Series and this time the line up includes Paula Fuga, Kapena, Anuhea and the Makaha Sons. Tickets start at \$39.50 and will go up closer to the show. Kids under 10 are free. Ticketholders can explore the park beginning at noon, music begins at 5 p.m. Food available for purchase, concert ends at 11 p.m. sealifepark.com.

MAY 6 - 7

HAWAII BOOK AND MUSIC FESTIVAL

This always popular book and music festival takes place throughout the weekend with even more local, national and internationally known authors; performances by musicians, storytellers, actors and dancers; and ongoing entertainment for the kids on multiple stages than ever before. Honolulu Hale. 9 a.m. – 5 p.m. HawaiiBookandMusicFestival.com.

MAY 6 - 7

HEN YUN

The world's premier classical Chinese dance and music company brings their spectacular act to Honolulu for the 9th season. Sit back and enjoy classically trained artists, amazing choreography, breathtaking costumes, state-of-the-art backdrops, and a unique orchestra combining the sounds of East and West. Saturday 2 p.m. & 7:30 p.m., Sunday 2 p.m. Tickets: \$70 – \$150. ticketmaster.com.

MAY 7

DUKE KAHANAMOKU BEACH CHALLENGE

If your guests are out and about in Waikiki today send them past the Hilton Lagoon as dozens of watermen and women compete in canoe races, SUP, and kayak in a fun filled day honoring Duke Kahanamoku. There will be plenty of pomp and circumstance, live music, and crafts for visitors to browse on the Great Lawn throughout the day. 9 a.m. – 2 p.m. waikikicomunitycenter.org.

MAY 7 • HOOKUPU ALOHA

The 17th annual Hookupu Aloha features food, arts & craft booths, live entertainment by some of the Islands finest musicians, hula and more. Kualoa Ranch. Free. 10 a.m. - 4 p.m. kualoa.com.

MAY 11-13

WORLD FIREKNIFE CHAMPIONSHIP

Some of the world's best fireknife dancers come together for three fiery nights of competition, bringing with them awe and gasps of amazement from onlookers. One of the most exciting cultural competitions visitors can see all year long. Polynesian Cultural Center. worldfireknife.com.

MAY 13 • NA MELE HONUA

Mission Houses Museum continues its Na Mele Honua this month. The musical series is themed around the natural environment this year, featuring the elements of nature: air, clouds, wind, mountains, ocean, and rain. This concert is entitled Songs of the Earth and is inspired by the verses of the song "Ke Ao Nani," and will celebrate the wonder of birds, fish, plants, flowers and the forest expressed through chant, dance and song. Chef Mark "Gooch" Noguchi will offer a special menu from Mission for this event. Tickets: \$30 each in advance, or \$35 at door. 5:30 – 8 p.m. missionhouses.org.

MAY 13-14 • ROMEO & JULIET

Violinist Sayaka Shoji is the guest artist in this classic piece Vaughan Williams, Respighi, and Prokofiev. Maestro Kenneth Lam will conduct. Blaisdell Concert Hall. Tickets: \$34-\$92. Blaisdell Concert Hall. 5/13 - 7:30 p.m.; 5/14 - 4:00 p.m. hissymphony.org.

MAY 14

MOTHERS DAY

From high tea at sea to fashion shows to special brunches, concerts and more, everyone is doing something special to honor Moms today. Choose your favorite and book it soon before they all sell out.

Continues on page 16.



MAJESTIC
by
Atlantis
CRUISES

Mother's Day Tea on the Sea

This Mother's Day, treat Mom to a unique "Tea on the Sea" package aboard Majestic by Atlantis Cruises.

We also offer nightly sunset dinner and appetizer cruises.

atlantisadventures.com

For info & reservations call (808) 973-1311 or fax to (808) 973-2499

   | #atlantishawaii

DISCOUNT HAWAII CAR RENTAL SAVE UP TO 50%



GUARANTEED RESERVATIONS
* NO BOOKING FEES * NO
DEPOSIT * CANCEL ANYTIME
* NATIONAL RENTAL
COMPANIES

call us today @

1.800.292.1930

or check us out online:

DiscountHawaiiCarRental.com

CALENDAR OF EVENTS CON'T

Continued from page 15

MAY 14 • HONOLULU TRIATHALON

All events will start and finish at Ala Moana Beach Park. The elite wave for the Olympic Trials will start at 5:45 a.m. with all other levels start in waves afterwards. Traffic will be affected in the Ward area for several hours. honolulutriathalon.com.

MAY 17 • MAMO

This is not your typical fashion show. Launched in Honolulu in 2006, the MAMo Wearable Arts Show is a component of PAI Foundation's Maoli Arts Movement (MAMo). This wearable art fashion show celebrates Native Hawaiian designers in fabric, clothing, and accessories, in cultural motifs. Hawaii Theatre. 7 p.m. Tickets: \$17-\$57. hawaiiitheatre.com.

MAY 13

GABBY PAHINUI WAIMANALO KANIKAPILA

It's the best Kanikapila all year. Stop by Waimanalo Beach Park between 9 a.m.- 6 p.m. to hear some of the islands best slack key guitarists jam on stage together. Hawaiian music just doesn't get better than this and any visitor lucky enough to be on the island that day would be remiss not to stop by. There will be plenty of booths, workshops, massage tents, demonstrations, food booths and arts & craft vendors to browse through. Free. gabbypahinui.com.

MAY 19 -20 • NICK SWARDSON

Stand up comedian best known for his time on "Reno 911" and appearances in such films as "Blades of Glory" and "I Now Pronounce you Chuck and Larry," brings his sketch comedy act to the Republik. Tickets: \$29-\$39. 7 p.m. bamproject.com.

MAY 12 • MICHAEL FRANTI & SPEARHEAD

Michael Franti is a musician, filmmaker and humanitarian who is widely recognized as a pioneering force in the music industry. Known for his globally conscious lyrics, powerful performances, and dynamic live shows, Franti has continually been at the forefront of lyrical activism, using his music as a positive force for change. Tickets: \$38. Republik. 7 p.m. bamproject.com.

MAY 20 • WAIKIKI ARTFEST

Check out 75 local artists as they display their crafts for all to see and buy. Enjoy live music and food booths while shopping. Free. 9 a.m. - 4 p.m. Kapiolani Park. 696-6717.

MAY 20 • 39TH ANNUAL VISITOR INDUSTRY CHARITY WALK

This one is your event, starting at 7 a.m. at Ala Moana Beach Park. Be sure to snap pictures of you and your colleagues along the way and email them to us by Sunday afternoon morning! charitywalkhawaii.org.

MAY 21

HONOLULU EKIDEN & MUSIC FESTIVAL 2017

The Honolulu Ekiden and Music Festival culminates in a star-studded concert finale featuring the Gin Blossoms, Dirty Heads, singer/songwriter Piko Taro and Japanese rock band FLOW. Tickets: \$30-\$855-9:15 p.m. Waikiki Shell. hnlkekiden.org.

MAY 26

TREVOR NOAH IN CONCERT

The host of Comedy Central's "The Daily Show," Trevor Noah, will make his first appearance in Hawaii later this month. The South African-born Noah will bring his standup comedy act to the Blaisdell Concert Hall. A second show was added the first night to accommodate demand. Tickets: \$45.50 - \$95.50. 8 p.m. & 10:30 p.m. ticketmaster.com.

MAY 26 - 29 • 50TH STATE FAIR

The 50th State Fair kicks off at 6 p.m. Friday night and runs through Memorial Day weekend then opens up again every Friday, Saturday and Sunday through June. FREE admission for all active-duty and retired military and their dependents with a valid military ID on Memorial Day. Hours & details: ekfernandez.com.

MAY 29 • LANTERN FLOATING CEREMONY

The 19th annual Lantern Floating Hawaii is one of the more popular festivals all year long as more than 50,000 people converge at Ala Moana Beach Park to send off specially made candle-lit lanterns into the ocean to honor their loved ones. This is an extremely picturesque event as 7,000 lanterns float away. Ceremonies start promptly at 6 p.m. and simulcast live on TV and online. lanternfloatinghawaii.com.

MAY 1 - 31

MELE MEI MONTH

Music lovers worldwide return to celebrate "Hawaiian Music Month," a series of workshops, live concerts and award ceremonies throughout Hawaii presented by the Hawaii Tourism Authority and the Hawaii Academy of Recording Arts (HARA) during the month of May. Schedule at melemei.com.

WAIKIKI BAPTIST Church
Your Church in Waikiki
424 Kuamo'o St
(Near the Ambassador Hotel)
Sunday Worship Services
9:00 AM - Contemporary
10:45 AM - Traditional
(808)955-3525
WaikikiBaptist.com

Hawaii Book & Music Festival

Continued from page 1

de Silva, Halau Mohala 'Ilima, Patrick Makuakane, Manu Boyd and Michael Pili Pang are just a few of the Kumu Hulas expected to bring their halau's to the festival to perform.

There will be plenty of food booths to choose from surrounded by tables and chairs, all in the shade of the Honolulu Hale lawn. Be sure to grab one of the foldout programs, located free at tables around the event. With ten stages, it would be a good to lay out a plan for the day. Volunteers suggest making note of who you want to see perform on the Main Stage and arrive early for chair or grass seating.

The Hawaii Book & Music Festival's mission statement says it strives to celebrate and honor books, storytelling and music in a fun, accessible, and memorable way for people of all ages, backgrounds and tastes to enjoy as well as introduce Hawaiian books and music to the world as well while introducing Hawaii to books and music they may not have heard about before. This family-friendly fest continues to grow each year!



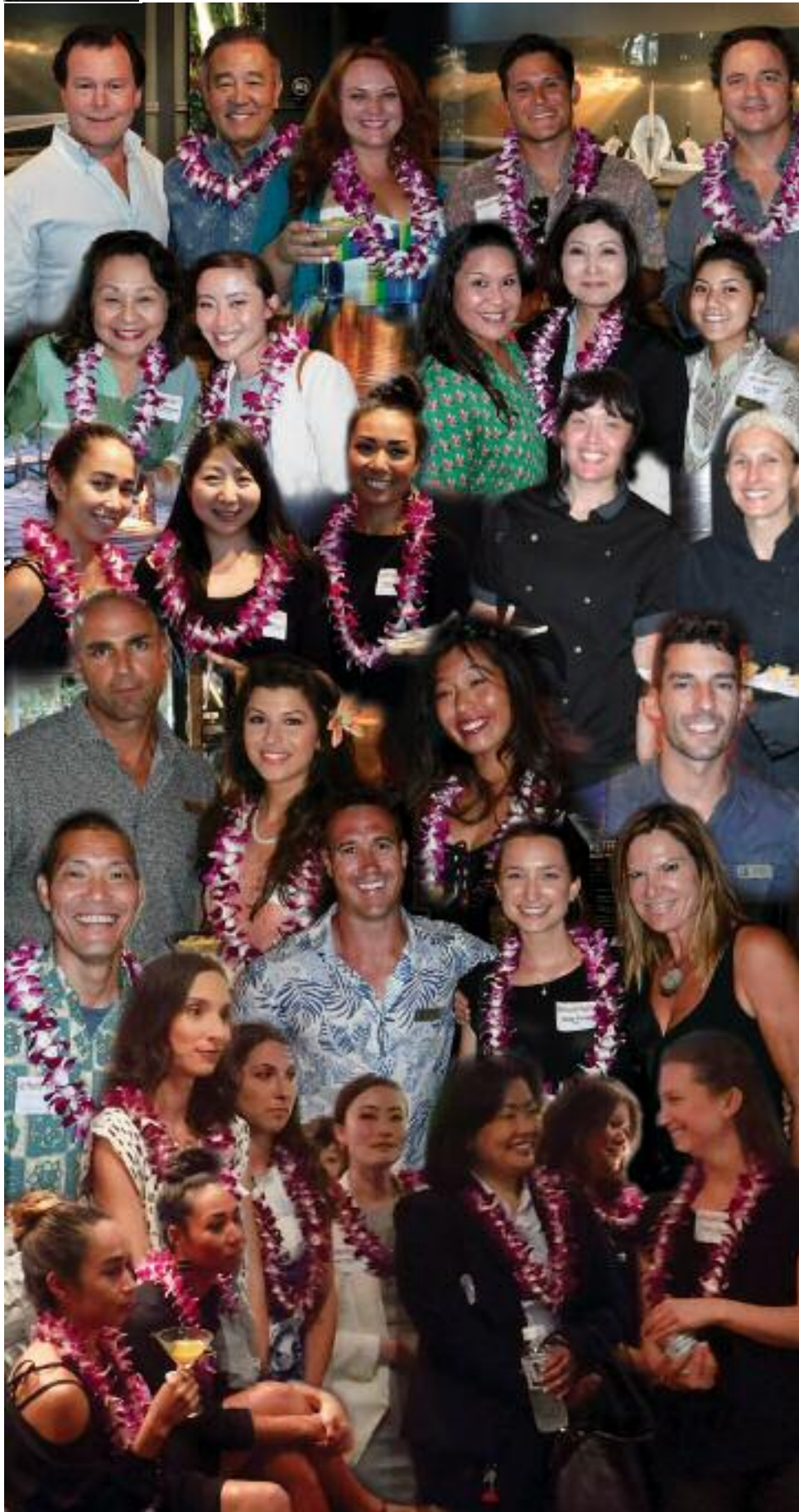
Authors signing their books at last year's festival.

And, for all you voracious readers out there, don't forget it's one of the biggest book exchanges on the island all year! Perfect for visitors who finished that one book they brought and need a new one for the flight home. Just turn in up to five gently used books and pick out new ones at the Book Swap tent. Hundreds of titles for adults and children will be available, and any books that are collected and remaining at the end of the festival will be donated to Hawaii Literacy. For a complete schedule of events, speakers, and performers, head to hawaiibookandmusicfestival.com. ~ Pam Davis

Wildlife Guaranteed
See dolphins or turtles or come again free wildlife-specific cruises in Waikiki, West Oahu & Kona. Family-owned company with ocean activities for all ages.
WAIKIKI • WAIANAE • KONA
Sail • Snorkel • Dolphins • Turtles • Whales • Scuba • Fireworks Dinner • Private Charter • Transportation
234-SAIL
(7245)
WE ANSWER 24 HOURS!
hawaiinautical.com Hawaii Nautical



The Peter Lik Gallery hosted a lovely small gathering for some of the neighboring hotels to stop by and familiarize themselves with the gallery, the works of Peter Lik and the management. Small organic vegan bites were provided by Juicy Brew, hand crafted cocktails were being served up and at the end of the night, Crystal Nichols from The Trump International Hotel Waikiki was the lucky winner of one of Peter Lik's new Element Packs, four smaller 10 x 10 pieces of Lik's larger pieces.



**CALL IT EARLY BIRD,
CALL IT NIGHTCAP.**

**HAPPY HOUR IS 20% OFF
THE ENTIRE MENU**

10X A WEEK!

MON-FRI 3-6PM ^{to} SUN-THU 10PM-MIDNIGHT




giovannipastrami.com 808-923-2100
227 Lewers Street in Waikiki


*Happy Hour is dine-in only. Visit us for details.

BEST OF KAUAI NEW!

One Day Helicopter+Land Combo



Fly to Kauai, see the island by land & helicopter, return to Oahu in a single day!



Gray Line
POLYNESIAN ADVENTURE TOURS

Booking your Gray Line Hawaii Tour is Easy!
808.833.3000

That's Entertainment

HOTELS

- HALE KOA HOTEL** 955-0555
 •TuSat - High and Right Comedy Show takes the stage at the Warriors Lounge at 8pm.
 •MThFS - Poolside music at the Barefoot Bar. 6-11pm
- HALEKULANI HOTEL** 923-2311
 •Daily-Hawaiian Music and hula at House Without A Key from 5:30-8pm.
 •Daily-Live Contemporary and light Jazz at Lewers Lounge from 8:30pm to midnite.
 •Sun- Sunday brunch at Orchids features Noly Paa on the piano from 9:30 - 2:30pm.
- HILTON HAWAIIAN VILLAGE** 949-4321
 •Fri - Fireworks at 7:45pm.
 •Fri - The Rockin' Hawaiian Rainbow Revue, a musical salute to King Kalakaua, at the Super Pool. 7 pm.
 •FriSat - Olomana at the Tapa Bar from 8-11pm.
 •Daily - Live entertainment at the Hau Tree Bar and the Tapa Bar from 8-11pm.
- THE KAHALA HOTEL & RESORT** 739-8888
 •TuWThFSat- David Swanson vocalizes on the piano at The Veranda from 7:30-10pm.Hawaiian on Sun/Mon.
- MOANA SURFRIDER** 922-3111
 •Daily-Hawaiian music & hula. The Banyan Court, 6-8 pm, and again from 8 -10 p.m. Weekends from 11:30- 2 p.m.
 •MWFri-Guided historical tours at 11am.
- NEW OTANI KAIMANA BEACH** 923-1555
 •FSat- Jazz guitarists in the Sunset Lanai Bar. 6-9pm.
- OUTRIGGER WAIKIKI ON THE BEACH** 923-0711
 •Mon- Kukui Nut Bracelet Making. 1pm.
 •Th- Ukulele Lessons. 1pm.
 •Fri- Aloha Fridays bring back old Hawai'i with music, hula, ukulele & lei making lessons. 9am-1pm.
- OUTRIGGER REEF ON THE BEACH** 923-3111
 •Daily- See guest artists at work in Kuloko Arts of Hawaii 9am-1pm and again from 6-9pm.
- SHERATON PRINCESS KAIULANI** 922-5811
 •Daily-Live Hawaiian music & halau at the lounge from 6-8:30pm, then poolside from 8:30-10:30pm.
 •Th-Princess Kaiulani historical tour at 9:30am.
- THE ROYAL HAWAIIAN** 923-7311
 •TTH- Free guided resort tour at 1pm.
- TURTLE BAY RESORT** 293-6300
 •MTWThFSat- Lei Making, Main Lobby at 10am.
 •ThSun - Fire Dancer, Hang Ten Pool Bar at Sunset
 •TThFri - Shell Hula Lessons, Lobby at 10am
 •TThFri - Ukulele Lessons, Lobby at 9am
 •Fri- Music & Hula. Lobby Lounge 6:30-8:30pm.
- WAIKIKI BEACH MARRIOTT RESORT** 922-6611

- Daily-Hawaiian entertainment in The Moana Terrace Bar. 6:30-9:30pm.
 •Fri-Local crafters "Aloha Friday Fair" Lobby 9a-2pm

MUSEUMS

- HAWAII STATE ART MUSEUM** 586-0900
 •TWThFSat - Inaugural exhibition "Enriched by Diversity: The Art of Hawai'i." Free. Tuesday-Saturday, 10 a.m. to 4 p.m. Located in the Capital District.
- HAWAII THEATRE** 528-0506
 •Tues- A one-hour guided tour offers a unique insight in the history, art, architecture and restoration of the Hawai'i Theatre with trained docents & a mini-concert on the 1922 Robert Morton Theatre Organ. 11 a.m. Admission: \$10.
- HONOLULU MUSEUM OF ART** 532-8726
 •MWF- Japanese Language Tours. Private tours also available. 1pm. Regular admission.
- HONOLULU FIRE MUSEUM** 723-7167
 •3rdSat- Free one-hour guided tours through various exhibits with a firefighter recounting HFDs history the 3rd Saturday: 9am - 2pm. Reservations required. 620 South Street. honolulu.gov/hfd/communityrelations
- IOLANI PALACE** 522-0832
 •Mon-Sat-45 minutes docent-lead or self-guided audio tours available in English or Japanese. Japanese-led tour is available only at 11:30 a.m. All tours include re-tour video and entrance into the Palace Galleries. Adults: \$14.75-\$21.75 / Keiki (5-12): \$6. 9am-5pm
 •Sat-Hawaiian Quilt Classes. Old Archives 9:30a-12p.
- LUCORAL MUSEUM** 922-5381
 •TTh- Learn how to plan your jewelry project and more in this beaded jewelry workshop \$10. 2-4 p.m.
- HAWAIIAN MISSION HOUSES** 447-3910
 •Tue-Sat-Learn about the story of cultural change in 19th-century Hawai'i. Docents lead tours through the oldest existing frame house in the Islands, Print Shop, and the Chamberlain House. missionhouses.org
- PACIFIC AVIATION MUSEUM** 441-1000
 •Daily-Vintage aircraft in battlefield hangars at Pearl Harbor. Combat flight simulators. Aviator's Tour takes you through the new Restoration Hangar. Restaurant, Museum Store. Shuttle & Tickets at USS Arizona Memorial Visitor Center or at PacificAviationMuseum.org.
- THE SPALDING HOUSE** 526-1322
 •Daily-Docent-led tours given daily. 1:30pm. Garden tours or Japanese language tours are by appointment.
- NAVAL AIR MUSEUM BARBERS POINT** 682-3982
 •Mon-Fri- A unique museum experience about aviation history in Hawaii. All aircraft are open to climb in, on and around. Tours: 8am - 4:30pm. \$7 / \$5 children

under 18. Kalaehoa Airport. Reservations req'd. Sat/Sun by appt only. www.nambp.org.

SHOPPING CENTERS

- ALA MOANA CENTERSTAGE** 955-9517
 •Mon-Sat - Ala Moana Hula Show. Centerstage 1-1:20pm
 •MWF- Hawaiian music Mauka Wing, Lvl 2 2:30-3:30pm
 •Sun - Keiki Hula Show. Centerstage 1-1:20pm
- INTERNATIONAL MARKET PLACE** 921-0536
 •Daily Ceremonial lighting of Lamaku Torch Tower just after sundown followed by a hula show. Queen's Court.
 •Every Other Sun Free Yoga. 10-11am. Queen's Court.
- KINGS VILLAGE** www.kings-village.com 237-6344
 •MW Famer's Market offering fresh produce, baked goods and local food items from 4-9pm.
 •Daily King's Guard Museum features a variety of collectibles and memorabilia. 10a-10:30p. FREE.
- ROYAL HAWAIIAN CENTER** 922-2299
 •MWF- Learn Lomilomi 11am-12pm, Bldg. B, 3rd floor
 •MF- Hawaiian Storytelling 12pm, Helumoa Hale
 •MTWF-Hula 10am (4pm on Wednesdays), Royal Grove
 •ThSat- Rock-a-Hula Pre-Show 7pm, Royal Grove
 •WTh- PCC Show 11am, Royal Grove
 •TWTh- Lauhala Weaving 1pm, Bldg A, 1st floor
 •TThF- Ukelele 12pm, Helumoa Hale
 •TWF- Live Hawaiian music 6-7pm, Royal Grove
 •ThSat- Rock-a-Hula Pre-Show 7pm, Royal Grove
 •Sat- Hula Kahiko 6-6:30pm, Royal Grove
- WAIKIKI BEACH WALK** www.waikikibeachwalk.com
 •Tuesdays - Ku Ha'aheo featuring Hawaiian song and dance on the Plaza stage. 4:30-6pm
 •Wednesdays - Yoga Classes 4-4:45pm. Free Plaza Stage

ATTRACTIONS

- KALAKAUA AVENUE** 527-5666
 •Fri - Strolling Hula from 8-10:00pm.
- KAPI'OLANI BANDSTAND** 527-5666
 •Fri-Hawai'i's finest musicians perform. 5:30-6:30pm
 •Sun-Royal Hawaiian Band performs 2-3:15pm.
- KUHIO BEACH HULA SHOW** 843-8002
 •TThSat- City & County presents a free hula show at sunset. 6:30 - 7:30pm at the hula mound.
- TAMARIND PARK - DOWNTOWN** 527-5666
 •Fri- Mayor's Aloha Friday Music from 12-1pm features live music from Hawaiian to Jazz to Pop.
- WAIKIKI TOWN CENTER** 922-2724
 •Mon-Sat-The songs and dances of Hawai'i, New Zealand, & Tahiti. Free shows begin at 7pm.
- EVENTS SUBJECT TO CHANGE PLEASE CALL TO CONFIRM PRIOR TO ATTENDING**

PAPARAZZI

Grand Lanai Restaurant Week Preview



The International Market Place introduced their version of Restaurant Week, featuring all of their Grand Lanai restaurants last month. A few of us were lucky enough to be included in their media preview. Sorry we couldn't get more of you in, but rest assured there is a lot coming up there.

Supermensch



Two icons in their own right. Longtime Honolulu columnist Ben Wood and the Supermensch honoree himself, Shep Gordon caught up at this year's Hawaii European Film Festival Awards Gala, Honolulu's fabulous red carpet event at the Moana Surfider.

James Bond is married to a Hawai'i girl!



Local girl Keelys Smith was also honored at the Gala for her powerful documentary, Poisoning Paradise. Pictured here with PR Diva extraordinaire Erika Kaufmann and Keelys well known husband, Pierce Brosnan. Picture by Michael Kovac.

Do you have a picture you would like us to run?
 Send them to: publisher@oahuconcierge.com

conciierge card

May 31, 2017

• **Bill's Sydney Waikiki** - 20% discount off food and beverage (not applicable on happy hour or other offers). Must show hotel ID to receive discount. 280 Beach Walk. 922-1500

Dole Plantation - 1 FREE Adult Admission To The Maze With Purchase of 1 Adult Admission. 621-8408

Giovanni Pastrami - 15% Off Full Bar, Dine-in or Take-Out at anytime with ID. 227 Lewers St. 923-2100.

Hard Rock Café - 15% off food, beverage (non-alcoholic), or merchandise. Hotel ID required. 280 Beachwalk Ave. 955-7383.

Hawai'i Prince Golf Club - \$5 Off Standard Kamaaina Green Fees. Tee Times: 944-4567

Hilo Hattie - 25% on Hilo Hattie labeled garments, 15% off other fashions/gifts and 10% off Hilo Hattie labeled foods. Not valid on sale item. Ala Moana Center. Ph 535-6500.

Hy's Steakhouse - 25% VIP Discount Off Food And Beverage (up to 2 persons) 2440 Kuhio Ave. 922-5555

Hyatt Regency Waikiki - 15% discount with the presentation of a concierge business card at SHOR, Japengo and SWIM. 2424 Kalakaua Ave. 923-1234.

Iolani Palace - Free Admission. Regular rate \$21.75. 364 S. King Street, Reservations & Hotel ID required. 522-0832.

• **IHOP** - Receive 20% on entire bill. Must show valid hotel ID. Not valid with any other offer or discount. Valid only at Aqua Palms, 1850 Ala Moana Blvd., 949-4467 and OHANA Waikiki Malia by Outrigger®, 2211 Kuhio Ave., 921-2400.

• **Il Lupino** - 15% discount off food and beverage (not applicable on liquor or specials). Must show hotel ID or business card to receive discount. Royal Hawaiian Center. 922-3400

Kaiwa - 20% off food & beverage between 5 & 7 p.m. 924-1555

Hawaiian Mission Houses - Free tour with hotel ID. 553 S. King Street. 447-3910

• **Noi Thai** - 20% discount off food and beverage (not applicable on liquor, happy hour or specials). Must show hotel ID to receive discount. Royal Hawaiian Center, Bldg. C. Level 3. 664-4039

• **NWL Nails Wax & Lashes** - 20% discount off all services. Must show hotel ID and mention ad in magazine to receive discount. Inside the lobby of the Waikiki Grand Hotel. 922-NAIL

Pacific International Skydiving Center - 50% Discount on Jump, 68-760 Farrington Hwy., 637-7472.

P.F. Chang's Waikiki - Receive 20% on all appetizers, entrees, desserts and beverages 11 am - 5 pm daily (not valid for Pau Hana menu) Royal Hawaiian Center. Ph: 628-6760, 637-7472

Romano's Macaroni Grill - 20% Off Food and Beverage for up to 2 guests. (Not Valid for Happy Hour Menu). Ala Moana Center, 1450 Ala Moana Blvd. 356-8300

Ruth's Chris Steak House - 20% Off Food and Beverage for up to 2 guests. (Not Valid for Happy Hour & Prime Time menus). Restaurant Row, 599-3860. Waikiki Beach Walk, 440-7910.

Honolulu Museum of Art Spalding House. - FREE Admission For you and one guest with hotel ID. 526-1322

The Original Glider Rides - Come experience the joy of soaring for yourself. Concierge / GSA may receive a complimentary scenic ride. Request the "GSA flight special" when booking your reservation. Hotel ID required. Dillingham Airfield. 637-0207

Tiki's Grill & Bar - FREE order of ANY appetizer with any purchase! One per table. OahuconPOKE. ASTON Waikiki Beach. 923-8454

Willoughby's Restaurant - 15% off all food items. Ohana Honolulu Airport Hotel. 3401 N. Nimitz Hwy. 836-0661.

HELP us update this card. If you know of an offer not being honored let us know. As management changes, sometimes offers can get lost.

You will be required to show Hotel ID or business card to claim offer. Do not cut this card out of the book. One special per person per business. Offers valid on regular-priced merchandise only. Discounts are available to Guest Service Professionals ONLY. Not valid with other promotions or special offers. A minimum 18% gratuity on original order required for all special food offers.

Activity Concierge of the Month



NAME: Michael Thiele

HOTEL: Elite Concierge

TITLE: Activity Concierge

Q. How long have you been with Elite Concierge?
A. Since the Summer of 2011.

Q. How big is your team there?
A. There are 10 of us.

Q. What drew you to a smaller company such as Elite?
A. I appreciate working with an employer the genuinely appreciates me and my hard work. It is truly a great feeling.

Q. How did you get your start in this industry?
A. I took a temp job at Embassy Vacation Club in Ka'anapali that turned into a full-time position eventually leading to position with Activities 4 Less, and then Expedia's call center. I then moved to Oahu and have worked at many locations.

Q. What is the biggest challenge at the desk?
A. Managing clients' expectations and their budget parameters.

Q. What do you like most about this industry?
A. Many things: Assisting clients make their Hawaii dream vacations come true by sharing with them my passion & love of the islands. The relationships with colleagues in the industry. The opportunities to experience first-hand the activities, tours, restaurants, events that I share with my clients directly. Clients that become friends over the years.

Q. What is your favorite restaurant to recommend?
A. Just one? I love food! I have lots of different recommendations depending on the clients taste. I really like Azure for oceanfront location and spectacular dining experience. Bills Sydney has great healthy (and not so healthy) choices that I think are unique. Willing to leave Waikiki? MW Restaurant is gem. Best pizza on the island has to be Prima in Kailua. Did I mention I love to eat?

Q. What about activities?
A. Blue Hawaiian Helicopters (every island - my favorites are Kauai and Oahu), Snorkel Trips with Ocean Joy (healing Hawaiian waters) and I really love the Blue Note concert venue - live music at this club is amazing.

Q. Do you have one particular guest that stands out?
A. One of my first clients (and now friends) with Elite. I coordinated their destination wedding. I helped with everything from the nuptials to the reception to excursions and accommodations for everyone attending via email and phone before ever meeting them in person. They just came back to celebrate their 5th Anniversary

Q. Recently you got serious about your health. Want to comment on that?
A. A few years ago I made up my mind that I was sick and tired of being sick and tired. I quit smoking (after 26 years!) with lots of support from great friends. Once I accomplished that I realized I had to change my health if I wanted to truly live my life to the fullest. I typically eat a salad every day, manage portions and limit sugar and carbs. Now, when I splurge, I plan for it. Most times when I attend a concierge event it's a splurge. I workout consistently and love to run. People always ask how I lost the weight. It's 90% diet/food choices and 10% exercise (mostly the exercise is for my mental well-being). I try to do my best each day.

Family Favorite

Mother's Day Brunch Cruise

May 14, 2017 • 12:00 - 2:30PM

\$63⁹⁸ adult

\$38⁹⁴ child

STARTM
Honolulu



808-983-STAR (7827) ★ StarofHonolulu.com

Please add 4.712% excise tax and 3% harbor fee to cruise prices. Price and contents subject to change.

The Oahu Concierge is printed monthly and direct mailed FREE to all Oahu Concierge, Hospitality & Activity Professionals.

Subscriptions available to non-industry at \$25 per year.

C O N T A C T

Davis Media

Ph: 596-4422

www.oahuconciierge.com

Twitter & Instagram: @OahuConciierge

Facebook: www.facebook.com/OahuConciierge

ADDRESS & NAME CHANGES / ADDITIONS

We do not take changes via telephone. All changes to mailing list must be submitted in writing by the 16th of the month to make the next issue, email is preferred.

S T A F F

PUBLISHER & EDITOR **Pam Davis**
publisher@oahuconciierge.com

CONTRIBUTING EDITOR

Lance Rae

DESIGN

Coreiya Design

The Oahu Concierge
4348 Waialae Avenue, #185
Honolulu, Hawaii 96816

Discover Jurassic Valley.

RESERVATION LINE NOW
OPEN UNTIL 9PM



Watch our video!

For these Adventures and more,
Call 808-202-2245 or visit kualoa.com

Open daily 8:30am - 5:30pm

KUALOA

WHERE LEGENDS ARE MADE



MOVIE SITE & PREMIERE
MOVIE SITE IMMERSION TOURS



Movie Site Immersion



Jurassic World



KING Skull Island



Jurassic Park



LOST

TASTE OF KUALOA
"FARM TO FORK" FOOD TOUR



Tarrow Net Fishing



Kualoa Beef



Kualoa Shrimp



Oyster Farming



Luxury Coach