

KEEPING THE HOSPITALITY INDUSTRY INFORMED SINCE 1998

Hawaii Book & Music Festival

JEREMIAH TOWER **STARS** AT HFWF



The 2018 Hawaii Book & Music Festival returns to Honolulu Hale on May 5th and 6th.

For the 13th year in a row, the Hawaii Book & Music Festival returns to downtown Honolulu on the grounds of the Frank F. Fasi Civic Center. From 10 a.m. to 5 p.m. on May 5th & 6th over 150 events will unfold on 10 separate pavilions and stages giving festival-goers plenty of activities to choose from.

Roam the festival grounds with the family in this free, family-friendly event. There will be something for all ages to enjoy, from book-sellers and publisher booths, dozens of author book-signings, a keiki fun zone with rides and bouncers, the ever-popular Book Swap, live entertainment and a multi-ethnic food court are part of this annual celebration of story and song.

Let's talk about what you will see if you head over there. We'll go kid-friendly first, because we all now if the kids aren't happy, the parents won't be either. This year there will be two venues dedicated to kids in addition to the keiki fun zone. Kristi Yamaguchi's Reading Corner is back, featuring 14 celebrity book-readers, including the Olympic skater herself, and the Keiki Stage, with 28 high energy dramatic and musical performances, including three daily shows by Mr. Steve, the PBS Kids Pied Piper, who is back yet again by popular demand. Popular local storytellers Jeff Gere, "Tita" Kathy Collins and Lopaka Kapanui will also return.

There will also be two Author's Pavilions that will offer a healthy line-up of national and local novelists, poets, memoirists, biographers and non-fiction writers, several Pulitzer Prize winners and New York Times best-selling authors including Pulitzer Prize winning author William Finnegan talking about *Barbarian Days: A Surfing Life* and award-winning author Scott Hogle and he discusses his new book *Persuade*, an atypical business sales book that focuses more on life stories, love, family & friendship. If poetry is more your thing, than make sure to catch award winning

poet Matthew Zapruder as he discusses his book *Why Poetry*. With so many authors and genres, there is bound to be something or everyone.

The Hawaii Book and music Festival has partnered with HMSA to bring two full days of panel discussions with 50 doctors and experts in to discuss various wellness issues in Hawaii such as homelessness, successful aging, teen suicide, the opioid epidemic and health impacts of climate change.

After listening to how to live a healthier lifestyle walk over to the Food & Cookbook Pavilion, spearheaded by Mark Noguchi of the Pili Group and supported by Ulupono Initiative, as it focuses on local food sustainability, local traditions and hands-on demonstrations for kids. See demos from local chefs, educational presentations and panel discussions, and a farmers market on both days.

Keep it local with a dozen Alana Hawaiian Culture presentations that explore new discoveries of early ali'i-missionary collaborations; Hawaiian immersion schools after 30 years; biographies of major figures in Hawaii's history; and two impressive novels that bracket the 19th-century: *In the Time Before Light* by the late Ian MacMillan, and *Dragonfruit* by Malia Mattoch.

When you're ready for a break, head over to the Bank of Hawaii Main Stage for ongoing entertainment throughout both days that include award-winning hula halau performances and Hawaiian music artists such as Kupaoa and Jeff Peterson. The festival culminates with a Sunday afternoon concert by Pandanus Club and ukulele virtuoso Jake Shimabukuro from 3 - 5 p.m.

The best part about this fun, educational and entertaining weekend is that it is all free, even parking! Free parking will be made available in the municipal and neighboring parking lots, while Waikiki trolleys and shuttle vans pull up in front of the event. For more information and schedules, log onto HawaiiBookAndMusicFestival.org. ~Pam



Jeremiah Tower will be in Honolulu as the first recipient of the Hawaii Food & Wine Festival's Culinary Heroes Series.

The 8th annual Hawaii Food & Wine Festival will kick off on May 9th and May 11th at The Kahala Hotel & Resort with two amazing culinary extravaganzas with the one and only, Jeremiah Tower.

For those not in the know, Jeremiah Tower is one of the most influential and controversial figures in the history of modern American gastronomy. He first rose to prominence at the famed Chez Panisse in Berkeley, California, where his "California Regional Dinner" menu in 1976 sparked the food revolution in America that focused on ingredients, not preparation, before opening his own restaurant Stars, in San Francisco and turned dinner into theatre. Stars was among the top-grossing eateries in the United States for

Continues on page 5.

TABLE OF CONTENTS

Yada Yada Yada	2
Lantern Floating Festival	2
Newsflash	3
Arts with Aloha	4
Paparazzi: Hawai'i Symphony Orchestra	6
Waikiki's Rock'n Reception	7
Paparazzi: Rock-A-Hula	8
Chef's Corner: Fete's Chef Robynne Maii	9
E Pili Kakou	10-13
Calendar	14-16
Paparazzi: La Perla	17
That's Entertainment	18
Concierge of the Month: James Tabusa	19

WOLFGANG'S
 STEAKHOUSE
 OPEN DAILY 11AM - MIDNIGHT
 922.3600 | wolfgangsteakhouse.net



Publisher's Letter



OK, who ticked off Mother Nature?

So, can I just repeat last month's column? That whole "spring has arrived question mark" bit? Because like you, I am trying to mentally prepare for the sticky humid conditions that are certainly coming our way, but I have to say, Mother Nature is being a total witch these days. I live in Hawaii Kai, and that storm was insane a few weeks ago. I had an actual waterfall off of my roof as the water overflowed my rain gutters in no time flat, and my yard flooded in record time. But once I was finally able to head towards town, I was not prepared for all the damage along Kalaniana'ole. Poor Niu Valley! I guess I'm used to the bad weather stories from the Waikane area, but it really doesn't impact East Honolulu like this too often. We're too built up. Not this time. I haven't seen that kind of damage in this area in years. Anyone else remember the New Years Eve storm on December 31st, 1987? I'll never forget the pictures of the people kayaking down the Kalaniana'ole back then. This will be one of those events people remember decades later. I put up a video on our Facebook page that someone took of the flooding the day after the storm, and it had a million views. A few days later it had been seen nearly 12 million times! A few of my friends live along the worst of the flood area, and my yard flooding over was a complete non-event compared to the damage their houses took. And let's not forget poor Kauai. It's going to take parts of Hanalei years to recover. Spring huh? Could have fooled me!

Aside from the funky weather, April has been a blast and far busier than normal. I fit in a few more concierge events than normal and I am still on a high from the Hawai'i Symphony Orchestra's #musicthatROCKS concerts featuring Windborne Music and the music of Journey and Led Zeppelin. I absolutely love the fact the Symphony is reaching out to younger audiences. I remember as a kid that my mother would always put on "The Greatest Hits of 1776" when she was mad at us. I actually love quite a bit of classical music these days, but it certainly took a while, as that album was always a bit painful for me. It was what I associated the symphony with in my younger days. There just wasn't anything there for a young person to relate to. These days, the Symphony is reaching out to people of all ages. From Windborne's music pairing classic rock with an orchestra, to their recent Harry Potter and Star Wars shows that paired the orchestra with hugely popular movie scores, even showing bits and pieces of the films throughout the performance, they are making huge efforts to reach out to all audiences. If only symphony's had done that sort of outreach as a child, it might not have taken me so many decades to appreciate it all. The Hawai'i Symphony Orchestra is starting a concentrated effort to reach out to our visitor industry and wants to start programs with the concierge and activity desks, even paying out the commission that has become a part of the industry, so please reach out if you're interested. Let's support music in Hawaii!



Yada Yada



Jeff Wagoner

There's a new head honcho at *Outrigger Hotels and Resorts*. **Jeff Wagoner**, who previously served as executive vice president of hotel operations for Trump Hotels as well as several senior level positions within the Wyndham Hotel Group, including being president of Wyndham Hotels & Resorts has been named the company's new president and chief executive officer. Wagoner brings his extensive leadership experience in both domestic and international markets to the company to assist their efforts to further expand the global footprint of the brand. • *International Market Place* welcomes **Irene Honma** as marketing and tourism specialist. She has extensive marketing knowledge with expertise in the Asian market and has worked

closely with hospitality, tourism, retail, and restaurant partners. Irene was most recently with PacRim Marketing Group/PRTech and was previously at Aston Hotels & Resorts. • **Tomo Kuriyama** has been named general manager of *The Royal Hawaiian, a Luxury Collection Resort*. Kuriyama started with the Sheraton Waikiki as an intern more than 15 years ago. He then moved up the chain as a guest service manager, outlet manager, front office manager and director of rooms. In 2010, he accepted the role of hotel manager at the Sheraton Grand Sukhumvit, a Luxury Collection Hotel in Thailand; then became general manager of the Sheraton Pattaya Resort, before returning to the Sheraton Waikiki as deputy general manager in 2016.



Tomo Kuriyama

Lantern Festival

One of the most unforgettable memories a visitor can take home from Oahu is the sight of 7,000 glowing lanterns set adrift on the ocean at dusk, each one casting its red-orange glow onto gentle waves.

The scene takes place every Memorial Day during the beautiful Lantern Floating Hawaii ceremony at Ala Moana Beach Park, hosted by Shinnyo-en, a school of Buddhism that works for global peace and harmony.

On this solemn occasion, they welcome all to come together for a collective moment of remembrance; reflection and gratitude for loved ones who have passed away. It is a magical moment, whether one is participating by floating a candle-lighted lantern, or one of 40,000 to 50,000 people sitting on the sand to witness the lanterns being set adrift.

I was able to take part in the event three years ago, two years after my husband's passing, and discovered that in spite of the large crowd, the cover of darkness allows individual mourners their moment of private communion with their loved ones, who are also celebrated with photos, messages and prayers written on the lanterns. For me, it offered a moment of peace and gratitude for our years together that I could share with him alone.

The day starts early for those who want to float a lantern. A Lantern Request Tent will open at the park beginning at 10 a.m. the day of the event. A single lantern will be available per party or family on a first-come, first-served basis until 4 p.m., or until lanterns run out. There is no cost for the lanterns, but donations are welcome and will be gifted to the City & County of Honolulu for the beautification of Ala Moana Beach Park.

After picking up a lantern, volunteers will be on hand to help individuals to assemble them and



The author Nadine Kam sets a lantern afloat for her husband

provide markers for writing messages.

Some people who are unable to get a lantern have resorted to bringing homemade ones in recent years as the event continues to grow in popularity. These homemade vessels are not allowed because the official lanterns have been tested for flammability in all weather conditions and

were designed for easy recapture to avoid polluting the ocean.

On this work holiday, many gather for picnics at the park and the beach starts filling up as early as 3 p.m., so those who want to enjoy the sight from the beach should show up early to reserve a spot on the sand. The Waikiki end of the beach park, closest to the stage, fills up first.

The blowing of conch shells signals the event's start at 6:30 p.m., with musical performances and the introduction of the head of Shinnyo-en, Her Holiness Shinso Ito, to preside over the event. Another highlight of the ceremony is the entrance of six large main lanterns that carry prayers on behalf of all people. These prayers are offered for victims of war, water-related accidents, natural and manmade disasters, famine and disease.

The ringing of a bell signals the passing of candles from person to person, as people wade in hip- to chest-deep to release their lighted lanterns, representing thousands of souls as they bob silently and gracefully on the water.

Lanterns are gathered at the end of the evening to be reused the following year. The messages are collected and handled in a ceremonial way.

Those who are unable to attend the event can still participate by writing a remembrance at a Shinnyo-en temple or by submitting it online to lanternfloatinghawaii.com. The event will also be live-streamed on the website and broadcast live on KGMB from 6:30 to 7:30 p.m. ~ Nadine Kam

ROCK-A-HULA OFFERS FREE ADMISSION FOR MILITARY

It's Military Appreciation Month and Rock-A-Hula is offering free admission to all active duty military members with valid I.D. and proof of being stationed in Hawaii at the time of check-in throughout the month of May. Military spouses and families are not eligible for free admission. Additional tickets may be purchased at the kama'aina rate of \$55.89 per adult and \$33.21 per child. 629-SHOW (7469). Locals have not been forgotten. In honor of the show's 7th anniversary, the Luau package price will be rolled back to their 2011 cost of \$72.90 through June 30th. Regularly priced at \$109, this is a great opportunity to see their new show, "Hawaiian Journey." 629-SHOW.

UNCLE CLAY'S HOUSE OF PURE ALOHA NOW OPEN

The 10th eatery to open at Ala Moana Center's newest dining hall, Uncle Clay's House of Pure Aloha, is now open at the Lanai @ Ala Moana Center. Located in a convenient outdoor location across from Agave & Vine, they will also feature a HOPA gift shop, offering tees, tanks, hats, tote bags, and other collectible merchandise. Their menu items are all-natural, homemade, and include 12 flavors of locally-made ice cream, including the popular Tahitian Vanilla, and "HOPA Originals" like Strawberry Cream, POG Cream, and Matcha Azuki Bean co-produced by Tropical Dreams on Hawai'i Island. alamoanacenter.com.

BISHOP MUSEUM TROLLEY CHANGE

The Bishop Museum was officially added to the Waikiki Trolley's Historic Honolulu Red Line last month, so that means that there is no longer a dedicated trolley for the Museum. Guests looking to book transportation to Bishop Museum can purchase a Waikiki Trolley Red Line pass. The museum is working with the Trolley to create a bundle package that will include both admission and transportation on the Red Line which will hopefully be announced soon. bishopmuseum.org

WET 'N' WILD OFFERS MILITARY HALF OFF IN MAY

Wet'n'Wild Hawaii is also getting into the spirit of Military Appreciation Month by inviting all active, retired, reserve and veteran U.S. military members and their dependents to enjoy the waterpark for only \$25 each + tax. This represents a savings of 50% off of General Admission prices throughout the month of May. Must bring valid U.S. military ID or purchase at any Military Ticket Outlets. wetnildhawaii.com.

INTERNATIONAL MARKET PLACE OPEN BUS DEPOT

The International Market Place recently completed construction on a new bus depot built to better accommodate wholesale, meetings, conventions, and group business wishing to come to the Market Place. Located on Level 1 near Saks Fifth Avenue, the bus depot can accommodate transportation services up to standard coach busses and will be open daily.

WORLD FIREKNIFE CHAMPIONSHIP RETURNS

The world's most talented fireknife dancers come together at the Polynesian Cultural Center for three nights of heated competition in the 26th annual World Fireknife Championship May 10th through 12th. Competitors as young as six years old to the most experienced and celebrated performer will all attempt to win the coveted title of World Fireknife Champion in their respective divisions. Attendees will see the best of the best perform, and a World Champion in both the Junior and Senior Divisions will be crowned. The High School Samoan Cultural Arts Festival runs concurrently on Sunday, May 12th from 9 a.m. - 2 p.m. Tickets: \$10-\$49.95. See polynesia.com for full schedule.

ONLINE VIRTUAL TOURS

Royal Star Hawaii and the Star of Honolulu have both introduced a new and convenient online virtual tour for tour operators to preview what they're about to book. Through the virtual tour, Royal Star guests can explore the signature Deluxe Gold MCI 4500 motorcoach and Deluxe Gold Temsa mini motorcoach. RoyalStarHawaii.com. Hop over to StarofHonolulu.com to view the \$1 million of renovations recently made onboard. Images on the website will offer 360° degree views of the luxury interior décor and exterior viewing areas. Virtual tours, which feature a virtual reality mode, are available in English and Japanese.

OUTRIGGER WAIKIKI BEGINS TO BUILD CLUB LOUNGE

Outrigger Waikiki has begun to build out a premiere guest lounge and private event space to open in summer 2018 in the former Chuck's Steakhouse location on the 2nd floor above Duke's. The brand-new Voyager 47 Club Lounge will be servicing guests on July 1st. Available only to resort guests staying in Voyager 47 Club level rooms and suites, the club lounge will provide a dedicated club concierge for guests to personally assist with anything from recommendations to reservations in a serene, oceanfront retreat while enjoying complimentary pupus, coffee, craft beer and specialty cocktails. The venue will also be available to book for private events.

THE GODFATHER OF BRITISH BLUES TO PLAY BLUE NOTE

The legendary John Mayall, often referred to as "The Godfather of British Blues," has served as a pioneer of blues music for over 50 years. In 2013 John signed with Forty Below Records and has since been experiencing a true artistic renaissance, evidenced by several new releases over the past few years, including the recent album, "Talk About That" with special guest guitarist Joe Walsh. Then there was his 2016 induction into the Blues Hall of Fame. Lucky us, he is bringing all that bluesy love to Blue Note as he performs eight shows from May 2 - 5. Tickets: \$35 - \$55. Limited kama'aina discounts available. bluenotehawaii.com.



INSPIRING A NEW GENERATION OF EXPLORERS

Atlantis
SUBMARINES
WAIKIKI

atlantisadventures.com
For info & reservations call (808) 973-9811
or fax to (808) 973-2499

   | #atlantishawaii

arts with aloha



When I think of May, the first thing that comes to mind is the word “mele” – what is mele? It is chant, its is song, it is poem and this month in Honolulu’s theatrical scene it is comedy, it is musical, it is dance.

production is that the actor playing Monty also portrays all the other D’Ysquith family members and the transformations on stage from one character to the next is astonishing. This means he has to kill himself over and over again until he becomes Earl. In addition to this gimmick in the show, there is a love triangle between Monty, his first love Miss Sibella Hallward and his sexy cousin Miss Phoebe D’Ysquith, whose brother he kills. When Sibella leaves Monty for another man, who has higher social standing, Monty turns to Phoebe, who is unable to inherit her family’s title since she is a woman. The repartee and music are very much like a Gilbert & Sullivan musical, but the references and innuendos are more modern and enjoyable for 21st century audiences. This whimsical musical runs Thursday through Saturdays at 7:30 p.m., Saturday matinees at 3 p.m. and Sunday matinees at 4 p.m. Tickets range from \$15 to \$50 and can be ordered online at DiamondHeadTheatre.com.

MANOA VALLEY THEATRE continues to celebrate its 39th season with one of the longest-running non-musicals plays in the world with “*Shear Madness*” from May 3rd to May 8th. I think the longest running play of all time is Agatha Christie’s *The Mousetrap* in London. The original *Shear Madness* production opened in Boston in 1980 at The Charles Playhouse Stage II. And guess what? It’s still playing there! The murder mystery was adapted from a German play entitled *Scherenschnitt* meaning “scissor cuts” which is fitting since the play is set entirely inside a unisex hair salon. Clearly this is the “shear” part of the title, now the murder mystery part of the story involves gay hairdresser named Tony, his ditzzy assistant Barbara, an uptight socialist named Eleanor Shubert, who frequents the salon and an antiques dealer Eddie Lawrence who are all suspects in the murder of Tony’s landlady who lived upstairs. The “madness” starts with cops Nick Rossetti and Mikey Thomas who enter the scene to solve the murder by letting the audience ask the questions. This means each night the story of the murder changes depending on what the audience asks. Think of this as the *Mystery of Edwin Drood*, without the songs, with a dash of “Steel Magnolias” and Second City antics. The audience gets to vote each night on who they think is the murderer. Tickets are \$40 adult, \$35 senior/military, \$22 for those 25 years and younger. The production runs through May 20th with possible extensions. Tickets can be purchased by calling 988-6131 or visit ManoaValleyTheatre.com.

If your guests are tired of human murder, then perhaps **IONA CONTEMPORARY DANCE THEATRE’S** production of *Dominion* about the mistreatment and extinction of animals at the historic **HAWAII THEATRE** is more to their liking. Most of you have probably seen the IONA dancers at high end events engaging with guests as statues or moving objects of art in fountains or flying through the air. On stage in a proper theatrical setting the dancers are equally as mesmerizing. This production runs May 11th and 12th at 8 p.m. The purpose of *Dominion* is to bring awareness to animal cruelty in the world through the unique vision of IONA Artistic Director Cheryl Flaharty. This production includes 25 dancers who interact with LED video screens and digital animation. Tickets are \$30 to \$75 and can be purchased at the Hawaii Theatre box office at 528-0506.

Murder is also the theme at **DIAMOND HEAD THEATRE’S** production of the Tony Award winning musical *A Gentleman’s Guide to Love and Murder* which opens Friday May 18th and runs through Sunday, June 10th. This absolutely hysterical musical about love and murder in Edwardian England is based on a 1907 novel entitled *Israel Rank: The Autobiography of a Criminal*. Aren’t you glad they changed the title? The book and lyrics of the musical comedy are by Robert L. Freedman and the music and additional lyrics are by Steven Lutvak, both of whom won Tony Awards for their work.

For those of your guests are into film and surf, the **HAWAII THEATRE** is premiering the film *Andy Irons: Kissed by God* from Teton Gravity Research on May 8th. The screening will be preceded by a street festival and benefit for the Hawaii Theatre Center. The outdoor festival will feature the music of Donavon Frankenreiter and two-time Na Hoku Hanahano Award winner Jeff Rasmussen. Festival tickets are \$75 which include a space available ticket to the screening. VIP tickets are \$100 each and include entry into the festival, reserved seating for the film, and an Andy Irons commemorative trucker cap. The outdoor festival which will include food and beverage booths starts at 4:45 p.m. and the film begins at 7:30 p.m. No one under the age of 21 is permitted. Ticket may be purchased online at hawaiiitheatre.com or at the above-mentioned box office number.

The musical is about the life and adventures of Lord Montague “Monty” D’Ysquith Navarro, the Ninth Earl of Highhurst and how he came to inherit the title from a long line of cousins, by murdering each of them. The twist in the

As you can see this Mele May, in addition to music and song, it’s also about the mele of laughter, dance and film. ~ Lance Rae

years. With its extravagant interior, a fast-moving open kitchen that had really not been seen before, Stars quickly became the hot spot for socialites and celebrities. With his pioneering approach to food, and his desire to create a dining experience like non-other, Jeremiah Tower became the original celebrity chef as Stars became an instant sensation. And then suddenly, he was gone. In 1998, at the age of 56, Tower shuttered Stars and disappeared — without a word — for 16 years.

“Stars was the place to be and such an important restaurant in culinary history and then it dissipated and Jeremiah sort of disappeared off the scene,” said Dana Cowin, editor-in-chief of Food and Wine magazine in a 2014 article in *The Mercury News*. “There are not a lot of people like that. Jeremiah was one of the great founders, or if you want to say philosophers, of the idea of California cuisine.”

Nearly two decades later he resurfaced at New York’s fabled but troubled Tavern on the Green. Six months later he was gone again, this time to embark on a voyage of self discovery, some of which is highlighted in Anthony Bourdain’s *The Last Magnificent*, a biographical documentary that explores Tower’s remarkable life, shining a light on the ground-breaking culinary hero and his lasting impact on modern American cuisine. The film, which first premiered in 2016, was then had a theatrical release in 2017 has reignited interest in the man that was once the biggest name in American cuisine before walking away from it all.

So, now that you know who he is, even the biggest non-foodie out there should realize how big a deal this is. Jeremiah Tower is a true culinary hero, so it should come as no surprise that the Hawaii Food & Wine Festival chose him to be recognized as the first chef to be recognized by their inaugural 1st Annual Culinary Heroes event presented by The Kahala Hotel & Resort.

“We’re honored to celebrate Jeremiah Tower for the inaugural Culinary Heroes event as we launch our eighth annual festival” says Hawai’i Food & Wine Festival (HFWF) Chief Executive Officer Denise Yamaguchi. “*California Dreamin’* will be reminiscent of the start of the food revolution four decades ago at Chez Panisse and later at Stars Restaurant where Tower changed the course of modern American cuisine.”

Tower will headline the six-course *California Dreamin’* dinner with five Hawaii master chefs on Wednesday, May 9th. Joining him will be HFWF Co-Founders, Alan Wong and Roy Yamaguchi, along with Chris Kajioka, Michelle Karr-Ueoka, and George Mavrothalassitis. This intimate dinner will be reminiscent of the start of Jeremiah’s food revolution four decades ago at Chez Panisse and Stars, where Tower set the stage for California cuisine, later known as modern American cuisines. In addition to the spectacular dishes and perfectly paired wines, the Supermensch himself, Shep Gordon, the founder of Hawaii Regional Cuisine, will lead a special live interview with Tower about his life and journey as the “Last Magnificent.” Tickets for this extraordinary event go for \$500 a piece and will be limited to the first 100 guests.

If that is too rich for your blood, there is another opportunity to meet the legendary chef at *Heart & Soul – Starring Local Ingredients* on May 11th. This grazing event will showcase delectable bites featuring some of the Island’s best ingredients being



Fireworks always wrap up Hawaii Food & Wine Festival final events, and the one at The Kahala is no exception. Don't miss the rare opportunity to rub elbows with culinary royalty. Photo provided by HFWF.

creatively prepared by 10 of Hawaii’s favorite chefs, including Daisuke Hamamoto from Arancino, the Kahala’s Wayne Hirabayashi, Herringbone’s Chad Horton, TOWN’s Ed Kenney, Piggy Small’s Andrew Le, and Lee Ann Wong to name a few. While he will not be cooking, Chef Jeremiah will be a special guest at the event, walking through the various food stations along with the rest of you. There will also be plenty of craft cocktails, lip smacking wines, and a fireworks finale to wrap up the evening. Tickets are \$175 per person.

Keep in mind that all of this isn’t for the Food &

Wine Festival itself. This is only the kickoff celebration, when the talent and themes will be announced for the actual festival that takes place from October 6 – 28th, 2018. During that time frame, over 100 culinary masters, 50 winemakers and a dozen mixologists will be on hand for the various events that take place on three islands.

If this is what they put together for the kickoff, I cannot wait for the actual festival itself. The full list of talent will be announced this weekend. To buy tickets or to learn more about the two different events, head to HFWF.me. ~Pam



Refer 25 guests. Get \$75 off.

For every 25 guests you bring to this special oceanfront steakhouse, you’ll get a \$75 dining credit. Enjoy fresh seafood, a selection of USDA Prime Allen Brothers steaks, and a majestic view of the Pacific Ocean. Contact Jay.Yada@Hilton.com to enroll in the program.



HILTON HAWAIIAN VILLAGE, RAINBOW TOWER | 5-9 PM TUES-SAT | 808-941-BALI | BALIWAIKIKI.COM



Mahalo for your continued support!

JOIN OUR

GUEST REFERRAL PROGRAM





Our program is simple!
For every 25 guests referred,
Ruth's Chris Steak House will send you
a \$50.00 dining certificate.

Please contact Emi Espinda if you have any
questions at eespinda@dirrestaurant.com

OPEN DAILY FROM 4:30PM
HAPPY HOUR DAILY IN OUR LOUNGE | 4:30PM - 7PM
PRIME TIME MENU DAILY | 4:30PM - 6PM
WINE WEDNESDAYS | 25% OFF BOTTLES OF WINE



Restaurant Row | 808.599.3850
Waikiki Beach Walk | 808.440.7910

WWW.RUTHSCRISHAWAII.COM   



SOMETHING NEW. SOMETHING CLASSIC.

Open Daily 11am - 10pm

Happy Hour

Daily in our lounge 3pm - 6pm & 8pm - 10pm

Vino Thursdays 25% Off Bottles of Wine

INQUIRE ABOUT OUR GUEST REFERRAL PROGRAM!

Our program is simple!
For every 10 complimentary
dessert cards redeemed
(WITH YOUR NAME ON THE CARD),
Romano's Macaroni Grill will send you a
\$25.00 dining certificate that may be used
at our Oahu restaurant.

Please contact the restaurant for details

**ROMANO'S
Macaroni
GRILL.**

Ho'okipa Terrace at Ala Moana Center
808.356.8300

WWW.MACARONIGRILL.COM



The Hawaii Symphony Orchestra treated members of the hospitality industry to a special dress rehearsal and a pair of tickets to Windborne Music's Journey and Led Zepplin #musichatROCKS performances, and boy, did they rock! Lead singer Brody Dolyniuk was as dynamic of a performer as he was last time for Queen, and the Honolulu Symphony Orchestra killed it. Everyone that went raved. Let's return the favor by promoting the HSO to all that are interested.





Waikiki is going retro this May with the opening of a new interactive, fully immersive theatre and dining experience called "Waikiki's Rock'n Reception" at the Sheraton Princess Kaiulani Hotel. Beginning May 19th, the Ainahau Showroom will be turning back the clock to 1955 Hawai'i and the wedding reception of local boy Kaleo Ka'ana'ana and his Las Vegas born bride Penny Crawford. Audience members will be treated to a complete wedding reception including toasts, cutting of the cake, and first dance, in addition to surprise musical numbers from Kaleo's and Penny's highly entertaining family and friends. The evening is centered around the merging of these two culturally different families who in the end, come together in "the name of love." The Ka'ana'ana's bring hula kahiko and chant to the evening's festivities, while Penny's father B. J. Crawford, a Las Vegas hotel owner, brings showgirls and a trio of "Cupcakes," who bring down the house. The entire evening is non-stop musical laughter under the guidance of Master of Ceremonies and lead vocalist Johnny Guava with the help of a crazy caterer named Miguel.

This original production was created by Gabby and Joel Himelhoch, with original music by Eric Gilliom and Michael Ruff. The show is a tribute to Gabby's father Barry John Navin, hence name of Penny's father B. J., who loved the music and era of 1950's Waikiki. In fact, the Princess Kaiulani first opened its doors in June of 1955 which is the exact moment of the show's reception.

Gabby and Joel have created a family friendly show reminiscent of the glory days of Waikiki. Audience members will be treated like invited wedding guests and learn to dance the "Hula Hop," share in some "Cotton Candy Kisses," "Shake It Like A Hula Girl," and say "Hello to Coconut Joe!"

The show offers two ticket categories: FAMILY and FRIENDS just like at a wedding. The Family Ticket at The Family Ticket at \$159 (\$129 for children 11 & younger) includes premium seating, cotton candy and cocktail on arrival, steak & seafood buffet (first in line), dessert, and souvenir photograph per group. The Friends Ticket at \$149 (\$109 keiki) includes everything except premium seating and first in line to the buffet. Children 4 years & younger are free. Check-in begins at 6 p.m. with a 6:30 p.m. curtain. The show ends at 8:30 p.m. This is a fully immersive experience not to be missed and your guests will be singing the songs back to your hotels. In May, the show runs Thursdays and Saturdays, then, starting in June, shows will be held on Mondays, Tuesdays, Thursdays and Saturdays. For reservations visit waikikisrocknreception.com or call 400-1955.

Oh and one last thing, *The Oahu Concierge's* very own Lancey Poo is playing Miguel the Caterer, so you know it's going to be a fun night for the audience!

~ Lance Rae



Mother's Day Brunch Cruise

May 13, 2018 • 12:00 - 2:30PM

Scenic Views • Taste of Hawaii Buffet • "Champagne" Toast
Prize Giveaways for Moms • Live Hawaiian Entertainment
Hula & Ukulele Lessons • Lei Making



\$65⁸³ Adult \$39⁸⁷ Child

Please add 4.712% excise tax and 3% harbor fee to cruise prices.



808-983-STAR (7827) • StarofHonolulu.com

LUNCH • DINNER • COPPER TOP BAR

HARBOR

RESTAURANT AT PIER 38



- Kiawe Burning Brasa Grill Ovens deliver distinctive textures and flavors
- Full Bar with Premium Craft Beers, Wine, and Harbor Signature Cocktails
- Enjoy Harbor Views Daily and Live Music Wed. - Sun.

Daily Lunch 11a - 3p | Huki Pau 2p - 5p
Dinner 5p - 9p | Live Music Wed. - Sun. 5p - 8p

Happy Hour is called **Huki Pau** at Harbor. Our **Copper Top Bar** is the ideal place to relax and unwind with your favorite beverage or pupu, offered at discount prices. Sixteen beer taps chilled to 29 degrees, along with fine bottled and tap wines, and exciting craft specialties await you at our spacious bar. Huki Pau happens daily from 2p - 5p. Free parking available



Welcome to authentic Honolulu Harbor views. Welcome to inspired cuisine. Welcome to Harbor.

For Reservations book on OPEN TABLE or call 808-550-3740

Private and Semi-Private Dining available. Contact Tricia at 550-3743 or tricia@harborpier38.com

PIER 38 | 1129 N. NIMITZ HIGHWAY | HONOLULU | HI | 96817
INFO@HARBORPIER38.COM | HARBORPIER38.COM |   



You have to give Rock - A - Hula credit, they simply never rest on their laurels. Always tweaking and improving, they have redone the show with new costumes, new performers, and new songs. They hve also just implemented a local artist series. Hirie was the inaugural performer of the series, and her rendition of Moana's "How Far I'll Go" was a perfect fit to a show that takes guests on a Journey from the 1920s to today. She will be followed by others, who will join "Elvis" and "Michael".



MICHELIN-STARRED
CHEF MICHAEL MINA
- INVITES YOU & YOUR GUESTS -



STRIPSTEAK

THE STEAKHOUSE REIMAGINED

Featuring:
Prime Steaks
Sushi Bar
Extensive Wine List
Craft Cocktails
& Plenty of Aloha Spirit



- STRIPSTEAK OHANA PROGRAM -
For every 25 guests referred in a month,
StripSteak will send you a \$100 gift card.

TO LEARN MORE ABOUT OUR
RESTAURANTS OR THE OHANA PROGRAM,
PLEASE CONTACT US AT:

StripSteak
International Market Place
2930 Kalanianaʻahe Ave. Suite 100, Honolulu, HI 96815
StripSteakWaikiki.com | 808 900 3094

The Street
International Market Place
2930 Kalanianaʻahe Ave. Ground Flr, Honolulu, HI 96815
TheStreetSocialHouse.com | 808 377 4400

MINA

Michelin@net



Chef's Corner

Chef /Owner of Fête Robynne Maii

Born in Honolulu, Robynne Maii majored in English and modern dance before returning to the islands to study culinary and pastry arts at Kapiolani Community College. She began as a line cook at 3660 on the Rise before advancing to assistant pastry chef. She then worked for Padovani's Bistro before moving to NYC to complete her graduate degree and work for Rocco DiSpirito. After stints working with Gourmet Magazine and teaching culinary arts, she and her husband Chuck Bussler returned home to open Fête in 2016.

Did you start off wanting to be a chef?

No. I actually had zero clue what I wanted to be when I grew up. I knew that I wanted to do something creative, physical, and to work with people.

What changed your mind?

I was offered a full-time teaching position at an all girls private school in Manhattan after I graduated from Middlebury. During the negotiations, I kept thinking about attending culinary school—but my parents made it clear that if I decided on culinary school, I would need to finance it myself. I realized very quickly that going to CIA or other name brand culinary schools was out of the question due to cost. I opted for Kapiolani Community College.

What was your first job in the industry?

First industry job was as a barista. First kitchen job was at 3660 on the Rise under Chef Russell Siu.

Who's would you consider your mentor and why?

Two people. Russell Siu spent a lot of time helping me understand running a restaurant. Dr. Jon Deutsch (grad school friend and former colleague) taught me how to problem solve and think outside of the box—creative problem solving!

You're from Hawaii, why did you move to the East Coast?

I wanted to experience something different and chose Middlebury College. After culinary school, I moved to New York City for graduate school at NYU and got my masters in Food Studies.

What made you come home to Hawaii?

I missed my family, and my husband, Chuck, was tired of living in New York City.

What was your goal when you decided to open Fête?

Our goal was to open a restaurant that consistently made delicious food and provided gracious service and to remain financially viable. We reached these goals and continue to evaluate and assess all aspects of the business as needed.

Where do you plan to take the restaurant from here?

We are in the midst of mentoring a handful of young, talented cooks. We think of ourselves as a learning kitchen and take great pride in seeing their growth. We have a

couple of new projects we are working on hope these cooks will take on more responsibility in new roles.

How would you describe your style of cooking?

First and foremost to me is taste and technique. The simplest things still need a lot of attention. I like cooking and eating things that are traditional. Our style of cooking is rooted in tradition (be it flavor profile and/or technique) and we use what is available as much as possible. But, we also use ready-made ingredients because of personal preference. It's very much like cooking at home, but on a more elaborate scale. The difference is, we take a few more steps to layer flavors and textures to make it more special than an every day home-cooked meal.

How do you come up with your menus?

Seasonality and availability of ingredients. Favorite things we grew up eating. Or tasty things we've experienced while traveling or living in different cities. We are driven by taste.

What do you make at home that you never cook at work?

Peanut butter and apricot jam sandwiches. Fried eggs on rice with shoyu.

What staple ingredients are always in your kitchen?

Olive oil, eggs, canned tomatoes, Best Foods mayonnaise, Dijon mustard, sliced bread for toast.

What would you tell someone who wants to be a cook?

They need to be physically strong. It takes a lot of stamina to work the long hours. They also have to be nimble, meaning they must be flexible because everyday is different. Even if a cook has made the same recipe 100 times, each time requires being present. Too many people take the mundane for granted and that's when mistakes happen. Also, ingredients vary from batch to batch. Everything from meat, produce, to dry goods. A good cook has to learn to adapt to the variations—this takes a lifetime to learn.

What do you like to do most on your days off?

Chuck and I only have Sundays off and we use it to catch up on our non-restaurant lives. It includes doing laundry, cleaning the house, and cooking dinner at home. We always eat a big breakfast. Half the time we cook at home and the other time we speed over to Sweet E's where we feel very well taken care of. It's such a treat to be cooked for!

Fête Deviled Eggs Yield: 2 dozen



Ingredients:	1	tablespoon Dijon mustard
1 dozen large eggs	1/2	teaspoon rice wine vinegar
1/2 cup Best Foods (Hellman's) mayonnaise	1/4	teaspoon granulated sugar
		To taste Kosher salt

Garnish ideas: Paprika • Fresh herbs, minced (chives, scallions, parsley, dill, tarragon, or cilantro) • Fish roe (caviar, smoked trout, ikura, mentaiko, tobiko, or masago) • Sliced olives (any variety) • Sliced roasted red peppers • Diced pickles (any variety) • Capers

Directions:

Place eggs in a large saucepan. Pour enough water to cover eggs by 2 inches. Bring eggs to a hard boil over high heat. Immediately, remove pan from heat and cover. Keep covered for 12 minutes. Drain eggs and immediately run cool water over them to stop cooking. Shake the pan to crack the eggshells gently all over. When cool, carefully peel the eggs starting from the air sac end. Cut eggs length-wise in half. Collect yolks in a small bowl and place whites on a serving platter. Using the back of a spatula, push yolks through a wire mesh sifter or strainer into a medium mixing bowl. Stir in mayonnaise, Dijon, vinegar, sugar, and salt to taste. Adjust seasoning and transfer yolks to a small pastry bag. Pipe yolks into egg halves (or use two teaspoons to fill whites) and garnish. Keep chilled until serving.

Fête is located at 2 N. Hotel Street (on the corner of Nuuanu Avenue)

Hours: Monday-Thursday from 11 a.m. - 10 p.m. • Friday - Saturday from 11 a.m. - 11 p.m.

Web: fetehawaii.com • FB/Instagram: @fetehawaii • Phone: 369-1390 #fetehawaii

Blue Note

HAWAII

HAWAII'S PREMIER LIVE MUSIC VENUE

MAY HIGHLIGHTS

SHOWS 8:30 & 9PM NIGHTLY



KIANA TORRES KAHALE
A TRIBUTE TO MAUI
May 6



ISLAND 90.5 REGGAE SERIES
WAILING SOULS
May 10



MOTHER'S DAY WITH
JANE SHIMABUKURO
May 11 - 13



DIONNE WARWICK
May 17 - 20
Shows at 8pm Nightly



WILLIE K
May 22



ISLAND 90.5 REGGAE SERIES
THE WAILERS
May 30 - June 2

RESERVATIONS

808-777-4228



GROUPS & PRIVATE EVENTS

For group information:
events@bluenotehawaii.com

WWW.BLUENOTEHAWAII.COM | 808-777-4090

Located in the Outrigger Waikiki Beach Resort

Let's be Together...

DINING ▸ ENTERTAINMENT ▸ PAU HANA ▸ EAT ▸ DRINK ▸ BE MERRY ▸ HAPPY HOUR

MONDAY

Barefoot Beach Café at Queen's Beach 924-2233
Live Contemporary Hawaiian
 Danny Galura 5:30-8:30pm
Chart House Waikiki 941-6660
Live Contemporary Hawaiian
 Camarillo Brothers 6:30-9:30pm
Cheesecake Factory 924-5001
Classic Hawaiian
 Christian Yrizarry Duo 8-11pm
Duke's Canoe Club Waikiki 922-2268
Live Contemporary Hawaiian
 Taz Vegas 4-6pm
 Ellsworth Simeona 9:30-12am
Hard Rock Cafe 955-7383
Bluesy Monday
 Danny Wassman or others 9-11am
 Candy Bullets 9-11pm
 The Clay Campania Band (5/28) 9-11pm
House Without a Key 923-2311
Live Hawaiian & Hula by Jeanne Kapela
 DeLima Ohana 5:30 - 8:30pm
Hula Grill 923-HULA
Live Contemporary Hawaiian
 Eric Lee 7-9pm
Kani Ka Pila Grille 924-4992
Hoku Award Winning Hawaiian musicians
 Sean Naauao 6:30-9:30pm
LBLE at the Hilton Waikiki Beach Hotel 922-0811
Live Contemporary Acoustic Hits
 Sean Cleland 7-10pm
Lewers Lounge 923-2311
Live Contemporary & Light Jazz
 Tommy James 8:30-12am
LuLu's 926-5222
Live Contemporary / Industry night 50% off
 Jason Laeha 6-9 p.m.
Mahina & Sun's 923-8882
Kanikaplia Jam Poolside on the Lanai
 Kimo Opiana Jr. 7-9pm
Mai Tai Bar at the Royal Hawaiian 923-7311
Live Contemporary Hawaiian with Hula Dancer
 Dave Watanabe 8-10 pm
Maui Brewing Company 843-2739
Live Contemporary Hawaiian
 Christian Yrizarry 3:30-5:30pm
Rumfire 921-4600
Solo Contemporary Guitarist
 Jeremy Cheng 5-8pm
 Jeremy Cheng 9:30-11:30pm
Signature Prime Steak 949-3636
Contemporary Pianist in the bar
 Isao Motomochi 6-9pm
Sky Waikiki 979-7590
Live Contemporary
 Yoza 6-9pm
The Edge at the Sheraton 921-4600
Live Hawaiian music with a firedancer at 7:30 p.m.
 Pu'uhonua Duo 6:30-9:30pm
The Study at the Modern 943-5800
Live Contemporary Hawaiian
 Kaleo 7-10pm
Tiki's Grill & Bar 923-TIKI
Live Contemporary Hawaiian
 P & L Experience 6-8:30pm
 The Kristi Masuhara Band 9-11pm

Tommy Bahama Restaurant 923-8785
Live Contemporary Hawaiian
 Johnny Helm 6-9pm
Tropics Bar & Grill 949-4321
Live Contemporary Hawaiian
 Starr Kalahiki 5:30-8:30pm

TUESDAY

Barefoot Beach Café at Queen's Beach 924-2233
Live Contemporary Hawaiian
 The Barefoot Boys feat. Pokii Vaughn 5:30-8:30pm
Chart House Waikiki 941-6660
Live Contemporary Hawaiian
 Shyne 6:30-9:30pm
Cheesecake Factory 924-5001
Classic Hawaiian
 Local Uprising Duo 8-11pm
 Mike Bell Duo (5/8) 8-11pm
Duke's Canoe Club Waikiki 922-2268
Live Contemporary Hawaiian
 Haumea Warrington & Mike 4-6pm
 Ellsworth Simeona 9:30-12am
Hard Rock Cafe 955-7383
Live Contemporary
 Mike Piranha 9-11am
 Piranha Brothers 9-11pm
House Without a Key 923-2311
Live Hawaiian & Hula by Allison Chu
 Pa'ahana 5:30 - 8:30pm
Hula Grill 923-HULA
Live Contemporary Hawaiian
 Kamuela Kahoano 7-9pm
Kani Ka Pila Grille 924-4992
Hoku Award Winning Hawaiian musicians
 Weldon Kekauoha 6:30-9:30pm
LBLE at the Hilton Waikiki Beach Hotel 922-0811
Live Contemporary Funk, Jazz, Hip Hop & Reggae
 Lina 7-10pm
Lewers Lounge 923-2311
Live Contemporary & Light Jazz
 Dan Del Negro & Rocky Holmes 8:30-12am
LuLu's 926-5222
Live Contemporary
 Johnny Helm 6-9pm
Mahina & Sun's 923-8882
Bossa Nova Poolside on the Lanai
 Sandy Tsukiyama 7-9pm
Mai Tai Bar at the Royal Hawaiian 923-7311
Live Contemporary Hawaiian with Hula Dancer
 Christian Yrizarry Duo 6:30-9:30pm
Maui Brewing Company 843-2739
Live Contemporary Hawaiian
 Chris Murphy 3:30-5:30pm
Rumfire 921-4600
Solo Contemporary Guitarist
 Jegaan Faye 5-8pm
 Kai Roots Duo 9:30-11:30pm
Signature Prime Steak 949-3636
Contemporary Pianist in the bar
 James Woo 6-9pm
Sky Waikiki 979-7590
Live Contemporary
 John Akapo 6-9pm
The Edge at the Sheraton 921-4600
Live Hawaiian music with a firedancer at 7:30 p.m.
 Brad Kawakami Duo 6:30-9:30pm
The Study at the Modern 943-5800

Live Contemporary Hawaiian
 Alex Oasay & Jeremy Cheng 7:30-10:30pm
Tiki's Grill & Bar 923-TIKI
Live Contemporary Hawaiian
 K.B. Riley 5:30-8:30pm
 Sani & Friends 9-11pm
Tommy Bahama Restaurant 923-8785
Live Contemporary Hawaiian
 Alex Oasay 6-9pm
Tropics Bar & Grill 949-4321
Live Contemporary Hawaiian
 Kailua Bay Buddies 5:30-8:30pm

WEDNESDAY

Barefoot Beach Café at Queen's Beach 924-2233
Live Contemporary Hawaiian
 Kimo Baker 5:30-8:30pm
Bin1901 at the Moana 921-4600
Piano Wine Bar
 Ginny Tiu 6:30-9:30pm
Chart House Waikiki 941-6660
Live Contemporary Hawaiian
 Tito Berinobis & David Kauahikaua 6-10:30pm
Cheesecake Factory 924-5001
Classic Hawaiian
 Kimo Artis Duo 8-11pm
Duke's Canoe Club Waikiki 922-2268
Acoustic, Soul, R&B
 Haumea Warrington 4-6pm
 Ellsworth Simeona 9:30-12am
Gordon Biersch 599-4877
Jazz Wednesdays
 Varying Artists 6:30-9:30pm
Hard Rock Cafe 955-7383
Live Contemporary
 Dave Watanabe 9-11am
 Buck on a Bender (or others) 9-11pm
House Without a Key 923-2311
Live Hawaiian & Hula by Allison Chu
 Pa'ahana 5:30 - 8:30pm
Hula Grill 923-HULA
Live Contemporary Music
 Brandon Serrano 7-9pm
Hy's Steak House 922-5555
Live Soft Contemporary
 Audy Kimura 6:30-10pm
Kani Ka Pila Grille 924-4992
Hoku Award Winning Hawaiian musicians
 Mike Kaawa 6-9pm
LBLE at the Hilton Waikiki Beach Hotel 922-0811
Live Contemporary Funk, Jazz, Hip Hop & Reggae
 Evan Khay 7-10pm
Lewers Lounge 923-2311
Live Contemporary & Light Jazz
 Maggie Herron & Rocky Holmes 8:30-12am
LuLu's 926-5222
Live Contemporary Hawaiian
 Mango Season 6-9pm
 Jason Laeha & Cole Strona 10-close
Mahina & Sun's 923-8882
Jazz, Pop & Rock Poolside on the Lanai
 Verge & Paula 7-9pm
Mai Tai Bar at the Royal Hawaiian 923-7311
Live Contemporary Hawaiian with Hula Dancer
 Jeremy Cheng 6:30-9:30pm
Maui Brewing Company 843-2739
Live Contemporary Hawaiian

E Pili Kākou

DINING ▶ ENTERTAINMENT ▶ PAU HANA ▶ EAT ▶ DRINK ▶ BE MERRY ▶ HAPPY HOUR

Johny Helm 3:30-5:30pm
Roy's Hawaii Kai 396-7697
Acoustic & Slack Key Top 40
 Dayton Watanabe 6:30-9:30pm
Rumfire 921-4600
Solo Contemporary Guitarist
 Thomson Enos 5-8pm
 Son Caribe Band 9:30-11:30pm
Signature Prime Steak 949-3636
Contemporary Pianist in the bar
 Pierre Grill 6-9pm
Sky Waikiki 979-7590
Live Contemporary
 Randy & Kanoe 6-9pm
SWIM at the Hyatt 923-1234
Live Contemporary
 Kuuipo Kumukahi 5:30-7pm
The Edge at the Sheraton 922-4422
Live Hawaiian music with a fire dancer at 7:30 p.m.
 Keoni Ku Duo 6:30-9:30 pm
The Street Food Hall by Michael Mina 921-4600
Live Hawaiian music with a fire dancer at 7:30 p.m.
 Christian Yrizarry Duo 6:30-9:30pm
The Study at the Modern 943-5800
Live Contemporary Hawaiian
 Melanie and Drew 6:30-9:30pm
Tiki's Grill & Bar 923-TIKI
Live Contemporary - 1/2 off Wine Wednesdays
 Canoes for Rent 5:30-8:30pm
 Johnny Helm 9-11pm
Tommy Bahama Restaurant 923-8785
Live Contemporary Hawaiian
 Sean Cleland 6-9pm
Tropics Bar & Grill 949-4321
Live Contemporary Rock
 Acoustik Playground 5:30-8:30pm

THURSDAY

Barefoot Beach Café at Queen's Beach 924-2233
Live Contemporary Hawaiian
 Shaka Madali 5:30-8:30pm
Bin1901 at the Moana 921-4600
Piano Wine Bar
 Scott Smith 6:30-9:30pm
BLT Market 729-9729
Live Contemporary Guitar
 Sean Cleland 6-9pm
Chart House Waikiki 941-6660
Live Contemporary Hawaiian
 Tito Berinobis 6:30-10pm
Cheeseburger Waikiki 941-2400
Contemporary / Old School Rock
 Alex Oasay 6:30-9:30pm
Cheesecake Factory 924-5001
Classic Hawaiian
 Ben Kama Duo 8-11pm
Duke's Canoe Club 922-2268
Live Contemporary Hawaiian
 Haumea Warrington 4-6pm
 Local Uprising Duo 9:30-midnight
 Denny Ono Duo (5/3) 9:30-midnight
 Preston Kauwe Duo (5/10) 9:30-midnight
 Scott Magz & Brady K (5/17) 9:30-midnight
Hard Rock Cafe 955-7383
Live Contemporary
 Zanuck Lindsay 9-11am
 Mark Caldaira (5/3) 9-11am

Kailua Bay Buddies 9-11pm
House Without a Key 923-2311
Live Hawaiian & Hula by Sarah Kamalei Kawakami
 Eric Lee Trio 5:30 - 8:30pm
Hula Grill 923-HULA
Live Contemporary Hawaiian
 Kamuela Kahoano 7-9pm
Hy's Steak House 922-5555
Live Soft Contemporary
 Audy Kimura 6:30-10pm
Kani Ka Pila Grille 924-4992
Hoku Award Winning Hawaiian musicians
 Kawika Kahiapo 6:30-9:30pm
LBLE at the Hilton Waikiki Beach Hotel 922-0811
Live Contemporary Pop/Rock
 Sunway 7-10pm
Lewers Lounge 923-2311
Contemporary Jazz
 Maggie Herron & Rocky Holmes 8:30-12am
LuLu's 926-5222
Live Contemporary Hawaiian
 Desmond Oliverira 6-9pm
Mahina & Sun's 923-8882
Mellow Acoustic Sounds Poolside on the Lanai
 Keith Omizo 7-9pm
Mai Tai Bar at the Royal Hawaiian 923-7311
Live Contemporary Hawaiian with Hula Dancer
 Dave Watanabe 8 - 10pm
Maui Brewing Company 843-2739
Live Contemporary Hawaiian
 Randy Allen 3:30-5:30pm
 Jeff James (5/10) 3:30-5:30pm
 Jegaan Allen (5/24) 3:30-5:30pm
Michel's at the Colony Surf 923-6552
Live Slack Key
 Jeff Peterson 7:30-10:00pm
Roy's Hawaii Kai 396-7697
Acoustic Hawaiian Guitar
 Steve English 6:30-9:30pm
Rumfire 921-4600
Solo Contemporary Guitarist
 Jeff James 5-8pm
Signature Prime Steak 949-3636
Contemporary Pianist in the bar
 Isao Motomochi 6-9pm
Sky Waikiki 979-7590
Live Contemporary
 Tahiti Rey 6-9pm
SWIM at the Hyatt 923-1234
Live Contemporary
 Kuuipo Kumukahi 5:30-7pm
The Edge at the Sheraton 921-4600
Live Hawaiian music with a fire dancer at 7:30 p.m.
 Christian Yrizarry Duo 6:30-9:30pm
The Study at the Modern 943-5800
Live Contemporary Hawaiian
 Simple Souls 6:30-9:30pm
Tiki's Grill & Bar 923-TIKI
Hot Hula Thursdays - hula dancers perform
 Malu the Band 5:30-7:30pm
 Ellsworth Simeona 8:30-10:30pm
Tommy Bahama Restaurant 923-8785
Live Contemporary Hawaiian
 Chris Mercado 6-9pm
Tropics Bar & Grill 949-4321
Live Contemporary Hawaiian
 Nohelani Cypriano 5:30-8:30pm

FRIDAY

Barefoot Beach Café at Queen's Beach 924-2233
Live Contemporary Hawaiian with Beach BBQ
 Art Kalahiki & Friends 5:30-8:30pm
Bin1901 at the Moana 921-4600
Piano Wine Bar
 Scott Smith 6:30-9:30pm
Chart House Waikiki 941-6660
Live Contemporary Hawaiian
 Mark Yim's Pilikia I 6-9pm
 Mark Yim's Pilikia II 9:30-12:30am
Cheeseburger Waikiki 941-2400
Contemporary Hawaiian
 Aku 6:30-9:30pm
Cheesecake Factory 924-5001
Live Contemporary
 Johnny Helm Duo 8:30-11:30pm
Dave & Busters 589-2215
Pau Hana Fridays Live Local Bands
 Varying Hawaiian Artists 6-8pm
Duke's Canoe Club Waikiki 922-2268
Live Contemporary Hawaiian
 Maunalua 4-6pm
 Chris Murphy Duo (5/4) 9:30 -12am
 Maiko Duo (5/11) 9:30 -12am
 Kona Chang Duo (5/18) 9:30 -12am
 Jesse & Jenna (5/25) 9:30 -12am
Hard Rock Cafe 955-7383
Live Contemporary

goma tei
 FIRE ISLAND RESTAURANT
 KAUAI RESTAURANT

PRESENT YOUR WORK ID & RECEIVE ONE FREE AJITAMA OR SOFT-POACHED EGG

PICTURED IS OUR SEAFOOD FRIED RICE MADE WITH FRESHLY COOKED, IMPORTED JAPANESE RICE MIXED WITH DICED CARROT, MALLI ONION AND EGGS ALL IN A SPECIAL FRIED RICE MACHINE. SERVED WITH A SPECIAL HOUSE MADE SOY SALICE WITH CRISPY GARLIC AND GARLIC OIL, A SOFT-POACHED EGG AND SCALLION GARNISH.

INTERNATIONAL MARKET PLACE
 2300 PALAKAUA AVE 318 - LEVEL 3, GRAND LANAI
 TEL 808 654-0363

HAVE ANY QUESTIONS OR COMMENTS?
 EMAIL US AT IMPP@GOMATEL.COM

SOME EXCLUSIONS MAY APPLY. THIS OFFER CANNOT BE COMBINED WITH ANY OTHER OFFER.

Let's be Together...

DINING ▶ ENTERTAINMENT ▶ PAU HANA ▶ EAT ▶ DRINK ▶ BE MERRY ▶ HAPPY HOUR

Alex Oasay 9-11am
 The Fresh Preps 9-11pm
 Buck on a Bender (5/18) 9-11pm
House Without a Key 923-2311
Live Hawaiian & Hula by Kanoe Miller
 The Kanoe Miller Trio 5:30 - 8:30pm
Hula Grill 923-HULA
Aloha Friday Lunch Luau with hula dancer
 David Asing 12:30-2:30pm
 Keoki & Russell 7-9pm
Hy's Steak House 922-5555
Live Soft Contemporary
 Audy Kimura 6:30-10pm
Kani Ka Pila Grille 924-4992
Hoku Award Winning Hawaiian musicians
 Ka Hehena 6-9pm
LBL at the Hilton Waikiki Beach Hotel 922-0811
Live Contemporary Pop/Rock
 Sunway 7-10pm
LuLu's 926-5222
Live Contemporary
 Glenn Domingo 6-9pm
Lewers Lounge 923-2311
Live Contemporary Jazz
 Maggie Herron & Dean Taba 8:30-12am
Mahina & Sun's 923-8882
Slack Key Poolside on the Lanai
 Jeff Rasmussen 7-9pm
Mai Tai Bar at the Royal Hawaiian 923-7311
Live Contemporary Hawaiian with Hula Dancer
 Kapala Contemporary 6:30-9:30pm
Maui Brewing Company 843-2739
Live Contemporary Hawaiian
 Sienna Souza 3:30-5:30pm
 Alika Souza 9-11pm
Michel's at the Colony Surf 923-6552
Live Slack Key Stylings & Jazz
 Jeff Peterson & Ernie Provencher 6:30-10pm
Roy's Hawaii Kai 396-7697
Keyboardist
 Brian Robert Shaw 6:30-9:30pm
Roy's Ko Olina 676-7697

Slack Key Guitar
 Chris Rego 5:30-8pm
Rumfire 921-4600
Solo Contemporary Guitarist
 Shar Carillo 5-8pm
Signature Prime Steak 949-3636
Contemporary Pianist in the bar
 Grant Carvalho 6-9pm
Sky Waikiki 979-7590
Live Contemporary
 John Akapo 5-8pm
The Edge at the Sheraton 921-4600
Live Hawaiian music with a fire dancer at 7:30 p.m.
 Na'ehu Duo 6:30-9:30pm
 Ben Kama Duo (4/20) 6:30-9:30pm
The Study at the Modern 943-5800
Live Contemporary Hawaiian
 Tahiti Rey 6:30-9:30pm
Tiki's Grill & Bar 923-TIKI
Live Contemporary Hawaiian
 Randy Allen 5-7pm
 Vaihi 7:30-9:30pm
 The Kristi Masuhara Band 10:30-midnight
Tommy Bahama Restaurant 923-8785
Live Contemporary Hawaiian
 Chris Murphy 6-9pm
Tropics Bar & Grill 949-4321
Live Contemporary Hawaiian
 Nohelani Cypriano 8-10:30pm

Audy Kimura 6:30-10pm
Kani Ka Pila Grille 924-4992
Hoku Award Winning Hawaiian musicians
 Hookena 6:30-9:30pm
LBL at the Hilton Waikiki Beach Hotel 922-0811
Live Contemporary Blues & R&B
 Tahiti Rey 7-10pm
Lewers Lounge 923-2311
Live Contemporary Jazz
 Maggie Herron & Dean Taba 8:30-12:30am
LuLu's 926-5222
Live Contemporary Hawaiian
 Kamaka 6-9pm
Mahina & Sun's 923-8882
Soul Poolside on the Lanai
 Maryanne Ito 7-9pm
Mai Tai Bar at the Royal Hawaiian 923-7311
Live Contemporary Hawaiian with Hula Dancer
 Mike Tulba 6:30-9:30pm
Maui Brewing Company 843-2739
Live Contemporary Hawaiian
 Mark Caldeira 3:30-5:30pm
 Local Uprising 9-11pm
 Fresh Preps (5/12) 9-11pm
 Ryan Tenney (5/26) 9-11pm
Michel's at the Colony Surf 923-6552
Live Contemporary Slack Key & Jazz
 Jeff Peterson 7-11pm
Roy's Hawaii Kai 396-7697
Acoustic Guitar
 Jimmy Funai 6-9:30pm

SATURDAY

Barefoot Beach Café at Queen's Beach 924-2233
Beach BBQ with Live Contemporary Hits
 The Barefoot Boys feat. Pokii Vaughn 5:30-8:30pm
Bin1901 at the Moana 921-4600
Piano Wine Bar
 Scott Smith 6:30-9:30pm
Chart House Waikiki 941-6660
Live Contemporary Hawaiian
 Tito Berinobis & Billy Beimes 7-12pm
Cheeseburger Waikiki 941-2400
Contemporary Hawaiian
 Sean Cleland 6:30-9:30pm
Cheesecake Factory 924-5001
Classic Hawaiian
 Dennis McClees Duo 8-11pm
Duke's Canoe Club Waikiki 922-2268
Live Hawaiian Entertainment
 Mojo (5/5) 4-6pm
 Kapena (5/12) 4-6pm
 Vaihi (5/19) 4-6pm
 Kaiona Band (5/26) 4-6pm
 Christian Yrizzary Duo 9:30-12am
 Jai Rodgers Duo (5/12) 9:30-12am
 Camarillo Brothers (5/26) 9:30-12am
Hard Rock Cafe 955-7383
Live Contemporary
 Eziekiel (or others) 9-11am
 Close the Distance 9-11pm
House Without a Key 923-2311
Hawaiian & Hula by Kanoe Miller
 The Kanoe Miller Trio 5:30 - 8:30pm
Hula Grill 923-HULA
Live Traditional Hawaiian with dancer
 Kaipo Dabin & friends 7-9pm
Hy's Steak House 922-5555
Live Soft Contemporary

Roy's Ko Olina 676-7697
Slack Key Guitar
 Chris Rego 5:30-8pm
Rumfire 921-4600
Solo Contemporary Guitarist
 Mike Izon 5-8pm
Signature Prime Steak 949-3636
Contemporary Pianist in the bar
 Grant Carvalho 6-9pm
Sky Waikiki 979-7590
Live Contemporary
 John Akapo 6-9pm
The Edge at the Sheraton 921-4600
Live Hawaiian music with a fire dancer at 7:30 p.m.
 Tino Jacobs Duo 6:30-9:30pm
Tiki's Grill & Bar 923-TIKI
Live Contemporary Hawaiian & Reggae
 Johnny Helm 5-7pm
 Guidance (or others) 7:30-9:30pm
 Ellsworth & Piko 10-midnight
Tommy Bahama Restaurant 923-8785
Live Contemporary Hawaiian
 Chris Murphy 6-9pm
Tropics Bar & Grill 949-4321
Live Contemporary Hawaiian
 Henry Kapono 4-6pm
 Juke Joint 6:30-9:30pm

SUNDAY

Barefoot Beach Café at Queen's Beach 924-2233
Live Contemporary Hawaiian
 Shaka Madali 5:30-8:30pm
 San Souci Beach Club w/DJ (2/11) 2-6pm
Chart House Waikiki 941-6660
Live Contemporary Hawaiian
 Dean & Dean 6-9pm

IL LUPINO
 TRADITIONAL HAWAIIAN & WINE BAR

15% OFF
 IL Lupino is pleased to extend a 15% discount to all Couples. Must show your work ID to receive the discount. Not applicable on liquor specials.

ROYAL HAWAIIAN CENTER • VALIDATED PARKING
 breakfast • lunch • happy hour • afternoon tea • dinner
 ilupino.com • @ilupino • #ilupino • 808.922.3400

E Pili Kākou

DINING ▸ ENTERTAINMENT ▸ PAU HANA ▸ EAT ▸ DRINK ▸ BE MERRY ▸ HAPPY HOUR

Cheesecake Factory	924-5001
<i>Classic Hawaiian</i>	
Chris Murphy	8-11pm
Duke's Canoe Club Waikiki	922-2268
<i>Live Hawaiian Entertainment</i>	
Henry Kaponu	4-6pm
Derrick Lee Duo (5/6)	9:30-12am
Alika Suza Duo (5/13)	9:30-12am
Ryan Tenney Duo (5/20)	9:30-12am
Chris Mercado (5/27)	9:30-12am
Hard Rock Cafe	955-7383
<i>Live Contemporary</i>	
Johnny Helm (or others)	9-11am
Analog	9-11pm
Jive Nene (5/6)	9-11pm
Brad's Pit (5/27)	9-11pm
House Without a Key	923-2311
<i>Live Hawaiian & Hula by Debbie Nakanelua</i>	
Pu'uhonua Trio	5:30 - 8:30pm
Hula Grill	923-HULA
<i>Live Traditional Hawaiian with dancer</i>	
Art Kalahiki Duo	7-9pm
Kani Ka Pila Grille	924-4992
<i>Hoku Award Winning Hawaiian musicians</i>	
Kaiao	6-9pm
Kelley O'Neil's	926-1777
<i>Live Irish Music</i>	
Various Celtic Bands	4-7pm
LBLE at the Hilton Waikiki Beach Hotel	922-0811
<i>Live, Energetic Mix of Pop and Rock Hits</i>	
Kristi Masuhara	7-10pm
Lewers Lounge	923-2311
<i>Live Contemporary & Light Jazz</i>	
Tommy James	8:30pm - 12am
LuLu's	926-5222
<i>Acoustic R&B</i>	
Jason Laeha	6-9pm
Mahina & Sun's	923-8882
<i>Live Jazz on the Lanai</i>	
Jegaan Faye	7-9pm
Mai Tai Bar at the Royal Hawaiian	923-7311
<i>Live Contemporary Hawaiian with Hula Dancer</i>	
Brian Mersberg Duo	6:30-9:30pm
Maui Brewing Company	843-2739
<i>Live Contemporary Hawaiian</i>	
David Sedlak	3:30-5:30pm
Scott Magz & Brady K	9-11pm
Roy's Ko Olina	676-7697
<i>Slack Key Guitar</i>	
Chris Rego	5:30-8pm
Rumfire	921-4600
<i>Solo Contemporary Guitarist</i>	
Johnny Kukui	5-8pm
Signature Prime Steak	949-3636
<i>Contemporary Pianist in the bar</i>	
Isao Motomochi	6-9pm
Sky Waikiki	979-7590
<i>Live Contemporary</i>	
Da Push-O-Verse	6-9pm
The Edge at the Sheraton	922-4422
<i>Live Hawaiian music with a fire dancer at 7:30 p.m.</i>	
Eric Lee Duo	6:30-9:30p
The Study at the Modern	943-5800
<i>Live Contemporary Hawaiian & Jazz</i>	
Jeremy Cheng	6-9pm
Smooth Jazz (varying artists)	10-2am
Tiki's Grill & Bar	923-TIKI

<i>Live Contemporary Hawaiian</i>	
Kapu the Band	2:30 - 5:30pm
Vaihi	6-8pm
Ellsworth & Piko	9-11pm
Tommy Bahama Restaurant	923-8785
<i>Live Contemporary Hawaiian</i>	
Johnny Helm	6-9pm
Tropics Bar & Grill	949-4321
<i>Live Contemporary Rock & Hawaiian</i>	
Mike Piranha	5:30 - 8:30pm
Uncle's Fish Market & Grill	275-0063
<i>Live Slack Key</i>	
Jeff Peterson	5:30-8:30pm



Hot Lines

Here's a few numbers for you to find out the latest in live music from places that change daily or don't update us regularly, since we can't possible list them all.

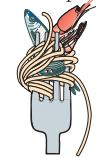
Anna O'Brien's	946-5190
Cheesecake Factory Kapolei	670-2666
Gordon Biersch	599-4877
Irish Rose Saloon	947-3414
Kelley O'Neil's	926-1777
Lucky Strike Honolulu	664-1140
Mai Tai Bar Ala Moana	947-2900
Moose McGillicuddy's	923-0751

Dining Dish



To thank our military, many restaurants will be offering special discounts to both active and retired military personnel to commemorate Armed Forces Day. **BLT Market** and **BLT Steak Waikiki** will be offering 35 percent off to anyone presenting a military ID on May 20 and 21. Other restaurants and activities are sure to follow, so remind your guests to be sure to ask if they are military. • The location made famous by Chai's Singha Thai Restaurant underneath Canterbury Place on the corner of Ena Road and Ala Moana Boulevard is serving Thai food again. **S & S Thai Kitchen**, a Thai eatery that started in 2014 as a food truck in Mo'ili'i before opening at Shirokiya's Japan Village Walk in 2016, just opened its second location in the famed spot. The eatery specializes in traditional Thai cuisine as well as Laotian dishes. The family business sources its ingredients from its Kahuku farm. Open from 11:00 a.m. to 10:30 p.m. 773-7218. sandsthaikitchen.com. • **Tim Ho Wan**, a Hong Kong-based Michelin-starred dim sum restaurant, just opened at the Royal Hawaiian Center last week. Known for its focus on modern and traditional Hong Kong-style dim sum, it only has one other location in the States in New York. Chef Li Jing Hong, who was born and raised in China, but has worked in Hawaii dim sum restaurants for 28 years will lead the restaurant, which will be open from 10 a.m. - 10 p.m. timhowanusa.com. • Pizza for breakfast? Why not, people have been doing it for years. Appetito Craft Pizza has stepped it up a notch and introduced

their the Signature Breakfast Pizza selection include the decadent and creamy Bacon Carbonara, topped with fresh Waimanalo egg yolk, the "Greens & Pork" made with local kale, crispy bacon and topped with mozzarella cheese, and the Classic Breakfast pizza topped with scrambled eggs, ham and avocado. At \$12 per pie, each breakfast pizza comes with a side of country potatoes and a glass of selected juice or coffee. The new breakfast menu also features \$10 freshly made Kiawe Wood-baked Piadina sandwiches. All pizza and sandwiches are made-to-order. Breakfast is served daily from 7 - 11 a.m. 922 - 1150. • **Top of Waikiki** announced eleven new menu items created by *Executive Chef Lance Kosaka*. Featuring Hawaii regional steak and seafood in appetizers, happy hour bites, and entrees. Some of the items include Fully Loaded Tots, Pickled Beet & Carrot Couscous, Thai-Inspired Shrimp Pasta and a "Paniolo" Ribeye. They are also offering a 3-course prix-fixe menu through the end of May that features an Oxtail Soup Dumplings appetizer, Pastele Stew plate lunch and Banana Lumpia for dessert. 923-3877. • Also offering a new menu? **Chef Mavro** has launched their Spring Menu including such classics as a rack of lamb, with crunchy english peas, and a black & green tapenade. 944-4714. • Have you checked out **Roy's Hawaii** Sunset Pau Hana Menu lately? I have and it's a good one. For \$45, diners will get Furikake Bigeye Ahi Tataki with Waimanalo Greens, Flame Grilled Petite Filet Mignon & Garlic Scampi Kauai Prawns and Roy's Signature Pineapple Upside Down Cake for dessert from 5 - 7 p.m. daily. Don't forget Roy's Waikiki offers Happy hour from 2 - 4 p.m. with drinks from \$5-\$8. roysrestaurants.com. • Popular LA-based chef **Chris Oh** of Seoul Sausage, best known for winning season 3 of Food Network's "Great Food Truck Race" has opened his first Hawaii restaurant. **Chingu** opened in the former Cafe Maru location on Kapiolani Boulevard, The restaurant showcases his modern Korean-style cuisine and a solid dose of LA's Korea-town with items like watermelon soju with pop rocks and fruity pebbles! Pricy, but good fun. Open 5 p.m. - 2 a.m. daily. 592-1035. ~ Pam



Dining Calendar

May 11: **BLT's Wine Down the Week**, a new event featuring wine, bites and fireworks. Guests will talk story with experts to learn (and taste) the differences in Rosé. 6:30-8:30 p.m. \$65 includes wine and pupu pairings. winesoverwaikiki.brownpapertickets.com.

May 21: **BLT Market Mixology Series** continues with Beverage Director Sarah Landry. This month, it's all about mezcal. Includes appetizers that pair well with the beverage you'll be learning to make (and drink!) 5 p.m. \$50. 729-9729.

Wednesdays: Wine & Dine Wednesdays Stop by the Veranda every Wednesday from 6-9 pm for a 3-course meal with paired wines for \$65+-. Each additional glass of wine for \$12. kahalaresort.com.

MAY CALENDAR OF EVENTS

Continuing Events

MONDAY – FRIDAY LYON ARBORETUM TOURS

The lush gardens at the top of the UH Manoa are open for guided tours daily. Knowledgeable guides will introduce the highlights of all 193.6 acres of botanical rainforest. Reservations required. 12 participants max. Donations accepted. 988-0461.

MONDAY-FRIDAY FOSTER BOTANICAL GARDENS

Guided garden tours of rare and beautiful plants from tropical regions throughout the world. Foster Botanical Gardens, 50 N. Vineyard. 1 p.m. Adults: \$5. Reservations recommended. 522-7066.

TUESDAYS TOURS OF THE HAWAII THEATRE

Get a behind-the-scenes tour of this historic theatre including history, architecture, and a performance on the 1922 Robert Morton theatre organ. Hawaii Theatre. 11 a.m. – 12 p.m. \$10. 528-0506.

TUESDAYS • KU HA'AHEO

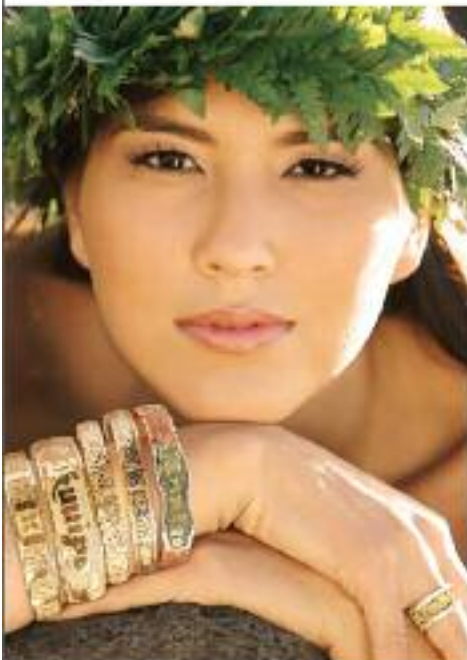
An afternoon of music and hula led by kumu hula Blaine Kamalani Kia. Waikiki Beach Walk, Plaza Lawn. 4:30–6 p.m. waikikibeachwalk.com. FREE.

TUESDAYS • KCC FARMERS MARKET

The Saturday Market is so popular they added another day. Head up to Kapiolani Community College to stock up on fresh, island produce, seafood, flowers and more, from several dozen vendors. 4 – 7 p.m. Free. 848-2074.

WORLD CLASS HAWAIIAN HEIRLOOM JEWELRY

Philip Prickard
NEW STORE IN WAIKIKI



INTERNATIONAL MARKET PLACE
LEVEL 1 • BANYAN COURT
808-924-7972 | philipprickard.com
Special offers for Concierges

TUESDAYS

INDOOR YARD SALE & FARMER'S MARKET
Weekly yard sale offers vendors from Hawaii Kai to Waikiki along with plenty of local food and fresh produce. Waikiki Community Center. 310 Paoakalani Avenue. 9 a.m. – 12 p.m. Free admission. 923-1802. waikikicomunitycenter.org.

**TUESDAYS & THURSDAYS
FRESH FARMERS MARKET AT THE HYATT**
The Hyatt's Farmers Market is offered twice a week. A great place for visitors and locals to stock up on fresh local organic fruits, vegetables, jams, honeys, baked goods and more. The market is spread out throughout the ground floor of the Pualeilani Atrium Shops. 4 – 8 p.m. waikiki.hyatt.com.

**TUESDAYS, THURSDAYS & SUNDAYS
TOUR & TEA AT THE HONOLULU
ACADEMY OF ARTS**
Tours are led by volunteer docents and designed for visitors, who would like to explore the galleries, learn more about art and culture, and socialize over a cup of tea. Docents lead discussions in the galleries and offer insight into many cultures and time periods. 2:30 – 4 p.m. in selected galleries. Free with admission. Reservations required. 532-8700.

**TUESDAY – SATURDAY
HAWAIIAN MISSION HOUSES GUIDED TOURS**
Visit the Print Shop, coral block Chamberlain House, and 1821 Mission House and learn about the 19th century history and culture preserved at this historic site. Docent-led tours of the historic houses begin on the hour, every hour from 11 a.m. for \$8 - \$10. No charge for the self-guided tour of the grounds. Hawaiian Mission Houses. Tues. - Sat. 10 a.m. - 4 p.m. 447-3910 or missionhouses.org.

**THIRD WEDNESDAY (MAY 16)
KONA NUI NIGHTS**
Kona Nui Nights honors and highlights Hawaiian language and music, as well as the art of hula on the third Wednesday of every month with food and drinks for sale. Free. Ward Village Information Center Courtyard. 6-8 p.m. wardvillageshops.com.

**SECOND THURSDAY (MAY 10)
COURTYARD CINEMA**
Ward Village hosts its monthly film series event, Courtyard Cinema, on the 2nd Thursday of each month. The showing features free popcorn, refreshments, food vendors and entertainment. Courtyard Cinema is free and open to the public. Seating is limited. Reserve your tickets at wardvillagecourtyardcinema.com.

THURSDAYS • COURTYARD YOGA
Take a complimentary yoga class with CorePower Yoga at the Ward Village Information Center Courtyard. Open to the first 50 in attendance. All experience levels welcome. 5:30 – 6:30 p.m. For more information visit wardvillageshops.com/yoga.

**THIRD THURSDAY (MAY 17)
DOWNTOWN GALLERY WALK & CRAFT FAIR**
The Arts at Marks Garage continues to build on downtown activities offering an excuse to hang out after work and giving everyone else a reason to head downtown. Free. 521-2903. artsatmarks.com.

FRIDAYS • CULTURAL CRAFT FAIR
The Hyatt's had so much success with their Farmers Market that they are applying the same principle to local craft items. The craft fair features local vendors

featuring arts & crafts, jewelry, photography, woodwork and more. 3-7 p.m. Waikiki.Hyatt.com.

**FIRST FRIDAY (MAY 4)
DOWNTOWN GALLERY WALK & CRAFT FAIR**
Art lovers should head to downtown Honolulu the first Friday of each month. This event has exploded into a downtown party with galleries and studios open for exhibitions, artist demos, and special performances. Many galleries and art-related shops, restaurants and museums participate. 6 – 9 p.m. Free. 521-2903 or artsatmarks.com.

**FIRST FRIDAY (MAY 4)
FREE MOVIE NIGHT ON THE LAWN**
PCC continues its love for families by offering a family-friendly movie the first Friday of the month to enjoy under the stars at Hukilau Marketplace. This month see "Star Wars: The Last Jedi" at 7:30 p.m. Admission and parking are free. HukilauMarketplace.com.

FINAL FRIDAY • ART AFTER DARK
Art After Dark is back with one of the hippest events all month. This month offers "Windows to the World." Take a trip around the world through art as each museum courtyard is transformed into a faraway region—grab your passport and get it stamped in each one! Food provided by EAT Honolulu. 6-9 p.m. artaafterdark.org.

SATURDAYS • KCC FARMERS MARKET
Fresh island produce, seafood, flowers and more are available from over two-dozen vendors at Kapiolani Community College. Free. 7:30 - 11 a.m. 848-2074.

**SATURDAYS
PEARLRIDGE FARMERS MARKET**
Over 40 vendors offering locally grown fruits and vegetables, plants and freshly made treats. A pop-up cafe offering seating and live music round out the day. Free. 8 a.m. - noon. PearlrIDGEOnline.com.

**SATURDAYS
KAKA'AKO FARMERS MARKET**
The Kaka'ako Farmer's Market hosts an abundance of treats from around our islands. Located next to Ross Dress for Less at Ward Gateway Center. Free. 8 a.m. - 12 p.m. wardvillage.com.

**SECOND SATURDAY (MAY 12)
DOWNTOWN GALLERY WALK & CRAFT FAIR**
First Friday has become such a success that events carry over to the second Saturday. HiSAM, 11 a.m. – 4 p.m. 586-9958. Other events around downtown Honolulu all afternoon including slam poetry and open mic events at The Arts at Marks from 3 -5 p.m. Free. 521-2903 or artsatmarks.com.

**SATURDAYS & SUNDAYS
ART ON THE ZOO FENCE**
More than 35 local artists display their works on the Zoo fence on Monsarrat Avenue opposite the Kapiolani Park Bandstand. Works for sale include original paintings, prints and photographs. 9 a.m. – 4 p.m. Free. arthonthezoo fence.com.

**FIRST SUNDAY (MAY 6)
LEI-MAKING CLASS WITH MELEANA ESTES**
Bringing back the practice of lei-making, the International Market Place offers a monthly lei-making workshop, with contemporary lei artist Meleana Estes every first Sunday of the month from 11am - 2pm in Queen's Court. Free will supplies last. shopinternationalmarketplace.com.

MAY CALENDAR OF EVENTS

SECOND SUNDAY (MAY 13)

FREE ADMISSION TO IOLANI PALACE

On the second Sunday of each month, Iolani Palace opens its doors to kama'aina guests to visit the historic landmark for free. iolanipalace.org.

THIRD SUNDAY (MAY 20)

NA MELE NO NA PUA SUNDAY CONCERT

Waikiki Beach Walk presents Natalie Ai Kamauu at the Plaza Stage from 5 – 6 p.m. for their free Sunday Concert Series. waikikibeachwalk.com.

THIRD SUNDAY (MAY 20)

BANK OF HAWAII FREE SUNDAY

The Honolulu Museum of Art opens its doors to the public free of charge on the third Sunday of every month thanks to Bank of Hawaii. Plenty of activities for all to enjoy. 11 a.m. - 5 p.m. Free. 532-8700.

MAY 1

MAY DAY

May Day is Lei Day in Hawaii and visitors and kama'aina alike will be able to smell the fragrance of flowers wafting through the air most of the day. This is the 91st anniversary of this annual celebration. Kapiolani Park. 9 a.m. – 5:30 p.m. with live entertainment throughout the day.

MAY 1

MAY DAY ON THE GREAT LAWN

May Day celebrations continue with a special performance from Robert Cazimero and his Halau Na Kamalei o Lili'lehua, as well as four other halaus from Kumu Hula's Victoria Holt Takamine, Mapuana de Silva, Michael Pili Pang and Manu Boyd. Other musicians include Keauhou, Jerry Santos, Marlene Sai and Kapena, to name a few. Tickets: \$25-\$100. The Great Lawn at Bishop Museum. 5 p.m. greatlawnhawaii.com.

MAY 1

5TH ANNUAL MAY DAY WAIKIKI

The Hawai'i Tourism Authority is bringing the 5th Annual May Day Waikiki to the beach in front of the Royal Hawaiian Hotel. The free event will honor legendary Waikiki Beachboys including George Parsons, Raymond "Mundo" Rillamas, Donald "Don" Lipton, and Woodbridge "Woody" Brown, known as the "father of the catamaran." to name a few. Bring a lei to say congratulate them for keeping aloha alive in Waikiki. The free event will also offer canoe rides, a helicopter flower drop on honor of those whose ashes have been scattered off the beach, and live entertainment from Henry Kapon & Friends, Jerry Santos, Johnny Valentine, Alx Kawakami and Blayne Asing, hula dancers, and more. The event will be livestreamed on Facebook. 4-6 p.m.77

MAY 5

PARADE OF FARMS

The 3rd annual event returns with a spotlight on Waimanalo. A free open house of activities will be held at UH's Waimanalo Research Station and will include booths about local farming and guided local farm tours from 9 a.m. – 3 p.m. Tickets may be reserved to attend in-depth guided farm tours. Enjoy a farmers market, keiki activities, and more. parade-of-farms.org.

MAY 5

CINCO DE MAYO BLOCK PARTY

First Friday just got a lot more exciting as the Biggest Cinco de Mayo Hispanic Street Festival Celebration closes the streets down between Nuuanu and King and Hotel to Smith Streets. Live bands, Latin dancers, DJs, contests, food vendors and more. 6 p.m. – 10 p.m.

MAY 5

HOOKUPU ALOHA

The 19th annual Hookupu Aloha is an annual event in honor of Kumu Mary Kupau and Kuhai Halau 'O Kahealani Pa Olapa Kahiko features food, arts & craft booths, live entertainment by some of the Islands finest musicians, and of course, hula. Kualoa Ranch. Free. 9 a.m. - 4 p.m. kualoa.com.

MAY 5 • FILIPINA FIESTA

It's time for the 26th Annual Filipino Fiesta and 6th Annual Flores de Mayo. Walk through booths filled with Filipino traditions, flavors, culture, and arts & crafts while enjoying live entertainment and keiki activities. Kaka'ako Gateway Park. Free. 9 a.m. – 5 p.m. filcom.org.

MAY 5-6 • SHEN YUN

The world's premier classical Chinese dance and music company brings their spectacular performance art to Honolulu for its 10th season. Sit back and enjoy classically trained artists, brilliant choreography, breathtaking costumes, state-of-the-art dynamic backdrops, and a unique orchestra combining the sounds of East and West. Saturday 2 p.m. & 7:30 p.m., Sunday 2 p.m. Tickets: \$80 – \$150. ticketmaster.com.

MAY 5-6

HAWAII BOOK AND MUSIC FESTIVAL

This always popular book and music festival takes place throughout the weekend with even more local, national and internationally known authors; performances by musicians, storytellers, actors and dancers; and ongoing entertainment for the kids on multiple stages than ever before. Honolulu Hale. 10 a.m. – 5 p.m. HawaiiBookandMusicFestival.com.

MAY 6

ANDY IRONS: KISSED BY GOD

Don't miss the Hawaii premiere of a new film from Teton Gravity Research about local surf hero Andy Irons. In celebration of Andy's life and accomplishments, there will also be a festival featuring the music of a high-profile band that has yet to be named. Open Air Festival 4 – 6:30 p.m. Film Premiere 7:30 p.m. hawaii theatre.com.

MAY 9

JEREMIAH TOWER CALIFORNIA DREAMIN'

The legendary chef presents a six-course "California Dreamin'" wine dinner along with local chefs Roy Yamaguchi, Alan Wong, George Mavrothalassitis, Chris Kajioka, & Michelle Karr-Ueoka as part of this year's Hawaii Food & Wine Festival kickoff. Shep Gordon leads a discussion with the chef after dinner. \$500. The Kahala Hotel. 5:30 p.m. HFWF.me.

MAY 10

WAVE OF THE WINTER

For four months every winter, the entire surf world is focused on the North Shore of Oahu. During the course of the season, some of the craziest, most intense rides of the year go down at Pipeline, Backdoor and Off-the-Wall. This movie chronicles the ultimate prize for those who push themselves the hardest in the ultra competitive North Shore proving grounds. 7:30 p.m. Ooklah the Moc performs after the screening. 8 p.m. \$10. The Republik. bampproject.com.

MAY 11 • HEART AND SOUL STARRING LOCAL INGREDIENTS

HFWF continues its launch weekend celebrating Jeremiah Tower with this fun grazing event starring

10 local celebrity chefs. Enjoy delectable food bites from local faves such as Ed Kenney, Lee Ann Wong, Vikram Garg and more as well as craft cocktails, superb wines and a big fireworks finale. 6 – 9 p.m. Kahala Hotel. HFWF.me.

MAY 11 • IRON & WINE

The South Carolina singer-songwriter who has released six studio indie-rock albums will perform one night in Honolulu. Opening act takes the stage at 8 p.m. Show starts at 9 p.m. \$39.50. The Republik. bampproject.com.

MAY 11-13

WORLD FIREKNIFE CHAMPIONSHIP

Some of the world's best fireknife dancers come together for three fiery nights of competition, bringing with them awe and gasps of amazement from onlookers. One of the most exciting cultural competitions visitors can see all year long. Polynesian Cultural Center. worldfireknife.com.

MAY 12

RAIATEA & FRIENDS

It's the second of Sea Life Park's Makapu'u Twilight Concert Series and this time the line up includes Kupaoa, Raiatea Helm, Makaha Sons, Anuhea. Tickets start at \$39.50 and will go up closer to the show. Kids under 10 are free. VIP Ticket holders can explore the park beginning at noon, music begins at 5 p.m. Food available for purchase, concert ends at 11 p.m. sealife park.com.

MAY 13-14

ROMEO & JULIET

Violinist Sayaka Shoji is the guest artist in this classic piece Vaughan Williams, Respighi, and Prokofiev. *Continues on page 16.*

Road to Hana

Travel the famous Road to Hana with Maui's most popular tour provider, Polynesian Adventure Tours. Guests relax on our brand new, luxury Coach mini coaches with wide viewing windows. They'll enjoy a picnic-style lunch in the heart of Hana and swim in splendor in a waterfall-fed pool, weather-permitting.

WWW.POLYAD.COM

Polynesian
adventure
808.833.3000

DISCOUNT HAWAII CAR RENTAL SAVE UP TO 50%



GUARANTEED RESERVATIONS
* NO BOOKING FEES * NO
DEPOSIT * CANCEL ANYTIME
* NATIONAL RENTAL
COMPANIES

call us today @
1.800.292.1930

or check us out online:

DiscountHawaiiCarRental.com

Wildlife Guaranteed

See dolphins or turtles or come again free wildlife-specific cruises in Waikiki, West Oahu & Kona. Family-owned company with ocean activities for all ages.



WAIKIKI •
WAIANAE •
KONA
Sail • Snorkel •
Dolphins • Turtles
• Whales • Scuba •
Fireworks Dinner •
Private Charter •
Transportation

234-SAIL

(7245)

WE ANSWER 24 HOURS!

hawaiinautical.com



Hawaii Nautical

WAIKIKI BAPTIST Church

Your Church in Waikiki

424 Kuamo'o St

(Near the Ambassador Hotel)

Sunday Worship Services

9:00 AM - Contemporary

10:45 AM - Traditional

(808)955-3525

WaikikiBaptist.com

MAY CALENDAR OF EVENTS

Continued from page 15.

Maestro Kenneth Lam will conduct. Blaisdell Concert Hall. Tickets: \$34-\$92. Blaisdell Concert Hall. 5/13 - 7:30 p.m.; 5/14 - 4:00 p.m. hisymphony.org.

MAY 14 • MOTHERS DAY

Make your reservations early, restaurants will sell out.



MAY 11 & 12 • DOMINION

IONA Contemporary Dance Theatre presents a visual and visceral masterpiece featuring 25 dancers, LED video screens, and interactive digital animations. Tickets: \$30 - \$75. Hawaii Theatre. 8 p.m. iona360.com.

MAY 13

HONOLULU TRIATHALON

All events will start and finish at Ala Moana Beach Park. The elite wave for the Olympic Trials will start at 5:45 a.m. with all other levels starting in waves afterwards. Traffic will be affected in the Ward area for several hours. honolulutriathlon.com.

MAY 13 - 14 • ILLENIUM

The dance music DJ from Denver has reached incredible heights in the past few years. The show on the 13th has sold out. Tickets still available for the 14th. 10 p.m. \$25-\$40. The Republik. bampproject.com.

MAY 19

ANNUAL VISITOR INDUSTRY CHARITY WALK

This one is your event, starting at 7 a.m. at Ala Moana Beach Park. Bring your appetite as there are 20 stops along the way. Be sure to snap pictures of you and your colleagues throughout the day and email them to us by Sunday afternoon! charitywalkhawaii.org.

MAY 19

NA MOKU EHA MELE

Mission Houses Museum continues its Na Mele Honua this month with this month focusing on the Songs of Oahu, sharing the music, hula, and tales of the gathering isle. More than just a concert, each performance includes stories from the musicians, the places, and events that inspired the music. Tickets: \$30 each in advance, or \$35 at door. 5:30 - 8 p.m. missionhouses.org.

MAY 19

FREE JOINT MILITARY BAND CONCERT

The combined band features outstanding services members from each branch of the military, with respective conductors taking up the baton in a selection of patriotic songs. This special concert will feature performances by the U.S. Navy Pacific Fleet Band, the U.S. Marine Forces Pacific Band, the U.S. Army 25th Infantry Division Band and members from The Army National Guard 11th Army Band. FREE, but reservations required. 4 p.m. hawaiiitheatre.com.

MAY 19

HONOLULU EIKDEN & MUSIC FESTIVAL

Teams get together for a 26.2 mile relay race followed by the 6th annual music festival featuring Hawaiian and Japanese artists such as Kalapana, Mana'o

Company, Ho'aikane, Japanese musician Sunplaza Nakano-Kun and guitarist Pappara Kawai. 5:45 p.m. Waikiki Shell. Tickets: \$30-\$100. hnlkiden.org.

MAY 19 LED ZEPPLICA



The top Led Zeppelin tribute band in the world returns to Honolulu for a one-night performance at Pier 11 at Aloha Tower.

Special guest Cutting Edge will perform a Journey tribute. 7 p.m. Tickets: \$20 GA. VIP \$40 available at eventbrite.com. 479-6004.

MAY 19-20 WAIKIKI ARTFEST

Check out around 60 local artists as they display their crafts for all to see and buy. Enjoy live music and food booths while shopping. Free. 9 a.m. - 4 p.m. Kapiolani Park. 696-6717.

MAY 25 - 28 50TH STATE FAIR

The 50th State Fair kicks off at 6 p.m. Friday night and runs through Memorial Day weekend then opens up again every Friday, Saturday and Sunday through July 1st. FREE admission for all active-duty and retired military and their dependents with a valid military ID on Memorial Day, May 28th. Hours & details online at ekfernandez.com.

MAY 27

HULA GIRL FESTIVAL ADVANCE FORUM

A new festival celebrating all that is hula is heading our way in November. The local hula community is invited to to learn more about the festival, and what their role is to be with the visiting kumu, halau and dancers. 3 - 5 p.m. Call 271-5853 to learn more and find out the meeting location. hulagirlfestival.com.

MAY 28

LANTERN FLOATING CEREMONY



The Lantern Floating Hawaii is one of the more popular festivals that takes place all year long as more than 50,000 people converge at Ala Moana Beach Park to send off specially made candle-lit lanterns into the ocean to honor their loved ones. This is also one of the more picturesque events that takes place each year as 7,000 lanterns float way. Ceremonies start promptly at 6 p.m. and are webcast live at lanternfloatinghawaii.com.

MAY 30

MAMO WEARABLE ARTS SHOW

This is NOT your typical fashion show! Launched in Honolulu in 2006, the MAMO Wearable Arts Show is a component of PAI Foundation's Maoli Arts Movement (MAMO). This wearable art fashion show celebrates Native Hawaiian designers in fabric, clothing, and accessories, in terms of cultural motifs. Tapa Ballroom, Hilton Hawaiian Village. Dinner 5 p.m., Show doors open 6:30 p.m. Tickets: \$35-\$200+. maoliartsmoonth.org.

LA PERLA

The luxury Italian lingerie designer has joined the ranks of companies seeking to make a connection with the hospitality industry. La Perla held an intimate event to introduce concierge to all they had to offer, including a mens and womens ready-to-wear line, beachwear, accessories and available VIP programs. It was a fun and informative night for all. Props to our token guy Tyler who definitely scored kudos from his wife with the take home gift! 949-4565.



Hawaii Exotic *Car Rentals*

**Special Occasion?
Wedding?
VIP Guest?
or just because you can....**

Hawaii Exotic Car Rentals offers beautiful, exciting Exotic Supercars perfect for your Oahu vacation. We offer some of the best Supercars in the world right here Oahu, conveniently located in Waikiki.

Our Sports Cars have exceptional after market stereo systems, as well as after market exhaust systems for boosted power and sound.



Rent our 2013 Lamborghini Gallardo or our 2012 Ferrari California Hard Top Convertible and take pictures and send them back to your friends and family at home in locations all over this stunning island.

Guaranteed to make your loved ones green with envy!!

Both cars are very simple to drive in automatic and offer the option of paddle shifting if you so choose.



Rental Requirements

- Must be 25 years of age or older
- Major credit card
- Valid drivers licence
- 24 hour rental minimum
- Insurance is included with rental

How much does a rental cost?

\$1,200 for the Ferrari
\$1,500 for the Lamborghini
\$700 for a white 2016 BMW X50 SUV
minimum 24 hour rental
10% discount available for multiple 24 hour periods and 20% discount for a week or longer.
Includes 100 miles, \$3.00 per mile over, insurance & taxes.

Waikiki Hotel Delivery
available upon request

Call: (808) 222-7376
info@hawaiiexoticcarrentals.com

www.HawaiiExoticCarRentals.com

That's Entertainment

HOTELS

- HALE KOA HOTEL** 955-0555
 •**TuSat** - High and Right Comedy Show takes the stage at the Warriors Lounge at 8pm.
 •**MThFS** - Poolside music at the Barefoot Bar. 6-11pm
- HALEKULANI HOTEL** 923-2311
 •**Daily**-Hawaiian Music and hula at House Without A Key from 5:30-8pm.
 •**Daily**-Live Contemporary and light Jazz at Lewers Lounge from 8:30pm to midnite.
 •**Sun**- Sunday brunch at Orchids features Noly Paa on the piano from 10am - 1:30pm.
- HILTON HAWAIIAN VILLAGE** 949-4321
 •**Fri** - Fireworks return to their normal time, 7:45 pm.
 •**Fri** - The Rockin' Hawaiian Rainbow Revue, a musical salute to King Kalakaua, at the Super Pool. 7 pm.
 •**Daily** - Live entertainment, Tapa Bar. 8:15-10:30pm.
- HYATT REGENCY WAIKIKI** 923-1234
 •**Fri** - Aloha Friday Polynesian show, lei-making, hula, and Fire dancer, 1st floor near the Waterfall, 4:30-6 pm.
- THE KAHALA HOTEL & RESORT** 739-8888
 •**TuWThFSat** - David Swanson vocalizes on the piano at The Veranda from 7:30-10pm. Hawaiian on Sun/Mon.
- MOANA SURFRIDER** 922-3111
 •**Daily**-Hawaiian music & hula. The Banyan Court, 6-8 pm, and again from 8 -10 p.m. Weekends from 11:30-2 p.m.
 •**MWFri**-Guided historical tours at 11am.
- NEW OTANI KAIMANA BEACH** 923-1555
 •**FSat**- Jazz guitarists in the Sunset Lanai Bar. 6-9pm.
- OUTRIGGER WAIKIKI ON THE BEACH** 923-0711
 •**Daily**- Daily Cultural Program, front lobby. 11am.
- OUTRIGGER REEF ON THE BEACH** 923-3111
 •**Daily**- Cultural programs at Kani Ka Pila Hale. 9am.
- SHERATON PRINCESS KAIULANI** 922-5811
 •**Daily**-Live Hawaiian music & halau at the lounge from 6-8:30pm, then poolside from 8:30-10:30pm.
 •**Th**-Princess Kaiulani historical tour at 9:30am.
- THE ROYAL HAWAIIAN** 923-7311
 •**TTh**- Free guided resort tour at 1pm.
- TURTLE BAY RESORT** 293-6000
 •**TThFri** - Shell Hula Lessons, Lobby at 10am
 •**TThFri** - Ukulele Lessons, Lobby at 9am
 •**Fri**- Music & Hula. Lobby Lounge 6:30-8:30pm.
- WAIKIKI BEACH MARRIOTT RESORT** 922-6611
 •**Daily**-Hawaiian entertainment in The Moana Terrace Bar. 6:30-9:30pm.
 •**Fri**-Local crafters "Aloha Friday Fair" Lobby 9am-2pm

MUSEUMS

- HAWAII STATE ART MUSEUM** 586-0900
 •**TWThFSat** - Inaugural exhibition "Enriched by Diversity: The Art of Hawai'i." Free. Tuesday-Saturday, 10 a.m. to 4 p.m. Located in the Capital District.
 •**Tues**- A one-hour guided tour offers a unique insight in the history, art, architecture and restoration of the Hawai'i Theatre with trained docents & a mini-concert on the 1922 Robert Morton Theatre Organ. 11 a.m. Admission: \$10.
- HONOLULU MUSEUM OF ART** 532-8726
 •**MWF**- Japanese Language Tours. Private tours also available. 1pm. Regular admission.
- HONOLULU FIRE MUSEUM** 723-7167
 •**3rdSat**- Free one-hour guided tours through various exhibits with a firefighter recounting HFDs history the 3rd Saturday: 9am - 2pm. Reservations required. 620 South Street. honolulu.gov/hfd/communityrelations
- IOLANI PALACE** 522-0832
 •**Mon-Sat**-45 minutes docent-lead or self-guided audio tours available in English or Japanese. Japanese-led tour is available only at 11:30 a.m. All tours include re-tour video and entrance into the Palace Galleries. Adults: \$14.75-\$21.75 / Keiki (5-12): \$6. 9am-5pm
 •**Sat**-Hawaiian Quilt Classes. Old Archives 9:30a-12p.
- LUCORAL MUSEUM** 922-5381
 •**TTh**- Learn how to plan your jewelry project and more in this beaded jewelry workshop \$10. 2-4pm
- HAWAIIAN MISSION HOUSES** 447-3910
 •**Tue-Sat**-Learn about the story of cultural change in 19th-century Hawai'i. Docents lead tours through the oldest existing frame house in the Islands, Print Shop, and the Chamberlain House. missionhouses.org
- PACIFIC AVIATION MUSEUM** 441-1000
 •**Daily**-Vintage aircraft in battlefield hangars at Pearl Harbor. Combat flight simulators. Aviator's Tour takes you through the new Restoration Hangar. Restaurant, Museum Store. Shuttle & Tickets at USS Arizona Memorial Visitor Center or at PacificAviationMuseum.org.
- THE SPALDING HOUSE** 526-1322
 •**Daily**-Docent-led tours given daily. 1:30pm. Garden tours or Japanese language tours are by appointment.
- NAVAL AIR MUSEUM BARBERS POINT** 682-3982
 •**Mon-Fri**- A unique museum experience about aviation history in Hawaii. All aircraft are open to climb in, on and around. Tours: 8am - 4:30pm. \$7 / \$5 children under 18. Kalaeloa Airport. Reservations req'd. Sat/Sun by appt only. www.nampb.org.

SHOPPING CENTERS

- ALA MOANA CENTERSTAGE** 955-9517
 •**Mon-Sat** - Ala Moana Hula Show. *Centerstage* 1-1:20pm
 •**MWF**- Hawaiian music *Mauka Wing*, Lvl 2 2:30-3:30pm
 •**Sun** - Keiki Hula Show. *Centerstage* 1-1:20pm
- INTERNATIONAL MARKET PLACE** 921-0536
 •**Daily** Ceremonial lighting of Lamaku Torch Tower just after sundown followed by a hula show. *Queen's Court*.
 •**Every Other Sun** Free Yoga from Lululemon. 10-11am. *Queen's Court*.
- KINGS VILLAGE** www.kings-village.com 237-6344
 •**MW** Famer's Market offering fresh produce, baked goods and local food items from 4-9pm.
 •**Daily** King's Guard Museum features a variety of collectibles and memorabilia. 10a-10:30p. FREE.
- ROYAL HAWAIIAN CENTER** 922-2299
 • **M**- Keiki Hula lessons 3:30pm, *Royal Grove*
 • **MWF**- Learn Lomilomi 11am-12pm, Bldg. B, 3rd floor
 • **MTF**-Hula 10am (4pm on Wednesdays), *Royal Grove*
 • **TThSat**- Rock-a-Hula Pre-Show 7pm, *Royal Grove*
 • **TWTh**- Lauhala Weaving 1pm, Bldg B., 3rd floor
 • **TThF**- Ukelele 12pm, *Helumoa Hale*
 • **TWThF**- Live Hawaiian music 6-7pm, *Royal Grove*
 • **Sat**- Hula Kahiko 6-6:30pm, *Royal Grove*
 • **Daily**- Heritage Room/Cultural Videos *Helumoa Hale*
- WAIKIKI BEACH WALK** www.waikikibeachwalk.com
 •**Tuesdays** - Ku Ha'aheo featuring Hawaiian song and dance on the Plaza stage. 4:30-6pm
 •**Wednesdays** - Yoga Classes 4-4:45pm. Free.Plaza Stage

ATTRACTIONS

- KALAKAUA AVENUE** 527-5666
 •**Fri** - Strolling Hula from 8-10:00pm.
- KAPI'OLANI BANDSTAND** 527-5666
 •**Fri**-Hawai'i's finest musicians perform. 5:30-6:30pm
 •**Sun**-Royal Hawaiian Band performs 2-3:15pm.
- KUHIO BEACH HULA SHOW** 843-8002
 •**TThSat**- Free hula show. 6:30 - 7:30pm hula mound.
- TAMARIND PARK - DOWNTOWN** 527-5666
 •**Fri**- Mayor's Aloha Friday Music from 12-1pm
- WAIKIKI TOWN CENTER** 922-2724
 •**Mon-Sat**-The songs and dances of Hawai'i, New Zealand, & Tahiti. Free shows begin at 7pm.

EVENTS SUBJECT TO CHANGE ... PLEASE CALL TO CONFIRM PRIOR TO ATTENDING

PAPARAZZI

Sinatra (no, not that one) opens Stussy



David Sinatra, Stussy President & CEO, U. S. Chapter Store, owner Brockton Kodama and his father James Kodama, owner of Island Snow at the official opening of the Stussy Hawaii store at Royal Hawaiian Center.

Brody Dolyniuk rocked the Concert Hall



The Hawai'i Symphony Orchestra brought in Windborne Music for a weekend of rock symphonies. Lead singer Brody Dolyniuk performed the music of Journey and Led Zepplin as arranged by founder and conductor, Brent Havens.

International Market Place new bus depot



The International Market Place team was on hand to bless their new bus deppot. From L-R, Thai Phan, Kyle Bigly, Jeff Staheli, Uelani Kodep, Michael Fenley, Breana Grosz, Marietta Bustamante, Beverly Retiquiano, Jillian Parel.

conciierge card

May 31, 2018

- **Bill's Sydney Waikiki** - 20% discount off food and beverage (not applicable on happy hour or other offers). Must show hotel ID to receive discount. 280 Beach Walk. 922-1500
- Dole Plantation** - 1 FREE Adult Admission To The Maze With Purchase of 1 Adult Admission. 621-8408
- Giovanni Pastrami** - 15% Off Full Bar, Dine-in or Take-Out at anytime with ID. 227 Lewers St. 923-2100.
- Hard Rock Café** - 15% off food, beverage (non-alcoholic), or merchandise. Hotel ID required. 280 Beachwalk Ave. 955-7383.
- Hawai'i Prince Golf Club** - \$5 Off Standard Kamaaina Green Fees. Tee Times: 944-4567
- Hilo Hattie** - 25% on Hilo Hattie labeled garments, 15% off other fashions/gifts and 10% off Hilo Hattie labeled foods. Not valid on sale item. Ala Moana Center. Ph 535-6500.
- Hy's Steakhouse** - 25% VIP Discount Off Food And Beverage (up to 2 persons) 2440 Kuhio Ave. 922-5555
- Hyatt Regency Waikiki** - 15% discount with the presentation of a concierge business card at SHOR, Japengo and SWIM. 2424 Kalakaua Ave. 923-1234.
- Iolani Palace** - Free Admission. Regular rate \$21.75. 364 S. King Street, Reservations & Hotel ID required. 522-0832.
- IHOP** - Receive 20% on entire bill. Must show valid hotel ID. Not valid with any other offer or discount. Valid only at Aqua Palms, 1850 Ala Moana Blvd., 949-4467 and OHANA Waikiki Mallia by Outrigger®, 2211 Kuhio Ave., 921-2400.
- Il Lupino** - 15% discount off food and beverage (not applicable on liquor or specials). Must show hotel ID or business card to receive discount. Royal Hawaiian Center. 922-3400

- Kaiva** - 20% off food & beverage between 5 & 7 p.m. 924-1555
- Hawaiian Mission Houses** - Free tour with hotel ID. 553 S. King Street. 447-3910
- Noi Thai** - 20% discount off food and beverage (not applicable on liquor, happy hour or specials). Must show hotel ID to receive discount. Royal Hawaiian Center, Bldg. C. Level 3. 664-4039
- Pacific International Skydiving Center** - 50% Discount on Jump, 68-760 Farrington Hwy, 637-7472.
- P.F. Chang's Waikiki** - Receive 20% on all appetizers, entrees, desserts and beverages 11 am - 5 pm daily (not valid for Pau Hana menu) Royal Hawaiian Center. Ph: 628-6760, 637-7472
- **Romano's Macaroni Grill** - 10% Off Food for up to 2 guests. (Not Valid for Happy Hour Menu). Ala Moana Center, 1450 Ala Moana Blvd. 356-8300.
- **Ruth's Chris Steak House** - 10% Off Food for up to 2 guests. (Not Valid for Happy Hour & Prime Time menus). Restaurant Row, 599-3860. Waikiki Beach Walk, 440-7910.
- Honolulu Museum of Art Spalding House.** - FREE Admission for you and one guest with hotel ID. 526-1322.
- The Original Glider Rides** - Come experience the joy of soaring for yourself. Concierge / GSA may receive a complimentary scenic ride. Request the "GSA flight special" when booking your reservation. Hotel ID required. Dillingham Airfield. 637-0207
- Tiki's Grill & Bar** - FREE order of ANY appetizer with any purchase! One per table. OahuconPOKE. ASTON Waikiki Beach. 923-8454
- Willoughby's Restaurant** - 15% off all food items. Ohana Honolulu Airport Hotel. 3401 N. Nimitz Hwy. 836-0661.

NEW OFFER

HELP us update this card. If you know of an offer not being honored let us know. As management changes, sometimes offers can get lost.

You will be required to show Hotel ID or business card to claim offer. Do not cut this card out of the book. One special per person per business. Offers valid on regular-priced merchandise only. Discounts are available to Guest Service Professionals ONLY. Not valid with other promotions or special offers. A minimum 18% gratuity on original order required for all special food offers.

Conciierge of the Month



NAME: James Tabusa
HOTEL: Hyatt Regency Waikiki
TITLE: Regency Club Conciierge

Q. How did you get your start in the industry?
 A. I started with Expedia Local Expert as a Conciierge. Josh Conlin brought me in. It was an eye opening experience and a lot of fun.

Q. When did you start working at the Hyatt?
 A. I started at the Hyatt Regency Waikiki in 2016.

Q. How was the transition from Expedia to Regency Club Conciierge? Are the job goals different?

A. It was an easy transition with a common goal. The goal in The Regency Club is to make our guests feel comfortable by listening and talking to each guest to try create a positive personal connection. Many of the guests have been coming here for 20 to 30 years and I want to ensure that they look forward to returning

Q. What are your daily duties in the Regency Club?

A. Mornings start with serving breakfast, in addition to taking care of our guest requests and anything else they may need. Throughout the day, I cheerfully answer guests questions about the islands, its activities and restaurants, make reservations and suggestions for activities, ensure all special requests are handled and sometimes even provide check-in services. Evenings start with appetizers and cocktails and many of our guests finish off the evening with dessert by the outdoor fire pit.

Q. What is your biggest challenge at the desk?

A. Finding and making the time to make a connection with our guests and taking care of whatever else they may need.

Q. What do you like most about this industry?

A. The people. For most of the guests, this is their first time here in the islands. I am happy to be a contributing factor in making their vacation one with special memories.

Q. How do you deal with those "difficult" guests?

A. At my point in life, it's not a problem. I start by listening and show a genuine concern for their situation. I really do care and try to find a solution or pass it on to the people that can make the right decision.

Q. Favorite perk of the job?

A. Having access to hotel stays around the world.

Q. What's your favorite off-property restaurant?

A. Limon in Kapolei, maybe the best chicken I have ever eaten. I really enjoy the view and food at Hula Grill right across the street. The Hyatt launched a delicious dinner buffet which might be the best value featuring King Crab Legs, Sushi and Prime Rib. (Sorry, but it's that good, so I have to mention it!) Maharani's, because I really enjoy great Indian food. Olive Tree in Kahala for excellent Greek food and their Tuesday special (Saffron Chicken) is the bomb. B Patisserie in IMP for the best Croissants and Kouign Amanns.

Q. What do you like to do most when not working?

A. I am a dawn patrol surfer in Waikiki, take ceramics and Tai Chi classes all of which keeps me centered.

Q. Where do you see yourself in 5 years?

A. Right here in Waikiki surfing every morning as I do now and working at the Hyatt.

BAREFOOT BEACH CAFE Waikiki

Open Daily 7am – 8:30pm (last call)
On the Beach at the Diamond Head End of Waikiki

Info Line | 808.924.2233 (CAFÉ)
 2699 Kalakaua Avenue,
 Honolulu, Hawaii 96815

Catering + Events | 808.699.8830
 Events@BarefootBeachCafe.com

@BarefootBeachCafe

The Oahu Concierge is printed monthly and direct mailed FREE to all Oahu Concierge, Hospitality & Activity Professionals.

Subscriptions available to non-industry at \$25 per year.

C O N T A C T

Davis Media

Ph: 596-4422

www.oahuconciierge.com

Twitter & Instagram: @OahuConciierge

Facebook: www.facebook.com/OahuConciierge

ADDRESS & NAME CHANGES / ADDITIONS

We do not take changes via telephone. All changes to mailing list must be submitted in writing by the 16th of the month to make the next issue, email is preferred.

S T A F F

PUBLISHER & EDITOR **Pam Davis**
publisher@oahuconciierge.com

CONTRIBUTING EDITORS
Lance Rae, Nadine Kam

DESIGN
Coreiya Design

The Oahu Concierge
4348 Waialae Avenue, #185
Honolulu, Hawaii 96816

APPETITO
CRAFT PIZZA & WINE BAR

for new.
adventure.
excitement.
Italian cuisine.

Come join us at Appetito!

OHANA
WAIKIKI EAST BY OUTRIGGER.

150 Kaiulani Ave. For reservation 808.922.1150 Instagram/Facebook Appetitowaikiki www.appetitowaikiki.com