

Concierge

KEEPING THE HOSPITALITY INDUSTRY INFORMED SINCE 1998

Turning Ten Hawaii Book & Music Festival



by tables and chairs, all in the shade of the Honolulu Hale lawn.

Hawaii's fine local publishers and book-sellers offer great prices, brand new book and music releases and tables where authors are ready to sign their newest book, at both the Barnes & Noble tent and the Festival's Publishers Village.

The two days offer the very best way to clear out space on the bookshelf, or trade in what came in a suitcase for new choices in vacation reading. The Bank of Hawaii Book Swap makes it easy. Just turn in up to five gently used books and pick out new ones at the Book Swap tent. Hundreds of titles for adults and children will be available, and any books that are collected and remaining at the end of the festival will be donated to Hawaii Literacy – it's the ultimate recycling project for readers of all ages.

Among the many national authors scheduled to present at the festival are Barry Lopez, Michael Gruber, Kathryn Ma, Jane Porter, Douglas Corleone, Sam Horn, Austin Aslan, Don Wallace, Kate Elliott, Jonathan Moore, Constance Hale and Jill Marie Landis.

Prominent local authors/presenters include, Michael W. Perry and Larry Price, Brenda Kwon, Richard Tillotson, Susan Scott, Jonathan Okamura, Jonathan Osorio, Lyla Berg, Frank Stewart, Ikaika Hussey, Dave Shoji and Ann Miller.

Ongoing stage performances include music artists such as Kupaoa, Kapala, Kimo Hussey, Brother Noland, Kenneth Makuakane's Singer-Songwriter competition, the Carmen Haugen Quartet, and the Royal Hawaiian Band. A panel of judges critiques the presentations, the audience reaps the benefit of their knowledge. Storytellers ready to charm or challenge include Jeff Gere and Moses Goods.

Be sure to grab one of the foldout programs, located free at tables around the event. With as many as six stages, it is good to lay out a plan for the day. The festival volunteers usually suggest making note of who you want to see on the Main Stage and arrive early for chair or grass seating. This year the main stage will feature presentations by award-winning hula halau of kumu Mapuana De Silva, Blaine Kamalani Kia, Michael Pili Pang, Tracie & Keawe Lopes and Lopes and Maile Beamer Loo, among others.

More mainstage entertainment includes performances by Na Hoku Hanohano Award

Continues on page 8.

Lantern Floating Ceremony



It's time once again for the Annual Lantern Floating Hawai'i Ceremony. This event, first launched in 1999, has grown steadily ever since and close to 50,000 visitors and residents are expected to crowd the shoreline of Ala Moana Beach Park this Memorial Day to watch thousands of candle-lit lanterns float into the sunset.

Everyone is welcome at this special ceremony led by Her Holiness Shinso Ito of Shinnyo-en Buddhist Order, remember those that have gone before us.

The highly traditional ceremony begins with the blowing of the conch shell, followed by taiko drums and Hawaiian chants before the grand entrance of the Parent lanterns. These are six large lanterns that carry prayers for all spirits on behalf of everyone. Prayers are offered for all who are being remembered. The lanterns are then floated with the hope of encouraging peace and harmony. More traditions are presented until Her Holiness rings the bell. The crystal clear sound of the bell is to focus everyone's thoughts and prayers and signifies it is time to float the lanterns. At that time

Continues on page 16.

TABLE OF CONTENTS

Yada Yada Yada	2
World Fireknife Festival	2
Newsflash	3
Arts with Aloha	4
Aunty Lynn's Adventures	6
Chef's Corner: REAL's Michael Longworth	9
E Pili Kakou	10-13
Calendar	14-15
SPAM Jam	17
That's Entertainment	18
Concierge of the Month: Marivic Aldaya	19

WOLF GANG'S
STEAKHOUSE
BY VOLVOVA & PARTNER

LUNCH • HAPPY HOUR • DINNER • WEEKEND BRUNCH • PRIVATE ROOMS

UNMISTEAKABLY NEW YORK

Royal Hawaiian Center, Bldg C, Level 3
wolfgangssteakhouse.net • opentable.com

808.922.3600





MAHALO for the month

I wanted to extend a big mahalo to Dave Mark at Island Air for choosing us as a partner to help promote their first hospitality and service industry professionals month where they offered every member of the industry 20% off all fares during the month of April. Thanks to him, we were given a pair of round trip tickets to give away each week in April, and all you guys had to do to win was answer a trivia question on social media. Hilton Grand Vacations Club Nikki Nakamura was our first big winner, and there's still three more pairs of tickets to go before this is all over. I hope you all took advantage of their generosity, and maybe even learned something in the process! It's nice to see a local airline get involved with the industry again. With your continued participation, hopefully there will be other promotions similar to this in the future. Mahalo to Island Air for recognizing what a great job you guys do and rewarding you for your efforts.

With this issue, the summer festival season has started. Whether or not summer has 'officially' started or not, as far as I'm concerned, it's here. Summer to me means festival after festival, gorgeous weather (a given), and paddling season is underway. All of which are happening now and gaining speed quickly, and it's still only April as I write this, so get ready for the influx of festivals, parades and endless outdoor activities, so everyone can be lucky they live Hawaii, even if its only for the few days they are visiting our Islands.

A few housekeeping notes. There's been a lot of movement in the industry lately. Please try to keep me informed of when people leave or names change at your property. We want to make sure each person that wants their own copy who works in the front of the house gets one, and if they don't, it's ok! We're not offended! Let me know and perhaps we can save a bit of paper and postage. A simple email of who has left and who has come on board is sufficient. Please be sure to let me know which department they work in and I'll get it changed as soon as I can.

Secondly, I can tell we're going to run short of concierge of the month nominations before the end of the year. Keep in mind even though I still have a few dozen nominations sitting here, there can only be one winner per hotel/company per year, so a lot of the ones I have here are stuck waiting until next year. Know someone fabulous that deserves some recognition for the job that they do? Send me an email and let me know who they are, why they deserve it and how to contact them and we'll see if they don't end up on page 19 as many illustrious others have before them. Unfortunately someone can only be recognized once.. so if they've been there before, as fabulous as they still are... they cannot go up again.

Hope everyone has a great month and I'll see you out there. Aloha!



Craig Anderson

We would like to wish **Craig Anderson** a fond farewell. He was always a happy, smiling face to run into at the Westin Moana Surf rider, but recently he accepted the position of vice president of operations at the Mauna Kea Resort overseeing the Mauna Kea Beach Hotel and Hapuna Beach Prince Hotel, as well as its golf courses. Congrats and best of luck! • Moving from the Big Island to Oahu, Executive Chef **Charles Charbonneau** has left the Hilton Waikoloa to take over the helm at the *Hilton Hawaiian Village*. Chef

brings more than 35 years of culinary experience and excellence to the resort. • The *International Market Place*, currently under construction and future home to the Islands first Saks Fifth Avenue has hired **Michael Fenley** as their new general manager. Fenley has more than 30 years of experience in shopping center management and will oversee the development of the International Market Place, scheduled to open on August 16, 2106. • **Janey Bullock**, formerly a sales manager at Atlantis Submarines has been hired as a sales and event manager at *Morton's The Steakhouse*. • **Jeff Perkins** recently left the Turtle Bay Resort to become hotel manager at *The Kahala Hotel & Resort*.

Hot Stuff

It's a staple of every great lu'au or evening of Polynesian entertainment, the spinning, twirling fire dancers who leap and twist and lick the fiery flames right off of their whirling batons. For many visitors, this is one of the most exciting parts of the evening and each May we get a chance to see some of the world's most talented Samoan fireknife dancers live in Laie. For one explosive weekend, the Polynesian Cultural Center's main theater will be filled with flames, drumming, and rhythmic chant as dancers from around the island and the world don their lavalava as the competition literally heats up.



Photo courtesy PCC

The World Fireknife Championships are part of the We Are Samoa Festival, Hawaii's largest Samoan event showcases their cultural traditions, and the Championships are definitely a highlight.

It wasn't until 1946 when a young Samoan man in San Francisco took inspiration from Hindu fire eaters and flaming batons by setting his nifo oti on fire. His bold move heightened both the danger and difficulty level of the traditional dance, making the whole spectacle even more exciting to watch. Modern fire dancers use a cotton towel wired to the knife blade that is soaked in gasoline or naphtha (a clear, flammable liquid) making the danger very real and very hot. In case they make it look too easy, you should know that even after years of practice, the dancers still get burned and occasionally cut by the knife end. Though it's hard to tell as they vigorously spin and dance, the heavy knife is hard to wield and the raw fire is very hot in their mouths and on their feet as they casually balance it on their tough soles. Over decades of friendly and serious competition, the fire knife dance has evolved and better dancers continue to raise the bar for new generations. The speed of twirling and variety of movements are constantly increasing making competition even tougher as judges look for a combination of traditional movements used in battle along with speed, tumbling, and flawlessness.

The 23rd Annual World Fireknife Competition will bring us three days of competition (May 7-9)

culminating with the final three dancers performing in hopes of claiming the coveted title of World Fireknife Champion.

In addition to the main competition, the youngsters have their own category of competition that starts on Thursday (May 7) where

warriors as young as six can try their hand at this challenging art. Starting at 7 p.m. at Hale Aloha the preliminary rounds for the juniors aged 6-11 and the intermediate competitors aged 12-17 are followed by the senior division. On Friday May 8th, the Junior/Intermediate Finals kick off at 7 p.m. followed by the semi-finals of the Senior Division. The final three competitors will face off during the intermission of Ha: Breath of Life on Saturday, May 9th with the winner announced at the conclusion of the evening show in a lavish award ceremony.

In conjunction with the fireknife competitions, the annual Samoan Cultural High School Arts Festival brings local high school students to PCC to demonstrate Samoan cultural traditions such as coconut husking, basket weaving, fire making, and more. The festival will take place in the Pacific Theater on Saturday from 9 a.m. to 2 p.m. before the evening's events.

These events are a unique cultural tradition that is fun and fascinating for the whole family and plenty of kama'aina show up in support of friends and family as they play with fire. Visitors to the island will love experiencing this unique festival and competition so make sure you pass along the information and send them up north. Admission to the Pacific Theater and Samoan Arts Festival is \$10 for adults and \$6 for keiki ages five to eleven. Full day tickets for PCC will also include admission to the first two nights of competition. For the final night of competition, guests must purchase a ticket to Ha: Breath of Life (\$19.95 for kama'aina, \$49.95 for visitors). For more information or to make reservations call the Polynesian Cultural Center at 293-3333 or visit www.polynesia.com.

~ Pam

EXTRA *Newsflash* EXTRA

RUN CONCIERGE HAWAII

Welcome Run Concierge Hawaii. Starting May 16, guest can drop in for a curated running tour of Waikiki every Saturday at the Duke Kahanamoku statue at 8 a.m. Led by 8x Ironman Rachel Ross, with 22 marathons under her belt, including three in Boston and a PR of 2:58. She will lead visitors and locals on a 3-4 miles through Waikiki and up Diamond Head while giving running tips along the way. All levels welcome. runconciiergehawaii.com

WATER ZEN

Waikiki Beach Activities at Hilton Hawaiian Village Duke's Lagoon, introduces meditation with Stand-Up Paddleboarding Yoga, taught by yoga master Yumi Hi, tandem surfing water woman and multi-lingual certified RTY 200 Yoga Alliance teacher and certified lifeguard. Group classes, Tues., Thurs, Sat., 9 a.m. - 10:30 a.m. private classes available. waikikibeachactivities.com.

MAILANI TOWER OPENS

The Royal Hawaiian has rebranded their Beach Tower as the exclusive Mailani Tower. The 179-room luxury tower gives guests their own check-in area, an exclusive bi-lingual concierge desk, as well as access to the new poolside Mailani Lounge.

C.A.H. FUNDRAISER

The Concierge Association of Hawaii (CAH) will launch a special online fundraiser on May 8th to support their educational fund for the professional development of hotel concierge. CAH will auction off hotel accommodations, spa treatments, dining certificates and more via CharityBids.org through June 5th. Anyone is welcome to bid, so even tourists can take advantage of some of these deals while they're in town. Find a complete list of items to bid on at conciergehi.charitybids.com.

LITTLE MONSTERS REJOICE

Legends in Concert Rock-A-Hula has changed their cast up, as a new Michael Jackson and Lady Gaga tribute artist join the show. J Lucas steps into Michael Jackson's famous red leather jacket as the King of Pop while Tierney Allen on Gaga. Allen first stumbled into this by being mistaken for Ldy Gaga several years ago, and was recently named The Best Lady Gaga Look-Alike in Las Vegas. Call 629-SHOW or visit RockAHulaHawaii.com.

ALOHA FOOD TOURS

Visitors interested in our local food culture should check out this casual walking culinary tour of Ala Moana. Guests get to see "where the locals eat," as your tour guide Ryan walks you from YogurStory to Home Bar & Grill then back over to Ala Moana with plenty of interesting insight and tasty treats along the way. He even took me to a place I had never been too before. Tuesdays, Thursday and Saturdays. 1:30 p.m. alohafoodtours.com

MU'UMU'U HEAVEN

A local favorite, which recently closed its doors in their longtime Kailua location, has opened a pop-up beach hut made out of 90% recyclable materials in the center of T Galleria Hawaii by DFS in Waikiki. You won't need a passport or an airline ticket to shop Mu'umu'u Heaven's signature vintage aloha brand daily from 11 a.m. - 10:30 p.m., but you do need to act quickly, because it will only be around until the end of June.

BRUE BAR

This hip coffee bar has partnered up with the Wedding Café in Ward Warehouse and has opened up in their new location between Novel-T World and Sunglass Hut. Now coffee drinkers can browse cutesy wedding gifts while sipping their loose tea leaf teas and freshly brewed drinks as brides to be work on their wedding details while noshing on pastries in this trendy space. wardvillages.com.

WHOOPIE

Looks like some of you may have gotten a magazine with the pages off last month. Seems our printers collator got off track for a bit, but fortunately they got it fixed before too many went out. Please accept our apologies if you got that one.

CANDY BAR

Not sure how I forgot this, but there's a brand new store dedicated to candy, including old favorites, traditional and local sweets on Lewers at Waikiki Beach Walk. Check out the fun and delicious store with their cute packaging perfect for omiyage.

HAWAII FOOD & WINE FEST

It's back and better than ever! Tickets for the 5th annual Hawaii Food & Wine Festival 2015 are on sale now and will undoubtedly sell out long before the event. This year the event will encompass just over two weeks and three islands. The fest kicks off on the Big Island on August 29th, moves to Maui September 4 - 6th and then onto Oahu September 10 -13th. Check out the complete list of events and chefs at hawaiifoodandwinefestival.com.

COURTYARD BRUNCH

Ward Village launched Courtyard Brunch last month. This monthly event showcases local chefs serving delicious food bites, and a few farmers market vendors in a chic casual setting under a huge tent at the IBM Building. Free to get in, food tickets are \$7 per and \$5 per drink .. or... pre-buy tickets online and you'll get 3 food tickets and one drink ticket for only \$20. wardvillageshops.com.

SUPER SPRING SALE
ONE DAY TOURS
ON MAUI & KAUAI

SAVINGS OF
\$30
PER COUPLE
FOR TRAVEL ON
ISLAND
4/1/15-5/31/15

HANA ADVENTURE
WAIMEA CANYON
WAILUA RIVER
HALEAKALA

Gray Line
POLYNESIAN
ADVENTURE TOURS

BOOK NOW, SPACE IS LIMITED!
808-212-9758
polyad.com

arts with aloha



This column usually focuses on the arts and cultural scene beyond the beach but this month with Mele Mei events and activities being so prevalent, I thought it might be useful to see what **ROYAL HAWAIIAN CENTER** has instore during the month long celebration of Hawaiian music that our visitors can catch as they walk on by, and give a little history of the aina there.

This month the Royal Hawaiian Center will be expanding its mission to promote excellence in Hawaiian performing and visual arts with a month long series of events called *"Discover Helumoa."* There will be expanded complimentary live entertainment by award winning artists and demonstrations by expert kumu (teachers) in such arts as lei making, quilting, hula, 'ukulele playing and more.

"In the spirit of Princess Pauahi's commitment to Hawaiian heritage and education," says Aaron Sala, Director of Cultural Affairs, "Royal Hawaiian Center at Helumoa is proud to serve as a gathering place for kama'aina (locals) and malihini (visitors) and as a hub for Hawaiian culture through entertainment, cultural enrichment classes and festive community events such as this."

Did you know that land that is now home to Royal Hawaiian Center was once called Helumoa? In the 15th century, O'ahu ruler Ma'ililukukahi relocated his court from central O'ahu to Waikiki. The abundance of fresh water made the area ideal for agriculture. Ma'ililukukahi established Waikiki as the royal seat of government and brought about decades of peace and prosperity.

Six generations later, his descendent, Kakuhihewa, encountered the supernatural rooster Ka'auhelemao who flew down to Waikiki from Palolo Valley to challenge him. Furiously scratching into the earth, the impressive rooster then vanished. Kakuhihewa took this as an omen and planted niu or coconuts at that very spot. Helumoa, meaning "chicken scratch," was the name he bestowed on that niu planting that would multiply into a grove of over 10,000 trees.

Following his conquest of O'ahu in 1795, King Kamehameha I established a home in the Helumoa coconut grove names Kuihelani, shaded by stately coconut trees in an area named Pua'ali'ilii. In the 1880s, Helumoa was inherited by Kamehameha's great-granddaughter, Princess Bernice Pauahi Bishop. The fascinating history of Helumoa is part of the Center's experience at Helumoa Hale Guest Services and Heritage Room in The Royal Grove.

This is just one of the many things your guests will learn in The Royal Grove this month during *"Discover Helumoa."* which kicks off on Friday, May 1st. At the time of this writing, Grammy Award-winner and Slack Key Master Cyril Pahinui has been confirmed for the May 9th performance and Na Hoku Hanohano Award-winner Weldon Kekauoha has been confirmed for the May 16th performance. I have been told there will be several more high profile musicians and halau visiting The Royal Grove this month, so please check the calendar of events page at RoyalHawaiianCenter.com or their Facebook page for

up to date listings of performers. All performances are free and seating on the grassy area of The Royal Grove is on a first come, first serve basis.

On Saturday, May 16th from 11 a.m. to 2 p.m. there will be poi pounding demonstrations in The Royal Grove. Your guests will not only get to see how poi is made but they can also sample it and get some great pictures of the men pounding away at their craft. And then on Saturday, May 23rd the Institute for Hawaiian Music (IHM) which consists of student musicians from UH-Maui will be performing on The Royal Gove stage.

The month's activities will end on May 30th with the **HELUMOA NIGHT MARKET** from 6 p.m. to 9:30 p.m. where the entire Royal Grove will be turned into a Hawaiian arts and craft festival with local Hawaiian craftsmen selling and showcasing their products and live performances by local entertainers at 6 p.m. and 8:15 p.m.

MAMO, MAOLI ARTS MONTH, presented by the PA'I Foundation, is back with the *10th Annual Native Arts Market* at **BISHOP MUSEUM**, May 16 and 17 from 9 a.m. to 5 p.m. showcasing as many as fifty native Hawaiian artists and practitioners. On Wednesday, May 20th, the finest of Hawaiian designers will dress a cast of dozens of halau members and fashion models, all strutting the catwalk in the annual *MAMO Wearable Art Fashion Show* at the **HAWAII THEATRE**. The show features both traditional and contemporary clothing, featherwork, shell work, tattoo, weaponry, weaving, carving and more. The show starts at 7 p.m. but doors open early for the MAMO Silent Auction in the second floor lobby. Following the show, narrated by emcees Kumu Vicky Takamine and Robert Cazimero, a neighboring gallery or courtyard is shoppers paradise with a the work of a dozen or more designers. Royal Hawaiian Center will also get involved with a special wearable arts fashion show in collaboration with the PA'I Foundation in addition to a 7 p.m. during their Helumoa Night Market. For all the details check out their website at maoliartsmoonth.org.

While at the **HAWAII THEATRE** make sure to the IONA Contemporary Dance Theatre's performance of *DOMINION*, a moving original work by IONA Artistic Director Cheryl Flaharty from May 8 - 10th. Tickets \$35 - \$65. You also don't want to miss *Jack Cione's Mardi Gras Follies 2015* on May 23rd at 7 p.m. This 4th annual fundraiser for the Hawaii Ballroom Dance Association features a talented cast of 60+ in lavish Las Vegas styled costumes of feathers, bangles, and bling. Tickets \$27. If dancing's not your thing, how about a play? The hysterical play *Defending the Caveman* returns for six performances between May 27 - 31. If you haven't seen it before, this is an hilarious look at the misunderstandings between men and women that has been seen by over eight million people in forty five countries. The show will keep the audience in hysterics all night. Tickets: \$35. hawaii theatre.com or 528-0506.

There are a wide variety of family friendly events during Mele Mei for you and your guests to experience Hawaiian music, language and culture. Please take advantage of these celebrations, many of which are free, and give your guests something to share with their friends back home. ~ Lance Rae

Mahalo for your continued support!
JOIN OUR
GUEST REFERRAL PROGRAM

Our program is simple!
For every 25 guests referred,
Ruth's Chris Steak House will send you
a \$50.00 dining certificate.
Please contact Emi Espinda if you have any
questions at eespinda@direstaurants.com

OPEN DAILY FROM 5PM
HAPPY HOUR DAILY IN OUR LOUNGE | 5PM - 7PM
PRIME TIME MENU | DAILY 5PM - 6PM
WINE WEDNESDAYS | 25% OFF BOTTLES OF WINE



Restaurant Row | 808.599.3860
Waikiki Beach Walk | 808.440.7910
WWW.RUTHSCRISHAWAII.COM



**SOMETHING NEW.
SOMETHING CLASSIC.**

Open Daily 11am - 10pm
Happy Hour Daily in our lounge 3pm - 6pm & 8pm - 10pm
Vino Thursdays 25% Off Bottles of Wine

**INQUIRE ABOUT OUR
GUEST REFERRAL PROGRAM!**

Our program is simple!
For every 10 complimentary dessert cards redeemed
(WITH YOUR NAME ON THE CARD),
Romano's Macaroni Grill will send you a
\$25.00 dining certificate that may be used
at our Oahu restaurant.
Please contact Emi Espinda if you have any
questions at eespinda@direstaurants.com



Ho'olapa Terrace at Ala Moana Center
808.356.8300
WWW.MACARONIGRILL.COM

IT LOOKS LIKE OLD LAIE
IS MAKING A BIG
COMEBACK.

Hukilau
MARKETPLACE
at the POLYNESIAN CULTURAL CENTER
LAIE, HAWAII



**SUPER AMBASSADOR
PACKAGE - OUR ULTIMATE
VIP EXPERIENCE**

Adult: **\$199.⁹⁵** | Child: **\$159.⁹⁵**

Receive **GENERAL ADMISSION**,
our **ALI'I LUAU**, plus these **VIP**
amenities:

- Personal guided tour
- **"HA: BREATH OF LIFE"**
evening show with VIP Super
Ambassador-level seating
- Kukui nut lei greeting
- Souvenir DVD & more

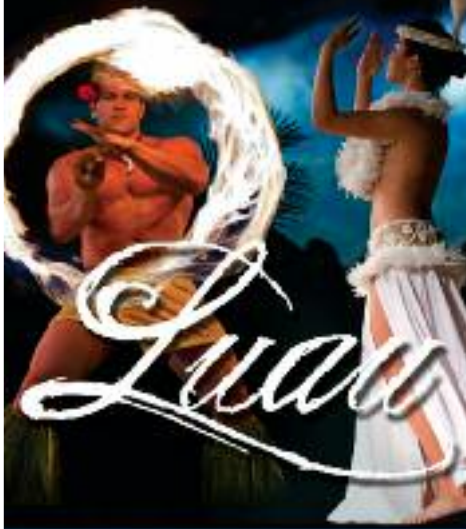
 POLYNESIAN
CULTURAL CENTER

YOUR GUESTS CAN GET A TASTE OF OLD LAIE AT OUR HUKILAU MARKETPLACE—a unique shopping, dining and entertainment experience with a nostalgic feel. And while they're at the center, have them enjoy our **Super Ambassador Package**. They'll get the ultimate VIP experience that includes our newly updated Ali'i Luau.

A new shopping & dining experience.

FREE parking. FREE wi-fi. FREE entertainment. Canoe rides. Clean restrooms.
For a full list of stores, go to HukilauMarketplace.com.

HILTON HAWAIIAN VILLAGE® PRESENTS
**WAIKIKI'S ONLY LUAU
 UNDER THE STARS**



WAIKIKI STARLIGHT LUAU

The drama and grace of Polynesia unfold with live music, drums, the captivating dances of the South Pacific and the fiery drama of four fire knife dancers. Indulge in a feast of unforgettable tropical flavors prepared by our award-winning resort chef, including Kalua Pig, Seared Island Catch, Huli Huli Chicken and Carved Pulehu Steak.

- SUNDAY - THURSDAY
 BEGINNING AT 5:30 PM •
- ENJOY ONE WELCOME MAI TAI &
 ONE SELECT BEVERAGE •
- COMPLIMENTARY VALET
 & SELF PARKING •

**808.941.LUAU
 (5828)**

www.HiltonHawaiianVillage.com/luau



HILTON HAWAIIAN VILLAGE®
 WAIKIKI BEACH RESORT
 2005 KALIA ROAD, HONOLULU • 808.949.4321



Auntie Lynn's Adventures X



MAY – I have your attention please -- he he, pardon the pun, just had to say that. I do have to say, from the look of the events calendar, there will be no quiet days or nights in our town in the near future.

MOVE IT – around the Ward Warehouse amphitheater with Kanoe Cazimero and Iwalani Walsh Tseu, plus all the kumu hula and dancers they have invited to join them for a 12-hour hula-thon. One of the aunts planning to be there mentioned that back in the day she danced a twelve-hour jitterbug marathon for the Red Cross, adding with a smile, “we didn’t have to move our hips that much!” The May 1st event is for Breast Cancer Awareness. Cazimero says if you know a hula, get up and dance.

MANOA – is more than a cool, green valley with a jungle at the top. Pacifikology, a moving and temporary pop-up showcase featuring contemporary design, art, Hawaiian vintage and contemporary fashions and accessories, will have a ten day run at Paradise Park, May 6 to 17. Colleen Kimura of Tutuvi Sinoa and Marla Momi Musik of Laukoa Creative, have gathered twenty artists for the fun. Open daily 10 a.m. to 6 p.m. Kimura is known for her stunning, hand screened fabrics from the early days of Na Mea Hawaii at Ward Warehouse and her shop, Mango Season on University Avenue. Interesting factoid, the two-story front of the building that held Mango Season and was home to Glenn Grant’s Ghost Tour company, is still there, though the building behind is gone. The wall in front has a strange, somewhat ghostly, door in the center. Anyone have any ideas what’s up?

MANY STITCHES – On Friday, May 8th, the Hawaii Quilt Guild opens their annual, ten day show at Linekona, the Honolulu Museum of Art School. At the entry of the show ten quilters will take the challenge to create quilt that presents their interpretation of Aloha. The big show will feature over seventy-five quilts of all styles and sizes, plus another seventeen quilts by the featured quilter, Shirfeir Sunada. One popular vote award-winner from the 2014 show, David Wotruba, is a returning quilter from Washington State. His 2014 entry, Hawaiian Garden, has been featured in the world’s largest quilt show in Texas, and will continue to tour the U.S. for another year. Word has gotten around about this Hawaiian Quilts, thanks in part to concierge and hotel staff in Waikiki. Several trolley loads of visitors arrive daily, all quilters and fans, looking for inspiration or possibly a new quilt to take home. Yes, some are for sale.

MAYBE – the ‘80’s music is not so square. After all, Taylor Dayne is guest artist on the final night of the 2014-15 Hawaii Pops Nightclub Series, May 9th, celebrating the music of the ‘80’s. So, May 9th is the night to catch Dayne with Matt Catingub directing, playing piano and singing with his Hawaii Pops. Just watch or get up and dance the night away. Personal favorite for this year’s Pops -- the Beatles tribute concert last fall. Rumor has it that even the orchestra is asking for another run down Abbey Road.



MELE WAHI PANA – is music and so much more, all under the stars. The Hawaiian Mission Houses will take you on a tour, via song, to Wai’anae. Only a short ride from Waikiki, the second in the summer concert series features music, hula, and story-telling by the more-famous-by-the-day Kumu ‘Olu Sam Gon and Aaron Mahi. Even on the chilly March evening of the first concert, every chair was filled. Details, missionhouses.org.

MELE ANA – is more than a name. It is the new program called Outrigger E Mele Ana, encompassing many music events and hundreds of performances at various hotel locations. Beyond the seven night a week Kani Ka Pila Grille shows, free concerts will be presented two Sundays per month, through December, at the Waikiki Beach Walk Plaza Stage. May 10 is Del Beazley, May 24, Eric Lee. The Stage is a great place for families. Concerts are from 5 to 6 p.m. No worries for the folks, kids can be up front and personal on the grass in front of the stage, with the fountain water shut down. Food and shopping options are plentiful and every palm tree is lighted like Disney Mainstreet – kept that way after a filming of Hawaii Five-0.

MUSIC OF THE NIGHT – will be played by a planetarium director. What? Yes, really. Bishop Museum’s Stars & Guitars, May 2 and 16 shows, will be serenaded by Mike Shanahan, director of visitor experience and planetarium and a highly accomplished classical guitarist. So, see the stars, hear the music and be dazzled by the ChronosII star projector, re-creating the night sky. At 9 p.m. when the last string is plucked, weather permitting, guests move to the Museum’s viewing deck above the planetarium to look for stars in the real sky. Only in Hawaii. See you there!



ALERT!

May 12-14

Box Jellyfish Window

Teaching Hawaii about jellyfish and other ocean creatures for over a century

brought to you by
 The Waikiki Aquarium
 open daily from 9 am - 4:30 pm





WARD VILLAGE

RETAIL • ENTERTAINMENT • DINING

HOME TO OVER 135 UNIQUE SPECIALTY SHOPS,
RESTAURANTS AND NATIONAL RETAILERS.

Nordstrom Rack, T.J.Maxx, Pier 1 Imports, Sports Authority, Ross,
Bed Bath & Beyond, Buca di Beppo and more.

WARDVILLAGESHOPS.COM



#WeAreWard @WVSHOPS

Hawaii Books & Music

Continued from page 1.

winning music artists, including Kupaoa, Kapala, Kimo Hussey, Herb Ohta Jr., Derick Sebastian and Brother Noland, along with contestants in Kenneth Makuakane's singer-songwriter competition.

The Hawaii Book & Music Festival has been able to broaden its Hawaiian Alana, "Awakening" programming thanks in large part to a 'Ahahui Grant from the Office of Hawaiian Affairs, offering a rare opportunity for the community and Hawaii's visitors to listen to and ask questions of the leaders of Hawaii's cultural community.

The Nature Conservancy of Hawaii scientist and kumu hula Sam Ohu Gon explains the ecology of pre-contact Oahu. With a bit of time for Q & A, Gon might also talk a bit about his recent stint on the World Wide Voyage of the Hokule'a.

Other featured presenters at the Alana Pavilion include Melody K. MacKenzie, Susan K. Serrano & D. Kaua'ala Sproat, with their definitive encyclopedia of current native Hawaiian law, *Native Hawaiian Law: A Treatise*.

A panel of authors will discuss their three new books on native Hawaiian sense of place: Leimomi Kiele, Akana Gonzales and John R.K. Clark, *Hānau ka Ua: Hawaiian Rain Names*; Katrina-Ann R. Kapa'anaokalaokela, *North Shore Place Names*; and Kaiponohea Hale, *Ancestral Places: Understanding Kanaka Geographies*. Wayne Moniz will present his novel, *Pukoko*, about Hawaiians in the American Civil War. Ikaika Hussey, Ed Greevy, and Kapua Sproat presenting *A Nation Rising*, their anthology of the most significant Hawaiian activist battles of the past 50 years

Four Hawaiian historians discuss how the understanding of Hawaiian history has been transformed: Jonathan K. K. Osorio, Umi Perkins, Davianna McGregor and Ronald Williams

Panelists Puakea Nogelmeier, Kamana Beamer, Noelani Arista and Tiffany Ing discuss the impact of the Hawaiian-language newspapers on new scholarship, and how that is changing perceptions of history and Hawaiian identity.

The fans of popular fiction, adventure, mystery and love should be very happy with the following list of key authors and presenters: Jay Asher, author of *New York Times* and international bestseller, *Thirteen Reasons Why*, a teen favorite that inspires anti-bullying discussions in schools across America. This school year he is hitting road to talk to teens about this important issue – making a stop in each of the 50 states, including Hawaii.

Kathryn Ma is the award-winning author of the novel *The Year She Left Us*, named a *New York Times* Editor's Choice, and selected by NPR as a Best Book of 2014.

Douglas Corleone is the author of contemporary crime novels. A former New York City criminal defense attorney, Corleone now lives in the Hawaiian Islands where he writes full time. His *Last Lawyer Standing* is on the shelves now. The good news for Robert Ludlum fans is that Corleone has been selected to continue the Robert Ludlum series with the first book due out in June, 2015.

Romance story lovers will be happy to hear Jane Porter, award winning author of romance fiction.



She wrote *Take Me, Cowboy* and *Flirting With Forty*, set in Seattle and Hawaii. Barry Lopez, author of *Arctic Dreams*, *About This Life*, and *Of Wolves and Men*.

Sam Horn, well known in Hawaii and across the world, is called the Intrigue Expert. A world-renowned author, keynote speaker and communications strategist who has coached the world's top entrepreneurs and executives. She will be speaking on the topic of Got Your Attention? How to Create Intrigue and Connect with Anyone.

If the name Susan Scott looks familiar, it is. She writes the weekly "Ocean Watch" column for the *Honolulu Star-Advertiser*. Scott has written seven books about nature in Hawaii. In 2005, at 56, Susan sailed to Palmyra Atoll where she worked as a volunteer for the U.S. Fish and Wildlife Service. Her book, *Call Me Captain, A Memoir of a Woman at Sea*, is the story of that adventure in marriage, midlife and marine wildlife.

Get updates and additional information by downloading their free HBMF app or visiting hawaiibookandmusicfestival.org. ~ Lynn Cook

We are the Master in Private Tours



RRH



Black-and-Gold is not our color. It is our CULTURE.



www.RoyalHawaiianLimousine.com | 1-808-275-6030 or 1-800-544-0066



Chef's Corner

REAL, a gastropub Chef de Cuisine Michael Longworth
Chef Mike has worked in several kitchens around town. From Jackie's Kitchen to Sam Choy's, where he was given the opportunity to advance to Executive Chef, to Romano's Macaroni Grill and now leads the team at REAL, a gastropub where the food constantly explores the boundaries of beer-centric pub-inspired food. Duck Confit Corndogs anyone?

When did you decide you wanted to be a chef?

Not sure if I ever decided to be a chef. I always loved being in the kitchen, and the high level of intensity involved. I happened to be the opening sous chef at Sam Choy's Diamond Head and the chef decided to leave. Sam gave me the opportunity to become the chef.

What was your first job in the industry?

At the age of 16 my mom got me a job as a dishwasher at the restaurant where she worked as a waitress.

Who would you consider your mentor and why?

I think Sam Choy was a big mentor. He gave me my first opportunity as a chef. He also gave me a lot of freedom to run his kitchen, he let me grow.

You've worked at several different restaurants. How would you describe the difference?

Sam Choy's was my first chef position, lots of learning there. I had to take his ideas, and his style and make it work. We were super busy, and had a really small kitchen with very little storage. What a great challenge that was. At Jackie's Kitchen I had the opportunity to design the menu for a new concept, and design the kitchen to my menu. Romano's gave me an opportunity to work for a corporate run restaurant. I learned lots of systems and how to keep the numbers tight. Here at Real I am fortunate to work with and for my buddy Troy.

You're from Boston. Die-hard sports fan?

Big sports fan! Love the Red Sox, Bruins, Celtics, and of course the New England Patriots. If you ever poke your head in the kitchen at Real you will see the Boston everywhere.

What's your biggest pet peeve about a kitchen?

Messy and unorganized cooks!

What's always in your fridge?

Water, and maybe... no.... that's about it!

What first brought you to Hawaii?

I was working at a summer spot on Cape Cod, and was supposed to go work at the sister restaurant in Boston, but they had a fire. One of the waiters where I was working was coming out here to Hawaii, and told me I would have no trouble finding a job. I always dreamed of coming to Hawaii, as a kid watching Hawaii 5-0, and then Magnum PI. Once I got here and experienced all the Aloha, I knew I would stay in Hawaii for some time.

Best part about living in Hawaii?

Great people!

Name your favorite restaurant in town you like to go to when not working?

It seems like I am always working. I enjoy Ethel's, Hanks Haute Dogs, and I like 12th Ave Grill. There are lots of great restaurants that I would to try though.

What do you have in plan for the menu?

I am always changing items. We get tired cooking the same thing and the customers want different things. I think next is to do a major over haul, and incorporate more local ingredients.

If you had to stop being a chef tomorrow, what would you do?

I'm not sure there is anything else I'd want to do!

It seems like most chefs I see have tattoos. Do you have any? Is it a chef thing?

I don't have any yet. Lots of chefs do, and I think it's just another form of expressing themselves.

What do you like to do most on your days off?

Anything out doors! I enjoy running, swimming, hiking, and just plain old relaxing.



Bacon Cheese Cake

by Chef Michael Longworth

Crust:	2 Tlbs. Sugar
4 oz. Graham Crackers, ground	1 Tlbs. Cocoa powder
	1 oz. Bacon fat

Method: Mix all ingredients together, press into a greased muffin tin. Bake at 350° for 10 minutes, let cool

Filling:	2 eggs
1 lb. cream cheese softened	1 tsp. vanilla extract
¼ cup sugar	¼ cup chopped bacon

Method: Cream the sugar with the cream cheese, add eggs and the vanilla. Mix well. Pour into the muffin tins. Top with bacon. Bake in a water bath at 300° for 50 minutes. Cool and enjoy.

REAL, a gastropub is located at the Ward Farmer's Market, 1020 Auahi Street, Bldg. 1

Monday thru Saturday 2:00 p.m. - 2:00 a.m. daily

Happy Hour: 2:00 - 6:00 p.m. daily • Phone: 596-2526

Facebook: REALgastropub • Twitter: @realgastropub1 • Web: realgastropub.com

MAC 24/7

THE RESTAURANT
HONOLULU BEACH ENCLAVE

MAC
WEDNESDAYS

Industry Night
11pm - 2am

50% OFF
ALL FOOD
with your industry ID

LIVE DJ

\$3 valet parking when dining

808-921-5664 • MAC247Waikiki.com
2500 Kuhio Avenue • Honolulu, HI 96815

MAC247Waikiki

*Restrictions apply, does not include alcohol, tax or gratuity.

Hale 'Aina Award Winner
Best Gourmet Comfort Food - Honolulu Magazine



CASUAL BEACHFRONT DINING
OPEN DAILY 7AM-8:30PM
BREAKFAST, LUNCH, DINNER

SUNSETS SERVED DAILY
LIVE MUSIC NIGHTLY, 5:30-8:30PM

ON QUEEN'S BEACH
@ LIFEGUARD STAND 3F
AT THE DIAMOND HEAD
END OF WAIKIKI
IN KAPOLANI PARK, ACROSS
FROM THE BANDSTAND



FULL MENU, CALENDAR, INFO:
BAREFOOTBEACHCAFE.COM
808.924.2233 (CAFÉ)

Let's be Together...

DINING ▸ ENTERTAINMENT ▸ PAU HANA ▸ EAT ▸ DRINK ▸ BE MERRY ▸ HAPPY HOUR

MONDAY

Barefoot Beach Café at Queen's Beach 924-2233
Contemporary Ukulele
 Shaka Madali 5:30-8:30pm

Chart House Waikiki 941-6660
Live Contemporary Hawaiian
 Tito Berinobis & David Kauahikaua 6:30-9:30pm

Cheesecake Factory 924-5001
Classic Hawaiian
 Christian Yrizarry Duo 8-11pm
 Jeremy Hirokawa (5/25) 8-11pm

Duke's Canoe Club Waikiki 922-2268
Live Contemporary Hawaiian
 Haumea Warrington 4-6pm
 Ellsworth Simeona 9:30-12am

Hard Rock Cafe 955-7383
Bluesy Mondays
 FreeSound (artists vary) 9-11am

House Without a Key 923-2311
Live Hawaiian & Hula by Skyler Kamaka
 DeLima Ohana 5:30 - 8:00pm

Hula Grill 923-HULA
Live Contemporary Hawaiian
 Eric Lee 7-9pm

Jimmy Buffett's at the Beachcomber 791-1200
Live Contemporary Hawaiian
 Ashley Lilinoe 7:00-9:30pm

Kani Ka Pila Grille 924-4992
Live Contemporary Hawaiian
 Sean Na'auao 6 - 9pm

LBL E at the Hilton Waikiki Beach Hotel 922-0811
Live Contemporary Acoustic Hits
 Johnny Helm 6-9pm

Lewers Lounge 923-2311
Live Contemporary & Light Jazz
 Noly Pa'a 8:30-12:30am

LuLu's 926-5222
Live Contemporary
 Johnny Helm 6:30-9:30 p.m.

Rumfire 921-4600
Live Contemporary Hawaiian
 Jeremy Cheng 5-8pm
 DJ Super CW 8:30pm-12:30am

Signature Prime Steak 949-3636
Contemporary Pianist in the bar
 Isao Motomochi 6-9pm

Sunrise Pool Bar at the Modern 943-5800
Live Contemporary
 Alex Oasay 5-8pm

The Edge at the Sheraton 921-4600
Live Hawaiian music with a fire dancer at 7:30 p.m.
 Widdy Loo 1:30-3:30pm
 Ka'ala Boys 6:30-8:30pm

The Study at the Modern 943-5800
Live Contemporary Hawaiian
 Kaleo 7-10pm

Tiki's Grill & Bar 923-TIKI
Live Contemporary Hawaiian
 Kapu the Band 6-8:30pm
 Jason Alan & Ian O'Sullivan 9-11pm

Tropics Bar & Grill 949-4321

Live Contemporary Hawaiian
 Acoustik Playground 5:30-8:30pm

TUESDAY

Barefoot Beach Café at Queen's Beach 924-2233
Contemporary Ukulele
 Shaka Madali 5:30-8:30pm

Bin1901 at the Moana 921-4600
Piano Wine Bar
 Scott Smith 6:30-9:30pm

Chart House Waikiki 941-6660
Live Contemporary Hawaiian
 The Camarillo Brothers 6:30-9:30pm

Cheesecake Factory 924-5001
Classic Hawaiian
 Derrick Lee Duo 8-11pm

Duke's Canoe Club Waikiki 922-2268
Live Contemporary Hawaiian
 Haumea Warrington 4-6pm
 Ellsworth Simeona 9:30-12am

Hard Rock Cafe 955-7383
Live Contemporary
 Saloon Pilots (or others) 9-11pm

House Without a Key 923-2311
Live Hawaiian & Hula by Radasha Ho'ohuli
 Po'okela 5:30 - 8:00pm

Hula Grill 923-HULA
Live Contemporary Hawaiian
 Kamuela Kahoano 7-9pm

Jimmy Buffett's at the Beachcomber 791-1200
Live Contemporary Hawaiian
 Mike Huhn 7:00-9:30pm

Kani Ka Pila Grille 924-4992
Live Contemporary Hawaiian
 Weldon Kekauoha 6-9pm

LBL E at the Hilton Waikiki Beach Hotel 922-0811
Live Contemporary Funk, Jazz, Hip Hop & Reggae
 Jason Laeha 6-9pm

Lewers Lounge 923-2311
Live Contemporary & Light Jazz
 Maggie Herron & Rocky Holmes 8:30-12:30am

LuLu's 926-5222
Live Contemporary
 Johnny Helm 6-9pm

Mai Tai Bar at the Royal Hawaiian 923-7311
Live Contemporary Hawaiian with Hula Dancer
 Kapala Duo 6:30-9:30pm

Rumfire 921-4600
Live Contemporary Rock
 Randy Allen 5-8pm
 Twilight Audio 8:30pm-12:30am

Signature Prime Steak 949-3636
Contemporary Pianist in the bar
 James Woo 6-9pm

Sunrise Pool Bar at the Modern 943-5800
Live Contemporary Hawaiian
 Cory Oliveros 5-8pm

The Edge at the Sheraton 921-4600
Live Hawaiian music with a fire dancer at 7:30 p.m.
 Eric Lee 1:30-3:30pm
 Ho'okani Duo 6:30-8:30m

The Study at the Modern 943-5800

Live Contemporary Hawaiian
 Alex Oasay & Jeremy Cheng 7:30-10:30pm

Tiki's Grill & Bar 923-TIKI
Live Hawaiian - \$2 Taco Tuesdays
 K.B. Riley 5:30-8:30pm
 Sani & Friends 9-11pm

Tropics Bar & Grill 949-4321
Live Contemporary Hawaiian
 Kailua Bay Buddies 5:30-8:30pm

WEDNESDAY

Barefoot Beach Café at Queen's Beach 924-2233
Instrumental Ukulele
 Paul Wilcox 5:30-8:30pm

Bin1901 at the Moana 921-4600
Piano Wine Bar
 Scott Smith 6:30-9:30pm

Chart House Waikiki 941-6660
Live Contemporary Hawaiian
 Tito Berinobis & David Kauahikaua 6-10:30pm

Cheesecake Factory 924-5001
Classic Hawaiian
 Kimo Artis Duo 8-11pm

Duke's Canoe Club Waikiki 922-2268
Acoustic, Soul, R&B
 Haumea Warrington 4-6pm
 Ellsworth Simeona 9:30-12am

Gordon Biersch 599-4877
Jazz Wednesdays
 Varying Artists 6:30-9:30pm

Hard Rock Cafe 955-7383
Live Contemporary
 John Valentine 5-7pm
 Piranha Brothers 9-11pm

House Without a Key 923-2311
Live Hawaiian & Hula by Lauren Matsumoto
 Pa'ahana 5:30 - 8:00pm

Hula Grill 923-HULA
Live Contemporary Music
 Brandon Serrano 7-9pm

Hy's Steak House 922-5555
Live Soft Contemporary
 Audy Kimura 6:30-10pm

Jimmy Buffett's at the Beachcomber 791-1200
Live Contemporary Hawaiian
 Shawn Garnet 7:00-9:30pm

Kani Ka Pila Grille 924-4992
Live Contemporary Slack Key
 Cyril Pahinui 6-9pm

LBL E at the Hilton Waikiki Beach Hotel 922-0811
Live Contemporary Funk, Jazz, Hip Hop & Reggae
 Soul Tree Music Factory 6-9pm

Lewers Lounge 923-2311
Live Contemporary & Light Jazz
 Maggie Herron & Rocky Holmes 8:30-12:30am

LuLu's 926-5222
Live Contemporary Hawaiian
 Jason Lehua 10-12:30am

Mai Tai Bar at the Royal Hawaiian 923-7311
Live Contemporary Hawaiian with Hula Dancer
 Eric Lee Duo 6:30-9:30pm

Roy's Hawaii Kai 396-7697

E Pili Kākou

DINING ▶ ENTERTAINMENT ▶ PAU HANA ▶ EAT ▶ DRINK ▶ BE MERRY ▶ HAPPY HOUR

Acoustic & Slack Key Top 40
Dayton Watanabe 6:30-9:30pm
Rumfire 921-4600
Live Contemporary Hawaiian
Kamuela Kahoano 5-8pm
Twilight Audio 8:30pm-12:30am
Signature Prime Steak 949-3636
Contemporary Pianist in the bar
Pierre Grill 6-9pm
SWIM at the Hyatt 923-1234
Contemporary Classic
Kailua Bay Buddies 6-9pm
Sunrise Pool Bar at the Modern 943-5800
Live Contemporary Hawaiian
Tahiti Rey & Sean Cleland 5-8pm
The Edge at the Sheraton 922-4422
Live Hawaiian music with a firedancer at 7:30 p.m.
Albert Maligmat 1:30-3:30pm
Keoni Ku Duo 6:30-8:30 pm
The Study at the Modern 943-5800
Live Contemporary Hawaiian
Melanie and Drew 6:30-9:30pm
Tiki's Grill & Bar 923-TIKI
Live Contemporary - 1/2 off Wine Wednesdays
Canoes for Rent 5:30-8:30pm
Johnny Helm 9-11pm
Tropics Bar & Grill 949-4321
Live Contemporary Rock
Acoustik Playground 5:30-8:30pm

THURSDAY

Barefoot Beach Café at Queen's Beach 924-2233
Instrumental Ukulele
Paul Wilcox 5:30-8:30pm
Bin1901 at the Moana 921-4600
Piano Wine Bar
Scott Smith 6:30-9:30pm
Chart House Waikiki 941-6660
Live Contemporary Hawaiian
Tito Berinobis 6:30-10pm
Cheeseburger Waikiki 941-2400
Contemporary / Old School Rock
Jeremy Chang 6:30-9:30pm
Cheesecake Factory 924-5001
Classic Hawaiian
T & J Duo 8-11pm
Duke's Canoe Club 922-2268
Live Contemporary Hawaiian
Haumea Warrington 4-6pm
Kaiona Duo (or others) 9:30-12am
Gordon Biersch 599-4877
Live Contemporary Funk and Classics
Acoustic Playground 7-10:30pm
Hard Rock Cafe 955-7383
Live Contemporary
Kailua Bay Buddies 9-11pm
House Without a Key 923-2311
Live Hawaiian & Hula by Radasha Ho'ohuli
Pa'ahana 5:30 - 8:00pm
Hula Grill 923-HULA
Live Contemporary Hawaiian
Kamuela Kahoano 7-9pm

Hy's Steak House 922-5555
Live Soft Contemporary
Audy Kimura 6:30-10pm
Jimmy Buffett's at the Beachcomber 791-1200
Live Contemporary Hawaiian
Shawn Garnet 7:00-9:30pm
Kani Ka Pila Grille 924-4992
Live Contemporary Hawaiian
Kawika Kahiapo 6-9pm
LBLE at the Hilton Waikiki Beach Hotel 922-0811
Live Contemporary Pop/Rock
Sunway 6-9pm
Lewers Lounge 923-2311
Contemporary Jazz
Maggie Herron & Rocky Holmes 8:30-12:30am
LuLu's 926-5222
Live Contemporary Hawaiian
Local Uprising 6-9pm
Mai Tai Bar at the Royal Hawaiian 923-7311
Live Contemporary Hawaiian with Hula Dancer
Delima Ohana 6:30-9:30pm
Michel's at the Colony Surf 923-6552
Live Slack Key
Jeff Peterson 7:30-10:00pm
Roy's Hawaii Kai 396-7697
Acoustic Hawaiian Guitar
Steve English 6:30-9:30pm
Rumfire 921-4600
Live Contemporary Rock
Johnny Helm 5-8pm
DJ Miked 8:30pm-12:30am
Signature Prime Steak 949-3636
Contemporary Pianist in the bar
Isao Motomochi 6-9pm
Sunrise Pool Bar at the Modern 943-5800
Live Contemporary Hawaiian
Christian Yrizarry Duo 5-8pm
SWIM at the Hyatt 923-1234
Contemporary Classic
Acoustik Playground 6-9pm
The Edge at the Sheraton 921-4600
Live Hawaiian music with a firedancer at 7:30 p.m.
Ellsworth Simeona 1:30-3:30pm
Christian Yrizarry Duo 6:30-8:30pm
The Study at the Modern 943-5800
Live Contemporary Hawaiian
Simple Souls 6:30-9:30pm
Tiki's Grill & Bar 923-TIKI
Heineken Hot Hula Nights - hula dancers perform
Malu the Band 5:30-7:30pm
Ellsworth Simeona 8:30-11:30pm
Tropics Bar & Grill 949-4321
Live Contemporary Hawaiian
Nohelani Cypriano 5:30-8:30pm

FRIDAY

Barefoot Beach Café at Queen's Beach 924-2233
Live Contemporary Hawaiian with Beach BBQ
Art Kalahiki & Friends 5:30-8:30pm
Bin1901 at the Moana 921-4600
Piano Wine Bar
Scott Smith 6:30-9:30pm

Chart House Waikiki 941-6660
Live Contemporary Hawaiian
Mark Yim's Pilikia I 6-9pm
Mark Yim's Pilikia II 9:30-12:30am
Cheeseburger Waikiki 941-2400
Contemporary Hawaiian
Alex or Aku 6:30-9:30pm
Cheesecake Factory 924-5001
Classic Hawaiian
Johnny Helm Duo 8-11pm
Christopher Murphy Duo (5/8) 8-11pm
Dave & Busters 589-2215
Pau Hana Fridays Live Local Bands
Varying Hawaiian Artists 6-8pm
Duke's Canoe Club Waikiki 922-2268
Live Contemporary Hawaiian
Maunaula 4-6pm
Kapena (5/1) 4-6pm
Kona Chang Duo (5/1) 9:30 -12am
Aina Folk (5/8) 9:30 -12am
Imua Garza Duo (5/15) 9:30 -12am
Kaiona Duo (5/22) 9:30 -12am
Christian Yrizarry (5/29) 9:30 -12am
Gordon Biersch 599-4877
Live Contemporary, R&B, Funk
Ben & Malia 5:30-9pm
Mojo 9 - 12:30am
Hard Rock Cafe 955-7383
Live Contemporary
Mantra 10-12am
Streetlight Cadence (4/3) 10-12am
Bon Temps (4/3) 10-12am
House Without a Key 923-2311
Live Hawaiian & Hula by Kanoe Miller
Hiram Olsen Trio 5:30 - 8:00pm
Hula Grill 923-HULA
Aloha Friday Lunch Luau with hula dancer
David Asing 12:30-2:30pm
Keoki & Russell 7-9pm
Hy's Steak House 922-5555
Live Soft Contemporary
Audy Kimura 6:30-10pm
Hard Rock Cafe 955-7383
Live Contemporary
Johnny Helm 5-7pm
Streetlight Cadence 9-11pm
Mantra (5/8, 5/22) 9-11pm
Jimmy Buffett's at the Beachcomber 791-1200
Live Contemporary Hawaiian
Missing Dave 9:30 - 11:30pm
Kani Ka Pila Grille 924-4992
Live Hawaiian Contemporary
Ho'okena 6-9pm
Mahiehie Elua (5/1) 6-9pm
LBLE at the Hilton Waikiki Beach Hotel 922-0811
Live Contemporary Pop/Rock
Sunway 6-9pm
Lewers Lounge 923-2311
Live Contemporary Jazz
Maggie Herron & Rocky Holmes 8:30-12:30am
LuLu's 926-5222

EVENTS ARE SUBJECT TO CHANGE WITHOUT NOTICE.

Let's be Together...

DINING ▸ ENTERTAINMENT ▸ PAU HANA ▸ EAT ▸ DRINK ▸ BE MERRY ▸ HAPPY HOUR

Live Contemporary Hawaiian
 Manoa DNA 6-9 p.m.
 Vinyl Wine 10-12:30am
Mai Tai Bar at the Royal Hawaiian 923-7311
Live Contemporary Hawaiian with Hula Dancer
 Kapala Duo 6:30-9:30pm
Michel's at the Colony Surf 923-6552
Live Slack Key Stylings & Jazz
 Jeff Peterson & Ernie Provencher 6:30-10pm
Roy's Hawaii Kai 396-7697
Keyboardist
 Brian Robert Shaw 6:30-9:30pm
Roy's Ko Olina 676-7697
Slack Key Guitar
 Chris Rego 5:30-8pm
Rumfire 921-4600
Live Contemporary Rock
 Kristi Masuhara 5-8pm
 DJ Euphoric 8:30pm-12:30am
Signature Prime Steak 949-3636
Contemporary Pianist in the bar
 Grant Carvalho 6-9pm
SWIM at the Hyatt 923-1234
Contemporary Classic
 Taimane 6-7pm
The Edge at the Sheraton 921-4600
Live Hawaiian music with a fire dancer at 7:30 p.m.

Brad Kawakami 1:30-3:30pm
 Delima Ohana Duo 6:30-8:30pm
The Study at the Modern 943-5800
Live Contemporary Hawaiian
 Tahiti Rey 6:30-9:30pm
Tiki's Grill & Bar 923-TIKI
Live Contemporary Hawaiian
 Randy Allen 5-7pm
 Vaihi 7:30-9:30pm
 Solanna and Selwyn 10-12am
Tropics Bar & Grill 949-4321
Live Contemporary Hawaiian
 Piranha Brothers 3:30-6:30pm
 Nohelani Cypriano 8:00-10:30pm

SATURDAY

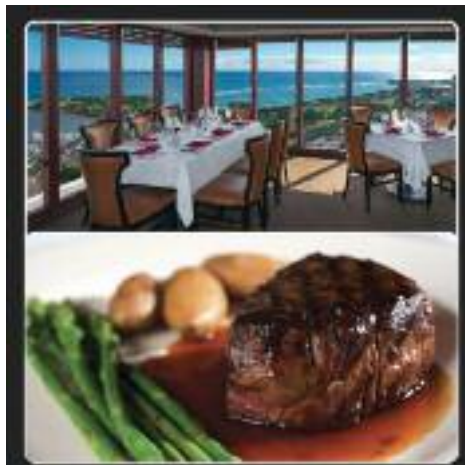
Barefoot Beach Café at Queen's Beach 924-2233
Beach BBQ with Live Contemporary Hits
 Chris Salvador 5:30-8:30pm
Bin1901 at the Moana 921-4600
Piano Wine Bar
 Scott Smith 6:30-9:30pm
Chart House Waikiki 941-6660
Live Contemporary Hawaiian
 Tito Berinobis & Billy Beimes 7-12pm
Cheeseburger Waikiki 941-2400
Contemporary Hawaiian
 Alex or Aku 6:30-9:30pm
Cheesecake Factory 924-5001
Classic Hawaiian
 Dennis McClees Duo 8-11pm
Duke's Canoe Club Waikiki 922-2268
Live Hawaiian Entertainment
 Beach 5 4-6pm
 Kona Chang Band (5/9) 4-6pm
 Vaihi (5/23) 4-6pm
 Simple Session (5/30) 4-6pm
 Chris Murphy Duo 9:30-12am
 Kai Roots Duo (5/2) 9:30-12am
 Darrell Aquino Duo (5/23) 9:30-12am
 Kamuela Kahoano (5/30) 9:30-12am

Hard Rock Cafe 955-7383
Live Contemporary
 Emke 10-12am
 Master of OZ (5/2, 5/23) 10-12am
House Without a Key 923-2311
Hawaiian & Hula by Kanoe Miller
 Hiram Olsen Trio 5:30 - 8:00pm
Hula Grill 923-HULA
Live Traditional Hawaiian with dancer
 Kaipo Dabin & friends 7-9pm
Hy's Steak House 922-5555
Live Soft Contemporary
 Audy Kimura 6:30-10pm
Jimmy Buffett's at the Beachcomber 791-1200
Live Contemporary Hawaiian
 Local Uprising 9:30-11:30pm
Kani Ka Pila Grille 924-4992
Live Contemporary Hawaiian
 Ka Hehena 6-9pm
LBLE at the Hilton Waikiki Beach Hotel 922-0811
Live Contemporary Blues & R&B

YOZA 6-9pm
Lewers Lounge 923-2311
Live Contemporary Jazz
 Maggie Herron & Rocky Holmes 8:30-12:30am
Mai Tai Bar at the Royal Hawaiian 923-7311
Live Contemporary Hawaiian with Hula Dancer
 Kapala Duo 6:30-9:30pm
Michel's at the Colony Surf 923-6552
Live Contemporary Slack Key & Jazz
 Jeff Peterson 7-11pm
Roy's Hawaii Kai 396-7697
Acoustic Guitar
 Jimmy Funai 6-9:30pm
Roy's Ko Olina 676-7697
Slack Key Guitar
 Chris Rego 5:30-8pm
Rumfire 921-4600
Live Contemporary Rock
 Tavana McMoore 5-8pm
 DJ Betty 8:30pm-12:30am
Signature Prime Steak 949-3636
Contemporary Pianist in the bar
 Grant Carvalho 6-9pm
Sunrise Pool Bar at the Modern 943-5800
Live Contemporary Hawaiian
 Kainalu 5-8pm
SWIM at the Hyatt 923-1234
Contemporary Acoustic
 Randy Allen & Kanoe Gibson 5 - 8pm
The Edge at the Sheraton 921-4600
Live Hawaiian music with a fire dancer at 7:30 p.m.
 John Valentine 1:30-3:30pm
 Tino Jacobs Duo 6:30-8:30pm
Tiki's Grill & Bar 923-TIKI
Live Contemporary Hawaiian & Reggae
 Johnny Helm 5-7pm
 Ellsworth & Piko 10-midnight
Tropics Bar & Grill 949-4321
Live Contemporary Hawaiian
 Henry Kapon 4-6pm
 Juke Joint 6:30-9:30pm

SUNDAY

Barefoot Beach Café at Queen's Beach 924-2233
Contemporary Ukulele
 Shaka Madali 5:30-8:30pm
Chart House Waikiki 941-6660
Live Contemporary Hawaiian
 Dean & Dean 6-9pm
Cheesecake Factory 924-5001
Classic Hawaiian
 Chris Murphy Duo 8-11pm
Duke's Canoe Club Waikiki 922-2268
Live Hawaiian Entertainment
 Henry Kapon 4-6pm
 Kapena Delima 9:30-12am
 Typical Hawaiians (5/3, 5/17) 9:30-12am
Hard Rock Cafe 955-7383
Live Contemporary
 Analog (or others) 9-11pm
House Without a Key 923-2311
Live Hawaiian & Hula by Debbie Nakanelua



• Live Entertainment Nightly
 • Happy Hour
 • Early/Late Bird Specials
 • Private Dining for 45 guests
 • Gift Cards



Ala Moana Hotel 36th Floor
 808.949.3636
 Nightly 4:30 pm - last seating at 10 pm
 www.signatureprimesteak.com

E Pili Kākou

DINING ▶ ENTERTAINMENT ▶ PAU HANA ▶ EAT ▶ DRINK ▶ BE MERRY ▶ HAPPY HOUR

Pa'ahana	5:30 - 8:00pm	
Hula Grill		923-HULA
<i>Live Traditional Hawaiian with dancer</i>		
Art Kalahiki Duo	7-9pm	
Jimmy Buffett's at the Beachcomber		791-1200
<i>Live Contemporary Hawaiian</i>		
Randy Allen	7:30-10:00pm	
Kani Ka Pila Grille		924-4992
<i>Live Contemporary Hawaiian Masters on stage</i>		
Kaiao & Kuana Torres Kahele (5/3)	6-9pm	
Huewa & Mailani Makainai (5/10)	6-9pm	
Lehua Kalima & Nathan Aweau (5/17)	6-9pm	
Kelley O'Neil's		926-1777
<i>Live Irish Music</i>		
Various Celtic Bands	4-7pm	
LBL E at the Hilton Waikiki Beach Hotel		922-0811
<i>Live, Energetic Mix of Pop and Rock Hits</i>		
Pushoverse	6-9pm	
Lewers Lounge		923-2311
<i>Live Contemporary & Light Jazz</i>		
Noly Pa'a	8:30pm - 12am	
LuLu's		926-5222
<i>Acoustic R&B</i>		
Simple Soulz	7-10pm	
Mai Tai Bar at the Royal Hawaiian		923-7311
<i>Live Contemporary Hawaiian with Hula Dancer</i>		
Eric Lee Duo	6:30-9:30pm	
Michel's at the Colony Surf		923-6552
<i>Classical Slack Key & Jazz Stylings</i>		
Jeff Peterson	6-9pm	
Roy's Ko Olina		676-7697
<i>Slack Key Guitar</i>		
Chris Rego	5:30-8pm	
Rumfire		921-4600
<i>Live Contemporary Hawaiian</i>		
Alex Oasay	5-8pm	
Twilight Audio	8:30pm-12:30am	
Signature Prime Steak		949-3636
<i>Contemporary Pianist in the bar</i>		
Isao Motomochi	6-9pm	
SWIM at the Hyatt		923-1234
<i>Contemporary, Pop, Rock</i>		
Sunway	6 - 9pm	
The Edge at the Sheraton		922-4422
<i>Live Hawaiian music with a fire dancer at 7:30 p.m.</i>		
Dave Watanabe	1:30-3:30pm	
Ellsworth Simeona Duo	6:30-8:30pm	
The Study at the Modern		943-5800
<i>Live Contemporary Hawaiian & Jazz</i>		
Jeremy Cheng	6-9pm	
Smooth Jazz (vaying artists)	10- 2am	
Tiki's Grill & Bar		923-TIKI
<i>Live Contemporary Hawaiian</i>		
Vaihi	6-9pm	
Ellsworth & Piko	9-11pm	
Tropics Bar & Grill		949-4321
<i>Live Contemporary Rock & Hawaiian</i>		
Piranha Brothers	2-5pm	
Beach 5	5:30 - 8:30pm	



Hot Lines

Here's a few numbers for you to find out the latest in live music from places that change daily or don't update us regularly, since we can't possible list them all,

Gordon Biersch	599-4877
Irish Rose Saloon	947-3414
Kelley O'Neil's	926-1777
Mai Tai Bar Ala Moana	947-2900

Dining Dish



Barefoot Beach Café will use Cinco de Mayo, which falls on a Tuesday this year, to launch their new Taco Tuesdays on the beach offering a special menu and \$2 tacos. They'll be offering poke by the pound and special cooler bags and even bags of ice for park BBQers during the Memorial Day weekend as well. Check BarefootBeachCafe.com for details. 924-2233. • Lots of restaurants opening in Ward Centre. **Ginza Sushi** opened a new casual dine-in next to the Crazy Shirts Outlet. Open from 10:30 a.m. to 9 p.m. daily, 10 p.m. on Fridays and Saturdays. One of my faves, **AGU Ramen** will open next to Kua'aina in May and will be open from 11 a.m. to midnight daily, for those seeking that late night ramen fix. Also opening in May is **Bellini Bistro and Bar**, next to ZPizza. Bellini, from the owner of Maile's Thai Restaurant, will feature imported meats, cheeses and pastas direct from Italy and Italian menu classics such as osso buco, piccata and tiramisu. wardvillageshops.com • As previously mentioned, I'm a big fan of AGU Ramen, but I'm hearing **Golden Pork Ton-kotsu Ramen Bar**, which just opened in the former Mediterraneo spot on King Street, may have taken over as the best ramen in town. Lines are out the door daily, and they've already reduced their hours because they kept running out of broth. Open for lunch from 11:30 a.m. to 3 p.m. and dinner from 5 - 9:30 p.m., and are closed Sundays. Last call to order is a half hour before they close. 888-5358. • Speaking of **Mediterraneo**, he's baaack! **Fabrizio** has reopened his popular Italian eatery down the street from his old one in the former Wine Stop location. 593-1466. • **Square Barrels** opened in the former Che Pasta location downtown. Owned by the guys behind Pint + Jigger, they will be focusing on gourmet burgers and beer. We're talking Molokai venison and homemade charcuterie types of menu items. 11 a.m. - 8 p.m. Monday thru Saturday. 524-2747. • **Mariposa** is launching a new menu this month, but we were unable to get our hands on in time for print. Whatever **Chef Marc Anthony Freiberg** has planned, we know it will be delicious. 951-3420. • **The District** opened underneath the Republik giving nightclub fans a new hotspot to choose from. Open Fridays & Saturdays from 10 p.m. to 3 a.m., guests are asked to be 23 to enter and dress fashionably upscale. thedistrictnightclub.com. ~ Pam



Dining Calendar

May 7-9: Morimoto Waikiki: Celebrity Iron Chef Morimoto will be in town for a few days. There's a very strong chance diners may be able to catch him in the restaurant during this time. 943-5900.

May 9: Stage Restaurant presents a special Low Tea matinee and fashion show in the Lime Lounge. 11:30 a.m. 237-5429

May 10: Mothers Day Have you made your reservations yet??? Do it now!

May 17: Courtyard Brunch at Ward Village Food and Farmers Market set up in this chic tent area with DJ Free to enter, \$7 per ticket or pre-buy tickets in advance for discounts. 10 a.m.- 1 p.m. wardvillageshops.com

Wednesdays: Bar 35: For many years, House of Brews has been hosting weekly beer tastings with different themes that feature around 6-8 beers, while enjoying Chef Valentini's appetizers. \$25. 6 p.m. 537-3535.

GIOVANNI PASTRAMI

APPETIZERS
 GP's NACHOS // CHICKEN WINGS \$9
 FRIED CALAMARI // CHILI CHEESE FRIES \$8

GIOVANNI'S SLIDERS
 Four per order, served with fresh fries.
 MINI CHEESEBURGERS \$9
 MINI HOT DOG SLIDERS \$9
 BBQ KALUA PIG SLIDERS \$9

PERSONAL PIZZAS \$5-\$7

BAR
 DOMESTIC DRAFT BEER \$4-\$5
 WELL DRINKS \$4
 PATRON SILVER \$8
 MAI TAI // BLUE HAWAII \$7
 CROWN // JACK \$6
 JAGERMEISTER // FIREBALL \$5
 30Z. STOLI MARTINIS \$7
 WINE BY THE GLASS \$1 OFF

PAU HANA
 Monday-Friday 3:00pm-6:00pm ... &
 Sunday-Thursday 10:00am-12:00 Midnight
 One-hour happy hour on Wednesdays. For other locations, apply.

EVENTS ARE SUBJECT TO CHANGE WITHOUT NOTICE.

MAY CALENDAR OF EVENTS

Continuing Events

MONDAY – FRIDAY LYON ARBORETUM TOURS

The lush gardens at the top of the University of Hawai'i Manoa are open for guided tours daily. Knowledgeable guides will introduce the highlights of the botanical rainforest's 193.6 acres. Reservations required. Limit of 12 participants daily. Donations accepted. 988-0461.

MONDAY – FRIDAY FOSTER BOTANICAL GARDENS

Guided garden tours of rare and beautiful plants from tropical regions throughout the world. Foster Botanical Gardens, 50 N. Vineyard. 1 p.m. Adults: \$5. Reservations recommended. 522-7066.

TUESDAYS TOURS OF THE HAWAII THEATRE

Get a behind-the-scenes tour of this historic theatre including history, architecture, and a performance on the 1922 Robert Morton theatre organ. Hawaii Theatre. 11 a.m. – 12 p.m. \$10. 528-0506.

TUESDAYS KU HA'AHEO

An afternoon of hula from multiple groups featuring adults and keiki performing contemporary and traditional dance and music led by kumu hula Blaine Kamalani Kia. Waikiki Beach Walk Plaza Lawn. 4:30 – 6 p.m. FREE. waikikibeachwalk.com or 931-3591.

TUESDAYS KCC FARMERS MARKET

Head up to Kapiolani Community College for a smaller version of the popular weekend market. 4 – 7 p.m. Free. 848-2074.

FIRST & THIRD TUESDAYS MEET THE MONK SEALS!

Learn about monk seals in the wild and meet two resident seals up close. Designed for participants 7 and up but anyone is welcome. Waikiki Aquarium. 3 p.m. \$4 – \$6. waquarium.org or 923-9741.

TUESDAYS & THURSDAYS FRESH FARMERS MARKET AT THE HYATT

The Hyatt holds their popular Farmers Market for visitors and locals to stock up on fresh local organic fruits, vegetables, jams, honeys, baked goods and more. Stop by twice weekly at this market located on ground floor of the Pualeilani Atrium Shops. 4 – 8 p.m. Waikiki.Hyatt.com.

TUESDAYS, THURSDAYS & SUNDAYS TOUR AND TEA AT THE HONOLULU ACADEMY OF ARTS

Tours are led by volunteer docents and designed for visitors who would like to explore the galleries, learn more about art and culture, and socialize over a cup of tea. Docents lead discussions in the galleries offer insight into many cultures and time periods. 2:30 – 4 p.m. in selected galleries. Free with admission; Reservations required. 532-8700.

**TUESDAY – SATURDAY
MISSION HOUSES MUSEUM GUIDED TOURS**
Visit the Printing Office and Frame House while learning about the 19th century history and culture preserved at this beautiful museum. Galleries also open to explore on your own. Mission Houses Museum. Tues. – Sat. 11 a.m. & 2:45 p.m.; Tues. – Fri. 1 p.m. \$6 – \$10. 531-0481 or missionhouses.org.

**WEDNESDAYS
HONOLULU FARMERS MARKET**
Meet the farmers and select from a wide variety of

fruits, vegetables, flowers, beef, seafood, baked goods and more. This market is held weekly on the Concert Hall Lawn. At the Blaisdell Center. On days an event is in the Concert Hall, the Market will be in the Arena parking lot on the corner of Kapiolani Blvd and Ward Ave. Free Entrance and Parking. 4 – 7 p.m.

WEDNESDAYS & FRIDAYS CHADO – THE WAY OF TEA

Japanese enthusiasts can experience the traditional tea ceremony (chanoyu) as it was meant to be seen and taught at the Urasenke Foundation of Hawaii. No prior knowledge required. Demos at 10 a.m. and 11 a.m. \$5. 923-3059.

SECOND THURSDAY (MAY 14) COURTYARD CINEMA

Ward Village hosts its monthly film series event on the 2nd Thursday of each month. The showing features free popcorn, refreshments, food vendors and entertainment. Courtyard Cinema is free and open to the public. Seating is limited. Reserve your tickets and learn more about future shows at wardvillage-courtyardcinema.com.

THIRD THURSDAY (MAY 21) DOWNTOWN GALLERY WALK & CRAFT FAIR

The Arts at Marks Garage continues to build on downtown activities offering execs an excuse to hang out after work and giving everyone else a reason to head downtown. Free. 521-2903. artsatmarks.com.

FRIDAYS CULTURAL CRAFT FAIR

The Hyatt has had so much success with its weekly Farmers Market featuring fresh local produce that they are applying the same principle to local craft items. Each week the craft fair will feature local vendors featuring arts & crafts, jewelry. Photography, woodwork and more. 3 – 7 p.m. Waikiki.hyatt.com

FIRST FRIDAY (MAY 1) DOWNTOWN GALLERY WALK & CRAFT FAIR

Art lovers are advised to head to downtown Honolulu the first Friday of each month. This event has exploded into a downtown party with galleries and studios open for exhibitions, artist demonstrations, and special performances. 23 galleries and art-related retail shops, restaurants and museums participate. Downtown Honolulu/ Chinatown. 6 – 9 p.m. Free. 521-2903 or artsatmarks.com.

FIRST & THIRD FRIDAYS (MAY 1 & 15) THE SKY TONIGHT

Learn about our Hawaiian skies and current events in space at the J. Watumull Planetarium. Bishop Museum. 8 p.m. No late seating. GA \$6, Keiki \$4. 848-4168 or bishopmuseum.org.

FINAL FRIDAY ART AFTER DARK

The hip art party where all the cool people go to mix and mingle amongst the art galleries takes place the last Friday each month. 6 – 9 p.m. artafterdark.org.

SATURDAYS KCC FARMERS MARKET

Fresh island produce, seafood, flowers and more are available from over two-dozen vendors at Kapiolani Community College. Free. 7:30-11 a.m. 848-2074.

SATURDAYS KAKA'AOKO FARMERS MARKET

Check out an abundance of locally grown produce, island made treats and much more from around our islands at the Kakaako Farmers Market at Ward Warehouse located between Ward and Kamakee Streets, Free. 9:00 a.m. - 1 p.m. 388-9696 or haleiwafarmersmarket.com.

SATURDAYS & SUNDAYS ART ON THE ZOO FENCE

More than 35 local artists display their works on the Zoo fence on Monsarrat Avenue opposite the Kapiolani Park Bandstand. Works for sale include original paintings, prints and photographs. 9 a.m. – 4 p.m. Free. artonthezoo fence.com.

**SECOND SATURDAY (MAY 2)
DOWNTOWN GALLERY WALK & CRAFT FAIR**
First Friday has become such a success that events carry over to the second Saturday. HiSAM, 11 a.m. – 3 p.m. 586-0900. Other events around downtown Honolulu all afternoon. Free. 521-2903 or artsatmarks.com.

NA MELE NO NA PUA SUNDAY SHOWCASE (MAY 10 & 24)

Waikiki Beach Walk has brought back its popular monthly free concert series. See Del Beazley May 10th and Eric Lee on the 24th at the Plaza Stage from 5 – 6 p.m. waikikibeachwalk.com.

THIRD SATURDAY HONOLULU NIGHT MARKET

The folks behind Eat the Street bring this monthly art event to Kakaako. Food, art and fashion will close Auahi Street down from Keawe to Coral as artists, food trucks, live entertainment and more fill the streets from 6 p.m. to 11 p.m. Lane closures begin at noon. streetgrindz.com

BANK OF HAWAII FREE SUNDAY (MAY 17) HONOLULU MUSEUM OF ART

May is National Bike Month, so the museum has partnered with the Hawaii Bicycling League for some two-wheeled fun. Honolulu Museum of Art. 11 a.m. - 5 p.m. Free. 532-8700.

MAY 1 • MAY DAY

May Day is Lei Day in Hawaii and visitors and kama'aina alike will be able to smell the fragrance of flowers wafting through the air most of the day. The 88th annual celebration will take place at Kapiolani Park from 9 a.m. – 4:30 p.m. with live entertainment throughout the day. The 2nd annual May Day Waikiki – Beach Boys, Memories and Music will take place on the beach in front of the Outrigger Waikiki from 3 – 5 p.m. or catch Kanoë Cazimero and Iwalani Walsh Tseu dancing a 12 hour hula marathon for Breast Cancer Awareness at the Ward Warehouse Amphitheater. The duo will be joined by other kumu hula and dancers. These are just a few of the many events sure to take place that day.

MAY 2 • SPAMJAM

This is the 13th annual festival celebrating all that is SPAM. Tens of thousands of people will crown onto Kalakaua from 4 – 10 p.m. See story page 17. spam-jamhawaii.com.

MAY 2 • HOOKUPU ALOHA

The 16th annual Hookupu Aloha "E Kuulei Makamae." Will feature food, arts & craft booths, live entertainment by some of the Islands finest such as Jerry Santos and Hoku Zuttermeister, hula and more. Kualoa Ranch. Free. 10 a.m. - 4 p.m. kualoa.com.

MAY 2 • WHERE TO WATCH THE MAYWEATHER PACQUIAO FIGHT

This is the fight of all fights, and we know you want to see it. Call first, most of the places could sell out. \$50 per head at Giovanni Pastrami, \$50 at Rivals, \$45 at Dave & Busters, \$30 at Buffalo Wild Wings, \$25 at Hooters, \$10 (subject to change) cover at Snappers, \$45 at M Nightclub, bottle service available. Home Bar & Grill was \$25, but they sold out. 3 p.m.

MAY CALENDAR OF EVENTS

MAY 2 - 3

HAWAII BOOK & MUSIC FESTIVAL

This is the 10th year of the fun, family friendly celebration of story and song takes place on the ground of Honolulu Hale. See cover story. 10 a.m. - 5 p.m. hawaiiobookandmusicfestival.org

MAY 6

DREAMS COME TRUE

This extremely popular band from Japan is coming to Hawaii for a special one-night concert at the Aulani Resort & Spa. Tickets sold out the same day they were released, so check craigslist if you want to go. hawaii-event.com.

MAY 7 - 9

WORLD FIREKNIFE CHAMPIONSHIP

Some of the world's best fireknife dancers come together for three fiery nights of competition, bringing with them awe and gasps of amazement from onlookers. One of the most exciting cultural competitions visitors can see all year long. See story page xx. Polynesian Cultural Center. Polynesia.com.



MAY 8 - 9 • SHEN YUN

See 5,000 years of Chinese civilization unfold as one is taken on a journey through the lost land of the Middle Kingdom as it is explored through classical Chinese dance, with athletic and acrobatic routines bursting with vibrant color and energy. Tickets: \$60-\$150. 7:30 p.m., with a 2 p.m. matinee on 5/9. Ticketmaster.com or 800-745-3000. shenyun.com

MAY 8-17 • HAWAII QUILT GUILD

The annual Hawaii Quilt Guild Show features 100 entries by local and nationally known quilters. There will be over seventy-five quilts of all styles and sizes, plus another seventeen quilts by the featured quilter, Shirfeir Sunada. This year's theme is Aia ka Pu'uwai i Ku'u 'Ohana, My Heart is with My Family. Honolulu Museum of Art School on Linekona Street. May 8 -17, 10 a.m. - 4:30 p.m. Tues. - Sat., Sunday 1 - 5 p.m., closed Monday. Free. hawaiiquiltguild.org.

MAY 9 • FILIPINO FIESTA

A week of events celebrating all that is Filipino comes to colorful end with a parade through Waikiki starting at 9 a.m., culminating at Kapiolani Park where festivities will include live entertainment, food and cultural items for purchase, keiki activities and special guest artist from the Philippines. 10 a.m. thru 5 p.m. fjchamber.org.

MAY 9 • SUPER GARAGE SALE

Don't miss your chance to shop this super sale, where dozens of military families sell their extra treasures, and sometimes their big ones for those families leaving our Islands. Over 150 booths to browse through. Richardson Field. 8 a.m. - noon.

MAY 9 • HAWAII FOR HAWAII

The visitor industry joins forces to hold a benefit concert for Hawaii's homeless featuring such Na Hoku Hanohano Award winners and finalists as Hapa, Amy Hanaiali'i, Taimane, Makana, and the Oahu debut of The Rough Riders, the newest band in the islands starring Henry Kaponu, John Cruz and Brother Noland. There will be food and beverage available for purchase, as well as an amazing silent auction. Hilton Hawaiian Village' Great Lawn. Tickets: \$45. Doors open at 5 p.m., concert starts at 6, with a fireworks display wrapping everything up at 9 p.m. hawaiiforhawaii.com

MAY 16 • 37TH ANNUAL VISITOR INDUSTRY CHARITY WALK

This one is your event, starting at 7 a.m. at Ala Moana Beach Park. Be sure to snap pictures of you and your colleagues along the way and email them to us by Monday morning! Charitywalkhawaii.org.

MAY 16 - 17 • WAIKIKI ARTFEST

Check out the work of close to 100 local artists as they display their crafts for all to see and buy. Enjoy live music and food booths while shopping. Free. 9 a.m. - 4 p.m. Kapiolani Park. 808-696-6717.



MAY 21 • VINO & VINYASA

Pairing wine and yoga seems to have been gaining popularity around town, and the Moana Surfriider hosts a monthly complimentary Vinyasa yoga class on the Diamond Head Lawn from 6 - 7 p.m., followed by \$5 wines bu the glass until 8:30 p.m. 923-2890

MAY 22-25, 29-31 • 50TH STATE FAIR

Get ready for the 50th State Fair as it kicks off this month and continues every weekend through July 6th. Live entertainment, carnival rides, food and more. Aloha Stadium. ekfernandez.com.

MAY 25

BACARDI POOL PARTY

OK all you party animals. My phone rings like crazy around this time of year for where all the hot pool parties are, so here you go. The Memorial Day Bacardi Pool party will take place from noon - 6 p.m. 21+ only. \$20 at the door. Hawaiian Monarch Hotel.

MAY 25

LANTERN FLOATING CEREMONY

The 17th annual Lantern Floating Hawaii is one of the more popular festivals all year long as more than 40,000 people converge at Ala Moana Beach Park to send off specially made candle-lit lanterns into the ocean to honor their loved ones. This is also one of the more picturesque events that takes place each year. Ceremonies start promptly at 6 p.m. and are webcast live at lanternfloatinghawaii.com.

MAY 25

KRISTIAN BUSH OF SUGARLAND

Those of you military affiliated personnel or carrying a DoD ID Card can catch this special Memorial Day Concert put on by Joint Base Pearl Harbor Hickam at Richardson Field. Gates open at 3:30 for fun and games, concert starts at 5:30 p.m.

MAY 29 • BRIAN REGAN

Comedy Central favorite Brian Ragan brings his eclectic brand of comedy to the Blaisdell Concert Hall. 8 p.m. Tickets: \$39.75 - \$49.75. ticketmaster.com.

MAY 31

GREENROOM FESTIVAL 15

Check out this surf culture festival featuring 2 stages with 7 musical guests including Jake Shimabukuro, Makua Rothman, and Donovan Frankenreiter, artist tents with popular surf artists in attendance, Yoga activities, food booths & more! Tickets: \$50. 3 - 9 pm. Waikiki Shell. greenroomfest.com

MAY IS MILITARY APPRECIATION MONTH

Many places, such as the Waikiki Aquarium, will be offering special admission prices for active-duty military and their families. Be sure to ask before paying.

Celebrate Mother's Day with Atlantis Cruises

All Mom's joining us on our May 10th Mother's Day sunset dinner cruise will receive both a fresh carnation flower and a shell lei.

Atlantis Cruises

Call (808) 973-1311 for information & reservations or fax to (808) 973-2499.

Mele Mai Month

From the earliest hours of the first day of May music will be, as they say, streaming live across our island. It is the official launch of Mele Mei, beginning with the celebratory luncheon for the Lifetime Achievement Awards presented by the Hawaii Academy of Recording Arts (HARA) and finishing with razzle-dazzle with the May 23rd Na Hoku Hano Hano Awards show.

The Lifetime Achievement event, is the place to see, meet, and get that Facebook shot with the honorees. It is open to all for a \$75 admission that covers lunch and extraordinary music. The honorees include Henry Allen, who will there via video as he will be sailing the seas, as well as Harold Kakuole, the Ho'opi'i Brothers, Ron Jacobs, Kenneth Makuakane, Jimmy Mo'ikeha and Puamana. The entertainers list is even longer with some of the honorees performing, and more.

Waikiki hotels are embracing the Mele Mei events, nearly doubling their live music days, nights and hours. Check the line-up at the Outrigger, Sheraton Hotels, the Kahala and others, so everyone can enjoy the music of the hundreds of nominees, leading up to the big night. Workshops and events are listed on the web site, at nahokuhanohano.org, as are all of the nominees.

The favorite entertainer of the year category has ten nominees this year, and nearly all of them are performing in Waikiki and around the island; We're talking Amy & Willie K, Ledward Kaapana, Kuana Torres Kahele, Kawika Kahiapo, Henry Kaponu, Mailani, Na Hoa, Keali'i Reichel and Waipuna and more. The Na Hokus cover thirty categories, giving viewers an entire night of glam and gala. This is something that no other state in the U.S. presents. Jazz, country music, classical... all have awards, but only in Hawaii is there one official language of dance and music. Celebrate it all month long at melemei.com. ~ Lynn Cook

Lantern Floating Ceremony

Continues from page 1.

more than 6,000 lanterns will be placed onto the water with wishes for peace and happiness of loved ones past while giving hope and courage those left behind. The vision of these flickering lanterns illuminating the waters off of Ala Moana Beach Park and floating off into the sunset is one of the most visually arresting sights available on Oahu. It's simple mesmerizing.

Those wanting to personally float a lantern during the ceremony may receive a single lantern per family or group at the Lantern Request Tent at Ala Moana Beach on the event day, from 10 a.m. Pans will be provided in the tent. Members of the public are welcome to submit their own prayers or thoughts on specially prepared paper provided by Shinnyo-en Hawaii that can then be attached to the lanterns that will be floated by volunteers. Floating homemade lanterns is highly discouraged in order to protect the environment. At the end of the ceremony all of the lanterns will be collected from the ocean and refurbished for use next year.

Scores of people will be flowing into Ala Moana Beach Park all afternoon for the ceremony that starts at 6:15 p.m. Live streaming of the proceedings and a complete schedule of events is available at lanternfloatinghawaii.com. ~ Pam



國家記憶
US-China Collaboration
During WWII
NATIONAL MEMORIES
HAWAII NOW
THROUGH
JULY 31
TOUR

New Chinese Exhibit & Free Audio Tour.

We're proud to serve as the first stop of the "National Memories" 2015 United States tour. It's a once-in-a-lifetime opportunity for your guests to view rarely seen images chronicling the cooperation and camaraderie between Chinese and US soldiers during WWII.

Admission to the traveling exhibit is free with paid admission.

Free Ford Island shuttle from Pearl Harbor Visitor Center.
For more information, call 808-441-1007
or email Education@pacificaviationmuseum.org

PACIFIC AVIATION MUSEUM
PEARL HARBOR
FOUR ISLANDS EMPIRE



Family Favorite

Mother's Day Brunch Cruise

May 10, 2015 • 12:00 - 2:30PM

Relaxing cruise
Scenic views
Taste of Hawaii Buffet
Champagne toast
Prize giveaways for moms
Hula and ukulele lessons
Lei making

\$63⁰⁵ per person **\$38⁰¹** per person

808-983-STAR (7627) • www.StarofHonolulu.com

Please add 4.712% excise tax and 3% harbor fee to cruise prices. Price and contents subject to change.

SPAM® JAM REDUX

13 Years and counting

Once a year SPAM jumps the pan and heats up taste buds in Waikiki. On Saturday, May 2, from 4 to 10 p.m., the 13th annual SPAM JAM® will be presented by Outrigger Resorts. Kalakaua Avenue will be filled with SPAM® enthusiasts enjoying many delicious SPAM® dishes. Island arts and crafts and SPAM®



merchandise will be on sale, from T-shirts, to shorts, to slippers. perfect souvenirs of a fun event; and the popular SPAM® Wave by Outrigger Resorts will be back for photo opportunities. Two musical stages will feature a line-up of island artists.

Cities across the world all have their signature foods – pizza in New York, hot dogs in Chicago, and SPAM® in Hawaii. The islands' affinity for SPAM® has been a love affair years in the making, stemming back to World War II when the luncheon meat was served to GIs. Billions of cans later, Hawaii continues to celebrate the island staple at the annual Waikiki SPAM JAM®.

Hawaii residents buy nearly seven million cans of SPAM® each year, making it the state that consumes more of the tasty luncheon meat than any other state in the country – that's nearly six cans of SPAM® per person, per year!

Approximately 25,000 festival goers will head to the Waikiki SPAM JAM® to celebrate our snack. Admission to the event is free, but many opportunities are offered to generate the much needed funds for the the Hawaii Foodbank, the only agency in the state of Hawaii that collects, warehouses and distributes mass quantities of both perishable and non-perishable food to 250 member agencies as well as food banks on Oahu, Kauai, Maui and Hawaii Island.

The idea for the event was cooked up by Bitsy Kelley, granddaughter of Outrigger founders Roy and Estelle Kelley, while serving up a plate of sizzling SPAM® during International Housekeepers Week back in 2000. Knowing that Hawaii was one of the largest consumers of SPAM® in the world, she was determined to make the Waikiki SPAM JAM® a reality. With the help of co-founder Barbara Campbell, also with Outrigger, they were able to establish a relationship with Hormel and bring the festival to life.

Hawaii's best island music groups will be performing on two entertainment stages. Ka Hehena, Brother Noland, Germaine's Luau, Del Beazley and Robi Kahakalau, Sean Naauao will perform on the stage in front of the Outrigger Waikiki. On the stage fronting Royal Hawaiian Center, artists will include Emke, Red Light Challenge, The Wreck, Legends and hula halau.

Here are a few things even the most expert Spam fan might not know about Hawaii's most mouth-watering food festival. First off, the meaning of SPAM® may never be known. To this day, the true definition of SPAM® remains a mystery. While most people assume it is short for "spiced ham," only a small circle of former Hormel Foods executives know the true meaning – and they're not talking while the flavor lasts.

Those who attend the event can look forward to sampling a wide selection of delicious local dishes from participating restaurants and food trucks, including the winning recipe from this years Great American SPAM® Championship. Teh Grand-prize recipe of Reuben SPAM® Rollups, got the winner a four-night, all expenses trip for two to this

year's festival and the item will be available at the Hula Grill Waikiki food tent.

The delicious appetizer combines diced SPAM® Classic, Thousand Island dressing, sauerkraut and Swiss cheese, was cooked up by Montana resident Beverly Zehnter who knows her way around a can of SPAM®. Seems this recipe also won a blue ribbon at the 2014 Montana State Fair before being entered in this contest. As a cute sidenote, Hawaii is where Beverly originally met her husband James more than 25 years ago. They've never been back since What a way to come back to celebrate!

In addition to all the fun, celebrating SPAM® has another, far more serious reason behind all of the festivities. Since the inception in 2002, the festival has collected more than 25,000 pounds of SPAM® products and other canned food items for the Hawaii Foodbank.

"Since the very first Waikiki SPAM JAM® in 2002, the festival has become a must-attend event for both visitors and Hawaii residents," said Barbara Campbell, Waikiki SPAM JAM® co-founder and vice president of retail leasing and development at Outrigger Enterprises Group. "Whether this is your 13th time attending or your very first, there's always something new to try at Waikiki SPAM JAM®.

Participating restaurants and their dishes include: Spamac and Cheese Balls and SPAM® cupcakes from Hard Rock Cafe; SPAM® Lauau from Atlantis Seafood & Steak; Chai's Waikiki has SPAM® and Fresh Ahi Katsu with Wasabi Curry and Fresh Mango Salsa, Spicy Garlic North Shore Shrimp; and Smoked SPAM®, Steamed Rice, Big Island Baby Greens and Tangerine Vinaigrette. Need a break from all the spamminess? There will be Hula Pie from Duke's Waikiki and Ono Pops will be serving their handmade ice pops, although they will have a candied SPAM® and Mac Nut Brittle one as well. There will also be SPAM® dishes from Gordon Biersch, ABC Stores, Hawaiian Pineapple, Jummy Buffet's, MAC 24/7, Mahaloa Burger, Uncle's North Shore, P.F. Chang's, Egg's 'N Things, Hula Grill and Seafood Village.

"Outrigger is proud to support the Waikiki SPAM JAM® and help to gather our community together to celebrate a local staple that many people enjoy here in the islands," said Bitsy Kelley, Waikiki SPAM® Jam co-founder and vice president of corporate communications for Outrigger Enterprises Group. "We at Outrigger are dedicated to taking care of the communities in which we live and work, which is why we are exceptionally pleased that the Waikiki SPAM® Jam benefits families who receive support from the Hawaii

DISCOUNT HAWAII CAR RENTAL

SAVE UP TO 50%



GUARANTEED RESERVATIONS
* NO BOOKING FEES * NO
DEPOSIT * CANCEL ANYTIME
* NATIONAL RENTAL
COMPANIES

call us today @
1.800.292.1930

or check us out online:

DiscountHawaiiCarRental.com

IL LUPINO

TRATTORIA & WINE BAR

Join us every weekend for

*Champagne
Brunch*

Sat/Sun • 7am-2pm

Choose from 6 Delicious
Brunch Entrees, served with
a Glass of Champagne.
\$19.95

Also join us for our Champagne
Happy Hour every Tues/Thurs all day.
Glass of Champagne \$9.

ROYAL HAWAIIAN CENTER • BLDG. B, LEVEL 1
VALIDATED PARKING
WWW.ILLUPINO.COM • 808.322.3400

How Can We Help?

We're a family-operated business dedicated to service, safety, quality & fun! Ocean activities for all ages and budgets. We're at your service to help provide a perfect match for your client.



Check out our newest yacht,
the Ko Nau Lani

Located at:
**WAIANAE
HILTON PIER
KEWALO**

We offer:
Sail • Snorkel •
Dolphins • Turtles •
Whales • Scuba •
Fireworks Dinner •
Private Charters •
Transportation

234-SAIL

(7245)

WE ANSWER 24 HOURS!

hawaiinautical.com

HawaiiNautical

That's Entertainment

HOTELS

- HALE KOA HOTEL** 955-0555
 •**TuSat** - High and Right Comedy Show takes the stage at the Warriors Lounge at 8pm.
 •**MThFS** - Poolside music at the Barefoot Bar. 6-11pm
- HALEKULANI HOTEL** 923-2311
 •**Daily**-Hawaiian Music and hula at The House Without A Key from 5:30-8:00pm.
 •**Daily**-Live Contemporary and light Jazz at Lewers Lounge from 8:30pm to midnite.
 •**Sun**- Sunday brunch at Orchids features Noly Paa on the piano from 9:30 - 2:30pm.
- HILTON HAWAIIAN VILLAGE** 949-4321
 •**Fri** - Fireworks at 7:45pm.
 •**Fri** - The Rockin' Hawaiian Rainbow Revue (formerly the King's Jubilee), a musical salute to King Kalakaua, at the Super Pool. 7 pm.
 •**FriSat** - Olomana at the Tapa Bar from 8-11pm.
 •**Sun** - Jeff Apaka at the Tapa Bar from 5-7pm.
 •**Daily** - Live entertainment at the Hau Tree Bar and the Tapa Bar from 8-11pm.
- THE KAHALA HOTEL** 739-8888
 •**TuWThFSat** - David Swanson vocalizes on the piano at The Veranda from 7:30-11pm. Live Jazz on Sun/Mon.
- MOANA SURFRIDER** 922-3111
 •**Daily**-Hawaiian music & hula. The Banyan Court, 6-8 pm, and again from 8 -11 p.m. Weekends from 11:30- 2 p.m.
 •**MWFri**-Guided historical tours at 11am.
- NEW OTANI KAIMANA BEACH** 923-1555
 •**FSat**- Local jazz guitarists plays live in the Sunset Lanai Bar. 6-9pm.
- OUTRIGGER WAIKIKI ON THE BEACH** 923-0711
 •**Mon**- Kukui Nut Bracelet Making. 1pm.
 •**Th**- Ukulele Lessons. 1pm.
 •**Fri**- Aloha Fridays bring back old Hawai'i with music, hula, ukulele & lei making lessons. 9am-1pm.
- OUTRIGGER REEF ON THE BEACH** 923-3111
 •**Daily**- See guest artists at work in Kuloko Arts of Hawaii 9am-1pm and again from 6-9pm.
- SHERATON PRINCESS KAIULANI** 922-5811
 •**Daily**-Live Hawaiian music & halau at the lounge from 6-8:30pm, then poolside from 8:30-10:30pm.
 •**Th**-Princess Kaiulani historical tour at 9:30am.
- THE ROYAL HAWAIIAN** 923-7311
 •**TTH**- Free guided resort tour at 1pm.
- TURTLE BAY RESORT** 293-6300
 •**MTWThFSat**- Lei Making, Main Lobby at 10am.
 •**ThSun** - Fire Dancer, Hang Ten Pool Bar at Sunset

- TThFri** - Shell Hula Lessons, Lobby at 10am
 •**TThFri** - Ukulele Lessons, Lobby at 9am
 •**Fri**- Music & Hula. Lobby Lounge 6:30-8:30pm.
- WAIKIKI BEACH MARRIOTT RESORT** 922-6611
 •**Daily**-Hawaiian entertainment in The Moana Terrace Bar. 6:30-9:30pm.
 •**Fri**-Local crafters "Aloha Friday Fair" Lobby 9a-2pm

MUSEUMS

- HAWAII STATE ART MUSEUM** 586-0900
 •**TWThFSat** - Inaugural exhibition "Enriched by Diversity: The Art of Hawai'i." Free. Tuesday-Saturday, 10 a.m. to 4 p.m. Located in the Capital District.
- HAWAII THEATRE** 528-0506
 •**Tues**- A one-hour guided tour offers a unique insight in the history, art, architecture and restoration of the Hawai'i Theatre with trained docents & a mini-concert on the 1922 Robert Morton Theatre Organ. 11 a.m. Admission: \$10.
- HONOLULU MUSEUM OF ART** 532-8726
 •**MWF**- Japanese Language Tours. Private tours also available. 1pm. Regular admission.
- IOLANI PALACE** 522-0832
 •**Mon-Sat**-45 minutes docent-led or self-guided audio tours available in English or Japanese. Japanese-led tour is available only at 11:30 a.m. All tours include re-tour video and entrance into the Palace Galleries. Adults: \$14.75-\$21.75 / Keiki (5-12): \$6. 9am-5pm
 •**Sat**-Hawaiian Quilt Classes. Old Archives 9:30a-12p.
- LUCORAL MUSEUM** 922-5381
 •**TTh**- Learn how to plan your jewelry project and more in this beaded jewelry workshop \$10. 2-4 p.m.
- MISSION HOUSES MUSEUM** 447-3910
 •**Tue-Sat**-Learn about the dramatic story of cultural change in 19th-century Hawai'i. Docents lead tours through the oldest existing frame house in the Islands, Printing Office, and the coral block Chamberlain House. Reservations required. www.missionhouses.org
- PACIFIC AVIATION MUSEUM** 441-1000
 •**Daily**-Vintage aircraft in battlefield hangars. Combat flight simulators. Aviator's Tour takes you through the new Restoration Hangar. Restaurant, Museum Store. Shuttle & Tickets at USS Arizona Memorial Visitor Center or at www.PacificAviationMuseum.org.
- THE SPALDING HOUSE** 526-1322
 •**Daily**-Docent-led tours given daily. 1:30pm. Garden tours or Japanese language tours are by appointment.
- NAVAL AIR MUSEUM BARBERS POINT** 682-3982
 •**Mon-Fri**- A unique museum experience about aviation history in Hawaii. All of the aircraft are open to climb

in, on and around. Tours: 8 a.m. - 4:30 p.m. \$7 / \$5 children under 18. BLDG 1792, Midway Road, Kalaeloa Airport. Reservations required. Sat/Sun by appt only. www.nambp.org.

SHOPPING CENTERS

- ALA MOANA CENTERSTAGE** 955-9517
 •**Tues** - PCC Polynesian Revue Show. 6pm.
 •**Sun** - Keiki Hula Show. 10-11am.
- KINGS VILLAGE** www.kings-village.com 237-6344
 •**MW** Famer's Market offering fresh produce, baked goods and local food items from 4-9pm.
 •**Daily** King's Guard Museum features a variety of collectibles and memorabilia. 10a-10:30p. FREE.
- ROYAL HAWAIIAN CENTER** 922-2299
 • **TWThF**- Beginner Ukelele 10-11am, *Helumoa Hale*
 • **MW**- Learn Lomilomi 11am-12pm, Bldg. C, 3rd floor
 • **MF**- Hawaiian Storytelling 12pm, *Helumoa Hale*
 • **TTh**- Intermediate Ukelele 11:30am, Bldg. C, 3rd floor
 • **TTh**-Hula (T) 11am-12pm (Th) 4-5pm, *Royal Grove*
 • **TWThF**- Live Hawaiian music 6-7pm, *Royal Grove*
 • **MTWThSat**- Lei making 1-2pm, *Bldg A, 1st floor*
 • **Sat**- Hula Kahiko 6-6:30pm, *Royal Grove*
 • **Sat**- Hawaiian musicians 7:30-8:30pm, *Royal Grove*
 • **WSat** - PCC Performs. 11-11:45am, *Royal Grove*
- WAIKIKI BEACH WALK** www.waikikibeachwalk.com
 •**Tuesdays** - Ku Ha'aheo featuring Hawaiian song and dance on the Plaza stage. 4:30-6pm
 •**Wednesdays** - Yoga Classes 4-4:45pm. Free.Plaza Stage
- WAIKIKI SHOPPING PLAZA** 923-1191
 •**Daily** Hula Lessons. 10am, 12pm
 •**MTTh** - Polynesian Review 1st & 3rd floor 7-9pm

ATTRACTIONS

- KALAKAUA AVENUE** 527-5666
 •**Fri** - Strolling Hula from 8-10:00pm.
- KAPI'OLANI BANDSTAND** 527-5666
 •**Fri**-Hawai'i's finest musicians perform. 5:30-6:30pm
 •**Sun**-Royal Hawaiian Band performs 2-3:15pm.
- KUHIO BEACH HULA SHOW** 843-8002
 •**TThSat**- City & County presents a free hula show at sunset. 6:30 - 7:30pm at the hula mound.
- TAMARIND PARK - DOWNTOWN** 527-5666
 •**Fri**- Mayor's Aloha Friday Music from 12-1pm features live music from Hawaiian to Jazz to Pop.
- WAIKIKI TOWN CENTER** 922-2724
 •**Mon-Sat**-The songs and dances of Hawai'i, New Zealand, & Tahiti. Free shows begin at 7pm.

EVENTS SUBJECT TO CHANGE PLEASE CALL TO CONFIRM PRIOR TO ATTENDING

PAPARAZZI

Mya in Morimoto's House



Alex dela Cruz from the Outrigger Waikiki got a picture with Grammy award winning artist Mya when she was at Morimoto Waikiki. Mya won the Grammy in 2002 for her rendition of 'Lady Marmalade' with Christina Aguilera.

Mu'umu'u Heaven pops into Waikiki



Everyone's favorite vintage mu'umu'u store has opened up a pop-up hut inside the lobby of T Galleria by DFS. Passerbys on the street will see this display. Just beyond is their purpose-built beach hut, made using 90 percent recyclable materials.

Do you have a picture you would like us to run?
 Send them to: publisher@oahuconciierge.com

Great Food, Great Chefs, Great Cause



Rob Trauger, Young's Market Executive VP & GM Philana Bouvier, Halekulani GM Ulrich Krauer and Pam Davis were at the Hawaii Food Bank to support Great Chefs Fight Hunger. It's never too early to collect those SPAM cans!

Dole Plantation - 1 FREE Adult Admission To The Maze With Purchase of 1 Adult Admission. 621-8408

Giovanni Pastrami - 15% Off Full Bar, Dine-in or Take-Out at anytime with ID. 227 Lewers St. 923-2100.

Hard Rock Café - 15% off food, beverage (non-alcoholic), or merchandise. Hotel ID required. 280 Beachwalk Ave. 955-7383.

Hawai'i Prince Golf Club - \$5 Off Standard Kamaaina Green Fees. Tee Times: 944-4567

Hilo Hattie - 25% on Hilo Hattie labeled garments, 15% off other fashions/gifts and 10% off Hilo Hattie labeled foods. Not valid on sale item. Ala Moana Center and Nimitz Hwy Ph 535-6500.

Hys Steakhouse - 25% VIP Discount Off Food And Beverage (up to 2 persons) 2440 Kuhio Ave. 922-5555

Hyatt Regency Waikiki - 15% discount with the presentation of a concierge business card at SHOR, Japengo and SWIM. 2424 Kalakaua Ave. 923-1234.

Iolani Palace - Free Admission. Regular rate \$20. 364 S. King Street, Reservations & Hotel ID required. 522-0832.

IHOP - Receive 20% on entire bill. Must show valid hotel ID. Not valid with any other offer or discount. Aqua Palms, 1850 Ala Moana Blvd restaurant only. Free parking available. 949-4467.

Kaiwa - 20% off food & beverage between 5 & 7 p.m. 924-1555

Longhi's - 25% off food & beverage up to 2 persons, not applicable with any other promotion or discount. 947-9899.

Mission Houses Museum - Free tour with hotel ID. 447-3910

Pacific International Skydiving Center - 50% Discount on Jump, 68-760 Farrington Hwy, 637-7472

Plaza Café - 15% off all food items. Best Western the Plaza Hotel. 3253 N Nimitz Highway. 836-3636.

P.F. Chang's Waikiki - Receive 20% on all appetizers, entrees, desserts and beverages 11 am - 5 pm daily (not valid for Pau Hana menu) Royal Hawaiian Center. Ph: 628-6760, 637-7472

Romano's Macaroni Grill - 20% Off Food and Beverage for up to 2 guests. (Not Valid for Happy Hour Menu). Ala Moana Center, 1450 Ala Moana Blvd. 356-8300

Royal Hawaiian Center - get your FREE Malama Card which offers special retail and dining discounts to local Waikiki workers. Royal Hawaiian Center, 2201 Kalakaua. 922-2299.

Ruth's Chris Steak House - 20% Off Food and Beverage for up to 2 guests. (Not Valid for Happy Hour & Prime Time menus). Restaurant Row, 500 Ala Moana Blvd. 599-3860. Waikiki Beach Walk, 226 Lewers Street. 440-7910

The Contemporary Museum - FREE Admission For Cardholder and One Guest. 526-1322

The Kahala Resort - Complimentary appetizers for a concierge and a guest with the presentation of a concierge business card at Hoku's, Plumeria Beach House, Seaside Grill, The Veranda. 5000 Kahala Avenue. 739-8888

The Original Glider Rides - Come experience the joy of soaring for yourself. Concierge / GSA may receive a complimentary scenic ride. Request the "GSA flight special" when booking your reservation. Hotel ID required. Dillingham Airfield. 637-0207

Tiki's Grill & Bar - FREE order of ANY appetizer with any purchase! One per table. OahuconPOKE. ASTON Waikiki Beach. 923-8454

Willoughby's Restaurant - 15% off all food items. Ohana Honolulu Airport Hotel. 3401 N. Nimitz Hwy. 836-0661.

HELP us update this card. If you know of an offer not being honored let us know. As management changes, sometimes offers can get lost. Also as we work on updating this, let us know if there is something you would like to see here & we'll see what we can do!

You may be required to provide identification. Must show Hotel ID to claim offer. One special per person per business. Offers valid on regular-priced merchandise only. Discounts are available to Guest Service Professionals ONLY. Not valid with other promotions or special offers. A minimum 18% gratuity on original order required for all special food offers.  New offer

Conciierge of the Month



NAME: Marivic Aldaya
HOTEL: Hilton Grand Vacations Club
TITLE: Club Coordinator

Q. How long have you been with HGVC ?

A. I was employed in 2003 as a HGVC club coordinator to market and promote Hilton Grand Vacation Club.

Q. How big is your team there?

A. We have a total of 83 concierge, 50 on the HHV towers and 33 on the HGVC tower.

Q. Describe what makes HGVC different?

A. HGVC promotes a product to help changes peoples lives. HGVC is a condominium setup with a luxury of a kitchen, living room, dining area and washer & dryer. It is situated in a hotel environment with a hotel setup in which you could enjoy the hotel amenities & ambiance.

Q. Where did you work before the Hilton?

A. I had my own medical supply Business in the Bay Area. We catered to the elderly in the carehomes and retirement homes.

Q. How did you get your start in the industry?

A. In San Francisco I worked at the front desk in a 3-star hotel and later became the night auditor.

Q. What's the biggest challenge at the desk?

A. Our main goal is to give our utmost customer service to our guests with a 100% satisfaction. If a feel that I am not at that level then I feel that I did not do my part.

Q. What do you like most about this industry?

A. I love to learn cultures from differnt countries. This industry gives you an opportunity to meet people from different walks of life. Understanding their ways and learning how they think.

Q. What is your favorite off property restaurant?

A. Thats easy, it has to be Chef Chai's. Many times, he's around to say hello and make you feel welcome. Of course, on our property it is Bali Steak and Seafood.

Q. Do you have one particular guest that stands out?

A. I remember this couple who prepared their bucket list of things to do on Oahu. It had 20 items on it and they only had 5 days to accomplish it. She came to my desk nervous and panicking. She didn't know how to do it all. I planned her daily activities and suggested how to go about doing it. She accomplished it all in 4 days and got a day to rest. She was so happy that she complemented me to our manager on duty.

Q. What's the one question you are asked most often?

A. Information about the Pearl Harbor.

Q. How do you deal with those "difficult" guests?

A. It's all about putting yourself in their shoes and going out of your way to make each person feel as if they're a guest in your home.

Q. Favorite part of the island to send guests too?

A. Haleiwa. It gives you a feel of old Honolulu and there are a lot of places to eat.

Q. What would people be surprised to learn about you?

A. I am single mother of 5 and have raised my children alone. I now have grandchildren and my family is my pride and joy.

Q. Where are you from originally?

A. Manila, Philippines. I migrated to San Francisco when I was 15 years old and came to Honolulu in 2000.

Q. What do you like to do most when not working?

A. I love to go the gym. I go to spinning classes, lift weights and zumba. Also, I love watching my twins plays basketball games.

Q. Any other comments you'd like to share?

A. Our concierge industry in Oahu has a great standard where we share the same spirit of aloha and proud of what we do to help every guests feels like their OHANA



Embrace Your Dreams

Experience the magic of dreams coming true in our inspiring and unforgettable dolphin programs starting at only \$125. Dolphin Quest is located at the legendary Kahala Hotel & Resort.



DOLPHIN QUEST
Oahu

Reserve

800-248-3316
808-739-8918
dolphinquest.com

A portion of the proceeds supports vital marine education, conservation and research.

The Oahu Concierge is printed monthly and direct mailed FREE to all Oahu Concierge, Hospitality & Activity Professionals.

Subscriptions available to non-industry at \$25 per year.

C O N T A C T

Davis Media

Ph: 596-4422 • Fax: 593-0839

www.oahuconciierge.com

Twitter & Instagram: @OahuConciierge

Facebook: www.facebook.com/OahuConciierge

ADDRESS & NAME CHANGES / ADDITIONS

We do not take changes by telephone. All changes to mailing list **must be submitted in writing** by the 16th of the month to make the next issue, email is preferred.

S T A F F

PUBLISHER Pam Davis
publisher@oahuconciierge.com

CONTRIBUTING EDITORS
Lynn Cook, Lance Rae

DESIGN
Coreiya Design

The Oahu Concierge
1221 Kapiolani Boulevard, Suite 1040
Honolulu, Hawaii 96814



LOOK & BOOK

Go to www.HIRealTime.com

A NEW AGENT TOOL built specifically for Hawaii Guest Professionals.

It's **FREE!**

- Activities
- Attractions
- Restaurants
- Events

Real-time booking for over 130 Vendors, with more being added each month.

Register to access for free at WWW.HIREALTIME.COM



ponorez serving Hawaii's visitor industry since 1988. . . 27 years & counting.

“Thank you for holding, a representative will be with you shortly.”



Are you getting tired of hearing the same automatic voice answering service every day? Put down the phone because now there is a new way to book activities without picking up the phone!

Now you can **Look & Book** at your convenience, at the office, on your way to work or even in your bed.

HIRealtime.com works on a variety of devices: Personal computer, MAC, tablet, Apple & Android mobile phones.

Similar to Net Neutrality, which ensures a level playing field for all internet companies,

A3H's PonoRez provides free, easy, non-preferenced ticketing access by logging on or by our API. API stands for Application Program Interface, essentially it provides a way for systems to talk with each other. A common layman's term for API is "bridge" **PonoRez's** bridge has been available to outside systems since May 2010. **A3H** continues to keep our bridge open and willing to communicate.

The system is called **PonoRez** for a reason. It's made with principle over profit in mind. **PonoRez** is not just a different kind of system; it's a system that is **“Making a Difference”**