

# Concierge

KEEPING THE HOSPITALITY INDUSTRY INFORMED SINCE 1998

## Taste the love of our land

Don't miss the 13th annual Hawaii Food & Wine Festival



The Hawaii Food & Wine Festival returns to Oahu November 2-5. For the first time in three years, they are bringing back their beachfront event in Ko Olina complete with fireworks! Photo courtesy of HF&W.

It is one of the premier food and wine festivals in the Pacific region and features a wide array of culinary experiences, wine tastings, and gastronomical delights across the state. The Hawaii Food & Wine Festival (HF&W) is bringing yet another fantastic lineup of renowned chefs and culinary personalities to the islands from around the world to create extraordinary dining experiences for festival attendees, including twenty-two first-time chefs to HF&W.

New faces such as Shirley Chung, Tyler Florence, Tara Monsod, Aarón Sánchez, Cedric Vongerichten, and Jeremiah Stone join HF&W veteran chefs like Chris Cosentino, Brandon Jew, Jonathan Waxman, Raphael Lunetta, Robynne Maii, Iron Chef Morimoto, and of course, festival co-founders Alan Wong and Roy Yamaguchi.

Ensure your guests know about this delicious annual festival that brings the best of the culinary world together to present spectacular culinary events for a great cause, promoting a vigorous local food movement to help free Hawaii from mainland dependency and give a bump in our culinary tourist market. HF&W prides itself on spotlighting Hawaii by

connecting all aspects of Hawaii's cuisine, culture, and cultivation through world-class culinary experiences. All chefs must create a dish using local ingredients from Hawaii's farmers, ranchers, and fishermen. The festival creates opportunities for the visitor industry to support local agriculture directly —vital in the state's efforts towards food security in the Islands — the importance of which has become a conversation highlight over the past few years.

HF&W is celebrating its 13th year with a theme that looks to the festival's future. Lucky 13, which means 'assured growth' and 'definitely vibrant' in many Eastern cultures— is part of the name of one of two brunches offered on Sunday, November 5th, but before we get to that, let's take a look at the entire lineup on O'ahu.

**Far East Street Ph'east** kicks off the excitement on November 2nd. The Alohilani Resort Waikiki Beach's pool deck will be turned into a bustling Asian Night Markets as twelve chefs, including Iron Chef Masaharu Morimoto, Top Chef fan favorite Shota Nakajima from Seattle,

Continued on page 4.

## Celebrating our last King



Dani Pahe will be addressed up to honor King Kalakaua's birthday on November 16th.

King Kalākaua, whose full name was David La'amea Kalākaua, was the last reigning king of the Kingdom of Hawaii. Born November 16, 1836, he ruled from 1874 until his death in 1891. During his time as king, King Kalākaua was known for his efforts to preserve and promote Hawaiian culture and traditions. He was a patron of the arts, especially music and dance. He encouraged the revival of hula and other traditional practices that had been suppressed during the decades of missionary influence in Hawaii. Although he advocated for a renewed sense of pride in all things Hawaiian, he also played a major role in the modernization of Hawaii during a time of significant change and influence from foreign powers, promoting the construction of a trans-Pacific telegraph cable, which connected Hawaii to the U.S. and Asia, thereby increasing communication and trade with the outside world.

continued on page 16.

### TABLE OF CONTENTS

Yada Yada Yada .....	2
Concierge Events .....	2
Newsflash .....	3
E Pili Kakou .....	8-13
Chef's Corner: Meat Church BBQ Matt Pittman .....	13
Calendar .....	14-17
Paparazzi: Off the Wall Craft Beer and Wine .....	18
That's Entertainment / Concierge Card .....	19

## Publisher's Letter



# Happy Thanksgiving

It's official; the holiday season has begun, and what better way to kick it off than with the Hawaii Food & Wine Festival?

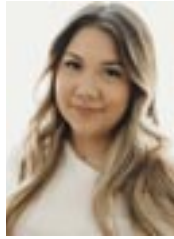
Once again, the team behind this culinary extravaganza has gone above and beyond what they have done before. I am continuously blown away by the creativity, organization, and execution of the HFWF team and am ridiculously excited for what's to come after writing the story for this issue. Several events were already sold out before I started writing this story, so if you or your guests have been hesitating, don't wait a minute longer. If you're wondering why you got the November issue early, it's because the HFWF takes place so early in the month. Events start on Thursday, November 2nd, and I wanted this in your hands before the Festival kicks off to make sure you have all the details. Foodie fans keep your eyes open because there will be a bunch of big-name chefs on the island.

The holidays kick off this month at all the shopping centers as well. I don't have everyone's hours yet, but I know Santa's Surf Shack opens at Ala Moana Center on November 17th. Pictures with Santa before Thanksgiving? Makes sense, actually. It allows people to get pictures of the kids for their Christmas cards. Might as well get those out before the official kick-off of the Christmas shopping season on Black Friday. Almost every store in the island will offer special sales and deals, and I'm sure some will open early. Do stores still open at midnight on Black Friday? I can promise you there has never been anything I needed so badly that I got in line for a midnight opening at a big box store, but I look forward to the videos!

Don't forget, along with the holidays, November also means the start of the big-wave season on the North Shore. Keep your ears open for those big swells rolling in, and remember to remind your guests to take extra precautions when heading out to watch the big surf.

I hope you all get some time to spend the holiday with your loved ones, even if you're working that day. Happy Thanksgiving everyone.  
Aloha!

# Yada Yada



Rena Agngarayngay

Congratulations to **Rena Agngarayngay**, who has just been promoted to General Manager of **HotelRenew**. She actually worked as a front desk agent at Hotel Renew from 2014-2016 before moving on to the Ritz Carlton, the Modern Honolulu and then taking over as Director of Front Office at the Ala Moana Hotel for three years before heading back to Hotel Renew in 2022 as hotel manager. Talk about full circle! The hotel also announced that **Mary Madamba** has been promoted to Guest Service Manager. Most recently she has been working as the front desk supervisor. Previously she worked in retail before joining the hotel in 2021 as a front desk agent. Great job ladies! • After 24 years, **Alan Mattson** has retired from **Castle Hospitality Group**. Stepping into the

role of President & CEO is **Matt Bailey**. Matt has more than 40 years of hospitality management experience, and is a recognized leader in Hawaii's travel and tourism industry. Prior to joining Castle Hospitality Group, he served as General Manager of the Montage Kapalua Bay. He also previously served as President & Chief Operating Office of Aqua-Aston Hospitality and held executive positions with Sundance Resort, Aston Hotels & Resorts, The Grand Wailea Resort Hotel & Spa, and Carmel Valley Ranch. • **Jennifer Hines** was recently promoted to Transient Sales Manager of the **Hyatt Regency Waikiki Beach Resort** after working on property for nearly seven years. Most recently she held the role of Group Sales Coordinator. Congratulations!



Matt Bailey

## Concierge Events 101: A Reminder Course

# Receiving an Invite

We've had a lot of concierge events lately, some big, some small, and since there are a lot of new faces out there, I wanted to remind everyone of a few basics about these invites.

I don't have everyone's email address. There are multiple hotels out there that I do not even have a contact for. So, if you are sitting at a front desk or working in guest services and have not received an invite lately - ask around. If no one on your team has heard from me - I may need to learn how to reach you. People move around, and often, when they leave, there goes my way to reach out to the team. The holiday parties are coming up, and I want to include everyone, so make sure I know how to reach you. Send an email to [rsvp@oahuconcierge.com](mailto:rsvp@oahuconcierge.com) to make sure your team is on the list.

If you are receiving the invite, it's not just for you. I am counting on you to share the invite with your team. Since we cannot accommodate your entire team, please be sure to share the info with your team upon your return if you attend.

When I email you an invite, please RESPOND, even if no one can go. Otherwise, I start to think you may not be getting it and share it with more people, which often causes confusion. It's best if there are only one or two emails per desk I email the invites to so they can share

and let me know who will be coming, but please let me know you got it even if your team is not interested. Not all events are for everybody. It's ok. Just let me know.

Not replying to an invite means when it's time to cut down a list for a smaller event, the hotels that don't respond are usually the first to go. It's difficult for a place with only a few seats to figure out who to cut—when they want everyone to know—so don't make it easy on me to take your property off the list.

Also, no matter the event's size, there will always be more of you than there are seats. Because of that, these invitations do not include a plus one. These are industry-only events. Just because your hotel may not have used all of its seats, does not mean you can fill them with your friends. I always try to be fair, so since I'm not allowing your colleague to bring a plus one, you can't either. I appreciate your understanding of this situation.

Lastly, when you RSVP, please include the name and title of who will be attending, and always let me know if something changes in a timely manner, so I have time to offer that seat to another hotel or advise the host the numbers have changed.

Above all else, when you come, have fun and enjoy! Aren't we lucky to have all these opportunities. Mahalo.

# EXTRA EXTRA EXTRA *Newsflash*

## NEW PLANT-BASED CAFÉ OPENS IN WARD VILLAGE

WildKind Café + Juicery opened its first brick-and-mortar location in Hawai'i in the former Ben & Jerry's location at Ward Entertainment Center. Combining a passion for wellness and plant-based foods, the expansive menu of real food smoothies, cold pressed juice, pitaya and acai bowls, vegan grab-and-go salads, overnight oats, vegan mini beach picnics, and a full espresso bar offering plant-based milk options. [wildkindehawaii.com](http://wildkindehawaii.com).

## RITZ-CARLTON RESIDENCES, WAKKIBeach VOTED #1

The Ritz-Carlton Residences, Waikiki Beach was named #1 in the "Top Hotels in Hawai'i" category in Condé Nast Traveler's 2023 Readers' Choice Awards. The largest 'Residences' in the brand's portfolio recently celebrated seven years since it officially opened in 2016, The readers ranked the top 10 hotels in Hawai'i - where 8 of the properties on the list were on O'ahu. Props go out to the Trump International Hotel Waikiki which took 2nd, Halekulani 3rd, The Kahala Hotel & Resort 4th, Halepuna Waikiki by Halekulani 6th, The Laylow 7th, Prince Waikiki 9th and the Waikiki Beachcomber 10th. Congrats to everyone on the list!

## A SPECIAL DAVID HOCKNEY EXHIBIT COMING TO HOMA

One of the most influential British artists of the 20th century, David Hockney is featured at the Honolulu Museum of Art from November 17, 2023 - March 10, 2024. "David Hockney: Perspective Should Be Reversed, Prints from the Collections of Jordan D. Schnitzer and His Family Foundation" is the largest North American retrospective print exhibition of Hockney's career, with more than 100 colorful prints, collages and photographic and iPad drawings in a variety of media spanning six decades of the artist's career. [honolulumuseum.org](http://honolulumuseum.org).

## G L I O N OFFERS TRANSPORTA- TION DINNER PACKAGES

Did you know G. Lion Hawaii, the company behind Hy's Steakhouse, La Vie and Quiora, offers transportation dinner packages? Guests can book a chauffeured Mercedes Benz GLS 450 as part of their dinner experience. Each experience can be personalized as needed, but Hy's has three prix-fix special menus inclusive of tax, gratuity and transportation that can be found online. Booking required one-week in advance. [gionhawaii.com](http://gionhawaii.com).

## ALA MOANA CENTER WELCOMES NEW TENANTS

Ala Moana Center welcomes four new tenants to its collection. Alo Yoga, a Los Angeles-based premium lifestyle brand opened last month. Also opened last month is Marni, recognized as the most artistic, color-savvy, life embracing, off-beat brand in the luxury segment. Both are located on Mall Level 2, Diamond Head Wing. Fitness studio Lagree Oahu and Texas de Brazil Restaurant will open in December. [alamoanacenter.com](http://alamoanacenter.com).

## HAWAII CONVENTION CENTER ADDS E-BARS AND NEW ART

The Hawai'i Convention Center has transformed its ground-floor Kahakai Lobby and escalator area by installing two new e-bars and a permanent artwork collection featuring the local artists. The e-bars feature seating with individual power and USB ports and counterspace for mobile devices and selected artwork they felt would enhance the look and feel of the space, including two lei renderings and a hand-shaped koa surfboard.

**Entertainment EVERY NIGHT**

HILTON HAWAIIAN VILLAGE™ PRESENTS  
**WAIKIKI STARLIGHT LUAU**

Fire knife dancers, live music and an authentic island feast—all under the stars. Upgrade to **Premier seating** for access to the first and second rows, a welcome beverage plus two drinks, and fresh flower lei greeting.

**GOLDEN CIRCLE and GENERAL SEATING also available.**

SCAN FOR CURRENT SCHEDULE & RESERVATIONS.

**TAPA BAR**  
IN THE TAPA TOWER

**LIVE MUSIC NIGHTLY 7-10pm**  
A venue for icons of Hawai'i's music scene, this is where you'll experience some of the finest local talent the islands have to offer. Join us for a fun-filled evening immersed in the heartbeat of Hawai'i's music.

**NOW SERVING**  
Smash Burgers, Nashville Hot Chicken, Pizzas and more!

**WAIKIKI MARKET**  
WHERE ALOHA MEETS 'ONO

**'OLILI**

**PiKO**  
kitchen + bar

**FREE**  
Delivery or  
Curbside  
Pickup  
with your first order!

Open daily from 6 am – 10 pm  
waikikimarkethawaii.com  
Lili'a Waikiki, 2380 Kuhio Avenue

## Hawaii Food & Wine Festival

Continued from page 1.



The pooldeck at the Ahihi'anii will be transformed into a bustling Asian Market as the 13th annual HFWF kicks off on November 2. Photo courtesy HFWF/Kris Labang

and James Beard Award winner Robynne Maii, the first Hawai'i-born recipient to win this award in 19 years will serve up mouth-watering dishes inspired by street food classics incorporating tastes from the Philippines, Vietnam, Japan, Korea and local flavors from our backyard. Ten mixologists and three wineries join the party, creating a fabulous evening under the stars. Tickets start at \$300. 6 – 9 p.m.

One of the most anticipated signature events occurs on Saturday, November 3rd on the rooftop of the Hawaii Convention Center. From sunset to starlight, this is the venue to sip and savor at the **Hawaiian Airlines Presents Crush'd**, featuring two dozen of the world's most celebrated wine estates sampling multiple wines from their vineyards. Chefs include well-known T.V. personalities Tyler Florence and Chris Cosentino, David LeFevre from Manhattan Beach Post, and Washington D.C.'s Aaron Silverman, joined by local favorites M.W.'s Michelle Karr-Ueoka, Andrew Le from The Pig and the Lady, Daisuke Hamamoto from Arancino at the Kahala, and Festival co-founder Roy Yamaguchi to name a few. Wine representatives from some of the top vineyards around the world will keep the guests complimentary HFWF etched Riedel glass filled throughout the night as representatives from such wineries as Au Bon Climat, Silver Oak Cellars, Duckhorn, and Sinegal Estates, as well as vintners from France such as Château Pape Clément, Domaine Louis Latour and Baron Philippe de Rothschild guarantee to offer something for every wine lover out there. Crush'd is one of those events where taking a ride-share is recommended. On top of all those wines, ten mixologists will also offer excellent hand-crafted cocktails, and you do not want to miss out on any of these fantastic beverages.

Wine enthusiasts will have a field day on Saturday, November 4th with three

wine seminars at the Halekulani. Each forum will last 90 minutes and will cost \$195. The day kicks off with a **Rivers-Marie: Pinot Noir Perspective** led by winemaker Thomas Rivers Brown and a panel of Master Sommeliers, for a once-in-a-lifetime opportunity to experience a vertical and side-by-side tasting of wines from The Summa Vineyard. 9 – 10:30 a.m.

At 11 a.m., join French wine magnate Bernard Magrez, the owner of four prestigious wine estates in Bordeaux: Château La Tour Carnet, Château Pape Clément, Château Fombrauge and Clos Haut-Peyraguey for **Bernard Magrez: The Winning Quartet**. Don't miss this exceptional vertical and horizontal tasting of two wines (an older vintage and a newer one) from each of these esteemed estates with an icon in the industry. Ends at 12:30 p.m.



HFWF is also known for its exceptional wine seminars. Photo courtesy HFWF/Travis Okamoto

Last up is this year's champagne seminar, **Grower Champagne, The Special Club**. As you may know, since 1999, roughly 28 growers/producers across the Champagne Region have created a Club referred to as the "Club Trésors de Champagne." These Club Members are asked to create a "Special Club" Cuvée, a wine crafted to represent their cellars' most remarkable achievement. A panel of Master Sommeliers and Joy Lindholm from Skurnik Wines in New York will explore ten unique "Special Club" Champagnes from some of the greatest Growers in the appellation. 1 – 2:30 p.m.

Hopefully, you monitored your alcohol intake throughout the day or hired a driver because HFWF is thrilled to announce the return of its beloved beachside grand tasting event after three long years. **First Hawaiian Bank Mastercard® Presents House of Blanc & Rouge** takes place in Ko Olina later that evening. Held on the beach at Lagoon 1 between the Aulani and Four Seasons, ladies should leave their high heels at home for this one. Stroll in the sand along the beach as you indulge in the

Continued on page 6.

## Book Jewelry Manufacturing Tour

Located in the heart of Honolulu, the Design Center is a free tour that gives you the chance to learn how Maui Divers Jewelry creates their exclusive masterpieces.



**MAUI DIVERS JEWELRY**

Inspired, designed and created in Hawai'i EST. 1959

Ala Moana Center | Hilton Hawaiian Village | International Market Place | Pearl Harbor | Dole Plantation

Hale'iwa Store Lots | Honolulu Airport | Maui Divers Jewelry Design Center

Tours, Bookings and Questions? Call or Text 808.946.2929

O'ahu | Maui | Big Island | Kaua'i | [MauiDivers.com](http://MauiDivers.com)

## PARK WEST FINE ART MUSEUM & GALLERY

Waikiki Beach Walk Honolulu  
808-859-4871 parkwesthawaii.com



Any client you refer for a private tour will get

**10% off their purchase\***  
if they mention the hotel and concierge that referred them.

For more details  
waikikibeach@parkwestgallery.com  
**PARK WEST FINE ART GALLERY**

\*Terms and conditions apply

## Hawaii Food & Wine Festival

Continued from page 1.



HFWF signature beachfront event at Ko Olina is always a hit. Photo courtesy HFWF/Travis Okimoto

culinary masterpieces of ten top chefs, including Gaby Maeda of State Bird Provisions, Top Chef's Marcel Vigneron, and Jonathon Waxman of N.Y.'s Barbuto, who will craft imaginative dishes showcasing the best local ingredients perfectly paired with hand-crafted cocktails from a half dozen mixologists, and of course, more wine, as a dozen winemakers from the night before are joining the party. As in years past, the event live music, this year featuring Maui songbird Anuhea, and wraps up with an impressive fireworks at night's end. If you have never been, sitting on the sand with the calm lagoon waters lapping at your toes, a signature cocktail in hand and the night sky exploding directly above you, it's truly one of those "only in Hawaii" kind of experiences. \$400. 6 – 9 p.m.

For those who want to take their evening up to another culinary level, they should consider the VIP experience offering four decadent action stations, including a caviar bar by Chef Vikram Garg, foie gras station from Chef Shaymus Alwin, pasta and truffle bar from Chef Ryo Takatsuka and tartare and a crudo station from Chef Roy Yamaguchi. Of course, there's a price tag on this kind of experience, but if your guests have the means, enjoying a gastronomical indulgence like this on the beach in Hawaii will be a truly once-in-a-lifetime experience—\$ 1,250. Doors open at 5 p.m., and you won't want to miss a minute.

New to this year's lineup are two brunch events—a fitness brunch and a dim sum brunch walk-around featuring Feng Shui and energy reading activities. For those who overindulged Saturday night, you can eliminate some of that guilt the following day. On Sunday, November 5th, join Egan Inoue at the Outrigger Reef Hotel for **Fit Brunch with Egan's Bootcamp**. Work up an appetite during an upbeat HIIT-style workout after which you can indulge in brunch bites

from five chefs, including Lee Anne Wong and Ming Tsai, while enjoying cocktails and a Bloody Mary Bar. 9 – 11:30 a.m. \$95.

Circling back to where we started, HFWF celebrates 13 years of food fests with **Lucky 13: Dim Sum and Then Some** at the Hyatt Regency Waikiki Beach. Enjoy a dim sum brunch with legendary chef and T.V. host Martin Yan, Mister Jiu's Brandon Jew, and five other chefs as they present their take on traditional dim sum dishes. As 13 is considered a lucky number in Chinese culture, guests can increase their good fortune by stopping by tables of crystal healers, tarot cards, Feng Shui, and more. Tickets were \$125, but this event sold out weeks ago. 11 a.m. – 1 p.m.

The festival has wrapped up with an elegant gala at the Halekulani for the past three years. **The Art of Food & Wine** has become a platform to showcase artists of all mediums. Guests will feast their eyes and tastebuds on culinary works of art inspired by esteemed local artists and up-and-coming creatives as Halekulani's Executive Chef Christian Testa will be joined in the kitchen by four other respected chefs, including James Beard Award winners, Michelin Star recipients, and even Bocuse d'Or finalists (the



World-renowned mixologist Francesco Lafranconi will be on hand for Crush and The Art of Food & Wine. Photo courtesy HFWF/Reid Shinaburo

culinary Olympics). These five chefs—like Monet and Van Gogh—use color, shape, line, texture, and form to bring their culinary vision to life in this artfully designed five-course dinner with fine wine pairings that engage all the senses.

The cocktail reception begins at 5 p.m., and the dinner at 6 p.m. Tickets are \$1,500.

For the past 12 years, the Gala was how the Hawaii Food & Wine Festival wrapped up its events, but this year, due to the devastating wildfires on Maui, there have been a few changes. First off, HFWF decided to postpone the Maui portion of the festival until sometime in Spring 2024. But, as they've shown by their actions before, HFWF is quick to support displaced restaurant, bar, and hospitality workers during times of crisis. Its Kokua Restaurant & Hospitality Fund

Continued on page 18



*the* VIP  
EXPERIENCE

Complimentary stylist and beauty appointments, special offers, and spa services to indulge your guests.

bloomingdale's

ALA MOANA CENTER 1450 ALA MOANA BOULEVARD, HONOLULU

# Let's be Together...

DINING ▶ ENTERTAINMENT ▶ PAU HANA ▶ EAT ▶ DRINK ▶ BE MERRY ▶ HAPPY HOUR ▶

## MONDAY

- Barefoot Beach Café at Queen's Beach** 924-2233  
Live Contemporary & Hawaiian  
The Barefoot Boys 5:30-8:30pm
- Chart House Waikiki** 941-6660  
Live Contemporary Hawaiian  
Cam and the Brothers 6-9pm
- Duke's Canoe Club Waikiki** 922-2268  
Live Contemporary Hawaiian  
Grace Wilton (prothes) 4-6pm  
Bryan & Halekahu (prothes) 7-9:30pm  
Ellsworth Sineona 9:30-12am
- Hard Rock Cafe** 955-7383  
Contemporary Rock  
Cassie and the... (Art & Son) 4-6pm
- House Without a Key** 923-2311  
Hawaiian music & hula by Miss Universe 97 Brook Lee  
Paahana Trio 5-8pm  
Nick Laa 8:15-10pm
- Kani Ka Pila Grille** 924-4992  
Hoku Award Winning Hawaiian Musicians  
Sean Nahaao 6-9pm
- Mahi'ai Table** 670-2778  
Live Contemporary  
Jenna Keala 5-8pm
- Mahina & Sun's** 923-8882

- Monday Vibes on the Lanai  
Brent Linos 6:30-9:30pm
- Mai Tai Bar at the Royal Hawaiian** 923-7311  
Live Contemporary Hawaiian  
Eric Lee 11am-2pm  
Brad Kawakami (11/3-Christie) 8-10pm
- Maui Brewing Company** 843-2739  
Live Contemporary Hawaiian  
Scott Magz 3:30-5:30pm
- Merriman's Honolulu** 215-0022  
Live Slack Key guitarist  
Deven Camat 5:30-7:30pm
- Monkeypod Kitchen Ko Olina** 381-4086  
Live Contemporary 3x a day including from 12:30-2pm.  
Kree and Malik 3:30-5pm  
Sienna Souza 7-9pm
- Monkeypod Kitchen Waikiki** 900-4226  
Live Contemporary 3x a day including from 12:30-2pm.  
Shawn Garnett 3:30-5pm  
Dustin Park 7-9pm
- Piko Kitchen & Bar** 923-2032  
Live Contemporary Hits  
Christian Yrizarry 5-9pm
- Rumfire** 921-4600  
Live Contemporary Hits  
Dave Watanabe 6-9pm
- Signature Prime Steak** 949-3636  
Contemporary Pianist in the bar  
Keith Montross 6-9pm

- Live Contemporary Hawaiian  
Walt Keale 4-6pm  
Kaibua Moon 7-9:30pm  
Stephen Inglis (11/14-Duva) 9:30-12am
- Eating House 1849 Waikiki** 924-1849  
Live Contemporary Hawaiian  
Kings Kabehani 4:30-7:30pm
- Giovanni Pastrami** 923-2100  
Acoustic Soul, R&B and Pop  
YOZA (prothes) 6:30-9:30pm
- Hard Rock Cafe** 955-7383  
Contemporary Rock  
Lance Reid (prothes) 4-6pm
- House Without a Key** 923-2311  
Hawaiian music & hula by former Miss Hawaii  
Delina Ohana 5-8pm  
Jesse Kūkahi (11/14-Brad Jennings) 8:15-10pm
- Kani Ka Pila Grille** 924-4992  
Hoku Award Winning Hawaiian Musicians  
Kaibee Camat 6-9pm
- Lewers Lounge** 923-2311  
Jazz Pianist  
Tommy James 8:30pm-12am
- Liko's Tap & Table** 394-5456  
Live Contemporary  
Jason Laaha 5-8pm
- Mahi'ai Table** 670-2778  
Live Contemporary  
Keoni Ku 5-8pm

- Splash Bar at the Sheraton Princess Kaiulani** 921-4600  
Live Contemporary Hawaiian  
David Aquino 6-9pm
- Swell at the Alohilani** 294-4108  
Solo Contemporary Guitarist  
Drew Hemmi 6:30-9:30pm
- SWIM at the Hyatt Regency** 923-1234  
Live Contemporary Hawaiian  
Kaulana Vinoya 5-9pm
- The Beach Bar at the Moana Surfrider** 922-3111  
Live Contemporary Hawaiian  
Eric Lee 3:30-6:30pm  
Johnny Valentine 7-10pm
- The Edge at the Sheraton** 921-4600  
Live Hawaiian Music  
Stephen Inglis 1-4pm
- The Point Sunset Pool Bar at Turtle Bay** 293-6000  
Live Contemporary Hawaiian with Fireknife Dancer  
Kuhio Travis 5-8pm

- Mahina & Sun's** 923-8882  
Electrifying Acoustic on the Lanai  
Laupepa Letuli 6:30-9:30pm
- Mai Tai Bar at the Royal Hawaiian** 923-7311  
Live Contemporary Hawaiian  
Kupu Dalie-Nahaao 11am-2pm  
Eric Lee (prothes) 6-9pm
- Maui Brewing Company** 843-2739  
Live Contemporary Hawaiian  
Christian Yrizarry 3:30-5:30pm
- Merriman's Honolulu** 215-0022  
Live Contemporary  
John Kema 5:30-7:30pm
- Moani Waikiki** 466-2629  
Live Contemporary Hawaiian  
Lava 7-10pm
- Monkeypod Kitchen Ko Olina** 381-4086  
Live Contemporary 3x a day including from 12:30-2pm.  
Pono 3:30-5pm  
Charite 7-9pm

## TUESDAY

- Amuse Wine Bar** 237-5428  
Live R&B & Contemporary  
Chris Salvador 7-9pm
- Barefoot Beach Café at Queen's Beach** 924-2233  
Backyard Hawaiian  
Ben Kama 5:30-8:30pm
- Chart House Waikiki** 941-6660  
Live Contemporary Hawaiian  
Ryan Tang Group 6-9pm  
Shane Kainoa (prothes) 6pm-9pm
- Duke's Canoe Club Waikiki** 922-2268

- Monkeypod Kitchen Waikiki** 900-4226  
Live Contemporary 3x a day including from 12:30-2pm.  
Tara and Evan 3:30-5pm  
John Akapo 7-9pm
- Piko Kitchen & Bar** 923-2032  
Live Contemporary Hits  
Drew Hemmi 5-9pm
- Rumfire** 921-4600  
Live Contemporary Hits  
Christian Yrizarry (or Biku Sinabuku) 6-9pm
- Signature Prime Steak** 949-3636

OriginalMagoosPizza.com/Order



HAWAII'S FAVORITE ISLAND-STYLE PIZZA, SUBS & CHICKEN

WE'VE MOVED TO KAIMUKI!  
DINE-IN & FULL BAR TAKEOUT & DELIVERY

3579 WAIALAE AVENUE  
(BETWEEN 11TH & 12TH AVE)



# E Pili Kākou

DINING ▶ ENTERTAINMENT ▶ PAU HANA ▶ EAT ▶ DRINK ▶ BE MERRY ▶ HAPPY HOUR

Contemporary Pianist in the bar  
Keith Montross 6-9pm

**Splash Bar at the Sheraton Princess Kaiulani 921-4600**  
Live Contemporary Hawaiian  
Mark Caldeira 6-9pm

**Swell at the Alohilani 294-4108**  
Solo Contemporary Guitarist  
Kamuela Kahoana (11/14 - Jesse Kukahi) 6:30-9:30pm

**SWIM at the Hyatt Regency 923-1234**  
Live Contemporary Hawaiian  
Dominic Carbs 5-9pm

**The Beach Bar at the Moana Surfrider 922-3111**  
Live Contemporary Hawaiian  
Stephen Inglis 3:30-6:30pm  
Alex Oassy (or Brad Kawakami) 7-10pm

**The Edge at the Sheraton 921-4600**  
Live Hawaiian Music  
Eric Lee (11/7 - Jesse Kukahi) 1-4pm

**The Point Sunset Pool Bar at Turtle Bay 293-6000**  
Live Contemporary Hawaiian with Flieknife Dancer  
Jenna Keala 5-8pm

## WEDNESDAY

**Barefoot Beach Café at Queen's Beach 924-2233**  
Island Vibes  
Danny Galua 5:30-8:30pm

**Chart House Waikiki 941-6660**  
Live Contemporary Hawaiian  
Mike Tutuba 6-9pm

**Duke's Canoe Club Waikiki 922-2268**  
Live Contemporary Hawaiian  
Keoni Ku 4-6pm  
Taula Lave 7-9:30pm  
Alika Souza 9:30-12am

**Eating House 1849 Waikiki 924-1849**  
Live Contemporary Hawaiian  
Shawn Garnett 4:30-6:30pm

**et al inside Kahala Market 732-2144**  
Live Contemporary Hawaiian  
Nick Laa 5:30-8:30pm

**Giovanni Pastrami 923-2100**  
Acoustic Guitar, Soul, R&B  
Jason Laaha 6:30-9:30pm

**Hard Rock Cafe 955-7383**  
Contemporary Rock  
Mike Piranha (or Danielle Parente) 4-6pm

**House Without a Key 923-2311**  
Hawaiian music & hula by Miss Universe 97 Brook Lee  
Palhana Tito 5-8pm  
Mike Tutuba (11/8 - Denny Ono) 8:15-10pm

**Kani Ka Pila Grille 924-4992**  
Hoku Award Winning Hawaiian Musicians  
Ei Nei 6-9pm

**Lewers Lounge 923-2311**  
Jazz Pianist  
Cory O'Liveros 5:30pm - 8pm  
Tommy James 8:30pm - 12am

**Mahi'ai Table 670-2778**  
Live Contemporary  
Dillon Pakele 5-8pm

**Mahina & Sun's 923-8882**

Soulful Guitar on the Lanai  
Cameron Achuea 6:30-9:30pm

**Mai Tai Bar at the Royal Hawaiian 923-7311**  
Live Contemporary Hawaiian  
Stephen Inglis 11am - 2pm  
Johnny Valentine (or Brad Kawakami) 6-9pm

**Maui Brewing Company 843-2739**  
Live Contemporary Hawaiian  
Donald Flakowski (or thes) 3:30-5:30pm

**Merriman's Honolulu 215-0022**  
Live Contemporary  
Kamaka Canaillo 5:30-7:30pm

**MINA's Fish House 679-0079**  
Live Contemporary Hits  
Kamuela Kahoana 6-9pm  
Jesse Kukahi (11/6, 11/5) 6-9pm

**Moani Waikiki 466-2629**  
Blues, Old School Rock, Country  
Keith Batlin 7-10pm

**Monkeypod Kitchen Ko Olina 381-4086**  
Live Contemporary  
Chris Murphy 3:30-5pm  
Sierra Lucia 7-9pm

**Monkeypod Kitchen Waikiki 900-4226**  
Live Contemporary  
Kailua Moon 12:30-2pm  
Jasmin Nicole 3:30-5pm  
Chante 7-9pm

**Piko Kitchen & Bar 923-2032**  
Live Contemporary Hits  
David Aquino 5-9pm

**Rumfire 921-4600**  
Live Contemporary Hits  
Jesse Kukahi (or Dominic Carbs) 6-9pm

**Signature Prime Steak 949-3636**  
Contemporary Pianist in the bar  
Pierre Grill 6-9pm

**Splash Bar at the Sheraton Princess Kaiulani 921-4600**  
Live Contemporary Hawaiian  
Alika Souza 6-9pm

**Swell at the Alohilani 294-4108**  
Solo Contemporary Guitarist  
Danielle Parente 6:30-9:30pm

**SWIM at the Hyatt Regency 923-1234**  
Live Contemporary Hawaiian  
Biku 5-9pm

**The Beach Bar at the Moana Surfrider 922-3111**  
Live Contemporary Hawaiian  
Brandon Senano 3:30-6:30pm  
Kaiona 7-10pm

**The Edge at the Sheraton 921-4600**  
Live Hawaiian Music  
Kupu Dalie Na'auao 1-4pm

**The Point Sunset Pool Bar at Turtle Bay 293-6000**  
Live Contemporary Hawaiian with Flieknife Dancer  
Alex Oassy 5-8pm

**Tiki's Grill & Bar 923-TIKI**  
Live Contemporary Hawaiian and hula  
Derrick Lee 1-3pm  
Malu Productions 5:30-7:30pm

**Vintage 1901 at the Moana 921-4600**  
Contemporary Piano  
David Swanson 6:30-10pm

## THURSDAY

**100 Sails at the Prince Waikiki 944-4494**  
Live Contemporary Hawaiian  
Kailua Moon (or thes) 6-8pm

**Barefoot Beach Café at Queen's Beach 924-2233**  
Live Contemporary & Hawaiian  
Alika Souza 5:30-8:30pm

**Chart House Waikiki 941-6660**  
Live Contemporary Hawaiian  
Tito & David 6-9pm

**Duke's Canoe Club Waikiki 922-2268**  
Live Contemporary Hawaiian  
Ben Kamala 4-6pm  
Chapter II (or Kona Chang Duo) 7-9:30pm  
Scott Magz 9:30-12am

**Eating House 1849 Waikiki 924-1849**  
Live Contemporary Hawaiian  
Shane Kahoana 5-8pm

**Giovanni Pastrami 923-2100**  
Live Contemporary  
Billy Sage 6:30-9:30pm

**Hard Rock Cafe 955-7383**  
Contemporary Rock

**SAVOR THE DAY**

**OPEN FOR LUNCH**

FRIDAY AT WATERFRONT PLAZA  
FRIDAY & SATURDAY AT WAIKIKI BEACH WALK  
11AM - 3PM

**RUTH'S CHRIS STEAK HOUSE**

[RUTHSCHRIS.COM](http://RUTHSCHRIS.COM)

# Let's be Together...

DINING ▶ ENTERTAINMENT ▶ PAU HANA ▶ EAT ▶ DRINK ▶ BE MERRY ▶ HAPPY HOUR ▶

**Chapter II (protheis)** 4-6pm  
**House Without a Key** 923-2311  
 Hawaiian music & hula by Miss Universe 97 Brook Lee  
 Waba 5-8pm  
 Duncan Kamakana 8:15-10pm  
**Kani Ka Pila Grille** 924-4992  
 Hoku Award Winning Hawaiian musicians  
 Kawika Kahalo 6-9pm  
**Lewers Lounge** 923-2311  
 Jazz Pianist  
 Chris Salvador 5:30pm-8pm  
 Ethan Capone & Rocky Holmes 8:30pm-12am  
**Mahi'ai Table** 670-2778  
 Live Contem porary  
 Alex Oassy (11/9 -Dom inib Carbs) 5-8pm  
**Mahina & Sun's** 923-8882  
 Hawaiian Contem porary on the Lanai  
 Kelly Boy Delina 6:30-9:30pm  
**Mai Tai Bar at the Royal Hawaiian** 923-7311  
 Live Contem porary Hawaiian  
 Christian Yrizarry 11am-2pm  
 Stephen Inglis 8-10pm  
**Maui Brewing Company** 843-2739  
 Live Contem porary Hawaiian  
 Johnny Hein 3:30-5:30pm  
**Maui Brewing Kailua** 518-2739  
 Live Contem porary Hawaiian  
 Grace Wellton (protheis) 6-8pm  
**Merriman's Honolulu** 215-0022  
 Live Contem porary  
 Laupepa 5:30-7:30pm  
**MINA's Fish House** 679-0079  
 Live Contem porary Hits  
 Tad Jennings (or Cory O'Leary) 6-9pm  
**Moani Waikiki** 466-2629  
 Contem porary Island Music  
 Kin o Opiana 7-10pm  
**Monkeypod Kitchen Ko Olina** 381-4086

Live Contem porary 3x a day including from 12:30-2pm.  
 Kona Abergas 3:30-5pm  
 Wavy 7-9pm  
**Monkeypod Kitchen Waikiki** 900-4226  
 Live Contem porary 3x a day including from 12:30-2pm.  
 Bela and Kapono 3:30-5pm  
 Javin Kai 7-9pm  
**Piko Kitchen & Bar** 923-2032  
 Live Contem porary Hits  
 Keoni Ku 5-9pm  
**Rumfire** 921-4600  
 Live Contem porary Hits  
 Brad Kawakami (11/16 - protheis) 6-9pm  
**Signature Prime Steak** 949-3636  
 Contem porary Pianist in the bar  
 Grant Carvalho 6-9pm  
**Splash Bar at the Sheraton Princess Kaiulani** 921-4600  
 Live Contem porary Hawaiian  
 Kaini Hananoeau 3:30-5:30pm  
 Ronson Asuncion (11/9 - Tad Jennings) 6-9pm  
**Stripsteak** 896-2545  
 Live Contem porary  
 Jason Laeha 6-9pm  
**Swell at the Alohilani** 294-4108  
 Solo Contem porary Guitarist  
 Denny Ono 6:30-9:30pm  
**SWIM at the Hyatt Regency** 923-1234  
 Live Contem porary Hawaiian  
 Koa Atwood (protheis) 5-9pm  
**The Beach Bar at the Moana Surfrider** 922-3111  
 Live Contem porary Hawaiian  
 Christian Yrizarry (or Chase Favella) 3:30-6:30pm  
 Kaini Hananoeau 7-10pm  
**The Edge at the Sheraton** 921-4600  
 Live Hawaiian Music  
 Alka Souza (11/23 - Jesse Kūkahi) 1-4pm  
**The Point Sunset Pool Bar at Turtle Bay** 293-6000  
 Live Contem porary Hawaiian with Fireknife Dancer  
 Dave Watanabe 5-8pm  
**The Veranda at the Kahala Hotel** 739-8760  
 Live Contem porary  
 Johnny Valentine 6-9pm  
 Brad Kawakami (11/16, 11/30) 6-9pm  
**Vintage 1901 at the Moana** 921-4600  
 Contem porary Piano  
 David Swanson 6:30-10pm

**Duke's Canoe Club Waikiki** 922-2268  
 Live Contem porary Hawaiian  
 Mounalia 4-6pm  
 Kawika Kahalo 7-9:30pm  
 Ernest Chang 9:30-12am  
**Hard Rock Cafe** 955-7383  
 Live Contem porary  
 Helelo (or Cbee the Distance) 8-10pm  
**House Without a Key** 923-2311  
 Hawaiian music & hula by Miss Hawaii 73 Kano Miller  
 Kapala a Tibo 5-8pm  
 Daniele Parente 8:15-10pm  
**Kani Ka Pila Grille** 924-4992  
 Hoku Award Winning Hawaiian musicians  
 Ka Hehena 6-9pm  
**Lewers Lounge** 923-2311  
 Jazz Pianist  
 Nick Laa 5:30pm-8pm  
 Maggie Heron & Dean Taba 8:30pm-12am  
**Mahi'ai Table** 670-2778  
 Live Contem porary  
 Kai Duhaybnsod 5-8pm  
**Mahina & Sun's** 923-8882  
 Slack Key on the Lanai  
 Dustin Park Duo 6:30-9:30pm  
**Mai Tai Bar at the Royal Hawaiian** 923-7311  
 Live Contem porary Hawaiian  
 Brandon Serrano 11am-2pm  
 Johnny III 6-9pm  
**Mariposa** 951-3420  
 Live Contem porary  
 Chris Salvador 2:30-5:30pm  
**Maui Brewing Company** 843-2739  
 Live Contem porary Hawaiian  
 Keith Baitin 3:30-5:30pm  
**Maui Brewing Kailua** 518-2739  
 Live Contem porary Hawaiian  
 Dion 'Boogie' Scott (protheis) 6-8pm  
**Merriman's Honolulu** 215-0022  
 Live Contem porary  
 Stephen Harris 5:30-7:30pm  
**MINA's Fish House** 679-0079  
 Live Contem porary Hits  
 Jenna Keala 6-9pm  
 Jesse Kūkahi (11/10, 11/24) 6-9pm  
**Moani Waikiki** 466-2629  
 Traditional Hawaiian, Reggae, DJ Spins from 10p-1:30am  
 Liam Moletta 6-9pm  
**Monkeypod Kitchen Ko Olina** 381-4086  
 Live Contem porary 3x a day including from 12:30-2pm.  
 Kona Abergas 3:30-5pm  
 John Akapo 7-9pm  
**Monkeypod Kitchen Waikiki** 900-4226  
 Live Contem porary 3x a day including from 12:30-2pm.  
 Sienna Souza 3:30-5pm  
 Izik 7-9pm  
**PAI Honolulu** 744-2531  
 Live Contem porary Hits  
 Ben Vegas 4:30-6pm  
**Piko Kitchen & Bar** 923-2032

**Plan an Adventure**  
 Let Hawaii Nautical show your guests our ocean playground.  
**808-234-SAIL (7245)** Hawaii Nautical

**TURTLES GUARANTEED**



Enjoy our morning and afternoon snorkel sailings at Turtle Canyon with a wildlife guarantee! See turtles or cruise again for free (certain rules apply). Wildlife guarantee is for re-rides only, no refunds.





## FRIDAY

**100 Sails at the Prince Waikiki** 944-4494  
 Live Contem porary & Hawaiian  
 Mike Tiuba Duo 6-8pm  
**Barefoot Beach Café at Queen's Beach** 924-2233  
 Live Contem porary Hawaiian  
 The Art Kahiki Band 5:30-8:30pm  
**Chart House Waikiki** 941-6660  
 Live Contem porary Hawaiian  
 Mike Tiuba 6-9pm  
**Dave & Buster's Honolulu** 589-2215  
 Pauhana Fridays hosted by Kona Chang  
 Kawika Kahalo Trio (artists vary weekly) 5-8pm

# E Pili Kākou

DINING ▶ ENTERTAINMENT ▶ PAU HANA ▶ EAT ▶ DRINK ▶ BE MERRY ▶ HAPPY HOUR

Live Contemporary Hits  
Johnny Helm (11/3 - Jason M. Ito) 5-9pm  
**Rumfire 921-4600**  
Live Contemporary Hits  
Stephen Inglis 4:30-7:30pm  
Drew Hermin 8-10:30pm  
**SHOR at the Hyatt Regency 923-1234**  
Live Contemporary Hawaiian  
Dave Watanabe 5-9pm  
**Signature Prime Steak 949-3636**  
Contemporary Pianist in the bar  
Grant Carvalho 6-9pm  
**Splash Bar at the Sheraton Princess Kaiulani 921-4600**  
Live Contemporary Hawaiian, DJ spins from 2-5pm  
Ben Kam a Duo & Dancer 5-8pm  
Stephen Inglis 8-10pm  
**Stripsteak 896-2545**  
Live Contemporary  
Shane Kaihoa 6-9pm  
**SWIM at the Hyatt Regency 923-1234**  
Live Contemporary Hawaiian  
Denny Ono (prothes) 5-9pm  
**The Beach Bar at the Moana Surf Rider 922-3111**  
Live Contemporary Hawaiian  
Keoni Ku 12-3pm  
Kailua Moon 3:30-6:30pm  
Kanuela Kahoa 7-10pm  
**The Edge at the Sheraton 921-4600**  
Live Hawaiian Music  
Christian Yrizarry 1-4pm  
**The Grove at the Modern Pool Deck 943-5800**  
Live Contemporary  
Danelle Parente (prothes) 4-7pm  
Brad Kawakami 6-8pm  
**The Point Sunset Pool Bar at Turtle Bay 293-6000**  
Live Contemporary Hawaiian with Flieknife Dancer  
Mark Calberia 5-8pm  
**The Veranda at the Kahala Hotel 739-8760**  
Live Contemporary  
Johnny Valentine 6-9pm  
Cory Oliveros (11/17) 6-9pm  
**Vintage 1901 at the Moana 921-4600**  
Contemporary Piano  
David Swanson 6:30-10pm

## SATURDAY

**100 Sails at the Prince Waikiki 944-4494**  
Live Contemporary Hawaiian, DJ/KK at the pool from 2-5  
Chase Favela 6-8pm  
**Barefoot Beach Café at Queen's Beach 924-2233**  
Live Contemporary Hawaiian  
Vanessa Aputia 5:30-8:30pm  
**Chart House Waikiki 941-6660**  
Live Contemporary Hawaiian  
Tio Bernobis 6-9pm  
**Duke's Canoe Club Waikiki 922-2268**  
Live Contemporary Hawaiian  
Drew Hermin (prothes) 12-2pm  
Beach 5 (prothes) 4-6pm  
Ellis Simona (11/11 - Jagan & Yem yn) 7-9:30pm

Sean Cleland (prothes) 9:30-12am  
**Eating House 1849 Waikiki 924-1849**  
Live Contemporary Hawaiian  
Kings Kabhelani 10:30am-1pm  
**Hard Rock Cafe 955-7383**  
Live Contemporary  
Stephen Harris (prothes) 8-10pm  
**House Without a Key 923-2311**  
Hawaiian music & hula by Miss Hawaii '73 Kance Miller  
Kapala a Trio 5-8pm  
Stephen Inglis 8:15-10pm  
**Kani Ka Pila Grille 924-4992**  
Hoku Award Winning Hawaiian Musicians  
Hobokena 6-9pm  
**Lewers Lounge 923-2311**  
Jazz Pianist  
Mike Tuba 5:30pm-8pm  
Dominic Carbo (11/3) 5:30pm-8pm  
Maggie Heron & Dean Taba 8:30pm-12am  
**Mahi'ai Table 670-2778**  
Live Contemporary  
Kamakana Kawaia 5-8pm  
**Mahina & Sun's 923-8882**  
Contemporary Hawaiian/B Blues on the Lanai  
Josh Akapo 6:30-9:30pm  
**Mai Tai Bar at the Royal Hawaiian 923-7311**  
Live Contemporary Hawaiian  
Ronson Asuncion 11am-2pm  
Chase Favela (11/4) 11am-2pm  
Dave Watanabe 6-9pm  
**Mariposa 951-3420**  
Live Contemporary  
Aisiah Jacobs 2:30-5:30pm  
**Maui Brewing Company 843-2739**  
Live Contemporary Hawaiian  
Sean Cleland (prothes) 3:30-5:30pm  
**Maui Brewing Kailua 518-2739**  
Live Contemporary Hawaiian  
Scott Magz (prothes) 7-9pm  
**Merriman's Honolulu 215-0022**  
Live Contemporary  
Shane Kaihoa 5:30-7:30pm  
**MINA's Fish House 679-0079**  
Live Contemporary Hits  
Alex Oasay (or Cory Oliveros) 6-9pm  
**Moani Waikiki 466-2629**  
Contemporary Reggae  
Braddah Ash 6-9pm  
Live Local Band 10pm-1:30am  
**Monkeypod Kitchen Ko Olina 381-4086**  
Live Contemporary 3x a day including from 12:30-2pm.  
Koa 3:30-5pm  
Javin Kai 7-9pm  
**Monkeypod Kitchen Waikiki 900-4226**  
Live Contemporary 3x a day including from 12:30-2pm.  
Michael Debra 3:30-5pm  
Kona Abergas 7-9pm  
**Piko Kitchen & Bar 923-2032**  
Live Contemporary Hits  
Biku Shinabuku 5-8pm

**Redfish at the Wayfinder Waikiki 921-3220**  
Live Contemporary Hits  
Johnny Helm (11/4 - David Aquino) 6-10p  
**Rumfire 921-4600**  
Live Contemporary Hits  
Mark Calberia (11/4 - Ed Jennings) 4:30-7:30pm  
Kaloo Kahumoku 8-10:30pm  
**SHOR at the Hyatt Regency 923-1234**  
Live Contemporary Hawaiian  
David Aquino 5-9pm  
**Signature Prime Steak 949-3636**  
Contemporary Pianist in the bar  
Grant Carvalho 6-9pm  
**Splash Bar at the Sheraton Princess Kaiulani 921-4600**  
Live Contemporary Hawaiian, DJ spins from 2-5pm  
Brad Kawakami Duo & Dancer 5-8pm  
Tangititily 8-10pm  
**Stripsteak 896-2545**  
Live Contemporary  
Dustin Park 6-9pm  
**SWIM at the Hyatt Regency 923-1234**  
Live Contemporary Hawaiian  
Stan Albrecht 5-9pm  
**The Beach Bar at the Moana Surf Rider 922-3111**  
Live Contemporary Hawaiian  
Chris Salvador 12-3pm  
Ronson Asuncion 3:30-6:30pm



BarefootBeachCafe.com

"WE PUT *Aloha*  
INTO EVERY BITE SO  
SIT BACK, RELAX AND  
ENJOY THE VIEW."

OPEN DAILY

BREAKFAST 8AM - 2PM  
LUNCH/DINNER 11AM - 8:30PM  
LIVE MUSIC NIGHTLY 5:30 - 8:30PM  
& SUNDAYS 11AM - 2PM

BAREFOOT BEACH CAFE  
2699 KALAKAUA AVENUE  
808.924.2233

EVENTS &  
GROUP RESERVATIONS  
808.699.8830

# Let's be Together...

DINING ▶ ENTERTAINMENT ▶ PAU HANA ▶ EAT ▶ DRINK ▶ BE MERRY ▶ HAPPY HOUR ▶

**Koa Atwood** 7-10pm  
**The Edge at the Sheraton** 921-4600  
 Live Hawaiian Music  
 Brad Kawakami 1-4pm  
**The Grove at the Modern Pool Deck** 943-5800  
 Live Contemporary  
 Mike Iron 4-7pm  
**The Point Sunset Pool Bar at Turtle Bay** 293-6000  
 Live Contemporary Hawaiian with Fiddle & Dancer  
 Denny Ono 5-8pm  
**The Veranda at the Kahala Hotel** 739-8760  
 Live Contemporary  
 Jeanette Treva's 6pm-9pm  
**Vintage 1901 at the Moana** 921-4600  
 Contemporary Piano  
 David Swanson 6:30-10pm

## SUNDAY

**100 Sails at the Prince Waikiki** 944-4494  
 Live Contemporary Hawaiian, DJ Jen at the pool from 2-5  
 Cherie Duo 6-8pm  
**Barefoot Beach Café at Queen's Beach** 924-2233  
 Live Contemporary Hawaiian  
 Kin o Baker 10am-1pm  
 Art Kahluki 5:30-8:30pm  
**Chart House Waikiki** 941-6660  
 Live Contemporary Hawaiian  
 Dean & Dean 6-9pm  
**Duke's Canoe Club Waikiki** 922-2268  
 Live Contemporary Hawaiian  
 Duva (Prothers) 12-2pm  
 Henry Kapono (Prothers) 4-6pm  
 Kaina Duo 7-9pm  
 Ted Jennings 9:30-12am  
**Eating House 1849 Waikiki** 924-1849  
 Live Contemporary Hawaiian  
 Shane Kainoa 10:30am-1pm

**Giovanni Pastrami** 923-2100  
 Reggae Pop Music  
 Kelandy 6:30-9:30pm  
**Hard Rock Cafe** 955-7383  
 Contemporary Rock  
 Brunch with Love Jack (9/24 - Day Brunch) 10am-12pm  
 Dylan (Prothers) 8-10pm  
**House Without a Key** 923-2311  
 Hawaiian Music & Hula M. I. S. Hawaii 23 Star Dah Lhuiston  
 Puuhonua Trio 5-8pm  
 Brad Kawakami 8:15-10pm  
**Kani Ka Pila Grille** 924-4992  
 Hoku Award Winning Hawaiian Musicians  
 Nathan Aweau 6-9pm  
**La Hiki Restaurant at the Four Seasons** 679-0079  
 Live Contemporary Hawaiian  
 Jenna Keala (11/26 - Kamuela Kahoano) 11am-2pm

**Mahi'ai Table** 670-2778  
 Live Contemporary  
 Johnny III 5-8pm  
**Mahina & Sun's** 923-8882  
 Award-winning ukulele on the Lanai  
 Trish Nalei 6:30-9:30pm  
**Mai Tai Bar at the Royal Hawaiian** 923-7311  
 Live Contemporary Hawaiian  
 John Coelho & Kance Aroha 11am-2pm  
 Christian Yrizarry 6-9pm  
**Mariposa** 951-3420  
 Live Contemporary  
 Zaysha 12-3pm  
**Maui Brewing Company** 843-2739  
 Live Contemporary  
 Duva & Yas 3:30-5:30pm  
**Merriman's Honolulu** 215-0022  
 Live Contemporary Piano  
 Grant Carvalho 5:30-7:30pm  
**Moani Waikiki** 466-2629  
 Contemporary Island Music  
 Dustin Park 7-10pm  
**Monkeypod Kitchen Ko Olina** 381-4086  
 Live Contemporary 3x a day including from 12:30-2pm  
 Kapono and Bella 3:30-5pm  
 Lava 7-9pm  
**Monkeypod Kitchen Waikiki** 900-4226  
 Live Contemporary 3x a day including from 12:30-2pm  
 Ted Jennings 3:30-5pm  
 Koa and Yazzin 7-9pm  
**Piko Kitchen & Bar** 923-2032  
 Live Contemporary Hits  
 Dominic Carbs 5-9pm  
**Rumfire** 921-4600  
 Live Contemporary Hits  
 Jenna Keala 4:30-7:30pm  
 Alex Oassy (or Biku Shin abuku) 8-10:30pm  
**SHOR at the Hyatt Regency** 923-1234  
 Live Contemporary Hawaiian  
 Derrick Lee 5-9pm  
**Signature Prime Steak** 949-3636  
 Contemporary Pianist in the bar  
 Keith M. Antross 6-9pm

**Splash Bar at the Sheraton Princess Kaiulani** 921-4600  
 Live Contemporary Hawaiian  
 Kailua Moon & Dancer 3:30-5:30pm  
 Chris Luke 8-10pm  
**Swell at the Alohilani** 294-4108  
 DJ Kenny Spins Poolside from 2-6pm  
 Jason Laeha 6:30-9:30pm  
**SWIM at the Hyatt Regency** 923-1234  
 Live Contemporary Hawaiian  
 Koa Atwood 5-9pm  
**The Beach Bar at the Moana Surf Rider** 922-3111  
 Live Contemporary Hawaiian  
 YOZA 12-3pm  
 Brad Kawakami 3:30-6:30pm  
 Dave Watanabe 7-10pm  
**The Edge at the Sheraton** 921-4600  
 Live Hawaiian Music  
 Christian Yrizarry 1-4pm  
**The Point Sunset Pool Bar at Turtle Bay** 293-6000  
 Live Contemporary Hawaiian with Fiddle & Dancer  
 Danielle Parente 5-8pm  
**Vintage 1901 at the Moana** 921-4600  
 Contemporary Piano  
 David Swanson 6:30-10pm



## Hot Lines

It's difficult to keep up with some music schedules these days, as many places have a different performer each day. Including contact numbers below of places that don't update us regularly, or have too many performers to list, so you can reach out and ask.

Anna O'Brien's Deck	946-5190
Hard Rock Cafe	931-4488
Irish Rose Saloon	955-7383
Kelley O'Neil's	947-3414
Lucky Strike Honolulu	926-1777
Mai Tai Bar Ala Moana	664-1140
Off the Wall	947-2900
Tiki's Grill & Bar	593-2337
Tommy Bahama	923-TIKI
	923-8785

## Dining Dish

You know how you hear a song or a movie that makes you feel old — well, get this: **Tiki's Grill & Bar** celebrated its 21st anniversary last month on October 17th. 21 years! I remember its opening like it was the other day. Remember all the concierge events we held there — the hat party, concierge of the year? The place is going just as strong as it ever was. Congrats to **Bill Tobin**, **Michael Miller**, and their entire team for keeping their vision as vibrant as it was on day one. • **Tanaka**

**WAIKIKI BAPTIST**

# Church

Your Church in Waikiki

424 Kuamo`o St

(Near the Ambassador Hotel)

**Sunday Worship Services**

9:00 AM - Contemporary

10:45 AM - Traditional

(808) 955-3525

WaikikiBaptist.com

**Ramen & Izakaya** at Ala Moana Center launched several new seasonal items last month that will be available through the end of December. Customers can enjoy a Mapo Tofu Mazemen available in ramen or over rice and a Mapo Tofu Rice. Both are available in a vegan-friendly version. They have also added a new Chikuwa Tempura, a Japanese fish cake fried in a tempura batter. For more info, go to [tanakaramen.com](http://tanakaramen.com). The condos at Ward Village are getting busy, adding plenty of new shops over the next few months. First up, **Cino at 'Aali'i**, the fourth concept by folks behind Duck Butt, DB Grill, and Mad Bene. The Italian Chophouse & Crudo Bar, under the direction of *Executive Chef Arnold Corpuz*, will offer a fusion of modern Italian cuisine that highlights local seafood and fresh produce. Open from 5-9 p.m., Sunday-Thursday and 5-11 p.m., Friday and Saturday, there are plans to add a brunch in the future. [cinohawaii.com](http://cinohawaii.com). • **Arancino at the Kahala** has added several new dishes to the regular menu that will be available until early spring. New menu items include a Carpaccio di Polpo (\$22), thinly sliced octopus, celery ribbon, olives, garlic crunch, and a lemon-garlic olive oil dressing. Spaghetti al Pomodoro Fresco (\$29), topped with a delicious mound of burrata cheese, locally grown tomato concassé garlic olive oil sauce, parmigiano reggiano, black pepper, as well as a Pizza Funghi e Tartufo (\$34). If you haven't had their pizzas before, they are amazing. This one is topped with eryngii, shimeji, maitake mushrooms, mozzarella, gorgonzola, mascarpone, parmigiano reggiano, and white truffle oil. 380-4400. • Former Morimoto General Manager *Chase Heu*, who spent the last few years as Area Food & Beverage Director at Highgate Hotels, has launched Hawaii's first **Capriotti's Sandwich Shop** in the Kū'ono Marketplace at Kahala with his wife, *Soojung*. Based in Las Vegas, Capriotti's has a 40-year tradition of slow-roasting whole, all-natural turkeys in-house every day, and is known for its award-winning, hand-crafted sandwiches. This new location will mark the 158th Capriotti's nationwide. Its menu features Turkey Subs, American Wagyu, Cheese Steaks, Classic Sandwiches, Vegetarian Sandwiches and Salads. Open from 10 a.m. - 9 p.m. 739-0960.



# Chef's Corner

## Meat Church Executive Chef Matt Pittman

Matt Pittman is the founder and CEO of Meat Church, a unique BBQ lifestyle brand that offers some of the most popular craft BBQ seasonings, apparel, recipe development & live fire cooking instruction in the world. After being picked to appear on the hit TV show BBQ Pitmasters, he quickly became a well-known expert in BBQ, and students travel from around the world to study with him in his private outdoor kitchen. He also has one of the largest social media reaches in outdoor cooking. Follow his YouTube channel listed below.

### What is your first childhood food memory?

Cookies from my Mamaw. Every time we would show up at her house, she always had our favorite desserts ready for us. Her chocolate oatmeal cookies with milk were my favorite.

### What did you learn from your grandmother?

It took me years to realize this, but my grandmothers taught me how to take care of people. They were traditional Southern cooks and they both were constantly asking if we wanted something to eat. I find myself doing the same for my family and my friends. No matter the occasion I am cooking something for everyone.

### When did you decide you wanted to be a chef?

I never actually wanted to be a "chef" per se. I wanted people to look at me and say, "that guy can cook!" I didn't want to attend traditional culinary school because I didn't want to work chef's hours and wanted to make more money. I wanted to be able to go out with friends when my chef friends had to work so I could enjoy life.

### Who would you consider your mentor?

It's impossible for me to name just one. I've been mentored by trained chefs such as Dean Fearing to the CEO of Traeger Grills, Jeremy Andrus.

### When did you first begin developing spices?

I started making them in 2013 with recipes I found online because I didn't know any better. I wanted to make BBQ and the internet seemed like the best option as I was an IT executive at the time.

### What was your first job in the industry?

I started producing craft BBQ seasoning in Texas, which lead to me teaching outdoor cooking and ultimately cooking private events for professional athletes and musicians.

### Why did you launch Meat Church?

Meat Church was our competition BBQ team name. I was picked to be on the TV show BBQ Pitmasters where they told me I could show any BBQ products that I made. I put the 2 seasonings I made in a bottle (Holy Cow and Honey Hog). By the time the show aired I had filed the trademark and launched [meatchurch.com](http://meatchurch.com).

### Do you prefer restaurant or competition BBQ?

BBQ joints (restaurants). In Texas, craft BBQ, where a small group oversees the entire cooking process makes the best BBQ in the world. There is way too much going on with competition BBQ. It's loaded with injections, brines, tons of seasoning and sauces to impress a judge in one bite. I can't eat too much competition BBQ, it's like eating a really rich cheesecake.

### Where's the best BBQ you ever tasted?

Texas without a doubt. I love and appreciate all the regions of BBQ, but Texas BBQ is about the simplicity of smoking beef simply seasoned with salt & pepper with a post oak fire.

### Do you wrap? If so, foil or butcher paper?

I wrap my beef in butcher paper. Paper allows the protein to breath, so you can maintain that beautiful bark that you worked so hard to develop. I will only wrap in foil if I want speed up a cook by braising or steaming of if I'm trying to add a sauce or flavor to the wrapped protein.

### Can you rest brisket for too long?

At some point, yes. I pull a brisket from the smoker and allow it to rest down to 140° internal temperature. Then I place it in a 140° degree warmer for 8 hours. The decline in internal temperature is just as important as the increase in temperature when you are cooking.

### How often do you do these food festivals?

I do a 3-4 per year. I love working alongside chefs that I admire, but most of all I love hearing from the people when they try my food. That praise is what keeps me going.

### What do you have planned for HFWF?

I am very excited to show O'ahu my traditional Smoked Barbacoa. Beef cheeks that are seasoned with my Holy Cow, smoked for hours then braised to fall apart tenderness.

### What's on your must-do list in the Islands?

That's easy. My beautiful wife Tracie is happiest when we rent a convertible, drive to the North shore then around the island to explore beaches that are not busy like here on the mainland.



## Texas Twinkies

### Ingredients:

12 jalapeño peppers  
(not too large so the bacon wraps around nicely)  
2 packages standard cut bacon  
1 cup chopped, smoked brisket

1 block cream cheese

(smoked cream cheese works even better)

2 T. Meat Church Holy Gospel BBQ Rub  
(sub Texas Sugar, The Gospel, Holy Voodoo or HoneyHog)

### Directions:

Prepare your smoker or oven to 250°. Slice a "T" in each pepper and remove the seeds, etc. The heat in a pepper comes from the veins, so remove if you like. Place the jalapeños on a rack (so you don't have to handle each pepper individually), and into the smoker for 30 minutes. This will soften the pepper which will make stuffing easier. Combine the cream cheese and brisket in a bowl and stuff each pepper completely. Wrap each stuffed jalapeño with bacon (typically takes 2 slices of bacon per). Season the wrapped pepper on all sides with Meat Church Holy Gospel and place into smoker or oven. Cook until bacon looks perfect, around 90 minutes. Remove from the smoker. Slice in half. Enjoy.

You can meet Matt Pittman at this years Hawaii Food & Wine Festival!

He will be at House of Blanc & Rouge at Ko Olina on November 4th. For tickets go to HFWF.me  
Web: [meatchurch.com](http://meatchurch.com) • Twitter / Instagram / FB: @meatchurch • YouTube: @MeatChurchBBQ

# NOVEMBER CALENDAR OF EVENTS

## Continuing Events

### MONDAYS, WEDNESDAYS & FRIDAYS O NĀ LANI SUNSET STORIES HULA SHOW

Honoring the rich history and sense of place of the International Market Place through song & dance. It begins at sunset with the lighting of the Lamakū Torch Tower on Kalākaua Avenue and leads to the Queen's Court. Free. 7 p.m. [shopinternationalmarketplace.com](http://shopinternationalmarketplace.com).

### TUESDAY THRU SATURDAY ARTS AT MARKS LATEST EXHIBIT

This month's exhibition at the Arts at Marks Garage is With heART for Our First Responders from November 3-24. Enjoy a Meet the Artists reception at Pau Hana Friday on the first and final Friday of the month from 5 - 8 p.m. Gallery open Tues-Saturday from noon - 5 p.m. [artsatmarks.com](http://artsatmarks.com).

### WEDNESDAYS, SATURDAYS & SUNDAYS ALOHA STADIUM SWAP MEET

The Aloha Stadium Swap Meet has been going strong since 1979 and will not stop anytime soon. Featuring over 400 vendors, crafters and artists, the Swap Meet offers low-prices on a wide selection of quality products with food trucks to snack from. Wednesdays & Saturdays: 8 a.m. - 3 p.m., Sundays, 6:30 a.m. - 3 p.m. \$2 admission ages 12 & up, \$1 for locals. [alohastadium.hawaii.gov](http://alohastadium.hawaii.gov).

### FIRST & THIRD THURSDAY (NOVEMBER 3/17) SIP & SHOP MARKET

Supporting Hawaii grown businesses & encouraging the community to shop local over live music + 'ono eats from Mahina & Sun's. Surfjack Hotel. \$8 parking for 4 hours validation at the Hyatt Centric. [surfjack.com](http://surfjack.com).

### FIRST FRIDAY (NOVEMBER 3) DOWNTOWN GALLERY WALK & CRAFT FAIR

Downtown comes alive the first Friday of every month as art lovers fill the streets for Honolulu's outdoor self-guided arts tour. Stores spill out onto the sidewalk, and artists are on hand to chat about to their works, and restaurants are

ready to serve you. Don't miss the living art exhibition in the windows of The ARTS at Marks Garage, as they relight the Red Light District of Honolulu with a unique show featuring burlesque performers, and go-go dancers from 9 - 10 p.m. Monthly updates are published on participating merchant websites, or two days before the event at [firstfridayhawaii.com](http://firstfridayhawaii.com).

### SECOND FRIDAY (OCTOBER 13) BISHOP MUSEUM NIGHT MARKET

Extended after-hours access to the Museum with a Pau Hana presentation, living culture demonstration, keiki activities, exhibition tours, J. Watumull Planetarium shows, a Membership Lounge, food trucks, and live music. 5 - 9 p.m. \$10 at the door. [bishopmuseum.org](http://bishopmuseum.org).

### FRIDAYS

#### ROYAL HAWAIIAN BAND LUNCHTIME SHOW

The Royal Hawaiian Band has returned to Iolani Palace for its popular lunchtime concerts. Held on most Fridays, the concerts are free and open to the public. 12 - 1 p.m. [iolanipalace.org](http://iolanipalace.org)

#### FRIDAYS & SATURDAYS • HOMA NIGHTS

On Friday and Saturday nights, regular museum admission also includes live musical performances, hands-on art activities, pop-ups in the HoMA Shop, movies on the lawn, bar service at the HoMA Cafe, and other interactive art experiences. The museum stays open until 9 p.m. [honolulumuseum.org](http://honolulumuseum.org).

### SATURDAYS & SUNDAYS ART ON THE ZOO FENCE

Art On The Zoo Fence is a group of resident Hawaii artists that meet every Saturday and Sunday to display and sell art and photography on the Zoo fence on Monsarrat Avenue opposite the Kapiolani Park Bandstand. This is the only outdoor art venue in Honolulu that has proudly been displaying art since 1953. 9 a.m. - 3 p.m. Free. [artonthezoo fencehi.com](http://artonthezoo fencehi.com).

### SECOND SUNDAY (NOVEMBER 12) KAMA'AINA SUNDAYS

Kama'aina Sundays are back at 'Iolani Palace. Locals can take advantage of free tours, entertainment, family-friendly activities and plenty of food options with proof of residency. Free tours will be available to the first 500 guests. This month's theme is Mo'ōlelo Traditions, highlighting stories, myths, legends that are part of the cultural fabric of Hawai'i. 9 a.m. - 3 p.m. [iolanipalace.org](http://iolanipalace.org).

### SECOND SUNDAY (NOVEMBER 12) MELE HALI'A

Waikiki Beach Walk celebrates Hawaiian music with award-winning musicians one Sunday a month on the Plaza Stage. Watch Nanea Kō Maka from 5-6 p.m. [waikikibeachwalk.com](http://waikikibeachwalk.com).

### THIRD SUNDAY (NOVEMBER 19) FAMILY FREE SUNDAY

Thanks to Bank of Hawaii, kama'aina have been offered free admission with ID on the third Sunday of the month since 2004. With engaging activities for keiki of all ages, entertainment, and community-focused programming around the museum, this is a great way for families to spend creative time together. Free admission for kama'aina. 10 a.m. - 6 p.m. 532-8700. [honolulumuseum.org](http://honolulumuseum.org).

### NOVEMBER 2 FAR EAST STREET PH' EAST

The Hawaii Food & Wine Festival kicks off on Oahu signature events bringing 12 chefs, 10 mixologists, and 3 wineries at the Asian Night Market street-food themed event. Tickets start at \$300. Alohilani Resort. 6 - 9 p.m. [hfwf.me](http://hfwf.me).

### NOVEMBER 3 STREETLIGHT CADENCE



Although a few of the faces have changed over the years, their energy and gift of story telling have not, continuing to

electrify audiences through their music and the 2nd season of their Emmy-nominated television series, "Will Play For Food," 7:00 p.m. Tickets: \$25-\$35. [bluenotehawaii.com](http://bluenotehawaii.com).

### NOVEMBER 3 HAWAIIAN AIRLINES PRESENTS CRUSH'D

The Hawaii Food & Wine Festival's annual wine-centric grand tasting features 2 dozen famed winemakers 17 chefs, and 8 mixologists, and a commemorative Hawaii Food & Wine Festival etched Riedel wine glass. Tickets start at \$300, but this one was sold at press time Hawaii Convention Center. 6 - 9 p.m. [hfwf.me](http://hfwf.me).

### NOVEMBER 4 HFWF WINE SEMINARS



The Hawaii Food & Wine Festival is known for their wine seminars, and there are three scheduled throughout the day at the Halekulani.

These exclusive tasting events are very popular with limited seating and sell out fast, so chances are high there won't be any tickets left by the time you see this, but it never hurts to check. Tickets: \$195. 9 a.m. - 2:30 p.m. [hfwf.me](http://hfwf.me).

### NOVEMBER 4 • FIRST HAWAIIAN BANK MASTERCARD® PRESENTS HOUSE OF BLANC & ROUGE AT KO OLINA

The Hawaii Food & Wine Festival's beachfront extravaganza brings together 10 chefs, (14 for VIP), 6 mixologists, and 12 winemakers for evening of culinary indulgence capped off with a fabulous fireworks show. Guests at the Aulani and Four Seasons who aren't going to the Festival won't want to miss the show! Kohala Lagoon #1. 6 - 9 p.m. [hfwf.me](http://hfwf.me).

### NOVEMBER 5 • MASTERWORKS: EARTH CRY, TCHAIKOVSKY & SIBELIUS



Violinist Simone Porter joins forces with the Hawaii Symphony Orchestra for a rallying roar of a changing planet. Experience the icy virtuosity of the Sibelius Violin Concerto, the wild heat of Sculthorpe's Earth Cry, and a duel with fate in Tchaikovsky's Symphony No. 5. 4 p.m. Tickets: \$10.50-\$99. [myhso.org](http://myhso.org).

## Pau Hana Sailing Private Charters

Pau Hana is offering highly personalized small group charters out of the Ala Wai Boat Harbor.

### Available Services

Sailing • Marine Life • Swimming • Snorkeling •  
Magic Carpet • Private Chef Available

BYOB or choose from our chef-driven curated menus

Would you like to experience first hand what we are all about?  
Call us if you're interested in coming onboard for a FAM Tour

Contact us:  
ph: 808-807-9191  
[pauhanasailing.com](http://pauhanasailing.com)

# NOVEMBER CALENDAR OF EVENTS

## NOVEMBER 5

### FIT BRUNCH WITH EGAN'S BOOTCAMP

Work up an appetite with a HIIT-style workout with Egan's Bootcamp Founder, Egan Inoue before refueling with delicious brunch bites from LeeAnne Wong, Ming Tsai, and more. Tickets start at \$95. Outrigger Reef Waikiki Beach Resort. 9 – 11:30 a.m. hfwf.me.

## NOVEMBER 5

### LUCKY 13: DIM SUM BRUNCH

It's brunch #2 of the day as 7 chefs and 2 mixologists, including Mr. Yan Can Cook himself, Martin Yan, as the chefs put their own twist on dim sum. Tickets start at \$125. Hyatt Regency Waikiki Resort. 11 a.m. – 1 p.m. hfwf.me.

## NOVEMBER 5

### THE ART OF FOOD & WINE

HFWF Signature Gala event with 5 award-winning chefs, 5 artists, 2 award-winning mixologists and an amazing sommelier creating works of art guests on every plate and in every glass. \$1,500. Halekulani. 5 p.m. hfwf.me.

## NOVEMBER 8

### CANDLELIGHT: VIVALDI'S FOUR SEASONS

Candlelight concerts bring the magic of a live, multi-sensory musical experience as the Range Ensemble String Quartet showcasing the music of Vivaldi's Four Seasons with the full polychromatic spectrum of musical color bathed in candlelight. Two shows nightly. 6:30 and 9:00 p.m. Tickets: \$32-\$58. bluenotehawaii.com.

## NOVEMBER 9

### MANA UP SHOWCASE CELEBRATION

Check out the Mana Up Showcase Celebration and Marketplace, including over 50 local vendors, craft cocktails by Kō Hana Rum, local food and more. All vendors will be offering special products, new releases, and limited-time discounts, perfect for early holiday shopping on the 3rd floor at Bloomingdale's Ala Moana. manaupshowcase.com.

## NOVEMBER 11 • TRACY MORGAN'S BIRTHDAY WEEKEND CELEBRATION



One of the best-known comedians of our time, Tracy Morgan, of Saturday Night Live and 30-Rock fame, is spending his birthday in the islands entertaining you at the Hawaii Theatre the night after he celebrates his 55th. 7 p.m. Tickets: \$79 - \$129. hawaii theatre.com.

## NOVEMBER 11

### UH RAINBOWS VS. SAN JOSE STATE

Watch the Rainbow Warriors play the Spartans, 6 p.m. Clarence T.C. Ching Athletics Complex. Tickets: \$30 - \$95. hawaiiathletics.com.

## NOVEMBER 11

### VETERANS DAY SUNSET CEREMONY

Don't miss the ceremony on the fantail of the retired USS Missouri, an official Regional Site for the observance of Veterans Day by the U.S. Department of Veterans Affairs, as they pay tribute to the sacrifice of all our nation's veterans, both past and present. Free and open to the public. Guests to be seated by 4:15 p.m. 4:30 – 5:30 p.m. ussmissouri.org.

## NOVEMBER 13

### IWA SAKE LAUNCH EVENT

IWA, the most exquisite and pioneering sake created by Richard Geoffroy, former Chef de Cave of Dom Perignon for the last 28 years, will celebrate its official Hawaii launch at Margotto Hawaii. 6 p.m. info@margotto-hawaii.com.

## NOVEMBER 16-19 • KEALI'I REICHEL



The legendary, award-winning, and beloved singer presents the soundtrack to Hawaii 6:30 p.m. nightly with an additional 9 p.m. show on the 18th. Tickets: \$85-\$125. bluenotehawaii.com.

## NOVEMBER 17-18

### OUR PLANET LIVE IN CONCERT

Our Planet Live in Concert is specially developed by the series producers Silverback Films and Oscar-winning composer Steven Price. The outstanding natural world visuals of the Netflix Original Documentary Series Our Planet mixed with on-screen narration by David Attenborough and William Shatner, amazing visual and sound effects, and a live on-stage 18-piece orchestra, will result in a spectacular experience. Fri. 7:30 p.m., Sat. 1 p.m. \$19-\$89. hawaii theatre.com.

## NOVEMBER 18

### JOE GATTO'S NIGHT OF COMEDY

Joe Gatto is one of the founding members of The Tenderloins Comedy Troupe who has toured with a live comedy show to sold-out

crowds across the world. Tonight, he brings his show to the islands. 7 p.m. Tickets: \$64.50 - \$84.50. hawaii theatre.com.

## NOVEMBER 18

### NOBUYUKI TSUJII BRUNCH RECITAL

As part of ANA's commitment to celebrating the culture and music of Japan and Hawai'i, the 2023 ANA 'Aha Mele will feature Cliburn Gold Award-winning pianist Nobuyuki Tsuji in an intimate solo concert with brunch at the Blue Note. Doors will open at 10 a.m., and seating is first-come, first-served in each price section. Tickets include brunch, cocktails additional. 10:30 a.m. \$125-\$150. bluenotehawaii.com

## NOVEMBER 18

### PAUL VAN DYK - FOR THE RECORD TOUR

Paul van Dyk is a German DJ, record producer and musician. One of the first true renowned DJs, van Dyk was the first artist to receive a Grammy Award nomination in the newly added category of Best Dance/Electronic album for his 2003 release Reflections. 9 p.m. \$35. The Republik. bampproject.com.

## NOVEMBER 19

### ANA 'AHA MELE 2023 CONCERT

ANA Honolulu Music Week, first held in 2019, was renewed last year as ANA 'Aha Mele. Nobuyuki Tsuji will perform works by Beethoven, Chopin and Debussy. He will be joined by local artists, including Hawaii's own Erin Nishi. Tickets begin at \$59. Waikiki Shell. 6:30 pm. ticketmaster.com.

Continues on page 17.



It's never been a better time for your guests to experience the Polynesian Cultural Center. They can explore our six island villages with our popular Gateway Buffet package or our Islands & HĀ Show package. For more information, visit [polynesia.com](http://polynesia.com).



# The Waikiki Grand Hotel Celebrates 60 Years!

The Waikiki Grand Hotel marked its 60th anniversary last month with a celebration filled with Hawaiian blessings, dance, and those who played a part in shaping the rich history and culture of this beloved hotel. Built in the 1960s by Japanese visionaries,



Pono Pu'aloaw i'o 'Ieona'aniKa'ahanui did the blessing. Photos by Denby Fawcett

the hotel stands as a testament to its deep roots in Hawaiian history and culture. Nestled on Kapahulu Avenue, the Waikiki Grand Hotel has been a beloved destination for countless visitors over the years and is home to many local residents. Congrats!



Senator Sharon M. Oriwaki, Representative Adrian Tam, Melissa Fiek, Mark Howard. Photos by Denby Fawcett



Malia Lum-Kawahoa Marquez danced. Photos by Denby Fawcett

## King's Birthday

Continued from page 1.

However, his reign was not without controversy. Kalakaua's flamboyant and fun-loving ways, as well as his extravagant spending, including his trip around the world, and his attempts to strengthen the monarchy's power, led to political tensions and ultimately contributed to the overthrow of the Hawaiian monarchy in 1893. He was succeeded by his sister, Queen Liliuokalani.

He is best known for his role in developing Iolani Palace, which became the royal residence and the political center of the Hawaiian Kingdom. He is remembered as the "Merrie Monarch" due to his patronage of the arts and his love of music and entertainment, and the beloved Merrie Monarch Festival is dedicated to his memory. According to their website, "Kalakaua commemorated his 50th birthday with a two-week celebration of Hawaiian culture on the 'Iolani Palace grounds. Known as the "Silver Jubilee," the 1886 festivities featured ho'opa'a (chanters) and 'olapa (dancers) performing in public for the first time in years. Every year the Merrie Monarch Festival continues what the king started, by hosting a week-long festival of music, crafts, art, demonstrations and a hula competition. During festival week, the grandeur, pride, and spirit of the Silver Jubilee is alive in Hilo, Hawai'i."



King Kalakaua. Photo courtesy Iolani Palace

There will be several places around town will be celebrating his birthday on November 16. The few that we are aware of is as follows:

'Iolani Palace will be adorned with bunting and King Kalakaua's standard. The Royal Hawaiian Band will perform from 11:30 a.m. – noon. From 12 – 12:30 p.m., there will be a Review of the Royal Guard, and the Royal Guardsmen will be posted at the gates from 12:20 p.m. - 2 p.m.

Hula Grill will celebrate King Kalakaua with a special event outside of the restaurant from 11:30 a.m.-12:30 p.m. Kumu Hula Michael Pili Pang and Halau Hula Ka No'eau will demonstrate hula implements made from bamboo, gourds, feathers and coconut. Free to the public.

Waimea Valley will be offering Hawai'i residents free admission on November 16 in honor of his birthday. Must present proof of residency.



Award-winning entertainment by Malu Productions  
 Select packages include admission to day time activities  
 NEW vegan curry and seasonal salads  
 AYCE buffet prepared fresh on-site

808-259-2500 • ALOHAKAILUAU.COM



# NOVEMBER CALENDAR OF EVENTS

Continued from page 15.

## NOVEMBER 22 • KASKADE

Multi GRAMMY® Award-nominated singer, songwriter, producer, and remixer Kaskade, a titan in the dance music world, and a groundbreaking innovator in the music industry is returning to the islands. 7 p.m. Waikiki Shell. \$59.50-\$99.50. [bampproject.com](http://bampproject.com).

## NOVEMBER 23 HAPPY THANKSGIVING

Check your favorite restaurants for special menus and times before they sell out.

## NOVEMBER 24 WAIKIKI HOLIDAY PARADE

Since 1998, the Waikiki Holiday Parade commemorates Pearl Harbor Survivors and the anniversary of the attacks by honoring survivors and veterans in memory of the attacks from December 7, 1941. Bands from here and the mainland will join military units, local officials, and dignitaries as they march down Kalakaua Avenue to Kapiolani Park. Held annually the Friday following Thanksgiving Day. 7 p.m. [waikikiholidayparade.com](http://waikikiholidayparade.com).

## NOVEMBER 24-25 THANKSGIVING WITH ANUHEA



Spend Thanksgiving with local singer-songwriter-songbird Anuhea, whose style has made her one of Hawaii's top female artists. Two shows nightly. 6:30 and 9:00 p.m. Tickets: \$35-\$45. [bluenotehawaii.com](http://bluenotehawaii.com).

## NOVEMBER 24-25 THE WAITIKI 7

Bringing back the sounds of a bygone era with the sounds of "Exotica,"



the quintessential, easy listening soundtrack from the days of Martin Denny 65-years ago, seven conservatory trained professional musicians known as the Waitiki 7, will perform two nights of Exotica at the House Without a Key at the Halekulani. 5:30 – 8 p.m. For reservations, call 518-2019 or go to [halekulani.com/experiences](http://halekulani.com/experiences).

## NOVEMBER 25 52ND ANNUAL HOLIDAY CRAFT FAIR

Don't miss the oldest craft fair in Honolulu. All items sold are made in Hawai'i: glass artwork, jewelry, pottery, woodwork, artistic silk scarves, and more, with over 40 local vendors. Sponsored by the Hawaiian Mission Houses Historic Site and Archives. 8:30 a.m. to 3 p.m. Parking is available at the Fasi Building Municipal Parking lot or along the street. [missionhouses.org](http://missionhouses.org).

## NOVEMBER 25 • THE PLATTERS VERY MERRY CHRISTMAS SHOW

Don't miss out on an amazing night of beautiful music from the past and Christmas season favorites. The Platters, known for such hits as "Only You," "Smoke Gets In Your Eyes," and, "The Great Pretender" return to the historic Hawaii Theatre to present a Motown holiday show like no other. 7 p.m. Tickets: \$55 - \$85. [hawaiiitheatre.com](http://hawaiiitheatre.com).

## NOVEMBER 25

### UH RAINBOWS VS. COLORADO STATE

Watch the University of Hawaii Rainbow Warriors play against the Rams, 6 p.m. Clarence T.C. Ching Athletics Complex. Tickets: \$30 - \$95. [hawaiiathletics.com](http://hawaiiathletics.com).

## NOVEMBER 26 AMY HANAIALI'I



Join one of Hawaii's most celebrated artists, Amy Hanaiali'i as she performs songs from her first Christmas album, the award winning "A Hawaiian Christmas," when holidays were all about family and friends. 1:30 p.m. Tickets: \$35-\$75. [hawaiiitheatre.com](http://hawaiiitheatre.com).

## NOVEMBER 28

### CANDLELIGHT: A TRIBUTE TO TAYLOR SWIFT

Candlelight concerts bring the magic of a live, multi-sensory musical experience from the Range Ensemble String Quartet as guests discover the music of Taylor Swift under candlelight. Two shows nightly. 6:30 and 9:00 p.m. Tickets: \$32-\$60. [bluenotehawaii.com](http://bluenotehawaii.com).



## NOVEMBER 29

### CANDLELIGHT: VIVALDI'S FOUR SEASONS

Candlelight concerts bring the magic of a live, multi-sensory musical experience as the Range

Ensemble String Quartet showcasing the music of Vivaldi's Four Seasons with the full polychromatic spectrum of musical color bathed in candlelight. Two shows nightly. 6:30 and 9:00 p.m. Tickets: \$37-\$66. [bluenotehawaii.com](http://bluenotehawaii.com).

## NOVEMBER 30 GILBERT O'SULLIVAN

With a career spanning 50 years, his first single "Nothing Rhymed," released in 1970 achieved nearly overnight success as it hit Top 10 status in the UK and Europe charts. His unique blend of melodic craftsmanship, witty wordplay, surrealist humor, and song writing knack has outlived and transcended fashion. Two shows nightly. 6:30 and 9:00 p.m. Tickets: \$55-\$65. [bluenotehawaii.com](http://bluenotehawaii.com). Thru Dec. 1.



## NOVEMBER 30 MARGARET CHO



As a comedian, actor, musician, advocate, entrepreneur and five-time Grammy and Emmy nominee, Margaret Cho's has repeatedly been named one of the best comedians of all time brings her Live and Livid Comedy Tour to the islands. 7:30 p.m. Tickets: \$64 - \$94. [hawaiiitheatre.com](http://hawaiiitheatre.com).



## A Cut Above

### The Blue Fish joins the superb roster of Waikiki Beach Walk® restaurants

Tradition meets innovation at Waikiki's newest restaurant! Featuring Omakase dining from master sushi chefs, The Blue Fish provides classic and signature sushi and sashimi along with exciting Japanese and Korean dishes and a full bar with craft cocktails, sake and an extensive wine list.

For more information visit [www.thebluefishsushi.com](http://www.thebluefishsushi.com)

### Free Parking 10am-3pm Daily\*

\*With \$10 minimum purchase

Located on Lewers St.  
between Kalakaua Ave. & Kalia Rd.  
Open 365 Days | 10AM-9PM



WAIKIKI  
BEACH WALK.

WAIKIKIBEACHWALK.COM |

## Hawaii Food & Wine Festival

Continued from page 6.

had raised over \$650,000 at the last glance. As part of its continuing efforts to support those affected by the disaster, a special event has been added to the schedule to wrap up the 2023 portion of the 13th annual event. On November 18th, **Taste Our Love for Maui: Special Edition of HFWF** brings together eight talented chefs with strong ties to the island at Humble Market Kitchen by Roy Yamaguchi and Wailea Beach Resort. This special edition of Hawaii Food & Wine Festival, in partnership with the Hawaii Tourism Authority, is the chance to make a meaningful difference in the lives of those affected by the recent Maui wildfires. 100% of ticket sales from this event will be donated to the Kokua Restaurant & Hospitality Fund. Tickets start at \$250

The special addition to the HFWFs calendar aligns with the mission they put on themselves on day one. Don't forget, they created this festival as a way to support the Hawai'i Agricultural Foundation. They have never strayed from their mission, curating exceptional culinary events as way to educate others about the bounty Hawai'i has to offer as way to support support local community organizations, culinary programs, and agriculture here on the islands.

Last year, HFWF donated an additional \$380,000 from the proceeds from 2022 to 17 different beneficiaries, bringing its total giving to \$3.5 million. They have supported more than 70 causes and organizations committed to sustainability, culinary and agricultural education, and cultural programs in Hawaii since HFWF began in 2011. According to HFWF CEO Denise Yamaguchi, "These beneficiaries are vital in Hawaii's journey to a more food sovereign and food secure future, and Hawaii Food & Wine Festival is proud to support these nonprofit organizations."

No matter which event fits your fancy or budget, the Hawaii Food & Wine Festival has plenty to please all tastes. What it doesn't have is a lot of tickets left. Many events have started to sell out well in advance, so if you still need to look for tickets, put this book down and get yours now if they're still available. Be sure to use your First Hawaiian Bank Mastercard when purchasing a G.A. ticket to enter an hour early with the Priority ticket holders at no additional cost. Find more information on the complete lineup of events and culinary talent on their website at HFWF.me.



Located in the South Shore Marketplace, Off the Wall Craft Brewing tap house offers an unforgettable experience of local flavors, artfully crafted beverages, and mouth watering dishes, focusing on locally sourced ingredients and Latin flavors. Guests got to experience the self-serve curated selection of local craft beers and wine while noshing on menu bites to get a feel for what this hidden gem has to offer. Offering happy hour Monday - Friday from 3 - 5 p.m. and live music Thursday - Saturday, check it out at [offthewallhawaii.com](http://offthewallhawaii.com).



# That's Entertainment

## HO TELS

- ALO HILAN IRESO RT** 922-1233
- Daily - Fish Feeding 10:30am & 2:30pm O Bar
  - Daily - Live Music 6:30-9:30pm SwellBar
  - Daily - Light Monuments Video Art Series 7-9pm SwellBar
  - SunWedSat - TankTalk 9am .O Bar
- HALEKULANI** 923-2311
- Daily - Music & Hula 5:30-8:30pm House Without a Key
  - TWThFS - Live Jazz 8pm -12am ,Jewels Lounge
  - Sun - Sunday brunch w/ Noly Paon piano 9:30am -2pm
- HILTON HAWAIIAN VILLAGE** 949-4321
- Fri - Fireworks at 8pm
  - SMTWThF - Live entertainment, Papa Bar, 7-10pm
  - FriSat - Live entertainment, Paradise Lounge, 7-10pm
- HYATT REGENCY WAKIKI** 923-1234
- MWed - Family's Market from 4-8pm
  - Mon-Fri - Cultural Program sat the Hokele Culture Center
  - TH - Walking Tour thru parts of Waiakiki at 10am
  - TH - Live Hawaiian music at Pualani Atrium, 4-6pm

- KAHALA HOTEL & RESORT** 739-8888
- Mon - Free kapala stamping at the Veranda at 10am
  - Tues - Free hula hula weaving at the Veranda at 10am
  - WFSat - Free lei making at the Veranda at 10am
  - Thurs - Free hula dancing at the Veranda at 10am
  - ThFSat - Live entertainment at the Veranda from 6-8pm .
  - FriSat - Afternoon Tea at the Veranda at 2pm & 3:30pm
  - Daily - See the interactive dolphin program every hour
- LUANA WAKIKI HOTEL & SUITES** 955-6000
- MWF - Enjoy live music and hula on the Mezzanine 5-6pm
- MOANA SURFRIDER** 922-3111
- Daily - Live music at the Beach Bar, 4:30-6:30pm, 7-10pm
  - WThFSSu - David Swanson at Vintage 1901, 6:30-10pm
  - SatSun - Afternoon Tea at the Veranda, 11:30am -2:30pm
- OUTRIGGER WAKIKI BEACH** 923-0711
- Daily - Live music at Duke's 4-11:30pm, Sat/Sun from 10am
- OUTRIGGER REEF WAKIKI BEACH** 923-3111
- Daily - Live Hawaiian music at KaniKaPila Grill, 6-9pm
- PRINCE WAKIKI** 956-1111
- ThFSSu - Live music at 100 Sails from 6-8pm
  - Sat - DJKK poolside from 2-5pm, Sun from 2:30-5:30pm
  - SHERATON PRINCESS KATULANI 922-5811
  - Daily - Live music poolside 6-9pm, DJ from 3-6pm .
- THE ROYAL HAWAIIAN** 923-7311
- Daily - Live Hawaiian music at the Mai Tai Bar, 11am -2pm
  - TWFFSSu - Live Hawaiian music at the Mai Tai Bar, 6-9pm
  - MTh - Live Hawaiian music at the Mai Tai Bar, 8-10pm
- TURTLE BAY RESORT** 293-6000
- Daily - Live music at the Pointe Pool Bar, 4-7pm
  - Daily - Live music at Off the Lip, 7pm
  - Daily - The Stable at Turtle Bay offers a variety of experiences
- WAKIKI BEACH MARRIOTT RESORT** 922-6611
- Daily - Live music, Queensbreak Restaurant 5:30-8:30pm
  - Daily - Live music in the Lobby 6-9pm

## FARMERS MARKETS

- BW OPEN MARKET**
- Mon - Setup on the Plaza at Waiakiki Beach Walk, 4-8pm .
- HYATT REGENCY FARMERS MARKET** 225-4002
- MonWed - Hyatt Regency 1st floor water fall atrium 4-8pm
- HAWAIIAN BUREAU MARKET** 848-2074
- Wed - Setup on the Blaisdell Concert Hall Lawn 4-7pm .
- ALOHA HOME MARKET** 225-4002
- Sun - Kailua 340 Union Street 9-2pm .
  - Sun - Ala Moana Mall Level 2 parking by Macy's 9am -2pm .
- HALEWA FARMERS MARKET** 388-9696
- Thurs - Located at Waimanua Valley, 2-6pm
- MAHUKU FARMERS MARKET** 225-4002
- Thurs - Bottom Level International Market Place 4-8pm .

- KCC FARMERS MARKET** 848-2074
- Sat - Kapihani Community College 7:30-11am
- KAKA'AKO FARMERS MARKET** 388-9696
- Sat - 919 Ala Moana Blvd & 210 Wai'anae Avenue, 8am -12pm
- PEARL RIDGE FARMERS MARKET** 388-9696
- Sat - Pearlridge Market by Macy's, 8am -12pm
- KAILUA FARM BUREAU MARKET** 848-2074
- Sun - Kailua Town Center, 4-7pm
- KAILUA TOWN FARMERS MARKET** 388-9696
- Sun - Enchanted Lake Center by Kailua Chemist, 8am -12pm

## ATTRACTIONS

- FOSTER BOTANICAL GARDEN** 768-7135
- Daily - Hawaii's oldest Botanical Garden in the middle of downtown open 9am -4pm . \$5/\$1 keiki (Kam a'aha \$3)
  - Daily - Free docent led tours at 10:30am . Reservations sec.
- HONOLULU ZOO** 926-3191
- Daily - The Zoo is open from 10am -4pm Last Entry at 3pm . GA \$19 adult \$11 keiki (Kam a'aha \$8/\$4).
  - Sat - Explore the Zoo after the gates close 5:30-7:30pm .
- KUHO BEACH HULA SHOW** 843-8002
- TSLastSun - Free show 6:30 -7:30pm Kuhio Hula Mound
- JWAIKIKIAQUARIUM** 923-9741
- Daily - The Aquarium is open from 9am -4:30pm . GA \$12 adult \$5 kids (Kam a'aha \$8).
  - 1st3rdTue - Hawaiian Plant Tour 1:30pm . Free w/admission

## MUSEUMS

- BISHOP MUSEUM** 847-3511
- Daily - The 15-acre campus offers guests a chance to learn about the cultural and natural heritage of Hawaii and the Pacific across three different exhibition buildings. Daily planetarium shows, a highly unique native Hawaiian botanical garden, and more. 9am -5pm .
- HAWAII STATE ART MUSEUM** 586-0900
- Mon-Sat - Museum interpreters on-site to provide visitors with basic information about the museum and artwork. Special evening events as listed below. Open 10am -4pm .
  - 1stFri - Live entertainment and food vendors. 6-9pm
  - 2ndFri - "Vibe" Jazz performances & food vendors. 6-9pm
  - 4thFri - Hawaiian music night. 6-9pm
  - 3rdSat - Family Arts & Crafts Day 11am -3pm
- HONOLULU MUSEUM OF ART** 532-8726
- ThFSSu - Tour & Talk Story 11am . Free with admission.
  - ThFSSu - Highlights tour 2pm . Free with admission.
  - FSat - HoMa Nights, open until 9pm . Free with admission.
- HONOLULU FIRE MUSEUM** 723-7167
- 3rdSat - Free one-hour guided tours through various exhibits with a firefighter recounting HFD's history the 3rd Saturday of every month. 9am -2pm on the hour. 620 South Street. Reservations required. Book online: fire.honolulu.gov then hit the submit request button and click museum tours.
- IDANIPALACE** 522-0832
- THS - Audio tours available from 9am -4pm
  - WTh - Docent led tours available from 9am -4pm
  - EveryOtherWed - He Mele Lahui Hawaii with Kuleipo, 9am
  - Fri - Royal Hawaiian Band, Free, 12-1pm
  - SunMon - Museum Closed
- LUCORAL MUSEUM** 778-8189
- Mon-Fri - Free self-guided tours featuring local and global gem stones and a one-of-a-kind dinosaur egg. Visitors can also create their own one-of-a-kind jewelry. 10% off gift shop with mention of Oahu Concierge. 10am -5pm .
- HAWAIIAN MUSEUMS** 447-3910
- TW - Docent led tours through the oldest existing frame house in the Islands. 11am, 12pm, 1pm and 2pm
  - ThFSat - 11am, 12pm, 1pm, 2pm and 3pm tours
  - TWThFSa - Gift shop open 10:30am -4pm

- PEARL HARBOR AVIATION MUSEUM** 441-1000
- Daily - Vintage aircraft in battle field hangars at Pearl Harbor, outdoor exhibits, flight simulators, and the Bob Hope: An American Treasure Exhibit. Shuttle & Tickets at USS Arizona Memorial Visitor Center or Pearl Harbor Aviation Museum.org.

## SHOPPING CENTERS

- ALAMOANA CENTER STAGE** 955-9517
- Daily - Hula Show, 5pm .
  - EveryOtherWed - Royal Hawaiian Band. 11am .
  - Sat - Local entertainment, 3pm .
  - Sun - Keiki Hula Show, 1pm .
  - Every2nd&LastFri - Night Market Food Truck and Craft Fair corner of Atkinson Drive and Ala Moana Boulevard. 4-9pm .
  - Daily - Pau Hana Music Series, 5:30pm . Ewa Wing Stage
- HALEWA STORE LOTS** 203-5700
- Sat - Live Hawaiian entertainment from 2-4pm
- INTERNATIONAL MARKET PLACE** 921-0536
- MWF - Ceremonial sunset lighting of Iliani Kū Torch Tower
  - MWF - Sunset Stories Hula Show, 7pm . Queens Court
  - Thurs - Mahuku Family's Market. 4-8pm . Banyan Court
  - 1stTh - Royal Hawaiian Band, Free. 11am . Queens Court
  - 1stSaSu - Island Crafters Market. 11am -5pm . 2nd level
  - 1st3rdSu - Free Yoga Class. 10-10:45am . Queens Court
- ROYAL HAWAIIAN CENTER** 922-2299
- Daily - Heritage Room / Cultural Videos, Helum oa Hale
  - Mon - Free Ukulele Lessons 11pm, Helum oa Hale
  - Tues - Free Hula Lessons 11am, Royal Grove
  - Wed - Free Lauhala Weaving 11am, Bldg A, Level 2
  - Thur - Free Keiki Hula Lessons 12pm, Royal Grove
  - Fri - Free Lei Making Class 12pm, Bldg A, Level 2
  - Sat - Hula Kahiko 5:30pm, Royal Grove
  - TWThF - Live Hawaiian Entertainment 5:30pm, Royal Grove
- WAKIKI BEACH WALK** waikiki beach walk.com
- Daily - The Ukulele Store offers free lessons at 4:30pm
  - Mon - Open Market 4-8pm
  - Tues - Ku Ha'aeo Hula Show. 4:30-6pm . Plaza Stage
  - Wed - Free feather lei making 11am, 2pm . Royal Room
  - Sun - Free hula lessons, 9-10am



- BALLOCEANFRONT**
- 20% off food & beverage. Hilton Hawaiian Village, 941-2254.
- GUAVASMOKE**
- 20% off food and drinks with hotel ID. 567 Kapahulu Ave, 2nd floor. Entrance/parking on Campbell Ave. 913-2100
- HAWAIIAN ISSUSSION HOUSES**
- Free tour with hotel ID. 553 S. King Street. 447-3910.
- IDANIPALACE**
- Free Admission with hotel ID. GA \$30. Kam a'aha \$19.95. 364 S. King Street, Reservations Required. 522-0832.
- MAUIDIVERSJEWELRY**
- 35% discount off purchases made at the Design Center and 20% at all stores. Must show hotel ID for discount. 1520 Lina St. 946-2929.
- RUTH'S CHRIS STEAK HOUSE**
- Complimentary Appetizer valued up to \$22 with the purchase of 2 entrees. Waiakiki Beach Walk, 440-7910. Restaurant Row, 599-3860.

You will be required to show Hotel ID or business card to claim offer. Magazine not needed. Simply mention offer when presenting hotel ID. Discounts available to Guest Service Professionals ONLY. Not valid with other promotions or special offers. Announce 18% gratuity on original order requested for all food offers.

The Oahu Concierge is printed monthly and direct mailed FREE to all Oahu Concierge, Hospitality & Activity Professionals.  
Subscriptions available to non-industry at \$25 per year.

C O N T A C T  
**Davis Media**  
Ph: (808) 225-8229

Website: [www.OahuConcierge.com](http://www.OahuConcierge.com)

**ADDRESS & NAME CHANGES / ADDITIONS**

We do not take changes via telephone. All changes to mailing list **must be submitted in writing** by the 16th of the month to make the next issue, email is preferred.

S T A F F

PUBLISHER & EDITOR **Pam Davis**  
[publisher@oahuconcierge.com](mailto:publisher@oahuconcierge.com)

DESIGN  
Coreiya Design

The Oahu Concierge  
4348 Waialae Avenue, #185  
Honolulu, Hawaii 96816

PRSR STD  
US Postage Paid  
TRADE MEDIA HUI



MORE CHEFS  
MORE FLAVOR

BANZAI BURGER

CRACKIN' KITCHEN

EATING HOUSE 1849  
*by Chef Roy Yamaguchi*

HERRINGBONE

KONA COFFEE  
PURVEYORS

KUHIO AVE FOOD HALL

LA PINA CANTINA

LILIHA BAKERY

MITSUWA MARKETPLACE  
*Japanese Market*

MOANI WAIKĪKĪ

SKYBOX TAPHOUSE

SHOREFYRE

STRIPSTEAK WAIKĪKĪ  
*by Chef Michael Mina*

UNCLE SHARKII POKE BAR

HAPPY HOUR 3-6PM DAILY  
*at participating restaurants*

**GRAND LĀNAI**  
INTERNATIONAL MARKET PLACE

2330 Kalākaua Avenue, Waikīkī