

Concierge

KEEPING THE HOSPITALITY INDUSTRY INFORMED SINCE 1998



October 17-19, 2014

Bayfest is back! After taking last year off due to sequestration and budget constraints, this highly popular festival has returned! Once again, for one weekend only, Kaneohe Marine Corps Base will get wild and explosive at the annual BayFest extravaganza, complete with all the games, rides, and entertainment we love. It's been 24 years since Kaneohe Marine Corps Base first transformed an ordinary helicopter pad into a fun-filled fair back in 1991 and the all-star line-up of local and nationally recognized performers, carnival rides, military displays and more is back, complete with a spectacular fireworks show over the bay. What began as a local fundraiser by the Marine Corps Community Services has turned into one of the Islands hottest tickets and we are thrilled to see it make its return.

This year, the event is being held in the fall rather than the summer so festival-goers can expect far more comfortable temperatures on the tarmac throughout the. As many of you may recall, Bayfest was always held in July. For a variety of reasons, organizers have moved the event to October going forward. BayFest will now be held



during even numbered years while the Kaneohe Bay Airshow will be held in odd numbered years. In other words, the next Bayfest will not be held until 2016, so don't miss out on this one.

With plenty of activities and events throughout each day, the whole family will find something to entertain. The fun begins on Friday, October 17th at 5 p.m. Hula, car shows, and comedy are just a sample of the weekend's festivities. Take a closer look at the military displays with tanks, planes, helicopters,



and much more, or get out on the water with a boat ride out to Coconut Island on Saturday and Sunday from noon to 6 p.m. The midway will be humming with all of your favorite fair rides for keiki and big kids too, along with carny food faves like cotton candy, corn dogs, and plate lunches. A Marine Unit will be bringing out one of their inflatable mobile obstacle courses that they use as a recruiting tool for kids of all ages to attempt.

This year toned abs take center stage in the Fest Tent at the 2014 BayFest GNC BodySearch Fitness Competition. Trim, toned, and tanned men and women will show off their sculpted bodies in both fitness modeling and interview categories as they compete for cash, prizes, and the coveted title of BayFest 2014 BodySearch King or Queen on Saturday from 3 – 5 p.m.

New to BayFest this year is a special Red Bull Street Bike Demo, as Aaron Colton, one of the Red Bull KTM action sport athletes, will showcase some of his best street freestyle and stunt riding moves. Catch all the action on either Saturday or

Continues on page 2.

Happy 100th Anniversary Diamond Head Theatre



The actors of the Honolulu Community Theatre performed at the Longhouse at the Hawaiian Village back in 1961 before the theatre found a permanent home.

In the early 1900's a group of ladies gathered in one-another's parlors in old Honolulu to read the lines of theatrical productions. Ladies only, men were not included. The attendees included the names Dillingham, Wilder and Lewers. Your grandmother could have been there.

In 1915 the gathering became a troupe with a name – The Footlights. Before most of the world knew Hawaii to be a civilized nation, the theater was thriving in Honolulu. On April 28th, 1915, The Footlights made their debut in the Honolulu Opera House, located where the main Post Office now stands.

Broadway and movie stars loved the islands. Even in the early years The Footlights theater attracted an amazing list of talent – 1928, Noel

Continues on page 8.

TABLE OF CONTENTS

Yada Yada Yada	2
Newsflash	3
Arts with Aloha	4
Talk Story Festival	5
Aunty Lynn's Adventures	6
Duke's Ukes / Ka Himeni 'Ana Winners	7
Chef's Corner: Celeb Chef Grant MacPherson ..	9
E Pili Kakou	10-13
Calendar	14-16
Hiker's Corner	16
Halloween Happenings	17
That's Entertainment	18
Concierge of the Month: James Speight	19

WOLFGANG'S
STEAKHOUSE
LUNCH • HAPPY HOUR • DINNER • WEEKEND BRUNCH • PRIVATE ROOMS

UNMISTEAKABLY NEW YORK
Royal Hawaiian Center, Bldg C, Level 3
wolfgangsteakhouse.net • opentable.com
808.922.3600



Publisher's Letter

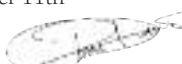


SOMETHING SEEMS DIFFERENT

October is bringing us a few different events than we're used to this time around. Usually when people say what month they're coming, I can instantly spout out what's going to be happening in town when they're here. Think about it, Matsuri Fest is always in June, the Made in Hawaii Festival in August, Aloha Festivals in September, the Triple Crown starts in November, The Sony Open in January. Ask me what to expect in October I'd tell you to look for the Hawaii International Film Festival and hope that PCCs Haunted Lagoon returns. Well not this year. First off, I'm sorry to report that the Polynesian Cultural Center did not bring back the immensely popular Haunted Lagoon as I had hoped, and secondly, HIFF is actually going to be held in November. Well technically, it kicks off October 30th, but the majority of the event will be held in November this year, so you can look forward to reading all about that in next month's issue. Instead, of all things, October is now the new home for another favorite event... BayFest. What? BayFest? That hugely popular summer festival held out on KBay that was cancelled last year due to sequestration? Yup that same one, only it's no longer a summer event. Organizers have decided to bring back BayFest as a bi-annual event every other October, swapping it out each year with the Air Show. So while I don't have any idea what month HIFF will take place in next year, I now know that every October I can plan to head out to Kaneohe Bay Marine Corp Air Station to take advantage of either watching the Blue Angels or to sit back and listen to a great musical line-up. I'm happy to report that not only is the event back but so are the three big nights of music. Check out the cover story - or hey - look at the picture right next to this sentence to see who's performing this year. Still one of the best concert deals around for only \$35 a ticket! (\$40 at the door)

One thing that hasn't changed is Halloween. While I guess I'll have to keep my fingers crossed that maybe PCC brings my favorite event back next year, there's more than enough to keep you busy this time around... and guess what? Halloween is on a Friday this year, so my guess is Kalakaua is going to get nuts. Even if you don't feel like getting dressed up and being a part of it, it's going to be something to see, so try to take a look at all the costumed crazies on the street. I've put together a quick preview of what's going on this Halloween on page 17, and actually found more than I have room for, so make sure to check out all of the Arts at Marks Garage events, including a showing of the Rocky Horror Picture Show, that I ended up placing on page 3.

Last but not least, many of you guys are always asking me to announce the date for the annual Mahalo party earlier so you can ask for the night off. Well mark your calendars, cause the party is set! Save Thursday, December 11th from 5 - 7 p.m. and I'll see you at the Hard Rock Cafe!



Yada Yada



Velma Hulihe'e-Carstensen

Hard Rock Cafe welcomes some new (and familiar) faces to their management team. Taking over the general manager reins is **CJ Chipley**. CJ joined the Honolulu team back in April 2013 as Assistant GM, and now leads the team himself. **Velma Hulihe'e-Carstensen** has also joined the team as Sales and Marketing Manager. Velma was most recently at Morton's Steakhouse and as many of you know, spent many years as a concierge herself. She'd love it if you'd stop by and say hi. • The President and Chief Operating Officer of the *USS Missouri Memorial Association* has added another title to his role, Chief Executive Officer. **Michael Carr** has been with the Association since 2008 and has led the Missouri through its most successful

years. • The *Hale Koa Hotel* has recently added **Jera Diaz** to their guest services team. • Also joining onto the guest services department is **Lindsay Michaelson** who just started at the *Outrigger Waikiki on the Beach*. • More new names in the guest services department at the *Outrigger Reef on the Beach*, as **Aira Ono**, **Reslyn Verzosa**, **Ronnie Barit** have joined the staff there. • **Jennie Manlutac** is now working as a Leahi Club Lounge Manager at the *Sheraton Waikiki*. She previously worked at the Kahala as a Front Desk Manager. • And at the *Doubletree by Hilton Alana Waikiki* a few new employees have been added to their roster. **Cheryl Fisher** is now working as an Assistant Front Office Manager. **Kathrin Dixon** has been named a guest service agent and **Michelle Wu** has joined the PBX department. Welcome all! To those we overlooked, please email us your newest hires.

BayFest is Back!

Continued from page 1.

Sunday from 1 - 2 p.m. and from 4 - 5 p.m.

Let's not forget about those concerts! One of the biggest draws of BayFest is always the concerts. BayFest is known to feature double-headers, giving the audience the opportunity to see multiple shows at one price and this year is no different as three fabulous nights of musical performances are planned on the USAA Entertainment Main Stage. The Marine Forces Pacific Band will perform all three days and then Friday night kicks off with a huge one-two rock punch. First up, Uncle Kracker of "Follow Me" and "Drift Away" fame will take the stage from



Uncle Kracker

6:30 - 7:45 p.m. followed by Smash Mouth will be "Walkin' in the Sun" from 8:15 - 9:30 p.m. with an "All Star" performance. To wrap up the first night of the festival in true BayFest-style, the famous Grucci Brothers will be putting on their world-renowned fireworks show immediately after Smash Mouth wraps up their set. For 30 minutes the sky will be literally exploding directly above concert-goers over the bay. This is the only night the fireworks will go off, and if past years are any indication, this is one show you do not want to miss!

On Saturday night, the music continues as Star 101.9 showcases their Battle of the Bands finalists between 1 - 3 p.m. At 6:30 p.m., the winners of that contest will take to the stage until 8:15 followed by Capital Cities, the pop duo best known for their hits "Safe and Sound" and "Kangaroo Court" from 8:45 - 10 p.m. After the concerts wrap on Friday and Saturday evening a DJ will kick off the after party inside the Fest Tent until 1 a.m. for festivalgoers to get their dance on.

Not to be forgotten, country fans are taken care

of on Sunday Night as local performer Dita Holyfield and Hillbilly House gets the audience warmed up between 5 and 6 p.m. Country sweetheart Rose Falcon, daughter of legendary singer-songwriter Billy Falcon takes to the stage from 6:30 - 7:15, followed by Rodney Atkins who closes up this year's BayFest with a performance from 7:45 - 9 p.m. that's sure to feature his 2012 Song of the Year "Take a Back Road"



Rodney Atkins

BayFest runs October 17th through 19th. Check out the fun from 5 p.m. to 1 a.m. on Friday; noon to 1 a.m. Saturday; and noon to 10 p.m. on Sunday, with concert gates opening at 5 p.m. (4 p.m. on Sunday). Tickets are available for only \$5 at the door and children under five get in free. Ride wristbands, good for 10 rides, will be sold for \$25 on Saturday and Sunday until 5 p.m. Concert tickets are \$35 if purchased by October 16th or \$40 at the gate. Tickets can be purchased at all Military Tickets outlets or Go Wireless locations.

Lastly, to make sure your guests have a fun, stress-free day, there are a few things to keep in mind when heading to Bayfest. Since the whole weekend takes place on a military base, make sure you follow the following rules: drive carefully, bring valid ID, wear your seatbelts, and don't talk and drive (heads up cell-phoners, they will be looking for you and they won't hesitate to write drivers a ticket out there). A few things to leave home include large backpacks, coolers, pets, outside food and drinks, and (shockingly) explosives or weapons. Proceeds from the entire event go to Marines, sailors, and family stationed here in Hawaii. Make sure you stop by the Retail Tent so you can take the memories home with you with BayFest memorabilia and logo wear. For more information on this year's event call the BayFest Hotline at 254-7679, or head online to visit bayfesthawaii.com.

~ Pam

EXTRA *Newsflash* EXTRA

ATLANTIS RUNS GREEN

Atlantis Adventures has been certified as a Sustainable Tour Operator by the Hawaii Ecotourism Association in recognition of their longstanding commitment to providing "green" submarine tours. The certification is good for two years and lets visitors know that they are supporting a company that believes and practices in ecotourism, as a way to promote sustainable tourism in Hawaii. atlantisadventures.com.

ISLAND JEWELRY OPENS

Owner and jewelry designer Brian Hee of Koa Nani jewelry boutique has opened a second store in the Royal Hawaiian Center showcasing his latest jewelry concept. Inspired by local flora and fauna, the collection includes intricate designs of various water creatures and flowers in a variety of materials such as gold, silver, pearls and koa. The store is located on the ground floor level of Building A behind Cartier and Hermes. 10 a.m. to 10 p.m.

IT'S THE NAVY'S TURN TO GET IN FREE AT PEARL HARBOR

In honor of the U.S. Navy's birthday on October 13th, Pearl Harbor Historic Sites will waive the admission of all active duty and retired Air Force personnel and their families into the Battleship Missouri Memorial, Pacific Aviation Museum Pearl Harbor, and the USS Bowfin Submarine Museum and Park on October 11th and 12th. Just present a valid military ID at the ticket booth to redeem. PearlHarborHistoricSites.org.

SOCIETY OF SEVEN RETURNS

The Society of Seven (Classic) is coming back to Honolulu for one night only on Saturday, October 25th with two concert-like performances at the Hibiscus Ballroom at the Ala Moana Hotel at 6:30 p.m. and 9:00 p.m. It's been 5 long years since we've seen founding SOS members Tony Ruivivar and Bert Sagum on stage, and they're bringing special guest star, spectacular song stylist, Lhey Bella with them. Tickets: \$55. To reserve, call 944-4333 or go to societyofseven.com.

HARRY WINSTON OPENS 2ND

The House of Harry Winston is opening its second location on Oahu. Harry Winston was one of the most famous jewelers in the world and has owned some of the most important diamonds of all time, including the Hope Diamond, which he later donated to the Smithsonian. Today, the Harry Winston Diamond Corporation operates salons around the world, and their latest two-story, 6,000 foot location will open in the Royal Hawaiian Center next to Forever 21 facing Kalakaua.

OLD HARD ROCK LOCATION GETS NEW TENANT

The Honolulu Coffee Co. has signed a 10-year lease for the former Hard Rock Cafe Honolulu location across from the Convention Center. The company will move all of their operations into the space which will include a 6,000-square-foot interactive coffee learning exhibit, a one-of-a-kind "Hawaiian Coffee Visitor Experience" and a sample roasting laboratory and kitchen visible behind a glass wall. The center will also have an outdoor cafe and should open in May 2015.

JUST IN TIME FOR FOOTBALL



In case there aren't already enough TVs, Giovanni Pastrami just added four brand new 4K ultra-high def 70" screens so sports fans can see their favorite team up close and personal in amazing definition. giovannipastrami.com

LOOKING FOR COTMS

Have you nominated your co-worker yet? We're running low on Concierge of the Month nominations for the rest of the year. Send in your nominations via email today.

CABARAE SHOWROOM OPENS

CabaRAE, the new show everyone's been talking about at the Hilton Hawaiian Village moves into their new digs this month. Keep your eyes open for an upcoming FAM to see it for yourself!

ROCKY HORROR RETURNS

Whoops, ran out of room in our Halloween sidebar on page 17, but we would be remiss if we didn't let you know that the classic Rocky Horror Picture Show will be shown during The Arts at Marks Haunted Garage event. Four days of Halloween fun will include 4 screenings of the cult classic, a Halloween Night Dance Party and a Day of the Dead Cocktail Party. Movie screenings will be at 8 p.m. Wed 10/29 - Fri 10/31 with a bonus show Sat 11/1 at 11 p.m. Costumes are encouraged. If you've never been to an Arts at Marks Halloween event, trust us, they're not to be missed. Check out artsatmarks.com/Halloween.

A NEW LUAU IN TOWN

Discover Hawaii Tours has launched a new luau in town with their Big Kahuna Luau up Tantalus at a private 1920s estate. Enjoy a live show filled with traditional dance and song, dinner, cultural activities, games, panoramic views of Diamond Head and more. Tickets: \$89-\$170. discoverhawaii.com

THE ENVELOPE PLEASE

As many of you know by now, Marriott International has begun a program of leaving envelopes in a room to encourage guests to leave a gratuity for the housekeeper that cleans their room. In a move that has generated conversations around the country, eyes are closely watching the outcome of this campaign and more envelopes could be popping up soon.

Rock a Hula™
LARGEST HAWAIIAN SHOW IN WAIKIKI™
Legendary Halloween
No Tricks! Just Family-Friendly Fun!
On 10/31, dining guests get a treat. Plus, dress up like a Legend and you could win a prize!

Michael Jackson *Elvis* *Lady Gaga*

At Royal Hawaiian Center, Bldg. B, 4th Floor
www.Rock-A-Hula.com ★ (808) 629-SHOW (7469) ♻️

legends
at the
Hawaiian Village

arts with aloha



When I think of the month of October, the first thing that comes to mind is what am I going to wear for Halloween. And before you send some of your guests to Savers or Party City for that naughty nurse outfit perhaps you can send them first to one of these Honolulu cultural and theatrical haunts to give them some inspiration.

Who needs inspiration to see an opera? A LOT OF PEOPLE! But in this case, if your guests are looking for something different to do one night, tell them you are sending them someplace HOT, that is the **HAWAII OPERA THEATRE** at the Blaisdell Concert Hall to see Puccini's timeless story of romance between a Japanese woman and an American naval officer in 19th Century Japan entitled "*Madam Butterfly*." Clearly this same romance could play itself out at the Shorebird Restaurant and Beach Bar at the Outrigger Reef some Saturday night but I think Puccini's version, which doesn't have a happy ending, still is a lot of fun to see and hear. The performances run October 10, 12 and 14. Tickets can be purchased by contacting the HOT Box Office at 596-7856, online at HawaiiOpera.org or via Ticket Master. For those of you not familiar with the opera, it's famous for melodies including the aria "Un bel di" ("One fine day") and is set in Nagasaki, Japan where an American naval officer named Pinkerton is set to marry a young Japanese woman named Cio-Cio-san, butterfly in Japanese. The marriage is cursed by her uncle and Pinkerton leaves promising to come back and does three years later with a wife, meanwhile Cio-Cio-San has given birth to his son. So you pretty much now get the picture of this tragedy.

The one thing you might not know is that opera has been part of island culture for more than a century. The old opera house used to be located across the street from Iolani Palace. Today it's the location of the downtown post office. Opera in Hawai'i dates back to the 1850s when Queen Emma used to sing in the chorus of Verdi's "Il Trovatore" while her husband, King Kamehameha IV served as the stage manager. Isn't that crazy? A fun fact to share with your guests.

Now I'm assuming many of your guests will run screaming away from the guest services desk if you even mention the word opera so perhaps you could send them to **BISHOP MUSEUM** for its current exhibit called "Scream Machines" on the first floor of the Castle Memorial Building. This crazy exhibit explores the science behind roller coasters through fun, interactive experiences. Your guests get to situate themselves into a stationary seat for a "Ride the Great Ones" roller coaster simulator ride that lets them experience five of the world's greatest roller coasters viewed on a large screen from the seat of a roller coaster car.

In addition to the simulator there is a moving room called the "Revolver" or "The Spin Room" where you guests will enter a circular space, about ten feet in diameter and the room begins to turn. As the room spins, they will be asked to room a ball to someone on the far side of the room, which ends up being a challenge since the room is

rotating. This demonstration shows what NASA must accomplish when it aims a rocket at Mars. The goal is to aim the rocket to where Mars will be when the rocket arrives, not where the planet is at launch. The same technique will be used by your guests in "The Spin Room" as they try to aim the ball to where they think the person across the way will be when it arrives. Clearly this isn't the best exhibit for any of your guest who suffer from motion sickness, but I am sure the museum will provide bags for those in need.

Now if these two elements are not enough for your guests, the "Scream Machines" exhibit features an elaborate model of a roller coaster called "The Black Plague." The roller coaster car descends through the whirlpool hill, through two teardrop loops, and turns twice over in a double corkscrew. I suggest this is the spot for your motion sick guests. There are also several interactive stations for kids to create their own roller coasters, but you don't have to be a kid to enjoy the fun.

And there is even more fun in the J. M. Long Gallery at **BISHOP MUSEUM** with the exhibit "Nature's Wonders" which showcases the museum's spectacular collection of natural history specimens. Your guests can check out iridescent butterflies, cute sea horses and glimmering beetle shell jewelry. The museums has over 22 million specimen in its collection. There are also a variety of skeletons and skulls on view, which fits in nicely with the Halloween theme. Did you know that native cultures in Hawai'i and the Pacific appreciated the beauty of nature and incorporate such items into wearable ornaments such as helmets, headbands, necklaces and bracelets. Some of these more unique examples are also on display. This exhibit will close on October 22. Bishop Museum is always a great stop for your guests on their way up to the North Shore. Don't forget to suggest they see the Hawaiian Hall as well.

HONOLULU MUSEUM OF ART has its own kind of Hawaiian Hall experience, but this exhibit celebrates the Art Deco style of the islands from the 1920s to the 1940s in an exhibit called "Art Deco Hawai'i." The exhibit which includes paintings, sculptures and works on paper is anchored by two mural cycles: (1) Eugene Savage's six canvases created for Matson, most of your guests will be familiar with these images and (2) the large-scale paintings by Arman Manookian both pieces a romanticized celebrations of early Hawaiian history. The Matson canvases are on public view for the very first time, so this is not to be missed and the Manookian paintings were on display at the Hana Hotel in Maui up until 2010. If your guests are nostalgic for that old sense of Hawai'i from the early 20th Century, this truly is the one place they should visit this fall. And don't forget this month's highly popular ArtafterDark which conveniently falls on Halloween eve!

As you can see, there is a lot of inspiration this month in Honolulu's arts and cultural scene. What have you decided to be for Halloween? I suggest keeping it simple. Just wear black and watch from the sidelines on Kalakaua Avenue but first be sure to stop by the Shorebird and pick up a tourist!

~ Lance Rae

O'AHU'S BEST -ECO- ADVENTURES

YOUR GUESTS WILL ENJOY:

- ATV TOUR
- HORSEBACK TOUR
- MOVIE SITES TOUR
- OCEAN VOYAGING TOUR
- SECRET ISLAND BEACH ACTIVITIES
- JUNGLE EXPEDITION TOUR
- ANCIENT HAWAIIAN FISHPOND TOUR
- TROPICAL FRUITS & FLOWERS TOUR
- ZIPLINE TOUR (COMING SOON)

ACTIVITIES DO SELL OUT, CALL FOR RESERVATIONS

808-457-4367
WWW.KUALOA.COM

“IT WAS A DARK & STORMY NIGHT...”
TALK STORY FESTIVAL 2014



Audiences Beware! Storyteller Jeff Gere can scare the skin off an orange. His 26th annual Talk Story Festival, October 17th and 18th, will be back to offer more chicken-skin moments. The festival runs for two evenings, each with a unique program, at McCoy Pavilion in Ala Moana Park, from 6 to 10 p.m. Gates open at 5 p.m. Big crowds are expected so an early arrival is encouraged.

Each night nine storytellers share the stage, with twenty-minutes each to electrify and educate the audience on the nuances of ghouls and ghosts and things that go bump in the night. The lighting by light Wizard Jack MacMillen helps to ‘color’ the stories, as the lights shine up at their faces, is so dramatic that audiences move closer together even before their stories begin. Live video of the performances will be projected onto 12-foot screens on either side of the stage so no one will miss a word, no matter where they are sitting.

Friday will feature SpOoOoKY Stories told by some of the island’s best storytellers including Kathy Collins from Maui. Her alter ego, the pidgin-spouting ‘Tita,’ appears all over Maui. She and Jeff Gere will tell the chilling obake story of *Okiku*. Serina Dunham, a UH undergrad student and local theater artist runs ‘Bento Rakugo’, a traditional Japanese comedic storytelling group, performing in English here on Oahu. She will offer her version of *Okiku*, a totally different approach from Collins and Gere. Ed Chevy, the best deaf storyteller in Hawaii returns to perform Edgar Allan Poe’s *The Fall of the House of Usher*. He has interpreted Poe at the Talk Story for a decade, and is currently making a ‘Deaf Poe’ video. He will be voiced by Kevin Roddy at the festival.

On Saturday, hear the ancient Hawaiian epic tale of Pele, the Volcano Goddess, her Kauai lover Lohiau, and the journey of Pele’s sister, Hi’iaka, to fetch him and bring him to Pele. Jeff asked many of the regular storytellers to join him in bringing this epic tale to life. The story will be performed as a team relay telling, passing the narration like a baton from one teller to another. The tellers include Moses Goods, a story teller at the Bishop Museum. Sandra MacLees, a professional storyteller from the mainland who retired to the Big Island, who returns to the festival after spending many years away. Master chanter Kalama Cabigon Kilohana Silve adds hula and stories and Jeff Gere will host and tell stories on both evenings. As a little taste of what’s to come, Gere retold a

fan’s story, “My husband, he in a chalanga-lang band, yeah? We live Kailua. One night he come home from one Honolulu gig and tell me dis. After they wen play, he an his buddy, you know, suck up a few beers and eat. They bring ‘em a plate for da road. So they heading up da Pali, and yep.... car sputter, car stop. The pal say, if it’s a pork sandwich in da plate, we gotta eat ‘em! My husband says nah, not me - you go grind ‘em. So his friend wen plow into da sandwich, and my husband wen get outta da car, step into da bushes, fo’ you know. Right? He hear someting, turn to his friend, “Hey, one dog ovah heah! You hear me? When he turn back, the dog gone. Then he see the dog, but it got big, like

a full size pig!” Gere thought about a ghost dog, Kaupe, or Kamapua’a, half human, half pig, stories that kept people from taking pork over the Pali.

The woman continued, “Look at dis! My husband calling to his friend, who still in the car, eating. My husband wen hear this deep, shake-the-ground rumble of a growl! He dive into da car, slap his friend’s hand so the pork sandwich wen fly outa da window. He screaming, “Go! Go! Jus GO! I mean NOW! Go!” Das what he told me. I got no reason to think he made ‘um up. Dat really happened on da Pali”

To hear the rest of the story, don’t miss out on the spookiness at McCoy Pavilion. ~ Lynn Cook

PEARL HARBOR

A DAY THEY’LL REMEMBER FOREVER

Grayline
POLYNESIAN ADVENTURE TOURS

ARIZONA • MISSOURI • HEROES • BOWFIN • AVIATION MUSEUM

CALL NOW FOR TOUR AVAILABILITY
(808) 212-9758

HILTON HAWAIIAN VILLAGE® PRESENTS
WAIKIKI'S ONLY LUAU
 UNDER THE STARS



**WAIKIKI
 STARLIGHT
 LUAU**

The drama and grace of Polynesia unfold with live music, drums, the captivating dances of the South Pacific and the fiery drama of four fire knife dancers. Indulge in a feast of unforgettable tropical flavors prepared by our award-winning resort chef, including Kalua Pig, Seared Island Catch, Huli Huli Chicken and Carved Pulehu Steak.

- SUNDAY - THURSDAY
 BEGINNING AT 5:30 PM •
- ENJOY ONE WELCOME MAI TAI &
 ONE SELECT BEVERAGE •
- COMPLIMENTARY VALET
 & SELF PARKING •

808.941.LUAU
 (5828)

www.HiltonHawaiianVillage.com/luau



HILTON HAWAIIAN VILLAGE®
 WAIKIKI BEACH RESORT
 2005 KALIA ROAD, HONOLULU • 808.949.4321



Auntie Lynn's Adventures X



The simple word, fall, can bring on a wave of melancholy. Thoughts turn to long walks through parks, trees painted with all those beautiful leaves.....crisp, cool days. Stop right there. Freeze frame long enough to realize that once fall actually happens "crisp" mornings come with 48-degree temperatures, one good rain and the leaves turn to slippery slime on the sidewalk. OK, all together now! Lucky We Live Hawaii!!

October really does usher in the arts season in Honolulu. The notices and invites keep falling, like those aforementioned leaves, onto my desk and computer screen.

DIRT – the first three days of October are the last three days you can play in the dirt at Linekona, the Honolulu Museum of Art School. Say what? The name of the show in the main gallery is DIRT and the artists involved are locally, nationally and internationally renowned Hawaii-based artists; Adella Buss, Daven Hee, May Isumi, Lynn Liverton, Rochelle Lum, Shigeru Miyamoto, Liz Train, Gordon Uyehara, Iori Uyehara, Maile Yawata and their fearless leader, printmaker David Smith. For more than a year the artists played in the ideas of dirt with stunning results. He says, "dirt is the earth we stand on and the stardust from which we are born." It is also something we dish, dig up and dust off. Gallery hours are 10 a.m. to 4:30 p.m.

DIG DEEP – a year ago we tumbled into a room full of rocks. Beautiful rocks. The 13th Annual Rock and Mineral Show and Sale happens again on Saturday, October 11th from 10 a.m. to 5 p.m. in the Leahi Room of the Outrigger Waikiki on the Beach. Free and fun to pet a fossil or two and be dazzled by gem stones.

DRESS UP – doing the October thing, it's time to decide who you want to be. Diamond Head Theatre Costume Shop is a good place to begin. Open from 10 a.m. to 6 p.m. October 25th through November 1st (closed on Oct. 26th) this is not your wear it and toss it pop-up costume shop. Costume rentals start at \$25, plus a refundable deposit, but they are a quality opportunity to play one of your favorite parts from a DHT musical. Song and dance lessons not included.

DIP & DAB – at the Arts at Marks Garage. On October 5th and 12th, from 12:30 to 4:30 p.m., artist Cristie Knoll will teach keiki, ages 9 to 18, how to sketch, develop and sculpt wearable artwork. Called "Monster In My Closet", the completed works will be on display in the gallery. This is an all new kind of "make it yourself" and gets the papier-mache mess out of the garage. On

October 19th, also from noon to 4:30 p.m., all ages are welcome to create a treat bag and then work as a group to make larger-than-life puppet masks. Again, family fun without trashing the kitchen. Each workshop has a fee. Call the ARTS at 521-2903. All leading up to, of course, to the all afternoon and evening October 25th HallowBaloo Music & Arts Festival in downtown Honolulu.

DON THE TIGHTS – folks wearing tights and tutus, stretching and waiving their arms on Bethel Street may not be dressed for the street party. Hawaii Theatre's stage will be filled with stars on point. The Stars of American Ballet, presented by Ballet Hawaii, will be led by New York City Ballet principal dancer, Daniel Ulbricht, in a concert that ranges from Tarantella to Tango, Tchaikovsky to Swan Lake. Say "George Balanchine's choreography" and hook the hearts of a dancer. Looking for a parking place will be easy for those who book the VIP dinner package at Restaurant EPIC. Parking and best seats available are part of the package. Contact Ballet Hawaii at 521-8600. Exit after the show and the street party will be in full swing, should you choose to accept the mission.

DOIN' THE TREAT THING – for your own pleasure. Down in Ka'akako, on Kamakee Street, Lucy's Lab Creamery opened in August. They serve something called a grilled Panini ice cream sandwich. Owner Lee Wang knows how to reach his audience. He lists flavors like Bacon Whiskey, Fruit Loops Vodka, Honey Lavender, Nutella, Earl Grey and Tahitian Vanilla. Can we possibly resist?

DOWN TO BUSINESS – or actually getting there is now easier in the war zone of construction at Ala Moana Center. Simply think ahead and navigate up the ramp toward the mall level 2 Morton's and Longhi's, drive thru the porte-cochere covered driveway to find complimentary valet parking during all mall business hours. Yaaaaay Team Ala Moana!

DOWN WIND – hopefully this finds you following the great canoe adventure, Malama Honua, to care for the earth. After 30 years of voyaging the Pacific, all by wind, waves, sky and stars, the great voyaging canoe, Hokule'a, is on her Worldwide Voyage. The canoe left Hawaii island on May 30th. They made landfall in Apia, Samoa on August 31st where the crew attended the United Nations Small Island Conference and took the Secretary General for a ride. The artist Wyland painted another of his famed murals. Hawaiian Airlines made another \$100,000 donation to the voyage. Here's what you can donate. Time. Take time to track www.hokulea.com. Share the link, savor this great adventure. See you there!



ALERT!
 brought to you by
 The Waikiki Aquarium
 open daily from 9 am - 4:30 pm
October 17-19
Box Jellyfish Window

Teaching Hawaii about jellyfish and other ocean creatures for over a century



Strum on Over



Jodie Kiyokawa won the Best Showmanship award last year.

It is probably safe to say that the uke is the symbol of Hawaii all around the world. The instrument inspires festivals, spontaneous hula and, for the 9th year, Duke's Ukes Contest at Duke's Waikiki in the Outrigger Waikiki on the Beach, will take place on October 11 from 10 a.m. to 1 p.m.

Amateur ukulele players take the stage with the hope of becoming the next Jake Shimabukuro or Taimane Gardner. Contestants compete in two divisions; ukulele instrumental and ukulele with vocals with elementary, intermediate and adult. The first category has age divisions and the uke with vocals is an open age category. Auditions were held in September, and the winners of that competition take the stage in the finals on the 11th. The contest winners, in each instrumental category this year, take home a Kamaka Ukulele.

The contest is judged by a panel of stars of the music world. In the past contestants have faced Bobby Modero and Kelly Boy Delima and the star of Sunday afternoon at Duke's, Henry Kapono. Of course family and friends are there to cheer on the contestants, dine and savor the day.

Dylan Ching, Duke's Waikiki general manager, says the contest was patterned after the long running contest at TS Restaurants Hula Grill Maui. "When Duke's Waikiki was putting together a plan for signature cultural events, it seemed a perfect fit." Nine years later it still works, including Friday nights, at the far end of Duke's bar, when patrons are often treated to what Ching calls "organic ukulele" with beach boys bringing out their uke's and playing for anyone willing to listen.

Outrigger Waikiki general manager, Robert McConnell, says that guests of the hotel are thrilled when they find their visit coincides with the contest. "Watching the young contestants compete with style and passion is a thrill for visitors and for all of us at the hotel." Outrigger, the Pacific Music Foundation and Kamaka Ukuleles join Duke's as sponsors of the annual event.

Supporting the goal of being stewards of Hawaiian culture, Duke's presents Hawaiian music three times a day, every day. It would be a very short list to name ukulele players who haven't played at one time or another. A bit of history on the jumping flea: a Portuguese immigrant, Joao Fernandez, strummed away for the natives in 1879, he introduced to the islands what was later to become Hawaii's first vehicle of musical expression. Called "braginho," the Portuguese name for the four-string instrument. Island folk renamed it "ukulele," the Hawaiian reference to the flea suggested by the jumping motion of the hand in strumming. Manuel Nunes made the first commercial ukuleles somewhere on King St. In 1916, Samuel K. Kamaka joined with musician friends in making ukuleles for personal use; his first and only business venture which he started in his home in Kaimuki.

Be sure to catch all the musical entertainment at this annual event. For more information go to DukesWaikiki.com/uke. ~ Lynn Cook

Night Music

"All Hawaiian, every night" could easily be the tag line for Kani Ka Pila Grille at the Outrigger Reef. It's a place you can count on for award winning music, a fact supported by the Tuesday, October 30th performance of the group, "Kaiao", winners of the 2013 Ka Himeni 'Ana contest and the 2014 Kani Ka Pila Grille Talent Search. Liki Tavete, 'Ekolu Chang and Kukaho'omalu Souza make up the group with an amazing mix of 'olelo, voice, music and hula experience. To enter the Grille contest, with finals held at the Made In Hawaii show, the groups sent in CDs and YouTube links. Luana Maitland, cultural specialist at the



award winners. On Friday the much loved, award-winning group, Ho'okena, including Grammy nominated Horace Dudoit, Chris Kamaka of Kamaka Ukuleles and 30-year veteran of the group, Glen Smith. On Saturday, Ka Hehena, with Nathan Nahinu, Ioane Burns and Halehaku Seabury, play traditional Hawaiian music. Music from 6 to 9 p.m., with no cover. ~ Lynn Cook

hotel says, "I even found one group playing at a party and suggested they enter."

The new Friday and Saturday night line-up at the Grille features musical groups, new to the venue but not new to Hawaii fans. The line up continues to feature Na Hoku Hanohano

award winners. On Friday the much loved, award-winning group, Ho'okena, including Grammy nominated Horace Dudoit, Chris Kamaka of Kamaka Ukuleles and 30-year veteran of the group, Glen Smith. On Saturday, Ka Hehena, with Nathan Nahinu, Ioane Burns and Halehaku Seabury, play traditional Hawaiian music. Music from 6 to 9 p.m., with no cover. ~ Lynn Cook

Mahalo for your continued support!

JOIN OUR
GUEST REFERRAL PROGRAM



OUR PROGRAM IS SIMPLE!
FOR EVERY 25 GUESTS THAT YOU REFER, RUTH'S CHRIS STEAK HOUSE WILL SEND YOU A \$50.00 DINING CERTIFICATE

Please contact Emi Espinda if you have any questions.
(808) 595.2205 • eespinda@direstaurants.com

OPEN DAILY FROM 5PM
HAPPY HOUR DAILY IN OUR LOUNGE 5PM - 7PM
PRIME TIME MENU DAILY 5PM - 7PM
WINE WEDNESDAYS 25% OFF BOTTLES OF WINE

Restaurant Row | 808.599.3860
Waikiki Beach Walk | 808.440.7910

WWW.RUTHSCHRISHAWAII.COM



25 NEW MENU ITEMS

Open Daily 11am - 10pm

Happy Hour Daily in our lounge 3pm - 6pm

Vino Thursdays 25% Off Bottles of Wine

Inquire about our Guest Referral Program!

Our program is simple! For every 10 complimentary dessert cards redeemed (WITH YOUR NAME ON THE CARD), Romano's Macaroni Grill will send you a \$25.00 dining certificate that may be used at our Oahu restaurant.

Please contact Emi Espinda for information.
(808) 595.2205 • eespinda@direstaurants.com

ROMANO'S
Macaroni GRILL

Ho'okipa Terrace at Ala Moana Center

808.356.8300

www.macaronigrill.com

Diamond Head Theatre turns 100

Continued from page 1.

Coward in *Hay Fever*, 1949, Dame Judith Anderson as *Medea*, and in 1950, Joe E. Brown in his starring role as *Elwood Dowd* with his invisible rabbit friend, *Harvey*. Today photos on the theater lobby walls tell the story of those historic shows, and are well worth the few minutes spent persuing them the next time you are there.

After the attack on Pearl Harbor, productions were staged behind blackout curtains on the lanai of private homes. The Footlights wandered from venue to venue, playing Hawaii Theater, the Royal Hawaiian Hotel, Punahou School, the Moana Hotel, and finally, in 1952 settled in their current home, Ruger Theater, formerly an army movie theater, on the slopes of Diamond Head. There, in 1990, the name changed from Honolulu Community Theater to Diamond Head Theatre. Through all name changes and multiple venues, the theater never missed a beat.

Stars shine from the slopes of Diamond Head, including Bette Midler before she left home to become a star; Kevin McCollum who went to Broadway to produce *RENT*; Dean Pitchford who later wrote *Footloose* and *Fame*, earned an Oscar and a Golden Globe, and Tom Selleck and Carol Burnett who performed *Love Letters* at DHT. Frank DeLima was *Scrooge* for six years running. Shari Lyn, Cathy Foy Mahi, Charles Degala and Loretta Ables are all visitor industry entertainers who have been regulars on stage at DHT.

In 1988 Jim Hutchinson, then artistic director of the theater, played the lead in the third production of *Music Man*. Hutch was fond of saying that Honolulu audiences love some shows

so much that a reprise every ten years is just fine. For the 1975 production *Music Man*, his friend, Meredith Wilson, creator of the shows' book, music and lyrics came to town and guest-conducted one show. Afterward, Wilson took key members of cast, including young John Rampage, out for dinner.

Rampage, today's brilliant light of artistic direction at DHT, had been traveling to Hawaii, from Chicago, with his family. In his early years the trips were via Matson liner or prop jet. Singing and dancing his way across the country, he made the permanent move to Hawaii and taught theater arts at Punahou School for 14 years. In 1995 he became full time artistic director of DHT. His job description includes performing, directing, choreographing, and re-imagining a way for *Titanic* to sink on stage – plus working with set director Willie Sabel on how to fly *Mary Poppins* and make it snow in the entire theater for *White Christmas*. He also created and works with the locally famous DHT Shooting Stars, teaches the *Silver Stars*, a Broadway jazz class and choreographs and directs two, usually three, shows a year. Guest actors and directors say they come from Broadway because they have great respect for Rampage and love Hawaii, he laughs and says, "it certainly isn't for the money. For transportation they use the theater truck!"

When Lee Cataluna and Keola Beamer were commissioned by DHT to write *You Somebody* Loretta Ables was the perfect fit for the lead. The audiences went wild. She was known as a singer but her comic acting, the hardest kind, brought applause and laughter that could be heard blocks away.

John Rampage says when the call came for

auditions for the Broadway revival of *South Pacific*, he says, "we set up the audition and did all we could to help Loretta prepare.

She got the part of *Bloody Mary* and went off to Broadway to perform for three years, then to London for the UK tour and back to the US for more shows." He says when she thanked him for his help he said, "I only ask one thing, when the time is right, we want you to come back to DHT and re-create the role. Spring, for the 100th season of DHT is the time she picked!"

Rampage and Deena Dray, DHT executive director, fly yearly to New York to negotiate at least one major blockbuster a season. DHT has been first in Hawaii to present *Hairspray*, *Spamalot* and the (really full) *Full Monty*, among others. As the theater became known for bringing top talent and shows to Hawaii, they adopted the new name with the mission statement that DHT was "Broadway of the Pacific, producing the best live community theater entertainment in Hawaii and advancing theater arts through education."

The 2014/2015 season is underway and Diamond Head Theatre is celebrating 100 years of drama, comedy, music and dance. DHT is the third-oldest continuously operating theater in the United States. More than 40,000 people see the shows each year and 1,200 students participate in performing arts programs. A small staff and 600 volunteers and generous financial support from visitor industry and local companies, make possible six shows a season to dazzle audiences.

Dray says, "we really enjoyed introducing Diamond Head Theatre to the hospitality professionals that attended our recent, and very first, Concierge Night to preview the new season. Let's face it, the concierge have their finger on the pulse of the visitor industry, they are in the know about everything that happens in our islands." She says the theater offers closeness to Waikiki and plentiful parking, plus great entertainment at a very reasonable price. "We hope to see more of the concierge and their families, as well as their guests in this new season!"

Many first-timers to the theater have that ah-ha moment when they remember coming to shows with their school class, their grandma or because someone knew someone in the cast. It is time to re-visit those memories and make new ones. Ticket prices range from \$15 to \$35 and can be purchased online at diamondheadtheatre.com. If work gets in the way, ticket date changes, based on availability, can be made 72-hours in advance. Season ticket holders have the ability to make changes up to 24 hours in advance. Call 733-0274 for more information.

~ Lynn Cook



Bette Midler was in at least two shows at Diamond Head Theatre before she left the island. She is shown here performing in *Showboat* back in 1962.

Experience Our Hawaii!

Our cruises depart daily.
Don't miss our Friday night fireworks cruise!

Atlantis Cruises

Call (808) 973-1311 for information & reservations or fax to (808) 973-2499.



Chef's Corner

Acclaimed Chef Grant MacPherson

This Scottish-born chef has cooked for everyone from U.S. presidents to royalty to British prime ministers to rock icons, and has run and opened restaurants all over the world, including here in Hawaii. In town last month for the Hawaii Food and Wine Festival, he continues his ties to the Island as Chef Ambassador for Global Ocean Club.

What was your first job in the industry? I started when I was 17 as a Chicken Wing chopper and a glass washer

What first sparked your interest in the industry?
Engaging with people and the travel

Looking back on the start of your career in Canada, what do you remember most fondly about the experience?
Having a chance to work with a famous French chef and butcher a female lion.

Who would you consider your mentor and why?
There would be many but certainly in Hawaii it would be Chef Philippe Padovani.

You were born in Scotland, raised in both Canada and South Africa, and have worked on 5 continents. All of those cultures and flavors had to affect your culinary profile. How?
All were very basic in the beginning and remember I first got in the business when it was not fashionable. Four Seasons Hotels started my culinary journey in the 80's. Then [it continued around the world during my tenure at] Regent Hotel's, Sydney, Singapore, Kuala Lumpur, Malaysia. From there I opened the The Ritz-Carlton on the Big Island of Hawaii and then headed off to the The Grand Old Lady of the Far East, The Raffles Hotel.

Where did you go from there? In the late 90's, I was the opening Executive Chef of the Bellagio Hotel with Steve Wynn. I was in charge of opening Wynn Las Vegas, Wynn Macau and all the Pre-Development for Wynn Encore.

Which one style of food would be your favorite and why?
A quick answer would be Cantonese Cuisine because of the subtle flavors like ginger/chili /soya and the amazing products they cook with such as live seafood and shellfish BBQ meats, poultry, game and fruits that are only in season.

What's the most memorable meal you ever tasted?
Having a chance to eat in all but one of Chef Joel Robuchon's restaurants globally.

Who was the first celebrity that you cooked for? Rod Stewart in London in 1984 at the Inn on the Park at the Four Seasons in London.

What did you make? Were you nervous? Steak and Chips. No. Because I was early in my culinary journey and I was still training.

I've read you love music as much as you love cooking and collect guitars. Did you ever consider being a musician?
Yes for sure but I can not sing or play guitar.

You've cooked for an unbelievable list of who's whos..from Presidents to Princess Di to Eric Clapton to Michael Jackson. Does one stick out more than the others?
Not really. They were all just moments in time that were special.

After years overseeing the culinary side of some of the top hotels in the world, you recently launched your own consulting firm. Why the switch?
Did not understand the corporate environment.

You were just here for the Hawaii Food & Wine Festival. Are those events as fun for you as the guests?
Of course because you get to meet old friends and make many new ones.

How many of those types of events around the world do you do each year?
It used to be around 10-15 a year. Nowadays you have to be much more selective and I'm doing around 3-4.

Could you explain your involvement with the yachts of Global Ocean Club here in Hawaii? Creating world class experiences with I'm working together with Chad Allenbaugh, Capt USMM to make a better 5-star experience for some of our higher end guests. We are creating world class experiences and working together to deliver a better product.

Years ago you worked at the Ritz Carlton on the Big Island when it opened as the Dining Room Chef. What did you like best about living in Hawaii?
Eating Ahi Poke and spending time on the beach with friends at the time

Any plans to open a restaurant in the Islands?
Certainly it has crossed my mind.

What's your favorite thing to do when not working?
Spending time with my two Sons Graeme who is 12 and Connor who is 9 years old

Is there any other information that you would like to share with our readers?
You bring them we cook them.

Farmer's Market Early Girl Tomatoes

with Buratta Cheese, Candied Striped Figs, Sweet Basil, Hawaiian Alaea Sea Salt

by Chef Grant MacPherson



Ingredients:

- | | |
|--|---------------------------------|
| 4 Pc - 2 ounce or 56 grams of Buratta Cheese | 4 Pc - Yellow figs |
| 6 Pc - Early Girl Tomato | 4 Tbls - Extra virgin olive oil |
| 4 Pc - Black mission figs | Alaea sea salt |
| | Cracked black pepper |

- Drizzle extra virgin olive oil over the cheese.
- Season the cheese with the salt and pepper.
- Wash and dry tomatoes.
- Cut the tomatoes in half.
- Drizzle extra virgin olive oil of the tomatoes
- Season with Hawaiian Alaea Sea Salt and cracked black pepper to taste
- Wash and dry the black and yellow figs.
- Cut the tips off of the figs and cut the figs in half.

Method:

- Open the bag of cheese.
- Cut the buratta cheese in half horizontally and store on a sheet pan or a plate. (line the plate with a napkin and cover the buratta cheese with a napkin to help collect all excess liquid)

Presentation:

- Buratta cheese in the center of the plate.
- Arrange the tomatoes and figs around the cheese.

Follow Chef Grant MacPherson online

Chef MacPherson is heavily involved with Global Ocean Club as their Chef Ambassador

Web: ScotchMyst.com | Twitter: [@ChefGrant888](https://twitter.com/ChefGrant888) | FB: [ScotchMystChef](https://www.facebook.com/ScotchMystChef) | Instagram: [scotchmystchef](https://www.instagram.com/scotchmystchef)

FROM BACKYARD BBQ TO HIGH-END CELEBRITY EVENTS, WE OFFER A WIDE RANGE OF EVENT SERVICES

- planning + coordination
- unique locations
- site design
- rentals
- food + bar catering
- florals + plants
- entertainment + audio-visual
- still photography + videography
- custom itineraries + travel services
- vow renewals + ohana blessings

FOR MORE INFORMATION:

- Communicate: info@DHCatering.com or +1.808.599.8880
- Check out our style: Pinterest.com/DHCatering
- Follow us @ DHCatering: [facebook.com/DHCatering](https://www.facebook.com/DHCatering)
- Like us: [facebook.com/DHCatering](https://www.facebook.com/DHCatering)

Open Daily, 7am - 9pm
Serving Breakfast, Lunch & Dinner
Live Music every Thu, Fri & Sat, 5:30-8:30pm, Sun, 11am-2pm
Available for Private Parties & Special Events
2699 Kalakaua, on the beach in Waikiki, across from the Kapiolani Park Bandstand

Concierge Line: 808.599.8830
Info@BarefootBeachCafe.com

Let's be Together...

DINING ▸ ENTERTAINMENT ▸ PAU HANA ▸ EAT ▸ DRINK ▸ BE MERRY ▸ HAPPY HOUR

MONDAY

Barefoot Beach Café at Queen's Beach 924-2233
Local Contemporary
 Shaka Madali 5:30-8:30pm
Chart House Waikiki 941-6660
Live Contemporary Hawaiian
 Tito Berinobis & David Kauahikaua 6:30-9:30pm
Cheesecake Factory 924-5001
Classic Hawaiian
 Christian Yrizarry Duo 8:30-11:30pm
Duke's Canoe Club Waikiki 922-2268
Live Contemporary Hawaiian
 Haumea Warrington 4-6pm
 Ellsworth Simeona 9:30-12am
Hang Ten Bar at Turtle Bay 293-6000
Live Contemporary Hawaiian with dancer
 Phil Strauss 5:30-7:30pm
Hard Rock Cafe 955-7383
Live Contemporary
 Zanuck & Piranha Duo 5-7pm
 Blue Mondays Varying Artists 9-11am
House Without a Key 923-2311
Live Hawaiian & Hula by Skyler Kamaka
 DeLima Ohana 5:30 - 8:00pm
Hula Grill 923-HULA
Live Contemporary Hawaiian
 Eric Lee 7-9pm
Jimmy Buffett's at the Beachcomber 791-1200
Live Contemporary Hawaiian
 Ashley Lilinoe 7:00-9:30pm
Kani Ka Pila Grille 924-4992
Live Contemporary Hawaiian
 Sean Na'auao 6 - 9pm
LBLE at the Hilton Waikiki Beach Hotel 922-0811
Live Contemporary Acoustic Hits
 Johnny Helm 6-9pm
Lewers Lounge 923-2311
Live Contemporary & Light Jazz
 Noly Pa'a 8:30-12:30am
LuLu's 926-5222
Live Contemporary
 Johnny Helm 6:30-9:30 p.m.
Rumfire 921-4600
Live Contemporary Hawaiian
 Jeremy Cheng 5-8pm
 DJ Super CW 8:30pm-12:30am
Sunrise Pool Bar at the Modern 943-5800
Live Contemporary
 Alex Oasay 5-8pm
The Edge at the Sheraton 921-4600
Live Hawaiian music with a firedancer at 7:30 p.m.
 Randy Allen 1:30-3:30pm
 Ka'ala Boys 6:30-8:30pm
The Study at the Modern 943-5800
Live Contemporary Hawaiian
 Kaleo 7-10pm
Tiki's Grill & Bar 923-TIKI
Live Contemporary Hawaiian
 Kapu the Band 6-8:30pm
 Jason Alan & Ian O'Sullivan 9-11pm
Tropics Bar & Grill 949-4321

Live Contemporary Hawaiian
 Acoustik Playground 5:30-8:30pm

TUESDAY

Barefoot Beach Café at Queen's Beach 924-2233
Local Contemporary Hits
 Chris Salvador or Paul Wilcox 5:30-8:30pm
Bin1901 at the Moana 921-4600
Piano Wine Bar
 Scott Smith 6:30-9:30pm
Chart House Waikiki 941-6660
Live Contemporary Hawaiian
 The Camarillo Brothers 6:30-9:30pm
Cheesecake Factory 924-5001
Classic Hawaiian
 Art Kalahiki Duo 8:30-11:30pm
Duke's Canoe Club Waikiki 922-2268
Live Contemporary Hawaiian
 Haumea Warrington 4-6pm
 Ellsworth Simeona 9:30-12am
Hang Ten Bar at Turtle Bay 293-6000
Live Contemporary Hawaiian
 Kapena Delima 5:30-7:30pm
Hard Rock Cafe 955-7383
Live Contemporary
 Alex Oasay Duo 5-7pm
 Da Push-O-Verse (or others) 9-11pm
House Without a Key 923-2311
Live Hawaiian & Hula by Radasha Ho'ohuli
 Po'okela 5:30 - 8:00pm
Hula Grill 923-HULA
Live Contemporary Hawaiian
 Kamuela Kahoano 7-9pm
Jimmy Buffett's at the Beachcomber 791-1200
Live Contemporary Hawaiian
 Mike Huhn 7:00-9:30pm
Kani Ka Pila Grille 924-4992
Live Contemporary Hawaiian
 Weldon Kekauoha 6-9pm
LBLE at the Hilton Waikiki Beach Hotel 922-0811
Live Contemporary Funk, Jazz, Hip Hop & Reggae
 Jason Laeha 6-9pm
Lewers Lounge 923-2311
Live Contemporary & Light Jazz
 Maggie Herron & Rocky Holmes 8:30-12:30am
LuLu's 926-5222
Live Contemporary
 Johnny Helm 6-9pm
Mai Tai Bar at the Royal Hawaiian 923-7311
Live Contemporary Hawaiian with Hula Dancer
 Kapala Duo 6:30-9:30pm
Rumfire 921-4600
Live Contemporary Rock
 Randy Allen 5-8pm
 Twilight Audio 8:30pm-12:30am
Sunrise Pool Bar at the Modern 943-5800
Live Contemporary Hawaiian
 Cory Oliveros 5-8pm
The Edge at the Sheraton 921-4600
Live Hawaiian music with a firedancer at 7:30 p.m.
 Kelly Villaverde 1:30-3:30pm
 Ho'okani Duo 6:30-8:30pm
The Study at the Modern 943-5800

Live Contemporary Hawaiian
 Alex Oasay & Jeremy Cheng 7:30-10:30pm
Tiki's Grill & Bar 923-TIKI
Live Hawaiian - \$2 Taco Tuesdays
 K.B. Riley 5:30-8:30pm
 Sani & Friends 9-11pm
Tropics Bar & Grill 949-4321
Live Contemporary Hawaiian
 Kailua Bay Buddies 5:30-8:30pm

WEDNESDAY

Barefoot Beach Café at Queen's Beach 924-2233
Instrumental Guitar
 Paul Wilcox 5:30-8:30pm
Bin1901 at the Moana 921-4600
Piano Wine Bar
 Scott Smith 6:30-9:30pm
Chart House Waikiki 941-6660
Live Contemporary Hawaiian
 Tito Berinobis & David Kauahikaua 6-10:30pm
Cheesecake Factory 924-5001
Classic Hawaiian
 Kimo Artis Duo 8:30-11:30pm
Duke's Canoe Club Waikiki 922-2268
Acoustic, Soul, R&B
 Haumea Warrington 4-6pm
 Ellsworth Simeona 9:30-12am
Du Vin 545-1115
Sessions at Du Vin features Live Jazz Wednesdays.
 Shoji Ledward 7-9pm
Gordon Biersch 599-4877
Jazz Wednesdays
 Varying Artists 6:30-9:30pm
Hard Rock Cafe 955-7383
Live Contemporary
 John Valentine 5-7pm
 Piranha Brothers 9-11pm
House Without a Key 923-2311
Live Hawaiian & Hula by Lauren Matsumoto
 Pa'ahana 5:30 - 8:00pm
Hula Grill 923-HULA
Live Contemporary Music
 Jeremy Chang 7-9pm
Hy's Steak House 922-5555
Live Soft Contemporary
 Audy Kimura 6:30-10pm
Jimmy Buffett's at the Beachcomber 791-1200
Live Contemporary Hawaiian
 Shawn Garnet 7:00-9:30pm
Kani Ka Pila Grille 924-4992
Live Contemporary Slack Key
 Cyril Pahinui 6-9pm
LBLE at the Hilton Waikiki Beach Hotel 922-0811
Live Contemporary Funk, Jazz, Hip Hop & Reggae
 Soul Tree Music Factory 6-9pm
Lewers Lounge 923-2311
Live Contemporary & Light Jazz
 Maggie Herron & Rocky Holmes 8:30-12:30am
LuLu's 926-5222
Live Contemporary Hawaiian
 Jason Lehua 10-12:30am
Mai Tai Bar at the Royal Hawaiian 923-7311
Live Contemporary Hawaiian with Hula Dancer

E Pili Kākou

DINING ▶ ENTERTAINMENT ▶ PAU HANA ▶ EAT ▶ DRINK ▶ BE MERRY ▶ HAPPY HOUR

Eric Lee Duo 6:30-9:30pm
Roy's Hawaii Kai 396-7697
Acoustic & Slack Key Top 40
 Dayton Watanabe 6:30-9:30pm
Rumfire 921-4600
Live Contemporary Hawaiian
 Kamuela Kahoano 5-8pm
 Twilight Audio 8:30pm-12:30am
SWIM at the Hyatt 923-1234
Contemporary Classic
 Kailua Bay Buddies 6-9pm
Sunrise Pool Bar at the Modern 943-5800
Live Contemporary Hawaiian
 Tahiti Rey & Sean Cleland 5-8pm
The Edge at the Sheraton 922-4422
Live Hawaiian music with a fire dancer at 7:30 p.m.
 Albert Malignat 1:30-3:30pm
 Keoni Ku Duo 6:30-8:30pm
The Study at the Modern 943-5800
Live Contemporary Hawaiian
 Melanie and Drew 6:30-9:30pm
Tiki's Grill & Bar 923-TIKI
Live Contemporary - 1/2 off Wine Wednesdays
 Canoes for Rent 5:30-8:30pm
 Johnny Helm 9-11pm
Tropics Bar & Grill 949-4321
Live Contemporary Rock
 Acoustik Playground 5:30-8:30pm

THURSDAY

Barefoot Beach Café at Queen's Beach 924-2233
Instrumental Guitar
 Paul Wilcox 5:30-8:30pm
Bin1901 at the Moana 921-4600
Piano Wine Bar
 Scott Smith 6:30-9:30pm
Chart House Waikiki 941-6660
Live Contemporary Hawaiian
 Tito Berinobis 6:30-10pm
Cheeseburger Waikiki 941-2400
Contemporary / Old School Rock
 Jeremy Chang 6:30-9:30pm
Cheesecake Factory 924-5001
Classic Hawaiian
 T & J Duo 8:30-11:30pm
Duke's Canoe Club 922-2268
Live Contemporary Hawaiian
 Haumea Warrington 4-6pm
 Kona Chang Duo (or others) 9:30-12am
Five-O Bar & Lounge 922-0550
Live Acoustic Contemporary & Reggae
 K Love Duo 7:30-10:30pm
Gordon Biersch 599-4877
Live Contemporary Funk and Classics
 Acoustic Playground 7-10:30pm
Hang Ten Bar at the Turtle Bay 293-6000
Live Hawaiian Contemporary
 Gordon Freitas 5:30-7:30pm
Hard Rock Cafe 955-7383
Live Contemporary
 Tim Rose (or others) 5-7pm
 Kailua Bay Buddies 9-11pm
House Without a Key 923-2311

Live Hawaiian & Hula by Radasha Ho'ohuli
 Pa'ahana 5:30 - 8:00pm
Hula Grill 923-HULA
Live Contemporary Hawaiian
 Sheila Waiwaiole & Mara Sagapolu 7-9pm
Hy's Steak House 922-5555
Live Soft Contemporary
 Audy Kimura 6:30-10pm
Jimmy Buffett's at the Beachcomber 791-1200
Live Contemporary Hawaiian
 Shawn Garnet 7:00-9:30pm
Kani Ka Pila Grille 924-4992
Live Contemporary Hawaiian
 Kawika Kahiapo & Del Beazley 6-9pm
LBLE at the Hilton Waikiki Beach Hotel 922-0811
Live Contemporary Pop/Rock
 Sunway 6-9pm
Lewers Lounge 923-2311
Contemporary Jazz
 Maggie Herron & Rocky Holmes 8:30-12:30am
LuLu's 926-5222
Live Contemporary Hawaiian
 Local Uprising 6-9pm
Mai Tai Bar at the Royal Hawaiian 923-7311
Live Contemporary Hawaiian with Hula Dancer
 Delima Ohana 6:30-9:30pm
Michel's at the Colony Surf 923-6552
Live Slack Key
 Jeff Peterson 7:30-10:00pm
Roy's Hawaii Kai 396-7697
Acoustic Hawaiian Guitar
 Steve English 6:30-9:30pm
Rumfire 921-4600
Live Contemporary Rock
 Johnny Helm 5-8pm
 DJ Miked 8:30pm-12:30am
Sunrise Pool Bar at the Modern 943-5800
Live Contemporary Hawaiian
 Christian Yrizarry Duo 5-8pm
SWIM at the Hyatt 923-1234
Contemporary Classic
 Acoustik Playground 6-9pm
The Edge at the Sheraton 921-4600
Live Hawaiian music with a fire dancer at 7:30 p.m.
 Ellsworth Simeona 1:30-3:30pm
 Christian Yrizarry Duo 6:30-8:30pm
The Study at the Modern 943-5800
Live Contemporary Hawaiian
 Simple Souls 6:30-9:30pm
Tiki's Grill & Bar 923-TIKI
Heineken Hot Hula Nights - hula dancers perform
 Malu the Band 5:30-7:30pm
 Ellsworth Simeona 8:30-11:30pm
Tropics Bar & Grill 949-4321
Live Contemporary Hawaiian
 Nohelani Cypriano 5:30-8:30pm

FRIDAY

Barefoot Beach Café at Queen's Beach 924-2233
Live Contemporary Hawaiian with Beach BBQ
 Art Kalahiki & Friends 5:30-8:30pm
Bin1901 at the Moana 921-4600
Piano Wine Bar

Scott Smith 6:30-9:30pm 7-8:30pm
Chart House Waikiki 941-6660
Live Contemporary Hawaiian
 Mark Yim's Pilikia I 6-9pm
 Mark Yim's Pilikia II 9:30-12:30am
Cheeseburger Waikiki 941-2400
Contemporary Hawaiian
 Alex or Aku 6:30-9:30pm
Cheesecake Factory 924-5001
Classic Hawaiian
 Johnny Helm Duo 8:30-11:30pm
Dave & Busters 589-2215
Pau Hana Fridays Live Local Bands
 Varying Hawaiian Artists 6-8pm
Duke's Canoe Club Waikiki 922-2268
Live Contemporary Hawaiian
 Maunalua 4-6pm
 Imua Garza Duo (10/3) 9:30 -12am
 Chris Murphy Duo (10/10) 9:30 -12am
 Christian Yrizarry Duo (10/17) 9:30 -12am
 Billy Sage V Duo (10/24) 9:30 -12am
 Kona Chang Duo (10/31) 9:30 -12am
Five-O Bar & Lounge 922-0550
Live Island Reggae
 Kimo Opiana 9-12am
Gordon Biersch 599-4877
Live Contemporary, R&B, Funk
 Ben & Malia 5:30-9pm
 Mojo 9 - 12:30am
Hard Rock Cafe 955-7383
Live Contemporary
 Johnny Helm 5-7pm
 Mantra 10-12am
House Without a Key 923-2311
Live Hawaiian & Hula by Kanoe Miller
 Hiram Olsen Trio 5:30 - 8:00pm
Hula Grill 923-HULA
Live Traditional Hawaiian with dancer
 David Asing & Alika Souza 7-9pm
Hy's Steak House 922-5555
Live Soft Contemporary
 Audy Kimura 6:30-10pm
Hard Rock Cafe 955-7383
Live Contemporary
 Johnny Helm 5-7pm
 Mantra 9-11pm
Jimmy Buffett's at the Beachcomber 791-1200
Live Contemporary Hawaiian
 Missing Dave 9:30 - 11:30pm
Kani Ka Pila Grille 924-4992
Live Hawaiian Contemporary
 Ho'okena 6-9pm
LBLE at the Hilton Waikiki Beach Hotel 922-0811
Live Contemporary Pop/Rock
 Sunway 6-9pm
Lewers Lounge 923-2311
Live Contemporary Jazz
 Maggie Herron & Rocky Holmes 8:30-12:30am
LuLu's 926-5222
Live Contemporary Hawaiian
 Manoa DNA 6-9 p.m.

EVENTS ARE SUBJECT TO CHANGE
 WITHOUT NOTICE.

Let's be Together...

DINING ▸ ENTERTAINMENT ▸ PAU HANA ▸ EAT ▸ DRINK ▸ BE MERRY ▸ HAPPY HOUR

Vinyl Wine 10-12:30am
Mai Tai Bar at the Royal Hawaiian 923-7311
Live Contemporary Hawaiian with Hula Dancer
 Kapala Duo 6:30-9:30pm
Michel's at the Colony Surf 923-6552
Live Slack Key Stylings & Jazz
 Jeff Peterson & Ernie Provencher 6:30-10pm
Roy's Hawaii Kai 396-7697
Keyboardist
 Brian Robert Shaw 6:30-9:30pm
Roy's Ko Olina 676-7697
Slack Key Guitar
 Chris Rego 5:30-8pm
Rumfire 921-4600
Live Contemporary Rock
 Johnna Padeken 5-8pm
 DJ Euphoric 8:30pm-12:30am
SWIM at the Hyatt 923-1234
Contemporary Classic
 Taimane 6-7pm
The Edge at the Sheraton 921-4600
Live Hawaiian music with a fire dancer at 7:30 p.m.
 Brad Kawakami 1:30-3:30pm
 Delima Ohana Duo 6:30-8:30pm
The Study at the Modern 943-5800
Live Contemporary Hawaiian
 Tahiti Rey 6:30-9:30pm
Tiki's Grill & Bar 923-TIKI
Live Contemporary Hawaiian
 Kaleo Del Sol 5-7pm
 Vaihi 7:30-9:30pm
 Tahiti Rey Duo 10-12am
Tropics Bar & Grill 949-4321
Live Contemporary Hawaiian
 Piranha Brothers 3:30-6:30pm
 Nohelani Cypriano 8:00-10:30pm

SATURDAY

Barefoot Beach Café at Queen's Beach 924-2233
Beach BBQ with Live Contemporary Hits
 Chris Salvador 5:30-8:30pm
Bin1901 at the Moana 921-4600
Piano Wine Bar
 Scott Smith 6:30-9:30pm
Chart House Waikiki 941-6660
Live Contemporary Hawaiian
 Tito Berinobis & Billy Beimes 7-12pm
Cheeseburger Waikiki 941-2400
Contemporary Hawaiian
 Alex or Aku 6:30-9:30pm
Cheesecake Factory 924-5001
Classic Hawaiian
 Dennis McLees Duo 8:30-11:30pm
Duke's Canoe Club Waikiki 922-2268
Live Hawaiian Entertainment
 Vaihi (10/4) 4-6pm
 Simple Sessions (10/11) 4-6pm
 Kapena (10/18, 10/25) 4-6pm
 Chris Murphy Duo (10/4, 10/18) 9:30-12am
 Terry Stebbins Duo (10/11) 9:30-12am
 Kaiona Duo (10/25) 9:30-12am
Five-O Bar & Lounge 922-0550
Live Island Reggae

Christian from Hoonua 9:30-12:30am
Hang Ten Bar at the Turtle Bay 293-6000
Live Contemporary Hawaiian
 Tim Rose 5:30-7:30pm
 Billy Sage V (10/18, 10/25) 5:30-7:30pm
Hard Rock Cafe 955-7383
Live Contemporary
 20 Degrees North 5-7pm
 Tavana (or others) 10-1am
House Without a Key 923-2311
Hawaiian & Hula by Kanoë Miller
 Hiram Olsen Trio 5:30 - 8:00pm
Hula Grill 923-HULA
Live Traditional Hawaiian with dancer
 Kaipo Dabin & Tommy Chock w/ Kahanu 7-9pm
Hy's Steak House 922-5555
Live Soft Contemporary
 Audy Kimura 6:30-10pm
Jimmy Buffett's at the Beachcomber 791-1200
Live Contemporary Hawaiian
 Local Uprising 9:30-11:30pm
Kani Ka Pila Grille 924-4992
Live Contemporary Hawaiian
 Ka Hehena 6-9pm
LBLE at the Hilton Waikiki Beach Hotel 922-0811
Live Contemporary Blues & R&B
 YOZA 6-9pm
Lewers Lounge 923-2311
Live Contemporary Jazz
 Maggie Herron & Rocky Holmes 8:30-12:30am
Mai Tai Bar at the Royal Hawaiian 923-7311
Live Contemporary Hawaiian with Hula Dancer
 Kapala Duo 6:30-9:30pm
Michel's at the Colony Surf 923-6552
Live Contemporary Slack Key & Jazz
 Jeff Peterson 7-11pm
Roy's Hawaii Kai 396-7697
Acoustic Guitar
 Jimmy Funai 6-9:30pm
Roy's Ko Olina 676-7697
Slack Key Guitar
 Chris Rego 5:30-8pm
Rumfire 921-4600
Live Contemporary Rock
 Tavana McMoore 5-8pm
 DJ Betty 8:30pm-12:30am
Sunrise Pool Bar at the Modern 943-5800
Live Contemporary Hawaiian
 Kainalu 5-8pm
SWIM at the Hyatt 923-1234
Contemporary Acoustic followed by karaoke at 8
 Randy Allen & Kanoë Gibson 5 - 8pm
The Edge at the Sheraton 921-4600
Live Hawaiian music with a fire dancer at 7:30 p.m.
 John Valentine 1:30-3:30pm
 Tino Jacobs Duo 6:30-8:30pm
Tiki's Grill & Bar 923-TIKI
Live Contemporary Hawaiian & Reggae
 Johnny Helm 5-7pm
 Sani and Friends (or others) 7:30-9:30pm
 Ellsworth Simeona 10-1am
Tropics Bar & Grill 949-4321
Live Contemporary Hawaiian

Henry Kaponu 4-6pm
 Juke Joint 6:30-9:30pm

SUNDAY

Barefoot Beach Café at Queen's Beach 924-2233
Live Instrumental Guitar
 Paul Wilcox 11am -2pm
Chart House Waikiki 941-6660
Live Contemporary Hawaiian
 Dean & Dean 6-9pm
Cheesecake Factory 924-5001
Classic Hawaiian
 Chris Murphy Duo 8-11pm
Duke's Canoe Club Waikiki 922-2268
Live Hawaiian Entertainment
 Henry Kaponu 4-6pm
 Kapena Delima 9:30-12am
 Typical Hawaiians (10/12) 9:30-12am
 Imua Garza Duo (10/26) 9:30-12am
Hard Rock Cafe 955-7383
Live Contemporary
 Brothers Rize 5-7pm
 EMKE (or others) 9-11pm
House Without a Key 923-2311
Live Hawaiian & Hula by Debbie Nakanelua
 Pa'ahana 5:30 - 8:00pm
Hula Grill 923-HULA
Live Traditional Hawaiian with dancer
 Art Kalahiki Duo 7-9pm
Jimmy Buffett's at the Beachcomber 791-1200
Live Contemporary Hawaiian
 Randy Allen 7:30-10:00pm
Kani Ka Pila Grille 924-4992
Live Contemporary Hawaiian Masters on stage
 Nathan Aweau 6-9pm
Kelley O'Neil's 926-1777
Live Irish Music
 Various Celtic Bands 4-7pm
LBLE at the Hilton Waikiki Beach Hotel 922-0811
Live, Energetic Mix of Pop and Rock Hits
 Pushoverse 6-9pm
Lewers Lounge 923-2311
Live Contemporary & Light Jazz
 Noly Pa'a 8:30pm - 12am
LuLu's 926-5222
Acoustic R&B
 Simple Soulz 7-10pm
Mai Tai Bar at the Royal Hawaiian 923-7311
Live Contemporary Hawaiian with Hula Dancer
 Eric Lee Duo 6:30-9:30pm
Michel's at the Colony Surf 923-6552
Classical Slack Key & Jazz Stylings
 Jeff Peterson 6-9pm
Roy's Ko Olina 676-7697
Slack Key Guitar
 Chris Rego 5:30-8pm
Rumfire 921-4600
Live Contemporary Hawaiian
 Jonny Yong 5-8pm
 Twilight Audio 8:30pm-12:30am
SWIM at the Hyatt 923-1234
Contemporary, Pop, Rock

E Pili Kākou

DINING ▶ ENTERTAINMENT ▶ PAU HANA ▶ EAT ▶ DRINK ▶ BE MERRY ▶ HAPPY HOUR

Sunway	6 - 9pm	
The Edge at the Sheraton		922-4422
<i>Live Hawaiian music with a fire dancer at 7:30 p.m.</i>		
Dave Watanabe	1:30-3:30pm	
Ellsworth Simeona Duo	6:30-8:30pm	
The Study at the Modern		943-5800
<i>Live Contemporary Hawaiian & Jazz</i>		
Jeremy Cheng	6-9pm	
Smooth Jazz (vaying artists)	10- 2am	
Tiki's Grill & Bar		923-TIKI
<i>Live Contemporary Hawaiian</i>		
Vaihi	6-9pm	
Ellsworth Simeona	9-11pm	
Tropics Bar & Grill		949-4321
<i>Live Contemporary Rock & Hawaiian</i>		
Piranha Brothers	2-5pm	
Beach 5	5:30 - 8:30pm	



Hot Lines

Here's a few numbers for you to find out the latest in live music from places that change daily or don't update us regularly, since we can't possible list them all,

Gordon Biersch	599-4877
Irish Rose Saloon	947-3414
Kelley O'Neils	926-1777
Mai Tai Bar Ala Moana	947-2900
Moose McGillycuddy's	923-0751

Dining Dish



As most of you have probably heard by now, **Jimmy Buffett's at the Beachcomber** didn't actually close last month as initially announced. Instead it has remained open, and is now being run and managed by chef Peter Merriman's company, Handcrafted Restaurants. Although the name will remain the same for at least the next year, the menu was completely revamped from day one. From what I have tasted thus far, it's a winner. Think of the food and drink menu from Monkeypod Kitchen. It's similar, and they brought those addictive Garlic Truffle Oil Fries over. (\$7.95). I didn't see the pizzas I get out in Ko Olina, but the Big Island Cheese Burger (\$12.95) looked amazing, made with fontina cheese, sautéed Maui onions, tomatoes, butter lettuce and Dijon aioli; and the House-made Gnocchi (\$19.95), with organic chard, wild mushrooms, tomato coulis and Big Island chevre was out of this world. I'm not normally a gnocchi fan, but these little bites were soft and tender and just melted in my mouth. Definite winner. Chef Merriman uses mostly locally sourced food in his restaurants and makes almost everything entirely in-house. You can taste the difference. The beers and wine have been stepped up a notch and the cocktails are all 'handcrafted.' Although I was unable to try them, I might try check out the new Happy Hour soon. Enjoy 50% off appetizers, \$6 house wines and \$8 specialty cocktails from 3 - 5:30 p.m. and 10 p.m. - midnight daily. 791-1200. • Takoyaki, the small pan-fried doughy balls with a piece of octopus inside

and topped with a variety of sauces is an extremely popular street food in Japan. The most famous takoyaki in Japan is made by **Takoyaki Yamachan**, and they have now opened a second location here on Oahu. Shoppers can grab these bite-sized treats to go at either their Shirokiya or now their Don Quijote location. • **Jade Dynasty** has introduced a few new menu items inspired by the owners recent travels. Although not on the regular menu, but often on the special menu on the table tent, the Shredded Chicken with Pomelo, Pine Nut and Cilantro Salad (\$17.95) is a refreshing take on the Chinese Chicken Salad. Another item of note is the Kyoto-Style Cake Noodle with Seafood (\$14.95) is a nice addition to their noodle selection and is a perfect accompaniment to their dim sum selection. jadedynastyhawaii.com. 947-8818. • Continuing with the Asian theme, there's a new izakaya in town. **Izakaya Mai**. Located at 1718 Kapiolani Blvd, next to Hawaiian Style by 24-Hour Fitness, this is the second restaurant for Japan born sushi chef and restaurateur **Yoichi Ito**. Having opened the first Izakaya Mai in San Mateo 10 years ago, Mr. Ito, a former sushi sensei at Benihana, decided it was time to move west and settle in the Islands. Offering authentic teishoku menus, chirashi, blue crab salad, and a beautifully presented dragon roll that uses the entire unagi on their menu as well as daily \$12.95 lunch specials. The restaurant itself is well designed using handmade tables and chairs, up-cycled materials and stunning artwork by Shuji Hamamoto. The restaurant is open for lunch Monday thru Saturday from 11:30 a.m. - 2 p.m., dinner Monday thru Friday from 6 p.m. to midnight and on Saturdays from 5:30 p.m. to midnight. A late night happy hour is also being offered from 9:30 - 11:30 p.m. 942-3838. izakayamai.com. Congratulations to • **Morimoto Waikiki** celebrating their 4th anniversary in Hawaii. 943-5900. • **Vintage Cave** quietly reopened last month under the leadership of **Jonathan Mizukami**, a Maui-born chef, who has spent nearly the last 10 years working in Thomas Keller's revered French Laundry. Although I have yet to try Mizukami's 10-course tasting menu, a sneak peek of the menu shows Mizukami using some of the same decadent ingredients as before like foie gras, Osetra caviar (one of the most prized caviars in the world), and more, while extensively utilizing local ingredients in each dish. Two examples include the Terrine of Hudson Valley Moularde Foie Gras with Maui strawberries, candied Macadamia Nuts, Hawaiian white honey, Mizuna and Toasted Brioche and the Salt-Baked Elysian Fields Farm Lamb Saddle with charred eggplant purée, marinated sun gold tomatoes, petite basil and a crispy chickpea chip. Mizukami is not the only new face there. He has assembled his own team of around a dozen chefs from different points all over the world including a new pastry chef, **Eddie Lopez**, who also worked at The French Laundry as the Pastry Chef de Partie. As before, the 10+ course menu is \$295 a head without wines and subject to change. Open for dinner only six nights a week, the restaurant is closed Sundays. Currently they are closed for lunch. If they do reopen for lunch, it will most likely be for members only. Memberships available from \$500 to \$50,000. For reservations call 441-1744 or go to vintagecave.com. ~ Pam



Dining Calendar

October 2: **Chopsticks & Wine** presents its 13th annual event featuring 14 of Oahu's best restaurants. \$125. 6-8:30 p.m. Hawaii Convention Center. 949-5531.

October 3: **The Veranda First Friday Flights** at the Kahala Hotel celebrates Sicily. Samples some of the areas best wines and small plates, featured in this 5-course dining experience. \$50. 6-9 p.m. 739-8760.

October 4: **VINO** presents oyster night. Chef Keith brings in fresh Pacific Northwest oysters served either raw or poached with white wine butter, kahuku corn relish & tobiko. Get 'em while they got 'em. 533-4476.

October 20: **Taormina's** wine dinner series offers a 4-course menu by Chef Hiroyuki & wines from master sommelier Roberto Viernes. \$150. 6-8 p.m. 926-5050.

Mondays: **Brasserie du Vin** has combined their weekly wine dinner and tasting events into one, Behind the Cellar Door. 6:30 p.m. 545-1115.

Wednesdays: **Beachhouse at the Moana** hosts a weekly wine tasting on the lanai with pupus and parking. \$19++. 4:30 - 5:30 p.m. 923-2861.

Wednesdays: **Bar 35:** House of Brews features a different theme weekly. Taste 6-8 beers, and enjoy Chef Valentini's pizza. \$20. 6 p.m. 537-3535.

IT'S GAMETIME!

- Open 30 minutes prior to kickoff on Saturdays and Sundays
- First-come, first-served seating
- Table top speakers for audio of any game
- Waikiki's Largest Breakfast Selection served ALL DAY
- Monday Night and Thursday Night Football with Happy Hour specials!

GIOVANNI PASTRAMI

227 LEWERS ST. WAIKIKI 808-923-2100

OCTOBER CALENDAR OF EVENTS

Continuing Events

MONDAY – FRIDAY LYON ARBORETUM TOURS

The lush gardens at the top of the University of Hawai'i Manoa are open for guided tours daily. Knowledgeable guides will introduce the highlights of the botanical rainforest's 193.6 acres. Reservations required. Limit of 12 participants daily. Donations accepted. 988-0461.

MONDAY-FRIDAY FOSTER BOTANICAL GARDENS

Guided garden tours of rare and beautiful plants from tropical regions throughout the world. Foster Botanical Gardens, 50 N. Vineyard. 1 p.m. Adults: \$5. Reservations recommended. 522-7066.

TUESDAYS TOURS OF THE HAWAII THEATRE

Get a behind-the-scenes tour of this historic theatre including history, architecture, and a performance on the 1922 Robert Morton theatre organ. Hawaii Theatre. 11 a.m. – 12 p.m. \$10. 528-0506.

TUESDAYS KU HA'AHEO

An afternoon of hula from multiple groups featuring adults and keiki performing contemporary and traditional dance and music led by kumu hula Blaine Kamalani Kia. Waikiki Beach Walk Plaza Lawn. 4:30 – 6 p.m. FREE. waikikibeachwalk.com or 931-3591.

TUESDAYS KCC FARMERS MARKET

The Saturday Market is so popular they added another day. Head up to Kapiolani Community College to stock up on fresh, island produce, seafood, flowers and more, from several dozen vendors. 4 – 7 p.m. Free. 848-2074.

FIRST & THIRD TUESDAYS MEET THE MONK SEALS!

Learn about monk seals in the wild and meet two resident seals up close. Designed for participants 7 and up but anyone is welcome. Waikiki Aquarium. 3 p.m. \$4 – \$6. waquarium.org or 923-9741.

TUESDAYS & THURSDAYS FRESH FARMERS MARKET AT THE HYATT

Due to its overwhelming success, the Hyatt has added another day of their popular Farmers Market for visitors and locals to stock up on fresh local organic fruits, vegetables, jams, honeys, baked goods and more. Stop by twice throughout the ground floor of the Pualeilani Atrium Shops. 4 – 8 p.m. Waikiki.hyatt.com.

TUESDAYS, THURSDAYS & SUNDAYS TOUR AND TEA AT THE HONOLULU ACADEMY OF ARTS

Tours are led by volunteer docents and designed for visitors, who would like to explore the galleries, learn more about art and culture, and socialize over a cup of tea. Docents lead discussions in the galleries and offer insight into many cultures and time periods. 2:30 – 4 p.m. in selected galleries. Free with admission; beverage donations welcomed. Reservations required. 532-8700.

**TUESDAY – SATURDAY
MISSION HOUSES MUSEUM GUIDED TOURS**
Visit the Printing Office and Frame House while

learning about the 19th century history and culture preserved at this beautiful museum. Galleries also open to explore on your own. Mission Houses Museum. Tues. – Sat. 11 a.m. & 2:45 p.m.; Tues. – Fri. 1 p.m. \$6 – \$10. 531-0481 or missionhouses.org.

SECOND WEDNESDAY (OCTOBER 8) STARGAZING

The Hokulani Imaginarium puts on a live star show while teaching about the mythology surrounding constellations. Windward CC, 45-720 Keaahala Rd., Kaneohe. 7 p.m. Adults \$7, Keiki (ages 4-12) \$5. Tickets aerospace.wcc.hawaii.edu/imaginarium.html or 235-7433.

WEDNESDAYS & FRIDAYS CHADO – THE WAY OF TEA

Japanese enthusiasts can experience the traditional tea ceremony (chanoyu) as it was meant to be both seen and taught at the Urasenke Foundation of Hawaii. No prior knowledge required. Demos at 10 a.m. and 11 a.m. \$5. 923-3059.

THIRD THURSDAY (OCTOBER 16) DOWNTOWN GALLERY WALK & CRAFT FAIR

The Arts at Marks Garage continues to build on downtown activities offering execs an excuse to hang out after work and giving everyone else a reason to head downtown. Free. 521-2903. artsatmarks.com.

FRIDAYS CULTURAL CRAFT FAIR

The Hyatt has had so much success with its weekly Framers Market featuring fresh local produce that they are applying the same principle to local craft items. Each week the craft fair will feature local vendors featuring arts & crafts, jewelry, photography, woodwork and more. 3 – 7 p.m. Waikiki.hyatt.com.

FIRST FRIDAY (OCTOBER 3) DOWNTOWN GALLERY WALK & CRAFT FAIR

Art lovers are advised to head to downtown Honolulu the first Friday of each month. This event has exploded into a downtown party with galleries and studios open for exhibitions, artist demonstrations, and special performances. 23 galleries and art-related retail shops, restaurants and museums participate. Downtown Honolulu/Chinatown. 6 – 9 p.m. Free. 521-2903 or artsatmarks.com.

FIRST & THIRD FRIDAYS (OCTOBER 3 & 17) THE SKY TONIGHT

Learn about our Hawaiian skies and current events in space at the J. Watumull Planetarium. Bishop Museum. 8 p.m. No late seating. GA \$6, Keiki \$4. 848-4168 or bishopmuseum.org.

FINAL FRIDAY (OCTOBER 31) ART AFTER DARK

Art After Dark is actually on Halloween Friday this year so get ready for Nightmare on Beretania Street! Costumes encouraged for a nod to some classic horror films. 6 – 9 p.m. Honolulu Museum of Art. artafterdark.org.

SATURDAYS KCC FARMERS MARKET

Fresh island produce, seafood, flowers and more are available from over two-dozen vendors at Kapiolani Community College. Free. 7:30-11 a.m. 848-2074.

SATURDAYS KAKA'AKO FARMERS MARKET

The Farmer's Market held Saturdays at Ala Moana has moved to Kaka'ako in light of the construction

around Sears these days. Check out an abundance of treats from around our islands. Their new home is at Ward Warehouse between Ward and Kamakee Streets, Free. 9:00 a.m. – 1 p.m. 388-9696 or haleiwa farmersmarket.com.

SATURDAYS & SUNDAYS ART ON THE ZOO FENCE

More than 35 local artists display their works on the Zoo fence on Monsarrat Avenue opposite the Kapiolani Park Bandstand. Works for sale include original paintings, prints and photographs. 9 a.m. – 4 p.m. Free. artonthefence.com.

SECOND SATURDAY (OCTOBER 11) DOWNTOWN GALLERY WALK & CRAFT FAIR

First Friday has become such a success that events carry over to the second Saturday. HiSAM, 11 a.m. – 3 p.m. 586-0900. Other events around downtown Honolulu all afternoon. Free. 521-2903 or artsatmarks.com.

BANK OF HAWAII FREE SUNDAY (OCTOBER 19) HONOLULU MUSEUM OF ART

Since 2004, Bank of Hawaii has made it possible for the Honolulu Museum of Art to open its doors to the public free of charge on the third Sunday of every month. Activities include art activities, entertainment and films. The month is a Halloween theme and kids can give their costumes an extra wear. 11 a.m. – 5 p.m. Free. 532-8700.

NA MELE NO NA PUA SUNDAY SHOWCASE (OCTOBER 19)

Waikiki Beach Walk has brought back its popular monthly free concert series every third Sunday at the Plaza Stage from 5 – 6 p.m. This month features Mailani. waikikibeachwalk.com.

OCTOBER 1 WAIKIKI POWWOW

In advance of the 40th annual PowWow to be held at Thomas Square this weekend, the will a special Waikiki event. Experience American Indian and Native Alaskan dancing, drumming, native arts & crafts and food. \$5 donation. Waikiki Community Center. 4 – 9 p.m.

OCTOBER 2 RAUL MIDON IN CONCERT

The New Mexico native singer-songwriter, blind since birth, has released seven albums since 1999 and has one of music's most distinctive voices. He has collaborated with Herbie Hancock, Stevie Wonder, Jason Mraz and more. Special guest Mike Love. \$45. Doris Duke Theatre. 7:30 p.m. Honolulu Museum of Art. holumuseum.org.

OCTOBER 3-5 MOSCOW INTERNATIONAL CIRCUS

For the first time in 10 years, the Moscow International Circus is heading back to Honolulu for a week filled with high flying daredevils, acrobats, magicians, contortionists, balancing acts, aerial ballet, clowns and more. including a special performance from Jordon Segundo. Tickets \$250-\$50, kids under 4 are free at ticketmaster.com. Showtimes: Fri. 5 p.m. and 8 p.m., Sat. & Sun., 1 p.m., 4 p.m., and 7:30 pm. moscowinternationalcircus.com

OCTOBER 4-5 40TH ANNUAL HONOLULU INTERTRIBAL POWWOW

This years theme is "Honoring Our Elders" as the Oahu Intertribal Council brings the 40th annual

OCTOBER CALENDAR OF

PowWow filled with dancing, drumming, singing, stories, American Indian & Native Alaskan handmade arts, crafts, and jewelry as well as traditional native foods. Several native drum groups from California, Washington, and Canada will attend and perform. Thomas Square Park. 10 a.m. – 5 p.m. honoluluintertribalpovwow.com.

OCTOBER 5

21ST ANNUAL CHILDREN AND YOUTH DAY

The largest children's event in the State features hundreds of booths, food trucks, live music stages and thousands of volunteers cover the grounds of the State Capital, Iolani Palace, the grounds of the Office of the Mayor of Honolulu and the Judiciary Building. 10 a.m. – 3 p.m. childrenandyouthday.com

OCTOBER 5

WIKI WIKI ONE DAY VINTAGE COLLECTIBLES & HAWAIIANA SHOW

This all vintage show takes place three times a year that features collectibles 20 years and older. Find antiques, Hawaiiana, art, estate jewelry, vintage fashion, tiki, gold & silver, koa, Niihau shell leis, lauhala hats, stamps, coins, aloha shirts, and more. Blaisdell Exhibition Hall. Early entry at 9 am, \$15. GA \$4.50. 10:30 a.m. – 4:30 p.m. ukulele.com

OCTOBER 9

COURTYARD CINEMA

Join in the fun at the Ward's free monthly film series. This month catch the film *A Long Way Down* with free popcorn, refreshments, food vendors and entertainment. The former IBM Building. Doors open at 6 p.m., screening begins at sunset. Reservations required. wardvillagecourtyardcinema.com

OCTOBER 10-14

MADAM BUTTERFLY

Hawaii Opera Theatre kicks off the 2014-2015 season with this iconic opera for three shows only. This timeless story has inspired audiences for centuries. Sung in Italian with English translations projected above stage. Tickets: \$34-\$135. 10/10, 8 p.m.; 10/12, 4 p.m.; 10/14, 7 p.m. Blaisdell Concert Hall. 596-7858 or HawaiiOpera.org.

OCTOBER 11

HISPANIC HERITAGE FESTIVAL AND HEALTH FAIR

In celebration of Hispanic Heritage Month, this free community-wide event features Latin food booths, crafters, cultural exhibits, a keiki section, community/health agencies and lots of entertainment. It regularly attracts up to 10,000+ people according to event organizers. Celebrate Hispanic Heritage Month with this family-friendly fest filled with Latin food booths, crafters, cultural exhibits and live entertainment honoring Hispanic history. Free. Kapiolani Park. 10 a.m. – 6 p.m. hispaniceventshawaii.com

OCTOBER 11

KE ALA O KA HUA MELE

Learn about the influence of the 2nd Hawaiian Renaissance of the 1970s and contemporary music with a free talk story panel between 5-6 p.m followed by a special performance from 6:30 to 8 p.m. \$30. Hawaiian Mission Houses. missionhouses.org.

OCTOBER 11

UH RAINBOWS VS. THE WYOMING COWBOYS

UH football is back, so get out your green and support the University of Hawaii Football Warriors as they play against the Wyoming Cowboys, 6 p.m. Aloha Stadium. hawaiiathletics.com.

OCTOBER 11-12

OH BABY! FAMILY EXPO 2014

Hawaii's 'Largest Baby & Kids Expo' features the latest products and services for every young family from over 150 exhibitors. There will be speakers, demos, entertainment, toy expo, games and activities for the whole family. Blaisdell Exhibition Hall. 10 a.m. – 5 p.m. ohbabyfamilyexpo.com

OCTOBER 11-12

13TH ANNUAL ROCK AND MINERAL SHOW

See dazzling displays of Rocks, Minerals, and Fossils. Featured items include Hawaiian minerals, Amethyst, Celestite, Fluorescent Minerals, Quartz, Gemstones, Jewelry, Fossils, Lapidary Minerals, Opals, Tourmalines, Meteorites, and more. Some items will be for sale and the public can bring their own fossil and mineral specimens to the show to be indentified. Outrigger Waikiki, Leahi Room. 10 a.m. – 5 p.m.

OCTOBER 12

MOLOKAI HOE

It's the men's turn to cross the channel. Head down to the beach fronting the Hilton Hawaiian Village to catch the end of the 62nd annual Molokai to Oahu canoe race as well over 100 teams from around the world cross the Kaiwi. Will Shell Vaa take it again? Good luck to all of the readers who will be competing this year. molokaihoe.com.

OCTOBER 12

ALII SUNDAY

Kawaiaha'o Church celebrates select Hawaiian Royalty (Alii) who are of particular importance to the Church by holding seven special Sunday services in their honor around their birthdays throughout the year filled with traditional Hawaiian cultural touches. Today they honor Princess Ka'iulani's birthday. 9 a.m. kawaiaha'o.org.

OCTOBER 17-18

26TH ANNUAL TALK STORY FESTIVAL

Don't miss this extremely popular event showcasing of the islands best story tellers. On Friday night, nine storytellers take the stage to share their spooky stories, while Madam Pele & Hiiaka Epics are the topic on Saturday night. Huge crowds are expected so get there early to get a seat. Video will be projected next to the screen and sign language interpreters will be on hand. Each performer gets 20 minutes. Gates open at 5 p.m., show is from 6-9:30 p.m.

OCTOBER 17-19

BAYFEST HAWAII



Smash Mouth

It's back and better than ever. Enjoy concerts from Uncle Kraker, Smashmouth, Capital Cities, Rodney Atkins and Rose Falcon, carnival rides, military displays, The Red Bull Street Bike Demo team and an amazing fireworks show. \$5 entry, \$35 for concerts. 5 p.m. – 1 a.m., Sun-day noon to 10 p.m. bayfeshawaii.com.

OCTOBER 18

OPEN COCKPIT DAY

Here's your chance to climb into the cockpit of several historic aircraft and talk story with pilots. Flight suits, helmets, and fun provided. Pacific Aviation Museum. 10 a.m. – 4 p.m. Free with admission. 441-1000 or PacificAviationMuseum.org.

How can we help?

We're a family business dedicated to service, safety, quality & fun. Ocean activities for all ages and budgets. We're at your service to help provide a perfect match for your client.

'Honi Olani,' one of the many yachts in our fleet



WAIANAE • HILTON PIER

• KEWALO
Sail • Snorkel • Dolphins • Turtles • Whales • Scuba • Fireworks Dinner • Private Charter • Transportation

234-SAIL

(7245)

WE ANSWER 24 HOURS!

hawaiiinautical.com



DISCOUNT HAWAII CAR RENTAL

SAVE UP TO 50%



GUARANTEED RESERVATIONS

* NO BOOKING FEES * NO DEPOSIT * CANCEL ANYTIME * NATIONAL RENTAL COMPANIES

call us today @

1.800.292.1930

or check us out online:

DiscountHawaiiCarRental.com

IL LUPINO

TRATTORIA & WINE BAR

Join us every weekend for

Champagne Brunch

Sat/Sun • 7am-2pm

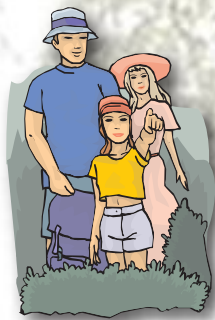
Choose from 6 Delicious Brunch Entrees, served with a Glass of Champagne. \$19.95

Also join us for our Champagne Happy Hour every Tues/Thurs all day. Glass of Champagne \$9.

ROYAL HAWAIIAN CENTER • BLDG. B LEVEL 1
VALIDATED PARKING
WWW.ILLUPINO.COM • 808.922.1400

Continues on page 16.

HIKER'S CORNER



NA ALA HELE TRAILS & ACCESS PROGRAM

For detailed information about hiking trails around the state, visit HawaiiTrails.org. The website includes an interactive map of each island and trail info that includes length, terrain,

photos, directions, biking information, and printable topographic map links. Also included on the site are trail announcements, local weather, and more. This is an easy way to provide your guests with a lot of helpful information for their hiking trip (without a lot of time on your part). You can also call them directly at 973-9782.

COORDINATED HIKES: The hikes listed below are arranged by local clubs and open to visitors. Hikers are recommended to bring a snack, sunscreen, hat, sturdy shoes, insect repellent, & water.

SIERRA CLUB: Most hikes meet at 8 a.m. at the Church of the Crossroads (back porch), 2510 Bingham St. Do not leave cars in the church parking lot. Windward outings may meet at First HI Bank, Windward Mall. Requested donation is \$5 (\$1 under 15 years). Please contact for information. Under 18 with adult.

HAWAIIAN TRAIL & MOUNTAIN CLUB: All hikes will depart from 'Iolani palace at 8:00am unless otherwise noted. Please arrive 10 minutes early to check in. Please contact for information.

HIKING HAWAII: Join a group of up to 15 hikers on a variety of guided treks. Private parties and door-to-door transportation available. Info and reservations at hikinghawaii808.com, 855-808-4453 or email hikinghawaii@yahoo.com.

WAIMEA VALLEY GUIDED HIKING SERIES: Waimea Valley Family Guided Hikes are offered on Thursdays and Sundays. 5 person minimum. Reservations required in advance with credit card (cost includes admission). Keiki under 18 must be with adult. Closed-toe shoes and water required. Cameras recommended! Reservations at 638-5877 or Lpool@waimeavalley.net.

WAIMEA VALLEY HIKES

Explore Waimea Valley's hidden trails and scenic wonders with a Native Hawaiian Cultural Educator. Price includes admission to Waimea Valley.

KAMANA IKI TRAIL: 3 miles. Moderate. \$40.

KAMANA NUI TRAIL: Native flora and fauna. Ridge to valley. 6.5 miles. Strenuous. \$75.

MONTHLY HIKES

OCTOBER 4

PHOTOGRAPHY HIKE

Easy, Wahiawa Botanical Garden. Native plants, colorful flowers and foliage. The pace is very slow.

Reservations Required. Sierra Club. 227-9925. clydekobashigawa@clearwire.net.

OCTOBER 5

KAHANA DITCH TRAIL

5 Miles – Intermediate, Ridge, Makiki. Explore the Makiki Tantalus trail complex on this selected combination of maze-like trails. At numerous junctions, carefully follow the coordinator's instructions and trail marker ribbons to navigate your way back to the start. HTMC: 590-0939.

OCTOBER 6

KAUKONAHUA

6 Miles – Moderate, +/- 500' ft, Wahiawa. An easy hike looking for native birds on the way to a swimming hole. Sierra Club: gsinclair@gmail.com.

OCTOBER 26

KALIOUOU LOOP

4 Miles – Strenuous, mostly Ridge, Kuli'ou'ou. Head up the Na Ala Hele Trail traversing 260 steps to the summit and descend by the Sidedoor Trail, turning left at the Boy Scout shelter and work down a little used trail. Some steep downhill areas. Hiking stick recommended. Sierra Club: 942-0145 makikirandy@yahoo.com.

For more information on hikes visit:

Hawaiian Trail & Mountain Club (HTMC)
htmclub.org

Hawaii Nature Center (HNC)
hawaiinaturecenter.org

Hawaii Trail and Access System
hawaiitrails.org

Hiking Hawaii
hikinghawaii808.com

Sierra Club
hi.sierraclub.org/oahu/outings.htm

Unreal Hawaii
unrealhawaii.com/hikes

Waimea Valley
waimeavalley.net

Volunteer Corner

If your guests are looking for more opportunities to give back, find new and updated events or activities to suggest at www.voluntourism.org

October 11 - MCBH Kaneohe Bay Service Project
Reservations Required. We will be working with Environmental clearing wetlands of mangrove plants to create habitat for Hawaii's endangered water birds. Because MCBH is a secured military facility, your name must be provided to the base in advance. We'll send you a waiver which you must bring with you. Contact Dan Anderson at 690-0479 or dander@gmail.com.

October 18 - Manana Trail Service Project

Hike about 1.5 miles up the Manana Trail and remove the Australian Tea Trees, Paper Bark Trees and other invasive species that are inhibiting the growth of Koa trees and other native plants along the trail. Bring small pruning saws or clippers. The leader will have some tools available for those who don't have them. Be sure to bring plenty of water and a willingness to do some light work. Meet at the end of Komo Mai Dr. in Pacific Palisades above Pearl City at 8:30 a.m. Resgistration required. Call Ed Mersino at 455-8193 or mersino@hawaii.edu.

OCT. CALENDAR CONT

Continued from page 15.

OCTOBER 18

HONOLULU NIGHT MARKET

The folks behind Eat the Street bring this monthly art event to Kakaako. Food, art and fashion will close Auahi Street down from Keawe to Coral as artists, food trucks, live entertainment and more fill the streets from 6 p.m. to 11 p.m. Lane closures begin at noon. streetgrindz.com.

OCTOBER 19 • SUSAN G. KOMEN HAWAII RACE FOR THE CURE

20 years after it first started, the Susan G. Komen is now the world's largest and most successful education and fundraising event for breast cancer ever created. The 5k around Kapiolani Park is open to runners of all ages and fitness levels, from walkers to elite runners. 7 a.m. – 1 p.m. komenhawaii.org.

OCTOBER 23

ART + FLEA

Over 60 vendors gather behind Marukai Market for this popular urban market. Find deals from local artists, food vendors, and live entertainment the last Thursday of each month. 4 - 9 p.m. 1020 Auahi Street. artandflea.com.

OCTOBER 25

UH RAINBOWS VS. THE NEVADA WOLF PACK

Go Bows! Support the University of Hawaii Football Warriors as they play against the Wyoming Cowboys, 6 p.m. Aloha Stadium. hawaiiathletics.com.

OCTOBER 25

SOCIETY OF SEVEN RETURNS TO HONOLULU



It's been 5 long years, but founding SOS members Tony Ruivivar and Bert Sagum are returning for two shows on one night only.

Special guest star Lhey Bella is sure to deliver. First show, 6:30 p.m., second show at 9 pm. Ala Moana Hotel. 944-4333.

OCTOBER 25

TARANG WITH KENNY ENDO

Abhijit Banerjee's Tarang, and ensemble of classical Indian musicians, collaborate with Hawaii's taiko drum phenom, Kenny Endo in order to perform traditional Indian music with a very modern and multi-cultural twist. \$30. shangrilahawaii.org.

OCTOBER 30TH

HIFF KICKS OFF

Get ready, the Hawaii International Film Festival starts on October 30th and runs through November 9th. We'll be covering the festival in next months issue, but for a sneak peek, check out hiff.org.

OCTOBER 31

HAWAIIAN HERITAGE HOSPITALITY FORUM

With its diverse and unique history, it is imperative that Hawai'i maintain and preserve the state's significant sites. This one-day forum will bring members of the travel industry and Hawai'i's heritage stewards together in order to explore ways in which historic and cultural-oriented travel can contribute to preserving Hawai'i's unique sense of place and provides a high-quality experience for visitors. \$150. Keynote featured speaker Andrew Te Whaiti luncheon-only tickets are \$100. 8 a.m. – 3 p.m. HHH.historichawaii.org



Halloween Happenings!



Halloween falls on a Friday this year so you can bet this town is going to go all out. Below is a list of some of the activities that will be going on.

Aloun Farm Pumpkin Festival

October 11, 12 & 18, 19 & 25, 26

Bring the family to pick your own pumpkin for Halloween! While there, be sure to pick some Ewa Sweet Corn and sunflowers. Enjoy live entertainment and hop on free hayrides throughout the day. Admission: \$3 (Children 2 and under free). 8 a.m.- 5 p.m. 91-1440 Farrington Hwy. 677-9516 or info@alounfarms.com

Haunted Plantation Chapter 9 Obake's Revenge

October 10, 11, 17, 18, 19, 24, 25, 26, 30, 31

The only haunted attraction in the islands located at an actual haunted location. Those brave enough can come down to Hawaii's Plantation Village and experience the thrills, scares, and heart-stopping experiences that we have been known for. See why this has been voted as one of the top Haunted Attractions in the nation (Matador Networks) for nine years running. Locals and visitors come from all over to experience this unique event. 7-11 p.m. \$15 general admission, \$20 Fast Pass. hawaiiplantationvillage.org.

Plantation Ghost Hunt

October 13, 16, 20, 23

Ghost hunters, paranormal investigators, and other fans of the supernatural have asked Hawaii Plantation Villages to open up the grounds to allow them to explore for ghosts and paranormal activities for themselves. So, for four nights those interested in exploring the true haunted spirits. They can supply some "ghost hunting" equipment, and people are welcome to bring their own cameras, videos, and sound equipment. This is the only time the public will be allowed to explore the Village at night and also use equipment and video/audio. 2 session per night at 7 and 9 p.m. \$20. Very limited space (to keep the experience intimate), reservations are req'd. 677-0110.

Haunted Hawaii Ghost Stories

October 14, 15, 21, 22, 28, 29

Nighttime tours of Hawaii's Plantation Village where the guide will tell of the true haunted happenings that have occurred in the Village. Ghostly sightings, unexplained events, deaths, contact with the supernatural and the dead. All the tales of the area and the Plantation Village will be told. Good for families where the children don't get too scared, not as intense as Haunted Plantation. 2 sessions per night at 7 and 8:30 p.m. \$13. Limited seating, reservations req'd. 677-0110.

Hallowbaloo Music + Arts Festival

Saturday, Oct. 25

The 7th annual Hallowbaloo brings over 15,000 costumed crazies into Chinatown a week before the big day itself. Enjoy live music on four stages all night long. New Orleans hip hop bounce music artist Big Freedia makes his Hawaii debut on the main stage. Also performing will be legendary instrumentalist, David Lindley and Nigerian-American soul, R&B, rock, hip hop and jazz star Iyeoka will be joined by local group Quadraphonix. Nearly two dozen local bands, artists and DJs will also be performing, making this the most ghoulish rocking block party in town.

5:30 p.m.-10 a.m. Free. Purchase a wristband for only \$5 for entry into 10 downtown clubs from 10 p.m. until 2 a.m. to keep the party going. (price will rise closer to the date) hallowbaloo.com.

Hotel Transylvania

October 31

A special edition of Courtyard Cinema will take place with a sunset Halloween screening of Hotel Transylvania, an animated movie that has Dracula inviting all of his monster friends to his resort for a big party. Hilarity ensues when a human stumbles onto this monsters-only resort. Dress-up for the costume contest and enjoy Halloween-themed music. Free. 6 p.m. 1240 Ala Moana Blvd. Tickets at wardvillagecourtyardcinema.com

Gotham City Masquerade Block Party

October 31

Restaurant Row's third annual Halloween block party will be one of the hot spots on Halloween night, with free admission until midnight, a big costume contest with a combined total of \$1000 in cash prizes, plus the Batman theme. M Nightclub and Restaurant Row, 9 p.m.-4 a.m. \$15 for club entry. mnlhnl.com

Nightmare on Beretania Street

October 31

ARTafterDARK conveniently falls on Halloween this year so they're giving a nod to classic horror films this month. Everyone is encouraged to dress in their terrifying best. Honolulu Museum of Art, 6 - 9 p.m. \$10 admission, free for members. honolulumuseum.org.

Halloween in Waikiki

October 31

Thousands of people will descend into Waikiki just to walk the streets in costume, or watch others, and enjoy the festive atmosphere on Halloween night. Most of the bars and clubs along the strip will be throwing their own parties as well.

Halloween at the Hyatt

October 31

Ghosts, goblins, and other creatures gather for an ghoulish night. Everyone may enter the costume contest with prizes ranging from \$1,000 to a trip to Vegas 21+ only. Tickets: \$10 in advance for regular entry and \$20 for VIP, free for hotel guests. 8 p.m. - 2 a.m. Tickets at eventbrite.com, VIP requests to be sent to info@hpelive.com.

RIP

Crazy, Sexy, Ghoul - the popular benefit costume party at Aloha Tower Marketplace has been cancelled this year. Sadly, **The Haunted Lagoon** will not be reappearing this year either.

Costume Craziess

Looking for the right costume? Check out the following locations for your creepiest outfits.

Savers

1505 Dillingham Boulevard savers.com

Party City

888 Nimitz Hwy partycity.com

Spirit Halloween

638-771 Iwilei Road 330 Kamakee Street spirithalloween.com

Flora Dec

373 N Nimitz Hwy floradec.com

Sensually Yours

1130 Nimitz Hwy sensuallyyours.com

Diamond Head Theatre

520 Makapuu Ave diamondheadtheatre.com

SAVE THE DATE

The date for the 2014 annual Mahalo Party is Set!

please join us

Thursday, December 11th
from 5 - 7 p.m.

at the



Fun

Frivolity

Great Food

meet the new management
and most importantly..

see who you chose as your

2014 Concierge
of the Year!

remember, this is also a food drive
for The Hawaii Food Bank, so
start collecting those cans now!

please bring SPAM* for Pam!

That's Entertainment

HOTELS

- HALE KOA HOTEL** 955-0555
 •**TuSat** - High and Right Comedy Show takes the stage at the Warriors Lounge at 8pm.
 •**MThFS** - Poolside music at the Barefoot Bar. 6-11pm
- HALEKULANI HOTEL** 923-2311
 •**Daily**-Hawaiian Music and hula at The House Without A Key from 5:30-8:00pm.
 •**Daily**-Live Contemporary and light Jazz at Lewers Lounge from 8:30pm to midnite.
 •**Sun**- Sunday brunch at Orchids features Noly Paa on the piano from 9:30 - 2:30pm.
- HILTON HAWAIIAN VILLAGE** 949-4321
 •**Fri** - Fireworks at 7:45pm.
 •**Fri** - The Rockin' Hawaiian Rainbow Revue (formerly the King's Jubilee), a musical salute to King Kalakaua, at the Super Pool. 7 pm.
 •**FriSat** - Olomana at the Tapa Bar from 8-11pm.
 •**Sun** - Jeff Apaka at the Tapa Bar from 5-7pm.
 •**Daily** - Live entertainment at the Hau Tree Bar and the Tapa Bar from 8-11pm.
- THE KAHALA HOTEL** 739-8888
 •**TuWThFSat** - David Swanson vocalizes on the piano at The Veranda from 7:30-11pm. Live Jazz on Sun/Mon.
- MOANA SURFRIDER** 922-3111
 •**Daily**-Hawaiian music & hula. The Banyan Court, 6-8 pm, and again from 8 -11 p.m. Weekends from 11:30- 2 p.m.
 •**MWFri**-Guided historical tours at 11am.
- NEW OTANI KAIMANA BEACH** 923-1555
 •**FSat**- Local jazz guitarists plays live in the Sunset Lanai Bar. 6-9pm.
- OUTRIGGER WAIKIKI ON THE BEACH** 923-0711
 •**Mon**- Kukui Nut Bracelet Making. 1pm.
 •**Th**- Ukulele Lessons. 1pm.
 •**Fri**- Aloha Fridays bring back old Hawai'i with music, hula, ukulele & lei making lessons. 9am-1pm.
- OUTRIGGER REEF ON THE BEACH** 923-3111
 •**Daily**- See guest artists at work in Kuloko Arts of Hawaii 9am-1pm and again from 6-9pm.
- SHERATON PRINCESS KAIULANI** 922-5811
 •**Daily**-Live Hawaiian music & halau at the lounge from 6-8:30pm, then poolside from 8:30-10:30pm.
 •**Th**-Princess Kaiulani historical tour at 9:30am.
- THE ROYAL HAWAIIAN** 923-7311
 •**TTH**- Free guided resort tour at 1pm.
- TURTLE BAY RESORT** 293-6300
 •**MTWThFSat**- Lei Making, Main Lobby at 10am.
 •**ThSun** - Fire Dancer, Hang Ten Pool Bar at Sunset

- TThFri** - Shell Hula Lessons, Lobby at 10am
 •**TThFri** - Ukulele Lessons, Lobby at 9am
 •**Fri**- Music & Hula. Lobby Lounge 6:30-8:30pm.
- WAIKIKI BEACH MARRIOTT RESORT** 922-6611
 •**Daily**-Hawaiian entertainment in The Moana Terrace Bar. 6-9pm.
 •**Fri**-Local crafters "Aloha Friday Fair" Lobby 9a-2pm

MUSEUMS

- HAWAII STATE ART MUSEUM** 586-0900
 •**TWThFSat** - Inaugural exhibition "Enriched by Diversity: The Art of Hawai'i." Free. Tuesday-Saturday, 10 a.m. to 4 p.m. Located in the Capital District.
- HAWAII THEATRE** 528-0506
 •**Tues**- A one-hour guided tour offers a unique insight in the history, art, architecture and restoration of the Hawai'i Theatre with trained docents & a mini-concert on the 1922 Robert Morton Theatre Organ. 11 a.m. Admission: \$10.
- HONOLULU MUSEUM OF ART** 532-8726
 •**MWF**- Japanese Language Tours. Private tours also available. 1pm. Regular admission.
- IOLANI PALACE** 522-0832
 •**Mon-Sat**-45 minutes docent-led or self-guided audio tours available in English or Japanese. Japanese-led tour is available only at 11:30 a.m. All tours include re-tour video and entrance into the Palace Galleries. Adults: \$14.75-\$21.75 / Keiki (5-12): \$6. 9am-5pm
 •**Sat**-Hawaiian Quilt Classes. Old Archives 9:30a-12p.
- LUCORAL MUSEUM** 922-5381
 •**TTh**- Learn how to plan your jewelry project and more in this beaded jewelry workshop \$10. 2-4 p.m.
- MISSION HOUSES MUSEUM** 447-3910
 •**Tue-Sat**-Learn about the dramatic story of cultural change in 19th-century Hawai'i. Docents lead tours through the oldest existing frame house in the Islands, Printing Office, and the coral block Chamberlain House. Reservations required. www.missionhouses.org
- PACIFIC AVIATION MUSEUM** 441-1000
 •**Daily**-Vintage aircraft in battlefield hangars. Combat flight simulators. Aviator's Tour takes you through the new Restoration Hangar. Restaurant, Museum Store. Shuttle & Tickets at USS Arizona Memorial Visitor Center or at www.PacificAviationMuseum.org.
- THE SPALDING HOUSE** 526-1322
 •**Daily**-Docent-led tours given daily. 1:30pm. Garden tours or Japanese language tours are by appointment.
- NAVAL AIR MUSEUM BARBERS POINT** 682-3982
 •**Mon-Fri**- A unique museum experience about aviation history in Hawaii. All of the aircraft are open to climb

in, on and around. Tours: 8 a.m. - 4:30 p.m. \$7 / \$5 children under 18. BLDG 1792, Midway Road, Kalaeloa Airport. Reservations required. Sat/Sun by appt only. www.nambp.org.

SHOPPING CENTERS

- ALA MOANA CENTERSTAGE** 955-9517
 •**Tues** - PCC Polynesian Revue Show. 6pm.
 •**Sun** - Keiki Hula Show. 10-11am.
- KING'S VILLAGE** www.kings-village.com 237-6344
 •**MW** Famer's Market offering fresh produce, baked goods and local food items from 4-9pm.
 •**Daily** King's Guard Museum features a variety of collectibles and memorabilia. 10a-10:30p. FREE.
- ROYAL HAWAIIAN CENTER** 922-2299
 • **TWThF**- Beginner Ukelele 10-11am, *Helumoa Hale*
 • **MW**- Learn Lomilomi 11am-12pm, Bldg. C, 3rd floor
 • **MF**- Hawaiian Storytelling 12pm, *Helumoa Hale*
 • **TTh**- Intermediate Ukulele 11:30am, Bldg. C, 3rd floor
 • **TTh**-Hula (T) 11am-12pm (Th) 4-5pm, *Royal Grove*
 • **TWThF**- Live Hawaiian music 6-7pm, *Royal Grove*
 • **MTWThSat**- Lei making 1-2pm, *Bldg A, 1st floor*
 • **Sat**- Hula Kahiko 6-6:30pm, *Royal Grove*
 • **Sat**- Hawaiian musicians 7:30-8:30pm, *Royal Grove*
 • **WSat** - PCC Performs. 11-11:45am, *Royal Grove*
- WAIKIKI BEACH WALK** www.waikikibeachwalk.com
 •**Tuesdays** - Ku Ha'aheo featuring Hawaiian song and dance on the Plaza stage. 4:30-6pm
 •**Wednesdays** - Yoga Classes 4-4:45pm. Free.Plaza Stage
- WAIKIKI SHOPPING PLAZA** 923-1191
 •**Daily** Hula Lessons. 10am, 12pm
 •**MTTh** - Polynesian Review 1st & 3rd floor 7-9pm

ATTRACTIONS

- KALAKAUA AVENUE** 527-5666
 •**Fri** - Strolling Hula from 8-10:00pm.
- KAPI'OLANI BANDSTAND** 527-5666
 •**Fri**-Hawai'i's finest musicians perform. 5:30-6:30pm
 •**Sun**-Royal Hawaiian Band performs 2-3:15pm.
- KUHIO BEACH HULA SHOW** 843-8002
 •**TThSat**- City & County presents a free hula show at sunset. 6:30 - 7:30pm at the hula mound.
- TAMARIND PARK - DOWNTOWN** 527-5666
 •**Fri**- Mayor's Aloha Friday Music from 12-1pm features live music from Hawaiian to Jazz to Pop.
- WAIKIKI TOWN CENTER** 922-2724
 •**Mon-Sat**-The songs and dances of Hawai'i, New Zealand, & Tahiti. Free shows begin at 7pm.

EVENTS SUBJECT TO CHANGE PLEASE CALL TO CONFIRM PRIOR TO ATTENDING

PAPARAZZI

Hawaii Food and Wine Festival



Chefs Josiah Citrin from *Mélie* in Santa Monica, California, Cat Cora of *Iron Chef* fame and Jason Fox of the *Commonwealth* in San Francisco were all smiles before the final event of the Hawaii Food and Wine Festival.



The beach area between the Aulani and the Ihilani Resorts was filled with barefoot festival attendees, big name chefs and a stage floating on top of the water with entertainment for the final event of the festival, It's a Food World After All.



Chef Michael Ginor from Hudson Valley Foie Gras in New York took a break from the heat with girlfriend Lili and a cool drink by the upstairs pool at The Modern Honolulu at the first Oahu event, A Lucky Modern Buddha Belly.

Dole Plantation - 1 FREE Adult Admission To The Maze With Purchase of 1 Adult Admission. 621-8408

Giovanni Pastrami - 15% Off Full Bar, Dine-in or Take-Out at anytime with ID. 227 Lewers St. 923-2100.

Hard Rock Café - 15% off food, beverage (non-alcoholic), or merchandise. Hotel ID required. 280 Beachwalk Ave. 955-7383.

Hawai'i Prince Golf Club - \$5 Off Standard Kamaaina Green Fees. Tee Times: 944-4567

Hilo Hattie - 25% on Hilo Hattie labeled garments, 15% off other fashions/gifts and 10% off Hilo Hattie labeled foods. Not valid on sale item. Ala Moana Center and Nimitz Hwy Ph 535-6500.

Hys Steakhouse - 25% VIP Discount Off Food And Beverage (up to 2 persons) 2440 Kuhio Ave. 922-5555

Hyatt Regency Waikiki - 15% discount with the presentation of a concierge business card at SHOR, Japengo and SWIM. 2424 Kalakaua Ave. 923-1234.

Iolani Palace - Free Admission. Regular rate \$20. 364 S. King Street, Reservations & Hotel ID required. 522-0832.

IHOP - Receive 20% on entire bill. Must show valid hotel ID. Not valid with any other offer or discount. Aqua Palms, 1850 Ala Moana Blvd restaurant only. Free parking available. 949-4467.

Kaiwa - 20% off food & beverage between 5 & 7 p.m. 924-1555

Longhi's - 25% off food & beverage up to 2 persons, not applicable with any other promotion or discount. 947-9899.

Mission Houses Museum - Free tour with hotel ID. 447-3910

Pacific International Skydiving Center - 50% Discount on Jump, 68-760 Farrington Hwy, 637-7472

Plaza Café - 15% off all food items. Best Western the Plaza Hotel. 3253 N Nimitz Highway. 836-3636.

P.F. Chang's Waikiki - Receive 20% on all appetizers, entrees, desserts and beverages 11 am - 5 pm daily (not valid for Pau Hana menu) Royal Hawaiian Center. Ph: 628-6760, 637-7472

Romano's Macaroni Grill - 20% Off Food and Beverage for up to 2 guests. (Not Valid for Happy Hour Menu). Ala Moana Center, 1450 Ala Moana Blvd. 356-8300

Royal Hawaiian Center - get your FREE Malama Card which offers special retail and dining discounts to local Waikiki workers. Royal Hawaiian Center, 2201 Kalakaua. 922-2299.

Ruth's Chris Steak House - 20% Off Food and Beverage for up to 2 guests. (Not Valid for Happy Hour & Prime Time menus). Restaurant Row, 500 Ala Moana Blvd. 599-3860. Waikiki Beach Walk, 226 Lewers Street. 440-7910

The Contemporary Museum - FREE Admission For Cardholder and One Guest. 526-1322


The Kahala Resort - Complimentary appetizers for a concierge and a guest with the presentation of a concierge business card at Hoku's, Plumeria Beach House, Seaside Grill, The Veranda. 5000 Kahala Avenue. 739-8888

The Original Glider Rides - Come experience the joy of soaring for yourself. Concierge / GSA may receive a complimentary scenic ride. Request the "GSA flight special" when booking your reservation. Hotel ID required. Dillingham Airfield. 637-0207

Tiki's Grill & Bar - FREE order of Prime Rib Poke with any purchase! One per table. OahuconPOKE. ASTON Waikiki Beach. 923-8454

Willoughby's Restaurant - 15% off all food items. Ohana Honolulu Airport Hotel. 3401 N. Nimitz Hwy. 836-0661.

HELP us update this card for 2014. If you know of an offer not being honored let us know. As management changes, sometimes offers can get lost. Also as we work on updating this, let us know if there is something you would like to see here & we'll see what we can do!

You may be required to provide identification. One special per person per business. Offers valid on regular-priced merchandise only. Discounts are available to Guest Service Professionals ONLY. Not valid with other promotions or special offers. A minimum 15% gratuity required for all special food offers.  New offer

Activity Concierge of the Month



NAME: James Speight

HOTEL: Expedia

TITLE: Expedia Local Expert

Q. You've been with Expedia since...?

A. I've been working in the tourism industry since 2001 in Honolulu, but have joined Expedia in 2010. I am a guest services concierge, activity ticketing and travel agent. I am also one of the people Expedia asks to train their new hires, and spearheads most new projects, including opening new properties and orientations.

Q. Which property do you work at most often?

A. The Holiday Inn Waikiki Beachcomber Resort is my main property. My team is led by Pete Sherbrick, which covers 7 properties with about 25 employees.

Q. How did you come to work in the hotel industry?

A. After I graduated UH I found my business degree and language skills were a good match for the industry here.

Q. What do you like about being at the desk the most?

A. I love to watch my guests transform. After the stress of daily life and a long flight, just a little bit of Aloha, a nap on a quiet beach and a mai tai... you can watch the stress melt away. It is a powerful reminder of how rejuvenating Hawaii really is.

Q. What do you find is the biggest perk of this industry?

A. I'm not ashamed to say I eat a lot of food...it's awesome!

Q. What has been your biggest challenge at the desk?

A. Making sure people understand we are a service desk first and an order-taker second. We're not in this just for the big sale. In the long run, if people have a good time they will come back; in essence, service drives sales. There's no shame in making the big sale though, especially if you've earned it. It takes time to earn people's trust, be patient and kind and people will respect you.

Q. What is your favorite activity to recommend?

A. I love recommending exploring all the islands. Big Island does not just have lava, spend the night there and go star gazing; Maui is not all about romance and resorts, try out Maui Flight Academy and take control. My absolute personal favorite is hiking into Kalaupapa and making a donation at St. Philomena's. It is the most awe-inspiring story I've ever had the opportunity to discover.

Q. Have you had any memorable guests?

A. A family of 8 stayed here last year. The couple had not been able to have children themselves so they had devoted their lives to helping and fostering sick and disabled children. To this day I am not sure if they were real people or if I was visited by angels. It is not very often I get to witness that kind of true heroism. I also have a lot of military guests and just recently I had a team of EOD experts come through. We talked for a long time about life in contemporary war zones. When I am confronted by that level of personal sacrifice and devotion to duty I feel so completely humbled.

Q. What's the one question you hear over and over?

A. Can I just have a second of your time? I have just a simple question... (Yeah right, that's when I know I am in trouble). *BONUS* My favorite question: Do you know any good places to get a bite to eat? I love food!

Q. Your guest has one day, what should they do?

A. Start your day with a dawn patrol surf lesson followed by lobster eggs benedict at Longhi's. Then take a private tour to the North Shore. Dinner at Jameson's in Haleiwa.

Q. What is your favorite restaurant to send guests to?

A. My new favorite is MW Restaurant. The chef and his wife are truly amazing. It is local, farm-to-table place that specializes in local cuisine. If you see duck on the menu...GET IT.

Q. Where do you see yourself in 5 years?

A. I love what I do. If I am still here in 5 years I will count myself very lucky. I am surrounded by talented coworkers and I get to take my family on great adventures. However, I do have an entrepreneurial spirit and I do hope to one day run my own small business.



Embrace Your Dreams

Experience the magic of dreams coming true in our inspiring and unforgettable dolphin programs starting at only \$125. Dolphin Quest is located at the legendary Kahala Hotel & Resort.

 **DOLPHIN QUEST**
Oahu

Reserve

800-248-3316
808-739-8918
dolphinquest.com

A portion of the proceeds supports vital marine education, conservation and research.

The Oahu Concierge is printed monthly and direct mailed FREE to all Oahu Concierge, Hospitality & Activity Professionals.

Subscriptions available to non-industry at \$25 per year.

C O N T A C T

Davis Media

Ph: 596-4422 • Fax: 593-0839

www.oahuconciierge.com

Twitter & Instagram: @OahuConciierge

Facebook: www.facebook.com/OahuConciierge

ADDRESS & NAME CHANGES / ADDITIONS

We do not take changes by telephone. All changes to mailing list must be submitted in writing by the 16th of the month to make the next issue, email is preferred.

S T A F F

PUBLISHER **Pam Davis**
publisher@oahuconciierge.com

CONTRIBUTING EDITORS
Lynn Cook, Lance Rae

DESIGN
Coreiya Design

The Oahu Concierge
1221 Kapiolani Boulevard, Suite 1040
Honolulu, Hawaii 96814

Presorted Std
US Postage Paid
Honolulu, HI
Permit # 583

Explore Oahu's Wonders

Experience the once-in-a-lifetime
adventure of our West Oahu Eco-Tours

Our mission is to leave the ocean a better place than when we entered

WEST
OAHU
SUP



- Small Groups
- Rentals
- Personal Service
- Tours

Call 729-2229
westoahusup.com

