

Concierge

KEEPING THE HOSPITALITY INDUSTRY INFORMED SINCE 1998



HALLOWEEN HAUNTS



Spooky Storytellers

Halloween found its roots over 2,000 years ago, as the Celts marked the end of summer and the harvest and the beginning of the dark, cold winter. A time of year that was often associated with human death. Celts believed on the night before the new year, the boundary between the worlds of the living and the dead became blurred. On the night of October 31st, they celebrated a pagan religious festival called Samhain, which believed the ghosts of the dead returned to earth.

As the Middle Ages progressed, so did the celebrations. Bonfires became a tradition, purportedly to protect families from fairies and witches, and carved turnips called Jack-o-lanterns began to appear, attached by strings to sticks and embedded with coal. Later Irish tradition switched to pumpkins. Soon October 31st became known as All Hallows Eve or Halloween. It contained much of the traditional pagan practices before being adopted in 19th-century America through Irish immigrants bringing their traditions across the ocean. As the beliefs and customs of different European ethnic groups and American Indians meshed, a distinctly American version of Halloween emerged. Borrowing from European traditions, Americans began to dress up in costumes and go house to house asking for food or money, a practice that eventually became today's "trick-or-treat" tradition. By the 1800s, there was a move in America to mold Halloween into a holiday more about community and neighborly get-togethers than ghosts, pranks, and witchcraft. Halloween parties for children and adults became the most common way to celebrate the day at the turn of the century and it just grew stronger from there.

Hawaii loves Halloween. With a rich history of mythology and folklore and numerous sacred sites across the state, Hawaii's link to the past is ever present, and Honolulu is full of myths and legends. If your guests are looking for a Halloween haunting, Hawaii offers many options. Here are some of them:

In Hawaii, we know it as "chicken skin." But others may be more familiar with the term "goosebumps. Hawaii is known for its Master Storytellers that keep the ghosts alive through tales that perpetuate our cultural legacy and history. Tales that give you chicken skin are nothing new in this town. Glenn Grant was one of the more well-known storytellers before he died. Lopaka Kapanui and Jeff Gere have been carrying that torch ever since and both will be giving performances this month. Jeff Gere was born to tell spooky stories. Literally... he was born on Halloween and has been telling stories for over 30 years. He was the man behind Talk Story Festival for 26 years. He will be doing two special Halloween shows at the Downtown Art Center in Honolulu's historic Chinatown Arts District that showcases Hawaii art & artists.

OCTOBER 21

Wild Rides: Folktales and Music

From the twisted mind of Master Storyteller Jeff Gere, here are the hair-raising, bone jarring, wild ride archetypal out-of-control tales that will knock your socks off. Includes Old Rink Rank; Jack & Evil Mountain Spirit; Beauty, Devil & Shepherd; First Nations: Scarred Prince. (a CD of some won a national award). With a special appearance by steel guitar music wizard Charlie Myers. This show is part of Jeff Gere's special Halloween Birthday storytelling series. Admission \$15. 7:30 – 9 p.m. downtownarhi.org.

OCTOBER 28

HAUNTED HAWAII: TRUE TERRIBLE LOCAL TALES

Jeff Gere's special Halloween Birthday storytelling series continues with his selection of tales collected over 35 years, including: Old Mililani Graveyard, Have You Ever Seen a Ghost? Pele, Kahuna, and more. This performance also incorporates musical sound effects by Charley Myers. Admission: \$15. 7:30 – 9 p.m. downtownarhi.org.

Continued on page 4.



HELP MAKE A DIFFERENCE

On Saturday, October 22nd, please join the Waikiki Improvement Association's Waikiki Ohana Workforce (WOW) as they start-up the beach clean-ups they did regularly before the pandemic.

Volunteers are asked to meet at 7 a.m. at the Duke Statue at Kūhio Beach Park. Transportation will then be provided to different clean up areas. Validated Self Parking will be offered to all beach clean up participants at the Hyatt Regency.

So grab your hats and your sunscreen and head on down to the beach with your team to donate a few hours to keeping our 'aina clean. The Waikiki Improvement Association will bring everything you need as far gloves, trashbags, water and refreshments. A continental breakfast will be provided to all participants and you will be pau by 9 a.m. to get on with your day. Many hands make light work!

The Waikiki Improvement Association would like to thank their sponsors for donating the necessary supplies. Mahalo to: ABC Stores, Bank of Hawai'i, Central Pacific Bank, Enoa Corporation, Halekulani, Hawaiian Building Maintenance, Highgate Hotels, Hilton Hawaiian Village, HPD D6, Hyatt Regency Waikiki, Lili'uokalani Trust, Moana Surfrider Hotel, Kaimana Beach Hotel, Outrigger Enterprises, Polynesian Adventure Tours, Royal Star Hawai'i, Sheraton Princess Ka'iulani, and the Waikiki Beach Marriott Resort.

TABLE OF CONTENTS

Yada Yada Yada	2
Winter brings Big Surf	2
Newsflash	3
E Pili Kakou	8-12
Chef's Corner: HFWF Chef Ming Tsai	13
Calendar	14-17
Paparazzi: JINYA Ramen	17
Around Town	18
Help Wanted	18
That's Entertainment/Concierge Card	19

Publisher's Letter



HAPPY HALLOWEEN

Happy Halloween! Can you believe it? The holidays are officially starting. This one is gearing up to be a lot different than the past few years. As a matter of fact, it looks like it used to be before COVID in case the crowd on Kalakaua during the Ho'olaule'a didn't give you a hint. People are back, and they want to go out! I have compiled as many Halloween events as I could put my hands on in September to get you started. Obviously, expect more to be announced as the day get closer.

We are also getting closer to the time of year when the surf goes way up, and your guests will be flocking to the North Shore. Since we want to make sure they get back safely, and I know there is so much going on in November space is going to be tight, I asked the Chief of Ocean Safety to give you a few tips a few weeks early. Please remember to share some of these safety tips with your guests when those big waves roll in. We know many of them will head out to see the big surf, and we want to be sure they all do it safely.

I also wanted to thank everyone for being so communicative regarding concierge events. Your communication with me makes managing so many of you and so few seats much easier. I had 22 people on the waiting list for this last one, and it worked out that everyone who wanted to go got in at the end. Patience is key - and I appreciate those of you reserving a seat letting me know if you can't make it in a timely manner so I have time to reallocate and accommodate as many of you as possible. There are many newbies out there now as well, and I love that. I hope you appreciate the experiences and learn about what's available. I just ask that you are always respectful to others and be sure to tip your servers. Even though the restaurant is hosting you, those kids are still working their okole's off to show you a great experience in the hopes you'll funnel more business their way if you like what you see, and a gratuity is appreciated. Keep showing up when you say you will, and I'll do my best to keep these events rolling so you can see what's out there. Get ready for the holidays!

Yada Yada



Aiko Storm

Congratulations to **Aiko Storm**, who joined the concierge desk at *The Ritz-Carlton Residences, Waikiki Beach*. She began her concierge career at the Sheraton Waikiki back in 2012. She moved to guest services in the Leahi Lounge after the hotel outsourced the desk. She is thrilled to be back where she belongs and we are thrilled for her! • Please welcome **Noah Elgin** who was recently hired as the Director of Customer Service for the *International Market Place*. Noah spent 7 years at the Hilton Hawaiian Village as Director of Guest Relations and was most recently a Guest Relations Manager at several Highgate properties. • The *Halekulani* has

announced several promotions in their F&B department. **Chef Christian Testa** has been promoted to Executive Chef of the *Halekulani* after serving as Orchids Chef de Cuisine for six years. In his new role, he will be responsible for leading the culinary operations across all the hotel's dining venues. **Chef Alexandre Trancher** has been promoted to Executive Chef of *La Mer* after overseeing La Mer for over a decade as its Chef de Cuisine. **Pauline Lam** has been hired as Executive Pastry Chef, bringing over 20 years of experience with her. • *Outrigger Resorts* announced that **Carly Clement** has been named vice president operations for *Hawai'i Vacation Condos*. Clement was most recently general manager at the Lotus Honolulu/Hotel Renew and at the Outrigger Waikiki Beach before that.

Winter Season Brings Big Surf & Visitors

Nights and early mornings are starting to be a little chilly on O'ahu, which means winter is coming, and with winter comes the North Shore surf season. Honolulu Ocean Safety is rapidly making strides on improving its coverage for the whole island, but for now, seven towers in the midst of the 7-mile miracle are open from 9 a.m. to 5:30 p.m. Mobile responders patrol Kamehameha Highway from 8 a.m. to 6:30 p.m.

Ocean Safety recommends hospitality experts who advise visitors on where to go and when, also remind them that the North Shore is still literally the country. Oftentimes, it can take 20-30 minutes (or more) to get an ambulance to the scene of an accident or emergency on the beach. Visitors to the North Shore in winter months should pay attention to tides and the high wash of waves – if the sand or rocks are wet, look out for more waves. Lifeguards in trucks and jet skis, and in the towers at Haleiwa, Laniakea, Chun's, Waimea Bay, Rock Piles, Pipeline, and Sunset Beach, are trained first responders and make thousands of rescues every winter.

Ocean Safety will string caution tape at beach parks when the surf is particularly unruly or huge, but generally speaking the most dangerous days are when surf is playful and not giant, say in the 4-6' range and perfect off shore conditions. Many visitors are lured into thinking they can



handle the beach break at Waimea Bay or Ke Iki Beach, or even think they can paddle out at Haleiwa or Puena Point, or even at 'Ehukai, or Chuns or Laniakea without some preparation. The reef at 'Ehukai – from Rock Piles all the way down past Rocky Point – can be particularly humbling, and cause significant injury, or even death.

So, please remind those visitors to listen to Lifeguards, to know whether the swell is coming up or subsiding, and to exercise extreme caution and do their due diligence before jumping in to the action. Ocean Safety encourages all visitors to have a great time and enjoy all the sights and sounds of country, but 'know before you go.'

The North Shore becomes a very busy place right around Halloween until about Valentine's Day. The contests at Haleiwa, Sunset, and Pipe draw thousands to those beaches. Many visitors to Hawai'i right now are still of the domestic variety, and many of them will rent cars and brave the traffic along the two-lane highway from Haleiwa to Sunset Beach and even around Kahuku Point all the way down to Kāne'ohe Bay. Ocean Safety strongly recommends that the number one tool in the tool box for all visitors to the North Shore, kama'aina and malihini alike, is patience. Have some patience, go slow and enjoy the country.

~ John Titchen, Chief of Ocean Safety

EXTRA NEWSFLASH EXTRA

SEA LIFE PARK INTRODUCES NEW SEA LION ENCOUNTER

Meet and interact with a California sea lion, and enjoy a fun, educational, and personal experience with these slippery, fascinating, and wonderful animals. Guests will have the opportunity to feed, touch, and interact with a sea lion both in a group of 4, and one on one throughout the duration of the 20-minute program. Open to guests 8 and older. Park admission is included in the \$89.99 cost. 2:30 p.m. daily. sealifeparkhawaii.com.

LET OFF SOME STEAM IN HONOLULU'S ONLY RAGE ROOM

Every feel like breaking something to let off some steam? Head to Hawaii's first and only rage room, Break'n Anger in Kaka'ako, where you can release your frustrations by breaking glassware and home appliances and no one will get mad at you! Just grab a baseball bat or a sledgehammer and smash them to pieces! They also offer a "Splatter Art Studio" where guests can be creative by throwing paint around the walls, on a canvas, or at each other! Guests can then walk away with a one-of-the kind piece of art to commemorate their adventure. Afterwards, guests can relax in the "zen" room to wind down. Book your session at 888-2630 or online at breaknanger.com.

WAIKIKI COMMUNITY CENTER REOPENS WEEKLY ACTIVITIES

The Waikiki Community Center has re-opened their weekly hula and classes to the public. Hula with Nalani is offered Mondays from 9 - 10:15 am, and Beginning Tahitian is offered Fridays from noon - 1 p.m. Classes are \$15 each. On Thursdays they offer Gentle Flow Yoga classes from 10 - 11 a.m., and Vinyasa Yoga on Fridays from 11 a.m. - 12:15 p.m. Classes are \$8 each. Classes are open to visitors and locals alike. The center is located at 310 Paoakalani Avenue. For detailed information on classes head to waikikicomunitycenter.org.

TIKI'S GRILL & BAR CELEBRATES ITS 20TH ANNIVERSARY

Tiki's Grill & Bar is celebrating its 20th Year Anniversary on October 16th. Everyone's invited to join the fun from 5-9 p.m. for only \$20 a ticket. (the same price as their opening party!) Enjoy live music, delicious food & drink with friends to celebrate Tiki's, while also supporting our community. 100% of your entry cost goes to local charities. 923-8454.

NAVY PERSONNEL GETS FREE ENTRY INTO PEARL HARBOR

In honor of the U.S. Navy's birthday on October 13th, Pearl Harbor Historic Sites continues their tradition of waving the admission of all active duty and retired Navy personnel and their families into the Battleship Missouri Memorial, Pacific Fleet Submarine Museum, and the Pearl Harbor Aviation Museum on October 15th and 16th. Must present a valid military ID at the Pearl Harbor Visitors Center. PearlHarborHistoricSites.org.

ALOHA HOME MARKET LAUNCHES WEEKLY IN WAIKIKI

Aloha Home Market, featuring one-of-a-kind, Made in Hawai'i souvenirs, art, jewelry, fashion, and prepared foods, will launch a weekly Waikiki Market Thursday, October 6 at Sheraton Princess Kaiulani Pool Terrace. Featuring 38 Hawai'i purveyors, artisans, jewelers, crafters and designers while shoppers enjoy Happy Hour specials and livemusic from the Splash Bar from 3 - 5 p.m. Thursdays from 3 - 9 p.m. alohahomemarket.com.

**Exceptional Dishes
And a View to Match**

Discover a one-of-a-kind dining experience where chef-driven dishes meet Oahu's most spectacular views. This is Bali Oceanfront.

- Contemporary open-air setting
- Sweeping ocean views
- Award-winning service
- Seasonal and locally harvested ingredients
- Serving breakfast and dinner

HILTON HAWAIIAN VILLAGE, RAINBOW TOWER
COMPLIMENTARY SELF PARKING

FOR RESERVATIONS VISIT BALIWAIKIKI.COM
808-941-2254

BREAKFAST	DINNER
7:00 - 11:30 AM, DAILY	5:00 - 9:00 PM, TUESDAY - THURSDAY 5:00 - 9:30 PM, FRIDAY - SATURDAY

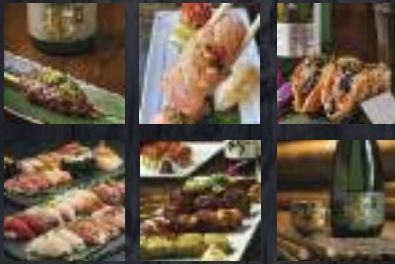
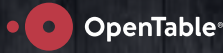
bali
OCEANFRONT

Hilton
HAWAIIAN VILLAGE®
WAIKIKI BEACH RESORT

Now Open

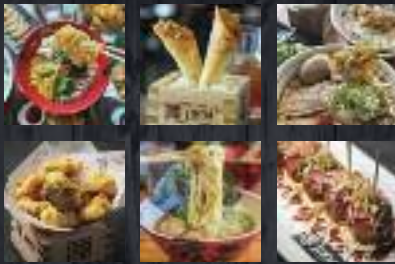
in Ward Village

Book your reservation now on



Robata JINYA
Honolulu

808-480-8577



陣 JINYA
RAMEN BAR

808-480-8477



LBD
Japanese Bar & Lounge

808-480-8677

1118 Ala Moana Blvd. Ste 100
Honolulu, HI 96814

Halloween Happenings

Continued from page 1.

OCTOBER 28

LOPAKA KAPANUI: NIGHT MARCHERS

Native Hawaiian master storyteller, author, actor, kumu hula, cultural practitioner, and former professional wrestler Lopaka Kapanui shares personal accounts of encounters with the night marchers and a bit of history on these ghostly warriors known to roam our islands. \$20. 18 & under: \$15. 7 p.m. Doris Duke Theatre.

GHOST TOURS



Head out on a Ghost Tour to experience chicken skin first hand. Mysteries of Hawaii is a Native Hawaiian owned and operated, and all ghost tours are led personally by Master Storyteller Lopaka Kapanui. Although their hour-and-a-half walking tours are year-round, they have a few special ones this month as well. Note the bus tours do not offer transportation to the pick-up location. More information below or at mysteries-of-hawaii.com.

MONDAYS

HONOLULU'S HAUNTED CRIME TOUR

Meet in front of the King Kamehameha statue at Ali'iolani Hale for a unique walking ghost tour. To the laws that carried out the penalties of the Fukunaga and the Massie trials, to a psychic who was murdered for knowing too much, walk around a few haunted sites in Downtown Honolulu. Tours begin promptly at 7 p.m. \$25.

WEDNESDAY, FRIDAY & SUNDAYS WAIKIKI NIGHT MARCHERS GHOST TOUR

Meet at the Waikiki Bandstand in Kapiolani Park for a tour that shows visitors the other side of Waikiki. Learn about the place that was famous for ancient burials, heiau, battlefields, the homes of ali'i, and several paths of the feared Night Marchers. Hear the stories of those who have witnessed the march and have survived to tell the tale. Tours begin promptly at 7 p.m. \$40.

THURSDAY & SATURDAYS

GHOSTS OF OLD HONOLULU WALKING TOUR

Meet in front of the King Kamehameha statue at Ali'iolani Hale for Hawaii's Original and Longest-Running Ghost Tour. This was Glen Grant's first Honolulu ghost tour that began in the late 1980s. Explore the paths once walked by Hawaiian Royalty and learn about the

ghosts that still travel these pathways. Tours begin promptly at 7 p.m. \$40.

OCTOBER 15

HAUNTED HONOLULU GHOST TOUR

Meet on the steps of the Hawaii State Library. Even though they may have a new, modern purpose, do the old buildings in Downtown Honolulu still carry the psychic trauma of the past? Do ghosts lurk in the places as people continue to go about their daily business? Hear the accounts of people who've experienced the hauntings of the area that was once the seat of Royalty. Tours begin promptly at 5 p.m. \$40.

OCTOBER 21

URBAN LEGENDS OF OAHU

The jump rope girl, Morgan's Corner, a moving statue, a haunted freeway overpass. Join us as we explore the strange origins behind some of the most popular and even a few lesser-known urban legends of O'ahu. This bus tour brings you to a few sites of popular Urban Legends of our island. Come and hear the real stories behind some of Oahu's most notorious legends. 7 – 10 p.m. \$60. Guests meet at the King Kamehameha Statue at Ali'iolani Hale, and the bus will depart from there.

OCTOBER 29

GHOSTS OF THE OLD 'EWA PLAINS

Our kupuna tell us that the general area of the central 'Ewa Plains is the land of "Wandering Spirits" and "Nightmarchers" and that the restless spirits become a problem for many developments in the area. The concern was that unsettled spirits that remain in the area cause unwanted paranormal activities to plague development projects and that the surrounding localities will become by the displaced spirits. Is it just superstition or is there something to what our elders say? 7 – 10 p.m. \$60. Guests need to get to Kapolei Regional Park, and the bus will depart from there.



IN SEARCH OF THE GREAT PUMPKIN



Unlike Linus, you don't have to wait for the Giant Pumpkin to arrive on Halloween night, you can find your own at a pumpkin patch on the island.

OCTOBER 15-16, 22-23, 29-30

LOUN FARMS 20TH PUMPKIN FESTIVAL

The 20th annual Pumpkin Festival takes place in Kapolei the last 3 weekends in October. For a \$5 entry fee, visitors can pick corn, beans, sunflowers, pumpkins

Continued on page 6.



MAUI DIVERS JEWELRY

Inspired, designed and created in Hawai'i EST. 1959

From Adventurous Divers to Hawai'i's Favorite Jeweler

Maui Divers Jewelry was not always a jeweler. In fact, in 1958, we started as a small dive shop offering adventurous diving excursions off Maui. During one expedition, we made the incredible discovery of Hawaiian black coral, which later became Hawai'i's state gem. This moment changed our lives and sparked our exploration into jewelry making.

A year later, Maui Divers Jewelry was founded. Every piece of jewelry is inspired by Hawai'i, designed by teams of skilled local artists, and created by masterful jewelers in Honolulu.

We welcome you, with Aloha, to join us on our journey and share in the adventure! Hawai'i's favorite and most trusted jeweler since 1959. Visit us on O'ahu, Maui, Big Island, and Kaua'i, or shop online at MauiDivers.com.



Scan Code to
Book your Experience



THE BEST ART IN OAHU IS WAITING FOR YOU



THE PARK WEST FINE ART MUSEUM & GALLERY

Waikiki Beach Walk
Honolulu
808-859-4871
parkwesthawaii.com

There's a lot happening at Park West Hawaii in October!

Ask about our 2nd annual "Made in Hawaii" artist search contest—we're looking for the next big artist from Hawaii!

Come see acclaimed artist Jon Rattenbury paint live when he visits the gallery on October 28-29!

Halloween Happenings

Continued from page 4.

and more. There will be craft booths and a farmers market to browse though, hay rides, keiki games, food vendors and live entertainment. A unique island tradition for all to enjoy. 8:30 - 5 p.m. Admission: \$5.00 per person, parking is free. Call 677-9516 or go to alounfarms.com.

OCTOBER 1ST TO NOVEMBER 20TH WAIMANALO COUNTRY FARMS FALL HARVEST FESTIVAL AND PUMPKIN PATCH 2022

Head to 'Nalo and enjoy the day at the Waimanalo Country Farms! Take a breath of fresh air in their pumpkin patch, wander through their beautiful sunflower fields, hop on a tractor ride, and don't forget to stop by their country market and grub stand for their fresh picked Dakota super sweet corn, famous fresh squeezed lemonade, honey, handmade coasters, delicious cornbread and more. Walk around on the designated paths as well as throughout the fields and other photo op areas to snap your photos. Admission: \$12, \$10 for local and military. For an additional fee feed the animals or fire the pumpkin cannon. Pumpkins range from \$2 - \$35, and sunflowers are \$3 each. First car in at 1 p.m. on weekdays and 9 a.m. on weekends. Last car in at 4 p.m. Closed Mondays. Look for the signs off of Kalaniana'ole. 41-225 Lupe Street. waimanalocountryfarms.com.

HALLOWEEN HAUNTED HOUSES & ATTRACTIONS

OCTOBER 14-6, 21-23, 28-31
16TH ANNUAL HAUNTED PLANTATION



Pic by Jace Lansing

The only haunted attraction in the islands that is located at an actual haunted location. Those brave enough should head over to Hawaii's Plantation Village to experience the thrills, scares, and heart-stopping experiences that they have been known for. This year theme is Return of the Oboke and promises to be scarier than ever. Locals and visitors come from all over to experience this unique event, but remember the fear is real. This event is not recommended for young children,

pregnant women, or people with heart conditions. 7-11 p.m. Tickets are \$20. Advance timed-entry tickets must be reserved online prior to attending. Absolutely no walk-ins will be admitted this year. Tickets may not be purchased on site without a booking confirmation. Anyone without a booking confirmation will not be allowed on property. hawaiihauntedplantation.com.

EVERY FRIDAY & SATURDAY IN OCTOBER PLUS OCTOBER 30TH & 31ST TRIALS OF FEAR

Instead of a Haunted Trolley, E Noa Tours has created Hawaii's first interactive haunted house experience. Haunted house meets escape room in this interactive haunted experience where you will have to complete 3 fearsome challenges before facing a final judgment. \$20 per person (aged 13 & over) 3015 Koapaka Street. 7 - 11 p.m. trialeffearshi.com.

DAILY GHOST BUS HAWAII

If you haven't been on the Ghost Bus Hawaii yet, this is the perfect time of the year to go. Located in the vacant lot across from the Marriott Hotel. Open from 4 p.m. - 9 p.m., time slots available every 30 minutes. On Halloween weekend (10/28-31), they will increase those time slots to every 20 minutes during prime hours from 6 - 9 p.m. (last seating at 8:30 p.m.) \$20 per person (\$15 for locals/military). ghostbushawaii.com.

KID FRIENDLY ACTIVITIES

OCTOBER 22-23, 28-29 SPOOK LIFE PARK

Sea Life Park turns into Spook Life Park the last two weekends of October with Halloween-themed vendors, decorations and shows. Feel free to come in costume! sealifeparkhawaii.com.

OCTOBER 29 HALLOW ZOO

The Honolulu Zoo Society is hosting a kid-friendly daytime event that includes a Haunted Habitat Treat Trail, as well as a Scare-venger Hunt through the Zoo for keiki to win prizes. Families are invited to come dressed in their spook-tacular best! Entry included with Zoo admission. 10 a.m. - 2 p.m. honoluluzeo.org.

OCTOBER 29 DINNER DETECTIVE HALLOWEEN SPECIAL

After a 2 year hiatus the Dinner Detective is reopening in time to celebrate this hallowed holiday, and all guests will be encouraged to attend in

their Halloween costumes. Every Saturday, figure out whodunit while you feast on a Italian dinner, but beware! The criminal is lurking somewhere in the room. Admission includes a full dinner, murder mystery entertainment, wait staff gratuity, prize package for Top Sleuth, and much more! Cash bar available. Buca di Beppo. Tickets: \$69.95. 8 p.m. thedinnerdetective.com/honolulu.

get the party started

Now that you've survived the ghouls and goblins it's time to get the party started, and the biggest one of them all is coming back

OCTOBER 29 HALLOWBALOO 2022



Chinatown will be crawling with costumed crazies as Halloweenbaloo 2022 makes its return. Families are encouraged to come down to wander the street festival before the rest of the ghouls come out and get crazy. There will be two stages of live entertainment, Mui's Herb Shop Street Cabaret, food trucks, and \$2,000 up for grab for best costumes. \$1,000 of it will be given away on the main stage, and Miss Catwings, Halloweenbaloo's 2022 Director of Dazzle, will be roaming the streets with a professional photographer awarding cash to and snapping photos with the most bedazzled revelers, giving away another 10 Golden Pineapple Awards with \$100 cash award. This year's entertainment line-up includes Henry Kaponu, Taimane, DJ Mr. Nick, Stephen Inglis Project (Jerry Garcia tribute concert), DJ Anit, and more. The Street Festival runs from 5 – 10 p.m. with Club Halloweenbaloo from 9 – 1:30 a.m. For tickets and the complete schedule of events head over to their website at halloweenbaloo.com.

OCTOBER 28 FRIGHT NIGHT HALLOWEEN PARTY

A night of chills and thrills with live performance and live bands all dressed up. There will be food trucks, creepy entertainers, and actors roaming around Aloha Tower Marketplace. 18+ only. \$20. Starts at 6 p.m.

OCTOBER 1-31 NIGHTMARE BAR

The former Shokudo Restaurant on Kapiolani will be decorated with the season and serving Halloween-themed cocktails. Open 6 p.m. – midnight

mall events

Most of the shopping malls in town will be offering Halloween specials, costume contests, and a chance for kids to trick-or-treat in their stores, giving parents an opportunity to get their shopping done while keeping their keiki happy.

INTERNATIONAL MARKET PLACE SHOPINTERNATIONALMARKETPLACE.COM

OCTOBER 29-31 VIRTUAL COSTUME CONTEST

Bring the whole 'ohana and celebrate Halloween at Royal Hawaiian Center with fa-boo-lous family-friendly trick-or-treating over two weekends. Follow @intlmtkplace. Post a photo wearing your Halloween costume at International Market Place and tag @intlmtkplace #marketplacestories

OCTOBER 31 TRICK-OR-TREAT

Families can trick or treat from 4 to 6 p.m. at participating International Market Place stores and restaurants. Look for special costumed characters and a balloon artist at the Queen's Court, Level 1.

ROYAL HAWAIIAN CENTER ROYALHAWAIIANCENTER.COM/EVENTS

OCTOBER 22-23 & 29-30 TRICK-OR-TREAT

Bring the whole 'ohana and celebrate Halloween at Royal Hawaiian Center with fa-boo-lous family-friendly trick-or-treating over two weekends.

OCTOBER 23 HALLOWEEN KEIKI COSTUME CONTEST

Keiki from infants to 10 years old and their parents are invited to compete for first, second, and third place prizes in four categories in this annual Keiki Costume Contest in The Royal Grove. Come dressed in your best and enter for your chance to win a prize! Or stop by just to see all the action!

We haven't heard from the other shopping centers yet, but you know they will all be offering trick or treat specials and encouraging costumes... Keep your ears open for more details as October unfolds.



Makalauna!

Be part of the celebration as Hawaiian music legend Gabby Pahinui is honored in a moving tribute of music and hula

Saturday, October 15, starting at 4:30 p.m. at the Waikiki Beach Walk Plaza.

Free Parking 10am-3pm Daily*
*With \$10 minimum purchase

Located on Lewers St. between Kalakaua Ave. & Kalia Rd. Open 365 Days | 11AM-9PM

WAIKIKI BEACH WALK.
WAIKIKIBEACHWALK.COM |

Performers & times subject to change

Let's be Together...

DINING ▶ ENTERTAINMENT ▶ PAU HANA ▶ EAT ▶ DRINK ▶ BE MERRY ▶ HAPPY HOUR ▶

MONDAY

Barefoot Beach Café at Queen's Beach 924-2233
Live Contemporary & Hawaiian
 The Barefoot Boys 5:30-8:30pm

Chart House Waikiki 941-6660
Live Contemporary Hawaiian
 Camarillo Brothers 6-9pm

Deck. at the Queen Kapiolani Hotel 931-4488
Mai Tai Mondays with Live Contemporary
 Freddy Leone (or others) 5pm-8pm

Duke's Canoe Club Waikiki 922-2268
Live Contemporary Hawaiian
 Donald Fialkowski (or others) 4-6pm
 Bryan & Halekahu (or others) 7-9pm
 Dominic Carlos (or Walt Keale) 9:30-11:30pm

House Without a Key 923-2311
Hawaiian music & hula by Miss Universe '97 Brook Lee
 Pa'ahana Trio 5:30-8:30pm

Kani Ka Pila Grille 924-4992
Hoku Award Winning Hawaiian musicians
 Sean Na'auao 6-9pm

Mahi'ai Table 670-2778
Live Contemporary
 Jenna Keala 5-8pm

Mahina & Sun's 923-8882
Monday Vibes on the Lanai

Brent Limos 6:30-9:30pm

Mai Tai Bar at the Royal Hawaiian 923-7311
Live Contemporary Hawaiian
 Eric Lee 11am-2pm
 Sidney Spencer 6-9pm

Maui Brewing Company 843-2739
Live Contemporary Hawaiian
 Scott Magz 3:30-5:30pm
 Dustin Park 6-8pm

Merriman's Honolulu 215-0022
Live Slack Key guitarist
 Freddy Leone 5:30-7:30pm

Moani Waikiki 466-2629
Contemporary Island Music
 AJ Keolanui 6-8pm

Monkeypod Kitchen Ko Olina 381-4086
Live Contemporary
 Koa & Yaz 3:30-5pm

Rumfire 921-4600
Live Contemporary Hits
 Shawn Garette 6-9pm

Signature Prime Steak 949-3636
Contemporary Pianist in the bar
 Keith Montross 6-9pm

Splash Bar at the Sheraton Princess Kaiulani 921-4600
Live Contemporary Hawaiian - DJ spins from 3 - 6pm
 David Aquino 6-9pm

Ben Kama 5:30-8:30pm

Chart House Waikiki 941-6660
Live Contemporary Hawaiian
 Ryan Tang Group 6-9pm

Deck. at the Queen Kapiolani Hotel 931-4488
Tequila & Taco Tuesday with Live Contemporary
 Shane Kainoa (or others) 6pm-9pm

Duke's Canoe Club Waikiki 922-2268
Live Contemporary Hawaiian
 Trish Nalei (or others) 4-6pm
 Scott Magz & Brytt Caires (or others) 7-9pm
 Stephen Inglis 9:30-11:30pm

Giovanni Pastrami 923-2100
Acoustic Soul, R&B and Pop
 YOZA (or others) 6:30-9:30pm

House Without a Key 923-2311
Hawaiian music & hula by Miss Hawaii USA '21 Allison Chu
 Delima Ohana 5:30-8:30pm
 Pa'ahana Trio (10/5, 10/12) 5:30-8:30pm

Kani Ka Pila Grille 924-4992
Hoku Award Winning Hawaiian musicians
 Kala'e Camarillo 6-9pm

Lewers Lounge 923-2311
Jazz Pianist
 Tommy James 8:30pm-12am

Mahi'ai Table 670-2778
Live Contemporary
 Keoni Ku 5-8pm

Mahina & Sun's 923-8882
Electrifying Acoustic on the Lanai
 Laupepa Letuli 6:30-9:30pm

Swell at the Alohilani 294-4108
Solo Contemporary Guitarist
 Drew Henmi 6:30-9:30pm

SWIM at the Hyatt Regency 923-1234
Live Contemporary Hawaiian
 Kupu Dalire Na'auao 5-8pm

The Beach Bar at the Moana Surfrider 922-3111
Live Contemporary Hawaiian
 Eric Lee 3:30-6:30pm
 Johnny Valentine 7-10pm
 Kamuela Kahoana (10/10) 5-8pm

The Edge at the Sheraton 921-4600
Live Hawaiian Music
 Stephen Inglis 1-4pm

The Point Sunset Pool Bar at Turtle Bay 293-6000
Live Contemporary Hawaiian
 Mike Cheape 5-8pm

Tiki's Grill & Bar 923-TIKI
Live Contemporary Hawaiian
 Michael Piranha 5-7pm
 BK Espiritu 7:30-9:30pm

Tommy Bahama Restaurant 923-8785
Contemporary Hawaiian. Happy Hour Daily 2 - 5 p.m.
 Jeremy Hirokawa 5-8pm

Tropics Bar & Grill 949-4321
Live Contemporary
 Ellsworth Simeona 3-5pm

Merriman's Honolulu 215-0022
Live Contemporary
 John Kema 5:30-7:30pm

Moani Waikiki 466-2629
R&B Soul
 Freddy Leon 6-8pm

Rumfire 921-4600
Live Contemporary Hits
 Christian Yrizarry 6-9pm

Signature Prime Steak 949-3636
Contemporary Pianist in the bar
 Keith Montross 6-9pm

Mai Tai Bar at the Royal Hawaiian 923-7311
Live Contemporary Hawaiian
 Kupu Dalire-Na'auao 11am-2pm
 Eric Lee 6-9pm
 Brad Kawakami (10/4) 8-10pm

Maui Brewing Company 843-2739
Live Contemporary Hawaiian
 Christian Yrizarry 3:30-5:30pm
 Donald Fialkowski (or Freddy Leone) 6-8pm

Splash Bar at the Sheraton Princess Kaiulani 921-4600
Live Contemporary Hawaiian - DJ spins from 3 - 6pm
 Dave Watanabe (or Sidney Spencer) 6-9pm

Swell at the Alohilani 294-4108
Solo Contemporary Guitarist
 Kamuela Kahoano 6:30-9:30pm

SWIM at the Hyatt Regency 923-1234
Live Contemporary Hawaiian

TUESDAY

Amuse Wine Bar 237-5428
Live R&B & Contemporary
 Chris Salvador 7-9pm

Barefoot Beach Café at Queen's Beach 924-2233
Backyard Hawaiian

OriginalMagoosPizza.com/Order

ORIGINAL
MAGOO'S
 PIZZA & HAWAII



**HAWAII'S FAVORITE
 ISLAND-STYLE PIZZA,
 SUBS & CHICKEN**

**WE'VE MOVED
 TO KAIMUKI!
 DINE-IN & FULL BAR
 TAKEOUT & DELIVERY**

**3579 WAIALAE AVENUE
 (BETWEEN 11TH & 12TH AVE)**

E Pili Kākou

DINING ▶ ENTERTAINMENT ▶ PAU HANA ▶ EAT ▶ DRINK ▶ BE MERRY ▶ HAPPY HOUR

Drew Henmi 5-8pm
The Beach Bar at the Moana Surfrider 922-3111
Live Contemporary Hawaiian
 Stephen Ingles 3:30-6:30pm
 Nick La'a 7-10pm
The Edge at the Sheraton 921-4600
Live Hawaiian Music
 Eric Lee (or Joel Coelho) 1-4pm
The Point Sunset Pool Bar at Turtle Bay 293-6000
Live Contemporary Hawaiian
 Danielle Parente 5-8pm
The Veranda at the Kahala Hotel 739-8760
Live Contemporary
 Kupu Dalire Na'auao 6-8pm
Tiki's Grill & Bar 923-TIKI
Live Contemporary Hawaiian & Reggae
 Biku 5-7pm
 Kelandy Diaz 7:30-9:30pm
Tommy Bahama Restaurant 923-8785
Contemporary Hawaiian. Happy Hour Daily 2 - 5 p.m.
 Johnny Kukui 5-8pm
Tropics Bar & Grill 949-4321
Live Contemporary
 Eddie Garrido (10/4, 10/18) 3-5pm
 Micheal Delara (10/11, 10/25) 3-5pm

WEDNESDAY

Azure at the Royal Hawaiian 921-4600
Live Contemporary Hawaiian
 Ethan Capone 5:30-8:30pm
Barefoot Beach Café at Queen's Beach 924-2233
Island Vibes
 Danny Galura 5:30-8:30pm
Chart House Waikiki 941-6660
Live Contemporary Hawaiian
 Mike Tulba 6-9pm
Duke's Canoe Club Waikiki 922-2268
Live Contemporary Hawaiian
 Taz Vegas (or Denny Ono) 4-6pm
 Koa & Yas 7-9pm
 Alika Souza 9:30-11:30pm
Giovanni Pastrami 923-2100
Acoustic Guitar Soul, R&B
 Jason Laeha 6:30-9:30pm
House Without a Key 923-2311
Hawaiian music & hula by Miss Universe '97 Brook Lee
 Pa'ahana Trio 5:30-8:30pm
Kani Ka Pila Grille 924-4992
Hoku Award Winning Hawaiian musicians
 Ei Nei 6-9pm
Lewers Lounge 923-2311
Jazz Pianist
 Tommy James 8:30pm-12am
Mahi'ai Table 670-2778
Live Contemporary
 Dillon Pakele 5-8pm
Mahina & Sun's 923-8882
Soulful Guitar on the Lanai
 Cameron Achuela 6:30-9:30pm
Mai Tai Bar at the Royal Hawaiian 923-7311
Live Contemporary Hawaiian

Stephen Inglis 11am-2pm
 Johnny Valentine (10/5, 10/19) 2-5pm
 Johnny Valentine (10/12, 10/26) 6-9pm
Maui Brewing Company 843-2739
Live Contemporary Hawaiian
 YOZA 3:30-5:30pm
 Scott Magz 6-8pm
Maui Brewing Kailua 518-2739
Live Contemporary Hawaiian
 David Sedlak (or Grace Welton) 6-8pm
Merriman's Honolulu 215-0022
Live Contemporary
 Kona Abergas 5:30-7:30pm
MINA's Fish House 679-0079
Live Contemporary Hits
 Kamuela Kahoano 6-9pm
Moani Waikiki 466-2629
Contemporary Island Music
 Kala'e Camarillo 6-8pm
Monkeypod Kitchen Ko Olina 381-4086
Live Contemporary
 Shaun Garnett 12:30-2pm
Rumfire 921-4600
Live Contemporary Hits
 Mike Tulba 6-9pm
Signature Prime Steak 949-3636
Contemporary Pianist in the bar
 Pierre Grill 6-9pm
Splash Bar at the Sheraton Princess Kaiulani 921-4600
Live Contemporary Hawaiian - DJ spins from 3 - 6pm
 Alika Souza 6-9pm
Swell at the Alohilani 294-4108
Solo Contemporary Guitarist
 Danielle Parente 6:30-9:30pm
SWIM at the Hyatt Regency 923-1234
Live Contemporary Hawaiian
 Keoni Ku 5-8pm
The Beach Bar at the Moana Surfrider 922-3111
Live Contemporary Hawaiian
 Brandon Serano 3:30-6:30pm
 Christian Yrizarry (or others) 7-10pm
The Edge at the Sheraton 921-4600
Live Hawaiian Music
 Kupu Dalire-Na'auao 1-4pm
The Point Sunset Pool Bar at Turtle Bay 293-6000
Live Contemporary Hawaiian
 Alex Oasay 5-8pm
The Veranda at the Kahala Hotel 739-8760
Live Contemporary
 Nick La'a 6-8pm
Tiki's Grill & Bar 923-TIKI
Live Contemporary Hawaiian
 Ben Kama 5-7pm
 TJ Rosimo 7:30-9:30pm
Tommy Bahama Restaurant 923-8785
Contemporary Hawaiian. Happy Hour Daily 2 - 5 p.m.
 Stan Albrecht 5-8pm
Tropics Bar & Grill 949-4321
Live Contemporary
 Trish NaLei (10/5, 10/19) 3-5pm

Christian Yrizarry Duo (10/12, 10/26) 3-5pm
Vintage 1901 at the Moana 921-4600
Contemporary Piano
 David Swanson 6:30-10pm

THURSDAY

100 Sails at the Prince Waikiki 944-4494
Live Contemporary & Hawaiian
 Kailua Moon 6-8pm
Azure at the Royal Hawaiian 921-4600
Live Contemporary Hawaiian
 Noly Paa 5:30-8:30pm
Barefoot Beach Café at Queen's Beach 924-2233
Live Contemporary & Hawaiian
 Keoni Coelho 5:30-8:30pm
Chart House Waikiki 941-6660
Live Contemporary Hawaiian
 Tito & David 6-9pm
Deck. at the Queen Kapiolani Hotel 931-4488
Live Contemporary
 Freddy Leone (or others) 5pm-8pm
Duke's Canoe Club Waikiki 922-2268
Live Contemporary Hawaiian
 Denny Ono (or others) 4-6pm
 Chapter II (or others) 7-9pm
 Uluwehi Young (or others) 9:30-11:30pm
Eating House 1849 Waikiki 924-1849
Live Contemporary Hawaiian



BarefootBeachCafe.com

"WE PUT Aloha INTO EVERY BITE SO SIT BACK, RELAX AND ENJOY THE VIEW."

OPEN DAILY
 BREAKFAST 8AM - 2PM
 LUNCH/DINNER 11AM - 8:30PM
 LIVE MUSIC NIGHTLY 5:30 - 8:30PM
 & SUNDAYS 11AM - 2PM

BAREFOOT BEACH CAFE
 2699 KALAKAUA AVENUE
 808.924.2233

EVENTS & GROUP RESERVATIONS
 808.699.8830

Performers & times subject to change

Let's be Together...

DINING ▶ ENTERTAINMENT ▶ PAU HANA ▶ EAT ▶ DRINK ▶ BE MERRY ▶ HAPPY HOUR ▶

Shane Kainoa 5-8pm
Giovanni Pastrami 923-2100
Live Contemporary
 Billy Sage 6:30-9:30pm
House Without a Key 923-2311
Hawaiian music & hula by Miss Universe '97 Brook Lee
 Ei Nei 5:30-8:30pm
Kani Ka Pila Grille 924-4992
Hoku Award Winning Hawaiian musicians
 Kawika Kahiapo 6-9pm
Lewers Lounge 923-2311
Jazz Pianist
 Ethan Capone 8:30pm-12am
Mahi'ai Table 670-2778
Live Contemporary
 Alex Oasay 5-8pm
Mahina & Sun's 923-8882
Hawaiian Contemporary on the Lanai
 Kelly Boy DeLima 6:30-9:30pm
Mai Tai Bar at the Royal Hawaiian 923-7311
Live Contemporary Hawaiian
 Christian Yrizarry 11am-2pm
 Stephen Inglis 8-10pm
Maui Brewing Company 843-2739
Live Contemporary Hawaiian
 Koa & Yaz 3:30-5:30pm
 David Sedlak 6-8pm
Maui Brewing Kailua 518-2739
Live Contemporary Hawaiian
 Jessie K (or others) 6-8pm
Merriman's Honolulu 215-0022
Live Contemporary
 Laupepa 5:30-7:30pm
MINA's Fish House 679-0079
Live Contemporary Hits
 Johnny III 6-9pm
Moani Waikiki 466-2629
Contemporary Island Music

Kimo Opiana 6-9pm
O Bar at the Alohilani 294-4108
Solo Contemporary Guitarist - DJ Spins poolside 6:30-9:30
 David Aquino 5-8pm
Rumfire 921-4600
Live Contemporary Hits
 Dave Watanabe 6-9pm
Signature Prime Steak 949-3636
Contemporary Pianist in the bar
 Grant Carvalho & Rocky Holmes 6-9pm
Sky Waikiki 979-7590
Live Contemporary
 John Akapo 5-8pm
Splash Bar at the Sheraton Princess Kaiulani 921-4600
Live Contemporary Hawaiian - DJ spins from 3 - 6pm
 Ronson Asuncion 6-9pm
Swell at the Alohilani 294-4108
Solo Contemporary Guitarist
 Denny Ono 6:30-9:30pm
 YOZA (10/6) 6:30-9:30pm
SWIM at the Hyatt Regency 923-1234
Live Contemporary Hawaiian
 Danielle Parente 5-8pm
The Beach Bar at the Moana Surfrider 922-3111
Live Contemporary Hawaiian
 Christian Yrizarry (or John Coelho) 3:30-6:30pm
 Kaimi Hananoeau 7-10pm
The Edge at the Sheraton 921-4600
Live Hawaiian Music
 Alika Souza 1-4pm
The Point Sunset Pool Bar at Turtle Bay 293-6000
Live Contemporary Hawaiian
 Johnny Helm 5-8pm
The Veranda at the Kahala Hotel 739-8760
Live Contemporary
 Eric Lee 6-8pm
 Brad Kawakami (10/6) 6-8pm
Tiki's Grill & Bar 923-TIKI
Live Contemporary Hawaiian & Reggae
 Malu Productions 5-7pm
 Ashton Nicolas 7:30-9:30pm
Tommy Bahama Restaurant 923-8785
Contemporary Hawaiian. Happy Hour Daily 2 - 5 p.m.
 Alex Oasay 5-8pm
Tropics Bar & Grill 949-4321
Live Contemporary
 Jason Midro (or Freddy Leone) 3-5pm
Vintage 1901 at the Moana 921-4600
Contemporary Piano
 David Swanson 6:30-10pm

Art Kalahiki & Friends 5:30-8:30pm
Chart House Waikiki 941-6660
Live Contemporary Hawaiian
 Mike Tulba 6-9pm
Deck. at the Queen Kapiolani Hotel 931-4488
Live Contemporary
 Shane Kainoa (or others) 6pm-9pm
Duke's Canoe Club Waikiki 922-2268
Live Contemporary Hawaiian
 Maunalua 4-6pm
 Kawika Kahiapo 7-9pm
 Ben Kama (or others) 9:30-11:30pm
Hard Rock Cafe 955-7383
Live Contemporary
 Kailua Beach Buddies 6-9pm
House Without a Key 923-2311
Hawaiian music & hula by Miss Hawaii '73 Kanoa Miller
 Kapalama Trio 5:30-8:30pm
Kani Ka Pila Grille 924-4992
Hoku Award Winning Hawaiian musicians
 Kamakakehau Fernandez 6-9pm
Lewers Lounge 923-2311
Jazz Pianist
 Maggie Herron & Dean Taba 8:30pm-12am
Mahi'ai Table 670-2778
Live Contemporary
 Brandon Serano (or John Coleho) 5-8pm
Mahina & Sun's 923-8882
Slack Key on the Lanai
 Dustin Park Duo 6:30-9:30pm
Mai Tai Bar at the Royal Hawaiian 923-7311
Live Contemporary Hawaiian
 Brandon Serano 11am-2pm
 Johnny III (10/7) 2-5pm
 Johnny III 6-9pm
Mariposa 951-3420
Live Contemporary
 Chris Salvador 2:30-5:30pm
Maui Brewing Company 843-2739
Live Contemporary Hawaiian
 Keith Batlin 3:30-5:30pm
 City Boys (or others) 6-8pm
Maui Brewing Kailua 518-2739
Live Contemporary Hawaiian
 Preston Kauwe (or others) 7-9pm
Merriman's Honolulu 215-0022
Live Contemporary
 Stephen Harris 5:30-7:30pm
MINA's Fish House 679-0079
Live Contemporary Hits
 Jenna Keala 6-9pm
Moani Waikiki 466-2629
Live Contemporary Hawaiian
 Keolu 6-8pm
Monkeypod Kitchen Ko Olina 381-4086
Live Contemporary
 Jasmin Nicole 12:30-2pm
O Bar at the Alohilani 294-4108
Solo Contemporary Guitarist - DJ Spins poolside 6:30-9:30
 Chris Salvador 6-9pm

BREAK'N ANGER
 HAWAII'S FIRST AND ONLY
RAGE ROOM
 SMASH LAB
 & SPLATTER ART STUDIO

Come down and smash away your frustrations in one of our Smash Labs or discover your creative side in our Splatter Art Studio.

808-888-2630
 1008-A KAWAIAHAO ST, HONOLULU HI 96814
 WWW.BREAKNANGER.COM

FRIDAY

100 Sails at the Prince Waikiki 944-4494
Live Contemporary & Hawaiian
 Mike Tulba Duo 6-8pm
Azure at the Royal Hawaiian 921-4600
Live Contemporary Hawaiian
 Ethan Capone 5:30-8:30pm
Barefoot Beach Café at Queen's Beach 924-2233
Live Contemporary Hawaiian

E Pili Kākou

DINING ▶ ENTERTAINMENT ▶ PAU HANA ▶ EAT ▶ DRINK ▶ BE MERRY ▶ HAPPY HOUR

Rumfire 921-4600

Live Contemporary Hits
Stephen Inglis 4:30-7:30pm
Kupu Dalire Na'auao 8-10:30pm

Signature Prime Steak 949-3636

Contemporary Pianist in the bar
Grant Carvalho & Rocky Holmes 6-9pm

Sky Waikiki 979-7590

Live Contemporary
John Akapo 5-8pm

Splash Bar at the Sheraton Princess Kaiulani 921-4600

Live Contemporary Hawaiian - DJ spins from 3 - 6pm
Donald Fialkowski (or Brad Kawakami) 6-9pm

Stripsteak 896-2545

Live Contemporary
Shane Kainoa 6-9pm

SWIM at the Hyatt Regency 923-1234

Live Contemporary Hawaiian
Mike Izon (or Tangi Tully) 5-8pm

The Beach Bar at the Moana Surfrider 922-3111

Live Contemporary Hawaiian
Kupu Dalire-Na'auao 3:30-6:30pm
Alex Oasay 7-10pm

The Edge at the Sheraton 921-4600

Live Hawaiian Music
Christian Yrizarry 1-4pm

The Grove at the Modern Pool Deck 943-5800

Live Contemporary
Shawn Garrett (or others) 4-7pm

The Point Sunset Pool Bar at Turtle Bay 293-6000

Live Contemporary Hawaiian
Mark Calderia (or Denny Ono) 5-8pm

The Veranda at the Kahala Hotel 739-8760

Live Contemporary
Johnny Valentine 6-8pm
Nick La'a (10/14) 6pm-8pm

Tiki's Grill & Bar 923-TIKI

Contemporary Hawaiian, Alternative, Pop-Rock, Reggae
Biku 3-5pm
RootsKai 5-7pm
Malu Productions 7:30-9:30pm

Tommy Bahama Restaurant 923-8785

Contemporary Hawaiian. Happy Hour Daily 2 - 5 p.m.
Chris Murphy 5-8pm

Tropics Bar & Grill 949-4321

Live Contemporary
Koa & Yas (or Kumuhau) 3-5pm

Vintage 1901 at the Moana 921-4600

Contemporary Piano
David Swanson 6:30-10pm

SATURDAY

100 Sails at the Prince Waikiki 944-4494

Live Contemporary & Hawaiian
Kupu Dalire-Na'auao 6-8pm

Azure at the Royal Hawaiian 921-4600

Live Contemporary Hawaiian
Koco Kawabuchi (or Ethan Capone) 5:30-8:30pm

Barefoot Beach Café at Queen's Beach 924-2233

Live Contemporary Hawaiian

Vanessa Alputila 5:30-8:30pm

Chart House Waikiki 941-6660

Live Contemporary Hawaiian
Tito Berinobis 6-9pm

Duke's Canoe Club Waikiki 922-2268

Live Contemporary Hawaiian
Walt Keale (or others) 10am-noon

YOZA (or others) 1-3pm

Kaiona Band (10/1) 4-6pm

Kona Chang Band (10/8) 4-6pm

Taulia Lave Band (10/15) 4-6pm

Alx Kawakami (10/22) 4-6pm

Beach 5 (10/29) 4-6pm

Ellsworth Simeona (or Kaiona Duo) 7-9pm

Ben Kama (or others) 9:30pm-12:30am

Hard Rock Cafe 955-7383

Live Contemporary
Kailua Beach Buddies 6-9pm

House Without a Key 923-2311

Hawaiian music & hula by Miss Hawaii '73 Kanoë Miller
Kapalama Trio 5:30-8:30pm

Kani Ka Pila Grille 924-4992

Hoku Award Winning Hawaiian musicians
Ho'okena 6-9pm

Lewers Lounge 923-2311

Jazz Pianist
Maggie Herron & Rocky Holmes 8:30pm-12am

Mahī'ai Table 670-2778

Live Contemporary
Brad Kawakami 5-8pm

Mahina & Sun's 923-8882

Contemporary Hawaiian/Blues on the Lanai
Josh Akapo 6:30-9:30pm

Mai Tai Bar at the Royal Hawaiian 923-7311

Live Contemporary Hawaiian
Ronson Asuncion (or Sidney Spencer) 11am-2pm

John Coelho (10/8) 2-4:30pm

Dave Watanabe 6-9pm

Mariposa 951-3420

Live Contemporary
Aisaiah Jacobs 2:30-5:30pm

Maui Brewing Company 843-2739

Live Contemporary Hawaiian
Deah Duo (or others) 3:30-5:30pm

Chapter II (or others) 6-8pm

Maui Brewing Kailua 518-2739

Live Contemporary Hawaiian
Eddie Garrido (or Michael Delara) 7-9pm

Merriman's Honolulu 215-0022

Live Contemporary
Shane Kainoa 5:30-7:30pm

MINA's Fish House 679-0079

Live Contemporary Hits
Johnny Helm 6-9pm

Moani Waikiki 466-2629

Contemporary Island Music
Keahi 5:30 - 8:30pm

O Bar at the Alohilani 294-4108

Solo Contemporary - DJ Spins poolside 1-4 / 6:30-9:30
Alex Oasay 6-9pm

Rumfire 921-4600

Live Contemporary Hits
Mark Caldeira 4:30-7:30pm
Kupu Dalire-Na'auao (10/8) 4:30-7:30pm
Keoni Ku 8-10:30pm

SHOR at the Hyatt Regency 923-1234

Live Contemporary Hawaiian
David Aquino 6-9pm

Signature Prime Steak 949-3636

Contemporary Pianist in the bar
Grant Carvalho & Rocky Holmes 6-9pm

Sky Waikiki 979-7590

Live Contemporary
John Akapo 5-8pm

Splash Bar at the Sheraton Princess Kaiulani 921-4600

Live Contemporary Hawaiian - DJ spins from 3 - 6pm
Tangi Tully 6-9pm

Stripsteak 896-2545

Live Contemporary
Dustin Park 6-9pm

The Beach Bar at the Moana Surfrider 922-3111

Live Contemporary Hawaiian
Kaleo Kahumoku 3:30-6:30pm
Chris Salvador 7-10pm

The Edge at the Sheraton 921-4600

Live Hawaiian Music
Brandon Serano 1-4pm

RUTH'S CHRIS Referral Program

Refer your guests to experience perfection at Ruth's Chris Steak House and receive a Ruth's Chris Gift Card



Receive a \$50 Ruth's Chris Gift Card for every 25 Guests that dine at Ruth's Chris Steak House. When making your GUEST reservation via phone, or Open Table, please provide your name and company name and our team will track your referrals accordingly.



"What's Sizzling at Ruth's"

- Sizzling Prime Time Menu available nightly from Opening to 6pm. (3) Course Menu from \$57.95 per person.



- Happy Hour featuring Appetizer and Drink Specials from Opening to 7pm.

Honolulu • 808.599.3860 • Waterfront Plaza, 500 Ala Moana Boulevard
Waikiki • 808.440.7910 • Waikiki Beach Walk, 226 Lewers Street
Wailea • 808.874.8880 • The Shops at Wailea, 3750 Wailea Ala Nui Drive

Let's be Together...

DINING ▶ ENTERTAINMENT ▶ PAU HANA ▶ EAT ▶ DRINK ▶ BE MERRY ▶ HAPPY HOUR ▶

John Coelho (10/8) 4:30-7:30pm
The Grove at the Modern Pool Deck 943-5800
Live Contemporary
 Kaimi Hananoeau (or others) 4-7pm
The Point Sunset Pool Bar at Turtle Bay 293-6000
Live Contemporary Hawaiian
 Kuhio Travis (or others) 5-8pm
The Veranda at the Kahala Hotel 739-8760
Live Contemporary
 Jeanette Trevias 6pm-8pm
 Kamuela Kahoano (10/1, 10/8) 6pm-8pm
Tiki's Grill & Bar 923-TIKI
Contemporary Hawaiian, Alternative, Pop-Rock, Reggae
 RootsKai 5-7pm
 Kelandy Diaz 7:30-9:30pm
Tommy Bahama Restaurant 923-8785
Contemporary Hawaiian. Happy Hour Daily 2 - 5 p.m.
 Chris Murphy 5-8pm
Tropics Bar & Grill 949-4321
Live Contemporary
 Chapter II (10/8, 10/22) 3-5pm
 Ells Simeona Duo (10/8, 10/22) 3-5pm
Vintage 1901 at the Moana 921-4600
Contemporary Piano
 David Swanson 6:30-10pm

SUNDAY

Azure at the Royal Hawaiian 921-4600
Live Contemporary Hawaiian
 Ethan Capone 5:30-8:30pm
Barefoot Beach Café at Queen's Beach 924-2233
Live Contemporary Hawaiian
 Alika Souza 11am-2pm
 Art Kalahiki 5:30-8:30pm
Chart House Waikiki 941-6660
Live Contemporary Hawaiian
 Dean & Dean 6-9pm
Duke's Canoe Club Waikiki 922-2268

Live Contemporary Hawaiian
 Ben Kama (or Dwight Kanae) 10am-noon
 Stephen Inglis (or others) 1-3pm
 Henry Kapono 4-6pm
 Ono Kine Duo (or Kaiona Duo) 7-9pm
 Kaimi (or others) 9:30-11:30pm
Giovanni Pastrami 923-2100
Reggae Pop Music
 Kelandy 6:30-9:30pm
Hinana Bar at the Prince Waikiki 944-4494
Live Contemporary & Hawaiian
 Kailua Moon 2:30-5:30pm
House Without a Key 923-2311
Hawaiian music & hula by Miss Hawaii USA '21 Allison Chu
 Pu'uhooua Trio 5:30-8:30pm
Kani Ka Pila Grille 924-4992
Hoku Award Winning Hawaiian musicians
 Nathan Aweau 6-9pm
La Hiki Restaurant at the Four Seasons 679-0079
Live Contemporary Hawaiian
 Jenna Keala (or Kamuela Kahoano) 11am-2pm
Mahi'ai Table 670-2778
Live Contemporary
 Johnny III 5-8pm
Mahina & Sun's 923-8882
Award-winning ukulele on the Lanai
 Trishnalei 6:30-9:30pm
Mai Tai Bar at the Royal Hawaiian 923-7311
Live Contemporary Hawaiian
 Kaleo Kahumoku 11am-2pm
 Christian Yrizarry (or Alex Oasay) 6-9pm
Mariposa 951-3420
Live Contemporary
 Zaysha 12-3pm
Maui Brewing Company 843-2739
Live Contemporary
 Jason Midro 3:30-5:30pm
 Chris Murphy (or others) 6-8pm
Maui Brewing Kailua 518-2739
Live Contemporary Hawaiian
 Kaimi (or others) 6-8pm
Merriman's Honolulu 215-0022
Live Contemporary
 Cassie and Selwyn 5:30-7:30pm
Moani Waikiki 466-2629
Contemporary Island Music
 Bronson Varde 6-8pm
Monkeypod Kitchen Ko Olina 381-4086
Live Contemporary
 Pono 12:30-2pm
O Bar at the Alohilani 294-4108
Solo Contemporary - DJ Spins poolside 2:30-5:30
 Johnny Helm 5-8pm
Rumfire 921-4600
Live Contemporary Hits
 Jenna Keala 4:30-7:30pm
 Sidney Spencer 8-10:30pm
Signature Prime Steak 949-3636
Contemporary Pianist in the bar
 Keith Montross 6-9pm

Splash Bar at the Sheraton Princess Kaiulani 921-4600
Live Contemporary Hawaiian - DJ spins from 3 - 6pm
 Kaleo Kahumoku 6-9pm
Swell at the Alohilani 294-4108
DJs Spins Poolside from 1 - 5 pm
 Jason Laeha 6:30-9:30pm
SWIM at the Hyatt Regency 923-1234
Live Contemporary Hawaiian
 Christian Yrizarry 5-8pm
The Beach Bar at the Moana Surf Rider 922-3111
Live Contemporary Hawaiian
 Brad Kawakami 3:30-6:30pm
 Bronson Varde 7-10pm
The Edge at the Sheraton 921-4600
Live Hawaiian Music
 Christian Yrizarry (or John Coelho) 1-4pm
 John Coelho (10/16, 10/23) 1-4pm
The Point Sunset Pool Bar at Turtle Bay 293-6000
Live Contemporary Hawaiian
 Derrick Lee 5-8pm
Tiki's Grill & Bar 923-TIKI
Live Contemporary Hawaiian
 Eddie & the Coconuts 3 - 5pm
 Ellsworth & Friends 5:30-7:30pm
Tommy Bahama Restaurant 923-8785
Contemporary Hawaiian. Happy Hour Daily 2 - 5 p.m.
 Glen Domingo 5-8pm
Tropics Bar & Grill 949-4321
Live Contemporary
 Kumuhau 3-5pm
Vintage 1901 at the Moana 921-4600
Contemporary Piano
 David Swanson 6:30-10pm

Dining Dish

The Halekulani fully re-opened **The House Without a Key** after an extensive renovation that includes a state-of-the-art exhibition-style glass kitchen and custom brick oven created in Italy, a re-imagined food and cocktail menu. The restaurant also has a new outdoor bar. **EARL'S**, their new pool bar located within the House Without A Key, is named in honor of 20th-century novelist Earl Derr Biggers, author of the Charlie Chan mysteries. The series' first book was "House Without a Key." A rare first edition of the 1925 novel is on display to welcome guests. • Also at the Halekulani, the **Cattleya Wine Bar** will re-open on October 13th. Featuring global wines by the glass and bottle paired with Mediterranean-influenced tapas style dishes. The bar is inside Orchids restaurant. 923-2311. • **Hy's Steak House** has introduced its new chauffeured dinner



WAIKIKI BAPTIST Church
Your Church in Waikiki
 424 Kuamo'o St
 (Near the Ambassador Hotel)
Sunday Worship Services
 9:00 AM - Contemporary
 10:45 AM - Traditional
 (808)955-3525
 WaikikiBaptist.com

packages. They will now offer luxury transportation in a Mercedes Benz GLS 450 to and from your location to the restaurant with three unique menu selections ranging from \$200 to \$400 per guest. A G. Lion Restaurant, this offer is also now available for **La Vie** and **Quiora** at the Ritz Carlton. Please book one week in advance. For more information go to gionhawaii.com/transportation. • White truffles from Italy has arrived at **Margotto Hawaii**. As mentioned when they opened, the truffle selection and price will vary depending on the types of truffles available. Unlike the Burgundian black summer truffles, which were available in June for just \$1 per gram, and the Tasmanian winter black truffles, which retailed for \$3.75 per gram throughout the summer, the white truffles currently command a premium price of \$7.50 per gram and that price could fluctuate throughout October depending on availability. Open from 5 to 10:30 p.m. Thursday through Tuesday, reservations are recommended. 592-8500. • **Honolulu Burger Company** has opened its first sit-down, full-service restaurant in Kaimuki. The new Kaimuki location offers the same burgers the restaurant is known for, but they have added new items not found at their other locations, such as Loaded Tater Tots, Deep Fried Brussels Sprouts, Caprese Salad, and Wing Dings. Open Friday through Wednesday, 11 a.m. - 2 p.m., 4 to 8 p.m. Sundays from 11 a.m - 3 p.m. 762-0552. • **Cracking Kitchen** has opened its latest location in the former Goma Tei at the International Market Place. Known for their signature Seafood combos with crab, shrimp, mussels, clams, corn, and potatoes, they offer a variety of sauces to choose from. In October, they will also be offering breakfast from 7 a.m. Choose from traditional breakfast items to Japanese-style curry rice with deep-fried shrimp, shrimp and grits, and of course, the loco moco. Large breakfast plates run from \$14 - \$20, and kama'aina get 10% off. Enjoy Happy Hour from 3 - 5 p.m. 404-9221. • Congratulations to **Highway Inn**, which celebrated 75 years last month. Founded in 1947 by Seiichi and Nancy Toguchi, the family-owned restaurant Highway Inn is now operated by the third generation of Toguchi's and has three locations and over 100 employees.



Chef's Corner

Celebrity Chef Ming Tsai

Ming Tsai started making a name for himself in the 90s. His life is about cooking, and helping. He devotes his time to help cancer charities. Cancer is the #1 cause of personal bankruptcy in the country, and the only national charity that financially helps families dealing with cancer is called familyreach.org. He's raised over 10 million for them over the years. He also donates a portion of proceeds of his gluten free, vegan Mings Bings to support the cause. These plant based goodies are available at Target. The motto of Mings Bings is Eat Good, Feel Good, Do Good.

Where did you catch the restaurant bug?

My parents had a restaurant in Dayton, Ohio. I was the cook/janitor/dishwasher manager/egg roll cart boy, and it is true that it's where I got what they call the restaurant bug. If you serve good food at a reasonable price, with a smile, which of course translates to service down the road, but, if you do have that formula... tasty, reasonable and pleasantly served, you can make someone happy. And that's the restaurant bug.

What made you decide to be a chef?

I also learned early on that I can make people happy through food. There's a story of when people stopped by the house when I was 10 years old and I made them fried rice, because every good Chinese household has leftover fried rice. We always have garlic, ginger, scallions, and eggs. The long and short of it is my race was little too salty, I put in too much soy sauce and a little too much oil, because I'm 10, but after I served it I watched and they smiled. And I'm like, wow, you can make people happy through the food. That's very cool. That's truly why I'm a chef.

You went to Yale for mechanical engineering?

Yes. My father is one of the foremost mechanical engineers. But I started going to Paris every summer while at Yale to master French cuisine at Le Cordon Bleu. My dad's partner lived in Paris at that time so I had a free place to stay and I was loving life.

How was your experience at Le Cordon Bleu Paris?

That was significant for me, because up until that point, I only knew Chinese cuisine. And when I went to France, I'm like, damn, the French could cook! Especially their desserts and pastries. Their desserts and pastries are far above what we did in Chinese cuisine. After my junior year I sat my parents down and told them I was going to finish my degree, but, I want to cook. I'm so very blessed, because they gave me their full support. Plus, my dad said, "Son, you weren't gonna be a very good engineer anyway, so go cook." Ha!

Tell us about opening Blue Ginger?

Blue Ginger was significant. It was my first personal opening, but it was probably my sixth opening. I always think opening restaurants are key. Opening hotels are key to learn how to do it. The cream rises the top during an opening. But during an opening, especially with other people's money, it's much better to make your rookie mistakes before you go off on your own.

What did you learn opening your first restaurant?

I will tell you the most important thing about opening a restaurant is cash flow. Location, yes, Concept, yes, and you have to be present every day because the decision made on site during the build out will protect that cash flow. And I can't stress enough that time is money. By being there and making quick decisions, you can save money. I proudly opened on time & on budget.

How did you get involved in the early food TV era?

I was "discovered," by the Food Network in Santa Fe, they had a show called Dining Around.

What do you think about the food TV craze?

I love doing TV. I think is fantastic. I've always loved teaching and that's how I got discovered. I think what cooking and chefs on TV have brought awareness to how food is made, what we can do, save environment, all of that, but just the sheer entertainment. It's great. Food shows are non-violent non-political everyone has a relationship in the world with food.

Tell us about Iron Chef?

Truth be told Iron Chef is the hardest thing I've ever done in my life. Those are true 60- or 75-minute competitions, five courses, five plates, whatever, an incredible amount of work is done in that timeframe. I am competitive to the bone and Iron Chef combines my competitiveness with what I love to do, cook.

What do you have planned for this years' HFWF?

I love this festival. It's one of my favorite festivals in the world. I'm excited to be making a surf & turf w/bone marrow and Kauai Shrimp mousse, and still have time to get in the water and golf!



Watermelon Salsa

Perfect for tortilla chips, grilled salmon, and over my Fiesta MingsBings!

Ingredients:

- | | |
|---|--|
| 1 small seedless Watermelon, diced | ½ Tbsp sweet chili sauce (Chef Tsai prefers MingsBings Sweet Chili Dipper) |
| 4 Scallions (whites and greens) chopped | 1 Tbsp extra virgin olive oil |
| 1 Tbsp ginger, peeled and minced | ¼ of a lemon, juiced |
| | Thai basil, minced |
| | Salt & pepper |

Directions:

Add watermelon, scallions, thai basil, ginger, sweet chili sauce, extra virgin olive oil, lemon juice, salt and pepper into a bowl and mix. Enjoy with tortilla chips or Fiesta MingsBings!

You can meet Chef Ming Tsai at this years Hawaii Food & Wine Festival at Momo & the Tiger at the Alohilani on November 3rd. For tickets go to HFWF.me. Website: ming.com • Instagram/Twitter: [@mingtsai](https://www.instagram.com/mingtsai) • Facebook: [/SimplyMingTV](https://www.facebook.com/SimplyMingTV)

OCTOBER CALENDAR OF EVENTS

Continuing Events

Continuing events such as cultural events at shopping centers and Farmer's Markets can now be found in our That's Entertainment section on page 18.

OCTOBER 1 - 31 HAWAII BOOK & MUSIC FESTIVAL

This year's Hawaii Book & Music Festival has gone virtual with over 75 Zoom events to choose from with well over 100 speakers. Register online and create your own personal schedule. hawaiiobookandmusicfestival.com.

MONDAYS, WEDNESDAYS & FRIDAYS O NĀ LANI SUNSET STORIES HULA SHOW

Honoring the rich history and sense of place of the International Market Place through song & dance. It begins at sunset with the lighting of the Lamakū Torch Tower on Kalākaua Avenue and leads to the Queen's Court. Free. 7 p.m. shopinternationalmarketplace.com.

WEDNESDAYS, SATURDAYS & SUNDAYS ALOHA STADIUM SWAP MEET

The Aloha Stadium Swap Meet has been going strong since 1979. Featuring over 400 vendors, crafters and artists, the Swap Meet offers low-prices on a wide selection of quality products with food trucks to snack from. Wednesdays & Saturdays: 8 a.m. - 3 p.m., Sundays, 6:30 a.m. - 3 p.m. alohastadium.hawaii.gov.

**FIRST FRIDAY (SEPTEMBER 2)
DOWNTOWN GALLERY WALK & CRAFT FAIR**
Downtown comes alive the first Friday of every month as art lovers fill the streets for Honolulu's outdoor self-guided arts tour. Stores spill out onto the sidewalk, artists are on hand to chat about to their works, and restaurants are ready to serve you. Monthly updates are published on participating merchant websites, or two days before the event at firstfridayhawaii.com.

SECOND FRIDAY (OCTOBER 14) BISHOP MUSEUM AFTER HOURS

Extended after-hours access to the Museum with a Pau Hana presentation, living culture demonstration, keiki activities, exhibition tours,

J. Watumull Planetarium shows, a Membership Lounge, food trucks, and live music. 5:30 - 9 p.m. \$20/\$10 kama'aina. bishopmuseum.org.

FRIDAYS

ROYAL HAWAIIAN BAND LUNCHTIME SHOW

The Royal Hawaiian Band has returned to Iolani Palace for its popular lunchtime concerts. Held on most Fridays, the concerts are free and open to the public. 12 - 1 p.m. iolanipalace.org

FRIDAYS & SATURDAYS • HOMA NIGHTS

On Friday and Saturday nights, regular museum admission also includes live musical performances, hands-on art activities, pop-ups in the HoMA Shop, movies on the lawn, bar service at the HoMA Cafe, and other interactive art experiences. The museum stays open until 9 p.m. honoluluuseum.org.

SATURDAYS & SUNDAYS ART ON THE ZOO FENCE

See the works of local artists displayed on the Zoo fence on Monsarrat Avenue opposite the Kapiolani Park Bandstand. Works include original paintings, prints and photographs. 9 a.m. - 3 p.m. Free. artonthezoo fence.com.

SATURDAYS & SUNDAYS YOGA IN THE PARK

Core Power Yoga have added Saturdays to their free yoga classes at Victoria Ward Park. Registration required. Sat: 12-1 p.m. Sun: 9 - 10 a.m. wardvillage.com/explore/activities.

THIRD SUNDAY (OCTOBER 16) MELE HALI'A

Waikiki Beach Walk celebrates Hawaiian music with an award-winning musician one Sunday a month on the Plaza Stage. This month see steel guitarist Greg Sardinha & Friends. 5-6 p.m. waikikibeachwalk.com.

THIRD SUNDAY (OCTOBER 16) FAMILY FREE SUNDAY

Thanks to Bank of Hawaii, kama'aina have been offered free admission with ID on the third Sunday of the month since 2004. Currently a combo of both in-person and virtual events, offering something for all, but for those that want to attend in-person, they can get free museum admission with reservations. Visitors welcome, but they have to pay. 10 a.m. - 6 p.m. Free. 532-8700. honoluluuseum.org.

OCTOBER 1 JOAN OSBORNE & CRACKER



Multi-platinum selling recording artist and seven-time Grammy nominee, Joan Osborne, is a soulful vocalist that is a highly sought-after collaborator who has performed alongside many notable artists, including Stevie Wonder, Bob Dylan, Luciano Pavarotti, Emmylou Harris, Taj Mahal, and even toured with the Grateful Dead, after Jerry Garcia died to name a few. 8 p.m. Tickets: \$37-\$67. hawaii theatre.com.

OCTOBER 1 MOANI'S WEST FEST 2022

West O'ahu's official music festival, presented by Moani Island Bistro & Bar, will feature food, music and fun for the whole family with

entertainment by some of Hawai'i's biggest names in music including Ekolu, Fia, Johnny Suite, BET, Pohaku and more! Doors open at 4 p.m. with music starting at 4:30 p.m. West Fest 2022 will take place in the parking lot of Ka Makana Ali'i near 'Ōlino Theatres. The festival will set up a large stage for entertainment and feature beverages by Moani available for purchase, along with local food vendors. Tickets: \$40-\$100. westfeshawaii.com.

OCTOBER 2 • WIKI WIKI ONE DAY VINTAGE COLLECTIBLES & HAWAIIANA SHOW

This is one of three vintage collectible and antiques show and sales a year. Close to a hundred vendors will offer antiques, estate jewelry, vintage fashion, aloha shirts, Hawaiiana and more. All items are over 20 years old. Blaisdell Hawaii Suites. 11 a.m. - 4:30 p.m. \$4.50. Early entry \$15 from 9 a.m. ukulele.com/wikiwiki.html.

OCTOBER 2 • SUSAN G. KOMEN HAWAII MORE THAN PINK WALK

Susan G. Komen is the world's largest and most successful education and fundraising event for breast cancer ever created. They are bringing their inaugural MORE THAN PINK walk to Kapiolani Park. This 1.8-mile walk is open to runners of all ages and fitness levels. 7 a.m. - noon. komenhawaii.org.

OCTOBER 5-6 • JOURNEY



This classic rock band continues its love affair with the islands, and the island continue to welcome them with "Open Arms". Journey first played at

the Diamond Head Crater Fest in the 70's and has been one of the most consistent bands to return time and time again. "Don't Stop Believing" in them now. Tickets still available: \$55 - \$375. Blaisdell Arena. ticketmaster.com.

OCTOBER 7 TIG NOTARO

Due to circumstances out of anyone's control Tig's rescheduled show in August had to be rescheduled yet again. All previous tickets for this stand-up comedian's show will be honored, and tickets are still available. 7 p.m. Tickets: \$29.50-\$54.50. hawaii theatre.com.

OCTOBER 7-9 FOOD & NEW PRODUCTS SHOW

Browse through the food court, plant sale, new products, and taste food samples at the Blaisdell Exhibition Hall. Friday, 5 - 8 p.m.; Sat. 10 a.m. - 8 p.m., Sun. 10 a.m. - 5 p.m. \$4. pacificexpos.com.

OCTOBER 8 OVER THE EDGE

Be sure to look up towards the top of the Hyatt Regency Hotel throughout the day to see people rappelling down more than 400 feet for the 13th annual fundraiser that benefits Special Olympics Hawaii. 8 a.m. - 4:30 p.m. sohawaii.org.

How Can We Help?

We're a family-operated business dedicated to service, safety, quality & fun! Ocean activities for all ages and budgets. We're at your service to help provide a perfect match for your client.



Located at:
• KEWALO
• WAIANAE
• HILTON PIER

We offer:
• Sail • Snorkel •
• Dolphins • Turtles
• Whales (in season)
• Private Charters
• Transportation

234-SAIL

(7245)

WE ANSWER 24 HOURS!

hawaiinautical.com

Hawaii Nautical



OCTOBER CALENDAR OF EVENTS

OCTOBER 8 WAIKIKI BAZAAR

The monthly street fair will close all lanes and sidewalk areas of Kalakaua from Seaside to Kapaehulu starting at 2 p.m. Wander through retail and craft booths, food trucks and more. 4 – 10 p.m. millwoodohanaproductions.com.

OCTOBER 8 CHRISTOPHER TITUS

Employing what he's labeled "hard funny," Christopher Titus has released seven ninety-minute albums in as many years. He has six one-hour comedy specials currently running on Comedy Central, and his seventh special, *Born With a Defect*, spent four weeks on the Billboard Top Ten Comedy Chart.:30 pm. Tickets: \$35-\$5 hawaiiitheatre.com.

OCTOBER 8-9 TAKE ME BACK TO CHICAGO TOUR

Former legendary drummer and founding member of Chicago, Danny Seraphine partners up with former lead singer Jeff Coffey will perform some of the bands legendary hits. Tickets: \$25-\$35. Two shows nightly at 6:30 & 9 p.m. bluenotehawaii.com.

OCTOBER 11-12 RITA RÜDNER

Beginning her career as a Broadway dancer, Rudner noticed the lack of female comedians in New York City and turned to stand-up comedy, where she has flourished for over three decades. Her numerous appearances on *The Tonight Show* with Johnny Carson helped establish Rudner as one of the premier comics to emerge from the comedy boom of the 1980s. Tickets: \$45-\$65. Two shows nightly at 6:30 & 9 p.m. bluenotehawaii.com.

OCTOBER 12 BIG BAD VOODOO DADDY

Since its formation in the early nineties in Ventura, California, the band has toured virtually nonstop, performing on average over 150 shows a year, and has produced a sizable catalog of recorded music, with sales of over 2 million albums to date. 29 years later, the band shows no signs of slowing down. 7 pm. Tickets: \$35-\$55. hawaiiitheatre.com.

OCTOBER 13-14, 16-17 • BILLY OCEAN



Grammy® Award - winning R&B singer Billy Ocean has sold over 30 million records in his lifetime. Billy has achieved extraordinary success as both an artist and a songwriter with hits like "Caribbean Queen," "Get Outta My Dreams, Get Into My Car" and "Loverboy," collecting a pile of gold and platinum records across the world. Tickets: \$85-\$125. 8 p.m. bluenotehawaii.com.

OCTOBER 12 THE ROYAL HAWAIIAN BAND

The band will be celebrating with the community with a special free concert with some of Hawaii's favorite artists, including: Amy Hānaiali'i Gilliom, Nathan Aweau, Keauhou, Karen Keawehawai'i, Danny Kaleikini, and many more. 7 pm. Tickets limited to 5 free tickets per customer. Tickets: \$39.50. hawaiiitheatre.com.

OCTOBER 14 BIG BOI

Formerly one-half of the hit group Outkast, Rapper Big Boi went solo years ago and has been riding high since his part of the 2019 Super Bowl half-time show with Maroon 5. Tickets: \$39.50. The Republik. 8 p.m. bampproject.com.

OCTOBER 14 & 16 THE SECRET GARDEN

The Hawaii Opera Theatre kicks off their 2022-2023 season with an operatic telling of one of literature's most beloved children's stories, *The Secret Garden*. The production will be conducted by Elizabeth Askren, who is making a name for herself throughout the US and Europe. This production, perfect for the whole family, is the same traditional story you love but set in a tropical Hawaiian oasis. Blaisdell Concert Hall. Tickets: \$30-\$135. 7:30 p.m., 4 p.m. on Sunday. hawaiiopera.org.

OCTOBER 14-16 HAWAII HOLIDAY CRAFT & GIFT FAIR

Nearly 150 vendors will be showcasing their unique, one-of-a-kind Hawaii products at the Blaisdell Exhibition Hall. Get a jump on that Christmas shopping! \$5. (Print the \$2 off coupon online) 10 a.m. – 5 p.m. hawaiiholidayfair.com.

OCTOBER 15 HISPANIC HERITAGE STREET FESTIVAL

Celebrate Hispanic Heritage Month with the 30th annual family-friendly fest and health fair (after a 2-year hiatus) filled with Latin food

booths, crafters, cultural displays, art, business/specialty booths, low-riders, classic & vintage car show, children's activities, beer garden for those 21+, and live entertainment honoring Hispanic history. Live entertainment all day. Free. American Veterans Center West Oahu in Ewa Beach. 11 a.m. – 6 p.m. hispaniceventshawaii.com.

OCTOBER 15 IONASPHERE 2022

Celebrating the artists that color our world, *La Vie Boheme* is the theme of this year's fundraiser for Iona Contemporary Dance Theatre at Swell Pool Deck at the Alohilani Resort. 6:30 – 10 p.m. iona360.com.

OCTOBER 15 UH RAINBOWS VS. NEVADA

The Warriors are back. Get your green on and support the University of Hawaii Football Warriors as they play against Nevada. 6 p.m. at the Clarence T.C. Ching Complex. hawaiiathletics.com.

OCTOBER 15 ROOTED IN PRIDE PARADE & FESTIVAL

The 2022 Honolulu Pride returns with in-person celebrations. This year's theme is "Rooted in Pride," an expression of Hawai'i's culture of diversity and inclusion. The Pride Parade begins on Magic Island at 10 a.m. Over 3,200 marchers, 15 floats, 40 vehicles, 4 bands, colorful floats, and balloons, dazzling streamers, and

Continued on page 17.



EXPERIENCE OUR NEW SEA LION ENCOUNTER

\$89.99 PER PERSON

FEED, TOUCH, AND INTERACT WITH A CALIFORNIA SEA LION. HAVE A FUN, EDUCATIONAL, AND PERSONAL EXPERIENCE WITH THESE FASCINATING ANIMALS.

CALL 808-259-2500 TO BOOK OR VISIT SEALIFEPARKHAWAII.COM

OCTOBER CALENDAR OF EVENTS

Continued from page 15.

glamorous drag queens will trek through Waikiki. The parade will wind up at the Waikiki Shell, where the Pride Festival begins at 11:30 a.m. until 6 p.m. There are multiple events throughout the month, so check the website for the details. hawaiibgtlegacyfoundation.com. Also, don't forget the Hawaii Food & Wine Festival is hosting a Cheers & Queers brunch on November 6th at the Blue Note from 11 a.m. - 1 p.m. Tickets (\$150) are going quickly so book yours at hfwf.me.

OCTOBER 15 MAKALAUNA

This annual ceremony includes musical tributes, hula and lei draping at Waikiki Beach Walk to honor legendary musician Gabby "Pops" Pahinui and 'ohana at his statue at the Waikiki Beach Walk Plaza. There will be ceremonial tributes and live music, including a special appearance by Kunia Galdeira – a grandson of Gabby – and other members of the Pahinui 'ohana with live musical tributes. 4:30 – 7:30 p.m. waikikibeachwalk.com.

OCTOBER 16 ALII SUNDAY

Kawaiahao Church celebrates select Hawaiian Royalty who are of particular importance for the Church by holding of special Sunday services in their honor around their birthdays throughout the year filled with traditional Hawaiian cultural touches. Today they honor Princess Ka'iulani's birthday. 9 a.m. kawaiahao.org.

OCTOBER 16-30 HAWAII'S WOODSHOW

The premier statewide exhibition of exquisite woodwork by talented woodworkers from Hawaii and abroad showcasing the versatility and beauty of Hawai'i-grown woods across a variety of design mediums from furniture to musical instruments. The 30th anniversary of Hawaii's Woodshow will be held at the Hawaii Opera Plaza. hawaiiforest.org.

OCTOBER 17 TASTE AMERICA HONOLULU

Taste America is a James Beard Foundation event across 20 cities nationwide, bringing chefs and diners together to celebrate local independent restaurants, and focus on the breadth of culinary creativity across the country. Chef Andrew Le of The Pig & The Lady and Chef Ravi Kapur of Liholiho Yacht Club in San Francisco will pair up to prepare a locally sourced multi-course meal with beverage pairings. The Pig and the Lady, Seatings at 5:30 p.m. and 8 p.m. jamesbeard.org/events.

OCTOBER 18 ANDREW MCMAHON IN THE WILDERNESS



McMahon began writing songs at age nine, drawing inspiration from singer/songwriter/ pianists such as Elton John and Billy Joel. In 2014, his song "Cecilia and the Satellite" hit gold. Tickets: \$25-\$35. 8 p.m. bluotehawaii.com.

OCTOBER 21 ANJELAH JOHNSON-REYES



Rising to stardom with her infamous skits about a Vietnamese nail salon employee, she has been selling out performances for years, and this night is no exception. Her first show sold out so quickly, she launched a 2nd one the same night. Blaisdell Concert Hall. Tickets: \$39.50-\$65. 7 p.m. show sold out. Tickets still available for the 2nd show. bampproject.com.

OCTOBER 21 KEHLANI - BLUE WATER ROAD TRIP TOUR

Kehlani is bringing her worldwide Blue Water Road Trip tour to the Islands. The "Distraction" singer-songwriter has been giving fans a show along with her two opening acts, Rico Nasty and Destin Conrad. Tickets: \$59.50 – \$125. Waikiki Shell. 7 pm. bampproject.com.

OCTOBER 22 WAIKIKI BEACH CLEAN UP

Come join the Waikiki Improvement Association and make a difference cleaning up Waikiki Beach. Validated self-parking at the Hyatt Regency is available for all participants and a continental breakfast will be provided. Meet at Duke's Statue at 7 a.m., and be pau by 9 a.m. If your desk would like to assist, RSVP to joann@waikikiimprovement.com.

OCTOBER 22 HONOLULU ON TAP

Enjoy live music and 40 beers on tap at this annual beer tasting festival. Tickets: \$40 gets you three hours of tastings, and a souvenir sampling glass from 2 - 5 p.m. \$60 gets you 4 hours of sampling, a souvenir sampling glass, a commemorative hat and a food voucher from 1 - 5 p.m. DD tickets available for \$10. Blaisdell Center. ticketmaster.com.

OCTOBER 22 • THE MOTH



The Moth began on a back porch in small-town Georgia, where founder — poet and best-selling novelist George Dawes Green — would spend sultry summer evenings swapping spellbinding tales with a small circle of friends. There was a hole in the screen, which let in moths that were attracted to the light, and the group started calling themselves "The Moths." They have presented more than fifteen thousand stories, told live and without notes, to standing-room-only crowds worldwide ever since. Tonight's performance include local legendary storyteller, Lopaka Kapanui. 7:30 pm. Tickets: \$38-\$58. hawaii theatre.com.

OCTOBER 28 DAY OF THE DEAD: TESTPILOT

Joel Thomas Zimmerman is a Canadian electronic music producer and DJ. Testpilot is the alias he uses for his techno music. You may also know him under his other alias, Deadmau5. The Republik. Tickets: \$35-\$55 10 p.m. bampproject.com.

DOCTORS OF WAIKIKI STATE-OF-THE-ART MODERN AND NEWEST URGENT CARE IN WAIKIKI

808.922.2112 | doctorsofwaikiki.com

Call to request courtesy complimentary transportation **FREE**

Offering ALL 5 TYPES of FDA/EUA Approved Tests for COVID-19

Currently only Medical Center on Oahu offering Abbott Rapid Covid-19 test: with results ready in 20 minutes

SERVICES INCLUDE:

- Courtesy complimentary transportation
- House/Hotel room calls
- Diagnosis and treatment of illness and injuries
- Contracted pre-employment physicals
- Drug screenings
- Immunizations for adults

Dr. Alan Wu, M.D.

Dr. Tony Trpkovski, M.D.

- Largest most full staffed urgent care in Waikiki
- Qualified and experience English, Japanese, Chinese & Korean speaking client service representatives
- Immigration medical examinations
- No appointment needed (walk-in urgent care)
- All major insurance and major credit cards accepted

HOURS OF OPERATION: 8:00AM-12:00AM (OPEN DAILY)

Sheraton Princess Ka'iulani Hotel ground floor • 120 Ka'iulani Avenue, #KW10 & 11, Honolulu, HI 96815 • 808.922.2112 • info@doctorsofwaikiki.com

OCT CON'T

OCTOBER 28-29 JON RATTENBURY

Renowned English artist Jon Rattenbury, known for his ethereal landscapes which he creates with a "dimensional acrylic" technique that gives his works a fantastic amount of depth and texture is coming to Waikiki for two public appearances at Park West Hawaii Gallery at Waikiki Beach Walk. On Friday from 5 to 9 p.m. he will be painting live for all to see. The event is free and open to the public. The next day they will host a private cocktail party at 7 pm. with drinks, appetizers, and prizes to those who attend. The cocktail party is free but only available to those who RSVP at waikikibeach@parkwestgallery.com.

OCTOBER 28-29 • JR DEGZMAN



JR De Guzman combines music and comedy into his shows, serenading the audience into laughter with songs, jokes, and stories of traveling the world, culture, and family. Born in the Philippines and raised in California, JR De Guzman began performing comedy while working as a music teacher, and was the Winner of 2016 Stand-up NBC. Tickets: \$20-\$30. Two shows nightly at 6:30 and 9 p.m., but only three are still available. One show is already sold out. bluenotehawaii.com.

OCTOBER 29 DAY OF THE DEAD: DEADMAUS

Progressive house music from the famous DJ and producer Joel Thomas Zimmerman known for the giant mouse head he wears during performances takes the stage at Blaisdell Arena. Tickets: \$40-\$59.50. 7 p.m. bampproject.com.

OCTOBER 29-30 HSO TAKES ON HARRY POTTER

Your Hawai'i Symphony Orchestra continues their popular Movie series, as they perform the magical score live from Harry Potter and the Order of the Phoenix™ while the entire film plays behind them in high-definition on a 40-foot screen. Tickets: \$27-\$82. Saturday 7 p.m., 4 p.m. on Sunday. Blaisdell Concert Hall. hawaiiisymphonyorchestra.org.

OCTOBER 29 UH RAINBOWS VS. WYOMING

Get your green on and support the University of Hawaii Football Warriors as they match up against the Wyoming Cowboys at the Clarence T.C. Ching Complex. 6 p.m. hawaiiathletics.com.

OCTOBER 29-30 THE THREE PHANTOMS



Three legendary Broadway stars are coming together to share the Music of the Night with Honolulu audiences for the first time since 2008. Featuring Craig Shulman, Keith Buterbaugh, and Gary Mauer, each who have played the Phantom on Broadway. In addition to songs from Phantom, music from other musicals like Les Misérables and Jekyll & Hyde will also be performed. 7 pm., Sunday 2 p.m. Tickets: \$30-\$50. hawaii theatre.com.



JINYA, the new hot spot at Ward Village, opened its third concept, JINYA Ramen Bar, and this place takes its ramen seriously. They make their broths in-house using only FUJI water, simmered for at least 20 hours, creating a rich, thick, flavorful base. Offering six different broths, including a vegan one, they are paired with handmade noodles that undergo a special aging process before being cooked and served with a wide array of authentic toppings. The small plates were also good. The overall consensus was this place is legit and a welcome addition to the Honolulu food scene. Open daily from 11 a.m. jinyaramenbar.com.



Make a difference starting with you
De-stress • Refresh • Relax • Heal



All New Clients Receive
10% off
 their first massage

EXPERIENCE SERENITY AND MASSAGE FOR YOURSELF

- Full 60 & 90 minute massages
- Peaceful, tranquil atmosphere
- Talented licensed massage therapists
- We follow COVID safety protocols
- Save \$26 per massage as a member
- Services include: Swedish, Lomi Lomi, Deep Tissue, Shiatsu, Reiki, Prenatal, Trigger Point Therapy, Neuromuscular Therapy, and more

We offer in-home/room massage services. Please call to inquire



HAWAII KAI SHOPPING CENTER

377 Keahole St., Ste. 207 (across from Safeway)

Call us at **396-7594**

Text us at **862-6163**

serenityandmassage.com



Congratulations Mr & Mrs. Beimes!



Congratulations to Kiana MacDonald, Area Director of Front Services for Outrigger Resorts and Matthew Beimes, Blue Hawaiian Activities Concierge Manager. They first met when they both worked at the Outrigger Reef in 2017, and tied the knot on August 27, 2002.

Halekulani launches Earl's inside HWAK



Halekulani General Manager Ulrich Krauer - Hiinani Blakesley - Cultural Advisor; Tuda Grehan - Lead Mixologist; Jarrin Otake - House Without A Key Chef; and Christian Testa - Executive Chef pose on the iconic stage at the official opening of EARL'S, an outdoor bar inside the House Without a Key

Travelers Aid CEO Visits VASH



The President & CEO of Travelers Aid of San Diego, Marcy Roke, and her husband Arthur took time out of their vacation to visit the Visitor Aloha Society of Hawaii offices. VASH President & CEO Jessica Lani Rich enjoyed spending time sharing how both take care of visitors in distress

Bloomingdale's celebrates 150 years!



Jeff Perkins, the former GM of the Queen Kapiolani and Shoreline Hotels when he lived here, and is currently the GM of the Laguna Cliffs Marriott happened past Bloomingdale's 150th anniversary VIP event while on a recent trip home, and snapped a photo with GM Lieu Tran.



Looking for a few extra hours? Do you have friends not back at work yet or looking for jobs? Whatever the case may be here are a few companies actively looking.

KO'ULA, WARD VILLAGE

KO'ULA Ko'ula, Ward Village's newest luxury condominium is now seeking concierge professionals to join our family to aid in anticipating needs, exceeding expectations and delivering first class services to our local, national and international residents. Preferred experiences: Language, hotel, condo, security. Pre-employment drug screen & background check required. Starting: \$19.00 - \$22.00/hour. Part and Full time positions available. Weekends, nights and holidays required. This is an on-site, non-remote position. Please email resumes to: admin@koulawardvillage.org

BAREFOOT BEACH CAFE

is hiring all positions for its oceanfront restaurant on Queen's Surf Beach. Looking for a Dish/Prep Cook Line Cook, Cashier/Server, and General Manager. Please send your resume and a short summary about yourself to: HireMe@BarefootBeachCafe.com.

ORIGINAL MAGOO'S PIZZA

is hiring all positions for its new dine-in location in Kaimuki. Pizza Cook, Dish/Prep Cook, Line Cook, Cashier/ Server, Bartender, Please send a resume and short summary about yourself to HireMe@OriginalMagoosPizza.com.

That's Entertainment

HOTELS

- 'ALOHILANI RESORT 922-1233**
- **Daily** - Fish Feeding 10:30am & 2:30pm *O Bar*
 - **Daily** - Live Music 6:30-9:30pm *Swell Bar*
 - **Daily** - Light Monument Video Art Series 7-9pm *Swell Bar*
 - **SunWedSat** - Tank Talk 9am. *O Bar*
 - **Sun** - Sunday Club Brunch with DJ KK 11:30am - 2:30pm
- HALEKULANI 923-2311**
- **Daily** - Music & Hula 5:30-8:30pm *House Without a Key*
 - **TWThFS** - Live Jazz 8pm - 12am, *Lewers Lounge*
 - **Sun** - Sunday brunch w/Noly Paa on piano 9:30am - 2pm
- HILTON HAWAIIAN VILLAGE 949-4321**
- **Fri** - Fireworks revert to the Fall/Winter time of 7:45pm
 - **SunMTWTh** - Live entertainment, Tapa Bar. 7-10pm
 - **FriSat** - Live entertainment, Tapa Bar. 8-11pm
 - **FSSun** - Live music at SHOR 5:30-8:30pm
- HYATT REGENCY WAIKIKI 923-1234**
- **Daily** - Live music at SWIM 5-8pm
 - **MWed** - Farmer's Market from 4-8pm
 - **Mon-Fri** - Cultural Programs at the Ho'okela Culture Center
 - **TTh** - Walking Tour thru parts of Waikiki at 10am
 - **TTh** - Live Hawaiian music at Pualeilani Atrium, 4-6 pm
 - **FSSun** - Live music at SHOR 5:30-8:30pm
- KAHALA HOTEL & RESORT 739-8888**
- **Mon** - Free kapala stamping at The Veranda at 10am
 - **Tues** - Free lauhala weaving at The Veranda at 10am
 - **WFSat** - Free Lei making at The Veranda at 10am
 - **Thurs** - Free hula dancing at The Veranda at 10am
 - **ThFSat** - Live entertainment at The Veranda from 6-8pm.
 - **FriSat** - Afternoon Tea at The Veranda at 2pm & 3:30pm
 - **Daily** - See the interactive dolphin programs every hour
- LUANA WAIKIKI HOTEL & SUITES 955-6000**
- **MWF** - Enjoy live music and hula on the Mezzanine 5-6pm
- MOANA SURFRIDER 922-3111**
- **Daily** - Live music at The Beach Bar, 4:30-6:30pm, 7-10pm
 - **WThFSSu** - David Swanson at Vintage1901, 5:30-9:30pm
 - **SatSun** - Afternoon Tea at the Veranda, 11:30am - 2:30pm
- OUTRIGGER WAIKIKI BEACH 923-0711**
- **Daily** - Live music at Duke's 4-11:30pm, Sat/Sun from 10am
- OUTRIGGER REEF WAIKIKI BEACH 923-3111**
- **Daily** - Live Hawaiian music at Kani Ka Pila Grille. 6-9pm
- PRINCE WAIKIKI 956-1111**
- **ThFSSu** - Live music at 100 Sails from 6-8pm
 - **FSSu** - Live music Hinana Bar from 5-7pm
 - **Sat** - DJ Jem poolside from 2-5pm
- SHERATON PRINCESS KA'IULANI 922-5811**
- **Daily** - Live music poolside 6-9pm. DJ from 3-6pm.
- THE ROYAL HAWAIIAN 923-7311**
- **Daily** - Live Hawaiian music at the Mai Tai Bar. 11am-2pm
 - **TWFSsu** - Live Hawaiian music at the Mai Tai Bar. 6-9pm
 - **MTh** - Live Hawaiian music at the Mai Tai Bar. 8-10pm
- TURTLE BAY RESORT 293-6000**
- **Daily** - Live music at The Pointe Pool Bar, 4-7pm
 - **Daily** - Live music at Off the Lip, 7pm
 - **Daily** - The Stable at Turtle Bay offers a variety of experiences
- WAIKIKI BEACH MARRIOTT RESORT 922-6611**
- **Daily** - Live music, Queensbreak Restaurant 5:30-8:30pm

FARMERS MARKETS

- WBW OPEN MARKET**
- **Mon** - Set up on the Plaza at Waikiki Beach Walk. 4-8pm.
- HYATT REGENCY FARMERS MARKET 225-4002**
- **MonWed** - Hyatt Regency 1st floor waterfall atrium 4-8pm
- HAWAII FARM BUREAU MARKET 848-2074**
- **Wed** - Set up on the Blaisdell Concert Hall Lawn 4-7pm.
- ALOHA HOME MARKET 225-4002**
- **Thurs** - Pool Terrace Sheraton Princess Kaiulani 3-9pm.
 - **Sun** - Ala Moana Mall Level 2 parking by Macys 9am-2pm.

- HALE'IWA FARMERS MARKET 388-9696**
- **Thurs** - Located at Waimea Valley. 2-6pm
- MAHIKU FARMERS MARKET 225-4002**
- **Thurs** - Bottom level International Market Place 4-8pm.
- KCC FARMERS MARKET 848-2074**
- **Sat** - Kapiolani Community College 7:30-11am
- KAKA'AKO FARMERS MARKET 388-9696**
- **Sat** - 919 Ala Moana Blvd & 210 Ward Avenue. 8am-12pm
- PEARLRIDGE FARMERS MARKET 388-9696**
- **Sat** - Pearlridge Mauka by Macy's. 8am-12pm
- KAILUA FARM BUREAU MARKET 848-2074**
- **Sun** - Kailua Town Center. 4-7pm
- KAILUA TOWN FARMERS MARKET 388-9696**
- **Sun** - Enchanted Lake Center by Kailua Cinema. 8am-12pm

ATTRACTIONS

- FOSTER BOTANICAL GARDEN 768-7135**
- **Daily** - Hawaii's oldest Botanical Garden in the midst of downtown open 9am - 4pm. \$5/\$1 keiki (kama'aina \$3)
 - **Daily** - Free docent-led tours at 10:30am. Reservations rec.
- HONOLULU ZOO 926-3191**
- **Daily** - The Zoo is open from 10am - 4pm. Last Entry at 3pm. GA \$19 adult/\$11 keiki (kamaaina \$8/\$4).
 - **Sat** - Explore the Zoo after the gates close 5:30-7:30pm.
- KUHIO BEACH HULA SHOW 843-8002**
- **WSat** - Free hula show 6:30 - 7:30pm Kuhio Hula Mound
- WAIKIKI AQUARIUM 923-9741**
- **Daily** - The Aquarium is open from 9am - 4:30pm. GA \$12 adult/\$5 kids (kamaaina \$8).
 - **1st3rdTue** - Hawaiian Plant Tour. 1:30pm. Free w/admission

MUSEUMS

- BISHOP MUSEUM 847-3511**
- **Daily** - The 15-acre campus offers guests a chance to learn about the cultural and natural heritage of Hawai'i and the Pacific across three different exhibition buildings. Daily planetarium shows, a highly unique native Hawaiian botanical garden, and more. 9am-5pm.
- HAWAII STATE ART MUSEUM 586-0900**
- **Mon-Sat** - 'Museum Interpreters' on-site to provide visitors with basic information about the museum and artwork. Special evening events as listed below. Open 10am - 4pm.
 - **1stFri** - Live entertainment and food vendors. 6-9pm
 - **2ndFri** - "Vibe" Jazz performances & food vendors. 6-9pm
 - **4thFri** - Hawaiian music night. 6-9pm
 - **3rdSat** - Family Arts & Crafts Day 11am - 3pm
- HONOLULU MUSEUM OF ART 532-8726**
- **ThFSSu** - Tour & Talk Story 11am. Free with admission.
 - **ThFSSu** - Highlights tour 2pm. Free with admission.
 - **FSat** - HoMA Nights, open until 9pm. Free with admission.
- HONOLULU FIRE MUSEUM 723-7167**
- **3rdSat** - Free one-hour guided tours through various exhibits with a firefighter recounting HFDs history the 3rd Saturday of every month. 9am - 2pm on the hour. 620 South Street. Reservations required. Book online: fire.honolulu.gov then hit the submit request button and click museum tours.
- IOLANI PALACE 522-0832**
- **TThS** - Audio tours available from 9am - 4pm
 - **WTh** - Docent-led tours available from 9am - 4pm
 - **Fri** - Royal Hawaiian Band. Free. 12-1pm
 - **SunMon** - Museum Closed
- LUCORAL MUSEUM 388-8905**
- **Daily** - Learn how to plan your jewelry project and more in these beaded jewelry workshops. Open by appointment only.
- HAWAIIAN MISSION HOUSES 447-3910**
- **TW** - Docents lead tours through the oldest existing frame house in the Islands. 11am, 12pm, 1pm and 2pm
 - **ThFSat** - 11am, 12pm, 1pm, 2pm and 3pm tours

- **TWThFSa** - Gift shop open 10:30am - 4pm
- PEARL HARBOR AVIATION MUSEUM 441-1000**
- **Daily** - Vintage aircraft in battlefield hangars at Pearl Harbor, outdoor exhibits, flight simulators, and the Bob Hope: An American Treasure Exhibit. Shuttle & Tickets at USS Arizona Memorial Visitor Center or PearlHarborAviationMuseum.org.

SHOPPING CENTERS

- ALA MOANA CENTERSTAGE 955-9517**
- **EveryOtherWed** - Royal Hawaiian Band. 11am.
 - **Every2nd&LastFri** - Night Market Food Truck and Craft Fair corner of Atkinson Drive and Ala Moana Boulevard. 4-9pm.
 - **Sat** - Local entertainment, 3pm.
 - **Sun** - Keiki Hula Show, 1pm.
- HALE'IWA STORE LOTS 203-5700**
- **Sat** - Live Hawaiian entertainment from 2-4pm
- INTERNATIONAL MARKET PLACE 921-0536**
- **MWF** - Ceremonial sunset lighting of Lamaku Torch Tower
 - **MWF** - Sunset Stories Hula Show, 7pm. *Queens Court*
 - **Thurs** - Mahiku Farmers Market. 4-8pm. *Banyan Court*
 - **1stTh** - Royal Hawaiian Band. Free. 11am. *Queens Court*
 - **1stSaSu** - Island Crafters Market. 11am-5pm. *2nd level*
 - **1st3rdSu** - Free Yoga Class. 10-10:45am. *Queens Court*
- ROYAL HAWAIIAN CENTER 922-2299**
- **Daily** - Heritage Room/Cultural Videos, *Helumoa Hale*
 - **Mon** - Free Ukelele Lessons 11pm, *Helumoa Hale*
 - **Tues** - Free Hula Lessons 11am, *Royal Grove*
 - **Wed** - Free Lauhala Weaving 11am, *Bldg A, Level 2*
 - **Thur** - Free Keiki Hula Lessons 12pm, *Royal Grove*
 - **Fri** - Free Lei Making Class 12pm, *Bldg A, Level 2*
 - **Sat** - Hula Kahiko 5:30pm, *Royal Grove*
 - **TWThF** - Live Hawaiian Entertainment 5:30pm, *Royal Grove*
- WAIKIKI BEACH WALK waikikibeachwalk.com**
- **Daily** - The Ukulele Store offers free lessons at 4:30pm
 - **Mon** - Open Market 4 - 8pm
 - **Tues** - Ku Ha'aeo Hula Show. 4:30-6pm. *Plaza Stage*
 - **Wed** - Free feather lei making 11am, 2pm. *Royal Room*
 - **Sun** - Free hula lessons, 9-10am

conciierge

DISCOUNTS

- BALI OCEANFRONT**
- 20% off all Food & Beverage. Hilton Hawaiian Village, 941-2254.
- GUAVA SMOKED**
- 20% off food and drinks with hotel ID. 567 Kapahulu Ave, 2nd floor. Entrance/parking on Campbell Ave. 913-2100
- HAWAIIAN MISSION HOUSES**
- Free tour with hotel ID. 553 S. King Street. 447-3910.
- IOLANI PALACE**
- Free Admission with hotel ID. GA \$30. Kama'aina \$19.95. 364 S. King Street, Reservations Required. 522-0832.
- MAUI DIVERS JEWELRY**
- 35% discount off purchases made at the Design Center and 20% at all stores. Must show hotel ID for discount. 1520 Liona St. 946-2929.
- RUTH'S CHRIS STEAK HOUSE**
- Complimentary Appetizer valued up to \$22 with the purchase of 2 entrees. Waikiki Beach Walk, 440-7910. Restaurant Row, 599-3860.

You will be required to show Hotel ID or business card to claim offer. Magazine not needed. Simply mention offer when presenting hotel ID. Discounts available to Guest Service Professionals ONLY. Not valid with other promotions or special offers. A minimum 18% gratuity on original order requested for all food offers.

The Oahu Concierge is printed monthly and direct mailed FREE to all Oahu Concierge, Hospitality & Activity Professionals.
Subscriptions available to non-industry at \$25 per year.

C O N T A C T
Davis Media
Ph: (808) 225-8229

Facebook: www.facebook.com/OahuConcierge

ADDRESS & NAME CHANGES / ADDITIONS
We do not take changes via telephone. All changes to mailing list **must be submitted in writing** by the 16th of the month to make the next issue, email is preferred.

S T A F F

PUBLISHER & EDITOR **Pam Davis**
publisher@oahuconcierge.com

DESIGN
Coreiya Design

The Oahu Concierge
4348 Waialae Avenue, #185
Honolulu, Hawaii 96816

PRSR STD
US Postage Paid
TRADE MEDIA HUI



MORE CHEFS MORE FLAVOR

BANZAI BURGER

CRACKIN' KITCHEN

EATING HOUSE 1849
by Chef Roy Yamaguchi

HERRINGBONE

KONA COFFEE
PURVEYORS

KUHIO AVE FOOD HALL

LA PINA CANTINA

LILIHA BAKERY

MITSUWA MARKETPLACE
Japanese Market

MOANI WAIKĪKĪ

SKYBOX TAPIOUSE

SHOREFYRE

STRIPSTEAK WAIKĪKĪ
by Chef Michael Mina

UNCLE SHARKIE POKE BAR



HAPPY HOUR 3-6PM DAILY
at participating restaurants

GRAND LANAI
INTERNATIONAL MARKET PLACE

2330 Kalākaua Avenue, Waikīkī