

# THE OAHU Concierge

KEEPING THE HOSPITALITY INDUSTRY INFORMED SINCE 1998

## Authentic Local Souvenirs

Every traveler brings home souvenirs of their vacation, whether a tangible object or memory of places ventured, people met.

The word "souvenir" is French, meaning "a remembrance or memory." Throughout the world, marketers have relied on the human need for physical reminders of a place, as if memory or photos alone cannot be trusted for triggering happy thoughts of roads traveled. The result has led to an industry of mass-produced merchandise such as T-shirts, postcards, refrigerator magnets, key chains, shot glasses, and miniatures of landmarks, hardly the type of objects packed with meaning.

One of the lessons many have learned from the soul-searching, scaled-back living through a pandemic is that most of us live with unnecessary clutter in our lives, and anything we add to it should be filled with meaning and joy.

In today's economy, authenticity is key for shoppers who want to avoid cheap, mass-produced tchotchkes. Shopping for locally designed objects offer a direct connection to Hawaii, its artisans and culture. Here are a few places visitors can shop for apparel and wares by local designers.

### Roberta Oaks



when she stopped in Honolulu to visit her sister. "She went home; I'm still here," Oaks said.

Designer Roberta Oaks arrived in Hawaii in 2003 as a tourist herself. She decided to take a break to see the world after graduating from college, and was on her way back to Missouri after an eight-month stay in New Zealand

With a background in fine art, she channeled her skills into sewing a batch of embellished slip dresses and patchwork skirts that she showed alongside her artwork during her first exhibition at the ARTS at Marks Garage.

"People didn't go for the artwork, they went for the clothes, so I said, 'Hmm, maybe I'll do this for a while.'"

That a while has led to the present, with her Chinatown boutique carrying her aloha shirt and women's apparel designs, as well as personally curated jewelry, accessories, housewares and beauty products in keeping with her simple, eco-lifestyle aesthetic.

Roberta Oaks is at 1152 Nuuanu Ave. Call 526-1111 or shop online at robertaoaks.com

### Jana Lam

Honolulu-raised artist and designer Jana Lam's aim is to create lifestyle products and accessories capturing the spirit of an endless summer. Her signature is screen-printed textile designs that explode with color. She initially started by turning her prints into simple clutches and tote bags, but over time has branched into infant and children's apparel and home wares.

Some of her recent products include infant swaddles, quilts, rainbow art prints, pareos and Erimon's Workshop collaborative patchwork throw pillows.

Jana Lam Studio + Shop is at 851 Pohukaina St. Suite C11 (storefront entrance at Kamani and Auahi streets. Call 888-5044 or shop online at janalam.com.

### Kini Zamora

Travelers who follow fashion may remember Kini Zamora's name. The local designer was among a handful of Hawaii contestants who participated in the TV fashion design competition, "Project ." He finished third during season 13, and was invited back for "Project Runway All-Stars" season five, finishing in second place.

*Continued on page 5.*

## The Arts at Marks Turns 20!



Photographer & The ARTS Board President Kim Taylor Reece. Photo and story by Lance Rae.

The ARTS at Marks is celebrating its 20th anniversary as the gathering place for Hawaii's arts community in downtown Honolulu. The artist-run, non-profit community arts center, before the pandemic, attracted annually over 45,000 visitors to twelve major multi-disciplinary exhibits and 150 performances, lectures, screenings, and workshops. Many of your guests may have only experienced it as a gallery or performance space. Still, for many artists and Chinatown residents, it has been an incubator for performance and visual arts groups and offered creative classes for the neighborhood youth. Over the past two decades, the 4,200 square foot space, located directly across from the historic Hawaii Theatre, has provided

*Continued on page 15.*

### TABLE OF CONTENTS

Yada Yada Yada .....	2
Hawaii CinemAttractions Opens .....	2
Newsflash .....	3
Paparazzi: Roger Dunn Golf Sim .....	4
Stay Safe and Use Common Sense .....	4
E Pili Kakou .....	6-9
Restaurant Updates .....	9
Calendar .....	10-11
The Ukulele Picnic 2021 .....	12
Chef's Corner: Celebrity Chef Todd English .....	13
Paparazzi: Raising Cane's Grand Opening .....	14

## Publisher's Letter



# Here we go again...

1,167 positive cases. Well, that's one way to slow things down, but honestly, I wish we could have found a better way to do so other than our case count skyrocketing and certain restrictions being put back into place. Although everything included has been confirmed when I sent the book to press, about ten days will have passed before it gets into your hands, so keep your ears open. Everything is always subject to change, but this month, it's more likely than usual.

I continue to be impressed with the industry's resilience. No matter what gets thrown at them, people continue to think outside of the box to find ways to make things work, keep the economy going, and find ways to reach out to even more people. This year's 'ukulele picnic is a perfect example of that. 'Ukulele lovers from around the world will be logging into the live stream to watch, listen, and perform. Their mission of having the 'ukulele connect the world comes together perfectly here.

Despite the challenges, places continue to open, re-launch, and expand hours. We had a nice run of concierge events there for a while, but even though we were running them in small groups spread out recently, I will step back for a few weeks to allow this latest surge to settle down. However, I did want to point out that if you have not received any invitations, reach out to me via my event email addy at [rspv@oahuconciierge.com](mailto:rspv@oahuconciierge.com). Although not every hotel is invited to every event, especially these days, between all of the ones we have held since they came back, every property should have received at least one or two invitations by now. If your desk or property is not getting these invites, you need to reach out to me to let me know.

I'm sorry to report that we continue to see a high percentage of our visitors putting themselves in danger. The winter swells are right around the corner, and I'm concerned that unless we start seeing people start to use some common sense out there, some people might really get into trouble, or worse. Please encourage your guests to think before they go, be prepared, and use common sense when in potentially dangerous situations. Most tragedies are preventable.

These are crazy times, and staying at home away from people really isn't an option for this group. Please take whatever steps necessary to protect yourself and stay healthy!



# Yada Yada



Natalie Caceres

**Natalie Caceres** has taken on the Director of Sales and Marketing position at the *Holiday Inn Express Waikiki*. Most recently, she held the Director of Sales position at Embassy Suites Waikiki Beach Walk and prior to that was at the Waikiki Beachcomber by Outrigger. **Randall Morisako** has also recently joined the staff as Chief Engineer, bringing thirty-eight years of experience with him. Most recently he was the Chief Engineer at the Waikiki Beachcomber. **Brett Akimoto** has also joined the team as their new Food & Beverage Manager. Brett brings

fifteen years of experience in the Food Service industry with him, and was most recently the Catering & Sales Manager at the DoubleTree by Hilton. • Former Expedia team members on the move. **Cameron Barnett** has moved over to Hilton Grand Vacations Club as the Tours & Activities Manager. Joining him there is **Abbie Johnson** on the marketing team and **Noelani Gillis Fernandez** and **Meena Walker** working as pre-arrival concierge. • Also a big welcome back to former Expedia Concierge Manager **Lori Sparks**, who has just joined *Blue Hawaiian Activities Concierge Team*. The Expedia group was very tight, so it's nice to see everyone sticking together at several difference companies and coming back to work!

## Hawaii CinemAttractions Takes Guests to New Heights

Hawaii CinemAttractions at the Hilton Hawaiian Village finally opened their doors, albeit a bit later than we first reported. The theatre offers visitors an opportunity to see the islands affordably and safely. The venue features 32-seats and a multi-screen 4DFX state-of-the-art motion picture experience featuring synchronized motion and sensory effects and includes a grand panoramic, visual experience. Visitors experience these special effects through motion-enabled chairs, mist, vibration, wind, scents, and much more that enhance the visuals on screen.

It's an exciting concept and offers a perfect alternative to those who want to explore the islands but don't necessarily have the time, money, or fitness to do so. The theatre offers five specially created 4DFX films. Two of them are designed specifically for those who want to explore the Hawaiian Islands. *Soaring Over Hawaii* takes guests up in a helicopter, complete with the seats vibrating as the aircraft takes off and then takes the viewer across the Islands as if they were in a helicopter soaring across the islands with its spectacular aerial footage. Another option is *Adventure Quest Hawaii*, a thrilling film that showcases extreme adventure sites around Oahu. Feel the breeze as you Zip Line down the mountain, smell the salt, and feel water mist around you as you watch adventure seekers tackle the big waves. These films



offer guests that can't actually fly over the entire island chain, or are physically incapable of taking part in some of the islands more adventurous tours out there, an opportunity to feel like they are right in the midst of the action.

Other film selections include *One Planet One People*, a film shot by Devin Supertramp Graham that takes the viewer to see iconic places and people worldwide; and *Roller Coasters*, a wild, thrilling film that offers the rider a virtual roller coaster experience. The average film length is only around 11 minutes, but each takes guests on an exciting ride. They will also present an enlightening and reflective cinematic journey called *Mother Earth*, a relaxing guided morning meditation live show that reflects how we perceive Earth.

A small arcade offers a handful of old-school video games, and there is a fully functioning antique 1924 Krakauer piano in the lobby. A virtual reality lounge with a variety of VR experiences to choose from is coming soon.

Tickets for each film are \$16 for kids (ages 12 and under) and \$20 for adults, with discounted pricing available for kama'aina, seniors, and military. Three film packages available. Located in the former CabaRAE theatre at the base of the Tapa Tower, (now known as the Tapa Cinema), it is open daily from 2 p.m. to 9 p.m. More info at [4fdxhawaii.com](http://4fdxhawaii.com).

# EXTRA EXTRA EXTRA *Newsflash*

## ALOHILANI'S SUNDAY CLUB REOPENS



The Alohilani Resort relaunched their highly popular Sunday Club Brunch at the Longboard Club featuring beats by Hawaii's own Big Wave Surf Champion, DJ KK, and brunch bites with a modern twist from

Executive Chef Frederic Hoffmann served in socially safe ways. 11 a.m.-3 p.m. Reservations available on Open Table. \$49. Call 294-4108.

## REMEDY SPA OPENS IN WAIKIKI

There's a new spa in town offering customized treatments incorporating state-of-the-art technology, high quality products, and expert techniques. Don't let the entrance put you off. A great deal of thought was put into the design of the Spa. Located at 345 Royal Hawaiian Avenue, Suite 303, walk through the entrance and take the elevator to beautiful designed suite of rooms filled with custom made chandeliers, clean lines and water features. Offering facials, massage, waxing, body sculpting, LED light therapy, and more. See it all at [remedyspahawaii.com](http://remedyspahawaii.com).

## MOANI WAIKIKI OPENS AT IMP

Popular west-side restaurant Moani Island Bistro has opened their first Waikiki location next to Herringbone at International Market Place on the Grand Lanai. Offering local-style comfort food crafted from recipes that have been handed down for generations and live music nightly. Happy hour will be offered Monday thru Friday from 4 - 6 p.m. featuring \$5 drinks and a \$10 pupu menu. Open from 5 to 10 p.m. daily. Call 466-2629 for reservations or head to [moaniwaikiki.com](http://moaniwaikiki.com).

## DA' HIBREW MOVES

Da' Hi Brew, a coffee shop, the self described "cozy coffee shop" has moved from their former location inside The Equus Hotel to their new location at the Discovery Bay Center across from Bombay Palace. Offering hand-crafted artisan espresso coffee and snacks including their signature Turmeric Latte. Open daily from 6:30 a.m. to 4 p.m. [dahibrew.com](http://dahibrew.com)

## BALI STEAK & SEAFOOD BECOMES BALI OCEANFRONT

Bali Steak & Seafood publicized their reopening at the Hilton Hawaiian Village last month, but they forgot to mention the name change. The restaurant is now known as Bali Oceanfront. Open for breakfast and dinner Wednesday to Sunday from 7 - 10 a.m. and 5:30 - 9 p.m. 941-2254.

## PESCA OPENS ATOP THE ILIKAI

Pesca, an upscale Mediterranean seafood restaurant and wedding venue has opened located at the top of The Ilikai, in the former Sarento's location. Offering dinner nightly from 5-10 p.m., they will be adding both lunch and happy hour sometime in September. Pesca features fresh seafood from Hawai'i and around the world that will be flown in daily. The over 2 story, 10,000 sq. ft space will also offer a bridal salon, wedding chapel, a private bar and a karaoke lounge. [pescasea.com](http://pescasea.com)

## FARMERS MARKET AND A NEW WEDDING STORE AT THE HYATT

After a lengthy hiatus, the Hyatt Regency Waikiki is bringing its popular Farmers Market back. The market will be held every Monday and Wednesday from 4 to 8 p.m. Enjoy delicious food and artisanal crafts while stocking up on fresh local organic fruits, veggies, jams, honeys, baked goods and more throughout the Pualeilani Atrium Shops. Also at the shops, a new store called Something Borrowed Wedding Hawaii, for those last minute wedding dresses and suit rentals your guests might need. [waikiki.hyatt.com](http://waikiki.hyatt.com).

**Entertainment EVERY NIGHT**

Hilton HAWAIIAN VILLAGE WAIKIKI BEACH RESORT

ON THE GREAT LAWN  
HILTON HAWAIIAN VILLAGE PRESENTS  
**WAIKIKI STARLIGHT LUAU**

Fire knife dancers, live music and an authentic island feast—all under the stars. Upgrade to **Premier seating** for access to the first and second rows, a welcome beverage plus two drinks, and fresh flower lei greeting.

**GOLDEN CIRCLE and GENERAL SEATING also available.**

SCAN FOR CURRENT SCHEDULE & RESERVATIONS.

**TAPA BAR**  
IN THE TAPA TOWER

**LIVE MUSIC NIGHTLY FROM 6:30-9:30 PM\***

A venue for icons of Hawaii's music scene, this is where you'll experience some of the finest local talent the islands have to offer. Join us for a fun-filled evening immersed in the heartbeat of Hawaii's music.

\*Thursdays start at 8 pm

SCAN TO VIEW THE LIVE MUSIC SCHEDULE.

## Stay Safe, Think First, & Use Common Sense

Unfortunately, the spate of rescues continues, and a higher than average percentage of them are still visitors. The hiking rescues continue daily, and again, almost all of them are preventable. People are heading off on hikes too late in the day and unable to get back before dark, or not having enough knowledge of where they are going in advance and getting themselves into trouble.

Now that the south swell is coming up, we also have to start worrying about water rescues. Honestly, they need to think about what they are doing. Recently, there have been two situations of visitors jumping off China Walls fully clothed, down to their shoes. Both are extremely lucky they didn't drown, and local surfers came to their rescue. But, really? What were they thinking?

DLNR reports they have responded to many ocean-related calls, including drownings, around the cliffs on the east side of Maunaloa Bay this year. Most of those calls come from China Walls. It's not only for people who jump off into the water that can't get back up because the swells are too big. Visitors can also be knocked off of the waves just by standing too close to the edge. This happened to a visitor just a few days before this article was written, and he was rushed to the hospital in critical condition. No one wants to spend their holiday that way. There is a jagged reef right under the surface there, and people can get significantly cut up as the swells toss them against the rocks or carry them away with the current. Even experienced swimmers can get in trouble over there, given the conditions. It's a painful lesson I learned as a teenager when two of my friends died there. One jumped off and couldn't get back up. The other one twisted up a towel for the one in the water to hang onto and climb back up, only to have a rogue wave wash him in as well. The first one panicked and ended up pulling the second one down with him. Sadly, both drowned.

Everyone needs to recognize that although beautiful, China Walls, Spitting Caves, and Halona Blowhole all have inherent hidden dangers. The swells tend to double up when they hit the shelf and smash against the rocks with incredible force. There are no lifeguards in the area, and there is no easy way to get out of the ocean. Ask your guests to use extreme caution in the area so they can stay safe.



## Souvenirs

Continued from page 1.

He returned home to present dramatic fashion shows for "Goodwill Goes Glam," and present fashion shows during Honolulu Fashion Week, as well as his own spectacular showcases with backdrops that have included the stairs of Iolani Palace.

With an eye toward promoting not only his own work, but that of upcoming young designers, Zamora created The Clique by KZ to focus on mentoring and collaboration to cultivate a thriving local design community whose wares can be found alongside his own seasonal and designer collections.

The Clique by KZ is at 99-1132 Iwaena Street in Halawa. Call 202-4471 or shop kinizamora.com.

## Manaola



Manaola, center, with a few of his models during a fashion show at Saks Waikiki. Photo and story by Nadine Kam

Manaola Yap was born to a hula family. As the eldest son of kumu hula Nani Lim Yap of Kohala, he was charged with keeping the family genealogy and groomed to one day succeed his mother as hula master.

Part of his education was learning to sew, creating headpieces for dances telling the stories of Hawaii's ocean goddesses and developing fiery ensembles representative of volcano goddess Pele, which sparked his love for fashion.

He also grew up weaving plant fibers and learned how to create plant-based dyes from kukui nuts, roots, fruits and bark fibers, putting him in a unique position in today's DIY-mad world in which others are playing catch-up in trying to relearn traditional methods of creation.

He launched Manaola in 2014, merging his cultural heritage with a contemporary fashion aesthetic, and after a 2017 show at New York Fashion Week came home to open two boutiques, where shoppers will find a complete range of men's and women's apparel, kidswear, handbags,

pillows and bedding.

Manaola boutiques are located at Ala Moana Center 943-MANA (6262) and at Pearlridge Center, 379-0001.

## Martin & MacArthur

Martin & MacArthur originated as premier makers of koa furniture and home accessories after its founding by Jon Martin in 1961. The cabinetry company was at the forefront of reviving an appreciation for koa wood, a species of the acacia genus grown only in the Hawaiian Islands. Martin partnered with local businessman Douglas MacArthur to handle the administrative and financial side of the business, and the two adopted the mission of reviving the art of fine furniture in the classic Hawaii style.

The company's heirloom furniture can be seen at Iolani Palace, The Moana Surfrider, the Royal Hawaiian Hotel and many more of Hawaii's finest resorts.

In 2008, the two were ready to retire from the business and sold it to Michael Tam and Simon McKenzie. With extensive retail experience, they quickly expanded the company beyond home furnishings and three retail stores into accessories, jewelry and gift items. Today there are 16 Martin & MacArthur stores in Hawaii and 2 in Las Vegas, with more planned.

Visitors can shop for koa bowls and boxes by 14 craftsmen, koa furnishings for home and office, plus koa wood watches, fine and fashion jewelry, artisan handbags, hats and visors, even a koa mini dress crafted by master veneer artist Paul Schurch with Martin & MacArthur's private stock of dark, curly koa. Visit [martinandmacarthur.com](http://martinandmacarthur.com) for full list of boutiques.

## Fighting Eel

Designers Rona Bennett and Lan Chung met while working at a retail boutique where they found they shared a dream of owning their own boutique one day.

They created their first Fighting Eel collection in the summer of 2003, and now operate three boutiques in Chinatown, Kahala Mall and Kailua.

They focus on versatile and comfortable women's apparel that can easily go from beach to office. A sister line called Ava Sky offers a sexier, resort style, perfect for a night out or lounging at home and reminiscing about summers spent beachside. Visitors to their shop will find dresses, pareos, handbags, hats, activewear, swimwear and jewelry. Visit [fightingeel.com](http://fightingeel.com) for location details.

~ Nadine Kam

# BRINGING WORLD- CLASS ART TO HONOLULU



## THE PARK WEST FINE ART MUSEUM & GALLERY

On display and for sale, a multi-million dollar collection by Picasso, Rembrandt, Renoir, and more alongside contemporary greats like Peter Max, Michael Godard, Mark Kostabi, and Nano Lopez.

Waikiki Beach Walk  
Honolulu  
808-859-4871  
[parkwesthawaii.com](http://parkwesthawaii.com)

**LABOR DAY SALE!** Visit the gallery from September 2-5, 2021 and guests can get \$1,000 off any one-of-a-kind painting, master artwork, or bronze sculpture!

Visitors also get special daily discounts and free shipping on any purchase!

Terms & conditions apply.

# Let's be Together...

DINING ▶ ENTERTAINMENT ▶ PAU HANA ▶ EAT ▶ DRINK ▶ BE MERRY ▶ HAPPY HOUR

## MONDAY

- Barefoot Beach Café at Queen's Beach** 924-2233  
Live Contemporary & Hawaiian  
The Barefoot Boys 5:30-8:30pm
- Chart House Waikiki** 941-6660  
Live Contemporary Hawaiian  
Camarillo Brothers 6-9pm
- Deck. at the Queen Kapiolani Hotel** 931-4488  
Mai Tai Mondays with Live Contemporary  
Freddy Leone (or others) 5pm-8pm
- Duke's Canoe Club Waikiki** 922-2268  
Live Contemporary Hawaiian  
Ellsworth Simeona (or others) 4-6pm  
Chris Murphy (or others) 7-10pm
- Kani Ka Pila Grille** 924-4992  
Hoku Award Winning Hawaiian musicians  
Sean Naauao 6-8pm
- Mahina & Sun's** 923-8882  
Monday Vibes on the Lanai  
Brent Limos 6:30-9:30pm
- Mai Tai Bar at the Royal Hawaiian** 923-7311  
Live Contemporary Hawaiian  
Christian Yrizary 8-10pm
- Merriman's Honolulu** 215-0022  
Live Slack Key guitarist  
Freddy Leone 5:30-7:30pm
- Monkeypod Kitchen Ko Olina** 381-4086  
Live Contemporary  
Gabe Miller or Dustin Park 6:30-8pm
- Rumfire** 921-4600  
Live Contemporary Hits  
Chris Salvador 6-9pm
- Signature Prime Steak** 949-3636  
Contemporary Pianist in the bar  
Keith Montross 6-9pm
- Splash Bar at the Sheraton Princess Kaiulani** 921-4600  
Live Contemporary Hawaiian  
Alex Oasay 5-8pm

- Swell at the Alohilani** 294-4108  
Solo Contemporary Guitarist  
Drew Henmi 6:30-9:30pm
- The Beach Bar at the Moana Surfrider** 922-3111  
Live Contemporary Hawaiian  
Johnny Valentine 5-8pm  
John Stahley 8-10pm
- The Edge at the Sheraton Waikiki** 921-4600  
Live Contemporary Hawaiian  
Keoni Ku 5-8pm
- Tiki's Grill & Bar** 923-TIKI  
Live Contemporary Hawaiian  
Sonny Kapu 5:30-7:30pm  
Push O Verse 8-10pm
- Tommy Bahama Restaurant** 923-8785  
Contemporary Hawaiian. Happy Hour Daily 2 - 5 p.m.  
Jeremy Hirokawa 5-8pm

## TUESDAY

- Amuse Wine Bar** 237-5428  
Live R&B & Contemporary  
Chris Salvador 7-9pm
- Barefoot Beach Café at Queen's Beach** 924-2233  
Backyard Hawaiian  
Ben Kama 5:30-8:30pm
- Chart House Waikiki** 941-6660  
Live Contemporary Hawaiian  
Ryan Tang Group 6-9pm
- Deck. at the Queen Kapiolani Hotel** 931-4488  
Tequila & Taco Tuesday with Live Contemporary  
Shane Kainoa (or others) 6pm-9pm
- Duke's Canoe Club Waikiki** 922-2268  
Live Contemporary Hawaiian  
Denny Ono (or others) 4-6pm  
Taulia Lave Duo (or others) 7-10pm
- Giovanni Pastrami** 923-2100  
Acoustic Soul, R&B and Pop  
YOZA (or others) 6:30-9:30pm
- Kani Ka Pila Grille** 924-4992  
Hoku Award Winning Hawaiian musicians  
Robi Kahakalau & Kalae Camarillo 6-8pm
- Mahina & Sun's** 923-8882  
Electrifying Acoustic on the Lanai  
Laupepa Letuli 6:30-9:30pm
- Mai Tai Bar at the Royal Hawaiian** 923-7311  
Live Contemporary Hawaiian  
Eric Lee 5-9pm
- Merriman's Honolulu** 215-0022  
Live Contemporary  
John Kema 5:30-7:30pm
- Monkeypod Kitchen Ko Olina** 381-4086  
Live Contemporary  
Johnny the Third (or others) 6:30-8pm
- Off the Lip Bar at Turtle Bay Resort** 293-6000  
Live Contemporary Hawaiian  
Jenna Keala 7:30-10:30pm
- Rumfire** 921-4600  
Live Contemporary Hits  
Christian Yrizary 6-9pm

- Signature Prime Steak** 949-3636  
Contemporary Pianist in the bar  
Keith Montross 6-9pm
- Splash Bar at the Sheraton Princess Kaiulani** 921-4600  
Live Contemporary Hawaiian  
Nu'u Kahalehau 5-8pm
- The Beach Bar at the Moana Surfrider** 922-3111  
Live Contemporary Hawaiian  
Alex Oasay 5-8pm  
Dave Watanabe 8-10pm
- The Edge at the Sheraton Waikiki** 921-4600  
Live Contemporary Hawaiian  
Jason Midro 5-8pm
- The Point Sunset Pool Bar at Turtle Bay** 293-6000  
Live Contemporary Hawaiian  
Kaimi Hananoeau 4:30-7:30pm
- Tiki's Grill & Bar** 923-TIKI  
Live Contemporary Hawaiian  
Jason Laeha 5:30-7:30pm  
Ashton 8-10pm
- Tommy Bahama Restaurant** 923-8785  
Contemporary Hawaiian. Happy Hour Daily 2 - 5 p.m.  
Johnny Kukui 5-8pm

## WEDNESDAY

- Barefoot Beach Café at Queen's Beach** 924-2233  
Island Vibes  
Danny Galura 5:30-8:30pm
- Chart House Waikiki** 941-6660  
Live Contemporary Hawaiian  
Mike Tulba 6-9pm
- Duke's Canoe Club Waikiki** 922-2268  
Live Contemporary Hawaiian  
Taz Vegas (or others) 4-6pm  
Kalae Camarillo 7-10pm  
Kelandy Diaz (9/1, 9/15) 7-10pm  
Shay Marcello (9/29) 7-10pm
- Giovanni Pastrami** 923-2100  
Acoustic Guitar Soul, R&B  
Jason Laeha 6:30-9:30pm
- Kani Ka Pila Grille** 924-4992  
Hoku Award Winning Hawaiian musicians  
Ei Nei 6-8pm
- Mahina & Sun's** 923-8882  
Soulful Guitar on the Lanai  
Cameron Achuela 6:30-9:30pm
- Mai Tai Bar at the Royal Hawaiian** 923-7311  
Live Contemporary Hawaiian  
Johnny Valentine 5-9pm
- Maui Brewing Kailua** 518-2739  
Live Contemporary Hawaiian  
Preston Kauwe 6-8pm
- Merriman's Honolulu** 215-0022  
Live Contemporary  
Gabe Miller 5:30-7:30pm
- MINA's Fish House** 679-0079  
Live Contemporary Hits  
Kamuela Kahoano 6-9pm  
Johnny Helm (9/8) 6-9pm
- Monkeypod Kitchen Ko Olina** 381-4086

**WAIKIKI BAPTIST Church**  
Your Church in Waikiki  
424 Kuamo'o St  
(Next to the Ambassador Hotel)  
Sunday Worship Services  
9:00 AM - Contemporary  
10:45 AM - Traditional  
(808) 955-3525  
WaikikiBaptist.com

# E Pili Kākou

music schedules subject to change

DINING ▶ ENTERTAINMENT ▶ PAU HANA ▶ EAT ▶ DRINK ▶ BE MERRY ▶ HAPPY HOUR

*Live Contemporary*  
Izik and Evan Khay 6:30-8p  
**Rumfire 921-4600**  
*Live Contemporary Hits*  
Mike Tulba 6-9pm  
**Signature Prime Steak 949-3636**  
*Contemporary Pianist in the bar*  
Pierre Grill 6-9pm  
**Splash Bar at the Sheraton Princess Kaiulani 921-4600**  
*Live Contemporary Hawaiian*  
Johnny Helm 5-8pm  
Ben Kama (9/8) 5-8pm  
**Swell at the Alohilani 294-4108**  
*Solo Contemporary Guitarist*  
John Stahey 6:30-9:30pm  
**The Beach Bar at the Moana Surfrider 922-3111**  
*Live Contemporary Hawaiian*  
Christian Yrizarry 5-9pm  
**The Edge at the Sheraton Waikiki 921-4600**  
*Live Contemporary Hawaiian*  
Kamaka Camarillo 5-8pm  
**Tiki's Grill & Bar 923-TIKI**  
*Live Contemporary Hawaiian*  
Ben Kama 5:30-7:30pm  
Push O Verse 8-10pm  
**Tommy Bahama Restaurant 923-8785**  
*Contemporary Hawaiian. Happy Hour Daily 2 - 5 p.m.*  
Stan Albrecht 5-8pm

## THURSDAY

**Barefoot Beach Café at Queen's Beach 924-2233**  
*Contemporary & Hawaiian*  
Keoni Coelho 5:30-8:30pm  
**Chart House Waikiki 941-6660**  
*Live Contemporary Hawaiian*  
Tito & David 6-9pm  
**Deck. at the Queen Kapiolani Hotel 931-4488**  
*Live Contemporary*  
Freddy Leone (or others) 5pm-8pm  
**Duke's Canoe Club Waikiki 922-2268**  
*Live Contemporary Hawaiian*  
Alika Souza (or others) 4-6pm  
Shar Carrillo Duo (or others) 7-10pm  
**Eating House 1849 Waikiki 924-1849**  
*Live Contemporary Hawaiian*  
Shane Kainoa 5-8pm  
**Giovanni Pastrami 923-2100**  
*Live Contemporary*  
Billy Sage 6:30-9:30pm  
**Kani Ka Pila Grille 924-4992**  
*Hoku Award Winning Hawaiian musicians*  
Kawika Kahiapo 6-8pm  
**Mahina & Sun's 923-8882**  
*Hawaiian Contemporary on the Lanai*  
Kelly Boy DeLima 6:30-9:30pm  
**Mai Tai Bar at the Royal Hawaiian 923-7311**  
*Live Contemporary Hawaiian*  
Mike Tulba 8-10pm  
**Maui Brewing Company 843-2739**  
*Live Contemporary Hawaiian*

Shay Marcello Duo 6-8pm  
**Maui Brewing Kailua 518-2739**  
*Live Contemporary Hawaiian*  
Jason Laeha 6-8pm  
**Merriman's Honolulu 215-0022**  
*Live Contemporary*  
Laupepa 5:30-7:30pm  
**MINA's Fish House 679-0079**  
*Live Contemporary Hits*  
Christian Yrizarry 6-9pm  
**Monkeypod Kitchen Ko Olina 381-4086**  
*Live Contemporary*  
Sienna Souza 6:30-8pm  
**Off the Lip Bar at Turtle Bay Resort 293-6000**  
*Live Contemporary Hawaiian*  
Kaimi Hananoeau 6:30-9:30pm  
**Rumfire 921-4600**  
*Live Contemporary Hits*  
Kamuella Kahoano 6-9pm  
**Signature Prime Steak 949-3636**  
*Contemporary Pianist in the bar*  
Grant Carvalho & Rocky Holmes 6-9pm  
**Sky Waikiki 979-7590**  
*Live Contemporary*  
John Akapo 5-8pm  
**Splash Bar at the Sheraton Princess Kaiulani 921-4600**  
*Live Contemporary Hawaiian*  
Dave Watanabe 5-8pm  
**The Beach Bar at the Moana Surfrider 922-3111**  
*Live Contemporary Hawaiian*  
Randy Allen 5-8pm  
Mike Izon 8-10pm  
**The Edge at the Sheraton Waikiki 921-4600**  
*Live Contemporary Hawaiian*  
Alika Souza 5-8pm  
**The Point Sunset Pool Bar at Turtle Bay 293-6000**  
*Live Contemporary Hawaiian*  
Johnny Helm 4:30-7:30pm  
**The Veranda at the Kahala Hotel 739-8760**  
*Live Contemporary*  
Kapena Delima 6-8pm  
**Tiki's Grill & Bar 923-TIKI**  
*Live Contemporary Hawaiian*  
Malu Productions 5:30-7:30pm  
Ashton 8-10pm  
**Tommy Bahama Restaurant 923-8785**  
*Contemporary Hawaiian. Happy Hour Daily 2 - 5 p.m.*  
Alex Oasay 5-8pm

## FRIDAY

**Barefoot Beach Café at Queen's Beach 924-2233**  
*Live Contemporary Hawaiian*  
Art Kalahiki & Friends 5:30-8:30pm  
**Chart House Waikiki 941-6660**  
*Live Contemporary Hawaiian*  
Mike Tulba 6-9pm  
**Deck. at the Queen Kapiolani Hotel 931-4488**  
*Live Contemporary*  
Shane Kainoa (or others) 6pm-9pm  
**Duke's Canoe Club Waikiki 922-2268**

*Live Contemporary Hawaiian*  
Maunalua 4-6pm  
Kawika Kahiapo 7-10pm  
Ben Kama Trio (9/17) 7-10pm  
Na Ukulele Ekolu (9/24) 7-10pm  
**Hard Rock Cafe 955-7383**  
*Live Contemporary*  
Kailua Beach Buddies 6-9pm  
**Kani Ka Pila Grille 924-4992**  
*Hoku Award Winning Hawaiian musicians*  
Kamakakehau Fernandez 6-8pm  
**Mahina & Sun's 923-8882**  
*Slack Key on the Lanai*  
Dustin Park Duo 6:30-9:30pm  
**Mai Tai Bar at the Royal Hawaiian 923-7311**  
*Live Contemporary Hawaiian*  
Johnny Stahley (9/5, 9/10) 5-9pm  
Cory Oliveros (9/17, 9/24) 5-9pm  
**Mariposa 951-3420**  
*Live Contemporary*  
Chris Salvado 2:30-5:30pm  
**Maui Brewing Company 843-2739**  
*Live Contemporary Hawaiian*  
City Boys 6-8pm  
**Maui Brewing Kailua 518-2739**  
*Live Contemporary Hawaiian*  
Dion "Boogie" Scott 7-9pm



BarefootBeachCafe.com

"WE PUT *Aloha*  
INTO EVERY BITE SO  
SIT BACK, RELAX AND  
ENJOY THE VIEW."

OPEN DAILY

BREAKFAST 8AM - 2PM  
LUNCH/DINNER 11AM - 8:30PM  
LIVE MUSIC NIGHTLY 5PM - 8PM  
& SUNDAYS 11AM - 2PM

BAREFOOT BEACH CAFE  
2699 KALAKAUA AVENUE  
808.924.2233

EVENTS &  
GROUP RESERVATIONS  
808.699.8830

# Let's be Together...

DINING ▶ ENTERTAINMENT ▶ PAU HANA ▶ EAT ▶ DRINK ▶ BE MERRY ▶ HAPPY HOUR

<b>Merriman's Honolulu</b> <i>Live Contemporary</i> Shane 5:30-7:30pm	<b>215-0022</b>
<b>MINA's Fish House</b> <i>Live Contemporary Hits</i> Jenna Keala 6-9pm	<b>679-0079</b>
<b>Monkeypod Kitchen Ko Olina</b> <i>Live Contemporary</i> John Akapo 6:30-8p	<b>381-4086</b>
<b>O Bar at the Alohilani</b> <i>Live Contemporary Hawaiian</i> Mike Izon 6:30-9:30pm	<b>294-4108</b>
<b>Rumfire</b> <i>Live Contemporary Hits</i> Johnny Helm 6-9pm	<b>921-4600</b>
<b>Signature Prime Steak</b> <i>Contemporary Pianist in the bar</i> Grant Carvalho & Rocky Holmes 6-9pm	<b>949-3636</b>
<b>Sky Waikiki</b> <i>Live Contemporary</i> John Akapo 5-8pm	<b>979-7590</b>
<b>Splash Bar at the Sheraton Princess Kaiulani</b> <i>Live Contemporary Hawaiian</i> Donald Fialkowski 5-8pm	<b>921-4600</b>
<b>The Beach Bar at the Moana Surfrider</b> <i>Live Contemporary Hawaiian</i> Alex Oasay 5-8pm	<b>922-3111</b>

Chris Salvador 8-10pm	
<b>The Edge at the Sheraton Waikiki</b> <i>Live Contemporary Hawaiian</i> Kama Kakaio 5-8pm	<b>921-4600</b>
<b>The Veranda at the Kahala Hotel</b> <i>Live Contemporary</i> Zanuck Lindsay (or others) 6-8pm	<b>739-8760</b>
<b>Tiki's Grill &amp; Bar</b> <i>Contemporary Hawaiian, Alternative, Pop-Rock, Reggae</i>	<b>923-TIKI</b>
The City Boys 3-5pm	
RootsKai 5:30-7:30pm	
La Pepe 8-10pm	
<b>Tommy Bahama Restaurant</b> <i>Contemporary Hawaiian. Happy Hour Daily 2 - 5 p.m.</i> Chris Murphy 5-8pm	<b>923-8785</b>
<b>Vintage 1901 at the Moana</b> <i>Contemporary Piano</i> David Swanson 6:30-9:30pm	<b>921-4600</b>

<b>Merriman's Honolulu</b> <i>Live Contemporary</i> Chris Salvador 5:30-7:30pm	<b>215-0022</b>
<b>MINA's Fish House</b> <i>Live Contemporary Hits</i> Randy Allen 6-9pm	<b>679-0079</b>
<b>Monkeypod Kitchen Ko Olina</b> <i>Live Contemporary</i> Izik and Evan Khay 6:30-8pm	<b>381-4086</b>
<b>O Bar at the Alohilani</b> <i>Live Contemporary Hawaiian</i> Johnny Helm 6:30-9:30pm	<b>294-4108</b>
<b>Rumfire</b> <i>Live Contemporary Hits</i> Drew Henmi 6-9pm	<b>921-4600</b>
<b>Signature Prime Steak</b> <i>Contemporary Pianist in the bar</i> Grant Carvalho & Rocky Holmes 6-9pm	<b>949-3636</b>

## SATURDAY

<b>100 Sails at the Prince Waikiki</b> <i>Live Contemporary &amp; Hawaiian</i> Jason Midro (or others) 6-8pm	<b>944-4494</b>
<b>Barefoot Beach Café at Queen's Beach</b> <i>Live Contemporary Hawaiian</i> The Barefoot Boys (or others) 5:30-8:30pm	<b>924-2233</b>
<b>Chart House Waikiki</b> <i>Live Contemporary Hawaiian</i> Tito Berinobis 6-9pm	<b>941-6660</b>
<b>Duke's Canoe Club Waikiki</b> <i>Live Contemporary Hawaiian</i> Walt Keale (or others) 10am-noon	<b>922-2268</b>
Jenna K. (or others) 1-3pm	
Alx Kawakami (or others) 4-6pm	
Kaiona Band (9/4, 9/18) 7-10pm	
Christian Yrizarry (9/11) 7-10pm	
Ellsworth Simeona (9/25) 7-10pm	
<b>Hard Rock Cafe</b> <i>Live Contemporary</i> Kailua Beach Buddies 6-9pm	<b>955-7383</b>
<b>Hinana Poolside Bar at the Hawaii Prince</b> <i>Live Contemporary Hawaiian</i> Mike Izon 5-7pm	<b>622-7558</b>
<b>Kani Ka Pila Grille</b> <i>Hoku Award Winning Hawaiian musicians</i> Hookena 6-8pm	<b>924-4992</b>
<b>Mahina &amp; Sun's</b> <i>Contemporary Hawaiian/Blues on the Lanai</i> Josh Akapo 6:30-9:30pm	<b>923-8882</b>
<b>Mai Tai Bar at the Royal Hawaiian</b> <i>Live Contemporary Hawaiian</i> Dave Watanabe 5-9pm	<b>923-7311</b>
<b>Mariposa</b> <i>Live Contemporary</i> Aisaiah Jacobs 2:30-5:30pm	<b>951-3420</b>
<b>Maui Brewing Company</b> <i>Live Contemporary Hawaiian</i> Scot Magz (or others) 6-8pm	<b>843-2739</b>
<b>Maui Brewing Kailua</b> <i>Live Contemporary Hawaiian</i> Scott Magz (or Kamuela Kahoano) 7-9pm	<b>518-2739</b>

<b>Sky Waikiki</b> <i>Live Contemporary</i> John Akapo 5-8pm	<b>979-7590</b>
<b>Splash Bar at the Sheraton Princess Kaiulani</b> <i>Live Contemporary Hawaiian</i> Kama Kakaio 5-8pm	<b>921-4600</b>
<b>Swell at the Alohilani</b> <i>DJ/Big Wave Pro Surfer Keala "KK" Kennelly Spins Poolside</i> DJ KK 1-4pm	<b>294-4108</b>
<b>The Beach Bar at the Moana Surfrider</b> <i>Live Contemporary Hawaiian</i> Kaimi Hanahoeau (or others) 5-8pm Christian Yrizarry (or others) 8-10pm	<b>922-3111</b>
<b>The Edge at the Sheraton Waikiki</b> <i>Live Contemporary Hawaiian</i> John Coelho 5-8pm	<b>921-4600</b>
<b>The Veranda at the Kahala Hotel</b> <i>Live Contemporary</i> Jeannette Trevais 6pm-8pm	<b>739-8760</b>
<b>Tiki's Grill &amp; Bar</b> <i>Contemporary Hawaiian, Alternative, Pop-Rock, Reggae</i> Johnny Helm 3:30-5:30pm RootsKai 6-8pm Ashton 8-10pm	<b>923-TIKI</b>
<b>Tommy Bahama Restaurant</b> <i>Contemporary Hawaiian. Happy Hour Daily 2 - 5 p.m.</i> Chris Murphy 5-8pm	<b>923-8785</b>
<b>Vintage 1901 at the Moana</b> <i>Contemporary Piano</i> David Swanson 6:30-9:30pm	<b>921-4600</b>

## SUNDAY

<b>Barefoot Beach Café at Queen's Beach</b> <i>Live Contemporary Hawaiian</i> Alika Souza 11am-2pm Art Kalahiki 5:30-8:30pm	<b>924-2233</b>
<b>Chart House Waikiki</b> <i>Live Contemporary Hawaiian</i> Dean & Dean 6-9pm	<b>941-6660</b>
<b>Duke's Canoe Club Waikiki</b> <i>Live Contemporary Hawaiian</i> Paul Dunlap (or others) 10am-noon	<b>922-2268</b>

OriginalMagoosPizza.com/Order



**HAWAII'S FAVORITE ISLAND-STYLE PIZZA, SUBS & CHICKEN**

**NOW OPEN DAILY**  
**MON - FRI • 4PM - 9PM**  
**SAT - SUN • 11AM - 9PM**

**KAPAHULU**  
**3110 WINAM AVE #G1**  
**808.949.5381**

**GRUBHUB**  
**Uber Eats**



# Let's be Together...

DINING ▶ ENTERTAINMENT ▶ PAU HANA ▶ EAT ▶ DRINK

Drew Henmi (or others)	1-3pm	
Henry Kapono	4-6pm	
Kaiona Duo (or others)	7-10pm	
<b>Giovanni Pastrami</b>		<b>923-2100</b>
<i>Reggae Pop Music</i>		
Kelandy	6:30-9:30pm	
<b>Hinana Poolside Bar at the Hawaii Prince</b>		<b>622-7558</b>
<i>Live Contemporary Hawaiian</i>		
John Stahley	5-7pm	
<b>Kani Ka Pila Grille</b>		<b>924-4992</b>
<i>Hoku Award Winning Hawaiian musicians</i>		
Nathan Aweau	6-8pm	
<b>La Hiki Restaurant at the Four Seasons</b>		<b>679-0079</b>
<i>Live Contemporary Hawaiian</i>		
Jenna Keala (or Kamuela Kahoano)	11am-2pm	
<b>Mahina &amp; Sun's</b>		<b>923-8882</b>
<i>Award-winning ukulele on the Lanai</i>		
Trishnalei	6:30-9:30pm	
<b>Mai Tai Bar at the Royal Hawaiian</b>		<b>923-7311</b>
<i>Live Contemporary Hawaiian</i>		
Alex Oasay	5-9pm	
<b>Mariposa</b>		<b>951-3420</b>
<i>Live Contemporary</i>		
Zaysha	12-3pm	
<b>Maui Brewing Company</b>		<b>843-2739</b>
<i>Live Contemporary Hawaiian</i>		
Chris Murphy (or others)	6-8pm	
<b>Maui Brewing Kailua</b>		<b>518-2739</b>
<i>Live Contemporary Hawaiian</i>		
Britt Kino	6-8pm	
David Sedlak (9/12)	6-8pm	
YOZA (9/26)	6-8pm	
<b>Merriman's Honolulu</b>		<b>215-0022</b>
<i>Live Contemporary</i>		
Cassie and Selwyn	5:30-7:30pm	
<b>Monkeypod Kitchen Ko Olina</b>		<b>381-4086</b>
<i>Live Contemporary</i>		
Sienna Souza	2:30-4pm	
Jenna Keala	6:30-8pm	
<b>O Bar at the Alohilani</b>		<b>294-4108</b>
<i>Live Contemporary Hawaiian</i>		
Dustin Park	6:30-9:30pm	
<b>Rumfire</b>		<b>921-4600</b>
<i>Live Contemporary Hits</i>		
Ben Kama	6-9p	
<b>Signature Prime Steak</b>		<b>949-3636</b>
<i>Contemporary Pianist in the bar</i>		
Keith Montross	6-9pm	
<b>Splash Bar at the Sheraton Princess Kaiulani</b>		<b>921-4600</b>
<i>Live Contemporary Hawaiian</i>		
Kaleo Hananoeau	5-8pm	
<b>Swell at the Alohilani</b>		<b>294-4108</b>
<i>DJ Spins Poolside</i>		
DJ KK (or others)	11:30am-2:30pm	
<b>The Beach Bar at the Moana Surftrider</b>		<b>922-3111</b>
<i>Live Contemporary Hawaiian</i>		
Dave Watanabe	5-9p	
<b>The Edge at the Sheraton Waikiki</b>		<b>921-4600</b>
<i>Live Contemporary Hawaiian</i>		
Christian Yrizarry	5-8pm	

<b>Tiki's Grill &amp; Bar</b>		<b>923-TIKI</b>
<i>Live Contemporary Hawaiian</i>		
Ellsworth & Friends	3-5pm	
Eddie & the Coconuts	5:30-7:30pm	
La Pepe	9-11pm	
<b>Tommy Bahama Restaurant</b>		<b>923-8785</b>
<i>Contemporary Hawaiian. Happy Hour Daily 2 - 5 p.m.</i>		
Glen Domingo	5-8pm	
<b>Vintage 1901 at the Moana</b>		<b>921-4600</b>
<i>Contemporary Piano</i>		
David Swanson	5:30-8:30pm	

## Dining Dish

Hawaii has long been a destination for culinary travel, and it simply keeps getting better. Many might have missed when **Mugen** opened at the ESPACIO, as it opened only a few months before the shutdown. But, it reopened a while back and recently launched its latest menu, and it truly is exceptional. **Chef Jason Yamaguchi** has prepared a \$150 8-course tasting menu that honestly feels as if it is underpriced. Not a single detail has been forgotten. From the presentation to the plating, to the vessels to the service, of course, the flavors and food. This is truly a one-of-a-kind culinary experience. Yes, it's pricey, so this isn't your average weekday meal. But for those looking to celebrate that special occasion, foodies searching out that extraordinary dining experience, that perfect bite, the best of ingredients, this place is not to be missed. Offering two seatings Tuesday - Saturday at 5 p.m. and 7:30 p.m. seatings. 377-2247. • **Fat Cheeks Hawaii** has moved from its current location in 'Ohana Hale Marketplace to a new location at Ward Centre next to the Roger Dunn Golf store. Known for their lobster rolls, they also offer other rolls with shrimp, crawfish, and crab, soups, salads, sides, and desserts. Open at 11 a.m. Tuesday to Saturday until 7 p.m., and on Sundays until 4 p.m. 773-4129. • **Artizen by MW**, the casual eatery on the first floor of Velocity Honolulu, recently launched a happy hour Monday thru Friday from 4 - 7 p.m. A small plates menu with items such as Yukari Fries with a shiso honey mayo (\$6), "Shake and Bake" Chicken Wings (\$6), and fried baby tako with wasabi koji sauce for (\$9) will be offered, along with \$4 beers, \$8 wines and more. 524-0499.

## Restaurant Updates

The reopenings continue

### Merriman's Requires Workers to be Vaccinated

Merriman's is requiring that all employees must have received their first dose of the vaccine by September 10th. Exemptions will be granted on a case-by-case basis for religious beliefs or medical conditions. Those who are granted exemptions, however, will be required to undergo regular testing. They say they did not take this decision lightly, but felt there is no greater responsibility than to protect the health and safety of ALL of their employees and their families. They also said 99% of their employees had no issues with the decision. They are not requiring our guests be vaccinated at this time.

### Pagoda Floating Restaurant

After being closed for over a year, the iconic Pagoda Floating Restaurant has reopened and revamped their breakfast menu, creating offerings that will delight all the locals, and should appease any visitors and hipsters. Items range from Smashed Avocado Toast to Black Pepper & Island Honey Charred Pork Belly, Kalo & Kalua Pork Hash, Lup Cheung Fried Rice to Egg Foo Young with Oyster Sauce Gravy. Their famous Prime Rib Buffet is back Friday thru Sundays from 5 - 9 p.m. 948-8354.

### Proof Social Club becomes First Restaurant to Require Vaccines

Chinatown bar Proof Social Club now requires proof of vaccination, or a negative Covid-19 test taken within 48 hours, for all employees and customers. The bar implemented the policy in August and says although some customers are less than pleased, even more customers have been receptive to it. The bar will accept both digital and physical copies of cards will be accepted. Just being vaccinated is not enough however, other Covid-related policies including contact tracing, mask wearing, and social distancing still apply. proofpublichouse.com.

### Stripsteak Extends Hours

Although still closed Monday and Tuesday, STRIPSTEAK has extended their dining hours. The bar now opens at 4:30 p.m. and the restaurant will now close at 10 p.m. 896-2545.

# SEPTEMBER CALENDAR OF EVENTS

## Continuing Events

### DAILY • FREE COVID TESTING

The City & County of Honolulu is providing free COVID-19 testing for all Hotel, Restaurant and Food Service Industry Workers. Must show valid government photo ID and employee ID/paystub. Hawaiian Monarch Hotel Upper Lobby. Open daily from 9 a.m. - 5 p.m. Pre-register at oahucitypass.lumisight.com.

**DAILY • BEYOND VAN GOGH: THE IMMERSIVE EXPERIENCE COMES TO AN END**  
This unique multimedia experience has been selling out since it opened at the Hawaii Convention Center in July. Featuring more than 300 of Vincent Van Gogh's masterpieces, the exhibit takes the art lover into a three-dimensional world. Exhibit closes on September 26th. vangogh-honolulu.com.

**DAILY • FREE UKULELE LESSONS**  
Free ukulele classes offered at The Ukulele Store taught by Tylee, a national award winner. Tylee's Ukulele Lessons required. 4:30 p.m. waikikibeachwalk.com.

**DAILY • LAST CHANCE TO SEE BISHOP MUSEUMS POW! WOW! EXHIBIT**  
Pow! Wow! may have been canceled in Kaka'ako this year, but Bishop Museum to the rescue! This exhibit showcases over 160 of the most notable Hawai'i-based artists, sculptors, and international street artists, with 30 artists creating murals and installations within the

gallery and throughout Bishop Museum's 15-acre campus. Open from 9 a.m. - 5 p.m. daily thru September 15th. bishopmuseum.org.

### MONDAY & WEDNESDAYS WBW FARMERS MARKET

Browse locally grown produce and a variety of made in Hawai'i products. Waikiki Beach Walk's Market. 4 - 8 p.m. waikikibeachwalk.com.

### TUESDAYS • KU HA'AHEO

The music and hula led by kumu hula Blaine Kia at Waikiki Beach Walk will be temporarily live-streamed as of August 17th until further notice. 4:30-6 p.m. Free. waikikibeachwalk.com.

### WEDNESDAYS LEARN TO MAKE MELE

Learn to make a feather flower lei from a third generation master in the art of feather lei making every Wednesday from 11 - 11:30 a.m. and again at 2 - 2:30 p.m. in The Royal Room. Limited to 4 people. Reserve in advance. Free. 499-7408. waikikibeachwalk.com.

### WEDNESDAYS, SATURDAYS & SUNDAYS ALOHA STADIUM SWAP MEET

The Aloha Stadium Swap Meet has been going strong since 1979. Featuring over 400 vendors, crafters, artists from all over the world, the Swap Meet offers discounts on a wide selection of high quality products. A rotating host of food trucks are also on hand. Wednesdays & Saturdays from 8 a.m. - 3 p.m., Sundays from 6:30 a.m. - 3 p.m. alohastadium.hawaii.gov.

### FRIDAYS

#### KAMA'AINA FREE ON FRIDAYS

The Honolulu Museum of Art is now offering free admission for Hawai'i residents every Friday from 4 - 9 p.m. 532-8700.

#### FIRST FRIDAY (SEPTEMBER 3) DOWNTOWN GALLERY WALK & CRAFT FAIR

Honolulu's beloved monthly outdoor self-guided arts tour downtown is back with safety modifications in place. Various art galleries and eateries offer specials between 6 - 9 p.m. Monthly updates about participants are finalized and published 2 days before each First Friday online at firstfridayhawaii.com.

#### FRIDAY & SATURDAYS FREE LEI MAKING CLASS

Enjoy an hour-long lei making lesson in the Building B Breezeway on Level 1. Limited to 16 people per class. All classes are first-come first-served, no reservations allowed. Free. 1 p.m. royalhawaiiancenter.com.

#### FRIDAY - SUNDAY MALU NIU EVENING ENTERTAINMENT

See live music and hula in the Royal Grove from 5:30-6:30 p.m. royalhawaiiancenter.com.

#### SATURDAYS • FREE HULA LESSONS

Free 120-minute lauhala weaving lessons in the outdoor eating area of Waikiki Food Hall Co., Level 3, Bldg. C. Limited to 5 people. 2 p.m. royalhawaiiancenter.com.

#### SATURDAYS KAKA'AKO FARMERS MARKET

Browse through an abundance of fresh local produce, artisan foods and wares from dozens of vendors. Saturdays, 8 a.m. - 12 p.m. farmloversmarkets.com.

#### SATURDAYS • KCC FARMERS MARKET

Fresh island produce, seafood, flowers and more are available from over two-dozen vendors at Kapiolani Community College. 7:30 - 11 a.m. hfbf.org/farmers-markets/kcc.

#### SATURDAYS PEARLRIDGE FARMERS MARKET

Dozens of vendors offering locally grown fruits and vegetables, plants and freshly made treats. A pop-up cafe offering seating and live music rounds out the day. Free. 8 a.m. - noon. farmloversmarkets.com.

#### SATURDAYS & SUNDAYS ART ON THE ZOO FENCE

See the works of local artists displayed on the Zoo fence on Monsarrat Avenue opposite the Kapiolani Park Bandstand. Works include original paintings, prints and photographs. 9 a.m. - 3 p.m. Free. artonthezoo fence.com.

#### FIRST SUNDAY (SEPTEMBER 5) NA KŪPUNA NIGHTS

The Hyatt Regency Waikiki celebrates Hawai'i's elders the first Sunday of each month with Na Kūpuna Nights at the Na Lea Terrace on the 3rd Floor. Featuring live Hawaiian music, arts and crafts, and food. \$80. 5 - 8 p.m. 237-6196.

#### SUNDAYS • FREE HULA LESSONS

Kumu Hula Blaine Kia offers weekly hula program at Waikiki Beach Walk. 10 people per class. Registration Required. Free. 9 - 10 a.m. waikikibeachwalk.com.



STATE-OF-THE-ART MODERN AND NEWEST URGENT CARE IN WAIKIKI

808.922.2112 | doctorsofwaikiki.com

Call to request courtesy complimentary transportation **FREE**

## Offering ALL 5 TYPES of FDA/EUA Approved Tests for COVID-19

Currently only Medical Center on Oahu offering Abbott Rapid Covid-19 test with results ready in 20 minutes

### SERVICES INCLUDE:

- Courtesy complimentary transportation
- House/Hotel room calls
- Diagnosis and treatment of illness and injuries
- Contracted pre-employment physicals
- Drug screenings
- Immunizations for adults



Dr. Alan Wu, M.D.



Dr. Tony Trpkovski, M.D.



- Largest most full staffed urgent care in Waikiki
- Qualified and experience English, Japanese, Chinese & Korean speaking client service representatives
- Immigration medical examinations
- No appointment needed (walk-in urgent care)
- All major insurance and major credit cards accepted

**HOURS OF OPERATION: 8:00AM-12:00AM (OPEN DAILY)**

Sheraton Princess Ka'iulani Hotel ground floor • 120 Ka'iulani Avenue, #KW10 & 11, Honolulu, HI 96815 • 808.922.2112 • info@doctorsofwaikiki.com

# SEPTEMBER CALENDAR OF EVENTS

## SUNDAYS KAILUA FARMERS MARKET

Wander through multiple vendors offering an abundance of fresh local produce, food and more. Now located at Kailua Cinemas parking lot. 8 a.m. - 12 p.m. farmloversmarkets.com.

## THIRD SUNDAY (SEPTEMBER 19) FAMILY FREE SUNDAY

The Honolulu Museum of Art Family Free Sunday has been offering free admission to kama'aina on the third Sunday of the month since 2004. Family Sundays are still largely virtual for now, but they are offering free museum admission to those that would like to come in with reservations 10 a.m. - 4:30 p.m. Free. 532-8700. honolulumuseum.org.

## SEPTEMBER 1- 14 2ND ANNUAL OKINAWAN FEAST - IVAL

To date, there has been over 350 Okinawan owned restaurants in Hawaii. This year, FEASTival is teaming up with the Okinawan Festival and a number of the Okinawan owned restaurants are creating special Okinawan inspired dishes or deals that will only be available during FEASTival week. Find a list of all the specials at hawaiiokinawans.com.

## SEPTEMBER 2 13TH ANNUAL UKULELE PICNIC

The Ukulele Picnic in Hawaii, a festival of music and friendship through Ukulele has gathered many ukulele enthusiasts for the last 12 years. Although COVID has changed the format of the event, it is still going forward in a live and virtual format, featuring Raiatea Helm, NUE, Kalei Gamiao & Chris Kamaka with Uncle's Jukebox and more. Livestream \$20, Live \$35-\$45. 6:30 p.m. bluenotehawaii.com.

## SEPTEMBER 4-5 OKINAWAN FESTIVAL

The Festival is going virtual this year, and, pre-orders for Bento, Andagi, and Andadog are open, because what's a festival without the food? The food can be picked up on Saturday and Sunday at the Hawaii Okinawa Center to enjoy while watching the virtual show. Watch the virtual Festival on the Hawaii United Okinawa Association YouTube and Facebook or on the Okinawan Festival Facebook pages both days from 2 - 5 p.m. A special one-hour shortened version will be shown on KHON Sept. 4th from 7 p.m. and re-airing on Sunday at 8 p.m. okinawanfestival.com.

## SEPTEMBER 7-8, 10-12 AIR SUPPLY



Graham Russell and Russell Hitchcock first met in 1975, and soon thereafter Air Supply was born and quickly landed the gig to open for Rod Stewart. It got them new fans, but did not break the US market. Fast forward a few years, and "Lost in Love" became the fastest selling single in the world and Clive Davis signed them to Arista Records. The second single was "All Out of Love," and that went up the charts even quicker. 46 years later they are still going strong. 6:30 and 9 p.m. \$95 - \$165. bluenotehawaii.com.

## SEPTEMBER 11 LEARN HOW TO PAIR WINE WITH FINE ART

Does red wine go with Rembrandt? Chardonnay with Chagall? Join the curators at the Park West Fine Art Museum & Gallery as they show you how to perfectly pair wine with some of the greatest eras in art history. Have fun and leave knowing a lot more about wine and art. Complimentary wine provided (21 or older with ID) and three lucky guests will win a free framed artwork about wine. 7:30-8:30 p.m. Please RSVP to waikikibeach@parkwestgallery.com.

## SEPTEMBER 11 ALA MOANA CENTER BLOOD DRIVE

Giving blood is a great way to commemorate 9/11. 20 years later the country is in crisis yet again, and blood banks everywhere are in dire need of all blood types. Currently, one in seven people entering a hospital in Hawaii will need blood and more than 200 donors are needed a day. The blood drive will be held on Street Level 1 in the Diamond Head Wing, next to Goma Tei. Schedule your appointment at bbhdonor.org.

## SEPTEMBER 14-16 SPYRO GYRA

The jazz group Spyro Gyra has reached an international audience for over forty years, resulting in sales of over 10 million albums and having played over five thousand shows on five continents. Due to COVID-19 this show has been rescheduled twice, but they can now add six more shows to their tally. Tickets purchased for the previous shows have been automatically transferred. See which show your tickets have

been transferred to at bluenotehawaii.com. 6:30 and 9 p.m. \$35 - \$55.

## SEPTEMBER 16

### ARTISTS OF HAWAII' I NOW EXHIBIT OPENS

The Honolulu Museum of Art offers a visually dynamic exploration of the most urgent global issues of our time features compelling, thought-provoking works from 18 leading local contemporary artists. The exhibition presents 13 new works and site-specific installations employing a wide variety of technologies, media, and techniques. A full slate of public programming is planned for the exhibition. Thru January 2022. honolulumuseum.org.

## SEPTEMBER 18 -19 • HAWAII SPORTSCARDS AND COLLECTIBLES SHOW

Stop by and see the hottest unopened graded cards, comics, autographed memorabilia, collecting supplies and more. Pearlridge Center's Wai Makai Center Court. 10 a.m. to 5 p.m. pearlridgeonline.com

## SEPTEMBER 25-26 POP CULTURE EXPO

Calling all collectors! From sports cards to comics, action figures to memorabilia, whether your thing is Star Wars or Star Trek, the Pop Culture Expo will offer something for all fans. Enthusiasts and their families made last year's mini-con such an incredible success that the Pop Culture Expo is coming back to Pearlridge for its third year. Wai Makai and Mauka Center Courts. 10 a.m. to 6 p.m. pearlridgeonline.com.

The Local's Favorite Smoked Meats & Fish



Just  
15 Minutes Walk  
from Waikiki



# Guava Smoked

HAWAII.com HI



Support Local

808-913-2100 • 567 Kapahulu Ave.

Parking/Entrance via Campbell Ave.

www.guavasmoked.com

# The Music Plays On

Over the past 12 years, the 'Ukulele Picnic in Hawaii has brought more people together to celebrate their love for the 'ukulele. Since the first event in 2009, more than 5,000 people from all over the world participate in the event every year,

increasing awareness about the 'ukulele, and building a strong following for Hawaiian music.

The 'ukulele is rich with history and tradition. The Picnic has built its foundation on the love people have for this small, guitar-like instrument and is known for bringing 'ukulele enthusiasts from around the world together to celebrate music and friendship year after year.

Sadly, like everything else these days, the pandemic ruined those plans, and the February event had to be postponed. Not to be deterred, the organizers picked themselves up and figured out how to reimagine the event to happen in a COVID world. Since travel is still challenging, the minds behind this festival decided to create a hybrid event that allowed for limited people to attend the festival live here in Hawaii and others to attend, and perform, virtually – hence the very first “Virtual” Ukulele Picnic in Hawaii will take place in September 2021.

## 13TH ANNUAL 2021 'UKULELE PICNIC IN HAWAII 13 第13回ウクレレピクニック・イン・ハワイ2021

The 'Ukulele Picnic in Hawaii was founded by a famous Japanese musician from the band Southern All Stars, Kazuyuki Sekiguchi.

Although he is the bassist for one of Japan's most successful rock groups in history that have sold

more than 47 million albums and singles in Japan alone, when he performs as a solo artist, he plays the ukulele and loves Hawaiian music. His love for the instrument is said to have begun after he saw Mia Farrow playing one in *The Purple Rose of Cairo*. He was the pioneer behind the 'ukulele music scene in Japan many years before he founded the annual festival, even opening a store in Japan that conveyed Hawaiian culture long before the ukulele was well known there. He decided to create the event to bring professional 'ukulele musicians together with the countless numbers of 'ukulele lovers across the globe. The people who attend this event are there because they love the 'ukulele, either as a player or a listener, and everything about the event celebrates the instrument.

The pandemic has made international travel extremely difficult, if not impossible for some, and the fact is, 'ukulele lovers exist worldwide. They wanted to find a way to bring every together. By adding a virtual component to this event, the organizers hope that the sweet, melodic sounds of the 'ukulele can bring 'ukulele lovers around the world closer during these trying times. After all, as Henry Wadsworth Longfellow once said, “Music is the universal language of mankind.”

The 13th anniversary of the 'Ukulele Picnic in Hawaii will kick off with a special concert at Blue Note Hawaii on September 2nd featuring Raiatea Helm, NUE, Kalei Gamiao & Chris Kamaka with Uncle's Jukebox. Seats are limited but available for \$35 - \$45. The concert will be streamed online. Anyone can purchase a ticket for \$20 and enjoy the show from wherever they may live, which perfectly fits the mission of the 'Ukulele Foundation of Hawai'i, which is “'Ukulele Connects the World.”

On Saturday, September 4th, 'ukulele musicians from around the world will

perform on a free live stream that begins at 4 p.m. Featuring local and international 'ukulele musicians, performers will beam in from across the US, England, France, Thailand, Japan, Canada, India, and of course Hawaii.

The live stream will feature four winners from each category of the International Ukulele Contest 2021. The unique and energetic performances of the new ukulele stars will thrill and entertain audiences.

Also scheduled to perform is Japan's 1933 Ukulele Allstars. This unique collaboration group consists of talented musicians and ukulele enthusiasts in Japan, led by Boo Takagi. Although he is well known as a member of the Drifters, he also loves Hawaii and has been passionate about the 'ukulele for many years. About 25 years ago, Boo-san asked Kazuyuki Sekiguchi if they could put together some sort of 'ukulele orchestra, and that's how this special group was created.

According to Sekiguchi-san, there are two essential criteria to be part of the 1933 Ukulele All Stars. They need to love the 'ukulele and respect Boo Takagi with their whole heart. Being famous doesn't hurt either. One of the group's newest members happens to be one of the biggest pop stars in Japanese music, Yoko Oginome. Yoko became obsessed with the ukulele, and her passion for the instrument continues to grow to this day. She recently released her first song composed on the 'ukulele. Yoshio Nomura, a member of the famous Tanokin-Torio is also part of the group.

Did you know there was a 'Ukulele Orchestra of Great Britain? This group



believes that all genres of music are available for reinterpretation, as long as they are played on the 'ukulele, and are known for their funny, virtuosic, twanging, awesome, foot-stomping rock-n-roll and melodious shows.

The live stream can be found on [youtube.com/user/ukupichawaii](https://www.youtube.com/user/ukupichawaii).

For more information about 'Ukulele Picnic in Hawai'i, please visit [www.ukulelepicnicinhawaii.org](http://www.ukulelepicnicinhawaii.org).

### How Can We Help?

We're a family-operated business dedicated to service, safety, quality & fun! Ocean activities for all ages and budgets. We're at your service to help provide a perfect match for your client.



Located at:  
• KEWALO  
• WAIANAE  
• HILTON PIER

We offer:  
• Sail • Snorkel •  
Dolphins • Turtles  
• Whales (in season)  
• Private Charters  
• Transportation

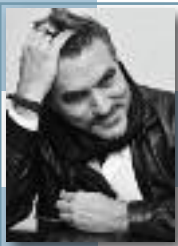
234-SAIL

(7245)

WE ANSWER 24 HOURS!  
[hawaiinautical.com](http://hawaiinautical.com)



Hawaii Nautical



# Chef's Corner

## Celebrity Chef Todd English

One of the most decorated and charismatic chefs in the world, Todd English has enjoyed a staggering number of accolades, including being a four-time James Beard Award winner, Bon Appetit's Restaurateur of the Year and one of People Magazine's 50 Most Beautiful People to name a few. His first restaurant Olives has achieved critical success over the years and led to multiple other concepts and close to two dozen restaurants around the world. His daughter Belle followed in his footsteps, opening her first restaurant at 17, and now is in charge of the Williams Sonoma Test Kitchen.

### How did you spend the shutdown?

I spent the shutdown cooking, writing, and reflecting.

### Restaurants were definitely some of the hardest hit during COVID. Did yours survive the pandemic?

About half of them survived, some are still up in the air.

### What are you seeing at restaurants around the world, are you confident in the industry's resurgence?

I am 100% confident there will be a resurgence in the industry. Of course there is some backlash and fear, we're still in the midst of the pandemic, but I'm confident that people will always want to go out to eat and drink and socialize.

### Let's talk about you. What's your first childhood food memory?

I remember distinct aromas of olive oil, garlic, and oregano in the kitchen.

### What was your first job in the industry?

I was a dishwasher in a Mexican restaurant.

### 33 years after Olives first opened, how have your priorities changed?

I would say my priorities are mostly the same. I have the same work ethic, and I aim to create the same joy for people.

### Where do you find the most joy in this industry?

The joy I see people have when they eat. I love to see how much food touches people, how it brings people together.

### You have a variety of different concepts out there. How many (and did that number go up or down?)

The number has gone down, but new restaurants are being built, opened and conceptualized.

### TV has thrust chefs into the forefront of pop culture. What are your thoughts on the TV chef "thing"?

I think it's great. Food is entertaining, relevant, and something that people will always want to watch.

### Who would you consider your mentor and why?

Julia Child; she was very encouraging to young American chefs to pursue this career. I spent a lot of time with her, at her home in Cambridge and hanging out and helping as one of the lackeys on her sets. She was so inspirational, so funny, so sweet, so encouraging to young chefs who wanted to pursue this career. She was a driving force to change the title of "chef" on the National Registry from blue collar to white collar.

### Describe your food / leadership philosophy?

I'm a big believer in teamwork. I like getting everyone involved. It's a hard business. I feel it's important to be working just as hard as my staff. Comradery is important.

### There's a lot of restaurants struggling out there these days with COVID. Any advice to share?

Be true to yourself, work hard, don't make excuses, and enjoy what you do.

### How many times have you participated in HFWF?

I've done the festival 3 or 4 times. I'm very excited to be working with my rockstar daughter.

### What do you have planned for this year's festival?

The great thing is: it's in my daughters hands.

### What's on your must-do list while in the Islands?

Musubi! And to hang ten on the giant waves on the north shore. Also cliff diving and swimming with the sharks. But mostly I just want to sit on the beach and play golf.

### What's your favorite part of these food festivals?

They're fun, they're a great way to see fellow chef buddies. I enjoy wonderful places like Hawaii, it's always great to be out and about in the food community.

### What's next for you?

The launch of The English Hotel.

## Cheesy Brussels Sprouts Gratin



- |  |  |
|--|--|
| 8 oz pancetta ( <i>diced</i> )                       | 2 tbsp fresh thyme leaves ( <i>chopped</i> ) |
| 2 lb. brussels sprouts ( <i>trimmed and halved</i> ) | 2 cups heavy cream                           |
| 2 ea. shallots ( <i>thinly sliced</i> )              | 1 tbsp Dijon mustard                         |
| 3 ea. peeled garlic cloves ( <i>finely chopped</i> ) | 1 cup walnuts ( <i>chopped</i> )             |
| 4 tbsp unsalted butter ( <i>melted</i> )             | 2 oz gruyere ( <i>grated</i> )               |
| 1/2 tsp ground black pepper                          | 2 oz parmesan ( <i>grated</i> )              |
|  | 1 tsp crushed red pepper flakes              |

**Directions:** Preheat oven to 425° degrees. Spread pancetta on a baking sheet and roast tossing once halfway through until lightly browned. Transfer pancetta to a large bowl along with brussels sprouts, shallots, garlic, butter, black pepper and 1 tbsp. chopped thyme leaves, reserve baking sheet. Stir ingredients together until everything is evenly coated. Dump brussels sprout mixture into a baking dish and roast in oven until brussels sprouts are evenly browned. In a bowl whisk together heavy cream and Dijon mustard. Remove brussels sprouts from oven and carefully pour cream/Dijon mixture over them. Sprinkle gruyere and parmesan cheese over brussels sprouts. Lower oven temperature to 375° and return brussels sprouts to oven. Arrange walnuts on baking sheet that was used for pancetta with remaining chopped thyme leaves and red pepper flakes, toast in oven until browned all around tossing halfway through (about 10 minutes) Remove brussels sprouts from oven when cream is thick, bubbling and browned around all edges (about 20 minutes). Sprinkle gratin with toasted walnuts and let cool for 10 minutes before serving.

You can meet Todd English at this year's Hawaii Food & Wine Festival

He will be cooking at Divine on October 24th at TBD.. by Vikram Garg alongside his daughter

Web: [toddenglish.com](http://toddenglish.com) • IG/FB/Twitter: [@cheftoddenglish](https://www.instagram.com/cheftoddenglish) • See HFWF information at: [hfwf.me](http://hfwf.me)



Custom Jewelry Bar at Kolohe



Plan Your Escape at Breakout Waikiki

# COME & PLAY!

at Waikiki Beach Walk



WAIKIKI BEACH WALK

WAIKIKIBEACHWALK.COM | [f](https://www.facebook.com/waikikibeachwalk) [i](https://www.instagram.com/waikikibeachwalk) [t](https://www.tiktok.com/@waikikibeachwalk)



Feather Flower Making at The Royal Room



Art Seminar at Park West Fine Art Museum & Gallery

# Make a difference starting with you

De-stress • Refresh • Relax • Heal



## Online Gift Certificates *Special*

visit [www.serenityandmassage.com](http://www.serenityandmassage.com) and use code "SERENITY15" for **15% OFF** all regularly priced gift certificates valid through 10/31/21

### EXPERIENCE SERENITY AND MASSAGE FOR YOURSELF

- Full 60 & 90 minute massages
- Peaceful, tranquil atmosphere
- Talented licensed massage therapists
- We follow COVID safety protocols
- Save \$27 per massage as a member
- Pre-approved worker's comp & no fault claims accepted
- *Services include:* Swedish, Lomi Lomi, Deep Tissue, Shiatsu, Reiki, Prenatal, Trigger Point Therapy, Neuromuscular Therapy, and more

Join our monthly membership before November 1st and be grandfathered in at the current membership rate



### HAWAII KAI SHOPPING CENTER

377 Keahole St., Ste. 207  
(across from Safeway)

**396-7594**



Raising Cane's opened their newest location at Royal Hawaiian Center's Paina Lanai, and invited hotel employees to have a free lunch the day before their grand opening to help their employee train. Nearly 100 hospitality workers stopped by, spun the wheel for prizes and enjoyed a free lunch. Invitees were encouraged to post pictures online, and one lucky person's post was chosen. See our Facebook page to see who won Free Cane's for a year!



# The Arts at Marks

Continued from page 1.

administrative space, office equipment, and offering clerical assistance for arts organizations in addition to hosting classroom space for art classes such as watercolor painting, ceramics, glass blowing, fabric printing. It is also a performing arts class space for acting, dancing, and slam poetry.



Artists at work and Chinatown residents enjoying coffee.

The ARTS continues to be a primary sponsor of the creative revitalization of the downtown Chinatown area through neighborhood relations, street festivals, maps, the monthly First Fridays, and other community celebrations and events.

The ARTS has been the home base for dozens of non-profit organizations over the years, such as The Friends of the Library of Hawaii, Hawaii Shakespeare Festival, Hawaii Watercolor Society, Play Builders of Hawaii Theater Company, and Hallowbaloo Music & Arts Festival, to name a few. The Hawaii Academy of Performing Arts (HAPA) is run by board president and famed photographer Kim Taylor Reece. The non-profit mission is to transform their community with the power of the arts and establish Honolulu's Chinatown as the creative capital of the Pacific.

Over the past two decades, The ARTS has seen a teen poet graduate from an afterschool program to perform for the president of the United States and another teen from Chinatown go from making Halloween masks to designing the next Macbooks. Through this period, the neighborhood has transformed from dangerous to the boutique.

Like most arts organizations and businesses, the pandemic of 2020 forced HAPA to close its doors and make drastic changes. Still, under the guidance of Kim and his board of directors, The ARTS has come out of this past year in the black with monthly gallery exhibitions and performances. The increase in visitors to Hawaii has been a boon for local artists. Three recent exhibits: Collage & Clay in June, Pineapple Man & Friends in July, and Being in Time in August, saw a significant upsurge in spending by mainland visitors. There is nothing more

exciting than to witness a young artist sell their art for the first time.

Did you know that the gallery at The ARTS is dedicated to the memory of Susan Rogers-Aregger? She was a prolific local artist specializing in collage utilizing hand-made and hand-dyed papers and ceramics created using varied firing techniques. She was also a teacher and mentor to many artists in Hawaii.

Every First Friday, The ARTS debuts a new exhibition, and this month's show is dedicated to many of the artists who have contributed their talents over the past twenty years. The lineup includes new works by Allana Coffee, Debra Drexler, Jodi Endicott, Sergio Garzon, Kris Goto, K.C. Grennen, Jon Hamblin, Kazu Kauinana, Mat Kubo, Kim Coffee Isaak, Jackie Lau, Jerry Mayfield, St. Marko, Meleanna Meyer, Roberta Oaks, San Shoppell, Noe Tanigawa and more. Most of the art will be available for sale.

The September exhibition is free and open to the public during regular business hours. There will be an opening night reception on September 3rd, with standard COVID protocols in place, as well as a collector's happy hour event on Saturday, September 18th, from 2 - 5 p.m. Snacks and drinks, are available for purchase inside the gallery.

The ARTS has postponed its 20th



The recently opened Cool Beans Coffee Shop at The ARTS has become a popular destination for early morning coffee and late afternoon tea for residents & visitors.

Anniversary Gala Fundraiser due to the rising COVID cases, but, in its place, they are launching a "20-for-20" donation campaign asking visitors to donate \$20 when they come into the space to help support this iconic home for the arts.

The Arts at Marks Garage is open Tuesday thru Saturday from 12 p.m. to 5 p.m. Find more info at [artsatmarks.com](http://artsatmarks.com), or call 521-2903.

~ Lance Rae

## The Arts Fun Facts

1. Every last Monday there's a Burlesque dance class
2. Every Wednesday at 5:30 p.m. is yoga
3. Every 2<sup>nd</sup> & 4<sup>th</sup> Wednesday is an Independence Writing Workshop.
4. Guests can use Venmo for snacks.

**THE GOLF SIM**  
POWERED BY ROGER DUNN GOLF HAWAII

**HAWAII'S FIRST & ONLY INDOOR GOLF SIMULATOR USING FORESIGHT SPORTS GCHAWK TECHNOLOGY**

INSTRUCTION | RECREATION | FITTING

THE PERFECT INDOOR GOLF EXPERIENCE FOR YOUR GUESTS  
CONVENIENTLY LOCATED JUST MINUTES FROM WAIKIKI

The Oahu Concierge is printed monthly and direct mailed FREE to all Oahu Concierge, Hospitality & Activity Professionals.  
Subscriptions available to non-industry at \$25 per year.

C O N T A C T  
**Davis Media**

Ph: 596-4422

www.oahuconciierge.com

Twitter & Instagram: @OahuConciierge

Facebook: www.facebook.com/OahuConciierge

ADDRESS & NAME CHANGES / ADDITIONS

We do not take changes via telephone. All changes to mailing list **must be submitted in writing** by the 16th of the month to make the next issue, email is preferred.

S T A F F

PUBLISHER & EDITOR Pam Davis  
publisher@oahuconciierge.com

CONTRIBUTING EDITORS  
Lance Rae, Nadine Kam

DESIGN  
Coreiya Design

The Oahu Concierge  
4348 Waialae Avenue, #185  
Honolulu, Hawaii 96816

PRSR STD  
US Postage Paid  
TRADE MEDIA HUI



## More Chefs. More Flavor.

Delight in globally-inspired culinary flavors at International Market Place, home to Waikiki's largest collection of restaurants. With extraordinary eateries from award-winning chefs like Michael Mina and Roy Yamaguchi, the next chapter in your culinary journey is just around the corner.

**GRAND LĀNAI**  
INTERNATIONAL MARKET PLACE

