

Concierge

KEEPING THE HOSPITALITY INDUSTRY INFORMED SINCE 1998

The Aloha Festivals Return “Pili’āina”

Okinawan Festival



The Royal Court Investiture & Opening Ceremony is the official kick off of the 2023 Aloha Festivals. All photos courtesy of The Aloha Festivals.



Pictures courtesy of The Okinawan Festival

Hawai'i's longest-running cultural festival returns this month for the 77th time. The Aloha Festivals is a month-long celebration of the spirit of aloha and the diverse traditions and cultures of the islands through music, dance, cuisine, and art. First launched in 1946, it was known as Aloha Week. It has grown over the past seven decades to become a month-long celebration to foster the aloha spirit through the perpetuation of the Hawaiian culture and the celebration of Hawai'i's unique history.

Building on last year's theme, Aloha' Āina, Aloha Festivals will continue to explore the integral relationship people have with the land with its 2023 theme Pili'āina – to have a kinship with the land. "At Aloha Festivals this year," said Debbie Nakanelua-Richards, co-chair of Aloha Festivals, "we want to inspire everyone to get out, explore, and appreciate the beauty of our world and let it leave its mark on you."

Pili means to have a personal connection to or close relationship with someone or something, and this theme encourages people to reconnect with their natural surroundings in both old and new ways. Pili'āina urges everyone to physically interact with Hawai'i's land and

environment by going on a hike, exploring the wonder of our destinations' living reefs, stopping to smell the flowers, or making a lei.

When was the last time you did something to connect to the land? We all get so busy in our day-to-day lives that we often forget to go on a hike, look underneath the sea at the wonders that live below, make a lei, or even stop and smell the flowers. I have been too busy to do any of that myself lately. I remember growing up, and we made lei every Saturday afternoon for the canoe regattas the next day. As we got older, my friends and I went hiking regularly. In my 20s, I lived close to the Mau'umae Trail entrance and walked it at least every other weekend. Those days are long gone as life took over and responsibilities grew. I don't even own a lei needle anymore. That should be sacrilegious here in the islands. The Aloha Festivals understands that and is urging everyone, visitors and locals alike, to take this time to reconnect in old and new ways with the land. We can all lead by example and take a few minutes to remind ourselves what a beautiful place we live in – and that will certainly allow us to share more

continued on page 6.

Hawaii loves to celebrate culture, not only its own but also the cultures of those who make up our community. This month, the Okinawan Festival celebrates its 41st anniversary at the Hawaii Convention Center, September 2 – 3.

The Okinawan Festival was born from a small cultural program by an Okinawan women's group, Hui O Laulima, that began at the Ala Moana Hotel in 1971. The cultural jubilee was held for a decade before they decided they wanted to reach an even larger audience, resulting in the creation of the Okinawan Festival itself.

The first Okinawan Festival was held in Hawaii in 1982 at McCoy Pavilion in Ala Moana Park. A mere three years later, the event had already outgrown its location at McCoy Pavilion and moved over to Thomas Square and the Honolulu Academy of Arts before moving once

continued on page 2.

TABLE OF CONTENTS

Yada Yada Yada	2
Newsflash	3
Paparazzi: 'Olili Restaurant	4
E Pili Kakou	8-13
Chef's Corner: Peso Chef Ria Dolly Barbosa	13
Calendar	14-15, 18
Lahaina Strong	16-17
That's Entertainment / Concierge Card	19

Publisher's Letter



Keep Lāhainā in your Heart

I can't find the words to describe the tragic events in Lāhainā. It's horrific, the devastation beyond belief, and the lives that were lost...will we ever even know? I can't imagine the terror these people went through, nor can I wrap my head around the fact that Lāhainā is gone, just erased from existence. The Maui we know is forever changed, and the scars will never go away, but I do know that the Hawaiian people are strong. They are survivors, and together, we will recover. It won't be easy, and it won't be quick, but we will get there.

The love and Aloha shown since this tragedy took place has been beautiful. The loss we all feel seems unsurmountable, and everyone was driven to do something to help as soon as they heard. Hotels, restaurants, stores, gyms, individuals, and everyone I know immediately went into action to get the survivors basic necessities such as clothes, bedding, and diapers before transitioning into organized relief efforts to provide food and housing. The spirit of Aloha runs strong in these islands, and we take care of our own. I think it's fitting that The Aloha Festivals takes place this month because now, more than ever, we are reminded of the importance of our people and preserving and perpetuating our history and culture.

I'm unsure where we go from here, but I know we will find our way together. Life will be different now. Business will be different now. We will never get over the sense of loss, but we will learn how to move forward as one. The one thing I haven't seen is negativity or in-fighting. I will treasure my memories of Maui forever. I have so many. I've been running around Front Street since I was a kid, my parents sailing over over into Lāhainā Harbor every long weekend we could. I loved taking the dingy into shore by the Pioneer Inn, slipping over to Lappert's Ice Cream when my parents weren't looking, obsessing over a little yellow dress I got from a store on Front Street when I was 12 that I think I wore though college. The countless Halloweens and hopping fights into Kaplaua for lunch back when you could get Mahalo Airline vouchers out of an ATM for \$25. The memories go on. How lucky are we to have such treasures to carry with us as we go forward? If you'd like to share some of yours, please email them to me, as I would love to print them in a future issue to help keep our memories of Maui alive... together.

Yada Yada



Douglas Kim

The Hyatt Centric Waikiki Beach Hotel has brought on **Donald Kim** as its new General Manager, taking over from Amy Taylor, who has been promoted to another Hyatt Centric property in Utah. Kim

has worked for various Hyatt's around the country before settling into the Hyatt Waikiki Beach team in 2018. Congrats! • **Disney Vacation Club at Aulani, a Disney Resort & Spa** has recently added **Mario Ramirez** as its Disney Vacation Club Sales Manager, while **Tatiana Faumuina** has joined the Marketing Team. • **The Kahala Hotel & Resort** has named **Brian Lynx** as its new Director of Sales & Marketing. With over 30 years of experience, Lynx brings

a wealth of knowledge and expertise with him. He held senior sales and marketing positions at several luxury hotels including the Grand Wailea, Westin Maui, Westin Moana Surfrider, Kea Lani Maui, St. Regis



Brian Lynx

Bora Bora, and the Mauna Kea Beach Resort. He also served as vice president of meetings, conventions and incentives for Hawai'i Tourism Authority where he oversaw the Hawai'i Convention Center. most recently, many of you might have spoken to him at The Magical Mystery Show where he remains a silent partner. Also at the Kahala, please welcome **Monica Wicks**, who is the newest member of the concierge team.

Okinawan Festival

Continued from page 1.

again in 1990 to Kapiolani Park, where the Festival would grow to become one of the largest ethnic festivals. In 2018, the decision was made to move the Okinawa Festival to the Hawaii Convention Center. Here we are, four decades later, five if you count its modest beginnings, and the Festival now attracts over 50,000 people a year and takes over 2,000 volunteers to put it on each year. Proceeds from the Festival support the Hawaii United Okinawa Association's mission of preserving, promoting, and sharing the Okinawan culture.

The Festival itself takes place on September 2 and 3. Doors open at 9 a.m. for a day filled with delicious food, crafts, educational cultural exhibits, live entertainment, and special performances beginning at 10 a.m. A bon dance begins at 5:30 p.m. on Saturday and continues through 9 p.m. Food scripts are \$1 per script. (Please note that during the Bon Dance, only Okinawa Soba, Andagi, Andadog, and Bento will be sold). On Sunday, expect a repeat of the festivities until 4 p.m. Check out their website at okinawanfestival.com for a complete schedule of events.



But the fun continues after the Festival closes, or at least the flavors do. The Okinawan FEASTival kicks off on Monday, September 4th, offering a delicious way to celebrate



Okinawan-owned restaurants by eating your favorite Okinawan food for two whole weeks. Several Okinawan-owned restaurants are creating special Okinawan-inspired dishes and offers that will only be available during the FEASTival. Discover new eateries by checking out their specials or revisit old favorites. At the end of the two weeks, the hope is that you will know all the Okinawan (& Okinawan-at-Heart) owned restaurants on the island and continue to support them throughout the year. Head to the website to find out who is participating in the FEASTival, or just to check out their handy-dandy guide of where to find specific Okinawan cuisine around O'ahu.

Looking for Andagi? They list nine restaurants that offer them regularly. Guests looking for other Okinawan specialties? Check out this website as it lists many restaurants offering Okinawan Dishes on their regular menu. Find all this, and more, at hawaiiokinawans.com.

EXTRA EXTRA EXTRA *Newsflash*

AUSTRALIAN JEWELRY STORE LOVISA OPENS IN WEST OAHU

Ka Makana Ali'i has welcomed Lovisa to the West O'ahu shopping center. A global Australian jewelry company that specializes in the latest trends in fashion accessories and jewelries. Established in 2010 Lovisa built their popularity offering affordable, trendy jewelry while providing an elevated shopping experience to its customers. Located in the Macy's wing of the Center across from Victoria's Secret. KaMakanaAlii.com.

NA HO'OLA SPA INTRODUCES HYDRAFACIALS

The Hyatt Regency Waikiki Beach has introduced the cutting-edge HydraFacial treatment at its Na Ho'ola Spa. This highly sought-after facial treatment promises to revolutionize skincare. HydraFacial is a multi-step, non-invasive facial treatment that combines cleansing, exfoliation, extraction, hydration, and antioxidant protection. The unique Vortex-Fusion® technology used delivers nourishing serums directly to the skin, instantly refreshing and revitalizing the complexion. hyattregencywaikiki.com.

WINE SPECTATOR ANNOUNCES WINE EXCELLENCE AWARDS

Wine Spectator Magazine announced its 2023 Awards of Excellence list, with six restaurants joining the total list of thirteen award winners on island. Margotto Hawaii, La Vie, Orchids, Mugen, Noe, and Stripsteak have joined Morton's, La Mer, Island Vintage Wine Bar, Il Lupino, Wolfgang's, Hy's and Longhi's on the list.

DAILY ROUND TRIP SHUTTLE SERVICE TO WAIKELE AVAILABLE

Apparently there has been a shuttle offering daily round trip service from any Waikiki hotel to Waikale Premium Outlets for nearly a year for \$30. Memory Shuttle & Tours offers flexible Waikale departures at 1 .m., 3 p.m., and 5 p.m. with on-site customer service. They also offer service to the Aloha Stadium Swap Meet. Go to memorytourshawaii.square.site.

IS YOUR MAILING LIST CORRECT

Are you reading someone else's copy of the magazine? Are there stacks of magazines in your mail room for people that no longer work there? Let us know! Please help us keep our mailing list up-to-date by emailing us with any additions (including their titles) or deletions. Please email: publisher@oahuconciierge.com

A VINTAGE EXPERIENCE AT HĀNAIAKAMALAMA

Imagine selecting a vintage mu'umu'u from an expansive collection of vintage aloha wear size S-XXL+, then learning how to create and fashion a fresh floral hairpiece to complete the ensemble before being led on a docent-led tour of the Queen Emma Summer Palace and ending with a picnic lunch overlooking the gardens Don't miss this special three-hour program on September 2 from 9:30 a.m. -1 p.m. \$70. daughtersofhawaii.org.

JAKE SHIMABUKURO HOSTS INAUGURAL MUSIC FESTIVAL

Jake Shimabukuro is hosting the 1st Annual Hana Hou Music Festival on September 8th and 9th at the Hawaii Theatre. With an impressive line-up of stars including Mick Fleetwood, The Jets, A Girl Named Tom, and countless local beloved musicians. The two-day festival has also been expanded to include a live stream to reach a broader audience and encourage donations and raise funds for relief efforts on Maui. hanahoufest.com.

Entertainment EVERY NIGHT

HILTON HAWAIIAN VILLAGE™ PRESENTS
WAIKIKI STARLIGHT LUAU

Fire knife dancers, live music and an authentic island feast—all under the stars. Upgrade to **Premier seating** for access to the first and second rows, a welcome beverage plus two drinks, and fresh flower lei greeting.

GOLDEN CIRCLE and GENERAL SEATING also available.

SCAN FOR CURRENT SCHEDULE & RESERVATIONS.

TAPA BAR
IN THE TAPA TOWER

LIVE MUSIC NIGHTLY 7-10pm
A venue for icons of Hawaii's music scene, this is where you'll experience some of the finest local talent the islands have to offer. Join us for a fun-filled evening immersed in the heartbeat of Hawaii's music.

NOW SERVING
Smash Burgers, Nashville Hot Chicken, Pizzas and more!

Hilton HAWAIIAN VILLAGE™ WAIKIKI BEACH RESORT

PARK WEST FINE ART MUSEUM & GALLERY

Waikiki Beach Walk Honolulu
808-859-4871 parkwesthawaii.com



Any client you refer for a private tour will get

10% off their purchase*
if they mention the hotel and concierge that referred them.

For more details
waikikibeach@parkwestgallery.com

PARK WEST GALLERY

*Terms and conditions apply

'OLILI

WAIKIKI

It was standing room only when 'Olili Waikiki, located above Kuhio Avenue on the 2nd floor of the Waikiki Market, opened its doors to the hospitality community for a FAM. Guests were treated to extensive samplings of the menu items as they were introduced to the new location and their referral program. It was surprising how many people were unaware of the new full service grocery store, grab 'n go food bar, Piko's Restaurant and live music downstairs and the new restaurant. oliiwaikikihawaii.com.





bloomingdale's

Enjoy complimentary stylist and beauty appointments, spa services, and special offers.

ALA MOANA CENTER 1450 ALA MOANA BOULEVARD, HONOLULU

Pili'āina

Continued from page 1.



The pa'u riders are always a parade highlight personal experiences with our visitors.

In addition to encouraging everyone to go out and explore our 'aina, several signature events make up the Aloha Festivals that visitors will want to attend. They can watch and participate in several fabulous events celebrating our identity. That includes watching a little Hawaiian pomp and circumstance with the Royal Court Investiture & Opening Ceremony. On Saturday, September 9th, the Aloha Festivals Royal Court will be introduced on the grounds of Helumoa, originally the home of Princess Bernice Pauahi Bishop. The investiture is a ceremony at which honors or rank are formally conferred on someone and will begin at 4 p.m. The king, queen, prince, and princess will then take their place on the royal court as part of the Opening Ceremony that starts at 5 p.m. As representatives of Hawai'i's past, the Aloha Festivals Royal Court ensures the festival is rooted in the most cherished traditions of Hawai'i. The Ali'i court members will receive royal cloaks, helmets, head feather lei, and other symbols of their reign at the Royal Hawaiian Hotel's Coconut Grove. The

procession then makes its way to Royal Hawaiian Center's Royal Grove, where traditional hula, chants, and musical performances for all to enjoy. The event marks the official statewide beginning of the Aloha Festivals and is free and open to the public.

On Saturday, September 23rd, visitors will not want to miss the 69th annual Waikiki Ho'olaule'a. This is one of the biggest block parties to take place throughout the year, and thousands of people will flock to the streets of Waikiki from 6 - 9:30 p.m. for food, fun, and lots of live entertainment, including some of Hawaii's top entertainers. Kala'kaua Avenue will come to life with booths highlighting Hawai'i cuisine and culture, local hand-made crafts will be on display for sale, and multiple entertainment stages will have live performances all night long, showcasing everything from contemporary bands and musicians to traditional Hawaiian music and plenty of hula hālau.

People will be literally dancing in the streets near the stages throughout the evening. It's an experience for all to enjoy.



Kalakaua Avenue teems with people during the ho'olaule'a

the parade goes past. Check your local listings to see who will be televising it. The parade begins at 9 a.m. at Ala Moana Beach Park and then winds to Kapiolani Park. Pro tip: Tell youguests to be sure to make it to the park as the parade ends for an up close and personal look to see the riders and floats, and offers a perfect photo op for visitors.

Thousands of volunteers unite yearly to coordinate events for nearly a million participants and spectators. This unique state celebration is an excellent opportunity for visitors who happen to be in town to see the fabulous floats and exciting entertainment while learning more about our culture. This year, is certain to be a bit more poignant given the recent devastation in Maui, shining a spotlight on the importance of perpetuating our history and culture and people to the world, especially given how quickly it can all be taken away. It would not be surprising to see several booth set up throughout the week accepting donations on behalf of our Maui 'ohana.

The Aloha Festival strives to share our beloved island home's rich history and tradition with both kamaaina and visitors year after year and our unique spirit of aloha. This year, take a moment to reconnect with the 'aina yourselves before directing your guests to do the same. More information about the Aloha Festivals can be found online at alohafestivals.com.



The following Saturday, on September 30th, will bring the 75th Annual Aloha Festivals Floral Parade to Waikiki, presented by 'Alohilani Resort. From 9 a.m. to noon, Kalakaua will come alive with over 2,000 participants on a mix of 40 vehicles, 15 floats, and 10 bands. As the state's largest parade, intricate floats are fully decorated with a rainbow of fresh flowers, men and women in cloaks on horseback will showcase the traditional art of pa'u riding, and participants from marching bands to civic leaders will display the unique aloha spirit that unites Hawai'i's community. Any spot you or your guests can find along the route will be good for watching. If you happen to be near the Moana Surfrider Hotel, listen closely for our own Lance Rae, who will be emceeding from there as

Plan an Adventure

Let Hawaii Nautical show your guests our ocean playground.

808-234-SAIL (7245) 

TURTLES GUARANTEED



Enjoy our morning and afternoon snorkel sailings at Turtle Canyon with a wildlife guarantee! See turtles or cruise again for free (certain rules apply). Wildlife guarantee is for re-rides only, no refunds.



Book Your Guests the
Experience of a Lifetime



Schedule Tours of the
Maui Divers Jewelry Design Center.
Guests will learn how we create all our jewelry
locally in Hawai'i, shop our updated showroom,
and hand pick pearls from our New Pearl Bar.



MAUI DIVERS JEWELRY

Inspired, designed and created in Hawai'i EST. 1959

Ala Moana Center | Hilton Hawaiian Village | International Market Place | Pearl Harbor | Dole Plantation

Hale'iwa Store Lots | Honolulu Airport | Maui Divers Jewelry Design Center

Tours, Bookings and Questions? Call or Text 808.946.2929

O'ahu | Maui | Big Island | Kaua'i | MauiDivers.com

Let's be Together...

DINING ▶ ENTERTAINMENT ▶ PAU HANA ▶ EAT ▶ DRINK ▶ BE MERRY ▶ HAPPY HOUR ▶

MONDAY

- Barefoot Beach Café at Queen's Beach** 924-2233
Live Contemporary & Hawaiian
 The Barefoot Boys 5:30-8:30pm
- Chart House Waikiki** 941-6660
Live Contemporary Hawaiian
 Camarillo Brothers 6-9pm
- Deck. at the Queen Kapiolani Hotel** 931-4488
Mai Tai Mondays with Live Contemporary
 JROQ (or others) 6pm-9pm
- Duke's Canoe Club Waikiki** 922-2268
Live Contemporary Hawaiian
 Grace Welton (or others) 4-6pm
 Bryan & Halekahu (or others) 7-9pm
 Ellsworth Simeona 9:30-11:30pm
- Hard Rock Cafe** 955-7383
Contemporary Rock
 Cassie and the... (or TJ & Son) 4-6pm
- House Without a Key** 923-2311
Hawaiian music & hula by Miss Universe '97 Brook Lee
 Pa'ahana Trio 5-8pm
 Nick La'a 8:15 - 10pm
- Kani Ka Pila Grille** 924-4992
Hoku Award Winning Hawaiian musicians
 Sean Na'auao 6-9pm
- Mahi'ai Table** 670-2778

- Live Contemporary*
 Jenna Keala (9/4 - Jason Midro) 5-8pm
- Mahina & Sun's** 923-8882
Monday Vibes on the Lanai
 Brent Limos 6:30-9:30pm
- Mai Tai Bar at the Royal Hawaiian** 923-7311
Live Contemporary Hawaiian
 Eric Lee 11am-2pm
 Brad Kawakami 8-10pm
- Maui Brewing Company** 843-2739
Live Contemporary Hawaiian
 Scott Magz 3:30-5:30pm
- Merriman's Honolulu** 215-0022
Live Slack Key guitarist
 Deven Camat 5:30-7:30pm
- Monkeypod Kitchen Ko Olina** 381-4086
Live Contemporary
 Koa & Yaz 3:30-5pm
- Piko Kitchen & Bar** 923-2032
Live Contemporary Hits
 Christian Yrizarry 5-9pm
- Rumfire** 921-4600
Live Contemporary Hits
 Kupu Dalire-Na'auao 6-9pm
- Signature Prime Steak** 949-3636
Contemporary Pianist in the bar
 Keith Montross 6-9pm
- Splash Bar at the Sheraton Princess Kaiulani** 921-4600
Live Contemporary Hawaiian
 David Aquino (or Tad Jennings) 6-9pm
- Swell at the Alohilani** 294-4108
Solo Contemporary Guitarist
 Drew Henmi 6:30-9:30pm
- SWIM at the Hyatt Regency** 923-1234
Live Contemporary Hawaiian
 Kaulana Vinoya 5-9pm
- The Beach Bar at the Moana Surfrider** 922-3111
Live Contemporary Hawaiian
 Eric Lee 3:30-6:30pm
 Johnny Valentine 7-10pm
- The Edge at the Sheraton** 921-4600
Live Hawaiian Music
 Stephen Inglis 1-4pm
- The Point Sunset Pool Bar at Turtle Bay** 293-6000
Live Contemporary Hawaiian with Fireknife Dancer
 Kuhio Travis 5-8pm
- Tiki's Grill & Bar** 923-TIKI
Live Contemporary Hawaiian
 Derrick Lee 1-3pm
 Michael Piranha 5:30-7:30pm
 Lava Grove 10-11pm
- Tommy Bahama Restaurant** 923-8785
Contemporary Hawaiian. Happy Hour Daily 2 - 5 p.m.
 Jeremy Hirokawa 5-8pm
- Tropics Bar & Grill** 949-4321
Live Contemporary
 Kaiona Duo 3-5pm
- Amuse Wine Bar** 237-5428
Live R&B & Contemporary

- Chris Salvador 7-9pm
- Barefoot Beach Café at Queen's Beach** 924-2233
Backyard Hawaiian
 Ben Kama 5:30-8:30pm
- Chart House Waikiki** 941-6660
Live Contemporary Hawaiian
 Ryan Tang Group 6-9pm
- Deck. at the Queen Kapiolani Hotel** 931-4488
Tequila & Taco Tuesday with Live Contemporary
 Freddy Leone 5pm-8pm
 Shane Kainoa (or others) 6pm-9pm
- Duke's Canoe Club Waikiki** 922-2268
Live Contemporary Hawaiian
 Trish Nalei (or others) 4-6pm
 Kailua Moon 7-9pm
 Stephen Inglis 9:30-11:30pm
- Eating House 1849 Waikiki** 924-1849
Live Contemporary Hawaiian
 Kings Kalohelani 4:30-7:30pm
- Giovanni Pastrami** 923-2100
Acoustic Soul, R&B and Pop
 YOZA (or others) 6:30-9:30pm
- Hard Rock Cafe** 955-7383
Contemporary Rock
 Lance Reid (or others) 4-6pm
- House Without a Key** 923-2311
Hawaiian music & hula by Miss Hawaii USA '21 Allison Chu
 Pu'uhonua 5-8pm
 Cory Oliveros 8:15 - 10pm
- Kani Ka Pila Grille** 924-4992
Hoku Award Winning Hawaiian musicians
 Kalale Camarillo 6-9pm
- Lewers Lounge** 923-2311
Jazz Pianist
 Tommy James 8:30pm-12am
- Liko's Tap & Table** 394-5456
Live Contemporary
 Jason Laeha 5-8pm
- Mahi'ai Table** 670-2778
Live Contemporary
 Keoni Ku 5-8pm
- Mahina & Sun's** 923-8882
Electrifying Acoustic on the Lanai
 Laupepa Letuli 6:30-9:30pm
- Mai Tai Bar at the Royal Hawaiian** 923-7311
Live Contemporary Hawaiian
 Kupu Dalire-Na'auao 11am-2pm
 Eric Lee 6-9pm
- Maui Brewing Company** 843-2739
Live Contemporary Hawaiian
 Christian Yrizarry 3-5pm
- Merriman's Honolulu** 215-0022
Live Contemporary
 John Kema 5:30-7:30pm
- Moani Waikiki** 466-2629
Live Contemporary Hawaiian
 Lava 7-10pm
- Piko Kitchen & Bar** 923-2032
Live Contemporary Hits
 Drew Henmi 5-9pm

OriginalMagoosPizza.com/Order



HAWAII'S FAVORITE ISLAND-STYLE PIZZA, SUBS & CHICKEN

WE'VE MOVED TO KAIMUKI! DINE-IN & FULL BAR TAKEOUT & DELIVERY

3579 WAIALAE AVENUE (BETWEEN 11TH & 12TH AVE)

TUESDAY

E Pili Kākou

DINING ▶ ENTERTAINMENT ▶ PAU HANA ▶ EAT ▶ DRINK ▶ BE MERRY ▶ HAPPY HOUR

Rumfire 921-4600

Live Contemporary Hits
Christian Yrizarry 6-9pm

Signature Prime Steak 949-3636

Contemporary Pianist in the bar
Keith Montross 6-9pm

Splash Bar at the Sheraton Princess Kaiulani 921-4600

Live Contemporary Hawaiian
Mark Caldeira 6-9pm

Swell at the Alohilani 294-4108

Solo Contemporary Guitarist
Kamuela Kahoana (9/12 - YOZA) 6:30-9:30pm

SWIM at the Hyatt Regency 923-1234

Live Contemporary Hawaiian
Dominic Carlos 5-9pm

The Beach Bar at the Moana Surfrider 922-3111

Live Contemporary Hawaiian
Stephen Inglis 3:30-6:30pm
Alex Oasay 7-10pm

The Edge at the Sheraton 921-4600

Live Hawaiian Music
Eric Lee 1-4pm

The Point Sunset Pool Bar at Turtle Bay 293-6000

Live Contemporary Hawaiian with Fireknife Dancer
Jenna Keala 5-8pm

Tiki's Grill & Bar 923-TIKI

Live Contemporary Hawaiian & Reggae
John Choelo 1-3 pm
Biku 5:30-7:30pm
Lindsey Wells 8-10pm

Tommy Bahama Restaurant 923-8785

Contemporary Hawaiian. Happy Hour Daily 2 - 5 p.m.
Johnny Kukui 5-8pm

Tropics Bar & Grill 949-4321

Live Contemporary
Kailua Bay Buddies 3-5pm

WEDNESDAY

Azure at the Royal Hawaiian 921-4600

Live Contemporary Hawaiian
Ethan Capone 5:30-8:30pm

Barefoot Beach Café at Queen's Beach 924-2233

Island Vibes
Danny Galura 5:30-8:30pm

Chart House Waikiki 941-6660

Live Contemporary Hawaiian
Mike Tulba 6-9pm

Duke's Canoe Club Waikiki 922-2268

Live Contemporary Hawaiian
Donald Fialkowski (or Keoni Ku) 4-6pm
Taulia Lave (or others) 7-9pm
Alika Souza 9:30-11:30pm

Eating House 1849 Waikiki 924-1849

Live Contemporary Hawaiian
Shawn Garnett 4:30-6:30pm

et al inside Kahala Market 732-2144

Live Contemporary Hawaiian
Nick La'a 5:30-8:30pm

Giovanni Pastrami 923-2100

Acoustic Guitar Soul, R&B
Jason Laeha 6:30-9:30pm

Hard Rock Cafe 955-7383

Contemporary Rock
Mike Piranha (or Danielle Parente) 4-6pm

House Without a Key 923-2311

Hawaiian music & hula by Miss Universe '97 Brook Lee
Pa'ahana Trio 5-8pm
Mike Tulba 8:15 - 10pm

Kani Ka Pila Grille 924-4992

Hoku Award Winning Hawaiian musicians
Ei Nei 6-9pm

Lewers Lounge 923-2311

Jazz Pianist
Tommy James 8:30pm-12am

Mahi'ai Table 670-2778

Live Contemporary
Dillon Pakele 5-8pm

Mahina & Sun's 923-8882

Soulful Guitar on the Lanai
Cameron Achuela 6:30-9:30pm

Mai Tai Bar at the Royal Hawaiian 923-7311

Live Contemporary Hawaiian
Stephen Inglis (9/20 - Christian Yrizarry) 11am-2pm
Johnny Valentine 6-9pm

Maui Brewing Company 843-2739

Live Contemporary Hawaiian
YOZA 3:30-5:30pm

Merriman's Honolulu 215-0022

Live Contemporary
Kamaka Camarillo 5:30-7:30pm

MINA's Fish House 679-0079

Live Contemporary Hits
Kamuela Kahoano (or Cory Oliveros) 6-9pm

Moani Waikiki 466-2629

Blues, Old School Rock, Country
Keith Batlin 7-10pm

Monkeypod Kitchen Ko Olina 381-4086

Live Contemporary
Shaun Garnett 12:30-2pm

Piko Kitchen & Bar 923-2032

Live Contemporary Hits
David Aquino (9/13 - Christian Yrizarry) 5-9pm

Rumfire 921-4600

Live Contemporary Hits
Dave Watanabe 6-9pm

Signature Prime Steak 949-3636

Contemporary Pianist in the bar
Pierre Grill 6-9pm

Splash Bar at the Sheraton Princess Kaiulani 921-4600

Live Contemporary Hawaiian
Alika Souza (9/20 - Chris Luke) 6-9pm

Swell at the Alohilani 294-4108

Solo Contemporary Guitarist
Danielle Parente 6:30-9:30pm

SWIM at the Hyatt Regency 923-1234

Live Contemporary Hawaiian
Biku 5-9pm

The Beach Bar at the Moana Surfrider 922-3111

Live Contemporary Hawaiian
Brandon Serrano 3:30-6:30pm
Kaiona (or others) 7-10pm

The Edge at the Sheraton 921-4600

Live Hawaiian Music
Kupu Dalire-Na'auao 1-4pm

The Point Sunset Pool Bar at Turtle Bay 293-6000

Live Contemporary Hawaiian with Fireknife Dancer
Alex Oasay 5-8pm

Tiki's Grill & Bar 923-TIKI

Live Contemporary Hawaiian and hula
Derrick Lee 1-3 pm
Malu Productions 5:30-7:30pm

Tommy Bahama Restaurant 923-8785

Contemporary Hawaiian. Happy Hour Daily 2 - 5 p.m.
Stan Albrecht 5-8pm

Tropics Bar & Grill 949-4321

Live Contemporary
Bryan & Halahaku 3-5pm

Vintage 1901 at the Moana 921-4600

Contemporary Piano
David Swanson 6:30-10pm

THURSDAY

100 Sails at the Prince Waikiki 944-4494

Live Contemporary & Hawaiian
Kailua Moon 6-8pm

Azure at the Royal Hawaiian 921-4600

Live Contemporary Hawaiian
Noly Paa 5:30-8:30pm

OPEN FOR LUNCH

FRIDAY AT WATERFRONT PLAZA
FRIDAY & SATURDAY AT WAIKIKI BEACH WALK
11AM - 3PM

SAVOR THE DAY

RUTH'S CHRIS STEAK HOUSE

RUTHSCHRIS.COM

Performers & times subject to change

Let's be Together...

DINING ▶ ENTERTAINMENT ▶ PAU HANA ▶ EAT ▶ DRINK ▶ BE MERRY ▶ HAPPY HOUR ▶

Barefoot Beach Café at Queen's Beach 924-2233 <i>Live Contemporary & Hawaiian</i> Alika Souza 5:30-8:30pm	Lewers Lounge 923-2311 <i>Jazz Pianist</i> Ethan Capone & Rocky Holmes 8:30pm-12am	The Veranda at the Kahala Hotel 739-8760 <i>Live Contemporary</i> Johnny Valentine 6-9pm
Chart House Waikiki 941-6660 <i>Live Contemporary Hawaiian</i> Tito & David 6-9pm	Mahi'ai Table 670-2778 <i>Live Contemporary</i> Alex Oasay 5-8pm	Tiki's Grill & Bar 923-TIKI <i>Live Contemporary Hawaiian & Reggae</i> Roddy Lopez 1-3 pm TJ Rosimo 5:30-7:30pm Roots Kai 8-10pm
Duke's Canoe Club Waikiki 922-2268 <i>Live Contemporary Hawaiian</i> Scott Magz 4-6pm Chapter II (or Kona Chang Duo) 7-9pm Walt Keale (or Uluwehi Young) 9:30-11:30pm	Mahina & Sun's 923-8882 <i>Hawaiian Contemporary on the Lanai</i> Kelly Boy DeLima 6:30-9:30pm	Tommy Bahama Restaurant 923-8785 <i>Contemporary Hawaiian. Happy Hour Daily 2 - 5 p.m.</i> Alex Oasay 5-8pm
Eating House 1849 Waikiki 924-1849 <i>Live Contemporary Hawaiian</i> Shane Kainoa 5-8pm	Mai Tai Bar at the Royal Hawaiian 923-7311 <i>Live Contemporary Hawaiian</i> Christian Yrizarry 11am-2pm Stephen Inglis (9/21 - Christian Yrizarry) 8-10pm	Tropics Bar & Grill 949-4321 <i>Live Contemporary</i> Jason Midro Duo 3-5pm
Giovanni Pastrami 923-2100 <i>Live Contemporary</i> Billy Sage 6:30-9:30pm	Maui Brewing Company 843-2739 <i>Live Contemporary Hawaiian</i> Johnny Helm 3:30-5:30pm	Vintage 1901 at the Moana 921-4600 <i>Contemporary Piano</i> David Swanson 6:30-10pm
Hard Rock Cafe 955-7383 <i>Contemporary Rock</i> Chapter II (or others) 4-6pm	Maui Brewing Kailua 518-2739 <i>Live Contemporary Hawaiian</i> David Sedlak (or others) 6-8pm	FRIDAY
House Without a Key 923-2311 <i>Hawaiian music & hula by Miss Universe '97 Brook Lee</i> Walea 5-8pm Duncan Kamakana 8:15-10pm	Merriman's Honolulu 215-0022 <i>Live Contemporary</i> Laupepa 5:30-7:30pm	100 Sails at the Prince Waikiki 944-4494 <i>Live Contemporary & Hawaiian</i> Mike Tulba Duo 6-8pm
Kani Ka Pila Grille 924-4992 <i>Hoku Award Winning Hawaiian musicians</i> Kawika Kahiapo 6-9pm	MINA's Fish House 679-0079 <i>Live Contemporary Hits</i> Johnny III 6-9pm	Azure at the Royal Hawaiian 921-4600 <i>Live Contemporary Hawaiian</i> Ethan Capone 5:30-8:30pm
	Moani Waikiki 466-2629 <i>Contemporary Island Music</i> Kimo Opiana 7-10pm	Barefoot Beach Café at Queen's Beach 924-2233 <i>Live Contemporary Hawaiian</i> The Art Kalahiki Band 5:30-8:30pm
	Piko Kitchen & Bar 923-2032 <i>Live Contemporary Hits</i> Keoni Ku 5-9pm	Chart House Waikiki 941-6660 <i>Live Contemporary Hawaiian</i> Mike Tulba 6-9pm
	Rumfire 921-4600 <i>Live Contemporary Hits</i> Brad Kawakami 6-9pm	Dave & Buster's Honolulu 589-2215 <i>Pauhana Fridays hosted byy Kona Chang</i> Kawaika Kahiapo Trio (artists vary weekly) 5-8pm
	Signature Prime Steak 949-3636 <i>Contemporary Pianist in the bar</i> Grant Carvalho 6-9pm	Duke's Canoe Club Waikiki 922-2268 <i>Live Contemporary Hawaiian</i> Maunalua 4-6pm Hi'ikua (or others) 7-9pm Justin Edwards (or Ernest Chang) 9:30-11:30pm
	Splash Bar at the Sheraton Princess Kaiulani 921-4600 <i>Live Contemporary Hawaiian</i> Kaimi Hananoeau 3:30-5:30pm Ronson Asuncion (9/28 - Tad Jennings) 6-9pm	Hard Rock Cafe 955-7383 <i>Live Contemporary</i> Heleo (or Close the Distance) 8-10pm
	Stripsteak 896-2545 <i>Live Contemporary</i> Jason Laeha 6-9pm	House Without a Key 923-2311 <i>Hawaiian music & hula by Miss Hawaii '73 Kanoë Miller</i> Kapalama Trio 5-8pm Danielle Parente 8:15 - 10pm
	Swell at the Alohilani 294-4108 <i>Solo Contemporary Guitarist</i> Denny Ono 6:30-9:30pm	Kani Ka Pila Grille 924-4992 <i>Hoku Award Winning Hawaiian musicians</i> Ka Hehena 6-9pm
	SWIM at the Hyatt Regency 923-1234 <i>Live Contemporary Hawaiian</i> Koa Atwood (or others) 5-9pm	Lewers Lounge 923-2311 <i>Jazz Pianist</i> Maggie Herron & Dean Taba 8:30pm-12am
	The Beach Bar at the Moana Surftrider 922-3111 <i>Live Contemporary Hawaiian</i> Christian Yrizarry (or others) 3:30-6:30pm Kaimi Hananoeau 7-10pm	Lucky Strike Honolulu 664-1140 <i>Live Reggae and R&B</i> Kamaka Camarillo (or others) 9pm-12am
	The Edge at the Sheraton 921-4600 <i>Live Hawaiian Music</i> Alika Souza (9/21 - YOZA) 1-4pm	Mahi'ai Table 670-2778 <i>Live Contemporary</i> Kai Duhaylonsod 5-8pm
	The Point Sunset Pool Bar at Turtle Bay 293-6000 <i>Live Contemporary Hawaiian with Fireknife Dancer</i> Dave Watanabe 5-8pm	Mahina & Sun's 923-8882 <i>Slack Key on the Lanai</i> Dustin Park Duo 6:30-9:30pm

BarefootBeachCafe.com



"WE PUT Aloha INTO EVERY BITE SO SIT BACK, RELAX AND ENJOY THE VIEW."

OPEN DAILY

BREAKFAST 8AM - 2PM
LUNCH/DINNER 11AM - 8:30PM
LIVE MUSIC NIGHTLY 5:30 - 8:30PM
& SUNDAYS 11AM - 2PM

BAREFOOT BEACH CAFE
2699 KALAKAUA AVENUE

808.924.2233

EVENTS & GROUP RESERVATIONS

808.699.8830

E Pili Kākou

DINING ▶ ENTERTAINMENT ▶ PAU HANA ▶ EAT ▶ DRINK ▶ BE MERRY ▶ HAPPY HOUR

Mai Tai Bar at the Royal Hawaiian 923-7311
Live Contemporary Hawaiian
 Brandon Serrano 11am-2pm
 Johnny III 6-9pm

Mariposa 951-3420
Live Contemporary
 Chris Salvador 2:30-5:30pm

Maui Brewing Company 843-2739
Live Contemporary Hawaiian
 Keith Batlin 3:30-5:30pm

Maui Brewing Kailua 518-2739
Live Contemporary Hawaiian
 Dion "Boogie" Scott (or others) 6-8pm

Merriman's Honolulu 215-0022
Live Contemporary
 Stephen Harris 5:30-7:30pm

MINA's Fish House 679-0079
Live Contemporary Hits
 Jenna Keala 6-9pm

Moani Waikiki 466-2629
Traditional Hawaiian, Reggae. DJ Spins from 10p-1:30am
 Liam Moletta 6-9pm

Monkeypod Kitchen Ko Olina 381-4086
Live Contemporary
 Jasmin Nicole 12:30-2pm

PAI Honolulu 744-2531
Live Contemporary Hits
 Ben Vegas 4:30 - 6pm

Piko Kitchen & Bar 923-2032
Live Contemporary Hits
 Johnny Helm 5-9pm

Rumfire 921-4600
Live Contemporary Hits
 Stephen Inglis (or Dominic Carlos) 4:30-7:30pm
 Kupu Dalire-Na'auao 8-10:30pm

SHOR at the Hyatt Regency 923-1234
Live Contemporary Hawaiian
 Dave Watanabe 5-9pm

Signature Prime Steak 949-3636
Contemporary Pianist in the bar
 Grant Carvalho 6-9pm

Splash Bar at the Sheraton Princess Kaiulani 921-4600
Live Contemporary Hawaiian, DJ Jem spins from 2-5pm
 Ben Kama Duo & Dancer 5-8pm
 Stephen Inglis 8-10pm

Stripsteak 896-2545
Live Contemporary
 Shane Kainoa 6-9pm

SWIM at the Hyatt Regency 923-1234
Live Contemporary Hawaiian
 Denny Ono (or others) 5-9pm

The Beach Bar at the Moana Surfrider 922-3111
Live Contemporary Hawaiian
 Keoni Ku 12-3pm
 Kailua Moon 3:30-6:30pm
 Kamuela Kahoano (9/8-YOZA) 7-10pm

The Edge at the Sheraton 921-4600
Live Hawaiian Music
 Christian Yrizarry 1-4pm

The Grove at the Modern Pool Deck 943-5800

Live Contemporary
 Danelle Parente (or others) 4-7pm
 Brad Kawakami 6-8pm

The Point Sunset Pool Bar at Turtle Bay 293-6000
Live Contemporary Hawaiian with Fireknife Dancer
 Mark Calderia (or others) 5-8pm

The Veranda at the Kahala Hotel 739-8760
Live Contemporary
 Johnny Valentine 6-9pm

Tiki's Grill & Bar 923-TIKI
Contemporary Hawaiian, Alternative, Pop-Rock, Reggae
 John Choelo 1-3 pm
 Chapter II 3-5pm
 Eddie 5:30-7:30pm
 Rachel Faith 8-10pm

Tommy Bahama Restaurant 923-8785
Contemporary Hawaiian. Happy Hour Daily 2 - 5 p.m.
 Chris Murphy 5-8pm

Tropics Bar & Grill 949-4321
Live Contemporary
 Kumuhau 3-5pm

Vintage 1901 at the Moana 921-4600
Contemporary Piano
 David Swanson 6:30-10pm

SATURDAY

100 Sails at the Prince Waikiki 944-4494
Live Contemporary Hawaiian, DJ KK at the pool from 2 - 5
 Kupu Dalire-Na'auao Duo 6-8pm

Azure at the Royal Hawaiian 921-4600
Live Contemporary Hawaiian
 Koco Kawabuchi (or Ethan Capone) 5:30-8:30pm

Barefoot Beach Café at Queen's Beach 924-2233
Live Contemporary Hawaiian
 Vanessa Alputila 5:30-8:30pm

Chart House Waikiki 941-6660
Live Contemporary Hawaiian
 Tito Berinobis 6-9pm

Duke's Canoe Club Waikiki 922-2268
Live Contemporary Hawaiian
 Jason Midro (or Walt Keale) 10am-noon
 YOZA (or Drew Henmi) 1-3pm
 Beach 5 (or others) 4-6pm
 Made to Order (or others) 7-9pm
 Ben Kama (or Darrell Aquino) 9:30-11:30pm

Eating House 1849 Waikiki 924-1849
Live Contemporary Hawaiian
 Kings Kalohelani 10:30am-1pm

Hard Rock Cafe 955-7383
Live Contemporary
 Stephen Harris (or others) 8-10pm

House Without a Key 923-2311
Hawaiian music & hula by Miss Hawaii '73 Kanoë Miller
 Kapalama Trio 5-8pm
 Stephen Inglis 8:15 - 10pm

Kani Ka Pila Grille 924-4992
Hoku Award Winning Hawaiian musicians
 Ho'okena 6-9pm

Lewers Lounge 923-2311
Jazz Pianist

Maggie Herron & Dean Taba 8:30pm-12am

Lucky Strike Honolulu 664-1140
Live Contemporary
 JROQ (or others) 9pm-12am

Mahi'ai Table 670-2778
Live Contemporary
 Dominic Carlos (or Kamakana Kawa'a) 5-8pm

Mahina & Sun's 923-8882
Contemporary Hawaiian/Blues on the Lanai
 Josh Akapo 6:30-9:30pm

Mai Tai Bar at the Royal Hawaiian 923-7311
Live Contemporary Hawaiian
 Ronson Asuncion (or Christian Yrizarry) 11am-2pm
 Dave Watanabe 6-9pm

Mariposa 951-3420
Live Contemporary
 Aisaiah Jacobs 2:30-5:30pm

Maui Brewing Company 843-2739
Live Contemporary Hawaiian
 Chapter II (or others) 3:30-5:30pm

Maui Brewing Kailua 518-2739
Live Contemporary Hawaiian
 Justin Edwards (or Scott Magz) 7-9pm

Merriman's Honolulu 215-0022
Live Contemporary
 Shane Kainoa 5:30-7:30pm

MINA's Fish House 679-0079
Live Contemporary Hits
 Alex Oasay 6-9pm

Moani Waikiki 466-2629
Contemporary Reggae
 Braddah Ash 6-9pm
 Live Local Band 10pm-1:30am

Piko Kitchen & Bar 923-2032
Live Contemporary Hits
 Biku Shimabuku 5-8pm

Redfish at the Wayfinder Waikiki 921-3220
Live Contemporary Hits
 Johnny Helm 6-10p

Rumfire 921-4600
Live Contemporary Hits
 Mark Caldeira (or Tad Jennings) 4:30-7:30pm
 Kaleo Kahumoku (9/16 - Jenny Yim) 8-10:30pm

SHOR at the Hyatt Regency 923-1234
Live Contemporary Hawaiian
 David Aquino 5-9pm

Signature Prime Steak 949-3636
Contemporary Pianist in the bar
 Grant Carvalho 6-9pm

Splash Bar at the Sheraton Princess Kaiulani 921-4600
Live Contemporary Hawaiian, DJ spins from 2-5pm
 Brad Kawakami Duo & Dancer 5-8pm
 Tangi Tully 8-10pm

Stripsteak 896-2545
Live Contemporary
 Dustin Park 6-9pm

SWIM at the Hyatt Regency 923-1234
Live Contemporary Hawaiian
 Stan Albrecht 5-9pm

The Beach Bar at the Moana Surfrider 922-3111

Let's be Together...

DINING ▶ ENTERTAINMENT ▶ PAU HANA ▶ EAT ▶ DRINK ▶ BE MERRY ▶ HAPPY HOUR ▶

Live Contemporary Hawaiian
 Chris Salvador 12-3pm
 Ronson Asuncion (or Zanuck Lindsey) 3:30-6:30pm
 Koa Atwood (or others) 7-10pm

The Edge at the Sheraton 921-4600
Live Hawaiian Music
 Brad Kawakami 1-4pm

The Grove at the Modern Pool Deck 943-5800
Live Contemporary
 Mike Izon (or others) 4-7pm

The Point Sunset Pool Bar at Turtle Bay 293-6000
Live Contemporary Hawaiian with Fireknife Dancer
 Denny Ono 5-8pm

The Veranda at the Kahala Hotel 739-8760
Live Contemporary
 Cory Oliveros (9/30 - Jeanette Trevias) 6pm-9pm

Tiki's Grill & Bar 923-TIKI
Contemporary Hawaiian, Alternative, Pop-Rock, Reggae
 Tangi Tully 1-3 pm
 Kapono Wong 3-5pm
 RootsKai 5-7pm

Tommy Bahama Restaurant 923-8785
Contemporary Hawaiian. Happy Hour Daily 2 - 5 p.m.
 Chris Murphy 5-8pm

Tropics Bar & Grill 949-4321
Live Contemporary
 Chapter II (or others) 3-5pm

Vintage 1901 at the Moana 921-4600
Contemporary Piano
 David Swanson 6:30-10pm

SUNDAY

100 Sails at the Prince Waikiki 944-4494
Live Contemporary Hawaiian, DJ Jem at the pool from 2 - 5
 Cherie Duo 6-8pm

Anna O'Briens 946-5190
Live Contemporary Rock
 Chicago Bob's Classic Rock Jams 9pm - 12am

Dr. J's Blues Review Show 9pm - 12am
Azure at the Royal Hawaiian 921-4600
Live Contemporary Hawaiian
 Ethan Capone 5:30-8:30pm

Barefoot Beach Café at Queen's Beach 924-2233
Live Contemporary Hawaiian
 Kimo Baker 10am-1pm
 Art Kalahiki 5:30-8:30pm

Chart House Waikiki 941-6660
Live Contemporary Hawaiian
 Dean & Dean 6-9pm

Duke's Canoe Club Waikiki 922-2268
Live Contemporary Hawaiian
 Jason Midro (or others) 10am-noon
 Duva (or others) 1-3pm
 Henry Kapono (or others) 4-6pm
 Taulia Lave Duo (or Kaiona Duo) 7-9pm
 Dom Carlos (or Kaimi) 9:30-11:30pm

Eating House 1849 Waikiki 924-1849
Live Contemporary Hawaiian
 Shane Kainoa 10:30am-1pm

Giovanni Pastrami 923-2100
Reggae Pop Music
 Kelandy 6:30-9:30pm

Hard Rock Cafe 955-7383
Contemporary Rock
 Brunch with Lovejack (9/24 - Drag Brunch) 10am-12pm
 Dylan (or others) 8-10pm

House Without a Key 923-2311
Hawaiian music & hula by Miss Hawaii USA '21 Allison Chu
 Pu'u honua Trio 5-8pm
 Brad Kawakami 8:15-10pm

Kani Ka Pila Grille 924-4992
Hoku Award Winning Hawaiian musicians
 Nathan Aweau 6-9pm

La Hiki Restaurant at the Four Seasons 679-0079
Live Contemporary Hawaiian
 Jenna Keala (or Kamuela Kahoano) 11am-2pm

Mahi'ai Table 670-2778
Live Contemporary
 Johnny III 5-8pm

Mahina & Sun's 923-8882
Award-winning ukulele on the Lanai
 Trishnalei 6:30-9:30pm

Mai Tai Bar at the Royal Hawaiian 923-7311
Live Contemporary Hawaiian
 John Coelho & Kanoe Arola 11am-2pm
 Christian Yrizarry 6-9pm

Mariposa 951-3420
Live Contemporary
 Zaysha 12-3pm

Maui Brewing Company 843-2739
Live Contemporary
 Chris Murphy 3:30-5:30pm

Merriman's Honolulu 215-0022
Live Contemporary Piano
 Grant Carvalho 5:30-7:30pm

Moani Waikiki 466-2629
Contemporary Island Music
 Dustin Park 7-10pm

Monkeypod Kitchen Ko Olina 381-4086
Live Contemporary
 Pono 12:30-2pm

Piko Kitchen & Bar 923-2032
Live Contemporary Hits
 Mike Izon 5-9pm

Rumfire 921-4600
Live Contemporary Hits
 Jenna Keala 4:30-7:30pm
 Alex Oasay 8-10:30pm

SHOR at the Hyatt Regency 923-1234
Live Contemporary Hawaiian
 Derrick Lee 5-9pm

Signature Prime Steak 949-3636
Contemporary Pianist in the bar
 Keith Montross 6-9pm

Splash Bar at the Sheraton Princess Kaiulani 921-4600
Live Contemporary Hawaiian
 Kailua Moon & Dancer 3:30-5:30pm
 Chris Luke (or others) 8-10pm

Swell at the Alohilani 294-4108
DJ Kenny Spins Poolside from 1 - 4 pm
 Jason Laeha 6:30-9:30pm

SWIM at the Hyatt Regency 923-1234
Live Contemporary Hawaiian
 Koa Attwood 5-9pm

The Beach Bar at the Moana Surf Rider 922-3111
Live Contemporary Hawaiian
 YOZA 12-3pm
 Brad Kawakami 3:30-6:30pm
 Dave Watanabe 7-10pm

The Edge at the Sheraton 921-4600
Live Hawaiian Music
 Christian Yrizarry 1-4pm

The Point Sunset Pool Bar at Turtle Bay 293-6000
Live Contemporary Hawaiian with Fireknife Dancer
 Danielle Parente 5-8pm

Tiki's Grill & Bar 923-TIKI
Live Contemporary Hawaiian
 Ellsworth & Friends 5:30-7:30pm
 Sabbath Cannon 8 - 10pm

Tommy Bahama Restaurant 923-8785
Contemporary Hawaiian. Happy Hour Daily 2 - 5 p.m.
 Glen Domingo 5-8pm

Tropics Bar & Grill 949-4321
Live Contemporary
 Ben Kama Duo 3-5pm

Vintage 1901 at the Moana 921-4600
Contemporary Piano
 David Swanson 6:30-10pm

Dining Dish



Congratulations to *Liz Watanabe* and *Chef Erwin Manzano*, who just celebrated their first anniversary at **Makana Lani, A Dining Experience** at the 'Alohilani Resort. Honestly, it was a great experience. I do love a buffet. Open for breakfast,

WAIKIKI BAPTIST Church
Your Church in Waikiki
 424 Kuamo'o St
 (Near the Ambassador Hotel)
Sunday Worship Services
 9:00 AM - Contemporary
 10:45 AM - Traditional
 (808)955-3525
 WaikikiBaptist.com

weekend brunch, holidays, and weekend dinners. An a la carte menu is open Thursday and Friday evenings. Check out makanalahawaii.com for complete menus. • Speaking of brunch, **The Chart House** has launched new weekend brunch times. Now available on Saturday and Sunday from 10 a.m. - 3 p.m., they have added new items such as Avocado Toast, Dutch Babies, and Bacon Candy to the menu. 941-6669. • And as one brunch opens, another closes. **Moani Waikiki** has announced they are no longer serving Sunday brunch, but never fear, the popular Waikiki restaurant remains open for dinner nightly beginning at 5 p.m. 466-2629. • **Swim Restaurant + Bar** at the Hyatt Regency has unveiled a new summer menu. A variety of new items showcasing Korean and Hawaiian flavors, such as Beef Bulgogi Nachos (\$18) and Washugyu Kushiyaki (\$28), and vegetarian items, such as the Edamame Hummus Wrap (\$18), now round out their summer classics. 923-1234. • Good news from **UMI by Vikram Garg**. They have finally gotten their liquor license and are bringing back the old-world charm and nostalgia of the table side Bar Cart. Enjoy an expansive spirit and wine menu from around the world. 744-4244. • **Kapa Hale** has launched a new summer tasting menu with Vegetable Trio, choosing a main course from a fresh beef tagliatelle, a blackened fish or a fried pork belly mango lechon, along with either a summer panna cotta or Kahlua mud pie for dessert. 888-2060. • For all of you that went to the **'Olili Waikiki FAM**, you know the menu was awesome. Take a look for yourself at oliliwaikikihawaii.com. • **Margotto Hawaii** has made some changes to its format effective this month. For one, they are now open seven days a week. They will also begin offering an a la carte menu on top of their tasting menus and no longer charge an automatic 20% gratuity, allowing the guests to decide the tip. They are also considering using their champagne counter for hand-rolled sushi on select weekends. Not sure exactly when that will happen, so keep your eyes on their website, margotto-hawaii.com. • Speaking of changes, there are several other exciting restaurant changes on the horizon that I just can't talk about yet — but get ready for some major chef changes and restaurant news! • One last note, be advised our music calendar is subject to more changes than normal given the recent Maui fires. Be patient.



Chef's Corner

Peso Neighborhood Chef Ria Dolly Barbosa

Ria Dolly Barbosa combined her traditional French culinary education with the Filipino flavors of her heritage she began focusing on a modern take on Filipino food. After partnering with Robert Villanueva, a 25-year veteran of fine dining establishments, working for notable Chefs Michael Mina, Jean-Louie Palladin and Bradley Ogden (including a stint here as Stripsteaks GM) and local girl Tiffany Tanaka to launch and open Petite Peso in Los Angeles. Earlier this year, she opened Peso Neighborhood Kitchen in Ward Village.

What is your first childhood food memory?

I remember walking through a sugarcane field in the Philippines with my lolo (grandpa) and mom at a very young age. I became fussy so we stopped and he took out his machete and began to whittle down a piece of sugarcane and handed it to me to chew on.

When did you decide you wanted to be a chef?

I've always been enamored with food thanks to my parents, PBS and the pre-competition days of the Food Network. But, it wasn't until junior year of high school when I began researching culinary schools that I knew it was the path I wanted to take.

What was your first job in the industry?

Does Mrs. Field's Cookies count? Haha! If so, that was my first job at 16. Otherwise The Mansion at MGM Grand after culinary school was my first professional kitchen.

Who would you consider your mentor and why?

I have two actually! While at Daniel Boulud Brasserie, Chef Philippe Rispoli taught me attention to detail and Chef Corina Weibel of Canele taught me the importance of farmer-chef relationships and cooking seasonally.

Can you name one meal or dish you remember most?

Simple steamed dungeness crab with butter, rice and fresh squeezed lemon. It reminds me of summers in Redondo Beach, California with my family growing up.

Weren't your grandparents born here? Have you spent much time on the islands?

Just my grandmother whose parents were Sakadas. We didn't have the means growing up so this is the first time I've spent a considerable amount of time on the islands.

Last year was your first HFWF - what did you think? (Were you excited, had you been here before, etc?)

Excited is a gross understatement of how I felt to be invited. We've done events and festivals but that was our first Food & Wine event. Although not the first time on the islands, it was a great opportunity to experience the current dining scene.

Briefly, tell us about the restaurant you opened here.

Peso Neighborhood Restaurant and Lumpia Bar is a modern Filipino concept and nothing like your lola's cooking.

How did the idea of Peso come about?

It was a concept that was initially conceptualized by my partners Robert Villanueva and Tiffany Tanaka a few years back. At that time I was on the lookout for a restaurant/partners where I could bring my modern take on Filipino food that I had been working on years prior. The idea was to showcase the value that has always been there but not often recognized. PESO embodies not just Filipino food, but culture, hospitality, art and contribution to society.

Did the festival have any impact to open a restaurant here?

It was always the plan to open up a Peso in each of our respective hometowns - Los Angeles, Las Vegas and now Honolulu. It was just a matter of when we would announce the news!

I have to ask, what is a Lumpia Bar?

We are enamored with the idea of Chef Nancy Silverton's "Burrata Bar" at Osteria Mozza in Los Angeles so much so, we envisioned doing something similar with lumpia. We have not yet activated that facet of the restaurant but are currently doing testing and excited to roll it soon!

What's next for the restaurant?

Now that we've launched lunch, brunch, dinner and our Pinoymakase tasting menu three days out of the week, we are looking forward to activating take-out/delivery options on top of the Lumpia Bar.

Are you living here full-time now?

Full time for now until we are ready to reopen back home in Los Angeles. I miss home, but you can't beat the gorgeous weather, beaches, incredible food & produce and the friendliest people here.

What do you have planned for this year's HFWF?

We are very excited to once again be involved with HFWF and plan to serve Lechon Kawali with Ginger Lugaw - crispy juicy pork belly paired with aromatic porridge.



Pinangat Sauce

Ingredients:

1 ½ lb Roma tomatoes, whole
½ lb Tomatillos

¼-½ c Datu Puti Cane Vinegar
3 tablespoons Coconut Milk
Salt to taste

Directions:

Char tomatoes and tomatillos over grill or open flame and cook through. Rough chop in food processor or by hand. Cook down with a little water and vinegar. Add a little coconut milk. Season to taste-Serve over opakapaka or your favorite grilled fish and enjoy!

You can meet Ria Dolly Barbosa at this years Hawaii Food & Wine Festival!

She will be at Far East Street Ph east at the 'Alohilani Resort on November 2th. For tickets go to HFWF.me

Web: pesoneighborhood.com • Facebook / Instagram: @riadollybarbosa / @pesoneighborhood

SEPTEMBER CALENDAR OF EVENTS

Continuing Events

MONDAYS, WEDNESDAYS & FRIDAYS O NĀ LANI SUNSET STORIES HULA SHOW

Honoring the rich history and sense of place of the International Market Place through song & dance. It begins at sunset with the lighting of the Lamakū Torch Tower on Kalākaua Avenue and leads to the Queen's Court. Free. 7 p.m. shopinternationalmarketplace.com.

TUESDAY THRU SATURDAY ARTS AT MARKS LATEST EXHIBIT

The newest exhibit at the Arts at Marks Garage was actually decided upon before the event of August 8th, and its timing is perfect. From September 1 - 29 check out HeART for Our First Responders, a variety of art by police officers, firefighters, EMT's, paramedics, doctors, nurses, etc. Enjoy a Meet the Artists reception at Pau Hana Friday on the first and final Friday of the month from 5 - 8 p.m. Gallery open Tuesday-Saturday from noon - 5 p.m. artsatmarks.com.

WEDNESDAYS, SATURDAYS & SUNDAYS ALOHA STADIUM SWAP MEET

The Aloha Stadium Swap Meet has been going strong since 1979 and will not stop anytime soon despite the Stadium shutting down. Featuring over 400 vendors, crafters and artists, the Swap Meet offers low-prices on a wide selection of quality products with food trucks to snack from. Wednesdays & Saturdays: 8 a.m. - 3 p.m., Sundays, 6:30 a.m. - 3 p.m. \$2 admission ages 12 & up, \$1 for locals. alohastadium.hawaii.gov

FIRST FRIDAY (SEPTEMBER 1) DOWNTOWN GALLERY WALK & CRAFT FAIR

Downtown comes alive the first Friday of every month as art lovers fill the streets for Honolulu's outdoor self-guided arts tour. Stores spill out onto the sidewalk, and artists are on hand to chat about to their works, and restaurants are ready to serve you. Monthly updates are published on participating merchant websites, or two days before the event at firstfridayhawaii.com.

Pau Hana Sailing Private Charters

Pau Hana is offering highly personalized small group charters out of the Ala Wai Boat Harbor.

Available Services

Sailing • Marine Life • Swimming • Snorkeling •
Magic Carpet • Private Chef Available

BYOB or choose from our chef-driven curated menus

Would you like to experience first hand what we are all about?
Call us if you're interested in coming onboard for a FAM Tour



Contact us:
ph: 808-807-9191
pauhanasailing.com

SECOND FRIDAY (SEPTEMBER 8) BISHOP MUSEUM NIGHT MARKET

Extended after-hours access to the Museum with a Pau Hana presentation, living culture demonstration, keiki activities, exhibition tours, J. Watumull Planetarium shows, a Membership Lounge, food trucks, and live music. 5 - 9 p.m. \$10 at the door. bishopmuseum.org.

FRIDAYS

ROYAL HAWAIIAN BAND LUNCHTIME SHOW

The Royal Hawaiian Band has returned to Iolani Palace for its popular lunchtime concerts. Held on most Fridays, the concerts are free and open to the public. 12 - 1 p.m. iolanipalace.org

FRIDAYS & SATURDAYS HOMA NIGHTS

On Friday and Saturday nights, regular museum admission also includes live musical performances, hands-on art activities, pop-ups in the HoMA Shop, movies on the lawn, bar service at the HoMA Cafe, and other interactive art experiences. The museum stays open until 9 p.m. honoluluuseum.org.

SATURDAYS & SUNDAYS ART ON THE ZOO FENCE

See the works of local artists displayed on the Zoo fence on Monsarrat Avenue opposite the Kapiolani Park Bandstand. This is the only outdoor art venue in Honolulu that has proudly been displaying art since 1953. Works include original paintings, prints and photographs. 9 a.m. - 3 p.m. Free. artonthezoofence.com.

SECOND SUNDAY (SEPTEMBER 10) KAMA'AINA SUNDAYS

Kama'aina Sundays are back at 'Iolani Palace. Locals can take advantage of free tours, entertainment, family-friendly activities and plenty of food options with proof of residency. Free tours will be available to the first 500 guests (limit 4 tickets per adult) on a first-come, first-served basis. Visitors welcome with paid admission. 9 a.m. - 3 p.m. iolanipalace.org.

SECOND SUNDAY (SEPTEMBER 10) MELE HALI'A

Waikiki Beach Walk celebrates Hawaiian music with award-winning musicians one Sunday a month on the Plaza Stage. This month will showcase Huapala, a Kamehameha Schools All Wahine Hawaiian Musical Quartet from 5-6 p.m. waikikibeachwalk.com.

THIRD SUNDAY (SEPTEMBER 17) FAMILY FREE SUNDAY

Thanks to Bank of Hawaii, kama'aina have been offered free admission with ID on the third Sunday of the month since 2004. Currently a combo of both in-person and virtual events, offering something for all, but for those that want to attend in-person, they can get free museum admission with reservations. Visitors welcome, but they have to pay. 10 a.m. - 6 p.m. Free. 532-8700. honoluluuseum.org.

SEPTEMBER 1 • LANY

The pop-rock band from LA started putting their songs on Soundcloud before jumping to performing in festivals such as Lollapalooza. From there they opened for John Mayer before putting out their debut album. Tickets: \$39.50 - \$238.50. The Republik. 8 p.m. bampproject.com.

SEPTEMBER 1 NIKI'S NICOLE WORLD TOUR

The Indonesian singer-songwriter is stopping in Hawaii as part of her huge world tour supporting her sophomore album. Tickets: \$49.50 - \$84.50. Waikiki Shell. 7 p.m. bampproject.com.

SEPTEMBER 2 THE GREEN



The highly popular reggae band known for their sound blends dub-heavy roots reggae, smooth lovers' rock, and contemporary pop and rock with indigenous Hawaiian musical/lyrical references has been selling out shows for years. Joined by special guests Teddy Swims & Keilana. Tickets: \$49.50 - \$249.50. Waikiki Shell. 6 p.m. bampproject.com.

SEPTEMBER 2 HUAKA'I CHEF SERIES AT THE KAHALA

The Kahala Hotel & Resort will be presenting a new celestial dining experience with chef and owner Rodney Wages of Michelin-starred restaurant, Avery, in San Francisco and a former French Laundry alumni for a remarkable epicurean adventure. Hoku's. \$295. 5:30-8:30 p.m. kahalaresort.com.

SEPTEMBER 2 HO'ONANEA: A VINTAGE EXPERIENCE

Take a step back in time, select a vintage mu'umu'u and enjoy the serenity of Hānaiakamalama in Nu'uuanu, during this deluxe tour experience at the Queen Emma Summer Palace. Ho'onanea: A Vintage Experience at Hānaiakamalama offers a unique and immersive tour at one of Honolulu's most honored and revered historic homes with a docent-led tour of the Palace to learn more about Queen Emma and their lives in old Hawai'i. The experience will conclude with a light picnic lunch on the terrace overlooking the picturesque tropical gardens. \$70. 9:30-11 a.m. daughtersofhawaii.org.

SEPTEMBER 2-3 OKINAWAN FESTIVAL



The largest ethnic festival in the state celebrates its 41st anniversary with live Okinawan performances and dozens of booths filled with food, crafts, and other cultural activities as the Festival seeks to share Okinawan culture with the public through exhibitions and demonstrations. The festival runs from 9 a.m. to 5 p.m., followed by a free bon dance from 5:30 - 9 p.m. on Saturday and again from 9 a.m. - 4 p.m. Tickets: \$15, children under 12 free. Hawaii Convention Center. okinawanfestival.com.

SEPTEMBER 3 HAWAII POLO SEASON CLOSING DAY

Polo Season is coming to an end with the final match of the year. The fun keeps going after the match is over as the bar remains open, players mingle with the crowd, and the band plays until dark. Music by 11th Hour and food provided from Hometown BBQ. Gates open at 11 a.m. Match begins at 2:30 p.m. Band starts at 5 p.m. hawaii-polo.org.

SEPTEMBER CALENDAR OF EVENTS

SEPTEMBER 4

WAIKIKI ROUGHWATER SWIM

This Labor Day tradition will be the 52nd annual 2.38 mile ocean swim. Nearly 1,000 swimmers will line up on San Souci Beach in front of the New Otani and race in this Labor Day tradition to the Hilton Hawaiian Village. Race starts at 8:30 a.m. waikikiroughwaterswim.com.

SEPTEMBER 8

ADAM CAROLLA IS UNPREPARED



Jimmy Kimmel once challenged Adam to take one-word suggestions from the audience and spin them into comedy bits right on the spot. Adam turned it into a tour! Enjoy a bit of stand-up Adam is known for followed by a daring segment of improv. Tickets: \$30-\$85. Two shows nightly at 6:30 p.m. and 9 p.m. bluenotehawaii.com.

SEPTEMBER 8-9 HANA HOU FESTIVAL

This inaugural music festival inspired by Jake Shimabukuro brings together artists from all genres of music for two-days of a musical jam session unlike any other. Guest stars include the legendary Mick Fleetwood, the Tongan American family pop band The Jets known for hits like "Crush on You", "You Got it All," the first ever group to win NBC's The Voice, Girl Named Tom, legendary smooth jazz and new-age music from Keiko Matsui, and a list of local Hawaiian music icons including Pure Heart, Raiatea Helm, and Brother Noland. 7:30 pm. Tickets: \$65-\$150. hawaiitheatre.com.



SEPTEMBER 8 - 10

HONOLULU RAINBOW FILM FESTIVAL

The Honolulu Rainbow Film Festival is one of the longest running and respected LGBTQ+ film festivals in the world, providing a bridge for queer cinema to Hawai'i, the Pacific, Asia, and the world. This is a hybrid event with live feature film screenings at the Doris Duke Theater, Honolulu Museum of Art, followed by an amazing collection of short films available for free online through the 18th. 2-5 p.m. Doris Duke Theater. HRFF.org.

SEPTEMBER 9

KALO AND AWA FESTIVAL

To celebrate the time of harvest for kalo and awa plants, head to this special festival where guests can sample different varieties of kalo and try kava tea. The festival begins with a ceremony and includes musical and hula performances. Free. 9 a.m. - 4 p.m. waimea.valley.net.

SEPTEMBER 9 • ALOHA FESTIVALS ROYAL COURT INVESTITURE & OPENING CEREMONY



The Royal Court Investiture and Opening Ceremony will kick off the month-long Aloha Festivals celebration with the Royal Court Investiture in a stately ceremony honoring Hawai'i's Ali'i at the Royal Hawaiian Resort followed by a special

Opening Ceremony will feature hula and musical performances at the Royal Grove at Royal Hawaiian Center. 4-6 p.m. alohafestivals.com.

SEPTEMBER 9

HUAKA'I 2023

Celebrate a "Journey with your 'Ohana," at the historic Pink Palace with an evening of incredible music and theatre performances, a traipse through the history of iconic Waikiki, live auction, a menu inspired by contemporary versions of Royal Hawaiian dishes from the 1920s and 30s at the beautiful Royal Hawaiian Hotel. \$350. 5 p.m. Proceeds benefit Hawaiian Mission Houses Education Programs. missionhouses.org.

SEPTEMBER 9 - 10

HONOLULU INTERTRIBAL POWWOW

Join hundreds of people at the 47th annual Pow Wow as they gather to celebrate two days of Native American heritages, pass on indigenous traditions, build communities, learn about Native American cultural diversity, dancers, and drummers. Browse handmade items, frybread, and try your hand at native crafts to take home. Great Lawn at Bishop Museum. 10 a.m. - 5 p.m. \$5. bishopmuseum.org/events.

SEPTEMBER 13-14

HALEKULANI COLLABORATION DINNER

The Halekulani has announced a special collaboration dinner with The Imperial Hotel Tokyo. The two prestigious properties will feature a five-course tasting menu comprised of signature dishes prepared by Thierry Voisin, Chef du Cuisine of Les Saisons at Imperial Hotel

Tokyo, and Alexandre Trancher, Executive Chef of La Mer at Halekulani. \$485. La Mer. 518-2019.

SEPTEMBER 14

DINING IN THE DARK

Imagine eating where you can't see a thing. Studies show that 80% of people eat with their eyes — and with that sense eliminated, the theory is that your other senses take over. I did this once in Florida and it was extraordinary. Stage Restaurant is offering a unique tasting experience where diners will eat secret 3-course menu and eat it blindfolded. Diners can select from a Vegan, Seafood or Red Meat option beforehand. \$125. stagerestauranthawaii.com.

SEPTEMBER 14 - 16

ANDREW DICE CLAY



It's the Dice Man. Andrew Dice Clay is one of America's most controversial and outrageous comics, and he is proud of it. Dice's rise to fame was nothing less than meteoric; he became the first comedian to sell out Madison

Square Garden two nights in a row and was the only performer ever "Banned For Life from MTV." The parental advisory label on his debut album, read "Warning: This album is offensive." Dice has since released numerous best-selling DVDs and a string of multi-gold and platinum selling CDs. This one is not for the faint of heart! Tickets: \$75-\$150. 8 p.m. bluenotehawaii.com.

Continues on page 18.

Your front row seats are ready.

With great food, more than 30 screens and over 100 beers on tap between 2 rockin' locations, Waikiki Beach Walk is the best place to watch football.

Free Parking 10am-3pm Daily
*With \$10 minimum purchase

Located on Lewers St. between Kalakaua Ave. & Kalia Rd.
Open 365 Days | 10AM - 9PM

WAIKIKI BEACH WALK

WAIKIKIBEACHWALK.COM |

Lāhainā Strong



"... it's gone, it's all gone." Those words, uttered by Maui Police Chief John Pelletier about the damage in Lāhainā, confirmed everyone's worst fears, the beloved oceanfront town had been destroyed by the catastrophic wildfires that tore through the historic former whaling village that was once the capital of our islands.

The scene has been described as apocalyptic, as if it was straight out of a horror film, but sadly, the grim reality is just beginning to resonate. While the tragedy is still unfolding, and the loss's true scope won't be known for some time, several things are abundantly clear. Lāhainā as we know it is gone forever, and... the people there desperately need our help.

Countless people had their lives torn apart, losing their homes, employment, most everything they owned, and people they loved in a matter of minutes. It's beyond heartbreaking. The love they have been shown since this happened has been extraordinary. As difficult as the road ahead may be, I hope the people of Maui know they are not alone.

I want to acknowledge all of you for the generosity you have shown Maui in the face of this unimaginable tragedy. From the moment the news hit, the people on this island and the world jumped into action. It's inspiring to see the love pouring out in so many ways, and it's nice

to see so much goodness coming out of so much sadness. But as quickly as people sprinted into action when the news first broke, that sprint is now over, and the marathon has begun. Maui will need our help for a very long time. I am aware that almost all of your employers already have a plan to help the island of Maui, its workers, and its residents, but many of you might be looking for additional ways you can help. If that's you, here are several other trusted ways you can support our Maui 'ohana.

Maui Strong Fund: Online

The Hawai'i Community Foundation started a Maui Strong Fund to support residents affected by the wildfires. There is a credit card processing fee, but HCF will not take an administrative fee, and 100% of the money will be given to the service provider. The fund has been seeded with \$1 million. Individuals can donate at hawaiicommunityfoundation.org/maui-strong.

Maui Food Bank: Online

Food assistance is likely going to be needed for quite some time. You can provide immediate support to the Maui Food Bank by making a monetary donation. Monetary donations can be utilized quickly to help provide support and food assistance to those in need. To donate, go to mauifoodbank.org.

Aloha for Maui: In Person

The Hawai'i Bankers Association launched Aloha for Maui, a program accepting donations at any of its member branches statewide. Monies will be donated to the Hawai'i Community Foundation's Maui Strong Fund, as we mentioned previously. This is a way to avoid the credit card processing fee. Cash and check donations are being accepted at the following banks:

- American Savings Bank
- Bank of Hawai'i
- Central Pacific Bank
- Finance Factors
- First Hawaiian Bank
- Hawai'i National Bank
- HomeStreet Bank
- Territorial Savings Bank

Checks should be made out to "Hawai'i Community Foundation" with "Maui Strong" written in the note section.

Maui United Way: Online

Aloha United Way has established a Maui Fire Relief Fund on its website, AUW.org, to support individuals and families devastated by the Maui fires. 100% of proceeds are directed to Maui United Way, whose partner agencies, such as Maui Food Bank, the Red Cross and the Salvation Army, are distributing relief funds according to the community's most urgent needs. Make donations at: mauiunitedway.org/disasterrelief.

Salvation Army Kahului: Online

The Salvation Army's Kahului Corps is providing meals to those taking shelter across the islands. They are feeding and coordinating over 7,200 meals daily at Maui County/American Red Cross and other shelters in response to the wildfire evacuations. Monetary donations are being requested and can be made at hawaii.salvationarmy.org.

Donate to Teachers: Online

The Hawaii State teacher's Association is collecting donations as well as sharing donation pages of teachers affected by the Maui wildfires. A link to teachers individual sites can be found at hsta.org.



Kokua Restaurant & Hospitality Fund for Maui: Online

The Kokua Restaurant & Hospitality Fund for Maui will provide immediate assistance to the hardworking restaurant, bar and hospitality workers displaced by the devastating wildfires that have impacted West Maui communities from Lahaina to Kapalua. They are also teaming up with the Hawai'i Agricultural Foundation has teamed up with Hawai'i Ag & Culinary Alliance to get funding directly to the farmers. When donating, you can choose who gets your donation by designating a restaurant or hospitality employer located between Lahaina and Kapalua by entering their name in the space provided. If you wish to support the farming community, write in the name Farmer. You can find more information and a Donate Now Button at hfwf.me.

Help Specific Restaurants: Online

Another way you can help specific restaurants or their employees is through GoFundMe. Countless Maui restaurants have set up specific fundraisers to help their own workers who lost their jobs, homes and belongings. If you have a specific restaurant you would like to help, you can search for them by name. GoFundMe has set up a page of verified fundraisers for affected individuals and families at gofundme.com/c/act/wildfire-relief/maui.

Kāko'o Maui: Online

The Council for Native Hawaiian Advancement is working in close collaboration with state and county leaders, nonprofit organizations, and community members to get an understanding of the quickly evolving priorities. They have also created a fund where 100% of the proceeds will go to Maui organizations to support relief efforts. hawaiiancouncil.org/maui.

Maui Humane Society: Online

The fire not only devastated Lāhainā town and its residents, but also their furry friends. The Maui Humane Society is working overtime caring for injured animals and trying to reunite those found with their owners. They are asking for monetary donations to help save the lives of Maui's animals and to help keep animals with their owners. Donations can be made at bit.ly/mauihumanesociety.

Donate HawaiianMiles: Online

Hawaiian Airlines is asking members to consider donating some of their unused miles to the American Red Cross of Hawaii, which will be used to transport

volunteers and staff to Maui. Hawaiian matched the first 30 million miles and is continuing to accept donations. To donate, log into your account, and the information is on the home page.

Donate Makai Points: In-Person

The next time you're at Foodland, you can donate up to \$249 to the American Red Cross of Hawai'i at checkout. You may also donate 250 Makai points for a \$5 donation or round up your purchase to the nearest dollar at checkout. Foodland will match a portion of each gift to support Maui. This program will go on through at least September 30th.

The Hawaii Food Bank: In Person

Perhaps you have more time than money. Consider volunteering your time with the Hawai'i Food Bank. They are always looking for more hands to help with everything from daily food inspections to distribution. Those interested need to fill out an application at: hawaiifoodbank.org/volunteer.

Remember to only donate to trusted, well-known charities. If someone is fundraising on behalf of a charity you are familiar with, it's best to donate to the charity directly. Any charity that solicits

donations in Hawai'i is required to register with the Department of the Attorney General. If you have doubts about a charity's legitimacy, you can go online to charity.ehawaii.gov and verify if it's registered with the state by clicking on the search tab, and then typing in its name.

Lāhainā was a special place for all of us, but it holds deep cultural significance for Hawaiians. The town was once the royal residence of King Kamehameha and the capital of the Hawaiian Kingdom for 25 years. Kings and queens are buried in the graveyard of the 200-year-old stone Wainee Church. It was designated a National Historic Landmark in 1962, and the Historical District was home to more than 60 historic sites. It's hard to wrap one's head around the fact that all of that is gone. But, amidst the devastation, the 150-year-old Banyan Tree still stands. While it's too soon to know if it will survive the damage sustained by the fire, one can always hope. What a sign that would be! When it comes down to it, there are simply no words to describe the pain and suffering people are experiencing after this tragic loss. All we can do is be there for each other with kindness and aloha for as long as it takes.



Award-winning entertainment by Malu Productions
Select packages include admission to day time activities
NEW vegan curry and seasonal salads
AYCE buffet prepared fresh on-site

808-259-2500 • ALOHAKAILUAU.COM

Make a difference starting with you
De-stress • Refresh • Relax • Heal

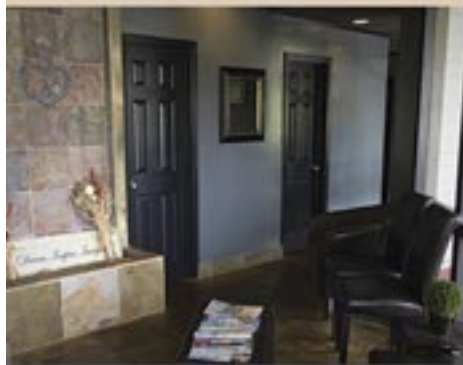


All New Clients Receive
10% off
 their first massage

EXPERIENCE SERENITY AND MASSAGE FOR YOURSELF

- Full 60 & 90 minute massages
- Peaceful, tranquil atmosphere
- Talented licensed massage therapists
- We follow COVID safety protocols
- Save \$26 per massage as a member
- *Services include:* Swedish, Lomi Lomi, Deep Tissue, Shiatsu, Reiki, Prenatal, Trigger Point Therapy, Neuromuscular Therapy, and more

We offer in-home/room massage services. Please call to inquire.



HAWAII KAI SHOPPING CENTER

377 Keahole St., Ste. 207 (across from Safeway)

Call us at **396-7594**

Text us at **862-6163**

serenityandmassage.com



SEPT. CALENDAR OF EVENTS

Continued from page 15.

**SEPTEMBER 21
 BEBEL GILBERTO IN CONCERT**



Don't miss world renowned and multiple-Grammy Award nominated singer/songwriter Bebel Gilberto. Widely considered Brazilian music royalty, her father is legendary Brazilian guitarist/composer João Gilberto, her mother is celebrated singer Miúcha, her uncle is the multifaceted performer/composer/playwright Chico Buarque, and her stepmother was the famed "Girl from Ipanema," Astrud Gilberto. Tickets: \$129-\$65. 7:30 p.m. hawaii theatre.com.

**SEPTEMBER 22
 GIMME GIMME DISCO**

Calling all dancing queens. Gimme Gimme Disco is a traveling DJ Disco Party taking inspiration from ABBA, that famous 70s group. Tickets: \$20. The Republik. 9 p.m. bampproject.com

**SEPTEMBER 22
 2023 KOLOHE KAI SUMMER TOUR**

Kolohe Kai has consistently been one of the most popular artists in Pacific Island Reggae music for over a decade. They will be joined by special guest Matisyahu. Tickets: \$29.50-\$89.50. Waikiki Shell. 6:30 p.m. bampproject.com

**SEPTEMBER 22
 KILABTITOS**

KilaboTitos pays tribute to the iconic hit movies, TV series, and songs of the 80s and 90s. Known for their unique blend of talent and showmanship the duo has captivated audiences around the world with their high-energy performances. Ogie Alcasid, The King of OPM (original Pilipino Music), a multi-awarded singer songwriter with more than 50 hit songs, double platinum albums, is one half of the duo. He has also starred in more than 60 films and TV projects. The other half of the duo, Ian Veneracion, is multi-talented showbiz royalty.

**SEPTEMBER 23
 REBEL SOULJAHZ**

Rebel Souljahz, the boys from Waipahu who began developing their signature sound in high school, celebrate the release of their 5th studio album at Aloha Stadium. The lead single "Herb, Whiskey & Reggae" has hit #1 chart spots on island reggae stations statewide since its release in March. \$39-\$149. 4:30 p.m. tmrevents.net.

**SEPTEMBER 23
 ALOHA FESTIVALS HO'OLAULE'A**



The 69th annual Waikiki Ho'olaulea is one of Hawaii's largest block parties. Thousands of people will converge onto Kalakaua Avenue for food, fun and entertainment, including Hawaiian music, hula, Hawaiian crafts, flower leis and plenty of food tents. The event will close all lanes of Kalakaua Avenue from Seaside to Ohua Ave. at 4 p.m. Makai lanes begin to shut down for setup beginning at 2 p.m. The street festival runs from 7 p.m. - 9:30 p.m. alohafestivals.com.

**SEPTEMBER 24
 KU'UIPO AT THE KAHALA**

Join "The Sweetheart of Hawaiian Music," Ku'uiipo Kumukahi, a highly acclaimed entertainer known for her mastery of the slack-key guitar and soothing vocals at the Plumeria Beach House. 6:30 - 8:30 p.m. kahalaresort.com.



**SEPTEMBER 24
 HONOLULU CENTURY RIDE**

Keep your eyes out for bicyclists all day as riders hot the road for a 100-mile race around the island. hbl.org.

SEPTEMBER 27 -28 • BLACK UHURU



Although Black Uhuru has gone through numerous lead singers and musicians. they have remained to be one of the most recognized and prolific reggae bands for over 50 years. Tickets: \$35-\$85.

Two shows nightly at 6:30 p.m. and 9 p.m. bluenotehawaii.com.

**SEPTEMBER 28
 MOON WALK AT WAIMEA**

Enter the Valley after dark for a stroll along the main pathway to the waterfall and learn about the Hawaiian phases of the moon. Special cultural tours of the authentic Hawaiian living site, Kauhale, are also available. \$10 admission. Entry begins at 8 p.m. waimeavalley.net.

SEPTEMBER 29-30 • MALI'O

Mali'o is a mythical woman renowned for entertaining with music and for her ability in love magic. This event is designed to bring the extraordinary wahine music makers together on one stage. Featuring multiple acclaimed Hawaiian music artists such as Karen Keawe'hawaii, Natalie Ai Kamaau and more. 6 p.m. hawaii theatre.com.

**SEPTEMBER 29-30
 ATSUKO OKATSUKA**

LA stand-up comedian Atsuko Okatsuka was named one of Variety's "10 Comics to Watch for 2022." Tickets: \$25-\$35. Two shows nightly at 6:30 p.m. and 9 p.m. bluenotehawaii.com.

**SEPTEMBER 29-30
 OH MY GODDESS!**

Don't miss the IONA Contemporary Dance Theatre's World Premiere of Oh My Goddess! (Ola Ko'u Akua Wahine) a ground breaking new work featuring contemporary representations of the four Hawaiian goddesses. IONA celebrates the artistic expressions of Hawaii's diverse cultures and communities. Tickets: \$55. 8 p.m. ohmygoddess.info.

**SEPTEMBER 30
 ALOHA FESTIVALS FLORAL PARADE**

The 75th annual floral parade has always been a fan favorite. Starting at Ala Moana Park the parade marches to Kapi'olani Park with a beautiful equestrian procession of many female and male pa'u riders, lovely floats filled with cascades of flowers, Hawaiian music, hula dancers and marching bands. 9 a.m. - noon. alohafestivals.com.

That's Entertainment

HOTELS

- 'ALOHLANI RESORT** 922-1233
 • **Daily** - Fish Feeding 10:30am & 2:30pm *O Bar*
 • **Daily** - Live Music 6:30-9:30pm *Swell Bar*
 • **Daily** - Light Monument Video Art Series 7-9pm *Swell Bar*
 • **SunWedSat** - Tank Talk 9am. *O Bar*

- HALEKULANI** 923-2311
 • **Daily** - Music & Hula 5:30-8:30pm *House Without a Key*
 • **TWThFS** - Live Jazz 8pm - 12am, *Lewers Lounge*
 • **Sun** - Sunday brunch w/Noly Paa on piano 9:30am - 2pm
HILTON HAWAIIAN VILLAGE 949-4321
 • **Fri** - Fireworks at 8pm
 • **SMTWThF** - Live entertainment, Tapa Bar. 7-10pm
 • **FriSat** - Live entertainment, Paradise Lounge. 7-10pm
 • **Sat** - Live entertainment, Tapa Bar. 1-10pm

- HYATT REGENCY WAIKIKI** 923-1234
 • **MWed** - Farmer's Market from 4-8pm
 • **Mon-Fri** - Cultural Programs at the Ho'okela Culture Center
 • **TTh** - Walking Tour thru parts of Waikiki at 10am
 • **TTh** - Live Hawaiian music at Pualeilani Atrium, 4-6 pm

- KAHALA HOTEL & RESORT** 739-8888
 • **Mon** - Free kapala stamping at The Veranda at 10am
 • **Tues** - Free lauhala weaving at The Veranda at 10am
 • **WFSat** - Free lei making at The Veranda at 10am
 • **Thurs** - Free hula dancing at The Veranda at 10am
 • **ThFSat** - Live entertainment at The Veranda from 6-8pm.
 • **FriSat** - Afternoon Tea at The Veranda at 2pm & 3:30pm
 • **Daily** - See the interactive dolphin programs every hour

- LUANA WAIKIKI HOTEL & SUITES** 955-6000
 • **MWF** - Enjoy live music and hula on the Mezzanine 5-6pm
MOANA SURFRIDER 922-3111
 • **Daily** - Live music at The Beach Bar, 4:30-6:30pm, 7-10pm
 • **WThFSSu** - David Swanson at Vintage1901, 6:30-10pm
 • **SatSun** - Afternoon Tea at the Veranda, 11:30am - 2:30pm

- OUTRIGGER WAIKIKI BEACH** 923-0711
 • **Daily** - Live music at Duke's 4-11:30pm, Sat/Sun from 10am
OUTRIGGER REEF WAIKIKI BEACH 923-3111
 • **Daily** - Live Hawaiian music at Kani Ka Pila Grille. 6-9pm
PRINCE WAIKIKI 956-1111
 • **ThFSSu** - Live music at 100 Sails from 6-8pm
 • **Sat** - DJ KK poolside from 2-5pm, Sun from 2:30-5:30pm

- SHERATON PRINCESS KAIULANI** 922-5811
 • **Daily** - Live music poolside 6-9pm. DJ from 3-6pm.
THE ROYAL HAWAIIAN 923-7311
 • **Daily** - Live Hawaiian music at the Mai Tai Bar. 11am-2pm
 • **TWFSu** - Live Hawaiian music at the Mai Tai Bar. 6-9pm
 • **MTh** - Live Hawaiian music at the Mai Tai Bar. 8-10pm

- TURTLE BAY RESORT** 293-6000
 • **Daily** - Live music at The Pointe Pool Bar, 4-7pm
 • **Daily** - Live music at Off the Lip, 7pm
 • **Daily** - The Stable at Turtle Bay offers a variety of experiences
WAIKIKI BEACH MARRIOTT RESORT 922-6611
 • **Daily** - Live music, Queensbreak Restaurant 5:30-8:30pm
 • **Daily** - Live music in the Lobby 6-9pm

FARMERS MARKETS

- WBW OPEN MARKET**
 • **Mon** - Set up on the Plaza at Waikiki Beach Walk. 4-8pm.
HYATT REGENCY FARMERS MARKET 225-4002
 • **MonWed** - Hyatt Regency 1st floor waterfall atrium 4-8pm
HAWAII FARM BUREAU MARKET 848-2074
 • **Wed** - Set up on the Blaisdell Concert Hall Lawn 4-7pm.
ALOHA HOME MARKET 225-4002
 • **Sun** - Kailua 340 Uluniu Street 9-2pm.
 • **Sun** - Ala Moana Mall Level 2 parking by Macys 9am-2pm.
HALE'IWA FARMERS MARKET 388-9696
 • **Thurs** - Located at Waimea Valley. 2-6pm
MAHIKU FARMERS MARKET 225-4002
 • **Thurs** - Bottom level International Market Place 4-8pm.

KCC FARMERS MARKET 848-2074

- **Sat** - Kapiolani Community College 7:30-11am

KAKA'AKO FARMERS MARKET 388-9696

- **Sat** - 919 Ala Moana Blvd & 210 Ward Avenue. 8am-12pm

PEARLRIDGE FARMERS MARKET 388-9696

- **Sat** - PearlrIDGE Mauka by Macy's. 8am-12pm

KAILUA FARM BUREAU MARKET 848-2074

- **Sun** - Kailua Town Center. 4-7pm

KAILUA TOWN FARMERS MARKET 388-9696

- **Sun** - Enchanted Lake Center by Kailua Cinema. 8am-12pm

ATTRACTIONS

FOSTER BOTANICAL GARDEN 768-7135

- **Daily** - Hawaii's oldest Botanical Garden in the midst of downtown open 9am - 4pm. \$5/\$1 keiki (kama'aina \$3)
- **Daily** - Free docent-led tours at 10:30am. Reservations rec.

HONOLULU ZOO 926-3191

- **Daily** - The Zoo is open from 10am - 4pm. Last Entry at 3pm. GA \$19 adult/\$11 keiki (kama'aina \$8/\$4).
- **Sat** - Explore the Zoo after the gates close 5:30-7:30pm.

KUHIO BEACH HULA SHOW 843-8002

- **TuesSat** - Free hula show 6:30 - 7:30pm Kuhio Hula Mound

WAIKIKI AQUARIUM 923-9741

- **Daily** - The Aquarium is open from 9am - 4:30pm. GA \$12 adult/\$5 kids (kama'aina \$8).
- **1st3rdTue** - Hawaiian Plant Tour. 1:30pm. Free w/admission

MUSEUMS

BISHOP MUSEUM 847-3511

- **Daily** - The 15-acre campus offers guests a chance to learn about the cultural and natural heritage of Hawai'i and the Pacific across three different exhibition buildings. Daily planetarium shows, a highly unique native Hawaiian botanical garden, and more. 9am-5pm.

HAWAII STATE ART MUSEUM 586-0900

- **Mon-Sat** - 'Museum Interpreters' on-site to provide visitors with basic information about the museum and artwork. Special evening events as listed below. Open 10am - 4pm.
- **1stFri** - Live entertainment and food vendors. 6-9pm
- **2ndFri** - "Vibe" Jazz performances & food vendors. 6-9pm
- **4thFri** - Hawaiian music night. 6-9pm
- **3rdSat** - Family Arts & Crafts Day 11am - 3pm

HONOLULU MUSEUM OF ART 532-8726

- **ThFSSu** - Tour & Talk Story 11am. Free with admission.
- **ThFSSu** - Highlights tour 2pm. Free with admission.
- **FSat** - HoMA Nights, open until 9pm. Free with admission.

HONOLULU FIRE MUSEUM 723-7167

- **3rdSat** - Free one-hour guided tours through various exhibits with a firefighter recounting HFDs history the 3rd Saturday of every month. 9am - 2pm on the hour. 620 South Street. Reservations required. Book online: fire.honolulu.gov then hit the submit request botton and click museum tours.

IOLANI PALACE 522-0832

- **TThS** - Audio tours available from 9am - 4pm
- **WTh** - Docent-led tours available from 9am - 4pm
- **EveryOtherWed** - He Mele Lahui Hawaii with Ku'uipo. 9am
- **Fri** - Royal Hawaiian Band. Free. 12-1pm
- **SunMon** - Museum Closed

LUCORAL MUSEUM 778-8189

- **Mon-Fri** - Free self-guided tours featuring local and global gemstones and a one-of-a-kind dinosaur egg. Visitors can also create their own one-of-a-kind jewelry. 10% off gift shop with mention of Oahu Concierge. 10am-5pm.

HAWAIIAN MISSION HOUSES 447-3910

- **TW** - Docents lead tours through the oldest existing frame house in the Islands. 11am, 12pm, 1pm and 2pm
- **ThFSat** - 11am, 12pm, 1pm, 2pm and 3pm tours
- **TWThFsa** - Gift shop open 10:30am - 4pm

PEARL HARBOR AVIATION MUSEUM 441-1000

- **Daily** - Vintage aircraft in battlefield hangars at Pearl Harbor, outdoor exhibits, flight simulators, and the Bob Hope: An American Treasure Exhibit. Shuttle & Tickets at USS Arizona Memorial Visitor Center or PearlHarborAviationMuseum.org.

SHOPPING CENTERS

ALA MOANA CENTERSTAGE 955-9517

- **Daily** - Hula Show, 5pm.
- **EveryOtherWed** - Royal Hawaiian Band. 11am.
- **Every2nd&LastFri** - Night Market Food Truck and Craft Fair corner of Atkinson Drive and Ala Moana Boulevard. 4-9pm.
- **Sat** - Local entertainment, 3pm.
- **Sun** - Keiki Hula Show, 1pm.

HALE'IWA STORE LOTS 203-5700

- **Sat** - Live Hawaiian entertainment from 2-4pm

INTERNATIONAL MARKET PLACE 921-0536

- **MWF** - Ceremonial sunset lighting of Lamaku Torch Tower
- **MWF** - Sunset Stories Hula Show, 7pm. *Queens Court*
- **Thurs** - Mahiku Farmers Market. 4-8pm. *Banyan Court*
- **1stTh** - Royal Hawaiian Band. Free. 11am. *Queens Court*
- **1stSaSu** - Island Crafters Market. 11am-5pm. *2nd level*
- **1st3rdSu** - Free Yoga Class. 10-10:45am. *Queens Court*

ROYAL HAWAIIAN CENTER 922-2299

- **Daily** - Heritage Room/Cultural Videos, *Helumoa Hale*
 - **Mon** - Free Ukelele Lessons 11pm, *Helumoa Hale*
 - **Tues** - Free Hula Lessons 11am, *Royal Grove*
 - **Wed** - Free Lauhala Weaving 11am, *Bldg A, Level 2*
 - **Thur** - Free Keiki Hula lessons 12pm, *Royal Grove*
 - **Fri** - Free Lei Making Class 12pm, *Bldg A, Level 2*
 - **Sat** - Hula Kahiko 5:30pm, *Royal Grove*
 - **TWThF** - Live Hawaiian Entertainment 5:30pm, *Royal Grove*
- WAIKIKI BEACH WALK waikikibeachwalk.com**
 • **Daily** - The Ukulele Store offers free lessons at 4:30pm
 • **Mon** - Open Market 4-8pm
 • **Tues** - Ku Ha'aoheo Hula Show. 4:30-6pm. *Plaza Stage*
 • **Wed** - Free feather lei making 11am, 2pm. *Royal Room*
 • **Sun** - Free hula lessons, 9-10am



BALI OCEANFRONT

- 20% off all Food & Beverage. Hilton Hawaiian Village, 941-2254.

GUAVA SMOKED

- 20% off food and drinks with hotel ID. 567 Kapahulu Ave, 2nd floor. Entrance/parking on Campbell Ave. 913-2100

HAWAIIAN MISSION HOUSES

- Free tour with hotel ID. 553 S. King Street. 447-3910.

IOLANI PALACE

- Free Admission with hotel ID. GA \$30. Kama'aina \$19.95. 364 S. King Street, Reservations Required. 522-0832.

MAUI DIVERS JEWELRY

- 35% discount off purchases made at the Design Center and 20% at all stores. Must show hotel ID for discount. 1520 Liona St. 946-2929.

RUTH'S CHRIS STEAK HOUSE

- Complimentary Appetizer valued up to \$22 with the purchase of 2 entrees. Waikiki Beach Walk, 440-7910. Restaurant Row, 599-3860.

You will be required to show Hotel ID or business card to claim offer. Magazine not needed. Simply mention offer when presenting hotel ID. Discounts available to Guest Service Professionals ONLY. Not valid with other promotions or special offers. A minimum 18% gratuity on original order requested for all food offers.

The Oahu Concierge is printed monthly and direct mailed FREE to all Oahu Concierge, Hospitality & Activity Professionals.
Subscriptions available to non-industry at \$25 per year.

C O N T A C T
Davis Media
Ph: (808) 225-8229

Website: www.OahuConcierge.com

ADDRESS & NAME CHANGES / ADDITIONS
We do not take changes via telephone. All changes to mailing list **must be submitted in writing** by the 16th of the month to make the next issue, email is preferred.

S T A F F

PUBLISHER & EDITOR **Pam Davis**
publisher@oahuconcierge.com

DESIGN
Coreiya Design

The Oahu Concierge
4348 Waialae Avenue, #185
Honolulu, Hawaii 96816

PRSR STD
US Postage Paid
TRADE MEDIA HUI

— GRAND LĀNAI —
RESTAURANT WEEK

— MONDAY, OCTOBER 2 - SUNDAY, OCTOBER 8 —

8 Spectacular Restaurants. 1 Delicious Week.



**INTERNATIONAL
MARKET PLACE**

2330 Kalākaua Avenue | www.GrandLanai.com